



2023 AUCTION





AUCTION

SALE INTERFACED WITH AUCTIONS PLUS



Laryn Gogel

0436 020 245

Steven Doecke

0427 817 323

Darryl Napper

0448 076 561

FRIDAY 24TH FEBRUARY 2023 | 10.00 AM

On Property: 2255 Naracoorte Road, Western Flat

Viewing from 8.30am.

Offering:

Limousin Bulls | Lots 1-20

Limousin Semen | Lots 21-23

Bulls can be viewed on AuctionsPlus



Stud Direction

Founding Limek Limousin Stud directors primary goal and focus is to select well muscled animals that have superior yield and carcass traits, it is with these traits we have developed a successful family business. In addition to the focus on Limousin breeding, we have an established bulk meat business that sells high Limousin content and full Limousin weaners directly to the consumer as half sides of beef. They appreciate the leaner nature of the cuts but love the high quality meat with the added benefit of knowing where it comes from. We likewise appreciate the Limousin's ability to get a calf up to the required weight quickly, with appropriate cover and with a far superior yield that leaves British breeds behind. This efficiency has been demonstrated year after year at the Adelaide Show, along with other Australian shows. The judges focus is to select high quality Limousin and Limousin content cattle for champion both on hoof and hook. Our Limousin has an efficiency that makes for an animal that hangs up better and returns its owner more dollars per animal.

That's why we want to share the Limousin advantage with you!

2255 Naracoorte Road, Bordertown SA

Ken 0428 582 010 | Josh 0497 906 362

✉ limeklimousin@gmail.com

f Limek Limousin Cattle Stud

SALE INFORMATION

Buyers' Registration and Sale Conditions

Buyers will be required to register with the selling agents prior to the commencement of the sale. They should display their registration number at the fall of the hammer when purchasing a sale lot. All sale lots are sold exclusive of GST.

Rebate

A rebate of 3% is offered to outside agents that introduce their buyers prior to the sale in writing as well as accompany them to the sale and settle on their behalf within 7 days. A 1% rebate is offered to outside agents that introduce their buyers prior to the sale in writing and settle on their behalf within 7 days.

Health and Structural Soundness

All Limek bulls have been;

- Physically inspected by a Veterinarian
- Semen tested
- Inspected for fitness to breed and structure by VPC cattle services
- Vaccinated twice with 7 in 1
- Vaccinated against Vibriosis
- Vaccinated against Pesti-Virus
- Tested negative to Pesti-Virus
- Included in the Zoetis Star (*Steps Taken Against Reproductive diseases*) program

Freight and Travel

We are willing to hold animals for a reasonable period, at the buyers risk, after they are purchased to enable buyers to coordinate the implementation of Limek bulls into their breeding program. Bulls must be insured by the purchaser during this time. We also offer free transportation for bulls & heifers bought in the Helmsman Auction within 200 km of Bordertown, SA and can arrange larger distances by negotiation.

Inspection

We understand that our clients are busy people and we are happy to organise times to see the bulls and the stud as requested. Please feel free to contact us at any time to arrange an individual inspection of the Limek bulls. We look forward to discussing how we can help you produce high yielding, well muscled, soft cattle to improve your bottom line!

Feeding method

At Limek our bulls are raised on a pasture based diet until the turn of the season when they are supplemented on hay and silage along with AIM nutritional products including year round herd nutritional advice. This enables the individual genetics of each animal to be fully realised and enables our clients to make a more informed decision on the bull they buy. By not making our bulls reliant on a highly supplemented diet they are able to settle in to the working conditions of our clients herds quickly and productively.

All EBV and actual data on the Limek Bulls featured in this catalogue is taken from 01 February 2022.



Safety in Bull Pens

The bulls have been selected strongly on docility and assessed independently ensuring they are quiet to handle under normal conditions. The stress and abnormal environment of sale day can upset some stock so we ask that you move quietly around the animals. If any assistance is needed to view the bulls, please ask one of team or a livestock agent. Please try to keep the number of people in the pens to a minimum at one time.

Visitors enter the viewing pens at their own risk and children must not enter the pens.

Sale Catalogue Disclaimer

All reasonable care has been taken by the Vendor to ensure the information provided in this catalogue is correct at the time of publication. However, neither the Vendor nor the Agent make no representations about the accuracy, reliability or the completeness of any information provided in the catalogue, and do not assume any responsibility for the use, or interpretation of the information in this catalogue.

Safety Disclaimer

The owners, employees and representatives of Limek accept no liability for any accidents that may occur at the Limek sale or while on the property.

Although any such occurrences are rare, any person attending the Limek sale or associated events does so at their own risk.

EBV EXPLANATION

An animal's breeding value is its genetic merit, half of which will be passed on to its progeny in DNA. While we will never know the exact breeding value, it is possible using both pedigree to make good estimates. These are based on an animal's own performance e.g. weights, measured sizes etc and the performance of known relatives. The factors measured give us an animal's Estimated Breeding Values (EBVs).

Important points to note when using EBVs

- The best way to use EBV is to compare each animal to the breed average EBV shown at the bottom of each EBV table in this catalogue.
- Considering an animal's EBV in respect to the Group Breedplan Percentiles will identify where the animal ranks in that specific trait for the breed. In this catalogue:
 - EBV's in the **top 10% of the breed are highlighted in a dark shade of orange** and
 - EBV's in the **top 30% of the breed are highlighted in a light shade of orange** in each EBV table for your easy reference.
- The accuracy percentage indicates how likely the EBV is to change when more data is added. The higher the accuracy the less likely the EBV may change as more data on the respective animal is collected.
- EBV can only be compared within each breed.

Interpreting Calving Ease DIR EBVs (CE Dir)

This EBV estimates the genetic differences between animals in the ability of their calves to be delivered from 2 year old heifers without assistance. The more positive the calving ease EBV, the easier calving ability the progeny should have.

Interpreting Gestation Length EBVs (GL)

The GL EBV (days) is based on AI records. Lower (negative) GL EBV indicate shorter gestation length and generally easier calving.

Interpreting Birth Weight EBVs (BW)

The Birth Weight EBV (kg) is based on the measured birth weight of animals, adjusted for dam age. The lower the value, the lighter the calf at birth and hence a lower likelihood of difficult birth occurring. This is particularly important when selecting sires for use over heifers.

Interpreting Milk EBVs (Milk)

The Milk EBV (kg) is an estimate of an animal's milking ability. For sires, this EBV is indicative of their daughter's milking ability. A higher value indicates a better milking ability.

Interpreting 200 Day Growth EBVs (200 WT)

The 200-Day EBV (kg) is calculated from the weight of animals taken between 80 and 300 days of age. This EBV is the best single estimate of an animal's genetic merit for growth to early ages and **weaner weight**. A higher value indicates better growth in this EBV.

Interpreting 400 Day Weight EBVs (400 WT)

The 400-Day Weight EBV (kg) is calculated from the weight of progeny taken between 301 and 500 days of age, adjusted to 400 days and for dam age. This EBV is the best single estimate of an animal's genetic merit for **yearling weight**. A higher value indicates better growth in this EBV.

Interpreting 600 Day Weight EBV (600 WT)

The 600-Day Weight EBV (kg) is calculated from the weight of progeny taken between 501 and 700 days of age, adjusted to 600 days and for dam age. This EBV is the best single estimate of an animal's genetic merit for growth *beyond yearling age*. A higher value indicates better growth in this EBV.

Interpreting Mature Weight EBV (Mat)

The Mature Weight EBV (kg) is calculated from the weight of dams at calf weaning and adjusted for dam age. A higher value indicates a heavier weight at a mature age in this EBV.

Interpreting Scrotal Size EBV (SS)

The SS EBV (cm) is an indicator of male fertility in regards to semen quality and quantity. Scrotal circumference measurements are taken between 300 and 500 days and adjusted to 400 days of age. This EBV is an indicator of male fertility, semen quality and quantity. Higher (positive) EBVs indicate higher fertility. A higher SS value is also positively associated with increased female fertility.

Carcase Weight EBV (CW)

The Carcase Weight EBV is an indicator of the genetic differences in carcase weight at the standard age of 650 days.

Eye Muscle Area EBV (EMA)

The EMA EBV is calculated in square centimetres. It estimates the genetic differences in eye muscle area at the 12/13th rib site of a 300 kg carcase. More positive EBVs indicate better muscling on animals.

Rib Fat and Rump Fat EBV

Both of these EBV are measured in millimetres calculated from measurements of subcutaneous fat depth at 12/13th rib site and the P8 rump site via ultrasound. Sires with low or negative fat EBV are expected to produce leaner progeny at any particular weight than sire's with higher EBV.

Intramuscular fat EBV (IMF)

Intramuscular fat is an estimate of the genetic difference in the percentage of intra muscular fat (marbling) at the 12/13th rib site in a 300 kg carcase. Depending on target markets, larger more positive values are more favorable.

Interpreting Docility EBV (Doc)

Docility EBV are estimates of genetic differences between animals in temperament. Docility EBV are expressed as differences in the percentage of progeny that will be scored with acceptable temperament ie. either 'docile' or 'restless'. These are calculated from temperament scores recorded on animals using a crush test when the animals are weaned. The higher the EBV the more docile the animals progeny can be expected to be.



LIMEK UPDATE

Welcome to LIMEK Limousin

LIMEK Limousin is run by Ken Modra, his son's Josh and Nathaniel, Josh's wife Asha and their son Charlie. We are located in the South East of South Australia, situated 22km out of Bordertown. LIMEK Limousin run 90 head of cattle on 1000 acres. Our team strongly believe that weight gain and structural elements are the two most important factors when selecting for our Limousin stud. We are thrilled with the even line up we have produced this year, especially their weight gain and shine, on just a silage and paddock feed diet. We have roughly a 50/50 split of apricot and black bulls, providing ample choice for our potential buyers.

While we are all still coming to terms with the loss of Enid, founding member, wife, mother and grandmother. The family is working hard to continue running this stud in a way that would make her proud. Charlie is now a busy two year old who loves helping his Pop with all things farming.

In 2022, we had three animals attend the Royal Adelaide Show and one attend the Mount Gambier Show all receiving fantastic results. At the Adelaide Show we received 2nd & 3rd placing on hoof, followed with 1st, 2nd and 4th placing on hook. In addition, one steer received Reserve Champion Pure Export carcass, which is an amazing achievement. At Mt Gambier Show one of our steer received 1st in his class & Champion carcass; its great to see how well genetics can perform in different enviroments, and that well bred Limousins still have all the correct meat qualities to be to win in carcass competitions against all the other breeds. Special thanks to Bordertown, Naracoorte & Faith Schools for representing and assisting Limek.

Thank you to our sale agents, Elders, for their assistance and support again this year. We are once again having an auction sale this year, however will change from a Helmsman Auction to a standard Auction. We believe this will allow an adequate opportunity for our clients to secure their desired genetics. Our bull line up is incredibly even, ensuring you will have a range of bulls to choose from to suit your budget, breeding heard and market aspirations.

All the best for 2023!

The Limek Team

*Ken, Josh, Asha, Charlie,
and Nathaniel*



LIMEK BULLS



Lot 1

Limek Super KE (P, A, AA)

LEKPS2

DOB 14 April 21 **Age** 22 months **Horned status** Hetero Polled (by DNA) **Weight** 776 kg

S MORRISVALE NULLABOR (PP, A, AA)

D LIMEK KRYSTAL K (P, A, U)



BUYER

PRICE \$

	CE Dir	GL	BW	Milk	200 Wt.	400 Wt.	600 Wt.	Mat	SS	CW	EMA	Rib Fat	Rump Fat	IMF	Doc
EBV	+1.5	-3.3	+2.1	+8	+28	+54	+63	+55	+1.6	+44	+3.3	-0.4	-0.7	-0.3	+59
	43%	52%	70%	44%	67%	68%	65%	54%	69%	50%	29%	33%	32%	29%	61%
Breed Avg	+0.5	-2.1	+1.7	+7	+21	+35	+49	+49	+1.1	+31	+1.8	0.0	-0.1	0.0	+43

Traits Observed: GL, CE, BWT, 200 WT, 400 WT, SS, DOC

Limek Super – A pick of the bunch that was identified internally as a Limek herd second sire. This beast is an early doer that sits in the top 10% for 200- and 400-day weight. ‘Super’ will offer great early growth potential and robustness to all he sires.

Lot 2

Limek Superior J (P, B, AA)

LEKPS5

DOB 18 April 21 **Age** 22 months **Horned status** Hetero Polled (by DNA) **Weight** 718 kg

S BALAMORE ENDEAVOR 701E (PP, BB, AA)

D LIMEK KOUGAR J (P, A, U)



BUYER

PRICE \$

	CE Dir	GL	BW	Milk	200 Wt.	400 Wt.	600 Wt.	Mat	SS	CW	EMA	Rib Fat	Rump Fat	IMF	Doc
EBV	+7.4	-7.6	-0.5	+8	+21	+35	+52	+65	+1.2	+39	+3.3	-0.6	-0.8	-0.1	+51
	43%	73%	71%	43%	67%	68%	65%	53%	70%	50%	33%	37%	36%	30%	61%
Breed Avg	+0.5	-2.1	+1.7	+7	+21	+35	+49	+49	+1.1	+31	+1.8	0.0	-0.1	0.0	+43

Traits Observed: CE, BWT, 200 WT, 400 WT, SS, DOC

Limek Superior - Aptly named, this beast sits at the top of the lots on offer. He is a carving ease specialist, with birth weight and gestational lengths sitting in the top 10% of the breed. Selectively used internally by the stud for spring mating as an outcross sire, his sire potential was identified early. Coming from a Dam with a proven track record of productive offspring, this bull should be at the forefront of your purchasing options.

Lot 3

Limek Sim Bug KE (P, A, U)

LEKPS10

DOB 25 APRIL 21

Age 22 months

Horned status Polled

Weight 758 kg

S RPY PAYNES TANK 12G ET (PP, R, AA)

D MORRISVALE LADYBUG (P, A, U)



BUYER

PRICE \$

	CE Dir	GL	BW	Milk	200 Wt.	400 Wt.	600 Wt.	Mat	SS	CW	EMA	Rib Fat	Rump Fat	IMF	Doc
EBV	-1.2	-2.1	+1.8	+8	+24	+40	+57	+57	+1.7	+35	-	-	-	-	+61
	31%	69%	65%	35%	60%	63%	57%	41%	66%	41%	-	-	-	-	52%
Breed Avg	+0.5	-2.1	+1.7	+7	+21	+35	+49	+49	+1.1	+31	+1.8	0.0	-0.1	0.0	+43

Traits Observed: CE, BWT, 200 WT, 400 WT, SS, DOC

Limek Simbug – showing a thick, well-muscled eye and appealing stature that carries the best scrotal size of the lots on offer. His high fertility will offer great security to any breeding operation.

Lot 4

Limek Son J (P, A, U)

LEKPS28

DOB 16 May 21

Age 21 months

Horned status Polled

Weight 794 kg

S IVY'S BUBBA WATSON HTZ24B (PP, A, AA)

D LIMEK POLLY J (P, A, U)



BUYER

PRICE \$

	CE Dir	GL	BW	Milk	200 Wt.	400 Wt.	600 Wt.	Mat	SS	CW	EMA	Rib Fat	Rump Fat	IMF	Doc
EBV	-1.5	-4.6	+3.2	+10	+36	+54	+82	+87	+1.2	+45	+2.0	-0.1	-0.1	-0.1	+24
	46%	71%	70%	48%	67%	68%	65%	54%	70%	51%	34%	39%	38%	34%	60%
Breed Avg	+0.5	-2.1	+1.7	+7	+21	+35	+49	+49	+1.1	+31	+1.8	0.0	-0.1	0.0	+43

Traits Observed: CE, GL, BWT, 200 WT, 400 WT, SS, DOC

Limek Son – The progeny of highly respected Canadian Sire, this bull offers an all-round package. Sitting in the top 1% for 200 and 600 day weight and top 5% for 400 day weight, 'Son' shows the potential to sire healthy young offspring that will be ahead of the game.

Lot 5

Limek Stefen KE (P, B, U)

LEKPS31

DOB 20 May 21

Age 21 months

Horned status Polled

Weight 712 kg

S LIMEK QUILL KE (P, B, AA)

D LIMEK NILLETA (P, A, U)



BUYER

PRICE \$

	CE Dir	GL	BW	Milk	200 Wt.	400 Wt.	600 Wt.	Mat	SS	CW	EMA	Rib Fat	Rump Fat	IMF	Doc
EBV	+2.5	-3.1	+0.6	+9	+21	+30	+39	+33	+1.7	+29	-	-	-	-	+59
	35%	50%	66%	38%	62%	63%	61%	50%	69%	45%	-	-	-	-	49%
Breed Avg	+0.5	-2.1	+1.7	+7	+21	+35	+49	+49	+1.1	+31	+1.8	0.0	-0.1	0.0	+43

Traits Observed: GL, CE, BWT, 200 WT, 400 WT, SS, DOC

Limek Stefen – a well presented, visually appealing, stylish black bull. He offers low birth weight traits and calving ease to those whom he is crossed with. A great offering for those seeking a stylish and hassle-free sire.

Lot 6

Limek Stud KE (P, B, AA)

LEKPS32

DOB 21 May 21

Age 21 months

Horned status Polled

Weight 718 kg

S MORRISVALE NULLABOR (PP, A, AA)

D LIMEK NEETA KE (PB, AA)



BUYER

PRICE \$

	CE Dir	GL	BW	Milk	200 Wt.	400 Wt.	600 Wt.	Mat	SS	CW	EMA	Rib Fat	Rump Fat	IMF	Doc
EBV	+3.7	-2.3	+1.3	+11	+23	+41	+52	+51	+0.8	+37	+2.7	+0.1	0.0	-	+47
	40%	46%	62%	40%	62%	63%	59%	47%	69%	47%	26%	29%	28%	-	58%
Breed Avg	+0.5	-2.1	+1.7	+7	+21	+35	+49	+49	+1.1	+31	+1.8	0.0	-0.1	0.0	+43

Traits Observed: CE, BWT, 200 WT, 400 WT, SS, DOC

Limek Stud – a well presented black bull that is sired by Limek stud icon Nullabor. A bull presenting a diverse package with above average traits in multiple categories. A great broad range offering to those looking to tick many boxes in their program.

Lot 7

Limek Scotch KE (P, B, U)

LEKPS34

DOB 24 May 21

Age 21 months

Horned status Polled

Weight 718 kg

S LIMEK NIFTY KE (PP, BB, AA)

D LIMEK NAOMI KE (P, A, U)



BUYER

PRICE \$

	CE Dir	GL	BW	Milk	200 Wt.	400 Wt.	600 Wt.	Mat	SS	CW	EMA	Rib Fat	Rump Fat	IMF	Doc
EBV	-2.8	-2.1	+2.9	+10	+29	+47	+60	+52	+1.1	+36	-	+0.2	+0.3	-	+51
	34%	69%	66%	39%	63%	64%	60%	50%	69%	45%	-	27%	26%	-	5%
Breed Avg	+0.5	-2.1	+1.7	+7	+21	+35	+49	+49	+1.1	+31	+1.3	0.0	-0.1	0.0	+43

Traits Observed: GL, CE, BWT, 200 WT, 400 WT, SS, DOC

Limek Scotch – a growing machine that has a calm and gentle nature. ‘Scotch’ will add depth to any buyer’s herd. He’s one to have a second look at.

Lot 8

Limek Space N (P, A, U)

LEKPS36

DOB 26 May 21

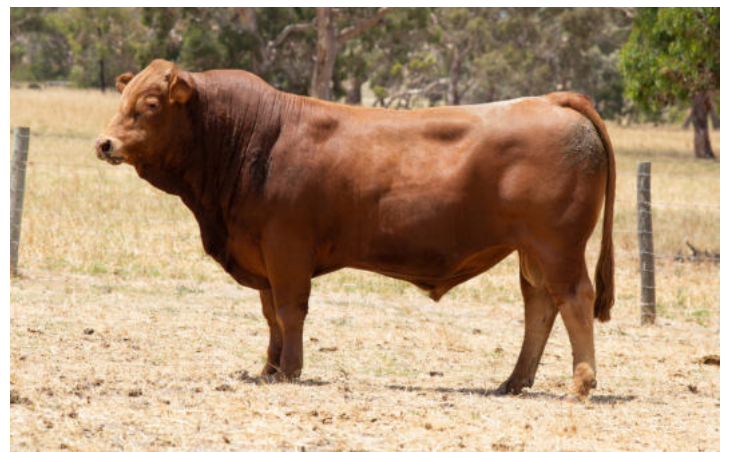
Age 21 months

Horned status Polled

Weight 762 kg

S WULFS YONKERS K682Y (PP, B, AA)

D LIMEK NOVA N (P, A, U)



BUYER

PRICE \$

	CE Dir	GL	BW	Milk	200 Wt.	400 Wt.	600 Wt.	Mat	SS	CW	EMA	Rib Fat	Rump Fat	IMF	Doc
EBV	-1.9	-0.7	+2.6	+12	+27	+45	+66	+65	+0.5	+38	+2.0	+0.4	+0.5	+0.3	+45
	44%	72%	70%	50%	66%	68%	65%	55%	70%	51%	36%	39%	38%	34%	59%
Breed Avg	+0.5	-2.1	+1.7	+7	+21	+35	+49	+49	+1.1	+31	+1.8	0.0	-0.1	0.0	+43

Traits Observed: GL, CE, BWT, 200 WT, DOC

Limek Space - an amazing specimen that has solid attributes, he shows a good collection of data and will bring excellent performance to your herd, ‘Space’ takes things into the next universe!

Lot 9

Limek Sanda KE (P, A, AA)

LEKPS38

DOB 26 May 21

Age 21 months

Horned status Polled

Weight 696 kg

S MORRISVALE NULLABOR (PP, A, AA)

D LIMEK QANDO KE (P, A, AA)



BUYER

PRICE \$

	CE Dir	GL	BW	Milk	200 Wt.	400 Wt.	600 Wt.	Mat	SS	CW	EMA	Rib Fat	Rump Fat	IMF	Doc
EBV	+4.0	-3.4	+1.3	+13	+26	+46	+56	+51	+0.9	+42	-	-0.2	-0.3	-	+50
	39%	45%	89%	36%	64%	66%	63%	49%	68%	47%	-	27%	26%	-	56%
Breed Avg	+0.5	-2.1	+1.7	+7	+21	+35	+49	+49	+1.1	+31	+30	0.0	-0.1	0.0	+43

Traits Observed: GL, CE, BWT, 200 WT, DOC

Limek Sanda – visually striking, this fella is a standout in the yards. A curve bender bull that offers carving ease with great early growth. One not to be missed by those seeking genuine and prominent characteristics.

Lot 10

Limek Shandy KE (P, B, U)

LEKPS44

DOB 9 June 21

Age 20 months

Horned status Polled

Weight 714 kg

S LIMEK QUILL KE (P, B, AA)

D LIMEK PELTA KA (P, A, U)



BUYER

PRICE \$

	CE Dir	GL	BW	Milk	200 Wt.	400 Wt.	600 Wt.	Mat	SS	CW	EMA	Rib Fat	Rump Fat	IMF	Doc
EBV	+2.1	-3.7	+0.8	+12	+24	+38	+49	+48	+1.3	+37	-	-0.1	-0.2	-	+63
	35%	48%	65%	36%	61%	64%	60%	50%	69%	45%	-	25%	25%	-	47%
Breed Avg	+0.5	-2.1	+1.7	+7	+21	+35	+49	+49	+1.1	+31	+1.8	0.0	-0.1	0.0	+43

Traits Observed: GL, CE, BWT, 200 WT, DOC

Limek Shandy – another offering from prominent Limek stud bull Quill and Matron Black Desire, Shandy presents strongly with great scrotal size. Shandy will look to add punch to your calf drop and overall balance to your program.

Lot 11

Limek Smiley J (P, A, AA)

LEKPS46

DOB 13 June 21

Age 21 months

Horned status Polled

Weight 692 kg

S MORRISVALE NULLABOR (PP, A, AA)

D LIMEK LIKELY J (P, A, AA)



BUYER

PRICE \$

	CE Dir	GL	BW	Milk	200 Wt.	400 Wt.	600 Wt.	Mat	SS	CW	EMA	Rib Fat	Rump Fat	IMF	Doc
EBV	+3.8	-2.5	+1.1	+10	+22	+34	+41	+27	+0.9	+31	+2.4	-0.2	-0.3	-0.2	+62
	40%	48%	66%	40%	60%	58%	59%	50%	47%	43%	25%	32%	31%	26%	58%
Breed Avg	+0.5	-2.1	+1.7	+7	+21	+35	+49	+49	+1.1	+31	+1.8	0.0	-0.1	0.0	+43

Traits Observed: GL, CE, BWT, 200 WT, DOC

Limek Smiley – A good natured, easily handled bull, he's our best shaped offering. A powerhouse at weaning, this bull matured early with superb vigour and robustness. An appealing, well-rounded offering that should be considered by all.

Lot 12

Limek S Magic J (P, B, U)

LEKPS56

DOB 4 Sept 21

Age 17 months

Horned status Polled

Weight 724 kg

S MORRISVALE NULLABOR (PP, A, AA)

D LIMEK KMAGIC J (P, B, U)



BUYER

PRICE \$

	CE Dir	GL	BW	Milk	200 Wt.	400 Wt.	600 Wt.	Mat	SS	CW	EMA	Rib Fat	Rump Fat	IMF	Doc
EBV	-1.3	-2.7	+3.9	+14	+38	+61	+79	+64	+1.6	+47	+3.3	-0.2	-0.3	-0.1	+55
	42%	54%	70%	44%	66%	67%	64%	53%	69%	49%	26%	31%	30%	26%	59%
Breed Avg	+0.5	-2.1	+1.7	+7	+21	+35	+49	+49	+1.1	+31	+1.8	0.0	-0.1	0.0	+43

Traits Observed: CE, BWT, 200 WT, DOC

Limek S Magic – A black growth machine, this bull sits in the top 1% for 200, 400 and 600 day weights. A great potential to sire robust, early does that will stand out in paddock and pen. This fella was the lead growth bull in the spring drop offering and is a standout to those looking for early size and structure.

*not recommended to put over heifers due to his high birth weight

Lot 13

Limek Sigmund N (P, A, U)

LEKPS57

DOB 5 Sept 21

Age 17 months

Horned status Polled

Weight 624 kg

S MORRISVALE NULLABOR (PP, A, AA)

D LIMEK MAJESTY N (P, A, U)



BUYER

PRICE \$

	CE Dir	GL	BW	Milk	200 Wt.	400 Wt.	600 Wt.	Mat	SS	CW	EMA	Rib Fat	Rump Fat	IMF	Doc
EBV	+5.2	-3.8	+0.5	+11	+22	+36	+41	+38	+0.5	+35	-	0.0	-0.2	-	+60
	40%	48%	70%	42%	66%	66%	64%	53%	69%	48%	-	26%	25%	-	58%
Breed Avg	+0.5	-2.1	+1.7	+7	+21	+35	+49	+49	+1.1	+31	+1.8	0.0	-0.1	0.0	+43

Traits Observed: GL, CE, BWT, 200 WT, DOC

Limek Sigmund - a well presented bull which has a low birthweight and great docility. Sigmund mean victory in German and he too, will bring victory to your herd

Lot 14

Limek Shaun KE (P, B, U)

LEKPS68

DOB 15 Sept 21

Age 17 months

Horned status Polled

Weight 648 kg

S FLEMINGTON QUALITY CONTROL Q41 (P, A, AA)

D LIMEK MARIA K (P, B, U)



BUYER

PRICE \$

	CE Dir	GL	BW	Milk	200 Wt.	400 Wt.	600 Wt.	Mat	SS	CW	EMA	Rib Fat	Rump Fat	IMF	Doc
EBV	+3.8	-3.3	+1.1	+7	+14	+32	+57	+29	+0.9	+29	+2.6	0.0	0.0	-0.1	+56
	37%	54%	66%	39%	62%	64%	60%	49%	66%	45%	28%	35%	34%	29%	52%
Breed Avg	+0.5	-2.1	+1.7	+7	+21	+35	+49	+49	+1.1	+31	+1.8	0.0	-0.1	0.0	+43

Traits Observed: GL, CE, BWT, 200 WT, DOC

Limek Shaun – a good black heifer bull that offers calving ease and versatility. A great value bull that can be successfully integrated into any breeding program. One that should appeal to many buyers.

Lot 15

Limek Scott KE (P, A, U)

LEKPS71

DOB 16 Sept 21

Age 17 months

Horned status Polled

Weight 642 kg

S MORRISVALE NULLABOR (PP, A, AA)

D LIMEK LARISSA K (P, A, U)



BUYER

PRICE \$

	CE Dir	GL	BW	Milk	200 Wt.	400 Wt.	600 Wt.	Mat	SS	CW	EMA	Rib Fat	Rump Fat	IMF	Doc
EBV	+5.7	-4.4	+0.4	+10	+21	+35	+40	+35	+0.7	+34	-	-0.1	-0.4	-	+53
	40%	46%	70%	42%	66%	67%	64%	52%	69%	48%	-	26%	25%	-	59%
Breed Avg	+0.5	-2.1	+1.7	+7	+21	+35	+49	+49	+1.1	+31	+1.8	0.0	-0.1	0.0	+43

Traits Observed: CE, BWT, 200 WT, DOC

Limek Scott – another great opportunity for those looking to add a heifer bull to their herd. A beast that presents a well-rounded prospect to those seeking calving ease and early doing.

Lot 16

Limek Seth J (P, A, U)

LEKPS74

DOB 18 Sept 21

Age 17 months

Horned status Polled

Weight 606 kg

S FLEMINGTON QUALITY COCONTROL Q41 (P, A, AA)

D LIMEK PERFORMANCE J (P, A, U)



BUYER

PRICE \$

	CE Dir	GL	BW	Milk	200 Wt.	400 Wt.	600 Wt.	Mat	SS	CW	EMA	Rib Fat	Rump Fat	IMF	Doc
EBV	+5.4	-6.3	-0.7	+8	+21	+36	+44	+46	+1.4	+39	+3.2	-0.4	-0.5	-0.1	+53
	35%	54%	66%	36%	61%	63%	59%	44%	66%	43%	25%	29%	28%	25%	51%
Breed Avg	+0.5	-2.1	+1.7	+7	+21	+35	+49	+49	+1.1	+31	+1.8	0.0	-0.1	0.0	+43

Traits Observed: GL, CE, BWT, 200 WT, DOC

Limek Seth – a striking bull that presents well in the yards and paddock. Seth is well structured, has a strong attitude and great potential to be long term contributor to any well-rounded herd.

Lot 17

Limek Sash KE (P, A, U)

LEKPS80

DOB 26 Sept 21

Age 17 months

Horned status Polled

Weight 652 kg

S MORRISVALE NULLABOR (PP, A, AA)

D LIMEK QINDLE KE (P, A, U)



BUYER

PRICE \$

	CE Dir	GL	BW	Milk	200 Wt.	400 Wt.	600 Wt.	Mat	SS	CW	EMA	Rib Fat	Rump Fat	IMF	Doc
EBV	+1.4	-2.6	+1.4	+13	+35	+58	+74	+61	+1.7	+45	-	-0.3	-0.5	-	+53
	38%	47%	67%	34%	62%	62%	60%	46%	62%	44%	-	26%	25%	-	55%
Breed Avg	+0.5	-2.1	+1.7	+7	+21	+35	+49	+49	+1.1	+31	+1.8	0.0	-0.1	0.0	+43

Traits Observed: GL, CE, BWT, 200 WT, DOC

Limek Sash – a growth machine that sits in the top 1% for 200 and 400 day weight, This bloke is a 'hit the ground' strong bull. For those looking for size, depth and thickness they need no look no further than Limek 'Sash'. A great opportunity for buyers.

Lot 18

Limek Sulla KE (P, B, AA)

LEKPS84

DOB 4 October 21

Age 16 months

Horned status Polled

Weight 572 kg

S MORRISVALE NULLABOR (PP, A, AA)

D GRAFFOE BLACK DESIRE (P, B, AA)



BUYER

PRICE \$

	CE Dir	GL	BW	Milk	200 Wt.	400 Wt.	600 Wt.	Mat	SS	CW	EMA	Rib Fat	Rump Fat	IMF	Doc
EBV	+4.9	-2.9	+1.0	+11	+20	+34	+44	+48	+0.6	+34	+1.9	-0.3	-0.6	-	+18
	43%	51%	70%	48%	66%	66%	64%	51%	66%	49%	26%	29%	29%	-	63%
Breed Avg	+0.5	-2.1	+1.7	+7	+21	+35	+49	+49	+1.1	+31	+1.8	0.0	-0.1	0.0	+43

Traits Observed: GL, CE, BWT, 200 WT, DOC

Limek Sulla – a strong looking, black heifer bull that is a great addition to your herd. He is packed with potential and is looking for an opportunity to be unlocked.

Lot 19

Limek Samson KE (P, B, AA)

LEKPS87

DOB 12 October 21 Age 16 months

Horned status Polled

Weight 572 kg

S FLEMINGTON QUALITY CONTROL Q41 (P, A, AA)

D LIMEK QEIDI KE (P, B, AA)

BUYER

PRICE \$



	CE Dir	GL	BW	Milk	200 Wt.	400 Wt.	600 Wt.	Mat	SS	CW	EMA	Rib Fat	Rump Fat	IMF	Doc
EBV	+5.8	-3.3	-0.4	+8	+16	+31	+41	+48	+1.1	+34	-	+0.1	+0.1	-	-
	34%	45%	62%	32%	54%	51%	52%	38%	38%	34%	-	27%	26%	-	-
Breed Avg	+0.5	-2.1	+1.7	+7	+21	+35	+49	+49	+1.1	+31	+1.8	0.0	-0.1	0.0	+43

Traits Observed: GL, CE, BWT, 200 WT, DOC

Limek Samson – a well presented black heifer bull offering. A great value opportunity that could present a savvy choice to an astute buyer.

Lot 20

Limek Sergio N (P, A, U)

LEKPS98

DOB 29 October 21 Age 16 months

Horned status Polled

Weight 536 kg

S FLEMINGTON QUALITY CONTROL Q41 (P, A, AA)

D LIMEK QUEEN N (P, A, U)

BUYER

PRICE \$



	CE Dir	GL	BW	Milk	200 Wt.	400 Wt.	600 Wt.	Mat	SS	CW	EMA	Rib Fat	Rump Fat	IMF	Doc
EBV	+3.0	-2.6	+0.6	+7	+19	+35	+46	+48	+0.9	+35	-	-0.2	-0.4	0.0	-
	33%	52%	62%	31%	54%	52%	52%	39%	38%	34%	-	29%	28%	25%	-
Breed Avg	+0.5	-2.1	+1.7	+7	+21	+35	+49	+49	+1.1	+31	+1.8	0.0	-0.1	0.0	+43

Traits Observed: GL, CE, BWT, 200 WT, DOC

Limek Sergio - a great way to finish this years line bull line up, He shows great potential to increase your herds bottom line.

LIMEK SEMEN

Lot 21 Limek Meat Machine J (HP)(B)(PF) LEKPM825

DOB 01 May 16

Grade Pure

Horned status Homo Polled

Colour Black

S TMF WESTWOOD 505W (HP*)(PN)(AA)

D MANDAYEN JILL G1874 (P)(B)(PF)

BUYER _____

PRICE \$ _____

Price is per straw for 10 straws of semen - stored at NHD Murray Bridge.



	CE Dir	GL	BW	Milk	200 Wt.	400 Wt.	600 Wt.	Mat	SS	CW	EMA	Rib Fat	Rump Fat	IMF	Doc
EBV	+7.3	-4.5	-0.7	+16	+28	+45	+53	+49	+1.3	+55	+4.4	-0.5	-0.6	-0.2	+74
	69%	86%	87%	16%	84%	83%	82%	49%	79%	55%	44%	50%	48%	43%	84%
Breed Avg	+0.5	-2.1	+1.7	+7	+21	+35	+49	+449	+1.1	+31	+1.8	0.0	-0.1	0.0	+43

Traits Observed: GL, CE, BWT, 200 WT, 400 WT, 600WT, SS, FAT, IMF, EMA, DOC - 35 PROGENY

Meat Machine was the top priced Bull in 2018 who continues to produce moderate birth weight calves which grow quickly with amazing length. Meat Machines docility is in the top 1% of the breed along with his birth weight and calving ease EBV's. Look no further for a great heifer or cow bull!

Lot 22 Limek Mack J (HP*)(R)(PN)(AA) LEKPM805

DOB 13 Apr 16

Grade Pure

Horned status Homo Polled

Colour Red

S ROMN TOW TRUCK 111T (HP*)(R)(PN)(AA)

D LIMEK KOUGAR J (P)(PU)

BUYER _____

PRICE \$ _____

Price is per straw for 10 straws of semen - stored at NHD Murray Bridge.



	CE Dir	GL	BW	Milk	200 Wt.	400 Wt.	600 Wt.	Mat	SS	CW	EMA	Rib Fat	Rump Fat	IMF	Doc
EBV	+7.5	-6.4	+0.9	+15	+29	+60	+86	+92	+1.2	+60	+4.0	-0.8	-1.0	-0.2	+48
	70%	76%	89%	63%	86%	84%	83%	72%	81%	68%	51%	58%	58%	49%	88%
Breed Avg	+0.5	-2.1	+1.7	+7	+21	+35	+49	+49	+1.1	+31	+1.8	0.0	-0.1	0.0	+43

Traits Observed: GL, CE, BWT, 200 WT, 400 WT, 600WT, SS, FAT, IMF, EMA, DOC - 60 PROGENY

Limek Mack has been hard at work in the Limek sire battery after we decided not to part with him in 2018. We continue to be impressed as much by his style and growth as we are with his EBVs. His progeny are displaying great growth continually. A well measured powerhouse!

Lot 23**Morrisvale Nullabor (HP*)(PF)(AA)****MRJPN4**

DOB 26 Feb 17

Grade Pure

Horned status Homo Polled

Colour Apricot

S MORRISVALE LUMBERJACK (HP*)(PN)(AA)**D MORRISVALE KRYSTAL MIST (P)(R)(PU)**

BUYER

PRICE \$

Price is per straw for 10 straws of semen - stored at NHD Murray Bridge.



	CE Dir	GL	BW	Milk	200 Wt.	400 Wt.	600 Wt.	Mat	SS	CW	EMA	Rib Fat	Rump Fat	IMF	Doc
EBV	+3.9	-3.3	+2.1	+13	+29	+47	+55	+38	+0.7	+40	+3.4	-0.2	-0.4	-0.2	+53
	63%	67%	90%	52%	85%	83%	82%	65%	73%	63%	34%	40%	39%	34%	87%
Breed Avg	+0.5	-2.1	+1.7	+7	+21	+32	+49	+49	+1.1	+31	+1.8	0.0	-0.12	0.0	+43

Traits Observed: CE, BWT, 200 WT, 400 WT, 600 WT, DOC - 67 PROGENY

Nullabor made the trip across his namesake a few years ago and has settled in really well. He brings plenty of style, stretch thickness in a moderate, structurally sound package.

★ STAR BREEDER PROGRAM

BUY WITH CONFIDENCE

All bulls at the sale will be STAR BREEDER program accredited. This program aims to maximise the reproductive integrity and health of stud stock.

Each STAR BREEDER certified animal at the sale has been:

- ✓ Tested to show that they are not Bovine Viral Diarrhoea Virus (BVDV) Persistently Infected (PI) animals
- ✓ Vaccinated against Pestivirus (BVDV) to ensure they are protected from the effects of this infection
- ✓ Vaccinated against Leptospirosis, a reproductive disease and potential WH&S risk for cattle handlers
- ✓ Vaccinated against Vibriosis, a sexually transmitted cattle disease

You can be confident that every step has been taken to ensure these animals presented for sale will not introduce preventable reproductive diseases into your herd.

For more information talk to your Zoetis Cattle Representative, call **1800 963 847** or visit starprogram.com.au



Limek Limousin Cattle Stud
2255 Naracoorte Rd, Bordertown SA



Zoetis Australia Pty Ltd. ABN 94 156 476 425. Level 6, 5 Rider Boulevard, Rhodes NSW 2138. © 2017 Zoetis Inc. All rights reserved ZL0661 02/17

REFERENCE SIRES



Sire of Lot 2

BALAMORE ENDEAVOR 701E (PP, BB, AA)



Sire of Lot 4

IVY'S BUBBA WATSON HTZ24B (PP, A, AA)



Sire of Lot 3

RPY PAYNES TANK 12G ET (PP, R, AA)



Sire of Lot 8

WULFS YONKERS K682Y (PP, B, AA)

REFERENCE SIRES



LIMEK QUILL KE (P, B, AA)



LIMEK NIFTY KE (PP, BB, AA)



FLEMINGTON QUALITY CONTROL Q41 (P, A, AA)

THE BENEFITS OF CROSS BREEDING

Cross breeding, Heterosis or Hybrid Vigor are all concepts and terms which are concerned with using the complimentary effects of matching the strengths of one breed to offset the weaknesses of another. Hybrid Vigour can impact many traits but is especially useful in improving performance in lowly heritable traits such as reproduction, early growth and fitness or lifetime productivity.

Research has shown that maximum Hybrid Vigour is realised in the first cross of distinctly different breeds. The largest and most dramatic expression of Hybrid Vigour is found in crosses between bos indicus (Brahman cattle and Bos Taurus) cattle because they do not share any recent common ancestors. A similar, albeit, slightly less expression of Hybrid Vigour may also be found in crosses between cattle from British and European origin cattle.

Hybrid Vigour can be divided into three components that it effects

- 1) Individual heterosis (cross bred calves)
- 2) Maternal heterosis (that found in crossbred cows)
- 3) Paternal heterosis (cross breed sires)

Maternal heterosis accounts for 2/3 of the crossbreeding advantage. Maternal heterosis has more impact because of the effect on reproductive performance through earlier puberty, higher conception rate, faster breed back, greater longevity, and the maternal impact on calf performance.

Individual heterosis comes in second for the crossbreeding advantage as demonstrated in a simple example below (*paraphrased from Jim Gosey, Cross Breeding the Forgotten Tool, 12 June 2005*)

Yearling Angus x Angus calf

Due to no Hybrid Vigour calf is expected to weight in at:

400 kg

When the animal is sold to the processor its carcass dresses at 54% due to its pure British genetics.

$54\% \times 400 \text{ kg} = 216 \text{ kg dressed}$

The processor pays \$7.50/kg and rewards straight Angus animals with a 20c premium.

$216 \text{ kg} \times \$7.70 = \1663

Yearling Angus x Limousin calf

With the genetic benefit of Hybrid Vigour the calf weighs in 8% heavier at:

432 kg

When the animal is sold to the processor the carcass dresses at 57%, the increase is due to the introduction of Limousin genetics.

$57\% \times 432 \text{ kg} = 246 \text{ kg dressed}$

The Limousin cross animal is ineligible for the premium and the processor pays \$7.50/kg

$246 \text{ kg} \times \$7.50 = \1845

The result is a \$182 greater pay check or 11% increase per calf for the Limousin X genetics. Over a small herd of 40 calves this equates to a \$7,280 increase!

Be sure to get the Limousin Advantage into your herd today!

LOOKING AFTER YOUR NEW BULL

Delivery

All Limek bulls have had the company of other animals throughout their time at Limek and have not been kept alone. Consequently it is best to have some company in the yards when they arrive at their new home.

All Limek bulls have had both dogs and motorbikes used with them when they are handled. We expect they will continue to handle well if they are handled quietly and with respect.

Joining Time

All bulls should be serving ability tested each year to ensure they are sound, prior to going out for mating.

When they are in the mating mob ensure they are checked regularly for continued performance and to ensure they have not become lame.

We recommend single mate groups where possible to prevent fighting and injuries sustained when bulls fight for dominance. If using multiple bulls for a joining it is recommended to introduce them before they join the mating mob to reduce fighting and injury.

Using multiple bulls in a single mob during mating can reduce the calving period but may increase the risk of bull injury due to fighting for dominance.

Post Joining

Try to split the bulls up where possible.

If they are reintroduced to a mob of bulls try to ensure plenty of feed is kept up to them to minimise fighting.

It is recommended the bulls remain in good condition during the post joining period without been allowed to become fat. Gaining excessive weight over this period can result in injuries to the bull, the cow herd and will likely lead to reduced productivity.

Bull Health

All Limek bulls undergo the Zoetis star health plan to maximise their performance. We recommend that they are continued on the program in the years to come with booster shots to maximise the bulls potential. Please speak to Josh (0497 906 362) if you would like more information regarding the program and its benefits.





2255 Naracoorte Road, Bordertown SA

Ken 0428 582 010 | Josh 0497 906 362

✉ limeklimousin@gmail.com

📌 Limek Limousin Cattle Stud