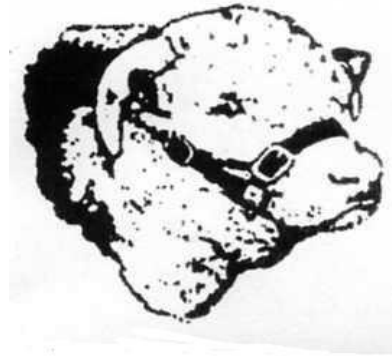


Kirraweena Glenholme

HEREFORD & POLL HEREFORD STUDS

70 YEARS – KIRRAWEENA 1953-2023

30 YEARS – GLENHOLME 1993-2023



21st ANNUAL SALE

At

“Glenholme”

Rodeo Drive

COOTAMUNDRA NSW

Wednesday,

1st March, 2023

1.30 PM

 AuctionsPlus™

~~~~~

**25 HEREFORD  
& POLL HEREFORD BULLS  
30 UNJOINED HEIFERS**

**FREE DELIVERY**

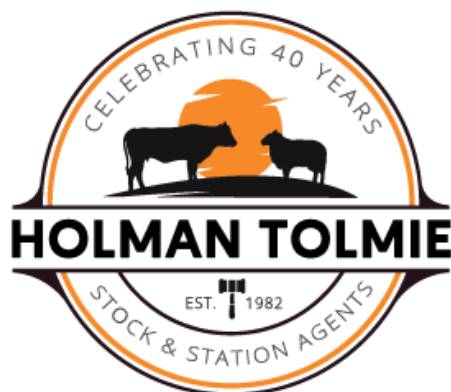
**FOR BULLS TO  
NSW & VIC**

# **Nutrien** *Ag Solutions\**

**TIM WOODHAM 0436 015 115**  
**PETER GODBOLT 0457 591 929**

**Tim Callan, Nutrien,  
Cootamundra  
(02) 6942 2122**

---



**JAMES TOLMIE 0439 991 082**  
**OFFICE (02) 6942 3055**

# **KIRRAWEENA**

*Est. 1953*

# **GLENHOLME**

*Est. 1993*

## **HEREFORD STUDS**

### **SALE**

*at*

**“Glenholme”**

**Rodeo Drive**

**COOTAMUNDRA NSW**

**Wednesday, 1<sup>st</sup> March, 2023**

**25 HEREFORD & POLL HEREFORD  
BULLS**

**30 UNJOINED HEIFERS**

- *Auctions Plus available*
- *Inspections from 10.30 am on the day  
or by prior arrangement with the  
vendors*
- *Sale to commence at approximately  
1.30 pm*
  - *Light Luncheon provided*
- *Free Delivery for all bulls sold to NSW  
& Victoria*

**Contact: Geoff & Heather Bush (02) 6942 3222**

EMAIL: [ghb.glenholme@bigpond.com](mailto:ghb.glenholme@bigpond.com)

WEBSITE: [www.glenholmeherefords.com.au](http://www.glenholmeherefords.com.au)

*Selling Agents:*

**Holman Tolmie Pty Ltd**

**Cootamundra**

**(02) 6942 3055**

**James Tolmie**

**Mob 0439 911 082**

**Nutrien**

**Tim Woodham**

**0436 015 115**

**Nutrien,**

**Cootamundra**

**Tim Callan**

**(02) 69422 122**

### **KIRRAWEENA HEREFORD STUD**

Kirraweena Hereford Stud was founded by the late Fred Bush in 1953, with a bull from the Glenelvie Stud and 2 females from the Bywong Stud, for the purpose of improving the commercial cattle he ran in conjunction with his father Sam and brother Rodney.

Two years after forming the Stud, Fred took his first cattle to the Sydney Royal Easter Show. He believed that the nearly 3 weeks (as it was then) mixing with the best Stud breeders in Australia would be the best place to learn.

Kirraweena cattle have been exhibited at every Sydney Royal Show since that first outing.

Commercial attributes were always top priority and with the use of seven Cuppa bulls in a row, rich in Vern (English) blood, they produced a line of easy doing cattle of a rich ruby red colour with females having plenty of milk. The easy doing ability and plenty of milk was necessary at "Greendale", Dalton. It was a fine wool property, situated 50 km east of Yass in Southern NSW. With the rich colour came softness and quality which butchers still seek today, as before the technology now used, this was an indication of the eating quality of the meat.

Kirraweena has taken out numerous hoof and hook awards at both local and Royal Show level in mainly supermarket weight (300-420 live) classes.

A large number of both Hereford and Poll Hereford Studs have purchased females from Kirraweena over the years,

After the sudden passing of Fred in 1997, the partnership with Rodney was dissolved and the Kirraweena Cow herd was moved to Geoff & Heather Bush's property, "Glenholme" at Cootamundra.

Stud sires used in recent years have come from Bowmont, Curracabark and Lotus and our own bull Glenholme Pharoah (Sire: Glendan Park Lassoo) along with AI sires including imported AI sires, Trillick Hotspur (Ireland) and Pute Nascar (New Zealand) and our own Glenholme Maclean (sired by Sugarloaf Houston), Kirraweena Lehman (sired by Talbalba Bridgetown) and Kirraweena Newton (Sired by Bowmont Winchester) .

## **GLENHOLME**

Glenholme was founded by Geoff & Heather in 1993. Formed with the purchase of 12 cows and 3 heifers from Don & Judy Maclean's Strathglee Stud at Moss Vale and later with females from Kirraweena, Tumulla (Max and Margaret Peel) and Lylen Studs. Females from the Field's Tiverton Stud and Smithston were also purchased.

Sires used in recent years include Bowmont Winchester, Curracabark Junee and Lotus Larson.

Next year we will have our first bull calves sired by new purchases Karoonda Warship Q296 and Lotus Quadrillion Q114 available for sale.

A Poll Hereford herd was formed in 2003 to breed good commercial Poll Cattle. Bulls used have been Gunyah Lion, Braybook Braxton Y243, Valma Landmark, Valma Ollie, Tycolah Majestic and Doodle Cooma Magnate.

AI sires used in the Poll Herefords include Rilo Park Unshakeable, Allendale Vengeance and Minlacowie Griffin.

All Poll Hereford Bulls in our sale this year are sired by Doodle Cooma Magnate. Next year we will offer our first calves by new sire Rose View Quigley.

Glenholme & Kirraweena Studs are currently joining 160 registered stud females annually.

## **DELIVERIES**

### ***Free delivery for bull purchases in NSW and Victoria.***

Cattle will be held free of charge at the Purchaser's risk until transport arrangements can be completed. Instructions concerning the delivery of cattle purchased at this sale must be given in writing and signed by the buyer or their representative. Buyer's instruction slips are at the back of the catalogue. No verbal instructions will be accepted.

## **GST**

GST will be added to all of the sale Lots.

G R & H B Bush, ABN 97 604 958 216

**HERD HEALTH STATUS**

The property is in a Bovine Johnes disease protected zone and Tuberculosis free area. **All Cattle have been tested Negative for Pestivirus.** All Cattle have been vaccinated twice with Pestiguard.

**WODONGA HEREFORD SHOW & SALE**

We have entered 6 bulls for the Wodonga National Show and Sale that will not be offered at our Sale.

**BREEDPLAN**

Kirraweena Glenholme joined Group Breedplan in 2001. Breedplan figures on sale bulls are January 2023 Group EBV's. If you have any questions regarding Breedplan, do not hesitate to ask us.

**SUPPLEMENTARY SHEET**

There will be a supplementary sheet available on the day of the sale detailing bull weights, eye muscle area, Fat Scans and Testicle measurements.

**OUTSIDE AGENTS**

4% Rebate to outside Agents introducing buyers in writing 24 hours prior to the sale and settling within 14 days.

**GUARANTEE & AFTER SALE SERVICE**

Don't hesitate to contact us. We have always looked after our clients, however, we would strongly suggest that buyers consider insuring their purchases.

**REFERENCE SIREs****Curracabark Junee (AI) (ET) (H) CRKJ106**

Born: 05/10/13

GH Neon 17N (IMP CAN) (H)  
 Mawarra Unique C041 (AI) (H)  
 Mawarra Minerva 554 ET1 (AI) (ET) (H)

SIRE:

Yarram Unique F181 (H)

Braybook Upperclass U504 (AI) (H)  
 Yarram Flossie A096 (H)  
 Yarram Flossie R065 (AI) (H)

Yarram Extra 57U M629 ET1 (AI) (ET) (H)  
 Curracabark Crusader (AI) (H)  
 Faulkand Carnation 42 (H)

DAM:

Curracabark Favourite F68 (H)

Yarram Star General S160 (AI) (H)  
 Curracabark Favourite 115 (AI) (H)  
 Curracabark Favourite 105 (H)

|       | BW   | Milk | 200 G | 400 G | 600 G | MWT  |
|-------|------|------|-------|-------|-------|------|
| EBV   | +7.7 | +15  | +39   | +63   | +90   | +78  |
| Acc % | 94   | 69   | 87    | 88    | 89    | 81   |
|       | CWT  | EMA  | RIB   | RUMP  | RBV%  | IMF% |
| EBV   | +63  | +6.3 | -0.4  | 0.0   | +1.8  | +0.4 |
| Acc%  | 86   | 78   | 82    | 84    | 71    | 84   |

**Notes: Junee has the top EBV in the breed for feed intake to growth rate in a feedlot setting. Also top 5% EMA and top 10% Retail Beef Yield.**

**Glenholme Maclean (AI) (H) GHBM038**

Born: 17/07/16

Cootharaba Magnum (H)  
 Glendan Park Empire E002 (AI) (ET) (H)  
 Glendan Park Minerva W164 (AI) (H)

SIRE:

Sugarloaf Houston (H)

Sugarloaf Jelly Bean A220 (H)  
 Sugarloaf Ladylike D18 (H)  
 Sugarloaf Ladylike Y008 (H)

Smithston Northern Light N046 (H)  
 Smithston Zig Zag (AI) (H)  
 Smithston Lady Lynda V192 (ET) (H)

DAM:

Glenholme Doreen F035 (AI) (H)

Eurangatuck Bahrain (H)  
 Glenholme Doreen C021 (H)  
 Glenholme Doreen W020 (H)

|       | BW   | Milk | 200 G | 400 G | 600 G | MWT  |
|-------|------|------|-------|-------|-------|------|
| EBV   | +7.8 | +18  | +40   | +67   | +110  | +102 |
| Acc % | 86   | 51   | 78    | 81    | 80    | 71   |
|       | CWT  | EMA  | RIB   | RUMP  | RBV%  | IMF% |
| EBV   | +69  | +4.6 | -1.6  | -1.9  | +2.9  | -0.3 |
| Acc%  | 68   | 57   | 64    | 69    | 61    | 65   |

**Notes: Top 1% Retail Beef Yield, Top 5% 600 Day Weight, Mature Cow Weight and Top 10% Carcase Weight.**

**Glenholme Newton (H)****GHBN170**

Born: 20/11/17

Sugarloaf Cracov A231 (H)  
 Gunyah Winchester (H)  
 Gunyah Loyal Y319 (H)

SIRE:

Bowmont Winchester H063 (H)  
 Tarcombe Captain (H)  
 Bowmont Queen W195 (AI) (H)  
 Bowmont Queen 130 (H)

Kirraweena Walsh (H)  
 Lowanna Walsh (H)  
 Lowanna Daylight 30 (H)

DAM:

Glenholme Queenie H015 (H)  
 Eurangatuck Bahrain (H)  
 Glenholme Queenie E026 (H)  
 Glenholme Queenie A073 (H)

|       | BW   | Milk | 200 G | 400 G | 600 G | MWT  |
|-------|------|------|-------|-------|-------|------|
| EBV   | +5.7 | +14  | +30   | +51   | +80   | +89  |
| Acc % | 76   | 47   | 69    | 69    | 70    | 61   |
|       | CWT  | EMA  | RIB   | RUMP  | RBV%  | IMF% |
| EBV   | +45  | +1.7 | -1.7  | -2.4  | +1.6  | -0.5 |
| Acc%  | 57   | 46   | 52    | 56    | 47    | 51   |

**Glenholme Pharoah (AI) (H)****GHBP142**

Born: 18/08/18

Bowmont Storm B720 (H)  
 Warringa Google G23 (H)  
 Warringa Fern D10 (H)

SIRE:

Glendan Park Lassoo L137 (H)  
 Cootharaba Magnum (H)  
 Glendan Park Fancy E067 (AI) (ET) (H)  
 Glendan Park Fancy Y114 (H)

Devon Court Pacemaker 5 (AI) (H)  
 Glenwarrah Lynch U028 (H)  
 Glenwarrah Last Day 4 (H)

DAM:

Glenholme Last Day D060 (H)  
 Smithston Urana U120 (H)  
 Glenholme Last Day X010 (H)  
 Tumulla Last Day 25 (H)

|       | BW   | Milk | 200 G | 400 G | 600 G | MWT  |
|-------|------|------|-------|-------|-------|------|
| EBV   | +9.7 | +13  | +42   | +74   | +115  | +127 |
| Acc % | 78   | 54   | 71    | 70    | 70    | 63   |
|       | CWT  | EMA  | RIB   | RUMP  | RBV%  | IMF% |
| EBV   | +62  | +3.3 | -1.2  | -1.6  | +1.8  | -0.3 |
| Acc%  | 57   | 49   | 54    | 58    | 50    | 55   |

**Notes: Top 1% Mature Cow Weight, Top 5% 600 Day Weight, Top 10% 400 Day Weight.**



**Lotus Larson (H)****OCTL119**

Born: 13/07/15

Cootharaba Magnum (H)  
 Mawarra Vice Admiral (H)  
 Mawarra Minerva 554 (AI) (ET) (H)

SIRE:

Mawarra Be Quick (AI) (H)

Yallaroo Tornado (H)  
 Mawarra Miss Titania 299 ET1 (ET) (H)  
 Mawarra Miss Titania 123 (AI) (ET) (H)

Red Hill Rockford Roy (AI) (H)  
 Red Hill Variety VB35 (H)  
 Red Hill Minerva 164 (H)

DAM:

Lotus Maritana 97 D6 (H)

SMH 598 Dom J50(H)  
 Lotus Maritana 26 (H)  
 Lotus Maritana 4 (H)

|       | BW   | Milk | 200 G | 400 G | 600 G | MWT  |
|-------|------|------|-------|-------|-------|------|
| EBV   | +5.2 | +17  | +23   | +34   | +55   | +49  |
| Acc % | 90   | 60   | 81    | 83    | 82    | 72   |
|       | CWT  | EMA  | RIB   | RUMP  | RBV%  | IMF% |
| EBV   | +27  | +2.9 | -0.5  | -1.0  | +1.0  | +0.8 |
| Acc%  | 69   | 60   | 65    | 70    | 62    | 68   |

**Kirraweena Lehmann (H)****FSBL224**

Born: 08/08/15

Glendan Park Storm W134 (H)  
 Bowmont Storm C115 (AI) (H)  
 Bowmont L Minerva Y314 (H)

SIRE:

Talbalba Bridgetown (H)

Cootharaba Magnum (H)  
 Talbalba Pearl D095 (AI) (H)  
 Injemira Pearl U561 (H)

Lowanna Jackpot S014 (AI) (H)  
 Lowanna Jackpot Y44 (H)  
 Lowanna Queen 87 (H)

DAM:

Kirraweena Minerva C111 (H)

Talbalba Limerick (AI) (H)  
 Kirraweena Minerva 258 (H)  
 Kirraweena Minerva 224 (AI) (H)

|       | BW   | Milk | 200 G | 400 G | 600 G | MWT  |
|-------|------|------|-------|-------|-------|------|
| EBV   | +2.9 | +9   | +23   | +35   | +47   | +32  |
| Acc % | 78   | 52   | 73    | 76    | 75    | 66   |
|       | CWT  | EMA  | RIB   | RUMP  | RBV%  | IMF% |
| EBV   | +28  | +2.9 | -0.4  | -0.5  | +0.8  | +0.4 |
| Acc%  | 63   | 51   | 58    | 62    | 53    | 60   |

**Trillick Hotspur (IMP IRL) (H)**

Born: 22/12/12

Trillick Transformer (H)  
 Spinney Dublin (H)  
 Spinney Dowager 161 (H)

SIRE:

Free Town Hotspur (H)

Free Town Maximus (AI) (H)  
 Free Town Benign (H)  
 Free Town Benison (H)

Churchill Storm V583 (H)  
 Grianan Firecracker (H)  
 Grianan Dominique (AI) (H)

DAM:

Cortlismore Echoe 591 (H)

Bawngariff Pilot (AI) (H)  
 Ballinveney Echoe (AI) (H)  
 Ballinveney Shivy (AI) (H)

|       | BW   | Milk | 200 G | 400 G | 600 G | MWT  |
|-------|------|------|-------|-------|-------|------|
| EBV   | +5.1 | +6   | +19   | +31   | +48   | +58  |
| Acc % | 81   | 30   | 72    | 74    | 75    | 62   |
|       | CWT  | EMA  | RIB   | RUMP  | RBV%  | IMF% |
| EBV   | +30  | +3.7 | +1.2  | +2.0  | -0.1  | +0.5 |
| Acc%  | 58   | 44   | 52    | 58    | 46    | 55   |

**Pute Nascar N13 (IMP NZL) (H)**

Born: 22/08/17

Yarram Extra 57U M629 (AI) (ET) (H)  
 Kiwi Yardstick Y47 (H)  
 Kiwi Regal 789U (H)

SIRE:

Gay Olympus 110088 (H)

Jandoc Pathfinder U813 (H)  
 Gay Amethyst 050139 (H)  
 Gay Amethyst 210 (H)

Pourakino Downs Jasper (IMP NZL) (H)  
 Glacier John 372 (H)  
 Glacier Sapphire 297 (H)

DAM:

Pute Rosa H105 (H)

Pute Casper C31 (H)  
 Pute Rosa F 1220 (H)  
 Pute Rosa C1117 (H)

|       | BW   | Milk | 200 G | 400 G | 600 G | MWT  |
|-------|------|------|-------|-------|-------|------|
| EBV   | +6.6 | +15  | +33   | +51   | +83   | +56  |
| Acc % | 93   | 58   | 89    | 89    | 87    | 76   |
|       | CWT  | EMA  | RIB   | RUMP  | RBV%  | IMF% |
| EBV   | +57  | +6.2 | +1.9  | +2.9  | +1.0  | +0.6 |
| Acc%  | 74   | 62   | 66    | 72    | 63    | 67   |

**Notes: Top 5% Rump fat, Top 10% of the breed in  
 EMA and Rib Fat.**

**POLL HEREFORD**

**Doodle Cooma Magnate (PP)**

**DCPM061**

Born: 21/08/16

Bowen Atlas A214 (AI) (ET) (P)  
Braybook Dynamo D309 (P)  
Bowen Maple X252 (P)

**SIRE:**

Doodle Cooma James Bond J19 (PP)  
Margfred Park Value U563 (AI) (ET) (P)  
Doodle Cooma Duchess B29 (P)  
Doodle Cooma Duchess (P)

Bowen Atlas A214 (AI) (ET) (P)  
Braybook Dynamo D309 (P)  
Bowen Maple X252 (P)

**DAM:**

Doodle Cooma Minerva 16 (P)  
Oak Downs Optimism (P)  
Doodle Cooma Minerva 8 (P)  
LJS 75A Minerva T215 (P)

|       | BW   | Milk | 200 G | 400 G | 600 G | MWT  |
|-------|------|------|-------|-------|-------|------|
| EBV   | +5.7 | +18  | +38   | +60   | +88   | +82  |
| Acc % | 87   | 55   | 79    | 82    | 81    | 70   |
|       | CWT  | EMA  | RIB   | RUMP  | RBV%  | IMF% |
| EBV   | +51  | +2.3 | -0.4  | -1.0  | +1.0  | +1.0 |
| Acc%  | 67   | 59   | 65    | 70    | 62    | 68   |



**FUTURE SIRES****Karoonda Warship Q296 (H)****SKSQ926**

Born: 21/07/19

Cootharaba Magnum (H)  
 Mawarra Classic Hit (AI) (H)  
 Mawarra Maritana 165 (AI) (ET) (H)

SIRE:

Karoonda Tempest M416 (H)  
 Glendan Park Storm W134 (H)  
 Karoonda Maritana A008 (AI) (H)  
 Karoonda Maritana 213 (H)

Red Hill Idle Rich ET (AI) (ET) (H)  
 Glenwarrah Men At Work (H)  
 Glenwarrah Minerva U44 (H)

DAM:

Karoonda Rosette K235 (AI) (H)  
 North End X061 (H)  
 Karoonda Rosette G856 (AI) (H)  
 Karoonda Rosette E308 (AI) (H)

|       | BW   | Milk | 200 G | 400 G | 600 G | MWT  |
|-------|------|------|-------|-------|-------|------|
| EBV   | +4.1 | +14  | +31   | +52   | +79   | +80  |
| Acc % | 73   | 53   | 67    | 65    | 70    | 62   |
|       | CWT  | EMA  | RIB   | RUMP  | RBV%  | IMF% |
| EBV   | +54  | +4.2 | -0.3  | -0.1  | +1.7  | 0.0  |
| Acc%  | 56   | 49   | 64    | 69    | 61    | 65   |

**Notes: Top 10% Retail Beef Yield.****Lotus Quadrillion Q114 (H)****OCTQ114**

Born: 01/09/19

Bowmont Victory Blend Z458 (H)  
 Bowmont Z458 Victory Blend F (AI) (H)  
 Bowmont Queen A546 (AI) (H)

SIRE:

Warringa Kakadu K8 (H)  
 Ironbark Rambo C225 (AI) (H)  
 Warringa Fern G3 (AI) (H)  
 Warringa Fern E16 (H)

Glenwarrah Men At Work (H)  
 Karoonda Northerly (H)  
 Karoonda First Day 63 (H)

DAM:

Lotus Kimbo K3 (H)  
 Red Hill Variety VB35 (H)  
 Lotus Kimbo 13 D37 (H)  
 Lotus Kimbo 6 (H)

|       | BW   | Milk | 200 G | 400 G | 600 G | MWT  |
|-------|------|------|-------|-------|-------|------|
| EBV   | +4.7 | +11  | +26   | +37   | +53   | +39  |
| Acc % | 69   | 55   | 68    | 68    | 71    | 62   |
|       | CWT  | EMA  | RIB   | RUMP  | RBV%  | IMF% |
| EBV   | +33  | +2.9 | +1.7  | +3.0  | -0.2  | +0.2 |
| Acc%  | 59   | 49   | 52    | 57    | 50    | 51   |

**Notes: Top 5% Rib Fat.**

**Rose View Quigley (P)**

**RVCQ103**

Born: 10/09/19

Karina Cherry Z8 (PP)  
Tycolah Jovial F77 (PP)  
Tycolah Countess W48 (P)

**SIRE:**

Gunyah Commodore (P)  
Gunyah Warne E214 (P)  
Gunyah Pattie G208 (P)  
Gunyah Pattie E151 (P)

Otapawa Spark 3060 (IMP NZL) (AI) (ET) (P)  
Bowen Flasher F140 (AI) (P)  
Bowen Matchless B157 (AI) (ET) (P)

**DAM:**

Rose View Fudge J101 (AI) (P)  
Rilo Park Liberator (AI) (ET) (P)  
Ellengrove Fudge F106 (P)  
Ellengrove Fudge (P)

|       |      |      |       |       |       |      |
|-------|------|------|-------|-------|-------|------|
|       | BW   | Milk | 200 G | 400 G | 600 G | MWT  |
| EBV   | +4.6 | +14  | +32   | +50   | +71   | +78  |
| Acc % | 64   | 47   | 61    | 60    | 61    | 52   |
|       | CWT  | EMA  | RIB   | RUMP  | RBV%  | IMF% |
| EBV   | +39  | +2.8 | +0.9  | +1.1  | -0.1  | +0.9 |
| Acc%  | 47   | 40   | 45    | 49    | 40    | 46   |

***GLENHOLME***

***PIES***

***Lunch is provided on the day  
of the sale -***

**Come and try our delicious  
home-grown meat pies**



## **UNJOINED HEIFERS**

Please note that heifers will be sold on a 3 hammer system. The person with the highest bid will have the option of taking from 1 to all heifers in pen. If they only take a part then the rest of the pen will be re-offered. The same will apply to the person with the highest bid the second time – either all remaining heifers or heifers of their choice. If they choose only part of what was on offer then the remainder of pen would be sold a third time and if there are some remaining they will be sold on the fourth and last fall of the hammer. A \$15 transfer fee will be added to purchases if needed to be transferred (for stud use). Transport can be arranged.

Heifers will be preg tested empty prior to the sale. Every precaution has been taken to ensure that the bulls are not with the heifers.



**FEMALES – Unjoined Heifers**

| LOT 1 | NO.  | NAME                     | D.O.B.  | SIRE               | SIRE OF DAM          |
|-------|------|--------------------------|---------|--------------------|----------------------|
|       | S101 | Glenholme Doreen (AI)    | 3/2/21  | Kirraweena Lehmann | Lotus Larson         |
|       | S113 | Glenholme Sunflower (AI) | 24/4/21 | Trillick Hotspur   | Talbalba Yogi        |
|       | S116 | Glenholme Doreen (AI)    | 25/4/21 | Trillick Hotspur   | Bowmont Winchester   |
|       | S123 | Glenholme Garland (H#)   | 30/4/21 | Lotus Larson       | Valma Landmark       |
|       | S127 | Glenholme Doreen         | 2/5/21  | Glenholme Newton   | Eurangatuck Bahrain  |
|       | S138 | Glenholme Victoria (TW)  | 25/5/21 | Glenholme Newton   | Talbalba Yogi        |
|       | S169 | Glenholme Victoria       | 15/9/21 | Glenholme Pharaoh  | Bowmont Winchester   |
|       | S178 | Glenholme Duchess        | 5/10/21 | Glenholme Pharaoh  | Talbalba Yogi        |
|       | S184 | Glenholme Duchess        | 19/8/21 | Glenholme Pharaoh  | Kirraweena Australia |
|       | S209 | Kirraweena Queenie       | 22/4/21 | Glenholme Newton   | Sugarloaf Houston    |

Purchased by: \_\_\_\_\_

Price: \_\_\_\_\_

Purchased by: \_\_\_\_\_

Price: \_\_\_\_\_

Purchased by: \_\_\_\_\_

Price: \_\_\_\_\_

|              | <b>NO.</b> | <b>NAME</b>        | <b>D.O.B.</b> | <b>SIRE</b>          | <b>SIRE OF DAM</b>    |
|--------------|------------|--------------------|---------------|----------------------|-----------------------|
| <b>LOT 2</b> |            |                    |               |                      |                       |
| <b>POLL</b>  | S103       | Glenholme Venus    | 2/3/21        | Doodle Cooma Magnate | Minlacowie Griffin    |
| <b>POLL</b>  | S105       | Glenholme Venus    | 4/3/21        | Doodle Cooma Magnate | Valma Ollie           |
| <b>POLL</b>  | S134       | Glenholme Doreen   | 16/5/21       | Doodle Cooma Magnate | Westwood Veron        |
| <b>POLL</b>  | S150       | Glenholme Doreen   | 15/7/21       | Doodle Cooma Magnate | Valma Ollie           |
| <b>POLL</b>  | S151       | Glenholme Duchess  | 19/7/21       | Doodle Cooma Magnate | Valma Landmark        |
| <b>POLL</b>  | S164       | Glenholme Doreen   | 19/8/21       | Doodle Cooma Magnate | Mt. Difficult Cadbury |
| <b>POLL</b>  | S168       | Glenholme Doreen   | 25/8/21       | Doodle Cooma Magnate | Curracabark Junee     |
| <b>POLL</b>  | S219       | Kirraweena Minerva | 2/5/21        | Doodle Cooma Magnate | Curracabark Junee     |
| <b>POLL</b>  | S239       | Kirraweena Doreen  | 21/8/21       | Doodle Cooma Magnate | Tycolah Majestic      |
| <b>POLL</b>  | S247       | Kirraweena Doreen  | 2/10/21       | Doodle Cooma Magnate | Curracabark Junee     |

Purchased by: \_\_\_\_\_

Price: \_\_\_\_\_

Purchased by: \_\_\_\_\_

Price: \_\_\_\_\_

Purchased by: \_\_\_\_\_

Price: \_\_\_\_\_



| <b>LOT 3</b> | <b>No.</b> | <b>Name</b>             | <b>D.O.B.</b> | <b>SIRE</b>       | <b>SIRE OF DAM</b>   |
|--------------|------------|-------------------------|---------------|-------------------|----------------------|
|              | S162       | Glenholme Sunflower     | 16/8/21       | Curracabark Junee | Eurangatuck Bahrain  |
|              | S187       | Glenholme Last Day      | 15/12/21      | Glenholme Pharaoh | Bundarra Zambia      |
|              | S224       | Kirraweena Doreen (AI)  | 30/6/21       | Pute Nascar       | Kirraweena Godfrey   |
|              | S228       | Glenholme Minerva       | 23/7/21       | Lotus Larson      | Invernaion Exeter    |
|              | S234       | Kirraweena Doreen       | 3/8/21        | Lotus Larson      | Glenholme Flanders   |
|              | S235       | Kirraweena Miss Bradman | 5/8/21        | Lotus Larson      | Mawarra Virginian    |
|              | S236       | Kirraweena Doreen       | 12/8/21       | Lotus Larson      | Mawarra Virginian    |
|              | S241       | Kirraweena Queenie      | 12/9/21       | Lotus Larson      | Lowanna Walsh        |
|              | S249       | Kirraweena Doreen       | 24/9/21       | Lotus Larson      | Kirraweena Australia |
|              | S251       | Kirraweena Doreen       | 23/10/21      | Lotus Larson      | Kirraweena Lehmann   |

Purchased by: \_\_\_\_\_ Price: \_\_\_\_\_

Purchased by: \_\_\_\_\_ Price: \_\_\_\_\_

Purchased by: \_\_\_\_\_ Price: \_\_\_\_\_

## STUD BULLS

### LOT 4

**GLENHOLME SHERWOOD (H)**

**GHBS122**

Born: 30/04/2021

SIRE:

Glenholme Newton (H)

Yarram Unique F181 (H)  
Curracabark Junee J106 (AI) (ET) (H)  
Curracabark Favourite F68 (H)

DAM:

Glenholme Lively N103 (H)  
Bundarra Zambia (H)  
Glenholme Lively K032 (AI) (H)  
Racovolis Lively Y646 (H)

|       | BW   | Milk | 200 G | 400 G | 600 G | MCW |
|-------|------|------|-------|-------|-------|-----|
| EBV   | +6.4 | +10  | +34   | +58   | +89   | +84 |
| Acc % | 69   | 42   | 62    | 61    | 66    | 55  |
|       | EMA  | RIB  | RUMP  | RBV%  | IMF%  | CWT |
| EBV   | +2.6 | -0.4 | -0.3  | +0.7  | +0.4  | +52 |
| Acc%  | 43   | 47   | 51    | 43    | 47    | 51  |

Purchased by: \_\_\_\_\_

Price: \_\_\_\_\_



**Lot 4 – Glenholme Sherwood**

**LOT 5**

**GLENHOLME SIMON (AI) (H)**

**GHBS128**

Born: 02/05/2021

SIRE:

Trillick Hotspur (IMP IRL) (H)

Gunyah Winchester (H)  
Bowmont Winchester H063 (H)  
Bowmont Queen W195 (AI) (H)

DAM:

Glenholme Treasure L039 (H)

Eurangatuck Bahrain (H)  
Glenholme Treasure D091 (H)  
Glenholme Treasure V037 (H)

|       | BW   | Milk | 200 G | 400 G | 600 G | MCW |
|-------|------|------|-------|-------|-------|-----|
| EBV   | +4.6 | +6   | +22   | +37   | +61   | +71 |
| Acc % | 70   | 38   | 63    | 62    | 67    | 56  |
|       | EMA  | RIB  | RUMP  | RBV%  | IMF%  | CWT |
| EBV   | +2.1 | +0.4 | +0.8  | -0.2  | +0.4  | +35 |
| Acc%  | 41   | 46   | 51    | 43    | 46    | 51  |

Purchased by:

Price:



**Lot 5 – Glenholme Simon**

**LOT 6**  
**KIRRAWEENA SOLOMON (H)**                      **FSBS231**  
Born 30/07/2021

SIRE:

Lotus Larson (H)

Kirraweena Walsh (H)  
Lowanna Walsh (H)  
Lowanna Daylight 30 (H)

DAM:

Kirraweena Queenie G137 (H)  
Glenwarrah Lynch U028 (H)  
Kirraweena Queenie Y125 (H)  
Kirraweena Queenie 416 (H)

|       |      |      |       |       |       |     |
|-------|------|------|-------|-------|-------|-----|
|       | BW   | Milk | 200 G | 400 G | 600 G | MCW |
| EBV   | +4.5 | +15  | +22   | +32   | +52   | +49 |
| Acc % | 72   | 47   | 65    | 65    | 68    | 58  |
|       | EMA  | RIB  | RUMP  | RBV%  | IMF%  | CWT |
| EBV   | +2.6 | -0.3 | -0.2  | +0.7  | +0.6  | +25 |
| Acc%  | 44   | 51   | 54    | 47    | 51    | 54  |

Purchased by: \_\_\_\_\_

Price: \_\_\_\_\_



**Lot 6 – Kirraweena Solomon**

**LOT 7**  
**KIRRAWEENASHELDON (AI) (H)**      **FSBS216**  
Born 02/05/2021

SIRE:

Kirraweena Lehmann (H)  
Yarram Unique F181 (H)  
Curracabark Junee J106 (AI) (ET) (H)  
Curracabark Favourite F68 (H)

DAM:

Kirraweena Minerva P212 (H)  
Glenholme Flanders (H)  
Kirraweena Minerva J231 (H)  
Kirraweena Minerva C111 (H)

|       | BW   | Milk | 200 G | 400 G | 600 G | MCW |
|-------|------|------|-------|-------|-------|-----|
| EBV   | +5.0 | +9   | +28   | +45   | +64   | +50 |
| Acc % | 66   | 43   | 62    | 62    | 63    | 54  |
|       | EMA  | RIB  | RUMP  | RBV%  | IMF%  | CWT |
| EBV   | +4.3 | -1.0 | -1.3  | +1.4  | +0.1  | +41 |
| Acc%  | 44   | 50   | 52    | 42    | 50    | 52  |

Notes: Heifer's first calf.

Purchased by: \_\_\_\_\_

Price: \_\_\_\_\_



**Lot 7 – Kirraweena Sheldon**

**LOT 8**  
**GLENHOLME STANFORD (AI) (H) GHBS120**  
Born 29/04/2021

SIRE:

Kirraweena Lehmann (H)

Yarram Unique F181 (H)

Curracabark Junee J106 (AI) (ET) (H)

Curracabark Favourite F68 (H)

DAM:

Glenholme Duchess P129 (H)

Kirraweena Australia (H)

Glenholme Duchess J013 (H)

Glenholme Duchess E001 (H)

|       | BW   | Milk | 200 G | 400 G | 600 G | MCW |
|-------|------|------|-------|-------|-------|-----|
| EBV   | +5.6 | +18  | +35   | +54   | +75   | +63 |
| Acc % | 68   | 44   | 62    | 62    | 66    | 56  |
|       | EMA  | RIB  | RUMP  | RBV%  | IMF%  | CWT |
| EBV   | +3.5 | -0.7 | -0.4  | +1.3  | 0.0   | +45 |
| Acc%  | 44   | 49   | 52    | 45    | 50    | 53  |

Notes: Heifer's first calf.

Purchased by:

Price:

---



**Lot 8 – Glenholme Stanford**

**LOT 9**  
**KIRRAWEENA STIRLING (AI) (H)**      **FSBS212**  
Born 28/04/2021

SIRE:  
Pute Nascar N13 (IMP NZL) (AI) (H)

Glendan Park Empire E002 (AI) (ET) (H)  
Sugarloaf Houston H146 (AI) (H)  
Sugarloaf Ladylike D18 (H)

DAM:  
Kirraweena Minerva M210 (AI) (H)  
Invernaion Exeter (H)  
Kirraweena Minerva G142 (AI) (H)  
Kirraweena Minerva A117 (H)

|       | BW   | Milk | 200 G | 400 G | 600 G | MCW |
|-------|------|------|-------|-------|-------|-----|
| EBV   | +6.3 | +14  | +35   | +55   | +89   | +76 |
| Acc % | 69   | 45   | 66    | 66    | 66    | 57  |
|       | EMA  | RIB  | RUMP  | RBV%  | IMF%  | CWT |
| EBV   | +4.3 | +0.5 | +1.0  | +0.7  | +0.9  | +59 |
| Acc%  | 44   | 50   | 54    | 45    | 49    | 54  |

Purchased by: \_\_\_\_\_ Price: \_\_\_\_\_



**Lot 9 – Kirraweena Stirling**

**LOT 10**  
**KIRRAWEENA SHELLAC (AI) (H)      FSBS213**  
Born 29/04/2021

SIRE:  
Trillick Hotspur (IMP IRL) (H)

Yarram Unique F181 (H)  
Curracabark Junee J106 (AI) (ET) (H)  
Curracabark Favourite F68 (H)

DAM:  
Kirraweena Doreen N229 (H)

Lowanna Jackpot Y44 (H)  
Kirraweena Doreen E125 (H)  
Kirraweena Doreen Z125 (H)

|       | BW   | Milk | 200 G | 400 G | 600 G | MCW |
|-------|------|------|-------|-------|-------|-----|
| EBV   | +5.3 | +8   | +24   | +34   | +52   | +58 |
| Acc % | 67   | 38   | 62    | 61    | 62    | 52  |
|       | EMA  | RIB  | RUMP  | RBV%  | IMF%  | CWT |
| EBV   | +2.3 | 0.0  | +0.3  | +0.2  | -0.3  | +28 |
| Acc%  | 41   | 47   | 50    | 49    | 48    | 50  |

Purchased by:

Price:



**Lot 10 – Kirraweena Shellac**



**LOT 11****KIRRAWEENA SULTAN (H)****FSBS204**

Born 15/03/2021

## SIRE:

Glenholme Maclean (AI) (H)

Glendan Park Empire E002 (AI) (ET) (H)

Sugarloaf Houston H146 (AI) (H)

Sugarloaf Ladylike D18 (H)

## DAM:

Kirraweena Queenie M205 (AI) (H)

Devon Court Emperor 72 (H)

Kirraweena Queenie G138 (AI) (H)

Kirraweena Queenie X007 (H)

|       | BW   | Milk | 200 G | 400 G | 600 G | MCW |
|-------|------|------|-------|-------|-------|-----|
| EBV   | +5.4 | +16  | +30   | +50   | +80   | +74 |
| Acc % | 68   | 42   | 64    | 61    | 61    | 53  |
|       | EMA  | RIB  | RUMP  | RBV%  | IMF%  | CWT |
| EBV   | +4.2 | -0.3 | 0.0   | +1.8  | +0.2  | +51 |
| Acc%  | 42   | 49   | 52    | 45    | 48    | 50  |

Notes: Top 10% in the breed for Retail Beef Yield.

Purchased by:

Price:

**Lot 11 – Kirraweena Sultan**

**LOT 12**  
**GLENHOLME SNEDDEN (AI) (H)**      **GHBS118**  
Born 27/04/2021

SIRE:  
Pute Nascar N13 (IMP NZL) (H)

Gunyah Winchester (H)  
Bowmont Winchester H063 (H)  
Bowmont Queen W195 (H)

DAM:  
Glenholme Victoria N115 (H)

Kirraweena Australia (H)  
Glenholme Prudence G045 (H)  
Lylen Prudence X026 (H)

|       |      |      |       |       |       |     |
|-------|------|------|-------|-------|-------|-----|
|       | BW   | Milk | 200 G | 400 G | 600 G | MCW |
| EBV   | +5.7 | +10  | +26   | +46   | +74   | +59 |
| Acc % | 71   | 44   | 65    | 64    | 66    | 57  |
|       | EMA  | RIB  | RUMP  | RBV%  | IMF%  | CWT |
| EBV   | +4.8 | +1.3 | +2.2  | +0.8  | +0.2  | +46 |
| Acc%  | 43   | 48   | 51    | 44    | 48    | 53  |

Notes: Top 10% in the breed for Rump Fat.

Purchased by:

Price:



**Lot 12 – Glenholme Snedden**

**LOT 13****GLENHOLME SHIRAZ (AI) (H)****GHBS147**

Born 10/07/2021

SIRE:

Pute Nascar N13 (IMP NZL) (H)

Yarram Unique F181 (H)

Curcabark Junee J106 (AI) (ET) (H)

Curcabark Favourite F68 (H)

DAM:

Glenholme Prudence N109 (H)

Bowmont Winchester H063 (H)

Glenholme Prudence L004 (H)

Glenholme Prudence G045 (H)

|       | BW   | Milk | 200 G | 400 G | 600 G | MCW |
|-------|------|------|-------|-------|-------|-----|
| EBV   | +5.9 | +12  | +28   | +48   | +77   | +63 |
| Acc % | 71   | 43   | 65    | 65    | 65    | 55  |
|       | EMA  | RIB  | RUMP  | RBY%  | IMF%  | CWT |
| EBV   | +6.3 | +0.5 | +0.8  | +1.9  | +0.5  | +53 |
| Acc%  | 45   | 49   | 52    | 43    | 49    | 54  |

Notes: Top 10% in the breed for Eye Muscle Area and Retail Beef Yield. Second calf from G. Prudence N109. First calf G. Reuben sold in 2021 sale.

Purchased by: \_\_\_\_\_

Price: \_\_\_\_\_

**Lot 13 – Glenholme Shiraz**

**LOT 14**  
**GLENHOLME SCOTT (H)**  
Born 29/06/2021

**GHBS140**

SIRE:  
Curracabark Junee J106 (AI) (ET) (H)

Gunyah Winchester (H)  
Bowmont Winchester H063 (H)  
Bowmont Queen W195 (H)

DAM:  
Glenholme Doreen N119 (H)

Glenwarrah Lynch U028 (H)  
Glenholme Doreen B005 (H)  
Glenholme Doreen X027 (H)

|       | BW   | Milk | 200 G | 400 G | 600 G | MCW |
|-------|------|------|-------|-------|-------|-----|
| EBV   | +5.9 | +15  | +30   | +46   | +71   | +70 |
| Acc % | 73   | 50   | 68    | 67    | 69    | 59  |
|       | EMA  | RIB  | RUMP  | RBV%  | IMF%  | CWT |
| EBV   | +5.0 | -0.4 | -0.1  | +1.4  | +0.7  | +44 |
| Acc%  | 54   | 58   | 60    | 49    | 59    | 61  |

Notes: Top 1% of the breed for feed intake to growth rate in a feedlot setting.

Purchased by: \_\_\_\_\_

Price: \_\_\_\_\_



**Lot 14 – Glenholme Scott**

**LOT 15**  
**KIRRAWEENA SCULLY (AI) (H)                      FSBS222**

Born: 28/06/2021

SIRE:

Trillick Hotspur (IMP IRL) (H)

Yarram Unique F181 (H)  
Curracabark Junee J106 (AI) (ET) (H)  
Curracabark Favourite F68 (H)

DAM:

Kirraweena Doreen M237 (H)

Lowanna Walsh (H)  
Glenholme Doreen H228 (H)  
Glenholme Doreen W053 (H)

|       | BW   | Milk | 200 G | 400 G | 600 G | MCW |
|-------|------|------|-------|-------|-------|-----|
| EBV   | +7.1 | +8   | +26   | +47   | +73   | +92 |
| Acc % | 70   | 37   | 62    | 61    | 64    | 55  |
|       | EMA  | RIB  | RUMP  | RBV%  | IMF%  | CWT |
| EBV   | +2.8 | -0.5 | -0.8  | +0.5  | +0.3  | +38 |
| Acc%  | 41   | 48   | 52    | 42    | 48    | 50  |

Notes: Top 10% Mature Cow Weight. Mother won Senior Interbreed Female at the 2022 Cootamundra Show and Grand Champion Hereford Female at the 2022 Harden-Murrumburrah Show.

Purchased by: \_\_\_\_\_

Price: \_\_\_\_\_



**Lot 15 – Kirraweena Scully**

**LOT 16**  
**GLENHOLME SUMO (PP)      GHBS124**  
Born: 01/05/2021

SIRE:  
Doodle Cooma Magnate (PP)

Antara Faroh A67 (P)  
Bahloo A67 Spartacus E51 (TW) (P)  
Bahloo Symphony Y5 (AI) (ET) (P)

DAM:  
Glenholme Doreen J026 (AI) (P)  
Glenholme Campbell (P)  
Glenholme Doreen E045 (P)  
Glenholme Doreen C021 (H)

|       | BW   | Milk | 200 G | 400 G | 600 G | MCW |
|-------|------|------|-------|-------|-------|-----|
| EBV   | +5.8 | +15  | +32   | +47   | +74   | +72 |
| Acc % | 69   | 38   | 61    | 62    | 64    | 55  |
|       | EMA  | RIB  | RUMP  | RBV%  | IMF%  | CWT |
| EBV   | +2.4 | +0.2 | +0.1  | +0.6  | +0.5  | +41 |
| Acc%  | 43   | 48   | 52    | 46    | 46    | 51  |

Notes: Homozygous polled bull out of a dam from a strong female family with Grand Dam G. Doreen E045 having produced eight calves including Lot 17 in this sale.

Purchased by: \_\_\_\_\_

Price: \_\_\_\_\_



**Lot 16 – Glenholme Sumo**

**LOT 17****GLENHOLME SEBASTIAN (P)****GHBS104**

Born: 03/03/2021

SIRE:

Doodle Cooma Magnate (PP)

Braybook Braxton Y243 (P)

Glenholme Campbell (P)

Glenholme Minerva Y021 (P)

DAM:

Glenholme Doreen E045 (P)

Eurangatuck Bahrain (H)

Glenholme Doreen C021 (H)

Glenholme Doreen W020 (H)

|       | BW   | Milk | 200 G | 400 G | 600 G | MCW |
|-------|------|------|-------|-------|-------|-----|
| EBV   | +5.6 | +13  | +31   | +53   | +77   | +87 |
| Acc % | 67   | 44   | 63    | 63    | 64    | 55  |
|       | EMA  | RIB  | RUMP  | RBV%  | IMF%  | CWT |
| EBV   | +1.3 | -1.8 | -3.0  | +1.7  | 0.0   | +41 |
| Acc%  | 43   | 48   | 52    | 45    | 49    | 52  |

Notes: Dam, G. Doreen E045, has had eight calves, including Glenholme Nelson N117 sold to Viewfield Hereford Stud in our 2019 sale. As well as Sebastian, Doreen E045's daughters are the Dams of both Lot 16 and Lot 18 in this sale.

Purchased by:

Price:

**Lot 17 - Glenholme Sebastian**

**LOT 18**  
**GLENHOLME SYD (PP)**      **GHBS167**  
Born 20/08/2021

SIRE:  
Doodle Cooma Magnate (PP)

Allendale Waterloo B50 (AI) (P)  
Minlacowie Griffin (PP)  
Minlacowie Sally D120 (AI) (P)

DAM:  
Glenholme Doreen L027 (AI) (P)  
Glenholme Campbell (P)  
Glenholme Doreen E045 (P)  
Glenholme Doreen C021 (H)

|       |      |      |       |       |       |      |
|-------|------|------|-------|-------|-------|------|
|       | BW   | Milk | 200 G | 400 G | 600 G | MCW  |
| EBV   | +7.1 | +21  | +42   | +74   | +111  | +120 |
| Acc % | 72   | 57   | 66    | 67    | 68    | 62   |
|       | EMA  | RIB  | RUMP  | RBV%  | IMF%  | CWT  |
| EBV   | +2.7 | -1.9 | -3.2  | +2.7  | -0.3  | +64  |
| Acc%  | 50   | 57   | 60    | 52    | 57    | 59   |

Notes: Homozygous polled, from a strong female family. Top 1% of the breed for Mature Cow Weight and Top 5% for both 600 day weight and Retail Beef Yield %.

Purchased by:

Price:



**Lot 18 – Glenholme Syd**



**LOT 19**  
**KIRRAWEENA SAMBO (P)**  
Born 26/07/2021

**FSBS229**

SIRE:  
Doodle Cooma Magnate (PP)

The Granary Bothwell X554 (P)  
Valma Ollie (P)  
Valma Golds Moonshine Z35 (P)

DAM:  
Kirraweena Minerva K207 (P)

Invernaion Exeter (H)  
Kirraweena Minerva G107 (AI) (H)  
Kirraweena Minerva W022 (H)

|       | BW   | Milk | 200 G | 400 G | 600 G | MCW |
|-------|------|------|-------|-------|-------|-----|
| EBV   | +5.1 | +14  | +35   | +51   | +73   | +71 |
| Acc % | 71   | 39   | 64    | 64    | 67    | 57  |
|       | EMA  | RIB  | RUMP  | RBY%  | IMF%  | CWT |
| EBV   | +2.1 | -0.9 | -1.5  | +1.2  | +0.2  | +43 |
| Acc%  | 44   | 49   | 54    | 47    | 47    | 53  |

Purchased by:

Price:



**Lot 19 – Kirraweena Sambo**

**LOT 20****GLENHOLME SERGIO (P)****GHBS137**

Born 27/05/2021

SIRE:

Doodle Cooma Magnate (PP)

Oxhill Laurence (H)  
Westwood Veron (IMP GBR) (H)  
Westwood Laura 319TH (H)

DAM:

Glenholme Queenie P152 (AI) (H)

Talbalba Yogi (AI) (H)  
Glenholme Queenie K002 (H)  
Glenholme Queenie B071 (H)

|       | BW   | Milk | 200 G | 400 G | 600 G | MCW |
|-------|------|------|-------|-------|-------|-----|
| EBV   | +6.2 | +16  | +32   | +44   | +63   | +51 |
| Acc % | 69   | 41   | 63    | 62    | 66    | 56  |
|       | EMA  | RIB  | RUMP  | RBV%  | IMF%  | CWT |
| EBV   | +3.5 | -0.1 | -0.3  | +1.5  | -0.2  | +36 |
| Acc%  | 43   | 47   | 52    | 45    | 47    | 51  |

Notes: Heifer's first calf.

Purchased by:

Price:

**Lot 20 – Glenholme Sergio**

**LOT 21**  
**KIRRAWEENA SIDDLE (P)**  
Born 13/10/21

**FSBS248**

SIRE:  
Doodle Cooma Magnate (PP)

Yarram Empire H152 (H)  
Yarram Empire L093 (AI) (H)  
Courallie V036 Wonder A192 (AI) (H)

DAM:  
Kirraweena Queenie P207 (AI) (H)

Lowanna Walsh (H)  
Kirraweena Queenie G144 (H)  
Kirraweena Queenie F123 (H)

|       | BW   | Milk | 200 G | 400 G | 600 G | MCW |
|-------|------|------|-------|-------|-------|-----|
| EBV   | +3.2 | +17  | +27   | +42   | +60   | +54 |
| Acc % | 65   | 40   | 61    | 60    | 61    | 51  |
|       | EMA  | RIB  | RUMP  | RBV%  | IMF%  | CWT |
| EBV   | +1.8 | -0.2 | -0.3  | +0.6  | +0.4  | +37 |
| Acc%  | 41   | 46   | 50    | 41    | 47    | 48  |

Notes: Heifer's first calf.

Purchased by:

Price:



**Lot 21 – Kirraweena Siddle**

**LOT 22**  
**GLENHOLME SUNNY (H)**  
Born 10/08/2021

**GHBS160**

SIRE:  
Glenholme Newton (H)

Yarram Unique F181 (H)  
Curracabark Junee J106 (AI) (ET) (H)  
Kirraweena Doreen W053 (H)

DAM:  
Glenholme Victoria P103 (H)

Kirraweena Australia (H)  
Glenholme Victoria K053 (H)  
Glenholme Victoria B009 (H)

|       | BW   | Milk | 200 G | 400 G | 600 G | MCW |
|-------|------|------|-------|-------|-------|-----|
| EBV   | +5.0 | +14  | +31   | +49   | +82   | +77 |
| Acc % | 63   | 41   | 60    | 59    | 60    | 51  |
|       | EMA  | RIB  | RUMP  | RBV%  | IMF%  | CWT |
| EBV   | +3.2 | -1.1 | -1.3  | +1.8  | -0.3  | +51 |
| Acc%  | 40   | 46   | 49    | 39    | 45    | 48  |

Notes: Heifer's first calf. Top 10% Retail Beef Yield.

Purchased by:

Price:

*Also available*

***GLENHOLME***  
**POLL DORSET**  
**RAMS**



*(Brucellosis accredited)*  
**Now taking orders for**  
**2023**

**LOT 23****GLENHOLME SIMPSON (H)****GHBS154**

Born 05/08/2021

## SIRE:

Glenholme Pharaoh (AI) (H)

Glenwarrah Lynch U028 (H)  
Kirraweena Australia (H)  
Kirraweena Doreen W053 (H)

## DAM:

Glenholme Doreen K009 (H)

Eurangatuck Bahrain (H)  
Glenholme Doreen E027 (H)  
Glenholme Doreen X027 (H)

|       | BW   | Milk | 200 G | 400 G | 600 G | MCW |
|-------|------|------|-------|-------|-------|-----|
| EBV   | +5.9 | +15  | +29   | +52   | +82   | +80 |
| Acc % | 69   | 44   | 61    | 62    | 62    | 54  |
|       | EMA  | RIB  | RUMP  | RBV%  | IMF%  | CWT |
| EBV   | +2.1 | -0.5 | -0.5  | +1.2  | -0.1  | +45 |
| Acc%  | 43   | 48   | 52    | 45    | 48    | 50  |

Notes: Half-brother Glenholme Quidditch sold for \$16,000 to Tondara Herefords at Wodonga in 2021.

Purchased by:

Price:

**Lot 23 – Glenholme Simpson**

**LOT 24**  
**KIRRAWEENA SHAMROCK (AI) (H) FSBS207**  
Born: 18/04/2021

SIRE:  
Trillick Hotspur (AI) (H)

Cootharaba Magnum (H)  
Mawarra Virginian (H)  
Mawarra Cherry Ripe 263 (H)

DAM:  
Kirraweena Doreen H215 (AI) (H)  
Glenwarrah Lynch U028 (H)  
Kirraweena Doreen X016 (H)  
Kirraweena Doreen 298 (H)

|       | BW   | Milk | 200 G | 400 G | 600 G | MCW |
|-------|------|------|-------|-------|-------|-----|
| EBV   | +5.4 | +11  | +24   | +37   | +60   | +53 |
| Acc % | 67   | 42   | 63    | 63    | 64    | 55  |
|       | EMA  | RIB  | RUMP  | RBV%  | IMF%  | CWT |
| EBV   | +3.3 | +0.5 | +0.9  | +0.4  | +0.8  | +34 |
| Acc%  | 42   | 49   | 52    | 43    | 49    | 51  |

Notes: Twin. Full brother Kirraweena Ronan sold to Tondara Herefords for \$24,000 at Wodonga in 2022.  
Purchased by: Price:



**Lot 24 – Kirraweena Shamrock**

**LOT 25**  
**GLENHOLME SAILOR (H)**  
Born 05/05/2021

**GHBS132**

SIRE:  
Glenholme Newton (H)

Kirraweena Walsh (H)  
Lowanna Walsh (H)  
Lowanna Daylight 30 (H)

DAM:  
Glenholme Queenie H015 (H)

Eurangatuck Bahrain (H)  
Glenholme Queenie E026 (H)  
Glenholme Queenie A073 (H)

|       | BW   | Milk | 200 G | 400 G | 600 G | MCW |
|-------|------|------|-------|-------|-------|-----|
| EBV   | +4.8 | +13  | +28   | +42   | +62   | +74 |
| Acc % | 69   | 44   | 64    | 65    | 66    | 58  |
|       | EMA  | RIB  | RUMP  | RBV%  | IMF%  | CWT |
| EBV   | +1.4 | -2.7 | -4.1  | +2.4  | -1.1  | +34 |
| Acc%  | 45   | 54   | 58    | 50    | 53    | 56  |

Notes: Top 5% in the breed for Retail Beef Yield.

Purchased by:

Price:



**Lot 25 – Glenholme Sailor**

**LOT 26**  
**KIRRAWEENA SYLVESTER (H)**      **FSBS227**  
Born 17/07/2021

SIRE:  
Pute Nascar N13 (IMP NZL) (H)

Devon Court Emperor 55 (H)  
Devon Court Emperor 72 (H)  
Devon Court Necklet 126 (H)

DAM:  
Glenholme Queenie G138 (H)

Glenwarrah Lynch U028 (H)  
Kirraweena Queenie X007 (H)  
Kirraweena Queenie 356 (AI) (H)

|       | BW   | Milk | 200 G | 400 G | 600 G | MCW |
|-------|------|------|-------|-------|-------|-----|
| EBV   | +3.9 | +17  | +24   | +36   | +58   | +45 |
| Acc % | 73   | 50   | 68    | 67    | 69    | 60  |
|       | EMA  | RIB  | RUMP  | RBV%  | IMF%  | CWT |
| EBV   | +2.8 | +1.5 | +2.5  | -0.2  | +0.6  | +33 |
| Acc%  | 47   | 52   | 56    | 49    | 51    | 57  |

Notes: Top 10% in the breed for Rump Fat.

Purchased by:

Price:



**Lot 26 – Kirraweena Sylvester**



**LOT 27**  
**GLENHOLME SNOWY (H)**  
Born 21/08/2021

**GHBS165**

SIRE:  
Curracabark Junee J106 (AI) (ET) (H)

Cootharaba Magnum (H)  
Talbalba Yogi (AI) (H)  
Bundarra Minerva T38 (H)

DAM:  
Glenholme Victoria J006 (H)

Smithston Zig Zag (AI) (H)  
Glenholme Victoria E009 (H)  
Lyn Victoria W027 (H)

|       | BW   | Milk | 200 G | 400 G | 600 G | MCW |
|-------|------|------|-------|-------|-------|-----|
| EBV   | +6.3 | +11  | +32   | +46   | +66   | +57 |
| Acc % | 69   | 40   | 61    | 62    | 60    | 52  |
|       | EMA  | RIB  | RUMP  | RBV%  | IMF%  | CWT |
| EBV   | +4.0 | -0.8 | -0.7  | +1.5  | +0.4  | +39 |
| Acc%  | 43   | 47   | 51    | 44    | 45    | 48  |

Notes: Top 1% of the breed for feed efficiency in a feedlot setting.

Purchased by:

Price:

---



**Lot 27 – Glenholme Snowy**

**LOT 28**  
**GLENHOLME SHOOTING STAR (AI) (H) GHBS175**  
 Born 26/09/2021

Injemira Advance C085 (H)  
 Devon Court Advance K126 (H)  
 Devon Court Lady B177 (H)

**SIRE:**

Devon Court Advance P121 (AI) (ET) (H)  
 Glendan Park Eclipse E040 (AI) (ET) (H)  
 Devon Court J225 (AI) (H)  
 Devon Court Lioness E344 (H)

Cootharaba Magnum (H)  
 Dunoon Forty Four F515 (H)  
 Dunoon Y070 (H)

**DAM:**

Beggan Hill Peacher K404 (H)  
 Glenwarrah Stand Aside (H)  
 Beggan Hill Peacher C120 (H)  
 Beggan Hill Peacher Y171 (H)

|       |      |      |       |       |       |     |
|-------|------|------|-------|-------|-------|-----|
|       | BW   | Milk | 200 G | 400 G | 600 G | MCW |
| EBV   | +3.7 | +19  | +28   | +49   | +78   | +69 |
| Acc % | 69   | 40   | 61    | 62    | 60    | 52  |
|       | EMA  | RIB  | RUMP  | RBY%  | IMF%  | CWT |
| EBV   | +4.4 | +0.6 | +1.2  | +0.5  | +1.7  | +52 |
| Acc%  | 43   | 47   | 51    | 44    | 45    | 48  |

Notes: Dam purchased at the Wagga Wagga All Breeds Sale in 2021. Top 10% IMF.  
 Purchased by: \_\_\_\_\_ Price: \_\_\_\_\_



**Lot 28 – Glenholme Shooting Star**



**Trillick Hotspur (H)**  
***AI Sire. Semen imported from  
Ireland***



**Pute Nascar N13 (H)**  
***AI Sire. Semen imported from  
New Zealand***



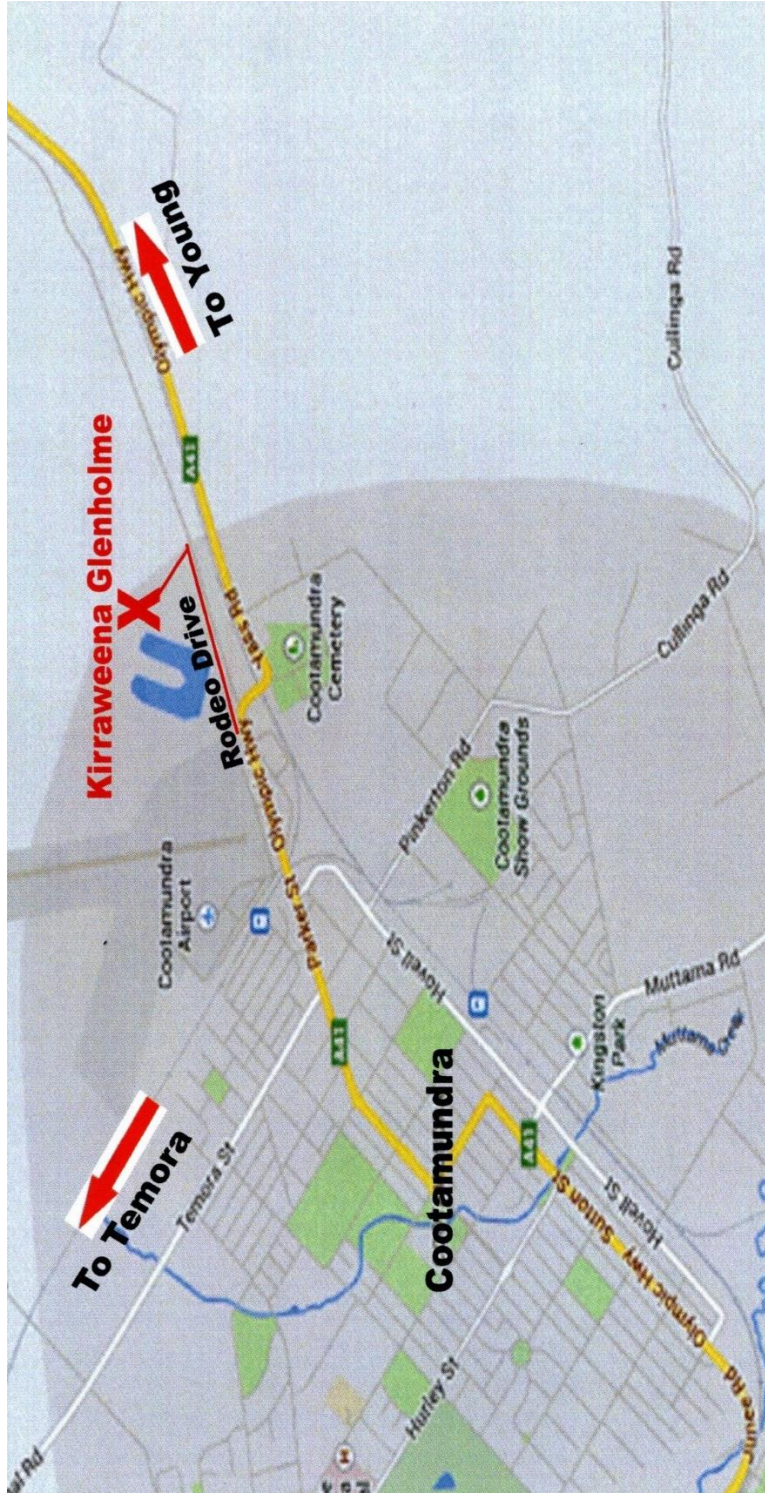
***Sam, Cassie, Jack, Heather & Geoff  
2022 Sale***

*Also available*

***GLENHOLME  
POLL DORSET  
RAMS***



***(Brucellosis accredited)  
Now taking orders for  
2023***



**Buyer's Instruction Slip** – no verbal instructions can be accepted

NAME: .....

ADDRESS: .....

.....Phone: .....  
(of person to whom transfer certificate is to be issued)

**PIC NO.** ..... **LOTS PURCHASED:** .....

ACCOUNT TO: .....

DELIVERY INSTRUCTIONS: .....

# **Independent Breeding Services**

*Providing the following Services*

**Artificial Insemination**

**Bull semen evaluations**

**Semen Collection & testing**

**Liquid Nitrogen deliveries**

**All AI Supplies**



**Freeze Branding**

**Semen Storage**

**Semen Shipping**

**Semen Purchases**

**Geoff & Heather Bush**

**Phone: 0428 423 221 - email: [ghb.glenholme@bigpond.com](mailto:ghb.glenholme@bigpond.com)**



***Kirraweena Ronan AI (H) (Sire: Trillick Hotspur)***

***Sold Wodonga 2022 for \$24,000 to Tondara Herefords***

***CONSISTENTLY BREEDING QUALITY, EASY DOING, QUIET HEREFORDS***

***CELEBRATING IN 2023***

***70 YEARS – KIRRAWEENA 1953-2023***

***30 YEARS – GLENHOLME 1993-2023***