



# FIFTH ANNUAL SALE

OFFERING:  
66 ANGUS BULLS

INSPECTION: TUESDAY  
7TH FEBRUARY 2023

SALE : SATURDAY 11TH  
FEBRUARY 2023 10AM

| JOIN US FOR BARISTA MADE COFFEE BREAKFAST AND LUNCH |



# FOREWARD

## *Welcome to the Keringa Angus Fifth Annual Bull Sale*

Another great year in the agricultural industry, particularly the beef sector. Seeing our clients share in this success, gives us confidence in the product we are supplying.

2022 provided one of the latest breaks we have even seen, however once it started it didn't stop. We are extremely pleased with this year's draft of bulls, displaying added dimension and power. Paddock raised with only hay and silage supplement the bulls will be presented with enough condition to show their genetic potential and ready to work yet continue to develop at their new homes. We believe presenting animals in this way aids with the longevity of the bulls

As with our 2022 a highlight of this year's increase offering of 66 bulls is Millah Murrah Paratrooper P15 sons with 16 bulls on offer. Paratrooper P15 has taken the breed by storm with sons topping at \$280,000 and averaging \$46,990 at the 2021 Millah Murrah auction, other Sires include MM Nectar N334, MM Nugget N266, MM Milestone M308, and Nampara Liberty L21 who has definitely left a stamp on our herd with his first daughter now having sons coming through the sale.

Whilst our major focus has never been on EBV's, phenotype and consistency come first. All bulls have been DNA tested and offered with genomically enhanced EBVs adding more accuracy than that is normally available on young bulls. These bulls are also verified to the sire and some also to the dams.

For those unable to attend the sale it will again be interfaced with AuctionPlus. We have done as much as we can with photos and comments, we have film each bull for those who can't make the sale. Please keep an eye on our website and Facebook page for updates. If you would like any more information on any of the bulls, please do not hesitate to contact myself or one of the agents

We hope to see you at the field days and sale. Please join us for a refreshment to celebrate the good times we are currently enjoying in agriculture and may they continue.

*Regards, Trent Walker*



# 5<sup>TH</sup> ANNUAL SALE

**OFFERING 66 ANGUS BULLS**

- 40 16-18 MONTHS / 26 RISING 2YO •

**BEEF FIELD-DAY**

**TUESDAY 7<sup>TH</sup> 9AM- 4PM FEB 2023**

Free delivery within 250km. All bulls freight assisted.  
interfaced with AuctionPlus.

**SALE DATE 11TH FEBRUARY 2023**

INSPECTION: TUESDAY 7TH FEBRUARY 2023

Contact: Trent Walker : 0429 965 167

Email: [tawkeringa@gmail.com](mailto:tawkeringa@gmail.com) / [www.keringa.com.au](http://www.keringa.com.au)

1167 Boothby Rd Culburra SA 5266  [keringa angus](#)

**PLATINUM** Livestock

A NUTRIEN AG SOLUTIONS PARTNER

Adam Bradley: 0428 838 285

 **AuctionPlus™**

**Elders**

Laryn Gogel: 0436 020 245







**06 SELLING INFO**

**08 UNDERSTANDING THE TRATRANSTASMAN  
ANGUS CATTLE EVALUATION**

**09 UNDERSTANDING EBVS**

**10 BEEFCLASS STRUCTURAL ASSESMENT**





- 12 BRINGING YOUR NEW BULL HOME
- 14 DISCLAIMER
- 15 RECESIVE GENETICS CONDITIONS
- 16 ANGUS CATTLE EVALUATION 2023
- 18 LOTS FOR SALE



# SELLING INFORMATION

## SALE DATE AND INSPECTION TIME

Selling will commence at 10am on Saturday the 11th of February 2023, Prior Inspection Tuesday 7th February 2023.

## CATERING

- Field-day – Light refreshments and cool drinks available
- Sale Day- Barista made coffee and Breakfast available pre-sale
- Smoked Brisket Rolls post sale, please join us



## PRIOR INSPECTION

Beef Week 2022 Tuesday 8th February 9am to 4pm. If you are unable to make the field day, please ring to organise an appointment for private inspection.

## SELLING SYSTEM

Animals will be sold under normal auction conditions. The sale will also be interfaced with AuctionsPlus, enabling anyone not able to make the sale to bid with confidence. Successful purchasers are requested to give written instruction to the selling agents regarding transport after the sale. All lots will be sold GST exclusive, with GST to be added to the final bid price. Please see selling agents for a full list of terms and conditions.

## AUCTIONSPLUS

The sale will be interface with AuctionsPlus so anyone not able to make the sale on the day can bid online. Please see [www.auctionplus.com.au](http://www.auctionplus.com.au)

## REGISTRATION

Please see the selling agent to obtain a buyer's card. Ownership of the bulls will be transferred by the vendor with Angus Australia. Please provide accurate information so the bulls can be transferred correctly, your Angus Australia herd ID (if you have one), also your PIC number so bulls can be transferred on the NLIS database.

## ACCOMMODATION

Accommodation is available in Coonalpyn, Tintinara.

## PHYSICAL EXAMINATION OF THE BULLS

All bulls have been vet checked and will only be offered if deemed to be fit for service. All bulls structurally assessed by Jim Green. Bulls have been semen tested palpated of scrotal contents by Nationwide AB. Bulls have all been scanned for EMA, rib and rump fat and IMF. Data available on request.

## PHONE BIDDING

Phone service is available at the sale area, but sometimes not of great quality, so it is suggested bids be placed with agents prior to the sale.

## VISITORS ENTER THE PENS AT THEIR OWN RISK

### NO CHILDREN MUST ENTER THE PENS

People entering the yards are at risk of injury. Be alert, especially if bulls are fighting, if a bull tries to be playful please do not respond by touching him on the head. Please alert staff to any issues. Leave the pen if you must and let the animals calm down. Although we work very hard on temperament, the pressure of the inspection and sale may cause some bulls to become agitated. If you require assistance in the pens, please ask one of the selling agents for assistance.



## TEMPERAMENT AND HANDLING

The Keringa herd takes pride in the docility of all our animals, all animals are assessed each time they come into the yards to ensure any animals not deemed suitable are culled. Understandably on sale day with the change in environment and more people around the odd animal may misbehave. Bulls have been handled with horses, utes, quad bikes, on foot and by dogs.

## MANAGEMENT

Bulls are paddock weaned at 5-7 months of age in large contemporary groups. They ran in these groups, growing on pasture and sown crops until late 2022 when they were split into sale groups.

At this time, they then started supplement silage and hay along with dry paddock feed to maintain condition for preparation for the sale.

## GENETIC CONDITIONS

Bulls are free from all other listed Genetic Conditions by pedigree only, apart for Lot 40 who is a DD carrier.

## EBVS

Please note EBV are from the Mid-January 2023 TACE run at Angus Australia.

## BULL HEALTH

Keringa bulls are ready to go to their new homes and work. Bulls have been DNA tested for pesti-virus, all animals tested negative to being PI (Persistently Infected). Double vaccinated with Pestiguard, Vibrovac and & 7 in 1. Semen Tested. Keringa Herd is J-BAS 8.

## SEMEN RIGHTS

All bulls sell with 80% semen marketing rights attached. Giving the purchaser a majority share in any semen sale but providing a link to the knowledge of the bulls from Keringa and potential marketing options. Should the purchaser wish to purchase 100% semen rights on a bull please contact the vendor at least 24 hours before the sale. Keringa retain the right to collect up to 500 straws of semen from any bull in the sale, at the vendor's expense and the purchaser's convenience.

## DELIVERY

All bulls come with free delivery within a 250km radius of Tulara Downs. Other bulls will be freight assisted.

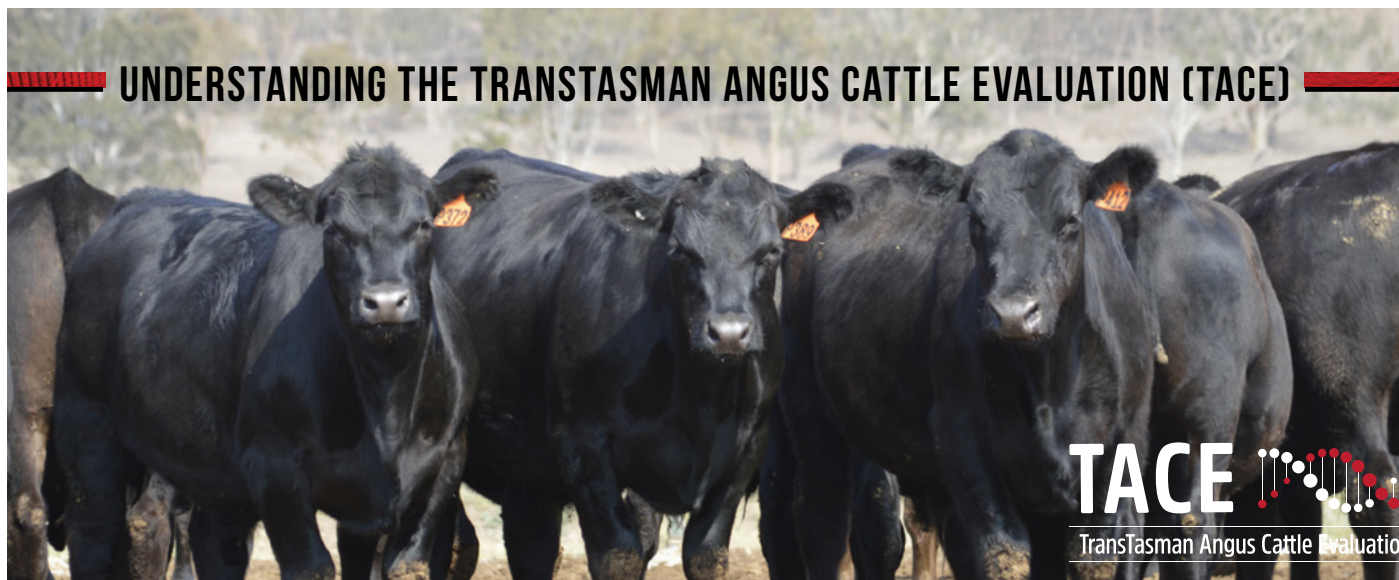
## HEALTH AND SAFETY OF VISITORS

All bulls are thoroughly screened for temperament but with the nature of cattle there is always a risk on the day as under different environments some bulls may become agitated.

## WARRANTY

The vendor Warrants that: Bulls are capable of natural service within 12 months of sale. Bulls are structurally sound for working. Resolution: The vendor will either provide a satisfactory replacement or provide a credit for the following Keringa Sale (less salvage value and associated cost in vendor taking delivery). In the case that a purchaser claims a bull is infertile, the purchaser must submit a veterinary report stating the reason for infertility. Keringa does not cover sickness or injury that may have occurred after delivery of the bull. We highly recommend that you insure your bulls for these issues. If a legitimate issue does arise please contact Trent Walker on 0429 965 167 and we will do our best to find a resolution and make sure your cows get in calf.

# UNDERSTANDING THE TRANSTASMAN ANGUS CATTLE EVALUATION (TACE)



## What is the TransTasman Angus Cattle Evaluation?

The TransTasman Angus Cattle Evaluation is the genetic evaluation program adopted by Angus Australia for Angus and Angus influenced beef cattle. The TransTasman Angus Cattle Evaluation uses Best Linear Unbiased Prediction (BLUP) technology to produce Estimated Breeding Values (EBVs) of recorded cattle for a range of important production traits (e.g. weight, carcase, fertility).

The TransTasman Angus Cattle Evaluation is an international genetic evaluation and includes pedigree, performance and genomic information from the Angus Australia and Angus New Zealand databases, along with selected information from the American and Canadian Angus Associations.

The TransTasman Angus Cattle Evaluation utilises a range of genetic evaluation software, including the internationally recognised BLUPF90 family of programs, and BREEDPLAN® beef genetic evaluation analytical software, as developed by the Animal Genetics and Breeding Unit (AGBU), a joint institute of NSW Agriculture and the University of New England, and Meat and Livestock Australia Limited (MLA).

## What is an EBV?

An animal's breeding value can be defined as its genetic merit for each trait. While it is not possible to determine an animal's true breeding value, it is possible to estimate it. These estimates of an animal's true breeding value are called EBVs (Estimated Breeding Values).

EBVs are expressed as the difference between an individual animal's genetics and a historical genetic level (i.e. group of animals) within the TACE genetic evaluation, and are reported in the units in which the measurements are taken.

## Using EBVs to Compare the Genetics of Two Animals

TACE EBVs can be used to estimate the expected difference in the genetics of two animals, with the expected difference equating to half the difference in the EBVs of the animals, all other things being equal (e.g. they are joined to the same animal/s).

For example, a bull with a 200 Day Growth EBV of +60 would be expected to produce progeny that are, on average, 10 kg heavier at 200 days of age than a bull with a 200 Day Growth EBV of +40 kg (i.e. 20 kg difference between the sire's EBVs, then halved as the sire only contributes half the genetics).

Or similarly, a bull with an IMF EBV of +3.0 would be expected to produce progeny with on average, 1% more intramuscular fat in a 400 kg carcase than a bull with a IMF EBV of +1.0 (i.e. 2% difference between the sire's EBVs, then halved as the sire only contributes half the genetics).

## Using EBVs to Benchmark an Animal's Genetics with the Breed

EBVs can also be used to benchmark an animal's genetics relative to the genetics of other Angus or Angus infused animals recorded with Angus Australia.

To benchmark an animal's genetics relative to other Angus animals, an animal's EBV can be compared to the EBV reference tables, which provide:

- the breed average EBV
- the percentile bands table

The current breed average EBV is listed on the bottom of each page in this publication, while the current EBV reference tables are included at the end of these introductory notes. For easy reference, the percentile band in which an animal's EBV ranks is also published in association with the EBV.

## Considering Accuracy

An accuracy value is published with each EBV, and is usually displayed as a percentage value immediately below the EBV.

The accuracy value provides an indication of the reliability of the EBV in estimating the animal's genetics (or true breeding value), and is an indication of the amount of information that has been used in the calculation of the EBV.

EBVs with accuracy values below 50% should be considered as preliminary or of low accuracy, 50-74% as of medium accuracy, 75-90% of medium to high accuracy, and 90% or greater as high accuracy.

## Description of TACE EBVs

EBVs are calculated for a range of traits within TACE, covering calving ease, growth, fertility, maternal performance, carcase merit, feed efficiency and structural soundness. A description of each EBV included in this publication is provided on the following page.



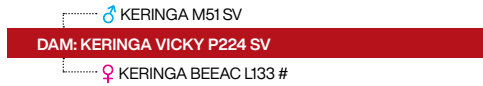
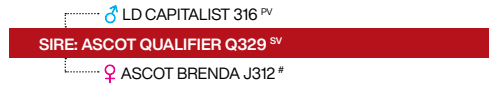
# UNDERSTANDING ESTIMATED BREEDING VALUES (EBVS)

Calving Ease/Birth	<b>CEDir</b>	%	Genetic differences in the ability of a sire's calves to be born unassisted from 2 year old heifers.	Higher EBVs indicate fewer calving difficulties in 2 year old heifers.
	<b>CEDtrs</b>	%	Genetic differences in the ability of a sire's daughters to calve unassisted at 2 years of age.	Higher EBVs indicate fewer calving difficulties in 2 year old heifers.
	<b>GL</b>	days	Genetic differences between animals in the length of time from the date of conception to the birth of the calf.	Lower EBVs indicate shorter gestation length.
	<b>BW</b>	kg	Genetic differences between animals in calf weight at birth.	Lower EBVs indicate lighter birth weight.
Growth	<b>200 Day</b>	kg	Genetic differences between animals in live weight at 200 days of age due to genetics for growth.	Higher EBVs indicate heavier live weight.
	<b>400 Day</b>	kg	Genetic differences between animals in live weight at 400 days of age.	Higher EBVs indicate heavier live weight.
	<b>600 Day</b>	kg	Genetic differences between animals in live weight at 600 days of age.	Higher EBVs indicate heavier live weight.
	<b>MCW</b>	kg	Genetic differences between animals in live weight of cows at 5 years of age.	Higher EBVs indicate heavier mature weight.
	<b>Milk</b>	kg	Genetic differences between animals in live weight at 200 days of age due to the maternal contribution of its dam.	Higher EBVs indicate heavier live weight.
Fertility	<b>DtC</b>	days	Genetic differences between animals in the time from the start of the joining period (i.e. when the female is introduced to a bull) until subsequent calving.	Lower EBVs indicate shorter time to calving.
	<b>SS</b>	cm	Genetic differences between animals in scrotal circumference at 400 days of age.	Higher EBVs indicate larger scrotal circumference.
Carcase	<b>CWT</b>	kg	Genetic differences between animals in hot standard carcase weight at 750 days of age.	Higher EBVs indicate heavier carcase weight.
	<b>EMA</b>	cm <sup>2</sup>	Genetic differences between animals in eye muscle area at the 12/13th rib site in a 400 kg carcase.	Higher EBVs indicate larger eye muscle area.
	<b>Rib Fat</b>	mm	Genetic differences between animals in fat depth at the 12/13th rib site in a 400 kg carcase.	Higher EBVs indicate more fat.
	<b>P8 Fat</b>	mm	Genetic differences between animals in fat depth at the P8 rump site in a 400 kg carcase.	Higher EBVs indicate more fat.
	<b>RBV</b>	%	Genetic differences between animals in boned out saleable meat from a 400 kg carcase.	Higher EBVs indicate higher yield.
	<b>IMF</b>	%	Genetic differences between animals in intramuscular fat (marbling) at the 12/13th rib site in a 400 kg carcase.	Higher EBVs indicate more intramuscular fat.
Feed/Temp.	<b>NFI-F</b>	kg/day	Genetic differences between animals in feed intake at a standard weight and rate of weight gain when animals are in a feedlot finishing phase.	Lower EBVs indicate more feed efficiency.
	<b>Doc</b>	%	Genetic differences between animals in temperament.	Higher EBVs indicate better temperament.
Structure	<b>Claw Set</b>	score	Genetic differences in claw set structure (shape and evenness of claws).	Lower EBVs indicate a lower score.
	<b>Foot Angle</b>	score	Genetic differences in foot angle (strength of pastern, depth of heel).	Lower EBVs indicate a lower score.
	<b>Leg Angle</b>	score	Genetic differences in rear leg structure when viewed from the side (angle at front of the hock).	Lower EBVs indicate a lower score.
Selection Index	<b>\$A</b>	\$	Genetic differences between animals in net profitability per cow joined in a typical commercial self replacing herd using Angus bulls. This selection index is not specific to a particular market end-point, but identifies animals that will improve overall net profitability in the majority of commercial, self replacing, grass and grain finishing beef production systems.	Higher selection indexes indicate greater profitability.
	<b>\$A-L</b>	\$	Genetic differences between animals in net profitability per cow joined in a typical commercial self replacing herd using Angus bulls. This selection index is not specific to a particular market end-point, but identifies animals that will improve overall net profitability in the majority of commercial, self replacing, grass and grain finishing beef production systems.  The \$A-L index is similar to the \$A index but is modelled on a production system where feed is surplus to requirements for the majority of the year, or the cost of supplying additional feed when animal feed requirements increase is low.  While the \$A aims to maintain mature cow weight, the \$A-L does not aim to limit the increase in mature cow weight as there is minimal cost incurred if the feed maintenance requirements of the female breeding herd increase as a result of selection decisions.	Higher selection indexes indicate greater profitability.

# 1 KERINGA SPORTSMAN S248<sup>PV</sup>

DOB 6/9/2021 | REGISTER HBR | ID SNE21S248

AMFU,CAFU,DDFU,NHFU



First son to sell of Ascot Qualifier Q329, the top selling bull at the 2020 Ascot spring sale. A large framed bull who will grow to be a powerhouse, impressive to make Lot one being the equal youngest bull in the sale. His pedigree is loaded with maternal genetics, Millah Murrah Brenda line from his sire, Vermont Lowan E356 a foundation cow for Keringa and Ardrossan X15 on the maternal side. Maternal Brother sold for \$20,000 to KW and BF Badenoch in 2022. Definitely one for the cows.

Mid January 2023 TransTasman Angus Cattle Evaluation

Traits Observed : BWT,200WT(x2),400WT(x2),SC,Scan(EMA,Rib,Rump,IMF),DOC,Genomics

TACE	CED	CEM	GL	BW	200	400	600	MCW	MILK	SS	DC	DOC	CWT	EMA	RIB	P8	RBY	IMF	NFI-F	FA	CS	RLSV	Selection Indexes			
EBV	-12	-9.8	-1	9.2	67	119	149	141	18	1.2	-4.6	11	101	3	-1.4	-1.1	0.9	-0.2	-0.4	0.7	0.66	0.9	ABI	DOM	GRN	GRS
ACC	54%	43%	67%	71%	70%	68%	68%	65%	57%	72%	34%	47%	58%	57%	59%	59%	52%	62%	48%	61%	61%	60%	\$174	\$156	\$228	\$153
PERC	99	99	94	99	3	2	5	5	46	82	51	91	1	87	79	64	22	97	3	4	14	12	77	62	76	80

PURCHASER ..... PRICE .....



SIRE OF LOT 1 ASCOT QUALIFIER Q329

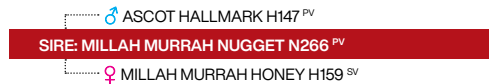


LOT 2 KERINGA SOVEREIGN S163

# 2 KERINGA SOVEREIGN S163 ET<sup>PV</sup>

DOB 2/8/2021 | REGISTER HBR | ID SNE21S163

AMFU,CAFU,DDFU,NHFU



First of four full brother to sell. P122 the dam of S163 is quickly becoming a foundation cow in the Keringa herd, her first son sold last year for \$24,000 to Tree Top Estate. Calving ease sire with explosive growth and a huge carcass. Suitable for heifers. Full brothers sell at lots 4,5 and 11

Mid January 2023 TransTasman Angus Cattle Evaluation

Traits Observed : BWT,200WT(x2),400WT(x2),SC,Scan(EMA,Rib,Rump,IMF),DOC,Genomics

TACE	CED	CEM	GL	BW	200	400	600	MCW	MILK	SS	DC	DOC	CWT	EMA	RIB	P8	RBY	IMF	NFI-F	FA	CS	RLSV	Selection Indexes			
EBV	4.9	5.6	-7.4	5	63	118	162	164	17	2.8	-3.3	38	99	2.9	-2.8	-4.6	0.7	1.3	0.16	0.9	0.84	11	ABI	DOM	GRN	GRS
ACC	59%	47%	73%	74%	73%	71%	71%	68%	63%	74%	37%	57%	61%	61%	62%	62%	56%	65%	51%	65%	64%	63%	\$190	\$158	\$242	\$178
PERC	32	23	14	71	6	2	1	1	55	23	84	4	1	88	96	98	34	73	47	31	47	70	62	60	67	58

PURCHASER ..... PRICE .....

# 3 KERINGA PARATROOPER S184 (AI)<sup>SV</sup>

DOB 9/8/2021 | REGISTER HBR | ID SNE21S184

AMFU,CAFU,DDFU,NHFU



Top 1% growth figure, this extra long bodied P15 son is what you are after if you want to add weight and carcass into your weaners

Mid January 2023 TransTasman Angus Cattle Evaluation

Traits Observed : GL,BWT,200WT(x2),400WT(x2),SC,Scan(EMA,Rib,Rump,IMF),DOC,Genomics

TACE	CED	CEM	GL	BW	200	400	600	MCW	MILK	SS	DC	DOC	CWT	EMA	RIB	P8	RBY	IMF	NFI-F	FA	CS	RLSV	Selection Indexes			
EBV	-7.9	4.6	-5.7	6.6	77	136	175	162	15	4.2	-2.8	17	106	8.9	-3.2	-3.4	1.4	0.8	0.12	1.02	0.86	11	ABI	DOM	GRN	GRS
ACC	61%	47%	83%	74%	73%	72%	72%	68%	61%	75%	37%	57%	61%	62%	63%	63%	57%	64%	50%	66%	67%	64%	\$226	\$195	\$297	\$210
PERC	97	33	34	93	1	1	1	1	67	3	91	64	1	21	98	93	6	84	41	61	52	70	21	14	23	22

PURCHASER ..... PRICE .....





**4****KERINGA SOVEREIGN S164 ET PV**

DOB 2/8/2021 | REGISTER HBR | ID SNE21S164

AMFU,CAFU,DDFU,NHFU

♂ ASCOT HALLMARK H147 PV

SIRE: MILLAH MURRAH NUGGET N266 PV

♀ MILLAH MURRAH HONEY H159 SV

♂ S CHISUM 255 SV

DAM: KERINGA CHAMPAGNE P122 PV

♀ WILLOW FIELDS CHAMPAGNE K7 PV

N266 x P122 again this bull boast the highest ADG of his contemporary group at 1.44kg/day and also scanned the 2nd highest EMA of 106 cm2 at 15.5 months. Suitable for heifers. Full brothers sell at lots 2,5 and 11

Mid January 2023 TransTasman Angus Cattle Evaluation

Traits Observed : BWT,200WT(x2),400WT(x2),SC,Scan(EMA,Rib,Rump,IMF),DOC,Genomics

TACE	CED	CEM	GL	BW	200	400	600	MCW	MILK	SS	DC	DOC	CWT	EMA	RIB	P8	RBY	IMF	NFI-F	FA	CS	RLSV	Selection Indexes			
EBV	8	7.2	-7.9	3	61	122	162	151	22	2.1	-4	38	105	1.4	0.2	-0.7	0.1	1.6	-0.04	0.9	0.74	112	ABI	DOM	GRN	GRS
ACC	59%	47%	74%	74%	73%	71%	71%	68%	63%	74%	37%	57%	61%	61%	62%	62%	56%	65%	51%	65%	64%	63%	\$215	\$182	\$278	\$200
PERC	10	11	10	26	9	2	1	2	16	49	68	4	1	95	42	57	72	65	22	31	26	76	33	28	38	32

PURCHASER .....

PRICE .....

**5****KERINGA SOVEREIGN S166 ET PV**

DOB 2/8/2021 | REGISTER HBR | ID SNE21S166

AMFU,CAFU,DDFU,NHFU

♂ ASCOT HALLMARK H147 PV

SIRE: MILLAH MURRAH NUGGET N266 PV

♀ MILLAH MURRAH HONEY H159 SV

♂ S CHISUM 255 SV

DAM: KERINGA CHAMPAGNE P122 PV

♀ WILLOW FIELDS CHAMPAGNE K7 PV

A long bull with a huge barrel. We thought very highly of these flush brother and have retained one to use in the Keringa herd. A balanced set of data, suitable for heifers. Full brothers sell at lots 2,4 and 11

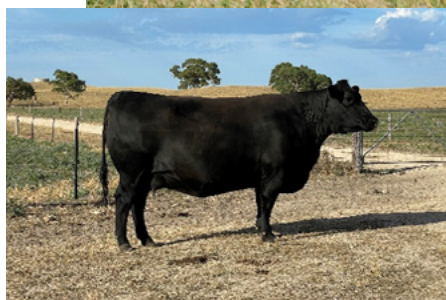
Mid January 2023 TransTasman Angus Cattle Evaluation

Traits Observed : BWT,200WT(x2),400WT(x2),SC,Scan(EMA,Rib,Rump,IMF),DOC,Genomics

TACE	CED	CEM	GL	BW	200	400	600	MCW	MILK	SS	DC	DOC	CWT	EMA	RIB	P8	RBY	IMF	NFI-F	FA	CS	RLSV	Selection Indexes			
EBV	7	3.1	-7.9	3.6	60	111	136	115	18	2.7	-4.7	38	82	4.8	-0.5	-1.5	0.3	2.7	0.24	1.1	0.86	104	ABI	DOM	GRN	GRS
ACC	59%	47%	74%	74%	73%	71%	72%	69%	63%	74%	37%	57%	62%	62%	63%	63%	57%	65%	51%	63%	61%	60%	\$237	\$205	\$314	\$219
PERC	15	50	10	39	13	6	15	26	47	26	48	4	12	69	60	71	60	33	58	78	52	51	13	7	13	15

PURCHASER .....

PRICE .....



LOT 5 KERINGA SOVEREIGN S166

DAM OF LOTS 2, 4, 5 AND KERINGA CHAMPAGNE P122



**LOT 6 KERINGA PARATROOPER S130**  
MILLAH MURRAH PARATROOPER P15, 16 SONS SELL INCLUDING LOT 6



**6 KERINGA PARATROOPER S130 (AI) <sup>SV</sup>**  
DOB 15/07/2021 | REGISTER APR | ID SNE21S130

AMFU,CAFU,DDFU,NHFU

♂ EF COMMANDO 1366 <sup>PV</sup>  
SIRE: MILLAH MURRAH PARATROOPER P15 <sup>PV</sup>  
♀ MILLAH MURRAH ELA M9 <sup>PV</sup>

♂ RAFF DYNAMITE D345 SV  
DAM: KERINGA BARUNAH M144 #  
♀ KERINGA BARUNAH H29 #

The top on this bull is incredible a true B muscle pattern, he scanned the top EMA of his contemporary group of 107cm<sup>2</sup> at 16 months. Suitable for heifers

Mid January 2023 TransTasman Angus Cattle Evaluation

Traits Observed : GL,BWT,200WT(x2),400WT(x2),SC,Scan(EMA,Rib,Rump,IMF),DOC,Genomics

TACE	CED	CEM	GL	BW	200	400	600	MCW	MILK	SS	DC	DOC	CWT	EMA	RIB	P8	RBY	IMF	NFI-F	FA	CS	RLSV	Selection Indexes			
																							ABI	DOM	GRN	GRS
EBV	1.1	2.5	-5.9	4.3	59	105	138	113	22	0.3	-4.1	17	91	6	-1.6	-1	0.8	0.6	-0.22	1.04	1	1.1	\$213	\$178	\$279	\$193
ACC	60%	46%	84%	74%	73%	71%	71%	68%	61%	75%	36%	56%	61%	61%	62%	62%	56%	64%	50%	66%	66%	64%	35	33	37	41
PERC	65	56	31	55	15	14	13	29	14	97	66	68	4	53	83	63	28	88	9	65	78	70				

PURCHASER ..... PRICE .....

**7 KERINGA SPORTSMAN S233 <sup>SV</sup>**  
DOB 31/08/2021 | REGISTER HBR | ID SNE21S233

AMFU,CAFU,DDFU,NHFU

♂ LD CAPITALIST 316 <sup>PV</sup>  
SIRE: ASCOT QUALIFIER Q329 <sup>SV</sup>  
♀ ASCOT BRENDA J312 #

♂ BOWMONT ABERDEEN J302 PV  
DAM: KERINGA SARAH M153 #  
♀ KERINGA J24 #

Growthy son of Q329 with a huge carcass, his maternal line goes back to Roseleigh Sarah S9. One for the mature cows.

Mid January 2023 TransTasman Angus Cattle Evaluation

Traits Observed : BWT,200WT(x2),400WT(x2),SC,Scan(EMA,Rib,Rump,IMF),DOC,Genomics

TACE	CED	CEM	GL	BW	200	400	600	MCW	MILK	SS	DC	DOC	CWT	EMA	RIB	P8	RBY	IMF	NFI-F	FA	CS	RLSV	Selection Indexes			
																							ABI	DOM	GRN	GRS
EBV	-3.2	2	-3.5	7.8	66	112	143	151	13	1.8	-4	17	94	7.3	-3.7	-4.6	1.9	-0.9	-0.45	0.96	0.9	1.16	\$186	\$170	\$234	\$169
ACC	53%	43%	69%	72%	70%	68%	67%	65%	58%	71%	35%	47%	58%	56%	59%	59%	52%	61%	48%	64%	64%	61%	66	44	73	67
PERC	88	61	71	98	3	5	8	2	85	61	68	67	2	36	99	98	1	99	2	46	60	84				

PURCHASER ..... PRICE .....

**8 KERINGA KINGDOM S211 ET <sup>PV</sup>**  
DOB 25/08/2021 | REGISTER HBR | ID SNE21S211

AMFU,CAFU,DDFU,NHFU

♂ HINGAIA 469 #  
SIRE: MILLAH MURRAH KINGDOM K35 <sup>PV</sup>  
♀ MILLAH MURRAH FLOWER G41 <sup>PV</sup>

♂ IRELANDS GALAXY G43 SV  
DAM: KERINGA VICKY K38 PV  
♀ IRELANDS VICKY Z15 PV

Next two bulls are full brothers by Millah Murrah Kingdom K35, Kingdom has left us with some incredible female which are at the heart of our herd, with the maternal strength of the Merrigrange Vicky female line, these are sure to breed you front paddock females. One for the cows.

Mid January 2023 TransTasman Angus Cattle Evaluation

Traits Observed : BWT,200WT(x2),400WT(x2),SC,Scan(EMA,Rib,Rump,IMF),DOC,Genomics

TACE	CED	CEM	GL	BW	200	400	600	MCW	MILK	SS	DC	DOC	CWT	EMA	RIB	P8	RBY	IMF	NFI-F	FA	CS	RLSV	Selection Indexes			
																							ABI	DOM	GRN	GRS
EBV	-3.2	-3.4	-1.7	6.7	58	100	137	145	9	1.8	-3.6	17	69	5.5	-2.7	-3.5	1.1	0.4	-0.27	1.16	0.72	1.06	\$155	\$129	\$199	\$141
ACC	63%	55%	73%	75%	74%	72%	73%	71%	68%	75%	49%	59%	67%	66%	67%	67%	63%	69%	60%	69%	69%	66%	88	87	89	87
PERC	88	94	90	93	18	23	14	4	98	61	78	66	41	60	95	94	14	91	6	87	23	58				

PURCHASER ..... PRICE .....





LOT 9 KERINGA KINGDOM S226

MILLAH MURRAH KINGDOM SIRE OF LOTS 8 AND 9



**9** KERINGA KINGDOM S226 ET <sup>PV</sup>  
 DOB 29/08/2021 | REGISTER HBR | ID SNE21S226

AMFU,CAFU,DDFU,NHFU

♂ HINGAIA 469 #  
 SIRE: MILLAH MURRAH KINGDOM K35 <sup>PV</sup>  
 ♀ MILLAH MURRAH FLOWER G41 <sup>PV</sup>

♂ IRELANDS GALAXY G43 SV  
 DAM: KERINGA VICKY K38 PV  
 ♀ IRELANDS VICKY Z15 PV

Full brother to the previous lot recommend use on cows.

Mid January 2023 TransTasman Angus Cattle Evaluation

Traits Observed : BWT,200WT(x2),400WT(x2),SC,Scan(EMA,Rib,Rump,IMF),DOC,Genomics

TACE	CED	CEM	GL	BW	200	400	600	MCW	MILK	SS	DC	DOC	CWT	EMA	RIB	P8	RBY	IMF	NFI-F	FA	CS	RLSV	Selection Indexes			
																							ABI	DOM	GRN	GRS
EBV	-4.3	-2.5	-2.2	7	59	105	146	159	10	2.3	-4.2	10	70	4.8	-1.2	-1.9	0.4	2	-0.21	1.2	0.82	128	\$165	\$131	\$216	\$153
ACC	64%	55%	73%	74%	75%	73%	73%	71%	68%	75%	49%	59%	67%	66%	67%	68%	63%	69%	60%	67%	67%	64%	83	85	82	80
PERC	91	91	86	95	15	14	7	1	96	40	63	92	39	69	76	78	54	53	9	91	43	97				

PURCHASER ..... PRICE .....

**10** KERINGA SPANIARD S189 (AI) <sup>PV</sup>  
 DOB 10/8/2021 | REGISTER HBR | ID SNE21S189

AMFU,CAFU,DDFU,NHFU

♂ S CHISUM 255 <sup>SV</sup>  
 SIRE: MILLAH MURRAH QUIXOTE Q96 <sup>PV</sup>  
 ♀ MILLAH MURRAH BRENDA N8 <sup>PV</sup>

♂ EF COMPLEMENT 8088 PV  
 DAM: KERINGA N281 PV  
 ♀ ABERDEEN ESTATE DREAM F101 E

The first Millah Murrah Quixote son to sell, this pedigree is littered with maternal genetics from Chisum 255, Klooney K42 on the top side to the famous Dream female line on the bottom side. One for the cows

Mid January 2023 TransTasman Angus Cattle Evaluation

Traits Observed : GL,BWT,200WT(x2),400WT(x2),SC,Scan(EMA,Rib,Rump,IMF),DOC,Genomics

TACE	CED	CEM	GL	BW	200	400	600	MCW	MILK	SS	DC	DOC	CWT	EMA	RIB	P8	RBY	IMF	NFI-F	FA	CS	RLSV	Selection Indexes			
																							ABI	DOM	GRN	GRS
EBV	-0.8	4.8	-6.2	7.5	61	109	146	122	27	3.1	-5.5	14	91	8.5	-1.5	-1.3	1.2	-0.3	0.45	1.4	1.06	122	\$220	\$188	\$275	\$207
ACC	59%	47%	84%	74%	74%	72%	71%	68%	61%	75%	40%	58%	62%	62%	63%	63%	57%	65%	53%	66%	66%	64%	28	21	41	25
PERC	77	31	27	97	9	8	6	18	2	16	26	80	3	24	81	68	11	98	81	99	86	93				

PURCHASER ..... PRICE .....

**11** KERINGA SOVEREIGN S165 ET <sup>PV</sup>  
 DOB 2/8/2021 | REGISTER HBR | ID SNE21S165

AMFU,CAFU,DDFU,NHFU

♂ ASCOT HALLMARK H147 <sup>PV</sup>  
 SIRE: MILLAH MURRAH NUGGET N266 <sup>PV</sup>  
 ♀ MILLAH MURRAH HONEY H159 <sup>SV</sup>

♂ S CHISUM 255 SV  
 DAM: KERINGA CHAMPAGNE P122 PV  
 ♀ WILLOW FIELDS CHAMPAGNE K7 PV

The last of four full brothers to sell, these bulls have impeccable structures as is with all N266 progeny. Calving ease bull with and IMF of 2.7 and top 15% docility he is hard to go past. Suitable for heifers. Full brothers sell at lots 2,4 and 5

Mid January 2023 TransTasman Angus Cattle Evaluation

Traits Observed : BWT,200WT(x2),400WT(x2),SC,Scan(EMA,Rib,Rump,IMF),DOC,Genomics

TACE	CED	CEM	GL	BW	200	400	600	MCW	MILK	SS	DC	DOC	CWT	EMA	RIB	P8	RBY	IMF	NFI-F	FA	CS	RLSV	Selection Indexes			
																							ABI	DOM	GRN	GRS
EBV	5.4	2.9	-6.4	3.5	57	101	139	122	21	2	-4.2	30	83	3.1	-2.7	-4.4	0.7	2.7	-0.14	0.8	0.62	1.02	\$207	\$166	\$269	\$191
ACC	58%	46%	74%	74%	73%	71%	71%	68%	63%	74%	37%	58%	62%	61%	63%	63%	56%	65%	51%	64%	61%	60%	43	50	46	43
PERC	27	52	24	36	18	22	12	18	20	53	63	15	9	86	95	98	34	33	14	13	10	44				

PURCHASER ..... PRICE .....



**12****KERINGA FIREBALL S106 (AI) PV****DOB 10/7/2021 | REGISTER HBR | ID SNE21S106**

AMFU,CAFU,DDFU,NHFU

♂ G A R SURE FIRE 6404 #

SIRE: GB FIREBALL 672 PV

♀ GB ANTICIPATION 432 #

♂ S POWERPOINT WS 5503 PV

DAM: KERINGA VICKY Q175 SV

♀ KERINGA VICKY N142 #

First of 4 GB Fireball sons, Fireball sons have excellent growth and carcass attributes. S106 descends from the Banquet Vicky line and is a heifers first calf. Slightly higher BWT but CE suggest ok to use on heifers.

**Mid January 2023 TransTasman Angus Cattle Evaluation****Traits Observed : GL,BWT,200WT(x2),400WT(x2),SC,Scan(EMA,Rib,Rump,IMF),DOC,Genomics**

TACE	CED	CEM	GL	BW	200	400	600	MCW	MILK	SS	DC	DOC	CWT	EMA	RIB	P8	RBY	IMF	NFI-F	FA	CS	RLSV	Selection Indexes			
EBV	0.7	4.1	-6.7	6.2	69	110	145	132	14	3.2	-4.5	5	86	10.9	-4.1	-4.7	1.3	1.4	-0.28	0.74	0.78	0.88	ABI	DOM	GRN	GRS
ACC	61%	46%	83%	73%	73%	71%	71%	67%	60%	75%	34%	58%	61%	62%	62%	62%	56%	65%	48%	70%	70%	65%	\$236	\$197	\$306	\$218
PERC	68	39	20	89	2	7	7	9	80	14	54	98	7	9	99	98	8	70	6	7	34	9	14	13	17	15

PURCHASER ..... PRICE .....

**13****KERINGA FIREBALL S300 ET PV****DOB 12/7/2021 | REGISTER HBR | ID SNE21S300**

AMFU,CAFU,DDFU,NHFU

♂ G A R SURE FIRE 6404 #

SIRE: GB FIREBALL 672 PV

♀ GB ANTICIPATION 432 #

♂ COONAMBLE HECTOR H249 SV

DAM: MILLAH MURRAH PRUE M186 PV

♀ MILLAH MURRAH PRUE K279 SV

The next 3 lots are full ET siblings out of Millah Murrah Prue M186. Super deep, easy fleshing donor cow. Displaying a figure of +13 for EMA and +3.4 IMF, he certainly shows his carcass attributes. Suitable for heifers.

**Mid January 2023 TransTasman Angus Cattle Evaluation****Traits Observed : BWT,200WT(x2),400WT(x2),SC,Scan(EMA,Rib,Rump,IMF),DOC,Genomics**

TACE	CED	CEM	GL	BW	200	400	600	MCW	MILK	SS	DC	DOC	CWT	EMA	RIB	P8	RBY	IMF	NFI-F	FA	CS	RLSV	Selection Indexes			
EBV	1.1	-1.8	-5.9	4.4	54	92	122	125	12	2.5	-5.5	15	64	13	-1.1	-2.2	1.5	3.4	-0.02	0.86	0.92	0.82	ABI	DOM	GRN	GRS
ACC	62%	47%	74%	74%	75%	73%	73%	69%	62%	71%	37%	62%	63%	64%	65%	64%	58%	67%	51%	69%	69%	65%	\$228	\$185	\$298	\$213
PERC	65	88	31	57	31	47	39	15	87	33	26	75	57	3	74	82	5	19	24	23	64	4	20	24	22	19

PURCHASER ..... PRICE .....

**LOT 13 KERINGA FIREBALL S300****DAM OF LOTS 13,14 AND 15 MILLAH MURRAH PRUE M186**



14

**KERINGA FIREBALL S302 ET PV**

DOB 16/07/2021 | REGISTER HBR | ID SNE21S302

AMFU,CAFU,DDFU,NHFU

♂ G A R SURE FIRE 6404 #  
 SIRE: GB FIREBALL 672 PV  
 ♀ GB ANTICIPATION 432 #

♂ COONAMBLE HECTOR H249 SV  
 DAM: MILLAH MURRAH PRUE M186 PV  
 ♀ MILLAH MURRAH PRUE K279 SV

Full sibling to the previous lot, all the male siblings to these bulls have made it to the Millah Murrah sale topping at \$38,000 last year. As with his brothers displaying excellent carcass attributes backed by strong maternal genetics. Suitable for heifers

Mid January 2023 TransTasman Angus Cattle Evaluation

Traits Observed : BWT,200WT(x2),400WT(x2),SC,Scan(EMA,Rib,Rump,IMF),DOC,Genomics

TACE	CED	CEM	GL	BW	200	400	600	MCW	MILK	SS	DC	DOC	CWT	EMA	RIB	P8	RBY	IMF	NFI-F	FA	CS	RLSV	Selection Indexes			
EBV	-0.1	1.3	-5.4	4.4	57	96	129	120	15	3.8	-5.1	20	65	14.2	-0.9	-2.2	1.5	2.9	-0.02	1.04	1.02	0.86	ABI	DOM	GRN	GRS
ACC	62%	47%	74%	75%	74%	72%	73%	69%	62%	75%	38%	61%	63%	64%	64%	64%	58%	67%	52%	69%	69%	65%	\$234	\$188	\$306	\$221
PERC	73	68	39	57	19	34	26	20	69	6	36	50	53	2	69	82	5	28	24	65	81	7	15	20	17	13

PURCHASER ..... PRICE .....

15

**KERINGA FIREBALL S301 ET PV**

DOB 15/07/2021 | REGISTER HBR | ID SNE21S301

AMFU,CAFU,DDFU,NHFU

♂ G A R SURE FIRE 6404 #  
 SIRE: GB FIREBALL 672 PV  
 ♀ GB ANTICIPATION 432 #

♂ COONAMBLE HECTOR H249 SV  
 DAM: MILLAH MURRAH PRUE M186 PV  
 ♀ MILLAH MURRAH PRUE K279 SV

Final Fireball x M186 to sell like his brothers he is a carcass bull suitable for use on heifers. Their Dam M186 will sell in April 2023 at the Millah Murrah female sale.

Mid January 2023 TransTasman Angus Cattle Evaluation

Traits Observed : BWT,200WT(x2),400WT(x2),SC,Scan(EMA,Rib,Rump,IMF),DOC,Genomics

TACE	CED	CEM	GL	BW	200	400	600	MCW	MILK	SS	DC	DOC	CWT	EMA	RIB	P8	RBY	IMF	NFI-F	FA	CS	RLSV	Selection Indexes			
EBV	0.5	3.4	-4.7	3.1	53	90	115	118	10	2.4	-6	20	59	11.1	-1.5	-2.5	1.1	3.1	-0.14	1.06	1.06	0.84	ABI	DOM	GRN	GRS
ACC	62%	47%	74%	75%	74%	72%	73%	69%	62%	75%	37%	61%	63%	64%	64%	64%	58%	67%	51%	70%	70%	65%	\$219	\$183	\$285	\$203
PERC	69	46	51	28	36	51	55	23	95	36	16	50	71	8	81	85	14	24	14	70	86	5	29	26	32	29

PURCHASER ..... PRICE .....

16

**KERINGA SPANIARD S190 (AI) SV**

DOB 10/8/2021 | REGISTER HBR | ID SNE21S190

AMFU,CAFU,DDFU,NHFU

♂ S CHISUM 255 SV  
 SIRE: MILLAH MURRAH QUIXOTE Q96 PV  
 ♀ MILLAH MURRAH BRENDA N8 PV

♂ KAROO D62 DOCKLANDS K153 SV  
 DAM: KERINGA DOCKLANDS P192 #  
 ♀ JONDARYAN FLOWER H63 SV

Stemming from the flower female line, his dam is a fleshy easy doing female, with a balance set of data this bull is suitable for heifers.

Mid January 2023 TransTasman Angus Cattle Evaluation

Traits Observed : GL,BWT,200WT(x2),400WT(x2),SC,Scan(EMA,Rib,Rump,IMF),DOC,Genomics

TACE	CED	CEM	GL	BW	200	400	600	MCW	MILK	SS	DC	DOC	CWT	EMA	RIB	P8	RBY	IMF	NFI-F	FA	CS	RLSV	Selection Indexes			
EBV	6.7	6.8	-3.8	2.7	50	103	128	106	22	4.9	-5.5	20	72	4.9	-0.5	-0.9	0.5	1.9	0.53	0.9	0.92	1.1	ABI	DOM	GRN	GRS
ACC	55%	42%	82%	73%	71%	69%	68%	64%	56%	73%	34%	54%	57%	57%	59%	59%	52%	61%	47%	66%	66%	64%	\$215	\$191	\$271	\$203
PERC	17	13	66	21	53	18	28	41	14	1	26	51	32	68	60	61	47	56	88	31	64	70	33	17	44	29

PURCHASER ..... PRICE .....

17

**KERINGA PARATROOPER S108 (AI) PV**

DOB 11/7/2021 | REGISTER HBR | ID SNE21S108

AMFU,CAFU,DDFU,NHFU

♂ EF COMMANDO 1366 PV  
 SIRE: MILLAH MURRAH PARATROOPER P15 PV  
 ♀ MILLAH MURRAH ELA M9 PV

♂ MILLAH MURRAH MARLON BRANDO M304 PV  
 DAM: KERINGA KATE Q168 SV  
 ♀ KERINGA FLOWER N160 #

The next 6 bulls are all sired by popular sire Millah Murrah Paratrooper P15, this bulls boast MM blood on both side with his great grandam being a foundation donor we purchased in 2013, with 3 of her 5 daughters still active in the herd and one recently joining the donor team herself. Maternal credentials of this bull are second to none. the bulls himself offer big growth and carcass. Heifers first calf however EBVS would suggest he would better suit cows.

Mid January 2023 TransTasman Angus Cattle Evaluation

Traits Observed : GL,BWT,200WT,400WT(x2),SC,Scan(EMA,Rib,Rump,IMF),DOC,Genomics

TACE	CED	CEM	GL	BW	200	400	600	MCW	MILK	SS	DC	DOC	CWT	EMA	RIB	P8	RBY	IMF	NFI-F	FA	CS	RLSV	Selection Indexes			
EBV	-1.6	5.2	-6.2	6.3	69	118	152	128	24	2.3	-5.1	25	98	5.3	-2.5	-3.6	0.9	1.7	-0.35	0.74	0.64	1.16	ABI	DOM	GRN	GRS
ACC	60%	46%	83%	73%	73%	71%	71%	68%	61%	75%	36%	58%	61%	62%	62%	62%	56%	65%	50%	69%	69%	67%	\$242	\$206	\$315	\$222
PERC	81	27	27	90	2	2	4	12	8	40	36	27	1	63	94	94	22	62	4	7	12	84	10	7	12	13

PURCHASER ..... PRICE .....





KERINGA WARGOONA R107 MATERNAL SISTER TO LOT 18



LOT 18 KERINGA PARATROOPER S125

## 18 KERINGA PARATROOPER S125 (AI) SV

DOB 14/07/2021 | REGISTER HBR | ID SNE21S125

AMFU,CAFU,DDFU,NHFU

EF COMMANDO 1366 PV  
**SIRE: MILLAH MURRAH PARATROOPER P15 PV**  
 MILLAH MURRAH ELA M9 PV

NAMPARA LIBERTY L21 SV  
**DAM: KERINGA WARGOONA P261 #**  
 TE MANIA WARGOONA D1082 SV

Hard to find words to describe this bull, he has very few flaws, impeccable structure, excellent set of data and is wide set with a definite yet soft muscle pattern. Scanned the highest IMF of his contemporary group and an EMA of 100cm<sup>2</sup> at 16 months. Suitable for heifers

Mid January 2023 TransTasman Angus Cattle Evaluation

Traits Observed : GL,BWT,200WT(x2),400WT(x2),SC,Scan(EMA,Rib,Rump,IMF),DOC,Genomics

TACE	CED	CEM	GL	BW	200	400	600	MCW	MILK	SS	DC	DOC	CWT	EMA	RIB	P8	RBY	IMF	NFI-F	FA	CS	RLSV	Selection Indexes			
EBV	3.2	6	-6.9	4.8	61	106	133	115	19	3.8	-5.3	33	79	12.8	0.3	0.5	0.7	2	0.28	0.68	0.5	102	ABI	DOM	GRN	GRS
ACC	61%	46%	83%	74%	73%	71%	71%	68%	61%	75%	36%	58%	61%	62%	62%	63%	56%	65%	51%	67%	67%	65%	\$252	\$212	\$332	\$237
PERC	47	19	18	66	8	12	19	26	32	6	31	8	17	3	40	34	34	53	63	3	3	44	6	4	6	6

PURCHASER ..... PRICE .....

## 19 KERINGA PARATROOPER S127 (AI) PV

DOB 14/07/2021 | REGISTER HBR | ID SNE21S127

AMFU,CAFU,DDFU,NHFU

EF COMMANDO 1366 PV  
**SIRE: MILLAH MURRAH PARATROOPER P15 PV**  
 MILLAH MURRAH ELA M9 PV

MILLAH MURRAH KLOONEY K42 PV  
**DAM: KERINGA MELODY Q184 SV**  
 KERINGA MELODY N233 #

Like the last lot this bull has the Paratrooper stamp, loads of carcass and style. scanned in the top 5 for both EMA and IMF. Maternal strength coming from our foundation Melody line and maternal grandsire Millah Murrah Klooney K42 whose sons sell later in the catalogue. Heifers first calf, BWT would suggest best used on mature cows.

Mid January 2023 TransTasman Angus Cattle Evaluation

Traits Observed : GL,BWT,200WT(x2),400WT(x2),SC,Scan(EMA,Rib,Rump,IMF),DOC,Genomics

TACE	CED	CEM	GL	BW	200	400	600	MCW	MILK	SS	DC	DOC	CWT	EMA	RIB	P8	RBY	IMF	NFI-F	FA	CS	RLSV	Selection Indexes			
EBV	-0.4	5.1	-5.5	7.4	60	103	134	94	26	1.6	-5.1	33	78	8.5	0.1	0.1	0.3	2.7	0.26	0.9	0.62	1.04	ABI	DOM	GRN	GRS
ACC	61%	48%	83%	74%	74%	72%	72%	68%	62%	75%	39%	59%	62%	63%	63%	63%	57%	66%	52%	68%	68%	66%	\$249	\$201	\$334	\$232
PERC	75	28	37	97	11	17	18	62	3	69	36	9	17	24	45	41	60	33	61	31	10	51	7	9	6	8

PURCHASER ..... PRICE .....

## 20 KERINGA PARATROOPER S139 (AI) PV

DOB 18/07/2021 | REGISTER HBR | ID SNE21S139

AMFU,CAFU,DDFU,NHFU

EF COMMANDO 1366 PV  
**SIRE: MILLAH MURRAH PARATROOPER P15 PV**  
 MILLAH MURRAH ELA M9 PV

NAMPARA LIBERTY L21 SV  
**DAM: KERINGA MELODY P258 PV**  
 KERINGA ELECTRA K55 SV

Paratrooper again descending from the Melody female line, this bull has a strong NZ influence with Highlander of Stern featuring on 3 side of the pedigree. Maternal brother sold last year to Forster Farming. Suitable for heifers.

Mid January 2023 TransTasman Angus Cattle Evaluation

Traits Observed : GL,BWT,200WT(x2),400WT(x2),SC,Scan(EMA,Rib,Rump,IMF),DOC,Genomics

TACE	CED	CEM	GL	BW	200	400	600	MCW	MILK	SS	DC	DOC	CWT	EMA	RIB	P8	RBY	IMF	NFI-F	FA	CS	RLSV	Selection Indexes			
EBV	5.2	6.1	-6.3	5.4	65	114	145	138	19	1.4	-3	31	89	8.7	-0.5	0.9	0.7	0.2	-0.54	0.78	0.62	112	ABI	DOM	GRN	GRS
ACC	60%	45%	83%	74%	73%	71%	71%	68%	61%	75%	36%	58%	61%	62%	62%	63%	56%	65%	51%	69%	70%	67%	\$223	\$189	\$297	\$201
PERC	29	19	25	78	4	4	7	6	39	76	88	13	4	22	60	27	34	94	1	10	10	76	24	19	23	31

PURCHASER ..... PRICE .....





**21****KERINGA PARATROOPER S174 (AI) PV**

DOB 4/8/2021 | REGISTER HBR | ID SNE21S174

AMFU,CAFU,DDFU,NHFU

♂ EF COMMANDO 1366 PV

SIRE: MILLAH MURRAH PARATROOPER P15 PV

♀ MILLAH MURRAH ELA M9 PV

♂ MILLAH MURRAH MARLON BRANDO M304 PV

DAM: KERINGA LADY BLACKBIRD Q249 SV

♀ KERINGA BLACKBIRD LADY M138 #

Paratrooper with a top 1% Angus Breeding Index. Heifers first calf and suitable for heifer mating.

Mid January 2023 TransTasman Angus Cattle Evaluation

Traits Observed : GL,BWT,200WT(x2),400WT(x2),SC,Scan(EMA,Rib,Rump,IMF),DOC,Genomics

TACE	CED	CEM	GL	BW	200	400	600	MCW	MILK	SS	DC	DOC	CWT	EMA	RIB	P8	RBV	IMF	NFI-F	FA	CS	RLSV	Selection Indexes			
EBV	6.4	9.2	-6	2.5	55	103	131	89	23	3.6	-6.4	19	78	10.9	0.3	-0.6	0.8	2.7	0.54	1.04	1.06	1.16	ABI	DOM	GRN	GRS
ACC	60%	46%	83%	73%	73%	71%	71%	68%	61%	75%	35%	57%	61%	62%	62%	62%	56%	64%	50%	68%	68%	66%	\$274	\$232	\$353	\$263
PERC	19	3	30	18	29	17	22	70	12	8	11	53	19	9	40	55	28	33	88	65	86	84	1	1	2	1

PURCHASER .....

PRICE .....

**22****KERINGA PARATROOPER S186 (AI) SV**

DOB 9/8/2021 | REGISTER HBR | ID SNE21S186

AMFU,CAFU,DDFU,NHFU

♂ EF COMMANDO 1366 PV

SIRE: MILLAH MURRAH PARATROOPER P15 PV

♀ MILLAH MURRAH ELA M9 PV

♂ KAROO D62 DOCKLANDS K153 SV

DAM: KERINGA LADY BLACKBIRD N205 #

♀ KERINGA J7 SV

Steaming from the same Lady Blackbird maternal line as the previous lot. This bull has a balanced set of data other than his BWT which would suggest best used over mature cows.

Mid January 2023 TransTasman Angus Cattle Evaluation

Traits Observed : GL,BWT,200WT(x2),400WT(x2),SC,Scan(EMA,Rib,Rump,IMF),DOC,Genomics

TACE	CED	CEM	GL	BW	200	400	600	MCW	MILK	SS	DC	DOC	CWT	EMA	RIB	P8	RBV	IMF	NFI-F	FA	CS	RLSV	Selection Indexes			
EBV	-4.2	4.5	-5.8	6.9	55	99	129	103	25	2.5	-3.3	17	73	7.8	0.2	0.3	1.7	0.12	0.8	0.66	1.08	ABI	DOM	GRN	GRS	
ACC	61%	47%	83%	74%	73%	71%	72%	68%	61%	75%	36%	57%	61%	61%	62%	62%	56%	64%	50%	65%	65%	63%	\$188	\$151	\$254	\$170
PERC	91	34	33	95	25	27	26	47	5	33	84	68	29	31	42	43	60	62	41	13	14	65	65	69	58	65

PURCHASER .....

PRICE .....

**23****KERINGA SCOTSMAN S46 PV**

DOB 8/4/2021 | REGISTER HBR | ID SNE21S46

AMFU,CAFU,DDFU,NHFU

♂ ATAHUA FREEDOM 609-10 #

SIRE: NAMPARA LIBERTY L21 SV

♀ NAMPARA H65 #

♂ RENNYLEA EDMUND E11 PV

DAM: WILLOW FIELDS BARA H12 PV

♀ WILLOW FIELDS BARA F13 PV

First of the rising 2yo bulls. A long upstanding bull he is one of the final sons of Liberty to sell. Many of the young dams of these bulls feature Liberty on the maternal side. Higher BWT as seen in the L21 sons, CE data suggests he would still be safe to use on heifers as we did his sire with no issues.

Mid January 2023 TransTasman Angus Cattle Evaluation

Traits Observed : BWT,200WT,400WT,600WT(x2),SC,Scan(EMA,Rib,Rump,IMF),DOC,Genomics

TACE	CED	CEM	GL	BW	200	400	600	MCW	MILK	SS	DC	DOC	CWT	EMA	RIB	P8	RBV	IMF	NFI-F	FA	CS	RLSV	Selection Indexes			
EBV	2	-3.2	-6.4	7.7	61	106	147	157	18	2.2	-4.4	28	87	5.3	-2.4	-2	1.3	-0.5	-0.24	0.98	0.74	1.14	ABI	DOM	GRN	GRS
ACC	60%	50%	73%	75%	74%	73%	75%	70%	65%	75%	43%	59%	66%	65%	65%	67%	61%	69%	60%	69%	69%	67%	\$176	\$149	\$221	\$164
PERC	58	93	24	98	9	12	6	2	47	44	57	19	6	63	93	79	8	99	8	51	26	80	75	70	80	71

PURCHASER .....

PRICE .....



LOT 20 KERINGA PARATROOPER S139



NAMPARA LIBERTY L21 SIRE OF LOTS 23 AND 24





SIRE OF LOT 26,27 AND 38 S POWER POINT

LOT 25 KERINGA SPEED STONE S29

24

KERINGA SCOTSMAN S53 PV

DOB 15/04/2021 | REGISTER HBR | ID SNE21S53

AMFU,CAFU,DDFU,NHFU

♂ ATAHUA FREEDOM 609-10 #

SIRE: NAMPARA LIBERTY L21 SV

♀ NAMPARA H65 #

♂ IRELANDS GALAXY G43 SV

DAM: KERINGA VICKY K38 PV

♀ IRELANDS VICKY Z15 PV

Maternal brother to lots 8 and 9 he has the highest ADG of his contemporary's at 1.33kg/day. Descending from the Merrigrange Vicky female line. Suitable for heifers.

Mid January 2023 TransTasman Angus Cattle Evaluation

Traits Observed : BWT,200WT(x2),400WT,600WT(x2),SC,Scan(EMA,Rib,Rump,IMF),DOC,Genomics

TACE	CED	CEM	GL	BW	200	400	600	MCW	MILK	SS	DC	DOC	CWT	EMA	RIB	P8	RBY	IMF	NFI-F	FA	CS	RLSV	Selection Indexes			
EBV	1.1	2.8	-5	4.2	56	98	137	126	20	3.3	-2.3	2	73	6.3	-0.3	0.7	0.7	-0.8	0.19	0.92	0.68	1.08	ABI	DOM	GRN	GRS
ACC	60%	48%	72%	76%	74%	73%	75%	70%	65%	76%	41%	58%	66%	65%	65%	67%	61%	69%	59%	68%	68%	65%	\$159	\$127	\$208	\$145
PERC	65	53	46	53	25	28	14	14	26	12	94	99	31	49	55	30	34	99	51	36	17	65	86	88	86	85

PURCHASER .....

PRICE .....

25

KERINGA SPEED STONE S29 (AI) SV

DOB 23/03/2021 | REGISTER HBR | ID SNE21S29

AMFU,CAFU,DDFU,NHFU

♂ MATAURI REALITY 839 #

SIRE: MILLAH MURRAH MILESTONE M308 PV

♀ MILLAH MURRAH RADO H331 SV

♂ KAROO D62 DOCKLANDS K153 SV

DAM: KERINGA P7 #

♀ KERINGA VICKY K38 PV

Millah Murrah Milestone M308 son. This bull scanned an EMA of 116cm2. Descending from the same Vicky female line as the previous lot, maternal brother sold last year to FO and VJ Hooper for \$21,000

Mid January 2023 TransTasman Angus Cattle Evaluation

Traits Observed : GL,BWT,200WT(x2),400WT,600WT(x2),SC,Scan(EMA,Rib,Rump,IMF),DOC,Genomics

TACE	CED	CEM	GL	BW	200	400	600	MCW	MILK	SS	DC	DOC	CWT	EMA	RIB	P8	RBY	IMF	NFI-F	FA	CS	RLSV	Selection Indexes			
EBV	2.7	2.8	-4.6	5.7	51	96	124	122	8	0.8	-2.8	12	68	7.9	-0.3	0.1	0.6	2.2	0.36	1.1	0.9	1.08	ABI	DOM	GRN	GRS
ACC	57%	47%	82%	74%	72%	72%	74%	67%	60%	75%	39%	55%	62%	62%	63%	63%	56%	66%	54%	64%	64%	61%	\$190	\$157	\$251	\$172
PERC	52	53	52	83	47	33	37	18	98	91	91	87	45	30	55	41	40	47	73	78	60	65	63	62	60	64

PURCHASER .....

PRICE .....

26

KERINGA SOCKET S9 (AI) PV

DOB 17/03/2021 | REGISTER HBR | ID SNE21S9

AMFU,CAFU,DDFU,NHFU

♂ TEHAMA REVERE #

SIRE: S POWERPOINT WS 5503 PV

♀ S QUEEN ESSA 248 #

♂ ARDROSSAN EQUATOR A241 PV

DAM: WILLOW FIELDS JULI J12 PV

♀ LAWSONS PONO V346 B1195 #

Next two bulls are sired by S PowerPoint, who's sons proved very popular at last years sale averaging \$23,000. This bull is no exception, he has always been a standout. Balanced bull with a sleek skin and positive fat EBV's. Suitable for heifers.

Mid January 2023 TransTasman Angus Cattle Evaluation

Traits Observed : GL,BWT,200WT(x2),400WT,600WT(x2),SC,Scan(EMA,Rib,Rump,IMF),DOC,Genomics

TACE	CED	CEM	GL	BW	200	400	600	MCW	MILK	SS	DC	DOC	CWT	EMA	RIB	P8	RBY	IMF	NFI-F	FA	CS	RLSV	Selection Indexes			
EBV	9.1	8.3	-8.1	0.9	53	98	130	104	20	3.5	-5.7	2	74	2	3.1	3.4	-0.9	2.8	0.34	0.86	0.92	0.88	ABI	DOM	GRN	GRS
ACC	62%	50%	83%	75%	74%	73%	75%	70%	66%	75%	39%	58%	65%	64%	65%	65%	59%	67%	52%	71%	70%	63%	\$222	\$179	\$295	\$209
PERC	5	5	9	4	35	29	23	44	28	9	22	99	28	93	3	4	98	31	71	23	64	9	25	32	25	23

PURCHASER .....

PRICE .....





27

**KERINGA SOCKET S25 (AI) #**

DOB 21/03/2021 | REGISTER HBR | ID SNE21S25

AMFU,CAFU,DDFU,NHFU

♂ TEHAMA REVERE #

SIRE: S POWERPOINT WS 5503 PV

♀ S QUEEN ESSA 248 #

♂ NAMPARA LIBERTY L21 SV

DAM: KERINGA QUIET P8 #

♀ KERINGA M55 #

Another calving ease son of S PowerPoint, suitable for heifers.

Mid January 2023 TransTasman Angus Cattle Evaluation

Traits Observed : GL,BWT,200WT(x2),400WT,600WT(x2),SC,Scan(EMA,Rib,Rump,IMF),DOC

TACE	CED	CEM	GL	BW	200	400	600	MCW	MILK	SS	DC	DOC	CWT	EMA	RIB	P8	RBY	IMF	NFI-F	FA	CS	RLSV	Selection Indexes			
EBV	1.6	8.1	-5.7	4.4	57	99	125	115	12	1.6	-3.5	13	71	6.1	1.1	0.1	1.2	0.1	-	-	-	ABI	DOM	GRN	GRS	
ACC	57%	43%	83%	74%	70%	71%	74%	67%	57%	74%	32%	55%	62%	57%	59%	59%	54%	58%	43%	-	-	-	\$197	\$165	\$263	\$176
PERC	61	6	34	57	21	25	34	26	88	69	80	85	35	52	23	24	72	75	39	-	-	-	55	51	51	59

PURCHASER ..... PRICE .....

28

**KERINGA SKYFALL S11 (AI) SV**

DOB 17/03/2021 | REGISTER HBR | ID SNE21S11

AMFU,CAFU,DDFU,NHFU

♂ EF COMMANDO 1366 PV

SIRE: MILLAH MURRAH PARATROOPER P15 PV

♀ MILLAH MURRAH ELA M9 PV

♂ NAMPARA LIBERTY L21 SV

DAM: KERINGA P34 #

♀ WILLOW FIELDS CHAMPAGNE G44 PV

Paratrooper x Liberty, descending from the Champagne female line, this bull boast positive fat and CE EBV's. Suitable for heifers

Mid January 2023 TransTasman Angus Cattle Evaluation

Traits Observed : GL,BWT,200WT(x2),400WT,600WT(x2),SC,Scan(EMA,Rib,Rump,IMF),DOC,Genomics

TACE	CED	CEM	GL	BW	200	400	600	MCW	MILK	SS	DC	DOC	CWT	EMA	RIB	P8	RBY	IMF	NFI-F	FA	CS	RLSV	Selection Indexes			
EBV	8.6	9.6	-7.7	0.1	43	89	111	99	21	2.3	-3.2	33	59	2.6	2.3	2.3	-0.7	3.5	0.62	1.04	0.98	0.96	ABI	DOM	GRN	GRS
ACC	61%	46%	83%	75%	73%	72%	75%	68%	61%	75%	35%	57%	61%	62%	62%	63%	56%	65%	51%	67%	67%	64%	\$179	\$145	\$250	\$162
PERC	7	2	11	2	83	56	65	53	20	40	86	9	71	90	8	10	97	17	92	65	75	26	72	75	62	73

PURCHASER ..... PRICE .....

29

**KERINGA SKYFALL S4 (AI) PV**

DOB 10/3/2021 | REGISTER HBR | ID SNE21S4

AMFU,CAFU,DDFU,NHFU

♂ EF COMMANDO 1366 PV

SIRE: MILLAH MURRAH PARATROOPER P15 PV

♀ MILLAH MURRAH ELA M9 PV

♂ NAMPARA LIBERTY L21 SV

DAM: KERINGA FLOWER Q19 PV

♀ KERINGA FLOWER H11 SV

Long as a train and as quiet as a mouse he doesn't mind a scratch, this bull has been a standout from a young age. This bull will deliver top quality females. His dam has just joined our donor team along with two of her sisters, their full brother sells at lot 58. Descending from the MM Flower line. Heifers first calf, suitable for heifers

Mid January 2023 TransTasman Angus Cattle Evaluation

Traits Observed : GL,BWT,200WT(x2),400WT,600WT(x2),SC,Scan(EMA,Rib,Rump,IMF),DOC,Genomics

TACE	CED	CEM	GL	BW	200	400	600	MCW	MILK	SS	DC	DOC	CWT	EMA	RIB	P8	RBY	IMF	NFI-F	FA	CS	RLSV	Selection Indexes			
EBV	6.9	1.3	-9.7	4.9	57	97	120	94	25	3.4	-5.3	26	72	5.5	2.7	2.8	-0.1	0.9	0.18	0.9	0.86	1.2	ABI	DOM	GRN	GRS
ACC	61%	46%	82%	75%	73%	72%	75%	68%	61%	75%	36%	58%	62%	62%	63%	63%	57%	65%	51%	68%	68%	65%	\$220	\$186	\$291	\$200
PERC	16	68	3	69	21	31	44	63	6	10	31	23	33	60	5	7	82	82	50	31	52	91	28	22	27	33

PURCHASER ..... PRICE .....



LOT 26 KERINGA SOCKET S9



SIRE OF LOTS 28 AND 29 MILLAH MURRAH PARATROOPER P15



LOT 29 KERINGA SKYFALL S4



**30****KERINGA SCOTSMAN S58<sup>SV</sup>****DOB 25/04/2021 | REGISTER HBR | ID SNE21S58**

AMFU,CAFU,DDFU,NHFU

♂ ATAHUA FREEDOM 609-10 #

SIRE: NAMPARA LIBERTY L21<sup>SV</sup>

♀ NAMPARA H65 #

♂ S CHISUM 255 SV

DAM: KERINGA PRUE P141 #

♀ KERINGA J24 #

A powerful young bull with explosive growth. Descending from the Roseleigh Sarah S9 female and Chisum 255 on the maternal side of his pedigree you would expect this bull to breed heavy steers and top quality replacement females. Categorically one for the cows.

Mid January 2023 TransTasman Angus Cattle Evaluation

Traits Observed : BWT,200WT,400WT,600WT(x2),SC,Scan(EMA,Rib,Rump,IMF),DOC,Genomics

TACE	CED	CEM	GL	BW	200	400	600	MCW	MILK	SS	DC	DOC	CWT	EMA	RIB	P8	RBY	IMF	NFI-F	FA	CS	RLSV	Selection Indexes			
EBV	-7.3	-2.7	-4.7	9.4	68	115	156	159	22	3.4	-1.4	17	92	5.9	-4	-4.3	15	-0.2	-0.54	0.86	0.82	1	ABI	DOM	GRN	GRS
ACC	57%	45%	73%	74%	72%	71%	74%	68%	63%	74%	38%	56%	63%	63%	62%	64%	58%	67%	56%	66%	66%	61%	\$152	\$124	\$204	\$135
PERC	96	92	51	99	2	3	2	1	16	10	98	68	3	54	99	97	5	97	1	23	43	38	89	89	88	90

PURCHASER .....

PRICE .....

**31****KERINGA SCANDAL S38 (A)<sup>PV</sup>****DOB 25/03/2021 | REGISTER HBR | ID SNE21S38**

AMFU,CAFU,DDF,NHFU

♂ ABERDEEN ESTATE HOMER H70<sup>PV</sup>SIRE: BANQUET NIXON N099<sup>SV</sup>♀ BANQUET KITE J463<sup>PV</sup>

♂ TE MANIA INFINITY 04 379 AB #

DAM: WILLOW FIELDS MILLIE H5<sup>PV</sup>♀ LAWSONS NEW DESIGN 1407 A334<sup>SV</sup>

Very sound son of Banquet Nixon N099, with an IMF of 2.9 and CE EBV's makes this bull suitable for heifers. His dam H5 is still active in the herd @ 11 years old with 10 registered progeny.

Mid January 2023 TransTasman Angus Cattle Evaluation

Traits Observed : GL,BWT,200WT(x2),400WT,600WT(x2),SC,Scan(EMA,Rib,Rump,IMF),DOC,Genomics

TACE	CED	CEM	GL	BW	200	400	600	MCW	MILK	SS	DC	DOC	CWT	EMA	RIB	P8	RBY	IMF	NFI-F	FA	CS	RLSV	Selection Indexes			
EBV	2.6	2.8	-3.5	4.1	54	105	127	117	18	3.4	-4.9	12	72	1.4	-0.9	-0.9	-0.3	2.9	0.19	0.64	0.56	0.98	ABI	DOM	GRN	GRS
ACC	59%	49%	83%	76%	74%	73%	75%	69%	64%	75%	42%	58%	64%	63%	65%	65%	59%	67%	54%	65%	66%	63%	\$195	\$172	\$259	\$178
PERC	53	53	71	50	30	14	30	24	43	10	42	86	34	95	69	61	89	28	51	2	5	31	57	41	55	58

PURCHASER .....

PRICE .....

**32****KERINGA SKYFALL S54 (A)<sup>PV</sup>****DOB 15/04/2021 | REGISTER HBR | ID SNE21S54**

AMFU,CAFU,DDFU,NHFU

♂ MILLAH MURRAH KLOONEY K42<sup>PV</sup>SIRE: MILLAH MURRAH MARLON BRANDO M304<sup>PV</sup>♀ MILLAH MURRAH FLOWER G41<sup>PV</sup>♂ KAROO D62 DOCKLANDS K153<sup>SV</sup>DAM: KERINGA KATE Q105<sup>PV</sup>♀ WILLOW FIELDS HARRIET H31<sup>PV</sup>

Millah Murrah Marlon Brando son. M304 is by cow maker Klooney K42 out of Kingdoms mother. S54 grandam H31 was a big roomy cow which you can expect from his progeny. Heifers first calf with slightly higher birth weight but CE EBV suggest he is safe to use on heifers.

Mid January 2023 TransTasman Angus Cattle Evaluation

Traits Observed : GL,BWT,200WT(x2),400WT,600WT(x2),SC,Scan(EMA,Rib,Rump,IMF),DOC,Genomics

TACE	CED	CEM	GL	BW	200	400	600	MCW	MILK	SS	DC	DOC	CWT	EMA	RIB	P8	RBY	IMF	NFI-F	FA	CS	RLSV	Selection Indexes			
EBV	3.9	3.1	-3.2	6	54	94	127	103	25	1.3	-5.2	23	69	13.9	-0.8	-0.2	1.6	1.7	-0.3	1.32	0.92	1.2	ABI	DOM	GRN	GRS
ACC	58%	49%	82%	74%	73%	72%	74%	69%	64%	75%	39%	57%	62%	62%	63%	63%	57%	65%	52%	67%	67%	65%	\$249	\$202	\$322	\$233
PERC	41	50	75	87	32	40	29	47	6	79	33	36	43	2	67	47	3	62	5	98	64	91	6	9	10	7

PURCHASER .....

PRICE .....

**33****KERINGA SOVEREIGN S18 (A)<sup>SV</sup>****DOB 18/03/2021 | REGISTER HBR | ID SNE21S18**

AMFU,CAFU,DDFU,NHFU

♂ ASCOT HALLMARK H147<sup>PV</sup>SIRE: MILLAH MURRAH NUGGET N266<sup>PV</sup>♀ MILLAH MURRAH HONEY H159<sup>SV</sup>♂ NAMPARA LIBERTY L21<sup>SV</sup>

DAM: KERINGA WILCOOLA P11 #

♀ WILLOW FIELDS WILCOOLA M27<sup>PV</sup>

Nugget N266 son with a big volume and depth, out of a Liberty daughter. A great match up with the grunt from Liberty and sleek skin and refinement from N266. Balanced set of data and suitable for use on heifers.

Mid January 2023 TransTasman Angus Cattle Evaluation

Traits Observed : GL,BWT,200WT(x2),400WT,600WT(x2),SC,Scan(EMA,Rib,Rump,IMF),DOC,Genomics

TACE	CED	CEM	GL	BW	200	400	600	MCW	MILK	SS	DC	DOC	CWT	EMA	RIB	P8	RBY	IMF	NFI-F	FA	CS	RLSV	Selection Indexes			
EBV	7.2	4.6	-8.9	4.3	52	95	129	114	23	2.2	-3.1	32	68	4.2	-1.1	-2	0.5	2.3	-0.37	0.98	0.84	1.12	ABI	DOM	GRN	GRS
ACC	58%	46%	83%	74%	72%	71%	74%	68%	62%	74%	37%	56%	61%	61%	62%	63%	56%	65%	52%	65%	63%	63%	\$189	\$150	\$251	\$172
PERC	14	33	5	55	41	36	26	27	12	44	87	11	46	76	74	79	47	44	4	51	47	76	63	70	61	64

PURCHASER .....

PRICE .....





LOT 34 KERINGA SWEET NECTAR S19



LOT 35 KERINGA SWEET NECTAR S3

### 34 KERINGA SWEET NECTAR S19 (AI) <sup>PV</sup>

DOB 19/03/2021 | REGISTER HBR | ID SNE21S19

AMFU,CAFU,DDFU,NHFU

♂ COONAMBLE HECTOR H249 <sup>SV</sup>

SIRE: MILLAH MURRAH NECTAR N334 <sup>PV</sup>

♀ MILLAH MURRAH PRUE H113 <sup>PV</sup>

♂ NAMPARA LIBERTY L21 <sup>SV</sup>

DAM: KERINGA FLOWER Q32 <sup>PV</sup>

♀ KERINGA FLOWER H11 <sup>SV</sup>

A bull with a huge amount of bone, muscle and a flawless structure S19's dam is another full sister to lot 58, descending from the Millah Murrah flower line. Sired by Millah Murrah Nectar N334, whose son's averaged over \$22,600 is last years sale. This impressive sire from a first calf heifer. Definitely one for the cows, he will breed front paddock females.

Mid January 2023 TransTasman Angus Cattle Evaluation

Traits Observed : GL,BWT,200WT(x2),400WT,600WT(x2),SC,Scan(EMA,Rib,Rump,IMF),DOC,Genomics

TACE	CED	CEM	GL	BW	200	400	600	MCW	MILK	SS	DC	DOC	CWT	EMA	RIB	P8	RBY	IMF	NFI-F	FA	CS	RLSV	Selection Indexes			
																							ABI	DOM	GRN	GRS
EBV	-2.6	-9.6	-7.3	8.2	64	110	146	150	12	1.7	-4.8	20	85	9.6	0.9	-0.4	0.7	1.1	-0.05	0.78	0.72	0.9	ABI	DOM	GRN	GRS
ACC	57%	45%	82%	74%	72%	72%	74%	67%	61%	74%	37%	55%	62%	61%	62%	63%	56%	65%	52%	64%	63%	60%	\$200	\$165	\$263	\$183
PERC	86	99	14	99	5	7	6	3	89	65	45	50	8	16	26	51	34	78	21	10	23	12	51	52	51	52

PURCHASER .....

PRICE .....

### 35 KERINGA SWEET NECTAR S3 (AI) <sup>PV</sup>

DOB 10/3/2021 | REGISTER HBR | ID SNE21S3

AMFU,CAFU,DDFU,NHFU

♂ COONAMBLE HECTOR H249 <sup>SV</sup>

SIRE: MILLAH MURRAH NECTAR N334 <sup>PV</sup>

♀ MILLAH MURRAH PRUE H113 <sup>PV</sup>

♂ MILLAH MURRAH KLOONEY K42 <sup>PV</sup>

DAM: KERINGA ANNA Q4 <sup>PV</sup>

♀ WILLOW FIELDS ANNA M50 <sup>PV</sup>

Another Nectar son this time out of a Klooney female. The maternal depth in this years catalogue is what we have been striving for. Stacking the pedigree bulls that breed quality females is paying off, also producing quality bulls. Heifers first calf with BWT of 6.0 and GL in the top 2% plus positive CE suggest suitable for heifers or mature cows.

Mid January 2023 TransTasman Angus Cattle Evaluation

Traits Observed : GL,BWT,200WT(x2),400WT,600WT(x2),SC,Scan(EMA,Rib,Rump,IMF),DOC,Genomics

TACE	CED	CEM	GL	BW	200	400	600	MCW	MILK	SS	DC	DOC	CWT	EMA	RIB	P8	RBY	IMF	NFI-F	FA	CS	RLSV	Selection Indexes			
																							ABI	DOM	GRN	GRS
EBV	1.5	-0.8	-10.4	6	54	100	136	127	18	2.4	-4.1	17	75	2.2	-0.5	-1.4	-0.1	2.2	-0.31	0.64	0.5	0.9	ABI	DOM <td>GRN</td> <td>GRS</td>	GRN	GRS
ACC	58%	47%	82%	74%	73%	72%	74%	68%	62%	74%	39%	55%	62%	62%	63%	63%	57%	66%	53%	65%	63%	63%	\$173	\$139	\$227	\$158
PERC	62	83	2	87	30	23	15	13	44	36	66	66	23	92	60	70	82	47	5	2	3	12	78	80	77	76

PURCHASER .....

PRICE .....

### 36 KERINGA SCOTSMAN S50 <sup>SV</sup>

DOB 13/04/2021 | REGISTER HBR | ID SNE21S50

AMFU,CAFU,DDFU,NHFU

♂ ATAHUA FREEDOM 609-10 <sup>#</sup>

SIRE: NAMPARA LIBERTY L21 <sup>SV</sup>

♀ NAMPARA H65 <sup>#</sup>

♂ MILLAH MURRAH HIGHLANDER F32 <sup>PV</sup>

DAM: KERINGA J24 <sup>#</sup>

♀ ROSELEIGH SARAH F66 <sup>SV</sup>

A well put together Liberty son with plenty of length and muscle, descending from the Sarah female line.

Mid January 2023 TransTasman Angus Cattle Evaluation

Traits Observed : BWT,200WT(x2),400WT,600WT(x2),SC,Scan(EMA,Rib,Rump,IMF),DOC,Genomics

TACE	CED	CEM	GL	BW	200	400	600	MCW	MILK	SS	DC	DOC	CWT	EMA	RIB	P8	RBY	IMF	NFI-F	FA	CS	RLSV	Selection Indexes			
																							ABI	DOM	GRN	GRS
EBV	0.2	0.5	-7.5	6.1	49	88	113	110	19	2.7	-3.5	7	66	6.5	0	1.3	1.2	-1.8	-0.13	1.02	0.72	0.94	ABI	DOM	GRN	GRS
ACC	59%	48%	73%	75%	73%	72%	75%	69%	65%	75%	39%	56%	65%	64%	64%	65%	59%	67%	57%	66%	66%	63%	\$147	\$132	\$186	\$132
PERC	71	75	13	88	57	58	60	34	35	26	80	97	50	46	47	21	11	99	14	61	23	20	91	85	93	90

PURCHASER .....

PRICE .....



37

**KERINGA SKYFALL S17 (AI) PV**

DOB 17/03/2021 | REGISTER HBR | ID SNE21S17

AMFU,CAFU,DDFU,NHFU

♂ EF COMMANDO 1366 PV

SIRE: MILLAH MURRAH PARATROOPER P15 PV

♀ MILLAH MURRAH ELA M9 PV

♂ WK REPLAY #

DAM: KERINGA J7 SV

♀ STONEY POINT BLACKBIRD LADY X60 #

Stylish and balanced P15 son, he has load of eye appeal. S17's dam is a complete outcross to modern genetics, she has been a key donor for us with many daughters in production. S17 scanned right at the top of his contemporary group for IMF. Suitable for heifers

Mid January 2023 TransTasman Angus Cattle Evaluation

Traits Observed : GL,BWT,200WT(x2),400WT,600WT(x2),SC,Scan(EMA,Rib,Rump,IMF),DOC,Genomics

TACE	CED	CEM	GL	BW	200	400	600	MCW	MILK	SS	DC	DOC	CWT	EMA	RIB	P8	RBY	IMF	NFI-F	FA	CS	RLSV	Selection Indexes			
EBV	4	6.5	-7.4	4.7	51	86	108	83	18	3	-5.4	37	60	7.2	0.6	1.2	0.2	1.9	0.29	1.06	1.02	1.16	ABI	DOM	GRN	GRS
ACC	62%	48%	83%	76%	75%	74%	76%	69%	63%	76%	38%	60%	63%	63%	64%	64%	58%	66%	51%	67%	68%	65%	\$216	\$181	\$282	\$198
PERC	40	15	14	64	45	63	71	80	40	18	28	4	69	38	33	22	66	56	64	70	81	84	33	29	35	34

PURCHASER ..... PRICE .....



LOT 37 KERINGA SKYFALL S17



LOT 38 KERINGA SOCKET S45

38

**KERINGA SOCKET S45 (AI) SV**

DOB 8/4/2021 | REGISTER HBR | ID SNE21S45

AMFU,CAFU,DDFU,NHFU

♂ TEHAMA REVERE #

SIRE: S POWERPOINT WS 5503 PV

♀ S QUEEN ESSA 248 #

♂ NAMPARA LIBERTY L21 SV

DAM: KERINGA P21 #

♀ KERINGA M85 #

The last opportunity to secure a PowerPoint son. We love the PowerPoint females we have with several joining the flush program last year including S45's full sister. His dam P21 is a moderate and thick Liberty daughter and that is exactly what you can expect from his progeny. Suitable for heifers.

Mid January 2023 TransTasman Angus Cattle Evaluation

Traits Observed : GL,BWT,200WT,400WT,600WT(x2),SC,Scan(EMA,Rib,Rump,IMF),DOC,Genomics

TACE	CED	CEM	GL	BW	200	400	600	MCW	MILK	SS	DC	DOC	CWT	EMA	RIB	P8	RBY	IMF	NFI-F	FA	CS	RLSV	Selection Indexes			
EBV	1.5	9	-6.6	4.6	56	101	121	105	13	2	-4	5	64	4.7	0.1	-0.1	-0.1	2.2	-0.03	0.74	0.76	0.78	ABI	DOM	GRN	GRS
ACC	59%	45%	83%	75%	73%	72%	74%	68%	63%	74%	33%	55%	62%	62%	62%	56%	65%	50%	70%	70%	63%	\$205	\$179	\$275	\$185	
PERC	62	3	22	62	22	21	43	43	82	53	68	98	58	70	45	45	82	47	23	7	30	2	45	32	40	49

PURCHASER ..... PRICE .....

39

**KERINGA SUPER STAR S22 (AI) PV**

DOB 20/03/2021 | REGISTER HBR | ID SNE21S22

AMFU,CAFU,DDFU,NHFU

♂ MILLAH MURRAH KLOONEY K42 PV

SIRE: MILLAH MURRAH MARLON BRANDO M304 PV

♀ MILLAH MURRAH FLOWER G41 PV

♂ NAMPARA LIBERTY L21 SV

DAM: KERINGA WILCOOLA Q40 SV

♀ KERINGA N101 #

Balanced is the perfect word to describe this bull, soft, long and deep. Liberty on the maternal side he has a higher BWT. Heifers first calf with a laid in shoulder, excellent GL and positive CE suggest suitable for heifers or mature cows.

Mid January 2023 TransTasman Angus Cattle Evaluation

Traits Observed : GL,BWT,200WT(x2),400WT,600WT(x2),SC,Scan(EMA,Rib,Rump,IMF),DOC,Genomics

TACE	CED	CEM	GL	BW	200	400	600	MCW	MILK	SS	DC	DOC	CWT	EMA	RIB	P8	RBY	IMF	NFI-F	FA	CS	RLSV	Selection Indexes			
EBV	4.2	1.9	-6.3	7	58	101	142	128	19	2.1	-5	20	78	8	-2.7	-3.8	1.5	0.7	-0.22	0.92	0.78	1.06	ABI	DOM	GRN	GRS
ACC	59%	49%	83%	75%	73%	72%	75%	69%	64%	75%	39%	57%	64%	63%	64%	64%	58%	67%	54%	66%	66%	64%	\$212	\$175	\$264	\$201
PERC	38	62	25	95	17	22	9	12	31	49	39	52	18	29	95	95	5	86	9	36	34	58	37	37	50	31

PURCHASER ..... PRICE .....





**40****KERINGA SANTA FE S66<sup>PV</sup>**

DOB 8/5/2021 | REGISTER HBR | ID SNE21S66

AMFU,CAFU,DDC,NHFU

♂ S CHISUM 255<sup>SV</sup>SIRE: KERINGA CHISUM 255 Q57<sup>PV</sup>♀ KERINGA MELODY L85<sup>PV</sup>

♂ WILLOW FIELDS MACKENZIE M9 PV

DAM: KERINGA QUIET Q118 PV

♀ WILLOW FIELDS QUIET E11 PV

The next four bulls are sire by our own herd sire Q57 a thick set easy doing son of Chisum 255. S66 carries a double cross of Chisum 6175, who was known for the females he produced, coupled with the Quiet female line S66's dam is one of my favourite young females. Excellent data set this bull is a heifers first calf suitable for use on heifers. Please note this bulls is DDC, but was to good not to offer at auction.

Mid January 2023 TransTasman Angus Cattle Evaluation

Traits Observed : BWT,200WT,400WT,600WT(x2),SC,Scan(EMA,Rib,Rump,IMF),DOC,Genomics

TACE	CED	CEM	GL	BW	200	400	600	MCW	MILK	SS	DC	DOC	CWT	EMA	RIB	P8	RBY	IMF	NFI-F	FA	CS	RLSV	Selection Indexes			
																							ABI	DOM	GRN	GRS
EBV	1	5.6	-6.3	2.8	61	100	114	78	24	2.4	-6.5	28	80	9.4	0.2	0.5	0.4	2	0.12	0.88	0.84	1.08	\$261	\$228	\$352	\$240
ACC	54%	42%	68%	70%	70%	68%	68%	65%	58%	72%	33%	44%	58%	57%	59%	52%	62%	48%	59%	59%	54%	3	1	2	5	
PERC	65	23	25	23	10	23	58	85	8	36	10	19	14	17	42	34	54	53	41	27	47	65	3	1	2	5

PURCHASER .....

PRICE .....

**41****KERINGA SANTA FE S55<sup>PV</sup>**

DOB 16/04/2021 | REGISTER HBR | ID SNE21S55

AMFU,CAFU,DDF,NHFU

♂ S CHISUM 255<sup>SV</sup>SIRE: KERINGA CHISUM 255 Q57<sup>PV</sup>♀ KERINGA MELODY L85<sup>PV</sup>

♂ WILLOW FIELDS MACKENZIE M9 PV

DAM: KERINGA LOWAN Q121 PV

♀ KERINGA M34 PV

This young bull descends from the Lowan E356 female line, his grand dam M34 is an impressive large volume donor, that is set to have a big impact in our herd. Expect top quality replacement females from this bull. heifers first calf with BWT of +1.7 suitable for heifers.

Mid January 2023 TransTasman Angus Cattle Evaluation

Traits Observed : BWT,200WT(x2),400WT,600WT(x2),SC,Scan(EMA,Rib,Rump,IMF),DOC,Genomics

TACE	CED	CEM	GL	BW	200	400	600	MCW	MILK	SS	DC	DOC	CWT	EMA	RIB	P8	RBY	IMF	NFI-F	FA	CS	RLSV	Selection Indexes			
																							ABI	DOM	GRN	GRS
EBV	4.4	4.9	-5.5	1.7	48	92	110	69	26	2	-5.2	9	72	4.4	0.6	1.5	0	2.3	0.06	0.92	0.7	1	\$222	\$190	\$295	\$203
ACC	52%	40%	67%	71%	69%	68%	72%	64%	57%	71%	32%	44%	57%	55%	57%	50%	61%	47%	60%	60%	56%	25	18	24	30	
PERC	36	30	37	9	62	46	68	92	3	53	33	94	32	74	33	18	77	44	34	36	20	38	25	18	24	30

PURCHASER .....

PRICE .....

**42****KERINGA SANTA FE S61<sup>SV</sup>**

DOB 27/04/2021 | REGISTER HBR | ID SNE21S61

AMFU,CAFU,DDF,NHFU

♂ S CHISUM 255<sup>SV</sup>SIRE: KERINGA CHISUM 255 Q57<sup>PV</sup>♀ KERINGA MELODY L85<sup>PV</sup>

♂ IRELANDS JEOPARDY J356 SV

DAM: KERINGA MOONGARA Q66 #

♀ WILLOW FIELDS MOONGARA K1 PV

Another calving ease son of Q57. Heifers first calf with a BWT of +2.6 you wont have any trouble sleeping while your heifers are calving

Mid January 2023 TransTasman Angus Cattle Evaluation

Traits Observed : BWT,200WT(x2),400WT,600WT(x2),SC,Scan(EMA,Rib,Rump,IMF),DOC,Genomics

TACE	CED	CEM	GL	BW	200	400	600	MCW	MILK	SS	DC	DOC	CWT	EMA	RIB	P8	RBY	IMF	NFI-F	FA	CS	RLSV	Selection Indexes			
																							ABI	DOM	GRN	GRS
EBV	3.5	1.4	-3.2	2.6	56	91	115	84	21	2.4	-5.9	12	71	7.7	-0.1	0.4	0.8	1.3	0.2	0.82	0.64	0.96	\$237	\$199	\$308	\$217
ACC	50%	39%	65%	70%	67%	66%	70%	62%	55%	70%	31%	43%	55%	54%	56%	49%	59%	45%	61%	61%	57%	13	11	16	17	
PERC	44	67	75	20	25	50	56	78	19	36	18	88	35	32	50	36	28	73	52	16	12	26	13	11	16	17

PURCHASER .....

PRICE .....



LOT 39 KERINGA SUPER STAR S22

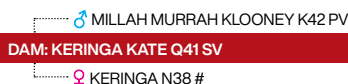
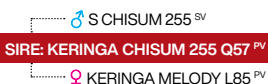


**43**

**KERINGA SANTA FE S60<sup>PV</sup>**

DOB 27/04/2021 | REGISTER HBR | ID SNE21S60

AMFU,CAFU,DDF,NHFU



Final son to sell from Q57, like his brothers being all heifers first calves he is a low BWT option suitable for heifers, with Klooney on the maternal side he will leave quality replacement females.

Mid January 2023 TransTasman Angus Cattle Evaluation

Traits Observed : BWT,200WT(x2),400WT,600WT(x2),SC,Scan(EMA,Rib,Rump,IMF),DOC,Genomics

TACE	CED	CEM	GL	BW	200	400	600	MCW	MILK	SS	DC	DOC	CWT	EMA	RIB	P8	RBY	IMF	NFI-F	FA	CS	RLSV	Selection Indexes			
EBV	5.8	3.7	-6.7	3.6	48	78	97	52	24	3.1	-5.4	25	53	8.9	0.1	-0.8	0.6	2.9	0.2	0.96	0.76	0.8	ABI	DOM	GRN	GRS
ACC	55%	44%	67%	71%	69%	68%	71%	64%	58%	71%	34%	47%	57%	57%	58%	59%	51%	62%	48%	64%	64%	60%	\$233	\$191	\$308	\$215
PERC	24	43	20	39	63	83	87	98	9	16	28	28	86	21	45	59	40	28	52	46	30	3	16	18	16	18

PURCHASER .....

PRICE .....



LOT 43 KERINGA SANTA FE S60



LOT 46 KERINGA SCOTSMAN S63

**44**

**KERINGA SPEED STONE S51 (AI)<sup>PV</sup>**

DOB 14/04/2021 | REGISTER HBR | ID SNE21S51

AMFU,CAFU,DDFU,NHFU



Positive fat Milestone M308 son out of a Liberty female. He is a long upstanding bull.

Mid January 2023 TransTasman Angus Cattle Evaluation

Traits Observed : GL,BWT,200WT(x2),400WT,600WT(x2),SC,Scan(EMA,Rib,Rump,IMF),DOC,Genomics

TACE	CED	CEM	GL	BW	200	400	600	MCW	MILK	SS	DC	DOC	CWT	EMA	RIB	P8	RBY	IMF	NFI-F	FA	CS	RLSV	Selection Indexes			
EBV	-1.8	1.6	-5.5	6.6	59	102	133	113	21	4.3	-6	28	72	6.9	0.7	0.2	0.7	1	0.22	11	0.9	1.24	ABI	DOM	GRN	GRS
ACC	57%	47%	82%	74%	73%	72%	74%	68%	61%	74%	39%	57%	63%	63%	63%	64%	57%	67%	56%	66%	66%	64%	\$217	\$185	\$276	\$203
PERC	82	65	37	93	13	19	19	29	20	3	16	18	33	41	31	39	34	80	55	78	60	95	31	24	40	29

PURCHASER .....

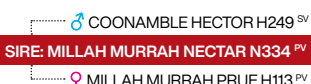
PRICE .....

**45**

**KERINGA SWEET NECTAR S36 (AI)<sup>PV</sup>**

DOB 25/03/2021 | REGISTER HBR | ID SNE21S36

AMFU,CAFU,DDFU,NHFU



One that is hard to miss, S36 is a well balanced, super sounds son of Millah Murrah Nectar, descending from the Millah Murrah Flower line, he is bred the same way as Lot 34 S19. A stylish individual that is certainly one of my favourites. another heifers first calf although suggest he should be used for mature cows

Mid January 2023 TransTasman Angus Cattle Evaluation

Traits Observed : GL,BWT,200WT(x2),400WT,600WT(x2),SC,Scan(EMA,Rib,Rump,IMF),DOC,Genomics

TACE	CED	CEM	GL	BW	200	400	600	MCW	MILK	SS	DC	DOC	CWT	EMA	RIB	P8	RBY	IMF	NFI-F	FA	CS	RLSV	Selection Indexes			
EBV	-5.4	-10.7	-2.3	7.4	63	110	140	138	16	3.1	-2.9	33	82	9.3	-2.2	-2.3	1.2	0.2	-0.36	0.58	0.5	0.88	ABI	DOM	GRN	GRS
ACC	57%	45%	82%	75%	73%	72%	74%	67%	61%	75%	37%	55%	62%	61%	62%	63%	57%	65%	52%	65%	64%	61%	\$169	\$145	\$226	\$149
PERC	93	99	85	97	6	8	10	6	59	16	89	8	11	18	91	83	11	94	4	1	3	9	80	75	78	82

PURCHASER .....

PRICE .....





# 46 KERINGA SCOTSMAN S63<sup>SV</sup>

DOB 4/5/2021 | REGISTER HBR | ID SNE21S63

AMFU,CAFU,DDF,NHFU

♂ ATAHUA FREEDOM 609-10 #  
 SIRE: NAMPARA LIBERTY L21<sup>SV</sup>  
 ♀ NAMPARA H65 #

♂ WILLOW FIELDS KEN K4 PV  
 DAM: KERINGA N25 #  
 ♀ WILLOW FIELDS MILLIE K28 PV

Liberty son out of a quality young dam whose first son topped our 2020 sale. Plenty of growth, carcass and yield in this fellow, Higher BWT with positive CE, calves will hit the ground running, use for heifers or mature cows

Mid January 2023 TransTasman Angus Cattle Evaluation

Traits Observed : BWT,200WT(x2),400WT,600WT(x2),SC,Scan(EMA,Rib,Rump,IMF),DOC,Genomics

TACE	CED	CEM	GL	BW	200	400	600	MCW	MILK	SS	DC	DOC	CWT	EMA	RIB	P8	RBY	IMF	NFI-F	FA	CS	RLSV	Selection Indexes			
EBV	2	-0.9	-6.6	7.5	65	107	147	140	21	3	-2.1	5	79	8.9	-1.8	-2.5	1.3	0.2	-0.17	0.96	0.62	0.98	ABI	DOM	GRN	GRS
ACC	57%	45%	70%	74%	72%	71%	74%	68%	63%	74%	38%	54%	64%	63%	63%	65%	58%	67%	57%	67%	67%	61%	\$191	\$153	\$252	\$173
PERC	58	84	22	97	4	11	6	5	22	18	95	98	16	21	86	85	8	94	12	46	10	31	61	67	60	62

PURCHASER ..... PRICE .....

# 47 KERINGA SCOTSMAN S47<sup>PV</sup>

DOB 8/4/2021 | REGISTER HBR | ID SNE21S47

AMFU,CAFU,DDFU,NHFU

♂ ATAHUA FREEDOM 609-10 #  
 SIRE: NAMPARA LIBERTY L21<sup>SV</sup>  
 ♀ NAMPARA H65 #

♂ KENNY'S CREEK DARWIN D392 PV  
 DAM: WILLOW FIELDS KATE H34 PV  
 ♀ WILLOW FIELDS KATE C2 SV

Liberty son descending from the Kate female line from Ardrossan Angus. Really cant go wrong with L21 son to add extra dimension and bone to their progeny.

Mid January 2023 TransTasman Angus Cattle Evaluation

Traits Observed : BWT,200WT(x2),400WT,600WT(x2),SC,Scan(EMA,Rib,Rump,IMF),DOC,Genomics

TACE	CED	CEM	GL	BW	200	400	600	MCW	MILK	SS	DC	DOC	CWT	EMA	RIB	P8	RBY	IMF	NFI-F	FA	CS	RLSV	Selection Indexes			
EBV	-4.2	-4.6	-3	7.7	54	93	129	124	21	2.1	-3.4	28	72	4.9	-1.5	-0.9	0.8	0.3	-0.22	0.82	0.8	0.98	ABI	DOM	GRN	GRS
ACC	58%	46%	72%	75%	73%	73%	75%	71%	65%	75%	39%	56%	65%	64%	64%	66%	59%	68%	57%	67%	68%	65%	\$147	\$117	\$194	\$132
PERC	91	96	77	98	34	44	25	16	20	49	82	20	31	68	81	61	28	93	9	16	39	31	91	92	91	91

PURCHASER ..... PRICE .....

# 48 KERINGA SCANDAL S40 (AI)<sup>SV</sup>

DOB 26/03/2021 | REGISTER HBR | ID SNE21S40

AMFU,CAFU,DDFU,NHFU

♂ ABERDEEN ESTATE HOMER H70<sup>PV</sup>  
 SIRE: BANQUET NIXON N099<sup>SV</sup>  
 ♀ BANQUET KITE J463<sup>PV</sup>

♂ MILLAH MURRAH HIGHLANDER F32 PV  
 DAM: KERINGA M85 #  
 ♀ WILLOW FIELDS PRINCESS G34 PV

Calving ease Nixon son. Dam M85 is still active in the herd with 5 registered progeny, S40's sister P21 by Liberty is very quickly making a name for herself with her PP son S45 selling at lot 38. Strong maternal genetics here to produce quality replacement females. Suitable for heifers

Mid January 2023 TransTasman Angus Cattle Evaluation

Traits Observed : GL,BWT,200WT(x2),400WT,600WT(x2),SC,Scan(EMA,Rib,Rump,IMF),DOC,Genomics

TACE	CED	CEM	GL	BW	200	400	600	MCW	MILK	SS	DC	DOC	CWT	EMA	RIB	P8	RBY	IMF	NFI-F	FA	CS	RLSV	Selection Indexes			
EBV	1.4	1.7	-1.7	5.1	46	82	104	96	22	2.9	-5.5	15	61	3.9	-0.8	-0.9	0.4	2.1	-0.14	0.82	0.56	0.96	ABI	DOM	GRN	GRS
ACC	56%	45%	83%	75%	72%	72%	74%	67%	61%	74%	36%	52%	61%	60%	62%	62%	56%	64%	50%	61%	61%	59%	\$175	\$148	\$227	\$157
PERC	63	64	90	73	72	74	79	58	13	20	26	77	66	79	67	61	54	50	14	16	5	26	76	72	77	77

PURCHASER ..... PRICE .....



LOT 45 KERINGA SWEET NECTAR S36



DAM OF LOT 48 KERINGA QUIET M85



## 16-18 MONTH BULLS

**49**

### KERINGA SPANIARD S144 (AI) <sup>PV</sup>

DOB 19/07/2021 | REGISTER HBR | ID SNE21S144

AMFU,CAFU,DDFU,NHFU

♂ S CHISUM 255 <sup>SV</sup>  
 SIRE: MILLAH MURRAH QUIXOTE Q96 <sup>PV</sup>  
 ♀ MILLAH MURRAH BRENDA N8 <sup>PV</sup>

♂ NAMPARA LIBERTY L21 <sup>SV</sup>  
 DAM: KERINGA SARAH Q240 <sup>PV</sup>  
 ♀ ROSELEIGH SARAH F66 <sup>SV</sup>

Quixote son out of a first calving Sarah female, huge amount of length in this bull and plenty of growth.

Mid January 2023 TransTasman Angus Cattle Evaluation

Traits Observed : GL,BWT,200WT(x2),400WT(x2),SC,Scan(EMA,Rib,Rump,IMF),DOC,Genomics

TACE	CED	CEM	GL	BW	200	400	600	MCW	MILK	SS	DC	DOC	CWT	EMA	RIB	P8	RBY	IMF	NFI-F	FA	CS	RLSV	Selection Indexes			
																							ABI	DOM	GRN	GRS
EBV	-2.8	4.1	-0.6	7.5	69	115	150	126	23	2.8	-4.3	21	94	7.8	-1.1	-1.6	0.7	-0.2	0.25	0.84	0.7	0.92	\$216	\$183	\$281	\$197
ACC	56%	43%	83%	74%	73%	71%	70%	67%	59%	74%	35%	57%	61%	61%	61%	62%	55%	64%	51%	67%	67%	64%	32	26	35	36
PERC	86	39	96	97	2	4	4	14	11	23	60	43	2	31	74	73	34	97	59	19	20	16	32	26	35	36

PURCHASER ..... PRICE .....

**50**

### KERINGA SUPER STAR S153 (AI) <sup>SV</sup>

DOB 22/07/2021 | REGISTER HBR | ID SNE21S153

AMFU,CAFU,DDFU,NHFU

♂ BOOROOMOOKA THEO T030 <sup>SV</sup>  
 SIRE: MILLAH MURRAH KLOONEY K42 <sup>PV</sup>  
 ♀ MILLAH MURRAH PRUE H4 <sup>SV</sup>

♂ S CHISUM 255 <sup>SV</sup>  
 DAM: KERINGA LOWAN P296 #  
 ♀ VERMONT LOWAN E356 <sup>PV</sup>

A balanced bull with plenty of muscle expression. Klooney K42 out of a young Chisum 255 female, descending from the Lowan E356 line. With this pedigree you can expect top quality replacement females. Suitable for use on heifers.

Mid January 2023 TransTasman Angus Cattle Evaluation

Traits Observed : GL,BWT,200WT(x2),400WT(x2),SC,Scan(EMA,Rib,Rump,IMF),DOC,Genomics

TACE	CED	CEM	GL	BW	200	400	600	MCW	MILK	SS	DC	DOC	CWT	EMA	RIB	P8	RBY	IMF	NFI-F	FA	CS	RLSV	Selection Indexes			
																							ABI	DOM	GRN	GRS
EBV	5	2.9	-4.1	4.3	42	73	87	57	16	4	-6.2	30	47	3.8	0.9	0.6	0.1	3.8	0.49	1.06	0.66	126	\$211	\$179	\$276	\$195
ACC	62%	53%	83%	74%	73%	71%	72%	70%	66%	75%	47%	58%	65%	65%	66%	66%	61%	68%	57%	67%	68%	66%	38	32	40	37
PERC	31	52	61	55	86	91	96	97	65	4	13	13	94	80	26	32	72	13	85	70	14	96	38	32	40	37

PURCHASER ..... PRICE .....

LOT 51 KERINGA SUPER STAR S153



MATERNAL SISTER TO LOT 51 KERINGA LOWAN R164



**51**

### KERINGA SUPER STAR S195 (AI) <sup>SV</sup>

DOB 12/8/2021 | REGISTER HBR | ID SNE21S195

AMFU,CAFU,DDFU,NHFU

♂ BOOROOMOOKA THEO T030 <sup>SV</sup>  
 SIRE: MILLAH MURRAH KLOONEY K42 <sup>PV</sup>  
 ♀ MILLAH MURRAH PRUE H4 <sup>SV</sup>

♂ S CHISUM 255 <sup>SV</sup>  
 DAM: KERINGA LOWAN P288 #  
 ♀ VERMONT LOWAN E356 <sup>PV</sup>

Breed identically to the previous lot, the dams are ET sisters. Looking for a pair of bulls you cant go to wrong here. S195 sister R164 is one of our top young females. Suitable for heifers.

Mid January 2023 TransTasman Angus Cattle Evaluation

Traits Observed : GL,BWT,200WT(x2),400WT(x2),SC,Scan(EMA,Rib,Rump,IMF),DOC,Genomics

TACE	CED	CEM	GL	BW	200	400	600	MCW	MILK	SS	DC	DOC	CWT	EMA	RIB	P8	RBY	IMF	NFI-F	FA	CS	RLSV	Selection Indexes			
																							ABI	DOM	GRN	GRS
EBV	5.4	0.5	-3.2	3.3	45	78	94	84	20	1	-4.1	31	59	8.5	-2.3	-3.4	1.5	2.1	0.15	0.72	0.74	1.02	\$191	\$163	\$252	\$168
ACC	63%	54%	83%	74%	74%	72%	72%	70%	66%	75%	47%	58%	66%	65%	66%	67%	61%	69%	58%	67%	67%	65%	61	54	60	68
PERC	27	75	75	32	76	84	91	78	24	87	66	13	73	24	92	93	5	50	45	5	26	44	61	54	60	68

PURCHASER ..... PRICE .....





52

**KERINGA LIBERTY S203 ET** <sup>PV</sup>  
**DOB 23/08/2021 | REGISTER HBR | ID SNE21S203**

AMFU,CAFU,DDFU,NHFU

♂ ATAHUA FREEDOM 609-10 #  
**SIRE: NAMPARA LIBERTY L21** <sup>SV</sup>  
 ♀ NAMPARA H65 #

♂ SITZ TRADITION RLS 8702 SV  
**DAM: WILLOW FIELDS VICKI D6** <sup>PV</sup>  
 ♀ WILLOW FIELDS VICKI X43 #

Liberty son with strong bone and muscle expression, out of D6 a female descending from the Merrigrange Vicky line, with 20 registered progeny she was still active in the herd at 14yo.

Mid January 2023 TransTasman Angus Cattle Evaluation

Traits Observed : BWT,200WT(x2),400WT(x2),SC,Scan(EMA,Rib,Rump,IMF),DOC,Genomics

TACE	CED	CEM	GL	BW	200	400	600	MCW	MILK	SS	DC	DOC	CWT	EMA	RIB	P8	RBY	IMF	NFI-F	FA	CS	RLSV	Selection Indexes			
EBV	1.2	-1.8	-5.3	6	50	82	109	114	12	2.4	-3.8	12	58	3.3	-0.3	19	0.8	-0.8	-0.06	0.92	0.94	0.94	ABI	DOM	GRN	GRS
ACC	62%	50%	74%	75%	74%	73%	73%	71%	66%	76%	41%	57%	66%	65%	65%	67%	60%	69%	58%	69%	69%	64%	\$144	\$124	\$185	\$128
PERC	64	88	41	87	53	74	69	28	87	36	74	88	76	85	55	14	28	99	20	36	68	20	92	90	93	92

PURCHASER ..... PRICE .....



LOT 53 KERINGA PARATROOPER S109

53

**KERINGA PARATROOPER S109 (AI)** <sup>PV</sup>  
**DOB 11/7/2021 | REGISTER HBR | ID SNE21S109**

AMFU,CAFU,DDFU,NHFU

♂ EF COMMANDO 1366 <sup>PV</sup>  
**SIRE: MILLAH MURRAH PARATROOPER P15** <sup>PV</sup>  
 ♀ MILLAH MURRAH ELA M9 <sup>PV</sup>

♂ MILLAH MURRAH NECTAR N334 <sup>PV</sup>  
**DAM: KERINGA PANDA Q205** <sup>SV</sup>  
 ♀ KERINGA PANDA N125 #

Neatly put together P15 son with a great data set. Out of a Panda females whose full sister was the dam of last years top selling bull also by Paratrooper. Nectar and Kingdom on the bottom side provides a very strong maternal pedigree. Heifers first calf suitable for heifers.

Mid January 2023 TransTasman Angus Cattle Evaluation

Traits Observed : GL,BWT,200WT(x2),400WT(x2),Scan(EMA,Rib,Rump,IMF),DOC,Genomics

TACE	CED	CEM	GL	BW	200	400	600	MCW	MILK	SS	DC	DOC	CWT	EMA	RIB	P8	RBY	IMF	NFI-F	FA	CS	RLSV	Selection Indexes			
EBV	5.2	5.9	-6.6	3.1	57	103	129	103	21	1.9	-5.5	33	82	10.9	1.2	15	0.7	1.4	0.36	0.78	0.62	1.08	ABI	DOM	GRN	GRS
ACC	60%	45%	83%	74%	73%	71%	71%	67%	60%	69%	36%	57%	61%	62%	62%	56%	65%	50%	67%	66%	64%	\$253	\$214	\$330	\$235	
PERC	29	20	22	28	20	17	26	46	22	57	26	9	12	9	21	18	34	70	73	10	10	65	5	4	7	7

PURCHASER ..... PRICE .....

54

**KERINGA PARATROOPER S121 (AI)** <sup>PV</sup>  
**DOB 14/07/2021 | REGISTER HBR | ID SNE21S121**

AMFU,CAFU,DDFU,NHFU

♂ EF COMMANDO 1366 <sup>PV</sup>  
**SIRE: MILLAH MURRAH PARATROOPER P15** <sup>PV</sup>  
 ♀ MILLAH MURRAH ELA M9 <sup>PV</sup>

♂ CARABAR DOCKLANDS D62 <sup>PV</sup>  
**DAM: KERINGA VICKY N135** <sup>PV</sup>  
 ♀ BANQUET VICKY D486 #

Bull with a huge amount of length and another strong maternal pedigree here. S121 is out of N135 a Vicky female who joined our donor program last year. Grandam D486 is still active in the herd at 15yo.Suitable for heifers

Mid January 2023 TransTasman Angus Cattle Evaluation

Traits Observed : GL,BWT,200WT(x2),400WT(x2),SC,Scan(EMA,Rib,Rump,IMF),DOC,Genomics

TACE	CED	CEM	GL	BW	200	400	600	MCW	MILK	SS	DC	DOC	CWT	EMA	RIB	P8	RBY	IMF	NFI-F	FA	CS	RLSV	Selection Indexes			
EBV	6.8	6	-6.5	3.7	50	87	113	98	16	3.1	-4.4	16	60	0.2	-0.4	-0.3	0.2	0.7	0.27	0.78	0.58	1.04	ABI	DOM	GRN	GRS
ACC	62%	49%	83%	74%	74%	72%	72%	68%	62%	75%	39%	58%	62%	62%	63%	63%	57%	65%	51%	67%	68%	66%	\$173	\$149	\$220	\$156
PERC	17	19	23	41	52	60	61	54	59	16	57	72	69	98	57	49	66	86	62	10	6	51	78	71	81	77

PURCHASER ..... PRICE .....



**55****KERINGA PARATROOPER S178 (AI) SV**

DOB 7/8/2021 | REGISTER HBR | ID SNE21S178

AMFU,CAFU,DDFU,NHFU

♂ EF COMMANDO 1366 PV

SIRE: MILLAH MURRAH PARATROOPER P15 PV

♀ MILLAH MURRAH ELA M9 PV

♂ MILLAH MURRAH KINGDOM K35 PV

DAM: KERINGA N7 #

♀ WILLOW FIELDS BLUE E6 PV

A long up standing bull out of a Kingdom female. Paratrooper over Kingdom has been a strong cross, with last years top bull carrying the same pedigree. Full brother sold in 2022 to KJ and NA Mclean. Suitable for heifers.

Mid January 2023 TransTasman Angus Cattle Evaluation

Traits Observed : GL,BWT,200WT(x2),400WT(x2),SC,Scan(EMA,Rib,Rump,IMF),DOC,Genomics

TACE	CED	CEM	GL	BW	200	400	600	MCW	MILK	SS	DC	DOC	CWT	EMA	RIB	P8	RBY	IMF	NFI-F	FA	CS	RLSV	Selection Indexes			
EBV	4.8	3.9	-8.4	4.6	61	109	146	102	26	2.5	-5.3	36	85	10.1	-0.9	-1.5	0.6	1.7	0.12	1.06	0.8	1.14	ABI	DOM	GRN	GRS
ACC	62%	48%	83%	74%	74%	72%	72%	68%	62%	75%	39%	59%	62%	62%	63%	63%	57%	65%	52%	68%	69%	66%	\$256	\$209	\$331	\$242
PERC	33	41	7	62	10	8	6	48	3	33	31	5	7	12	69	71	40	62	41	70	39	80	4	6	7	4

PURCHASER ..... PRICE .....



LOT 56 KERINGA SUGAR S222

**56****KERINGA SUGAR S222 (AI) PV**

DOB 27/08/2021 | REGISTER HBR | ID SNE21S222

AMFU,CAFU,DDF,NHFU

♂ S CHISUM 255 SV

SIRE: MILLAH MURRAH QUIXOTE Q96 PV

♀ MILLAH MURRAH BRENDA N8 PV

♂ S CHISUM 255 SV

DAM: KERINGA LOWAN P297 PV

♀ KERINGA ELECTRA E7 SV

Neatly put together Quixote son out of a young Chisum 255 female descending from our foundation Melody line. Brother sold last year and we just recently received a call to say how well he was going and is so quiet that he could be patted in the paddock. This is something we strive for in our bulls. Suitable for heifers

Mid January 2023 TransTasman Angus Cattle Evaluation

Traits Observed : GL,BWT,200WT(x2),400WT(x2),SC,Scan(EMA,Rib,Rump,IMF),DOC,Genomics

TACE	CED	CEM	GL	BW	200	400	600	MCW	MILK	SS	DC	DOC	CWT	EMA	RIB	P8	RBY	IMF	NFI-F	FA	CS	RLSV	Selection Indexes			
EBV	3	5.6	-5.2	5.4	56	94	131	94	25	1.5	-3.9	28	81	4.4	1.1	0.6	-0.4	1.5	-0.02	1	0.72	1	ABI	DOM	GRN	GRS
ACC	56%	43%	84%	75%	74%	72%	72%	68%	61%	75%	37%	59%	62%	62%	63%	63%	57%	65%	51%	64%	64%	60%	\$199	\$152	\$267	\$181
PERC	49	23	42	78	23	39	22	62	6	73	71	18	12	74	23	32	91	68	24	56	23	38	52	67	48	54

PURCHASER ..... PRICE .....

**57****KERINGA SHOWMAN S134 (AI) SV**

DOB 16/07/2021 | REGISTER HBR | ID SNE21S134

AMFU,CAFU,DDFU,NHFU

♂ WITHERSWOOD PERFORMER E49 SV

SIRE: KERINGA M21 PV

♀ WILLOW FIELDS MOONGARA K1 PV

♂ NAMPARA LIBERTY L21 SV

DAM: KERINGA FLOWER P129 #

♀ KERINGA FLOWER L91 #

A bull with plenty of length and muscle expression, out of a young Liberty female descending from the flower female line. Suitable for heifers

Mid January 2023 TransTasman Angus Cattle Evaluation

Traits Observed : GL,BWT,200WT(x2),400WT(x2),SC,Scan(EMA,Rib,Rump,IMF),DOC,Genomics

TACE	CED	CEM	GL	BW	200	400	600	MCW	MILK	SS	DC	DOC	CWT	EMA	RIB	P8	RBY	IMF	NFI-F	FA	CS	RLSV	Selection Indexes			
EBV	9.4	4.2	-8	2.3	46	84	111	108	21	3.4	-3.9	8	67	0.7	-0.1	0.7	0.1	1.8	0.01	1.12	0.98	1.1	ABI	DOM	GRN	GRS
ACC	53%	42%	82%	72%	70%	67%	68%	65%	58%	72%	34%	47%	58%	57%	59%	59%	52%	62%	49%	60%	60%	57%	\$162	\$132	\$214	\$144
PERC	4	38	9	15	68	69	65	37	22	10	71	96	48	97	50	30	72	59	27	81	75	70	85	85	84	85

PURCHASER ..... PRICE .....





58

**KERINGA LIBERTY S231 ET** PV

DOB 31/08/2021 | REGISTER HBR | ID SNE21S231

AMFU,CAFU,DDF,NHFU

♂ ATAHUA FREEDOM 609-10 #

SIRE: NAMPARA LIBERTY L21 SV

♀ NAMPARA H65 #

♂ S A V MUSTANG 9134 #

DAM: KERINGA FLOWER H11 SV

♀ BULL OAK WELL FLOWER C16 #

This Liberty son is a full brother to the dams of lots 29,34 and 45, these 3 females have all joined the donor program showing the maternal strength of this pedigree. This bull will produce top quality females.

Mid January 2023 TransTasman Angus Cattle Evaluation

Traits Observed : BWT,200WT(x2),400WT(x2),SC,Scan(EMA,Rib,Rump,IMF),DOC,Genomics

TACE	CED	CEM	GL	BW	200	400	600	MCW	MILK	SS	DC	DOC	CWT	EMA	RIB	P8	RBY	IMF	NFI-F	FA	CS	RLSV	Selection Indexes			
EBV	-0.2	-1.7	-2.9	6.9	58	106	139	124	26	2.9	-2.5	17	80	2.5	-0.2	0	0.3	0.1	-0.38	1	1.02	1.12	ABI	DOM	GRN	GRS
ACC	59%	47%	73%	74%	74%	72%	73%	70%	65%	75%	41%	56%	66%	65%	65%	66%	60%	69%	58%	66%	66%	60%	\$163	\$136	\$218	\$145
PERC	74	88	79	95	16	11	12	16	3	20	93	67	15	90	52	43	60	95	3	56	81	76	84	82	82	85

PURCHASER .....

PRICE .....



LOT 58 KERINGA LIBERTY S231



LOT 60 KERINGA SPORTSMAN S247

59

**KERINGA SPANIARD S155 (AI)** SV

DOB 23/07/2021 | REGISTER APR | ID SNE21S155

AM2%,CA2%,DDF,NH2%

♂ S CHISUM 255 SV

SIRE: MILLAH MURRAH QUIXOTE Q96 PV

♀ MILLAH MURRAH BRENDA N8 PV

♂ NAMPARA LIBERTY L21 SV

DAM: KERINGA CLEO P123 #

♀ KERINGA CLEO M193 #

Plenty of length in this Quixote son. Suitable for heifers.

Mid January 2023 TransTasman Angus Cattle Evaluation

Traits Observed : GL,BWT,200WT(x2),400WT(x2),SC,Scan(EMA,Rib,Rump,IMF),DOC,Genomics

TACE	CED	CEM	GL	BW	200	400	600	MCW	MILK	SS	DC	DOC	CWT	EMA	RIB	P8	RBY	IMF	NFI-F	FA	CS	RLSV	Selection Indexes			
EBV	6	4.4	-1.9	2.5	48	78	103	77	24	2.9	-3.9	21	65	3.3	-0.9	-1.7	0.3	2.2	-0.01	0.7	0.4	1	ABI	DOM	GRN	GRS
ACC	55%	41%	83%	73%	71%	69%	68%	65%	57%	72%	32%	54%	58%	58%	59%	59%	53%	62%	48%	66%	66%	63%	\$181	\$144	\$242	\$161
PERC	22	36	89	18	61	85	80	86	7	20	71	45	56	85	69	75	60	47	25	4	1	38	71	75	67	73

PURCHASER .....

PRICE .....

60

**KERINGA SPORTSMAN S247** SV

DOB 6/9/2021 | REGISTER HBR | ID SNE21S247

AMFU,CAFU,DDFU,NHFU

♂ LD CAPITALIST 316 PV

SIRE: ASCOT QUALIFIER Q329 SV

♀ ASCOT BRENDA J312 #

♂ S CHISUM 255 SV

DAM: KERINGA FLOWER P201 #

♀ KERINGA FLOWER M160 SV

Q329 son with length and bone, descending from the Millah Murrah Flower female line his great grandam K41 is still an active donor in the herd at 12 years of age. Millah Murrah females on both side of this pedigree provides strong maternal depth.

Mid January 2023 TransTasman Angus Cattle Evaluation

Traits Observed : BWT,200WT(x2),400WT(x2),SC,Scan(EMA,Rib,Rump,IMF),DOC,Genomics

TACE	CED	CEM	GL	BW	200	400	600	MCW	MILK	SS	DC	DOC	CWT	EMA	RIB	P8	RBY	IMF	NFI-F	FA	CS	RLSV	Selection Indexes			
EBV	0	5.5	0	6.5	55	89	117	112	15	0.1	-4.7	24	73	4.4	0.5	0.2	0.7	1.5	-0.33	1.04	1.04	1.06	ABI	DOM	GRN	GRS
ACC	55%	44%	67%	72%	70%	68%	68%	65%	58%	72%	36%	50%	58%	57%	59%	59%	53%	62%	49%	64%	64%	60%	\$198	\$164	\$260	\$177
PERC	72	24	98	92	28	55	51	31	68	98	48	31	30	74	35	39	34	68	5	65	84	58	53	52	54	58

PURCHASER .....

PRICE .....





LOT 64 KERINGA SUPER STAR S141

**61** KERINGA SUGAR S202 (AI) <sup>SV</sup>  
 DOB 22/08/2021 | REGISTER HBR | ID SNE21S202

AMFU,CAFU,DDFU,NHFU

♂ COONAMBLE HECTOR H249 <sup>SV</sup>  
 SIRE: MILLAH MURRAH NECTAR N334 <sup>PV</sup>  
 ♀ MILLAH MURRAH PRUE H113 <sup>PV</sup>

♂ PATHFINDER GOLDMARK D189 PV  
 DAM: KERINGA M18 #  
 ♀ WILLOW FIELDS KATE C2 SV

A positive fat Nectar son with a pedigree stacked with maternal bulls on every side, makes this bull the ultimate for breeding replacement females. Suitable for heifers.

Mid January 2023 TransTasman Angus Cattle Evaluation

Traits Observed : GL,BWT,200WT(x2),400WT(x2),SC,Scan(EMA,Rib,Rump,IMF),DOC,Genomics

TACE	CED	CEM	GL	BW	200	400	600	MCW	MILK	SS	DC	DOC	CWT	EMA	RIB	P8	RBY	IMF	NFI-F	FA	CS	RLSV	Selection Indexes			
EBV	1.5	1	-9.2	5.3	51	83	108	96	15	1.9	-3.2	28	54	10	3.1	2.3	0.4	1.5	0.23	0.7	0.5	0.96	ABI	DOM	GRN	GRS
ACC	57%	45%	83%	74%	73%	72%	71%	68%	62%	75%	38%	55%	62%	62%	63%	63%	58%	65%	52%	63%	61%	60%	\$187	\$148	\$255	\$167
PERC	62	70	4	76	47	72	71	58	69	57	86	20	84	13	3	10	54	68	57	4	3	26	65	72	58	69

PURCHASER ..... PRICE .....

**62** KERINGA SOVEREIGN S228 (AI) <sup>SV</sup>  
 DOB 29/08/2021 | REGISTER HBR | ID SNE21S228

AMFU,CAFU,DDFU,NHFU

♂ ASCOT HALLMARK H147 <sup>PV</sup>  
 SIRE: MILLAH MURRAH NUGGET N266 <sup>PV</sup>  
 ♀ MILLAH MURRAH HONEY H159 <sup>SV</sup>

♂ WILLOW FIELDS KARL K14 PV  
 DAM: KERINGA N12 #  
 ♀ WILLOW FIELDS JUDI J8 PV

Another positive fat son this time from Nugget N266, full brother sold last year to Hillcrest Pastoral for \$20,000. Suitable for heifers

Mid January 2023 TransTasman Angus Cattle Evaluation

Traits Observed : GL,BWT,200WT(x2),400WT(x2),SC,Scan(EMA,Rib,Rump,IMF),DOC,Genomics

TACE	CED	CEM	GL	BW	200	400	600	MCW	MILK	SS	DC	DOC	CWT	EMA	RIB	P8	RBY	IMF	NFI-F	FA	CS	RLSV	Selection Indexes			
EBV	6	4.9	-5.8	3.8	40	83	110	72	17	3.1	-5.5	35	55	8.5	1.8	0.8	0.4	3.2	0.6	0.94	0.64	112	ABI	DOM	GRN	GRS
ACC	58%	48%	83%	74%	73%	71%	71%	68%	63%	75%	39%	55%	62%	62%	63%	63%	57%	66%	52%	61%	60%	60%	\$220	\$180	\$280	\$211
PERC	22	30	33	43	89	72	67	90	54	16	26	6	83	24	13	28	54	22	92	41	12	76	28	30	36	21

PURCHASER ..... PRICE .....

**63** KERINGA SOVEREIGN S180 (AI) <sup>PV</sup>  
 DOB 7/8/2021 | REGISTER HBR | ID SNE21S180

AMFU,CAFU,DDFU,NHFU

♂ ASCOT HALLMARK H147 <sup>PV</sup>  
 SIRE: MILLAH MURRAH NUGGET N266 <sup>PV</sup>  
 ♀ MILLAH MURRAH HONEY H159 <sup>SV</sup>

♂ MILLAH MURRAH MARLON BRANDO M304 PV  
 DAM: KERINGA VICKY Q185 SV  
 ♀ KERINGA VICKY N178 #

A long upstanding heifers first calf by Nugget. Descending from Banquet Vicky D486 still active in the herd at 15yo. Suitable for heifers.

Mid January 2023 TransTasman Angus Cattle Evaluation

Traits Observed : GL,BWT,200WT(x2),400WT(x2),SC,Scan(EMA,Rib,Rump,IMF),DOC,Genomics

TACE	CED	CEM	GL	BW	200	400	600	MCW	MILK	SS	DC	DOC	CWT	EMA	RIB	P8	RBY	IMF	NFI-F	FA	CS	RLSV	Selection Indexes			
EBV	1.5	-1.2	-3.1	6.2	44	85	109	100	16	2.1	-5	19	61	6.3	-1.1	-2.2	1.6	0.9	-0.07	0.9	0.48	1.06	ABI	DOM	GRN	GRS
ACC	58%	48%	84%	74%	74%	72%	72%	69%	64%	75%	38%	57%	62%	63%	64%	64%	57%	66%	52%	61%	60%	60%	\$176	\$157	\$218	\$164
PERC	62	85	76	89	78	67	69	52	58	49	39	55	68	49	74	82	3	82	19	31	2	58	75	61	82	71

PURCHASER ..... PRICE .....





**64****KERINGA SUPER STAR S141 (A) PV**

DOB 18/07/2021 | REGISTER HBR | ID SNE21S141

AMFU,CAFU,DDFU,NHFU

♂ BOOROOMOOKA THEO T030 SV

SIRE: MILLAH MURRAH KLOONEY K42 PV

♀ MILLAH MURRAH PRUE H4 SV

♂ WILLOW FIELDS MACNAIR M11 PV

DAM: KERINGA SARAH Q220 PV

♀ ROSELEIGH SARAH F66 SV

Moderate framed Klooney son with loads of muscles expression. Heifers first calf with another strong maternal pedigree. Suitable for heifers

Mid January 2023 TransTasman Angus Cattle Evaluation

Traits Observed : GL,BWT,200WT(x2),400WT(x2),SC,Scan(EMA,Rib,Rump,IMF),DOC,Genomics

TACE	CED	CEM	GL	BW	200	400	600	MCW	MILK	SS	DC	DOC	CWT	EMA	RIB	P8	RBY	IMF	NFI-F	FA	CS	RLSV	Selection Indexes			
EBV	2.9	3	-3.1	4.5	49	91	106	72	25	2.7	-6	16	67	5.7	-0.6	-1.7	0.7	1.5	0.2	0.84	0.6	0.88	ABI	DOM	GRN	GRS
ACC	62%	53%	82%	73%	73%	71%	71%	70%	66%	75%	47%	57%	65%	64%	65%	66%	60%	68%	58%	68%	68%	67%	\$215	\$193	\$275	\$196
PERC	50	51	76	60	56	50	75	90	6	26	16	70	50	57	62	75	34	68	52	19	8	9	33	15	40	37

PURCHASER ..... PRICE .....

**65****KERINGA SUPER STAR S237 (A) SV**

DOB 31/08/2021 | REGISTER HBR | ID SNE21S237

AMFU,CAFU,DDFU,NHFU

♂ BOOROOMOOKA THEO T030 SV

SIRE: MILLAH MURRAH KLOONEY K42 PV

♀ MILLAH MURRAH PRUE H4 SV

♂ S CHISUM 255 SV

DAM: KERINGA SARAH P173 #

♀ KERINGA SARAH K21#

Very stylish young bull with a similar type to the previous lot, booth by breed legend Millah Murrah Klooney K42 and both descending from the Roseleigh Sarah female line. Suitable for heifers

Mid January 2023 TransTasman Angus Cattle Evaluation

Traits Observed : GL,BWT,200WT(x2),400WT(x2),SC,Scan(EMA,Rib,Rump,IMF),DOC,Genomics

TACE	CED	CEM	GL	BW	200	400	600	MCW	MILK	SS	DC	DOC	CWT	EMA	RIB	P8	RBY	IMF	NFI-F	FA	CS	RLSV	Selection Indexes			
EBV	1.4	5.9	-3.8	6.2	53	87	106	88	20	2.2	-5.7	33	64	8	-2.2	-3.7	1.8	1.3	0.21	0.86	0.78	0.92	ABI	DOM	GRN	GRS
ACC	62%	53%	83%	74%	73%	71%	71%	69%	66%	75%	46%	58%	65%	64%	65%	66%	61%	68%	57%	68%	68%	66%	\$221	\$195	\$280	\$201
PERC	63	20	66	89	37	61	75	73	27	44	22	9	58	29	91	95	2	73	54	23	34	16	27	13	37	31

PURCHASER ..... PRICE .....



LOT 65 KERINGA SUPER STAR S237



LOT 66 KERINGA PARATROOPER S238

**66****KERINGA PARATROOPER S238 (A) SV**

DOB 31/08/2021 | REGISTER HBR | ID SNE21S238

AMFU,CAFU,DDFU,NHFU

♂ EF COMMANDO 1366 PV

SIRE: MILLAH MURRAH PARATROOPER P15 PV

♀ MILLAH MURRAH ELA M9 PV

♂ KAROO D62 DOCKLANDS K153 SV

DAM: KERINGA DOCKLANDS P191 #

♀ WILLOW FIELDS DANDLOO G12 SV

Very handy Paratrooper son to finish the sale off, we are very please with the depth of this years offering and this young bull is no exception, moderate framed and thick set he is a very balance bull. Suitable for heifers.

Mid January 2023 TransTasman Angus Cattle Evaluation

Traits Observed : GL,BWT,200WT(x2),400WT(x2),SC,Scan(EMA,Rib,Rump,IMF),DOC,Genomics

TACE	CED	CEM	GL	BW	200	400	600	MCW	MILK	SS	DC	DOC	CWT	EMA	RIB	P8	RBY	IMF	NFI-F	FA	CS	RLSV	Selection Indexes			
EBV	3.8	6.8	-4.1	4.3	51	88	106	80	19	2.3	-4	22	63	11.8	-1.6	-2.7	1.7	0.8	0.29	0.7	0.72	1	ABI	DOM	GRN	GRS
ACC	59%	45%	82%	74%	72%	70%	70%	66%	59%	74%	35%	55%	59%	60%	61%	61%	55%	63%	49%	67%	67%	65%	\$217	\$190	\$280	\$196
PERC	42	13	61	55	47	57	75	83	35	40	68	41	62	5	83	87	2	84	64	4	23	38	31	19	36	36

PURCHASER ..... PRICE .....





# BRINGING YOUR NEW BULL HOME

WHEN PURCHASING A BULL, CARE AND HANDLING AFTER THE SALE CAN BE AS IMPORTANT AS THE PURCHASE ITSELF. LOOKING AFTER YOUR BULL WELL DURING THE INITIAL STAGES OF HIS WORKING LIFE MAY ENSURE LONGEVITY AND SUCCESS WITHIN YOUR BREEDING HERD.

## PURCHASE

Temperament is an important characteristic when selecting a bull. Selecting a bull that may be flighty or aggressive will make life difficult for you each time he is handled. Note which bulls continually push to the centre of a mob, run around, or are unreasonably nervous, aggressive or excited.

At the sale, note any changes of temperament by individual bulls. Some bulls that are quiet in the yard or paddock may not like the pressure and noise of the auction and become excited. Others that were excited beforehand get much worse in the sale ring and can really perform. Use the yard or paddock behaviour as a guide, rather than the temperament shown in the ring.

## DELIVERY

When transporting your new bull insurance against loss in transit, accidental loss of use, or infertility, is sometimes provided by vendors. Where it is not, it is worth considering. After purchase tips:

- When purchasing, ask which health treatments he has received.
- Treat and handle him quietly at all times - no dogs, no buzzers. Talk to him and give him time and room to make up his mind.
- With more than one bull from different origins, you must be able to separate them on the truck.
- Make sure that the truck floor is covered to prevent bulls from slipping. Sand, sawdust or a floor grid will prevent bulls from being damaged by going down in transit.
- If you can arrange it, put a few quiet cows or steers on the truck with the bull. Let them down into a yard with the bulls for a while before loading and after unloading.
- Unload and reload during the trip as little as possible. If necessary, rest with water and feed. Treat bulls kindly your impatience or nervousness is easily transmitted to an animal unfamiliar to you and unsure of his environment.

## IF YOU USE A PROFESSIONAL CARRIER:

- Make sure the carrier knows which bulls can be mixed together.

- Discuss with the carrier, resting procedures for long trips, expected delivery time, truck condition and quiet handling.
- Give ear tag and brand numbers to the carrier and make sure you have the carrier's phone number.
- If buying bulls from interstate, organise any necessary health tests before leaving and work out if any other requirements must be met before cattle can come into another State.

When buying bulls from far away, you may often have to fit in with other delivery arrangements to reduce cost. You should make it clear how you want your bulls handled.

## ARRIVAL

When the bull or bulls arrive home, unload them at the yards into a group of house cows, steers or herd cows. Never jump them from the back of a truck directly into a paddock—it may be the last time you see them. Bulls from different origins should be put into separate yards with other cattle for company.

Provide hay and water, then leave them alone until the next morning.

The next day, bulls should receive routine health treatments. If they have not been treated before, all bulls should be vaccinated with:

- 5-in-1 vaccine;
- vibriosis vaccine;
- leptospirosis vaccine (if in areas like the Hunter where leptospirosis exists);
- three-day sickness vaccine (if in areas where this sickness can cause problems).

Give particular attention to preventing new bulls bringing vibriosis into a herd. Vibriosis, a sexually transmitted disease, causes infertility and abortions and is most commonly introduced to a clean herd by an infected bull. These bulls show no signs of the illness. Vaccinated bulls are free from vibriosis, so vaccinating bulls against the disease should be a routine practice.

Vaccination involves two injections, 4–6 weeks apart, at the time of introduction, and then a booster shot every year. Complete the vaccinations 4 weeks before joining.

PURCHASE

DELIVERY

AFTER PURCHASE TIPS

ARRIVAL

MATING NEW YOUNG BULLS

MANAGING OLDER HERD BULL

DURING MATING

NORTHERN AUSTRALIA







# BRINGING YOUR NEW BULL HOME

Consult with your veterinarian and draw up a policy for treating bulls on arrival and then annually. Bulls should be drenched to prevent introducing worms and, if necessary, should be treated for lice.

Plan to give follow-up vaccinations 4–6 weeks later. Leave the bulls in the yards for the next day or two on feed and water to allow them to settle down with other stock for company. A bull's behaviour will decide how quickly he can be moved out to paddocks.

## MATING NEW YOUNG BULLS

Newly purchased young bulls should not be placed with older herd bulls for multiple-sire joining. The older, dominant bull will not allow the young bulls to work, and will knock them around while keeping them away from the cows.

Use new bulls in either single-sire groups or with young bulls their own age. If a number of young bulls are to be used together, run them together for a few weeks before joining starts. They sort out their pecking order quickly and have few problems later.

When the young bulls are working, inspect them regularly and closely.

## MATING NEW YOUNG BULLS

Older working bulls also need special care and attention before mating starts. They should be tested or checked every year for physical soundness, testicle tone, and serving capacity or ability.

All bulls to be used must be free-moving, active and in good condition. Working bulls may need supplementary feeding before the joining season to bring up condition.

## DURING MATING

- Check bulls at least twice each week for the first 2 months. Get up close to them and watch each bull walk; check for swellings around the sheath and for lameness.
- Have a spare bull or bulls available to replace any that break down. Replace any suspect bull immediately.
- Rotate bulls in single-sire groups to make sure that any bull infertility is covered. Single-sire joining works well but it has risks. The bulls must be checked regularly and carefully, or the bulls should be rotated every one or two cycles.

Bulls are a large investment for breeding herds and they have a major effect on herd fertility. A little time and attention to make sure they are fit, free from disease and actively working is well worthwhile.

## NORTHERN AUSTRALIA

Although the Angus breed originated in a cooler climate, they can adapt to subtropical regions with many straight-bred and cross bred producers finding success in Northern Australia. Some of the following information may also be helpful for new bulls located in more temperate climates.

## ADAPTATION

The key to Northern success for Angus is that cattle introduced from the Southern regions of Australia be allowed to adapt to their new environment before commencing their working life. If possible, a break of 3 months is advisable before you set your bull to work.

## PURCHASE IN COOLER MONTHS

Ensure your bulls are in good condition before they do commence their working life. The cooler months are an ideal time to purchase and introduce Angus cattle, allowing them plenty of time to acclimatise.

## CHANGE OF FEED SOURCE

When inducting Angus cattle into your herd consider their source of feed. Have you taken an animal which has been supplemented on grain straight to a dry pasture? Animals should be gradually changed over to their new feed to ensure they do not lose condition. This may involve using supplements which could include dry lick/urea blocks.

## MANAGING CATTLE TICKS

For ticky areas, bulls should be vaccinated prior to transport and given another booster afterwards. Remember males are more susceptible to ticks than females.

Information is provided by the Department of Primary Industries NSW. For further information visit the DPI web site: [www.dpi.nsw.gov.au](http://www.dpi.nsw.gov.au). or [www.angusaustralia.com.au](http://www.angusaustralia.com.au). Further reading - Buying Angus Bulls

**FOR FURTHER INFORMATION VISIT**  
[www.angusaustralia.com.au](http://www.angusaustralia.com.au)

Angus Australia Locked Bag 11, Armidale NSW 2350  
Phone: (02) 6772 3011 | Fax: (02) 6772 3095  
Email: [office@angusaustralia.com.au](mailto:office@angusaustralia.com.au)  
Website: [www.angusaustralia.com.au](http://www.angusaustralia.com.au)

[WWW.ANGUSAUSTRALIA.COM.AU](http://WWW.ANGUSAUSTRALIA.COM.AU)

#ANGUSPREMIUM

#ANGUSBULLS



# DISCLAIMER AND PRIVACY INFORMATION

## Attention Buyer

Animal details included in this catalogue, including but not limited to pedigree, DNA information, Estimated Breeding Values (EBVs) and Index values, are based on information provided by the breeder or owner of the animal. Whilst all reasonable care has been taken to ensure that the information provided in this catalogue was correct at the time of publication, Angus Australia will assume no responsibility for the accuracy or completeness of the information, nor for the outcome (including consequential loss) of any action taken based on this information.

## Parent Verification Suffixes

The animals listed within this catalogue including its pedigree, are displaying a Parent Verification Suffix which indicates the DNA parent verification status that has been conducted on the animal. The Parent Verification Suffixes that will appear at the end of each animal's name.

The suffix displayed at the end of each animal's name indicates the DNA parentage verification that has been conducted by Angus Australia.

PV : both parents have been verified by DNA.

SV : the sire has been verified by DNA.

DV : the dam has been verified by DNA.

# : DNA verification has not been conducted.

E : DNA verification has identified that the sire and/or dam may possibly be incorrect, but this cannot be confirmed conclusively.

## Privacy Information

In order for Angus Australia to process the transfer of a registered animal in this catalogue, the vendor will need to provide certain information to Angus Australia and the buyer consents to the collection and disclosure of that information by Angus Australia in certain circumstances. If the buyer does not wish for his or her information to be stored and disclosed by Angus Australia, the buyer must complete the form included below and forward it to Angus Australia. If the form is not completed, the buyer will be taken to have consented to the disclosure of such information.

### BUYERS OPTION TO OPT OUT OF DISCLOSING PERSONAL INFORMATION TO ANGUS AUSTRALIA

If you do not complete this form, you will be taken to have consented to Angus Australia using your name, address and phone number for the purposes of effecting a change of registration of the animal(s) that you have purchased, maintaining its database and disclosing that information to its members on its website.

I, the buyer of animals with the following idents.....

.....(name) do not consent to Angus Australia using my name, address and phone number for the purposes of effecting a change of registration of the animals I have mentioned above that I have purchased, maintaining its database and disclosing that information to its members on its website.

Name: ..... Signature: .....

Date: .....

Please forward this completed consent form to Angus Australia, 86 Glen Innes Road, Armidale NSW 2350.



If you have any questions or queries regarding any of the above, please contact Angus Australia on (02) 6773 4600 or email [office@angusaustralia.com.au](mailto:office@angusaustralia.com.au)

Updated 25/11/2020





# RECESSIVE GENETIC CONDITIONS

This is information for bull buyers about the recessive genetic conditions, Arthrogyriposis Multiplex (AM), Hydrocephalus (NH), Contractural Arachnodactyly (CA) and Developmental Duplications (DD).

## Putting undesirable Genetic Recessive Conditions in perspective

All animals, including humans, carry single copies (alleles) of undesirable or “broken” genes. In single copy form, these undesirable alleles usually cause no harm to the individual.

But when animals carry 2 copies of certain undesirable or “broken” alleles it often results in bad consequences. Advances in genomics have facilitated the development of accurate diagnostic tests to enable the identification and management of numerous undesirable or “broken” genes.

Angus Australia is proactive in providing its members and their clients with relevant tools and information to assist them in the management of known undesirable genes and our members are leading the industry in their use of this technology.

## What are AM, NH, CA and DD?

AM, NH, CA and DD are all recessive conditions caused by “broken” alleles within the DNA of individual animals. When a calf inherits 2 copies of the AM or NH alleles their development is so adversely affected that they will be still-born.

In other cases, such as CA and DD, calves carrying 2 copies of the broken allele may reach full-term. In such cases the animal may either appear relatively normal, or show physical symptoms that affect their health and/or performance.

## How are the conditions inherited?

Research in the U.S. and Australia indicates that AM, NH, CA and DD are simply inherited recessive conditions. This means that a single gene (or pair of alleles) controls the condition.

For this mode of inheritance two copies of the undesirable allele need to be present before the condition is seen; in which case you may get an abnormal calf. A more common example of a trait with a simple recessive pattern of inheritance is black and red coat colour.

Animals with only one copy of the undesirable allele (and one copy of the normal form of the allele) appear normal and are known as “carriers”.

## What happens when carriers are mated to other animals?

Carriers, will on average, pass the undesirable allele to a random half (50 %) of their progeny.

When a carrier bull and carrier cow is mated, there is a 25% chance that the resultant calf will inherit two normal alleles, a 50% chance that the mating will result in a carrier (i.e. with just 1 copy of the undesirable allele), and a 25% chance that the calf will inherit two copies of the undesirable gene.

If animals tested free of the undesirable gene are mated to carrier animals the condition will not be expressed at all. All calves will appear normal, but approximately half (50%) could be expected to be carriers.

## How is the genetic status of animals reported?

DNA-based diagnostic tests have been developed which can be used to determine whether an individual animal is either a carrier or free of the alleles resulting in AM, NH, CA or DD.

Angus Australia uses advanced software to calculate the probability of (untested) animals to being carriers of AM, NH, CA or DD. The software uses the test results of any relatives in the calculations and the probabilities may change as new results for additional animals become available.

The genetic status of animals is being reported using five categories:

AMF	Tested AM free
AMFU	Based on Pedigree AM free - Animal has not been tested
AM_%	_% probability the animal is an AM carrier
AMC	Tested AM-Carrier
AMA	AM-Affected

For NH, CA and DD, simply replace AM in the above table with NH, CA or DD.

Registration certificates and the Angus Australia web-database display these codes. This information is displayed on the animal details page and can be accessed by conducting an “Database Search” from the Angus Australia website or looking up individual animals listed in a sale catalogue.

## Implications for Commercial Producers

Your decision on the importance of the genetic condition status of replacement bulls should depend on the genetics of your cow herd (which bulls you previously used) and whether some female progeny will be retained or sold as breeders.

Most Angus breeders are proactive and transparent in managing known genetic conditions, endeavouring to provide the best information available. The greatest risk to the commercial sector from undesirable genetic recessive conditions comes from unregistered bulls with unknown genetic background. The genetic condition testing that Angus Australia seedstock producers are investing in provides buyers of registered Angus bulls with unmatched quality assurance.

For further information contact Angus Australia's Breed Development & Extension Manager on (02) 6773 4618.





2023