



# SALE CATALOGUE

Gulgong Showground Sheep Pavilion  
Online bidding through Auctions Plus

**Inspection welcome before sale date by  
appointment**

**14<sup>th</sup> January 2023**

Viewing from 9.30 am

Sale commences 11.30 am

Stud and Commercial Rams, Stud and Commercial Ewes

Selling Agent: McDonald Lawson Carter Pty Ltd Mudgee

Andy Carter 0429721442

Ph: 6372 1442

Catering provided by Gulgong Hospital Auxiliary



rma network. Accredited Member



Australia's Livestock Marketplace



WESTMORELAND  
*Wiltipolls*

**Julie Huie and Jeff Lucas**

2626 Beaconsfield Road,  
WISEMANS CREEK NSW 2795

PIC: NF 045269

**Mob: 0488 188 772**

juliehuie60@gmail.com

ABN: 31 669 216 241

WESTMORELAND  
*Wiltipolls*

**WILTIPOLL SALE**

Stud and Commercial  
Rams and Ewes

14th January 2023  
Gulgong Showground Sheep Pavilion  
Viewing from 9:30am  
Sale commences 11:00am

**Westmoreland Wiltipolls**  
Wisemans Creek NSW  
Inspection by appointment  
Jeff & Julie 0488 188 772  
juliehuie60@gmail.com

 **AuctionsPlus**  
Australia's Livestock Marketplace



**McDonald Lawson Carter Pty Ltd**  
Mudgee NSW  
Andy Carter 0429 721 442  
02 6372 1442  
admin@mcdlc.com.au

# CONTENTS

# PAGE

---

Vaccinations and Accreditations	3
Stud Rams - 11 LOTS	4-9
Commercial Rams - 12 LOTS	9-15
Stud Ewes – 10 LOTS	16-19
Commercial Ewes	19
Sale Conditions	20
Agent and contact details	20

---

## Vaccinations and Accreditations

- Brucellosis Accreditation - OB 17/28 Expiry 31/08/23
- Member of ASSBA – Westmoreland Flock number 48
- All Stud Rams and Ewes eligible for registration with ASSBA
- All Vaccinated with Glenery B12 15/10/22 except lots 29 & 30 - 5/11/22
- All vaccinated with Gudair 9/10/2021 except lot 12 - 5/11/2020
- Lots 1-23 Drenched with Startech - 15/10/22
- Lots 24-39 drenched with Startech - 18/10/22

**Stud ram videos and images of stud ewes will be available on Auctions Plus 7-10 days before sale date.**

**Transportation of stock to be arranged by buyers on day of sale or by prior arrangement.**

## LOT 1 – Stud Ram Westmoreland Yellow 328

Sire	Westmoreland White 8
Dam	Westmoreland Yellow 42
Sire of Dam	Gunhurst Orange 79
Dam of Dam	Grangevale black
Sire of Sire	Kirwin Green 385
Dam of Sire	Westmoreland Green 34
DOB	12/08/2021
multiple	Twin
Birth Weight	5.40kg
Weaning Weight	34.0kg
Avg daily gain	236g



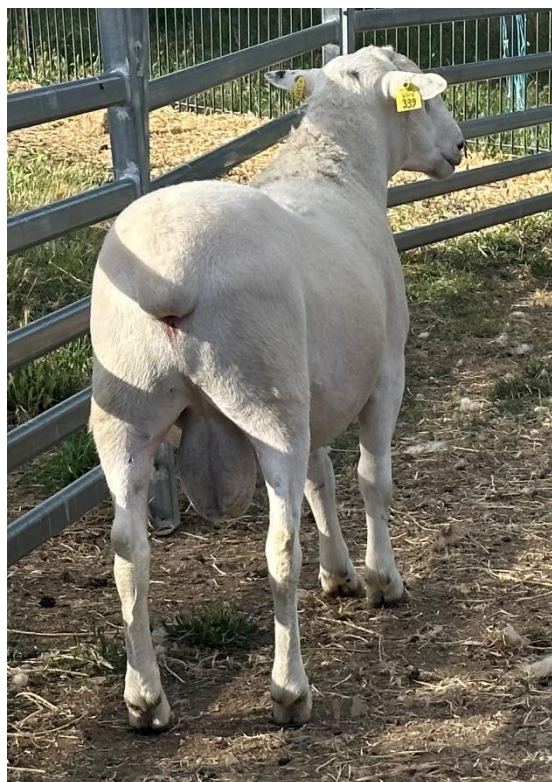
## LOT 2 – Stud Ram Westmoreland Yellow 332

Sire	Westmoreland White 8
Dam	Carthona Black 1619
Sire of Dam	Munna 1375
Dam of Dam	Carthona 302
Sire of Sire	Kirwin Green 385
Dam of Sire	Westmoreland Green 34
DOB	13/08/21
Multiple	twin
Birth Weight	3.60kg
Weaning Weight	36.50kg
Avg daily gain	274g



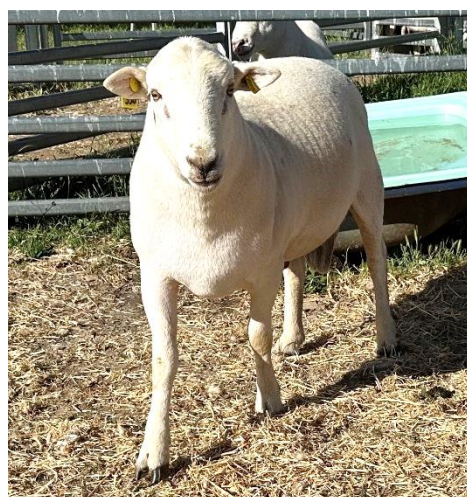
## LOT 3 - Stud Ram Westmoreland Yellow 339

Sire	Reavesdale Black 408
Dam	Westmoreland Green 109
Sire of Dam	Lone Pine 27
Dam of Dam	Westmoreland White 16
Sire of Sire	Munna 1691
Dam of Sire	Reavesdale 65
DOB	13/08/21
Multiple	twin
Birth Weight	4.80kg
Weaning Weight	39.0kg
Avg daily gain	285g



## LOT 4 – Stud Ram Westmoreland Yellow 330

Sire	Westmoreland Green 161
Dam	Westmoreland Black 14
Sire of Dam	Kirwin Green 385
Dam of Dam	Westmoreland Purple 15
Sire of Sire	Lone Pine Blue 27
Dam of Sire	Westmoreland Black 6
DOB	12/08/21
Multiple	single
Birth Weight	4.80kg
Weaning Weight	38.50kg
Avg daily gain	279g



## LOT 5 – Stud Ram Westmoreland Yellow 346

Sire	Westmoreland White 8
Dam	Westmoreland White 25
Sire of Dam	Lone Pine Blue 27
Dam of Dam	Westmoreland Yellow 42
Sire of Sire	Kirwin Green 385
Dam of Sire	Westmoreland Green 34
DOB	14/08/21
Multiple	Twin
Birth Weight	5.10kg
Weaning Weight	36.0kg
Avg daily gain	260g



## LOT 6 - Stud Ram Westmoreland Yellow 350

Sire	Westmoreland Green 145
Dam	Westmoreland Orange 35
Sire of Dam	Kirwin Green 385
Dam of Dam	Carthona 1619
Sire of Sire	Reavesdale Black 408
Dam of Sire	Westmoreland Purple 4
DOB	15/08/21
Multiple	twin
Birth Weight	4.40kg
Weaning Weight	40.00kg
Avg daily gain	302g



## LOT 7 – Stud Ram Westmoreland Yellow 378



Sire	Westmoreland White 8
Dam	Westmoreland White 7
Sire of Dam	Lone Pine Blue 27
Dam of Dam	Westmoreland Yellow 43
Sire of Sire	Kirwin Green 385
Dam of Sire	Westmoreland Green 34
DOB	30/08/21
Multiple	Twin
Birth Weight	6.80kg
Weaning Weight	48.5kg
Avg daily gain	405g



## LOT 8 - Stud Ram Westmoreland Yellow 314

Sire	Westmoreland Green 145
Dam	Westmoreland Green 136
Sire of Dam	Kirwin Green 385
Dam of Dam	Westmoreland Black 5
Sire of Sire	Reavesdale Black 408
Dam of Sire	Westmoreland Purple 4
DOB	11/08/21
triplet	Triplet
Birth Weight	3.20kg
Weaning Weight	32.00kg
Avg daily gain	244g



## LOT 9 - Stud Ram Westmoreland Yellow 368

Sire	Reavesdale Black 408
Dam	Westmoreland Black 10
Sire of Dam	Kirwin Green 385
Dam of Dam	Westmoreland Green 22
Sire of Sire	Munna 1691
Dam of Sire	Reavesdale 65
DOB	25/08/21
Multiple	twin
Birth Weight	3.70kg
Weaning Weight	29.50kg
Avg daily gain	239g



## LOT 10 - Stud Ram Westmoreland Yellow 366

Sire	Westmoreland Green 145
Dam	Westmoreland Green 151
Sire of Dam	Westmoreland White 8
Dam of Dam	Carthona Black 1650
Sire of Sire	Reavesdale Black 408
Dam of Sire	Westmoreland Purple 4
DOB	24/08/21
Multiple	twin
Birth Weight	4.70kg
Weaning Weight	38.00kg
Avg daily gain	306g





# LOT 11 – Stud Ram Westmoreland Yellow 377

Sire	Lone Pine Blue 27
Dam	Westmoreland Green 147
Sire of Dam	Reavesdale Black 408
Dam of Dam	Westmoreland purple 4
Sire of Sire	Windellama Downs Red 10
Dam of Sire	Reavesdale V132
DOB	29/08/21
Multiple	twin
Birth Weight	3.40kg
Weaning Weight	30.50kg
Avg daily gain	261g



# LOT 12 Commercial Ram Westmoreland Purple 203

DOB	03/08/20
Multiple	twin



## LOT 13 – Commercial Ram Westmoreland Yellow 351

DOB	15/08/21
Multiple	Twin
Birth Weight	4.40kg
Weaning Weight	36.50kg
Avg daily gain	272g



## LOT 14 Commercial Ram Westmoreland Yellow 369

DOB	25/08/21
Multiple	twin
Birth Weight	4.50kg
Weaning Weight	36.00kg
Avg daily gain	292g



## LOT 15 – Commercial Ram Westmoreland Yellow 388

DOB	01/09/21
Multiple	twin
Birth Weight	4.70kg
Weaning Weight	33.50kg
Avg daily gain	285g



## LOT 16- Commercial Ram Westmoreland Yellow 334

DOB	13/08/21
Multiple	Twin
Birth Weight	4.60kg
Weaning Weight	33.00kg
Avg daily gain	237g



## LOT 17 - Commercial Ram Westmoreland Yellow 353

DOB	15/08/21
Multiple	Twin
Birth Weight	3.70kg
Weaning Weight	25.50kg
Avg daily gain	185g



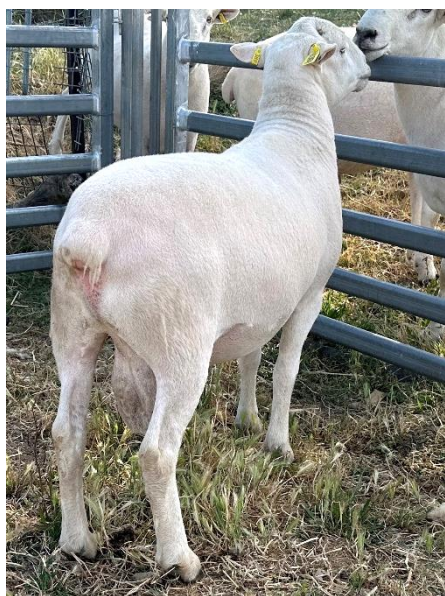
## LOT 18 - Commercial Ram Westmoreland Yellow 376

DOB	29/9/21
Multiple	Twin
Birth Weight	3.90kg
Weaning Weight	29.50kg
Avg daily gain	246g



## LOT 19 - Commercial Ram Westmoreland Yellow 389

DOB	03/09/21
Multiple	Twin
Birth Weight	4.70kg
Weaning Weight	26.00kg
Avg daily gain	215g



## LOT 20 - Commercial Ram Westmoreland Yellow 362

DOB	19/08/21
Multiple	Twin
Birth Weight	5.00kg
Weaning Weight	35.50kg
Avg daily gain	268g



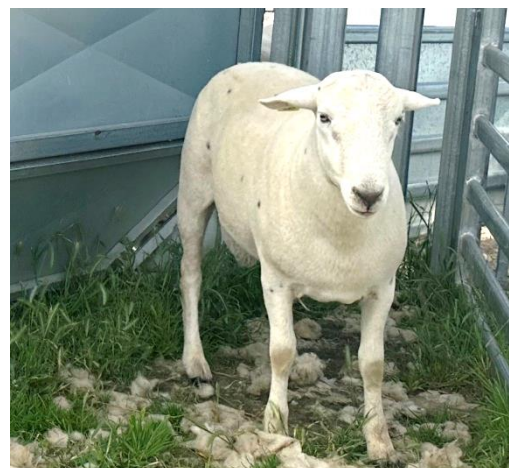
## LOT 21 - Commercial Ram Westmoreland Yellow 379

DOB	31/08/21
Multiple	Twin
Birth Weight	4.40kg
Weaning Weight	33.00kg
Avg daily gain	280g



## LOT 22 - Commercial Ram Westmoreland Yellow 385

DOB	01/09/21
Multiple	Twin
Birth Weight	4.70kg
Weaning Weight	33.00kg
Avg daily gain	280kg



## LOT 23 - Commercial Ram Westmoreland Yellow 386

DOB	01/09/21
Multiple	Twin
Birth Weight	4.20kg
Weaning Weight	25.50kg
Avg daily gain	211g



## STUD EWES

Additional images available on auctions plus website

## LOT 24 – Stud Ewe Westmoreland Yellow 354

Sire	Reavesdale Black 408
Dam	Westmoreland White 37
Sire of Dam	Kirwin Green 385
Dam of Dam	Westmoreland Purple 15
Sire of Sire	Munna 1691
Dam of Sire	Reavesdale 65
DOB	15/08/21
multiple	twin
Birth Weight	4.10kg
Weaning Weight	34.00kg
Avg daily gain	253g



## LOT 25 – Stud Ewe Westmoreland Yellow 320

Sire	Westmoreland Green 161
Dam	Westmoreland Black 4
Sire of Dam	Kirwin Green 385
Dam of Dam	Westmoreland Purple 17
Sire of Sire	Lone Pine Blue 27
Dam of Sire	Westmoreland Black 6
DOB	11/08/21
multiple	single
Birth Weight	3.80
Weaning Weight	36.00
Avg daily gain	264g



## LOT 26 – Stud Ewe Westmoreland Yellow 391

Sire	Westmoreland White 8
Dam	Westmoreland Green 113
Sire of Dam	Lone Pine Blue 27
Dam of Dam	Westmoreland Yellow 41
Sire of Sire	Kirwin Green 385
Dam of Sire	Westmoreland Green 34
DOB	13/09/21
multiple	Twin
Birth Weight	3.60kg
Weaning Weight	23.00kg
Avg daily gain	218g



## LOT 27 – Stud Ewe Westmoreland Yellow 326

Sire	Westmoreland Green 145
Dam	Westmoreland Green 168
Sire of Dam	Westmoreland White 8
Dam of Dam	Carthona Black 1619
Sire of Sire	Reavesdale Black 408
Dam of Sire	Westmoreland Purple 4
DOB	12/08/21
multiple	twin
Birth Weight	3.70kg
Weaning Weight	30.00kg
Avg daily gain	217g





## LOT 28 – Stud Ewe Westmoreland Yellow 322

Sire	Lone Pine Blue 27
Dam	Westmoreland White 16
Sire of Dam	Kirwin Green 385
Dam of Dam	Westmoreland Green 13
Sire of Sire	Windellama Downs Red 10
Dam of Sire	Reavesdale V132
DOB	29/08/21
multiple	twin
Birth Weight	4.40kg
Weaning Weight	20.00kg
Avg daily gain	212g



## LOT 29 – Stud Ewe Westmoreland Yellow 325 (substituted for 317 4/1/23)

Sire	Reavesdale Black 408
Dam	Westmoreland Black 8
Sire of Dam	Kirwin Green 385
Dam of Dam	Westmoreland Green 2
Sire of Sire	Munna 1691
Dam of Sire	Reavesdale 65
DOB	11/09/21
multiple	Twin
Birth Weight	4.40kg
Weaning Weight	28 kg
Avg daily gain	195g



## LOT 30 – Stud Ewe Westmoreland Yellow 324

Sire	Reavesdale Black 408
Dam	Westmoreland Black 9
Sire of Dam	Kirwin Green 385
Dam of Dam	Westmoreland Green 2
Sire of Sire	Munna 1691
Dam of Sire	Reavesdale 65
DOB	12/08/21
multiple	twin
Birth Weight	3.80kg
Weaning Weight	33.00kg
Avg daily gain	241g



## LOT 31 – Stud Ewe Westmoreland Yellow 311

Sire	Westmoreland Green 145
Dam	Westmoreland Green 152
Sire of Dam	Westmoreland White 8
Dam of Dam	Carthona Black 1650
Sire of Sire	Reavesdale Black 408
Dam of Sire	Westmoreland Purple 4
DOB	09/08/21
multiple	single
Birth Weight	4.40kg
Weaning Weight	33.50kg
Avg daily gain	315



## LOT 32 – Stud Ewe Westmoreland Yellow 313

Sire	Westmoreland White 8
Dam	Westmoreland Yellow 43
Sire of Dam	Gunhurst Orange 79
Dam of Dam	Grangevale Black
Sire of Sire	Kirwin Green 385
Dam of Sire	Westmoreland Green 34
DOB	09/09/21
multiple	Twin
Birth Weight	3.70kg
Weaning Weight	35.00kg
Avg daily gain	252g



## LOT 33 – Stud Ewe Westmoreland Yellow 349

Sire	Lone Pine Blue 27
Dam	Westmoreland Black 5
Sire of Dam	Kirwin Green 385
Dam of Dam	Westmoreland Green 1
Sire of Sire	Windellama Downs Red 10
Dam of Sire	Reavesdale V132
DOB	15/08/21
multiple	twin
Birth Weight	4.80kg
Weaning Weight	34.50kg
Avg daily gain	252g



# COMMERCIAL EWES

Video of stock available on Auctions Plus website



---

## LOT 34 – Commercial Ewes

Westmoreland Yellow tag ewes  
2 ewes per lot, sale price per head



---

## LOT 35 – Commercial Ewes

Westmoreland Yellow tag ewes  
2 ewes per lot, sale price per head



---

## LOT 36 – Commercial Ewes

Westmoreland Yellow tag ewes  
2 ewes per lot, sale price per head



---

## LOT 37 – Commercial Ewes

Westmoreland Yellow tag ewes  
2 ewes per lot, sale price per head



---

## LOT 38 – Commercial Ewes

Westmoreland Yellow tag ewes  
2 ewes per lot, sale price per head



---

## LOT 39 – Commercial Ewes

Westmoreland Yellow tag ewes  
2 ewes per lot, sale price per head



## SALE CONDITIONS

- Sheep substitution: Sheep may be substituted if a nominated animal is sick or injured or dies and will be replaced with a similar quality animal and advised before auction commences.
- NOTE: Negotiations between vendor and buyers before, during and after the sale are not permitted. All negotiations must be undertaken through the agent.

Selling Agents: McDonald Lawson Carter Pty Ltd  
Bill Lawson  
73 Church St Mudgee NSW

Contact details:  
Andy Carter: 02 6372 1442  
Mob: 0429721442  
admin@mcdonaldlawson.com.au

Sale Organisers  
Julie Huie and Jeff Lucas 0488188772 juliehuie60@gmail.com

### DISCLAIMER

The information contained in this catalogue is believed to be accurate at time of printing/sending.  
The organizers accept no responsibility for any inaccuracies included in this catalogue.



rmanetwork. Accredited Member



*Australia's Livestock Marketplace*