

Lot 1

John Deere 9760 header (2600 rotor hrs, large discharge auger with extension helical concave straw chopper with 42' Midwest front fitted with canola cross auger, pre-season service);



Lot 2

New Holland T8050 FWA tractor (duals, rear wheel weight and weight kit, Trimble steer ready (no screen), road transport light kit, 6327hrs);



Lot 3

Rogator 1286C spray rig (36m, 4,500L stainless tank, Raven controller, fill hopper, fresh water tank, Trimble steer ready, C11 CAT motor, 4245hrs, transmission rebuild, new front tyres, new injectors & tuned by CAT mechanic);



Lot 4

CAT 966 Series B 75A3007 140hp loader (no ROP);



Lot 5

John Deere 4620 row crop tractor with cab, (good tyres, 9,000hrs, no ROP);



Lot 6

Can-Am Defender HD8 side by side (1050hrs, dealer serviced, Reman gearbox);



Lot 7

Acco 3070 truck with Cummins 930 motor and 13 speed Roadranger & 31' bogie axle tipping trailer;



Lot 8

Acco 1910 V8 392 truck with 10 speed Roadranger (94,000km, 5.5m steel tray);



Lot 8a

Cattle crate (stands & grate)



Lot 9

Boss Ag XS25P 12m planter (333mm spacing, 3 bar Spring Ridge Engineering frame, planted 1200ha only);



Lot 10

Simplicity 9,000 trailing air seed cart (2x bins with sorghum plates and hydraulic auger loader E15 control console, good tyres);



Lot 11

36x Groundhog planter units (including parts, press wheels, gauge wheels, frames, bolts etc);



Lot 12

11m Heston blade plough (5 blades);



Lot 13

11m Agrisure cultivator (spring tynes harrows);



Lot 14

10.5m Agrisure cultivator



Lot 15

14m International fire harrows on folding frame;



Lot 16

5m Agro Plough (shear pin break out tyres);



Lot 17

2.75m drag bucket;



Lot 18

Kanga M slasher (2.2m, 2x rear wheels);



Lot 19

8 row Big Rig crop planter (with big rig fertiliser boxes and Janke planter boxes);



Lot 20

2,000L fuel trailer with Fill-Rite 75L 12V pump and meter;



Lot 21

John Shearer 45' 5-160 cultivator bar on 7" tyne spacing;



Lot 22

10'x5' dual axle trailer;



Lot 23

Trimble 1000 screen, RTK unlock EZ-Pilot steering & wiring harness;



Lot 24

Farm King 80'x10" auger with swing away hopper;



Lot 25

O'Neill 45' bogie axle comb trailer with brakes;



Lot 26

Vennings 28t chaser bin (dual axles, 30.5 x32 tyres as new, adjustable cut off doors, adjustable auger spout, work road light kit PTO drive and roll trap);



Lot 27

Vennings 85t mother bin (5 axles on dual truck tyres, folding steel lids, PTO drive, 3m centres);



Lot 28

Briggs Engineering 25t chaser bin (hydraulic and PTO drive 15" auger adjustable cut off door, auger snorkel, 30.5 tyres single axle roll tarp);



Lot 29

Header fire suppression kit (blower and outlet manifold, 8 fan jets, hydraulic pump and control box);



Lot 30

GrainSafe 3000 aeration controller, settings continuous, auger purge & auto protect;



Lot 31

Allis-Chalmers model U tractor (4 cyl kero engine, circa 1952);



Lot 32

Moffat single cyl diesel engine with 32V generator;



Lot 36

AGA oil burning combustion stove;



Lot 41

5x sheep panels (16'x3' & 3'x10');



Lot 45

Approx. 16x sheets of curved galvanised iron;



Lot 33

Buick 6 cyl petrol motor & gear box;



Lot 37

4x steel wagon type wheels;



Lot 42

10x sheep yard panels (10'x3'5");



Lot 46

6x rolls 8 line ringlock & 3x small rolls;



Lot 34

Hercules 4 cyl kero engine;



Lot 38

Horse drawn silt scoop;



Lot 43

Approx. 21x sheep yard panel posts;



Lot 47

Calf cradle;



Lot 35

2x bore pump jacks;



Lot 39

Old sickle mower;



Lot 44

Front end loader hay grab;



Lot 48

Ruddweigh cattle scales & monitor;



Lot 40

Gaston Bros. old bridle draft scarifier;



Lot 49

White calf cradle with baulk gates;



Lot 50

Advantage 3800 HD cattle feeder & supplement feeder;



Lot 51

Advantage 3800 HD cattle feeder & supplement feeder;



Lot 52

4x earth augers;



Lot 53

Chook pen;



Lot 54

2x gauge wheels;



Lot 55

Approx. 7t Lysaught seed silo (sound);



Lot 56

Approx. 28t Parks Ind. silo (sound);



Lot 57

Approx. 18t Parkes Ind. silo (minor rust patches);



Lot 58

Approx. 18t Parkes Ind. silo (minor rust patches);



Lot 59

Ahrens self-propelled 26' grain elevator with sweep (needs safety covers);



Lot 60

Pipe bender;



Lot 61

Air seeder drive;



Lot 62

Augermate (suit 9" auger);



Lot 63

Header Vittetoe chaff spreader;



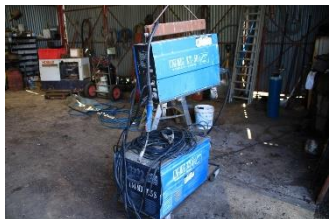
Lot 64

66x crop fingers;



Lot 65

Unimig 375 mig welder;



Lot 69

22x spring loaded coulters;



Lot 73

Square bale forks;



Lot 77

2x John Deere front tractor tyres;



Lot 66

3x tool boxes;



Lot 70

Assorted planter parts;



Lot 74

Pallet 15" tyres & rims;



Lot 78

3x axles & tyres;



Lot 67

12x Gyral air diffusers;



Lot 71

John Deere header exhaust & Versatile exhaust;



Lot 75

Pallet 16" tyres;



Lot 79

Pallet lifter;



Lot 68

Metfarm 75hp diesel engine (runs);



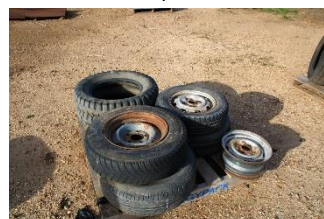
Lot 72

Truck tyre & rim (1122.5);



Lot 76

Pallet 13" & 14" tyres & rims;



Lot 80

Sunflower trays & sorghum fingers;



Lot 81

Tractor weights;



Lot 82

John Deere wheel weights;



Lot 83

7'6" front tractor blade;



Lot 84

7'6" front blade



Lot 85

Assorted press wheels & tynes;



Lot 86

Sweeps & points;



Lot 87

Primary Sales knife guards & 253x snap on fingers (42')



Lot 88

130x light crop fingers;



Lot 89

2x pallets of Case 2388 header parts;



Lot 90

Assorted bearings & chains;



Lot 91

Assorted zero till points;



Lot 92

20hp Vanguard motor (running);



Lot 93

Daihatsu Rocky (runs);



Lot 94

Quad bike roll protection;



Lot 95

5.1t of pickled Lancer wheat (germ tested, in 1t bags);



Lot 96

4.8t of Hattrick chick peas (graded & pickled, germ tested, in 1t bags);



Lot 97

Groundhound planter parts;



Lot 98

Fitzpatrick aeration fan;



Lot 99

Fitzpatrick aeration fan with electric motor;



Lot 100

Assorted farm gates;



Lot 101

Assorted farm gates;



Lot 102

5x gates with posts (2x 6' & 3x 8')



Lot 103

4x 8' portable sheep panels;



Lot 104

Farm gates (6x 10' & 3x 14');

