

# **VALLEY VIEW CHAROLAIS STUD**

**REDUCTION SALE OF  
PTIC EMBRYO TRANSFER FEMALES  
ON AUCTIONS PLUS**

**FRIDAY 14<sup>TH</sup> AUGUST 2015.**

**CONTACT: ALLEN RAMSEY 0428 664927**

*Ramsey & Bulmer*

- A reduction of exceptional quality E.T. genetics all P.T.I.C., acquired from various leading reputable studs, all with a good spread of Breedplan data & will breed on.
- A.I.'d to breed leading Sires and then depastured to our double polled red factor Bravo/Rebby Walking Bull with curve bending EBV's, VLW J2E.
- All grass fed only.
- All calves weaned July
- Treatments 1st July 2015: Dectomax Backline; Multimin & Vetade injections
- All very quiet

**VLW C4E (A.I.)(E.T.)(P) x Silverstream Geddes P.T.I.C. (Due 8 Dec 2015)**

A.I. sire new bull from Silverstream (check their website). C4E is a Mr Perfect ET daughter of Palgrove Estella I45, the junior champion and reserve champion female behind Airlie Rebecca W26F at the Ekka 2004. Always weans a top calf.

Top 15% CE Dtrs, 200 Day; Top 20% GL; Top 25% BWT, Milk.



VLW C4E (710kg)



Joining Sire, Silverstream Geddes

**THW E21E (A.I.)(E.T.)(P) (double polled) x Fernvale Primemover P.T.I.C. (Due 8 Dec 2015)**

Rare BCR Polled Unlimited genetics who was a trait leader in the Southern Bin Project. ET daughter of top priced female at Toowoomba Super Summer Female sale at \$8,500.

Weaned a show prospect Pinay Heifer.

The renowned "Lindskov Theil" LT Bulls are riddled with BCR Polled genetics on the Dam side

Top 5% CE Dir, Export and NT indexes; Top 10% GL, Milk, SS, Dom Index; Top 15% BWT; Top 25% 600 Day, Rib & Rump Fat



THW E21E (605kg)



Joining Sire, Primemover

**SS1 B4F (A.I.)(E.T)(FF) x Leachman White Gold P.T.I.C. (Due 30 Jan 2016)**

Full French ET DONOR cow from the renowned Trevlac WFD72F cow line by one of the better performed French sires. Her son Gendarme sold for \$7,000 as a yearling to Avabundy Charolais and two daughters retained.

A Leachman son Kooyong Jackson was recently was purchased for stud duties at Liberty Charolais for \$9,500.

Top 15% for RBY.



SS1 B4F (690kg)



Son, Gendarme



Daughter, VLW H8E

**VLW C6E (A.I.)(E.T.)(P)(R/F) joined to VLW J2E P.T.I.C. (Due Mar 2016)**

Rare ET Wyoming Wind sister to C8 (below) from good donor cow GLE W15E. Bull calf retained. Running with J2 since mid-May.

A soft Red Factor polled cow.

Top 10% SS, Rib & Rump Fat; Top 25% Milk; Exp Index.



VLW C6E (650kg)



Sire of C6 & C8, LT Wyoming Wind

**Joining Sire to C6 & C8**



Check his breed plan data  
VLW J2E as a yearling bull

**VLW C8E (A.I.)(E.T.)(P) joined to VLW J2E P.T.I.C. (Due Mar 2016)**

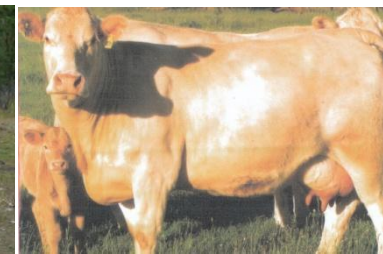
Again, rare ET Wyoming Wind sister to C6 from good donor cow GLE W15E. Bull calf retained. Running with J2 since mid-May.

Larger frame cow than her full E.T. sister VLW C6E.

Top 5% SS; Top 10% Rib & Rump Fat; Top 20% Milk; Top 25% 200 Day.



VLW C8E (770kg)



Dam of C6 & C8, GLE W15E

**VLW G70E (A.I.)(E.T.)(P/S) x JDJ Smokester 20/06/2015 P.T.I.C. (Due Mar 2016)**

Her dam was a multi ribbon winning female including Interbreeds as a junior. Tragically lost day old twin Rio Bravo bull calves, frozen in a horrific hail storm. Rare MNE Golden Eagle Genetics.

Top 10% CE Dir, Rib, Exp & NT Indexes; Top 15% Milk, Rump; Top 20% SS, Dom Index.



VLW G70E (720kg)



Joining Sire, Smokester

**VLW H28E (A.I.)(E.T.)(P)(R/F)(Double Polled) with polled calf at foot x Lt Long Distance (PCK L11E)**

A purpose bred E.T. Rebby x Wind genetic special soft heifer for sale. Rebby's full sister Monument Valley Honey and Hope cleaned up at the Sydney Royal and then one sold as a junior heifer for \$12,000 to a stud group of DSK, Moongool & Elite. Polled 135kg 4 month old heifer calf at foot.



VLW H28E (514kg)



H28 and L11 (135kg)



Joining Sire, LT Long Distance

**VLW J26E (P)(Double Polled) x Lt Thundering Wind P.T.I.C (Due Mar 2016)**

Stylish heifer Al'd naturally in June. One of the first Branch View Forged From Steel BVC F34E females to sell out of our BCR Polled cow.



VLW J26E (405kg)



Sire, Forged From Steel



Half-sister, VLW K7E