



MAROCARA DORSETS

Kelly Wongarbon Pty Ltd | 22nd Annual

ON PROPERTY SALE

at 'Hillview' Wongarbon | 6th September 2022 | 2pm

IN CONJUNCTION WITH:  AuctionsPlus™

160 PERFORMANCE RAMS

Lambplan measured | Quality assured



Carter Lindsay & Weber



Licensed Auctioneers, Stock & Station Agents, Real Estate Agents, Carcase & Feedlot Agents

SPECIALIST AUCTIONEERS

Shaun McHugh 0417 487 914
www.carterlindsayweber.com.au



THANK YOU FOR YOUR SUPPORT



MAROCARA DORSETS

Directions:

- From Dubbo, travel east on Mitchell Hwy - 14kms from last roundabout
- Just before Wongarbron, turn right onto River Rd
- Travel 2kms down River Rd
- Ram Sale in shearing shed on the left
- Watch for signs



Carter Lindsay & Weber



Licensed Auctioneers, Stock & Station Agents, Real Estate Agents, Carcase & Feedlot Agents

SPECIALIST AUCTIONEERS

For the marketing of your Livestock, contact:

John Lindsay 0439 844 498
Shaun McHugh 0417 487 914
Hugh Edwards 0457 730 703

76 Brisbane St, PO Box 70
North Dubbo NSW 2830
Office: (02) 6882 5177
www.carterlindsayweber.com.au

Sheep & Lambs - Monday
Prime Cattle - Thursday
Store Cattle Sales - Monthly





22nd Annual MAROCARA on-property sale. "Hillview" River Road, Wongarbon NSW 2831.

The Kelly Family would like to welcome you to Marocara Dorsets' annual sale.

We are proud to present another line up of rams aimed at helping you gain the premiums at market that the Poll Dorsets are renown for. It looks like another great season upon us, and we look forward to working with you to help drive your prime lamb business.

We'd like to highlight a few points for the coming year.

- A great line up of leading sires represented this year including Felix 190141 & Bruan 190275 – ranked 1st and 3rd respectively on Sheep Genetics for TCP. We have retained four rams from Felix 190141 (210404, 210157, 210321, 210221). Melton Vale 190152, a leading eating quality sire, is also well represented with 22 rams. We have retained two of his sons (210368, 210378). In addition, two sons of Marocara 190117 have been kept on farm (210494, 210508) with 16 rams represented in the line up.
- The sale this year will be held on site and simulcast live on AuctionsPlus. The AuctionsPlus site will have links to Youtube clips and Sheep Genetics pedigree information will be listed on each lot.
- We have slightly changed the coloring of the percentile bands to be in line with Sheep Genetics. This indicates where each animal sits within each trait and Index. These are **Pink** Top 5%, **Blue** Top 10%, **Green** Top 20%, **Grey** above 50%. We have included a couple of charts to indicate the % weighting of each trait that contributes each index. (TCP and LEQ)
- This year we will be offering a delivery service within NSW. We aim to make it as convenient as possible for you to purchase rams and get them home safely. Please let us know if you wish to utilise this service.

We would like to thank the following businesses and individuals for partnering with us this year.

- Blue Hills Sheep Service, Jim Bourke with his shearing and crutching trailers has taken some of the hard work out of these jobs.
- Clearvision Imaging—Thanks to Ben Hooper for his hard work shooting, editing and uploading videos of each lot.
- Carter Lindsay Weber for conducting our sale. Thanks to Shaun, Hugh, John and Matt for your continued support.
- Special mention to Aaron Buckler, our dedicated and extremely valued member of our operation. Thank you for all your hard work.
- The Kelly Team— Three generations are helping and supporting each other to put the together our sale and help run our farming business. THANK YOU!!.

Please note, only a limited number of rams are registerable with the APDA, for more information regarding individual ram registration please be in touch.

If you have any questions please don't hesitate to call Gus, Al or John.

Gus Kelly

0428 878 221 angus.kelly@bigpond.com

Alistair Kelly

0427 878 221 alistairkelly@bigpond.com

Property PIC – NJ220319 Brucellosis accreditation – 76512 expires February 28, 2025.

MAROCARA is declared to be footrot and lice free.

Rams were backlined with FENNECH and vaccinated with Glanvac 6 in 1 on 18/7/2022, Rams had DynaMax Capsules 25/3/2022 (expired 3/7/2022).

Rams were shorn on 18/7/2022 by Blue Hills Sheep Services, Jim Bourke 0428 878 413.

Weighed 12-8-2022.

All buyers will be supplied with a National Sheep Health Statement (SHS) and National Vendor Declaration (NVD). MAROCARA has a “Property Biosecurity Plan”

Definitions of Abbreviations

DOB = Month of Lambing. **Sire** = Sire indicated and stud name. **BT** = Birth type, 1 = Single, 2 = Twin, 3 = Triplet.

WWT = Weaning weight expressed in kgs at 14 weeks of age. Rams with a higher WWT figure will have lambs that grow quicker to weaning.

PWWT = Post Weaning weight, expressed in kgs at 7.5 months of age. A positive PWWT reflects the animals ability to grow after weaning and reach target weight.

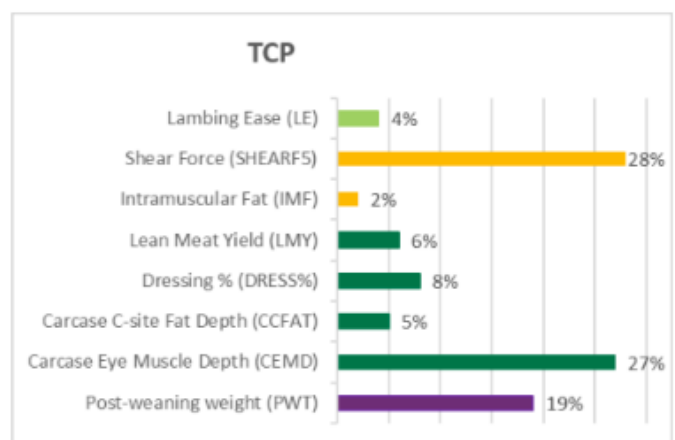
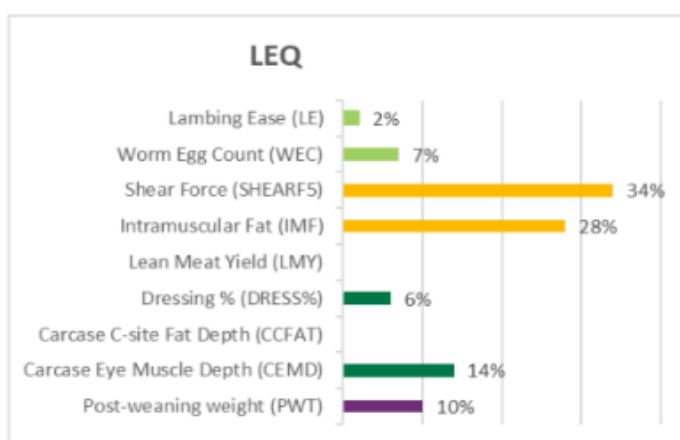
PFAT = Post weaning fat depth, expressed in mm at 45kg. Estimates the difference in animals fat at the GR site. An animal with negative PFAT will produce leaner lambs.

PEMD = Post weaning eye muscle depth, expressed in mm at 45kg. Animals with a higher PEMD will have more muscle and more lean meat yield independent of weight. The correlation between PEMD and hindquarter development is only 15%, therefore visual assessments need to be made.

TCP = Terminal Carcase Production is a \$ value index. Similar production traits to Carcase plus for growth and muscle with emphasis on eating quality. Use this index to “**maintain eating quality and improving carcase growth**”

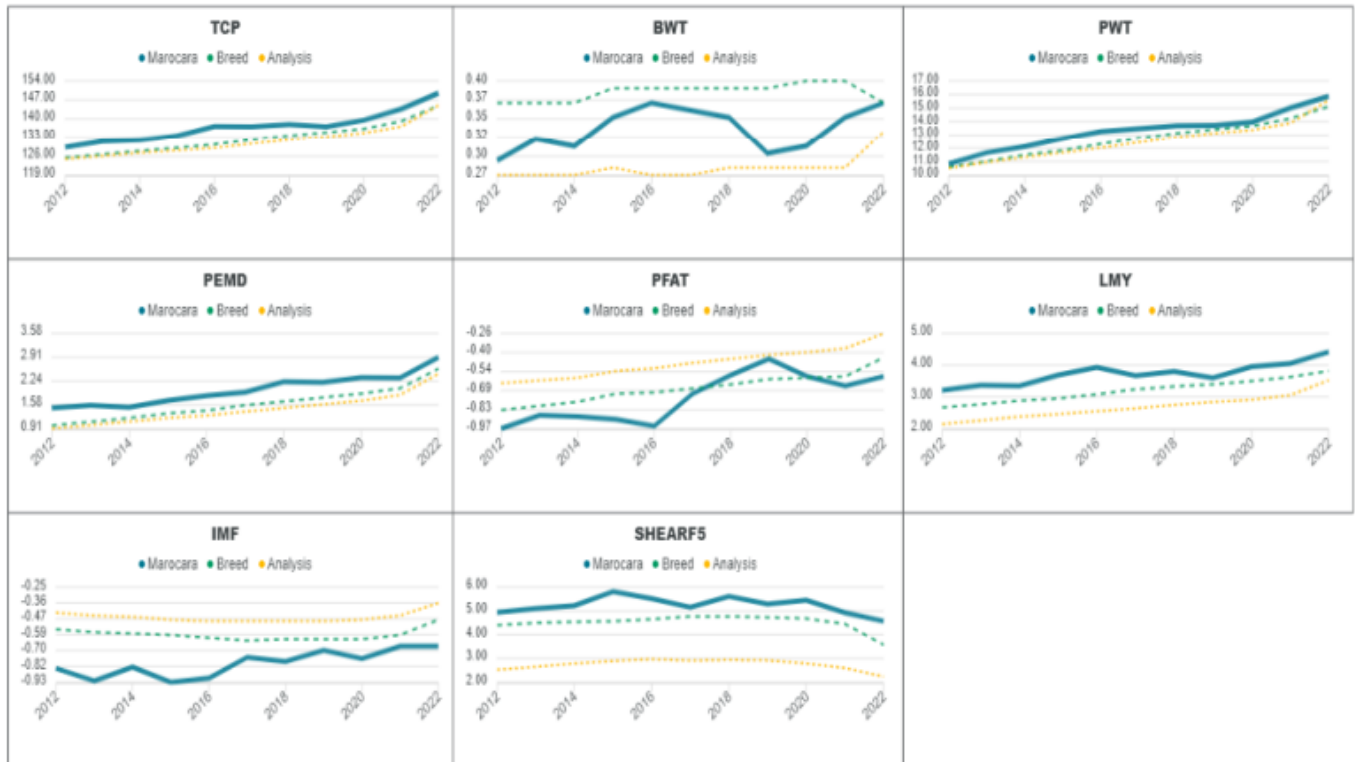
LEQ = Index is targeting larger improvements in eating quality and modest increase in LMY. Information is gathered through genotyping young rams to improve accuracy of this ASBV's. “Improving eating quality ,carcase, growth”

IMF = marbling , a higher IMF indicates greater ability for animal to produce intramuscular Fat. **SF5** = is a measurement of tenderness (shearforce) **LMY**= Lean Meat Yield **Dress** = Dressing percentage.



Report: Genetic Trends
 Analysis: TERMINAL
 Analysis date: 01/08/2022
 Flock code: 162002
 Flock name: MAROCARA

Total animals by drop



Report: Percentile Bands
 Analysis: TERMINAL
 Analysis date: 01/08/2022



Band	WWT	PWT	PFAT	PEMD	TCP	LEQ	IMF	SHEARF5	DRESS	LMY
1	12.72	19.51	1.09	4.06	158.58	158.23	0.39	-2.6	3.37	5.44
5	11.81	18.1	0.56	3.42	153.76	151.18	0.07	-0.98	3.04	4.76
10	11.35	17.38	0.32	3.09	150.95	147.28	-0.05	-0.23	2.85	4.43
20	10.8	16.52	0.06	2.67	147.31	142.52	-0.19	0.67	2.61	4.03
30	10.38	15.84	-0.11	2.37	144.33	138.93	-0.29	1.3	2.44	3.73
40	9.99	15.22	-0.26	2.11	141.53	135.85	-0.38	1.88	2.28	3.48
50	9.59	14.6	-0.4	1.86	138.78	133	-0.46	2.45	2.12	3.24
60	9.13	13.85	-0.53	1.62	135.95	130.19	-0.54	3.08	1.96	2.98
70	8.54	12.91	-0.66	1.37	132.8	127.27	-0.62	3.83	1.78	2.66
80	7.7	11.57	-0.82	1.08	128.93	123.95	-0.72	4.68	1.56	2.2
90	6.41	9.69	-1.03	0.7	123.69	118.82	-0.86	5.83	1.24	1.46



*** 160 LAMBPLAN PERFORMANCE RAMS ***

Tuesday 6th Sept 2022 - 2pm
On Property & Auctionsplus.



LOT	TAG	SIRE	DOB 2021	Kgs 11/8	BT	Wwt	Pwwt	Pfat	PEMD	TCP	LEQ	IMF	SFS	DRESS	LMY	Buyer/Price
1	721	M 190209	24/5	117	1	9.8	15.0	-0.9	2.8	148.5	138.3	-0.86	4.70	2.71	4.83	Top 20% PEMD, Top 20% TCP, Top 20% Dress %, Top 5% LMY,
2	704	Bundara Downs 193638	22/5	112	1	11.0	15.9	-1.3	1.8	142.7	131.9	-0.91	7.30	2.35	4.44	Top 20% Wwt, Top 10% LMY,
3	751	M 190117	24/5	111	2	10.9	15.7	-0.9	2.1	143.5	134.5	-0.75	5.55	2.17	4.49	Top 20% Wwt, Top 20% LMY,
4	17	Aberdeen 180538	30/4	121	2	11.2	16.1	0.0	1.9	139.0	129.9	-0.73	6.09	2.25	3.43	Top 20% Wwt,
5	429	M 190009	16/5	115	1	8.9	13.8	-0.9	2.5	146.9	140.1	-0.68	4.15	2.67	4.49	Top 20% Dress %, Top 10% LMY,
6	765	M 200274	24/5	125	2	12.0	17.1	-1.2	2.0	147.8	135.8	-1.00	7.12	2.46	5.01	Top 5% Wwt Top 20% Pwwt, Top 20% TCP, Top 5% LMY,
7	850	M 200274	8/6	106	2	9.9	14.2	-0.8	2.6	143.2	132.8	-0.86	6.43	2.47	4.48	Top 10% LMY,
8	359	Melton Vale 190152	12/5	107	3	10.9	16.2	-0.2	2.9	151.1	145.4	-0.43	4.19	2.99	3.85	Top 20% Wwt, Top 20% PEMD, Top 10% TCP, Top 20% LEQ, Top 10% Dress %
9	490	M 190009	17/5	125	2	10.7	17.1	-0.8	2.1	151.2	141.2	-0.83	4.43	2.81	4.73	Top 20% Pwwt, Top 10% TCP, Top 10% Dress %, Top 10% LMY,
10	27	M 190074	30/4	115	1	10.7	15.1	-1.3	2.0	140.8	135.0	-0.77	7.43	1.99	5.16	Top 5% LMY,
11	183	Felix 190141	8/5	115	2	11.3	19.1	-0.3	2.5	155.8	152.3	-0.15	1.54	3.03	4.09	Top 10% Wwt, Top 5% Pwwt, Top 5% TCP, Top 5% LEQ, Top 20% IMF, Top 20% Dress %, Top 20% LMY,
12	353	Bruan 190140	12/5	117	2	10.2	15.3	-0.6	2.7	151.1	149.5	-0.08	2.49	2.48	3.80	Top 20% PEMD, Top 10% TCP, Top 10% LEQ, Top 20% IMF,
13	260	Bruan 190140	10/5	102	1	11.2	17.2	-0.9	2.7	159.3	156.3	-0.13	1.67	2.96	4.02	Top 20% Wwt, Top 20% Pwwt, Top 1% TCP (Trait Leader), Top 1% LEQ (Trait Leader), Top 20% IMF, Top 10% Dress %, Top 20% LMY,
14	251	Melton Vale 190152	10/5	127	1	12.0	19.2	-0.4	1.2	149.1	147.9	-0.15	2.92	2.40	2.99	Top 5% Wwt Top 5% Pwwt, Top 20% TCP, Top 10% LEQ, Top 20% IMF,
15	184	Felix 190141	8/5	128	2	11.9	19.1	-0.2	2.5	150.7	145.1	-0.35	4.12	2.88	4.29	Top 5% Wwt Top 5% Pwwt, Top 20% TCP, Top 20% LEQ, Top 10% Dress %, Top 20% LMY,
16	176	Felix 190141	8/5	115	3	11.7	19.2	0.3	2.9	158.5	156.2	-0.16	0.78	3.12	3.48	Top 10% Wwt, Top 5% Pwwt, Top 20% PEMD, Top 1% TCP (Trait Leader), Top 1% LEQ (Trait Leader), Top 20% IMF, Top 5% Dress %
17	318	Melton Vale 190152	12/5	111	2	11.8	18.5	-0.3	2.4	154.1	150.1	-0.29	3.56	2.89	3.93	Top 5% Wwt Top 5% Pwwt, Top 5% TCP, Top 10% LEQ, Top 20% Dress %, Top 20% LMY,
18	92	M 190209	6/5	116	2	8.8	13.4	-0.6	3.4	148.5	137.6	-0.93	3.69	2.89	4.52	Top 5% PEMD, Top 20% TCP, Top 10% Dress %, Top 10% LMY,
19	363	Rangeview 190045	12/5	117	2	7.7	12.0	-1.1	3.9	151.6	142.0	-0.81	2.49	2.58	4.61	Top 5% PEMD, Top 10% TCP, Top 20% Dress %, Top 10% LMY,
20	233	Pollambi 160212	8/5	114	1	9.5	14.6	-0.3	3.7	149.6	138.5	-0.92	4.38	3.13	4.90	Top 5% PEMD, Top 20% TCP, Top 5% Dress %, Top 5% LMY,
21	755	Bundara Downs 193638	24/5	119	1	11.5	18.3	-1.6	1.6	147.7	135.7	-1.03	7.56	2.62	4.99	Top 10% Wwt, Top 5% Pwwt, Top 20% TCP, Top 20% Dress %, Top 5% LMY,
22	986	Bundara Downs 193638	10/8	119	2	12.1	18.6	-1.3	2.0	148.5	137.4	-0.94	7.94	2.92	4.73	Top 5% Wwt Top 5% Pwwt, Top 20% TCP, Top 10% Dress %, Top 10% LMY,
23	605	M 200289	21/5	117	2	9.2	13.6	-0.6	3.7	148.9	136.9	-1.01	5.37	2.86	4.88	Top 5% PEMD, Top 20% TCP, Top 10% Dress %, Top 5% LMY,
24	367	Melton Vale 190152	12/5	113	3	12.3	19.0	0.1	2.4	153.1	149.5	-0.24	4.18	3.07	3.67	Top 5% Wwt Top 5% Pwwt, Top 10% TCP, Top 10% LEQ, Top 10% Dress %, Top 20% LMY,
25	179	Bruan 190140	8/5	111	2	8.9	13.5	-0.6	3.0	148.6	147.7	-0.02	2.32	2.51	3.73	Top 20% PEMD, Top 20% TCP, Top 10% LEQ, Top 10% IMF,
26	816	M 190009	3/6	110	2	10.1	15.7	-0.5	3.6	151.7	139.2	-1.04	5.85	3.24	5.07	Top 5% PEMD, Top 10% TCP, Top 5% Dress %, Top 5% LMY,
27	374	Melton Vale 190152	12/5	111	2	9.5	14.8	-0.1	2.0	142.8	143.7	0.15	1.78	2.33	2.51	Top 20% LEQ, Top 5% IMF,
28	112	Bruan 190275	6/5	116	2	11.3	17.3	-1.4	1.8	154.9	148.5	-0.53	2.97	2.18	4.73	Top 20% Wwt, Top 20% Pwwt, Top 5% TCP, Top 10% LEQ, Top 10% LMY,
29	265	Bundara Downs 193638	11/5	127	2	12.9	19.3	-1.4	1.6	149.6	137.8	-1.00	8.31	2.72	5.11	Top 1% Wwt (Trait Leader) Top 5% Pwwt, Top 20% TCP, Top 20% Dress %, Top 5% LMY,
30	281	M 200289	11/5	110	2	9.9	14.8	-0.3	3.6	150.1	140.6	-0.77	5.17	3.11	4.52	Top 5% PEMD, Top 20% TCP, Top 5% Dress %, Top 10% LMY,



*** 160 LAMBPLAN PERFORMANCE RAMS ***

Tuesday 6th Sept 2022 - 2pm
On Property & Auctionsplus.



LOT	TAG	SIRE	DOB 2021	Kgs 11/8	BT	Wwt	Pwwt	Pfat	PEMD	TCP	LEQ	IMF	SFS	DRESS	LMY	Buyer/Price
31	780	Bundara Downs 193638	24/5	116	2	12.0	18.4	-1.5	1.6	152.4	145.1	-0.60	5.11	2.46	4.77	Top 5% Wwt, Top 5% Pwwt, Top 10% TCP, Top 20% LEQ, Top 5% LMY,
32	445	M 190117	16/5	126	2	12.7	18.8	-1.2	1.9	148.8	139.9	-0.91	6.73	2.53	5.41	Top 1% Wwt (Trait Leader), Top 5% Pwwt, Top 20% TCP, Top 5% LMY,
33	579	M 190009	18/5	122	1	10.1	16.2	-0.5	3.3	154.8	143.3	-0.96	3.85	3.30	5.06	Top 10% PEMD, Top 5% TCP, Top 20% LEQ, Top 5% Dress %, Top 5% LMY,
34	423	Lambpro 140859	16/5	105	2	10.5	16.7	-0.5	3.5	154.0	141.2	-1.20	6.00	3.13	5.42	Top 20% Pwwt, Top 5% PEMD, Top 5% TCP, Top 5% Dress %, Top 5% LMY,
35	468	Bundara Downs 193638	17/5	132	1	13.0	19.2	-1.0	2.2	148.8	136.6	-1.01	8.15	2.97	4.96	Top 1% Wwt (Trait Leader), Top 5% Pwwt, Top 20% TCP, Top 10% Dress %, Top 5% LMY,
36	124	Felix 170667	6/5	105	2	10.1	15.6	-0.8	3.1	150.5	140.6	-0.82	5.88	2.91	4.99	Top 20% PEMD, Top 20% TCP, Top 10% Dress %, Top 5% LMY,
37	700	M 190209	22/5	101	1	9.2	14.1	-0.5	3.4	150.5	141.8	-0.72	3.30	2.89	4.51	Top 10% PEMD, Top 20% TCP, Top 10% Dress %, Top 10% LMY,
38	317	Melton Vale 190152	12/5	118	2	10.7	16.6	-0.3	2.2	148.3	145.3	-0.19	3.09	2.56	3.33	Top 20% Pwwt, Top 20% TCP, Top 20% LEQ, Top 20% IMF, Top 20% Dress %
39	381	Bruan 190275	12/5	100	2	11.1	16.2	-0.9	2.5	150.0	141.1	-0.73	4.85	2.34	4.87	Top 20% Wwt, Top 20% TCP, Top 5% LMY,
40	91	M 190209	6/5	118	2	9.4	14.3	-1.0	2.5	146.0	135.1	-0.93	4.39	2.52	4.58	Top 10% LMY,
41	314	Melton Vale 190152	12/5	101	2	10.2	14.3	-0.4	2.6	144.4	139.1	-0.40	4.37	2.44	3.58	
42	757	M 200274	24/5	131	1	10.5	14.8	-0.8	2.2	139.0	128.1	-0.91	7.59	2.36	4.40	Top 20% LMY,
43	61	M 190074	6/5	118	2	11.2	16.6	-0.9	1.7	144.8	136.6	-0.67	5.12	2.14	4.37	Top 20% Wwt, Top 20% Pwwt, Top 20% LMY,
44	444	M 200289	16/5	111	2	8.3	12.8	-0.7	3.4	146.1	138.4	-0.63	4.57	2.63	4.43	Top 10% PEMD, Top 20% Dress %, Top 10% LMY,
45	401	Lambpro 140859	12/5	114	2	10.3	15.4	-0.1	3.3	148.9	142.7	-0.62	4.29	2.76	4.39	Top 10% PEMD, Top 20% TCP, Top 20% LEQ, Top 10% Dress %, Top 20% LMY,
46	240	Melton Vale 190152	8/5	112	2	10.9	16.7	-0.4	2.2	148.2	144.6	-0.26	3.71	2.65	3.55	Top 20% Wwt, Top 20% Pwwt, Top 20% TCP, Top 20% LEQ, Top 20% Dress %
47	330	Lambpro 140859	12/5	108	2	10.6	16.4	-1.2	2.4	152.9	144.7	-0.72	3.65	2.65	4.87	Top 10% TCP, Top 20% LEQ, Top 20% Dress %, Top 5% LMY,
48	811	M 190209	3/6	116	1	9.1	13.4	-0.3	2.8	141.6	133.8	-0.64	4.02	2.46	3.91	Top 20% PEMD,
49	352	Bruan 190140	12/5	117	2	10.1	15.6	-0.3	3.4	153.0	148.7	-0.32	3.12	2.95	3.97	Top 5% PEMD, Top 10% TCP, Top 10% LEQ, Top 10% Dress %,
50	175	Bruan 190275	8/5	112	3	10.4	16.7	-0.5	2.8	152.7	144.6	-0.66	3.80	3.04	4.38	Top 20% Pwwt, Top 20% PEMD, Top 10% TCP, Top 20% LEQ, Top 10% Dress %, Top 20% LMY,
51	383	Felix 170667	12/5	117	2	9.7	15.6	-1.3	2.5	148.2	137.3	-0.93	5.91	2.66	5.28	Top 20% TCP, Top 20% Dress %, Top 5% LMY,
52	522	M 200289	18/5	115	1	9.1	13.6	-1.0	2.2	142.7	134.3	-0.70	5.01	2.32	4.15	Top 20% LMY,
53	369	Melton Vale 190152	12/5	106	2	10.6	16.6	-0.5	1.4	143.1	138.9	-0.31	4.52	2.42	3.38	Top 20% Pwwt,
54	463	M 190074	17/5	113	2	10.2	15.3	-0.7	2.2	145.3	135.1	-0.85	4.79	2.42	4.32	Top 20% LMY,
55	229	Melton Vale 190152	8/5	100	3	9.2	15.2	0.2	2.5	145.8	143.5	-0.14	2.19	2.86	2.65	Top 20% LEQ, Top 20% IMF, Top 10% Dress %,
56	346	Pollambi 160212	12/5	110	2	10.2	16.4	-0.9	3.0	150.0	137.1	-1.09	5.66	2.90	5.46	Top 20% PEMD, Top 20% TCP, Top 10% Dress %, Top 1% LMY (Trait Leader),
57	361	Melton Vale 190152	12/5	106	3	9.1	14.0	0.1	3.0	145.3	141.5	-0.27	3.02	2.82	2.93	Top 20% PEMD, Top 10% Dress %,
58	23	Felix 180325	30/4	117	1	9.8	14.5	-1.2	1.9	138.0	130.1	-0.98	7.26	2.08	4.63	Top 10% LMY,
59	414	Rangeview 190045	12/5	111	3	10.3	15.5	-0.6	3.2	150.9	140.9	-0.83	4.44	2.78	4.53	Top 10% PEMD, Top 20% TCP, Top 10% Dress %, Top 10% LMY,
60	856	M 190098	8/6	130	1	10.1	15.4	-0.3	2.6	140.0	129.4	-0.87	7.93	2.79	4.31	Top 10% Dress %, Top 20% LMY,



*** 160 LAMBPLAN PERFORMANCE RAMS ***

Tuesday 6th Sept 2022 - 2pm
On Property & Auctionsplus.



AuctionsPlus
Buy and Sell stock nationally



LOT	TAG	SIRE	DOB 2021	Kgs 11/8	BT	Wwt	Pwwt	Pfat	PEMD	TCP	LEQ	IMF	SFS	DRESS	LMY	Buyer/Price
61	533	Rangeview 190045	18/5	125	1	10.6	15.9	-0.8	2.7	149.9	143.9	-0.60	4.17	2.60	4.26	Top 20% PEMD, Top 20% TCP, Top 20% LEQ, Top 20% Dress %, Top 20% LMY,
62	459	M 190098	17/5	101	2	10.5	15.1	-0.7	3.0	145.4	133.4	-1.01	7.20	2.73	5.18	Top 20% PEMD, Top 20% Dress %, Top 5% LMY,
63	745	M 200289	24/5	125	1	9.7	14.5	-1.0	2.4	144.3	136.3	-0.66	5.03	2.30	4.39	Top 20% LMY,
64	370	Melton Vale 190152	12/5	113	2	10.3	16.3	0.3	2.0	143.1	140.1	-0.20	3.81	2.72	2.80	Top 20% IMF, Top 20% Dress %,
65	692	M 200034	22/5	107	2	11.9	17.2	-1.0	2.2	141.5	128.2	-1.13	8.80	2.37	5.05	Top 5% Wwt Top 20% Pwwt, Top 5% LMY,
66	77	M 190098	6/5	105	2	9.2	14.7	-0.5	2.5	144.6	136.7	-0.66	4.39	2.74	4.01	Top 20% Dress %,
67	489	M 190009	17/5	114	2	8.6	14.2	-1.0	1.8	144.1	135.3	-0.74	3.55	2.35	4.13	Top 20% LMY,
68	714	M 190098	22/5	115	2	10.2	15.2	-0.3	2.9	142.0	131.2	-0.90	7.16	2.80	4.35	Top 20% PEMD, Top 10% Dress %, Top 20% LMY,
69	511	M 190117	17/5	103	1	9.8	14.8	-0.7	1.8	144.9	140.4	-0.50	1.08	1.97	3.37	
70	480	M 190209	17/5	112	1	9.3	13.7	-0.1	3.0	142.8	134.4	-0.69	4.23	2.69	3.90	Top 20% PEMD, Top 20% Dress %,
71	683	M 190117	22/5	103	2	10.6	15.8	-1.4	1.4	144.0	134.7	-0.78	5.08	1.88	4.40	Top 20% LMY,
72	588	M 190209	21/5	110	2	9.2	13.6	-0.3	3.2	146.1	137.9	-0.67	3.64	2.68	4.13	Top 10% PEMD, Top 20% Dress %, Top 20% LMY,
73	615	Bundara Downs 193638	21/5	121	3	11.2	17.1	-1.3	1.1	140.4	133.4	-0.58	7.20	2.15	4.23	Top 20% Wwt, Top 20% Pwwt, Top 20% LMY,
74	84	M 200289	6/5	112	2	10.6	15.7	-0.7	2.6	150.0	142.7	-0.75	4.36	2.60	4.40	Top 20% TCP, Top 20% LEQ, Top 20% Dress %, Top 20% LMY,
75	531	M 190117	18/5	118	1	10.7	15.2	-1.0	2.4	146.7	136.9	-0.81	4.86	2.32	4.74	Top 10% LMY,
76	85	Melton Vale 190152	6/5	112	1	10.3	15.7	-0.6	2.4	149.3	145.6	-0.27	3.60	2.54	3.93	Top 20% TCP, Top 20% LEQ,
77	476	Bundara Downs 193638	17/5	121	2	11.1	16.8	-1.5	0.4	138.4	130.0	-0.71	7.06	1.91	3.78	Top 20% Wwt, Top 20% Pwwt,
78	215	Melton Vale 190152	8/5	119	2	10.3	16.1	0.3	2.2	143.0	140.7	-0.13	3.45	2.81	2.65	Top 20% IMF, Top 10% Dress %,
79	546	M 190009	14/5	126	1	10.2	16.0	-0.5	2.9	148.2	137.5	-0.89	5.76	3.14	4.77	Top 20% PEMD, Top 20% TCP, Top 5% Dress %, Top 5% LMY,
80	380	Bruan 190275	12/5	106	2	12.2	18.0	-1.1	2.2	152.6	143.1	-0.78	5.41	2.42	5.21	Top 5% Wwt Top 10% Pwwt, Top 10% TCP, Top 20% LEQ, Top 5% LMY,
81	634	M 190117	21/5	109	3	11.1	15.9	-0.9	2.1	143.7	134.4	-0.77	5.67	2.22	4.48	Top 20% Wwt, Top 10% LMY,
82	343	Rangeview 190045	12/5	108	3	9.6	14.5	-0.5	3.3	149.2	139.6	-0.80	4.04	2.71	4.32	TRAP * OK FEB22 OK SALE 22 SALE 22 LOT 82 Top 10% PEMD, Top 20% TCP, Top 20% Dress %, Top 20% LMY,
83	397	Melton Vale 190152	12/5	103	2	9.1	14.4	0.3	3.1	146.8	145.0	-0.09	2.24	2.83	2.90	Top 10% PEMD, Top 20% LEQ, Top 20% IMF, Top 10% Dress %,
84	312	Melton Vale 190152	12/5	126	1	11.5	17.3	0.4	1.8	141.1	139.2	-0.09	4.57	2.52	2.63	Top 10% Wwt, Top 20% Pwwt, Top 20% IMF,
85	93	M 190209	6/5	109	2	10.2	15.6	-0.6	3.1	149.8	140.5	-0.78	4.63	3.03	4.78	Top 20% PEMD, Top 20% TCP, Top 10% Dress %, Top 5% LMY,
86	386	Bruan 190275	12/5	97	3	8.9	14.3	-0.1	4.3	158.4	150.5	-0.64	1.22	3.28	4.45	Top 1% PEMD (Trait Leader), Top 5% TCP, Top 10% LEQ, Top 5% Dress %, Top 10% LMY,
87	487	Bundara Downs 193638	17/5	115	2	11.4	17.1	-1.4	2.1	150.0	138.0	-1.02	6.84	2.76	4.91	Top 10% Wwt, Top 20% Pwwt, Top 20% TCP, Top 10% Dress %, Top 5% LMY,
88	727	M 190117	24/5	112	2	11.9	16.9	-1.4	2.1	147.6	136.4	-0.95	6.44	2.26	5.20	Top 5% Wwt Top 20% Pwwt, Top 20% TCP, Top 5% LMY,
89	633	M 190117	21/5	99	3	9.6	14.6	-0.7	2.7	144.9	136.0	-0.74	4.39	2.46	4.24	Top 20% PEMD, Top 20% LMY,
90	598	M 190117	21/5	110	2	10.9	16.0	-0.7	3.3	152.2	140.9	-0.94	5.30	2.94	5.01	Top 20% Wwt, Top 20% PEMD, Top 10% TCP, Top 10% Dress %, Top 5% LMY,



*** 160 LAMBPLAN PERFORMANCE RAMS ***

Tuesday 6th Sept 2022 - 2pm
On Property & Auctionsplus.



LOT	TAG	SIRE	DOB 2021	Kgs 11/8	BT	Wwt	Pwwt	Pfat	PEMD	TCP	LEQ	IMF	SFS	DRESS	LMY	Buyer/Price
91	276	Melton Vale 190152	11/5	105	2	10.6	16.3	-0.7	1.6	145.9	143.6	-0.15	3.20	2.37	3.47	Top 20% LEQ, Top 20% IMF,
92	55	M 190074	6/5	124	2	11.0	16.4	-0.9	2.7	151.3	141.4	-0.82	5.07	2.62	5.08	Top 20% Wwt, Top 20% PEMD, Top 10% TCP, Top 20% Dress %, Top 5% LMY,
93	104	Bruan 190007	6/5	128	2	12.2	18.5	-0.2	2.6	157.8	159.9	0.00	2.34	3.37	3.98	Top 5% Wwt, Top 5% Pwwt, Top 5% TCP, Top 1% LEQ (Trait Leader), Top 20% IMF, Top 5% Dress %,
94	329	M 190117	12/5	117	2	8.8	12.8	-1.0	2.5	142.6	134.3	-0.69	3.46	2.07	4.15	Top 20% LMY,
95	461	M 190074	17/5	99	2	10.0	15.1	-0.5	2.1	139.8	130.5	-0.76	5.98	2.21	4.02	Top 20% LMY,
96	161	Melton Vale 190152	8/5	126	3	11.0	17.4	-0.1	1.8	146.1	143.2	-0.19	3.56	2.65	3.06	Top 20% Wwt, Top 10% Pwwt, Top 20% LEQ, Top 20% IMF, Top 20% Dress %
97	495	Bundara Downs 193638	17/5	114	2	11.7	17.5	-1.5	1.6	145.6	134.3	-0.97	8.13	2.65	4.92	Top 10% Wwt, Top 10% Pwwt, Top 20% Dress %, Top 5% LMY,
98	280	M 200289	11/5	103	2	9.5	14.1	-0.4	2.9	144.5	136.0	-0.69	5.20	2.70	4.07	Top 20% PEMD, Top 20% Dress %, Top 20% LMY,
99	432	M 190117	22/5	114	2	9.6	14.3	-1.3	2.5	146.2	135.3	-0.92	4.67	2.34	4.77	Top 5% LMY,
100	475	M 170107	17/5	108	2	10.6	15.9	-0.2	2.9	145.2	137.6	-0.61	5.28	2.83	4.22	Top 20% PEMD, Top 10% Dress %, Top 20% LMY,
101	651	M 190117	21/5	100	3	11.5	17.5	-0.7	2.6	149.9	138.0	-1.00	5.38	2.72	4.85	Top 10% Wwt, Top 10% Pwwt, Top 20% TCP, Top 20% Dress %, Top 5% LMY,
102	501	M 190209	17/5	117	2	10.6	16.2	-1.0	2.2	147.8	138.1	-0.82	4.68	2.64	4.62	Top 20% TCP, Top 20% Dress %, Top 10% LMY,
103	535	M 190009	18/5	110	2	8.9	14.2	-1.0	2.9	151.0	140.9	-0.85	3.30	2.78	4.61	Top 20% PEMD, Top 10% TCP, Top 10% Dress %, Top 10% LMY,
104	129	Melton Vale 190152	6/5	121	2	11.6	17.5	-0.6	1.2	144.7	142.9	-0.10	3.88	2.16	3.28	Top 10% Wwt, Top 10% Pwwt, Top 20% LEQ, Top 20% IMF,
105	747	M 190074	24/5	118	2	10.2	14.9	-0.4	2.4	142.9	135.8	-0.57	5.07	2.46	3.93	
106	342	Melton Vale 190152	12/5	123	2	10.3	16.4	0.1	2.4	143.0	139.9	-0.39	5.12	3.10	2.98	Top 5% Dress %,
107	72	Felix 180325	6/5	114	2	10.0	14.3	-0.5	3.4	147.3	135.8	-0.95	5.29	2.71	4.82	Top 10% PEMD, Top 20% TCP, Top 20% Dress %, Top 5% LMY,
108	269	M 190009	11/5	114	2	9.9	15.0	-0.7	2.4	146.6	135.3	-0.96	5.20	2.84	4.68	Top 10% Dress %, Top 10% LMY,
109	743	Bundara Downs 193638	24/5	115	2	11.6	17.0	-1.2	1.7	143.3	132.9	-0.88	7.85	2.47	4.51	Top 10% Wwt, Top 20% Pwwt, Top 10% LMY,
110	744	Bundara Downs 193638	24/5	122	2	11.5	16.9	-1.1	2.0	144.4	133.8	-0.89	7.76	2.59	4.56	Top 10% Wwt, Top 20% Pwwt, Top 20% Dress %, Top 10% LMY,
111	681	Felix 180325	22/5	117	2	11.1	17.3	-0.9	3.3	152.2	139.6	-1.06	7.09	2.95	5.76	Top 20% Wwt, Top 20% Pwwt, Top 10% PEMD, Top 10% TCP, Top 10% Dress %, Top 1% LMY (Trait Leader),
112	131	Bruan 190140	6/5	102	2	10.3	15.9	-0.5	1.8	143.0	142.4	0.01	3.51	2.17	3.31	Top 10% IMF,
113	601	M 190074	21/5	107	3	10.3	15.7	-0.8	2.2	145.0	135.7	-0.77	5.13	2.45	4.36	Top 20% LMY,
114	185	Felix 190968	8/5	104	2	9.1	15.3	-0.1	3.2	148.4	144.4	-0.30	2.82	2.91	3.64	Top 10% PEMD, Top 20% TCP, Top 20% LEQ, Top 10% Dress %,
115	593	M 190117	21/5	118	2	10.6	15.3	-0.9	2.2	144.0	132.6	-0.96	4.86	2.21	4.32	Top 20% LMY,
116	422	Lambpro 140859	16/5	112	2	11.3	17.7	-0.1	2.8	152.3	143.8	-0.69	3.63	2.91	4.05	Top 20% Wwt, Top 10% Pwwt, Top 20% PEMD, Top 10% TCP, Top 20% LEQ, Top 10% Dress %, Top 20% LMY,
117	421	M 190117	12/5	102	2	10.9	15.5	-1.0	3.3	151.2	141.0	-0.86	5.06	2.69	5.13	Top 20% Wwt, Top 10% PEMD, Top 10% TCP, Top 20% Dress %, Top 5% LMY,
118	606	M 200289	21/5	102	2	9.0	12.9	-0.8	3.1	143.7	132.3	-0.95	5.64	2.42	4.60	Top 20% PEMD, Top 10% LMY,
119	236	Felix 190968	8/5	107	2	10.6	16.4	-0.3	3.1	149.7	142.7	-0.57	3.98	3.00	4.20	Top 10% PEMD, Top 20% TCP, Top 20% LEQ, Top 10% Dress %, Top 20% LMY,
120	143	Rangeview 190045	6/5	115	1	9.5	15.0	-0.4	2.7	145.7	140.3	-0.50	3.82	2.39	3.90	Top 20% PEMD,



*** 160 LAMBPLAN PERFORMANCE RAMS ***

Tuesday 6th Sept 2022 - 2pm
On Property & Auctionsplus.



LOT	TAG	SIRE	DOB 2021	Kgs 11/8	BT	Wwt	Pwwt	Pfat	PEMD	TCP	LEQ	IMF	SFS	DRESS	LMY	Buyer/Price
121	782	M 200274	24/5	112	2	10.3	15.3	0.4	2.8	140.1	133.1	-0.55	5.56	2.71	3.16	Top 20% PEMD, Top 20% Dress %
122	777	M 190209	24/5	125	2	10.4	15.8	-0.3	2.4	142.8	134.1	-0.71	5.53	2.69	4.09	Top 20% Dress %, Top 20% LMY
123	418	Rangeview 190045	12/5	118	2	9.8	14.1	-0.2	3.4	147.8	140.8	-0.65	3.74	2.69	3.74	Top 10% PEMD, Top 20% TCP, Top 20% Dress %
124	306	Felix 180325	11/5	123	2	10.1	15.2	-0.9	2.6	146.7	137.6	-0.75	4.57	2.39	4.28	Top 20% LMY
125	733	M 190117	24/5	113	2	10.6	15.2	-0.8	3.3	149.6	138.0	-0.97	5.33	2.78	5.01	Top 10% PEMD, Top 20% TCP, Top 10% Dress %, Top 5% LMY
126	753	M 190074	24/5	121	2	11.8	17.5	-0.3	1.8	143.6	135.4	-0.66	6.07	2.41	3.93	Top 5% Wwt Top 10% Pwwt
127	420	M 190117	12/5	96	2	11.4	16.2	-1.2	2.6	149.9	139.6	-0.86	5.50	2.47	5.19	Top 10% Wwt, Top 20% TCP, Top 5% LMY
128	159	Melton Vale 190152	8/5	114	3	10.9	17.4	-0.5	2.4	147.9	143.0	-0.38	4.81	2.96	3.83	Top 20% Wwt, Top 20% Pwwt, Top 20% TCP, Top 20% LEQ, Top 10% Dress %
129	576	Rangeview 190045	18/5	121	1	7.6	12.0	-0.2	3.0	139.4	131.7	-0.63	3.46	2.39	3.21	Top 20% PEMD
130	583	Bundara Downs 193638	21/5	117	2	10.6	16.8	-1.3	1.8	147.8	138.2	-0.81	5.33	2.61	4.31	Top 20% Pwwt, Top 20% TCP, Top 20% Dress %, Top 20% LMY
131	435	M 190009	16/5	114	2	10.6	16.5	-0.5	2.4	146.4	135.7	-0.90	5.79	2.92	4.41	Top 10% Dress %, Top 20% LMY
132	736	Bundara Downs 193638	24/5	106	1	10.1	15.8	-1.5	1.6	143.1	134.7	-0.71	6.14	2.34	4.26	Top 20% LMY
133	396	Felix 190968	12/5	112	2	10.5	17.0	-0.1	2.9	150.0	144.5	-0.42	3.80	3.05	3.80	Top 20% Pwwt, Top 20% PEMD, Top 20% TCP, Top 20% LEQ, Top 10% Dress %
134	1098	M 190209	25/9	93	1	10.1	15.2	-0.9	2.5	146.5	137.1	-0.79	5.31	2.65	4.77	Top 20% Dress %, Top 5% LMY
135	889	Bundara Downs 193638	19/7	113	1	10.6	16.3	-1.0	2.6	148.4	140.0	-0.70	5.98	2.92	4.34	Top 20% TCP, Top 10% Dress %, Top 20% LMY
136	920	Felix 190968	22/7	115	2	10.3	16.0	-0.4	2.9	147.3	137.6	-0.81	5.35	2.80	4.53	Top 20% PEMD, Top 20% TCP, Top 10% Dress %, Top 10% LMY
137	910	Melton Vale 190152	22/7	117	1	11.4	17.4	-0.4	1.9	146.5	142.5	-0.29	4.39	2.55	3.71	Top 10% Wwt, Top 10% Pwwt, Top 20% LEQ, Top 20% Dress %
138	1004	Bundara Downs 193638	17/8	103	3	11.3	17.4	-0.9	2.3	147.1	138.4	-0.72	6.42	2.86	4.20	Top 20% Wwt, Top 10% Pwwt, Top 10% Dress %, Top 20% LMY
139	946	Bundara Downs 193638	28/7	113	2	11.3	17.8	-1.5	1.2	144.7	134.7	-0.85	6.81	2.36	4.52	Top 20% Wwt, Top 10% Pwwt, Top 10% LMY
140	1084	Bundara Downs 193638	23/9	100	1	11.3	17.3	-1.5	1.5	146.8	137.3	-0.80	6.63	2.47	4.53	Top 20% Wwt, Top 20% Pwwt, Top 10% LMY
141	921	Felix 190968	22/7	106	2	9.8	15.2	-0.3	3.0	146.3	136.9	-0.78	5.03	2.79	4.38	Top 20% PEMD, Top 10% Dress %, Top 20% LMY
142	1027	Bundara Downs 193638	3/9	111	1	11.3	17.8	-1.2	2.2	148.8	137.5	-0.96	7.34	2.89	4.72	Top 20% Wwt, Top 10% Pwwt, Top 20% TCP, Top 10% Dress %, Top 10% LMY
143	944	Felix 190968	25/7	116	2	10.3	16.6	-0.5	2.9	148.8	141.5	-0.60	4.06	2.78	4.01	Top 20% Pwwt, Top 20% PEMD, Top 20% TCP, Top 10% Dress %
144	970	M 190209	30/7	100	1	9.5	15.0	-0.8	3.0	147.9	137.7	-0.86	5.10	2.90	4.72	Top 20% PEMD, Top 20% TCP, Top 10% Dress %, Top 10% LMY
145	1087	Bundara Downs 193638	23/9	108	1	12.1	18.3	-2.0	1.1	147.7	136.7	-0.95	7.08	2.23	5.09	Top 5% Wwt, Top 5% Pwwt, Top 20% TCP, Top 5% LMY
146	901	Rangeview 190045	19/7	106	1	9.0	13.9	-0.5	2.7	144.4	138.5	-0.47	2.98	2.31	3.64	Top 20% PEMD
147	953	M 190074	28/7	113	1	11.5	17.3	-0.9	2.3	146.8	134.9	-1.00	7.19	2.52	5.09	Top 10% Wwt, Top 20% Pwwt, Top 5% LMY
148	905	Bundara Downs 193638	19/7	107	2	11.7	17.7	-1.0	1.7	145.3	136.7	-0.70	6.69	2.57	4.04	Top 10% Wwt, Top 10% Pwwt, Top 20% Dress %, Top 20% LMY
149	1035	Bundara Downs 193638	3/9	102	1	11.6	17.6	-1.5	2.0	150.2	140.6	-0.82	6.68	2.60	5.17	Top 10% Wwt, Top 10% Pwwt, Top 20% TCP, Top 20% Dress %, Top 5% LMY
150	1020	Bundara Downs 193638	24/8	103	1	12.3	18.0	-1.9	1.4	148.0	134.7	-1.14	8.19	2.34	5.53	Top 5% Wwt, Top 5% Pwwt, Top 20% TCP, Top 1% LMY (Trait Leader)



*** 160 LAMBPLAN PERFORMANCE RAMS ***

Tuesday 6th Sept 2022 - 2pm
On Property & Auctionsplus.



LOT	TAG	SIRE	DOB 2021	Kgs 11/8	BT	Wwt	Pwwt	Pfat	PEMD	TCP	LEQ	IMF	SFS	DRESS	LMY	Buyer/Price
151	992	Bundara Downs 193638	17/8	108	1	11.2	17.0	-1.0	1.9	144.5	135.0	-0.80	6.74	2.68	4.11	Top 20% Wwt, Top 20% Pwwt, Top 20% Dress %, Top 20% LMY,
152	928	Lambpro 140859	22/7	96	2	10.7	15.3	-0.4	2.9	149.6	142.5	-0.57	4.44	2.56	4.55	Top 20% PEMD, Top 20% TCP, Top 20% LEQ, Top 20% Dress %, Top 10% LMY,
153	886	M 190074	19/7	102	2	11.8	16.8	-1.4	1.7	149.7	142.2	-0.61	5.38	2.26	5.08	Top 5% Wwt Top 20% Pwwt, Top 20% TCP, Top 5% LMY,
154	1058	Bundara Downs 193638	11/9	104	1	12.0	18.4	-1.4	1.6	148.6	139.1	-0.80	6.66	2.58	4.73	Top 5% Wwt Top 5% Pwwt, Top 20% TCP, Top 20% Dress %, Top 10% LMY,
155	1050	Bundara Downs 193638	11/9	95	1	11.5	17.6	-1.3	1.7	148.6	139.3	-0.79	6.06	2.62	4.75	Top 10% Wwt, Top 10% Pwwt, Top 20% TCP, Top 20% Dress %, Top 10% LMY,
156	948	M 190074	28/7	112	1	11.4	17.0	-1.0	2.0	148.3	141.0	-0.59	4.43	2.32	4.42	Top 10% Wwt, Top 20% Pwwt, Top 20% TCP, Top 20% LMY,
157	974	Bundara Downs 193638	10/8	105	1	10.6	16.2	-0.7	2.4	144.4	134.5	-0.83	6.35	2.83	3.97	Top 10% Dress %,
158	980	Bundara Downs 193638	10/8	109	1	11.0	16.8	-1.6	2.1	148.8	137.6	-0.95	7.24	2.69	5.00	Top 20% Wwt, Top 20% Pwwt, Top 20% TCP, Top 20% Dress %, Top 5% LMY,
159	832	Bundara Downs 193638	8/6	127	2	11.0	17.3	-1.7	0.8	141.5	129.2	-1.06	7.93	2.21	4.50	Top 20% Wwt, Top 20% Pwwt, Top 10% LMY,
160	806	Syn 1-21	3/6	123	2	10.4	15.0	-1.4	1.6	143.1	134.6	-0.71	5.42	1.92	4.74	Top 10% LMY,



BLUE HILLS

Cage Dipping, Ram Shearing & Crutching Trailer

sheep services

(02) 6887 1272 | 0428 878 413

FULLY INSURED



MAROCARA/Breed Averages - 1 August 2022 Analysis.

	WWT	PWWT	PFAT	PEMD	TCP	LEQ	IMF	SF5	DRS %	LMY	Counts
SALE Rams Av.	10.5	16.0	-0.7	2.4	147.2	139.0	-0.68	5.01	2.62	4.32	160
2021 All Progeny Av.	9.9	15.0	-0.6	2.3	143.7	135.7	-0.67	4.93	2.43	4.05	1113
Poll Dorset 2021 drop progeny across flocks Av.	9.5	14.2	-0.6	2.0	137.5	132.3	-0.59	4.45	2.16	3.63	

SIRES USED in 2021 Drops & Retained Rams for 2022

Sire	Sire of Sire	Sire of Dam	BT	BWT	WWT	PWT	PFAT	PEMD	TCP	LEQ	IMF	SFS	DRESS	LMV	IB	Prog	Fks	rams in sale	Comments
FELIX 190141	FELIX-160494	FELIX 160222	2	0.5	13.2	21.7	0.5	3.6	167.2	166.6	0.05	1.22	3.77	3.96	3%	45.4	9	3	AI Sire 2021 Top 1% TCP (Front Leader), Top 1% Wwt, Top 1% Pwt, Top 1% LEQ, Top 5% IMF, Top 5% Dress.
BRUAN 190275	BRUAN 180030	M 150049	2	0.5	11.6	18.3	-0.7	3.4	167.0	158.8	-0.53	1.49	3.27	5.39	7%	34.6	7	5	AI Sire 2021, Top 1% TCP (Front Leader), Top 5% Pwt, Top 1% LEQ, Top 5% Dress, Top 5% IMF
BRUAN 190007	DERRNOC 170028	M 150049	2	0.1	11.5	17.4	-1.1	2.0	160.5	154.3	0.31	0.41	2.83	3.82	4%	45.5	13	1	AI Sire 2021, Top 1% TCP (Front Leader), Top 1% LEQ, Top 5% IMF
M 210157	FELIX 190141	M 150049	2	0.5	12.6	19.5	-1.0	3.1	160.4	150.4	-0.69	5.89	3.40	5.91	3%	38	1	-	Top 5% Wwt Top 1% Pwt (Front Leader), Top 20% Pemd, Top 1% TCP (Front Leader), Top 10% LEQ, Top 5% Dress % Top 1% IMF (Front Leader) Used as Ram Lamb, KEEPER 2022
M 210404	FELIX 190141	M 150049	1	0.4	11.2	17.1	0.3	4.1	159.9	158.7	0.04	1.56	3.67	3.71	2%	-	-	-	Top 20% Wwt, Top 20% Pwt, Top 1% Pemd (Front Leader), Top 1% TCP (Front Leader), Top 1% LEQ (Front Leader), Top 10% IMF, Top 1% Dress % (Front Leader) Used as Ram Lamb, KEEPER 2022
M 210321	FELIX 190141	MELTON VALE 160114	2	0.4	11.0	17.6	-0.1	3.4	159.6	155.6	-0.28	1.09	3.22	3.72	2%	42	1	-	Top 20% Wwt, Top 10% Pwt, Top 5% Pemd, Top 1% TCP (Front Leader), Top 5% LEQ, Top 5% Dress % Used as Ram Lamb, KEEPER 2022
M 210368	MELTON VALE 190152	ABERDEEN 160527	3	0.4	12.1	18.6	-0.1	3.1	158.1	153.2	-0.36	4.02	3.37	4.27	3%	-	-	-	Top 5% Wwt Top 5% Pwt, Top 10% Pemd, Top 5% TCP, Top 5% LEQ, Top 5% Dress % Top 20% IMF, KEEPER 2022
M 190117	LAMBPRO 160299	POLLAMBI 110451	2	0.6	12.4	18.2	-1.2	3.0	157.8	151.0	-0.86	4.64	2.81	5.59	3%	96	1	16	Top 1% TCP (Front Leader), Top 5% Pwt, Top 1% IMF, KEEPER 2022
M 210221	FELIX 190141	M 150049	2	0.3	11.3	17.5	-0.4	3.6	156.9	152.7	-0.31	3.73	3.22	4.71	3%	44	1	-	Top 20% Wwt, Top 10% Pwt, Top 5% Pemd, Top 5% TCP, Top 5% LEQ, Top 5% Dress % Top 10% IMF, Used as Ram Lamb, KEEPER 2022
M 210508	M 190117	M 150049	1	0.4	10.2	15.6	-1.1	3.2	155.5	147.7	-0.64	3.23	2.82	5.05	3%	-	-	-	Top 10% Pemd, Top 5% TCP, Top 10% LEQ, Top 10% Dress % Top 5% IMF, KEEPER 2022
BRUAN 190140	WUNNAMU RRA 120455	FELIX 130653	2	0.2	10.9	17.3	-0.1	2.6	155.2	157.1	0.48	0.93	2.74	3.22	3%	44.7	14	5	AI Sire 2021, Top 1% LEQ, Top 1% IMF
M 210378	MELTON VALE 190152	FELIX 161073	2	0.4	11.7	18.3	-0.5	2.5	154.7	153.0	-0.15	3.98	2.96	4.31	3%	-	-	-	Top 10% Wwt, Top 5% Pwt, Top 5% TCP, Top 5% LEQ, Top 20% IMF, Top 10% Dress % Top 20% IMF, KEEPER 2022
M 210178	Bruan 190140	M 150049	2	0.2	9.7	14.4	-0.7	3.3	153.3	151.0	-0.14	2.90	2.72	4.41	2%	-	-	-	Top 10% Pemd, Top 10% TCP, Top 5% LEQ, Top 20% IMF, Top 20% Dress % Top 20% IMF, KEEPER 2022
M 190209	POLLAMBI 160212	M 150049	2	0.3	10.0	15.3	-0.4	3.4	153.0	144.0	-0.63	3.27	3.09	4.79	1%	123	1	10	Top 5% Dress, Top 5% IMF
M 190009	POLLAMBI 160212	M 150049	2	0.2	9.8	16.0	-0.6	2.8	153.0	145.5	-0.93	4.13	3.26	4.86	2%	91	1	9	Top 5% Dress, Top 5% IMF
FELIX 190968	FELIX-160494	HILCROFT FARMS 130156	1	0.3	10.1	17.1	0.1	3.6	152.8	150.0	-0.27	1.8	3.23	3.73	3%	40.1	8	6	Top 5% Pemd, Top 5% Dress
M 210494	M 190117	M 150049	1	0.3	10.1	15.2	-0.6	3.7	152.5	145.3	-0.57	3.91	2.89	4.76	6%	-	-	-	Top 5% Pemd, Top 10% TCP, Top 20% LEQ, Top 10% Dress % Top 5% IMF, KEEPER 2022
LAMBPRO 140859	HILCROFT FARMS 130967	HILCROFT FARMS 110232	2	0.4	9.4	14.2	0.0	3.7	151.9	148.8	-0.35	0.55	2.79	3.99	10%	54.2	8	5	Top 5% Pemd
MELTON VALE 190152	WUNNAMU RRA 120455	MELTON VALE 120094	2	0.3	11.4	18.1	0.4	2.2	151.5	156.6	0.50	1.34	2.98	2.31	2%	53.1	8	22	Impressive Ending Quality sire, AI 2021, Top 5% Pwt, Top 5% LEQ, Top 1% IMF
FELIX 170667	FELIX 160800	FELIX 141005	2	0.4	10.4	16.1	-1.1	3.4	150.7	146.8	-0.62	5.63	3.14	5.54	6%	35.2	8	2	Top 5% Dress, Top 1% IMF
BUINDARA DOWNS 193638	BUINDARA DOWNS 170180	GLOROV 120518	1	0.6	12.8	19.9	-2.1	1.2	149.3	137.8	-0.89	8.1	2.76	5.12	4%	19.9	1	28	Purchased Bandura Downs Sire 2020, Impressive growth, Top 1% Wwt, Top 1% Pwt, Top 5% IMF
M 190074	OLD WOOLMIRI 150042	M 150049	2	0.3	11.2	16.5	-0.8	2.2	148.0	141.8	-0.57	4.59	2.36	4.48	3%	16.3	1	11	Top 5% Wwt, Top 5% Pwt, Top 5% Dress, Top 1% IMF
POLLAMBI 160212	POLLAMBI 150796	POLLAMBI 110451	2	0.3	12.0	18.7	-0.5	3.3	147.5	138.3	-1.22	5.45	3.49	6.03	7%	58.4	11	2	Top 5% Wwt, Top 5% Pwt, Top 5% Dress, Top 1% IMF
M 200289	ABERDEEN 180538	M 150049	1	0.3	9.8	14.2	-0.7	2.8	146.0	138.9	-0.69	5.13	2.46	4.56	4%	31	1	8	Top 5% Wwt, Top 5% Pwt, Top 5% Dress, Top 1% IMF
M 200274	M 170273	ABERDEEN 160527	2	0.4	11.3	16.1	-0.7	2.2	143.9	133.6	-0.84	7.4	2.51	4.45	3%	13	1	4	Top 5% Dress, Top 5% IMF
M 190098	M 150049	POLLAMBI 110451	2	0.1	10.2	15.4	-0.4	3.0	143.7	134.4	-0.82	7.91	3.00	4.87	3%	59	1	4	Top 5% Dress, Top 5% IMF
RANGEVIEW 190045	LAMBPRO 140859	DERRNOC 140033	1	0.4	7.9	12.2	-0.3	3.4	142.7	137.8	-0.45	1.86	2.33	3.37	4%	43.9	9	8	Purchased 2020 in Sydney with Meat Ene Australia Members
FELIX 180325	FELIX 170667	POLLAMBI 130052	2	0.2	9.4	14.3	-1.0	2.9	142.2	135.7	-0.91	6.39	2.42	5.05	5%	24.9	1	4	Purchased Felix Sire 2019, Top 5% IMF
M 200094	M 180259	FELIX 150545	2	0.5	12.3	17.6	-0.3	2.3	138.9	127.7	-1.15	10.02	2.52	4.84	6%	22	1	1	Top 5% Wwt, Top 5% IMF

