

# WOMBOOTA BORDER LEICESTERS



# SALE

**THURSDAY 29<sup>TH</sup> SEPTEMBER 2022**

at 1.00pm, Womboota Pastoral Shearing Shed,  
3783 Perricoota Road, Womboota Via Moama, NSW

WOMBOOTA



PASTORAL

**Vendors**

**Malcolm Starritt 0429 893 200**

Ian Starritt 03 5489 3250

malcolm.starritt@gmail.com

**100 ONE YEAR OLD RAMS**

12 Specially Selected Rams

88 Flock Rams

25 Specially Selected Stud Ready Ewes

**Nutrien**  
Livestock™

Wilson Beer  
0428 505 520

**Elders**

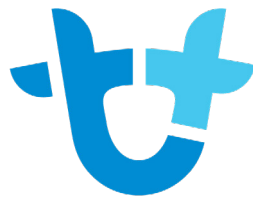
Matt O'Connor  
0427 845 954



AuctionsPlus



[www.wombootapastoral.com](http://www.wombootapastoral.com)



# AuctionsPlus

## How to Register and Bid on AuctionsPlus

1

Go to [www.auctionsplus.com.au](http://www.auctionsplus.com.au) to register at least 48 hours before the sale.

2

Select “**Sign Up**” in the top right hand corner.

3

Fill out your name, mobile number, email address and create a password.

4

Go to your emails and confirm the account.

5

Return to AuctionsPlus and log in.

6

Select “**Dashboard**” and then select “**Request Approval to Buy**”.

7

Fill in buyer details and once completed go back to Dashboard.

8

Complete buyer induction module (approx. 30 minutes).

9

AuctionsPlus will email you to let you know that your account has been approved.

10

Log in on sale day and connect to auction.

11

Bid using the two-step process – unlock the bid button and bid at that price.

12

If you are successful, the selling agent will contact you post sale to organise delivery and payment.

For more information please contact us on:

Phone: (02) 9262 4222

Email: [info@auctionsplus.com.au](mailto:info@auctionsplus.com.au)



## WHY WOMBOOTA PASTORAL BORDER LEICESTERS?

### HISTORY -

Our family has been breeding some of the best Border Leicesters in Australia for 108 years.

### WE USE OUR OWN -

We benefit from superior stud genetics in our own prime lamb operations.

### PROVEN PROFIT -

We are proud of our clients' continued success with phenomenal sales of Womboota Border Leicesters progeny.

- Rams will be penned from 11.00am on the day of the sale.
- Full Lambplan ASBV's available on each ram and ewe.
- If you are feeling unwell or are awaiting the result of a COVID test, we request that you do not attend the sale in person.
- We are using Auctions Plus if you are unable to make it on sale day. We have photographed all of the lots so that you can see in detail what you are bidding on.
- Complementary delivery arrangements to all successful purchasers will be made where possible
- All breeding sheep at Womboota Pastoral have been Gudair vaccinated since 2004.
- Rams carry an Australian Health Score of 8 out of a possible 10 points under the previous ABC scheme.
- Womboota Border Leicester Stud is registered with the Australian Stud Sheep Breeders Association
- Womboota Border Leicester Stud is Accredited Brucellosis free.
- Womboota Pastoral is located within a footrot protected area, and in the Riverina bio security area.
- Light refreshments available on the day of the sale.

We look forward to seeing you at our sale.  
Regards, the Starritt Family, Womboota



Wilson Beer 0428 505 520



Matt O'Connor 0427 845 954

[www.wombootapastoral.com](http://www.wombootapastoral.com)

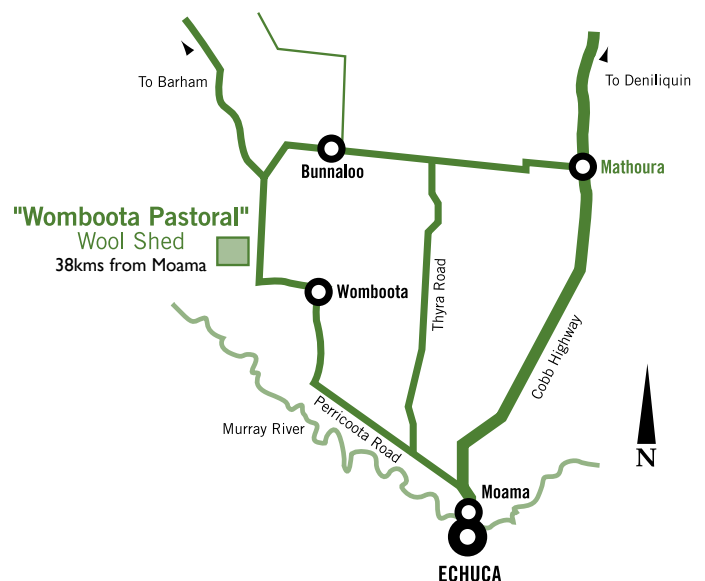
[www.superborders.com](http://www.superborders.com)

[www.sheepgenetics.org.au](http://www.sheepgenetics.org.au)

Womboota Border Leicester Stud

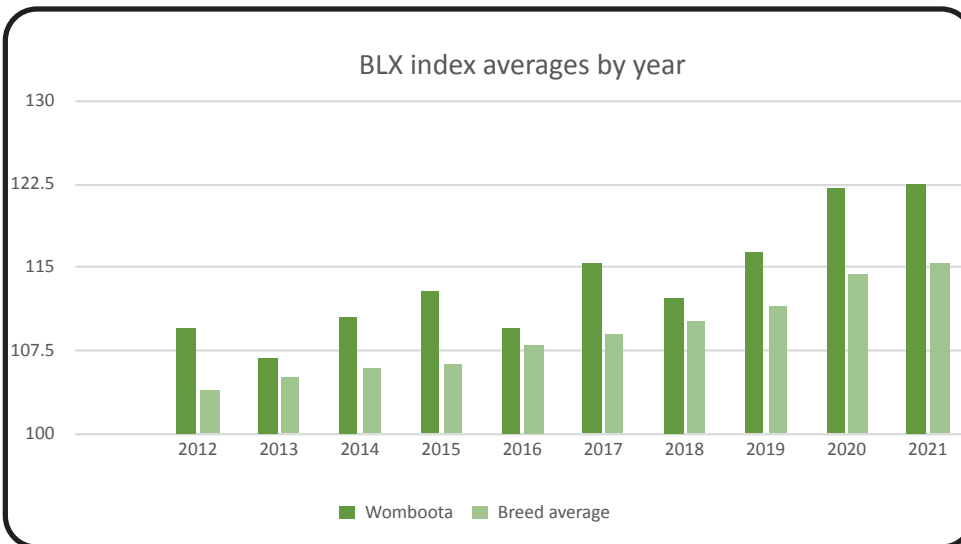
womboota\_borderleicester

\*Outside Agents 3% rebate if in attendance on the day of sale.



Proudly printed by EMPD 5480 7545

WOMBOOTA  
PASTORAL



[www.superborders.com](http://www.superborders.com)

SuperBorders is the brand name for Border Leicester Rams that are of high genetic merit for a first cross production system. The official SuperBorder yellow ear tags allow SuperBorder rams to be easily identified.

To qualify as a SuperBorder a Border Leicester ram must be above the 50th percentile for the breed based on the BLX index (Border Leicester Cross Index). The 50th percentile index value is calculated based on the 15th of August LAMBPLAN run each year. It is used to determine SuperBorder rams for that selling season. The BLX Index has been developed for production systems using Border Leicester sires crossed to Merino dams to produce first cross progeny. BLX balances maintaining mature size with significant improvements in early growth and reproduction. A higher BLX index targets animals that are more profitable in this production system.

**The cut off for the 2021 drop is 115.67. Everything on or over this index is a Superborder for the 2021 sale**

Not all rams sold by SuperBorder members are necessarily SuperBorder quality, but are bred by committed, registered breeders striving for genetic gain. SuperBorder rams must be structurally sound and of good breed type.

The SuperBorders group is made up of a number of studs across 5 states who work together in meeting market requirements for objectively measured maternal genetics in the Australian Lamb Industry. SuperBorders members are industry leaders with longstanding involvement in research, trials and industry resource flocks.

First cross lambs sired by 100% SuperBorder rams may be sold as 'Bred from SuperBorders'. Special yellow pen cards and SuperBorders ear tags are available to identify these animals when sold in physical sales. Virtual yellow sale cards are also available for SuperBorders progeny sold on online sale platforms. Please speak with us if you would like either of these marketing materials.

## Updates to the BLX Index

**Number of Lambs Weaned (NLW) has been replaced by an improved ASBV called Weaning Rate (WR). This new ASBV has been included in the BLX index.**

Sheep Genetics has released a new trait that measures reproductive performance called Weaning Rate (WR). WR combines the traits of Conception (CON), Litter Size (LS) and Ewe Rearing Ability (ERA) into a single ASBV for selection. From 2022 onwards WR has replaced the previous trait of Number of Lambs Weaned (NLW) and has been included in the BLX index.

As a result of the introduction and inclusion of WR in the BLX index there have been changes in the percentiles for the analysis. You may notice that the 50<sup>th</sup> percentile for the analysis has changed compared to last year.

This ram sale season it will be important to use the percentile band table to re-benchmark what the percentiles are to assist with ram purchasing decisions.

To access the current percentile bands table please use the QR code below of the left. For further information on Weaning Rate please use the QR code on the right and refer to page 4 of the Sheep Genetics 2022 Analysis Enhancement Documentation.

Access the current First-Cross Sire Percentile Band Table



For more information on Weaning Rate



Report: Percentile Bands  
 Analysis: FIRST CROSS SIRE BREEDS  
 Analysis date: 15/08/2022



Band	BILX	BMWT	PWT	AWT	MMWT	PEMD	PFAT	YGFW	WR
1	148.34	-0.1	13.01	16.66	2.35	2.08	1.81	16.89	0.18
5	137.99	0.01	11.53	14.66	1.84	1.59	1.06	13.42	0.13
10	132.12	0.07	10.8	13.72	1.58	1.31	0.73	11.72	0.1
20	126.65	0.14	9.91	12.61	1.26	0.98	0.4	9.74	0.07
30	122.82	0.19	9.25	11.78	1.03	0.73	0.19	8.3	0.05
40	119.37	0.23	8.65	11.04	0.85	0.52	0.01	7.07	0.03
50	115.67	0.27	8.05	10.31	0.68	0.33	-0.16	5.98	0.01
60	111.4	0.3	7.39	9.54	0.51	0.14	-0.32	4.73	-0.01
70	107.34	0.34	6.65	8.73	0.34	-0.03	-0.48	3.4	-0.03
80	103.52	0.39	5.78	7.77	0.13	-0.25	-0.68	1.89	-0.05
90	99.55	0.44	4.58	6.42	-0.19	-0.54	-0.92	-0.3	-0.07

The percentile report above shows the range of trait figures from the top performing sheep of the breed to the bottom. The 50th percentile band is deemed as the average. You can use this report to check where each lot fits within the breed for particular traits.

### Understanding the information in the Wamboota Border Leicesters catalogue

The Australian Sheep Breeding Values (ASBVS) within the catalogue are based on the Lambplan maternal analysis from the 15th of August 2022.

Heading	Trait	Units	Details
ID	Animal Identification		Each animal is tagged from birth with an eid tag. Then an extra visual tag and colour coded family tags are added at lamb marking
T	Animal Identification		Indicates the animal is born a Twin
TR	Animal Identification		Indicates the animal is born a Triplet
BWT	Birth weight	Kgs	Measures the genetic difference in liveweight at birth
PWT	Post weaning weight	Kgs	Genetic difference in liveweight at 9 months of age of a sires progeny
AWT	Adult weight	Kgs	Genetic difference in liveweight at 12 months of age
MWWT	Maternal weaning weight	Kgs	Genetic difference in a sires female progeny's ability to raise healthy live lambs
PEMD	Post weaning eye muscle depth	Mm	Genetic difference in eye muscle depth at the loin at 9 months of age
PFAT	Post weaning fat depth	Mm	Genetic difference in fat depth at 9 months of age
YGFW	Yearling greasy fleece weight	Kgs	Genetic difference in total fleece weight at 12 months of age.
WR	Weaning rate	Lambs per ewe joined	The genetic difference between female progeny of a sire for the number of lambs surviving at the time of weaning
BLX	Border Leicester Crossing index		Calculated across a number of ASBVS to rank animals on the suitability for first cross ewe and wether production
			The yellow background in the BLX column indicates the animal is a Superborder
Acc	Accuracies	Percentage	Are a reflection on the amount and quality of information available to calculate the ASBVs for each animal.
SB no	Superborder number		Every animal eligible to be a superborder is allocated an extra tag. Each tag is a unique number for quality assurance within the Superborder group
Sire/Dam	Pedigree		These are unique numbers relating to searching animals within sheep genetics Please call if you need help searching for full pedigrees on any animal
			Indicates the animal is ranked within the top 10 % of the breed
			Indicates the animal is ranked within the top 20 % of the breed

### Wamboota Border Leicester stud - Sires page

Name	Sire	Dam	BLX	BWT	Acc	PWT	Acc	AWT	Acc	MWWT	Acc	PEMD	Acc	PFAT	Acc	YGFW	Acc	WR	Acc
JOHNOS-209.18	0244112011110083	0244112016160306	139.45	0.34	65	11.45	84	15.47	93	0.74	81	0.30	67	0.42	92	16.83	90	0.18	57
WOMBOOTA-85.18	0245752015150022	0245752011110052	137.06	0.19	60	6.22	82	8.47	92	-0.33	79	1.41	62	1.10	91	21.29	90	0.19	52
WOMBOOTA-14.19	0245752017170016	0245752017170141	134.85	0.42	50	10.86	72	12.51	88	1.22	77	0.75	50	-0.55	87	8.77	86	0.10	38
JOHNOS-134.18	020041199898X049	0244112015155021	127.66	-0.24	63	3.05	86	2.24	93	1.00	82	2.74	67	2.16	90	-15.93	90	0.05	55
WOMBOOTA-162.18	0245752016160010	0245752014140003	127.52	0.10	60	7.05	82	7.95	92	2.09	80	0.82	61	0.80	91	-0.54	90	0.06	51
WOMBOOTA-187.20	0245752017170190	0245752018180070	124.41	0.32	49	7.16	63	7.88	77	0.38	69	-0.31	51	-0.40	76	5.92	76	0.12	44
WOMBOOTA-176.19	0245752016160186	0245752012120003	119.91	0.37	54	9.12	72	10.70	87	1.40	77	0.49	60	0.35	84	5.96	82	-0.01	45
WOMBOOTA-208.19	0245752016160213	0245752017170134	119.90	0.46	52	7.85	74	8.04	89	0.20	78	0.62	49	0.02	88	7.71	86	0.01	41
WOMBOOTA-178.20	0244112018180134	0245752019190007	113.43	0.05	47	4.88	63	7.38	72	1.43	64	1.06	51	-0.22	70	-10.57	65	0.00	43
WOMBOOTA-273.19	0245752016160186	0245752015150184	113.18	0.52	53	11.67	69	13.79	88	1.95	77	0.44	55	0.56	87	7.81	85	-0.13	43

WOMBOOTA BORDER LEICESTER STUD - 12 Specially selected rams

Lot	Animal Id	BWT	Acc	PWT	Acc	AWT	Acc	MWWT	Acc	PEMD	Acc	PFAT	Acc	YGFW	Acc	WR	Acc	BLX	Acc	SB No	Sire	Dam
1	158.21	0.44	58	11.71	69	14.64	62	1.44	50	0.20	66	-0.23	69	8.57	70	0.09	44	131.74	46	25674	0244112018180209	0245752018180021
Purchaser																						
2	42.21T	0.41	62	11.31	70	15.50	63	0.93	52	0.68	67	0.65	69	13.49	70	0.12	45	133.76	47	25627	0244112018180209	0245752018180170
Purchaser																						
3	361.21T	0.51	51	11.75	68	14.84	60	1.67	45	0.31	64	-0.29	67	8.79	68	-0.05	38	118.26	42	25668	0245752019190273	0245752019190259
Purchaser																						
4	300.21T	0.50	53	10.61	69	15.00	62	2.27	47	0.07	65	-0.46	68	12.60	69	-0.03	39	117.22	43	25638	0245752019190273	0245752018180173
Purchaser																						
5	314.21T	0.51	50	11.38	67	13.53	60	1.14	41	-0.26	63	-0.80	66	16.10	67	0.00	29	121.23	36	25673	0245752019190014	0245752018180322
Purchaser																						
6	116.21	0.47	53	10.16	68	12.55	61	1.33	44	-0.05	64	-0.25	67	16.90	68	0.08	37	128.83	41	25612	0245752019190014	0245752018180103
Purchaser																						
7	394.21T	0.53	58	13.02	69	17.41	61	1.51	51	0.28	66	-0.40	68	17.56	69	0.11	45	136.17	47	25671	0244112018180209	0245752019190148
Purchaser																						
8	133.21	0.44	52	8.48	68	10.35	62	0.98	45	0.06	64	-0.55	67	11.21	67	-0.04	34	112.06	40		0245752019190176	0245752017170380
Purchaser																						
9	10.21T	0.48	57	9.84	69	11.71	62	1.27	50	-0.23	64	0.13	67	-2.53	68	0.01	40	117.95	44	25660	0245752019190176	0245752017170104
Purchaser																						
10	375.21T	0.47	56	10.35	70	14.04	63	0.79	49	0.39	67	-0.20	69	15.45	70	0.06	40	124.98	44	25691	0245752018180085	0245752017170169
Purchaser																						
11	101.21T	0.43	57	8.77	69	12.31	62	1.80	44	0.36	65	-0.98	68	5.50	69	0.08	31	125.10	38	25685	0245752019190014	0245752017170281
Purchaser																						
12	58.21TR	0.36	58	8.87	69	9.95	62	1.36	50	1.01	65	0.32	68	11.01	67	0.07	39	133.11	43	25652	0245752019190176	0245752015150046
Purchaser																						



**WOMBOOTA BORDER LEICESTER STUD - 40 rams (Displayed in pens of 2. Sold individually)**

Lot	Animal Id	BWT	Acc	PWT	Acc	AWT	Acc	MWWT	Acc	PEMD	Acc	PFAT	Acc	YGFW	Acc	WR	Acc	BLX	Acc	SB No	Sire	Dam
13	125.21	0.22	61	7.16	71	10.06	63	-0.29	52	1.10	67	0.23	70	21.25	71	0.15	47	131.17	48	25689	0245752018180085	0245752018180055
Purchaser																						
14	332.21T	0.41	58	11.01	70	13.65	62	1.27	50	0.84	66	0.77	69	10.55	70	0.11	44	135.96	46	25668	0244112018180209	0245752019190280
Purchaser																						
15	131.21	0.37	52	10.01	69	11.00	62	1.86	46	0.11	65	-0.33	68	4.16	69	-0.03	35	119.96	40	25678	0245752019190273	0245752017170215
Purchaser																						
16	207.21T	0.53	54	9.68	68	10.45	61	1.31	46	0.09	64	-0.39	67	10.06	59	0.11	37	132.98	41	25621	0245752019190014	0245752017170058
Purchaser																						
17	333.21T	0.60	53	11.32	68	12.33	61	0.39	44	0.38	65	-0.30	67	16.48	68	0.01	39	124.02	42	25651	0245752019190208	0245752019190251
Purchaser																						
18	149.21	0.44	59	11.53	70	12.89	62	0.85	50	-0.36	67	-0.04	69	10.88	70	0.14	44	136.12	46	25603	0244112018180209	0245752019190016
Purchaser																						
19	181.21T	0.44	53	9.28	69	10.96	61	1.68	46	0.76	65	0.67	68	6.18	69	-0.05	39	117.48	43	25653	0245752019190273	0245752018180189
Purchaser																						
20	225.21T	0.35	54	10.13	68	12.87	61	0.70	48	0.41	64	0.08	67	14.09	67	0.05	42	124.64	44	25670	0245752019190176	0245752019190077
Purchaser																						
21	102.21	0.60	58	10.12	69	13.61	62	1.42	46	-0.06	65	-0.21	68	11.28	69	-0.07	40	109.65	43		0245752019190273	0245752018180269
Purchaser																						
22	311.21T	0.58	53	10.27	69	13.72	61	1.81	47	-0.38	65	-0.28	68	5.34	68	-0.06	38	111.43	42		0245752019190273	0245752017170222
Purchaser																						
23	200.21T	0.43	59	9.46	69	12.54	63	0.85	51	0.14	66	-0.30	69	23.00	70	0.09	44	128.34	46	25688	0244112018180209	0245752018180144
Purchaser																						
24	260.21T	0.37	53	8.49	69	9.50	62	1.61	47	0.46	65	-0.02	68	7.34	69	-0.09	39	112.53	42		0245752019190273	0245752016160272
Purchaser																						
25	41.21T	0.09	60	5.77	69	8.40	62	1.61	50	1.38	65	0.59	68	-5.09	69	0.03	44	120.63	46	25614	0244112018180134	0245752018180010
Purchaser																						
26	119.21	0.44	53	10.15	68	14.34	61	0.49	44	0.25	64	-0.51	67	4.25	68	0.05	38	117.93	41	25637	0245752019190014	0245752019190011
Purchaser																						
27	224.21T	0.31	57	7.62	69	11.74	61	0.29	48	0.25	65	0.46	68	21.21	69	0.09	42	121.64	44	25616	0245752018180085	0245752018180273
Purchaser																						
28	299.21T	0.34	57	10.59	69	15.41	62	1.70	50	0.22	66	-0.11	68	3.43	70	0.05	43	122.37	45	25697	0245752018180162	0245752018180227
Purchaser																						



**WOMBOOTA BORDER LEICESTER STUD - 40 rams (Displayed in pens of 2. Sold individually)**

Lot	Animal Id	BWT	Acc	PWT	Acc	AWT	Acc	MWWT	Acc	PEMD	Acc	PFAT	Acc	YGFW	Acc	WR	Acc	BLX	Acc	SB No	Sire	Dam
45	322.21T	0.43	54	8.20	69	9.81	62	1.05	45	0.18	65	-0.06	68	-1.66	69	0.05	39	120.57	42	25607	0245752019190208	0245752018180153
Purchaser																						
46	263.21T	0.45	58	9.97	69	10.12	61	1.59	50	0.32	66	-0.25	68	3.05	70	0.05	43	128.96	45	25657	0245752018180162	0245752019190055
Purchaser																						
47	114.21	0.30	59	7.72	70	10.76	63	0.25	51	0.82	67	0.23	70	6.05	71	0.13	46	128.32	47	25692	0245752018180085	0245752019190190
Purchaser																						
48	173.21TR	0.38	58	8.83	69	11.56	61	0.63	50	1.04	65	0.14	68	12.53	69	0.13	44	132.98	46	25693	0245752018180085	0245752019190132
Purchaser																						
49	117.21	0.32	57	9.18	69	11.92	61	0.21	48	0.74	66	-0.15	69	16.40	70	0.09	42	127.20	44	25647	0245752018180085	0245752019190193
Purchaser																						
50	143.21	0.45	60	8.27	71	8.54	63	-0.41	52	0.28	67	-0.60	70	17.90	71	0.15	47	133.65	49	25641	0245752018180085	0245752019190038
Purchaser																						
51	230.21T	0.27	58	6.95	69	8.67	63	1.70	51	0.41	66	0.36	69	2.25	69	0.07	43	125.43	46	25656	0245752018180162	0245752017170246
Purchaser																						
52	61.21TR	0.38	62	7.40	71	9.83	63	-0.53	52	0.72	68	0.50	70	22.81	72	0.15	46	130.48	48	25702	0245752018180085	0245752019190224
Purchaser																						

**WOMBOOTA BORDER LEICESTER STUD - 39 rams (Displayed in pens of 3. Sold individually)**

Lot	Animal Id	BWT	Acc	PWT	Acc	AWT	Acc	MWWT	Acc	PEMD	Acc	PFAT	Acc	YGFW	Acc	WR	Acc	BLX	Acc	SB No	Sire	Dam
53	29.21TR	0.11	63	7.58	71	9.23	64	1.45	55	1.41	68	1.60	70	-7.84	71	0.09	43	130.51	47	25623	0244112018180134	0245752012120003
Purchaser																						
54	11.21T	0.46	57	8.53	69	9.59	62	1.27	50	-0.31	64	-0.18	67	8.13	68	0.01	40	119.24	44	25680	0245752019190176	0245752017170104
Purchaser																						
55	362.21T	-0.03	57	3.93	71	5.58	64	0.56	51	1.63	67	0.77	70	-3.90	71	0.01	39	115.14	44		0244112018180134	0245752014140243
Purchaser																						
56	47.21T	0.30	58	8.53	69	8.38	62	1.39	45	0.92	65	-0.12	68	7.66	69	0.09	33	134.16	39	25672	0245752019190014	0245752017170010
Purchaser																						
57	32.21T	0.24	60	7.78	71	9.73	63	0.93	50	0.43	67	-0.22	70	-0.04	71	0.05	40	119.43	44	25666	0245752018180162	0245752016160208
Purchaser																						
58	283.21T	0.11	57	7.11	70	7.58	63	1.11	51	1.29	67	0.78	69	-5.60	70	0.06	41	127.68	45	25677	0244112018180134	0245752017170266
Purchaser																						



**WOMBOOTA BORDER LEICESTER STUD - 39 rams (Displayed in pens of 3. Sold individually)**

Lot	Animal Id	BWT	Acc	PWT	Acc	AWT	Acc	MWWT	Acc	PEMD	Acc	PFAT	Acc	YGFW	Acc	WR	Acc	BLX	Acc	SB No	Sire	Dam
<b>76</b>	222.21TR	0.50	58	9.15	69	12.76	61	0.54	50	0.30	66	-0.13	69	3.94	70	0.13	44	126.32	46	25655	0245752018180085	0245752019190028
Purchaser																						
<b>77</b>	359.21T	0.50	52	9.00	68	9.44	60	0.81	44	-0.23	64	-0.70	67	5.49	68	0.07	37	124.76	41	25648	0245752019190014	0245752019190061
Purchaser																						
<b>78</b>	304.21T	0.43	53	8.17	70	7.12	62	1.01	43	0.99	66	0.21	69	8.85	70	0.02	33	128.02	39	25663	0245752019190208	0245752018180080
Purchaser																						
<b>79</b>	358.21T	0.50	52	8.94	61	9.83	57	0.81	44	-0.24	58	-0.88	59	8.67	64	0.07	37	124.35	39	25676	0245752019190014	0245752019190061
Purchaser																						
<b>80</b>	172.21TR	0.35	58	8.05	69	9.99	61	0.62	50	1.09	65	0.07	68	8.27	69	0.13	44	132.56	46	25613	0245752018180085	0245752019190132
Purchaser																						
<b>81</b>	352.21T	0.16	60	6.58	70	7.23	62	0.06	50	1.17	66	0.87	68	-1.90	70	0.05	44	120.98	46	25631	0244112018180134	0245752017170170
Purchaser																						
<b>82</b>	401.21T	0.38	58	9.63	70	12.49	62	0.39	51	-0.53	66	0.24	69	8.18	70	0.12	44	124.29	46	25624	0244112018180209	0245752019190125
Purchaser																						
<b>83</b>	179.21T	0.45	54	9.23	69	10.26	62	1.32	49	-0.12	65	0.34	68	6.70	68	0.02	40	120.50	44	25690	0245752019190176	0245752018180056
Purchaser																						
<b>84</b>	383.21T	0.27	55	6.66	70	6.91	62	0.66	46	0.64	65	-0.31	68	8.40	69	0.04	31	122.03	38	25695	0245752019190208	0245752015150071
Purchaser																						
<b>85</b>	152.21	0.42	47	9.05	65	9.78	57	1.86	37	0.03	61	-0.17	64	2.72	65	-0.13	28	107.32	34		0245752019190273	0245752019190313
Purchaser																						
<b>86</b>	85.21TR	0.33	60	9.43	70	9.85	62	1.50	50	0.47	66	0.32	69	5.18	70	0.09	43	132.98	46	25658	0245752018180162	0245752019190036
Purchaser																						
<b>87</b>	382.21T	0.29	55	7.39	70	8.96	62	0.65	46	0.71	65	-0.37	68	7.73	69	0.03	31	120.69	38	25630	0245752019190208	0245752015150071
Purchaser																						
<b>88</b>	188.21T	0.27	59	6.56	69	10.06	62	0.29	50	0.62	66	0.97	68	13.71	69	0.08	44	120.06	46	25644	0245752018180085	0245752017170182
Purchaser																						
<b>89</b>	218.21T	0.27	55	8.05	70	10.14	63	1.13	48	1.02	66	-0.51	69	-1.83	69	0.05	39	123.06	43	25628	0245752019190014	0245752017170014
Purchaser																						
<b>90</b>	202.21T	0.26	52	6.40	69	6.16	62	0.28	42	0.86	65	1.30	68	6.29	68	0.06	34	124.53	39	23395	0245752019190208	0245752018180241
Purchaser																						
<b>91</b>	393.21T	0.31	59	7.67	70	9.67	62	1.79	50	0.32	66	-0.09	69	2.19	70	0.06	44	124.48	46	25622	0245752018180162	0245752019190147
Purchaser																						

**WOMBOOTA BORDER LEICESTER STUD - 39 rams (Displayed in pens of 3. Sold individually)**

Lot	Animal Id	BWT	PWT	AWT	MWWT	PEMD	PFAT	YGFW	WR	BLX	Acc	SB No	Sire	Dam
92	154.21	0.22	6.88	8.10	1.29	0.22	0.02	6.61	0.03	119.51	46	25646	0245752018180162	0245752019190047
Purchaser														
93	357.21T	0.26	6.73	9.12	0.60	0.55	0.27	3.48	0.02	114.99	41		0245752019190208	0245752019190278
Purchaser														
94	275.21T	0.41	7.93	9.21	1.29	-0.42	-0.44	3.84	0.03	117.88	44	25645	0245752019190176	0245752019190261
Purchaser														
95	310.21T	0.30	6.94	7.95	0.44	0.74	0.29	16.53	0.14	134.02	45	25643	0245752018180085	0245752019190260
Purchaser														
96	82.21T	0.30	7.75	8.47	1.08	0.59	0.49	3.84	0.07	124.85	46	25654	0245752018180162	0245752018180236
Purchaser														
97	313.21T	0.42	9.82	12.01	1.13	-0.30	-1.11	5.75	-0.01	114.83	36		0245752019190014	0245752018180322
Purchaser														
98	328.21T	0.32	9.83	10.44	0.86	0.69	-0.18	4.76	0.05	127.34	40	25681	0245752019190014	0245752019190089
Purchaser														
99	318.21T	0.15	4.52	6.47	0.37	0.40	0.42	0.55	0.03	110.62	40		0245752019190208	0245752013130022
Purchaser														
100	366.21T	0.10	5.69	6.19	1.15	1.55	0.39	0.14	-0.01	119.54	45	25636	0244112018180134	0245752017170386
Purchaser														



Wamboota Border Leicester stud. 25 Specially selected ewes (To be sold individually)

Lot	Tag no	BWT	Acc	PWT	Acc	AWT	Acc	MWWT	Acc	PEMD	Acc	PFAT	Acc	YGFW	Acc	WR	Acc	BLX	Acc	Sire	Dam
101	159.21	0.37	60	10.52	70	15.18	63	1.18	52	0.37	67	0.52	69	12.41	70	0.12	47	131.39	48	0244112018180209	0245752018180049
Purchaser																					
102	326.21	0.36	53	8.38	70	11.66	63	0.89	45	0.74	66	-0.13	69	18.91	70	0.08	30	126.24	38	0245752019190014	0245752014140092
Purchaser																					
103	175.21T	0.22	57	9.14	71	12.00	63	1.50	51	0.88	67	-0.15	70	6.55	70	0.08	40	128.08	44	0245752018180162	0245752015150069
Purchaser																					
104	112.21	0.39	59	10.59	64	15.47	58	0.41	51	0.29	61	0.32	63	9.04	62	0.12	45	126.31	46	0244112018180209	0245752019190142
Purchaser																					
105	387.21T	0.50	59	12.66	70	18.53	63	1.09	51	-0.22	66	-0.07	69	20.23	70	0.12	45	130.31	47	0244112018180209	0245752018180136
Purchaser																					
106	252.21T	0.22	57	6.31	71	9.55	63	1.09	52	0.82	67	0.45	70	14.69	71	0.08	39	124.07	44	0245752018180085	0245752014140135
Purchaser																					
107	371.21T	0.32	59	7.35	70	11.05	63	0.50	52	0.41	66	0.55	69	2.30	70	0.10	44	121.22	47	0245752018180085	0245752016160155
Purchaser																					
108	153.21	0.45	55	7.31	70	10.90	63	1.46	48	-0.95	66	-1.70	69	5.39	70	0.03	38	109.86	43	0245752019190014	0245752016160199
Purchaser																					
109	77.21T	0.24	58	8.39	69	10.15	63	1.19	48	0.00	64	-0.37	67	5.41	69	0.05	38	120.87	42	0245752018180162	0245752017170096
Purchaser																					
110	19.21T	0.22	59	7.37	69	9.38	60	-0.37	49	1.28	66	0.09	68	15.20	66	0.05	39	121.27	43	0245752018180085	0245752015150181
Purchaser																					
111	273.21T	0.43	53	8.30	69	10.60	62	0.58	48	0.24	65	0.88	68	7.10	69	0.04	36	118.71	41	0245752019190176	0245752015150105
Purchaser																					
112	255.21T	0.32	53	8.43	69	11.73	61	0.69	44	0.62	64	0.04	67	6.81	69	0.02	37	118.08	41	0245752019190208	0245752018180203
Purchaser																					
113	63.21T	0.47	57	12.22	69	16.39	62	0.74	45	0.48	65	0.11	68	5.26	70	0.01	34	119.88	40	0245752019190273	0245752017170180
Purchaser																					
114	238.21T	0.18	55	8.51	70	12.42	62	0.66	50	0.18	66	0.62	69	18.46	69	0.07	39	122.37	44	0244112018180209	0245752018180259
Purchaser																					
115	195.21T	0.27	57	8.82	69	13.95	61	2.18	50	0.38	65	-0.29	68	9.47	69	0.01	43	118.23	45	0245752018180162	0245752018180071
Purchaser																					

**Womboota Border Leicester stud. 25 Specially selected ewes (To be sold individually)**

Lot	Tag no	BWT	Acc	PWT	Acc	AWT	Acc	MWWT	Acc	PEMD	Acc	PFAT	Acc	YGFW	Acc	WR	Acc	BLX	Acc	Sire	Dam	
116	92.21T																					
Purchaser																						
117	264.21T	0.43	54	9.39	71	12.09	63	1.71	48	0.44	67	0.11	69	13.00	71	-0.11	40	110.81	44	0245752019190273	0245752019190158	
Purchaser																						
118	3.21T	0.20	60	6.54	69	8.35	62	0.63	51	0.87	66	0.14	68	10.39	70	0.13	44	131.52	46	0245752018180085	0245752017170312	
Purchaser																						
119	122.21	0.44	55	8.47	64	10.99	55	0.23	46	0.38	61	0.39	63	5.10	60	0.01	41	114.18	43	0245752019190208	0245752017170155	
Purchaser																						
120	344.21	0.35	58	10.04	69	14.44	61	1.39	50	0.03	66	-0.39	68	10.21	69	0.04	44	121.09	46	0244112018180209	0245752019190272	
Purchaser																						
121	236.21T	0.22	55	6.91	70	7.06	62	1.72	48	0.22	66	0.21	69	7.98	70	0.02	39	121.88	43	0245752018180162	0245752015150131	
Purchaser																						
122	289.21T	0.31	56	8.10	70	9.22	62	1.84	48	-0.16	66	-0.97	69	0.58	70	0.02	39	119.51	43	0245752018180162	0245752017170075	
Purchaser																						
123	65.21T	0.28	62	8.54	70	10.33	62	0.46	54	0.33	67	0.34	69	11.68	66	0.16	48	134.83	50	0244112018180209	0245752017170025	
Purchaser																						
124	403.21T	0.34	59	8.20	70	9.67	62	1.23	52	-0.16	67	-1.03	69	2.68	70	0.06	44	120.87	46	0245752018180162	0245752017170260	
Purchaser																						
125	96.21T	0.13	60	6.41	70	7.86	62	0.54	50	0.35	66	0.10	69	7.26	70	0.09	44	121.59		0245752018180162	0245752019190200	
Purchaser																						



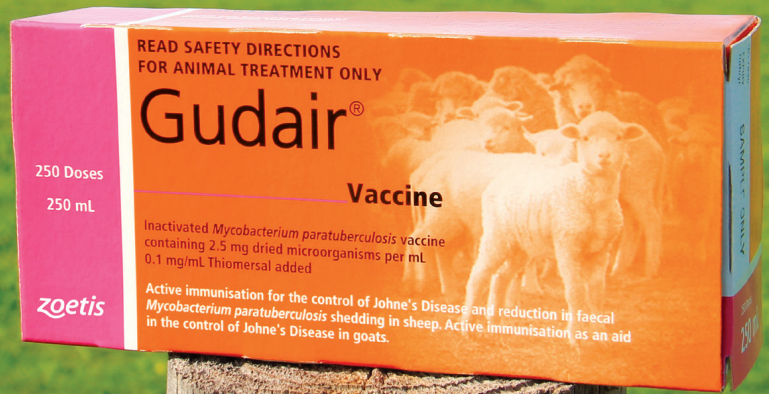


**Reflections from the past: George and Ray Starritt, Kelso Border Leicester Stud. We are proud of our family history of breeding Border Leicesters for 108 years.**



EACH YEAR  
OJD KILLS  
**6.2%**  
OF ADULT SHEEP  
FROM INFECTED  
FLOCKS<sup>1</sup>

## OJD DISEASE IS STILL THREATENING PROPERTIES ACROSS AUSTRALIA



### VACCINATION WITH GUDAIR HAS BEEN HIGHLY SUCCESSFUL IN PROTECTING MANY FLOCKS.

### GIVE ONE DOSE AT 4-16 WEEKS AND PROTECT LAMBS FOR LIFE.

#### Gudair®: Best Practice Vaccination Technique

In accordance with the registered product label, the vaccine should only be administered under the skin (subcutaneously). However, a recent study conducted by Zoetis<sup>2</sup> has revealed that even experienced sheep producers may be unintentionally administering Gudair into muscle, or hitting other structures such as bone, on a regular basis. This increases the risk of carcase trimming, abscesses - and the subsequent risk of fly strike - and, in rare cases, neurological dysfunction ("OJD staggers").

#### THE CORRECT VACCINATION TECHNIQUE BY CLASS OF STOCK

Class of Stock	Needle Gauge	Needle Length	Needle angle to skin
Lambs	18G	¼ Inch	45°
Adults off-shears/ short wool/low body condition score	18G	¼ Inch	45°
Adults with wool growth	18G	¼ Inch	90°

#### Human safety - use the Gudair sekurus safety vaccinator

All oil vaccines are known to be reactive. Take care to avoid accidental self-injection by ensuring: In the case of human exposure (self-injection, scratch), seek medical attention immediately. Take the vaccine box for the healthcare professional to read.

For more information call the Zoetis Technical Helpline on 1800 814 883 or contact your local Zoetis Professional Sales Representative: Heidi Sutherland, Central Victoria, 0419 263 867

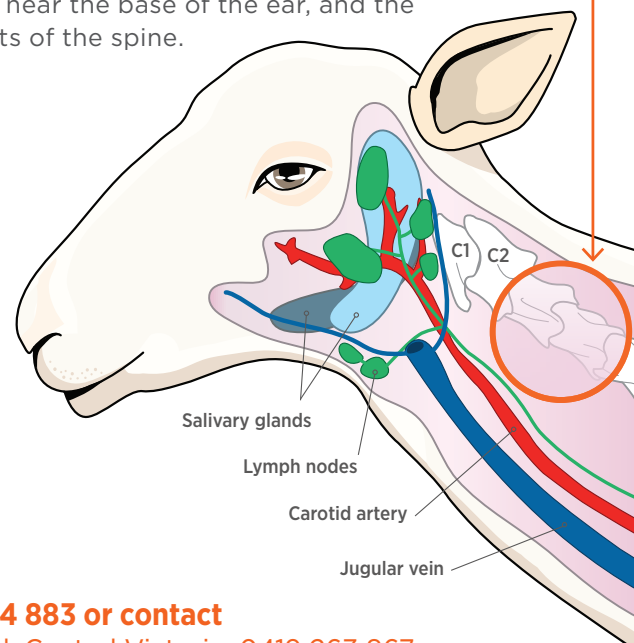
Reference: 1. Toribio, J; Bush, R; Windsor, P. OJD.023 A Study of the Biological and Economic Impact of OJD in affected Sheep Flocks in NSW (2015) Meat & Livestock Australia Limited. 2. Robertson, N. Study of OJD vaccination techniques: Revelations after dissecting sheep administered dyed Gudair® vaccine. Proceedings of the Australian Sheep Veterinarian's Conference, Dubbo, 2016.



#### The benefits of a Gudair Vaccination Program are:

- Decreases the amount of bacteria shed in a flock by up to 90%
- Reduces mortalities
- Delays shedding for 12 months

The orange circle on the sheep anatomy diagram indicates the correct site to vaccinate, under the skin, on the side of the neck, avoiding critical structures near the base of the ear, and the C1/C2 joints of the spine.



# WOMBOOTA BORDER LEICESTER RAM

# SALE

1st X EWES SET TO SMASH  
2022 SPRING MARKET



**= UP TO 100% MORE \$ THAN PRIME LAMBS**

**Thursday**  
**September 29<sup>th</sup> 2022, 1pm**