



VC SIMMENTALS ONLINE

**SPRING BULL**  
*sale*

16<sup>th</sup> SEPTEMBER 2022

sale broadcasted online with AuctionPlus [www.auctionplus.com.au](http://www.auctionplus.com.au)



VC SIMMENTALS ONLINE

# SPRING BULL

sale

sale broadcasted online with



[www.auctionsplus.com.au](http://www.auctionsplus.com.au)

Helmsman Auction from 6:30pm

What a time to be in the beef industry. With unprecedented prices in both the cattle and property markets, the future looks bright for the whole agricultural sector. At VC we are excited to help make the bred we love, Simmentals, part of this growth.

Welcome, to the first VC online spring bull sale. In future years auctions will be held on the first Friday in March and the third Friday in September. This arrangement will give the commercial producer two opportunities to purchase VC yearling bulls. This will give the buyer the time to acclimatize bulls for use or put them straight out to work for a spring joining. Rest assured if this is the case we will personally transport your bull/bulls the very next day for your joining requirements, providing a positive ROI on their investment, into the future.

Indeed, this edition is the strongest ever offering with excitement, we feel there are genetics here that will go on to escalate any program & generate a large ROI. The progressive programs that do their homework & are prepared for the sale on Friday 16th September at 6.30pm on Auctions Plus will benefit as there is always excellent value at any price point. We have proved that bulls at any price point can have strong returns for purchases & be very financially rewarding into the future.

We always say the cattle business, in particularly seedstock is all about people, passions, programs & product. Here at VC we are particularly excited by Simmentals Australia's move to trailing IGS data set within incorporation & ability to include genomics on the data set, therefore helping the small to medium breeder collect meaningful data at an earlier age.

**DNA be sure of what you're buying.** All sale animals have been parent verified (PV) for up to 4 generations.

**What does this mean?** Buying Simmental cattle with 100% assurance that the pedigrees are true & correct.

Buying Simmental cattle that EBV's are generated using a combination of mid parent, raw data harvested on farm & on the IGS front a combination of raw data combined with the genomic information.

Our yearling bull sale draft have got at the point of catalogue a GL, BWT, 200 WT. DOC recorded & analysed at point of cataloguing. Also added to this will be a 400-day, IMF, EMA, RIB, RUMP & Scrotal measurement that will be incorporated into the next breed plan run at point of sale.

Through a lifetime of breeding Simmental cattle and with a wealth of experiences along the way, we have pushed our breeding program in a positive direction. Attention to detail and an unwavering quest for excellence, some say bordering on obsession, is clearly seen in the equality of our cattle. We believe the industry is heading towards positive FAT, soft easy doing Simmentals with most of all controlled birth weight plus, the renewed focus on the sustainability cow EPD. This basically is a measurement of daughters in production after 6 years therefore, utilising this measurement encompasses structural integrity, udder and feet quality & the ability to breed in the window provided. #MakingSimmentalsGreat

We pride ourselves as leaders in the cattle industry of sourcing, measuring and blending the highest performing genetics that will provide the opportunity for our commercial clients to improve the quality of their herds. We call this "Raising the Bar". Improved herd genetics sourced from VC will improve profit and efficiency, this is the backbone of the VC program.

SALE DAY INFORMATION

## INSPECTIONS

We welcome inspections of the cattle before the sale to provide you with necessary time to ensure you are selecting the correct bull for your program. Please contact Stuart Moeck on 0419465242 or Samantha Moeck on 0423249746 so that you get that one-on-one service.

## BIDDING

All bidding will take place on AuctionsPlus & will commence at 6.30pm Friday 16th September 2022 running for 1hr as a timed-out helmsman auction. Time clock will start at 7.30pm. Please contact Tim Woodham on 0436 015 115 if you are unsure of this process or wish to phone bid.

## DNA

All bulls have been parent verified. All bulls have had genomic samples submitted and reported. Colour tested, polled tested, PI tested. The highest level of catalogue integrity available.

All animals have had a 200 day weight submitted docility, birth weight, gestation length submitted at time of printing EBV's for sale catalogue. In addition to this there will be a 400 day weight scrotal, EMA, Rib & Rump, IMF submitted for the September run. Breed Plan will have updated the Simmental data base by the 8-9th of September 2022 with this additional information as we cannot improve if we do not measure!

IGS numbers will be made available upon request.

## TRANSPORT/DELIVERY

As a part of our service, we offer FREE CARTAGE

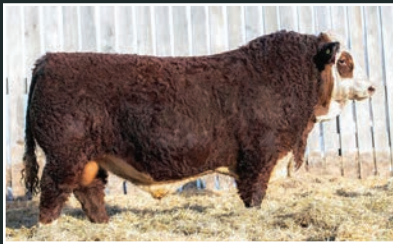
- Australia Wide (Mainland) to all major selling centres.



**VALLEY CREEK SIMMENTALS** *Stuart and Samantha Moeck*  
Binda, New South Wales  
Stuart: 0419465242 Samantha: 0423249746



Looking to the future, exclusive genetic rights to VC Simmentals – BBL RUMBLE 62H, R PLUS MANDATE 1044J & MADER WALK THE LINE 92J



These factors demonstrate the strongest commitment to the Simmental breed that we can deliver, ensuring that VC has a positive impact in the industry now and into the future. A factor that at VC we believe is paramount for the breed development and vendors can be assured of the cattle they purchase through us. Keeping in mind, the spring-based bull sale is made up of mainly AI & natural joining's & the March 2023 sale will be made up of primarily ET calves moving forward. This will enable commercial cow/calf operations to access yearling bulls every 6 months getting new genetics into the Simmental gene pool faster.

This year's sale draft has been performing on Quayle Milling pellets, individually tailored for VC. Each bull getting 6kgs a day hand feed plus pasture silage. Be assured that they are well presented & not overdone.

- VC are proud to offer 4 Traditional bulls, 3 Red bulls & 10 Black bulls.
- The 2nd offering of RF Caliber 014G semen to sell in Australia, this semen will be only offered at VC sales.
- The first offering of R Plus Reddington 0443H semen
- 4 x Rainbow River Sprinkles 49H / R Plus Reddington 0443H embryos

These lots will enable the smaller operation to operate at the top end of the Simmental job with marketability & exclusivity.

At VC we strive to sell cattle that will be profitable for their new owners. This we believe is a measure of our processes and success. We rely on a 100% hands on approach and a marketing strategy based on honesty, offering elite genetics that are presented well. With an old fashion handshake guarantee, working for you and with you in the livestock industry we at VC can see a strong future ahead for the Simmental breed. We look forward to building a relationship with new & repeat customers who strive to improve the livestock industry.

**Stuart & Samantha Moeck**, Team VC!

## **REBATE**

Selling agents are Nutrien Livestock. Outside agents are entitled to a 4% rebate under the strict following conditions:

- introducing the buyer in writing to the selling agent at least 24 hours prior to the sale and settling within 7 days,

## **TRANSFER**

All sale cattle are registered with Simmental Australia and are eligible for transfer to your ownership. Please advise us if you wish to transfer your bull.

## **INSURANCE**

We recommend insuring your purchases at the fall of the hammer. A Nutrien Insurance representative will be available – Insurance Manager Fiona Petersen 0408 924 508. All cattle are at the purchaser's risk from the fall of the hammer/timmer.

## **GST**

All lots are sold exclusive of GST.

## **INDEPENDENT ASSEMENT**

Please feel free to contact any of the Nutrien staff listed to discuss your potential purchase.

Tim Woodham	0436 015 115
John Settree	0408 297 368
John Palmer	0417 653 445
Peter Godbolt	0457 591 929
Daniel Croker	0407 283 783

## PHOTOS & VIDEOS OF SALE LOTS

Videos of all lots are available online now on Auction Plus. Photos and videos of sale lots will also be posted on the respective stud Facebook pages & YouTube.

## HEALTH & FERTILITY

VC are Accredited J-BAS Status 7 herd. All cattle have been tested free of Pestivirus. All bulls have undergone a full 7 in 1 and Pestivirus vaccination program with booster vaccinations prior to sale. VC cattle have been drenched with Ivomec. All VC bulls have been semen tested by Ironmines Veterinary Clinic. All bulls have had a Selovin LA at weaning & are all tested negative for Pesti Virus.

## LOCATION

Binda is a tiny village located 19 km north-west of Crookwell and 259 km south-west of Sydney via the Hume Highway and Goulburn.

## GUARANTEE

If there is ever a problem with any of our sale cattle, we would appreciate being the first to know! All of our bulls are fully guaranteed. In the event that a heifer/bull is found to be infertile or incapable of natural service, (which has not occurred due to disease or injury), following the fall of the hammer, we will offer a replacement heifer/bull or a credit will be given for the following sale, less the salvage value of the animal. This guarantee does not include interest, expenses, costs or damages. Any claims should be made in writing within 6 months, and accompanied by a veterinary certificate.

## IN HERD SEMEN RIGHTS

VC reserve the right to collect semen from any bull catalogued for sale for respective in-herd use only. If acted upon any collection will be arranged at a time of convenience to the purchaser. All expenses will be met by VC Simmentals

## SALE CATALOGUE DISCLAIMER

All reasonable care has been taken by the vendor and designer to ensure that the information provided in this catalogue is correct at the time of publication. However, neither the vendor, selling agents and designer make no other representations about the accuracy, reliability or completeness of any information provided in this catalogue and do not assume any responsibility for the use or interpretation of the information included in the catalogue.

## EBV INFORMATION

### SIMMENTAL GROUP BREEDPLAN

The breedplan values in this catalogue were calculated in the 2017 Simmental Trans Tasman Group Breedplan evaluation. Each reported trait shows an EBV and its accuracy level. The EBV (Estimated Breeding Value) provides the best current estimate of the bull's true genetic merit for that trait, relative to the overall base for the Simmental breed. It indicates how its progeny should perform relative to those of other bulls in the breed. The accuracy indicates how well an EBV predicts the true genetic worth of an animal. The accuracy of an EBV will be higher for traits with a higher heritability and will increase as more performance information on an animal and its relatives become available. The accuracy of an EBV is reported as a percentage. EBV's with higher accuracy will change less than EBV's of low accuracy when more performance records are analysed.

See more information on pages 6 and 7

## POLLED AND COAT COLOR INFORMATION

Bull	Cow	Resulting Calves
<b>HOMO POLLED - the bull carries two copies of the polled gene</b>		
Homo Polled	Homo Polled	100% Polled
	Hetero Polled	100% Polled
	Horned	100% Polled
<b>HETERO POLLED - the bull carries one polled gene and one horned gene</b>		
Hetero Polled	Homo Polled	100% Polled
	Hetero Polled	75% Polled, 25% Horned
	Horned	50% Polled, 50% Horned
<b>HOMO BLACK - the bull carries two copies of the black gene</b>		
Homo Black	Homo Black	100% Black
	Hetero Black	100% Black
	Red	100% Black
<b>HETERO BLACK - the bull is black in color, but carries one black gene and one red gene. Black is dominant to red, so the red color is not expressed when it is paired with a black gene.</b>		
Hetero Black	Homo Black	100% Black
	Hetero Black	75% Black, 25% Red
	Red	50% Black, 50% Red
<b>RED - the bull carries two copies of the red gene. This example assumes the bull is diluter free.</b>		
Red	Homo Black	100% Black
	Hetero Black	75% Black, 25% Red
	Red	100% Red





# STRUCTURAL ASSESSMENT in Beef Cattle

Structural traits are widely recognized as key traits for any breeding program. The question is, how to objectively measure these traits and relay those objective measures to prospective buyers?

Structure is one of the most subjective traits in the beef industry. What constitutes good structure in one breeders mind may also be inadequate in another.

However, one constant remains a fact, beyond subjective opinion, that poor structure costs the Australian beef industry millions of dollars annually in lost production.

Structural problems in cattle have a substantial effect on both the reproductive and growth performance of a beef herd. It is widely recognised that structural problems in sires has a detrimental effect on conception rates, calving patterns and therefore profitability. Similarly, females with inadequate structural characteristics are more prone to weaning lighter calves or conceiving later in the breeding season than their more functional counterparts. These structural problems are filtered through the supply chain resulting in reduced income for the producer or feedlot and thus reduces the overall profitability of the Australian beef industry.

Whilst genetic improvement for maternal, growth and carcass traits will continue to be pivotal in developing the Australian beef industry, correct structure and temperament remain fundamentals that all other traits are built on.

**HERITABILITY OF STRUCTURE** Structure is a moderately to highly heritable trait and can therefore be improved genetically. Front and Rear foot angle, or heel depth and Front and Rear claw settings have similar and high heritability. Rear leg angle and Rear leg set, are moderately heritable traits, similar to growth traits, and are also able to be improved genetically. This means that careful selection of genetics will not only improve structure within a herd, but also that, incorrect selection of genetics for a herd, will also decrease structural integrity within a herd. It also means that correct culling for less functional cattle will increase the genetic potential within a herd to achieve good structure.

**EFFECT OF POOR STRUCTURE ON BULLS** Bulls work much like elite athletes to complete a joining season. Apart from the workload of serving the cows, bulls must also find time to graze. Bulls showing structural issues may have reduced function, reducing their ability to cover the required number of females in the required time. This can result in delayed or extended calving patterns, reducing the herds ability to retain a 12-month calving cycle, reducing weaning weights and potentially leaving valuable cows empty. Often these cows are culled for infertility, despite not having contributed to the fertility issues.

Bulls also represent a tremendous investment for any breeding program and achieving a long working life maximises the bull return on investment. Bulls with reduced function have higher rates of breakdowns at an earlier age, leading to lost investment.

The high heritability of structural traits means that the bull will also pass on any structural issues to their progeny, affecting profitability for years to come, unless affected progeny are culled from the herd.

## BEEF CLASS STRUCTURAL ASSESSMENT SYSTEM.

**Bringing Objective Measurement to Structure** The Beef Class Structural Assessment System was designed by MLA, the BIA and several breed societies to address the structural problems in the beef industry. Detailed analysis of 300 genetically linked herds indicated that structural characteristics such as leg and foot structure were moderately to highly heritable.

As a result, the Beef Class Structural Assessment System was developed to assist producers to objectively measure these traits.

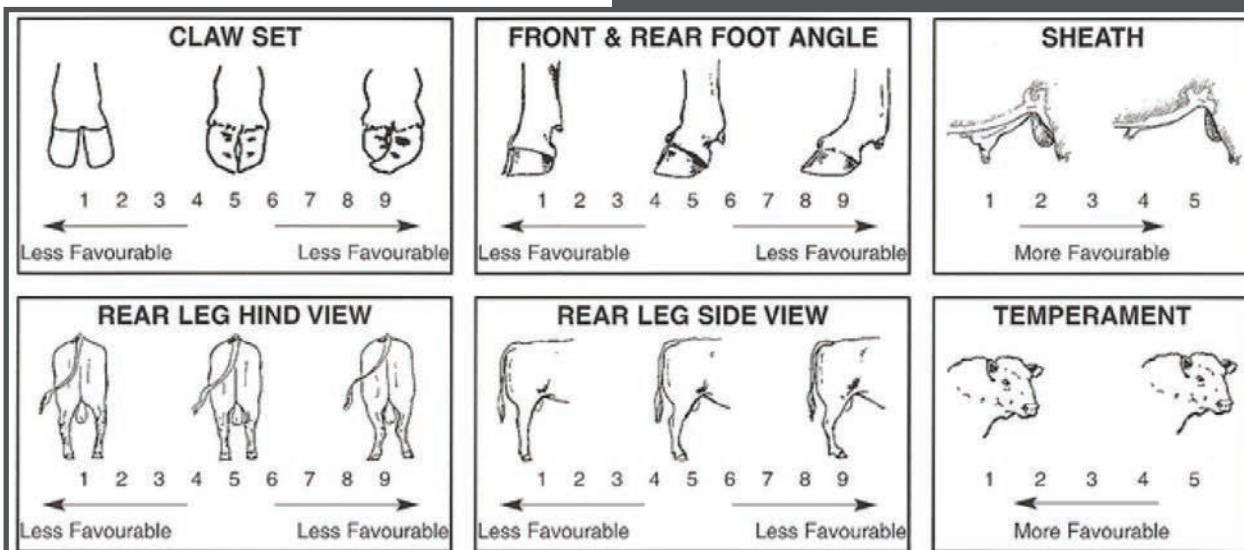
Whilst most breeders are conscious of structure and endeavour to improve structure within their herds, it is the ability to independently and objectively measure these traits and to present the results in a clear format to purchasers that was not previously available.

Assessors must be registered and have to undergo an accreditation process before being given an accredited assessor number. Only cattle assessed by accredited assessors should have Beef Class Assessment Structural data supplied to purchasers.

### How the Beef Class Structural Assessment System works?

The Beef Class Structural Assessment System uses a 1-9 scoring system;

- A score of 5 is ideal. (Note: Temperament Score of 1 is preferable);
- A score of 4 or 6 shows slight variation from ideal, but this includes most animals. An animal scoring 4 or 6 would be acceptable in any breeding program;
- A score of 3 or 7 shows greater variation but would be acceptable in most commercial programs. However, seed stock producers should be vigilant and understand that this score indicates greater variation from ideal;
- A score of 2 or 8 are low scoring animals and should be looked at closely before purchasing;
- A score of 1 or 9 should not be catalogued and are considered culls.





## SIMMENTAL GROUP BREEDPLAN

# Interpreting THE FIGURES

An animal's breeding value is its genetic merit, half of which will be passed on to its progeny. While we will never know the exact breeding value, for performance traits it is possible to make good estimates. These estimates are called Estimated Breeding Values (EBVs).

In the calculation of EBVs, the performance of individual animals within a contemporary group is directly compared to the average of other animals in that group. A contemporary group consists of animals of the same sex and age class within a herd, run under the same management conditions and treated equally. Indirect comparisons are made between animals reared in different contemporary groups, through the use of pedigree links between the groups.

EBVs are expressed in the units of measurement for each particular trait. They are shown as +ive or -ive differences between an individual animal's genetics difference and the genetic base to which the animal is compared. For example, a bull with an EBV of +50 kg for 600-Day Weight is estimated to have genetic merit 50 kg above the breed base of 0 kg. Since the breed base is set to an historical benchmark, the average EBVs of animals in each year drop has changed over time as a result of genetic progress within the breed.

The absolute value of any EBV is not critical, but rather the differences in EBVs between animals. Particular animals should be viewed as being "above or below breed average" for a particular trait.

Whilst EBVs provide the best basis for the comparison of the genetic merit of animals reared in different environments and management conditions, they can only be used to compare animals analysed within the same analysis. Consequently, Simmental GROUP BREEDPLAN EBVs cannot be validly compared with EBVs from any other BREEDPLAN analysis.

EBVs are published for a range of traits covering fertility, calving ease, milking ability, growth, and carcase merit. When using EBVs to assist in selection decisions it is important to achieve a balance between the different groups of traits and to place emphasis on those traits that are important to the particular herd, markets and environment. One of the advantages of having a comprehensive range of EBVs is that it is possible to avoid extremes in particular traits and select for animals with balanced overall performance.

## EBV EXPLANATION

**Calving Ease EBVs (%)** are based on calving difficulty scores, birth weights and gestation length information. More positive EBVs are favourable and indicate easier calving.

- **CE % Dir = Direct Calving Ease** - The EBV for direct calving ease indicates the influence of the sire on calving ease in purebred females calving at two years of age.
- **CE % Daughters = Daughters' Calving Ease** - The EBV for daughters' calving ease indicates how easily that sire's daughters will calve at two years of age.

**Gestation Length EBV (days)** is an estimate of the time from conception to the birth of the calf and is based on Artificial Insemination and hand mating records. Lower (negative) Gestation Length EBVs indicate shorter gestation length and therefore easier calving and increased growth after birth.

**Birth Weight EBV (kg)** is based on the measured birth weight of progeny, adjusted for dam age. The lower the value the lighter the calf at birth and the lower the likelihood of a difficult birth. This is particularly important when selecting sires for use over heifers.

**200-Day Growth EBV (kg)** is calculated from the weight of progeny taken between 80 and 300 days of age. Values are adjusted to 200 days and for age of dam. This EBV is the best single estimate of an animal's genetic merit for growth to early ages.

**400-Day Weight EBV (kg)** is calculated from the weight of progeny taken between 301 and 500 days of age, adjusted to 400 days and for age of dam. This EBV is the best single estimate of an animal's genetic merit for yearling weight.

**600-Day Weight EBV (kg)** is calculated from the weight of progeny taken between 501 and 900 days of age, adjusted to 600 days and for age of dam. This EBV is the best single estimate of an animal's genetic merit for growth beyond yearling age.

**Mature Cow Weight EBV (kg)** is based on the cow weight when the calf is weighed for weaning, adjusted to 5 years of age. This EBV is an estimate of the genetic difference in cow weight at 5 years of age and is an indicator of growth at later ages and potential feed maintenance requirements of the females in the breeding herd. Steer breeders wishing to grow animals out to a larger weight may also use the Mature Cow Weight EBV.

**Milk EBV (kg)** is an estimate of an animal's milking ability. For sires, this EBV indicates the effect of the daughter's milking ability, inherited from the sire, on the 200-day weights of her calves. For dams, it indicates her milking ability.

**Scrotal Size EBV (cm)** is calculated from the circumference of the scrotum taken between 300 and 700 days of age and adjusted to 400 days of age. This EBV is an estimate of an animal's genetic merit for scrotal size. There is also a small negative correlation with age of puberty in female progeny and therefore selection for increased scrotal size will result in reduced age at calving of female progeny.

**Days to Calving EBV (days)** indicates the fertility of the daughters of the sire. It is the time interval between the day when the female is first exposed to a bull in a paddock mating to the day when she subsequently calves. A negative EBV for days to calving indicates a shorter interval from bull-in date to calving and therefore higher fertility.

**Carcase Weight EBV (kg)** is based on abattoir carcase records and is an indicator of the genetic differences in carcase weight at the standard age of 650 days.

**Eye Muscle Area EBV (sq cm)** is calculated from measurements from live animal ultrasound scans and from abattoir carcase data, adjusted to a standard 300 kg carcase. This EBV estimates genetic differences in eye muscle area at the 12/13th rib site of a 300 kg dressed carcase. More positive EBVs indicate better muscling on animals. Sires with relatively higher Eye Muscle Area EBVs are expected to produce better muscled and higher percentage yielding progeny at the same carcase weight than will sires with lower Eye Muscle Area EBVs.

SIMMENTAL GROUP AVERAGE EBV'S FOR 2021 BORN CALVES

BREED AVERAGE	BIRTH		GROWTH				FERT	CARCASS					INDEXES			
	GL	BW	200D	400D	600D	MILK	SS	EMA	RIB	RUMP	RBV	IMF	DM	EM	NT	VT
	-1.5	0.9	20	36	44	8	0.5	2.5	0.2	0.0	0.7	0.2	40	49	24	34



**Rib Fat and Rump Fat EBVs (mm)** are calculated from measurements of subcutaneous fat depth at the 12/13 rib site and the P8 rump site (from live animal ultrasound scans and from abattoir carcasses) and are adjusted to a standard 300 kg carcass. These EBVs are indicators of the genetic differences in fat distribution on a standard 300 kg carcass. Sires with low, or negative, fat EBVs are expected to produce leaner progeny at any particular carcass weight than will sires with higher EBVs.

**Retail Beef Yield EBV (%)** indicates genetic differences between animals for retail yield percentage in a standard 300 kg carcass. Sires with larger EBVs are expected to produce progeny with higher yielding carcasses.

**Intramuscular Fat EBV (%)** is an estimate of the genetic difference in the percentage of intramuscular fat (marbling) at the 12/13th rib site in a 300 kg carcass. Depending on market targets, larger more positive values are generally more favourable.

## SELECTION INDEXES

Simmental selection indexes are calculated for four market specifications, namely, Domestic Maternal, Export Maternal, Northern Terminal and Vealer Terminal. These Indexes relate to typical Simmental herds in temperate Australia targeting these specifications.

Indexes are reported as an EBV, in units of relative earning capacity (\$'s) for a given market. They reflect both the short-term profit generated by a sire through the sale of his progeny, and the longer-term profit generated by his daughters in a self-replacing cow herd. Note that different types of animals can give similar profit values, so consideration should be given to both the index and the component EBVs when selecting animals for a particular production system. More information is available on selecting animals using a selection index.

The Indexes are derived using the BreedObject technology. More information on this technology is available from the BreedObject web site.

**Domestic Maternal Index** - Estimates the genetic differences between animals in net profitability per cow joined for an example commercial herd in Southern Australia (e.g. Angus cows) targeting the domestic supermarket trade. Steers are either finished on grass or grain (e.g. 60-70 days). Steers are marketed at 430 kg live weight (240 kg HSCW and 6 mm P8 fat depth) at 14 months of age. Daughters are retained for breeding.

**Export Maternal Index** - Estimates the genetic differences between animals in net profitability per cow joined for an example commercial herd in Southern Australia (e.g. Angus cows) targeting the export trade. Steers are finished on grain (e.g. 120 days) and marketed at 700 kg live weight (380 kg HSCW and 8 mm P8 fat depth) at 28 months of age. Daughters are retained for breeding.

**Northern Terminal Index** - Estimates the genetic differences between animals in net profitability per cow joined for an example commercial herd in Northern Australia (e.g. Brahman cows) targeting the export trade. Steers are finished on grass and marketed at 630 kg live weight (345 kg HSCW and 12 mm P8 fat depth) at 28 months of age. This is a terminal production system therefore no daughters are retained for breeding.

**Vealer Terminal Index** - Estimates the genetic differences between animals in net profitability per cow joined for an example commercial herd in Southern Australia (e.g. Angus cows) targeting the vealer trade. Vealers are weaned and sold at 8 months of age weighing 350 kg (195 kg HSCW and 6 mm P8 fat depth). This is a terminal production system therefore heifers are not retained for breeding purposes.

Note that \$Index Values for individual animals are sensitive to the assumptions used in the BreedObject analysis to calculate the relevant selection index. More information is available on the weightings used in the Simmental Selection Indexes.

## ACCURACY

Accuracy (%) is based on the amount of performance information available on the animal and its close relatives - particularly the number of progeny analysed. Accuracy is also based on the heritability of the trait and the genetic correlations with other recorded traits. Hence accuracy indicates the "confidence level" of the EBV. The higher the accuracy value the lower the likelihood of change in the animal's EBV as more information is analysed for that animal or its relatives. Even though an EBV with a low accuracy may change in the future, it is still the best estimate of an animal's genetic merit for that trait. As more information becomes available, an EBV is just as likely to increase in value, as it is to decrease.

**Accuracy values range from 0-99%. The following guide is given for interpreting accuracy:**

ACCURACY RANGE	INTERPRETATION
less than 50%	EBV should be considered as a preliminary estimate. It could change substantially as more performance information becomes available.
50-74%	Medium accuracy, usually based on the animal's own records and pedigree. Still subject to substantial changes with more information, particularly when the performance of progeny are analysed.
75-90%	Medium - high accuracy and includes some progeny information. Becoming a more reliable indicator of the animal's value as a parent.
more than 90%	High accuracy estimate of the animal's true breeding value. It is unlikely that the EBV will change much with the addition of more progeny data.

As a rule, animals should be compared on EBVs regardless of accuracy. However, where two animals have similar EBVs the one with higher accuracy could be the safer choice, assuming other factors are equal.

For further information please contact the Simmental Society or Simmental BREEDPLAN.







# AuctionsPlus

## How to Register and Bid on AuctionsPlus

- 1 Go to [www.auctionsplus.com.au](http://www.auctionsplus.com.au) to register at least 48 hours before the sale.
- 2 Select **"Sign Up"** in the top right hand corner.
- 3 Fill out your name, mobile number, email address and create a password.
- 4 Go to your emails and confirm the account.
- 5 Return to AuctionsPlus and log in.
- 6 Select **"Dashboard"** and then select **"Request Approval to Buy"**.
- 7 Fill in buyer details and once completed go back to Dashboard.
- 8 Complete buyer induction module (approx. 30 minutes).
- 9 AuctionsPlus will email you to let you know that your account has been approved.
- 10 Log in on sale day and connect to auction.
- 11 Bid using the two-step process – unlock the bid button and bid at that price.
- 12 If you are successful, the selling agent will contact you post sale to organise delivery and payment.

For more information please contact us on:

Phone: (02) 9262 4222

Email: [info@auctionsplus.com.au](mailto:info@auctionsplus.com.au)

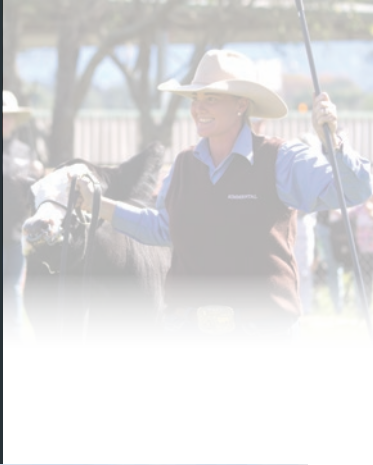




# VALLEY CREEK

*reference sires*

FULLBLOOD ■ BLACK ■ RED GENETICS



SUNNY VALLEY CANON 86E



WILLANDRA MARMADUKE



MADER WALK THIS WAY 224B



RF SUPERCHARGED 9150G



VC PAYTON



CCR COWBOY CUT 5048Z







## VC STOCKHOLM (PP)(AI)

EBVS	GL: 0.8	BW: 3.8	200D: 34	400D: 50	600D: 61	MILK: 11	SC: 0.9	EMA: 3.0	RIB: -0.2	RUMP: 0.2	RBV: 1.5	IMF: -0.2	DOC: 21	
Scanning Results	12 month weight	668 kg	Scrotal:	37 cm	EMA (sq cm):	104	Rib (mm):	6	Rump (sq cm):	6	IMF %:	4.5	Age at Scanning:	12 months



TOPWEIGHT JACK ARTA  
S: WILLANDRA MARMADUKE  
WILLANDRA OLIVE K12

WOONALLEE LANDLORD  
D: VC HEIDI P014  
VALLEY CREEK HEIDI

WOONALLEE FLAMBOYANT  
TOPWEIGHT BETTINA 333  
WILLANDRA CAVALIER C100  
WILLANDRA OLIVE B70

STARWEST TOTAL VALUE  
WOONALLEE VASTI B117  
WOONALLEE BHR TORNADO  
WATERFRONT DORINDA-D39

registration#  
ZMJPS047  
birth date  
19th August, 2021

Homo Polled Purebred

Stockholm S047 is everything one seeks to advance a breeding program with unsurpassed quality in the lines of combining attractive phenotype, awesome pedigree and EPD's unlike any other. He replicates his sire with an impressively large foot & moves so freely in is sound structure with length, smoothness, muscle, balance & presence though his front end. His pedigree is backed by beautiful udder females with strong maternal traits & proven production records that show us his potential legacy will breed true for many generations. With the cherry on the top breed leading EPD's that put him in the top breed average birth 5.8 (the power of genomics) Top 5% weaning weight, Top 4% yearling weight, Top 2% carcass weight, Top 1% REA, Top 1% fat, Top 40% marbling, Top 4% yield grade, Top 30% stability. The exclusivity of the genetics holds a value & impact he can have on a program for generations is invaluable.

**Homozygous polled, Stud Sire Prospect.**



Sire of Stockholm  
WILLANDRA MARMADUKE



Dam of Stockholm  
VC HEIDI P014





Sire: CANON 86E



Dam: JEWEL

registration#  
ZMJPS046

birthdate  
18th August, 2021

Hetero Polled Purebred

## VC SECRET WEAPON (Pp)(AI)

EBVS	GL: 0.3	BW: 1.6	200D: 20	400D: 27	600D: 31	MILK: 6	SC: 0.3	EMA: 2.9	RIB: -0.2	RUMP: -0.2	RBY: 0.8	IMF: 0.3	DOC: 21	
Scanning Results	12 month weight	641 kg	Scrotal:	37 cm	EMA (sq cm):	97	Rib (mm):	6	Rump (sq cm):	7	IMF %:	5.2	Age at Scanning:	12 months



STARWEST POL BLUEPRINT  
S: SUNNY VALLEY CANON 86E  
SUNNY VALLEY TRINITY 53Z

ANCHOR T RUSTY 59G  
PHS HOMOZYGOUS XCEPTIONAL  
ANCHOR D VIPER 103W  
SUNNY VALLEY TRINITY 70T

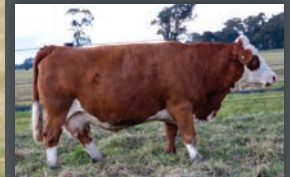
VALLEY CREEK HARRACH  
D: VALLEY CREEK JEWEL  
BARANA DEANNA

BAR 5 SA HARRACH 801P  
VALLEY CREEK ROZ  
GOWRIE YANKEE  
BARANA YONDER

We think a great deal of this bull, he's out of Champion of the World Cow – Valley Creek Jewel. The carcass shape & overall doing ability in this bull really shows. Big performance & power. He is an easy type we are proud to offer. Breed average birth on IGS, top 15% weighing weight, Top 10% yearling weight, Top 10% stability & Top 2% DOC. **Hetero Polled**



Pat Grandsire: BLUEPRINT



Mat Granddam:  
HIGH FIVE CHERRY C002

registration#  
ZMJPS063

birthdate  
4th October, 2021

Hetero Polled Purebred

## VC SHIRE (Pp)

EBVS	GL: 0.0	BW: 2.9	200D: 27	400D: 39	600D: 47	MILK: 9	SC: 1.9	EMA: 2.5	RIB: -1.6	RUMP: -1.9	RBY: 1.7	IMF: 0.9	DOC: 4	
Scanning Results	10 1/2 month weight	532 kg	Scrotal:	33 cm	EMA (sq cm):	87	Rib (mm):	4	Rump (sq cm):	6	IMF %:	5.1	Age at Scanning:	10 1/2 months



STARWEST POL BLUEPRINT  
S: VC PAY DAY  
WOONALLEE KATHIE B111

ANCHOR T RUSTY 59G  
PHS HOMOZYGOUS XCEPTIONAL  
BHR DOORN G629E  
BHR KATHIE SA L055E

GLEN ANTHONY Y-ARTA AY02  
D: VALLEY CREEK MISS Y-ARTA  
HIGH FIVE CHERRY C002

WAI-TI HIGH RISER  
WILLOWBROOK URSULINA AU18  
BHR THREE SIXES SA L666E  
WOONALLEE ROWENA X33

Unbelievably deep heart room & capacity, if you're looking to soften your cow herd, he's the man. Cracking skin type & to be honest we have never felt skin like his on any VC produced animal. Top 10% for BW & calving ease, Top 15% milk, Top 4% satiability, Top 3% for docility & Top 10% API on IGS. **Hetero Polled**





Pat Grandsire: BLUEPRINT



Mat Granddam: HIGH FIVE CHERRY C002

registration#  
ZMJPS059

birthdate  
9th September, 2021

Hetero Polled Purebred

## VC SALT LAKE CITY (Pp)

EBVS	GL: -1.0	BW: 1.2	200D: 16	400D: 27	600D: 38	MILK: 10	SC: 0.4	EMA: 2.9	RIB: -0.6	RUMP: -0.4	RBY: 2.0	IMF: -0.3	DOC: 16
Scanning Results	11 month weight	Scrotal:	EMA (sq cm):			Rib (mm):	Rump (sq cm):	IMF %:	Age at Scanning:				
	490 kg	37 cm	90			4	5	4.6	11 months				



STARWEST POL BLUEPRINT  
S: VC PAY DAY  
WOONALLEE KATHIE B111

ANCHOR T RUSTY 59G  
PHS HOMOZYGOUS XCEPTIONAL  
BHR DOORN G629E  
BHR KATHIE SA L055E

SIEGFRIED  
D: VC MISS SIEGFRIED Q028  
VALLEY CREEK MISS Y-ARTA

SULTAN II  
BIENE 30335  
GLEN ANTHONY Y-ARTA AY02  
HIGH FIVE CHERRY C002

Heifers first calf out of Siegfried daughter. Stacked with generations of direct maternal caving ease. Top 15% calving ease, Top 15% BW, Top 20% milk, Top 10% Satiability, Top 10% docility & Top 15% API on IGS. Heifer Bull option.  
**Hetero Polled**



Sire: VC PAYTON



Dam: VC LUCY P006

registration#  
ZMJPS060

birthdate  
13th September, 2021

Homo Polled Purebred

## VC STYLISH MAN (PP)(R)

EBVS	GL: -1.2	BW: 2.1	200D: 31	400D: 50	600D: 54	MILK: 3	SC: 0.6	EMA: 3.2	RIB: 0.3	RUMP: -1.0	RBY: 0.1	IMF: 0.2	DOC: -7
Scanning Results	11 month weight	Scrotal:	EMA (sq cm):			Rib (mm):	Rump (sq cm):	IMF %:	Age at Scanning:				
	509 kg	31 cm	88			3	3	4.7	11 months				



IPU TIGER 73C  
S: VC PAYTON  
CIRCLE EIGHT MISS LUCY K299

MRL EL TIGRE 52Z  
IPU MS RED EFFORT 1045  
TNT TANKER U263  
ST PAULS DREAM LUCY E431

VALLEY CREEK MARKSMAN  
D: VC LUCY P006  
CIRCLE EIGHT MISS LUCY K299

WOONALLEE JARGON  
LANCASTER ERICA A330  
TNT TANKER U263  
ST PAULS DREAM LUCY E431

Homozygous Polled, if you're looking to add frame bone & overall phenotype to your red Simmental program, look no further. Top 15% for weaning & yearling weight on IGS. **Homo Polled**





Pat Grandsire: EL TIGRE



Sire: VC PAYTON

registration#  
ZMJPS055

birthdate  
1st September, 2021

Homo Polled Purebred

## VC SAVING CASH (PP)(R)

EBVS	GL: -2.0	BW: 0.7	200D: 28	400D: 43	600D: 51	MILK: 2	SC: 0.4	EMA: 3.1	RIB: 0.5	RUMP: -0.7	RBV: -0.3	IMF: 0.3	DOC: -
Scanning Results	11 month weight	Scrotal:	EMA (sq cm):			Rib (mm):	Rump (sq cm):	IMF %:	Age at Scanning:				
	538 kg	37 cm	87			4	5	4.9	11 months				



IPU TIGER 73C  
S: VC PAYTON  
CIRCLE EIGHT MISS LUCY K299

MRL EL TIGRE 52Z  
IPU MS RED EFFORT 104S  
TNT TANKER U263  
ST PAULS DREAM LUCY E431

TNT TANKER U263  
D: CIRCLE EIGHT MISS LUCY K299  
ST. PAULS DREAM LUCY

MR NLC SUPERIOR S6018  
TNT MISS S17  
CNS DREAM ON L186  
LUCAS MS 129L 594R

Saving Cash is a complete as a sire for a red calf, we are proud to offer him to the industry. He has a double cross of his beautiful dam that is pear shaped with an exceptional udder. Utilize S055 to add overall performance through his length, bone & add frame score combined with stoutness & muscle shape while enhancing foot quality & double cross of maternal strength along the way. Top 10% for yearling weight on IGS. **Homo Polled**



Sire: WALK THIS WAY



Pat Grandsire: COBRA 47Y

registration#  
ZMJPS040

birthdate  
8th August, 2021

Hetero Polled Purebred

## VC SID (Pp)(AI)(R)

EBVS	GL: -3.9	BW: -2.0	200D: 12	400D: 18	600D: 16	MILK: 2	SC: 0.1	EMA: 3.5	RIB: 0.7	RUMP: -0.4	RBV: 0.3	IMF: 0.1	DOC: 2
Scanning Results	12 month weight	Scrotal:	EMA (sq cm):			Rib (mm):	Rump (sq cm):	IMF %:	Age at Scanning:				
	466 kg	33 cm	87			4	6	4.8	12 months				



NCB COBRA 47Y  
S: MADER WALK THIS WAY 224B  
MADER P IRON SUGAR 7X

LFE VIPER 455U  
NCB MISS DREAM 22T  
MADER P BLACK IRONMAN 22U  
LFE FAMOUS 632T

GNA SIMMENTALS M006  
D: SBS POCAHONTAS  
MALA-DAKI BLK POCAHONTAS L698

BUCKINGHAM GEORGE  
GNA SIMMENTALS JAFFA  
MALA-DAKI FERRARI F463  
MALA-DAKI POCAHONTAS G502

Heifers first calf, by the much-famed Mader Walk This Way 224B. Complete outcross, light birthweight, long smooth built. A true calving ease bull with the bonus of putting great shape into his progeny. Heifer bull option. **Hetero Polled**





Sire: RF SUPERCHARGED



Dam: STRIKE K176

registration#  
ZMJPS050

birthdate  
23rd August, 2021

Homo Polled Purebred

## VC SASKATOON (PP)(AI)(B)

EBVS	GL: 0.6	BW: 0.0	200D: 21	400D: 34	600D: 35	MILK: 5	SC: -0.5	EMA: 3.4	RIB: 0.8	RUMP: -0.4	RBY: 0.0	IMF: 0.1	DOC: 1
Scanning Results	12 month weight	Scrotal:	EMA (sq cm):			Rib (mm):	Rump (sq cm):	IMF %:	Age at Scanning:				
	630 kg	38 cm	103			5	5	4.4	12 months				



RF CAPACITY 742E  
S: RF SUPERCHARGED 9150G  
RF CERTAINLY FLIRTIN 202Z

WFL WESTCOTT 24C  
RF FAMOUS 409B/CC-RC  
WHEATLAND STOUT 930W  
RF FLIRTIN FOR CERTIN 37U

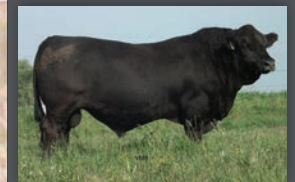
TNT TANKER U263  
D: LANCASTER STRIKE K176  
LANCASTER E105

MR NLC SUPERIOR S6018  
TNT MISS S17  
LANCASTER AVIATOR  
LANCASTER E105

Homozygous polled & homozygous black when investing in the next herd sire we always view the cow families, Saskatoon is truly one of the very best on both sides. He's backed by a dam & grand dam that is awesome footed, great uddered & built on production value. S50 is truly one of the most intriguing bulls with the pedigree he holds. Impressive to view as he has so much length, top, bone combined with a middle third with a big hip & extra muscle shape, awesome foot & large scrotal. Top 1% weaning weight, Top 1% yearling weight on IGS. Stud Sire Potential. **Homo Polled and Homo Black**



Sire: RF SUPERCHARGED



Mat Grandsire:  
CAPTAIN MOREGAN

registration#  
ZMJPS042

birthdate  
12th August, 2021

Homo Polled Purebred

## VC SEATTLE SOUNDS (PP)(AI)(B)

EBVS	GL: -2.5	BW: 0.0	200D: 25	400D: 43	600D: 40	MILK: 3	SC: 0.6	EMA: 4.0	RIB: 0.7	RUMP: -0.4	RBY: 0.4	IMF: 0.0	DOC: 11
Scanning Results	12 month weight	Scrotal:	EMA (sq cm):			Rib (mm):	Rump (sq cm):	IMF %:	Age at Scanning:				
	644 kg	37 cm	107			6	10	4.9	12 months				



RF CAPACITY 742E  
S: RF SUPERCHARGED 9150G  
RF CERTAINLY FLIRTIN 202Z

WFL WESTCOTT 24C  
RF FAMOUS 409B/CC-RC  
WHEATLAND STOUT 930W  
RF FLIRTIN FOR CERTIN 37U

SVS CAPTAIN MORGAN 11Z  
D: VALLEY CREEK GLENDIVE N049  
BONNYDALE GLENDIVE K199

HARVIE JDF WALLBANGER11X  
SUNNYVALLEY BLK JENNA 880U  
BONNYDALE BLACK HAWK H274  
BONNYDALE GLENDIVE E239

Homozygous polled & homozygous black, after seeing S042 at 6 weeks old we knew he was special. A calf with much thickness, eye appeal & correctness doesn't come around often he continues to impress as he develops into a true outstanding herd sire. He combines a moderate birthweight with explosive growth in an extremely soft made package. Wide topped, strong quartered, big barrelled & excellent feet. He has a solid genetic base to leave a lasting impression on any herd. Top 4% weaning weight, Top 2% yearling weight on IGS. **Homo Polled and Homo Black**





Sire: RF SUPERCHARGED



Pat Grandsire: CAPACITY

registration#  
ZMJPS048

birthdate  
19th August, 2021

Hetero Polled Purebred

## VC SANTA CRUZ (PP)(AI)(B)

EBVS	GL: 0.0	BW: 1.0	200D: 27	400D: 42	600D: 40	MILK: 0	SC: 0.4	EMA: 4.2	RIB: 0.6	RUMP: -0.6	RBY: -0.1	IMF: 0.8	DOC: 2
Scanning Results	12 month weight	Scrotal:	EMA (sq cm):			Rib (mm):		Rump (sq cm):	IMF %:	Age at Scanning:			
	636 kg	37 cm	101			6		8	5.5	12 months			



S: RF CAPACITY 742E  
RF SUPERCHARGED 9150G  
RF CERTAINLY FLIRTIN 202Z

WFL WESTCOTT 24C  
RF FAMOUS 409B/CC-RC  
WHEATLAND STOUT 930W  
RF FLIRTIN FOR CERTIN 37U

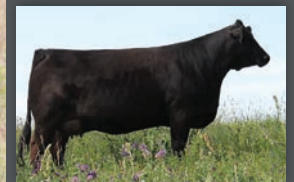
D: VALLEY CREEK LEAH  
MR NLC UPGRADE U8676  
LANCASTER POPPY B376

ELLINGSON LEGACY M229  
MS NLC MOJO S6119 B  
GW LUCKY ONE 686K  
GW MISS CHOICE 717F

Homozygous Black, A long-bodied bull with good extension & mobility. He's beautifully designed sire prospect. Very well balanced, deep ribbed, wide made & excellent bone with a powerful hip & hind leg. His dam is the rock-solid VC Leah cow that just keeps producing year in year out. S048 has the ingredients to leave a lasting mark in siring phenotypically great cattle combining with Top 1% weaning weight & yearling weight on IGS. **Hetero Polled and Homo Black**



Sire: WALK THIS WAY



Pat Granddam:  
IRON SUGAR 7X

registration#  
ZMJPS044

birthdate  
15th August, 2021

Homo Polled Purebred

## VC SYIVESTER (PP)(AI)(B)

EBVS	GL: -3.0	BW: 0.1	200D: 27	400D: 42	600D: 45	MILK: 6	SC: 0.8	EMA: 3.6	RIB: 0.7	RUMP: -0.5	RBY: -0.1	IMF: 0.3	DOC: 12
Scanning Results	12 month weight	Scrotal:	EMA (sq cm):			Rib (mm):		Rump (sq cm):	IMF %:	Age at Scanning:			
	656 kg	40 cm	109			4		6	5.4	12 months			



S: NCB COBRA 47Y  
MADER WALK THIS WAY 224B  
MADER P IRON SUGAR 7X

LFE VIPER 455U  
NCB MISS DREAM 22T  
MADER P BLACK IRONMAN 22U  
LFE FAMOUS 632T

D: VALLEY CREEK SHES MORGEN  
SVS CAPTAIN MORGAN 11Z  
LANCASTER POPPY B376

HARVIE JDF WALLBANGER111X  
SUNNYVALLEY BLK JENNA 880U  
GW LUCKY ONE 686K  
GW MISS CHOICE 717F

Homozygous polled & homozygous black, Plenty of power & thickness, a deep sided bull. His dam is nitrous for always bringing in the no 1 weaning weight calf at weaning. A strong headed young sire with tremendous bone & capacity, fault free disposition. We believe S044 is the widest calf bred to date! Top 3% for weaning weight, Top 4% yearling weight & Top 1% milk on IGS. **Homo Polled and Homo Black**





Sire: WALK THIS WAY



Pat Grandsire: RIDDLER

registration#  
ZMJPS041

birthdate  
11th August, 2021

Hetero Polled Purebred

## VC SUPERNATURAL (Pp)(AI)(B)

EBVS	GL: -4.4	BW: -0.4	200D: 27	400D: 44	600D: 40	MILK: 4	SC: 0.1	EMA: 4.2	RIB: 0.0	RUMP: -1.6	RBY: 0.7	IMF: 0.0	DOC: 11
Scanning Results	12 month weight	Scrotal:	EMA (sq cm):			Rib (mm):	Rump (sq cm):	IMF %:	Age at Scaming:				
	650 kg	40 cm	105			6	6	5.0	12 months				



NCB COBRA 47Y  
S: MADER WALK THIS WAY 224B  
MADER P IRON SUGAR 7X

LFE VIPER 455U  
NCB MISS DREAM 22T  
MADER P BLACK IRONMAN 22U  
LFE FAMOUS 632T

LFE THE RIDDLER 323B  
D: VC STRIKE N051  
LANCASTER STRIKE K176

LFE GOTHAM 819Y  
LFE BS CHARO 23Y  
TNT TANKER U263  
LANCASTER E105

Homozygous black, the best overall balanced sire combining the best phenotype with great IGS figures. Heifer bull option with a neat overall package to be used on cows & heifers. He really is a flexible sire he epitomizes the direction the VC program is headed. Top 1% for yearling weight, Top 1% for weaning weight & top 15% for satiability. **Hetero Polled and Homo Black**



Sire: VC PAYTON



Grandsire: EL TIGRE 52Z

registration#  
ZMJPS037

birthdate  
3rd August, 2021

Homo Polled Purebred

## VC SOUTHERN COMFORT (PP)(B)

EBVS	GL: -1.8	BW: 0.2	200D: 27	400D: 39	600D: 42	MILK: 6	SC: 0.2	EMA: 3.4	RIB: 0.2	RUMP: -1.0	RBY: 0.1	IMF: 0.3	DOC: -20
Scanning Results	12 month weight	Scrotal:	EMA (sq cm):			Rib (mm):	Rump (sq cm):	IMF %:	Age at Scaming:				
	564 kg	33 cm	98			5	9	5.7	12 months				



IPU TIGER 73C  
S: VC PAYTON  
CIRCLE EIGHT MISS LUCY K299

MRL EL TIGRE 52Z  
IPU MS RED EFFORT 1045  
TNT TANKER U263  
ST PAULS DREAM LUCY E431

IPU TIGER 73C  
D: VC LADY LUCK Q012  
VALLEY CREEK LADY LUCK

MRL EL TIGRE 52Z  
IPU MS RED EFFORT 1045  
MR NLC UPGRADE U8676  
LANCASTER POPPY B376

Homozygous polled, heifers first calf by the consistent VC Payton that just does not miss. Pure carcass bull, structurally sound, he's a versatile bull that can be used in many different ways. Vealer production in the south our growing out them steers out past 600 days in the north with added bone & muscle shape that is required. **Homo Polled**





Pat Grandsire: EL TIGRE



Mat Granddam: LINETTE

registration#  
ZMJPS053  
birthdate  
27th August, 2021  
Homo Polled Purebred

## VC SILVER BULLET (PP)(B)

EBVS	GL: -2.9	BW: -0.6	200D: 24	400D: 39	600D: 37	MILK: 5	SC: 0.3	EMA: 3.6	RIB: 0.7	RUMP: -0.5	RBV: 0.0	IMF: 0.1	DOC: -3
Scanning Results	12 month weight		Scrotal:		EMA (sq cm):		Rib (mm):		Rump (sq cm):		IMF %:		Age at Scanning:
	600 kg		33 cm		95		6		8		4.1		12 months



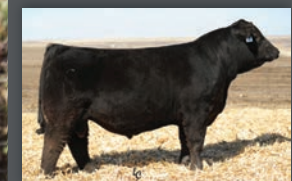
S: IPU TIGER 73C  
VC PAYTON  
CIRCLE EIGHT MISS LUCY K299

MRL EL TIGRE 52Z  
IPU MS RED EFFORT 104S  
TNT TANKER U263  
ST PAULS DREAM LUCY E431

D: LFE THE RIDDLER 323B  
VALLEY CREEK LINETTE N004  
BLACKSAND LINETTE 823U

LFE GOTHAM 819Y  
LFE BS CHARO 23Y  
SPRINGCREEK LINER 104S  
SPRINGCREEK DAWN 131P

Homozygous polled & homozygous black a moderate framed bull with extra depth of body a versatile bull that can be used on heifer job without sacrificing quality. He would be suited in the northern job given his abundance of loose skin combining with muscle shape. **Homo Polled and Homo Black**



Pat Grandsire: COWBOY CUT



Mat Grandsire: PIT BOSS

registration#  
MGVPS254  
birthdate  
23rd June, 2021  
Homo Polled Purebred

## Morganvale PANTHER S254 (PP)(B)

EBVS	GL: -2.3	BW: -0.2	200D: 25	400D: 40	600D: 40	MILK: 7	SC: 0.3	EMA: 2.4	RIB: 1.3	RUMP: 0.2	RBV: -0.7	IMF: -	DOC: -
Scanning Results	13 1/2 month weight		Scrotal:		EMA (sq cm):		Rib (mm):		Rump (sq cm):		IMF %:		Age at Scanning:
	694 kg		40 cm		107		5		7		5.5		13 1/2 months



S: WOONALLEE LONDON  
MORGANVALE PANTHER  
MORGANVALE PRINCESS M163

CCR COWBOY CUT 5048Z  
WEBB CAPTAIN H0922  
PERT G140  
LANCASTER PRINCESS B392

D: WOONALLEE MCGRAW  
MORGANVALE LUCKY Q131  
MORGANVALE LUCKY L250

ERIXON PIT BOSS 21Z  
WOONALLEE CHARO H253  
PERT G140  
PERT LUCKY MAN C20

Homozygous polled & homozygous black, a heifers first calf that we bought in, super soft easy doing bodied bull. Extra depth & body, massive rib shape & will add extra pounds to your calf crop. Top 15% yearling weight, Top 10% yearling weigh on IGS. **Homo Polled and Homo Black**





Sire: COWBOY CUT



Dam: STRIKE J141

registration#  
ZMJPS035

birthdate  
27th June, 2021

Homo Polled Purebred

## VC STATESMAN (PP)(AI)(B)

EBVS	GL: -0.1	BW: 0.4	200D: 27	400D: 50	600D: 51	MILK: 4	SC: 1.5	EMA: 3.6	RIB: 1.9	RUMP: 0.9	RBV: -1.1	IMF: 1.0	DOC: -1
Scanning Results	13 1/2 month weight 630 kg	Scrotal: 40 cm	EMA (sq cm): 100			Rib (mm): 4	Rump (sq cm): 6	IMF %: 5.1	Age at Scanning: 13 1/2 months				



TRIPLE C SINGLETARY S3H  
S: CCR COWBOY CUT 5048Z  
CCR MS 4045 TIME 7322T

HOOK'S SHEAR FORCE 38K  
LUCAS JOSIE 19K  
HTP SVF IN DEW TIME  
CCR MS PRETTY 4045P

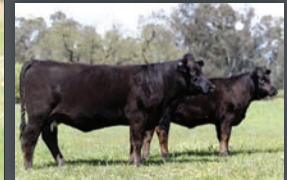
NICHOLS MANIFEST T79  
D: LANCASTER STRIKE J141  
LANCASTER C370

NICHOLS LEGACY M72  
NICHOLS MCM N13  
LANCASTER ACE  
LANCASTER MISS STRIKE 2015

Homozygous polled & homozygous black, a natural calf off our Lancaster Strike J141 cow that was purchased at the roses of red sale. Add frame size, clean coated with tremendous mobility. Heifer bull option while retaining top 2% yearling & weaning weight. Top 10% for stability plus an API of 154 on IGS. **Homo Polled and Homo Black**



Pat Grand sire: EL TIGRE



Mat Granddam:  
GLENDIVE K199

registration#  
ZMJPS068

birthdate  
14th November, 2021

Homo Polled Purebred

## VC SPEED HUMP (PP)(B)

EBVS	GL: -2.0	BW: 0.9	200D: 28	400D: 45	600D: 48	MILK: 5	SC: 0.5	EMA: 4.0	RIB: 0.0	RUMP: -1.5	RBV: 0.7	IMF: 0.1	DOC: -4
Scanning Results	9 month weight 452 kg	Scrotal: 32 cm	EMA (sq cm): 81			Rib (mm): 3	Rump (sq cm): 3	IMF %: 3.9	Age at Scanning: 9 months				



IPU TIGER 73C  
S: VC PAYTON  
CIRCLE EIGHT MISS LUCY K299

MRL EL TIGRE 52Z  
IPU MS RED EFFORT 104S  
TNT TANKER U263  
ST PAULS DREAM LUCY E431

VALLEY CREEK NORTH N050  
D: VC GLENDIVE Q030  
BONNYDALE GLENDIVE K199

LFE THE RIDDLER 323B  
LANCASTER STRIKE K176  
BONNYDALE BLACK HAWK H274  
BONNYDALE GLENDIVE E239

Homozygous polled & homozygous black, with the performance & bone S068 has a stacked pedigree combining Lucy K299, Strike K176, Glendive K199 & Tigre 73C on the top side resulting progeny are sure to be a standout, bone, muscle shape, size & capacity one not to be looked over for the commercial edge! **Homo Polled and Homo Black**





## SEMEN LOT *RF* CALIBER 014G (P)(B)

EBVS | GL: -2.7 | BW: 1.2 | 200D: 28 | 400D: 47 | 600D: 43 | MILK: 1 | SC: 0.1 | EMA: 3.5 | RIB: 0.9 | RUMP: -0.5 | RBY: 0.1 | IMF: 0.1 | DOC: -



NCB COBRA 47Y  
S: NGDB STRUCTURE 34D  
NGDB LOUISE 411 B

LFE VIPER 455U  
NCB MISS DREAM 22T  
DRAKE POKER FACE 2X  
NGDB 204Z

SVS CAPTAIN MORGAN 11Z  
D: RF NOT JUST A FLIRT 404B  
RF CERTAINLY FLIRTIN 202Z

HARVIE JDF WALLBANGER111X  
SUNNYVALLEY BLK JENNA 880U  
WHEATLAND STOUT 930W  
RF FLIRTIN FOR CERTIN 37U

registration#  
IMCPO0444

birthdate  
30th December, 2019

Homo Polled Purebred

RF Caliber 014G is a bull bred for the real world and his future impact on this great breed is truly exciting. This \$150,000 attractive powerhouse of a breeding piece ranks 1% of the breed for WW and YW plus 3% for MWW and a strong set of EPDs throughout. He comes with a nice set of number but his true value is the phenotype and genotype that he has to offer as it is a world leading! He is backed by 404B who was a past Supreme Champion Female at Farm-Fair & Agribition and has evolved into one of the great breeding donors of all time. The Structure sons topped every bull sale they sold in, and he has been a true breed leader with Caliber being his best accomplishment to date. 2 Breed leaders, Lewis Farms & LaBatte Simmentals bought exclusive packages in this valuable sire and with this will be the first semen ever offered to public in 2022 in Australia. Here is your chance to be a part of Caliber, one of the most exciting bulls to ever hit the Simmental Industry!

**Homo Polled and Homo Black**

18: 10 Units    19: 10 Units

All semen stored at Holbrook Vets. Buyer to pay all shipping costs.



Dam of Caliber 014G  
RF NOT JUST A FLIRT 404B



Mat Granddam of Caliber  
RF CERTAINLY FLIRTIN 202Z



Sire of Caliber  
NGDB STRUCTURE 34D





## SEMEN LOT *R Plus* REDDINGTON 0143H

Canadian EPDS

CE: 10.1

BW: 3.2

WW: 88.9

YW: 128.5

MILK: 26.9

MCE: 4.7

MWW: 71.4



NCB COBRA 47Y  
S: R PLUS VENOM 4006B  
IPU MS. TULA 104Z

LFE VIPER 455U  
NCB MISS DREAM 22T  
DRAKE POKER FACE 2X  
D BAR C BLK SATIN 680S

R PLUS REDGE 8018U  
D: MISS R PLUS 6168D  
MISS R PLUS 1033Y

R PLUS BLACKEDGE  
MISS R PLUS 3158N  
PRL TOBASCO 201T  
MISS R PLUS 2168M

CSA registration #  
PG1339212

birth date

11th February, 2020

Homo Polled Purebred

On its way to Australia as you read this, without a doubt one of the most exciting red Simmental bulls the industry has seen & he sold for \$161,000. He has a lot of valuable attributes, Reddington offers an untouchable phenotype, large impressive feet & a very strong productive dam that you would be proud to own a herd bull out of. Utilize him to add bone, structural integrity & depth of body. An exciting outcross genetics to Australia.

20: 10 Units    21: 10 Units

All semen stored at Holbrook Vets. Buyer to pay all shipping costs.



Hind Shot  
R PLUS REDDINGTON 0143H



Grandsire of Reddington 0143H  
NCB COBRA 47Y





*embryo opportunity* **Four (4) Embryos**

R Plus Reddington x Rainbow River Sprinkles 49H



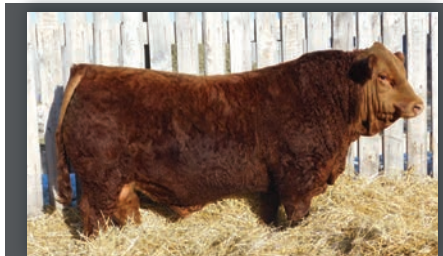
R PLUS VENOM 4006B  
R PLUS REDDINGTON 0143H  
MISS R PLUS 6168D

NCB COBRA 47Y  
IPU MS. TULA 104Z  
R PLUS REDGE 8018U  
MISS R PLUS 1033Y



SVS TYCOON 841F  
RAINBOWRIVER SPRINKLES 49H  
MAF SPRINKLES 189E

SVS BROOKS 669D  
SVS RED ANNIE 411B  
IPU RED DEPUTY 25C  
MAF SPRINKLES 14A



Sire of Sprinkles 49H  
SVS TYCOON 841F



**R Plus Reddington** is without a doubt one of the most exciting red Simmental bulls the industry has seen & he made \$161,000. He has a lot of valuable attributes, Reddington offers an untouchable phenotype, large impressive feet & a very strong productive dam that you would be proud to own a herd bull out of. Utilize him to add bone, structural integrity & depth of body. An exciting outcross genetics to Australia. Be assured you will be the first to put them in before VC!

**Rainbowriver Sprinkles 49H**

She has made a big splash in a short period of time consistently stamping her progeny with her attractive look. Especially in the Rainbow River Simmentals program in Canada. Therefore, we thought only fitting that we bought the best daughter at the time especially with the ability to unfold the SVS Tycoon bull into the picture. Fresh new cow family to Australia plus outcross to most existing programs.

R Plus  
**REDDINGTON**

Canadian EPDs	CE	BW	WW	YW	MILK	MCE	MWW
10.1	3.2	88.9	128.5	26.9	4.7	71.4	







# FALLS

*Livestock Transport*

FINLEY

*Specialists in Stud Stock  
Servicing all States Australia Wide*



**Lockie Falls – 0429 826 342**  
[www.fallslivestock.com.au](http://www.fallslivestock.com.au)







*thank you*  
to our buyers

JN LAURIE  
S & E MULLER  
SOUTHERN BLACK SIMMENTALS  
MICHAEL MAWM  
GLEN CO PASTORAL  
DARREN WEIR  
ST PAULS GENETICS  
GRANGEBURN SIMMENTALS  
ELITE CATTLE CO  
WOMBETTA PTY LTD  
LUKE SCICLUNA  
RJ BAILEY  
PETER & ODETTE MORLEY  
CANNON DEE SIMMENTALS  
WOMBAT HILLS SIMMENTALS  
INTERNATIONAL ANIMAL HEALTH  
HEART & SPADE SIMMENTALS  
GAVIN ROBINSON  
BARRY & KAY GRAHAM  
HARTFIELD SIMMENTALS  
LUCRANA SIMMENTALS  
TULLAYR SIMMENTALS  
WILLS PARTNERSHIP  
HAMILTON & ANNE BARBER  
C & S ANDREWARTHA

MCWILLIAM CATTLE  
CLOVERNOOK PARTNERSHIP  
MAGPIE PARK SIMMENTALS  
ICT INDIGO CREEK TRADING  
SETTLER SIMMENTALS  
D & C BLAKE  
CHRIS & RACHEAL SODERLAND  
H & L LIVESTOCK  
GLEN-LEE ASH STUD  
BRM FARMS  
LNA LIVESTOCK  
JOHN & CORRINA ADAMS  
I & P BARNARD PTY LTD  
MERCHANTS CONTRACTING  
MR R & MRS M FLANNERY  
KIDMAN DOWNS SIMMENTALS  
SPRINGSIDE SIMMENTALS  
HOBBS LIVESTOCK  
ABARRAK FARMING CO

JACK DAWSON  
DAVID FELETTA  
CRAIG BULLOCH  
MICHELLE GROSSER  
WOONALLEE SIMMENTALS  
LOGIE SIMMENTALS  
CHELSEA GREEN  
JEFF & ROBBIE KNOX  
SUMMERHILL SIMMENTALS  
BLUE GENE CATTLE COMPANY

VC SIMMENTALS ONLINE  
**SPRING BULL**  
*sale*