

# TENALBA

## BORDER LEICESTER STUD

**'ALBERT' MOOLA ROAD**  
CANOWINDRA NEW SOUTH WALES

## 23RD ANNUAL SALE

---

Offering 95 Rams  
Thursday 15th September 2022

**SALE COMMENCES 11.00AM**  
**ON PROPERTY**

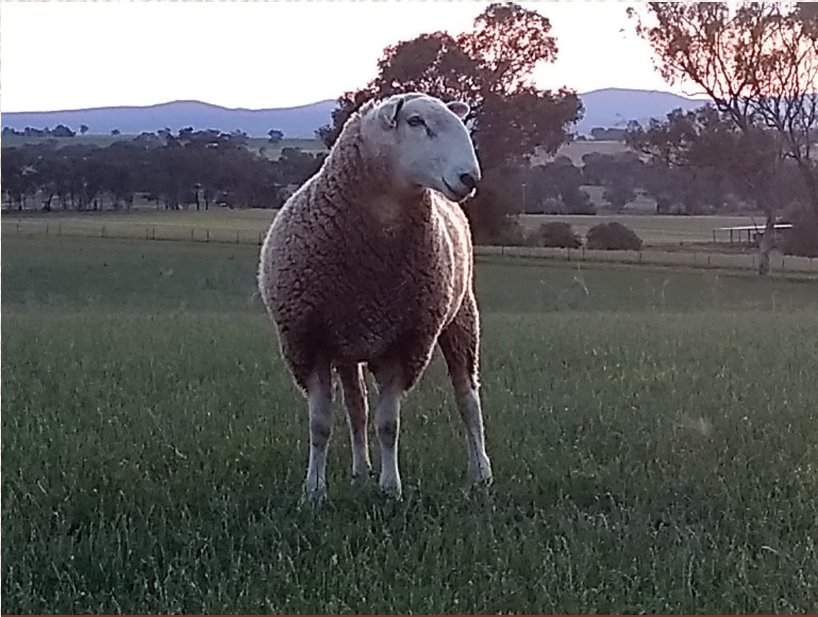
All Sheep Lambplan Tested  
MAP Ovine Johnes MN3V  
Brucellosis Accredited Free  
Footrot Free

**STUD MASTER PHILLIP RUSSELL**  
Telephone 02 6344 1964 | Mobile 0427 023 780



**Selling Agents KMWL**  
Paul Breen 0427 102 667

Interfaced with Auctionsplus  
 **AuctionsPlus**<sup>®</sup>  
Australia's Livestock Marketplace



Tenalba 219/17



Sale Rams

Tenalba Border Leicester Stud was established in 1976 and has endeavoured to breed to best maternal sire available to the lamb industry.

The collection of raw data is enabling us to produce a maternal sire that has traits beneficial for the prime lamb industry. By using this raw data and also utilising Lambplan to assist with data/trait analysis. Our sheep are continuing to develop the traits needed to be leaders in the maternal sector whilst still maintaining their worth as prime lambs.

**LAMBPLAN ASBV's** are calculated from raw data collected by breeders and accredited Lambplan operators. Lambplan (a division of Meat and Livestock Australia Limited) does not oversee or audit the collection of this data and therefore MLA does not accept any responsibility for the accuracy of the information in this document. Lambplan ASBV's are designed to give the best possible estimate of true genetic merit from that data, ie the estimate that maximizes the correlation between ASBV's and true genetic merit.



All sale sheep have been vaccinated with 6 in 1 three times in the last twelve months. They have also been Gudair vaccinated.



Our flock is rated MN3 V in the Market Assurance Programme.

We are brucellosis accredited free,  
and footrot free.

# ASBV's

(Australian Sheep Breeding Value)

BWT: Birth weight measured in kgs

MWWT: Maternal Weaning Weight, related to milking ability of the female progeny.  
*Measured in kg*

WWT: Weaning Weight. (With MWWT relevant to the sucker industry).  
*Measured in kg*

PWWT: Post Weaning Weight. A good indicator of the lamb's ability to grow after weaning to market weights. (8 – 10 months)  
*Measured in kg*

PFAT: Post Weaning Fat.  
*Measured in mm*

PEMD: Post Weaning Eye Muscle Depth.  
*Measured in mm*

## LEGEND

Acc: Accuracies for ASBV's as a percentage

Tw: Twin

Tr: Triplet

Qu: Quadruplet

BT: Birth Type

RT: Rear Type

S of D: Sire of Dam

### ASBV's in this catalogue

*This year the catalogue does not contain an ASBV for the Weaning Rate or an Index figure.*

*I have decided to not report the Weaning Rate as it is believed to be approximately 5% heritable and as such is reported with very low accuracies, within this flock at around 20% to 30%. I do not think that 20% - 30% accuracies are reliable enough.*

*With the index being heavily influenced by the Weaning Rate component I believe it may also create an index figure that is not truly reflective of what these sheep offer the industry.*

*The ASBV's in the catalogue are those that are reported with high accuracies.*

# MEMORANDUM OF SIREs

	BWT	MWWT	WWT	PWWT	PFAT	PEMD
--	-----	------	-----	------	------	------

Tenalba 219/17 Tw

Sire Tenalba 29/15 Tw

	0.11	1	6.1	9	0.1	2.3
Acc	(93)	(81)	(95)	(94)	(93)	(92)

This ram brings an exceptional balance of ASBVs to match his sire appeal. He has great birth weight, solid maternal weaning weight, good growth, with a growth curve that should help maintain mature ewe size at manageable levels. Top shelf ram for eye muscle.

Tenalba 44/18

Sire Hanookra 537/16

	0.37	-0.2	5.7	9.1	-0.1	0.4
Acc	(88)	(64)	(91)	(91)	(91)	(90)

Used as a linkage ram for Sheep Genetics. From an impressive ewe that reared triplets brilliantly.

Tenalba 139/18Tw

Sire Hanookra 537/16

	0.49	1.3	7	11.7	0.3	1.1
Acc	(898)	(69)	(92)	(91)	(90)	(88)

This ram brings positive maternal weaning weight, growth, fat and muscle. He has a real sires outlook.

Cooinda 85/19Tw

Sire Cooinda 20/17Tw

	0.21	0.4	7	11.4	0.5	0.4
Acc	(85)	(57)	(89)	(87)	(84)	(82)

This ram is a complete outcross. He comes with very acceptable birth weight, strong weaning and post weaning weight, positive fat and muscle.

The following sires were used for the ewe lamb mating in 2021

	BWT	MWWT	WWT	PWWT	PFAT	PEMD
--	-----	------	-----	------	------	------

Tenalba 14/20Tw

Sire Tenalba 219/17Tw

	0.24	1.2	7.1	9.8	0.5	1
Acc	(75)	(59)	(80)	(80)	(79)	(77)

This ram comes from an exceptional ewe line. He has a great compliment of ASBVs, birth, maternal, growth, fat, and muscle.

Tenalba 83/20Tw

Sire Tenalba 82/17Tw

	0.23	1	5.9	9.2	1	0.7
Acc	(73)	(53)	(80)	(79)	(78)	(75)

This ram was second top priced ram at last years sale, sold to Pastoria stud in Victoria. He has an impressive blend of ASBVs that are really suitable for breeding superior first cross ewes.

Tenalba 110/20Tw

Sire Tenalba 139/18Tw

	0.29	0.7	6.2	10.8	0.2	1.1
Acc	(69)	(53)	(76)	(75)	(74)	(71)

This ram has good birth weight, growth, positive fat and muscle

Tenalba 179/20Tw

Sire Tenalba 67/18

	0.28	1.8	5.5	8	-0.1	1.3
Acc	(70)	(51)	(77)	(77)	(76)	(73)

This ram was out of an excellent breeding older ewe. Strong maternal weaning weight and muscle.

Tenalba 231/20

Sire Tenalba 19/19Tw

	0.32	1.7	5.7	9.8	0.4	0.7
Acc	(68)	(45)	(76)	(75)	(72)	(69)

This ram was a result of the ewe joining in 2020. He ticks a lot of boxes with all ASBVs showing positive attributes for the prime lamb industry.

### Please note

Lots 3, 11, 22, and 25 were used this year in the ewe lamb joining program.

## LAMBPLAN - 26 years of service

Lambplan continues to be a useful tool. It does a very solid job of reporting the highly heritable traits i.e. birth weight (BWT), weaning weight (WWT), post weaning weight (PWWT), post weaning eye muscle depth (PEMD), and post weaning fat depth (PFAT). I have found the reporting of maternal weaning weight (MWWT) to be satisfactory.

The reporting of reproduction I have found to be unreliable and the reporting of it appears to vary. After speaking with sheep genetics it has become apparent that all flocks are not analysed in the same way. It appears Sheep Genetics has a system that makes “allowances” for environment that results in not all flocks being analysed the same way. Currently Sheep Genetics are not reporting the ewes within my flock that continue to be the “top performers” for reproduction as the high performers within my flock.

All maternal indices are heavily driven by reproduction breeding values, which creates a distraction when selecting rams.

The use of ASBVs when selecting your breeding stock instead of the index figure allows you to select an even type/ breeding line. Selection using indices may give a huge variation in traits/type, creating progeny with very different finishing/maturity patterns. Selection of breeding stock with a good balance of ASBVs that suite your breeding objectives I believe enables us to better target our goals.

I am also finding Sheep Genetics reporting of across flock and across breed breeding values to be unreliable and highly variable. Their reporting of within flock breeding values appear to be more useful.

	BWT	MWWT	WWT	PWWT	PFAT	PEMD
Lambplan Breed Average	.26	0.69	5.01	7.79	-0.09	0.38
Tenalba Flock Average	.26	0.96	5.97	9.39	0.15	0.88

**Wilson Beer** will be attendance at the sale for anyone who would like an independent assessment. Ph **0428 505520**

# 95 Rams

	BWT	MWWT	WWT	PWWT	PFAT	PEMD
Lot 1	Sire 85 BT 1	Dam RT 1	Tenalba 190169	S of D Tenalba 170082		
175/21 Acc	0.33 (59)	1.3 (42)	7.2 (67)	10.3 (66)	0.2 (64)	0.3 (61)
Lot 2	Sire 85 BT 3	Dam RT 1	Tenalba 190024Tw Trip to lot 14	S of D Tenalba 170040 Fostered as I had a spare ewe		
38/21Tr Acc	0.45 (59)	1.7 (45)	8.4 (66)	12.9 (65)	0.2 (63)	0.9 (60)
Lot 3	Sire 219 BT 2	Dam RT 1	Johnos 190372Tw	S of D Johnos 110083 Used ewe lamb joining		
59/21Tw Acc	0.25 (62)	1.2 (52)	7.4 (68)	10.9 (67)	0.3 (65)	1.7 (63)
Lot 4	Sire 219 BT 2	Dam RT 2	Tenalba 190078Tw	S of D Tenalba 170037		
172/21Tw Acc	0.31 (62)	1.2 (51)	6.6 (69)	11 (68)	0.5 (66)	1.6 (64)
Lot 5	Sire 219 BT 2	Dam RT 2	Tenalba 160010	S of D Cadell 140658		
226/21Tw Acc	0.26 (64)	0.4 (55)	6.7 (70)	9.7 (69)	0.3 (67)	1.5 (65)
Lot 6	Sire 219 BT 1	Dam RT 1	Tenalba 140079Tw	S of D Tenalba 120118		
235/21 Acc	0.29 (65)	1.4 (59)	6.1 (72)	7.4 (71)	-0 (71)	1 (69)



	BWT	MWWT	WWT	PWWT	PFAT	PEMD
Lot 7	Sire 85 BT 3	Dam RT 2	Tenalba 180002Tw Twin lot 8	S of D Tenalba	150141	
204/21Tr Acc	0.44 (60)	1.1 (48)	7.2 (67)	11.6 (66)	0.7 (63)	0.4 (61)
Lot 8	Sire 85 BT 3	Dam RT 2	Tenalba 180002Tw Twin lot 7	S of D Tenalba	150141	
203/21Tr Acc	0.32 (60)	1.1 (48)	6.5 (67)	10.5 (66)	0.6 (63)	0.5 (61)
Lot 9	Sire 219 BT 2	Dam RT 2	Tenalba 180111Tw	S of D Tenalba	150141	
234/21Tw Acc	0.26 (63)	1.4 (54)	7 (69)	10.8 (69)	-0 (68)	1.5 (66)
Lot 10	Sire 139 BT 2	Dam RT 2	Tenalba 170125Tw	S of D Tenalba	150136	
46/21Tw Acc	0.37 (62)	1.3 (51)	5.5 (69)	9.8 (68)	0.2 (66)	0.8 (64)
Lot 11	Sire 85 BT 1	Dam RT 1	Tenalba 150158Tw	S of D Gleneith	120030	
214/21 Acc	0.19 (61)	1.5 (49)	5.8 (69)	8.9 (67)	0.2 (65)	1.1 (63)
Lot 12	Sire 219 BT 2	Dam RT 1	Tenalba 150026Tw	S of D Towarri	120037	
65/21Tw Acc	0.25 (64)	1.5 (56)	5.9 (70)	8.7 (69)	-0.4 (67)	1 (65)
Lot 13	Sire 219 BT 2	Dam RT 2	Tenalba 190175Tw	S of D Tenalba	170082	
69/21Tw Acc	0.3 (64)	1.4 (53)	6.5 (70)	10.5 (68)	0.1 (66)	1.2 (64)

	BWT	MWWT	WWT	PWWT	PFAT	PEMD
Lot 14	Sire 85	Dam	Tenalba 190024Tw	S of D	Tenalba 170040	
	BT 3	RT 2	Triplet to lot 2			
37/21Tr	0.28	1.8	7.2	11.6	0	0.6
Acc	(59)	(45)	(66)	(65)	(63)	(60)
Lot 15	Sire 219	Dam	Tenalba 190116Tw	S of D	Tenalba 170037	
	BT 2	RT 2				
189/21Tw	0.17	0.7	6.4	10.6	0.1	1.1
Acc	(63)	(52)	(69)	(68)	(67)	(64)
Lot 16	Sire 44	Dam	Tenalba 150044Tr	S of D	Gleneith 120030	
	BT 3	RT 2				
35/21Tr	0.28	-0.4	6	9.4	-0.3	0.2
Acc	(64)	(53)	(70)	(69)	(67)	(65)
Lot 17	Sire 219	Dam	Tenalba 190189Tw	S of D	Tenalba 180100	
	BT 1	RT 1				
43/21	0.35	1.2	7.5	11	-0.1	1.1
Acc	(62)	(49)	(68)	(67)	(65)	(63)
Lot 18	Sire 85	Dam	Tenalba 140006Tr	S of D	Gleneith 120030	
	BT 2	RT 2	Twin to lot 58			
147/21Tw	0.42	0.3	7.2	12.2	-0	0.3
Acc	(61)	(49)	(68)	(67)	(65)	(63)
Lot 19	Sire 139	Dam	Tenalba 190049Tw	S of D	Tenalba 170040	
	BT 3	RT 3				
206/21Tr	0.38	1.1	7.4	11.8	-0.2	0.5
Acc	(61)	(48)	(68)	(67)	(65)	(63)
Lot 20	Sire 231	Dam	Tenalba 200015Tw	S of D	Tenalba 170219	
	BT 2	RT 2	Product of ewe lamb joining			
298/21Tw	0.29	1.6	6.8	11.1	0.8	1.5
Acc	(65)	(39)	(66)	(66)	(65)	(62)

	BWT	MWWT	WWT	PWWT	PFAT	PEMD
Lot 21	Sire 219 BT 2	Dam RT 2	Tenalba 170180Tw	S of D Tenalba	150141	
182/21Tw	0.29	1.3	6.2	9.2	-0.4	1
Acc	(65)	(56)	(70)	(69)	(67)	(65)
Lot 22	Sire 219 BT 1	Dam RT 1	Tenalba 140118	S of D Towarri	120037	
141/21	0.31	1.7	6.1	9.2	-0.2	1.2
Acc	(65)	(56)	(71)	(70)	(68)	(66)
Lot 23	Sire 139 BT 2	Dam RT 2	Johnos 180324Tw	S of D Johnos	110551	
23/21Tw	0.54	2.2	7.5	11.2	-0.3	0.8
Acc	(62)	(50)	(69)	(68)	(66)	(64)
Lot 24	Sire 85 BT 2	Dam RT 2	Tenalba150042Tw	S of D Tenalba	120118	
102/21Tw	0.27	0.8	6.2	9.8	0.8	0
Acc	(62)	(50)	(69)	(68)	(66)	(46)
Lot 25	Sire 219 BT 2	Dam RT 2	Tenalba 180151Tw	S of D Tenalba	150141	
174/21Tw	0.36	1.3	6.6	10	0.5	1.6
Acc	(63)	(54)	(69)	(68)	(66)	(64)
Lot 26	Sire 85 BT 2	Dam RT 2	Tenalba 190091Tw	S of D Tenalba	170219	
177/21Tw	0.14	0.8	5.6	9.5	0.6	1.2
Acc	(60)	(44)	(68)	(66)	(64)	(62)
Lot 27	Sire 139 BT 3	Dam RT 3	Tenalba 190237Tw	S of D Tenalba	170123	
169/21Tr	0.17	0.4	5	9.5	1.2	1.7
Acc	(61)	(49)	(68)	(67)	(65)	(62)

	BWT	MWWT	WWT	PWWT	PFAT	PEMD
Lot 28	Sire 85 BT 3	Dam Tenalba 180024Tw RT 2	S of D Hanookra 160537			
85/21Tr	0.2	0.7	6.8	11	0.4	1.1
Acc	(59)	(47)	(67)	(66)	(64)	(62)
Lot 29	Sire 44 BT 2	Dam Tenalba 170189Tw RT Poddy	S of D Cadell 170189			
159/21Tw	0.35	0	6.2	9.2	0.1	0.2
Acc	(63)	(49)	(69)	(69)	(69)	(66)
Lot 30	Sire 219 BT 2	Dam Tenalba 180005Tw RT 2	S of D Tenalba 160044			
21/21Tw	0.1	0.9	5	7.9	0	0.8
Acc	(64)	(54)	(70)	(69)	(67)	(65)
Lot 31	Sire 139 BT 2	Dam Johnos 177450Tw RT 2	S of D Johnos 166017			
230/21Tw	0.61	2	6.6	10.4	-0.8	0
Acc	(62)	(48)	(69)	(68)	(68)	(65)
Lot 32	Sire 85 BT 2	Dam Tenalba 190086Tr RT 2	S of D Tenalba 170123			
216/21Tw	0.19	-0.3	6.2	10.2	0.3	0.5
Acc	(59)	(42)	(67)	(66)	(63)	(61)
Lot 33	Sire 219 BT 2	Dam Tenalba 180141 RT 2	S of D Tenalba 150136			
146/21Tw	0.31	0.8	6	9.2	0	1.1
Acc	(64)	(54)	(70)	(69)	(68)	(66)
Lot 34	Sire 139 BT 3	Dam Tenalba 150167Tw RT 2	S of D Tenalba 120118			
71/21Tr	0.36	1	6.5	10	0	0.8
Acc	(63)	(54)	(70)	(69)	(67)	(65)

	BWT	MWWT	WWT	PWWT	PFAT	PEMD
Lot 35	Sire 139	Dam	Tenalba 190047Tw	S of D Tenalba 170219		
	BT 2	RT 1				
78/21Tw	0.21	1.3	5.4	9.2	0.9	1.5
Acc	(62)	(47)	(69)	(68)	(66)	(64)

Lot 36	Sire 219	Dam	Tenalba 170023Tr	S of D Tenalba 150141		
	BT 3	RT 3				
82/21Tr	0.29	1.2	6.7	10.1	-0.1	1
Acc	(64)	(55)	(70)	(69)	(67)	(65)

Lot 37	Sire 44	Dam	Tenalba 170196Tr	S of D Tenalba 150136		
	BT 2	RT 2				
83/21Tw	0.37	0.3	4.8	8.3	0.4	0.1
Acc	(63)	(52)	(69)	(68)	(67)	(65)

Lot 38	Sire 219	Dam	Tenalba 190034Tr	S of D Tenalba 170082		
	BT 3	RT 1				
67/21Tr	0.17	1.2	6	9	0.2	1.1
Acc	(64)	(52)	(70)	(69)	(67)	(65)

Lot 39	Sire 219	Dam	Tenalba 160167Tr	S of D Gleneith 120030		
	BT 4	RT Poddy		Quad to lot 55		
191/21Qu	0.21	1	6	9.5	0.5	1.3
Acc	(65)	(56)	(71)	(70)	(70)	(67)

Lot 40	Sire 219	Dam	Tenalba 170030Tr	S of D Tenalba 150136		
	BT 2	RT 2				
143/21Tr	0.28	1.3	5.7	8.7	-0.5	0.7
Acc	(63)	(54)	(62)	(62)	(61)	(60)

Lot 41	Sire 179	Dam	Tenalba 200190Tw	S of D Tenalba 170219		
	BT 2	RT 1		Product of ewe lamb joining		
281/21Tw	0.34	1.8	6.1	9.2	0.2	0.2
Acc	(56)	(38)	(65)	(65)	(65)	(62)

	BWT	MWWT	WWT	PWWT	PFAT	PEMD
Lot 42	Sire 85 BT 2	Dam RT 1	Tenalba 180114Tw	S of D	Tenalba 150141	
63/21Tw Acc	0.22 (60)	0.7 (47)	5.8 (68)	9.2 (66)	0.4 (65)	0.4 (62)
Lot 43	Sire 219 BT 2	Dam RT 2	Tenalba 180135	S of D	Tenalba 160044	
29/21Tw Acc	0.2 (63)	-0.2 (55)	6.2 (69)	9.4 (68)	-0.8 (67)	1.2 (65)
Lot 44	Sire 85 BT 3	Dam RT 3	Johnos 177463Tw	S of D	Johnos 100009	
5/21Tr Acc	0.15 (61)	0.2 (48)	6.3 (68)	10 (67)	-0.1 (65)	0.4 (63)
Lot 45	Sire 139 BT 3	Dam RT 3	Tenalba 150021Tw	S of D	Gleneith 120030 Triplet to lot 94	
139/21Tr Acc	0.23 (64)	0.8 (53)	6 (70)	10.2 (69)	-0.4 (67)	0.7 (65)
Lot 46	Sire 219 BT 3	Dam RT 3	Tenalba 170012	S of D	Cadell 140658	
126/21Tr Acc	0.26 (64)	0.9 (55)	5.2 (70)	7.3 (69)	0.3 (67)	1.5 (65)
Lot 47	Sire 14 BT 2	Dam RT 2	Tenalba 200051Tw	S of D	Tenalba 180139 Product of ewe lamb joining	
296/21Tw Acc	0.33 (58)	1.5 (42)	7.2 (66)	10.5 (66)	0.5 (66)	0.5 (63)
Lot 48	Sire 219 BT 1	Dam RT 1	Tenalba 180105Tw	S of D	Hanookra 160537	
151/21 Acc	0.19 (62)	0.7 (49)	5 (68)	7.7 (68)	1 (68)	1.8 (65)

	BWT	MWWT	WWT	PWWT	PFAT	PEMD
Lot 49	Sire 44	Dam Tenalba 190044Tr	S of D Tenalba 150136			
	BT 2	RT 2	Twin to lot 50			
196/21Tw	0.36	1.3	5.7	9.9	0.4	0.8
Acc	(62)	(49)	(69)	(67)	(66)	(64)

Lot 50	Sire 44	Dam Tenalba 190044Tr	S of D Tenalba 150136			
	BT 2	RT 2	Twin to lot 49			
195/21Tw	0.3	1.3	6	10.5	0.5	0.8
Acc	(62)	(49)	(69)	(67)	(66)	(64)

Lot 51	Sire 219	Dam Tenalba 190089Tw	S of D Tenalba 170123			
	BT 2	RT 2				
198/21Tw	0.19	0.2	5.8	8.8	0.3	1.2
Acc	(63)	(51)	(69)	(68)	(66)	(64)

Lot 52	Sire 139	Dam Tenalba 170034Tw	S of D Tenalba 150141			
	BT 2	RT 2	Twin to lot 53			
16/21Tw	0.34	1	5.7	9.5	-0.1	0.2
Acc	(63)	(52)	(69)	(68)	(68)	(64)

Lot 53	Sire 139	Dam Tenalba 170034Tw	S of D Tenalba			
150141	BT 2	RT 2	Twin to lot 52			
17/21Tw	0.43	1	6.3	10.3	0.1	0.6
Acc	(63)	(52)	(69)	(68)	(66)	(64)

Lot 54	Sire 85	Dam Tenalba 180001Tw	S of D Tenalba 160044			
	BT 2	RT 2				
7/21Tw	0.18	0.8	5.8	9.2	0.1	0
Acc	(60)	(46)	(68)	(67)	(64)	(62)

Lot 55	Sire 219	Dam Tenalba 160167Tr	S of D Gleneith 120030			
	BT 4	RT Poddy	Quad to lot 39			
192/21Qu	0.24	1	5.5	8.8	0.1	1.6
Acc	(65)	(56)	(71)	(70)	(70)	(67)

	BWT	MWWT	WWT	PWWT	PFAT	PEMD
Lot 56	Sire 85 BT 3	Dam Tenalba 160001 RT 3		S of D Gleneith 120030		
57/21Tr	0.22	1.6	5.5	9.1	-0.3	0.1
Acc	(60)	(48)	(68)	(67)	(64)	(62)
Lot 57	Sire 179 BT 2	Dam Tenalba 200007Tr RT 2		S of D Tenalba 170082 Product of ewe lamb joining		
257/21Tw	0.25	1.8	4.4	7.6	0.4	1.3
Acc	(57)	(40)	(65)	(65)	(65)	(62)
Lot 58	Sire 85 BT 2	Dam Tenalba 140006Tr RT 2		S of D Gleneith 120030 Twin to lot 18		
148/21Tw	0.54	0.3	7.5	12	-0.5	0
Acc	(61)	(49)	(68)	(67)	(65)	(63)
Lot 59	Sire 219 BT 3	Dam Tenalba 150038 RT 1		S of D Tenalba 120118 Fostered Triplet to lot 85		
115/21Tr	0.23	1.6	5.9	8.2	0.3	1.3
Acc	(64)	(58)	(64)	(63)	(62)	(61)
Lot 60	Sire 219 BT 2	Dam Tenalba 190059 RT 2		S of D Tenalba 170037		
154/21Tw	0.18	1.5	5.2	8	-0	1.3
Acc	(64)	(52)	(70)	(68)	(67)	(65)
Lot 61	Sire 83 BT 1	Dam Tenalba 200056Tr RT 1		S of D Kegra 180056 Product of ewe lamb joining		
284/21	0.39	2.1	7.1	9.6	0.2	0.2
Acc	(57)	(40)	(65)	(65)	(65)	(62)
Lot 62	Sire 219 BT 3	Dam Tenalba 180104Tw RT 3		S of D Tenalba 150141		
62/21Tr	0.16	0.8	5.5	8.5	0.6	1
Acc	(64)	(55)	(70)	(69)	(68)	(66)



	BWT	MWWT	WWT	PWWT	PFAT	PEMD
Lot 63	Sire 14	Dam Tenalba 200174Tr	200174Tr	S of D Tenalba 180067		
	BT 1	RT 1	Product of ewe lamb joining			
267/21	0.28	1	6.4	9.4	0.3	0.6
Acc	(57)	(41)	(66)	(66)	(65)	(63)
Lot 64	Sire 219	Dam Tenalba 170152Tr	170152Tr	S of D Tenalba 150141		
	BT 3	RT 1				
136/21Tr	0.35	0.8	6.8	10	-0.4	1.5
Acc	(64)	(56)	(70)	(69)	(68)	(66)
Lot 65	Sire 14	Dam Tenalba 200108Tr	200108Tr	S of D Kegra 180056		
	BT 2	RT 2	Product of ewe lamb joining			
269/21Tw	0.34	1.3	7.1	10.1	-0	0.7
Acc	(57)	(42)	(66)	(66)	(65)	(62)
Lot 66	Sire 219	Dam Tenalba 170162Tw	170162Tw	S of D Tenalba 150141		
	BT 3	RT 2				
202/21Tw	0.25	1.4	4.4	6.9	-0.2	1.3
Acc	(64)	(56)	(70)	(69)	(67)	(65)
Lot 67	Sire 85	Dam Tenalba 180133Tw	180133Tw	S of D Kegra 160075		
	BT 3	RT 3				
163/21Tw	0.22	0.8	6.2	9.4	0.5	0.4
Acc	(60)	(47)	(68)	(66)	(64)	(62)
Lot 68	Sire 219	Dam Tenalba 190100Tw	190100Tw	S of D Tenalba 170123		
	BT 2	RT 2				
97/21Tw	0.15	0.1	6.2	8.6	-0.6	0.8
Acc	(63)	(53)	(69)	(68)	(64)	(62)
Lot 69	Sire 139	Dam Tenalba 190201	190201	S of D Tenalba 180100		
	BT 2	RT 2				
19/21Tw	0.26	-0	5.6	9.5	0.3	0.7
Acc	(60)	(45)	(68)	(66)	(64)	(62)

	BWT	MWWT	WWT	PWWT	PFAT	PEMD
Lot 70	Sire 110	Dam Tenalba 200125Tw	S of D Tenalba 170219			
	BT 1	RT 1	Product of ewe lamb joining			
264/21	0.29	1.3	5.8	9.5	0	1.2
Acc	(57)	(39)	(65)	(65)	(65)	(62)
Lot 71	Sire 139	Dam Tenalba 180038Tw	S of D Tenalba 160044			
	BT 2	RT 2				
200/21Tw	0.48	1.4	7.1	11.1	-0.3	0.5
Acc	(62)	(50)	(69)	(68)	(66)	(63)
Lot 72	Sire 139	Dam Tenalba 180039Tw	S of D Hanookra 160537			
	BT 1	RT 1				
131/21	0.24	0.9	6	8.7	-0.2	1.5
Acc	(63)	(53)	(69)	(68)	(66)	(64)
Lot 73	Sire 219	Dam Tenalba 180115Tw	S of D Tenalba 150141			
	BT 3	RT 3	Triplet to lot 76			
110/21Tr	0.23	1.4	6	9.3	-0	1.4
Acc	(64)	(56)	(70)	(69)	(68)	(66)
Lot 74	Sire 139	Dam Tenalba 170150Tr	S of D Tenalba 150141			
	BT 2	RT 2	Twin to lot 75			
219/21Tw	0.41	1.2	5	8.8	0.3	0.9
Acc	(62)	(51)	(69)	(68)	(66)	(64)
Lot 75	Sire 139	Dam Tenalba 170150Tr	S of D Tenalba 150141			
	BT 2	RT 2	Twin to lot 74			
220/21Tw	0.37	1.3	4.6	8.2	-0	0.9
Acc	(62)	(51)	(69)	(68)	(66)	(64)
Lot 76	Sire 219	Dam Tenalba 180115Tw	S of D Tenalba 150141			
	BT 3	RT 3	Triplet to lot 73			
111/21Tr	0.18	1.4	5.2	8.3	0	1.8
Acc	(64)	(56)	(70)	(69)	(68)	(66)

	BWT	MWWT	WWT	PWWT	PFAT	PEMD
Lot 77	Sire 85 BT 3	Dam RT 2	Tenalba 190208	S of D Tenalba 180100	Triplet to lot 81	
94/21Tr Acc	0.18 (57)	-0.2 (41)	5.4 (66)	8.8 (64)	0.3 (62)	0.5 (59)
Lot 78	Sire 85 BT 2	Dam RT 2	Tenalba 170160Tr	S of D Tenalba 150141	Twin to lot 82	
222/21Tw Acc	0.19 (59)	1.1 (46)	5.3 (67)	8.6 (66)	-0 (64)	0.3 (61)
Lot 79	Sire 85 BT 1	Dam RT 1	Tenalba 180028Tw	S of D Tenalba 150141		
194/21 Acc	0.29 (60)	0.7 (46)	6 (68)	9.6 (66)	-0.2 (64)	0.1 (62)
Lot 80	Sire 83 BT 2	Dam RT 1	Tenalba 200190Tw	S of D Tenalba 170219	Product of ewe lamb joining	
285/21Tw Acc	0.26 (59)	0.6 (41)	7.5 (66)	11 (66)	-0.1 (66)	1.1 (63)
Lot 81	Sire 85 BT 3	Dam RT 2	Tenalba 190208	S of D Tenalba 180100	Triplet to lot 77	
95/21Tr Acc	0.15 (57)	-0.3 (41)	4.6 (64)	8.4 (64)	1 (62)	0.4 (59)
Lot 82	Sire 85 BT 2	Dam RT 2	Tenalba 170160Tr	S of D Tenalba 150141	Twin to lot 78	
223/21Tw Acc	0.22 (59)	1.1 (46)	5.7 (67)	9.3 (66)	-0.1 (64)	0.2 (61)
Lot 83	Sire 83 BT 2	Dam RT 2	Tenalba 200066Tr	S of D Kegra 180056	Product of ewe lamb joining	
262/21Tw Acc	0.45 (57)	1.4 (41)	6.9 (66)	10.4 (66)	0.2 (65)	0 (62)

	BWT	MWWT	WWT	PWWT	PFAT	PEMD
Lot 84	Sire 219 BT 3	Dam RT 1	Tenalba 180103Tw	S of D Tenalba	150141	
108/21Tr Acc	0.13 (64)	0.9 (54)	5.2 (70)	8 (69)	0.4 (67)	1.3 (65)
Lot 85	Sire 219 BT 3	Dam RT 1	Tenalba 150038	S of D Tenalba	120118	
114/21Tr Acc	0.17 (65)	1.6 (58)	5.4 (71)	7 (70)	0.6 (69)	1.7 (67)
				Triplet to lot 59		
Lot 86	Sire 85 BT 3	Dam RT 2	Tenalba 180015Tw	S of D Tenalba	160044	
123/21Tr Acc	0.14 (60)	0.2 (46)	5.7 (67)	9.5 (66)	0 (64)	0.5 (61)
Lot 87	Sire 85 BT 3	Dam RT 2	Tenalba 170154Tr	S of D Tenalba	150134	
210/21Tr Acc	0.23 (60)	0.9 (47)	4.9 (68)	8.3 (66)	0.2 (65)	0.5 (62)
Lot 88	Sire 139	Dam BT 2	Tenalba 190084Tw	S of D Tenalba	170219	
130/21Tw Acc	0.2 (62)	0.6 (49)	5.3 (69)	9.1 (68)	0.1 (66)	1.7 (64)
			RT 2			
Lot 89	Sire 83 BT 2	Dam RT 2	Tenalba 200058Tr	S of D Kegra	180056	
279/21Tw Acc	0.37 (57)	2.1 (41)	6.4 (65)	9.9 (64)	0.9 (61)	0.5 (58)
				Product of ewe lamb joining		
Lot 90	Sire 14 BT 2	Dam RT 1	Tenalba 200225Tw	S of D Tenalba	180139	
252/21Tw Acc	0.27 (58)	1 (41)	6.4 (66)	10.1 (66)	0 (66)	0.8 (63)
				Product of ewe lamb joining		

	BWT	MWWT	WWT	PWWT	PFAT	PEMD
Lot 91	Sire 83	Dam	Tenalba 200119	S of D Tenalba 180067		
	BT 2	RT 2	Product of ewe lamb joining			
253/21Tw	0.16	0.7	4.2	7	0.9	0.6
Acc	(58)	(39)	(66)	(66)	(66)	(63)

Lot 92	Sire 179	Dam	Tenalba 200018Tw	S of D Tenalba 170219		
	BT 1	RT 1	Product of ewe lamb joining			
282/21	0.14	1.2	5.1	7.7	0	1.2
Acc	(57)	(40)	(66)	(66)	(66)	(63)

Lot 93	Sire 231	Dam	Tenalba 200016Tw	S of D Tenalba 170219		
	BT 2	RT 2	Product of ewe lamb joining			
265/21Tw	0.26	1.3	5.8	9.3	0	1
Acc	(57)	(39)	(66)	(66)	(65)	(62)

Lot 94	Sire 139	Dam	Tenalba 150021Tw	S of D Gleneith 120030		
	BT 3	RT 3	Triplet to lot 45			
138/21Tr	0.22	0.8	5.2	8.8	-0.1	1
Acc	(64)	(53)	(70)	(69)	(67)	(65)

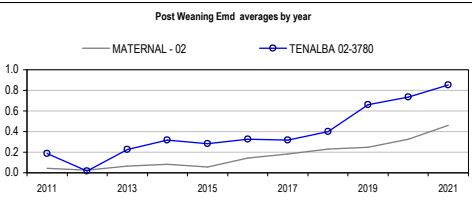
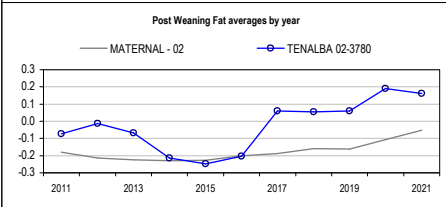
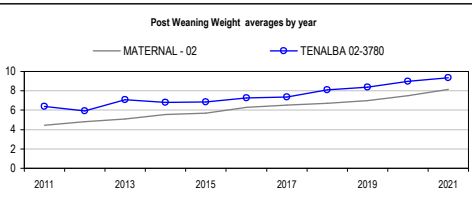
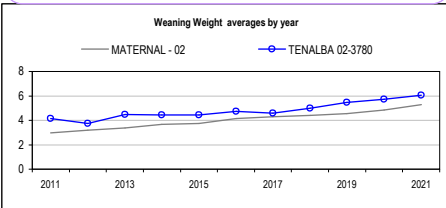
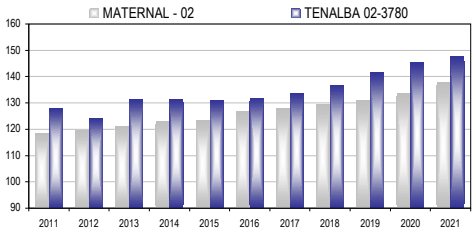
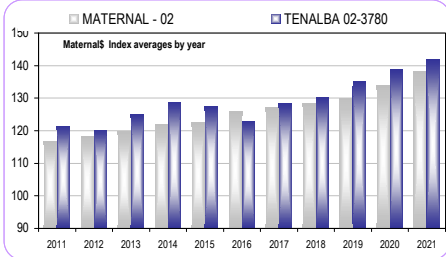
Lot 95	Sire 139	Dam	Tenalba 180032Tr	S of D Tenalba 150141		
	BT 3	RT 3				
185/21Tr	0.23	1	5.2	9.1	0.1	0.8
Acc	(62)	(50)	(69)	(68)	(66)	(64)



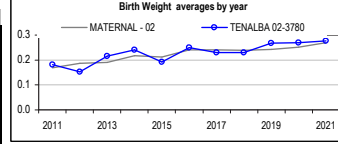
Analysis : **MATERNAL - 02**

Dated : 01-Mar-22

**023780 averages by Year**



MATERNAL - 02	Bwt	Wwt	Pwwt	Pfat	Pemd	023780	Mat\$	Counts
2012	0.19	3.21	4.84	-0.21	0.03	<b>119.63</b>	118.4	17798
2013	0.19	3.36	5.09	-0.22	0.06	<b>121.09</b>	119.8	15929
2014	0.22	3.68	5.54	-0.23	0.08	<b>122.99</b>	122.1	13898
2015	0.21	3.75	5.68	-0.23	0.06	<b>123.42</b>	122.5	13669
2016	0.24	4.13	6.30	-0.20	0.14	<b>126.85</b>	125.9	14011
2017	0.24	4.28	6.51	-0.19	0.18	<b>128.19</b>	127.2	15592
2018	0.24	4.40	6.71	-0.16	0.23	<b>129.58</b>	128.5	15039
2019	0.24	4.57	6.99	-0.16	0.25	<b>130.91</b>	130.2	14263
2020	0.25	4.86	7.52	-0.11	0.33	<b>133.88</b>	134.0	15525
2021	0.27	5.27	8.16	-0.05	0.46	<b>138.10</b>	138.4	11973

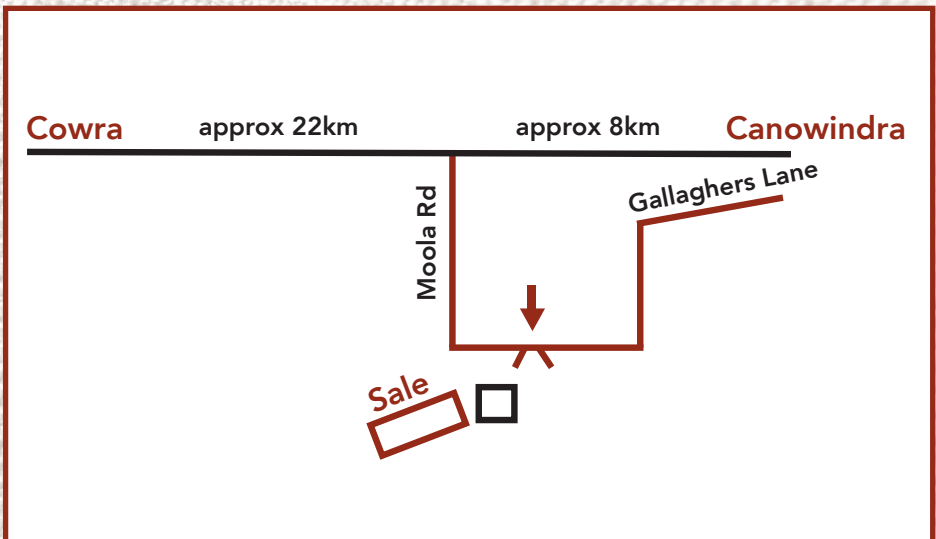


LAMBPLAN reports are prepared using data supplied by breeders and/or accredited operators. LAMBPLAN cannot guarantee the accuracy of this data. LAMBPLAN ASBV's are designed to estimate genetic merit of animals from the data supplied. The reports are provided to assist breeders but no liability is accepted for the outcome resulting from the use of this information.

TENALBA 02-3780	Bwt	Wwt	Pwwt	Pfat	Pemd	023780	Mat\$	Counts
2012	0.15	3.73	5.94	-0.01	0.02	<b>124.17</b>	120.3	170
2013	0.22	4.49	7.08	-0.07	0.23	<b>131.27</b>	125.0	162
2014	0.24	4.43	6.80	-0.21	0.32	<b>131.47</b>	128.8	131
2015	0.19	4.45	6.84	-0.25	0.28	<b>130.97</b>	127.6	156
2016	0.25	4.74	7.27	-0.20	0.33	<b>131.91</b>	123.1	195
2017	0.23	4.58	7.35	0.06	0.32	<b>133.76</b>	128.4	242
2018	0.23	4.98	8.11	0.06	0.40	<b>136.76</b>	130.2	229
2019	0.27	5.46	8.39	0.06	0.66	<b>141.67</b>	135.3	196
2020	0.27	5.72	8.98	0.19	0.73	<b>145.32</b>	138.9	258
2021	0.28	6.07	9.33	0.16	0.85	<b>147.52</b>	141.9	299

Linkage Summary	
TENALBA 02-3780	linked
Wts	Yes
Carcass	Yes
FEC	No
Reproduction	Yes

# FIND US HERE



**Selling Agents: KMWL**  
**Paul Breen 0427 102 667**

*Wishing you every success with your Purchases.  
Thank you for attending our Sale.*