



# SPRINGWATERS

POLL DORSET STUD EST. 1979

## 19th Annual Ram Sale

Friday 30th September 2022



**HEAVY MUSCLING × EARLY MATURITY  
CARCASE SHAPE**

# FOR LOCAL AGRIBUSINESS SERVICE

Elders Boorowa have a dedicated local team committed to our clients and our community. Our team live your business like you do. Experience the difference and contact the Elders Branch today about all your agribusiness needs.

Dermot McGrath	Branch Manager	0428 297 433
Rachel Pritchard	Stud Stock Sale Specialist	0472 801 869
Andrew Coombe	Wool & Stud Stock Specialist	0428 528 182
Craig Pearsal	Wool & Stud Stock Specialist	0428 253 103
John Scarlett	Finance	0419 692 007
Scott Thrift	Wool & Stud Stock Specialist	0417 660 260
Paul Jameson	Stud Stock Manager NSW	0428 667 998

## Elders Boorowa

109 Pudman St, Boorowa NSW 2586  
P. (02) 6385 4200  
e. [dermot.mcgrath@elders.com.au](mailto:dermot.mcgrath@elders.com.au)

The Elders logo consists of the word "Elders" in a white, cursive script font, set against a red rectangular background.



## Welcome to our 19th Annual Ram Sale

Welcome to the 2022 Springwaters Poll Dorset stud annual ram sale. We are pleased to offer 218 rams for sale, which is our largest offering to date. The draft of rams in this catalogue represents the type of sheep we try to breed and the type of sheep we feel are commercially relevant to today's prime lamb industry. They display great carcase attributes and really good early growth with consistency through the sale that we are very pleased with.

The winter of 2022 has not been the easiest season for presenting rams for sale and, while the draft might end up slightly lighter on sale day than previous years, we think the early maturity, carcase shape and fat cover they possess is a good representation of our program. The extremely wet conditions has placed another layer of selection pressure on the structure of the rams and the rams in this catalogue have handled it very well.

The sale is made up of 61 autumn 2021 drop rams, 115 spring 2021 drop rams and 42 autumn 2022 ram lambs. Its the second year we have offered ram lambs in the sale, on the back of increased demand and popularity over the last five years through paddock sales.

Some extra information on the ram lambs is included further in the catalogue.

Again, we thank everyone who helps us with the sale, both on the day and throughout the year as well. As we stare down an amazing spring, it is a great time to be in the lamb industry and we hope you find our 2022 ram draft to your liking. We thank you for your support and interest in our stud breeding program.

Dane and Lisa, Dennis and Jo-Anne



## **AUCTIONSPLUS**



The live auction will be interfaced with AuctionsPlus. If you intend to purchase online, you will require an AuctionsPlus registered buyers account.

## **RAM LAMBS**

We have included a selection of April 2022 ram lambs in this catalogue. Ram lambs can require some different management as opposed to mature rams. They need to be looked after post-joining to allow them to mature and grow out naturally. These lambs are recommended for joining from about 1st December 2022. If you haven't used ram lambs in the past, feel free to contact Dane to discuss the serving capacity and capability of these young sires. We have selected lambs that would normally be part of our 2023 ram sale and not rams that would be sold as grade rams. In our view, they are of the same standard as the older rams, just not displaying the maturity on sale day.

## **ASBVs**

Springwaters sheep now carry ASBV's. We have not included them in this catalogue for the flock rams, but they are available on a supplementary sheet on the day or beforehand by request. We are not striving to breed huge numbers and you will not see any major changes to our sheep or bloodlines, but they are available as a selection tool.



## SIRE SUMMARY



### **POCOCK**

#### **Springwaters 66-16**

Pocock has well and truly forged a name for himself as a genuine industry sire, continuing to be used through many studs throughout Australia. The consistency in progeny he throws is truly unique. 2022 will be the last year that he features as the dominant sire in our sale catalogue, with smaller drafts of rams coming forward in the future. That said, his influence on our flock remains huge, with 270 daughters and currently 3 sons featuring in our stud breeding program. 53 sons are to be sold, taking the total number of sons sold through our auction ring in the last 4 years to 211.

**Supreme Exhibit Sydney · Supreme Exhibit NSW  
Championships · Senior Champion Australasian  
Bendigo · Champion Ram Lamb Australasian Bendigo**



## SIRE SUMMARY



### **GUINNESS**

#### **Springwaters 22-18**

We are finding the carcass quality and early maturity Guinness is known for is well represented in the rams catalogued in 2022. Guinness is the largest EMA scanning ram we have bred and his phenotype is impressive. He has a great line of sons at the front of the draft, following on from his son 637-20 topping the sale in 2021 at \$21,000 to the Luana stud at Taralga. 42 sons are to sell this year.

**Supreme Poll Dorset ASWS Bendigo**  
**Senior Champion NSW Dorset Championships**  
**Reserve Champion Sydney Royal**



## SIRE SUMMARY



### **GOLDIE**

#### **Springwaters 627-20**

Goldie was sold in 2021 to the Redline stud for \$20,000 and has been used extensively through AI. His first progeny are represented in the ram lambs section of the catalogue and show his carcass qualities and class. More sons will be part of the sale catalogue in the years ahead. 14 sons sell.



## SIRE SUMMARY

### **SPRINGWATERS 75-18**

One of the leading Pocock sons to hit the ground at Springwaters. He is close to faultless structurally but possesses the carcass quality you would expect from his father. Excellent lambing ease credentials from a body shape point of view with an ideal shoulder and neck setting. 16 sons to sell.

### **SPRINGWATERS 807-18**

Retained in the flock for his true Dorset type and easy finishing ability. Another Pocock son, but in a more moderate frame than 75-18. Possess great bone and skin and a lot of his progeny are well suited to early sucker production. 10 sons to sell.

### **SPRINGWATERS 365-18**

A moderate ram in frame, but extreme in muscling. A huge amount of meat through his loin and hind-quarter and square right through the carcass. His lambs are not born very big, but grow quickly and lay down fat early. Another early sucker-producing bloodline. We have retained an outstanding son of 365, SW770-21, who will feature heavily in years to come. 18 sons to sell.

### **SPRINGWATERS 105-19**

Retained in our stud for his commercial traits. He is a heavy-boned ram with a lot of body depth and natural thickness. His progeny display good body length with power, with great clean heads. 27 sons sell.





## SIRE SUMMARY

### **PUNCHGROVE 16-14**

We purchased 16-14 in 2015 from the Punchgrove stud in Tasmania, and he has been used again through our AI program. He has been used primarily as an outcross to our Pocock and 310 ewes with very pleasing results. 18 sons sell.

### **PALANA 103**

Purchased from the Palana stud at Warialda in 2021. A smooth ram with true Dorset type, heavy bone and plenty of carcase. 19 sons sell.

### **PALANA 58**

Purchased from the same sale as his brother 103, a fair bit more grunt in this ram, in a moderate frame. 58 was joined to ewe lambs for the 2021 spring lambing. 17 sons sell.

# SPRINGWATERS

ANGUS STUD EST. 2017



*Lot 2 – SWX S14 Springwaters Paratrooper – sold to Eubindal Pastoral for \$21k. Pictured with Sean Dwyer, Eubindal Pastoral Manager, and Dane Rowley, Springwaters Angus Stud.*

Earlier this month, we held our second yearling bull sale, with 20 out of 20 bulls selling to a top of \$21,000 and averaging \$15,550. We were thrilled with the support of our young stud cattle enterprise and received a lot of good feedback on the bulls, both from existing clients and from producers who were inspecting the bulls for the first time.

Our offering of bulls for 2023 will be made up primarily of progeny of Millah Murrah Paratrooper P15 and the bull we purchased in 2021, Millah Murrah Nectar R53. Paratrooper needs no introduction, with his progeny topping sales around the country in 2021, including ours. Nectar R53 has been used both in our herd and in the Millah Murrah herd and sons will be offered for sale in both bull sales next year. The majority of our bulls for 2023 will again be produced from our annual ET program.

We recently purchased Millah Murrah Sandstone S56 for \$55,000. He will join Nectar R53 as our walking stud sires and complement bloodlines we use through AI and ET each year.



Scanning for performance traits in animals has become a significant on-farm measuring tool over the last 10 years within the stud industry.

Australian STOCKSCAN Services P/L scanners assess sheep at around 12 months of age for the following:

- Weight (LW)
- Eye Muscle Width (A)
- Eye Muscle Depth (B)
- Fat Measurement (C)

Eye Muscle Area (EMA) is calculated using the eye muscle width and eye muscle depth measurements.

The meat index is based on the Eye Muscle Width, Eye Muscle Depth and Fat Measurement with an adjustment for the age of the sheep.

### **STOCKSCAN figures as at 27th July 2022**

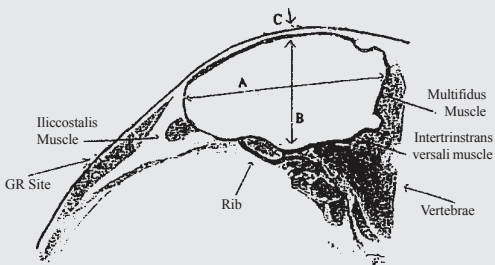


Figure 1: Exposed 12th rib on the carcass cut through the last thoracic and first lumbar vertebrae.

# SXW STUD RAMS

Lot	Tag	DOB	Birth Size	Sire	
1	642(t)	14.8.21	M	SW22-18	
	<b>STOCKSCAN</b>   done 27th July 2022				
	Fat Depth		EMA		Index
	8		40.43		1727
	<b>ASBVs</b>   done 1st September 2022				
	BWT	WWT	PWWT	PFAT	PEMD
	0.53	10.67	16.23	-1.02	0.29
	IMF	SHRF5	LMY	TCP	EQ
	-0.66	4.40	3.50	134.76	126.50

Plenty of weight for age with this ram. Great shape in the hindquarters with a little bit extra length than most Guinness progeny. Good shoulders and plenty of sires outlook. Out of a cracking 310 daughter.



PURCHASER: .....

PRICE: .....

2

Lot	Tag	DOB	Birth Size	Sire	
	748(t)	19.8.21	M	SW22-18	
<b>STOCKSCAN</b>   done 27th July 2022					
Fat Depth		EMA		Index	
9		47.40		2072	
<b>ASBVs</b>   done 1st September 2022					
BWT	WWT	PWWT	PFAT	PEMD	
0.53	11.62	18.22	-0.48	0.80	
IMF	SHRF5	LMY	TCP	EQ	
-0.61	4.02	3.53	140.68	132.88	

Supreme Poll Dorset at the ASWS in Bendigo in July. So exciting to see Guinness out of a Pocock daughter produce such a good sheep. A huge amount of meat and power in this ram and, like his sire, he displays a fantastic muscle pattern in the rump. He has the largest Stockscan index we have had in our rams and sits in the top 10% for WWT and top 5% for PWWT on LAMBPLAN. We are retaining a semen share in this ram for in-flock use only.



PURCHASER: .....  
 PRICE: .....

# SXW STUD RAMS

Lot	Tag	DOB	Birth Size	Sire	
3	746(t)	19.8.21	M	SW365-18	
	<b>STOCKSCAN</b>   done 27th July 2022				
	Fat Depth		EMA		Index
	7		39.62		1709
	<b>ASBVs</b>   done 1st September 2022				
	BWT	WWT	PWWT	PFAT	PEMD
	0.45	8.88	13.70	-0.99	0.68
	IMF	SHRF5	LMY	TCP	EQ
	-0.45	2.63	3.14	134.59	128.85

We have retained a brother to 746 in the stud this year and that is the only reason we are offering him for sale. Class, thickness and power. A true example of the type we aim to breed. An outstanding sires outlook with a beautiful Dorset head. We are retaining a semen share in this ram for in-flock use only.



PURCHASER: .....

PRICE: .....

Lot	Tag	DOB	Birth Size	Sire	
<b>4</b>	894(t)	15.9.21	M	SW22-18	
	<b>STOCKSCAN</b>   done 27th July 2022				
	Fat Depth		EMA		Index
	7		34.65		1476
	<b>ASBVs</b>   done 1st September 2022				
	BWT	WWT	PWWT	PFAT	PEMD
	0.43	9.19	14.16	-0.33	0.42
	IMF	SHRF5	LMY	TCP	EQ
	-0.48	3.42	2.33	128.00	121.71

One of the most stylish rams in the draft and the youngest represented in the selected rams. A beautiful outlook while retaining the muscling the Guinness progeny are known for.



PURCHASER: .....

PRICE: .....

# SXW STUD RAMS

Lot	Tag	DOB	Birth Size	Sire	
5	534	10.5.21	L	SW105-19	
	<b>STOCKSCAN</b>   done 27th July 2022				
	Fat Depth		EMA		Index
	8		47.43		1763
	<b>ASBVs</b>   done 1st September 2022				
	BWT	WWT	PWWT	PFAT	PEMD
	0.32	7.50	10.58	-	-
	IMF	SHRF5	LMY	TCP	EQ
	-0.20	2.07	2.52	126.89	124.12

First of the Autumn born sires, a lot of power and length in this ram. Really heavy bone and Dorset type, with great scan data behind him, third highest Stockscan index.



PURCHASER: .....

PRICE: .....



# 6

Lot	Tag	DOB	Birth Size	Sire	
	554	3.6.21	L	SW365-18	
<b>STOCKSCAN</b>   done 27th July 2022					
Fat Depth		EMA		Index	
10		50.03		1857	
<b>ASBVs</b>   done 1st September 2022					
BWT	WWT	PWWT	PFAT	PEMD	
0.46	8.97	12.93	-1.09	0.66	
IMF	SHRF5	LMY	TCP	EQ	
-0.36	2.68	3.18	133.35	128.66	

One of the most powerful rams we have produced. The muscle right through this ram is worth a look. He is square set and thick with great weight for age. Second biggest Stockscan index behind Lot 2.



PURCHASER: .....

PRICE: .....

Lot	Tag	DOB	Birth Size	Sire	
<b>7</b>	43(t)	13.4.21	M	Punchgrove16-14	
	<b>STOCKSCAN</b>   done 27th July 2022				
	Fat Depth		EMA		Index
	10		47.86		1748
	<b>ASBVs</b>   done 1st September 2022				
	BWT	WWT	PWWT	PFAT	PEMD
	0.48	9.58	12.85	-0.90	1.43
	IMF	SHRF5	LMY	TCP	EQ
	-0.50	4.30	3.27	133.92	127.50

A very stylish son of our Punchgrove outcross sire. Again, with excellent scan data to back up his muscling, his structural correctness is a feature. Would make an excellent joining option to Pocock, Guinness and 310 bloodlines.



PURCHASER: .....

PRICE: .....

8

Lot	Tag	DOB	Birth Size	Sire	
	230(t)	14.4.21	M	SW105-19	
<b>STOCKSCAN</b>   done 27th July 2022					
Fat Depth		EMA		Index	
9		46.57		1737	
<b>ASBVs</b>   done 1st September 2022					
BWT	WWT	PWWT	PFAT	PEMD	
0.39	8.56	11.82	-	-	
IMF	SHRF5	LMY	TCP	EQ	
-0.29	-	2.71	128.59	-	

A lot of outlook on this ram. Great through the front end, with a beautiful head and sires presence. Will add body length and strength through the carcass and bone.



PURCHASER: .....

PRICE: .....

# SXW STUD RAMS

Lot	Tag	DOB	Birth Size	Sire	
9	703(t)	17.8.21		SW75-18	
	<b>STOCKSCAN</b>   done 27th July 2022				
	Fat Depth		EMA		Index
	7		34.00		1382
	<b>ASBVs</b>   done 1st September 2022				
	BWT	WWT	PWWT	PFAT	PEMD
	0.33	8.85	13.41	-0.99	0.95
	IMF	SHRF5	LMY	TCP	EQ
	-0.26	1.83	3.38	138.08	134.56

A very smooth and clean pointed spring drop ram.  
 Wonderful shoulder setting and very square in the back end.



PURCHASER: .....

PRICE: .....

Lot	Tag	DOB	Birth Size	Sire	
<b>10</b>	667(t)	15.8.21	M	SW75-18	
	<b>STOCKSCAN</b>   done 27th July 2022				
	Fat Depth		EMA		Index
	8		33.96		1414
	<b>ASBVs</b>   done 1st September 2022				
	BWT	WWT	PWWT	PFAT	PEMD
	0.29	6.89	10.72	-0.83	0.77
	IMF	SHRF5	LMY	TCP	EQ
	-0.22	1.14	2.39	128.69	125.58

Square and meaty right through the loin and hindquarters. He has a very good topline and tail setting and, just like his sire SW75-18, possess great structure.



PURCHASER: .....

PRICE: .....

# SXW STUD RAMS

Lot	Tag	DOB	Birth Size	Sire	
11	616(tr)	13.8.21	S	SW66-16	
	<b>STOCKSCAN</b>   done 27th July 2022				
	Fat Depth		EMA		Index
	7		37.33		1571
	<b>ASBVs</b>   done 1st September 2022				
	BWT	WWT	PWWT	PFAT	PEMD
	0.34	9.05	13.63	-0.98	0.54
	IMF	SHRF5	LMY	TCP	EQ
	-0.25	2.31	3.07	134.20	130.67

A full brother to "Goldie", who sold for \$20,000 in 2021. Born a triplet, he has certainly made up for his light start, great thickness and weight for age.



PURCHASER: .....

PRICE: .....

Lot	Tag	DOB	Birth Size	Sire	
12	803	17.8.21	L	SW365-18	
	<b>STOCKSCAN</b>   done 27th July 2022				
	Fat Depth		EMA		Index
	8		41.24		1713
	<b>ASBVs</b>   done 1st September 2022				
	BWT	WWT	PWWT	PFAT	PEMD
	0.41	6.93	10.42	-0.98	0.70
	IMF	SHRF5	LMY	TCP	EQ
	-0.31	1.49	2.42	127.73	123.70

A moderate framed ram, with really good hindquarters. He has smooth shoulders and a classic wedge shape from above.



PURCHASER: .....

PRICE: .....

# SXW STUD RAMS

Lot	Tag	DOB	Birth Size	Sire	
13	303	11.4.21	L	SW105-19	
	<b>STOCKSCAN</b>   done 27th July 2022				
	Fat Depth		EMA		Index
	9		42.83		1476
	<b>ASBVs</b>   done 1st September 2022				
	BWT	WWT	PWWT	PFAT	PEMD
	0.32	7.44	10.44	-	0.63
	IMF	SHRF5	LMY	TCP	EQ
	-0.21	-	2.32	126.13	123.20

Plenty of power in this ram, with a good outlook and a lovely head out of a good 310 daughter.



PURCHASER: .....

PRICE: .....



Lot	Tag	DOB	Birth Size	Sire	
14	510	11.5.21	L	SW22-18	
	<b>STOCKSCAN</b>   done 27th July 2022				
	Fat Depth		EMA		Index
	9		41.20		1504
	<b>ASBVs</b>   done 1st September 2022				
	BWT	WWT	PWWT	PFAT	PEMD
	0.41	9.12	13.55	-0.68	0.42
	IMF	SHRF5	LMY	TCP	EQ
	-0.59	3.99	2.65	127.26	119.80

Excellent shape in the hindquarters, with a lot of meat through the loin as well. Does display some scur, often an indicator of extra bone, this ram is no exception.



PURCHASER: .....

PRICE: .....

Lot	Tag	DOB	Birth Size	Sire	
<b>15</b>	315	20.4.21	L	SW22-18	
	<b>STOCKSCAN</b>   done 27th July 2022				
	Fat Depth		EMA		Index
	10		44.48		1624
	<b>ASBVs</b>   done 1st September 2022				
	BWT	WWT	PWWT	PFAT	PEMD
	0.51	10.15	14.97	-0.76	0.17
	IMF	SHRF5	LMY	TCP	EQ
	-0.57	4.28	2.80	128.97	121.63

A lot of strength in this ram, both in his bone and his carcass. A bigger framed ram with lots of stretch and grunt.



PURCHASER: .....

PRICE: .....

Lot	Tag	DOB	Birth Size	Sire	
<b>16</b>	105(t)	24.4.21	M	Hillden110-9	
	<b>STOCKSCAN</b>   done 27th July 2022				
	Fat Depth		EMA		Index
	8		46.52		1633
	<b>ASBVs</b>   done 1st September 2022				
	BWT	WWT	PWWT	PFAT	PEMD
	0.47	8.11	11.76	-0.94	0.43
	IMF	SHRF5	LMY	TCP	EQ
	-0.42	3.00	2.99	127.22	121.93

Classic Dorset type. Sired by outcross sire Hilden 110-19, beautiful head, skin and bone with a fair bit of style.



PURCHASER: .....

PRICE: .....

Lot	Tag	DOB	Birth Size	Sire	STOCKSCAN				ASBV's										
					Fat Depth	EMA	Index	BWT	WWT	PWWT	PFAT	PEMD	IMF	SHRF5	LMY	TCP	EQ		
1	642(t)	14.8.21	M	SW22-18	8	40.43	1727	0.53	10.67	16.23	-1.02	0.29	-0.66	4.40	3.50	134.76	126.50		
2	748(t)	19.8.21	M	SW22-18	9	47.40	2072	0.53	11.62	18.22	-0.48	0.80	-0.61	4.02	3.53	140.68	132.88		
3	746(t)	19.8.21	M	SW365-18	7	39.62	1709	0.45	8.88	13.70	-0.99	0.68	-0.45	2.63	3.14	134.59	128.85		
4	894(t)	15.9.21	M	SW22-18	7	34.65	1476	0.43	9.19	14.16	-0.33	0.42	-0.48	3.42	2.33	128.00	121.71		
5	534	10.5.21	L	SW105-19	8	47.43	1763	0.32	7.50	10.58	-	-	-0.20	2.07	2.52	126.89	124.12		
6	554	3.6.21	L	SW365-18	10	50.03	1857	0.46	8.97	12.93	-1.09	0.66	-0.36	2.68	3.18	133.35	128.66		
7	43(t)	13.4.21	M	Punchgrove16-14	10	47.86	1748	0.48	9.58	12.85	-0.90	1.43	-0.50	4.30	3.27	133.92	127.50		
8	230(t)	14.4.21	M	SW105-19	9	46.57	1737	0.39	8.56	11.82	-	-	-0.29	-	2.71	128.59	-		
9	703(t)	17.8.21		SW75-18	7	34.00	1382	0.33	8.85	13.41	-0.99	0.95	-0.26	1.83	3.38	138.08	134.56		
10	667(t)	15.8.21	M	SW75-18	8	33.96	1414	0.29	6.89	10.72	-0.83	0.77	-0.22	1.14	2.39	128.69	125.58		
11	616(tr)	13.8.21	S	SW66-16	7	37.33	1571	0.34	9.05	13.63	-0.98	0.54	-0.25	2.31	3.07	134.20	130.67		
12	803	17.8.21	L	SW365-18	8	41.24	1713	0.41	6.93	10.42	-0.98	0.70	-0.31	1.49	2.42	127.73	123.70		
13	303	11.4.21	L	SW105-19	9	42.83	1476	0.32	7.44	10.44	-	0.63	-0.21	-	2.32	126.13	123.20		
14	510	11.5.21	L	SW22-18	9	41.20	1504	0.41	9.12	13.55	-0.68	0.42	-0.59	3.99	2.65	127.26	119.80		
15	315	20.4.21	L	SW22-18	10	44.48	1624	0.51	10.15	14.97	-0.76	0.17	-0.57	4.28	2.80	128.97	121.63		
16	105(t)	24.4.21	M	Hilden110-9	8	46.52	1633	0.47	8.11	11.76	-0.94	0.43	-0.42	3.00	2.99	127.22	121.93		

# SW FLOCK RAMS AUTUMN 2021 DROP

Lot	Tag	DOB	Birth Size	Sire	Fat Depth	EMA	Index
-----	-----	-----	------------	------	-----------	-----	-------

<b>17</b>	137	12.4.21	L	Punchgrove16-14	11	49.97	1781
-----------	-----	---------	---	-----------------	----	-------	------

PURCHASER: .....

PRICE: .....

<b>18</b>	365	21.4.21	L	SW105-19	9	46.57	1665
-----------	-----	---------	---	----------	---	-------	------

PURCHASER: .....

PRICE: .....

<b>19</b>	371	22.4.21	L	SW66-16	12	48.28	1733
-----------	-----	---------	---	---------	----	-------	------

PURCHASER: .....

PRICE: .....

<b>20</b>	118	14.4.21	L	Punchgrove16-14	7	39.62	1432
-----------	-----	---------	---	-----------------	---	-------	------

PURCHASER: .....

PRICE: .....

<b>21</b>	53(t)	22.4.21	S	SW22-18	8	42.84	1552
-----------	-------	---------	---	---------	---	-------	------

PURCHASER: .....

PRICE: .....

<b>22</b>	169(t)	14.4.21	M	SW105-19	7	41.24	1440
-----------	--------	---------	---	----------	---	-------	------

PURCHASER: .....

PRICE: .....

<b>23</b>	887	1.5.21	M	SW22-18	8	42.04	1494
-----------	-----	--------	---	---------	---	-------	------

PURCHASER: .....

PRICE: .....

<b>24</b>	95(t)	24.4.21	M	Hillden110-19	8	47.43	1727
-----------	-------	---------	---	---------------	---	-------	------

PURCHASER: .....

PRICE: .....

# SW FLOCK RAMS AUTUMN 2021 DROP

Lot	Tag	DOB	Birth Size	Sire	Fat Depth	EMA	Index
-----	-----	-----	------------	------	-----------	-----	-------

25	125	12.4.21	L	Punchgrove16-14	7	36.91	1301
----	-----	---------	---	-----------------	---	-------	------

PURCHASER: .....

PRICE: .....

26	447(t)	11.5.21	M	SW22-18	6	38.11	1320
----	--------	---------	---	---------	---	-------	------

PURCHASER: .....

PRICE: .....

27	509	11.5.21	L	SW105-19	7	32.52	1061
----	-----	---------	---	----------	---	-------	------

PURCHASER: .....

PRICE: .....

28	161(t)	14.4.21	M	SW22-18	6	34.36	1138
----	--------	---------	---	---------	---	-------	------

PURCHASER: .....

PRICE: .....

29	237(t)	15.4.21	S	SW75-18	9	38.89	1330
----	--------	---------	---	---------	---	-------	------

PURCHASER: .....

PRICE: .....

30	273	17.4.21	M	SW105-19	6	35.85	1182
----	-----	---------	---	----------	---	-------	------

PURCHASER: .....

PRICE: .....

31	567(t)	5.6.21	M	SW22-18	6	33.29	1015
----	--------	--------	---	---------	---	-------	------

PURCHASER: .....

PRICE: .....

32	254	28.4.21	L	SW66-16	6	33.26	1087
----	-----	---------	---	---------	---	-------	------

PURCHASER: .....

PRICE: .....

Lot	Tag	DOB	Birth Size	Sire	Fat Depth	EMA	Index
-----	-----	-----	------------	------	-----------	-----	-------

<b>33</b>	443(t)	10.5.21	S	SW365-18	8	36.98	1225
-----------	--------	---------	---	----------	---	-------	------

PURCHASER: .....

PRICE: .....

<b>34</b>	307	28.4.21	M	SW807-18	7	35.07	1192
-----------	-----	---------	---	----------	---	-------	------

PURCHASER: .....

PRICE: .....

<b>35</b>	153(t)	14.4.21	M	SW22-18	6	34.65	1203
-----------	--------	---------	---	---------	---	-------	------

PURCHASER: .....

PRICE: .....

<b>36</b>	490(t)	19.5.21	S	SW365-18	7	36.91	1301
-----------	--------	---------	---	----------	---	-------	------

PURCHASER: .....

PRICE: .....

<b>37</b>	579	15.6.21	M	SW365-18	8	35.48	1145
-----------	-----	---------	---	----------	---	-------	------

PURCHASER: .....

PRICE: .....

<b>38</b>	581	15.6.21	M	SW365-18	7	35.77	1250
-----------	-----	---------	---	----------	---	-------	------

PURCHASER: .....

PRICE: .....

<b>39</b>	400(t)	1.5.21	M	SW105-19	5	31.12	989
-----------	--------	--------	---	----------	---	-------	-----

PURCHASER: .....

PRICE: .....

<b>40</b>	145	13.4.21	M	SW66-16	7	33.26	1083
-----------	-----	---------	---	---------	---	-------	------

PURCHASER: .....

PRICE: .....

# SW FLOCK RAMS AUTUMN 2021 DROP

Lot	Tag	DOB	Birth Size	Sire	Fat Depth	EMA	Index
-----	-----	-----	------------	------	-----------	-----	-------

<b>41</b>	120	14.4.21	L	Punchgrove16-14	6	32.22	1000
-----------	-----	---------	---	-----------------	---	-------	------

PURCHASER: .....

PRICE: .....

<b>42</b>	46(t)	13.4.21	M	SW66-16	6	31.53	942
-----------	-------	---------	---	---------	---	-------	-----

PURCHASER: .....

PRICE: .....

<b>43</b>	574(t)	15.6.21	M	SW66-16	6	30.13	898
-----------	--------	---------	---	---------	---	-------	-----

PURCHASER: .....

PRICE: .....

<b>44</b>	289	20.4.21	M	SW807-18	5	26.18	939
-----------	-----	---------	---	----------	---	-------	-----

PURCHASER: .....

PRICE: .....

<b>45</b>	385(t)	1.5.21	S	SW365-18	6	30.46	927
-----------	--------	--------	---	----------	---	-------	-----

PURCHASER: .....

PRICE: .....

<b>46</b>	149(t)	20.4.21	S	SW105-19	6	32.22	1000
-----------	--------	---------	---	----------	---	-------	------

PURCHASER: .....

PRICE: .....

<b>47</b>	163(t)	14.4.21	M	SW66-16	6	33.65	1080
-----------	--------	---------	---	---------	---	-------	------

PURCHASER: .....

PRICE: .....

<b>48</b>	227(t)	14.4.21	M	SW66-16	5	29.11	851
-----------	--------	---------	---	---------	---	-------	-----

PURCHASER: .....

PRICE: .....



Lot	Tag	DOB	Birth Size	Sire	Fat Depth	EMA	Index
-----	-----	-----	------------	------	-----------	-----	-------

<b>49</b>	218(t)	13.4.21	M	SW66-16	6	31.17	877
-----------	--------	---------	---	---------	---	-------	-----

PURCHASER: .....

PRICE: .....

<b>50</b>	373(t)	22.4.21	M	SW75-18	6	29.80	869
-----------	--------	---------	---	---------	---	-------	-----

PURCHASER: .....

PRICE: .....

<b>51</b>	318(t)	25.4.21	M	SW22-18	6	32.92	1058
-----------	--------	---------	---	---------	---	-------	------

PURCHASER: .....

PRICE: .....

<b>52</b>	252(t)	24.4.21	S	SW22-18	7	33.61	1112
-----------	--------	---------	---	---------	---	-------	------

PURCHASER: .....

PRICE: .....

<b>53</b>	144(t)	13.4.21	M	SW66-16	7	36.59	1236
-----------	--------	---------	---	---------	---	-------	------

PURCHASER: .....

PRICE: .....

<b>54</b>	380(t)	1.5.21	M	SW22-18	6	30.15	862
-----------	--------	--------	---	---------	---	-------	-----

PURCHASER: .....

PRICE: .....

<b>55</b>	575	15.6.21	M	SW365-18	6	34.74	1131
-----------	-----	---------	---	----------	---	-------	------

PURCHASER: .....

PRICE: .....

<b>56</b>	445(t)	15.5.21	M	SW365-18	6	40.45	1422
-----------	--------	---------	---	----------	---	-------	------

PURCHASER: .....

PRICE: .....

# SW FLOCK RAMS AUTUMN 2021 DROP

Lot	Tag	DOB	Birth Size	Sire	Fat Depth	EMA	Index
-----	-----	-----	------------	------	-----------	-----	-------

<b>57</b>	566(t)	5.6.21	M	SW807-18	6	28.78	818
-----------	--------	--------	---	----------	---	-------	-----

PURCHASER: .....

PRICE: .....

<b>58</b>	456(t)	16.5.21	M	SW22-18	5	25.53	640
-----------	--------	---------	---	---------	---	-------	-----

PURCHASER: .....

PRICE: .....

<b>59</b>	508	11.5.21	M	SW105-19	5	23.93	567
-----------	-----	---------	---	----------	---	-------	-----

PURCHASER: .....

PRICE: .....

<b>60</b>	390(t)	1.5.21	M	SW105-19	5	28.47	757
-----------	--------	--------	---	----------	---	-------	-----

PURCHASER: .....

PRICE: .....

<b>61</b>	167(t)	14.4.21	M	SW66-16	6	33.29	1051
-----------	--------	---------	---	---------	---	-------	------

PURCHASER: .....

PRICE: .....

<b>62</b>	473(t)	14.5.21	S	SW365-18	6	30.84	884
-----------	--------	---------	---	----------	---	-------	-----

PURCHASER: .....

PRICE: .....

<b>63</b>	431(t)	8.5.21	S	SW22-18	7	32.23	960
-----------	--------	--------	---	---------	---	-------	-----

PURCHASER: .....

PRICE: .....

<b>64</b>	333	25.4.21	M	SW365-18	7	32.92	1054
-----------	-----	---------	---	----------	---	-------	------

PURCHASER: .....

PRICE: .....

Lot	Tag	DOB	Birth Size	Sire	Fat Depth	EMA	Index
-----	-----	-----	------------	------	-----------	-----	-------

<b>65</b>	27(t)	11.4.21	S	Punchgrove16-14	5	30.79	960
	PURCHASER: .....						
	PRICE: .....						

<b>66</b>	233(t)	17.4.21	M	SW807-18	5	25.53	640
	PURCHASER: .....						
	PRICE: .....						

<b>67</b>	379(t)	1.5.21	M	SW22-18	6	30.13	898
	PURCHASER: .....						
	PRICE: .....						

<b>68</b>	549(t)	3.6.21	S	SW75-18	7	31.45	1010
	PURCHASER: .....						
	PRICE: .....						

# SW FLOCK RAMS SPRING 2021 DROP

Lot	Tag	DOB	Birth Size	Sire	Fat Depth	EMA	Index
-----	-----	-----	------------	------	-----------	-----	-------

<b>69</b>	684(t)	16.8.21	M	SW22-18	8	34.65	1472
-----------	--------	---------	---	---------	---	-------	------

PURCHASER: .....

PRICE: .....

<b>70</b>	711(t)	17.8.21	M	SW22-18	8	33.96	1414
-----------	--------	---------	---	---------	---	-------	------

PURCHASER: .....

PRICE: .....

<b>71</b>	759	15.8.21	L	SW365-18	8	35.10	1429
-----------	-----	---------	---	----------	---	-------	------

PURCHASER: .....

PRICE: .....

<b>72</b>	830	20.8.21	L	SW22-18	7	37.35	1535
-----------	-----	---------	---	---------	---	-------	------

PURCHASER: .....

PRICE: .....

<b>73</b>	916	9.9.21	L	SW22-18	7	34.65	1476
-----------	-----	--------	---	---------	---	-------	------

PURCHASER: .....

PRICE: .....

<b>74</b>	819	20.8.21	M	SW75-18	6	27.10	1022
-----------	-----	---------	---	---------	---	-------	------

PURCHASER: .....

PRICE: .....

<b>75</b>	772(t)	16.8.21	M	SW66-16	5	25.64	1018
-----------	--------	---------	---	---------	---	-------	------

PURCHASER: .....

PRICE: .....

<b>76</b>	859(t)	9.9.21	M	SW66-16	6	26.43	1000
-----------	--------	--------	---	---------	---	-------	------

PURCHASER: .....

PRICE: .....

Lot	Tag	DOB	Birth Size	Sire	Fat Depth	EMA	Index
-----	-----	-----	------------	------	-----------	-----	-------

<b>77</b>	728(t)	19.8.21	M	SW365-18	5	28.41	1106
-----------	--------	---------	---	----------	---	-------	------

PURCHASER: .....

PRICE: .....

<b>78</b>	608(t)	25.8.21	M	Palana 103-19	5	25.83	946
-----------	--------	---------	---	---------------	---	-------	-----

PURCHASER: .....

PRICE: .....

<b>79</b>	712(t)	17.8.21	M	SW22-18	4	23.56	855
-----------	--------	---------	---	---------	---	-------	-----

PURCHASER: .....

PRICE: .....

<b>80</b>	917	9.9.21	M	Palana58-19	6	27.78	1044
-----------	-----	--------	---	-------------	---	-------	------

PURCHASER: .....

PRICE: .....

<b>81</b>	606(t)	12.8.21	M	Palana103-19	4	26.33	1044
-----------	--------	---------	---	--------------	---	-------	------

PURCHASER: .....

PRICE: .....

<b>82</b>	673(t)	16.8.21	M	SW105-19	5	28.10	1077
-----------	--------	---------	---	----------	---	-------	------

PURCHASER: .....

PRICE: .....

<b>83</b>	766	29.8.21	M	Palana58-19	5	29.75	1186
-----------	-----	---------	---	-------------	---	-------	------

PURCHASER: .....

PRICE: .....

<b>84</b>	863(t)	9.9.21	S	Palana58-19	5	26.13	975
-----------	--------	--------	---	-------------	---	-------	-----

PURCHASER: .....

PRICE: .....

# SW FLOCK RAMS SPRING 2021 DROP

Lot	Tag	DOB	Birth Size	Sire	Fat Depth	EMA	Index
-----	-----	-----	------------	------	-----------	-----	-------

<b>85</b>	701(t)	17.8.21	M	SW75-18	5	29.11	1128
	PURCHASER: .....						
	PRICE: .....						

<b>86</b>	736(t)	19.8.21	M	Palana103-19	5	30.40	1244
	PURCHASER: .....						
	PRICE: .....						

<b>87</b>	812	20.8.21	L	Palana103-19	5	27.10	1026
	PURCHASER: .....						
	PRICE: .....						

<b>88</b>	749(tr)	19.8.21	S	SW66-16	5	25.16	924
	PURCHASER: .....						
	PRICE: .....						

<b>89</b>	734(t)	19.8.21	M	SW66-16	6	27.72	1080
	PURCHASER: .....						
	PRICE: .....						

<b>90</b>	604(t)	12.8.21	M	SW75-18	5	27.10	1026
	PURCHASER: .....						
	PRICE: .....						

<b>91</b>	720(t)	18.8.21	M	Palana103-19	5	29.11	1128
	PURCHASER: .....						
	PRICE: .....						

<b>92</b>	692(t)	17.8.21	M	SW22-18	6	23.65	811
	PURCHASER: .....						
	PRICE: .....						

Lot	Tag	DOB	Birth Size	Sire	Fat Depth	EMA	Index
-----	-----	-----	------------	------	-----------	-----	-------

<b>93</b>	685(t)	24.8.21	M	Palana103-19	6	27.72	1080
-----------	--------	---------	---	--------------	---	-------	------

PURCHASER: .....

PRICE: .....

<b>94</b>	937	20.9.21	M	SW105-19	5	26.83	961
-----------	-----	---------	---	----------	---	-------	-----

PURCHASER: .....

PRICE: .....

<b>95</b>	909(t)	17.9.21	M	Palana58-19	5	28.73	1135
-----------	--------	---------	---	-------------	---	-------	------

PURCHASER: .....

PRICE: .....

<b>96</b>	942	20.9.21	M	SW105-19	5	24.22	873
-----------	-----	---------	---	----------	---	-------	-----

PURCHASER: .....

PRICE: .....

<b>97</b>	821	20.8.21	M	SW66-16	5	24.87	895
-----------	-----	---------	---	---------	---	-------	-----

PURCHASER: .....

PRICE: .....

<b>98</b>	810	20.8.21	S	Palana58-19	5	26.18	939
-----------	-----	---------	---	-------------	---	-------	-----

PURCHASER: .....

PRICE: .....

<b>99</b>	618(t)	13.8.21	M	SW22-18	5	23.08	757
-----------	--------	---------	---	---------	---	-------	-----

PURCHASER: .....

PRICE: .....

<b>100</b>	735(t)	19.8.21	M	Palana103-19	4	24.29	841
------------	--------	---------	---	--------------	---	-------	-----

PURCHASER: .....

PRICE: .....

# SW FLOCK RAMS SPRING 2021 DROP

Lot	Tag	DOB	Birth Size	Sire	Fat Depth	EMA	Index
-----	-----	-----	------------	------	-----------	-----	-------

<b>101</b>	637(t)	14.8.21	M	SW22-18	5	28.46	1070
------------	--------	---------	---	---------	---	-------	------

PURCHASER: .....

PRICE: .....

<b>102</b>	597(t)	12.8.21	M	SW365-18	5	24.87	895
------------	--------	---------	---	----------	---	-------	-----

PURCHASER: .....

PRICE: .....

<b>103</b>	885(t)	10.9.21	M	SW22-18	5	28.46	1070
------------	--------	---------	---	---------	---	-------	------

PURCHASER: .....

PRICE: .....

<b>104</b>	741(t)	19.8.21	S	SW105-19	5	26.13	975
------------	--------	---------	---	----------	---	-------	-----

PURCHASER: .....

PRICE: .....

<b>105</b>	686(t)	24.8.21	M	Palana103-19	4	24.87	899
------------	--------	---------	---	--------------	---	-------	-----

PURCHASER: .....

PRICE: .....

<b>106</b>	919	18.9.21	M	Palana58-19	6	26.04	1007
------------	-----	---------	---	-------------	---	-------	------

PURCHASER: .....

PRICE: .....

<b>107</b>	794	17.8.21	S	Palana58-19	4	24.22	877
------------	-----	---------	---	-------------	---	-------	-----

PURCHASER: .....

PRICE: .....

<b>108</b>	709(t)	17.8.21	S	SW75-18	5	25.16	924
------------	--------	---------	---	---------	---	-------	-----

PURCHASER: .....

PRICE: .....



Lot	Tag	DOB	Birth Size	Sire	Fat Depth	EMA	Index
-----	-----	-----	------------	------	-----------	-----	-------

<b>109</b>	950	20.9.21	M	SW105-19	4	23.28	826
	PURCHASER: .....						
	PRICE: .....						

<b>110</b>	716(t)	18.8.21	S	SW75-18	4	25.16	928
	PURCHASER: .....						
	PRICE: .....						

<b>111</b>	781	22.8.21	M	Palana103-19	4	23.65	819
	PURCHASER: .....						
	PRICE: .....						

<b>112</b>	892(t)	15.9.21	M	SW66-16	5	27.72	1084
	PURCHASER: .....						
	PRICE: .....						

<b>113</b>	844(t)	8.9.21	S	Palana58-19	5	21.47	720
	PURCHASER: .....						
	PRICE: .....						

<b>114</b>	649(t)	14.8.21	M	SW105-19	5	23.93	844
	PURCHASER: .....						
	PRICE: .....						

<b>115</b>	936	20.9.21	M	SW105-19	5	23.65	815
	PURCHASER: .....						
	PRICE: .....						

<b>116</b>	790	16.8.21	M	SW105-19	5	25.46	953
	PURCHASER: .....						
	PRICE: .....						

# SW FLOCK RAMS SPRING 2021 DROP

Lot	Tag	DOB	Birth Size	Sire	Fat Depth	EMA	Index
-----	-----	-----	------------	------	-----------	-----	-------

<b>117</b>	939	20.9.21	M	SW105-19	4	26.49	972
------------	-----	---------	---	----------	---	-------	-----

PURCHASER: .....

PRICE: .....

<b>118</b>	763(t)	15.8.21	M	SW75-18	4	24.58	870
------------	--------	---------	---	---------	---	-------	-----

PURCHASER: .....

PRICE: .....

<b>119</b>	918	18.9.21	M	Palana58-19	5	25.46	953
------------	-----	---------	---	-------------	---	-------	-----

PURCHASER: .....

PRICE: .....

<b>120</b>	739(t)	19.8.21	S	Palana58-19	4	25.16	928
------------	--------	---------	---	-------------	---	-------	-----

PURCHASER: .....

PRICE: .....

<b>121</b>	875(t)	10.9.21	S	Palana58-19	5	27.41	1055
------------	--------	---------	---	-------------	---	-------	------

PURCHASER: .....

PRICE: .....

<b>122</b>	707(t)	17.8.21	M	SW66-16	4	21.90	681
------------	--------	---------	---	---------	---	-------	-----

PURCHASER: .....

PRICE: .....

<b>123</b>	621(t)	13.8.21	M	SW807-18	4	21.83	717
------------	--------	---------	---	----------	---	-------	-----

PURCHASER: .....

PRICE: .....

<b>124</b>	628(t)	13.8.21	M	SW22-18	5	22.73	764
------------	--------	---------	---	---------	---	-------	-----

PURCHASER: .....

PRICE: .....

Lot	Tag	DOB	Birth Size	Sire	Fat Depth	EMA	Index
-----	-----	-----	------------	------	-----------	-----	-------

<b>125</b>	865(t)	10.9.21	S	SW22-18	5	24.87	895
------------	--------	---------	---	---------	---	-------	-----

PURCHASER: .....

PRICE: .....

<b>126</b>	893(t)	15.9.21	M	SW66-16	5	23.28	822
------------	--------	---------	---	---------	---	-------	-----

PURCHASER: .....

PRICE: .....

<b>127</b>	715(t)	18.8.21	M	SW105-19	4	21.62	652
------------	--------	---------	---	----------	---	-------	-----

PURCHASER: .....

PRICE: .....

<b>128</b>	842(t)	8.9.21	S	Palana58-19	5	25.46	953
------------	--------	--------	---	-------------	---	-------	-----

PURCHASER: .....

PRICE: .....

<b>129</b>	926(t)	18.9.21	M	SW22-18	4	22.37	775
------------	--------	---------	---	---------	---	-------	-----

PURCHASER: .....

PRICE: .....

<b>130</b>	612(t)	13.8.21	S	SW22-18	5	22.73	764
------------	--------	---------	---	---------	---	-------	-----

PURCHASER: .....

PRICE: .....

<b>131</b>	878(t)	10.9.21	M	SW66-16	4	17.99	419
------------	--------	---------	---	---------	---	-------	-----

PURCHASER: .....

PRICE: .....

<b>132</b>	631(t)	13.8.21	S	SW365-18	5	22.91	829
------------	--------	---------	---	----------	---	-------	-----

PURCHASER: .....

PRICE: .....

# SW FLOCK RAMS SPRING 2021 DROP

Lot	Tag	DOB	Birth Size	Sire	Fat Depth	EMA	Index
-----	-----	-----	------------	------	-----------	-----	-------

<b>133</b>	898(t)	15.9.21	M	SW22-18	3	21.62	656
------------	--------	---------	---	---------	---	-------	-----

PURCHASER: .....

PRICE: .....

<b>134</b>	799	17.8.21	S	SW807-18	5	25.53	917
------------	-----	---------	---	----------	---	-------	-----

PURCHASER: .....

PRICE: .....

<b>135</b>	929	18.9.21	M	SW22-18	4	22.73	768
------------	-----	---------	---	---------	---	-------	-----

PURCHASER: .....

PRICE: .....

<b>136</b>	615(t)	13.8.21	M	SW365-18	5	21.73	749
------------	--------	---------	---	----------	---	-------	-----

PURCHASER: .....

PRICE: .....

<b>137</b>	805(t)	17.8.21	S	SW75-18	4	22.64	804
------------	--------	---------	---	---------	---	-------	-----

PURCHASER: .....

PRICE: .....

<b>138</b>	726(tr)	3.9.21	S	SW66-16	5	24.22	873
------------	---------	--------	---	---------	---	-------	-----

PURCHASER: .....

PRICE: .....

<b>139</b>	635(t)	13.8.21	M	SW75-18	4	23.93	848
------------	--------	---------	---	---------	---	-------	-----

PURCHASER: .....

PRICE: .....

<b>140</b>	879(t)	10.9.21	M	SW66-16	4	21.56	688
------------	--------	---------	---	---------	---	-------	-----

PURCHASER: .....

PRICE: .....

Lot	Tag	DOB	Birth Size	Sire	Fat Depth	EMA	Index
-----	-----	-----	------------	------	-----------	-----	-------

<b>141</b>	933	18.9.21	M	SW66-16	3	19.82	590
------------	-----	---------	---	---------	---	-------	-----

PURCHASER: .....

PRICE: .....

<b>142</b>	853(t)	9.9.21	S	Palana58-19	4	23.36	790
------------	--------	--------	---	-------------	---	-------	-----

PURCHASER: .....

PRICE: .....

<b>143</b>	718(tr)	18.8.21	M	Palana103-19	5	25.46	953
------------	---------	---------	---	--------------	---	-------	-----

PURCHASER: .....

PRICE: .....

<b>144</b>	782	16.8.21	L	SW807-18	4	24.87	899
------------	-----	---------	---	----------	---	-------	-----

PURCHASER: .....

PRICE: .....

<b>145</b>	656(t)	15.8.21	M	SW75-18	5	25.83	946
------------	--------	---------	---	---------	---	-------	-----

PURCHASER: .....

PRICE: .....

<b>146</b>	661(t)	15.8.21	M	Palana103-19	5	23.45	887
------------	--------	---------	---	--------------	---	-------	-----

PURCHASER: .....

PRICE: .....

<b>147</b>	914(t)	1.9.21	M	Palana103-19	5	26.43	1004
------------	--------	--------	---	--------------	---	-------	------

PURCHASER: .....

PRICE: .....

<b>148</b>	924	18.9.21	M	SW807-18	5	24.50	902
------------	-----	---------	---	----------	---	-------	-----

PURCHASER: .....

PRICE: .....

# SW FLOCK RAMS SPRING 2021 DROP

Lot	Tag	DOB	Birth Size	Sire	Fat Depth	EMA	Index
-----	-----	-----	------------	------	-----------	-----	-------

<b>149</b>	737(t)	19.8.21	M	SW105-19	5	24.50	902
------------	--------	---------	---	----------	---	-------	-----

PURCHASER: .....

PRICE: .....

<b>150</b>	627(t)	13.8.21	M	SW22-18	5	26.43	1004
------------	--------	---------	---	---------	---	-------	------

PURCHASER: .....

PRICE: .....

<b>151</b>	824(t)	30.8.21	M	SW66-16	5	25.83	946
------------	--------	---------	---	---------	---	-------	-----

PURCHASER: .....

PRICE: .....

<b>152</b>	669(t)	28.8.21	M	SW22-18	4	21.90	681
------------	--------	---------	---	---------	---	-------	-----

PURCHASER: .....

PRICE: .....

<b>153</b>	706(t)	17.8.21	S	Palana58-19	4	25.83	950
------------	--------	---------	---	-------------	---	-------	-----

PURCHASER: .....

PRICE: .....

<b>154</b>	839(t)	20.8.21	M	SW105-19	5	25.53	917
------------	--------	---------	---	----------	---	-------	-----

PURCHASER: .....

PRICE: .....

<b>155</b>	679(t)	16.8.21	S	Palana58-19	5	27.10	1026
------------	--------	---------	---	-------------	---	-------	------

PURCHASER: .....

PRICE: .....

<b>156</b>	890(t)	15.9.21	S	Palana58-19	5	24.22	873
------------	--------	---------	---	-------------	---	-------	-----

PURCHASER: .....

PRICE: .....

Lot	Tag	DOB	Birth Size	Sire	Fat Depth	EMA	Index
-----	-----	-----	------------	------	-----------	-----	-------

<b>157</b>	663(t)	15.8.21	M	SW105-19	5	26.13	975
	PURCHASER: .....						
	PRICE: .....						

<b>158</b>	791	17.8.21	S	SW807-18	5	26.43	1004
	PURCHASER: .....						
	PRICE: .....						

<b>159</b>	670(t)	28.8.21	M	SW22-18	5	25.16	924
	PURCHASER: .....						
	PRICE: .....						

<b>160</b>	654(t)	15.8.21	M	SW75-18	4	51.65	1808
	PURCHASER: .....						
	PRICE: .....						

<b>161</b>	678(t)	16.8.21	S	Palana58-19	5	25.46	953
	PURCHASER: .....						
	PRICE: .....						

<b>162</b>	867(tr)	10.9.21	S	SW75-18	3	19.90	554
	PURCHASER: .....						
	PRICE: .....						

<b>163</b>	691(t)	17.8.21	M	SW22-18	5	23.84	880
	PURCHASER: .....						
	PRICE: .....						

<b>164</b>	699(t)	17.8.21	M	SW66-16	5	24.58	866
	PURCHASER: .....						
	PRICE: .....						

# SW FLOCK RAMS SPRING 2021 DROP

Lot	Tag	DOB	Birth Size	Sire	Fat Depth	EMA	Index
-----	-----	-----	------------	------	-----------	-----	-------

<b>165</b>	831(t)	20.8.21	M	Palana103-19	4	25.83	950
------------	--------	---------	---	--------------	---	-------	-----

PURCHASER: .....

PRICE: .....

<b>166</b>	750(tr)	19.8.21	S	SW66-16	5	26.52	932
------------	---------	---------	---	---------	---	-------	-----

PURCHASER: .....

PRICE: .....

<b>167</b>	648(t)	14.8.21	M	SW105-19	5	24.58	866
------------	--------	---------	---	----------	---	-------	-----

PURCHASER: .....

PRICE: .....

<b>168</b>	658(tr)	15.8.21	S	SW66-16	5	28.10	1077
------------	---------	---------	---	---------	---	-------	------

PURCHASER: .....

PRICE: .....

<b>169</b>	652(t)	28.8.21	M	SW22-18	5	23.28	822
------------	--------	---------	---	---------	---	-------	-----

PURCHASER: .....

PRICE: .....

<b>170</b>	690(t)	17.8.21	M	SW22-18	6	26.13	971
------------	--------	---------	---	---------	---	-------	-----

PURCHASER: .....

PRICE: .....

<b>171</b>	935	18.9.21	M	SW105-19	4	24.58	870
------------	-----	---------	---	----------	---	-------	-----

PURCHASER: .....

PRICE: .....

<b>172</b>	940	20.9.21	M	SW105-19	5	24.87	895
------------	-----	---------	---	----------	---	-------	-----

PURCHASER: .....

PRICE: .....



Lot	Tag	DOB	Birth Size	Sire	Fat Depth	EMA	Index
-----	-----	-----	------------	------	-----------	-----	-------

<b>173</b>	829(t)	22.8.21	M	SW807-18	5	26.49	968
	PURCHASER: .....						
	PRICE: .....						

<b>174</b>	911(t)	17.9.21	M	SW22-18	3	18.80	474
	PURCHASER: .....						
	PRICE: .....						

<b>175</b>	928	18.9.21	M	SW75-18	4	22.18	710
	PURCHASER: .....						
	PRICE: .....						

<b>176</b>	609(t)	25.8.21	S	Palana103-19	4	23.01	797
	PURCHASER: .....						
	PRICE: .....						

# SW FLOCK RAMS RAM LAMBS 2022

Lot	Tag	DOB	Birth Size	Sire	Fat Depth	EMA	Index
-----	-----	-----	------------	------	-----------	-----	-------

<b>177</b>	117	4.4.22	L	Punchgrove16-14	3	17.74	943
------------	-----	--------	---	-----------------	---	-------	-----

PURCHASER: .....

PRICE: .....

<b>178</b>	126	4.4.22	L	Punchgrove16-14	3	17.99	972
------------	-----	--------	---	-----------------	---	-------	-----

PURCHASER: .....

PRICE: .....

<b>179</b>	96(t)	4.4.22	M	Punchgrove16-14	3	16.47	834
------------	-------	--------	---	-----------------	---	-------	-----

PURCHASER: .....

PRICE: .....

<b>180</b>	144(t)	5.4.22	M	SW22-18	4	16.17	837
------------	--------	--------	---	---------	---	-------	-----

PURCHASER: .....

PRICE: .....

<b>181</b>	92	4.4.22	L	Punchgrove16-14	3	15.63	819
------------	----	--------	---	-----------------	---	-------	-----

PURCHASER: .....

PRICE: .....

<b>182</b>	167(t)	5.4.22	M	SW22-18	4	16.17	837
------------	--------	--------	---	---------	---	-------	-----

PURCHASER: .....

PRICE: .....

<b>183</b>	10(t)	1.4.22	M	Punchgrove16-14	3	16.71	863
------------	-------	--------	---	-----------------	---	-------	-----

PURCHASER: .....

PRICE: .....

<b>184</b>	247(t)	11.4.22	M	SW66-16	2	14.23	685
------------	--------	---------	---	---------	---	-------	-----

PURCHASER: .....

PRICE: .....

Lot	Tag	DOB	Birth Size	Sire	Fat Depth	EMA	Index
-----	-----	-----	------------	------	-----------	-----	-------

<b>185</b>	41	2.4.22	L	Punchgrove16-14	3	14.74	703
------------	----	--------	---	-----------------	---	-------	-----

PURCHASER: .....

PRICE: .....

<b>186</b>	272(t)	14.4.22	M	SW22-18	3	12.68	514
------------	--------	---------	---	---------	---	-------	-----

PURCHASER: .....

PRICE: .....

<b>187</b>	210(t)	10.4.22	M	Palana103-19	4	13.58	590
------------	--------	---------	---	--------------	---	-------	-----

PURCHASER: .....

PRICE: .....

<b>188</b>	54(t)	3.4.22	M	SW627-20	3	11.64	369
------------	-------	--------	---	----------	---	-------	-----

PURCHASER: .....

PRICE: .....

<b>189</b>	175(t)	9.4.22	M	SW65-20	4	16.71	859
------------	--------	--------	---	---------	---	-------	-----

PURCHASER: .....

PRICE: .....

<b>190</b>	161(t)	5.4.22	M	SW627-20	4	14.45	706
------------	--------	--------	---	----------	---	-------	-----

PURCHASER: .....

PRICE: .....

<b>191</b>	188(t)	9.4.22	M	Palana103-19	4	18.30	961
------------	--------	--------	---	--------------	---	-------	-----

PURCHASER: .....

PRICE: .....

<b>192</b>	130(t)	4.4.22	M	Punchgrove16-14	3	14.55	638
------------	--------	--------	---	-----------------	---	-------	-----

PURCHASER: .....

PRICE: .....

# SW FLOCK RAMS RAM LAMBS 2022

Lot	Tag	DOB	Birth Size	Sire	Fat Depth	EMA	Index
-----	-----	-----	------------	------	-----------	-----	-------

<b>193</b>	137(t)	4.4.22	M	SW627-20	3	13.10	572
------------	--------	--------	---	----------	---	-------	-----

PURCHASER: .....

PRICE: .....

<b>194</b>	106	4.4.22	L	SW627-20	3	15.18	761
------------	-----	--------	---	----------	---	-------	-----

PURCHASER: .....

PRICE: .....

<b>195</b>	110(t)	4.4.22	S	Punchgrove16-14	2	15.02	700
------------	--------	--------	---	-----------------	---	-------	-----

PURCHASER: .....

PRICE: .....

<b>196</b>	119(t)	4.4.22	M	SW627-20	3	15.74	884
------------	--------	--------	---	----------	---	-------	-----

PURCHASER: .....

PRICE: .....

<b>197</b>	62(t)	3.4.22	M	Punchgrove16-14	3	18.80	1023
------------	-------	--------	---	-----------------	---	-------	------

PURCHASER: .....

PRICE: .....

<b>198</b>	20(tr)	2.4.22	M	SW627-20	3	16.23	805
------------	--------	--------	---	----------	---	-------	-----

PURCHASER: .....

PRICE: .....

<b>199</b>	74(t)	3.4.22	M	SW627-20	3	16.63	899
------------	-------	--------	---	----------	---	-------	-----

PURCHASER: .....

PRICE: .....

<b>200</b>	100(t)	4.4.22	M	SW627-20	4	14.23	677
------------	--------	--------	---	----------	---	-------	-----

PURCHASER: .....

PRICE: .....

Lot	Tag	DOB	Birth Size	Sire	Fat Depth	EMA	Index
-----	-----	-----	------------	------	-----------	-----	-------

<b>201</b>	142(t)	4.4.22	M	SW627-20	4	15.48	750
	PURCHASER: .....						
	PRICE: .....						

<b>202</b>	231(t)	11.4.22	M	Palana103-19	3	14.96	732
	PURCHASER: .....						
	PRICE: .....						

<b>203</b>	46(t)	3.4.22	M	Punchgrove16-14	3	16.40	870
	PURCHASER: .....						
	PRICE: .....						

<b>204</b>	209(t)	10.4.22	M	Palana 103-19	2	14.01	656
	PURCHASER: .....						
	PRICE: .....						

<b>205</b>	71(t)	3.4.22	M	SW627-20	3	13.58	594
	PURCHASER: .....						
	PRICE: .....						

<b>206</b>	87(tr)	4.4.22	S	SW627-20	3	13.10	572
	PURCHASER: .....						
	PRICE: .....						

<b>207</b>	101(t)	4.4.22	M	SW627-20	4	15.52	714
	PURCHASER: .....						
	PRICE: .....						

<b>208</b>	172(t)	9.4.22	M	SW365-18	2	15.28	693
	PURCHASER: .....						
	PRICE: .....						

# SW FLOCK RAMS RAM LAMBS 2022

Lot	Tag	DOB	Birth Size	Sire	Fat Depth	EMA	Index
-----	-----	-----	------------	------	-----------	-----	-------

<b>209</b>	104(t)	4.4.22	M	Punchgrove16-14	3	17.99	972
	PURCHASER: .....						
	PRICE: .....						

<b>210</b>	141(t)	4.4.22	M	SW627-20	2	14.23	685
	PURCHASER: .....						
	PRICE: .....						

<b>211</b>	229(t)	11.4.22	M	Palana103-19	3	17.74	943
	PURCHASER: .....						
	PRICE: .....						

<b>212</b>	187(t)	9.4.22	M	Palana103-19	3	16.71	863
	PURCHASER: .....						
	PRICE: .....						

<b>213</b>	243(t)	11.4.22	M	SW389-20	2	13.21	641
	PURCHASER: .....						
	PRICE: .....						

<b>214</b>	200(t)	10.4.22	M	SW389-20	3	15.41	790
	PURCHASER: .....						
	PRICE: .....						

<b>215</b>	13	2.4.22	L	SW627-20	2	14.01	656
	PURCHASER: .....						
	PRICE: .....						

<b>216</b>	246(t)	11.4.22	M	SW66-16	3	14.74	703
	PURCHASER: .....						
	PRICE: .....						

Lot	Tag	DOB	Birth Size	Sire	Fat Depth	EMA	Index
-----	-----	-----	------------	------	-----------	-----	-------

<b>217</b>	16	2.4.22	L	Punchgrove16-14	4	15.41	786
	PURCHASER: .....						
	PRICE: .....						

<b>218</b>	134	4.4.22	L	Punchgrove16-14	4	17.19	917
	PURCHASER: .....						
	PRICE: .....						



# NOTES

A series of horizontal dotted lines for writing notes, spanning the width of the page.





# BUYERS INSTRUCTIONS SLIP

**MUST BE HANDED TO AGENT'S  
PRIOR TO LOADING**

NAME: .....

TRADING NAME: .....

ADDRESS: .....

.....

LOTS PURCHASED: .....

.....

.....

INSURE FOR: .....

CONSIGN TO: .....

TODAY / LATER: .....

SEND ACCOUNT TO: .....

.....

BUYER SIGNATURE: .....

DATE: .....

## **OUTSIDE AGENTS REBATE**

A 2% rebate is offered to approved outside agents who introduce their clients in writing prior to or in-person on sale day.

**THIS PAGE HAS BEEN  
INTENTIONALLY LEFT BLANK**

DELTA



LIVESTOCK & PROPERTY

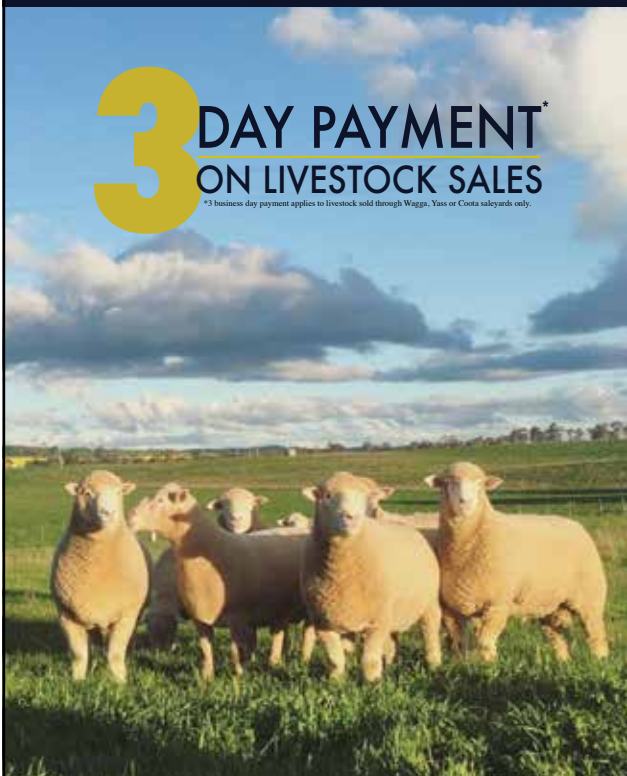
Dave Corcoran | 0400 382 388

Cameron Rosser | 0429 218 962

Jack Mann | 0428 794 280

**3** DAY PAYMENT<sup>\*</sup>  
ON LIVESTOCK SALES

\*3 business day payment applies to livestock sold through Wagga, Yass or Coota saleyards only.



We **partner** with farmers  
to make the **right** decisions.

# CORKHILLS AG SERVICES



*Working when you are...*

Welcome to Corkhills Ag Services!

Tom, Ally, Finn, Jack and Maurie Corkhill welcome all our new and existing clients and friends to our business and hope to see you throughout 2021.

Corkhills Ag thank our loyal customers for shopping locally. Drop in or give us a call for all your rural needs.

- AGRONOMY SERVICE AND ADVICE
  - INCITEC FERTILISERS
- FERTILISER AND LIME SPREADING SERVICES
  - SOIL AND PLANT TISSUE TESTS
  - ANIMAL HEALTH PRODUCTS
  - PASTURE AND GRAIN SEED
  - PRIMARY SALES POINTS
  - FENCING MATERIALS
  - PRODUCE
- HARDI SPRAYING EQUIPMENT
- FABSTOCK LIVESTOCK SUPPLEMENT
- LARGE RANGE OF STOCK FEEDERS

## **CORKHILLS AG SERVICES – CONTACT DETAILS**

Tom Corkhill – Director

4/8 Marsden St, Boorowa NSW 2586

P: (02) 63 853 611 F: (02) 63 853 866

M: 0427 012 081 E: [corkhillsag@outlook.com](mailto:corkhillsag@outlook.com)

Check out our Facebook page

[www.facebook.com/Corkhillsag](http://www.facebook.com/Corkhillsag)