

**2022**



**THE 17<sup>TH</sup> ANNUAL**  
**SANTA CENTRAL SALE**

**TUESDAY**  
**13th SEPTEMBER – 12 noon**  
**HEADINGLY SALE COMPLEX, CLIFTON QLD**

# WELCOME:



Photography by:  
Kent B Ward | Phoebe Ferguson

## I would like to welcome you to our 17th Annual Santa Central Sale.

Again in 2022 we have seen above average rainfall and ironically after so many dry years this year's oats has suffered from wet feet and has not been the best of crops. However, the bulls are now enjoying some longer and warmer days whilst grazing the ever improving oats.

Again, this year we have been pleased to witness progeny of Santa Central bulls perform in commercial herds with progeny topping sales in the current buoyant market. Also, progeny appear in stud and show catalogues in high and consistent numbers all across Australia, something we as vendors are particularly proud of. Sale animals in this catalogue are the very best chosen out of over 2,500 classified females.

2022 has seen some major changes for not only myself but also family and clients. After many years of supporting everything Santa Gertrudis in Royal Show rings and competitions all over Australia the decision was made to stop showing. After COVID had cancelled the last two EKKA's and the ever increasing interest and demand on photos, videos, online and social media, the need to present our cattle to the public in places like show rings is diminishing.

With this in mind the 2022 catalogue sees lot 1 to 19 to be what we consider some of our pick bulls and what would have been everybody's show team.

None of these cattle have been prepared for shows except lots 11 and 12 who are new vendors in the sale this year. Therefore, all other bulls have been treated no differently to any other bull in the sale.

Again, this year the 2022 sale will be interfaced with AuctionsPlus, photos and videos will be available on each lot via our QR codes.

I would like to thank Wendy and my girls for their support. Ryan and the many workers, clients and friends that without their help none of what we do would be possible.

Please note that in some photos you will notice brands A, B, C, D. These bulls were used in the SGBA judging and assessment school at Headingly and these bulls were used for that exercise and painted for that purpose. Unfortunately, the paint was better than expected and proved impossible to remove.

We would like to welcome you to 'Headingly' and appreciate your interest in our 2022 catalogue. Please feel free to contact myself or your preferred Nutrien agent if you would like an on property inspection or further information on any lots.

Regards  
Scott G Ferguson  
0407 645 917



Our Socials



WATCH NOW



**2022**

**THE 17<sup>TH</sup> ANNUAL  
SANTA CENTRAL SALE**

**TUESDAY, 13th SEPTEMBER – 12 noon**

HEADINGLY SALE COMPLEX, CLIFTON QLD

– FEATURING –

**19 CLASSIFIED SELECT BULLS**

**84 CLASSIFIED BULLS**

**90% POLLS**



**AuctionsPlus**

The Digital Ag Market

[auctionsplus.com.au](http://auctionsplus.com.au)

**02 9262 4222**

[studsales@auctionsplus.com.au](mailto:studsales@auctionsplus.com.au)



*Livestock™*

**NUTRIEN TOOWOOMBA**

**07 4637 3000**

Colby Ede ..... 0417 265 980

Andrew Costello ..... 0429 485 191

Simon Booth ..... 0438 756 245

Aaron Randall ..... 0458 732 117



**AuctionsPlus**<sup>®</sup>

Australia's Livestock Marketplace

## Can't make the sale?

*Purchase online in eight simple steps!*

*Log on to AuctionsPlus and bid on your phone, tablet or computer.*

1

### REGISTER ONLINE

Free once off registration for all auctions.

2

### COMPLETE BUYER INDUCTION

The buyer induction will help you understand the roles and responsibilities of everyone on the AuctionsPlus system.

3

### VIEW CATALOGUE

View photos, videos, pedigrees and more.

4

### ENTER AUCTION

Log into the auction anytime, anywhere and bid on your mobile, tablet or computer.

5

### AUTO BID

Can't stay for the whole sale? Set your maximum bid on the lot that you want to purchase and let the computer bid for you.

6

### CONTACT SELLING AGENT

If successful, contact selling agent to arrange payment and delivery. The agent contact details will be available in the catalogue header.

7

### PAYMENT

Via the selling agent's terms and conditions.

8

### DELIVERY

Arrange transport of livestock at your expense.

Contact AuctionsPlus on (02) 9262 4222  
or email [studsales@auctionsplus.com.au](mailto:studsales@auctionsplus.com.au)  
or [www.auctionsplus.com.au](http://www.auctionsplus.com.au)

Check us out on:





## BAAN BAA

Baan Baa Santa Gertrudis Stud was established in 2017 by Ross Murray & Cheryl Pawley. The stud is run at Baan Baa North West NSW, south of Narrabri in conjunction with ASH Stud. As Head Stockman at Warendra Santa Gertrudis Stud, Ross took a real liking to the Santa breed.

## BULLAMAKINKA

After many years of conducting our own annual bull sale we are now again offering the lead of our draft of bulls at the Santa Central bull sale for the third year. This year's draft are represented by some of our proven Bullamakinka genetics including Bullamakinka Rimfire (P) and new sire Bullamakinka Patriot P2(P).

Many of our sale bulls are by new purchased sires including Waco Nelson (PS) and Yarrabee Himalaya and existing sires Waco Nike N124, Yarrowonga M462(PS), Glenn Oaks Nashville (PS), Dunlop Return (P), Dunlop Quentin and Rosehill Jameson (PS).

Bullamakinka stud was formed in 2006 following the acquisition of "Bullamakinka" in the Goondiwindi district and after investment in the purchase of select lines of breeders from studs, Warendra, Kelly Wallah, Erin Vale, Rosevale, Yarrowonga, Waco, Marston, Eidsvold Station, Moongana, Santa Park, Douglas, Kolodong, Killarney and Wave Hill.

Major investment has been made since the stud was formed on sires including our foundation sires, Warendra Sentry (P) and Canowindra Gold Edition with their genetics forming the majority of our current breeder base of approximately 350 classified breeders.

Recently, additional major investment has been made in new genetics with sire acquisitions include Dangarfield X-Box (P), Waco Flynn, Glenn Oaks Nashville (PS), Waco Nelson (PS), Yarrowonga Diplomat (P), Waco Napoleon (P), Dunlop Return (P), Dunlop Quentin (PS), Yarrabee Himalaya (P) and Waco N124.

Our stud aim is to produce fertile cattle with good softness, bone, growth and muscle with fine tropical coats and good breed character.

## DIAMOND H

The Hatton family have been breeding Santa Gertrudis for over 40 years. The Diamond H Stud was established in 1993 with Yarrowonga and Waco bloodlines.

The Hatton family run pure bred commercial and stud herds over 5 properties in the Wandoan and Auburn River districts, north of Chinchilla. Their cattle country comprises of a mix of brigalow, ironbark, sandalwood and vine scrub, grassed predominately with buffel and some lighter forest areas.

Recent sires have been purchased from Waco, Glenn Oaks, Wave Hill, Warendra, Munnabah, Hardigreen Park, Yarrabee, Dunlop and Strathmore studs.

## GLENN OAKS

Glenn Oaks was started with females from Kabunga West and Bilukura Santa Studs. The late Bruce Perrett was very generous and looked after me well at the Big S sales.

Glenn Oaks females have always been run in conjunction with the Glenview Stud and early sires were from King Ranch and Yarrowonga-Waco.

We have consistently had success at Royal and Feature shows winning many broad ribbons. We have been fortunate to breed and sell bulls successfully that have gone onto breed for their purchasers including names like Braveheart, Banker, Cooper, Drayton, Farmhand, Fleetwood, Hastings, Jabba, Jacobite, Jack Hammer, Jetlag, Jibba, Jumbo Bwana, Kilimanjaro, King Pin, Kingsburg, Lambert, Lionheart, Magnate, Nakuru, Nashville and Z77 that have all sold for consistent prices into studs.

It is particularly pleasing to see Glenn Oaks bloodlines appear in pedigrees of sale and show cattle for studs such as Bullamakinka, Dangarfield, Dunlop, Glenalbyn, Goolagong, Jamar, Munnabah, Santahat, Waco, Wave Hill, Welbatch, Yarrabee and Yugilbar to name a few.

Recent sires from Yarrowonga, Waco, Diamond H and Dunlop have bred consistently for us. Not forgetting Yarrowonga Oberg daughters have been the most consistent breeders we have ever had. Recent sires that have been purchased

## STUD PROFILES

include Diamond H R47 and Munnabah Ironman (with Warena) and Goolagong Leopard.

2016 saw the purchase of Diamond H Red Foo (with Warena and Wave Hill) who unfortunately died prematurely. We were enormously happy with his athleticism and constitution.

2017 we purchased (in partnership with Warena) Waco Murdoch and Waco L596.

In 2018, Yarrabee Gonyah 1377 (P) was purchased in partnership with the Diamond H stud for \$54,000.

2019 sire purchases include Yarrawonga P590 (PS), Forest Park 1073 and Glenalbyn Noble.

2020 saw Glenn Oaks Palo P1211 (ET)(AI)(PS) break the Australian breed record selling for \$126,000 to the Munnabah and Glenalbyn studs. 2020 also saw Glenn Oaks Penfold P1261 (ET)(AI)(PS) sell for \$95,000 to the Warena stud. Both out of Glenn Oaks Harmony who was the dam of 7 Glenn Oaks bulls in 2020's sale. These 7 bulls combined to gross \$279,000 and average \$39,857. With much sadness Harmony passed away suddenly in late 2020.

In 2021, 22 Glenn Oaks bulls averaged \$29,159 with sales including Rubbel (\$120,000) to Scott and Rebecca Dunlop, Remington (\$100,000) to the Hatton Family of Diamond H, Q144 (\$110,000) to the Kilcock stud and R38 (\$90,000) to the Watson family of Watasanta. Glenn Oaks and Wave Hill purchased new sires including Yarrawonga Katmandu for \$150,000 (New Australian Breed Record), Munnabah Oban (P) for \$26,000, Diamond H Xav (P) for \$90,000 and Annabranche Rambo (P) for \$23,000 (top price at Wandoan 2021).

## GOOLAGONG

---

Breeding quality beef is something which comes naturally for the team at Goolagong Santa Gertrudis stud, with Brian and son Heath Tiller being involved with beef cattle their whole lives.

Goolagong stud was established in 1979 and has been through several changes since Brian purchased the original 17 Santa Gertrudis cows, three heifers and bull.

Heath is a fifth-generation farmer on the original selection property at Warnertown, South Australia and has continued to work hard to introduce the right bloodlines to continue to

improve the herds confirmation, growth for age and fertility.

The stud has also continuously improved its herd by adhering to the Santa Gertrudis breed standards and comparing its animals to others by showing cattle at various country shows, the Royal shows at Adelaide and Sydney and the Brisbane Ekka.

Some of Goolagong's top achievements include selling bulls in Queensland to a top of \$36,000 and selling a heifer for \$19,500 at Santa Central's inaugural female sale.

The stud, which also owns an Angus stud, holds an annual on-property bull sale selling about 80 bulls to buyers across Australia.

Heath aims to breed bulls with a low birth weight, high growth rate and are structurally correct and females which are true to type with good skins.

## JARRAH PARK

---

Mike purchased his first Santa cow in 1998, a Hardigreen Park female, and from then has always had a love for the breed. Mike and Danni then registered Jarrah Park in 2009 after a small nucleus of high performance females had been developed after further purchases from Warena, Rosevale and Hardigreen Park and breeding a nice line of females from the initial purchases had occurred.

Jarrah Park has always been run as a small herd, with a limited number of females been kept as breeders. This has allowed us to develop an exceptional line of females, which must perform and not only just have a calf each year, but be a quality calf, with new females constantly pressuring the established females to keep their place in the herd.

## KILCOCK

---

Kilcock Santas started the wheels turning 32 years ago as a commercial cattle operation which ran alongside merino wool production, cropping, irrigation and fodder programs.

Over the journey, the purchase of remaining Kent stud cows from the Wills family, a draft of Anderson bred cattle from Brookside, a draft of Tim Phillips from The Reefs and some of the old original cows from King Ranch, Cumberland and

Calga bloodlines were graded and became our base.

This all took a big change of direction when we sat down and decided to do the cattle in a more official program. Registering the stud in July 2015.

Since the cattle became a major priority, we still had to make the farm work, so the sheep had to go and a more intense beef production ramped up. Cropping and irrigation being paramount in our part of the world for fodder production and the ability to finish all cattle for all markets is a major criteria at Kilcock.

Breeding objectives is one of our major priorities. Soft, easy doing, quiet and traditional cattle with plenty of skin, ear, fat and milk which makes our cattle sought after with processors, breeders and backgrounders. We focus on the female cattle being the vital building blocks of all aspects at Kilcock.

The purchase of stud sires since 2015 are Bullamakinka K462, Yarrawonga L688, Canowindra P5, Goolagong N212, Munnabah 1242 & Nightwalker P2683 (\$32,500), Aberdeen Mandella V34 V57 and X28, Balgree Champion, Big Ben, Maximus, Warrilee L3 M90, The Wave Hill Piano Man P84 (\$52,500). Glenn Oaks Q144 (P) was purchased in 2021 for \$110,000 in the unled section of Santa Central. These sires play a major role from natural to A.I. programs every year.

## RIBBLETON

---

Ribbleton Santa's is currently based in Clifton/Nobby. With the main herd of stud females based on 6,000 acres in between Inglewood and Texas ('Hillcrest'). Ribbleton Santa's was registered as a stud in 2018. The herd was only recently graded up from a commercial herd in November of 2020. We first started breeding Santa's back in 2008 with the acquisition of 63 commercial Santa females. At the end of 2017, the breeding female herd was at 350 breeding commercial females, before the drought hit. The herd now consists of 50 classified stud females.

Ribbleton has always bought classified 'S' bulls over our years of breeding. Our first Santa bulls bought were Bremervale Qugliy & Bremervale Ripley. To us, they were known as 'Jerry' and 'Romeo'. Other bulls that have been used in the herd over the years were Dundee Aztec and a number of 'Jerrys' sons have had some time in the herd. Dundee Aztec had a massive impact in

the herd with his female prodigy. Our top cows in the herd today are by him.

Our current sires that are in use at the moment are Linlands Mate and Ribbleton Humphrey. Linlands Mate was bought privately from Barry Lindemann, Linlands Santa Gertrudis stud. Mates' progeny are showing the all the attributes he has; length, frame and with the tremendous amount of bone. Our other sire is Ribbleton Humphrey. Humphrey is a successful AI out of Wave Hill Jager J14 (PS). Humphrey was shown in the show ring with great success in local shows. He is dark coated bull with a powerful sires head and is loaded with muscle. He shows all the classic Santa Gertrudis characteristics and his prodigy are showing an early maturing pattern with plenty of muscle throughout.

## SUJO

---

It all began when I moved to Coonabarabran to a very scrubby 4000 acres. During the first years nearly 2000 acres was bulldozed and improved to make this property what it is today.

I purchased 19 Santa Gertrudis purebred heifers from Robin Hooper of 'Boolarong' and my interest in cattle began. Later other breeds were purchased but Santa's showed outstanding constitutions and were more suited to this country.

In 1988 SuJo Santa Gertrudis Stud was registered. Females were purchased from Calga West, Murrumbo, Florando, Big Sur, Hardigreen Park, Pine Villa, Noralla and Kelly Wallah.

## TOOKEY CREEK

---

Tookey Creek Santa Gertrudis Stud was established in 1987 using genetics from Arthur Kirkby, Pampoola, Kelly Wallah, G.B.L. and Brigalow studs.

We began showing locally, then at Sydney RAS, EKKA and Rockhampton Beef. Our greatest achievement was Grand Champion Bull at Sydney RAS with TC Geronimo.

Tookey Creek strides to breed structurally correct, quiet cattle with neat sheaths and underlines, and with the ability to adapt to all conditions.

### WARENDA

---

The first Santa Gertrudis bull was purchased in 1965 and used over Poll Hereford cows. Only Santa bulls were purchased thereafter. The benefits of the breed became obvious to my father. This was the base of the Warena Stud registered in 1984.

Valued sires have been purchased and home bred sires retained. Many have been very influential in the stud, namely Murrumbo Beaumon (P) and Warena Mexico (P). Recently sires Waco Murdock and Bullamakinka Nick (P) have been added, and Glenn Oaks Penfold (P) was purchased at Santa Central Sale in 2020 for 2nd top price of \$95,000. He was admired for his power. At 25 months he had a weight 1118 kgs. EMA 154cm. DWG 1.42 and we look forward to his calves due to arrive August 2021.

AI programs have also been conducted over the years.

The selection of females is strict. Neat udders, quiet temperament, doing ability, fertility and quality, which is a slick tropical coat and breed character, all required and strived for.

Very few females are offered for sale, only a select heifer, occasionally.

Warena Stud commenced showing in 1990 and met with success at regional shows, breed feature shows and Royal shows. Broad ribbons have been won at Brisbane, Sydney and Melbourne with both heifers, cows, junior and senior bulls.

Warena conducted an on property sale for 12 years until 2009. Sales were successful with

loyal repeat buyers with bulls selling to studs. Warena Sahara held the Australian record price of \$80,000 for 8 years.

The stud herd was unfortunately reduced in 2009. Warena has sold at the Santa Central Sale since with a bull sale average of \$9871 over the last 12 years.

### WAVE HILL

---

In the mid 1950's the Kirkby Family first imported Santa Gertrudis cattle from America. These cattle were the foundation of the Wave Hill Stud. Wave Hill has always concentrated on breeding cattle that are fertile and efficient. It has been important that the cowherd is low maintenance with cows expected to calve unassisted. Neat teats and good shaped udders are highly desirable and very hereditary. Doing ability is also strongly emphasized, along with trim sheaths and excellent scrotal measurements.

Wave Hill has had major achievements at auction sales. Bulls have consistently sold for excellent averages for many years in both QLD and NSW. At the 2015 Santa Central sale Wave Hill achieved equal top prices of \$67,500 for two bulls Wave Hill Jager (P) and Wave Hill Jackal (P).

Wave Hill has been showing cattle for many years with success. Winning broad ribbons at both Sydney and Brisbane Royal Shows. Achievements have been Grand Champion Bull at Brisbane RNA in 1994 and again in 2015.

2017 saw the Wave Hill stud purchased in its entirety by Scott and Wendy Ferguson.



July 2022 Santa Gertrudis BREEDPLAN - Percentile Bands for all 2020 born animals - Use this table as a guide to compare individual animals with the current genetic level of the breed

Percentile Band	Gestational Length (days)	Birth Wt (kg)	200 Day Wt (kg)	400 Day Wt (kg)	600 Day Wt (kg)	Mat Cow Wt (kg)	Milk (kg)	Scrotal Size (cm)	Days to Calving (days)	PNS (%)	Carcass Wt (kg)	Eye Muscle Area (sq cm)	Rib fat (mm)	Rump Fat (mm)	Retail Beef Yield (%)	IMF (%)	Flight Time (secs)	SF (kg)	Domestic Index (\$)	Export Index (\$)
High 1%	-3.6	-2.1	+26	+38	+54	+72	+5	+3.1	-13.5	+8.0	+24	+5.2	+2.5	+2.6	+1.9	+0.8	+0.40	-0.20	+34	+48
High 5%	-1.9	-0.9	+21	+32	+44	+58	+4	+2.5	-10.0	+5.5	+20	+4.2	+1.7	+1.6	+1.5	+0.5	+0.25	-0.08	+29	+40
High 10%	-1.4	-0.3	+19	+29	+39	+51	+3	+2.1	-8.0	+4.2	+18	+3.7	+1.4	+1.3	+1.3	+0.4	+0.19	-0.03	+26	+36
High 15%	-1.2	+0.0	+17	+26	+36	+47	+2	+1.8	-6.6	+3.3	+16	+3.4	+1.1	+1.0	+1.1	+0.4	+0.15	+0.00	+25	+33
High 20%	-1.0	+0.3	+16	+25	+34	+43	+2	+1.7	-5.4	+2.6	+15	+3.1	+1.0	+0.8	+1.0	+0.3	+0.12	+0.02	+23	+31
High 25%	-0.8	+0.5	+15	+23	+32	+40	+2	+1.5	-4.4	+2.1	+14	+2.9	+0.8	+0.6	+0.9	+0.3	+0.10	+0.03	+22	+29
High 30%	-0.7	+0.7	+14	+22	+30	+37	+1	+1.4	-3.4	+1.6	+13	+2.7	+0.8	+0.4	+0.9	+0.3	+0.09	+0.05	+21	+27
High 35%	-0.6	+0.9	+13	+21	+28	+35	+1	+1.3	-2.7	+1.3	+12	+2.5	+0.7	+0.3	+0.8	+0.2	+0.07	+0.06	+20	+25
High 40%	-0.5	+1.0	+12	+19	+26	+32	+1	+1.2	-1.9	+0.9	+11	+2.4	+0.6	+0.2	+0.8	+0.2	+0.06	+0.08	+19	+23
High 45%	-0.4	+1.2	+11	+18	+25	+30	+1	+1.0	-1.4	+0.6	+10	+2.3	+0.5	+0.1	+0.7	+0.2	+0.05	+0.09	+18	+22
<b>50%</b>	<b>-0.4</b>	<b>+1.3</b>	<b>+11</b>	<b>+17</b>	<b>+23</b>	<b>+28</b>	<b>+0</b>	<b>+0.9</b>	<b>-0.9</b>	<b>+0.2</b>	<b>+9</b>	<b>+2.1</b>	<b>+0.4</b>	<b>+0.0</b>	<b>+0.7</b>	<b>+0.1</b>	<b>+0.04</b>	<b>+0.10</b>	<b>+16</b>	<b>+20</b>
Low 45%	-0.3	+1.4	+10	+16	+22	+27	+0	+0.8	-0.4	+0.0	+9	+2.0	+0.3	-0.1	+0.6	+0.1	+0.03	+0.11	+15	+19
Low 40%	-0.3	+1.5	+9	+15	+21	+25	+0	+0.7	+0.2	-0.2	+8	+1.9	+0.2	-0.2	+0.6	+0.1	+0.02	+0.12	+14	+17
Low 35%	-0.2	+1.7	+9	+14	+19	+23	-1	+0.7	+0.7	-0.5	+7	+1.8	+0.1	-0.3	+0.5	+0.0	+0.02	+0.13	+13	+16
Low 30%	-0.1	+1.8	+8	+13	+18	+21	-1	+0.6	+1.3	-0.7	+6	+1.6	+0.0	-0.4	+0.4	+0.0	+0.00	+0.14	+12	+15
Low 25%	-0.1	+2.0	+7	+12	+17	+19	-1	+0.5	+1.9	-1.0	+6	+1.5	-0.1	-0.5	+0.4	-0.1	+0.01	+0.16	+11	+13
Low 20%	+0.0	+2.2	+6	+10	+15	+17	-2	+0.3	+2.7	-1.3	+5	+1.3	-0.2	-0.7	+0.3	-0.1	-0.02	+0.18	+10	+12
Low 15%	+0.1	+2.4	+5	+9	+13	+14	-2	+0.2	+3.5	-1.7	+4	+1.1	-0.3	-0.9	+0.2	-0.2	-0.03	+0.20	+9	+10
Low 10%	+0.2	+2.7	+4	+7	+10	+9	-3	+0.0	+4.7	-2.2	+2	+0.8	-0.5	-1.1	+0.0	-0.2	-0.06	+0.23	+7	+7
Low 5%	+0.5	+3.2	+1	+4	+6	+2	-4	-0.4	+7.0	-3.1	+0	+0.3	-0.8	-1.4	-0.2	-0.3	-0.10	+0.29	+2	+0
Low 1%	+1.3	+4.3	-4	-3	-3	-10	-5	-1.2	+14.3	-5.6	-6	-0.6	-1.3	-2.1	-0.6	-0.5	-0.19	+0.46	-8	-18

As a set of benchmark figures that approximate the current genetic level for the breed, you will find the average EBVs for all animals born in 2011 (Table1) to be very useful. You can use these average EBVs to help you to assess the relative ranking of animals for the various traits. Only Santa Gertrudis GROUP BREEDPLAN EBVs or Interim EBVs with Accuracy (ACC) can be validly compared between herds.

**ESTIMATED BREEDING VALUES (EBVS):** The EBV is the best estimate of an animal’s genetic merit for that trait.

**ACCURACY:** An accuracy is presented with every EBV and gives an indication of the amount of information that has been used in the calculation of that EBV. The higher the accuracy the lower the likelihood of change in the animal’s EBV as more information is analysed for that animal or its relatives. Accuracy below 50% should be considered low.

**FERTILITY**

**SS:** Scrotal Size EBV (cm) is an indicator of male fertility in regards to semen quality and quantity. Higher (positive) EBVs indicate higher fertility. Size is also positively associated with earlier age at puberty of bull and heifer progeny.

**DC:** Days to Calving EBV (days) is an indicator of female fertility based on the time between the cows first exposure to a bull and when she subsequently calves. Cows that calve late in the season or fail to calve are penalized. This is more useful as a sire trait. Lower (negative) EBVs are preferred indicating shorter days to calving for sire’s daughters.

**GROWTH**

**MILK:** 200-Day Milk EBV (kg) is an estimate of an animal’s milking ability. For sires, this EBV is indicative of their daughter’s milking ability as it affects the 200 day weight of their calves.

**200:** 200-Day Growth EBV: (kg) is calculated from the weight of animals taken between 80 and 300 days of age. Values are adjusted to 200 days and for age of dam. This EBV is the best single estimate of an animal’s genetic merit for growth to early ages.

**400:** 400-Day Weight EBV (kg) is calculated from the weight of animals taken between 301 and 500 days of age, adjusted to 400 days and for age of dam. This EBV is the best single estimate of an animal’s genetic merit for yearling weight.

## EBVs

**600:** 600-Day Weight EBV (kg) is calculated from the weight of animals taken between 501 and 900 days of age, adjusted to 600 days and for age of dam. This EBV is the best single estimate of an animal's genetic merit for growth beyond yearling age.

**MWT:** Mature Cow Weight EBV (kg) is an estimate of the genetic difference in cow weight at 5 years of age. Smaller, or more moderate EBVs are generally more favourable.

### CARCASE

**CWT:** Carcase Weight EBV (kg) estimates the genetic difference in carcase weight at a standard age of 650 days.

**EMA:** Eye Muscle Area EBV (cm<sup>2</sup>) estimates the genetic differences in eye muscle area at the 12/13th rib site of a 300kg dressed carcase. More positive EBVs indicate better muscling on animals.

**RIB:** Rib Fat EBV (mm) estimates the genetic differences in fat depth at the 12/13th rib site of a 300kg dressed carcase. More positive EBVs indicate more subcutaneous fat and earlier maturity.

**RUMP:** Rump Fat EBV (mm) estimates the genetic differences in fat depth at the P8 site of a 300kg dressed carcase. More positive EBVs indicate more subcutaneous fat and earlier maturity.

**RBV%:** Retail Beef Yield Percent EBV (%) represents total (boned out) meat yield as a percentage of a 300kg dressed carcase. A more positive EBV indicates higher percentage yield for the 300kg carcase size.

**IMF%:** Intra Muscular Fat Percent EBV (%) is an estimate of the genetic difference in the percentage of intra-muscular fat at the 12/13th rib site in a 300kg carcase. Depending on market targets, larger more positive values are generally more favourable.

*The Santa Gertrudis GROUP BREEDPLAN Estimated Breeding Values contained in this Sale Catalogue were compiled by the Agricultural Business Research Institute (ABRI) from data supplied by the breeders. Neither the Santa Gertrudis Breeders (Australia) Association nor the ABRI oversee or audit the collection of this data.*

## SALE INFORMATION / LOCATION MAP

Whilst all care is taken, people attend Santa Central Sale at "Headingly" at their own risk and no responsibility will be accepted by us.

### SUPPLEMENTARY SHEET:

All bulls will have been scanned prior to the sale. These scans include measurements for eye muscle area and fat at the rump and rib sites. This sheet will also include actual sale weights and scrotal sizes to guide your selections.

### VACCINATIONS & TESTS

All bulls have been inoculated for 7 in 1, Vibrio, 3 Day and 3 Germ Blood. All bulls have been semen tested for motility and morphology.

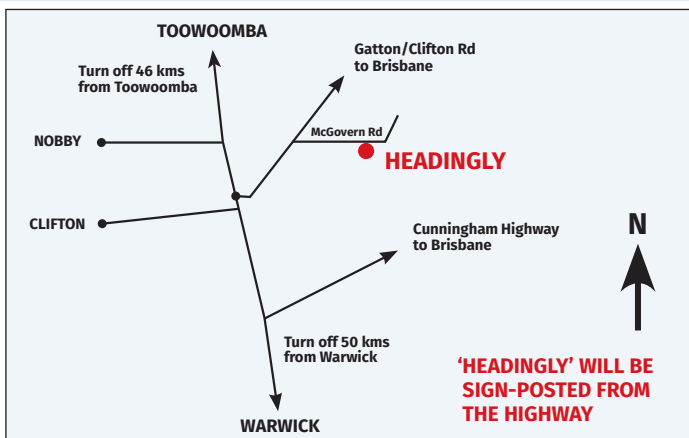
**DELIVERY:** Apart from purchasers who have trucks present on the day – NO delivery will be given until the day after the sale. Free delivery only applies to the following centres: Dalby, Wandoan, Taroom, Roma, Blackall, Goondiwindi, Narrabri, Tamworth. Buyers will be advised by the agents regarding their deliveries.

**INSURANCE** is recommended and an insurance representative will be present on the day.

**OUTSIDE AGENT REBATE:** A 4% rebate will only apply to purchasers that are introduced in writing 24 hours prior to the sale to Jennifer Radke. Phone: 07 4637 3000 – [jennifer.radke@nutrien.com.au](mailto:jennifer.radke@nutrien.com.au) The agent is required to appear in person with their buyer and settling their account within 7 days.

**CONDITIONS OF SALE** are on public display at the agent's office.

Please contact Scott Ferguson mob 0407 645 917 for more information.





## BAAN BAA



### ***Munnabah 944 (P)***

Munnabah 944 (P) was purchased from Santa Central in 2015 for \$15,000 by the Wave Hill Stud. He was purchased for his slick coat and breed character. Boasting a 42cm scrotum and 131cm EMA he is proving to be a powerful sire, injecting a lot of muscle into the herd.

## BULLAMAKINKA



### ***Bullamakinka Patriot P2 (P)***

Patriot was retained for stud use in 2019 but used very lightly after sustaining a leg injury. Being a son of the \$55,000 Waco Flynn and out of a quality Gold Edition cow, Patriot has impressed us with his type, bone, depth and exceptional weight for age being 1100 kgs at 26 months when put out with the cows.



### ***Bullamakinka Rimfire M022 (P)***

Sired by Yarrowonga Diplomat (P) and becoming one of our leading sires with his first crop of sons averaging over \$22,600 in the first year at Santa. Central.

Rimfire is a big quiet bull with exceptional growth and carcase and is throwing similar traits into his progeny. Rimfire produced Bullamakinka Quarantine Q40 (P) sold to Goolagong Stud for \$65,000 and retained sire, Bullamakinka Q80 (P). In 2021 he has produced a number of quality sons including Bullamakinka Rocky (P) being the Junior Champion Santa bull at Beef 2021 and selling to RL Pastoral for \$130,000.



### ***Dunlop Quentin L134***

Dunlop Quentin was purchased in 2016 for \$16,000 as a young led bull and has bred consistently for us with his progeny being thick-set and tropical types like himself. He is represented with tropical type bulls at this year's sale.



## REFERENCE SIRES



### ***Dunlop Return M96 (P)***

Dunlop Return was purchased at the Clermont Santa Sale for \$20,000 and has bred well at Bullamakinka. Return is a big active sire and is represented with sale progeny in his second season after his sons sold well last year with Bullamakinka Real Deal selling to Yarrowonga for \$70,000.



### ***Glenn Oaks Nashville N128 (PS)***

Purchased in 2018 for \$24,000 at 15m and purchased for his outcross genetics, early maturity pattern, thickness and softness, Nashville has been used successfully as a heifer bull and is producing a very even line of progeny with his first sons selling in 2021 and averaging \$20,875. In his first season he was joined to 72 yearling stud heifers and the mob returned 71 PTIC.



### ***Rosehill Jameson 4 (ET)(AI)(PS)***

Jameson was purchased in 2015 for \$45,000 at Santa Central and purchased for his pedigree, growth and tropical type. Jameson has bred consistently for us and has been producing exceptional females.



### ***Waco Nike N124***

N124 is a big growthy horned bull with good breed character, pedigree and bone that we bought to join back over poll cows. He is breeding very well for us with his first sons offered in 2021. N124 has produced the largest number of sale bulls in 2021 which reflects his breeding consistency and averaged \$14,750. N124 has produced some of our leading sale bulls in 2022.



### ***Waco Nelson N384 (PS)***

Purchased at Yarrowonga Waco sale in 2019 for \$36,000 we liked Nelson for his carcass, structure, bone and scale. Nelson has become one of our leading sires at Bullamakinka and is clicking with our Sentry and Gold Edition females. His progeny are particularly growthy and producing both high quality males and females.

## REFERENCE SIRES



### ***Yarrabee Himalaya 1393 (P)***

Purchased in 2019 for the second top price at the Yarrabee sale, Himalaya was purchased for his overall type with a dark clean coat, good structure and being a son of Jumbo Bwana.



### ***Yarrowonga M462 (PS)***

M462 (PS) was purchased at the Clermont Santa Sale for his type, shape and exceptional growth, being a large bull at 980kgs at under 22 months when purchased in 2017. M462 (PS) has been used lightly at Bullamakinka having sustained a leg injury but his progeny have been consistent and represented with two quality sons selected for the sale.

## DIAMOND H



### ***Canowindra President P2 (PS)***

President is an outstanding carcass bull. He has an excellent muscle pattern and great thickness in his topline and hindquarter. He is an easy-doing bull with a great coat type.



### ***Dunlop Rigby M32 (P)***

Purchased at the 2017 Dunlop Sale for \$18,000, sired by Yarrowonga Christo H1222 (P).



### ***Dunlop N476 (P)***

Purchased at the 2018 Dunlop Sale for \$11,000.

## REFERENCE SIRES



### **Glenn Oaks Kingsburg K110 (P)**

Kingsburg was purchased at the 2016 Santa Central Sale from Phoebe, Sophie and Lilly Ferguson for \$22,000. He has thrown an even line of weaners for the last three years.



### **Glenn Oaks Nakuru N53 (PS)**

Purchased at the 2018 Santa Central Sale for \$22,000. Sired by Munnabah Ironman 960 (P). Glenn Oaks Nakuru sired top priced bulls at the 2021 Santa Central Sale. Diamond H Xane (PS) sold to Bullamakinka for \$55,000 and Diamond H Xav (P) sold to Glenn Oaks for \$90,000.

### **Waco Chapman H80 (ET) (P)**

Purchased in 2014 for \$42,000, sired by Yarrawonga Youtube. Consistently breeding quality easy doing cattle. Top prices received for sons Diamond H Trickshot (P) \$30,000 (Moongana Stud) and Diamond H Thurston \$20,000 (J Howard Burleigh Estates) at the 2017 Diamond H sale.



### **Wave Hill Jackal J98 (P)**

Son of Glenn Oaks Fleetwood purchased at Santa Central 2015 for equal top price of \$67,500. Producing an exceptional line of poll bulls and females.



### **Wave Hill Longstrong L84 (P)**

Purchased at the 2017 Santa Central Sale for \$10,000. Sired by Glenn Oaks Fleetwood F27 (PS).



### ***Yarrowonga N542 (P)***

Purchased in 2018 for \$22,000. Sired by Yarrowonga Efficient, he is a deep bodied bull with good breed character and breeding some very credible progeny.

## GLENN OAKS AND WAVE HILL



### ***Diamond H Renegade R47 (P)***

By Warenda Equador (P) was purchased in 2015. He has bred an even line of well-muscled calves with good temperament and character. In the 2021 Santa Central Sale 9 sons averaged \$40,666 including Rubbel (\$120,000 to Dunlop Santas), Q144 (\$110,000 to Kilcock Stud), and three daughters to averaged \$9,666 including Quinn (\$18,000 to N. Watts).



### ***Glenalbyn Noble N687 (P)***

Glenalbyn Noble was purchased at the 2019 Santa Central Sale. A bull that carries a terrific body whilst maintaining his softness. He was used over heifers in his first year with a 100% preg test result. These are his fist sale bulls and his heifers of the same age are amongst the best in that year. He has again sired some very good weaners.



### ***Glenn Oaks Quartermaine Q74 (P)***

Glenn Oaks Quartermaine was in our 2020 show team and very much a favourite for his faultless temperament. He was purchased by Luke and Carly Baker of Annabranche Stud at the 2020 Santa Central Sale. We had used him over two show heifers, 'Quinn' who had a heifer calf at foot by Quartermaine when sold to N. Watts and 'Ripple' who is now in our IVF programme and the dam of 'Shake 'n' Bake'.







### ***Goolagong Leopard L26 (AI)(P)***

Goolagong Leopard (AI)(P) was purchased at the 2016 Santa Central sale for \$23,000 he had been awarded Reserve Junior Champion at the Ekka one month earlier. We have been impressed with Leopard's progeny and he has used extensively throughout the stud.



### ***Forest Park Legislator 1173***

Legislator was purchased at the 2019 Barcoo Sale. He was admired for his breed character and correctness. He is a good doing, soft bull with very good fertility.



### ***Waco Murdock M188***

Murdock was purchased in partnership with Warena stud in 2017. We had noticed and appreciated his muscling, depth of body, beautiful skin and faultless temperament at the Ekka on month before sale time.



### ***Yarrabee Gunyah 1377 (P)***

Gunyah was purchased in 2018 for \$54,000 in partnership with the Diamond H stud. He has grown into a massive sire with extraordinary length. We believed he was a standout bull for the 2018 year. Gunyah is extremely quiet just like his sire Glenn Oaks Jumbo Bwana J26 (P). At the 2021 sale one son, Ramjet sold for \$28,000 to the Tookey Creek and Jarrah Park studs.

## REFERENCE SIRES



### ***Yarrowonga Hardy N606 (P)***

N606 (P) was kept within the Yarrowonga stud for his growth whilst retaining softness with good doing ability.



### ***Yarrowonga P590 (PS)***

Yarrowonga P590 (PS) was purchased at the 2019 Yarrowonga Sale for \$40,000. He was purchased for his softness and depth of body.

## GOOLAGONG



### ***Goolagong Neon N180 (ET)(AI)(P)***

Sold to Newenham in the Goolagong Stud 2020 Bull Sale. Neon was used over a selected stud females for his structural correctness, breed character and very good pedigree.



### ***Waco Zeus F154***

Zeus was retained by the Yarrowonga stud. Goolagong purchased semen in Zeus.





### ***Warenda Kilimanjaro K4 (P)***

Kilimanjaro was offered at the 2016 and purchased by the Hatton family of Santahat Stud for \$50,000. A share was retained by Warenda and Glenn Oaks. He has been used extensively in an ET programme with some very pleasing results.

## JARRAH PARK and TOOKEY CREEK

### ***Tookey Creek Magnus M14***

Retained as the standout son of Waco Einstein (purchased for \$47,500), he has all the attributes we look for in a great sire. He has bred an exceptional line of functional, fertile females, and his sons are as admirable as he is. Magnus is still active in the stud.

### ***Yarrowonga N22***

Purchased at the 2018 Yarrowonga Waco sale for \$14,000, we were surprised at the value of this bull. He has great sire appeal, softness, skin type and an impeccable temperament, attributes that he has passed on to his progeny. We used Yarrowonga N22 for 3 years before we unfortunately lost him.

## KILCOCK



### ***Aberdeen V34 (P)***

Purchased privately in 2017 from Buster and Pat Pirie, this bull offered Kilcock meat, content, style, skin, and a very neat sheath. A grandson from Balgree Madiba and out of a solid base cow Aberdeen O10. It was thought that this sire could produce very stylish females and young sires that will have plenty of meat and he has not disappointed. Both R08 and R100 show this bulls capabilities and carry his powerful traits.

## REFERENCE SIRES



### ***Canowindra Park Royal P5 (P)***

Purchased from Canowindra Cardona Sale in 2018 for \$21,000. This bull was a meat machine, he has carcass, breed character and power. P5 is very easy doing, he has passed this on to his progeny. His heifers ease style, and power with that feminine touch. His young bulls have plenty in them and are coming through our draft in the coming months as dominant calves.



### ***Warrillee L3 (PS)***

This sire was purchased at Brisbane Valley in 2018. He is by Wave Hill Arnie and has played a major role in our breeding programs. This sire was purchased as a heifer bull with new genetics and bloodlines. He has proven himself as a female bull as well as a bull that will produce very impressive male calves. Not the biggest sire but a soft easy doing sire that offers plenty.

### ***Warrillee M90 (P)***

Purchased at Brisbane Valley Sale in 2019 for \$11,000 by Dangarfield Renault. This sire was purchased as a heifer bull and has not let us down, not the biggest of bulls but a soft easy doing meaty bull with breed character to boot. He is made his home in the Riverina and makes a big impact on our young cattle.

## RIBBLETON



### ***Linlands Mate (PS)***

Linlands Mate was purchased privately off Barry Lindemann from Linlands Santa Gertrudis Stud. Barry retained a 1/8th share of Mate and used him over his heifers. Mate has tremendous length, bone and oozes sire appeal. He has great temperament, good feet and has a quality muscle pattern. Mate is sired by Yarrawonga Donatello (bought by Linlands Santa for \$30,000).



### ***Ribbleton Humphrey 327 (AI)(PS)***

Ribbleton Humphrey (AI)(PS) is a successful AI from Wave Hill Jager J14 (PS). Humphrey has plenty of sire appeal. His muscling, hooded eyes and coat colour are true to the Santa Gertrudis Breed. He has a tidy sheath and large testicles and has proven himself to have an impact in our herd already. Humphrey is structurally correct and his progeny are showing his genetic characteristics.

## SUJO



### ***Sujo Nicco N52 (PS)***

Sujo Nicco (PS) a son of Yarrawonga K482 (P) was retained in the Sujo stud for heifer joining. We are pleased with his progeny and has proven to be an active fertile sire.

## WARENDA



### ***Bullamakinka Nick N54 (P)***

Nick (P) was purchased at the Bullamakinka sale in 2018 for the top price of \$57,000. He was impressive for his overall eye appeal, correct structure, strong top line with a smooth tail setting. He has beautiful breed character with a slick coat type and has developed into a big heavy sire. The consistently placid temperament of his calves is a trait highly valued at Warend.



### ***Waco Eland J1402 (P)***

Eland has been a fertile sire. He is admired for his doing ability and quiet nature. He is putting considerable muscle into his progeny.



## DISCLAIMER

*All reasonable care has been taken by the vendors to ensure that the information provided in this catalogue is accurate at the time of publication. However, neither the vendors nor the selling agents nor any of their representatives assume any responsibility or liability for the correctness, use or interpretation of any of the information supplied.*

*Unless specifically stated, there has been no verification of pedigrees of the sale lots by DNA test or otherwise. The information concerning the pedigrees of the lots is supplied by the vendors as the most accurate information that is available to them.*



# GOOLAGONG ROCKET R46 (AI)(P)

TATTOO: **R46**

STUD BOOK No.: **GOO20MR46**

BORN: **7/04/2020**

**29 months**



WACO LANDLORD (P)  
 WACO SAMSON  
 WACO D770 (P)  
**SIRE: WACO ZEUS**  
 YARRAWONGA JOMAR (PS)  
 WACO A709  
 WACO F175  
 YARRAWONGA RUTHLESS (P)  
 WACO YOUTHFUL (PS)  
 WACO A485 (P)  
**DAM: GOOLAGONG M53 (AI)(P)**  
 WALMONA QUILLAN (P)  
 GOOLAGONG G011 (P)  
 GOOLAGONG B63 (P)



WEIGHT	DLG	SCROTUM	EMA	RIB FAT	RUMP FAT

	200D WT	400D WT	600D WT	MAT COW WT	MILK	SCROTAL SIZE	DAYS TO CALVING	EMA	RIB	RUMP	RBV%	IMF
<b>EBV</b>	+18	+24	+30					+1.0	-0.7	-1.5	+0.4	-0.2
<b>ACC</b>	61%	55%	56%					41%	48%	48%	37%	50%

Purchaser: \_\_\_\_\_ Price: \$ \_\_\_\_\_





# KILCOCK BUNDY R08 (P)

TATTOO: R08

STUD BOOK No.: KCS20MR08

BORN: 3/06/2020

27 months



BALGREE MADIBA (PS)  
 ABERDEEN R41 (P)  
 ABERDEEN 010  
**SIRE: ABERDEEN V34 (P)**  
 ABERDEEN M29 (P)  
 ABERDEEN Q6  
 ABERDEEN 09  
 DE LEEAH VALE JASPER (P)  
 CATHNAL OTTIS  
 CATHNAL INGRID (AI)  
**DAM: KILCOCK M203**



WEIGHT	DLG	SCROTUM	EMA	RIB FAT	RUMP FAT

Purchaser: \_\_\_\_\_ Price: \$ \_\_\_\_\_



# KILCOCK R100 (P)

TATTOO: **R100**

STUD BOOK No.: **KCS20MR100**

BORN: **13/06/2020**

**27 months**



BALGREE MADIBA (PS)  
 ABERDEEN R41 (P)  
 ABERDEEN 010  
**SIRE: ABERDEEN V34 (P)**  
 ABERDEEN M29 (P)  
 ABERDEEN Q6  
 ABERDEEN 09  
 CANOWINDRA GOLD EDITION  
 BULLAMAKINKA K462 (P)  
 KOLODONG DREAM (P)  
**DAM: KILCOCK N90**



WEIGHT	DLG	SCROTUM	EMA	RIB FAT	RUMP FAT

Purchaser: \_\_\_\_\_ Price: \$ \_\_\_\_\_





# GOOLAGONG ROOSTER R139 (PS)

TATTOO: **R139**    STUD BOOK No.: **G0020MR139**    BORN: **5/07/2020**    **26 months**



DIAMOND H LEGEND (P)  
 GLENN OAKS JUMBO BWANA J26 (P)  
 GLENN OAKS B53  
**SIRE: GOOLAGONG NEON N180 (ET)(AI)(P)**  
 YARRAWONGA VERSATILE (PS)  
 GOOLAGONG LASSIE L71 (ET)(AI)  
 GOOLAGONG Z37 (PS)  
 WACO SAMSON  
 WACO ZEUS  
 WACO A709  
**DAM: GOOLAGONG N41 (AI)**  
 WACO VOLUME (P)  
 GOOLAGONG G059 (P)  
 GOOLAGONG E061 (P)



WEIGHT	DLG	SCROTUM	EMA	RIB FAT	RUMP FAT

	200D WT	400D WT	600D WT	MAT COW WT	MILK	SCROTAL SIZE	DAYS TO CALVING	EMA	RIB	RUMP	RBY%	IMF
<b>EBV</b>						+0.3		+0.4	-0.3	-1.1	+0.3	-0.1
<b>ACC</b>						58%		37%	43%	43%	33%	46%

Purchaser: \_\_\_\_\_ Price: \$ \_\_\_\_\_



# KILCOCK R2 (P)

TATTOO: R2

STUD BOOK No.: KCS20MR2

BORN: 8/08/2020

25 months



DANGARFIELD NAVIGATOR (PS)  
DANGARFIELD RENAULT (PS)  
DANGARFIELD 4601

**SIRE: WARRILLEE M90 (P)**  
GYRANDA ZURICH  
WARRILLEE B31  
WARRILLEE 617

MULTIPLE SIRE

**DAM: KILCOCK P209 (P)**

MULTIPLE DAM



WEIGHT	DLG	SCROTUM	EMA	RIB FAT	RUMP FAT

Purchaser: \_\_\_\_\_ Price: \$ \_\_\_\_\_

# Nutrien

## Ag Solutions®

# TOOWOOMBA



**CROP  
INPUTS**



**AGRONOMY**



**LIVESTOCK  
AGENCY**



**ANIMAL  
MANAGEMENT**



**ANIMAL  
HEALTH**



**FENCING**



**FINANCE**



**INSURANCE**



**REAL ESTATE**

Nutrien Ag Solutions is committed to providing clients with services and expertise to better their farming operation.

Nutrien Ag Solutions Toowoomba	388 Taylor St, Toowoomba	(07) 4637 3000
Branch Manager	<b>James McMahon</b>	0437 674 744
Merchandise	<b>Roby Parker</b>	0477 984 473
Livestock	<b>Andrew Costello</b>	0429 485 191
	<b>Aaron Randall</b>	0458 732 117
	<b>Jenny Radke</b>	07 4637 3013
	<b>Meg Ryan</b>	07 4637 3062
	Stud Stock	<b>Colby Ede</b>
Finance	<b>Robert Moncrieff</b>	0408 296 952
Insurance	<b>Lizz Whittall</b>	0409 267 068

NutrienAgSolutions.com.au

**Nutrien**  
Ag Solutions®



# KILCOCK R06 (P)

TATTOO: R06

STUD BOOK No.: KCS20MR06

BORN: 10/08/2020

25 months



DANGARFIELD NAVIGATOR (PS)  
 DANGARFIELD RENAULT (PS)  
 DANGARFIELD 4601  
**SIRE: WARRILLEE M90 (P)**  
 GYRANDA ZURICH  
 WARRILLEE B31  
 WARRILLEE 617



MULTIPLE SIRE

**DAM: KILCOCK P111 (P)**

MULTIPLE DAM

WEIGHT	DLG	SCROTUM	EMA	RIB FAT	RUMP FAT

Purchaser: \_\_\_\_\_ Price: \$ \_\_\_\_\_



# BAAN BAA ROMEO R2 (PS)

TATTOO: R2

STUD BOOK No.: BAA20MR2

BORN: 25/08/2020

24 months



WARENDA SAHARA (P)  
YULGILBAR DROVER D234 (AI)(P)  
YULGILBAR B53

**SIRE: MUNNABAH 944 (P)**

WARENDA LANCE (P)  
MUNNABAH 445 (P)  
MUNNABAH 345

YARRAWONGA WOODCRAFT (P)  
YARRAWONGA BREWSTER G152  
YARRAWONGA A701 (P)

**DAM: WARENDA K29**

WARENDA CHARLTON (PS)  
WARENDA G9 (P)  
WARENDA S113 (P)



WEIGHT	DLG	SCROTUM	EMA	RIB FAT	RUMP FAT

Purchaser: \_\_\_\_\_ Price: \$ \_\_\_\_\_





# GOOLAGONG RICHIE R238 (P)

TATTOO: **R238**

STUD BOOK No.: **GOO20MR238**

BORN: **30/09/2020**

**23 months**



DIAMOND H LEGEND (P)  
 GLENN OAKS JUMBO BWANA J26 (P)  
 GLENN OAKS B53  
**SIRE: GOOLAGONG NEON N180 (ET)(AI)(P)**  
 YARRAWONGA VERSATILE (PS)  
 GOOLAGONG LASSIE L71 (ET)(AI)  
 GOOLAGONG Z37 (PS)

WACO SAMSON  
 WACO ZEUS  
 WACO A709  
**DAM: GOOLAGONG L113 (AI)(P)**  
 MULTIPLE SIRE  
 GOOLAGONG C44 (P)  
 GOOLAGONG Y45 (P)



WEIGHT	DLG	SCROTUM	EMA	RIB FAT	RUMP FAT

	200D WT	400D WT	600D WT	MAT COW WT	MILK	SCROTAL SIZE	DAYS TO CALVING	EMA	RIB	RUMP	RBY%	IMF
<b>EBV</b>	+8	+14	+19									
<b>ACC</b>	55%	47%	49%									

Purchaser: \_\_\_\_\_ Price: \$ \_\_\_\_\_



# GLENN OAKS SHILLING S84 (P)

TATTOO: S84

STUD BOOK No.: GLO21MS84

BORN: 17/10/2020

22 months



WACO SAMSON  
 WACO ZEUS  
 WACO A709  
**SIRE: GOOLAGONG LEOPARD L26 (AI)(P)**  
 WACO VOLUME (P)  
 GOOLAGONG G069 (P)  
 GOOLAGONG Y45 (P)  
 WARENDA EQUADOR (P)  
 DIAMOND H RENEGADE R47 (P)  
 DIAMOND H N036  
**DAM: GLENN OAKS M4 (P)**  
 YARRAWONGA ARCHER G280  
 GLENN OAKS J300

*DNA Sire Verified. M4's first calf (R96) sold in 2021 to Munnabah for \$67,500. S84 is her second calf and T159 who is a heifer calf that has been weaned.*



WEIGHT	DLG	SCROTUM	EMA	RIB FAT	RUMP FAT

Purchaser: \_\_\_\_\_ Price: \$ \_\_\_\_\_





# BULLAMAKINKA SENTRY S4 (PS)

TATTOO: S4

STUD BOOK No.: BLM21MS4

BORN: 18/10/2020

22 months



WACO F268 (ET)  
 WACO DAGWOOD J1250 (P)  
 WACO E345  
**SIRE: YARRAWONGA M462 (PS)**  
 WACO NATHAN  
 YARRAWONGA C309  
 YARRAWONGA V687  
 CANOWINDRA B64 (P)  
 CANOWINDRA GOLD EDITION  
 QUANDILLA Y35 (P)  
**DAM: BULLAMAKINKA K369 (P)**  
 ROSEVALE BEAUMON X334  
 ROSEVALE AFFRICA B163 (P)  
 ROSEVALE AFFRICA T72 (P)



WEIGHT	DLG	SCROTUM	EMA	RIB FAT	RUMP FAT

Purchaser: \_\_\_\_\_ Price: \$ \_\_\_\_\_



Allflex Livestock Intelligence

## Tissue Sampling Unit (TSU)

Our Tissue Sampling Units are easy to use, yielding excellent lab results. Collect a clean, uncontaminated sample in seconds with a single squeeze motion.

When paired to a matching NLIS and management tags, we've simplified DNA sampling, creating an absolute sample to animal linkage.

### Questions?

1300 138 247  
allflexcs@msd.com

For more information, visit [allflex.com.au](http://allflex.com.au)

**Allflex**<sup>®</sup>  
Livestock Intelligence™



# RIBBLETON SPRING ROLL 372 (P)

TATTOO: 372

STUD BOOK No.: RIB21M372

BORN: 18/10/2020

22 months



WACO VERSACE (P)  
 YARRAWONGA DONATELLO J850 (P)  
 YARRAWONGA C823 (P)  
**SIRE: LINLANDS MATE (PS)**  
 YULGILBAR ENRIQUE E234  
 LINLANDS H206 (P)

ROSEVALE FIXALL A758  
 BREMERVALE QUIGLEY  
 BREMERVALE JEWEL  
**DAM: RIBBLETON 107**



WEIGHT	DLG	SCROTUM	EMA	RIB FAT	RUMP FAT

Purchaser: \_\_\_\_\_ Price: \$ \_\_\_\_\_



# RIBBLETON STEVE 374 (P)

TATTOO: 374

STUD BOOK No.: RIB21M374

BORN: 18/10/2020

22 months



WARENDA CHARLTON (PS)  
 WAVE HILL JAGER J14 (PS)  
 WAVE HILL F53  
**SIRE: RIBBLETON HUMPHREY 327 (AI)(PS)**  
 ROSEVALE PARK PHAROAH H4 (PS)  
 ROSEVALE PARK PRUE L113  
 ROSEVALE PARK PRUE 304  
 MOONGANA GOTHIC E1728 (P)  
 DUNDEE AZTEC (P)  
 DUNDEE 567 (P)

**DAM: RIBBLETON 619**

MULTIPLE DAM

*Steve (P) was Senior  
 and Grand Champion  
 Bull at the 2022  
 Brisbane Exhibition.*



WEIGHT	DLG	SCROTUM	EMA	RIB FAT	RUMP FAT

Purchaser: \_\_\_\_\_ Price: \$ \_\_\_\_\_





# GLENN OAKS STAPLETON S44 (P)

TATTOO: S44

STUD BOOK No.: GLO21MS44

BORN: 24/10/2020

22 months



GLENN OAKS BRAVEHEART  
 WARENDA EQUADOR (P)  
 WARENDA N41 (P)  
**SIRE: DIAMOND H RENEGADE R47 (P)**  
 DIAMOND H GENERAL (P)  
 DIAMOND H N036  
 DIAMOND H 288  
 YARRAWONGA VALID  
 GLENN OAKS FLEETWOOD F27 (PS)  
 GLENN OAKS C63 (P)  
**DAM: WAVE HILL I30**  
 MULTIPLE DAM



*DNA Sire and Dam Verified.*

WEIGHT	DLG	SCROTUM	EMA	RIB FAT	RUMP FAT

Purchaser: \_\_\_\_\_ Price: \$ \_\_\_\_\_



# NOBBY

## GENERAL STORE

7 DAYS  
*a week*

BREAD, MILK,

ICE, FUEL, PAPERS, SWAP N GO GAS BOTTLES

Home of the famous Nobby Burger!

Fresh ground Merlo Coffee

Fresh rolls, wraps, salads

Fresh cooked takeaways

*We can cater for your next function:*

*Morning teas, sandwiches, BBQs*

### TRADING HOURS

- Monday to Friday 6am - 6pm
- Saturday 6am - 3pm
- Sunday 8am - 2pm

PHONE  
ORDERS  
WELCOME



**T 4696 3207 14 Tooth St NOBBY**



# BULLAMAKINKA SHERLOCK S2 (P)

TATTOO: S2

STUD BOOK No.: BLM21MS2

BORN: 2/11/2020

22 months



DUNLOP KAISER (PS)  
GLENN OAKS JAY WALK J129 (P)  
GLENN OAKS Z25

**SIRE: WACO N124**

WACO SAMSON  
WACO H771  
WACO A615

YARRAWONGA BASS G1072 (PS)  
YARRAWONGA DIPLOMAT J16 (P)  
YARRAWONGA F909 (P)

**DAM: BULLAMAKINKA M583 (P)**

MULTIPLE DAM



*DNA Sire Verified.*

WEIGHT	DLG	SCROTUM	EMA	RIB FAT	RUMP FAT

Purchaser: \_\_\_\_\_ Price: \$ \_\_\_\_\_



# DIAMOND H YARAKA Y170 (P)

TATTOO: **Y170**

STUD BOOK No.: **DIA21MY170**

BORN: **8/11/2020**

**22 months**



YARRAWONGA VALID  
 GLENN OAKS FLEETWOOD F27 (PS)  
 GLENN OAKS C63 (P)  
**SIRE: WAVE HILL JACKAL J98 (P)**  
 WAVE HILL ARNIE  
 WAVE HILL E155  
 WAVE HILL Y18 (P)  
 WARENDA ROLEX (AI)  
 HARDIGREEN PARK NERO  
 RAYTEK J103 (P)  
**DAM: DIAMOND H Q247 (PS)**  
 GRALYN B806  
 DIAMOND H N135  
 DIAMOND H H210



WEIGHT	DLG	SCROTUM	EMA	RIB FAT	RUMP FAT

Purchaser: \_\_\_\_\_ Price: \$ \_\_\_\_\_



# GLENN OAKS SWAHILI S320 (PS)

TATTOO: S320

STUD BOOK No.: GLO21MS320

BORN: 12/11/2020

22 months



YARRAWONGA YOUTUBE (P)  
YARRAWONGA DURABLE J572 (ET)(P)  
WACO A709

**SIRE: YARRAWONGA HARDY N606 (P)**

MULTIPLE SIRE  
YARRAWONGA J527 (P)  
YARRAWONGA G255

YARRAWONGA YEMEN  
YARRAWONGA J134 (ET)(P)  
YARRAWONGA YAYA (ET)(P)

**DAM: GLENN OAKS M306 (P)**

GLENN OAKS SANCTUS DEO  
KELLY WALLAH W89  
KELLY WALLAH T67



*DNA Sire Verified.*

WEIGHT	DLG	SCROTUM	EMA	RIB FAT	RUMP FAT

Purchaser: \_\_\_\_\_ Price: \$ \_\_\_\_\_



# BULLAMAKINKA SAMSON S16 (PS)

TATTOO: S16

STUD BOOK No.: BLM21MS16

BORN: 22/11/2020

21 months



MULTIPLE SIRE  
 WACO ATTORNEY F678  
 MULTIPLE DAM  
**SIRE: GLENN OAKS NASHVILLE N128 (PS)**  
 WACO H1304  
 GLENN OAKS L8  
 WACO A493  
 YARRAWONGA ACTOR F446 (P)  
 CANOWINDRA PISTOL P54 (PS)  
 CANOWINDRA H70 (P)  
**DAM: BULLAMAKINKA Q221 (P)**  
 WAVE HILL YOKEL Y5 (PS)  
 BULLAMAKINKA F119 (P)  
 MARSTON B85



DNA Sire Verified.

WEIGHT	DLG	SCROTUM	EMA	RIB FAT	RUMP FAT

Purchaser: \_\_\_\_\_ Price: \$ \_\_\_\_\_





# GLENN OAKS SOMESBY S64 (P)

TATTOO: **S64**

STUD BOOK No.: **GLO21MS64**

BORN: **27/11/2020**

**21 months**



WACO SAMSON  
 WACO ZEUS  
 WACO A709  
**SIRE: GOOLAGONG LEOPARD L26 (AI)(P)**  
 WACO VOLUME (P)  
 GOOLAGONG G069 (P)  
 GOOLAGONG Y45 (P)  
 WACO TRITON (ET)(P)  
 WACO ELAND J1402 (P)  
 WACO Y65  
**DAM: GLENN OAKS M118**  
 GLENN OAKS G137

*DNA Sire Verified. M118's first calf (R100) was sold privately. S64 is her second calf and T34 died one week old. M118 is PTIC to Munnabah Oban.*



WEIGHT	DLG	SCROTUM	EMA	RIB FAT	RUMP FAT

Purchaser: \_\_\_\_\_ Price: \$ \_\_\_\_\_



# QUEENSLAND MACHINERY AGENCY



**GT Mfg., Inc.** Grain Dryers ← Diesel Conversion Kits



**All-in-one  
Rollermill  
Mixer**

Steele Rudd CNR, Nobby QLD 4360 | [qma.net.au](http://qma.net.au)  
0447 965 555 | [mark@qma.net.au](mailto:mark@qma.net.au)



# GLENN OAKS SHAKE 'N' BAKE S424 (P)

TATTOO: S424

STUD BOOK No.: GLO21MS424

BORN: 22/02/2021

18 months



WACO ZEUS  
 GOOLAGONG LEOPARD L26 (AI)(P)  
 GOOLAGONG G069 (P)  
**SIRE: GLENN OAKS QUARTERMAINE Q74 (P)**  
 DUNLOP KAISER (PS)  
 GLENN OAKS K101  
 GLENN OAKS G110  
 YULGILBAR DROVER D234 (AI)(P)  
 MUNNABAH IRONMAN 960 (P)  
 MUNNABAH 597  
**DAM: GLENN OAKS RIPPLE R99 (P)**  
 YARRAWONGA OBERG (P)  
 GLENN OAKS GODDESS G82 (P)  
 GLENN OAKS Z45

*Ripple was entered for EKKA 2021 and was joined to Glenn Oaks Quartermaine before he was sold to Luke & Carly Baker. Goddess was Grand Champion and Best Exhibit at Sydney Royal in 2018. Ripple is now in an IVF programme.*



WEIGHT	DLG	SCROTUM	EMA	RIB FAT	RUMP FAT

Purchaser: \_\_\_\_\_ Price: \$ \_\_\_\_\_



# GOOLAGONG RATBAG R15 (AI)(PS)

TATTOO: **R15**

STUD BOOK No.: **G0020MR15**

BORN: **24/03/2020**

**29 months**



WARENDA REQUIRE (PS)  
 WARENDA CHARLTON (PS)  
 WARENDA R121  
**SIRE: WARENDA KILIMANJARO K4 (P)**  
 WAVE HILL ARNIE  
 WARENDA E71 (P)  
 WARENDA S113 (P)  
 CARDONA MAMBO M33 (P)  
 CARDONA PERFECTO P55 (P)  
 CARDONA GLITTER M232 (P)  
**DAM: GOOLAGONG N255 (ET)(AI)**  
 WACO VOLUME (P)  
 GOOLAGONG H5  
 GOOLAGONG E039 (P)



WEIGHT	DLG	SCROTUM	EMA	RIB FAT	RUMP FAT

	200D WT	400D WT	600D WT	MAT COW WT	MILK	SCROTAL SIZE	DAYS TO CALVING	EMA	RIB	RUMP	RBY%	IMF
<b>EBV</b>	+12	+20	+27			+0.7		+1.8	-1.5	-2.4	+1.3	-0.5
<b>ACC</b>	54%	50%	49%			61%		39%	46%	46%	35%	49%

Purchaser: \_\_\_\_\_ Price: \$ \_\_\_\_\_





**DIAMOND H X6 (P)**

TATTOO: X006

STUD BOOK No.: DIA20MX006

BORN: 3/05/2020

28 months

MULTIPLE SIRE

SIRE: DUNLOP N476 (P)



DNA Sire Verified.

DAM: MULTIPLE DAM

WEIGHT	DLG	SCROTUM	EMA	RIB FAT	RUMP FAT

Purchaser: \_\_\_\_\_ Price: \$ \_\_\_\_\_



**DIAMOND H X074 (P)**

TATTOO: X074

STUD BOOK No.: DIA20MX074

BORN: 15/05/2020

28 months

MULTIPLE SIRE

SIRE: YARRAWONGA N542 (P)

YARRAWONGA BECKER G590 (PS)

YARRAWONGA K33

YARRAWONGA F61

YARRAWONGA ROMEO (P)

WACO WRANGLER (P)

WACO A291 (P)

DAM: DIAMOND H T247 (P)

DIAMOND H CENTENARY

DIAMOND H L309

MULTIPLE DAM



DNA Sire and Dam Verified.

WEIGHT	DLG	SCROTUM	EMA	RIB FAT	RUMP FAT

Purchaser: \_\_\_\_\_ Price: \$ \_\_\_\_\_





**Trusted values  
& local knowledge**

**in property sales  
on the Darling Downs**



**Nutrien Harcourts Cooke**

67 King Street, Clifton

**T 4612 3779**

[cooke.nutrienharcourts.com.au](http://cooke.nutrienharcourts.com.au)



# GLENN OAKS REVOLUTION R112 (P)

TATTOO: **R112**

STUD BOOK No.: **GLO20MR112**

BORN: **20/05/2020**

**27 months**



DIAMOND H LEGEND (P)  
 GLENN OAKS JUMBO BWANA J26 (P)  
 GLENN OAKS B53  
**SIRE: YARRABEE GUNYAH 1377 (P)**  
 SUJO FLASH  
 YARRABEE DANBUE 6135  
 YARRABEE XORAH 5867  
 MULTIPLE SIRE  
 WACO H1304  
 MULTIPLE DAM  
**DAM: GLENN OAKS N70 (P)**  
 DUNLOP KAISER (PS)  
 GLENN OAKS J126  
 YARRAWONGA G941

*R112 is N70's first calf.  
 N70 was preg tested  
 empty on agistment and  
 sold.*



WEIGHT	DLG	SCROTUM	EMA	RIB FAT	RUMP FAT

Purchaser: \_\_\_\_\_ Price: \$ \_\_\_\_\_



# GLENN OAKS RUMPUS R192 (PS)

TATTOO: **R192**

STUD BOOK No.: **GLO20MR192**

BORN: **1/06/2020**

**27 months**



GLENN OAKS BRAVEHEART  
 WARENDA EQUADOR (P)  
 WARENDA N41 (P)  
**SIRE: DIAMOND H RENEGADE R47 (P)**  
 DIAMOND H GENERAL (P)  
 DIAMOND H N036  
 DIAMOND H 288  
 WACO SAMSON  
 YARRAWONGA ARCHER G280  
 YARRAWONGA A21 (ET)(PS)  
**DAM: GLENN OAKS K84 (P)**  
 YARRAWONGA IRISH  
 WACO Y327  
 WACO U467



*K84 is the dam of R522  
 sold in 2021 for \$16,000  
 to Westmoor Grazing.*

WEIGHT	DLG	SCROTUM	EMA	RIB FAT	RUMP FAT

Purchaser: \_\_\_\_\_ Price: \$ \_\_\_\_\_



# GLENN OAKS REMBRANT R158 (P)

TATTOO: **R158**

STUD BOOK No.: **GLO20MR158**

BORN: **22/06/2020**

**26 months**



WACO SAMSON  
 WACO ZEUS  
 WACO A709  
**SIRE: GOOLAGONG LEOPARD L26 (AI)(P)**  
 WACO VOLUME (P)  
 GOOLAGONG G069 (P)  
 GOOLAGONG Y45 (P)  
 NUNGAROI UTOPIA (P)  
 CANOWINDRA FINE FORM (PS)  
 CANOWINDRA 1418  
**DAM: YARRAWONGA G819**

YARRAWONGA D21  
 YARRAWONGA V625

*DNA Sire Verified. G819 has mothered two Santa Central Sale bulls and two paddock sale bulls. G819 was CFA.*



WEIGHT	DLG	SCROTUM	EMA	RIB FAT	RUMP FAT

Purchaser: \_\_\_\_\_ Price: \$ \_\_\_\_\_





# LION & SHIELD

INSURANCE & FINANCIAL SERVICES



## THE POSITIVES OF GETTING OLD

There are an abundance of reliable and efficient strategies for pre- and post-retirement which will save you significant tax.

You can count on us to find the right approach for you.

GET IN TOUCH TODAY

Ben Wilshire  
07 4632 2900  
[admin@lionandshield.com.au](mailto:admin@lionandshield.com.au)  
[www.lionandshield.com.au](http://www.lionandshield.com.au)





**DIAMOND H X027 (P)**

TATTOO: X027

STUD BOOK No.: DIA20MX027

BORN: 2/07/2020

26 months

CANOWINDRA JAG J26 (PS)  
 CANOWINDRA MAGNUM M5 (P)  
 CANOWINDRA G87  
**SIRE: CANOWINDRA P2 (PS)**  
 NUNGAROI UTOPIA (P)  
 CANOWINDRA H95 (P)  
 CANOWINDRA B36  
 YARRAWONGA YOUTUBE (P)  
 WACO CHAPMAN H80 (ET)(P)  
 WACO SIENNA  
**DAM: DIAMOND H U053 (P)**  
 GRALYN B806  
 DIAMOND H Q121  
 DIAMOND H K037



WEIGHT	DLG	SCROTUM	EMA	RIB FAT	RUMP FAT

Purchaser: \_\_\_\_\_ Price: \$ \_\_\_\_\_



**DIAMOND H X067 (PS)**

TATTOO: X067

STUD BOOK No.: DIA20MX067

BORN: 7/07/2020

26 months

MULTIPLE SIRE  
**SIRE: YARRAWONGA N542 (P)**  
 YARRAWONGA BECKER G590 (PS)  
 YARRAWONGA K33  
 YARRAWONGA F61  
 GILLESPIE X78  
 CARDONA KOBALT K307  
 CARDONA NATALIE D64  
**DAM: DIAMOND H T79**  
 DIAMOND H JUSTICE (P)  
 DIAMOND H N286  
 DIAMOND H K037



DNA Sire and Dam Verified.

WEIGHT	DLG	SCROTUM	EMA	RIB FAT	RUMP FAT

Purchaser: \_\_\_\_\_ Price: \$ \_\_\_\_\_



**Lot 79**

'S' BULLS



**GOOLAGONG ROUDY R142 (PS)**

TATTOO: **R142**    STUD BOOK No.: **GOO20MR142**    BORN: **9/07/2020**    26 months



DIAMOND H LEGEND (P)  
GLENN OAKS JUMBO BWANA J26 (P)  
GLENN OAKS B53  
**SIRE: GOOLAGONG NEON N180 (ET)(AI)(P)**  
YARRAWONGA VERSATILE (PS)  
GOOLAGONG LASSIE L71 (ET)(AI)  
GOOLAGONG Z37 (PS)  
YARRAWONGA RUTHLESS (P)  
WACO YOUTHFUL (PS)  
WACO A485 (P)  
**DAM: GOOLAGONG M101 (AI)(P)**  
WACO VOLUME (P)  
GOOLAGONG G069 (P)  
GOOLAGONG Y45 (P)

WEIGHT	DLG	SCROTUM	EMA	RIB FAT	RUMP FAT

	200D WT	400D WT	600D WT	MAT COW WT	MILK	SCROTAL SIZE	DAYS TO CALVING	EMA	RIB	RUMP	RBV%	IMF
<b>EBV</b>	+3	+5	+8			-0.7		-0.7	0.0	-0.7	0.0	+0.3
<b>ACC</b>	55%	51%	51%			58%		37%	44%	43%	33%	46%

Purchaser: \_\_\_\_\_ Price: \$ \_\_\_\_\_



**DIAMOND H X156 (P)**

TATTOO: **X156**    STUD BOOK No.: **DIA20MX156**    BORN: **10/07/2020**    26 months



MULTIPLE SIRE  
**SIRE: YARRAWONGA N542 (P)**  
YARRAWONGA BECKER G590 (PS)  
YARRAWONGA K33  
YARRAWONGA F61  
YARRAWONGA ROMEO (P)  
WACO WRANGLER (P)  
WACO A291 (P)  
**DAM: DIAMOND H T238**  
DIAMOND H GILCHRIST  
DIAMOND H L152  
DIAMOND H CAPRI

*DNA Sire and Dam Verified.*

WEIGHT	DLG	SCROTUM	EMA	RIB FAT	RUMP FAT

Purchaser: \_\_\_\_\_ Price: \$ \_\_\_\_\_



**Glenn Oaks Rubbel R36 (PS) sold for \$120,000 to the Dunlop family of Dunlop Santas in 2021.**



**JARRAH PARK ROGUE R1 (P)**

TATTOO: **R1**      STUD BOOK No.: **JAR20MR1**      BORN: **3/08/2020**      25 months

WACO YALE E880 (P)  
WACO EINSTEIN K808 (P)  
WACO A871

**SIRE: TOOKEY CREEK MAGNUS**

WARENDA SAHARA (P)  
TOOKEY CREEK G9 (P)  
TOOKEY CREEK 9256

CANOWINDRA JAG J26 (PS)  
CANOWINDRA MAGNUM M5 (P)  
CANOWINDRA G87

**DAM: JARRAH PARK MAGNOLIA M8 (AI)(P)**

KELLY WALLAH GANDALF (PS)  
TOOKEY CREEK 8635  
HARDIGREEN PARK A571



WEIGHT	DLG	SCROTUM	EMA	RIB FAT	RUMP FAT

Purchaser: \_\_\_\_\_ Price: \$ \_\_\_\_\_



**JARRAH PARK RILEY R3 (PS)**

TATTOO: **R3**      STUD BOOK No.: **JAR20MR3**      BORN: **7/08/2020**      25 months

WACO YALE E880 (P)  
WACO EINSTEIN K808 (P)  
WACO A871

**SIRE: TOOKEY CREEK MAGNUS**

WARENDA SAHARA (P)  
TOOKEY CREEK G9 (P)  
TOOKEY CREEK 9256

SANTALANDS ACTION  
MOONGANA BOUNTY (PS)  
MOONGANA 877 (P)

**DAM: CARDONA TIFFANY M20**

CARDONA VICTOR  
CARDONA TIFFANY C40  
CARDONA TIFFANY 1148



WEIGHT	DLG	SCROTUM	EMA	RIB FAT	RUMP FAT

Purchaser: \_\_\_\_\_ Price: \$ \_\_\_\_\_



**KILCOCK R15 (P)**

TATTOO: **R15**      STUD BOOK No.: **KCS20MR15**      BORN: **14/08/2020**      25 months

WAVE HILL ARNIE  
WAVE HILL G52 (P)  
WAVE HILL W91

**SIRE: WARRILLEE L3 (PS)**

DANGARFIELD RENAULT (PS)  
WARRILLEE I62  
WARRILLEE D45

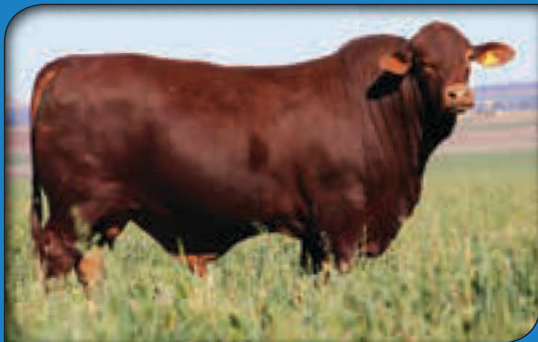


**DAM: MULTIPLE DAM**

WEIGHT	DLG	SCROTUM	EMA	RIB FAT	RUMP FAT

Purchaser: \_\_\_\_\_ Price: \$ \_\_\_\_\_

# 2021 Santa Central SALE WRAP UP



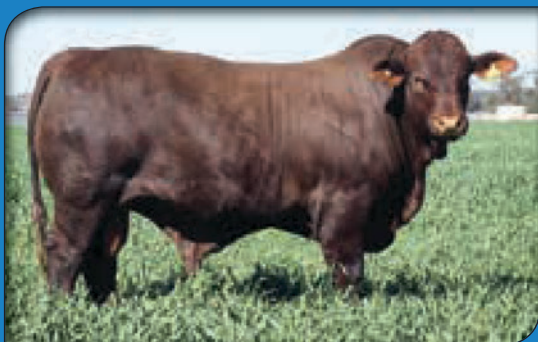
*Lot 76 sold for \$16,000*



*Lot 84 sold for \$7,000*



*Lot 88 sold for \$6,000*



*Lot 93 sold for \$10,000*



*Lot 98 sold for \$8,000*



*Lot 101 sold for \$7,000*



*Lot 103 sold for \$12,000*



*Lot 115 sold for \$10,000*

**30%**  
of bulls sold for  
**\$5,000 – \$7,000**

**16%**  
of bulls sold for  
**\$8,000 – \$10,000**

**13%**  
of bulls sold for  
**\$11,000 – \$14,000**

**21%**  
of bulls sold for  
**\$15,000 – \$20,000**

**19%**  
of bulls sold for  
**\$20,000 or more**



# THOMPSON LONGHORN

Est. 1983

Innovative Livestock Equipment - Design and Manufacture

## AUTOMATED CATTLE YARD TECHNOLOGY THAT GETS YOU RESULTS



### Consult, Design, Fabricate & Install

With over 35 years' experience servicing the livestock industry, Thompson Longhorn provides services including consultation, design, fabrication and installation.

Whether you need an individual service or a combination, our experienced team will address your specific design requirements cost factors, technology, workplace safety and animal welfare, backed by a high quality assurance and future support.



**DELIVERING  
SOLUTIONS  
AUSTRALIA WIDE  
and ABROAD**

**Ph: 07 4666 6174**  
**[www.thompsonlonghorn.com.au](http://www.thompsonlonghorn.com.au)**



**KILCOCK R19 (P)**

TATTOO: **R19**    STUD BOOK No.: **KCS20MR19**    BORN: **15/08/2020**    25 months

DANGARFIELD NAVIGATOR (PS)  
 DANGARFIELD RENAULT (PS)  
 DANGARFIELD 4601  
**SIRE: WARRILLEE M90 (P)**  
 GYRANDA ZURICH  
 WARRILLEE B31  
 WARRILLEE 617



MULTIPLE SIRE

**DAM: KILCOCK P261 (P)**

MULTIPLE DAM

WEIGHT	DLG	SCROTUM	EMA	RIB FAT	RUMP FAT

Purchaser: \_\_\_\_\_ Price: \$ \_\_\_\_\_



**JARRAH PARK REGAL R5 (PS)**

TATTOO: **R5**    STUD BOOK No.: **JAR20MR5**    BORN: **16/08/2020**    25 months

YARRAWONGA BARBARIAN G398  
 YARRAWONGA EFFICIENT K584 (P)  
 YARRAWONGA D815 (P)  
**SIRE: YARRAWONGA N22**  
 CARDONA KEYSTONE K261  
 YARRAWONGA K113  
 YARRAWONGA H277



DRENSMAINE APEX 238 (P)  
 HARDIGREEN PARK TUSK L80 (P)  
 HARDIGREEN PARK H109 (P)

**DAM: JARRAH PARK P18 (P)**

MOONGANA BOUNTY (PS)  
 CARDONA TIFFANY M20  
 CARDONA TIFFANY C40

WEIGHT	DLG	SCROTUM	EMA	RIB FAT	RUMP FAT

Purchaser: \_\_\_\_\_ Price: \$ \_\_\_\_\_



**WARENDA R12 (P)**

TATTOO: **R12**    STUD BOOK No.: **WRN20MR12**    BORN: **18/08/2020**    24 months

CANOWINDRA B64 (P)  
 CANOWINDRA GOLD EDITION  
 QUANDILLA Y35 (P)  
**SIRE: BULLAMAKINKA NICK N54 (P)**  
 WARENDA SENTRY (P)  
 BULLAMAKINKA J43  
 BULLAMAKINKA F53



WARENDA MAHOGANY (P)  
 WARENDA DENVER (P)  
 MARSTON C307

**DAM: WARENDA J13 (P)**

WARENDA CHARLTON (PS)  
 WARENDA F15  
 MARSTON C187

WEIGHT	DLG	SCROTUM	EMA	RIB FAT	RUMP FAT

Purchaser: \_\_\_\_\_ Price: \$ \_\_\_\_\_



**SUJO ROY R30 (P)**

TATTOO: **R30**    STUD BOOK No.: **SUJ20MR30**    BORN: **25/08/2020**    24 months

YARRAWONGA AVENGER G300 (PS)  
 YARRAWONGA K482 (P)  
 YARRAWONGA D617 (ET)(P)

**SIRE: SUJO NICCO N52 (PS)**

YARRAWONGA LATHAM  
 SUJO 179  
 SUJO 150 (P)

YULGILBAR DROVER D234 (AI)(P)  
 MUNNABAH 944 (P)  
 MUNNABAH 445 (P)

**DAM: SUJO N33 (P)**

SUJO KNOCK YOUR SOCKS OFF (PS)  
 SUJO ROSIE P11 (P)  
 SUJO M11 (P)



WEIGHT	DLG	SCROTUM	EMA	RIB FAT	RUMP FAT

Purchaser: \_\_\_\_\_ Price: \$ \_\_\_\_\_



**SUJO RIC R32 (P)**

TATTOO: **R32**    STUD BOOK No.: **SUJ20MR32**    BORN: **27/08/2020**    24 months

YARRAWONGA AVENGER G300 (PS)  
 YARRAWONGA K482 (P)  
 YARRAWONGA D617 (ET)(P)

**SIRE: SUJO NICCO N52 (PS)**

YARRAWONGA LATHAM  
 SUJO 179  
 SUJO 150 (P)

WAVE HILL ARNIE  
 WAVE HILL G74 (P)  
 WAVE HILL X17 (P)

**DAM: SUJO N27 (P)**

SUJO KNOCK YOUR SOCKS OFF (PS)  
 SUJO Q42  
 SUJO M35



WEIGHT	DLG	SCROTUM	EMA	RIB FAT	RUMP FAT

Purchaser: \_\_\_\_\_ Price: \$ \_\_\_\_\_



**WARENDA R18 (P)**

TATTOO: **R18**    STUD BOOK No.: **WRN20MR18**    BORN: **3/09/2020**    24 months

YARRAWONGA MATRIX (P)  
 WACO TRITON (ET)(P)  
 WACO D770 (P)

**SIRE: WACO ELAND J1402 (P)**

YARRAWONGA LYNX  
 WACO Y65  
 WACO F179

WARENDA MAHOGANY (P)  
 WARENDA DENVER (P)  
 MARSTON C307

**DAM: WARENDA N41 (P)**

WARENDA CHARLTON (PS)  
 WARENDA F15  
 MARSTON C187



WEIGHT	DLG	SCROTUM	EMA	RIB FAT	RUMP FAT

Purchaser: \_\_\_\_\_ Price: \$ \_\_\_\_\_



# KILCOCK R39 (PS)

TATTOO: R39

STUD BOOK No.: KCS20MR39

BORN: 5/09/2020

24 months



DANGARFIELD NAVIGATOR (PS)  
DANGARFIELD RENAULT (PS)  
DANGARFIELD 4601

**SIRE: WARRILLEE M90 (P)**  
GYRANDA ZURICH  
WARRILLEE B31  
WARRILLEE 617



**DAM: MULTIPLE DAM**

WEIGHT	DLG	SCROTUM	EMA	RIB FAT	RUMP FAT

Purchaser: \_\_\_\_\_ Price: \$ \_\_\_\_\_

agri**business**

more  
than  
money



*Dedicated to*  
**THE AGRICULTURAL  
INDUSTRY IN  
THE DARLING DOWNS**

With more than 155 years of experience looking after primary producers and secondary processors, we have the insights, expertise and the local knowledge to help you bring your plans to life – at every stage of the journey.

**Talk to your NAB Agribusiness banker today  
or call:**

**David Moffitt**

0436 657 720

**Jason Lipp**

0428 297 250

**NAB Toowoomba**





**KILCOCK R113 (P)**

TATTOO: **R113**    STUD BOOK No.: **KCS20MR113**    BORN: **11/09/2020**    24 months

CANOWINDRA JAG J26 (P5)  
 CANOWINDRA MAGNUM M5 (P)  
 CANOWINDRA G87  
**SIRE: CANOWINDRA P5 (P)**  
 WATASANTA A GOODEN (P)  
 CANOWINDRA J41 (P)  
 CANOWINDRA G90 (P)  
 DE LEEAH VALE JASPER (P)  
 CATHNAL OTTIS  
 CATHNAL INGRID (AI)  
**DAM: KILCOCK K38 (P)**  
 MULTIPLE SIRE  
 KILCOCK H2  
 MULTIPLE DAM



WEIGHT	DLG	SCROTUM	EMA	RIB FAT	RUMP FAT

Purchaser: \_\_\_\_\_ Price: \$ \_\_\_\_\_



**KILCOCK R119 (P)**

TATTOO: **R119**    STUD BOOK No.: **KCS20MR119**    BORN: **11/09/2020**    24 months

CANOWINDRA JAG J26 (P5)  
 CANOWINDRA MAGNUM M5 (P)  
 CANOWINDRA G87  
**SIRE: CANOWINDRA P5 (P)**  
 WATASANTA A GOODEN (P)  
 CANOWINDRA J41 (P)  
 CANOWINDRA G90 (P)  
 MULTIPLE SIRE  
**DAM: KILCOCK K52 (P)**  
 MULTIPLE DAM



WEIGHT	DLG	SCROTUM	EMA	RIB FAT	RUMP FAT

Purchaser: \_\_\_\_\_ Price: \$ \_\_\_\_\_



**TOOKEY CREEK R6 (P)**

TATTOO: **R6**    STUD BOOK No.: **TOO20MR6**    BORN: **18/09/2020**    23 months

WACO YALE E880 (P)  
 WACO EINSTEIN K808 (P)  
 WACO A871  
**SIRE: TOOKEY CREEK MAGNUS**  
 WARENDA SAHARA (P)  
 TOOKEY CREEK G9 (P)  
 TOOKEY CREEK 9256  
 ROWANLEA CORPORAL C06  
 ROWANLEA FREEWAY F68 (P)  
 ROWANLEA WIGGLE W037 (P)  
**DAM: TOOKEY CREEK J59 (P)**  
 CUMBERLAND AUSTRALIS (P)  
 TOOKEY CREEK G35 (P)  
 TOOKEY CREEK 6552 (AI)

*Tookeey Creek J59 has had 7 calves in 7 years with a son selling to \$47,500 to RL Pastoral Company PL.*



WEIGHT	DLG	SCROTUM	EMA	RIB FAT	RUMP FAT

Purchaser: \_\_\_\_\_ Price: \$ \_\_\_\_\_



**JARRAH PARK REVELATION R9 (PS)**

TATTOO: **R9**      STUD BOOK No.: **JAR20MR9**      BORN: **19/09/2020**      23 months

YARRAWONGA BARBARIAN G398  
YARRAWONGA EFFICIENT K584 (P)  
YARRAWONGA D815 (P)

**SIRE: YARRAWONGA N22**

CARDONA KEYSTONE K261  
YARRAWONGA K113  
YARRAWONGA H277

CANOWINDRA JAG J26 (PS)  
CANOWINDRA MAGNUM M5 (P)  
CANOWINDRA G87

**DAM: JARRAH PARK MAISEY M10 (AI)**

BENELKAY LIFELINE (P)  
ROSEVALE HEIDI H113 (P)  
ROSEVALE HEIDI A359



WEIGHT	DLG	SCROTUM	EMA	RIB FAT	RUMP FAT

Purchaser: \_\_\_\_\_ Price: \$ \_\_\_\_\_



**BULLAMAKINKA SHANE S10 (P)**

TATTOO: **S10**      STUD BOOK No.: **BLM21MS10**      BORN: **28/09/2020**      23 months

YARRAWONGA AVENGER G300 (PS)  
YARRAWONGA EL SALVADOR K306 (PS)  
WACO CHANEL H95 (ET)(PS)

**SIRE: WACO NELSON N384 (PS)**

WACO CARTER (P)  
WACO FLORENCE L383 (P)  
WACO C669

CANOWINDRA B64 (P)  
CANOWINDRA GOLD EDITION  
QUANDILLA Y35 (P)

**DAM: BULLAMAKINKA J17 (P)**

WARENDA RANDOM (AI)  
BULLAMAKINKA F57 (P)  
ERIN VALE Z3 (P)



WEIGHT	DLG	SCROTUM	EMA	RIB FAT	RUMP FAT

Purchaser: \_\_\_\_\_ Price: \$ \_\_\_\_\_



**KILCOCK R159 (PS)**

TATTOO: **R159**      STUD BOOK No.: **KCS20MR159**      BORN: **29/09/2020**      23 months

WAVE HILL ARNIE  
WAVE HILL G52 (P)  
WAVE HILL W91

**SIRE: WARRILLEE L3 (PS)**

DANGARFIELD RENAULT (PS)  
WARRILLEE I62  
WARRILLEE D45

WACO CEASER H310 (P)  
YARRAWONGA FIREWORKS L556  
YARRAWONGA G581

**DAM: MUNNABAH 2599**



WEIGHT	DLG	SCROTUM	EMA	RIB FAT	RUMP FAT

Purchaser: \_\_\_\_\_ Price: \$ \_\_\_\_\_



**TOOKEY CREEK R30 (P)**

TATTOO: **R30**    STUD BOOK No.: **TOO20MR30**    BORN: **1/10/2020**    23 months

WACO YALE E880 (P)  
 WACO EINSTEIN K808 (P)  
 WACO A871  
**SIRE: TOOKEY CREEK MAGNUS**  
 WARENDA SAHARA (P)  
 TOOKEY CREEK G9 (P)  
 TOOKEY CREEK 9256  
 GREENUP ABILITY (A80)  
 GREENUP GAFFER G74 (P)  
 WILGAR00N K9 (P)  
**DAM: TOOKEY CREEK J29 (P)**  
 TOOKEY CREEK UTE (PS)  
 TOOKEY CREEK B37 (P)  
 TOOKEY CREEK 3817



*Tookey Creek J29 has had 6 calves in 7 years, with 3 "S".*

WEIGHT	DLG	SCROTUM	EMA	RIB FAT	RUMP FAT

Purchaser: \_\_\_\_\_ Price: \$ \_\_\_\_\_



**GLENN OAKS STROGANOFF S62 (P)**

TATTOO: **S62**    STUD BOOK No.: **GLO21MS62**    BORN: **5/10/2020**    23 months

WACO SAMSON  
 WACO ZEUS  
 WACO A709  
**SIRE: GOOLAGONG LEOPARD L26 (AI)(P)**  
 WACO VOLUME (P)  
 GOOLAGONG G069 (P)  
 GOOLAGONG Y45 (P)  
 YARRAWONGA YEMEN  
 YARRAWONGA J134 (ET)(P)  
 YARRAWONGA YAYA (ET)(P)  
**DAM: GLENN OAKS N541 (P)**  
 YARRAWONGA OBERG (P)  
 GLENN OAKS B73  
 OAKDALE ZIP



*DNA Sire Verified. S62 was N541's first calf. She has a "T" calf at foot who is not yet weaned. N541 is PTIC to a Multiple Sire.*

WEIGHT	DLG	SCROTUM	EMA	RIB FAT	RUMP FAT

Purchaser: \_\_\_\_\_ Price: \$ \_\_\_\_\_



**WARENDA R40 (P)**

TATTOO: **R40**    STUD BOOK No.: **WRN20MR40**    BORN: **9/10/2020**    23 months

YARRAWONGA MATRIX (P)  
 WACO TRITON (ET)(P)  
 WACO D770 (P)  
**SIRE: WACO ELAND J1402 (P)**  
 YARRAWONGA LYNX  
 WACO Y65  
 WACO F179  
 WARENDA SENTRY (P)  
 BULLAMAKINKA HALLMARK H20 (P)  
 BULLAMAKINKA 611  
**DAM: WARENDA M51 (P)**  
 WARENDA DENVER (P)  
 WARENDA J13 (P)  
 WARENDA F15



WEIGHT	DLG	SCROTUM	EMA	RIB FAT	RUMP FAT

Purchaser: \_\_\_\_\_ Price: \$ \_\_\_\_\_



**Need signage  
for your next  
bull sale?**

We R Signs offers a whole range of signage options from corflutes, aluminium composite panels to banners, pull up banners, flags, a-frames, stickers and much more. Call us today to tailor a package to suit your signage needs.

**PHONE 07 4661 3419**

**EMAIL [sales@wersigns.com.au](mailto:sales@wersigns.com.au)**

**LOCATED AT 10-12 Betta Place, Warwick**

**RANBUILD**

***It's not just a shed,  
it's a Ranbuild!*** ✓



**MCG Sheds Pty Ltd is the accredited Ranbuild dealer servicing  
Warwick, Stanthorpe, Goondiwindi, Texas and surrounding areas.**

**[www.ranbuild.com.au](http://www.ranbuild.com.au)**

**Phone 07 4661 2255**

**Email [sales@ranbuildwarwick.com.au](mailto:sales@ranbuildwarwick.com.au)**

**Located at 10-12 Betta Place, Warwick**

**Proudly owned and operated by Matthew and Candyce Grew**



**DIAMOND H YOSHI Y060 (P)**

TATTOO: **Y060**

STUD BOOK No.: **DIA21MY060**

BORN: **10/10/2020**

**23 months**

YARRAWONGA VALID  
GLENN OAKS FLEETWOOD F27 (PS)  
GLENN OAKS C63 (P)

**SIRE: WAVE HILL LONGSTRONG L84 (P)**  
WAVE HILL ARNIE  
WAVE HILL F79

DIAMOND H IRON BAR  
DIAMOND H OSCAR O220 (P)  
DIAMOND H I244 (P)

**DAM: DIAMOND H S209 (P)**  
WACO WRANGLER (P)  
DIAMOND H O182  
DIAMOND H 291



*DNA Sire and Dam Verified.*

WEIGHT	DLG	SCROTUM	EMA	RIB FAT	RUMP FAT

Purchaser: \_\_\_\_\_ Price: \$ \_\_\_\_\_



**Lot 49**





# BULLAMAKINKA SIDNEY S32 (PS)

TATTOO: S32

STUD BOOK No.: BLM21MS32

BORN: 15/10/2020

22 months



YARRAWONGA OUTRANK (PS)  
YARRAWONGA VERSATILE (PS)  
YARRAWONGA Z521

**SIRE: ROSEHILL JAMESON 4 (ET)(AI)(PS)**

YARRAWONGA SIR  
GLENN OAKS FABIANA F66  
GLENN OAKS FANTASIA

CANOWINDRA B64 (P)  
CANOWINDRA GOLD EDITION  
QUANDILLA Y35 (P)

**DAM: BULLAMAKINKA K397**

ROSEVALE QUILPIE Z292  
BULLAMAKINKA E67  
BULLAMAKINKA 641 (P)



WEIGHT	DLG	SCROTUM	EMA	RIB FAT	RUMP FAT

Purchaser: \_\_\_\_\_ Price: \$ \_\_\_\_\_



**BULLAMAKINKA SERGEANT S34 (P)**

TATTOO: S34

STUD BOOK No.: BLM21MS34

BORN: 24/10/2020

22 months

WACO F268 (ET)  
 WACO DAGWOOD J1250 (P)  
 WACO E345  
**SIRE: YARRAWONGA M462 (PS)**  
 WACO NATHAN  
 YARRAWONGA C309  
 YARRAWONGA V687

MULTIPLE SIRE

**DAM: BULLAMAKINKA M241 (P)**

MULTIPLE DAM



WEIGHT	DLG	SCROTUM	EMA	RIB FAT	RUMP FAT

Purchaser: \_\_\_\_\_ Price: \$ \_\_\_\_\_



**GLENN OAKS STANFORD S36 (PP)**

TATTOO: S36

STUD BOOK No.: GLO21MS36

BORN: 28/10/2020

22 months

GLENN OAKS BRAVEHEART  
 WARENDA EQUADOR (P)  
 WARENDA N41 (P)  
**SIRE: DIAMOND H RENEGADE R47 (P)**  
 DIAMOND H GENERAL (P)  
 DIAMOND H N036  
 DIAMOND H 288

MULTIPLE SIRE

**DAM: GLENN OAKS J50**

WACO OREGON  
 YARRAWONGA B931  
 YARRAWONGA X275

*DNA Sire and Dam Verified.  
 J50 had two bull calves sold  
 at Santa Central. One sold to  
 Gungel Pastoral and one sold to  
 Argile Station.*



WEIGHT	DLG	SCROTUM	EMA	RIB FAT	RUMP FAT

Purchaser: \_\_\_\_\_ Price: \$ \_\_\_\_\_



**BULLAMAKINKA SAFARI S36 (P)**

TATTOO: S36

STUD BOOK No.: BLM21MS36

BORN: 30/10/2020

22 months

YARRAWONGA BASS G1072 (PS)  
 YARRAWONGA DIPLOMAT J16 (P)  
 YARRAWONGA F909 (P)  
**SIRE: BULLAMAKINKA RIMFIRE M022 (P)**  
 CANOWINDRA GOLD EDITION  
 BULLAMAKINKA J339  
 ROSEVALE AFFRICA B163 (P)

CANOWINDRA B64 (P)  
 CANOWINDRA GOLD EDITION  
 QUANDILLA Y35 (P)

**DAM: BULLAMAKINKA H121 (P)**

WARENDA SLEUTH (P)  
 BULLAMAKINKA E147 (P)  
 MOONGANA X531 (P)



*DNA Sire Verified.*



WEIGHT	DLG	SCROTUM	EMA	RIB FAT	RUMP FAT

Purchaser: \_\_\_\_\_ Price: \$ \_\_\_\_\_



# KILLARNEY CO-OP.

## Killarney Co-operative Limited Phone 07 4664 1188

Fax 07 4664 1377

[www.killarneycoop.com](http://www.killarneycoop.com)

Community owned: Profits returned to shareholders



***For all your stockfeed requirements.***



24 HOUR FUEL





**DIAMOND H YARDFORCE Y063**

TATTOO: **Y063**    STUD BOOK No.: **DIA21MY063**    BORN: **3/11/2020**    22 months

YARRAWONGA VALID  
GLENN OAKS FLEETWOOD F27 (PS)  
GLENN OAKS C63 (P)  
**SIRE: WAVE HILL LONGSTRONG L84 (P)**  
WAVE HILL ARNIE  
WAVE HILL F79



DIAMOND H IRON BAR  
DIAMOND H OSCAR O220 (P)  
DIAMOND H I244 (P)  
**DAM: DIAMOND H S219 (P)**  
YARRAWONGA PACIFIC  
DIAMOND H O241  
DIAMOND H F28

WEIGHT	DLG	SCROTUM	EMA	RIB FAT	RUMP FAT

Purchaser: \_\_\_\_\_ Price: \$ \_\_\_\_\_



**DIAMOND H YAMBA Y188 (P)**

TATTOO: **Y188**    STUD BOOK No.: **DIA21MY188**    BORN: **6/11/2020**    22 months

MULTIPLE SIRE  
WACO ATTORNEY F678  
MULTIPLE DAM  
**SIRE: GLENN OAKS KINGSBURG K110 (P)**  
WAVE HILL LIZARD (AI)(P)  
GLENN OAKS G600  
MULTIPLE DAM



WAVE HILL Z146 (P)  
HARDIGREEN PARK LAWYER  
HARDIGREEN PARK B705 (P)  
**DAM: DIAMOND H R282**  
WACO NAGLE  
DIAMOND H L283  
DIAMOND H 242

WEIGHT	DLG	SCROTUM	EMA	RIB FAT	RUMP FAT

Purchaser: \_\_\_\_\_ Price: \$ \_\_\_\_\_



**GLENN OAKS SALTER S38 (PS)**

TATTOO: **S38**    STUD BOOK No.: **GLO21MS38**    BORN: **7/11/2020**    22 months

GLENN OAKS BRAVEHEART  
WARENDA EQUADOR (P)  
WARENDA N41 (P)  
**SIRE: DIAMOND H RENEGADE R47 (P)**  
DIAMOND H GENERAL (P)  
DIAMOND H N036  
DIAMOND H 288



*DNA Sire and Dam Verified.  
M63 had a bull calf (R58) who  
was sold privately.*

WACO TRITON (ET)(P)  
WACO ELAND J1402 (P)  
WACO Y65  
**DAM: GLENN OAKS M63 (P)**  
YARRAWONGA SIR  
GLENN OAKS G54  
GLENN OAKS C26 (P)

WEIGHT	DLG	SCROTUM	EMA	RIB FAT	RUMP FAT

Purchaser: \_\_\_\_\_ Price: \$ \_\_\_\_\_

'S' BULLS



GLENN OAKS SALVADOR S166

TATTOO: S166

STUD BOOK No.: GLO21MS166

BORN: 8/11/2020

22 months

WACO SAMSON  
 WACO ZEUS  
 WACO A709  
**SIRE: GOOLAGONG LEOPARD L26 (AI)(P)**  
 WACO VOLUME (P)  
 GOOLAGONG G069 (P)  
 GOOLAGONG Y45 (P)  
 YARRAWONGA YEMEN  
 YARRAWONGA J134 (ET)(P)  
 YARRAWONGA YAYA (ET)(P)  
**DAM: GLENN OAKS M70 (P)**  
 WAVE HILL LIZARD (AI)(P)  
 GLENN OAKS G600  
 MULTIPLE DAM

*DNA Sire Verified. M70's first calf died at 2 days of age. Her second calf is S166 and her third calf is T154. M70 is PTIC to a Multiple Sire.*



WEIGHT	DLG	SCROTUM	EMA	RIB FAT	RUMP FAT

Purchaser: \_\_\_\_\_ Price: \$ \_\_\_\_\_



GLENN OAKS STUDMORE S148

TATTOO: S148

STUD BOOK No.: GLO21MS148

BORN: 10/11/2020

22 months

WACO SAMSON  
 WACO ZEUS  
 WACO A709  
**SIRE: GOOLAGONG LEOPARD L26 (AI)(P)**  
 WACO VOLUME (P)  
 GOOLAGONG G069 (P)  
 GOOLAGONG Y45 (P)

*DNA Sire Verified.*



**DAM: MULTIPLE DAM**

WEIGHT	DLG	SCROTUM	EMA	RIB FAT	RUMP FAT

Purchaser: \_\_\_\_\_ Price: \$ \_\_\_\_\_



**Glenn Oaks Q144 (P) topped the unled section of the 2021 sale, selling for \$110,000 to the Kilcock stud.**





# GLENN OAKS SICILEY S82 (P)

TATTOO: **S82**

STUD BOOK No.: **GLO21MS82**

BORN: **10/11/2020**

**22 months**



WACO SAMSON  
 WACO ZEUS  
 WACO A709  
**SIRE: GOOLAGONG LEOPARD L26 (AI)(P)**  
 WACO VOLUME (P)  
 GOOLAGONG G069 (P)  
 GOOLAGONG Y45 (P)  
 YULGILBAR DROVER D234 (AI)(P)  
 MUNNABAH IRONMAN 960 (P)  
 MUNNABAH 597  
**DAM: GLENN OAKS N89**  
 MULTIPLE SIRE  
 GLENN OAKS H68 (P)  
 MULTIPLE DAM

*DNA Sire Verified. N89's first calf was Remington who sold for \$100,000 to Diamond H. N89 has a 'T' calf on the ground that has been tagged but not yet weaned. N89 is PTIC to Diamond H Xav.*



WEIGHT	DLG	SCROTUM	EMA	RIB FAT	RUMP FAT

Purchaser: \_\_\_\_\_ Price: \$ \_\_\_\_\_



# Be a Fairholme Girl *for a Day*



**25 OCTOBER 2022**

Step into our beautiful grounds and find out why Fairholme is the leading school on the Darling Downs.

[www.fairholme.qld.edu.au](http://www.fairholme.qld.edu.au)



**GLENN OAKS SPACKMAN S32 (PP)**

TATTOO: **S32**      STUD BOOK No.: **GLO21MS32**      BORN: **10/11/2020**      22 months

WARENDA CHARLTON (PS)  
 WARENDA KINGSTON K14 (P)  
 WARENDA E69 (P)  
**SIRE: GLENALBYN NOBLE N687 (P)**  
 GLENN OAKS JETLAG J164 (P)  
 GLENALBYN 615 (P)  
 GLENALBYN 502  
 WACO TRITON (ET)(P)  
 WACO ELAND J1402 (P)  
 WACO Y65  
**DAM: GLENN OAKS N302 (P)**  
 YARRAWONGA HONDURAS  
 NORALLA 737  
 NORALLA 509

*DNA Sire Verified. N302 was a show heifer. S32 is her first calf. She has had a T calf sighted as a newborn but never tagged. N302 is PTIC to Goolagong Leopard.*



WEIGHT	DLG	SCROTUM	EMA	RIB FAT	RUMP FAT

Purchaser: \_\_\_\_\_ Price: \$ \_\_\_\_\_



**GLENN OAKS SATCHWELL S152**

TATTOO: **S152**      STUD BOOK No.: **GLO21MS152**      BORN: **11/11/2020**      22 months

WACO SAMSON  
 WACO ZEUS  
 WACO A709  
**SIRE: GOOLAGONG LEOPARD L26 (AI)(P)**  
 WACO VOLUME (P)  
 GOOLAGONG G069 (P)  
 GOOLAGONG Y45 (P)  
 OAKDALE ACORN 536  
 DUNLOP KAISER (PS)  
 DUNLOP SX732  
**DAM: GLENN OAKS J501**  
 YARRAWONGA TOPPER  
 YARRAWONGA G279 (P)  
 YARRAWONGA A547 (P)

*DNA Sire Verified. J501 had a heifer (Q47) who sold for \$18,000 to Watts Family Trust. Her 'R' calf was sold as a weaner. S152 and, T173, a heifer calf.*



WEIGHT	DLG	SCROTUM	EMA	RIB FAT	RUMP FAT

Purchaser: \_\_\_\_\_ Price: \$ \_\_\_\_\_



**BULLAMAKINKA SALVADOR S212 (P)**

TATTOO: **S212**      STUD BOOK No.: **BLM21MS212**      BORN: **12/11/2020**      22 months

DANGARFIELD RAYMONDO  
 DUNLOP NINJA (P)  
 MULTIPLE DAM  
**SIRE: DUNLOP L134**  
 MULTIPLE SIRE  
 DUNLOP G533  
 CANOWINDRA CHESTER  
 CARDONA HUDSON  
 CARDONA CAMELIA C18  
**DAM: CARDONA N76 (P)**  
 WILGARON HUNTER (P)  
 CARDONA LUCINDA I54 (P)  
 CARDONA LUCINDA E64

WEIGHT	DLG	SCROTUM	EMA	RIB FAT	RUMP FAT



Purchaser: \_\_\_\_\_ Price: \$ \_\_\_\_\_



**DIAMOND H YETMAN Y179 (P)**

TATTOO: **Y179**    STUD BOOK No.: **DIA21MY179**    BORN: **12/11/2020**    **22 months**

MULTIPLE SIRE  
WACO ATTORNEY F678  
MULTIPLE DAM  
**SIRE: GLENN OAKS KINGSBURG K110 (P)**  
WAVE HILL LIZARD (AI)(P)  
GLENN OAKS G600  
MULTIPLE DAM  
  
YARRAWONGA PACIFIC  
DIAMOND H KEEGAN  
CANOWINDRA D123  
**DAM: DIAMOND H P155 (P)**  
DIAMOND H BART  
DIAMOND H F146  
DIAMOND H DENIA



WEIGHT	DLG	SCROTUM	EMA	RIB FAT	RUMP FAT

Purchaser: \_\_\_\_\_ Price: \$ \_\_\_\_\_



**BULLAMAKINKA SAHARA S12 (P)**

TATTOO: **S12**    STUD BOOK No.: **BLM21MS12**    BORN: **15/11/2020**    **22 months**

YARRAWONGA AVENGER G300 (PS)  
YARRAWONGA EL SALVADOR K306 (PS)  
WACO CHANEL H95 (ET)(PS)  
**SIRE: WACO NELSON N384 (PS)**  
WACO CARTER (P)  
WACO FLORENCE L383 (P)  
WACO C669  
  
WILGARON JESTER (AI)(P)  
WARENDA SENTRY (P)  
WARENDA IZA  
**DAM: BULLAMAKINKA H233 (P)**  
SANTALANDS ACTION  
BULLAMAKINKA D19  
MOONGANA Z771



DNA Sire Verified.

WEIGHT	DLG	SCROTUM	EMA	RIB FAT	RUMP FAT

Purchaser: \_\_\_\_\_ Price: \$ \_\_\_\_\_



**Glenn Oaks Remington R86 (P)**  
sold to the Hatton Family of  
Diamond H for \$100,000 in 2021.



# BULLAMAKINKA SONIC S44 (P)

TATTOO: S44

STUD BOOK No.: BLM21MS44

BORN: 15/11/2020

22 months



DUNLOP KAISER (PS)  
GLENN OAKS JAY WALK J129 (P)  
GLENN OAKS Z25

**SIRE: WACO N124**

WACO SAMSON  
WACO H771  
WACO A615

CANOWINDRA GOLD EDITION  
BULLAMAKINKA H276 (P)  
MOONGANA B1485 (P)

**DAM: BULLAMAKINKA M215 (P)**

WARENDA RANDOM (AI)  
BULLAMAKINKA E81  
MOONGANA V457



*DNA Sire Verified.*

WEIGHT	DLG	SCROTUM	EMA	RIB FAT	RUMP FAT

Purchaser: \_\_\_\_\_ Price: \$ \_\_\_\_\_





*The 2nd Santa Central Female Sale saw Lot 17 Warenda Q47 (P) and her bull calf be purchased by Phoebe, Sophie and Lilly Ferguson for \$24,000.*



**DIAMOND H YALE Y024 (P)**

TATTOO: **Y024**    STUD BOOK No.: **DIA21MY024**    BORN: **15/11/2020**    22 months

YARRAWONGA YOUTUBE (P)  
YARRAWONGA CHRISTO H1222 (P)  
YARRAWONGA E339

**SIRE: DUNLOP RIGBY M32 (P)**  
MULTIPLE SIRE  
DUNLOP G31

GILLESPIE X78  
CARDONA KOBALT K307  
CARDONA NATALIE D64

**DAM: DIAMOND H S046**  
TARA LEGEND  
DIAMOND H H122  
DIAMOND H CAIETA



*DNA Sire and Dam Verified.*

WEIGHT	DLG	SCROTUM	EMA	RIB FAT	RUMP FAT

Purchaser: \_\_\_\_\_ Price: \$ \_\_\_\_\_



**DIAMOND H YOUNG GUN Y181 (P)**

TATTOO: **Y181**    STUD BOOK No.: **DIA21MY181**    BORN: **15/11/2020**    22 months

YARRAWONGA RUTHLESS (P)  
YARRAWONGA YOUTUBE (P)  
YARRAWONGA A247

**SIRE: WACO CHAPMAN H80 (ET)(P)**  
YARRAWONGA W100  
WACO SIENNA  
WACO U555 (P)

WAVE HILL Z146 (P)  
HARDIGREEN PARK LAWYER  
HARDIGREEN PARK B705 (P)

**DAM: DIAMOND H R267 (AI)(P)**  
DIAMOND H GENERAL (P)  
DIAMOND H L060 (P)  
DIAMOND H CHARIS



WEIGHT	DLG	SCROTUM	EMA	RIB FAT	RUMP FAT

Purchaser: \_\_\_\_\_ Price: \$ \_\_\_\_\_



**DIAMOND H YULEBA Y206 (P)**

TATTOO: **Y206**    STUD BOOK No.: **DIA21MY206**    BORN: **16/11/2020**    22 months

MULTIPLE SIRE  
WACO ATTORNEY F678  
MULTIPLE DAM

**SIRE: GLENN OAKS KINGSBURG K110 (P)**  
WAVE HILL LIZARD (AI)(P)  
GLENN OAKS G600  
MULTIPLE DAM

WACO MASCOT (AI)  
YARRAWONGA PAMPAS  
YARRAWONGA G423

**DAM: DIAMOND H R114 (AI)(P)**  
DIAMOND H GENERAL (P)  
DIAMOND H O066 (P)  
DIAMOND H E144



WEIGHT	DLG	SCROTUM	EMA	RIB FAT	RUMP FAT

Purchaser: \_\_\_\_\_ Price: \$ \_\_\_\_\_

# Gillies Meats



We wish  
Scott & Wendy  
every success  
for their  
Annual  
Bull Sale



Open Monday-Friday 7am to 5pm; Saturday 7am-12 noon

**“Fresh Meat Specialists”**

**53 KING ST, CLIFTON - Phone 4697 3997**





**GLENN OAKS SAWYER S26 (PS)**

TATTOO: **S26**

STUD BOOK No.: **GLO21MS26**

BORN: **18/11/2020**

**21 months**

WACO SAMSON  
 WACO ZEUS  
 WACO A709  
**SIRE: GOOLAGONG LEOPARD L26 (AI)(P)**  
 WACO VOLUME (P)  
 GOOLAGONG G069 (P)  
 GOOLAGONG Y45 (P)  
 YARRAWONGA YEMEN  
 YARRAWONGA J134 (ET)(P)  
 YARRAWONGA YAYA (ET)(P)  
**DAM: GLENN OAKS N61 (P)**  
 YARRAWONGA OBERG (P)  
 RAYTEK I45 (P)  
 RAYTEK D21 (P)



*DNA Sire Verified. S26 is N61's first calf. T141 is a heifer calf that has been weaned. N61 is PTIC to Munnabah Oban.*

WEIGHT	DLG	SCROTUM	EMA	RIB FAT	RUMP FAT

Purchaser: \_\_\_\_\_ Price: \$ \_\_\_\_\_



**DIAMOND H YEOVAL Y205 (P)**

TATTOO: **Y205**

STUD BOOK No.: **DIA21MY205**

BORN: **19/11/2020**

**21 months**

MULTIPLE SIRE  
 WACO ATTORNEY F678  
 MULTIPLE DAM  
**SIRE: GLENN OAKS KINGSBURG K110 (P)**  
 WAVE HILL LIZARD (AI)(P)  
 GLENN OAKS G600  
 MULTIPLE DAM  
 YARRAWONGA TAVERN  
 GLENVIEW GRANVILLE G120 (PS)  
 GLENVIEW X20  
**DAM: DIAMOND H R191 (PS)**  
 YARRAWONGA PACIFIC  
 DIAMOND H K364  
 DIAMOND H H276



WEIGHT	DLG	SCROTUM	EMA	RIB FAT	RUMP FAT

Purchaser: \_\_\_\_\_ Price: \$ \_\_\_\_\_



# McAuley & Co.

ACCOUNTING || ADVISORY

## Agricultural experts supporting your business from the ground up

---

---

A Boutique Firm providing an innovative,  
modern and personalised approach  
to accounting.

Book your free consultation today.

---

---

McAuley & Co is proud to be associated with  
Scott & Wendy Ferguson



M. 0438 773 822 || P. +61 (07) 4633 9823

Clifford Chambers, Suite 8 || 120 Russell Street, Toowoomba City QLD 4350

[Danny@McAuleyCo.com.au](mailto:Danny@McAuleyCo.com.au)

CERTIFIED PRACTICISING ACCOUNTANTS





**BAAN BAA R8 (PS)**

TATTOO: **R8**      STUD BOOK No.: **BAA20MR8**      BORN: **20/11/2020**      21 months

WARENDA SAHARA (P)  
YULGILBAR DROVER D234 (AI)(P)  
YULGILBAR B53  
**SIRE: MUNNABAH 944 (P)**  
WARENDA LANCE (P)  
MUNNABAH 445 (P)  
MUNNABAH 345  
WARENDA MAHOGANY (P)  
WARENDA DENVER (P)  
MARSTON C307  
**DAM: WARENDA G41 (P)**  
STRATHMORE 69L  
MARSTON C187



WEIGHT	DLG	SCROTUM	EMA	RIB FAT	RUMP FAT

Purchaser: \_\_\_\_\_ Price: \$ \_\_\_\_\_



**GLENN OAKS SOCKET S24 (PS)**

TATTOO: **S24**      STUD BOOK No.: **GLO21MS24**      BORN: **20/11/2020**      21 months

WARENDA CHARLTON (PS)  
WARENDA KINGSTON K14 (P)  
WARENDA E69 (P)  
**SIRE: GLENALBYN NOBLE N687 (P)**  
GLENN OAKS JETLAG J164 (P)  
GLENALBYN 615 (P)  
GLENALBYN 502  
MULTIPLE SIRE  
WACO ATTORNEY F678  
MULTIPLE DAM  
**DAM: GLENN OAKS N165**  
WACO NIGHTCAP  
YARRAWONGA D133  
YARRAWONGA U577

*DNA Sire Verified. S24 was N165 first calf followed by T121 who is a heifer calf that has been weaned. N165 is PTIC to Yarrowonga Katmandu.*



WEIGHT	DLG	SCROTUM	EMA	RIB FAT	RUMP FAT

Purchaser: \_\_\_\_\_ Price: \$ \_\_\_\_\_



**Diamond H Xav X316 (P) sold to Scott and Wendy Ferguson, Glenn Oaks, for \$90,000 in 2021.**



# DIAMOND H YORKEY Y166 (P)

TATTOO: **Y166**

STUD BOOK No.: **DIA21MY166**

BORN: **20/11/2020**

**21 months**



YARRAWONGA VALID  
GLENN OAKS FLEETWOOD F27 (PS)  
GLENN OAKS C63 (P)

**SIRE: WAVE HILL JACKAL J98 (P)**

WAVE HILL ARNIE  
WAVE HILL E155  
WAVE HILL Y18 (P)

WAVE HILL Z146 (P)  
HARDIGREEN PARK LAWYER  
HARDIGREEN PARK B705 (P)

**DAM: DIAMOND H R274 (P)**

KELLY WALLAH TIRPITZ (P)  
DIAMOND H L300 (P)  
CANOWINDRA A76



WEIGHT	DLG	SCROTUM	EMA	RIB FAT	RUMP FAT

Purchaser: \_\_\_\_\_ Price: \$ \_\_\_\_\_



**DIAMOND H YARDLEY Y112 (PS)**

TATTOO: **Y112**

STUD BOOK No.: **DIA21MY112**

BORN: **24/11/2020**

**21 months**

YULGILBAR DROVER D234 (AI)(P)  
MUNNABAH IRONMAN 960 (P)  
MUNNABAH 597

**SIRE: GLENN OAKS NAKURU N53 (PS)**

MULTIPLE SIRE  
GLENN OAKS D73  
MULTIPLE DAM

GILLESPIE L61  
DIAMOND H IDAHO  
DIAMOND H 267

**DAM: DIAMOND H OLGA O122 (P)**

MULTIPLE DAM



WEIGHT	DLG	SCROTUM	EMA	RIB FAT	RUMP FAT

Purchaser: \_\_\_\_\_ Price: \$ \_\_\_\_\_



**GLENN OAKS SALISBURY S28 (P)**

TATTOO: **S28**

STUD BOOK No.: **GLO21MS28**

BORN: **26/11/2020**

**21 months**

GLENN OAKS BRAVEHEART  
WARENDA EQUADOR (P)  
WARENDA N41 (P)

**SIRE: DIAMOND H RENEGADE R47 (P)**

DIAMOND H GENERAL (P)  
DIAMOND H N036  
DIAMOND H 288

OAKDALE ACORN 536  
DUNLOP KAISER (PS)  
DUNLOP SX732

**DAM: GLENN OAKS L304**

GLENN OAKS SANCTUS DEO  
KELLY WALLAH W89  
KELLY WALLAH T67



*DNA Sire Verified.*

WEIGHT	DLG	SCROTUM	EMA	RIB FAT	RUMP FAT

Purchaser: \_\_\_\_\_ Price: \$ \_\_\_\_\_



# Boost Livestock performance

with **Anipro** Liquid Supplements.

MOLASSES BASED  
LIQUID SUPPLEMENT

ESSENTIAL PROTEIN,  
MINERALS AND VITAMINS

UP TO 27% IMPROVEMENT  
IN FORAGE INTAKE

FULLY SERVICED PROGRAM  
SAVES TIME & MONEY

**Anipro**  
Liquid Supplements

Deliver protein and  
minerals to optimise  
cattle production.

Improving results in beef cattle systems requires year-round nutrition planning. Anipro provides convenient, custom nutrition liquid supplements that optimises available forage, minerals and protein for herd health and profitability.

| 1800 300 593  
| [performancefeeds.com.au](http://performancefeeds.com.au)



**PERFORMANCE  
FEEDS**





# DIAMOND H YERONGA Y168 (P)

TATTOO: **Y168**

STUD BOOK No.: **DIA21MY168**

BORN: **27/11/2020**

**21 months**



MULTIPLE SIRE  
 WACO ATTORNEY F678  
 MULTIPLE DAM  
**SIRE: GLENN OAKS KINGSBURG K110 (P)**  
 WAVE HILL LIZARD (AI)(P)  
 GLENN OAKS G600  
 MULTIPLE DAM  
 GLENN OAKS BRAVEHEART  
 WARENDA EQUADOR (P)  
 WARENDA N41 (P)  
**DAM: DIAMOND H Q030**  
 YARRAWONGA PACIFIC  
 DIAMOND H M044  
 MULTIPLE DAM



WEIGHT	DLG	SCROTUM	EMA	RIB FAT	RUMP FAT

Purchaser: \_\_\_\_\_ Price: \$ \_\_\_\_\_





# GLENN OAKS STERLING S314 (PP)

TATTOO: S314

STUD BOOK No.: GLO21MS314

BORN: 28/11/2020

21 months



WACO YOUTHFUL (PS)  
 YARRAWONGA CORVETTE H730 (P)  
 YARRAWONGA E591  
**SIRE: YARRAWONGA N138 (P)**  
 MULTIPLE SIRE  
 YARRAWONGA J873  
 YARRAWONGA G23 (ET)(P)  
 OAKDALE ACORN 536  
 DUNLOP KAISER (PS)  
 DUNLOP SX732  
**DAM: GLENN OAKS K44**  
 YARRAWONGA OBERG (P)  
 GLENN OAKS B42  
 YARRAWONGA Y565 (P)

*DNA Sire Verified. K44 had a heifer calf (Q77) who was retained within the stud. She had a bull calf (R182) who was a Santa Central Sale bull. K44 has a 'T' calf at foot which is not yet weaned.*



WEIGHT	DLG	SCROTUM	EMA	RIB FAT	RUMP FAT

Purchaser: \_\_\_\_\_ Price: \$ \_\_\_\_\_



**GLENN OAKS SQUIRE S94**

TATTOO: **S94**

STUD BOOK No.: **GLO21MS94**

BORN: **1/12/2020**

**21 months**

WAVE HILL Z146 (P)  
HARDIGREEN PARK LEGION C78 (P)  
HARDIGREEN PARK B711

**SIRE: FOREST PARK LEGISLATOR 1173**

SWAN HILL 7561 IMPERIAL  
FOREST PARK 7057  
FOREST PARK 4793 (P)

WACO TRITON (ET)(P)  
WACO ELAND J1402 (P)  
WACO Y65

**DAM: GLENN OAKS N132**

MULTIPLE DAM




*DNA Sire Verified. S94 was N132's first calf followed by T131 who is a heifer that has been weaned. N132 is PTIC to Yarrowonga Katmandu.*

WEIGHT	DLG	SCROTUM	EMA	RIB FAT	RUMP FAT

Purchaser: \_\_\_\_\_ Price: \$ \_\_\_\_\_



Find us on 

# *Finesse*



## EMBROIDERY

0409 383 480

[finesseembroidery@bigpond.com](mailto:finesseembroidery@bigpond.com)

Can supply and embroider on:

- Shirts • Polos • Pants • Jackets • Caps •
- Towels • Stubby Coolers •

No job too big or too small!

Numerous clothing brands including:

- Bisley • JB's Wear •
- Biz Collection • DNC Workwear •
- Ritemate • Pilbara •



*With over 25 years of experience*



# BULLAMAKINKA SPARTAN S6 (P)

TATTOO: S6

STUD BOOK No.: BLM21MS6

BORN: 3/12/2020

21 months



GREENUP FITZGERALD F144  
 GREENUP JUSTICE J020 (P)  
 GREENUP E27 (P)

**SIRE: DUNLOP M96 (P)**

MULTIPLE SIRE  
 DUNLOP B1089 (PS)  
 MULTIPLE DAM

YARRAWONGA BASS G1072 (PS)  
 YARRAWONGA DIPLOMAT J16 (P)  
 YARRAWONGA F909 (P)

**DAM: BULLAMAKINKA M297 (P)**

WARENDA RANDOM (AI)  
 BULLAMAKINKA J221  
 BULLAMAKINKA G21



DNA Sire Verified.



WEIGHT	DLG	SCROTUM	EMA	RIB FAT	RUMP FAT

Purchaser: \_\_\_\_\_ Price: \$ \_\_\_\_\_



**DIAMOND H YAHOO Y015 (P)**

TATTOO: **Y015**    STUD BOOK No.: **DIA21MY015**    BORN: **3/12/2020**    **21 months**

YARRAWONGA YOUTUBE (P)  
YARRAWONGA CHRISTO H1222 (P)  
YARRAWONGA E339

**SIRE: DUNLOP RIGBY M32 (P)**  
MULTIPLE SIRE  
DUNLOP G31

GLENN OAKS BRAVEHEART  
WARENDA EQUADOR (P)  
WARENDA N41 (P)

**DAM: DIAMOND H S142 (P)**  
DIAMOND H IRON BAR  
DIAMOND H PEACE P202  
DIAMOND H I302

*DNA Sire and Dam Verified.*



WEIGHT	DLG	SCROTUM	EMA	RIB FAT	RUMP FAT

Purchaser: \_\_\_\_\_ Price: \$ \_\_\_\_\_



**DIAMOND H YARROW Y029 (PS)**

TATTOO: **Y029**    STUD BOOK No.: **DIA21MY029**    BORN: **3/12/2020**    **21 months**

YARRAWONGA YOUTUBE (P)  
YARRAWONGA CHRISTO H1222 (P)  
YARRAWONGA E339

**SIRE: DUNLOP RIGBY M32 (P)**  
MULTIPLE SIRE  
DUNLOP G31

YARRAWONGA TAVERN  
GLENVIEW GRANVILLE G120 (PS)  
GLENVIEW X20

**DAM: DIAMOND H R296 (P)**  
GRALYN C34  
DIAMOND H N337  
MULTIPLE DAM

*DNA Sire and Dam Verified.*



WEIGHT	DLG	SCROTUM	EMA	RIB FAT	RUMP FAT

Purchaser: \_\_\_\_\_ Price: \$ \_\_\_\_\_



**DIAMOND H YORK Y075 (PS)**

TATTOO: **Y075**    STUD BOOK No.: **DIA21MY075**    BORN: **3/12/2020**    **21 months**

YARRAWONGA VALID  
GLENN OAKS FLEETWOOD F27 (PS)  
GLENN OAKS C63 (P)

**SIRE: WAVE HILL LONGSTRONG L84 (P)**  
WAVE HILL ARNIE  
WAVE HILL F79

WAVE HILL Z146 (P)  
HARDIGREEN PARK LAWYER  
HARDIGREEN PARK B705 (P)

**DAM: DIAMOND H S186**  
DIAMOND H CENTENARY  
DIAMOND H L005  
DIAMOND H 295 (P)

*DNA Sire and Dam Verified.*



WEIGHT	DLG	SCROTUM	EMA	RIB FAT	RUMP FAT

Purchaser: \_\_\_\_\_ Price: \$ \_\_\_\_\_





# BULLAMAKINKA SCOUT S14

TATTOO: **S14**

STUD BOOK No.: **BLM21MS14**

BORN: **10/12/2020**

**21 months**



DUNLOP KAISER (PS)  
GLENN OAKS JAY WALK J129 (P)  
GLENN OAKS Z25

**SIRE: WACO N124**

WACO SAMSON  
WACO H771  
WACO A615

TYNDALE NODDY (AI)(P)  
WARENDA RANDOM (AI)  
WARENDA M17

**DAM: BULLAMAKINKA E171**

MOONGANA UNO (P)  
MOONGANA ZENNA  
MOONGANA 49



*DNA Sire Verified.*

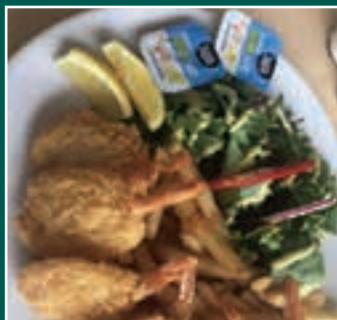
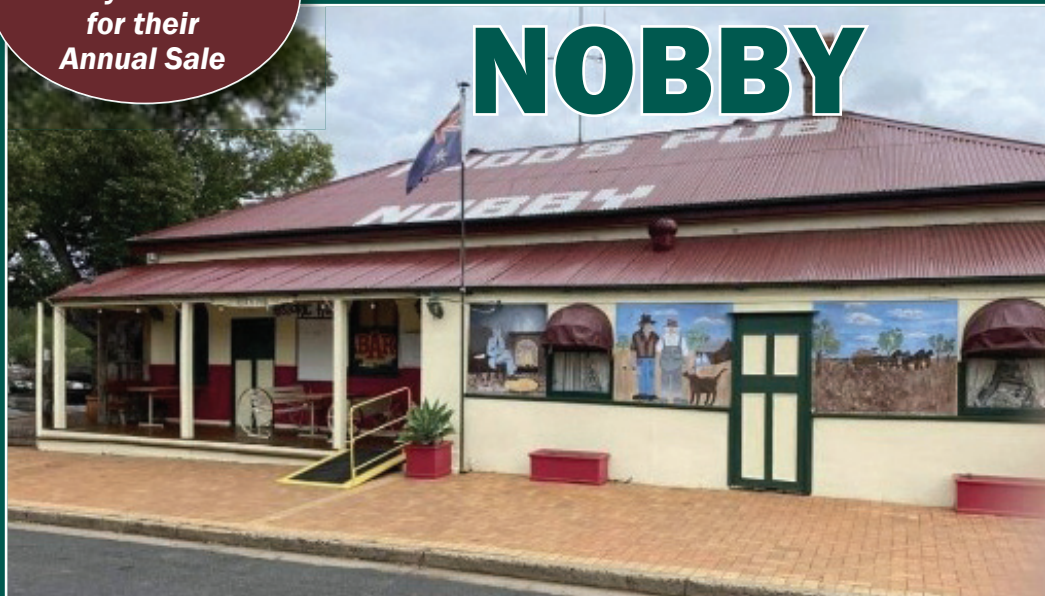
WEIGHT	DLG	SCROTUM	EMA	RIB FAT	RUMP FAT

Purchaser: \_\_\_\_\_ Price: \$ \_\_\_\_\_

*Wishing  
Scott & Wendy  
every success  
for their  
Annual Sale*

# RUDD'S PUB

## NOBBY



- Open for Lunch and Dinner 7 Days a Week
- Catering for Private Functions
- Accommodation Available



**10 TOOTH STREET, NOBBY QLD 4360**

**Phone (07) 4696 3211**



**BULLAMAKINKA SONNY S88 (PS)**

TATTOO: **S88**    STUD BOOK No.: **BLM21MS88**    BORN: **12/12/2020**    21 months

DIAMOND H LEGEND (P)  
 GLENN OAKS JUMBO BWANA J26 (P)  
 GLENN OAKS B53  
**SIRE: YARRABEE HIMALAYA 1393 (P)**  
 DANGARFIELD VIGILANTE V007 (AI)(P)  
 YARRABEE ESABELLA 6200 (P)  
 YARRABEE YVONNE (P)



**DAM: MULTIPLE DAM**

WEIGHT	DLG	SCROTUM	EMA	RIB FAT	RUMP FAT

Purchaser: \_\_\_\_\_ Price: \$ \_\_\_\_\_



**BULLAMAKINKA SOLDIER S66 (P)**

TATTOO: **S66**    STUD BOOK No.: **BLM21MS66**    BORN: **14/12/2020**    21 months

WACO CRACKER H4 (ET)  
 WACO FLYNN L180  
 WACO F333  
**SIRE: BULLAMAKINKA PATRIOT P2 (P)**  
 CANOWINDRA GOLD EDITION  
 BULLAMAKINKA J17 (P)  
 BULLAMAKINKA F57 (P)  
 CANOWINDRA B64 (P)  
 CANOWINDRA GOLD EDITION  
 QUANDILLA Y35 (P)  
**DAM: BULLAMAKINKA G123**  
 YARRAWONGA MACHO  
 KELLY WALLAH Y5 (P)  
 KELLY WALLAH T31 (P)



*DNA Sire Verified.*

WEIGHT	DLG	SCROTUM	EMA	RIB FAT	RUMP FAT



2021 sale top price Bullamakinka Rocky R82 (P) sold for \$130,000 to RL Pastoral Co.



# WAVE HILL SPACEMAN S106 (PS)

TATTOO: S106

STUD BOOK No.: WAV21MS106

BORN: 15/12/2020

21 months



DIAMOND H LEGEND (P)  
 GLENN OAKS JUMBO BWANA J26 (P)  
 GLENN OAKS B53  
**SIRE: YARRABEE GUNYAH 1377 (P)**  
 SUJO FLASH  
 YARRABEE DANBUE 6135  
 YARRABEE XORAH 5867  
 WARENDA REQUIRE (PS)  
 WARENDA CHARLTON (PS)  
 WARENDA R121  
**DAM: WAVE HILL L23 (P)**  
 WAVE HILL YOKEL Y5 (PS)  
 WAVE HILL E45  
 WAVE HILL B6 (AI)

*DNA Sire Verified. Since purchasing L23. Her 2019 calf was sold as a weaner. 2020 calf is S106. Her 2021 calf is a weaner awaiting DNA results. She is PTIC to Yarrowonga Katmandu.*



WEIGHT	DLG	SCROTUM	EMA	RIB FAT	RUMP FAT

Purchaser: \_\_\_\_\_ Price: \$ \_\_\_\_\_





**BULLAMAKINKA SIGNATURE S228 (P)**

TATTOO: **S228**

STUD BOOK No.: **BLM21MS228**

BORN: **17/12/2020**

**22 months**

DANGARFIELD RAYMONDO  
DUNLOP NINJA (P)  
MULTIPLE DAM  
**SIRE: DUNLOP L134**  
MULTIPLE SIRE  
DUNLOP G533

CANOWINDRA B64 (P)  
CANOWINDRA GOLD EDITION  
QUANDILLA Y35 (P)  
**DAM: BULLAMAKINKA M007**  
BULLAMAKINKA E39 (P)  
BULLAMAKINKA H97  
MOONGANA Z771



WEIGHT	DLG	SCROTUM	EMA	RIB FAT	RUMP FAT

Purchaser: \_\_\_\_\_ Price: \$ \_\_\_\_\_



**Lot 18**





# GLENN OAKS SHAMROCK S66 (PS)

TATTOO: S66

STUD BOOK No.: GLO21MS66

BORN: 17/12/2020

20 months



WACO SAMSON  
 WACO ZEUS  
 WACO A709  
**SIRE: GOOLAGONG LEOPARD L26 (AI)(P)**  
 WACO VOLUME (P)  
 GOOLAGONG G069 (P)  
 GOOLAGONG Y45 (P)  
 YARRAWONGA YEMEN  
 YARRAWONGA J134 (ET)(P)  
 YARRAWONGA YAYA (ET)(P)  
**DAM: GLENN OAKS M97 (P)**  
 GLENN OAKS G136

*DNA Sire Verified. M97's first calf (R91) was sold to Jacob Ryan for \$6,000 in 2021. Her second calf is S66 and her third calf is awaiting DNA results.*



WEIGHT	DLG	SCROTUM	EMA	RIB FAT	RUMP FAT

Purchaser: \_\_\_\_\_ Price: \$ \_\_\_\_\_



**BULLAMAKINKA SENATOR S78 (PS)**

TATTOO: **S78**

STUD BOOK No.: **BLM21MS78**

BORN: **18/12/2020**

**21 months**

CANOWINDRA GOLD EDITION  
 BULLAMAKINKA K476 (P)  
 BULLAMAKINKA F65 (P)  
**SIRE: BULLAMAKINKA N124 (P)**  
 WAVE HILL XTRA (P)  
 BULLAMAKINKA F47 (P)  
 MARSTON D524  
 WARENDA SENTRY (P)  
 BULLAMAKINKA G230 (PS)  
 ERIN VALE SPORTY SPICE S39  
**DAM: BULLAMAKINKA L129 (P)**  
 RAYTEK 300 (PS)  
 RAYTEK C64 (P)  
 RAYTEK BELLA (P)



WEIGHT	DLG	SCROTUM	EMA	RIB FAT	RUMP FAT

Purchaser: \_\_\_\_\_ Price: \$ \_\_\_\_\_





**GNF**  
REAL ESTATE

**THE PROGRESSIVE SALES  
TEAM CATERING FOR  
ALL YOUR LIVESTOCK &  
REAL ESTATE NEEDS**

**COVERING SOUTH EASTERN QUEENSLAND  
AND NORTHERN NEW SOUTH WALES**

**OFFICE – 07 4661 4644**

**[www.gnfrealestate.com.au](http://www.gnfrealestate.com.au)**

Matthew Grayson ..... 0419 686 540  
Maugan Benn ..... 0427 253 528  
Brian Gillam ..... 0428 299 725  
Blake Doro ..... 0423 962 797

**REAL ESTATE:**

*Rural*

Jacob Allport ..... 0448 060 959

*Residential*

Tiffany Cruice ..... 0447 301 913



Phone (07) 4661 4644  
Fax (07) 4661 4829  
[www.gnfrealestate.com.au](http://www.gnfrealestate.com.au)  
61 Albon St., Warwick QLD 4370

**GNF** warwick



# WAVE HILL SAWTELL S30 (PP)

TATTOO: **S30**

STUD BOOK No.: **WAV21MS30**

BORN: **23/12/2020**

**20 months**



WARENDA CHARLTON (PS)  
 WARENDA KINGSTON K14 (P)  
 WARENDA E69 (P)  
**SIRE: GLENALBYN NOBLE N687 (P)**  
 GLENN OAKS JETLAG J164 (P)  
 GLENALBYN 615 (P)  
 GLENALBYN 502  
 YULGILBAR DROVER D234 (AI)(P)  
 MUNNABAH IRONMAN 960 (P)  
 MUNNABAH 597  
**DAM: WAVE HILL N41 (P)**  
 ROSEVALE ZEST Z32 (AI)(PS)  
 WAVE HILL F44 (P)  
 WAVE HILL X26 (P)

*DNA Sire Verified. N41 has had two bull calves (S30 & T118). She is PTIC to Yarrowonga Katmandu.*



WEIGHT	DLG	SCROTUM	EMA	RIB FAT	RUMP FAT

Purchaser: \_\_\_\_\_ Price: \$ \_\_\_\_\_



**GLENN OAKS SCALLYWAG S130 (P)**

TATTOO: **S130**    STUD BOOK No.: **GLO21MS130**    BORN: **26/12/2020**    20 months

WACO SAMSON  
WACO ZEUS  
WACO A709  
**SIRE: GOOLAGONG LEOPARD L26 (AI)(P)**  
WACO VOLUME (P)  
GOOLAGONG G069 (P)  
GOOLAGONG Y45 (P)  
WACO TRITON (ET)(P)  
WACO ELAND J1402 (P)  
WACO Y65  
**DAM: GLENN OAKS M28 (P)**  
DIAMOND H GENERAL (P)  
DIAMOND H QUIRKIE Q162 (P)  
DIAMOND H H188

*DNA Sire Verified. M28's first calf was a heifer who was retained within the stud (R103). M28 has a heifer calf (T265) at foot who is not yet weaned.*



WEIGHT	DLG	SCROTUM	EMA	RIB FAT	RUMP FAT

Purchaser: \_\_\_\_\_ Price: \$ \_\_\_\_\_



**JARRAH PARK REVEILLE R21 (P)**

TATTOO: **R21**    STUD BOOK No.: **JAR20MR21**    BORN: **29/12/2020**    20 months

**SIRE: MULTIPLE SIRE**

SUJO FERRYMAN (PS)  
BULLAMAKINKA E58 (PS)  
BULLAMAKINKA C11 (P)  
**DAM: ROSEVALE MALTA H163 (P)**  
DRENSMAINE JAFFA  
ROSEVALE MALTA Y103  
ROSEVALE V356 (P)



WEIGHT	DLG	SCROTUM	EMA	RIB FAT	RUMP FAT

Purchaser: \_\_\_\_\_ Price: \$ \_\_\_\_\_



**DIAMOND H YODEL Y077**

TATTOO: **Y077**    STUD BOOK No.: **DIA21MY077**    BORN: **4/01/2021**    20 months

YARRAWONGA VALID  
GLENN OAKS FLEETWOOD F27 (PS)  
GLENN OAKS C63 (P)  
**SIRE: WAVE HILL LONGSTRONG L84 (P)**  
WAVE HILL ARNIE  
WAVE HILL F79

YARRAWONGA TAVERN  
GLENVIEW GRANVILLE G120 (PS)  
GLENVIEW X20  
**DAM: DIAMOND H S671**  
ERIN VALE X-CEL X17  
DIAMOND H K209  
DIAMOND H F62



WEIGHT	DLG	SCROTUM	EMA	RIB FAT	RUMP FAT

Purchaser: \_\_\_\_\_ Price: \$ \_\_\_\_\_





**BULLAMAKINKA STORM S76 (PS)**

TATTOO: **S76**    STUD BOOK No.: **BLM21MS76**    BORN: **10/01/2021**    **20 months**

YARRAWONGA OUTRANK (PS)  
 YARRAWONGA VERSATILE (PS)  
 YARRAWONGA Z521  
**SIRE: ROSEHILL JAMESON 4 (ET)(AI)(PS)**  
 YARRAWONGA SIR  
 GLENN OAKS FABIANA F66  
 GLENN OAKS FANTASIA  
 WARENDA SENTRY (P)  
 BULLAMAKINKA G230 (PS)  
 ERIN VALE SPORTY SPICE S39  
**DAM: BULLAMAKINKA M275 (P)**  
 COOLOON TOMAHAWK  
 BULLAMAKINKA 611  
 EIDSVOLD STATION V731



WEIGHT	DLG	SCROTUM	EMA	RIB FAT	RUMP FAT

Purchaser: \_\_\_\_\_ Price: \$ \_\_\_\_\_



**DIAMOND H YARDMAN Y159**

TATTOO: **Y159**    STUD BOOK No.: **DIA21MY159**    BORN: **25/01/2021**    **19 months**

YULGILBAR DROVER D234 (AI)(P)  
 MUNNABAH IRONMAN 960 (P)  
 MUNNABAH 597  
**SIRE: GLENN OAKS NAKURU N53 (PS)**  
 MULTIPLE SIRE  
 GLENN OAKS D73  
 MULTIPLE DAM  
 WACO MASCOT (AI)  
 GRALYN C34  
 GRALYN Y33  
**DAM: DIAMOND H 0029 (P)**  
 DIAMOND H MARSHALL E87  
 DIAMOND H K293  
 CANOWINDRA A25



WEIGHT	DLG	SCROTUM	EMA	RIB FAT	RUMP FAT

Purchaser: \_\_\_\_\_ Price: \$ \_\_\_\_\_



**GLENN OAKS SILVESTER S50 (PS)**

TATTOO: **S50**    STUD BOOK No.: **GLO21MS50**    BORN: **10/02/2021**    **19 months**

GLENN OAKS BRAVEHEART  
 WARENDA EQUADOR (P)  
 WARENDA N41 (P)  
**SIRE: DIAMOND H RENEGADE R47 (P)**  
 DIAMOND H GENERAL (P)  
 DIAMOND H N036  
 DIAMOND H 288  
 MULTIPLE SIRE

*DNA Sire and Dam Verified.  
 G743 is the dam of 7 recorded calves including 3 sold privately and Rubble sold to the Dunlop stud in 2021 for \$120,000.*



**DAM: WACO G743**

WEIGHT	DLG	SCROTUM	EMA	RIB FAT	RUMP FAT

Purchaser: \_\_\_\_\_ Price: \$ \_\_\_\_\_

# FIVE STAR

## *Creative Promotions*

- ALL FACETS OF DIGITAL LIVESTOCK MARKETING
- STUDSTOCK PROMOTIONAL VIDEOS
- SALE DAY COVERAGE
- FLYER AND LOGO DESIGN
- REAL ESTATE PROMOTIONAL VIDEOS
- SOCIAL MEDIA MANAGEMENT

*We wish Santa Central success  
with their Annual Sale*

PH MATT 0473 903 088

SHANNON 0427 636 025

EMAIL: [FSCREATIVEPROMOTIONS@GMAIL.COM](mailto:FSCREATIVEPROMOTIONS@GMAIL.COM)



**GLENN OAKS SITADELL S78 (P)**

TATTOO: **S78**    STUD BOOK No.: **GLO21MS78**    BORN: **10/02/2021**    **19 months**

WARENDA CHARLTON (PS)  
 WARENDA KINGSTON K14 (P)  
 WARENDA E69 (P)  
**SIRE: GLENALBYN NOBLE N687 (P)**  
 GLENN OAKS JETLAG J164 (P)  
 GLENALBYN 615 (P)  
 GLENALBYN 502  
 YARRAWONGA OLYMPIC  
 YARRAWONGA SHERLOCK  
 YARRAWONGA NIMBLE  
**DAM: YARRAWONGA G535**  
 YARRAWONGA OUTRANK (PS)  
 YARRAWONGA C301  
 YARRAWONGA Z467



*DNA Sire and Dam Verified.*

WEIGHT	DLG	SCROTUM	EMA	RIB FAT	RUMP FAT

Purchaser: \_\_\_\_\_ Price: \$ \_\_\_\_\_



**DIAMOND H YARRAMAN Y064 (P)**

TATTOO: **Y064**    STUD BOOK No.: **DIA21MY064**    BORN: **12/02/2021**    **19 months**

MULTIPLE SIRE  
**SIRE: YARRAWONGA P918 (PP)**  
 MULTIPLE DAM  
 YARRAWONGA ROMEO (P)  
 WACO WRANGLER (P)  
 WACO A291 (P)  
**DAM: DIAMOND H R322 (P)**  
 DIAMOND H GENERAL (P)  
 DIAMOND H K026  
 DIAMOND H REEBOK E64



WEIGHT	DLG	SCROTUM	EMA	RIB FAT	RUMP FAT

Purchaser: \_\_\_\_\_ Price: \$ \_\_\_\_\_



**BULLAMAKINKA SAXON S890 (P)**

TATTOO: **S890**    STUD BOOK No.: **BLM21MS890**    BORN: **15/02/2021**    **19 months**

YARRAWONGA BASS G1072 (PS)  
 YARRAWONGA DIPLOMAT J16 (P)  
 YARRAWONGA F909 (P)  
**SIRE: BULLAMAKINKA RIMFIRE M022 (P)**  
 CANOWINDRA GOLD EDITION  
 BULLAMAKINKA J339  
 ROSEVALE AFFRICA B163 (P)  
 WILGARROON JESTER (AI)(P)  
 WARENDA SENTRY (P)  
 WARENDA IZA  
**DAM: BULLAMAKINKA L313 (AI)**  
 MULTIPLE DAM



*DNA Sire Verified.*

WEIGHT	DLG	SCROTUM	EMA	RIB FAT	RUMP FAT

Purchaser: \_\_\_\_\_ Price: \$ \_\_\_\_\_



**GLENN OAKS SILAS S306**

TATTOO: **S306**

STUD BOOK No.: **GLO21MS306**

BORN: **15/02/2021**

**19 months**

YARRAWONGA YOUTUBE (P)  
YARRAWONGA DURABLE J572 (ET)(P)  
WACO A709

**SIRE: YARRAWONGA HARDY N606 (P)**

MULTIPLE SIRE  
YARRAWONGA J527 (P)  
YARRAWONGA G255

MULTIPLE SIRE

**DAM: GLENN OAKS L57**

MULTIPLE DAM



*DNA Sire Verified. L57 has had two females retained in the stud (Q97 & R231) and 1 bull calf (S306). She is PTIC.*

WEIGHT	DLG	SCROTUM	EMA	RIB FAT	RUMP FAT

Purchaser: \_\_\_\_\_ Price: \$ \_\_\_\_\_



**GLENN OAKS SMITHERS S310 (P)**

TATTOO: **S310**

STUD BOOK No.: **GLO21MS310**

BORN: **15/02/2021**

**19 months**

YARRAWONGA YOUTUBE (P)  
YARRAWONGA DURABLE J572 (ET)(P)  
WACO A709

**SIRE: YARRAWONGA HARDY N606 (P)**

MULTIPLE SIRE  
YARRAWONGA J527 (P)  
YARRAWONGA G255

MULTIPLE SIRE

**DAM: GLENN OAKS L200**

MULTIPLE DAM



*DNA Sire Verified.*

WEIGHT	DLG	SCROTUM	EMA	RIB FAT	RUMP FAT

Purchaser: \_\_\_\_\_ Price: \$ \_\_\_\_\_





**WAVE HILL SUGARMAN S162**

TATTOO: **S162**

STUD BOOK No.: **WAV21MS162**

BORN: **26/02/2021**

**19 months**

MULTIPLE SIRE

**SIRE: YARRAWONGA P590 (PS)**

MULTIPLE DAM

YARRAWONGA VALID  
GLENN OAKS FLEETWOOD F27 (PS)  
GLENN OAKS C63 (P)

**DAM: WAVE HILL J65 (PS)**  
KENDARA WATCHMAN (P)  
WAVE HILL C852 (P)  
WAVE HILL A43 (P)

*DNA Sire Verified. J65 has had 4 recorded calves since purchase including 1 Santa Central Sale Bull and 1 female retained.*



WEIGHT	DLG	SCROTUM	EMA	RIB FAT	RUMP FAT

Purchaser: \_\_\_\_\_ Price: \$ \_\_\_\_\_



**GLENN OAKS SANTIAGO S92 (P)**

TATTOO: **S92**

STUD BOOK No.: **GLO20MS92**

BORN: **2/03/2021**

**18 months**

**SIRE: MULTIPLE SIRE**

WACO ZEUS  
GOOLAGONG LEOPARD L26 (AI)(P)  
GOOLAGONG G069 (P)

**DAM: GLENN OAKS Q89 (P)**  
MULTIPLE SIRE  
GLENN OAKS M90 (P)  
MULTIPLE DAM



WEIGHT	DLG	SCROTUM	EMA	RIB FAT	RUMP FAT

Purchaser: \_\_\_\_\_ Price: \$ \_\_\_\_\_







## Sale Summary

No.	Description	Total Sold	Average	Top Price
	Led Bulls			
	Unled Bulls			
	TOTAL BULLS			
	GROSS			

*Thank You*

**Thank you for supporting our  
17th Santa Central Sale at "Headingly".**

**We sincerely hope you have enjoyed your day.  
Wishing you a safe journey home.**





*Tomorrow's Bovine Genetics Delivered Today*

## farmers breeding supplies

- Liquid Nitrogen
- On Farm Delivery Service
- Beef & Dairy Semen Sales
- Semen & Embryo Transport
- Semen & Embryo Storage
- Artificial Breeding Supplies
- Liquid Nitrogen Containers (New & Second Hand)

**Phone:** 07 4630 2722

**Email:** [info@farmersbreedingsupplies.com.au](mailto:info@farmersbreedingsupplies.com.au)

**Shaun Fogg:** 0408 884 092

**Address:** PO Box 7633, Toowoomba South, Qld, 4350



# Buyer Instruction Slip – Santa Central Sale 13/09/2022

NO VERBAL INSTRUCTIONS CAN BE ACCEPTED

Bid Card No..... PIC.....

Name.....

Address.....

Contact Person.....

Phone/s.....

Email.....

Lots Purchased..... Total.....

---

## DELIVERY

Destination.....

Delivery Date.....

Transport Arrangements (include Carriers Name).....

Further Instructions: .....

Stud Name (if transfer is required)..... Stud No.....

Insurance (state period).....

Signature..... Date.....



# PARKLYON

HAY SUPPLIES

OATEN - WHEATEN  
BARLEY HAY - HD (8 X 4 X 3)  
LUCERNE (8 X 4 X 3)

Small squares LUCERNE and MOBY BARLEY  
BALE BARON packs  
(21 small bales)

Freight Available

*Wishing Scott and Wendy every success for their Annual Sale*

**LIAM LYONS 0417 972 164 | PAT LYONS 0419 773 590**

Nobby Southern QLD • parklyon@bigpond.com • www.parklyonhay.com.au



<b>VENDOR</b>	<b>CONTACT DETAILS</b>	<b>LOT NUMBERS</b>
<b>BAAN BAA</b>	<b>Ross Murray 0429 944 715</b>	<b>7, 71</b>
<b>BULLAMAKINKA</b>	<b>Craig Hindle 0427 036 052</b>	<b>10, 14, 17, 44, 50, 51, 53, 62, 64, 65, 79, 83, 84, 85, 87, 89, 94, 99</b>
<b>DIAMOND H</b>	<b>Shane Hatton 0427 693 237</b>	<b>15, 21, 22, 26, 27, 29, 49, 54, 55, 63, 66, 67, 68, 70, 73, 74, 76, 80, 81, 82, 93, 95, 98</b>
<b>GLENN OAKS</b>	<b>Scott &amp; Wendy Ferguson 0407 645 917</b>	<b>9, 13, 16, 18, 19, 23, 24, 25, 47, 52, 56, 57, 58, 59, 60, 61, 69, 72, 75, 77, 78, 88, 91, 96, 97, 100, 101, 103</b>
<b>GOOLAGONG</b>	<b>Heath Tiller 0418 859 361</b>	<b>1, 4, 8, 20, 28</b>
<b>JARRAH PARK</b>	<b>Michael &amp; Danielle MacCue 0409 785 301</b>	<b>30, 31, 34, 43, 92</b>
<b>KILCOCK</b>	<b>Mark Daly – 417 345 873 Matt Way – 0457 584 509</b>	<b>2, 3, 5, 6, 32, 33, 39, 40, 41, 45</b>
<b>RIBBLETON</b>	<b>Gus Hutchinson 0477 800 151</b>	<b>11, 12</b>
<b>SUJO</b>	<b>Sue Hunt 0429 429 163</b>	<b>36, 37</b>
<b>TOOKEY CREEK</b>	<b>Ian &amp; Louise MacCue 0428 937 466</b>	<b>42, 46</b>
<b>WARENDA</b>	<b>Sylvia Kirkby 0428 922 099</b>	<b>35, 38, 48</b>
<b>WAVE HILL</b>	<b>Scott &amp; Wendy Ferguson 0407 645 917</b>	<b>86, 90, 102</b>

