

*YOUR* **NO. #1 F1**



LOT 4  
MARELLAN XCLUSIVE (P)

## **Marellan Shorthorns**

*"Bred for Bos Indicus Cows" Bull Sale*

**Tuesday 27th Sept 2022**

**ONLINE & ON PROPERTY** "Emerald Downs" Emerald

Dear Beef Producers,

It is with great pleasure that we invite to our 2022 "Bred for Bos Indicus Cows Bull Sale, online and on-property. The Sale commences at 12 Midday, with inspection from 8am on Sale Day, or any other time by appointment.

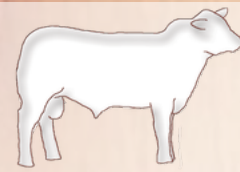
It has been exceptionally pleasing to receive so many good reports of the progeny of our Marellan Shorthorn bulls over Bos Indicus Cows in the last 12 months. It's great to see that your Bos Indicus Cows and our Shorthorn bulls are forming a profitable and potent combination. We continue to strive for **Industry Leading Selection Pressure**, to instil in our herd more genetic gain and northern industry relevance. The exceptionally dry season last year means that this year's bulls had to prove themselves in adversity.

Please Note that this year's sale is both on farm and online, livestreamed through Auctions Plus. Videos of the bulls will be available around mid-September, via [www.marellan.com.au](http://www.marellan.com.au) or Marellan Shorthorns Facebook or Auctions Plus. If you are intending on using Auctions Plus on sale day, please ensure that you are registered to do so.

**About the Bulls:** On offer will be 50 Shorthorn Bulls. All these bulls have been blooded and have been fully vaccinated with 3-day, Vibrio, Pestiguard and 7 in 1. The bulls have been **Morphology Semen Tested** and up to date weighs and scan will be available before the sale. We are very pleased with this year's bulls. These bulls represent the very best in Shorthorn genetics, which have been bred for generations to prosper in the Queensland environment. **PLEASE NOTE: Marellan Shorthorn bulls are grass-fed paddock bulls, NO GRAIN – NOT EVER.** We think that this policy is in the best **long-term** interests of both our business and yours. This inevitably means that the bulls are not as visually impressive (lighter weights and lower scans) to the eye, as you may see at other sales. We ask both returning clients and new clients to **lower your sale day expectations but increase your long-term expectations** of the contribution that these Marellan Shorthorn bulls can make to your herd.

Additionally, this year we will also be offering 11 outstanding Brahman heifers PTIC to Marellan United. We were very fortunate to select our pick from 500 Brahman heifers originating from the famed Kaiuroo herd.

Yours sincerely,  
Lincoln & Lisa Job and Family



**marellan**  
shorthorns

**Bred for Bos Indicus Cows!**



# Marellan Shorthorns

*"Bred for Bos Indicus Cows" Bull Sale*

Tuesday 27th Sept 2022 "Emerald Downs" Emerald  
**ONLINE & ON PROPERTY**

## Tuesday 27th September 2022

12 noon

**ON PROPERTY**

"Emerald Downs" Emerald

*Inspection from 8am on sale day*

---

# 50 Shorthorn Bulls

## & 11 Brahman Heifers PTIC to Marellan United

---

**Selling Agent:**

**H&W**  
Livestock & Property

  
**AuctionsPlus**  
Buy and Sell stock nationally

**Outside Agents Rebate:**

A 5% rebate will be offered to outside agents who;

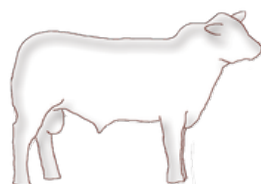
1. Introduce their clients more than 24 hours before the sale (to vendors or selling agents)
2. Attend the sale with them (or purchase on their behalf) and settle within 7 days.
3. Agents may **ONLY** introduce clients under the specific instruction of their clients.
4. Sale day buyers registration forms must be consistent with introductions.

**LINCOLN & LISA JOB**

**(M) 0404 083 438**

[www.marellan.com.au](http://www.marellan.com.au) | [lincolnandlisa@marellan.com.au](mailto:lincolnandlisa@marellan.com.au)

If you are unable to reach Lincoln on sale day or before,  
please feel free to call Lisa's mobile on 0411 311 323



**marellan**  
shorthorns

**Bred for Bos Indicus Cows!**

# Sale Information

**Inspection:** Inspection will be from 8am on sale day or any other time by appointment.

**On Property & Online:** The sale will be On-Property at “Emerald Downs” under Covid-Safe protocol. The Sale will also be on the AuctionPlus selling platform. Video’s of the Bulls will be online by 7-10 days prior to the sale.

**Accommodation:** Emerald has numerous accommodation options.

**Airport:** “Emerald Downs” is situated only 10km from the Emerald Airport. Please call Lincoln (0404 08 34 38) or Lisa (0411 311 323) if you would like us to arrange for you to be picked up from the airport.

**Breeding Soundness:** All bulls will be Semen Morphology tested and examined for reproductive and structural soundness by Dr Ced Wise, Adam Wise and Rocky Repro.

**Supplementary Sheet:** Supplementary Sheets will be available in the week leading up to the Sale. Bulls will be weighed, scanned for EMA, IMF, Marble Fleck and Fat cover. Scrotal measurements have been done by Dr Ced Wise & Adam Wise with the ‘reliable’ tension measurer, in accordance with the Australian Cattle Veterinarians.

**Delivery:** We will endeavour to help co-ordinate efficient delivery of the bulls where required. Trucks are welcome on sale day. All bulls sold outside of the ticks will be delivered and presented clean to the clearance dip at the vendor’s expense.

**Health:** All bulls have been vaccinated with 7 in 1, Pestiguard, 3-day and Vibrio. All bulls have been blooded with 3-germ. The Central Highlands is ticky country; consequently, all bulls have been exposed to ticks on numerous occasions and will need to be cleared if they are sold to a tick free area. Bulls will not be within a withholding period on sale day and are therefore free to go to Organic herds.

**Delayed Payment:** Delayed payment may be available to some producers. Please speak to Lincoln prior to sale day.

**Mobile Phones:** “Emerald Downs” has very good mobile phone coverage.

**Directions:** “Emerald Downs” is located just north of Emerald on the Gregory Highway. Please see inside the back cover for a map.

**Sale Bulls:** Sale bulls have been prepared for their working lives, under our strict Selection Pressure polices. They are genuine grass fed, paddock reared bulls that have undergone intense selection pressure. Consequently, they will not have the finish that you may see at other sales. We are determined to ensure that our bulls can survive and thrive in Central, North and Western Queensland, rather than ‘look good’ on sale day. Please Note: Numerous sale bulls have not been parent verified. Sale bulls have various registration status, ranging from Unregistered Herd Bulls to Herd Book Registered. Please speak to Lincoln if you require any clarification.

**Semen Rights:** We have collected semen from a limited number of sale bulls. **We retain 50% Semen rights on ALL LOTS.** It is most likely that this will be absolutely irrelevant for virtually all buyers but please speak to Lincoln if you require any clarification.

**GST:** 10% GST will be added to the knock down price.

## IGS Breed Average EPD’s

	CE	BW	WW	YW	Milk	MCE	MWWT	Stay	DOC	CWT	REA	FAT	MARB	YG	API\$
EPD	+7.7	+3.0	+53.0	+82.2	+26.6	+5.6	+53.0	+12.7	+10.7	+4.5	+0.37	-0.079	-0.03	-0.33	108.73



**SPECIALISING IN MARKETING**

- Livestock Private & Auction Sales
- Auctionsplus
- Live Export
- Feedlot Services
- Rural Property
- Stud Sales &
- Clearing Sales



Livestock & Property

**Jake Passfield      0488 588 044**

**Tony Hoch            0448 831 553**

**Clermont Office    07 4983 1555**

[www.hochandwilkinson.com](http://www.hochandwilkinson.com)



**AuctionsPlus**

**How to Register and Bid on AuctionsPlus**

- |   |  |
|---|--|
| <p><b>1</b> Go to <a href="http://www.auctionsplus.com.au">www.auctionsplus.com.au</a> to register at least 48 hours before the sale.</p> | <p><b>7</b> Fill in buyer details and once completed go back to Dashboard.</p>   |
| <p><b>2</b> Select "Sign Up" in the top right hand corner.</p>  | <p><b>8</b> Complete buyer induction module (approx. 30 minutes).</p>  |
| <p><b>3</b> Fill out your name, mobile number, email address and create a password.</p>   | <p><b>9</b> AuctionsPlus will email you to let you know that your account has been approved.</p>                       |
| <p><b>4</b> Go to your emails and confirm the account.</p>  | <p><b>10</b> Log in on sale day and connect to auction.</p>  |
| <p><b>5</b> Return to AuctionsPlus and log in.</p>  | <p><b>11</b> Bid using the two-step process – unlock the bid button and bid at that price.</p>                         |
| <p><b>6</b> Select "Dashboard" and then select "Request Approval to Buy".</p>   | <p><b>12</b> If you are successful, the selling agent will contact you post sale to organise delivery and payment.</p> |

For more information please contact us on:

Phone: (02) 9262 4222

Email: [info@auctionsplus.com.au](mailto:info@auctionsplus.com.au)



**AuctionsPlus**

*Buy and Sell stock nationally*

**Bid and watch  
online on  
AuctionsPlus.**

# Industry Leading Selection Pressure – to Increase your bottom line \$

Our breeding philosophy is pretty simple, start with the best genetics possible (& keep adding to that group), chuck them all in at the deep end and see who learns to swim...quickly. This approach is ultimately about your herd as much as ours. Because if our bulls don't excel in your herd, we don't have a business. Feedback is always welcome, both positive and negative. As this feedback helps to refine our breeding program.



## 'NO Grain – NOT Ever'

Marellan Shorthorns exists for the sustainability and profitability of our herd and our client's herds. Our 2022 sale bulls are genuine grass-fed paddock reared bulls. **NO Grain – NOT Ever**; it proves our bulls can handle the environment. **NO Grain – NOT Ever**; It ensures the bulls are not carrying excess weight, they don't need to be let down; our bulls are for breeding not for looking prime on sale day. We believe that not pushing a bull's skeletal structure to the maximum is best for longevity. **NO Grain – NOT Ever**; it's part of our wider selection pressure.

## Paternal (Bull) Selection Pressure

Our Paternal (Bull) Selection pressure doesn't end with **NO Grain NOT Ever**; Once weaned we deliberately ensure that our bulls don't get a silver spoon put in their mouths. We ensure that that are only grazed on low quality feed and given minimum animal health treatments. This most definitely effects their growth, development and heavy they are on sale day, but this selection pressure means that only those with the best survivability prosper, making the culling process quite easy. The bulls are then finished for sale day on grazing crop. **Please don't expect to see fat, prime, feedlot finished bulls on sale day**. The feedlot is the **finishing system** of many, but grass is **production system** of virtually all. Our bulls are all about production, so our Paternal Selection Pressure reflects this. But don't worry, their progeny will be great feedlot performers, a group of mixed sex feedlot cattle (mainly cull cows) averaged 3.41KG per day. Our bulls are light but have been tested and verified with extreme selection pressure, for the long-term benefit of your herd and ours. If you can source British Bred Bulls of high quality anywhere in the country that have had that much selection pressure; we suggest you do!



## Shorthorns in the Ticks

We are determined to produce a tropically adapted Shorthorn herd in the ticks. We want our herd to survive and thrive in an environment that is similar to our client's herds. We use environmental selection pressure to make our cattle even more industry relevant. There are very few British Bred Bull breeding herds in the country that are in the ticks. Breeding a tropically adapted Shorthorn herd is not easy, but that's our aim. To help achieve this, environmental selection pressure is at the heart of our breeding philosophy. To have Shorthorns in the ticks we apply **Unique Selection Pressure** within our herd. We have and are monitoring the tick levels on different individuals and lines within our herd to identify and then propagate those that have the lowest tick burden and highest industry relevance for the north. Our aim isn't to have Shorthorn cows that need constant intervention, but to have a herd of Shorthorn Females that get no more care and attention than the majority of Bos Indicus herds. As stud breeders we believe that our selection pressure must be harder than our clients, to help ensure that our bulls provide genetic gain for their new owners.

## Maternal Selection Pressure – Focussed on Fertility

Selection Pressure is at the absolute core of our breeding philosophy. When immense selection pressure is combined with the pursuit of elite genetics, it becomes the mechanism by which the value of a herd is ultimately determined. It is only those that remain after a heavy selection pressure that we want to breed from; the cream rises to the top. Adversity is the only genuine time where superiority is proven.

But our selection pressure doesn't stop with ticks, fly and heat. Fertility is at the core of our selection pressure. Heifers are only joined for 2 cycles and we demand that our cows calve each year, and rebreed whilst lactating, ensure a calving interval that is close to or less than 365 days. Females that don't meet our high standards are culled, to ensure that inferior and uneconomical traits are not spread into our client's herds. We are finding that our ideal females are ones with constitution and rumen capacity, that maintain their body condition throughout lactation and along the roller-coaster that is Central Queensland seasons. Fertility is also our focus with our bulls. Our bulls are semen motility & morphology tested. Only a minority of herds morphology test and then supply that data. All scrotal measurements are undertaken with the 'Reliable' tension measurer in accordance with the Australian Cattle Vets.

## Heifer Bull Status

We often get questions about the suitability of individual bulls to use over maiden heifers. Opinions vary greatly as to how much to back off performance for the first calf. Within our herd we try to walk that fine line between applying selection pressure, demanding live calves born unassisted and demanding that that calf is still a contributor to our herd. We want our herd to always lean on the side of greater selection pressure, whereas non-bull breeding herds have the scope to make more decisions for ease of management. The design of your breeding program is up to you, but we seek to simply provide information to allow for wise decisions to be made. Like nearly all breeding decisions, there are multiple influencing factors. The bull used on heifers are only part of the problem or solution. The information boxes for each bull has a box for 'Heifer Bull Status'.

There are different options.

<b>HFC</b>	This denotes bulls that were born as a Heifers First Calf. Some people use this as an extra guide to bulls suitable to use over heifers.
<b>Cows Only</b>	These are the bulls whose genotype and phenotype are bigger growth and bigger known birth size. We do not recommend that these bulls are used over maiden heifers.
<b>Buyer Discretion</b>	These bulls are bulls that would be fine to use over heifers in some circumstances. Some clients have used bulls successfully over heifers that fall into this category.
<b>3 Star</b>	Bulls that should be OK to use in most circumstances when used over heifers with good growth nutrition and management practices.
<b>4 Star</b>	A safer option for heifers joining assuming that other good management practises have been followed.
<b>5 Star</b>	A really safe option to use over heifers. Normally these bulls are lower performance than their peers.

# MARELLAN XANTUS (P)

# LOT 1

ID: JOBR126

BORN: 24/6/20 (27 MTHS)

ROAN



**Sire:** MARELLAN PROPHET (P)  
**MARELLAN STAR (P)**  
 MARELLAN CAMELOT 0078 (P)  
**Dam:** NUNYARA SUPERMAN L191 (P)  
**WARRABERRY PEGGY P47 (P)**  
 WARRABERRY PEGGY M122 (P)

Top 5% Docility, Top 10% Birthweight, Top 15% Calving Ease, Top 20% Maternal Calving Ease and Fat, Top 25% Milk.

A classy roan to start the sale. Xantus is a super long bull with a wide topline that will breed top F1 steers or replacement females. Star has left some top progeny that perform well in our environment.

Weight	Fat	EMA	IMF	Fleck
HB Status		Scrotal	Morph.	Mot.
3 Star (HFC)				75%

	CE	BW	WW	YW	Milk	MCE	MWWT	Stay	DOC	CWT	REA	FAT	MARB	YG	API\$
EPD	+11.4	+0.2	+43.5	+69.7	+30.0	+7.5	+51.8	+10.3	+16.6	-1.5	+0.22	-0.067	-0.11	-0.28	\$105.77
Acc.	22%	30%	19%	19%	8%	14%	12%	7%	12%	14%	13%	10%	12%	11%	

Purchaser: ..... Price: \$ .....

# MARELLAN XZIBIT (P)

# LOT 2

ID: JOBR090

BORN: 16/7/20 (26 MTHS)

ROAN



**Sire:** GOBOTHERY SIRE  
**GOBOTHERY CHRIS (P)**  
 GOBOTHERY COW  
**Dam:** GOBOTHERY SIRE  
**GOBOTHERY L164**  
 GOBOTHERY COW

Top 10% Yield Grade.  
 A chunky roan with tremendous rumen capacity to put on condition quickly (without ice cream). Looks like a bull to breed top bullocks, feeders or F1 replacements.

Weight	Fat	EMA	IMF	Fleck
HB Status		Scrotal	Morph.	Mot.
Cows Only				85%

	CE	BW	WW	YW	Milk	MCE	MWWT	Stay	DOC	CWT	REA	FAT	MARB	YG	API\$
EPD	+7.5	+2.7	+53.9	+81.7	+25.0	+4.9	+52.0	+10.4	+10.5	-2.1	+0.37	-0.097	-0.13	-0.41	\$99.56
Acc.	7%	7%	7%	7%	1%	3%	3%	5%	1%	8%	8%	7%	7%	7%	

Purchaser: ..... Price: \$ .....



# MARELLAN XURXO (P)

# LOT 3

ID: JOBR114 BORN: 19/7/20 (26 MTHS) ROAN



**Sire:** MARELLAN NUCLEAR (P)  
**WEEBOLLABOLLA NICOL N340 (P)**  
**WEEBOLLABOLLA ARDULLIE H378 (H)**  
**Dam:** GOBOTHERY SIRE  
**GOBOTHERY COW**  
**GOBOTHERY COW**

Sire is Top 1% Yield Grade, Top 10% Weaning Weight, Top 15% Yearling Weight, Top 25% Maternal Weaning Weight.

A top Nicol son. A bullock producing roan bull that combines doing ability, stature and performance.

Sire EPDS.

Weight	Fat	EMA	IMF	Fleck
HB Status		Scrotal	Morph.	Mot.
Cows Only				75%

	CE	BW	WW	YW	Milk	MCE	MWWT	Stay	DOC	CWT	REA	FAT	MARB	YG	API\$
EPD	+7.1	+3.3	+64.1	+95.7	+25.8	+5.3	+57.9	+8.8	+10.6	-9.7	-0.39	-0.115	-0.23	-0.49	\$93.13
Acc.	31%	33%	31%	31%	6%	13%	14%	21%	5%	38%	36%	33%	36%	31%	

Purchaser: ..... Price: \$ .....

# MARELLAN XCLUSIVE (P)

# LOT 4

ID: JOBR088 BORN: 8/7/20 (26 MTHS) ROAN



**Sire:** MARELLAN NUCLEAR (P)  
**WEEBOLLABOLLA J138 (P)**  
**WEEBOLLABOLLA F147 (P)**  
**WEEBOLLABOLLA G358 (H)**  
**Dam:** GOBOTHERY SIRE  
**GOBOTHERY L168**  
**GOBOTHERY COW**

Top 10% Yield Grade.  
 Just take a look here - Xclusive is probably the best bullock bull we have ever sold, especially if your bullocks only ever eat grass. Supreme doing ability and actual northern survivability. We have already used him in our herd. A bull with incredible 'Constitution'.

Weight	Fat	EMA	IMF	Fleck
HB Status		Scrotal	Morph.	Mot.
Cows Only				90%

	CE	BW	WW	YW	Milk	MCE	MWWT	Stay	DOC	CWT	REA	FAT	MARB	YG	API\$
EPD	+7.5	+2.7	+53.9	+81.7	+25.0	+4.9	+52.0	+10.4	+10.5	-2.1	+0.37	-0.097	-0.13	-0.41	\$99.56
Acc.	7%	7%	7%	7%	1%	3%	3%	5%	1%	8%	8%	7%	7%	7%	

Purchaser: ..... Price: \$ .....

# MARELLAN XABIER (P)

# LOT 5

ID: JOBR096

BORN: 1/7/20 (26 MTHS)

ROAN



GOBOTHERY SIRE  
**Sire: GOBOTHERY SIRE**  
 GOBOTHERY COW

WEEBOLLABOLLA HIGGINS H82  
**Dam: GOBOTHERY M43**  
 GOBOTHERY COW

Top 10% Yield Grade.  
 One word summary here: Grunt. Xabier is a real performance sire with a tremendous topline. An attractive roan with heaps of length and sound structure. I can't wait to see his bullocks.  
**Tested PP.**

Weight	Fat	EMA	IMF	Fleck
HB Status		Scrotal	Morph.	Mot.
Cows Only				85%

	CE	BW	WW	YW	Milk	MCE	MWWT	Stay	DOC	CWT	REA	FAT	MARB	YG	API\$
EPD	+7.5	+2.7	+53.9	+81.7	+25.0	+4.9	+52.0	+10.4	+10.5	-2.1	+0.37	-0.097	-0.13	-0.41	\$99.56
Acc.	7%	7%	7%	7%	1%	3%	3%	5%	1%	8%	8%	7%	7%	7%	

Purchaser: ..... Price: \$ .....

# MARELLAN XAVI (P)

# LOT 6

ID: JOBR093

BORN: 2/7/20 (26 MTHS)

ROAN

Top 1% Weaning Weight, Top 2% Yearling Weight, Top 15% Maternal Weaning Weight, Top 20% Stayability.

Xavi is a very big framed bull with tremendous performance. More frame than necessary but his steers will be heavy and fast growing.

Tested PP.

THE GROVE OSCAR A748 (P)  
**Sire: WEEBOLLABOLLA HIGGINS H82 (P)**  
 WEEBOLLABOLLA JILLAROO Z49 (P)

**Dam: GOBOTHERY J562**

Weight	Fat	EMA	IMF	Fleck
HB Status		Scrotal	Morph.	Mot.
Cows Only				75%

	CE	BW	WW	YW	Milk	MCE	MWWT	Stay	DOC	CWT	REA	FAT	MARB	YG	API\$
EPD	+4.3	+4.9	+74.3	+111.1	+23.4	+4.4	+60.6	+15.2	+9.5	-2.9	+0.34	-0.081	-0.19	-0.36	\$105.31
Acc.	29%	30%	30%	30%	5%	11%	13%	21%	2%	37%	35%	33%	36%	30%	

Purchaser: ..... Price: \$ .....



## INTERSTATE

FINANCE & LEASING

We have provided finance solutions for our clients for over 25 years. For hassle free finance call us today and ask us about our specials and how we can help you beat the end of financial year deadline.

<b>South Queensland</b> Jeff Budden 0409 162 255	<b>Central Queensland</b> David Pickstone 0456 778 892
---	---

[www.interstatefinance.com.au](http://www.interstatefinance.com.au)

- Rural Finance
- Commercial Lending
- Home Loans
- Equipment Finance
- Insurance Premium Funding
- Debtor Finance

*We work for you, not the banks.*

# MARELLAN XUSO (P)

# LOT 7

ID: JOBR115

BORN: 22/7/20 (26 MTHS)

RED



GOBOTHERY SIRE  
**Sire: GOBOTHERY SIRE**  
 GOBOTHERY COW

GOBOTHERY SIRE  
**Dam: GOBOTHERY M334**  
 GOBOTHERY COW

Top 10% Yield Grade.  
 Xuso is a tremendous red bull. I really like his length and weight and the ease of how he carries himself. A great bull to breed those top end F1 females.  
**Tested PP.**

Weight	Fat	EMA	IMF	Fleck
HB Status		Scrotal	Morph.	Mot.
Buyers Discretion				80%

	CE	BW	WW	YW	Milk	MCE	MWWT	Stay	DOC	CWT	REA	FAT	MARB	YG	API\$
EPD	+7.5	+2.7	+53.9	+81.7	+25.0	+4.9	+52.0	+10.4	+10.5	-2.1	+0.37	-0.097	-0.13	-0.41	\$99.56
Acc.	7%	7%	7%	7%	1%	3%	3%	5%	1%	8%	8%	7%	7%	7%	

Purchaser: ..... Price: \$ .....

# MARELLAN XANDRO (P)

# LOT 8

ID: JOBR097

BORN: 12/7/20 (26 MTHS)

RED



MARELLAN NUCLEAR (P)  
**Sire: WEEBOLLABOLLA NICOL N340 (P)**  
 WEEBOLLABOLLA ARDULLIE H378 (H)

WEEBOLLABOLLA HIGGINS H82  
**Dam: GOBOTHERY N219**  
 GOBOTHERY COW

Top 1% Weaning Weight, Top 2% Yearling Weight, Top 4% Maternal Weaning Weight and Yield Grade, Top 15% Stayability, Top 20% API, Top 30% Calving Ease.  
**A really clean coated sire with stature, structure and substance. His sire Nicol is destined to be a hugely influential sire within our herd (& hopefully yours).**

Weight	Fat	EMA	IMF	Fleck
HB Status		Scrotal	Morph.	Mot.
Cows Only				90%

	CE	BW	WW	YW	Milk	MCE	MWWT	Stay	DOC	CWT	REA	FAT	MARB	YG	API\$
EPD	+8.9	+3.2	+75.9	+113.0	+26.3	+5.6	+64.3	+16.0	+10.5	-16.3	+0.20	-0.104	-0.14	-0.43	\$119.65
Acc.	28%	30%	29%	29%	2%	9%	11%	21%	1%	35%	34%	30%	30%	29%	

Purchaser: ..... Price: \$ .....

# MARELLAN XENO (P)

# LOT 9

ID: JOBR102

BORN: 3/7/20 (26 MTHS)

RED



MARELLAN NUCLEAR (P)  
**Sire: WEEBOLLABOLLA NICOL N340 (P)**  
 WEEBOLLABOLLA ARDULLIE H378 (H)

GOBOTHERY SIRE  
**Dam: GOBOTHERY N252**  
 GOBOTHERY COW

Top 1% Weaning Weight, Yearling Weight and Yield Grade, Top 3% Maternal Weaning Weight, Top 30% Calving Ease.

A big strong long red to transmit growth and performance into his progeny. I like the constitution of this Nicol son, good heart room, definitely not a water troff camper.

Weight	Fat	EMA	IMF	Fleck
HB Status		Scrotal	Morph.	Mot.
Buyers Discretion				85%

	CE	BW	WW	YW	Milk	MCE	MWWT	Stay	DOC	CWT	REA	FAT	MARB	YG	API\$
EPD	+9.2	+3.4	+78.9	+121.2	+26.3	+6.3	+65.8	+11.4	+10.5	-12.2	+0.31	-0.116	-0.25	-0.48	\$106.74
Acc.	27%	29%	29%	29%	2%	10%	11%	20%	1%	34%	34%	30%	30%	28%	

Purchaser: ..... Price: \$ .....

# MARELLAN XHAVIT (P)

# LOT 10

ID: JOBR106

BORN: 11/7/20 (26 MTHS)

RED

Top 10% Yield Grade.

Another long bodied sire to breed those growthy F1 bullocks. Please Note: one eye has limited function due to an injury as a yearling.... could be a good buy.

Tested PP.

GOBOTHERY SIRE  
**Sire: GOBOTHERY SIRE**  
 GOBOTHERY COW

GOBOTHERY SIRE  
**Dam: GOBOTHERY M119**  
 GOBOTHERY COW

Weight	Fat	EMA	IMF	Fleck
HB Status		Scrotal	Morph.	Mot.
Buyers Discretion				80%

	CE	BW	WW	YW	Milk	MCE	MWWT	Stay	DOC	CWT	REA	FAT	MARB	YG	API\$
EPD	+7.5	+2.7	+53.9	+81.7	+25.0	+4.9	+52.0	+10.4	+10.5	-2.1	+0.37	-0.097	-0.13	-0.41	\$99.56
Acc.	7%	7%	7%	7%	1%	3%	3%	5%	1%	8%	8%	7%	7%	7%	

Purchaser: ..... Price: \$ .....



## WEEBOLLABOLLA NICOL (P)

Sire of numerous sale lots. Sired by Marellan Nuclear who was the best Theodore son Lisa & I have bred. Weebollabolla Theodore's influence on our herd and the Shorthorn breed cannot be overstated. It's no surprise that his name means 'Gift of God'. One of the least talked about traits these days is constitution. In our herd, the feed bucket/bunk has no opportunity to hide constitution issues. Ticks, fly, heat and long periods of low quality feed are invited into our herd, because we need to test for (and then breed for) constitution. The constitution of Nicol (like his grandfather, Theodore) is why we like him so much. The majority of our donor cows have been or will be flushed to Nicol.

# MARELLAN XERXES (P)

# LOT 11

ID: JOBR069

BORN: 27/7/20 (26 MTHS)

RED



**Sire:** TURANVILLE CHICAGO Z82 (P)  
**FUTURITY KOKODA (P)**  
 FUTURITY PHENOMENONS RUBY H59 (P)  
**Dam:** LAKE HAWDON HORACIO H25 (P)  
**CHADWICK KAZANDRA K7 (P)**  
 CHADWICK DAWSO D12 (P)

Top 15% Stayability, Top 25% API, Top 30% Docility and Fat.

A top notch sire. Xerxes has a ideal smooth carcass type; thickness all through, sound made, big nuts and plenty of doing ability. A top bull to breed those top bullocks and F1 replacement females.

Weight	Fat	EMA	IMF	Fleck
HB Status		Scrotal	Morph.	Mot.
3 Star				85%

	CE	BW	WW	YW	Milk	MCE	MWWT	Stay	DOC	CWT	REA	FAT	MARB	YG	API\$
EPD	+8.3	+2.4	+49.0	+81.3	+28.1	+6.0	+52.6	+15.9	+12.6	-2.7	+0.29	-0.073	-0.03	-0.32	\$116.57
Acc.	18%	21%	20%	20%	9%	11%	13%	9%	24%	19%	18%	14%	17%	15%	

Purchaser: ..... Price: \$ .....

# MARELLAN XANTHIPPE (P)

# LOT 12

ID: JOBR130

BORN: 28/6/20 (26 MTHS)

RED



**Sire:** MARELLAN PROPHET (P)  
**MARELLAN STAR (P)**  
 MARELLAN CAMELOT 0078 (P)  
**Dam:** NUNYARA SUPERMAN L191 (P)  
**WARRABERRY FREDA P70 (P)**  
 WARRABERRY FREDA M210 (P)

Top 4% Docility, Top 15% Fat, Top 20% Calving Ease and Maternal Calving Ease, Top 25% Milk, Top 30% Birthweight.

A slick coated red that will take your eye due to his length, width and smoothness of mobility. Star, Superman and Nicodemus (the Billboard bull) just add to his relevance to bred Maternal F1's or bullocks that will weigh and pay.

Weight	Fat	EMA	IMF	Fleck
HB Status		Scrotal	Morph.	Mot.
Buyers Discretion (HFC)				70%

	CE	BW	WW	YW	Milk	MCE	MWWT	Stay	DOC	CWT	REA	FAT	MARB	YG	API\$
EPD	+10.0	+2.1	+47.3	+74.1	+29.7	+7.3	+53.4	+9.3	+16.9	-1.7	+0.21	-0.062	-0.11	-0.27	\$99.48
Acc.	21%	28%	19%	19%	7%	13%	11%	8%	14%	14%	13%	10%	12%	11%	

Purchaser: ..... Price: \$ .....



Location: 9 Turrama Road, Clermont QLD  
Phone: 07 4983 1688 Fax: 07 4983 1779  
Website: [www.breckoncattleequipment.com.au](http://www.breckoncattleequipment.com.au)



# Leading Manufacturers of

~ Manual, Hydraulic and Pneumatic Crushes & Branding Cradles ~

~ Feeding Equipment ~ Roller Mills ~



**Breckon Cattle Equipment  
"BCE" proudly owned and  
manufactured by Gregory  
Fabrications in Clermont QLD.  
Contact them for all you cattle  
handling equipment.**



# MARELLAN UNCLE JAMES (P)

# LOT 13

ID: JOBR123

BORN: 4/7/20 (26 MTHS)

RED



MARELLAN PROPHET (P)  
**Sire: MARELLAN SID (P)**  
 MARELLAN IDA 2012 (P)

GOBOTHERY SIRE  
**Dam: GOBOTHERY P253 (P)**  
 GOBOTHERY COW

Sire is Top 2% Maternal Weaning Weight, Top 3% Milk, Top 4% Yearling Weight, Stayability and API, Top 10% Weaning Weight and Fat, Top 20% Calving Ease, Top 30% REA and Marbling.

A top son of Sid. Uncle James has the length that weighs and quality that pays. Another bull that has a clean coat and the mobility for CQ and beyond.

**Tested PP.**

**Sire EPDS.**

Weight	Fat	EMA	IMF	Fleck
HB Status		Scrotal	Morph.	Mot.
Buyers Discretion (HFC)				70%

	CE	BW	WW	YW	Milk	MCE	MWWT	Stay	DOC	CWT	REA	FAT	MARB	YG	API\$
<b>EPD</b>	+9.9	+2.4	+63.4	+105.1	+35.9	+8.3	+67.6	+17.8	+9.0	+0.3	+0.44	-0.057	+0.03	-0.32	\$131.83
<b>Acc.</b>	43%	53%	44%	44%	11%	20%	22%	25%	32%	44%	42%	32%	40%	34%	

Purchaser: ..... Price: \$ .....

# MARELLAN XYLON (P)

# LOT 14

ID: JOBR116

BORN: 24/7/20 (26 MTHS)

RED



GOBOTHERY SIRE  
**Sire: GOBOTHERY SIRE**  
 GOBOTHERY COW

GOBOTHERY SIRE  
**Dam: GOBOTHERY M328**  
 GOBOTHERY COW

Top 10% Yield Grade.

A young sire with carcass shape, mobility and length of body. Should produce good bullocks or feeders.

**Tested PP.**

Weight	Fat	EMA	IMF	Fleck
HB Status		Scrotal	Morph.	Mot.
Buyers Discretion				95%

	CE	BW	WW	YW	Milk	MCE	MWWT	Stay	DOC	CWT	REA	FAT	MARB	YG	API\$
<b>EPD</b>	+7.5	+2.7	+53.9	+81.7	+25.0	+4.9	+52.0	+10.4	+10.5	-2.1	+0.37	-0.097	-0.13	-0.41	\$99.56
<b>Acc.</b>	7%	7%	7%	7%	1%	3%	3%	5%	1%	8%	8%	7%	7%	7%	

Purchaser: ..... Price: \$ .....

# MARELLAN XIMO (P)

# LOT 15

ID: JOBR138 BORN: 4/8/20 (25 MTHS) RED



MARELLAN NUCLEAR (P)  
**Sire: WEEBOLLABOLLA NICOL N340 (P)**  
 WEEBOLLABOLLA ARDULLIE H378 (H)

GOBOTHERY SIRE  
**Dam: GOBOTHERY P128 (P)**  
 GOBOTHERY COW

Sire is Top 1% Yield Grade, Top 10% Weaning Weight, Top 15% Yearling Weight, Top 25% Maternal Weaning Weight.

Another top quality Nicol son. A middle of the road bull that has the doing ability and rumen capacity to do well in CQ and beyond. A good bull for breeding maternal F1's.

Sire EPDS

Weight	Fat	EMA	IMF	Fleck
HB Status		Scrotal	Morph.	Mot.
Buyers Discretion				70%

	CE	BW	WW	YW	Milk	MCE	MWWT	Stay	DOC	CWT	REA	FAT	MARB	YG	API\$
EPD	+7.1	+3.3	+64.1	+95.7	+25.8	+5.3	+57.9	+8.8	+10.6	-9.7	-0.39	-0.115	-0.23	-0.49	\$93.13
Acc.	31%	33%	31%	31%	6%	13%	14%	21%	5%	38%	36%	33%	36%	31%	

Purchaser: ..... Price: \$ .....

# MARELLAN XCELLENT (P)

# LOT 16

ID: JOBR107 BORN: 10/7/20 (26 MTHS) WHITE



THE GROVE OSCAR A748 (P)  
**Sire: WEEBOLLABOLLA HIGGINS H82 (P)**  
 WEEBOLLABOLLA JILLAROO Z49 (P)

GOBOTHERY SIRE  
**Dam: GOBOTHERY H484**  
 GOBOTHERY COW

Top 10% REA and Yearling Weight, Top 15% Yearling Weight, Top 20% Weaning Weight and Calving Weight. A cracking white sire. He will specialise in big roan bullocks that finish quick, weigh heavy and taste great.

Weight	Fat	EMA	IMF	Fleck
HB Status		Scrotal	Morph.	Mot.
Cows Only				95%

	CE	BW	WW	YW	Milk	MCE	MWWT	Stay	DOC	CWT	REA	FAT	MARB	YG	API\$
EPD	+5.6	+2.4	+61.1	+95.8	+23.4	+5.7	+54.0	+11.3	+9.5	+13.0	+0.56	-0.100	-0.18	-0.41	\$99.92
Acc.	29%	30%	30%	30%	5%	11%	13%	20%	2%	36%	35%	30%	33%	29%	

Purchaser: ..... Price: \$ .....



# MARELLAN XENOS

# LOT 17

ID: JOBR135

BORN: 20/7/20 (26 MTHS)

WHITE



ROYALLA QUANTUM J392 (P)  
**Sire: ROYALLA TRIGGER M246 (P)**  
 ROYALLA MELODY 8366L (P)

ROYALLA NEXT OF KIN F261 (P)  
**Dam: WARRABERRY PRINCESS MARGIEJ115 (P)**  
 ROYALLA PRINCESS MARGIE 7378 (P)

Sire is Top 2% Fat, Top 10% Stayability, Top 15% Marbling, Top 20% Yearling Weight, Milk and Maternal Weaning Weight, Top 25% Calving Weight, Top 30% API. **Another top white bull. A real all rounder; good doing, nice carcass and plenty of performance. His big roan bullocks will be in demand at every level of the industry.**

**Clean Polled, PP by parentage.**  
**Sire EPDS.**

Weight	Fat	EMA	IMF	Fleck
HB Status		Scrotal	Morph.	Mot.
Buyers Discretion				90%

	CE	BW	WW	YW	Milk	MCE	MWWT	Stay	DOC	CWT	REA	FAT	MARB	YG	API\$
EPD	+3.3	+5.6	+56.5	+93.0	+30.9	+3.2	+59.2	+16.8	+9.3	+11.2	+0.24	-0.035	+0.09	-0.16	\$114.47
Acc.	48%	66%	57%	58%	13%	21%	28%	23%	37%	49%	46%	34%	44%	37%	

Purchaser: ..... Price: \$ .....

# MARELLAN XABI (H)

# LOT 18

ID: JOBR092

BORN: 12/7/20 (26 MTHS)

WHITE



MARELLAN NUCLEAR (P)  
**Sire: WEEBOLLABOLLA NICOL N340 (P)**  
 WEEBOLLABOLLA ARDULLIE H378 (H)

WEEBOLLABOLLA J95  
**Dam: GOBOTHERY N230**  
 GOBOTHERY COW

Top 1% Weaning Weight and Yearling Weight, Top 3% Maternal Weaning Weight, Top 20% Yield Grade. **Horned. A good sound made white that will produce attractive and profitable roan bullocks or feeders.**

Weight	Fat	EMA	IMF	Fleck
HB Status		Scrotal	Morph.	Mot.
Buyers Discretion				70%

	CE	BW	WW	YW	Milk	MCE	MWWT	Stay	DOC	CWT	REA	FAT	MARB	YG	API\$
EPD	+7.5	+4.5	+79.3	+114.3	+26.3	+5.2	+66.0	+6.2	+10.5	-14.5	+0.14	-0.096	-0.26	-0.38	\$89.65
Acc.	27%	29%	28%	28%	1%	9%	10%	21%	1%	35%	33%	28%	30%	28%	

Purchaser: ..... Price: \$ .....

# MARELLAN XPERT (P)

# LOT 19

ID: JOBR132

BORN: 15/7/20 (26 MTHS)

ROAN



BUNDALEER UNITED CHIEF U21 (P)  
**Sire: WEEBOLLABOLLA GOODAR G105 (P)**  
 WEEBOLLABOLLA E25 (P)

MARELLAN LUDWIG 8267 (P)  
**Dam: WARRABERRY MEME G45 (P)**  
 WARRABERRY MEME 14 (P)

Top 15% REA and Fat, Top 20% Docility, Top 30% Milk, Maternal Weaning Weight and Calving Weight. Xpert is an impressive roan sire with a beautiful soft muscle pattern. It would be hard to go wrong with a bull like this when joined to Bos Indicus females. A full brother and 3/4 brother sold for \$19,000 & \$18,000 in last years sale to Mt Douglas. Two daughters of G45 are donor females. One of them is the dam of Wow Factor, last years top priced bull at \$38,000.

Weight	Fat	EMA	IMF	Fleck
HB Status		Scrotal	Morph.	Mot.
3 Star				70%

	CE	BW	WW	YW	Milk	MCE	MWWT	Stay	DOC	CWT	REA	FAT	MARB	YG	API\$
EPD	+7.7	+3.5	+54.6	+83.2	+28.9	+5.5	+56.2	+9.2	+13.6	+8.5	+0.50	-0.062	-0.22	-0.32	\$90.49
Acc.	19%	21%	18%	18%	9%	12%	12%	12%	13%	18%	18%	13%	14%	14%	

Purchaser: ..... Price: \$ .....

# MARELLAN XUYANGSHENG (H)

# LOT 20

ID: JOBR124

BORN: 4/7/20

(26 MTHS)

ROAN



MARELLAN PROPHET (P)  
**Sire: MARELLAN STAR (P)**  
 MARELLAN CAMELOT 0078 (P)

**Dam: GOBOTHERY P115**

Sire is Top 15% Birthweight, Milk, Maternal Weaning Weight and Docility, Top 20% Calving Ease, Top 25% Fat. Horned. Another Star son that will transmitting quick finishing traits into his progeny. A medium maturity bull that has a good soft muscle pattern, with nice thickness from behind and on top.

Sire EPDS.

Weight	Fat	EMA	IMF	Fleck
HB Status		Scrotal	Morph.	Mot.
3 Star (HFC)				90%

	CE	BW	WW	YW	Milk	MCE	MWWT	Stay	DOC	CWT	REA	FAT	MARB	YG	API\$
EPD	+10.5	+0.9	+41.5	+66.6	+31.8	+7.6	+52.6	+9.1	+14.2	+4.2	+0.29	-0.069	-0.15	-0.28	\$97.57
Acc.	51%	59%	51%	51%	10%	25%	24%	24%	36%	48%	45%	33%	39%	36%	

Purchaser: ..... Price: \$ .....

# MARELLAN XIWANGGONGCHENG (P)

# LOT 21

ID: JOBR122 BORN: 5/7/20 (26 MTHS) ROAN



**Sire:** MARELLAN PROPHET (P)  
**MARELLAN STAR (P)**  
 MARELLAN CAMELOT 0078 (P)

**Dam:** GOBOTHERY SIRE  
**GOBOTHERY P21**  
 GOBOTHERY COW

Sire is Top 15% Birthweight, Milk, Maternal Weaning Weight and Docility, Top 20% Calving Ease, Top 25% Fat. Thick, soft and deep. Earlier maturity pattern than most. Xiwanggongcheng is a great option for producers targeting the domestic market, but he's not a great option for producers that like to be able to spell their bulls names. He comes with an extra steak!

Sire EPDS.

Weight	Fat	EMA	IMF	Fleck
HB Status		Scrotal	Morph.	Mot.
3 Star (HFC)				80%

	CE	BW	WW	YW	Milk	MCE	MWWT	Stay	DOC	CWT	REA	FAT	MARB	YG	API\$
EPD	+10.5	+0.9	+41.5	+66.6	+31.8	+7.6	+52.6	+9.1	+14.2	+4.2	+0.29	-0.069	-0.15	-0.28	\$97.57
Acc.	51%	59%	51%	51%	10%	25%	24%	24%	36%	48%	45%	33%	39%	36%	

Purchaser: ..... Price: \$ .....

# MARELLAN XUGUANGXIAN (P)

# LOT 22

ID: JOBR125 BORN: 7/7/20 (26 MTHS) ROAN



**Sire:** MARELLAN PROPHET (P)  
**MARELLAN STAR (P)**  
 MARELLAN CAMELOT 0078 (P)

**Dam:** GOBOTHERY SIRE  
**GOBOTHERY P55**  
 GOBOTHERY COW

Sire is Top 15% Birthweight, Milk, Maternal Weaning Weight and Docility, Top 20% Calving Ease, Top 25% Fat. A slick soft roan Star son that is easy doing. Should be a good option for heifers.

Sire EPDS.

Weight	Fat	EMA	IMF	Fleck
HB Status		Scrotal	Morph.	Mot.
4 Star (HFC)				75%

	CE	BW	WW	YW	Milk	MCE	MWWT	Stay	DOC	CWT	REA	FAT	MARB	YG	API\$
EPD	+10.5	+0.9	+41.5	+66.6	+31.8	+7.6	+52.6	+9.1	+14.2	+4.2	+0.29	-0.069	-0.15	-0.28	\$97.57
Acc.	51%	59%	51%	51%	10%	25%	24%	24%	36%	48%	45%	33%	39%	36%	

Purchaser: ..... Price: \$ .....



Tom's Quality Meats specialise in a wide range of products from local beef and pork to MSA graded Tasmanian beef as well as fresh chicken products and wood smoked ham and bacon products.

We are also available for private beef cut ups.

*'Sale day Pies were proudly made by Tom's Quality meats using Thousand Guineas Shorthorn Beef'*

**TOM'S QUALITY MEATS**  
29 Marion Street  
Charters Towers Qld 4820

**07 4787 1445**  
info@tomsqualitymeats.com.au

## MARELLAN XAVIER (P)

# LOT 23

**ID: JOBR068      BORN: 25/7/20 (26 MTHS)      ROAN**

Top 20% REA, Top 30% Maternal Weaning Weight and Docility.  
A real meaty type bull with good bone and structure. Please note; Xavier carried more hair through winter than most of our bulls. Dam has bred some outstanding progeny.

Weight	Fat	EMA	IMF	Fleck
HB Status	Scrotal	Morph.	Mot.	
Cows Only			90%	

**Sire:** SPRYS ISABELLA'S MASTER F293 (P)  
**MARELLAN QUEENSLANDER (P)**  
ROYALLA MARGIES MEMORY 9054M (P)  
**Dam:** MARELLAN LUDWIG 8267 (P)  
**WARRABERRY MEME G45 (P)**  
WARRABERRY MEME 14 (P)

	CE	BW	WW	YW	Milk	MCE	MWWT	Stay	DOC	CWT	REA	FAT	MARB	YG	API\$
EPD	+2.9	+5.9	+56.5	+82.7	+28.5	+2.7	+56.8	+9.7	+12.8	+8.0	+0.48	-0.078	-0.17	-0.35	\$84.13
Acc.	18%	20%	18%	18%	8%	11%	11%	13%	14%	19%	19%	16%	16%	16%	

Purchaser: ..... Price: \$ .....

## MARELLAN XANTHUS (P)

# LOT 24

**ID: JOBR131      BORN: 30/6/20 (26 MTHS)      RED**



**Sire:** MARELLAN PROPHET (P)  
**MARELLAN STAR (P)**  
MARELLAN CAMELOT 0078 (P)  
**Dam:** DAMO PARK TIPPERARY M022 (P)  
**WARRABERRY FREDA P253 (P)**  
WARRABERRY FREDA L33 (P)

Top 3% Docility, Top 15% Birthweight and Fat, Top 20% Calving Ease and Maternal Calving Ease, Top 30% Milk.  
A moderate framed carcass machine. Xanthus has really good rumen capacity and smooth body. He will produce high class progeny with a bias to early finishing. Star X Tipperary is a very good cross.

Weight	Fat	EMA	IMF	Fleck
HB Status	Scrotal	Morph.	Mot.	
3 Star (HFC)			90%	

	CE	BW	WW	YW	Milk	MCE	MWWT	Stay	DOC	CWT	REA	FAT	MARB	YG	API\$
EPD	+10.3	+1.3	+47.3	+77.2	+29.4	+7.3	+53.1	+10.2	+17.6	-4.4	+0.23	-0.063	-0.08	-0.28	\$106.01
Acc.	21%	30%	21%	21%	8%	14%	12%	7%	12%	14%	13%	11%	12%	11%	

Purchaser: ..... Price: \$ .....

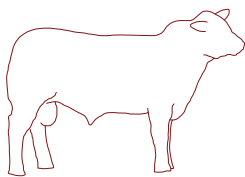
# YOUR NO. #1 F1

Based in the ticks at Emerald in Central Queensland, **MARELLAN SHORTHORNS** is dedicated SOLELY to the Northern Beef Industry, with industry leading selection pressure and selling bulls with **'NO GRAIN – NOT EVER'**.

Produce your **NUM#1 F1**.

## Marellan Shorthorns *"Bred for Bos Indicus Cows"* Bull Sale

Tuesday 27th Sept 2022  
On Property "Emerald Downs" Emerald



**marellan  
shorthorns**

**Bred for Bos Indicus Cows!**



LINCOLN & LISA JOB 0404 083 438 EMERALD QUEENSLAND  
lincolnandlisa@marellan.com.au www.marellan.com.au

## Grass



Organic F1, F2 & F3 Shorthorn X Bos Indicus  
Appleton Cattle Co, 'Islay Plains' Alpha

## Feedlot



F1 Shorthorn X Bos Indicus Cow  
WH Kettle & Co, Capella

## Maternal



F1 Shorthorn X Brahman  
10yr old maternal excellence  
with F2 calf at side

# MARELLAN XENOCRATES (P)

# LOT 25

ID: JOBR128

BORN: 26/6/20 (27 MTHS)

RED



**Sire:** MARELLAN PROPHET (P)  
**MARELLAN STAR (P)**  
 MARELLAN CAMELOT 0078 (P)

**Dam:** DAMO PARK TIPPERARY M022 (P)  
**WARRABERRY LUCILLA P173 (P)**  
 WARRABERRY LUCILLA H122 (P)

Top 20% Birthweight, Docility and Fat, Top 25% Calving Ease and Milk, Top 30% Maternal Calving Ease. Xenocrates has a soft and smooth muscle pattern. Combined with his clean coat, doing ability and athleticism him a pretty handy bull.

Weight	Fat	EMA	IMF	Fleck
HB Status		Scrotal	Morph.	Mot.
3 Star (HFC)				85%

	CE	BW	WW	YW	Milk	MCE	MWWT	Stay	DOC	CWT	REA	FAT	MARB	YG	API\$
EPD	+9.3	+1.5	+46.9	+76.3	+29.6	+6.8	+53.1	+9.2	+13.5	-0.8	+0.31	-0.066	-0.05	-0.30	\$103.38
Acc.	20%	28%	19%	19%	6%	12%	10%	7%	14%	13%	13%	10%	12%	11%	

Purchaser: ..... Price: \$ .....

# MARELLAN XINJIANG (P)

# LOT 26

ID: JOBR121

BORN: 8/7/20 (26 MTHS)

RED



**Sire:** MARELLAN PROPHET (P)  
**MARELLAN STAR (P)**  
 MARELLAN CAMELOT 0078 (P)

**Dam:** GOBOTHERY P298

Sire is Top 15% Birthweight, Milk, Maternal Weaning Weight and Docility, Top 20% Calving Ease, Top 25% Fat. Depth and doing ability are the features of this Star son. He will produce progeny that finish quickly.

Sire EPDS.

Weight	Fat	EMA	IMF	Fleck
HB Status		Scrotal	Morph.	Mot.
3 Star (HFC)				80%

	CE	BW	WW	YW	Milk	MCE	MWWT	Stay	DOC	CWT	REA	FAT	MARB	YG	API\$
EPD	+10.5	+0.9	+41.5	+66.6	+31.8	+7.6	+52.6	+9.1	+14.2	+4.2	+0.29	-0.069	-0.15	-0.28	\$97.57
Acc.	51%	59%	51%	51%	10%	25%	24%	24%	36%	48%	45%	33%	39%	36%	

Purchaser: ..... Price: \$ .....

# MARELLAN YEOVAL EAGLE (P)

# LOT 27

ID: JOBR149

BORN: 26/12/20 (21 MTHS)

RED



**Sire:** MARELLAN PROPHEX (P)  
MARELLAN SID (P)  
MARELLAN IDA 2012 (P)

**Dam:** MARELLAN CAMELOT 0078 (P)  
MARELLAN CAMELOT I5214 (P)

Top 3% Milk, Top 10% Maternal Weaning Weight, Top 15% Fat, Top 30% Maternal Calving Ease and API.  
Yeoval Eagle is an outstanding slick coated mobile red sire. Great rocks, thick carcass and performance without compromising doing ability, his weight for day of age is off the charts. Comes from a mating between 2 of the best we have ever had, Sid X Camelot 0078. She is the dam of Star, Pom and many other top progeny.

Weight	Fat	EMA	IMF	Fleck
HB Status		Scrotal	Morph.	Mot.
Buyers Discretion				75%

	CE	BW	WW	YW	Milk	MCE	MWWT	Stay	DOC	CWT	REA	FAT	MARB	YG	API\$
EPD	+7.2	+2.7	+52.6	+84.6	+35.2	+6.6	+61.5	+14.7	+9.9	-7.1	+0.32	-0.065	0.00	-0.33	\$114.84
Acc.	21%	28%	22%	22%	9%	12%	13%	11%	15%	19%	18%	16%	18%	15%	

Purchaser: ..... Price: \$ .....

# MARELLAN UNCLE TIM (P)

# LOT 28

ID: JOBR081

BORN: 1/11/20 (22 MTHS)

RED/WHITE



**Sire:** MARELLAN PROPHEX (P)  
MARELLAN SID (P)  
MARELLAN IDA 2012 (P)

**Sire:** MARELLAN NICODEMUS (P)  
MARELLAN DUCHESS 2176 (P)  
MARELLAN DAINTY DUCHESS 9358 (P)

Top 10% Milk, Top 15% Maternal Weaning Weight, Top 20% Maternal Calving Ease, Top 25% Stayability, Top 30% Fat.

Smooth and thick muscle pattern, slick coat and packed by some proven genetics. Uncle Tim is one of Sid's best and dam, Duchess 2176, is also the dam of Viriviri (used in herd) and numerous outstanding progeny in the pipeline. She is our favourite Nicodemus cow.

Weight	Fat	EMA	IMF	Fleck
HB Status		Scrotal	Morph.	Mot.
Buyers Discretion				80%

	CE	BW	WW	YW	Milk	MCE	MWWT	Stay	DOC	CWT	REA	FAT	MARB	YG	API\$
EPD	+8.5	+3.3	+54.0	+85.4	+32.6	+7.6	+59.6	+14.6	+11.8	-6.7	+0.33	-0.072	-0.10	-0.35	\$110.10
Acc.	21%	28%	25%	23%	9%	11%	14%	12%	11%	26%	25%	15%	17%	19%	

Purchaser: ..... Price: \$ .....

# MARELLAN XHOSA (P)

# LOT 29

ID: JOBR080

BORN: 23 /10/20 (23 MTHS)

RED



MARELLAN NICODEMUS (P)  
**Sire: MARELLAN SURAT (P)**  
 MARELLAN DAINTY DUCHESS 9358 (P)  
 MARELLAN OIL SKIN (P)  
**Sire: MARELLAN EDEL 4080 (P)**  
 MARELLAN EDEL 2177 (P)

Top 20% Milk, Top 30% Birthweight, Maternal Weaning Weight and Fat.

Another thick, chunky, slick coated red. Xhosa will be with your cows, not camped at the water.

Weight	Fat	EMA	IMF	Fleck
HB Status		Scrotal	Morph.	Mot.
Buyers Discretion				75%

	CE	BW	WW	YW	Milk	MCE	MWWT	Stay	DOC	CWT	REA	FAT	MARB	YG	API\$
EPD	+7.6	+2.1	+50.5	+75.0	+30.9	+6.4	+56.2	+10.5	+12.0	-2.5	+0.29	-0.072	-0.03	-0.32	\$104.09
Acc.	16%	23%	21%	20%	9%	10%	13%	9%	8%	22%	20%	11%	12%	15%	

Purchaser: ..... Price: \$ .....

# MARELLAN XTRA COLOUR (P)

# LOT 30

ID: JOBR083

BORN: 3/11/20 (22 MTHS)

RED/WHITE



YANCO LIMITED EDITION L18 (P)  
**Sire: MALLEEVALE NEWEST ADDITION N1 (P)**  
 ESELAR PARK FTN HONOUR H168 (P)  
 MARELLAN QUEENSLANDER (P)  
**Dam: MARELLAN HARMONY 8017 (P)**  
 MARELLAN HARMONY 2270 (P)

Top 30% Birthweight and Calving Ease.  
 A striking Red & White. He has good performance and structure. Xtra Colour would be great bull for producers that have roads going through their property. 1/8 Content. Harmony 8017 is a beautiful bodied cow.

Weight	Fat	EMA	IMF	Fleck
HB Status		Scrotal	Morph.	Mot.
3 Star				85%

	CE	BW	WW	YW	Milk	MCE	MWWT	Stay	DOC	CWT	REA	FAT	MARB	YG	API\$
EPD	+7.8	+2.1	+50.3	+75.7	+25.7	+5.1	+50.8	+5.7	+10.4	+9.5	+0.25	-0.088	-0.04	-0.33	\$94.26
Acc.	14%	23%	14%	14%	4%	6%	7%	7%	5%	14%	13%	11%	12%	11%	

Purchaser: ..... Price: \$ .....





# Become a supplier to the award-winning beef program.

The **Thousand Guineas** beef program is the only dedicated shorthorn beef brand in the market.

Thousand Guineas beef celebrates the history of the breed and its origins in England with the record price tag of 1,000 Guineas, paid back in 1810 for the iconic bull Comet.

Read more about the background story on the brand website [www.thousandguineasbeef.com.au](http://www.thousandguineasbeef.com.au)

The brand has grown from strength to strength over the years with meat wholesalers, butcher shops and restaurants around the world recognising the superiority of this beef brand.

The brand is underpinned by the quality of the breed and JBS is always looking to introduce new suppliers to the program.

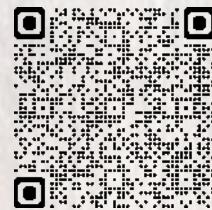
## To be part of the program:

Livestock Specifications for Feedlot Entry

<b>Breed Type</b>	Shorthorn (verified and accredited)
<b>Weight</b>	380kg - 520kg 0-4 teeth
<b>Weight</b>	250kg minimum 0 teeth only

Cattle must be pre-vaccinated with Bovilis MH+IBR before delivery to Prime City, Riverina or Carooona feedlots.

## To find your local JBS cattle buyer scan here:



Your trusted and reliable partner in the cattle industry.



# MARELLAN YANCO 1053 (P)

# LOT 31

ID: JOBS053

BORN: 4/2/21 (19 MTHS)

ROAN



ROYALLA RENEGADE K272 (P)  
**Sire: ROYALLA P220 (P)**  
 ROYALLA HEATHER M173 (P)  
 MARELLAN PROPHET (P)  
**Dam: MARELLAN IDA 8034 (P)**  
 MARELLAN IDA 1319 (P)

Top 20% Calving Ease, Docility and Fat, Top 25% Maternal Weaning Weight, Top 30% Weaning Weight and Yearling Weight.

A super soggy sire, he is a top self bull for maintaining body condition. Deep, thick and easy doing, Yanco would do a great job over any type of Bos Indicus cow.

Weight	Fat	EMA	IMF	Fleck
HB Status		Scrotal	Morph.	Mot.
Buyers Discretion (HFC)				85%

	CE	BW	WW	YW	Milk	MCE	MWWT	Stay	DOC	CWT	REA	FAT	MARB	YG	API\$
EPD	+10.2	+2.4	+57.6	+89.1	+28.6	+6.2	+57.4	+10.9	+13.9	-1.8	+0.30	-0.067	-0.03	-0.31	\$111.08
Acc.	17%	27%	18%	18%	7%	9%	11%	8%	6%	13%	13%	11%	13%	11%	

Purchaser: ..... Price: \$ .....

# MARELLAN YUTOPIA (P)

# LOT 32

ID: JOBS048

BORN: 27/1/21 (20 MTHS)

ROAN



ROYALLA PROVENENCE H352 (P)  
**Sire: MARELLAN UTOPIA (P)**  
 MARELLAN MERENDEE 2444 (P)  
 WAUKARU ORION 2047 ET (P)  
**Dam: MARELLAN PRINCESS MARGIE 5025 (P)**  
 ROYALLA PRINCESS MARGIEJ6258 (P)

Top 3% Weaning Weight and Yearling Weight, Top 4% Maternal Weaning Weight, Top 10% Yield Grade, Top 30% Milk and REA.

Yutopia ia a magnificent easy doing roan. More hair than most but is thick throughout. His sire Utopia was top priced in our 2019 bull sale.

Weight	Fat	EMA	IMF	Fleck
HB Status		Scrotal	Morph.	Mot.
Cows Only				80%

	CE	BW	WW	YW	Milk	MCE	MWWT	Stay	DOC	CWT	REA	FAT	MARB	YG	API\$
EPD	+6.9	+5.4	+70.6	+106.8	+29.0	+4.9	+64.3	+13.3	+10.4	+2.8	+0.44	-0.093	-0.07	-0.40	\$109.64
Acc.	19%	30%	20%	20%	7%	9%	11%	11%	22%	18%	18%	15%	17%	15%	

Purchaser: ..... Price: \$ .....

# MARELLAN YACKA (P)

# LOT 33

ID: JOBS020

BORN: 3/1/21 (20 MTHS)

ROAN



WEEBOLLABOLLA BOSWORTH B90 (P)  
**Sire: MARELLAN NICODEMUS (P)**  
 MARELLAN ISOBEL 7152 (P)  
 ROYALLA NOSTALGIA (P)  
**Dam: ROYALLA ISOBEL L019 (P)**  
 ROYALLA ISOBEL J140 (P)

Top 4% Docility, Top 5% Fat, Top 20% Milk and Maternal Calving Ease.

A top grade bull with heaps of performance. Yacka has a great topline, thick and long body. Sired by the hugely influential Nicodemus, from one of the very best in the Royalla herd.

Weight	Fat	EMA	IMF	Fleck
HB Status		Scrotal	Morph.	Mot.
Buyers Discretion				85%

	CE	BW	WW	YW	Milk	MCE	MWWT	Stay	DOC	CWT	REA	FAT	MARB	YG	API\$
EPD	+7.0	+4.3	+50.3	+77.8	+30.4	+7.4	+55.6	+11.2	+16.8	-2.7	+0.34	-0.054	-0.12	-0.29	\$95.96
Acc.	21%	24%	22%	22%	13%	15%	16%	15%	14%	28%	26%	24%	26%	23%	

Purchaser: ..... Price: \$ .....

# MARELLAN YAMANTO (P)

# LOT 34

ID: JOBS074

BORN: 21/2/21 (19 MTHS)

ROAN



CRATHES HASTINGS (P)  
**Sire: FUTURITY PROPHECY P13 (P)**  
 FUTURITY ENIA H8 (P)  
 WARRABERRY FARLEY (P)  
**Dam: WARRABERRY CHANCE J141 (P)**  
 YAMBURGAN C323 (P)

Top 5% Calving Weight, Top 10% Weaning Weight, Yearling Weight, Maternal Weaning Weight, REA and Marbling, Top 15% Docility, Top 30% Milk and Yield Grade.

Yamanto is a big, bold, performance orientated bull. Dam other's progeny include Stoic, top priced bull at our 2017 sale.

Weight	Fat	EMA	IMF	Fleck
HB Status		Scrotal	Morph.	Mot.
Cows Only				80%

	CE	BW	WW	YW	Milk	MCE	MWWT	Stay	DOC	CWT	REA	FAT	MARB	YG	API\$
EPD	+6.8	+5.1	+65.1	+99.6	+29.2	+5.6	+61.8	+10.0	+14.3	+20.3	+0.57	-0.090	+0.13	-0.36	\$112.43
Acc.	20%	23%	20%	20%	8%	10%	12%	12%	22%	20%	20%	15%	18%	16%	

Purchaser: ..... Price: \$ .....

# MARELLAN UNCLE PAUL (H)

# LOT 35

ID: JOBS017

BORN: 4/1/21 (20 MTHS)

WHITE



MARELLAN PROPHET (P)

**Sire: MARELLAN SID (P)**

MARELLAN IDA 2012 (P)

MARELLAN NICODEMUS (P)

**Dam: MARELLAN CARNATION 4181 (P)**

MARELLAN CARNATION 0214 (P)

Top 10% Fat, Top 15% Yearling Weight, Top 20% Weaning Weight and Maternal Weaning Weight, Top 30% Maternal Calving Ease.

**Horned. A beautiful smooth bodied sire. Quick finishing and strong topline. 1/8 content. His roan progeny will be impressive. We will use Uncle Paul by AI.**

Weight	Fat	EMA	IMF	Fleck
HB Status		Scrotal	Morph.	Mot.
3 Star				90%

	CE	BW	WW	YW	Milk	MCE	MWWT	Stay	DOC	CWT	REA	FAT	MARB	YG	API\$
EPD	+7.8	+3.7	+60.4	+97.9	+28.0	+6.7	+58.2	+13.2	+8.7	+0.6	+0.32	-0.055	-0.04	-0.28	\$111.71
Acc.	18%	20%	19%	19%	7%	10%	11%	12%	15%	19%	18%	15%	17%	15%	

Purchaser: ..... Price: \$ .....

# MARELLAN YARRAMBAT (P)

# LOT 36

ID: JOBS089

BORN: 8/3/21 (18 MTHS)

WHITE



MARELLAN STAR (P)

**Sire: MARELLAN VIN DIESEL (P)**

ROYALLA LADY MARGIE M110 (P)

MARELLAN NICODEMUS (P)

**Dam: MARELLAN CHERIE 2111 (P)**

MARELLAN CHERIE J6139 (P)

Top 4% Fat, Top 25% Maternal Calving Ease and Docility.

**A soggy white with depth and width. Carries more hair than most but will produce roan F1's with carcase and coverage that can be turned off at a young age.**

Weight	Fat	EMA	IMF	Fleck
HB Status		Scrotal	Morph.	Mot.
3 Star				90%

	CE	BW	WW	YW	Milk	MCE	MWWT	Stay	DOC	CWT	REA	FAT	MARB	YG	API\$
EPD	+7.9	+2.8	+44.4	+68.9	+23.8	+6.9	+46.0	+10.7	+13.2	+0.8	+0.23	-0.051	-0.10	-0.23	\$97.57
Acc.	12%	29%	16%	17%	8%	8%	11%	7%	8%	12%	11%	8%	9%	9%	

Purchaser: ..... Price: \$ .....

# MARELLAN UNCLE WILF (P)

# LOT 37

ID: JOBS081

BORN: 6/3/21 (18 MTHS)

ROAN



**Sire:** MARELLAN PROPHET (P)  
**MARELLAN SID (P)**  
MARELLAN IDA 2012 (P)  
**Dam:** WARRABERRY FARLEY (P)  
**WARRABERRY CHANCE J141 (P)**  
YAMBURGAN C323 (P)

Top 10% Milk, Maternal Calving Ease and Maternal Weaning Weight, Top 15% Calving Ease, Top 20% API, Top 25% Weaning Weight, Yearling Weight, Stayability and REA, Top 30% Birthweight.

A clean coated roan Sid son with length and robust structure. A high performance bull, will weigh less than potential due to be picked on his peer group. Same dam as lot 34 & Stoic.

Weight	Fat	EMA	IMF	Fleck
HB Status		Scrotal	Morph.	Mot.
3 Star				80%

	CE	BW	WW	YW	Milk	MCE	MWWT	Stay	DOC	CWT	REA	FAT	MARB	YG	API\$
EPD	+10.7	+2.2	+58.2	+91.7	+33.0	+8.2	+62.1	+14.7	+10.3	+8.1	+0.45	-0.076	-0.07	-0.34	\$118.11
Acc.	20%	32%	21%	20%	8%	11%	12%	11%	15%	19%	18%	15%	16%	15%	

Purchaser: ..... Price: \$ .....

# MARELLAN YARRAS (P)

# LOT 38

ID: JOBS092

BORN: 11/3/21 (18 MTHS)

ROAN



**Sire:** MARELLAN STAR (P)  
**MARELLAN VIN DIESEL (P)**  
ROYALLA LADY MARGIE M110 (P)  
**Dam:** MARELLAN NUKARNI (P)  
**MARELLAN SUSAN 3175 (P)**  
ROYALLA SUSAN 3352 (P)

Top 10% Fat, Top 15% Birthweight, Top 25% Calving Ease.

Another clean coated, smooth made roan sire. A bull with good shape and tremendous structure. Susan 3175 is also the dam of Xcalibur, the \$36,000 bull from our 2021 sale. A good bull for heifers and producing progeny that can be turned off at a young age. PP by parentage.

Weight	Fat	EMA	IMF	Fleck
HB Status		Scrotal	Morph.	Mot.
4 Star				65%

	CE	BW	WW	YW	Milk	MCE	MWWT	Stay	DOC	CWT	REA	FAT	MARB	YG	API\$
EPD	+9.7	+1.0	+41.4	+67.4	+22.1	+6.2	+42.8	+9.2	+10.7	-2.0	+0.21	-0.056	-0.12	-0.25	\$98.43
Acc.	14%	30%	18%	18%	8%	7%	11%	4%	5%	10%	10%	9%	10%	8%	

Purchaser: ..... Price: \$ .....

# *YOUR* NO. #1 F1



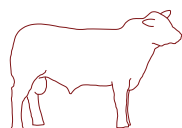
Outstanding F1 Bullock: High quality Brahman Cow X Marellan Shorthorn Bull  
WH Kettle & Co, Capella Qld

## Marellan Shorthorns

*"Bred for Bos Indicus Cows" Bull Sale*

**Tuesday 27th Sept 2022**

On Property "Emerald Downs" Emerald



**marellan**  
shorthorns  
Bred for Bos Indicus Cows!

LINCOLN & LISA JOB 0404 083 438  
EMERALD QUEENSLAND  
lincolnandlisa@marellan.com.au  
www.marellan.com.au



# MARELLAN YUNDI (P)

# LOT 39

ID: JOBS052

BORN: 29/1/21 (20 MTHS)

ROAN



**Sire:** ROYALLA RENEGADE K272 (P)  
**ROYALLA P220 (P)**  
 ROYALLA HEATHER M173 (P)

**Dam:** MARELLAN RINGER (P)  
**MARELLAN CAMELOT 8032 (P)**  
 MARELLAN CAMELOT I5214 (P)

Top 10% Birthweight, Top 15% Calving Ease, Top 20% Docility.

A neat and tidy roan. A real easy doing bull, ideal to breed those attractive saleable cattle from heifers. P220 bred a lot of easy doing progeny that still have carcass shape.

Weight	Fat	EMA	IMF	Fleck
HB Status		Scrotal	Morph.	Mot.
5 Star (HFC)				70%

	CE	BW	WW	YW	Milk	MCE	MWWT	Stay	DOC	CWT	REA	FAT	MARB	YG	API\$
EPD	+11.1	+0.3	+47.6	+72.8	+27.4	+6.5	+51.2	+13.8	+13.6	-4.2	+0.30	-0.076	-0.11	-0.34	\$113.83
Acc.	17%	25%	16%	16%	6%	9%	9%	7%	5%	13%	13%	11%	13%	11%	

Purchaser: ..... Price: \$ .....

# MARELLAN YOWIE (P)

# LOT 40

ID: JOBS050

BORN: 31/1/21 (20 MTHS)

RED



**Sire:** MEL-BAR RODEO DRIVE 347 (P)  
**BYLAND MISSION 6RD112 (IMP USA (P))**  
 BYLAND CINDY BEAUTY (P)

**Dam:** MARELLAN PHIL KEARNS (P)  
**MARELLAN BRONWYN 4050 (P)**  
 MARELLAN BRONWYN 2248 (P)

Top 10% Maternal Calving Ease, Top 15% Calving Ease, Top 20% Birthweight and Yield Grade.

A big performance sire. Heaps of weight for age and growth. His sire, Byland Mission is one of only a handful North American bred bulls to have proven survivability (& therefore stayability) in our herd. Dam, Bronwyn 4050 is an outstanding donor cow, she hasn't discovered how not to be fat. 1/8 Content.

Weight	Fat	EMA	IMF	Fleck
HB Status		Scrotal	Morph.	Mot.
Buyers Discretion				80%

	CE	BW	WW	YW	Milk	MCE	MWWT	Stay	DOC	CWT	REA	FAT	MARB	YG	API\$
EPD	+11.3	+1.6	+46.2	+70.7	+25.8	+8.3	+48.9	+13.7	+12.3	-11.8	+0.26	-0.083	-0.07	-0.38	\$113.22
Acc.	21%	23%	22%	23%	16%	16%	18%	16%	10%	30%	28%	25%	27%	24%	

Purchaser: ..... Price: \$ .....

# MARELLAN YARRAWONGA (P)

# LOT 41

ID: JOBS035

BORN: 26/1/21 (20 MTHS)

RED



**Sire:** MEL-BAR RODEO DRIVE 347 (P)  
**BYLAND MISSION 6RD112 (IMP USA (P))**  
 BYLAND CINDY BEAUTY (P)

**Dam:** MARELLAN PHIL KEARNS (P)  
**MARELLAN BRONWYN 4050 (P)**  
 MARELLAN BRONWYN 2248 (P)

Top 10% Maternal Calving Ease, Top 15% Calving Ease, Top 20% Birthweight and Yield Grade.

Yarrowonga is another easy doing bull with carcass, like his full brother (Lots 40 & 45). We have collected over 80 embryo's from his dam. 1/8 content. He doesn't have many friends within his peer group.

Weight	Fat	EMA	IMF	Fleck
HB Status		Scrotal	Morph.	Mot.
5 Star				75%

	CE	BW	WW	YW	Milk	MCE	MWWT	Stay	DOC	CWT	REA	FAT	MARB	YG	API\$
EPD	+11.3	+1.6	+46.2	+70.7	+25.8	+8.3	+48.9	+13.7	+12.3	-11.8	+0.26	-0.083	-0.07	-0.38	\$113.22
Acc.	21%	23%	22%	23%	16%	16%	18%	16%	9%	30%	29%	27%	27%	25%	

Purchaser: ..... Price: \$ .....

# MARELLAN YIPPEE (P)

# LOT 42

ID: JOBS062

BORN: 15/2/21 (19 MTHS)

RED



**Sire:** MARELLAN STAR (P)  
**MARELLAN VIN DIESEL (P)**  
 ROYALLA LADY MARGE M110 (P)

**Dam:** MARELLAN CARMEN CH7 (P)

Sire is Top 4% Fat, Top 30% Birthweight. Incredible meat and muscularity and scrotal development. Beware, his progeny may force you brand early... they will be chunky. 25% Belmont. His sire, Vin Diesel has produced many top progeny.

Sire EPDS.

Weight	Fat	EMA	IMF	Fleck
HB Status		Scrotal	Morph.	Mot.
Cows Only				90%

	CE	BW	WW	YW	Milk	MCE	MWWT	Stay	DOC	CWT	REA	FAT	MARB	YG	API\$
EPD	+8.0	+2.1	+49.0	+76.9	+26.2	+5.5	+50.7	+9.9	+11.8	+6.6	+0.21	-0.049	-0.09	-0.20	\$99.29
Acc.	24%	39%	24%	23%	9%	13%	14%	8%	17%	20%	19%	15%	17%	16%	

Purchaser: ..... Price: \$ .....



# MARELLAN YOUR TURN (P) (TWIN)

# LOT 43

ID: JOBS059

BORN: (19 MTHS)

RED



BYLAND MISSION (P)  
**Sire: MARELLAN U-TURN (P)**  
 MARELLAN ELLA 7329K (P)

MARELLAN Q-BULL (S)  
**Dam: MARELLAN LEMON MERINGUE 6187 (P)**  
 MARELLAN LEMON MERINGUE 4435 (P)

Dam is Top 10% Weaning Weight and Maternal Weaning Weight, Top 15% Yearling Weight and Maternal Calving Ease, Top 20% Calving Ease, Top 25% Fat, Top 30% Milk. **A chunky, soggy red. A good doing bull with a thick butt. A bull to produce those high selling weaner cattle and progeny to fatten and kill young.**  
**PP by parentage.**

Dam EPDS.

Weight	Fat	EMA	IMF	Fleck
HB Status		Scrotal	Morph.	Mot.
Buyers Discretion				85%

	CE	BW	WW	YW	Milk	MCE	MWWT	Stay	DOC	CWT	REA	FAT	MARB	YG	API\$
EPD	+10.5	+4.3	+65.5	+97.6	+29.0	+8.1	+61.8	+7.2	+11.5	-10.1	+0.03	-0.071	-0.38	-0.26	\$83.83
Acc.	31%	34%	36%	36%	6%	15%	16%	24%	34%	38%	36%	28%	35%	30%	

Purchaser: ..... Price: \$ .....

# MARELLAN YARRA (P)

# LOT 44

ID: JOBS027

BORN: 13/1/21 (20 MTHS)

RED



ROYALLA RENEGADE K272 (P)  
**Sire: ROYALLA P220 (P)**  
 ROYALLA HEATHER M173 (P)

MARELLAN NICODEMUS (P)  
**Dam: MARELLAN BELINDA 8044 (P)**  
 MARELLAN BELINDA 0228 (P)

Top 5% Fat, Top 10% Docility, Top 15% Calving Ease, Top 20% Birthweight and Maternal Calving Ease. **It is a pleasure to watch Yarra walk. A great structured, high headed bull that combines carcase shape and doing ability.**

Weight	Fat	EMA	IMF	Fleck
HB Status		Scrotal	Morph.	Mot.
3 Star (HFC)				85%

	CE	BW	WW	YW	Milk	MCE	MWWT	Stay	DOC	CWT	REA	FAT	MARB	YG	API\$
EPD	+11.1	+1.7	+48.3	+72.4	+28.5	+7.3	+52.7	+11.1	+16.2	-4.2	+0.21	-0.054	-0.09	-0.25	\$106.12
Acc.	19%	27%	17%	17%	8%	12%	11%	9%	6%	16%	15%	12%	15%	13%	

Purchaser: ..... Price: \$ .....

# Finally. All in one.



## DOOVER.COM

Tanks, Troughs, Trackers,  
Pumps, Pivots, Meters,  
Cameras, Dams, Weather



Find Tall Tom on sale day  
Or call 0407 899 288



### MARELLAN YELLOW ROCK (P)

### LOT 45

ID: JOBS042      BORN: 27/1/21 (20 MTHS)      RED

Top 10% Maternal Calving Ease, Top 15% Calving Ease, Top 20% Birthweight and Yield Grade.

A moderate framed bull that has the easy doing carcase type. Progeny will fatten easily and taste great. Dam is a high meat quality female. 1/8 Content. Mission daughters have good survivability.

Sire: MEL-BAR RODEO DRIVE 347 (P)  
BYLAND MISSION 6RD112 (IMP USA (P))  
BYLAND CINDY BEAUTY (P)

Dam: MARELLAN PHIL KEARNS (P)  
MARELLAN BRONWYN 4050 (P)  
MARELLAN BRONWYN 2248 (P)

Weight	Fat	EMA	IMF	Fleck
HB Status	Scrotal	Morph.	Mot.	
4 Star			85%	

	CE	BW	WW	YW	Milk	MCE	MWWT	Stay	DOC	CWT	REA	FAT	MARB	YG	API\$
EPD	+11.3	+1.6	+46.2	+70.7	+25.8	+8.3	+48.9	+13.7	+12.3	-11.8	+0.26	-0.083	-0.07	-0.38	\$113.22
Acc.	21%	23%	22%	23%	16%	16%	18%	16%	9%	30%	29%	26%	27%	25%	

Purchaser: ..... Price: \$ .....

## NO GRAIN – NOT EVER

**NO GRAIN – NOT EVER. NO Pellets. NO Silage. NO Vague Statements about Bull Preparation.**

Just **HEAPS** of **SELECTION PRESSURE** and a finish on Grazing Crop. Presenting Bulls to a bull sale that are genuinely grass fed all their lives, means our bulls do not have the same sale day punch like bulls that have been assisted with grain at various times. It's a little like the groom turning up to his wedding in his favourite football shorts and ripped T-Shirt – it takes away from the day but it's probably a much more accurate predictor of the future.

*More Genetic progress is made in Adversity than Prosperity*

# MARELLAN YOU KNIGHTED (P)

# LOT 46

ID: JOBS113

BORN: 11/4/21 (17 MTHS)

RED



SEIFERT TEDSTAR (H)  
**Sire: MARELLAN UNITED (P)**  
 YAMBURGAN CONNIE D133 (P)  
 RONELLE PARK HURRICANE H242 (P)  
**Dam: MARELLAN ALICE 7057 (P)**  
 MARELLAN ALICE 4042 (P)

Top 20% Yearling Weight, Top 25% Weaning Weight.  
 A long bodied smooth made bull that will get out with cows in big paddocks. 1/4 Belmont. You Knighted has a great smooth coat and soft skin. I predict very good meat quality here. Will produce top bullocks and maternal F1's.

Weight	Fat	EMA	IMF	Fleck
HB Status		Scrotal	Morph.	Mot.
4 Star				80%

	CE	BW	WW	YW	Milk	MCE	MWWT	Stay	DOC	CWT	REA	FAT	MARB	YG	API\$
EPD	+6.9	+3.5	+59.5	+94.4	+22.8	+4.4	+52.6	+11.2	+10.1	+3.1	+0.42	-0.079	-0.08	-0.36	\$104.54
Acc.	20%	30%	21%	21%	7%	9%	12%	12%	9%	18%	18%	15%	17%	15%	

Purchaser: ..... Price: \$ .....

# MARELLAN YENGO (P) (TWIN)

# LOT 47

ID: JOBS098

BORN: 20/3/21 (18 MTHS)

RED/WHITE



MARELLAN STAR (P)  
**Sire: MARELLAN VIN DIESEL (P)**  
 ROYALLA LADY MARGE M110 (P)  
 MARELLAN QUANTUM (P)  
**Dam: MARELLAN BELINDA 7003 (P)**  
 MARELLAN BELINDA 0228 (P)

Top 20% Fat.  
 Moderate framed, thick and easy doing. A top option for breeders chasing progeny that finish early with good carcase shape. Dam is a donor cow. One of the younger bulls in the sale. Our selection pressure means bulls like this one don't express all their growth potential...but his progeny will.

Weight	Fat	EMA	IMF	Fleck
HB Status		Scrotal	Morph.	Mot.
3 Star				65%

	CE	BW	WW	YW	Milk	MCE	MWWT	Stay	DOC	CWT	REA	FAT	MARB	YG	API\$
EPD	+7.6	+3.7	+54.6	+85.2	+28.0	+5.2	+55.3	+10.1	+12.0	+5.7	+0.29	-0.067	-0.12	-0.27	\$97.49
Acc.	10%	14%	12%	12%	5%	6%	7%	5%	6%	11%	11%	9%	10%	9%	

Purchaser: ..... Price: \$ .....

# MARELLAN YAGOONA (P)

# LOT 48

ID: JOBS044

BORN: 27/1/21 (20 MTHS)

RED/WHITE



SEIFERT TEDSTAR (H)  
**Sire: MARELLAN UNITED (P)**  
 YAMBURGAN CONNIE D133 (P)  
**MARELLAN NICODEMUS (P)**  
**Dam: MARELLAN JILLIAN 2131 (P)**  
 MARELLAN JILLIAN 9139 (P)

Top 15% Weaning Weight and Yearling Weight, Top 25% Maternal Weaning Weight and Docility, Top 30% Fat.  
**A sound made sire with very good scrotal development. A real middle of the road type bull with top end maternal attributes. 1/4 Belmont. Dam has been a top producer, like so many of the Nicodemus daughters.**

Weight	Fat	EMA	IMF	Fleck
HB Status		Scrotal	Morph.	Mot.
Buyers Discretion				85%

	CE	BW	WW	YW	Milk	MCE	MWWT	Stay	DOC	CWT	REA	FAT	MARB	YG	API\$
EPD	+3.8	+5.7	+62.6	+96.7	+26.2	+5.2	+57.5	+9.4	+13.2	+2.5	+0.33	-0.073	-0.13	-0.31	\$90.79
Acc.	20%	31%	21%	21%	8%	10%	12%	12%	10%	18%	18%	14%	17%	15%	

Purchaser: ..... Price: \$ .....

# MARELLAN YAMBUK 1007 (P)

# LOT 49

ID: JOBS007

BORN: 4/1/21 (20 MTHS)

RED

Top 10% Birthweight, Top 15% Calving Ease, Top 20% Docility.  
**A bull that has length of body and nice carcass shape. A low birthweight bull that would be ideal for heifer joining's. Please note, lot 49 is below his genetic body condition, he's about as popular in his peer group as ScoMo at an ABC board meeting.**

ROYALLA RENEGADE K272 (P)  
**Sire: ROYALLA P220 (P)**  
 ROYALLA HEATHER M173 (P)  
**MARELLAN RINGER (P)**  
**Dam: MARELLAN CAMELOT 8006 (P)**  
 MARELLAN CAMELOT I5214 (P)

Weight	Fat	EMA	IMF	Fleck
HB Status		Scrotal	Morph.	Mot.
4 Star (HFC)				85%

	CE	BW	WW	YW	Milk	MCE	MWWT	Stay	DOC	CWT	REA	FAT	MARB	YG	API\$
EPD	+11.1	+0.3	+47.6	+72.8	+27.4	+6.5	+51.2	+13.8	+13.6	-4.2	+0.30	-0.076	-0.11	-0.34	\$113.83
Acc.	17%	26%	16%	17%	7%	9%	10%	7%	5%	13%	13%	11%	13%	11%	

Purchaser: ..... Price: \$ .....

## NEGATIVE FEEDBACK

We always welcome feedback on the performance of our bulls. Like all business' sometimes that feedback is negative. The most common piece of negative feedback is that our Shorthorn bulls don't like staying in their paddock when they're not working. When I hear this I'm not quite sure whether to be proud of them or ashamed. Nevertheless it is still a genuine issue to discuss. Shorthorn bulls, as part of their nature will often go looking for work - this obviously has an upside. Here are 5 strategies that may help with the management of your Shorthorn bulls.

1. There are not many things bulls respect, but one of them is electricity. If possible investing in electric fences around your spelling paddock, that may help to keep him in.

2. If your bull paddock has numerous sires in it, ensure that there are multiple options for the bulls to get water.
3. It doesn't hurt to have a few pregnant females running with the bulls in the off season, it may help the bulls stay settled.
4. If you have a 'wandering bull', try not to leave him/s out with cows for too long after the cows would be in calf. As some bulls start wandering once they have no work to do.
5. Take some photo's of your Shorthorn F1's, and of the scales at weaning, and your kill sheets, so that when you get annoyed by the bull/s you can remember why he's worth the hassle.

# MARELLAN YALLOURN (P)

# LOT 50

ID: JOBS119 BORN: 24/4/21 (17 MTHS) RED



YANCO LIMITED EDITION L18 (P)  
**Sire: MALLEEVALE NEWEST ADDITION N1 (P)**  
 ESELAR PARK FTN HONOUR H168 (P)

MARELLAN QUADE STAR (P)  
**Dam: MARELLAN DESTINY 6154 (P)**  
 MARELLAN DESTINY A027 (P)

Sire is Top 10% Calving Weight, Top 15% Birthweight, Top 25% REA and Marbling, Top 30% Maternal Calving Ease.

The youngest bull in the sale....but he's ready to go to work to produce good steers and great replacement females. I appreciated his long smooth body and soft skin. 1/8 Belmont. Dam has bred 4 top progeny from 4 calves.

Sire EPDS.

Weight	Fat	EMA	IMF	Fleck
HB Status		Scrotal	Morph.	Mot.
3 Star				85%

	CE	BW	WW	YW	Milk	MCE	MWWT	Stay	DOC	CWT	REA	FAT	MARB	YG	API\$
EPD	+8.6	+1.2	+53.0	+80.3	+23.9	+6.5	+50.4	+6.6	+11.2	+16.7	+0.45	-0.086	+0.04	-0.33	\$104.39
Acc.	40%	47%	38%	39%	10%	16%	19%	23%	11%	40%	39%	30%	37%	31%	

Purchaser: ..... Price: \$ .....

# MARELLAN YORKSHIRE (H)

# LOT 51

ID: JOBS184 BORN: 6/4/21 (17 MTHS) ROAN



ROYALLA ROCKSTAR K274 (P)  
**Sire: ROYALLA VENTURA P158 (P)**  
 ROYALLA MARCIA H257 (P)

SPRYS JUNCTION (P)  
**Dam: ROYALLA MEGAN L215 (P)**  
 ROYALLA MEGAN H501 (P)

Top 10% Weaning Weight and Yearling Weight, Top 20% Maternal Weaning Weight, Top 30% Docility.

Horned. A cracker of a bull. Sired by the Interbreed Champion bull at Beef 2021, Royalla Ventura. A top roan sire with shape, softness and doing ability.

Weight	Fat	EMA	IMF	Fleck
HB Status		Scrotal	Morph.	Mot.
Cows Only				70%

	CE	BW	WW	YW	Milk	MCE	MWWT	Stay	DOC	CWT	REA	FAT	MARB	YG	API\$
EPD	+7.9	+3.8	+65.3	+101.5	+25.8	+4.8	+58.5	+13.1	+12.5	-0.7	+0.39	-0.074	-0.11	-0.35	\$109.34
Acc.	21%	32%	21%	21%	7%	12%	12%	12%	14%	18%	18%	15%	17%	15%	

Purchaser: ..... Price: \$ .....

# MARELLAN YAM ISLAND (H)

# LOT 52

ID: JOBS189 BORN: 5/4/21 (17 MTHS) RED



ROYALLA ROCKSTAR K274 (P)  
**Sire: ROYALLA VENTURA P158 (P)**  
 ROYALLA MARCIA H257 (P)

RONELLE PARK HURRICANE H242 (P)  
**Dam: ROYALLA ISOBEL N484 (P)**  
 ROYALLA ISOBEL F157 (P)

Top 5% Maternal Weaning Weight, Top 10% Yearling Weight and Milk, Top 15% Weaning Weight, Top 25% Docility, Top 30% Stayability and REA.

Horned. Sired by the Interbreed Champion bull at Beef 2021, Royalla Ventura. Yam Island has the same attractive pattern as his sire. Lots of carcass but still a good doing bull. Please note; only 17 months. A super classy red to finish the day. This bull will bred sensational bullocks.

Weight	Fat	EMA	IMF	Fleck
HB Status		Scrotal	Morph.	Mot.
Cows Only				75%

	CE	BW	WW	YW	Milk	MCE	MWWT	Stay	DOC	CWT	REA	FAT	MARB	YG	API\$
EPD	+2.8	+7.1	+62.9	+100.2	+32.6	+1.7	+64.1	+14.3	+13.3	+5.4	+0.43	-0.078	0.00	-0.35	\$104.40
Acc.	19%	31%	18%	18%	10%	13%	13%	9%	10%	15%	15%	12%	14%	12%	

Purchaser: ..... Price: \$ .....

# 11 PTIC BRAHMAN HEIFERS

# LOT 53



Offering 11 outstanding Red & Grey Brahman heifers PTIC to Marellan United, due January/February 2023. We were very fortunate to select our pick from 500 Brahman heifers originating from the famed Kaiuroo herd. Individual ID's will be made available in the lead up to the sale.

Purchaser: ..... Price: \$ .....

# A whole JBS Thousand Guineas Shorthorn Strip Loin

# LOT 54

With 100% of proceeds going to RFDS & Destiny Rescue.



Purchaser: ..... Price: \$ .....

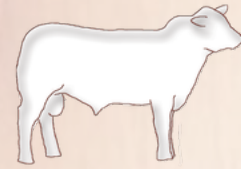
# A whole JBS Thousand Guineas Shorthorn Strip Loin

# LOT 55

With 100% of proceeds going to RFDS & Destiny Rescue.

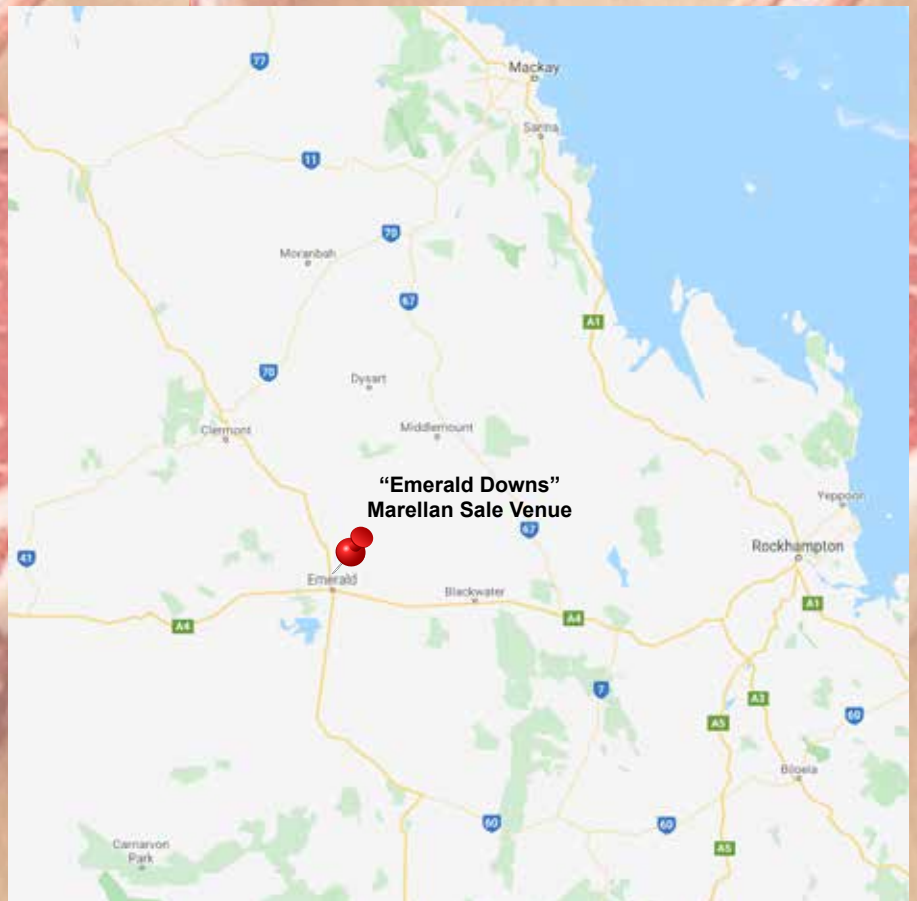


Purchaser: ..... Price: \$ .....



**marellan**  
shorthorns

**Bred for Bos Indicus Cows!**



Based in the ticks at Emerald in CQ, Marellan Shorthorns is dedicated solely to the Northern Beef industry, with industry leading selection pressure and selling bulls with NO GRAIN – NOT EVER.

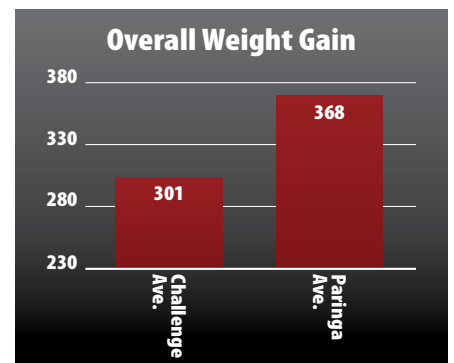
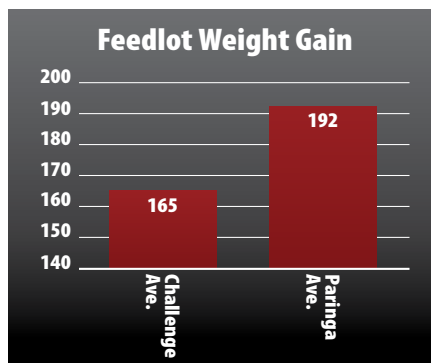
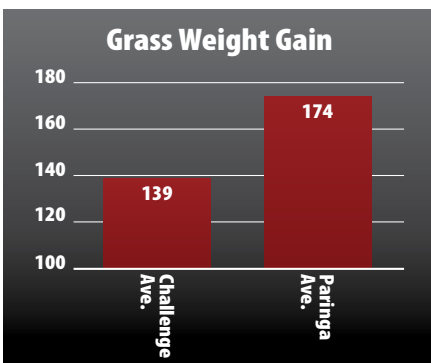
# PRODUCE YOUR NO. #1 F1



Paringa Shorthorn F1

Congratulations to PARINGA GOLD on their outstanding success in the Clermont Show Cattleman's Challenge. **MARELLAN SHORTHORN Sired** from high quality Paringa Braford cows.

**1st** Grass Weight Gain **1st** Overall Weight Gain (Grass & Grain) **1st** Live Judging Pen of 3

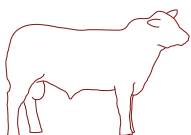


The Cattleman's Challenge steers were fed at Paringa Feedlot, Central Queensland.

## Marellan Shorthorns

*"Bred for Bos Indicus Cows"* Bull Sale  
Tuesday 27th Sept 2022

**ONLINE & ON PROPERTY** "Emerald Downs" Emerald



**marellan**  
shorthorns

**Bred for Bos Indicus Cows!**

LINCOLN & LISA JOB  
0404 083 438 EMERALD QUEENSLAND  
lincolnandlisa@marellan.com.au  
www.marellan.com.au



**H&W**  
Livestock & Property  
Clermont 07 4983 1555  
Tony Hoch 0448 831 553  
Jake Passfield 0488 588 044