

# INAUGURAL GENETIC PRODUCTION SALE

Saturday 10th September, 2022  
12:00pm (midday) AEST



Online Auction @ [www.auctionsplus.com.au](http://www.auctionsplus.com.au)  
Contact Agent: Nutrien Livestock  
Wilson Beer: 0428 505 520

## Information for Buyers

**AUCTION START:** Saturday 10th September, 2022. Auction –12.00 (noon)

**INSPECTIONS:** By Arrangements with Vendors Prior to Auction. See Vendors Facebook, Web sites etc. Contact Vendors to Arrange On Farm Inspections.

**REGISTRATION:** All prospective buyers must register with Auctions Plus by Thursday 8th September. Terms as per Nutrien / AuctionsPlus. Ph: 02 9262 4222. [www.auctionsplus.com.au](http://www.auctionsplus.com.au)

**DELIVERY:** Alpacas may remain up to 4 weeks free of charge at Vendors property, refer to each Lot or by arrangement.

**TRANSPORT:** Buyers should make their own transport arrangements prior to the auction.

**INSURANCE:** Buyers please arrange own insurance contract prior to sale day.

**HEALTH:** As Per Vendors. Refer to Malakai, Kurrawa, Ashbourne.

**AAA TRANSFERS:** All animal transfers with the AAA will be at the purchasers cost.

**STATE HEALTH PROTOCOL:** Buyers, please ensure that you are aware of the necessary State Health Protocol required at the destination of your purchase.

**OPENING BIDS:** Minimum opening bid applies: **Unreserved Lots—\$600.00;** **Reserved Lots—Opening bid will vary; Service To Males, Lots 69,70,71,72,73— \$500.00;**

**TERMS & CONDITIONS:** All stock is offered under standard terms and conditions. These are available from the Agent, Nutrien. GST will be charged on top of bid price i.e. \$1500 + \$150 GST = \$1,650.00

**TERMS OF PAYMENT:** Terms of payment are EFT at time of purchase on Invoice. In accordance with the conditions of sale. For further information contact Nutrien : Wilson Beer 0428 505 520.

**BUYING ORDERS, TELEPHONE BIDDING:** Buyers orders can be placed with Nutrien prior to Auction day. **Telephone Bidding, available** for both national and international. **Buying Orders will be handled By Wilson Beer 0428 505 520.**

**CATALOGUES:** All details in this catalogue are provided by the Vendors and whilst all care has been taken in their preparation Nutrien Livestock & Hunter Alpacas accept no responsibility for errors or mis-descriptions herein. Catalogues are available from Nutrien, or online Nutrien & AuctionsPlus.

**VENDORS:** Malakai, Kurrawa, Ashbourne, MalakaiAshbourne

**Wilson Beer: 0428 505 520 E: [wilsonbeer@bigpond.com](mailto:wilsonbeer@bigpond.com)**

**Ray Attwell: 0428 836 136**



## Vendors Contact

### Ashbourne Alpaca Stud— Pic 3MRHS238

Darren & Rebecca Hard

Mob: 0438 756 231

2375 Harmony Way, Elphinstone...Vic...3448

E: [darren@ashbournealpacas.com.au](mailto:darren@ashbournealpacas.com.au)

[www.ashbournealpacas.com.au](http://www.ashbournealpacas.com.au)

### Kurrawa Alpaca Stud - (Q 05/0018) Pic: 35FRA014

Ann, Robert & Natasha Clark

Ph: 03 5261 3714 / Mob: 0412 960 200

1330 Anglesea Rd, Bellbrae...Vic...3228

E: [kurrawa@ozemail.com.au](mailto:kurrawa@ozemail.com.au)

[www.kurrawa.com.au](http://www.kurrawa.com.au)

### Malakai Alpaca Stud— (Unassessed) Pic— 3BTFH095

Shane Carey & Daniel Barendsen

Mob: 0409 270 381

17 Miners Rd, Miners Rest... Vic... 3352

E: [shane@malakai.com.au](mailto:shane@malakai.com.au)

[www.malakai.com.au](http://www.malakai.com.au)

### MalakaiAshbourne Alpaca Stud—contact, Malakai & Ashbourne Studs

Updates & Information  
Follow On Facebook



### On-Line Auction via AuctionsPlus

1. Bid—Online Sat. 10th Sept. or Pre Bid
2. Phone Bidding or Buying Order – Arranged with Wilson by Thursday 8th Sept.
3. On-Line via AuctionsPlus — Must Pre-Register by Thursday 8th Sept.

#### To Register with AuctionsPlus -

1. Go to [www.auctionsplus.com.au](http://www.auctionsplus.com.au) and signup.
2. Must Complete Full Registration.
3. Enter your info and confirm your email address.
4. NOTE: You need to have FULL approval to Buy/Sell (Approval may take 24-48 hours). Contact: 02 9262 4222 for further information & assistance

Nutrien Livestock, Agent : Wilson Beer 0428 505 520 e: [wilsonbeer@bigpond.com](mailto:wilsonbeer@bigpond.com)

# Kurrawa Alpacas



## Kurrawa Alpacas Established In 1990

Kurrawa have been farming alpacas for over 30 years on 130 acres situated in Bellbrae on the beautiful Surfcoast of Victoria. Kurrawa Alpacas is home to 300 Huacaya and Suri Alpacas.

Natasha being an AAA Accredited Senior Judge and International Judge overseeing our breeding program and farming alpacas full time keeps us striving for the best.

We strive to produce high quality alpacas focusing on the breeding genetics and fleece development of our alpaca herd. Kurrawa have won many Supremes and Champions at Royal and National level.



### Kurrawa Huacava Stud Sires

Premier Kiwi Legend  
Kurrawa Legends Armed N Dangerous  
Kurrawa Legend's Roll Of The Dice ET  
Kurrawa Legend's Enforcer ET  
Kurrawa Legends Instigator  
Kurrawa Game Changer  
EP Cambridge Forged In Fire  
Park View Bellows

### Kurrawa Suri Stud Sires

Kurrawa Man Of The Moment  
Kurrawa Man About Town ET  
Kurrawa Devil In Disguise ET  
Kurrawa Red Hot So What ET  
Kurrawa Ready Aim Fire  
Kurrawa Just A Toy Boy  
Kurrawa Same Same But Different  
Kurrawa Jabari  
Surilana Cosmic Storm  
Didohama Cactus Kid



# MALAKAI ALPACA STUD



## ABOUT MALAKAI ALPACA STUD

Malakai Alpaca Stud was formed in 1993 with the purchase of two wethers. Twelve months later we acquired our first pregnant female with a female cria at foot, our herd has now grown to over 400 females. Shane is a AAA accredited Senior judge and has judged over Australia and New Zealand.

Our breeding is continually recognised in the show ring having won numerous championships and Supremes at Royal and National Level.

In 2020 we began our journey with Valais Blacknose sheep. We are one of the first breeders in Australia and we are currently importing embryos and semen from the United Kingdom.



✉ [shane@malakai.com.au](mailto:shane@malakai.com.au)

☎ 0409270381

📍 17 Miners Rest Road, Miners Rest

# ASHBOURNE ALPACAS

## Breeding champions FOR NOW AND THE FUTURE



### Producing:

- Quality Champion winning stud males and elite females
- Fine, dense and highly aligned fleeces in white, light fawn and coloured huacayas
- Fleeces that are lustrous with stay fine results and a low SD – ultimately achieving our goal of breeding a true commercial fleece herd

Our Elite Foundation Herd have been sourced and acquired from the best studs around Australia.

When sourcing these outstanding alpacas, we have researched the best genetic bloodlines, together with reviewing them for advanced fleece styles and excellent conformational characteristics.

### Our ELITE HERD SIRE:

- Ashbourne The Hipster
- Malakai Ashbourne Sinful
- EP Cambridge Revenent
- Ashbourne Rising Dragon
- Yaringa Royal Highness
- Malakai Premium Edition
- Softfoot Protagonist WP
- Softfoot Shuman SM ET
- Softfoot Torbrek WH
- Warrandene Massimo

### Our ELITE DAMS:

- EP Cambridge Sin City
- Ambleside Sapphire
- EP Cambridge Graduate
- Ashbourne All That Jazz
- EP Cambridge Girls Aloud
- Malakai Light the Way ET



[ashbournealpacas.com.au](http://ashbournealpacas.com.au)





# MalakaiAshbourne

In 2018, we decided to seriously commit to a long-term collaboration of our 2 herds - Malakai and Ashbourne; whilst still maintaining the strength of our individual herds.



## Why

To accelerate the development of elite fibre characteristics on exceptional frames for the Huacaya breed.

## How

- Buying the best genetics and phonetics and bringing them together
- Sharing the load
- Investing more
- Bringing together all of our individual expertise, skills and knowledge
- Challenging each other
- Being clear about our goals

## Result

- Ongoing consistent development of our fibre
- Consistency and depth with our show ring success

"Most great learning happens in groups. Collaboration is the stuff of growth." **Ken Robinson**



Malakai Farm  
17 Miners Rest Road,  
Miners Rest VIC 3352  
+61 (0) 409 270 381  
malakai@vic.chariot.net.au  
malakai.com.au



Ashbourne Alpacas  
2375 Harmony Way,  
Elphinstone VIC 3448  
+61 (0) 438 756 231  
info@ashbournealpacas.com.au  
ashbournealpacas.com.au

Lot 1 Kurrawa CS Cosmic  
Dancer

Solid Light Fawn Female IAR: 248219 DOB: 28.06.21

Mated: Maiden

Fleece: Oct 21— M 17.3 SD 4.1

Sire:

SURILANA MADOLO  
SMB  
SURILANA COSMIC  
STORM SMB  
SURILANA COSMIC  
SWT

Dam:

CEDAR HOUSE SENSATIONAL SWT  
KURRAWA SHIMMER  
SWT  
KURRAWA SHANTI SWT



Cosmic Dancer is the first girl sired by Storm at Kurrawa who does not stand at public stud. This is a great mix of two of the most successful suri studs genetics. Cosmic Dancer is showing huge promise displaying a dense well-nourished fleece with excellent lustre on a well-balanced frame for her age. She would be suited to either a coloured or white breeding program, a breeder wanting a combination of different and high-quality bloodlines to mate to your male.

**Kurrawa -Reserved**



Lot 2 Kurrawa Melting Moment

Solid White Female

IAR: 244563 DOB: 12.01.20

Mated: Maiden

Fleece: Oct 21—M 21.5 SD 4.3

	SURILANA ICALON SWT		KURRAWA SNAPSHOT SWT
Sire:	KURRAWA JUST CRUISING ET SWT	Dam:	KURRAWA MAGIC MO- MENT SWT
	SUILANA MILADY JOANNA SWT		KURRAWA JUST MAGIC ET SWT



This girl has a pedigree packed with elite genetics. This is the first female offered for sale from our Magic line. Melting Moment has been shorn and her returning fleece is an extremely lustrous soft handling fleece with good density. She carries this on a correct frame. She is sold with a mating to either Man Of The Moment or Ready Am Fire. With this combination of bloodlines this cria will be something special and this mix of genetics won't be easily accessed. Mating is not transferable.

**Kurrawa -Reserved**

Lot 3 Kurrawa That Kinda Girl

Solid Light Fawn Female

IAR: 248212 DOB: 29.05.21

Mated: Maiden

Fleece: Oct 21— M 14.9 SD 3.9

	ILR MOON RIVER'S PERUVIAN DURAN- GO. SMB		KURRAWA READY AIM FIRE SWT
Sire:	BAARROOKA THUN- DERCRACK SLF	Dam:	KURRAWA RA NAUGH- TY NINA SWT
	BAARROOKA LISA LINDSAY SWT		KURRAWA JUST A LIT- TLE WICKED SWT



That Kinda Girl has a uniform and fine micron fleece that is reflected in her beautiful handle. Her returning fleece is growing back with excellent organisation and lustre. Her dam is Naughty Nina the dam of Toy Boy who won the highest scoring fleece at Sydney Royal 2022. Naughty Nina's sire is Ready Aim Fire a AAA National Supreme who doesn't stand at public stud. That Kinda Girl has some of Kurrawa's best genetics on the dam side. She would be suited to either a white or coloured breeding program and is offered with a mating to either Cactus Kid (dark fawn) or Man Of The Moment. Mating is not transferable. **Kurrawa - Reserved**



Lot 4 Kurrawa Girl On Fire

Solid White Female

IAR: 248202 DOB: 13.05.21

Mated: Maiden

WINDSONG VALLEY  
FIREDRAGON SLF PREMIER KIWI LEGEND  
SWT

Fleece: OCT 21—M 17.6 SD 4.5

Sire: EP CAMBRIDGE FORGED IN FIRE SMF Dam: KURRAWA LEGEND'S  
EP CAMBRIDGE EYE CANDY SWT  
EP CAMBRIDGE KURRAWA SUMMER  
CHANCER SWT SONG SWT



Attractive well balanced young female who displays a fine luxurious handling ultra-bright, long growing fleece. Girl On Fire has some of our best blood-lines in her pedigree and would suit either a white or coloured breeding program.

Kurrawa - Reserved

Lot 5 Kurrawa PV Afternoon  
Delight

Solid Light Fawn Female

IAR: 248218 DOB: 12.06.21

Mated: Maiden

PARK VIEW BELLOWS EP CAMBRIDGE TIMEOUT  
SMF SWT

Fleece: Oct 21— M 16.6 SD 4.4

Sire: KURRAWA GAME CHANGER SWT Dam: PARK VIEW DOUBLE  
DELIGHT SLF  
KURRAWA LEGENDS PARK VIEW BREANNA  
DESTINY'S CHILD SWT  
SWT



Afternoon Delight is a classy young female with a great pedigree. She has a bright soft handling fine fleece with excellent density and character that she carries on a correct frame. She has a small scar on her eye from a grass seed. She would be suited to any stud wanting to bring in new bloodlines. She has a great mix of our genetics that are producing well for Kurrawa.

Kurrawa—Reserved



Lot 6 Kurrawa Legend's Eye  
Candy

Solid White Female

IAR: 231639 DOB: 22.06.16

Mated: 1/10/21 Park View Bellows

Fleece: Oct 21—M 24.2 SD 5.5

	BENLEIGH LEGEND	JOLIMONT SHERE KHAN
	SWT	SWT
Sire:	PREMIER KIWI LEG- END SWT	Dam: KURRAWA SUMMER
	PREMIER SAMIRA	SONG SWT
	SWT	KURRAWA SWISH SWT



**Kurrawa –Reserved**

We are proud to offer Eye Candy in this year's auction. We have retained her sister in our breeding program. This female line has produced well for us and with Kiwi Legend as her sire she has a great mix of genetics. She displays great density with excellent brightness and a bolder style of fleece. Eye Candy is pregnant to Bellows who is producing quality cria for us and is due in October. Bellows sire is EP Cambridge Timeout who has Jolimont Conquistador and EP Cambridge Peruvian Amethyst in his pedigree. Not long to wait for her cria and we expect something special.

Lot 7 Kurrawa Drum Roll

Solid Light Fawn Male

IAR: 248223 DOB: 26.11.20

Male: Fertility & Certification  
Guarantee

Fleece: Oct 21 - M 14.7 SD 3.4

	EP CAMBRIDGE	PREMIER KIWI LEGEND
	TIMEOUT SWT	SWT
Sire:	PARK VIEW BELLOWS	Dam: KURRAWA LEGEND'S
	SMF	BRIDESMAID SLF
	PARK VIEW	KURRAWA RUNNAWAY
	MAYBELLE. SLF	BRIDE SLF



**Kurrawa –Reserved**

Drum Roll has a pedigree packed with some of our best genetics. He has a long growing, deep amplitude, stylish dense fleece with a fine uniform micron. All those positive traits are carried on a correct frame with great substance of bone and a true to type head style. We think very highly of this male and with his pedigree will be an asset to any breeder wanting to produce white or coloured offspring.



Lot 8 Park View Columbine

Solid Med. Fawn Female

IAR: 192582 DOB: 22.03.15

Mated: **Optionally,**  
**EP Cambridge Forged In Fire**  
Fleece: **Oct 21 - M 22.5 SD 5.6**

	EP CAMBRIDGE TIMEOUT SWT	SUZENDY HOT SHOT SLF
Sire:	PARK VIEW BEL- LOWS. SMF	Dam: PARK VIEW CONNIE MF
	PARK VIEW MAYBELLE SLF	HOMLEA CLEMATIS MB



Columbine is an easy breeder with a correct frame and is still producing a soft fleece. She has produced well for us and has a pedigree full of colour. Her sire is Bel-lows who had a successful show career. She has an optional mating to EP Cambridge Forged In Fire (SMF) who does not stand at public Stud. Columbine could easily produce a quality coloured cria. She has just weaned her current cria and will be ready to mate in Spring.

**Kurrawa - Unreserved**

Lot 9 Kurrawa Kiss In The Rain

Solid Light Fawn Female

IAR: 231645 DOB: 15.12.16

Mated: **Includes Spring Mating to Premier Kiwi Legend**  
Fleece: **Oct 22 - M 22.1 SD 5.1**

	PURRUMBETE LEDG- ERS BOY SWT	EP CAMBRIDGE TIMEOUT SWT
Sire:	KURRAWA DASH OF CLASS ET SLF	Dam: KURRAWA DRAMA QUEEN SWT
	SANJO SHAKIRA SWT	WYUNA PARK LOLA SWT



Kiss is half sister to Kurrawa Legends Challenge on the dams side. She is an up-standing female that is still carrying a soft bright fleece. Kiss is offered for sale with a mating to Legend which can be done in Spring. Her current cria has been retained by Kurrawa. We expect a quality cria from this combination. Drama Queen is one of our best females and Legend doesn't stand at public stud. She is only offered for sale as we have her dam and her sister.

**Kurrawa—Reserved**



Lot 10 Kurrawa Summer Fire

Solid Light Fawn Female

IAR: 260901 DOB: 27.10.21

Mated: **Maiden**

Fleece: **July 22 - M 16.7 SD 3.6**

Sire:

WINDSONG VALLEY  
FIREDRAGON SMF  
EP CAMBRIDGE  
FORGED IN FIRE SMF  
CAMBRIDGE CHAN-

Dam:

PREMIER KIWI LEGEND  
SWT  
KURRAWA LEGEND'S  
SHOW STOPPER ET SLF  
KURRAWA CHAM-



This female comes from a consistent female line. Both her dam and dams full sister have been National & Royal Champion winners in fleece and her dams full sister has won in halter at National level. Summer Fire is exhibiting a productive and stylish fleece with a uniform micron with excellent length. She will be a nice addition for someone wanting a line of different bloodlines to mate to your male.

**Kurrawa—Reserved**

Lot 11 Kurrawa Kalinda

Solid White Female

IAR: 199921 DOB: 8.02.13

Mated: **Optionally –**

**Kurrawa Game Changer or  
Park View Bellows**

Sire:

Jolimont Tucapel

Dam:

Kurrawa Petria SWT



Kalinda is an easy breeder and has raised her babies with no dramas. She is the dam of some lovely crias and produced well for us.

Her recent cria will have just been weaned and she is for sale with an optional mating to either Game Changer or Bellows and can be mated in Spring.

**Kurrawa—Unreserved**



Lot 12 Kurrawa Pretty Penny

Solid Light Fawn Female

IAR: 212998 DOB: 18.02.15

**Mated: Optionally –  
Kurrawa Game Changer or  
Park View Bellows.**

Sire: Kurrawa Dash Of  
Class ET. SLF

Dam: Kurrawa Kalinda. SWT



Pretty Penny is a true to type looking female with a beautiful head style and substance of bone. She has just had her current cria weaned and is ready for mating in Spring.

She is offered with an optional spring mating to either Game Changer or Bellows.

**Kurrawa – Unreserved**

Lot 13 Kurrawa Danica

Light Fawn Female

IAR: 190147 DOB: 25.02.12

**Mated: Optionally –  
Park View Bellows or Kurrawa  
Game Changer**

Sire: Jolimont Tucapel

Dam: Wyuna Park Dianna



Danica is an attractive female and in her younger day was shown and a broad ribbon winner. She is an easy breeder who has produce well with a couple of nice boys for us.

She is for sale with an optional mating to Bellows or Game Changer and can be mated in Spring

**Kurrawa – Unreserved**



Lot 14 Taraqui Sabrina

Solid White Female

IAR: 135388 DOB: 6.05.12

**Mated: Optionally –  
Kurrawa Game Changer or  
Park View Bellows**

**Fleece: Oct 21 – M 23.5 SD 5**

	Somerset Accoyo Challenger SWT		Purrumbete Ledgers Boy SWT
Sire:	Kurrawa The Count	Dam:	Tariqui Olivia SLF
	Kurrawa Contessa		Taraqui Lucy SLB



Sabrina is an easy breeder who breeds on. Kurrawa are retaining her current cria which is due to be weaned end of September.

Sabrina will get free agistment until the cria is weaned and while she is being mated to either Game Changer or Bellows. She will be mated in Spring .

**Kurrawa – Unreserved**

**Note: Kurrawa Retaining Current Cria, Pictured**

Lot 15 Kurrawa I see Fire

Solid White Male

IAR: 250309 DOB: 5.02.21

**Male: Fertility & Certification  
Guarantee**

**Fleece: Oct 21 – M 15.5 SD 3.7**

	WINDSONG VALLEY FIREDRAGON SLF		KURRAWA LEGENDS ARMED N DANGEROUS SWT
Sire:	EP CAMBRIDGE FORGED IN FIRE SMF	Dam:	KURRAWA AND LAILU- NA SWT
	CAMBRIDGE CHAN- CER SWT		KURRAWA KALINDA SWT



Fire is an upstanding male with correct conformation. His fleece has the most luxurious handle which is reflected in his fine uniform micron. He also displays great length with excellent crimp style, density, and brightness.

With his mix of genetics including Armed N Dangerous and Forged In Fire, we believe he will be an asset to any breeding program.

**Kurrawa—Reserved**

**Fertility & Certification Guarantee**



Lot 16 Park View Dianna

Solid Med Fawn Female

IAR: 192580 DOB: 8.04.15

Mated: Kurrawa Legends Enforcer  
(Spring Mating)

Fleece: Oct 21 - M 24.2 SD 4.9

EP CAMBRIDGE		PARK VIEW CUSCO SWT
TIMEOUT SWT		
Sire:	PARK VIEW BELLOWS	Dam: PARK VIEW SUMMER
	SMF	LF
	PARK VIEW	HOMLEA SILKY LADY
	MAYBELLE SLF	MB



Dianna is an easy breeder and good mum with a correct frame. She is still displaying crimp style with a good handle to her fleece. She currently has a baby at foot which will be retained by Kurrawa. Dianna will be ready to mate in Spring and leave Kurrawa in November. She is offered for sale with a mating to Enforcer who is not available for outside stud. Enforcer is the sire of winning offspring in the show ring and has colour in his pedigree. This is your chance to have an Enforcer offspring and hopefully colour.

**Kurrawa—Reserved**

Lot 17 Kurrawa Legend's Social Scandal

Solid White Female

IAR: 235879 DOB: 25.12.16

Mated: EP Cambridge Forged In  
Fire (Spring Mating)

Fleece: Oct 21 - M 20.6 SD 4.7

BENLEIGH LEGEND		JOLOMONT TUCAPEL
SWT		SWT
Sire:	PREMIER KIWI LEG- END SWT	Dam: KURRAWA CHAMPAYNE
	PREMIER SAMIRA ET SWT	BUBBLES SLF
		KURRAWA DRAMA
		QUEEN SWT



Social Scandal is from one of our favourite and most consistent female lines. She is a stylish female to look at with correct conformation. Her fleece displays a medium frequency and amplitude crimp with excellent density, brightness and handle. She has the most beautiful cria at foot sired by Forged In Fire which Kurrawa will retain. She will be remated to Forged In Fire in Spring and ready to leave Kurrawa in November. The impending cria should be something special. Social Scandal is only offered for sale as we have her full sister and daughter retained in our herd.

**Kurrawa—Reserved**



Lot 18 Kurrawa Mimosa

Solid White Female

IAR: 199902 DOB: 8.10.12

[Mated: Optionally –  
Kurrawa Game Changer or Park  
View Bellows](#)

Sire: [Jolimont Tucapel](#) Dam: [Kurrawa Liberty SWT](#)



Mimosa is an easy breeder and great mum who has produced quality offspring. Her current cria will be weaned in November and retained by Kurrawa.

She is sold with a mating to either Game Changer or Bellows in Spring and ready to leave Kurrawa in November.

**Kurrawa – Unreserved**

Lot 19 Kurrawa Larissa

Solid White Female

IAR: 199928 DOB: 28.04.13

[Mated: Optionally –  
Kurrawa Game Changer or Park  
View Bellows](#)

Sire: [Jolimont Tucapel  
SWT](#)

[Purrumbete Ledgers  
Boy SWT](#)  
Dam: [Premier Ledgers Lass ET](#)

[Sanjo Shakira SWT](#)



Larissa has some of the old impact lines in her pedigree which include Highlander, Ledgers Dream, Ice Star and Highland Mist. She has been an easy breeder and currently has a cria at foot that will be weaned end of September and retained by Kurrawa. She is offered with an optional mating that can be done in Spring or she can be mated to your male.

**Kurrawa - Unreserved**



Lot 20 Kurrawa Legend's  
Breakin Hearts

Solid White Female

IAR: 231642 DOB: 1.09.16

Mated: **Open**

Fleece: **Oct 21 – M 18.9 SD 4.6**

Sire:

Benleigh Legend SWT

Premier Kiwi Legend  
SWT

Premier Samira ET  
SWT

Dam:

Blackgate Lodge Snow-  
master SLF

Blackgate Lodge Mar-  
gaux SWT

Blackgate Lodge Mari-  
anna SWT



Breakin Hearts is a beautiful looking female with correct conformation. She displays a long growing fleece with good brightness, handle, density and maintaining a fine micron. Her sire is Kiwi Legend and on her dams side she has Blackgate Lodge Snowmaster who did well in the show ring and has produced quality offspring. She is offered for sale open to mate to your male or you can negotiate a mating with one of the Kurrawa males.

**Kurrawa - Reserved**

Lot 21 Kurrawa AND The  
Princess

White Female

IAR: 250303 DOB: 29.11.20

Mated: **Spring mating to either  
Forged In Fire, Game Changer or  
Bellows**

Fleece: **Oct 21 : M 15.2 SD 3.1**

Sire:

PREMIER KIWI LEG-  
END SWT

KURRAWA LEGENDS  
ARMED N DANGER-  
OUS SWT

KURRAWA PAZZAZ

Dam:

SHANBROOKE ACCOYO  
RASPUTIN SWT

KURRAWA SUELA SWT

SUZENDY SNOW WHITE



Princess is a daughter of Armed N Dangerous who isn't available for outside stud, she is the only daughter sired by him in the auction. In her pedigree she has some influential sires including Kiwi Legend and Shanbrooke Accoyo Rasputin. She has a correct frame and displays a long growing stylish fleece with a superb handle. She has a dark fawn spot on her side, would be suited to either a coloured or white breeding program.

**Kurrawa – Reserved**



Lot 22 MalakaiAshbourne  
Candy Dancer      Solid Black Female      IAR: 237193      DOB: 21.04.20

Mated: **Softfoot Encounter**  
LMD 06/10/2021

Fleece: Dec 21 - M 18.6 SD 4.4

	Wyterrica Propaganda	Alpaca Specialist Crack-erjack
Sire:	Softfoot Protagonist WP	Dam: Softfoot Lolygag
	Canchones Graffiti	Softfoot Gigi



**Candy Dancer—Pregnant Female**

Candy is an upstanding young female sired by the King of black males - Softfoot Protagonist.

She has been mated to Softfoot Encounter to add some more structure to her fleece with the aim of retaining her dark colour

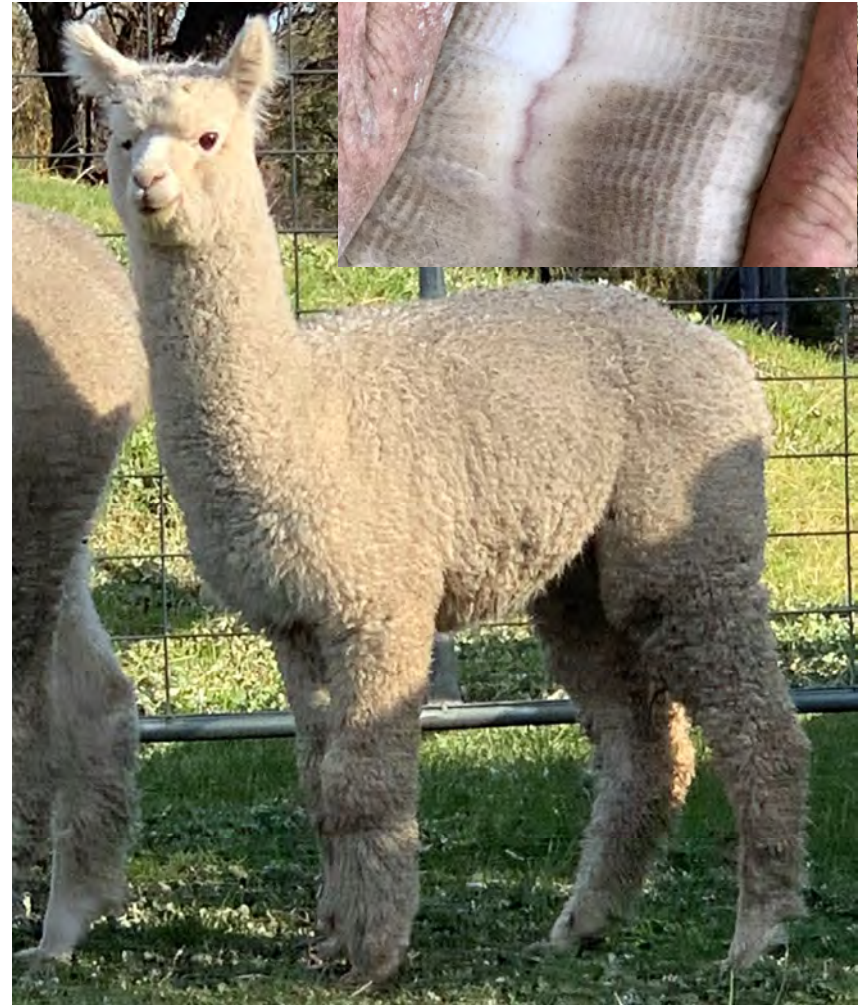
**MalakaiAshbourne—Reserved**

Lot 23 MalakaiAshbourne  
Mustang Sally      Solid White Female      IAR: 258004      DOB: 16.10.21

Mated: **Open Female**

Fleece: TBA

	EP Cambridge Pre-rogative ET	Whyte Park Timothy
Sire:	EP Cambridge Revenant	Dam: Softfoot Mercedes TM
	EP Cambridge Podigal Daughter	Softfoot Luciano MO



MalakaiAshbourne Mustang Sally is an exciting junior female. Her elite parentage is a who's who of champion winning huacayas. She has a very pretty feminine well balanced frame. Her fleece is well nourished, high frequency and highly aligned. One for the astute buyer.

**MalakaiAshbourne - Reserved**



Lot 24 MalakaiAshbourne  
Foxtrot      Solid White Female      IAR: 250056    DOB: 11.03.21

Mated: **Open Female**

Camelot Tor      Briarmist Khashoggi

Sire: Malakai Fire Chief ET      Dam: Malakai Quick Step

Malakai Fire N Ice      Briarmist Lickity Split

Fleece: Dec 21 - M 16.4 SD 4.4



Malakai Ashbourne Foxtrot, who is a Malakai Fire Chief daughter, is a extremely well grown female on a correct frame. She has a fine fleece that is bright and is displaying good density.

Foxtrot will make a great addition to any starter herd.

**MalakaiAshbourne-  
Unreserved**

Lot 25 MalakaiAshbourne  
Now or Never      Roan Female      IAR: 269934    DOB: 27.03.20

Mated: **Autumn Gold Galileo**

Wyterrica Propagan-  
da      Wyterrica Propaganda

LMD 18.1.22

Sire: Softfoot Platinum      Dam: Softfoot Proceed WP

Fleece: Dec 21- M 17.1 SD 4.1

Greenvale Deanna ET      Benleigh Angelica



This girl has eye appeal. From one of our top Grey females - Softfoot Proceed and sired by Softfoot Platinum, she is pregnant to Autumn Gold Galileo. She has the who's who of greys in her pedigree.

**It's now or never to secure this pregnant female  
into your herd.**

**MalakaiAshbourne-  
Reserved**



Lot 26 Softfoot Stunning

Med. Grey Certified Male

IAR: 236801 DOB: 16.04.18

**Certified Male**

Regal House Mr

Wyterra Propaganda

**Fleece: Dec 21 - M 25.5 SD 4.6**

Sire: Coolaroo Harlequin

Dam: Softfoot Profound WP

Greenvale Angela

Softfoot Lady to Watch



One for the astute coloured breeder - Softfoot Stunning has unique genetics in his background. He placed first in his class at the National Fleece Show in 2020 and has an extremely dense fleece with great staple length.

**He comes certified and has confirmed pregnancies.**

**MalakaiAshbourne—  
Reserved**

Lot 27 Softfoot Deya MD ET

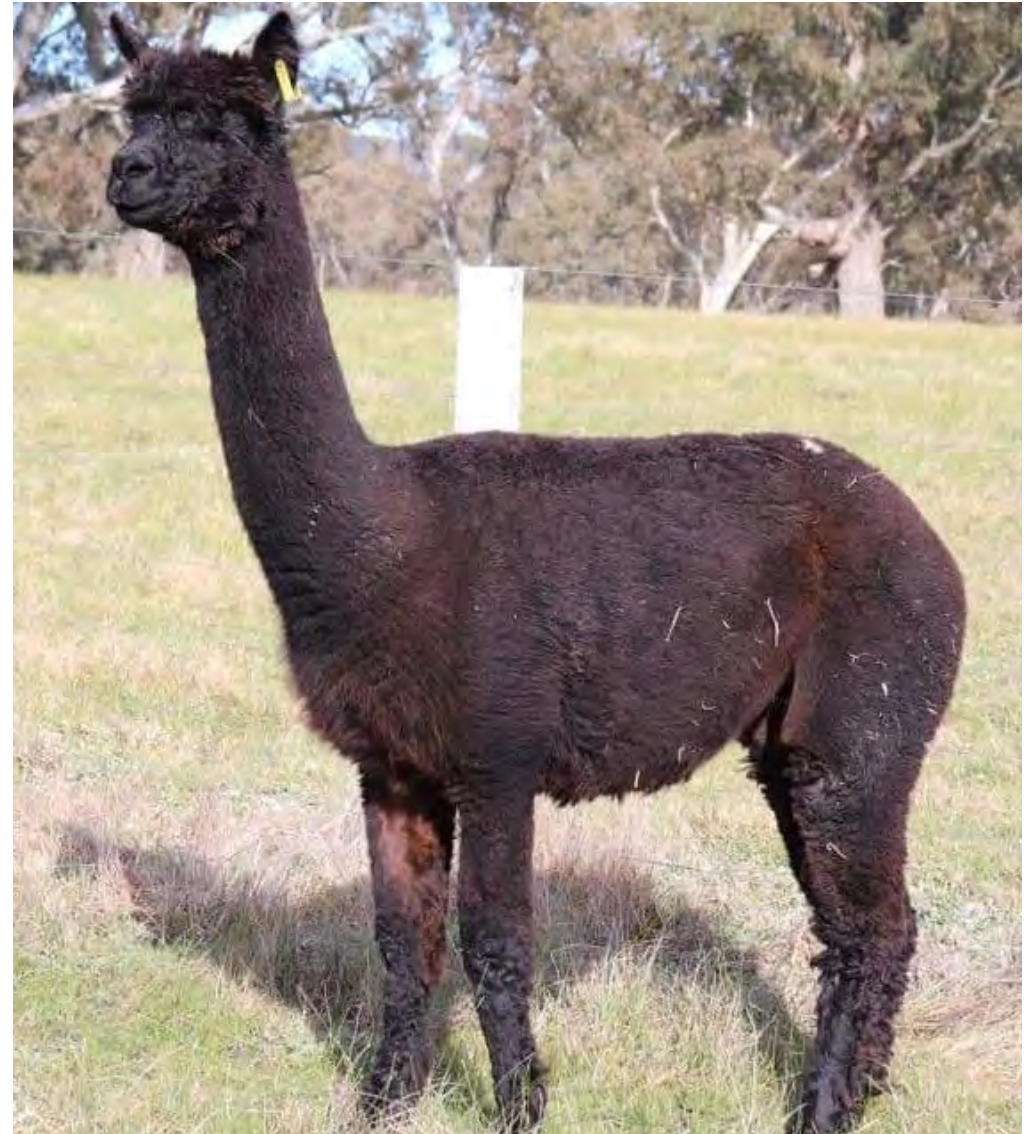
Solid Black Female

IAR: 194230 DOB: 26.10.13

**Mated: Leopard Toros Fahren-  
heit 21.2.22**

Sire: Jolimont Gianmarco  
Softfoot Maudib ET  
Softfoot Pasha

Dam: Parnabrae Luciano  
Lyneden Darly  
Lyneden Dania



Lovely upstanding pregnant female with a great temperament. She is sired by Softfoot Maudib and mated to our dominant leopard appaloosa male with the hope of producing a quality leopard appaloosa cria.

**MalakaiAshbourne—  
Unreserved**



Lot 28 MalakaiAshbourne  
Main Event

Solid White Male

IAR: 250052 DOB: 31.01.21

**Male: Fertility & Certification**

**Guarantee**

**Fleece: Dec 21 - M 17.8 SD 4.5**

Sire:	Snowmass Comopa's Kahuna	Dam:	EP Cambridge Crixas
	ILR Snowmass Royal Kahuna		EP Cambridge Main Attraction
	Snowmass Royal		EP Cambridge Reyna



**MalakaiAshbourne Main Event** is a well grown young male with an incredibly bright future ahead of him. He has a well nourished fleece with excellent levels of density, that is highly aligned.

He will be sold with a fertility and certification guarantee - **do not miss this one!**

**MalakaiAshbourne-Reserved**

Lot 29 Malakaiashbourne  
Propulsion

Solid Med. Fawn Female

IAR: 258073 DOB: 15.01.22

**Mated: Weanling Female**

**Fleece: 15.8m 3.5 SD 100%CF**

Sire:	Yaringa Black Watch SBLK	Dam:	Wyterrica Propoganda RG
	Yaringa Royal High- ness SBLK		Softfoot Profound MG
	Yaringa Classic Czari- na SBLK		Softfoot Lady To Watch SBLK



Propulsion is the very first daughter of multiple Best black winning male Yaringa Royal Highness. Propulsion Has very exciting genetics and will be a huge asset to any coloured breeding program.

Her fleece is lovely and soft with a consistent medium frequency crimp style.

**MalakaiAshbourne—Reserved**



Lot 30 Ashbourne Hidden Maiden

Solid Med. Fawn Female

IAR: 247693 DOB: 02.03.21

Mated: **Open Female**

Fleece: **Dec 21 - M 18.0 SD 5.0**

Sire:	Camelot Lancelot Ashbourne Hidden Agenda Ashbourne Sienna	Dam:	Shanbrooke Freedom Jigaru Free Maiden Amity Green Maider
-------	--	------	--



Ashbourne Hidden Maiden is a well grown starter female.

She has a strong depth of colour in her pedigree which will suit the coloured breeder.

**Ashbourne - Unreserved**

Lot 31 Ashbourne Impulse

Solid White Female

IAR: 253617 DOB: 22.04.21

Mated: **Open Female**

Fleece: **Dec 21 - M 14.9 SD 4.2**

Sire:	Malakai Fire Chief ET Ashbourne The Hipster Ashbourne All That Jazz	Dam:	Jolimont Tucapel Jolimont Ashbourne Desire Jolimont Joana
-------	--	------	--



Impulse is the result of some of Ashbourne's best genetics, with her dam being mother to many of our broad ribbon winners & her sire - Ashbourne The Hipster. Ashbourne Impulse is well grown for her age and ready to be mated. She has an exceptional staple length to her fleece; it is incredibly soft handling with a medium to high frequency and excellent amplitude.

**Ashbourne -Reserved**



Lot 32 Ashbourne Proserpina    Solid Med. Fawn Female    IAR: 253619    DOB: 01.05.21

**Mated: Open Female**

**Fleece: Dec 21 - M 14.7 SD 3.4**

Sire:	WV Firedragon	Dam:	Malakai Fire Chief ET
	Ashbourne Rising Dragon		Ashbourne Persephone
	EP Cambrdge Girls Aloud		Jolimont Ashbourne Desire



Proserpina has a beautiful high frequency, well nourished fleece with extremely long bundling staples. She has a well proportioned feminine frame with her entire breeding career ahead of her. Ashbourne Proserpina is a result of combining Fire Chief and Rising Dragon, which has consistently delivered elite results.

**Ashbourne - Reserved**

Lot 33 Ashbourne Rhett B    Solid Med. Fawn Male    IAR: 253615    DOB: 25.12.19

**Male: Certification & Fertility Guarantee.**

**Fleece: Dec 21 - M 16.7 SD 3.9**

Sire:	Malakai Fire Chief ET	Dam:	Jigaru Renegade
	Ashbourne The Hipster		Ashbourne Scarlett O'Hara
	Ashbourne All That Jazz		Jigaru Satisfaction



Ashbourne Rhett B is the first of The Hipster's sons to be offered for release & is a coloured male at that! He has a well aligned medium to high frequency fleece style. Solid in colour throughout, he is displaying an extremely long dense staple that The Hipster is certainly throwing in all of his progeny.

Rhett B will come with a certification & fertility guarantee.

**Ashbourne - Reserved**



Lot 34 Ashbourne Maleficient

Dark Grey Female

IAR: 247670 DOB: 12.03.20

Mated: Open Female

Fleece: Dec 21 - M 17.8 SD 4.0

	Tarraganda Lodge Ekeko		Forestglen Platinum
Sire:	Vista Platino	Dam:	Vista La Milenia ET
	Morning Star Platinum Rose		Timbertop Milla



Ashbourne Maleficient is a compact dark grey female from a long line of grey genetics. She has a medium frequency style and is well natured.

A great addition to those looking to start their grey breeding.

**Ashbourne – Unreserved**

Lot 35 Ashbourne Last Post

Solid White Female

IAR: 247698 DOB: 11.03.21

Mated: Open Female

Fleece: Dec 21 - M 16.9 SD 3.8

	WV Kenjiro		Swan Valley Heritage
Sire:	WV Kichirou	Dam:	Jigaru Eternity
	WV Dream Maiden		Jigaru National Ap-



Ashbourne Last Post has a bright white dense fine fleece with a medium frequency style. She is extremely well grown on a correct frame and is ready for mating. With excellent genetics in her background she will be a great addition to any starter herd.

**Ashbourne - Unreserved**



Lot 36 Ashbourne Soul Man

Solid Dark Brown Male

IAR: 253625 DOB: 03.01.22

Male: Certification & Fertility Guarantee

Wyterra Propagan-

Forestglen Platinum

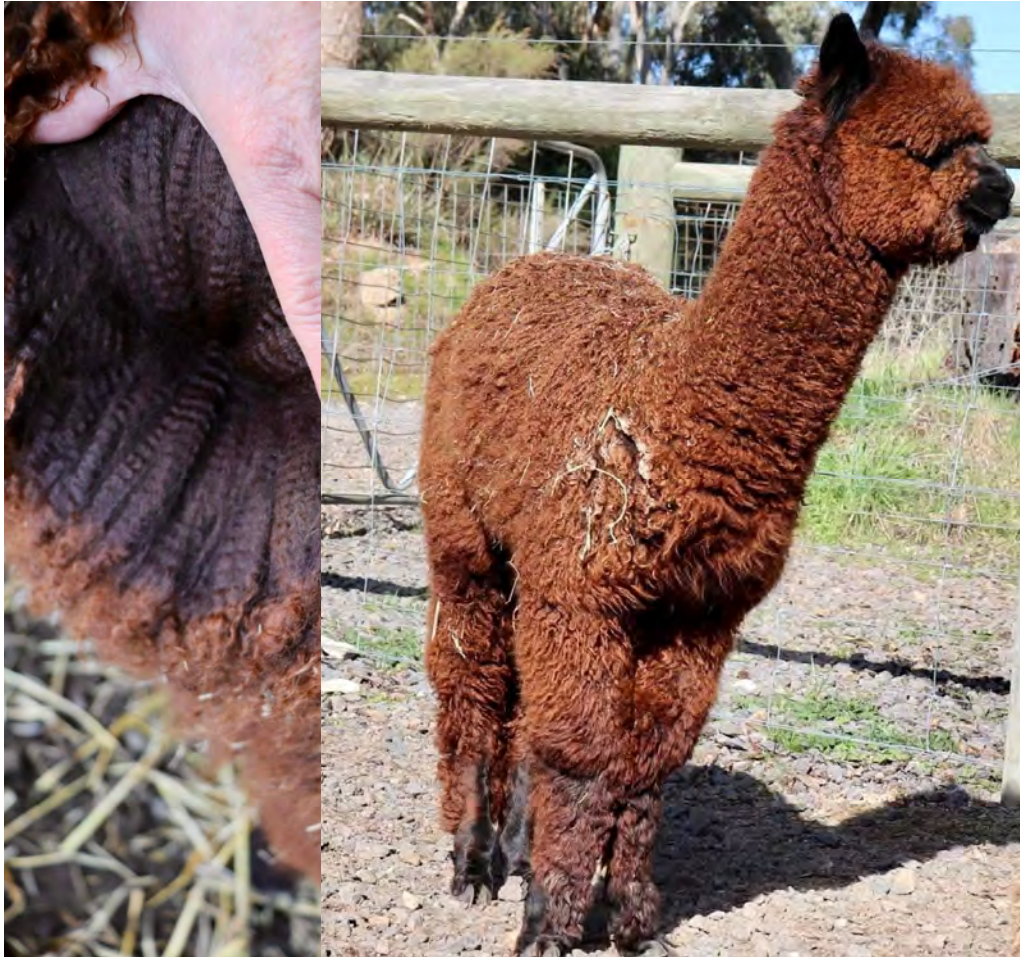
Sire: Softfoot Protagonist

Dam: Vista Solera

Fleece: N/A

Canchones Graffiti

Wyona Sunbunny



Ashbourne Soul Man is a dark brown junior male. He has a medium to high frequency fleece style which is exhibiting great length, good lustre, high amplitude and breaks into small bundling staples.

With excellent genetics and depth of colour in his background, this young male could add to your future breeding program. Soul Man will come with a certification and fertility guarantee.

**Ashbourne – Unreserved**

Lot 37 Ashbourne Octavia

Solid White Female

IAR: 253620 DOB: 06.05.21

Mated: Open Female

WV Firedragon

Coricancha Guamani

Sire: Ashbourne Rising Dragon

Dam: Ashbourne Messalina

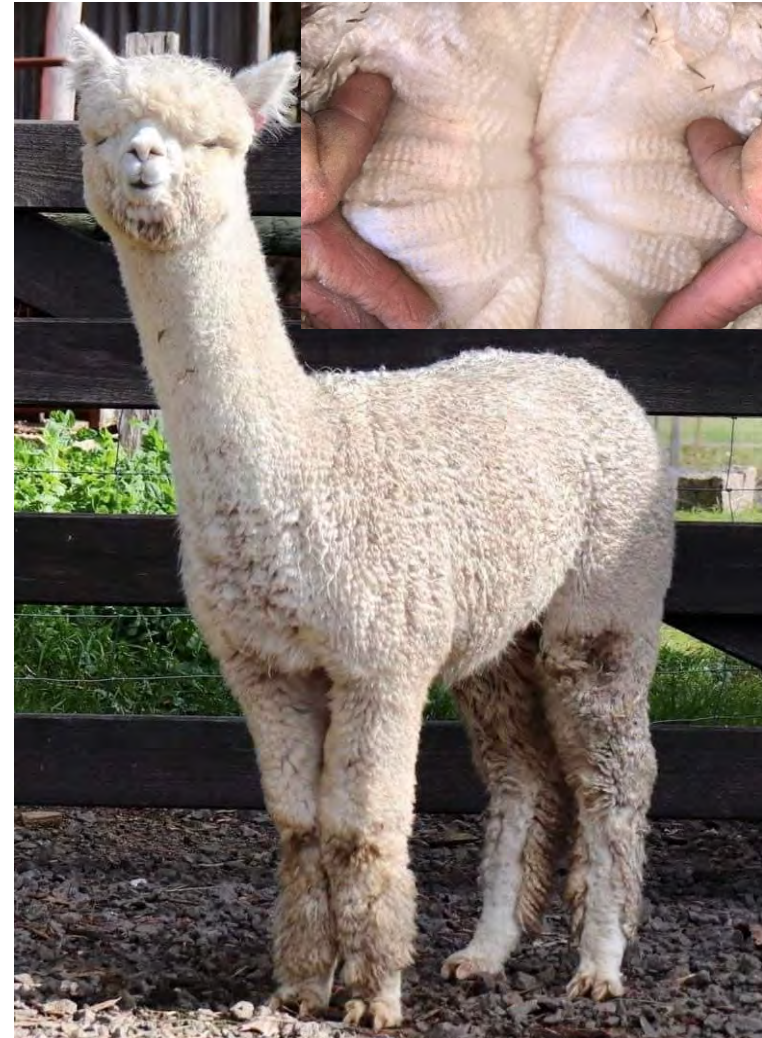
Fleece: Dec 21 M 14.8 SD 3.4

EP Cambridge Girls

Blackgate Lodge Maela-

Aloud

na



Ashbourne Octavia is an elite young female displaying advanced fleece characteristics. Her fleece is high frequency & high amplitude with excellent density that breaks into micro bundles. On a beautifully correct & feminine frame; she has her entire breeding career ahead of her. This young maiden is one not to be missed.

**Ashbourne—Reserved**



Lot 38 Ashbourne Firefly

White Female

IAR: 247658 DOB: 19.05.19

Mated: Ashbourne Rising Dragon  
LMD 11/11/2021

Fleece: Dec 21 M 20.3 SD 4.3

	Camelot Tor	WV Kichirou
Sire:	Malakai Fire Chief ET	Dam: Ashbourne Cherry Blossom
	Malakai Fire N Ice	Katydid Marigold



Ashbourne Firefly is a well grown young female who was scanned pregnant on the 25th of April. She has a bright highly aligned fleece with good levels of density. She has a fawn spot on her tail. This mating combination to Ashbourne Rising Dragon should produce well as this combination of Fire Chief Daughters to RD has been highly successful.

Ashbourne - Reserved

Lot 39 Malakai Irish Lace

Solid White

IAR: 261111 DOB: 18.12.21

Mated: Maiden

Fleece: 15.8m 3.8SD 100% CF

	Camelot Tor SW	Shanbrooke Peruvian Nano SW
Sire:	Malakai Fire Chief ET SW	Dam: Malakai Lacey SW
	Malakai Fire N Ice SW	Shanbrooke Invincible's Silken Lace ET SW



Irish Lace is bred in the purple with the who's who of alpacas in her pedigree, Her grandmother was a Melbourne Royal Supreme and her sire himself a supreme champion winner and producer of multiple champions. She has a medium frequency crimp on a correct frame.

Malakai- Reserved



Lot 40 Malakai Grey Love ET

Light Grey Female

IAR: 261136 DOB: 30.03.22

Mated: Weanling Female

Fleece: 18.1m 4.7SD 98.7CF

Almora Nomad MG

Sire:

Autumn Gold Galileo MG  
Autumn Gold Tiarna RG

Dam:

Canchones Ferrari Black ET SBLK  
Canchones Grey Lavandra MG  
Canchones Lumiere SBLK



Grey Love is from our most successful grey lineage, she is a lovely well put together young female with a very soft handling fleece.

This maternal line is held closely in our herd as they are such consistent producers of quality greys. Excitingly her full sister is also in this auction.

**Malakai – Reserved**

Lot 41 Malakai Black Fantasy ET

Solid Black Female

IAR: 261137 DOB: 08.03.22

Mated: Weanling Female

Fleece: 17.8m 4.3SD 99.5CF

Almora Nomad MG

Sire:

Autumn Gold Galileo MG  
Autumn Gold Tiarna RG

Dam:

Canchones Ferrari Black SBLK  
Canchones Grey Lavandra MG  
Canchones Lumiere SBLK



A rare offering here of a tightly held line. Black Fantasy has strong grey lines and we are confident that if bred back to grey she will produce grey cria for you. She is very true to type with a very pretty fleece.

She has the wow factor and was a standout from day one.

**Malakai – Reserved**



Lot 42 Malakai Encrypted ET

Appaloosa Female

IAR: 261148 DOB: 25.03.22

Mated: Weanling Female

NZ Summerhill Prince

Ambersun Jag APP

Fleece: 17.2m 4.5SD 100CF

Sire:

Neo Summerhill  
Leopord Surprise APP  
Tumi Dijon WH / MB

Dam:

Ambersun Cryptic APP  
Ambersun Confetti APP



With both parents being true leopard appaloosas this girl has an exciting career ahead of her. Encrypted is covered in little fawn spots.

We would have loved to have kept her and bred on but wanted to release a appaloosa in this auction.

Could she be carrying the homozygous Leopard appaloosa gene??

**Malakai – Reserved**

Lot 43 Softfoot Bees Knees

Solid Black Female

IAR: 209319 DOB: 05.03.15

Mated: Yaringa Royal Highness

Alpacaspecialist  
Picaso SBLK

Merungle Lancelot SMF

LMD 31.1.22

Sire:

Alpacaspecialist  
Crackerjack SBLK  
Alpacaspecialist  
Misty Dream SBLK

Dam:

Bonnie Park Penelope  
SMF  
Coonawarra Prima  
Donna SDF

Fleece: 23.1m 4.7SD 92.5CF



A handy black female sired by a closely held male Crackerjack and pregnant to tightly held Yaringa Royal Highness. This resulting cria will boast the who's who of black genetics and hopefully take you straight to the show ring.

**Malakai—Reserved**



Lot 44 MalakaiAshbourne  
Galina Light Grey Female IAR: 258017 DOB: 01.11.21

Mated: Weanling

Fleece: Not Tested

Sire: Autumn Gold Galileo MG  
Dam: Softfoot Molydooker SBLK



A beautiful Galileo daughter for your consideration, this particular line has given us excellent quality females and Galina is no exception with her long growing and well defined staples.

Galina is sure to be an excellent stud female in any grey breeding program.

**MalakaiAshbourne –Reserved**

Lot 45 Malakai Victoria's Secret Solid White Female IAR: 197386 DOB: 26.12.13

Mated: Neo Summerhill Leopard Surprise App 29.11.21

Fleece: 29m 63.5CF

Sire: Peruvian  
Shanbrooke Peruvian  
Nano SW  
Peruvian  
Dam: Sandjo High Esteem SW  
Malakai Secret Image ET  
SLF  
Blue Grass Leading Lady  
SLF



Victoria's Secret was a broad ribbon winner in her time, unfortunately she slipped on the concrete at a show and now her gait is not perfect but does not affect her in any way.

She has an exciting mating onboard pregnant to 2022 Colourbration Supreme in the hope of producing an appaloosa cria.

**Malakai – Unreserved**



Lot 46 Malakai Isabella

Medium Grey Female

IAR: 197526 DOB: 17.04.13

Mated: **Neo Summerhill Leopard Surprise 4.3.22**

Sire:	Malakai Sirocco MG	Dam:	Jardee Braveheart SW
	Malakai Imakahn MG		Malakai Tarina Roan
	Malakai Kahni RG		Malakai Tiana Sblk

Fleece: 23.9m 4.4SD 91.2CF



A handy female to have in your herd, Isabella has always produced us grey cria of good quality, she has produced a couple of grey females for us and a stud male.

Not the prettiest girl but she produces typey offspring.

Mated to Colourbration Supreme Champion Surprise, we believe she is capable of producing a leopard appaloosa cria.

**Malakai – Unreserved**

Lot 47 Softfoot Cari TM

Solid White Female

IAR: 236836 DOB: 12.03.19

Mated: **Malakai Fire Chief ET SW LMD 11.2.22**

Sire:	Patagonia Celtic Triumph W	Dam:	Jolimont Glanmarco SW
	Whyte Park Timothy		Softfoot Cassia GM SW
	Tarrant Ridge Miatmo SW		Cambridge Marvel SW

Fleece: 16.4m 4.2SD 100% CF



We thought long and hard about putting this female in the auction, she was the pick of the white females when we purchased the softfoot herd, with her mating to Fire Chief this package is extremely exciting. She has a beautiful high frequency crimp style that is both dense and fine. Still carrying 100 CF at 3 years of age and having reared one cria. Highly recommended.

**MalakaiAshbourne – Reserved**



Lot 48 MalakaiAshbourne  
Neive Solid White Female IAR: 258023 DOB: 05.11.21

Mated: **Wealing Female** Camelot Tor SW Waradene Massimo SW  
Fleece: **15.1m 3.6 SD 100% CF** Sire: Malakai Fire Chief ET Dam: Softfoot Mahalia SW  
Malakai Fire N Ice SW Softfoot Thredbo SW



Neive has a beautiful fine fleece that opens up in to bundles of high frequency crimp that is even across her saddle.

**One of the last Fire Chief offspring to be offered for sale.**

**MalakaiAshbourne –  
Reserved**

Lot 49 MalakaiAshbourne  
Daydream Believer Solid Med. Brown Female IAR: 258059 DOB: 14.12.21

Mated: **Weanling** Jolimont Gianmarco SW Softfoot Proprietor MG  
Fleece: **17.6m 4.6 SD 100% CF** Sire: Softfoot Maudib SMF Dam: Softfoot Dreamer SMB  
Softfoot Pasha SW Alternative View Lady Dreamer SW



Daydream Believer is down from one of our favourite and consistent lines. She has a medium frequency crimp style.

She is well grown, true to type and consistent in colour.

**MalakaiAshbourne – Reserved**



Lot 50 MalakaiAshbourne Stormy Skies Medium Grey Female IAR: 258054 DOB: 04.11.21

Mated: Weanling Jolimont Gianmarco SW Greenvale Rocco ET MG  
 Fleece: 14.4m 3.0 SD 100% CF Sire: Softfoot Maudib SMF Dam: Softfoot Stormie Ro ET MG  
 Softfoot Pasha SW Alpacaspecialist Misty SBLK



Stormy skies is a very correct young grey female, again one we would love to continue on with but we cannot keep them all. Our loss is your gain.

This line has given us some beautiful grey animals.

She has a soft fleece that is even in its structure.

**MalakaiAshbourne – Reserved**

Lot 51 Whyte Park Rita Solid Black Female IAR: 236882 DOB: 26.04.19

Mated: Yaringa Royal Highness Wyterrica Propaganda RG Ipacaspecialist Crackerjack SBLK  
 LMD 22/1/22 Softfoot Protagonist WP SBLK Whyte Park Seniorita SBLK  
 Fleece: 22.2m 5 SD 94.3 CF Sire: Canchones Graffiti Dam: Lysterfield Jessie SDB



A beautifully conformed young female with a extremely exciting pregnancy on board. She is pregnant to multiple best black winning male Yaringa Royal Highness.

Royal Highness does not stand at public stud so don't miss this opportunity to obtain these elite genetics.

**MalakaiAshbourne – Reserved**



Lot 52 Goldleaf Dusky Haze

Roan Female

IAR: 202756 DOB: 29.10.14

Mated: Autumn Gold Galileo

22.1.22

Fleece: 30.9m 6.4SD 52.7CF

Alpacapartners Bona-Parte RG

Sire:

Bella-Grove Storm Boy MG

Dam:

Cordillera Sonderado

Aintree Summer Dusk LB

Qozzo Velrosa RG

Windsong Valley Summer Haze



Dusky Haze has been an excellent producer for our herd, having produced a certified stud male and multiple females of excellent quality. This female is a very consistent producer. We highly recommend her to the coloured enthusiast. Don't let her high micron put you off, she produces a quality cria every year.

Malakai—Unreserved

Lot 53 Koonang Park Delivine

Medium Grey Female

IAR: 177174 DOB: 06.05.14

Mated: Open

Fleece: 27.7m 4.9SD 75.4 CF

Wyterrica John Boy

Blue Grass Waterloo

Sire:

Wyterrica Cyrus SBLK

Dam:

Koonang Park Daphney

Wyterrica Serina

Lee Carrow Dimity SLB



Delivine is a beautifully proportioned female who has the wow factor in the paddock, she is an extremely good producer of grey.

Malakai—Unreserved



Lot 54 Softfoot Dreamer PP      Solid Med. Brown Female      IAR: 236780      DOB: 19.3.18

**Mated: Ashbourne The Hipster**  
**SW 22.1.22**

**Fleece: 20.2m 4.5 SD 97.6CF**

	Wyterrica Propoganda RG		Windsong Valley
	Softfoot Proprietier WP MG		Mathew SLF
Sire:		Dam:	Alternative View Lady Dreamer SW
	Softfoot Gigi SBLK		Alternative View High Dream SWT



Out of one of our top White donor females, this brown female has the attribute to produce outstanding cria thus why we have mated her to 8x Supreme champion Ashbourne The Hipster.

The resulting cria should be special.

**MalakaiAshbourne – Reserved**

Lot 55 Faversham Tahlia      Solid White Female      IAR: 202722      DOB: 21.12.14

**Mated: Ashbourne The Hipster**  
**SW 10.4.22**

**Fleece: 24.4m 5 SD 87.3 CF**

	Somerset Accoyo Challenger SW		Faversham Armani SW
	Rosedeanne Sayonara SW		Faversham Amelia SW
Sire:		Dam:	Faversham Romilly SW
	Rosedeanne Freya SW		



Tahlia is a quality female who has consistently produced quality cria for us. We are retaining her previous daughter so we can release Tahlia in todays aution.

Mated to 8 x supreme Champion Ashbourne The Hipster the cria should be special.

**Malakai – Reserved**



Lot 56 Malakai Xaveria

Solid White Female

IAR: 205156 DOB: 14.03.14

Mated: Open

Fleece: 23.3 m 5.4 SD 89.5 % CF

	Windsong valley	Jolimont Conquistador
	Iceman SW	SW
Sire:	Sierra Vista Santorin	Malakai Classic Addition
	SW	W
	Lyra Diva SW	Malakai Classic Touch
Dam:		SW



Xaveria produced a outstanding grey cria last season to a white male so we know she carries a colour gene, an excellent female to use in your colour breeding program.

Malakai – Unreserved

Lot 57 Malakai Tamaya

Medium Grey Female

IAR: 123456 DOB: 25.12.19

Mated: LeopardToros Farenheit 18.3.22

Fleece: 20.8m 4.8SD 96 % CF

	Jolimont Warrior SW	Kingston Park Vulcan
Sire:	Blue Grass Waterloo	Dam: Malakai Tamali Et SBLK
	Alpacos Park Ariel SW	Manna-Gum Farm Show



Tamaya is one of our favorites, she has a beautiful soft handling grey fleece. Mated to Fahrenheit, we would hope she could produce a appaloosa cria.

Malakai—Reserved



Lot 58 MalakaiAshbourne  
Affezione ET

Medium Grey Female

IAR: 258071 DOB: 12.01.22

Mated: **Weanling**

Fleece: **15.5m 4.2SD 100% CF**

	Blue Grass Waterloo Sunset RG	Alpacaspecialist Valenti- no SMB
Sire:	Malakai Premium Edition MG	Dam: Softfoot Amore SBLK
	Malakai Special Issue SDBR	Softfoot Analee SBLK



Can't believe we are putting this young female in the auction. A beautiful medium grey female out of our favourite Softfoot Black female.

Affezione has a beautiful high frequency crimp style that carries evenly across her body.

Highly recommended to the serious grey breeder.

**MalakaiAshbourne –  
Reserved**

Lot 59 MalakaiAshbourne  
Elle Nina

White Female

IAR: 258070 DOB: 08.01.22

Mated: **Weanling**

Fleece: **16.1m 3.6SD 100% CF**

	Timbertop CT Whis- tler SW	Alpacaspecialist Shar- man SW
Sire:	Softfoot Torbreck SW	Dam: Softfoot Ninovan SM ET SW
	Softfoot Austral SW	Softfoot Nefertite GM SLF



Elle Nina is a favourite, her fleece has the WOW factor, she opens up in to beautifully defined staples of high frequency crimp that is consistent everywhere you open her.

She has a beautiful frame that catches your eye in the paddock every time.

**MalakaiAshbourne – Reserved**



Lot 60 MalakaiAshbourne Sihu  
ET Solid White Male IAR: 258065 DOB: 30.12.21

Male : Weanling

Fleece: 14.8m 3.7SD 100% CF

Sire: Ambersun Kings  
Ransom SW  
Alpacaspecialist  
Sharman SW  
Bonnie Park Charlotte  
DF  
Dam: Softfoot Ceroc SW  
Softfoot Prima Donna  
ET SW  
Softfoot Pasha SW



Sihu is a young male with a exciting future ahead of him. He is down from the line that created Maudib and Coroboree on the maternal line.

He is both dense and fine with a beautiful high frequency crimp style with medium amplitude.

We are excited to offer this male unreserved today to allow you the chance to add him to your herd.

**MalakaiAshbourne – Unreserved**

Lot 61 Malakai Karianna Solid White Female IAR: 261109 DOB: 06.12.21

Mated: Weanling

Fleece: 15.8m 3.8SD 100% CF

Sire: Goldleaf Nobility SW  
Malakai Sensational  
ET SW  
Shanbrooke Accoyo  
Sensation ET SW  
Dam: Malakai Logical Choice  
ET SMF  
Malakai Karinya SW  
Sandjo Gwenith M SLF



Karianna is the very first Sensational daughter to be released.

She has a high frequency crimp style that has excellent length to it, she is well grown and has a correct frame.

**Malakai –Reserved**



Lot 62 Malakai Dusky Days

Solid Dark Fawn Female

IAR: 261115 DOB: 02.01.22

Mated: **Weanling**

Fleece: **17m 3.8SD 100%CF**

Sire:

Blue Grass Waterloo  
Sunset RG  
Malakai Premium  
Edition MG  
Malakai Special Issue  
SDBR

Dam:

Bella-Grove Stormboy  
Goldleaf Dusky Haze  
Aintree Summer Dusk



Dusky Days is a pocket rocket, she is very square and compact in her frame and is carrying a power of fleece which is both soft and uniform.

This line has produced quality stock including stud males that are performing well.

**Malakai –Unreserved**

Lot 63 Marquez Quinto

Solid Black Male

IAR: 228710 DOB: 01.03.19

**Male**

Fleece: **23.2m 4.4 SD 89.3 CF**

Sire:

Blue Grass Waterloo  
Sunset RG  
Wyterra Propoganda RG  
Wyterra Dark Eyes  
Sblk

Dam:

Marquez Kristian Sblk  
Marquez Natalia Sblk  
Marquez Kristina SMF



Check out the bloodlines of this male, jam packed full of champions, he is out of one of our top black females, we are only releasing him for sale as we are retaining his brother for breeding. Unreserved for your bidding.

**Malakai –Unreserved**



Lot 64 Malakai Strike Force

Solid White Certified Male

IAR: 232835 DOB: 20.01.17

**Certified Male**

**Fleece: 22.8m 4.6SD 93.7 CF**

	Slierra Vista Santorini SW	Blue Grass Star Warrior SLF
Sire:	Malakai I'm The Man W	Malakai Swansong ET SW
Dam:	Malakai Belissima SW	Malakai Songstress ET



Strike Force is an extremely fertile male with a high libido. He is correct in his fram and has a high frequency deep amplitude crimp.

Has sired colour including grey. We have his sire and he is too closely related to our herd to keep two males of similar genetics

**Malakai –Unreserved**

Lot 65 Malakai Upon A Wish

Solid White Female

IAR: 232812 DOB: 16.12.17

**Mated: Malakai Sensational ET SW 18.1.22**

**Fleece: 21.1m 5.7SD 93.8 Cf**

	Faversham Armani SLF	Sierra Vista Santorini SW
Sire:	Goldleaf Nobility SW	Malakai Upon A Star SW
Dam:	Qualup Elly SW	Malakai Uptown Girl ET SW



Upon A wish is a compact female with her full breeding life ahead of her, she has a soft handling fleece with a medium frequency style of crimp.

Mated to Sensational he should enhance the amplitude in the crias fleece.

**Malakai – Unreserved**



Lot 66 MalakaiAshbourne  
Misty

Solid Black Female

IAR: 258009 DOB: 24.10.21

Mated: **Open**

Fleece: **15.1m 3.2SD 100% CF**

Sire:	Wytterica Propoganda RG Softfoot  Protagonist SBLK Canchones Graffiti	Dam:	Coonawarra Gladiator SBLK Alpacaspecialist Misty Dream SBLK Willowood Padme SMF
-------	---	------	---



A rare gem here, being a maternal sister to Alpacaspecialist Crackerjack, Misty has an incredibly soft handling fleece that is fine with a medium frequency crisp style. She is well grown and true to type.

Bloodlines not to be missed.

**MalakaiAshbourne –Reserved**

Lot 67 Softfoot Philana MD

Solid Black Female

IAR: 236859 DOB: 27.03.19

Mated: **Open**

Fleece: **20.3m 3.9SD 98.1% CF**

Sire:	Jolimont Gianmarco SW Softfoot Maudib MF Softfoot Pasha SW	Dam:	Wyterica Propoganda RG Softfoot Proceed MG Benleigh Angelica RG
-------	--	------	---



Philana is a lovely upstanding black daughter of Maudib, she comes unmated and unreserved in todays auction.

She has a lovely soft handling fleece with beautiful style and good brightness.

**MalakaiAshbourne –Unreserved**



Lot 68 Malakai Norlene

Solid White Female

IAR: 261117 DOB: 12.01.22

Mated: Weanling

Fleece: 17.2m 3.9SD 100% CF

	Flying Colours CT Leading Edge	EP Cambridge Phenom- enon
Sire:	Black Jack Yaringa Leading Light SLF	Dam: Cedar House Noritake
	Timbertop CT Maky- be Deva	Cedar House Special one



A correct young female with a long growing fleece with a medium frequency crimp style.

A handy female to have in your herd who carries unique outside genetics.

Malakai—Unreserved

Lot 69 Stud Service to

Kurrawa Legend's Enforcer

Solid White

IAR: 231636

ET

• Live Cria Guarantee.

Sire: Premier Kiwi  
Legend SWT

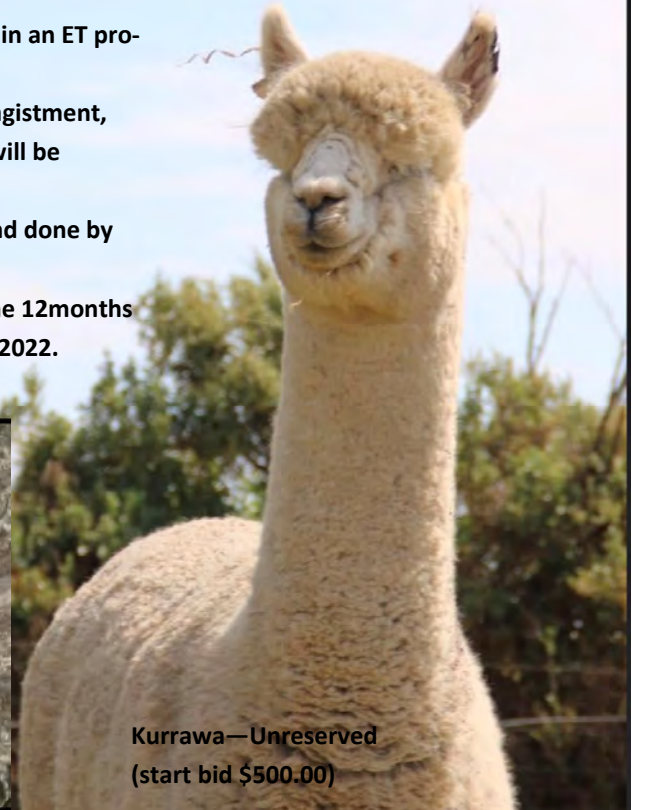
Dam: Kurrawa Gosh I'm  
Posh SMB

Enforcer is not available for outside stud so don't miss the opportunity to be the winning bidder of this mating.

### *Kurrawa Legend's Enforcer*

We are offering one service to Enforcer. Enforcer is sired by Kiwi Legend and his mum Posh is one of our most consistent females always breeding quality offspring some being colour. This family line is one to consider over your good female. Enforcer has progeny winning in the show ring. Enforcer is still carrying a fine fleece with excellent density, correct conformation and great substance of bone.

- Mating is not to be used in an ET program.
- Drive by or 60 days free agistment, after 60 days agistment will be charged.
- Free pregnancy ultrasound done by Kurrawa.
- Mating is to be used in the 12months from the 10<sup>th</sup> September 2022.



Kurrawa—Unreserved  
(start bid \$500.00)



Lot 70 Stud Service to  
 Kurrawa Legends Armed N Dangerous  
 Solid White IAR: 19941

- **Live Cria Guarantee.** Sire: Premier Kiwi Legend SWT Dam: Kurrawa Pazzaz SWT

We are offering one service to Armed N Dangerous. Armed is a Supreme winner in the show ring with halter and fleece. He was awarded Supreme at one of our biggest royals, Melbourne Royal. Armed N Dangerous has excellent density and style to his fleece with a uniform Micron which is carried on a substantial correct frame. He is throwing quality offspring with the same characteristics.

Armed N Dangerous is not available for outside stud. This is your opportunity to secure a mating to him by being the winning bidder.

- Mating is not to be used in an ET Program.
- Drive by or 60 days free agistment, after 60 days agistment will be charged.
- Free pregnancy ultrasound done by Kurrawa.
- Mating is to be used in the 12 months from the 10<sup>th</sup> September 2022



Kurrawa—Unreserved  
 (start bid \$500.00)

Lot 71 Stud Service to  
 Didohama Cactus Kid  
 Solid Light Brown Suri IAR: 178772

- **Live Cria Guarantee** Sire: Surilana Quechuan Kid SWT Dam: Surilana Desert Lady SMB

Cactus Kid has been shown successfully and is the sire of Kurrawa Hell Raiser SMB who won best brown at AAA National level, exported to the UK and has continued his success in the show ring. Cactus is a beautiful even colour with excellent lustre, style and density. He has the most exquisite handle to his fleece. Cactus has correct conformation and great substance of bone. He has a pedigree with a lot of colour and some exceptional suris behind him including Surilana Quechuan Kid, Surilana Icalon, Surilana Desert Lady and Cedar House Desert Prince to name a few.

Don't miss this opportunity to get a Cactus Kid mating to your female.

- Mating is not to be used in an ET program.
- Drive by or 60 days free agistment, after 60 days agistment will be charged.
- Free pregnancy ultrasound done by Kurrawa.
- Mating is to be used in the 12 months from the 10<sup>th</sup> September 22.



- We are offering one service to Cactus Kid.

Kurrawa—Unreserved  
 (start bid \$500.00)



**Genetics Include:** Malakai Fire Chief ET, Shanbrooke Peruvian Nano, Windsong Valley Kichirou, Camelot Tor, Windsong Valley Kenjiro, Jolimont Warrior

Ashbourne The Hipster has had an outstanding show record, winning 8 Supreme Champion awards in his short show career.

The Hipster's advanced fleece style, fleece weight, density, low SD and length of fleece combined with his correct frame; have enabled him to be the Male Huacaya of his age

Culminating The Hipster winning Best Alpaca at the Royal Melbourne Show in 2019.

- Mating is not to be used in an ET program.
- Drive by or 60 days free agistment, after 60 days agistment will be charged.
- Free pregnancy ultrasound done by Malakai.
- Mating is to be used in the 12 months from the 10<sup>th</sup> September 22.

MalakaiAshbourne —  
Unreserved  
(start bid \$500.00)

**Genetics Include:** Sahnbrooke Accoyo Tulaco, Patagonia Celtic Triumph, Jolimont Conquistador, Jolimont Commisario, Softfoot Ceroc.

Torbrek, displays an extremely dense fine fleece with a high frequency style that is highly aligned with a very soft handle. Passing on these same fleece traits to his progeny; Torbrek has a strong macho frame that is well balanced.

If you are looking for that combination of stunning phenotype with the genetics to match, then Torbrek is the stud male you are looking for.

Softfoot Torbrek, an Elite White Male Huacaya who is producing outstanding progeny.

- Mating is not to be used in an ET program.
- Drive by or 60 days free agistment, after 60 days agistment will be charged.
- Free pregnancy ultrasound done by Malakai.
- Mating is to be used in the 12 months from the 10<sup>th</sup> September 22.

MalakaiAshbourne —  
Unreserved  
(start bid \$500.00)



## First time offering of Valais Blacknose Sheep in Australia.

### Presented By Malakai Stud

This new and exciting sheep breed was imported to Australia in 2020, there are less than 30 pure bred Valais Blacknose in Australia.

Here is your chance to get involved with this exciting new breed. These 50 % Valais ewes are being offered today as part of the up breeding program.

If you are successful in purchasing these ewes we have 100% pure Valais semen available to purchase when they are ready to breed.

We will continue to support you each generation to breed up to pure bred.

Such an exciting new emerging breed. Be one of the first to get involved and own this unique sheep breed in Australia.

- Lots 74, 75, 76 (Ewes) - All born April 13
- Sired by Gemstones Stupf x [all mothers are Border Leicester x White Suffolk ewes]

Here is your chance to own a lamb of this exciting new breed.

- Lots 77,78,79,80,81 are being offered today as unique pets. These 50 % Valais wethers.



Photo of pure bred for reference only photo courtesy of Caprotek.

Lot 74 Malakai Ear Tag 111

Valais Blacknose Ewe

DOB: 13 April



Malakai—  
Reserved

Lot 75 Malakai Ear Tag 113

Valais Blacknose Ewe

DOB: 13 April



Malakai—  
Reserved



Lot 76 Malakai Ear Tag 122

Valais Blacknose Ewe

DOB: 13 April



**Malakai—  
Reserved**

Lot 78 Malakai Ear Tag 63

Valais Blacknose Wether

DOB: 13 April



**Malakai—  
Reserved**

Lot 77 Malakai Ear Tag 54

Valais Blacknose Wether

DOB: 13 April



**Malakai—  
Reserved**

Lot 79 Malakai Ear Tag 45

Valais Blacknose Wether

DOB: 13 April



**Malakai—  
Reserved**



Lot 80 Malakai Ear Tag 55

Valais Blacknose Wether

DOB: 13 April



Malakai—  
Reserved

Lot 81 Malakai Ear Tag 82

Valais Blacknose Wether

DOB: 13 April



Malakai—  
Reserved

# INAUGURAL GENETIC PRODUCTION SALE

Saturday 10th September  
12:00pm (midday) AEST



online auction @ [www.auctionsplus.com.au](http://www.auctionsplus.com.au)