

13TH ON-PROPERTY RAM SALE





Photos & Videos of Ram's on-line at
www.auctionsplus.com.au prior to sale

13TH ON-PROPERTY RAM SALE

OFFERING 535 RAMS

Friday, September 23rd, 2022
 "Karuga Park" 1217 Bournewood Road, Yeoval NSW 2868

INSPECTIONS FROM 6:30AM SALE STARTS 12:00PM Morning tea and lunch will be provided.		SALES CONTACTS	
		NIGEL & KATE KERIN P 0427 464 070 E kerinag@bigpond.com W www.kerinpoll.com.au	BRETT KERIN P 0427 861 938 brettkerin@outlook.com
AUCTIONEERS		AGENTS- BOWYER & LIVERMORE	
SALE WILL BE INTERFACED WITH AUCTIONSPLUS			
Paul Dooley	0458 662 646	Todd Clements Nick Fogarty Justin Guy Tom Card	0429 070 225 0409 070 225 0421 467 520 0438 594 675

PRE-REGISTRATION AND BUYERS INSTRUCTION

The Ram Sale is to be held On-Property at Kerin Poll on Friday, September 23rd 2022 commencing at 12 noon. To avoid delays, we strongly encourage you to Pre Register with the Selling Agents (Bowyer and Livermore) via email office@bandl.com.au as a buyer by 5pm on Wednesday 21st September.

WELCOME

THERE is one thing we are not afraid of at Kerin Poll and that's the science behind sheep breeding.

Top sheep backed with elite figures have allowed our business to move forward at almost break-neck speed, something we couldn't have achieved if we had denied the value of tools like genomics, MateSel and Australian Sheep Breeding Values.

The use of these tools allows businesses to march forward in an environment where adoption and implementation is simply the most logical choice.

We have also harnessed some of the smartest minds in the industry our quest to be the best performing Merinos in Australia.

Investing in the best genes which are backed by science, not hearsay or tradition, can lift your business quickly and effectively without giving anything away and that's what we know this year's draft of rams will do for your flock.

We also believe we have produced sheep which will fit the changing environment, turning climate challenges into opportunities with the main drivers being fertility and early growth.

The philosophy at Kerin Poll remains the same – if you win, we win – and this year's sale team is another great example of this relationship.

This year we will be offering 535 rams to allow everyone a chance to bid and secure their numbers, and it again will be the largest auction offering of Poll Merino rams in Australia.

Some important things to notice in this catalogue include the consistently high Australian Sheep Breeding Values which lead the industry. These include:

- Catalogue average of +8.4 for post-weaning weight (PWT) or the top 5 per cent of the breed
- Catalogue average of +25.5 for yearly greasy fleece weight (YGFW) which is in the top 7 per cent of the breed
- Catalogue average of +9.9 for yearling weight (YWT) which is in the top 6 per cent of the breed.

(ASBVs are from MerinoSelect run date 7/8/2022)

The 535 rams averaged 93kg when they were weighed as they were lotted. All rams have been ran on grass and no self-feeders were used. All animal health is up to date last drench on 22/8/22

All rams shorn 3/05/2022

Please feel confident to bid freely, knowing not only do we stand by every ram we sell, but the figures do too. And at this exciting time for the sheep industry, we wish you well in finding the genetics to move your business from good to great.

- Nigel, Kate, Joe & Brett Kerin



SALE INFORMATION

Inspection

Sale inspections from 6:30am. Pre-sale inspections by appointment always welcome.

Catering

Morning tea, light refreshments and lunch will be provided.

Fertility

The rams testicles have been examined at classing and are guaranteed to be ready for work. Should a ram prove infertile or incapable upon veterinary inspection within six (6) months of purchase, the ram will be replaced or refunded.

Delivery

All Rams will be delivered by Dick Smith Transport Australia wide free of charge.

Insurance

It will be the responsibility of the purchasers to insure their Rams if required which can be arranged through Bowyer & Livermore after the sale.

Outside agents

Will be offered a 2 % rebate by the vendor. All introductions have to be emailed to Bowyer and Livermore by 5pm on Wednesday 22nd September.

office@bandl.com.au | 02 6331 5166

Buyers instructions

Please complete the buyer's instruction slip provided on sale day by Bowyer & Livermore. No verbal instructions will be accepted.

GST

The Kerin Poll On-Property Ram Sale will be GST exclusive. GST will be added to the purchase price prior to invoicing.

Disclaimer

All reasonable care has been taken to ensure that the information provided in this catalogue is correct. However the vendor or the selling agent do not assume any responsibility for the correctness, use or interpretation of the information included in this catalogue.





WHAT ARE ASBVS?

Australian Sheep Breeding Values are an estimate of an animal's true breeding value based on pedigree and performance recorded information. They are essentially a projection of how that animal's progeny will perform for a range of traits.



PWT (Post Weaning Weight)

Taken at 200 Days of age this ASBV describes the animal's genetic merit for growth rate. A positive ASBV means the animal is genetically faster growing.

YWT (Yearling Weight)

ASBVs describe the animal's genetic merit for growth rate. A positive ASBV means the animal is genetically faster growing.

YFAT (Yearling Fat Depth)

ASBVs describe the value of an animal's genes for fat depth at a constant weight – a negative ASBV means a genetically leaner animal.

YEMD (Yearling Eye Muscle Depth)

ASBVs describe the value of animal's genes for eye muscle depth at a constant weight – a positive ASBV means a genetically thicker-muscled animal, and one that will have slightly more of its lean tissue in the higher-priced cuts

YGFW (Yearling greasy Fleece Weight)

ASBVs describe the value of animal's genes for wool weight a positive ASBV means a genetically heavier cutting animal.

EBWR (Early Breech Wrinkle)

Rams with a lower breech wrinkle (BWR) will produce progeny that have a lower degree of wrinkle in the breech area. A ram with an ASBV of -0.3 scores lower than the progeny of a ram with an ASBV of 0.

YFD (Yearling Fibre Diameter)

Lower negative fibre diameter (FD) ASBV's are generally desirable. A ram that has an ASBV of -0.8 will produce progeny that are genetically 0.4 microns finer than a ram with an ASBV of 0.

YWEC (Worm Egg Count)

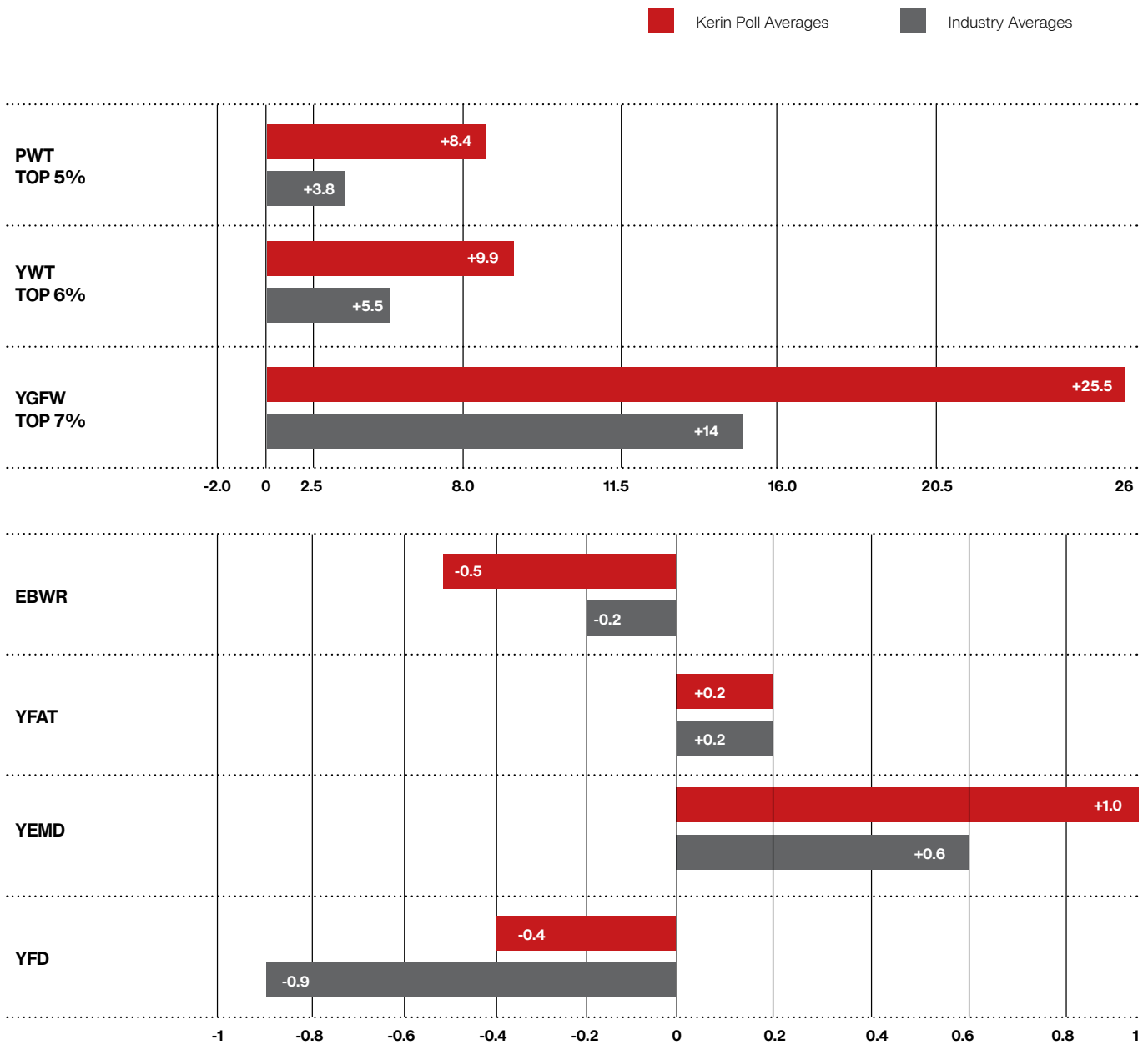
ASBVs estimate an animal's genetic potential for resisting worm burdens. Lower WEC ASBVs are desirable.

TREND IN DATA

Kerin Poll Merino stud was established in 2009 with the goal to build the traits that made the terminal industry a success into the Merino breed, "fast early growth", "fertility" and "doing ability". 13 years on our data for post weaning weight is 121% above the Australian Merino industry average.

With the innovation of genomics/MateSel and technology we were able to fast track our data through the use of

embryo transfer and artificial insemination. Resulting in our Merinos exhibiting outstanding growth patterns only previously seen in terminal breeds. This has allowed our clients to succeed in producing an animal with increased fertility and fast growth, allowing their flocks to create a faster turnover of product.



	MIC	CV	SD	PWT	YWT	YFAT	YEMD	YCFW	YGFW
2010	19.0	15.3	-	-	+3.8	-0.39	-1.06	-	-
2011	19.0	15.4	3.0	-	+4.9	-0.24	-0.71	-	-
2012	19.3	15.7	3.0	-	+5.7	0.0	-0.5	-	-
2013	18.7	15.1	2.8	-	+6.7	0.3	+0.3	-	-
2014	19.0	14.6	2.7	-	+6.0	0.2	+0.4	+14.4	-
2015	19.2	16.8	3.1	-	+6.7	-0.1	-0.4	+19.5	-
2016	19.6	15.6	3.1	+6.4	+7.7	-0.1	-0.1	-	+20.8
2017	20.2	14.7	3.0	+5.8	+7.1	0.0	-0.2	-	+19.1
2018	18.2	15.2	2.9	+6.3	+8.4	-0.2	-0.1	-	+21.2
2019	19.9	14.4	2.9	+6.4	+8.6	-0.2	+0.1	-	+21.2
2020	19.5	15.1	2.9	+7.0	+9.0	-0.3	+0.1	-	+24.5
2021	18.7	14.9	2.8	+7.9	+9.9	0	+0.4	-	+26
2022	19.1	16.2	3.1	+8.4	+9.9	+0.2	+1.0	-	+25.5
INDUSTRY AVERAGES				+3.8	+5.5	+0.2	+0.6	-	+14

SEMEN RETENTION RIGHTS

Kerin Agriculture selling as Kerin Poll Merino Stud Retains semen rights on all rams sold on the following conditions:

1. The commercial rights to the semen of the animal sold are forever owned by Kerin Poll Merino Stud and the right of the Purchaser as to semen from the animal is limited to the use, naturally or by way of artificial insemination, on the Purchaser's own herd or flock. The Purchaser does not have any right to sell or otherwise commercially deal with the semen from or semen rights of the animal.
2. The names of all members of any syndicate, partnership or other joint arrangement of ownership of the animal by the Purchaser must be listed on the bidder card at registration prior to the sale.
3. The Purchaser (which includes all the members of any syndicate, partnership or other joint arrangement) does not have the right or legal ability to sell, lease, transfer or otherwise deal with fractions or portions of the Purchaser's interest in the animal and can only sell, lease, transfer or otherwise deal with animal as a whole.
4. If the Purchaser transfers the animal, whether by way of sale, gift or otherwise, then the transferee is bound by these rules and the Purchaser agrees to obtain the agreement of transferee to these rules and to guarantee the performance of the rules by the transferee to Kerin Poll Merino Stud.



2022 RAM SALE SIRE INFO

180027	KERIN POLL X KERIN POLL 160137
190022	KERIN POLL X KERIN POLL 170402
190125	KERIN POLL X ANDERSON 170660
190902	KERIN POLL X KERIN POLL 170024
193511	KERIN POLL X KERIN POLL 181002
193599	KERIN POLL X KERIN POLL 181559
193704	KERIN POLL X KERIN POLL 182016
170660	ANDERSON 170660
160003	MOOJEPIN 160003
173081	MOOJEPIN 173081



RAM LAMBS USED

200309	KERIN POLL X KERIN POLL 182504
200717	KERIN POLL X KERIN POLL 181877
200808	KERIN POLL X TV 180227
200860	KERIN POLL X TV 180227
200871	KERIN POLL X MP 130306
201313	KERIN POLL X KERIN POLL 180027
201314	KERIN POLL X TV 180227

LOT 1	TAG	SIRE	DROP	MIC	SD	CV	CF%	BW
	210661	190902	APRIL	19.5	3.4	17.3	99.2	118
	YWEC	PWT	YWT	YFAT	YEMD	YGFW	YFD	EBWR
	8.7	11.3	13	1	0.6	26	-0.4	-0.9
+	SINGLE	+	BUYER				\$	

LOT 2	TAG	SIRE	DROP	MIC	SD	CV	CF%	BW
	210455	190125	APRIL	20.9	2.6	12.5	99.8	109
	YWEC	PWT	YWT	YFAT	YEMD	YGFW	YFD	EBWR
	-4.6	9.8	11.9	0.9	1	29.3	0.5	-0.7
+	TWIN	+	BUYER				\$	

LOT 3	TAG	SIRE	DROP	MIC	SD	CV	CF%	BW
	210169	193599	APRIL	18.9	2.9	15.2	99.2	98
	YWEC	PWT	YWT	YFAT	YEMD	YGFW	YFD	EBWR
	-20.6	7.7	9.2	0.5	2.8	20.2	-1	-0.2
+	TWIN	+	BUYER				\$	

LOT 4	TAG	SIRE	DROP	MIC	SD	CV	CF%	BW
	212241	170660	AUG	19.1	2.5	12.9	99.8	99
	YWEC	PWT	YWT	YFAT	YEMD	YGFW	YFD	EBWR
	-26.9	10.4	11.3	1	1.4	28.1	0.1	-0.5
+	TWIN	+	BUYER				\$	

LOT 5	TAG	SIRE	DROP	MIC	SD	CV	CF%	BW
	210714	193599	APRIL	17.9	3.3	18.5	99.5	101
	YWEC	PWT	YWT	YFAT	YEMD	YGFW	YFD	EBWR
	-5.2	7.9	9	0.7	2.5	24.3	-1.1	-0.9
+	TWIN	+	BUYER				\$	

LOT 6	TAG	SIRE	DROP	MIC	SD	CV	CF%	BW
	211657	193599	AUG	18.9	3	15.8	99.5	104
	YWEC	PWT	YWT	YFAT	YEMD	YGFW	YFD	EBWR
	-20.2	11.3	13.3	0.4	1.9	18.6	-0.4	-1
+	TWIN	+	BUYER				\$	

LOT 7	TAG	SIRE	DROP	MIC	SD	CV	CF%	BW
	210254	193599	MAY	19.4	4.4	22	99	114
	YWEC	PWT	YWT	YFAT	YEMD	YGFW	YFD	EBWR
	33.1	9.4	10.9	0.2	2.3	27.8	-0.7	-0.8
+	TWIN	+	BUYER				\$	

LOT 8	TAG	SIRE	DROP	MIC	SD	CV	CF%	BW
	210284	193599	AUG	20.6	2.9	14.2	99	98
	YWEC	PWT	YWT	YFAT	YEMD	YGFW	YFD	EBWR
	-8.7	11.4	13.5	0.5	1.2	21.8	0.1	-1
+	TWIN	+	BUYER				\$	

LOT 9	TAG	SIRE	DROP	MIC	SD	CV	CF%	BW
	210148	193599	APRIL	20.5	3	14.4	99.8	103
	YWEC	PWT	YWT	YFAT	YEMD	YGFW	YFD	EBWR
	-32.2	8	9.6	0.9	2	24.5	0.4	-1.1
+	TWIN	+	BUYER				\$	

LOT 10	TAG	SIRE	DROP	MIC	SD	CV	CF%	BW
	210008	193599	AUG	18.4	3.5	18.9	99.8	112
	YWEC	PWT	YWT	YFAT	YEMD	YGFW	YFD	EBWR
	12.4	10.1	12.1	0.4	1.7	24.8	-1.1	-0.9
‡ TWIN ‡	BUYER						\$	

LOT 11	TAG	SIRE	DROP	MIC	SD	CV	CF%	BW
	210005	193599	AUG	19.9	2.8	14.3	99.5	102
	YWEC	PWT	YWT	YFAT	YEMD	YGFW	YFD	EBWR
	8.4	12.5	13.7	-0.1	1.2	31.3	-0.3	-0.9
‡ TWIN ‡	BUYER						\$	

LOT 12	TAG	SIRE	DROP	MIC	SD	CV	CF%	BW
	211824	193599	AUG	18	2.7	15.1	99.2	95
	YWEC	PWT	YWT	YFAT	YEMD	YGFW	YFD	EBWR
	-28.6	11.6	13.1	1.3	3.8	15.4	-0.4	-0.9
‡ TWIN ‡	BUYER						\$	

LOT 13	TAG	SIRE	DROP	MIC	SD	CV	CF%	BW
	210078	193599	AUG	18.8	2.7	14.1	99.5	103
	YWEC	PWT	YWT	YFAT	YEMD	YGFW	YFD	EBWR
	-17.9	9.2	10.2	0.4	1.8	22.6	-0.4	-0.2
‡ SINGLE ‡	BUYER						\$	

LOT 14	TAG	SIRE	DROP	MIC	SD	CV	CF%	BW
	210282	193599	APRIL	19.4	3.1	15.8	99	95
	YWEC	PWT	YWT	YFAT	YEMD	YGFW	YFD	EBWR
	-12.3	8	10.1	0.8	1.8	21.4	-0.5	-0.3
‡ SINGLE ‡	BUYER						\$	

LOT 15	TAG	SIRE	DROP	MIC	SD	CV	CF%	BW
	212455	160003	AUG	20.9	3.1	14.9	99.8	108
	YWEC	PWT	YWT	YFAT	YEMD	YGFW	YFD	EBWR
	11.5	7.5	10.6	0.7	1.3	29.2	0.8	-0.6
‡ TWIN ‡	BUYER						\$	

LOT 16	TAG	SIRE	DROP	MIC	SD	CV	CF%	BW
	211634	193599	AUG	19.6	2.7	14	99.2	98
	YWEC	PWT	YWT	YFAT	YEMD	YGFW	YFD	EBWR
	-44.7	11.7	12.7	1.2	3.5	19.1	0.3	-0.7
‡ TWIN ‡	BUYER						\$	

LOT 17	TAG	SIRE	DROP	MIC	SD	CV	CF%	BW
	212446	160003	AUG	20.1	3.9	19.5	99	97
	YWEC	PWT	YWT	YFAT	YEMD	YGFW	YFD	EBWR
	7.4	9.3	11.3	1.2	1.5	22	0.3	-1
‡ SINGLE ‡	BUYER						\$	

LOT 18	TAG	SIRE	DROP	MIC	SD	CV	CF%	BW
	211806	193599	AUG	18	3.4	18.7	99.5	82
	YWEC	PWT	YWT	YFAT	YEMD	YGFW	YFD	EBWR
	-19.7	7.8	10	0.6	2.4	25.9	-0.4	-0.2
‡ TWIN ‡	BUYER						\$	

LOT 19	TAG	SIRE	DROP	MIC	SD	CV	CF%	BW
	210122	193599	SEPT	18.1	2.7	15	99.2	88
	YWEC	PWT	YWT	YFAT	YEMD	YGFW	YFD	EBWR
	-16.4	3.9	5.9	1.1	4.2	25.6	-1.2	-0.2
‡ TWIN ‡	BUYER						\$	

LOT 20	TAG	SIRE	DROP	MIC	SD	CV	CF%	BW
	210130	193599	APRIL	19.5	2.7	13.8	99	99
	YWEC	PWT	YWT	YFAT	YEMD	YGFW	YFD	EBWR
	-18.8	8.4	10.2	1	3.2	15.6	-0.4	-0.5
‡ TWIN ‡	BUYER						\$	

LOT 21	TAG	SIRE	DROP	MIC	SD	CV	CF%	BW
	211801	193599	AUG	18.2	2.8	15.4	99.2	109
	YWEC	PWT	YWT	YFAT	YEMD	YGFW	YFD	EBWR
	-25.1	9.8	12.3	0.4	2.3	26.8	-1	-0.1
‡ TWIN ‡	BUYER						\$	

LOT 22	TAG	SIRE	DROP	MIC	SD	CV	CF%	BW
	212447	160003	AUG	20.4	3.6	17.5	99.5	109
	YWEC	PWT	YWT	YFAT	YEMD	YGFW	YFD	EBWR
	16.2	10.6	13.3	0.6	0.9	23.5	0.8	-1.3
‡ SINGLE ‡	BUYER						\$	

LOT 23	TAG	SIRE	DROP	MIC	SD	CV	CF%	BW
	211659	193599	AUG	19.1	2.9	15	99.8	103
	YWEC	PWT	YWT	YFAT	YEMD	YGFW	YFD	EBWR
	-1.8	11.4	13.7	0	0.8	27.7	-0.9	-0.6
‡ TWIN ‡	BUYER						\$	

LOT 24	TAG	SIRE	DROP	MIC	SD	CV	CF%	BW
	212565	201313	SEPT	16.6	2.4	14.7	100	97
	YWEC	PWT	YWT	YFAT	YEMD	YGFW	YFD	EBWR
	-10.8	8.9	10.5	-0.2	-0.7	18.9	-1.4	-0.6
‡ TWIN ‡	BUYER						\$	

LOT 25	TAG	SIRE	DROP	MIC	SD	CV	CF%	BW
	211450	190902	AUG	19.2	3.1	16.3	99	92
	YWEC	PWT	YWT	YFAT	YEMD	YGFW	YFD	EBWR
	-20	9.6	11.2	0.5	1.2	21.8	-0.3	-1.2
‡ TWIN ‡	BUYER						\$	

LOT 26	TAG	SIRE	DROP	MIC	SD	CV	CF%	BW
	211483	190902	AUG	19.9	3.4	17	99.5	99
	YWEC	PWT	YWT	YFAT	YEMD	YGFW	YFD	EBWR
	-18.7	7.5	9.8	0	0.7	22.9	0.3	-0.8
‡ SINGLE ‡	BUYER						\$	

LOT 27	TAG	SIRE	DROP	MIC	SD	CV	CF%	BW
	211495	190902	SEPT	19.7	4.8	22	98.9	98
	YWEC	PWT	YWT	YFAT	YEMD	YGFW	YFD	EBWR
	-1.9	8.3	10.7	-0.2	0.4	30	-0.1	-0.6
‡ SINGLE ‡	BUYER						\$	

LOT 28	TAG	SIRE	DROP	MIC	SD	CV	CF%	BW
	211410	190902	AUG	17.9	2.7	14.9	100	98
	YWEC	PWT	YWT	YFAT	YEMD	YGFW	YFD	EBWR
	-18.9	8.5	10.6	-0.2	0.5	22.1	-0.8	-1.1
+ TWIN +	BUYER						\$	

LOT 29	TAG	SIRE	DROP	MIC	SD	CV	CF%	BW
	211621	193599	AUG	17.7	2.3	12.7	99.8	90
	YWEC	PWT	YWT	YFAT	YEMD	YGFW	YFD	EBWR
	-23.5	9.7	10.7	0.2	1.5	20.4	-0.9	-0.5
+ SINGLE +	BUYER						\$	

LOT 30	TAG	SIRE	DROP	MIC	SD	CV	CF%	BW
	212382	160003	AUG	20.1	3.2	15.9	99.5	86
	YWEC	PWT	YWT	YFAT	YEMD	YGFW	YFD	EBWR
	6.2	8.4	9.8	0.9	2	14.6	0.2	-1.1
+ TWIN +	BUYER						\$	

LOT 31	TAG	SIRE	DROP	MIC	SD	CV	CF%	BW
	212259	170660	SEPT	17.5	3	17.2	99.8	90
	YWEC	PWT	YWT	YFAT	YEMD	YGFW	YFD	EBWR
	-38.6	6.8	6.7	0	0.1	26.7	-0.6	0
+ SINGLE +	BUYER						\$	

LOT 32	TAG	SIRE	DROP	MIC	SD	CV	CF%	BW
	211809	193599	AUG	19.2	3.8	19.8	99.2	89
	YWEC	PWT	YWT	YFAT	YEMD	YGFW	YFD	EBWR
	-11.7	9	10.4	0.7	1.2	25.9	-0.3	-0.6
+ TWIN +	BUYER						\$	

LOT 33	TAG	SIRE	DROP	MIC	SD	CV	CF%	BW
	211466	190902	AUG	19.9	3.6	18	99.2	93
	YWEC	PWT	YWT	YFAT	YEMD	YGFW	YFD	EBWR
	4	8.6	11.1	0.5	1.9	28.3	0.3	-0.5
+ TWIN +	BUYER						\$	

LOT 34	TAG	SIRE	DROP	MIC	SD	CV	CF%	BW
	211902	190125	AUG	19.4	4.1	21.2	99	91
	YWEC	PWT	YWT	YFAT	YEMD	YGFW	YFD	EBWR
	-0.4	9.1	11.1	-0.5	0.6	32.7	-0.3	0.1
+ TWIN +	BUYER						\$	

LOT 35	TAG	SIRE	DROP	MIC	SD	CV	CF%	BW
	212768	201314	AUG	19.1	3.8	19.7	99	90
	YWEC	PWT	YWT	YFAT	YEMD	YGFW	YFD	EBWR
	20.2	8.9	10.8	0.3	0.5	27.2	-0.4	-0.6
+ TWIN +	BUYER						\$	

LOT 36	TAG	SIRE	DROP	MIC	SD	CV	CF%	BW
	211411	190902	AUG	19.3	2.8	14.5	99.2	90
	YWEC	PWT	YWT	YFAT	YEMD	YGFW	YFD	EBWR
	-5	6.5	7.9	0.5	0.9	28.7	0.1	-0.6
+ SINGLE +	BUYER						\$	

LOT 37	TAG	SIRE	DROP	MIC	SD	CV	CF%	BW	
	211491	190902	AUG	20.1	3.5	17.7	99.8	88	
	YWEC	PWT	YWT	YFAT	YEMD	YGFW	YFD	EBWR	
	1.9	8.3	10.2	0.3	0.7	39.7	0.7	-0.3	
+	TRIPLET	+	BUYER				\$		

LOT 38	TAG	SIRE	DROP	MIC	SD	CV	CF%	BW	
	211418	190902	AUG	19.3	3.5	18.2	99.2	89	
	YWEC	PWT	YWT	YFAT	YEMD	YGFW	YFD	EBWR	
	-11.2	9.9	11.7	0.5	1.1	19.1	-0.6	-0.9	
+	TRIPLET	+	BUYER				\$		

LOT 39	TAG	SIRE	DROP	MIC	SD	CV	CF%	BW	
	211432	190902	AUG	20.3	3	15	100	87	
	YWEC	PWT	YWT	YFAT	YEMD	YGFW	YFD	EBWR	
	-1.3	7.7	8	0.5	1.4	34.3	0.5	-0.6	
+	TWIN	+	BUYER				\$		

LOT 40	TAG	SIRE	DROP	MIC	SD	CV	CF%	BW	
	212554	201313	SEPT	17.2	2.1	12.2	99.8	85	
	YWEC	PWT	YWT	YFAT	YEMD	YGFW	YFD	EBWR	
	15.9	6.1	7.4	0.1	1.1	21.7	-1.4	0	
+	TWIN	+	BUYER				\$		

LOT 41	TAG	SIRE	DROP	MIC	SD	CV	CF%	BW	
	212442	160003	AUG	17.5	2.4	13.8	100	90	
	YWEC	PWT	YWT	YFAT	YEMD	YGFW	YFD	EBWR	
	-20.8	5.3	6.2	0.9	1	20.7	-0.8	-0.7	
+	SINGLE	+	BUYER				\$		

LOT 42	TAG	SIRE	DROP	MIC	SD	CV	CF%	BW	
	211618	193599	AUG	19.9	3	15	99.5	100	
	YWEC	PWT	YWT	YFAT	YEMD	YGFW	YFD	EBWR	
	3.5	10.4	12.1	0.7	1.8	21.4	0.1	-0.8	
+	TWIN	+	BUYER				\$		

LOT 43	TAG	SIRE	DROP	MIC	SD	CV	CF%	BW	
	212769	201314	AUG	18.9	3	15.7	99.2	101	
	YWEC	PWT	YWT	YFAT	YEMD	YGFW	YFD	EBWR	
	16.7	7.6	10.1	0.7	0.9	29.8	-0.1	-0.3	
+	SINGLE	+	BUYER				\$		

LOT 44	TAG	SIRE	DROP	MIC	SD	CV	CF%	BW	
	211439	190902	AUG	20.1	3.7	18.4	99	99	
	YWEC	PWT	YWT	YFAT	YEMD	YGFW	YFD	EBWR	
	21	10.9	12.9	0.5	1.9	29.7	-0.3	-1	
+	TWIN	+	BUYER				\$		

LOT 45	TAG	SIRE	DROP	MIC	SD	CV	CF%	BW	
	212343	160003	AUG	19	2.9	15	99.5	105	
	YWEC	PWT	YWT	YFAT	YEMD	YGFW	YFD	EBWR	
	8.5	9.5	11.4	0.4	0.7	22.6	-0.6	-0.8	
+	SINGLE	+	BUYER				\$		

LOT 46	TAG	SIRE	DROP	MIC	SD	CV	CF%	BW
	211632	193599	SEPT	17.6	3.4	19.1	99	94
	YWEC	PWT	YWT	YFAT	YEMD	YGFW	YFD	EBWR
	-21.9	9.3	11.3	0.1	1.9	17.9	-0.7	-0.8
‡ TWIN ‡	BUYER						\$	

LOT 47	TAG	SIRE	DROP	MIC	SD	CV	CF%	BW
	211844	193599	AUG	19.6	2.8	14.4	99.8	95
	YWEC	PWT	YWT	YFAT	YEMD	YGFW	YFD	EBWR
	-43.6	10.7	12.4	0.6	2.8	21.2	-0.1	-0.6
‡ TWIN ‡	BUYER						\$	

LOT 48	TAG	SIRE	DROP	MIC	SD	CV	CF%	BW
	211549	190902	AUG	17.3	2.4	14	100	98
	YWEC	PWT	YWT	YFAT	YEMD	YGFW	YFD	EBWR
	-18.9	8.3	10.1	-0.4	0.1	37.4	-0.8	-0.6
‡ TRIPLET ‡	BUYER						\$	

LOT 49	TAG	SIRE	DROP	MIC	SD	CV	CF%	BW
	212459	160003	AUG	19.7	3.1	15.5	99.5	99
	YWEC	PWT	YWT	YFAT	YEMD	YGFW	YFD	EBWR
	-8.4	7.8	9.1	0.9	1.5	18	-0.1	-0.8
‡ SINGLE ‡	BUYER						\$	

LOT 50	TAG	SIRE	DROP	MIC	SD	CV	CF%	BW
	211821	193599	AUG	17.6	2.7	15.5	99.8	98
	YWEC	PWT	YWT	YFAT	YEMD	YGFW	YFD	EBWR
	-23.1	9.3	11.1	0	1.8	23.4	-1.1	0.4
‡ TWIN ‡	BUYER						\$	

LOT 51	TAG	SIRE	DROP	MIC	SD	CV	CF%	BW
	212483	160003	AUG	18.4	2.5	13.5	99.8	98
	YWEC	PWT	YWT	YFAT	YEMD	YGFW	YFD	EBWR
	-11.5	6.8	7.8	0.7	1.3	17.7	-1.3	-0.7
‡ TWIN ‡	BUYER						\$	

LOT 52	TAG	SIRE	DROP	MIC	SD	CV	CF%	BW
	212434	160003	AUG	18.2	2.8	15.4	100	91
	YWEC	PWT	YWT	YFAT	YEMD	YGFW	YFD	EBWR
	20.2	6.7	7.8	0.1	0.6	34.6	-0.3	-0.2
‡ TRIPLET ‡	BUYER						\$	

LOT 53	TAG	SIRE	DROP	MIC	SD	CV	CF%	BW
	211625	193599	SEPT	16.1	3.4	21.4	99	92
	YWEC	PWT	YWT	YFAT	YEMD	YGFW	YFD	EBWR
	-12.5	8.3	10.2	0.6	2.2	15.7	-1.2	-0.5
‡ TWIN ‡	BUYER						\$	

LOT 54	TAG	SIRE	DROP	MIC	SD	CV	CF%	BW
	212558	201313	AUG	18.4	2.6	14	99.5	92
	YWEC	PWT	YWT	YFAT	YEMD	YGFW	YFD	EBWR
	47.4	8.1	9.9	0.1	0.3	22.3	-1.6	0.2
‡ TWIN ‡	BUYER						\$	

LOT 55	TAG	SIRE	DROP	MIC	SD	CV	CF%	BW
	212440	160003	AUG	19.2	3.4	17.6	99	92
	YWEC	PWT	YWT	YFAT	YEMD	YGFW	YFD	EBWR
	-9.8	9.1	10.3	1.8	0.9	17.1	0	-1
‡ TWIN ‡	BUYER						\$	

LOT 56	TAG	SIRE	DROP	MIC	SD	CV	CF%	BW
	212470	160003	AUG	18.7	2.4	12.7	100	95
	YWEC	PWT	YWT	YFAT	YEMD	YGFW	YFD	EBWR
	12.3	8.4	9.8	0.2	-0.2	28	-0.5	-0.6
‡ TWIN ‡	BUYER						\$	

LOT 57	TAG	SIRE	DROP	MIC	SD	CV	CF%	BW
	211938	190125	AUG	20.2	3.4	16.8	99	101
	YWEC	PWT	YWT	YFAT	YEMD	YGFW	YFD	EBWR
	-5.4	7	9.1	0.6	1.8	15.7	0.2	-0.8
‡ TWIN ‡	BUYER						\$	

LOT 58	TAG	SIRE	DROP	MIC	SD	CV	CF%	BW
	211465	190902	AUG	19.4	4.1	20.9	99.2	101
	YWEC	PWT	YWT	YFAT	YEMD	YGFW	YFD	EBWR
	-47.5	11.7	12.9	0.5	0.2	29	0.3	-1
‡ SINGLE ‡	BUYER						\$	

LOT 59	TAG	SIRE	DROP	MIC	SD	CV	CF%	BW
	211953	190125	AUG	18.4	2.4	12.8	100	102
	YWEC	PWT	YWT	YFAT	YEMD	YGFW	YFD	EBWR
	0.5	5.6	8.6	0	1.4	33.2	-0.4	-0.3
‡ SINGLE ‡	BUYER						\$	

LOT 60	TAG	SIRE	DROP	MIC	SD	CV	CF%	BW
	212403	160003	AUG	18.5	2.6	14	99.8	103
	YWEC	PWT	YWT	YFAT	YEMD	YGFW	YFD	EBWR
	-6.4	8.6	10.5	0.1	0.6	30.1	-0.2	-0.1
‡ TWIN ‡	BUYER						\$	

LOT 61	TAG	SIRE	DROP	MIC	SD	CV	CF%	BW
	212342	160003	AUG	19.2	2.6	13.3	100	111
	YWEC	PWT	YWT	YFAT	YEMD	YGFW	YFD	EBWR
	13.3	10.1	13.4	0.7	1.4	16.8	0.3	-0.4
‡ TWIN ‡	BUYER						\$	

LOT 62	TAG	SIRE	DROP	MIC	SD	CV	CF%	BW
	212253	170660	AUG	19.6	3.6	18.3	99	97
	YWEC	PWT	YWT	YFAT	YEMD	YGFW	YFD	EBWR
	-31.8	8.6	9.1	0.3	1.2	26.6	0.5	-0.8
‡ SINGLE ‡	BUYER						\$	

LOT 63	TAG	SIRE	DROP	MIC	SD	CV	CF%	BW
	211919	190125	AUG	19.8	3.1	15.5	99.5	97
	YWEC	PWT	YWT	YFAT	YEMD	YGFW	YFD	EBWR
	-19.4	6.2	8.6	-0.4	0.1	29.5	0.3	0
‡ TWIN ‡	BUYER						\$	

LOT 64	TAG	SIRE	DROP	MIC	SD	CV	CF%	BW
	212469	160003	AUG	19	3	15.6	99.5	96
	YWEC	PWT	YWT	YFAT	YEMD	YGFW	YFD	EBWR
	18.2	10.4	12.7	0.2	0.4	25.8	-0.3	-0.9
+ TRIPLET +	BUYER						\$	

LOT 65	TAG	SIRE	DROP	MIC	SD	CV	CF%	BW
	211812	193599	AUG	18.7	3.5	18.6	99.8	98
	YWEC	PWT	YWT	YFAT	YEMD	YGFW	YFD	EBWR
	5.6	12.1	14.3	-0.2	1.6	24.1	-0.8	-0.4
+ TRIPLET +	BUYER						\$	

LOT 66	TAG	SIRE	DROP	MIC	SD	CV	CF%	BW
	211963	190125	AUG	18.7	3.6	19.3	99	93
	YWEC	PWT	YWT	YFAT	YEMD	YGFW	YFD	EBWR
	-8.1	5.6	6.4	0.3	1.2	27.3	-0.3	-0.3
+ SINGLE +	BUYER						\$	

LOT 67	TAG	SIRE	DROP	MIC	SD	CV	CF%	BW
	212431	160003	AUG	19.1	2.9	15	99.2	91
	YWEC	PWT	YWT	YFAT	YEMD	YGFW	YFD	EBWR
	32	8.6	10.2	0.7	1.3	23.9	-1	-0.6
+ TRIPLET +	BUYER						\$	

LOT 68	TAG	SIRE	DROP	MIC	SD	CV	CF%	BW
	211441	190902	AUG	20.9	4	19.4	99	91
	YWEC	PWT	YWT	YFAT	YEMD	YGFW	YFD	EBWR
	6.2	7.8	9.5	0	1	33.7	0.3	-0.5
+ TWIN +	BUYER						\$	

LOT 69	TAG	SIRE	DROP	MIC	SD	CV	CF%	BW
	212406	160003	AUG	19	3.2	17.1	99.5	97
	YWEC	PWT	YWT	YFAT	YEMD	YGFW	YFD	EBWR
	-7.2	6.5	7.3	0.9	0.8	20.3	-0.7	-0.5
+ SINGLE +	BUYER						\$	

LOT 70	TAG	SIRE	DROP	MIC	SD	CV	CF%	BW
	211838	193599	AUG	19.1	4.2	21.9	99	96
	YWEC	PWT	YWT	YFAT	YEMD	YGFW	YFD	EBWR
	-8.9	11.3	13.6	0.1	2.5	24.1	-0.5	-0.9
+ TWIN +	BUYER						\$	

LOT 71	TAG	SIRE	DROP	MIC	SD	CV	CF%	BW
	212398	160003	AUG	18.1	3.1	17	99.8	93
	YWEC	PWT	YWT	YFAT	YEMD	YGFW	YFD	EBWR
	-1.9	8.3	10.2	0.4	0.3	35	-0.9	-0.7
+ TRIPLET +	BUYER						\$	

LOT 72	TAG	SIRE	DROP	MIC	SD	CV	CF%	BW
	212766	201314	SEPT	19.6	2.6	13.2	99.8	91
	YWEC	PWT	YWT	YFAT	YEMD	YGFW	YFD	EBWR
	37.7	9.7	11.2	0.4	-0.2	18.1	-0.1	-0.4
+ TWIN +	BUYER						\$	

LOT 73	TAG	SIRE	DROP	MIC	SD	CV	CF%	BW
	212275	170660	SEPT	18.1	4	22	99.5	90
	YWEC	PWT	YWT	YFAT	YEMD	YGFW	YFD	EBWR
	-44.3	8.3	9.5	0.2	0.7	25.1	-0.7	-0.6
‡ TWIN ‡	BUYER						\$	

LOT 74	TAG	SIRE	DROP	MIC	SD	CV	CF%	BW
	212478	160003	AUG	19.4	4.1	21.1	99.2	81
	YWEC	PWT	YWT	YFAT	YEMD	YGFW	YFD	EBWR
	0.5	5.6	7.2	1.3	2.4	16.2	-0.2	-1
‡ TWIN ‡	BUYER						\$	

LOT 75	TAG	SIRE	DROP	MIC	SD	CV	CF%	BW
	211494	190902	AUG	16.5	2.9	17.7	99.5	87
	YWEC	PWT	YWT	YFAT	YEMD	YGFW	YFD	EBWR
	5.8	9	10.6	0.6	0.2	26.1	-1.5	-0.2
‡ TWIN ‡	BUYER						\$	

LOT 76	TAG	SIRE	DROP	MIC	SD	CV	CF%	BW
	212884	200717	SEPT	20.5	3.1	14.9	99.2	79
	YWEC	PWT	YWT	YFAT	YEMD	YGFW	YFD	EBWR
	-1.2	5.7	7.2	0.7	2.1	26.6	0.5	-0.4
‡ SINGLE ‡	BUYER						\$	

LOT 77	TAG	SIRE	DROP	MIC	SD	CV	CF%	BW
	211604	193599	AUG	18.5	2.9	15.9	99.8	77
	YWEC	PWT	YWT	YFAT	YEMD	YGFW	YFD	EBWR
	-11.6	8.2	9.8	0.1	1.7	17	-0.8	-0.8
‡ TWIN ‡	BUYER						\$	

LOT 78	TAG	SIRE	DROP	MIC	SD	CV	CF%	BW
	212732	201314	SEPT	16.3	2.4	15	100	84
	YWEC	PWT	YWT	YFAT	YEMD	YGFW	YFD	EBWR
	29.2	5.4	6.8	0.7	0.8	19	-1.3	-0.1
‡ SINGLE ‡	BUYER						\$	

LOT 79	TAG	SIRE	DROP	MIC	SD	CV	CF%	BW
	212439	160003	AUG	19.8	3.4	17	99	92
	YWEC	PWT	YWT	YFAT	YEMD	YGFW	YFD	EBWR
	41.6	8.8	9.7	0.3	1.6	28.8	0.6	-1
‡ TRIPLET ‡	BUYER						\$	

LOT 80	TAG	SIRE	DROP	MIC	SD	CV	CF%	BW
	211964	190125	AUG	17.5	2.7	15.3	99.5	90
	YWEC	PWT	YWT	YFAT	YEMD	YGFW	YFD	EBWR
	-48.4	5.2	5.6	0.4	2	15.2	-0.1	-0.9
‡ SINGLE ‡	BUYER						\$	

LOT 81	TAG	SIRE	DROP	MIC	SD	CV	CF%	BW
	212690	173081	AUG	19.4	3.9	20.2	99	89
	YWEC	PWT	YWT	YFAT	YEMD	YGFW	YFD	EBWR
	-23	7.4	10.2	1	1.6	20.4	0.5	-0.7
‡ TWIN ‡	BUYER						\$	

LOT 82	TAG	SIRE	DROP	MIC	SD	CV	CF%	BW
	212705	173081	AUG	21.3	4.5	21	99.2	87
	YWEC	PWT	YWT	YFAT	YEMD	YGFW	YFD	EBWR
	-51.3	10.1	11	1	1.7	21.7	1.1	-1.1
+ TWIN +	BUYER						\$	

LOT 83	TAG	SIRE	DROP	MIC	SD	CV	CF%	BW
	212559	201313	AUG	16.9	2.4	13.9	99.8	86
	YWEC	PWT	YWT	YFAT	YEMD	YGFW	YFD	EBWR
	13.6	6.2	8.4	1.1	1.1	17.1	-1.9	-0.5
+ SINGLE +	BUYER						\$	

LOT 84	TAG	SIRE	DROP	MIC	SD	CV	CF%	BW
	211578	190902	SEPT	18	3	16.8	99.8	93
	YWEC	PWT	YWT	YFAT	YEMD	YGFW	YFD	EBWR
	-9.4	10.6	12.1	-0.1	0.3	27.2	-0.9	-0.3
+ TWIN +	BUYER						\$	

LOT 85	TAG	SIRE	DROP	MIC	SD	CV	CF%	BW
	212438	160003	AUG	17.3	2.6	15.1	99.8	97
	YWEC	PWT	YWT	YFAT	YEMD	YGFW	YFD	EBWR
	7	9.3	10.5	0.7	2.5	17.8	-1.3	-0.9
+ TRIPLET +	BUYER						\$	

LOT 86	TAG	SIRE	DROP	MIC	SD	CV	CF%	BW
	211858	190125	AUG	18	3.4	18.9	99.2	96
	YWEC	PWT	YWT	YFAT	YEMD	YGFW	YFD	EBWR
	-13.8	6.4	7.1	0	1.2	21.4	-0.9	-0.3
+ SINGLE +	BUYER						\$	

LOT 87	TAG	SIRE	DROP	MIC	SD	CV	CF%	BW
	211566	190902	SEPT	19.1	3.8	20.1	99	97
	YWEC	PWT	YWT	YFAT	YEMD	YGFW	YFD	EBWR
	37	9	10.3	0	0.4	32	-0.1	-0.8
+ TWIN +	BUYER						\$	

LOT 88	TAG	SIRE	DROP	MIC	SD	CV	CF%	BW
	211576	190902	AUG	19.5	2.9	14.7	100	98
	YWEC	PWT	YWT	YFAT	YEMD	YGFW	YFD	EBWR
	40.3	9.4	10.9	0	0.4	33.8	0.2	-0.6
+ TWIN +	BUYER						\$	

LOT 89	TAG	SIRE	DROP	MIC	SD	CV	CF%	BW
	211588	193599	AUG	19	3	15.6	99.5	96
	YWEC	PWT	YWT	YFAT	YEMD	YGFW	YFD	EBWR
	-4.5	10.7	12.7	0.3	2	16.7	-0.1	-0.7
+ TWIN +	BUYER						\$	

LOT 90	TAG	SIRE	DROP	MIC	SD	CV	CF%	BW
	212664	173081	AUG	19.5	3.1	16.2	99.5	103
	YWEC	PWT	YWT	YFAT	YEMD	YGFW	YFD	EBWR
	-39.5	10.4	12	-0.2	-0.2	27.3	-0.5	-0.8
+ SINGLE +	BUYER						\$	

LOT 91	TAG	SIRE	DROP	MIC	SD	CV	CF%	BW
	211616	193599	SEPT	18.4	2.6	14	100	95
	YWEC	PWT	YWT	YFAT	YEMD	YGFW	YFD	EBWR
	-39.8	10	11.2	0.9	2.7	21.1	-0.7	-0.9
✦ TWIN ✦	BUYER						\$	

LOT 92	TAG	SIRE	DROP	MIC	SD	CV	CF%	BW
	211965	190125	AUG	18.4	2.6	14.3	99.5	93
	YWEC	PWT	YWT	YFAT	YEMD	YGFW	YFD	EBWR
	-34.1	7.1	9	-0.6	-0.8	29.6	-0.5	-0.5
✦ TWIN ✦	BUYER						\$	

LOT 93	TAG	SIRE	DROP	MIC	SD	CV	CF%	BW
	212443	160003	AUG	19.8	3.1	15.5	99.5	94
	YWEC	PWT	YWT	YFAT	YEMD	YGFW	YFD	EBWR
	-11.3	6.8	7.4	0.7	1.4	28.3	0.3	-0.6
✦ SINGLE ✦	BUYER						\$	

LOT 94	TAG	SIRE	DROP	MIC	SD	CV	CF%	BW
	211985	190125	AUG	19.4	2.4	12.5	100	96
	YWEC	PWT	YWT	YFAT	YEMD	YGFW	YFD	EBWR
	-31.5	8.2	10	0	0.5	36.1	-0.7	0
✦ TWIN ✦	BUYER						\$	

LOT 95	TAG	SIRE	DROP	MIC	SD	CV	CF%	BW
	211481	190902	AUG	18.9	3.4	17.8	99	93
	YWEC	PWT	YWT	YFAT	YEMD	YGFW	YFD	EBWR
	2.7	8.8	10.5	-0.6	-0.6	33.1	-0.1	-0.4
✦ TWIN ✦	BUYER						\$	

LOT 96	TAG	SIRE	DROP	MIC	SD	CV	CF%	BW
	211813	193599	SEPT	17.7	2.5	14.4	100	93
	YWEC	PWT	YWT	YFAT	YEMD	YGFW	YFD	EBWR
	-31	11.9	13	0.2	2.8	21.9	-1.1	-0.6
✦ TWIN ✦	BUYER						\$	

LOT 97	TAG	SIRE	DROP	MIC	SD	CV	CF%	BW
	211556	190902	AUG	18.4	3.8	20.9	99.5	90
	YWEC	PWT	YWT	YFAT	YEMD	YGFW	YFD	EBWR
	17.8	6.1	6.2	-0.2	-0.7	31.2	-0.6	0.1
✦ TWIN ✦	BUYER						\$	

LOT 98	TAG	SIRE	DROP	MIC	SD	CV	CF%	BW
	211404	190902	AUG	21.2	3.6	16.4	99	89
	YWEC	PWT	YWT	YFAT	YEMD	YGFW	YFD	EBWR
	-0.9	9.7	11.5	0.6	0	24.7	1.2	-0.8
✦ TWIN ✦	BUYER						\$	

LOT 99	TAG	SIRE	DROP	MIC	SD	CV	CF%	BW
	212839	200860	SEPT	16.2	3.1	19.1	99.8	81
	YWEC	PWT	YWT	YFAT	YEMD	YGFW	YFD	EBWR
	24.3	8	9.5	-0.1	0.4	20.6	-1.7	0.1
✦ TWIN ✦	BUYER						\$	

LOT 100	TAG	SIRE	DROP	MIC	SD	CV	CF%	BW
	211496	190902	AUG	18.5	3.9	21.1	99	81
	YWEC	PWT	YWT	YFAT	YEMD	YGFW	YFD	EBWR
	7	9.2	10.6	-0.4	-0.7	34.6	-0.4	-0.6
‡ TWIN ‡	BUYER						\$	

LOT 101	TAG	SIRE	DROP	MIC	SD	CV	CF%	BW
	211590	193599	AUG	17.7	2.6	14.6	99.2	77
	YWEC	PWT	YWT	YFAT	YEMD	YGFW	YFD	EBWR
	-18	6.8	7.8	0.1	1.9	17.3	-1.3	-0.2
‡ TWIN ‡	BUYER						\$	

LOT 102	TAG	SIRE	DROP	MIC	SD	CV	CF%	BW
	211459	190902	AUG	18.9	3.5	18.8	99.5	80
	YWEC	PWT	YWT	YFAT	YEMD	YGFW	YFD	EBWR
	-3	7.3	9.7	0.5	1.9	28.3	-0.2	-0.4
‡ TWIN ‡	BUYER						\$	

LOT 103	TAG	SIRE	DROP	MIC	SD	CV	CF%	BW
	212688	173081	AUG	18.8	2.7	14.2	99.8	90
	YWEC	PWT	YWT	YFAT	YEMD	YGFW	YFD	EBWR
	-26.7	8.8	10.3	0.2	0.3	16.4	-0.4	-0.4
‡ TRIPLET ‡	BUYER						\$	

LOT 104	TAG	SIRE	DROP	MIC	SD	CV	CF%	BW
	211443	190902	AUG	19.2	3.1	15.9	99.8	82
	YWEC	PWT	YWT	YFAT	YEMD	YGFW	YFD	EBWR
	-14.4	6.4	7.4	0.4	0.9	28.5	0.2	-0.4
‡ TWIN ‡	BUYER						\$	

LOT 105	TAG	SIRE	DROP	MIC	SD	CV	CF%	BW
	211816	193599	AUG	18.2	4.2	23.2	99.2	89
	YWEC	PWT	YWT	YFAT	YEMD	YGFW	YFD	EBWR
	-29.1	10.3	12.2	-0.1	1.9	22.3	-1	-0.4
‡ TWIN ‡	BUYER						\$	

LOT 106	TAG	SIRE	DROP	MIC	SD	CV	CF%	BW
	211841	193599	SEPT	18.8	3.2	17.1	99.5	94
	YWEC	PWT	YWT	YFAT	YEMD	YGFW	YFD	EBWR
	-6.7	7	9.1	0.5	1.9	23	-0.3	0.1
‡ SINGLE ‡	BUYER						\$	

LOT 107	TAG	SIRE	DROP	MIC	SD	CV	CF%	BW
	211598	193599	AUG	20.8	2.7	13.2	99.8	95
	YWEC	PWT	YWT	YFAT	YEMD	YGFW	YFD	EBWR
	5.6	12	14.2	0	1.9	24.4	0.5	-0.8
‡ TWIN ‡	BUYER						\$	

LOT 108	TAG	SIRE	DROP	MIC	SD	CV	CF%	BW
	212288	170660	SEPT	20.6	3.5	17.2	98.5	91
	YWEC	PWT	YWT	YFAT	YEMD	YGFW	YFD	EBWR
	-41	9.1	9.5	0.9	1.8	17	0.8	-0.9
‡ TWIN ‡	BUYER						\$	

LOT 109	TAG	SIRE	DROP	MIC	SD	CV	CF%	BW
	211684	193599	AUG	18.9	2.9	15.5	99.2	101
	YWEC	PWT	YWT	YFAT	YEMD	YGFW	YFD	EBWR
	-30.5	10.9	12.5	-0.1	1.8	19.1	-1	0
✦ TWIN ✦	BUYER						\$	

LOT 110	TAG	SIRE	DROP	MIC	SD	CV	CF%	BW
	211958	190125	AUG	19.3	3.3	17.2	99	100
	YWEC	PWT	YWT	YFAT	YEMD	YGFW	YFD	EBWR
	-4.4	7.8	9.8	-0.6	0.4	26.2	-0.4	-0.4
✦ TWIN ✦	BUYER						\$	

LOT 111	TAG	SIRE	DROP	MIC	SD	CV	CF%	BW
	211591	193599	APRIL	19.5	4	20.3	99	97
	YWEC	PWT	YWT	YFAT	YEMD	YGFW	YFD	EBWR
	-20.7	10.8	12.1	1.2	2.7	16.5	0.5	-1.1
✦ TWIN ✦	BUYER						\$	

LOT 112	TAG	SIRE	DROP	MIC	SD	CV	CF%	BW
	212425	160003	AUG	21	3.4	16.4	99.8	103
	YWEC	PWT	YWT	YFAT	YEMD	YGFW	YFD	EBWR
	2.2	9.8	10.8	0.3	0.3	29	0.3	-0.7
✦ SINGLE ✦	BUYER						\$	

LOT 113	TAG	SIRE	DROP	MIC	SD	CV	CF%	BW
	211597	193599	AUG	17.6	4.1	23.1	99.2	99
	YWEC	PWT	YWT	YFAT	YEMD	YGFW	YFD	EBWR
	-20.1	11.1	12.8	0	0.1	24.5	-1.4	-0.9
✦ TWIN ✦	BUYER						\$	

LOT 114	TAG	SIRE	DROP	MIC	SD	CV	CF%	BW
	212286	170660	AUG	19.7	3.8	19.1	99	98
	YWEC	PWT	YWT	YFAT	YEMD	YGFW	YFD	EBWR
	-47.1	9.4	10.3	0.1	0.6	32.5	-0.1	-0.8
✦ TWIN ✦	BUYER						\$	

LOT 115	TAG	SIRE	DROP	MIC	SD	CV	CF%	BW
	211449	190902	SEPT	19.9	3.2	16.3	99.5	94
	YWEC	PWT	YWT	YFAT	YEMD	YGFW	YFD	EBWR
	-18.9	11	12.2	1.1	2.3	32	0.8	-0.9
✦ SINGLE ✦	BUYER						\$	

LOT 116	TAG	SIRE	DROP	MIC	SD	CV	CF%	BW
	211677	193599	AUG	15.6	2.7	17	99.8	97
	YWEC	PWT	YWT	YFAT	YEMD	YGFW	YFD	EBWR
	-20.5	10.1	11.8	0.2	2.4	24.1	-2.2	-0.1
✦ TWIN ✦	BUYER						\$	

LOT 117	TAG	SIRE	DROP	MIC	SD	CV	CF%	BW
	212444	160003	AUG	18.7	3.3	17.4	99.5	105
	YWEC	PWT	YWT	YFAT	YEMD	YGFW	YFD	EBWR
	18.8	9.7	11	0.1	0.2	25.1	-0.8	-0.7
✦ SINGLE ✦	BUYER						\$	

LOT 118	TAG	SIRE	DROP	MIC	SD	CV	CF%	BW	
	212404	160003	AUG	20.3	3	14.7	99.2	99	
	YWEC	PWT	YWT	YFAT	YEMD	YGFW	YFD	EBWR	
	-22.3	8.2	10.5	1.3	1.1	26.9	0.3	-0.8	
+	SINGLE	+	BUYER				\$		

LOT 119	TAG	SIRE	DROP	MIC	SD	CV	CF%	BW	
	212712	173081	AUG	19.5	3.5	18.1	99	94	
	YWEC	PWT	YWT	YFAT	YEMD	YGFW	YFD	EBWR	
	-19.2	9.4	12.4	0.3	0.7	25.8	-0.2	-0.8	
+	TWIN	+	BUYER				\$		

LOT 120	TAG	SIRE	DROP	MIC	SD	CV	CF%	BW	
	212861	200309	SEPT	19.8	3.5	17	99	92	
	YWEC	PWT	YWT	YFAT	YEMD	YGFW	YFD	EBWR	
	-3.1	8.3	10.4	-0.2	1	19.5	-0.3	-1.1	
+	TWIN	+	BUYER				\$		

LOT 121	TAG	SIRE	DROP	MIC	SD	CV	CF%	BW	
	212215	170660	AUG	20	3.4	17	99	89	
	YWEC	PWT	YWT	YFAT	YEMD	YGFW	YFD	EBWR	
	-20.1	6.9	7.4	-0.3	0.3	30	0.2	-0.6	
+	TWIN	+	BUYER				\$		

LOT 122	TAG	SIRE	DROP	MIC	SD	CV	CF%	BW	
	212427	160003	AUG	19.6	4.6	22	99	86	
	YWEC	PWT	YWT	YFAT	YEMD	YGFW	YFD	EBWR	
	40.9	7.6	10	0.2	0.1	23.5	-0.1	-1.1	
+	TRIPLET	+	BUYER				\$		

LOT 123	TAG	SIRE	DROP	MIC	SD	CV	CF%	BW	
	211408	190902	AUG	18.1	3.5	19.1	99.8	90	
	YWEC	PWT	YWT	YFAT	YEMD	YGFW	YFD	EBWR	
	-11.6	7.8	9.9	0.2	0.2	28.8	-0.9	-0.3	
+	TWIN	+	BUYER				\$		

LOT 124	TAG	SIRE	DROP	MIC	SD	CV	CF%	BW	
	211419	190902	AUG	21.1	3.6	17.1	99.5	91	
	YWEC	PWT	YWT	YFAT	YEMD	YGFW	YFD	EBWR	
	-2.1	8.5	9.4	-0.6	-0.6	33.8	0	-0.6	
+	TWIN	+	BUYER				\$		

LOT 125	TAG	SIRE	DROP	MIC	SD	CV	CF%	BW	
	211646	193599	AUG	18.9	4	21	99.2	94	
	YWEC	PWT	YWT	YFAT	YEMD	YGFW	YFD	EBWR	
	-29.5	8.5	9.3	0.8	2.6	27.7	-0.2	-0.6	
+	TRIPLET	+	BUYER				\$		

LOT 126	TAG	SIRE	DROP	MIC	SD	CV	CF%	BW	
	212201	170660	AUG	19.4	2.7	13.9	99.5	96	
	YWEC	PWT	YWT	YFAT	YEMD	YGFW	YFD	EBWR	
	-38.5	8.3	10.4	0.9	0.5	28.2	0.1	-0.5	
+	TWIN	+	BUYER				\$		

LOT 127	TAG	SIRE	DROP	MIC	SD	CV	CF%	BW	
	211445	190902	AUG	20.2	3.5	17.1	99.8	95	
	YWEC	PWT	YWT	YFAT	YEMD	YGFW	YFD	EBWR	
	10.3	7.7	8.8	0.1	0.7	23.1	0.1	-0.9	
+	SINGLE	+	BUYER					\$	

LOT 128	TAG	SIRE	DROP	MIC	SD	CV	CF%	BW	
	211845	193599	AUG	17.4	2.6	14.7	99.5	94	
	YWEC	PWT	YWT	YFAT	YEMD	YGFW	YFD	EBWR	
	-12.8	10.8	13.5	-0.2	2.4	26.9	-1.1	-0.4	
+	TWIN	+	BUYER					\$	

LOT 129	TAG	SIRE	DROP	MIC	SD	CV	CF%	BW	
	211680	193599	SEPT	16.5	2.6	15.5	99.5	99	
	YWEC	PWT	YWT	YFAT	YEMD	YGFW	YFD	EBWR	
	-21.8	8.7	10.8	0	1.8	23.2	-2	-0.5	
+	SINGLE	+	BUYER					\$	

LOT 130	TAG	SIRE	DROP	MIC	SD	CV	CF%	BW	
	211602	193599	SEP	18.5	2.4	12.7	100	92	
	YWEC	PWT	YWT	YFAT	YEMD	YGFW	YFD	EBWR	
	-11.9	12.1	14.5	0.1	1.7	17.1	-1.1	-0.7	
+	SINGLE	+	BUYER					\$	

LOT 131	TAG	SIRE	DROP	MIC	SD	CV	CF%	BW	
	212281	170660	SEPT	19.7	3.2	16.4	99	92	
	YWEC	PWT	YWT	YFAT	YEMD	YGFW	YFD	EBWR	
	-37.3	8	8.3	0.3	0.4	29.3	0.3	-0.3	
+	TWIN	+	BUYER					\$	

LOT 132	TAG	SIRE	DROP	MIC	SD	CV	CF%	BW	
	212107	190125	SEPT	17.1	3	17.7	99.8	90	
	YWEC	PWT	YWT	YFAT	YEMD	YGFW	YFD	EBWR	
	-22.1	5.6	7	0.1	1.8	23.5	-1.3	-0.3	
+	SINGLE	+	BUYER					\$	

LOT 133	TAG	SIRE	DROP	MIC	SD	CV	CF%	BW	
	212362	160003	AUG	17.8	3	16.6	99.2	93	
	YWEC	PWT	YWT	YFAT	YEMD	YGFW	YFD	EBWR	
	-0.9	8.9	9.8	0.5	1.1	22	-0.9	-1.1	
+	TWIN	+	BUYER					\$	

LOT 134	TAG	SIRE	DROP	MIC	SD	CV	CF%	BW	
	212577	201313	AUG	17.9	3.7	20.7	99	88	
	YWEC	PWT	YWT	YFAT	YEMD	YGFW	YFD	EBWR	
	-1.1	6.3	7.6	0.6	1.2	16.7	-1.1	-0.5	
+	SINGLE	+	BUYER					\$	

LOT 135	TAG	SIRE	DROP	MIC	SD	CV	CF%	BW	
	211423	190902	AUG	17.6	3.3	18.8	99.2	89	
	YWEC	PWT	YWT	YFAT	YEMD	YGFW	YFD	EBWR	
	-8.3	8	9.6	-0.6	0.2	32.1	-1.2	-0.3	
+	TWIN	+	BUYER					\$	

LOT 136	TAG	SIRE	DROP	MIC	SD	CV	CF%	BW
	212642	200808	AUG	19.6	2.8	14.2	99.8	87
	YWEC	PWT	YWT	YFAT	YEMD	YGFW	YFD	EBWR
	-0.7	8.7	10.1	1.4	1.4	22.3	0.5	0
‡ TWIN ‡	BUYER						\$	

LOT 137	TAG	SIRE	DROP	MIC	SD	CV	CF%	BW
	211570	190902	AUG	18.5	3.5	19.1	99.8	90
	YWEC	PWT	YWT	YFAT	YEMD	YGFW	YFD	EBWR
	0.9	8.8	11	-0.3	0.1	31.9	-0.9	-0.5
‡ TWIN ‡	BUYER						\$	

LOT 138	TAG	SIRE	DROP	MIC	SD	CV	CF%	BW
	211435	190902	AUG	19.2	3.5	18.3	99.2	90
	YWEC	PWT	YWT	YFAT	YEMD	YGFW	YFD	EBWR
	0.5	8.5	9.5	-0.7	-0.4	31.2	-0.4	-0.3
‡ SINGLE ‡	BUYER						\$	

LOT 139	TAG	SIRE	DROP	MIC	SD	CV	CF%	BW
	212674	173081	AUG	18.2	2.2	11.9	100	90
	YWEC	PWT	YWT	YFAT	YEMD	YGFW	YFD	EBWR
	-32.4	10	11.1	0.5	0.3	30.6	-0.3	-0.7
‡ TWIN ‡	BUYER						\$	

LOT 140	TAG	SIRE	DROP	MIC	SD	CV	CF%	BW
	211437	190902	AUG	19.7	3.4	17.1	99.2	90
	YWEC	PWT	YWT	YFAT	YEMD	YGFW	YFD	EBWR
	33.1	6.5	8	-0.6	0.7	39.7	-0.3	0.1
‡ TWIN ‡	BUYER						\$	

LOT 141	TAG	SIRE	DROP	MIC	SD	CV	CF%	BW
	212863	200309	SEPT	19.2	2.5	13.2	99.8	93
	YWEC	PWT	YWT	YFAT	YEMD	YGFW	YFD	EBWR
	10.1	7.9	9.5	-0.5	0.3	30.5	-0.9	-0.4
‡ TWIN ‡	BUYER						\$	

LOT 142	TAG	SIRE	DROP	MIC	SD	CV	CF%	BW
	211417	190902	AUG	20.7	3.1	14.8	99.8	92
	YWEC	PWT	YWT	YFAT	YEMD	YGFW	YFD	EBWR
	-22.8	7	8	0.2	1	34.2	0.6	-0.1
‡ TWIN ‡	BUYER						\$	

LOT 143	TAG	SIRE	DROP	MIC	SD	CV	CF%	BW
	212468	160003	SEPT	18.4	3.4	18.5	98.5	93
	YWEC	PWT	YWT	YFAT	YEMD	YGFW	YFD	EBWR
	-1.2	7.5	8.3	0.3	1.1	27	-1.1	-0.6
‡ SINGLE ‡	BUYER						\$	

LOT 144	TAG	SIRE	DROP	MIC	SD	CV	CF%	BW
	211589	193599	AUG	17.8	3	17	99.5	106
	YWEC	PWT	YWT	YFAT	YEMD	YGFW	YFD	EBWR
	17.4	11.6	12.4	0	1.7	20.3	-1.1	-0.6
‡ TWIN ‡	BUYER						\$	

LOT 145	TAG	SIRE	DROP	MIC	SD	CV	CF%	BW
	212432	160003	AUG	18.7	2.9	15.4	99.5	105
	YWEC	PWT	YWT	YFAT	YEMD	YGFW	YFD	EBWR
	3	11.9	13.4	0.1	0.5	22.3	-0.1	-1
† TWIN †	BUYER						\$	

LOT 146	TAG	SIRE	DROP	MIC	SD	CV	CF%	BW
	211951	190125	AUG	18.4	3.1	16.9	99.8	99
	YWEC	PWT	YWT	YFAT	YEMD	YGFW	YFD	EBWR
	-21.1	10.5	12.1	0.2	1.6	18.2	-0.5	-0.7
† TWIN †	BUYER						\$	

LOT 147	TAG	SIRE	DROP	MIC	SD	CV	CF%	BW
	211594	193599	SEPT	17.8	2.7	15.2	99.5	95
	YWEC	PWT	YWT	YFAT	YEMD	YGFW	YFD	EBWR
	-35	8.3	9.7	0	2.6	22.6	-0.8	-0.8
† SINGLE †	BUYER						\$	

LOT 148	TAG	SIRE	DROP	MIC	SD	CV	CF%	BW
	211593	193599	AUG	17.1	2.6	15.2	99.8	97
	YWEC	PWT	YWT	YFAT	YEMD	YGFW	YFD	EBWR
	-12.5	7.8	9	0.2	2	28.1	-1.3	0.2
† SINGLE †	BUYER						\$	

LOT 149	TAG	SIRE	DROP	MIC	SD	CV	CF%	BW
	211827	193599	AUG	18.7	2.2	11.7	100	93
	YWEC	PWT	YWT	YFAT	YEMD	YGFW	YFD	EBWR
	-44	8.6	10.5	1.1	2.9	12.5	-0.6	-0.5
† TWIN †	BUYER						\$	

LOT 150	TAG	SIRE	DROP	MIC	SD	CV	CF%	BW
	212480	160003	AUG	19.3	3.2	16.5	99.5	90
	YWEC	PWT	YWT	YFAT	YEMD	YGFW	YFD	EBWR
	10	7.6	9.3	0.4	1.3	29.4	0	-0.8
† TRIPLET †	BUYER						\$	

LOT 151	TAG	SIRE	DROP	MIC	SD	CV	CF%	BW
	211993	190125	AUG	19	4.5	22	99	93
	YWEC	PWT	YWT	YFAT	YEMD	YGFW	YFD	EBWR
	-10.3	8.6	8.4	0.3	1.4	37.9	0.1	-0.4
† TRIPLET †	BUYER						\$	

LOT 152	TAG	SIRE	DROP	MIC	SD	CV	CF%	BW
	211568	190902	AUG	19.6	3.3	16.7	99.2	102
	YWEC	PWT	YWT	YFAT	YEMD	YGFW	YFD	EBWR
	-3.6	8.3	10.3	-0.5	-0.1	37.3	-0.4	-0.1
† TWIN †	BUYER						\$	

LOT 153	TAG	SIRE	DROP	MIC	SD	CV	CF%	BW
	211932	190125	SEPT	19.5	2.8	14.2	99.8	103
	YWEC	PWT	YWT	YFAT	YEMD	YGFW	YFD	EBWR
	-0.4	8.5	9.9	-0.3	1	28.7	-0.3	-0.7
† TWIN †	BUYER						\$	

LOT 154	TAG	SIRE	DROP	MIC	SD	CV	CF%	BW
	211619	193599	AUG	20.3	4.8	23.7	99	96
	YWEC	PWT	YWT	YFAT	YEMD	YGFW	YFD	EBWR
	-28.2	6.3	7.2	0.9	2.7	26.2	0	-0.5
‡ TWIN ‡	BUYER						\$	

LOT 155	TAG	SIRE	DROP	MIC	SD	CV	CF%	BW
	211600	193599	AUG	18.3	3.2	17.6	99.2	99
	YWEC	PWT	YWT	YFAT	YEMD	YGFW	YFD	EBWR
	-12.7	12	13.4	0.8	3.3	16.8	-0.6	-0.7
‡ TWIN ‡	BUYER						\$	

LOT 156	TAG	SIRE	DROP	MIC	SD	CV	CF%	BW
	212388	160003	APRIL	18.8	4.1	21.9	99.5	99
	YWEC	PWT	YWT	YFAT	YEMD	YGFW	YFD	EBWR
	25.7	9.4	11	-0.1	0.6	24.3	-0.9	-0.8
‡ TWIN ‡	BUYER						\$	

LOT 157	TAG	SIRE	DROP	MIC	SD	CV	CF%	BW
	212527	201313	AUG	18.3	2.3	12.8	100	97
	YWEC	PWT	YWT	YFAT	YEMD	YGFW	YFD	EBWR
	1.4	7.3	9.5	0.2	2	17.7	-0.6	-0.3
‡ TWIN ‡	BUYER						\$	

LOT 158	TAG	SIRE	DROP	MIC	SD	CV	CF%	BW
	212879	200717	SEPT	20.1	2.4	12.2	100	97
	YWEC	PWT	YWT	YFAT	YEMD	YGFW	YFD	EBWR
	39.5	9.4	10.5	0.3	1.2	30.2	0.6	-0.3
‡ SINGLE ‡	BUYER						\$	

LOT 159	TAG	SIRE	DROP	MIC	SD	CV	CF%	BW
	212485	160003	AUG	19.4	2.9	15	99.8	97
	YWEC	PWT	YWT	YFAT	YEMD	YGFW	YFD	EBWR
	13.2	9.4	10.8	0.7	1.7	21.1	0.1	-1
‡ SINGLE ‡	BUYER						\$	

LOT 160	TAG	SIRE	DROP	MIC	SD	CV	CF%	BW
	211956	190125	AUG	19.6	3.5	18	99.2	106
	YWEC	PWT	YWT	YFAT	YEMD	YGFW	YFD	EBWR
	-31.3	7.1	8.8	-0.3	0.5	24.5	0	-0.7
‡ SINGLE ‡	BUYER						\$	

LOT 161	TAG	SIRE	DROP	MIC	SD	CV	CF%	BW
	211837	193599	AUG	18.1	3.3	18.3	99	103
	YWEC	PWT	YWT	YFAT	YEMD	YGFW	YFD	EBWR
	-0.5	10.9	12.3	-0.4	2.1	16	-1.6	-0.3
‡ SINGLE ‡	BUYER						\$	

LOT 162	TAG	SIRE	DROP	MIC	SD	CV	CF%	BW
	211453	190902	APRIL	17.4	2.5	14.3	100	96
	YWEC	PWT	YWT	YFAT	YEMD	YGFW	YFD	EBWR
	-9.8	6.7	7.7	-0.1	-0.3	28.6	-1.1	-0.1
‡ SINGLE ‡	BUYER						\$	

LOT 163	TAG	SIRE	DROP	MIC	SD	CV	CF%	BW	
	212458	160003	AUG	18.5	3.4	18.4	99.5	105	
	YWEC	PWT	YWT	YFAT	YEMD	YGFW	YFD	EBWR	
	-20	8	9.7	0.7	0.8	24.7	-0.9	-0.8	
+	SINGLE	+	BUYER					\$	

LOT 164	TAG	SIRE	DROP	MIC	SD	CV	CF%	BW	
	211972	190125	AUG	18.6	2.6	14.1	99.8	104	
	YWEC	PWT	YWT	YFAT	YEMD	YGFW	YFD	EBWR	
	-18.5	7.7	8.8	-1.2	0.3	32.3	-0.4	-0.2	
+	TWIN	+	BUYER					\$	

LOT 165	TAG	SIRE	DROP	MIC	SD	CV	CF%	BW	
	211696	193599	AUG	18.9	3	15.9	100	102	
	YWEC	PWT	YWT	YFAT	YEMD	YGFW	YFD	EBWR	
	-32.3	9.7	10.6	0.4	1.5	24.1	-0.1	-0.4	
+	TWIN	+	BUYER					\$	

LOT 166	TAG	SIRE	DROP	MIC	SD	CV	CF%	BW	
	211427	190902	AUG	17.7	3.3	18.8	99.5	98	
	YWEC	PWT	YWT	YFAT	YEMD	YGFW	YFD	EBWR	
	35.8	9	9.7	-0.1	0.3	29.2	-1	-0.5	
+	TWIN	+	BUYER					\$	

LOT 167	TAG	SIRE	DROP	MIC	SD	CV	CF%	BW	
	211861	190125	AUG	17.6	2.7	15.1	100	91	
	YWEC	PWT	YWT	YFAT	YEMD	YGFW	YFD	EBWR	
	-5.3	7	8.4	-0.1	0.4	18.2	-1.2	-0.7	
+	TWIN	+	BUYER					\$	

LOT 168	TAG	SIRE	DROP	MIC	SD	CV	CF%	BW	
	211400	190902	AUG	17.6	2.7	15.1	99.2	90	
	YWEC	PWT	YWT	YFAT	YEMD	YGFW	YFD	EBWR	
	-28.1	8.2	9.6	0	0.9	32.6	-1	-0.2	
+	SINGLE	+	BUYER					\$	

LOT 169	TAG	SIRE	DROP	MIC	SD	CV	CF%	BW	
	211401	190902	AUG	17.3	2.4	13.8	99.8	96	
	YWEC	PWT	YWT	YFAT	YEMD	YGFW	YFD	EBWR	
	-12.2	8.3	9.6	0	0.1	25.9	-1.1	-0.4	
+	SINGLE	+	BUYER					\$	

LOT 170	TAG	SIRE	DROP	MIC	SD	CV	CF%	BW	
	211551	190902	AUG	17.3	3.4	19.4	99.5	94	
	YWEC	PWT	YWT	YFAT	YEMD	YGFW	YFD	EBWR	
	-22.2	8	8.8	-0.1	0.3	27.4	-1.1	-0.1	
+	TWIN	+	BUYER					\$	

LOT 171	TAG	SIRE	DROP	MIC	SD	CV	CF%	BW	
	211901	190125	AUG	18.7	3.3	17.8	99	91	
	YWEC	PWT	YWT	YFAT	YEMD	YGFW	YFD	EBWR	
	-7.6	6.7	8.5	0.1	1.5	25.4	-0.6	-0.1	
+	SINGLE	+	BUYER					\$	

LOT 172	TAG	SIRE	DROP	MIC	SD	CV	CF%	BW
	211467	190902	SEPT	20.8	3.4	16.2	99.2	91
	YWEC	PWT	YWT	YFAT	YEMD	YGFW	YFD	EBWR
	-27.9	10.6	11.2	0.5	1.6	29.5	0.7	-0.7
‡ TRIPLET ‡	BUYER						\$	

LOT 173	TAG	SIRE	DROP	MIC	SD	CV	CF%	BW
	211452	190902	AUG	19	3.7	19.6	99	92
	YWEC	PWT	YWT	YFAT	YEMD	YGFW	YFD	EBWR
	-30.3	8.2	8.8	0.2	0.3	24.9	-0.4	-0.7
‡ TWIN ‡	BUYER						\$	

LOT 174	TAG	SIRE	DROP	MIC	SD	CV	CF%	BW
	211548	190902	AUG	20.6	2.8	13.7	99.2	99
	YWEC	PWT	YWT	YFAT	YEMD	YGFW	YFD	EBWR
	-23.7	9.9	11.8	0	0.5	33.6	0.4	-0.4
‡ TRIPLET ‡	BUYER						\$	

LOT 175	TAG	SIRE	DROP	MIC	SD	CV	CF%	BW
	211661	193599	AUG	18.2	2.9	15.8	99.8	91
	YWEC	PWT	YWT	YFAT	YEMD	YGFW	YFD	EBWR
	-26	8.3	9.4	-0.4	2	32.9	-0.5	-0.2
‡ TWIN ‡	BUYER						\$	

LOT 176	TAG	SIRE	DROP	MIC	SD	CV	CF%	BW
	212709	173081	SEPT	19.7	2.6	13.2	100	85
	YWEC	PWT	YWT	YFAT	YEMD	YGFW	YFD	EBWR
	-26.4	8.8	11.4	0.5	1.2	15.3	-0.1	-0.2
‡ TRIPLET ‡	BUYER						\$	

LOT 177	TAG	SIRE	DROP	MIC	SD	CV	CF%	BW
	211558	190902	APRIL	19	3.2	16.9	99.2	84
	YWEC	PWT	YWT	YFAT	YEMD	YGFW	YFD	EBWR
	-14.5	6.2	7.1	0.4	0.9	23.9	0.1	-0.9
‡ SINGLE ‡	BUYER						\$	

LOT 178	TAG	SIRE	DROP	MIC	SD	CV	CF%	BW
	211484	190902	SEPT	19.3	3.8	19.4	99.2	88
	YWEC	PWT	YWT	YFAT	YEMD	YGFW	YFD	EBWR
	-2.9	6.9	7.9	-0.2	0.4	35	0.1	-0.6
‡ TWIN ‡	BUYER						\$	

LOT 179	TAG	SIRE	DROP	MIC	SD	CV	CF%	BW
	211468	190902	AUG	18.8	2.9	15.1	99.2	85
	YWEC	PWT	YWT	YFAT	YEMD	YGFW	YFD	EBWR
	2.3	7.2	8.7	-0.5	0	27.1	-1.3	-0.3
‡ TRIPLET ‡	BUYER						\$	

LOT 180	TAG	SIRE	DROP	MIC	SD	CV	CF%	BW
	212859	200309	SEPT	18	3.9	21.5	99.5	84
	YWEC	PWT	YWT	YFAT	YEMD	YGFW	YFD	EBWR
	19.7	5.9	8	0.2	1.4	25.2	-1.3	-0.5
‡ TWIN ‡	BUYER						\$	

LOT 181	TAG	SIRE	DROP	MIC	SD	CV	CF%	BW	
	212576	201313	SEPT	16.1	2.2	13.9	100	85	
	YWEC	PWT	YWT	YFAT	YEMD	YGFW	YFD	EBWR	
	-7.9	7.2	9.1	0.7	1.1	14.9	-1.3	-0.5	
+	SINGLE	+	BUYER				\$		

LOT 182	TAG	SIRE	DROP	MIC	SD	CV	CF%	BW	
	211429	190902	AUG	18.2	3.4	18.6	99.8	86	
	YWEC	PWT	YWT	YFAT	YEMD	YGFW	YFD	EBWR	
	-8.3	6	7.4	0	0.2	31.3	-0.6	-0.3	
+	SINGLE	+	BUYER				\$		

LOT 183	TAG	SIRE	DROP	MIC	SD	CV	CF%	BW	
	211546	190902	AUG	20.2	2.8	13.8	99.8	86	
	YWEC	PWT	YWT	YFAT	YEMD	YGFW	YFD	EBWR	
	-2.7	8.8	10.2	0	0.3	22.1	0	-0.7	
+	TWIN	+	BUYER				\$		

LOT 184	TAG	SIRE	DROP	MIC	SD	CV	CF%	BW	
	211507	190902	AUG	17.6	2.6	14.8	99.8	86	
	YWEC	PWT	YWT	YFAT	YEMD	YGFW	YFD	EBWR	
	-9.9	5.9	7.3	0.8	1.3	17.3	-1.1	-0.5	
+	TWIN	+	BUYER				\$		

LOT 185	TAG	SIRE	DROP	MIC	SD	CV	CF%	BW	
	211954	190125	AUG	18.5	2.6	14.3	99.8	88	
	YWEC	PWT	YWT	YFAT	YEMD	YGFW	YFD	EBWR	
	0	8.7	9.9	-0.7	-0.5	22.7	-0.6	-0.7	
+	TWIN	+	BUYER				\$		

LOT 186	TAG	SIRE	DROP	MIC	SD	CV	CF%	BW	
	211553	190902	AUG	20.6	4.4	21.4	99.2	89	
	YWEC	PWT	YWT	YFAT	YEMD	YGFW	YFD	EBWR	
	4.9	7.1	8	0.3	0.4	37.3	0.2	-0.5	
+	TWIN	+	BUYER				\$		

LOT 187	TAG	SIRE	DROP	MIC	SD	CV	CF%	BW	
	212269	170660	AUG	20.5	3.7	18.1	98.2	87	
	YWEC	PWT	YWT	YFAT	YEMD	YGFW	YFD	EBWR	
	-50	6.1	6.9	0.3	0	28.5	0.7	-0.3	
+	SINGLE	+	BUYER				\$		

LOT 188	TAG	SIRE	DROP	MIC	SD	CV	CF%	BW	
	211413	190902	AUG	18.4	2.6	14.1	99.5	81	
	YWEC	PWT	YWT	YFAT	YEMD	YGFW	YFD	EBWR	
	17.8	5.5	7.2	-0.6	0.9	28.4	-1	0	
+	TWIN	+	BUYER				\$		

LOT 189	TAG	SIRE	DROP	MIC	SD	CV	CF%	BW	
	211475	190902	AUG	18.4	2.7	14.8	99.8	76	
	YWEC	PWT	YWT	YFAT	YEMD	YGFW	YFD	EBWR	
	0.2	6.9	8.6	0.2	0.5	28.8	-0.4	-0.5	
+	TWIN	+	BUYER				\$		

LOT 190	TAG	SIRE	DROP	MIC	SD	CV	CF%	BW
	212293	170660	AUG	19.8	2.8	14.1	99.8	89
	YWEC	PWT	YWT	YFAT	YEMD	YGFW	YFD	EBWR
	-36.6	9.5	9.7	0.2	1.3	27	0.3	-0.3
+ TWIN +	BUYER						\$	

LOT 191	TAG	SIRE	DROP	MIC	SD	CV	CF%	BW
	212591	200808	SEPT	21	3.7	17.8	97.8	93
	YWEC	PWT	YWT	YFAT	YEMD	YGFW	YFD	EBWR
	-1.8	8.8	9.8	0.2	-0.3	30	1	-0.6
+ TWIN +	BUYER						\$	

LOT 192	TAG	SIRE	DROP	MIC	SD	CV	CF%	BW
	212670	173081	AUG	19.8	4.1	20.6	99	95
	YWEC	PWT	YWT	YFAT	YEMD	YGFW	YFD	EBWR
	-19.8	9.3	11.4	0.8	2	21.1	0.3	-0.8
+ TWIN +	BUYER						\$	

LOT 193	TAG	SIRE	DROP	MIC	SD	CV	CF%	BW
	212677	173081	AUG	20	2.9	14.6	99.5	98
	YWEC	PWT	YWT	YFAT	YEMD	YGFW	YFD	EBWR
	4	7.3	9.2	0.8	1.8	13.8	0.5	-0.2
+ SINGLE +	BUYER						\$	

LOT 194	TAG	SIRE	DROP	MIC	SD	CV	CF%	BW
	212303	170660	AUG	19.5	3	15.4	99.2	110
	YWEC	PWT	YWT	YFAT	YEMD	YGFW	YFD	EBWR
	-45.4	10.3	12.7	0.3	0.2	29.8	0.1	-0.5
+ TWIN +	BUYER						\$	

LOT 195	TAG	SIRE	DROP	MIC	SD	CV	CF%	BW
	211607	193599	AUG	20.1	4	19.9	99	97
	YWEC	PWT	YWT	YFAT	YEMD	YGFW	YFD	EBWR
	-21.9	8.9	10.2	0.2	2.2	20.9	0	-0.9
+ TWIN +	BUYER						\$	

LOT 196	TAG	SIRE	DROP	MIC	SD	CV	CF%	BW
	211994	190125	AUG	19	2.1	11.3	100	99
	YWEC	PWT	YWT	YFAT	YEMD	YGFW	YFD	EBWR
	-8.6	9.9	11.3	-0.3	-1.1	29.2	0.1	-0.8
+ TWIN +	BUYER						\$	

LOT 197	TAG	SIRE	DROP	MIC	SD	CV	CF%	BW
	211426	190902	AUG	18	3	16.8	100	102
	YWEC	PWT	YWT	YFAT	YEMD	YGFW	YFD	EBWR
	-1.4	8.9	10.1	-0.4	0.1	35.7	-0.5	-0.2
+ SINGLE +	BUYER						\$	

LOT 198	TAG	SIRE	DROP	MIC	SD	CV	CF%	BW
	212695	173081	AUG	20.1	2.4	12.1	99.5	104
	YWEC	PWT	YWT	YFAT	YEMD	YGFW	YFD	EBWR
	-12.5	11.7	13.2	0.5	1	20.2	0.3	-0.8
+ SINGLE +	BUYER						\$	

LOT 199	TAG	SIRE	DROP	MIC	SD	CV	CF%	BW	
	211649	193599	AUG	16.6	3.5	21.2	99.2	92	
	YWEC	PWT	YWT	YFAT	YEMD	YGFW	YFD	EBWR	
	8.9	8.8	10.3	0.3	2.4	27.7	-1.5	-0.6	
+	TWIN	+	BUYER				\$		

LOT 200	TAG	SIRE	DROP	MIC	SD	CV	CF%	BW	
	211444	190902	AUG	19.6	3.8	19.4	99	96	
	YWEC	PWT	YWT	YFAT	YEMD	YGFW	YFD	EBWR	
	-6.9	10.4	10.5	-0.3	0.1	32.3	0.1	-0.4	
+	TWIN	+	BUYER				\$		

LOT 201	TAG	SIRE	DROP	MIC	SD	CV	CF%	BW	
	211615	193599	AUG	17.8	2.6	14.7	99.5	102	
	YWEC	PWT	YWT	YFAT	YEMD	YGFW	YFD	EBWR	
	-24.4	10.8	13.9	0.1	0.4	14.2	-1.1	-0.4	
+	TWIN	+	BUYER				\$		

LOT 202	TAG	SIRE	DROP	MIC	SD	CV	CF%	BW	
	211952	190125	AUG	18.9	2.6	13.5	100	103	
	YWEC	PWT	YWT	YFAT	YEMD	YGFW	YFD	EBWR	
	-11.5	8.5	10.6	-0.8	0.4	34.1	0.4	-0.6	
+	SINGLE	+	BUYER				\$		

LOT 203	TAG	SIRE	DROP	MIC	SD	CV	CF%	BW	
	212645	200808	AUG	17.8	3.2	18.2	99.2	104	
	YWEC	PWT	YWT	YFAT	YEMD	YGFW	YFD	EBWR	
	-7.1	8.3	9	0.6	0.5	19.6	-0.3	-0.7	
+	SINGLE	+	BUYER				\$		

LOT 204	TAG	SIRE	DROP	MIC	SD	CV	CF%	BW	
	211550	190902	AUG	21.2	4	18.9	98.9	104	
	YWEC	PWT	YWT	YFAT	YEMD	YGFW	YFD	EBWR	
	-27	7.7	9	0.1	0.5	30.3	0.5	0.3	
+	SINGLE	+	BUYER				\$		

LOT 205	TAG	SIRE	DROP	MIC	SD	CV	CF%	BW	
	211428	190902	AUG	16.8	3.5	20.8	99.5	99	
	YWEC	PWT	YWT	YFAT	YEMD	YGFW	YFD	EBWR	
	-10.8	9.3	11	-0.5	-0.1	34.1	-1	-0.2	
+	SINGLE	+	BUYER				\$		

LOT 206	TAG	SIRE	DROP	MIC	SD	CV	CF%	BW	
	211464	190902	AUG	21	3.1	15	99.5	94	
	YWEC	PWT	YWT	YFAT	YEMD	YGFW	YFD	EBWR	
	-22.2	10.2	11	-0.1	0.4	28.5	0.7	-0.7	
+	TWIN	+	BUYER				\$		

LOT 207	TAG	SIRE	DROP	MIC	SD	CV	CF%	BW	
	212436	160003	AUG	18	3.5	19.2	99.5	88	
	YWEC	PWT	YWT	YFAT	YEMD	YGFW	YFD	EBWR	
	-5.1	8	10	0.5	0.4	30.8	-0.5	-0.8	
+	TRIPLET	+	BUYER				\$		

LOT 208	TAG	SIRE	DROP	MIC	SD	CV	CF%	BW
	212545	201313	SEPT	17.3	2.1	12.4	100	84
	YWEC	PWT	YWT	YFAT	YEMD	YGFW	YFD	EBWR
	-26.9	6.7	7.5	0.8	1.2	14.8	-0.5	-0.4
+	SINGLE	+	BUYER				\$	

LOT 209	TAG	SIRE	DROP	MIC	SD	CV	CF%	BW
	211480	190902	AUG	18.8	2.9	15.6	99.2	78
	YWEC	PWT	YWT	YFAT	YEMD	YGFW	YFD	EBWR
	-4.4	7	8.1	0.1	0.3	31.7	-0.6	-0.4
+	TWIN	+	BUYER				\$	

LOT 210	TAG	SIRE	DROP	MIC	SD	CV	CF%	BW
	211828	193599	AUG	17.3	2.1	12.1	100	83
	YWEC	PWT	YWT	YFAT	YEMD	YGFW	YFD	EBWR
	-46.8	7.9	8.5	0.8	3.6	20.2	-1.5	-0.2
+	TWIN	+	BUYER				\$	

LOT 211	TAG	SIRE	DROP	MIC	SD	CV	CF%	BW
	211412	190902	AUG	19.8	2.7	13.4	99.5	76
	YWEC	PWT	YWT	YFAT	YEMD	YGFW	YFD	EBWR
	8.9	7.3	9	0.5	0.7	27.3	0.1	-0.8
+	TWIN	+	BUYER				\$	

LOT 212	TAG	SIRE	DROP	MIC	SD	CV	CF%	BW
	212632	200808	SEPT	19.2	4.2	22	99.2	82
	YWEC	PWT	YWT	YFAT	YEMD	YGFW	YFD	EBWR
	-14.3	5.9	6.6	0.8	1.7	23.3	0	-0.2
+	TWIN	+	BUYER				\$	

LOT 213	TAG	SIRE	DROP	MIC	SD	CV	CF%	BW
	212430	160003	AUG	18.4	3.7	20.1	99.5	87
	YWEC	PWT	YWT	YFAT	YEMD	YGFW	YFD	EBWR
	9.4	7.9	8.9	0.7	1.9	30.2	-0.4	-0.6
+	TRIPLET	+	BUYER				\$	

LOT 214	TAG	SIRE	DROP	MIC	SD	CV	CF%	BW
	212244	170660	SEPT	19.4	2.3	12	100	91
	YWEC	PWT	YWT	YFAT	YEMD	YGFW	YFD	EBWR
	-36.2	10.4	11	0.9	1.2	28.1	0.7	-0.4
+	TWIN	+	BUYER				\$	

LOT 215	TAG	SIRE	DROP	MIC	SD	CV	CF%	BW
	212603	200808	AUG	19.5	3.5	17.9	99.5	93
	YWEC	PWT	YWT	YFAT	YEMD	YGFW	YFD	EBWR
	21.5	7.4	8.7	0.1	0.4	24.5	0.3	-0.3
+	SINGLE	+	BUYER				\$	

LOT 216	TAG	SIRE	DROP	MIC	SD	CV	CF%	BW
	211434	190902	AUG	20.5	3.6	17.7	99.8	98
	YWEC	PWT	YWT	YFAT	YEMD	YGFW	YFD	EBWR
	-34.7	8.1	8.9	0	0.4	37.4	0.6	-0.1
+	SINGLE	+	BUYER				\$	

LOT 217	TAG	SIRE	DROP	MIC	SD	CV	CF%	BW
	211402	190902	AUG	17.9	4.3	23.9	99.2	95
	YWEC	PWT	YWT	YFAT	YEMD	YGFW	YFD	EBWR
	20.3	10.6	11.9	-0.4	-0.3	23.1	-1.3	-0.6
✦ TWIN ✦	BUYER						\$	

LOT 218	TAG	SIRE	DROP	MIC	SD	CV	CF%	BW
	211937	190125	SEPT	17.1	2.3	13.3	100	96
	YWEC	PWT	YWT	YFAT	YEMD	YGFW	YFD	EBWR
	-34.5	8	9.2	0.6	1.9	16.8	-1.1	-0.9
✦ TWIN ✦	BUYER						\$	

LOT 219	TAG	SIRE	DROP	MIC	SD	CV	CF%	BW
	212524	201313	SEPT	18.2	2.2	12	100	96
	YWEC	PWT	YWT	YFAT	YEMD	YGFW	YFD	EBWR
	36.9	6.9	9.8	0.1	0.1	21.3	-0.4	-0.5
✦ SINGLE ✦	BUYER						\$	

LOT 220	TAG	SIRE	DROP	MIC	SD	CV	CF%	BW
	212696	173081	AUG	18.9	4.7	22.5	99	95
	YWEC	PWT	YWT	YFAT	YEMD	YGFW	YFD	EBWR
	-31	7.4	8.1	0.1	1.4	16.8	-0.4	-0.6
✦ SINGLE ✦	BUYER						\$	

LOT 221	TAG	SIRE	DROP	MIC	SD	CV	CF%	BW
	211810	193599	AUG	18.2	4.1	22.7	99	104
	YWEC	PWT	YWT	YFAT	YEMD	YGFW	YFD	EBWR
	-4.4	10.3	11.8	-0.3	1.2	22.2	-1	-0.8
✦ TWIN ✦	BUYER						\$	

LOT 222	TAG	SIRE	DROP	MIC	SD	CV	CF%	BW
	211987	190125	AUG	18.7	2.7	14.4	100	99
	YWEC	PWT	YWT	YFAT	YEMD	YGFW	YFD	EBWR
	1.4	9.1	11	-0.4	0.6	34.4	-0.8	0.1
✦ TWIN ✦	BUYER						\$	

LOT 223	TAG	SIRE	DROP	MIC	SD	CV	CF%	BW
	211612	193599	AUG	18.8	2.2	11.8	99.8	97
	YWEC	PWT	YWT	YFAT	YEMD	YGFW	YFD	EBWR
	-18.4	11	13.1	0.4	1.7	17.2	-0.3	-1
✦ TRIPLET ✦	BUYER						\$	

LOT 224	TAG	SIRE	DROP	MIC	SD	CV	CF%	BW
	212344	160003	AUG	21.1	3	14.3	99	92
	YWEC	PWT	YWT	YFAT	YEMD	YGFW	YFD	EBWR
	2.4	7.4	9.5	0.7	0.4	31.9	0.2	-0.2
✦ TWIN ✦	BUYER						\$	

LOT 225	TAG	SIRE	DROP	MIC	SD	CV	CF%	BW
	211579	190902	AUG	18.9	3.1	16.6	99.5	93
	YWEC	PWT	YWT	YFAT	YEMD	YGFW	YFD	EBWR
	7	8.6	10.5	0.2	0.5	24.4	-0.6	-0.4
✦ TWIN ✦	BUYER						\$	

LOT 226	TAG	SIRE	DROP	MIC	SD	CV	CF%	BW
	211897	190125	AUG	20.1	4	20	99	88
	YWEC	PWT	YWT	YFAT	YEMD	YGFW	YFD	EBWR
	-29.1	5.7	7.1	-0.1	0.2	32.6	0.1	-0.2
‡ TWIN ‡	BUYER						\$	

LOT 227	TAG	SIRE	DROP	MIC	SD	CV	CF%	BW
	212452	160003	AUG	20.2	3.9	19.5	99.2	90
	YWEC	PWT	YWT	YFAT	YEMD	YGFW	YFD	EBWR
	-0.7	7.5	9.4	1	1.9	33	0.1	-0.8
‡ SINGLE ‡	BUYER						\$	

LOT 228	TAG	SIRE	DROP	MIC	SD	CV	CF%	BW
	211904	190125	SEPT	17.6	3	16.9	99.2	91
	YWEC	PWT	YWT	YFAT	YEMD	YGFW	YFD	EBWR
	-12.6	7.9	9.7	0.2	0	22.4	-0.3	-0.3
‡ TWIN ‡	BUYER						\$	

LOT 229	TAG	SIRE	DROP	MIC	SD	CV	CF%	BW
	212426	160003	AUG	18.8	3.7	19.6	99.5	92
	YWEC	PWT	YWT	YFAT	YEMD	YGFW	YFD	EBWR
	-12.7	8.8	11.1	0.8	1.5	23.8	-0.5	-0.3
‡ TWIN ‡	BUYER						\$	

LOT 230	TAG	SIRE	DROP	MIC	SD	CV	CF%	BW
	212216	170660	SEPT	18.3	3.4	18.6	99.2	93
	YWEC	PWT	YWT	YFAT	YEMD	YGFW	YFD	EBWR
	-30.6	7.3	8.4	-0.1	-0.4	27.8	-0.1	0
‡ SINGLE ‡	BUYER						\$	

LOT 231	TAG	SIRE	DROP	MIC	SD	CV	CF%	BW
	211586	193599	AUG	19.1	3.2	16.9	99	91
	YWEC	PWT	YWT	YFAT	YEMD	YGFW	YFD	EBWR
	0.3	8.4	9.1	-0.1	2.4	22.3	-0.4	-0.4
‡ TWIN ‡	BUYER						\$	

LOT 232	TAG	SIRE	DROP	MIC	SD	CV	CF%	BW
	211463	190902	AUG	20.4	3.7	18.2	99	90
	YWEC	PWT	YWT	YFAT	YEMD	YGFW	YFD	EBWR
	21.6	7.2	9	-0.4	0.6	39.2	0.6	-0.6
‡ TWIN ‡	BUYER						\$	

LOT 233	TAG	SIRE	DROP	MIC	SD	CV	CF%	BW
	211552	190902	AUG	20.5	2.9	14.2	100	91
	YWEC	PWT	YWT	YFAT	YEMD	YGFW	YFD	EBWR
	6.1	10.1	11.8	0.9	1.2	26.8	0.2	-0.9
‡ TWIN ‡	BUYER						\$	

LOT 234	TAG	SIRE	DROP	MIC	SD	CV	CF%	BW
	212429	160003	AUG	19	3.8	20	98	95
	YWEC	PWT	YWT	YFAT	YEMD	YGFW	YFD	EBWR
	-0.5	10.2	11.7	0.6	1.2	26.9	-0.2	-1
‡ TWIN ‡	BUYER						\$	

LOT 235	TAG	SIRE	DROP	MIC	SD	CV	CF%	BW	
	212240	170660	AUG	19.5	4	20.4	99	105	
	YWEC	PWT	YWT	YFAT	YEMD	YGFW	YFD	EBWR	
	-20.3	10.4	11.7	0.2	0.6	34.9	0.4	-0.5	
+	TWIN	+	BUYER				\$		

LOT 236	TAG	SIRE	DROP	MIC	SD	CV	CF%	BW	
	211424	190902	AUG	19.8	2.8	14.3	99.8	100	
	YWEC	PWT	YWT	YFAT	YEMD	YGFW	YFD	EBWR	
	0.6	8.7	9.9	0.7	1.2	30.6	0.3	-0.5	
+	SINGLE	+	BUYER				\$		

LOT 237	TAG	SIRE	DROP	MIC	SD	CV	CF%	BW	
	211652	193599	AUG	18.7	2.9	15.4	100	105	
	YWEC	PWT	YWT	YFAT	YEMD	YGFW	YFD	EBWR	
	-45.8	11.7	13.7	0.1	2.1	27.3	-0.3	-0.9	
+	TRIPL	+	BUYER				\$		

LOT 238	TAG	SIRE	DROP	MIC	SD	CV	CF%	BW	
	211840	193599	AUG	20.8	3.3	15.7	99.2	95	
	YWEC	PWT	YWT	YFAT	YEMD	YGFW	YFD	EBWR	
	-21	10.3	12.6	1	2.7	15.6	0.8	-0.7	
+	TWIN	+	BUYER				\$		

LOT 239	TAG	SIRE	DROP	MIC	SD	CV	CF%	BW	
	212698	173081	AUG	19.4	2.5	12.8	99.5	105	
	YWEC	PWT	YWT	YFAT	YEMD	YGFW	YFD	EBWR	
	-4.1	11.6	13.9	0.7	2.1	12.6	-0.4	-1.1	
+	TWIN	+	BUYER				\$		

LOT 240	TAG	SIRE	DROP	MIC	SD	CV	CF%	BW	
	211603	193599	AUG	19.7	2.8	14.5	99.5	102	
	YWEC	PWT	YWT	YFAT	YEMD	YGFW	YFD	EBWR	
	-30.8	10.7	12.6	0.1	1.6	21.1	-0.6	-0.7	
+	TWIN	+	BUYER				\$		

LOT 241	TAG	SIRE	DROP	MIC	SD	CV	CF%	BW	
	211641	193599	SEPT	18.6	2.9	15.6	99.8	96	
	YWEC	PWT	YWT	YFAT	YEMD	YGFW	YFD	EBWR	
	-17.7	9.3	11.8	0.6	1.6	14.7	-0.9	-0.5	
+	SINGLE	+	BUYER				\$		

LOT 242	TAG	SIRE	DROP	MIC	SD	CV	CF%	BW	
	211943	190125	AUG	18.3	4	22	99.5	95	
	YWEC	PWT	YWT	YFAT	YEMD	YGFW	YFD	EBWR	
	-23.4	4.1	5.4	0	-0.4	23.8	-1.3	-0.1	
+	SINGLE	+	BUYER				\$		

LOT 243	TAG	SIRE	DROP	MIC	SD	CV	CF%	BW	
	212255	170660	SEPT	18.4	2.7	14.7	99.2	103	
	YWEC	PWT	YWT	YFAT	YEMD	YGFW	YFD	EBWR	
	-32.2	10.9	12.5	0.4	-0.7	26.4	0.3	-0.3	
+	SINGLE	+	BUYER				\$		

LOT 244	TAG	SIRE	DROP	MIC	SD	CV	CF%	BW
	211936	190125	SEPT	16.6	2.9	17.5	99.8	98
	YWEC	PWT	YWT	YFAT	YEMD	YGFW	YFD	EBWR
	-22	9.7	10.8	0.2	1.6	22	-0.7	-0.7
‡ TWIN ‡	BUYER						\$	

LOT 245	TAG	SIRE	DROP	MIC	SD	CV	CF%	BW
	212541	201313	AUG	19.4	2.6	13.3	99.8	88
	YWEC	PWT	YWT	YFAT	YEMD	YGFW	YFD	EBWR
	26.8	6	7.8	-0.6	0.1	28.2	-0.7	-0.3
‡ TWIN ‡	BUYER						\$	

LOT 246	TAG	SIRE	DROP	MIC	SD	CV	CF%	BW
	212786	192329	SEPT	18.1	2.4	13.4	99.8	85
	YWEC	PWT	YWT	YFAT	YEMD	YGFW	YFD	EBWR
	-24.4	6.5	6.7	0.2	0.1	25.9	-0.2	-0.7
‡ TWIN ‡	BUYER						\$	

LOT 247	TAG	SIRE	DROP	MIC	SD	CV	CF%	BW
	212301	170660	AUG	20.2	3.7	18.5	99.2	87
	YWEC	PWT	YWT	YFAT	YEMD	YGFW	YFD	EBWR
	-42.4	5.9	6.7	0.3	1	29.7	0.8	-0.5
‡ SINGLE ‡	BUYER						\$	

LOT 248	TAG	SIRE	DROP	MIC	SD	CV	CF%	BW
	211409	190902	AUG	19.5	3.7	19	99.5	89
	YWEC	PWT	YWT	YFAT	YEMD	YGFW	YFD	EBWR
	17.8	9	10.2	-0.1	0.8	24.9	-0.1	-0.4
‡ TWIN ‡	BUYER						\$	

LOT 249	TAG	SIRE	DROP	MIC	SD	CV	CF%	BW
	212304	170660	SEPT	17.1	2.3	13.6	100	86
	YWEC	PWT	YWT	YFAT	YEMD	YGFW	YFD	EBWR
	-53.2	7.6	8.4	0.2	0.5	29	-0.6	0
‡ TWIN ‡	BUYER						\$	

LOT 250	TAG	SIRE	DROP	MIC	SD	CV	CF%	BW
	211533	190902	AUG	18.3	3.1	16.9	99.5	81
	YWEC	PWT	YWT	YFAT	YEMD	YGFW	YFD	EBWR
	-9	7.5	8.8	-0.1	1	29.8	-0.5	-0.7
‡ TWIN ‡	BUYER						\$	

LOT 251	TAG	SIRE	DROP	MIC	SD	CV	CF%	BW
	212660	200808	SEPT	18.5	2.7	14.5	99.8	84
	YWEC	PWT	YWT	YFAT	YEMD	YGFW	YFD	EBWR
	-30.5	5.1	7.4	0.9	1.2	15.5	-0.3	-0.5
‡ TWIN ‡	BUYER						\$	

LOT 252	TAG	SIRE	DROP	MIC	SD	CV	CF%	BW
	211903	190125	AUG	20.9	3.8	18.2	98.9	84
	YWEC	PWT	YWT	YFAT	YEMD	YGFW	YFD	EBWR
	-26.3	6.8	8.4	-0.8	-0.4	35.6	0.8	-0.6
‡ TRIPLET ‡	BUYER						\$	

LOT 253	TAG	SIRE	DROP	MIC	SD	CV	CF%	BW	
	211886	190125	SEPT	19.2	3.2	16.9	99	84	
	YWEC	PWT	YWT	YFAT	YEMD	YGFW	YFD	EBWR	
	-14.4	7.3	7.7	0.3	1	27.1	-0.2	-0.7	
+	TWIN	+	BUYER				\$		

LOT 254	TAG	SIRE	DROP	MIC	SD	CV	CF%	BW	
	212407	160003	AUG	17.8	2.9	16.4	99.8	81	
	YWEC	PWT	YWT	YFAT	YEMD	YGFW	YFD	EBWR	
	-16.3	7.6	8.5	0.4	0.3	22.7	-0.9	-0.7	
+	SINGLE	+	BUYER				\$		

LOT 255	TAG	SIRE	DROP	MIC	SD	CV	CF%	BW	
	212683	173081	AUG	20.3	3.3	16.4	99.5	85	
	YWEC	PWT	YWT	YFAT	YEMD	YGFW	YFD	EBWR	
	-43.8	8.1	9.9	0.9	1.6	24.9	0.3	-0.8	
+	TWIN	+	BUYER				\$		

LOT 256	TAG	SIRE	DROP	MIC	SD	CV	CF%	BW	
	211655	193599	AUG	20.7	3.1	15.1	99.8	89	
	YWEC	PWT	YWT	YFAT	YEMD	YGFW	YFD	EBWR	
	-5.1	10.7	12.3	0.5	2.4	20.7	0.7	-1	
+	TRIPLET	+	BUYER				\$		

LOT 257	TAG	SIRE	DROP	MIC	SD	CV	CF%	BW	
	211623	193599	AUG	18.4	4	21.6	99.2	86	
	YWEC	PWT	YWT	YFAT	YEMD	YGFW	YFD	EBWR	
	-19	5.1	5.7	-0.7	0.7	25.2	-0.7	-0.7	
+	TWIN	+	BUYER				\$		

LOT 258	TAG	SIRE	DROP	MIC	SD	CV	CF%	BW	
	212854	200309	SEPT	19.5	2.7	13.9	99.5	97	
	YWEC	PWT	YWT	YFAT	YEMD	YGFW	YFD	EBWR	
	-15.6	6.7	9.2	0.9	1.4	19.8	0	-0.7	
+	SINGLE	+	BUYER				\$		

LOT 259	TAG	SIRE	DROP	MIC	SD	CV	CF%	BW	
	211906	190125	AUG	18.5	3.1	16.7	99.2	100	
	YWEC	PWT	YWT	YFAT	YEMD	YGFW	YFD	EBWR	
	16.8	12.2	13.4	-0.6	1.2	30.9	-1.1	-0.4	
+	TWIN	+	BUYER				\$		

LOT 260	TAG	SIRE	DROP	MIC	SD	CV	CF%	BW	
	211671	193599	AUG	19.3	2.7	14.2	100	108	
	YWEC	PWT	YWT	YFAT	YEMD	YGFW	YFD	EBWR	
	-0.9	12	13.8	0	1.5	21.1	-0.5	-0.6	
+	TWIN	+	BUYER				\$		

LOT 261	TAG	SIRE	DROP	MIC	SD	CV	CF%	BW	
	211613	193599	AUG	18.3	2.6	14.4	99.8	103	
	YWEC	PWT	YWT	YFAT	YEMD	YGFW	YFD	EBWR	
	8.4	10.9	12.4	0	0.5	27.4	-0.4	0.1	
+	SINGLE	+	BUYER				\$		

LOT 262	TAG	SIRE	DROP	MIC	SD	CV	CF%	BW
	211669	193599	AUG	20.3	3.8	18.6	99.2	96
	YWEC	PWT	YWT	YFAT	YEMD	YGFW	YFD	EBWR
	-40.1	12.1	14.6	-0.1	1.5	25.4	-0.3	-1
	+ TWIN +	BUYER					\$	

LOT 263	TAG	SIRE	DROP	MIC	SD	CV	CF%	BW
	212725	173081	AUG	20.6	3.3	16	99.8	91
	YWEC	PWT	YWT	YFAT	YEMD	YGFW	YFD	EBWR
	-47.3	8.1	10.6	0.8	2	24.7	0.2	-0.4
	+ TWIN +	BUYER					\$	

LOT 264	TAG	SIRE	DROP	MIC	SD	CV	CF%	BW
	211458	190902	AUG	19.1	3.5	18.2	99.2	84
	YWEC	PWT	YWT	YFAT	YEMD	YGFW	YFD	EBWR
	-20.2	8.9	10.3	0.3	0.6	21.2	0.1	-1
	+ TWIN +	BUYER					\$	

LOT 265	TAG	SIRE	DROP	MIC	SD	CV	CF%	BW
	211829	193599	AUG	17.7	3.9	22	99.5	89
	YWEC	PWT	YWT	YFAT	YEMD	YGFW	YFD	EBWR
	-39.5	9.4	9.5	0.4	2	16.9	-1	-0.5
	+ TWIN +	BUYER					\$	

LOT 266	TAG	SIRE	DROP	MIC	SD	CV	CF%	BW
	211988	190125	AUG	18.9	2.5	13	99.8	85
	YWEC	PWT	YWT	YFAT	YEMD	YGFW	YFD	EBWR
	-36.1	5.9	7.5	-0.7	0.7	27.1	-0.7	-0.2
	+ TWIN +	BUYER					\$	

LOT 267	TAG	SIRE	DROP	MIC	SD	CV	CF%	BW
	211620	193599	AUG	19.4	3.9	20.3	99	94
	YWEC	PWT	YWT	YFAT	YEMD	YGFW	YFD	EBWR
	-43.3	9.8	10.7	1.2	2.8	20.4	-0.2	-0.6
	+ TRIPLET +	BUYER					\$	

LOT 268	TAG	SIRE	DROP	MIC	SD	CV	CF%	BW
	211636	193599	SEPT	19.7	3.5	17.6	99.2	96
	YWEC	PWT	YWT	YFAT	YEMD	YGFW	YFD	EBWR
	-17.7	9.7	12.5	0.8	2.1	20	0.1	-0.7
	+ TWIN +	BUYER					\$	

LOT 269	TAG	SIRE	DROP	MIC	SD	CV	CF%	BW
	211614	193599	AUG	19.3	2.7	13.7	100	100
	YWEC	PWT	YWT	YFAT	YEMD	YGFW	YFD	EBWR
	3.8	12	14.4	1.3	2.7	21.3	-0.3	-0.6
	+ SINGLE +	BUYER					\$	

LOT 270	TAG	SIRE	DROP	MIC	SD	CV	CF%	BW
	210155	193599	APRIL	19.2	3.7	19.3	98.9	93
	YWEC	PWT	YWT	YFAT	YEMD	YGFW	YFD	EBWR
	-29.8	9.1	9.3	-0.2	1.2	20	-0.4	-0.9
	+ SINGLE +	BUYER					\$	

LOT 271	TAG	SIRE	DROP	MIC	SD	CV	CF%	BW
	210171	193704	APRIL	20.2	3.4	17	99.5	99
	YWEC	PWT	YWT	YFAT	YEMD	YGFW	YFD	EBWR
	9.6	7.1	9.8	-0.2	-0.3	31.7	0.1	-0.8
✦ TWIN ✦	BUYER						\$	

LOT 272	TAG	SIRE	DROP	MIC	SD	CV	CF%	BW
	210353	190125	APRIL	21.1	2.8	13.2	99.2	89
	YWEC	PWT	YWT	YFAT	YEMD	YGFW	YFD	EBWR
	-28.3	8	8.7	-0.2	0.9	15.9	0.2	-0.8
✦ TWIN ✦	BUYER						\$	

LOT 273	TAG	SIRE	DROP	MIC	SD	CV	CF%	BW
	210686	190902	APRIL	18	2.7	15.1	99.8	87
	YWEC	PWT	YWT	YFAT	YEMD	YGFW	YFD	EBWR
	14.3	6.9	8.3	-0.4	-0.1	25.6	-1.3	-0.9
✦ TWIN ✦	BUYER						\$	

LOT 274	TAG	SIRE	DROP	MIC	SD	CV	CF%	BW
	210092	193599	MAY	17.1	2.7	15.9	99.5	83
	YWEC	PWT	YWT	YFAT	YEMD	YGFW	YFD	EBWR
	-21.6	9.1	10.2	0.3	1.6	20.9	-1.7	-0.8
✦ TWIN ✦	BUYER						\$	

LOT 275	TAG	SIRE	DROP	MIC	SD	CV	CF%	BW
	211133	193704	APRIL	18.5	3.5	19.1	99	78
	YWEC	PWT	YWT	YFAT	YEMD	YGFW	YFD	EBWR
	19.6	6.4	7.7	0.1	0.3	23.8	-1.2	-0.9
✦ TWIN ✦	BUYER						\$	

LOT 276	TAG	SIRE	DROP	MIC	SD	CV	CF%	BW
	210033	193599	APRIL	20.5	3.4	16.6	99	85
	YWEC	PWT	YWT	YFAT	YEMD	YGFW	YFD	EBWR
	31.7	7.7	9.2	1.1	2	12.6	-0.1	-0.9
✦ SINGLE ✦	BUYER						\$	

LOT 277	TAG	SIRE	DROP	MIC	SD	CV	CF%	BW
	210743	190902	APRIL	20.8	3.1	15.1	99.2	87
	YWEC	PWT	YWT	YFAT	YEMD	YGFW	YFD	EBWR
	-12.6	6.9	8	-0.2	0.1	35.7	-0.3	-0.2
✦ TWIN ✦	BUYER						\$	

LOT 278	TAG	SIRE	DROP	MIC	SD	CV	CF%	BW
	211231	193511	MAY	17.4	2.2	12.5	100	88
	YWEC	PWT	YWT	YFAT	YEMD	YGFW	YFD	EBWR
	-13.8	8.1	10.3	0.2	1.1	25	-1.7	0
✦ TWIN ✦	BUYER						\$	

LOT 279	TAG	SIRE	DROP	MIC	SD	CV	CF%	BW
	210745	190902	APRIL	19.7	3.2	16.2	99.2	86
	YWEC	PWT	YWT	YFAT	YEMD	YGFW	YFD	EBWR
	18.3	6	7.6	0.6	0.9	28.5	-0.5	-0.2
✦ TWIN ✦	BUYER						\$	

LOT 280	TAG	SIRE	DROP	MIC	SD	CV	CF%	BW
	210511	190125	MAY	19.8	3.1	15.5	99	85
	YWEC	PWT	YWT	YFAT	YEMD	YGFW	YFD	EBWR
	-11.4	5.7	7.4	0.3	0.5	21.7	0.1	-0.1
‡ SINGLE ‡	BUYER						\$	

LOT 281	TAG	SIRE	DROP	MIC	SD	CV	CF%	BW
	212727	173081	AUG	18.3	3.4	18.3	99	87
	YWEC	PWT	YWT	YFAT	YEMD	YGFW	YFD	EBWR
	-34.2	7.4	10	0.1	0.9	18.5	-0.9	-0.8
‡ SINGLE ‡	BUYER						\$	

LOT 282	TAG	SIRE	DROP	MIC	SD	CV	CF%	BW
	210509	190125	APRIL	18.9	2.5	13.2	99.8	89
	YWEC	PWT	YWT	YFAT	YEMD	YGFW	YFD	EBWR
	-0.9	5.8	7	0.1	-0.5	20.6	-0.8	-0.1
‡ SINGLE ‡	BUYER						\$	

LOT 283	TAG	SIRE	DROP	MIC	SD	CV	CF%	BW
	211008	180027	APRIL	19.9	2.3	11.7	100	90
	YWEC	PWT	YWT	YFAT	YEMD	YGFW	YFD	EBWR
	-2.2	6.8	7.6	0.1	0.4	27.7	-0.4	0.3
‡ TWIN ‡	BUYER						\$	

LOT 284	TAG	SIRE	DROP	MIC	SD	CV	CF%	BW
	210197	193599	APRIL	19	2.9	15.1	99.5	88
	YWEC	PWT	YWT	YFAT	YEMD	YGFW	YFD	EBWR
	-54.3	9.4	9.5	0.4	2.2	15.2	-1.1	-1.1
‡ TRIPLET ‡	BUYER						\$	

LOT 285	TAG	SIRE	DROP	MIC	SD	CV	CF%	BW
	210585	190902	MAY	19.1	2.6	13.5	99.8	90
	YWEC	PWT	YWT	YFAT	YEMD	YGFW	YFD	EBWR
	-4	5	5.8	-0.6	-0.5	32.9	-0.9	0.5
‡ SINGLE ‡	BUYER						\$	

LOT 286	TAG	SIRE	DROP	MIC	SD	CV	CF%	BW
	210716	190902	APRIL	19.8	3.2	16	99.8	88
	YWEC	PWT	YWT	YFAT	YEMD	YGFW	YFD	EBWR
	-13.6	7.6	8	-0.3	0.1	24.1	-0.4	-0.7
‡ TRIPLET ‡	BUYER						\$	

LOT 287	TAG	SIRE	DROP	MIC	SD	CV	CF%	BW
	210583	190902	MAY	19.8	3.1	15.7	99.5	91
	YWEC	PWT	YWT	YFAT	YEMD	YGFW	YFD	EBWR
	21.5	6.6	8.7	-0.5	0	30.6	-0.3	-0.6
‡ SINGLE ‡	BUYER						\$	

LOT 288	TAG	SIRE	DROP	MIC	SD	CV	CF%	BW
	210446	190125	APRIL	21	2.9	13.6	98.8	91
	YWEC	PWT	YWT	YFAT	YEMD	YGFW	YFD	EBWR
	-8.7	8.3	9.5	-0.2	0.2	29.9	0.7	-0.2
‡ SINGLE ‡	BUYER						\$	

LOT 289	TAG	SIRE	DROP	MIC	SD	CV	CF%	BW
	210364	190125	APRIL	19.7	2.4	12.2	100	90
	YWEC	PWT	YWT	YFAT	YEMD	YGFW	YFD	EBWR
	-19.7	8.5	9.9	0	1.6	26.8	-0.5	-0.7
✦ TWIN ✦	BUYER						\$	

LOT 290	TAG	SIRE	DROP	MIC	SD	CV	CF%	BW
	210179	193599	MAY	18.2	3.1	17.3	99.5	90
	YWEC	PWT	YWT	YFAT	YEMD	YGFW	YFD	EBWR
	-33.8	11.2	12.5	1	3.2	20	-1.1	-0.4
✦ TRIPLET ✦	BUYER						\$	

LOT 291	TAG	SIRE	DROP	MIC	SD	CV	CF%	BW
	210480	190125	APRIL	21	2.5	12	100	95
	YWEC	PWT	YWT	YFAT	YEMD	YGFW	YFD	EBWR
	-16.8	6.1	7.9	-0.6	-0.4	23.1	0.2	-0.4
✦ TWIN ✦	BUYER						\$	

LOT 292	TAG	SIRE	DROP	MIC	SD	CV	CF%	BW
	210437	190125	APRIL	19.9	2.3	11.8	100	95
	YWEC	PWT	YWT	YFAT	YEMD	YGFW	YFD	EBWR
	-30.3	7.9	9.3	0.3	1.4	18.2	-0.1	-0.5
✦ TWIN ✦	BUYER						\$	

LOT 293	TAG	SIRE	DROP	MIC	SD	CV	CF%	BW
	210891	190022	APRIL	19.4	3	15.3	99.5	94
	YWEC	PWT	YWT	YFAT	YEMD	YGFW	YFD	EBWR
	57.7	5.5	7.8	-0.7	-0.7	31.1	-0.1	-0.4
✦ SINGLE ✦	BUYER						\$	

LOT 294	TAG	SIRE	DROP	MIC	SD	CV	CF%	BW
	210724	190902	APRIL	20	3.3	16.7	99	96
	YWEC	PWT	YWT	YFAT	YEMD	YGFW	YFD	EBWR
	-19.5	8.5	9.8	0.5	1.6	32.3	-0.4	-0.9
✦ TWIN ✦	BUYER						\$	

LOT 295	TAG	SIRE	DROP	MIC	SD	CV	CF%	BW
	210820	170660	APRIL	19	2.8	14.8	99.5	96
	YWEC	PWT	YWT	YFAT	YEMD	YGFW	YFD	EBWR
	-39.1	7.8	9.3	0.3	0.2	23.8	-0.8	-0.2
✦ TWIN ✦	BUYER						\$	

LOT 296	TAG	SIRE	DROP	MIC	SD	CV	CF%	BW
	211217	193511	APRIL	18.7	2.7	14.5	99.8	101
	YWEC	PWT	YWT	YFAT	YEMD	YGFW	YFD	EBWR
	31.8	8.5	9.6	-0.3	0.9	30.2	-0.5	-0.4
✦ SINGLE ✦	BUYER						\$	

LOT 297	TAG	SIRE	DROP	MIC	SD	CV	CF%	BW
	211014	180027	MAY	18.2	2.5	13.9	99.5	100
	YWEC	PWT	YWT	YFAT	YEMD	YGFW	YFD	EBWR
	-21.6	10.8	12.4	0.1	0.7	23.3	-1.3	-0.3
✦ TWIN ✦	BUYER						\$	

LOT 298	TAG	SIRE	DROP	MIC	SD	CV	CF%	BW
	210124	193599	APRIL	21.1	2.8	12.9	99	98
	YWEC	PWT	YWT	YFAT	YEMD	YGFW	YFD	EBWR
	-39	10.5	12.5	0.5	3	24.5	0.6	-0.4
+	SINGLE	+	BUYER				\$	

LOT 299	TAG	SIRE	DROP	MIC	SD	CV	CF%	BW
	211041	180027	APRIL	19.2	2.4	12.6	99.8	99
	YWEC	PWT	YWT	YFAT	YEMD	YGFW	YFD	EBWR
	50.5	9.9	11.5	0.2	-0.2	26	-0.5	0.3
+	SINGLE	+	BUYER				\$	

LOT 300	TAG	SIRE	DROP	MIC	SD	CV	CF%	BW
	210851	170660	MAY	19.7	2.5	12.9	99.8	102
	YWEC	PWT	YWT	YFAT	YEMD	YGFW	YFD	EBWR
	-56	10.2	11.9	0.1	0.5	24.5	0.2	-1
+	TWIN	+	BUYER				\$	

LOT 301	TAG	SIRE	DROP	MIC	SD	CV	CF%	BW
	210121	193599	APRIL	18.2	2.6	14.3	99.2	106
	YWEC	PWT	YWT	YFAT	YEMD	YGFW	YFD	EBWR
	-5	8.4	9.4	0	1	16.9	-1.5	-0.4
+	SINGLE	+	BUYER				\$	

LOT 302	TAG	SIRE	DROP	MIC	SD	CV	CF%	BW
	210448	190125	APRIL	19.1	2.8	14.6	99.5	99
	YWEC	PWT	YWT	YFAT	YEMD	YGFW	YFD	EBWR
	-27.4	10	11.3	0.2	1	19.9	-0.5	-0.8
+	TRIPLET	+	BUYER				\$	

LOT 303	TAG	SIRE	DROP	MIC	SD	CV	CF%	BW
	210739	190902	APRIL	19.4	3.1	15.8	99.8	97
	YWEC	PWT	YWT	YFAT	YEMD	YGFW	YFD	EBWR
	-13.2	11.9	13.5	0.8	1.5	26.8	-0.2	-0.3
+	SINGLE	+	BUYER				\$	

LOT 304	TAG	SIRE	DROP	MIC	SD	CV	CF%	BW
	210034	193599	APRIL	19.5	2.4	12.3	99.8	96
	YWEC	PWT	YWT	YFAT	YEMD	YGFW	YFD	EBWR
	-0.3	10	12	0.1	1.2	19.1	-0.6	-0.8
+	SINGLE	+	BUYER				\$	

LOT 305	TAG	SIRE	DROP	MIC	SD	CV	CF%	BW
	210346	190125	APRIL	18.6	2.5	13.2	99.8	99
	YWEC	PWT	YWT	YFAT	YEMD	YGFW	YFD	EBWR
	-12.7	7.4	9.5	-0.7	0.1	32.9	-0.5	0.4
+	SINGLE	+	BUYER				\$	

LOT 306	TAG	SIRE	DROP	MIC	SD	CV	CF%	BW
	210343	190125	MAY	19.3	2.4	12.3	99.8	97
	YWEC	PWT	YWT	YFAT	YEMD	YGFW	YFD	EBWR
	8.5	10.2	12.5	0.3	0	23.6	-0.1	-0.9
+	SINGLE	+	BUYER				\$	

LOT 307	TAG	SIRE	DROP	MIC	SD	CV	CF%	BW	
	210231	193599	APRIL	17.7	2.4	13.4	100	97	
	YWEC	PWT	YWT	YFAT	YEMD	YGFW	YFD	EBWR	
	-16.6	10.3	11.7	0.7	1.5	20.9	-1.3	-0.2	
+	SINGLE	+	BUYER				\$		

LOT 308	TAG	SIRE	DROP	MIC	SD	CV	CF%	BW	
	210787	170660	APRIL	20	2.3	11.5	100	94	
	YWEC	PWT	YWT	YFAT	YEMD	YGFW	YFD	EBWR	
	-61	6.4	5.9	0.8	0.9	23.1	0	-0.4	
+	TWIN	+	BUYER				\$		

LOT 309	TAG	SIRE	DROP	MIC	SD	CV	CF%	BW	
	210235	193599	APRIL	18.6	3.6	19.3	99.5	91	
	YWEC	PWT	YWT	YFAT	YEMD	YGFW	YFD	EBWR	
	8	10.3	11.6	0	0	26.7	-1	-0.3	
+	SINGLE	+	BUYER				\$		

LOT 310	TAG	SIRE	DROP	MIC	SD	CV	CF%	BW	
	210164	193599	MAY	17.9	2.5	14	99.8	91	
	YWEC	PWT	YWT	YFAT	YEMD	YGFW	YFD	EBWR	
	-46	8.3	10.6	0.3	1.6	17.5	-1.4	-0.7	
+	TWIN	+	BUYER				\$		

LOT 311	TAG	SIRE	DROP	MIC	SD	CV	CF%	BW	
	210644	190902	APRIL	17.5	3.4	19.6	99.5	93	
	YWEC	PWT	YWT	YFAT	YEMD	YGFW	YFD	EBWR	
	9.7	6.6	7.3	0	0.5	21.7	-1.5	0	
+	SINGLE	+	BUYER				\$		

LOT 312	TAG	SIRE	DROP	MIC	SD	CV	CF%	BW	
	210872	170660	APRIL	20.1	2.8	14.1	99.2	96	
	YWEC	PWT	YWT	YFAT	YEMD	YGFW	YFD	EBWR	
	-60.5	9.9	10.7	0.5	0.2	23	0.2	-0.7	
+	TWIN	+	BUYER				\$		

LOT 313	TAG	SIRE	DROP	MIC	SD	CV	CF%	BW	
	210103	193599	APRIL	18.7	2.3	12.4	100	97	
	YWEC	PWT	YWT	YFAT	YEMD	YGFW	YFD	EBWR	
	-33.2	8.1	9.1	0.5	2	23.3	-1.2	0.4	
+	SINGLE	+	BUYER				\$		

LOT 314	TAG	SIRE	DROP	MIC	SD	CV	CF%	BW	
	211002	180027	APRIL	19.5	2.4	12.5	99.5	95	
	YWEC	PWT	YWT	YFAT	YEMD	YGFW	YFD	EBWR	
	2.5	9.6	11.5	-0.2	-0.8	19.9	-0.8	-0.8	
+	SINGLE	+	BUYER				\$		

LOT 315	TAG	SIRE	DROP	MIC	SD	CV	CF%	BW	
	210170	193704	APRIL	21.2	2.9	13.5	99.8	97	
	YWEC	PWT	YWT	YFAT	YEMD	YGFW	YFD	EBWR	
	51.8	5.9	8.1	0.9	0.4	25.9	0.9	-0.7	
+	SINGLE	+	BUYER				\$		

LOT 316	TAG	SIRE	DROP	MIC	SD	CV	CF%	BW
	210701	190902	APRIL	19	3.4	17.9	98.9	94
	YWEC	PWT	YWT	YFAT	YEMD	YGFW	YFD	EBWR
	7.6	7.4	9.7	-0.8	-0.1	40.2	-0.8	0
+ TWIN +	BUYER						\$	

LOT 317	TAG	SIRE	DROP	MIC	SD	CV	CF%	BW
	211117	193704	APRIL	21	3.3	15.1	99	93
	YWEC	PWT	YWT	YFAT	YEMD	YGFW	YFD	EBWR
	38.5	5.9	7.3	0.4	0.6	26.8	0.9	-0.7
+ SINGLE +	BUYER						\$	

LOT 318	TAG	SIRE	DROP	MIC	SD	CV	CF%	BW
	210653	190902	APRIL	18.3	2.8	15.4	100	91
	YWEC	PWT	YWT	YFAT	YEMD	YGFW	YFD	EBWR
	4.6	7.9	8.8	-0.5	0.1	27.9	-1.5	-0.7
+ TWIN +	BUYER						\$	

LOT 319	TAG	SIRE	DROP	MIC	SD	CV	CF%	BW
	210683	190902	APRIL	20.1	2.8	13.7	99.8	93
	YWEC	PWT	YWT	YFAT	YEMD	YGFW	YFD	EBWR
	13.7	9.2	10.2	0.6	1.4	31.1	-0.1	-0.8
+ SINGLE +	BUYER						\$	

LOT 320	TAG	SIRE	DROP	MIC	SD	CV	CF%	BW
	210251	193599	APRIL	19.7	2.5	12.6	99.8	86
	YWEC	PWT	YWT	YFAT	YEMD	YGFW	YFD	EBWR
	-30.9	9.4	10.6	0.4	2.3	19.4	-0.5	-0.6
+ TWIN +	BUYER						\$	

LOT 321	TAG	SIRE	DROP	MIC	SD	CV	CF%	BW
	211022	180027	MAY	19.2	2.5	13	99.2	88
	YWEC	PWT	YWT	YFAT	YEMD	YGFW	YFD	EBWR
	-28.6	9.5	11	0.6	1.3	22.1	-0.7	-0.9
+ TWIN +	BUYER						\$	

LOT 322	TAG	SIRE	DROP	MIC	SD	CV	CF%	BW
	210345	190125	MAY	18.6	2.9	15.7	99	90
	YWEC	PWT	YWT	YFAT	YEMD	YGFW	YFD	EBWR
	2.2	9.2	11.5	-0.1	1.6	21.6	-0.9	-0.9
+ TWIN +	BUYER						\$	

LOT 323	TAG	SIRE	DROP	MIC	SD	CV	CF%	BW
	210830	170660	APRIL	18.8	3.6	18.9	99	92
	YWEC	PWT	YWT	YFAT	YEMD	YGFW	YFD	EBWR
	-46	6.7	7.7	-0.1	1.1	30.1	-0.4	-0.3
+ SINGLE +	BUYER						\$	

LOT 324	TAG	SIRE	DROP	MIC	SD	CV	CF%	BW
	211066	180027	APRIL	17.3	2.6	15.1	99.8	93
	YWEC	PWT	YWT	YFAT	YEMD	YGFW	YFD	EBWR
	13.5	8.8	10.3	0.1	-0.6	13.1	-1.8	-0.2
+ SINGLE +	BUYER						\$	

LOT 325	TAG	SIRE	DROP	MIC	SD	CV	CF%	BW	
	210067	193599	MAY	19.8	3.8	19.3	99.8	93	
	YWEC	PWT	YWT	YFAT	YEMD	YGFW	YFD	EBWR	
	-29.9	9	11.4	0.3	2.1	23.8	-0.1	-0.7	
+	TWIN	+	BUYER					\$	

LOT 326	TAG	SIRE	DROP	MIC	SD	CV	CF%	BW	
	210046	193599	APRIL	19	2.9	15.4	99.2	95	
	YWEC	PWT	YWT	YFAT	YEMD	YGFW	YFD	EBWR	
	1	6.8	7.6	0.6	1.6	22.9	-0.7	-0.8	
+	SINGLE	+	BUYER					\$	

LOT 327	TAG	SIRE	DROP	MIC	SD	CV	CF%	BW	
	210210	193599	APRIL	16.9	2.9	17.3	99.5	97	
	YWEC	PWT	YWT	YFAT	YEMD	YGFW	YFD	EBWR	
	-44.5	9.6	11.9	-0.1	1.6	21.4	-2	-0.1	
+	SINGLE	+	BUYER					\$	

LOT 328	TAG	SIRE	DROP	MIC	SD	CV	CF%	BW	
	210180	193599	APRIL	19.7	3.4	17.2	99	98	
	YWEC	PWT	YWT	YFAT	YEMD	YGFW	YFD	EBWR	
	-6.2	9.6	12.4	0.3	2.5	24.5	-0.4	-0.8	
+	SINGLE	+	BUYER					\$	

LOT 329	TAG	SIRE	DROP	MIC	SD	CV	CF%	BW	
	211039	180027	APRIL	18.3	2.5	14	99.8	100	
	YWEC	PWT	YWT	YFAT	YEMD	YGFW	YFD	EBWR	
	-14	6.9	9.1	0.2	0.1	20.8	-1.2	-0.2	
+	SINGLE	+	BUYER					\$	

LOT 330	TAG	SIRE	DROP	MIC	SD	CV	CF%	BW	
	210176	193599	APRIL	19.8	2.4	12.1	99.5	100	
	YWEC	PWT	YWT	YFAT	YEMD	YGFW	YFD	EBWR	
	-12.8	10.9	13.4	0.1	1.5	20.3	-0.7	-0.8	
+	TWIN	+	BUYER					\$	

LOT 331	TAG	SIRE	DROP	MIC	SD	CV	CF%	BW	
	210467	190125	APRIL	19.2	3	14	99.2	101	
	YWEC	PWT	YWT	YFAT	YEMD	YGFW	YFD	EBWR	
	-13.9	7.5	10	-0.3	0.6	19.1	-0.6	-0.9	
+	SINGLE	+	BUYER					\$	

LOT 332	TAG	SIRE	DROP	MIC	SD	CV	CF%	BW	
	210988	190022	MAY	19.3	2.4	12.5	99.8	95	
	YWEC	PWT	YWT	YFAT	YEMD	YGFW	YFD	EBWR	
	9.2	9.4	11.7	0	-0.4	31.6	-0.3	-1	
+	TWIN	+	BUYER					\$	

LOT 333	TAG	SIRE	DROP	MIC	SD	CV	CF%	BW	
	210842	170660	APRIL	20.3	2.7	13.5	99.5	98	
	YWEC	PWT	YWT	YFAT	YEMD	YGFW	YFD	EBWR	
	-21.2	8	8.4	0.6	1.4	22.6	0.3	-0.8	
+	TWIN	+	BUYER					\$	

LOT 334	TAG	SIRE	DROP	MIC	SD	CV	CF%	BW
	210412	190125	APRIL	19.3	3.3	17.1	99.8	93
	YWEC	PWT	YWT	YFAT	YEMD	YGFW	YFD	EBWR
	-17.7	6.5	8.1	0.2	0.4	17	-0.9	-0.6
	↕ TWIN ↕	BUYER						\$

LOT 335	TAG	SIRE	DROP	MIC	SD	CV	CF%	BW
	210375	190125	APRIL	19.5	2.9	14.9	99.8	94
	YWEC	PWT	YWT	YFAT	YEMD	YGFW	YFD	EBWR
	-7.1	8.4	9.5	-0.3	1.2	24.2	-0.6	-0.6
	↕ SINGLE ↕	BUYER						\$

LOT 336	TAG	SIRE	DROP	MIC	SD	CV	CF%	BW
	210529	190125	APRIL	19	2.9	15.4	99.2	90
	YWEC	PWT	YWT	YFAT	YEMD	YGFW	YFD	EBWR
	-13.8	7	8.3	0	1.8	22.4	-1.3	-0.5
	↕ TWIN ↕	BUYER						\$

LOT 337	TAG	SIRE	DROP	MIC	SD	CV	CF%	BW
	211099	193704	APRIL	19.4	4.5	21.5	99	92
	YWEC	PWT	YWT	YFAT	YEMD	YGFW	YFD	EBWR
	2.5	5.5	6.5	0.4	0.2	35.2	-0.5	0
	↕ SINGLE ↕	BUYER						\$

LOT 338	TAG	SIRE	DROP	MIC	SD	CV	CF%	BW
	211093	180027	MAY	19.3	2.5	13.2	99.8	95
	YWEC	PWT	YWT	YFAT	YEMD	YGFW	YFD	EBWR
	18.5	8.1	8.8	0	0.7	22.2	-0.2	-0.8
	↕ TWIN ↕	BUYER						\$

LOT 339	TAG	SIRE	DROP	MIC	SD	CV	CF%	BW
	210760	190902	APRIL	21.5	3.5	16.5	98.9	92
	YWEC	PWT	YWT	YFAT	YEMD	YGFW	YFD	EBWR
	37.1	8.3	9.5	0.7	2.4	21.8	0.5	-0.7
	↕ TWIN ↕	BUYER						\$

LOT 340	TAG	SIRE	DROP	MIC	SD	CV	CF%	BW
	210408	190125	APRIL	19.9	3.5	17.8	99.5	93
	YWEC	PWT	YWT	YFAT	YEMD	YGFW	YFD	EBWR
	6.1	7.4	9	0.3	1.2	23.4	-0.2	-0.2
	↕ SINGLE ↕	BUYER						\$

LOT 341	TAG	SIRE	DROP	MIC	SD	CV	CF%	BW
	210458	190125	APRIL	20.4	3.9	19.3	98.8	92
	YWEC	PWT	YWT	YFAT	YEMD	YGFW	YFD	EBWR
	-13.9	8.8	10	-0.6	0.5	32.2	-0.3	-0.6
	↕ TWIN ↕	BUYER						\$

LOT 342	TAG	SIRE	DROP	MIC	SD	CV	CF%	BW
	210385	190125	APRIL	17.6	5.2	23	98.5	93
	YWEC	PWT	YWT	YFAT	YEMD	YGFW	YFD	EBWR
	-21.4	8.2	9.2	0.2	0.9	19.8	-1.2	-0.7
	↕ SINGLE ↕	BUYER						\$

LOT 343	TAG	SIRE	DROP	MIC	SD	CV	CF%	BW	
	210721	190902	APRIL	18.2	3.9	21.6	99.5	93	
	YWEC	PWT	YWT	YFAT	YEMD	YGFW	YFD	EBWR	
	-19.6	8.8	11.7	0.1	0.6	28.8	-1.1	-0.7	
+	SINGLE	+	BUYER				\$		

LOT 344	TAG	SIRE	DROP	MIC	SD	CV	CF%	BW	
	210166	193704	MAY	19	3.3	17.2	99.5	92	
	YWEC	PWT	YWT	YFAT	YEMD	YGFW	YFD	EBWR	
	36.1	9	9.5	0.4	0.2	36.3	-0.3	-0.1	
+	TWIN	+	BUYER				\$		

LOT 345	TAG	SIRE	DROP	MIC	SD	CV	CF%	BW	
	210628	190902	APRIL	19	2.5	13	99.8	96	
	YWEC	PWT	YWT	YFAT	YEMD	YGFW	YFD	EBWR	
	13.8	10.4	11.1	0.9	1.5	30.2	-0.5	-1.1	
+	TWIN	+	BUYER				\$		

LOT 346	TAG	SIRE	DROP	MIC	SD	CV	CF%	BW	
	210989	190022	MAY	21	3.9	17.8	99.5	98	
	YWEC	PWT	YWT	YFAT	YEMD	YGFW	YFD	EBWR	
	17.9	5	7.4	-0.1	0.1	35.7	0.9	-0.8	
+	TWIN	+	BUYER				\$		

LOT 347	TAG	SIRE	DROP	MIC	SD	CV	CF%	BW	
	210974	190022	APRIL	20	3.4	16.8	99	95	
	YWEC	PWT	YWT	YFAT	YEMD	YGFW	YFD	EBWR	
	-4.8	7.1	9.6	-0.1	-0.6	32.8	0.2	-0.7	
+	SINGLE	+	BUYER				\$		

LOT 348	TAG	SIRE	DROP	MIC	SD	CV	CF%	BW	
	210099	193599	APRIL	18.4	3	16.5	99.2	95	
	YWEC	PWT	YWT	YFAT	YEMD	YGFW	YFD	EBWR	
	12.5	7.8	10.2	-0.1	1.4	22.4	-0.9	-0.7	
+	TWIN	+	BUYER				\$		

LOT 349	TAG	SIRE	DROP	MIC	SD	CV	CF%	BW	
	210985	190022	APRIL	20.9	3.2	15.2	99.8	97	
	YWEC	PWT	YWT	YFAT	YEMD	YGFW	YFD	EBWR	
	20.9	9.4	12.2	-0.1	-0.2	31.9	0.5	-1.1	
+	SINGLE	+	BUYER				\$		

LOT 350	TAG	SIRE	DROP	MIC	SD	CV	CF%	BW	
	210183	193599	APRIL	20.1	4.2	20.8	99	104	
	YWEC	PWT	YWT	YFAT	YEMD	YGFW	YFD	EBWR	
	13.9	13	14.4	1.1	2.1	12.5	0.1	-1.4	
+	TWIN	+	BUYER				\$		

LOT 351	TAG	SIRE	DROP	MIC	SD	CV	CF%	BW	
	210693	190902	APRIL	21.1	4.1	19.1	98.9	104	
	YWEC	PWT	YWT	YFAT	YEMD	YGFW	YFD	EBWR	
	9.4	8.3	9.5	0.4	0.4	24.8	0.6	-0.4	
+	SINGLE	+	BUYER				\$		

LOT 352	TAG	SIRE	DROP	MIC	SD	CV	CF%	BW
	210350	190125	APRIL	20	2.9	14.3	99.5	101
	YWEC	PWT	YWT	YFAT	YEMD	YGFW	YFD	EBWR
	-16.4	8.9	11.2	0.3	1.5	21.9	-0.3	-0.9
‡ TWIN ‡	BUYER						\$	

LOT 353	TAG	SIRE	DROP	MIC	SD	CV	CF%	BW
	211082	180027	MAY	20	4.1	20.3	99	98
	YWEC	PWT	YWT	YFAT	YEMD	YGFW	YFD	EBWR
	70.2	8.7	10	-0.2	0.4	22.9	-0.3	0
‡ TWIN ‡	BUYER						\$	

LOT 354	TAG	SIRE	DROP	MIC	SD	CV	CF%	BW
	210190	193599	APRIL	19.7	3.9	19.9	99	107
	YWEC	PWT	YWT	YFAT	YEMD	YGFW	YFD	EBWR
	-28.1	12	15.5	0.8	3.1	19.9	-0.3	-0.8
‡ TWIN ‡	BUYER						\$	

LOT 355	TAG	SIRE	DROP	MIC	SD	CV	CF%	BW
	210472	190125	APRIL	18.7	2.9	15.6	99.2	102
	YWEC	PWT	YWT	YFAT	YEMD	YGFW	YFD	EBWR
	-3.5	7	7.9	-0.1	0.4	22.3	-0.9	-0.6
‡ SINGLE ‡	BUYER						\$	

LOT 356	TAG	SIRE	DROP	MIC	SD	CV	CF%	BW
	210283	193599	APRIL	17.4	2.2	12.8	99.8	96
	YWEC	PWT	YWT	YFAT	YEMD	YGFW	YFD	EBWR
	-36.1	10.4	12.5	0.5	1.8	13.4	-1.4	-0.4
‡ TWIN ‡	BUYER						\$	

LOT 357	TAG	SIRE	DROP	MIC	SD	CV	CF%	BW
	210677	190902	APRIL	17.9	2.6	14.4	99.8	94
	YWEC	PWT	YWT	YFAT	YEMD	YGFW	YFD	EBWR
	39.7	10.1	11.8	-0.2	0	30.6	-1.5	-0.5
‡ TWIN ‡	BUYER						\$	

LOT 358	TAG	SIRE	DROP	MIC	SD	CV	CF%	BW
	210608	190902	MAY	20	2.6	13	99.8	91
	YWEC	PWT	YWT	YFAT	YEMD	YGFW	YFD	EBWR
	-2.4	6.9	8.6	0	0.8	29.4	-0.5	0.1
‡ TWIN ‡	BUYER						\$	

LOT 359	TAG	SIRE	DROP	MIC	SD	CV	CF%	BW
	210332	190125	MAY	20.5	3.1	15.3	99.8	82
	YWEC	PWT	YWT	YFAT	YEMD	YGFW	YFD	EBWR
	-3.5	7	8.9	0	0.3	19.3	0.2	-0.6
‡ TWIN ‡	BUYER						\$	

LOT 360	TAG	SIRE	DROP	MIC	SD	CV	CF%	BW
	210042	193599	APRIL	21.3	3.1	14.2	99.8	82
	YWEC	PWT	YWT	YFAT	YEMD	YGFW	YFD	EBWR
	-63.5	7.9	9.3	0.4	1.9	21.5	0.9	-0.5
‡ SINGLE ‡	BUYER						\$	

LOT 361	TAG	SIRE	DROP	MIC	SD	CV	CF%	BW	
	210504	190125	APRIL	20.2	2.5	12.2	100	84	
	YWEC	PWT	YWT	YFAT	YEMD	YGFW	YFD	EBWR	
	-14	5.5	7	-0.1	-0.6	26.8	-0.3	-0.1	
+	SINGLE	+	BUYER					\$	

LOT 362	TAG	SIRE	DROP	MIC	SD	CV	CF%	BW	
	210145	193599	MAY	18.1	4.3	22.8	99	87	
	YWEC	PWT	YWT	YFAT	YEMD	YGFW	YFD	EBWR	
	-13.1	8.6	10.4	-0.2	1.6	29.9	-0.8	-0.8	
+	TWIN	+	BUYER					\$	

LOT 363	TAG	SIRE	DROP	MIC	SD	CV	CF%	BW	
	210069	193599	APRIL	18.4	2.2	12	99.8	88	
	YWEC	PWT	YWT	YFAT	YEMD	YGFW	YFD	EBWR	
	-21.6	7.8	9.7	0.4	2.9	16.1	-1.2	-0.8	
+	TRIPLET	+	BUYER					\$	

LOT 364	TAG	SIRE	DROP	MIC	SD	CV	CF%	BW	
	210207	193599	APRIL	17.8	3.1	17.4	99.2	88	
	YWEC	PWT	YWT	YFAT	YEMD	YGFW	YFD	EBWR	
	-18.3	7.7	9.1	0.8	3.6	22	-1.4	0	
+	TWIN	+	BUYER					\$	

LOT 365	TAG	SIRE	DROP	MIC	SD	CV	CF%	BW	
	211004	180027	APRIL	19.6	3.7	18.7	99.2	87	
	YWEC	PWT	YWT	YFAT	YEMD	YGFW	YFD	EBWR	
	26.5	7.5	8.8	0.3	0.7	28.1	-0.5	0.3	
+	TWIN	+	BUYER					\$	

LOT 366	TAG	SIRE	DROP	MIC	SD	CV	CF%	BW	
	210807	170660	MAY	21.1	3	14.1	99.8	90	
	YWEC	PWT	YWT	YFAT	YEMD	YGFW	YFD	EBWR	
	-44.7	9.2	9.4	-0.3	1.2	31.4	0.6	-0.8	
+	TWIN	+	BUYER					\$	

LOT 367	TAG	SIRE	DROP	MIC	SD	CV	CF%	BW	
	210379	190125	APRIL	18.9	2.7	14.5	99.5	92	
	YWEC	PWT	YWT	YFAT	YEMD	YGFW	YFD	EBWR	
	-23.8	4.9	6.3	0.7	1.7	24.4	-1	-1	
+	SINGLE	+	BUYER					\$	

LOT 368	TAG	SIRE	DROP	MIC	SD	CV	CF%	BW	
	210660	190902	APRIL	21	3.1	14.3	100	99	
	YWEC	PWT	YWT	YFAT	YEMD	YGFW	YFD	EBWR	
	-14.4	8.1	11	0.2	0.7	29.2	0.7	-0.7	
+	TWIN	+	BUYER					\$	

LOT 369	TAG	SIRE	DROP	MIC	SD	CV	CF%	BW	
	210112	193599	APRIL	17.9	2.7	15	99.5	101	
	YWEC	PWT	YWT	YFAT	YEMD	YGFW	YFD	EBWR	
	-17.8	10.5	11.1	-0.3	1.1	21.6	-1.5	-0.5	
+	SINGLE	+	BUYER					\$	

LOT 370	TAG	SIRE	DROP	MIC	SD	CV	CF%	BW
	211159	193704	APRIL	20	3.5	17.5	99.5	102
	YWEC	PWT	YWT	YFAT	YEMD	YGFW	YFD	EBWR
	21.3	7.9	9.3	-0.2	0.1	32.3	0.2	0.3
+	SINGLE	+	BUYER				\$	

LOT 371	TAG	SIRE	DROP	MIC	SD	CV	CF%	BW
	210181	193599	APRIL	19.6	2.5	12.8	99.8	101
	YWEC	PWT	YWT	YFAT	YEMD	YGFW	YFD	EBWR
	-11	7.9	10.2	0.6	3.1	27.3	-0.4	-0.5
+	SINGLE	+	BUYER				\$	

LOT 372	TAG	SIRE	DROP	MIC	SD	CV	CF%	BW
	210269	193599	APRIL	19	2.3	12	100	100
	YWEC	PWT	YWT	YFAT	YEMD	YGFW	YFD	EBWR
	-8.3	10.3	12.8	0.3	2	17.1	-0.3	-0.9
+	SINGLE	+	BUYER				\$	

LOT 373	TAG	SIRE	DROP	MIC	SD	CV	CF%	BW
	211164	193704	APRIL	20.8	3.1	15.1	99.8	94
	YWEC	PWT	YWT	YFAT	YEMD	YGFW	YFD	EBWR
	20.7	7.6	9.9	0.8	0.6	20.9	0.1	-0.4
+	SINGLE	+	BUYER				\$	

LOT 374	TAG	SIRE	DROP	MIC	SD	CV	CF%	BW
	210452	190125	APRIL	19.2	3.5	18.2	99.2	94
	YWEC	PWT	YWT	YFAT	YEMD	YGFW	YFD	EBWR
	-50.6	4.4	5.6	-0.3	0.7	23.8	-0.7	-0.5
+	SINGLE	+	BUYER				\$	

LOT 375	TAG	SIRE	DROP	MIC	SD	CV	CF%	BW
	211200	193511	APRIL	18.7	3.7	20	99	92
	YWEC	PWT	YWT	YFAT	YEMD	YGFW	YFD	EBWR
	-0.8	5.8	7.2	0	2.3	27.5	-1.2	0.2
+	TWIN	+	BUYER				\$	

LOT 376	TAG	SIRE	DROP	MIC	SD	CV	CF%	BW
	210062	193599	APRIL	18.7	2.9	15.4	99.8	90
	YWEC	PWT	YWT	YFAT	YEMD	YGFW	YFD	EBWR
	-3	8.5	9.5	-0.2	1.7	34.1	-0.9	-0.4
+	SINGLE	+	BUYER				\$	

LOT 377	TAG	SIRE	DROP	MIC	SD	CV	CF%	BW
	210934	190022	MAY	21	4.5	21.4	98	90
	YWEC	PWT	YWT	YFAT	YEMD	YGFW	YFD	EBWR
	92.5	8.6	11.1	-0.4	-0.6	29.3	0.2	-1
+	TWIN	+	BUYER				\$	

LOT 378	TAG	SIRE	DROP	MIC	SD	CV	CF%	BW
	210491	190125	APRIL	19.7	2.9	14.7	99.5	90
	YWEC	PWT	YWT	YFAT	YEMD	YGFW	YFD	EBWR
	-4.6	6.5	7.7	-0.1	0.4	28.3	-0.1	-0.2
+	SINGLE	+	BUYER				\$	

LOT 379	TAG	SIRE	DROP	MIC	SD	CV	CF%	BW
	210128	193599	APRIL	19.3	3	15.3	99.2	91
	YWEC	PWT	YWT	YFAT	YEMD	YGFW	YFD	EBWR
	-23.6	10.4	12.4	-0.1	1.6	22	-0.3	-0.9
+ SINGLE +	BUYER						\$	

LOT 380	TAG	SIRE	DROP	MIC	SD	CV	CF%	BW
	211207	193511	APRIL	19	3.7	19.5	98.2	91
	YWEC	PWT	YWT	YFAT	YEMD	YGFW	YFD	EBWR
	18.3	6.9	8.9	-0.3	-0.6	45	-1	0.3
+ SINGLE +	BUYER						\$	

LOT 381	TAG	SIRE	DROP	MIC	SD	CV	CF%	BW
	210941	190022	MAY	19.5	2.7	14	100	87
	YWEC	PWT	YWT	YFAT	YEMD	YGFW	YFD	EBWR
	37.4	7.3	9.6	0.1	0.2	29.4	-0.2	-0.8
+ TWIN +	BUYER						\$	

LOT 382	TAG	SIRE	DROP	MIC	SD	CV	CF%	BW
	210193	193599	APRIL	18.8	2.5	13.4	99.5	88
	YWEC	PWT	YWT	YFAT	YEMD	YGFW	YFD	EBWR
	-32.4	7.8	8.8	-0.2	1.1	24.1	-0.8	-0.6
+ SINGLE +	BUYER						\$	

LOT 383	TAG	SIRE	DROP	MIC	SD	CV	CF%	BW
	211061	180027	APRIL	18.4	2.7	14.9	99.2	87
	YWEC	PWT	YWT	YFAT	YEMD	YGFW	YFD	EBWR
	39	6.6	8.3	-0.1	-0.5	20.5	-1.6	-0.5
+ SINGLE +	BUYER						\$	

LOT 384	TAG	SIRE	DROP	MIC	SD	CV	CF%	BW
	210137	193599	APRIL	18.9	2.8	15.1	100	84
	YWEC	PWT	YWT	YFAT	YEMD	YGFW	YFD	EBWR
	6.4	6.5	7.9	0.3	2.1	21.6	-1	-0.4
+ SINGLE +	BUYER						\$	

LOT 385	TAG	SIRE	DROP	MIC	SD	CV	CF%	BW
	210978	190022	APRIL	18.7	3.6	19.3	99.5	85
	YWEC	PWT	YWT	YFAT	YEMD	YGFW	YFD	EBWR
	16.7	5.1	6.5	-0.3	-0.2	27.3	-1.2	-0.4
+ SINGLE +	BUYER						\$	

LOT 386	TAG	SIRE	DROP	MIC	SD	CV	CF%	BW
	210866	170660	MAY	21.2	3	14.1	99.8	83
	YWEC	PWT	YWT	YFAT	YEMD	YGFW	YFD	EBWR
	-25.3	7.3	7.6	0.4	0.3	32.5	0.6	-0.2
+ TWIN +	BUYER						\$	

LOT 387	TAG	SIRE	DROP	MIC	SD	CV	CF%	BW
	210502	190125	APRIL	19.4	2.8	14.4	100	84
	YWEC	PWT	YWT	YFAT	YEMD	YGFW	YFD	EBWR
	-33.7	6.7	8	0.5	0.4	25	-0.2	0
+ TRIPLET +	BUYER						\$	

LOT 388	TAG	SIRE	DROP	MIC	SD	CV	CF%	BW
	210682	190902	MAY	17.9	2	11.3	100	83
	YWEC	PWT	YWT	YFAT	YEMD	YGFW	YFD	EBWR
	-4	5.8	6.9	0.5	0.9	29.6	-1.5	-0.1
+ TWIN +	BUYER						\$	

LOT 389	TAG	SIRE	DROP	MIC	SD	CV	CF%	BW
	210630	190902	APRIL	21	3	14.3	99	83
	YWEC	PWT	YWT	YFAT	YEMD	YGFW	YFD	EBWR
	-27.7	7.9	9.4	0.9	1.5	28.6	0.6	-0.8
+ TWIN +	BUYER						\$	

LOT 390	TAG	SIRE	DROP	MIC	SD	CV	CF%	BW
	210926	190022	APRIL	18.8	2.6	14	99.8	85
	YWEC	PWT	YWT	YFAT	YEMD	YGFW	YFD	EBWR
	18	6.1	7.9	-0.1	-0.4	30.3	-0.7	-0.8
+ SINGLE +	BUYER						\$	

LOT 391	TAG	SIRE	DROP	MIC	SD	CV	CF%	BW
	211151	193704	APRIL	19.1	2.5	13.2	100	82
	YWEC	PWT	YWT	YFAT	YEMD	YGFW	YFD	EBWR
	-2.3	5.9	7.3	0.5	2.1	25.3	-0.4	-0.8
+ TWIN +	BUYER						\$	

LOT 392	TAG	SIRE	DROP	MIC	SD	CV	CF%	BW
	210688	190902	MAY	21	2.9	13.4	100	85
	YWEC	PWT	YWT	YFAT	YEMD	YGFW	YFD	EBWR
	3.7	10.8	12.1	0	0.9	32.9	1.2	-0.9
+ TWIN +	BUYER						\$	

LOT 393	TAG	SIRE	DROP	MIC	SD	CV	CF%	BW
	210669	190902	MAY	18.9	4.5	24	98.9	88
	YWEC	PWT	YWT	YFAT	YEMD	YGFW	YFD	EBWR
	40.2	5.4	6.6	-0.6	0.7	32.5	-1.2	-0.5
+ SINGLE +	BUYER						\$	

LOT 394	TAG	SIRE	DROP	MIC	SD	CV	CF%	BW
	210191	193599	APRIL	20.5	2.4	11.5	100	90
	YWEC	PWT	YWT	YFAT	YEMD	YGFW	YFD	EBWR
	-44.8	10.3	11.9	0.5	2.1	23.5	0.1	-0.2
+ TWIN +	BUYER						\$	

LOT 395	TAG	SIRE	DROP	MIC	SD	CV	CF%	BW
	210707	190902	MAY	18.2	2.6	14.2	99.5	90
	YWEC	PWT	YWT	YFAT	YEMD	YGFW	YFD	EBWR
	39.1	7.8	10	0.2	0.6	29.3	-1.1	-0.6
+ TWIN +	BUYER						\$	

LOT 396	TAG	SIRE	DROP	MIC	SD	CV	CF%	BW
	211150	193704	APRIL	20.3	3.2	15.8	99.5	89
	YWEC	PWT	YWT	YFAT	YEMD	YGFW	YFD	EBWR
	34.5	5.6	6.4	0.3	0.3	36.6	0.2	-0.4
+ SINGLE +	BUYER						\$	

LOT 397	TAG	SIRE	DROP	MIC	SD	CV	CF%	BW
	210781	170660	MAY	19.6	3.4	17.4	99	94
	YWEC	PWT	YWT	YFAT	YEMD	YGFW	YFD	EBWR
	-49.4	8.7	9.3	0.2	0.9	27.6	0.1	-0.8
† TWIN †	BUYER						\$	

LOT 398	TAG	SIRE	DROP	MIC	SD	CV	CF%	BW
	210030	193599	APRIL	18.7	3.3	17.6	99.2	92
	YWEC	PWT	YWT	YFAT	YEMD	YGFW	YFD	EBWR
	-13.4	7.5	8.2	0.5	1.3	17.3	-1.1	-0.3
† SINGLE †	BUYER						\$	

LOT 399	TAG	SIRE	DROP	MIC	SD	CV	CF%	BW
	210984	190022	APRIL	21	3.7	17.1	99	96
	YWEC	PWT	YWT	YFAT	YEMD	YGFW	YFD	EBWR
	55.8	8.4	10	-0.2	0	29.4	0.3	-0.8
† TWIN †	BUYER						\$	

LOT 400	TAG	SIRE	DROP	MIC	SD	CV	CF%	BW
	210338	190125	APRIL	20	3.6	18.2	99	93
	YWEC	PWT	YWT	YFAT	YEMD	YGFW	YFD	EBWR
	-27.5	6.1	8.8	0	1.6	30.8	-0.1	-0.6
† SINGLE †	BUYER						\$	

LOT 401	TAG	SIRE	DROP	MIC	SD	CV	CF%	BW
	211120	193704	APRIL	19.6	4.3	22	99	90
	YWEC	PWT	YWT	YFAT	YEMD	YGFW	YFD	EBWR
	-23.3	5.7	7.2	0.1	0.4	32.4	-0.3	-0.7
† TWIN †	BUYER						\$	

LOT 402	TAG	SIRE	DROP	MIC	SD	CV	CF%	BW
	211179	193704	APRIL	20.3	3.3	16.4	99.5	91
	YWEC	PWT	YWT	YFAT	YEMD	YGFW	YFD	EBWR
	12	5.8	7.2	0.5	0.2	23.2	0.3	-0.2
† SINGLE †	BUYER						\$	

LOT 403	TAG	SIRE	DROP	MIC	SD	CV	CF%	BW
	210606	190902	MAY	19.2	4.1	21.3	98.9	89
	YWEC	PWT	YWT	YFAT	YEMD	YGFW	YFD	EBWR
	-22.1	6.6	7.8	0	0.8	39.8	-0.6	0.2
† TWIN †	BUYER						\$	

LOT 404	TAG	SIRE	DROP	MIC	SD	CV	CF%	BW
	210374	190125	APRIL	20.3	3.4	16.9	99	90
	YWEC	PWT	YWT	YFAT	YEMD	YGFW	YFD	EBWR
	-7.5	5.5	7.2	0.4	1.3	27.9	-0.1	-0.3
† TWIN †	BUYER						\$	

LOT 405	TAG	SIRE	DROP	MIC	SD	CV	CF%	BW
	210617	190902	APRIL	19.6	3.2	16.4	99.8	84
	YWEC	PWT	YWT	YFAT	YEMD	YGFW	YFD	EBWR
	-1.4	8	8.7	0.5	1	32.7	-0.3	-0.6
† TWIN †	BUYER						\$	

LOT 406	TAG	SIRE	DROP	MIC	SD	CV	CF%	BW
	210613	190902	APRIL	19.5	2.7	13.8	99.8	83
	YWEC	PWT	YWT	YFAT	YEMD	YGFW	YFD	EBWR
	1.5	6.7	7.9	-0.4	0	27.6	0	-0.5
‡ SINGLE ‡	BUYER						\$	

LOT 407	TAG	SIRE	DROP	MIC	SD	CV	CF%	BW
	210199	193599	APRIL	20	2.5	12.4	100	81
	YWEC	PWT	YWT	YFAT	YEMD	YGFW	YFD	EBWR
	-17.3	9	11.3	0.2	2.1	23.2	-0.3	0
‡ SINGLE ‡	BUYER						\$	

LOT 408	TAG	SIRE	DROP	MIC	SD	CV	CF%	BW
	211096	193704	APRIL	19.7	3.7	18.6	99.5	82
	YWEC	PWT	YWT	YFAT	YEMD	YGFW	YFD	EBWR
	29.9	5.5	6.9	0	-0.1	31.1	-0.4	-0.2
‡ TWIN ‡	BUYER						\$	

LOT 409	TAG	SIRE	DROP	MIC	SD	CV	CF%	BW
	210052	193599	APRIL	20.9	3.8	18.2	99	84
	YWEC	PWT	YWT	YFAT	YEMD	YGFW	YFD	EBWR
	-4.8	9.7	11.8	0.4	2	14.4	0.3	-0.7
‡ SINGLE ‡	BUYER						\$	

LOT 410	TAG	SIRE	DROP	MIC	SD	CV	CF%	BW
	210490	190125	APRIL	18.9	3.4	18.1	99.8	92
	YWEC	PWT	YWT	YFAT	YEMD	YGFW	YFD	EBWR
	-5.8	7.7	8.1	-0.2	0.8	30.2	-0.8	-0.6
‡ TWIN ‡	BUYER						\$	

LOT 411	TAG	SIRE	DROP	MIC	SD	CV	CF%	BW
	210390	190125	APRIL	19.2	2.7	13.9	99.8	95
	YWEC	PWT	YWT	YFAT	YEMD	YGFW	YFD	EBWR
	-31.6	8.1	9	0.7	2.8	19.5	-0.4	-0.8
‡ SINGLE ‡	BUYER						\$	

LOT 412	TAG	SIRE	DROP	MIC	SD	CV	CF%	BW
	210675	190022	MAY	20.2	2.9	14.5	99.2	93
	YWEC	PWT	YWT	YFAT	YEMD	YGFW	YFD	EBWR
	16.9	6.6	8.3	-0.1	-0.3	29.1	-0.2	-0.5
‡ TWIN ‡	BUYER						\$	

LOT 413	TAG	SIRE	DROP	MIC	SD	CV	CF%	BW
	211115	193704	APRIL	19.2	3	15.5	99.5	94
	YWEC	PWT	YWT	YFAT	YEMD	YGFW	YFD	EBWR
	32.6	7.9	10.2	0.1	-0.1	30.5	-0.7	-0.6
‡ SINGLE ‡	BUYER						\$	

LOT 414	TAG	SIRE	DROP	MIC	SD	CV	CF%	BW
	210064	193599	MAY	19.1	2.5	12.9	99.8	100
	YWEC	PWT	YWT	YFAT	YEMD	YGFW	YFD	EBWR
	-66.8	9.4	10.8	-0.1	1.1	22.8	-0.3	-0.4
‡ SINGLE ‡	BUYER						\$	

LOT 415	TAG	SIRE	DROP	MIC	SD	CV	CF%	BW	
	210387	190125	APRIL	19.5	3.5	17.7	99.2	105	
	YWEC	PWT	YWT	YFAT	YEMD	YGFW	YFD	EBWR	
	-20.2	7.9	9.4	-0.5	0	20.8	-0.6	-0.7	
+	SINGLE	+	BUYER					\$	

LOT 416	TAG	SIRE	DROP	MIC	SD	CV	CF%	BW	
	210321	190125	APRIL	19.4	2.5	12.8	99.8	103	
	YWEC	PWT	YWT	YFAT	YEMD	YGFW	YFD	EBWR	
	-6.9	9.4	10.9	-0.3	0.3	23.7	-0.3	-0.9	
+	SINGLE	+	BUYER					\$	

LOT 417	TAG	SIRE	DROP	MIC	SD	CV	CF%	BW	
	210604	190902	MAY	18.6	3	16.1	99.8	103	
	YWEC	PWT	YWT	YFAT	YEMD	YGFW	YFD	EBWR	
	16.2	9.6	11.7	0.1	-1.2	27.5	-0.9	-0.5	
+	TWIN	+	BUYER					\$	

LOT 418	TAG	SIRE	DROP	MIC	SD	CV	CF%	BW	
	210914	190022	APRIL	19.6	3.6	18.3	99.2	102	
	YWEC	PWT	YWT	YFAT	YEMD	YGFW	YFD	EBWR	
	48.6	7.1	9.5	0.1	0.4	39.7	-0.5	-0.8	
+	TWIN	+	BUYER					\$	

LOT 419	TAG	SIRE	DROP	MIC	SD	CV	CF%	BW	
	210014	193599	APRIL	17.6	2.3	13	99.5	97	
	YWEC	PWT	YWT	YFAT	YEMD	YGFW	YFD	EBWR	
	-23.3	11.3	12.9	0.4	2.1	18.3	-1.7	-0.4	
+	TWIN	+	BUYER					\$	

LOT 420	TAG	SIRE	DROP	MIC	SD	CV	CF%	BW	
	210187	193599	APRIL	19.3	2.4	12.4	99.8	93	
	YWEC	PWT	YWT	YFAT	YEMD	YGFW	YFD	EBWR	
	-61	10.8	12.8	-0.5	2.2	21.6	-0.5	-0.4	
+	TWIN	+	BUYER					\$	

LOT 421	TAG	SIRE	DROP	MIC	SD	CV	CF%	BW	
	210758	190902	MAY	18.9	3.5	18.5	98.8	93	
	YWEC	PWT	YWT	YFAT	YEMD	YGFW	YFD	EBWR	
	0.8	8.9	11.5	-0.4	0.8	38.1	-1	0	
+	SINGLE	+	BUYER					\$	

LOT 422	TAG	SIRE	DROP	MIC	SD	CV	CF%	BW	
	210429	190125	MAY	19.9	4.3	21.6	99.2	93	
	YWEC	PWT	YWT	YFAT	YEMD	YGFW	YFD	EBWR	
	4.1	6.3	7.2	0.1	1.1	26.4	-0.5	-0.6	
+	TWIN	+	BUYER					\$	

LOT 423	TAG	SIRE	DROP	MIC	SD	CV	CF%	BW	
	211069	180027	MAY	19.8	3.3	16.6	99.5	93	
	YWEC	PWT	YWT	YFAT	YEMD	YGFW	YFD	EBWR	
	16.7	8.8	10.4	0.7	0.5	33.3	-0.7	-0.2	
+	TWIN	+	BUYER					\$	

LOT 424	TAG	SIRE	DROP	MIC	SD	CV	CF%	BW
	210680	190902	APRIL	19	2.6	13.5	99.2	94
	YWEC	PWT	YWT	YFAT	YEMD	YGFW	YFD	EBWR
	16.4	7.6	8.2	0.1	-0.6	30	-1	-0.4
+ TWIN +	BUYER						\$	

LOT 425	TAG	SIRE	DROP	MIC	SD	CV	CF%	BW
	211206	193511	MAY	18.7	3	16	99.5	93
	YWEC	PWT	YWT	YFAT	YEMD	YGFW	YFD	EBWR
	-39.5	7.9	9.5	0.2	0.7	30.9	-0.7	0
+ TWIN +	BUYER						\$	

LOT 426	TAG	SIRE	DROP	MIC	SD	CV	CF%	BW
	210461	190125	APRIL	20.4	3	14.5	99.8	92
	YWEC	PWT	YWT	YFAT	YEMD	YGFW	YFD	EBWR
	-6.6	6.8	7.5	-0.2	-0.6	20.5	0	-0.3
+ SINGLE +	BUYER						\$	

LOT 427	TAG	SIRE	DROP	MIC	SD	CV	CF%	BW
	210450	190125	APRIL	19.5	2.7	13.7	99.2	88
	YWEC	PWT	YWT	YFAT	YEMD	YGFW	YFD	EBWR
	-5.5	6.9	7.7	-0.7	-0.4	28.1	-0.6	-0.5
+ SINGLE +	BUYER						\$	

LOT 428	TAG	SIRE	DROP	MIC	SD	CV	CF%	BW
	210632	190902	MAY	21	3.8	17.5	99	86
	YWEC	PWT	YWT	YFAT	YEMD	YGFW	YFD	EBWR
	-7.8	9.6	10	0	1.2	31	0.7	-1.2
+ TWIN +	BUYER						\$	

LOT 429	TAG	SIRE	DROP	MIC	SD	CV	CF%	BW
	211114	193704	MAY	19.4	3.4	17.4	99.8	85
	YWEC	PWT	YWT	YFAT	YEMD	YGFW	YFD	EBWR
	37.5	6	7.8	0.8	-0.4	28.2	-0.1	-0.2
+ TWIN +	BUYER						\$	

LOT 430	TAG	SIRE	DROP	MIC	SD	CV	CF%	BW
	210337	190125	APRIL	19.8	3.4	17	99	83
	YWEC	PWT	YWT	YFAT	YEMD	YGFW	YFD	EBWR
	-52.7	7.1	8.3	0.5	1.7	21.9	0	-0.8
+ SINGLE +	BUYER						\$	

LOT 431	TAG	SIRE	DROP	MIC	SD	CV	CF%	BW
	211158	193704	MAY	19.6	3.7	18.8	99	82
	YWEC	PWT	YWT	YFAT	YEMD	YGFW	YFD	EBWR
	63.6	7.5	9.9	1.3	0.7	26.9	-0.3	-0.6
+ TWIN +	BUYER						\$	

LOT 432	TAG	SIRE	DROP	MIC	SD	CV	CF%	BW
	210298	193599	MAY	18.8	2.5	13.5	100	90
	YWEC	PWT	YWT	YFAT	YEMD	YGFW	YFD	EBWR
	-14.7	7.8	9.7	0.1	2.1	24.8	-1	-0.4
+ TWIN +	BUYER						\$	

LOT 433	TAG	SIRE	DROP	MIC	SD	CV	CF%	BW	
	210658	190902	APRIL	17.4	3.4	19.8	99	95	
	YWEC	PWT	YWT	YFAT	YEMD	YGFW	YFD	EBWR	
	-0.3	6.6	7.8	-0.5	0	28.6	-1.3	-0.6	
+	SINGLE	+	BUYER					\$	

LOT 434	TAG	SIRE	DROP	MIC	SD	CV	CF%	BW	
	210195	193599	APRIL	20.3	2.9	14.1	99.5	103	
	YWEC	PWT	YWT	YFAT	YEMD	YGFW	YFD	EBWR	
	-7.4	10.1	11.6	0.4	1.6	26.4	0.1	-0.5	
+	SINGLE	+	BUYER					\$	

LOT 435	TAG	SIRE	DROP	MIC	SD	CV	CF%	BW	
	211045	180027	APRIL	17.9	2.2	12.1	100	101	
	YWEC	PWT	YWT	YFAT	YEMD	YGFW	YFD	EBWR	
	17.2	8	8.7	0.1	-0.2	21.2	-1.1	-0.3	
+	SINGLE	+	BUYER					\$	

LOT 436	TAG	SIRE	DROP	MIC	SD	CV	CF%	BW	
	210389	190125	MAY	18.9	2.2	11.4	100	103	
	YWEC	PWT	YWT	YFAT	YEMD	YGFW	YFD	EBWR	
	-8.9	11	12.1	0.2	1.9	18.5	-0.4	-0.8	
+	TWIN	+	BUYER					\$	

LOT 437	TAG	SIRE	DROP	MIC	SD	CV	CF%	BW	
	210834	170660	MAY	17.2	3.2	18.4	99.8	106	
	YWEC	PWT	YWT	YFAT	YEMD	YGFW	YFD	EBWR	
	-35.2	8.6	8.5	0.5	0.3	21.4	-0.9	-0.5	
+	TWIN	+	BUYER					\$	

LOT 438	TAG	SIRE	DROP	MIC	SD	CV	CF%	BW	
	211012	180027	APRIL	17.7	3.7	20.9	99.5	102	
	YWEC	PWT	YWT	YFAT	YEMD	YGFW	YFD	EBWR	
	49.7	9.6	11.5	0.1	0.6	32.5	-1.1	0.2	
+	SINGLE	+	BUYER					\$	

LOT 439	TAG	SIRE	DROP	MIC	SD	CV	CF%	BW	
	210995	190022	APRIL	20.1	3.2	16	99.2	104	
	YWEC	PWT	YWT	YFAT	YEMD	YGFW	YFD	EBWR	
	29.5	7.7	10.2	0.1	1	24.6	0.3	-0.7	
+	SINGLE	+	BUYER					\$	

LOT 440	TAG	SIRE	DROP	MIC	SD	CV	CF%	BW	
	210271	193599	APRIL	18.3	2.9	16.1	99.8	106	
	YWEC	PWT	YWT	YFAT	YEMD	YGFW	YFD	EBWR	
	-46.4	10.8	12.1	0.2	2.1	32.7	-1	-0.4	
+	TWIN	+	BUYER					\$	

LOT 441	TAG	SIRE	DROP	MIC	SD	CV	CF%	BW	
	211020	180027	MAY	19.4	2.3	11.6	100	99	
	YWEC	PWT	YWT	YFAT	YEMD	YGFW	YFD	EBWR	
	31.9	8.9	10.9	-0.6	-0.4	23.1	-0.4	-0.2	
+	TWIN	+	BUYER					\$	

LOT 442	TAG	SIRE	DROP	MIC	SD	CV	CF%	BW
	210234	193599	APRIL	20.6	2.4	11.7	100	107
	YWEC	PWT	YWT	YFAT	YEMD	YGFW	YFD	EBWR
	3.5	11.5	13.7	0.6	1.8	25.8	0.3	-0.7
+ TWIN +	BUYER						\$	

LOT 443	TAG	SIRE	DROP	MIC	SD	CV	CF%	BW
	210070	193599	MAY	21.5	3.1	14.4	98.9	100
	YWEC	PWT	YWT	YFAT	YEMD	YGFW	YFD	EBWR
	-33.6	13.9	15.5	0.4	2.3	26.7	0.5	-0.9
+ TWIN +	BUYER						\$	

LOT 444	TAG	SIRE	DROP	MIC	SD	CV	CF%	BW
	210394	190125	MAY	18.4	2.6	14	99.8	89
	YWEC	PWT	YWT	YFAT	YEMD	YGFW	YFD	EBWR
	-1.3	5.1	6.4	-0.5	0.3	25.3	-1.5	-0.3
+ TWIN +	BUYER						\$	

LOT 445	TAG	SIRE	DROP	MIC	SD	CV	CF%	BW
	211106	193704	APRIL	19.2	3.2	16.6	99.8	90
	YWEC	PWT	YWT	YFAT	YEMD	YGFW	YFD	EBWR
	22.4	4.7	6.6	-0.5	-0.3	37.3	-0.2	-0.4
+ SINGLE +	BUYER						\$	

LOT 446	TAG	SIRE	DROP	MIC	SD	CV	CF%	BW
	211249	193511	MAY	20.1	3.8	19	99.5	93
	YWEC	PWT	YWT	YFAT	YEMD	YGFW	YFD	EBWR
	-20.2	8.5	10.3	0.5	0.6	31.1	-0.1	-0.4
+ TWIN +	BUYER						\$	

LOT 447	TAG	SIRE	DROP	MIC	SD	CV	CF%	BW
	210865	170660	MAY	20.7	2.7	13	99.5	90
	YWEC	PWT	YWT	YFAT	YEMD	YGFW	YFD	EBWR
	-48.2	6.8	7.5	0	0.4	26.4	0.2	-0.8
+ TWIN +	BUYER						\$	

LOT 448	TAG	SIRE	DROP	MIC	SD	CV	CF%	BW
	210276	193599	APRIL	19.5	2.2	11.4	100	96
	YWEC	PWT	YWT	YFAT	YEMD	YGFW	YFD	EBWR
	-18.4	9	10.8	0.6	2.3	17.4	-0.3	-0.1
+ TWIN +	BUYER						\$	

LOT 449	TAG	SIRE	DROP	MIC	SD	CV	CF%	BW
	210367	190125	APRIL	20.4	4	19.6	99	100
	YWEC	PWT	YWT	YFAT	YEMD	YGFW	YFD	EBWR
	-12.3	5	6	1.1	1.5	27.3	-0.1	-0.2
+ TWIN +	BUYER						\$	

LOT 450	TAG	SIRE	DROP	MIC	SD	CV	CF%	BW
	210623	190902	APRIL	18.1	2.4	13.3	99.8	92
	YWEC	PWT	YWT	YFAT	YEMD	YGFW	YFD	EBWR
	-15.7	8.3	10	0	-0.3	19.8	-1.3	-0.5
+ SINGLE +	BUYER						\$	

LOT 451	TAG	SIRE	DROP	MIC	SD	CV	CF%	BW
	211011	180027	APRIL	18.8	3.6	19.3	99.5	96
	YWEC	PWT	YWT	YFAT	YEMD	YGFW	YFD	EBWR
	-7.4	8.9	9.4	0.4	-0.2	23.9	-1.2	-0.1
✦ TWIN ✦	BUYER						\$	

LOT 452	TAG	SIRE	DROP	MIC	SD	CV	CF%	BW
	210655	190902	APRIL	18.2	4.2	22.9	98.9	94
	YWEC	PWT	YWT	YFAT	YEMD	YGFW	YFD	EBWR
	-6.8	6.4	7.8	-0.5	1.1	32.3	-0.8	-0.7
✦ SINGLE ✦	BUYER						\$	

LOT 453	TAG	SIRE	DROP	MIC	SD	CV	CF%	BW
	210996	190022	APRIL	20	3.5	17.4	99.8	90
	YWEC	PWT	YWT	YFAT	YEMD	YGFW	YFD	EBWR
	101.1	7.4	10.1	-0.2	-0.1	31.1	0.1	-0.6
✦ SINGLE ✦	BUYER						\$	

LOT 454	TAG	SIRE	DROP	MIC	SD	CV	CF%	BW
	210300	193599	APRIL	20.6	3.3	16.2	99	81
	YWEC	PWT	YWT	YFAT	YEMD	YGFW	YFD	EBWR
	-9.4	8.1	9	-0.4	2.1	21.3	-0.5	-0.8
✦ QUAD ✦	BUYER						\$	

LOT 455	TAG	SIRE	DROP	MIC	SD	CV	CF%	BW
	211027	180027	MAY	20.7	3.1	15.2	99.5	86
	YWEC	PWT	YWT	YFAT	YEMD	YGFW	YFD	EBWR
	-17.6	7.5	8.6	0.6	-0.3	19.2	-0.1	-0.4
✦ TWIN ✦	BUYER						\$	

LOT 456	TAG	SIRE	DROP	MIC	SD	CV	CF%	BW
	210382	190125	APRIL	19.7	2.4	12.3	99.5	84
	YWEC	PWT	YWT	YFAT	YEMD	YGFW	YFD	EBWR
	-38.3	5.7	7.2	1	1.9	21.3	-0.4	-0.4
✦ TWIN ✦	BUYER						\$	

LOT 457	TAG	SIRE	DROP	MIC	SD	CV	CF%	BW
	210223	193599	APRIL	19.5	2.3	11.6	99.5	86
	YWEC	PWT	YWT	YFAT	YEMD	YGFW	YFD	EBWR
	-35.5	10	11.6	0.1	2	21.5	-0.7	-0.2
✦ TWIN ✦	BUYER						\$	

LOT 458	TAG	SIRE	DROP	MIC	SD	CV	CF%	BW
	211147	193704	APRIL	18.8	2.9	15.4	99.2	83
	YWEC	PWT	YWT	YFAT	YEMD	YGFW	YFD	EBWR
	11	4.8	6	0.1	-0.9	27.6	-0.8	-0.3
✦ TWIN ✦	BUYER						\$	

LOT 459	TAG	SIRE	DROP	MIC	SD	CV	CF%	BW
	210462	190125	APRIL	18.7	2.4	12.7	99.8	91
	YWEC	PWT	YWT	YFAT	YEMD	YGFW	YFD	EBWR
	-30.3	7	8.5	-1	0.2	24.2	-0.5	-0.4
✦ TWIN ✦	BUYER						\$	

LOT 460	TAG	SIRE	DROP	MIC	SD	CV	CF%	BW
	210476	190125	APRIL	21	3.2	15.3	99	95
	YWEC	PWT	YWT	YFAT	YEMD	YGFW	YFD	EBWR
	-26.3	8.3	9	0	-0.3	24	0.7	-0.4
	↕ SINGLE ↕	BUYER						\$

LOT 461	TAG	SIRE	DROP	MIC	SD	CV	CF%	BW
	211180	193704	APRIL	19.4	2.7	13.8	99.8	102
	YWEC	PWT	YWT	YFAT	YEMD	YGFW	YFD	EBWR
	8	7.2	8.8	0.1	0.9	30.4	-0.3	0
	↕ SINGLE ↕	BUYER						\$

LOT 462	TAG	SIRE	DROP	MIC	SD	CV	CF%	BW
	210100	193599	APRIL	19.9	3.3	16.4	99.2	101
	YWEC	PWT	YWT	YFAT	YEMD	YGFW	YFD	EBWR
	-13.5	9.4	11.9	-0.4	2.7	13.3	-0.4	-1.1
	↕ TWIN ↕	BUYER						\$

LOT 463	TAG	SIRE	DROP	MIC	SD	CV	CF%	BW
	310090	193599	APRIL	18.8	4	21	99.8	100
	YWEC	PWT	YWT	YFAT	YEMD	YGFW	YFD	EBWR
	-9	10.5	12.9	0	0.8	20.7	-1	-0.8
	↕ TWIN ↕	BUYER						\$

LOT 464	TAG	SIRE	DROP	MIC	SD	CV	CF%	BW
	210085	193599	APRIL	19.8	3.4	17	99.5	104
	YWEC	PWT	YWT	YFAT	YEMD	YGFW	YFD	EBWR
	-37	11	11.2	0.6	1.2	19.1	-0.5	-1.1
	↕ TWIN ↕	BUYER						\$

LOT 465	TAG	SIRE	DROP	MIC	SD	CV	CF%	BW
	210105	193599	APRIL	20.3	3.2	15.6	99.2	104
	YWEC	PWT	YWT	YFAT	YEMD	YGFW	YFD	EBWR
	-12.6	10.8	12.7	-0.1	1.7	26.8	0.3	-0.4
	↕ SINGLE ↕	BUYER						\$

LOT 466	TAG	SIRE	DROP	MIC	SD	CV	CF%	BW
	210331	190125	APRIL	19.5	3.6	18.5	98.8	99
	YWEC	PWT	YWT	YFAT	YEMD	YGFW	YFD	EBWR
	-35.5	8.5	9.7	-0.3	0.6	27.3	-0.5	-0.8
	↕ SINGLE ↕	BUYER						\$

LOT 467	TAG	SIRE	DROP	MIC	SD	CV	CF%	BW
	211085	180027	MAY	18.8	2.4	12.8	99.8	92
	YWEC	PWT	YWT	YFAT	YEMD	YGFW	YFD	EBWR
	8.9	10	11.7	-0.4	0.7	26.4	-0.8	-0.5
	↕ TWIN ↕	BUYER						\$

LOT 468	TAG	SIRE	DROP	MIC	SD	CV	CF%	BW
	211258	193511	MAY	19.6	3	15.2	99.2	94
	YWEC	PWT	YWT	YFAT	YEMD	YGFW	YFD	EBWR
	-16.4	8.5	10.4	-0.4	0.5	24.7	-0.3	-0.4
	↕ TWIN ↕	BUYER						\$

LOT 469	TAG	SIRE	DROP	MIC	SD	CV	CF%	BW	
	210356	190125	MAY	20	4.2	21	99	89	
	YWEC	PWT	YWT	YFAT	YEMD	YGFW	YFD	EBWR	
	2.8	9.4	10.1	0.3	0.2	21.8	-0.3	-0.5	
+	TWIN	+	BUYER				\$		

LOT 470	TAG	SIRE	DROP	MIC	SD	CV	CF%	BW	
	210161	193599	MAY	17.5	2.8	16.2	99.8	83	
	YWEC	PWT	YWT	YFAT	YEMD	YGFW	YFD	EBWR	
	-35.6	6.8	8.3	0.5	2.5	22.2	-1.3	-0.7	
+	SINGLE	+	BUYER				\$		

LOT 471	TAG	SIRE	DROP	MIC	SD	CV	CF%	BW	
	210839	170660	APRIL	21.2	3.1	14.6	99	84	
	YWEC	PWT	YWT	YFAT	YEMD	YGFW	YFD	EBWR	
	-35	8.9	10.3	0.5	0.4	25.6	0.5	-0.2	
+	SINGLE	+	BUYER				\$		

LOT 472	TAG	SIRE	DROP	MIC	SD	CV	CF%	BW	
	210023	193599	MAY	17.8	3.1	17.6	99.5	95	
	YWEC	PWT	YWT	YFAT	YEMD	YGFW	YFD	EBWR	
	-13.6	9.6	12.4	0.1	1.8	17.8	-1.6	-0.7	
+	TWIN	+	BUYER				\$		

LOT 473	TAG	SIRE	DROP	MIC	SD	CV	CF%	BW	
	210421	190125	MAY	21.1	2.8	12.8	99.2	100	
	YWEC	PWT	YWT	YFAT	YEMD	YGFW	YFD	EBWR	
	-7.5	9.4	11	-0.7	-0.7	26.3	0.9	-0.5	
+	SINGLE	+	BUYER				\$		

LOT 474	TAG	SIRE	DROP	MIC	SD	CV	CF%	BW	
	210055	193599	APRIL	19.2	4.2	22	99.2	107	
	YWEC	PWT	YWT	YFAT	YEMD	YGFW	YFD	EBWR	
	-56	11.1	12.5	0.4	0.9	24.8	-0.9	-0.7	
+	TWIN	+	BUYER				\$		

LOT 475	TAG	SIRE	DROP	MIC	SD	CV	CF%	BW	
	210967	190022	APRIL	18.7	4.2	21.2	99.5	111	
	YWEC	PWT	YWT	YFAT	YEMD	YGFW	YFD	EBWR	
	30.4	9.7	11.7	-0.7	-0.3	31.2	-1	-0.6	
+	SINGLE	+	BUYER				\$		

LOT 476	TAG	SIRE	DROP	MIC	SD	CV	CF%	BW	
	211168	193704	APRIL	20.9	2.7	13.1	99.8	102	
	YWEC	PWT	YWT	YFAT	YEMD	YGFW	YFD	EBWR	
	3.8	7.8	9.8	-0.3	-0.7	36.4	0.4	-0.6	
+	SINGLE	+	BUYER				\$		

LOT 477	TAG	SIRE	DROP	MIC	SD	CV	CF%	BW	
	210640	193599	MAY	21	3.7	17.5	99.2	100	
	YWEC	PWT	YWT	YFAT	YEMD	YGFW	YFD	EBWR	
	-13.3	12.6	14.9	0.9	1.7	24.1	0.5	-1.1	
+	TWIN	+	BUYER				\$		

LOT 478	TAG	SIRE	DROP	MIC	SD	CV	CF%	BW
	210329	190125	APRIL	19	2.5	13.3	99.2	105
	YWEC	PWT	YWT	YFAT	YEMD	YGFW	YFD	EBWR
	-3	8.6	9.9	0.3	0.7	25.4	-0.4	-0.7
‡ SINGLE ‡	BUYER						\$	

LOT 479	TAG	SIRE	DROP	MIC	SD	CV	CF%	BW
	211130	193704	APRIL	19.5	3.3	17.1	99	93
	YWEC	PWT	YWT	YFAT	YEMD	YGFW	YFD	EBWR
	3.8	6.7	9.2	-0.1	0.1	22.8	-0.3	0.1
‡ SINGLE ‡	BUYER						\$	

LOT 480	TAG	SIRE	DROP	MIC	SD	CV	CF%	BW
	210141	193599	MAY	18.9	2.3	12.4	100	93
	YWEC	PWT	YWT	YFAT	YEMD	YGFW	YFD	EBWR
	-26.7	11.9	13.3	0.7	1.7	15.9	-0.8	-1
‡ TWIN ‡	BUYER						\$	

LOT 481	TAG	SIRE	DROP	MIC	SD	CV	CF%	BW
	210860	170660	MAY	20	2.9	14.5	99.5	92
	YWEC	PWT	YWT	YFAT	YEMD	YGFW	YFD	EBWR
	-54.1	7.3	9	0.6	-0.2	27.6	-0.1	0
‡ TWIN ‡	BUYER						\$	

LOT 482	TAG	SIRE	DROP	MIC	SD	CV	CF%	BW
	210433	190125	APRIL	20.1	2.7	13.7	99.8	98
	YWEC	PWT	YWT	YFAT	YEMD	YGFW	YFD	EBWR
	-32.8	10.2	12.2	0.1	0.1	23.5	0.2	-0.5
‡ TWIN ‡	BUYER						\$	

LOT 483	TAG	SIRE	DROP	MIC	SD	CV	CF%	BW
	210649	190902	MAY	19.7	3.5	18	99	99
	YWEC	PWT	YWT	YFAT	YEMD	YGFW	YFD	EBWR
	14.5	9	10.9	0	0.3	28.4	-0.5	-0.7
‡ SINGLE ‡	BUYER						\$	

LOT 484	TAG	SIRE	DROP	MIC	SD	CV	CF%	BW
	210725	190902	APRIL	21.1	3.3	15.6	99.2	92
	YWEC	PWT	YWT	YFAT	YEMD	YGFW	YFD	EBWR
	-30.5	9.6	10.1	0	0.5	33.2	0.4	-0.1
‡ SINGLE ‡	BUYER						\$	

LOT 485	TAG	SIRE	DROP	MIC	SD	CV	CF%	BW
	210454	190125	APRIL	20.2	2.7	13.5	99.5	90
	YWEC	PWT	YWT	YFAT	YEMD	YGFW	YFD	EBWR
	-27.2	7.5	8.3	-0.7	0.9	25.6	0.1	-0.5
‡ TWIN ‡	BUYER						\$	

LOT 486	TAG	SIRE	DROP	MIC	SD	CV	CF%	BW
	210316	193599	MAY	20.4	5.3	23	99.2	89
	YWEC	PWT	YWT	YFAT	YEMD	YGFW	YFD	EBWR
	-22	6.5	7.2	0.2	1.5	28.6	0.4	-0.4
‡ TWIN ‡	BUYER						\$	

LOT 487	TAG	SIRE	DROP	MIC	SD	CV	CF%	BW
	210079	193599	APRIL	21.4	3	14	99.2	88
	YWEC	PWT	YWT	YFAT	YEMD	YGFW	YFD	EBWR
	-34.6	9.1	11.6	1.2	2.9	26.3	0.6	-1.1
‡ TWIN ‡	BUYER						\$	

LOT 488	TAG	SIRE	DROP	MIC	SD	CV	CF%	BW
	210296	193599	APRIL	17.7	3.2	18.1	99.5	82
	YWEC	PWT	YWT	YFAT	YEMD	YGFW	YFD	EBWR
	-48.6	10.2	11.8	1.3	3.8	19.7	-1.1	-0.8
‡ TWIN ‡	BUYER						\$	

LOT 489	TAG	SIRE	DROP	MIC	SD	CV	CF%	BW
	210418	190125	APRIL	17.6	2	11.3	100	90
	YWEC	PWT	YWT	YFAT	YEMD	YGFW	YFD	EBWR
	-24.9	7	8.5	0.1	2.5	22.8	-1.3	-0.5
‡ TWIN ‡	BUYER						\$	

LOT 490	TAG	SIRE	DROP	MIC	SD	CV	CF%	BW
	210849	170660	MAY	20.5	3.2	15.6	99.2	88
	YWEC	PWT	YWT	YFAT	YEMD	YGFW	YFD	EBWR
	-20.1	10.7	11.2	0.3	0.8	26.1	0.7	-0.5
‡ TWIN ‡	BUYER						\$	

LOT 491	TAG	SIRE	DROP	MIC	SD	CV	CF%	BW
	210706	190902	APRIL	18	3.5	19.3	99.8	88
	YWEC	PWT	YWT	YFAT	YEMD	YGFW	YFD	EBWR
	-17.2	8.9	9.2	0.2	0.3	30	-1.5	-0.7
‡ TWIN ‡	BUYER						\$	

LOT 492	TAG	SIRE	DROP	MIC	SD	CV	CF%	BW
	211232	193511	MAY	19.6	2.6	13.3	99.8	85
	YWEC	PWT	YWT	YFAT	YEMD	YGFW	YFD	EBWR
	-9.7	5.9	8.1	-0.3	0.7	37.8	-0.7	0.1
‡ TWIN ‡	BUYER						\$	

LOT 493	TAG	SIRE	DROP	MIC	SD	CV	CF%	BW
	211225	193511	MAY	19.6	2.8	14.6	99.2	89
	YWEC	PWT	YWT	YFAT	YEMD	YGFW	YFD	EBWR
	-1.3	9.4	10.5	-0.3	0.7	29.2	-0.4	-0.2
‡ TWIN ‡	BUYER						\$	

LOT 494	TAG	SIRE	DROP	MIC	SD	CV	CF%	BW
	210811	170660	APRIL	19	2.5	13.2	99.8	92
	YWEC	PWT	YWT	YFAT	YEMD	YGFW	YFD	EBWR
	-45.2	6.3	7.1	0	-0.2	29.2	-0.3	-0.5
‡ SINGLE ‡	BUYER						\$	

LOT 495	TAG	SIRE	DROP	MIC	SD	CV	CF%	BW
	210672	190902	APRIL	21.8	4	18.2	99.8	93
	YWEC	PWT	YWT	YFAT	YEMD	YGFW	YFD	EBWR
	-16.1	10.7	12.2	0.1	-0.3	37.4	1.1	-0.3
‡ TWIN ‡	BUYER						\$	

LOT 496	TAG	SIRE	DROP	MIC	SD	CV	CF%	BW
	211088	190022	MAY	19.4	2.8	14.4	99.8	93
	YWEC	PWT	YWT	YFAT	YEMD	YGFW	YFD	EBWR
	14.1	6.2	7.2	-0.4	-0.4	33.4	-0.4	-0.7
‡ SINGLE ‡	BUYER						\$	

LOT 497	TAG	SIRE	DROP	MIC	SD	CV	CF%	BW
	210602	190902	MAY	18.1	3.1	16.9	99.5	104
	YWEC	PWT	YWT	YFAT	YEMD	YGFW	YFD	EBWR
	3.8	9.2	10.9	-0.3	-0.7	36.5	-1.5	0.1
‡ SINGLE ‡	BUYER						\$	

LOT 498	TAG	SIRE	DROP	MIC	SD	CV	CF%	BW
	210093	193599	APRIL	19.4	2.3	11.7	100	104
	YWEC	PWT	YWT	YFAT	YEMD	YGFW	YFD	EBWR
	-15.5	11.7	12.8	-0.3	1.1	22.5	-0.1	-0.9
‡ SINGLE ‡	BUYER						\$	

LOT 499	TAG	SIRE	DROP	MIC	SD	CV	CF%	BW
	211056	180027	APRIL	18.6	2.3	12.3	100	102
	YWEC	PWT	YWT	YFAT	YEMD	YGFW	YFD	EBWR
	4	10.5	13	0.5	0.1	16.6	-0.7	-0.4
‡ TWIN ‡	BUYER						\$	

LOT 500	TAG	SIRE	DROP	MIC	SD	CV	CF%	BW
	212449	160003	AUG	17.7	3.8	21.3	99.5	96
	YWEC	PWT	YWT	YFAT	YEMD	YGFW	YFD	EBWR
	1.3	7.6	9.6	1.1	1.2	28.1	-1	-0.3
‡ TWIN ‡	BUYER						\$	

LOT 501	TAG	SIRE	DROP	MIC	SD	CV	CF%	BW
	211802	193599	AUG	19.4	4.6	22.5	99.2	97
	YWEC	PWT	YWT	YFAT	YEMD	YGFW	YFD	EBWR
	-9.8	10.4	11.9	-0.2	2	26.2	-0.4	-1
‡ TWIN ‡	BUYER						\$	

LOT 502	TAG	SIRE	DROP	MIC	SD	CV	CF%	BW
	211973	190125	AUG	19.3	2.7	14.2	99.2	92
	YWEC	PWT	YWT	YFAT	YEMD	YGFW	YFD	EBWR
	-15.7	10	11.2	0.4	1.5	23.3	0.7	-0.9
‡ TWIN ‡	BUYER						\$	

LOT 503	TAG	SIRE	DROP	MIC	SD	CV	CF%	BW
	212544	201313	SEPT	16.6	2.6	15.9	99.8	89
	YWEC	PWT	YWT	YFAT	YEMD	YGFW	YFD	EBWR
	42.3	6.9	9.2	0.9	1.8	13.1	-1.9	0
‡ TWIN ‡	BUYER						\$	

LOT 504	TAG	SIRE	DROP	MIC	SD	CV	CF%	BW
	211866	190125	AUG	19.6	2.5	12.7	100	89
	YWEC	PWT	YWT	YFAT	YEMD	YGFW	YFD	EBWR
	-48.2	8.3	9.8	0.2	0.7	34.8	0	-0.3
‡ TWIN ‡	BUYER						\$	

LOT 505	TAG	SIRE	DROP	MIC	SD	CV	CF%	BW
	211694	193599	SEPT	18.4	2.4	13.2	100	88
	YWEC	PWT	YWT	YFAT	YEMD	YGFW	YFD	EBWR
	-29.8	9.5	11.5	0.7	2.1	19.5	-0.7	-1.1
‡ TWIN ‡	BUYER						\$	

LOT 506	TAG	SIRE	DROP	MIC	SD	CV	CF%	BW
	211830	193599	AUG	17.6	2.5	14	99.5	85
	YWEC	PWT	YWT	YFAT	YEMD	YGFW	YFD	EBWR
	6.1	9.4	10.9	0.1	1.6	16.3	-1	-0.7
‡ TWIN ‡	BUYER						\$	

LOT 507	TAG	SIRE	DROP	MIC	SD	CV	CF%	BW
	211998	190125	AUG	19.7	2.6	13.3	99.5	85
	YWEC	PWT	YWT	YFAT	YEMD	YGFW	YFD	EBWR
	-18.3	8.1	9.9	0.2	0.8	28.7	0.1	-0.3
‡ SINGLE ‡	BUYER						\$	

LOT 508	TAG	SIRE	DROP	MIC	SD	CV	CF%	BW
	211942	190125	AUG	17.6	2.8	15.9	99.2	85
	YWEC	PWT	YWT	YFAT	YEMD	YGFW	YFD	EBWR
	3.3	8.8	10.6	-0.4	0.6	22.4	-1.2	-0.9
‡ TWIN ‡	BUYER						\$	

LOT 509	TAG	SIRE	DROP	MIC	SD	CV	CF%	BW
	212278	170660	AUG	21	4.4	21.1	99.2	78
	YWEC	PWT	YWT	YFAT	YEMD	YGFW	YFD	EBWR
	-45.4	6.7	8.3	1	1.7	30.9	0.7	-0.9
‡ TRIPLET ‡	BUYER						\$	

LOT 510	TAG	SIRE	DROP	MIC	SD	CV	CF%	BW
	212229	170660	AUG	18.6	2.6	13.9	99.5	77
	YWEC	PWT	YWT	YFAT	YEMD	YGFW	YFD	EBWR
	-59.9	7.4	8.1	0.9	1.8	17.9	0.7	-0.9
‡ TRIPLET ‡	BUYER						\$	

LOT 511	TAG	SIRE	DROP	MIC	SD	CV	CF%	BW
	211831	193599	AUG	17.9	2.8	15.7	99.5	83
	YWEC	PWT	YWT	YFAT	YEMD	YGFW	YFD	EBWR
	-33.9	8.2	11.3	0.4	1.6	27.3	-1.2	-0.3
‡ TWIN ‡	BUYER						\$	

LOT 512	TAG	SIRE	DROP	MIC	SD	CV	CF%	BW
	211939	190125	AUG	17.5	3	17.1	99.2	85
	YWEC	PWT	YWT	YFAT	YEMD	YGFW	YFD	EBWR
	-21.9	7.6	9.2	-0.5	0.5	31.1	-1.3	-0.2
‡ TWIN ‡	BUYER						\$	

LOT 513	TAG	SIRE	DROP	MIC	SD	CV	CF%	BW
	212550	201313	AUG	16.9	3.2	18.7	99.5	81
	YWEC	PWT	YWT	YFAT	YEMD	YGFW	YFD	EBWR
	13	8	8.8	-0.6	-0.8	21.1	-1.7	-0.2
‡ TWIN ‡	BUYER						\$	

LOT 514	TAG	SIRE	DROP	MIC	SD	CV	CF%	BW
	212389	160003	SEPT	19.2	2.8	14.3	100	98
	YWEC	PWT	YWT	YFAT	YEMD	YGFW	YFD	EBWR
	-21.8	7.4	9.4	1.5	1	10.3	-0.4	-1
	↕ SINGLE ↕	BUYER						\$

LOT 515	TAG	SIRE	DROP	MIC	SD	CV	CF%	BW
	212103	190125	AUG	17.4	3.4	19.4	99.5	91
	YWEC	PWT	YWT	YFAT	YEMD	YGFW	YFD	EBWR
	-15.8	7.4	8.3	-0.5	1.2	21.1	-1	-0.6
	↕ TWIN ↕	BUYER						\$

LOT 516	TAG	SIRE	DROP	MIC	SD	CV	CF%	BW
	211916	190125	SEPT	19.3	3.4	17.7	99.5	85
	YWEC	PWT	YWT	YFAT	YEMD	YGFW	YFD	EBWR
	-13	6.9	8.6	1.2	1.2	24.7	0.2	-0.7
	↕ SINGLE ↕	BUYER						\$

LOT 517	TAG	SIRE	DROP	MIC	SD	CV	CF%	BW
	211155	193704	APRIL	17.3	4	22	99.5	82
	YWEC	PWT	YWT	YFAT	YEMD	YGFW	YFD	EBWR
	16.6	5.5	6.7	-0.4	-0.6	35.4	-1.3	-0.2
	↕ TWIN ↕	BUYER						\$

LOT 518	TAG	SIRE	DROP	MIC	SD	CV	CF%	BW
	210636	190902	MAY	19.9	3.2	16	99.5	79
	YWEC	PWT	YWT	YFAT	YEMD	YGFW	YFD	EBWR
	-21.3	5.5	5.6	0.4	1.5	30.9	-0.2	0
	↕ TWIN ↕	BUYER						\$

LOT 519	TAG	SIRE	DROP	MIC	SD	CV	CF%	BW
	210250	193599	APRIL	18.6	3	16.1	99	84
	YWEC	PWT	YWT	YFAT	YEMD	YGFW	YFD	EBWR
	-12.6	9.1	11.1	0.2	2.2	18.8	-0.8	-0.4
	↕ TWIN ↕	BUYER						\$

LOT 520	TAG	SIRE	DROP	MIC	SD	CV	CF%	BW
	210705	190902	APRIL	18.5	4.3	22.1	99.2	83
	YWEC	PWT	YWT	YFAT	YEMD	YGFW	YFD	EBWR
	9.9	6.2	7.1	-0.3	0	29.2	-1.1	-0.6
	↕ TWIN ↕	BUYER						\$

LOT 521	TAG	SIRE	DROP	MIC	SD	CV	CF%	BW
	211076	180027	APRIL	19.5	2.5	12.6	100	85
	YWEC	PWT	YWT	YFAT	YEMD	YGFW	YFD	EBWR
	34.5	7.5	9.1	0.9	-0.4	22.3	-0.4	-1
	↕ TWIN ↕	BUYER						\$

LOT 522	TAG	SIRE	DROP	MIC	SD	CV	CF%	BW
	211097	193704	APRIL	21.3	2.6	12.1	100	92
	YWEC	PWT	YWT	YFAT	YEMD	YGFW	YFD	EBWR
	30.7	6.3	8.5	0.6	0.9	27.7	0.6	-0.5
	↕ SINGLE ↕	BUYER						\$

LOT 523	TAG	SIRE	DROP	MIC	SD	CV	CF%	BW	
	211031	180027	MAY	19.3	2.7	13.9	99.5	94	
	YWEC	PWT	YWT	YFAT	YEMD	YGFW	YFD	EBWR	
	43.7	8.1	10.2	0	-1	27.1	-0.8	0	
+	SINGLE	+	BUYER				\$		

LOT 524	TAG	SIRE	DROP	MIC	SD	CV	CF%	BW	
	210616	190902	APRIL	19.4	3.7	19.1	99.5	100	
	YWEC	PWT	YWT	YFAT	YEMD	YGFW	YFD	EBWR	
	-12.4	8.5	10.7	-0.7	-0.5	31.5	-0.5	-0.4	
+	SINGLE	+	BUYER				\$		

LOT 525	TAG	SIRE	DROP	MIC	SD	CV	CF%	BW	
	211073	180027	APRIL	19.5	3.1	15.9	99.2	94	
	YWEC	PWT	YWT	YFAT	YEMD	YGFW	YFD	EBWR	
	-19.1	9.6	11.2	0.3	-0.1	29.2	-0.7	0.1	
+	TWIN	+	BUYER				\$		

LOT 526	TAG	SIRE	DROP	MIC	SD	CV	CF%	BW	
	210717	190902	APRIL	18.2	2.3	12.4	100	83	
	YWEC	PWT	YWT	YFAT	YEMD	YGFW	YFD	EBWR	
	32.8	7.5	9.1	0.6	0.3	28	-0.6	-0.4	
+	SINGLE	+	BUYER				\$		

LOT 527	TAG	SIRE	DROP	MIC	SD	CV	CF%	BW	
	210795	170660	MAY	19.5	3.2	16.2	99.2	85	
	YWEC	PWT	YWT	YFAT	YEMD	YGFW	YFD	EBWR	
	-24.1	8	9	-0.5	-0.1	24.2	-0.3	-0.3	
+	TWIN	+	BUYER				\$		

LOT 528	TAG	SIRE	DROP	MIC	SD	CV	CF%	BW	
	210257	193599	MAY	19.6	3.1	15.7	99.8	83	
	YWEC	PWT	YWT	YFAT	YEMD	YGFW	YFD	EBWR	
	-29.2	8.1	8.5	-0.2	1.8	27.1	-0.3	-0.8	
+	TWIN	+	BUYER				\$		

LOT 529	TAG	SIRE	DROP	MIC	SD	CV	CF%	BW	
	211128	193704	APRIL	20.1	3.1	15.4	99.5	83	
	YWEC	PWT	YWT	YFAT	YEMD	YGFW	YFD	EBWR	
	-24.1	5	6.5	0.8	0.5	29.3	0	0.3	
+	TWIN	+	BUYER				\$		

LOT 530	TAG	SIRE	DROP	MIC	SD	CV	CF%	BW	
	211065	180027	APRIL	19.8	4.2	21.2	99.2	88	
	YWEC	PWT	YWT	YFAT	YEMD	YGFW	YFD	EBWR	
	25.7	6.5	7.7	-0.8	-1	30.1	-0.3	0	
+	SINGLE	+	BUYER				\$		

LOT 531	TAG	SIRE	DROP	MIC	SD	CV	CF%	BW	
	210592	190902	MAY	20.8	3.6	17.1	99	95	
	YWEC	PWT	YWT	YFAT	YEMD	YGFW	YFD	EBWR	
	-51.5	6.4	8.9	0	0.2	27	0.2	-0.5	
+	TWIN	+	BUYER				\$		

LOT 532	TAG	SIRE	DROP	MIC	SD	CV	CF%	BW
	210864	170660	MAY	21.3	3.5	16.3	99.5	87
	YWEC	PWT	YWT	YFAT	YEMD	YGFW	YFD	EBWR
	-44.4	6.7	8.2	0.4	0.9	35.1	0.7	-0.4
	← TWIN →	BUYER					\$	

LOT 533	TAG	SIRE	DROP	MIC	SD	CV	CF%	BW
	210060	193599	MAY	19.9	3.1	15.4	99.5	82
	YWEC	PWT	YWT	YFAT	YEMD	YGFW	YFD	EBWR
	-33.8	10	11.4	0.2	2.1	27.4	0.2	-0.7
	← TWIN →	BUYER					\$	

LOT 534	TAG	SIRE	DROP	MIC	SD	CV	CF%	BW
	210499	190125	APRIL	20.1	3.5	17.4	99.5	95
	YWEC	PWT	YWT	YFAT	YEMD	YGFW	YFD	EBWR
	20.3	6.4	7.3	-0.1	0.6	27.3	-0.2	-0.3
	← SINGLE →	BUYER					\$	

LOT 535	TAG	SIRE	DROP	MIC	SD	CV	CF%	BW
	210702	190902	APRIL	21.1	3.2	15.3	99.2	93
	YWEC	PWT	YWT	YFAT	YEMD	YGFW	YFD	EBWR
	0.6	8	9.9	1.1	0.9	28.4	0.4	-0.3
	← TWIN →	BUYER					\$	

SALE TEAM AVERAGE

MIC	SD	CV	CF%	BW	PWT	YWT	YFAT
19.1	3.1	16.2	99.5	93	+8.4	+9.9	+0.2
YEMD	YGFW	EBWR	YFD	YWEC			
19.1	3.1	16.2	99.5	93			

MERINO AVERAGE ANALYSIS DATE 7/8/2022

PWT	YWT	YFAT	YEMD	YGFW	EBWR	YFD	YWEC
+3.8	+5.5	+0.2	+0.6	+14	-0.2	-0.9	-16.1



kerinpoll.com.au

“Intelligence is
the ability to adapt
to change”

- Stephen Hawking

You're invited - 365 days a year - to scrutinise
our entire business, our management, our livestock
and our investments into the Merino industry.

kerinag@bigpond.com

Nigel: 0427 464 070

Brett: 0427 861 938

Karuga Park, 1217 Bournemouth Road,
Yeoval NSW 2868

