



jarrah

GENETICS

{ BRED TO PERFORM } Annual Bull Sale

MONDAY 5
SEPTEMBER 2022

43 CQ Acclimatised Hereford Bulls
(100% PP, P or S)

SPRING DROP BULLS



LOT 1 JARRAH KOANUI R339 (AI) (s)



LOT 3 JARRAH ANZAC K220 R338 (AI) (ET) (s)



LOT 4 JARRAH FORTUNE R353 (PP)



LOT 5 JARRAH FORTUNE R312 (PP)



LOT 7 JARRAH TECHNO N226 R358 (s)



LOT 8 JARRAH TECHNO N226 R350 (s)

jarrah

HEREFORDS

Bred to perform
10th Annual **Bull Sale 2022**

87

Bulls

43

Herefords

44

Jarrah Reds



Monday 5 September 2022
On property at 'Glenarchy' Banana QLD

Sale commences 11:00am

Inspections from 9am on Sale Day

We welcome prior inspections of the bulls and entire herd

jarrah
GENETICS

'Glenarchy'
11311 Leichhardt Highway
BANANA QLD 4702

For more information:
Sam Becker 0417 576 667
sam@jarrahcattle.com.au

view videos of our bulls online at
jarrahcattle.com.au

Our competitive advantage is that our Hereford bulls are **adapted** to the central and northern Queensland environment.



Matt Bishop
0437 972 292

Brad Passfield
0459 160 791



AuctionsPlus

Buy and Sell stock nationally

This sale is interfaced with AuctionsPlus and will be conducted live online in real time. Bidding is available only to registered AuctionsPlus users. To bid you must register, preferably 24 hours prior to the sale. Go to page 6 for more details.

Outside agent

A 3% rebate will be paid to outside agents providing the licensed agent accompanies their client to the sale.



JARRAH GENETICS

Jarrah is a family-owned and hands on operated cattle breeding business committed to providing the most relevant, efficient and market orientated genetics to the Australian Beef Industry. Jarrah Genetics, our bull breeding enterprise is a result of this policy and focusing on the superior genetics with proven records to enhance performance and predictability.

We offer 3 lines of genetics in:

- / **Herefords** - polled. Acclimatised to Central Queensland.
- / **Redfords** - a pure red animal that is a minimum 25% Jarrah Hereford and remaining percentage Red Brahman.
- / **Jarrah Reds** 'the clean-coated flatbacks' are a blend between our Redford genetics and Santa Gertrudis.

The genetics we offer stems from our philosophy that Australia's global market advantage is and will be grass-fed beef. A type of animal that has the ability to finish off grass also excels in a short-fed grain program, an area

where Australia's production has expanded in recent years.

In the bull breeding program, we focus on producing genetics with carcasses that have commercial relevance. On top of this, traits such as temperament, structural correctness, udder shape, milking performance and fertility are selected for. The genetics are backed with generations of calving ease traits and fertility. Each herd has a short joining period and a strict cull of the pregtested empties is adhered to.

We see our real strength as the fact we run a vertically integrated beef program. This means we cover and are exposed to everything from seed stock production through to the commercial end product. Jarrah Cattle Company is our commercial breeding and backgrounding operation. By growing cattle through to the end product it ensures we have a commercial slant in the Jarrah program.

THE JARRAH 'BUY BACK' SCHEME

At Jarrah we run a commercial breeding operation utilising our own genetics and also background cattle. Part of the backgrounding operation is offering a 'buy back' scheme. We stand behind our genetics and prefer to source weaners with our genetics. It adds further traceability for the genetics and also allows a floor to be put in the market for clients' selling program. If this is something that interests you in the future, please ensure you let us know and we would be pleased to work with you.

jarrah
GENETICS

WELCOME

WE HAVE COINED 2022 AS A YEAR OF GROWTH. FOR US IT HAS MEANT GROWING AS A FAMILY AND A BUSINESS. FOR THE INDUSTRY IS HAS MEANT CONTINUING GROWTH IN THE NATIONAL CATTLE HERD AND GROWTH IN LAND PRICES.

Perhaps the most important growth for 2022 is the growth in our bull numbers for the annual Jarrah Genetics bull sale! This year we are proud to be presenting our largest offering of both Hereford and Jarrah Red bulls to date, and we are confident that they are our strongest draft yet.

The past few years we have commented on how strong the cattle market and broader agricultural industry have been, and this year is no exception. In April, we saw the EYCI reach a new all time record, feedlots have been operating at high capacities, and despite the hardships throughout the supply chain beef prices have managed to remain strong. The continued emergence of new global markets, combined with an increasing supply as the national herd rebuilds, gives us confidence that the Australian beef industry will remain in good stead to capture new opportunities moving forward.

More broadly in agriculture we have also seen growth in the mindset of the producer. We have seen operations become increasingly progressive, making significant investment in both water infrastructure as well as the development of land, to increase productivity and mitigate the ramifications of marginal seasons moving forward. All huge steps in the sustainability of our industry.

From our perspective, it has been rewarding to see how people's investments in our genetics have been paying off for their operations. Making an investment in new sires should never be underestimated, as this is setting up a herd for years to come. The feedback we receive on increased fertility results with heifers, as well as steers hitting market specs quicker from using Jarrah bulls, gives us confidence in our breeding program.

'BRED TO PERFORM' - COMBINING PERFORMANCE AND PHENOTYPE.

'Bred to Perform' is a motto that we have come up with to underpin our breeding program at Jarrah. It is based around the concept of combining performance with phenotype, to ensure we are producing the most commercially relevant genetics to progress our operation and yours. All too often we see breeders going one sided when considering these traits, we aim to maintain both to produce optimal genetics that are suitable, relevant, and efficient.

Focusing on phenotype, ensures that the cattle we breed have the constitution, structural correctness and soundness needed to handle Queensland conditions and meet market specifications. A focus on performance and incorporating the use of EBVs, ensures greater efficiencies for the producer and an operation. For us, this encompasses creating fertility pressures through yearling heifer joinings, having short, controlled joining periods and by setting benchmarks for things such as scrotal development amongst each draft of bulls. Further to this weight gain benchmarks ensures that steers and surplus heifers reach market specifications in the quickest time possible, to allow for an efficient and consistent turn off.

It is our philosophy, that by having 'Bred to Perform' in the front of our minds with every decision, we can offer you bulls with genetics that not only look the part and are suited to the environment but have depth of performance behind them. All of this helps to make your investment safer.

We are very proud of this line of bulls and believe them to be representative of these ideals. We look forward to welcoming you to inspect our draft of 2022 sale bulls.

2022 HEREFORD SALE BULLS

We have been eagerly waiting to present this line of bulls for you.

Over the past years, Anzac blood has had such a huge influence on the Jarrah herd and the bulls we have offered. Whilst these bulls were top quality lines, we always saw that our greatest advantage from these genetics would come through his daughters, and here they are. This year an incredible 28 Bulls in the line up are out of Anzac females giving these bulls tremendous depth of breeding.

Anzac himself produced consistency, and that trait has continued with his females, easily making this line up of bulls our most even offering. From the opening pen to the final pen, top quality commercial sires with carcass, doing ability and soundness are represented.

The sire power continues in this run of bulls with both natural and AI calves. Repeat sires include Injemira Fortune M152 (PP), Injemira Techno N226 (PP) and Injemira Anzac K220 (PP) with new sires represented by Injemira Techno N276 (PP) and Injemira Wildfire P042 (PP).

The Fortune calves continue to carry that extra meat that really excites us. They are true curve benders, being born small with rapid growth providing so much versatility to an operation. Both Techno bulls have sons represented with plenty of growth, length and style. The first drop of Wildfire's has been even better than we hoped for, adding that bit of extra thickness and depth into the herd.

These bulls have enjoyed significantly better seasons than previous sale bulls, which is shown in how well they have grown out and developed. When viewing the bulls please keep in mind that we no longer offer the 28 month of age bulls. Our lead bulls are rising 2 year old and also yearling bulls.

Positive feedback on the performance of the 2021 yearling offering during their first joining season gives us confidence that this younger age group of bulls will provide many benefits for purchasers. Not only will they continue to allow us to provide our most recent genetics to you sooner, but they have the ability to acclimatise to your environment from a young age aiding longevity.

We are proud of the level of quality and consistency this line of bulls display, and are confident a sire that suits all commercial operations is represented amongst the draft.

*Sam & Sarah
Becker*

Specialists in

❖ Livestock ❖ Rural Property ❖ Clearing Sales

Prompt, Professional & Personal Service

BRAD PASSFIELD 0459 160 791

MATT BISHOP 0437 972 292

BRAD HANSON 0408 684 612

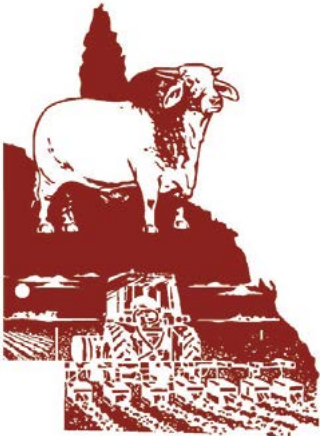
ALEX DODSON 0437 837 520

ASHLEY STEEL 0437 322 383

MATT McKEE 0407 747 364



HOURN & BISHOP QLD



 (07) **4997 2227**

21 Gillespie Street,
Moura QLD 4718

www.hournbishopqld.com.au

Locally Owned and Operated in Central Queensland



Article and photograph by Kent Ward, KB Consulting.

2021 SALE

Hereford bulls hit \$29,000 to average \$11,142 while Jarrah Reds averaged \$13,030 selling to a high of \$18,000 at Monday's Jarrah Genetics sale, Banana.

It was an unseasonably brisk day at Glenarchy, Banana, but this didn't deter the crowds from attending the Becker family's ninth annual Jarrah Genetics bull sale. Records for the stud were achieved in both breeds, reaching the highest top price and average across both the Hereford and Jarrah Red drafts of bulls.

Ending in another complete clearance, the result saw 24 rising two-year-old Hereford bulls top at \$29,000 to set an \$11,083 average, and 11 yearling counterparts averaging \$11,272, selling to a top of \$19,000.

Thirty three Jarrah Reds sold to set a \$13,030 average and topped at \$18,000, resulting in an overall \$4243 boost to last year's sale result.

TOP SELLERS 2021

JARRAH ANZAC H006 Q040 (PP)



\$16,000

JARRAH ANZAC H006 Q090 (P)



\$17,000

JARRAH FORTUNE Q236 (PP)

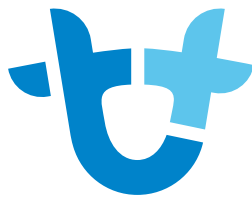


\$29,000

JARRAH FORTUNE R028 (PP)



\$19,000



AuctionsPlus

How to Register and Bid on AuctionsPlus

1

Go to www.auctionsplus.com.au to register at least 48 hours before the sale.

2

Select “**Sign Up**” in the top right hand corner.

3

Fill out your name, mobile number, email address and create a password.

4

Go to your emails and confirm the account.

5

Return to AuctionsPlus and log in.

6

Select “**Dashboard**” and then select “**Request Approval to Buy**”.

7

Fill in buyer details and once completed go back to Dashboard.

8

Complete buyer induction module (approx. 30 minutes).

9

AuctionsPlus will email you to let you know that your account has been approved.

10

Log in on sale day and connect to auction.

11

Bid using the two-step process – unlock the bid button and bid at that price.

12

If you are successful, the selling agent will contact you post sale to organise delivery and payment.

For more information please contact us on:

Phone: (02) 9262 4222

Email: info@auctionsplus.com.au

Before you bid

SALE INFORMATION



The Jarrah 'Bred to Perform' Bull Sale will be held Mon 5 September at 'Glenarchy' 11311 Leichhardt Hwy, Banana. Inspections are welcome from 9:00am, with the sale to commence at 11:00am.

HEALTH

All sale bulls have been vaccinated with the following:

- / 3 Germ Blood
- / 3 Day Sickness
- / Vibrovax
- / Longrange - Botulism
- / Ultravac 7 in 1
- / Pestiguard
- / We recommend all boosters are done in July 2023

Jarrah is J-BAS 6

All bulls will be pre-treated for ticks and we will have them cleared shortly after the sale, if required.

SAFETY

All Bulls have been screened for temperament and are quiet to handle under normal circumstances. However, sale day places added pressure on them, so we ask that you please use caution and common sense when entering the sale pens. Please no children to enter the sale pens.

AFTER SALE SERVICE

We pride ourselves on the relationships we establish with clients. The feedback we receive as to how the bulls are handling the conditions and performing only strengthens our breeding program. Please do not hesitate to contact us to give feedback.

HORN / POLL DESCRIPTION

Horned and Polled Bulls will be catalogued together. All information is in the sale lot, for example:

- (H)** Horned
- (PP)** Homozygous Polled
- (P)** Clean Polled
- (S)** Scurred
- (H#)** Horned with Poll genetics in pedigree

GUARANTEE

All bulls are guaranteed to breed. If a bull should fail to naturally breed within the first 6 months of purchase, a replacement bull (if available) or a credit to the purchase price (less any salvage value of the bull) will be given at the following sale or on a private sale bull. A veterinary certificate must be accompanied with the claim. The loss to naturally breed must not be from an injury or illness contracted post sale day.

PAYMENT

We understand in this industry that payments spread over time can be beneficial. It is for this reason that we are happy to offer term payment options, which are available upon request. All arrangements must be made prior to sale day, by contacting Sam Becker or Hourn & Bishop QLD.

DELIVERY

Delivery can be arranged by filling in the Buyers Instruction sheet handed out on the sale day. If you are picking up your bulls on the day of sale please note that there might be a short delay after the sale to get this sorted.

TRANSPORT AND TRAVEL

There are commercial flights to Rockhampton and Biloela (Thangool). If a pickup to travel to and from the sale is required please contact Sam Becker or selling agents Hourn and Bishop to arrange.

ACCOMMODATION

Banana Hotel Motel provides excellent accommodation. Alternatively, Moura has a range of motels.

Banana Hotel Motel (07) 4995 7232

Moura Meridian Motel (07) 4997 6100

Moura Motel (07) 4997 1588

REFRESHMENTS

Morning tea, lunch, tea, coffee and water will be available on the sale day.

PRIOR INSPECTIONS

We welcome prior inspections of our draft of 2022 sale bulls. Please contact Sam Becker or agent Matt Bishop to arrange a date and time.

Sam Becker, Jarrah Genetics
0417 576 667

Matt Bishop, Hourn & Bishop
0437 972 292

SUPPLEMENTARY DATA

The following information will be available on sale day. And available on the website one week out from Sale Day.

SEMEN / BSE RESULTS

All bulls stood on sale day will have passed a Bull Soundness Evaluation conducted by Ced Wise AB Services.

The bull's motility and morphology results as well as scrotal measurement will be available in the supplementary data.

SCAN DATA

All bulls will be scanned prior to sale by David Reid, a certified scanning technician for:

- / Eye Muscle Area;
- / Rump and Rib Fat; and
- / Intra Muscular Fat.

At this time the bull's sale weight will also be measured. These results will be available on sale day as part of the supplementary data.



BULL SALE VIDEOS

Individual videos of each lot will be available on the Jarrah website mid-August.

visit jarrahcattle.com.au or find Jarrah Cattle Company on YouTube.

Jarrah Herefords - For your cross-breeding success



**Hereford
cross progeny
from our
commercial
herd.**

Reference Sires



- FELTONS SOUNDER 957 (P)
- **EFBEEF FOREMOST U208** (IMP USA) (PP)
- EFBEEF G824 KATE S610 ET (P)
- EFBEEF U208 FORTUNE Y848** (IMP USA) (P)
- SRM MANR MASTR 103T 9802 (P)
- **EFBEEF 9802 STELLA S657** (P)
- EF J126 STELLA P295 (P)
- ALLENDALE TIPPERARY D13 (AI) (ET) (P)
- **DAYS WIZARD F84** (P)
- ALLENDALE DAWN Z21 (AI) (P)
- INJEMIRA HAPPY DAY J042** (P)
- KAIRURU ABERDEEN 03 0047 (IMP NZL) (P)
- **INJEMIRA HAPPY DAY D053** (AI) (ET) (P)
- INJEMIRA HAPPY DAY Y012 (H)

INJEMIRA FORTUNE M152 AI ET (AI) (ET) (PP)

DOB 20/8/2016 EYE PIGMENT 100/100

Fortune is a homozygous polled sire with outcross genetics, purchased at the 2018 Injemira Annual Sale for the top price of \$50,000. He has the sought after combination of carcass and phenotype. With the industry on a herd rebuild phase we identified that it was important to produce some specialised 'heifer' bulls for clients. Whilst the Fortune sons are suitable for heifers, they have curve bending growth, meaning you won't lose growth with these genetics, giving versatility for these bulls to be used over the entire herd. He is the complete bull with Top 5% IMF, EMA, MILK and Calving Ease, all this combined with well above average growth numbers. A bull that has the data to match his leading phenotype.

INDEX VALUES

SSR	\$194
NSR	\$186
SBM	\$232
NBT	\$180

JUNE 2022 HEREFORD BREEDPLAN

EBV	BW	200 Wt	400 Wt	600 Wt	M C	Milk	SS	DTC	C Wt	EMA	Rib	Rump	RBV	IMF
ACC%	-0.2	+36	+62	+83	+40	+26	+2.9	-2.9	+72	+6.8	+2.4	+2.1	+1.2	+1.7
	92%	91%	91%	88%	79%	66%	93%	45%	77%	69%	73%	78%	69%	75%



- KOANUI UNANIMOUS 7174 (P)
- **KOANUI UNANIMOUS 0408** (P)
- KOANUI GIRLIE 3048 (P)
- KOANUI TECHNO 3062** (IMP NZL) (PP)
- LEELANDS X-TENSION 293 (P)
- **KOANUI BLUSH 6455** (P)
- KOANUI BLUSH 3304 (P)
- ALLENDALE YACKA (AI) (P)
- **ALLENDALE ANZAC E114** (PP)
- ALLENDALE DAWN B22 (AI) (ET) (P)
- INJEMIRA VENUS AI J159** (AI) (P)
- DEBARRY RUGGERO (S)
- **INJEMIRA VENUS D113** (P)
- INJEMIRA VENUS A006 (AI) (H)

INJEMIRA TECHNO N226 (AI) (PP)

DOB 2/9/2017 EYE PIGMENT 100/100

Techno has really made his mark in the Australian Hereford breed, with many sons continuing to top sales around the country. For Jarrah, N226 was the clear choice as he had tremendous mobility, plenty of growth, carcass, neck extension and exhibits the clean coat we focus on in our program. The sons in this year's sale share the same qualities as their father. Techno's data offers breed leading performance in terms of fertility, carcass and growth traits, being in the Top 1% of the breed for Scrotal Size, Top 5% for Milk, 200, 400 & 600 Day Weights and Top 20% for EMA and IMF data.

INDEX VALUES

SSR	\$136
NSR	\$110
SBM	\$119
NBT	\$90

JUNE 2022 HEREFORD BREEDPLAN

EBV	BW	200 Wt	400 Wt	600 Wt	M C	Milk	SS	DTC	C Wt	EMA	Rib	Rump	RBV	IMF
ACC%	+8.3	+46	+78	+111	+109	+26	+4.8	-3.6	+67	+5.1	+0.5	+0.4	+1.1	+1.1
	86%	87%	86%	83%	74%	63%	89%	53%	74%	67%	71%	75%	67%	73%

Reference Sires

REFERENCES



- KOANUI UNANIMOUS 7174 (P)
- **KOANUI UNANIMOUS 0408 (P)**
- KOANUI GIRLIE 3048 (P)
- KOANUI TECHNO 3062 (IMP NZL) (PP)**
- LEELANDS X-TENSION 293 (P)
- **KOANUI BLUSH 6455 (P)**
- KOANUI BLUSH 3304 (P)
- ALLENDALE YACKA (AI) (P)
- **ALLENDALE ANZAC E114 (PP)**
- ALLENDALE DAWN B22 (AI) (ET) (P)
- INJEMIRA PRUDENCE AI J182 (AI) (P)**
- RILO PARK G-FORCE B6 (AI) (ET) (P)
- **INJEMIRA PRUDENCE F009 T (TW) (P)**
- INJEMIRA PRUDENCE B145 (H#)

INJEMIRA TECHNO N276 (AI) (PP)

DOB 5/9/2017 EYE PIGMENT 100/100

Techno N276 was the top price bull at the 2019 Injemira sale, selling for \$54,000. N276 was a bull that we wanted to use strategically as an AI sire. We could argue that N276 possesses one of the strongest carcasses that we have seen in a Hereford bull; he is incredibly thick across the top with a huge butt shape and plenty of softness. AI progeny at Jarrah possess this same performance and punch, which you will note when inspecting the line of bulls. His EBVs place him in the Top 1% of the breed for Milk, Top 5% for IMF, carcass weight and growth and Top 10% for EMA.

INDEX VALUES

SSR	\$159
NSR	\$137
SBM	\$170
NBT	\$137

JUNE 2022 HEREFORD BREEDPLAN

EBV	BW	200 Wt	400 Wt	600 Wt	M C	Milk	SS	DTC	C Wt	EMA	Rib	Rump	RBV	IMF
ACC%	+4.6	+40	+77	+104	+99	+29	+3.0	-2.8	+72	+5.7	+0.9	+1.0	+0.6	+1.8
	94%	88%	87%	89%	78%	62%	87%	53%	76%	66%	70%	75%	67%	73%



- ALLENDALE WATERHOUSE D1 (PP)
- **DAYS ROBIN HOOD H38 (AI) (ET) (PP)**
- ALLENDALE FANCY U5 (AI) (P)
- RAVENSDALE WILDFIRE L133 (ET) (PP)**
- KAIRURU ABERDEEN 03 0047 (IMP NZL) (P)
- **MERAWAH IRISH ROSE B1 (AI) (P)**
- MERAWAH IRISH ROSE X147 (P)
- ALLENDALE TIPPERARY D13 (AI) (ET) (P)
- **DAYS WIZARD F84 (P)**
- ALLENDALE DAWN Z21 (AI) (P)
- INJEMIRA BEGONIA J064 (P)**
- HEATHERDALE HEALY X62 (AI) (P)
- **INJEMIRA BEGONIA B061 (AI) (H#)**
- INJEMIRA BEGONIA Y184 (H)

INJEMIRA WILDFIRE P042 (PP)

DOB 2/5/2018 EYE PIGMENT 100/100

Purchased at the 2020 Injemira Sale for \$26,000, Wildfire is a sire that offers real consistency to our herd. He was selected for his strength of carcass, doing ability and exceptional head and eye. Progeny of Wildfire have superseded our expectations. They are moderate in size born, with ample growth, extreme top lines and thickness making them very relevant to the commercial producer. Again, Wildfires phenotype is backed by a strong data set; being in the Top 5% of the breed for EMA, Top 10% for Rump Fat, Top 15% for Retail Beef Yield and Milk, as well as the Top 20% for 600 Day Weight.

INDEX VALUES

SSR	\$142
NSR	\$131
SBM	\$139
NBT	\$100

JUNE 2022 HEREFORD BREEDPLAN

EBV	BW	200 Wt	400 Wt	600 Wt	M C	Milk	SS	DTC	C Wt	EMA	Rib	Rump	RBV	IMF
ACC%	+4.9	+37	+61	+91	+70	+21	+1.7	-1.2	+64	+6.8	+1.2	+2.5	+1.6	+0.5
	78%	80%	81%	79%	70%	56%	85%	43%	69%	61%	66%	71%	63%	69%



INJEMIRA ANZAC K220 (AI) (PP)

DOB 24/8/2014 EYE PIGMENT 100/100

The \$110,000 breed leader. Injemira Anzac K220 (PP) topped the Injemira Production Sale in 2016 and smashed modern sale records for the Hereford breed. Limited semen was available, and we were fortunate to acquire some to do an ET program. K220 has real sire appeal, he is tremendously thick with all the carcass attributes that we aim for in our herd. His dam Plum E212, provides outcross genetics to us and is regarded as one of the top performing bloodlines in the Injemira herd. An ET bull are represented in the sale in lot 3, that speak to the power of this sire.

INDEX VALUES

SSR	\$104
NSR	\$87
SBM	\$70
NBT	\$46

JUNE 2022 HEREFORD BREEDPLAN

EBV	BW	200 Wt	400 Wt	600 Wt	M C	Milk	SS	DTC	C Wt	EMA	Rib	Rump	RBY	IMF
ACC%	+7.7	+42	+61	+90	+77	+16	+2.4	-1.3	+58	+8.1	+0.8	0.0	+2.3	+1.5
	98%	96%	96%	96%	92%	90%	96%	65%	91%	86%	88%	90%	84%	90%



INJEMIRA ROBERT REDFORD Q287 (PP)

DOB 3/9/2019 EYE PIGMENT 100/100

The Australian Hereford record breaking sire. What a milestone this bull has achieved for the Hereford breed after selling for \$160,000 in 2021. Jarrah Genetics was losing bidder on this powerful genetic package, but we quickly negotiated and secured a share. Q287 epitomises 'bred to perform' possessing so many of the attributes that we focus on; exceptional skin and hair, extreme carcass and mobility. On top of this he has breed leading EBVs with birth weight, growth, EMA and IMF data all placing him within the top 15% of the breed. We know this bull will take our breeding program forward and allow us to continue to produce bulls suited to CQ with phenotype and data. Our first progeny of Q287 have now hit the ground at Jarrah and they certainly haven't disappointed. First bulls to be offered as yearlings in 2023.

JUNE 2022 HEREFORD BREEDPLAN

EBV	BW	200 Wt	400 Wt	600 Wt	M C	Milk	SS	DTC	C Wt	EMA	Rib	Rump	RBY	IMF
ACC%	+1.3	+45	+73	+98	+70	+21	+2.5	-1.1	+86	+8.8	+1.1	+1.7	+2.1	+1.9
	72%	68%	68%	69%	62%	58%	78%	36%	59%	51%	56%	60%	52%	56%

- ALLENDALE PUNTER 3 (AI) (P)
- ALLENDALE YACKA (AI) (P)
- ALLENDALE FLORRIE Z33 (AI) (P)
- ALLENDALE ANZAC E114 (PP)
- ALLENDALE NATIONAL W168 (PP)
- ALLENDALE DAWN B22 (AI) (ET) (P)
- ALLENDALE DAWN T60 (AI) (P)
- BOWEN VINCENT V1 (S)
- DEBARRY RUGGERO (S)
- DEBARRY PRUDENCE T111 (AI) (P)
- INJEMIRA PLUM E212 (P)
- RILO PARK KINGAIR (AI) (ET) (P)
- BURANDO Y2 PLUM 39 (P)
- BURANDO MONOTONES PLUM 27 T02 (P)

- KOANUI ROCKET 0219 (IMP NZL) (P)
- REDGATE REDFORD D935 (AI) (P)
- REDGATE ROYAL B81 (AI) (P)
- INJEMIRA REDFORD J006 (PP)
- PINE HILL CAVALIER C568 (AI) (P)
- INJEMIRA CAVALIER F201 (P)
- INJEMIRA MISCHIEF D127 (P)
- ALLENDALE WATERHOUSE D1 (PP)
- DAYS EXECUTIVE K168 (PP)
- DAYS SILVIA G13 (AI) (P)
- INJEMIRA FIRST DAY N063 (P)
- ALLENDALE ANZAC E114 (PP)
- INJEMIRA FIRST DAY H004 (P)
- INJEMIRA FIRST DAY E016 (AI) (P)

INDEX VALUES

SSR	\$207
NSR	\$207
SBM	\$224
NBT	\$169

EBVs, Selection Indexes and Accuracy

An animal's breeding value is its genetic evaluation, half of which will be passed on to its progeny. These estimates are called Estimated Breeding Values (EBVs).

In the calculation of EBVs, the performance of individual animals within a contemporary group is directly compared to the average of other animals in that group. A contemporary group consists of animals of the same sex and age class within a herd, run under the same management conditions and treated equally. Indirect comparisons are made between animals reared in different contemporary groups, through the use of pedigree links between the groups.

The absolute value of any EBV is not critical, but rather the differences in EBVs between animals. Particular animals should be viewed as being "above or below breed average" for a particular trait.

Whilst EBVs provide the best basis for the comparison of the genetic evaluation of animals reared in different environments and management conditions, they can only be used to compare animals analysed within the same analysis. Consequently, Hereford EBVs cannot be compared with EBVs for any other breed.

AN OUTLINE OF THE DIFFERENT EBVS

Birth Weight EBV (kg) (BW) the lower the EBV value, the lighter the calf at birth.

200-Day Growth EBV (kg) (200 Wt) indicates the relative weight advantage of a sire at 8-10 months.

400-Day Weight EBV (kg) (400 Wt) indicates the relative weight advantage of a sire at yearling age.

600-Day Weight EBV (kg) (600 Wt) the best single estimate of an animal genetic merit for growth beyond yearling age.

Mature Cow Weight EBV (kg) (Mat Cow) an estimate of the genetic difference in cow weight at 5 years of age.

Milk EBV (kg) (Milk) is an estimate of an animal's milking ability. For sires, this EBV indicates the effect of the daughter's milking ability, inherited from the sire, on the 200-day weights of her calves. For dams, it indicates her own milking ability.

Scrotal Size EBV (cm) (Scrotal) is calculated from the circumference of the scrotum taken. This EBV is an estimate of an animal's genetic merit for scrotal size.

Carcase Weight EBV (kg) (Carcase Wt) is based on abattoir carcass records and is an indicator of the genetic differences in carcass weight at the standard age of 650 days.

Eye Muscle Area EBV (sq cm) (EMA) positive EBVs indicate better muscling on animals. Sires with higher EMA EBVs are expected to produce better muscled progeny.

Fat EBV (mm) (Rib) (Rump) are calculated from measurements of subcutaneous fat depth at the rib and rump (from live animal ultrasound scans). Sires with a low, or negative, fat EBV are expected to produce leaner progeny at any particular carcass weight than will sires with higher EBVs.

Retail Beef Yield EBV (%) (RBY) indicates genetic differences between animals for retail yield percentage in a standard 300 kg carcass. Sires with larger EBVs are expected to produce progeny with higher yielding carcasses.

Intramuscular Fat EBV (%) (IMF) positive EBVs indicate likelihood of more intramuscular fat.

Accuracy (%) (ACC%) accuracy indicates the "confidence level" of the EBV. The higher the accuracy value the lower the likelihood of change in the animal's EBV with addition of more performance records on the animal.

SELECTION INDEXES

Herefords Australia has released new Indexes values. Each selection index describes a different production/market scenario and relates to a typical commercial herd using Hereford bulls. Producers are advised to use the selection index that most closely aligns to their production system. All four selection indexes are focussed on maintaining and improving eating quality. Significant premiums are applied for increasing marbling score up to a marbling score of 3. Pressure is also applied to early life growth to maintain low ossification scores and good MSA compliance. In addition, each selection index targets the following specifications.

Southern Self-Replacing Index (SSR) Estimates the genetic differences between animals in net profitability per cow joined in a commercial self-replacing straight bred Hereford herd targeting the domestic market. Daughters are retained for breeding and so maternal traits are of importance. Steers are slaughtered at 20 to 22 months of age to produce 300 kg carcasses with 10 mm P8 fat depth. A moderate cost is applied for cow feed costs during the annual feed shortage period.

Northern Self-Replacing Index (NSR) Estimates the genetic differences between animals in net profitability per cow joined in a commercial self-replacing herd targeting the domestic market. This index is suitable for use by both straight bred Hereford herds and in crossbreeding programs where Hereford bulls are being used over a Bos Indicus based cow herd (e.g. flatback). Daughters are retained for breeding and so maternal traits are of importance. Steers are slaughtered at 20 to 22 months of age to produce 340 kg carcasses with 12 mm P8 fat depth. A high cost is applied for cow feed costs during the annual feed shortage period.

Southern Baldy Maternal Index (SBM) Estimates the genetic differences between animals in net profitability per cow joined in a commercial crossbred herd using Hereford bulls over Bos taurus females (e.g. Angus). A portion of the heifers are retained for breeding and so maternal traits are of importance. The steers and surplus heifers are destined for slaughter at 20 to 22 months of age. Steers produce 300 kg carcasses with 10 mm of P8 fat depth, while heifers produce 270 kg carcasses with 12 mm of P8 fat depth. A moderate cost is applied for cow feed costs during the annual feed shortage period.

Northern Baldy Terminal Index (NBT) Estimates the genetic differences between animals in net profitability per cow joined in a commercial crossbred herd (e.g. flatback) using Hereford bulls over Bos indicus/Tropical females (e.g. Santa Gertrudis) where all progeny (male and female) are destined for slaughter. Steers and heifers are slaughtered at 20 to 22 months of age. Steers produce 340 kg carcasses with 14 mm of P8 fat depth while heifers produce 300 kg carcasses with 17 mm of P8 fat depth.

Hereford EBVs

LOT #	Tattoo	CE Dir (%)	CE DTRS (%)	GI Days	BW (kg)	200 wt (kg)	400wt (kg)	600wt (kg)	Mat Cow (kg)	Milk (kg)	Scrotal (cm)	DTC	C Wt (kg)	EMA (cm ²)	Rib (mm)	Rump (mm)	RBV (%)	IMF (%)	SSR \$	NSR \$	SBM \$	NBT \$
1	CDIR339	+0.4	-0.7	-2.0	+6.1	+46	+84	+117	+112	+26	+2.7	-2.3	+79	+5.1	+0.5	+0.7	+1.0	+1.2	\$170	\$147	\$176	\$139
2	CDIR342	-0.4	0.0	-0.3	+5.9	+41	+78	+113	+98	+26	+5.1	-4.1	+74	+6.3	+0.4	+0.3	+1.9	+1.1	\$186	\$163	\$182	\$134
3	CDIR338	-6.8	-2.4	-1.5	+7.1	+38	+57	+84	+83	+14	+1.8	-0.1	+49	+5.1	+0.1	-0.4	+1.5	+0.7	\$96	\$79	\$87	\$67
4	CDIR353	+11.3	+4.4	-2.8	+2.6	+41	+70	+101	+68	+25	+1.8	-2.2	+75	+5.5	+2.1	+2.1	+0.9	+1.8	\$204	\$190	\$233	\$175
5	CDIR312	+11.1	+4.5	-0.9	+3.1	+42	+67	+92	+62	+24	+1.7	-1.1	+74	+6.1	+2.0	+2.0	+0.5	+1.8	\$181	\$169	\$213	\$164
6	CDIR316	+10.9	+4.4	-0.4	+4.9	+50	+86	+123	+99	+22	+3.2	-2.2	+92	+6.1	+0.6	0.0	+2.1	+1.0	\$228	\$211	\$255	\$193
7	CDIR358	-4.0	0.0	-1.1	+6.7	+41	+72	+102	+99	+23	+3.4	-2.2	+66	+4.5	+0.1	0.0	+1.1	+0.9	\$134	\$110	\$130	\$99
8	CDIR350	-7.2	-3.4	-0.4	+8.2	+44	+75	+108	+109	+22	+3.1	-2.1	+65	+4.0	-0.4	-0.7	+1.6	+0.2	\$124	\$97	\$113	\$86
9	CDIR352	-0.8	-2.4	+4.4	+8.8	+51	+86	+129	+118	+26	+4.0	-2.6	+80	+6.2	+0.1	-0.2	+2.2	+0.6	\$187	\$160	\$188	\$143
10	CDIR362	+11.1	+4.1	-1.9	+3.6	+44	+73	+107	+74	+24	+3.3	-3.2	+78	+6.0	+1.5	+1.4	+1.5	+1.1	\$214	\$199	\$238	\$177
11	CDIR337	+0.6	0.0	-2.5	+4.8	+39	+69	+96	+92	+26	+1.9	-2.6	+64	+4.0	+0.9	+1.4	+0.6	+0.7	\$137	\$117	\$144	\$113
12	CDIR335	+11.3	+4.7	-1.8	+2.9	+38	+66	+91	+67	+22	+3.1	-2.5	+70	+6.2	+0.9	+0.4	+1.9	+0.9	\$185	\$174	\$212	\$162
13	CDIR363	+10.7	+3.8	-1.9	+2.9	+38	+63	+85	+65	+22	+1.6	-1.5	+64	+4.7	+0.9	+0.6	+1.4	+0.6	\$161	\$149	\$190	\$148
14	CDIR324	+0.6	-0.3	-2.2	+4.9	+34	+65	+88	+86	+23	+1.8	-1.6	+61	+6.1	+0.3	+0.6	+1.9	+0.5	\$131	\$117	\$138	\$110
15	CDIR302	+11.1	+3.8	-1.4	+2.2	+37	+63	+87	+61	+28	+2.7	-3.3	+67	+4.6	+2.2	+2.6	+0.2	+0.9	\$168	\$155	\$196	\$151
16	CDIR326	+11.0	+3.5	-1.9	+3.5	+42	+74	+102	+79	+24	+3.1	-2.7	+75	+5.2	+1.2	+1.2	+1.3	+0.7	\$191	\$176	\$218	\$167
17	CDIR303	+11.3	+4.2	-1.3	+3.3	+41	+69	+92	+64	+29	+1.1	-2.3	+66	+4.9	+2.8	+3.6	-0.6	+1.9	\$175	\$160	\$207	\$162
18	CDIR349	+11.2	+3.9	-2.6	+2.5	+36	+61	+87	+56	+21	+2.7	-2.0	+68	+7.6	+2.0	+2.4	+1.3	+1.4	\$186	\$179	\$212	\$160
19	CDIR336	+10.8	+4.2	-1.6	+3.1	+42	+69	+96	+71	+22	+2.4	-2.6	+72	+5.4	+2.1	+2.4	+0.8	+1.0	\$189	\$179	\$215	\$163
20	CDIR314	+10.9	+4.4	-2.4	+1.7	+34	+61	+77	+47	+27	+3.2	-3.1	+64	+5.7	+1.7	+1.5	+0.9	+1.2	\$166	\$154	\$191	\$146
21	CDIR333	+11.0	+3.7	-2.3	+2.2	+35	+61	+84	+62	+21	+3.9	-3.4	+63	+5.1	+1.4	+1.4	+1.3	+0.6	\$172	\$165	\$196	\$150
22	CDIR372	+12.6	+5.2	-1.7	+1.6	+33	+59	+84	+48	+25	+3.1	-3.1	+65	+6.5	+1.3	+1.0	+2.2	+1.0	\$191	\$181	\$219	\$163
23	CDIR371	-4.6	-0.7	-1.3	+7.4	+44	+80	+114	+117	+24	+4.1	-3.0	+69	+3.9	0.0	-0.2	+1.3	+0.4	\$144	\$119	\$138	\$106
24	CDIS073	-4.6	+0.2	+0.4	+8.5	+45	+78	+113	+110	+25	+4.7	-3.6	+69	+6.0	+1.3	+2.0	+1.0	+0.8	\$154	\$132	\$145	\$108
25	CDIS005	+11.5	+4.5	-3.0	+5.1	+47	+84	+114	+86	+22	+4.2	-3.1	+81	+6.2	+1.8	+2.4	+1.1	+1.0	\$220	\$208	\$247	\$185
26	CDIS089	-2.7		-0.8	+6.6	+42	+66	+99	+79	+21	+0.8	-0.6	+67	+5.2	+1.0	+1.7	+1.1	+0.9	\$145	\$126	\$144	\$104
27	CDIS047	-2.7	-1.4	-2.7	+6.6	+43	+70	+101	+96	+22	+3.1	-1.7	+67	+5.7	+0.1	0.0	+2.1	+0.3	\$139	\$121	\$138	\$105
28	CDIS051	-6.1	-0.7	-0.3	+6.7	+37	+59	+85	+81	+22	+2.0	-1.4	+51	+4.1	+1.0	+1.3	+0.2	+0.8	\$95	\$73	\$89	\$67
29	CDIS063	-3.9	-0.6	-0.5	+8.9	+42	+74	+104	+111	+18	+3.6	-2.0	+57	+2.5	-0.6	-1.6	+1.3	+0.4	\$124	\$96	\$120	\$93
30	CDIS020	-4.6	-1.2	-1.0	+7.0	+39	+66	+97	+79	+27	+4.0	-3.9	+57	+4.2	+1.6	+1.6	+0.5	+1.4	\$143	\$117	\$131	\$93
31	CDIS011	+11.4	+4.5	-0.8	+3.2	+38	+68	+93	+63	+24	+2.9	-2.1	+66	+5.2	+1.3	+1.0	+1.0	+1.1	\$184	\$168	\$213	\$161
32	CDIS080	-1.5	-0.5	-2.0	+3.2	+34	+55	+80	+61	+23	+2.5	-2.5	+57	+5.4	+1.3	+2.2	+0.9	+1.1	\$133	\$122	\$130	\$96
33	CDIS053	+10.9	+4.2	-2.8	+2.3	+40	+66	+88	+58	+21	+1.2	-1.9	+70	+5.5	+1.8	+1.9	+1.1	+0.8	\$181	\$173	\$208	\$156
34	CDIS016	-5.0	-0.2	-1.2	+4.9	+38	+61	+86	+86	+25	+3.0	-3.1	+52	+2.7	-0.2	-0.6	+1.2	+0.4	\$106	\$83	\$98	\$76
35	CDIS038	+11.2	+4.5	-1.1	+4.0	+41	+67	+92	+79	+21	+2.8	-3.2	+65	+3.9	+1.1	+0.9	+1.2	+0.3	\$170	\$158	\$198	\$153
36	CDIS025	+11.4	+4.7	-3.0	+1.8	+37	+64	+87	+55	+23	+2.3	-2.3	+73	+6.3	+2.3	+2.9	+0.6	+1.6	\$186	\$178	\$214	\$161
37	CDIS084	-5.2	+0.2	-1.4	+4.8	+34	+56	+78	+71	+20	+3.2	-2.7	+54	+5.1	+0.3	0.0	+1.8	+0.7	\$113	\$98	\$101	\$74
38	CDIS056	-1.7	-1.1	-0.7	+5.1	+36	+61	+89	+74	+20	+2.6	-3.5	+59	+5.5	+1.6	+2.6	+1.3	+0.4	\$147	\$136	\$139	\$100
39	CDIS076	-2.4	-0.4	-1.8	+2.8	+29	+48	+70	+59	+18	+1.8	-1.1	+54	+6.1	+1.4	+2.4	+0.7	+1.3	\$109	\$102	\$107	\$81
40	CDIS012	-1.7	-1.1	-2.6	+3.8	+28	+47	+68	+50	+14	+2.0	-3.0	+45	+4.4	+1.8	+2.6	+0.2	+0.9	\$117	\$107	\$108	\$75
41	CDIS059	+12.7	+5.8	0.0	+3.1	+39	+63	+89	+49	+27	+2.2	-2.4	+69	+7.8	+2.5	+3.0	+1.1	+2.2	\$201	\$191	\$232	\$175
42	CDIS055	-4.9	-1.1	-1.2	+6.3	+44	+71	+96	+97	+26	+1.9	-2.9	+65	+5.2	+0.9	+1.2	+1.3	+0.2	\$120	\$104	\$115	\$90
43	CDIS049	-6.1	-0.9	-2.0	+5.0	+39	+69	+90	+80	+20	+4.5	-3.9	+65	+5.8	+0.4	+0.4	+1.9	+0.9	\$139	\$126	\$121	\$88
JUNE 2022 HEREFORD BREEDPLAN																						
		+2.5	+2.1	-0.6	+4.1	+33	+55	+77	+66	+17	+2.1	-3.0	+51	+3.8	+0.8	+1	+0.8	+0.6	\$132	\$119	\$134	\$99

Jarrah's Genetics

THE COMPLETE PACKAGE

At Jarrah we pride ourselves on the industry leading EBVs that our genetics offer. The graphs below show a snapshot of where the average 2022 Jarrah Hereford sale bull sits compared to the 2020 born averages for the breed. The numbers speak for themselves.

As important as EBVs are, they are only one tool in the selection process. Using your 'eye' will always be of utmost importance. Structural integrity, carcass shape and maturity patterns are each vital components that must be inspected to be accurately appraised. Ultimately it is these attributes that will ensure you are producing an animal that is productive, efficient and marketable for your business.

We believe the 2022 line-up of Jarrah Hereford bulls have the phenotype to back their industry leading EBVs.

Calving Periods

At Jarrah we have two calving periods. The two calving periods are run separately, and the same fertility pressure is ensured. Both mobs are given a control joining period. This year we will have two age group of bulls spring bulls (22-24 months) and yearling autumn bulls (15-16 months).

We have always kept the best bulls for the bull sale to give equal opportunity for purchase.

Yearling Bulls

This year we will again be offering a run of yearling bulls. Last year the decision to offer yearling bulls came about for a number of reasons, the main being that we are able to offer our newest genetics sooner. This year, after receiving positive feedback on both pregnancy test results and the performance of these bulls we decided to further increase our offering.

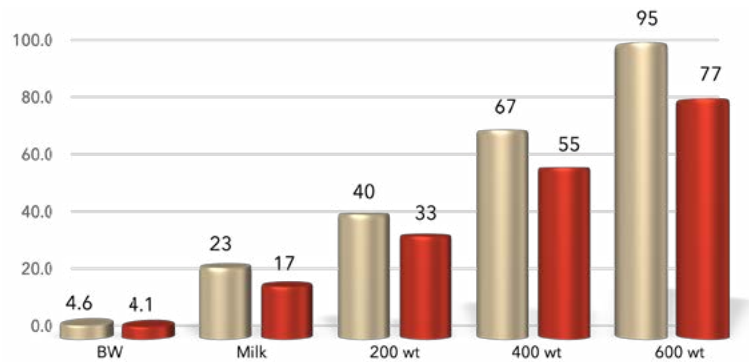
Hereford bulls are earlier maturing, so have the ability to be joined younger. It also allows the bulls to be acclimatised from a younger age, providing benefits for both the buyer and the bulls. Whilst yearlings may not grow out to their full genetic potential, acclimatising earlier has been proven to increase their working life because of super fitness and lower levels of body fat. We urge you to keep these factors in mind when considering the yearling draft.

On page 22 we have included some more information from a publication about the use of yearling bulls

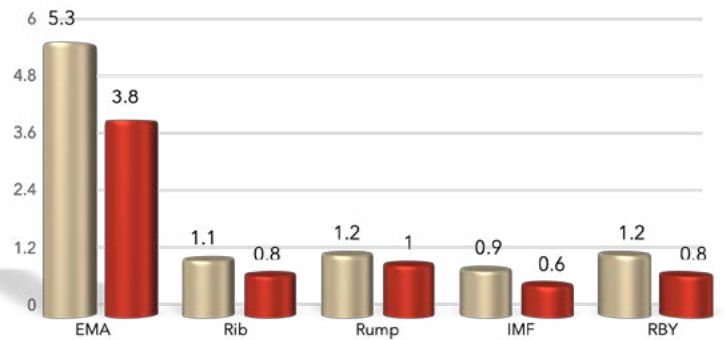
Heifer Bulls HB

This year we offer a line of bulls that have the versatility to be used as heifer bulls. These bull are well below breed average for Birthweight and Gestation Length and have data well above breed average for Calving Ease. They are marked with the symbol.

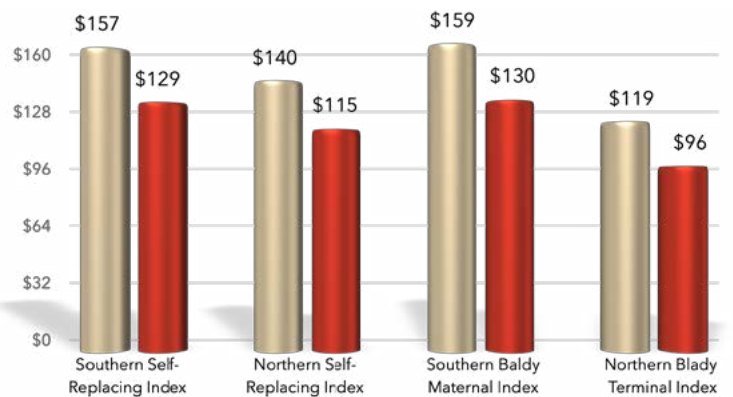
JARRAH PRODUCTION



JARRAH CARCASS



JARRAH AVERAGE INDEX



● JARRAH SALE AVERAGE

● BREED AVERAGE

LOT 1 JARRAH KOANUI R339 (AI) (S)

DOB 22/8/2020 AGE 24.5 months EYE PIGMENT 100/100

What a powerhouse to kick off the Hereford line up for 2022. R339 has a beautiful clean coat with tremendous power, depth and length. He has the growth, muscle and IMF, all backed up by his EBV's making this bull the complete package. We see the Anzac influence with his dam being a lead Anzac daughter. This bull will produce tremendous weight for age weaners that will continue to grow out. A standout lot. Top 1% 400 & 600 Day Wt, Top 5% 200 Day Wt, Top 15% IMF, Top 20% EMA, GL.

INDEX VALUES

SSR	\$170
NSR	\$147
SBM	\$176
NBT	\$139

- KOANUI UNANIMOUS 0408 (P)
- KOANUI TECHNO 3062 (IMP NZL) (PP)
- KOANUI BLUSH 6455 (P)
- INJEMIRA TECHNO N276 (AI) (PP)
- ALLENDALE ANZAC E114 (PP)
- INJEMIRA PRUDENCE AI J182 (AI) (P)
- INJEMIRA PRUDENCE F009 T (TW) (P)
- ALLENDALE ANZAC E114 (PP)
- INJEMIRA ANZAC H006 (PP)
- INJEMIRA MARINDA B028 (AI) (P)
- JARRAH QUEEN SHEBA M028 (H#)
- INJEMIRA POMPEII Z033 ET (AI) (ET) (H)
- JARRAH QUEEN SHEBA H054 (P)
- JARRAH QUEEN SHEBA C602 (P)

BUYER _____ \$ _____

JUNE 2022 HEREFORD BREEDPLAN

EBV	BW	200 Wt	400 Wt	600 Wt	MC	Milk	SS	DTC	C Wt	EMA	Rib	Rump	RBV	IMF
+6.1	+46	+84	+117	+112	+26	+2.7	-2.3	+79	+5.1	+0.5	+0.7	+1.0	+1.2	
ACC%	63%	65%	67%	69%	61%	48%	75%	36%	58%	49%	53%	57%	51%	52%

LOT 2 JARRAH KOANUI R342 (AI) (S)

DOB 24/8/2020 AGE 24.5 months EYE PIGMENT 100/100

A standout bull from birth! This bull represents what Jarrah is about, combining phenotype with performance. Another very sleek coated Techno N276 son that oozes style, with length and thickness. This bull could easily be the best carcass bull in the sale. R342 is out of our lead 1098Y cow who constantly produces quality. Again, this bull will produce top weight weaners that will continue to grow out. A feature lot. Top 1% SS, Top 5% 400 & 600 Day Wt, Top 10% EMA, Top 15% 200 Day Wt, Top 20% IMF.

INDEX VALUES

SSR	\$186
NSR	\$163
SBM	\$182
NBT	\$134

- KOANUI UNANIMOUS 0408 (P)
- KOANUI TECHNO 3062 (IMP NZL) (PP)
- KOANUI BLUSH 6455 (P)
- INJEMIRA TECHNO N276 (AI) (PP)
- ALLENDALE ANZAC E114 (PP)
- INJEMIRA PRUDENCE AI J182 (AI) (P)
- INJEMIRA PRUDENCE F009 T (TW) (P)
- HH ADVANCE 8050U ET (H)
- HH ADVANCE 1098Y (IMP USA) (H)
- HH MISS ADVANCE 9065W (H)
- JARRAH JUNO K019 (AI) (H#)
- INJEMIRA HUSTLER C021 (AI) (H#)
- JARRAH JUNO G010 (P)
- JARRAH JUNO A017 (P)

BUYER _____ \$ _____

JUNE 2022 HEREFORD BREEDPLAN

EBV	BW	200 Wt	400 Wt	600 Wt	MC	Milk	SS	DTC	C Wt	EMA	Rib	Rump	RBV	IMF
+5.9	+41	+78	+113	+98	+26	+5.1	-4.1	+74	+6.3	+0.4	+0.3	+1.9	+1.1	
ACC%	64%	65%	66%	68%	59%	48%	74%	33%	57%	48%	52%	55%	49%	50%

LOT 3 JARRAH ANZAC K220 R338 (AI) (ET) (S)

DOB 20/8/2020 AGE 24.5 months EYE PIGMENT 100/70

The carcass bulls just keep coming! The thickness of this bull has to be seen to be appreciated, with beef from his nose to tail. An embryo calf that has risen to the top. From a young age R338 displayed natural muscle with plenty of mobility. Another bull with that impeccable coat we aim to produce. This style of bull is ideally suited to a cross breeding program, adding that extra carcass to Bos Indicus females. A top class sire. Top 20% EMA.

INDEX VALUES

SSR	\$96
NSR	\$79
SBM	\$87
NBT	\$67

- ALLENDALE YACKA (AI) (P)
- ALLENDALE ANZAC E114 (PP)
- ALLENDALE DAWN B22 (AI) (ET) (P)
- INJEMIRA ANZAC K220 (AI) (PP)
- DEBARRY RUGGERO (S)
- INJEMIRA PLUM E212 (P)
- BURANDO Y2 PLUM 39 (P)
- FAULKLAND LEGION (AI) (H)
- INJEMIRA LEGION E064 (AI) (ET) (H)
- INJEMIRA VENUS Y075 (H)
- INJEMIRA DOM PATTIE G086 (H)
- INJEMIRA ADVANCE Z080 (AI) (H)
- INJEMIRA DOM PATTIE D022 (AI) (H)
- INJEMIRA DOM PATTIE Y085 (AI) (H)

BUYER _____ \$ _____

JUNE 2022 HEREFORD BREEDPLAN

EBV	BW	200 Wt	400 Wt	600 Wt	MC	Milk	SS	DTC	C Wt	EMA	Rib	Rump	RBV	IMF
+7.1	+38	+57	+84	+83	+14	+1.8	-0.1	+49	+5.1	+0.1	-0.4	+1.5	+0.7	
ACC%	65%	64%	64%	64%	59%	59%	62%	39%	58%	51%	55%	58%	51%	56%



LOT 2 JARRAH KOANUI R342 (S)

BREED AVERAGE FOR 2020 BORN CALVES

EBV	BW	200 Wt	400 Wt	600 Wt	MC	Milk	SS	DTC	C Wt	EMA	Rib	Rump	RBV	IMF
+4.1	+33	+55	+77	+66	+17	+2.1	-3.0	+51	+3.8	+0.8	+1	+0.8	+0.6	

LOT 4 JARRAH FORTUNE R353 (PP) HB

DOB 5/9/2020 AGE 24 months EYE PIGMENT 100/100

STUD SIRE. This Fortune PP bull is hard to fault. He combines phenotype and data to create the ultimate performance bull. R353 is eye catching with his strong sire head, impeccable coat, thickness and carcass and then his data is first class. This bull is sure to breed bulls, with depth of breeding on both sides of his pedigree. He is a low birthweight, high calving ease bull giving him the versatility to be used over heifers. R353 is a heifers first calf, his dam P046 has a big future in our herd. A standout Stud Sire. Top 5% CED, IMF, Top 10% 400 & 600 Day Wt, Top 15% 200 Day Wt, EMA, GL.

BUYER \$

INDEX VALUES

SSR	\$204
NSR	\$190
SBM	\$233
NBT	\$175

- EFBEEF FOREMOST U208 (IMP USA) (PP)
- EFBEEF U208 FORTUNE Y848 (IMP USA) (P)
- EFBEEF 9802 STELLA S657 (P)
- INJEMIRA FORTUNE M152 AI ET (AI) (ET) (PP)
- DAYS WIZARD F84 (P)
- INJEMIRA HAPPY DAY J042 (P)
- INJEMIRA HAPPY DAY D053 (AI) (ET) (P)
- ALLENDALE ANZAC E114 (PP)
- INJEMIRA ANZAC L170 (AI) (ET) (PP)
- INJEMIRA HAPPY DAY D053 (AI) (ET) (P)
- JARRAH CONSTANCE P046 (P)
- COURALLIE BENTLEY E204 AI P (AI) (P)
- COURALLIE E204 CONSTANCE J596 (AI) (P)
- COURALLIE CONSTANCE G318 (P)

JUNE 2022 HEREFORD BREEDPLAN

EBV	BW	200 Wt	400 Wt	600 Wt	M C	Milk	SS	DTC	C Wt	EMA	Rib	Rump	RBV	IMF
+2.6	+41	+70	+101	+68	+25	+1.8	-2.2	+75	+5.5	+2.1	+2.1	+0.9	+1.8	
ACC%	69%	68%	68%	69%	61%	52%	76%	35%	59%	50%	56%	61%	52%	57%

LOT 5 JARRAH FORTUNE R312 (PP) HB

DOB 13/8/2020 AGE 24.5 months EYE PIGMENT 100/100

It was splitting hairs deciding between this bull and the previous lot. Another heifer's first calf combining Fortune over Anzac genetics, who is an elite PP bull, with curve bending data. This bull has length in the extreme, whilst still displaying impressive thickness and carcass traits. These Fortunes are very valuable; offering the versatility to use over heifers without compromising on growth or grunt. A top end sire to suit any operation. Top 5% CED, IMF, Top 10% 200 Day Wt, EMA, Top 15% 400 & 600 Day Wt.

BUYER \$

INDEX VALUES

SSR	\$181
NSR	\$169
SBM	\$213
NBT	\$164

- EFBEEF FOREMOST U208 (IMP USA) (PP)
- EFBEEF U208 FORTUNE Y848 (IMP USA) (P)
- EFBEEF 9802 STELLA S657 (P)
- INJEMIRA FORTUNE M152 (AI) (ET) (PP)
- DAYS WIZARD F84 (P)
- INJEMIRA HAPPY DAY J042 (P)
- INJEMIRA HAPPY DAY D053 (AI) (ET) (P)
- ALLENDALE ANZAC E114 (PP)
- INJEMIRA ANZAC L170 (AI) (ET) (PP)
- INJEMIRA HAPPY DAY D053 (AI) (ET) (P)
- JARRAH QUEEN SHEBA P074 (P)
- INJEMIRA ADVANCE Y095 (H)
- JARRAH QUEEN SHEBA J076 (AI) (P)
- JARRAH QUEEN SHEBA Z058 (P)

JUNE 2022 HEREFORD BREEDPLAN

EBV	BW	200 Wt	400 Wt	600 Wt	M C	Milk	SS	DTC	C Wt	EMA	Rib	Rump	RBV	IMF
+3.1	+42	+67	+92	+62	+24	+1.7	-1.1	+74	+6.1	+2.0	+2.0	+0.5	+1.8	
ACC%	68%	67%	67%	68%	59%	52%	76%	33%	57%	49%	55%	59%	51%	56%

LOT 6 JARRAH FORTUNE R316 (PP)

DOB 14/8/2020 AGE 24.5 months EYE PIGMENT 100/100

Is this the Fortune you have been waiting for? The highest growth Fortune son we have produced. R316 will be sure to impress with his exceptional length, strong sires head, impeccable coat combined with his carcass and bone. A bull that will inject lift and weight into any herd. The quality of this lot should come as no surprise with the pedigree that is behind him; an Anzac / Odyssey line joined with Fortune. A bull that will command 3 ticks upon inspection. Top 1% 200, 400 & 600 Day Wt, Top 5% CED, Top 10% EMA, SS.

BUYER \$

INDEX VALUES

SSR	\$228
NSR	\$211
SBM	\$255
NBT	\$193

- EFBEEF FOREMOST U208 (IMP USA) (PP)
- EFBEEF U208 FORTUNE Y848 (IMP USA) (P)
- EFBEEF 9802 STELLA S657 (P)
- INJEMIRA FORTUNE M152 AI ET (AI) (ET) (PP)
- DAYS WIZARD F84 (P)
- INJEMIRA HAPPY DAY J042 (P)
- INJEMIRA HAPPY DAY D053 (AI) (ET) (P)
- ALLENDALE ANZAC E114 (PP)
- INJEMIRA ANZAC H006 (PP)
- INJEMIRA MARINDA B028 (AI) (P)
- JARRAH BRITISHER P089 (P)
- INJEMIRA ODYSSEY H044 (AI) (S)
- JARRAH BRITISHER L070 (P)
- JARRAH BRITISHER C597 (H)

JUNE 2022 HEREFORD BREEDPLAN

EBV	BW	200 Wt	400 Wt	600 Wt	M C	Milk	SS	DTC	C Wt	EMA	Rib	Rump	RBV	IMF
+4.9	+50	+86	+123	+99	+22	+3.2	-2.2	+92	+6.1	+0.6	0.0	+2.1	+1.0	
ACC%	68%	68%	68%	68%	61%	54%	75%	35%	59%	50%	56%	61%	53%	57%



LOT 6 JARRAH FORTUNE R316 (PP)

LOT 7 JARRAH TECHNO N226 R358 (S)

DOB 27/9/2020 AGE 23.5 months EYE PIGMENT 100/100

We now enter a run of bulls with plenty of power and growth. A strong bodied bull with plenty of length and natural thickness to add that extra weight to his progeny. R358 is the first lot in this years draft by resident sire N226. Like his sire, he has that strong sires head and clean coat, making him well suited to Queensland conditions. A top commercial bull that will produce heavy weaners that have that ability to be grown through to feeders and bullocks. Top 10% 400 & 600 Day Wt, SS, Top 15% 200 Day Wt.

INDEX VALUES

SSR	\$134
NSR	\$110
SBM	\$130
NBT	\$99

- KOANUI UNANIMOUS 0408 (P)
- KOANUI TECHNO 3062 (IMP NZL) (PP)
- KOANUI BLUSH 6455 (P)
- INJEMIRA TECHNO N226 (AI) (PP)
- ALLENDALE ANZAC E114 (PP)
- INJEMIRA VENUS AI J159 (AI) (P)
- INJEMIRA VENUS D113 (P)
- VALMA ODYSSEY (PP)
- INJEMIRA ODYSSEY H044 (AI) (S)
- INJEMIRA HAPPY DAY D053 (AI) (ET) (P)
- JARRAH BEGONIA N017 (H#)
- INJEMIRA GOOGLE F020 (H)
- JARRAH BEGONIA J100 (H)
- JARRAH BEGONIA B071 (H)

BUYER \$

JUNE 2022 HEREFORD BREEDPLAN

EBV	BW	200 Wt	400 Wt	600 Wt	MC	Milk	SS	DTC	C Wt	EMA	Rib	Rump	RBV	IMF
+6.7	+41	+72	+102	+99	+23	+3.4	-2.2	+66	+4.5	+0.1	0.0	+1.1	+0.9	
ACC%	58%	63%	65%	66%	57%	45%	74%	33%	55%	47%	50%	54%	48%	48%

LOT 8 JARRAH TECHNO N226 R350 (S)

DOB 29/8/2020 AGE 24 months EYE PIGMENT 100/100

Another impressive son of Techno N226 with length, depth, growth and plenty of bone. Again, a bull with the sleek northern coat we aim to breed. The capacity of this bull makes him arguably one of the highest growth potential bulls in the draft. His dam is an impressive cow with loads of capacity, who produced our top priced Hereford bull in 2020. This sire will produce cattle with top weights, whether your selling weaners, feeders or bullocks. A bull to inspect if growth is what you're looking for. Top 5 % 200, 400 & 600 Day Wt.

INDEX VALUES

SSR	\$124
NSR	\$97
SBM	\$113
NBT	\$86

- KOANUI UNANIMOUS 0408 (P)
- KOANUI TECHNO 3062 (IMP NZL) (PP)
- KOANUI BLUSH 6455 (P)
- INJEMIRA TECHNO N226 (AI) (PP)
- ALLENDALE ANZAC E114 (PP)
- INJEMIRA VENUS AI J159 (AI) (P)
- INJEMIRA VENUS D113 (P)
- COURALLIE POMPEII (H)
- INJEMIRA POMPEII Z033 ET (AI) (ET) (H)
- INJEMIRA CHERRY RIPE Q117 ET (AI) (ET) (H)
- JARRAH CORA H012 (H)
- INJEMIRA HIGH ENERGY S123 (AI) (ET) (H)
- JARRAH CORA V083 (H)
- JARRAH CORA P43 (H)

BUYER \$

JUNE 2022 HEREFORD BREEDPLAN

EBV	BW	200 Wt	400 Wt	600 Wt	MC	Milk	SS	DTC	C Wt	EMA	Rib	Rump	RBV	IMF
+8.2	+44	+75	+108	+109	+22	+3.1	-2.1	+65	+4.0	-0.4	-0.7	+1.6	+0.2	
ACC%	56%	61%	62%	59%	51%	48%	58%	34%	51%	43%	47%	50%	44%	48%

LOT 9 JARRAH KOANUI R352 (AI) (S)

DOB 1/9/2020 AGE 24 months EYE PIGMENT 100/100

Another large framed, long and upstanding son of AI sire Techno N276. These Techno sons sure do offer plenty of growth in their genetics. R352 is out of a very solid female with a very neat udder. Again if you are chasing an injection of growth for your herd then be sure to inspect this lot. Top 1% 200, 400 & 600 Day Wt, Top 5% EMA, RBV.

INDEX VALUES

SSR	\$187
NSR	\$160
SBM	\$188
NBT	\$143

- KOANUI UNANIMOUS 0408 (P)
- KOANUI TECHNO 3062 (IMP NZL) (PP)
- KOANUI BLUSH 6455 (P)
- INJEMIRA TECHNO N276 (AI) (PP)
- ALLENDALE ANZAC E114 (PP)
- INJEMIRA PRUDENCE AI J182 (AI) (P)
- INJEMIRA PRUDENCE F009 T (TW) (P)
- DAYS WIZARD F84 (P)
- INJEMIRA WIZARD K362 (P)
- INJEMIRA CORA G075 (P)
- JARRAH BRITISHER N051 (H#)
- HH ADVANCE 1098Y (IMP USA) (H)
- JARRAH BRITISHER L018 (AI) (H)
- JARRAH BRITISHER H040 (H)

BUYER \$

JUNE 2022 HEREFORD BREEDPLAN

EBV	BW	200 Wt	400 Wt	600 Wt	MC	Milk	SS	DTC	C Wt	EMA	Rib	Rump	RBV	IMF
+8.8	+51	+86	+129	+118	+26	+4.0	-2.6	+80	+6.2	+0.1	-0.2	+2.2	+0.6	
ACC%	66%	65%	65%	66%	58%	49%	74%	34%	56%	46%	52%	56%	48%	54%

LOT 10 JARRAH FORTUNE R362 (S) HB

DOB 1/10/2020 AGE 23 months EYE PIGMENT 100/100

A sleeper of the sale. This impressive young sire combines pedigree with curve bending data. He is the 3rd youngest bull in the spring draft and has pushed his way right to the front of the catalogue. A genetic package offering the versatility of a heifer bull with extra growth and carcass. His dam, N054 is without a doubt a 'front paddock' breeder. A top sire prospect in his own right, that will continue to impress. Top 5% 200, 400 & 600 Day Wt, CED, Top 10% EMA, SS, Top 20% IMF.

INDEX VALUES

SSR	\$214
NSR	\$199
SBM	\$238
NBT	\$177

- EFBEEF FOREMOST U208 (IMP USA) (PP)
- EFBEEF U208 FORTUNE Y848 (IMP USA) (P)
- EFBEEF 9802 STELLA S657 (P)
- INJEMIRA FORTUNE M152 AI ET (AI) (ET) (PP)
- DAYS WIZARD F84 (P)
- INJEMIRA HAPPY DAY J042 (P)
- INJEMIRA HAPPY DAY D053 (AI) (ET) (P)
- ALLENDALE ANZAC E114 (PP)
- INJEMIRA ANZAC H006 (PP)
- INJEMIRA MARINDA B028 (AI) (P)
- JARRAH CORA N054 (P)
- HH ADVANCE 1098Y (IMP USA) (H)
- JARRAH CORA J080 (AI) (H)
- JARRAH CORA F565 (H)

BUYER \$

JUNE 2022 HEREFORD BREEDPLAN

EBV	BW	200 Wt	400 Wt	600 Wt	MC	Milk	SS	DTC	C Wt	EMA	Rib	Rump	RBV	IMF
+3.6	+44	+73	+107	+74	+24	+3.3	-3.2	+78	+6.0	+1.5	+1.4	+1.5	+1.1	
ACC%	62%	65%	67%	68%	59%	47%	75%	32%	57%	50%	52%	56%	50%	51%

BREED AVERAGE FOR 2020 BORN CALVES

EBV	BW	200 Wt	400 Wt	600 Wt	MC	Milk	SS	DTC	C Wt	EMA	Rib	Rump	RBV	IMF
+4.1	+33	+55	+77	+66	+17	+2.1	-3.0	+51	+3.8	+0.8	+1	+0.8	+0.6	

LOT 11 JARRAH KOANUI R337 (AI) (S)

DOB 20/8/2020 AGE 24.5 months EYE PIGMENT 100/100

Another top end commercial bull by AI Sire Techno N276 with plenty of length, growth and power. R337 is a rugged bull that will add punch to his offspring and is backed by a very strong cow family. A bull that may be overlooked in his pen given the caliber of bulls in it, but one that is worthy of close inspection. Top 10% 400 & 600 Day Wt, Top 20% 200 Day Wt.

INDEX VALUES

SSR	\$137
NSR	\$117
SBM	\$144
NBT	\$113

- KOANUI UNANIMOUS 0408 (P)
- KOANUI TECHNO 3062 (IMP NZL) (PP)
- KOANUI BLUSH 6455 (P)
- INJEMIRA TECHNO N276 (AI) (PP)
- ALLENDALE ANZAC E114 (PP)
- INJEMIRA PRUDENCE AI J182 (AI) (P)
- INJEMIRA PRUDENCE F009 T (TW) (P)
- ALLENDALE ANZAC E114 (PP)
- INJEMIRA ANZAC H006 (PP)
- INJEMIRA MARINDA B028 (AI) (P)
- JARRAH CHERRY RIPE M011 (P)
- INJEMIRA ADVANCE Y095 (H)
- JARRAH CHERRY RIPE H066 (H)
- JARRAH CHERRY RIPE E019 (H)

BUYER \$

JUNE 2022 HEREFORD BREEDPLAN

EBV	BW	200 Wt	400 Wt	600 Wt	M C	Milk	SS	DTC	C Wt	EMA	Rib	Rump	RBV	IMF
+4.8	+39	+69	+96	+92	+26	+1.9	-2.6	+64	+4.0	+0.9	+1.4	+0.6	+0.7	
ACC%	63%	65%	66%	69%	60%	47%	75%	35%	58%	49%	53%	57%	51%	51%

LOT 12 JARRAH FORTUNE R335 (S) (HB)

DOB 19/8/2020 AGE 24.5 months EYE PIGMENT 100/100

The more we see this bull the more we like him. Plenty of length and thickness combine to create a very strong carcass. Fortune puts a real stamp on his progeny with the beef he adds and particularly the strength behind the shoulders. When you look at the pedigree we again see that strength of the maternal Anzac line shine through. A bull with the versatility to be joined to heifers but certainly not to be put only in that box as he offers a lot to any herd. A top end commercial bull. Top 5% CED, EMA, Top 20% 400 & 600 Day Wt.

INDEX VALUES

SSR	\$185
NSR	\$174
SBM	\$212
NBT	\$162

- EFBEEF FOREMOST U208 (IMP USA) (PP)
- EFBEEF U208 FORTUNE Y848 (IMP USA) (P)
- EFBEEF 9802 STELLA S657 (P)
- INJEMIRA FORTUNE M152 AI ET (AI) (ET) (PP)
- DAYS WIZARD F84 (P)
- INJEMIRA HAPPY DAY J042 (P)
- INJEMIRA HAPPY DAY D053 (AI) (ET) (P)
- ALLENDALE ANZAC E114 (PP)
- INJEMIRA ANZAC H006 (PP)
- INJEMIRA MARINDA B028 (AI) (P)
- JARRAH BRITISHER P088 (P)
- INJEMIRA HUSTLER C021 (AI) (H#)
- JARRAH BRITISHER G044 (H#)
- JARRAH BRITISHER B066 (H)

BUYER \$

JUNE 2022 HEREFORD BREEDPLAN

EBV	BW	200 Wt	400 Wt	600 Wt	M C	Milk	SS	DTC	C Wt	EMA	Rib	Rump	RBV	IMF
+2.9	+38	+66	+91	+67	+22	+3.1	-2.5	+70	+6.2	+0.9	+0.4	+1.9	+0.9	
ACC%	61%	65%	67%	68%	59%	48%	75%	32%	57%	50%	53%	57%	51%	51%

LOT 13 JARRAH FORTUNE R363 (S) (HB)

DOB 6/10/2020 AGE 23 months EYE PIGMENT 100/100

R363 is a younger bull who has forged his way to the top with quality. The squareness and butt shape definition of this bull has always been impressive, and as he continues to develop it is only becoming more prominent. Another curve bending sire that still offers plenty of punch. Bulls like R363 will produce high weight for age weaners that hit the feeder market quickly. A strong commercial bull whose full sister is top of her drop and proving to be an exceptional breeder. Top 5% CED, Top 25% 200 & 400 Day Wt.

INDEX VALUES

SSR	\$161
NSR	\$149
SBM	\$190
NBT	\$148

- EFBEEF FOREMOST U208 (IMP USA) (PP)
- EFBEEF U208 FORTUNE Y848 (IMP USA) (P)
- EFBEEF 9802 STELLA S657 (P)
- INJEMIRA FORTUNE M152 AI ET (AI) (ET) (PP)
- DAYS WIZARD F84 (P)
- INJEMIRA HAPPY DAY J042 (P)
- INJEMIRA HAPPY DAY D053 (AI) (ET) (P)
- ALLENDALE ANZAC E114 (PP)
- INJEMIRA ANZAC H006 (PP)
- INJEMIRA MARINDA B028 (AI) (P)
- JARRAH BRITISHER M027 (P)
- INJEMIRA HUSTLER C021 (AI) (H#)
- JARRAH BRITISHER G067 (H#)
- JARRAH BRITISHER D570 (H)

BUYER \$

JUNE 2022 HEREFORD BREEDPLAN

EBV	BW	200 Wt	400 Wt	600 Wt	M C	Milk	SS	DTC	C Wt	EMA	Rib	Rump	RBV	IMF
+2.9	+38	+63	+85	+65	+22	+1.6	-1.5	+64	+4.7	+0.9	+0.6	+1.4	+0.6	
ACC%	62%	66%	67%	69%	60%	48%	75%	32%	58%	50%	53%	58%	51%	52%

LOT 14 JARRAH KOANUI R324 (AI) (PP)

DOB 18/8/2020 AGE 24.5 months EYE PIGMENT 100/100

A PP bull that will catch your eye! A very strong headed son of AI sire Techno N276 with a bit of extra thickness and style. R324 is a bit more moderate compared to his brothers, but that doesn't make him any less quality as he is possibly the thickest. This bull again has the strength on his maternal side with yet another Anzac female. A very complete lot. Top 10% EMA, Top 20% 400 Day Wt, GL.

INDEX VALUES

SSR	\$131
NSR	\$117
SBM	\$138
NBT	\$110

- KOANUI UNANIMOUS 0408 (P)
- KOANUI TECHNO 3062 (IMP NZL) (PP)
- KOANUI BLUSH 6455 (P)
- INJEMIRA TECHNO N276 (AI) (PP)
- ALLENDALE ANZAC E114 (PP)
- INJEMIRA PRUDENCE AI J182 (AI) (P)
- INJEMIRA PRUDENCE F009 T (TW) (P)
- ALLENDALE ANZAC E114 (PP)
- INJEMIRA ANZAC H006 (PP)
- INJEMIRA MARINDA B028 (AI) (P)
- JARRAH CORA M045 (P)
- INJEMIRA POMPEII Z033 ET (AI) (ET) (H)
- JARRAH CORA H043 (P)
- JARRAH CORA A013 (P)

BUYER \$

JUNE 2022 HEREFORD BREEDPLAN

EBV	BW	200 Wt	400 Wt	600 Wt	M C	Milk	SS	DTC	C Wt	EMA	Rib	Rump	RBV	IMF
+4.9	+34	+65	+88	+86	+23	+1.8	-1.6	+61	+6.1	+0.3	+0.6	+1.9	+0.5	
ACC%	69%	68%	68%	70%	62%	54%	76%	38%	60%	50%	56%	60%	52%	58%

LOT 15 JARRAH FORTUNE R302 (PP) HB

DOB 10/8/2020 AGE 25 months EYE PIGMENT 100/100

An extreme carcass bull that will compliment any Bos Indicus breeding operation. This bull has low birthweight, high calving ease combined with strong growth and carcass data. Yet another pedigree with that Anzac / Fortune cross. On top of this, the Cora line is one of our strongest for handling CQ conditions. A cross breeding powerhouse, that we would highly recommend to any operation aiming to hit the weaner or feedlot markets. Top 5% CED.

INDEX VALUES

SSR	\$168
NSR	\$155
SBM	\$196
NBT	\$151

- EFBEEF FOREMOST U208 (IMP USA) (PP)
- EFBEEF U208 FORTUNE Y848 (IMP USA) (P)
- EFBEEF 9802 STELLA S657 (P)
- INJEMIRA FORTUNE M152 AI ET (AI) (ET) (PP)
- DAYS WIZARD F84 (P)
- INJEMIRA HAPPY DAY J042 (P)
- INJEMIRA HAPPY DAY D053 (AI) (ET) (P)
- ALLENDALE ANZAC E114 (PP)
- INJEMIRA ANZAC H006 (PP)
- INJEMIRA MARINDA B028 (AI) (P)
- JARRAH CORA P071 (P)
- JARRAH GIANNI G001 (P)
- JARRAH CORA J051 (P)
- JARRAH CORA F032 (H)

BUYER \$

JUNE 2022 HEREFORD BREEDPLAN

EBV	BW	200 Wt	400 Wt	600 Wt	MC	Milk	SS	DTC	C Wt	EMA	Rib	Rump	RBV	IMF
+2.2	+37	+63	+87	+61	+28	+2.7	-3.3	+67	+4.6	+2.2	+2.6	+0.2	+0.9	
ACC%	68%	67%	68%	60%	52%	75%	34%	58%	49%	55%	59%	51%	56%	

LOT 16 JARRAH FORTUNE R326 (S) HB

DOB 18/8/2020 AGE 24.5 months EYE PIGMENT 100/100

The strength of this years line up continues with R326. A strong headed bull who has a bit of extra softness to him whilst still having the carcass you've come to expect from these genetics. He is possibly the deepest bull in the pen and displays plenty of bone. R326 is another bull with the versatility to be used over heifers, that will still add punch into any herd. A very powerful lot. Top 5% 400 Day Wt, CED, Top 10% 200 & 600 Day Wt, Top 15% EMA.

INDEX VALUES

SSR	\$191
NSR	\$176
SBM	\$218
NBT	\$167

- EFBEEF FOREMOST U208 (IMP USA) (PP)
- EFBEEF U208 FORTUNE Y848 (IMP USA) (P)
- EFBEEF 9802 STELLA S657 (P)
- INJEMIRA FORTUNE M152 AI ET (AI) (ET) (PP)
- DAYS WIZARD F84 (P)
- INJEMIRA HAPPY DAY J042 (P)
- INJEMIRA HAPPY DAY D053 (AI) (ET) (P)
- ALLENDALE ANZAC E114 (PP)
- INJEMIRA ANZAC H006 (PP)
- INJEMIRA MARINDA B028 (AI) (P)
- JARRAH QUEEN SHEBA P061 (P)
- INJEMIRA POMPEII Z033 ET (AI) (ET) (H)
- JARRAH QUEEN SHEBA H054 (P)
- JARRAH QUEEN SHEBA C602 (P)

BUYER \$

JUNE 2022 HEREFORD BREEDPLAN

EBV	BW	200 Wt	400 Wt	600 Wt	MC	Milk	SS	DTC	C Wt	EMA	Rib	Rump	RBV	IMF
+3.5	+42	+74	+102	+79	+24	+3.1	-2.7	+75	+5.2	+1.2	+1.2	+1.3	+0.7	
ACC%	62%	65%	67%	68%	59%	48%	76%	33%	57%	50%	54%	58%	51%	52%

LOT 17 JARRAH FORTUNE R303 (PP) HB

DOB 11/8/2020 AGE 25 months EYE PIGMENT 100/100

An eye appealing PP Fortune son. R303 is a long bodied bull with plenty of softness. Backed by strong growth and IMF data. If your aim is to produce heavy weaners and feeders and to hit the MSA markets, bulls like R303 will be the ones for you. A solid commercial bull ideally suited for crossbreeding. Top 5% IMF, CED, Top 10% 400 Day Wt, Top 15% 200 Day Wt, Top 20% EMA, 600 Day Wt.

INDEX VALUES

SSR	\$175
NSR	\$160
SBM	\$207
NBT	\$162

- EFBEEF FOREMOST U208 (IMP USA) (PP)
- EFBEEF U208 FORTUNE Y848 (IMP USA) (P)
- EFBEEF 9802 STELLA S657 (P)
- INJEMIRA FORTUNE M152 AI ET (AI) (ET) (PP)
- DAYS WIZARD F84 (P)
- INJEMIRA HAPPY DAY J042 (P)
- INJEMIRA HAPPY DAY D053 (AI) (ET) (P)
- ALLENDALE ANZAC E114 (PP)
- INJEMIRA ANZAC L170 (AI) (ET) (PP)
- INJEMIRA HAPPY DAY D053 (AI) (ET) (P)
- JARRAH DOM PATTIE P033 (P)
- INJEMIRA ANZAC H006 (PP)
- JARRAH DOM PATTIE L122 (AI) (ET) (P)
- INJEMIRA DOM PATTIE G086 (H)

BUYER \$

JUNE 2022 HEREFORD BREEDPLAN

EBV	BW	200 Wt	400 Wt	600 Wt	MC	Milk	SS	DTC	C Wt	EMA	Rib	Rump	RBV	IMF
+3.3	+41	+69	+92	+64	+29	+1.1	-2.3	+66	+4.9	+2.8	+3.6	-0.6	+1.9	
ACC%	67%	67%	67%	59%	51%	75%	34%	57%	49%	54%	59%	51%	55%	



LOT 14 JARRAH KOANUI R324 (AI) (PP)

BREED AVERAGE FOR 2020 BORN CALVES

EBV	BW	200 Wt	400 Wt	600 Wt	MC	Milk	SS	DTC	C Wt	EMA	Rib	Rump	RBV	IMF
+4.1	+33	+55	+77	+66	+17	+2.1	-3.0	+51	+3.8	+0.8	+1	+0.8	+0.6	

LOT 18 JARRAH FORTUNE R349 (PP) HB

DOB 28/8/2020 AGE 24.5 months EYE PIGMENT 100/100

A true muscle powerhouse, with the second highest EMA in the sale. R349 is an extremely heavy carcass bull with plenty of spring of rib and butt shape. He is a PP bull, who is moderate in frame that again offers that versatility to be used over heifers. From experience these bulls with extra carcass and muscle compliment a Bos Indicus breeding operation extremely well, adding that bit of extra punch. Backed with maternal strength and one of our oldest poll lines. Top 1% EMA, Top 5% CED, Top 10% IMF, Top 20% 200 Day Wt.

BUYER \$

JUNE 2022 HEREFORD BREEDPLAN

EBV	BW	200 Wt	400 Wt	600 Wt	M C	Milk	SS	DTC	C Wt	EMA	Rib	Rump	RBV	IMF
+2.5	+36	+61	+87	+56	+21	+2.7	-2.0	+68	+7.6	+2.0	+2.4	+1.3	+1.4	
ACC%	68%	68%	68%	60%	53%	76%	35%	59%	50%	56%	60%	52%	57%	

INDEX VALUES

SSR	\$186
NSR	\$179
SBM	\$212
NBT	\$160

- EFBEEF FOREMOST U208 (IMP USA) (PP)
- EFBEEF U208 FORTUNE Y848 (IMP USA) (P)
- EFBEEF 9802 STELLA S657 (P)
- INJEMIRA FORTUNE M152 AI ET (AI) (ET) (PP)
- DAYS WIZARD F84 (P)
- INJEMIRA HAPPY DAY J042 (P)
- INJEMIRA HAPPY DAY D053 (AI) (ET) (P)
- ALLENDALE ANZAC E114 (PP)
- INJEMIRA ANZAC L170 (AI) (ET) (PP)
- INJEMIRA HAPPY DAY D053 (AI) (ET) (P)
- JARRAH LADY MARINDA P045 (P)
- INJEMIRA ADVANCE Y203 (H)
- JARRAH LADY MARINDA L132 (AI) (ET) (P)
- JARRAH LADY MARINDA Y070 (P)

LOT 19 JARRAH FORTUNE R336 (PP) HB

DOB 19/8/2020 AGE 24.5 months EYE PIGMENT 100/100

This PP Fortune son is arguably the thickest bull in the sale with strength behind his shoulders and plenty of topline. This combined with his extra depth and bone has always made R336 weigh well. This carcass bull will add extra weight when combined with Bos Indicus type breeders or a bit of extra softness to Euro cross females. A bull with beef in all the right places. Top 5% CED, Top 10% 200 & 400 Day Wt, Top 15% 600 Day Wt, EMA.

BUYER \$

JUNE 2022 HEREFORD BREEDPLAN

EBV	BW	200 Wt	400 Wt	600 Wt	M C	Milk	SS	DTC	C Wt	EMA	Rib	Rump	RBV	IMF
+3.1	+42	+69	+96	+71	+22	+2.4	-2.6	+72	+5.4	+2.1	+2.4	+0.8	+1.0	
ACC%	67%	67%	67%	68%	60%	52%	76%	34%	58%	50%	55%	59%	52%	56%

INDEX VALUES

SSR	\$189
NSR	\$179
SBM	\$215
NBT	\$163

- EFBEEF FOREMOST U208 (IMP USA) (PP)
- EFBEEF U208 FORTUNE Y848 (IMP USA) (P)
- EFBEEF 9802 STELLA S657 (P)
- INJEMIRA FORTUNE M152 AI ET (AI) (ET) (PP)
- DAYS WIZARD F84 (P)
- INJEMIRA HAPPY DAY J042 (P)
- INJEMIRA HAPPY DAY D053 (AI) (ET) (P)
- ALLENDALE ANZAC E114 (PP)
- INJEMIRA ANZAC H006 (PP)
- INJEMIRA MARINDA B028 (AI) (P)
- JARRAH CORA P095 (P)
- INJEMIRA ODYSSEY H044 (AI) (S)
- JARRAH K038 (H#)
- JARRAH CORA F032 (H)

LOT 20 JARRAH FORTUNE R314 (PP) HB

DOB 14/8/2020 AGE 24.5 months EYE PIGMENT 100/100

Another sleeper of the sale not to be overlooked. R314 is hard to fault, he's thick, deep with length and has the bonus of being both PP and suitable for the use over heifers. There isn't much variance in these Fortune bulls, it has been splitting hairs between them all. A bull, similar to the previous 2 lots, that would add value to any Bos Indicus or Euro cross herd. Top 5% CED, Top 10% EMA SS, Top 15% IMF, GL.

BUYER \$

JUNE 2022 HEREFORD BREEDPLAN

EBV	BW	200 Wt	400 Wt	600 Wt	M C	Milk	SS	DTC	C Wt	EMA	Rib	Rump	RBV	IMF
+1.7	+34	+61	+77	+47	+27	+3.2	-3.1	+64	+5.7	+1.7	+1.5	+0.9	+1.2	
ACC%	68%	68%	68%	68%	61%	54%	75%	35%	59%	51%	56%	61%	53%	57%

INDEX VALUES

SSR	\$166
NSR	\$154
SBM	\$191
NBT	\$146

- EFBEEF FOREMOST U208 (IMP USA) (PP)
- EFBEEF U208 FORTUNE Y848 (IMP USA) (P)
- EFBEEF 9802 STELLA S657 (P)
- INJEMIRA FORTUNE M152 AI ET (AI) (ET) (PP)
- DAYS WIZARD F84 (P)
- INJEMIRA HAPPY DAY J042 (P)
- INJEMIRA HAPPY DAY D053 (AI) (ET) (P)
- ALLENDALE ANZAC E114 (PP)
- INJEMIRA ANZAC H006 (PP)
- INJEMIRA MARINDA B028 (AI) (P)
- JARRAH BEGONIA P066 (P)
- INJEMIRA ODYSSEY H044 (AI) (S)
- JARRAH BEGONIA L072 (H#)
- JARRAH BEGONIA E042 (P)

LOT 21 JARRAH FORTUNE R333 (S) HB

DOB 19/8/2020 AGE 24.5 months EYE PIGMENT 100/100

A very balanced lot with the maternal strength and clean coat we aim to produce. This pen of bulls is extremely even, I could write the same comments for them all! A low birthweight, high calving ease bull that has the curve bending growth data we aim to produce. Often people categorise a low birthweight bull just as a heifer bull, but the growth these bulls have allows them to add value to any age breeder. A balanced commercial sire. Top 5% CED, Top 20% EMA, GL.

BUYER \$

JUNE 2022 HEREFORD BREEDPLAN

EBV	BW	200 Wt	400 Wt	600 Wt	M C	Milk	SS	DTC	C Wt	EMA	Rib	Rump	RBV	IMF
+2.2	+35	+61	+84	+62	+21	+3.9	-3.4	+63	+5.1	+1.4	+1.4	+1.3	+0.6	
ACC%	61%	65%	67%	68%	59%	47%	75%	32%	57%	50%	53%	58%	51%	52%

INDEX VALUES

SSR	\$172
NSR	\$165
SBM	\$196
NBT	\$150

- EFBEEF FOREMOST U208 (IMP USA) (PP)
- EFBEEF U208 FORTUNE Y848 (IMP USA) (P)
- EFBEEF 9802 STELLA S657 (P)
- INJEMIRA FORTUNE M152 AI ET (AI) (ET) (PP)
- DAYS WIZARD F84 (P)
- INJEMIRA HAPPY DAY J042 (P)
- INJEMIRA HAPPY DAY D053 (AI) (ET) (P)
- ALLENDALE ANZAC E114 (PP)
- INJEMIRA ANZAC H006 (PP)
- INJEMIRA MARINDA B028 (AI) (P)
- JARRAH BEGONIA P040 (P)
- INJEMIRA POMPEII Z033 ET (AI) (ET) (H)
- JARRAH BEGONIA F029 (H)
- JARRAH BEGONIA U209 (H)

LOT 22 JARRAH FORTUNE R372 (s) HB

DOB 12/11/2020 AGE 22 months EYE PIGMENT 60/100

The youngest bull of the Spring draft, but he certainly isn't left behind with carcass power! By being the youngest, it's always hard for these bulls to catch up but this lot has been able to hold his own and we know that he will only continue to grow out well. His dam gives us this confidence, consistently producing lead progeny. R372 is well suited to heifers and would also compliment a cross breeding operation. A sleek coated heavy carcass lot. Top 1% CED, Top 5% EMA, Top 15% SS.

BUYER \$

INDEX VALUES

SSR	\$191
NSR	\$181
SBM	\$219
NBT	\$163

- EFBEEF FOREMOST U208 (IMP USA) (PP)
- EFBEEF U208 FORTUNE Y848 (IMP USA) (P)
- EFBEEF 9802 STELLA S657 (P)
- INJEMIRA FORTUNE M152 AI ET (AI) (ET) (PP)
- DAYS WIZARD F84 (P)
- INJEMIRA HAPPY DAY J042 (P)
- INJEMIRA HAPPY DAY D053 (AI) (ET) (P)
- HH ADVANCE 8050U ET (H)
- HH ADVANCE 1098Y (IMP USA) (H)
- HH MISS ADVANCE 9065W (H)
- JARRAH BRITISHER K023 (AI) (H#)
- INJEMIRA HUSTLER C021 (AI) (H#)
- JARRAH BRITISHER G044 (H#)
- JARRAH BRITISHER B066 (H)

JUNE 2022 HEREFORD BREEDPLAN

EBV	BW	200 Wt	400 Wt	600 Wt	MC	Milk	SS	DTC	C Wt	EMA	Rib	Rump	RBV	IMF
+1.6	+33	+59	+84	+48	+25	+3.1	-3.1	+65	+6.5	+1.3	+1.0	+2.2	+1.0	
ACC%	62%	64%	65%	57%	50%	70%	30%	55%	48%	51%	54%	48%	50%	

LOT 23 JARRAH TECHNO N226 R371 (PP)

DOB 9/11/2020 AGE 22 months EYE PIGMENT 100/100

We always like to finish each drop of bulls with a standout commercial bull, and we feel this bull achieves that. The second youngest bull in the spring draft who will impress with his thickness, softness and strong head. R371 also has the bonus of being PP, a genetic dehorner. His dam M036 is one of our first Anzac females who continues to produce top end calves. R371 has the growth data behind him which assures us that he will continue to develop. Top 5% 200, 400 & 600 Day Wt, SS.

BUYER \$

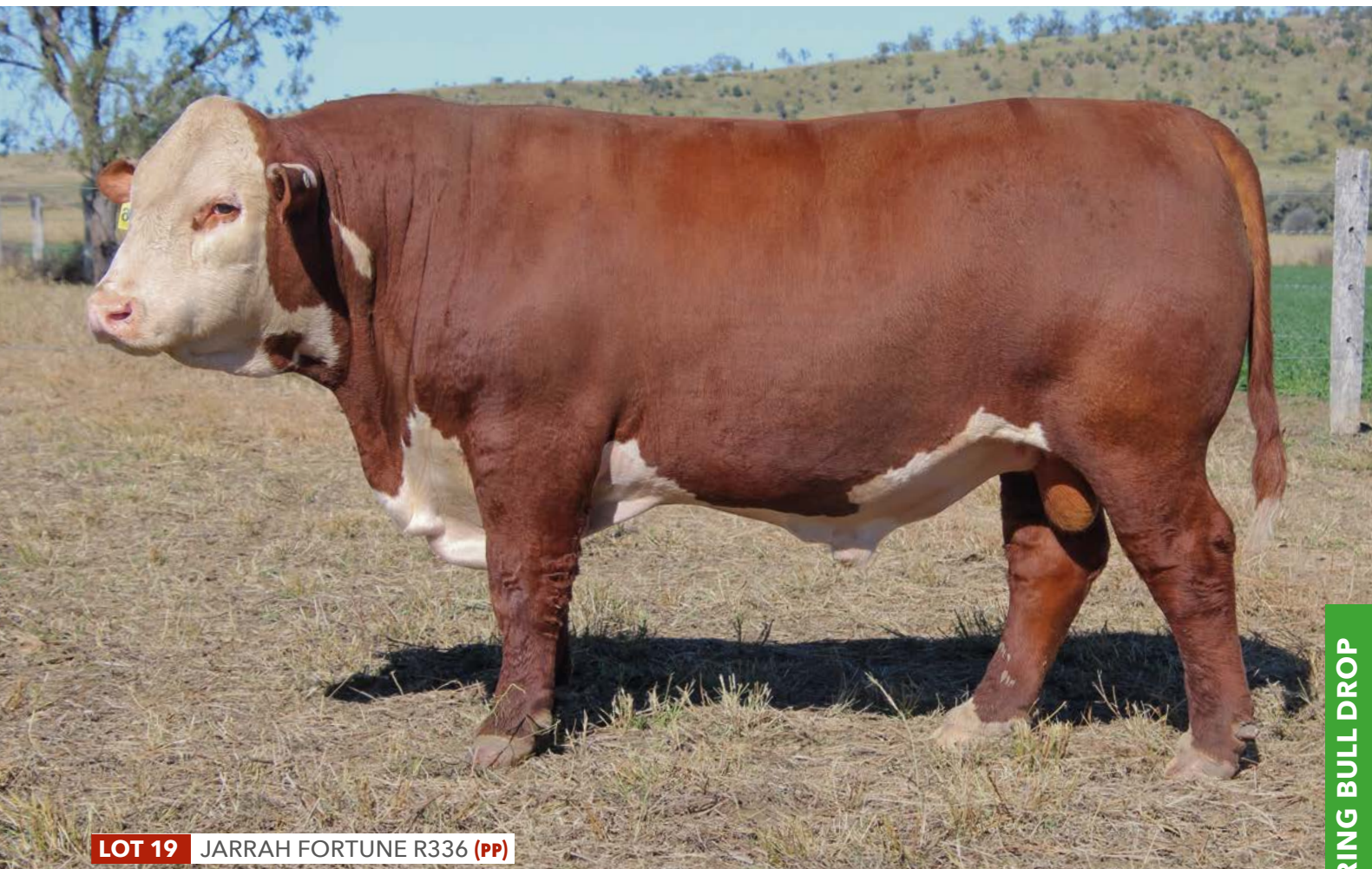
INDEX VALUES

SSR	\$144
NSR	\$119
SBM	\$138
NBT	\$106

- KOANUI UNANIMOUS 0408 (P)
- KOANUI TECHNO 3062 (IMP NZL) (PP)
- KOANUI BLUSH 6455 (P)
- INJEMIRA TECHNO N226 (AI) (PP)
- ALLENDALE ANZAC E114 (PP)
- INJEMIRA VENUS AI J159 (AI) (P)
- INJEMIRA VENUS D113 (P)
- ALLENDALE ANZAC E114 (PP)
- INJEMIRA ANZAC H006 (PP)
- INJEMIRA MARINDA B028 (AI) (P)
- JARRAH BRITISHER M036 (P)
- INJEMIRA HUSTLER C021 (AI) (H#)
- JARRAH BRITISHER G060 (H#)
- JARRAH BRITISHER C597 (H)

JUNE 2022 HEREFORD BREEDPLAN

EBV	BW	200 Wt	400 Wt	600 Wt	MC	Milk	SS	DTC	C Wt	EMA	Rib	Rump	RBV	IMF
+7.4	+44	+80	+114	+117	+24	+4.1	-3.0	+69	+3.9	0.0	-0.2	+1.3	+0.4	
ACC%	66%	66%	66%	67%	59%	52%	68%	36%	58%	48%	55%	59%	50%	56%



LOT 19 JARRAH FORTUNE R336 (PP)

BREED AVERAGE FOR 2020 BORN CALVES

EBV	BW	200 Wt	400 Wt	600 Wt	MC	Milk	SS	DTC	C Wt	EMA	Rib	Rump	RBV	IMF
+4.1	+33	+55	+77	+66	+17	+2.1	-3.0	+51	+3.8	+0.8	+1	+0.8	+0.6	

Yearling Bulls

THIS YEAR WE WILL AGAIN BE OFFERING A RUN OF YEARLING BULLS. LAST YEAR THE DECISION TO OFFER YEARLING BULLS CAME ABOUT FOR A NUMBER OF REASONS, THE MAIN BEING THAT WE ARE ABLE TO OFFER OUR NEWEST GENETICS SOONER. THIS YEAR, AFTER RECEIVING POSITIVE FEEDBACK ON BOTH PREGNANCY TEST RESULTS AND THE PERFORMANCE OF THESE BULLS WE DECIDED TO FURTHER INCREASE OUR OFFERING.

Hereford bulls are earlier maturing, so have the ability to be joined younger. It also allows the bulls to be acclimatised from a younger age, providing benefits for both the buyer and the bulls. Whilst yearlings may not grow out to their full genetic potential, acclimatising earlier has been proven to increase their working life because of super fitness and lower levels of body fat. We urge you to keep these factors in mind when considering the yearling draft.

YEARLING BULLS - TAPPING THEIR IMMENSE POTENTIAL

We have included snippets from this paper for your consideration. The full article can be found by entering the title into google, or contact us and we can email you a copy and answer any queries.

ACKNOWLEDGMENT

This publication was originally prepared by Sandy Yeates, former Beef Cattle Officer with NSW Agriculture.

YEARLINGS BECOMING POPULAR

In Australia there is a trend towards using bulls at yearling age (12-18 months). This allows introduction of superior genetic material into herds a year earlier than normal, resulting in faster genetic improvement. By using genetically superior bulls as young as possible, faster turnover rates of genes are achieved.

Their introduction has the potential to allow breeders to extend the working lives of bulls by a year or more, lowering the bulls costs of a herd. This extra workload is achieved at the time in their lives when they are young, lean, fit and exuberant. They are free of the structural problems that beset older bulls.

Yearling bulls have much to offer, both genetically and financially.

WHY USE YEARLINGS?

Cattle producers with experience in managing yearlings often say that they prefer them because they settle in better, mix with other cattle more easily and are easier to handle than older bulls. However, there are some far more tangible incentives in using them.

By first using bulls as yearlings, the working life of a bull can be extended by a year or more. In addition to this advantages, there is strong circumstantial evidence to suggest that bulls used first as yearlings have even longer working lives because of superior fitness and lower levels of body fat. The more active lives of these bulls means that they are maintained at body weights below their genetic potential. As a result, less stress is placed on their skeletal structure when serving, with less likelihood of breakdowns occurring.

WILL YEARLING BULLS BE SEXUALLY MATURE?

British breed yearling bulls will generally be sexually mature if they:

- / are well grown
- / are in good condition (fat score of high 2 or low 3)
- / are 12 months of age or older

SERVING ABILITY

Yearling bulls are usually sexually inexperienced. As a result, they are sometimes, but not always, a little clumsy and awkward. However, young bulls have very steep learning curves. This learning phase may cause minor delays in the start of calving. Should this be a problem, joining should start 7 or 14 days earlier than normal to compensate for the slight delay.

MATING MANAGEMENT

Yearling bulls can be effectively joined either individually or in peer groups. They should not be joined in a group with older bulls because of 'dominance'.

The use of yearling bulls is limited only by their health and fitness. A lot of common sense is needed in order to strike a balance. It does not matter whether they 'won't grow out' as it's just not relevant. If our beef industry is to make progress, we must purge our minds of the belief that a bull has to be fat and well grown to be any good. The value of a bull should be measured by the performance of his offspring—not on what he looks like.

A more conservative approach is needed in the first year, until you have a track record for the performances of yearling bulls on your farm. In these situations, mating loads of only 25-30 females are recommended.

WON'T YEARLING BULLS HAVE SMALLER CALVES?

There is no relationship between the age of a bull at joining and the weights of his calves.

The birthweight of calves is heritable, so a bull will influence, genetically, the birthweight of his calves. If you are concerned about birthweight, buy a bull that has a low estimated breeding value (EBV) for birthweight, or one that had a lower birthweight than the average of other bull calves in the same drop.

SUMMARY

- / Try to avoid single sire mating at all times, no matter the bulls age, and ideally join yearlings with bulls same age in the group to avoid injury
- / Yearlings can handle between 25-40 females at one time, but the bigger the cows, reduce the size of group per bull, we would recommend in their first year 30 females per bull
- / Bulls can lose condition after joining, but recover to normal weight in time. Post joining diet overcomes this and the bulls generally remain lean and fit for longer
- / Keep an eye on the bulls during joining if you can
- / Please don't hesitate to call us at any time with questions!

YEARLING DROP BULLS



LOT 24 JARRAH TECHNO S073 (PP)



LOT 25 JARRAH FORTUNE S005 (P)



LOT 26 JARRAH WILDFIRE S089 (S)



LOT 27 JARRAH TECHNO S047 (S)



LOT 31 JARRAH FORTUNE S011 (PP)



LOT 33 JARRAH FORTUNE S053 (PP)

LOT 24 JARRAH TECHNO S073 (PP)

DOB 28/5/2021 AGE 15.5 months EYE PIGMENT 100/100

We kick off the yearling bulls with one of the best bulls we have bred. S073 is a PP bull who is long, has plenty of bone, a short sleek coat with a tremendous topline and carcass in the extreme. When this bull strides out you appreciate his impressive front end and how well suited he is for the north. His dam M021 is from our strong Britisher line. This bull will add growth and muscle into both a purebred and crossbreeding operation. A bull with all the attributes to make him a stud sire. Top 1% SS, Top 5% 200, 400 & 600 Day Wt, Top 10% EMA.

INDEX VALUES

SSR	\$154
NSR	\$132
SBM	\$145
NBT	\$108

- KOANUI UNANIMOUS 0408 (P)
- KOANUI TECHNO 3062 (IMP NZL) (PP)
- KOANUI BLUSH 6455 (P)
- INJEMIRA TECHNO N226 (AI) (PP)
- ALLENDALE ANZAC E114 (PP)
- INJEMIRA VENUS AI J159 (AI) (P)
- INJEMIRA VENUS D113 (P)
- REDGATE REDFORD D935 (AI) (P)
- INJEMIRA REDFORD AI J204 (AI) (PP)
- INJEMIRA HAPPY DAY G045 (P)
- JARRAH BRITISHER M021 (P)
- JARRAH POMPEII F047 (P)
- JARRAH BRITISHER J054 (H#)
- JARRAH BRITISHER C026 (H)

JUNE 2022 HEREFORD BREEDPLAN

EBV	BW	200 Wt	400 Wt	600 Wt	M C	Milk	SS	DTC	C Wt	EMA	Rib	Rump	RBV	IMF
+8.5	+45	+78	+113	+110	+25	+4.7	-3.6	+69	+6.0	+1.3	+2.0	+1.0	+0.8	
ACC%	65%	65%	64%	65%	58%	51%	74%	34%	56%	46%	52%	56%	48%	53%

LOT 25 JARRAH FORTUNE S005 (P)

DOB 5/5/2021 AGE 16 months EYE PIGMENT 100/100

Stud sire potential. S005 is a heifers first calf that has been a standout since birth that continues to be 'top of the drop'. S005 has the structure and carcass of a true sire and his thickness, depth and squareness set him apart. His dam P231 is another strong cow line and after her first 2 calves has been labelled 'the one to watch'. Whatever your markets are, this bull will produce you weight for age weaners through to top end bullocks. A bull we can't recommend more highly. Top 1% 400 Day Wt, Top 5% 200 & 600 Day Wt, SS, EMA.

INDEX VALUES

SSR	\$220
NSR	\$208
SBM	\$247
NBT	\$185

- EFBEEF FOREMOST U208 (IMP USA) (PP)
- EFBEEF U208 FORTUNE Y848 (IMP USA) (P)
- EFBEEF 9802 STELLA S657 (P)
- INJEMIRA FORTUNE M152 AI ET (AI) (ET) (PP)
- DAYS WIZARD F84 (P)
- INJEMIRA HAPPY DAY J042 (P)
- INJEMIRA HAPPY DAY D053 (AI) (ET) (P)
- ALLENDALE ANZAC E114 (PP)
- INJEMIRA ANZAC L170 (AI) (ET) (PP)
- INJEMIRA HAPPY DAY D053 (AI) (ET) (P)
- JARRAH BEGONIA P231 (P)
- INJEMIRA POMPEII Z033 ET (AI) (ET) (H)
- JARRAH BEGONIA E545 (H)
- JARRAH BEGONIA Y321 (H)

JUNE 2022 HEREFORD BREEDPLAN

EBV	BW	200 Wt	400 Wt	600 Wt	M C	Milk	SS	DTC	C Wt	EMA	Rib	Rump	RBV	IMF
+5.1	+47	+84	+114	+86	+22	+4.2	-3.1	+81	+6.2	+1.8	+2.4	+1.1	+1.0	
ACC%	68%	68%	68%	69%	61%	53%	76%	35%	59%	50%	55%	59%	51%	56%

LOT 26 JARRAH WILDFIRE S089 (S)

DOB 13/6/2021 AGE 15.5 months EYE PIGMENT 100/100

The first of our Wildfire sons and this lot sets the benchmark high. Another bull that oozes sire appeal with his softness, spring of rib, bone and carcass. One of the youngest bulls that forged his way to the top. The Wildfires display thickness and high-quality carcass attributes. S089's dam is a true front paddock female, with plenty of milk. Bulls like this will add value to your operation, producing females that will breed on and males that will hit all markets. A standout lot. Top 10% 200 & 600 Day Wt, Top 15% EMA Top 20% 400 Day Wt.

INDEX VALUES

SSR	\$145
NSR	\$126
SBM	\$144
NBT	\$104

- DAYS ROBIN HOOD H38 (AI) (ET) (PP)
- RAVENSDALE WILDFIRE L133 (ET) (PP)
- MERAWAH IRISH ROSE B1 (AI) (P)
- INJEMIRA WILDFIRE P042 (PP)
- DAYS WIZARD F84 (P)
- INJEMIRA BEGONIA J064 (P)
- INJEMIRA BEGONIA B061 (AI) (H#)
- VALMA ODYSSEY (PP)
- INJEMIRA ODYSSEY H044 (AI) (S)
- INJEMIRA HAPPY DAY D053 (AI) (ET) (P)
- JARRAH FIRST DAY N014 (P)
- JARRAH GIANNI G001 (P)
- JARRAH FIRST DAY J123 (P)
- JARRAH FIRST DAY E529 (H)

JUNE 2022 HEREFORD BREEDPLAN

EBV	BW	200 Wt	400 Wt	600 Wt	M C	Milk	SS	DTC	C Wt	EMA	Rib	Rump	RBV	IMF
+6.6	+42	+66	+99	+79	+21	+0.8	-0.6	+67	+5.2	+1.0	+1.7	+1.1	+0.9	
ACC%	63%	63%	63%	64%	56%	49%	73%	31%	54%	46%	52%	56%	48%	52%

LOT 27 JARRAH TECHNO S047 (S)

DOB 16/5/2021 AGE 15.5 months EYE PIGMENT 100/100

A bull that will be sure to add that extra growth and power to an operation. He has plenty of length, depth and bone. S047 has the early maturity pattern we aim to produce whilst still having high growth to ensure progeny meet a range of markets. His dam L130 is a sister to Injemira's leading female, D053, ensuring that there is plenty of breeding behind this bull. A top end commercial bull. Top 10% 200, 400 & 600 Day Wt, EMA, Top 15% SS.

INDEX VALUES

SSR	\$139
NSR	\$121
SBM	\$138
NBT	\$105

- KOANUI UNANIMOUS 0408 (P)
- KOANUI TECHNO 3062 (IMP NZL) (PP)
- KOANUI BLUSH 6455 (P)
- INJEMIRA TECHNO N226 (AI) (PP)
- ALLENDALE ANZAC E114 (PP)
- INJEMIRA VENUS AI J159 (AI) (P)
- INJEMIRA VENUS D113 (P)
- KAIRURU ABERDEEN 03 0047 (IMP NZL) (P)
- INJEMIRA ABERDEEN B012 ET (AI) (ET) (P)
- INJEMIRA PATTIE X007 (AI) (H)
- JARRAH HAPPY DAY L130 (AI) (ET) (H#)
- INJEMIRA ADVANCE V093 (H)
- INJEMIRA HAPPY DAY Y012 (H)
- INJEMIRA HAPPY DAY U673 (H)

JUNE 2022 HEREFORD BREEDPLAN

EBV	BW	200 Wt	400 Wt	600 Wt	M C	Milk	SS	DTC	C Wt	EMA	Rib	Rump	RBV	IMF
+6.6	+43	+70	+101	+96	+22	+3.1	-1.7	+67	+5.7	+0.1	0.0	+2.1	+0.3	
ACC%	67%	66%	65%	65%	58%	53%	75%	37%	57%	49%	54%	58%	50%	55%

LOT 28 JARRAH TECHNO S051 (S)

DOB 17/5/2021 AGE 15.5 months EYE PIGMENT 100/100

It's hard to not start off by talking about S051's mother! A female that is breeding well above herself, producing last years Lot 1 bull that was our 3rd highest seller and whose daughter produced this year's Lot 5 bull. Then we have this standout commercial sire in his own right, now that's consistency! S051 has the neck extension and smoothness through the front end we like to see in these powerful bulls. A very square bull with tremendous carcass, oozing that quality we have come to expect from the N226 progeny.

BUYER \$

JUNE 2022 HEREFORD BREEDPLAN

EBV	BW	200 Wt	400 Wt	600 Wt	MC	Milk	SS	DTC	C Wt	EMA	Rib	Rump	RBV	IMF
+6.7	+37	+59	+85	+81	+22	+2.0	-1.4	+51	+4.1	+1.0	+1.3	+0.2	+0.8	
ACC%	66%	65%	65%	65%	57%	54%	75%	35%	56%	47%	52%	56%	48%	53%

INDEX VALUES

SSR	\$95
NSR	\$73
SBM	\$89
NBT	\$67

- KOANUI UNANIMOUS 0408 (P)
- KOANUI TECHNO 3062 (IMP NZL) (PP)
- KOANUI BLUSH 6455 (P)
- INJEMIRA TECHNO N226 (AI) (PP)
- ALLENDALE ANZAC E114 (PP)
- INJEMIRA VENUS AI J159 (AI) (P)
- INJEMIRA VENUS D113 (P)
- INJEMIRA ADVANCE V093 (H)
- INJEMIRA ADVANCE Y095 (H)
- INJEMIRA VENUS U492 (H)
- JARRAH QUEEN SHEBA J076 (AI) (P)
- JARRAH SUPER FREEK S501 (ET) (P)
- JARRAH QUEEN SHEBA Z058 (P)
- JARRAH QUEEN SHEBA V060 (H)

LOT 29 JARRAH TECHNO S063 (P)

DOB 22/5/2021 AGE 15.5 months EYE PIGMENT 100/100

Yet another growthy, rugged Techno N226 son. The consistency keeps coming with this N226 sons. A bull that will be sure to pass on growth to his progeny and have the capacity to perform. S063 has that sleek coat we aim to produce to better handle the northern conditions. His dam line would be hard to beat, ensuring this bull will breed on. A strong commercial bull. Top 5% 400 & 600 Day Wt, SS, Top 10% 200 Day Wt.

BUYER \$

JUNE 2022 HEREFORD BREEDPLAN

EBV	BW	200 Wt	400 Wt	600 Wt	MC	Milk	SS	DTC	C Wt	EMA	Rib	Rump	RBV	IMF
+8.9	+42	+74	+104	+111	+18	+3.6	-2.0	+57	+2.5	-0.6	-1.6	+1.3	+0.4	
ACC%	66%	66%	66%	66%	58%	56%	76%	36%	57%	48%	54%	58%	49%	55%

INDEX VALUES

SSR	\$124
NSR	\$96
SBM	\$120
NBT	\$93

- KOANUI UNANIMOUS 0408 (P)
- KOANUI TECHNO 3062 (IMP NZL) (PP)
- KOANUI BLUSH 6455 (P)
- INJEMIRA TECHNO N226 (AI) (PP)
- ALLENDALE ANZAC E114 (PP)
- INJEMIRA VENUS AI J159 (AI) (P)
- INJEMIRA VENUS D113 (P)
- INJEMIRA HUSTLER Z108 (AI) (ET) (P)
- INJEMIRA HUSTLER C021 (AI) (H#)
- EULAMEET FLOSSIE Y062 (H)
- JARRAH FIRST DAY G066 (H#)
- INJEMIRA POMPEII Z033 ET (AI) (ET) (H)
- JARRAH FIRST DAY C100 (H)
- INJEMIRA FIRST DAY Z095 (AI) (H)

LOT 30 JARRAH TECHNO S020 (S)

DOB 10/5/2021 AGE 16 months EYE PIGMENT 60/90

Hands down the best coated bull in the sale but it's his quality carcass combined with plenty of softness that pulls S020 to the top end of this run of bulls. His dam G012 is a very influential cow whose daughters are leaving a legacy in our herd. S020 would ideally be suited to a cross breeding program to add that extra punch to his progeny whilst still have plenty of softness. A top end commercial bull. Top 5% SS, Top 10% IMF, Top 15% 600 Day Wt, Top 20% 200 & 400 Day Wt.

BUYER \$

JUNE 2022 HEREFORD BREEDPLAN

EBV	BW	200 Wt	400 Wt	600 Wt	MC	Milk	SS	DTC	C Wt	EMA	Rib	Rump	RBV	IMF
+7.0	+39	+66	+97	+79	+27	+4.0	-3.9	+57	+4.2	+1.6	+1.6	+0.5	+1.4	
ACC%	65%	65%	65%	65%	58%	55%	75%	36%	56%	48%	53%	57%	49%	54%

INDEX VALUES

SSR	\$143
NSR	\$117
SBM	\$131
NBT	\$93

- KOANUI UNANIMOUS 0408 (P)
- KOANUI TECHNO 3062 (IMP NZL) (PP)
- KOANUI BLUSH 6455 (P)
- INJEMIRA TECHNO N226 (AI) (PP)
- ALLENDALE ANZAC E114 (PP)
- INJEMIRA VENUS AI J159 (AI) (P)
- INJEMIRA VENUS D113 (P)
- DR ACHIEVER 8403 (IMP USA) (H)
- INJEMIRA ACHIEVER B007 ET (AI) (ET) (H)
- INJEMIRA HAPPY DAY Y012 (H)
- JARRAH CHERRY RIPE G012 (H)
- INJEMIRA GRAND NATIONAL X336 (H)
- JARRAH CHERRY RIPE B061 (H)
- JARRAH CHERRY RIPE X037 (H)

LOT 31 JARRAH FORTUNE S011 (PP) HB

DOB 8/5/2021 AGE 16 months EYE PIGMENT 100/100

Stud Sire potential. The Fortunes just keep coming! We have seen what this combination of Fortune over Anzac can produce right throughout the draft, and this lot could be one of the strongest. S011 is PP with an extremely strong head who oozes style with his length, depth, and bit of extra softness. He has the curve bending data that offers versatility of a heifer bull as well as over cows. His dam is proving to be an elite female. A bull that comes with our highest recommendation. Top 5% CED, Top 15% 400 Day Wt, SS, EMA, Top 20% 200 & 600 Day Wt, IMF.

BUYER \$

JUNE 2022 HEREFORD BREEDPLAN

EBV	BW	200 Wt	400 Wt	600 Wt	MC	Milk	SS	DTC	C Wt	EMA	Rib	Rump	RBV	IMF
+3.2	+38	+68	+93	+63	+24	+2.9	-2.1	+66	+5.2	+1.3	+1.0	+1.0	+1.1	
ACC%	68%	67%	67%	67%	60%	52%	76%	34%	58%	50%	55%	60%	52%	56%

INDEX VALUES

SSR	\$184
NSR	\$168
SBM	\$213
NBT	\$161

- EFBEEF FOREMOST U208 (IMP USA) (PP)
- EFBEEF U208 FORTUNE Y848 (IMP USA) (P)
- EFBEEF 9802 STELLA S657 (P)
- INJEMIRA FORTUNE M152 AI ET (AI) (ET) (PP)
- DAYS WIZARD F84 (P)
- INJEMIRA HAPPY DAY J042 (P)
- INJEMIRA HAPPY DAY D053 (AI) (ET) (P)
- ALLENDALE ANZAC E114 (PP)
- INJEMIRA ANZAC L170 (AI) (ET) (PP)
- INJEMIRA HAPPY DAY D053 (AI) (ET) (P)
- JARRAH BEGONIA P047 (P)
- INJEMIRA ANZAC H006 (PP)
- JARRAH BEGONIA L064 (P)
- JARRAH BEGONIA D062 (H)

BREED AVERAGE FOR 2020 BORN CALVES

EBV	BW	200 Wt	400 Wt	600 Wt	MC	Milk	SS	DTC	C Wt	EMA	Rib	Rump	RBV	IMF
+4.1	+33	+55	+77	+66	+17	+2.1	-3.0	+51	+3.8	+0.8	+1	+0.8	+0.6	

LOT 32 JARRAH WILDFIRE S080 (P) HB

DOB 4/6/2021 AGE 15 months EYE PIGMENT 100/100

This bull has the 3 P's. Pedigree, performance and phenotype. Another very strong Wildfire son who has the maternal power behind him. S080 could easily stand at the front of these yearling bulls on quality with his carcass, strong head and length. He certainly has the commercial attributes to give any herd a step in the right direction. S080 has the versatility to be used over heifers whilst still being above average for growth. A quality commercial sire. Top 15% EMA, Top 20% GL, IMF.

INDEX VALUES

SSR	\$133
NSR	\$122
SBM	\$130
NBT	\$96

- DAYS ROBIN HOOD H38 (AI) (ET) (PP)
- RAVENSDALE WILDFIRE L133 (ET) (PP)
- MERAWAH IRISH ROSE B1 (AI) (P)
- INJEMIRA WILDFIRE P042 (PP)
- DAYS WIZARD F84 (P)
- INJEMIRA BEGONIA J064 (P)
- INJEMIRA BEGONIA B061 (AI) (H#)
- ALLENDALE ANZAC E114 (PP)
- INJEMIRA ANZAC H006 (PP)
- INJEMIRA MARINDA B028 (AI) (P)
- JARRAH CORA L068 (P)
- INJEMIRA ACHIEVER B007 ET (AI) (ET) (H)
- JARRAH CORA F564 (H)
- JARRAH CORA C031 (H)

BUYER \$

JUNE 2022 HEREFORD BREEDPLAN

EBV	BW	200 Wt	400 Wt	600 Wt	M C	Milk	SS	DTC	C Wt	EMA	Rib	Rump	RBV	IMF
+3.2	+34	+55	+80	+61	+23	+2.5	-2.5	+57	+5.4	+1.3	+2.2	+0.9	+1.1	53%
ACC%	64%	63%	64%	65%	57%	50%	73%	32%	55%	47%	53%	57%	49%	53%

LOT 33 JARRAH FORTUNE S053 (PP) HB

DOB 17/5/2021 AGE 15.5 months EYE PIGMENT 100/100

Curve bending birthweight and growth data, combined with calving ease and stamped with impressive carcass data makes this PP bull one to be sure to inspect. You could throw a blanket over these Fortunes and be happy to use any. This fella separates himself with the bit of extra growth and length he displays with softness. A bull that suits those aiming for the weaner or feedlot market. A bull that offers versatility. Top 5% CED, Top 15% 200 Day Wt, EMA, Top 20% 400 Day Wt.

INDEX VALUES

SSR	\$181
NSR	\$173
SBM	\$208
NBT	\$156

- EFBEEF FOREMOST U208 (IMP USA) (PP)
- EFBEEF U208 FORTUNE Y848 (IMP USA) (P)
- EFBEEF 9802 STELLA S657 (P)
- INJEMIRA FORTUNE M152 AI ET (AI) (ET) (PP)
- DAYS WIZARD F84 (P)
- INJEMIRA HAPPY DAY J042 (P)
- INJEMIRA HAPPY DAY D053 (AI) (ET) (P)
- ALLENDALE ANZAC E114 (PP)
- INJEMIRA ANZAC H006 (PP)
- INJEMIRA MARINDA B028 (AI) (P)
- JARRAH CARISSIMA P254 (P)
- INJEMIRA GRAND NATIONAL X336 (H)
- JARRAH CARISSIMA D565 (P)
- JARRAH CARISSIMA A044 (P)

BUYER \$

JUNE 2022 HEREFORD BREEDPLAN

EBV	BW	200 Wt	400 Wt	600 Wt	M C	Milk	SS	DTC	C Wt	EMA	Rib	Rump	RBV	IMF
+2.3	+40	+66	+88	+58	+21	+1.2	-1.9	+70	+5.5	+1.8	+1.9	+1.1	+0.8	55%
ACC%	67%	67%	67%	67%	59%	52%	76%	34%	58%	50%	54%	58%	50%	55%

LOT 34 JARRAH TECHNO S016 (PP)

DOB 9/5/2021 AGE 16 months EYE PIGMENT 100/100

A quality Techno N226 son with plenty of thickness and depth, with that bone that we have come to appreciate from the Techno bloodline. S016 has a moderate birth weight followed on by solid growth numbers. We see the level of consistency in this draft continue with the influence of another Anzac female. A solid bull.

INDEX VALUES

SSR	\$106
NSR	\$83
SBM	\$98
NBT	\$76

- KOANUI UNANIMOUS 0408 (P)
- KOANUI TECHNO 3062 (IMP NZL) (PP)
- KOANUI BLUSH 6455 (P)
- INJEMIRA TECHNO N226 (AI) (PP)
- ALLENDALE ANZAC E114 (PP)
- INJEMIRA VENUS AI J159 (AI) (P)
- INJEMIRA VENUS D113 (P)
- ALLENDALE ANZAC E114 (PP)
- INJEMIRA ANZAC H006 (PP)
- INJEMIRA MARINDA B028 (AI) (P)
- JARRAH QUEENS SHEBA M025 (P)
- PINE HILL ERIK Y601 (AI) (S)
- JARRAH QUEEN SHEBA H079 (AI) (P)
- JARRAH QUEEN SHEBA E009 (H)

BUYER \$

JUNE 2022 HEREFORD BREEDPLAN

EBV	BW	200 Wt	400 Wt	600 Wt	M C	Milk	SS	DTC	C Wt	EMA	Rib	Rump	RBV	IMF
+4.9	+38	+61	+86	+86	+25	+3.0	-3.1	+52	+2.7	-0.2	-0.6	+1.2	+0.4	56%
ACC%	67%	66%	66%	67%	60%	53%	75%	38%	58%	49%	55%	59%	51%	56%

LOT 35 JARRAH FORTUNE S038 (PP) HB

DOB 12/5/2021 AGE 16 months EYE PIGMENT 100/100

A sleek coated Fortune son with the genetic power of the Anzac female line. A moderate bull with plenty of softness, spring of rib and style. A bull more suited to those chasing the weaner and feedlot market and wanting to add some extra carcass. A strong sale lot. Top 5% CED, Top 15% 200 & 400 Day Wt, Top 20% 600 Day Wt, SS.

INDEX VALUES

SSR	\$170
NSR	\$158
SBM	\$198
NBT	\$153

- EFBEEF FOREMOST U208 (IMP USA) (PP)
- EFBEEF U208 FORTUNE Y848 (IMP USA) (P)
- EFBEEF 9802 STELLA S657 (P)
- INJEMIRA FORTUNE M152 AI ET (AI) (ET) (PP)
- DAYS WIZARD F84 (P)
- INJEMIRA HAPPY DAY J042 (P)
- INJEMIRA HAPPY DAY D053 (AI) (ET) (P)
- ALLENDALE ANZAC E114 (PP)
- INJEMIRA ANZAC H006 (PP)
- INJEMIRA MARINDA B028 (AI) (P)
- JARRAH QUEEN SHEBA P053 (P)
- INJEMIRA ODYSSEY H044 (AI) (S)
- JARRAH QUEEN SHEBA L073 (P)
- JARRAH QUEEN SHEBA C602 (P)

BUYER \$

JUNE 2022 HEREFORD BREEDPLAN

EBV	BW	200 Wt	400 Wt	600 Wt	M C	Milk	SS	DTC	C Wt	EMA	Rib	Rump	RBV	IMF
+4.0	+41	+67	+92	+79	+21	+2.8	-3.2	+65	+3.9	+1.1	+0.9	+1.2	+0.3	57%
ACC%	69%	68%	68%	68%	61%	54%	76%	35%	59%	51%	56%	61%	53%	57%

LOT 36 JARRAH FORTUNE S025 (s) HB

DOB 10/5/2021 AGE 16 months EYE PIGMENT 95/100

A Fortune with the low birthweight, solid growth, high calving ease and exceptional carcass data we now expect. A moderate bull that displays squareness and butt shape with plenty of softness. A heifers first calf makes this lot even more impressive. A lot with the versatility of being a heifer bull that doesn't compromise on growth. Top 5% CED, EMA, Top 10% IMF, GL, Top 20% BW.

INDEX VALUES

SSR	\$186
NSR	\$178
SBM	\$214
NBT	\$161

- EFBEEF FOREMOST U208 (IMP USA) (PP)
- EFBEEF U208 FORTUNE Y848 (IMP USA) (P)
- EFBEEF 9802 STELLA S657 (P)
- INJEMIRA FORTUNE M152 AI ET (AI) (ET) (PP)
- DAYS WIZARD F84 (P)
- INJEMIRA HAPPY DAY J042 (P)
- INJEMIRA HAPPY DAY D053 (AI) (ET) (P)
- ALLENDALE ANZAC E114 (PP)
- INJEMIRA ANZAC L170 (AI) (ET) (PP)
- INJEMIRA HAPPY DAY D053 (AI) (ET) (P)
- JARRAH QUEEN SHEBA P255 (P)
- INJEMIRA ODYSSEY H044 (AI) (S)
- JARRAH QUEEN SHEBA K027 (P)
- JARRAH QUEEN SHEBA E024 (P)

BUYER \$

JUNE 2022 HEREFORD BREEDPLAN

EBV	BW	200 Wt	400 Wt	600 Wt	M C	Milk	SS	DTC	C Wt	EMA	Rib	Rump	RBV	IMF
ACC%	+1.8	+37	+64	+87	+55	+23	+2.3	-2.3	+73	+6.3	+2.3	+2.9	+0.6	+1.6
	70%	70%	70%	70%	62%	54%	77%	35%	60%	51%	57%	61%	53%	58%

LOT 37 JARRAH TECHNO S084 (PP)

DOB 7/6/2021 AGE 15 months EYE PIGMENT 100/100

A stylish PP lot who is a moderate Techno with plenty of beef in the right places. S084 will be sure to catch your eye with his strong head, sleek coat and sire appeal. He has that bit of extra thickness and carcass that will ensure his progeny have weight for age as weaners and will make ideal feeder cattle. His dam N062 is rising to the top of the herd with what she is producing and is one of our oldest poll lines. A strong commercial sire that we think highly of. Top 20% EMA.

INDEX VALUES

SSR	\$113
NSR	\$98
SBM	\$101
NBT	\$74

- KOANUI UNANIMOUS 0408 (P)
- KOANUI TECHNO 3062 (IMP NZL) (PP)
- KOANUI BLUSH 6455 (P)
- INJEMIRA TECHNO N226 (AI) (PP)
- ALLENDALE ANZAC E114 (PP)
- INJEMIRA VENUS AI J159 (AI) (P)
- INJEMIRA VENUS D113 (P)
- VALMA ODYSSEY (PP)
- INJEMIRA ODYSSEY H044 (AI) (S)
- INJEMIRA HAPPY DAY D053 (AI) (ET) (P)
- JARRAH SYMPHONY N062 (P)
- INJEMIRA HUSTLER C021 (AI) (H#)
- JARRAH SYMPHONY G069 (P)
- JARRAH SYMPHONY V902 (P)

BUYER \$

JUNE 2022 HEREFORD BREEDPLAN

EBV	BW	200 Wt	400 Wt	600 Wt	M C	Milk	SS	DTC	C Wt	EMA	Rib	Rump	RBV	IMF
ACC%	+4.8	+34	+56	+78	+71	+20	+3.2	-2.7	+54	+5.1	+0.3	0.0	+1.8	+0.7
	65%	65%	65%	65%	57%	51%	74%	35%	56%	47%	52%	56%	48%	54%

LOT 38 JARRAH WILDFIRE S056 (PP)

DOB 19/5/2021 AGE 15.5 months EYE PIGMENT 100/100

S056's maternal brother was our top priced yearling bull in 2021 selling for \$19,000. And this bull certainly has many of the same characteristics with his strong carcass, thickness and strong head with hooded eyes. His dam is 'breeding the house down' and we look forward to her future. Another Wildfire son who is a neat package and would offer advancement in any purebred or crossbreeding operation. A front paddock bull. Top 15% EMA.

INDEX VALUES

SSR	\$147
NSR	\$136
SBM	\$139
NBT	\$100

- DAYS ROBIN HOOD H38 (AI) (ET) (PP)
- RAVENSDALE WILDFIRE L133 (ET) (PP)
- MERAWAH IRISH ROSE B1 (AI) (P)
- INJEMIRA WILDFIRE P042 (PP)
- DAYS WIZARD F84 (P)
- INJEMIRA BEGONIA J064 (P)
- INJEMIRA BEGONIA B061 (AI) (H#)
- ALLENDALE ANZAC E114 (PP)
- INJEMIRA ANZAC H006 (PP)
- INJEMIRA MARINDA B028 (AI) (P)
- JARRAH CHERRY RIPE N157 (P)
- HH ADVANCE 1098Y (IMP USA) (H)
- JARRAH CHERRY RIPE K018 (AI) (H)
- JARRAH CHERRY RIPE F560 (H)

BUYER \$

JUNE 2022 HEREFORD BREEDPLAN

EBV	BW	200 Wt	400 Wt	600 Wt	M C	Milk	SS	DTC	C Wt	EMA	Rib	Rump	RBV	IMF
ACC%	+5.1	+36	+61	+89	+74	+20	+2.6	-3.5	+59	+5.5	+1.6	+2.6	+1.3	+0.4
	65%	65%	65%	66%	59%	52%	74%	33%	57%	48%	55%	59%	51%	55%

LOT 39 JARRAH WILDFIRE S076 (PP) HB

DOB 31/5/2021 AGE 15 months EYE PIGMENT 100/100

Another moderate Wildfire son with plenty of thickness and softness. He has the favorable trait of being PP, meaning he is a genetic dehorned. An early maturing bull that has plenty of thickness and carcass. Another bull that would be well suited to join to heifers whilst still adding carcass. Top 10% EMA, Top 15% IMF.

INDEX VALUES

SSR	\$109
NSR	\$102
SBM	\$107
NBT	\$81

- DAYS ROBIN HOOD H38 (AI) (ET) (PP)
- RAVENSDALE WILDFIRE L133 (ET) (PP)
- MERAWAH IRISH ROSE B1 (AI) (P)
- INJEMIRA WILDFIRE P042 (PP)
- DAYS WIZARD F84 (P)
- INJEMIRA BEGONIA J064 (P)
- INJEMIRA BEGONIA B061 (AI) (H#)
- VALMA ODYSSEY (PP)
- INJEMIRA ODYSSEY H044 (AI) (S)
- INJEMIRA HAPPY DAY D053 (AI) (ET) (P)
- JARRAH BRITISHER L070 (P)
- INJEMIRA POMPEII Z033 ET (AI) (ET) (H)
- JARRAH BRITISHER C597 (H)
- JARRAH BRITISHER Y068 (H)

BUYER \$

JUNE 2022 HEREFORD BREEDPLAN

EBV	BW	200 Wt	400 Wt	600 Wt	M C	Milk	SS	DTC	C Wt	EMA	Rib	Rump	RBV	IMF
ACC%	+2.8	+29	+48	+70	+59	+18	+1.8	-1.1	+54	+6.1	+1.4	+2.4	+0.7	+1.3
	63%	63%	64%	65%	57%	51%	73%	31%	55%	47%	53%	57%	49%	53%

BREED AVERAGE FOR 2020 BORN CALVES

EBV	BW	200 Wt	400 Wt	600 Wt	MC	Milk	SS	DTC	C Wt	EMA	Rib	Rump	RBV	IMF
	+4.1	+33	+55	+77	+66	+17	+2.1	-3.0	+51	+3.8	+0.8	+1	+0.8	+0.6

LOT 40 JARRAH WILDFIRE S012 (S) HB

DOB 9/5/2021 AGE 16 months EYE PIGMENT 100/100

The real strength of this bull is his dam, H050. She produces quality after quality no matter who you join her to. Last year she produced out 2nd top priced bull in the sale, and who has a daughter in the herd that will be a donor in the future. S012 is recommended for heifers with his low birthweight and short gestation length but has the carcass and fats to produce quality offspring. A safe investment.

INDEX VALUES

SSR	\$117
NSR	\$107
SBM	\$108
NBT	\$75

- DAYS ROBIN HOOD H38 (AI) (ET) (PP)
- RAVENSDALE WILDFIRE L133 (ET) (PP)
- MERAWAH IRISH ROSE B1 (AI) (P)
- INJEMIRA WILDFIRE P042 (PP)
- DAYS WIZARD F84 (P)
- INJEMIRA BEGONIA J064 (P)
- INJEMIRA BEGONIA B061 (AI) (H#)
- DR ACHIEVER 8403 (IMP USA) (H)
- INJEMIRA ACHIEVER B007 ET (AI) (ET) (H)
- INJEMIRA HAPPY DAY Y012 (H)
- JARRAH SPRUCE H050 (H)
- JARRAH TOP DECK T114 (H)
- JARRAH SPRUCE X008 (H)
- JARRAH SPRUCE T171 (H)

BUYER \$

JUNE 2022 HEREFORD BREEDPLAN

EBV	BW	200 Wt	400 Wt	600 Wt	MC	Milk	SS	DTC	C Wt	EMA	Rib	Rump	RBV	IMF
+3.8	+28	+47	+68	+50	+14	+2.0	-3.0	+45	+4.4	+1.8	+2.6	+0.2	+0.9	
ACC%	64%	64%	64%	65%	57%	53%	74%	32%	55%	47%	53%	57%	49%	53%

LOT 41 JARRAH FORTUNE S059 (P) HB

DOB 20/5/2021 AGE 15.5 months EYE PIGMENT 100/100

S059 is extremely thick bull with spring of rib, very square over the rump and displays prominent jump muscles. He goes back to one of the Courallie females we purchased at their dispersal, and she is arguably the best performing heifer we bought. S059 is moderate with thickness and would be a safe purchase for those looking for heifer bulls with above average growth and strong carcass. Top 1% CED, EMA, Top 5% IMF, Top 15% 600 Day Wt, Top 20% 200 Day Wt.

INDEX VALUES

SSR	\$201
NSR	\$191
SBM	\$232
NBT	\$175

- EFBEEF FOREMOST U208 (IMP USA) (PP)
- EFBEEF U208 FORTUNE Y848 (IMP USA) (P)
- EFBEEF 9802 STELLA S657 (P)
- INJEMIRA FORTUNE M152 AI ET (AI) (ET) (PP)
- DAYS WIZARD F84 (P)
- INJEMIRA HAPPY DAY J042 (P)
- INJEMIRA HAPPY DAY D053 (AI) (ET) (P)
- ALLENDALE ANZAC E114 (PP)
- INJEMIRA ANZAC L170 (AI) (ET) (PP)
- INJEMIRA HAPPY DAY D053 (AI) (ET) (P)
- JARRAH CHOICE P250 (P)
- DAYS CALIBRE G74 (PP)
- COURALLIE CHOICE L577 (AI) (P)
- COURALLIE Y207 CHOICE C010 (AI) (H)

BUYER \$

JUNE 2022 HEREFORD BREEDPLAN

EBV	BW	200 Wt	400 Wt	600 Wt	MC	Milk	SS	DTC	C Wt	EMA	Rib	Rump	RBV	IMF
+3.1	+39	+63	+89	+49	+27	+2.2	-2.4	+69	+7.8	+2.5	+3.0	+1.1	+2.2	
ACC%	70%	69%	69%	70%	62%	54%	77%	36%	60%	51%	57%	61%	53%	58%

LOT 42 JARRAH TECHNO S055 (S)

DOB 18/5/2021 AGE 15.5 months EYE PIGMENT 100/100

The depth of breeding in any program can be seen in the level of consistency in the sale line up. This year we pride ourselves on the level of bulls right through to the end. Our second last lot and still has many of the traits seen earlier in the sale with growth, thickness and strong carcass characteristics. Out of a very strong females, again with the influence of Anzac. S055 still has a lot of growing in front of him. A top-quality commercial sire. Top 5% 200 Day Wt, Top 10% 400 Day Wt, Top 15% 600 Day Wt, EMA.

INDEX VALUES

SSR	\$120
NSR	\$104
SBM	\$115
NBT	\$90

- KOANUI UNANIMOUS 0408 (P)
- KOANUI TECHNO 3062 (IMP NZL) (PP)
- KOANUI BLUSH 6455 (P)
- INJEMIRA TECHNO N226 (AI) (PP)
- ALLENDALE ANZAC E114 (PP)
- INJEMIRA VENUS AI J159 (AI) (P)
- INJEMIRA VENUS D113 (P)
- ALLENDALE ANZAC E114 (PP)
- INJEMIRA ANZAC H006 (PP)
- INJEMIRA MARINDA B028 (AI) (P)
- JARRAH FIRST DAY N152 (P)
- INJEMIRA POMPEII Z033 ET (AI) (ET) (H)
- JARRAH FIRST DAY E510 (H)
- JARRAH FIRST DAY Y055 (H)

BUYER \$

JUNE 2022 HEREFORD BREEDPLAN

EBV	BW	200 Wt	400 Wt	600 Wt	MC	Milk	SS	DTC	C Wt	EMA	Rib	Rump	RBV	IMF
+6.3	+44	+71	+96	+97	+26	+1.9	-2.9	+65	+5.2	+0.9	+1.2	+1.3	+0.2	
ACC%	66%	66%	66%	67%	60%	53%	75%	37%	58%	48%	55%	59%	50%	56%

LOT 43 JARRAH TECHNO S049 (PP)

DOB 16/5/2021 AGE 15.5 months EYE PIGMENT 100/100

A cracking Techno N226 son to finish off the run of Hereford sale bulls. We always like to finish with a standout commercial sire. This young PP bull has ample potential and breeding ability with his strong growth and carcass. S049 displays strong spring of rib with plenty of thickness. A bull with that good sires head that will be sure to catch your eye. A top-quality commercial sire to conclude the Hereford draft for 2022. Top 10% 400 Day Wt, EMA, Top 20% 200 Day Wt.

INDEX VALUES

SSR	\$139
NSR	\$126
SBM	\$121
NBT	\$88

- KOANUI UNANIMOUS 0408 (P)
- KOANUI TECHNO 3062 (IMP NZL) (PP)
- KOANUI BLUSH 6455 (P)
- INJEMIRA TECHNO N226 (AI) (PP)
- ALLENDALE ANZAC E114 (PP)
- INJEMIRA VENUS AI J159 (AI) (P)
- INJEMIRA VENUS D113 (P)
- ALLENDALE ANZAC E114 (PP)
- INJEMIRA ANZAC H006 (PP)
- INJEMIRA MARINDA B028 (AI) (P)
- JARRAH FIRST DAY N181 (P)
- INJEMIRA ODYSSEY H044 (AI) (S)
- JARRAH FIRST DAY K028 (P)
- JARRAH FIRST DAY G066 (H#)

BUYER \$

JUNE 2022 HEREFORD BREEDPLAN

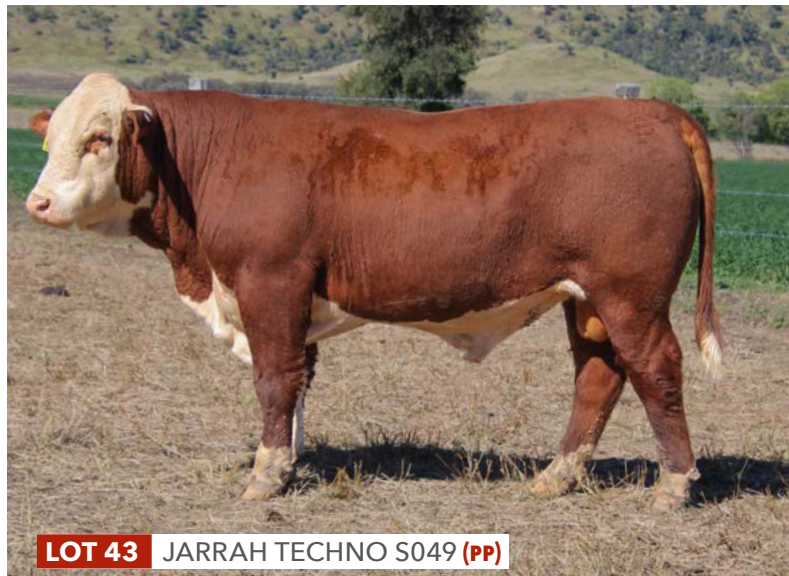
EBV	BW	200 Wt	400 Wt	600 Wt	MC	Milk	SS	DTC	C Wt	EMA	Rib	Rump	RBV	IMF
+5.0	+39	+69	+90	+80	+20	+4.5	-3.9	+65	+5.8	+0.4	+0.4	+1.9	+0.9	
ACC%	66%	66%	66%	66%	59%	52%	75%	37%	57%	49%	55%	58%	50%	56%

BREED AVERAGE FOR 2020 BORN CALVES

EBV	BW	200 Wt	400 Wt	600 Wt	MC	Milk	SS	DTC	C Wt	EMA	Rib	Rump	RBV	IMF
+4.1	+33	+55	+77	+66	+17	+2.1	-3.0	+51	+3.8	+0.8	+1	+0.8	+0.6	



LOT 37 JARRAH TECHNO S084 (PP)



LOT 43 JARRAH TECHNO S049 (PP)



FMSTUDIOS
FENECH MULTIMEDIA STUDIOS

Our core service is **design**, our
key resource is **creativity**

fmstudios.com.au

BRANDING | LOGOS | PRINT DESIGN | SOCIAL
WEBSITE DESIGN | CMS & SEO INTEGRATION

WILLIAMS STOCKFEEDS *and* **WESTGULF STOCKFEEDS**

Your Partners in Nutrition



**WE OFFER A WIDE RANGE OF
PREMIUM QUALITY STOCK FEEDS**

Custom Feed Programs | Molasses Supplements | Custom Grain Rations | Feedlot Feed

Weaner Pellets | Dairy Feed | Equine Feed | Poultry, Lamb & Hog Feed

WILLIAMS STOCKFEEDS

(07) 4992 6777

admin@williamsstockfeeds.com.au



WESTGULF STOCKFEEDS

0407 188 352

admin@westgulf.com.au

GET IN TOUCH



Backed by
generations
of rural
experience

beckerco.com.au

Becker
& Co (QLD)

Chartered Accountants
Trusted Rural Business Advisors



GET
TWICE AS TOUGH

ON WORMS

DECTOMAX



LEVAMISOLE

NEW

DECTOMAX V[®]

doramectin and levamisole injection

AUSTRALIA'S FIRST DUAL ACTIVE INJECTABLE DRENCH FOR CATTLE

Dectomax V achieved
99.8% EFFICACY*



EFFECTIVELY KILLS:
ROUND WORMS



EFFECTIVELY CONTROLS:
CATTLE TICKS
FOR 30 DAYS



EFFECTIVELY CONTROLS:
SUCKING LICE
FOR UP TO 56 DAYS



AVAILABLE AT YOUR LOCAL
VET & RURAL RESELLER



*Overall mean efficacy (GM) of 99.8% across thirteen field studies. Zoetis data on file. Zoetis Australia Pty Ltd. ABN 94 156 476 425. Level 6, 5 Rider Boulevard Rhodes, NSW 2138. © 2021 Zoetis Inc. All rights reserved. 12/21 ZL1524



LivestockSolutions Information in your hands

zoetis | ZOETIS.COM.AU/LS

THE WHITEFACE INFLUENCE PUSHES NORTH

A story published by *The Queensland Country Life*

Herefords Australia's most northern bred Super Sire, Jarrah Fortune Q236 (PP) is set to make his mark for Clermont based beef producers, The Burnett Group. This follows a push from the breed towards the uptake of white-faced genetics in more northern production systems.

Q236 is a homozygous polled bull bred by the Becker family at Banana in Central Queensland. He was purchased by Doug and Amanda Burnett, Bendemeer, Clermont, for \$29,000 in September, 2021, at the annual Jarrah Genetics bull sale.

The Burnett Group has a large portfolio of beef cattle stations spread across CQ, with more than 15,000 breeders joined each year within a rotational crossbreeding program. Q236 is destined to join the Burnett's bull breeding program located at Bendemeer. This program culminates in the production of three lines of bulls and forms the genetic base for the larger Burnett Group.

The genetic base for the Burnett's herds has traditionally been Brahman and Braford breeds, but in more recent years, principal Doug Burnett, has begun to introduce Herefords into the mix. The Hereford and Brahman cross is a well suited, productive article that achieves the groups production goals, and simultaneously expands the genetic diversity for the operation.

Mr Burnett says that Herefords offer a number of traits that are essential to his family's operations, including polled genetics, carcass quality and temperament. Significantly, these traits are all backed up by data that has been measured and has high accuracy, which is in contrast to many other breeds that could be considered.

Mr Burnett saw the acquisition of Q236 (PP) as a great opportunity to obtain industry leading genetics with proven performance to enhance the overall efficiencies of the Burnett Group beef cattle operation. He said it was pivotal that Fortune was born and bred in Central Queensland tick country, meaning he was already adapted to survive in the harsher northern conditions in comparison to his southern bred counterparts within the Super Sire program.

BURNETTS PLAN FOR Q236

Mr Burnett's plan is to use Q236 over higher Brahman content, stud Braford cows at Bendemeer to produce replacement females as well as young bulls that will be offered for sale and use among the broader Burnett Group commercial breeding herds.

"Q236 has a tremendous phenotype, with great carcass attributes, and is a bull that I like more every time I see him. To be able to obtain these genetics, backed by the quality of the Hereford Group Breedplan, that has also been bred in our tropical climate, is not something that happens every day!" he said.

"When I saw his sire, the \$50,000 Injemira Fortune M152, in the paddock at Jarrah, I was very impressed by his tremendous width and scale while still maintaining a moderate overall size. Performance throughout a pedigree gives you a really good gauge on the bull's breeding consistency, and Q236 certainly offers that. We have some fairly large-framed cows, so I'm confident these genetics will combine well with our herd."

The bull breeding herd at Bendemeer has been performance recorded for over 40 years. In this time Mr Burnett has noticed a considerable lift in the commercial performance throughout the operation, with gains in fertility, calving percentages and growth rates all apparent.

In line with these breeding philosophies Q236 is a bull that he believes will not only keep their calving ease and birthweights in check, but also add to the weight gains and carcass quality of the operation.

"Q236 will be pivotal in continuing to capitalise on these essential economic traits within our business. And he's homozygous polled as well, meaning we'll be able to maintain a lot of polled genetics in our herd."

THE OPPORTUNITY

What makes Q236 stand out from the other Super Sires in the program is the fact that he has been bred in CQ, tick country.

Breeder, Sam Becker of Jarrah Herefords said Q236 is flying the flag for Herefords Australia's vision to push the breed into 'Brahman breeder country'.

"This Super Sire has the phenotype to perform in our part of the world," Mr Becker said.

Mr Burnett said, in his experience, that for cross-breeding purposes, Herefords haven't been used extensively in the north due to the lack of individuals with tropical adaptation.

"Q236 changes this. He's now a new option to rapidly capitalise on massive hybrid vigour, without adding too much hair. Further to this, Q236's low birthweight, high calving ease and short gestation length have the ability to take the risk out of joining heifers. In my experience, this is another essential trait that's at the forefront of producers mind's in our part of the world.

"Combined with the benefits of improved carcass quality and market suitability for feeder cattle over Brahman-based herds, there's financial incentive for producers to consider this as a viable option for their operations moving forward."

He said Q236 also presents a fantastic opportunity for southern Hereford bull breeders to expand their market further north by using a tropically bred Hereford bull with breed-leading performance data.

"They can use Q236 to make their southern-bred Herefords more suited to northern producers and create a bigger customer base."

Herd bolstering homozygous polled semen is now available to purchase from the northernmost Hereford Super Sire, Jarrah Fortune Q236 (PP).

For this season only, commercial producers can access semen straws at a 50 per cent discount. In addition to this offer, any Queensland based breeders are also able to obtain semen at a further 50pc discount for a limited time.

Mr Burnett made this decision to incentivise people, so they may experience firsthand the opportunities Hereford genetics like these can offer their production systems.

"After sending him to the breeding centre immediately after the Jarrah sale, Q236 produced much more high quality semen than we could ever use ourselves so we've made the decision to make his genetics available to other producers until the excess supplies run out."

50%

DISCOUNT

FOR QLD BASED
PRODUCERS



burnett group

SEMEN
AVAILABLE NOW
FOR A LIMITED TIME

LIMITED SEMEN RELEASE



JARRAH FORTUNE Q236 (PP)

Jarrah Fortune Q236 (PP) offers the unique combination of curve bending, breed leading genetics wrapped up in a tropically bred and adapted phenotype.

Homozygous Polled with high growth, high calving ease and low birth weight, Q236 ticks all the boxes for commercial and stud breeders alike.

To benefit from the only Queensland Bred, Hereford Super Sire, *contact us today.*

Doug Burnett 0427 030 883
doug@burnettgroup.com.au

PRICE (EX GST)

Stud: \$50/straw

Commercial: \$25/straw

(10 straws minimum order)

RESULTS

HEREFORD BULLS

Offered	
Sold	
Clearance	
Top price \$	Purchaser
Average price \$	

JARRAH RED BULLS

Offered	
Sold	
Clearance	
Top price \$	Purchaser
Average price \$	

Glenarchy

11311 Leichhardt Highway
BANANA QLD 4702

Moura

jarrah
GENETICS

GLENARCHY

5 km from Banana heading towards Theodore on the Leichhardt Highway, Eastern side.

Look for the Jarrah Genetics, 'Glenarchy' red and white sign.



THANK YOU

On behalf of all the team at Jarrah we would like to thank all buyers and under bidders. We appreciate your support and wish you every success with the genetic package. We appreciate feedback and will follow up to see how the bulls have performed.

Sam Becker