



ROMA BULL SALE

1pm, Wednesday 14th September 2022

Roma Saleyards, QLD and via AuctionsPlus



Lot 4

80 Charolais Bulls on offer

WWW.GLENLEABEEF.COM.AU

WELCOME TO OUR ANNUAL ROMA BULL SALE



The combined Glenlea and Fairfield herds are offering 80 Charolais bulls in Roma this year and we are committed to a sale every year long term to support existing and new clients in the Roma and wider Maranoa.

Glenlea Beef Stud Charolais herd now in our 49th continuous year! Established in Tasmania in 1973 by my parents, their simple vision to produce more kg of beef from their cows and existing land base using Charolais genetics still drives our program today.

From modest beginnings Glenlea Charolais found innovative pathways to grow through good and tough times, including a major move from the apple isle in 2010 to Northern NSW and with plans to establish a base in North QLD planned for 2023. We are growing to become a major Charolais seedstock producer in Australia as Glenlea Beef with the goal to grow more and cement our position as a Charolais seedstock producer of influence.

We have been selling with Fairfield Charolais in recent years here Roma and last year we purchased the entire herd of Fairfield females from Lindsey and Belinda Hindle to add to our growing Charolais cow herd now numbering 1000 cows with the aim of growing to be Australia's Largest Charolais seedstock Business and supplying large numbers of bulls throughout QLD and NSW to our existing and new clients.

Our cow herd is located across a wide geographical area in sub-tropical coastal far north NSW, and inland at Coonabarabran south of Goondiwindi. We put pressure on our herd continuously to identify poor performance females through performance recording the whole herd and the tough coastal environment helps identify poor doers which are culled.

With bull sales this year in Winton, Roma and Clermont. Our focus is **QUEENSLAND** with our bull sales, now and into the future. Taking our bulls to our existing and new clients!

Our performance recording and genetic testing is a key part of our growth, and we are committed to providing full performance data, from collecting and submitting Raw data for analysis to BREEDPLAN.

Traits such as gestation length, birth weight, calving ease, live weights and carcass scans. As well as raw scan data sale day!

Our stud cattle are our primary business, we have sold off nearly all our commercial cattle to make way for increased number of Charolais females. Our goal of producing and selling bulls that add value to our client's bottom line, and the entire supply chain is what we strive to produce in everything we do with our cattle. Our after sales service we take very seriously and back our stock with 100% guarantee.

Glenlea bulls have a strong reputation in the Maranoa with strong repeat buying and the Fairfield cattle have had a great reputation for doability and performance for many years. Our growth in numbers continuously drive us to expand our client base and put more bulls in the paddock.

Our bulls are working in most areas of Qld with our growing client base in most districts including Blackall, St George Clermont, Emerald, Alpha, and further north to Charters Towers, Prairie and Julia Creek. Feedback has been very positive with repeat buying the benchmark, we attribute this easy adaptability to having generationally bred cattle with natural doing ability as our number 1 selection criteria, with performance recording and all the other selection and breeding tools we use being applied after that.

The bulls we have on offer in this sale include our top Winter and early Spring born two year old sire prospects. An outstanding draft of LVH Fairfield yearling bulls that we are sure will impress upon inspection. Joint prefix bulls are from our joint venture breeding programs and is one of our growth strategies now and in the future.

The draft includes 11 bulls, selected from the Calmview Stud, whom we have invited to offer bulls at all our sales this year, tough coastal bred bulls with same breeding philosophy as Glenlea.

Regards,
Roderick Binny





ROMA BULL SALE

1pm, Wednesday 14th September 2022

Sale to be held at Roma Saleyards, QLD and via AuctionsPlus

80 Charolais Bulls on offer

Red Factor & White | Many DNA Tested Homozygous Polled (PP)

INSPECTIONS

Bulls will be available for inspection from 12noon on Tuesday 13th September
All Bulls will be penned individually from 10am on Wednesday 14th September Saleyards.

VIDEOS

Videos of feature bulls are available to view at www.glenleabeef.com.au
They will also be on AuctionsPlus a week out from sale day.

CONTACTS



Keith Couch Blake Munro
0428 745 924 0428 862 469



Charlie Gleeson Brad Neven
0408 967 326 0427 626 386



AJ Riley Toby Coulthard
0429 227 441 0455 176 178



James Dockrill
0400 387 116



STUD PRINCIPAL,

Roderick Binny P: 0409 911 791
E: rbinny@australiangrassfedmeats.com



Top priced Glenlea yearling bull, \$12,500, at the 2020 Fairfield Roma Sale with Roderick Binny and purchaser Angus Mcgilvray, Womblebank Pastoral, Injune.
Photo courtesy of Queensland Country Life.

WWW.GLENLEABEEF.COM.AU

Conditions of Sale

INSPECTIONS: Bulls will be available for group inspection at Roma Saleyards from 12noon on Thursday 13th September and penned individually from 10am Sale Day Wednesday 14th September.

BULL HEALTH AND FERTILITY: All bulls have been vaccinated for 3 germ blood, 3 day, pesti virus, botulism and 7 in 1. Bulls have all been semen tested. Glenlea Beef is a JBAS 7 herd.

GUARANTEE: All bulls are guaranteed to be able to serve cows naturally at the time of sale and are guaranteed for 6 months from sale day. If a bull should prove infertile or unable to serve cows naturally, provided the inability not caused by injury or disease contracted after sale, the bull will be replaced with a bull of similar quality or credit given for another of our sales by discussion with purchaser. Less salvage value of the bull.

INSURANCE: We recommend you insure your new bulls. Elders can arrange this at fall of hammer sale day.

AGENT REBATE: A rebate of 2% to all licensed agents is available, introducing buyers 24 hours prior to sale and settling accounts within 7 days.

REFRESHMENTS: A complimentary lunch and drinks will be provided on sale day on behalf of Glenlea Beef, so even if you don't require a bull this year come along, inspect the bulls and enjoy lunch on us!

TRANSPORT: Delivery will be coordinated by Elders Roma.

PHONE BIDDING: Phone bidding is available by contacting the agents or vendor prior to sale to arrange for a dedicated agent to call you and assist you with your bidding.

ACCURACY OF CATALOGUE: Every effort is made to be as accurate as possible. However mistakes can happen in the construction of catalogue and printing, we will resolve any issues at best as possible but make no warranty.

CHAROLAIS BREEDPLAN: We no longer print detailed explanations of BREEDPLAN in our catalogues. All information explaining BREEDPLAN and how to use it to help with your selections is available at the click of your mouse. Of particular relevance is that Charolais EBV's can only be compared within the Charolais breed. For instance the average 600 Day weight EBV in Charolais is +33kg for the average for Angus is +110kg . This is not a reflection of Angus having a higher 600-day growth, rather they have a much lower base breed growth and an average animal needs a 600 weight above the base of +110kg above the base of Angus where as Charolais are a much higher growth breed that has a higher base weight, therefore an average Charolais only needs to be +33kg above the base to be average for the Charolais breed . This is often confused when trying to compare breeds and performance. The key point is don't compare EBV's across breeds as they are only able to be comparable within each breed.

Upcoming Sales ...

40 Bulls at Clermont QLD - 14th October 2022

120 Females and 10 Bulls at Casino NSW - 5th November 2022



Can't make the sale?
Register in just seven easy steps and log onto AuctionsPlus to bid from anywhere on your phone, tablet or desktop.

- 1 REGISTER ONLINE**
FREE once off registration for all auctions.

- 2 COMPLETE BUYER INDUCTION**
The buyer induction will help you understand the roles and responsibilities of everyone on the AuctionsPlus system.

- 3 VIEW CATALOGUE**
Stock history, photos, videos, pedigrees and more. You can also favourite lots you are interested in.

- 4 ENTER AUCTION**
Log into the auction anytime, anywhere and bid on your mobile, tablet or computer. Auctions can end after 30 minutes so get in early.

- 5 Auto bid**
Can't stay for the whole sale? Set your maximum bid on the lot that you want to purchase and let the computer bid for you.

- 6 CONTACT SELLER**
If successful, contact selling agent to arrange payment and delivery. Or if you are the highest bidder you can log into your dashboard to meet the reserve.

- 7 PAYMENT**
Via the selling agent's terms and conditions.

- 8 DELIVERY**
Arrange transport of livestock at your expense.

*Contact AuctionsPlus on (02) 9262 4222
or www.auctionsplus.com.au*

~ Glenlea Beef ~

Background, Bloodlines, Breeding Strategy & Customer Service

Australian Charolais breeders have embraced performance recording as other countries have reduced their efforts, I have seen this first hand in north America. Our data now is more accurate and detailed, making looking overseas less likely to add genetics that take your herd forward in genetic development than using **Australian evolved genetics that are the best in the world for our environments and markets** with large amounts of individual data to help us as seedstock producers, identify positive influences.

Glenlea beef is now a large seedstock enterprise, including JV herds total over 500 Charolais females. We have been using **Australian bred sires** to continue the evolution of the herd over the last 10 to 15 years with limited use of overseas sires. Where you will see overseas as well Australian sires in the Glenlea herd is in our E.T. program using **exclusive proven sires** in very specific planned matings to produce elite progeny from our highest genetic merit females, our donors!

Our genetic base of the Glenlea herd is now as diverse as the breed in Australia, with a blend of many bloodlines and different phenotypes to produce an Australian type Charolais. We have a degree of type variation, which is necessary with our range of markets and geographic footprint, from higher growth and yield types for northern markets over bos indicus cows to more moderate, early maturing types that suit more southern markets, but all assessed through the same process for all economic traits. This will be evident through the catalogue and comments, and EBV's on individual lots will highlight this.

Our breeding strategy is to produce powerful performance cattle in a medium to moderate frame score with a complete carcass. By that we mean above average yield, EMA, fat cover and IMF%. Measuring birthweights to be able to assist our bull clients to make the best selections for their operation and maintaining calving ease through BW and early gestation length.

Maternal strength focus on fertility, milking ability with great udders and moderate sized teats for longevity. While we are primary a terminal breed, in northern markets especially, Charolais x heifers are retained in there 1000's, so as seedstock producers we must always have our customers and in turn their customers in the front of mind in our breeding decisions, as those decisions ripple down the supply chain and leave big impacts, both positive and negative.

Polled genetics have progress in our breed to match horned bloodlines for every economic trait. Our herd still has a number of horned females and these are joined to homozygous polled sires. 98% of our calves born in the last 5 years are polled, many homozygous, and all testing will be available in catalogue or supplementary sheet.

BREEDPLAN is a genetic evaluation tool now over 30 years old and proven across many breeds and countries. We no longer print a detailed general explanation in our catalogues for bull sales or female sales as that information is available at the touch of your phone screen or click of your mouse! We are happy to explain any of the finer points of EBV's as they relate to the Charolais breed and specifically to our cattle, just call and ask! In the comments of each lot, you will see our summary of the EBV's printed for that lot.

Customer Service is at the heart of what we do, we spend much of our time travelling to clients both commercial and stud to help with a full range of services. We provide many services to all our clients from the most basic to full stud breeding and marketing support. Your success is our success. We are here to assist and work with you and your agents to help you achieve the highest possible price for your Glenlea sired stock.



Glenlea Mandy 1st (P)

Junior Champion Charolais
Female at BEFF 2021

Sired by Australian bred
Glenlea Honourable (P) R/F



Glenlea Confidence 32nd (PP) R/F

Reserve Junior Champion
Charolais Female at BEEF 2021

Sired by Australian bred
Glenlea Kenworth (PP)



Glenlea Isabella (PP) R/F

Reserve Champion Heifer
Calf at BEEF 2021

Sired by Australian bred
Glenlea Just Red (PP) R/F



Shandon Glenlea Q-Brick (PP)

Upcoming Stud sire.

Sired by Australian bred
Glenlea North (P).

REFERENCE SIRE

CHARNELLE LOUIS (AI) (ET) (P)

TATTOO: GKA L73E

DOB: 26/12/2015

COLOUR: White



Photo at 5 years.

COMMENTS: Purchased in 2017 for \$20,000 this sire has produced great progeny adding thickness and EMA while also adding Fat Cover, often opposing traits. His early maturing body type is passed onto his progeny along with his extra length and many sons are PP Polled. Sire is a Full French import, Polled, massive carcass and bone, with great maternal traits. Dam was a fully imported Embryo from the USA, was a leading Donor cow and produced several stud sires, including Louis. Total outcross to all Polled bloodlines. **EBVs show moderate BW with Top 1% EMA and Top 5% fat Cover with good 400-day growth.**



July 2022 Australasian Charolais BREEDPLAN Analysis

	BW	200	400	600	MCW	Milk	SS	EMA	Rump	IMF
EBV	+0.5	+5	+21	+14	+5	+9	+1.0	+3.7	+1.7	+0.5
Acc	90%	79%	79%	79%	74%	60%	76%	48%	57%	47%

EMILE - RS 8900459227 (PED -9227F)

RC CHARLIE 0327 M672200 (OAU Y2200E) (P)

SIRE: GALLWAY - RS 8900451063 (OAF G1063F) (P)

DAM: CHARNELLE ELLE (GKA E10E) (P)

DEMLER - RS 8900457103 (PED -7103F)

MS CC JACKPOT 1107M55 F970558 (OAU X558E)

REFERENCE SIRE

LVH-FAIRFIELD LETHAL (P)

TATTOO: LVH L220E

DOB: 30/09/2015

COLOUR: White



Photo at 3 years.

COMMENTS: Lethal has produced progeny with loads of growth, good bone and plenty of carcass yield while still having excellent Fat cover.

Daughters have perfect udders and teats are feminine good milking females that are proving to be very fertile.



July 2022 Australasian Charolais BREEDPLAN Analysis

	BW	200	400	600	MCW	Milk	SS	EMA	Rump	IMF
EBV	+2.3	+16	+34	+42	+64	+8	+0.6	+0.9	+1.3	+0.4
Acc	79%	67%	68%	69%	67%	53%	53%	45%	49%	44%

HARVIE REDEMPTION 36P (OAC Z6641E) (P)

SIDELINE YODELL (NLG Y63E)

SIRE: FERVALE FLIP (FEN F4E) (P)

DAM: LVH-FAIRFIELD AGINA (LVH D7E)

FERVALE BURGUNDY ROSE (FEN B59E) (P)

FERVALE AGINA (FEN A4E)

REFERENCE SIRE

LVH-FAIRFIELD LONE RANGER (P)

TATTOO: LVH L36E

DOB: 12/10/2015

COLOUR: White



Photo at 4.5 years.

COMMENTS: Powerful Carcass bull with well above breed average growth and great bone in his progeny. We have several sons' top sales in last two years including top priced bull at out Winton Sale in 2021.

Selected with Lethel in 2017 as two standout out sire prospects, from inspecting over 500 bulls from several QLD studs and they have not disappointed us.

Purchasing these two sires at that time was a real starting point of Glenlea purchasing the entire Fairfield herd in 2021.



July 2022 Australasian Charolais BREEDPLAN Analysis

	BW	200	400	600	MCW	Milk	SS	EMA	Rump	IMF
EBV	+1.9	+17	+34	+44	+51	+4	+1.8	+2.3	+0.6	+0.3
Acc	76%	63%	66%	68%	62%	46%	49%	43%	43%	40%

PALGROVE VIAGRA (PK V92E) (P)

SIRE: PALGROVE CELTIC (PK C632E) (P)

PALGROVE DIGNA 82 (PK W174E) (P)

FERNVALE ZIG ZAG (FEN Z128E) (P)

DAM: FERNVALE CHARITY (FEN C63E)

FERNVALE ZETTA (FEN Z95E)

REFERENCE SIRE

ELRIDGE LORD (AI) (P) (R/F)

TATTOO: RUU L43E

DOB: 17/08/2015

COLOUR: Red factor



Photo at 2 years.

COMMENTS: Trait leading sire for growth, fat cover with moderate BW and excellent EMA.

Progeny are docile and can finish at any age so have great market versatility.

Really breaks the rules in opposing traits of growth and finish.

His daughters are coming through with perfect udders, extra growth and plenty of milk.

Top 1% all growth traits, Top 10% Fat Cover.



July 2022 Australasian Charolais BREEDPLAN Analysis

	BW	200	400	600	MCW	Milk	SS	EMA	Rump	IMF
EBV	+1.1	+22	+57	+76	+66	+10	+1.5	+2.1	+2.6	+1.0
Acc	71%	79%	82%	83%	73%	61%	88%	68%	69%	68%

LT RIO BRAVO 3181 P M665507 (OAU Y5507E) (P)

SIRE: PARINGA RIO BRAVO D213E (TOL D213E) (P)

PARINGA CIGAR B064 (TOL B64E)

RANGAN PARK REDEMPTION E42 (RAN E42E) (P)

DAM: ELRIDGE HARMONY (RUU H14E)

ELRIDGE ALLEGANZ (RUU A13E)

REFERENCE SIRE

ADVANCE KODY K13 (P) (R/F)

TATTOO: ADV K13E

DOB: 07/09/2014

COLOUR: Red factor



COMMENTS: Big strong Polled sire that has produced many great bulls in the Fairfield herd. High growth progeny with good bone, slick skin and fine hair, with great carcass and ability to finish.

Sire was a champion at EKKA and a very high growth bull. Dam was from the royal show Champion Gina cow family.

EBVs Top 1% for all growth traits and well above average EMA, Beef Yield and IMF%.



July 2022 Australasian Charolais BREEDPLAN Analysis

	BW	200	400	600	MCW	Milk	SS	EMA	Rump	IMF
EBV	+2.7	+24	+50	+76	+83	+9	+1.7	+3.1	-0.3	+0.7
Acc	47%	57%	66%	59%	52%	38%	73%	47%	49%	48%

ADVANCE DOLLAR D117 (ADV D117E) (P)

SIRE: ADVANCE GRANDSLAM G47 (ADV G47E) (P)

ADVANCE ST MORITZ Y10 (ADV Y10E) (P)

PALGROVE UPTURN (PK U353E)

DAM: ADVANCE GINA B21 (ADV B21E)

ADVANCE GINA R/F (ADV T3E)

REFERENCE SIRE

ORARA WATERFALL GLENLEA NEPTUNE (P)

TATTOO: WFA N42E

DOB: 06/08/2017

COLOUR: White



COMMENTS: Very high yielding carcass, Low BW sire, good bone and fat cover, very gentle docile temperament.

Outcross to nearly all our genetics, we retained semen on this bull for his strength of type while maintaining suitability to use on heifers to add substance and carcass.

His first calves have matched our expectations and we will be using him again this year.

Top 5% EMA and Top 10% Retail beef Yield with well below breed average BW.



July 2022 Australasian Charolais BREEDPLAN Analysis

	BW	200	400	600	MCW	Milk	SS	EMA	Rump	IMF
EBV	-0.3	+15	+27	+38	+31	+8	+1.6	+3.2	+0.0	-0.1
Acc	66%	47%	51%	51%	48%	32%	50%	35%	36%	34%

GLENLEA EDDIE (GLE E14E) (P)

SIRE: GLENLEA JEDDI (VLW J15E) (P)

FERNVALE BONNY MANDIE (FEN B24E)

GLENLEA FREEWAY (GLE F22E) (P)

DAM: GOODVIEW BLONDIE 3RD (HEL J10E) (P)

GOODVIEW BLONDIE (HEL B4E) (P)

REFERENCE SIRE

CHALLAMBI MUSCLES (AI) (ET) (P)

TATTOO: CHA M15E

DOB: 22/07/2016

COLOUR: White



Photo at 5 years.

COMMENTS: Early maturing sire we have used on heifers and larger framed cows. Big bodied type with loads of overall carcass and excellent Fat Cover. His sons are highly sort after.

Sire was Ultra Low BW and early maturing USA Import LT Venture (PP). Dam is a leading donor in the Rosedale herd, from one of their leading cow families.

EBVs very low BW Top 6% of breed. Top 15% 400- and 600-day weight and Fat Cover, with positive EMA.



July 2022 Australasian Charolais BREEDPLAN Analysis

	BW	200	400	600	MCW	Milk	SS	EMA	Rump	IMF
EBV	-2.4	+15	+34	+43	+30	+15	+2.4	+1.9	+2.0	-0.2
Acc	71%	66%	68%	69%	62%	58%	69%	54%	59%	54%

LT STAGECOACH 8068 PLD (OAU D7606E) (P)

SIRE: LT VENTURE 3198 M835612 (OAU J5612E) (P)

LT BALLET 9219 (OAU E7686E) (P)

PALGROVE EXPO (PK E132E) (P)

DAM: ROSEDALE HIGHNESS G114E (MR G114E) (P)

ROSEDALE HIGHNESS X27 (MR X27E) (P)

REFERENCE SIRE

PALGROVE MONARCH (AI) (P)

TATTOO: PK M628E

DOB: 29/08/2016

COLOUR: White



Photo at 2 years.

COMMENTS: Great breeding sire producing thick bodied early maturing sons with moderate BW and good carcass, fine hair.

Sire is a low BW carcass sire, with early maturity and fine hair type from USA. Dam is a Full French donor female from Palgrove's well known Desire cow family.

EBVs Trait Leader for 200 day weight Top 3% of breed, Top 10% EMA and Beef Yield, Top 15% for 400 and 600 day weight.



July 2022 Australasian Charolais BREEDPLAN Analysis

	BW	200	400	600	MCW	Milk	SS	EMA	Rump	IMF
EBV	-0.8	+22	+32	+42	+39	+8	+1.1	+2.7	-1.1	+0.7
Acc	88%	84%	83%	80%	76%	74%	81%	64%	71%	64%

LT BLUEGRASS 4017P M686569 (OAU Z4017E) (P)

SIRE: LT LEDGER 0332 M791626 (OAU F3168E) (P)

LT BRENDA 6120 PLD F1046992 (PED -6992E)

PINAY 8552394134 (OAF U4134F)

DAM: PALGROVE DESIRE 172 (PK F724F)

PALGROVE DESIRE 69 (PK X465F)

Lot 1

GLENLEA LOUIS R514 (AI) (P)

TATTOO: GLE R514A

DOB: 01/06/2020

COLOUR: White



COMMENTS: Big strong polled bull to lead off the sale. Good bone, fine coated, with extra carcass and plenty of finish. Very good temperament. Progeny will suit all target markets from weaners to bullocks.

His sire Louis has produced great progeny, thick, high yielding and easy finishing with strong maternal traits, and moderate BW to add value to your replacement heifers.

EBV's show good 400- and 600-day growth around breed average and well above average EMA in top 10% of breed, positive fat cover.



July 2022 Australasian Charolais BREEDPLAN Analysis

	BW	200	400	600	MCW	Milk	SS	EMA	Rump	IMF
EBV	+0.6	+6	+21	+21	+13	+6	+0.9	+2.5	+0.5	+0.0
Acc	51%	48%	51%	56%	47%	29%	62%	35%	37%	34%

GALLWAY - RS 8900451063 (OAF G1063F) (P)

SIRE: **CHARNELLE LOUIS (GKA L73E) (P)**

DAM: **GLENLEA N120 (GLE N120)**

CHARNELLE ELLE (GKA E10E) (P)

Lot 2

GLENLEA LETHEL R54 (P/S)

TATTOO: GLE R54E

DOB: 05/09/2020

COLOUR: White



COMMENTS: Growth and carcass is what we use Charolais for in crossbreeding and this fellow has plenty of both. Big strong Poll/scur bull with bone and length. Excellent temperament.

Sired by another outstanding Fairfield sire that has also produced great progeny, R54's Dam is an outstanding cow, perfect udder at 11 years old with great maternal data, you will retain many of this bulls' heifers.

EBV's show again all growth trait in top 20% of breed, with all positive carcass data.



July 2022 Australasian Charolais BREEDPLAN Analysis

	BW	200	400	600	MCW	Milk	SS	EMA	Rump	IMF
EBV	+1.4	+15	+30	+42	+56	+9	+0.6	+0.9	+0.8	+0.2
Acc	66%	48%	48%	50%	48%	35%	37%	31%	33%	30%

FERNVALE FLIP (FEN F4E) (P)

SIRE: **LVH-FAIRFIELD LETHAL (LVH L220E) (P)**

ROSEDALE DINGA (MR D25E) (P)

DAM: **JACKSON GALA (MEJ G6E) (P)**

LVH-FAIRFIELD AGINA (LVH D7E)

JAY TEES ADELPHI (JT A12E) (P)

Lot 3

TAYLOR GLENLEA RHINESTONE (P)

TATTOO: TC3 R7E

DOB: 07/08/2020

COLOUR: White



COMMENTS: A powerful big strong polled sire. Growth, Bone, length, and carcass, this bull will add performance to any brahman cow. Bomb proof temperament. Progeny would be ideal to grow on to heavy feeders or bullocks. Dam is particularly good milker, very sound udder and good carcass. Sire is a powerful Fairfield sire that has bred outstanding progeny with extra carcass and growth.

Herd bull sire prospect.

EBV's show all growth traits and EMA in top 20% or better of the breed, with all carcass traits positive.



July 2022 Australasian Charolais BREEDPLAN Analysis

	BW	200	400	600	MCW	Milk	SS	EMA	Rump	IMF
EBV	+1.0	+17	+34	+42	+50	+7	+1.4	+2.2	+0.5	+0.3
Acc	52%	45%	47%	47%	44%	36%	38%	32%	33%	31%

PALGROVE CELTIC (PK C632E) (P)

RANGAN PARK RIO BRAVO D15 (RAN D15E) (P)

SIRE: LVH-FAIRFIELD LONE RANGER (LVH L36E) (P)

DAM: GLENLEA ESTELLA 34TH (GLE K19E) (P)

FERNVALE CHARITY (FEN C63E)

THW ESTELLA 32 JOUFFLU (THW E2E)

Lot 4

GLENLEA LOUIS R305E (P)

TATTOO: GLE R305E

DOB: 10/07/2020

COLOUR: White



PP POLLED

COMMENTS: We have admired R305 since a calf, growth, carcass, bone, herd bull sire prospect. Double polled, great temperament, sired by Louis who adds so much EMA, Fat cover, IMF and yield all at the same time, very rare in a Charolais sire! His Dam is one of highest growth females we own with 400- and 600-day growth top 5% of breed, she is fine haired, perfect udder, long feminine cow that has calved within 3 weeks of her first calf, every year through good and poor seasons. R305's daughters will be high value females.

EBV's Top 10% EMA, with all other carcass traits well above average. Top 25% for 400 days, well above average 600 day and Mature weight.



July 2022 Australasian Charolais BREEDPLAN Analysis

	BW	200	400	600	MCW	Milk	SS	EMA	Rump	IMF
EBV	+3.0	+12	+30	+36	+44	+8	+0.6	+2.5	+0.7	+0.4
Acc	70%	57%	62%	59%	55%	35%	72%	44%	45%	43%

GALLWAY - RS 8900451063 (OAF G1063F) (P)

GLENLEA HI GUY (GLE H52E) (P) (AI) (ET)

SIRE: CHARNELLE LOUIS (GKA L73E) (P)

DAM: ORARA WATERFALL LESLIE (WFA L5E) (P)

CHARNELLE ELLE (GKA E10E) (P)

VALLEY VIEW GC DC (VLW G44E) (P) (R/F)

Lot 5

GLENLEA LOUIS R309 (P)

TATTOO: GLE R309E

DOB: 14/07/2020

COLOUR: White



COMMENTS: Strong, big, thick bodied, Polled sire. Very similar lot 4, medium maturity, bone, and well covered high yielding carcass.

Dam is a lovely big powerful cow, very quiet, at the very top of our herd for growth. And calved within 3 weeks of her first calf every year since.

A herd bull sire prospect!

EBV's are top 1% for EMA, positive Fat Cover, 400 and 600 day growth well above average.



July 2022 Australasian Charolais BREEDPLAN Analysis

	BW	200	400	600	MCW	Milk	SS	EMA	Rump	IMF
EBV	+1.8	+12	+26	+34	+31	+7	+0.6	+3.4	+0.2	+0.0
Acc	70%	57%	62%	59%	55%	36%	72%	44%	45%	43%

GALLWAY - RS 8900451063 (OAF G1063F) (P)

SIRE: **CHARNELLE LOUIS (GKA L73E) (P)**

CHARNELLE ELLE (GKA E10E) (P)

GLENLEA HILTON (GLE H30E) (P)

DAM: **GLENLEA KARANA 2ND (GLE M250E) (P/S)**

GOBONGO KARANA E376E (GO E376E)

Lot 6

GLENLEA LETHEL R50 (P) (R/F)

TATTOO: GLE R50E

DOB: 24/08/2020

COLOUR: Red factor



PP POLLED

COMMENTS: Lovely fine haired, easy finishing, thick bodied, PP Polled, Red Charolais Sire. Early maturing, very docile, progeny will suit all markets.

Sired by Lethel who breeds clean coated, easy finishing, growthy progeny and daughters with perfect udders and teats.

Dam is a deep bodied easy doing powerful cow from one of Palgrove's oldest cow families.

EBV's top 5% for all growth traits and IMF%, with other carcass traits all positive.



July 2022 Australasian Charolais BREEDPLAN Analysis

	BW	200	400	600	MCW	Milk	SS	EMA	Rump	IMF
EBV	+2.6	+19	+41	+51	+64	+6	-0.5	+0.4	+0.9	+0.8
Acc	66%	51%	52%	53%	50%	38%	62%	41%	42%	40%

FERNVALE FLIP (FEN F4E) (P)

SIRE: **LVH-FAIRFIELD LETHAL (LVH L220E) (P)**

LVH-FAIRFIELD AGINA (LVH D7E)

RANGAN PARK REDEMPTION E42 (RAN E42E) (P)

DAM: **ASH-LIN FLARE 8 (ACW H15E) (P)**

ASH-LIN FLARE 6 (ACW F16E) (P)

Lot 7

GLENLEA LOUIS R326 (P) (R/F)

TATTOO: GLE R326E

DOB: 04/11/2020

COLOUR: Red factor



COMMENTS: A class bull, note the big age difference from the previous lots. Growth, carcass and bone! We have used Louis over our bigger framed, high growth cows and the combination has produced bulls of real class equal to any in the Charolais Business.

His dam is a powerful cow that is breeding great progeny. 22 months sale day, powerful polled red factor sire.

EBV's top 10% EMA, all carcass traits positive with above breed average growth for all traits moderate BW



July 2022 Australasian Charolais BREEDPLAN Analysis

	BW	200	400	600	MCW	Milk	SS	EMA	Rump	IMF
EBV	+1.4	+12	+29	+36	+36	+8	+0.9	+2.6	+0.2	+0.3
Acc	56%	46%	47%	47%	44%	36%	44%	29%	34%	28%

GALLWAY - RS 8900451063 (OAF G1063F) (P)

SIRE: **CHARNELLE LOUIS (GKA L73E) (P)**

CHARNELLE ELLE (GKA E10E) (P)

GLENLEA HILTON (GLE H30E) (P)

DAM: **ORARA WATERFALL KARANA 1ST (WFA L13E) (P/S)**

GOBONGO KARANA E376E (GO E376E)

Lot 8

GLENLEA LOUIS R308 (P)

TATTOO: GLE R308E

DOB: 12/07/2020

COLOUR: White



COMMENTS: Very thick, good butted, early maturing polled bull. This bull will find lots of admirers on sale day.

Ideal for many crossbreeding programs, his dam is a fertile good milking female medium framed with a perfect udder, his daughters will be keepers, as is our aim for all our bulls. Ideal for use over euro influence cows.

EBV's for growth reflect his early maturing body type, Top 15% EMA and Top 20% Fat Cover. Moderate BW



Mid Parent EBVs - July 2022 Australasian Charolais BREEDPLAN Analysis

	BW	200	400	600	MCW	Milk	SS	EMA	Rump	IMF
EBV	+0.9	+8	+19	+22	+16	+7	+0.9	+2.4	+1.0	+0.5

GALLWAY - RS 8900451063 (OAF G1063F) (P)

SIRE: **CHARNELLE LOUIS (GKA L73E) (P)**

CHARNELLE ELLE (GKA E10E) (P)

LITTLE VALLEY GRANDIOSE (GKB G5E) (P)

DAM: **ORARA WATERFALL GLENLEA GABBY 1ST (WFAM54E)(P)**

JACKSON GABBY (MEJ G111E) (P)

Lot 9

GLENLEA LOUIS R314 (P)

TATTOO: GLE R314E

DOB: 21/07/2020

COLOUR: White



COMMENTS: Probably the highest yielding bull in the sale. He has a very powerful overall carcass shape.

Will add yield to the plainest of Brahman cows, producing those sale topping weaners and premium feeders or bullocks.

His dam is big strong cow, with lots of bone and carcass while still being feminine.

EBV's Top 5% EMA and retail beef yield with all growth traits at breed average.



July 2022 Australasian Charolais BREEDPLAN Analysis

	BW	200	400	600	MCW	Milk	SS	EMA	Rump	IMF
EBV	+1.8	+8	+23	+30	+26	+7	+0.8	+3.1	-1.2	+0.1
Acc	71%	58%	63%	60%	55%	36%	72%	44%	45%	33%

GALLWAY - RS 8900451063 (OAF G1063F) (P)

SIRE: **CHARNELLE LOUIS (GKA L73E) (P)**

CHARNELLE ELLE (GKA E10E) (P)

GLENLEA HILTON (GLE H30E) (P)

DAM: **ORARA WATERFALL LAEL (WFA L14E)**

PIPECLAY E5E (ROL E5E)

Lot 10

MAW GLENLEA RENEGADE (AI) (ET) (P) (R/F)

TATTOO: MAW R104E

DOB: 12/09/2020

COLOUR: Red factor



Photo of Glenlea Honourable, Sire of lot 10.

COMMENTS: Big strong easy doing polled Red sire. Growth, finish in a powerful, very quiet bull.

Only bull in this sale by Glenlea Honourable a sire that has produced many high sellers for us, and that is an impact sire adding, mass, growth and docility to any cow he is joined to.

Dam is a donor that has produced very well for us since purchasing her in 2017.

EBV's Top 5% for 600-day weight top 10% 200, 400 and MW, top 25% EMA and Fat Cover.



July 2022 Australasian Charolais BREEDPLAN Analysis

	BW	200	400	600	MCW	Milk	SS	EMA	Rump	IMF
EBV	+2.6	+19	+34	+57	+58	+3	+1.0	+2.2	+1.1	+0.5
Acc	58%	53%	54%	54%	50%	50%	53%	42%	46%	42%

RANGAN PARK REDEMPTION E42 (RAN E42E) (P)

SIRE: **GLENLEA HONOURABLE (VLW H25E) (P)**

FERNVALE CHIFFON (FEN C22E)

WCR SIR FA MAC 2244 M234430 (OAU B2244E) (P)

DAM: **CHARNELLE FRIESIA 4 (GKA H34E) (P)**

PALGROVE FRIESIA 19 (PK Y224E) (P)

Lot 11

MAW GLENLEA SKAGGS R101 (ET) (P)

TATTOO: MAW R101E

DOB: 10/09/2020

COLOUR: White



PP POLLED

COMMENTS: A bull with great doability and easy finishing. Good growth and carcass, a very balanced polled bull.

Sire by Canadian sire Skaggs, who is admired for his early maturity and maternal traits. Dam is also the dam of lot 10, a great producing PP Polled cow that Glenlea Purchased in 2017. His daughters will be high value replacement heifers, such is the reputation of the Skaggs female line. Especially when combined with a donor cow of H34's calibre.

EBV's show top 20% for 200, 400 and 600 growth, all positive EMA and Fat cover. Low BW



July 2022 Australasian Charolais BREEDPLAN Analysis

	BW	200	400	600	MCW	Milk	SS	EMA	Rump	IMF
EBV	+0.5	+17	+31	+44	+42	+4	+1.5	+1.2	+0.7	-0.2
Acc	59%	58%	57%	55%	53%	55%	56%	45%	49%	44%

MD ALI TRADE U1059 PMC332642 (PED D1059E) (P)

WCR SIR FA MAC 2244 M234430 (OAU B2244E) (P)

SIRE: WINN MANS SKAGGS 663X (OAC F663E) (P)

DAM: CHARNELLE FRIESIA 4 (GKA H34E) (P)

WINN MANS BEVERLY 663S FC358266 (PED B663E)

PALGROVE FRIESIA 19 (PK Y224E) (P)

Lot 12

CHALLAMBI GLENLEA RUSSELL (AI) (P) (R/F)

TATTOO: CHA R48E

DOB: 24/08/2020

COLOUR: Red factor



PP POLLED

COMMENTS: Classy Red, PP polled sire. Clean coated, easy doing with good fat cover, progeny suit all markets, will add colour and Fat cover to your weaners if they looking to pure from increased Charolais influence. Or to poll and produce apricot coloured charbrays.

Only bull by Glenlea Just Red whose sons have topped several of our sales in recent times, Dam is from one of our oldest and most prolific cows families, noted for growth and maternal strength.

EBV's top 5% IMF%, top 20% all growth traits and fat cover with positive EMA. Moderate BW.



July 2022 Australasian Charolais BREEDPLAN Analysis

	BW	200	400	600	MCW	Milk	SS	EMA	Rump	IMF
EBV	+1.0	+17	+33	+46	+40	+5	+0.8	+1.2	+1.4	+1.0
Acc	69%	61%	57%	57%	55%	47%	49%	37%	42%	35%

RANGAN PARK REDEMPTION E42 (RAN E42E) (P)

ASCOT GOLDRUSH G136E (JAJ G136E) (P)

SIRE: GLENLEA JUST RED (GLE J5E) (P)

DAM: CHALLAMBI ELSA M2 (CHA M2E) (P)

GLENLEA JANET U6E R/F (GLE U6E) (P)

GLENLEA ELSA 62ND (GLE J53E) (P/S)

Lot 13

GLENLEA LOUIS R512 (AI) (P)

TATTOO: GLE R512A

DOB: 08/06/2020

COLOUR: White



PP POLLED

COMMENTS: Good framed, long bull, medium maturity with finish and carcass. Fine hair type and very noticeable quiet temperament.

PP Polled 100% dehorn all horned cows.

Suitable for heifers and cows.

EBV's top 5% fat cover and Low BW, well below breed average.



July 2022 Australasian Charolais BREEDPLAN Analysis

	BW	200	400	600	MCW	Milk	SS	EMA	Rump	IMF
EBV	-0.8	+3	+13	+6	+1	+6	+0.7	+1.7	+2.1	+0.2
Acc	49%	48%	51%	56%	47%	29%	62%	35%	37%	34%

GALLWAY - RS 8900451063 (OAF G1063F) (P)

SIRE: CHARNELLE LOUIS (GKA L73E) (P)

DAM: GLENLEA N117 (GLE N117)

CHARNELLE ELLE (GKA E10E) (P)

Lot 14

GLENLEA MASCOT R522 (P)

TATTOO: GLE R522A

DOB: 12/08/2020

COLOUR: White



COMMENTS: Early maturing, moderate framed, thick set bull ideal for weaner and heavy feeders.

Suitable for heifers and cows.

EBV's Low BW well below breed average, breed average growth and top 15% fat cover.



July 2022 Australasian Charolais BREEDPLAN Analysis

	BW	200	400	600	MCW	Milk	SS	EMA	Rump	IMF
EBV	-0.2	+12	+23	+35	+40		+1.9	-0.9	+1.8	+0.6
Acc	37%	46%	49%	56%	45%		62%	34%	33%	33%

PALGROVE JAGUAR J629E (PK J629E) (P)

SIRE: MINNIE-VALE MASCOT (SGS M97E) (P)

DAM: CSA CHAROLAIS GENERIC DAM 997 (\$A7 A997)

MINNIE-VALE UTOPIE H82E (SGS H82E)

Lot 15

GLENLEA MASCOT R517 (P)

TATTOO: GLE R517A

DOB: 24/06/2020

COLOUR: White



PP POLLED

COMMENTS: Early maturing, moderate framed thick bull, similar to previous Lot.

R517 is PP polled. Updated EBV's available sale day expect to show above average carcass traits.

Ideal for weaners and heavy feeders and over euro influence cows to maintain finish and early maturity.

EBV's update for sale day, raw data omitted from august analysis.



July 2022 Australasian Charolais BREEDPLAN Analysis

	BW	200	400	600	MCW	Milk	SS	EMA	Rump	IMF
EBV	-0.5	+8	+16	+20	+19					
Acc	26%	32%	33%	32%	30%					

PALGROVE JAGUAR J629E (PK J629E) (P)

SIRE: MINNIE-VALE MASCOT (SGS M97E) (P)

MINNIE-VALE UTOPIE H82E (SGS H82E)

DAM: CSA CHAROLAIS GENERIC DAM 997 (\$A7 A997)

Lot 16

GLENLEA MASCOT R509 (P)

TATTOO: GLE R509A

DOB: 01/06/2020

COLOUR: White



PP POLLED

COMMENTS: R509 is early maturing, thick set, great doing bull.

These MV sired bulls are ideal for harder country, able to thrive where others may struggle.

R509 is PP Polled to produced soft coated polled weaners with finish to sell at the top of the market range and feeders that always hit target fat cover on time. Suitable for heifers and cows.

EBV's reflect early maturity and Low BW.



July 2022 Australasian Charolais BREEDPLAN Analysis

	BW	200	400	600	MCW	Milk	SS	EMA	Rump	IMF
EBV	-0.1	+6	+14	+17	+15		+0.1	+0.4	+0.1	-0.2
Acc	35%	44%	47%	53%	43%		58%	32%	31%	31%

PALGROVE JAGUAR J629E (PK J629E) (P)

SIRE: MINNIE-VALE MASCOT (SGS M97E) (P)

MINNIE-VALE UTOPIE H82E (SGS H82E)

DAM: CSA CHAROLAIS GENERIC DAM 997 (\$A7 A997)

Lot 17

GLENLEA MASCOT R513 (P)

TATTOO: GLE R513A

DOB: 13/06/2020

COLOUR: White



PP POLLED

COMMENTS: These Mascot bulls are very consistent, thick bodied, good yielding easy finishing that can survive and produce in harder country and get those high value char X weaners on the ground.

R513 is PP Polled so all progeny will be polled from any horned cow.

Suitable for heifers and cows.

EBV's have early maturing growth pattern, with top 15% Fat cover and Top 20% Low BW.



July 2022 Australasian Charolais BREEDPLAN Analysis

	BW	200	400	600	MCW	Milk	SS	EMA	Rump	IMF
EBV	-0.9	+10	+17	+23	+23		+1.6	+0.5	+1.8	+0.5
Acc	35%	44%	47%	53%	43%		58%	32%	31%	31%

PALGROVE JAGUAR J629E (PK J629E) (P)

SIRE: MINNIE-VALE MASCOT (SGS M97E) (P)

MINNIE-VALE UTOPIE H82E (SGS H82E)

DAM: CSA CHAROLAIS GENERIC DAM 997 (\$A7 A997)

Lot 18

GLENLEA LOUIS R64 (P)

TATTOO: GLE R64E

DOB: 11/10/2020

COLOUR: White



PP POLLED

COMMENTS: A younger, earlier maturing Louis son with extra length, on a moderate to medium frame, showing all the carcass that the Louis sons are becoming known and PP Polled.

Dam is a powerful, feminine cow with a perfect udder and extra growth.

EBV's Top 5% EMA with top 20% Fat Cover and IMF%, with all growth traits above breed average. With Low BW.



July 2022 Australasian Charolais BREEDPLAN Analysis

	BW	200	400	600	MCW	Milk	SS	EMA	Rump	IMF
EBV	+0.5	+13	+30	+34	+33	+10	+1.4	+3.0	+1.3	+0.5
Acc	54%	48%	48%	48%	45%	39%	45%	32%	37%	32%

GALLWAY - RS 8900451063 (OAF G1063F) (P)

SIRE: CHARNELLE LOUIS (GKA L73E) (P)

CHARNELLE ELLE (GKA E10E) (P)

RANGAN PARK RIO BRAVO D15 (RAN D15E) (P)

DAM: ORARA WATERFALL GLENLEA CHARL 6TH (WFAM14E)(P)

GLENLEA CHAROL 72ND (GLE J8E) (P)

Lot 19

GLENLEA JONA R528 (P)

TATTOO: GLE R528A

DOB: 26/09/2020

COLOUR: White



COMMENTS: Early maturing, good doing bull sired by MV Jona.

Like the MV Mascot sired bulls earlier, low birthweight and suitable for heifers or cows.

Good carcass in this bull, showing extra overall shape.

EBV's reflect early maturing through growth and well above average EMA.



July 2022 Australasian Charolais BREEDPLAN Analysis

	BW	200	400	600	MCW	Milk	SS	EMA	Rump	IMF
EBV	+0.0	+5	+12	+13	+11	+4	-0.5	+1.9	+0.0	-0.2
Acc	40%	47%	50%	58%	46%	28%	62%	32%	31%	31%

AYR INCA'S NATONE (AYR C258F)

SIRE: MINNIE-VALE JONA (SGS J62E) (P)

DAM: CSA CHAROLAIS GENERIC DAM 997 (\$A7 A997)

MINNIE-VALE SLUMBER E110E (SGS E110E) (P)

Lot 20

GLENLEA KENWORTH R79 (P/S)

TATTOO: GLE R79E

DOB: 20/12/2020

COLOUR: White



COMMENTS: Very balanced bull and allrounder.

Early maturity, balance of overall carcass and finish, excellent doability and Low BW so could used on heifers or cows without concern. Poll/Scur.

EBV's show around breed average growth with all positive carcass traits.



July 2022 Australasian Charolais BREEDPLAN Analysis

	BW	200	400	600	MCW	Milk	SS	EMA	Rump	IMF
EBV	-0.4	+8	+20	+28	+27	+9	+1.8	+0.8	+0.6	+0.3
Acc	67%	56%	58%	64%	55%	37%	68%	42%	44%	41%

RANGAN PARK RIO BRAVO D15 (RAN D15E) (P)

SIRE: GLENLEA KENWORTH (GLE K80E) (P)

GOBONGO DECOY D85E (GO D85E) (P)

DAM: GOBONGO UMA F56E (GO F56E)

THW TATT MAC D10E (THW D10E) (P)

GOBONGO UMA D18E (GO D18E) (P)

Lot 21

GLENLEA KENWORTH R77 (P/S) (R/F)

TATTOO: GLE R77E

DOB: 25/11/2020

COLOUR: Red factor



COMMENTS: R77 is similar to previous lot, would make a great pair to join to brahman heifers or cows.

Early to mid-maturity with good balance of muscle and finish, will mature to be a thick set easy keeping Charolais bull.

Kenworth sons' are very sound structured, we have never had one break down out working!

Poll/Scur



July 2022 Australasian Charolais BREEDPLAN Analysis

	BW	200	400	600	MCW	Milk	SS	EMA	Rump	IMF
EBV	+0.0	+12	+23	+34	+41	+8	+1.4	+0.8	+0.8	+0.5
Acc	66%	48%	48%	49%	48%	38%	38%	30%	33%	29%

RANGAN PARK RIO BRAVO D15 (RAN D15E) (P)

ROSEDALE DINGA (MR D25E) (P)

SIRE: GLENLEA KENWORTH (GLE K80E) (P)

DAM: ORARA WATERFALL GLENLEA PIPECLAY 1ST (WFAK14E)(P)

THW TATT MAC D10E (THW D10E) (P)

PIPECLAY G3E (ROL G3E)

Lot 22

CALMVIEW RUDOLF R78E (P) (R/F)

TATTOO: CVW R78E

DOB: 16/09/2020

COLOUR: Red factor



COMMENTS: The first of a very even draft of Calmview bulls, invited to sell at this sale as a guest vendor.

Rudolf is long bodied, fine coated red sire, nice bone, good growth with good yielding carcass and Fat Cover.

Dam is a donor and one of our most valued Red factor cows.

EBV's show breed average growth will all above average carcass traits.



July 2022 Australasian Charolais BREEDPLAN Analysis

	BW	200	400	600	MCW	Milk	SS	EMA	Rump	IMF
EBV	+0.6	+7	+22	+34	+29	+9	+2.0	+1.9	+0.5	+0.2
Acc	66%	50%	49%	48%	47%	31%	43%	29%	30%	28%

PLEASANT DAWN CHISUM 216A (OAC J216E) (P)

WATERFORD LIONHEART L34E (WET L34E) (P)

SIRE: PALGROVE NIFTY (PK N458E) (P)

DAM: ALLEDNAW DESIRE P41 (AKT P41E) (P)

PALGROVE TREASURE L299E (PK L299E) (P)

ALLEDNAW DESIRE J120 (AKT J120E) (P)

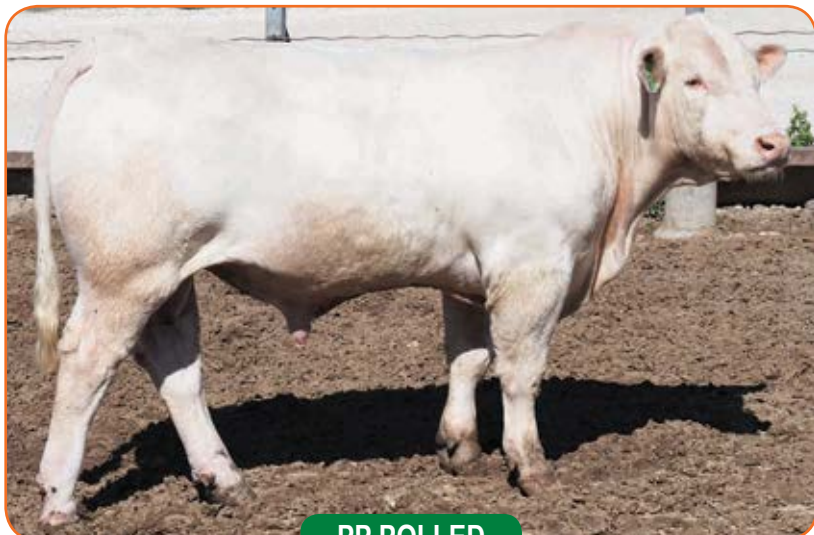
Lot 23

CALMVIEW ROADWAY R79E (P)

TATTOO: CVW R79E

DOB: 04/10/2020

COLOUR: White



PP POLLED

COMMENTS: Thick bodied, early maturing bull. PP polled.

EBV's above breed average for all growth traits.



July 2022 Australasian Charolais BREEDPLAN Analysis

	BW	200	400	600	MCW	Milk	SS	EMA	Rump	IMF
EBV	+1.4	+15	+25	+33	+42	+3				
Acc	63%	46%	43%	43%	42%	34%				

ANC KINGSTON K277 (ANC K277F) (P)

SIRE: **ANC NASDAQ (ANC N357F) (P)**

ANC NATASHA 311 (ANC K311F) (P)

NARGOON GANG BUSTERS (J5Y G35E) (P)

DAM: **CALMVIEW CELESTE K15E (CVW K15E) (P)**

NARGOON CELESTE G27F (J5Y G27E) (P)

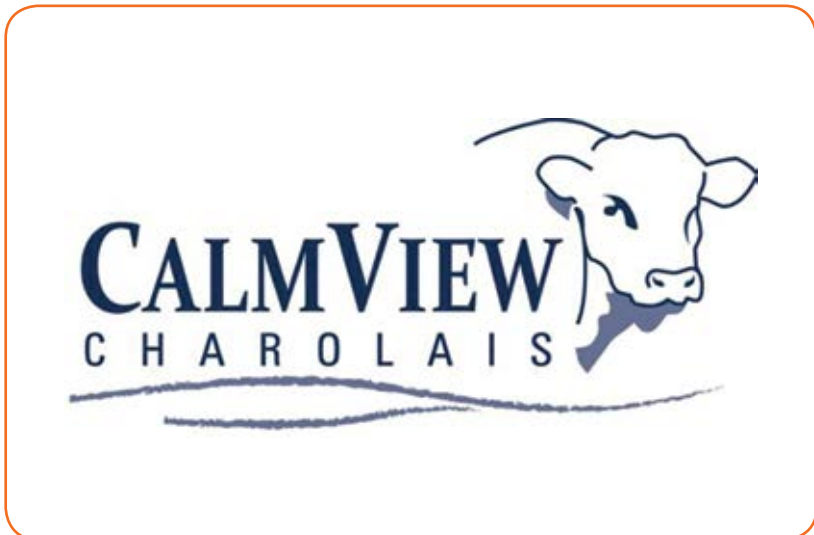
Lot 24

CALMVIEW RODRICK R52E (P) (R/F)

TATTOO: CVW R52E

DOB: 19/06/2020

COLOUR: Red factor



COMMENTS: Same early maturity type, with extra yielding carcass.

EBV's have Low BW with well above average for all growth traits, EMA, Yield and IMF%



July 2022 Australasian Charolais BREEDPLAN Analysis

	BW	200	400	600	MCW	Milk	SS	EMA	Rump	IMF
EBV	-1.2	+18	+28	+37	+36	+9	+0.9	+1.7	-0.8	+0.5
Acc	70%	55%	53%	53%	52%	45%	45%	35%	39%	35%

LT LEDGER 0332 M791626 (OAU F3168E) (P)

SIRE: **PALGROVE MONARCH (PK M628E) (P)**

PALGROVE DESIRE 172 (PK F724F)

CALMVIEW HANSEL (CVW H27E) (P)

DAM: **CALMVIEW PATRICIA L92E (CVW L92E) (P)**

NARGOON BUNYA H2E (J5Y H3E) (P)

Lot 25

CALMVIEW ROCKAFELLA R49E (P)

TATTOO: CVW R49E

DOB: 12/06/2020

COLOUR: White



COMMENTS: Square well shaped carcass, fine haired type.

Progeny will suit all markets.

EBV's Top 10% for Milk , Top 20% for IMF%, Top 25% for 600 day weight, above breed average EMA. Top 20% for Low BW.



July 2022 Australasian Charolais BREEDPLAN Analysis

	BW	200	400	600	MCW	Milk	SS	EMA	Rump	IMF
EBV	-0.7	+16	+29	+45	+36	+12	+1.5	+1.8	-0.3	+0.7
Acc	70%	62%	57%	57%	55%	48%	46%	36%	40%	36%

LT LEDGER 0332 M791626 (OAU F3168E) (P)

SIRE: PALGROVE MONARCH (PK M628E) (P)

PALGROVE DESIRE 172 (PK F724F)

FERNVALE GOLD DIGGER (FEN G39E) (P)

DAM: CALMVIEW CHABLIS M12E (CVW M12E)

FERNVALE CHABLIS (FEN C17E) (P)

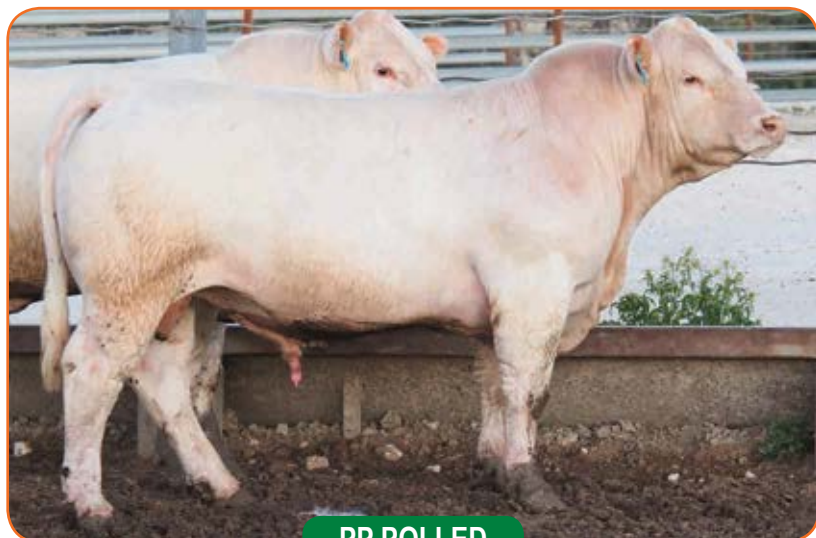
Lot 26

CALMVIEW RIDER R69E (AI) (P)

TATTOO: CVW R69E

DOB: 19/09/2020

COLOUR: White



PP POLLED

COMMENTS: Early maturing, moderate framed, PP Polled bull, showing extra finish.

Ideal for weaner / heavy feeders.

EBV's reflect early maturity Top 20% Low BW, and Top 5% of breed for Fat cover.



July 2022 Australasian Charolais BREEDPLAN Analysis

	BW	200	400	600	MCW	Milk	SS	EMA	Rump	IMF
EBV	-0.7	+8	+21	+19	+20	+8	+1.1	+0.7	+2.5	+0.6
Acc	70%	58%	58%	60%	56%	52%	51%	38%	41%	38%

LT EASY BLEND 5125 PLD M705113 (OAU A5113E) (P)

SIRE: LT CHEYENNE BLEND 7142 P (OAU C2067E) (P)

LT ALLI 3221 PLD F979387 (PED -9387E)

GALLWAY - RS 8900451063 (OAF G1063F) (P)

DAM: CHARNELLE DIGNA 168 (GKA P32E) (P)

CHARNELLE DIGNA78 (GKA D10E) (P)

Lot 27

CALMVIEW RUDOLPH R54F (P)

TATTOO: CVW R54F

DOB: 01/07/2020

COLOUR: White



COMMENTS: Polled Full French bull.

Show good yielding carcass and bone.

EBV's around breed average carcass data available sale day.



July 2022 Australasian Charolais BREEDPLAN Analysis

	BW	200	400	600	MCW	Milk	SS	EMA	Rump	IMF
EBV	+1.3	+12	+21	+26	+45	+3				
Acc	67%	43%	42%	44%	43%	26%				

ANC KINGSTON K277 (ANC K277F) (P)

SIRE: ANC NASDAQ (ANC N357F) (P)

ANC NATASHA 311 (ANC K311F) (P)

ANC BOUNTY (ANC B549F) (P)

DAM: ANC KRISTINA (ANC K21F)

ANC ZEREN,S NETTY (ANC D163F)

Lot 28

CALMVIEW ROLLS R77E (P)

TATTOO: CVW R77E

DOB: 03/10/2020

COLOUR: White



PP POLLED

COMMENTS: Square bodied, early maturing PP polled bull as all the Calmview draft are.

Good doing and will handle the rough country.



July 2022 Australasian Charolais BREEDPLAN Analysis

	BW	200	400	600	MCW	Milk	SS	EMA	Rump	IMF
EBV	+0.6	+6	+21	+27	+33	+8	+1.3	+1.0	-0.2	-0.2
Acc	66%	51%	50%	51%	48%	35%	41%	25%	26%	25%

PLEASANT DAWN CHISUM 216A (OAC J216E) (P)

SIRE: PALGROVE NIFTY (PK N458E) (P)

PALGROVE TREASURE L299E (PK L299E) (P)

ANC KILOWATT (ANC K96F) (P)

DAM: CALMVIEW MY FAIR LADY N46E (CVW N46E) (P)

CALMVIEW MY FAIR LADY J43E (CVW J43E) (P)

Lot 29

CALMVIEW RUDIE R80E (P)

TATTOO: CVW R80E

DOB: 05/09/2020

COLOUR: White



COMMENTS: Moderate framed, good thick bull.

Extra Low BW bull suitable for heifers.

EBV's Top 10% of the breed for Low BW with positive EMA and Fat Cover.



July 2022 Australasian Charolais BREEDPLAN Analysis

	BW	200	400	600	MCW	Milk	SS	EMA	Rump	IMF
EBV	-1.9	+3	+13	+17	+4	+10	+1.8	+1.3	+0.5	+0.0
Acc	66%	49%	48%	48%	46%	33%	44%	29%	30%	28%

PLEASANT DAWN CHISUM 216A (OAC J216E) (P)

SIRE: PALGROVE NIFTY (PK N458E) (P)

PALGROVE TREASURE L299E (PK L299E) (P)

ASCOT ELDORADO L525 (JAJ L525E) (P)

DAM: CALMVIEW HAREM P33E (CVW P33E) (P)

CALMVIEW HAREM J24E (CVW J24E)

Lot 30

CALMVIEW RANDY R43E (P) (R/F)

TATTOO: CVW R43E

DOB: 03/06/2020

COLOUR: Red Factor



COMMENTS: Another square meaty Red Polled bull by Monarch.

Great doability in tough environments.

Suitable for heifers and cows.



July 2022 Australasian Charolais BREEDPLAN Analysis

	BW	200	400	600	MCW	Milk	SS	EMA	Rump	IMF
EBV	-1.5	+15	+23	+26	+21	+5	+1.4	+1.5	+0.0	+0.2
Acc	69%	60%	56%	55%	53%	47%	48%	36%	40%	36%

LT LEDGER 0332 M791626 (OAU F3168E) (P)

SIRE: PALGROVE MONARCH (PK M628E) (P)

PALGROVE DESIRE 172 (PK F724F)

DSK EDGE ECHO E19 (DSK E19E) (P)

DAM: YEO ECHO PINAY (YEO M50E) (P)

YEO H11E (YEO H11E) (P)

Lot 31

CALMVIEW RANGER R75E (P) (R/F)

TATTOO: CVW R75E

DOB: 27/09/2020

COLOUR: Red factor



COMMENTS: Square bodied meaty, high yielding carcass Red Polled Bull.

Ideal maturity type for weaner / heavy feeders.

EBV's all growth traits above breed average.



July 2022 Australasian Charolais BREEDPLAN Analysis

	BW	200	400	600	MCW	Milk	SS	EMA	Rump	IMF
EBV	+1.6	+14	+27	+31	+42	+2	+0.9			
Acc	62%	42%	40%	41%	40%	29%	25%			

ANC KINGSTON K277 (ANC K277F) (P)

SIRE: ANC NASDAQ (ANC N357F) (P)

ANC NATASHA 311 (ANC K311F) (P)

DSK EDGE ECHO E19 (DSK E19E) (P)

DAM: YEO ECHO STORMGIRL (YEO J17E) (P)

PALGROVE FLARE 123 (PK C595E)

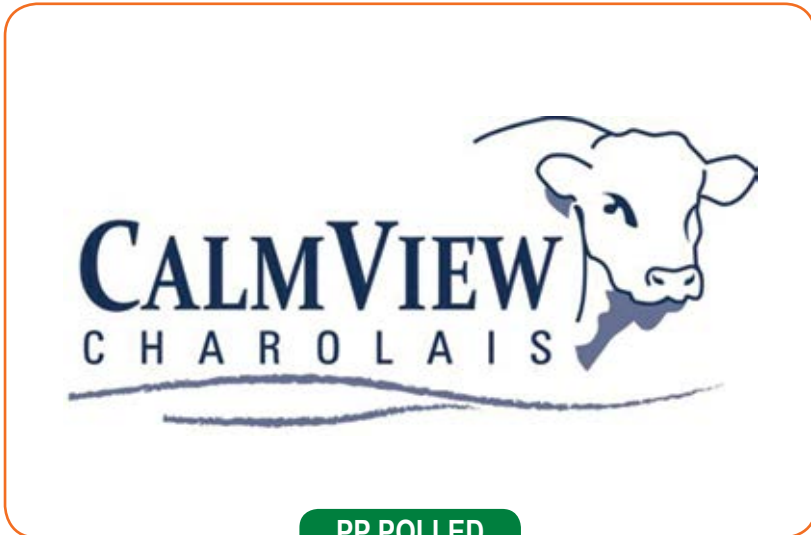
Lot 32

CALMVIEW ROOTBEER R82E (P)

TATTOO: CVW R82E

DOB: 09/10/2020

COLOUR: White



PP POLLED

COMMENTS: Moderate framed and built like a brick.



July 2022 Australasian Charolais BREEDPLAN Analysis

	BW	200	400	600	MCW	Milk	SS	EMA	Rump	IMF
EBV	-0.3	+12	+22	+31	+27	+3	+0.4			
Acc	65%	47%	46%	46%	45%	35%	30%			

ANC KINGSTON K277 (ANC K277F) (P)

SIRE: ANC NASDAQ (ANC N357F) (P)

ANC NATASHA 311 (ANC K311F) (P)

CHARNELLE FEDERATION (GKA F29E) (P)

DAM: CHARNELLE PANACHE 17 (GKA M12E) (P)

CHARNELLE PANACHE 8 (GKA H67E) (P/S)

Lot 33

DSK KAPPA SOUNDWAVE S28

TATTOO: DSK S28E

DOB: 01/04/2021

COLOUR: White



COMMENTS: Purchased as a calf at foot on our pick of the first calvers at last year's DSK dispersal.

Soundwave is a powerful bull, great bone, excellent growth and carcass with finish.

Progeny would suit any market.

EBV's Top 15% for all growth traits, and all positive carcass traits.



July 2022 Australasian Charolais BREEDPLAN Analysis

	BW	200	400	600	MCW	Milk	SS	EMA	Rump	IMF
EBV	+1.2	+18	+32	+49	+53	+8	+1.6	+1.0	+1.1	+0.3
Acc	51%	47%	47%	47%	44%	42%	45%	35%	40%	35%

SVY PILGRIM PLD 655S MC303031 (OAC B3031E) (P)

SIRE: DSK PGRM KAPPA K25E (DSK K25E) (P)

VENTURON GORGEOUS (VE7 G8E) (P)

VENTURON CRUSTY DEMON (VE7 C5E) (P)

DAM: DSK CRUSTY L70 P6E (DSK P6E) (P)

DSK TGL B43 L70E (DSK L70E) (P)



Emily Molloy doing a paddock check on young bulls, and North S16 making sure Emily is ok too! With his buddies looking on, no special handling just naturally quiet cattle ...this is what we mean when talking about Bomb Proof Temperaments!

Lot 34

GLENLEA MARLO R602 - Herd Bull

TATTOO: GLE R502

DOB: 9/10/20

COLOUR:

COMMENTS: Good boned, early to medium maturity bull, ideal carcass type with balance of muscle and fat cover, progeny will suit all markets and moderate birth weight.

Unregistered. No EBVs.

VERNOLA JUST RIGHT J6E VIWJ6E (S)

SIRE: ALLEDNAW GLENLEA MARLO (AKT M41E) (P)

CANOONA EMMA A3 (IGV A3E) (P)

BRANCHVIEW FORGED FROM STEEL (P) R/F

DAM: GLENLEA K448

GLENLEA PURE CHAROLAIS

Lot 35

GLENLEA MARLO R603 - Herd Bull

TATTOO: GLE R503

DOB: 27/10/20

COLOUR:

COMMENTS: Very similar bull to lot 34, moderate BW, good bone with good overall yield and easy finishing. Their sire Marlo sire has been very consistent producing early maturing easy doing sons and fertile, easy calving, good milking daughters.

Unregistered. No EBVs.

VERNOLA JUST RIGHT J6E (VIW J6E) (S)

SIRE: ALLEDNAW GLENLEA MARLO (AKT M41E) (P)

CANOONA EMMA A3 (IGV A3E) (P)

RP RIO BRAVO D15

DAM: GLENLEA N716

GLENLEA PURE CHAROLAIS

Lot 36

GLENLEA M1 R580 (P) - Herd Bull

TATTOO: GLE R580

DOB: 14/05/20

COLOUR: White

COMMENTS: Deep bodied, big strong bull, very fine hair coat, with good fat cover.

Unregistered. No EBVs.

DOUGLASDALE WYOMING (DOU E2E) (AI) (ET)

SIRE: DOUGLASDALE M1 (DOU M1E) (P)

DOUGLASDALE OLIVE 2 (DOU D22E)

Dam: DOU K404 (P)

PP POLLED

Lot 37

TAYLOR GLENLEA RANGER 6TH (P)

TATTOO: TC3 S1E

DOB: 04/01/2021

COLOUR: White



COMMENTS: Powerful young sire, great overall yield, plenty of Fat Cover, fine haired, good bone and that extra eye appeal and body capacity a sire needs to exhibit. His Sire has produced powerful, high yielding early maturing progeny with powerful body type. Dam is from one our oldest cow families with 2 other full sisters producing outstanding progeny in stud herds. Progeny will suit any market and would sire herd bulls.

EBV's are outstanding top 5% of breed for 200 and 400 days, Top 15% 600 days and MW, EMA and IMF% are Top 10% with fat cover well above average.



July 2022 Australasian Charolais BREEDPLAN Analysis

	BW	200	400	600	MCW	Milk	SS	EMA	Rump	IMF
EBV	+2.0	+21	+39	+49	+60	+4	+1.4	+2.6	+1.0	+0.5
Acc	63%	55%	59%	56%	52%	37%	39%	33%	37%	30%

PALGROVE CELTIC (PK C632E) (P)

RANGAN PARK RIO BRAVO D15 (RAN D15E) (P)

SIRE: LVH-FAIRFIELD LONE RANGER (LVH L36E) (P)

DAM: GLENLEA JANET 60TH (GLE H8E) (P)

FERNVALE CHARITY (FEN C63E)

GLENLEA JANET 30TH (GLE E10E) (P)

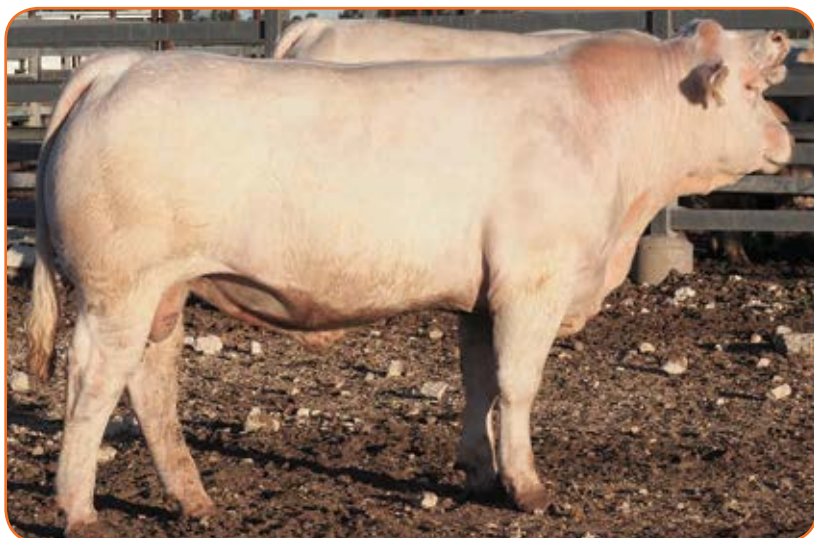
Lot 38

GLENLEA MUSCLES S4 (P/S)

TATTOO: GLE S4E

DOB: 11/01/2021

COLOUR: White



COMMENTS: Another early maturing thick, easy doing sire. Good carcass with plenty of finish.

Ideal for weaners to heavy feeders, suitable for heifers and cows.

Dam was a first calf heifer, as was the next lot.

EBV's growth 200 to 600 days all above average, top 15% EMA and Fat cover.



July 2022 Australasian Charolais BREEDPLAN Analysis

	BW	200	400	600	MCW	Milk	SS	EMA	Rump	IMF
EBV	-0.3	+13	+28	+32	+29	+10	+1.3	+2.4	+1.8	+0.3
Acc	65%	53%	56%	63%	53%	34%	68%	43%	44%	42%

LT VENTURE 3198 M835612 (OAU J5612E) (P)

GLENLEA EMBLEM L109 (GLE L109E) (P)

SIRE: CHALLAMBI MUSCLES (CHA M15E) (P)

DAM: GLENLEA FESTOON 1ST (GLE P705E) (P)

ROSEDALE HIGHNESS G114E (MR G114E) (P)

HUNTER VIEW FESTOON H6E (HV1 H6E) (P)

Lot 39

GLENLEA MUSCLES S1 (P/S)

TATTOO: GLE S1E

DOB: 01/01/2021

COLOUR: White



COMMENTS: Same early maturing, easy finishing type as his 3/4 brother in previous lot.

Muscles S1 has a lower BW again and ever more finish and bomb proof temperament.

Ideal over Charbray or Euro influence heifers or cows.

EBV's 200 to 600 growth all above breed average, with fat cover in top 10% Low BW in top 15% of breed.



July 2022 Australasian Charolais BREEDPLAN Analysis

	BW	200	400	600	MCW	Milk	SS	EMA	Rump	IMF
EBV	-1.4	+13	+30	+34	+27	+11	+1.3	+1.9	+2.0	+0.4
Acc	65%	54%	58%	65%	54%	34%	68%	44%	46%	44%

LT VENTURE 3198 M835612 (OAU J5612E) (P)

SIRE: CHALLAMBI MUSCLES (CHA M15E) (P)

ROSDALE HIGHNESS G114E (MR G114E) (P)

GLENLEA EMBLEM L109 (GLE L109E) (P)

DAM: GLENLEA FESTOON 3RD (GLE P704E) (P)

HUNTER VIEW K4E (HV1 K4E) (P)

Lot 40

LVH-FAIRFIELD KODY S130 (P)

TATTOO: LVH S130E

DOB: 25/03/2021

COLOUR: White



COMMENTS: Leading off the Fairfield branded Yearlings is Kody S130. Very well grown, ready to work. Long bodied, good overall yield and fat cover, with good bone. Very eye appealing Polled sire that would breed powerful polled bulls in a herd bull program or stud herd. Sired by Kody, maximum growth sire, with great carcass. Dam is a deep bodied great doing polled cow.

EBV's Top 10% 400 days, Top 15% 600-day weight, Top 25% EMA and Top 10% of breed for Fat Cover. Moderate BW



July 2022 Australasian Charolais BREEDPLAN Analysis

	BW	200	400	600	MCW	Milk	SS	EMA	Rump	IMF
EBV	+1.2	+15	+36	+46	+45	+9	+0.7	+2.2	+2.1	+0.2
Acc	53%	55%	62%	59%	52%	37%	74%	48%	47%	47%

PARINGA RIO BRAVO D213E (TOL D213E) (P)

SIRE: ELRIDGE LORD (RUU L43E) (P)

ELRIDGE HARMONY (RUU H14E)

PALGROVE ZILLMAN (PK Z108E) (P)

DAM: LVH-FAIRFIELD ZEENA 4 (LVH G302E) (P)

LVH-FAIRFIELD ZEENA (LVH Z10E) (P)

Lot 41

LVH-FAIRFIELD LORD S133

TATTOO: LVH S133E

DOB: 15/04/2021

COLOUR: White



COMMENTS: One of the highest performance and carcass bulls in the sale. Bone, length, weight for age and overall yield. Dam is a powerful big cow, half French, with massive volume. Sire is a trait leader for all growth traits, high EMA and extra fat cover. Would produce herd bulls in a nucleus program or purebred bulls and tremendous bullocks.

EBV's Top 1% all growth traits as well EMA and with positive fat cover and above average IMF% double the breed average for \$index Northern production. Moderate BW.



July 2022 Australasian Charolais BREEDPLAN Analysis

	BW	200	400	600	MCW	Milk	SS	EMA	Rump	IMF
EBV	+1.3	+22	+47	+63	+62	+6	+1.2	+3.2	+0.2	+0.4
Acc	52%	56%	62%	59%	52%	40%	74%	48%	47%	47%

PARINGA RIO BRAVO D213E (TOL D213E) (P)

SIRE: ELRIDGE LORD (RUU L43E) (P)

ELRIDGE HARMONY (RUU H14E)

TREVLAC BRONCO (WF7 B6F)

DAM: LVH-FAIRFIELD JODIE H313D (LVH H313D)

BAROOLA JODIE (NCF B498C)

Lot 42

LVH-FAIRFIELD LEVI S139E (P)

TATTOO: LVH S139E

DOB: 07/03/2021

COLOUR: White



COMMENTS: Big bodied, plenty of carcass and Fat Cover. Very eye appealing bull that progeny will suit all markets.

Sire is an early maturing Low BW sire, and his dam is a real performance cow with frame and carcass.

Progeny will suit any market.

EBV's Top 5% of breed for Fat Cover and IMF% ideal for MSA targeted Progeny above breed average in all growth traits, milk, and EMA. Low BW.



July 2022 Australasian Charolais BREEDPLAN Analysis

	BW	200	400	600	MCW	Milk	SS	EMA	Rump	IMF
EBV	+0.2	+13	+29	+37	+39	+10	-0.1	+1.8	+2.3	+0.9
Acc	50%	51%	58%	53%	48%	33%	72%	45%	44%	44%

PARINGA RIO BRAVO D213E (TOL D213E) (P)

SIRE: ELRIDGE LEVI (RUU L69E) (P)

GRANVILLE LUCY 10 (GDA F11E)

FERNVALE EAGLE ROCK (FEN E49E) (P/S)

DAM: LVH-FAIRFIELD CUTE H209 (LVH H209E) (P)

LVH-FAIRFIELD CUTE (LVH D14E) (P)

Lot 43

LVH-FAIRFIELD KODY S148 (P/S)

TATTOO: LVH S148E

DOB: 19/03/2021

COLOUR: White



COMMENTS: Powerful bodied sire, carcass with good bone and growth!

Sire is very high growth sire. Dam is powerful bodied medium framed cow that has earned her place every year in the Fairfield herd through droughts and floods.

EBV's Top 5% 400- and 600-day weight and IMF%, Top 15% EMA with positive fat cover.



July 2022 Australasian Charolais BREEDPLAN Analysis

	BW	200	400	600	MCW	Milk	SS	EMA	Rump	IMF
EBV	+1.4	+18	+39	+59	+64	+7	+2.1	+2.5	+0.4	+0.9
Acc	44%	49%	57%	51%	44%	26%	70%	39%	37%	38%

ADVANCE GRANDSLAM G47 (ADV G47E) (P)

SIRE: ADVANCE KODY K13 (ADV K13E) (P)

ADVANCE GINA B21 (ADV B21E)

LVH-FAIRFIELD BATMAN (LVH B2E)

DAM: LVH-FAIRFIELD BALI 2 (LVH H48E) (P)

LVH-FAIRFIELD BALI (LVH B9E) (P)

Lot 44

LVH-FAIRFIELD KODY S140 (P) (R/F)

TATTOO: LVH S140E

DOB: 20/04/2021

COLOUR: Red factor



COMMENTS: Growth, bone, fine hair type, easy finishing, an eye appealing Red polled sire. Very docile, progeny would suit all markets and would breed some powerful bull progeny and high performing steers. Dam is a fine coated very easy doing good boned cow, with a perfect udder. The highest IMF% EBV in the sale, ideal to target progeny to MSA Grids, with his extra Fat cover as well. Semen retained for in herd use.

EBV's Top 1% for IMF%, Top 10% for all growth traits and EMA, Top 20% Fat Cover. Moderate BW



July 2022 Australasian Charolais BREEDPLAN Analysis

	BW	200	400	600	MCW	Milk	SS	EMA	Rump	IMF
EBV	+0.7	+18	+36	+51	+49	+9	+1.8	+2.6	+1.4	+1.1
Acc	46%	51%	59%	53%	47%	33%	71%	44%	43%	44%

ADVANCE GRANDSLAM G47 (ADV G47E) (P)

SIRE: ADVANCE KODY K13 (ADV K13E) (P)

ADVANCE GINA B21 (ADV B21E)

LT BLUEGRASS 4017P M686569 (OAU Z4017E) (P)

DAM: LVH-FAIRFIELD BROCADE II H98 (LVH H98E) (P)

LVH-FAIRFIELD BROCADE (LVH E69E) (P)

Lot 45

LVH-FAIRFIELD LORD S102 (P) (R/F)

TATTOO: LVH S102E

DOB: 30/03/2021

COLOUR: Red factor



COMMENTS: A bull showing plenty of growth and scale. Long bodied, good boned with a lovely rich apricot colored hide, broad strong polled head. Sire is trait leader for growth and Fat cover, and consistently producing outstanding progeny. Dam is lovely natured performance cow, that we are going to add to our donor herd. Heavy feeders, Bullocks, stud progeny.

Semen retained for in herd use.

EBV's are top of the breed. Top 3% for growth, Top 5% Fat Cover, Top 15% EMA and IMF%. Moderate BW.



July 2022 Australasian Charolais BREEDPLAN Analysis

	BW	200	400	600	MCW	Milk	SS	EMA	Rump	IMF
EBV	+1.2	+19	+43	+58	+58	+8	+1.6	+2.4	+2.4	+0.6
Acc	53%	55%	62%	59%	52%	37%	74%	48%	47%	47%

PARINGA RIO BRAVO D213E (TOL D213E) (P)

SIRE: ELRIDGE LORD (RUU L43E) (P)

ELRIDGE HARMONY (RUU H14E)

PALGROVE CELTIC (PK C632E) (P)

DAM: LVH-FAIRFIELD POSEY J5 (LVH J5E) (P)

LVH-FAIRFIELD POSEY (LVH C61E) (P)

Lot 46

LVH-FAIRFIELD LORD S119 (P)

TATTOO: LVH S119E

DOB: 23/03/2021

COLOUR: White



COMMENTS: These Lord sons have outstanding performance, are easy doing with extra fat cover for market versatility. S119 is a great sire in the making, good bone, strong polled head, fine coated and docile. Dam is one of the highest performance females in the Fairfield herd, 11 years old, with a perfect udder and raising another great calf. Semen retained for in herd use.

EBV's are again right at the very top of the breed. Top 1% for growth, Top 3% for Carcass weight, Top 5% for EMA and Fat Cover, top 15% for IMF%



July 2022 Australasian Charolais BREEDPLAN Analysis

	BW	200	400	600	MCW	Milk	SS	EMA	Rump	IMF
EBV	+1.9	+22	+47	+63	+67	+7	+1.9	+2.8	+2.4	+0.6
Acc	52%	56%	62%	59%	52%	38%	74%	48%	47%	47%

PARINGA RIO BRAVO D213E (TOL D213E) (P)

SIRE: ELRIDGE LORD (RUU L43E) (P)

ELRIDGE HARMONY (RUU H14E)

PALGROVE CELTIC (PK C632E) (P)

DAM: LVH-FAIRFIELD ZENICE (LVH G289E) (P)

FERNVALE ZENICE (FEN Z85E)

Lot 47

LVH-FAIRFIELD KODY S122

TATTOO: LVH S122E

DOB: 15/03/2021

COLOUR: White



COMMENTS: Powerful performance bull with extra yield, good bone, sires head and easy doing.

Dam is a big volumed female, always in great body condition relative to the mob.

Ideal to breed those high yielding bullocks on grass or grain.

EBV's Top 5% 400- and 600-day weight, Top 10% 200 days, top 20% EMA and above average IMF%



July 2022 Australasian Charolais BREEDPLAN Analysis

	BW	200	400	600	MCW	Milk	SS	EMA	Rump	IMF
EBV	+1.8	+19	+38	+56	+68	+7	+1.5	+2.3	-0.3	+0.3
Acc	44%	47%	56%	50%	43%	25%	70%	39%	37%	38%

ADVANCE GRANDSLAM G47 (ADV G47E) (P)

SIRE: ADVANCE KODY K13 (ADV K13E) (P)

ADVANCE GINA B21 (ADV B21E)

LVH-FAIRFIELD BATMAN (LVH B2E)

DAM: LVH-FAIRFIELD SUSANNAH J57E (LVH J57E)

LVH-FAIRFIELD SUSANNAH (LVH B18E)

Lot 48

MAW GLENLEA NEPTUNE S37 (AI) (P) (TW)

TATTOO: MAW S37E

DOB: 01/05/2021

COLOUR: White



PP POLLED

COMMENTS: The first of 7 MAW/GLENLEA joint venture yearling bulls.

S37 is a powerful polled sire with growth, bone and carcass. Lovely loose hid and Low BW.

Dam is an outstanding first calver, from one of our leading cow families.

EBV's will be updated sale day as this bull's raw data was omitted from his group the August analysis. His weight for age and Raw scans were some of the highest in his management group and his updated EBV data will reflect this.



July 2022 Australasian Charolais BREEDPLAN Analysis

	BW	200	400	600	MCW	Milk	SS	EMA	Rump	IMF
EBV	-0.3	+15	+29	+40	+35	+9	+1.6		+0.7	
Acc	45%	33%	34%	35%	33%	25%	32%		25%	

GLENLEA JEDDI (VLW J15E) (P)

SIRE: OW GLENLEA NEPTUNE (WFA N42E) (P)

GOODVIEW BLONDIE 3RD (HEL J10E) (P)

CHALLAMBI MUSCLES (CHA M15E) (P)

DAM: GLENLEA ADAWNA 7TH (GLE Q2E) (P)

GLENLEA ADAWNA 5TH (GLE M106E) (P)

Lot 49**MAW GLENLEA VIAGRA S65 (AI) (P)****TATTOO:** MAW S65E**DOB:** 12/05/2021**COLOUR:** White**PP POLLED****COMMENTS:** Strong polled head, length of body, good bone and slick skin.

Sired by one of Palgrove's most proven sires Viagra. Dam is a high-performance female, tremendous easy finishing female, always in fat condition while still milking very well and raising calves like S65.

EBV's Top 5% for Fat cover, Top 10% EMA with above breed average growth and IMF%**July 2022 Australasian Charolais BREEDPLAN Analysis**

	BW	200	400	600	MCW	Milk	SS	EMA	Rump	IMF
EBV	+0.8	+16	+28	+29	+40	+8	+1.1	+2.6	+2.4	+0.3
Acc	62%	62%	66%	63%	60%	54%	73%	56%	59%	55%

LT WYOMING WIND 4020 PLD (OAU P4020E) (P)

SIRE: PALGROVE VIAGRA (PK V92E) (P)

PALGROVE ESTELLA 73 (PK S201E)

ASCOT LIQUID GOLD L7E (JAJ L7E) (P)

DAM: ASCOT ESTELLA N81E (JAJ N81E) (P)

ASCOT ESTELLA L84E (JAJ L84E) (P)

Lot 50**MAW GLENLEA NEPTUNE S31 (AI) (P)****TATTOO:** MAW S31E**DOB:** 05/05/2021**COLOUR:** White**PP POLLED****COMMENTS:** Built like a Sherman tank, extra yield on every part of his body. Docile nature and early maturity. Dam is an outstanding easy doing, big volumed, perfect uddered daughter of trait leading sire Paringa Kilo Packer. Sire, Neptune is breeding outstanding Low BW high yielding progeny. Sale topping weaners and heavy feeders this bull will give you out of any cow, and stud breeders you may not find a better bull for heifer's and larger framed cows this year to add carcass! Semen retained for in herd use.**EBV's Top 1% of breed for EMA, Top 10% Retail beef yield, Top 5% for Direct Calving ease, Top 10% for Low BW, Top 20% growth traits, above average milk with positive Fat and IMF%.****July 2022 Australasian Charolais BREEDPLAN Analysis**

	BW	200	400	600	MCW	Milk	SS	EMA	Rump	IMF
EBV	-1.7	+17	+31	+43	+32	+9	+2.7	+3.4	+0.1	+0.2
Acc	53%	50%	56%	51%	46%	29%	68%	41%	41%	40%

GLENLEA JEDDI (VLW J15E) (P)

SIRE: OW GLENLEA NEPTUNE (WFA N42E) (P)

GOODVIEW BLONDIE 3RD (HEL J10E) (P)

PARINGA KILO PACKER K330 (TOL K330E) (P)

DAM: ASCOT LAONIE P65E (JAJ P65E) (P)

ASCOT LAONIE M84E (JAJ M84E) (P)

Lot 51

MAW GLENLEA LANNISTER S93 (AI) (P) (TW)

TATTOO: MAW S93E

DOB: 08/05/2021

COLOUR: White



COMMENTS: Powerful made bull with extra yielding carcass, even finish and bone. Slick skinned, sire is 200-day weight trait leader and noted for early maturing high-performance progeny. We have admired this calf from birth, and he has just kept developing. Dam is a very powerful French sired cow from the famous Estella cow family.

Progeny will suit any market, would sire herd bulls and purebred bulls in a stud herd.

EBV's Top 20% 200 weight, well above breed average 400- and 600-day weight. Top 20% EMA and Top 25% IMF.



July 2022 Australasian Charolais BREEDPLAN Analysis

	BW	200	400	600	MCW	Milk	SS	EMA	Rump	IMF
EBV	+0.5	+17	+29	+36	+47	+8	+1.4	+2.1	-0.1	+0.5
Acc	55%	50%	50%	49%	47%	48%	47%	36%	39%	36%

RANGAN PARK GAUGUIN C15 (RAN C15E) (P)

SIRE: JC LANNISTER L1 (CJC L1E) (P)

RANGAN PARK NANETTE H102 (RAN H102E) (P)

NOVOTEL 5897127519 (OAF S7519F)

DAM: VALLEY VIEW ESTELLA C14 9E (VLW J9E) (P/S)

PALGROVE ESTELLA 214 (PK A416E) (P)

Lot 52

MAW GLENLEA ASHWOOD S32 (AI) (P)

TATTOO: MAW S32E

DOB: 06/05/2021

COLOUR: White



PP POLLED

COMMENTS: Well-shaped, early maturing, easy finishing Low BW Polled bull. Fine hair.

Suitable for heifers or cows.

Sire is a trait leader for Low BW and milk. Dam is lovely young cow, from a famous cow family.

EBV's Top 5% direct Calving ease, Milk, fat Cover and IMF%, Top 10% Low BW, above breed average growth.



July 2022 Australasian Charolais BREEDPLAN Analysis

	BW	200	400	600	MCW	Milk	SS	EMA	Rump	IMF
EBV	-1.9	+13	+29	+39	+35	+13	+2.3	+1.5	+2.8	+0.9
Acc	62%	61%	65%	61%	57%	50%	73%	51%	53%	51%

ASHWOOD PARK RIO D213 F56E (HAS F56E) (P)

SIRE: RANGAN ASHWOOD F56 L84 (RAN L84E) (P)

RANGAN PARK DELIGHT G42 (RAN G42E) (P)

ASCOT GOLDRUSH G136E (JAJ G136E) (P)

DAM: ASCOT ISOBELLA P59E (JAJ P59E) (P)

GOBONGO ISABELLA D10E (GO D10E) (P)

Lot 53

MAW GLENLEA NEPTUNE S38 (AI) (P)

TATTOO: MAW S38E

DOB: 28/04/2021

COLOUR: White



PP POLLED

COMMENTS: Want an alternative heifer bull to Low BW and Low Yielding Angus? S38 is a Charolais that breaks the rules. Slick skinned, thick bodied and easy finishing.

Ultra-Low Birthweight and calving ease, would suit calving young heifer's at 2 years and produce quick finishing progeny for short fed domestic market. Or bigger framed, high performance Stud heifers to add Fat cover and moderate frame.

EBV's Top 1% Fat Cover, Top 5% direct calving ease and Low BW, EMA and Milk, with above average growth.



July 2022 Australasian Charolais BREEDPLAN Analysis

	BW	200	400	600	MCW	Milk	SS	EMA	Rump	IMF
EBV	-2.5	+14	+26	+33	+27	+13	+1.9	+3.1	+3.3	-0.1
Acc	53%	49%	56%	51%	46%	29%	68%	41%	43%	41%

GLENLEA JEDDI (VLW J15E) (P)

SIRE: OW GLENLEA NEPTUNE (WFA N42E) (P)

GOODVIEW BLONDIE 3RD (HEL J10E) (P)

ASCOT KING ARTHUR K44E (JAJ K44E) (P)

DAM: ASCOT GOLDEN P12E (JAJ P12E) (P)

ASHWOOD PARK GOLDEN (HAS G54E) (P)

Lot 54

LVH-FAIRFIELD LORD S137

TATTOO: LVH S137E

DOB: 02/04/2021

COLOUR: White



COMMENTS: Strong bodied, performance bull with carcass and finish.

Suitable for heifers and cows.

EBV's Top 5% growth and Fat cover, Top 15 % IMF%, Top 25% EMA. Moderate BW



July 2022 Australasian Charolais BREEDPLAN Analysis

	BW	200	400	600	MCW	Milk	SS	EMA	Rump	IMF
EBV	+0.5	+21	+44	+59	+50	+4	+2.2	+2.1	+2.7	+0.6
Acc	52%	55%	62%	59%	52%	38%	74%	48%	46%	40%

PARINGA RIO BRAVO D213E (TOL D213E) (P)

SIRE: ELRIDGE LORD (RUU L43E) (P)

ELRIDGE HARMONY (RUU H14E)

PALGROVE DALLAS (PK D288E) (P)

DAM: LVH-FAIRFIELD ZINA H118 (LVH H118E) (P)

LVH-FAIRFIELD ZINA (LVH E4E) (P)

Lot 55

LVH-FAIRFIELD LORD S129

TATTOO: LVH S129A

DOB: 06/04/2021

COLOUR: White



COMMENTS: Good balanced bull growth, carcass, finish.

EBV's above average growth, carcass traits, with Low BW



July 2022 Australasian Charolais BREEDPLAN Analysis

	BW	200	400	600	MCW	Milk	SS	EMA	Rump	IMF
EBV	-0.1	+12	+34	+42	+34	+7	+0.7	+1.1	+1.6	+0.6
Acc	41%	50%	58%	53%	46%	30%	72%	45%	44%	45%

PARINGA RIO BRAVO D213E (TOL D213E) (P)

SIRE: **ELRIDGE LORD (RUU L43E) (P)**

DAM: **FAIRFIELD STUD CHAROLAIS COW**

ELRIDGE HARMONY (RUU H14E)

Lot 56

LVH-FAIRFIELD KODY S123 (P)

TATTOO: LVH S123A

DOB: 27/02/2021

COLOUR: White



COMMENTS: Strong Polled bull with Growth and good yielding carcass.

Very good type to suit all markets as all these Fairfield bulls are.

EBV's Top 20% 400- and 600-day weight, Top 10% EMA. moderate BW



July 2022 Australasian Charolais BREEDPLAN Analysis

	BW	200	400	600	MCW	Milk	SS	EMA	Rump	IMF
EBV	+1.1	+13	+31	+45	+41		+1.3	+2.6	-0.6	+0.0
Acc	31%	42%	52%	45%	37%		70%	38%	36%	37%

ADVANCE GRANDSLAM G47 (ADV G47E) (P)

SIRE: **ADVANCE KODY K13 (ADV K13E) (P)**

DAM: **FAIRFIELD STUD CHAROLAIS COW**

ADVANCE GINA B21 (ADV B21E)

Lot 57

LVH-FAIRFIELD LORD S107

TATTOO: LVH S107A

DOB: 24/03/2021

COLOUR: White



COMMENTS: Good growth, medium frame, with easy finishing carcass.

Low BW suitable for Heifers this season and into the cows next year.

EBV's Top 15% 400- and 600-day weight and IMF% with above average fat cover. Low BW



July 2022 Australasian Charolais BREEDPLAN Analysis

	BW	200	400	600	MCW	Milk	SS	EMA	Rump	IMF
EBV	+0.1	+11	+35	+44	+35	+6	+1.3	+0.9	+0.8	+0.6
Acc	41%	50%	58%	53%	46%	30%	72%	45%	44%	45%

PARINGA RIO BRAVO D213E (TOL D213E) (P)

SIRE: **ELRIDGE LORD (RUJ L43E) (P)**

DAM: **FAIRFIELD STUD CHAROLAIS COW**

ELRIDGE HARMONY (RUJ H14E)

Lot 58

LVH-FAIRFIELD KODY S116 (P)

TATTOO: LVH S116A

DOB: 01/03/2021

COLOUR: White



COMMENTS: Good growth and carcass showing extra yield, Polled. Moderate BW

EBV's top 20% 400- and 600-day weight, EMA with positive Fat cover and IMF%



July 2022 Australasian Charolais BREEDPLAN Analysis

	BW	200	400	600	MCW	Milk	SS	EMA	Rump	IMF
EBV	+0.9	+13	+31	+43	+42		+0.5	+2.3	+0.3	+0.2
Acc	31%	42%	52%	45%	37%		70%	38%	36%	37%

ADVANCE GRANDSLAM G47 (ADV G47E) (P)

SIRE: **ADVANCE KODY K13 (ADV K13E) (P)**

DAM: **FAIRFIELD STUD CHAROLAIS COW**

ADVANCE GINA B21 (ADV B21E)

Lot 59

LVH-FAIRFIELD KODYS127

TATTOO: LVH S127A

DOB: 19/03/2021

COLOUR: White



COMMENTS: Early maturing bull with carcass and good finish, easy doing type.

Suit the tougher country, with more moderate mature size. Suitable for heifer's and cows.

EBV's Top 20% Fat cover and IMF%, growth reflects early maturity with all positive EMA. Low BW



July 2022 Australasian Charolais BREEDPLAN Analysis

	BW	200	400	600	MCW	Milk	SS	EMA	Rump	IMF
EBV	-1.2	+7	+19	+23	+14	+7	+0.6	+1.1	+1.4	+0.6
Acc	38%	46%	55%	49%	42%	27%	71%	42%	41%	42%

PARINGA RIO BRAVO D213E (TOL D213E) (P)

SIRE: **ELRIDGE LEVI (RUU L69E) (P)**

DAM: **FAIRFIELD STUD CHAROLAIS COW**

GRANVILLE LUCY 10 (GDA F11E)

Lot 60

LVH-FAIRFIELD LEVI S120

TATTOO: LVH S120A

DOB: 24/03/2021

COLOUR: White



COMMENTS: Good carcass with early maturity, plenty of finish and Low BW suitable for heifer's this year and out with cows next year.

These low BW bulls give you the option of using Charolais on your heifers and getting better returns from progeny while still getting a high calving %. The benefits of performance recording!

EBV's Top 5% Fat cover, positive EMA and IMF% with growth curve reflecting early maturity.



July 2022 Australasian Charolais BREEDPLAN Analysis

	BW	200	400	600	MCW	Milk	SS	EMA	Rump	IMF
EBV	-1.2	+11	+23	+28	+22	+7	+0.7	+1.5	+2.6	+0.3
Acc	38%	46%	55%	49%	42%	27%	71%	42%	41%	42%

PARINGA RIO BRAVO D213E (TOL D213E) (P)

SIRE: **ELRIDGE LEVI (RUU L69E) (P)**

DAM: **FAIRFIELD STUD CHAROLAIS COW**

GRANVILLE LUCY 10 (GDA F11E)

Lot 61

MAW GLENLEA ASHWOOD S35 (AI) (P)

TATTOO: MAW S35E

DOB: 07/05/2021

COLOUR: White



PP POLLED

COMMENTS: Easy finishing, very early maturing, thick bodied low BW Polled Bull. Dam is a daughter of Ascot's number 1 donor cow.

Suitable to join to young heifers of any breed and have that small born calf that puts weight on fast with body shape making a premium in the market!

EBV's Top 4% Low BW, Top 8% Direct Calving ease, Top 5% milk, Fat Cover, Top 10% IMF% Top 25% EMA.



July 2022 Australasian Charolais BREEDPLAN Analysis

	BW	200	400	600	MCW	Milk	SS	EMA	Rump	IMF
EBV	-2.2	+8	+15	+22	+19	+15	+0.9	+2.2	+2.4	+0.7
Acc	62%	60%	64%	60%	56%	49%	73%	51%	53%	50%

ASHWOOD PARK RIO D213 F56E (HAS F56E) (P)

SIRE: RANGAN ASHWOOD F56 L84 (RAN L84E) (P)

RANGAN PARK DELIGHT G42 (RAN G42E) (P)

ROSEDALE LUMP SUM (MR L8E) (P)

DAM: ASCOT ESTELLA P809E (JAJ P809E) (P)

PALGROVE ESTELLA 195 (PK Z498E) (P)

Lot 62

LVH-FAIRFIELD LORD S117 (P) (R/F)

TATTOO: LVH S117A

DOB: 12/04/2021

COLOUR: Red factor



COMMENTS: Dark red polled bull to breed weaners or feeders with colored hide from apricot from white or cream cows. Early to mid-maturity body type, deep square. Easy doing and adaptable.

Great over white/cream Charbray heifers!

EBV's Top 5% 400 day, Top 15% 600 day weight, Top 10% Fat cover. Low BW



July 2022 Australasian Charolais BREEDPLAN Analysis

	BW	200	400	600	MCW	Milk	SS	EMA	Rump	IMF
EBV	+0.0	+14	+38	+48	+44	+6	+2.0	+0.8	+2.2	+0.2
Acc	41%	50%	58%	53%	46%	30%	72%	45%	44%	45%

PARINGA RIO BRAVO D213E (TOL D213E) (P)

SIRE: ELRIDGE LORD (RUU L43E) (P)

ELRIDGE HARMONY (RUU H14E)

DAM: FAIRFIELD STUD CHAROLAIS COW

Lot 63

LVH-FAIRFIELD LORD S109 (P/S) (R/F)

TATTOO: LVH S109A

DOB: 02/05/2021

COLOUR: Red factor



COMMENTS: Half brother and same dark coat color as previous lot. These are purebred bulls from a Red Charolais Sire and Dam.

Good doing, early maturing, thick made adaptable bulls with the added element that will produce black progeny from Black cows with Charolais growth!

EBV's Top 15% fat cover, positive EMA and IMF% with Growth reflecting early maturity. Low BW



July 2022 Australasian Charolais BREEDPLAN Analysis

	BW	200	400	600	MCW	Milk	SS	EMA	Rump	IMF
EBV	-0.3	+11	+30	+37	+29	+6	+0.6	+1.3	+2.4	+0.3
Acc	40%	48%	55%	51%	44%	30%	68%	44%	43%	43%

PARINGA RIO BRAVO D213E (TOL D213E) (P)

SIRE: **ELRIDGE LORD (RUU L43E) (P)**

DAM: **FAIRFIELD STUD CHAROLAIS COW**

ELRIDGE HARMONY (RUU H14E)

Lot 64

LVH-FAIRFIELD KODYS104 (P/S) (R/F)

TATTOO: LVH S104A

DOB: 30/03/2021

COLOUR: Red factor



COMMENTS: Composite Char/Santa bull that have been sold by Fairfield for many years. Adaptable, soft haired, easy doing bull.

We have registered these bulls and have EBV's that allow more direct comparison with other bulls in the sale, further demonstration of Glenlea Beef's commitment to performance recording.

EBV's key factor here is low mature weight, with daughter's being those being easy to maintain moderate females. Low BW



July 2022 Australasian Charolais BREEDPLAN Analysis

	BW	200	400	600	MCW	Milk	SS	EMA	Rump	IMF
EBV	-1.9	+5	+13	+26	+3		-0.8	+1.5	+1.4	+0.7
Acc	31%	42%	53%	45%	37%		70%	38%	36%	38%

ADVANCE GRANDSLAM G47 (ADV G47E) (P)

SIRE: **ADVANCE KODY K13 (ADV K13E) (P)**

DAM: **FAIRFIELD PURE SANTA COW**

ADVANCE GINA B21 (ADV B21E)

Lot 65

LVH-FAIRFIELD KODY S151 (R/F)

TATTOO: LVH S151A

DOB: 07/04/2021

COLOUR: Red factor



COMMENTS: Char/ Santa Composite, half brother to previous bull.

Good type ideal over Char x females to keep Charolais content at 50%.

EBV's low mature weight to moderate cows mature size.



July 2022 Australasian Charolais BREEDPLAN Analysis

	BW	200	400	600	MCW	Milk	SS	EMA	Rump	IMF
EBV	-1.9	+5	+13	+26	+5		+0.0	+1.5	+1.6	+0.1
Acc	31%	42%	53%	45%	37%		70%	38%	36%	38%

ADVANCE GRANDSLAM G47 (ADV G47E) (P)

SIRE: **ADVANCE KODY K13 (ADV K13E) (P)**

DAM: **FAIRFIELD PURE SANTA COW**

ADVANCE GINA B21 (ADV B21E)

Lot 66

LVH-FAIRFIELD KODY S105 (P)

TATTOO: LVH S105A

DOB: 01/04/2021

COLOUR: White



COMMENTS: Well-shaped carcass with good cover, growth, EMA and Polled.

EBV's Top 20% for 400 and 600 weight, above average EMA with positive Fat Cover.



July 2022 Australasian Charolais BREEDPLAN Analysis

	BW	200	400	600	MCW	Milk	SS	EMA	Rump	IMF
EBV	+0.9	+13	+31	+43	+44		+1.2	+1.9	+0.5	-0.3
Acc	31%	42%	52%	45%	37%		70%	38%	36%	37%

ADVANCE GRANDSLAM G47 (ADV G47E) (P)

SIRE: **ADVANCE KODY K13 (ADV K13E) (P)**

DAM: **FAIRFIELD STUD CHAROLAIS COW**

ADVANCE GINA B21 (ADV B21E)

Lot 67**LVH-FAIRFIELD JACKEROO S114 (P) (R/F)****TATTOO:** LVH S114A**DOB:** 12/03/2021**COLOUR:** Red factor

COMMENTS: Long bodied, well-shaped carcass, Red polled bull. Early maturing with good bone, strong head.

EBV's Low BW, positive Fat cover.

**July 2022 Australasian Charolais BREEDPLAN Analysis**

	BW	200	400	600	MCW	Milk	SS	EMA	Rump	IMF
EBV	+0.2	+5	+13	+12	+10	+1	+0.6	-0.7	+0.4	-0.4
Acc	40%	46%	54%	48%	41%	27%	70%	40%	39%	40%

ADVANCE DOMINO D36 (ADV D36E) (P)

SIRE: CRATHES JACKEROO (KRG J29E) (P)**DAM:** FAIRFIELD STUD CHAROLAIS COW

GOBONGO OREGON E300E (GO E300E) (P)

Lot 68**LVH-FAIRFIELD JACKEROO S121****TATTOO:** LVH S121A**DOB:** 26/04/2021**COLOUR:** White

COMMENTS: Neat, square bull, good finish will adapt and handle the rougher country.

EBV's Low BW, above average fat cover.

**July 2022 Australasian Charolais BREEDPLAN Analysis**

	BW	200	400	600	MCW	Milk	SS	EMA	Rump	IMF
EBV	+0.1	+6	+15	+12	+13	+3	+0.2	-0.9	+0.8	-0.3
Acc	40%	46%	54%	48%	41%	27%	70%	40%	39%	40%

ADVANCE DOMINO D36 (ADV D36E) (P)

SIRE: CRATHES JACKEROO (KRG J29E) (P)**DAM:** FAIRFIELD STUD CHAROLAIS COW

GOBONGO OREGON E300E (GO E300E) (P)

Lot 69

LVH-FAIRFIELD KODY S136

TATTOO: LVH S136A

DOB: 01/05/2021

COLOUR: White

COMMENTS: Moderate framed good thick bull, good finish and good over all yielding carcass.

EBV's growth reflects early maturity, with all positive carcass traits.

	July 2022 Australasian Charolais BREEDPLAN Analysis									
	BW	200	400	600	MCW	Milk	SS	EMA	Rump	IMF
EBV	-0.8	+8	+22	+27	+17	+7	+0.9	+1.3	+0.8	+0.6
Acc	38%	45%	52%	47%	41%	27%	66%	41%	40%	40%

PARINGA RIO BRAVO D213E (TOL D213E) (P)

SIRE: ELRIDGE LEVI (RUU L69E) (P)

DAM: FAIRFIELD STUD CHAROLAIS COW

GRANVILLE LUCY 10 (GDA F11E)

Lot 70

LVH-FAIRFIELD LEVI S106

TATTOO: LVH S106A

DOB: 03/03/2021

COLOUR: White

	July 2022 Australasian Charolais BREEDPLAN Analysis									
	BW	200	400	600	MCW	Milk	SS	EMA	Rump	IMF
EBV	-1.0	+5	+13	+16	+1	+6	+0.3	+1.5	+0.1	+0.1
Acc	38%	46%	55%	49%	42%	27%	71%	42%	41%	32%

PARINGA RIO BRAVO D213E (TOL D213E) (P)

SIRE: ELRIDGE LEVI (RUU L69E) (P)

DAM: FAIRFIELD STUD CHAROLAIS COW

GRANVILLE LUCY 10 (GDA F11E)

Lot 71

LVH-FAIRFIELD KODY S124 (P)

TATTOO: LVH S124A

DOB: 20/04/2021

COLOUR: White

	July 2022 Australasian Charolais BREEDPLAN Analysis									
	BW	200	400	600	MCW	Milk	SS	EMA	Rump	IMF
EBV	+0.8	+13	+31	+45	+46		+2.2	+1.2	+0.1	+0.1
Acc	31%	42%	52%	45%	37%		70%	38%	36%	37%

ADVANCE GRANDSLAM G47 (ADV G47E) (P)

SIRE: ADVANCE KODY K13 (ADV K13E) (P)

DAM: FAIRFIELD STUD CHAROLAIS COW

ADVANCE GINA B21 (ADV B21E)

Lot 72

LVH-FAIRFIELD JACKEROO S132 (P/S)

TATTOO: LVH S132A

DOB: 01/04/2021

COLOUR: White

	July 2022 Australasian Charolais BREEDPLAN Analysis									
	BW	200	400	600	MCW	Milk	SS	EMA	Rump	IMF
EBV	+0.6	+5	+15	+10	+13	+4	-0.6	-1.5	-0.1	-0.7
Acc	40%	46%	54%	48%	41%	27%	70%	40%	39%	40%

ADVANCE DOMINO D36 (ADV D36E) (P)

SIRE: CRATHES JACKEROO (KRG J29E) (P)

DAM: FAIRFIELD STUD CHAROLAIS COW

GOBONGO OREGON E300E (GO E300E) (P)

Lot 73

LVH-FAIRFIELD KODY S150 (P)

TATTOO: LVH S150A

DOB: 03/05/2021

COLOUR: White



July 2022 Australasian Charolais BREEDPLAN Analysis

	BW	200	400	600	MCW	Milk	SS	EMA	Rump	IMF
EBV	+0.9	+15	+33	+46	+48	+1.4	+2.0	+0.5	+0.0	
Acc	31%	42%	51%	44%	37%	66%	37%	36%	37%	

ADVANCE GRANDSLAM G47 (ADV G47E) (P)

SIRE: ADVANCE KODY K13 (ADV K13E) (P)

DAM: FAIRFIELD STUD CHAROLAIS COW

ADVANCE GINA B21 (ADV B21E)

Lot 74

LVH-FAIRFIELD LORD S113

TATTOO: LVH S113A

DOB: 13/03/2021

COLOUR: White



July 2022 Australasian Charolais BREEDPLAN Analysis

	BW	200	400	600	MCW	Milk	SS	EMA	Rump	IMF
EBV	-0.4	+10	+27	+35	+26	+4	+1.4	+0.6	+1.8	+0.2
Acc	41%	50%	58%	53%	46%	30%	72%	45%	44%	45%

PARINGA RIO BRAVO D213E (TOL D213E) (P)

SIRE: ELRIDGE LORD (RUU L43E) (P)

DAM: FAIRFIELD STUD CHAROLAIS COW

ELRIDGE HARMONY (RUU H14E)

Lot 75

LVH-FAIRFIELD LEVI S154 (P)

TATTOO: LVH S154A

DOB: 16/03/2021

COLOUR: White



July 2022 Australasian Charolais BREEDPLAN Analysis

	BW	200	400	600	MCW	Milk	SS	EMA	Rump	IMF
EBV	-1.1	+6	+15	+19	+6	+5	+0.8	+1.6	+1.2	+0.1
Acc	38%	46%	55%	49%	42%	27%	71%	42%	41%	42%

PARINGA RIO BRAVO D213E (TOL D213E) (P)

SIRE: ELRIDGE LEVI (RUU L69E) (P)

DAM: FAIRFIELD STUD CHAROLAIS COW

GRANVILLE LUCY 10 (GDA F11E)

Lot 76

LVH-FAIRFIELD LEVI 128A

TATTOO: LVH S128A

DOB: 02/03/2021

COLOUR: White



July 2022 Australasian Charolais BREEDPLAN Analysis

	BW	200	400	600	MCW	Milk	SS	EMA	Rump	IMF
EBV	+0.4	+3	+10	+6	+4	+2	-0.3	-0.9	-0.5	-0.7
Acc	40%	46%	54%	48%	41%	27%	70%	40%	39%	40%

ADVANCE DOMINO D36 (ADV D36E) (P)

SIRE: CRATHES JACKEROO (KRG J29E) (P)

DAM: FAIRFIELD STUD CHAROLAIS COW

GOBONGO OREGON E300E (GO E300E) (P)

Lot 77**LVH-FAIRFIELD LORD S144 (P/S)****TATTOO:** LVH S144A**DOB:** 15/04/2021**COLOUR:** White

July 2022 Australasian Charolais BREEDPLAN Analysis

	BW	200	400	600	MCW	Milk	SS	EMA	Rump	IMF
EBV	-0.1	+9	+27	+32	+25	+6	+0.6	+0.4	+1.5	-0.1
Acc	41%	50%	58%	53%	46%	30%	72%	45%	44%	45%

PARINGA RIO BRAVO D213E (TOL D213E) (P)

SIRE: ELRIDGE LORD (RUU L43E) (P)**DAM:** FAIRFIELD STUD CHAROLAIS COW

ELRIDGE HARMONY (RUU H14E)

Lot 78**LVH-FAIRFIELD LEVI S101 (P) - Herd Bull****TATTOO:** LVH S101**DOB:** 03/05/2021**COLOUR:**

COMMENTS: One of the youngest polled bulls in the sale. S101 is like all the Levi sons, an Early Maturing Low BW Bull suitable to join heifers this year and go out with the cows next year.

Unregistered no EBV's

PARINGA RIO BRAVO D213E (TOL D213E) (P)

SIRE: ELRIDGE LEVI (RUU L69E) (P)**DAM:** FAIRFIELD STUD CHAROLAIS COW

GRANVILLE LUCY 10 (GDA F11E)

Lot 79**GLENLEA MUSCLES R607 (P) - Herd Bull****TATTOO:** GLE R607**DOB:** 02/11/20**COLOUR:**

COMMENTS: Very easy doing, early maturing polled bull.

Enough good growth and extra fat cover to make grass finished bullocks with an ideal maturity pattern for weaners and feeders.

LT VENTURE 3198 M835612 (OAU J5612E) (P)

SIRE: CHALLAMBI MUSCLES (CHA M15E) (P)

RANGAN PARK RIO BRAVO D15 (RAN D15E) (P)

DAM: GLENLEA J324

ROSEDALE HIGHNESS G114E (MR G114E) (P)

GLENLEA PURE CHAROLAIS COW

Lot 80**GLENLEA MUSCLES R405 (P) - Herd Bull****TATTOO:** GLE R405**DOB:** 20/09/20**COLOUR:**

COMMENTS: We always select a couple quality bulls to finish our sales. Long bodied, fine coated, well muscled with a little extra growth and frame. Could have easily been catalogued in the first 30 lots of 2 year old bulls.

LT VENTURE 3198 M835612 (OAU J5612E) (P)

SIRE: CHALLAMBI MUSCLES (CHA M15E) (P)

RANGAN PARK RIO BRAVO D15 (RAN D15E) (P)

DAM: GLENLEA J355

ROSEDALE HIGHNESS G114E (MR G114E) (P)

GLENLEA PURE CHAROLAIS COW

END OF SALE



Lindsay Hindle and Roderick Binny at Winton Bull Sale 2021.

With the purchase of the Fairfield herd in late 2021, the Hindle's Fairfield Herd is now part of Glenlea Beef.

A logo for Pinedock Fitting. It features a stylized outline of a cow's head and body in black. The background is divided into three horizontal bands: red at the top, white in the middle, and blue at the bottom. The text "PD" is in red above the word "PINEDOCK" in large, bold, blue letters. Below "PINEDOCK" is the word "FITTING" in red. To the right of the cow outline, the text "James & Jane Dockrill" is in black. Below that, contact information is listed: "James: 0400 387 116", "Jane: 0438 812 240", "Ph: 02 66 63 1274", and "E: pinedock@gmail.com".



The Dockrill family are an integral part of Glenlea Beef and provide a range of services, from feeding and showing our cattle, preparing bulls for our range of bull sales, marketing photos, clipping and video taking, production and editing. Additionally an increasing amount of private bulls directly from their Casino, NSW property.

All the rest of the Glenlea Beef team thank them for all their support, input and hard work without which Glenlea Beef could not operate in the way it does currently.



**JC LANNISTER L1
(CJC L1E) (P)**

Sire of Lot 51.



**GLENLEA ADAWNA
7TH (GLE Q2E) (P)**

Dam of Lot 48 prior
to calving with him
as her first calf.



Top Price Bull at our Winton Sale in July, at \$16,000.
Sold to repeat buyers Lance and Tracey Horsely, Tungamah
Pastoral, Longreach. *Left to right Roderick Binny, Scott Taylor
Elders Winton and Gavin Smith Winton Saleyards Manager.*

SCX JEHU 233E

Highest Priced Charolais bull ever sold
at Auction in Canada for \$CAD265,000.



*Photos at
5 years of age.*

**Proven Breeding
Bull with daughters
in production.**

**Sons have sold to
\$CAN80,000.**



Homozygous Polled (PP)

Australian Semen Rights Owned by Glenlea Beef.
NZ Semen Rights owned by Silverstream Charolais.

Embryos For Sale Spring 2022.



LOT 12

PP Polled

2 year old



LOT 15

PP Polled

2 year old



LOT 51

Polled Yearling Sire



LOT 53

PP Polled Yearling Sire