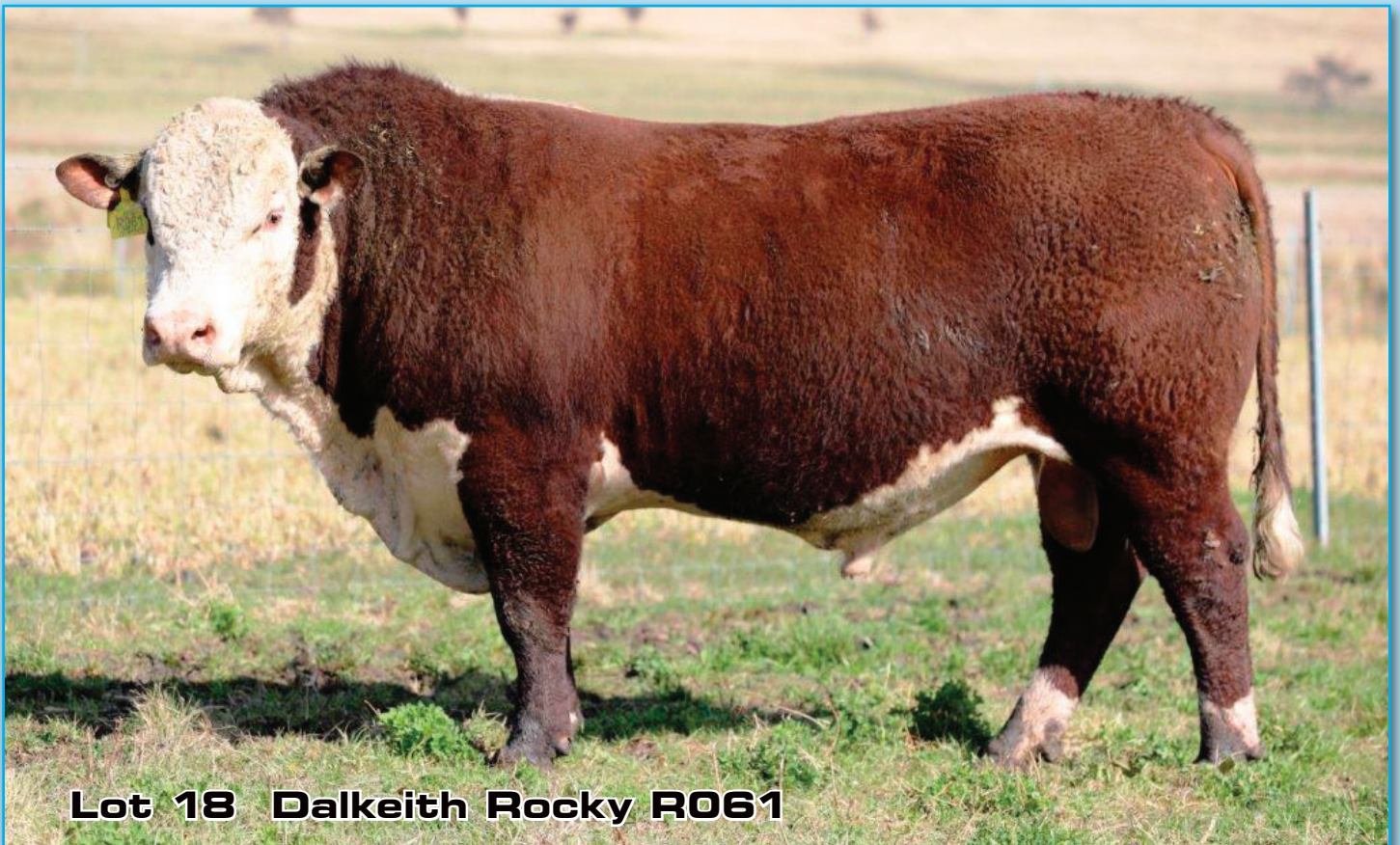


DALKEITH

POLL HEREFORDS
& HEREFORDS

AUCTIONS PLUS ONLINE SALE ONLY



Lot 18 Dalkeith Rocky R061

JULY 2022 HEREFORD GROUP BREEDPLAN



CE Dir	CE DTRS	GL	BWT	200D	400D	600D	MILK	SS	EMA	RIB	RUMP	IMF	Sth Self Replce Index	171
5.6	2.8	4.6	5.0	44	69	92	9	2.9	3.8	0.8	1.4	0.0	Nth Self Replce Index	164
45%	37%	75%	72%	68%	68%	69%	55%	77%	51%	56%	60%	58%	Sth Baldy Mat Index	174
													Nth Baldy Term Index	126

52nd Annual Spring Sale

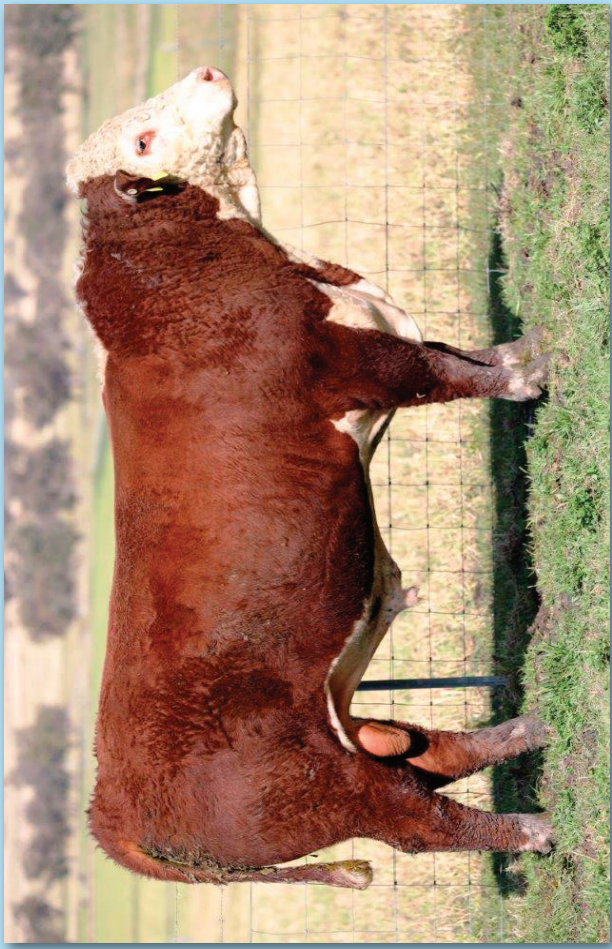


THURSDAY 8th SEPTEMBER 2022

COMMENCING AT 1.30pm



R010 Lot 4



R017 Lot 5



R045 Lot 13



R055 Lot 16

DALKEITH

POLL HEREFORDS & HEREFORDS

↓ Offering ↓

30 2 YR OLD POLL HEREFORD BULLS 30

(ALL BULLS USED AS YEARLINGS AT DALKEITH)

**All Bulls are available for inspection at any time
by phoning - Ant Martin on 6376 4624**

52nd Annual Spring Sale



**THIS AUCTION IS AN
AUCTIONS PLUS ONLINE SALE ONLY
WHICH WILL RUN FROM 1.30pm TO 2.30pm.**



BULLS WILL BE YARDED AT TANGARATTA ON SALE DAY FOR INSPECTION.
LUNCH AND MORNING TEA WILL BE PROVIDED.

WE WILL ALSO HOLD A INSPECTION DAY FOR THE BULLS, TO BE HELD ON SATURDAY 27th OF AUGUST 2022.
TO BE HELD AT "TANGARATTA" FROM 10.00AM TO 4.00PM LUNCH AND MORNING TEA TO BE PROVIDED.

COVID-19 SAFETY WILL BE OBSERVED BOTH DAYS. DUE TO THE ADVANCING COVID WE ARE AVAILABLE FOR
PRIVATE INSPECTIONS AT ANY TIME PRIOR TO SALE DAY. CONTACT ANT AT 02 6376 4624 OR 0427 761 123.

HERD HEALTH STATUS: 3 x 7-1, Vibrio, Pesti Virus Vaccines - All bulls have 3 doses JBAS 7

SALE STARTING TIME: 1.30pm

CONTACTS: Antony Martin (02) 63 76 4624 ah
0427 761 123 mob

Charlie Martin 0427 649 980 mob

Troy Rose (02) 63 76 4623

AGENTS: Milling Stuart Pty Ltd Dunedoo
(02) 63 75 1009 work
(02) 63 75 1528 fax

Angus Stuart 0427 751 009 mob
Jamie Stuart 0427 467 322 mob

Elders Pastoral (Mudgee)
Phill Davis 0429 453 710 mob
Jason Pearce 0438 144 702 mob
Brian Kennedy 0427 844 047 mob

WEB: dalkeithpollherefords.com.au **EMAIL:** charlie@dalkeithpollherefords.com.au



POLL HEREFORDS & HEREFORDS

Information: Things have certainly improved over the past 3 years. We now have a very select group of cows.

Considering the wet season we have had this year the bulls have handled things quite well. We have a team of powerful bulls which have had no grain in their lives and have been on native pastures for most of their lives. We have had them on barley crop for the past 2 months and they have flown ahead since then.

We have calved heifers again this year which will increase our bull numbers in 2024.

The bull sale in 2023 should be about the same number as this year.

Our 2022 bull sale will be as was last year it will be a sale held by auctions plus on Thursday 8th of September 2022. We will have the bulls available for inspecting any time between now and sale day.

We will hold an open day on Saturday 27th August 2022, this day will be held at Tangaratta and the bulls will be yarded and not out in the barley paddocks as in the past. Lunch and morning tea will be provided.

On sale day the bulls will be yarded for inspection and we will have facilities for bidding on auctions plus.

Just this week we have had our bull ACMR090 Dalkeith Randy accepted into the Super sires program within the Hereford society. This bull is a son of the top priced bull in 2019 (Dalkeith Nipper N082. Sold to Hillary O'Leary.)

We are proud to say that two of the top bulls this year are by the top selling bull in 2020. (Dalkeith Prince P041 - Sold to Tom Lyons "Parmedman" Coonamble).

Please don't hesitate to contact Ant Martin should you have any queries regarding the 2022 bull sale on 02 6376 4624 or 0427 761 123.

Represented in this years bull sale will be 11 sires again showing the use of a large genetic base in our herd.

As has been our practice over the last 20 odd years most of these bulls have had a joining last year to heifers or cows some on loan and some to other breeds. A lot of bull breeders have told me this year they have had to feed their bulls grain or pellets to get them ready for sale, we have not changed our rules and no bull has seen any grain what so ever.



Can't make the sale?

Purchase online in eight simple steps!

Log on to AuctionsPlus and bid on your phone, tablet or computer.

Contact AuctionsPlus on (02) 9262 4222
or email studsales@auctionsplus.com.au
or www.auctionsplus.com.au

Check us out on:    

- 1 REGISTER ONLINE**
Free once off registration for all auctions.
- 2 COMPLETE BUYER INDUCTION**
The buyer induction will help you understand the roles and responsibilities of everyone on the AuctionsPlus system.
- 3 VIEW CATALOGUE**
View photos, videos, pedigrees and more.
- 4 ENTER AUCTION**
Log into the auction anytime, anywhere and bid on your mobile, tablet or computer.
- 5 AUTO BID**
Can't stay for the whole sale? Set your maximum bid on the lot that you want to purchase and let the computer bid for you.
- 6 CONTACT SELLING AGENT**
If successful, contact selling agent to arrange payment and delivery. The agent contact details will be available in the catalogue header.
- 7 PAYMENT**
Via the selling agent's terms and conditions.
- 8 DELIVERY**
Arrange transport of livestock at your expense.

EXPLANATORY NOTES OF EBV'S

The EBVs contained within this catalogue can be validly compared with other Hereford GROUP BREEDPLAN EBVs in other herds. These EBVs cannot be used to compare animals of another breed.

ESTIMATED BREEDING VALUES (EBVs)

An animal's breeding value is its genetic merit, half of which will be passed on to its progeny. While we will never know the exact breeding value, for performance traits it is possible to make good estimates. These are called Estimated Breeding Values (EBVs). The EBV is therefore the best estimate of an animal's genetic merit for that trait. EBVs are expressed as the difference between an individual animal's genetics and the genetic base to which the animal is compared.

ACCURACY

An accuracy value is presented with every EBV and gives an indication of the amount of information that has been used in the calculation of that EBV. The higher the accuracy, the lower the likelihood of change in the animal's EBV as more information is analysed for that animal or its relatives.

Accuracy Range	Interpretation
Less than 50%	The EBVs are preliminary. EBVs in this range will have been calculated based on very little information. These EBVs could change substantially as more direct performance information becomes available on the animal.
50 – 74%	The EBVs are of medium accuracy. EBVs in this range will usually have been calculated based on the animal's own performance and some limited pedigree information.
75 – 90%	The EBVs are of medium-high accuracy. EBVs in this range will usually have been calculated based on the animal's own performance coupled with the performance for a small number of the animal's progeny.
90% and above	The EBVs are a high accuracy estimate of the animal's true breeding value. It is unlikely that EBVs will change considerably with addition of more progeny data.

CALVING EASE

Calving Ease EBVs are based on calving difficulty scores, birth weights and gestation length information. More positive EBVs are favourable and indicate easier calving.

Direct: Direct calving ease indicates how this animal influences the birth of its progeny.

Daughters: Calving Ease-Daughter's indicates how well the animal produces daughters that have easier calving.

BIRTH

Gestation Length: The GL EBV (days) is based on AI records. Lower (negative) GL EBVs indicate shorter gestation length and generally easier calving.

Birth Weight: The Birth Weight EBV (kg) is based on the measured birth weight of animals, adjusted the dam age. The lower the value, the lighter the calf at birth & the lower the likelihood of a difficult birth. This is particularly important when selecting sires for use over heifers.

FERTILITY

Scrotal Size: The SS EBV (cm) is an indicator of male fertility in regards to semen quality and quantity. Higher (positive) EBVs indicate higher fertility. SS is also positively associated with female fertility.

Days to Calving: The DC EBV (days) is an indicator of female fertility based on the time between a cow's first exposure to a bull and when she subsequently calves. Cows that calve late in the season or fail to calve are penalised. This is more useful as a sire trait. Lower (negative) EBVs are preferred indicating shorter days to calving for the sire's daughters.

GROWTH

Milk: 200-Day Milk EBV (kg) is an estimate of an animal's milking ability. For sires, this EBV is indicative of their daughter's milking ability as it affects the 200-day weight of their calves.

200-Day Growth: The 200-Day EBV (kg) is calculated from the weight of animals taken between 80 and 300 days of age. Values are adjusted to 200 days and for dam age. This EBV is the best single estimate of an animal's genetic merit for growth to early ages.

400-Day Weight: The 400-Day Weight EBV (kg) is calculated from the weight of progeny taken between 301 and 500 days of age, adjusted to 400 days and for dam age. This EBV is the best single estimate of an animal's genetic merit for yearling weight.

600-Day Weight: The 600-Day Weight EBV (kg) is calculated from the weight of progeny taken between 501 and 900 days of age, adjusted to 600 days and for dam age. This EBV is the best single estimate of an animal's genetic merit for growth beyond yearling age.

Mature Cow Weight: The Mature Cow Weight EBV (kg) is an estimate of the genetic difference in cow weight at 5 years of age. Smaller or more moderate EBVs are generally more favourable.

CARCASE

Carcase Weight: The Carcase Weight EBV (kg) estimates the genetic difference in carcase weight at a standard age of 650 days.

Eye Muscle Area: The EMA EBV (cm²) estimates genetic differences in eye muscle area at the 12/13th rib site of a 300kg dressed carcase. More positive EBVs indicate better muscling on animals.

Rib Fat: The Rib Fat EBV (mm) estimates the genetic differences in fat depth at the 12/13th rib in a 300kg dressed carcase. More positive EBVs indicate more subcutaneous fat and earlier maturity.

Rump Fat: The Rump Fat EBV (mm) estimates the genetic differences in fat depth at the P8 site of a 300kg dressed carcase. More positive EBVs indicate more subcutaneous fat and earlier maturity.

Retail Beef Yield %: The RBY% EBV (%) represents total (boned out) meat yield as a percentage of a 300kg dressed carcase. A more positive EBV indicates higher percentage yield for the 300kg carcase size.

Intramuscular Fat %: The IMF% EBV (%) is an estimate of the genetic difference in the percentage of intra-muscular fat at the 12/13th rib site in a 300kg carcase. Depending on market targets, larger more positive values are generally more favourable.

SELECTION INDICES

Southern Self-Replacing Index – Estimates the genetic differences between animals in net profitability per cow joined in a commercial self-replacing purebred Hereford herd targeting the domestic market. Daughters are retained for breeding and so maternal traits are of importance. Steers are slaughtered at 18 months of age to produce 300 kg carcasses with 10 mm P8 fat depth. A moderate cost is applied for cow feed costs during the annual feed shortage period which results in small increases in cow weight.

Northern Self-Replacing Index – Estimates the genetic differences between animals in net profitability per cow joined in a commercial self-replacing herd targeting the domestic market. This index is suitable for use by both straight bred Hereford herds and in crossbreeding programs where Hereford bulls are being used over a Bos indicus based cow herd. Daughters are retained for breeding and so maternal traits are of importance. Steers are slaughtered at 18 months of age to produce 340 kg carcasses with 12 mm P8 fat depth. A high cost is applied for cow feed costs during the annual feed shortage period which produces little change in mature cow weight.

Southern Baldy Maternal Index – Estimates the genetic differences between animals in net profitability per cow joined in a commercial crossbred herd using Hereford bulls over Bos taurus females (e.g. Angus). A portion of the heifers are retained for breeding and so maternal traits are of importance. The steers and surplus heifers are destined for slaughter at 18 to 19 months of age. Steers produce 300 kg carcasses with 10 mm of P8 fat depth, while heifers produce 270 kg carcasses with 12 mm of P8 fat depth. A moderate cost is applied for cow feed costs during the annual feed shortage period which results in small increases in cow weight.

Northern Baldy Terminal Index – Estimates the genetic differences between animals in net profitability per cow joined in a commercial crossbred herd using Hereford bulls over Bos indicus females (e.g. Santa Gertrudis) where all progeny (male and female) are destined for slaughter. Steers and heifers are slaughtered at 18 to 19 months of age. Steers produce 340 kg carcasses with 14 mm of P8 fat depth while heifers produce 300 kg carcasses with 17 mm of P8 fat depth.

Further details will be made available upon the release of the new Herefords Australia selection indexes in October 2019.

The Hereford GROUP BREEDPLAN Estimated Breeding Values contained in this Sale Catalogue were compiled by the Agricultural Business Research Institute (ABRI) from data supplied by the breeders. Neither Herefords Australia Limited nor the ABRI oversee or audit the collection of the data.

The "Completeness of Performance" Herd Rating System

The "Completeness of Performance" herd rating system assesses the quantity of pedigree and performance information that has been submitted to BREEDPLAN by an individual seedstock herd.

While ultimately EBV accuracy values provide an indication of the reliability of an animal's EBV's, one of the key factors underpinning the accuracy of EBV's is the quantity of performance information that has been recorded with BREEDPLAN by a herd.

The star rating for a herd is calculated based on the proportion of calves within the herd born in a fixed five year period that have performance recorded for each trait. Different criteria are used within each individual breed depending on the traits for which EBV's are calculated within the breed. Each herd receives a star rating on a 0 – 5 scale (including half stars) that summarized the relative "completeness" of their performance information.

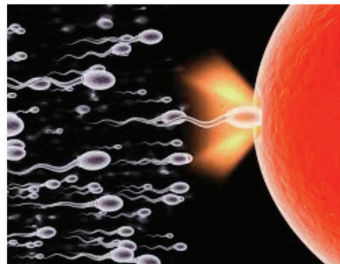
Following is a description of each star rating:

Star Rating	Description
5	Herds with a star rating of "5" are gold standard. They are considered to be recording "complete" performance information with BREEDPLAN for all animals across all traits for which EBV's are available.
4 or 4.5	Herds with a star rating of "4" or "4.5" are silver standard. They are considered to be recording comprehensive performance information with BREEDPLAN for most animals and traits, but are recording less performance than a 5 star herd.
3 or 3.5	Herds with a star rating of "3" or "3.5" are considered bronze standard. They are considered to be recording performance information with BREEDPLAN for a reasonable number of traits or animals, but are recording less performance information than a 4 or 5 star herd.
2.5 or less	Herds with a rating of "2.5" or less are recording information with BREEDPLAN but not for all animals or traits. They are recording less performance information than a 3, 4 or 5 star herd.



FOR ALL YOUR ARTIFICIAL BREEDING NEEDS

Artificial Insemination Ultrasound Preg Testing Semen Collection Semen & Embryo Storage Ear Tags Supplements



www.northernab.com.au

brendan@northernab.com.au

02 6545 2465

0427 417 148

Lot 1 DALKEITH ROCK R001 Born: 16/03/2020 EP: 100 / 100 Tattoo R001
 STUDBROOK DARTAGNION (V086) Birth Weight: 40.0 Polled
 OTAPAWA SPARK 3060

Sire: DALKEITH MATE (M006)
 OTAPAWA SPOT (P30)
 DALKEITH INNOCENT 43 (T153) YALGOO ENGINEER (N95)
 DALKEITH INNOCENT 3 (P096) Heifers 1st calf.
 SOUTH BUKALONG WALLACE 2 (Y781) Born 20days early.
 DALKEITH LIKEABULL (L017)

Dam: DALKEITH TM (N298)
 DALKEITH LIONESS (H285)
 MARKOWEN ROCKET (D44)
 DALKEITH TM (G053)
 DALKEITH TM (D170)

JULY 2022 HEREFORD GROUP BREEDPLAN

	CE Dir	CE DTRS	GL	BWT	200D	400D	600D	MILK	SS	EMA	RIB	RUMP	IMF	Sth Self Replce Index	201
	7.4	5.7	-8.3	5.2	44	70	103	12	3.4	4.1	1.1	1.8	1.4	Nth Self Replce Index	190
	42%	36%	73%	71%	66%	66%	67%	55%	75%	49%	55%	59%	56%	Sth Baldy Mat Index	207
														Nth Baldy Term Index	151

Purchaser..... Price.....

Lot 2 DALKEITH ROOTER R003 Born: 21/03/2020 EP: 100 / 100 Tattoo R003
 ALLENDALE SUPERSTAR (B28) Birth Weight: 28.5 Polled
 ALLENDALE YALLARO I 2 (E25)

Sire: ALLENDALE FCF BARKLY (H127)
 ALLENDALE FANCY (A181) Heifers 1st calf.
 OKAWA COMMODORE 2076 Born 15days early.
 ALLENDALE FANCY (C210) Aled to Stud & Com heifers.
 ALLENDALE FANCY (Y98) Used as AI Stud cover Sire over heifers & cows.
 NJW 73S W18 HOMETOWN 10Y 25 Stud & Com calves born unassited this year.
 CASCADE MAGNATE (M003) Paul Durkin (Valley View) has Aled heifers to him.
 CASCADE IRISH MAID (J138) Semen collect for in herd use.
 MARKOWEN NO EXCUSE (A29)

Dam: DALKEITH LADYBIRD (P114)
 MARKOWEN LADYBIRD (A18)
 DALKEITH LADYBIRD (K050)

JULY 2022 HEREFORD GROUP BREEDPLAN

	CE Dir	CE DTRS	GL	BWT	200D	400D	600D	MILK	SS	EMA	RIB	RUMP	IMF	Sth Self Replce Index	152
	6.9	5.6	-4.7	1.7	40	61	76	14	1.3	3.6	0.6	0.7	1.1	Nth Self Replce Index	147
	45%	37%	75%	70%	68%	68%	69%	56%	76%	51%	57%	61%	59%	Sth Baldy Mat Index	168
														Nth Baldy Term Index	125

Purchaser..... Price.....

Lot 3 DALKEITH ROYALTY R004 Born: 22/03/2020 EP: 100 / 100 Tattoo R004
 ALLENDALE YALLARO I 2 (E25) Birth Weight: 28.0 Polled
 ALLENDALE FCF BARKLY (H127)

Sire: DALKEITH MIGHTY (M097)
 ALLENDALE FANCY (C210)
 MOUNTAIN VALLEY QUICKDRAW (A18)
 NEWSOME PATRICIA (G63)
 NEWSOME V36 PATRICIA (Y301) Heifers 1st calf.
 OTAPAWA SPARK 3060 Born 14days early.

Dam: DALKEITH MARINDA (P081)
 DALKEITH INNOCENT 43 (T153)
 YAMBRO CONRAD (C26)
 DALKEITH MARINDA 453 (H218)
 DALKEITH MARINDA 322 (B157)

JULY 2022 HEREFORD GROUP BREEDPLAN

	CE Dir	CE DTRS	GL	BWT	200D	400D	600D	MILK	SS	EMA	RIB	RUMP	IMF	Sth Self Replce Index	134
	3.9	3.0	-4.6	4.2	35	55	74	11	2.5	3.9	1.1	1.6	0.9	Nth Self Replce Index	128
	40%	29%	72%	61%	63%	64%	62%	44%	75%	46%	51%	55%	49%	Sth Baldy Mat Index	138
														Nth Baldy Term Index	104

Purchaser..... Price.....

Breed Averages	CE Dir	CE DTRS	GL	BWT	200D	400D	600D	MILK	SS	EMA	RIB	RUMP	IMF	Practical Systems STOCKBOOK		
	2.50	2.10	-0.70	4.00	33.00	55.00	78.00	17.00	2.10	3.80	0.80	1.00	0.60	Top 10%	Top 25%	Above Av

Lot 4 DALKEITH RECRUIT R010 Born: 1/04/2020 EP: 100 / 100 Tattoo R010
 EK=LITE 4110 F229 Birth Weight: 41.0 Polled

YAVENVALE JIBBER (J424)

YAVANVALE DOREEN (G302)

Sire: KERLSON PINES KEYSTONE (M004)

ALLENDALE WATERLOO (B50)

KERLSON PINES LAST DAY (F115)

KERLSON PINES LAST DAY (Y13)

Heifers 1st calf.
Born 4days early.

KURRAJONG PARK (B144)

YAVENVALE EINSTEIN (E344)

YAVENVALE DOREEN (C119)

Dam: DALKEITH FROLIC (P019)

KAIRURU FLINT 8058

DALKEITH FROLIC (K281)

DALKEITH FROLIC 153 (B010)

JULY 2022 HEREFORD GROUP BREEDPLAN

BREEDPLAN COMPLETENESS	CE Dir	CE DTRS	GL	BWT	200D	400D	600D	MILK	SS	EMA	RIB	RUMP	IMF	Sth Self Replce Index	140
	1.3	1.4	-0.4	4.9	37	57	83	19	1.4	4.2	2.0	3.3	1.1	Nth Self Replce Index	128
	44%	32%	73%	72%	66%	66%	65%	44%	76%	48%	53%	57%	51%	Sth Baldy Mat Index	142
														Nth Baldy Term Index	104

Purchaser.....

Price.....

Lot 5 DALKEITH RAIDER R017 Born: 4/04/2020 EP: 100 / 100 Tattoo R017
 YAMBRO VELOCITY (X78) Birth Weight: 41.0 Polled

YAMBRO CONRAD (B88)

YAMBRO SPOT (W123)

Sire: DALKEITH MACHINE (M051)

YALGOO ENGINEER (N95)

DALKEITH INNOCENT 43 (T153)

DALKEITH INNOCENT 3 (P096)

Heifers 1st calf.
Born 1day early.

ALLENDALE YALLAROI 2 (E25)

ALLENDALE FCF BARKLY (H127)

ALLENDALE FANCY (C210)

Dam: DALKEITH CHRISTINA (P052)

DALKEITH JACKAROO (J087)

DALKEITH CHRISTINA (L365)

DALKEITH CHRISTINA 99 (F162)

JULY 2022 HEREFORD GROUP BREEDPLAN

BREEDPLAN COMPLETENESS	CE Dir	CE DTRS	GL	BWT	200D	400D	600D	MILK	SS	EMA	RIB	RUMP	IMF	Sth Self Replce Index	158
	3.0	1.0	-0.8	5.3	42	64	85	13	2.3	3.4	1.0	1.8	0.5	Nth Self Replce Index	148
	43%	35%	73%	71%	66%	66%	65%	49%	76%	49%	53%	57%	51%	Sth Baldy Mat Index	155
														Nth Baldy Term Index	111

Purchaser.....

Price.....

Lot 6 DALKEITH ROBUST R018 Born: 4/04/2020 EP: 100 / 100 Tattoo R018
 EK=LITE 4110 F229 Birth Weight: 43.0 Polled

YAVENVALE JIBBER (J424)

YAVANVALE DOREEN (G302)

Sire: KERLSON PINES KEYSTONE (M004)

ALLENDALE WATERLOO (B50)

KERLSON PINES LAST DAY (F115)

KERLSON PINES LAST DAY (Y13)

Heifers 1st calf.
Born 1day early.

SOUTH BUKALONG WALLACE 2 (Y781)

DALKEITH LUST (L070)

MARKOWEN LADYBIRD (A18)

Dam: DALKEITH DEAREST (N234)

DALKEITH FRED (F075)

DALKEITH DEAREST 317 (H250)

DALKEITH DEAREST 19 (W358)

JULY 2022 HEREFORD GROUP BREEDPLAN

BREEDPLAN COMPLETENESS	CE Dir	CE DTRS	GL	BWT	200D	400D	600D	MILK	SS	EMA	RIB	RUMP	IMF	Sth Self Replce Index	108
	-0.8	1.4	-0.3	5.9	37	56	78	14	1.7	2.9	0.8	1.1	0.6	Nth Self Replce Index	93
	41%	30%	74%	72%	66%	66%	67%	49%	76%	47%	53%	57%	54%	Sth Baldy Mat Index	108
														Nth Baldy Term Index	81

Purchaser.....

Price.....

Breed Averages	CE Dir	CE DTRS	GL	BWT	200D	400D	600D	MILK	SS	EMA	RIB	RUMP	IMF	Practical Systems STOCKBOOK		
	2.50	2.10	-0.70	4.00	33.00	55.00	78.00	17.00	2.10	3.80	0.80	1.00	0.60	Top 10%	Top 25%	Above Av

Lot 7 DALKEITH RINGLEADER R020 Born: 4/04/2020 EP: 100 / 100 Tattoo R020
 STUDBROOK DARTAGNION (V086) Birth Weight: 42.0 Polled
 OTAPAWA SPARK 3060

Sire: DALKEITH MATE (M006)

OTAPAWA SPOT (P30)
 YALGOO ENGINEER (N95)
 DALKEITH INNOCENT 43 (T153)
 DALKEITH INNOCENT 3 (P096) Heifers 1st calf.
 SOUTH BUKALONG WALLACE 2 (Y781) Born 1 day early.
 DALKEITH LUST (L070)

Dam: DALKEITH PANSY (N217)

MARKOWEN LADYBIRD (A18)
 DALKEITH JACKASS (J088)
 DALKEITH PANSY (L119)
 DALKEITH PANSY (J033)

JULY 2022 HEREFORD GROUP BREEDPLAN

Breedplan Completeness	CE Dir	CE DTRS	GL	BWT	200D	400D	600D	MILK	SS	EMA	RIB	RUMP	IMF	Sth Self Replce Index	147
	4.5	6.0	-3.7	4.6	35	54	79	12	2.1	2.7	1.4	2.2	1.0	Nth Self Replce Index	137
42%	36%	72%	71%	66%	66%	65%	49%	75%	49%	53%	57%	51%	Sth Baldy Mat Index	152	
													Nth Baldy Term Index	108	

Purchaser.....

Price.....

Lot 8 DALKEITH RUMP R022 Born: 4/04/2020 EP: 100 / 100 Tattoo R022
 EK=LITE 4110 F229 Birth Weight: 37.0 Polled
 YAVENVALE JIBBER (J424)

Sire: KERLSON PINES KEYSTONE (M004)

YAVANVALE DOREEN (G302)
 ALLENDALE WATERLOO (B50)
 KERLSON PINES LAST DAY (F115)
 KERLSON PINES LAST DAY (Y13) Heifers 1st calf.
 OKAWA LAIDLAW 4156 Born 1 day early.
 MONYMUSK EIFFEL TOWER 0140

Dam: DALKEITH MARINDA (N103)

MONYMUSK LEONORA 050091
 SOUTH BUKALONG WALLACE 2 (Y781)
 DALKEITH MARINDA (K100)
 DALKEITH MARINDA 442 (H087)

JULY 2022 HEREFORD GROUP BREEDPLAN

Breedplan Completeness	CE Dir	CE DTRS	GL	BWT	200D	400D	600D	MILK	SS	EMA	RIB	RUMP	IMF	Sth Self Replce Index	137
	7.5	3.6	-0.5	2.6	28	47	65	12	0.7	3.5	1.6	2.2	1.3	Nth Self Replce Index	130
44%	35%	74%	72%	66%	66%	65%	45%	76%	49%	53%	58%	52%	Sth Baldy Mat Index	151	
													Nth Baldy Term Index	111	

Purchaser.....

Price.....

Lot 9 DALKEITH RUM R025 Born: 5/04/2020 EP: 100 / 100 Tattoo R025
 EK=LITE 4110 F229 Birth Weight: 42.0 Polled
 YAVENVALE JIBBER (J424)

Sire: KERLSON PINES KEYSTONE (M004)

YAVANVALE DOREEN (G302)
 ALLENDALE WATERLOO (B50)
 KERLSON PINES LAST DAY (F115)
 KERLSON PINES LAST DAY (Y13) Heifers 1st calf.
 ALLENDALE YALLAROI 2 (E25) Born on due date.
 ALLENDALE FCF BARKLY (H127) Used as AI Stud cover Sire over cows.
 15 Stud calves born unassisted this year.
 Semen collected for in herd use.

Dam: DALKEITH PAGON (P172)

ALLENDALE FANCY (C210)
 BOWEN ESPLANADE (E332)
 DALKEITH PAGON (K072)
 MOUNTAIN VALLEY PAGON (D492)

JULY 2022 HEREFORD GROUP BREEDPLAN

Breedplan Completeness	CE Dir	CE DTRS	GL	BWT	200D	400D	600D	MILK	SS	EMA	RIB	RUMP	IMF	Sth Self Replce Index	167
	2.5	2.9	0.2	5.7	46	76	104	14	1.8	3.7	1.4	2.3	1.0	Nth Self Replce Index	153
44%	32%	74%	72%	66%	66%	67%	50%	76%	46%	53%	58%	55%	Sth Baldy Mat Index	175	
													Nth Baldy Term Index	128	

Purchaser.....

Price.....

Breed Averages	CE Dir	CE DTRS	GL	BWT	200D	400D	600D	MILK	SS	EMA	RIB	RUMP	IMF	Practical Systems STOCKBOOK		
	2.50	2.10	-0.70	4.00	33.00	55.00	78.00	17.00	2.10	3.80	0.80	1.00	0.60	Top 10%	Top 25%	Above Av

Lot 10 DALKEITH RIPPER R034 Born: 7/04/2020 EP: 100 / 100 Tattoo R034
 ALLENDALE YALLAROI 2 (E25) Birth Weight: 43.0 Polled
 ALLENDALE FCF BARKLY (H127)
 ALLENDALE FANCY (C210)

Sire: DALKEITH MIGHTY (M097)
 MOUNTAIN VALLEY QUICKDRAW (A18)
 NEWSOME PATRICIA (G63)
 NEWSOME V36 PATRICIA (Y301)
 SOUTH BUKALONG WALLACE 2 (Y781)
 DALKEITH LUST (L070)
 MARKOWEN LADYBIRD (A18)

Heifers 1st calf.
 Used as AI Stud cover Sire over cows.
 6 Stud calves born unassisted this year.
 Semen collected for in herd use.

Dam: DALKEITH MINERVA (N187)
 KARINA CHERRY (Z8)
 DALKEITH MINERVA 4 (H294)
 MERAWAH MINERVA (B106)

JULY 2022 HEREFORD GROUP BREEDPLAN

	CE Dir	CE DTRS	GL	BWT	200D	400D	600D	MILK	SS	EMA	RIB	RUMP	IMF	Sth Self Replce Index	138
	-2.2	1.9	0.7	6.3	37	64	90	14	3.4	4.2	0.7	1.0	0.2	Nth Self Replce Index	124
	41%	31%	72%	71%	65%	65%	66%	50%	76%	47%	52%	56%	53%	Sth Baldy Mat Index	129
														Nth Baldy Term Index	91

Purchaser..... Price.....

Lot 11 DALKEITH RIVAL R036 Born: 7/04/2020 EP: 100 / 100 Tattoo R036
 ALLENDALE YALLAROI 2 (E25) Birth Weight: 45.5 Polled
 ALLENDALE FCF BARKLY (H127)
 ALLENDALE FANCY (C210)

Sire: DALKEITH PRINCE (P041)
 MONYMUSK EIFFEL TOWER 0140
 DALKEITH RANA (L261)
 DALKEITH RANA 71 (E218)
 CANNAWIGRA COMMANDER (Z51)
 MOUNTAIN VALLEY GAMBLER (G14)
 MOUNTAIN VALLEY (B44)

Heifers 1st calf.

Dam: DALKEITH CHRISTINA (N152)
 KARINA CHERRY (Z8)
 DALKEITH CHRISTINA (J028)
 DALKEITH CHRISTINA (F154)

JULY 2022 HEREFORD GROUP BREEDPLAN

	CE Dir	CE DTRS	GL	BWT	200D	400D	600D	MILK	SS	EMA	RIB	RUMP	IMF	Sth Self Replce Index	148
	0.5	-3.8	0.3	3.9	38	62	86	12	2.7	2.9	1.1	1.6	0.4	Nth Self Replce Index	135
	40%	32%	61%	70%	64%	64%	65%	49%	75%	47%	52%	56%	53%	Sth Baldy Mat Index	138
														Nth Baldy Term Index	99

Purchaser..... Price.....

Lot 12 DALKEITH RICH R040 Born: 8/04/2020 EP: 100 / 100 Tattoo R040
 EK=LITE 4110 F229 Birth Weight: 42.0 Polled
 YAVENVALE JIBBER (J424)
 YAVANVALE DOREEN (G302)

Sire: KERLSON PINES KEYSTONE (M004)
 ALLENDALE WATERLOO (B50)
 KERLSON PINES LAST DAY (F115)
 KERLSON PINES LAST DAY (Y13)
 ALLENDALE YALLAROI 2 (E25)
 ALLENDALE FCF BARKLY (H127)
 ALLENDALE FANCY (C210)

Heifers 1st calf.

Dam: DALKEITH MATCHLESS (N029)
 GRASSMERE SPARK 555
 MOUNTAIN VALLEY MATCHLESS (H161)
 MOUNTAIN VALLEY MATCHLESS (A23)

JULY 2022 HEREFORD GROUP BREEDPLAN

	CE Dir	CE DTRS	GL	BWT	200D	400D	600D	MILK	SS	EMA	RIB	RUMP	IMF	Sth Self Replce Index	139
	-0.9	-0.4	2.2	5.3	38	62	85	12	2.2	4.3	1.4	2.2	1.1	Nth Self Replce Index	129
	44%	33%	73%	72%	67%	67%	66%	44%	76%	49%	53%	57%	52%	Sth Baldy Mat Index	133
														Nth Baldy Term Index	97

Purchaser..... Price.....

Breed Averages	CE Dir	CE DTRS	GL	BWT	200D	400D	600D	MILK	SS	EMA	RIB	RUMP	IMF	Practical Systems STOCKBOOK		
	2.50	2.10	-0.70	4.00	33.00	55.00	78.00	17.00	2.10	3.80	0.80	1.00	0.60	Top 10%	Top 25%	Above Av

Lot 13 DALKEITH RAMBO R045 Born: 10/04/2020 EP: 100 / 100 Tattoo R045
 EK=LITE 4110 F229 Birth Weight: 48.0 Polled

YAVENVALE JIBBER (J424)

YAVANVALE DOREEN (G302)

Sire: KERLSON PINES KEYSTONE (M004)

ALLENDALE WATERLOO (B50)

KERLSON PINES LAST DAY (F115)

KERLSON PINES LAST DAY (Y13)

Heifers 1st calf.

ALLENDALE YALLAROI 2 (E25)

ALLENDALE FCF BARKLY (H127)

ALLENDALE FANCY (C210)

Dam: DALKEITH PHOEBE (N199)

ALLENDALE VAGABOND (A74)

DALKEITH PHOEBE (J163)

DALKEITH PHOEBE (D001)

JULY 2022 HEREFORD GROUP BREEDPLAN

	CE Dir	CE DTRS	GL	BWT	200D	400D	600D	MILK	SS	EMA	RIB	RUMP	IMF	Sth Self Replce Index	135
	-0.7	1.0	1.5	5.7	41	65	90	14	1.2	3.6	0.4	0.9	0.5	Nth Self Replce Index	120
	43%	32%	74%	72%	66%	67%	66%	44%	76%	48%	53%	57%	52%	Sth Baldy Mat Index	135
														Nth Baldy Term Index	98

Purchaser.....

Price.....

Lot 14 DALKEITH REWARD R048 Born: 11/04/2020 EP: 100 / 100 Tattoo R048
 EK=LITE 4110 F229 Birth Weight: 42.0 Polled

YAVENVALE JIBBER (J424)

YAVANVALE DOREEN (G302)

Sire: KERLSON PINES KEYSTONE (M004)

ALLENDALE WATERLOO (B50)

KERLSON PINES LAST DAY (F115)

KERLSON PINES LAST DAY (Y13)

Heifers 1st calf.

ALLENDALE YALLAROI 2 (E25)

ALLENDALE FCF BARKLY (H127)

ALLENDALE FANCY (C210)

Dam: DALKEITH INNOCENT (P024)

YAMBRO CONRAD (B88)

DALKEITH INNOCENT (M036)

DALKEITH INNOCENT 43 (T153)

JULY 2022 HEREFORD GROUP BREEDPLAN

	CE Dir	CE DTRS	GL	BWT	200D	400D	600D	MILK	SS	EMA	RIB	RUMP	IMF	Sth Self Replce Index	163
	2.5	0.6	2.2	5.0	39	61	86	13	2.5	4.2	1.7	2.9	1.0	Nth Self Replce Index	153
	44%	33%	73%	71%	66%	66%	64%	44%	76%	48%	52%	56%	51%	Sth Baldy Mat Index	160
														Nth Baldy Term Index	113

Purchaser.....

Price.....

Lot 15 DALKEITH REAL DEAL R052 Born: 15/04/2020 EP: 100 / 100 Tattoo R052
 EK=LITE 4110 F229 Birth Weight: 36.5 Polled

YAVENVALE JIBBER (J424)

YAVANVALE DOREEN (G302)

Sire: KERLSON PINES KEYSTONE (M004)

ALLENDALE WATERLOO (B50)

KERLSON PINES LAST DAY (F115)

KERLSON PINES LAST DAY (Y13)

Heifers 1st calf.

SOUTH BUKALONG WALLACE 2 (Y781)

DALKEITH LUST (L070)

MARKOWEN LADYBIRD (A18)

Dam: DALKEITH DIVIDEND (N195)

OTAPAWA SPARK 3060

DALKEITH DIVIDEND 648 (G084)

DALKEITH DIVIDEND 447 (X449)

JULY 2022 HEREFORD GROUP BREEDPLAN

	CE Dir	CE DTRS	GL	BWT	200D	400D	600D	MILK	SS	EMA	RIB	RUMP	IMF	Sth Self Replce Index	132
	5.7	4.5	-1.3	1.1	27	45	61	15	1.9	3.9	1.5	2.0	1.1	Nth Self Replce Index	126
	42%	32%	61%	72%	66%	66%	66%	50%	76%	48%	53%	57%	54%	Sth Baldy Mat Index	140
														Nth Baldy Term Index	102

Purchaser.....

Price.....

Breed Averages	CE Dir	CE DTRS	GL	BWT	200D	400D	600D	MILK	SS	EMA	RIB	RUMP	IMF	Practical Systems STOCKBOOK		
	2.50	2.10	-0.70	4.00	33.00	55.00	78.00	17.00	2.10	3.80	0.80	1.00	0.60	Top 10%	Top 25%	Above Av

Lot 16 DALKEITH RANGA R055 Born: 21/04/2020 EP: 100 / 100 Tattoo R055

ALLENDALE YALLAROI 2 (E25) Birth Weight: 35.0 Scurred
 ALLENDALE FCF BARKLY (H127)
 ALLENDALE FANCY (C210)
 MONYMUSK EIFFEL TOWER 0140 Heifers 1st calf.
 DALKEITH RANA (L261) DALKEITH RANA 71 (E218) Aled to Stud & Com heifers.
 DAYS ROBIN HOOD (H38) Used as AI Stud cover Sire over heifers & cows.
 HUNTER LAKES LANCELOT (L103) HUNTER LAKES FANCY (F7) 24 Stud & Com calves born unassisted this year.
 SEMEN collected for in herd use.

Dam: DALKEITH NIKKI (P070)
 MINLACOWIE NIKKI (C77) MINLACOWIE XCITEMENT (X127)
 MINLACOWIE NIKKI (A08)

JULY 2022 HEREFORD GROUP BREEDPLAN

BREEDPLAN COMPLETENESS	CE Dir	CE DTRS	GL	BWT	200D	400D	600D	MILK	SS	EMA	RIB	RUMP	IMF	Sth Self Replce Index	171
	7.6	4.3	-1.1	2.9	34	52	82	19	1.4	4.4	0.8	1.0	0.5	Nth Self Replce Index	160
41%	33%	59%	70%	64%	64%	65%	51%	76%	47%	52%	57%	53%	Sth Baldy Mat Index	183	
														Nth Baldy Term Index	131

Purchaser..... Price.....

Lot 17 DALKEITH REFLEX R057 Born: 23/04/2020 EP: 100 / 100 Tattoo R057

YAMBRO CONRAD (B88) Birth Weight: 44.0 Polled
 DALKEITH MACHINE (M051)
 DALKEITH INNOCENT 43 (T153)
 MATARIKI HOLY-SMOKE 0390
 DALKEITH DIVIDEND (L228) DALKEITH DIVIDEND 652 (H081) Heifers 1st calf.
 PINE HILL CROSSFIRE (C558)
 YAVENVALE JET FIRE (J032)

Dam: DALKEITH LADYBIRD (N004)
 YAVENVALE EMPRESS (G320)
 MARKOWEN CLASSIC (C49)
 DALKEITH LADYBIRD (L073) MARKOWEN LADYBIRD (D7)

JULY 2022 HEREFORD GROUP BREEDPLAN

BREEDPLAN COMPLETENESS	CE Dir	CE DTRS	GL	BWT	200D	400D	600D	MILK	SS	EMA	RIB	RUMP	IMF	Sth Self Replce Index	164
	0.3	3.0	-1.0	7.4	50	75	108	19	2.1	3.7	-0.7	-0.8	-0.3	Nth Self Replce Index	144
39%	30%	58%	70%	64%	64%	66%	50%	76%	47%	53%	57%	54%	Sth Baldy Mat Index	166	
														Nth Baldy Term Index	119

Purchaser..... Price.....

Lot 18 DALKEITH ROCKY R061 Born: 29/04/2020 EP: 100 / 100 Tattoo R061

ALLENDALE SUPERSTAR (B28) Birth Weight: 35.0 Polled
 ALLENDALE YALLAROI 2 (E25)
 ALLENDALE FANCY (A181)
 OKAWA COMMODORE 2076
 ALLENDALE FANCY (C210) ALLENDALE FANCY (Y98) Heifers 1st calf.
 SOUTH BUKALONG WALLACE 2 (Y781) SEMEN collected for in herd use.
 DALKEITH LIKEABULL (L017)

Dam: DALKEITH GLITTER (P015)
 DALKEITH LIONESS (H285)
 MATARIKI HOLY-SMOKE 0390
 DALKEITH GLITTER (L258) MOUNTAIN VALLEY GLITTER (D67)

JULY 2022 HEREFORD GROUP BREEDPLAN

BREEDPLAN COMPLETENESS	CE Dir	CE DTRS	GL	BWT	200D	400D	600D	MILK	SS	EMA	RIB	RUMP	IMF	Sth Self Replce Index	171
	5.6	2.8	4.6	5.0	44	69	92	9	2.9	3.8	0.8	1.4	0.0	Nth Self Replce Index	164
45%	37%	75%	72%	68%	68%	69%	55%	77%	51%	56%	60%	58%	Sth Baldy Mat Index	174	
														Nth Baldy Term Index	126

Purchaser..... Price.....

Breed Averages	CE Dir	CE DTRS	GL	BWT	200D	400D	600D	MILK	SS	EMA	RIB	RUMP	IMF	Practical Systems STOCKBOOK		
	2.50	2.10	-0.70	4.00	33.00	55.00	78.00	17.00	2.10	3.80	0.80	1.00	0.60	Top 10%	Top 25%	Above Av

Lot 19 DALKEITH RINGER R078 Born: 12/05/2020 EP: 100 / 100 Tattoo R078
 CAPETHORNE HOT SHOT 03 22 Birth Weight: 32.0 Polled

MATARIKI HOLY-SMOKE 0390
 MATARIKI GIRLIE 00323
 Sire: MATARIKI 0380
 BEANBAH 02217
 MATARIKI BRACELET 050223
 MATARRIKI BRACELET 270 Born 6days early.
 SOUTH BUKALONG WALLACE 2 (Y781)
 WIRRUNA ECHUCA (E99)
 WIRRUNA GOLDEN VANITY (C32)

Dam: DALKEITH MARINDA (L048)
 TYCOLAH UP RITE (Q42)
 DALKEITH MARINDA 344 (C042)
 DALKEITH MARINDA 257 (Z101)

JULY 2022 HEREFORD GROUP BREEDPLAN

	CE Dir	CE DTRS	GL	BWT	200D	400D	600D	MILK	SS	EMA	RIB	RUMP	IMF	Sth Self Replce Index	153
	2.7	3.8	-3.1	4.0	32	58	80	11	2.8	4.4	1.8	2.9	0.6	Nth Self Replce Index	150
	54%	49%	60%	73%	68%	68%	68%	61%	75%	55%	58%	61%	57%	Sth Baldy Mat Index	154
														Nth Baldy Term Index	108

Purchaser..... Price.....

Lot 20 DALKEITH RANDOM R081 Born: 13/05/2020 EP: 100 / 100 Tattoo R081
 ALLENDALE YALLAROI 2 (E25) Birth Weight: 39.5 Polled

ALLENDALE FCF BARKLY (H127)
 ALLENDALE FANCY (C210)
 Sire: DALKEITH PRINCE (P041)
 MONYMUSK EIFFEL TOWER 0140
 DALKEITH RANA (L261)
 DALKEITH RANA 71 (E218) Heifers 1st calf.
 KURRAJONG PARK (B144)
 YAVENVALE EINSTEIN (E344)

Dam: DALKEITH INOCENT (P028)
 YAVENVALE DOREEN (C119)
 DALKEITH INNOCENT (M074)
 REMITALL BOOMER 46B (IMP CAN) (P)
 DALKEITH INNOCENT 43 (T153)

JULY 2022 HEREFORD GROUP BREEDPLAN

	CE Dir	CE DTRS	GL	BWT	200D	400D	600D	MILK	SS	EMA	RIB	RUMP	IMF	Sth Self Replce Index	164
	0.9	0.7	-0.3	6.7	45	63	91	17	2.9	4.2	1.6	2.1	0.6	Nth Self Replce Index	147
	40%	31%	55%	68%	63%	64%	63%	44%	75%	47%	51%	56%	49%	Sth Baldy Mat Index	156
														Nth Baldy Term Index	106

Purchaser..... Price.....

Lot 21 DALKEITH ROCKSTAR R089 Born: 16/05/2020 EP: 100 / 100 Tattoo R089
 YAMBRO CONRAD (B88) Birth Weight: 39.0 Scurred

DALKEITH MACHINE (M051)
 DALKEITH INNOCENT 43 (T153)
 Sire: DALKEITH PERFORMANCE (P093)
 MATARIKI HOLY-SMOKE 0390
 DALKEITH DIVIDEND (L228)
 DALKEITH DIVIDEND 652 (H081) Heifers 1st calf.
 SOUTH BUKALONG WALLACE 2 (Y781)
 DALKEITH LUST (L070)

Dam: DALKEITH MELLOW (N260)
 MARKOWEN LADYBIRD (A18)
 DALKEITH MELLOW 30 (H002)
 KIWI ZABEST Z3
 DALKEITH MELLOW 24 (B226)

JULY 2022 HEREFORD GROUP BREEDPLAN

	CE Dir	CE DTRS	GL	BWT	200D	400D	600D	MILK	SS	EMA	RIB	RUMP	IMF	Sth Self Replce Index	140
	0.4	3.2	-1.2	5.8	41	62	90	14	1.7	2.3	0.3	0.5	0.4	Nth Self Replce Index	123
	37%	29%	46%	69%	63%	63%	62%	43%	75%	46%	50%	54%	48%	Sth Baldy Mat Index	139
														Nth Baldy Term Index	100

Purchaser..... Price.....

Breed Averages	CE Dir	CE DTRS	GL	BWT	200D	400D	600D	MILK	SS	EMA	RIB	RUMP	IMF	Practical Systems STOCKBOOK		
	2.50	2.10	-0.70	4.00	33.00	55.00	78.00	17.00	2.10	3.80	0.80	1.00	0.60	Top 10%	Top 25%	Above Av

Lot 22 **DALKEITH RIP R094** **Born: 18/05/2020** **EP: 100 / 100** **Tattoo R094**
 CAPETHORNE HOT SHOT 03 22 **Birth Weight: 48.0** Polled

Sire: MATARIKI 0380

MATARIKI HOLY-SMOKE 0390
 MATARIKI GIRLIE 00323
 BEANBAH 02217
 MATARRIKI BRACELET 270
 ALLENDALE YALLAROI 2 (E25)
 ALLENDALE FCF BARKLY (H127)

Dam: PORTER (M160)

ALLENDALE FANCY (C210)
 ALLENDALE OPINION (U122)
 DALKEITH DIVIDEND (E046)
 DALKEITH DIVIDEND 535 (B167)

JULY 2022 HEREFORD GROUP BREEDPLAN

	CE Dir	CE DTRS	GL	BWT	200D	400D	600D	MILK	SS	EMA	RIB	RUMP	IMF	Sth Self Replce Index	150
	-8.3	-0.6	-2.6	8.0	52	80	110	10	1.4	5.0	1.1	1.8	0.7	Nth Self Replce Index	136
	52%	46%	74%	73%	68%	68%	67%	58%	77%	54%	57%	61%	56%	Sth Baldy Mat Index	129
														Nth Baldy Term Index	89

Purchaser.....

Price.....

Lot 23 **DALKEITH RUSTY R096** **Born: 18/05/2020** **EP: 100 / 100** **Tattoo R096**
 EK=LITE 4110 F229 **Birth Weight: 41.0** Polled

Sire: KERLSON PINES KEYSTONE (M004)

YAVENVALE JIBBER (J424)
 YAVANVALE DOREEN (G302)
 ALLENDALE WATERLOO (B50)
 KERLSON PINES LAST DAY (F115)
 KERLSON PINES LAST DAY (Y13)
 STUDBROOK DARTAGNION (V086)
 OTAPAWA SPARK 3060

Dam: DALKEITH INNOCENT (M015)

OTAPAWA SPOT (P30)
 YALGOO ENGINEER (N95)
 DALKEITH INNOCENT 43 (T153)
 DALKEITH INNOCENT 3 (P096)

JULY 2022 HEREFORD GROUP BREEDPLAN

	CE Dir	CE DTRS	GL	BWT	200D	400D	600D	MILK	SS	EMA	RIB	RUMP	IMF	Sth Self Replce Index	151
	2.4	1.1	-0.6	4.2	35	57	80	14	2.5	4.0	2.0	3.1	1.3	Nth Self Replce Index	143
	47%	39%	74%	72%	67%	67%	66%	48%	77%	51%	55%	59%	54%	Sth Baldy Mat Index	146
														Nth Baldy Term Index	107

Purchaser.....

Price.....

Lot 24 **DALKEITH RODGER R098** **Born: 20/05/2020** **EP: 100 / 100** **Tattoo R098**
 EK=LITE 4110 F229 **Birth Weight: 40.0** Polled

Sire: KERLSON PINES KEYSTONE (M004)

YAVENVALE JIBBER (J424)
 YAVANVALE DOREEN (G302)
 ALLENDALE WATERLOO (B50)
 KERLSON PINES LAST DAY (F115)
 KERLSON PINES LAST DAY (Y13)
 SOUTH BUKALONG WALLACE 2 (Y781)
 DALKEITH KERMIT (K021)

Dam: DALKEITH MARLINE (M342)

MERAWAH MINERVA (B106)
 YAMBRO CONRAD (B88)
 DALKEITH MARLINE (H135)
 MARKOWEN MARLINE 7 (Y28)

JULY 2022 HEREFORD GROUP BREEDPLAN

	CE Dir	CE DTRS	GL	BWT	200D	400D	600D	MILK	SS	EMA	RIB	RUMP	IMF	Sth Self Replce Index	161
	4.9	3.5	-0.1	4.4	37	62	88	18	1.6	4.0	1.6	2.4	0.9	Nth Self Replce Index	150
	42%	31%	73%	72%	66%	66%	65%	45%	76%	48%	53%	58%	52%	Sth Baldy Mat Index	171
														Nth Baldy Term Index	125

Purchaser.....

Price.....

Breed Averages	CE Dir	CE DTRS	GL	BWT	200D	400D	600D	MILK	SS	EMA	RIB	RUMP	IMF	<i>Practical Systems STOCKBOOK</i>		
	2.50	2.10	-0.70	4.00	33.00	55.00	78.00	17.00	2.10	3.80	0.80	1.00	0.60	Top 10%	Top 25%	Above Av

Lot 25 **DALKEITH REPLAY R105** Born: 24/05/2020 EP: 100 / 100 Tattoo R105
 CAPETHORNE HOT SHOT 03 22 Birth Weight: 35.0 Polled
 MATARIKI HOLY-SMOKE 0390

Sire: DALKEITH LEGEND (L055)
 MATARIKI GIRLIE 00323
 STRATHLEIGH TITANIC 34 (X250)
 MOUNTAIN VALLEY VICTORIA (E55)
 MOUNTAIN VALLEY VICTORIA (X48)
 ALLENDALE ROSEMOUNT 2 (X55)
 ALLENDALE VAGABOND (A74)

Dam: DALKEITH DIVIDEND 656 (H114)
 SUZELLE MARLINE (U54)
 DALKEITH (Y103)
 DALKEITH DIVIDEND 560 (C264)
 DALKEITH DIVIDEND 349 (U243)

JULY 2022 HEREFORD GROUP BREEDPLAN

	CE Dir	CE DTRS	GL	BWT	200D	400D	600D	MILK	SS	EMA	RIB	RUMP	IMF	Sth Self Replce Index	134
	2.3	0.2	0.5	4.3	36	61	84	13	2.3	4.4	0.4	0.9	0.6	Nth Self Replce Index	126
	42%	37%	72%	70%	64%	64%	63%	52%	75%	48%	52%	56%	50%	Sth Baldy Mat Index	140
														Nth Baldy Term Index	109

Purchaser..... Price.....

Lot 26 **DALKEITH ROVER R117** Born: 3/06/2020 EP: 100 / 100 Tattoo R117
 ALLENDALE YALLAROI 2 (E25) Birth Weight: 46.0 Polled
 ALLENDALE FCF BARKLY (H127)

Sire: DALKEITH PRINCE (P041)
 ALLENDALE FANCY (C210)
 MONYMUSK EIFFEL TOWER 0140
 DALKEITH RANA (L261)
 DALKEITH RANA 71 (E218)
 CAPETHORNE HOT SHOT 03 22
 MATARIKI HOLY-SMOKE 0390

Dam: DALKEITH DIVIDEND (L228)
 MATARIKI GIRLIE 00323
 GRASSMERE SPARK 555
 DALKEITH DIVIDEND 652 (H081)
 DALKEITH DIVIDEND 541 (B251)

JULY 2022 HEREFORD GROUP BREEDPLAN

	CE Dir	CE DTRS	GL	BWT	200D	400D	600D	MILK	SS	EMA	RIB	RUMP	IMF	Sth Self Replce Index	149
	-3.0	0.0	-0.5	6.9	48	67	97	13	0.6	3.8	1.6	2.4	1.1	Nth Self Replce Index	135
	43%	36%	56%	70%	65%	65%	64%	47%	76%	49%	53%	57%	51%	Sth Baldy Mat Index	139
														Nth Baldy Term Index	99

Purchaser..... Price.....

Lot 27 **DALKEITH RIPPER R120** Born: 6/06/2020 EP: 100 / 100 Tattoo R120
 YAMBRO CONRAD (B88) Birth Weight: 39.5 Polled
 DALKEITH MACHINE (M051)

Sire: DALKEITH PERFORMANCE (P093)
 DALKEITH INNOCENT 43 (T153)
 MATARIKI HOLY-SMOKE 0390
 DALKEITH DIVIDEND (L228)
 DALKEITH DIVIDEND 652 (H081)
 DALKEITH GIGOLO (G034)
 DALKEITH JIZM (J162)

Dam: DALKEITH DIVIDEND (L351)
 DALKEITH DEAREST 254 (Z345)
 OTAPAWA SPARK 3060
 DALKEITH DIVIDEND 632 (G153)
 DALKEITH DIVIDEND 490 (Z320)

JULY 2022 HEREFORD GROUP BREEDPLAN

	CE Dir	CE DTRS	GL	BWT	200D	400D	600D	MILK	SS	EMA	RIB	RUMP	IMF	Sth Self Replce Index	143
	1.8	1.3	0.2	4.2	37	57	80	13	2.8	3.1	1.7	2.7	1.4	Nth Self Replce Index	134
	39%	31%	45%	71%	64%	64%	63%	46%	76%	46%	51%	55%	49%	Sth Baldy Mat Index	140
														Nth Baldy Term Index	103

Purchaser..... Price.....

Breed Averages	CE Dir	CE DTRS	GL	BWT	200D	400D	600D	MILK	SS	EMA	RIB	RUMP	IMF	Practical Systems STOCKBOOK		
	2.50	2.10	-0.70	4.00	33.00	55.00	78.00	17.00	2.10	3.80	0.80	1.00	0.60	Top 10%	Top 25%	Above Av

Lot 28 **DALKEITH RETRO R121** Born: 6/06/2020 EP: 100 / 100 Tattoo R121
 ALLENDALE YALLAROI 2 (E25) Birth Weight: 40.0 Polled
 ALLENDALE FCF BARKLY (H127)

Sire: **DALKEITH PRINCE (P041)**
 DALKEITH RANA (L261)
 DALKEITH JACK (J255)
 ALLENDALE FANCY (C210)
 MONYMUSK EIFFEL TOWER 0140
 DALKEITH RANA 71 (E218)
 KIDMAN THE DON (Y220)

Dam: **DALKEITH DEAREST (L366)**
 DALKEITH DEAREST 254 (Z345)
 ALLENDALE OPINION (U122)
 DALKEITH DEAREST 217 (U349)

JULY 2022 HEREFORD GROUP BREEDPLAN

	CE Dir	CE DTRS	GL	BWT	200D	400D	600D	MILK	SS	EMA	RIB	RUMP	IMF	Sth Self Replce Index	114
	2.3	-0.2	0.0	4.7	38	54	74	16	1.8	2.0	0.6	0.9	0.5	Nth Self Replce Index	98
	40%	32%	53%	70%	64%	64%	63%	48%	76%	46%	51%	55%	49%	Sth Baldy Mat Index	117
														Nth Baldy Term Index	89

Purchaser..... Price.....

Lot 29 **DALKEITH RODEO R126** Born: 14/06/2020 EP: 100 / 100 Tattoo R126
 YAMBRO CONRAD (B88) Birth Weight: 45.0 Polled
 DALKEITH MACHINE (M051)

Sire: **DALKEITH PERFORMANCE (P093)**
 DALKEITH DIVIDEND (L228)
 ALLENDALE FCF BARKLY (H127)
 DALKEITH INNOCENT 43 (T153)
 MATARIKI HOLY-SMOKE 0390
 DALKEITH DIVIDEND 652 (H081)
 ALLENDALE YALLAROI 2 (E25)

Dam: **DALKEITH FROLIC (M335)**
 DALKEITH FROLIC 164 (C009)
 DALKEITH (Y103)
 DALKEITH FROLIC 33 (R083)

JULY 2022 HEREFORD GROUP BREEDPLAN

	CE Dir	CE DTRS	GL	BWT	200D	400D	600D	MILK	SS	EMA	RIB	RUMP	IMF	Sth Self Replce Index	154
	-1.6	0.7	0.7	6.1	46	68	97	12	1.8	3.4	0.5	1.0	0.4	Nth Self Replce Index	141
	39%	31%	49%	71%	64%	64%	63%	46%	76%	47%	51%	55%	49%	Sth Baldy Mat Index	146
														Nth Baldy Term Index	102

Purchaser..... Price.....

Lot 30 **DALKEITH RENO R133** Born: 3/07/2020 EP: 100 / 100 Tattoo R133
 YAMBRO CONRAD (B88) Birth Weight: 47.5 Polled
 DALKEITH MACHINE (M051)

Sire: **DALKEITH PERFORMANCE (P093)**
 DALKEITH DIVIDEND (L228)
 MOUNTAIN VALLEY GANGSTER (G31)
 DALKEITH INNOCENT 43 (T153)
 MATARIKI HOLY-SMOKE 0390
 DALKEITH DIVIDEND 652 (H081)
 CANNAWIGRA COMMANDER (Z51)

Dam: **DALKEITH DIVIDEND (K075)**
 DALKEITH DIVIDEND 632 (G153)
 OTAPAWA SPARK 3060
 DALKEITH DIVIDEND 490 (Z320)

JULY 2022 HEREFORD GROUP BREEDPLAN

	CE Dir	CE DTRS	GL	BWT	200D	400D	600D	MILK	SS	EMA	RIB	RUMP	IMF	Sth Self Replce Index	115
	-3.6	0.0	1.8	5.9	37	57	81	15	1.1	2.7	0.9	1.5	0.7	Nth Self Replce Index	99
	38%	30%	52%	61%	61%	63%	61%	46%	73%	46%	51%	55%	49%	Sth Baldy Mat Index	104
														Nth Baldy Term Index	75

Purchaser..... Price.....

Breed Averages	CE Dir	CE DTRS	GL	BWT	200D	400D	600D	MILK	SS	EMA	RIB	RUMP	IMF	Practical Systems STOCKBOOK		
	2.50	2.10	-0.70	4.00	33.00	55.00	78.00	17.00	2.10	3.80	0.80	1.00	0.60	Top 10%	Top 25%	Above Av

Outback PRESS.

We Create & Print:

The **Coolah District Diary**

The **Dunedoo District Diary**

The **Merriwa District Diary**

Contact us for all your
advertising requirements

For all your Printing & Graphic Needs



27,000 HITS
PER MONTH
ON OUR WEBPAGE

ARCHIVED STATE &
NATIONAL LIBRARIES OF
AUSTRALIA

10,000 COPIES
DISTRIBUTED BY
AUSTRALIA POST PER MONTH

We Print and Design:

- Local Newspapers
- NCR Books
- Order Books
- Tax Invoice Books
- Receipt Books
- Agricultural Show Books
- Sale Catalogues
- Letterheads
- Envelopes
- Brochures
- Mailers
- Business Cards

54 Binnia Street, Coolah, NSW. 2843.

Ph: (02) 6377 1950

Mob: 0429 771 629

coolahdiary@outbackpress.com.au

On Offer At The 52nd Annual Dalkeith Spring Sale



R034 Lot 10

All Sale Bulls Prepared On Green Oats Only

All joined as yearlings

**30 Grassfed Bulls
No Grain Joined as yearlings**

**THIS AUCTION IS AN
AUCTIONS PLUS ONLINE SALE ONLY
WHICH WILL RUN FROM 1.30pm TO 2.30pm.**