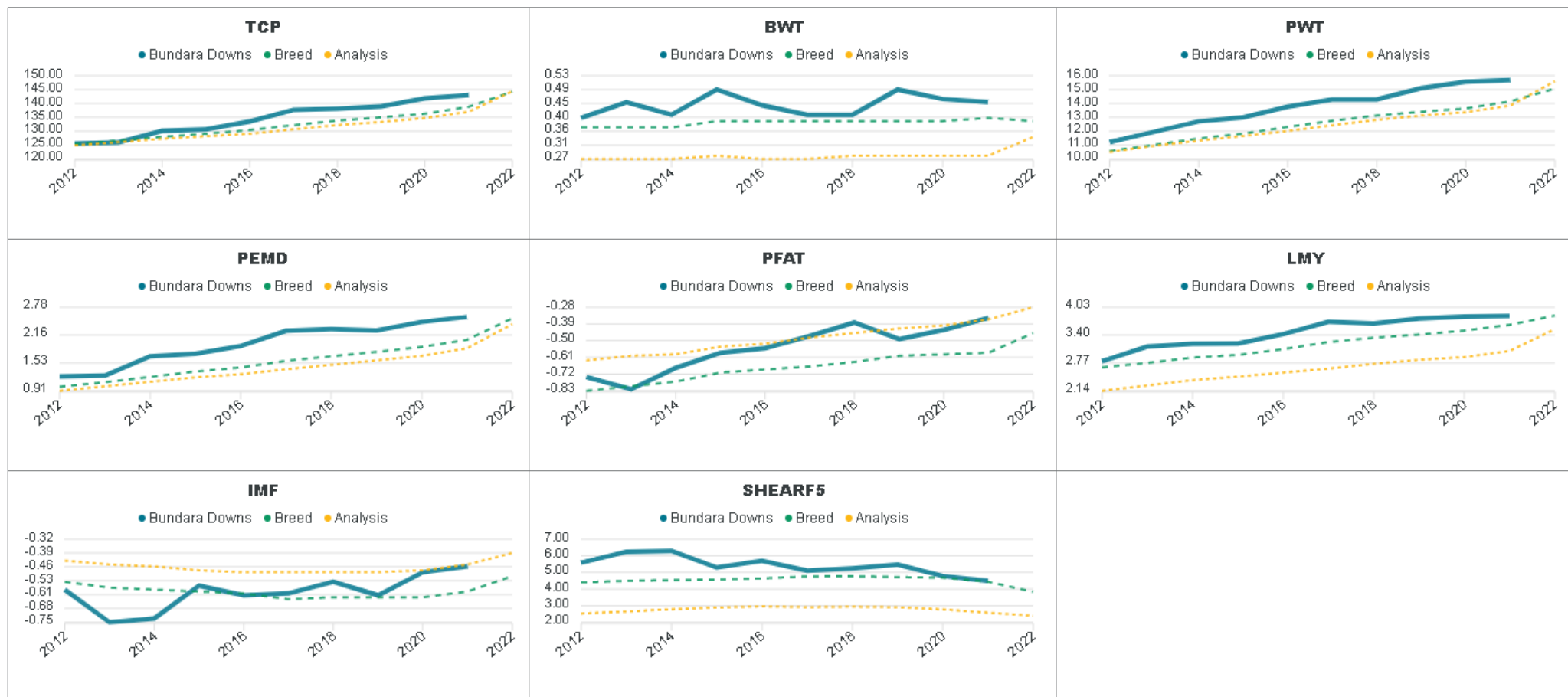
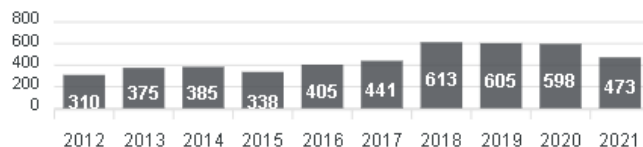


Report: Genetic Trends
Analysis: TERMINAL
Analysis date: 15/08/2022
Flock code: 164324
Flock name: BUNDARA DOWNS

Total animals by drop



Reports are prepared using data supplied by breeders and/or accredited operators. We cannot guarantee the accuracy of this data. ASBV's are designed to estimate genetic merit of animals from the data supplied. The reports are provided to assist breeders but no liability is accepted for the outcome resulting from the use of this information.



Report: Genetic Trends
Analysis: TERMINAL
Analysis date: 15/08/2022
Flock code: 164324
Flock name: BUNDARA DOWNS



Breed

Year	TCP	BWT	PWT	PEMD	PFAT	LMY	IMF	SHEARF5
2012	125.38	0.37	10.58	1.00	-0.83	2.87	-0.54	4.40
2013	126.84	0.37	11.01	1.10	-0.80	2.77	-0.57	4.49
2014	127.97	0.37	11.48	1.22	-0.77	2.89	-0.58	4.54
2015	129.12	0.39	11.83	1.34	-0.71	2.95	-0.59	4.57
2016	130.44	0.39	12.31	1.43	-0.89	3.08	-0.60	4.64
2017	132.19	0.39	12.75	1.58	-0.87	3.24	-0.63	4.76
2018	133.80	0.39	13.13	1.88	-0.84	3.34	-0.62	4.77
2019	134.99	0.39	13.40	1.78	-0.80	3.41	-0.62	4.72
2020	138.31	0.39	13.84	1.89	-0.59	3.50	-0.62	4.88
2021	138.78	0.40	14.15	2.05	-0.58	3.83	-0.59	4.44
2022	144.28	0.39	15.07	2.53	-0.45	3.84	-0.51	3.83

Report: Genetic Trends
Analysis: TERMINAL
Analysis date: 15/08/2022
Flock code: 164324
Flock name: BUNDARA DOWNS



Analysis

Year	TCP	BWT	PWT	PEMD	PFAT	LMY	IMF	SHEARF5
2012	124.89	0.27	10.50	0.91	-0.63	2.14	-0.43	2.53
2013	126.07	0.27	10.95	1.01	-0.60	2.26	-0.45	2.65
2014	127.26	0.27	11.32	1.11	-0.59	2.38	-0.46	2.79
2015	128.21	0.28	11.66	1.21	-0.54	2.46	-0.46	2.89
2016	129.10	0.27	12.02	1.26	-0.52	2.55	-0.49	2.96
2017	130.71	0.27	12.43	1.39	-0.46	2.64	-0.49	2.91
2018	132.21	0.28	12.82	1.49	-0.45	2.75	-0.49	2.94
2019	133.33	0.28	13.13	1.59	-0.42	2.84	-0.49	2.91
2020	134.75	0.28	13.37	1.69	-0.40	2.90	-0.46	2.76
2021	137.01	0.28	13.65	1.66	-0.36	3.04	-0.45	2.56
2022	144.39	0.34	15.60	2.40	-0.26	3.53	-0.39	2.40