



2022

**ADELAIDE
RAM SALE
REVIEW**

MERINO & POLL MERINO

Wayville Showgrounds, Adelaide
Friday 9th September 2022 at 12pm
Livestreaming Auctions Plus

CONTACT

Tony Wetherall
Tom Penna
Alistair Keller
Damien Webb
Laryn Gogel

0427 390 001
0428 854 708
0499 457 023
0418 837 648
0436 020 245

Elders

GLENLEA PARK

PA & LM Wallis | Pinaroo & Keith, SA



Stud Contacts

Peter 0428 766 126

Elders Contacts

Alistair Keller, Elders Stud Stock
p. 0499 457 023
e. Alistair.keller@elders.com.au

2021 Sales Results:

Adelaide. Top \$56,000 average \$21,600

2022 on property sale

46th on property 160 to \$19,000 averaged \$4286

Lot 1

Tag: 21-0009 ET

Sire: GP191120 Sired by GP 150567 ET

Dam: GP 150193 Also the dam of semen sire GP 170614

Age: April/May 2021-drop

20u 3.1SD 15.5CV 99.7CF

122kgs mid-July OJD Status: MN3V



A massive crowd flocked to the 2022 Glenlea Park on property sale that resulted in the amazing \$4,286 average. Peter Wallis realises to keep that momentum going he will need sires of great quality in his armoury. He 'highly' rates 009 and considers him to be one of his very best. So, there will be a RESERVE placed on this ram.

009 is ET bred and tested PP. He is a robust upstanding plainer-bodied poll sire. With head covering he is uncomplicated showing great width through the chest and barrel. A BRILLIANT fibre here – superb bold-crimping well-nourished wool with stud sire staple length and density. With a deep jaw, good feet and mouth, he is quiet natured.

Note: The dam has reared 36 progeny (with never a cull) with sons retained in the stud and also selling to \$34,000 and \$27,000.

This represents a great OPPORTUNITY for progressive stud masters to tap into incredible momentum. We will be interested to see who stands up and has 'a crack' here in Adelaide.



[CLICK HERE FOR MORE INFORMATION](#)

GLENLEA PARK

PA & LM Wallis | Pinaroo & Keith, SA



Lot 2
Tag: 21-0483
Sire: GP170382
Dam: 180373. Sired by Charinga 712
Age: April/May 2021-drop

21.1u 3.4SD
16.1CV 99.3 CF

109kgs mid-July

An easy-doing 'stretchy' 'later maturing' larger framed, well-covered ram, again wide through the chest and great back end. With a good mouth and feet, he grows wool with real clout – 'pearly' white fibre with punchy crimp, lock structure and extra staple length. Also tested PP.



[CLICK HERE FOR MORE INFORMATION](#)

Lot: 3
Tag: 21-0482
Sire: GP 190182. Grandsire NE73
Dam: GP 191101 – Sired by GP 150881 (Sire of \$100k Smithy)
Age: April/May 2021-drop

18.8u 3.1SD
16.5CV 99.5CF

118Kgs Mid July

A masculine STUD SIRE that will lift the 'production' bar for astute breeders going forward. To create upward shifts breeders occasionally need to insert extremes. We believe this sheep to be a stud sire that will have impacting influence.

Back in the breeding of the dam is MP Kelvinator that sold for \$53,000. The sheer substance of this ram has Kelvinator influence!

With a powerful soft muzzle and wide chest he stands square behind. A placid-natured ram with strong bone and belly wool. Plenty of grunt in the body, but more so is the GUSTY stud sire's wool he grows. If it's not his direct sons, it could be his son's son, but a dominant lineage is sure to emerge from 482. Also tested PP.



[CLICK HERE FOR MORE INFORMATION](#)

GLENLEA PARK

PA & LM Wallis | Pinaroo & Keith, SA



Lot 4
Tag: 210762
Sire: GP160004. Grandsire PB 948
Dam: GP170258
Age: April/May 2021-drop

18.9u 3.3SD
17.5CV 99.2CF

107kgs mid-July

A 'robust' squarely made plainer bodied poll sire with a strong head and soft nose that is also good on his feet and mouth. We love the wool on this sheep - 'proper' ram-breeding stud wool. Great combing wool coming off a rich pliable skin. Dominant 'gutsy' crimp definition that holds its character all over. Tested: PH.



[CLICK HERE FOR MORE INFORMATION](#)

Lot 5
Tag: 210015 ET
Sire: GP191120
Dam: GP 190393 Sired by NE073 and her dam was Smithy's dam
Age: April/May 2021-drop

21.4u 3.5SD
16.4CV 98.9CF

115kgs mid-July PP

Impact stud sire. This ET bred PP exhibits a powerful soft muzzle and clean poll. He is wide through the chest and with growth and shape.



[CLICK HERE FOR MORE INFORMATION](#)

A bulky free-growing wool with excellent stud sire lock structure and staple length. Modern, easy-doing production here! He does it easy for body and wool cut. Used right he will breed rows of front line on property sale rams and stud worker sires. We rate him highly!

GREENFIELDS

JFH & E Sullivan Pty Ltd | Booborowie, SA



Stud Contacts

James 0427 942 097

Elders Contacts

Michael Foster, Burra
p. 0488 651 929
e. Michael.foster@elders.com.au

2021 Sales Results:

On property: 118 rams sold to \$14,500 to average \$2,904
38 mini auction av \$1142
Adelaide 4 rams to \$23,000 av \$13,125.

2022 on property sale

Monday September 12
200 stud ewes will be offered
Auctions Plus interface



James and Fiona and their young family have based at Booborowie and will continue their part of the Greenfields poll stud that was founded in 1957.

GREENFIELDS

JFH & E Sullivan Pty Ltd | Booborowie, SA



Lot: 6
Tag: 200993
Sire: Greenfields PT 129
Age: September 2020-drop

20.1u 3.4SD
16.9CV 99.6CF

August: 132kgBW GFW112%

993 is a LARGE-FRAMED SPRING DROP POLL SIRE – He will 'boom' away with spring weather leading into Adelaide. He presents a powerful silky-soft muzzle and strong head outlook and clean poll. With good feet and mouth he is wide through the chest.

A 'good looker', he tested PP. A 'long-stapled' free-grower of sharply marked 'rich' crimped bold medium wool quality – there is X factor about this sheep!!

Very much the Greenfields type being very complete 'free-moving' square robust sire that is worth looking out for!



[CLICK HERE FOR MORE INFORMATION](#)

Lot: 7
Tag: 563
Sire: 444 – Charinga family
Age: April 2021-drop

21.5u 2.8SD
13CV 99.7CF

August: BW119kg GFW114%

A poll merino ram sired by the Greenfields 444 family, A pure barrelly deep-sided ram that has a leg in each corner. A very sirey powerful strong soft muzzle he stands up very proud and carries a high yielding bright white long stapled medium wool. The young sire that has always been big and powerful since early February ram-lamb inspections. Carcase and wool quality/quantity traits here. Also tested PP.



[CLICK HERE FOR MORE INFORMATION](#)

GREENFIELDS

Sullivan Williallo | Hallet, SA



Stud Contacts

Robert 0428 942 184
Jim 08 8894 2175

Elders Contacts

Michael Foster, Burra
p. 0488 651 929
e. Michael.foster@elders.com.au

2021 Sales Results:

On property: 118 rams sold to \$14,500 to average \$2,904
38 mini auction av \$1142
Adelaide 4 rams to \$23,000 av \$13,125.

2022 on property sale

Monday September 12
200 stud ewes will be offered
Auctions Plus interface



GREENFIELDS

Sullivan Williallo | Hallett, SA



Lot: 8
Horn Brand: 1.21
Sire: Glen Donald 8.68.
2019 Bendigo Champion Medium wool
Age: April 2021-drop

22.2u 3.9SD
17.6CV 97.6CF

Greenfields horn stud was founded in 1949 and poll stud in 1957 with Robert, Celia and young family living at Hallett.

The first of the Merino rams for Greenfields is AI bred sired the prominent Glen Donald 8.68. A strong-headed pure masculine muzzled merino sire with a good horn setting. A very well balanced ram with good spring of rib a good hindquarter and correct on his feet. He carries well-defined white nourished sire's quality wool with a good wool cutting skin. A Merino ram that stood out as a young ram when inspected early in the year.



[CLICK HERE FOR MORE INFORMATION](#)

Lot: 9
Horn Brand: 1.22
Sire: Glen Donald 8.68
Age: April 2021-drop

19.9u 2.9SD
14.6CV 99.9 CF

Another GD 8.68 son. A very long bodied well footed ram with 'quality' testing bright white medium wool. A merino ram with a wide strong horn setting. A very well balanced complete dual purpose merino sire. Represents the Greenfields type impressively.



[CLICK HERE FOR MORE INFORMATION](#)

NYOWEE

IC & DM Michael | Balaklava, SA



Stud Contacts

Ian Michael 0409 692 891

Elders Contacts

Tyson Fechner, Riverton
p. 0439 531 501
e. Tyson.fechner@elders.com.au

2021 Sales Results:

On property 200 to \$10,000 av \$2,410.
Adelaide 5 to \$20,000 av \$9,200

2022 on property sale

Wednesday September 14.

Lot 10
Tag: LV-91
Sire: Nyowee LV-80 (E430 Lustre Family)
Age: April/May 2021-drop

21.1u 3.3SD
15.6CV 99.5CF

Mid-August BW 114kgs

Founded in 1955, Nyowee is now in the 'very capable' hands of Ian and Diane Michael and their sons (With Barrie very much on hand!).

Often we see a 'kicker' come from Nyowee. A ram that bounds ahead as the cold winter months move to longer spring days. We are confident this sheep will flourish catch the eye in Adelaide.

He's stands on good feet, is well covered, has noticeable barrel and clean face.

More so is the 'gutsy' 'breed on' sire's wool he carries. A nicely finished poll sire with good balance and a fair bit extra in the wool!!

LV-91 is what Nyowee is known for and he is very much the complete package. A sire that has a lot of potential in the industry.



[CLICK HERE FOR MORE INFORMATION](#)

NYOWEE

IC & DM Michael | Balaklava, SA



Lot 11
Tag: J6-45
Sire: Nyowee J2-168
Age: April/May 2021-drop

20.6u 3.3SD
16CV 99.5CF

Doing ability! Mid-August BW 113kgs.

Another 'breed on' stud wool sheep! This ram also carries the attributes of the Nyowee stud. A very pure soft well-made sire with an exceptionally long body. Finished off with rich gutsy bold lustrous long stapled bright DEEPLY-STAMPED white wool. An exciting stud sire prospect.



[CLICK HERE FOR MORE INFORMATION](#)

Lot 12
Tag: LV-154
Sire: Nyowee LV-80 (E430 Lustre Family)
Age: April/May 2021-drop

18.7u 2.9SD
15.5CV 99.8CF

Mid-August BW 120kgs

Another LV-80 son. A poll merino sire that stands very correctly and is very much an uncomplicated well-balanced ram with a powerful stance and muzzle. Completed with high yielding long stapled bright white medium wool. Body weight with a crisp 'punchy' wool.



[CLICK HERE FOR MORE INFORMATION](#)

NYOWEE

IC & DM Michael | Balaklava, SA



Lot 13
Tag: J3-28
Sire: Nyowee J-31
Age: September 2021-drop

16.5u 2.8SD
17CV 99.8CF

Weight for age: Mid-August BW 97kgs and on the move.

ABSOLUTE QUALITY. And at just one year-old, this J-31 son is more than INTERESTING. He will roll into Adelaide with excellent growth for age and with reliable make and shape and growing brilliant rich wool.



[CLICK HERE FOR MORE INFORMATION](#)

Lot 14
Tag: JS-388
Sire: Nyowee J-22
Age: September 2021-drop

16u 2.2SD
13.8CV 99.9CF

Mid-August BW 93kgs

As Classer Len Anderson would say, 'Wool soft enough to knit angel's underwear!' Another younger one-year-old. A brilliant testing low micron fibre. Both of these youngsters show maturity for age and superb rich wool. The safest way to appreciate them is to buy both. We see them both having influences into the future.



[CLICK HERE FOR MORE INFORMATION](#)

NORTH ASHROSE

GE Ashby & Sons | Gulnare, SA



Stud Contacts

Tom. 0427 452 107

Angus. 0400 057 825

2021 Sales Results:

On property: 172 to \$8,500 average \$2,603
Adelaide sale: 6 to \$15,000 average \$9,000

Elders Contacts

Scott Fleetwood, Jamestown
p. 0427 727 827
e. scott.fleetwood@elders.com.au

2022 on property sale

Wednesday August 29. Auctions Plus interface

Lot: 17

Tag: 210100

Sire: Gunallo 463 sold for \$37,000

Age: May 2021-drop

Mid-August: BW 116kg

20.4u 3.2SD
15.7CV 99.8CF

North Ashrose is a great example of how the Merino/Poll Merino breed is advancing in **early growth and carcass shape**. The Ashby family are into fifth generation stud breeders with the stud foundation dating back to the early 1900's.

ELITE wool here. To lead of the North Ashrose sale team is a Gunallo 463 son that is very much an **easy-care-dual-purpose** poll merino sire with a good back end and displaying a lot of meat in his twist. A long stapled bold crimping bright 'sharply-crimped glossy white wool, a very square ram that has a good soft loose skin.

He will rank in the top end of the Adelaide catalogue.

SL 80mm EMD 43
Mid-August: BW 116kg
SL 80mm EMD 43
BFAT 7.9



[CLICK HERE FOR MORE INFORMATION](#)

NORTH ASHROSE

GE Ashby & Sons | Gulnare, SA



Lot: 18
Tag: 210150
Sire: Masterbuilt
Age: May 2021-drop
20.8u 3.2SD 15.4CV 99.3CF

He looks the part. A large-framed poll that stands up. With a soft broad muzzle and solid bodyweight, he will fill a pen by September. Big sheep – excellent testing wool – quite a recipe in today’s world!! Sired by Collinsville Masterbuilt a very long and deep bodied sire that is also very much the modern-day-dual-purpose poll merino sire. He has a powerful strong pure sire head. A sire that has plenty of heart room very square on his feet with plenty of grunt. To go with all the power and grunt he has a bold crimping wool that is very well aligned bright white with extra staple length. A ram that stood out as a ram lamb, very worthy of inspection.

Mid-August: BW 114kg SL 95mm
 EMD 43.1 BFAT 6.7



[CLICK HERE FOR MORE INFORMATION](#)

Lot: 19
Tag: 210067
Sire: Gunallo 463 sold for \$37,000
Age: May 2021-drop
19.7u 3.1SD 15.7CV 99.4CF

Also sired by Gunallo 463 this poll merino sire is very much the wool sheep of the North Ashrose team. A very bright white nourished bold medium wool that has a good balance of density and staple length. A good all-round dual purpose poll merino that stands well on his feet, good chest area and backend. A well-balanced ram that is very much a bale filler.

Mid-August: BW 108kg SL 85mm
 EMD 42.6 BFAT 8



[CLICK HERE FOR MORE INFORMATION](#)

NORTH ASHROSE

GE Ashby & Sons | Gulnare, SA



Lot: 20
Tag: 212882
Sire: WR 023
Age: May 2021-drop

20.9u 3.7SD 17.7CV 99.1CF

The lead merino ram for North Ashrose is a white river 23 son a grandson of Wallaloo Park 112 that was sold for \$52,000. A long bodied open headed good horn setting merino sire with a rich gutsy bright white well aligned modern day merino productive skin. Big staple length. **High quality merino ram**. Open head and horn setting set off a robust ram with heavy-cutting creditability. Top end stud sire



Mid-August: BW 116kg SL 90mm
 EMD 42 B FAT 8.6



[CLICK HERE FOR MORE INFORMATION](#)

Lot: 21
Tag: 212612
Sire: WR 023
Age: May 2021-drop

21.49u 3.3SD 15.4CV 99.2CF

Also, a WR 23 son. A mirror image of Lot 20. A massive muscle to fat ratio. He is a long bodied deep sided merino sire with a good spring of rib. A deep wide and powerful sire muzzle with a good wide horn setting. He carries a good rich sire wool on his back and carries it to the floor. Right up there for staple length.



Mid-August: BW 114kg SL 90mm
 EMD 44.9 B FAT 6.1



[CLICK HERE FOR MORE INFORMATION](#)

MULLOORIE

PS & JH Meyer | Brinkworth & Tintinara, SA

Elders

Stud Contacts

Paul and Airlie (08) 8846 2077/ 0428 462 077
Pete and Julie 0408 089 669
Brett and Toni 0428 565 091

Elders Contacts

Darren Pretlove, (Clare) 0488 946 471,
Steven Doecke, (Keith) 0427 817 323

2021 Sales Results:

Adelaide. Sold 3 to \$12,000 av \$9,333.

2022 on property sale

2022 Tintinara 36 to \$7,800 av \$2560.
Brinkworth Monday 19th September Auctions
Plus interface.

Lot: 24
Tag: 1205
Sire: Mulloorie 2.0
Age: September-October 2020-drop

21.1u 2.9SD
13.7CV 99.7CF

Mulloorie blood sheep perform in all types of environments from pastoral country to 700mm rainfall and the Meyer Family came home from the 2022 Hay Sheep Show as Most Successful Exhibitor. (Also won the title in 2021). Also, congratulations for winning SA Ram of The Year recently judged at the Northern SA Merino Expo, Jamestown.

HIGH CALIBRE STUD RAM. 1205 is a 'spring drop' Poll Merino Sire is by M.20 and is very much the Mulloorie type. He is a long bodied well put together ram with a good spring of rib he stands up very well displaying a rich soft handling medium wool that carries right to the floor. A ram that could go anywhere in Australia. Tested PP.

He represents typical Mulloorie traits – growth, bone, cover & wool cut. He stands proud and square on strong legs and good feet. With staple length and lock structure he grows 'breedy' lustrous white wool.

Excellent testing ram-breeding wool on a powerful robust body. TOP SHEEP!

Mid August. BW 142kgs SL 80mm



CLICK HERE FOR MORE
INFORMATION

MULLOORIE

PS & JH Meyer | Brinkworth & Tintinara, SA



Lot: 25
Tag: 914
Sire: Mulloorie Elliott. Back to Mianelup sire sired by Moorundie Park A321
Age: June 2021-drop
21.3u 3.1SD 14.6CV 99.4CF

REALLY do value this sheep!
A Mulloorie Elliot that is showing huge potential a poll merino sire that stands very well on all four legs with plenty of bone. He has a good soft deep muzzle, heaps of spring a rib, and long stapled bright white wool with plenty of density and wool cut.

Keeping with the consistency of the Elliott sons, this YOUNGER poll ram with strong bone is an uncomplicated type - a plainer body with genuine width of body. Really like the lock and excellent wool character here! A productive wool-growing skin.

Quality package!! Correctly made poll sire with grunt here! Combination sheep – early growth and wool cut. Tested PP
Mid August. BW 114kgs SL 85mm



[CLICK HERE FOR MORE INFORMATION](#)

HAMILTON RUN

LA Genetics Trust | Jamestown, SA



Stud Contacts

Greg Andrews 0428 161 746

Elders Contacts

Scott Fleetwood, Jamestown
p. 0427 727 827
e. scott.fleetwood@elders.com.au

2021 Sales Results:

on property sold to \$15,000 av \$2680.
Adelaide 2 to \$14,000 av \$11,500.
Private sale \$15,000 & \$12,000.

2022 on property sale

Tuesday September 1.

Lot: 28
Tag: HR 87
Sire: Gunallo 463 purchased for \$37,000
Age: May/June 2021-drop

18.5u 2.9CF
15.7CV 99.8CF

With family origins back to the 1950's Greg Andrews is third generation stud merino breeder. We are delighted to offer these Gunallo 463 sons.

Tag 87 (tested PP) is a long-bodied strong headed sire that has good neck extension. A well-balanced 'heavy bodyweight' ram that is very square. On his back he carries a well aligned long stapled white waxy wool. A well grown 'lower micron' ram with genuine wool cut ability!

Early August: 126kgBW

44.5EMD 7BFAT



[CLICK HERE FOR MORE INFORMATION](#)

HAMILTON RUN

LA Genetics Trust | Jamestown, SA



Lot 29

Tag: HR 171

Sire: Gunallo 463 purchased for \$37,000

Age: May/June 2021-drop

19.65u 2.5CF

12.8CV 99.7CF

Tested PP. Another Gunallo 463 son that has a powerful strong sirey stance, a wide chest and a very deep body. 171 has a massive hindquarter (46.5EMD) with a good deep meaty twist. Very much a dual-purpose meaty poll merino sire that has extra staple length, well crimped and bright white wool. Brilliant testing fibre!

Early August: 116kgBW

46.5EMD 7.5BFAT



[CLICK HERE FOR MORE INFORMATION](#)

GUNALLO

Gunallo Pty Ltd | Murrayville, SA



Stud Contacts

Ray Schroeder 0427 778 485
Brad Schroeder 0400 335 660

Elders Contacts

Alistair Keller, Elders Stud Stock
p. 0499 457 023
e. Alistair.keller@elders.com.au

2021 Sales Results:

2021 Adelaide 2 to \$18,000
2021 Classings Classic 8 to \$19,000
Stud rams & semen sold to SA, WA, Vic & NSW

2022 on property sale

Thursday 1st September. Auctions Plus interface.

Also offering at Classings Classic Monday 5th September

Lot 30
Tag: 210800
Sire: Gunallo 170331
DOB: May 2021-drop

19.2u 3SD
15.6CV 99.8CF

27/4/22: 42.4EMD 5.1BFAT
Cut 7kgs 85mm at 5.5 month's lamb's wool.

8.8YWT -0.04YFAT
-0.31YEMD 23.74YGFW
25.66YCF 11.9YSL
DP+163.8 MP+168



INFLUENCIAL uncomplicated large-framed animals growing long-stapled crimped wool comfortably describes Gunallo sheep and over the last decade we've seen the Schroeder family offer stud sires that have impacted around the country.

RIGHT IN THE SLOT: 800 is an EXCITING large-framed plainer-bodied poll sire with genuine barrel. He is long-bodied and deep-sided and carries PP - TWO COPIES double poll gene.

With a pure soft nose and dry poll he grows bulky 'DEEP CRIMPING' free-growing fibre with extra staple length from an exquisite pliable loose wool growing skin. He has a 'placid' nature and has been tested for good quality semen.

We REGARD this offering DECIDELY – He's a great OPPORTUNITY to tap into an elite wool sire that stands structurally correct. Very much an ADELAIDE highlight!



[CLICK HERE FOR MORE INFORMATION](#)

Stud Contacts

Joe & Tracey Dahlitz 0428 295 706

2021 Sales Results:

Adelaide sold 2 to \$21,000

Elders Contacts

Steve Davidson, Cummins
p. 0437 875 707
e. Steve.davidson@elders.com.au

2022 on property sale

32nd on property sold 105 to \$7,500 av \$2628.

Lot: 32

Tag: 210055

Sire: GP 180173 Smithy sold for \$100,000

Dam: 180772 (PB 140948)

DOB: April/May 2021-drop

20.5u	3.1SD	
15.1CV	99.7CF	
8.89WWT	8.73HWT	
29.8YCFW	1.64LMY	184.7DP+

Mid-June EMD 43.4	BFAT 5.8
-------------------	----------

Mid-August BW 116kgs	SL 85mm
Wool Cut 7 months blade shorn 8.13kg	



After their successful 32nd annual on property sale we are delighted to offer 3 Smithy sons for the Dahlitz Family. We've had our eye on 55 since our ram lamb tour in February and he is coming up a treat.

He is a twin that tested PP. A well-made, pliable skinned, plainer-bodied Poll sire prospect with great width of body and Eye Muscle shape. He's a heavy cutter (29.8CFW) of lustrous pearly 'stud' quality white wool. With years of success in dual purpose competitions the Roemahkita ewe flock has developed in built carcass attributes. Smithy sons have featured in the last two Roemahkita sales topping at \$10,000 (twice). We firmly believe this ram to be a 'top shelf' Smithy son with 184.7DP+



[CLICK HERE FOR MORE INFORMATION](#)

ROEMAHKITA

Roemahkita Pty Ltd | Cummins, SA



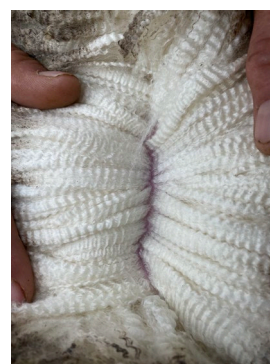
Lot: 33
Tag: 210008
Sire: GP 180173 Smithy sold for \$100,000
Dam: 172281 – Spring syndicate
DOB: April/May 2021-drop
20.8u 3.2SD
15.4CV 99.4CF



A genuine commercial flock improving poll ram – a single lamb Smithy son that with an easy doing uncomplicated body. Similar backend to tag 55 – square behind filling down the twist. 008 grows brilliant fibre that is deep crimping, free-growing and sweetly white. Tested PP.

5.8WWT 5.83HWT 21.38YCFW
1.08LMY 152.4DP+

Mid-June EMD 40.4 BFAT 9
Mid-August BW 114kgs SL 80mm
Wool Cut 6 months machine shorn 7.62kg



[CLICK HERE FOR MORE INFORMATION](#)

Lot: 34
Tag: 210057
Sire: GP 180173 Smithy sold for \$100,000
Dam Sire: 180575 - WP family.
DOB: April/May 2021-drop
19u 3.1SD
16.3CV 99.7CF



Similar type to his brothers 57 he is right up there for shape with 42.6 EMD that again carried down the twist. Doing ability here – a fleshy ram. And a heavier cutter with a more pronounced lock structure. Solid allrounder – meat and wool combination! Tested PP.

6.59WWT 6.38HWT 25.72YCFW
1.32LMY 174.59DP+

Mid-June EMD 42.64 BFAT 7.6
Mid-August BW 117kgs SL 85mm
Wool Cut 6 months machine shorn 6.72kg



[CLICK HERE FOR MORE INFORMATION](#)

KAMORA PARK

CD & JIC Boughen | Karoonda, SA



Stud Contacts

Colin, Julie, Wade & Katelyn Boughen
p.08 8578 3456

Elders Contacts

Eli Koch, Elders Karoonda
p. 0409 698 713
e. Eli.koch@elders.com.au

2021 Sales Results:

Adelaide sold 4. average \$6,500

2022 on property sale

2022 on property sold 209
Top \$8,600 average \$2,245

Lot: 38
Tag: KP 115
Sire: Gunallo 463 sold for \$37,000
Age: April 2021-drop

18.9u 2.8SD
14.8CV 99.6CF

PROFITOUS.

Favourable, auspicious, fortunate.

In simpler terms we are super excited to offer these Kamora Park lots that will be ABSOLUTE Adelaide star lots!

These are the most 'complete' rams to be offered by the stud and its eye of the beholder as to which is to be more favoured. Both are the culmination of investing in leading genetics and an AI programme of over 1,000 ewes.

115 is a well-proportioned 'PLACID-NATURED' square bodied 'broad chested' poll with an appealing loose-draped-front that tested PP. He stands on good feet and presents a clean open soft face. But more so is the SPECIAL fibre that he grows from his loose pliable skin. A robust body growing ABSOLUTE top class IMPACT fibre!! Fleece weight 8kg at 6 months growth

Scan 15/7. BW 112kg EMD 38 BF 15



[CLICK HERE FOR MORE INFORMATION](#)

KAMORA PARK

CD & JIC Boughen| Karoonda, SA



Lot: 39
Tag: KP 233
Sire: KP Gunallo sons. Grandson of Gunallo 295 sold for \$60,000
Age: May 2021-drop
20.1u 3.3SD
16.4CV 99.4CF



Production here.

Great 'make and shape'. A big eye muscle square-bodied meaty sire. A 'growthy' plainer-bodied ram with clean poll and soft, strong head. With a superb surface to handle, he is a healthy cutter of bulky free-growing WHITE wool. From a natural mating he oozes quality – a brilliant combination and balance of body and wool quality. Body shape, wool cut and wool quality. All class here!

Fleece weight 8.2kg at 6 months growth

Scan 15/7 BW109kg. EMD 44 BF 11



[CLICK HERE FOR MORE INFORMATION](#)

RICES CREEK

Vandeleur Rural | Tintinara & Saddleworth, SA



Stud Contacts

Mark. 0417 871 054
James. 0409 092 118
Jim. 0429 492 062

Elders Contacts

Stephen Doecke, Keith
p. 0427 817 323
Tyson Fechner, Riverton
p. 0439 531 501

2021 Sales Results:

On property: Sold to \$10,200 average \$2,584
Adelaide sold 2 to \$10,000

2022 on property sale

Sold 96 to \$8,500 av \$2,581

Lot 40
Tag: 2757
Sire: Collinsville Imperial 20 purchased for \$32,000.
Age: April 2021-drop

21.1u 3SD 14.2CV
 99.8CF

July: EMD 41.5. BF 7
Mid-August BW 130kgs SL 85mm



Rices Creek established in 1925 and the younger generations coming on are 'on the move' forward. With Mark's son Charlie's approval Elders opted for this impressive poll sire. Young Charlie has a keen eye and has picked Rices Creek top priced rams in recent years. Seriously, we rate this sheep! He displays excellent growth for age and body shape. A well covered 'athletic' ram set off with a masculine head, pure muzzle, good mouth, and wide hips. Even with his covering we still see him as a modern plain-bodied sire that stands on good feet.

So, a very good body growing quality sire's wool. Well-structured lock and crimp definition. Imp 20 has been a success at Rices Creek and we believe this ram as probably the best of his sons that the Vandeleur family have offered! Body weight and sensational testing fibre.



Definitely recommend inspection here. Could go under the radar. But we think a STAR lot.

[CLICK HERE FOR MORE INFORMATION](#)

OLD ASHROSE

Old Ashrose Props | Hallett, SA



Stud Contacts

Nick Wadlow 0427 088 022.
Rob Ashby 0408 855 960

Elders Contacts

Michael Foster, Burra
p. 0448 651 929
e. Michael.foster@elders.com.au

2021 Sales Results:

on property 119 sold to \$6,500 average \$ 2,650.
Adelaide 3 to \$8,000

2022 on property sale

Thursday September 15. Note: 150 Merino/Poll merino & 80 White Suffolk rams on offer. Inspections from 9.30am. White Suffolk auction 11am and Merinos 1pm.

Lot: 41
Tag: PEH 977
Sire: OA PEH 445 Will sold for \$40,000
Age: May/June 2021-drop

19.9u 3.5SD
17.6CV 99CF

Old Ashrose genetics have a strong reputation for constitution, conformation and heavy wool-cutting ability. Combining this with high fertility and carcass traits Old Ashrose sheep continue to encompass all the profit drivers needed for a successful sheep enterprise!

977 is a Will son that is very much the Old Ashrose Type. We've had ticks marked next to his notes since viewing him as a ram lamb in February.

Slightly younger he is a big square powerful long bodied poll ram with plenty of sire appeal. He is very much a productive ram – a DOER - with a good hindquarter stands on plenty of bone finished and appealing 'bulky' bold-medium white wool on his back with cutting ability.



[CLICK HERE FOR MORE INFORMATION](#)

OLD ASHROSE

Old Ashrose Props | Hallett, SA



Lot 42
Tag: PEH 017
Sire: OA PEH 445 Will sold for \$40,000
Age: May/June 2021-drop

20.5u 3.6SD
17.6CV 99.5CF

Another Will son that impressed us as a woolly ram lamb. With a correct make and shape he nutures well-nourished bright white long stapled medium wool covering that is 'noticeably' soft to handle. He is very much a modern day easy care poll merino sire – A STRONG well balanced body (big barrel) that that stands on good feet. He commands attention.



[CLICK HERE FOR MORE INFORMATION](#)

Lot 43
Tag: PEH 957
Sire: OA PEH 445 Will sold for \$40,000
Age: May/June 2021-drop

19.4u 3.4SD
17.5CV 99.9CF

SNAPPY WOOL SHEEP. Another Wil son showing the same consistency. A well conformed ram with solid bone and conformation displaying bright-white richly nourished wool that is soft to handle. Again, ample staple length and well defined crimp. A 'likeable' offering.



[CLICK HERE FOR MORE INFORMATION](#)

OLD ASHROSE

Old Ashrose Props | Hallett, SA

Elders

Lot 44
Tag: PWP093
Sire: WP180060
Age: May/June 2021-drop

18.8u 2.5SD
13.3CV 99.8CF

From the Old Ashrose Wallaloo Park Family. He is much the wool sheep on the group. A soft bold medium bright white 'lustrous' but not only has he got a good wool he is the complete package a dual purpose long deep sided sire with plenty of things going for him. An uncomplicated square bodied sheep. Staple length again. The Old Ashrose team stack up in the staple length department!



[CLICK HERE FOR MORE INFORMATION](#)

Lot 45
Tag: PMA 919
Sire: OAPMA 242
Age: May/June 2021-drop

20u 3.4SD
17CV 99.7CF

A complete dual purpose poll merino ram with a powerful deep jaw, wide hips, and soft pure head. A plainer bodied ram that is still nicely covered. He a well footed deep-sided ram growing 'long stapled' well defined 'gutsy' strong wool on his back. A ram sure to breed lines of sale rams and very productive ewes.



[CLICK HERE FOR MORE INFORMATION](#)

ORRIE COWIE

HMV & JD Dalla | Warooka, SA



Stud Contacts

John Dalla 0419 826 228
Heather Dalla 0417 898 474

Elders Contacts

Adam Pitt, Minlaton
p. 0418 899 349
e. Adam.pitt@elders.com.au

2021 Sales Results:

Adelaide sold 1 to \$10,000

2022 on property sale

56th sale sold 116 to \$13,000 average \$2,322

Note: Stud Ewe Sale Monday 3rd October. Auctions Plus online sale.

Lot: 46

Tag: 21002

Sire: Glen Donald 8.68. 2019

Bendigo Champion Medium Wool
Ram

Age: June 2021-drop

21.3u 3.1SD
14.6CV 99.5CF

The lead off ram for Orrie Cowie this year is a very impressive Glendonald 8.68 Son. He won champion march shorn ram the hay sheep show 2022. An 'athletic' free-moving merino sire that shows a massive amount of bone. Big deep strong sirey muzzle, a very long and deep body and good topline. He stands very proud with a good horn setting with a QUALITY waxy medium wool. A ram that knows he is good.

Definitely a 'classy wool' stud sheep with ample free-growing staple length and lock structure. Do like the strong jaw and width of hip here!



[CLICK HERE FOR MORE INFORMATION](#)

ORRIE COWIE

HMV & JD Dalla | Warooka, SA



Lot 47
Tag: 210001
Sire: OC Midnight Oil
Age: June 2021-drop

19.4u SD
14.4CV 99.6CF

The first poll for Orrie Cowie is a Midnight oil 20 son. He was awarded the Reserve Champion March shorn ram at Hay sheep show 2022. A well put together powerful sire that is well balanced and stands on massive amount of bone, a huge backend and very powerful strong sirey head. A very well nourished long stapled crimp strong wool that should not be walked past.



[CLICK HERE FOR MORE INFORMATION](#)

Lot 48
Tag: 210551
Sire: Moorundie A32
Age: June 2021-drop

19.4u 2.8SD
14.4CV 99.6CF

A poll merino sire that is a natural mating sired by a Moorundie ram. Six weeks younger, he is a very deep sided dual-purpose-modern-day poll merino sire that is very uncomplicated. He stands well on all four legs and with massive amount of meat and hindquarter. Not only is he well-built but has a good bright white shiny well aligned medium wool on his back.



[CLICK HERE FOR MORE INFORMATION](#)

RADNOR

EC & LN Koehler | Langhorne Creek, SA



Stud Contacts

Stephen 0407 099 465
Brett 0438 379 569

Elders Contacts

Haydon Biddle, Murray Bridge
p. 0429 031 194
e. haydon.biddle@elders.com.au

2021 Sales Results:

Adelaide. Sold 2 to \$3000

2022 on property sale

38th on property sale sold to \$3,800 av \$1181.

Lot 49
Tag: P962
Sire: Radnor P110 Sloane

19.7u 2.8SD
14.2CV 99.9CF

Age: April/May 2021-drop



Formed in 1982 the Koehler Family offer a well-grown 'WELL-STRUCTURED' stand up poll ram growing excellent testing fibre. ET bred. A top-end commercial flock improver! A clean faced ram that stands square behind. With a productive loose wool-growing skin he has a value balance of density and staple length. Rich wool sheep. His sire cut 10.4kgs at 6 months and dam (a Bendigo Wool Show strong wool champ) cut 12.5kg of 21micron wool)



[CLICK HERE FOR MORE INFORMATION](#)

Stud Contacts

Kevin Crook. 0427 921 037

2021 Sales Results:

On property sold 70 to \$5,100 average of \$2,501

Elders Contacts

Kieran O'Shannesy, Ouyen
p. 0427 553 033
e. kieran.oshannesy@elders.com.au

2022 on property sale

Friday 2nd September 2021
Auctions Plus interface

Lot: 54

Tag: Y999

Sire: T127 sold in Adelaide for \$15,000.

Goes back to Willandra family.

Age: June 2021-drop

19.9u 2.8SD

14.1CV 99.7CF

Son of a gun!

Founded in 1986 in Central Victorian Mallee the Tamaleuca stud flock comprises 1300 ewes. This year the ewes averaged 133% lambing to ewes joined with their hogget wool 18-19micron and over everything 20.4micron.

The sire of this sheep has bred well in different places and Y999 is a spitting image of his father. He is a 'stand up' well-grown plainer bodied ram with sound feet and mouth. With a clean poll and nose, he has extra staple length and an even count of superb testing fibre with clear definition. Early August. 114kgBW 39EMD 8BFAT Won the 'Soft Bold All Purpose' lamb class at Bendigo. He is on the move will look a picture in Adelaide.



[CLICK HERE FOR MORE INFORMATION](#)

TAMALEUCA

Tamaleuca Pty Ltd | Ouyen, VIC



Lot 55

Tag: 1003

Sire: T127 sold in Adelaide for \$15,000. Goes back to Willandra family.

Age: AI bred June 2021-drop

19.3u 2.7SD 14CV 99.9CF

Another T127 son and a slightly different style of ram. He has extra spring of rib, a well-developed hindquarter that carries down through the twist. Also, a pure 'ripply' loosed skinned nose, clean poll, good feet and mouth.

Won the Fine Medium All Purpose lamb class in Bendigo. He grows a white-wool fleece of visual fine/medium quality wool. INTERESTING prospect!

August 114kgBW 40EMD 7BFAT



[CLICK HERE FOR MORE INFORMATION](#)

SANDALWOOD POLL MERINO

Boughen Bros Family Trust | Karoonda, SA



Stud Contacts

Justin Boughen 0423 065 513
Paul Boughen 0435 230 607

Elders Contacts

Eli Koch
p. 0409 698 713
e. Eli.koch@elders.com.au

2022 on property sale

sold to \$6,600 average \$2,208.

Lot 56

Tag: 117

Sire: One Oak Poll JB10 purchased for \$30,000

DOB: April 2021-drop

19.5u 3.3SD
16.9CV 99.6CF

STUD WOOL SHEEP

With 3,000 ewes and more than 50 years breeding big boned square bodied sheep and stylish white wools in 'tough mallee' country the Boughen Family have rebranded to Sandalwood Poll with the slogan; 'Working Man's rams!'

What makes a STUD SIRE and an Adelaide ram is a sheep that outlooks way over and above on property rams. This is such a sheep. With an 'exclusive' wool that will breed on and stamp quality into ram sale front rows and beyond.

The One Oak influence has been significant through adding length of body to the Sandalwood barrels and the strongly inherent WHITE Wool to their fleeces.

With a tick for feet and mouth and a strong nose this ram with 42EMD has body shape. But, it very much about the superb rich wool-growing skin, the supple handle of the wool surface and the OUTSTANDING crimpy White Wool here.

July 98kgs 42EMD 5.4BFAT

Star Lot! We fully expect this sheep to have an influence over the next decade.



[CLICK HERE FOR MORE INFORMATION](#)

SANDALWOOD POLL MERINO

Boughen Bros Family Trust | Karoonda, SA



Lot 57
Tag: 277
Sire: NE73 010. Grandsire: Moorundie NE73
DOB: April 2021-drop
19.4u 3.4SD
17.5CV 99.7CF

IMPRESSIVE

We really do rate this sheep. The more we looked at him, the more we thought about him the more we like him.

Body weight and eye muscle. A plainer-bodied wide-chested 'meaty' sire combining good length of body with spring of rib. He 'grants' a thick, pure, velvety muzzle and stylish bright white medium quality wool. He was a standout lamb that has progressed easily to earn his spot in the Adelaide team. Good sheep!

July 112kgs 44EMD 6.5BFAT



[CLICK HERE FOR MORE INFORMATION](#)

GLEN DONALD

Robert Harding | Nhill, SA



Stud Contacts

Robert. 0417 565 805

Elders Contacts

Alistair Keller, Elders Stud Stock
p. 0499 457 023
e. Alistair.keller@elders.com.au

Lot: 58
Tag: A30226
Sire: GLD 8.68
Age: May 2020-drop
19.6u 2.9SD
13.8CV 99.8CF



Glen Donald was founded in 1921 and there is a neighbouring family that is still buying rams from the stud from that start. The Harding family took over the reins in 1974 and a perception of their sheep could be that they are a yard wide, a yard and a half deep with a foot of belly wool.

These are heavy-cutting 'wool-pack filling' genetics. This year their 621 April/May drop ewes scanned 718 lambs – the ewes generally average cut around 9.5kgs of wool averaging around 20micron.

There first horn ram is a large-framed 'fully-covered-power-house'. He weighed 164kgs early August. A strong, masculine headed sire with a big hindquarter. He carries bright white bold medium 'sire's' wool with great density. With a tick for mouth and feet his sire – the popular and well known 8.68 – weighed 174kgs and cut 19kgs of wool.



[CLICK HERE FOR MORE INFORMATION](#)

GLEN DONALD

Robert Harding | Nhill, SA



Lot: 59
Tag: A30232
Sire: GDL 5-29
Age: May 2020-drop
22.1u 3.7SD 16.7CV
 99CF



A huge girth gets the weight here. He weighed 163kg early August. A robust square bodied horn sire with a nourished tip that opens to 'shafty' stud wool. A big staple length 'strong wool' ram. A full fronted sheep set off with a strong soft nose that stands on good feet. High production type here!



[CLICK HERE FOR MORE INFORMATION](#)

Lot: 60
Tag: A30237
Sire: GLD Poll Green 316
Age: May 2020-drop
20.8u 3SD 14.4CV 99.2CF



The poll ram of the team also ticks the good feet and mouth requirement. He is a well-covered, full fronted wide-hipped sire with a long soft nose. A bulky free-growing fleece of 'superb' testing bright, white bold medium wool – and plenty of it. He weighed 140kg early August.



[CLICK HERE FOR MORE INFORMATION](#)



2022

**ADELAIDE
RAM SALE
REVIEW**

MERINO & POLL MERINO

Wayville Showgrounds, Adelaide
Friday 9th September 2022 at 12pm
Livestreaming Auctions Plus

CONTACT

Tony Wetherall
Tom Penna
Alistair Keller
Damien Webb
Laryn Gogel

0427 390 001
0428 854 708
0499 45 023
0418 837 648
0436 020 245

Elders