



14th ANNUAL

SPRING BULL SALE

MONDAY 29 AUGUST 2022 • 1 PM

22 POLLED AND
18 HORNED BULLS
• 5 females •

*Look
to the
future!*


AuctionsPlus™



LOT
2

www.truroherefords.com



FUTURE SIRE



Yavenvale Real Deal R125 (PP)
Purchased for \$74,000

SALE INFORMATION



This sale will be a Helmsman sale interfaced with AuctionsPlus. Online bidding commences on Friday 26th August on AuctionsPlus and concludes on Sale Day, Monday 29 August 2022. The sale day commences at 10am for inspection and lunch, followed by the Helmsman sale commencing at 1pm.

All bulls will be semen and morphology tested, 5in1, Pestigard, Vibriovax, DNA and Sire Verified with full Breedplan figures.

Clients can be rest assured hygiene protocols will be in place at the sale or people can bid from the comfort of their own home on AuctionsPlus.

LOCATION:
3281 Berrigal Creek Road, Bellata NSW 2397
T 0427 937 839 (Scott) or
0428 937 839 (Pip)



Message FROM YOUR HOSTS

As I sit here and type this opening message I'm thinking about the exciting genetics we have on offer this year. It's been an amazing season here, and we hope everyone is enjoying their season and may it continue for a long while. The cattle market is still nothing short of amazing !! With the numbers being short in all categories we can't see it changing in the next couple of years.

Our 2022 catalogue is a collection full of bulls that are the right type that are structurally very sound, with real performance and data that is at the very top end of the breed. We've been working overtime making our cattle more efficient in every trait. This is especially in the traits of fertility, calving ease, birth weight and gestation length. 2022 sees the continuation of us offering a draft of yearling bulls that exhibit these traits, in the purple.

Very positive calving ease, low to moderate birth weights with short gestation.

These all go hand in hand and we've worked really hard on our selection of both bulls and females. Please don't think we've forgotten all our carcass traits, of course we haven't ! Our EMAs and IMFs have received enormous attention over the last 10 years, and will continue doing the same going forward. We feel these yearling bulls are epitomising what we are striving to achieve at Truro , the job is never done though !!

At Truro we have moved strongly into using more Poll genetics, but in the last couple of years we have seen an increase in demand for horn genetics, and to this end we have joined our horn cows back to horn bulls. We are dedicated to breeding both horn and poll herefords, sourcing genetics that are the right type phenotypically alongside the best genetics with performance that we can.



We have been busy spending money on bulls, which always hurts the bank account, but to continue enhancing our genetics has to be done! We've added two new walking sires and one AI sire to the Poll battery. We purchased Yavenvale Real Deal in February for \$74,000, which is a record for us to spend, but we wanted him badly, a real impact sire. A beautifully made bull with genetic and data merit that will enhance the poll program enormously. It is stated in the Yavenvale catalogue that Real Deal is out of their number one cow in the herd. This excites us enormously as great bulls come from great cows!! At the same time we purchased Yavenvale Ripcord, predominantly to use on our poll heifers. Ripcord is the right type to use on heifers and comes with some amazing data as a bonus. We also have purchased semen in the Dubbo National Champion, and top price, The Ranch Remington. We just love this bull!

We have sourced 2 more Horn sires to enhance that side of the programme. We found an amazing young calf Warwick Court Roma, at just 15 months we purchased Roma privately.

Roma amazes me every time I see him, a real impact sire that possibly has the most balanced data set of any horn bull in the breed. We also purchased another exciting sire Karoonda Yackandandah for \$32,000, a commanding looking calf, that predominantly will be used on heifers, built right and again a very balanced data set.

If we could put into one sentence what our goals are, and what we are trying to achieve at Truro, it would be :

We are aiming for cattle with high calving ease, short gestation, low to moderate birth, high growth, muscle and IMF data with positive fats and retail beef yield - that are functional, easy doing, sound cattle that are easy on the eye with performance !!

High expectations, but desirable and definitely achievable.

Would love to see you, or have a conversation, on the 29th August, or before.

All the best in Herefords

Scotty, Pip and family

BREED AVG. EBVS FOR 2020 BORN CALVES

	CED	CED DTRS	GL	BW	200	400	600	MCW	MILK	SS	DTC	CWT	EMA	RIB	RUMP	RBY	IMF
EBV	+2.5	+2.1	-0.7	+4.0	+33	+55	+78	+66	+17	+2.1	-3.0	+51	+3.8	+0.8	+1.0	+0.8	+0.6

SELECTION INDEX VALUES

Market Target	Breed Average
Southern Self-Replacing Index (\$)	+\$ 132
Northern Self-Replacing Index (\$)	+\$ 119
Southern Baldy Maternal Index (\$)	+\$ 134
Northern Baldy Terminal Index (\$)	+\$ 98

PLEASE NOTE:
Lots are listed in
Age Order in
this catalogue

DISCLAIMER: The owners, employees, sale staff and representatives accept no liability for accidents that occur. Although these are rare at cattle sales, any person attending does so at their own risk. While all care has been taken in the preparation of the contents of this catalogue, Truro Herefords principals accept no responsibility for any errors or omissions contained in this publication. Prospective buyers should satisfy themselves by inspection or otherwise as to the accuracy of the particulars.



SIRES OF SALE LOTS

Kylandee Niangala N022 (H)



	CED	CED DTRS	GL	BW	200	400	600	MCW	MILK	SS	DTC	CWT	EMA	RIB	RUMP	RBY	IMF
EBV	+0.2	-1.2	+0.6	+4.5	+29	+55	+82	+75	+15	+1.1	-1.1	+49	+3.9	+0.4	+0.9	+0.9	+0.9
ACC	46%	31%	52%	84%	81%	82%	79%	69%	57%	79%	35%	68%	54%	60%	64%	57%	59%

Truro Powder Monkey P159 (PP)



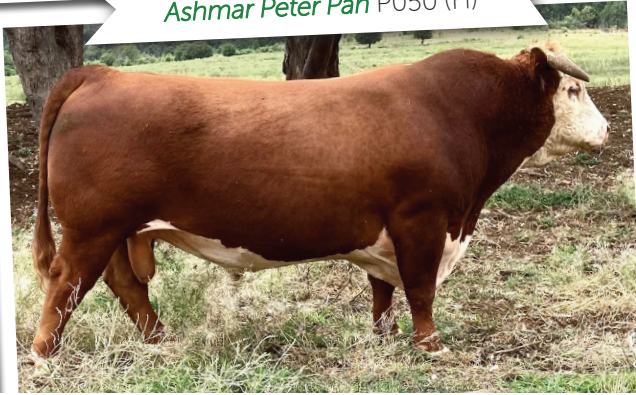
	CED	CED DTRS	GL	BW	200	400	600	MCW	MILK	SS	DTC	CWT	EMA	RIB	RUMP	RBY	IMF
EBV	+6.5	+1.4	-1.7	+3.4	+40	+59	+85	+62	+24	+2.5	-2.4	+57	+5.4	+0.5	-0.3	+1.5	+1.3
ACC	50%	34%	66%	84%	80%	81%	79%	72%	59%	80%	37%	68%	57%	62%	65%	57%	61%





SIRES OF SALE LOTS

Ashmar Peter Pan P050 (H)



	CED	CED DTRS	GL	BW	200	400	600	MCW	MILK	SS	DTC	CWT	EMA	RIB	RUMP	RBY	IMF
EBV	+2.4	-	-1.1	+4.0	+32	+52	+78	+52	+20	+1.3	-2.2	+47	+3.4	+1.1	+0.8	+0.9	+0.9
ACC	42%	-	57%	83%	78%	79%	76%	67%	50%	77%	32%	65%	53%	59%		54%	58%

Centennial Anzac P055 (PP)



	CED	CED DTRS	GL	BW	200	400	600	MCW	MILK	SS	DTC	CWT	EMA	RIB	RUMP	RBY	IMF
EBV	+0.6	+1.1	-1.3	+5.8	+45	+74	+101	+101	+17	+4.0	-2.1	+69	+4.2	+0.9	+1.1	+0.3	+1.2
ACC	66%	57%	68%	88%	84%	84%	84%	80%	74%	87%	53%	75%	65%	69%	72%	66%	68%



1**TRURO ROCKY ROAD R086 (H)****Tattoo: R086****Rego No: JDHR086****Born: 20/10/2020**

WRL FORUM (AI) (H)

COURALLIE J F051 JACKHAMMER (H)

COURALLIE J Z043 KOALA F053 (H)

Sire: **KYLANDEE NIANGALA (H)**

GLEN WILGA TOKYO (AI) (H)

STRATHLEIGH DOWAGER A779 (H)

STRATHLEIGH DOWAGER 56 (H)

GH RAMBO 279R (IMP CAN) (H)

TONDARA 29R RAMBO F152 (AI) (H)

TONDARA LAST DAY 102 (HPR) (H)

Dam: **TRURO DAFFODIL J132 (H)**

SMITHSTON YOU BEAUT (H)

TRURO DAFFODIL E075 (AI) (ET) (H)

TRURO DAFFODIL C009 (H)

Purchaser:

Price \$:

Traits Observed:

BWT,200WT,400WT,600WT,SS,FAT,EMA,IMF,Genomics

July 2022 Hereford BREEDPLAN							
DIR	DTRS	GL	BWT	200	400	600	MWT
-0.7		+0.3	+5.3	+33	+51	+76	+71
32%		48%	67%	65%	64%	65%	56%
MILK	SS	DC	CWT	EMA	RIB	RUMP	IMF%
+14	+0.9	-1.5	+49	+4.6	-0.2	+0.3	+0.0
48%	68%	28%	54%	42%	49%	53%	49%
\$Index Values:		SSR: +\$112	NSR: +\$100	SBM: +\$112	NBT: +\$84		

HORN Very attractive calf, great skin and hair, big bold bull and structurally very sound. Well above average for EMA and RBY, with a great set of testicles.

2**TRURO REAL TIME R090 (P)****Tattoo: R090****Rego No: JDHR090****Born: 10/11/2020**

ALLEDALE YACKA (AI) (P)

ALLEDALE ANZAC E114 (PP)

ALLEDALE DAWN B22 (AI) (ET) (P)

Sire: **CENTENNIAL ANZAC L055 (AI) (ET) (PP)**

YAVENVALE COMPASS C330 (P)

DUNOON PAGEANT G007 (P)

DUNOON PAGEANT D131 (AI) (P)

TH 122 711 VICTOR 719T (IMP USA) (P)

H VICTOR 0136 (IMP USA) (P)

H LADY EXCELL 824 ET (P)

Dam: **TRURO ADVANCE L080 (AI) (P)**

MCCOY 25M RENAISSANCE 53W (IMP CAN) (PP)

TRURO ADVANCE G146 (AI) (P)

TRURO ADVANCE E304 (P)

Purchaser:

Price \$:

Traits Observed:

BWT,200WT,400WT,600WT,SS,FAT,EMA,IMF,Genomics

July 2022 Hereford BREEDPLAN							
DIR	DTRS	GL	BWT	200	400	600	MWT
+3.2	+1.0	-2.5	+3.9	+38	+65	+90	+86
40%	33%	58%	68%	65%	65%	67%	61%
MILK	SS	DC	CWT	EMA	RIB	RUMP	IMF%
+19	+4.0	-3.7	+60	+4.2	+0.5	+0.8	+0.6
54%	69%	36%	58%	47%	54%	58%	54%
\$Index Values:		SSR: +\$147	NSR: +\$133	SBM: +\$153	NBT: +\$118		

POLL Real Time is as thick as a brick, very solid with great carcass, very good structure, thick topped and terrific data set.

14th Annual SPRING BULL SALE 2022



3

TRURO SPEED DEMON S005 (P)

Tattoo: S005

Rego No: JDHS005

Born: 12/01/2021

ALLENDALE YACKA (AI) (P)
 ALLENDALE ANZAC E114 (PP)
 ALLENDALE DAWN B22 (AI) (ET) (P)
 Sire: **CENTENNIAL ANZAC L055 (AI) (ET) (PP)**
 YAVENVALE COMPASS C330 (P)
 DUNOON PAGEANT G007 (P)
 DUNOON PAGEANT D131 (AI) (P)

Purchaser:

Price \$:

TENARU CADET C2 (AI) (P)
 MERAWAH CADET F31 (P)
 MERAWAH IRISH ROSE C34 (P)
 Dam: **TRURO PR. CHRISTIAN J006 (P)**
 COOTHARABA MENDEZ (H)
 TRURO PR CHRISTIAN F042 (H)
 TRURO PRINCESS CHRISTIAN C088 (H)

Traits Observed:
 BWT,200WT,400WT,SS,FAT,EMA,IMF,Genomics

July 2022 Hereford BREEDPLAN							
DIR	DTRS	GL	BWT	200	400	600	MWT
+0.4	+0.4	-1.5	+5.1	+41	+70	+97	+90
40%	33%	56%	71%	66%	66%	68%	62%
MILK	SS	DC	CWT	EMA	RIB	RUMP	IMF%
+17	+2.7	-2.2	+68	+4.1	+0.9	+1.4	+0.7
55%	76%	36%	58%	47%	54%	57%	54%

\$Index Values:	SSR: +\$147	NSR: +\$133	SBM: +\$150	NBT: +\$113
-----------------	-------------	-------------	-------------	-------------

SCURRED Big long calf, great skin and hair with a wonderful set of data. His mum is a cracking cow who always delivers.

4

TRURO SHOTGUN S008 (P)

Tattoo: S008

Rego No: JDHS008

Born: 20/01/2021

ALLENDALE YACKA (AI) (P)
 ALLENDALE ANZAC E114 (PP)
 ALLENDALE DAWN B22 (AI) (ET) (P)
 Sire: **CENTENNIAL ANZAC L055 (AI) (ET) (PP)**
 YAVENVALE COMPASS C330 (P)
 DUNOON PAGEANT G007 (P)
 DUNOON PAGEANT D131 (AI) (P)

Purchaser:

Price \$:

TENARU CADET C2 (AI) (P)
 MERAWAH CADET F31 (P)
 MERAWAH IRISH ROSE C34 (P)
 Dam: **TRURO MAPLE J010 (H#)**
 MERAWAH HOUSTON C95 (AI) (S)
 TRURO MAPLE F031 (H#)
 BOWEN MAPLE B77 (P)

Traits Observed:
 BWT,200WT,400WT,SS,FAT,EMA,IMF,Genomics

July 2022 Hereford BREEDPLAN							
DIR	DTRS	GL	BWT	200	400	600	MWT
-3.2	-1.3	+0.9	+5.2	+38	+64	+88	+80
40%	33%	52%	70%	64%	64%	65%	59%
MILK	SS	DC	CWT	EMA	RIB	RUMP	IMF%
+17	+4.1	-3.5	+58	+5.3	+1.4	+1.6	+1.4
52%	75%	34%	55%	45%	51%	55%	52%

\$Index Values:	SSR: +\$135	NSR: +\$122	SBM: +\$125	NBT: +\$93
-----------------	-------------	-------------	-------------	------------

POLL Wonderful volume and capacity. Very attractive calf with great carcass expression. Very gutsy bull with a fantastic data set. Heaviest poll calf at weaning - 465kgs.



5**TRURO SHOW PONY S014 (H)****Tattoo: S014****Rego No: JDHS014****Born: 01/02/2021**

WRL FORUM (AI) (H)

COURALLIE J F051 JACKHAMMER (H)

COURALLIE J Z043 KOALA F053 (H)

Sire: KYLANDEE NIANGALA (H)

GLEN WILGA TOKYO (AI) (H)

STRATHLEIGH DOWAGER A779 (H)

STRATHLEIGH DOWAGER 56 (H)

Purchaser:

.....

Price \$:

COOTHARABA MAGNUM (H)

TALBALBA ZINNIA (AI) (H)

BUNDARRA MONICA Y101 (H)

Dam: TRURO MARIANNE K157 (H)

MOORLANDS GRAND NATIONAL V045 (AI) (H)

TRURO MARIANNE C114 (H)

COURALLIE FATTIE X011 (H)

Traits Observed:

BWT,200WT,400WT,SS,FAT,EMA,IMF,Genomics

July 2022 Hereford BREEDPLAN							
DIR	DTRS	GL	BWT	200	400	600	MWT
-0.2	+0.8	+1.4	+5.1	+32	+58	+85	+71
33%	25%	49%	70%	64%	65%	65%	58%
MILK	SS	DC	CWT	EMA	RIB	RUMP	IMF%
+20	+1.3	-0.4	+54	+4.6	-0.1	+0.1	+0.1
49%	74%	30%	56%	45%	51%	55%	51%
Index Values:		SSR: +\$127	NSR: +\$110	SBM: +\$133	NBT: +\$97		

HORN Very attractive calf and has been a cracking calf since birth. Big, long fellow with great eye appeal. Great head and eye and a real sire. Very good data set and a very good bull. Maternally from one of the best cows in the herd. Biggest raw EMA in horned yearlings and 2nd heaviest horn calf at weaning - 433kgs.

6**TRURO SATURN S015 (H)****Tattoo: S015****Rego No: JDHS015****Born: 01/02/2021**

WRL FORUM (AI) (H)

COURALLIE J F051 JACKHAMMER (H)

COURALLIE J Z043 KOALA F053 (H)

Sire: KYLANDEE NIANGALA (H)

GLEN WILGA TOKYO (AI) (H)

STRATHLEIGH DOWAGER A779 (H)

STRATHLEIGH DOWAGER 56 (H)

Purchaser:

.....

Price \$:

L1 DOMINO 03571 (H)

HH ADVANCE 7034T ET (IMP USA) (H)

HH MISS ADVANCE 1088L (H)

Dam: TRURO MIRANDA KERR M140 (AI) (ET) (H)

MAWARRA WHAT-A-BULL (AI) (H)

TRURO MIRANDA KERR H001 (H)

TRURO DAFFODIL E058 (AI) (ET) (H)

Traits Observed:

BWT,200WT,400WT,SS,FAT,EMA,IMF,Genomics

July 2022 Hereford BREEDPLAN							
DIR	DTRS	GL	BWT	200	400	600	MWT
+1.3		-0.4	+4.0	+30	+53	+78	+61
30%		41%	69%	63%	63%	61%	53%
MILK	SS	DC	CWT	EMA	RIB	RUMP	IMF%
+16	+1.1	-1.8	+49	+4.1	+0.6	+1.0	+0.7
42%	74%	26%	51%	43%	47%	51%	44%
Index Values:		SSR: +\$136	NSR: +\$122	SBM: +\$137	NBT: +\$99		

HORN Interesting pedigree here ! A dash of Line 1 in him gives him great maternal qualities. Very balanced calf with great carcass and a balanced data set.

14th Annual SPRING BULL SALE 2022





Lot 3's mother J006



Lot 5's mother K157



14th Annual SPRING BULL SALE 2022

7 TRURO SOUNDWAVE S019 (P)

Tattoo: S019

Rego No: JDHS019

Born: 04/02/2021

ALLEDALE YACKA (AI) (P)
 ALLEDALE ANZAC E114 (PP)
 ALLEDALE DAWN B22 (AI) (ET) (P)
 Sire: **CENTENNIAL ANZAC L055 (AI) (ET) (PP)**
 YAVENVALE COMPASS C330 (P)
 DUNOON PAGEANT G007 (P)
 DUNOON PAGEANT D131 (AI) (P)

Purchaser:

Price \$:

REMITALL EMBRACER 8E (IMP CAN) (P)
 DAYS BLACKBERRY G82 (AI) (P)
 ALLEDALE FANCY B94 (AI) (P)
 Dam: **TRURO CARNATION M087 (AI) (H#)**
 TALBALBA ZINNIA (AI) (H)
 TRURO CARNATION J099 (H)
 TRURO CARNATION E047 (AI) (H)

Traits Observed:

BWT,200WT,400WT,SS,FAT,EMA,IMF,Genomics

July 2022 Hereford BREEDPLAN							
DIR	DTRS	GL	BWT	200	400	600	MWT
-1.6	-0.4	-0.6	+9.2	+54	+84	+122	+112
42%	35%	57%	70%	65%	65%	66%	62%
MILK	SS	DC	CWT	EMA	RIB	RUMP	IMF%
+18	+2.9	-1.7	+76	+4.3	-0.2	-0.2	+0.1
54%	76%	36%	57%	47%	52%	55%	53%

\$Index Values:	SSR: +\$169	NSR: +\$145	SBM: +\$169	NBT: +\$124
-----------------	-------------	-------------	-------------	-------------

POLL Very attractive bull with extreme length and great presence and volume. His mum, being a Day's Blackberry cow, just adds to his credentials. They are wonderful breeding cows! Very good data set again! 2nd biggest raw EMA in poll yearlings and 2nd heaviest poll calf at weaning - 457 kg

8 TRURO SONAR S021 (P)

Tattoo: S021

Rego No: JDHS021

Born: 10/02/2021

ALLEDALE YACKA (AI) (P)
 ALLEDALE ANZAC E114 (PP)
 ALLEDALE DAWN B22 (AI) (ET) (P)
 Sire: **CENTENNIAL ANZAC L055 (AI) (ET) (PP)**
 YAVENVALE COMPASS C330 (P)
 DUNOON PAGEANT G007 (P)
 DUNOON PAGEANT D131 (AI) (P)

Purchaser:

Price \$:

TH 122 711 VICTOR 719T (IMP USA) (P)
 H VICTOR 0136 (IMP USA) (P)
 H LADY EXCELL 824 ET (P)
 Dam: **TRURO RUTH L074 (AI) (P)**
 BOWEN URALBA U160 (P)
 BOWEN RUTH B123 (P)
 BOWEN RURH T230 (P)

Traits Observed:

BWT,200WT,400WT,SS,FAT,EMA,IMF,Genomics

July 2022 Hereford BREEDPLAN							
DIR	DTRS	GL	BWT	200	400	600	MWT
+2.6	+1.6	-3.0	+3.6	+42	+71	+96	+79
41%	34%	58%	70%	65%	65%	66%	60%
MILK	SS	DC	CWT	EMA	RIB	RUMP	IMF%
+17	+2.5	-1.2	+66	+4.5	+0.5	+0.6	+0.4
55%	75%	35%	57%	47%	53%	56%	53%

\$Index Values:	SSR: +\$160	NSR: +\$149	SBM: +\$168	NBT: +\$125
-----------------	-------------	-------------	-------------	-------------

POLL Just a ball of muscle this fellow, with great muscle expression, stout and thick topped. Very easy doing calf and once again a very balanced set of data.

14th Annual SPRING BULL SALE 2022



9**TRURO STREET SMART S023 (H)**

Tattoo: S023

Rego No: JDHS023

Born: 11/02/2021

WRL FORUM (AI) (H)

COURALLIE J F051 JACKHAMMER (H)

COURALLIE J Z043 KOALA F053 (H)

Sire: **KYLANDEE NIANGALA (H)**

GLEN WILGA TOKYO (AI) (H)

STRATHLEIGH DOWAGER A779 (H)

STRATHLEIGH DOWAGER 56 (H)

MAWARRA UNIQUE C041 (AI) (H)

YARRAM UNIQUE F181 (H)

YARRAM FLOSSIE A096 (H)

Dam: **TRURO MARIANNE M199 (H)**

GLENDAN PARK EMPIRE E002 (AI) (ET) (H)

TRURO MARIANNE H068 (AI) (H)

TRURO MARIANNE Y039 (H)

Purchaser:

Price \$:

Traits Observed:

BWT,200WT,400WT,SS,FAT,EMA,IMF,Genomics

July 2022 Hereford BREEDPLAN							
DIR	DTRS	GL	BWT	200	400	600	MWT
-2.3	-2.3	+2.0	+6.9	+33	+52	+80	+75
36%	28%	54%	71%	65%	66%	66%	59%
MILK	SS	DC	CWT	EMA	RIB	RUMP	IMF%
+18	+1.7	-2.9	+50	+5.9	+0.6	+1.1	+0.8
51%	75%	32%	57%	47%	53%	56%	53%

\$Index Values:	SSR: +\$120	NSR: +\$105	SBM: +\$113	NBT: +\$86
------------------------	--------------------	--------------------	--------------------	-------------------

HORN A powerhouse of a bull - with volume, capacity and punch. Great looking bull from our No.1 Horn cow. She is a real performance cow who breeds a good calf every time. (Look out for Tonto next year). Outstanding data set on this fellow. Very good bull. Heaviest horn calf at weaning - 456 kgs. 3rd biggest raw EMA in horn yearlings.

10**TRURO STARDUST S026 (H)****WITHDRAWN**

WHAT MAKES A SUCCESSFUL STUD STOCK BUSINESS?

Our network of experienced and professional stud stock staff around Australia are dedicated to marketing livestock to generate optimum results for you and your stud. The Elders Stud Stock Team provide superior auctioneering along with pre and post-sale service backed by a commercial client base serviced by our company branch network. We work closely with stud stock producers sharing industry knowledge and providing tailored advice on stud management and direction.

Elders Gunnedah

P 02 6748 3000

E d.g.gunnedah@elders.com.au

Nik Hannaford 0417 201 460

Jon Glover 0428 486 887

Elders Stud Stock

Brian Kennedy 0427 844 047

Paul Jameson 0428 667 998

Lincoln McKinlay 0419 239 963



14th Annual SPRING BULL SALE 2022

11 TRURO SYLVESTER S027 (H)

Tattoo: S027

Rego No: JDHS027

Born: 11/02/2021

WRL FORUM (AI) (H)
 COURALLIE J F051 JACKHAMMER (H)
 COURALLIE J Z043 KOALA F053 (H)
 Sire: **KYLANDEE NIANGALA (H)**
 GLEN WILGA TOKYO (AI) (H)
 STRATHLEIGH DOWAGER A779 (H)
 STRATHLEIGH DOWAGER 56 (H)

Purchaser:

Price \$:

MAWARRA UNIQUE C041 (AI) (H)
 YARRAM UNIQUE F181 (H)
 YARRAM FLOSSIE A096 (H)
 Dam: **TRURO INNOCENT K023 (AI) (H)**
 HUNDAY QUIVER (H)
 TRURO INNOCENT G158 (H)

Traits Observed:
 BWT,200WT,400WT,SS,FAT,EMA,IMF,Genomics

July 2022 Hereford BREEDPLAN							
DIR	DTRS	GL	BWT	200	400	600	MWT
+2.1	+0.7	+1.3	+2.7	+22	+39	+59	+43
36%	27%	57%	72%	67%	67%	68%	60%
MILK	SS	DC	CWT	EMA	RIB	RUMP	IMF%
+17	+1.5	-3.4	+37	+5.9	+1.6	+3.0	+1.4
51%	75%	32%	59%	47%	54%	58%	54%
\$Index Values:		SSR: +\$125	NSR: +\$120	SBM: +\$124	NBT: +\$91		

HORN Another K.Niangala that is very good. Great outlook and type, very long and attractive, with a very good data set. From a great F181 mumma ! Highest raw IMF in horn yearlings.

12 TRURO SILVERADO S029 (P)

Tattoo: S029

Rego No: JDHS029

Born: 12/02/2021

C ETF WILDCAT 4248 (ET) (P)
 CHURCHILL GUNPOWDER 657D (IMP USA) (ET) (PP)
 CHURCHILL LADY 002X ET (P)
 Sire: **TRURO PISTOL PETE P160 (AI) (ET) (PP)**
 DAYS BLACKBERRY G82 (AI) (P)
 TRURO CHEERY RIPE K036 (AI) (P)
 TRURO CHERRY RIPE G064 (AI) (P)

Purchaser:

Price \$:

WIRRUNA ECHUCA E99 (AI) (P)
 DALKEITH JOEY J130 (AI) (P)
 DALKEITH PHOEBE 28 (G089) (AI) (P)
 Dam: **TRURO RUTH N001 (P)**
 H VICTOR 0136 (IMP USA) (P)
 TRURO RUTH K006 (AI) (P)

Traits Observed:
 BWT,200WT,400WT,SS,FAT,EMA,IMF

July 2022 Hereford BREEDPLAN							
DIR	DTRS	GL	BWT	200	400	600	MWT
+5.5		-1.0	+3.0	+32	+51	+72	+63
33%		46%	69%	63%	63%	61%	56%
MILK	SS	DC	CWT	EMA	RIB	RUMP	IMF%
+14	+2.9	-2.2	+46	+3.8	+0.1	-0.2	+0.2
44%	75%	28%	50%	44%	48%	52%	44%
\$Index Values:		SSR: +\$130	NSR: +\$121	SBM: +\$142	NBT: +\$107		

POLL Thick topped calf, very stout with real carcass. Great structure and balance with very good data.

13**TRURO SPITFIRE S030 (P)****Tattoo: S030****Rego No: JDHS030****Born: 12/02/2021**

C ETF WILDCAT 4248 (ET) (P)

CHURCHILL GUNPOWDER 657D (IMP USA) (ET) (PP)

CHURCHILL LADY 002X ET (P)

Sire: TRURO PISTOL PETE P160 (AI) (ET) (PP)

DAYS BLACKBERRY G82 (AI) (P)

TRURO CHEERY RIPE K036 (AI) (P)

TRURO CHERRY RIPE G064 (AI) (P)

H VICTOR 0136 (IMP USA) (P)

TRURO KOBRA K007 (AI) (H#)

TRURO MARIANNE E034 (H)

Dam: TRURO FANTASIA N112 (H#)

YARRAM UNIQUE F181 (H)

TRURO FANTASIA K052 (AI) (H)

TRURO FANTASIA G178 (H)

Purchaser:

Price \$:

Traits Observed:BWT,200WT,400WT,SS,FAT,EMA,IMF,Geno
mics

July 2022 Hereford BREEDPLAN							
DIR	DTRS	GL	BWT	200	400	600	MWT
+2.2		-0.9	+6.0	+45	+76	+111	+95
32%		54%	70%	63%	63%	64%	59%
MILK	SS	DC	CWT	EMA	RIB	RUMP	IMF%
+21	+3.8	-1.7	+72	+4.5	-0.8	-1.9	+1.2
48%	75%	28%	53%	44%	48%	52%	49%
\$Index Values:		SSR: +\$174	NSR: +\$147	SBM: +\$182	NBT: +\$137		

SCURRED Those that have seen Silverado put him at the top of the class. A very powerful bull, real presence, volume and capacity, wrapped up in a very attractive skin. His data set backs up what you see in the flesh. Sired by our homebred ET sire, Truro Pistol Pete P160, who is breeding the house down (currently leased by Yavenville for Autumn joining 2022). Highly recommend this bull. 2nd biggest raw EMA in Poll yearlings and 3rd heaviest Poll calf at weaning - 453 kgs and the 3rd highest raw IMF in Poll yearlings.

14**TRURO SHOCKWAVE S032 (P)****Tattoo: S032****Rego No: JDHS032****Born: 12/02/2021**

C ETF WILDCAT 4248 (ET) (P)

CHURCHILL GUNPOWDER 657D (IMP USA) (ET) (PP)

CHURCHILL LADY 002X ET (P)

Sire: TRURO PISTOL PETE P160 (AI) (ET) (PP)

DAYS BLACKBERRY G82 (AI) (P)

TRURO CHEERY RIPE K036 (AI) (P)

TRURO CHERRY RIPE G064 (AI) (P)

DEBARRY ELLIOTT (P)

MERAHAH HIGHLIGHT E62 (AI) (P)

MERAHAH IRISH ROSE B1 (AI) (P)

Dam: TRURO TRICEL M055 (H#)

MERAHAH HOUSTON C95 (AI) (S)

TRURO TRICEL F073 (P)

BOWEN TRICEL B204 (P)

Purchaser:

Price \$:

Traits Observed:BWT,200WT,400WT,SS,FAT,EMA,IMF,Geno
mics

July 2022 Hereford BREEDPLAN							
DIR	DTRS	GL	BWT	200	400	600	MWT
+1.6	+0.1	-1.7	+3.1	+36	+58	+80	+69
35%	27%	54%	70%	63%	63%	64%	59%
MILK	SS	DC	CWT	EMA	RIB	RUMP	IMF%
+23	+1.9	-2.2	+58	+4.7	+1.1	+1.3	+0.5
52%	75%	30%	54%	44%	49%	53%	50%
\$Index Values:		SSR: +\$124	NSR: +\$110	SBM: +\$131	NBT: +\$102		

POLL Another P160 and another very good bull. Great length and type, and is a very sound calf with lots of capacity. Very balanced data set once again. Maternally very consistent mumma. Highest IMF on raw data in Poll yearlings.



14th Annual SPRING BULL SALE 2022

15**TRURO STARLIGHT S038 (H)****Tattoo: S038****Rego No: JDHS038****Born: 13/02/2021**

WRL FORUM (AI) (H)

COURALLIE J F051 JACKHAMMER (H)

COURALLIE J Z043 KOALA F053 (H)

Sire: KYLANDEE NIANGALA (H)

GLEN WILGA TOKYO (AI) (H)

STRATHLEIGH DOWAGER A779 (H)

STRATHLEIGH DOWAGER 56 (H)

WALLAN CREEK SHARKA B324 (H)

WALLAN CREEK SHARKA E011 (H)

WALLAN CREEK LASS B227 (H)

Dam: TRURO KOALA J109 (H)

THE ROCK TOP GUN Z041 (H)

TRURO KOALA C030 (H)

TRURO KOALA A041 (AI) (H)

Purchaser:

Price \$:

Traits Observed:

BWT,200WT,400WT,SS,FAT,EMA,IMF,Genomics

July 2022 Hereford BREEDPLAN							
DIR	DTRS	GL	BWT	200	400	600	MWT
-0.4		+0.4	+5.5	+28	+49	+72	+76
31%		48%	71%	66%	66%	67%	59%
MILK	SS	DC	CWT	EMA	RIB	RUMP	IMF%
+11	+0.5	-0.2	+42	+5.0	-0.8	-1.0	+0.3
49%	75%	28%	56%	44%	51%	56%	51%
Index Values:		SSR: +\$101	NSR: +\$88	SBM: +\$105	NBT: +\$83		

HORN Great length here and length weighs !! A big calf who is bold and solid.

16**TRURO SEXY S042 (H)****Tattoo: S042****Rego No: JDHS042****Born: 14/02/2021**

COOTHARABA MENDEZ (H)

TRURO GILLETTE (H)

RACOVOLIS SPRUCE X671 (H)

Sire: TRURO PONCHO P048 (H)

TRURO HE DA MAN (AI) (H)

TRURO PRINCESS CHRISTIAN L (H)

TRURO CHRISTIAN B029 (H)

YARRAM UNIQUE F181 (H)

TRURO JONTE J033 (AI) (H)

TRURO PRUDENCE C106 (H)

Dam: TRURO DAFFODIL P021 (H)

TONDARA 29R RAMBO F152 (AI) (H)

TRURO DAFFODIL J132 (H)

TRURO DAFFODIL E075 (AI) (ET) (H)

Purchaser:

Price \$:

Traits Observed:

BWT,200WT,400WT,SS,FAT,EMA,IMF,Genomics

July 2022 Hereford BREEDPLAN							
DIR	DTRS	GL	BWT	200	400	600	MWT
+2.3		-0.3	+4.5	+34	+56	+81	+67
31%		38%	68%	62%	62%	60%	52%
MILK	SS	DC	CWT	EMA	RIB	RUMP	IMF%
+21	+2.0	-2.6	+55	+4.6	+0.4	+1.1	+0.0
39%	74%	26%	49%	42%	46%	50%	43%
Index Values:		SSR: +\$135	NSR: +\$121	SBM: +\$140	NBT: +\$103		

HORN Really good calf with a great phenotype, with wonderful length and type with carcase. Heifer's first calf. Very balanced set of data.

14th Annual SPRING BULL SALE 2022



17 TRURO STALONE S043 (PP)

Tattoo: S043

Rego No: JDHS043

Born: 14/02/2021

C ETF WILDCAT 4248 (ET) (P)
 CHURCHILL GUNPOWDER 657D (IMP USA) (ET) (PP)
 CHURCHILL LADY 002X ET (P)

Sire: **TRURO POWDER MONKEY P159 (AI) (ET) (PP)**

Purchaser:

DAYS BLACKBERRY G82 (AI) (P)
 TRURO CHEERY RIPE K036 (AI) (P)
 TRURO CHERRY RIPE G064 (AI) (P)

.....

Price \$:

ALLENDALE ANZAC E114 (PP)
 CENTENNIAL ANZAC L055 (AI) (ET) (PP)
 DUNOON PAGEANT G007 (P)

Dam: **TRURO ALMOND QUEEN P076 (P)**

YALGOO BOOSTER B045 (AI) (P)
 TRURO ALMOND QUEEN E319 (AI) (P)
 HEATHERDALE ALMOND QUEEN U70 (P)

Traits Observed:

BWT,200WT,400WT,SS,FAT,EMA,IMF, Genomics

July 2022 Hereford BREEDPLAN							
DIR	DTRS	GL	BWT	200	400	600	MWT
+3.8		-1.1	+3.9	+37	+51	+75	+54
33%		45%	69%	63%	63%	62%	56%
MILK	SS	DC	CWT	EMA	RIB	RUMP	IMF%
+21	+2.3	-2.5	+50	+4.0	+1.3	+1.4	+1.2
43%	75%	28%	51%	44%	48%	52%	45%
\$Index Values:		SSR: +\$133	NSR: +\$118	SBM: +\$141	NBT: +\$106		

POLL Real meat machine, great front end with thick top and butt. Heifer's first calf. Great pedigree and data set.

18 TRURO SILVER FOX S044 (H)

Tattoo: S044

Rego No: JDHS044

Born: 14/02/2021

CL 1 DOMINO 215Z (H)
 HH ADVANCE 5044C (IMP USA) (H)
 HH MISS ADVANCE 1072Y (ET) (H)

Sire: **ASHMAR PETER PAN (AI) (H)**

Purchaser:

HH ADVANCE 7034T ET (IMP USA) (H)
 ASHMAR MARITANA J008 (AI) (H)
 ASHMAR MARITANA F026 (H)

.....

Price \$:

COOTHARABA MENDEZ (H)
 TRURO GILLETTE (H)
 RACOVOLIS SPRUCE X671 (H)

Dam: **TRURO MISS P131 (H)**

TRURO YOGI BEAR Y019 (AI) (H)
 TRURO MISS D039 (H)
 SMITHSTON MISS W007 (AI) (H)

Traits Observed:

BWT,200WT,400WT,SS,FAT,EMA,IMF,Genomics

July 2022 Hereford BREEDPLAN							
DIR	DTRS	GL	BWT	200	400	600	MWT
+3.4		-0.3	+3.8	+33	+44	+70	+43
30%		51%	69%	64%	64%	64%	56%
MILK	SS	DC	CWT	EMA	RIB	RUMP	IMF%
+20	+0.1	-0.7	+49	+4.0	+0.3	+0.0	-0.1
47%	75%	28%	54%	43%	50%	54%	50%
\$Index Values:		SSR: +\$125	NSR: +\$111	SBM: +\$135	NBT: +\$96		

HORN Very good type, beautifully made and the first Ashmar Peter Pan. Infusing some Line 1 genetics into our programme always adds maternal merits and more. Heifer's first calf and a wonderful set of data. 2nd highest raw IMF in horn yearlings.



19 TRURO SPONGE BOB S047 (H)

Tattoo: S047

Rego No: JDHS047

Born: 15/02/2021

COOTHARABA MENDEZ (H)
 TRURO GILLETTE (H)
 RACOVOLIS SPRUCE X671 (H)
 Sire: **TRURO PONCHO P048 (H)**
 TRURO HE DA MAN (AI) (H)
 TRURO PRINCESS CHRISTIAN L (H)
 TRURO CHRISTIAN B029 (H)
 YARRAM UNIQUE F181 (H)
 TRURO JONTE J033 (AI) (H)
 TRURO PRUDENCE C106 (H)
 Dam: **TRURO CALAMITY JANE P033 (H)**
 TRURO GILLETTE (H)
 TRURO CALAMITY JANE K076 (H)
 TRURO CALAMITY JANE G144 (H)

Purchaser:

Price \$:

Traits Observed:
 BWT,200WT,400WT,SS,FAT,EMA,IMF,Genomics

July 2022 Hereford BREEDPLAN							
DIR	DTRS	GL	BWT	200	400	600	MWT
+3.5		-1.6	+3.9	+32	+48	+69	+50
32%		49%	69%	63%	63%	64%	56%
MILK	SS	DC	CWT	EMA	RIB	RUMP	IMF%
+21	+1.5	-2.3	+47	+4.3	+0.7	+1.3	-0.3
47%	75%	28%	54%	43%	49%	53%	50%

\$Index Values:	SSR: +\$123	NSR: +\$112	SBM: +\$131	NBT: +\$95
-----------------	-------------	-------------	-------------	------------

HORN Wonderful head and eye with terrific length and type. Heifer's first calf with a very good data set. 3rd heaviest horn calf at weaning - 412 kgs.

20 TRURO SANDMAN S048 (P)

Tattoo: S048

Rego No: JDHS048

Born: 15/02/2021

C ETF WILDCAT 4248 (ET) (P)
 CHURCHILL GUNPOWDER 657D (IMP USA) (ET) (PP)
 CHURCHILL LADY 002X ET (P)
 Sire: **TRURO POWDER MONKEY P159 (AI) (ET) (PP)**
 DAYS BLACKBERRY G82 (AI) (P)
 TRURO CHEERY RIPE K036 (AI) (P)
 TRURO CHERRY RIPE G064 (AI) (P)
 DALKEITH JOEY J130 (AI) (P)
 TRURO MOONRAKER M062 (H#)
 TRURO GOLDEN DAWN K159 (H)
 Dam: **TRURO IRISH GIRL P045 (P)**
 TRURO GONDOLIER (H)
 TRURO IRISH GIRL M139 (P)
 TRURO IRISH GIRL J048 (P)

Purchaser:

Price \$:

Traits Observed:
 BWT,200WT,400WT,SS,FAT,EMA,IMF,Genomics

July 2022 Hereford BREEDPLAN							
DIR	DTRS	GL	BWT	200	400	600	MWT
+6.7		-1.6	+0.6	+32	+39	+48	+8
30%		52%	69%	63%	63%	64%	59%
MILK	SS	DC	CWT	EMA	RIB	RUMP	IMF%
+19	+1.5	-2.7	+38	+4.3	+1.4	+1.4	+0.8
48%	75%	28%	53%	43%	48%	52%	49%

\$Index Values:	SSR: +\$130	NSR: +\$126	SBM: +\$138	NBT: +\$97
-----------------	-------------	-------------	-------------	------------

POLL Great muscle expression here, very thick topped with beautiful structure. Heifer's first calf again with balanced data.



21

TRURO SENTINEL S053 (H)

WITHDRAWN

Ray White® Livestock

Bingara

RUSS SMYTH

0428 684 227

russell.smyth@raywhite.com

CHARLIE HART

0428 658 457

charlie@cbhart.com.au

22

TRURO SLICK S054 (P)

Tattoo: S054

Rego No: JDHS054

Born: 17/02/2021

C ETF WILDCAT 4248 (ET) (P)

CHURCHILL GUNPOWDER 657D (IMP USA) (ET) (PP)

CHURCHILL LADY 002X ET (P)

Sire: **TRURO POWDER MONKEY P159 (AI) (ET) (PP)**

DAYS BLACKBERRY G82 (AI) (P)

TRURO CHEERY RIPE K036 (AI) (P)

TRURO CHERRY RIPE G064 (AI) (P)

H VICTOR 0136 (IMP USA) (P)

TRURO KOBRA K007 (AI) (H#)

TRURO MARIANNE E034 (H)

Dam: **TRURO DAFFODIL P053 (H#)**

TALBALBA ZINNIA (AI) (H)

TRURO DAFFODIL J032 (H)

TRURO DAFFODIL Z022 (AI) (H)

Purchaser:

.....

Price \$:

Traits Observed:

BWT,200WT,400WT,SS,FAT,EMA,IMF,Geno
mics

July 2022 Hereford BREEDPLAN

DIR	DTRS	GL	BWT	200	400	600	MWT
+4.5		+0.2	+3.4	+35	+51	+73	+46
32%		53%	69%	63%	63%	64%	59%
MILK	SS	DC	CWT	EMA	RIB	RUMP	IMF%
+19	+1.9	-1.8	+51	+5.5	+0.7	+0.4	+1.7
49%	75%	29%	54%	44%	49%	53%	49%
\$Index Values:		SSR: +\$149	NSR: +\$137	SBM: +\$157	NBT: +\$117		

POLL Stout, solid calf with great muscle expression. Wonderful type with some real carcase here. Heifer's first calf and just love the data set. 2nd highest raw IMF in Poll yearlings.



14th Annual SPRING BULL SALE 2022

LOT
1

Truro
Rocky Road
R086 (H)



LOT
5

Truro
Show Pony
S014 (H)



LOT
8

Truro
Sonar
S021 (P)



14th Annual SPRING BULL SALE 2022



LOT
11

Truro
Sylvester
S027 (H)



Truro
Spitfire
S030 (S)

LOT
13



Lot 13's mother N112



14th Annual SPRING BULL SALE 2022

LOT
14

Truro
Shockwave
S032 (P)



*Look
to the
future!*

LOT
16

Truro
Sexy
S042 (H)



14th Annual SPRING BULL SALE 2022



LOT
22

Truro
Slick
S054 (P)



LOT
38

Truro
Struth
S117 (P)



LOT
40

Truro
Showman
S123 (H)



14th Annual SPRING BULL SALE 2022

23**TRURO SPEEDY GONZALES S057 (P)****Tattoo: S057****Rego No: JDHS057****Born: 17/02/2021**

ALLENDALE YACKA (AI) (P)

ALLENDALE ANZAC E114 (PP)

ALLENDALE DAWN B22 (AI) (ET) (P)

Sire: CENTENNIAL ANZAC L055 (AI) (ET) (PP)

YAVENVALE COMPASS C330 (P)

DUNOON PAGEANT G007 (P)

DUNOON PAGEANT D131 (AI) (P)

HUNDAY QUIVER (H)

TRURO GONDOLIER (H)

TRURO CALAMITY JANE A039 (AI) (H)

Dam: TRURO ALMOND QUEEN M169 (H#)

MERAWAH CADET F31 (P)

TRURO ALMOND QUEEN J156 (P)

TRURO ALMOND QUEEN E319 (AI) (P)

Purchaser:

.....

Price \$:

Traits Observed:

BWT,200WT,400WT,SS,FAT,EMA,IMF,Genomics

July 2022 Hereford BREEDPLAN							
DIR	DTRS	GL	BWT	200	400	600	MWT
-1.2	-0.4	-0.4	+5.1	+38	+64	+88	+87
38%	31%	52%	70%	64%	64%	65%	60%
MILK	SS	DC	CWT	EMA	RIB	RUMP	IMF%
+18	+2.6	-1.5	+59	+3.8	+0.3	+0.7	+0.6
52%	75%	34%	55%	44%	50%	54%	51%
\$Index Values:		SSR: +\$119	NSR: +\$104	SBM: +\$122	NBT: +\$96		

POLL Lots of capacity here, very thick and wonderful muscle expression. Centennial Anzac always adds guts to his progeny and this fellow is a fine example of that. Data set very good.

24**TRURO SCANDAL S059 (H)****Tattoo: S059****Rego No: JDHS059****Born: 21/02/2021**

WRL FORUM (AI) (H)

COURALLIE J F051 JACKHAMMER (H)

COURALLIE J Z043 KOALA F053 (H)

Sire: KYLANDEE NIANGALA (H)

GLEN WILGA TOKYO (AI) (H)

STRATHLEIGH DOWAGER A779 (H)

STRATHLEIGH DOWAGER 56 (H)

MAWARRA UNIQUE C041 (AI) (H)

YARRAM UNIQUE F181 (H)

YARRAM FLOSSIE A096 (H)

Dam: TRURO DAFFODIL J081 (AI) (ET) (H)

MAWARRA TRAIL BLAZER (AI) (H)

TRURO DAFFODIL E058 (AI) (ET) (H)

TRURO DAFFODIL Z040 (AI) (H)

Purchaser:

.....

Price \$:

Traits Observed:

BWT,200WT,400WT,SS,FAT,EMA,IMF,Genomics

July 2022 Hereford BREEDPLAN							
DIR	DTRS	GL	BWT	200	400	600	MWT
+4.2	+0.3	+1.4	+6.4	+37	+68	+102	+99
37%	29%	54%	71%	67%	67%	67%	60%
MILK	SS	DC	CWT	EMA	RIB	RUMP	IMF%
+13	+0.9	-0.2	+63	+5.0	-0.3	-0.2	+0.8
52%	75%	33%	59%	48%	55%	58%	55%
\$Index Values:		SSR: +\$157	NSR: +\$140	SBM: +\$172	NBT: +\$134		

HORN Love this bull and he is one of my favourites. Great skin and hair and type. One of the best Niangalas. Wonderful carcass with terrific structure. From one of the best F181 mummies we have. Fantastic set of numbers that puts him up the top for data sets.

14th Annual SPRING BULL SALE 2022



25**TRURO SAMMY S062 (H)****Tattoo: S062****Rego No: JDHS062****Born: 22/02/2021**

CL 1 DOMINO 215Z (H)
 HH ADVANCE 5044C (IMP USA) (H)
 HH MISS ADVANCE 1072Y (ET) (H)
 Sire: **ASHMAR PETER PAN (AI) (H)**
 HH ADVANCE 7034T ET (IMP USA) (H)
 ASHMAR MARITANA J008 (AI) (H)
 ASHMAR MARITANA F026 (H)

Purchaser:

Price \$:

BOWMONT A584 STORM D117 (H)
 TRURO HOLY DOOLEY (H)
 TRURO MARIANNE E102 (H)
 Dam: **TRURO MARIANNE N049 (H)**
 COOTHARABA MENDEZ (H)
 TRURO MARIANNE D023 (H)
 COURALLIE V093 MARIANNE Z147 (AI) (H)

Traits Observed:
 BWT,200WT,400WT,SS,FAT,EMA,IMF,Genomics

July 2022 Hereford BREEDPLAN							
DIR	DTRS	GL	BWT	200	400	600	MWT
+2.1		+0.7	+5.5	+29	+47	+69	+57
31%		51%	70%	64%	64%	64%	57%
MILK	SS	DC	CWT	EMA	RIB	RUMP	IMF%
+19	+0.4	+0.4	+36	+2.7	-1.2	-2.4	-0.6
48%	75%	28%	55%	44%	50%	54%	50%

\$Index Values:	SSR: +\$97	NSR: +\$73	SBM: +\$110	NBT: +\$80
------------------------	-------------------	-------------------	--------------------	-------------------

HORN Again by Ashmar Peter Pan. Very long balanced bull. Wonderful structure with good carcass. Balanced set of data.

26**TRURO STARSTRUCK S073 (H)****Tattoo: S073****Rego No: JDHS073****Born: 01/03/2021**

CL 1 DOMINO 215Z (H)
 HH ADVANCE 5044C (IMP USA) (H)
 HH MISS ADVANCE 1072Y (ET) (H)
 Sire: **ASHMAR PETER PAN (AI) (H)**
 HH ADVANCE 7034T ET (IMP USA) (H)
 ASHMAR MARITANA J008 (AI) (H)
 ASHMAR MARITANA F026 (H)

Purchaser:

Price \$:

MAWARRA UNIQUE C041 (AI) (H)
 YARRAM UNIQUE F181 (H)
 YARRAM FLOSSIE A096 (H)
 Dam: **TRURO MARIANNE M183 (H)**
 TRURO YIPPYIO Y005 (AI) (H)
 TRURO MARIANNE B017 (AI) (H)
 TRURO MARIANNE X011 (H)

Traits Observed:
 BWT,200WT,400WT,SS,FAT,EMA,IMF,Genomics

July 2022 Hereford BREEDPLAN							
DIR	DTRS	GL	BWT	200	400	600	MWT
+2.5	+1.3	+0.0	+4.1	+30	+52	+76	+61
34%	25%	52%	70%	64%	64%	64%	57%
MILK	SS	DC	CWT	EMA	RIB	RUMP	IMF%
+15	+2.4	-4.1	+47	+4.1	+1.2	+1.7	+0.9
48%	74%	30%	56%	45%	51%	55%	52%

\$Index Values:	SSR: +\$142	NSR: +\$128	SBM: +\$140	NBT: +\$99
------------------------	--------------------	--------------------	--------------------	-------------------

HORN Structurally very sound in his type. He is a long, clean-fronted fellow with very good data.



14th Annual SPRING BULL SALE 2022

27 TRURO SLINGSHOT S074 (H#)

Tattoo: S074

Rego No: JDHS074

Born: 01/03/2021

ALLENDALE ANZAC E114 (PP)
 CENTENNIAL ANZAC L055 (AI) (ET) (PP)
 DUNOON PAGEANT G007 (P)
 Sire: **TRURO PRANKSTER P011 (P)**
 BOWMONT A584 STORM D117 (H)
 TRURO MISS JEN (H)
 TRURO JENNIFER HAWKINS (H)

Purchaser:

Price \$:

TH 122 711 VICTOR 719T (IMP USA) (P)
 H VICTOR 0136 (IMP USA) (P)
 H LADY EXCELL 824 ET (P)
 Dam: **TRURO MARIANNE M077 (AI) (H#)**
 GLENDAN PARK EMPIRE E002 (AI) (ET) (H)
 TRURO MARIANNE H042 (AI) (H)
 TRURO MARIANNE B033 (H)

Traits Observed:
 BWT,200WT,400WT,SS

July 2022 Hereford BREEDPLAN							
DIR	DTRS	GL	BWT	200	400	600	MWT
-1.7	-1.6	-0.8	+5.9	+42	+77	+109	+106
34%	26%	48%	69%	62%	62%	60%	54%
MILK	SS	DC	CWT	EMA	RIB	RUMP	IMF%
+15	+2.5	-1.5	+73	+5.4	-0.3	-0.2	+0.6
41%	74%	27%	48%	37%	41%	44%	41%

\$Index Values:	SSR: +\$157	NSR: +\$140	SBM: +\$156	NBT: +\$119
-----------------	-------------	-------------	-------------	-------------

POLL Great calf here with wonderful carcass and muscle expression. From one of our best Victor cows. Terrific, balanced data set. Very good bull.

28 TRURO SILVER S077 (H)

Tattoo: S077

Rego No: JDHS077

Born: 03/03/2021

CL 1 DOMINO 215Z (H)
 HH ADVANCE 5044C (IMP USA) (H)
 HH MISS ADVANCE 1072Y (ET) (H)
 Sire: **ASHMAR PETER PAN (AI) (H)**
 HH ADVANCE 7034T ET (IMP USA) (H)
 ASHMAR MARITANA J008 (AI) (H)
 ASHMAR MARITANA F026 (H)

Purchaser:

Price \$:

COOTHARABA MENDEZ (H)
 TRURO GILLETTE (H)
 RACOVOLIS SPRUCE X671 (H)
 Dam: **TRURO MARIANNE P091 (H)**
 MOORLANDS GRAND NATIONAL V045 (AI) (H)
 TRURO MARIANNE D067 (H)
 TRURO MARIANNE S047 (H)

Traits Observed:
 BWT,200WT,400WT,SS,FAT,EMA,IMF,Geno
 mics

July 2022 Hereford BREEDPLAN							
DIR	DTRS	GL	BWT	200	400	600	MWT
+1.6		-2.3	+3.1	+29	+50	+72	+41
31%		51%	69%	64%	64%	64%	56%
MILK	SS	DC	CWT	EMA	RIB	RUMP	IMF%
+18	+0.3	-1.8	+49	+4.7	+1.3	+1.7	+0.8
48%	75%	29%	54%	44%	50%	54%	50%

\$Index Values:	SSR: +\$141	NSR: +\$128	SBM: +\$142	NBT: +\$96
-----------------	-------------	-------------	-------------	------------

HORN Great bull here. A heifer's first calf and we look forward to what his mumma can produce in the future. Very thick and solid topped calf with great structure. Different and good pedigree here and balanced data. 2nd biggest raw EMA in horn yearlings and the 3rd highest raw IMF in Horn yearlings.

29**TRURO SONIC BOOM S083 (H)****Tattoo: S083****Rego No: JDHS083****Born: 05/03/2021**

CL 1 DOMINO 215Z (H)
 HH ADVANCE 5044C (IMP USA) (H)
 HH MISS ADVANCE 1072Y (ET) (H)
 Sire: **ASHMAR PETER PAN (AI) (H)**
 HH ADVANCE 7034T ET (IMP USA) (H)
 ASHMAR MARITANA J008 (AI) (H)
 ASHMAR MARITANA F026 (H)

Purchaser:

Price \$:

MAWARRA UNIQUE C041 (AI) (H)
 YARRAM UNIQUE F181 (H)
 YARRAM FLOSSIE A096 (H)

Dam: **TRURO CALAMITY JANE N160 (H)**
 WALLAN CREEK SHARKA E011 (H)
 TRURO CALAMITY JANE J106 (H)
 TRURO CALAMITY JANE C080 (H)

Traits Observed:
 BWT,200WT,400WT,SS,FAT,EMA,IMF,Genomics

July 2022 Hereford BREEDPLAN							
DIR	DTRS	GL	BWT	200	400	600	MWT
+4.1		-2.0	+2.7	+32	+59	+89	+75
33%		53%	70%	65%	64%	65%	57%
MILK	SS	DC	CWT	EMA	RIB	RUMP	IMF%
+25	+2.0	-2.0	+61	+5.0	+0.2	+0.3	+0.9
49%	75%	31%	57%	46%	52%	56%	53%
\$Index Values:		SSR: +\$152	NSR: +\$135	SBM: +\$165	NBT: +\$127		

HORN Very long, clean fronted bull, out of a very good F181 cow. Love the type and balance of this calf and also has a very good set of data.

30**TRURO SLINKY S085 (H)****Tattoo: S085****Rego No: JDHS085****Born: 05/03/2021**

COOTHARABA MENDEZ (H)
 TRURO GILLETTE (H)
 RACOVOLIS SPRUCE X671 (H)
 Sire: **TRURO PONCHO P048 (H)**
 TRURO HE DA MAN (AI) (H)
 TRURO PRINCESS CHRISTIAN L (H)
 TRURO CHRISTIAN B029 (H)

Purchaser:

Price \$:

COOTHARABA MENDEZ (H)
 TRURO GILLETTE (H)
 RACOVOLIS SPRUCE X671 (H)

Dam: **TRURO MARIANNE P054 (H)**
 TRURO HE DA MAN (AI) (H)
 TRURO MARIANNE L072 (H)
 TRURO MARIANNE C086 (H)

Traits Observed:
 BWT,200WT,400WT,SS,FAT,EMA,IMF

July 2022 Hereford BREEDPLAN							
DIR	DTRS	GL	BWT	200	400	600	MWT
+2.3		-0.9	+4.3	+33	+58	+85	+70
34%		44%	71%	65%	65%	63%	55%
MILK	SS	DC	CWT	EMA	RIB	RUMP	IMF%
+20	+2.4	-2.3	+58	+3.7	-0.4	-0.1	-0.3
44%	77%	28%	52%	45%	49%	54%	46%
\$Index Values:		SSR: +\$138	NSR: +\$121	SBM: +\$143	NBT: +\$105		

HORN Wonderful carcass, clean fronted and again a heifer's first calf. Very balanced set of data.



14th Annual SPRING BULL SALE 2022

31 TRURO STASH S091 (PP)

Tattoo: S091

Rego No: JDHS091

Born: 07/03/2021

C ETF WILDCAT 4248 (ET) (P)
 CHURCHILL GUNPOWDER 657D (IMP USA) (ET) (PP)
 CHURCHILL LADY 002X ET (P)
 Sire: **TRURO POWDER MONKEY P159 (AI) (ET) (PP)**
 DAYS BLACKBERRY G82 (AI) (P)
 TRURO CHEERY RIPE K036 (AI) (P)
 TRURO CHERRY RIPE G064 (AI) (P)

Purchaser:

Price \$:

DALKEITH JOEY J130 (AI) (P)
 TRURO MOONRAKER M062 (H#)
 TRURO GOLDEN DAWN K159 (H)
 Dam: **TRURO FATTIE P113 (P)**
 MERAWAH HIGHLIGHT E62 (AI) (P)
 TRURO FATTIE M186 (P)
 TRURO FATTIE C012 (H)

Traits Observed:
 BWT,200WT,400WT,SS,FAT,EMA,IMF, Genomics

July 2022 Hereford BREEDPLAN							
DIR	DTRS	GL	BWT	200	400	600	MWT
+6.2		-0.8	+4.1	+39	+60	+85	+69
31%		43%	68%	62%	63%	61%	56%
MILK	SS	DC	CWT	EMA	RIB	RUMP	IMF%
+23	+2.6	-1.9	+56	+4.2	-0.2	-0.8	+0.4
42%	74%	26%	50%	43%	46%	51%	43%

\$Index Values:	SSR: +\$148	NSR: +\$131	SBM: +\$165	NBT: +\$126
------------------------	--------------------	--------------------	--------------------	--------------------

POLL Another heifer's first calf and very nicely made. Very thick and stout with wonderful muscle expression. Love the data set - very balanced.

32 TRURO SPICKSNSPECKS S093 (H#)

Tattoo: S093

Rego No: JDHS093

Born: 12/03/2021

ALLENDAL E ANZAC E114 (PP)
 CENTENNIAL ANZAC L055 (AI) (ET) (PP)
 DUNOON PAGEANT G007 (P)
 Sire: **TRURO PRANKSTER P011 (P)**
 BOWMONT A584 STORM D117 (H)
 TRURO MISS JEN (H)
 TRURO JENNIFER HAWKINS (H)
 DEBARRY ELLIOTT (P)
 MERAWAH HIGHLIGHT E62 (AI) (P)
 MERAWAH IRISH ROSE B1 (AI) (P)
 Dam: **TRURO UNITY M156 (H#)**
 RILO PARK UNSHAKEABLE (AI) (ET) (P)
 RAYLEIGH S UNITY G65 (H#)
 RAYLEIGH S TIFFANY C54 (P)

Purchaser:

Price \$:

Traits Observed:
 BWT,200WT,400WT,SS,FAT,EMA,IMF,Genomics

July 2022 Hereford BREEDPLAN							
DIR	DTRS	GL	BWT	200	400	600	MWT
-2.2	-1.1	-0.2	+6.4	+43	+73	+103	+99
36%	28%	51%	68%	62%	62%	63%	57%
MILK	SS	DC	CWT	EMA	RIB	RUMP	IMF%
+19	+2.4	-2.3	+62	+2.6	+0.2	+0.1	+0.4
50%	74%	30%	53%	44%	48%	52%	49%

\$Index Values:	SSR: +\$135	NSR: +\$110	SBM: +\$133	NBT: +\$100
------------------------	--------------------	--------------------	--------------------	--------------------

POLL Beautiful skin and hair with great volume, capacity and carcass. We just love the Prankster calves - very practical, gutsy cattle. Very solid set of data.



33**TRURO STAND N DELIVER S094 (PP)**

Tattoo: S094

Rego No: JDHS094

Born: 16/03/2021

ALLENDALE ANZAC E114 (PP)
 CENTENNIAL ANZAC L055 (AI) (ET) (PP)
 DUNOON PAGEANT G007 (P)
 Sire: **TRURO PRANKSTER P011 (P)**
 BOWMONT A584 STORM D117 (H)
 TRURO MISS JEN (H)
 TRURO JENNIFER HAWKINS (H)

Purchaser:

Price \$:

DEBARRY ELLIOTT (P)
 MERAWAH HIGHLIGHT E62 (AI) (P)
 MERAWAH IRISH ROSE B1 (AI) (P)
 Dam: **TRURO IRISH GIRL N066 (P)**
 MERAWAH CADET F31 (P)
 TRURO IRISH GIRL J048 (P)
 TRURO DORT E309 (P)

Traits Observed:

BWT,200WT,400WT,SS,FAT,EMA,IMF,Genomics

July 2022 Hereford BREEDPLAN							
DIR	DTRS	GL	BWT	200	400	600	MWT
-2.9	-1.4	+0.6	+6.7	+46	+75	+106	+97
35%	27%	49%	68%	61%	61%	62%	56%
MILK	SS	DC	CWT	EMA	RIB	RUMP	IMF%
+16	+2.3	-0.8	+71	+3.5	+0.0	+0.3	+0.0
47%	72%	29%	51%	42%	47%	51%	47%
\$Index Values:		SSR: +\$139	NSR: +\$118	SBM: +\$137	NBT: +\$101		

POLL Another Prankster and another good one. Great type with beautiful carcass and good data, especially in the growth department. An outstanding individual.

34**TRURO STAN THE MAN S099 (H#)**

Tattoo: S099

Rego No: JDHS099

Born: 21/03/2021

ALLENDALE ANZAC E114 (PP)
 CENTENNIAL ANZAC L055 (AI) (ET) (PP)
 DUNOON PAGEANT G007 (P)
 Sire: **TRURO PRANKSTER P011 (P)**
 BOWMONT A584 STORM D117 (H)
 TRURO MISS JEN (H)
 TRURO JENNIFER HAWKINS (H)

Purchaser:

Price \$:

TH 122 711 VICTOR 719T (IMP USA) (P)
 H VICTOR 0136 (IMP USA) (P)
 H LADY EXCELL 824 ET (P)
 Dam: **TRURO MARIANNE M096 (AI) (H#)**
 MAWARRA WHAT-A-BULL (AI) (H)
 TRURO MARIANNE H002 (H)
 TRURO MARIANNE N05 (AI) (H)

Traits Observed:

BWT,200WT,400WT,SS,FAT,EMA,IMF,Genomics

July 2022 Hereford BREEDPLAN							
DIR	DTRS	GL	BWT	200	400	600	MWT
+1.5	-2.5	+0.0	+4.2	+32	+61	+85	+78
34%	26%	54%	69%	62%	63%	63%	58%
MILK	SS	DC	CWT	EMA	RIB	RUMP	IMF%
+10	+1.9	-0.4	+53	+4.4	+0.2	+0.5	+0.8
49%	73%	30%	53%	43%	49%	52%	49%
\$Index Values:		SSR: +\$129	NSR: +\$118	SBM: +\$135	NBT: +\$106		

POLL Very stout, thick bull. Real butt and type with near perfect structure. Love the data set on this calf. Equal 3rd biggest raw EMA in poll yearlings.



14th Annual SPRING BULL SALE 2022

35**TRURO SPOT ON S100 (H#)****Tattoo: S100****Rego No: JDHS100****Born: 22/03/2021**

ALLENDAL E ANZAC E114 (PP)
 CENTENNIAL ANZAC L055 (AI) (ET) (PP)
 DUNOON PAGEANT G007 (P)
 Sire: **TRURO PRANKSTER P011 (P)**
 BOWMONT A584 STORM D117 (H)
 TRURO MISS JEN (H)
 TRURO JENNIFER HAWKINS (H)

Purchaser:

Price \$:

WIRRUNA ECHUCA E99 (AI) (P)
 DALKEITH JOEY J130 (AI) (P)
 DALKEITH PHOEBE 28 (G089) (AI) (P)
 Dam: **TRURO PRUDENCE M026 (P)**
 HH ADVANCE 7034T ET (IMP USA) (H)
 TRURO PRUDENCE K039 (AI) (H)
 TRURO PRUDENCE C089 (H)

Traits Observed:

BWT,200WT,400WT,SS,FAT,EMA,IMF, Genomics

July 2022 Hereford BREEDPLAN							
DIR	DTRS	GL	BWT	200	400	600	MWT
+3.5	+3.2	-1.2	+3.9	+38	+62	+85	+64
33%	25%	42%	68%	62%	62%	60%	54%
MILK	SS	DC	CWT	EMA	RIB	RUMP	IMF%
+18	+1.9	-1.6	+56	+3.7	+0.6	+1.0	+0.7
41%	73%	27%	49%	42%	46%	50%	43%

\$Index Values:	SSR: +\$150	NSR: +\$137	SBM: +\$159	NBT: +\$115
------------------------	--------------------	--------------------	--------------------	--------------------

POLL Some growth and carcase here, real performance with great eye appeal.Very attractive calf with very good structure and his performance figures are terrific.

36**TRURO SPEEDO S101 (P)****Tattoo: S101****Rego No: JDHS101****Born: 23/03/2021**

C ETF WILDCAT 4248 (ET) (P)
 CHURCHILL GUNPOWDER 657D (IMP USA) (ET) (PP)
 CHURCHILL LADY 002X ET (P)
 Sire: **TRURO POWDER MONKEY P159 (AI) (ET) (PP)**
 DAYS BLACKBERRY G82 (AI) (P)
 TRURO CHEERY RIPE K036 (AI) (P)
 TRURO CHERRY RIPE G064 (AI) (P)

Purchaser:

Price \$:

DEBARRY ELLIOTT (P)
 MERAWAH HIGHLIGHT E62 (AI) (P)
 MERAWAH IRISH ROSE B1 (AI) (P)
 Dam: **TRURO RUTH N125 (P)**
 MERAWAH CADET F31 (P)
 TRURO RUTH J114 (P)
 TRURO RUTH E303 (P)

Traits Observed:

BWT,200WT,400WT,SS,FAT,EMA,IMF, Genomics

July 2022 Hereford BREEDPLAN							
DIR	DTRS	GL	BWT	200	400	600	MWT
+3.5	+0.5	-1.0	+3.6	+36	+53	+79	+70
36%	27%	54%	70%	64%	64%	65%	59%
MILK	SS	DC	CWT	EMA	RIB	RUMP	IMF%
+20	+1.7	-1.7	+54	+4.2	+0.6	+0.3	+0.7
51%	74%	30%	55%	45%	51%	54%	50%

\$Index Values:	SSR: +\$124	NSR: +\$108	SBM: +\$136	NBT: +\$106
------------------------	--------------------	--------------------	--------------------	--------------------

POLL Great carcase here - very solid with terrific structure. Great balanced breedplan again.

14th Annual SPRING BULL SALE 2022



37 TRURO SNAPPER S11 (PP)

Tattoo: S111

Rego No: JDHS111

Born: 27/03/2021

C ETF WILDCAT 4248 (ET) (P)

CHURCHILL GUNPOWDER 657D (IMP USA) (ET) (PP)

CHURCHILL LADY 002X ET (P)

Sire: **TRURO POWDER MONKEY P159 (AI) (ET) (PP)**

DAYS BLACKBERRY G82 (AI) (P)

TRURO CHEERY RIPE K036 (AI) (P)

TRURO CHERRY RIPE G064 (AI) (P)

DALKEITH JOEY J130 (AI) (P)

TRURO MOONRAKER M062 (H#)

TRURO GOLDEN DAWN K159 (H)

Dam: **TRURO FATTIE P090 (P)**

DALKEITH JOEY J130 (AI) (P)

TRURO FATTIE M049 (H#)

TRURO FATTIE K151 (TW) (H)

Purchaser:

Price \$:

Traits Observed:

BWT,200WT,400WT,SS,FAT,EMA,IMF,Geno
mics

July 2022 Hereford BREEDPLAN								
DIR	DTRS	GL	BWT	200	400	600	MWT	
+6.4		-1.5	+4.2	+41	+58	+82	+56	
31%		51%	66%	62%	62%	63%	58%	
MILK	SS	DC	CWT	EMA	RIB	RUMP	IMF%	
+22	+1.7	-2.0	+57	+4.3	+0.4	+0.4	+0.6	
47%	73%	28%	53%	42%	48%	52%	48%	
Index Values:		SSR: +\$158	NSR: +\$145	SBM: +\$172	NBT: +\$127			

POLL Heifer's first calf and a very neat bull. Really solid with great muscle expression. Very balanced set of data.

38 TRURO STRUTH S117 (P)

Tattoo: S117

Rego No: JDHS117

Born: 04/04/2021

C ETF WILDCAT 4248 (ET) (P)

CHURCHILL GUNPOWDER 657D (IMP USA) (ET) (PP)

CHURCHILL LADY 002X ET (P)

Sire: **TRURO PISTOL PETE P160 (AI) (ET) (PP)**

DAYS BLACKBERRY G82 (AI) (P)

TRURO CHEERY RIPE K036 (AI) (P)

TRURO CHERRY RIPE G064 (AI) (P)

H VICTOR 0136 (IMP USA) (P)

TRURO KOBRA K007 (AI) (H#)

TRURO MARIANNE E034 (H)

Dam: **TRURO DAFFODIL P109 (H#)**

SMITHSTON YOU BEAUT (H)

TRURO DAFFODIL H027 (AI) (H)

TRURO DAFFODIL D105 (H)

Purchaser:

Price \$:

Traits Observed:

BWT,200WT,400WT,SS,FAT,EMA,IMF, Genomics

July 2022 Hereford BREEDPLAN								
DIR	DTRS	GL	BWT	200	400	600	MWT	
+2.3		-0.5	+5.0	+40	+66	+94	+76	
32%		46%	67%	62%	62%	60%	56%	
MILK	SS	DC	CWT	EMA	RIB	RUMP	IMF%	
+23	+2.9	-1.7	+62	+5.0	-0.1	-0.4	+0.5	
43%	74%	27%	50%	43%	47%	51%	44%	
Index Values:		SSR: +\$152	NSR: +\$132	SBM: +\$160	NBT: +\$119			

POLL Very stout and thick and another very good P160. Great structure and very good data set. Equal 3rd biggest raw EMA in poll yearlings.





Lot 24's mother J081 and Lot 24 as a calf



Lot 39's mother M108

39**TRURO STRUAN S122 (P)****Tattoo: S122****Rego No: JDHS122****Born: 16/04/2021**

ALLENDALE ANZAC E114 (PP)

CENTENNIAL ANZAC L055 (AI) (ET) (PP)

DUNOON PAGEANT G007 (P)

Sire: TRURO PRANKSTER P011 (P)

BOWMONT A584 STORM D117 (H)

TRURO MISS JEN (H)

TRURO JENNIFER HAWKINS (H)

Purchaser:

Price \$:

REMITALL EMBRACER 8E (IMP CAN) (P)

DAYS BLACKBERRY G82 (AI) (P)

ALLENDALE FANCY B94 (AI) (P)

Dam: TRURO UNITY M108 (AI) (P)

MERAWAH CADET F31 (P)

TRURO UNITY J171 (P)

RAYLEIGH M UNITY G68 (P)

Traits Observed:

BWT,200WT,400WT,SS,FAT,EMA,IMF, Genomics

July 2022 Hereford BREEDPLAN							
DIR	DTRS	GL	BWT	200	400	600	MWT
-1.4	-2.7	+0.6	+4.2	+37	+60	+81	+65
35%	27%	48%	67%	62%	63%	61%	55%
MILK	SS	DC	CWT	EMA	RIB	RUMP	IMF%
+16	+1.9	-0.9	+53	+3.6	+0.4	+0.6	+1.0
42%	73%	28%	50%	43%	47%	51%	44%
\$Index Values:	SSR: +\$117		NSR: +\$101		SBM: +\$117		NBT: +\$89

POLL Love this bull !! Some real potential here. For us this is the best Prankster in the sale, and perhaps as good a calf as is in the sale. Real scale and performance here wrapped up in a very attractive coat. Great carcass and volume - a very gutsy calf. Maternally as solid as you can get, being out of a Day's Blackberry mumma. We rate the Blackberry cows very high. His data set is very balanced. A very good bull.

40**TRURO SHOWMAN S123 (H)****Tattoo: S123****Rego No: JDHS123****Born: 17/04/2021**

CL 1 DOMINO 215Z (H)

HH ADVANCE 5044C (IMP USA) (H)

HH MISS ADVANCE 1072Y (ET) (H)

Sire: ASHMAR PETER PAN (AI) (H)

HH ADVANCE 7034T ET (IMP USA) (H)

ASHMAR MARITANA J008 (AI) (H)

ASHMAR MARITANA F026 (H)

Purchaser:

Price \$:

BOWMONT A584 STORM D117 (H)

TRURO HOLY DOOLEY (H)

TRURO MARIANNE E102 (H)

Dam: TRURO MARIANNE N051 (H)

TRURO FIG JAM F001 (H)

TRURO MARIANNE H103 (H)

TRURO MARIANNE D023 (H)

Traits Observed:

BWT,200WT,400WT,SS,FAT,EMA,IMF,Genomics

July 2022 Hereford BREEDPLAN							
DIR	DTRS	GL	BWT	200	400	600	MWT
-1.1		-0.9	+6.2	+39	+60	+89	+74
30%		50%	68%	64%	63%	64%	57%
MILK	SS	DC	CWT	EMA	RIB	RUMP	IMF%
+21	+0.7	+0.7	+53	+2.9	-0.2	-0.7	+0.5
47%	74%	28%	54%	44%	50%	54%	50%
\$Index Values:	SSR: +\$116		NSR: +\$91		SBM: +\$124		NBT: +\$91

HORN Perhaps the best Peter Pan in the sale. Love the type and pattern of this fellow. Great skin and hair with real carcass expression. Great data set and again outcross genetics.



14th Annual SPRING BULL SALE 2022

41 TRURO PR.CHRISTIAN M023 (H#)

Tattoo: M023

Rego No: JDHM023

Born: 05/07/2016

BOWEN VINCENT V1 (S)
 DEBARRY ELLIOTT (P)
 DEBARRY PURITY S67 (AI) (P)
 Sire: **MERAWAH HIGHLIGHT E62 (AI) (P)**
 KAIRURU ABERDEEN 03 0047 (IMP NZL) (P)
 MERAWAH IRISH ROSE B1 (AI) (P)
 MERAWAH IRISH ROSE X147 (P)

Purchaser:

.....

Price \$:

YARRAM POMPEII V055 (AI) (H)
 COURALLIE V055 YOGI Y149 (AI) (H)
 COURALLIE GOLDEN DAWN U063 (H)
 Dam: **COURALLIE Y149 PR CHRISTIAN A216 (H)**
 INVERARY POWER OF ONE R747 (H)
 COURALLIE R747 PR CHRISTIAN X184 (H)
 COURALLIE PR CHRISTIAN Q498 (H)

Traits Observed:
 CE,BWT,400WT,MWT

July 2022 Hereford BREEDPLAN							
DIR	DTRS	GL	BWT	200	400	600	MWT
+1.8	+0.7	-0.5	+4.8	+37	+55	+82	+66
53%	44%	58%	76%	71%	71%	72%	72%
MILK	SS	DC	CWT	EMA	RIB	RUMP	IMF%
+22	+1.5	-1.2	+53	+2.3	+0.9	+1.4	+0.0
64%	65%	36%	61%	51%	56%	59%	55%
Index Values:		SSR: +\$117	NSR: +\$97	SBM: +\$126	NBT: +\$93		

HORN# Great cow with a wonderful pedigree. Sired by the \$40,000 Merawah Highlight and out of our No.1 cow up until she died (A216). This pedigree is second to none. M023 will calve to Yalgoo Peacemaker P034 PP, hopefully before the sale. The Yalgoo Peacemaker progeny are the best we have ever seen at Truro, big call, but they are very, very good.

42 TRURO DAFFODIL M066 (AI) (H#)

Tattoo: M066

Rego No: JDHM066

Born: 02/08/2016

REMITALL ACME 10A (P)
 REMITALL EMBRACER 8E (IMP CAN) (P)
 PLAIN LAKE BELLE 20X 117P 5B (P)
 Sire: **DAYS BLACKBERRY G82 (AI) (P)**
 ALLENDALE NATIONAL W168 (PP)
 ALLENDALE FANCY B94 (AI) (P)
 ALLENDALE FANCY V46 (P)

Purchaser:

.....

Price \$:

TENARU CADET C2 (AI) (P)
 MERAWAH CADET F31 (P)
 MERAWAH IRISH ROSE C34 (P)
 Dam: **TRURO DAFFODIL J180 (P)**
 TALBALBA VAMPIRE (H)
 TRURO DAFFODIL F035 (H)
 TRURO DAFFODIL B073 (H)

Traits Observed:
 GL,CE,BWT,400WT,MWT

July 2022 Hereford BREEDPLAN							
DIR	DTRS	GL	BWT	200	400	600	MWT
-1.6	-5.4	-2.8	+2.9	+31	+49	+65	+49
49%	38%	72%	76%	69%	69%	70%	70%
MILK	SS	DC	CWT	EMA	RIB	RUMP	IMF%
+18	+1.9	-0.8	+44	+3.6	-0.5	-0.9	+0.3
59%	57%	31%	58%	45%	50%	53%	50%
Index Values:		SSR: +\$90	NSR: +\$74	SBM: +\$89	NBT: +\$71		

HORN# Some of the best bulls in our sale are out of Blackberry cows, so this pedigree is exciting ! M066 has bred very well for us, and again she will Calve to Yalgoo Peacemaker, hopefully before the sale !



43**TRURO MARIANNE M183 (H)****Tattoo: M183****Rego No: JDHM183****Born: 16/09/2016**

GH NEON 17N (IMP CAN) (H)
 MAWARRA UNIQUE C041 (AI) (H)
 MAWARRA MINERVA 554 ET1 (AI) (ET) (H)
 Sire: **YARRAM UNIQUE F181 (H)**
 BRAYBOOK UPPERCLASS U504 (AI) (H)
 YARRAM FLOSSIE A096 (H)
 YARRAM FLOSSIE R065 (AI) (H)

Purchaser:

Price \$:

YARRAM EXTRA 57U M629 ET1 (AI) (ET) (H)
 TRURO YIPPYIO Y005 (AI) (H)
 TRURO DAFFODIL U005 (H)
 Dam: **TRURO MARIANNE B017 (AI) (H)**
 TRURO UPBEAT (AI) (H)
 TRURO MARIANNE X011 (H)
 TRURO MARIANNE V020 (H)

Traits Observed: BWT,400WT

July 2022 Hereford BREEDPLAN							
DIR	DTRS	GL	BWT	200	400	600	MWT
+1.9	+0.4	-0.1	+4.7	+30	+55	+81	+78
54%	45%	59%	77%	71%	71%	70%	66%
MILK	SS	DC	CWT	EMA	RIB	RUMP	IMF%
+11	+2.5	-4.0	+53	+5.0	+0.7	+1.6	+1.2
63%	67%	40%	63%	56%	61%	63%	61%
\$Index Values:		SSR: +\$142	NSR: +\$131	SBM: +\$140	NBT: +\$104		

HORN A commanding cow and the first F181 cow for us to offer. She is a beauty. She is straight horn pedigree and as good as you get. Has a son, Lot 26 in this sale, who is a very good calf. Wonderful set of data on this cow, as you would expect from an F181. Seen served by Warwick Court Roma R111 on 30/4/22 and should be 4 months in calf by the sale.

44**TRURO DAFFODIL M230 (P)****Tattoo: M230****Rego No: JDHM230****Born: 31/10/2016**

BOWEN VINCENT V1 (S)
 DEBARRY ELLIOTT (P)
 DEBARRY PURITY S67 (AI) (P)
 Sire: **MERAWAH HIGHLIGHT E62 (AI) (P)**
 KAIRURU ABERDEEN 03 0047 (IMP NZL) (P)
 MERAWAH IRISH ROSE B1 (AI) (P)
 MERAWAH IRISH ROSE X147 (P)

Purchaser:

Price \$:

FOXFORTH VALUABLE (H)
 TALBALBA VAMPIRE (H)
 BUNDARRA LIONESS U59 (H)
 Dam: **TRURO DAFFODIL F083 (H)**
 CURRACABARK ROMAN (AI) (H)
 TRURO DAFFODIL A074 (H)
 TRURO DAFFODIL U005 (H)

Traits Observed: BWT,400WT,MWT

July 2022 Hereford BREEDPLAN							
DIR	DTRS	GL	BWT	200	400	600	MWT
+2.5	+0.7	-0.7	+4.2	+32	+46	+64	+42
51%	42%	55%	74%	68%	68%	69%	71%
MILK	SS	DC	CWT	EMA	RIB	RUMP	IMF%
+17	+1.4	-0.8	+40	+2.2	+0.7	+1.0	+0.1
62%	62%	34%	59%	46%	50%	53%	50%
\$Index Values:		SSR: +\$104	NSR: +\$90	SBM: +\$112	NBT: +\$80		

POLL Sired by the \$40,000 Merawah Highlight makes this cow special. They are maternally as good as you get. M230 will be due to calve to Yalgoo Peacemaker P034 PP, hopefully prior to the sale.

45 TRURO DAFFODIL N050 (P)

Tattoo: N050

Rego No: JDHN050

Born: 01/08/2017

BOWEN VINCENT V1 (S)
 DEBARRY ELLIOTT (P)
 DEBARRY PURITY S67 (AI) (P)
 Sire: **MERAWAH HIGHLIGHT E62 (AI) (P)**
 KAIRURU ABERDEEN 03 0047 (IMP NZL) (P)
 MERAWAH IRISH ROSE B1 (AI) (P)
 MERAWAH IRISH ROSE X147 (P)

Purchaser:

Price \$:

EBBX CALGARY (AI) (ET) (P)
 DEBARRY ROULETTE (P)
 DEBARRY LASS X24 (P)
 Dam: **TRURO DAFFODIL F109 (P)**
 TRURO XCELLENT (H)
 TRURO DAFFODIL B019 (H)
 TRURO DAFFODIL X028 (H)

Traits Observed: BWT,MWT

July 2022 Hereford BREEDPLAN							
DIR	DTRS	GL	BWT	200	400	600	MWT
+2.9	+0.8	-0.2	+5.0	+33	+56	+81	+81
49%	41%	54%	75%	67%	65%	68%	69%
MILK	SS	DC	CWT	EMA	RIB	RUMP	IMF%
+17	+2.2	-1.7	+50	+2.4	+0.5	+0.5	-0.1
61%	61%	33%	56%	46%	49%	53%	49%

\$Index Values:	SSR: +\$113	NSR: +\$96	SBM: +\$124	NBT: +\$97
-----------------	-------------	------------	-------------	------------

POLL Big strong cow by Merawah Highlight again. Don't like selling any of these cows, but are continuing to sell a few older cows in our bull sales to give breeders the opportunity to benefit from some very sound, performance pedigrees. N050 again will calve (hopefully before the sale) to Yalgoo Peacemaker PP.

Truro
 Daffodil
 N050 (P)



LOT
45

14th Annual SPRING BULL SALE 2022





SALE COWS

LOT
41



Turo Pr. Christian M023 (H#)

LOT
42



Turo Daffodil M066 (AI) (H#)

LOT
43



Turo Marianne M183 (H)

LOT
44



Turo Daffodil M230 (P)

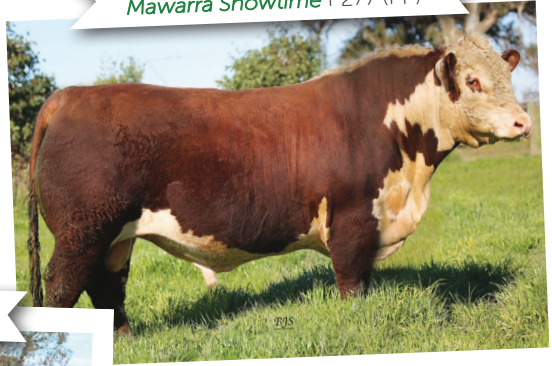


14th Annual SPRING BULL SALE 2022

FUTURE SIREs



Mawarra Showtime P277 (PP)

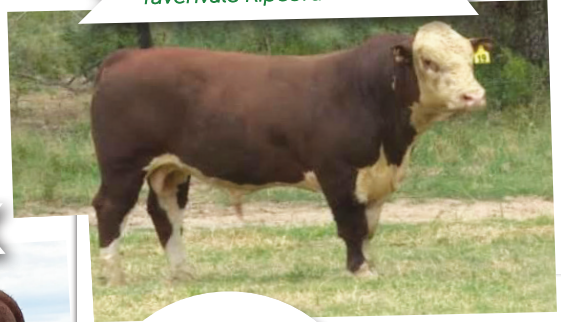


*Look
to the
future!*

Yarram Park Lottery M089 (H)



Yavenvale Ripcord R059 (PP)



Karoonda Yackandandah R276 (H)



*Look
to the
future!*

14th Annual SPRING BULL SALE 2022





SIRES AUTUMN SALE

Friday 17th February 2023

Yalgoo Peacemaker P034 (PP)



Hylands Fortunate Q265 (H)



14th Annual SPRING BULL SALE 2022



FUTURE SIRE



Warwick Court Roma R111 (H)

THANKYOU

FOR SUPPORTING OUR 14th ANNUAL SALE

*Look
to the
future!*

LOT
24



LOT
39



SCOTT & PIP HANN • 'TRURO' BELLATA NSW 2397

0427 937 839 or 0428 937 839

www.truroherefords.com