



MUNDARLO ANGUS
BREEDING BULLS FOR THE FUTURE

INAUGURAL BULL & COMMERCIAL FEMALE SALE



OFFERING

40 Angus Bulls

60 Commercial Heifers

26 Commercial Heifers
with calves at foot sired
by Texas Top Gun R66^{PV}

Wednesday 17th August, 2022 at 12.30pm
Brownsdale, 201 Coreinbob Rd, Tarcutta, NSW

mundarloangus.com.au

WE LIVE YOUR BUSINESS LIKE YOU DO

LIVESTOCK

Rob Stubbs | Livestock Manager | 0417 478 886
Harrison Daley | Territory Sales Manager | 0428 977 437
Nick Gilvarry | Territory Sales Manager | 0438 871 653
Jake Smith | Territory Sales Manager | 0400 281 347
Harry Waters | Territory Sales Manager | 0417 441 155

SUPPORT & SPECIALISTS

Ross Tout | Branch Manager | 0427 144 430
Tim McMeekin | District Wool Manager | 0427 830 003
Jenni O'Sullivan | Stud Stock Specialist | 0428 222 080

FARM SUPPLIES

Daniel McDonnell | Gundagai | 0418 979 243
David Crooks | Adelong | 0407 632 347
Rebecca Reeves | Tumut | 0427 559 500



Adelong P. 02 6941 3100
Gundagai P. 02 6944 1155
Tumut P. 02 6981 3100





MUNDARLO ANGUS
BREEDING BULLS FOR THE FUTURE

INAUGURAL BULL & COMMERCIAL FEMALE SALE

Wednesday 17th August, 2022
Commencing at 12.30pm

201 Coreinbob Rd, Tarcutta, NSW

Open Day Friday 5th August 2022
From 10am - 3pm

OFFERING

40 Angus Bulls
60 Commercial Heifers
26 Commercial Heifers
with calves at foot sired
by Texas Top Gun R66^{PV}

Interfaced with AuctionsPlus

Vendors:

Ron & Cheryl Blyth
02 6944 7566 | 0418 693 302

Manager:

Stephen Hulm
0418 215 525

Agents:

Nick Gilvarry
0438 871 653
Jenni O'Sullivan
0428 222 080



WELCOME

Please consider accepting this invitation to come and visit our sale barn and see the 1st on property sale of Mundarlo Angus cattle at 'Brownsdale' on the 17th of August 22. You are most welcome to come and see what we have for sale and what we have done at 'Brownsdale'.

I often say now I'm old [73] 'God has been very kind to me, blessing me with some beautiful farms and nice stock'.

I remember when I was young in my 20's almost bankrupt and I went into pigs to try and save myself. I had about 150 sows and was breeding replacement boars. I was always a figures person and I rang another pig breeder who was into figures and quoted him the boars stats in question and his reply I will never forget - 'either the pigs a freak or you are a liar'.

Well, I hope and pray I never tell a lie about an animal's stats but one of the great joys of being a stock person is breeding that 'freak' animal of excellence in its day. If you do come you will see some nice animals maybe not all freaks but very good quality cattle thanks to perhaps my experience but mainly Steve being rock solid on quality.

I also am blessed with having a very helpful wife and extremely faithful men helping me run the farm.

Mark has stuck with me through drought, fire and flood. Peter is my close aid; he is versatile with machinery and keeps me in check.

Now we have Steve who is a very good stock (cattle not sheep) person and has both inspired me mentally and encouraged us to sell bulls.

I developed the stud to provide bulls for our commercial herd.

The program was a blanket A.I. joining each year to a nucleus of quality stud females.

The stud has grown since Steve's arrival, and he is instrumental in organising the on-property sale, has helped us purchase sires, from Kenny's Creek and from the Texas Angus studs.

The whole thing is quite exciting, a lot of work but as any of you who are in stock know, very rewarding at this point in time in our farming careers.

Cheryl and I invite you to our 1ST Angus Bull Sale. Come and see the sale stock Steve and our team have for you to inspect. Our open day is Friday 5th August 2022 from 10am to 3pm.

Yours Faithfully,
Ron Blyth.

SALE INFORMATION

SALE DATE & TIME

Wednesday 17th August 2022 at 12.30pm.

SALE LOCATION

Brownsdale, 201 Coreinbob Rd Tarcutta NSW.

INSPECTIONS

An inspection day will be held Friday 5th August 2022 from 10am - 3pm.
Cattle will be available for inspections from 9 am on sale day.
Or by appointment, phone Stephen Hulm 0418 215 525.

HERD HEALTH

- Mundarlo Angus is a JBAS 6 herd
- All bulls have tested Pesti negative
- 2 Shots of 7IN1
- 2 Shots of Vibrovax
- 2 shots of Pestigard

SOUNDNESS

All bulls have been vet checked and semen tested by Tom Graham of Coolac Vet Services.

GUARANTEE

If in the next 6 months a bull becomes infertile or breaks down, provided it is not from injury or disease contracted after it has left our possession, then we will offer a suitable replacement or a credit at our next bull sale. Any claim must be accompanied by a relevant veterinary certificate.

REBATE

A rebate of 3% will be allowed to outside agents in attendance.

PADDOCK GROUPS

The bulls have been running in the following paddock groups-

Group 1: lots 1 to 9 & lots 36 to 40

Group 2: lots 10 to 35

DELIVERY

Free delivery will be provided within 150km from Brownsdale.
For longer distances Mundarlo uses and recommends Joe Wilton 0408 739 559.

INSURANCE

Representatives will be available on sale day to take care of your livestock insurance needs.

While all due care will be taken by the vendor and the agents, the purchases become the responsibility of the buyer at the fall of the hammer.

CATERING

Morning tea, lunch and refreshments will be available.

Visitors enter the property at their own risk.

DISCLAIMER

While all due care and attention has been paid to accuracy in the compilation of this catalogue, neither the vendors, the selling agents or representatives thereof assume any responsibility whatsoever for the correctness, use or interpretation of the information on animals included.

ANGUS AUSTRALIA DISCLAIMER

Animal details included in this catalogue, including but not limited to pedigree, DNA information, Estimated Breeding Values (EBVs) and Index values, are based on information provided by the breeder or owner of the animal. Whilst all reasonable care has been taken to ensure that the information provided in this catalogue was correct at the time of publication, Angus Australia will assume no responsibility for the accuracy or completeness of the information, nor for the outcome (including consequential loss) of any action taken based on this information.

PARENT VERIFICATION SUFFIXES

The animals listed within this catalogue including its pedigree, are displaying a Parent Verification Suffix which indicates the DNA parent verification status that has been conducted on the animal. The Parent Verification Suffixes that will appear at the end of each animal's name.

PV : both parents have been verified by DNA.

SV : the sire has been verified by DNA.

DV : the dam has been verified by DNA.

: DNA verification has not been conducted.

E : DNA verification has identified that the sire and/or dam may possibly be incorrect, but this cannot be confirmed conclusively.

PRIVACY INFORMATION

In order for Angus Australia to process the transfer of a registered animal in a catalogue, the vendor will need to provide certain information to Angus Australia and the buyer consents to the collection and disclosure of that information by Angus Australia in certain circumstances.

If the buyer does not wish for his or her information to be stored and disclosed by Angus Australia, the buyer must notify in writing to Angus Australia. If Angus Australia is not notified, then the buyer will be taken to have consented to the disclosure of such information.

ABOUT

My relationship with stud stock started when I was a boy at school.

It began when Dad and Uncle put a Murray Grey over some Jerseys. The results were remarkable, and they then bought stud Greys each year. By 1962 our family owned enough pure-bred Greys to become foundation members of the Murray Grey Society. By the time I reached sixteen, Mum and I were doing all the recording, tattooing and bookwork associated with the stud cattle. And by twenty-one I had broken in many bulls and had been to a lot of shows. I even achieved my dream of winning a junior broad ribbon in Sydney, and provided a steer that secured the Stan Haven Cup that same year.

I began purchasing my own land, building a business as a Murray Grey stud and seed stock breeder. I continued to attend shows, locally and in Sydney and Melbourne. The Wodonga annual sale in 1973 was a highlight, where my bull Rajah made second top price (\$12,750) for the year. Three years later Rajah's new Queensland owner sent me a letter of appreciation, including photos of the bull amongst his cows.

By the late 1980s I had a wife, three kids, and seven thousand acres. Unfortunately, the breed had then become contaminated. Growth rates and size had improved. But this had destroyed the breed's great benefit of nil calving trouble. The key moment for us was the purchase of a new stud sire that increased calf weights by over fifty per cent. Our clients soon began experiencing calving trouble. Although I had been a foundation member of the Society, and we had achieved much with the breed, my wife and I decided to close our Murray Grey Stud.

With help, we now manage about fourteen thousand acres stocked with Merino sheep and Angus. During our time with Murray Greys I acquired knowledge of Angus through a breeding up program. I visited studs and, along with family, purchased many females for the program. Our Angus commercial herd has grown with the size of the farm. The stud exists to optimise the income of this enterprise. We have thus far produced bulls for the commercial herd, and the stud has about two hundred and fifty females. Until recently, our joining program for our stud females was a blanket A.I. program. We used semen from sires of note that we believed would breed the best possible commercial cattle.

Now, though the advice of our experienced and talented stud cattle manager, we begin to offer our bulls to others.

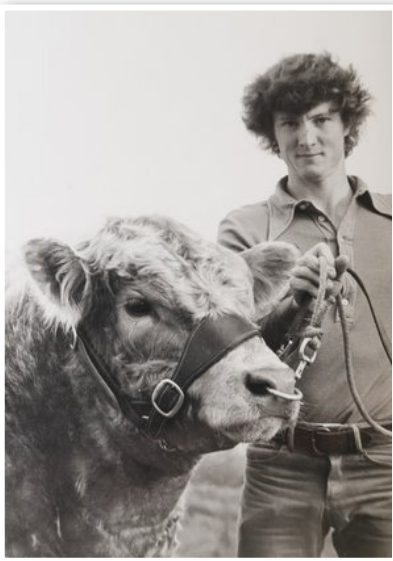
We approach this new enterprise with the same diligence we apply to our Merino Stud business. For more than twenty-five years we have had an annual, on-property sale supplying Merino rams to local farmers. It had been the late John Pike, my colleague and an excellent Merino man, who suggested I start selling rams. I agreed, but with the following cautionary advice: 'It is one thing producing seed stock for yourself. But once you start selling something that is going to become someone else's livelihood you must be very careful!'

I would not commence selling bulls without a person like our current manager. He is a diligent man, a good stockman, and understands cattle. In 2021 he purchased for us a bull with good figures from Kenny's Creek. He also promoted our latest quality purchase from Texas in August 2021: 'Top Gun'.

I like 'Top Gun', and am eager to see his progeny. I feed him morning and night with pellets because he is just two years old and has already worked hard for his age. He went straight to the A.I. centre after we purchased him, and he then came to our farm for physical mating. There will be many little Top Guns next year.

You may wonder why, in my seventies, am I doing this. I think of Gerry Harvey when he said, 'Please don't take my horses away from me'. Like him, I love my stock and I love farming. So, while ever I am able, I will farm and continue farming and producing the best produce and stock I, with help, am able.'

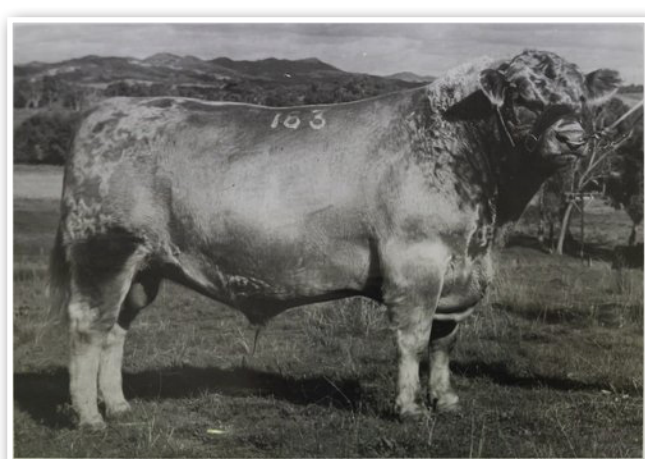
- Ron Blyth



Ron Blyth, 1973



Texas Top Gun R66^{PV} - DXTR66



Success with Mundarlo Commercial Heifers



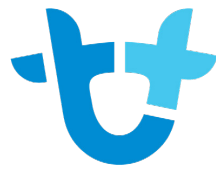
Adelong Show 2022 - Group of commercial heifers, Best Commercial Heifers



Adelong Show 2022 -
Group of commercial heifers, Best Commercial Heifers



Gundagai Special Sale 2022 - Best Commercial Heifers



AuctionsPlus

How to Register and Bid on AuctionsPlus

- 1 Go to www.auctionsplus.com.au to register at least 48 hours before the sale.
- 2 Select “**Sign Up**” in the top right hand corner.
- 3 Fill out your name, mobile number, email address and create a password.
- 4 Go to your emails and confirm the account.
- 5 Return to AuctionsPlus and log in.
- 6 Select “**Dashboard**” and then select “**Request Approval to Buy**”.
- 7 Fill in buyer details and once completed go back to Dashboard.
- 8 Complete buyer induction module (approx. 30 minutes).
- 9 AuctionsPlus will email you to let you know that your account has been approved.
- 10 Log in on sale day and connect to auction.
- 11 Bid using the two-step process – unlock the bid button and bid at that price.
- 12 If you are successful, the selling agent will contact you post sale to organise delivery and payment.

For more information please contact us on:

Phone: (02) 9262 4222

Email: info@auctionsplus.com.au

Full Catalogue Design by Sam Hamilton, Angus Australia

“Enhancing & Promoting the value of Angus”

ph: (02) 6773 4613 email: sam@angusaustralia.com.au

www.angusaustralia.com.au



Angus
AUSTRALIA

TransTasman Angus Cattle Evaluation - Mid June 2022 Reference Tables

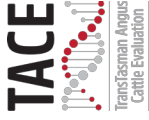
BREED AVERAGE EBVs																															
Calving Ease				Birth				Growth				Fertility				Carcase				Other				Structure				Selection Indexes			
CEDiR	CEDtrs	GL	BW	200	400	600	MCW	Milk	SS	SCWT	DTC	CWT	EMA	RIB	P8	RBV	IMF	NFLF	DOC	Angle	Claw	Claw	Greater	Profitability	Greater	Profitability	Greater	Profitability			
+2.2	+2.5	-4.7	+4.1	+50	+89	+116	+100	+17	+2.1	-4.6	+66	+6.2	+0.0	-0.4	+0.5	+2.1	+0.18	+7	+0.98	+0.85	+194	+335									

* Breed average represents the average EBV of all 2020 drop Australian Angus and Angus-influenced seedstock animals analysed in the Mid June 2022 TransTasman Angus Cattle Evaluation

PERCENTILE BANDS TABLE																																																						
Calving Ease				Birth				Growth				Fertility				Carcase				Other				Structure				Selection Indexes																										
Less	More	Diffculty	Diffculty	Lighter	Heavier	Lighter	Heavier	Lighter	Heavier	Lighter	Heavier	Lighter	Heavier	Lighter	Heavier	Lighter	Heavier	Longer	Shorter	Smaller	Scrotal	Size	Time to	Calving	Carcase	Weight	EMA	RIB	P8	More	Fat	Yield	IMF	Greater	Feed	Efficiency	More	Docile	Sound	Angle	Claw	Claw	Less	Sound	More	Sound	Less	Sound	Greater	Profitability	Greater	Profitability	Greater	Profitability
+11.0	+9.8	-10.6	-0.1	+68	+120	+161	+158	+28	+4.7	-9.9	+93	+12.7	+3.5	+3.6	+2.9	+4.6	-0.57	+36	+0.60	+0.42	+451	+420	+403	+391	+382	+373	+366	+359	+352	+346	+339	+333	+326	+319	+311	+302	+292	+280	+263	+235	+169	+194	+335											

* The percentile bands represent the distribution of EBVs across the 2020 drop Australian Angus and Angus-influenced seedstock animals analysed in the Mid June 2022 TransTasman Angus Cattle Evaluation .

TransTasman Angus Cattle Evaluation - Mid June 2022 Reference Tables



BREED AVERAGE EBVs										
	\$A	\$D	\$GN	\$GS	\$A-L	\$D-L	\$GN-L	\$GS-L	\$PRO	\$T
Brd Avg	+194	+160	+255	+178	+335	+290	+400	+376	+141	+179

* Breed average represents the average EBV of all 2020 drop Australian Angus and Angus-influenced seedstock animals analysed in the Mid June 2022 TransTasman Angus Cattle Evaluation .

PERCENTILE BANDS TABLE										
% Band	\$A	\$D	\$GN	\$GS	\$A-L	\$D-L	\$GN-L	\$GS-L	\$PRO	\$T
	Greater Profitability	Greater Profitability	Greater Profitability	Greater Profitability	Greater Profitability	Greater Profitability	Greater Profitability	Greater Profitability	Greater Profitability	Greater Profitability
1%	+279	+232	+375	+266	+451	+390	+548	+510	+218	+242
5%	+255	+212	+342	+241	+420	+363	+509	+474	+197	+225
10%	+243	+200	+324	+228	+403	+348	+487	+455	+185	+216
15%	+234	+193	+311	+219	+391	+338	+472	+441	+177	+210
20%	+227	+187	+301	+212	+382	+329	+459	+429	+171	+204
25%	+221	+182	+293	+206	+373	+322	+449	+420	+165	+200
30%	+216	+177	+285	+200	+366	+315	+439	+411	+161	+195
35%	+211	+173	+278	+195	+359	+309	+430	+403	+156	+191
40%	+206	+169	+271	+190	+352	+304	+421	+395	+152	+188
45%	+201	+165	+264	+185	+346	+298	+413	+388	+147	+184
50%	+196	+161	+257	+180	+339	+293	+404	+380	+143	+181
55%	+192	+158	+250	+175	+333	+287	+396	+373	+139	+177
60%	+187	+154	+244	+170	+326	+281	+387	+365	+134	+173
65%	+182	+149	+236	+164	+319	+275	+378	+357	+130	+170
70%	+176	+145	+229	+159	+311	+268	+368	+348	+125	+165
75%	+170	+140	+220	+153	+302	+261	+357	+338	+119	+161
80%	+163	+135	+211	+146	+292	+253	+344	+326	+112	+155
85%	+154	+128	+200	+137	+280	+242	+329	+313	+104	+149
90%	+142	+118	+184	+125	+263	+229	+308	+294	+93	+141
95%	+122	+102	+158	+106	+235	+205	+274	+264	+75	+127
99%	+80	+69	+104	+67	+169	+151	+196	+191	+38	+95
	Lower Profitability	Lower Profitability	Lower Profitability	Lower Profitability	Lower Profitability	Lower Profitability	Lower Profitability	Lower Profitability	Lower Profitability	Lower Profitability

* The percentile bands represent the distribution of EBVs across the 2020 drop Australian Angus and Angus-influenced seedstock animals analysed in the Mid June 2022 TransTasman Angus Cattle Evaluation .

Lot 1

MUNDARLO ENTICE R73^{SV}

AYOR73

DOB: 15/08/2020

Registration Status: HBR

Mating Type: AI

Genetic Status: AMF,CAF,DDF,NHF

SYDGEN EXCEED 3223^{PV}
 SYDGEN ENHANCE^{SV}
 SYDGEN RITA 2618[#]

SITZ UPWARD 307R^{SV}
 EXAR UPSHOT 0562B[#]
 EXAR BARBARA T020[#]

Sire: USA18952921 MOGCK ENTICE^{SV}

Dam: CMAH312 WELCOME SWALLOW UPSTART H312[#]

MOGCK SURE SHOT 253[#]
 MOGCK ERICA 2255[#]
 MOGCK ERICA 2162[#]

WOODHILL ADMIRAL 77K[#]
 WELCOME SWALLOW ADMIRAL JILT E271[#]
 MOHNEN JILT 910[#]

Mid June 2022 TransTasman Angus Cattle Evaluation

TACE	Dir	Dtrs	GL	BW	200 W	400 W	600 W	MCW	Milk	SS
EBV	+8.5	+1.9	-6.5	+2.6	+57	+106	+137	+122	+21	+3.6
ACC	55%	46%	84%	72%	70%	69%	70%	68%	62%	64%
Perc	8	61	22	18	18	10	12	16	24	6
D t C	CWT	EMA	Rib	Rump	RBV	IMF	NFI-F	Doc	Angle	Claw
-2.8	+77	+1.3	-1.2	-2.6	+0.7	+1.6	-0.49	-	+1.00	+1.00
36%	64%	61%	66%	62%	63%	61%	51%	-	72%	72%
80	16	98	81	93	40	67	2	-	56	79

Selection Indexes

\$A	\$D
\$195	\$165
52	46
\$GN	\$GS
\$259	\$176
49	55

Traits Observed: GL,BWT,Genomics

Notes: R73 low birth weight sire suitable for heifers. Top 8% of the breed for calving ease direct.

Purchaser:.....

\$:.....

Lot 2

MUNDARLO ENTICE R78^{SV}

AYOR78

DOB: 16/08/2020

Registration Status: APR

Mating Type: AI

Genetic Status: AMF,CAF,DDC,NHF

SYDGEN EXCEED 3223^{PV}
 SYDGEN ENHANCE^{SV}
 SYDGEN RITA 2618[#]

BON VIEW NEW DESIGN 1407[#]
 SITZ NEW DESIGN 458N[#]
 SITZ ELLUNAS ELITE 3308[#]

Sire: USA18952921 MOGCK ENTICE^{SV}

Dam: CMAG52 WELCOME SWALLOW G52[#]

MOGCK SURE SHOT 253[#]
 MOGCK ERICA 2255[#]
 MOGCK ERICA 2162[#]

K C F BENNETT PERFORMER[#]
 WELCOME SWALLOW DIVA E242[#]
 WELCOME SWALLOW FUTURE DIRECTION A82[#]

Mid June 2022 TransTasman Angus Cattle Evaluation

TACE	Dir	Dtrs	GL	BW	200 W	400 W	600 W	MCW	Milk	SS
EBV	+8.0	+2.8	-5.3	+2.9	+57	+98	+126	+81	+20	+3.5
ACC	56%	48%	84%	73%	71%	70%	72%	69%	63%	65%
Perc	10	52	39	23	16	26	29	83	25	7
D t C	CWT	EMA	Rib	Rump	RBV	IMF	NFI-F	Doc	Angle	Claw
-1.0	+72	+5.9	-1.3	-2.5	+1.4	+1.7	-0.28	-	+0.62	+0.58
39%	66%	62%	68%	64%	64%	63%	53%	-	70%	70%
95	30	52	83	92	17	63	7	-	2	7

Selection Indexes

\$A	\$D
\$237	\$195
14	14
\$GN	\$GS
\$312	\$220
15	15

Traits Observed: GL,BWT,Genomics

Notes: Suitable for heifers.

Purchaser:.....

\$:.....

Lot 3

MUNDARLO ENTICE R54^{SV}

AYOR54

DOB: 10/08/2020

Registration Status: APR

Mating Type: AI

Genetic Status: AMF,CAF,DDF,NHF

SYDGEN EXCEED 3223^{PV}
 SYDGEN ENHANCE^{SV}
 SYDGEN RITA 2618[#]

TE MANIA YORKSHIRE Y437^{PV}
 TE MANIA BERKLEY B1^{PV}
 TE MANIA LOWAN Z53[#]

Sire: USA18952921 MOGCK ENTICE^{SV}

Dam: CMAF157 WELCOME SWALLOW BERKLEY F157[#]

MOGCK SURE SHOT 253[#]
 MOGCK ERICA 2255[#]
 MOGCK ERICA 2162[#]

LEACHMAN BOOM TIME[#]
 WELCOME SWALLOW BOOMTIME C139[#]
 WELCOME SWALLOW X28[#]

Mid June 2022 TransTasman Angus Cattle Evaluation

TACE	Dir	Dtrs	GL	BW	200 W	400 W	600 W	MCW	Milk	SS
EBV	+3.9	+5.2	-9.5	+4.8	+64	+116	+153	+138	+15	+4.1
ACC	55%	48%	84%	72%	70%	69%	70%	68%	62%	64%
Perc	41	26	3	66	3	3	3	6	68	3
D t C	CWT	EMA	Rib	Rump	RBV	IMF	NFI-F	Doc	Angle	Claw
-4.2	+85	+2.3	-3.3	-4.2	+1.2	+2.6	-0.59	-	+0.98	+0.94
39%	65%	61%	67%	63%	63%	62%	52%	-	70%	70%
57	5	95	99	99	22	29	1	-	51	69

Selection Indexes

\$A	\$D
\$226	\$188
21	19
\$GN	\$GS
\$302	\$209
20	23

Traits Observed: GL,BWT,Genomics

Notes: R54 offers plenty of stretch & growth. Top 2% 400 day, Top 3% for 200 day & 600 day.

Purchaser:.....

\$:.....

Lot 4

MUNDARLO ENTICE R62^{SV}

AYOR62

DOB: 12/08/2020

Registration Status: APR

Mating Type: AI

Genetic Status: AMF,CAF,DDF,NHF

SYDGEN EXCEED 3223^{PV}
 SYDGEN ENHANCE^{SV}
 SYDGEN RITA 2618[#]

HYLINE RIGHT TIME 338[#]
 K C F BENNETT PERFORMER[#]
 K C F MISS 589 L182[#]

Sire: USA18952921 MOGCK ENTICE^{SV}

Dam: CMAH289 WELCOME SWALLOW PERFORMER H289[#]

MOGCK SURE SHOT 253[#]
 MOGCK ERICA 2255[#]
 MOGCK ERICA 2162[#]

MOHNNEN DYNAMITE 1356[#]
 WELCOME SWALLOW BOOM PRINCESS E126^{PV}
 WELCOME SWALLOW BANDO 9074 C136^{PV}

Mid June 2022 TransTasman Angus Cattle Evaluation

TACE	Dir	Dtrs	GL	BW	200 W	400 W	600 W	MCW	Milk	SS
EBV	+2.4	+2.5	-9.1	+5.6	+65	+107	+141	+117	+20	+3.7
ACC	56%	49%	84%	73%	71%	71%	72%	70%	63%	65%
Perc	54	55	4	81	3	8	9	23	31	5
D t C	CWT	EMA	Rib	Rump	RBV	IMF	NFI-F	Doc	Angle	Claw
-3.5	+78	+4.5	-0.7	-1.8	+2.2	+1.0	-0.55	-	+0.86	+0.84
39%	66%	63%	68%	64%	65%	63%	53%	-	70%	70%
69	14	75	69	82	5	86	2	-	23	48

Selection Indexes

\$A	\$D
\$234	\$198
15	12
\$GN	\$GS
\$300	\$214
21	19

Traits Observed: GL,BWT,Genomics

Notes: Son of Entice out of Welcome Swallow H289, top 3% for 200 day, top 7% 400 day & top 8% for 600 day growth.

Purchaser:.....

\$:.....

Lot 5

MUNDARLO ENTICE R89^{SV}

AYOR89

DOB: 20/08/2020

Registration Status: HBR

Mating Type: AI

Genetic Status: AMF,CAC,DDF,NHF

SYDGEN EXCEED 3223^{PV}
 SYDGEN ENHANCE^{SV}
 SYDGEN RITA 2618[#]

BALDRIDGE KABOOM K243 KCF[#]
 MOHNNEN DYNAMITE 1356[#]
 MOHNNEN JILT 910[#]

Sire: USA18952921 MOGCK ENTICE^{SV}

Dam: CMAH713 WELCOME SWALLOW DYNAMITE A70 H713[#]

MOGCK SURE SHOT 253[#]
 MOGCK ERICA 2255[#]
 MOGCK ERICA 2162[#]

S A F 598 BANDO 5175[#]
 WELCOME SWALLOW BANDO DESIGN A70^{PV}
 TE MANIA BARWON X142[#]

Mid June 2022 TransTasman Angus Cattle Evaluation

TACE	Dir	Dtrs	GL	BW	200 W	400 W	600 W	MCW	Milk	SS
EBV	+1.4	+1.7	-4.8	+4.3	+60	+110	+141	+116	+16	+3.2
ACC	55%	47%	84%	72%	70%	70%	71%	68%	62%	65%
Perc	61	62	47	54	9	6	9	23	65	12
D t C	CWT	EMA	Rib	Rump	RBV	IMF	NFI-F	Doc	Angle	Claw
-2.8	+76	+7.6	-2.3	-4.5	+3.0	+1.7	-0.27	-	+1.00	+0.94
38%	65%	62%	67%	63%	64%	62%	52%	-	70%	70%
80	19	26	96	99	1	63	8	-	56	69

Selection Indexes

\$A	\$D
\$233	\$201
16	10
\$GN	\$GS
\$301	\$217
20	17

Traits Observed: GL,BWT,Genomics

Notes: This bull shows excellent weight and growth for age.

Purchaser:.....

\$:.....

Lot 6

MUNDARLO ENTICE R88^{SV}

AYOR88

DOB: 20/08/2020

Registration Status: APR

Mating Type: AI

Genetic Status: AMF,CAF,DDF,NHF

SYDGEN EXCEED 3223^{PV}
 SYDGEN ENHANCE^{SV}
 SYDGEN RITA 2618[#]

C R A BEXTOR 872 5205 608[#]
 TC ABERDEEN 759^{SV}
 TC BLACKBIRD 4034[#]

Sire: USA18952921 MOGCK ENTICE^{SV}

Dam: CMAH333 WELCOME SWALLOW ABERDEEN H333[#]

MOGCK SURE SHOT 253[#]
 MOGCK ERICA 2255[#]
 MOGCK ERICA 2162[#]

LEACHMAN BOOM TIME[#]
 WELCOME SWALLOW BOOMTIME THEO W29 D221[#]
 WELCOME SWALLOW W29[#]

Mid June 2022 TransTasman Angus Cattle Evaluation

TACE	Dir	Dtrs	GL	BW	200 W	400 W	600 W	MCW	Milk	SS
EBV	-6.1	-0.6	-3.6	+7.6	+78	+133	+175	+151	+20	+5.8
ACC	56%	48%	84%	73%	71%	70%	72%	69%	63%	65%
Perc	94	80	67	98	1	1	1	2	27	1
D t C	CWT	EMA	Rib	Rump	RBV	IMF	NFI-F	Doc	Angle	Claw
-5.0	+92	+3.3	-1.6	-2.8	+1.9	+1.5	-0.31	-	+0.98	+0.54
39%	66%	62%	67%	64%	64%	63%	52%	-	70%	70%
43	2	89	88	94	8	71	6	-	51	4

Selection Indexes

\$A	\$D
\$246	\$208
9	7
\$GN	\$GS
\$323	\$228
11	10

Traits Observed: GL,BWT,Genomics

Notes: Top 1% for 200, 400 & 600 day growth.

Purchaser:.....

\$:.....

Lot 7

MUNDARLO HONOUR R82^{PV}

AYOR82

DOB: 17/08/2020

Registration Status: HBR

Mating Type: Natural

Genetic Status: AMF,CAF,DDF,NHF

TE MANIA BERKLEY B1^{PV}
 PATHFINDER GENESIS G357^{PV}
 PATHFINDER DIRECTION D245^{SV}

ARDROSSAN HONOUR H255^{PV}
 ARDROSSAN HONOUR M103^{SV}
 ARDROSSAN EVERELDA ENTENSE F226^{PV}

Sire: NAQP221 ARDROSSAN GENESIS P221^{PV}

Dam: NAQP138 ARDROSSAN WILCOOLA P138^{SV}

RENNYLEA EDMUND E11^{PV}
 ARDROSSAN MARBLE L10^{SV}
 ARDROSSAN MARBLE J313[#]

EF COMPLEMENT 8088^{PV}
 ARDROSSAN WILCOOLA M92[#]
 ARDROSSAN WILCOOLA J315^{SV}

Mid June 2022 TransTasman Angus Cattle Evaluation

TACE	Dir	Dtrs	GL	BW	200 W	400 W	600 W	MCW	Milk	SS
EBV	+8.1	+6.1	-11.8	+3.7	+47	+84	+121	+106	+21	+1.0
ACC	53%	48%	67%	70%	69%	68%	69%	66%	61%	61%
Perc	10	18	1	40	66	68	40	39	20	87
D t C	CWT	EMA	Rib	Rump	RBV	IMF	NFI-F	Doc	Angle	Claw
-4.2	+68	+5.8	-0.2	-0.9	+0.9	+2.3	+0.60	-	+1.44	+0.76
40%	64%	61%	67%	63%	64%	61%	54%	-	63%	61%
57	44	54	54	63	33	39	91	-	99	31

Selection Indexes

\$A	\$D
\$198	\$152
48	63
\$GN	\$GS
\$259	\$182
49	48

Traits Observed: BWT,Genomics

Notes: Stylish sire. Top 1% of the breed for gestation length & top 8% for calving ease direct. Suitable for heifers.

Purchaser:.....

\$:.....

Lot 8

MUNDARLO EQUATOR R113^{SV}

AYOR113

DOB: 06/09/2020

Registration Status: HBR

Mating Type: Natural

Genetic Status: AMF,CAF,DDF,NHF

TE MANIA BERKLEY B1^{PV}
 PATHFINDER GENESIS G357^{PV}
 PATHFINDER DIRECTION D245^{SV}

ARDROSSAN EQUATOR A241^{PV}
 ARDROSSAN EQUATOR E151^{SV}
 ARDROSSAN WILCOOLA W168[#]

Sire: NAQP221 ARDROSSAN GENESIS P221^{PV}

Dam: NAQP550 ARDROSSAN WILCOOLA P550[#]

RENNYLEA EDMUND E11^{PV}
 ARDROSSAN MARBLE L10^{SV}
 ARDROSSAN MARBLE J313[#]

ARDROSSAN DIRECTION W109^{PV}
 ARDROSSAN WILCOOLA C147[#]
 ARDROSSAN WILCOOLA V093[#]

Mid June 2022 TransTasman Angus Cattle Evaluation

TACE	Dir	Dtrs	GL	BW	200 W	400 W	600 W	MCW	Milk	SS
EBV	+4.6	+3.7	-9.8	+4.4	+48	+86	+122	+116	+15	+2.5
ACC	55%	50%	67%	70%	69%	68%	69%	67%	62%	62%
Perc	34	42	3	57	58	62	38	23	70	29
D t C	CWT	EMA	Rib	Rump	RBV	IMF	NFI-F	Doc	Angle	Claw
-5.1	+73	+7.0	+0.4	+0.4	+0.5	+2.5	+0.67	-	+1.40	+0.88
41%	65%	62%	67%	63%	65%	62%	54%	-	63%	60%
41	26	34	37	29	49	32	94	-	99	57

Selection Indexes

\$A	\$D
\$193	\$150
54	65
\$GN	\$GS
\$251	\$180
55	50

Traits Observed: Genomics

Notes: R113 Offers plenty of stretch and muscle. Top 2% of the breed for gestation length

Purchaser:.....

\$:.....

Lot 9

PREMIER NAPA R56^{PV}

ASHR56

DOB: 14/07/2020

Registration Status: HBR

Mating Type: AI

Genetic Status: AMF,CAF,DDF,NHF

SCHURRTOP REALITY X723[#]
 MATAURI REALITY 839[#]
 MATAURI 06663[#]

CONNELLY CAPITALIST 028[#]
 LD CAPITALIST 316^{PV}
 LD DIXIE ERICA 2053[#]

Sire: NJWN498 MILWILLAH NAPA N498^{PV}

Dam: ASHP172 PREMIER LOLA P172^{PV}

COONAMBLE ELEVATOR E11^{PV}
 MILWILLAH BARUNAH H224[#]
 MILWILLAH BARUNAH B55^{PV}

H A POWER ALLIANCE 1025[#]
 ST PAULS LOLA C108^{PV}
 ST PAULS 036 LOLA Z321^{PV}

Mid June 2022 TransTasman Angus Cattle Evaluation

TACE	Dir	Dtrs	GL	BW	200 W	400 W	600 W	MCW	Milk	SS
EBV	+9.4	+9.3	-2.4	+2.9	+42	+85	+102	+72	+19	+2.7
ACC	57%	51%	83%	72%	71%	70%	70%	67%	61%	64%
Perc	4	2	84	23	85	66	81	91	35	23
D t C	CWT	EMA	Rib	Rump	RBV	IMF	NFI-F	Doc	Angle	Claw
-5.6	+55	+0.5	+4.3	+4.3	-3.2	+2.8	+0.83	-	+1.02	+0.68
41%	64%	62%	66%	63%	63%	61%	53%	-	66%	66%
32	85	99	1	1	99	23	98	-	60	17

Selection Indexes

\$A	\$D
\$187	\$158
60	55
\$GN	\$GS
\$247	\$172
58	59

Traits Observed: GL,BWT,Genomics

Notes: We purchased this bull at the Premier Angus dispersal sale with his mother. Low birth weight sire in the top 2% for calving ease DTRS. Top 5% for calving ease direct. Top 1% for P8 & RIB. Suitable for heifers

Purchaser:.....

\$:.....

Lot 10

MUNDARLO NERO R34^{SV}

AYOR34

DOB: 24/07/2020

Registration Status: APR

Mating Type: AI

Genetic Status: AMF,CAF,DDF,NHF

TE MANIA JENKINS J89^{SV}
TE MANIA LEGACY L135^{PV}
TE MANIA DANDLOO J13^{SV}

TE MANIA BERKLEY B1^{PV}
TE MANIA JEROME J131^{PV}
TE MANIA LOWAN G694^{SV}

Sire: VTMN181 TE MANIA NERO N181^{PV}

Dam: DHQP84 VALDEMAR P84[#]

TE MANIA GARTH G67^{PV}
TE MANIA LOWAN L1251^{PV}
TE MANIA LOWAN G694^{SV}

TE MANIA JAMESON J362^{SV}
VALDEMAR M416[#]
TE MANIA JAPARA F418[#]

Mid June 2022 TransTasman Angus Cattle Evaluation

TACE	Dir	Dtrs	GL	BW	200 W	400 W	600 W	MCW	Milk	SS
EBV	-6.6	-4.9	-3.0	+6.1	+55	+97	+136	+116	+29	+3.9
ACC	58%	51%	84%	73%	72%	72%	72%	69%	63%	67%
Perc	95	96	76	88	23	28	14	24	1	4
D t C	CWT	EMA	Rib	Rump	RBV	IMF	NFI-F	Doc	Angle	Claw
-8.0	+85	+12.2	-1.9	-3.1	+1.9	+3.3	+0.49	-	+1.24	+0.86
41%	67%	65%	70%	66%	66%	65%	58%	-	61%	60%
7	5	2	92	96	8	12	84	-	94	52

Selection Indexes

\$A	\$D
\$218	\$166
28	44
\$GN	\$GS
\$295	\$207
24	24

Traits Observed: GL,BWT,Genomics

Notes: Steve's Pick. R34 has a lot to offer: top 2% EMA; top 6% for carcass weight; top 10% for IMF.

Purchaser:.....

\$:.....

Lot 11

MUNDARLO ENTICE R86^{SV}

AYOR86

DOB: 19/08/2020

Registration Status: APR

Mating Type: AI

Genetic Status: AMF,CAF,DDF,NHF

SYDGEN EXCEED 3223^{PV}
SYDGEN ENHANCE^{SV}
SYDGEN RITA 2618[#]

KAROO W109 DIRECTION Z181^{SV}
CARABAR DOCKLANDS D62^{PV}
CARABAR BLACKCAP MARY B12^{PV}

Sire: USA18952921 MOGCK ENTICE^{SV}

Dam: AYOL26 MUNDARLO L26[#]

MOGCK SURE SHOT 253[#]
MOGCK ERICA 2255[#]
MOGCK ERICA 2162[#]

TC ABERDEEN 759^{SV}
WELCOME SWALLOW ABERDEEN H333[#]
WELCOME SWALLOW BOOMTIME THEO W29 D221[#]

Mid June 2022 TransTasman Angus Cattle Evaluation

TACE	Dir	Dtrs	GL	BW	200 W	400 W	600 W	MCW	Milk	SS
EBV	-3.7	+0.1	-4.7	+7.6	+73	+127	+171	+147	+20	+4.1
ACC	56%	49%	84%	73%	71%	70%	71%	69%	63%	65%
Perc	88	75	49	98	1	1	1	3	30	3
D t C	CWT	EMA	Rib	Rump	RBV	IMF	NFI-F	Doc	Angle	Claw
-4.0	+92	+6.6	-2.8	-4.1	+2.1	+2.1	-0.53	-	+1.10	+0.62
39%	66%	63%	68%	64%	65%	63%	53%	-	69%	69%
61	2	40	98	99	5	47	2	-	77	10

Selection Indexes

\$A	\$D
\$241	\$198
12	12
\$GN	\$GS
\$319	\$223
12	13

Traits Observed: GL,BWT,Genomics

Notes: Excellent growthy sire in the top 1% of the breed for 200, 400 & 600 day growth. Top 1% for carcass weight.

Purchaser:.....

\$:.....

Lot 12

MUNDARLO ENTICE R63^{SV}

AYOR63

DOB: 17/08/2020

Registration Status: HBR

Mating Type: AI

Genetic Status: AMF,CAF,DDF,NHF

SYDGEN EXCEED 3223^{PV}
SYDGEN ENHANCE^{SV}
SYDGEN RITA 2618[#]

C R A BEXTOR 872 5205 608[#]
TC ABERDEEN 759^{SV}
TC BLACKBIRD 4034[#]

Sire: USA18952921 MOGCK ENTICE^{SV}

Dam: CMAH345 WELCOME SWALLOW H345[#]

MOGCK SURE SHOT 253[#]
MOGCK ERICA 2255[#]
MOGCK ERICA 2162[#]

SITZ NEW DESIGN 458N[#]
WELCOME SWALLOW DESIGN 458N E251[#]
TE MANIA BARUNAH X171^{SV}

Mid June 2022 TransTasman Angus Cattle Evaluation

TACE	Dir	Dtrs	GL	BW	200 W	400 W	600 W	MCW	Milk	SS
EBV	+5.2	+2.4	-3.0	+3.2	+60	+108	+135	+93	+23	+2.2
ACC	55%	48%	84%	73%	71%	70%	71%	69%	62%	65%
Perc	29	56	76	29	8	8	15	63	11	41
D t C	CWT	EMA	Rib	Rump	RBV	IMF	NFI-F	Doc	Angle	Claw
-2.2	+74	+4.5	-1.1	-1.7	+0.4	+2.2	-0.51	-	+0.96	+0.84
39%	65%	62%	67%	63%	64%	62%	52%	-	70%	70%
87	24	75	79	81	53	43	2	-	45	48

Selection Indexes

\$A	\$D
\$247	\$206
8	8
\$GN	\$GS
\$334	\$230
7	10

Traits Observed: GL,BWT,Genomics

Notes: Stylish sire with plenty of bone. Suitable for heifers.

Purchaser:.....

\$:.....

Lot 13

MUNDARLO L10 R124^{SV}

AYOR124

DOB: 18/09/2020

Registration Status: APR

Mating Type: Natural

Genetic Status: AMF,CAF,DDF,NHF

CONNEALY CONSENSUS[#]
 CONNEALY EARNAN 076E^{PV}
 BRAZILA OF CONANGA 3991 839A[#]

BASIN FRANCHISE P142[#]
 EF COMPLEMENT 8088^{PV}
 EF EVERELDA ENTENSE 6117[#]

Sire: CMAL010 WELCOME SWALLOW L010^{SV}

Dam: AYON32 MUNDARLO N32[#]

TE MANIA BERKLEY B1^{PV}
 WELCOME SWALLOW BERKLEY H208[#]
 WELCOME SWALLOW ABERDEEN F156[#]

BOOROOMOOKA ON TIME D105^{PV}
 WELCOME SWALLOW G50[#]
 WELCOME SWALLOW TOTAL Z148 E111^{SV}

Mid June 2022 TransTasman Angus Cattle Evaluation

TACE	Dir	Dtrs	GL	BW	200 W	400 W	600 W	MCW	Milk	SS
EBV	+2.7	+7.2	-6.4	+3.2	+53	+100	+127	+98	+19	+1.7
ACC	55%	51%	67%	71%	69%	69%	70%	69%	63%	63%
Perc	51	10	23	29	33	20	27	55	36	63
D t C	CWT	EMA	Rib	Rump	RBV	IMF	NFI-F	Doc	Angle	Claw
-6.2	+78	+6.3	+2.0	+1.4	-1.2	+2.3	+0.27	-	+0.94	+0.90
42%	65%	62%	67%	64%	64%	62%	55%	-	63%	61%
23	14	45	8	12	95	39	62	-	40	61

Selection Indexes

\$A	\$D
\$225	\$188
22	20
\$GN	\$GS
\$294	\$210
24	22

Traits Observed: BWT,Genomics

Notes: Powerful young bull, sired by Welcome Swallows L010. This bull offers plenty of phenotype. Suitable for heifers.

Purchaser:

\$:

Lot 14

MUNDARLO NESTOR S1^{SV}

AYO21S1

DOB: 15/01/2021

Registration Status: APR

Mating Type: Natural

Genetic Status: AM1%,CA1%,DDF,NHF

G A R TWINHEARTS 8418^{SV}
 TE MANIA JENKINS J89^{SV}
 TE MANIA JAPARA G115[#]

TUWHARETOA REGENT D145^{PV}
 TE MANIA GARAH G959^E
 TE MANIA JEDDA C622^{PV}

Sire: VTMM436 TE MANIA NESTOR N436^{SV}

Dam: HNIN44 WIDGEEGONGA N44[#]

AYRVALE BARTEL E7^{PV}
 TE MANIA DANDLOO J13^{SV}
 TE MANIA DANDLOO G673[#]

TE MANIA BERKLEY B1^{PV}
 WIDGEEGONGA G12[#]
 WIDGEEGONGA HNI E53[#]

Mid June 2022 TransTasman Angus Cattle Evaluation

TACE	Dir	Dtrs	GL	BW	200 W	400 W	600 W	MCW	Milk	SS
EBV	-	-	-	-	-	-	-	-	-	-
ACC	-	-	-	-	-	-	-	-	-	-
Perc	-	-	-	-	-	-	-	-	-	-
D t C	CWT	EMA	Rib	Rump	RBV	IMF	NFI-F	Doc	Angle	Claw
-	-	-	-	-	-	-	-	-	-	-
-	-	-	-	-	-	-	-	-	-	-
-	-	-	-	-	-	-	-	-	-	-

Selection Indexes

\$A	\$D
-	-
-	-
\$GN	\$GS
-	-
-	-

Traits Observed: BWT

Notes: Sired by Te Mania Nestor N436.

Purchaser:

\$:

Lot 15

MUNDARLO MAGNETIC S25^{SV}

AYO21S25

DOB: 02/02/2021

Registration Status: APR

Mating Type: Natural

Genetic Status: AMF,CAF,DDF,NHF

G A R TWINHEARTS 8418^{SV}
 TE MANIA JERILDERIE J10^{SV}
 TE MANIA DANDLOO G649[#]

TE MANIA FESTIVITY F327^{PV}
 TE MANIA KOKODA K441^{PV}
 TE MANIA LOWAN Z412^{PV}

Sire: VTMM79 TE MANIA MAGNETIC M79^{PV}

Dam: HNIN219 WIDGEEGONGA N219[#]

TE MANIA GARTH G67^{PV}
 TE MANIA BARWON K256^{SV}
 TE MANIA BARWON F720[#]

TE MANIA FEZ F341[#]
 WIDGEEGONGA J162[#]
 WIDGEEGONGA F110[#]

Mid June 2022 TransTasman Angus Cattle Evaluation

TACE	Dir	Dtrs	GL	BW	200 W	400 W	600 W	MCW	Milk	SS
EBV	+4.7	+7.1	-7.2	+3.1	+44	+81	+97	+74	+21	+1.2
ACC	51%	44%	59%	70%	61%	62%	62%	62%	54%	52%
Perc	34	11	15	27	79	76	87	89	19	82
D t C	CWT	EMA	Rib	Rump	RBV	IMF	NFI-F	Doc	Angle	Claw
-9.0	+53	+7.2	+0.9	+0.0	+0.0	+3.0	+0.03	-	-	-
35%	56%	54%	59%	56%	55%	55%	43%	-	-	-
3	89	31	24	39	69	18	31	-	-	-

Selection Indexes

\$A	\$D
\$229	\$195
19	14
\$GN	\$GS
\$300	\$212
21	20

Traits Observed: BWT

Notes: Easy care with plenty of power behind him. Suitable for heifers.

Purchaser:

\$:

Lot 16

MUNDARLO NESTOR S4^{SV}

AYO21S4

DOB: 22/01/2021

Registration Status: **APR**

Mating Type: **Natural**

Genetic Status: **AMF,CAF,DDF,NHF**

G A R TWINHEARTS 8418^{SV}
 TE MANIA JENKINS J89^{SV}
 TE MANIA JAPARA G115[#]

LAWSONS TANK B1155^{PV}
 TE MANIA GOVERNOR G576^{PV}
 TE MANIA DANDLOO E95^{PV}

Sire: VTMN436 TE MANIA NESTOR N436^{SV}

Dam: HNIN112 WIDGEEGONGA N112[#]

AYRVALE BARTEL E7^{PV}
 TE MANIA DANDLOO J13^{SV}
 TE MANIA DANDLOO G673[#]

TE MANIA COPIOUS C1073[#]
 WIDGEEGONGA G52[#]
 WIDGEEGONGA D174[#]

Mid June 2022 TransTasman Angus Cattle Evaluation

TACE	Dir	Dtrs	GL	BW	200 W	400 W	600 W	MCW	Milk	SS
EBV	-	-	-	-	-	-	-	-	-	-
ACC	-	-	-	-	-	-	-	-	-	-
Perc	-	-	-	-	-	-	-	-	-	-
D t C	CWT	EMA	Rib	Rump	RBV	IMF	NFI-F	Doc	Angle	Claw
-	-	-	-	-	-	-	-	-	-	-
-	-	-	-	-	-	-	-	-	-	-
-	-	-	-	-	-	-	-	-	-	-

Selection Indexes

\$A	\$D
-	-
-	-
\$GN	\$GS
-	-
-	-

Traits Observed: BWT

Notes: Easy care young sire with plenty of phenotype. Suitable for heifers.

Purchaser:.....

\$:.....

Lot 17

MUNDARLO MAGNETIC S18^{SV}

AYO21S18

DOB: 11/02/2021

Registration Status: **APR**

Mating Type: **Natural**

Genetic Status: **AMFU,CAFU,DDF,NHF**

G A R TWINHEARTS 8418^{SV}
 TE MANIA JERILDERIE J10^{SV}
 TE MANIA DANDLOO G649[#]

TE MANIA GARTH G67^{PV}
 TE MANIA KANTIKI K202^{SV}
 TE MANIA JAPARA F691[#]

Sire: VTMM79 TE MANIA MAGNETIC M79^{PV}

Dam: HNIP166 WIDGEEGONGA P166[#]

TE MANIA GARTH G67^{PV}
 TE MANIA BARWON K256^{SV}
 TE MANIA BARWON F720[#]

TE MANIA JEROME J131^{PV}
 WIDGEEGONGA L17[#]
 WIDGEEGONGA J2[#]

Mid June 2022 TransTasman Angus Cattle Evaluation

TACE	Dir	Dtrs	GL	BW	200 W	400 W	600 W	MCW	Milk	SS
EBV	+7.8	+7.5	-8.6	+2.8	+47	+85	+107	+92	+22	+1.8
ACC	50%	45%	60%	63%	62%	63%	64%	62%	54%	52%
Perc	11	8	6	21	63	64	72	65	14	58
D t C	CWT	EMA	Rib	Rump	RBV	IMF	NFI-F	Doc	Angle	Claw
-10.3	+61	+7.2	+0.8	+0.1	-0.5	+3.8	+0.14	-	-	-
36%	57%	55%	60%	57%	56%	56%	44%	-	-	-
1	69	31	26	36	84	5	45	-	-	-

Selection Indexes

\$A	\$D
\$239	\$195
13	14
\$GN	\$GS
\$320	\$224
12	12

Traits Observed: None

Notes: S18 son of Te Mania Magnetic. Stylish young sire. Suitable for heifers.

Purchaser:.....

\$:.....

Lot 18

MUNDARLO MAGNETIC S11^{SV}

AYO21S11

DOB: 31/01/2021

Registration Status: **APR**

Mating Type: **Natural**

Genetic Status: **AMF,CAF,DDF,NHF**

G A R TWINHEARTS 8418^{SV}
 TE MANIA JERILDERIE J10^{SV}
 TE MANIA DANDLOO G649[#]

TUWHARETOA REGENT D145^{PV}
 TE MANIA JACKHAMMER J93^{SV}
 TE MANIA MOONGARA G342[#]

Sire: VTMM79 TE MANIA MAGNETIC M79^{PV}

Dam: HNIP240 WIDGEEGONGA P240[#]

TE MANIA GARTH G67^{PV}
 TE MANIA BARWON K256^{SV}
 TE MANIA BARWON F720[#]

TE MANIA GARTH G67^{PV}
 WIDGEEGONGA J37[#]
 WIDGEEGONGA G110[#]

Mid June 2022 TransTasman Angus Cattle Evaluation

TACE	Dir	Dtrs	GL	BW	200 W	400 W	600 W	MCW	Milk	SS
EBV	+2.0	+5.1	-6.7	+4.8	+49	+87	+109	+89	+22	+1.7
ACC	50%	45%	59%	68%	62%	62%	63%	61%	54%	52%
Perc	57	27	20	66	51	58	67	71	14	63
D t C	CWT	EMA	Rib	Rump	RBV	IMF	NFI-F	Doc	Angle	Claw
-10.1	+61	+8.7	+0.9	+0.6	+0.0	+3.6	+0.11	-	-	-
36%	56%	54%	60%	57%	56%	55%	44%	-	-	-
1	69	15	24	25	69	7	41	-	-	-

Selection Indexes

\$A	\$D
\$242	\$200
11	11
\$GN	\$GS
\$321	\$227
12	11

Traits Observed: BWT

Notes: Stylish young sire with excellent growth & weight for age. Son of Te Mania Magnetic

Purchaser:.....

\$:.....

Lot 19

MUNDARLO NESTOR S5^{SV}

AYO21S5

DOB: 24/01/2021

Registration Status: APR

Mating Type: Natural

Genetic Status: AMF,CAF,DDF,NHF

G A R TWINHEARTS 8418^{SV}
TE MANIA JENKINS J89^{SV}
TE MANIA JAPARA G115[#]

G A R TWINHEARTS 8418^{SV}
TE MANIA JALTA J314[#]
TE MANIA BARUNAH G402[#]

Sire: VTMN436 TE MANIA NESTOR N436^{SV}

Dam: HNIN179 WIDGEEGONGA N179[#]

AYRVALE BARTEL E7^{PV}
TE MANIA DANDLOO J13^{SV}
TE MANIA DANDLOO G673[#]

TE MANIA BERKLEY B1^{PV}
WIDGEEGONGA J34[#]
WIDGEEGONGA G166[#]

Mid June 2022 TransTasman Angus Cattle Evaluation

TACE	Dir	Dtrs	GL	BW	200 W	400 W	600 W	MCW	Milk	SS
EBV	-	-	-	-	-	-	-	-	-	-
ACC	-	-	-	-	-	-	-	-	-	-
Perc	-	-	-	-	-	-	-	-	-	-
D t C	CWT	EMA	Rib	Rump	RBV	IMF	NFI-F	Doc	Angle	Claw
-	-	-	-	-	-	-	-	-	-	-
-	-	-	-	-	-	-	-	-	-	-
-	-	-	-	-	-	-	-	-	-	-

Selection Indexes

\$A	\$D
-	-
-	-
\$GN	\$GS
-	-
-	-

Traits Observed: BWT

Notes: A very stylish young sire by Te Mania Magnetic. Suitable for heifers.

Purchaser:.....

\$:.....

Lot 20

MUNDARLO L010 R1^{SV}

AYOR1

DOB: 01/03/2020

Registration Status: APR

Mating Type: Natural

Genetic Status: AMF,CAF,DDF,NHF

CONNELY CONSENSUS[#]
CONNELY EARNAN 076E^{PV}
BRAZILA OF CONANGA 3991 839A[#]

BASIN FRANCHISE P142[#]
EF COMPLEMENT 8088^{PV}
EF EVERELDA ENTENSE 6117[#]

Sire: CMAL010 WELCOME SWALLOW L010^{SV}

Dam: AYON26 MUNDARLO N26[#]

TE MANIA BERKLEY B1^{PV}
WELCOME SWALLOW BERKLEY H208[#]
WELCOME SWALLOW ABERDEEN F156[#]

EXAR UPSHOT 0562B[#]
WELCOME SWALLOW UPSTART H310[#]
WELCOME SWALLOW MIRREN C186^{SV}

Mid June 2022 TransTasman Angus Cattle Evaluation

TACE	Dir	Dtrs	GL	BW	200 W	400 W	600 W	MCW	Milk	SS
EBV	+4.9	+7.6	-5.3	+2.6	+41	+74	+95	+75	+21	+0.1
ACC	55%	50%	66%	70%	68%	67%	69%	67%	62%	62%
Perc	32	8	39	18	87	90	89	89	22	98
D t C	CWT	EMA	Rib	Rump	RBV	IMF	NFI-F	Doc	Angle	Claw
-5.7	+55	+6.3	+0.9	+1.1	-0.2	+1.3	+0.16	-	+0.98	+0.84
41%	63%	60%	66%	62%	63%	61%	53%	-	65%	64%
31	86	45	24	16	76	78	48	-	51	48

Selection Indexes

\$A	\$D
\$182	\$152
65	62
\$GN	\$GS
\$229	\$162
70	68

Traits Observed: BWT,Genomics

Notes: Suitable for use over heifers.

Purchaser:.....

\$:.....

Lot 21

MUNDARLO L010 R2^{SV}

AYOR2

DOB: 12/03/2020

Registration Status: APR

Mating Type: Natural

Genetic Status: AMF,CAF,DDF,NHF

CONNELY CONSENSUS[#]
CONNELY EARNAN 076E^{PV}
BRAZILA OF CONANGA 3991 839A[#]

RENNYLEA EDMUND E11^{PV}
ARDROSSAN HONOUR H255^{PV}
ARDROSSAN WILCOOLA D17^{PV}

Sire: CMAL010 WELCOME SWALLOW L010^{SV}

Dam: NXTN093 TWYNAM N093[#]

TE MANIA BERKLEY B1^{PV}
WELCOME SWALLOW BERKLEY H208[#]
WELCOME SWALLOW ABERDEEN F156[#]

S A V 5175 BANDO 0699[#]
TWYNAM F241[#]
TWYNAM Z65^{SV}

Mid June 2022 TransTasman Angus Cattle Evaluation

TACE	Dir	Dtrs	GL	BW	200 W	400 W	600 W	MCW	Milk	SS
EBV	-3.0	+0.5	-4.6	+4.2	+44	+79	+104	+84	+19	+1.0
ACC	54%	49%	68%	71%	68%	68%	69%	67%	62%	62%
Perc	86	73	51	52	77	81	77	79	32	87
D t C	CWT	EMA	Rib	Rump	RBV	IMF	NFI-F	Doc	Angle	Claw
-7.0	+62	+9.0	+0.9	-0.4	+0.7	+1.8	+0.60	-	+0.84	+0.74
42%	64%	61%	67%	63%	64%	61%	54%	-	63%	61%
14	66	13	24	50	40	59	91	-	19	27

Selection Indexes

\$A	\$D
\$187	\$154
60	60
\$GN	\$GS
\$239	\$170
64	60

Traits Observed: BWT,Genomics

Notes: R2 offers plenty of stretch. Sired by Welcome Swallows L010

Purchaser:.....

\$:.....

Lot 22

MUNDARLO MONARCH R33^{SV}

AYOR33

DOB: 24/07/2020

Registration Status: APR

Mating Type: AI

Genetic Status: AMF,CAF,DDF,NHF

C R A BEXTOR 872 5205 608#
G A R PROPHET^{SV}
G A R OBJECTIVE 1885#

PATHFINDER GOLDMARK D189^{PV}
TE MANIA LAX L557^{SV}
TE MANIA LOWAN G253#

Sire: VTMM1254 TE MANIA MONARCH M1254^{PV}

Dam: DHQP326 VALDEMAR P326#

TUWHARETOA REGENT D145^{PV}
TE MANIA DANDLOO G508^F
TE MANIA DANDLOO D20^{SV}

TE MANIA GASKIN G555^{SV}
VALDEMAR BARUNAH L34#
TE MANIA JEDDA C100#

Mid June 2022 TransTasman Angus Cattle Evaluation

TACE	Dir	Dtrs	GL	BW	200 W	400 W	600 W	MCW	Milk	SS
EBV	-3.6	-1.9	-4.1	+7.0	+61	+96	+131	+118	+24	+1.6
ACC	57%	52%	83%	72%	71%	71%	71%	70%	65%	66%
Perc	88	87	59	95	8	30	21	21	8	67
D t C	CWT	EMA	Rib	Rump	RBV	IMF	NFI-F	Doc	Angle	Claw
-5.6	+78	+6.3	-2.3	-3.1	+1.0	+3.3	+0.23	-	+0.84	+0.76
41%	67%	64%	69%	66%	66%	64%	56%	-	67%	66%
32	14	45	96	96	29	12	57	-	19	31

Selection Indexes

\$A	\$D
\$219	\$166
27	45
\$GN	\$GS
\$310	\$200
16	31

Traits Observed: GL,BWT,Genomics

Notes: R33 offers plenty of growth being in the top 8% of the breed for 200 days.

Purchaser:.....

\$:.....

Lot 23

MUNDARLO MONARCH R19#

AYOR19

DOB: 20/07/2020

Registration Status: APR

Mating Type: AI

Genetic Status: AM12%,CAFU,DDFU,NHFU

C R A BEXTOR 872 5205 608#
G A R PROPHET^{SV}
G A R OBJECTIVE 1885#

TE MANIA FLAME F565^{SV}
TE MANIA KIRK K226^{PV}
TE MANIA BARUNAH D120^{SV}

Sire: VTMM1254 TE MANIA MONARCH M1254^{PV}

Dam: DHQP48 VALDEMAR P48#

TUWHARETOA REGENT D145^{PV}
TE MANIA DANDLOO G508^F
TE MANIA DANDLOO D20^{SV}

DUNOON Z191 BRINDABELLA B197^{PV}
VALDEMAR QUEANBEYAN F24#
TE MANIA QUEANBEYAN D172#

Mid June 2022 TransTasman Angus Cattle Evaluation

TACE	Dir	Dtrs	GL	BW	200 W	400 W	600 W	MCW	Milk	SS
EBV	+7.5	+4.5	-5.9	+1.7	+47	+85	+111	+78	+26	+1.5
ACC	57%	51%	84%	73%	64%	64%	64%	63%	59%	61%
Perc	13	34	30	8	62	64	64	86	4	71
D t C	CWT	EMA	Rib	Rump	RBV	IMF	NFI-F	Doc	Angle	Claw
-7.1	+63	+5.1	-0.5	-0.1	-0.7	+4.0	+0.59	-	-	-
39%	60%	58%	61%	60%	58%	58%	50%	-	-	-
13	63	66	63	42	89	4	90	-	-	-

Selection Indexes

\$A	\$D
\$245	\$189
9	18
\$GN	\$GS
\$340	\$232
6	9

Traits Observed: GL,BWT

Notes: R19 sire by Te Mania Monarch M1254 & out of Valdemar P48. Top 4% of the breed for IMF. R19 offers plenty of Phenotype

Purchaser:.....

\$:.....

Lot 24

MUNDARLO MALFOY R6^{SV}

AYOR6

DOB: 17/07/2020

Registration Status: APR

Mating Type: AI

Genetic Status: AMF,CAF,DDC,NHF

TE MANIA FLAME F565^{SV}
TE MANIA KIRK K226^{PV}
TE MANIA BARUNAH D120^{SV}

UNKNOWN

Sire: VTMP888 TE MANIA PESO P888^{PV}

Dam: DHQP195 VALDEMAR P195#

TE MANIA EMPEROR E343^{PV}
TE MANIA LOWAN H423^{SV}
TE MANIA LOWAN E869#

UNKNOWN

Mid June 2022 TransTasman Angus Cattle Evaluation

TACE	Dir	Dtrs	GL	BW	200 W	400 W	600 W	MCW	Milk	SS
EBV	+8.8	+9.6	-8.0	+0.5	+33	+74	+91	+59	+15	-0.8
ACC	52%	44%	82%	69%	68%	67%	68%	65%	58%	60%
Perc	6	2	9	3	98	90	93	97	69	99
D t C	CWT	EMA	Rib	Rump	RBV	IMF	NFI-F	Doc	Angle	Claw
-2.8	+57	+2.8	+1.5	+1.8	-0.5	+1.1	+0.41	-	+1.06	+1.00
34%	62%	59%	65%	61%	61%	59%	49%	-	59%	59%
80	81	92	13	8	84	84	77	-	69	79

Selection Indexes

\$A	\$D
\$168	\$148
77	67
\$GN	\$GS
\$207	\$152
82	76

Traits Observed: GL,BWT,Genomics

Notes: Low birth weight sire with R6 being in the top 3% of the breed for birth weight. Top 2% for calving ease DTRS & 6% for calving ease direct. Suitable for Heifers

Purchaser:.....

\$:.....

Lot 25

MUNDARLO L10 R121^{SV}

AYOR121

DOB: 14/09/2020

Registration Status: APR

Mating Type: Natural

Genetic Status: AMF,CAF,DDF,NHF

CONNEALY CONSENSUS#
 CONNEALY EARNAN 076^{PV}
 BRAZILA OF CONANGA 3991 839A#

TE MANIA YORKSHIRE Y437^{PV}
 TE MANIA BERKLEY B1^{PV}
 TE MANIA LOWAN Z53#

Sire: CMAL010 WELCOME SWALLOW L010^{SV}

Dam: CMAH342 WELCOME SWALLOW BERKLEY H342#

TE MANIA BERKLEY B1^{PV}
 WELCOME SWALLOW BERKLEY H208#
 WELCOME SWALLOW ABERDEEN F156#

UNKNOWN
 WELCOME SWALLOW MIRREN C241#
 TE MANIA LOWAN X9#

Mid June 2022 TransTasman Angus Cattle Evaluation

TACE	Dir	Dtrs	GL	BW	200 W	400 W	600 W	MCW	Milk	SS
EBV	+5.0	+5.5	-3.5	+2.0	+44	+85	+109	+112	+12	+1.7
ACC	54%	50%	67%	69%	67%	66%	68%	67%	61%	60%
Perc	31	23	69	11	78	65	68	30	89	63
D t C	CWT	EMA	Rib	Rump	RBV	IMF	NFI-F	Doc	Angle	Claw
-5.5	+64	+3.9	+1.8	+0.7	-1.3	+2.1	+0.50	-	+1.30	+1.14
41%	62%	59%	65%	61%	62%	60%	52%	-	64%	64%
34	58	83	10	23	96	47	85	-	97	93

Selection Indexes

\$A	\$D
\$158	\$132
84	82
\$GN	\$GS
\$206	\$141
83	83

Traits Observed: BWT,Genomics

Notes:

Purchaser:.....

\$:.....

Lot 26

MUNDARLO GARTH R122^{SV}

AYOR122

DOB: 16/09/2020

Registration Status: APR

Mating Type: Natural

Genetic Status: AMF,CAF,DDF,NHF

TE MANIA AFRICA A217^{PV}
 TE MANIA GARTH G67^{PV}
 TE MANIA MITTAGONG E28^{SV}

TE MANIA BERKLEY B1^{PV}
 TE MANIA JEROME J131^{PV}
 TE MANIA LOWAN G694^{SV}

Sire: VTMM685 TE MANIA MEAGRE M685^{SV}

Dam: DHQP268 VALDEMAR P268#

TE MANIA FITZPATRICK F528^{PV}
 TE MANIA LOWAN J458#
 TE MANIA LOWAN E295^{SV}

WERNER WESTWARD 357#
 TE MANIA JEDDA J408#
 TE MANIA JEDDA E23#

Mid June 2022 TransTasman Angus Cattle Evaluation

TACE	Dir	Dtrs	GL	BW	200 W	400 W	600 W	MCW	Milk	SS
EBV	+4.7	+2.2	-7.5	+3.5	+45	+81	+118	+102	+30	+3.2
ACC	56%	52%	71%	71%	70%	69%	71%	69%	64%	63%
Perc	34	58	12	35	75	75	47	47	1	12
D t C	CWT	EMA	Rib	Rump	RBV	IMF	NFI-F	Doc	Angle	Claw
-7.1	+63	+1.5	+0.4	-1.1	-0.5	+3.1	+0.04	-	+1.12	+0.84
43%	67%	64%	69%	66%	66%	65%	56%	-	63%	63%
13	61	98	37	68	84	16	33	-	81	48

Selection Indexes

\$A	\$D
\$183	\$133
64	82
\$GN	\$GS
\$249	\$168
56	62

Traits Observed: BWT,Genomics

Notes:

Purchaser:.....

\$:.....

Lot 27

MUNDARLO PESO R4^{SV}

AYOR4

DOB: 13/07/2020

Registration Status: APR

Mating Type: AI

Genetic Status: AMF,CAF,DDF,NHF

TE MANIA AFRICA A217^{PV}
 TE MANIA GARTH G67^{PV}
 TE MANIA MITTAGONG E28^{SV}

SYDGEN TRUST 6228#
 TE MANIA KELTIE K577^{SV}
 TE MANIA WARGOONA G142#

Sire: VTMM530 TE MANIA MALFOY M530^{PV}

Dam: DHQP233 VALDEMAR P233#

TUWHARETOA REGENT D145^{PV}
 TE MANIA BARWON H377^{SV}
 TE MANIA BARWON C436#

TE MANIA JELA J821^{SV}
 VALDEMAR MITTAGONG M2#
 TE MANIA MITTAGONG F616#

Mid June 2022 TransTasman Angus Cattle Evaluation

TACE	Dir	Dtrs	GL	BW	200 W	400 W	600 W	MCW	Milk	SS
EBV	+8.6	+8.8	-11.4	+2.5	+46	+81	+120	+121	+13	+1.8
ACC	55%	50%	83%	72%	70%	70%	71%	68%	62%	64%
Perc	7	3	1	16	70	75	42	17	82	58
D t C	CWT	EMA	Rib	Rump	RBV	IMF	NFI-F	Doc	Angle	Claw
-7.9	+57	+3.5	+1.3	+0.9	-0.6	+3.0	+0.34	-	+0.94	+0.66
40%	65%	62%	68%	64%	65%	63%	53%	-	64%	64%
7	82	87	16	19	87	18	70	-	40	14

Selection Indexes

\$A	\$D
\$197	\$147
50	68
\$GN	\$GS
\$257	\$185
50	46

Traits Observed: GL,BWT,Genomics

Notes: Stretchy young sire with plenty of phenotype to offer. Suitable for use over heifers

Purchaser:.....

\$:.....

Lot 28

MUNDARLO MOJO R12^{SV}

AYOR12

DOB: 19/07/2020

Registration Status: APR

Mating Type: AI

Genetic Status: AMF,CAF,DDC,NHF

AYRVALE BARTEL E7^{PV}
 AYRVALE HERCULES H9^{PV}
 LAWSONS INVINCIBLE F338^{SV}

BOOROOMOOKA INSPIRED E124^{PV}
 TE MANIA JAKUBZIK J275^{PV}
 TE MANIA JAPARA E63^{SV}

Sire: VTMM886 TE MANIA MOJO M886^{PV}

Dam: DHQP347 VALDEMAR P347[#]

TE MANIA BERKLEY B1^{PV}
 TE MANIA BARUNAH F121[#]
 TE MANIA BARUNAH C854[#]

TE MANIA FITZPATRICK F528^{PV}
 VALDEMAR LOWAN H225[#]
 TE MANIA LOWAN D622[#]

Mid June 2022 TransTasman Angus Cattle Evaluation

TACE	Dir	Dtrs	GL	BW	200 W	400 W	600 W	MCW	Milk	SS
EBV	+9.0	+9.0	-6.9	+0.8	+43	+64	+81	+61	+13	+1.5
ACC	57%	52%	83%	73%	72%	71%	72%	70%	65%	67%
Perc	6	3	18	3	83	98	98	96	82	71
D t C	CWT	EMA	Rib	Rump	RBV	IMF	NFI-F	Doc	Angle	Claw
-5.6	+66	+7.4	+1.7	+1.5	-1.3	+4.0	+0.75	-	+0.94	+0.86
40%	68%	64%	69%	67%	66%	65%	54%	-	66%	66%
32	52	29	11	11	96	4	96	-	40	52

Selection Indexes

\$A	\$D
\$225	\$170
22	40
\$GN	\$GS
\$317	\$212
13	20

Traits Observed: GL,BWT,Genomics

Notes: Top 3% of the breed for birth weight. Top 3% for calving ease DTRS & top 6% for calving ease direct. Suitable for heifers.

Purchaser:

\$:

Lot 29

MUNDARLO PESO R30^{SV}

AYOR30

DOB: 24/07/2020

Registration Status: APR

Mating Type: AI

Genetic Status: AMF,CAF,DDF,NHF

TE MANIA FLAME F565^{SV}
 TE MANIA KIRK K226^{PV}
 TE MANIA BARUNAH D120^{SV}

TE MANIA GARTH G67^{PV}
 TE MANIA LENNOX L676^{PV}
 TE MANIA LOWAN H55^{PV}

Sire: VTMP888 TE MANIA PESO P888^{PV}

Dam: DHQP117 VALDEMAR P117[#]

TE MANIA EMPEROR E343^{PV}
 TE MANIA LOWAN H423^{SV}
 TE MANIA LOWAN E869[#]

TE MANIA GREGADOO G1053^{PV}
 VALDEMAR M320[#]
 VALDEMAR H242[#]

Mid June 2022 TransTasman Angus Cattle Evaluation

TACE	Dir	Dtrs	GL	BW	200 W	400 W	600 W	MCW	Milk	SS
EBV	+9.4	+6.9	-4.6	+1.2	+39	+79	+99	+100	+22	+2.2
ACC	58%	51%	84%	72%	71%	70%	71%	68%	62%	64%
Perc	4	12	51	5	92	80	85	51	18	41
D t C	CWT	EMA	Rib	Rump	RBV	IMF	NFI-F	Doc	Angle	Claw
-10.1	+56	+1.7	+1.0	+1.4	-1.0	+3.1	+0.64	-	+1.16	+0.72
39%	65%	63%	68%	65%	65%	64%	53%	-	59%	59%
1	84	97	22	12	93	16	93	-	86	23

Selection Indexes

\$A	\$D
\$191	\$159
56	53
\$GN	\$GS
\$251	\$176
55	55

Traits Observed: GL,BWT,Genomics

Notes: Low birth weight sire suitable to use over heifers with top 1% of the breed for Days to Calve, top 5% for birth weight, & top 5% for calving ease direct.

Purchaser:

\$:

Lot 30

MUNDARLO KENYAN R59^{SV}

AYOR59

DOB: 11/08/2020

Registration Status: APR

Mating Type: Natural

Genetic Status: AMF,CAF,DDF,NHF

SITZ NEW DESIGN 458N[#]
 TE MANIA GOODOOGA G843^{PV}
 TE MANIA MITTAGONG B112^{SV}

AYRVALE BARTEL E7^{PV}
 TE MANIA JANEK J423^{SV}
 TE MANIA MITTAGONG F315[#]

Sire: VTMK721 TE MANIA KENYAN K721^{SV}

Dam: DHQP1 VALDEMAR P1[#]

TE MANIA 07 436 AB^{SV}
 TE MANIA PANDA F5^{SV}
 TE MANIA PANDA D1216[#]

TE MANIA EARL GREY E25^{SV}
 VALDEMAR WARGOONA H15[#]
 VALDEMAR WARGOONA F47[#]

Mid June 2022 TransTasman Angus Cattle Evaluation

TACE	Dir	Dtrs	GL	BW	200 W	400 W	600 W	MCW	Milk	SS
EBV	+5.9	+3.0	-6.0	+2.4	+46	+94	+113	+80	+23	+4.6
ACC	53%	47%	67%	71%	68%	68%	69%	67%	60%	61%
Perc	24	50	28	15	70	37	58	84	11	2
D t C	CWT	EMA	Rib	Rump	RBV	IMF	NFI-F	Doc	Angle	Claw
-6.3	+72	+5.8	-0.2	+1.0	-0.3	+4.0	+1.20	-	+0.78	+0.74
37%	64%	60%	66%	63%	63%	61%	50%	-	61%	61%
22	31	54	54	17	79	4	99	-	10	27

Selection Indexes

\$A	\$D
\$239	\$200
12	11
\$GN	\$GS
\$325	\$231
10	9

Traits Observed: BWT,Genomics

Notes: Powerful sire with excellent type. Top 4% of the breed for IMF. Suitable for heifers

Purchaser:

\$:

Lot 31

MUNDARLO KENYAN R66^{SV}

AYOR66

DOB: 14/08/2020

Registration Status: APR

Mating Type: Natural

Genetic Status: AMF,CAF,DDF,NHF

SITZ NEW DESIGN 458N[#]
 TE MANIA GOODOOGA G843^{PV}
 TE MANIA MITTAGONG B112^{SV}

PATHFINDER GOLDMARK D189^{PV}
 TE MANIA LAX L557^{SV}
 TE MANIA LOWAN G253[#]

Sire: VTMK721 TE MANIA KENYAN K721^{SV}

Dam: DHQP327 VALDEMAR P327[#]

TE MANIA 07 436 AB^{SV}
 TE MANIA PANDA F5^{SV}
 TE MANIA PANDA D1216[#]

TE MANIA GARTH G67^{PV}
 VALDEMAR CHIZ L201[#]
 VALDEMAR CHIS G24[#]

Mid June 2022 TransTasman Angus Cattle Evaluation

TACE	Dir	Dtrs	GL	BW	200 W	400 W	600 W	MCW	Milk	SS
EBV	+8.4	-0.3	-6.0	+1.5	+42	+81	+102	+83	+25	+2.9
ACC	52%	47%	66%	70%	67%	67%	68%	65%	59%	61%
Perc	8	78	28	7	84	77	80	80	6	18
D t C	CWT	EMA	Rib	Rump	RBV	IMF	NFI-F	Doc	Angle	Claw
-6.4	+61	+3.3	+0.4	+0.0	-0.7	+3.1	+0.12	-	+1.04	+0.74
36%	62%	59%	65%	62%	62%	60%	50%	-	63%	63%
20	68	89	37	39	89	16	43	-	65	27

Selection Indexes

\$A	\$D
\$192	\$154
56	60
\$GN	\$GS
\$261	\$176
48	55

Traits Observed: BWT,Genomics

Notes: Top 5% of the breed for birth weight. Suitable for heifers

Purchaser:.....

\$:.....

Lot 32

MUNDARLO L10 R119^{SV}

AYOR119

DOB: 11/09/2020

Registration Status: APR

Mating Type: Natural

Genetic Status: AMF,CAF,DDC,NHF

CONNEALY CONSENSUS[#]
 CONNEALY EARNAN 076E^{PV}
 BRAZILA OF CONANGA 3991 839A[#]

BT EQUATOR 395M[#]
 BOOROOMOOKA ON TIME D105^{PV}
 BOOROOMOOKA WUBU B31[#]

Sire: CMAL010 WELCOME SWALLOW L010^{SV}

Dam: CMAJ48 WELCOME SWALLOW ON TIME J48[#]

TE MANIA BERKLEY B1^{PV}
 WELCOME SWALLOW BERKLEY H208[#]
 WELCOME SWALLOW ABERDEEN F156[#]

SITZ NEW DESIGN 458N[#]
 WELCOME SWALLOW DESIGN 458N D222[#]
 WELCOME SWALLOW ROYAL MISS B165[#]

Mid June 2022 TransTasman Angus Cattle Evaluation

TACE	Dir	Dtrs	GL	BW	200 W	400 W	600 W	MCW	Milk	SS
EBV	+9.3	+9.5	-3.2	-1.1	+35	+70	+85	+52	+25	+0.1
ACC	52%	47%	66%	70%	67%	67%	68%	66%	61%	61%
Perc	5	2	73	1	97	95	97	99	5	98
D t C	CWT	EMA	Rib	Rump	RBV	IMF	NFI-F	Doc	Angle	Claw
-5.2	+53	+2.9	+3.1	+2.2	-1.8	+1.6	+0.29	-	+1.02	+0.86
39%	63%	59%	65%	61%	62%	60%	52%	-	64%	64%
39	90	92	2	5	99	67	64	-	60	52

Selection Indexes

\$A	\$D
\$184	\$152
63	62
\$GN	\$GS
\$239	\$166
64	64

Traits Observed: BWT,Genomics

Notes: Top 1% of the breed for birth weight. Top 2% calving ease DTRS & top 5% calving ease direct. Suitable for heifers

Purchaser:.....

\$:.....

Lot 33

MUNDARLO BERKLEY R109^{SV}

AYOR109

DOB: 02/09/2020

Registration Status: APR

Mating Type: Natural

Genetic Status: AMF,CAF,DDF,NHF

TE MANIA YORKSHIRE Y437^{PV}
 TE MANIA BERKLEY B1^{PV}
 TE MANIA LOWAN Z53[#]

AYRVALE HERCULES H9^{PV}
 TE MANIA MAGNATE M13^{PV}
 TE MANIA BARWON K200^{SV}

Sire: VTMM952 TE MANIA MIDDLE M952^{PV}

Dam: DHQP250 VALDEMAR P250[#]

TE MANIA BANJO B170^{SV}
 TE MANIA MITTAGONG H390^{PV}
 TE MANIA MITTAGONG D273^{SV}

TUWHARETOA REGENT D145^{PV}
 VALDEMAR H138[#]
 CHIS Y045[#]

Mid June 2022 TransTasman Angus Cattle Evaluation

TACE	Dir	Dtrs	GL	BW	200 W	400 W	600 W	MCW	Milk	SS
EBV	+5.0	+5.5	-2.7	+2.4	+39	+74	+84	+71	+16	+3.0
ACC	54%	50%	69%	70%	68%	67%	69%	67%	62%	62%
Perc	31	23	80	15	93	90	97	91	59	15
D t C	CWT	EMA	Rib	Rump	RBV	IMF	NFI-F	Doc	Angle	Claw
-10.0	+52	+4.9	-0.7	-0.2	-0.2	+4.0	+0.47	-	+1.14	+1.04
42%	65%	62%	68%	64%	65%	62%	55%	-	61%	61%
1	91	69	69	44	76	4	82	-	84	84

Selection Indexes

\$A	\$D
\$217	\$186
29	21
\$GN	\$GS
\$291	\$204
26	27

Traits Observed: Genomics

Notes: Powerful bull with plenty of phenotype. Suitable for heifers.

Purchaser:.....

\$:.....

Lot 34

MUNDARLO CAPITALIST R103^{SV}

AYOR103

DOB: 27/08/2020

Registration Status: **HBR**

Mating Type: **Natural**

Genetic Status: **AMF,CAF,DDF,NHF**

PATHFINDER GENESIS G357^{PV}
 PATHFINDER COMPLETE K22^{SV}
 PATHFINDER EQUATOR H756[#]

CONNEALY CAPITALIST 028[#]
 LD CAPITALIST 316^{PV}
 LD DIXIE ERICA 2053[#]

Sire: NAQP83 ARDROSSAN COMPLETE P83^{PV}

Dam: NAQP347 ARDROSSAN WILCOOLA P347[#]

ARDROSSAN EDMUND J124^{SV}
 ARDROSSAN WILCOOLA M104 M302^{SV}
 ARDROSSAN WILCOOLA G289^{SV}

B C MARATHON 7022[#]
 ARDROSSAN WILCOOLA D73^{SV}
 ARDROSSAN WILCOOLA A183[#]

July 2022 TransTasman Angus Cattle Evaluation

TACE	Dir	Dtrs	GL	BW	200 W	400 W	600 W	MCW	Milk	SS
EBV	+2.9	+4.2	-0.6	+3.8	+35	+66	+82	+69	+9	-0.1
ACC	40%	32%	46%	62%	46%	43%	44%	44%	38%	37%
Perc	49	37	96	42	97	97	98	93	98	99
D t C	CWT	EMA	Rib	Rump	RBV	IMF	NFI-F	Doc	Angle	Claw
-	+53	+2.9	+1.6	+1.3	-1.5	+1.6	+0.25	-	-	-
-	38%	36%	40%	38%	38%	37%	31%	-	-	-
-	89	92	12	13	97	67	59	-	-	-

Selection Indexes

\$A	\$D
\$118	\$99
96	96
\$GN	\$GS
\$155	\$98
96	97

Traits Observed: BWT

Notes: Stretchy young bull with plenty of phenotype to offer.

Purchaser:

\$:

Lot 35

MUNDARLO ENTICE R57^{SV}

AYOR57

DOB: 11/08/2020

Registration Status: **HBR**

Mating Type: **AI**

Genetic Status: **AMF,CAF,DDF,NHF**

SYDGEN EXCEED 3223^{PV}
 SYDGEN ENHANCE^{SV}
 SYDGEN RITA 2618[#]

SITZ UPWARD 307R^{SV}
 EXAR UPSHOT 0562B[#]
 EXAR BARBARA T020[#]

Sire: USA18952921 MOGCK ENTICE^{SV}

Dam: CMAH310 WELCOME SWALLOW UPSTART H310[#]

MOGCK SURE SHOT 253[#]
 MOGCK ERICA 2255[#]
 MOGCK ERICA 2162[#]

S A V NET WORTH 4200[#]
 WELCOME SWALLOW MIRREN C186^{SV}
 TE MANIA MOONGARA X8[#]

Mid June 2022 TransTasman Angus Cattle Evaluation

TACE	Dir	Dtrs	GL	BW	200 W	400 W	600 W	MCW	Milk	SS
EBV	+9.2	+6.2	-7.4	+1.3	+50	+86	+102	+62	+19	+1.4
ACC	55%	47%	72%	72%	70%	69%	70%	68%	62%	64%
Perc	5	17	13	6	50	62	80	96	33	75
D t C	CWT	EMA	Rib	Rump	RBV	IMF	NFI-F	Doc	Angle	Claw
-3.2	+53	+7.5	+0.6	-1.3	+1.4	+1.4	+0.00	-	+0.92	+0.84
36%	64%	61%	66%	62%	63%	61%	51%	-	72%	72%
74	90	27	31	73	17	74	28	-	35	48

Selection Indexes

\$A	\$D
\$242	\$208
11	7
\$GN	\$GS
\$313	\$223
15	13

Traits Observed: BWT, Genomics

Notes:

Purchaser:

\$:

Lot 36

MUNDARLO EQUATOR R107^{PV}

AYOR107

DOB: 30/08/2020

Registration Status: **HBR**

Mating Type: **Natural**

Genetic Status: **AMF,CAF,DDF,NHF**

PATHFINDER GENESIS G357^{PV}
 PATHFINDER COMPLETE K22^{SV}
 PATHFINDER EQUATOR H756[#]

ARDROSSAN EQUATOR A241^{PV}
 ARDROSSAN EQUATOR E151^{SV}
 ARDROSSAN WILCOOLA W168[#]

Sire: NAQP83 ARDROSSAN COMPLETE P83^{PV}

Dam: NAQP483 ARDROSSAN P483^{SV}

ARDROSSAN EDMUND J124^{SV}
 ARDROSSAN WILCOOLA M104 M302^{SV}
 ARDROSSAN WILCOOLA G289^{SV}

ARDROSSAN APOLLO A334^{SV}
 ARDROSSAN KYLIE F101^{SV}
 ARDROSSAN KYLIE Z107[#]

July 2022 TransTasman Angus Cattle Evaluation

TACE	Dir	Dtrs	GL	BW	200 W	400 W	600 W	MCW	Milk	SS
EBV	+2.6	+2.5	-3.3	+4.8	+49	+96	+130	+114	+26	+1.5
ACC	54%	49%	70%	71%	70%	69%	71%	68%	64%	64%
Perc	52	55	72	66	50	31	22	26	4	71
D t C	CWT	EMA	Rib	Rump	RBV	IMF	NFI-F	Doc	Angle	Claw
-6.4	+80	+1.3	-0.5	+0.4	+0.2	+0.9	-0.18	-	-	-
41%	67%	64%	69%	65%	67%	64%	56%	-	-	-
20	12	98	63	29	62	89	12	-	-	-

Selection Indexes

\$A	\$D
\$176	\$149
71	66
\$GN	\$GS
\$219	\$157
76	72

Traits Observed: BWT, Genomics

Notes:

Purchaser:

\$:

Lot 37

MUNDARLO EDMUND R126^{PV}

AYOR126

DOB: 26/09/2020

Registration Status: HBR

Mating Type: Natural

Genetic Status: AMF,CAF,DDF,NHF

TE MANIA BERKLEY B1^{PV}
 PATHFINDER GENESIS G357^{PV}
 PATHFINDER DIRECTION D245^{SV}

RENNYLEA EDMUND E11^{PV}
 ARDROSSAN EDMUND M83^{SV}
 ARDROSSAN KYLIE F133^{SV}

Sire: NAQP221 ARDROSSAN GENESIS P221^{PV}

Dam: NAQP516 ARDROSSAN WILCOOLA P516^{SV}

RENNYLEA EDMUND E11^{PV}
 ARDROSSAN MARBLE L10^{SV}
 ARDROSSAN MARBLE J313[#]

ARDROSSAN EQUATOR A241^{PV}
 ARDROSSAN WILCOOLA J230^{SV}
 ARDROSSAN WILCOOLA Z187[#]

July 2022 TransTasman Angus Cattle Evaluation

TACE	Dir	Dtrs	GL	BW	200 W	400 W	600 W	MCW	Milk	SS
EBV	+6.6	+7.7	-4.9	+2.7	+32	+61	+83	+67	+20	+1.6
ACC	54%	49%	68%	71%	69%	69%	69%	67%	62%	62%
Perc	19	8	46	20	99	99	97	94	28	67
D t C	CWT	EMA	Rib	Rump	RBV	IMF	NFI-F	Doc	Angle	Claw
-4.3	+52	+7.5	+2.2	+1.3	+0.2	+1.9	+0.94	-	-	-
41%	65%	62%	68%	64%	65%	62%	54%	-	-	-
55	92	27	6	13	62	54	99	-	-	-

Selection Indexes

\$A	\$D
\$154	\$123
86	88
\$GN	\$GS
\$193	\$139
88	84

Traits Observed: BWT, Genomics

Notes:

Purchaser:

\$:

Lot 38

MUNDARLO CAPITALIST R97^{SV}

AYOR97

DOB: 25/08/2020

Registration Status: HBR

Mating Type: Natural

Genetic Status: AMF,CAF,DDF,NHF

MATAURI REALITY 839[#]
 CLUNIE RANGE LEGEND L348^{PV}
 ABERDEEN ESTATE LAURA J81^{PV}

LD CAPITALIST 316^{PV}
 LD DIXIE ERICA 2053[#]

Sire: NAQP34 ARDROSSAN LEGEND P34^{PV}

Dam: NAQP274 ARDROSSAN KYLIE P274[#]

ARDROSSAN HONOUR H255^{PV}
 ARDROSSAN WILCOOLA M216^{SV}
 ARDROSSAN WILCOOLA G77[#]

ARDROSSAN FAIRFAX F21^{PV}
 ARDROSSAN KYLIE H436^{SV}
 ARDROSSAN KYLIE E402[#]

Mid June 2022 TransTasman Angus Cattle Evaluation

TACE	Dir	Dtrs	GL	BW	200 W	400 W	600 W	MCW	Milk	SS
EBV	+8.5	+6.6	-6.1	+2.5	+51	+95	+126	+113	+18	+3.5
ACC	54%	48%	70%	71%	69%	68%	69%	67%	61%	62%
Perc	8	14	27	16	41	34	28	28	47	7
D t C	CWT	EMA	Rib	Rump	RBV	IMF	NFI-F	Doc	Angle	Claw
-4.7	+74	+4.8	+3.1	+1.4	+0.1	+1.3	+0.44	-	+0.90	+0.68
38%	64%	61%	67%	63%	64%	62%	53%	-	65%	64%
48	23	71	2	12	66	78	80	-	31	17

Selection Indexes

\$A	\$D
\$194	\$164
53	47
\$GN	\$GS
\$244	\$179
60	51

Traits Observed: BWT, Genomics

Notes: Stylish bull, Suitable for use over heifers

Purchaser:

\$:

Lot 39

MUNDARLO ENTICE R93^{SV}

AYOR93

DOB: 23/08/2020

Registration Status: APR

Mating Type: AI

Genetic Status: AMF,CAF,DDF,NHF

SYDGEN EXCEED 3223^{PV}
 SYDGEN ENHANCE^{SV}
 SYDGEN RITA 2618[#]

WERNER WAR PARTY 2417[#]
 R B TOUR OF DUTY 177^{PV}
 B A LADY 6807 305[#]

Sire: USA18952921 MOGCK ENTICE^{SV}

Dam: AYOL25 MUNDARLO L25[#]

MOGCK SURE SHOT 253[#]
 MOGCK ERICA 2255[#]
 MOGCK ERICA 2162[#]

SCHAFF NET INCOME 7024[#]
 WELCOME SWALLOW INCOME D121 H706[#]
 WELCOME SWALLOW X13 FORESIGHT D121[#]

Mid June 2022 TransTasman Angus Cattle Evaluation

TACE	Dir	Dtrs	GL	BW	200 W	400 W	600 W	MCW	Milk	SS
EBV	+0.5	-1.7	-3.2	+5.6	+62	+108	+140	+125	+25	+3.9
ACC	55%	46%	84%	73%	71%	70%	71%	69%	63%	66%
Perc	68	86	73	81	6	7	10	14	6	4
D t C	CWT	EMA	Rib	Rump	RBV	IMF	NFI-F	Doc	Angle	Claw
-3.6	+82	+7.2	-2.8	-3.8	+2.7	+1.6	-0.47	-	+1.04	+0.76
36%	66%	62%	67%	63%	64%	62%	51%	-	69%	69%
68	8	31	98	99	2	67	2	-	65	31

Selection Indexes

\$A	\$D
\$213	\$181
33	26
\$GN	\$GS
\$281	\$193
33	37

Traits Observed: GL, Genomics

Notes: Stylish bull with excellent growth.

Purchaser:

\$:

Lot 40

MUNDARLO ENTICE R90^{SV}

AYOR90

DOB: 20/08/2020

Registration Status: APR

Mating Type: AI

Genetic Status: AMF,CAF,DDF,NHF

SYDGEN EXCEED 3223^{PV}
 SYDGEN ENHANCE^{SV}
 SYDGEN RITA 2618[#]

HF KODIAK 5R^{PV}
 HF PROWLER 43U[#]
 HF ROSEBUD 98P[#]

Sire: USA18952921 MOGCK ENTICE^{SV}

Dam: AYOM60 MUNDARLO M60[#]

MOGCK SURE SHOT 253[#]
 MOGCK ERICA 2255[#]
 MOGCK ERICA 2162[#]

TC ABERDEEN 759^{SV}
 WELCOME SWALLOW ABERDEEN H333[#]
 WELCOME SWALLOW BOOMTIME THEO W29 D221[#]

Mid June 2022 TransTasman Angus Cattle Evaluation

TACE	Dir	Dtrs	GL	BW	200 W	400 W	600 W	MCW	Milk	SS
EBV	-6.3	+1.1	-2.6	+7.5	+69	+118	+151	+134	+15	+4.2
ACC	52%	43%	83%	71%	69%	68%	69%	66%	60%	62%
Perc	94	68	81	98	1	2	4	8	71	3
D t C	CWT	EMA	Rib	Rump	RBV	IMF	NFI-F	Doc	Angle	Claw
-2.9	+90	+9.7	-3.9	-5.7	+3.5	+1.7	-0.53	-	+0.68	+0.44
33%	63%	59%	66%	60%	61%	60%	48%	-	69%	69%
78	2	9	99	99	1	63	2	-	3	2

Selection Indexes

\$A	\$D
\$219	\$191
27	17
\$GN	\$GS
\$288	\$200
28	30

Traits Observed: GL,BWT,Genomics

Notes: Best of both with good growth and fats.

Purchaser:.....

\$:.....



Ron & Texas Top Gun R66^{PV}





What is the TransTasman Angus Cattle Evaluation?

The TransTasman Angus Cattle Evaluation is the genetic evaluation program adopted by Angus Australia for Angus and Angus influenced beef cattle. The TransTasman Angus Cattle Evaluation uses Best Linear Unbiased Prediction (BLUP) technology to produce Estimated Breeding Values (EBVs) of recorded cattle for a range of important production traits (e.g. weight, carcase, fertility).

The TransTasman Angus Cattle Evaluation is an international genetic evaluation and includes pedigree, performance and genomic information from the Angus Australia and Angus New Zealand databases, along with selected information from the American and Canadian Angus Associations.

The TransTasman Angus Cattle Evaluation utilises a range of genetic evaluation software, including the internationally recognised BLUPF90 family of programs, and BREEDPLAN® beef genetic evaluation analytical software, as developed by the Animal Genetics and Breeding Unit (AGBU), a joint institute of NSW Agriculture and the University of New England, and Meat and Livestock Australia Limited (MLA).

What is an EBV?

An animal's breeding value can be defined as its genetic merit for each trait. While it is not possible to determine an animal's true breeding value, it is possible to estimate it. These estimates of an animal's true breeding value are called EBVs (Estimated Breeding Values).

EBVs are expressed as the difference between an individual animal's genetics and a historical genetic level (i.e. group of animals) within the TACE genetic evaluation, and are reported in the units in which the measurements are taken.

Using EBVs to Compare the Genetics of Two Animals

TACE EBVs can be used to estimate the expected difference in the genetics of two animals, with the expected difference equating to half the difference in the EBVs of the animals, all other things being equal (e.g. they are joined to the same animal/s).

For example, a bull with a 200 Day Growth EBV of +60 would be expected to produce progeny that are, on average, 10 kg heavier at 200 days of age than a bull with a 200 Day Growth EBV of +40 kg (i.e. 20 kg difference between the sire's EBVs, then halved as the sire only contributes half the genetics).

Or similarly, a bull with an IMF EBV of +3.0 would be expected to produce progeny with on average, 1% more intramuscular fat in a 400 kg carcase than a bull with a IMF EBV of +1.0 (i.e. 2% difference between the sire's EBVs, then halved as the sire only contributes half the genetics).

Using EBVs to Benchmark an Animal's Genetics with the Breed

EBVs can also be used to benchmark an animal's genetics relative to the genetics of other Angus or Angus infused animals recorded with Angus Australia.

To benchmark an animal's genetics relative to other Angus animals, an animal's EBV can be compared to the EBV reference tables, which provide:

- the breed average EBV
- the percentile bands table

The current breed average EBV is listed on the bottom of each page in this publication, while the current EBV reference tables are included at the end of these introductory notes. For easy reference, the percentile band in which an animal's EBV ranks is also published in association with the EBV.

Considering Accuracy

An accuracy value is published with each EBV, and is usually displayed as a percentage value immediately below the EBV.

The accuracy value provides an indication of the reliability of the EBV in estimating the animal's genetics (or true breeding value), and is an indication of the amount of information that has been used in the calculation of the EBV.

EBVs with accuracy values below 50% should be considered as preliminary or of low accuracy, 50-74% as of medium accuracy, 75-90% of medium to high accuracy, and 90% or greater as high accuracy.

Description of TACE EBVs

EBVs are calculated for a range of traits within TACE, covering calving ease, growth, fertility, maternal performance, carcase merit, feed efficiency and structural soundness. A description of each EBV included in this publication is provided on the following page.

UNDERSTANDING ESTIMATED BREEDING VALUES (EBVS)

Calving Ease	CEDir	%	Genetic differences in the ability of a sire's calves to be born unassisted from 2 year old heifers.	Higher EBVs indicate fewer calving difficulties in 2 year old heifers.
	CEDtrs	%	Genetic differences in the ability of a sire's daughters to calve unassisted at 2 years of age.	Higher EBVs indicate fewer calving difficulties in 2 year old heifers.
	GL	days	Genetic differences between animals in the length of time from the date of conception to the birth of the calf.	Lower EBVs indicate shorter gestation length.
	BW	kg	Genetic differences between animals in calf weight at birth.	Lower EBVs indicate lighter birth weight.
Growth	200 Day	kg	Genetic differences between animals in live weight at 200 days of age due to genetics for growth.	Higher EBVs indicate heavier live weight.
	400 Day	kg	Genetic differences between animals in live weight at 400 days of age.	Higher EBVs indicate heavier live weight.
	600 Day	kg	Genetic differences between animals in live weight at 600 days of age.	Higher EBVs indicate heavier live weight.
	MCW	kg	Genetic differences between animals in live weight of cows at 5 years of age.	Higher EBVs indicate heavier mature weight.
	Milk	kg	Genetic differences between animals in live weight at 200 days of age due to the maternal contribution of its dam.	Higher EBVs indicate heavier live weight.
Fertility	DtC	days	Genetic differences between animals in the time from the start of the joining period (i.e. when the female is introduced to a bull) until subsequent calving.	Lower EBVs indicate shorter time to calving.
	SS	cm	Genetic differences between animals in scrotal circumference at 400 days of age.	Higher EBVs indicate larger scrotal circumference.
Carcass	CWT	kg	Genetic differences between animals in hot standard carcass weight at 750 days of age.	Higher EBVs indicate heavier carcass weight.
	EMA	cm ²	Genetic differences between animals in eye muscle area at the 12/13th rib site in a 400 kg carcass.	Higher EBVs indicate larger eye muscle area.
	Rib Fat	mm	Genetic differences between animals in fat depth at the 12/13th rib site in a 400 kg carcass.	Higher EBVs indicate more fat.
	P8 Fat	mm	Genetic differences between animals in fat depth at the P8 rump site in a 400 kg carcass.	Higher EBVs indicate more fat.
	RBY	%	Genetic differences between animals in boned out saleable meat from a 400 kg carcass.	Higher EBVs indicate higher yield.
	IMF	%	Genetic differences between animals in intramuscular fat (marbling) at the 12/13th rib site in a 400 kg carcass.	Higher EBVs indicate more intramuscular fat.
Feed/Temp.	NFI-F	kg/day	Genetic differences between animals in feed intake at a standard weight and rate of weight gain when animals are in a feedlot finishing phase.	Lower EBVs indicate more feed efficiency.
	Doc	%	Genetic differences between animals in temperament.	Higher EBVs indicate better temperament.
Structure	Foot Angle	score	Genetic differences in foot angle (strength of pastern, depth of heel).	Lower EBVs indicate more desirable foot angle.
	Claw Set	score	Genetic differences in claw set structure (shape and evenness of claws).	Lower EBVs indicate more desirable claw structure.
Selection Indexes	\$A	\$	Genetic differences between animals in net profitability per cow joined in a typical commercial self replacing herd using Angus bulls. This selection index is not specific to a particular market end-point, but identifies animals that will improve overall net profitability in the majority of commercial, self replacing, grass and grain finishing beef production systems.	Higher selection indexes indicate greater profitability.
	\$A-L	\$	<p>Genetic differences between animals in net profitability per cow joined in a typical commercial self replacing herd using Angus bulls. This selection index is not specific to a particular market end-point, but identifies animals that will improve overall net profitability in the majority of commercial, self replacing, grass and grain finishing beef production systems.</p> <p>The \$A-L index is similar to the \$A index but is modelled on a production system where feed is surplus to requirements for the majority of the year, or the cost of supplying additional feed when animal feed requirements increase is low.</p> <p>While the \$A aims to maintain mature cow weight, the \$A-L does not aim to limit the increase in mature cow weight as there is minimal cost incurred if the feed maintenance requirements of the female breeding herd increase as a result of selection decisions.</p>	Higher selection indexes indicate greater profitability.

UNDERSTANDING ESTIMATED BREEDING VALUES (EBVS)

Selection Indexes

\$D	\$	Genetic differences between animals in net profitability per cow joined in a commercial self replacing herd targeting the domestic supermarket trade. Steers are either finished using pasture, pasture supplemented by grain, or grain (e.g. 50 -70 days) with steers assumed to be slaughtered at 510kg live weight (280kg carcass weight with 12mm P8 fat depth) at 16 months of age.	Higher selection indexes indicate greater profitability.
\$D-L	\$	Genetic differences between animals in net profitability per cow joined in a commercial self replacing herd targeting the domestic supermarket trade. Steers are either finished using pasture, pasture supplemented by grain, or grain (e.g. 50 -70 days) with steers assumed to be slaughtered at 510kg live weight (280kg carcass weight with 12mm P8 fat depth) at 16 months of age. The \$D-L index is similar to the \$D index but is modelled on a production system where feed is surplus to requirements for the majority of the year, or the cost of supplying additional feed when animal feed requirements increase is low. While the \$D aims to maintain mature cow weight, the \$D-L does not aim to limit the increase in mature cow weight as there is minimal cost incurred if the feed maintenance requirements of the female breeding herd increase as a result of selection decisions.	Higher selection indexes indicate greater profitability.
\$GN	\$	Genetic differences between animals in net profitability per cow joined in a commercial self replacing herd targeting pasture grown steers with a 250 day feedlot finishing period for the grain fed high quality, highly marbled markets. Steers are assumed to be slaughtered at 800 kg live weight (455 kg carcass weight with 30 mm P8 fat depth) at 24 months of age, with a significant premium for steers that exhibit superior marbling.	Higher selection indexes indicate greater profitability.
\$GN-L	\$	Genetic differences between animals in net profitability per cow joined in a commercial self replacing herd targeting pasture grown steers with a 250 day feedlot finishing period for the grain fed high quality, highly marbled markets. Steers are assumed to be slaughtered at 800 kg live weight (455 kg carcass weight with 30 mm P8 fat depth) at 24 months of age, with a significant premium for steers that exhibit superior marbling. The \$GN-L index is similar to the \$GN index but is modelled on a production system where feed is surplus to requirements for the majority of the year, or the cost of supplying additional feed when animal feed requirements increase is low. While the \$GN aims to maintain mature cow weight, the \$GN-L does not aim to limit the increase in mature cow weight as there is minimal cost incurred if the feed maintenance requirements of the female breeding herd increase as a result of selection decisions.	Higher selection indexes indicate greater profitability.
\$GS	\$	Genetic differences between animals in net profitability per cow joined in a commercial self replacing herd targeting pasture finished steers. Steers are assumed to be slaughtered at 650 kg live weight (350 kg carcass weight with 12 mm P8 fat depth) at 22 months of age. Emphasis has been placed on eating quality and tenderness to favour animals that are suited to MSA requirements.	Higher selection indexes indicate greater profitability.
\$GS-L	\$	Genetic differences between animals in net profitability per cow joined in a commercial self replacing herd targeting pasture finished steers. Steers are assumed to be slaughtered at 650 kg live weight (350 kg carcass weight with 12 mm P8 fat depth) at 22 months of age. Emphasis has been placed on eating quality and tenderness to favour animals that are suited to MSA requirements. The \$GS-L index is similar to the \$GS index but is modelled on a production system where feed is surplus to requirements for the majority of the year, or the cost of supplying additional feed when animal feed requirements increase is low. While the \$GS aims to maintain mature cow weight, the \$GS-L does not aim to limit the increase in mature cow weight as there is minimal cost incurred if the feed maintenance requirements of the female breeding herd increase as a result of selection decisions.	Higher selection indexes indicate greater profitability.
\$PRO	\$	Genetic differences between animals in net profitability per cow joined in a commercial self replacing herd based in New Zealand that targets the production of grass finished steers for the AngusPure programme. Steers are assumed marketed at approximately 530 kg live weight (290 kg carcass weight with 10 mm P8 fat depth) at 20 months of age, with a significant premium for steers that exhibit superior marbling.	Higher selection indexes indicate greater profitability.
\$T	\$	Genetic difference between animals in net profitability per cow joined in a situation where Angus bulls are being used as a terminal sire over mature breeding females and all progeny, both male and female, are slaughtered. The Angus Terminal Sire Index focusses on increasing growth, carcass yield and eating quality. Daughters are not retained for breeding and therefore no emphasis is given to female fertility or maternal traits.	Higher selection indexes indicate greater profitability.



TOP GUN

TEXAS TOP GUN R66

**TURN THE AFTERBURNERS ON
IN YOUR HERD WITH TEXAS TOP GUN**

**A Poss Maverick son @ 3.4 IMF
Super sound structure
The Cattleman's Choice**



Product of the USA



WORLD WIDE SIRES

wwsaustralia.com

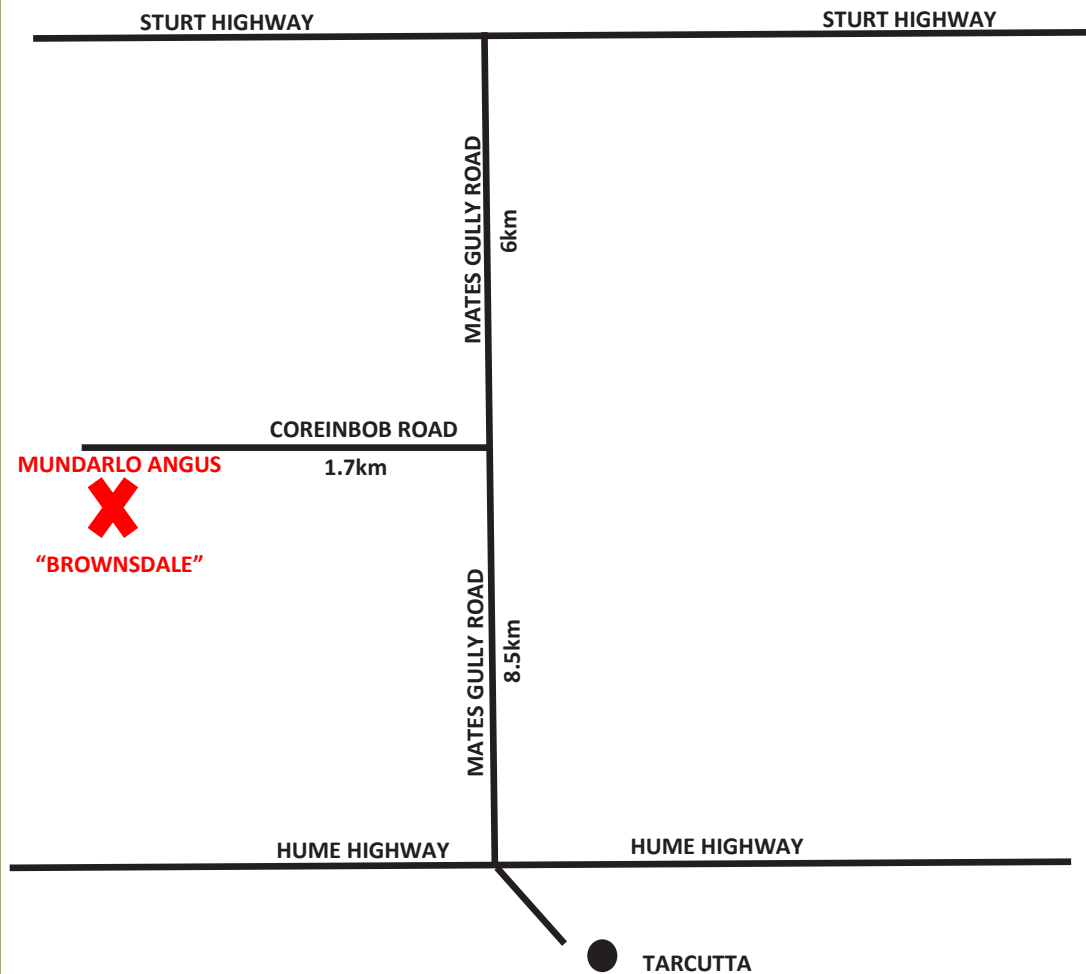
Geoff Wood • General Manager • WWS Australia • 0427 391 355 • gwood@wwsaustralia.com
Dale Edwards • Beef Manager • WWS Australia • 0427 806 672 • dedwards@wwsaustralia.com





LOCATION MAP

"BROWNSDALE" 201 COREINBOB ROAD, TARCUTTA NSW



DIRECTIONS

FROM STURT HIGHWAY:

- Turn off Sturt Hwy onto Mates Gully Road.
- 6kms turn right onto Coreinbob Road.
- 1.7km Mundarlo Angus, Brownsdale entrance will be on your left hand side.

FROM TARCUTTA:

- Follow Mates Gully Road for 8.5kms.
- Turn Left onto Coreinbob Road.
- 1.7km Mundarlo Angus, Brownsdale entrance will be on your left hand side.