

# MA BEEF

MANCHEE AGRICULTURE



LOT 22 R337

**AUGUST 31ST 1PM**

**2022 ANNUAL ON PROPERTY SALE**

**68** PERFORMANCE PACKED  
**BULLS**

[www.manchee.com.au](http://www.manchee.com.au)

**YY**

YAMBURGAN SHORTHORNS



LOT 24 YY R535



LOT 26 YY R345



LOT 27 YY R291



LOT 30 YY R356



LOT 35 YY R277



LOT 36 YY R530



LOT 40 YY R367



LOT 41 YY R562

# MA BEEF

Since 1947

## 28th ANNUAL SALE

Wednesday 31st August 2022

On-Property - 'Wallah' Narrabri NSW

Sale Commencing at 1pm

(With Morning Tea & Lunch Provided)



## OFFERING 68 LOTS

**45** Performance Tested 2 Year Old Shorthorn Bulls

**23** Performance Tested Yearling Shorthorn Bulls



### Manchee Agriculture

John 0427 944 825

[www.manchee.com.au](http://www.manchee.com.au)

Ph 02 6794 4825

[john@manchee.com.au](mailto:john@manchee.com.au)



Narrabri | 02 6792 3163

Scott Hamilton | 0447 449 912

David Mortimer | 0427 449 913

[hmaoffice@bigpond.com](mailto:hmaoffice@bigpond.com)



Narrabri | 02 6799 1111

John Settree | 0408 297 368

Matt Collett | 0427 311 415

[jenny.mapstone@nutrien.com.au](mailto:jenny.mapstone@nutrien.com.au)



Paul Dooley | 0458 662 646

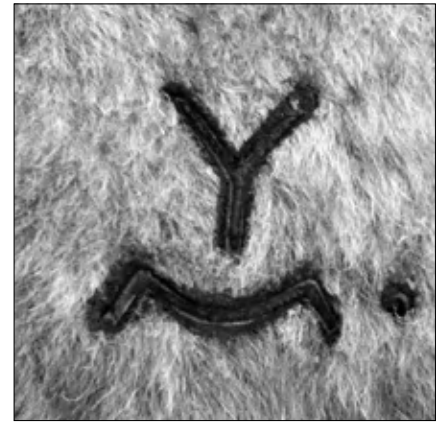
| 02 6766 2646

Welcome to the 2022 Manchee Agriculture Bull Sale.

This year's bull sale will see 68 bulls catalogued for sale on property on the 31st August 2022.

The beef industry has remained competitive throughout 2022 with corrections driven mainly by external forces and the weather.

The outlook moving forward looks very positive with dry conditions in the northern hemisphere, a rebuilding domestic herd and continued high demand for the award winning JBS Thousand Guineas Shorthorn branded product.



The 2022 draft of intensively selected bulls have had some of the best conditions we have seen in our 75 years of continuous Shorthorn Breeding. All bulls went onto forage oats in early May and like every year are totally forage prepared for sale. I believe strongly in this preparation to add longevity and virility to your new Yamburgan sire.

The standout sires in the 2-year-old bulls are again Y Gigabytes M1052 for moderate maturity and tremendous carcass traits, with Y Zeus M499 having a line of high calving ease, high marbling sires.

In the yearling bulls I believe its one of our best presented catalogues of bulls, with nearly every lot suitable for heifers. An excellent line of bulls led by Y Anzac L278 and our newest outstanding sire Y Bedourie P94.

Thankyou for your interest in the Manchee Agriculture program, we look forward to seeing you on the 31st August 2022.

Kind Regards,

John Manchee

Manchee Agriculture



# Bet you \$272 they are heavier!!

I recently travelled to "Refuge" Boomi, the 9000 acre grazing and cropping property owned by the Officer family for over 100 years.

Bart Officer attended the Yamburgan Bull Sale in 2020, purchasing two bulls for his 360 head Santa Gertrudis breeding herd.

Bart said "I have been so impressed with the consistency of type, fast growth and extra muscle capacity of the Yamburgan genetics."

The virility of the shorthorn bulls has been outstanding, achieving an over 90% positive pregnancy test rate in an 7-week joining. "This is a goal I have been striving to achieve for nearly 10 years", Bart said.



The proof is in the progeny with this years sale yearlings returning \$272/hd more than their purebred counterparts.

**Shorthorn x Av: 394kg @ \$6.46 returning \$2,545**

**Santa Gertrudis Av: 352kg @ \$6.46 returning \$2,273**



**Combine this with the 10% extra calves of the Shorthorn bulls,  
Bart has returned an extra \$33,066  
from the purchase of the 2 bulls in one year.**

This is a prime example that weight for age and fertility are the two biggest profit drivers of all beef cattle herds.

Thankyou to Bart and family for your time.

Written by John Manchee





Lots showing the YY logo are selected as potential sires or donors for Manchee Agriculture to use in the future. Manchee Agriculture retains the right to collect up to 300 straws, for in herd use at no cost to the purchaser. Manchee Agriculture will collect semen at an agreed time with the purchaser.

## SUPPLEMENTARY SHEET

All bulls will have up to date weights, EMA, fat depth, scrotal size measurements and have been semen tested. A supplementary sheet with this information will be available from the 21st August, 2022. EPD figures are printed in the catalogue.

## INSPECTION

We encourage prospective buyers to inspect cattle prior to sale. This gives us an opportunity to assist you in your selection of the best genetics for your requirements. Inspection on sale day will be from 9am.

## ACCOMMODATION

Accommodation can be hard to get in Narrabri, we recommend you book early.

Nandewar Motor Inn - (02) 6792 1155 or 1800 027 941.

Southern Cross Motor Inn - (02) 6792 3838.

Club Motor Inn - (02) 6792 3191

Mid Town Inn - (02) 6792 2233

Adelong Motel - (02) 6792 1488

## TRANSPORT

Bulls sold in to Queensland, South Australia, Victoria, Tasmania and Northern Territory are eligible for a transport rebate from Manchee Agriculture to the NSW border only.

## HEALTH

All bulls have been vaccinated with 7 in 1 and Pestiguard and drenched with Dectomax on 2nd June 2022. Booster shots are due in June each year. Semen testing will be carried out by Geoff Steinbeck, Excel Genetics, Dungowan. (02) 6769 4251. The bulls are guaranteed fertile on the day of the sale.

## BREEDING GUARANTEE

All bulls are guaranteed to be breeders with the exception of:

- (a) In the event of injury or disease that occurs to the animal after the sale;
- (b) Gross negligence or wilful misconduct on the part of the purchaser.

## BUYERS INSTRUCTION

1. No verbal instructions will be accepted.
2. Please use the instruction slip provided by the settling agents and hand it to the booking clerk before leaving.
3. Instructions for dispatch for consignments comprising of more than one owner must be signed by each buyer, no instructions will be considered complete until all have been signed.
4. All bulls will be sold GST exclusive.

## BUYER REGISTRATION

We request that all prospective buyers register and receive a buyer number before the sale.

## OUTSIDE AGENT REBATE

An outside agent rebate of 3% will be offered to agents who attend the sale and introduce their clients in writing to Hamilton Mortimer Agency, 02 6792 3163, at least 24 hours prior to the sale. Agents introducing their clients in writing at least 24 hours prior to the sale and not attending the sale will be paid a 1% rebate. The rebate WILL NOT be paid outside these conditions.

## AIRCRAFT

There is an airstrip at Narrabri. Vendor's agents will be happy to arrange transport to the sale. Please make contact well before the sale date.

## DISCLAIMER

The vendors, selling agents, its members, related corporations and employees, will act with due care to provide correct information but will not be responsible for any errors or omissions in this catalogue. All persons who attend the sale do so entirely at their own risk and the vendor, Manchee Agriculture and the selling agents do not assume or accept any responsibility or liability, of whatever nature, legal or otherwise, for any accident, injury or damage which may occur.

## HOW TO READ THE SALE CATALOGUE

Bulls name and registration details →


Pedigree information →

**LOT 48** **YAMBURGAN ANZAC S46 (P)** **HBR**

DOB: 19/02/2021      REG: YY S46      COLOUR: ROAN

THE GROVE OSCAR A748  
YAMBURGAN OSSIE E65  
YAMBURGAN JILL 132ND  
**SIRE: YAMBURGAN ANZAC L27B**  
WEEBOLLABOLLA THEODORE T85  
YAMBURGAN MAYFLOWER F82  
YAMBURGAN MAYFLOWER D203  
YAMBURGAN ZEUS D79  
YAMBURGAN ZEUS H140  
BROUGHTON PARK HARMONY F55  
**DAM: YAMBURGAN MAREE P291**  
ELOORA DESIGNER J06  
YAMBURGAN MAREE L149  
YAMBURGAN MAREE J161

Homzygous Polled.  
Hard to go past Lot 48 as one of the pick bulls of this year's sale. So much presence and correctness through the neck and shoulder. A bull admired for his extra length of body and width through the thrule and lower leg. A good combination of material traits, muscle and softness. Interesting that Lot 47 and 48 go back to the same female line.



YY

← Herd Book Registered or COM -Commercial Registered

← Image

← Select Lot Symbol

← Shaded animals are in the top 30% of the breed

July 2022 IGS EPD'S															
	CE	BW	WW	YW	Milk	MCE	MVWWT	STAY	DOC	CW	REA	FAT	MARB	YG	API
EPD	3.5	2.8	56.4	93.3	23.6	4.7	51.8	11.9	8.2	5.6	0.38	-0.064	0.08	-0.30	Index
Acc	38%	44%	44%	44%	15%	19%	25%	26%	32%	44%	42%	35%	39%	35%	110.36
%RK	95	45	35	20	75	70	60	60	80	45	50	15	20	80	45

Purchaser \_\_\_\_\_ \$ \_\_\_\_\_



### Buying

STEP

### Selling

**REGISTER ONLINE**

FREE once off registration for all auctions.

**VIEW CATALOGUE**

Stock history, photos, videos, pedigrees and more .

**LIMIT BID**

Can't make the auction? Set your maximum bid prior to auction and let the system bid for you.

**ENTER AUCTION**

Log into the auction anytime, anywhere and bid on your mobile, tablet or computer.

**CONTACT SELLER**

Contact selling agent to arrange payment and delivery.

**PAYMENT**

Via the selling agent's terms and conditions.

**DELIVERY**

Arrange transport of livestock at your expense.

1

**CONTACT AGENT**

Arrange for your livestock to be assessed.

2

**SELECT AUCTION**

Select an auction in which to offer your livestock.

3

**SET PRICES**

Avoid market volatility with a reserve price and free re-offer.

4

**VIEW AUCTION**

Log into the auction and watch it in real-time on your mobile, tablet or computer.

5

**VIEW RESULTS**

View the results Australia wide and your agent will contact the buyer to organise delivery.

6

**PAYMENT**

Via your agent's terms and conditions.

7

**DELIVERY**

Sell direct from your paddock, the buyer manages freight.

Log in today at [auctionsplus.com.au](http://auctionsplus.com.au) or call 02 9262 4222



## YAMBURGAN ZEUS M499 (P)

24 August 2016

Yamburgan Zeus M499 is proving to be a very consistent sire, breeding true to type just like his sire. A low birth weight bull with excellent growth and carcass traits. We are very excited about the influence he is having on the herd. His progeny carry an extra degree of yield and muscle development. Zeus M499 is represented by 9 sons.

Pictured is Yamburgan Zeus H140.

JULY 2022 IGS EPD's

	CE	BW	WW	YW	Milk	MCE	MWWT	STAY	DOC	CW	REA	FAT	MARB	YG	API
EPD	7.8	2.3	62.3	97.3	32.0	6.8	63.2	9.8	19.1	5.4	0.48	-0.070	0.21	-0.34	Index
Acc	54%	68%	54%	52%	19%	30%	31%	32%	18%	52%	50%	35%	42%	39%	121.62
%RK	45	35	15	15	10	30	10	85	2	45	20	25	3	50	15



## YAMBURGAN GIGABYTES M1052 (P)

08 December 2016

This is the third drop of calves to be offered by Y Gigabytes M1052. A long bodied, high muscling and marbling sire, which genetically is a rare combination. His progeny have stood out since they were calves and we are very impressed with his performance to date.

His dam BP Harmony F55 is also the dam of Y. Zeus H140, one of Australia's most widely used sires. M1052 is represented by 11 sons. Homozygous Polled.

JULY 2022 IGS EPD's

	CE	BW	WW	YW	Milk	MCE	MWWT	STAY	DOC	CW	REA	FAT	MARB	YG	API
EPD	2.5	5.0	67.2	109.8	33.8	4.0	67.4	11.0	2.8	12.2	0.79	-0.102	0.08	-0.50	Index
Acc	52%	65%	53%	51%	20%	27%	31%	26%	40%	49%	46%	38%	43%	38%	108.89
%RK	100	90	5	3	5	80	2	70	100	20	1	100	20	1	50



## YAMBURGAN SPARTAN N27 (P)

11 March 2017

Spartan N27 is a soft, well muscled, very wide thurled bull, with tremendous presence and sire appeal. A bull that scanned and performed at the top of his contemporary group. Spartan was first used as a 14 month old bull and has been heavily worked over the last 2 years.

His dam is a high performing, high milking female with lots of body capacity and is still in production.

Pictured is the Grand Sire Y Sparta F149. Spartan N27 is represented by 3 sons.

Homozygous Polled.

JULY 2022 IGS EPD's

	CE	BW	WW	YW	Milk	MCE	MWWT	STAY	DOC	CW	REA	FAT	MARB	YG	API
EPD	5.4	5.2	63.1	99.4	7.2	4.9	38.8	7.0	11.9	-2.0	0.35	-0.072	-0.18	-0.34	Index
Acc	50%	62%	46%	46%	18%	21%	27%	26%	27%	45%	45%	32%	45%	35%	86.58
%RK	80	95	15	10	100	70	100	100	40	80	55	30	90	55	100





**YAMBURGAN BEDOURIE P94 (P)**

16 March 2018

Yamburgan Bedourie P94 was a standout individual of the entire P drop contemporary group. An outstanding phenotype, backed by two of our strongest performing female lines. Bedourie P94 has the rare combination of perfect shoulder placement, head carriage and tremendous width and muscle expression. The dam of Bedourie is a special female, the one that takes everyone's eye when inspecting our cowherd. Her constitution never wavered during the drought and she has a lot of performance! She is so typical of the Ossie females; the next great sire from Yamburgan will carry this lineage. P94 is represented by 6 sons.

JULY 2022 IGS EPD's

	CE	BW	WW	YW	Milk	MCE	MWWT	STAY	DOC	CW	REA	FAT	MARB	YG	API
EPD	3.3	4.4	65.2	102.9	26.5	4.3	59.1	12.4	12.4	-1.8	0.46	-0.087	0.07	-0.41	111.28
Acc	47%	54%	46%	43%	15%	22%	25%	26%	10%	42%	41%	34%	41%	34%	40
%RK	100	85	10	10	55	80	20	50	35	80	25	75	20	10	20



**YAMBURGAN THUNDER M495 (P)**

25 August 2016

Yamburgan Thunder M495 has bred very soft, easy doing, low birth progeny with a lot of functionality and correctness. We have found the BP Thunder females to breed with great consistency; their strike rate of sale bulls is very high. The dam of Thunder M495 was one of our best maternal matron's ever retained at Yamburgan, with 40 calves registered with the society. A super breeding female who's legacy will live on for many generations to come. M495 is represented by 8 sons.

Maternal brother E102 pictured.

JULY 2022 IGS EPD's

	CE	BW	WW	YW	Milk	MCE	MWWT	STAY	DOC	CW	REA	FAT	MARB	YG	API
EPD	10.8	1.0	52.1	81.3	31.4	6.7	57.5	17.1	5.8	-18.4	0.28	-0.060	0.02	-0.35	Index
Acc	48%	58%	51%	49%	22%	26%	32%	28%	38%	47%	46%	33%	38%	36%	127.60
%RK	15	15	55	55	15	30	25	5	95	100	80	10	30	45	5



**YAMBURGAN ANZAC L278 (P)**

28 July 2015

Yamburgan Anzac L278 has been used considerably on heifers, unfortunately with limited results during the drought. His consistency of breeding true to type is very high, as can be seen from this line of sale bulls. His progeny are soft with excellent calving ease and low birthweights. The sire of Anzac, Y Ossie E65 has been a prolific breeder and its only now we are seeing his true worth. His females always breed on, they are heavy, fertile and very high capacity cattle. This is a line we will retain and use heavily, with 3 son's currently in use. L278 is represented by 8 sons.

JULY 2022 IGS EPD's

	CE	BW	WW	YW	Milk	MCE	MWWT	STAY	DOC	CW	REA	FAT	MARB	YG	API
EPD	5.7	2.9	58.4	91.7	13.1	6.6	42.3	19.1	1.6	-1.4	0.17	-0.036	0.11	-0.19	Index
Acc	60%	78%	72%	73%	34%	36%	47%	32%	62%	64%	60%	40%	60%	45%	128.34
%RK	80	50	25	25	100	35	100	1	100	75	95	2	15	100	5

## PERFORMANCE RECORDED 2 YEAR OLD BULLS



### LOT 1 YAMBURGAN TIGER MOTH R298 (P) HBR

DOB: 23/08/2020

REG: YY R298

COLOUR: RED LITTLE WHITE

THE GROVE INFORMANT Y463  
THE GROVE GIGABYTES J0837  
THE GROVE KOOKAS DALE E1237  
**SIRE: YAMBURGAN GIGABYTES M1052**  
BROUGHTON PARK THUNDER C023  
BROUGHTON PARK HARMONY F55  
BROUGHTON PARK HARMONY C091  
YAMBURGAN JAFAR D174  
YAMBURGAN SPARTA F149  
YAMBURGAN CLOUDY C61  
**DAM: YAMBURGAN WENDY J493**  
DUNBEACON BENTLEY  
YAMBURGAN WENDY E301  
YAMBURGAN WENDY A324

Homozygous Polled.  
One of the standout lots of the catalogue this year. An excellent yielding, big barreled, deep bodied bull with a lot of depth through the twist and lower leg. His Dam has been a prolific breeder with 2 daughters retained and sons selling to a top of \$18,000 to Peter Caskey in 2017.



#### July 2022 IGS EPD'S

	CE	BW	WW	YW	Milk	MCE	MWWT	STAY	DOC	CW	REA	FAT	MARB	YG	API
EPD	5.2	3.8	61.7	97.9	23.3	5.9	54.2	9.5	6.4	3.8	0.58	-0.086	0.03	-0.42	Index
Acc	19%	33%	25%	23%	11%	13%	16%	10%	15%	24%	24%	13%	15%	18%	105.62
%RK	85	70	15	15	80	50	45	85	95	55	5	70	30	4	60

Purchaser \_\_\_\_\_ \$ \_\_\_\_\_

### LOT 2 YAMBURGAN LONGREACH R517 (P) HBR

DOB: 20/08/2020

REG: YY R517

COLOUR: RED

YAMBURGAN TOBERMOREY F090  
YAMBURGAN MONKIRA K303  
BROUGHTON PARK HARMONY F55  
**SIRE: YAMBURGAN BEDOURIE P94**  
YAMBURGAN OSSIE E65  
YAMBURGAN MATILDA J168  
YAMBURGAN MATILDA 45TH  
YAMBURGAN ZEUS D79  
YAMBURGAN ZEUS H140  
BROUGHTON PARK HARMONY F55  
**DAM: YAMBURGAN VELVET N6**  
YAMBURGAN TOBERMOREY F090  
YAMBURGAN VELVET J667  
BROUGHTON PARK VELVET C060

Homozygous Polled  
The first Y Bedourie P94 son to be offered for sale. This genetic combination has gelled very well, with the power and performance of his sire and the consistent maternal traits of Zeus H140. Dam is from the same Velvet line of Y Hector J423, sold to the Futurity Stud in 2015.



#### July 2022 IGS EPD'S

	CE	BW	WW	YW	Milk	MCE	MWWT	STAY	DOC	CW	REA	FAT	MARB	YG	API
EPD	8.0	1.4	51.7	81.5	27.7	7.7	53.6	10.9	15.5	-16.2	0.39	-0.092	0.00	-0.46	Index
Acc	42%	47%	41%	40%	13%	20%	22%	26%	5%	42%	41%	31%	36%	33%	110.50
%RK	45	20	60	55	40	20	45	70	10	100	45	85	35	2	40

Purchaser \_\_\_\_\_ \$ \_\_\_\_\_

#### JULY 2022 IGS EPD AVERAGES FOR ALL 2020 CALVES

	CE	BW	WW	YW	Milk	MCE	MWWT	STAY	DOC	CW	REA	FAT	MARB	YG	API
EPD	7.7	3.0	53.1	82.4	26.4	5.7	52.9	12.4	10.7	4.5	0.37	-0.079	-0.03	-0.33	108.04

## LOT 3 YAMBURGAN MR MIYAGI R279 (P)

HBR

DOB: 10/08/2020

REG: YY R279

COLOUR: RED

YAMBURGAN POSEIDON D176  
YAMBURGAN OCTAGONAL H246  
YAMBURGAN CLOUDY C61  
**SIRE: CARLTON MR MIYAGI M55**  
FUTURITY DROUGHT BREAKER  
CARLTON FAIRY FLOSS  
CARLTON KARLI Z116  
THE GROVE OSCAR A748  
YAMBURGAN EMPEROR E103  
YAMBURGAN ROYAL 71ST  
**DAM: YAMBURGAN JILL H640**  
NARRALDA ALADDIN A048  
YAMBURGAN JILL D204  
YAMBURGAN JILL 180TH

One of the best weight for age bulls of the draft. Clearly one of the heaviest bulls offered with only a moderate birthweight. Dam is a typical Emperor daughter, very soft, long and with an excellent udder and teet placement. A maternal brother sold in last years sale to Gavin Stuckey and family, Condobolin for \$18,000.



July 2022 IGS EPD'S

	CE	BW	WW	YW	Milk	MCE	MWWT	STAY	DOC	CW	REA	FAT	MARB	YG	API
EPD	3.4	4.0	56.6	90.6	29.2	4.5	57.5	11.8	7.8	4.9	0.44	-0.076	-0.07	-0.35	Index
Acc	20%	33%	21%	20%	12%	13%	15%	9%	7%	25%	25%	13%	14%	18%	99.44
%RK	100	75	35	25	30	75	25	60	85	50	30	40	60	45	80

Purchaser \_\_\_\_\_ \$ \_\_\_\_\_

## LOT 4 YAMBURGAN ZEUS R328 (P)

HBR

DOB: 09/09/2020

REG: YY R328

COLOUR: RED LITTLE WHITE

THE GROVE LEGEND A584  
YAMBURGAN ZEUS D79  
YAMBURGAN MATILDA 61ST  
**SIRE: YAMBURGAN ZEUS H140**  
BROUGHTON PARK THUNDER C023  
BROUGHTON PARK HARMONY F55  
BROUGHTON PARK HARMONY C091  
THE GROVE LOCKYER X857  
THE GROVE OSCAR A748  
THE GROVE DALE 39TH  
**DAM: YAMBURGAN CLOUDY G187**  
YAMBURGAN MITTIEBAH 3RD  
YAMBURGAN CLOUDY 586TH  
YAMBURGAN CLOUDY 474TH

A very sirey, stylish fronted bull who stands out from the pack. A great combination of balance, performance and softness. Dam is a moderate framed, deep ribbed Oscar daughter with 3 daughters retained and a half brother selling to Essex Cattle Co in 2018.



July 2022 IGS EPD'S

	CE	BW	WW	YW	Milk	MCE	MWWT	STAY	DOC	CW	REA	FAT	MARB	YG	API
EPD	6.8	3.9	53.3	88.6	25.9	7.5	52.6	9.3	18.0	-7.0	0.40	-0.070	-0.04	-0.37	Index
Acc	23%	36%	31%	30%	20%	19%	24%	14%	12%	29%	28%	24%	25%	24%	100.39
%RK	60	75	50	35	60	20	55	90	3	95	40	25	50	25	80

Purchaser \_\_\_\_\_ \$ \_\_\_\_\_

## LOT 5 YAMBURGAN SPARTAN R296 (P)

HBR

DOB: 21/08/2020

REG: YY R296

COLOUR: RED

YAMBURGAN SPARTA F149  
YAMBURGAN SPARTAN K442  
YAMBURGAN COUNTESS G98  
**SIRE: YAMBURGAN SPARTAN N27**  
BROUGHTON PARK AMBASSADOR F29  
YAMBURGAN FANCY H116  
YAMBURGAN FANCY F11  
SPRYS BONECRUSHER B030  
NEEARRA GOVERNOR  
NEEARRA WENDY 63  
**DAM: YAMBURGAN FIDGET H270**  
THE GROVE LOCKYER X857  
YAMBURGAN FIDGET C6  
YAMBURGAN FIDGET 147TH

Homozygous Polled  
A sound fronted, long bodied bull who stands with his head above his spine. A bull carrying a lot of carcass development and muscle expression through the hind quarter. Dam is a consistent bull breeder with sons averaging \$12,000.



July 2022 IGS EPD'S

	CE	BW	WW	YW	Milk	MCE	MWWT	STAY	DOC	CW	REA	FAT	MARB	YG	API
EPD	8.5	3.8	68.9	105.1	19.5	6.7	54.0	10.9	9.8	6.2	0.42	-0.064	-0.10	-0.30	Index
Acc	39%	46%	40%	39%	11%	16%	21%	23%	11%	39%	38%	32%	37%	31%	107.03
%RK	35	70	4	5	95	30	45	70	65	40	35	15	70	80	55

Purchaser \_\_\_\_\_ \$ \_\_\_\_\_

JULY 2022 IGS EPD AVERAGES FOR ALL 2020 CALVES

	CE	BW	WW	YW	Milk	MCE	MWWT	STAY	DOC	CW	REA	FAT	MARB	YG	API
EPD	7.7	3.0	53.1	82.4	26.4	5.7	52.9	12.4	10.7	4.5	0.37	-0.079	-0.03	-0.33	108.04

## LOT 6 YAMBURGAN TIGER MOTH R510 (P) HBR

DOB: 08/07/2020

REG: YY R510

COLOUR: RED

THE GROVE INFORMANT Y463  
 THE GROVE GIGABYTES J0837  
 THE GROVE KOOKAS DALE E1237  
**SIRE: YAMBURGAN GIGABYTES M1052**  
 BROUGHTON PARK THUNDER C023  
 BROUGHTON PARK HARMONY F55  
 BROUGHTON PARK HARMONY C091  
 BYLAND GOLD SPEAR  
 CROOKED POST GRISSOM 24T (IMP)  
 CROOKED POST RED ROSE 11P  
**DAM: YAMBURGAN ROSEWOOD J23**  
 YAMBURGAN OSSIE D96  
 YAMBURGAN ROSEWOOD G6  
 YAMBURGAN ROSEWOOD 184TH

Homozygous Polled  
 A big powerful Gigabytes son who has always been one of the heaviest bulls of the draft. A very quiet, sirey headed bull with excellent skin and softness.



July 2022 IGS EPD'S

	CE	BW	WW	YW	Milk	MCE	MWWT	STAY	DOC	CW	REA	FAT	MARB	YG	API
EPD	6.4	4.0	62.8	105.7	33.9	5.8	65.3	14.0	9.3	13.1	0.79	-0.100	-0.02	-0.49	Index
Acc	37%	41%	40%	39%	12%	17%	21%	25%	30%	40%	39%	35%	37%	32%	115.23
%RK	70	75	15	4	5	50	3	30	70	20	1	100	45	1	25

Purchaser \_\_\_\_\_ \$ \_\_\_\_\_

## LOT 7 YAMBURGAN PERCEUS R312 (P) HBR

DOB: 02/09/2020

REG: YY R312

COLOUR: RED

YAMBURGAN ZEUS D79  
 YAMBURGAN ZEUS H140  
 BROUGHTON PARK HARMONY F55  
**SIRE: YAMBURGAN ZEUS M499**  
 BROUGHTON PARK THUNDER C023  
 YAMBURGAN COUNTESS G98  
 BROUGHTON PARK COUNTESS C097  
 MARRINGTON BOTTLER B67  
 BUNDALEER FORMULA ONE F94  
 BUNDALEER WITCHELL Y79  
**DAM: YAMBURGAN MOIRA J151**  
 YAMBURGAN ZEUS D79  
 YAMBURGAN MOIRA G75  
 YAMBURGAN MOIRA E6

Homozygous Polled  
 One of the standout bulls of the catalogue. A very good natured, correct and balanced bull who always stands square. Rare to see a bull with this much performance and such a refined front end for calving ease.  
 Dam has been a beautiful matron, a big bodied, wide female with a great bag of milk.



July 2022 IGS EPD'S

	CE	BW	WW	YW	Milk	MCE	MWWT	STAY	DOC	CW	REA	FAT	MARB	YG	API
EPD	5.5	4.1	67.1	107.3	31.7	4.7	65.3	11.8	16.7	13.3	0.55	-0.086	0.14	-0.38	Index
Acc	42%	47%	41%	41%	14%	19%	23%	25%	23%	42%	40%	34%	39%	33%	118.18
%RK	80	75	10	3	15	70	3	60	5	15	10	70	10	20	20

Purchaser \_\_\_\_\_ \$ \_\_\_\_\_

## LOT 8 YAMBURGAN CORDILLO R341 (P) HBR

DOB: 13/09/2020

REG: YY R341

COLOUR: ROAN

WEEBOLLABOLLA THEODORE T85  
 YAMBURGAN TOBERMOREY F090  
 YAMBURGAN CONNIE D133  
**SIRE: YAMBURGAN MONKIRA M14**  
 BROUGHTON PARK THUNDER C023  
 YAMBURGAN DUCHESS G115  
 BROUGHTON PARK DUCHESS C069  
 YAMBURGAN EMPEROR E103  
 YAMBURGAN EMPEROR H33  
 YAMBURGAN CLOUDY 487TH  
**DAM: YAMBURGAN JILL L1011**  
 YAMBURGAN LOCKYER 17TH  
 YAMBURGAN JILL H2087  
 DALGONALLY JILL C855

Homozygous Polled.  
 An outstanding young sire that takes your eye in this pen. A bull very hard to fault, he stands square on good feet and legs. A bull with excellent body shape, width and overall capacity.



July 2022 IGS EPD'S

	CE	BW	WW	YW	Milk	MCE	MWWT	STAY	DOC	CW	REA	FAT	MARB	YG	API
EPD	10.6	4.9	63.3	99.4	29.0	9.0	60.7	12.0	11.4	2.8	0.19	-0.064	0.04	-0.25	Index
Acc	42%	47%	42%	41%	12%	20%	22%	26%	5%	42%	41%	32%	39%	33%	115.36
%RK	20	90	15	10	30	10	15	55	45	60	95	15	25	95	25

Purchaser \_\_\_\_\_ \$ \_\_\_\_\_

JULY 2022 IGS EPD AVERAGES FOR ALL 2020 CALVES

	CE	BW	WW	YW	Milk	MCE	MWWT	STAY	DOC	CW	REA	FAT	MARB	YG	API
EPD	7.7	3.0	53.1	82.4	26.4	5.7	52.9	12.4	10.7	4.5	0.37	-0.079	-0.03	-0.33	108.04

## LOT 9 YAMBURGAN PERCEUS R314 (P) HBR

DOB: 03/09/2020

REG: YY R314

COLOUR: RED

YAMBURGAN ZEUS D79  
YAMBURGAN ZEUS H140  
BROUGHTON PARK HARMONY F55  
**SIRE: YAMBURGAN ZEUS M499**  
BROUGHTON PARK THUNDER C023  
YAMBURGAN COUNTESS G98  
BROUGHTON PARK COUNTESS C097  
CROOKED POST GRISSOM 24T (IMP)  
YAMBURGAN GRISSOM G31  
YAMBURGAN ISABELLA E35  
**DAM: YAMBURGAN ROSEWOOD K383**  
BROOME GRAND OCCASSION W10  
YAMBURGAN ROSEWOOD 188TH  
YAMBURGAN ROSEWOOD 182ND

A mid maturity Perceus son who will breed excellent feeder steers. I really admire the spring of rib and softness of muscle pattern with Lot 9. A very good natured, soundly structured, easy moving bull. Dam is from the Rosewood line, going back to Y Rosewood 182nd, one of our most prolific breeders.



July 2022 IGS EPD'S

	CE	BW	WW	YW	Milk	MCE	MWWT	STAY	DOC	CW	REA	FAT	MARB	YG	API
EPD	5.2	3.6	64.8	96.3	29.2	4.4	61.6	8.9	14.5	19.8	0.63	-0.098	0.01	-0.40	Index
Acc	40%	46%	42%	40%	9%	18%	20%	26%	32%	41%	41%	33%	40%	33%	103.41
%RK	85	65	10	15	30	75	10	90	15	10	3	95	35	10	70

Purchaser \_\_\_\_\_ \$ \_\_\_\_\_

## LOT 10 YAMBURGAN TIGER MOTH R285 (P) HBR

DOB: 15/08/2020

REG: YY R285

COLOUR: ROAN

THE GROVE INFORMANT Y463  
THE GROVE GIGABYTES J0837  
THE GROVE KOOKAS DALE E1237  
**SIRE: YAMBURGAN GIGABYTES M1052**  
BROUGHTON PARK THUNDER C023  
BROUGHTON PARK HARMONY F55  
BROUGHTON PARK HARMONY C091  
THE GROVE OSCAR A748  
YAMBURGAN OSSIE E65  
YAMBURGAN JILL 132ND  
**DAM: YAMBURGAN FIRST LADY H205**  
BROUGHTON PARK SENATOR Y041  
BROUGHTON PARK FIRST LADY D065  
BROUGHTON PARK FIRST LADY A101

A stylish, sound fronted bull with perfect shoulder angle and neck extension. A sirey headed, wide thurled bull who carries that width right through to behind the shoulder. The Ossie E65 daughters really breed on.



July 2022 IGS EPD'S

	CE	BW	WW	YW	Milk	MCE	MWWT	STAY	DOC	CW	REA	FAT	MARB	YG	API
EPD	5.6	3.7	60.1	97.9	28.9	6.6	59.0	16.4	9.0	-4.7	0.46	-0.067	0.21	-0.37	Index
Acc	40%	46%	41%	41%	12%	18%	22%	23%	29%	41%	40%	35%	38%	33%	129.21
%RK	80	70	20	15	30	35	20	10	75	90	25	20	3	25	4

Purchaser \_\_\_\_\_ \$ \_\_\_\_\_

## LOT 11 YAMBURGAN TIGER MOTH R278 (P) HBR

DOB: 10/08/2020

REG: YY R278

COLOUR: RED

THE GROVE INFORMANT Y463  
THE GROVE GIGABYTES J0837  
THE GROVE KOOKAS DALE E1237  
**SIRE: YAMBURGAN GIGABYTES M1052**  
BROUGHTON PARK THUNDER C023  
BROUGHTON PARK HARMONY F55  
BROUGHTON PARK HARMONY C091  
BYLAND GOLD SPEAR  
CROOKED POST GRISSOM 24T (IMP)  
CROOKED POST RED ROSE 11P  
**DAM: YAMBURGAN VIOLA H177**  
YAMBURGAN CHURCHILL C26  
YAMBURGAN VIOLA F89  
YAMBURGAN VIOLA 6TH

Homozygous Polled  
A balanced long bodied bull with good depth and spring of rib. A beautiful carcass shape and softness to Lot 11. Dam is a 10 year old Viola female, still in production with an excellent calving interval of only 4 weeks over a 10 year period.



July 2022 IGS EPD'S

	CE	BW	WW	YW	Milk	MCE	MWWT	STAY	DOC	CW	REA	FAT	MARB	YG	API
EPD	3.6	5.5	70.5	111.8	28.7	4.4	64.0	13.7	6.9	15.7	0.88	-0.072	-0.11	-0.43	Index
Acc	40%	45%	41%	39%	10%	17%	20%	24%	33%	41%	39%	33%	38%	32%	104.59
%RK	95	95	3	2	30	75	5	35	90	15	1	30	75	3	65

Purchaser \_\_\_\_\_ \$ \_\_\_\_\_

JULY 2022 IGS EPD AVERAGES FOR ALL 2020 CALVES

	CE	BW	WW	YW	Milk	MCE	MWWT	STAY	DOC	CW	REA	FAT	MARB	YG	API
EPD	7.7	3.0	53.1	82.4	26.4	5.7	52.9	12.4	10.7	4.5	0.37	-0.079	-0.03	-0.33	108.04

## LOT 12 YAMBURGAN PERCEUS R317 (P) HBR

DOB: 06/09/2020

REG: YY R317

COLOUR: RED LITTLE WHITE

YAMBURGAN ZEUS D79  
YAMBURGAN ZEUS H140  
BROUGHTON PARK HARMONY F55  
**SIRE: YAMBURGAN ZEUS M499**  
BROUGHTON PARK THUNDER C023  
YAMBURGAN COUNTESS G98  
BROUGHTON PARK COUNTESS C097  
BYLAND GOLD SPEAR  
CROOKED POST GRISSOM 24T (IMP)  
CROOKED POST RED ROSE 11P  
**DAM: YAMBURGAN MAYFLOWER G17**  
THE GROVE NEW LEGEND Z058  
YAMBURGAN MAYFLOWER E31  
YAMBURGAN MAYFLOWER C1

A bigger framed bull with good weight for age and an excellent front end for breeding replacement females. Lot 12 will breed thumping feeder steers and his extra length and slope from hip to pin will produce easy calving replacement daughters.



July 2022 IGS EPD'S

	CE	BW	WW	YW	Milk	MCE	MWWT	STAY	DOC	CW	REA	FAT	MARB	YG	API
EPD	9.3	3.4	63.3	101.3	31.8	7.8	63.5	11.0	16.5	6.5	0.56	-0.078	0.21	-0.39	Index
Acc	41%	47%	41%	40%	12%	21%	22%	27%	28%	42%	41%	35%	37%	34%	124.91
%RK	30	60	15	10	15	15	5	70	5	40	10	45	3	15	10

Purchaser \_\_\_\_\_ \$ \_\_\_\_\_

## LOT 13 YAMBURGAN PERCEUS R318 (P) HBR

DOB: 06/09/2020

REG: YY R318

COLOUR: RED

YAMBURGAN ZEUS D79  
YAMBURGAN ZEUS H140  
BROUGHTON PARK HARMONY F55  
**SIRE: YAMBURGAN ZEUS M499**  
BROUGHTON PARK THUNDER C023  
YAMBURGAN COUNTESS G98  
BROUGHTON PARK COUNTESS C097  
THE GROVE OSCAR A748  
YAMBURGAN OSSIE E65  
YAMBURGAN JILL 132ND  
**DAM: YAMBURGAN PENDANT K165**  
YAMBURGAN DIAMANTINA 20TH  
YAMBURGAN PENDANT D354  
YAMBURGAN PENDANT Y258

A quiet, sound natured bull very similar to Lot 12. An upstanding, correct sire who stands square. A lower birth weight bull with very balanced data.



July 2022 IGS EPD'S

	CE	BW	WW	YW	Milk	MCE	MWWT	STAY	DOC	CW	REA	FAT	MARB	YG	API
EPD	6.6	2.7	55.9	86.8	26.6	6.0	54.6	15.3	12.9	7.8	0.47	-0.064	0.12	-0.32	Index
Acc	18%	25%	26%	24%	10%	13%	15%	11%	17%	26%	25%	12%	15%	18%	122.70
%RK	65	45	35	40	50	45	40	15	30	35	20	15	10	70	10

Purchaser \_\_\_\_\_ \$ \_\_\_\_\_

## LOT 14 YAMBURGAN ZEUS R354 (P) HBR

DOB: 23/09/2020

REG: YY R354

COLOUR: RED

THE GROVE LEGEND A584  
YAMBURGAN ZEUS D79  
YAMBURGAN MATILDA 61ST  
**SIRE: YAMBURGAN ZEUS H140**  
BROUGHTON PARK THUNDER C023  
BROUGHTON PARK HARMONY F55  
BROUGHTON PARK HARMONY C091  
CROOKED POST GRISSOM 24T (IMP)  
YAMBURGAN GRISSOM G31  
YAMBURGAN ISABELLA E35  
**DAM: YAMBURGAN ROSE M132**  
BROUGHTON PARK THUNDER C023  
YAMBURGAN ROSE G124  
BROUGHTON PARK ROSE D088

Homozygous Polled.  
A low birth weight sire with more depth of flank and width through the hindquarter. A bull with a good bone to muscle ratio adding yield and calving ease to your program.  
Dam is a very nice Grissom daughter who's calving interval is coming forward every year.



July 2022 IGS EPD'S

	CE	BW	WW	YW	Milk	MCE	MWWT	STAY	DOC	CW	REA	FAT	MARB	YG	API
EPD	12.4	-0.3	51.4	78.3	28.5	9.4	54.2	8.9	12.3	-13.1	0.14	-0.061	0.08	-0.29	Index
Acc	43%	48%	46%	45%	19%	24%	28%	28%	23%	45%	44%	38%	40%	36%	118.22
%RK	10	4	60	65	35	5	45	90	35	100	100	10	20	85	20

Purchaser \_\_\_\_\_ \$ \_\_\_\_\_

JULY 2022 IGS EPD AVERAGES FOR ALL 2020 CALVES

	CE	BW	WW	YW	Milk	MCE	MWWT	STAY	DOC	CW	REA	FAT	MARB	YG	API
EPD	7.7	3.0	53.1	82.4	26.4	5.7	52.9	12.4	10.7	4.5	0.37	-0.079	-0.03	-0.33	108.04

## LOT 15 YAMBURGAN SPARTAN R357 (P)

HBR

DOB: 25/09/2020

REG: YY R357

COLOUR: RED

YAMBURGAN SPARTA F149  
YAMBURGAN SPARTAN K442  
YAMBURGAN COUNTESS G98  
**SIRE: YAMBURGAN SPARTAN N27**  
BROUGHTON PARK AMBASSADOR F29  
YAMBURGAN FANCY H116  
YAMBURGAN FANCY F11  
THE GROVE INFORMER F1131  
THE GROVE SHERLOCK J0110  
THE GROVE B135  
**DAM: YAMBURGAN COUNTESS M261**  
BROUGHTON PARK SENATOR Y041  
BROUGHTON PARK COUNTESS C09  
BROUGHTON PARK COUNTESS Y010

Homozygous Polled.  
A bull that strides out, moves efficiently and stands square everytime. Lot 15 has excellent shoulder placement and angle for a bull carrying this much muscle content. A sire that will add weight for age and yield to your program.



July 2022 IGS EPD'S

	CE	BW	WW	YW	Milk	MCE	MWWT	STAY	DOC	CW	REA	FAT	MARB	YG	API
EPD	2.8	5.2	64.3	107.3	19.6	3.4	51.8	9.6	8.3	16.4	0.39	-0.058	0.12	-0.24	Index
Acc	40%	46%	40%	39%	11%	15%	21%	24%	11%	41%	40%	29%	36%	32%	105.90
%RK	100	95	10	3	95	90	60	85	80	10	45	10	10	95	60

Purchaser \_\_\_\_\_ \$ \_\_\_\_\_

## LOT 16 YAMBURGAN ZEUS R377 (P)

HBR

DOB: 09/10/2020

REG: YY R377

COLOUR: RED LITTLE WHITE

YAMBURGAN ZEUS D79  
YAMBURGAN ZEUS H140  
BROUGHTON PARK HARMONY F55  
**SIRE: YAMBURGAN ZEUS M499**  
BROUGHTON PARK THUNDER C023  
YAMBURGAN COUNTESS G98  
BROUGHTON PARK COUNTESS C097  
WEEBOLLABOLLA THEODORE T85  
YAMBURGAN TOBERMOREY F090  
TYAMBURGAN CONNIE D133  
**DAM: YAMBURGAN LIMELIGHT J294**  
YAMBURGAN CASSIUS CLAY C108  
YAMBURGAN LIMELIGHT F298  
YAMBURGAN LIMELIGHT X223

A bigger framed, heavier bull with good balance and a quiet nature. A bull with strong material traits who will breed excellent replacement females.



July 2022 IGS EPD'S

	CE	BW	WW	YW	Milk	MCE	MWWT	STAY	DOC	CW	REA	FAT	MARB	YG	API
EPD	6.4	3.7	61.9	96.8	30.0	6.0	61.0	9.4	15.9	5.3	0.45	-0.077	0.06	-0.35	Index
Acc	20%	35%	28%	26%	12%	16%	17%	11%	10%	26%	26%	11%	13%	18%	108.17
%RK	70	70	15	15	20	45	10	90	10	45	25	40	20	40	50

Purchaser \_\_\_\_\_ \$ \_\_\_\_\_

## LOT 17 YAMBURGAN TIGER MOTH R349 (P)

HBR

DOB: 21/09/2020

REG: YY R349

COLOUR: ROAN

THE GROVE INFORMANT Y463  
THE GROVE GIGABYTES J0837  
THE GROVE KOOKAS DALE E1237  
**SIRE: YAMBURGAN GIGABYTES M1052**  
BROUGHTON PARK THUNDER C023  
BROUGHTON PARK HARMONY F55  
BROUGHTON PARK HARMONY C091  
YAMBURGAN JAFAR D174  
YAMBURGAN SPARTA F149  
YAMBURGAN CLOUDY C61  
**DAM: YAMBURGAN MAYFLOWER J457**  
WEEBOLLABOLLA THEODORE T85  
YAMBURGAN MAYFLOWER F82  
YAMBURGAN MAYFLOWER D203

Homozygous Polled.  
A stylish, softer bull with good neck extension and shoulder placement. A neatly made, sirey headed bull who will grow on.  
Dam is a beautiful Sparta female who goes back to Y Mayflower F82, the dam of Y Anzac L278.



July 2022 IGS EPD'S

	CE	BW	WW	YW	Milk	MCE	MWWT	STAY	DOC	CW	REA	FAT	MARB	YG	API
EPD	4.0	3.1	57.5	92.4	20.7	4.5	49.5	12.7	4.9	7.7	0.59	-0.099	0.17	-0.44	Index
Acc	41%	47%	41%	41%	13%	19%	22%	26%	26%	43%	39%	36%	39%	34%	117.69
%RK	95	55	30	25	90	75	75	50	95	35	5	95	5	3	20

Purchaser \_\_\_\_\_ \$ \_\_\_\_\_

JULY 2022 IGS EPD AVERAGES FOR ALL 2020 CALVES

	CE	BW	WW	YW	Milk	MCE	MWWT	STAY	DOC	CW	REA	FAT	MARB	YG	API
EPD	7.7	3.0	53.1	82.4	26.4	5.7	52.9	12.4	10.7	4.5	0.37	-0.079	-0.03	-0.33	108.04

## LOT 18 YAMBURGAN MR MIYAGI R301 (P)

HBR

DOB: 28/08/2020

REG: YY R301

COLOUR: ROAN

YAMBURGAN POSEIDON D176  
YAMBURGAN OCTAGONAL H246  
YAMBURGAN CLOUDY C61  
**SIRE: CARLTON MR MIYAGI M55**  
FUTURITY DROUGHT BREAKER  
CARLTON FAIRY FLOSS  
CARLTON KARLI Z116  
WEEBOLLABOLLA THEODORE T85  
YAMBURGAN TOBERMOREY F090  
YAMBURGAN CONNIE D133  
**DAM: YAMBURGAN FIRST LADY K214**  
BROUGHTON PARK SENATOR Y041  
BROUGHTON PARK FIRST LADY D065  
BROUGHTON PARK FIRST LADY A101

A softer, bigger framed bull who is really hitting his straps. A quiet natured, good fronted bull, well suited to cows and heifers.



July 2022 IGS EPD'S

	CE	BW	WW	YW	Milk	MCE	MWWT	STAY	DOC	CW	REA	FAT	MARB	YG	API
EPD	5.8	2.5	51.0	84.0	24.3	5.7	49.8	14.8	11.3	1.5	0.35	-0.075	-0.01	-0.33	Index
Acc	19%	33%	27%	24%	11%	12%	16%	10%	6%	25%	25%	12%	14%	18%	112.84
%RK	75	40	60	45	70	50	70	20	45	65	55	35	40	60	35

Purchaser \_\_\_\_\_ \$ \_\_\_\_\_

## LOT 19 YAMBURGAN TIGER MOTH R302 (P)

HBR

DOB: 28/08/2020

REG: YY R302

COLOUR: RED

THE GROVE INFORMANT Y463  
THE GROVE GIGABYTES J0837  
THE GROVE KOOKAS DALE E1237  
**SIRE: YAMBURGAN GIGABYTES M1052**  
BROUGHTON PARK THUNDER C023  
BROUGHTON PARK HARMONY F55  
BROUGHTON PARK HARMONY C091  
THE GROVE OSCAR A748  
YAMBURGAN OSSIE E65  
YAMBURGAN JILL 132ND  
**DAM: YAMBURGAN MARGARET H638**  
YAMBURGAN NANDEWAR 3RD  
YAMBURGAN MARGARET 31ST  
YAMBURGAN MARGARET 20TH

A long bodied type of bull with good muscling through the hind quarter and lower leg. A bull with a strong sirey head and wide muzzle which carries right through his body. Dam is from the Margaret line and was in our donor program, with 5 daughters retained.



July 2022 IGS EPD'S

	CE	BW	WW	YW	Milk	MCE	MWWT	STAY	DOC	CW	REA	FAT	MARB	YG	API
EPD	4.9	3.4	65.4	103.8	29.3	5.5	62.0	16.0	4.0	10.3	0.65	-0.087	0.06	-0.42	Index
Acc	20%	33%	26%	24%	12%	13%	17%	10%	18%	24%	23%	14%	16%	18%	121.92
%RK	85	60	10	5	25	55	10	10	100	25	2	75	20	5	15

Purchaser \_\_\_\_\_ \$ \_\_\_\_\_

## LOT 20 YAMBURGAN CORDILLO R396 (P)

HBR

DOB: 06/11/2020

REG: YY R396

COLOUR: RED

WEEBOLLABOLLA THEODORE T85  
YAMBURGAN TOBERMOREY F090  
YAMBURGAN CONNIE D133  
**SIRE: YAMBURGAN MONKIRA M14**  
BROUGHTON PARK THUNDER C023  
YAMBURGAN DUCHESS G115  
BROUGHTON PARK DUCHESS C069  
THE GROVE INFORMER F1131  
THE GROVE SHERLOCK J0110  
THE GROVE B135  
**DAM: YAMBURGAN DANCER M372**  
NARRALDA ALADDIN A048  
YAMBURGAN DANCER E36  
YAMBURGAN DANCER Z141

Homozygous Polled. A younger bull that is one to keep your eye on. A slick coated, moderate maturity bull who is very complete. Interesting to look at his bone to muscle ratio and lower birthweight. A high yielding bull with good maternal traits.



July 2022 IGS EPD'S

	CE	BW	WW	YW	Milk	MCE	MWWT	STAY	DOC	CW	REA	FAT	MARB	YG	API
EPD	7.0	2.4	53.4	84.2	25.9	6.7	52.6	12.0	7.5	1.7	0.47	-0.081	0.03	-0.38	Index
Acc	40%	47%	41%	40%	11%	17%	21%	23%	9%	42%	39%	33%	36%	33%	111.78
%RK	60	35	50	45	60	30	55	55	85	65	20	55	30	20	40

Purchaser \_\_\_\_\_ \$ \_\_\_\_\_

JULY 2022 IGS EPD AVERAGES FOR ALL 2020 CALVES

	CE	BW	WW	YW	Milk	MCE	MWWT	STAY	DOC	CW	REA	FAT	MARB	YG	API
EPD	7.7	3.0	53.1	82.4	26.4	5.7	52.9	12.4	10.7	4.5	0.37	-0.079	-0.03	-0.33	108.04



## LOT 21 YAMBURGAN THUNDERBOLT R391 (P) HBR

DOB: 26/10/2020

REG: YY R391

COLOUR: RED LITTLE WHITE

WEEBOLLABOLLA THEODORE T85  
BROUGHTON PARK THUNDER C023  
BROUGHTON PARK ROSE A011  
**SIRE: YAMBURGAN THUNDER M495**  
YAMBURGAN NANDEWAR 3RD  
YAMBURGAN MARGARET 31ST  
YAMBURGAN MARGARET 20TH  
YAMBURGAN ZEUS D79  
YAMBURGAN ZEUS H140  
BROUGHTON PARK HARMONY F55  
**DAM: YAMBURGAN CLOUDY L174**  
YAMBURGAN TOBERMOREY F090  
YAMBURGAN CLOUDY J220  
YAMBURGAN CLOUDY 568TH

Homozygous Polled.  
A powerful, moderate framed bull with a maturity pattern to suit both Domestic and Export markets. You will admire Lot 21 for his extra softness, depth of flank and strong muscling over the loin.



July 2022 IGS EPD'S

	CE	BW	WW	YW	Milk	MCE	MWWT	STAY	DOC	CW	REA	FAT	MARB	YG	API
EPD	9.3	2.4	60.1	94.2	30.4	7.4	60.5	13.1	12.1	-11.0	0.29	-0.068	-0.04	-0.34	Index
Acc	20%	25%	28%	26%	13%	14%	18%	11%	12%	17%	16%	14%	15%	14%	115.68
%RK	30	35	20	20	20	20	15	40	35	100	75	20	50	45	25

Purchaser \_\_\_\_\_ \$ \_\_\_\_\_

## LOT 22 YAMBURGAN CORDILO R337 (P) HBR

DOB: 11/09/2020

REG: YY R337

COLOUR: RED LITTLE WHITE

WEEBOLLABOLLA THEODORE T85  
YAMBURGAN TOBERMOREY F090  
YAMBURGAN CONNIE D133  
**SIRE: YAMBURGAN MONKIRA M14**  
BROUGHTON PARK THUNDER C023  
YAMBURGAN DUCHESS G115  
BROUGHTON PARK DUCHESS C069  
YAMBURGAN OSSIE E65  
YAMBURGAN ANZAC H616  
YAMBURGAN E444  
**DAM: YAMBURGAN FIDGET L901**  
YAMBURGAN JAFAR E120  
YAMBURGAN FIDGET J3905  
DALGONALLY FIDGET C866

Homozygous Polled.  
A very soft, easy doing bull who displays excellent carcass development along the spine and over the loin. A low birthweight sire, with a good combination of calving ease, marbling and fats.



July 2022 IGS EPD'S

	CE	BW	WW	YW	Milk	MCE	MWWT	STAY	DOC	CW	REA	FAT	MARB	YG	API
EPD	12.4	1.8	48.9	80.6	25.7	9.2	50.2	12.9	10.3	-0.4	0.24	-0.079	0.10	-0.31	Index
Acc	39%	45%	41%	40%	11%	17%	21%	24%	6%	41%	40%	33%	38%	33%	123.99
%RK	10	25	70	60	60	5	70	45	60	75	85	45	15	70	10

Purchaser \_\_\_\_\_ \$ \_\_\_\_\_

## LOT 23 YAMBURGAN PERCEUS R532 (P) HBR

DOB: 12/09/2020

REG: YY R532

COLOUR: ROAN

YAMBURGAN ZEUS D79  
YAMBURGAN ZEUS H140  
BROUGHTON PARK HARMONY F55  
**SIRE: YAMBURGAN ZEUS M499**  
BROUGHTON PARK THUNDER C023  
YAMBURGAN COUNTESS G98  
BROUGHTON PARK COUNTESS C097  
BYLAND GOLD SPEAR  
CROOKED POST GRISSOM 24T (IMP)  
CROOKED POST RED ROSE 11P  
**DAM: YAMBURGAN MARGARET G582**  
THE GROVE LOCKYER X857  
YAMBURGAN MARGARET 45TH  
YAMBURGAN MARGARET 31ST

Homozygous Polled  
A soft easy doing Perceus son who is as long as a coal train. Lot 23 will catch your eye in this pen with his neck extension and natural ability to stand square. Dam is from the same family line as Yamburgan Thunder M495.



July 2022 IGS EPD'S

	CE	BW	WW	YW	Milk	MCE	MWWT	STAY	DOC	CW	REA	FAT	MARB	YG	API
EPD	8.2	1.8	55.7	88.1	29.3	7.3	57.2	15.9	16.4	9.2	0.49	-0.086	0.02	-0.37	Index
Acc	18%	25%	25%	23%	10%	14%	15%	12%	19%	26%	24%	13%	15%	18%	122.50
%RK	40	25	40	35	25	25	25	15	5	30	20	70	30	25	15

Purchaser \_\_\_\_\_ \$ \_\_\_\_\_

JULY 2022 IGS EPD AVERAGES FOR ALL 2020 CALVES

	CE	BW	WW	YW	Milk	MCE	MWWT	STAY	DOC	CW	REA	FAT	MARB	YG	API
EPD	7.7	3.0	53.1	82.4	26.4	5.7	52.9	12.4	10.7	4.5	0.37	-0.079	-0.03	-0.33	108.04

## LOT 24 YAMBURGAN LONGREACH R535 (H) HBR

DOB: 12/09/2020

REG: YY R535

COLOUR: ROAN

YAMBURGAN TOBERMOREY F090  
YAMBURGAN MONKIRA K303  
BROUGHTON PARK HARMONY F55

**SIRE: YAMBURGAN BEDOURIE P94**

YAMBURGAN OSSIE E65  
YAMBURGAN MATILDA J168  
YAMBURGAN MATILDA 45TH

YAMBURGAN OSSIE D220  
MOOMBI OOKTALI G34  
SPJ HONOR Z23

**DAM: YAMBURGAN CONNIE N680**

YAMBURGAN LOCKYER 17TH  
YAMBURGAN CONNIE H2334  
DALGONALLY CONNIE B722

One of the standout lots of this year's sale. A bull that displays tremendous weight for age with natural fleshing ability and softness. I really admire Lot 24 for his depth of carcass and overall width but in a package that moves so efficiently



July 2022 IGS EPD'S

	CE	BW	WW	YW	Milk	MCE	MWWT	STAY	DOC	CW	REA	FAT	MARB	YG	API
EPD	6.1	3.5	65.6	100.1	26.9	5.9	59.7	14.0	12.2	8.7	0.37	-0.072	0.02	-0.30	Index
Acc	35%	39%	39%	38%	10%	17%	20%	23%	6%	39%	38%	30%	36%	31%	115.89
%RK	75	65	10	10	50	50	15	30	35	30	50	30	30	80	25

Purchaser \_\_\_\_\_ \$ \_\_\_\_\_

## LOT 25 YAMBURGAN TIGER MOTH R305 (P) HBR

DOB: 27/08/2020

REG: YY R305

COLOUR: RED LITTLE WHITE

THE GROVE INFORMANT Y463  
THE GROVE GIGABYTES J0837  
THE GROVE KOOKAS DALE E1237

**SIRE: YAMBURGAN GIGABYTES M1052**

BROUGHTON PARK THUNDER C023  
BROUGHTON PARK HARMONY F55  
BROUGHTON PARK HARMONY C091

THE GROVE LEGEND A584  
YAMBURGAN ZEUS D79  
YAMBURGAN MATILDA 61ST

**DAM: YAMBURGAN JILL G218**

NARRALDA ALADDIN A048  
YAMBURGAN JILL E91  
YAMBURGAN JILL 136TH

Homozygous Polled.  
An easy fleshing, solid bull with tremendous spring of rib and depth through the twist. A strong headed, wide muzzled sire with the skin and hair type to suit northern Australia. Dam is a well bred female by Zeus's sire out of a very strong Jill line.  
A full brother topped our 2021 sale for \$30,000 selling to the Belmore Stud, SA.



July 2022 IGS EPD'S

	CE	BW	WW	YW	Milk	MCE	MWWT	STAY	DOC	CW	REA	FAT	MARB	YG	API
EPD	3.9	3.3	59.1	90.0	25.5	4.5	55.1	12.4	8.1	-2.1	0.62	-0.106	-0.10	-0.51	Index
Acc	41%	47%	41%	40%	11%	19%	21%	23%	31%	42%	39%	35%	37%	33%	102.04
%RK	95	60	25	30	60	75	40	50	85	80	3	100	70	1	70

Purchaser \_\_\_\_\_ \$ \_\_\_\_\_

## LOT 26 YAMBURGAN CORDILLO R345 (P) HBR

DOB: 18/09/2020

REG: YY R345

COLOUR: RED

WEEBOLLABOLLA THEODORE T85  
YAMBURGAN TOBERMOREY F090  
YAMBURGAN CONNIE D133

**SIRE: YAMBURGAN MONKIRA M14**

BROUGHTON PARK THUNDER C023  
YAMBURGAN DUCHESS G115  
BROUGHTON PARK DUCHESS C069

YAMBURGAN EMPEROR E103  
YAMBURGAN EMPEROR H33  
YAMBURGAN CLOUDY 487TH

**DAM: YAMBURGAN CLOUDY L1009**

YAMBURGAN LOCKYER 17TH  
YAMBURGAN CLOUDY H2324  
DALGONALLY CLOUDY B727

A slick skinned, easy doing bull with a good nature and a neat, well shaped hind quarter. A lighter birth weight bull with good calving ease and balanced carcass data. Well worth an inspection in this pen.



July 2022 IGS EPD'S

	CE	BW	WW	YW	Milk	MCE	MWWT	STAY	DOC	CW	REA	FAT	MARB	YG	API
EPD	10.3	1.8	46.9	73.9	28.1	8.8	51.6	13.6	11.4	-9.4	0.32	-0.072	-0.04	-0.36	Index
Acc	21%	34%	26%	25%	13%	15%	17%	10%	5%	27%	25%	21%	24%	21%	113.26
%RK	20	25	80	80	40	10	60	35	45	100	65	30	50	35	35

Purchaser \_\_\_\_\_ \$ \_\_\_\_\_

JULY 2022 IGS EPD AVERAGES FOR ALL 2020 CALVES

	CE	BW	WW	YW	Milk	MCE	MWWT	STAY	DOC	CW	REA	FAT	MARB	YG	API
EPD	7.7	3.0	53.1	82.4	26.4	5.7	52.9	12.4	10.7	4.5	0.37	-0.079	-0.03	-0.33	108.04

## LOT 27 YAMBURGAN TIGER MOTH R291 (P)

HBR

DOB: 19/08/2020

REG: YY R291

COLOUR: RED

THE GROVE INFORMANT Y463  
 THE GROVE GIGABYTES J0837  
 THE GROVE KOOKAS DALE E1237  
**SIRE: YAMBURGAN GIGABYTES M1052**  
 BROUGHTON PARK THUNDER C023  
 BROUGHTON PARK HARMONY F55  
 BROUGHTON PARK HARMONY C091  
 YAMBURGAN ACHILLES  
 YAMBURGAN HECTOR G418  
 YAMBURGAN CONNIE D133  
**DAM: YAMBURGAN FIRST LADY K228**  
 BROUGHTON PARK SENATOR Y041  
 BROUGHTON PARK FIRST LADY C081  
 BROUGHTON PARK FIRST LADY U124

Homozygous Polled.  
 A quiet, long bodied bull with a mid maturity pattern to suit both domestic and export markets. A slick coated, correct, efficient moving sire with good balance.



July 2022 IGS EPD'S

	CE	BW	WW	YW	Milk	MCE	MWWT	STAY	DOC	CW	REA	FAT	MARB	YG	API
EPD	6.4	2.5	55.2	89.2	29.6	6.3	57.2	16.8	7.3	-3.6	0.33	-0.072	0.15	-0.34	Index
Acc	39%	46%	40%	39%	11%	17%	21%	24%	31%	40%	39%	32%	37%	32%	128.03
%RK	70	40	40	30	25	40	25	10	90	85	65	30	10	55	5

Purchaser \_\_\_\_\_ \$ \_\_\_\_\_

## LOT 28 YAMBURGAN SPARTAN R335 (P)

HBR

DOB: 10/09/2020

REG: YY R335

COLOUR: RED

YAMBURGAN SPARTA F149  
 YAMBURGAN SPARTAN K442  
 YAMBURGAN COUNTESS G98  
**SIRE: YAMBURGAN SPARTAN N27**  
 BROUGHTON PARK AMBASSADOR F29  
 YAMBURGAN FANCY H116  
 YAMBURGAN FANCY F11  
 WEEBOLLABOLLA THEODORE T85  
 YAMBURGAN TOBERMOREY F090  
 YAMBURGAN CONNIE D133  
**DAM: YAMBURGAN FIRST LADY L427**  
 YAMBURGAN OSSIE E65  
 YAMBURGAN FIRST LADY H205  
 BROUGHTON PARK FIRST LADY D065

Homozygous Polled.  
 An easy fleshing, strong topped bull who carries his muscle right along the spine and deep through the lower leg. A very complete, neatly made sire with a stylish well put together front end.



July 2022 IGS EPD'S

	CE	BW	WW	YW	Milk	MCE	MWWT	STAY	DOC	CW	REA	FAT	MARB	YG	API
EPD	6.7	3.6	54.0	82.6	15.2	6.7	42.2	10.5	12.7	-8.0	0.34	-0.052	0.06	-0.31	Index
Acc	40%	47%	41%	40%	12%	17%	22%	25%	10%	40%	41%	30%	39%	32%	106.76
%RK	65	65	45	50	100	30	100	75	30	95	60	4	20	75	55

Purchaser \_\_\_\_\_ \$ \_\_\_\_\_

## LOT 29 YAMBURGAN CORDILLO R347 (P)

HBR

DOB: 19/09/2020

REG: YY R347

COLOUR: ROAN

WEEBOLLABOLLA THEODORE T85  
 YAMBURGAN TOBERMOREY F090  
 YAMBURGAN CONNIE D133  
**SIRE: YAMBURGAN MONKIRA M14**  
 BROUGHTON PARK THUNDER C023  
 YAMBURGAN DUCHESS G115  
 BROUGHTON PARK DUCHESS C069  
 THE GROVE OSCAR A748  
 YAMBURGAN OSSIE E65  
 YAMBURGAN JILL 132ND  
**DAM: YAMBURGAN KAY J513**  
 WEEBOLLABOLLA THEODORE T85  
 YAMBURGAN KAY F230  
 YAMBURGAN KAY 71ST

A moderate framed bull with excellent rein of neck, good slope from hip to pin and standing on good bone. Dam is an outstanding type, one of the most feminine, highest yielding females you will ever see. This is a legacy of Ossie E65.



July 2022 IGS EPD'S

	CE	BW	WW	YW	Milk	MCE	MWWT	STAY	DOC	CW	REA	FAT	MARB	YG	API
EPD	5.7	4.3	54.3	85.0	26.4	4.5	53.6	16.2	10.4	-7.5	0.35	-0.065	-0.03	-0.34	Index
Acc	22%	36%	28%	26%	14%	15%	19%	11%	9%	27%	26%	21%	24%	22%	111.57
%RK	80	80	45	45	55	75	45	10	60	95	55	15	50	50	40

Purchaser \_\_\_\_\_ \$ \_\_\_\_\_

JULY 2022 IGS EPD AVERAGES FOR ALL 2020 CALVES

	CE	BW	WW	YW	Milk	MCE	MWWT	STAY	DOC	CW	REA	FAT	MARB	YG	API
EPD	7.7	3.0	53.1	82.4	26.4	5.7	52.9	12.4	10.7	4.5	0.37	-0.079	-0.03	-0.33	108.04

## LOT 30 YAMBURGAN MR MIYAGI R356 (P)

HBR

DOB: 24/09/2020

REG: YY R356

COLOUR: RED LITTLE WHITE

YAMBURGAN POSEIDON D176  
YAMBURGAN OCTAGONAL H246  
YAMBURGAN CLOUDY C61

SIRE: CARLTON MR MIYAGI M55

FUTURITY DROUGHT BREAKER  
CARLTON FAIRY FLOSS  
CARLTON KARLI Z116

DAM: YAMBURGAN ROSE G124

WEEBOLLABOLLA THEODORE T85  
BROUGHTON PARK THUNDER C023  
BROUGHTON PARK ROSE AO11  
BROUGHTON PARK SENATOR YO41  
BROUGHTON PARK ROSE D088  
BROUGHTON PARK ROSE WO16

Homozygous Polled.  
A low birthweight, correct, easy moving sire who stands square. A good natured young bull with good width through the thurle. Dam traditionally breeds high yielding carcass cattle, a typical Thunder daughter.



July 2022 IGS EPD'S

	CE	BW	WW	YW	Milk	MCE	MWWT	STAY	DOC	CW	REA	FAT	MARB	YG	API
EPD	6.3	1.7	49.2	76.9	24.2	4.8	48.8	12.1	7.9	-2.5	0.49	-0.064	0.01	-0.36	Index
Acc	40%	46%	40%	39%	12%	17%	21%	24%	5%	42%	40%	33%	36%	33%	109.02
%RK	70	25	70	70	75	70	80	55	85	80	20	15	35	30	45

Purchaser \_\_\_\_\_

\$ \_\_\_\_\_

## LOT 31 YAMBURGAN MONSOON R376 (P)

HBR

DOB: 07/10/2020

REG: YY R376

COLOUR: RED AND WHITE

THE GROVE OSCAR A748  
YAMBURGAN OSSIE D807  
YAMBURGAN JILL 142ND

SIRE: YAMBURGAN MONSOON J37

BROUGHTON PARK THUNDER C023  
YAMBURGAN COUNTESS G98  
BROUGHTON PARK COUNTESS C097

DAM: YAMBURGAN JEWEL M453

THE GROVE INFORMER F1131  
THE GROVE SHERLOCK JO110  
THE GROVE B135  
YAMBURGAN ZEUS D79  
YAMBURGAN JEWEL G414  
YAMBURGAN JEWEL E292

Homozygous Polled.  
A stylish, good fronted bull displaying excellent length of body and moderate bone. Well suited to heifers.



July 2022 IGS EPD'S

	CE	BW	WW	YW	Milk	MCE	MWWT	STAY	DOC	CW	REA	FAT	MARB	YG	API
EPD	11.4	2.0	55.7	88.8	28.7	8.6	56.6	13.6	6.3	2.9	0.49	-0.072	0.12	-0.36	Index
Acc	20%	34%	26%	24%	11%	12%	16%	9%	10%	25%	23%	18%	22%	19%	127.22
%RK	15	30	40	30	30	10	30	35	95	60	20	30	10	30	10

Purchaser \_\_\_\_\_

\$ \_\_\_\_\_

## LOT 32 YAMBURGAN LONGREACH R525 (H)

HBR

DOB: 12/09/2020

REG: YY R525

COLOUR: RED

YAMBURGAN TOBERMOREY F090  
YAMBURGAN MONKIRA K303  
BROUGHTON PARK HARMONY F55

SIRE: YAMBURGAN BEDOURIE P94

YAMBURGAN OSSIE E65  
YAMBURGAN MATILDA J168  
YAMBURGAN MATILDA 45TH

DAM: YAMBURGAN GOLDEN DROP N64

YAMBURGAN GRISSOM G31  
YAMBURGAN NORMANDY J70  
YAMBURGAN QUEEN G143  
YAMBURGAN ZEUS H140  
YAMBURGAN GOLDEN DROP L107  
YAMBURGAN GOLDEN DROP J12

A Bedourie son with excellent fleshing and natural muscling ability. A soft bull with good constitution, fine hair and perfect structure



July 2022 IGS EPD'S

	CE	BW	WW	YW	Milk	MCE	MWWT	STAY	DOC	CW	REA	FAT	MARB	YG	API
EPD	5.5	3.9	64.1	97.2	27.4	5.5	59.5	12.2	12.4	7.6	0.48	-0.102	0.04	-0.41	Index
Acc	37%	40%	38%	37%	10%	17%	19%	24%	5%	41%	40%	32%	38%	32%	111.95
%RK	80	75	10	15	45	55	15	55	35	35	20	100	25	10	35

Purchaser \_\_\_\_\_

\$ \_\_\_\_\_

JULY 2022 IGS EPD AVERAGES FOR ALL 2020 CALVES

	CE	BW	WW	YW	Milk	MCE	MWWT	STAY	DOC	CW	REA	FAT	MARB	YG	API
EPD	7.7	3.0	53.1	82.4	26.4	5.7	52.9	12.4	10.7	4.5	0.37	-0.079	-0.03	-0.33	108.04

## LOT 33 YAMBURGAN MR MIYAGI R340 (P)

HBR

DOB: 13/09/2020

REG: YY R340

COLOUR: RED LITTLE WHITE

YAMBURGAN POSEIDON D176  
YAMBURGAN OCTAGONAL H246  
YAMBURGAN CLOUDY C61

Homozygous Polled.  
A soft, easy doing bull with a barrel like a 44 gallon drum.  
A moderate birth weight bull with good growth for age and very balanced carcase traits.

**SIRE: CARLTON MR MIYAGI M55**

FUTURITY DROUGHT BREAKER  
CARLTON FAIRY FLOSS  
CARLTON KARLI Z116

THE GROVE KOOKABURRA W735  
YAMBURGAN KOOKABURRA J214  
YAMBURGAN CONNIE D133

**DAM: YAMBURGAN ROSEWOOD M322**

YAMBURGAN ROXBOROUGH  
YAMBURGAN ROSEWOOD J3326  
DALGONALLY ROSEWOOD B621



July 2022 IGS EPD'S

	CE	BW	WW	YW	Milk	MCE	MWWT	STAY	DOC	CW	REA	FAT	MARB	YG	API
EPD	8.8	3.7	55.4	90.3	24.6	7.7	52.3	15.7	7.8	2.9	0.43	-0.069	-0.01	-0.33	Index
Acc	38%	43%	39%	37%	9%	14%	19%	23%	6%	41%	39%	30%	35%	32%	118.08
%RK	35	70	40	30	70	20	55	15	85	60	30	20	40	55	20

Purchaser \_\_\_\_\_ \$ \_\_\_\_\_

## LOT 34 YAMBURGAN ZEUS R369 (P)

HBR

DOB: 02/10/2020

REG: YY R369

COLOUR: RED LITTLE WHITE

THE GROVE LEGEND A584  
YAMBURGAN ZEUS D79  
YAMBURGAN MATILDA 61ST

A long bodied, low birth weight bull, well suited to both mature cows and heifers. Lot 34 is well suited to all markets, a quiet natured, strong topped bull typical of Zeus progeny.

**SIRE: YAMBURGAN ZEUS H140**

BROUGHTON PARK THUNDER C023  
BROUGHTON PARK HARMONY F55  
BROUGHTON PARK HARMONY C091

THE GROVE OSCAR A748  
YAMBURGAN EVEREST E102  
YAMBURGAN MARGARET 31ST

**DAM: YAMBURGAN MOIRA G466**

WEEBOLLABOLLA THEODORE T85  
YAMBURGAN MOIRA D46  
YAMBURGAN MOIRA 137TH



July 2022 IGS EPD'S

	CE	BW	WW	YW	Milk	MCE	MWWT	STAY	DOC	CW	REA	FAT	MARB	YG	API
EPD	8.8	1.8	42.5	71.4	28.6	8.2	49.9	5.8	14.9	-13.9	0.25	-0.062	-0.04	-0.33	Index
Acc	41%	44%	43%	43%	20%	24%	28%	29%	28%	45%	42%	37%	37%	35%	94.76
%RK	35	25	95	85	35	15	70	100	10	100	85	10	50	60	90

Purchaser \_\_\_\_\_ \$ \_\_\_\_\_

## LOT 35 YAMBURGAN TIGER MOTH R277 (P)

HBR

DOB: 09/08/2020

REG: YY R277

COLOUR: RED LITTLE WHITE

THE GROVE INFORMANT Y463  
THE GROVE GIGABYTES J0837  
THE GROVE KOOKAS DALE E1237

A mid maturity Gigabytes son with a lot of carcase potential. Rare to see a bull so fine through the shoulder and front end with so much width and carcase through the hindquarter. Lot 35 has a soft muscle pattern and not coarse at all. Combine this with a smooth, well placed shoulder he is well suited to all self replacing breeder herds.

**SIRE: YAMBURGAN GIGABYTES M1052**

BROUGHTON PARK THUNDER C023  
BROUGHTON PARK HARMONY F55  
BROUGHTON PARK HARMONY C091

SPRYS BONECRUSHER B030  
NEEARRA GOVERNOR  
NEEARRA WENDY 63

**DAM: YAMBURGAN ROSEWOOD H537**

BROOME GRAND OCCASSION W10  
YAMBURGAN ROSEWOOD 188TH  
YAMBURGAN ROSEWOOD 182ND



July 2022 IGS EPD'S

	CE	BW	WW	YW	Milk	MCE	MWWT	STAY	DOC	CW	REA	FAT	MARB	YG	API
EPD	2.9	4.0	58.7	93.5	29.7	2.1	59.1	10.9	3.5	1.7	0.73	-0.114	0.04	-0.55	Index
Acc	40%	45%	40%	40%	12%	17%	21%	24%	33%	41%	39%	34%	34%	33%	105.21
%RK	100	75	25	20	25	100	20	70	100	65	1	100	25	1	60

Purchaser \_\_\_\_\_ \$ \_\_\_\_\_

JULY 2022 IGS EPD AVERAGES FOR ALL 2020 CALVES

	CE	BW	WW	YW	Milk	MCE	MWWT	STAY	DOC	CW	REA	FAT	MARB	YG	API
EPD	7.7	3.0	53.1	82.4	26.4	5.7	52.9	12.4	10.7	4.5	0.37	-0.079	-0.03	-0.33	108.04

## LOT 36 YAMBURGAN LONGREACH R530 (P)

HBR

DOB: 12/09/2020

REG: YY R530

COLOUR: RED LITTLE WHITE

YAMBURGAN TOBERMOREY F090  
 YAMBURGAN MONKIRA K303  
 BROUGHTON PARK HARMONY F55  
**SIRE: YAMBURGAN BEDOURIE P94**  
 YAMBURGAN OSSIE E65  
 YAMBURGAN MATILDA J168  
 YAMBURGAN MATILDA 45TH  
 YAMBURGAN ZEUS D79  
 YAMBURGAN ZEUS H140  
 BROUGHTON PARK HARMONY F55  
**DAM: YAMBURGAN ROSEWOOD N276**  
 NEEARRA GOVERNOR  
 YAMBURGAN ROSEWOOD H537  
 YAMBURGAN ROSEWOOD 188TH

A proud, sirey headed bull with a lot of efficiency of movement. A bull that always stands square with his head above his spine. Dam is a Rosewood with a very deep pedigree, this female line continues to breed on.



July 2022 IGS EPD'S

	CE	BW	WW	YW	Milk	MCE	MWWT	STAY	DOC	CW	REA	FAT	MARB	YG	API
EPD	4.0	2.6	53.9	84.2	25.9	3.7	52.9	11.0	13.9	1.3	0.52	-0.060	-0.03	-0.35	Index
Acc	37%	41%	40%	39%	12%	17%	21%	24%	7%	40%	39%	34%	35%	32%	102.04
%RK	95	40	45	45	60	85	50	70	20	65	15	10	50	45	70

Purchaser \_\_\_\_\_

\$ \_\_\_\_\_

## LOT 37 YAMBURGAN TIGER MOTH R344 (P)

HBR

DOB: 17/09/2020

REG: YY R344

COLOUR: RED

THE GROVE INFORMANT Y463  
 THE GROVE GIGABYTES J0837  
 THE GROVE KOOKAS DALE E1237  
**SIRE: YAMBURGAN GIGABYTES M1052**  
 BROUGHTON PARK THUNDER C023  
 BROUGHTON PARK HARMONY F55  
 BROUGHTON PARK HARMONY C091  
 YAMBURGAN ZEUS D79  
 YAMBURGAN ZEUS H140  
 BROUGHTON PARK HARMONY F55  
**DAM: YAMBURGAN QUEEN K253**  
 YAMBURGAN OSSIE E65  
 YAMBURGAN QUEEN H261  
 BROUGHTON PARK QUEEN D059

A low birth weight, very long bodied bull, like he has an extra rib. A quiet, good natured sire who is very correct on his feet and hard to fault. A later maturing bull who will grow on and produce beautiful replacement daughters.



July 2022 IGS EPD'S

	CE	BW	WW	YW	Milk	MCE	MWWT	STAY	DOC	CW	REA	FAT	MARB	YG	API
EPD	7.5	2.0	56.7	91.4	30.7	7.1	59.1	12.3	10.0	5.3	0.57	-0.081	0.08	-0.40	Index
Acc	23%	35%	28%	27%	14%	16%	19%	11%	3%	27%	25%	14%	16%	19%	118.26
%RK	50	30	35	25	20	25	20	55	65	45	10	55	20	10	20

Purchaser \_\_\_\_\_

\$ \_\_\_\_\_

## LOT 38 YAMBURGAN TIGER MOTH R295 (P)

HBR

DOB: 21/08/2020

REG: YY R295

COLOUR: RED

THE GROVE INFORMANT Y463  
 THE GROVE GIGABYTES J0837  
 THE GROVE KOOKAS DALE E1237  
**SIRE: YAMBURGAN GIGABYTES M1052**  
 BROUGHTON PARK THUNDER C023  
 BROUGHTON PARK HARMONY F55  
 BROUGHTON PARK HARMONY C091  
 THE GROVE OSCAR A748  
 YAMBURGAN EVEREST E102  
 YAMBURGAN MARGARET 31ST  
**DAM: YAMBURGAN JILL G339**  
 WEEBOLLABOLLA THEODORE T85  
 YAMBURGAN JILL C72  
 YAMBURGAN JILL 179TH

A stylish, sound and very muscular Gigabytes son. Lot 38 catches your eye with his tremendous carcass pattern and softness. Rare to see a bull with this much efficiency of movement carrying so much carcass development.



July 2022 IGS EPD'S

	CE	BW	WW	YW	Milk	MCE	MWWT	STAY	DOC	CW	REA	FAT	MARB	YG	API
EPD	7.9	4.1	58.7	98.7	29.8	7.5	59.2	10.3	2.6	1.2	0.58	-0.088	-0.11	-0.44	Index
Acc	40%	47%	42%	40%	13%	20%	23%	24%	28%	42%	41%	35%	38%	34%	102.66
%RK	45	75	25	10	25	20	20	80	100	65	5	75	75	3	70

Purchaser \_\_\_\_\_

\$ \_\_\_\_\_

JULY 2022 IGS EPD AVERAGES FOR ALL 2020 CALVES

	CE	BW	WW	YW	Milk	MCE	MWWT	STAY	DOC	CW	REA	FAT	MARB	YG	API
EPD	7.7	3.0	53.1	82.4	26.4	5.7	52.9	12.4	10.7	4.5	0.37	-0.079	-0.03	-0.33	108.04

## LOT 39 YAMBURGAN LONGREACH R520 (P)

HBR

DOB: 11/09/2020

REG: YY R520

COLOUR: RED LITTLE WHITE

YAMBURGAN TOBERMOREY F090  
 YAMBURGAN MONKIRA K303  
 BROUGHTON PARK HARMONY F55  
**SIRE: YAMBURGAN BEDOURIE P94**  
 YAMBURGAN OSSIE E65  
 YAMBURGAN MATILDA J168  
 YAMBURGAN MATILDA 45TH  
 THE GROVE INFORMANT Y463  
 THE GROVE GIGABYTES J0837  
 THE GROVE KOOKAS DALE E1237  
**DAM: YAMBURGAN COUNTESS N517**  
 BROUGHTON PARK THUNDER C023  
 YAMBURGAN COUNTESS G98  
 BROUGHTON PARK COUNTESS C097

A deep bodied bull with depth through the flank, twist and girth. This shows with his high fat data, a good doing young sire with an excellent pedigree.



July 2022 IGS EPD'S

	CE	BW	WW	YW	Milk	MCE	MWWT	STAY	DOC	CW	REA	FAT	MARB	YG	API
EPD	5.0	4.2	57.6	90.6	25.4	5.2	54.2	11.6	6.3	-5.0	0.37	-0.055	0.26	-0.31	Index
Acc	36%	40%	40%	39%	10%	16%	20%	24%	9%	40%	39%	35%	39%	33%	118.82
%RK	85	80	30	25	65	60	45	65	95	90	50	5	2	75	20

Purchaser \_\_\_\_\_ \$ \_\_\_\_\_

## LOT 40 YAMBURGAN CORDILLO R367 (P)

HBR

DOB: 01/10/2020

REG: YY R367

COLOUR: RED LITTLE WHITE

WEEBOLLABOLLA THEODORE T85  
 YAMBURGAN TOBERMOREY F090  
 YAMBURGAN CONNIE D133  
**SIRE: YAMBURGAN MONKIRA M14**  
 BROUGHTON PARK THUNDER C023  
 YAMBURGAN DUCHESS G115  
 BROUGHTON PARK DUCHESS C069  
 YAMBURGAN DIAMANTINA 3RD  
 YAMBURGAN ROXBOROUGH  
 YAMBURGAN JILL 148TH  
**DAM: YAMBURGAN JILL J3311**  
 YAMBURGAN LOCKYER 17TH  
 DALGONALLY JILL C835  
 DALGONALLY JILL 60TH

An alert, excellent fronted bull who carries himself very efficiently. A strong topped sire with muscle filling right behind the shoulder. A bull that ticks a lot of boxes.



July 2022 IGS EPD'S

	CE	BW	WW	YW	Milk	MCE	MWWT	STAY	DOC	CW	REA	FAT	MARB	YG	API
EPD	6.6	2.1	54.7	82.2	30.2	5.2	57.6	11.1	11.4	-6.0	0.31	-0.075	-0.06	-0.35	Index
Acc	39%	46%	42%	41%	11%	17%	21%	25%	7%	42%	41%	34%	38%	34%	104.07
%RK	65	30	45	50	20	60	25	70	45	90	70	35	60	40	65

Purchaser \_\_\_\_\_ \$ \_\_\_\_\_

## LOT 41 YAMBURGAN LONGREACH R562 (P)

HBR

DOB: 12/11/2020

REG: YY R562

COLOUR: ROAN

YAMBURGAN TOBERMOREY F090  
 YAMBURGAN MONKIRA K303  
 BROUGHTON PARK HARMONY F55  
**SIRE: YAMBURGAN BEDOURIE P94**  
 YAMBURGAN OSSIE E65  
 YAMBURGAN MATILDA J168  
 YAMBURGAN MATILDA 45TH  
 THE GROVE KOOKABURRA W735  
 YAMBURGAN GENERAL H188  
 YAMBURGAN CONNIE F169  
**DAM: YAMBURGAN CLOUDY N179**  
 YAMBURGAN OSSIE D807  
 YAMBURGAN CLOUDY H99  
 YAMBURGAN CLOUDY F39

Homozygous Polled.  
 A younger bull with a lot of softness and doing ability combined with good weight for age. Dam is a beautiful cloudy female, moderate framed with a lot of spring of rib with an excellent udder.



July 2022 IGS EPD'S

	CE	BW	WW	YW	Milk	MCE	MWWT	STAY	DOC	CW	REA	FAT	MARB	YG	API
EPD	6.7	2.9	57.7	91.7	28.3	6.7	57.2	12.5	11.5	1.0	0.43	-0.078	0.06	-0.36	Index
Acc	15%	19%	15%	14%	7%	9%	10%	10%	5%	15%	15%	12%	14%	12%	114.71
%RK	65	50	30	25	35	30	25	50	45	65	30	45	20	30	30

Purchaser \_\_\_\_\_ \$ \_\_\_\_\_

JULY 2022 IGS EPD AVERAGES FOR ALL 2020 CALVES

	CE	BW	WW	YW	Milk	MCE	MWWT	STAY	DOC	CW	REA	FAT	MARB	YG	API
EPD	7.7	3.0	53.1	82.4	26.4	5.7	52.9	12.4	10.7	4.5	0.37	-0.079	-0.03	-0.33	108.04

## LOT 42 YAMBURGAN MONSOON R374 (P)

HBR

DOB: 05/10/2020

REG: YY R374

COLOUR: RED

THE GROVE OSCAR A748  
YAMBURGAN OSSIE D807  
YAMBURGAN JILL 142ND  
**SIRE: YAMBURGAN MONSOON J37**  
BROUGHTON PARK THUNDER C023  
YAMBURGAN COUNTESS G98  
BROUGHTON PARK COUNTESS C097  
THE GROVE OSCAR A748  
YAMBURGAN OSSIE E65  
YAMBURGAN JILL 132ND  
**DAM: YAMBURGAN PENDANT L227**  
YAMBURGAN DIAMANTINA 20TH  
YAMBURGAN PENDANT D354  
YAMBURGAN PENDANT Y258

Homozygous Polled.  
A moderate framed,  
soundly structured bull with  
tremendous muscle shape  
and depth through the twist  
and hindquarter. A lower birth  
weight bull ideal for heifers or  
mature cows.



July 2022 IGS EPD'S

	CE	BW	WW	YW	Milk	MCE	MWWT	STAY	DOC	CW	REA	FAT	MARB	YG	API
EPD	12.0	0.9	42.3	67.1	24.0	9.9	45.2	16.9	7.2	-7.8	0.44	-0.061	0.14	-0.36	Index
Acc	20%	33%	26%	25%	13%	14%	17%	10%	10%	26%	25%	18%	23%	20%	131.77
%RK	10	15	95	90	75	3	90	10	90	95	30	10	10	30	3

Purchaser \_\_\_\_\_ \$ \_\_\_\_\_

## LOT 43 YAMBURGAN MR MIYAGI R352 (P)

HBR

DOB: 22/09/2020

REG: YY R352

COLOUR: RED LITTLE WHITE

YAMBURGAN POSEIDON D176  
YAMBURGAN OCTAGONAL H246  
YAMBURGAN CLOUDY C61  
**SIRE: CARLTON MR MIYAGI M55**  
FUTURITY DROUGHT BREAKER  
CARLTON FAIRY FLOSS  
CARLTON KARLI Z116  
THE GROVE BODACIOUS D425  
THE GROVE F915  
THE GROVE A252  
**DAM: YAMBURGAN ROSEWOOD M290**  
NEEARRA GOVERNOR  
YAMBURGAN ROSEWOOD H537  
YAMBURGAN ROSEWOOD 188TH

A sirey headed, solid bull with  
good heart room and width  
behind. An easy moving and  
efficient sire with a good  
shoulder angle and rein  
of neck. Well suited to all  
markets.



July 2022 IGS EPD'S

	CE	BW	WW	YW	Milk	MCE	MWWT	STAY	DOC	CW	REA	FAT	MARB	YG	API
EPD	3.6	2.9	49.6	82.9	24.6	2.1	49.4	14.5	7.0	-1.4	0.45	-0.069	0.04	-0.36	Index
Acc	38%	43%	38%	38%	8%	14%	18%	20%	4%	38%	38%	28%	34%	30%	110.84
%RK	95	50	70	50	70	100	75	25	90	75	25	20	25	35	40

Purchaser \_\_\_\_\_ \$ \_\_\_\_\_

## LOT 44 YAMBURGAN PERCEUS R572 (P)

HBR

DOB: 20/12/2020

REG: YY R572

COLOUR: RED

YAMBURGAN ZEUS D79  
YAMBURGAN ZEUS H140  
BROUGHTON PARK HARMONY F55  
**SIRE: YAMBURGAN ZEUS M499**  
BROUGHTON PARK THUNDER C023  
YAMBURGAN COUNTESS G98  
BROUGHTON PARK COUNTESS C097  
YAMBURGAN ZEUS D79  
YAMBURGAN ZEUS H140  
BROUGHTON PARK HARMONY F55  
**DAM: YAMBURGAN MARCHIONESS M331**  
MARELLAN LOYAL  
YAMBURGAN MARCHIONESS J439  
BROUGHTON PARK MARCHIONESS F10

Homozygous Polled.  
The youngest 2yr old in the  
catalogue. A bull displaying  
good growth and weight for  
age, with a strong top line and  
a good bone to muscle ratio.  
Well worth an inspection.



July 2022 IGS EPD'S

	CE	BW	WW	YW	Milk	MCE	MWWT	STAY	DOC	CW	REA	FAT	MARB	YG	API
EPD	8.2	2.1	58.0	92.2	31.8	7.2	60.8	7.2	18.0	-0.1	0.37	-0.072	0.06	-0.34	Index
Acc	17%	21%	17%	16%	9%	11%	12%	11%	0%	30%	29%	13%	15%	21%	107.32
%RK	40	30	30	25	15	25	10	100	3	70	50	30	20	55	55

Purchaser \_\_\_\_\_ \$ \_\_\_\_\_

JULY 2022 IGS EPD AVERAGES FOR ALL 2020 CALVES

	CE	BW	WW	YW	Milk	MCE	MWWT	STAY	DOC	CW	REA	FAT	MARB	YG	API
EPD	7.7	3.0	53.1	82.4	26.4	5.7	52.9	12.4	10.7	4.5	0.37	-0.079	-0.03	-0.33	108.04



## LOT 45 YAMBURGAN CHENNAI R276 (P)

HBR

DOB: 08/08/2020

REG: YY R276

COLOUR: RED LITTLE WHITE

MARELLAN HUM DINGER  
ROYALLA KUBAL  
ROYALLA MARGIES MEMORY 2344

An easy doing, earlier maturing bull with good shape and muscle expression down the hind leg. A low birth weight bull, well suited to heifers.

**SIRE: YAMBURGAN KUBAL M74**

YAMBURGAN TOBERMOREY F090  
YAMBURGAN MAYFLOWER K113  
YAMBURGAN MAYFLOWER G617



YAMBURGAN OSSIE D807  
YAMBURGAN MONSOON J37  
YAMBURGAN COUNTESS G98

**DAM: YAMBURGAN LIMELIGHT P277**

NARRALDA ALADDIN A048  
YAMBURGAN LIMELIGHT E238  
YAMBURGAN LIMELIGHT X223

### July 2022 IGS EPD'S

	CE	BW	WW	YW	Milk	MCE	MWWT	STAY	DOC	CW	REA	FAT	MARB	YG	API
EPD	14.1	-0.2	42.4	68.3	28.1	11.0	49.3	12.9	11.4	-6.3	0.28	-0.073	-0.02	-0.34	Index
Acc	20%	32%	25%	23%	10%	12%	15%	9%	7%	26%	24%	20%	24%	20%	120.23
%RK	3	4	95	90	40	2	75	45	45	90	80	30	45	55	15

Purchaser \_\_\_\_\_ \$ \_\_\_\_\_



## DNA SAMPLING SIMPLIFIED

with the **ALLFLEX TISSUE SAMPLING UNIT (TSU)**



- Easiest way to collect a quality sample
- Vials fit in standard lab well plate (96 vials)
- Efficient and cost effective
- Available with paired NLIS and management tags

ABCD1234  
**M123**

**Allflex**<sup>®</sup>

Livestock Intelligence™

[www.allflex.com.au](http://www.allflex.com.au)

Questions? 1300 138 247 or [customerservice@allflex.com.au](mailto:customerservice@allflex.com.au)

### JULY 2022 IGS EPD AVERAGES FOR ALL 2020 CALVES

	CE	BW	WW	YW	Milk	MCE	MWWT	STAY	DOC	CW	REA	FAT	MARB	YG	API
EPD	7.7	3.0	53.1	82.4	26.4	5.7	52.9	12.4	10.7	4.5	0.37	-0.079	-0.03	-0.33	108.04



**LOT 46**     **YAMBURGAN ANZAC S111 (P)**     **HBR**

DOB: 22/02/2021     REG: YY S111     COLOUR: ROAN

THE GROVE OSCAR A748  
YAMBURGAN OSSIE E65  
YAMBURGAN JILL 132ND  
**SIRE: YAMBURGAN ANZAC L278**  
WEEBOLLABOLLA THEODORE T85  
YAMBURGAN MAYFLOWER F82  
YAMBURGAN MAYFLOWER D203  
YAMBURGAN ZEUS D79  
YAMBURGAN ZEUS H140  
BROUGHTON PARK HARMONY F55  
**DAM: YAMBURGAN ISABELLA P319**  
YAMBURGAN GRISSOM G31  
YAMBURGAN ISABELLA K384  
YAMBURGAN ISABELLA F1

An eye catching, strong boned bull to start the yearling bulls. A very correct, well balanced sire who stands with his head above his spine. A good combination of depth, length and softness.



July 2022 IGS EPD'S															
	CE	BW	WW	YW	Milk	MCE	MWWT	STAY	DOC	CW	REA	FAT	MARB	YG	API
EPD	5.6	3.1	57.8	90.5	20.3	6.1	49.2	12.9	8.2	-0.2	0.30	-0.063	0.00	-0.29	Index
Acc	17%	21%	19%	19%	11%	12%	14%	10%	16%	27%	26%	21%	26%	21%	109.83
%RK	80	55	30	25	95	45	75	45	80	70	70	15	35	85	45

Purchaser \_\_\_\_\_ \$ \_\_\_\_\_

**LOT 47**     **YAMBURGAN ANZAC S106 (P)**     **HBR**

DOB: 20/02/2021     REG: YY S106     COLOUR: RED

THE GROVE OSCAR A748  
YAMBURGAN OSSIE E65  
YAMBURGAN JILL 132ND  
**SIRE: YAMBURGAN ANZAC L278**  
WEEBOLLABOLLA THEODORE T85  
YAMBURGAN MAYFLOWER F82  
YAMBURGAN MAYFLOWER D203  
YAMBURGAN OSSIE D807  
YAMBURGAN MONSOON J37  
YAMBURGAN COUNTESS G98  
**DAM: YAMBURGAN MAREE P205**  
SOUTH BUNDARA DIVIDEND D224  
YAMBURGAN MAREE J161  
YAMBURGAN MAREE F102

Homozygous Polled  
A standout individual in this years catalogue. A young sire with a lot of potential. A soft, well fleshed bull who is so balanced and efficient with his movement. A real sire in the making.



July 2022 IGS EPD'S															
	CE	BW	WW	YW	Milk	MCE	MWWT	STAY	DOC	CW	REA	FAT	MARB	YG	API
EPD	6.7	1.5	47.5	74.6	18.0	6.8	41.8	15.2	3.2	2.5	0.18	-0.066	0.01	-0.25	Index
Acc	38%	44%	42%	42%	15%	19%	24%	26%	28%	43%	42%	35%	38%	35%	114.43
%RK	65	20	80	75	100	30	100	20	100	60	95	15	35	95	30

Purchaser \_\_\_\_\_ \$ \_\_\_\_\_

JULY 2022 IGS EPD AVERAGES FOR ALL 2020 CALVES															
	CE	BW	WW	YW	Milk	MCE	MWWT	STAY	DOC	CW	REA	FAT	MARB	YG	API
EPD	7.7	3.0	53.1	82.4	26.4	5.7	52.9	12.4	10.7	4.5	0.37	-0.079	-0.03	-0.33	108.04

## LOT 48 YAMBURGAN ANZAC S46 (P)

HBR

DOB: 19/02/2021

REG: YY S46

COLOUR: ROAN

THE GROVE OSCAR A748  
YAMBURGAN OSSIE E65  
YAMBURGAN JILL 132ND

Homzygous Polled.  
Hard to go past Lot 48 as one of the pick bulls of this year's sale. So much presence and correctness through the neck and shoulder. A bull admired for his extra length of body and width through the thrule and lower leg. A good combination of material traits, muscle and softness. Interesting that Lot 47 and 48 go back to the same female line.

SIRE: YAMBURGAN ANZAC L278

WEEBOLLABOLLA THEODORE T85  
YAMBURGAN MAYFLOWER F82  
YAMBURGAN MAYFLOWER D203



YAMBURGAN ZEUS D79  
YAMBURGAN ZEUS H140  
BROUGHTON PARK HARMONY F55

DAM: YAMBURGAN MAREE P291

ELOODRA DESIGNER J06  
YAMBURGAN MAREE L149  
YAMBURGAN MAREE J161



July 2022 IGS EPD'S

	CE	BW	WW	YW	Milk	MCE	MWWT	STAY	DOC	CW	REA	FAT	MARB	YG	API
EPD	3.5	2.8	56.4	93.3	23.6	4.7	51.8	11.9	8.2	5.6	0.38	-0.064	0.08	-0.30	Index
Acc	38%	44%	44%	44%	15%	19%	25%	26%	32%	44%	42%	35%	39%	35%	110.36
%RK	95	45	35	20	75	70	60	60	80	45	50	15	20	80	45

Purchaser \_\_\_\_\_ \$ \_\_\_\_\_

## LOT 49 YAMYAMBURGAN ANZAC S31 (P)

HBR

DOB: 15/02/2021

REG: YY S31

COLOUR: ROAN

THE GROVE OSCAR A748  
YAMBURGAN OSSIE E65  
YAMBURGAN JILL 132ND

One of the heaviest weaners of the draft and a very similar type of bull to Lot 48. Lot 49 displays a lot of rein of neck and length of body, which gives him this weight for age. Grand Dam is a beautiful bodied Sparta female with tremendous barrel and heart room and a neat full udder.

SIRE: YAMBURGAN ANZAC L278

WEEBOLLABOLLA THEODORE T85  
YAMBURGAN MAYFLOWER F82  
YAMBURGAN MAYFLOWER D203



YAMBURGAN OSSIE E65  
YAMBURGAN ANZAC L137  
YAMBURGAN IRISH DREAMS G154

DAM: YAMBURGAN ROSEWOOD P217

YAMBURGAN SPARTA F149  
YAMBURGAN ROSEWOOD J477  
YAMBURGAN ROSEWOOD 188TH

July 2022 IGS EPD'S

	CE	BW	WW	YW	Milk	MCE	MWWT	STAY	DOC	CW	REA	FAT	MARB	YG	API
EPD	4.5	5.0	74.5	112.7	19.0	5.2	56.3	16.6	5.6	1.0	0.33	-0.050	0.08	-0.26	Index
Acc	20%	27%	29%	27%	14%	14%	19%	9%	4%	28%	26%	20%	26%	21%	122.99
%RK	90	90	2	2	95	60	30	10	95	65	65	4	20	95	10

Purchaser \_\_\_\_\_ \$ \_\_\_\_\_

## LOT 50 YAMBURGAN ANZAC S27 (S)

HBR

DOB: 14/02/2021

REG: YY S27

COLOUR: RED

THE GROVE OSCAR A748  
YAMBURGAN OSSIE E65  
YAMBURGAN JILL 132ND

A well grown, stylish fronted bull with an excellent nature. Not as heavy as some of the bulls above him but certainly has the frame to continue growing. A soundly structured young sire that is hard to fault.

SIRE: YAMBURGAN ANZAC L278

WEEBOLLABOLLA THEODORE T85  
YAMBURGAN MAYFLOWER F82  
YAMBURGAN MAYFLOWER D203



YAMBURGAN EMPEROR E103  
YAMBURGAN EMPEROR K28  
YAMBURGAN CONNIE C202

DAM: YAMBURGAN MAREE P280

CROOKED POST GRISSOM 24T (IMP)  
YAMBURGAN MAREE G30  
YAMBURGAN MAREE C15



July 2022 IGS EPD'S

	CE	BW	WW	YW	Milk	MCE	MWWT	STAY	DOC	CW	REA	FAT	MARB	YG	API
EPD	4.6	3.5	60.9	96.2	21.0	5.3	51.5	19.5	4.6	12.6	0.38	-0.073	0.11	-0.29	Index
Acc	38%	44%	44%	43%	14%	20%	24%	24%	27%	44%	42%	36%	38%	35%	128.41
%RK	90	65	20	15	90	60	60	1	95	20	50	30	15	85	5

Purchaser \_\_\_\_\_ \$ \_\_\_\_\_

JULY 2022 IGS EPD AVERAGES FOR ALL 2020 CALVES

	CE	BW	WW	YW	Milk	MCE	MWWT	STAY	DOC	CW	REA	FAT	MARB	YG	API
EPD	7.7	3.0	53.1	82.4	26.4	5.7	52.9	12.4	10.7	4.5	0.37	-0.079	-0.03	-0.33	108.04

## LOT 51 YAMBURGAN ANZAC S28 (P) HBR

DOB: 13/02/2021

REG: YY S28

COLOUR: RED

THE GROVE OSCAR A748  
YAMBURGAN OSSIE E65  
YAMBURGAN JILL 132ND

**SIRE: YAMBURGAN ANZAC L278**

WEEBOLLABOLLA THEODORE T85  
YAMBURGAN MAYFLOWER F82  
YAMBURGAN MAYFLOWER D203

YAMBURGAN ZEUS H140  
FUTURITY KENEBRI

**DAM: YAMBURGAN MAYFLOWER P157**

FUTURITY GOLDMINE'S DALE C122  
CROOKED POST GRISSOM 24T (IMP)  
YAMBURGAN MAYFLOWER H105  
YAMBURGAN MAYFLOWER F35

Homozygous Polled.  
A very similar type of bull to Lot 50, with even less birth weight. Well suited to both heifers and mature cows.



July 2022 IGS EPD'S

	CE	BW	WW	YW	Milk	MCE	MWWT	STAY	DOC	CW	REA	FAT	MARB	YG	API
EPD	11.1	0.1	40.2	60.6	22.5	9.4	42.6	16.1	7.7	3.5	0.40	-0.084	0.02	-0.36	Index
Acc	37%	43%	43%	43%	13%	18%	23%	25%	33%	43%	41%	31%	37%	33%	122.54
%RK	15	10	95	100	85	5	100	10	85	55	40	65	30	30	15

Purchaser \_\_\_\_\_ \$ \_\_\_\_\_

## LOT 52 YAMBURGAN THUNDER S122 (P) HBR

DOB: 23/02/2021

REG: YY S122

COLOUR: RED

WEEBOLLABOLLA THEODORE T85  
BROUGHTON PARK THUNDER C023  
BROUGHTON PARK ROSE AO11

**SIRE: YAMBURGAN THUNDER M495**

YAMBURGAN NANDEWAR 3RD  
YAMBURGAN MARGARET 31ST  
YAMBURGAN MARGARET 20TH

THE GROVE KOOKABURRA W735  
YAMBURGAN GENERAL H188  
YAMBURGAN CONNIE F169

**DAM: YAMBURGAN MOIRA M467**

MARELLAN LOYAL  
YAMBURGAN MOIRA G433  
YAMBURGAN MOIRA 111TH

Homozygous Polled.  
A growthy, soft bull with good constitution and depth of flank. Lot 52 ticks a lot of boxes combining low birth weight with good weight for age, marbling and doing ability.



July 2022 IGS EPD'S

	CE	BW	WW	YW	Milk	MCE	MWWT	STAY	DOC	CW	REA	FAT	MARB	YG	API
EPD	9.9	1.2	44.4	78.2	32.3	6.7	54.5	16.1	7.8	-9.8	0.17	-0.054	-0.06	-0.27	Index
Acc	36%	41%	41%	40%	11%	16%	21%	25%	13%	41%	39%	34%	36%	33%	118.02
%RK	25	15	90	65	10	30	40	10	85	100	95	5	60	95	20

Purchaser \_\_\_\_\_ \$ \_\_\_\_\_

## LOT 53 YAMBURGAN THUNDER S103 (P) HBR

DOB: 19/02/2021

REG: YY S103

COLOUR: RED

WEEBOLLABOLLA THEODORE T85  
BROUGHTON PARK THUNDER C023  
BROUGHTON PARK ROSE AO11

**SIRE: YAMBURGAN THUNDER M495**

YAMBURGAN NANDEWAR 3RD  
YAMBURGAN MARGARET 31ST  
YAMBURGAN MARGARET 20TH

MARELLAN INDESTRUCTABLE  
MARELLAN LOYAL  
MARELLAN ELLA

**DAM: YAMBURGAN JILL M483**

BUNDALEER FORMULA ONE F94  
YAMBURGAN JILL J208  
YAMBURGAN JILL D93

A bull showing very similar traits to Lot 52. A lot of depth of body, heart room and constitution, this bull will live on the smell of an oily rag. A low birth weight bull, well suited to all markets.



July 2022 IGS EPD'S

	CE	BW	WW	YW	Milk	MCE	MWWT	STAY	DOC	CW	REA	FAT	MARB	YG	API
EPD	7.1	0.8	46.9	66.7	28.2	5.1	51.7	14.9	6.9	-15.5	0.16	-0.066	0.00	-0.32	Index
Acc	35%	40%	39%	38%	10%	16%	20%	23%	11%	39%	40%	33%	35%	32%	114.32
%RK	60	10	80	90	35	65	60	20	90	100	95	15	35	70	30

Purchaser \_\_\_\_\_ \$ \_\_\_\_\_

JULY 2022 IGS EPD AVERAGES FOR ALL 2020 CALVES

	CE	BW	WW	YW	Milk	MCE	MWWT	STAY	DOC	CW	REA	FAT	MARB	YG	API
EPD	7.7	3.0	53.1	82.4	26.4	5.7	52.9	12.4	10.7	4.5	0.37	-0.079	-0.03	-0.33	108.04

## LOT 54 YAMBURGAN PERSEUS S516 (P)

HBR

DOB: 23/02/2021

REG: YY S516

COLOUR: RED

YAMBURGAN ZEUS D79  
YAMBURGAN ZEUS H140  
BROUGHTON PARK HARMONY F55  
**SIRE: YAMBURGAN ZEUS M499**  
BROUGHTON PARK THUNDER C023  
YAMBURGAN COUNTESS G98  
BROUGHTON PARK COUNTESS C097  
THE GROVE INFORMER F1131  
THE GROVE SHERLOCK J0110  
THE GROVE B135  
**DAM: YAMBURGAN CLOUDY N77**  
NARRALDA ALADDIN A048  
YAMBURGAN CLOUDY F39  
YAMBURGAN CLOUDY 487TH



Homozygous Polled.  
A good natured, growthy Perceus son that catches your eye with his balance and sirey outlook when standing. A lot of rein of neck with a well laid in shoulder make Lot 54 attractive to both heifers and mature cows. A young sire that ticks all the boxes, well worth an inspection.



July 2022 IGS EPD'S

	CE	BW	WW	YW	Milk	MCE	MWWT	STAY	DOC	CW	REA	FAT	MARB	YG	API
EPD	7.5	2.8	59.2	93.9	28.8	6.7	58.4	12.4	10.7	9.1	0.48	-0.072	0.14	-0.34	Index
Acc	18%	24%	27%	25%	10%	13%	16%	10%	15%	24%	24%	12%	15%	18%	120.68
%RK	50	45	25	20	30	30	20	50	55	30	20	30	10	55	15

Purchaser \_\_\_\_\_ \$ \_\_\_\_\_

## LOT 55 YAMBURGAN THUNDER S132 (P)

HBR

DOB: 25/02/2021

REG: YY S132

COLOUR: RED

WEEBOLLABOLLA THEODORE T85  
BROUGHTON PARK THUNDER C023  
BROUGHTON PARK ROSE AO11  
**SIRE: YAMBURGAN THUNDER M495**  
YAMBURGAN NANDEWAR 3RD  
YAMBURGAN MARGARET 31ST  
YAMBURGAN MARGARET 20TH  
MARELLAN INDESTRUCTABLE  
MARELLAN LOYAL  
MARELLAN ELLA  
**DAM: YAMBURGAN SCARLET M204**  
YAMBURGAN OSSIE D807  
YAMBURGAN SCARLET H231  
BROUGHTON PARK SCARLET AO90

Homozygous Polled -  
A good hind quartered, quiet natured bull with a lot of strength over the loin. A low birth weight bull that combines growth for age and softness very well.



July 2022 IGS EPD'S

	CE	BW	WW	YW	Milk	MCE	MWWT	STAY	DOC	CW	REA	FAT	MARB	YG	API
EPD	8.9	1.8	52.2	81.9	28.7	6.8	54.8	13.3	6.8	-16.5	0.28	-0.061	0.00	-0.35	Index
Acc	16%	20%	24%	23%	11%	11%	15%	9%	11%	16%	15%	12%	13%	13%	115.29
%RK	30	25	55	55	30	30	40	40	90	100	80	10	35	45	25

Purchaser \_\_\_\_\_ \$ \_\_\_\_\_

## LOT 56 YAMBURGAN CORDILLO S160 (P)

HBR

DOB: 17/03/2021

REG: YY S160

COLOUR: ROAN

WEEBOLLABOLLA THEODORE T85  
YAMBURGAN TOBERMOREY F090  
YAMBURGAN CONNIE D133  
**SIRE: YAMBURGAN MONKIRA M14**  
BROUGHTON PARK THUNDER C023  
YAMBURGAN DUCHESS G115  
BROUGHTON PARK DUCHESS C069  
YAMBURGAN ZEUS D79  
YAMBURGAN ZEUS H140  
BROUGHTON PARK HARMONY F55  
**DAM: YAMBURGAN FIDGET K3**  
YAMBURGAN EMPEROR E103  
YAMBURGAN FIDGET H6  
YAMBURGAN FIDGET 163RD

A neat, soundly made bull with excellent efficiency of movement in a mid maturity package. A soft haired, good constitution bull that will grow on into an impressive sire.



July 2022 IGS EPD'S

	CE	BW	WW	YW	Milk	MCE	MWWT	STAY	DOC	CW	REA	FAT	MARB	YG	API
EPD	6.8	3.3	49.4	82.4	27.2	6.8	51.9	9.8	15.0	-9.4	0.36	-0.057	-0.15	-0.33	Index
Acc	38%	43%	43%	43%	14%	19%	24%	26%	8%	42%	41%	34%	39%	34%	94.36
%RK	60	60	70	50	45	30	60	85	10	100	55	10	85	55	90

Purchaser \_\_\_\_\_ \$ \_\_\_\_\_

JULY 2022 IGS EPD AVERAGES FOR ALL 2020 CALVES

	CE	BW	WW	YW	Milk	MCE	MWWT	STAY	DOC	CW	REA	FAT	MARB	YG	API
EPD	7.7	3.0	53.1	82.4	26.4	5.7	52.9	12.4	10.7	4.5	0.37	-0.079	-0.03	-0.33	108.04

## LOT 57 YAMBURGAN ANZAC S18 (P)

HBR

DOB: 11/02/2021

REG: YY S18

COLOUR: ROAN

THE GROVE OSCAR A748  
YAMBURGAN OSSIE E65  
YAMBURGAN JILL 132ND

Homozygous Polled.  
A heifers first calf with a fantastic weaning weight, being at the top end of the contemporary group. Another low birthweight bull that has very balanced performance data.

**SIRE: YAMBURGAN ANZAC L278**

WEEBOLLABOLLA THEODORE T85  
YAMBURGAN MAYFLOWER F82  
YAMBURGAN MAYFLOWER D203

YAMBURGAN OSSIE E65  
YAMBURGAN ANZAC L137  
YAMBURGAN IRISH DREAMS G154

**DAM: YAMBURGAN JILL P227**

YAMBURGAN ACHILLES  
YAMBURGAN JILL G237  
YAMBURGAN JILL C58



July 2022 IGS EPD'S

	CE	BW	WW	YW	Milk	MCE	MWWT	STAY	DOC	CW	REA	FAT	MARB	YG	API
EPD	5.5	1.2	54.5	85.8	22.6	5.3	49.9	12.6	5.2	6.9	0.44	-0.056	0.07	-0.29	Index
Acc	40%	45%	44%	44%	17%	20%	26%	28%	16%	44%	43%	33%	41%	34%	115.22
%RK	80	15	45	40	85	60	70	50	95	40	30	10	20	85	25

Purchaser \_\_\_\_\_

\$ \_\_\_\_\_

## LOT 58 YAMBURGAN CORDILLO S149 (P)

HBR

DOB: 09/03/2021

REG: YY S149

COLOUR: RED

WEEBOLLABOLLA THEODORE T85  
YAMBURGAN TOBERMOREY F090  
YAMBURGAN CONNIE D133

**SIRE: YAMBURGAN MONKIRA M14**

BROUGHTON PARK THUNDER C023  
YAMBURGAN DUCHESS G115  
BROUGHTON PARK DUCHESS C069

YAMBURGAN ZEUS H140  
YAMBURGAN ZEUS K62  
YAMBURGAN MARGARET H86

**DAM: YAMBURGAN PRECIOUS M249**

YAMBURGAN OSSIE E65  
YAMBURGAN PRECIOUS K554  
YAMBURGAN PRECIOUS C328

A deep, rich, soft, slick coated bull to suit all environments. I really admire the muscle pattern of Lot 58, very strong over the loin and spine like his sire. A good natured, quiet bull that will grow on into an impressive sire.



July 2022 IGS EPD'S

	CE	BW	WW	YW	Milk	MCE	MWWT	STAY	DOC	CW	REA	FAT	MARB	YG	API
EPD	9.5	3.0	54.6	85.8	28.2	8.3	55.5	11.2	12.6	-0.2	0.43	-0.074	-0.01	-0.36	Index
Acc	17%	18%	17%	16%	7%	10%	10%	10%	7%	25%	25%	21%	23%	21%	110.54
%RK	25	50	45	40	35	15	35	70	30	70	30	35	40	30	40

Purchaser \_\_\_\_\_

\$ \_\_\_\_\_

## LOT 59 YAMBURGAN THUNDER S139 (P)

HBR

DOB: 05/03/2021

REG: YY S139

COLOUR: ROAN

WEEBOLLABOLLA THEODORE T85  
BROUGHTON PARK THUNDER C023  
BROUGHTON PARK ROSE A011

**SIRE: YAMBURGAN THUNDER M495**

YAMBURGAN NANDEWAR 3RD  
YAMBURGAN MARGARET 31ST  
YAMBURGAN MARGARET 20TH

WEEBOLLABOLLA THEODORE T85  
YAMBURGAN TOBERMOREY F090  
YAMBURGAN CONNIE D133

**DAM: YAMBURGAN QUEEN L465**

MARRINGTON BOTTLER B67  
BROUGHTON PARK QUEEN D093  
BUNDALEER QUEEN ANN B28

An impressive, proud, young sire who stands with his head up, showing good balance. Light birth weight, moderate growth and good cover are traits that are hard to combine.



July 2022 IGS EPD'S

	CE	BW	WW	YW	Milk	MCE	MWWT	STAY	DOC	CW	REA	FAT	MARB	YG	API
EPD	10.1	0.6	40.9	66.0	27.7	7.4	48.2	14.6	9.4	-12.7	0.31	-0.071	-0.03	-0.36	Index
Acc	16%	22%	26%	24%	12%	13%	17%	10%	13%	17%	16%	12%	14%	13%	116.02
%RK	20	10	95	95	40	20	80	25	70	100	70	25	50	30	25

Purchaser \_\_\_\_\_

\$ \_\_\_\_\_

JULY 2022 IGS EPD AVERAGES FOR ALL 2020 CALVES

	CE	BW	WW	YW	Milk	MCE	MWWT	STAY	DOC	CW	REA	FAT	MARB	YG	API
EPD	7.7	3.0	53.1	82.4	26.4	5.7	52.9	12.4	10.7	4.5	0.37	-0.079	-0.03	-0.33	108.04

## LOT 60 YAMBURGAN LONGREACH S553 (P)

HBR

DOB: 24/03/2021

REG: YY S553

COLOUR: ROAN

YAMBURGAN TOBERMOREY F090  
 YAMBURGAN MONKIRA K303  
 BROUGHTON PARK HARMONY F55  
**SIRE: YAMBURGAN BEDOURIE P94**  
 YAMBURGAN OSSIE E65  
 YAMBURGAN MATILDA J168  
 YAMBURGAN MATILDA 45TH  
 SPRYS BONECRUSHER B030  
 NEEARRA GOVERNOR  
 NEEARRA WENDY 63  
**DAM: YAMBURGAN CLOUDY J95**  
 DUNBEACON BENTLEY  
 YAMBURGAN CLOUDY F6  
 YAMBURGAN CLOUDY D5

A wide thurled, strong topped young sire with impressive muscling and spring of rib. Rare to see this sort of width with such an impressive rein of neck and shoulder placement. A bull that ticks a lot of profitable traits.



July 2022 IGS EPD'S

	CE	BW	WW	YW	Milk	MCE	MWWT	STAY	DOC	CW	REA	FAT	MARB	YG	API
EPD	6.1	4.2	52.2	81.8	30.1	5.3	56.2	12.6	10.5	9.1	0.57	-0.073	-0.10	-0.36	Index
Acc	36%	40%	38%	37%	10%	16%	19%	20%	7%	39%	37%	30%	37%	31%	100.55
%RK	75	80	55	55	20	60	30	50	55	30	10	30	70	30	75

Purchaser \_\_\_\_\_ \$ \_\_\_\_\_

## LOT 61 YAMBURGAN CORDILO S13 (P)

HBR

DOB: 06/02/2021

REG: YY S13

COLOUR: ROAN

WEEBOLLABOLLA THEODORE T85  
 YAMBURGAN TOBERMOREY F090  
 YAMBURGAN CONNIE D133  
**SIRE: YAMBURGAN MONKIRA M14**  
 BROUGHTON PARK THUNDER C023  
 YAMBURGAN DUCHESS G115  
 BROUGHTON PARK DUCHESS C069  
 YAMBURGAN ZEUS D79  
 YAMBURGAN ZEUS H140  
 BROUGHTON PARK HARMONY F55  
**DAM: YAMBURGAN ROYAL L143**  
 THE GROVE OSCAR A748  
 YAMBURGAN ROYAL G35  
 YAMBURGAN ROYAL 64TH

A long bodied bull with a lot of muscle expression in a young sire.. Lot 61 carries his muscle right along the spine. A sound neatly made bull with very balanced performance data.



July 2022 IGS EPD'S

	CE	BW	WW	YW	Milk	MCE	MWWT	STAY	DOC	CW	REA	FAT	MARB	YG	API
EPD	7.3	2.6	46.6	75.4	27.5	7.5	50.8	10.4	14.8	-6.9	0.38	-0.073	-0.06	-0.37	Index
Acc	19%	24%	28%	26%	12%	14%	17%	11%	8%	26%	24%	22%	23%	21%	101.20
%RK	55	40	80	75	45	20	65	80	15	95	50	30	60	25	75

Purchaser \_\_\_\_\_ \$ \_\_\_\_\_

## LOT 62 YAMBURGAN PERSEUS S503 (P)

HBR

DOB: 01/02/2021

REG: YY S503

COLOUR: RED LITTLE WHITE

YAMBURGAN ZEUS D79  
 YAMBURGAN ZEUS H140  
 BROUGHTON PARK HARMONY F55  
**SIRE: YAMBURGAN ZEUS M499**  
 BROUGHTON PARK THUNDER C023  
 YAMBURGAN COUNTESS G98  
 BROUGHTON PARK COUNTESS C097  
 YAMBURGAN TOBERMOREY F090  
 YAMBURGAN MONKIRA K303  
 BROUGHTON PARK HARMONY F55  
**DAM: YAMBURGAN MATILDA P95**  
 YAMBURGAN GRISSOM G31  
 YAMBURGAN MATILDA K392  
 YAMBURGAN MATILDA 45TH

A typical Perceus type with a very strong top line and loin, sound structured that is hard to fault. Big testicles, neat sheath. Lot 62 ticks a lot of traits. Well suited to heifers.



July 2022 IGS EPD'S

	CE	BW	WW	YW	Milk	MCE	MWWT	STAY	DOC	CW	REA	FAT	MARB	YG	API
EPD	8.9	2.3	50.5	83.1	29.5	7.7	54.8	11.0	18.7	-11.0	0.20	-0.092	0.08	-0.38	Index
Acc	38%	44%	43%	41%	12%	19%	22%	26%	14%	43%	41%	33%	39%	34%	114.28
%RK	30	35	65	50	25	20	40	70	2	100	90	85	20	20	30

Purchaser \_\_\_\_\_ \$ \_\_\_\_\_

JULY 2022 IGS EPD AVERAGES FOR ALL 2020 CALVES

	CE	BW	WW	YW	Milk	MCE	MWWT	STAY	DOC	CW	REA	FAT	MARB	YG	API
EPD	7.7	3.0	53.1	82.4	26.4	5.7	52.9	12.4	10.7	4.5	0.37	-0.079	-0.03	-0.33	108.04

## LOT 63 YAMBURGAN SPARTACUS S524 (P)

HBR

DOB: 05/03/2021

REG: YY S524

COLOUR: ROAN

YAMBURGAN SPARTAN K442  
YAMBURGAN SPARTAN N27  
YAMBURGAN FANCY H116  
**SIRE: YAMBURGAN SPARTAN Q114**  
WEEBOLLABOLLA THEODORE T85  
YAMBURGAN JOANNA M25  
YAMBURGAN JOANNA K46  
THE GROVE GIGABYTES J0837  
YAMBURGAN GIGABYTES M1052  
BROUGHTON PARK HARMONY F55  
**DAM: YAMBURGAN MATILDA Q37**  
YAMBURGAN OSSIE E65  
YAMBURGAN MATILDA J168  
YAMBURGAN MATILDA 45TH

A deep bodied, wide barrelled bull with good depth of flank and a lot of muscle expression. A very quiet, good natured bull well worth an inspection. A heifers first calf, dam is from the same family line a Y Bedourie P94.



July 2022 IGS EPD'S

	CE	BW	WW	YW	Milk	MCE	MWWT	STAY	DOC	CW	REA	FAT	MARB	YG	API
EPD	6.4	2.8	56.3	90.8	23.0	6.0	51.2	12.2	9.9	-8.4	0.39	-0.064	0.04	-0.36	Index
Acc	17%	21%	25%	23%	10%	11%	15%	8%	5%	13%	12%	10%	12%	10%	112.43
%RK	70	45	35	25	80	45	65	55	65	95	45	15	25	35	35

Purchaser \_\_\_\_\_ \$ \_\_\_\_\_

## LOT 64 YAMBURGAN ANZAC S44 (P)

HBR

DOB: 17/02/2021

REG: YY S44

COLOUR: ROAN

THE GROVE OSCAR A748  
YAMBURGAN OSSIE E65  
YAMBURGAN JILL 132ND  
**SIRE: YAMBURGAN ANZAC L278**  
WEEBOLLABOLLA THEODORE T85  
YAMBURGAN MAYFLOWER F82  
YAMBURGAN MAYFLOWER D203  
YAMBURGAN OSSIE E65  
YAMBURGAN ANZAC L137  
YAMBURGAN IRISH DREAMS G154  
**DAM: YAMBURGAN CLOUDY P197**  
YAMBURGAN HECTOR G418  
YAMBURGAN CLOUDY K285  
YAMBURGAN CLOUDY F144

A moderate framed, efficient moving, Anzac son. I admire Lot 64 for his overall softness of body and hair. In the top of his contemporary group for weaning weight. A heifers first calf.



July 2022 IGS EPD'S

	CE	BW	WW	YW	Milk	MCE	MWWT	STAY	DOC	CW	REA	FAT	MARB	YG	API
EPD	4.8	4.2	60.0	92.3	21.6	5.7	51.6	18.1	6.3	-1.2	0.32	-0.056	0.07	-0.28	Index
Acc	21%	27%	30%	28%	15%	14%	20%	9%	4%	28%	27%	20%	26%	22%	121.58
%RK	90	80	20	25	90	50	60	2	95	75	65	10	20	90	15

Purchaser \_\_\_\_\_ \$ \_\_\_\_\_

## LOT 65 YAMBURGAN THUNDER S131 (P)

HBR

DOB: 25/02/2021

REG: YY S131

COLOUR: RED

WEEBOLLABOLLA THEODORE T85  
BROUGHTON PARK THUNDER C023  
BROUGHTON PARK ROSE A011  
**SIRE: YAMBURGAN THUNDER M495**  
YAMBURGAN NANDEWAR 3RD  
YAMBURGAN MARGARET 31ST  
YAMBURGAN MARGARET 20TH  
THE GROVE OSCAR A748  
YAMBURGAN EMPEROR E103  
YAMBURGAN ROYAL 71ST  
**DAM: YAMBURGAN MAYFLOWER K522**  
THE GROVE NEW LEGEND Z058  
YAMBURGAN MAYFLOWER D203  
YAMBURGAN MAYFLOWER 305TH

Homozygous Polled.  
A good growth for age Thunder son that stood out from the group at weaning. A sound, quiet natured bull that will keep growing into an impressive mature bull. Well suited to heifers. Yamburgen Mayflower D203 is the Grand Dam of Yamburgen Anzac L278



July 2022 IGS EPD'S

	CE	BW	WW	YW	Milk	MCE	MWWT	STAY	DOC	CW	REA	FAT	MARB	YG	API
EPD	8.5	2.3	54.9	84.3	33.1	6.4	60.6	13.0	6.2	-7.2	0.33	-0.064	0.01	-0.33	Index
Acc	17%	23%	27%	24%	12%	12%	17%	10%	12%	16%	16%	12%	13%	13%	114.47
%RK	35	35	40	45	10	40	15	45	95	95	65	15	35	55	30

Purchaser \_\_\_\_\_ \$ \_\_\_\_\_

JULY 2022 IGS EPD AVERAGES FOR ALL 2020 CALVES

	CE	BW	WW	YW	Milk	MCE	MWWT	STAY	DOC	CW	REA	FAT	MARB	YG	API
EPD	7.7	3.0	53.1	82.4	26.4	5.7	52.9	12.4	10.7	4.5	0.37	-0.079	-0.03	-0.33	108.04



## LOT 66 YAMBURGAN CORDILLO S156 (P)

HBR

DOB: 13/03/2021

REG: YY S156

COLOUR: RED LITTLE WHITE

WEEBOLLABOLLA THEODORE T85  
YAMBURGAN TOBERMOREY F090  
YAMBURGAN CONNIE D133  
**SIRE: YAMBURGAN MONKIRA M14**  
BROUGHTON PARK THUNDER C023  
YAMBURGAN DUCHESS G115  
BROUGHTON PARK DUCHESS C069  
YAMBURGAN ZEUS H140  
FUTURITY KENEBRI  
FUTURITY GOLDMINE'S DALE C122  
**DAM: YAMBURGAN CONNIE P156**  
YAMBURGAN EMPEROR E103  
YAMBURGAN CONNIE J380  
YAMBURGAN CONNIE F119

A young sire that always stands square. Lot 66 is a sound structured, low birth weight bull with very balanced performance.



July 2022 IGS EPD'S

	CE	BW	WW	YW	Milk	MCE	MWWT	STAY	DOC	CW	REA	FAT	MARB	YG	API
EPD	7.4	2.8	50.1	78.2	28.1	6.7	53.2	10.3	12.3	-5.8	0.40	-0.076	-0.03	-0.38	Index
Acc	15%	20%	16%	16%	8%	10%	11%	9%	8%	24%	23%	21%	22%	20%	103.00
%RK	55	45	65	65	40	30	50	80	35	90	40	40	50	20	70

Purchaser \_\_\_\_\_ \$ \_\_\_\_\_

## LOT 67 YAMBURGAN SPATACUS S536 (P)

HBR

DOB: 14/03/2021

REG: YY S536

COLOUR: RED

YAMBURGAN SPARTAN K442  
YAMBURGAN SPARTAN N27  
YAMBURGAN FANCY H116  
**SIRE: YAMBURGAN SPARTAN Q114**  
WEEBOLLABOLLA THEODORE T85  
YAMBURGAN JOANNA M25  
YAMBURGAN JOANNA K46  
THE GROVE KOOKABURRA W735  
YAMBURGAN KOOKABURRA J214  
YAMBURGAN CONNIE D133  
**DAM: YAMBURGAN FANCY Q70**  
BROUGHTON PARK AMBASSADOR F29  
YAMBURGAN FANCY H116  
YAMBURGAN FANCY F11

Homozygous Polled.  
A lot of shape through the hind quarter, very similar to his sire. A powerful young sire with big testicles and a quiet nature. A heifers first calf.



July 2022 IGS EPD'S

	CE	BW	WW	YW	Milk	MCE	MWWT	STAY	DOC	CW	REA	FAT	MARB	YG	API
EPD	7.5	2.3	55.5	90.8	19.6	7.2	47.4	8.8	11.6	-7.2	0.47	-0.081	0.01	-0.42	Index
Acc	33%	38%	38%	37%	10%	14%	19%	23%	5%	38%	37%	29%	35%	30%	106.43
%RK	50	35	40	25	95	25	85	90	45	95	20	55	35	5	55

Purchaser \_\_\_\_\_ \$ \_\_\_\_\_

## LOT 68 YAMBURGAN SPARTACUS S587 (P)

HBR

DOB: 05/05/2021

REG: YY S587

COLOUR: RED

YAMBURGAN SPARTAN K442  
YAMBURGAN SPARTAN N27  
YAMBURGAN FANCY H116  
**SIRE: YAMBURGAN SPARTAN Q114**  
WEEBOLLABOLLA THEODORE T85  
YAMBURGAN JOANNA M25  
YAMBURGAN JOANNA K46  
THE GROVE KOOKABURRA W735  
YAMBURGAN KOOKABURRA J214  
YAMBURGAN CONNIE D133  
**DAM: YAMBURGAN ROSE Q84**  
BROUGHTON PARK GOLDRUSH A030  
YAMBURGAN ROSE G96  
BROUGHTON PARK ROSE Z035

A smaller framed, very expressively muscled bull with a light birth weight and very impressive marbling and fat figures. Well suited to heifers. Note: The youngest bull cataloged.



July 2022 IGS EPD'S

	CE	BW	WW	YW	Milk	MCE	MWWT	STAY	DOC	CW	REA	FAT	MARB	YG	API
EPD	8.8	0.7	54.7	80.7	24.3	8.0	51.7	10.3	12.1	-17.7	-0.19	-0.050	0.17	-0.17	Index
Acc	32%	36%	38%	37%	8%	14%	18%	22%	4%	38%	38%	27%	35%	30%	119.67
%RK	35	10	45	55	70	15	60	80	35	100	100	4	5	100	15

Purchaser \_\_\_\_\_ \$ \_\_\_\_\_

JULY 2022 IGS EPD AVERAGES FOR ALL 2020 CALVES

	CE	BW	WW	YW	Milk	MCE	MWWT	STAY	DOC	CW	REA	FAT	MARB	YG	API
EPD	7.7	3.0	53.1	82.4	26.4	5.7	52.9	12.4	10.7	4.5	0.37	-0.079	-0.03	-0.33	108.04

## DIRECTIONS TO MANCHEE AGRICULTURE

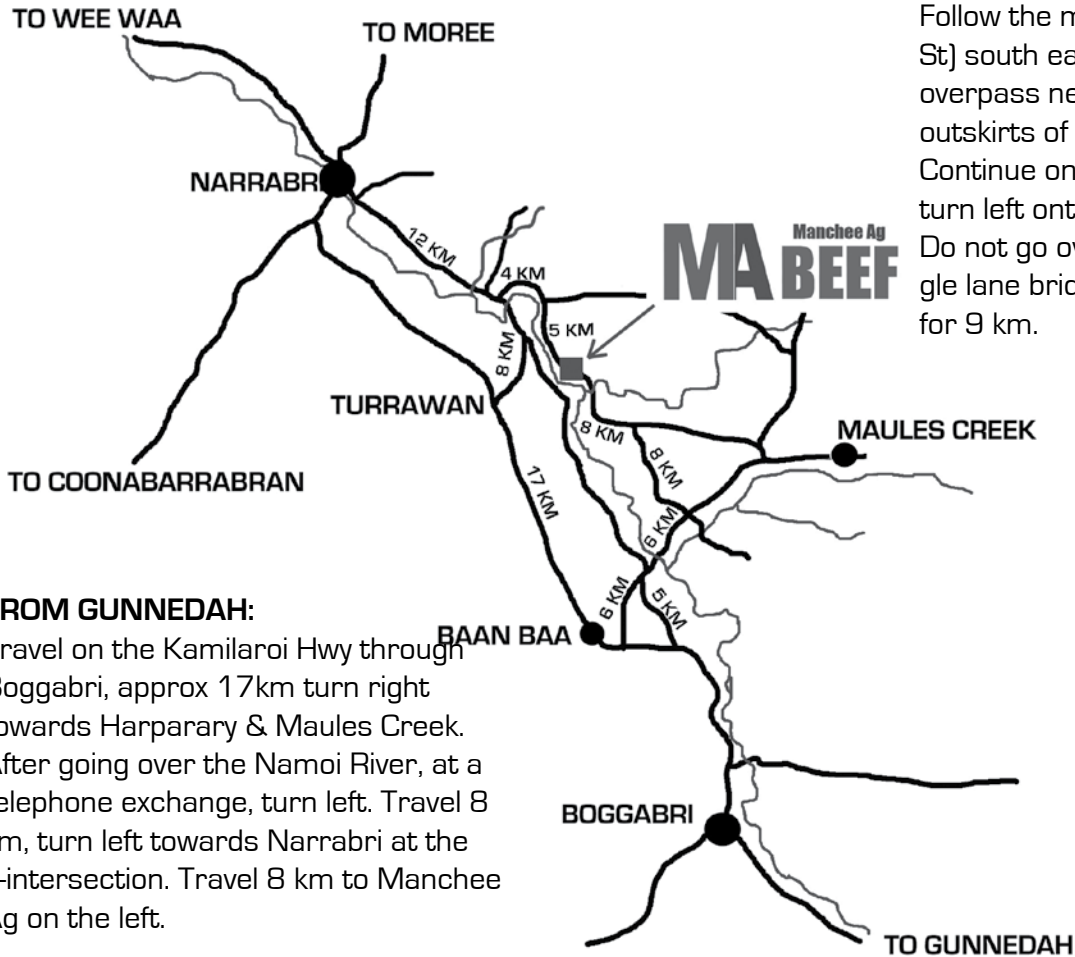
YOU CAN ALSO FIND US ON **GOOGLE MAPS** BY SEARCHING FOR MANCHEE AGRICULTURE.

Look for blue & white MANCHEE AG road signs.

### FROM NARRABRI:

Follow the main street (Maitland St) south east, under the railway overpass near the RSL club on the outskirts of town.

Continue on this road for 12 km, turn left onto the Maules Creek Rd. Do not go over the Namoi River (single lane bridge). Travel on this road for 9 km.



### FROM GUNNEDAH:

Travel on the Kamilaroi Hwy through Boggabri, approx 17km turn right towards Harparary & Maules Creek. After going over the Namoi River, at a telephone exchange, turn left. Travel 8 km, turn left towards Narrabri at the T-intersection. Travel 8 km to Manchee Ag on the left.

ACCOMMODATION CAN BE DIFFICULT TO GET IN NARRABRI - PLEASE BOOK EARLY.  
MOTEL DETAILS ARE AVAILABLE ON THE SALE INFORMATION PAGE.



**LOT 47 YY S106**



**LOT 48 YY S46**



**LOT 51 YY S28**



**LOT 52 YY S122**



**LOT 54 YY S516**



**LOT 62 YY S503**



**LOT 63 YY S524**



**LOT 68 YY S587**



**LOT 1** YY R298



**LOT 2** YY R517



**LOT 7** YY R312



**LOT 8** YY R341



**LOT 9** YY R314



**LOT 10** YY R285



**LOT 21** YY R391



**LOT 22** YY R337