

Breeders Choice

Alpaca Auction

Saturday 16th July 2022

12 Noon

Online @ www.auctionsplus.com.au

National & International Alpaca Sale

10th Annual BCAA

Stud & Commercial Stock — Genetics Plus



Online @ AuctionsPlus.com.au

Agent: Nutrien Livestock

Wilson Beer: 0428 505 520

Information for Buyers

AUCTION START: Saturday 16th July, 2022. Auction –12.00 (noon)

INSPECTIONS: By Arrangements with Vendors Prior to Auction. See Vendors Facebook, Web sites etc. for Open Days.

REGISTRATION: All prospective buyers must register with Auctions Plus by Thursday 14th July. Terms as per Nutrien / AuctionsPlus. Ph: 02 9262 4222. www.auctionsplus.com.au

DELIVERY: Alpacas may remain up to 4 weeks free of charge at Vendors property or by arrangement.

TRANSPORT: Buyers should make their own transport arrangements prior to the auction.

INSURANCE: Buyers to arrange own insurance.

HEALTH: As Per Vendors. Refer to Page 6 & 7.

AAA TRANSFERS: All animal transfers with the AAA will be at the purchasers cost.

STATE HEALTH PROTOCOL: Buyers please ensure that you are aware of the necessary State Health Protocol required at the destination of your purchase.

OPENING BIDS: Minimum opening bid applies: Single Lots—\$600.00; Females with Female Cria at Foot—\$1,000.00; Females with Male Cria at Foot—\$800.00; Reserved Lots—Opening bid will vary.

TERMS & CONDITIONS: All stock is offered under standard terms and conditions. These are available from the Agent, Nutrien. GST will be charged on top of bid price i.e. \$1500 + \$150 GST = \$1,650.00

TERMS OF PAYMENT: Terms of payment are EFT at time of purchase on Invoice. In accordance with the conditions of sale. For further information contact Nutrien: Wilson Beer 0428 505 520.

BUYING ORDERS, TELEPHONE BIDDING: Buyers orders can be placed with Nutrien prior to Auction day. Telephone Bidding, available for both national and international. **Buying Orders will be handled By Wilson Beer 0428 505 520.**

CATALOGUES: All details in this catalogue are provided by the Vendors and whilst all care has been taken in their preparation Nutrien Livestock & Vendors accept no responsibility for errors or mis-descriptions herein. Catalogues are available from Nutrien, or online Nutrien & AuctionsPlus.

VENDORS: Details on Page 6 & 7 .

Wilson Beer: 0428 505 520 E: wilsonbeer@bigpond.com

Ray Attwell: 0428 836 136

Join—*Breeders Choice Alpaca Auction*



Breeders Choice Alpaca Auction

Since 2013

Welcome to the 10th annual **Breeders Choice Alpaca Auction**— an annual event not to be missed on the Australian Alpaca Calendar.

Our 3rd “online auction”!

Access the most unique array of animals from the comfort & convenience of your own home. As a buyer you have access to a diversified range of Alpacas all in one convenient location like never before!

Take Advantage of the variety in bloodlines, the range of fleeces & styles, the different coloured selections which will make complementary additions to your herd, or build a new herd. You will find everything from diversified genetics with quality fleece production, white to black and some with spots or maybe stripes, beautiful temperaments, stud sires & potential stud sires, 3-in-1 packages, established breeding females, crias and weanlings.

Perfect options for the new breeder or experienced breeder.
There is something for everyone on offer at this auction.

We welcome Vendors from SA, Vic, NSW at this National—International Event.

23 Breeders have specially selected for auction with a total of 78 Lots.

Huacaya and Suri genetics are offered for sale.

Unreserved (see P2 Opening Bid) and Reserved Lots (with very sensible reserves)

All vendors are active participants in the Australian Alpaca Industry represent a community of people who are passionate about what they do and wish to share this passion and support others in the industry.

**Don't miss an important opportunity such as this!
Purchase sought after genetics at reasonable prices!**

- ⇒ **Access Stud Stock & Commercial Stock at one location.**
- ⇒ **Join the vendors & breeders on auction day, online.**
- ⇒ **Lots, open for bidding simultaneously or pre-bid.**
- ⇒ **Inspect prior to auction day, contact vendors.**
- ⇒ **Take advantage of Breeding Advancement.**
- ⇒ **Impressive array of Pedigree's presented.**
- ⇒ **Strengthen & Reinforce your Breeding.**
- ⇒ **Select and Expand your Bloodlines.**
- ⇒ **Make exciting alpaca purchases.**
- ⇒ **Diversify your Farm Business.**

“Be assured these alpacas are presented to sell at this auction.”

Join Us on Facebook



Breeders Choice Alpaca Auction

Online Auction

Register with AuctionsPlus: Buyers must complete Full Registration in order to bid/buy.

Auction Site / Location: Your own home, office, lounge room, or wherever you may be at auction time. **12 noon, Saturday 16th July 2021.**

Alpaca Inspections: Vendors Farms, live video chat with vendors, facetime etc. Discuss your options with vendors.

Photos: Extra and larger photos posted online at Auctions Plus. Vendors Web Sites & Facebook Pages. There will extra photos to include teeth / legs etc.

Videos: AuctionsPlus, Facebook. Ask a vendor direct for information you require. Arrange Facetime with the Vendor and the Alpaca..

Fleece Samples: Request vendors to post samples.

Farm Visits: Inspect Alpacas yourself or ask a friend.

Contact Vendors & Ask Questions: See Vendor details page 6 & 7

Join or Follow Our FaceBook Page: *Breeders Choice Alpaca Auction*

Delivery of Alpacas: All vendors will allow alpacas to remain on farm up to 4 weeks free. If you require additional agistment or additional time for collection, please contact vendors as they are very open to making suitable arrangements.



AuctionsPlus

Buy and Sell stock nationally

On-Line via AuctionsPlus — Register! Bid!

1. Online—Day of Auction Sat. 16th July or Pre Bid
2. Phone Bidding or Buying Order – Arranged with Wilson by Thursday 14th July
3. On-Line via AuctionsPlus — Must Pre-Register by Thursday 14th July

To Pre Register with AuctionsPlus -

1. Go to www.auctionsplus.com.au and signup. Complete Full Registration
2. Enter your info and confirm your email address
3. NOTE: You need to have FULL approval to Buy/Sell (Approval may take 24-48 hours). Contact: 02 9262 4222 for further information & assistance
4. Once registered, you are registered for life.

Nutrien Livestock, Agent : Wilson Beer 0428 505 520 e: wilsonbeer@bigpond.com

EP Cambridge Alpaca Stud

est. 1993

EP Cambridge is proud to offer this elite selection for the BCAA 2022. Straight from our show team... an exciting opportunity to access decades of proven genetics, some never previously released.



INSTINCT



HONEY NICKEL



BLOODSTONE



STEEPLECHASE



ARCADE



DRAGANOUGHT



PHONIC

OAKBANK, South Australia

0417828753

lawrence@alpacastud.com.au
matthew.lloyd@btconnect.com



Andean Spirit (Q—15/0449)

PO Box 60, Yankalilla SA 5211
91 Coomooloo Rd, Bald Hills SA 5211
Pic: SB472018

Ashbourne Alpacas

PO Box 503, Woodend. VIC 3442
826 Ashbourne Rd, Woodend VIC 3442
Pic: 3MRHS238

Coolawarra / Storybook (Unassessed)

PO Box 7182, Berrima NSW 2577
471 Woodlands Rd, Mittagong NSW 2575
Pic: NB 373513

Dural Alpaca Park (Unassessed)

432 Towrang Rd, Towrang NSW 2580
Pic: NG 274450

Eaglewood Alpacas (Unassessed)

156 Isabel Dr, Murrumbateman. NSW 2582
Pic: NG622849

EP Cambridge Alpaca Stud (MN3-S46)

PO Box 261, Balhannah SA 5242
173 Martins Rd, Oakbank SA 5243
Pic: SB420752

Green Gully Alpacas (Unassessed)

89 Brechts Lane, Kentucky South NSW
Pic: NA 023079

Greygum Alpacas (Unassessed)

619 River Rd, Kialla Vic 3631
Pic: 3sppu226

Haylilla Alpacas (Q—10/0379)

PO Box 1121, Glenelg South SA 5045
59 Brunato Rd, Blewitt Springs SA
Pic: SB450150

Helmshore Manor Alpacas (Unassessed)

100 Felled Timber Rd, Porters Retreat NSW 2787
Pic: NF046427

Janella Alpacas (Unassessed)

772 Sofala Rd, Bathurst NSW 2795
Pic: NC046776

Kibworth Park (Unassessed)

PO Box 432 Lake Boga Vic 3584
40 Roberts Lane, Lake Boga Vic 3584
Pic: 35HMF101

James Wheeler

Mob: 0403 972 609
E: jsw@kobler.com.au

Darren & Rebecca Hard

P: 03 5427 2215 / Mob: 0438 756 231
E: rebecca@ashbournealpacas.com.au
www.ashbournealpacas.com.au

Mick Williams & Rubey Williams

Mob: 0407 407 618 / 0439 389 994
E: storybookalpacas@gmail.com
www.storybookalpacas.com.au

Kurtis Parker

Mob: 0478 148 020
E: duralalpacapark@gmail.com

Robert Harborne

Mob: 0417 998 897
E: info@eaglewood.com.au

Matthew & Catherine Lloyd, & Lawrence

P: 08 8389 7199 Mob: 0417 828 753
E: lawrence@alpacastud.com.au
www.epcambridgealpacas.com

Noel & Cathy Reid

Mob: 0415 459 067 / 0414 663 541
E: cathyreid@bigpond.com
www.greengullyalpacas.com

Trevis Bird

Mob: 0409 944 972
E: greygumalpacas@bigpond.com
www.greygumalpacas.com

Ruth & Steve Godfellow

Mob: 0419 597 998
E: haylilla@outlook.com
www.haylilla.com.au

Brian & Jill Ross

Mob: 0419 123 576 / 0403 975 588
E: info@helmshoremanor.com.au
www.helmshoremanor.com.au

Jane Merison

Mob: 0419 484 589
E: sales@janella.com.au
www.janella.com.au

Kevin Sleep

Mob: 0475 784 959
E: kwpark01@bigpond.com

Kurrawa Alpacas (Q-05/0018)
1330 Anglesea Rd, Bellbrae Vic 3228
Pic: 35FRA014

Lillyfield Alpacas (Q—05/0001)
PO Bos 2051, Bowning NSW 2582
69 Graces Flat Road, Bowning NSW 2582
Pic: NH622680

Lualto Alpacas (Unassessed)
130 Davis Lane, Yass NSW 2582
Pic: NI622332

Luckenbach Alpacas (Unassessed)
441 Eusdale Rd, Yetholme NSW 2795
Pic: NG048007

Maison Mauve (Unassessed)
Mt Tanga. 26 Eldridge Lane, Taylors Flat NSW 2586
Pic: NB634111

Malakai (Unassessed)
17 Miners Rd, Miners Rest Vic 3352
Pic: 3BTFH095

Mapa Alpacas (Q—20/0559)
2764 Yass River Rd, Yass River. NSW.2582
Pic: NC623764

Patagonia Alpacas (Unassessed)
166 Diamond Swamp Rd, Meadow Flat NSW 2795
Pic: NH044710

Precision Alpaca Group (Non-Assessed)
39 Budds Lane, Baynton Vic 3444
Pic: 3MRAF016

Silcron Alpacas (Q—15/0442)
PO Box 2030, Bowning NSW 2582
54 Red Hill Rd, Bowning NSW 2582
Pic: ND623416

Walkley Fields Alpacas (Unassessed)
43 Tierney Rd, Kurmond NSW 2757
Pic: NH041165

Ann, Robert & Natasha Clark
Ph: 03 5261 3714 Mob: 0412 960 200
E: kurrawa@ozemail.com.au

Carolyn Austin
Ph: 02 6227 6224 Mob: 0410 693 802
E: lillyfield@bigpond.com
www.lillyfield.com

Tim Toshack
Mob: 0429 783 575
E: lualtoalpacas1@bigpond.com
www.lualtoalpacas.com.au

Robert Atcheson
Mob: 0406 975 466
E: robert.atcheson@me.com

Rosie Francis
Ph: 02 6345 2397 Mob: 0417 203 751
E: rosiered@usa.net
E: www.maisonmauve.net

Shane Carey
Mob: 0409 270 381
E: Malakai@vic.chariot.net.au
E: www.malakai.com.au

Paul Maslen & Malcom Gray
Mob: 0417 862 096
E: sales@mapaalpacas.com.au

Ian Braithwaite & Cathi McMullen
Mob: 0418 608 447 Mob: 0407 338 823
E: info@patagoniaalpacas.com.au
www.patagoniaalpacas.com.au

Max & Taryn Mathews
Mob: 0417 845 480
E: precisionalpaca@gmail.com
www.precisionalpaca.com

Diane Bulpit
Mob: 0414 447 178
E: dianebulpit@gmail.com

Richard Brennan
Mob: 0400 477 091
E: richardjbrennan@gmail.com
www.walkleyfieldsalpacas.com.au

Lot 1 Helmsore Manor Laborius

Solid Medium Fawn Female

IAR: 245850 DOB: 17.1.21



Ellenvale Palladium

EKC Billabong

Sire: Hunter Dynamite

Dam: Helmsore Manor Lucinda

Hunter Dark Angel

EKC Lucy

Mated: Open

Fleece: Nov 21 – M 17.3, SD 4.2, CV 24.2, CF 100%, CRV 33.5

An easy-going young female, Laborius carries an extremely fine, lustrous fleece on a solid frame. With the strong coloured background on both sides of her pedigree, she is a must for any colour breeder. More than ready to be mated to the male of your choice, Laborius is already sitting on the fence line next to the males. On-farm viewing welcome by appointment.

Helmsore Manor - Reserved

Lot 2 Garibaldi Notorious

Solid Dark Fawn Male

IAR: 231026 DOB: 17.11.17



Sire: Lillyfield Up The Ante

Dam: Garibaldi Royal Princess

Certified Male

Fleece: M 6.9, SD 5.8, CF 78.9%, SL 115mm

Attractive working commercial male. Produces Cria which carry stunning, long, lustrous even fleeces. Full sister is a National Show winner. His dam is from Shanbrooke Watch Me Shine, show champion herself. Up the Ante has topped off that density with length, very soft handle and great substance of bone. Purchaser is sure to reap the benefits of his advanced genetics well into the future.

Maison Mauve—Unreserved

Lot 3 Everlast HipHop

Black Female

IAR: 189041 DOB: 14.11.11



Sire: Blue Grass Bollinger

Dam: Everlast Harmony

Mated: One Tree Hill Flecktam, LMD 31.5.21

Fleece: M 24.4, SD 4.5, CF 90.6%, CRV 37.4

Attractive working commercial male. Produces Cria which carry stunning, long, lustrous even fleeces. Full sister is a National Show winner. His dam is from Shanbrooke Watch Me Shine, show champion herself. Up the Ante has topped off that density with length, very soft handle and great substance of bone. Purchaser is sure to reap the benefits of his advanced genetics well into the future.

Maison Mauve—Unreserved

Lot 4 Lillyfield Jive Talkin + F/Cria

Medium Fawn Female

IAR: 245138 DOB: 16.3.19



Sire: Lillyfield Nuteyez

Dam: Lillyfield Masquerade

Mated: Alpha Centauri Tarantino, LMD 3.1.22

Fleece: M 26.6, SD 5.6, CF 81.9%, SL 92mm, CRV 35.7

DF Female Cria at Foot: Maison Mauve Kwilla.
DOB 8.12.21, IAR 253293.

This young female displays upright & straight conformation as well as an excellent even coverage across the frame

Maison Mauve—Unreserved

Lot 5 Lavender Park Cordelia

Solid Bay Black Female

IAR: 233780 DOB: 17.11.17



Sire: Lavender Park Ishmale

Dam: Patagonia Masquerade ET

Mated: Maison Mauve Amadeus (Appl), LMD 3.4.22

Fleece: M 21.2, SD 3.9, CF 96.5%, CRV 41.4

A lovely young female with a fine, crimped fleece that is even across her entire frame.

Excellent buy for black & appaloosa breeders.

Maison Mauve—Unreserved

Lot 6 Maison Mauve Tina

Solid White Female

IAR: 250285 DOB: 19.3.20



Sire: Malakai Rezeki

Dam: Everlast Sugar & Spice

Mated: Maison Mauve Namatjira, LMD 4.1.22

Fleece: M 18.0, SD 3.5, CF 99.7%, CRV 42.3, SL 110mm

Fabulous female, well grown with a good frame. She exhibits a beautiful fleece with excellent density, lustre & a soft handle.

Maison Mauve—Unreserved

Lot 7 Alpha Centauri Jemimah

Solid Medium Fawn Female

IAR: 218666 DOB: 25.12.15



Lillyfield – Reserved

Benleigh Bellisimo

Elyision Jupiter

Sire: Malakai Cross Fire ET

Dam: Sandyanna Jemma's Girl

Blue Grass Leading Lady

Alpha Centauri Sunrae

Mated: Malakai Rezeki 6.4.22

Fleece: M 21.9, SD 4.3, CV 19.5%, CRV 49

Attractive, well balanced female, maintaining excellent fleece stats for age, also producing quality cria.

Jemimah has most of the original magic numbers in her background and produces a highly crimped butter scotch fleece. Remated to Rezeki as the cria last year was lovely & staying in the herd.

Lot 8 Garibaldi Trinidad

Solid White Female

IAR: 245137 DOB: 9.3.19



Lillyfield – Reserved

Benleigh Cavalier

Lillyfield Santanna

Sire: Jandarra Touchdown

Dam: Garibaldi Havanah

Jandarra Sapphire

Garibaldi Eden

Mated: Lillyfield Mojave 4.1.22

Fleece: M 25.5, SD 4.4, CV 19.3%, 110mm

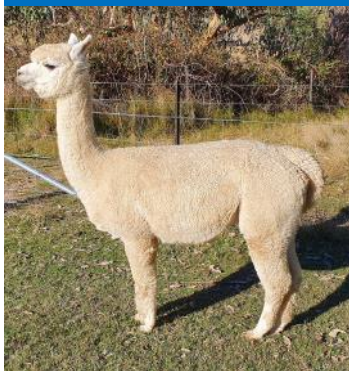
Trinidad is a larger female producing real commercial fleece. She cuts well over 3.5kg of consistent fibre.

This girl is well credentialed with a lovely backline of excellent genetics. Spitting off well to Mojave and the result should be pleasing.

Lot 9 Lillyfield Castile

Light Fawn Female

IAR: 214568 DOB: 15.4.15



Lillyfield – Reserved

Forestview Prince of Thieves

Blue Grass Khan

Sire: Lillyfield Nureyez

Dam: Lillyfield Geneva

Wongadene Coppelia

Alawah Vivienne

Mated: Lillyfield Rip Tide 12.4.22

Fleece: M 24.0, SD 4.0, CV 16.6%, 85mm

A well put together female producing excellent length of fibre on a compact, but well balanced frame. Castile is now mated to our highly successful show boy "Rip Tide" and we expect colour from this joining. She does have a spot under her tail, so the mating is designed to enhance that genetic.

Lot 13 Yenaminut Jada

Solid White Female

IAR: 233512 DOB: 6.3.19



Cedar House Alaska

Ambersun El Salvador

Sire: Bardella Park Kumar

Dam: Riverport Jenny ET

Bardella Park Amethyst

Jandarra Conchita

Mated: 27.3.22 Precision Hyperion ET

Fleece: 2019—M 14.8, SD 3.5, CF 100%, CRV 45.4

2021—M 20.1, SD 4.5, CF 98.2%, CRV 39.8

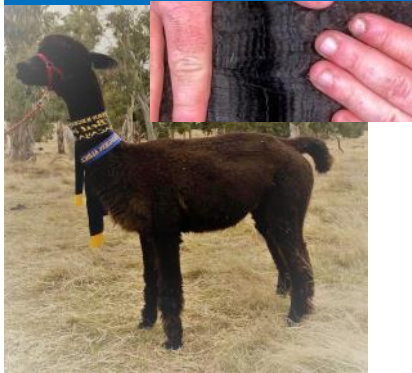
Jada exhibits an ultra-soft, long growing, beautifully bright fleece with a high amplitude style which carries well across her solid frame. These characteristics had her awarded Junior Champion at her only show – 2019 Charles Ledger. Her sire is one of Precision's top males and a supreme champion, while her maternal grandsire is a National Supreme. Mated to Sydney Royal 2022 Supreme Fleece winner – this package is not to be missed!

Precision Group – Reserved

Lot 14 Shanbrooke Mianeh ET

Bay Black Female

IAR: 228540 DOB: 5.4.17



Tarraganda Lo. Ekekko

Ballinfield Grey Song

Sire: Morning Star Rigel

Dam: Lemarli Marjaneh

Morning Star Gigi

Lemarli Hermione

Mated: 23.4.22 Baringhup Austin

Fleece: 2017—M 16.3, SD 4.4, CF 100%, CRV 26.7

2021—M 23, SD 4.0, CF 94.9%, CRV 34.8

Mianeh is carrying an extremely bright, soft handling fleece with a highly defined crimp style and great density on a correct frame. She was awarded Best Black Female at the 2018 AlpacaFest. She has inherited her longevity of positive fibre traits from her highly awarded sire, with high density levels from her dam. Mated to the 2022 Sydney Royal Supreme Black, this package is one for the astute black or grey breeder.

Precision Group – Reserved

Lot 15 Yenaminut Summer Joy

Solid Light Fawn Female

IAR: 242713 DOB: 24.2.21



Cedar House Alaska

Windsong Valley Amadeus

Sire: Yenaminut Candido

Dam: Yenaminut Summer Breeze

Yenaminut Cerazi

Blackgate Lodge Sunshine

Mated: Open

Fleece: 2021—M 15, SD 3.3, CF 100%, CRV 50.5

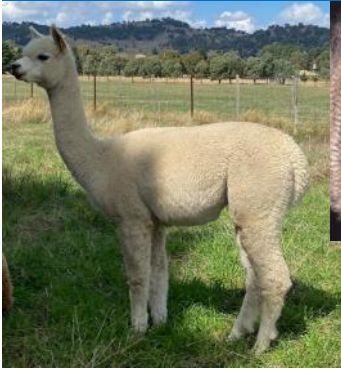
Summer Joy is an extremely exciting maiden with plenty of potential. She packs on a big fleece which is exhibiting a highly aligned, high frequency style which carries well across her upstanding frame. She couples this with ultra fineness, a beautifully nourished handle and a high level of brightness. Her quality comes as no surprise, with both parents being multiple Supreme Champions from some of our most successful lines. This combination has proven consistent in producing elite quality, with her full brother ear marked as one of our elites.

Precision Group – Reserved

Lot 16 Yenaminut Petunia

Solid Medium Fawn Female

IAR: 233371 DOB: 1.12.20



Yaamba Enforcer

Autumn Gold Thunderbolt

Sire: Yenaminut Evokateur

Dam: Yenaminut Persia

Yenaminut Evoka

Dundreugan Paisley

Mated: 23.4.22 Baringhup Austin

Fleece: 2021—M 14.6, SD 2.7, CF 100%, CRV 54.6

Petunia offers huge potential for the astute colour breeder. Producing a super long fleece exhibiting a very high frequency, high amplitude style, ultra-fineness coupled with excellent brightness and a buttery handle with high density all on a fast-growing, solid frame. By a National Grand Champion & multiple Supreme and out of a high density, extremely typey dam this quality is no surprise. Sold with the mating to 2022 Sydney Royal Supreme Black, the quality and depth this offers is quite exciting.

Precision Group – Reserved

Lot 17 Yenaminut Mercado

Solid White Male

IAR: 228649 DOB: 30.12.20



Yaamba Enforcer

Snowmass Fortune Favors

Sire: Yenaminut Evokateur

Dam: Yenaminut Martina

Yenaminut Evoka

Combe Hill Matilda

Fleece: 2021— M 14, SD 3.1, CF100%, CRV 51.4CRV

Mercado, an extremely exciting young macho who will suit white or coloured breeders. He exhibits an indulgently nourished handle, ultra-brightness, a highly aligned high frequency/high amplitude fleece style which carries from his nose to his toes. He exhibits very low presence of coarse primary fibres and carries this on a true-to-type and correct frame. These qualities saw him awarded Reserve Champion Intermediate Male at the 2022 Canberra Royal.

Precision Group – Reserved

Lot 18 Yenaminut Mantra

Medium Grey Male

IAR: 242573 DOB: 24.11.20



Combe Hill Avatar

Morning Star Rigel

Sire: Combe Hill Firenzo

Dam: Yenaminut Muriosa

Combe Hill Fern

Yenaminut GK Montie

Fleece: 2021—M 14.7, SD 3.2, CF 100%, CRV 39.7

Mantra is an extremely upstanding young macho with a real “look-at-me” stance. He carries a fast-growing fleece with ultra-softness and superb brightness, coupled with a high amplitude style. His lack of coarse primary fibres is quite exceptional and he carries these characteristics well into the extremities. With genetics including MS Rigel, Trumar GK, CH Sirocco and WV Firedragon this male is not one to be missed.

Precision Group – Unreserved

Lot 19 Janella Almirah

Solid Light Fawn Female

IAR: 194793 DOB: 16.1.13



Sire: Regal House Mr Darcy Dam: The Gorge Blossom

Mated: 6.1.22 to Patagonia Elite Grantham

Fleece: 9th—M 29.3, SD 5.8, CRV 29.6

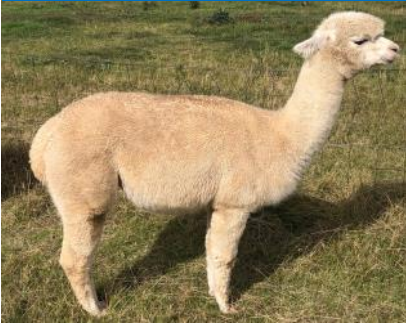
Almirah is a quality female by elite sire Mr Darcy, now mated to our young male Patagonia Elite Grantham. Grantham is a multi broad ribbon winner both in halter & fleece. With these genetics, the resulting cria should be very promising. Almirah births easily and is a good mother, she would be an asset to any herd.

Janella —Reserved

Lot 20 Janella Evie

Solid White Female

IAR: 194796 DOB: 7.12.18



Sire: Shanbrooke Pure Evolution Dam: Gunnamatta Sonnet

Mated: 28.12.21 to Patagonia Elite Grantham

Fleece: 3rd—M 26.1, SD 5.1, CRV 26.6

Evie, smaller framed female with a sweet temperament. Strong genetics from Pure Evolution and Grantham should produce an exciting cria. With a soft handling, low frequency crimp style, she would be an asset to any herd.

Janella—Reserved

Lot 21 Janella Cheeki Chic

Solid Light Fawn Female

IAR: 194794 DOB: 18.1.13



Sire: Encantador Ring Master Dam: Ngullaminya Miss World

Mated: Open, to be mated prior to auction.

Fleece: 9th—M 27.5, SD 5.3, CRV 32.4

Cheeki has a large frame and a sweet temperament, who will be mated to Patagonia Elite Grantham prior to auction. Background of excellent genetics, she has the potential to breed a quality cria. She would be an asset to any coloured breeders.

Janella —Reserved

Lot 22 Kurrawa Mans Reflection

Solid White Suri Male

IAR: 248225 DOB: 12.3.21



Sire: [Kurrawa Man About Town ET](#)

Dam: [Kurrawa Reflections ET](#)

Fleece: Current—Mic 17.4, SD 4.1, CV 23.7, CF 100%

More photos will be available on the Kurrawa Alpacas FB page and www.kurrawa.com.au & Auctions Plus

Our suris need no introduction having won major awards at our biggest shows. This young male is a combination of our best genetics and has a stunning fleece. His fleece displays brilliant lustre combined with density, uniform micron, soft handle on a correct frame. We guarantee certification. He will be entered at the Nationals for his new owners to show and if he wasn't for sale he would be certified for use at Kurrawa. We believe he has a big future and will be an impact male for any stud.

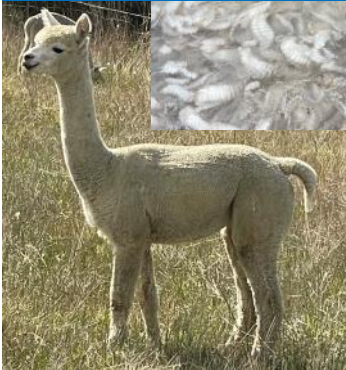
Kurrawa – Reserved



Lot 23 Kurrawa Fire Me UP

Solid White Female

IAR: 248201 DOB: 13.05.21



Sire: [EP Cambridge Forged In Fire](#)

Dam: [Kurrawa Mimosa](#)

Mated: Maiden

Fleece: 1st—Mic 15.7, SD 4.0, CV 25.2, CF 100%

Fire Me Up is sired by EP Cambridge Forged In Fire and her grand-sire is the renowned Firedragon. She would be an asset to either a white or a coloured breeding program. We have been extremely happy with the Forged In fire offspring and she is no exception. She is a well grown conformationally correct female with a fleece that displays a fine micron with density and character. We feel this combination of genetics will be suited to any stud looking to bring in different bloodlines

Kurrawa – Reserved



Lot 24 Kurrawa Leg. Havana Dream

Light Fawn Female

IAR: 250315 DOB: 16.03.21



Sire: [Premier Kiwi Legend](#)

Dam: [Kurrawa Idaho](#)

Mated: Maiden Kurrawa Legends Havana Dream

Fleece: Current—Mic 14.2, SD 2.4, CV 17.2, CF 100%

We are proud to offer Dream in this years auction. This is one female we would love to keep in our breeding program. Dream is full sister to Bandido now residing in the UK. Bandido is producing quality coloured offspring and we are positive Dream will do the same. She has an exceptional fleece which we have put aside for our biggest fleece show. Dream has a correct frame and displays a highly aligned, dense, fine micron, beautiful handling fleece. We rarely offer Legend females for sale and this girl will not disappoint. This is your opportunity to purchase a quality Legend daughter for your breeding program.

Kurrawa – Reserved



Lot 25 Luckenbach Yuri

Solid White Female

IAR: 247776 DOB: 22.4.20



Snowmass Conopa's Kahuna

Snowmass Elite Transcendence

Sire: Snowmass Royal Kahuna

Dam: Patagonia Elite Hummingbird

Snowmass Royal Wedding

Patagonia Rising Sunbird

Mated: Maiden

Fleece: 1st (6 months)—M 15.9, SD 3.7, CV 23.3, SL 85, CF 100%
2nd—M 16.6, SD 3.8, CV 22.7, SL 120, CF 100%

Yuri (means Lilly in Japanese) has wonderful bone structure and good conformation. Her fleece is ultrafine, soft and long coming in at 120, which she inherited from her dam, Hummingbird (also in this auction), along with her fleece density from her sire, Royal Kahuna.

Luckenbach Alpacas – Unreserved

Lot 26 Luckenbach Sakura

Solid White Female

IAR: 247779 DOB: 12.10.20



Snowmass Conopa's Kahuna

Snowmass Elite Transcendence

Sire: Snowmass Royal Kahuna

Dam: Patagonia Elite Flame ET

Snowmass Royal Wedding

Patagonia Celtic Flamenco

Mated: Maiden

Fleece: 1st – M 16.7, SD 3.9, CV 23.5, SL 145, CF 100%

Sakura (means Cherry Blossom in Japanese) is the great granddaughter of Celtic Triumph and has a beautiful ultrafine fleece with good density, crimping, soft handle all within extremely long staples! Sakura has great conformation and bone structure.

Luckenbach Alpacas – Unreserved

Lot 27 Patagonia Elite Flame

Solid White Female

IAR: 239742 DOB: 15.4.18



Snowmass Elite Legend

Patagonia Celtic Triumph

Sire: Snowmass Elite Transcendence

Dam: Patagonia Celtic Flamenco

SPA Alpaca's Per. Sonnet

Pat. Trumpeting Angel

Mated: Open

Fleece: 3rd—M 19.9, SD 3.7, CV 18.7, SL 110, CF 98.5%

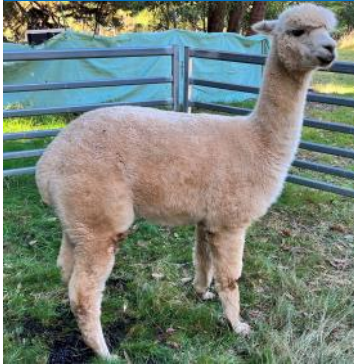
Flame has fantastic genetics (granddaughter of Celtic Triumph) and has done well with her first progeny, Sakura. Flame has a large frame, great bone structure, conformation and maintains her fleece quality well, including great density, crimp and long length.

Luckenbach Alpacas – Unreserved

Lot 28 Patagonia Elite Hummingbird

Solid White Female

IAR: 217993 DOB: 26.3.17



[Snowmass Elite Legend](#)

[Patagonia Celtic Rising Sun ET](#)

Sire: [ILR Snowmass Elite Transcendence](#)

Dam: [Patagonia Rising Sunbird](#)

[SPA Alpaca's Peruvian Sonnet](#)

[Patagonia Kestrel](#)

Mated: Open

Fleece: 5th—M 22.7, SD 4.3, CV 19.1, SL 100, CF 95%

Hummingbird is a big girl with good fleece density, bone structure and conformation. Even on her 5th fleece she maintains exceptional length and crimp, handle and a fine fleece. Her first progeny, Yuri, has inherited her physical characteristics and exceptional fleece length.

Luckenbach – Unreserved

Lot 29 Kibworth Park Langton

Roan Male

IAR: 227522 DOB: 18.4.18



Sire: [Orrapooro Trumpeter](#)

Dam: [Combe Hill Priscilla](#)

Show Results 2019: Reserve Champion Junior Male & Best Roan, Red Hill. Champion Intermediate Male & Best Roan, Wangaratta. Best Roan, Bendigo.

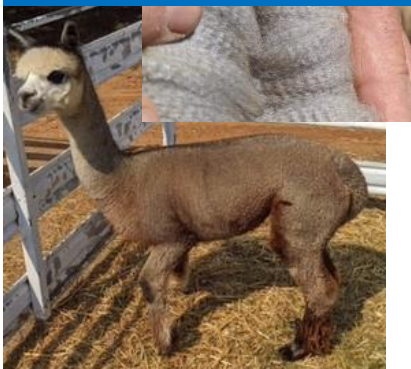
Langton has an extraordinary level of density, as well as uniformity of fleece across his saddle into his neck and extremities. Langton has a well-formed medium size frame and exhibits excellent conformation and temperament.

Kibworth Park —Reserved

Lot 30 Kibworth Park Meadow Brooke

Medium Grey Female

IAR: 245933 DOB: 9.4.20



Sire: [Buckland Messiah ET](#)

Dam: [Kibworth Park Princess Mychiale](#)

Mated: Open

Fleece:

Meadow Brooke is a medium framed animal with a dense fleece throughout the saddle and into her extremities, when you open her fleece up, you will find a very highly defined medium grey fleece. Regrettably this grey girl was not shown due to the COVID lockdowns and would be part of the Kibworth Park show team for this season

Kibworth Park—Reserved

Lot 31 Silcron Antarctic Echo + F/Cria

Solid White Female

IAR: 1012122

DOB: 15.1.13



Sire: [Silcron Charango](#)

Dam: [Silcron Antarctica](#)

Mated: 25.4.22 Lillyfield Up the Ante SDF

Fleece: M 24.7, SD 4.5, CF 89.6%

F/ Cria Cooee By Futura Momentum IAR 247866 DOB 11.4.22

Echo and her promising daughter Cooee come as a package. Cooee has a bright, soft fleece on a very correct frame. Echo is an experienced and competent mother and consistent breeder of improved progeny. She's pleasant to deal with and will be missed around the farm. Three of her daughters are retained in the herd and available to inspect. Echo is mated to colour this time as the cria has a spot.

Silcron – Reserved

Lot 32 Silcron Jewel

Solid Light Fawn Female

IAR: 220083

DOB: 12.03.16



Sire: [Ambersun Guerrero Quartz](#)

Dam: [Silcron Spinning Jenny](#)

Mated: 19.3.22 Futura Momentum SLF

Fleece: M 23.6, SD 4.5, CF 92.9%

Jewel produced a cracker of a daughter this season and the mating has been repeated. I'm keeping the daughter but Jewel is available with this repeat cria on board. Jewel's sire, Ambersun Guerrero Quartz, is SMF and she has dark pigmentation so is well placed to produce colour if put to a coloured male. Her current daughter is light fawn and available to inspect.

Silcron – Reserved

Lot 33 Silcron Willow

Solid White Female

IAR: 1011309

DOB: 16.10.12



Sire: [Silcron Charango](#)

Dam: [Silcron Atatori](#)

Mated: 25.4.22 EP Cambridge Oblivion ET

Fleece: M 25.4, SD 5.0, CF 83.2%

Willow grows a bright well-nourished greasy fleece showing good alignment and excellent commercial length for age. She has a strong frame with good depth of body and substance of bone. A very good mother, she produces attractive, ultrafine offspring - her last cria tested 13.6m, 3.2sd & 100%cf. I would expect good things from all her future cria.

Silcron – Unreserved

Lot 34 Alpha C Smooth Criminal

Solid White Certified Male

IAR: 218851 DOB: 30.5.19



ElySION Jupiter

Woodland Chase Milagro

Sire: Alpha Centauri Kamando

Dam: Elitealpaca Sharlena (LF)

Certified Male—Alpha Centauri Smooth Criminal

Fleece: Oct 21—M 19.1, SD 4.1, CF 98.2%, SL 105mm

An impressive looking young male with hard to get quality genetics (sired by Kamando, a prizewinning ElySION Jupiter son). He has a fine dense stylish fleece extending well over a solid compact frame.

Lualto—Reserved

Lot 35 Lualto Firelight

Solid White Female

IAR: 245347 DOB: 31.3.21



Windsong V. Firedragon

Jolimont Galan

Sire: Windsong Valley Reuben

Dam: Lualto Sia (W)

Mated: Open

Fleece: Oct 21—M 19.7, SD 3.9, CF 99.2%

A fine fleeced young female from a good genetic line descending from Windsong Valley Firedragon & Jolimont Galan. Her fleece has a high frequency crimp style extending over her well balanced upright frame.

Lualto Alpacas – Reserved

Lot 36 Lualto Rebel

Light Fawn Female

IAR: 245349 DOB: 06.4.21



Softfoot Maudib

Jolimont Galan

Sire: Softfoot Belar MD (RN)

Dam: Lualto Destiny (W)

Mated: Open

Fleece: Oct 21—M 19.7, SD 5.3, CF 95.6%

An interesting combination of genetics, her sire is a prize winning dark roan and her dam is one of our best white females. She is a well grown young female with a dense fleece and medium crimp style on a very solid frame.

Lualto — Unreserved

Lot 37 Mapa Viscountess

Solid White Female

IAR: 253304 DOB: 6.3.21



Yass Valley Horatio

Plantel Illawarra Horatio

Sire: Yass Valley Sir Samuel

Dam: Constellation Monique

Blue Grass Leading Lady

Constellation Mira

Mated: Maiden

Fleece: M 17.8, SD 4.4, CF 99.6, CVR 34.6

Beautifully frame on this young female, she has good bone and a very feminine head from famous bloodlines. Her fleece is showing excellent stats and producing a really commercial length of ultra-soft bright fibre.

Mapa—Reserved

Lot 38 Stansfield Park Kitty

White Female

IAR: 188871 DOB: 25.5.14



Somerset Accoyo Challenger

Encantador Masterpiece

Sire: Kyana Oliver

Dam: Marriglen Kathryn

Kyana Peruvian Princessa

Pentland Serena

Mated: 5.12.21 Lillyfield Pacitti

Fleece: M 21.5, SD 4.3, CF 96.2, CVR 36.2

Kitty is a WA girl, who will be an asset to bring new genetics into your herd. She does have a small spot on her left side, still maintaining excellent fleece stats for age. Now mated to "Pacitti" who brings excellent density & valuable fleece length.

Mapa —Unreserved

Lot 39 Yaringa Olivia + F/Cria

Dark Fawn Female

IAR: 201990 DOB: 4.1.15



Shanbrooke Per. Nano

Ambersun Kings Ransom

Sire: Shanb. Simply the Best

Dam: Yaringa Georgina

Shanb. Conchatonca Illa

Alpacaspecialist Priscilla

Mated: 23.4.22 Lillyfield Cross Fire

Fleece: M 23.9, SD 4.6, CF 91.1, CVR 30.5

Female Cria at Foot by Patagonia Moritz

Olivia is well built girl with a dense blockier crimp style which is still at a lower micron level, particularly for age. She comes with a female cria at foot and is being an excellent mum. The cria is a solid young girl with a dense fleece that is bright & full of lustre (sire Patagonia Moritz). Olivia has now joined to our up & coming True Black male "Cross Fire" to enhance those colour genetics

Mapa —Reserved

Lot 40 Goldleaf Desert Chemise + F/Cria

Solid White Female

IAR: 245138

DOB: 16.3.19



Mapa—Reserved

Premier Kiwi Legend

Windsong Valley Champers

Sire: Kurrawa Leg. Challenge

Dam: Goldleaf Desert Harmony

Kurrawa Drama Queen

Echo Valley Farm Desert Magic

Mated: Grey Gum Classified

Fleece: 24.4m 5.7 SD 86.1 CF CRV 30.1

Female Cria at Foot by Mapa Scout

A great opportunity to acquire some coveted genetics. Desert Chemise is a young attractive female with a lovely female cria at foot by Mapa Scout. Desert Chemise will be mated prior to auction

Lot 41 Haylilla Mariella

Solid True Black Female

IAR: 249709

DOB: 4.3.21



Haylilla —Reserved

Baringhup Toscanini SBK

Leaenna Armani SBK

Sire: Baringhup The Wizard

Dam: Haylilla Marula SBK

Camelot Merlin's Trick

Chaparral Amarula SDB

Mated: Maiden

Fleece: M 15.4, SD 3.8, CRV 31.8, SL 120mm

Pedigree : (Black on Black) X (Black on Black)

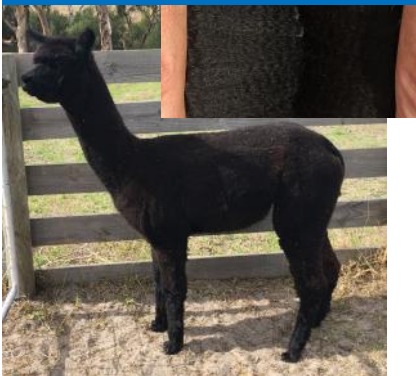
A beautiful example of the quality progeny sired by Baringhup The Wizard with Leaenna Armani genetics on the Dam's side. Mariella exhibits masses of heavy cutting, soft handling and well organised fleece with an enviable low micron. A reluctant offering, only available as we have a full sister in our 2022 cria drop.

Lot 42 Haylilla Cassidra

Solid True Black Female

IAR: 247277

DOB: 9.12.20



Haylilla —Reserved

Windsong Valley Firedragon SLF

Leaenna Armani SBK

Sire: EP Cambridge Black Dragon SBK

Dam: Haylilla Cassis SDF

EP Cambridge Ambience SBK

Haylilla Riviera SBK

Mated: Maiden

Fleece: M 20.0, SD 5.1, CRV 28.3, Staple length 140mm

A Calm, friendly female with true to type conformation and a lustrous blue-black fleece. She is one of the first EP. C Black Dragon offspring to be released. Black Dragon is imparting great density and consistency of fleece style to his progeny. He retains fineness with age and is proving to be most valuable asset to our black breeding program.

Lot 43 Eaglewood Aperol + M/Cria

Solid True Black Female

IAR: 251756 DOB: 27.5.19



Sire: Eaglewood Kai

Dam: Alpacamagic April Rain

Mated: Mating May 2022 to Eaglewood Prince Una

Fleece: M 26.50, SD 5.6, CRV 40.7

Black Male Cria at Foot by Silverspoon, DOB 14.3.22

Aperol is a lovely well grown female that is a great mum. She has a beautiful Black male cria born 14.3.22 by Silverspoon MG, already displaying a great degree of character and style to his fleece.

Aperol will be mated to Eaglewood Prince Una, stunning medium grey, who has won Champion Grey 3 of his 6 shows presented.

Eaglewood—Reserved

Lot 44 Millpaca Sunset Gem + F/Cria

Medium Grey Female

IAR: 245138 DOB: 16.3.19



Sire: Bluegrass Waterloo Sunset

Dam: Malakai Diamente

Mated: Mating May 2022 to Eaglewood Prince Una

Fleece: 2018—M 19.2, SD 4.1, CF 95.8, CRV 53.6

Roan Female Cria at Foot by Shanbrooke Silverspoon

Sunset Gem, an exceptional elite grey sired by the great Waterloo Sunset. Her dam is a Malakai female by Bluegrass Star Warrior. Her show career, both ring & fleeces, has been impeccable. Her lineage, presence and show ring quality is already presented in her exceptional roan female cria at foot.

Eaglewood —Reserved

Lot 45 Ashbourne Illuminated

Solid Light Fawn Male

IAR: 247696 DOB: 11.3.21



Sire: Malakai Fire Chief ET

Dam: Malakai Light The Way ET

Male: Certification Guarantee

Fleece: M 15.6, SD 3.7

Ashbourne Illuminated is the full brother of 7 times Supreme Champion Ashbourne Illuminati. Illuminated shown Sydney Royal 2022 & received Reserve Champion with exemplary judges comments. This boy has a huge future as a stud male. Certification Guarantee.

Ashbourne —Reserved

Lot 46 Grey Gum Ella

Light Fawn Female

IAR: 256890 DOB: 30.1.21



Windsong V Firedragon

Windsong Valley Kichirou

Sire: Grey Gum Fawkner

Dam: Yaamba Dancing Queen

Grey Gum Daquiri

Yaamba Sundance

Mated: Maiden

Fleece: Oct 21 – M 17.2, SD 4.2, CV 24.3, CF 100%

A quality young maiden with all the style you could ask for. Great bone, solid conformation and a high frequency crimp style. She carries genetics from the best of EP Cambridge and Windsong Valley. Ready to be mated to the sire of choice.

GreyGum—Reserved

Lot 47 Grey Gum Luna

Solid Medium Brown Female

IAR: 256894 DOB: 23.2.21



EP Cambridge Diversity

EP Cambridge Diversity

Sire: Grey Gum Xtreme

Dam: Grey Gum Odyssey

Grey Gum Tequila

Rossmore Cleo

Mated: Maiden

Fleece: Oct 21 – M 17.9, SD 4.2, CV 23.4, CF 99.6%

Stunning young maiden for the coloured breeder, showing the benefits of crossing top line white genetics over our coloured females. Ready to be mated and moved to your front paddock.

GreyGum—Reserved

Lot 48 Grey Gum Hope

Medium Fawn Female

IAR: 256895 DOB: 15.3.21



Acacia Caribbean

EP Cambridge Diversity

Sire: Grey Gum Kamikaze

Dam: Grey Gum Rock N Roll

Grey Gum High Voltage

Grey Gum Futurity

Mated: Maiden

Fleece: Oct 21 – M 15.75, SD 4.0, CV 25.3, CF 100%

Beautiful in all ways. This female will not disappoint. She is the first release of our Kamikaze cria and will be hard to part with. Commisario, Spartacus, Iceman and Diversity fill the family tree. Highly Recommend.

GreyGum—Reserved

Lot 49 Dural Stand Out

Light Fawn Female

IAR: 209934 DOB: 16.2.21



Sire: Banksia Park KOVPKS
Johny Depp

Dam: Bumble Hill Cheri

Mated: Maiden

Fleece: M 19, SD 3.6, CV 19.0, CF 99.7%, CRV 39.7

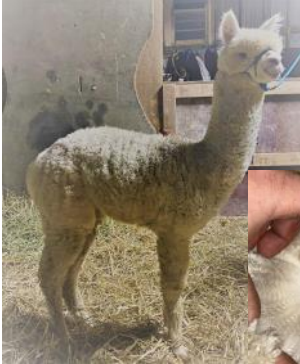
This stylish young female has the same sire as the 2019 National and Charles Ledger supreme. She has a soft handling and lustrous, well aligned fleece. She displays a high level of density for her fineness on a true and correct frame. Stand Out would be a great addition to any breeding program.

Dural—Reserved

Lot 50 Dural Blaze of Glory

Solid White Male

IAR: 209942 DOB: 11.4.21



Sire: Banksia Park KOVPKS
Johny Depp

Dam: Naliandrah Shania

Fleece: M 16.9, SD 3.4, CV 20.2, CF 100%, CRV 43.3

A promising young male with great potential. His sire Johny Depp is also the sire of the 2019 National and Charles Ledger supreme. Blaze of Glory was reserve champion he carries a soft, highly aligned dense fleece that continues into the extremities. He would be an asset to any breeding program. Offered with fertility guarantee.

Dural—Reserved

Lot 51 Ashbourne Bewitched

Solid White Female

IAR: 253612 DOB: 6.4.21



Sire: Ashbourne The Hipster

Dam: Ashbourne Allure

Mated: Maiden

Fleece: M 15.1, SD 3.3

Bewitched is kicking her heel up being the first Ashbourne The Hipster female to be released. With Simply irresistible genetics on both sides this girl offers a breeder a fantastic opportunity to show and start breeding forward.

Ashbourne —Reserved

Lot 52 Entwood Pandora

Fancy Female

IAR: 219437 DOB: 25.11.18



Sire: Entwood Gandarf (MG) Dam: Leranda Ridge Stella (W)

Mated: Broadwater Duke (Fancy Br/W) LMD 19.3.22

Fleece: M 21.9, SD 4.8, CF 95.3%

This fancy female has very nice fleece that is both long and dense. The handle of the fleece is very creamy. She has been mated to a fancy male in the hope that they will produce something really eye catching.

Green Gully —Reserved

Lot 53 Green Gully Black Betty

Black Female

IAR: 240794 DOB: 23.12.19



Sire: Jolimont Essien (Blk) Dam: Vista Bonita (Blk)

Mated: Wyona Torque, LMD 8.1.22

Fleece: M 22.4, SD 4.7, CF 95.5%

Black Betty is a bay black female with a compact frame. Her fleece is dense; displaying good style and consistency. She has been scanned pregnant to Wyona Torque (TBlk) who will further enhance the fineness and handle in their cria.

Green Gully —Reserved

Lot 54 Green Gully Eleanor

Grey Female

IAR: 240836 DOB: 16.12.21



Sire: Vista Charasmatico (MG) Dam: Green Gully Eloise (MG)

Mated: Maiden—Weanling

Fleece: Untested

Eleanor is a well grown weanling female. Her fleece is bright, dense and consistent in style. Carrying Grey genetics from both Sire & Dam, with minimal spotting, she would be an asset to any grey breeding program.

Green Gully —Reserved

Lot 55 Andean Spirit Kismet

Light Fawn Female

IAR: 240743 DOB: 30.11.20

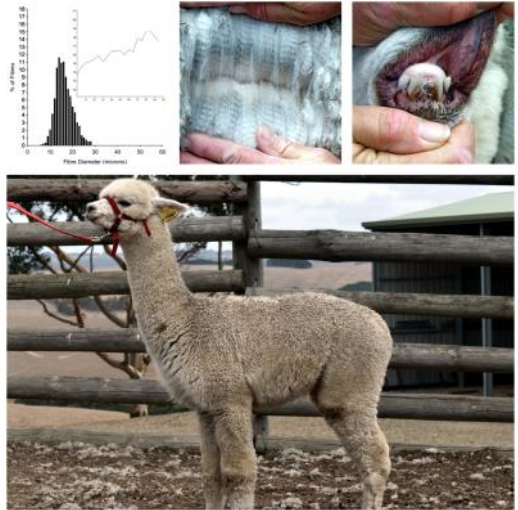
Mated: Optionally—Andache Ambition ET
Fleece: Oct 21—M 16.2, SD 3.8, CV 23.2,
SL 100, CF 100%, CEM 7.4

Sire: Windsong Valley Fire-
dragon
ANDACHE IMPERIAL
FIRE
Grand Flowerdale BSM
Sovereign ET

Dam: Shanbrooke Accoyo Royal
Challenge ET
ANDACHE DESIREE
Blackgate Lodge High
Potential

So infrequently do we see an alpaca with such an enviable pedigree. It is an incredible list of prepotent machos and hembra.

Kismet is a more compact female but well conformed with a lovely head. Her very fine fleece displays a deep, bold amplitude crimp. The most striking feature of this fleece is the length of staple across the body and excitingly continues up into the neck.



Andean Spirit —Unreserved

Lot 56 Andean Spirit Aria

Solid White Female

IAR: 240744 DOB: 5.12.20

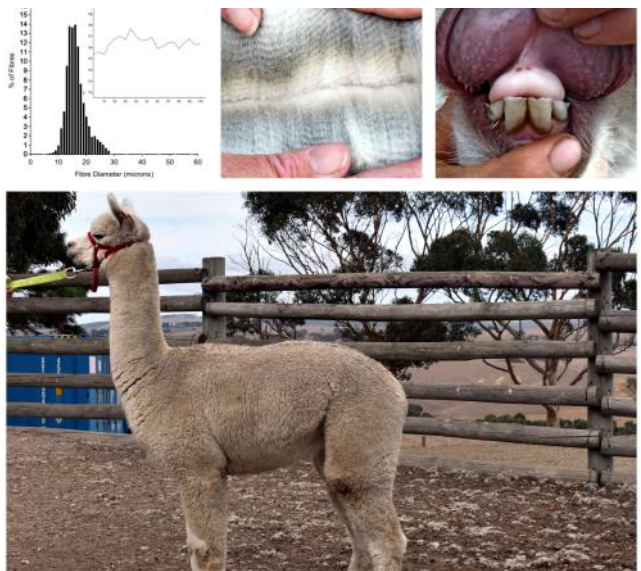
Mated: Optionally – Andache Imperial
Fire
Fleece: Oct 21—M 16.3, SD 3.4,
CV 21.1, SL 105, CF 100%, CEM 7.6

Sire: Timbertop CT Whistler
ANDACHE AMBITION ET
Softfoot Leila

Dam: Swan Valley Stanzout
FAVERSHAM ARIADNE
Faversham Jane

Aria is easily the best grown of all the 2021 drop.

She is very true to type upstanding young female. Her bright, soft handling fleece is representative of her fineness and low standard deviation. The higher frequency crimp with minimal micron variation extends well into the brisket and under the belly.



Andean Spirit—Reserved

Lot 57 Andean Spirit Flair

Solid White Female

IAR: 255638 DOB: 30.01.21

Mated: Optionally – Andache Imperial Fire
Fleece: Oct 21—M 16.3 , SD 3.4, CV 21.1,
SL 105, CF 100%, CEM 7.6

Timbertop CT Whistler

Blackgate Lodge Snowmas-
ter

Sire: ANDACHE AMBITION ET

Dam:

BLACKGATE LODGE HIGH
POTENTIAL

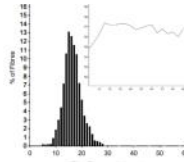
Softfoot Leila

Blackgate Lodge Phi Phi

Flare, like many, has missed out on showing opportunities however was rewarded with a reserve champion junior female at her first show in Strathablyn. Her 16-micron fleece is beautifully bright with a very pleasing level of density, ensuring brilliant alignment across the body and well into the extremities.

These outstanding fleece qualities compliment a very proud true to type stance and calm demeanour.

Andean Spirit—Reserved



FRIENDLY, THOROUGH AND PROFESSIONAL ALPACA SHEARING EXPERIENCE



ALPACASHEARING.COM.AU

Kobler

HELPING GROW A SUSTAINABLE AUSTRALIAN ALPACA INDUSTRY



ALPACAFIBRE.COM.AU

QUALITY AND CONSISTENT SUPPLY OF AUSTRALIAN ALPACA FIBRE TO A GLOBAL MARKET

Lot 58 Malakai Jazmyn

Medium Grey Female

IAR: 253521 DOB: 15.3.21



Sire: MALAKAI PREMIUM EDITION

Dam: MALAKAI JAZARAH

Mated: Open

Fleece: M 14.5, CF 100%

Jazmyn is a beautifully conformed young female with a beautiful even soft handling fleece with a high frequency crimp that has recently been recognised at Sydney Royal show where she placed first in her class.

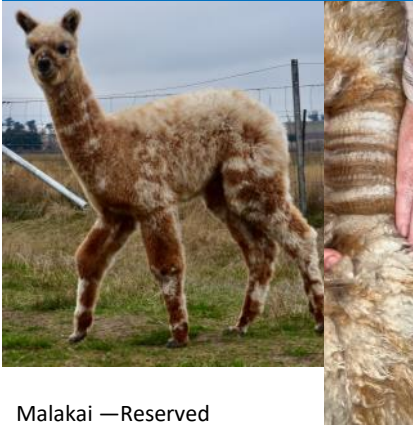
She comes unmated and ready to join to the sire of your choice. **Highly recommended.**

Malakai—Reserved

Lot 59 Malakai Appy Days

Appaloosa Female

IAR: 261125 DOB: 14.1.22



Sire: NEO SUMMERHILL LEOPORD SURPRISE

Dam: MALAKAI CELTIC PRINCESS

Mated: Maiden - weanling

Fleece: M 14.9, CF 100%

We are proud to release our first leopard appaloosa for your consideration. This girl has it all, colour conformation and a beautiful fleece.

If you are looking at breeding leopard appaloosa, then Appy Days is your girl.

Malakai —Reserved

Lot 60 Malakai My Fantasy

Medium Grey Female

IAR: 252635 DOB: 3.3.21



Sire: AUTUMN GOLD GALILEO

Dam: MALAKAI MY FAIR LADY ET

Mated: Maiden

Fleece: M 17.1, CF 100%

My Fantasy has a pedigree grey breeders dream of, with the who's who of the grey world combined with Malakai's star female Blue Grass Leading Lady on her maternal side. She is well grown and has a medium frequency crimp style, and is ready to commence her breeding career in Spring.

Malakai—Reserved

Lot 61 Malakai Go Getter

Medium Grey Female

IAR: 261112 DOB: 1.01.22



Sire: SOFTFOOTMAUDIB

Dam: CHIVERTEN TATIANA

Mated: Maiden - Weanling

Fleece: M 16.2, CF 100%

Go Getter is a beautiful young female sired by the phenomenal Softfoot Maudib. Her fleece is beautifully soft and dense with a high frequency crimp that is very consistent throughout. Another one we would love to keep but we wanted to put some of our best in this auction

Malakai —Reserved

Lot 62 Malakai Embryo

Solid White x Solid Light Fawn

IAR:

DOB:

Malakai Fire Chief ET x Malakai Galaxia

Embryo Conceived : 7/10/21

Sire: Malakai Fire Chief ET

Dam: Malakai Galaxia

On offer is a confirmed pregnancy of Malakai Fire Chief ET x Malakai Galaxia.

A rare and exciting opportunity to secure the genetics of these outstanding alpacas.

Galaxia needs no introduction to the alpaca world having won an astonishing 78 broad ribbons in her show career.

Fire Chief progeny have dominated the show circuit over the last 5 years taking out Championships and Supremes at all major shows.

The combination of Galaxia and Fire Chief is proven with full siblings who have taken out Championships at National level.

Don't miss this one off opportunity to purchase an embryo from such elite parentage.



Malakai —Reserved

Lot 63 Patagonia Absolut Caprice

Solid Light Fawn Female

IAR: 246636 DOB: 7.1.21

Fleece: Nov 21 (1st)—M 17, SD 3.1, CV 18.4, SF 16.2, CF 100%, Cur 41.7, SL 110mm

Sire:

Snowmass Absolut Asset W
ILR Snowmass Absolut Temptation W
Snowmass Irresistable Temptations W

Dam:

Snowmass Royal Kahuna SW
Patagonia KH Capella SW
Patagonia Chanteuse SW



Our **STAR FEMALE** pick for this year’s auction, Caprice a daughter of Snowmass Absolut Temptation – whose progeny (including full sisters Absolut-ly Starstruck and Absolut Starlet) have been making waves in the showing recently. Caprice is on our show team and a girl we would gladly retain in our breeding program - but we like to offer a star female for the Breeder’s Choice auction each year.

Caprice caught our eye at a very young age with her spectacular bundling fleece. She has a stylish well organised fleece with a high frequency, deep amplitude crimp that extends well on her strong and correct frame. She has density and length and a very soft handling fleece

She has depth of pedigree with her dam being a Snowmass Kahuna daughter out of Patagonia Chanteuse, one of our top female lines.

Show Results

- 2nd Light Fawn Intermediate Female Royal Canberra 2022
- 1st Light Fawn Intermediate Female Moss Vale 2022
- Champion Intermediate Female Moss Vale 2022
- 1st Sires Progeny (Absolut Temptation) Moss Vale 2022

Our first “Vodka” (Absolut Temptation) daughter offered for sale at auction, Caprice presents a limited opportunity to access the genetics of this exceptional Snowmass male.



Snowmass Absolut Temptation
7th Fleece Royal Canberra 2020



Patagonia Absolut Caprice – 2nd Fleece
2022



Absolut Caprice (L) and Absolut-ly Starstruck (R) Sires Progeny Winner – Moss Vale 2022

Lot 64 Patagonia MZ Vika

Solid Light Brown Female

IAR: 246637 DOB: 10.4.21

Fleece: Nov 21 (1st)—M 14.7, SD 3.5, CV 23.4, CF 100%, Cur 49.4, SL 95mm

Snowmass Elite Transcendence W

Patagonia Celtic Rising Sun ET SMF

Sire: Patagonia Elite Moritz SDF

Dam: Patagonia Vittoria SDB

Patagonia Midnight Sun ET SDB

Patagonia Goldie SMF

If you are looking for top quality colour and genetics then Patagonia MZ Vika, should be the next female in your herd. Vika has an long ultra-fine, soft lustrous fleece with a high frequency crimp extending across her body. She has a square correct frame.

Vika brings together a range of interesting genetics. Her sire Patagonia Elite Moritz is a very even coloured dark fawn male (sired by Snowmass Elite Transcendence) with fine, extremely long and lustrous fleece with a high frequency crimp, characteristics that he reliably passes to his progeny. Vika has black genetics in her dam's line with Patagonia Vittoria – a Patagonia Celtic Rising Sun daughter. Vika's half sister, VV Vita sold at the BCAA 2020 auction and has gone on to breed black when joined to a black sire.

Let your breeding strategy dictate which way you take her mating.



Show Results

- 1st Brown Junior Female Moss Vale 2022
- 2nd Brown Junior Female Royal Canberra 2022
- 3rd Brown Junior Female Bathurst 2022



Patagonia MZ Vika
2022 fleece



Sire: Patagonia Elite Moriz 2019



Lot 65 PlanTEL Winterfell	Solid White Female	IAR: 239613 DOB: 16.12.19
----------------------------------	---------------------------	---

Mated: Paddock Mated May 2022 to HUNTER Excel
 Fleece: 2020– M 16.2 (classed into HSUWT)
 2021 - M 17.0 (classed into HUFWT)

Sire: WINDSONG VALLEY Iceman (WT) COOLAROO Magic Ice (LF) JOLIMONT Maggie (LF)	Dam: ILLAWARRA Dynasty ET (LF) PLANTEL Dynasty's Star (LF) PLANTEL ILLAWARRA Evening Star (WT)
---	--

PLANTEL Winterfell is a well grown and upstanding young female. She exhibits an excellent level of brightness, impressive alignment and a lovely soft handle.

We've elected to cover her with HUNTER Excel as he will help in improving phenotype and further enhance her already impressive fleece traits.

Show Results: 2nd place 2021 Sydney Royal Easter Show

Coolawarra / Storybook—Reserved



Lot 66 Coolawarra Victoria's Secret	Dark Fawn Female	IAR: 239573 DOB: 14.3.21
--	-------------------------	--

Fleece Show Results 2022: 4th Place @ Sydney Royal

Mated: offered with Spring mating to Softfoot Platinum WP

Fleece: 2021 - M 15.2 (classed into HSUDF)

Sire: WINDSONG VALLEY Iceman (WT) COOLAROO Magic Ice (LF) JOLIMONT Maggie (LF)	Dam: WYNDARRA Designer (WT) COOLAROO Siriano (DF) COOLAROO Greta (DF)
---	---

COOLAWARRA Victoria's Secret is one of our favourite females from the 2021 dropping season. On a robust frame, she carries an exceptionally fine fleece that separates into highly aligned bundles when parted and is very even in her fawn colouring. In Spring of 2022, we had planned to add her to our grey breeding programme and mate her to Platinum.

Coolawarra / Storybook—Reserved



Lot 67 Coolawarra Aphrodite

Appaloosa Female

IAR: 239678

DOB: 21.02.21

Mated: offered with Spring mating to Softfoot Platinum WP
Show Results 2022: 1st Canberra, 1st & Champion Fancy F. Sydney Royal

Sire:

REGAL HOUSE Mr Darcy
COOLAROO Harlequin
(APP)
GREENVALE Angela
(MG)

Dam:

COOLAROO Bravissimo (WT)
COOLAROO Moon Goddess
(MF)
COOLAROO Mardimoon
(WT)

A female that we are reluctantly offering as a part of this year’s auction – COOLAWARRA Aphrodite. A special young lady culminating from years of selective breeding – Aphrodite is both a harlequin and leopard appaloosa. Her fleece is also no disappointment – it is long growing, with a high frequency crimp style and little micron variation between all her colours. To top it off – she is incredibly sweet and well natured.

We just love Aphrodite and hope you do too!

Coolawarra / Storybook—Reserved



Lot 68 Coolaroo Magic Vine

Light Fawn Certified Male

IAR: 233059

DOB: 04.04.17

Fleece: 2018 –M 18.2 classed into HUFWT. 2019 –M19.2 classed into HSFWT. 2020 –M 19.4 classed into HSFWT. 2021 –M 19.5 classed into HSFWT.

Sire:

WINDSONG VALLEY
Iceman (WT)
COOLAROO Magic Ice
(LF)
JOLIMONT Maggie (LF)

Dam:

WYNDARRA Designer (WT)
COOLAROO Vionett (WT)
COOLAROO I’violetta III ET
(WT)

Show Results: 2018-1st Camden, 4th Sydney Royal. 2019 -3rd Sydney Royal. 2021-2nd Sydney Royal. 2022-1st & Champion Canberra, 1st Sydney Royal.

COOLAROO Magic Vine is a prime example of how good things come to those that wait. A long-time member of our show team – we’ve always had a good feeling about this male. He is well-grown and has a sturdy frame, with fleece that is beautifully bright, holding a fine micron and has been commended for his level of density. **He comes certified, with a fertility guarantee and ready to meet some ladies!**



Coolawarra / Storybook—Reserved

Lot 69 Walkley Field Chandarra's Applause

Solid White Female

IAR: 241543 DOB: 17.4.19



Belbourie Moonshine SW

Bumble Hill Moonraher SLF

Sire: Walkley Field Accolade

Dam: Walkley field Chandarra SW

Shanbrooke T. Standing

Belbourie Chanel SW

Mated: To Forestglen Catalyst—Due 9.5.22

Fleece: Nov 21—M 19.4, SD 3.6, over 2.0kg Skirted Saddle

Chandarra's Applause is a stylish female with a bright, bold and very dense solid white fleece. She inherited the combination of the silky softness of Accolade and the density of Chandarra. At almost 3 years of age she is still 19 micron with 3.6 SD, but cutting over 2kg of fleece. The combination with Supreme Champion Forestglen Catalyst should produce something very exciting.

Walkley Field - Unreserved

Lot 70 Walkley Field Hawks Dream

Solid Light Fawn Female

IAR: 241511 DOB: 2.5.18



Rosedean Sayonara SW

Wyndarra Designer SW

Sire: Futura Kittihawk SLF

Dam: Walkley Field Guintara SW

Windsong V Kityama

Bonnie Vale Guinivere SW

Mated: To be mated to Forestglen Illuminate

Fleece: Nov 21— M 22.5, SD 5.0

Hawk's Dream is a beautiful light fawn female with lovely genetics. She is the combination of Kittihawk (a WA male) and Walkley Fields Guintara (classed by Jim Watts as one of the top SRS females). She should produce something very special mated to Forestglen Illuminate. One of the best females from our Kittihawk line and the first time we have released progeny from Guintara.

Walkley Field – Unreserved

Lot 71 Walkley Field Luca

Solid White Male

IAR: 241516 DOB: 11.5.18



Windsong Valley Firedragon SLF

Benleigh Legend SW

Sire: Cambridge Fireproof SLF

Dam: Walkley Field Lucienne SW

Cambridge Validation SW

Windsong Valley Layla SW

Fleece: Nov 21 - 22.1 micron, 3.9 SD, over 3kg of fleece

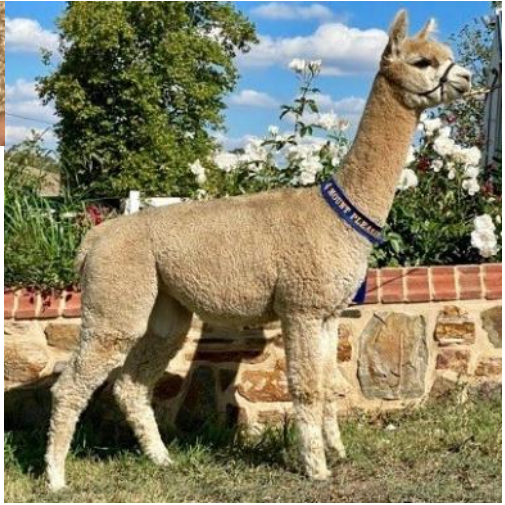
Luca is one of a select few EP Cambridge Fireproof stud males to be offered for sale. He has been on the potential top sire list for a few years now and its time for him to show his potential. Luca's Dam is from the lovely Benleigh Legend. These really are an impressive set of genetics. Luca has inherited Fireproof's creamy and lustrous fleece with aa bolder crimp style and deep amplitude.

A rare opportunity and one to watch.

Walkley Field —Reserved

Lot 72 EP Cambridge Instinct Solid Med Fawn Female IAR: 258755 DOB: 19.11.20

Mated: Maiden	Leaenna Armani SBLK	EP Cambridge Risk Taker ET SW
Fleece: Oct. 2021 – M 15.2, SD 3.1, CV 20.5, CRV 53.8, CF 100%	Sire: Haylilla Intuition SMF	Dam: EP Cambridge Drops Of Jupiter LF
2022 Mt Pleasant Show: 1st Int. M/D Fawn	Haylilla Bliss SBB	Cambridge Simran SLF



EP Cambridge is excited, if reluctant, to release a female of this quality. It is easy to breed fineness but combining that with this level of density is a whole other challenge!
 Instinct, a first release of Intuition genetics, is the complete package. Exhibiting an extremely dense and fine fleece that opens in consistent bundles from head to toe on a beautiful correct frame.
 Show winning fleece and presence. **You can trust your instinct..... this is an exceptional female.**

EP Cambridge—Reserved

Lot 73 EP Cambridge Bloodstone Rose Grey Female IAR: 257554 DOB: 02.01.21

Mated: Maiden	Eastwinds Snowstorm W	EP Cambridge Evolution MG
Fleece: Oct 2021—M 15.3, SD 3.5, CV 23.0, CRV 45.4, CF 100%	Sire: Xanadu Aristide SW	Dam: EP Cambridge Medusa MG
2022 Mount Pleasant Show : 2nd Int. Grey F.	Xanadu AU Courant SW	EP Cambridge Juno



Convincing a breeder to release their best, phenotypically and genetically, can be like trying to get blood from a stone....well here's your chance.
 Bloodstone is the first release from our USA male Aristide and offers the opportunity to obtain new, unique coloured genetics of the highest quality...straight from our show team.
 Stunning from day one, this beautifully even rose grey female has an advanced fleece style incorporating incredible length and brightness.
This female simply oozes quality.

EP Cambridge —Reserved

Lot 74 EP Cambridge Honey Nickel

Solid Black Female

IAR: 258757 DOB: 15.1.21

Mated: Maiden

Fleece: Oct. 2021 – M 16.4, SD 3.4, CV 20.5, CRV 42.4, CF 100%

Mt Pleasant Show 2022: 2nd Int. Black F.

Windsong Valley Fire-dragon SLF

Sire:

Marquez Nicolas SBLK

Marquez Honorata SBLK

Dam:

Yenaminut Lunar Eclipse SDF

EP Cambridge Honeysuckle SMB

EP Cambridge Jasmine SBLK

Honey Nickel is a striking true black female with ribbon winning form.

Sired by none other than Marquez Nicolas, back to back National Best Black.

This is the first female to be released by Nicolas and she really does him proud. Superior density, fineness and style that every black breeder strives for and all packed onto the perfect frame.

Take your black breeding and genetics to the top with this exquisite female.



EP Cambridge —Reserved

Lot 75 EP Cambridge Steeplechase

Solid Medium Fawn Female

IAR: 258756 DOB: 14.1.21

Mated: Maiden

Fleece: Oct. 2021 – M 16.0, SD 3.6, CV 22.4, CRV 47.2, CF 100%

Sire:

Leaenna Armani SBLK

Haylilla Intuition SMF

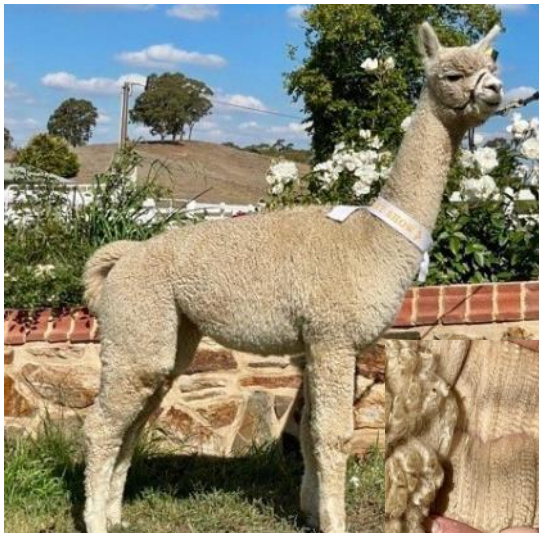
Haylilla Bliss SBB

Dam:

Windsong Valley Firedragon SLF

EP Cambridge Ascot Chase SLF

EP Cambridge Ascot SW



Take the jump and add this elite young female to your breeding program.

Steeplechase is everything you would expect from her pedigree...a very complete, high frequency, fine and dense fleece that is uniform throughout.

Tightly held genetics on her dam's side and newly released genetics from her 'National Best Fawn' sire, Intuition.



Take the chance to secure a ribbon winning, thoroughbred female.

Mt Pleasant Show 2022: 3rd Int. Med/Dark Fawn Female.

EP Cambridge —Reserved

Lot 76 EP Cambridge Arcade

Solid Black Female

IAR: 257162 DOB: 25.2.19

Arcade is a true black female with elite true black parents.

Her sire Kristian has imparted everything we've come to expect in his progeny... a fine, bright, stylish, beautiful handling fleece that is jet black. Just starting her breeding career, her mating decision was a no-brainer... Firedragon... a male who can take black to the next level.

This is an exciting opportunity to access 'in-house' genetics and a highly anticipated cria.

Mated: Windsong Valley Firedragon 23.3.22

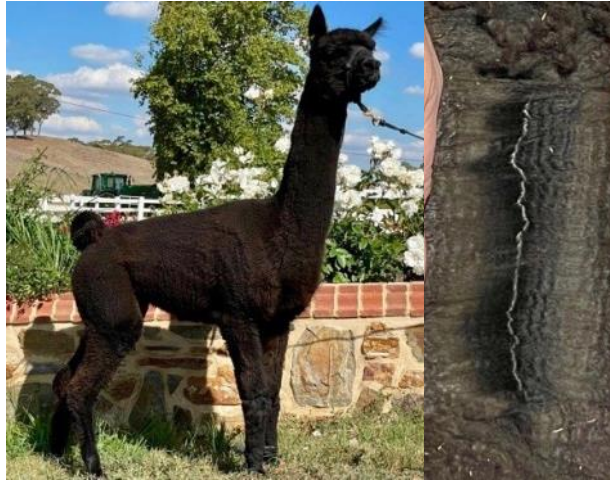
Fleece: Oct 21 – M 19.3, SD 4.1, CV 21.4, CRV 40.4, CF 98.3%

Canchones Gendarme SBLK

EP Cambridge Scandalous SBLK

Sire: Marquez Kristian SBLK
Alpacaspecialist Shilo SBLK

Dam: EP Cambridge Academy ET SBLK
EP Cambridge Royal Flare SBLK



EP Cambridge —Reserved

Lot 77 EP Cambridge Dragan -ought

Solid Light Fawn Male

IAR: 258760 DOB: 23.03.21

Fleece: Oct 21 – M 14.4, SD 3.3, CV 23.5, CRV 50.9, CF 100%

Jolimont Warrior SW
Windsong Valley Fire-dragon SLF
Windsong Valley Star-bright SLF

EP Cambridge Valour SW
EP Cambridge Lobethal SMF
Shingleback Amina SW

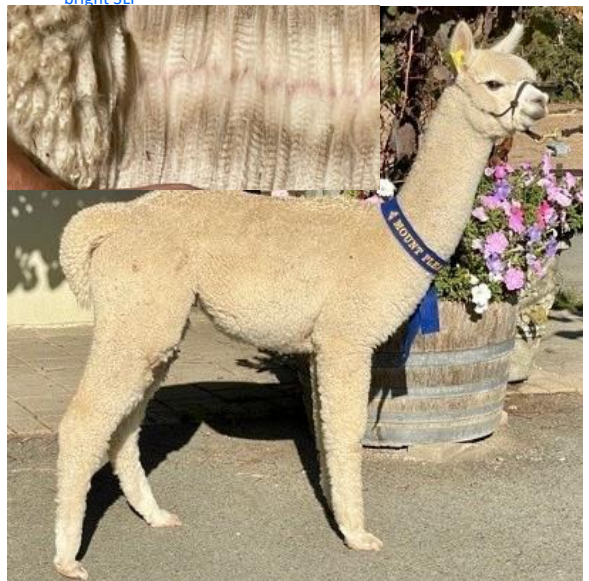
Sire:

Dam:

This young light fawn male is a champion in the making, placing first in his class against some of the best Australian breeders had to offer earlier this year.

Superfine with an advanced, highly crimped fleece that is packed onto a correct frame. To touch this fleece is a dream, it melts in your hand.

This is your opportunity to purchase a future herd sire with the fleece and pedigree to take your herd forward.



Mt Pleasant Show 2022: 1st Junior Light Fawn Male

EP Cambridge —Reserved

Lot 78 EP Cambridge Phonic

Dark Grey Male

IAR: 258761 DOB: 28.03.21

Fleece: Oct. 2021 – M 16.2, SD 3.9, CV 24.0,
CRV 41.2, CF 100%

EP Cambridge Evolution
MG

Windsong Valley Firedrag-
on SLF

Sire: EP Cambridge Sonic DG
EP Cambridge Carissa
SLF

Dam: EP Cambridge Fifi SMF
EP Cambridge Rise To Glory
SW

**EP Cambridge Phonic...everything
sounds right with this young male.**

Sired by our super dense grey male
Sonic, this boy's pedigree combines
grey with renowned white and light
genetics...and his fleece is just what
we wanted. Super bright, even colour
with very few spots.

Winning his class at the Mt Pleasant
Show earlier this year, this young grey
will no doubt be a future stud.

[Mt Pleasant Show 2022: 1st Junior Grey
Male](#)

EP Cambridge — Reserved



**Thanks to all the Vendors for
this years Outstanding Selections**
Check out the Pedigree of the Line Up...
Now its up to you, the Buyers....

Register Now & Bid Online : www.auctionsplus.com.au

12 noon — Saturday 16th July 2022

EP Cambridge Alpaca Stud

est. 1993

The Breeders Choice Alpaca Auction 2022 offers the chance to secure genetics never previously released by EP Cambridge. Ribbon winning breeding stock sired by males rigorously selected to advance our breeding and who have done just that. Take advantage of this rare release of “in-house” genetics from these industry-leading sires.



Marquez Nicolas

If you know your blacks then you know Nicolas. Back to back National Best Black, he's in a league of his own. It's not hard to see why when his sire is the one and only Firedragon, a prolific National Supreme Champion producer. When it comes to density in a black this male is unmatched and we are excited by what he's putting on the ground. These are tightly held genetics, don't miss the chance to add them to your herd.



Xanadu Aristide

Imported from the USA after an exhaustive 2-year search for sires that would not only compliment but also advance our breeding program. Highly decorated in the show ring...his fleece is advanced, organized, dense and fine and he is imparting this in his progeny across all colours. Awarded Supreme Champion at their first show, the proof is in the progeny. Aristide is fast becoming an industry-shaping male.



Haylilla Intuition

When you're a National Best Fawn male there are great expectations to produce some special cria and Intuition has far exceeded them. An advanced fleece with a depth of coloured genetics, he is consistently producing quality across every colour from white to black. This male is set to be a staple in the pedigrees of the very best.



Breeders Co-Operative

"Set up by breeders for breeders!!"

100,000 kg contract with China - +22 μ Huacaya

All COLOURS & White Suri all microns

Containers leaving 2022

June, August, October & December

Payment 2 Weeks after shipments leave Australia

Huacaya All COLOURS sub 22 μ to Italy

All welcome Member & Non Members

Time to get your fibre to us in Mittagong

Contact Mick Williams 0407 407 618 to arrange drop off

Breeders.....Blurbs

Andean Spirit Alpacas — Established 2019 as a joint venture between Kobler and Yaringa alpaca studs in South Australia. We are building on an existing base of exceptional genetics to produce well-balanced alpacas with good body structure and longevity of profitable fleece characteristics.

Ashbourne Alpacas— Est. 2009 by Rebecca & Darren Hard, located in Elphinstone Victoria. Breeding huacaya, our goal is to continue to produce elite fibre characteristics on structurally correct frames that are true to type..

Coolawarra / Storybook Alpacas— Committed to the entirety of the Alpaca, the sustainability of Australian Agriculture, and passionate about the development of genetically bred champions. We are excited to be part of this wonderful industry now and ‘happily ever after!!!’.

Dural Alpaca Park— Long antiquity of quality breeding embedded within the industry. In 2017 a new generation built on a long line of in-depth genetics and continued the reputation of a small stud. Dural aims to sustain a high level of breeding excellence and produce desirable fleeces that encompass all the commercial characteristics.

Eaglewood Alpacas—Located at Murrumbateman and established since 2005. We aim to breed fine, well-grown alpacas that produce beautiful wool. Focus on whites & colours, especially greys. Eaglewood has enjoyed considerable success in the showring over the years. Recently added Sire ‘Vista Del Nunca’ to our herd —Supreme Champion Roan, 2017 Nationals.

EP Cambridge Alpaca Stud— Est. 1993. Grown to become Australia’s largest pedigree herd and a true international stud with operations in Europe and USA. Dedicated to the breeding of elite alpacas with next level fleece characteristics. We have recently imported some of the most renowned and pre-potent males available from America— worthy additions to our stable of industry sires. We offer advanced fleeced animals with generations of predictable, proven genetics in every colour.

Green Gully Alpacas—We started in 2005 and our love and fascination with these unique animals continues to grow. Our herd of 100 Huacayas thrives in the New England climate and we are proud of the quality of alpacas that we are producing and offering for sale. The ongoing health and wellbeing of our alpacas is most important to us, so we are very happy to provide ongoing advice and support.

Greygum Alpacas — formed in 1998, we have constantly used the best genetics available to us, the result is a very even quality across the whole herd. All inquiry or inspections are welcome by appointment.

Haylilla Alpacas— Est. 2009 by Ruther and Steve Goodfellow, located in Blewitt Springs, South Australia. The Haylilla breeding programme focusses on the continued advancement of true black and leopard appaloosa huacaya. Our sought-after coloured genetics are consistently awarded at National Show level.

Helmshore Manor Alpacas— breeding quality alpacas since 2002, we focus on breeding predictability with sound conformation combined with fine, well –structured fleeces. We concentrate our breeding program on producing fineness, density, lustre and crimp across all our colour ranges—effectively concentrating on “the whole package”. Our stock originates from some of the finest Hunter and Jolimont bloodlines plus additional sourced genetics to improve our lines.

Breeders.....Blurbs

Janelia Alpacas— Situated just outside Bathurst NSW in the beautiful Central West. We have had show success in both halter & fleece. Focused on production of white and light fawn, but also have quality coloured stock. We recently purchased multi broad winner Patagonia Elite Grantham, and are looking forward to seeing his impact on our herd.

Kibworth Park Alpacas— In 2004 our alpaca journey began with four girls, our stud named after Maxine's grandfather's English home. We are located with front deck views of beautiful Lake Boga SA. Our aim is to breed high-quality Grey Huacaya and we are seeing the results of patience and good breeding. The achievement and recognition of breeding multi award champion animals has given us further incentive in this great industry.

Kurrawa Alpacas— Est. 1990 is a family owned and operated Alpaca Stud. We have focused on the breeding & development of our alpaca herd, huacaya and suri since then, to generate and produce the best quality possible. Our aim—to continue to produce high quality alpacas with reliable genetics, correct conformation and commercially viable fleece.

Lillyfield Alpacas—Breeding Generations of Champions with long term fineness, commercial fibre length, great capacity & substance of bone. Focusing on fawns but excelling in breeding exceptional whites.

Lualto Alpacas— Breeding huacayas since 2003 and located just off Hume Highway near Yass, NSW. We are focused on producing quality fleece for commercial yarn production.

Luckenbach Alpacas— situated east of Bathurst NSW at Yetholme. We would be one of the newbies in the alpaca world as we started in 2019. We carry a very small herd of top line alpacas.

Maison Mauve Alpacas— A small stud built over 10 years, concentrating on fineness and evenness. We are specialising in coloured, fancy and appaloosa alpacas with good frames.

Malakai Alpacas— Since 1996, located at Miners Rest Victoria. Producing advance fibre alpacas by remaining focused on our breed criteria. Long term successful breeders, we ar honours to offer our genetics for sale at this auction.

Mapa Alpacas— Establish in 2016 and young to the industry, however growing in size quickly. We run a Q alpaca herd in NSW using well known genetics from Australia wide. Producing mostly white & light fawns, however some quality coloured stock.

Patagonia Alpacas—Since 1996, our quest at Patagonia has been to breed to ultimate elite Australian alpaca. As a luxury natural fibre, we realise the importance of focusing on the key attributes that reinforce this positioning—high lustre, softness and silky soft handle. We select for high fleece weights, strong crimp definition, ultra-soft handle, long fibre length and lustre. We have invested significantly in importing unique genetics from Snowmass Alpacas—arguably one of the best breeders in the USA. Very excited by the progeny from the Snowmass males over our Celtic Triumph females.

Breeders.....Blurbs

Precision Alpaca Group — is the culmination of five studs: Bardella Park, Cuzco, Precision, Trademark and Yenaminut. Within each of these studs lies years of genetic advancement and breeding experience, combining to bring together the best Australia has to offer in white and coloured alpaca.

Silcron Alpaca Stud— founded 2001 in southern NSW. Over the years the alpacas and I have lived in several states & New Zealand, now pleased to settle in Bowning NSW. Focused on white and light fawn huacaya, however enjoy that occasional special fawn. Striving for even and consistent fine and bright fleece with length and great handle on a strong balanced frame. By exhibiting at halter & fleece shows confirms we are meeting these goals.

Walkley Fields— Specialising in White & Fawn alpacas. In operation for almost a decade, Walkley Fields has carefully selected unique genetics to establish the core of our elite breeding herd. Our strategy is focused on the collection of scientific data, shearing results & establishing the pre-potency of traits for each individual animal. Situated at properties located at the foothills of the Blue Mountains & Meadow Flat, just west of the Great Dividing Range.

2022 BCAA Vendors

Thank you for Your Consideration at this sale.

In Order to Bid, Don't Forget to Complete your Online Registration

www.auctionsplus.com.au



Breeders Choice Alpaca Auction

Become a Vendor in 2023

All Breeders Welcome.

It's Your Auction—It's Your Selection

Contact: prnrtulip@outlook.com Ph: 0412 496 520

Breeders Choice Alpaca Auction

Auction—Saturday 16th July 2022

Mail : PR & NR Tulip

537 Louth Park Rd

East Maitland...NSW...2323

Ph: 0412 496 520

www.huntermalpaca.com.au

POSTAGE

PAID

AUSTRALIA