



**WATTLETOP
LIVESTOCK**

BULL SALE 13TH OF MAY 2022

ON **AUCTIONSPLUS ONLY** AT 12PM



**Open Day 11th May 11am - 3pm
At "Wattletop"
Guyra**

UNLOCK  YOUR GENETIC POTENTIAL



WATTLETOP
LIVESTOCK



LOT 1 NWPR34
SIRE: CLUNIE RANGE LEGEND



LOT 2 NWPR93
SIRE: WATTLETOP GENERAL N48



LOT 3 NWPR7
SIRE: SYDGEN ENHANCE



LOT 4 NWPR51
SIRE: RENNYLEA N479



LOT 5 NWPR85
SIRE: WATTLETOP GENERAL N48



LOT 7 NWPR8
SIRE: LAWSON'S MOMENTOUS M518



**WATTLETOP
LIVESTOCK**

ANGUS BULL SALE

FRIDAY 13TH OF MAY 2022

OPEN DAY

11TH MAY AT WATTLETOP 11AM-3PM

BULL SALE

13TH OF MAY ON AUCTIONSPLUS ONLY AT 12PM

Agent Rebate- A 2% rebate is offered to outside agents who introduce the client by email 12 hours prior to the sale

Selling Agents:

RAY WHITE LIVESTOCK

Sam Sewell: 0447 255 100

Blake O'Reilly: 0448 213 668

Independant Breeding &

Marketing Services

Dick Whale: 0427 697 968



Enquiries

Henry MacDougall: 0411 758 948

Jess MacDougall: 0428 792 007

jess@wattletop.com.au

Be sure of a catalogue- bring this one with you





Hello,

We hope that you are well and that mother nature is being kind to you. The last few years have offered an incredible opportunity for many producers to make up ground that was lost during the drought with sky high cattle prices, an abundance of feed and low interest rates. Those that have been in farming for decades are referring to this time as a “once in a career highlight” so we are savouring this moment but are cautious that it won’t last forever.

What is threatening farm profitability is a rapid increase in input costs. Chemical, fertiliser, steel and diesel costs have all seen dramatic increases due to global factors (COVID, Russian invasion of Ukraine, etc). With the combination of these higher prices and the wet weather our next round of fertiliser and new cattle yards might be on hold for a little longer!

It also isn’t far from our minds the financial challenges the feedlot, processor and retail sectors must all be facing with high cattle prices, grain prices and energy prices. With a large portion of Australian slaughter cattle being grainfed we continue to focus on producing cattle with good Net Feed Intake (NFI) ebvs, as well as keeping our mature cow weights lower than the 600 day weights. Half of the sale offering are in the top 10% and above for NFI. On top of this we endeavour to pack as much marbling and eye muscle area into our cattle to improve their eating quality and their carcase value.

We are really excited about offering these 35 rising two year old bulls for sale on the 13th of May, in the same format as last year on Auctionsplus only. After two cracking seasons in a row, the bulls have grown out really well on pasture and we won’t see a need for any supplementation this year apart from some straw and mineral lick.

This will be the last of the older genetics that we will offer from embryos that we retained. The Conversion sons still continue to impress in their thickness and power and the same goes for the TC Franklin sons.

We are also pleased with the muscle pattern of the Rennylea N479 sons. He is a 3/4 brother to well known stud sires Rennylea L508 and L519, that have bred some outstanding stud bulls in the Angus industry. The Sydgen Enhance and Lawson’s momentous sons also have a lot to offer as well as Wattletop General N48 who has 2 outstanding 7 grading sons.

We hope that you can make it to our open day on the 11th of May to enjoy some beautiful steak and a relaxed catch up. If you can’t make it to our open day please get in touch and we can happily show them to you at a time that suits best.

Kind Regards,
Henry, Jess, Sadie and Oscar MacDougall





WATTLETOP LIVESTOCK

SALE INFORMATION

DIRECTIONS TO WATTLETOP

Wattletop is located 18kms east of Guyra
on the Guyra-Ebor Rd on the left.

**Road address is:
5814 Guyra Rd
Guyra**

CATERING AT THE OPEN DAY

Complimentary morning tea and a south
American inspired BBQ lunch catered for by
Bald Blair Public School.

A big thank you to JBS for supplying the
Bachelor Angus beef for our lunch .

BULL HEALTH

All bulls have had the following treatments
and require a booster annually:

- 7 in 1
- Pestiguard
- Vibriovax
- Ear notch tested negative for Pestivirus

In areas where 3 day sickness, red water disease
or tick fever may be a problem we recommend
bulls be treated accordingly before entering
these areas.

INSURANCE

Bulls can be insured through our WFI
Insurance representative David Di Feranti
by calling 0412 328 911 or your
preferred insurance agency.

We recommend that
purchasers insure their bulls.

INSPECTING BULLS SAFELY

Visitors enter the pens at their own risk.
Children under 16 years are not
permitted to enter the pens

All sale bulls have been assessed for
temperament and are quiet to handle
under normal circumstances. Having a
crowd of people around them places
them under pressure and even the
quietest bull can be unpredictable.

Please don't congregate in pens
and be aware of bulls fighting.

STUD TRANSFERS

All sale lots will be transferred to their new
owners within 60 days of the sale.

J-BAS

The Wattletop Livestock herd
is a J-BAS 7

BUYERS PLEASE NOTE

Due to circumstances outside of our control, the 600 day weight and scan data was submitted after this catalogue was printed. The EBVs are likely to change between printing and the sale. Please view their updated EBVs on the Angus website. A supplementary sheet will also be provided at our open day and on the Auctionsplus listing.

#Charity-bull



Lot 15 R33

It is heartbreaking to see tragic events, both natural and man made, unfolding so dramatically right now. We have selected Lot 15 as our charity bull because #1 he has balls like Ukrainian president Zelenskyy and #2 he is friendly and kind which is what the world needs more of.

30% OF THE PROCEEDS OF LOT 15 WILL GO TO THE FOLLOWING CHARITIES

10%



GIVIT is managing offers of donated goods, services, volunteering and funds, including corporate offers, in response to the widespread flooding across Queensland and New South Wales. 100% of the proceeds donated to GIVIT reach the recipients.

10%



A grass roots organisation that was established in the 2014 Russian attack on Georgia, Ukraine. They are delivering medical supplies, bulletproof vests and humanitarian aid to Ukrainian civilians.

10%



So far in 2022, 17 women have been killed in Australia from domestic violence. That's more than 1 a week! Dangerous Females delivers 100% of proceeds to organisations that help women suffering from domestic violence and sexual assault.



AuctionsPlus

How to Register and Bid on AuctionsPlus

1

Go to www.auctionsplus.com.au to register at least 48 hours before the sale.

2

Select "**Sign Up**" in the top right hand corner.

3

Fill out your name, mobile number, email address and create a password.

4

Go to your emails and confirm the account.

5

Return to AuctionsPlus and log in.

6

Select "**Dashboard**" and then select "**Request Approval to Buy**".

7

Fill in buyer details and once completed go back to Dashboard.

8

Complete buyer induction module (approx. 30 minutes).

9

AuctionsPlus will email you to let you know that your account has been approved.

10

Log in on sale day and connect to auction.

11

Bid using the two-step process – unlock the bid button and bid at that price.

12

If you are successful, the selling agent will contact you post sale to organise delivery and payment.

For more information please contact us on:

Phone: (02) 9262 4222

Email: info@auctionsplus.com.au

IBMS INDEPENDANT BREEDING SERVICES TYPE AND STRUCTURAL ASSESSMENT

All of the bulls catalogued for this sale have been inspected and assessed on the IBMS Type/Structure system, by Dick Whale at least twice in their life. They were all considered acceptable for structural soundness and muscling. If any potential buyers wish to discuss any of the bulls prior to the sale, please contact Dick on (0427 697968), or talk to him at our open day.

STRUCTURAL SOUNDNESS TRAITS

Feet	Evaluation of front and rear feet, with 25 being ideal. Scores lower than 25 exhibit some scissor claw in the feet. Scores greater than 25 are open clawed.
Pastern Angle	Evaluation of strength of pastern, depth of heel and length of foot, with 25 ideal. Scores greater than 25 tend towards having deeper heels, less than 25 towards having shallow heels.
Leg Angle	Evaluation of rear leg set with 25 being ideal. Scores greater than 25 tend towards being sickle hocked, less than 25 post legged.

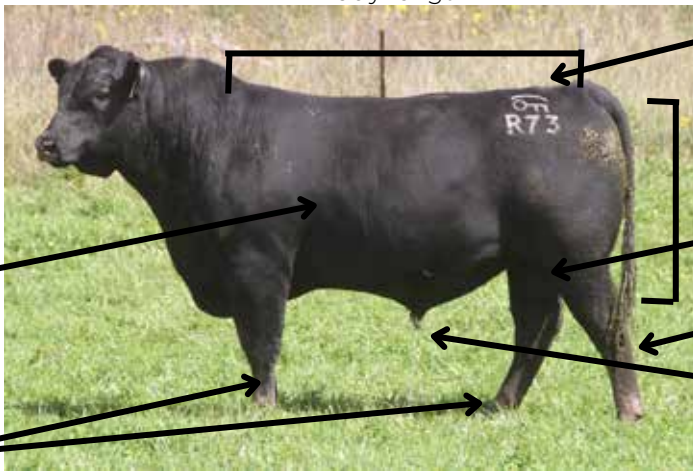
FEET AND LEG STRUCTURE IN FURTHER DETAIL

- A score of 25 is ideal.
- A score of 23, 24 or 26 and 27 shows slight variation from ideal, but includes most sound animals.
- A score of 22 or 28 shows greater variation but would be acceptable in most commercial programs. However, seedstock producers should be vigilant and understand that this score indicates greater variation from ideal.
- A score of 21 or 29 are low scoring animals and should be looked at cautiously and inspected very closely before purchasing.
- A score of 20 or 30 should not be catalogued and are considered immediate culls.

DESCRIPTIVE TRAITS

Stature	Evaluation of bulls for maturity pattern and frame size. A stature score of 25 is average. This score may be influenced by age of dam, nutrition, etc. Scores greater than 25 are generally larger framed, later maturing cattle.
Capacity	Evaluation combines the depth of rib, spring of rib, and chest floor width. Scores greater than 35 indicate bulls with greater capacity.
Body Length	Evaluation of body length from point of shoulder to pin bone. Scores greater than 25 indicate longer body length.
Muscle Score	Is the muscularity of the bull devoid of subcutaneous fat. Higher scores indicate animals with higher yield attributes. Scores : 25 = C- muscle 30 = C 35 = C+ 40 = B- 45 = B 50 = B+
Doability	Is the ability of an animal to deposit fat in the fat depots of the body, relative to their peers under a common management regime. The higher doability cattle are easier doing.
Sheath score	- 5 is a bull with a tight sheath. -1 is a bull with a very pendulous sheath.
Grade	1 = Cull, 2 = Just, 3 = Below Average, 4 = Average, 5 = Above Average, 6 & Higher = Best Bulls

Body length



Stature

Muscling

Scrotal

Rear leg set

Sheath

Capacity

Feet & pasterns

STATURE

Evaluation of an animal's frame size, based on visual assessment of the animal's hip height

Score	0	5	10	15	20	25	30	35	40	45
Frame score equivalent				3	4	5	6	7	8	

CAPACITY

Evaluation of an animal by visual assessment combining depth of fore rib along with spring of rib and width of chest floor as well as depth of flank.

Score	0	5	10	15	20	25	30	35	40	45	50
-------	---	---	----	----	----	----	----	----	----	----	----

The greater the score, the greater the animal's capacity

BODY LENGTH

Evaluation by visual assessment of an animal's length from wither to pins

Score	0	5	10	15	20	25	30	35	40	45	50
-------	---	---	----	----	----	----	----	----	----	----	----

The greater the score, the greater the body length

FRONT FEET

Evaluation by visual assessment of an animal's front feet structure

Score	20	21	22	23	24	25	26	27	28	29	30
-------	----	----	----	----	----	----	----	----	----	----	----

Tending scissor claws,

Ideal

Tending open claws,

HIND FEET

Evaluation by visual assessment of an animal's hind feet structure

Score	20	21	22	23	24	25	26	27	28	29	30
-------	----	----	----	----	----	----	----	----	----	----	----

Tending scissor claws,

Ideal

Tending open claws,

REAR LEG SET

Evaluation by visual assessment of an animal's rear leg angle

Score	20	21	22	23	24	25	26	27	28	29	30
-------	----	----	----	----	----	----	----	----	----	----	----

Tending post legged,

Ideal

Tending sickle hocked,

FEET & PASTERNS

Evaluation by visual assessment of an animal's length and strength of heel

Score	20	21	22	23	24	25	26	27	28	29	30
-------	----	----	----	----	----	----	----	----	----	----	----

Shallow heel

Ideal

Deep heel

MUSCLING

Evaluation by visual assessment of an animal's combined width of rump and hindquarter, with secondary consideration given to forearm muscling

Score	5	10	15	20	25	30	35	40	45	50
Equivalent muscle		D	D+	C-	C	C+	B-	B	B+	

SHEATH

Evaluation the tightness of the sheath of the bull

Score	1	2	3	4	5
-------	---	---	---	---	---

Pendulous & loose

Good & tight

BULL TESTING

All bulls have passed a fertility test conducted by Peter Brown, Bovine Breeders Armidale including- Examination for structural soundness, examination of reproductive organs, measurement of scrotal circumference (which is the measurement shown in the catalogue) and checked for semen motility and morphology.

SEMEN MOTILITY

Sperm cells need to be motile as they have a way to travel to get the job done. A sample is collected and a drop is placed on a microscope slide and examined "crush side" to assess the percentage of sperm cells moving forward and to assess the concentration level and pick up any infection in the semen that needs treating. We recommend motility testing your bulls each year before joining to ensure their semen quality is satisfactory for joining.

SEMEN MORPHOLOGY

Morphology is the anatomy or structure of the sperm. It cannot be tested "crush side", requiring a large specialised microscope to examine a preserved semen sample, assessing the % normal and % abnormal sperm cells. It can pick up defects in the sperm that "crush side" testing cannot. The most serious of these defects can see the sperm start to fertilise an egg but fail to result in a viable embryo and the female will fail to fall in calf. Note that semen morphology can differ in subsequent samples of the same bull. Stress can cause this and the process of open days, bull sales and being trucked to a new environment will generally cause some stress.



ABN 61 081 673 916

AQIS Accreditation: ABC-015-NSW

"Campton"
107 Campton Rd
ARMIDALE NSW 2350

Phone: 0428 783 833
B/h (02) 6775 1718
Email: peter@bovinebreeders.com.au

29.03.22

To Whom It May Concern:

This is to certify that on the 21st of March 2022, the Wattletop Livestock sale bulls were subjected to a crush side semen test and morphology assessment and examined for reproductive and structural soundness, and passed with satisfactory results relative to age.

Peter Brown
PRINCIPLE

OUR GUARENTEE

In the unlikely event of infertility, provided it is not caused by injury, stress or disease contracted after our sale, we will endeavour to supply a satisfactory replacement if available or issue with a credit equal to the purchase price minus the salvage value which may be used at future Wattletop Livestock Bull sales. This guarentee stands for 12 months after the bull sale.

DISCLAIMER AND PRIVACY INFORMATION

Attention Buyer

Animal details included in this catalogue, including but not limited to pedigree, DNA information, Estimated Breeding Values (EBVs) and Index values, are based on information provided by the breeder or owner of the animal. Whilst all reasonable care has been taken to ensure that the information provided in this catalogue was correct at the time of publication, Angus Australia will assume no responsibility for the accuracy or completeness of the information, nor for the outcome (including consequential loss) of any action taken based on this information.

Parent Verification Suffixes

The animals listed within this catalogue including its pedigree, are displaying a Parent Verification Suffix which indicates the DNA parent verification status that has been conducted on the animal. The Parent Verification Suffixes that will appear at the end of each animal's name.

The suffix displayed at the end of each animal's name indicates the DNA parentage verification that has been conducted by Angus Australia.

PV : both parents have been verified by DNA.

SV : the sire has been verified by DNA.

DV : the dam has been verified by DNA.

: DNA verification has not been conducted.

E : DNA verification has identified that the sire and/or dam may possibly be incorrect, but this cannot be confirmed conclusively.

Privacy Information

In order for Angus Australia to process the transfer of a registered animal in this catalogue, the vendor will need to provide certain information to Angus Australia and the buyer consents to the collection and disclosure of that information by Angus Australia in certain circumstances. If the buyer does not wish for his or her information to be stored and disclosed by Angus Australia, the buyer must complete the form included below and forward it to Angus Australia. If the form is not completed, the buyer will be taken to have consented to the disclosure of such information.

.....

BUYERS OPTION TO OPT OUT OF DISCLOSING PERSONAL INFORMATION TO ANGUS AUSTRALIA

If you do not complete this form, you will be taken to have consented to Angus Australia using your name, address and phone number for the purposes of effecting a change of registration of the animal(s) that you have purchased, maintaining its database and disclosing that information to its members on its website.

I, the buyer of animals with the following idents.....

.....
from member.....(name) do not consent to Angus Australia using my name, address and phone number for the purposes of effecting a change of registration of the animals I have mentioned above that I have purchased, maintaining its database and disclosing that information to its members on its website.

Name: Signature:

Date:

Please forward this completed consent form to Angus Australia, 86 Glen Innes Road, Armidale NSW 2350.



If you have any questions or queries regarding any of the above, please contact Angus Australia on (02) 6773 4600 or email office@angusaustralia.com.au



What is the TransTasman Angus Cattle Evaluation?

The TransTasman Angus Cattle Evaluation is the genetic evaluation program adopted by Angus Australia for Angus and Angus influenced beef cattle. The TransTasman Angus Cattle Evaluation uses Best Linear Unbiased Prediction (BLUP) technology to produce Estimated Breeding Values (EBVs) of recorded cattle for a range of important production traits (e.g. weight, carcase, fertility).

The TransTasman Angus Cattle Evaluation is an international genetic evaluation and includes pedigree, performance and genomic information from the Angus Australia and Angus New Zealand databases, along with selected information from the American and Canadian Angus Associations.

The TransTasman Angus Cattle Evaluation utilises a range of genetic evaluation software, including the internationally recognised BLUPF90 family of programs, and BREEDPLAN® beef genetic evaluation analytical software, as developed by the Animal Genetics and Breeding Unit (AGBU), a joint institute of NSW Agriculture and the University of New England, and Meat and Livestock Australia Limited (MLA).

What is an EBV?

An animal's breeding value can be defined as its genetic merit for each trait. While it is not possible to determine an animal's true breeding value, it is possible to estimate it. These estimates of an animal's true breeding value are called EBVs (Estimated Breeding Values).

EBVs are expressed as the difference between an individual animal's genetics and a historical genetic level (i.e. group of animals) within the TACE genetic evaluation, and are reported in the units in which the measurements are taken.

Using EBVs to Compare the Genetics of Two Animals

TACE EBVs can be used to estimate the expected difference in the genetics of two animals, with the expected difference equating to half the difference in the EBVs of the animals, all other things being equal (e.g. they are joined to the same animal/s).

For example, a bull with a 200 Day Growth EBV of +60 would be expected to produce progeny that are, on average, 10 kg heavier at 200 days of age than a bull with a 200 Day Growth EBV of +40 kg (i.e. 20 kg difference between the sire's EBVs, then halved as the sire only contributes half the genetics).

Or similarly, a bull with an IMF EBV of +3.0 would be expected to produce progeny with on average, 1% more intramuscular fat in a 400 kg carcase than a bull with a IMF EBV of +1.0 (i.e. 2% difference between the sire's EBVs, then halved as the sire only contributes half the genetics).

Using EBVs to Benchmark an Animal's Genetics with the Breed

EBVs can also be used to benchmark an animal's genetics relative to the genetics of other Angus or Angus infused animals recorded with Angus Australia.

To benchmark an animal's genetics relative to other Angus animals, an animal's EBV can be compared to the EBV reference tables, which provide:

- the breed average EBV
- the percentile bands table

The current breed average EBV is listed on the bottom of each page in this publication, while the current EBV reference tables are included at the end of these introductory notes. For easy reference, the percentile band in which an animal's EBV ranks is also published in association with the EBV.

Considering Accuracy

An accuracy value is published with each EBV, and is usually displayed as a percentage value immediately below the EBV.

The accuracy value provides an indication of the reliability of the EBV in estimating the animal's genetics (or true breeding value), and is an indication of the amount of information that has been used in the calculation of the EBV.

EBVs with accuracy values below 50% should be considered as preliminary or of low accuracy, 50-74% as of medium accuracy, 75-90% of medium to high accuracy, and 90% or greater as high accuracy.

Description of TACE EBVs

EBVs are calculated for a range of traits within TACE, covering calving ease, growth, fertility, maternal performance, carcase merit, feed efficiency and structural soundness. A description of each EBV included in this publication is provided on the following page.

UNDERSTANDING ESTIMATED BREEDING VALUES (EBVS)

Calving Ease	CEDir	%	Genetic differences in the ability of a sire's calves to be born unassisted from 2 year old heifers.	Higher EBVs indicate fewer calving difficulties in 2 year old heifers.
	CEDtrs	%	Genetic differences in the ability of a sire's daughters to calve unassisted at 2 years of age.	Higher EBVs indicate fewer calving difficulties in 2 year old heifers.
	GL	days	Genetic differences between animals in the length of time from the date of conception to the birth of the calf.	Lower EBVs indicate shorter gestation length.
	BW	kg	Genetic differences between animals in calf weight at birth.	Lower EBVs indicate lighter birth weight.
Growth	200 Day	kg	Genetic differences between animals in live weight at 200 days of age due to genetics for growth.	Higher EBVs indicate heavier live weight.
	400 Day	kg	Genetic differences between animals in live weight at 400 days of age.	Higher EBVs indicate heavier live weight.
	600 Day	kg	Genetic differences between animals in live weight at 600 days of age.	Higher EBVs indicate heavier live weight.
	MCW	kg	Genetic differences between animals in live weight of cows at 5 years of age.	Higher EBVs indicate heavier mature weight.
	Milk	kg	Genetic differences between animals in live weight at 200 days of age due to the maternal contribution of its dam.	Higher EBVs indicate heavier live weight.
Fertility	DtC	days	Genetic differences between animals in the time from the start of the joining period (i.e. when the female is introduced to a bull) until subsequent calving.	Lower EBVs indicate shorter time to calving.
	SS	cm	Genetic differences between animals in scrotal circumference at 400 days of age.	Higher EBVs indicate larger scrotal circumference.
Carcass	CWT	kg	Genetic differences between animals in hot standard carcass weight at 750 days of age.	Higher EBVs indicate heavier carcass weight.
	EMA	cm ²	Genetic differences between animals in eye muscle area at the 12/13th rib site in a 400 kg carcass.	Higher EBVs indicate larger eye muscle area.
	Rib Fat	mm	Genetic differences between animals in fat depth at the 12/13th rib site in a 400 kg carcass.	Higher EBVs indicate more fat.
	P8 Fat	mm	Genetic differences between animals in fat depth at the P8 rump site in a 400 kg carcass.	Higher EBVs indicate more fat.
	RBY	%	Genetic differences between animals in boned out saleable meat from a 400 kg carcass.	Higher EBVs indicate higher yield.
	IMF	%	Genetic differences between animals in intramuscular fat (marbling) at the 12/13th rib site in a 400 kg carcass.	Higher EBVs indicate more intramuscular fat.
Feed/Temp.	NFI-F	kg/day	Genetic differences between animals in feed intake at a standard weight and rate of weight gain when animals are in a feedlot finishing phase.	Lower EBVs indicate more feed efficiency.
	Doc	%	Genetic differences between animals in temperament.	Higher EBVs indicate better temperament.
Structure	Foot Angle	score	Genetic differences in foot angle (strength of pastern, depth of heel).	Lower EBVs indicate more desirable foot angle.
	Claw Set	score	Genetic differences in claw set structure (shape and evenness of claws).	Lower EBVs indicate more desirable claw structure.
Selection Indexes	\$A	\$	Genetic differences between animals in net profitability per cow joined in a typical commercial self replacing herd using Angus bulls. This selection index is not specific to a particular market end-point, but identifies animals that will improve overall net profitability in the majority of commercial, self replacing, grass and grain finishing beef production systems.	Higher selection indexes indicate greater profitability.
	\$A-L	\$	<p>Genetic differences between animals in net profitability per cow joined in a typical commercial self replacing herd using Angus bulls. This selection index is not specific to a particular market end-point, but identifies animals that will improve overall net profitability in the majority of commercial, self replacing, grass and grain finishing beef production systems.</p> <p>The \$A-L index is similar to the \$A index but is modelled on a production system where feed is surplus to requirements for the majority of the year, or the cost of supplying additional feed when animal feed requirements increase is low.</p> <p>While the \$A aims to maintain mature cow weight, the \$A-L does not aim to limit the increase in mature cow weight as there is minimal cost incurred if the feed maintenance requirements of the female breeding herd increase as a result of selection decisions.</p>	Higher selection indexes indicate greater profitability.

Trans Tasman Angus Cattle Evaluation - April 2022 Reference Tables

BREED AVERAGE EBVs																															
Calving Ease				Birth				Growth				Fertility				Carcass				Other				Structure				Selection Indexes			
CEDir	CEDirs	GL	BW	200	400	600	MCW	Milk	SS	SS	Shorter Calving Time	Lighter Calving	Carcass Weight	Larger EMA	More Fat	RIB	P8	EMA	CWT	CVT	EMA	RIB	P8	RFY	IMF	NFI-F	DOC	Angle	Claw	\$A	\$A-L
Brd Avg	+2.2	+2.6	-4.7	+4.1	+50	+89	+116	+101	+18	+2.1	-4.7	+66	+6.2	+0.0	-0.4	+0.5	+2.1	+0.19	+7	+0.97	+0.85	+194	+336								

* Breed average represents the average EBV of all 2020 drop Australian Angus and Angus-influenced seedstock animals analysed in the April 2022 TransTasman Angus Cattle Evaluation .

PERCENTILE BANDS TABLE																																
% Band	Calving Ease				Birth				Growth				Fertility				Carcass				Other				Structure				Selection Indexes			
	Less Calving Difficulty	More Calving Difficulty	Longer Calving Difficulty	Heavier Live Weight	Lighter Live Weight	Lighter Live Weight	Lighter Live Weight	Lighter Live Weight	Lighter Live Weight	Lighter Live Weight	Lighter Live Weight	Lighter Live Weight	Lighter Live Weight	Lighter Live Weight	Lighter Live Weight	Lighter Live Weight	Lighter Live Weight	Lighter Live Weight	Lighter Live Weight	Lighter Live Weight	Lighter Live Weight	Lighter Live Weight	Lighter Live Weight	Lighter Live Weight	Lighter Live Weight	Lighter Live Weight	Lighter Live Weight	Lighter Live Weight	Lighter Live Weight	Lighter Live Weight	Lighter Live Weight	Lighter Live Weight
1%	+11.1	+10.0	-10.6	-0.1	+68	+120	+160	+157	+29	+4.6	-9.9	+93	+12.8	+3.5	+3.5	+2.9	+4.6	-0.55	+36	+0.80	+0.44	+278	+452									
5%	+9.2	+8.3	-8.8	+1.2	+62	+110	+146	+138	+25	+3.7	-8.3	+85	+10.7	+2.2	+2.2	+2.1	+3.8	-0.33	+27	+0.70	+0.56	+255	+421									
10%	+8.0	+7.3	-7.8	+1.9	+59	+105	+139	+129	+23	+3.3	-7.5	+80	+9.5	+1.6	+1.6	+1.7	+3.4	-0.21	+22	+0.76	+0.62	+242	+404									
15%	+7.2	+6.6	-7.2	+2.4	+57	+102	+135	+123	+22	+3.0	-6.9	+78	+8.8	+1.4	+1.2	+1.5	+3.2	-0.13	+19	+0.84	+0.66	+234	+392									
20%	+6.4	+6.0	-6.7	+2.7	+56	+100	+131	+119	+21	+2.8	-6.5	+75	+8.2	+1.1	+0.9	+1.3	+3.0	-0.07	+17	+0.80	+0.70	+227	+382									
25%	+5.8	+5.4	-6.3	+3.0	+54	+98	+128	+115	+20	+2.7	-6.1	+74	+7.7	+0.9	+0.6	+1.1	+2.8	-0.02	+15	+0.86	+0.72	+221	+374									
30%	+5.2	+4.9	-5.9	+3.2	+53	+96	+125	+112	+20	+2.5	-5.8	+72	+7.3	+0.7	+0.4	+1.0	+2.6	+0.02	+13	+0.88	+0.76	+216	+367									
35%	+4.6	+4.5	-5.6	+3.5	+52	+94	+123	+109	+19	+2.4	-5.5	+71	+7.0	+0.5	+0.2	+0.9	+2.5	+0.07	+12	+0.90	+0.78	+211	+360									
40%	+4.0	+4.0	-5.3	+3.7	+51	+92	+121	+106	+19	+2.3	-5.2	+69	+6.6	+0.3	+0.0	+0.7	+2.3	+0.11	+10	+0.92	+0.80	+206	+353									
45%	+3.4	+3.5	-5.0	+3.9	+50	+91	+118	+103	+18	+2.1	-5.0	+68	+6.3	+0.1	-0.2	+0.6	+2.2	+0.15	+9	+0.94	+0.82	+201	+347									
50%	+2.9	+3.1	-4.7	+4.1	+50	+89	+116	+100	+17	+2.0	-4.7	+66	+6.0	+0.0	-0.4	+0.5	+2.1	+0.18	+7	+0.96	+0.84	+197	+341									
55%	+2.2	+2.6	-4.4	+4.3	+49	+88	+114	+98	+17	+1.9	-4.4	+65	+5.8	-0.2	-0.6	+0.4	+1.9	+0.22	+6	+0.98	+0.86	+192	+334									
60%	+1.6	+2.0	-4.1	+4.5	+48	+86	+112	+95	+16	+1.8	-4.2	+64	+5.5	-0.3	-0.7	+0.3	+1.8	+0.26	+4	+1.00	+0.90	+187	+327									
65%	+0.9	+1.5	-3.8	+4.7	+47	+85	+110	+92	+16	+1.7	-3.9	+62	+5.2	-0.5	-0.9	+0.1	+1.7	+0.31	+3	+1.02	+0.92	+182	+320									
70%	+0.2	+0.9	-3.5	+5.0	+46	+83	+108	+90	+15	+1.6	-3.6	+61	+4.9	-0.7	-1.1	+0.0	+1.6	+0.35	+1	+1.06	+0.94	+177	+312									
75%	-0.6	+0.2	-3.1	+5.2	+45	+81	+105	+86	+15	+1.4	-3.2	+59	+4.5	-0.9	-1.4	-0.1	+1.4	+0.40	-1	+1.08	+0.98	+171	+304									
80%	-1.6	-0.6	-2.8	+5.5	+43	+79	+102	+83	+14	+1.3	-2.9	+58	+4.2	-1.1	-1.6	-0.3	+1.3	+0.45	-2	+1.10	+1.00	+164	+294									
85%	-2.8	-1.5	-2.3	+5.8	+42	+77	+99	+79	+13	+1.1	-2.5	+55	+3.7	-1.4	-1.9	-0.5	+1.1	+0.52	-5	+1.14	+1.04	+155	+281									
90%	-4.4	-2.7	-1.7	+6.3	+40	+74	+94	+73	+12	+0.9	-1.9	+53	+3.1	-1.7	-2.3	-0.8	+0.9	+0.60	-8	+1.18	+1.10	+144	+265									
95%	-6.8	-4.6	-0.8	+7.0	+37	+69	+88	+64	+10	+0.6	-1.0	+48	+2.2	-2.2	-2.9	-1.2	+0.5	+0.73	-12	+1.26	+1.18	+123	+237									
99%	-12.1	-8.6	+1.2	+8.3	+31	+59	+73	+46	+7	-0.2	+1.0	+39	+0.3	-3.3	-4.2	-2.0	+0.0	+0.97	-20	+1.40	+1.32	+81	+172									

* The percentile bands represent the distribution of EBVs across the 2020 drop Australian Angus and Angus-influenced seedstock animals analysed in the April 2022 TransTasman Angus Cattle Evaluation .

TransTasman Angus Cattle Evaluation - April 2022 Reference Tables

BREED AVERAGE EBVs										
	\$A	\$D	\$GN	\$GS	\$A-L	\$D-L	\$GN-L	\$GS-L	\$PRO	\$T
Brd Avg	+194	+160	+255	+178	+336	+290	+401	+378	+141	+179

* Breed average represents the average EBV of all 2020 drop Australian Angus and Angus-influenced seedstock animals analysed in the April 2022 TransTasman Angus Cattle Evaluation .

PERCENTILE BANDS TABLE										
% Band	\$A	\$D	\$GN	\$GS	\$A-L	\$D-L	\$GN-L	\$GS-L	\$PRO	\$T
1%	Greater Profitability	Greater Profitability	Greater Profitability	Greater Profitability	Greater Profitability	Greater Profitability	Greater Profitability	Greater Profitability	Greater Profitability	Greater Profitability
5%	+278	+231	+374	+266	+452	+391	+549	+512	+218	+242
10%	+255	+211	+341	+241	+421	+363	+509	+476	+196	+225
15%	+242	+200	+323	+228	+404	+348	+487	+455	+184	+216
20%	+234	+192	+311	+219	+392	+338	+472	+442	+177	+210
25%	+227	+187	+301	+212	+382	+330	+460	+430	+171	+204
30%	+221	+182	+293	+206	+374	+322	+449	+421	+165	+200
35%	+216	+177	+285	+200	+367	+316	+439	+412	+161	+195
40%	+211	+173	+278	+195	+360	+310	+431	+404	+156	+192
45%	+206	+169	+271	+190	+353	+304	+422	+396	+152	+188
50%	+201	+165	+264	+185	+347	+299	+414	+389	+148	+184
55%	+197	+162	+257	+180	+341	+293	+406	+382	+143	+181
60%	+192	+158	+251	+175	+334	+288	+397	+374	+139	+177
65%	+187	+154	+244	+170	+327	+282	+389	+366	+135	+174
70%	+182	+150	+237	+165	+320	+276	+379	+358	+130	+170
75%	+177	+146	+229	+159	+312	+270	+370	+349	+125	+166
80%	+171	+141	+221	+153	+304	+262	+358	+339	+120	+161
85%	+164	+135	+212	+146	+294	+254	+346	+328	+113	+156
90%	+155	+129	+201	+138	+281	+244	+330	+314	+105	+150
95%	+144	+119	+185	+126	+265	+230	+310	+296	+94	+141
99%	+123	+103	+160	+107	+237	+207	+276	+266	+76	+128
	+81	+71	+106	+68	+172	+155	+200	+194	+39	+96
	Lower Profitability	Lower Profitability	Lower Profitability	Lower Profitability	Lower Profitability	Lower Profitability	Lower Profitability	Lower Profitability	Lower Profitability	Lower Profitability

* The percentile bands represent the distribution of EBVs across the 2020 drop Australian Angus and Angus-influenced seedstock animals analysed in the April 2022 TransTasman Angus Cattle Evaluation .

Reference Sire **LAWSONS MOMENTOUS M518^{PV}** **VLYM518**

Date of Birth: 30/06/2016 Register: HBR AMFU,CAFU,DDF,NHFU

G A R PREDESTINED[#] TE MANIA ULONG U41^{SV}
 G A R PROGRESS^{SV} TE MANIA AFRICA A217^{PV}
 G A R OBJECTIVE 2345[#] TE MANIA JEDDA Y32^{SV}

SIRE: USA17354145 G A R MOMENTUM^{PV} **DAM: VLYH229 LAWSONS AFRICA H229^{SV}**
 ALC BIG EYE D09N[#] B/R AMBUSH 28[#]
 G A R BIG EYE 1770[#] LAWSONS ROCKND AMBUSH E1103^{PV}
 G A R OBJECTIVE 3387[#] LAWSONS FAIR DINKUM C565^{PV}

TACE	April 2022 TransTasman Angus Cattle Evaluation																		
	Dir	Dtrs	GL	BWT	200D	400D	600D	MCW	Milk	SS	D t C	CWT	EMA	Rib	P8	RBY	IMF	NFI-F	Doc
EBVs	-2.0	-8.2	-5.5	+3.9	+51	+96	+116	+74	+31	+2.6	-2.5	+63	+13.1	-1.1	-0.7	+0.4	+5.0	+0.73	+24
Acc	93%	78%	99%	99%	98%	98%	98%	94%	90%	98%	63%	91%	90%	91%	89%	85%	88%	82%	98%
% Rank	82	99	36	45	40	30	52	90	1	26	85	65	1	79	58	53	1	95	8

Traits Observed: GL,BWT,200WT(x2),400WT(x2),600WT,Scan(EMA,Rib,Rump,IMF),Genomics
 Statistics: Number of Herds: 77, Prog Analysed: 3569, Genomic Prog: 269
 Lots in sale: 7,9,12,13,25

"M518 produces sound footed cattle with slick coats and good EMA and IMF. The heifers have lovely well suspended udders."

Selection Indexes				
\$A-L	\$A	\$D	\$GN	\$GS
\$350	\$242	\$186	\$359	\$231
43	11	21	3	9

Reference Sire **SYDGEN ENHANCE^{SV}** **USA18170041**

Date of Birth: 27/01/2015 Register: HBR AMF,CAF,DDF,NHF,DWF,MAF,MHF,OHF,OSF

D A A R INFINITY 313[#] CONNEALY FORWARD[#]
 SYDGEN GOOGOL[#] SYDGEN LIBERTY GA 8627[#]
 SYDGEN FOREVER LADY 4087[#] SYDGEN BLACKBIRD GA 051[#]

SIRE: USA17501893 SYDGEN EXCEED 3223^{PV} **DAM: USA17405676 SYDGEN RITA 2618[#]**
 SYDGEN 928 DESTINATION 5420[#] G T SHEAR FORCE[#]
 SYDGEN FOREVER LADY 1255[#] FOX RUN RITA 9308[#]
 SYDGEN FOREVER LADY 8114[#] LIMESTONE RITA U0004[#]

TACE	April 2022 TransTasman Angus Cattle Evaluation																		
	Dir	Dtrs	GL	BWT	200D	400D	600D	MCW	Milk	SS	D t C	CWT	EMA	Rib	P8	RBY	IMF	NFI-F	Doc
EBVs	+4.1	+0.6	-3.7	+3.0	+61	+109	+141	+94	+21	+2.7	-1.0	+78	+8.2	-2.0	-2.1	+1.5	+2.7	-0.76	+31
Acc	92%	75%	99%	99%	98%	98%	98%	94%	88%	98%	48%	88%	89%	89%	85%	84%	88%	71%	98%
% Rank	39	72	66	25	7	6	9	62	20	23	95	15	20	93	88	14	26	1	3

Traits Observed: Genomics
 Statistics: Number of Herds: 105, Prog Analysed: 2595, Genomic Prog: 110
 Lots in sale: 3,24

"The Enhance progeny are born easily, quiet, easy doing and efficiently gain weight. With over 2600 progeny analysed his EBVs have very high accuracy."

Selection Indexes				
\$A-L	\$A	\$D	\$GN	\$GS
\$411	\$267	\$216	\$362	\$255
8	3	4	2	3

Reference Sire **CLUNIE RANGE LEGEND L348^{PV}** **NBHL348**

Date of Birth: 9/07/2015 Register: HBR AMF,CAF,DDF,NHF,DWF,MAF,OSF,RGF

SCHURR 77 1346 EXCEL[#] CONNEALY CONSENSUS[#]
 SCHURRTOP REALITY X723[#] CONNEALY EARNAN 076^{PV}
 SCHURRTOP 8019 V141[#] BRAZILA OF CONANGA 3991 839A[#]

SIRE: NZE14647008839 MATAURI REALITY 839[#] **DAM: AHWJ81 ABERDEEN ESTATE LAURA J81^{PV}**
 TE MANIA ULONG U41^{SV} B/R AMBUSH 28[#]
 MATAURI 06663[#] TUWHARETOA E111^{PV}
 MATAURI 04456 AB[#] TUWHARETOA A52^{PV}

TACE	April 2022 TransTasman Angus Cattle Evaluation																		
	Dir	Dtrs	GL	BWT	200D	400D	600D	MCW	Milk	SS	D t C	CWT	EMA	Rib	P8	RBY	IMF	NFI-F	Doc
EBVs	-5.6	+4.6	-8.2	+6.0	+58	+101	+128	+160	+3	+2.8	-6.6	+72	+1.9	+3.8	+0.8	-1.7	+2.9	+0.04	+13
Acc	91%	80%	99%	99%	98%	98%	98%	96%	94%	97%	69%	92%	92%	92%	91%	90%	90%	83%	96%
% Rank	93	34	8	87	13	17	25	1	99	20	18	30	97	1	21	98	21	32	33

Traits Observed: BWT,200WT,400WT,600WT,SC,Scan(EMA,Rib,Rump,IMF),Genomics
 Statistics: Number of Herds: 100, Prog Analysed: 1302, Genomic Prog: 306
 Lots in sale: 1,15

"The Legend bulls are thick with plenty of muscle and really standout as weaners."

Selection Indexes				
\$A-L	\$A	\$D	\$GN	\$GS
\$331	\$145	\$122	\$204	\$126
58	90	89	84	91

Reference Sire **RENNYLEA N479^{PV}** **NORN479**

Date of Birth: 31/07/2017 Register: HBR AMFU,CAFU,DDFU,NHFU

G A R NEW DESIGN 5050[#] TE MANIA YORKSHIRE Y437^{PV}
 G A R INGENUITY[#] TE MANIA BERKLEY B1^{PV}
 G A R OBJECTIVE 1067[#] TE MANIA LOWAN Z53[#]

SIRE: USA17366506 H P C A INTENSITY[#] **DAM: NORH411 RENNYLEA H411^{SV}**
 G A R PREDESTINED[#] BOOROOMOOKA DESIGN Y120^{SV}
 G A R PREDESTINED 287L[#] RENNYLEA D298[#]
 G A R OBJECTIVE 1885[#] RENNYLEA B412[#]

TACE	April 2022 TransTasman Angus Cattle Evaluation																		
	Dir	Dtrs	GL	BWT	200D	400D	600D	MCW	Milk	SS	D t C	CWT	EMA	Rib	P8	RBY	IMF	NFI-F	Doc
EBVs	-4.2	+6.9	-2.9	+5.3	+59	+95	+124	+107	+14	+1.0	-9.1	+72	+7.8	+3.2	+2.0	-1.3	+3.5	-0.13	-7
Acc	79%	66%	97%	97%	93%	93%	91%	84%	75%	88%	57%	80%	79%	81%	79%	78%	78%	67%	87%
% Rank	90	13	78	76	11	31	34	38	82	87	3	30	24	2	6	96	9	15	90

Traits Observed: BWT,200WT,400WT,SC,Scan(EMA,Rib,Rump,IMF),DOC,Structure(Claw Set x 1, Foot Angle x 1),Genomics

Statistics: Number of Herds: 5, Prog Analysed: 247, Genomic Prog: 0

Lots in sale: 4,8,10,11,23,26,30

"N479 was purchased by Glenavon Angus and is a ¼ brother to Rennyalea L519 and L508 who have bred exceptionally well in the seedstock industry (Dunoon sold an L508 son for \$140,000 and an L519 son for \$90,000). These bulls are moderate, sound and well muscled with good carcass figures. The N479 heifers are looking great in the lead up to calving."

Selection Indexes				
\$A-L	\$A	\$D	\$GN	\$GS
\$399	\$247	\$193	\$338	\$233
12	8	15	6	8

Reference Sire **GLENOCH-JK MAKAHU M602^{SV}** **QLLM602**

Date of Birth: 6/08/2016 Register: HBR AMFU,CAFU,DDFU,NHFU

SCHURR 77 1346 EXCEL[#] TUWHARETOA REGENT D145^{PV}
 SCHURRTOP REALITY X723[#] GLENOCH HINMAN H221^{SV}
 SCHURRTOP 8019 V141[#] GLENOCH FLOWER D80^{SV}

SIRE: NZE14647008839 MATAURI REALITY 839[#] **DAM: QLLK615 GLENOCH-JK ANN K615^{SV}**
 TE MANIA ULONG U41^{SV} TE MANIA INFINITY 04 379 AB[#]
 MATAURI 06663[#] GLENOCH-JK ANN F606^{SV}
 MATAURI 04456 AB[#] GLENOCH ANN C102^{SV}

TACE	April 2022 TransTasman Angus Cattle Evaluation																		
	Dir	Dtrs	GL	BWT	200D	400D	600D	MCW	Milk	SS	D t C	CWT	EMA	Rib	P8	RBY	IMF	NFI-F	Doc
EBVs	+5.1	+1.7	-7.0	+5.0	+59	+105	+139	+137	+19	+4.7	-6.1	+77	+6.4	+2.2	-1.1	+0.3	+2.5	+0.47	+9
Acc	80%	68%	98%	98%	96%	96%	96%	85%	76%	96%	59%	81%	84%	85%	83%	80%	83%	70%	95%
% Rank	31	63	17	70	11	11	11	6	41	1	25	16	44	6	68	57	32	82	47

Traits Observed: GL,CE,BWT,200WT,400WT(x2),SC,Scan(EMA,Rib,Rump,IMF),Genomics

Statistics: Number of Herds: 55, Prog Analysed: 689, Genomic Prog: 17

Lots in sale: 18

"We liked the pedigree of Makahu with proven bloodlines of Reality and Hinman and are happy with the soundness of his progeny's feet and genuine muscle."

Selection Indexes				
\$A-L	\$A	\$D	\$GN	\$GS
\$392	\$204	\$168	\$270	\$188
15	43	42	41	42

Reference Sire **TC FRANKLIN 619[#]** **USA15462648**

Date of Birth: 18/01/2006 Register: HBR AMF,CAF,DDF,NHF,MAF

B/R NEW DESIGN 036[#] CONNEALY FRONTLINE[#]
 BON VIEW NEW DESIGN 208^{SV} CONNEALY FOREFRONT[#]
 BON VIEW ERICA 443[#] EILEEN HEARTLAND CONANGA6443[#]

SIRE: USA14844711 TC TOTAL 410[#] **DAM: USA13963170 TC MARCIA 1069[#]**
 TWIN VALLEY PRECISION E161[#] TC DIVIDEND 963[#]
 TC ERICA EILEEN 2047[#] TC MARCIA 7105[#]
 TC ERICA EILEEN 5116[#] MARCIA 0022[#]

TACE	April 2022 TransTasman Angus Cattle Evaluation																		
	Dir	Dtrs	GL	BWT	200D	400D	600D	MCW	Milk	SS	D t C	CWT	EMA	Rib	P8	RBY	IMF	NFI-F	Doc
EBVs	+5.1	+8.6	-3.5	+1.6	+49	+85	+108	+101	+11	+1.0	-2.8	+51	+2.0	-2.5	-1.6	-0.9	+2.1	-0.45	+8
Acc	96%	88%	99%	99%	98%	98%	98%	98%	98%	98%	80%	96%	95%	96%	95%	94%	94%	88%	94%
% Rank	31	4	69	7	54	64	70	50	94	87	81	92	96	97	79	92	47	3	49

Traits Observed: Genomics

Statistics: Number of Herds: 49, Prog Analysed: 1139, Genomic Prog: 83

Lots in sale: 20,22

"TC Franklin is the sire of Wattletop G188 who has bred some powerful females in our herd. These are some older embryos from donor cow D115 who sold to Heart Angus for \$32k. A lot of longevity in this pedigree."

Selection Indexes				
\$A-L	\$A	\$D	\$GN	\$GS
\$317	\$172	\$140	\$235	\$151
67	75	76	67	77

Reference Sire **SILVEIRAS CONVERSION 8064[#]** **USA16262077**

Date of Birth: 19/01/2008 Register: HBR AMF,CAF,DDF,NHF,MAF
 G A R PRECISION 1680[#] TWIN VALLEY PRECISION E161[#]
 C A FUTURE DIRECTION 5321[#] BR MIDLAND[#]
 C A MISS POWER FIX 308[#] BR ROYAL LASS 7036-19[#]
SIRE: USA758N BT CROSSOVER 758N[#] **DAM: USA15368244 EXG SARAS DREAM S609 R3[#]**
 O S U 6T6 ULTRA[#] A&B YUKON 7150[#]
 BT ROYAL PRIDE 237G[#] EXAR SARAS DREAM 9809[#]
 BT ROYAL PRIDE 326A[#] SARAS DREAM[#]

TACE	April 2022 TransTasman Angus Cattle Evaluation																		
	Dir	Dtrs	GL	BWT	200D	400D	600D	MCW	Milk	SS	D t C	CWT	EMA	Rib	P8	RBY	IMF	NFI-F	Doc
EBVs	-22.9	-23.3	-1.9	+8.5	+65	+108	+134	+121	+19	+3.5	-3.7	+82	+12.3	-2.0	+0.4	+2.3	+1.7	-0.44	-27
Acc	95%	89%	99%	99%	98%	98%	98%	97%	98%	98%	79%	95%	95%	95%	95%	93%	94%	86%	96%
% Rank	99	99	89	99	3	8	16	17	33	7	68	8	2	93	29	4	63	3	99

Traits Observed: Genomics
 Statistics: Number of Herds: 48, Prog Analysed: 1006, Genomic Prog: 145
 Lots in sale: 14,19,21,34

Selection Indexes				
\$A-L	\$A	\$D	\$GN	\$GS
\$254	\$173	\$141	\$243	\$155
93	74	75	61	74

"Conversion produced some powerful, beautiful uddered females in the Wattletop herd and these 8064 sons have thickness and eye appeal. Certainly not a heifer sire but still packs a punch beside the latest genetics."

Reference Sire **AYRVALE BARTEL E7^{PV}** **HIOE7**

Date of Birth: 9/09/2009 Register: HBR AMF,CAF,DDF,NHF,MAF,RGF
 B/R NEW DESIGN 036[#] S A F FOCUS OF E R[#]
 B/R NEW DIMENSION 7127^{SV} MYTTY IN FOCUS[#]
 B/R RUBY OF TIFFANY 4117[#] MYTTY COUNTESS 906[#]
SIRE: VTMB219 TE MANIA BARTEL B219^{PV} **DAM: BVVB32 EAGLEHAWK JEDDA B32^{SV}**
 C A FUTURE DIRECTION 5321[#] BON VIEW NEW DESIGN 1407[#]
 TE MANIA JEDDA W85[#] EAGLEHAWK JEDDA Z48[#]
 TE MANIA JEDDA S241[#] EAGLEHAWK JEDDA X113[#]

TACE	April 2022 TransTasman Angus Cattle Evaluation																		
	Dir	Dtrs	GL	BWT	200D	400D	600D	MCW	Milk	SS	D t C	CWT	EMA	Rib	P8	RBY	IMF	NFI-F	Doc
EBVs	+10.6	+10.7	-5.2	+1.7	+50	+88	+114	+73	+27	+2.5	-10.8	+73	+8.5	-0.2	+1.0	+0.5	+3.0	+0.51	-13
Acc	99%	95%	99%	99%	99%	99%	99%	99%	99%	99%	92%	98%	98%	98%	97%	97%	95%	99%	99%
% Rank	2	1	41	8	46	55	57	91	3	29	1	26	17	55	17	49	18	85	96

Traits Observed: BWT,200WT,400WT,600WT,SC,Scan(EMA,Rib,Rump,IMF),Genomics
 Statistics: Number of Herds: 260, Prog Analysed: 6702, Genomic Prog: 1080
 Lots in sale: 16,17,31

Selection Indexes				
\$A-L	\$A	\$D	\$GN	\$GS
\$445	\$289	\$237	\$373	\$278
2	1	1	2	1

"More embryo sons from cows dispersed at the stage 1 sale. With nearly 7000 progeny analysed, Bartel has proven he is an all rounder for calving ease, low birth, breed average growth, top 20% EMA and IMF."

Reference Sire **WATTLETOP FRANKLIN G188^{SV}** **NWPG188**

Date of Birth: 27/07/2011 Register: HBR AMFU,CAFU,DDF,NHFU
 BON VIEW NEW DESIGN 208^{SV} L T 598 BANDO 9074[#]
 TC TOTAL 410[#] WATTLETOP USA9074 C118^{PV}
 TC ERICA EILEEN 2047[#] WATTLETOP USUAL U86[#]
SIRE: USA15462648 TC FRANKLIN 619[#] **DAM: NWPE295 WATTLETOP BARUNAH E295^{PV}**
 CONNEALY FOREFRONT[#] B/R AMBUSH 28[#]
 TC MARCIA 1069[#] WATTLETOP BARUNAH C136^{SV}
 TC MARCIA 7105[#] WATTLETOP BARUNAH Z155^{PV}

TACE	April 2022 TransTasman Angus Cattle Evaluation																		
	Dir	Dtrs	GL	BWT	200D	400D	600D	MCW	Milk	SS	D t C	CWT	EMA	Rib	P8	RBY	IMF	NFI-F	Doc
EBVs	+4.2	+8.7	-4.7	+2.1	+63	+109	+144	+114	+23	+3.4	-4.9	+79	+2.9	-0.1	-0.5	-0.7	+1.3	-1.00	+20
Acc	93%	81%	99%	99%	98%	98%	98%	97%	96%	97%	69%	94%	93%	94%	93%	90%	92%	86%	96%
% Rank	38	4	49	12	4	6	7	27	11	8	46	13	92	51	53	89	78	1	14

Traits Observed: GL,CE,BWT,600WT,SC,Scan(EMA,Rib,Rump,IMF),Genomics
 Statistics: Number of Herds: 66, Prog Analysed: 1237, Genomic Prog: 427
 Lots in sale: 28,32

Selection Indexes				
\$A-L	\$A	\$D	\$GN	\$GS
\$406	\$233	\$190	\$307	\$216
10	16	17	18	17

"These are the last 2 G188 sons we will offer as we have a lot of his bloodlines through our herd. Both are out of an old donor cow B159 who produced 40 progeny between the Wattletop and Curracabark herds. Through the benchmarking program G188 proved to be a calving ease specialist with good growth and carcass."

Reference Sire

WATTLETOP GENERAL N48^{SV}

NWPN48

Date of Birth: 2/07/2017

Register: HBR

AMFU,CAFU,DDFU,NHFU

TE MANIA YORKSHIRE Y437^{PV}
TE MANIA BERKLEY B1^{PV}
TE MANIA LOWAN Z53[#]

WATTLETOP FRANKLIN G188^{SV}
WATTLETOP J312^{SV}
WATTLETOP USUAL G206[#]

SIRE: HIOG18 AYRVALE GENERAL G18^{PV}

DAM: NWPL351 WATTLETOP BARUNAH L351[#]

TE MANIA BARTEL B219^{PV}
AYRVALE EASE E3^{PV}
EAGLEHAWK JEDDA B32^{SV}

WATTLETOP ANDY C109^{PV}
WATTLETOP BARUNAH F138[#]
WATTLETOP BARUNAH Z100^{SV}

TACE	April 2022 TransTasman Angus Cattle Evaluation																		
	Dir	Dtrs	GL	BWT	200D	400D	600D	MCW	Milk	SS	D t C	CWT	EMA	Rib	P8	RBY	IMF	NFI-F	Doc
EBVs	+2.5	+4.2	-6.0	+5.4	+59	+103	+137	+120	+24	+4.0	-6.7	+81	+12.0	-0.3	-1.1	+1.6	+2.7	+0.19	-
Acc	67%	58%	83%	85%	81%	81%	82%	78%	69%	75%	48%	73%	69%	74%	71%	71%	69%	59%	-
% Rank	53	38	28	78	11	14	12	19	9	3	17	10	2	58	68	12	26	51	-

Traits Observed: GL,CE,BWT,200WT(x2),400WT,SC,Scan(EMA,Rib,Rump,IMF),Genomics

Statistics: Number of Herds: 1, Prog Analysed: 21, Genomic Prog: 0

Lots in sale: 2,5,6,29

"We purchased N48 from Lock's last sale as a yearling and we are so happy with his temperament and how sound his feet have remained. He stamps his progeny with thickness and a lot of muscle and the heifers have lovely udders."

Selection Indexes				
\$A-L	\$A	\$D	\$GN	\$GS
\$419	\$245	\$200	\$321	\$232
6	9	10	11	9

Reference Sire

WATTLETOP REGENT L78 P527^{SV}

NWPP527

Date of Birth: 7/07/2018

Register: HBR

AMFU,CAFU,DDFU,NHFU

TE MANIA AMBASSADOR A134^{SV}
TUWHARETOA REGENT D145^{PV}
LAWSONS HENRY VIII Y5^{SV}

TUWHARETOA REGENT D145^{PV}
KENNY'S CREEK REGENT G213^{SV}
KENNY'S CREEK SATURN C189[#]

SIRE: NWPL78 WATTLETOP REGENT L78^{PV}

DAM: NWPK109 WATTLETOP USUAL K109[#]

TE MANIA INFINITY 04 379 AB[#]
WATTLETOP ANN F40^{SV}
WATTLETOP ANN Z397^{SV}

B/R AMBUSH 28[#]
WATTLETOP USUAL D70[#]
WATTLETOP USUAL A143^{PV}

TACE	April 2022 TransTasman Angus Cattle Evaluation																		
	Dir	Dtrs	GL	BWT	200D	400D	600D	MCW	Milk	SS	D t C	CWT	EMA	Rib	P8	RBY	IMF	NFI-F	Doc
EBVs	+4.1	+2.8	-5.8	+4.1	+47	+87	+130	+118	+27	+3.2	-6.6	+78	+2.9	-2.5	-2.2	-0.2	+2.9	+0.20	-
Acc	59%	52%	71%	77%	75%	76%	75%	71%	63%	64%	41%	68%	61%	67%	63%	63%	61%	53%	-
% Rank	39	53	31	50	65	59	22	21	3	11	18	14	92	97	89	76	21	52	-

Traits Observed: BWT,200WT,400WT,Scan(EMA,Rib,Rump,IMF),Genomics

Statistics: Number of Herds: 1, Prog Analysed: 11, Genomic Prog: 0

Lots in sale: 27,33,35,36

"P527 is a large framed bull that has produced bulls with eye appeal. He has a good spread of breed average birth, to top 22% 600 day, good scrotal and IMF."

Selection Indexes				
\$A-L	\$A	\$D	\$GN	\$GS
\$337	\$177	\$126	\$238	\$163
53	70	87	65	68



WATTLETOP ANGUS' SALE BULL SUMMARY

Lot no	Tag ID	Sire	CE direct	CE dtrs	birth wt	200 day	400 day	600 day	mat cow	DTC	scro-tal	CW	EMA	RIB	P8	RBY	IMF	\$A	\$A-L
1	R34	NBHL348	3.1	3.4	4.3	51	85	109	124	-5.3	1.1	64	5.3	1.6	-0.2	0.3	2.5	\$181	\$343
2	R93	NWPN48	5	4.7	3.4	55	102	130	114	-6.5	3	78	8.3	-0.4	-1.5	1.1	2.5	\$234	\$407
3	R7	ENHANCE	6.7	7.5	2.6	62	108	139	87	-5.6	3.3	73	8.6	-1.9	-1.3	1.5	3.5	\$314	\$475
4	R51	NORN479	2.7	6.2	5.3	58	100	136	114	-7.7	2	75	6.6	3.1	1.9	-1.2	2.7	\$237	\$410
5	R85	NWPN48	4.3	4.6	3.3	56	103	134	124	-6.5	3.1	77	9.4	-0.1	0.3	0.9	2.6	\$238	\$420
6	R83	NWPN48	-2.1	1.6	6.3	58	98	131	107	-6.6	4.4	74	8	1.5	3.7	0.2	2.5	\$240	\$392
7	R8	VLYM518	1.4	3.9	3.1	47	91	109	64	-3.1	2.5	60	9.8	-1.7	-1.2	1.5	2.6	\$234	\$347
8	R41	NORN479	5.8	7.8	3	50	86	111	81	-6	1.8	63	6.8	2.6	1.5		2.5	\$229	\$371
9	R6	VLYM518	-9.5	-1.4	7.5	62	105	133	104	-4.3	2.9	71	9.1	-2.5	-2.4	1.7	2.4	\$218	\$339
10	R82	NORN479	-5.9	3.5	6.1	62	100	128	112	-4.2	1.6	73	8.5	-1.1	-3.2	1.2	2.7	\$219	\$355
11	R55	NORN479	-4.1	2.3	5.8	50	83	105	82	-6.9	1.4	59	5.7	2.4	3.5	-2.1	3.7	\$210	\$330
12	R65	VLYM518	-7.2	-7.2	5.9	57	100	127	102	-2.6	3.3	74	11.2	-3.1	-3.1	1.5	3.3	\$204	\$320
13	R76	VLYM518	-6	-2.5	4.8	50	88	116	86	-3	1	60	9.5	0.3	-0.8	-0.1	3.8	\$204	\$310
14	R63	CONVERSION	-21.1	-19.1	9.9	61	97	125	106	-5.1	2.8	62	12.3	-1.5	-0.1	3.1	1.4	\$183	\$257
15	R33	NBHL348	0.9	3.7	4.8	51	88	112	111	-6	3.4	70	7.8	0.4	-2.2	0.9	2.2	\$180	\$331
16	R73	HIOE7	3.8	3	5.3	60	105	140	123	-7.8	1.4	90	8.6	-2.2	-2	1.6	3.1	\$264	\$443
17	R74	HIOE7	0.1	6.2	4.6	62	112	146	114	-7.1	3.5	87	7.6	-2.6	-4	1.9	2.2	\$253	\$420
18	R68	QLLM602	-1.6	2.2	6.2	66	111	159	153	-4.8	5	79	2.6	0	-0.6	-0.6	2.6	\$199	\$386
19	R39	CONVERSION	-7.9	-9.3	5.9	49	86	116	112	-5.9	3.7	58	9.4	-0.3	1.6	1.1	2.5	\$175	\$297
20	R64	TC FRANKLIN	-6.8	6.3	5.7	48	76	106	111	-1.9	0.4	60	2.9	-4.5	-4.8	1.5	1.7	\$123	\$234
21	R58	CONVERSION	-3.3	-6	5.2	48	83	103	107	-7.3	2.7	56	7.8	0.8	2.2	0.5	2	\$178	\$312
22	R56	TC FRANKLIN	2.7	10.6	2.2	46	82	105	101	-3.3	0.9	65	5.4	-1.2	-1.6	-0.5	3.1	\$179	\$323
23	R75	NORN479	-4.1	3.6	7.4	69	112	148	128	-8.8	2.7	83	6	1.7	1.2	-0.9	3.6	\$265	\$439
24	R72	ENHANCE	2.2	5	3.2	53	92	120	91	-2.7	3.3	60	9.6		-1.7	2.2	1.9	\$229	\$364
25	R15	VLYM518	0.9	-5	5.4	55	98	129	93	-2.2	3.1	72	12.9	-0.6	-0.6	1.1	4.1	\$245	\$376
26	R81	NORN479	-16	-0.5	7.4	58	93	123	118	-8.5	3	66	6.6	0.6	0.4	0.2	2.6	\$185	\$305
27	R103	NWPP527	-0.7	3.1	6.5	55	95	132	125	-6.3	2.4	75	6.7	-2.6	-1.2	0.7	2.4	\$193	\$354
28	R70	NWPG188	9.2	7.4	0.2	47	83	118	81	-3.8	1.4	67	4.3	-0.1	-0.8	0	1	\$208	\$344
29	R95	NWPN48	-0.3	2.9	5	59	96	129	108	-5.6	4.2	73	7.4	-1.1	-0.9	0.9	2.7	\$230	\$379
30	R38	NORN479	4.9	7.3	2.7	56	94	125	86	-6.7	1.3	75	4.9	2.5	0.8	-0.5	2	\$255	\$403
31	R78	HIOE7	4.5	1.8	3.6	48	83	110	98	-9.5	2.4	68	7.7	-0.9	-0.2	1.3	2.5	\$229	\$381
32	R18	NWPG188	7.3	8.8	0.2	43	70	96	50	-2.6	1.4	53	6.9	-1.8	-3	2.4	0.1	\$211	\$310
33	R102	NWPP527	0.6	1	5.3	56	96	141	123	-4.2	1.8	86	0.3	-2.3	-2.4	-0.5	2.4	\$185	\$337
34	R69	CONVERSION	-3.7	-6.2	5.6	53	88	118	123	-5.3	1.9	62	8.3	-0.1	0.9	0.8	2.2	\$179	\$320
35	R106	NWPP527	1.8	2.3	4	46	75	112	86	-3.6	3.4	65	5.4	-1.5	-1.9	0.6	1.7	\$171	\$287
36	R100	NWPP527	-2.5	1.6	5.9	51	88	129	125	-3.7	2.9	67	4.1	-2.1	-2.5	0.8	1.9	\$150	\$294



WATTLETOP ANGUS' GENETIC TYPE SUMMARY (GTS)

Lot No.	Tag no	Stature	Capacity	Body Length	Front Feet	Back Feet	Leg Angle	Pastern Angle	Muscling	Do Ability	Sheath	Grade
1	R34	28	39	32	23	24	26	23	39	32	4	7
2	R93	28	38	31	23	24	26	23	38	34	5	7
3	R7	25	40	29	23	22	26	23	40	32	5	5
4	R51	25	40	29	22	23	27	23	40	31	5	7
5	R85	26	39	30	22	23	26	23	39	34	4	7
6	R83	28	38	32	23	24	27	22	38	31	5	6
7	R8	23	38	27	23	24	26	23	39	30	5	6
8	R41	23	38	27	23	24	26	23	38	31	5	6
9	R6	27	40	32	22	23	26	23	39	33	5	6
10	R82	23	41	30	22	23	26	23	41	31	5	6
11	R55	24	39	28	23	24	26	22	38	32	5	6
12	R65	29	38	33	22	23	27	23	38	32	5	5
13	R76	28	37	31	22	23	26	23	37	30	5	5
14	R63	25	40	29	22	23	27	22	40	33	5	6
15	R33	23	39	27	22	22	26	23	40	30	4	4
16	R73	28	38	32	21	23	26	23	39	32	5	5
17	R74	28	38	32	22	23	25	24	30	30	5	4
18	R68	27	39	31	23	24	27	22	40	29	5	6
19	R39	28	32	32	23	24	26	23	38	32	5	6
20	R64	28	38	32	23	24	27	23	39	30	4	6
21	R58	23	39	27	23	24	26	23	38	36	5	6
22	R56	27	38	31	22	23	27	23	38	31	4	5
23	R75	25	38	29	22	24	26	23	38	29	5	5
24	R72	25	38	28	22	24	27	23	38	31	5	5
25	R15	27	38	32	22	23	27	23	38	33	5	5
26	R81	26	38	30	22	23	26	23	38	38	5	5
27	R103	27	38	31	23	23	26	23	38	32	5	5
28	R70	29	40	38	22	24	26	23	38	32	5	4
29	R95	23	39	26	23	24	26	23	38	32	5	4
30	R38	22	39	26	23	24	27	22	39	33	4	5
31	R78	23	38	27	22	23	26	23	38	30	5	4
32	R18	22	39	25	23	24	26	23	39	32	5	4
33	R102	25	38	28	22	23	25	24	38	32	5	4
34	R69	24	38	27	21	24	26	23	38	30	4	4
35	R106	23	38	26	23	24	27	22	38	32	5	5
36	R100	24	38	26	23	24	27	23	38	33	5	5



A COUNTRY COMMUNITY IN A HAMPER

GATHERED Goods

EST 2018

The buyers of
**Top Priced Bull &
 Highest Volume Buyer**
 will receive a Gathered Goods
 Australia Hamper valued at \$250.
 Showcasing 100% Regional Aussie
 produce. Featuring Bison Ceramics,
 and Glen Gowrie Gin.

Valued
 at \$250



Jess and Henry MacDougall with Ray White Agents Blake O'Reilly and Sam Sewell

Lot 1 **WATTLETOP LEGEND R34^{PV}** **NWPR34**

Date of Birth: 19/07/2020 Register: HBR Traits Observed: GL,CE,BWT,200WT,400WT,Genomics AMFU,CAFU,DDFU,NHFU
 SCHURRTOP REALITY X723^{PV} TE MANIA BERKLEY B1^{PV}
 MATAURI REALITY 839^{PV} AYRVALE GENERAL G18^{PV}
 MATAURI 06663^{PV} AYRVALE EASE E3^{PV}
SIRE: NBHL348 CLUNIE RANGE LEGEND L348^{PV} **DAM: NWP401 WATTLETOP ANN N401^{SV}**
 CONNEALY EARNAN 076^{PV} SILVEIRAS M811 TOTAL 6103^{PV}
 ABERDEEN ESTATE LAURA J81^{PV} WATTLETOP J197^{PV}
 TUWHARETOA E111^{PV} WATTLETOP ANN Z397^{SV}

Actual Birth Weight	41 kg
Scrotal Circumference	40 cm

TACE April 2022 TransTasman Angus Cattle Evaluation																			
Dir	Dtrs	GL	BWT	200D	400D	600D	MCW	Milk	SS	D t C	CWT	EMA	Rib	P8	RBY	IMF	NFI-F	Doc	
EBVs	+3.1	+3.4	-10.8	+4.3	+51	+85	+109	+124	+12	+1.1	-5.3	+64	+5.3	+1.6	-0.2	+0.3	+2.5	+0.09	-
Acc	62%	56%	84%	73%	72%	72%	73%	71%	68%	69%	46%	69%	67%	71%	68%	69%	67%	60%	-
% Rank	48	46	1	54	41	65	67	15	91	85	38	61	63	12	44	57	32	38	-

Genetic Type Summary (GTS)											Selection Indexes				
Stature	Capacity	Body Length	Front Feet	Hind Feet	Rear Leg Set	Feet & Past.	Muscling	Doability	Sheath	Grade	\$A-L	\$A	\$D	\$GN	\$GS
28	39	32	23	24	26	23	39	32	4	7	\$343	\$181	\$149	\$245	\$161
											49	66	67	59	69

"A sound Legend son that has caught the eye of a few that have seen him. A bull with power that also suits heifers. Graded a 7 by Dick."

Lot 2 **WATTLETOP GENERAL R93^{PV}** **NWPR93**

Date of Birth: 15/08/2020 Register: HBR Traits Observed: BWT,200WT,400WT,Genomics AMFU,CAFU,DDF,NHFU
 TE MANIA BERKLEY B1^{PV} TUWHARETOA REGENT D145^{PV}
 AYRVALE GENERAL G18^{PV} WATTLETOP J95^{PV}
 AYRVALE EASE E3^{PV} WATTLETOP IDOLDEE F171^{PV}
SIRE: NWP48 WATTLETOP GENERAL N48^{SV} **DAM: NWP407 WATTLETOP BARUNAH N407^{SV}**
 WATTLETOP J312^{SV} GLENAVON C140^{SV}
 WATTLETOP BARUNAH L351^{PV} WATTLETOP BARUNAH G219^{PV}
 WATTLETOP BARUNAH F138^{PV} WATTLETOP BARUNAH C276^{PV}

Actual Birth Weight	38 kg
Scrotal Circumference	43 cm

TACE April 2022 TransTasman Angus Cattle Evaluation																			
Dir	Dtrs	GL	BWT	200D	400D	600D	MCW	Milk	SS	D t C	CWT	EMA	Rib	P8	RBY	IMF	NFI-F	Doc	
EBVs	+5.0	+4.7	-6.3	+3.4	+55	+102	+130	+114	+24	+3.0	-6.5	+78	+8.3	-0.4	-1.5	+1.1	+2.5	-0.30	-
Acc	53%	48%	69%	70%	68%	68%	69%	67%	61%	63%	38%	64%	61%	67%	63%	64%	61%	52%	-
% Rank	31	32	24	33	25	16	23	27	9	15	20	14	19	61	77	25	32	6	-

Genetic Type Summary (GTS)											Selection Indexes				
Stature	Capacity	Body Length	Front Feet	Hind Feet	Rear Leg Set	Feet & Past.	Muscling	Doability	Sheath	Grade	\$A-L	\$A	\$D	\$GN	\$GS
28	38	31	23	24	26	23	38	34	5	7	\$407	\$234	\$197	\$308	\$219
											9	15	12	17	15

"R93 follows his sire's pattern with plenty of muscle and do ability with sound feet. Graded a 7 by Dick, a bull with a good balance of data with positive calving ease, low birth making him suitable for heifers. In the top 20% for 7 traits."

Lot 3 **WATTLETOP ENHANCE R7^{SV}** **NWPR7**

Date of Birth: 5/07/2020 Register: HBR Traits Observed: GL,CE,BWT,200WT,400WT,Genomics AMFU,CAFU,DDF,NHFU
 SYDGEN GOOGOL^{PV} TE MANIA AFRICA A217^{PV}
 SYDGEN EXCEED 3223^{PV} BOONAROO GRAVITY G013^{PV}
 SYDGEN FOREVER LADY 1255^{PV} TE MANIA LOWAN Z618^{PV}
SIRE: USA18170041 SYDGEN ENHANCE^{SV} **DAM: NWPP509 WATTLETOP USUAL P509^{SV}**
 SYDGEN LIBERTY GA 8627^{PV} BOOROOMOOKA FRANKEL F510^{PV}
 SYDGEN RITA 2618^{PV} WATTLETOP USUAL L51^{PV}
 FOX RUN RITA 9308^{PV} WATTLETOP USUAL E64^{SV}

Actual Birth Weight	35 kg
Scrotal Circumference	44 cm

TACE April 2022 TransTasman Angus Cattle Evaluation																			
Dir	Dtrs	GL	BWT	200D	400D	600D	MCW	Milk	SS	D t C	CWT	EMA	Rib	P8	RBY	IMF	NFI-F	Doc	
EBVs	+6.7	+7.5	-8.2	+2.6	+62	+108	+139	+87	+25	+3.3	-5.6	+73	+8.6	-1.9	-1.3	+1.5	+3.5	-0.51	-
Acc	61%	53%	82%	72%	71%	71%	72%	70%	64%	68%	39%	67%	65%	69%	65%	66%	65%	55%	-
% Rank	18	9	8	18	6	7	11	74	6	10	33	28	16	92	73	14	9	2	-

Genetic Type Summary (GTS)											Selection Indexes				
Stature	Capacity	Body Length	Front Feet	Hind Feet	Rear Leg Set	Feet & Past.	Muscling	Doability	Sheath	Grade	\$A-L	\$A	\$D	\$GN	\$GS
25	40	29	23	22	26	23	40	32	5	5	\$475	\$314	\$255	\$424	\$305
											1	1	1	1	1

"A very thick, well muscled Enhance son that has stood out from the start. He has an impressive spread of raw data with the second lowest birth weight (35kgs) in his contemporary and the highest 400 day wt. This has been reflected in his EBVs along with moderate mature cow weight, good scrotal, EMA and IMF. He was our highest scanning for IMF at a whopping 7.2 (the average was 6.1) so we are interested to see how this affects his IMF EBV when the data comes through. He is also in the top 1% for all indexes."

Lot 4 **WATTLETOP N479 R51^{PV}** **NWPR51**

Date of Birth: 22/07/2020 Register: HBR Traits Observed: BWT,200WT,400WT,Genomics AMFU,CAFU,DDFU,NHFU
 G A R INGENUITY* TC FRANKLIN 619*
 H P C A INTENSITY* WATTLETOP FRANKLIN G188^{SV}
 G A R PREDESTINED 287L* WATTLETOP BARUNAH E295^{SV}
SIRE: NORN479 RENNYLEA N479^{PV} **DAM: NWPM161 WATTLETOP DANDLOO M161^{SV}**
 TE MANIA BERKLEY B1^{PV} RENNYLEA EDMUND E11^{PV}
 RENNYLEA H411^{SV} WATTLETOP DANDLOO K77*
 RENNYLEA D298* WATTLETOP DANDLOO C36^{SV}

Actual Birth Weight	43 kg
Scrotal Circumference	43 cm

TACE April 2022 TransTasman Angus Cattle Evaluation																			
	Dir	Dtrs	GL	BWT	200D	400D	600D	MCW	Milk	SS	D t C	CWT	EMA	Rib	P8	RBY	IMF	NFI-F	Doc
EBVs	+2.7	+6.2	-5.3	+5.3	+58	+100	+136	+114	+18	+2.0	-7.7	+75	+6.6	+3.1	+1.9	-1.2	+2.7	+0.05	-
Acc	59%	53%	72%	74%	72%	72%	73%	70%	64%	67%	43%	67%	64%	69%	66%	66%	65%	56%	-
% Rank	51	18	39	76	14	20	13	26	49	50	8	21	40	2	7	95	26	33	-

Genetic Type Summary (GTS)											Selection Indexes				
Stature	Capacity	Body Length	Front Feet	Hind Feet	Rear Leg Set	Feet & Past.	Muscling	Doability	Sheath	Grade	\$A-L	\$A	\$D	\$GN	\$GS
25	40	29	22	23	27	23	40	31	5	7	\$410	\$237	\$187	\$312	\$223
											8	13	20	15	13

"Out of a very powerful G188 donor whose first progeny offered last year made \$30k and \$20k. R51 is a bull with thickness and muscling in a moderate package. Graded a 7 by Dick. His 4 full flush sisters graded 7,6,6 & 4. His full brothers are Lots 8 & 23."

Lot 5 **WATTLETOP GENERAL R85^{PV}** **NWPR85**

Date of Birth: 1/08/2020 Register: HBR Traits Observed: CE,BWT,200WT,400WT,Genomics AMFU,CAFU,DDFU,NHFU
 TE MANIA BERKLEY B1^{PV} CONNEALY EARNAN 076E^{PV}
 AYRVALE GENERAL G18^{PV} MUSGRAVE BIG SKY^{PV}
 AYRVALE EASE E3^{PV} SAV PRIMROSE 7861*
SIRE: NWP48 WATTLETOP GENERAL N48^{SV} **DAM: NWPM56 WATTLETOP ANN M56^{SV}**
 WATTLETOP J312^{SV} TUWHARETOA REGENT D145^{PV}
 WATTLETOP BARUNAH L351* WATTLETOP ANN K217*
 WATTLETOP BARUNAH F138* WATTLETOP ANN F45^{SV}

Actual Birth Weight	41 kg
Scrotal Circumference	41 cm

TACE April 2022 TransTasman Angus Cattle Evaluation																			
	Dir	Dtrs	GL	BWT	200D	400D	600D	MCW	Milk	SS	D t C	CWT	EMA	Rib	P8	RBY	IMF	NFI-F	Doc
EBVs	+4.3	+4.6	-6.5	+3.3	+56	+103	+134	+124	+21	+3.1	-6.5	+77	+9.4	-0.1	+0.3	+0.9	+2.6	+0.24	-
Acc	55%	50%	69%	70%	68%	68%	70%	67%	62%	64%	40%	64%	61%	67%	63%	64%	61%	53%	-
% Rank	37	34	22	31	18	15	17	14	24	13	20	18	11	51	32	32	29	57	-

Genetic Type Summary (GTS)											Selection Indexes				
Stature	Capacity	Body Length	Front Feet	Hind Feet	Rear Leg Set	Feet & Past.	Muscling	Doability	Sheath	Grade	\$A-L	\$A	\$D	\$GN	\$GS
26	39	30	22	23	26	23	39	34	4	7	\$420	\$238	\$197	\$312	\$225
											6	13	12	15	12

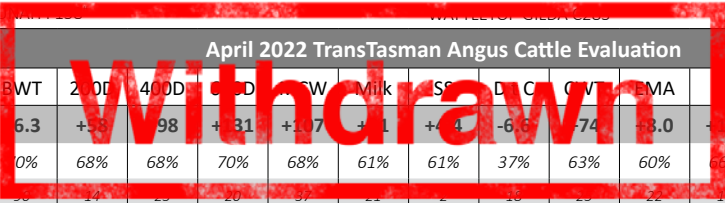
"This bull has been a standout since he was a sappy weaner on his Big Sky dam. He is soft, deep flanked and very easy doing. He had the largest EMA and equal second highest scan for IMF at 6.9. At 3.2 birth he is a suitable option for heifers with plenty to offer in growth and carcase."

Lot 6 **WATTLETOP GENERAL R83^{SV}** **NWPR83**

Date of Birth: 30/07/2020 Register: HBR Traits Observed: CE,BWT,200WT,400WT,Genomics AMFU,CAFU,DDFU,NHFU
 TE MANIA BERKLEY B1^{PV} SILVEIRAS CONVERSION 8064*
 AYRVALE GENERAL G18^{PV} WATTLETOP CONVERSION J198^{PV}
 AYRVALE EASE E3^{PV} WATTLETOP USUAL A108^{PV}
SIRE: NWP48 WATTLETOP GENERAL N48^{SV} **DAM: NWPL330 WATTLETOP GILDA L330***
 WATTLETOP J312^{SV} GLENAVON C140^{SV}
 WATTLETOP BARUNAH L351* WATTLETOP GILDA F267*
 WATTLETOP BARUNAH F138* WATTLETOP GILDA F267*

Actual Birth Weight	45 kg
Scrotal Circumference	45 cm

TACE April 2022 TransTasman Angus Cattle Evaluation																			
	Dir	Dtrs	GL	BWT	200D	400D	600D	MCW	Milk	SS	D t C	CWT	EMA	Rib	P8	RBY	IMF	NFI-F	Doc
EBVs	-2.1	+1.6	-5.3	+6.3	+58	+98	+131	+117	+11	+4.1	-6.5	+74	+8.0	+1.5	+3.7	+0.2	+2.5	+0.11	-
Acc	53%	47%	66%	70%	68%	68%	70%	68%	61%	61%	37%	63%	60%	66%	62%	63%	60%	51%	-
% Rank	82	64	39	36	14	15	10	37	21	1	16	19	22	13	1	61	32	40	-



Genetic Type Summary (GTS)											Selection Indexes				
Stature	Capacity	Body Length	Front Feet	Hind Feet	Rear Leg Set	Feet & Past.	Muscling	Doability	Sheath	Grade	\$A-L	\$A	\$D	\$GN	\$GS
28	38	32	23	24	27	22	38	31	5	6	\$392	\$240	\$192	\$313	\$228
											15	12	16	15	10

"A sound N48 son with plenty of length graded a 6 by Dick."

Lot 7 **WATTLETOP MOMENTOUS R8^{SV}** **NWPR8**

Date of Birth: 6/07/2020 Register: HBR Traits Observed: GL,CE,BWT,200WT,400WT,Genomics AMFU,CAFU,DDFU,NHFU
 G A R PROGRESS^{SV} CONNEALY EARNAN 076E^{PV}
 G A R MOMENTUM^{PV} MUSGRAVE BIG SKY^{PV}
 G A R BIG EYE 1770[#] SAV PRIMROSE 7861[#]
SIRE: VLYM518 LAWSONS MOMENTOUS M518^{PV} **DAM: NWPP507 WATTLETOP BARUNAH P507^{PV}**
 TE MANIA AFRICA A217^{PV} WATTLETOP FRANKLIN G188^{SV}
 LAWSONS AFRICA H229^{SV} WATTLETOP BARUNAH M19^{SV}
 LAWSONS ROCKND AMBUSH E1103^{PV} WATTLETOP BARUNAH K159[#]

Actual Birth Weight	37 kg
Scrotal Circumference	40 cm

TACE April 2022 TransTasman Angus Cattle Evaluation																			
	Dir	Dtrs	GL	BWT	200D	400D	600D	MCW	Milk	SS	D t C	CWT	EMA	Rib	P8	RBY	IMF	NFI-F	Doc
EBVs	+1.4	+3.9	-5.7	+3.1	+47	+91	+109	+64	+26	+2.5	-3.1	+60	+9.8	-1.7	-1.2	+1.5	+2.6	+0.74	-
Acc	62%	56%	82%	73%	72%	72%	73%	71%	66%	68%	44%	68%	66%	70%	67%	66%	66%	59%	-
% Rank	62	41	33	27	64	46	68	95	5	29	77	75	9	90	71	14	29	96	-

Genetic Type Summary (GTS)											Selection Indexes				
Stature	Capacity	Body Length	Front Feet	Hind Feet	Rear Leg Set	Feet & Past.	Muscling	Doability	Sheath	Grade	\$A-L	\$A	\$D	\$GN	\$GS
23	38	27	23	24	26	23	39	30	5	6	\$347	\$234	\$199	\$309	\$220
											45	15	11	16	15

"A moderate Momentous son that is sound footed with calving ease and low birth suited for heifers. A big Sky heifers first calf, her granddam M19 produced the top priced bull in our 2021 sale."

Lot 8 **WATTLETOP N479 R41^{PV}** **NWPR41**

Date of Birth: 20/07/2020 Register: HBR Traits Observed: BWT,200WT,400WT,Genomics AMFU,CAFU,DDFU,NHFU
 G A R INGENUITY[#] TC FRANKLIN 619[#]
 H P C A INTENSITY[#] WATTLETOP FRANKLIN G188^{SV}
 G A R PREDESTINED 287L[#] WATTLETOP BARUNAH E295^{PV}
SIRE: NORN479 RENNYLEA N479^{PV} **DAM: NWPM161 WATTLETOP DANDLOO M161^{SV}**
 TE MANIA BERKLEY B1^{PV} RENNYLEA EDMUND E11^{PV}
 RENNYLEA H411^{SV} WATTLETOP DANDLOO K77[#]
 RENNYLEA D298[#] WATTLETOP DANDLOO C36^{SV}

Actual Birth Weight	35 kg
Scrotal Circumference	43 cm

TACE April 2022 TransTasman Angus Cattle Evaluation																			
	Dir	Dtrs	GL	BWT	200D	400D	600D	MCW	Milk	SS	D t C	CWT	EMA	Rib	P8	RBY	IMF	NFI-F	Doc
EBVs	+5.8	+7.8	-6.1	+3.0	+50	+86	+111	+81	+16	+1.8	-6.0	+63	+6.8	+2.6	+1.5	-1.0	+2.5	-0.20	-
Acc	58%	51%	71%	73%	71%	70%	71%	68%	62%	65%	41%	65%	62%	67%	64%	64%	63%	54%	-
% Rank	25	7	27	25	45	63	64	83	63	59	27	65	37	4	11	93	32	11	-

Genetic Type Summary (GTS)											Selection Indexes				
Stature	Capacity	Body Length	Front Feet	Hind Feet	Rear Leg Set	Feet & Past.	Muscling	Doability	Sheath	Grade	\$A-L	\$A	\$D	\$GN	\$GS
23	38	27	23	24	26	23	38	31	5	6	\$371	\$229	\$185	\$299	\$214
											27	19	22	21	19

"A full brother to lot 4 R41 is a moderate N479 son that is sound footed and well muscled. With an actual birth weight of 35kgs and low birth EBV's he is well suited to heifers."

Lot 9 **WATTLETOP MOMENTOUS R6^{SV}** **NWPR6**

Date of Birth: 5/07/2020 Register: HBR Traits Observed: GL,CE,BWT,200WT,400WT,Genomics AMFU,CAFU,DDFU,NHFU
 G A R PROGRESS^{SV} TC FRANKLIN 619[#]
 G A R MOMENTUM^{PV} WATTLETOP FRANKLIN G188^{SV}
 G A R BIG EYE 1770[#] WATTLETOP BARUNAH E295^{PV}
SIRE: VLYM518 LAWSONS MOMENTOUS M518^{PV} **DAM: NWPP545 WATTLETOP ANN P545^{SV}**
 TE MANIA AFRICA A217^{PV} SILVEIRAS M811 TOTAL 6103[#]
 LAWSONS AFRICA H229^{SV} WATTLETOP ANN G322[#]
 LAWSONS ROCKND AMBUSH E1103^{PV} WATTLETOP ANN Z226[#]

Actual Birth Weight	40 kg
Scrotal Circumference	36 cm

TACE April 2022 TransTasman Angus Cattle Evaluation																			
	Dir	Dtrs	GL	BWT	200D	400D	600D	MCW	Milk	SS	D t C	CWT	EMA	Rib	P8	RBY	IMF	NFI-F	Doc
EBVs	-9.5	-1.4	-7.5	+7.5	+62	+105	+133	+104	+20	+2.9	-4.3	+71	+9.1	-2.5	-2.4	+1.7	+2.4	-0.16	-
Acc	62%	55%	83%	73%	72%	72%	73%	71%	66%	68%	43%	68%	66%	71%	67%	67%	66%	59%	-
% Rank	98	85	12	98	6	11	18	44	27	17	57	34	13	97	91	10	36	13	-

Genetic Type Summary (GTS)											Selection Indexes				
Stature	Capacity	Body Length	Front Feet	Hind Feet	Rear Leg Set	Feet & Past.	Muscling	Doability	Sheath	Grade	\$A-L	\$A	\$D	\$GN	\$GS
27	40	32	22	23	26	23	39	33	5	6	\$339	\$218	\$181	\$294	\$199
											52	28	26	25	31

"One of the favourite Momentous sons picked by the Ray White guys. A G188 heifer's first calf he is very thick set with a lot of muscle."

Lot 10 **WATTLETOP N479 R82^{PV}** **NWPR82**

Date of Birth: 29/07/2020 Register: HBR Traits Observed: CE,BWT,200WT,400WT,Genomics AMFU,CAFU,DDFU,NHFU
 G A R INGENUITY# SITZ UPWARD 307R^{SV}
 H P C A INTENSITY# TEHAMA UPWARD Y238#
 G A R PREDESTINED 287L# TEHAMA ELITE BLACKBIRD T735#
SIRE: NORN479 RENNYLEA N479^{PV} **DAM: NWPN411 WATTLETOP DANDLOO N411^{SV}**
 TE MANIA BERKLEY B1^{PV} TC FRANKLIN 619#
 RENNYLEA H411^{SV} WATTLETOP DANDLOO H10#
 RENNYLEA D298# WATTLETOP DANDLOO F2#

Actual Birth Weight	46 kg
Scrotal Circumference	41 cm

TACE April 2022 TransTasman Angus Cattle Evaluation																			
	Dir	Dtrs	GL	BWT	200D	400D	600D	MCW	Milk	SS	D t C	CWT	EMA	Rib	P8	RBY	IMF	NFI-F	Doc
EBVs	-5.9	+3.5	-5.9	+6.1	+62	+100	+128	+112	+16	+1.6	-4.2	+73	+8.5	-1.1	-3.2	+1.2	+2.7	-0.42	-
Acc	56%	50%	72%	72%	70%	70%	71%	68%	62%	65%	40%	65%	62%	67%	64%	64%	63%	53%	-
% Rank	94	45	30	88	6	19	25	30	60	67	59	27	17	79	97	22	26	3	-

Genetic Type Summary (GTS)											Selection Indexes				
Stature	Capacity	Body Length	Front Feet	Hind Feet	Rear Leg Set	Feet & Past.	Muscling	Doability	Sheath	Grade	\$A-L	\$A	\$D	\$GN	\$GS
23	41	30	22	23	26	23	41	31	5	6	\$355	\$219	\$177	\$303	\$200
											39	27	30	19	30

"One of the heaviest muscled bulls in the offering this Rennylea N479 son comes in a moderate package. He will breed thick sappy weaners packed with carcase that are also efficient with an NFI in the top 3%."

Lot 11 **WATTLETOP N479 R55^{PV}** **NWPR55**

Date of Birth: 23/07/2020 Register: HBR Traits Observed: GL,CE,BWT,200WT,400WT,Genomics AMFU,CAFU,DDFU,NHFU
 G A R INGENUITY# CONNEALY EARNAN 076E^{PV}
 H P C A INTENSITY# MUSGRAVE BIG SKY^{PV}
 G A R PREDESTINED 287L# SAV PRIMROSE 7861#
SIRE: NORN479 RENNYLEA N479^{PV} **DAM: NWPN426 WATTLETOP BARUNAH N426^{SV}**
 TE MANIA BERKLEY B1^{PV} B/R NEW DAY 454#
 RENNYLEA H411^{SV} WATTLETOP BARUNAH H49#
 RENNYLEA D298# WATTLETOP BARUNAH F151#

Actual Birth Weight	42 kg
Scrotal Circumference	41 cm

TACE April 2022 TransTasman Angus Cattle Evaluation																			
	Dir	Dtrs	GL	BWT	200D	400D	600D	MCW	Milk	SS	D t C	CWT	EMA	Rib	P8	RBY	IMF	NFI-F	Doc
EBVs	-4.1	+2.3	-3.4	+5.8	+50	+83	+105	+82	+13	+1.4	-6.9	+59	+5.7	+2.4	+3.5	-2.1	+3.7	+0.39	-
Acc	58%	52%	83%	72%	71%	70%	71%	69%	63%	66%	42%	65%	63%	68%	64%	65%	63%	54%	-
% Rank	90	58	71	84	46	69	75	81	87	75	15	75	56	5	1	99	6	74	-

Genetic Type Summary (GTS)											Selection Indexes				
Stature	Capacity	Body Length	Front Feet	Hind Feet	Rear Leg Set	Feet & Past.	Muscling	Doability	Sheath	Grade	\$A-L	\$A	\$D	\$GN	\$GS
24	39	28	23	24	26	22	38	32	5	6	\$330	\$210	\$164	\$290	\$195
											59	36	48	27	35

"A sound footed N479 son with eye appeal. Out of a 6 grading Big Sky cow. Top 1% rump fat, top 6% IMF."

Lot 12 **WATTLETOP MOMENTOUS R65^{PV}** **NWPR65**

Date of Birth: 25/07/2020 Register: HBR Traits Observed: GL,CE,BWT,200WT,400WT,Genomics AMFU,CAFU,DDF,NHFU
 G A R PROGRESS^{SV} CONNEALY EARNAN 076E^{PV}
 G A R MOMENTUM^{PV} MUSGRAVE BIG SKY^{PV}
 G A R BIG EYE 1770# SAV PRIMROSE 7861#
SIRE: VLYM518 LAWSONS MOMENTOUS M518^{PV} **DAM: NWPM100 WATTLETOP BARUNAH M100^{SV}**
 TE MANIA AFRICA A217^{PV} BOOROOMOOKA FRANKEL F510^{PV}
 LAWSONS AFRICA H229^{SV} WATTLETOP J309#
 LAWSONS ROCKN...

Actual Birth Weight	46 kg
Scrotal Circumference	43 cm

TACE April 2022 TransTasman Angus Cattle Evaluation																			
	Dir	Dtrs	GL	BWT	200D	400D	600D	MCW	Milk	SS	D t C	CWT	EMA	Rib	P8	RBY	IMF	NFI-F	Doc
EBVs	-7.2	-7.2	-4.6	5.9	+57	+100	+127	+112	+17	+1.3	-2.5	+74	+1.2	-1.1	-3.1	+1.5	+3.3	+0.05	-
Acc	62%	55%	82%	73%	72%	72%	72%	70%	66%	68%	44%	68%	66%	60%	67%	66%	66%	58%	-
% Rank	96	99	51	86	16	20	26	47	9	10	85	27	4	99	96	14	12	33	-



Genetic Type Summary (GTS)											Selection Indexes				
Stature	Capacity	Body Length	Front Feet	Hind Feet	Rear Leg Set	Feet & Past.	Muscling	Doability	Sheath	Grade	\$A-L	\$A	\$D	\$GN	\$GS
29	38	33	22	23	27	23	38	32	5	5	\$320	\$204	\$161	\$292	\$188
											66	43	51	26	42

"Out of a powerful big sky cow this bull comes in a slightly larger frame. Top 12% and better for milk, scrotal, EMA & IMF."

Lot 13 **WATTLETOP MOMENTOUS R76^{SV}** **NWPR76**

Date of Birth: 28/07/2020 Register: HBR Traits Observed: CE,BWT,200WT,400WT,Genomics AMFU,CAFU,DDFU,NHFU
 G A R PROGRESS^{SV} SYDGEN TRUST 6228[#]
 G A R MOMENTUM^{PV} SYDGEN BLACK PEARL 2006^{PV}
 G A R BIG EYE 1770[#] SYDGEN ANITA 8611[#]
SIRE: VLYM518 LAWSONS MOMENTOUS M518^{PV} **DAM: NWPL266 WATTLETOP BARUNAH L266^{SV}**
 TE MANIA AFRICA A217^{PV} B/R NEW DAY 454[#]
 LAWSONS AFRICA H229^{SV} WATTLETOP BARUNAH G261[#]
 LAWSONS ROCKND AMBUSH E1103^{PV} WATTLETOP BARUNAH B233[#]

Actual Birth Weight	42 kg
Scrotal Circumference	40 cm

TACE	April 2022 TransTasman Angus Cattle Evaluation																		
	Dir	Dtrs	GL	BWT	200D	400D	600D	MCW	Milk	SS	D t C	CWT	EMA	Rib	P8	RBY	IMF	NFI-F	Doc
EBVs	-6.0	-2.5	-2.5	+4.8	+50	+88	+116	+86	+23	+1.0	-3.0	+60	+9.5	+0.3	-0.8	-0.1	+3.8	+0.49	-
Acc	64%	57%	74%	74%	74%	73%	74%	73%	68%	70%	47%	70%	68%	72%	69%	69%	68%	61%	-
% Rank	94	90	83	66	47	56	52	76	13	87	78	72	10	39	61	73	5	83	-

Genetic Type Summary (GTS)											Selection Indexes				
Stature	Capacity	Body Length	Front Feet	Hind Feet	Rear Leg Set	Feet & Past.	Muscling	Doability	Sheath	Grade	\$A-L	\$A	\$D	\$GN	\$GS
28	37	31	22	23	26	23	37	30	5	5	\$310	\$204	\$151	\$293	\$190
											72	43	64	26	40

"Another large framed momentous son out of a powerful, slick skinned black pearl cow. He offers plenty of EMA and IMF."

Lot 14 **WATTLETOP CONVERSION R63^{PV}** **NWPR63**

Date of Birth: 24/07/2020 Register: HBR Traits Observed: BWT,200WT,400WT,Genomics AMFU,CAFU,DDFU,NHFU
 C A FUTURE DIRECTION 5321[#] TE MANIA KNIGHT K206+90^{SV}
 BT CROSSOVER 758N[#] TE MANIA ULONG U41^{SV}
 BT ROYAL PRIDE 237G[#] TE MANIA LOWAN Q42+95[#]
SIRE: USA16262077 SILVEIRAS CONVERSION 8064[#] **DAM: NWPA108 WATTLETOP USUAL A108^{PV}**
 BR MIDLAND[#] B/R NEW DESIGN 036[#]
 EXG SARAS DREAM S609 R3[#] WATTLETOP USUAL U2[#]
 EXAR SARAS DREAM 9809[#] WATTLETOP USUAL P22+94[#]

Actual Birth Weight	52 kg
Scrotal Circumference	42 cm

TACE	April 2022 TransTasman Angus Cattle Evaluation																		
	Dir	Dtrs	GL	BWT	200D	400D	600D	MCW	Milk	SS	D t C	CWT	EMA	Rib	P8	RBY	IMF	NFI-F	Doc
EBVs	-21.1	-19.1	-3.7	+9.9	+61	+97	+125	+106	+15	+2.8	-5.1	+62	+12.3	-1.5	-0.1	+3.1	+1.4	-0.79	-
Acc	65%	61%	72%	74%	73%	73%	74%	72%	71%	70%	53%	70%	68%	72%	69%	69%	68%	61%	-
% Rank	99	99	66	99	7	27	32	41	69	20	42	67	2	87	42	1	75	1	-

Genetic Type Summary (GTS)											Selection Indexes				
Stature	Capacity	Body Length	Front Feet	Hind Feet	Rear Leg Set	Feet & Past.	Muscling	Doability	Sheath	Grade	\$A-L	\$A	\$D	\$GN	\$GS
25	40	29	22	23	27	22	40	33	5	6	\$257	\$183	\$150	\$243	\$165
											92	64	65	61	65

"One of 4 full flush brothers out of a legendary cow from the Wattletop herd A108. A full brother J198 topped the Wattletop sale in 2015. R63 is a standout in the sale for his deep spring of rib, muscling and do ability. Definitely not one for heifers but offers very high EMA, yield and NFI."

Lot 15 **WATTLETOP LEGEND R33^{PV}** **NWPR33**

Date of Birth: 19/07/2020 Register: HBR Traits Observed: GL,CE,BWT,200WT,400WT,Genomics AMFU,CAFU,DDFU,NHFU
 SCHURRTOP REALITY X723[#] TC FRANKLIN 619[#]
 MATAURI REALITY 839[#] WATTLETOP FRANKLIN G188^{SV}
 MATAURI 06663[#] WATTLETOP BARUNAH E295^{PV}
SIRE: NBHL348 CLUNIE RANGE LEGEND L348^{PV} **DAM: NWPL88 WATTLETOP BARUNAH L88^{SV}**
 CONNEALY EARNAN 076E^{PV} B/R AMBUSH 28[#]
 ABERDEEN ESTATE LAURA J81^{PV} WATTLETOP BARUNAH C144[#]
 TUWHARETOA E111^{PV} WATTLETOP BARUNAH Z155^{PV}

Actual Birth Weight	45 kg
Scrotal Circumference	47 cm

TACE	April 2022 TransTasman Angus Cattle Evaluation																		
	Dir	Dtrs	GL	BWT	200D	400D	600D	MCW	Milk	SS	D t C	CWT	EMA	Rib	P8	RBY	IMF	NFI-F	Doc
EBVs	+0.9	+3.7	-9.6	+4.8	+51	+88	+112	+111	+10	+3.4	-6.0	+70	+7.8	+0.4	-2.2	+0.9	+2.2	-0.10	-
Acc	63%	57%	83%	75%	74%	73%	74%	73%	69%	70%	48%	71%	69%	73%	70%	71%	69%	62%	-
% Rank	65	43	3	66	41	55	60	31	96	8	27	38	24	37	89	32	43	18	-

Genetic Type Summary (GTS)											Selection Indexes				
Stature	Capacity	Body Length	Front Feet	Hind Feet	Rear Leg Set	Feet & Past.	Muscling	Doability	Sheath	Grade	\$A-L	\$A	\$D	\$GN	\$GS
23	39	27	22	22	26	23	40	30	4	4	\$331	\$180	\$154	\$233	\$162
											58	68	60	68	68

"A donor cow's natural calf that weighed 466kgs at weaning. A very moderate, easy doing bull with a very impressive scrotal of 46cm at 18 months. He will produce stout early maturing calves. R33 has been chosen by Jess as our charity bull to support 3 different charities. For more information please read the full information on page 4 of our catalogue. R33 became a favourite of Jess' as a calf on his donor mother coming into the yards twice a day to be needed for flushing and he was so quiet he would stand beside his mother in the crush, licking the AI tank (yes that was getting a bit too close to the valuable goods)!"

Lot 16 **WATTLETOP BARTEL R73^{PV}** **NWPR73**

Date of Birth: 27/07/2020 Register: HBR Traits Observed: BWT,200WT,400WT,Genomics AMFU,CAFU,DDFU,NHFU
 B/R NEW DIMENSION 7127^{SV} TE MANIA BARTEL B219^{PV} TE MANIA JEDDA W85[#]
 TUWHARETOA REGENT D145^{PV} LAWSONS HENRY VIII Y5^{SV}
SIRE: HIOE7 AYRVALE BARTEL E7^{PV} **DAM: NWPK204 WATTLETOP ANN K204^{PV}**
 MYTTY IN FOCUS[#] TE MANIA INFINITY 04 379 AB[#]
 EAGLEHAWK JEDDA B32^{SV} WATTLETOP ANN F45^{SV}
 EAGLEHAWK JEDDA Z48[#] WATTLETOP ANN Z397^{SV}

Actual Birth Weight	41 kg
Scrotal Circumference	42 cm

TACE April 2022 TransTasman Angus Cattle Evaluation																			
	Dir	Dtrs	GL	BWT	200D	400D	600D	MCW	Milk	SS	D t C	CWT	EMA	Rib	P8	RBY	IMF	NFI-F	Doc
EBVs	+3.8	+3.0	-4.6	+5.3	+60	+105	+140	+123	+23	+1.4	-7.8	+90	+8.6	-2.2	-2.0	+1.6	+3.1	+0.33	-
Acc	65%	63%	70%	72%	71%	71%	72%	71%	68%	67%	56%	70%	68%	72%	69%	70%	68%	63%	-
% Rank	42	51	51	76	9	11	10	15	11	75	8	2	16	95	86	12	16	68	-

Genetic Type Summary (GTS)											Selection Indexes				
Stature	Capacity	Body Length	Front Feet	Hind Feet	Rear Leg Set	Feet & Past.	Muscling	Doability	Sheath	Grade	\$A-L	\$A	\$D	\$GN	\$GS
28	38	32	21	23	26	23	39	32	5	5	\$443	\$264	\$214	\$351	\$249
											2	3	4	4	4

"A long bodied Bartel son out of a Regent donor cow. He balances positive calving ease with good growth, EMA and IMF."

Lot 17 **WATTLETOP BARTEL R74^{PV}** **NWPR74**

Date of Birth: 27/07/2020 Register: HBR Traits Observed: BWT,200WT,400WT,Genomics AMFU,CAFU,DDFU,NHFU
 B/R NEW DIMENSION 7127^{SV} TC FRANKLIN 619[#]
 TE MANIA BARTEL B219^{PV} WATTLETOP FRANKLIN G188^{SV}
 TE MANIA JEDDA W85[#] WATTLETOP BARUNAH E295^{SV}
SIRE: HIOE7 AYRVALE BARTEL E7^{PV} **DAM: NWPK45 WATTLETOP USUAL K45^{SV}**
 MYTTY IN FOCUS[#] B/R NEW DAY 454[#]
 EAGLEHAWK JEDDA B32^{SV} WATTLETOP USUAL H28[#]
 EAGLEHAWK JEDDA Z48[#] WATTLETOP USUAL F308[#]

Actual Birth Weight	41 kg
Scrotal Circumference	45 cm

TACE April 2022 TransTasman Angus Cattle Evaluation																			
	Dir	Dtrs	GL	BWT	200D	400D	600D	MCW	Milk	SS	D t C	CWT	EMA	Rib	P8	RBY	IMF	NFI-F	Doc
EBVs	+0.1	+6.2	-0.9	+4.6	+62	+112	+146	+114	+24	+3.5	-7.1	+87	+7.6	-2.6	-4.0	+1.9	+2.2	-0.29	-
Acc	65%	61%	72%	73%	72%	72%	73%	72%	69%	69%	54%	70%	68%	72%	69%	70%	68%	63%	-
% Rank	71	18	95	62	6	4	5	27	8	7	13	4	26	97	99	7	43	7	-

Genetic Type Summary (GTS)											Selection Indexes				
Stature	Capacity	Body Length	Front Feet	Hind Feet	Rear Leg Set	Feet & Past.	Muscling	Doability	Sheath	Grade	\$A-L	\$A	\$D	\$GN	\$GS
28	38	32	22	23	25	24	30	30	5	4	\$420	\$253	\$214	\$327	\$237
											6	6	5	9	7

"Another large framed Bartel son this time out of a G188 donor cow. Around breed average for birth with top 7% growth for 400 & 600 days (he was the equal heaviest bull in the draft at 600 days) with good scrotal and scanned second highest for IMF at 6.9. He is the type of bull that will breed valuable feeder steers and fertile daughters."

Lot 18 **WATTLETOP MAKAHU R68^{PV}** **NWPR68**

Date of Birth: 26/07/2020 Register: HBR Traits Observed: GL,CE,BWT,200WT,400WT,Genomics AMFU,CAFU,DDFU,NHFU
 SCHURRTOP REALITY X723[#] TC FRANKLIN 619[#]
 MATAURI REALITY 839[#] WATTLETOP FRANKLIN G188^{SV}
 MATAURI 06663[#] WATTLETOP BARUNAH E295^{SV}
SIRE: QLLM602 GLENOCH-JK MAKAHU M602^{SV} **DAM: NWP532 WATTLETOP PRIMROSE P532^{SV}**
 GLENOCH HINMAN H221^{SV} HYLIN RIGHT TIME 338[#]
 GLENOCH-JK ANN K615^{SV} WATTLETOP USUAL D110[#]
 GLENOCH-JK ANN F606^{SV} WATTLETOP USUAL Y286^{SV}

Actual Birth Weight	37 kg
Scrotal Circumference	44 cm

TACE April 2022 TransTasman Angus Cattle Evaluation																			
	Dir	Dtrs	GL	BWT	200D	400D	600D	MCW	Milk	SS	D t C	CWT	EMA	Rib	P8	RBY	IMF	NFI-F	Doc
EBVs	-1.6	+2.2	-4.5	+6.2	+66	+111	+159	+153	+21	+5.0	-4.8	+79	+2.6	+0.0	-0.6	-0.6	+2.6	-0.23	-
Acc	59%	53%	83%	74%	73%	73%	73%	70%	65%	69%	44%	68%	66%	71%	67%	68%	66%	58%	-
% Rank	80	59	53	89	2	5	2	2	20	1	48	12	94	48	55	87	29	9	-

Genetic Type Summary (GTS)											Selection Indexes				
Stature	Capacity	Body Length	Front Feet	Hind Feet	Rear Leg Set	Feet & Past.	Muscling	Doability	Sheath	Grade	\$A-L	\$A	\$D	\$GN	\$GS
27	39	31	23	24	27	22	40	29	5	6	\$386	\$199	\$146	\$274	\$184
											18	48	70	38	46

"Our only Makahu son in the sale. We used Makahu for his soundness and fleshing ability that comes through strongly from Reality and R68 offers a lot of both factors. We are looking forward to seeing how the Makahu daughters develop into mothers. They are very sound footed and deep bodied."

Lot 19 **WATTLETOP CONVERSION R39^{PV}** **NWPR39**

Date of Birth: 20/07/2020 Register: HBR Traits Observed: BWT,200WT,400WT,Genomics AMFU,CAFU,DDFU,NHFU
 C A FUTURE DIRECTION 5321[#] TE MANIA KNIGHT K206+90^{SV}
 BT CROSSOVER 758N[#] TE MANIA ULONG U41^{SV}
 BT ROYAL PRIDE 237G[#] TE MANIA LOWAN Q42+95[#]
SIRE: USA16262077 SILVEIRAS CONVERSION 8064[#] **DAM: NWPA108 WATTLETOP USUAL A108^{PV}**
 BR MIDLAND[#] B/R NEW DESIGN 036[#]
 EXG SARAS DREAM S609 R3[#] WATTLETOP USUAL U2[#]
 EXAR SARAS DREAM 9809[#] WATTLETOP USUAL P22+94[#]

Actual Birth Weight	42 kg
Scrotal Circumference	44 cm

TACE April 2022 TransTasman Angus Cattle Evaluation																			
	Dir	Dtrs	GL	BWT	200D	400D	600D	MCW	Milk	SS	D t C	CWT	EMA	Rib	P8	RBY	IMF	NFI-F	Doc
EBVs	-7.9	-9.3	-3.8	+5.9	+49	+86	+116	+112	+22	+3.7	-5.9	+58	+9.4	-0.3	+1.6	+1.1	+2.5	-0.23	-
Acc	65%	61%	72%	74%	73%	73%	74%	72%	71%	70%	53%	70%	68%	72%	69%	69%	68%	61%	-
% Rank	97	99	65	86	51	61	52	30	18	5	28	80	11	58	10	25	32	9	-

Genetic Type Summary (GTS)											Selection Indexes				
Stature	Capacity	Body Length	Front Feet	Hind Feet	Rear Leg Set	Feet & Past.	Muscling	Doability	Sheath	Grade	\$A-L	\$A	\$D	\$GN	\$GS
28	32	32	23	24	26	23	38	32	5	6	\$297	\$175	\$136	\$234	\$161
											79	72	80	68	69

"Another 6 grading Conversion son that is a full brother to Lot 14. Certainly not a heifer bull either but offers good scrotal, EMA & IMF."

Lot 20 **WATTLETOP FRANKLIN R64^{SV}** **NWPR64**

Date of Birth: 24/07/2020 Register: HBR Traits Observed: BWT,200WT,400WT,Genomics AMFU,CAFU,DDFU,NHFU
 BON VIEW NEW DESIGN 208^{SV} ROCKN D AMBUSH 1531[#]
 TC TOTAL 410[#] B/R AMBUSH 28[#]
 TC ERICA EILEEN 2047[#] B/R RUBY OF TIFFANY 8250[#]
SIRE: USA15462648 TC FRANKLIN 619[#] **DAM: NWPD115 WATTLETOP USUAL D115^{PV}**
 CONNEALY FOREFRONT[#] C A FUTURE DIRECTION 5321[#]
 TC MARCIA 1069[#] WATTLETOP USUAL A143^{PV}
 TC MARCIA 7105[#] WATTLETOP USUAL U102[#]

Actual Birth Weight	42 kg
Scrotal Circumference	40 cm

TACE April 2022 TransTasman Angus Cattle Evaluation																			
	Dir	Dtrs	GL	BWT	200D	400D	600D	MCW	Milk	SS	D t C	CWT	EMA	Rib	P8	RBY	IMF	NFI-F	Doc
EBVs	-6.8	+6.3	-2.5	+5.7	+48	+76	+106	+111	+9	+0.4	-1.9	+60	+2.9	-4.5	-4.8	+1.5	+1.7	-0.82	-
Acc	65%	60%	72%	75%	74%	74%	75%	74%	71%	70%	52%	71%	68%	72%	70%	70%	69%	62%	-
% Rank	95	17	83	83	60	87	74	31	98	97	90	72	92	99	99	14	63	1	-

Genetic Type Summary (GTS)											Selection Indexes				
Stature	Capacity	Body Length	Front Feet	Hind Feet	Rear Leg Set	Feet & Past.	Muscling	Doability	Sheath	Grade	\$A-L	\$A	\$D	\$GN	\$GS
28	38	32	23	24	27	23	39	30	4	6	\$234	\$123	\$94	\$173	\$102
											96	95	97	93	96

"Lot 20 & 22 are full brothers out of an exceptional donor cow D115 that sold for \$32K to Heart Angus. R64 is soundfooted with plenty of frame."

Lot 21 **WATTLETOP CONVERSION R58^{PV}** **NWPR58**

Date of Birth: 23/07/2020 Register: HBR Traits Observed: BWT,200WT,400WT,Genomics AMFU,CAFU,DDFU,NHFU
 C A FUTURE DIRECTION 5321[#] TE MANIA KNIGHT K206+90^{SV}
 BT CROSSOVER 758N[#] TE MANIA ULONG U41^{SV}
 BT ROYAL PRIDE 237G[#] TE MANIA LOWAN Q42+95[#]
SIRE: USA16262077 SILVEIRAS CONVERSION 8064[#] **DAM: NWPA108 WATTLETOP USUAL A108^{PV}**
 BR MIDLAND[#] B/R NEW DESIGN 036[#]
 EXG SARAS DREAM S609 R3[#] WATTLETOP USUAL U2[#]
 EXAR SARAS DREAM 9809[#] WATTLETOP USUAL P22+94[#]

Actual Birth Weight	45 kg
Scrotal Circumference	40 cm

TACE April 2022 TransTasman Angus Cattle Evaluation																			
	Dir	Dtrs	GL	BWT	200D	400D	600D	MCW	Milk	SS	D t C	CWT	EMA	Rib	P8	RBY	IMF	NFI-F	Doc
EBVs	-3.3	-6.0	-4.4	+5.2	+48	+83	+103	+107	+12	+2.7	-7.3	+56	+7.8	+0.8	+2.2	+0.5	+2.0	-0.60	-
Acc	65%	61%	72%	74%	74%	73%	74%	73%	71%	71%	53%	71%	69%	72%	70%	70%	69%	61%	-
% Rank	87	98	54	74	56	71	79	38	90	23	11	84	24	26	5	49	51	1	-

Genetic Type Summary (GTS)											Selection Indexes				
Stature	Capacity	Body Length	Front Feet	Hind Feet	Rear Leg Set	Feet & Past.	Muscling	Doability	Sheath	Grade	\$A-L	\$A	\$D	\$GN	\$GS
23	39	27	23	24	26	23	38	36	5	6	\$312	\$178	\$153	\$229	\$161
											71	69	62	71	69

"Another 8064 ET brother that is growing out into a stylish bull with thickness and sound feet."

Lot 22 **WATTLETOP FRANKLIN R56^{SV}** **NWPR56**

Date of Birth: 23/07/2020 Register: HBR Traits Observed: BWT,200WT,400WT,Genomics AMFU,CAFU,DDFU,NHFU
 BON VIEW NEW DESIGN 208^{SV} ROCKN D AMBUSH 1531[#]
 TC TOTAL 410[#] B/R AMBUSH 28[#]
 TC ERICA EILEEN 2047[#] B/R RUBY OF TIFFANY 8250[#]
SIRE: USA15462648 TC FRANKLIN 619[#] **DAM: NWPD115 WATTLETOP USUAL D115^{PV}**
 CONNEALY FOREFRONT[#] C A FUTURE DIRECTION 5321[#]
 TC MARCIA 1069[#] WATTLETOP USUAL A143^{PV}
 TC MARCIA 7105[#] WATTLETOP USUAL U102[#]

Actual Birth Weight	34 kg
Scrotal Circumference	40 cm

TACE April 2022 TransTasman Angus Cattle Evaluation																			
	Dir	Dtrs	GL	BWT	200D	400D	600D	MCW	Milk	SS	D t C	CWT	EMA	Rib	P8	RBY	IMF	NFI-F	Doc
EBVs	+2.7	+10.6	-4.1	+2.2	+46	+82	+105	+101	+13	+0.9	-3.3	+65	+5.4	-1.2	-1.6	-0.5	+3.1	+0.20	-
Acc	65%	60%	73%	75%	74%	74%	75%	74%	71%	70%	52%	71%	69%	72%	70%	70%	69%	62%	-
% Rank	51	1	60	13	69	74	75	50	85	90	74	55	61	82	79	84	16	52	-

Genetic Type Summary (GTS)											Selection Indexes				
Stature	Capacity	Body Length	Front Feet	Hind Feet	Rear Leg Set	Feet & Past.	Muscling	Doability	Sheath	Grade	\$A-L	\$A	\$D	\$GN	\$GS
27	38	31	22	23	27	23	38	31	4	5	\$323	\$179	\$142	\$250	\$162
											64	68	75	56	68

"With the lowest actual birth weight in the line up R56 is well suited to heifers with pretty high IMF at 3.1 for older genetics."

Lot 23 **WATTLETOP N479 R75^{PV}** **NWPR75**

Date of Birth: 27/07/2020 Register: HBR Traits Observed: BWT,200WT,400WT,Genomics AMFU,CAFU,DDFU,NHFU
 G A R INGENUITY[#] TC FRANKLIN 619[#]
 H P C A INTENSITY[#] WATTLETOP FRANKLIN G188^{SV}
 G A R PREDESTINED 287L[#] WATTLETOP BARUNAH E295^{PV}
SIRE: NORN479 RENNYLEA N479^{PV} **DAM: NWPM161 WATTLETOP DANDLOO M161^{SV}**
 TE MANIA BERKLEY B1^{PV} RENNYLEA EDMUND E11^{PV}
 RENNYLEA H411^{SV} WATTLETOP DANDLOO K77[#]
 RENNYLEA D298[#] WATTLETOP DANDLOO C36^{SV}

Actual Birth Weight	50 kg
Scrotal Circumference	42 cm

TACE April 2022 TransTasman Angus Cattle Evaluation																			
	Dir	Dtrs	GL	BWT	200D	400D	600D	MCW	Milk	SS	D t C	CWT	EMA	Rib	P8	RBY	IMF	NFI-F	Doc
EBVs	-4.1	+3.6	-5.2	+7.4	+69	+112	+148	+128	+17	+2.7	-8.8	+83	+6.0	+1.7	+1.2	-0.9	+3.6	-0.50	-
Acc	59%	52%	73%	74%	72%	72%	73%	70%	64%	67%	43%	67%	64%	69%	66%	66%	65%	56%	-
% Rank	90	44	41	97	1	4	5	11	55	23	3	7	50	11	14	92	8	2	-

Genetic Type Summary (GTS)											Selection Indexes				
Stature	Capacity	Body Length	Front Feet	Hind Feet	Rear Leg Set	Feet & Past.	Muscling	Doability	Sheath	Grade	\$A-L	\$A	\$D	\$GN	\$GS
25	38	29	22	24	26	23	38	29	5	5	\$439	\$265	\$208	\$365	\$251
											3	3	6	2	3

"A larger framed N479 son with plenty of length. Offers high growth, positive fat and high IMF along with top 2% feed efficiency."

Lot 24 **WATTLETOP ENHANCE R72^{PV}** **NWPR72**

Date of Birth: 27/07/2020 Register: HBR Traits Observed: GL,CE,BWT,200WT,400WT,Genomics AMFU,CAFU,DDFU,NHFU
 SYDGEN GOOGOL[#] SITZ UPWARD 307R^{SV}
 SYDGEN EXCEED 3223^{PV} TEHAMA UPWARD Y238[#]
 SYDGEN FOREVER LADY 1255[#] TEHAMA ELITE BLACKBIRD T735[#]
SIRE: USA18170041 SYDGEN ENHANCE^{SV} **DAM: NWPM182 WATTLETOP BARUNAH M182^{SV}**
 SYDGEN LIBERTY GA 8627[#] WATTLETOP USA9074 C118^{PV}
 SYDGEN RITA 2618[#] WATTLETOP BARUNAH E295^{PV}
 FOX RUN RITA 9308[#] WATTLETOP BARUNAH C136^{SV}

Actual Birth Weight	41 kg
Scrotal Circumference	47 cm

TACE April 2022 TransTasman Angus Cattle Evaluation																			
	Dir	Dtrs	GL	BWT	200D	400D	600D	MCW	Milk	SS	D t C	CWT	EMA	Rib	P8	RBY	IMF	NFI-F	Doc
EBVs	+2.2	+5.0	-1.3	+3.2	+53	+92	+120	+91	+21	+3.3	-2.7	+60	+9.6	-1.0	-1.7	+2.2	+1.9	-0.48	-
Acc	62%	53%	83%	74%	73%	73%	74%	71%	66%	69%	38%	68%	66%	70%	66%	67%	66%	56%	-
% Rank	55	29	93	29	31	40	41	67	20	10	82	72	10	77	81	4	55	2	-

Genetic Type Summary (GTS)											Selection Indexes				
Stature	Capacity	Body Length	Front Feet	Hind Feet	Rear Leg Set	Feet & Past.	Muscling	Doability	Sheath	Grade	\$A-L	\$A	\$D	\$GN	\$GS
25	38	28	22	24	27	23	38	31	5	5	\$364	\$229	\$188	\$298	\$214
											32	19	19	22	19

"This bull is really starting to stand out with plenty of thickness. Out of a deep bodied Upward cow he is suited to heifers with good scrotal, EMA, yield and top 2% NFI."

Lot 25 **WATTLETOP MOMENTOUS R15^{SV}** **NWPR15**

Date of Birth: 14/07/2020 Register: HBR Traits Observed: GL,CE,BWT,200WT,400WT,Genomics AMFU,CAFU,DDF,NHFU
 G A R PROGRESS^{SV} TE MANIA BERKLEY B1^{PV}
 G A R MOMENTUM^{PV} AYRVALE GENERAL G18^{PV}
 G A R BIG EYE 1770[#] AYRVALE EASE E3^{PV}
SIRE: VLYM518 LAWSONS MOMENTOUS M518^{PV} **DAM: NWPP536 WATTLETOP USUAL P536^{SV}**
 TE MANIA AFRICA A217^{PV} WATTLETOP J95^{PV}
 LAWSONS AFRICA H229^{SV} WATTLETOP USUAL L152[#]
 LAWSONS ROCKND AMBUSH E1103^{PV} WATTLETOP USUAL F308[#]

Actual Birth Weight	39 kg
Scrotal Circumference	41 cm

TACE	April 2022 TransTasman Angus Cattle Evaluation																		
	Dir	Dtrs	GL	BWT	200D	400D	600D	MCW	Milk	SS	D t C	CWT	EMA	Rib	P8	RBY	IMF	NFI-F	Doc
EBVs	+0.9	-5.0	-3.1	+5.4	+55	+98	+129	+93	+26	+3.1	-2.2	+72	+12.9	-0.6	-0.6	+1.1	+4.1	+0.50	-
Acc	63%	56%	83%	73%	73%	72%	73%	71%	67%	69%	45%	69%	67%	71%	68%	68%	67%	60%	-
% Rank	65	96	75	78	22	25	25	64	5	13	88	32	1	67	55	25	3	84	-

Genetic Type Summary (GTS)											Selection Indexes				
Stature	Capacity	Body Length	Front Feet	Hind Feet	Rear Leg Set	Feet & Past.	Muscling	Doability	Sheath	Grade	\$A-L	\$A	\$D	\$GN	\$GS
27	38	32	22	23	27	23	38	33	5	5	\$376	\$245	\$187	\$346	\$235
											24	9	20	5	7

"R15 combines some of the most proven carcass sires in Australia with Momentous, Africa, General and Regent. It is no surprise he is in the top 1% for EMA, 3% IMF and weighed the equal heaviest at 600 days."

Lot 26 **WATTLETOP N479 R81^{PV}** **NWPR81**

Date of Birth: 29/07/2020 Register: HBR Traits Observed: CE,BWT,200WT,400WT,Genomics AMFU,CAFU,DDFU,NHFU
 G A R INGENUITY[#] TC FRANKLIN 619[#]
 H P C A INTENSITY[#] WATTLETOP FRANKLIN G188^{SV}
 G A R PREDESTINED 287L[#] WATTLETOP BARUNAH E295^{PV}
SIRE: NOR479 RENNYLEA N479^{PV} **DAM: NWPM17 WATTLETOP BARUNAH M17^{SV}**
 TE MANIA BERKLEY B1^{PV} RENNYLEA EDMUND E11^{PV}
 RENNYLEA H411^{SV} WATTLETOP BARUNAH K215^{PV}
 RENNYLEA D298[#] WATTLETOP BARUNAH E89^{PV}

Actual Birth Weight	48 kg
Scrotal Circumference	41 cm

TACE	April 2022 TransTasman Angus Cattle Evaluation																		
	Dir	Dtrs	GL	BWT	200D	400D	600D	MCW	Milk	SS	D t C	CWT	EMA	Rib	P8	RBY	IMF	NFI-F	Doc
EBVs	-16.0	-0.5	-2.8	+7.4	+58	+93	+123	+118	+10	+3.0	-8.5	+66	+6.6	+0.6	+0.4	+0.2	+2.6	-0.47	-
Acc	59%	53%	73%	73%	72%	72%	72%	70%	64%	67%	43%	67%	65%	70%	66%	67%	65%	57%	-
% Rank	99	80	79	97	15	39	35	22	97	15	4	53	40	31	29	61	29	2	-

Genetic Type Summary (GTS)											Selection Indexes				
Stature	Capacity	Body Length	Front Feet	Hind Feet	Rear Leg Set	Feet & Past.	Muscling	Doability	Sheath	Grade	\$A-L	\$A	\$D	\$GN	\$GS
26	38	30	22	23	26	23	38	38	5	5	\$305	\$185	\$146	\$252	\$170
											75	62	70	55	61

"Another moderate N479 son with good scrotal and IMF."

Lot 27 **WATTLETOP REGENT R103^{PV}** **NWPR103**

Date of Birth: 30/08/2020 Register: HBR Traits Observed: 200WT,400WT,Genomics AMFU,CAFU,DDFU,NHFU
 TUWHARETOA REGENT D145^{PV} WATTLETOP J200^{SV}
 WATTLETOP REGENT L78^{PV} WATTLETOP REGENT L306^{SV}
 WATTLETOP ANN F40^{SV} WATTLETOP BARUNAH E295^{PV}
SIRE: NWPP527 WATTLETOP REGENT L78 P527^{SV} **DAM: NWPN433 WATTLETOP BARUNAH N433[#]**
 KENNY'S CREEK REGENT G213^{SV} B/R AMBUSH 28[#]
 WATTLETOP USUAL K109[#] WATTLETOP BARUNAH C158^{SV}
 WATTLETOP USUAL D70[#] WATTLETOP BARUNAH Z155^{PV}

Actual Birth Weight	kg
Scrotal Circumference	43 cm

TACE	April 2022 TransTasman Angus Cattle Evaluation																		
	Dir	Dtrs	GL	BWT	200D	400D	600D	MCW	Milk	SS	D t C	CWT	EMA	Rib	P8	RBY	IMF	NFI-F	Doc
EBVs	-0.7	+3.1	-6.8	+6.5	+55	+95	+132	+125	+20	+2.4	-6.3	+75	+6.7	-2.6	-1.2	+0.7	+2.4	-0.03	-
Acc	51%	46%	65%	69%	67%	67%	68%	66%	61%	61%	37%	63%	60%	66%	62%	63%	60%	51%	-
% Rank	76	50	19	92	25	32	19	14	27	33	22	21	39	97	71	40	36	24	-

Genetic Type Summary (GTS)											Selection Indexes				
Stature	Capacity	Body Length	Front Feet	Hind Feet	Rear Leg Set	Feet & Past.	Muscling	Doability	Sheath	Grade	\$A-L	\$A	\$D	\$GN	\$GS
27	38	31	23	23	26	23	38	32	5	5	\$354	\$193	\$152	\$253	\$175
											40	55	62	54	56

"One of the younger bulls that has caught up to his contemporaries and will grow into a large framed bull. He offers good growth, scrotal and NFI."

Lot 28 **WATTLETOP G188 R70^{PV}** **NWPR70**

Date of Birth: 26/07/2020 Register: HBR Traits Observed: Genomics AMFU,CAFU,DDFU,NHFU
 TC TOTAL 410[#] BON VIEW NEW DESIGN 1407[#]
 TC FRANKLIN 619[#] LAWSONS NEW DESIGN 1407 Y64[#]
 TC MARCIA 1069[#] YTHANBRAE SCOTCH CAP OB45 W249[#]
SIRE: NWP188 WATTLETOP FRANKLIN G188^{SV} **DAM: NWPB159 WATTLETOP ROBE B159^{SV}**
 WATTLETOP USA9074 C118^{PV} YTHANBRAE ROCKN D AMBUSH W129[#]
 WATTLETOP BARUNAH E295^{SV} WATTLETOP Z352[#]
 WATTLETOP BARUNAH C136^{SV} WATTLETOP W187[#]

Actual Birth Weight	41 kg
Scrotal Circumference	43 cm

TACE	April 2022 TransTasman Angus Cattle Evaluation																		
	Dir	Dtrs	GL	BWT	200D	400D	600D	MCW	Milk	SS	D t C	CWT	EMA	Rib	P8	RBY	IMF	NFI-F	Doc
EBVs	+9.2	+7.4	-7.1	+0.2	+47	+83	+118	+81	+20	+1.4	-3.8	+67	+4.3	-0.1	-0.8	+0.0	+1.0	-0.42	-
Acc	64%	57%	73%	76%	74%	74%	75%	74%	71%	71%	47%	71%	68%	72%	69%	69%	68%	61%	-
% Rank	5	10	16	2	61	69	46	82	30	75	66	50	78	51	61	69	87	3	-

Genetic Type Summary (GTS)											Selection Indexes				
Stature	Capacity	Body Length	Front Feet	Hind Feet	Rear Leg Set	Feet & Past.	Muscling	Doability	Sheath	Grade	\$A-L	\$A	\$D	\$GN	\$GS
29	40	38	22	24	26	23	38	32	5	4	\$344	\$208	\$161	\$265	\$193
											48	39	51	45	38

"R70 is going to grow into a big lump of a bull. One of the last G188's we will offer for sale. He is suitable for heifers yet offers plenty of frame and growth in the flesh and was one of the highest scanning for IMF in his contemporary so it will be interesting to see if his IMF EBVs change."

Lot 29 **WATTLETOP GENERAL R95^{SV}** **NWPR95**

Date of Birth: 16/08/2020 Register: HBR Traits Observed: BWT,200WT,400WT,Genomics AMFU,CAFU,DDF,NHFU
 TE MANIA BERKLEY B1^{PV} SYDGEN TRUST 6228[#]
 AYRVALE GENERAL G18^{PV} SYDGEN BLACK PEARL 2006^{PV}
 AYRVALE EASE E3^{PV} SYDGEN ANITA 8611[#]
SIRE: NWP48 WATTLETOP GENERAL N48^{SV} **DAM: NWP49 WATTLETOP USUAL M94[#]**
 WATTLETOP J312^{SV} TC FRANKLIN 619[#]
 WATTLETOP BARUNAH L351[#] WATTLETOP J88[#]
 WATTLETOP BARUNAH F138[#] WATTLETOP USUAL C176[#]

Actual Birth Weight	43 kg
Scrotal Circumference	42 cm

TACE	April 2022 TransTasman Angus Cattle Evaluation																		
	Dir	Dtrs	GL	BWT	200D	400D	600D	MCW	Milk	SS	D t C	CWT	EMA	Rib	P8	RBY	IMF	NFI-F	Doc
EBVs	-0.3	+2.9	-5.8	+5.0	+59	+96	+129	+108	+28	+4.2	-5.6	+73	+7.4	-1.1	-0.9	+0.9	+2.7	+0.09	-
Acc	54%	49%	69%	69%	67%	67%	69%	66%	60%	61%	39%	63%	59%	65%	62%	62%	60%	51%	-
% Rank	73	52	31	70	11	28	24	37	2	3	33	27	29	79	63	32	26	38	-

Genetic Type Summary (GTS)											Selection Indexes				
Stature	Capacity	Body Length	Front Feet	Hind Feet	Rear Leg Set	Feet & Past.	Muscling	Doability	Sheath	Grade	\$A-L	\$A	\$D	\$GN	\$GS
23	39	26	23	24	26	23	38	32	5	4	\$379	\$230	\$180	\$313	\$215
											23	18	27	15	18

"A moderate N48 son with good muscle and top 2% scrotal out of a Black Pearl cow that weaned the heaviest calf this year."

Lot 30 **WATTLETOP N479 R38^{PV}** **NWPR38**

Date of Birth: 20/07/2020 Register: HBR Traits Observed: GL,CE,BWT,200WT,400WT,Genomics AMFU,CAFU,DDC,NHFU
 G A R INGENUITY[#] TUWHARETOA REGENT D145^{PV}
 H P C A INTENSITY[#] WATTLETOP J95^{PV}
 G A R PREDESTINED 287L[#] WATTLETOP IDOLDEE F171[#]
SIRE: NORN479 RENNYLEA N479^{PV} **DAM: NWP419 WATTLETOP DANDLOO N419^{PV}**
 TE MANIA BERKLEY B1^{PV} SITZ JACKSON 431T[#]
 RENNYLEA H411^{SV} WATTLETOP J24^{SV}
 RENNYLEA D298[#] WATTLETOP DANDLOO G102[#]

Actual Birth Weight	35 kg
Scrotal Circumference	42 cm

TACE	April 2022 TransTasman Angus Cattle Evaluation																		
	Dir	Dtrs	GL	BWT	200D	400D	600D	MCW	Milk	SS	D t C	CWT	EMA	Rib	P8	RBY	IMF	NFI-F	Doc
EBVs	+4.9	+7.3	-6.9	+2.7	+56	+94	+125	+86	+20	+1.3	-6.7	+75	+4.9	+2.5	+0.8	-0.5	+2.0	-0.28	-
Acc	56%	49%	82%	71%	69%	69%	70%	67%	61%	64%	39%	64%	61%	66%	63%	63%	61%	52%	-
% Rank	32	10	18	20	19	35	31	76	27	79	17	23	69	4	21	84	51	7	-

Genetic Type Summary (GTS)											Selection Indexes				
Stature	Capacity	Body Length	Front Feet	Hind Feet	Rear Leg Set	Feet & Past.	Muscling	Doability	Sheath	Grade	\$A-L	\$A	\$D	\$GN	\$GS
22	39	26	23	24	27	22	39	33	4	5	\$403	\$255	\$205	\$332	\$239
											11	5	8	8	6

"A sound footed N479 son suited for heifer joinings with top 8% NFI."

Lot 31 **WATTLETOP BARTEL R78^{PV}** **NWPR78**

Date of Birth: 28/07/2020 Register: HBR Traits Observed: BWT,200WT,400WT,Genomics AMFU,CAFU,DDFU,NHFU
 B/R NEW DIMENSION 7127^{SV} TE MANIA AMBASSADOR A134^{SV}
 TE MANIA BARTEL B219^{PV} TUWHARETOA REGENT D145^{PV}
 TE MANIA JEDDA W85[#] LAWSONS HENRY VIII Y5^{SV}
SIRE: HIOE7 AYRVALE BARTEL E7^{PV} **DAM: NWPK204 WATTLETOP ANN K204^{PV}**
 MYTTY IN FOCUS[#] TE MANIA INFINITY 04 379 AB[#]
 EAGLEHAWK JEDDA B32^{SV} WATTLETOP ANN F45^{SV}
 EAGLEHAWK JEDDA Z48[#] WATTLETOP ANN Z397^{SV}

Actual Birth Weight	40 kg
Scrotal Circumference	43 cm

TACE April 2022 TransTasman Angus Cattle Evaluation																			
	Dir	Dtrs	GL	BWT	200D	400D	600D	MCW	Milk	SS	D t C	CWT	EMA	Rib	P8	RBY	IMF	NFI-F	Doc
EBVs	+4.5	+1.8	-4.2	+3.6	+48	+83	+110	+98	+18	+2.4	-9.5	+68	+7.7	-0.9	-0.2	+1.3	+2.5	+0.32	-
Acc	65%	63%	71%	73%	72%	72%	73%	72%	69%	69%	57%	71%	69%	73%	70%	71%	69%	64%	-
% Rank	36	62	58	37	61	72	66	54	43	33	2	44	25	75	44	19	32	67	-

Genetic Type Summary (GTS)											Selection Indexes				
Stature	Capacity	Body Length	Front Feet	Hind Feet	Rear Leg Set	Feet & Past.	Muscling	Doability	Sheath	Grade	\$A-L	\$A	\$D	\$GN	\$GS
23	38	27	22	23	26	23	38	30	5	4	\$381	\$229	\$189	\$291	\$214
											21	19	18	26	19

"A full brother to lot 16 their Regent dam sold to Coolie Angus. R78 is suitable for heifers and offers good EMA and IMF."

Lot 32 **WATTLETOP G188 R18^{PV}** **NWPR18**

Date of Birth: 14/07/2020 Register: HBR Traits Observed: BWT,200WT,400WT,Genomics AMFU,CAFU,DDFU,NHFU
 TC TOTAL 410[#] BON VIEW NEW DESIGN 1407[#]
 TC FRANKLIN 619[#] LAWSONS NEW DESIGN 1407 Y64[#]
 TC MARCIA 1069[#] YTHANBRAE SCOTCH CAP OB45 W249[#]
SIRE: NWPB188 WATTLETOP FRANKLIN G188^{SV} **DAM: NWPB159 WATTLETOP ROBE B159^{SV}**
 WATTLETOP USA9074 C118^{PV} YTHANBRAE ROCKN D AMBUSH W129[#]
 WATTLETOP BARUNAH E295^{SV} WATTLETOP Z352[#]
 WATTLETOP BARUNAH C136^{SV} WATTLETOP W187[#]

Actual Birth Weight	37 kg
Scrotal Circumference	38 cm

TACE April 2022 TransTasman Angus Cattle Evaluation																			
	Dir	Dtrs	GL	BWT	200D	400D	600D	MCW	Milk	SS	D t C	CWT	EMA	Rib	P8	RBY	IMF	NFI-F	Doc
EBVs	+7.3	+8.8	-8.0	+0.2	+43	+70	+96	+50	+20	+1.4	-2.6	+53	+6.9	-1.8	-3.0	+2.4	+0.1	-0.29	-
Acc	64%	57%	73%	76%	74%	74%	75%	74%	71%	71%	47%	71%	68%	72%	69%	69%	68%	61%	-
% Rank	14	4	9	2	84	95	89	99	29	75	83	90	36	91	96	3	99	7	-

Genetic Type Summary (GTS)											Selection Indexes				
Stature	Capacity	Body Length	Front Feet	Hind Feet	Rear Leg Set	Feet & Past.	Muscling	Doability	Sheath	Grade	\$A-L	\$A	\$D	\$GN	\$GS
22	39	25	23	24	26	23	39	32	5	4	\$310	\$211	\$173	\$261	\$195
											72	35	35	48	35

"A G188 son that is suited to heifer joinings."

Lot 33 **WATTLETOP REGENT R102^{SV}** **NWPR102**

Date of Birth: 28/08/2020 Register: HBR Traits Observed: BWT,200WT,400WT,Genomics AMFU,CAFU,DDFU,NHFU
 TUWHARETOA REGENT D145^{PV} TC FRANKLIN 619[#]
 WATTLETOP REGENT L78^{PV} WATTLETOP FRANKLIN G188^{SV}
 WATTLETOP ANN F40^{SV} WATTLETOP BARUNAH E295^{SV}
SIRE: NWPP527 WATTLETOP REGENT L78 P527^{SV} **DAM: NWPP519 WATTLETOP ANN P519^{SV}**
 KENNY'S CREEK REGENT G213^{SV} TUWHARETOA REGENT D145^{PV}
 WATTLETOP USUAL K109[#] WATTLETOP J187[#]
 WATTLETOP USUAL D70[#] WATTLETOP ANN F45^{SV}

Actual Birth Weight	41 kg
Scrotal Circumference	39 cm

TACE April 2022 TransTasman Angus Cattle Evaluation																			
	Dir	Dtrs	GL	BWT	200D	400D	600D	MCW	Milk	SS	D t C	CWT	EMA	Rib	P8	RBY	IMF	NFI-F	Doc
EBVs	+0.6	+1.0	-5.1	+5.3	+56	+96	+141	+123	+26	+1.8	-4.2	+86	+0.3	-2.3	-2.4	-0.5	+2.4	-0.58	-
Acc	54%	49%	66%	70%	69%	68%	69%	67%	62%	63%	39%	65%	62%	68%	63%	65%	62%	54%	-
% Rank	67	69	42	76	20	30	9	16	4	59	59	5	99	96	91	84	36	1	-

Genetic Type Summary (GTS)											Selection Indexes				
Stature	Capacity	Body Length	Front Feet	Hind Feet	Rear Leg Set	Feet & Past.	Muscling	Doability	Sheath	Grade	\$A-L	\$A	\$D	\$GN	\$GS
25	38	28	22	23	25	24	38	32	5	4	\$337	\$185	\$131	\$255	\$165
											53	63	84	52	65

"A good spread from birth to growth with heavy carcass and top 1% NFI."

Lot 34 **WATTLETOP CONVERSION R69^{PV}** **NWPR69**

Date of Birth: 26/07/2020 Register: HBR Traits Observed: BWT,200WT,400WT,Genomics AMFU,CAFU,DDFU,NHFU
 C A FUTURE DIRECTION 5321[#] TE MANIA KNIGHT K206+90^{SV}
 BT CROSSOVER 758N[#] TE MANIA ULONG U41^{SV}
 BT ROYAL PRIDE 237G[#] TE MANIA LOWAN Q42+95[#]
SIRE: USA16262077 SILVEIRAS CONVERSION 8064[#] **DAM: NWPA108 WATTLETOP USUAL A108^{PV}**
 BR MIDLAND[#] B/R NEW DESIGN 036[#]
 EXG SARAS DREAM S609 R3[#] WATTLETOP USUAL U2[#]
 EXAR SARAS DREAM 9809[#] WATTLETOP USUAL P22+94[#]

Actual Birth Weight	44 kg
Scrotal Circumference	40 cm

TACE	April 2022 TransTasman Angus Cattle Evaluation																		
	Dir	Dtrs	GL	BWT	200D	400D	600D	MCW	Milk	SS	D t C	CWT	EMA	Rib	P8	RBY	IMF	NFI-F	Doc
EBVs	-3.7	-6.2	-5.1	+5.6	+53	+88	+118	+123	+17	+1.9	-5.3	+62	+8.3	-0.1	+0.9	+0.8	+2.2	-0.60	-
Acc	65%	61%	72%	74%	73%	74%	73%	71%	71%	53%	70%	68%	72%	69%	70%	68%	61%	-	-
% Rank	88	98	42	81	34	53	48	16	58	54	38	68	19	51	19	36	43	1	-

Genetic Type Summary (GTS)											Selection Indexes				
Stature	Capacity	Body Length	Front Feet	Hind Feet	Rear Leg Set	Feet & Past.	Muscling	Doability	Sheath	Grade	\$A-L	\$A	\$D	\$GN	\$GS
24	38	27	21	24	26	23	38	30	4	4	\$320	\$179	\$141	\$240	\$160
											66	68	75	64	70

"The last of the 8064 x A108 embryos to be offered. Moderate framed he offers high EMA and top 1% NFI."

Lot 35 **WATTLETOP REGENT R106^{PV}** **NWPR106**

Date of Birth: 14/09/2020 Register: HBR Traits Observed: BWT,Genomics AMFU,CAFU,DD50%,NHFU
 TUWHARETOA REGENT D145^{PV} WATTLETOP FRANKLIN G188 K252^{SV}
 WATTLETOP REGENT L78^{PV} WATTLETOP FRANKLIN M377^{PV}
 WATTLETOP ANN F40^{SV} WATTLETOP ANN F42[#]
SIRE: NWPP527 WATTLETOP REGENT L78 P527^{SV} **DAM: NWPP573 WATTLETOP KERRY P573^{PV}**
 KENNY'S CREEK REGENT G213^{SV} SITZ NEW DESIGN 458N[#]
 WATTLETOP USUAL K109[#] WATTLETOP KERRY F76[#]
 WATTLETOP USUAL D70[#] WATTLETOP Z101^{PV}

Actual Birth Weight	39 kg
Scrotal Circumference	41 cm

TACE	April 2022 TransTasman Angus Cattle Evaluation																		
	Dir	Dtrs	GL	BWT	200D	400D	600D	MCW	Milk	SS	D t C	CWT	EMA	Rib	P8	RBY	IMF	NFI-F	Doc
EBVs	+1.8	+2.3	-4.9	+4.0	+46	+75	+112	+86	+23	+3.4	-3.6	+65	+5.4	-1.5	-1.9	+0.6	+1.7	+0.26	-
Acc	51%	46%	66%	70%	69%	69%	70%	67%	61%	62%	37%	65%	61%	67%	63%	64%	61%	52%	-
% Rank	59	58	46	47	67	88	62	77	13	8	69	57	61	87	85	44	63	59	-

Genetic Type Summary (GTS)											Selection Indexes				
Stature	Capacity	Body Length	Front Feet	Hind Feet	Rear Leg Set	Feet & Past.	Muscling	Doability	Sheath	Grade	\$A-L	\$A	\$D	\$GN	\$GS
23	38	26	23	24	27	22	38	32	5	5	\$287	\$171	\$124	\$224	\$155
											83	76	88	74	74

"A moderate P527 son that is sound in the feet. Out of a lovely uddered, sound P female that was the last to calve and went back in calf to the bull at the same time as the AI program. Moderate birth and good scrotal."

Lot 36 **WATTLETOP REGENT R100^{SV}** **NWPR100**

Date of Birth: 26/08/2020 Register: HBR Traits Observed: BWT,200WT,400WT,Genomics AMFU,CAFU,DDF,NHFU
 TUWHARETOA REGENT D145^{PV} WATTLETOP FRANKLIN K51^{SV}
 WATTLETOP REGENT L78^{PV} WATTLETOP FRANKLIN M521^{SV}
 WATTLETOP ANN F40^{SV} WATTLETOP USUAL F109[#]
SIRE: NWPP527 WATTLETOP REGENT L78 P527^{SV} **DAM: NWPP590 WATTLETOP ALEXIS P590^{SV}**
 KENNY'S CREEK REGENT G213^{SV} BT EQUATOR 395M[#]
 WATTLETOP USUAL K109[#] WATTLETOP ALEXIS F112[#]
 WATTLETOP USUAL D70[#] WATTLETOP ALEXIS A220[#]

Actual Birth Weight	39 kg
Scrotal Circumference	45 cm

TACE	April 2022 TransTasman Angus Cattle Evaluation																		
	Dir	Dtrs	GL	BWT	200D	400D	600D	MCW	Milk	SS	D t C	CWT	EMA	Rib	P8	RBY	IMF	NFI-F	Doc
EBVs	-2.5	+1.6	-1.7	+5.9	+51	+88	+129	+125	+17	+2.9	-3.7	+67	+4.1	-2.1	-2.5	+0.8	+1.9	-0.26	-
Acc	49%	44%	64%	68%	66%	66%	67%	65%	59%	59%	34%	62%	58%	64%	60%	61%	58%	49%	-
% Rank	84	64	90	86	43	55	23	14	56	17	68	47	81	94	92	36	55	8	-

Genetic Type Summary (GTS)											Selection Indexes				
Stature	Capacity	Body Length	Front Feet	Hind Feet	Rear Leg Set	Feet & Past.	Muscling	Doability	Sheath	Grade	\$A-L	\$A	\$D	\$GN	\$GS
24	38	26	23	24	27	23	38	33	5	5	\$294	\$150	\$111	\$200	\$133
											80	88	94	86	88

"A very thick, deep flanked P527 son to finish the sale. These P527 sons have been stamped with good strong heads, powerful movement and plenty of growth."



WATTLETOP
LIVESTOCK



LOT 9 NWPR6

SIRE: LAWSON'S MOMENTOUS



LOT 10 NWPR82

SIRE: RENNYLEA N479



LOT 19 NWPR39

SIRE: SILVEIRAS CONVERSION



LOT 20 NWPR64

SIRE: TC FRANKLIN 619



LOT 24 NWPR72

SIRE: SYDGEN ENHANCE



LOT 25 NWPR15

SIRE: LAWSON'S MOMENTOUS M518



WATTLETOP
LIVESTOCK



LOT 27 NWPR103
SIRE: WATTLETOP P527



LOT 28 NWPR70
SIRE: WATTLETOP G188



LOT 30 NWPR38
SIRE: RENNYLEA N479



LOT 34 NWPR69
SIRE: SILVEIRAS CONVERSION



LOT 35 NWPR106
SIRE: WATTLETOP P527



LOT 36 NWPR100
SIRE: WATTLETOP P527