

ROSEDALE CHAROLAIS 33RD ANNUAL BULL SALE



FRIDAY 20TH MAY 2022
AUCTION STARTS 12PM



58 X CHAROLAIS BULLS

30 X COMPOSITE BULLS

33RD ANNUAL BULL SALE

Friday 20th May 2022 - 12 pm
on property at "Rosedale" Blayney



CONTACTS

James Millner

Mobile: 0425 341 341
millner@rosedalecharolais.com.au

Michael and Jenny Millner

Ph:(02) 6368 7195
Mobile: 0409 682 339

FOLLOW US



rosedalecharolais.com.au

ONLINE SALES



AUCTIONEER



Paul Dooley
0458 662 646

SELLING AGENTS



Todd Clements 0429 070 225	Tom Card 0438 594 675
Nick Fogerty 0409 070 225	Harry Phillips 0428 855 314
Justin Guy 0421 467 520	

SELLING AGENTS



Andrew Bickford 0427 943 78	Paul Jameson 0428 667 998
Lincoln Mckinley 0419 239 963	Jesse Gauci 0417 473 127

CONTENTS

Welcome	4	Charolais Bulls	13
Rosedale News	5	Charolais Yearling Bulls	35
Sale Information	6	Composite Sires	36
Performance Data Summary	9	Composite Bulls	37
Charolais Sires	10	Property Map	46



LEADING from the front FOR OVER 50 YEARS



Rosedale Charolais are your proven source of top quality polled Charolais genetics.

Rosedale continues to lead the way in Australia's carcass competitions with unrivalled success in recent times.

This is a true reflection that our breeding program is on the right track and that our genetics are out performing in a commercial situation.

We have a wide range of bulls to cover all Australian domestic & export markets including stud sire duties. We welcome your inspection and stand 100% behind the bulls we put on offer. We focus on growth and meat quality and this is reflected in our carcass competition success.

Now with a branded product for Rosedale Customers there is no better place to source your bulls for maximum crossbreeding profitability.

Our cattle are specifically bred for profitable cross-breeding under Australian conditions.

ROSEDALE'S PROVEN COMMERCIAL PERFORMANCE IN AUSTRALIA'S BIGGEST INDEPENDENT FEEDLOT TRIALS.

NSW BEEF SPECTACULAR FEED LOT TRIAL

- 2013** Grand Champion Team, Most Profitable Team Reserve Champion Weight Gain
- 2014** 3 Teams in the Top 10 (out of 120 entered) 2nd Most Profitable Team
- 2016** Champion Weight Gain, Most Profitable
- 2017** Reserve Champion Weight Gain, 2nd most profitable Team. 3rd Overall
- 2018** Riverine Classic Champion
- 2019** 10th overall and 3 teams in the top 20.
- 2021** Grand Champion & Reserve Champion Team, (4 teams in the top 6)

AUSTRALIAN NATIONAL FIELD DAYS

- 2012** Grand Champion Team 1st Carcass Yield
- 2013** 1st Carcass Yield, 2nd Carcass Points, 4th overall
- 2014** Champion Individual Steer
- 2015** Highest Carcass Points, 3rd overall
- 2017** Grand Champion Team, 1st and 2nd Carcass and yield.

SYDNEY ROYAL BEEF CHALLENGE

- 2012** Grand Champion Domestic Team
- 2013** Grand Champion Export Team
- 2015** Grand Champion Domestic Team
- 2016** Grand Champion Export Team, 4th Domestic Team
- 2019** Branga Plains - Grand Champion Domestic Team (Rosedale Genetics)

BRISBANE ROYAL PADDOCK TO PALATE

- 2017** Highest MSA Indexing Team (Domestic)
- 2019** Champion Domestic Team
- 2020** Reserve Champion Export Team HGP Free





WELCOME TO OUR 33RD ANNUAL BULL SALE

Welcome to the 33rd On Property Annual sale at Rosedale. What a terrific 12 months its been for cattle producers and what a great time to be in the cattle industry. Commercial prices have continued to flourish and defied many of the leading market commentators. We have seen many producers getting to work on rebuilding herds and cow numbers are now back on the rise. One of the main observations in recent weaner sales is the premium placed on heifers being retained as future breeders, a sign that producers are intent on stepping up numbers to meet the demand by breeding more females for future production. On the flip side to this as we look to next year and the years after, it is unlikely the level of demand will be available for such breeding females as paddocks fill up and breeding herds are replenished. This is why we believe that now is the time to step up your investment in the terminal side of your breeding program in order to drive your business ahead in two years time and beyond when the dynamics of the cattle market from recent times will have shifted away from the herd rebuilding phase.

Our bulls have been extensively tested and proven to perform on both grass fed and grain fed systems and we believe Charolais genetics are the ultimate terminal sire when crossed with British or Boss Indicus influenced herds. Earlier this year we were thrilled to take out the NSW beef spectacular Grand Champion and reserve Grand Champion teams with Charolais x Angus cattle that went into the feedlot at only 12.5 months old weighing 450kg at the time of entry. They continued to grow at over 2kg per day in the feedlot whilst still had adequate fat cover and marbling characteristics ensuring a high end final product. In a pure grass fed situation Robbie Millner of Guerie homestead consistently gets all his yearling cattle (both steers and heifers) cattle into a coles grass fed supermarket program at 14 - 18 months of age (livewights 500kg an above). These are examples of the efficiencies and key profit drivers we target when making breeding decisions. To us its all about reaching target markets faster and perhaps most importantly making sure that carcass specifications and carcass quality are catered for in that process.

The composite bull program is coming along very well and these are the best bulls chosen from our commercial breeding herd out of specially selected sires. The composite bulls deliver a different dimension in a cross breeding situation and in general have the ability to lay on a bit more fat cover than a pure Charolais with above industry growth rates.

All Animals purchased in the sale come with the Rosedale 12 month guarantee for fertility and structure. We stand behind the animals we sell and you can be assured when purchasing from Rosedale the quality is guaranteed. We are a family owned and managed business and we take a lot of pride and care into what we do.

Inspections are available at any time leading up to the sale by appointment but we do welcome you all to come on sale day and look forward to catching up.

Supplementary information and pictures of all lots will be available on www.rosedalecharolais.com.au as well as Rosedale's Auctionsplus sale page.

Michael, Jenny and James Millner





NSW BEEF SPECTACULAR - FEEDLOT TRIAL

The 2022 NSW Beef Spectacular turned out to be one of the most successful Feedlot and carcass trials we have been a part of. We were completely thrilled to take out the Grand Champion and Reserve Champion team which also created history in the fact that no other entrant has achieved this feat in the competitions 13 year history. We have been supporting this trial for 10 years and absolutely thrilled to win this highly regarded event for the second time in that period. The steers entered were Charolais x Angus and went on to compete against 74 other teams in the competition performing well in both the weight gain section and the carcass section.

Adding to the success was the 5th and 6th placing of Rosedale Charolais x Angus steers entered by Michael and Jenny Millner leaving Rosedale genetics with 4 teams in the top 6 of the entire competition. The steers were entered into Teys Jindalee Feedlot for 100 Days (HGP Free) and then processed at Teys Wagga with points scored for both weight gain and carcass quality.



2021 Beef Australia - Carcass Awards

Not for the first time Rosedale genetics performed admirably in the carcass competition at Beef Australia with winners announced during Beef week at Rockhampton last year. A team entered by Michael and Jenny Millner came second overall in the largest class of the event. The Grain fed export chiller bullocks 300-420kg class with 77 entries (teams of 3). The cattle can be slaughtered at a number of plants over the country but the carcasses are judged on the highest scoring MSA index scores.

Rosedale Genetics - Out and About

Davidson Family - Gunnedah District

Val and Family have been using Rosedale Charolais bulls to great success over their Santa Infused Cattle herd on the Liverpool plains. Last year they turned off steers 12 to 13 months old averaging a whopping 475kg's. Heifers were sold a month later topping the local market and being snapped up by a domestic supermarket.

Glenview - Kangaroo Valley

Running speckle park Cows with calves at foot by a Rosedale Charolais bull Glenview were thrilled with their calves at weaning, weighing 400-450kgs at 10 months. Glenview plan to keep the females for future breeding and sell the steers.

Ascot Charolais - Warwick QLD

Ascot Charolais achieved a breed topping average of \$17,455 for their Charolais draft last September. Topping the draft was a Rosedale Lump Sum sired bull at \$47,500 selling into central QLD and coming in second was a Rosedale Nagel sired bull selling for \$46,000 into WA.





SALE INFORMATION

ROSEDALE SALE BULL EBV'S

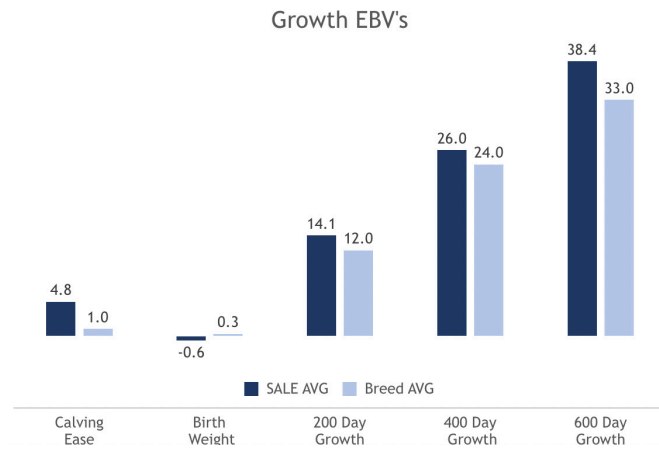
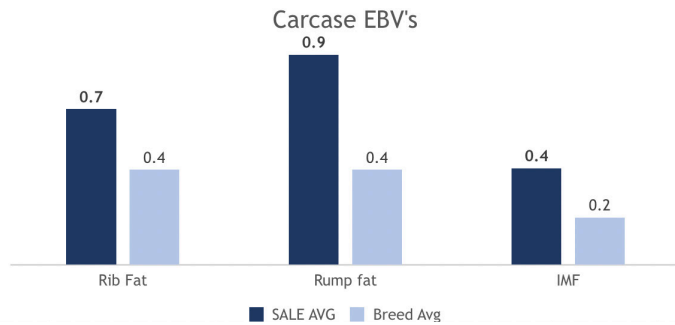
Rosedale has been a member of breedplan for over 30 years. This has helped assist us to consistently retain and source external genetics that have enabled us to produce the types of cattle you see in our paddocks today.

Genetic gain in growth rates has always been a priority of ours, but we understand sensible calving ease and birthweights need to be maintained. With our own commercial herd of 1000 British bred cows, we are very familiar with the benefits our charolais bulls are delivering in a crossbreeding situation.

The graphs shown are a good 'measuring stick' as to where our sale bulls are compared to the Australian Charolais breed average.

Although we understand that EBV's are not everything we believe they do help to illustrate the types of bulls we are aiming to produce. We submit large amounts of meaningful data each year to breedplan to help ensure the information is as accurate as it can be.

At Rosedale we are always looking to improve our genetic pool in an effort to further satisfy our clients. We welcome all feedback you may have on our breeding program and objectives.



VISUAL ASSESSMENT

When choosing bulls we recommend using a combination of EBVs, Raw Data and visual assessment. Visual assessment is essential to assess physical and structural soundness and is a reasonable indicator of health and temperament.

EBV's are a tool that will help you to make more "educated" decisions when you are choosing breeding stock. Do your homework well before the sale when you have plenty of time and set some parameters for your EBVs that fall within your market requirements, to narrow down potential purchases.

Use this "suitable list" of bulls and spend time looking and assessing the physical characteristics that you require.

CARING FOR YOUR NEW BULL

Always be considerate to your bulls and handle them with respect and kindness. Handle them quietly, walk them rather than rushing them, treat them with care and in a gentle manner and they will do likewise.

A bull leaving ROSEDALE is leaving the security of a large mob and will arrive in a strange environment at the purchaser's property. Unload him and make sure he has a steer or cow as a companion straight away if you can't put him out into your bull mob immediately.

A young bull can move in with older bulls and settle well, but remember, being the youngest he will get the last of any feed available because of the pecking order. The paddock needs to be reasonably large so he can keep away from the others and find adequate feed. Young bulls are still growing fast and need enough feed to maintain their growth pattern and be able to settle the cows quickly and efficiently.

ROSEDALE bulls are used to being handled by stockmen on motor bikes. Most of the fences are electrified and the bulls treat them with respect.

SALE INFORMATION



INSPECTION: cattle inspections are welcome at any time prior to the sale by arrangement with the Vendor. Cattle will be yarded into pens by 9am sale day.

MORNING TEA & LUNCH: Will be available.

LOCATION: (map inside back cover)

1km out of Blayney on the Orange Road, turn left into Brown's Creek Road. Continue for 5kms and you will see "Rosedale Charolais Stud" on the left. Follow gravel road for 2kms.

HEALTH: All bulls catalogued have been semen tested and examined by Peter Brown of Bovine Breeders for structural soundness. All of our cattle receive 7 in 1 vaccinations at 4 months of age, then 6 weeks later and an annual booster. They were drenched at weaning and periodically according to worm counts. Cattle were last drenched with Cattleguard together with a 7in1 in March. The sale bulls have been vaccinated for Pestivirus (BVDV).

RAW DATA: All bulls will be scanned prior to the Sale for eye muscle area (EMA), rump and rib fat, marbling (IMF%) as well as sale weight and scrotal measurements. Supplementary sheet available on the day and on the rosedale website, along with photos of all the lots.

ROSEDALE'S 12 MONTH GUARANTEE: All stock have been evaluated for structural soundness and fertility. To the best of our knowledge the bulls are in sound working order at the time of the sale. Any claim against the breeding ability or a structural breakdown of any animal must be made in writing and accompanied by a Veterinary Certificate within 12 months of the sale date. Any animal failing to breed may be either replaced with an animal of similar value or credit made available to the value of the purchase price, minus salvage value, for use at a future Rosedale sale. The Purchaser will be responsible for any costs incurred.

DELIVERY: A delivery instruction slip must be completed and signed. Stock awaiting delivery will be held free of charge - all care will be taken, but absolutely no responsibility will be accepted for any injury or loss occasioned during, as a consequence of, or in relation to any holding. Rosedale offers a free delivery service locally and to Dubbo. We are more than happy to assist with all deliveries, please speak to us as we will go out of our way to help you get your purchases home safely and economically. We also can deliver cattle to CTLX, which is a transport hub for most major carriers. For Interstate buyers please speak to us directly as we can subsidise freight costs.

INSURANCE: Ownership passes at the fall of the hammer. An insurance representative will be in attendance on Sale day.

TELEPHONE LINK-UP: Mobile telephones will be available. Please arrange with the Vendor or Agent to ensure a line.

AUCTIONS PLUS: Our sale is conducted live on line in real time and will be interfaced on Auctions Plus with the physical auction that is being conducted. A computer is used to bring the on-site bid price to the internet screen for remote bidders to observe. Bidders can bid on computers at their location and the bid is immediately transferred to the auction barn and relayed to the auctioneer. Bidding is only available if registered with Auctions Plus. You must register on-line to their website www.auctionsplus.com.au - at least 24 hours prior to the sale. For first time users of Auctions Plus we recommend you register as soon as possible and become familiar with the site. The staff in Sydney are very helpful and happy to guide you through it.

For more information contact:- Auctions Plus - (02) 9262 4222

3% REBATE: The rebate will be offered to outside agents on the condition that a written introduction is received 48 hours prior to the sale and/or the agent accompanies the purchaser to the sale and settles on their behalf within 7 days. (This clause will be strictly adhered to.)

TERMS AND CONDITIONS: Terms of the sale are as per Conditions of Sale NSW Stud Stock.

PLEASE NOTE: It is unethical for anyone to promote, advertise or arrange the sale of any cattle, other than those in this sale on this sale premises.

COVID 19: Please follow directions and safety signs on sale day in regards to Covid 19. We will be working within current guidelines as set by the Australian Government. All guests will be to adhere to current social distancing rules. Please be responsible and respectful of others and their health and safety and do not attend if you are not feeling well. Online Bidding and over the phone bidding is available and private inspections are welcomed and encouraged at any time prior to the sale by appointment.

SALE DAY SAFETY: All sale bulls have been screened for temperament and are quiet to handle under normal circumstances. However, there are risks associated with cattle handling. **Visitors enter the cattle pens at their own risk. Children must not enter pens.**

DISCLAIMER: People entering upon this property for any purpose whatsoever including attendance at cattle auctions do so at their own risk. We are not liable to you for any personal injury or death suffered by you and for theft loss or damage to any property caused or contributed to by us or by any other person whether caused or contributed to by or by negligence deliberate act or unlawful conduct. "We" or "us" or "our" refer to the owners their employees contractors and agents and each of them. While every care has been taken in compiling this catalogue to ensure accuracy of information supplied no responsibility is accepted for any errors which may have occurred.



UNDERSTANDING BREEDPLAN EBV'S

All bulls in this sale have been managed under identical conditions from the point of weaning, therefore comparisons can be made between animals of similar age. Weights, scans of EMA and IMF% and scrotal measurements will be available on the day of sale to further aid your visual assessment.

Charolais Group Breedplan is an advanced genetic evaluation system that provides a genetic description of Charolais cattle for a range of traits influencing fertility, growth and carcass performance. It provides predictions of the genetic merit of individual animals called Estimated Breeding Values (EBVs). EBVs are based on all the available pedigree and performance records provided by breeders in Australia and New Zealand, along with available overseas genetic information. EBVs are expressed in the units of measurement for each particular trait and are shown as +ive or -ive values. The Charolais breed average EBV for different traits changes over time as the breed makes genetic progress. The absolute value of any EBV is not critical, but rather the differences in EBVs between animals. Particular animals should be viewed as being "above or below breed average" for a particular trait. The averages for calves born in 2014 are shown below and at the bottom of the Performance Data Summary. Please note that each breed has their own EBV and cannot be compared across breeds. All EBVs quoted in this catalogue are Charolais Group Breedplan EBVs and are directly comparable with the EBVs from other Charolais Group Breedplan herds.

How to use EBVs

To use these figures successfully you must first determine which characteristics you desire to breed for and then select the EBV which best supports these qualities. It is important to note that in a successful breeding programme it is advisable to maintain balance and not to direct effort toward gaining a single, higher EBV for one particular trait.

Birth Weight is a major factor in calving difficulty. Use this EBV to select against birth weight if calving is a problem.

The lower the EBV the lighter the calves are expected to be at birth.

200 Day Growth and Milk is of particular interest to those targeting high weight gains at an early age to supply to the Domestic and Restaurant trade. Milk should be emphasized if the bull is being used to breed replacement progeny.

400 and 600 Day Growth indicates animals with superior weight gains from 12 months to 2 years of age, which would optimize profits in the domestic to Jap Ox markets.

Accuracy (Acc.%) provides an indication of the reliability of an EBV. As more performance information becomes available on an animal, it's progeny and relatives, the accuracy of it's EBVs for particular traits increases. The higher the accuracy the less chance the figure for each EBV will vary.

Index Values are reported as EBVs, in units of relative earning capacity (\$'s) for a given market. They reflect both the short-term profit generated by a sire through the sale of his progeny, and the longer-term profit generated by his daughters in a self-replacing cow herd. A selection index combines the EBVs with economic information (costs and returns) for specific market and production systems to rank animals based on relative profit values. Note that different types of animals can give similar profit values, so consideration should be given to both the index and the component EBVs when selecting animals for a particular production system.

Domestic Index(\$) Estimates the genetic differences between animals in net profitability per cow joined for an example commercial herd with a British cow base targeting grass-finished production for the domestic trade. This Index assumes pasture grown & finished steers weighing 430kgs (240kg HSCW and 6mm P8 fat) at 12 months. Daughters are retained or sold for breeding therefore maternal traits are of importance. In response to industry feedback, positive emphasis has been placed on finishing ability.

Export Index(\$) Estimates the genetic differences between animals in net profitability per cow joined for an example commercial herd with a British cow base targeting the production of steers for export markets. This Index assumes pasture grown & finished steers weighing 700kg (380kg HSCW and 9mm P8 fat) at 29 months. Daughters are retained or sold for breeding therefore maternal traits are of importance. In response to industry feedback, positive emphasis has been placed on finishing ability.

Scrotal Size is a good indicator of the bull's ability to produce sperm. A 2 year old bull with a testicle size of 34cm or more is regarded as satisfactory. Measurements will be available sale day.

Average Group Breedplan EBV's for 2020 born calves																	
Charolais	Calve ease direct (%)	Calve ease dtrs (%)	Gest length (days)	Birth Wt (kg)	200 Day Wt (kg)	400 Day Wt (kg)	600 Day Wt (kg)	Mat Cow Wt (kg)	Milk	Mat Value (kg)	Scr Size (cm)	Carc Wt (kg)	Eye mscl area (cm ²)	Rib fat (mm)	Rump fat (mm)	Retail beef yield (%)	IMF (%)
EBV	+1.0	+0.6	-2.7	+0.3	+12	+24	+33	+34	+7	+20	+1.1	+20	+1.6	+0.4	+0.4	+0.1	+0.2
\$ Index Value													+\$24		+\$38		

PERFORMANCE DATA SUMMARY



Lot	Calving Ease	Birth Weight	200 Day Growth	400 Day Growth	600 Day Growth	Milk	Eye Muscle Area	Rib Fat	Rump Fat	IMF
1	0.8	0.5	19	38	56	12	1.3	0.9	1.0	0.3
2	-0.5	0.7	20	35	53	4	1.9	0.4	0.6	0.5
3	4.1	0	20	32	52	8	2.2	-1.1	-1.7	-0.1
4	-2.1	1.2	26	50	75	11	1.9	1	1.0	0.5
5	2.1	0.2	27	56	71	17	1.8	1.3	1.3	0.0
6	2	0.5	20	40	57	12	0.9	0.7	1.0	0.4
7	8.8	-1.1	9	21	28	11	0.8	1.3	1.7	0.5
8	-1.9	1.1	17	36	53	12	1.8	0.3	0.2	0.5
9	11.2	-2.3	10	23	35	16	1.5	-0.2	-0.3	-0.5
10	7.2	-1	16	30	43	13	1.5	0.4	0.7	0.7
11	3.5	-0.5	15	33	47	10	3.1	0.3	0.3	0.3
12	6.2	0.7	11	24	33	14	0.7	0.2	0.6	0.6
13	9.5	-2.1	10	15	21	12	0.0	0.6	0.8	0.2
14	6.9	-1.4	7	13	16	10	0.0	0.8	1.2	0.3
15	5	0.4	21	41	59	13	1.5	1.4	2.1	1.1
16	-3.8	1.2	20	35	55	8	2.4	-1.0	-1.4	0.0
17	3.3	0.3	26	50	69	15	0.8	0.7	0.9	0.5
18	8.4	-1.4	13	22	32	11	1.4	0.5	0.7	0.2
19	1.1	0.5	24	45	67	13	2.8	0.6	0.5	0.4
20	5.6	-0.8	22	40	53	12	0.4	0.2	0.3	0.2
21	8.3	-1.1	14	30	39	13	2.1	0.8	1.2	0.4
22	-1	0.9	14	28	44	9	1.8	0.4	0.5	0.2
23	7.1	-0.9	11	18	27	14	0.3	0.3	0.3	0.3
24	3.8	-0.6	22	38	53	10	0.8	1.1	1.4	0.8
25	6.9	-1.1	11	20	33	12	1.1	0.4	0.7	0.6
26	0.7	0.9	18	33	46	9	1.6	0.7	1.0	0.5
27	11.4	-2.5	10	14	23	13	1.1	0.8	1.2	1
28	6.8	-1.3	14	29	40	16	2.1	1.8	2.1	-0.1
29	3.7	-1	13	18	29	12	0.8	0.8	1.1	-0.2
30	3.9	-1.2	11	18	25	11	1.0	1.1	1.8	0.7
31	3.8	0.5	19	36	54	12	1.4	0.6	0.8	0.6
32	4	-0.8	12	18	23	11	0.6	0.6	0.9	0.0
33	8.2	-1.8	12	16	23	10	0.7	0.8	1.1	0.2
34	4.8	-0.7	13	12	22	9	0.0	0.8	1.1	-0.3
35	3.3	-0.4	14	28	40	14	1.4	1.8	2.4	0.8
36	0.4	1.6	16	23	32	9	0.7	2.5	3.1	0.7
37	0.8	0.4	15	25	36	8	1.4	0.4	0.8	0.2
38	5.5	-0.5	11	17	26	18	1.2	0.4	0.7	0.1
39	1.8	0.4	9	19	34	12	0.7	-0.5	-0.6	-0.5
40	2.1	-0.6	12	18	29	10	1.4	0.9	1.3	0.8
41	9.2	-1.5	5	14	17	12	0.0	0.4	0.7	0.1
42	8.2	-2.2	14	15	22	10	0.5	0.7	1.1	0.2
43	0.7	0.5	18	32	50	11	1.5	-0.4	-0.7	0.3
44	10.1	-1.7	6	10	15	13	-0.2	0.4	0.7	0.3
45	10.1	-2	4	5	15	11	-0.2	1.5	2.1	0.7
46	4.8	0	8	15	30	13	1.3	0.6	0.9	0.4
47	9.9	-2.2	8	14	22	13	1.6	0.5	1.0	0.9
48	7.8	-1.1	12	17	26	11	0.6	1.2	1.8	0.2
49	-3.8	0.4	10	20	37	10	1.1	1.3	1.5	0.8
50	9.1	-1.8	13	26	38	15	2.1	1.5	1.7	0.0
51	5.8	0.1	15	33	47	12	0.9	0.9	1.3	1
52	9.9	-2.1	18	37	45	12	0.0	0.8	1.3	0.9
53	8.6	-1	8	23	30	12	1.8	0.4	0.6	0.6
54	1.4	0.1	12	23	34	8	1.2	-0.4	-0.8	0.1
55	10.7	-2.2	6	15	25	13	0.5	1.4	2.0	0.7
56	2.1	0	8	20	38	14	1.2	-0.2	-0.3	0.3
57	6	-0.5	15	26	43	13	1.0	0.9	1.1	0.3
58	3.9	-0.2	13	25	40	12	0.8	0.7	0.8	0.4

EBV

Breed average EBV's for 2020 born calves



Calving Ease	Birth Weight	200 Day Growth	400 Day Growth	600 Day Growth	Milk	Eye Muscle Area	Rib Fat	Rump Fat	IMF
+1	+03	+12	+24	+33	+7	+1.6	+0.4	+0.4	+0.2

Represents top 25% or better of Charolais Breed



CHAROLAIS SIRES

ROSEDALE MAVERICK (AI) (ET) (RF)

Born: 21/07/2016

Society ID: MRM299E

Sire: **ROSEDALE DEALER (P)**
 PALGROVE STANDOUT (P)
 GUNNADOO YUPPY (P)
 GUNNADOO CINDY (P)
 MINNIE-VALE DEPUTY (P)
 ROSEDALE BUTTERSCOTCH Y47 (P) (RF)
 ROSEDALE BUTTERSCOTCH V150 (P)

Dam: **ROSEDALE CANDY G304 (AI) (ET) (P) (R/F)**
 LANGS ERIC THE RED (P)
 HARVIE JAGER (P)
 HARVIE MISS FRANCIS
 PALGROVE JACKPOT (P)
 ROSEDALE CANDY Q140 (P)
 ROSEDALE CANDY 10 (P)



Charolais Group Breedplan EBV's - March, 2020								
DIR	DTRS	GL	BWT	200	400	600	MWT	
+7.3	+1.5	-1.4	-0.4	+9	+19	+30	+20	
63%	45%	63%	92%	84%	87%	85%	71%	
MILK	SS	CWT	EMA	RIB	RMP	RBY	IMF	
+12	+1.2	+16	+1.3	+1.0	+1.4	-0.6	+0.6	
59%	68%	73%	61%	69%	69%	62%	61%	
Index \$ Value	Domestic (\$)				Export (\$)			
	+\$ 43				+\$ 66			

Sire Appeal, Red Factor and Homozygous polled - Maverick is one of the best bulls we have produced in recent times. The progeny in this sale are yet again fantastic. Maverick's strike rate for producing quality is as good as we have seen. Earlier maturity pattern, Excellent IMF and fantastic skin type.

SILVERSTREAM LANDMARK (P)

Born: 5/09/2015

Society ID: OANL40E

Sire: **SILVERSTREAM EVOLUTION (P)**
 PALGROVE XCEPT (AI) (ET) (P)
 SILVERSTREAM BRUMBY (P)
 SILVERSTREAM R75
 IJOUFFLU
 SILVERSTREAM GLOSSY S120
 SILVERSTREAM IVEY

Dam: **MERRIDALE FARAH F14**
 DALTON
 NECESSAIRE
 LICHETTE
 KAITOKE OCTAVIOUS (P)
 MERRIDALE TASMAN T8
 MERRIDALE OLIVIA



Charolais Group Breedplan EBV's - March, 2020								
DIR	DTRS	GL	BWT	200	400	600	MWT	
+8	-1.4	-2.0	+0.5	+17	+28	+49	+52	
68%	56%	80%	94%	87%	88%	88%	79%	
MILK	SS	CWT	EMA	RIB	RMP	RBY	IMF	
+5	+0.5	+33	+2.9	-2	-2.9	+2.0	+0.1	
65%	88%	77%	68%	77%	76%	71%	67%	
Index \$ Value	Domestic (\$)				Export (\$)			
	+\$ 26				+\$ 39			

Exclusive to Rosedale, Landmark is doing all the things we asked for adding bone, muscle, style and growth to his progeny. Moderate birth weight calves that really grow into substance. His sire Silverstream Evolution needs no introduction to the charolais world. Was selected for his type and Excellent EMA and IMF raw measurements. Some very good sons in this draft.

ROSEDALE PREMIER (AI) (P)

Born: 1/08/2018

Society ID: MRP197E

Sire: **SILVERSTREAM LANDMARK**
 SILVERSTREAM BRUMBY (P)
 SILVERSTREAM EVOLUTION (P)
 SILVERSTREAM GLOSSY S120
 NECESSAIRE
 MERRIDALE FARAH F14
 MERRIDALE TASMAN
 PARINGA NOVOTEL
 ROSEDALE DONOTELLO (P)

Dam: **ROSEDALE GOLDEN GIRL K6 (P)**
 ROSEDALE REBECCA A38 (P)
 MINNIE VALE DEPUTY (P)
 ROSEDALE GOLDEN GIRL A34
 ROSEDALE GOLDEN GIRL 2



Charolais Group Breedplan EBV's - March, 2020								
DIR	DTRS	GL	BWT	200	400	600	MWT	
-2.6	-6.3	-1.3	+1.0	+20	+38	+63	+68	
61%	45%	77%	90%	77%	77%	74%	70%	
MILK	SS	CWT	EMA	RIB	RMP	RBY	IMF	
+9	+0.7	+34	+2.3	-0.3	-0.8	0.0	+0.2	
55%	79%	72%	60%	69%	68%	65%	55%	
Index \$ Value	Domestic (\$)				Export (\$)			
	+\$ 36				+\$ 44			

A lovely thick and fleshy yet powerful son we bred by the successful Silverstream Landmark sire. This draft represents Premier's first calves and they are very commercially focused animals with grunt. We look forward to presenting a bigger offering in the years ahead. Trait leader 400 Day Growth



OW LEAD TIME 6294 (P)

Born: 10/04/2016
Society ID: OAUM6294E

COOLEY ROYCE (P)

Sire: FF ABOUT TIME

DG GRONA (P)

MC-OW SANDCREEK 375

Dam: OW MISS SANDCREEK (P)

OW MISS MAXIMISER W13 (P)



Charolais Group Breedplan EBV's - March, 2020								
	DIR	DTRS	GL	BWT	200	400	600	MWT
Charolais	+14.5	+7.7	-5.7	-4	+6	+17	+21	-12
	73%	45%	94%	94%	87%	88%	87%	74%
	MILK	SS	CWT	EMA	RIB	RMP	RBY	IMF
	+14	+3.5	+18	+2.9	+2.6	+2.9	-0.6	-0.3
	67%	91%	81%	60%	74%	73%	74%	60%
Index \$ Value	Domestic (\$)				Export (\$)			
	+\$ 26				+\$ 92			

An AI sire from North America we are very pleased with the progeny we have thus far. In the US He ranks in the top 4% of the breed for marbling and we appreciate his birth to growth spread and ability to put on fat cover. Some nice sons in this draft.

ROSEDALE H168 (HOMO POLLED)

Born: 05/10/2012
Society ID: MRH168E

FERNVALE RIPPER
FERNVALE TRAPPER
FERNVALE PRIMA DONNA (AI) (ET)
Sire: ROSEDALE DARWIN (P)
WCR SIR DUKE (P)
ROSEDALE GRACE A97 (AI) (ET) (P)
ROSEDALE GRACE T9 (P)

NOVOTEL
PARINGA NOVOTEL (P)
PARINGA FASTRAC (AI) (ET) (P)
Dam: ROSEDALE BEATRIX D148 (P)
ROSEDALE WILLIE (P)
ROSEDALE BEATRIX Z185 (P)
ROSEDALE BEATRIX W119



Charolais Group Breedplan EBV's - March, 2020								
	DIR	DTRS	GL	BWT	200	400	600	MWT
Charolais	+5.4	-1.9	+0.1	+0.5	+17	+35	+55	+70
	72%	58%	63%	96%	89%	94%	92%	82%
	MILK	SS	CWT	EMA	RIB	RMP	RBY	IMF
	+18	+0.8	+29	+1.9	+1.8	+2.6	-1.5	+1.2
	68%	89%	81%	70%	83%	82%	72%	70%
Index \$ Value	Domestic (\$)				Export (\$)			
	+\$ 46				+\$ 67			

Homozygous polled, with growth and depth, softness combined with marbling ability. H168 has been joined heavily at Rosedale and maintained excellent body condition and structural correctness his entire working life. Retired from stud earlier this year after his 7th year around with feet still in excellent condition.

ROSEDALE MUSTANG (AI) (ET) (P)

Born: 29/07/2016
Society ID: MRM297E

PALGROVE STANDOUT (P)
GUNNADOO YUPPY (P)
GUNNADOO CINDY (P)
Sire: ROSEDALE DEALER (P)
MINNIE-VALE DEPUTY (P)
ROSEDALE BUTTERSCOTCH Y47 (P) (RF)
ROSEDALE BUTTERSCOTCH V150 (P)

LANGS ERIC THE RED (P)
HARVIE JAGER (P)
HARVIE MISS FRANCIS
Dam: ROSEDALE CANDY G304 (AI) (ET) (P) (R/F)
PALGROVE JACKPOT (P)
ROSEDALE CANDY Q140 (P)
ROSEDALE CANDY 10 (P)



Charolais Group Breedplan EBV's - March, 2020								
	DIR	DTRS	GL	BWT	200	400	600	MWT
Charolais	+11.0	+2.6	-2.4	-1.3	+14	+22	+36	+28
	51%	40%	53%	76%	65%	68%	69%	63%
	MILK	SS	CWT	EMA	RIB	RMP	RBY	IMF
	+12	+1.4	+22	+1.5	+0.2	+0.3	+0.3	+0.1
	49%	55%	58%	45%	55%	56%	51%	45%
Index \$ Value	Domestic (\$)				Export (\$)			
	+\$ 42				+\$ 61			

A full Homozygous polled brother to Rosedale Maverick and his progeny are very impressive and also very consistent. We are absolutely delighted with the way he has bred and the fantastic temperament in all his offspring.



CHAROLAIS SIRES

ROSEDALE PRIME TIME (P)

Born: 22/08/2018
Society ID: MRP124E

LT WYOMING WIND (P)
 HARVIE REDEMPTION
 HARVIE MS MOLSON 53M (P)
Sire: ASCOT GRAND REDEMPTION (P)
 BALDRIDGE FASTRACK (P)
 GOBONGO JULIET B43 (P)
 GOBONGO JULIET Z15

NOVOTEL
 PARINGA NOVOTEL (P)
 PARINGA FASTRACK (AI) (P)
Dam: ROSEDALE RUBY G4 (P)
 MINNIE VALE DEPUTY (P)
 ROSEDALE RUBY A218 (P)
 ROSEDALE RUBY V120 (P)



The heaviest yearling of the "P" drop bulls retained for in herd use. Provides weight for age and strong carcass values. A real curve bender in terms of moderately born calves that really grow. Trait leader for 200, 400 & 600 day growth.

Charolais Group Breedplan EBV's - March, 2020								
	DIR	DTRS	GL	BWT	200	400	600	MWT
	+4.2	+0.0	-3.8	-0	+29	+58	+77	+77
	68%	56%	68%	77%	79%	75%	75%	71%
	MILK	SS	CWT	EMA	RIB	RMP	RBY	IMF
	+14	+3.0	+30	+0.6	+1.4	+1.8	-1.2	+0.6
	59%	59%	76%	56%	96%	63%	70%	55%
Index \$ Value	Domestic (\$)				Export (\$)			
	+\$ 56				+\$ 105			

AIRLIE KOWTOW (AI) (ET) (P)

Born: 01/04/2014
Society ID: A1SK47E

LT ASSERTION (P)
 LT BLUEGRASS (P)
 LT PEARLS BREEZE (P)
Sire: LT LEDGER

LT RIO BRAVO
 LT BRENDA 6120
 LT BRENDA'S EASE
 PINNAROO RED RULER
 AIRLIE VERSION
 AIRLIE PETROUS
Dam: AIRLIE IONA Z608 (P)
 BROOKFIELD REAGAN FF
 AIRLIE IONA W209E (AI) (P)
 AIRLIE IONA T176 (P)



A bull purchased a number of years ago and has been successful on joining to cows and heifers. LT LEDGER progeny have been some of the best genetics introduced out of North America in the last 10 years. His bulls in this draft are easy doing with an earlier maturity pattern combined with strong maternal traits. Trait leader for birthweight.

Charolais Group Breedplan EBV's - March, 2020								
	DIR	DTRS	GL	BWT	200	400	600	MWT
	+9.7	+2.3	-2.6	-2.0	+8	+6	+8	+11
	57%	43%	75%	90%	79%	81%	79%	67%
	MILK	SS	CWT	EMA	RIB	RMP	RBY	IMF
	+11	+2.0	+6	+0.1	+0.7	+1.1	0.0	-0.1
	52%	70%	61%	52%	57%	56%	54%	60%
Index \$ Value	Domestic (\$)				Export (\$)			
	+\$ 13				+\$ 30			





1 ROSEDALE RAFAEL (RF) (P)

Born: 07/10/2020
Society ID: MRR90E

Sire: **ROSEDALE MAVERICK (AI) (ET) (P) (R/F)**
 GUNNADOO YUPPY (P)
 ROSEDALE DEALER (AI) (P) (R/F)
 ROSEDALE BUTTERSCOTCH Y47 (P) (R/F)
 HARVIE JAEGAR (P) (R/F)
 ROSEDALE CANDY G304 (AI) (ET) (P) (R/F)
 ROSEDALE CANDY Q140 (P)

Dam: **ROSEDALE BUTTERSCOTCH L44 (RF) (P)**
 HARVIE CRAVEN A-JAY (RF)
 HARVIE HIGH TIMES (P) (RF)
 SDC HOPE
 PARINGA NOVOTEL A100 (AI) (ET) (P)
 ROSEDALE BUTTERSCOTCH H21 (P)
 ROSEDALE BUTTERSCOTCH E109

Cross into profit

Charolais

Index \$ Value	
Domestic (\$)	Northern Maternal (\$)
\$+36	+\$67

Charolais Group Breedplan EBV's					
	Calving ease	Birth weight	200 day growth	400 day growth	600 Day Growth
EBV	+0.4	+0.5	+19	+38	+56
ACC	41%	74%	66%	63%	61%

Milk	CWT	EMA	Rib	Rump	IMF %
+12	+29	+1.3	+0.9	+1.0	+0.3
42%	45%	54%	59%	49%	43%

Comments - HOMOZYGOUS POLLED

TOP 10% 200, 400 & 600 DAY GROWTH, MILK, TOP 25% RIB AND RUMP FATS, TOP 10% DOM & NTH MAT INDEX

A Very classy Maverick son who is high end Stud quality. His Dam was flushed 3 times last year. Rafael combines growth for age with high fat cover and exceptional maternal traits leading us to believe he will continue to add value as breeding sire over many generations.

Purchaser	
\$	

2 ROSEDALE RAPAKI (P)

Born: 19/08/2020
Society ID: MR72E

Sire: **SILVERSTREAM LANDMARK (AI) (P)**
 SILVERSTREAM BRUMBY (P)
 SILVERSTREAM EVOLUTION (P)
 SILVERSTREAM GLOSSY
 NECESSAIRE
 MERRIDALE FARAH
 MERRIDALE TASMAN T8

Dam: **ROSEDALE ARMOUR L177 (P)**
 HARVIE REDEMPTION (P) (RF)
 ASCOT GRAND REDEMPTION (P)
 GOBONGO JULIET (A) (P)
 REIDS ASSASSIN (P)
 ROSEDALE ARMOUR E186 (P)
 ROSEDALE AMOUR B11 (P) (RF)

Cross into profit

Charolais

Index \$ Value	
Domestic (\$)	Nth Maternal (\$)
\$35	\$38

Charolais Group Breedplan EBV's					
	Calving ease	Birth weight	200 day growth	400 day growth	600 Day Growth
EBV	-0.5	+0.7	+20	+35	+53
ACC	49%	73%	65%	67%	64%

Milk	CWT	EMA	Rib	Rump	IMF %
+4	+31	+1.9	+0.4	+0.6	+0.5
45%	56%	49%	56%	55%	49%

Comments - HOMOZYGOUS POLLED

Top 5% 400 & 600 DAY GROWTH, IMF % and MILK. TOP 10% 200 DAY GROWTH & CWT , TOP 15% RIB and RUMP

A Top class and thickset yet still moderate Landmark son who we used in the stud as a yearling bull. We really admire the maturity pattern of this bull along with his strong carcass traits and structural correctness. Well balanced with a lovely nature he is one of our picks.

Purchaser	
\$	



CHAROLAIS BULLS

3 ROSEDALE RAUMATI (AI) (P)

Born: 21/08/2020

Society ID: MRR70E

SILVERSTREAM BRUMBY (P)
 SILVERSTREAM EVOLUTION (P)
 SILVERSTREAM GLOSSY
Sire: SILVERSTREAM LANDMARK (AI) (P)
 NECESSAIRE
 MERRIDALE FARAH
 MERRIDALE TASMAN T8

NOVOTEL
 PARING NOVOTEL (P)
 LT BRENDA
Dam: ROSEDALE REBECCA H115 (P)
 FERNVALE TRAPPER
 ROSEDALE REBECCA A143(P)
 ROSEDALE REBECCA R137 (P)

Cross into profit



Charolais



Purchaser

\$

Index \$ Value

Domestic (\$)	Nth Maternal (\$)
\$+39	+\$51

Charolais Group Breedplan EBV's

	Calving ease	Birth weight	200 day growth	400 day growth	600 Day Growth
EBV	+4.1	0.0	+20	+32	+52
ACC	48%	73%	66%	69%	69%

Milk	CWT	EMA	Rib	Rump	IMF %
+9	+33	+2.2	-1.1	-1.7	-0.1
49%	58%	46%	54%	53%	46%

Comments - POLLED

Top 5% 200 DAY GROWTH, CWT Top 10% 400 & 600 Day Growth. TOP 25% MILK, EMA

An outstanding bull also used to join as a yearling. The heaviest weaned bull of the R drop, Raumati has continued to power on despite his time with cows. We love the length, depth and strength of this bull who is loaded with eye appeal. Sire Alert.

4 ROSEDALE ROSS (P)

Born: 05/10/2020

Society ID: MRR65E

SILVERSTREAM EVOLUTION (P)
 SILVERSTREAM LANDMARK (P)
 MERRIDALE FARAH
Sire: ROSEDALE PREMIER (AI) (P)
 ROSEDALE DONOTELLO (P)
 ROSEDALE GOLDEN GIRL K6 (AI) (ET) (P)
 ROSEDALE GOLDEN GIRL A34 (P)

HARVIE REDEMPTION (P) (R/F)
 ASCOT GRAND REDEMPTION
 GOBONGO JULIETTE (AI) (P)
Dam: ROSEDALE REBECCA N250 (P)
 PARING NOVOTEL (P)
 ROSEDALE REBECCA E178 (P)
 ROSEDALE REBECCA A100 (P)

Cross into profit



Charolais



Purchaser

\$

Index \$ Value

Domestic (\$)	Nth Maternal (\$)
\$46	\$76

Charolais Group Breedplan EBV's

	Calving ease	Birth weight	200 day growth	400 day growth	600 Day Growth
EBV	-2.1	+1.2	+26	+50	+75
ACC	49%	71%	62%	64%	60%

Milk	CWT	EMA	Rib	Rump	IMF %
+11	+40	+1.9	+1.0	+1.0	+0.5
51%	58%	45%	53%	53%	45%

Comments - POLLED

TOP 1% 200, 400 AND 600 DAY GROWTH, TOP 15% milk TOP 20% IMF TOP 25% RIB FAT.

The 1st of the Premiers and what a beautiful and complete bull he is. Length of body, softness and raw power in a soundly put together package. Some outstanding EBV's supported by terrific raw data.



5 ROSEDALE RODOLFO (P)

Sire: ROSEDALE PRIMETIME
 HARVIE REDEMPTION (P) (R/F)
 ASCOT GRAND REDEMPTION
 GOBONGO JULIETTE (AI) (P)
 PARINGA NOVOTEL (P)
 ROSEDALE RUBY G4 (P)
 ROSEDALE RUBY A218 (P)

Dam: ROSEDALE HONOUR N96 (AI) (P)
 FINK (P)
 RAILE SOVEREIGN (AI) (P)
 RC NICHOLE
 ROSEDALE FAIRLANE (P)
 ROSEDALE HONOUR L2 (P)
 ROSEDALE HONOUR F78 (P)

Born: 14/09/2020

Society ID: MRR63E

Cross into profit

Charolais

Purchaser	
\$	

Index \$ Value					
Domestic (\$)	Nth Maternal (\$)				
\$+54	+\$87				
Charolais Group Breedplan EBV's					
	Calving ease	Birth weight	200 day growth	400 day growth	600 Day Growth
EBV	+2.1	-0.2	+27	+56	+71
ACC	40%	71%	62%	64%	60%
Milk	CWT	EMA	Rib	Rump	IMF %
+17	+43	+1.8	+1.3	+1.3	+0.0
42%	57%	44%	53%	53%	44%

Comments - HOMOZYGOUS POLLED

Top 10% 400 & 600 DAY GROWTH & IMF %, TOP 15% 200 DAY GROWTH, DOM & EXP INDEX and CWT.

This is an impressive carcass bull who we think will do an outstanding job in any leading commercial herd. Weight for age, length of body and natural thickness in its finest form. This is a real curve bending bull of the highest quality.

6 ROSEDALE RONALDO (P)

Sire: ROSEDALE PRIMETIME
 ARVIE REDEMPTION (P) (R/F)
 ASCOT GRAND REDEMPTION
 GOBONGO JULIETTE (AI) (P)
 PARINGA NOVOTEL (P)
 ROSEDALE RUBY G4 (P)
 ROSEDALE RUBY A218 (P)

Sire: ROSEDALE CANDY M298 (AI) (ET) (P) (R/F)
 GUNNADOO YUPPY (P)
 ROSEDALE DEALER (AI) (P) (R/F)
 ROSEDALE BUTTERSCOTCH Y47 (P) (R/F)
 HARVIE JAEGAR (P) (R/F)
 ROSEDALE CANDY G304 (AI) (ET) (P) (R/F)
 ROSEDALE CANDY Q140 (P)

Born: 17/09/2020

Society ID: MRR52E

Cross into profit

Charolais

Purchaser	
\$	

Index \$ Value					
Domestic (\$)	Nth Maternal (\$)				
\$39	\$72				
Charolais Group Breedplan EBV's					
	Calving ease	Birth weight	200 day growth	400 day growth	600 Day Growth
EBV	+2.0	+0.5	+20	+40	+57
ACC	40%	73%	63%	64%	60%
Milk	CWT	EMA	Rib	Rump	IMF %
+12	+31	+0.9	+0.7	+1.0	+0.4
42%	51%	36%	45%	45%	38%

Comments - POLLED

Top 5% 400 & 600 DAY GROWTH and IMF%, Top 15% 200 Day Growth and Dom & Exp Index

Another thickset Bull by Primetime who will leave behind some outstanding progeny full of shape and weight. His mother is a full sister to Rosedale Maverick and is an easy doing cow who holds her condition well.



CHAROLAIS BULLS

7 ROSEDALE RUBEN (P) (R/F)

Born: 06/09/2020

Society ID: MRR79E

GUNNADOO YUPPY (P)
 ROSEDALE DEALER (AI) (P) (R/F)
 ROSEDALE BUTTERSCOTCH Y47 (P) (R/F)
Sire: ROSEDALE MAVERICK (AI) (ET) (P) (R/F)
 HARVIE JAEGAR (P) (R/F)
 ROSEDALE CANDY G304 (AI) (ET) (P) (R/F)
 ROSEDALE CANDY Q140 (P)

LT EASY BLEND (AI) (ET) (P)
 ROSEDALE FIRST CLASS (P)
 ROSEDALE CINDERELLA D6 (P)
Dam: ROSEDALE CONFIDENCE H254 (P)
 ROSEDALE ARCHIE (P)
 ROSEDALE CONFIDENCE E117 (P)
 ROSEDALE CONFIDENCE B111 (P)

Cross into profit



Charolais



Purchaser

\$

Index \$ Value

Domestic (\$)	Nth Maternal (\$)
\$+24	+\$41

Charolais Group Breedplan EBV's

	Calving ease	Birth weight	200 day growth	400 day growth	600 Day Growth
EBV	+8.8	-1.1	+9	+21	+28
ACC	45%	63%	63%	66%	58%

Milk	CWT	EMA	Rib	Rump	IMF %
+11	+17	+0.8	+1.3	+1.7	+0.5
42%	54%	39%	53%	53%	40%

Comments - HOMOZYGOUS POLLED

TOP 10% CALVING EASE, TOP 15% RIB & RUMP FAT & MILK, TOP 20% IMF

As to we have come to expect from Maverick another very stylish and smooth coated son who is very easy doing yet still packs a lot of punch. This bull is so even, so well balanced and has a lovely temperament to match.

8 ROSEDALE RODRIGO (P) (R/F)

Born: 17/09/2020

Society ID: MRR86E

GUNNADOO YUPPY (P)
 ROSEDALE DEALER (AI) (P) (R/F)
 ROSEDALE BUTTERSCOTCH Y47 (P) (R/F)
Sire: ROSEDALE MAVERICK (AI) (ET) (P) (R/F)
 HARVIE JAEGAR (P) (R/F)
 ROSEDALE CANDY G304 (AI) (ET) (P) (R/F)
 ROSEDALE CANDY Q140 (P)

PINAY (P)
 PALGROVE EXPO (P)
 PALGROVE ESTELLA (AI) (P)
Dam: ROSEDALE RUBY K166 (P)
 PARINGA NOVOTEL
 ROSEDALE RUBY G175 (P)
 ROSEDALE RUBY Z98 (P)

Cross into profit



Charolais



Purchaser

\$

Index \$ Value

Domestic (\$)	Nth Maternal (\$)
\$34	\$50

Charolais Group Breedplan EBV's

	Calving ease	Birth weight	200 day growth	400 day growth	600 Day Growth
EBV	-1.9	+1.1	+17	+36	+53
ACC	40%	59%	52%	53%	51%

Milk	CWT	EMA	Rib	Rump	IMF %
+12	+29	+1.8	+0.3	+0.2	+0.5
51%	58%	45%	53%	53%	45%

Comments - POLLED

TOP 10% 400, 600 DAY GROWTH, MILK TOP 20% 200 DAY GROWTH, IMF

A very smooth and correct Red Factor sire with length, depth and width of body. Yet again a wonderful temperament and some outstanding growth traits combined with exceptional phenotype. Will leave behind some very attractive progeny.



9

ROSEDALE RAYLAN (P)

Born:	09/09/2020
Society ID:	MRR108E

GUNNADOO YUPPY (P)
 ROSEDALE DEALER (AI) (P) (R/F)
 ROSEDALE BUTTERSCOTCH Y47 (P) (R/F)
Sire: ROSEDALE MUSTANG (AI) (ET) (P) (R/F)
 HARVIE JAEGAR (P) (R/F)
 ROSEDALE CANDY G304 (AI) (ET) (P) (R/F)
 ROSEDALE CANDY Q140 (P)

ROSEDALE FAIRLANE (P)
 ROSEDALE KAVIAR (P)
 ROSEDALE NET E58 (AI) (P)
Dam: ROSEDALE EMPRESS M258 (P)
 PALGROVE EXPO (P)
 ROSEDALE EMPRESS H203 (P)
 ROSEDALE GEORGETTE (P)

Cross into profit

Charolais

Index \$ Value	
Domestic (\$)	Nth Maternal (\$)
\$+32	+\$52

Charolais Group Breedplan EBV's					
	Calving ease	Birth weight	200 day growth	400 day growth	600 Day Growth
EBV	+11.2	-2.3	+10	+23	+35
ACC	40%	71%	62%	65%	61%

	Milk	CWT	EMA	Rib	Rump	IMF %
	+16	+24	+1.5	+0.2	+0.3	+0.5
	40%	53%	47%	53%	53%	48%

Purchaser	
\$	

Comments - HOMOZYGOUS POLLED

TOP 5% MILK, TOP 10% CALVING EASE, BWT, TOP 25% IMF DOM & NTH MAT INDEX

This bull is a tank and the first of a great draft of Rosedale Mustang progeny in the catalogue. A very square and moderate bull packed full of meat. He combines thickness, softness, calving ease and yet again an outstanding temperament.

10

ROSEDALE RANDALL (P)

Born:	28/08/2020
Society ID:	MRR102E

GUNNADOO YUPPY (P)
 ROSEDALE DEALER (AI) (P) (R/F)
 ROSEDALE BUTTERSCOTCH Y47 (P) (R/F)
Sire: ROSEDALE MUSTANG (AI) (ET) (P) (R/F)
 HARVIE JAEGAR (P) (R/F)
 ROSEDALE CANDY G304 (AI) (ET) (P) (R/F)
 ROSEDALE CANDY Q140 (P)

SVY PILGRIM (P)
 ROSEDALE HARRY (P)
 ROSEDALE CANDY C36 (P)
Dam: ROSEDALE EMPRESS L145 (P)
 FERNVALE TRAPPER
 ROSEDALE EMPRESS F33 (P)
 ROSEDALE EMPRESS B188 (P)

Cross into profit

Charolais

Index \$ Value	
Domestic (\$)	Nth Maternal (\$)
\$36	\$66

Charolais Group Breedplan EBV's					
	Calving ease	Birth weight	200 day growth	400 day growth	600 Day Growth
EBV	+7.2	-1.0	+16	+30	+43
ACC	49%	73%	63%	69%	65%

	Milk	CWT	EMA	Rib	Rump	IMF %
	+13	+26	+1.5	+0.4	+0.7	+0.7
	51%	58%	45%	53%	53%	45%

Purchaser	
\$	

Comments - POLLED

TOP 10% IMF, MILK, Top 25% 200, 400 & 600 Day Growth, CWT, Top 20% Birth weight and Calving Ease.

A very attractive thick, soft and strong young sire who represents what we stand for in breeding modern Australian Charolais Bulls. Moderate birth, terrific performance and a good balance of carcass traits & maternal traits. An all purpose bull who is top quality.



CHAROLAIS BULLS

11 ROSEDALE ROCKET MAN (AI) (P)

Born: 24/08/2020

Society ID: MRR123E

Sire: **OW LEAD TIME (P)**
 COOLEY ROYCE (P)
 FF ABOUT TIME (P)
 DC GRONA (P)
 MC-OW SANDCREEK
 OW MISS SANDCREEK (P)
 OW MISS MAXIMISER (P)

Dam: **ROSEDALE CANDY P171 (P)**
 SILVERSTREAM EVOLUTION (P)
 SILVERSTREAM LANDMARK (P)
 MERRIDALE FARAH
 ROSEDALE ZINGER (P)
 ROSEDALE CANDY D187 (P)
 ROSEDALE CANDY W23

Cross into profit



Charolais



Purchaser

\$

Index \$ Value

Domestic (\$)	Nth Maternal (\$)
\$+40	+\$80

Charolais Group Breedplan EBV's

	Calving ease	Birth weight	200 day growth	400 day growth	600 Day Growth
EBV	+3.5	-0.5	+15	+33	+47
ACC	45%	63%	61%	68%	63%

Milk	CWT	EMA	Rib	Rump	IMF %
+10	+30	+3.1	+0.3	+0.3	+0.3
42%	57%	44%	53%	53%	44%

Comments - POLLED

Top 1% 600 Day Growth & CWT, Top 5% 400 Day Growth, Top 10% Milk, 200 Day Growth Top 20% EMA and IMF

The first of the OW Lead Time sons and he is a cracker. The softness and carcass traits of Lead Time have worked really well on a Landmark first calving heifer. A bull that has grunt yet also that all important finishing ability.

12 ROSEDALE RICKY (P)

Born: 11/09/2020

Society ID: MRR88E

Sire: **ROSEDALE MAVERICK (AI) (ET) (P) (R/F)**
 GUNNADOO YUPPY (P)
 ROSEDALE DEALER (AI) (P) (R/F)
 ROSEDALE BUTTERSCOTCH Y47 (P) (R/F)
 HARVIE JAEGAR (P) (R/F)
 ROSEDALE CANDY G304 (AI) (ET) (P) (R/F)
 ROSEDALE CANDY Q140 (P)

Dam: **ROSEDALE RUBY K48 (P)**
 NWMSU DOC SILVER (P)
 ASCOT DOC SILVER (P) (AI)
 PARINGA RIO BRAVO E310 (AI) (P)
 ROSEDALE DONOTELLO (P)
 ROSEDALE RUBY H8 (P)
 ROSEDALE RUBY A 218 (P)

Cross into profit



Charolais



Purchaser

\$

Index \$ Value

Domestic (\$)	Nth Maternal (\$)
\$28	\$47

Charolais Group Breedplan EBV's

	Calving ease	Birth weight	200 day growth	400 day growth	600 Day Growth
EBV	+6.2	-0.7	+11	+24	+33
ACC	49%	73%	63%	69%	65%

Milk	CWT	EMA	Rib	Rump	IMF %
+14	+18	+0.7	+0.2	+0.6	+0.6
51%	58%	45%	53%	53%	45%

Comments - HOMOZYGOUS POLLED

Top 5% Milk, TOP 20% CE, Top 25% BIRTH,

Deep bodied, soft and exceptionally so smooth. A bull that has it all with the bonus of being homozygous polled. Moderate in birth, big on performance with terrific carcass scans.



13 ROSEDALE REX (P) (R/F)

Born: 02/08/2020

Society ID: MRR48E

LT BLUEGRASS (P)
LT LEDGER (P)
LT BRENDA (P)
Sire: AIRLIE KOWTOW (AI) (ET) (P)
AIRLIE VERSION (P)
AIRLIE IONA Z608 (P)
AIRLIE IONA W209 (AI) (P)

LT SILVER DISTANCE (P)
LT LONG DISTANCE (P)
LT BELLE (P)
Dam: ROSEDALE BUTTERSCOTCH K71 (AI) (P) (R/F)
PARINGA NOVOTEL (P)
ROSEDALE BUTTERSCOTCH H123 (P) (R/F)
ROSEDALE BUTTERSCOTCH A56

Cross into profit



Purchaser

\$

Index \$ Value

Domestic (\$)	Nth Maternal (\$)
\$+21	+\$39

Charolais Group Breedplan EBV's

	Calving ease	Birth weight	200 day growth	400 day growth	600 Day Growth
EBV	+9.5	-2.1	+10	+15	+21
ACC	38%	69%	59%	62%	58%

Milk	CWT	EMA	Rib	Rump	IMF %
+12	+11	0.0	+0.6	+0.8	+0.2
42%	57%	44%	53%	53%	44%

Comments - HOMOZYGOUS POLLED

TOP 5% CE, TOP 10 % BIRTH WEIGHT

A high quality Red Factor sire who could be joined to heifers. Low birth weight and calving ease on both sides of the pedigree this bull should be a safe bet. On top of those features he also has some very good growth for age and balanced carcass data.

14 ROSEDALE RONIN (P)

Born: 14/08/2020

Society ID: MRR47E

LT BLUEGRASS (P)
LT LEDGER (P)
LT BRENDA (P)
Sire: AIRLIE KOWTOW (AI) (ET) (P)
AIRLIE VERSION (P)
AIRLIE IONA Z608 (P)
AIRLIE IONA W209 (AI) (P)

LT EASY BLEND (P)
ROSEDALE FIRST CLASS (P)
ROSEDALE CINDERELLA D6 (P)
Dam: ROSEDALE VIOLET K231 (P)
ROSEDALE ZINGER (P)
ROSEDALE VIOLET E174 (P)
ROSEDALE VIOLET Z136 (P)

Cross into profit



Purchaser

\$

Index \$ Value

Domestic (\$)	Nth Maternal (\$)
\$15	\$28

Charolais Group Breedplan EBV's

	Calving ease	Birth weight	200 day growth	400 day growth	600 Day Growth
EBV	+6.9	-1.4	+7	+13	+16
ACC	40%	72%	62%	65%	61%

Milk	CWT	EMA	Rib	Rump	IMF %
+10	+10	+0.0	+0.8	+1.2	+0.3
51%	58%	45%	53%	53%	45%

Comments - HOMOZYGOUS POLLED

TOP 15% CE, BIRTH, TOP 20% MILK, Top 25% RUMP Fat

This is a lovely Kowtow bull who always seems to pull up in a pose! So correct and well balanced, with a text book blend of softness, length and depth of body. A moderate birth bull who will power on.



CHAROLAIS BULLS

15 ROSEDALE ROOSEVELT (P)

Born: 06/09/2020

Society ID: MRR115E

FERNVALE TRAPPER
ROSEDALE DARWIN (P) MRD122E (P)
ROSEDALE GRACE A97 (AI) (ET) (P)
Sire: ROSEDALE H168 (P)
PARINGA NOVOTEL A100 (AI) (ET) (P)
ROSEDALE BEATRIX D148 (P)
ROSEDALE BEATRIX

PARING NOVOTEL (P)
ROSEDALE FRONTIER (P)
ROSEDALE NICKY N7 (P)
Dam: ROSEDALE BUTTERSCOTCH J202 (P)
ROSEDALE WILLIE (P)
ROSEDALE BUTTERSCOTCH A56 (RF)
ROSEDALE BUTTERSCOTCH U119 (P)



Purchaser	
\$	

Index \$ Value					
Domestic (\$)	Nth Maternal (\$)				
+\$41	+\$63				
Charolais Group Breedplan EBV's					
	Calving ease	Birth weight	200 day growth	400 day growth	600 Day Growth
EBV	+5.0	+0.4	+21	+41	+59
ACC	43%	72%	63%	66%	62%
Milk	CWT	EMA	Rib	Rump	IMF %
+13	+31	+1.5	+1.4	+2.1	+1.1
42%	57%	44%	53%	53%	44%

Comments - POLLED

TOP 5% 200, 400 & 600 DAY GROWTH, TOP 5% IMF, TOP 10% RIB & RUMP FAT, MILK, CWT, Dom & Mat IND TOP 25% CE.

A Very impressive data set on a very commercially focussed bull. Extremely well balanced across the board and a phenotypically attractive bull. One of the last H168 sons to sell at Auction.

16 ROSEDALE ROCCO (AI) (P)

Born: 30/08/2020

Society ID: MRR77E

SILVERSTREAM BRUMBY (P)
SILVERSTREAM EVOLUTION (P)
SILVERSTREAM GLOSSY
Sire: SILVERSTREAM LANDMARK (AI) (P)
NECESSAIRE
MERRIDALE FARAH
MERRIDALE TASMAN T8

HARVIE REDEMPTION (P) (RF)
ASCOT GRAND REDEMPTION (P)
GOBONGO JULIET (A) (P)
Dam: ROSEDALE BEATRIX M216 (P)
CANOONA CAVALERO (P)
ROSEDALE BEATRIX H81 (P)
ROSEDALE BEATRIX Z72 (P)



Purchaser	
\$	

Index \$ Value					
Domestic (\$)	Nth Maternal (\$)				
\$36	\$54				
Charolais Group Breedplan EBV's					
	Calving ease	Birth weight	200 day growth	400 day growth	600 Day Growth
EBV	-3.8	+1.2	+20	+35	+55
ACC	41%	72%	63%	68%	64%
Milk	CWT	EMA	Rib	Rump	IMF %
+8	+34	+2.4	-1.0	-1.4	+0.0
43%	57%	52%	53%	52%	49%

Comments - POLLED

Top 5% 200, 600 DAY GROWTH, CWT, TOP 10% 400 DAY GROWTH, TOP 15% EMA

A bull i have a lot of time for, Rocco would be a fantastic bull to use on British bred cows with his extra power and muscle yet still with that softness to produce some top notch weaners. This bull has a real strength in his makeup and would stamp his progeny well.



17 ROSEDALE REMI (P)

Born: 14/09/2020

Society ID: MRR61E

Sire: **ROSEDALE PRIMETIME**
 ARVIE REDEMPTION (P) (R/F)
 ASCOT GRAND REDEMPTION
 GOBONGO JULIETTE (AI) (P)
 PARINGA NOVOTEL (P)
 ROSEDALE RUBY G4 (P)
 ROSEDALE RUBY A218 (P)

Dam: **ROSEDALE BEATRIX N258(P)**
 ROSEDALE FAIRLANE (P)
 ROSEDALE KAVIAR (P)
 ROSEDALE NET E58 (AI) (P)
 DSK YABBA
 ROSEDALE BEATRIX G147 (P)
 ROSEDALE BEATRIX D148 (P)

Cross into profit



Charolais



Purchaser

\$

Index \$ Value

Domestic (\$)

\$+50

Nth Maternal (\$)

+\$84

Charolais Group Breedplan EBV's

	Calving ease	Birth weight	200 day growth	400 day growth	600 Day Growth
EBV	+3.3	+0.3	+26	+50	+69
ACC	40%	71%	62%	64%	60%

Milk	CWT	EMA	Rib	Rump	IMF %
+15	+39	+0.8	+0.7	+0.9	+0.5
42%	52%	47%	53%	53%	47%

Comments - POLLED SCUR

**TOP 1% 200, 400 & 600 DAY GROWTH, CWT, DOM \$IND
 TOP 5% MILK, MAT \$IND TOP 20% IMF**

A long and soft bull with some terrific growth values being at the pinnacle of the breed for all growth traits, Remi recorded one of the heaviest yearling weights in the draft. Yet again a fantastic nature and structurally very sound.

18 ROSEDALE RODNEY (P)

Born: 01/09/2020

Society ID: MRR101E

Sire: **ROSEDALE MUSTANG (AI) (ET) (P)**
 GUNNADOO YUPPY (P)
 ROSEDALE DEALER (AI) (P) (R/F)
 ROSEDALE BUTTERSCOTCH Y47 (P) (R/F)
 HARVIE JAEGAR (P) (R/F)
 ROSEDALE CANDY G304 (AI) (ET) (P) (R/F)
 ROSEDALE CANDY Q140 (P)

Dam: **ROSEDALE CANDY J25 (P)**
 SVY PIONEER (P)
 SVY PILGRIM (P)
 HFCC FRENCHKISS
 DSK YABBA
 ROSEDALE CANDY C36 (P)
 ROSEDALE CANDY Z34 (P)

Cross into profit



Charolais



Purchaser

\$

Index \$ Value

Domestic (\$)

\$29

Nth Maternal (\$)

\$55

Charolais Group Breedplan EBV's

	Calving ease	Birth weight	200 day growth	400 day growth	600 Day Growth
EBV	+8.4	-1.4	+13	+22	+32
ACC	48%	74%	66%	69%	66%

Milk	CWT	EMA	Rib	Rump	IMF %
+11	+19	+1.4	+0.5	+0.7	+0.2
51%	58%	45%	53%	53%	45%

Comments - POLLED

TOP 15% CE, BWT, MILK, TOP 25% MAT IND

A smoothly made Mustang young sire out of a lovely Pilgrim cow. This guy packs so much power into a moderate frame with positive fat cover. A versatile bull who yet again has got the looks in not only the paddock but well supported on paper.



CHAROLAIS BULLS

19 ROSEDALE REY (P)

Born: 25/08/2020

Society ID: MRR57E

SILVERSTREAM EVOLUTION (P)
 SILVERSTREAM LANDMARK (P)
 MERRIDALE FARAH
Sire: ROSEDALE PREMIER (AI) (P)
 ROSEDALE DONOTELLO (P)
 ROSEDALE GOLDEN GIRL K6 (AI) (ET) (P)
 ROSEDALE GOLDEN GIRL A34 (P)

ROSEDALE FAIRLANE (P)
 ROSEDALE KAVIAR (P)
 ROSEDALE NET E58 (AI) (P)
Dam: ROSEDALE HONOR N230 (P)
 CANOONA CAVALERO (P)
 ROSEDALE HONOR F222 (P)
 ROSEDALE HONOR W39 (P)

Cross into profit



Charolais



Purchaser

\$

Index \$ Value

Domestic (\$)	Nth Maternal (\$)
+\$45	+\$63

Charolais Group Breedplan EBV's

	Calving ease	Birth weight	200 day growth	400 day growth	600 Day Growth
EBV	+1.1	+0.5	+24	+45	+67
ACC	44%	74%	64%	68%	64%

Milk	CWT	EMA	Rib	Rump	IMF %
+13	+38	+2.8	+0.6	+0.5	+0.4
42%	57%	44%	53%	53%	44%

Comments - POLLED

Top 1% 200, 400 & 600 Day Growth, Top 5% DOM & MAT Index. Top 10% EMA, TOP 25% IMF

Another outstanding Premier youngster who is without a doubt one of the best bulls in the sale. Excellent growth for age in combination with outstanding carcass traits. A strong sire type who will leave his mark on his progeny.

20 ROSEDALE REAGAN (P)

Born: 09/09/2020

Society ID: MRR53E

ARVIE REDEMPTION (P) (R/F)
 ASCOT GRAND REDEMPTION
 GOBONGO JULIETTE (AI) (P)
Sire: ROSEDALE PRIMETIME
 PARINGA NOVOTEL (P)
 ROSEDALE RUBY G4 (P)
 ROSEDALE RUBY A218 (P)

GUNNADOO YUPPY (P)
 ROSEDALE DEALER (P) (R/F)
 ROSEDALE BUTTERSCOTCH Y47 (P) (R/F)
Sire: ROSEDALE CANDY M300 (AI) (ET) (P)
 HARVIE JAGER 65J PMC228759 (P)
 ROSEDALE CANDY G304E (AI) (ET) (P) (R/F)
 ROSEDALE CANDY Q140 (P)

Cross into profit



Charolais



Purchaser

\$

Index \$ Value

Domestic (\$)	Nth Maternal (\$)
\$38	\$77

Charolais Group Breedplan EBV's

	Calving ease	Birth weight	200 day growth	400 day growth	600 Day Growth
EBV	+6.1	-0.9	+19	+37	+48
ACC	41%	71%	62%	65%	61%

Milk	CWT	EMA	Rib	Rump	IMF %
+13	+29	+0.6	+1.6	+2.1	+0.8
42%	50%	43%	49%	48%	48%

Comments - POLLED

TOP 5% MAT IND, TOP 10% 200, 400 & 600 DAY GROWTH, DOM & MAT INDEX, MILK, TOP 20% CE, TOP 25% BIRTH

A terrific style of bull who defines substance, softness and structure. Out of a Dam in the same flush as Maverick and Mustang, she is a very easy doing soft and moderate yet thick cow that milks very well. You will not go wrong with this great young curve bender.



21 ROSEDALE RED RULER (P) (R/F)

Born: 10/08/2020

Society ID: MRR85E

GUNNADOO YUPPY (P)
ROSEDALE DEALER (P) (R/F)
ROSEDALE BUTTERSCOTCH Y47 (P) (R/F)
Sire: ROSEDALE MAVERICK (AI) (ET) (P) (R/F)
HARVIE JAGER 65J PMC228759 (P)
ROSEDALE CANDY G304E (AI) (ET) (P) (R/F)
ROSEDALE CANDY Q140 (P)

LT BLUEGRASS (P)
LT LEDGER (P)
LT BRENDA (P)
Dam: ROSEDALE VIOLET J95 (P)
CANOONA CAVALERO (P)
ROSEDALE VIOLET G92 (P) (R/F)
ROSEDALE VIOLET V38



Charolais Group Breedplan EBV's								
	DIR	GL	BWT	200	400	600	MILK	DOM
Charolais	+8.3	-3.6	-1.1	+14	+30	+39	+13	+\$37
	48%	52%	74%	66%	69%	66%	51%	
	SS	CWT	EMA	RIB	RMP	RBY	IMF	MAT
	+2.0	+25	+2.1	+0.8	+1.2	0.0	+0.4	+\$68
	75%	58%	54%	59%	58%	57%	54%	
Purchaser							\$	

TOP 10% DOM & MAT \$IND Top 15% CE, TOP 20% BIRTH, TOP 25% 400, IMF, RUMP FAT, CWT

A Very nice bull indeed, double polled and double Red Factor genes in play. This bull is capable of producing all black calves from Angus cows. Low birth, easy calving with a big 400 Day weight & solid carcass data.

22 ROSEDALE RUSTY (P) (R/F)

Born: 14/08/2020

Society ID: MRR80E

GUNNADOO YUPPY (P)
ROSEDALE DEALER (P) (R/F)
ROSEDALE BUTTERSCOTCH Y47 (P) (R/F)
Sire: ROSEDALE MAVERICK (AI) (ET) (P) (R/F)
HARVIE JAGER 65J PMC228759 (P)
ROSEDALE CANDY G304E (AI) (ET) (P) (R/F)
ROSEDALE CANDY Q140 (P)

PINAY
PALGROVE EXPO (P)
PALGROVE ESTELLA 130 (P)
Dam: ROSEDALE CANDY J165 (P)
ROSEDALE WILLIE (P)
ROSEDALE CANDY B169 (P)
ROSEDALE CANDY U109 (P)



Charolais Group Breedplan EBV's								
	DIR	GL	BWT	200	400	600	MILK	DOM
Charolais	-1.0	-1.6	+0.9	+14	+28	+44	+9	+\$27
	43%	70%	72%	61%	66%	62%	40%	
	SS	CWT	EMA	RIB	RMP	RBY	IMF	MAT
	+1.3	+23	+1.8	+0.4	+0.5	+0.2	+0.2	+\$45
	51%	54%	40%	47%	47%	44%	40%	
Purchaser							\$	

Top 25% Rump Fat, 600 Day Growth, MILK HOMOZYGOUS POLLED -

A very stylish deep red and even bodied future sire. Maverick has really complemented the extra power from a strong Expo cow with his softness to deliver a great bull.

23 ROSEDALE ROY (P/S)

Born: 17/08/2020

Society ID: MRR87E

GUNNADOO YUPPY (P)
ROSEDALE DEALER (P) (R/F)
ROSEDALE BUTTERSCOTCH Y47 (P) (R/F)
Sire: ROSEDALE MAVERICK (AI) (ET) (P) (R/F)
HARVIE JAGER 65J PMC228759 (P)
ROSEDALE CANDY G304E (AI) (ET) (P) (R/F)
ROSEDALE CANDY Q140 (P)

ROSEDALE FAIRLANE (P)
ROSEDALE HONOR A118
Dam: ROSEDALE BUTTERSCOTCH K23 (P)
ROSEDALE ZINGER (P)
ROSEDALE BUTTERSCOTCH E147 (P)
ROSEDALE BUTTERSCOTCH (P)



Charolais Group Breedplan EBV's								
	DIR	GL	BWT	200	400	600	MILK	DOM
Charolais	+7.1	-1.5	-0.9	+11	+18	+27	+14	\$21
	49%	55%	73%	63%	69%	65%	51%	
	SS	CWT	EMA	RIB	RMP	RBY	IMF	MAT
	+0.7	+15	+0.3	+0.3	+0.3	-0.6	+0.3	\$33
	54%	58%	45%	53%	53%	49%	45%	
Purchaser							\$	

Top 15% CED, TOP 20% BIRTH, TOP 5% MILK

Roy was a moderate born calf who has really excelled to grow into the bull he is today. We love density and smoothness of the muscle in this bull combined with his deep flank and width from behind.



CHAROLAIS BULLS

24 ROSEDALE REGINALD (P)

Born: 19/08/2020
Society ID: MRR55E

HARVIE REDEMPTION (P) (R/F)
ASCOT GRAND REDEMPTION
GOBONGO JULIETTE (AI) (P)
Sire: ROSEDALE PRIMETIME
PARINGA NOVOTEL (P)
ROSEDALE RUBY G4 (P)
ROSEDALE RUBY A218 (P)

SVY PILGRIM (P)
ROSEDALE HARRY (P)
ROSEDALE CANDY C36 (P)
Dam: ROSEDALE DOLLY N181 (P)
CANOONA CAVALERO (P)
ROSEDALE DOLLY H59 (P)
ROSEDALE DOLLY D177 (P)



Charolais Group Breedplan EBV's									
	DIR	GL	BWT	200	400	600	MILK	DOM	
Charolais	+3.8	-4.0	-0.6	+22	+38	+53	+10	+\$40	
	48%	53%	74%	65%	68%	66%	51%		
	SS	CWT	EMA	RIB	RMP	RBY	IMF	MAT	
	+2.3	+29	+0.8	+1.1	+1.4	-1.0	+0.8	+\$77	
	73%	58%	52%	57%	56%	55%	52%		
Purchaser							\$		

TOP 5% 200, 400, 600 DAY GROWTH, DOM & MAT \$IND, SCROTAL, TOP 10% CWT, IMF TOP 20% RIB & RUMP FAT, GL, HOMOZYGOUS POLLED

A lovely deep soft and thick bull that would be an asset to almost any beef operation. Moderate birth with explosive growth and best of breed carcass scans and data. Homo polled bonus - a very complete bull.

25 ROSEDALE RAMSEY (P)

Born: 16/08/2020
Society ID: MRR103E

GUNNADOO YUPPY (P)
ROSEDALE DEALER (P) (R/F)
ROSEDALE BUTTERSCOTCH Y47 (P) (R/F)
Sire: ROSEDALE MUSTANG (AI) (ET) (P)
HARVIE JAGER 65J PMC228759 (P)
ROSEDALE CANDY G304E (AI) (ET) (P) (R/F)
ROSEDALE CANDY Q140 (P)

SVY PILGRIM (P)
ROSEDALE HARRY (P)
ROSEDALE CANDY C36 (P)
Dam: ROSEDALE CONFIDENCE L150 (P)
PARINGA NOVOTEL A100 (AI) (ET) (P)
ROSEDALE CONFIDENCE G23 (P)
ROSEDALE CONFIDENCE B10 (P)



Charolais Group Breedplan EBV's									
	DIR	GL	BWT	200	400	600	MILK	DOM	
Charolais	+6.9	-2.4	-1.1	+11	+20	+33	+12	+\$25	
	42%	70%	72%	61%	66%	62%	42%		
	SS	CWT	EMA	RIB	RMP	RBY	IMF	MAT	
	+1.6	+19	+1.1	+0.4	+0.7	-0.4	+0.6	+\$49	
	51%	54%	40%	54%	53%	44%	48%		
Purchaser							\$		

Top 15% CED, IMF, Top 10% MILK, TOP 20% BIRTH TOP 25% SCROTAL - HOMOZYGOUS POLLED

Another very nice type of bull with moderate birth and very efficient growth rates. Ramsey is soft with a lot of red meat.

26 ROSEDALE RALPH (P) (R/F)

Born: 28/08/2020
Society ID: MRR89E

GUNNADOO YUPPY (P)
ROSEDALE DEALER (P) (R/F)
ROSEDALE BUTTERSCOTCH Y47 (P) (R/F)
Sire: ROSEDALE MAVERICK (AI) (ET) (P) (R/F)
HARVIE JAGER 65J PMC228759 (P)
ROSEDALE CANDY G304E (AI) (ET) (P) (R/F)
ROSEDALE CANDY Q140 (P)
SVY PILGRIM (P)

ROSEDALE HARRY (P)
ROSEDALE CANDY C36 (P)
Dam: ROSEDALE CONFIDENCE L159 (P)
ROSEDALE FIRST CLASS (P)
ROSEDALE CONFIDENCE H254 (P)
ROSEDALE CONFIDENCE E117 (P)



Charolais Group Breedplan EBV's									
	DIR	GL	BWT	200	400	600	MILK	DOM	
Charolais	+0.7	-1.4	+0.9	+18	+33	+46	+9	\$33	
	49%	55%	73%	63%	69%	65%	51%		
	SS	CWT	EMA	RIB	RMP	RBY	IMF	MAT	
	+1.5	+24	+1.6	+0.7	+1.0	-0.2	+0.5	\$54	
	54%	58%	45%	53%	53%	49%	45%		
Purchaser							\$		

Top 15% 200, 400 DAY GROWTH, TOP 20% 600, IMF, DOM & MAT IND, TOP 25% MILK

Ralph is a typical Maverick son with excellent structure, top end of the breed growth rates and great carcass qualities. A great disposition.



27 ROSEDALE RUGER (P)

Born: 07/09/2020

Society ID: MRR99E

GUNNADOO YUPPY (P)
ROSEDALE DEALER (P) (R/F)
ROSEDALE BUTTERSCOTCH Y47 (P) (R/F)
Sire: ROSEDALE MUSTANG (AI) (ET) (P)
HARVIE JAGER 65J PMC228759 (P)
ROSEDALE CANDY G304E (AI) (ET) (P) (R/F)
ROSEDALE CANDY Q140 (P)

MD SENTINEL RULER (P)
PARINGA SENTINEL RULER (P)
PARINGA DUKE (AI) (ET)
Dam: ROSEDALE AMOUR H291 (AI) (P) (R/F)
LHD MR PERFECT (P)
ROSEDALE AMOUR (AI) (P) (R/F)
ROSEDALE ARMOUR U28 (P)



Charolais Group Breedplan EBV's									
	DIR	GL	BWT	200	400	600	MILK	DOM	
Charolais	+11.4	-5.1	-2.5	+10	+14	+23	+13	+\$25	
	41%	70%	72%	61%	66%	62%	39%		
	SS	CWT	EMA	RIB	RMP	RBY	IMF	MAT	
	+1.0	+12	+1.1	+0.8	+1.2	-0.7	+1.0	+\$48	
	51%	54%	39%	47%	47%	43%	39%		
Purchaser							\$		

Top 5% DIR, IMF%, TOP 10% GL, BIRTH, TOP 20% MILK, TOP 25% HOMOZYGOUS POLLED

Whilst trying not to sound repetitive this is another great mustang Bull who is soft, thick and deep. A lovely topline and wonderful nature, whilst stands square. Ruger progeny will be easy calving and high in marbling.

28 ROSEDALE RENEGADE (AI) (P)

Born: 24/09/2020

Society ID: MRR129E

COOLEY ROYCE (P)
FF ABOUT TIME (P)
DC GRONA (P)
Sire: OW LEAD TIME (P)
MC-OW SANDCREEK
OW MISS SANDCREEK (P)
OW MISS MAXIMISER (P)

ROSEDALE FAIRLANE (P)
ROSEDALE KAVIAR (P)
ROSEDALE CANDY C36 (P)
Dam: ROSEDALE RUBY M226 (P)
FERNVALE TRAPPER (H)
ROSEDALE RUBY A204 (P)
ROSEDALE RUBY Q79 (P)



Charolais Group Breedplan EBV's									
	DIR	GL	BWT	200	400	600	MILK	DOM	
Charolais	+6.8	-2.9	-1.3	+14	+29	+40	+16	+\$32	
	42%	70%	72%	61%	66%	62%	40%		
	SS	CWT	EMA	RIB	RMP	RBY	IMF	MAT	
	+2.3	+25	+2.1	+1.8	+2.1	-0.5	-0.1	+\$72	
	51%	54%	40%	47%	47%	44%	40%		
Purchaser							\$		

Top 5% MILK,SS, TOP 10% RIB & RUMP, TOP 15% DIR, TOP 20% BIRTH,

HOMOZYGOUS POLLED.
A very good OW Lead time youngster who is starting to develop into a very useful bull. Top Combination of EMA and fat cover whilst moderate birth with great growth rates.

29 ROSEDALE RAIDER (P) (R/F)

Born: 10/08/2020

Society ID: MRR39E

LT BLUEGRASS (P)
LT LEDGER (P)
LT BRENDA (P)
Sire: AIRLIE KOWTOW (AI) (ET) (P)
AIRLIE VERSION (P)
AIRLIE IONA Z608 (P)
AIRLIE IONA W209 (AI) (P)
NOVOTEL
PARINGA NOVOTEL (P)
PARINGA FASTRACK (AI) (P)
Dam: ROSEDALE BEATRIX G109 (P)
MINNIE VALE DEPUTY (P)
ROSEDALE BEATRIX A122(P)
ROSEDALE BEATRIX W88 P)



Charolais Group Breedplan EBV's									
	DIR	GL	BWT	200	400	600	MILK	DOM	
Charolais	+3.7	-2.9	-1.0	+13	+18	+29	+12	\$25	
	49%	55%	73%	63%	69%	65%	51%		
	SS	CWT	EMA	RIB	RMP	RBY	IMF	MAT	
	+2.0	+16	+0.8	+0.8	+1.1	-0.3	-0.2	\$38	
	54%	58%	45%	53%	53%	49%	45%		
Purchaser							\$		

Top 5% 600 Day, Top 10% CWT 200, 400 Day, Top 15% IMF%, Top 25% MILK, EMA - HOMOZYGOUS POLLED.

An earlier maturing Homo polled bull that we really like. Great softness in his skin whilst carrying so much width whilst so even.



CHAROLAIS BULLS

30 ROSEDALE RORY (P) (R/F)

Born: 14/08/2020
Society ID: MRR38E

LT BLUEGRASS (P)
LT LEDGER (P)
LT BRENDA (P)
Sire: AIRLIE KOWTOW (AI) (ET) (P)
AIRLIE VERSION (P)
AIRLIE IONA Z608 (P)
AIRLIE IONA W209 (AI) (P)
PALGROVE WISDOM (P)
CANOONA CAVALERO (P)
PALGROVE ESTELLA 174 (P)
Dam: ROSEDALE VIOLET G92 (RF) (P)
ROSEDALE SNAG (P)
ROSEDALE VIOLET V38 (P)
ROSEDALE VIOLET S149 (P)



Charolais Group Breedplan EBV's								
	DIR	GL	BWT	200	400	600	MILK	DOM
Charolais	+3.9	-3.6	-1.2	+11	+18	+25	+11	+\$22
	40%	51%	72%	62%	64%	60%	41%	
	SS	CWT	EMA	RIB	RMP	RBY	IMF	MAT
	+1.9	+13	+1.0	+1.1	+1.8	-0.7	+0.7	+\$45
	73%	52%	46%	50%	49%	47%		
Purchaser						\$		

TOP 10% IMF, RIB FAT, TOP 15% MILK, RUMP FAT, TOP 20% BIRTH, HOMOZYGOUS POLLED

Rory is a long bodied and smooth Red bull by the successful Airlie Kowtow. His dam G92 is one of our favorite red cows and has never missed a calving. A soft bull that would produce some lovely daughters.

31 ROSEDALE RAMPAGE (P)

Born: 28/08/2020
Society ID: MRR114E

FERNVALE TRAPPER
ROSEDALE DARWIN (P) MRD122E (P)
ROSEDALE GRACE A97 (AI) (ET) (P)
Sire: ROSEDALE H168 (P)
PARINGA NOVOTEL A100 (AI) (ET) (P)
ROSEDALE BEATRIX D148 (P)
ROSEDALE BEATRIX Z185 (P)
PINAY (P)
PALGROVE EXPO (AI) (P)
PALGROVE ESTELLA 130 (P)
Dam: ROSEDALE HONOR J190 (P)
DSK YABBA
ROSEDALE HONOR F80 (P) (R/F)
ROSEDALE HONOR C124 (P)



Charolais Group Breedplan EBV's								
	DIR	GL	BWT	200	400	600	MILK	DOM
Charolais	+3.8	-1.6	+0.5	+19	+36	+54	+12	+\$37
	47%	50%	74%	66%	69%	66%	50%	
	SS	CWT	EMA	RIB	RMP	RBY	IMF	MAT
	+1.1	+30	+1.4	+0.6	+0.8	-0.4	+0.6	+\$56
	73%	50%	54%	59%	58%	47%	53%	
Purchaser						\$		

Top 10% 200 DAY GROWTH, MILK, CWT, TOP 15% 400, 600 DAY GROWTH, IMF DOM & MAT IND

A great middle of the road bull backed by some outstanding growth EBV's. One of the last H168's to sell he is very worthy of inspection.

32 ROSEDALE RYAN (P)

Born: 24/08/2020
Society ID: MRR50E

LT BLUEGRASS (P)
LT LEDGER (P)
LT BRENDA (P)
Sire: AIRLIE KOWTOW (AI) (ET) (P)
AIRLIE VERSION (P)
AIRLIE IONA Z608 (P)
AIRLIE IONA W209 (AI) (P)
HARVIE REDEMPTION (P) (R/F)
ASCOT GRAND REDEMPTION
GOBONGO JULIETTE (AI) (P)
Dam: ROSEDALE CONFIDENCE L188 (P)
ROSEDALE ZINGER (P)
ROSEDALE CONFIDENCE E95 (P)
ROSEDALE CONFIDENCE S106 (P)



Charolais Group Breedplan EBV's								
	DIR	GL	BWT	200	400	600	MILK	DOM
Charolais	+4.0	-1.9	-0.8	+12	+18	+18	+11	\$22
	49%	55%	73%	63%	69%	65%	51%	
	SS	CWT	EMA	RIB	RMP	RBY	IMF	MAT
	+1.7	+15	+0.6	+0.6	+0.6	-0.2	0.0	\$43
	54%	58%	45%	53%	53%	49%	45%	
Purchaser						\$		

Top 25% BIRTH, TOP 15% MILK, TOP 20% SCROTAL

Ryan has the thickness and softness of Kowtow crossed with the length and scope of a lovely Grand Redemption daughter. A nice bull - low in birth with above average 200 Day Growth.



33 ROSEDALE ROWAN (P)

Born: 107/08/2020

Society ID: MRR31E

LT BLUEGRASS (P)
LT LEDGER (P)
LT BRENDA (P)
Sire: AIRLIE KOWTOW (AI) (ET) (P)
AIRLIE VERSION (P)
AIRLIE IONA Z608 (P)
AIRLIE IONA W209 (AI) (P)

NOVOTEL
PARINGA NOVOTEL (P)
PARINGA FASTRAC
Dam: ROSEDALE CINDERELLA F62 (P)
NARACOO XPOSITION (P)
ROSEDALE CINDERELLA A201 (P)
ROSEDALE CINDERELLA X136 (P)



Charolais Group Breedplan EBV's									
	DIR	GL	BWT	200	400	600	MILK	DOM	
Charolais	+8.2	-3.6	-1.8	+12	+16	+23	+10	+\$22	
	41%	70%	72%	61%	66%	62%	39%		
	SS	CWT	EMA	RIB	RMP	RBY	IMF	MAT	
	+1.7	+14	+0.7	+0.8	+1.1	-0.6	+0.2	+\$43	
	51%	54%	39%	47%	47%	43%	39%		
Purchaser							\$		

Top 25% scrotal, GL - HOMOZYGOUS POLLED

A very eye appealing and well proportioned bull with excellent fattening ability making him ideal for grass fed vealer production. Homozygous polled yet again a bonus,

34 ROSEDALE RONALD (P)

Born: 02/09/2020

Society ID: MRR43E

LT BLUEGRASS (P)
LT LEDGER (P)
LT BRENDA (P)
Sire: AIRLIE KOWTOW (AI) (ET) (P)
AIRLIE VERSION (P)
AIRLIE IONA Z608 (P)
AIRLIE IONA W209 (AI) (P)

PALGROVE WISDOM (P)
CANOONA CAVALERO (P)
PALGROVE ESTELLA 174 (P)
Dam: ROSEDALE VIOLET J233 (P)
FERVALE TRAPPER
ROSEDALE VIOLET Z136 (P)
ROSEDALE VIOLET 17 (P)



Charolais Group Breedplan EBV's									
	DIR	GL	BWT	200	400	600	MILK	DOM	
Charolais	+4.8	-3.1	-0.7	+13	+12	+22	+9	+\$16	
	42%	70%	72%	61%	66%	62%	40%		
	SS	CWT	EMA	RIB	RMP	RBY	IMF	MAT	
	+1.5	+9	0.0	+0.8	+1.1	-0.3	-0.3	+\$35	
	51%	54%	40%	47%	47%	44%	40%		
Purchaser							\$		

Top 15% 200 Day Growth, SS and IMF % - HOMOZYGOUS POLLED

Ronald is another quality Kowtow son with the extra fattening ability complimented by great shape. This bull carries depth from the barrel right through to the flank and has a great disposition.

35 ROSEDALE RANDY (P) (R/F)

Born: 30/08/2020

Society ID: MRR84E

GUNNADOO YUPPY (P)
ROSEDALE DEALER (P) (R/F)
ROSEDALE BUTTERSCOTCH Y47 (P) (R/F)
Sire: ROSEDALE MAVERICK (AI) (ET) (P) (R/F)
HARVIE JAGER 65J PMC228759 (P)
ROSEDALE CANDY G304E (AI) (ET) (P) (R/F)
ROSEDALE CANDY Q140 (P)
SVY PIONERR (P)
SVY PILGRIM (P)

HCC FRENCH KISS
Dam: ROSEDALE NET J298 (AI) (ET) (P)
EC NO DOUBT (P)
ROSEDALE NET E58 (AI) (P)
ROSEDALE NET B195 (P)



Charolais Group Breedplan EBV's									
	DIR	GL	BWT	200	400	600	MILK	DOM	
Charolais	+3.3	-3.0	-0.4	+14	+28	+40	+14	\$28	
	46%	51%	74%	65%	69%	65%	48%		
	SS	CWT	EMA	RIB	RMP	RBY	IMF	MAT	
	+1.4	+22	+1.4	+1.8	+2.4	-1.2	+0.8	\$47	
	54%	58%	45%	54%	53%	49%	49%		
Purchaser							\$		

TOP 10% RIB & RUMP FAT, IMF, TOP 5% MILK, - HOMOZYGOUS POLLED

Randy is an eye catching Maverick son who moves so freely and has that little extra muscle whilst also possessing that all important softness. Bred from a lovely Pilgrim ET cow his genetics are from the top shelf.



CHAROLAIS BULLS

36 ROSEDALE RIGBY (AI) (P)

Born: 25/08/2020
Society ID: MRR126E

JDJ JUSTICE (P/S)
LHD CHOTEAU (P)
LHD MRS CIGARSON (P)
Sire: LT AUTHORITY (P)
LT STAGECOACH (P)
LT KATY 4273 (P)
LT KATY 8042 (P)
SVY PILGRIM (P)
ROSEDALE HARRY (P)
ROSEDALE CANDY C36 (P)
Dam: ROSEDALE EMPRESS P71 (P)
PALGROVE EXPO (P)
ROSEDALE EMPRESS J257 (P)
ROSEDALE EMPRESS F183 (P)



Charolais Group Breedplan EBV's								
	DIR	GL	BWT	200	400	600	MILK	DOM
Charolais	+0.4	-5.1	-1.6	+16	+23	+32	+9	+\$21
	46%	71%	74%	66%	69%	66%	46%	
	SS	CWT	EMA	RIB	RMP	RBY	IMF	MAT
	+2.0	+17	+0.7	+2.5	+3.1	-1.9	+0.7	+\$51
	51%	54%	39%	54%	53%	43%	48%	
Purchaser						\$		

TOP 5% RIB & RUMP FAT, TOP 10% GL, IMF, SCROTAL, TOP 25% MILK

One of the First LT Authority sons to sell in Australia and we think very highly of this bull. Easy calving and low birth, big growth with an earlier maturity pattern. Rigby was a heifers first calf and grown into an outstanding future sire.

37 ROSEDALE RONNY (P)

Born: 19/08/2020
Society ID: MRR42E

LT BLUEGRASS (P)
LT LEDGER (P)
LT BRENDA (P)
Sire: AIRLIE KOWTOW (AI) (ET) (P) (R/F)
AIRLIE VERSION (P)
AIRLIE IONA Z608 (P)
AIRLIE IONA W209 (AI) (P)
PALGROVE WISDOM (P)
CANOONA CAVALERO (P)
PALGROVE ESTELLA (AI) (P)
Dam: ROSEDALE LUCY J142 (P)
ROSEDALE ZINGER (P)
ROSEDALE LUCY D298 (P)
ROSEDALE LUCY V85



Charolais Group Breedplan EBV's								
	DIR	GL	BWT	200	400	600	MILK	DOM
Charolais	+0.8	-1.7	+0.4	+15	+25	+36	+8	+\$28
	44%	48%	73%	64%	68%	65%	46%	
	SS	CWT	EMA	RIB	RMP	RBY	IMF	MAT
	+1.7	+21	+1.4	+0.4	+0.8	-0.3	+0.2	+\$51
	45%	57%	52%	58%	57%	55%	39%	
Purchaser						\$		

Ronny is a little different in type to a lot of the other Kowtow bulls with extra length and a frame score higher with extra growth and scope. A bull we used as a yearling in the commercial herd, quiet as a mouse.

38 ROSEDALE RILEY (P) (R/F)

Born: 24/09/20
Society ID: MRR35E

LT BLUEGRASS (P)
LT LEDGER (P)
LT BRENDA (P)
Sire: AIRLIE KOWTOW (AI) (ET) (P) (R/F)
AIRLIE VERSION (P)
AIRLIE IONA Z608 (P)
LANGS ERIC THE RED (P/S)
HARVIE JAGAER (R/F) (P)
HARVIE MISS FRANCIS
Dam: ROSEDALE CANDY G304 (AI) (ET) (P) (R/F)
PALGROVE JACKPOT (P)
ROSEDALE CANDY Q140 (P)
ROSEDALE CANDY 10 (P)



Charolais Group Breedplan EBV's								
	DIR	GL	BWT	200	400	600	MILK	DOM
Charolais	+5.5	-1.2	-0.5	+11	+17	+26	+10	\$23
	42%	51%	72%	62%	64%	61%	44%	
	SS	CWT	EMA	RIB	RMP	RBY	IMF	MAT
	+2.0	+15	+1.2	+0.4	+0.7	+0.1	+0.1	\$50
	48%	53%	48%	52%	51%	51%	48%	
Purchaser						\$		

Top 20% CED, MILK, SCROTAL. - HOMOZYGOUS POLLED

A bull that has attracted a bit of interest as he stand out in his mob. A top quality bull who shares the same Dam as Maverick and Mustang. Double Red and Homozygous polled, this bull could be a game changer.



39 ROSEDALE ROLANDO (P)

Born: 19/09/2020

Society ID: MRR104E

GUNNADOO YUPPY (P)
ROSEDALE DEALER (P) (R/F)
ROSEDALE BUTTERSCOTCH Y47 (P) (R/F)
Sire: ROSEDALE MUSTANG (AI) (ET) (P)
HARVIE JAGER 65J PMC228759 (P)
ROSEDALE CANDY G304E (AI) (ET) (P) (R/F)
ROSEDALE CANDY Q140 (P)

ROSEDALE FRONTLINE (P)
ROSEDALE JUNO (AI) (ET) (P)
ROSEDALE REBECCA A38 (P)
Dam: ROSEDALE BOBBIN L258 (P)
ROSEDALE ZINGER (P)
ROSEDALE BOBBIN C23 (P)
ROSEDALE BOBBIN Z106 (P)



Charolais Group Breedplan EBV's								
	DIR	GL	BWT	200	400	600	MILK	DOM
Charolais	+1.8	-1.3	+0.4	+9	+19	+34	+12	+\$22
	41%	70%	73%	65%	67%	65%	44%	
	SS	CWT	EMA	RIB	RMP	RBY	IMF	MAT
	+0.5	+17	+0.7	-0.5	-0.6	+0.3	+0.5	+\$36
	74%	57%	52%	56%	55%	54%	54%	
Purchaser							\$	

Top 10% MILK, TOP 20% IMF - HOMOZYGOUS POLLED

Another impressive Mustang son who has a terrific draft of bulls in this catalogue. Rolando is a bit younger than some of the bulls but has really come into his own of late. We love the thickness, softness and power in him.

40 ROSEDALE RONAN (P) (R/F)

Born: 28/08/2020

Society ID: MRR83E

GUNNADOO YUPPY (P)
ROSEDALE DEALER (P) (R/F)
ROSEDALE BUTTERSCOTCH Y47 (P) (R/F)
Sire: ROSEDALE MAVERICK (AI) (ET) (P) (R/F)
HARVIE JAGER 65J PMC228759 (P)
ROSEDALE CANDY G304E (AI) (ET) (P) (R/F)
ROSEDALE CANDY Q140 (P)

PINAY (P)
PALGROVE EXPO (P)
PALGROVE ESTELLA 130 (AI) (P)
Dam: ROSEDALE EMPRESS J257 (P)
PALGROVE COACH (P)
ROSEDALE EMPRESS F183 (P)
ROSEDALE EMPRESS B164 (P)



Charolais Group Breedplan EBV's								
	DIR	GL	BWT	200	400	600	MILK	DOM
Charolais	+2.1	-2.4	-0.6	+12	+18	+29	+10	+\$22
	41%	49%	71%	61%	64%	61%	41%	
	SS	CWT	EMA	RIB	RMP	RBY	IMF	MAT
	+1.1	+15	+1.4	+0.9	+1.3	-0.5	+0.8	+\$39
	72%	54%	47%	51%	50%	44%	47%	
Purchaser							\$	

TOP 25% BIRTH, RUMP FAT, TOP 20% MILK, TOP 10% IMF,

Ronan is a great soft Red Factor bull out of a strong Expo cow. Moderate birth with above average growth, this is great commercial bull with top 10% IMF and yet again a bomb proof temperament .

41 ROSEDALE RAYAN (P)

Born: 29/08/2020

Society ID: MRR51E

LT BLUEGRASS (P)
LT LEDGER (P)
LT BRENDA (P)
Sire: AIRLIE KOWTOW (AI) (ET) (P)
AIRLIE VERSION (P)
AIRLIE IONA Z608 (P)
LANGS ERIC THE RED (P/S)
ROSEDALE DARWIN (P)
ROSEDALE H168 (P)
ROSEDALE BEATRIX D148 (P)

Dam: ROSEDALE RUBY L83 (P)
MINNIE VALE DEPUTY (P)
ROSEDALE RUBY A218 (P)
ROSEDALE RUBY V120



Charolais Group Breedplan EBV's								
	DIR	GL	BWT	200	400	600	MILK	DOM
Charolais	+9.2	-1.7	-1.5	+5	+14	+17	+12	+\$19
	39%	50%	70%	57%	63%	61%	37%	
	SS	CWT	EMA	RIB	RMP	RBY	IMF	MAT
	+1.4	+12	+0.0	+0.4	+0.7	-0.6	+0.1	\$35
	54%	58%	45%	53%	53%	49%	45%	
Purchaser							\$	

TOP 10% CALVING EASE, TOP 15% BIRTH, MILK, HOMOZYGOUS POLLED

Red Factor and Homozygous polled combination who is a great calving ease bull ranking in the top 10% of the breed. A very soft easy doing bull with great feet and legs.



CHAROLAIS BULLS

42 ROSEDALE ROBERT (P)

Born: 21/08/2020

Society ID: MRR34E

LT BLUEGRASS (P)
LT LEDGER (P)
LT BRENDA (P)
Sire: AIRLIE KOWTOW (AI) (ET) (P)
AIRLIE VERSION (P)
AIRLIE IONA Z608 (P)
LANGS ERIC THE RED (P/S)

LT SILVER BAR (P)
PALGROVE COACH (AI) (P)
PALGROVE FRESIA (P)
Dam: ROSEDALE NICKY G185 (P)
EC NEW TREND (P)
ROSEDALE NICKY X7 (AI) (P)
ROSEDALE NICKY U98 (P)



Charolais Group Breedplan EBV's

	DIR	GL	BWT	200	400	600	MILK	DOM
Charolais	+8.2	-3.6	-2.2	+14	+15	+22	+10	+\$22
	41%	41%	72%	63%	66%	62%	49%	
	SS	CWT	EMA	RIB	RMP	RBY	IMF	MAT
	+1.9	+12	+0.5	+0.7	+1.1	-0.5	+0.2	+\$44
	46%	46%	51%	55%	54%	43%	50%	

Purchaser

\$

TOP 10% BIRTH, TOP 15% CALVING EASE, TOP 20% MILK, TOP 25% RUMP FAT HOMOZYGOUS POLLED

Robert is a thick, meaty and moderate with good fat cover. He would be a great option for heifers or cows due to his top ranking birth and calving ease numbers with the bonus of being homozygous polled.

43 ROSEDALE R135 (P)

Born: 10/11/2020

Society ID: MRR135E

SILVERSTREAM EVOLUTION (P)
SILVERSTREAM LANDMARK (P)
MERRIDALE FARAH
Sire: ROSEDALE PREMIER (AI) (P)
ROSEDALE DONOTELLO (P)
ROSEDALE GOLDEN GIRL K6 (AI) (ET) (P)
ROSEDALE GOLDEN GIRL A34 (P)

SVY PILGRIM (P)
ROSEDALE HARRY (AI) (P)
ROSEDALE CANDY C36 (P)
Dam: ROSEDALE BEATRIX M144 (P)
PARING ANOVOTEL (P)
ROSEDALE BEATRIX D148 (P)
ROSEDALE BEATRIX Z185 (P)



Charolais Group Breedplan EBV's

	DIR	GL	BWT	200	400	600	MILK	DOM
Charolais	+0.7	-1.8	+0.5	+18	+32	+50	+11	+\$32
	42%	70%	72%	61%	66%	62%	40%	
	SS	CWT	EMA	RIB	RMP	RBY	IMF	MAT
	+1.1	+28	+1.5	-0.4	-0.7	+0.3	+0.3	+\$40
	51%	54%	40%	47%	47%	44%	40%	

Purchaser

\$

Top 5% Rib & Rump, Top 10% 200 & 600 Day, MILK, Top 15% Dom & Exp Index, IMF, EMA CWT. - HOMOZYGOUS POLLED

A meaty and soft free moving young bull. R135 is definitely worthy of inspection and his raw statistics stack up pretty well considering he is a November calf. A very efficient bull that optimizes performance.

44 ROSEDALE ROB (P) (R/F)

Born: 25/08/2020

Society ID: MRR33E

LT BLUEGRASS (P)
LT LEDGER (P)
LT BRENDA (P)
Sire: AIRLIE KOWTOW (AI) (ET) (P)
AIRLIE VERSION (P)
AIRLIE IONA Z608 (P)
LANGS ERIC THE RED (P/S)
LT WYOMING WIND (P)

DSK YABBA
PALGROVE ESTELLA 31 (AI) (ET)
Dam: ROSEDALE BEATRIX G170 (P)
GUNNADOO YUPPY (P)
ROSEDALE BEATRIX D172 (P)
ROSEDALE BEATRIX W119



Charolais Group Breedplan EBV's

	DIR	GL	BWT	200	400	600	MILK	DOM
Charolais	+10.1	-3.0	-1.7	+6	+10	+15	+13	\$17
	49%	55%	73%	63%	69%	65%	51%	
	SS	CWT	EMA	RIB	RMP	RBY	IMF	MAT
	+1.5	+8	-0.2	+0.4	+0.7	-0.6	+0.3	\$35
	54%	58%	45%	53%	53%	49%	45%	

Purchaser

\$

TOP 10% CALVING EASE, TOP 15% BIRTH, TOP 25% SCROTAL

Rob is a top notch Red Factor calving ease bull that we think has more punch in him than his numbers may suggest. Would breed some great females with some strong maternal genes in his makeup.



45 ROSEDALE REECE (P)

Born: 31/08/2020

Society ID: MRR95E

GUNNADOO YUPPY (P)
ROSEDALE DEALER (P) (R/F)
ROSEDALE BUTTERSCOTCH Y47 (P) (R/F)
Sire: ROSEDALE MUSTANG (AI) (ET) (P)
HARVIE JAGER 65J PMC228759 (P)
ROSEDALE CANDY G304E (AI) (ET) (P) (R/F)
ROSEDALE CANDY Q140 (P)

LT WYOMING WIND (P)
DSK YABBA
PALGROVE ESTELLA 31 (AI) (ET)
Dam: ROSEDALE HONOUR G142 (P)
REIDS ASSASSIN (P)
ROSEDALE HONOR D76 (P)
ROSEDALE HONOR Z180 (P)



Charolais Group Breedplan EBV's									
	DIR	GL	BWT	200	400	600	MILK	DOM	
Charolais	+10.1	-2.6	-2.0	+4	+5	+15	+11		\$9
	43%	50%	72%	63%	62%	60%	44%		
	SS	CWT	EMA	RIB	RMP	RBY	IMF	MAT	
	+1.1	+5	-0.2	+1.5	+2.1	-1.6	+0.7		+\$33
	70%	52%	47%	51%	50%	50%	46%		
Purchaser									\$

TOP 10% CALVING EASE, BIRTH, RIB AND RUMP FAT, IMF, TOP 15% MILK, - HOMOZYGOUS POLLED

A super stylish and sound, easy doing bull that will suit cows or heifers. So very docile with some top milking ability and fantastic carcass data.

46 ROSEDALE ROWEN (P)

Born: 29/08/2020

Society ID: MRR92E

GUNNADOO YUPPY (P)
ROSEDALE DEALER (P) (R/F)
ROSEDALE BUTTERSCOTCH Y47 (P) (R/F)
Sire: ROSEDALE MUSTANG (AI) (ET) (P)
HARVIE JAGER 65J PMC228759 (P)
ROSEDALE CANDY G304E (AI) (ET) (P) (R/F)
ROSEDALE CANDY Q140 (P)

ROSEDALE DARWIN (P)
ROSEDALE HI68 (P)
ROSEDALE BEATRIX D148 (P)
Dam: ROSEDALE VIOLET M87 (P)
ROSEDALE ZINGER (P)
ROSEDALE VIOLET C128 (P)
ROSEDALE VIOLET Z127 (P)



Charolais Group Breedplan EBV's									
	DIR	GL	BWT	200	400	600	MILK	DOM	
Charolais	+4.8	-0.6	0.0	+8	+15	+30	+13		+\$18
	37%	49%	72%	56%	62%	60%	34%		
	SS	CWT	EMA	RIB	RMP	RBY	IMF	MAT	
	+0.9	+14	+1.3	+0.6	+0.9	-0.3	+0.4		+\$35
	70%	54%	47%	51%	49%	50%	45%		
Purchaser									\$

TOP 10% MILK, TOP 25% CALVING EASE - HOMOZYGOUS POLLED

A very docile easy doing Mustang son who is just starting to hit his straps. He has a balance of calving ease, a solid growth curve and some very nice carcass data.

47 ROSEDALE RODERICK (P)

Born: 09/09/2020

Society ID: MRR98E

GUNNADOO YUPPY (P)
ROSEDALE DEALER (P) (R/F)
ROSEDALE BUTTERSCOTCH Y47 (P) (R/F)
Sire: ROSEDALE MUSTANG (AI) (ET) (P)
HARVIE JAGER 65J PMC228759 (P)
ROSEDALE CANDY G304E (AI) (ET) (P) (R/F)
ROSEDALE CANDY Q140 (P)
LT RIO BRAVO (P)

RANGAN PARK RIO BRAVO D15 (AI) (P)
PALGROVE SHOW GIRL 6 (P)
Dam: GLENLEA CHAROL (P) (R/F)
PAGNOL
GLENLEA CAAROL B48 (AI) (ET) (RF)
GLENLEA CAAROL N48 (P)



Charolais Group Breedplan EBV's									
	DIR	GL	BWT	200	400	600	MILK	DOM	
Charolais	+9.9	-3.7	-2.2	+8	+14	+22	+13		\$23
	38%	48%	69%	62%	62%	60%	36%		
	SS	CWT	EMA	RIB	RMP	RBY	IMF	MAT	
	+1.0	+15	+1.6	+0.5	+1.0	-0.4	+0.9		\$35
	70%	51%	47%	50%	49%	50%	45%		
Purchaser									\$

TOP 10% CALVING EASE, BIRTH, MILK, IMF, TOP 25% GL, HOMOZYGOUS POLLED

Roderick is out of a very efficient Red Factor dam who has always reared a good one and by the ever reliable Mustang. Low birth and high marbling.



CHAROLAIS BULLS

48 ROSEDALE RICARDO (R/F) (P)

Born: 17/09/2020
Society ID: MRR37E

LT BLUEGRASS (P)
LT LEDGER (P)
LT BRENDA (P)
Sire: AIRLIE KOWTOW (AI) (ET) (P)
AIRLIE VERSION (P)
AIRLIE IONA Z608 (P)
LANGS ERIC THE RED (P/S)
FERNVALE TRAPPER
ROSEDALE DARWIN (P)
ROSEDALE GRACE A97 (AI) (ET) (P)
Dam: ROSEDALE KRISTINA G86 (P)
DC MR ELIMINATOR 2210
ROSEDALE KRISTINA C81 (P)
ROSEDALE KRISTINA U40 (P)



Charolais Group Breedplan EBV's								
	DIR	GL	BWT	200	400	600	MILK	DOM
Charolais	+7.8	-1.8	-1.1	+12	+17	+26	+11	+\$22
	41%	46%	70%	60%	63%	60%	43%	
	SS	CWT	EMA	RIB	RMP	RBY	IMF	MAT
	+1.4	+15	+0.6	+1.2	+1.8	-0.9	+0.2	+\$44
	51%	54%	39%	47%	47%	43%	39%	
Purchaser						\$		

Top 15% CE, MILK, RUMP FAT TOP 20% BIRTHWEIGHT, RIB FAT
Another good, moderate and attractive Red Factor bull sired by Kowtow. He combines calving ease with growth and excellent carcass traits all in one hit.

49 ROSEDALE RAMSAY (P)

Born: 12/09/2020
Society ID: MRR71E

SILVERSTREAM EVOLUTION (P)
SILVERSTREAM LANDMARK (P)
MERRIDALE FARAH
Sire: ROSEDALE PREMIER (AI) (P)
ROSEDALE DONOTELLO (P)
ROSEDALE GOLDEN GIRL K6 (AI) (ET) (P)
ROSEDALE GOLDEN GIRL A34 (P)
PALGROVE WISDOM (P)
CANOONA CAVALERO (P)
PALGROVE ESTELLA (AI) (P)
Dam: ROSEDALE HONOR J215 (P)
REIDS ASSASSIN (P)
ROSEDALE HONOR D76 (P)
ROSEDALE HONOR Z180 (P)



Charolais Group Breedplan EBV's								
	DIR	GL	BWT	200	400	600	MILK	DOM
Charolais	-3.8	-2.0	+0.4	+10	+20	+37	+10	+\$15
	45%	48%	73%	64%	68%	51%	45%	
	SS	CWT	EMA	RIB	RMP	RBY	IMF	MAT
	+0.6	+17	+1.1	+1.3	+1.5	-1.0	+0.8	+\$24
	51%	54%	40%	51%	50%	44%	47%	
Purchaser						\$		

TOP 10% IMF, TOP 15% RIB FAT, TOP 20% MILK, RUMP FAT
A terrific Premier son who combines growth for age with softness and good marbling. Ramsay has that all important natural thickness, depth of body and great structure. A very high quality commercial sire who typifies Polled with Grunt.

50 ROSEDALE RUCKMAN (AI) (P)

Born: 25/08/2020
Society ID: MRR122E

COOLEY ROYCE (P)
FF ABOUT TIME (P)
DC GRONA (P)
Sire: OW LEAD TIME (P)
MC-OW SANDCREEK
OW MISS SANDCREEK (P)
OW MISS MAXIMISER (P)
ROSEDALE FAIRLANE (P)
ROSEDALE KAVIAR (P)
ROSEDALE NET E58 (AI) (P)
Dam: ROSEDALE REBECCA N231 (P)
PARINGA NOVOTEL (P)
ROSEDALE REBECCA H115 (P)
ROSEDALE REBECCA A143 (P)



Charolais Group Breedplan EBV's								
	DIR	GL	BWT	200	400	600	MILK	DOM
Charolais	+9.1	-4.1	-1.8	+13	+26	+38	+15	+\$32
	49%	72%	74%	66%	69%	66%	49%	
	SS	CWT	EMA	RIB	RMP	RBY	IMF	MAT
	+2.3	+24	+2.1	+1.5	+1.7	-0.4	+0.0	+\$74
	75%	59%	54%	60%	59%	57%	54%	
Purchaser						\$		

Top 5% MILK, SCROTAL, Top 10% RIB FAT, CALVING EASE, TOP 15% RUMP FAT, BIRTH, TOP 25% GL-
A lovely bull by lead Time, with superb numbers. A great commercial bull bred to deliver profit. Excellent combination of EMA and positive Fats.



51 ROSEDALE RAMIRO (P)

Born: 06/09/2020

Society ID: MRR109E

FERNVALE TRAPPER
ROSEDALE DARWIN (P) MRD122E (P)
ROSEDALE GRACE A97 (AI) (ET) (P)
Sire: ROSEDALE H168 (P)
PARINGA NOVOTEL A100 (AI) (ET) (P)
ROSEDALE BEATRIX D148 (P)
ROSEDALE BEATRIX Z185 (P)

PALGROVE STANDOUT (P)
GUNNADOO YUPPY (P)
ROSEDALE CINDY R34E (AI) (P)
Dam: ROSEDALE VIOLET E96 (P)
ROSEDALE SNAG (AI) (P)
ROSEDALE VIOLET V38 (P)
ROSEDALE VIOLET S149(P)



Charolais Group Breedplan EBV's									
DIR	GL	BWT	200	400	600	MILK	DOM		
+5.8	-1.8	+0.1	+15	+33	+47	+12		+\$36	
40%	70%	72%	61%	66%	62%	38%			
SS	CWT	EMA	RIB	RMP	RBY	IMF	MAT		
+0.9	+24	+0.9	+0.9	+1.3	-0.8	+1.0		+\$55	
45%	47%	38%	47%	47%	43%	39%			
Purchaser					\$				

TOP 5% IMF, TOP 15% CALVING EASE, 400 DAY & 600 DAY GROWTH, TOP 10% MILK & DOM IND, TOP 25% RUMP FAT

The last of the H168's to be sold and this is a great example of his breeding. Easy fleshing, strong growth and excellent carcass data. Ramiro is a punchy bull from a very reliable elderly matron.

52 ROSEDALE REGGIE (P)

Born: 25/08/2020

Society ID: MRR54E

HARVIE REDEMPTION (P) (R/F)
ASCOT GRAND REDEMPTION
GOBONGO JULIETTE (AI) (P)
Sire: ROSEDALE PRIMETIME
PARINGA NOVOTEL (P)
ROSEDALE RUBY G4 (P)
ROSEDALE RUBY A218 (P)

LT BLUEGRASS (P)
LT LEDGER (P)
ROSEDALE BRENDA(P)
Dam: ROSEDALE GEORGETTE N100 (AI) (P)
ROSEDALE HARRY (AI) (P)
ROSEDALE GEORGETTE L135 (P)
ROSEDALE GEORGETTE B196 (P)



Charolais Group Breedplan EBV's									
DIR	GL	BWT	200	400	600	MILK	DOM		
+9.9	-3.7	-2.1	+18	+37	+45	+12		+\$41	
40%	44%	71%	55%	56%	55%	39%			
SS	CWT	EMA	RIB	RMP	RBY	IMF	MAT		
+2.6	+28	0.0	+0.8	+1.3	-1.4	+0.9		+\$80	
51%	54%	40%	47%	47%	44%	40%			
Purchaser					\$				

TOP 5% DOM & MAT \$IND, SCROTAL, TOP 10% BIRTH, 400, MILK, TOP 15% 200 & 600, CWT, TOP 25% RUMP HOMOZYGOUS POLLED

A low birthweight bull stemming from a moderate and efficient dam who has one of the better weaning ratios on the place.

53 ROSEDALE RAFFA (P) (R/F)

Born: 22/08/2020

Society ID: MRR82E

GUNNADOO YUPPY (P)
ROSEDALE DEALER (P) (R/F)
ROSEDALE BUTTERSCOTCH Y47 (P) (R/F)
Sire: ROSEDALE MAVERICK (AI) (ET) (P) (R/F)
HARVIE JAGER 65J PMC228759 (P)
ROSEDALE CANDY G304E (AI) (ET) (P) (R/F)
ROSEDALE CANDY Q140 (P)
ROSEDALE FAIRLANE (P)
ROSEDALE FRONTIER (P)
ROSEDALE NICKY X7 (AI) (P)
Dam: ROSEDALE RUBY J219 (P)
EC NEW TREND (P)
ROSEDALE RUBY Z57 (AI) (P)
ROSEDALE RUBY W154 (P)



Charolais Group Breedplan EBV's									
DIR	GL	BWT	200	400	600	MILK	DOM		
+8.6	-2.5	-1.0	+8	+23	+30	+12		\$30	
41%	44%	71%	55%	57%	56%	41%			
SS	CWT	EMA	RIB	RMP	RBY	IMF	MAT		
+1.1	+20	+1.8	+0.4	+0.6	+0.0	+0.6		\$53	
45%	46%	38%	53%	53%	49%	45%			
Purchaser					\$				

Top 10% CALVING EASE, MILK, TOP 15% IMF, TOP 20% BIRTH, HOMOZYGOUS POLLED A quality homozygous polled bull who is moderate in type with great all-round EBV's indicating the quality in his bloodlines. You will be hard pressed to find a more docile and user friendly red factor Charolais bull.



CHAROLAIS BULLS

54 ROSEDALE RIVER (P)

Born: 01/10/2020

Society ID: MRR67E

SILVERSTREAM EVOLUTION (P)
 SILVERSTREAM LANDMARK (P)
 MERRIDALE FARAH
Sire: ROSEDALE PREMIER (AI) (P)
 ROSEDALE DONOTELLO (P)
 ROSEDALE GOLDEN GIRL K6 (AI) (ET) (P)
 ROSEDALE GOLDEN GIRL A34 (P)

MINNIE VALE DEPUTY (P)
 ROSEDALE ZINGER (P)
 ROSEDALE NICKY X7 (P)
Dam: ROSEDALE RUBY E170 (P)
 FERNVALE TRAPPER
 ROSEDALE RUBY Z90 (P)
 ROSEDALE RUBY Q22



Charolais Group Breedplan EBV's

	DIR	GL	BWT	200	400	600	MILK	DOM
Charolais	+1.4	-1.7	+0.1	+12	+23	+34	+8	
	41%	70%	72%	61%	66%	62%	39%	+\$24
	SS	CWT	EMA	RIB	RMP	RBY	IMF	MAT
	+0.4	+21	+1.2	-0.4	-0.8	+0.3	+0.1	
	51%	54%	39%	47%	47%	43%	39%	+\$30

Purchaser: \$

Top 25% CE, Top 15% GI, Top 20% 200 Day

River is a bit of a late bloomer, also being one of the younger bulls in the sale but we really like the direction he is heading. He is moderate birth with a great growth curve and structurally very sound.

55 ROSEDALE RAMON (P)

Born: 11/09/2020

Society ID: MRR96E

GUNNADOO YUPPY (P)
 ROSEDALE DEALER (P) (R/F)
 ROSEDALE BUTTERSCOTCH Y47 (P) (R/F)
Sire: ROSEDALE MUSTANG (AI) (ET) (P)
 HARVIE JAGER 65J PMC228759 (P)
 ROSEDALE CANDY G304E (AI) (ET) (P) (R/F)
 ROSEDALE CANDY Q140 (P)

LT EASY BLEND (P)
 ROSEDALE FIRST CLASS (AI) (P)
 ROSEDALE CINDERELLA D6 (P)
Dam: ROSEDALE RUBY K227 (P)
 PARINGA NOVOTEL A100 (AI) (ET) (P)
 ROSEDALE RUBY E143 (P)
 ROSEDALE RUBY A6 (P)



Charolais Group Breedplan EBV's

	DIR	GL	BWT	200	400	600	MILK	DOM
Charolais	+10.7	-3.1	-2.2	+6	+15	+25	+13	
	42%	70%	72%	61%	66%	62%	40%	+\$19
	SS	CWT	EMA	RIB	RMP	RBY	IMF	MAT
	+1.1	+15	+0.5	+1.4	+2.0	-1.4	+0.7	
	51%	54%	40%	47%	47%	44%	40%	+\$39

Purchaser: \$

TOP 10% CALVING EASE, BIRTH, MILK, IMF, TOP 15% RIB AND RUMP FAT. HOMOZYGOUS POLLED

A very nice easy calving bull with excellent carcass traits. Long bodied and thick with even fat cover. Great for cows or heifers.

56 ROSEDALE ROMEO (P)

Born: 01/10/2020

Society ID: MRR97E

GUNNADOO YUPPY (P)
 ROSEDALE DEALER (P) (R/F)
 ROSEDALE BUTTERSCOTCH Y47 (P) (R/F)
Sire: ROSEDALE MUSTANG (AI) (ET) (P)
 HARVIE JAGER 65J PMC228759 (P)
 ROSEDALE CANDY G304E (AI) (ET) (P) (R/F)
 ROSEDALE CANDY Q140 (P)

PINAY
 PALGROVE EXPO (P)
 PALGROVE ESTELLA 130 (P)
Dam: ROSEDALE BEATRIX G231(P)
 GUNNADOO YUPPY (P)
 ROSEDALE BEATRIX B108 (P)
 ROSEDALE BEATRIX W87 (P)



Charolais Group Breedplan EBV's

	DIR	GL	BWT	200	400	600	MILK	DOM
Charolais	+2.1	-1.7	0.0	+8	+20	38	+14	
	49%	55%	73%	63%	69%	65%	51%	\$23
	SS	CWT	EMA	RIB	RMP	RBY	IMF	MAT
	+0.7	+21	+1.2	-0.2	-0.3	+0.3	+0.3	
	54%	58%	45%	53%	53%	49%	45%	\$41

Purchaser: \$

Top 5% Milk

A great bull here out of a big smooth Expo cow that we have used in our Flush Program. Also the mother of Rosedale Lumpsum who is doing a tremendous job for Ascot Charolais. A well rounded & good looking type.

CHAROLAIS YEARLING BULLS



57 ROSEDALE SPARTAN (P)

Born: 7/05/2021

Society ID: MRS43

GUNNADOO YUPPY (P)
ROSEDALE DEALER (P) (R/F)
ROSEDALE BUTTERSCOTCH Y47 (P) (R/F)
Sire: ROSEDALE MAVERICK (AI) (ET) (P) (R/F)
HARVIE JAGER 65J PMC228759 (P)
ROSEDALE CANDY G304E (AI) (ET) (P) (R/F)
ROSEDALE CANDY Q140 (P)

NOVOTEL
PARINGA NOVOTEL (P)
PARINGA FASTRACK (AI) (ET) (P)
Dam: ROSEDALE KRISTINA H116 (P)
FERNVALE TRAPPER
ROSEDALE KRISTINA A168 (P)
ROSEDALE KRISTINA U40 (AI) (P)

Cross into profit



Charolais



Purchaser	
\$	

Index \$ Value					
Domestic (\$)	NTH MATERNAL (\$)				
+\$30	+\$57				
Charolais Group Breedplan EBV's					
	Calving ease	Birth weight	200 day growth	400 day growth	600 Day Growth
EBV	+6.0	-0.5	+15	+26	+43
ACC	44%	71%	62%	61%	61%
Milk	CWT	EMA	Rib	Rump	IMF %
+13	+22	+1.0	+0.9	+1.1	+0.3
46%	51%	42%	50%	50%	42%

Comments - HOMOZYGOUS POLLED

Top 10% Milk, Top 20% Calving Ease, NTH MAT \$IND, TOP 25% 600 DAY GROWTH, DOM \$IND

An outstanding young bull that we really like, the heaviest weaned "S" AUT calf in the group. Spartan is barely 12 months old, Homozygous polled with reliable and solid Growth EBVS out of a very consistent Dam with great milk. Stud sire potential.

58 ROSEDALE SAINTLY (P) (R/F)

Born: 10/05/2021

Society ID: MRS3E

GUNNADOO YUPPY (P)
ROSEDALE DEALER (P) (R/F)
ROSEDALE BUTTERSCOTCH Y47 (P) (R/F)
Sire: ROSEDALE MAVERICK (AI) (ET) (P) (R/F)
HARVIE JAGER 65J PMC228759 (P)
ROSEDALE CANDY G304E (AI) (ET) (P) (R/F)
ROSEDALE CANDY Q140 (P)

PARINGA NOVOTEL (P)
PALGROVE DONOTELLO (P)
ROSEDALE REBECCA A38 (P)
Dam: ROSEDALE ZIG GAIEITY F37 (AI) (P)
MINNIE VALE DEPUTY (P)
ROSEDALE GAIEITY C115 (P)
ROSEDALE GAIEITY X32 (AI)

Cross into profit



Charolais



Purchaser	
\$	

Index \$ Value					
Domestic (\$)	NTH MATERNAL(\$)				
\$27	\$49				
Charolais Group Breedplan EBV's					
	Calving ease	Birth weight	200 day growth	400 day growth	600 Day Growth
EBV	+3.9	-0.2	+13	+25	+40
ACC	41%	71%	55%	57%	56%
Milk	CWT	EMA	Rib	Rump	IMF %
+12	+20	+0.8	+0.7	+0.8	+0.4
40%	46%	37%	43%	43%	37%

Comments - POLLED

Top 10% 200, 400, 600 Day, CWT Top 15% Milk

Saintly is the other pick of our Autumn yearling bulls and he is also good enough to serve in stud duties. Moderate in birth and even and reliable growth EBV's. Out of a lovely and feminine matron that is backed by top class bloodlines he will produce great sons and daughters that will add value to any herd.



COMPOSITE SIRES

DSK TGL LOTABULL L13 (R/F) (P)

Born: 02/02/2015

Society ID: DSKL13E

TEMANA XOROX
YACCAMOO COWBOY (P)
YACCAMOO (AI) (P)
Sire: TEMANA GOLDEN LOGIE G66E (P) (R/F)
MEILARD RJ
TEMANA X104 (AI) (ET)
TEMANA LORETTA (P/S)

AYR HUELVA'S HUSTLER (AI)
DSK RED EMPEROR Y13E (P) (R/F)
DSK GN JULIETTE U1E (AI) (P)
Dam: DSK RE WENDY C31E (P) (R/F)
LT WYOMING WIND 4020 PLD (P)
DSK WW WENDY A10E (AI) (ET) (P)
PINNAROO RED TRENDIE R/F



A Dark Red Bull purchased from DSK in 2016, one of the Sale toppers. He has done such a good job in our black program we bought his full brother as well.

Canadian Charolais EPD's								
	DIR	DTRS	GL	BWT	200	400	600	MWT
Charolais	-0.2	-1.1	-0.7	+1.4	+11	+19	+27	+32
	43%	34%	48%	70%	55%	59%	60%	53%
	MILK	SS	CWT	EMA	RIB	RMP	RBY	IMF
	+4	+1.3	+11	+1.2	+0.5	+0.6	-0.4	+0.6
	35%	68%	49%	42%	46%	45%	45%	41%
Index \$ Value	Domestic (\$)				Export (\$)			
	+\$14				+\$22			

DSK MITCH M44 (P) (R/F)

Born: 03/06/2016

Society ID: DSKM44E

TEMANA XOROX
YACCAMOO COWBOY (P)
YACCAMOO (AI) (P)
Sire: TEMANA GOLDEN LOGIE G66E (P) (R/F)
MEILARD RJ
TEMANA X104 (AI) (ET)
TEMANA LORETTA (P/S)

AYR HUELVA'S HUSTLER (AI)
DSK RED EMPEROR Y13E (P) (R/F)
DSK GN JULIETTE U1E (AI) (P)
Dam: DSK RE WENDY C31E (P) (R/F)
LT WYOMING WIND 4020 PLD (P)
DSK WW WENDY A10E (AI) (ET) (P)
PINNAROO RED TRENDIE R/F



A Dark Red Charolais Sire doing a great job on our black commercial herd. Top priced bull in their 2018 sale. Some lovely offspring in this draft, very happy with his progeny.

Charolais Group Breedplan EBV's								
	DIR	DTRS	GL	BWT	200	400	600	MWT
Charolais	+3.4	-4.3	-0.7	+0.3	+3	+6	+9	+15
	33%	25%	46%	68%	60%	62%	65%	55%
	MILK	SS	CWT	EMA	RIB	RMP	RBY	IMF
	+6	+0.7	+5	+1.2	-0.7	-0.9	+0.5	+0.2
	41%	71%	51%	43%	43%	43%	45%	42%
Index \$ Value	Domestic (\$)				Export (\$)			
	+\$7				\$+9			





59 ROSEDALE XBR30 (P)

Born: 02/09/2020 Tag: XBR30

TEMANA GOLD LOGIE (P) (R/F)
SIRE: DSK LOTTABULL
 DSK WENDY C31(P) (R/F)

DAM: TWYNAM ANGUS COW _____

Raw Data					
Weight	P8	Rib	EMA	IMF %	Scrotal

Purchaser _____ \$ _____



60 ROSEDALE XBR43 (P)

Born: 05/09/2020 Tag: XBR43

TEMANA GOLD LOGIE (P) (R/F)
SIRE: DSK MITCH M44
 DSK WENDY C31(P) (R/F)

DAM: SELECTED ANGUS COW _____

Raw Data					
Weight	P8	Rib	EMA	IMF %	Scrotal

Purchaser _____ \$ _____



61 ROSEDALE XBR40 (P)

Born: 08/08/2020 Tag: XBR40

TEMANA GOLD LOGIE (P) (R/F)
SIRE: DSK LOTTABULL
 DSK WENDY C31(P) (R/F)

DAM: TWYNAM ANGUS COW _____

Raw Data					
Weight	P8	Rib	EMA	IMF %	Scrotal

Purchaser _____ \$ _____



62 ROSEDALE XBR77 (P)

Born: 28/08/2020 Tag: XBR77

PALGROVE HALLMARK (P) (RF)
SIRE: ROSEDALE NIMROD (AI) (ET) (P) (RF)
 ROSEDALE BUTTERSCOTCH F68 (P)

DAM: SELECTED ANGUS COW _____

Raw Data					
Weight	P8	Rib	EMA	IMF %	Scrotal

Purchaser _____ \$ _____





COMPOSITE BULLS

63 ROSEDALE XBR75 (P)

Born: 18/08/2020 Tag: XBR75

TEMANA GOLD LOGIE (P) (R/F)
SIRE: DSK LOTTABULL
 DSK WENDY C31(P) (R/F)

DAM: SELECTED ANGUS COW _____

Raw Data					
Weight	P8	Rib	EMA	IMF %	Scrotal
Purchaser				\$	



64 ROSEDALE XBR76 (P)

Born: 16/08/2020 Tag: XBR76

TEMANA GOLD LOGIE (P) (R/F)
SIRE: DSK LOTTABULL
 DSK WENDY C31(P) (R/F)

DAM: SELECTED ANGUS COW _____

Raw Data					
Weight	P8	Rib	EMA	IMF %	Scrotal
Purchaser				\$	



65 ROSEDALE XBR107 (P)

Born: 25/08/2020 Tag: XBR107

TEMANA GOLD LOGIE (P) (R/F)
SIRE: DSK MITCH M44
 DSK WENDY C31(P) (R/F)

DAM: SELECTED ANGUS COW _____

Raw Data					
Weight	P8	Rib	EMA	IMF %	Scrotal
Purchaser				\$	



66 ROSEDALE XBR98 (P)

Born: 21/08/2020 Tag: XBR98

TEMANA GOLD LOGIE (P) (R/F)
SIRE: DSK MITCH M44
 DSK WENDY C31(P) (R/F)

DAM: TWYNAM ANGUS COW _____

Raw Data					
Weight	P8	Rib	EMA	IMF %	Scrotal
Purchaser				\$	





67 ROSEDALE XBR106

Born: 08/09/2020 Tag: XBR106

TEMANA GOLD LOGIE (P) (R/F)
SIRE: DSK LOTTABULL
 DSK WENDY C31(P) (R/F)

DAM: SELECTED ANGUS COW _____

Raw Data					
Weight	P8	Rib	EMA	IMF %	Scrotal

Purchaser \$ _____



68 ROSEDALE XBR92 (P)

Born: 2/9/2020 Tag: XBR92

TEMANA GOLD LOGIE (P) (R/F)
SIRE: DSK MITCH M44
 DSK WENDY C31(P) (R/F)

DAM: SELECTED ANGUS COW _____

Raw Data					
Weight	P8	Rib	EMA	IMF %	Scrotal

Purchaser \$ _____



69 ROSEDALE XBR91 (P)

Born: 02/08/2020 Tag: XBR91

TEMANA GOLD LOGIE (P) (R/F)
SIRE: DSK LOTTABULL
 DSK WENDY C31(P) (R/F)

DAM: SELECTED ANGUS COW _____

Raw Data					
Weight	P8	Rib	EMA	IMF %	Scrotal

Purchaser \$ _____



70 ROSEDALE XBR83 (P)

Born: 20/08/2020 Tag: XBR83

TEMANA GOLD LOGIE (P) (R/F)
SIRE: DSK LOTTABULL
 DSK WENDY C31(P) (R/F)

DAM: SELECTED ANGUS COW _____

Raw Data					
Weight	P8	Rib	EMA	IMF %	Scrotal

Purchaser \$ _____





COMPOSITE BULLS

71 ROSEDALE XBR46 (P)
 Born: 19/8/2020 Tag: XBR46
 PALGROVE HALLMARK (P) (RF)
SIRE: ROSEDALE NIMROD (AI) (ET) (P) (RF)
 ROSEDALE BUTTERSCOTCH F68 (P)
DAM: SELCECTED ANGUS COW

Raw Data					
Weight	P8	Rib	EMA	IMF %	Scrotal
Purchaser				\$	



72 ROSEDALE XBR82 (P)
 Born: 02/08/2020 Tag: XBR82
 PALGROVE HALLMARK (P) (RF)
SIRE: ROSEDALE NIMROD (AI) (ET) (P) (RF)
 ROSEDALE BUTTERSCOTCH F68 (P)
DAM: SELECTED ANGUS COW

Raw Data					
Weight	P8	Rib	EMA	IMF %	Scrotal
Purchaser				\$	



73 ROSEDALE XBR99 (P)
 Born: 19/08/2020 Tag: XBR99
 TEMANA GOLD LOGIE (P) (R/F)
SIRE: DSK MITCH M44
 DSK WENDY C31 (P) (R/F)
DAM: TWYNAM ANGUS COW

Raw Data					
Weight	P8	Rib	EMA	IMF %	Scrotal
Purchaser				\$	



74 ROSEDALE XBR31 (P)
 Born: 25/08/2020 Tag: XBR31
 TEMANA GOLD LOGIE (P) (R/F)
SIRE: DSK MITCH M44
 DSK WENDY C31 (P) (R/F)
DAM: SELECTED ANGUS COW

Raw Data					
Weight	P8	Rib	EMA	IMF %	Scrotal
Purchaser				\$	





75 ROSEDALE XBR73 (P)
 Born: 24/08/2020 Tag: XBR73

TEMANA GOLD LOGIE (P) (R/F)
SIRE: DSK MITCH M44
 DSK WENDY C31(P) (R/F)

DAM: SELECTED ANGUS COW _____

Raw Data					
Weight	P8	Rib	EMA	IMF %	Scrotal
Purchaser				\$	



76 ROSEDALE XBR108 (P)
 Born: 26/8/2020 Tag: XBR108

PALGROVE HALLMARK (P) (RF)
SIRE: ROSEDALE NIMROD (AI) (ET) (P) (RF)
 ROSEDALE BUTTERSCOTCH F68 (P)

DAM: TWYNAM ANGUS COW _____

Raw Data					
Weight	P8	Rib	EMA	IMF %	Scrotal
Purchaser				\$	



77 ROSEDALE XBR52 (P)
 Born: 18/09/2020 Tag: XBR52

TEMANA GOLD LOGIE (P) (R/F)
SIRE: DSK MITCH M44
 DSK WENDY C31(P) (R/F)

DAM: SELECTED SHORTHORN COW _____

Raw Data					
Weight	P8	Rib	EMA	IMF %	Scrotal
Purchaser				\$	



78 ROSEDALE XBR277
 Born: 09/09/2020 Tag: XBR277

SIRE: BRANGA PLAINS ANGUS BULL (P)
 ROSEDALE HARRY (AI) (P)
DAM: ROSEDALE GEORGETTE P64 (P)
 ROSEDALE GEORGETTE J114 (P)

Raw Data					
Weight	P8	Rib	EMA	IMF %	Scrotal
Purchaser				\$	





COMPOSITE BULLS

79 ROSEDALE XBR277 (P)
 Born: 23/08/2020 Tag: XBR277

SIRE: BRANGA PLAINS ANGUS BULL (P)
 ROSEDALE H168 (P)
DAM: ROSEDALE HUSSY P237 (P)
 ROSEDALE HUSSY J172 (P)

Raw Data					
Weight	P8	Rib	EMA	IMF %	Scrotal
Purchaser				\$	



80 ROSEDALE XBR600
 Born: 22/7/2020 Tag: 600

SIRE: KEANU (P)
 PALGROVE EXPO (P)
 ROSEDALE BUTTERSCOTCH D123 (P)
DAM: SELECTED SHORTHORN COW

Raw Data					
Weight	P8	Rib	EMA	IMF %	Scrotal
Purchaser				\$	



81 ROSEDALE XBR599 (P)
 Born: 25/07/2020 Tag: 599

SIRE: ROSEDALE LAWS (P)
 ROSEDALE FAIRLANE (P)
 ROSEDALE BUTTERSCOTCH H240 (P)
DAM: SELECTED SHORTHORN COW

Raw Data					
Weight	P8	Rib	EMA	IMF %	Scrotal
Purchaser				\$	



82 ROSEDALE XBR589 (P)
 Born: 21/07/2020 Tag: 589

SIRE: ROSEDALE LILLY (P)
 ASCOT GRAND REDEMPTION (P)
 ROSEDALE RUBY C77 (P)
DAM: SELECTED SHORTHORN COW

Raw Data					
Weight	P8	Rib	EMA	IMF %	Scrotal
Purchaser				\$	





83 ROSEDALE XBR593 (P)

Born: 16/8/2020 Tag: R593

PALGROVE EXPO (P)
SIRE: KEANU (P)
 ROSEDALE BUTTERSCOTCH D123 (P)

DAM: SELECTED SHORTHORN COW _____

Raw Data					
Weight	P8	Rib	EMA	IMF %	Scrotal

Purchaser \$ _____



84 ROSEDALE XBR602

Born: 11/08/2020 Tag: XBR602

ROSEDALE HARRY (P)
SIRE: ROSEDALE KLYD (P)
 ROSEDALE BEATRIX G14 (P)

DAM: SELECTED SHORTHORN COW _____

Raw Data					
Weight	P8	Rib	EMA	IMF %	Scrotal

Purchaser \$ _____



85 ROSEDALE XBR595 (P)

Born: 13/08/2020 Tag: R595

ROSEDALE HARRY (P)
SIRE: ROSEDALE MONTREAL (P)
 ROSEDALE HONOR J254 (P)

DAM: SELECTED SHORTHORN COW _____

Raw Data					
Weight	P8	Rib	EMA	IMF %	Scrotal

Purchaser \$ _____





COMPOSITE BULLS

86 **ROSEDALE XBR586 (P)**

Born: 8/8/2020 Tag: R586

ROSEDALE HARRY (P)
SIRE: ROSEDALE MONTREAL (P)
 ROSEDALE HONOR J254 (P)

DAM: SELECTED SHORTHORN COW

Raw Data					
Weight	P8	Rib	EMA	IMF %	Scrotal

Purchaser \$



87 **ROSEDALE XBR579 (P)**

Born: 2/8/2020 Tag: R579

ROSEDALE HARRY (P)
SIRE: ROSEDALE MONTREAL (P)
 ROSEDALE HONOR J254 (P)

DAM: SELECTED SHORTHORN COW

Raw Data					
Weight	P8	Rib	EMA	IMF %	Scrotal

Purchaser \$



88 **ROSEDALE XBR590 (P)**

Born: 11/09/2020 Tag: R590

ROSEDALE HARRY (P)
SIRE: ROSEDALE KLYD (P)
 ROSEDALE BEATRIX G14 (P)

DAM: SELECTED SHORTHORN COW

Raw Data					
Weight	P8	Rib	EMA	IMF %	Scrotal

Purchaser \$

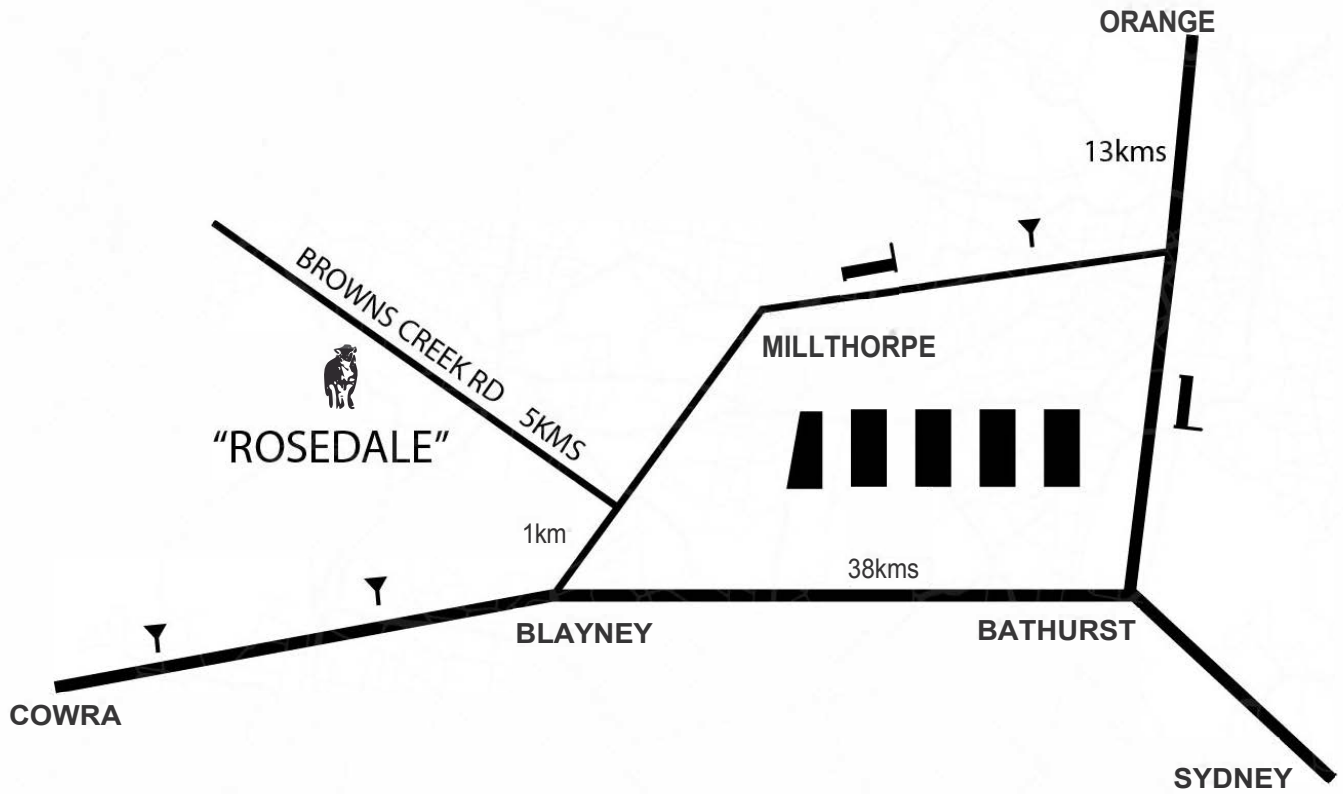




LOT 12



PROPERTY MAP

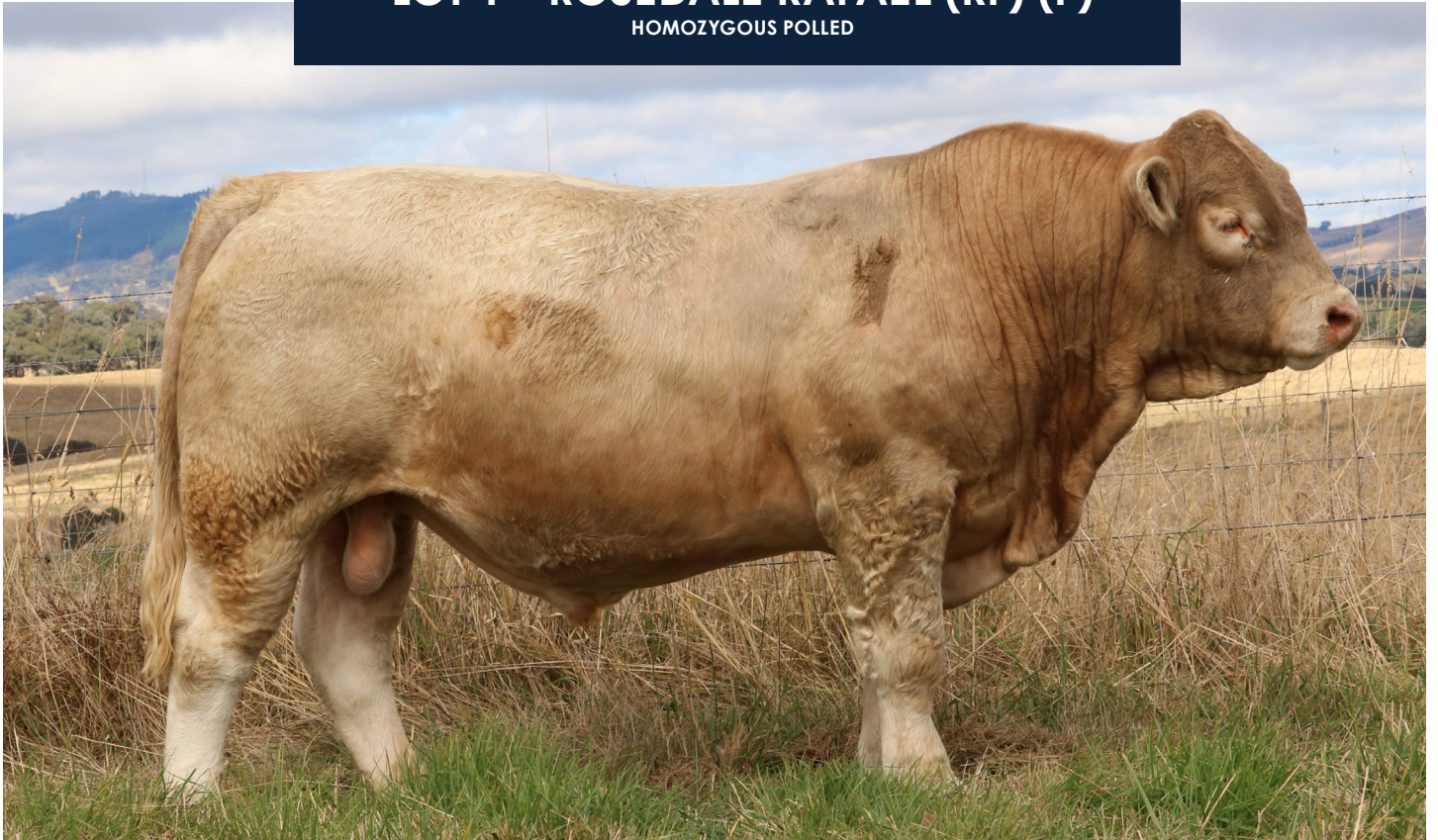


1 km out of Blayney on the Orange Road, turn left into Brown's Creek Road. Continue for 5kms and you will see "Rosedale Charolais Stud" on the left. Following gravel road for 2kms.

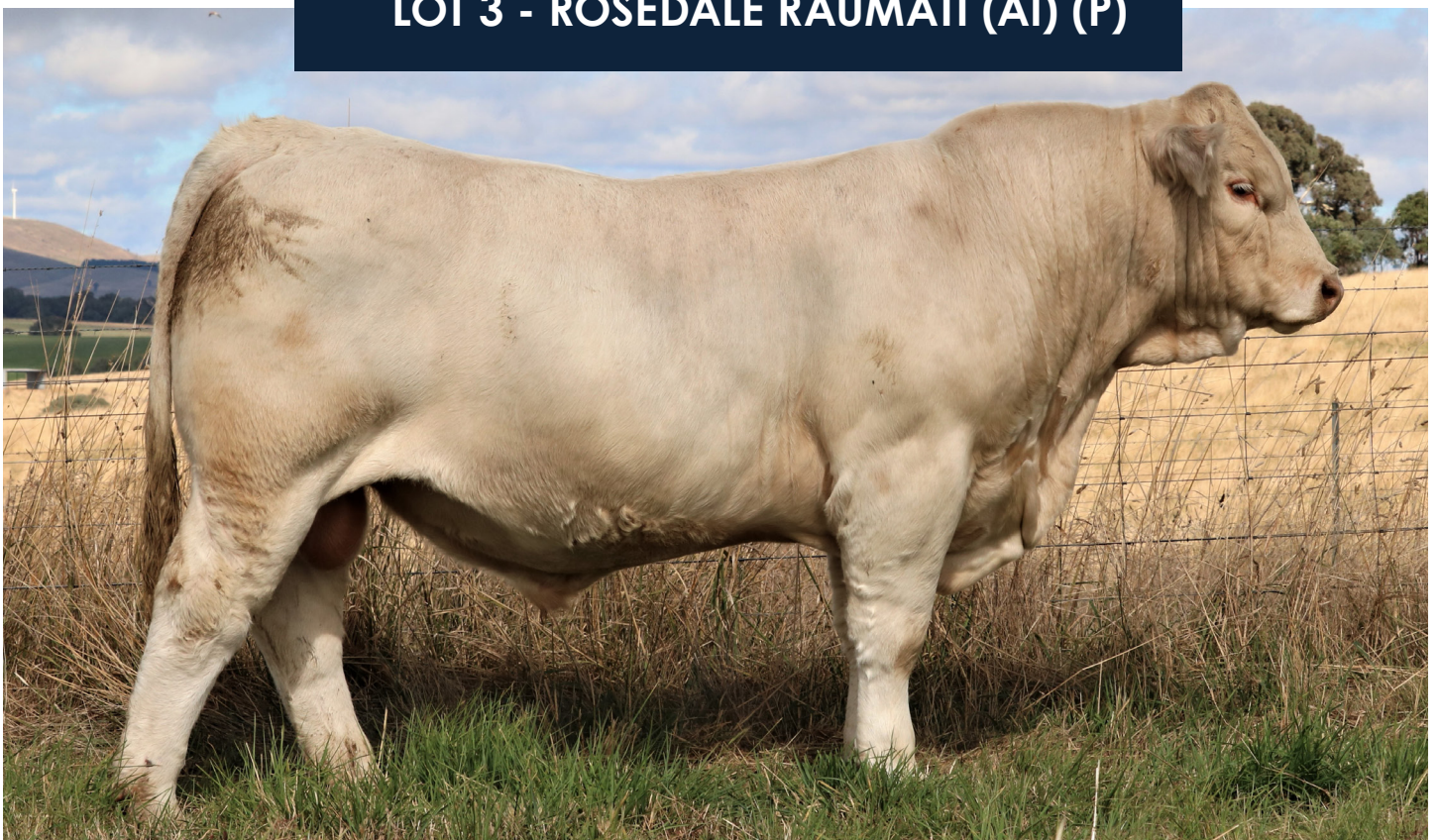




LOT 1 - ROSEDALE RAFAEL (RF) (P)
HOMOZYGOUS POLLED



LOT 3 - ROSEDALE RAUMATI (AI) (P)





'Rosedale Charolais' 126 Rosedale Road, Browns Creek via Blayney NSW 2799

James Millner m: 0425 341 341 e: millner@rosedalecharolais.com.au

Michael & Jenny Millner m: 0409 682 339 p: (02) 6368 7195

www.rosedalecharolais.com.au

