

Online Only, AuctionsPlus

  
**MYSTIC**  
ANGUS STUD



AuctionsPlus

*Production Sale*



*Offering: • Bulls • Females • Semen • Embryos*

Friday, 27th May 2022 at 1pm - Saturday, 28th May 2022 at 1pm



# AuctionsPlus

## How to Register and Bid on AuctionsPlus

1

Go to [www.auctionsplus.com.au](http://www.auctionsplus.com.au) to register at least 48 hours before the sale.

2

Select “**Sign Up**” in the top right hand corner.

3

Fill out your name, mobile number, email address and create a password.

4

Go to your emails and confirm the account.

5

Return to AuctionsPlus and log in.

6

Select “**Dashboard**” and then select “**Request Approval to Buy**”.

7

Fill in buyer details and once completed go back to Dashboard.

8

Complete buyer induction module (approx. 30 minutes).

9

AuctionsPlus will email you to let you know that your account has been approved.

10

Log in on sale day and connect to auction.

11

Bid using the two-step process – unlock the bid button and bid at that price.

12

If you are successful, the selling agent will contact you post sale to organise delivery and payment.

For more information please contact us on:

Phone: (02) 9262 4222

Email: [info@auctionsplus.com.au](mailto:info@auctionsplus.com.au)

# Mystic Angus Production Sale

## SATURDAY, 21<sup>ST</sup> MAY, 2022

All cattle will be available on the 21st of May 2022 at 103 Hooper Rd Goorambat Vic from 11am for inspection please feel free to come along and check out our sale team.

## FRIDAY, 27<sup>TH</sup> MAY, 2022

Bidding opens via AuctionsPlus starting at Friday, 27th of May 1pm, Saturday, 28th of May 2022 1pm sale closes on AuctionsPlus, timer controlled by bidding activity. All lots are offered simultaneously.

## MYSTIC ANGUS STUD PRINCIPALS

Tom, James, Lucy, Edward & Archie Wilkinson

## MYSTIC ANGUS CONTACT

Peter Wilkinson

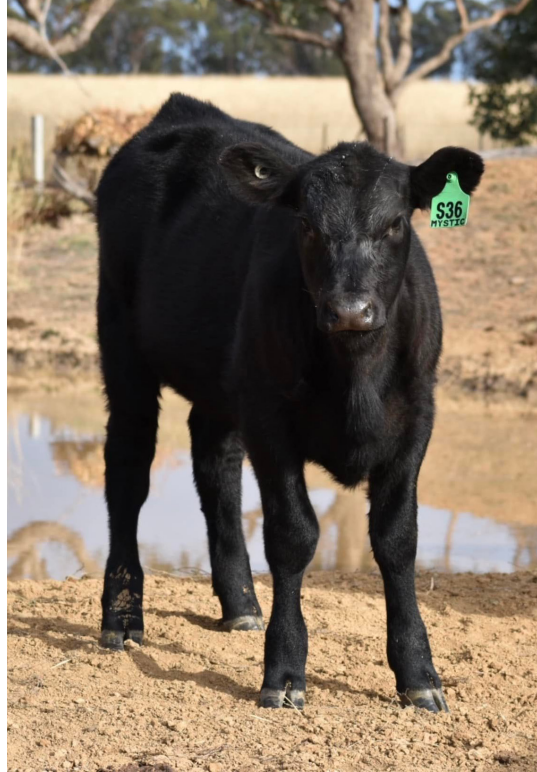
0412 658 418

accounts@woollahragrazing.com.au

## ELDERS AGENT

Jenni O'Sullivan

0428 222 080



## Welcome

Welcome to our First production sale we hope you enjoy what we have to offer.

- 5 x 18month old Stud Bulls
- 9 x Yearling Commercial Bulls
- 3 x ET Calves
- 4 x Embryo Packages
- 4 x Semen Packages

We are very proud to offer 5 stud bulls which are from outstanding imported genetics and by some of Australia's leading Sires.

All 9 of the commercial bulls are By Te Mania Morino M452 and are out of outstanding hand selected commercial Team Te Mania cows.

2 of the 3 ET calves are by the very popular Chisum 255 which has bred so well for Millah Murrah Angus Stud. The other calf is by GAR Bonfire and is an absolute stand out. This Bull calf will develop into an outstanding sire with excellent figures to back him up.

The 4 Embryo packages are out of our 4 best cows these joinings will not disappoint.

The 4 semen Packages are from Dunoon Pathway P1379 who's Progeny are of excellent temperament, outstanding confirmation and structure. Pathways is backed with a truck load of performance with 9 of his traits being in the top 20% of the breed.

*Tom, James, Lucy, Edward & Archie Wilkinson*

**Sale Closes on timer Saturday, 28th May 2022 at 1pm**

# Sale Information

## HERD HEALTH

Mystic Angus is LPA Accredited and JBAS 6.

All bulls have been vaccinated with 7 in 1, Vibrax, and Pestigard.

All bulls have been ear notched and tested free of pestivirus.

All bulls have been inspected and undergone a thorough vet check by Brad Goonan.

All bulls have undergone a full structural and fertility soundness evaluation and are offered at the time of the sale as sound breeding bulls.

## DNA

Stud bulls have been DNA Genomic tested and their results are incorporated into their EBVs.

## WARRANTY

Warranty

If in the next 6 months a bull becomes infertile or breaks down, provided it is not from injury or disease contracted after it has left our possession then we will offer a suitable replacement or a credit at our next bull sale.

## TRANSFERS

The vendor will transfer ownership of the animals to the purchaser on the Angus Australia database.

## VENDOR DISCLAIMER

All reasonable care and attention has been paid to accuracy in the compilation of this catalogue, neither the vendors nor the selling agents or representatives there of resume any responsibility what so ever for the correctness, use or interpretation of the information on animals included in this sale catalogue. Prospective purchasers should satisfy themselves by enquiry or inspection to the accuracy.

## ANGUS AUSTRALIA DISCLAIMER

Animal details included in this catalogue, including but not limited to pedigree, DNA information, Estimated Breeding Values (EBVs) and Index values, are based on information provided by the breeder or owner of the animal. Whilst all reasonable care has been taken to ensure that

the information provided in this catalogue was correct at the time of publication, Angus Australia will assume no responsibility for the accuracy or completeness of the information, nor for the outcome (including consequential loss) of any action taken based on this information.

## EMBRYO EXPECTED AVERAGE PROGENY VALUES

Expected average progeny values are provided to assist breeders estimate the outcome of particular mating combinations. The actual EBVs for any individual progeny resulting from a particular mating are likely to vary from the expected average values.

## PARENT VERIFICATION SUFFIXES

The animals listed within this catalogue including its pedigree, are displaying a Parent Verification Suffix which indicates the DNA parent verification status that has been conducted on the animal. The Parent Verification Suffixes that will appear at the end of each animal's name.

**PV:** both parents have been verified by DNA.

**SV:** the sire has been verified by DNA.

**DV:** the dam has been verified by DNA.

**#:** DNA verification has not been conducted.

**E:** DNA verification has identified that the sire and/or dam may possibly be incorrect, but this cannot be confirmed conclusively.

## PRIVACY INFORMATION

In order for Angus Australia to process the transfer of a registered animal in this catalogue, the vendor will need to provide certain information to Angus Australia and the buyer consents to the collection and disclosure of that information by Angus Australia in certain circumstances.

If the buyer does not wish for his or her information to be stored and disclosed by Angus Australia, the buyer must notify in writing to Angus Australia. If Angus Australia is not notified, then the buyer will be taken to have consented to the disclosure of such information.





Quick Reference for Mystic Angus Production Sale

Animal Ident	CEDr		CEDirs		Calling Ease		BWT		Growth		Fertility		Carcase		Feed		Temp.		Structural		Selection Indexes				
					GL	BWT	200	400	600	MCW	Milk	SS	DTC	CWT	EMA	RIB	PB	RBV	IMF	NIF-F	Doc	Angle	Claw	SA	SA-I
1 MYTR1	-3.5	-4.5	-4.5	+4.2	+4.5	+4.2	+58	+99	+131	+121	+17	-0.1	+74	+5.1	-3.1	-3.4	+1.0	+1.7	-0.04	+1	+120	+1.06	+1.76	\$306	\$306
2 MYTR2	-4.8	+4.1	-4.5	+4.6	+4.6	+4.5	+83	+106	+106	+111	+7	-10	+67	+3.4	-2.2	-3.6	+1.0	+1.7	-0.15	+5	+100	+0.92	+1.77	\$253	\$253
3 ASHR181	+2.4	+0.6	-6.2	+4.4	+4.6	+4.6	+87	+108	+108	+113	+14	+2.6	+68	+5.4	+1.6	+0.7	+0.1	+2.6	+0.43	-	+0.76	-0.80	+1.64	\$313	\$313
4 MYTR4	-4.2	-7.3	-1.6	+5.6	+5.0	+93	+118	+106	+133	+134	+8	+0.9	+2.3	+78	+7.9	-5.4	+3.6	+1.8	-0.25	+6	+0.98	+1.08	+1.18	\$244	\$244
5 MYTR5	-11.3	-2.6	-1.4	+7.4	+6.0	+106	+133	+134	+134	+134	+8	+0.9	+2.3	+78	+7.9	-5.4	+3.6	+1.8	-0.63	+7	+0.80	+0.70	+1.49	\$278	\$278
15 MYT2S34	+2.1	+7.4	-4.8	+3.9	+5.4	+89	+110	+89	+110	+87	+17	+2.0	+6.5	+67	+7.5	-0.4	-0.7	+1.9	+0.23	-	-	-	+2.30	\$368	\$368
16 MYT2S35	-4.7	-1.3	-1.9	+5.4	+6.4	+111	+141	+111	+141	+126	+15	+2.6	+4.3	+80	+4.1	-2.1	-2.3	+1.0	+2.5	-0.19	-	-	-	\$224	\$378
17 MYT2S36	+0.4	+3.1	-2.3	+4.5	+5.2	+89	+105	+89	+105	+87	+16	+2.1	-3.0	+61	+8.6	-1.6	-1.5	+2.5	+0.1	+0.04	-	-	-	\$186	\$308
18 Embryo Lot*	-2.5	-2.8	-3.8	+4.8	+6.1	+111	+143	+110	+143	+110	+26	+1.7	-5.0	+86	+9.6	-1.0	-2.0	+2.1	+2.0	-0.31	-	+0.77	+0.87	\$230	\$395
19 Embryo Lot*	-9.2	+1.8	-3.1	+6.3	+6.7	+114	+144	+119	+144	+119	+22	+2.6	-4.7	+87	+7.9	-2.3	-3.8	+3.3	+1.1	-0.17	-1	+0.87	+0.90	\$235	\$373
20 Embryo Lot*	-1.2	+1.3	-2.3	+4.5	+5.2	+89	+105	+89	+105	+87	+16	+2.2	-3.1	+61	+8.6	-1.6	-1.5	+2.5	+0.2	+0.05	+20	+0.93	+0.83	\$183	\$299
21 Embryo Lot*	+1.5	+7.2	-4.9	+3.8	+5.3	+88	+109	+88	+109	+85	+17	+2.0	+6.5	+67	+7.5	-0.3	-0.7	+1.9	+0.8	+0.24	+13	+1.01	+0.86	\$226	\$360
22 BHRP1379	-3.8	-7.8	-7.7	+5.7	+5.7	+101	+143	+101	+143	+110	+25	+2.0	-1.5	+79	+9.3	-1.9	-1.5	+1.1	+2.5	+0.45	+21	+0.86	+0.50	\$207	\$334
<b>TACE</b> <small>THE ANGUS CATTLE EVALUATION SYSTEM</small>	CEDr	CEDirs	GL	BWT	200	400	600	MCW	Milk	SS	DTC	CWT	EMA	RIB	PB	RBV	IMF	NIF-F	Doc	Angle	Claw	SA	SA-I		
	+2.2	+2.5	-4.7	+4.1	+50	+89	+116	+100	+18	+2.1	-4.7	+66	+6.2	+0.0	-0.4	+0.5	+2.1	+0.19	+7	+0.97	+0.85	+94	+336	+336	

View real time data for the

# Mystic Angus Production Sale

Scan Me

[www.angusaustralia.com.au](http://www.angusaustralia.com.au)

\* The EBVs for the Emryo Lots are Expected Average Progeny Values, the actual EBVs for the individual progeny resulting from a particular mating are likely to vary from these Expected Average Values. Please refer to page 2.



**MYSTIC RAMPAGE R1<sup>PV</sup>**

**17/09/2020**

**MYTR1**

Register: HBR

Mating Type: AI

AMFU,CAFU,DDFU,NHFU



Selection Indexes	
\$A	\$A-L
\$176	\$306
71	74

Mystic Rampage R1 has a lovely temperament and very good growth figures excellent structure and length in this young sire. By GAR Inertia who combines low birth weight and high growth rate.

G A R PROGRESS<sup>SV</sup>

G A R MOMENTUM<sup>PV</sup>

G A R BIG EYE 1770<sup>#</sup>

DMM AMBUSH 03M<sup>#</sup>

DBRL 03M TITAN 4T<sup>#</sup>

DBRL BLACKBIRD 2N<sup>#</sup>

**Sire: USA18636043 G A R INERTIA<sup>PV</sup>**

G A R PROPHET<sup>SV</sup>

G A R PROPHET 2984<sup>#</sup>

G A R DAYBREAK 1521<sup>#</sup>

**Dam: NKSL77 DSK TTN LADY HEATHER L77<sup>#</sup>**

COLDSTREAM PARADOX 73N<sup>#</sup>

COLDSTREAM LADY HEATHER 92S<sup>#</sup>

COLDSTREAM HEATHER WHYTE 42K<sup>#</sup>

### May 2022 TransTasman Angus Cattle Evaluation

TACE <small>THE ANGUS CATTLE EVALUATION</small>	CEDir	CEDtrs	GL	BW	200	400	600	MCW	Milk	SS
EBV	-3.5	-4.5	-4.5	+4.2	+58	+99	+131	+121	+17	-0.1
Acc	57%	51%	82%	72%	72%	71%	72%	69%	64%	68%
Perc	88	95	52	52	14	22	21	18	56	99
DTC	CWT	EMA	Rib	P8	RBY	IMF	NFI-F	Doc	Angle	Claw
+0.1	+74	+5.1	-3.1	-3.4	+1.0	+1.7	-0.04	+1	+1.20	+1.06
39%	66%	64%	69%	65%	65%	64%	53%	49%	67%	67%
98	24	66	99	97	29	63	23	72	91	86

Traits Observed: GL,BWT,400WT,Genomics

Purchaser ..... \$ .....

**Sale Closes on timer Saturday, 28th May 2022 at 1pm**



**MYSTIC REBEL R2<sup>SV</sup>**

17/09/2020

**MYTR2**

Register: HBR

Mating Type: AI

AMFU,CAFU,DDFU,NHFU



Selection Indexes	
\$A	\$A-L
\$127	\$253
95	93

Mystic Rebel R2 is a very smoothly muscled bull showing plenty of growth for age. By the \$50,000 Texas Earnan.

CONNEALY CONSENSUS<sup>#</sup>  
 CONNEALY EARNAN 076E<sup>PV</sup>  
 BRAZILA OF CONANGA 3991 839A<sup>#</sup>

DMM AMBUSH 03M<sup>#</sup>  
 DBRL 03M TITAN 4T<sup>#</sup>  
 DBRL BLACKBIRD 2N<sup>#</sup>

**Sire: DXTL612 TEXAS EARNAN L612<sup>PV</sup>**  
 TE MANIA BERKLEY B1<sup>PV</sup>  
 TEXAS UNDINE H638<sup>PV</sup>  
 TEXAS UNDINE Z183<sup>PV</sup>

**Dam: NKSL43 DSK TTN LADY HEATHER L43<sup>#</sup>**  
 COLDSTREAM PARADOX 73N<sup>#</sup>  
 COLDSTREAM LADY HEATHER 92S<sup>#</sup>  
 COLDSTREAM HEATHER WHYTE 42K<sup>#</sup>

### May 2022 TransTasman Angus Cattle Evaluation

TACE <small>IP@100</small>	CEDir	CEDtrs	GL	BW	200	400	600	MCW	Milk	SS
EBV	-4.8	+4.1	-4.5	+4.6	+45	+83	+106	+111	+7	+1.0
Acc	54%	48%	82%	71%	69%	69%	70%	67%	62%	65%
Perc	91	38	52	61	76	70	73	31	99	87
DTC	CWT	EMA	Rib	P8	RBY	IMF	NFI-F	Doc	Angle	Claw
-3.7	+67	+3.4	-2.2	-3.6	+1.0	+1.7	-0.15	+5	+1.00	+0.92
38%	64%	61%	66%	63%	63%	61%	51%	35%	61%	61%
67	48	88	95	98	29	63	14	59	57	64

Traits Observed: GL,BWT,400WT,Genomics

Purchaser ..... \$ .....





**PREMIER NAPA R181<sup>PV</sup>**

**27/08/2020**

**ASHR181**

Register: HBR

Mating Type: Natural

AMFU,CAFU,DDFU,NHFU



Selection Indexes	
\$A	\$A-L
\$164	\$313
80	70

Premier Nappa R181 will make an excellent heifer bull in any stud herd. By the highly sought after Millwillah Napa N498, N498 sold for \$50,000 at the Premier Dispersal sale. R181 is a very soft easy doing bull with an excellent muscle pattern.

SCHURRTOP REALITY X723<sup>#</sup>

MATAURI REALITY 839<sup>#</sup>

MATAURI 06663<sup>#</sup>

SITZ UPWARD 307R<sup>SV</sup>

BRUIN UPROAR 0070<sup>PV</sup>

FALCON BLACKBIRD 6071<sup>#</sup>

**Sire: NJWN498 MILWILLAH NAPA N498<sup>PV</sup>**

COONAMBLE ELEVATOR E11<sup>PV</sup>

MILWILLAH BARUNAH H224<sup>#</sup>

MILWILLAH BARUNAH B55<sup>PV</sup>

**Dam: ASHP142 PREMIER LEAH P142<sup>PV</sup>**

S A V 707 RITO 9969<sup>#</sup>

KANSAS LEAH J28<sup>SV</sup>

KANSAS LEAH E221<sup>#</sup>

**May 2022 TransTasman Angus Cattle Evaluation**

TACE <small>IPV</small>	CEDir	CEDtrs	GL	BW	200	400	600	MCW	Milk	SS
EBV	+2.4	+0.6	-6.2	+4.4	+46	+87	+108	+113	+14	+2.6
Acc	56%	49%	70%	72%	71%	70%	71%	68%	62%	65%
Perc	54	72	25	57	67	58	68	28	79	26
DTC	CWT	EMA	Rib	P8	RBY	IMF	NFI-F	Doc	Angle	Claw
-3.6	+68	+5.4	+1.6	+0.7	+0.1	+2.6	+0.43	-	+0.76	+0.80
41%	65%	63%	68%	64%	65%	62%	54%	-	66%	66%
69	45	61	12	23	66	29	78	-	9	38

Traits Observed: BWT,400WT,Genomics

Purchaser ..... \$ .....

**Sale Closes on timer Saturday, 28th May 2022 at 1pm**



Register: HBR

Mating Type: AI

AMFU,CAFU,DDFU,NHFU



Selection Indexes	
\$A	\$A-L
\$118	\$244
96	94

Mystic Rolex R4 has been used as a yearling in our herd. By Young Dale Xcaliber, he is in the top 8 % of the Breed for NFI-F. A very well structured bull, excellent weight for age.

LAGRAND MAF ANTIDOTE 5775<sup>#</sup>

YOUNG DALE KNOCKOUT 134U<sup>#</sup>

YOUNG DALE ERICA 26N<sup>#</sup>

REMITALL NIGHTHAWK 37N<sup>#</sup>

REMITALL H RACHIS 21R<sup>#</sup>

HENDERSON MISSIE 32'02<sup>#</sup>

**Sire: CAN1564938 YOUNG DALE XCALIBER 32X<sup>PV</sup> Dam: NKSL50 DSK RR BLACKBIRD L50<sup>#</sup>**

S A V 004 DENSITY 4336<sup>SV</sup>

BROOKMORE TIBBIE 222T<sup>#</sup>

BROOKMORE TIBBIE 35N<sup>#</sup>

DBRL 03M TITAN 4T<sup>#</sup>

COLDSTREAM BLACKBIRD 73Y<sup>#</sup>

COLDSTREAM BLACKBIRD 53G<sup>#</sup>

### May 2022 TransTasman Angus Cattle Evaluation

TACE <small>IP@MIL</small>	CEDir	CEDtrs	GL	BW	200	400	600	MCW	Milk	SS
EBV	-4.2	-7.3	-1.6	+5.6	+50	+93	+118	+119	+10	+1.9
Acc	55%	48%	82%	72%	71%	71%	72%	69%	66%	66%
Perc	90	99	91	81	47	39	46	20	96	54
DTC	CWT	EMA	Rib	P8	RBY	IMF	NFI-F	Doc	Angle	Claw
-2.8	+67	+2.1	-2.2	-3.3	+1.8	+0.2	-0.25	+6	+0.98	+1.08
36%	67%	64%	69%	65%	65%	63%	52%	35%	57%	57%
81	50	96	95	97	9	98	8	55	52	88

Traits Observed: GL,BWT,400WT,Genomics

Purchaser ..... \$ .....



**MYSTIC RANGER R5<sup>PV</sup>**

**25/09/2020**

**MYTR5**

Register: HBR

Mating Type: AI

AMFU,CAFU,DDFU,NHFU



Selection Indexes	
\$A	\$A-L
\$149	\$278
88	86

Mystic Ranger R5 by Texas Earnan has outstanding growth figures and is also in the top 1% of the breed for NFI-F. Ranger is extremely well structured and carries a very well muscled body. Excellent weight for age and the heaviest bull in our draft, he will add class and weight for age in any stud herd.

CONNEALY CONSENSUS<sup>#</sup>  
 CONNEALY EARNAN 076E<sup>PV</sup>  
 BRAZILA OF CONANGA 3991 839A<sup>#</sup>

YOUNG DALE KNOCKOUT 134U<sup>#</sup>  
 YOUNG DALE XCALIBER 32X<sup>PV</sup>  
 BROOKMORE TIBBIE 222T<sup>#</sup>

**Sire: DXTL612 TEXAS EARNAN L612<sup>PV</sup>**  
 TE MANIA BERKLEY B1<sup>PV</sup>  
 TEXAS UNDINE H638<sup>PV</sup>  
 TEXAS UNDINE Z183<sup>PV</sup>

**Dam: NKSL70 DSK YXC LADY HEATHER L70<sup>#</sup>**  
 COLDSTREAM PARADOX 73N<sup>#</sup>  
 COLDSTREAM LADY HEATHER 92S<sup>#</sup>  
 COLDSTREAM HEATHER WHYTE 42K<sup>#</sup>

**May 2022 TransTasman Angus Cattle Evaluation**

TACE <small>IPV</small>	CEDir	CEDtrs	GL	BW	200	400	600	MCW	Milk	SS
EBV	-11.3	-2.6	-1.4	+7.4	+60	+106	+133	+134	+8	+0.9
Acc	55%	49%	82%	71%	70%	70%	71%	68%	63%	66%
Perc	99	90	92	97	9	10	17	7	99	89
DTC	CWT	EMA	Rib	P8	RBY	IMF	NFI-F	Doc	Angle	Claw
-2.3	+78	+7.9	-5.4	-6.4	+3.6	+0.4	-0.63	+7	+0.80	+0.70
39%	65%	63%	67%	64%	64%	62%	53%	38%	61%	61%
86	14	23	99	99	1	96	1	51	14	19

Traits Observed: GL,BWT,400WT,Genomics

Purchaser ..... \$ .....

**Sale Closes on timer Saturday, 28th May 2022 at 1pm**

# Bulls

6



Full details for lot 6 will be available via supplementary sheet on sale day.

Herd Bull Born 3/3/21 Out of a selected Team Te Mania Commercial cow By Te Mania Marino M452 very low birth weight and in the top 12% of the breed for milk Excellent heifer bull.

7



Full details for lot 7 will be available via supplementary sheet on sale day.

Herd Bull born 3/3/21 Out of a selected Team Te Mania Commercial cow By Te Mania Marino M452 very low birth weight and in the top 12% of the breed for milk Excellent heifer bull.



Full details for lot 8 will be available via supplementary sheet on sale day.

Herd Bull Born 5/3/21 Out of a selected Team Te Mania Commercial cow By Te Mania Marino M452 very low birth weight and in the top 12% of the breed for milk Excellent heifer bull.



Full details for lot 9 will be available via supplementary sheet on sale day.

Herd Bull Born 8/3/21 Out of a selected Team Te Mania Commercial cow By Te Mania Marino M452 very low birth weight and in the top 12% of the breed for milk Excellent heifer bull.

# Bulls

10



Full details for lot 10 will be available via supplementary sheet on sale day.

Herd Bull Born 8/3/21 Out of a selected Team Te Mania Commercial cow By Te Mania Marino M452 very low birth weight and in the top 12% of the breed for milk Excellent heifer bull.

11



Full details for lot 11 will be available via supplementary sheet on sale day.

Herd Bull born 14/3/21 Out of a selected Team Te Mania Commercial cow By Te Mania Marino M452 very low birth weight and in the top 12% of the breed for milk Excellent heifer bull.

12



Full details for lot 12 will be available via supplementary sheet on sale day.

Herd Bull born 21/3/21 Out of a selected Team Te Mania Commercial cow By Te Mania Marino M452 very low birth weight and in the top 12% of the breed for milk Excellent heifer bull.

13



Full details for lot 13 will be available via supplementary sheet on sale day.

Herd Bull Born 26 /3/21 Out of a selected Team Te Mania Commercial cow By Te Mania Marino M452 very low birth weight and in the top 12% of the breed for milk Excellent heifer bull.

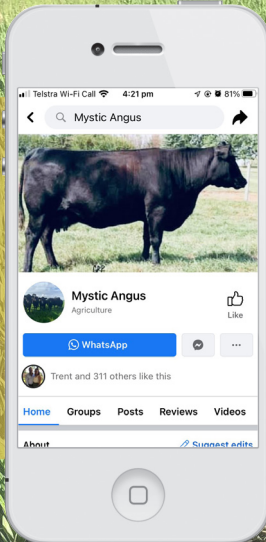
# Bulls

14



Full details for lot 14 will be available via supplementary sheet on sale day.

Herd Bull Born 4/4/21 Out of a selected Team Te Mania Commercial cow By Te Mania Marino M452 very low birth weight and in the top 12% of the breed for milk Excellent heifer bull.



*Like and follow  
Mystic Angus  
on Facebook!*





**MYSTIC CHISUM S34#**

12/12/2021

MYT21S34

Register: HBR

Mating Type: ET

AMFU,CAFU,DDFU,NHFU



Selection Indexes	
\$A	\$A-L
\$230	\$368
18	30

This young bull calf has been bred in the Purple his mother is an outstanding cow and has bred well with Chisum.

Buyers choice the recipient is available at an additional \$3,000 or S34 can be weaned before delivery.

S ALLIANCE 3313#

S CHISUM 6175<sup>PV</sup>

S GLORIA 464#

**Sire: USA17298481 S CHISUM 255<sup>SV</sup>**

SHIPWHEEL CHINOOK#

S BLOSSOM 0278#

S BLOSSOM 8378#

HOFF HI SPADE S C 491#

S V F HI ROAD#

LADY BLACKBIRD 111 G D A R#

**Dam: NKSM3 DSK HR ANITA M3#**

SYDGEN BULLET#

SYDGEN ANITA 9647#

THREE TREES ANITA 5133#

**May 2022 TransTasman Angus Cattle Evaluation**

TACE <small>IPV</small>	CEDir	CEDtrs	GL	BW	200	400	600	MCW	Milk	SS
EBV	+2.1	+7.4	-4.8	+3.9	+54	+89	+110	+87	+17	+2.0
Acc	55%	47%	66%	68%	66%	66%	67%	64%	61%	63%
Perc	56	9	47	44	28	52	65	75	56	49
DTC	CWT	EMA	Rib	P8	RBY	IMF	NFI-F	Doc	Angle	Claw
-6.5	+67	+7.5	-0.4	-0.7	+1.9	+0.8	+0.23	-	-	-
40%	62%	60%	64%	61%	61%	59%	50%	-	-	-
19	48	27	60	58	8	91	56	-	-	-

Traits Observed: BWT

Purchaser ..... \$ .....

**Sale Closes on timer Saturday, 28th May 2022 at 1pm**



**MYSTIC BONFIRE S35#**

14/12/2021

MYT21S35

Register: HBR

Mating Type: ET

AMFU,CAFU,DDFU,NHFU



Selection Indexes	
\$A	\$A-L
\$224	\$378
23	23

S35 just keeps getting better every time I see him, he is a well balanced young sire that shows a huge amount of potential backed with a ton of performance.

Buyers choice the recipient is available at an additional \$3,000 or S35 can be weaned before delivery.

CONNEALY IN SURE 8524#

G A R SURE FIRE<sup>SV</sup>

CHAIR ROCK 5050 G A R 8086#

CONNEALY EARNAN 076E<sup>PV</sup>

TEXAS EARNAN L612<sup>PV</sup>

TEXAS UNDINE H638<sup>PV</sup>

**Sire: USA18789776 G A R BONFIRE<sup>PV</sup>**

G A R PROPHET<sup>SV</sup>

CHAIR ROCK PROPHET 3054#

CHAIR ROCK 5050 G A R 1131#

**Dam: NKSQ59 DSK TEL BLACKBIRD Q59<sup>SV</sup>**

REMITALL H RACHIS 21R#

DSK RR BLACKBIRD L50#

COLDSTREAM BLACKBIRD 73Y#

### May 2022 TransTasman Angus Cattle Evaluation

TACE <small>THE ANGUS CATTLE EVALUATION</small>	CEDir	CEDtrs	GL	BW	200	400	600	MCW	Milk	SS
EBV	-4.7	-1.3	-1.9	+5.4	+64	+111	+141	+126	+15	+2.6
Acc	51%	45%	68%	66%	64%	64%	65%	62%	58%	60%
Perc	91	84	89	78	4	5	9	13	68	26
DTC	CWT	EMA	Rib	P8	RBY	IMF	NFI-F	Doc	Angle	Claw
-4.3	+80	+4.1	-2.1	-2.3	+1.0	+2.5	-0.19	-	-	-
37%	61%	59%	63%	59%	61%	59%	50%	-	-	-
56	11	80	94	90	29	32	12	-	-	-

Traits Observed: BWT

Purchaser ..... \$ .....

Female



**MYSTIC LADY HEATHER S36#**

18/12/2021

MYT21S36

Register: HBR

Mating Type: ET

AMFU,CAFU,DDFU,NHFU



Selection Indexes	
\$A	\$A-L
\$186	\$308
62	73

S36 is a lovely heifer out of our best cow, one of 17 embryos. We also offer 4 embryos in lot 20 of this same joining they are all outstanding calves. Buyers choice the recipient is available at an additional \$3,000 or S36 can be weaned before delivery.

S ALLIANCE 3313#

S CHISUM 6175<sup>PV</sup>

S GLORIA 464#

**Sire: USA17298481 S CHISUM 255<sup>SV</sup>**

SHIPWHEEL CHINOOK#

S BLOSSOM 0278#

S BLOSSOM 8378#

YOUNG DALE KNOCKOUT 134U#

YOUNG DALE XCALIBER 32X<sup>PV</sup>

BROOKMORE TIBBIE 222T#

**Dam: NKSL70 DSK YXC LADY HEATHER L70#**

COLDSTREAM PARADOX 73N#

COLDSTREAM LADY HEATHER 92S#

COLDSTREAM HEATHER WHYTE 42K#

**May 2022 TransTasman Angus Cattle Evaluation**

TACE <small>IPV</small>	CEDir	CEDtrs	GL	BW	200	400	600	MCW	Milk	SS
EBV	+0.4	+3.1	-2.3	+4.5	+52	+89	+105	+87	+16	+2.1
Acc	55%	47%	69%	69%	68%	68%	68%	65%	63%	65%
Perc	69	49	85	59	39	52	75	75	64	45
DTC	CWT	EMA	Rib	P8	RBY	IMF	NFI-F	Doc	Angle	Claw
-3.0	+61	+8.6	-1.6	-1.5	+2.5	+0.1	+0.04	-	-	-
37%	63%	61%	65%	62%	62%	60%	50%	-	-	-
78	70	16	88	77	3	99	32	-	-	-

Traits Observed: BWT

Purchaser ..... \$ .....

**Sale Closes on timer Saturday, 28th May 2022 at 1pm**

### BUSHS WIND CHILL 982<sup>PV</sup> x YOOTHAMURRA N11<sup>PV</sup>



YOAN11 Pictured

Selection Indexes	
\$A	\$A-L
\$250	\$395
6	13

4 Embryos per Package sold per embryo. If you are chasing figures, this joining will offer you the chance to get some very high accomplishments on the ground. Plenty of growth and performance here in the top 2% for Milk and an EBV chart to die for.

SITZ UPWARD 307R<sup>SV</sup>  
 KOUPALS B&B IDENTITY<sup>SV</sup>  
 B&B ERICA 605<sup>#</sup>

TUWHARETOA REGENT D145<sup>PV</sup>  
 PARINGA JUDD J5<sup>PV</sup>  
 STRATHEWEN BERKLEY WILPENA F30<sup>PV</sup>

**Sire:** USA17954351 BUSHS WIND CHILL 982<sup>PV</sup>  
 BUSHS TROOPER 402<sup>#</sup>  
 BUSHS LADY TROOPER 1453<sup>#</sup>  
 BUSHS UPTOWN LADY 7703<sup>#</sup>

**Dam:** YOAN11 YOOTHAMURRA N11<sup>PV</sup>  
 TOPBOS AMBASSADOR F4<sup>PV</sup>  
 LAWSONS AMBASSADOR J1427<sup>PV</sup>  
 LAWSONS TANK E685<sup>SV</sup>

#### Expected Average Progeny Values

TACE <small>IPV</small>	CEDir	CEDtrs	GL	BW	200	400	600	MCW	Milk	SS
EBV	-2.5	-2.8	-3.8	+4.8	+61	+111	+143	+110	+26	+1.7
Acc	67%	57%	90%	84%	81%	81%	80%	78%	74%	75%
Perc	83	90	65	67	6	4	6	31	4	66
DTC	CWT	EMA	Rib	P8	RBY	IMF	NFI-F	Doc	Angle	Claw
-5.0	+86	+9.6	-1.0	-2.0	+2.1	+2.0	-0.31	-	+0.77	+0.87
47%	75%	72%	76%	72%	72%	72%	59%		66%	66%
44	3	9	78	86	5	54	5	-	10	55

Inbreeding Coefficient: 3%

Min./ (Avg.) Generations: 3(10.7)

Embryo Purchaser ..... \$ .....

## BUSHES WIND CHILL 982<sup>PV</sup> x MYSTIC RUBY R3<sup>DV</sup>



Selection Indexes	
\$A	\$A-L
\$235	\$373
14	25

4 Embryos per Package sold per embryo. R3 is out of a very good female line in our herd and will have plenty of performance in this joining.

USA17954351 Pictured

SITZ UPWARD 307R<sup>SV</sup>  
 KOUPALS B&B IDENTITY<sup>SV</sup>  
 B&B ERICA 605<sup>#</sup>

REMITALL NIGHTHAWK 37N<sup>#</sup>  
 REMITALL H RACHIS 21R<sup>#</sup>  
 HENDERSON MISSIE 32'02<sup>#</sup>

**Sire:** USA17954351 BUSHES WIND CHILL 982<sup>PV</sup>  
 BUSHES TROOPER 402<sup>#</sup>  
 BUSHES LADY TROOPER 1453<sup>#</sup>  
 BUSHES UPTOWN LADY 7703<sup>#</sup>

**Dam:** MYTR3 MYSTIC RUBY R3<sup>DV</sup>  
 S V F HI ROAD<sup>#</sup>  
 DSK HR ANITA M3<sup>#</sup>  
 SYDGEN ANITA 9647<sup>#</sup>

Expected Average Progeny Values										
TACE <small>IPM</small>	CEDir	CEDtrs	GL	BW	200	400	600	MCW	Milk	SS
EBV	-9.2	+1.8	-3.1	+6.3	+67	+114	+144	+119	+22	+2.6
Acc	63%	53%	83%	83%	80%	80%	79%	76%	72%	74%
Perc	97	62	75	89	1	2	6	20	16	28
DTC	CWT	EMA	Rib	P8	RBY	IMF	NFI-F	Doc	Angle	Claw
-4.7	+87	+7.9	-2.3	-3.8	+3.3	+1.1	-0.17	-1	+0.87	+0.90
43%	74%	70%	74%	70%	71%	70%	56%	42%	64%	64%
50	3	23	95	98	1	85	13	77	26	63

Inbreeding Coefficient: 2%

Min./ (Avg.) Generations: 3(8.9)

Embryo Purchaser ..... \$ .....

## S CHISUM 255<sup>SV</sup> x DSK YXC LADY HEATHER L70<sup>#</sup>



NKSL70 Pictured

Selection Indexes	
\$A	\$A-L
\$183	\$299
63	77

4 Embryos per Package sold per embryo. NKSL70 what a cow, she never stops coming up with the goods. Dam of lot 5 Mystic Ranger R5, he displays all the characteristics of a top sire and out of this first class female. We offer a full sister to this joining and is one not to miss.

S ALLIANCE 3313<sup>#</sup>

S CHISUM 6175<sup>PV</sup>

S GLORIA 464<sup>#</sup>

**Sire: USA17298481 S CHISUM 255<sup>SV</sup>**

SHIPWHEEL CHINOOK<sup>#</sup>

S BLOSSOM 0278<sup>#</sup>

S BLOSSOM 8378<sup>#</sup>

YOUNG DALE KNOCKOUT 134U<sup>#</sup>

YOUNG DALE XCALIBER 32X<sup>PV</sup>

BROOKMORE TIBBIE 222T<sup>#</sup>

**Dam: NKSL70 DSK YXC LADY HEATHER L70<sup>#</sup>**

COLDSTREAM PARADOX 73N<sup>#</sup>

COLDSTREAM LADY HEATHER 92S<sup>#</sup>

COLDSTREAM HEATHER WHYTE 42K<sup>#</sup>

### Expected Average Progeny Values

TACE <small>IPM</small>	CEDir	CEDtrs	GL	BW	200	400	600	MCW	Milk	SS
EBV	-1.2	+1.3	-2.3	+4.5	+52	+89	+105	+87	+16	+2.2
Acc	70%	58%	88%	87%	85%	84%	84%	80%	79%	82%
Perc	77	66	85	60	38	52	74	74	64	44
DTC	CWT	EMA	Rib	P8	RBY	IMF	NFI-F	Doc	Angle	Claw
-3.1	+61	+8.6	-1.6	-1.5	+2.5	+0.2	+0.05	+20	+0.93	+0.83
46%	78%	76%	78%	75%	74%	73%	60%	60%	70%	71%
77	69	16	89	78	2	98	32	13	40	46

Inbreeding Coefficient: 1%

Min./(Avg.) Generations: 4(8.5)

Embryo Purchaser ..... \$ .....

21

S CHISUM 255<sup>SV</sup> x DSK HR ANITA M3<sup>#</sup>

NKSM3 Pictured

## Selection Indexes

\$A	\$A-L
\$226	\$360
20	34

4 Embryos per Package sold per embryo. NKSM3 is a powerful cow and is breeding very well in the Mystic herd. This joining will produce some outstanding progeny similar to Lot 15 which is a full brother to this joining.

S ALLIANCE 3313<sup>#</sup>S CHISUM 6175<sup>PV</sup>S GLORIA 464<sup>#</sup>Sire: USA17298481 S CHISUM 255<sup>SV</sup>SHIPWHEEL CHINOOK<sup>#</sup>S BLOSSOM 0278<sup>#</sup>S BLOSSOM 8378<sup>#</sup>HOFF HI SPADE S C 491<sup>#</sup>S V F HI ROAD<sup>#</sup>LADY BLACKBIRD 111 G D A R<sup>#</sup>Dam: NKSM3 DSK HR ANITA M3<sup>#</sup>SYDGEN BULLET<sup>#</sup>SYDGEN ANITA 9647<sup>#</sup>THREE TREES ANITA 5133<sup>#</sup>

## Expected Average Progeny Values

TACE <small>IPM</small>	CEDir	CEDtrs	GL	BW	200	400	600	MCW	Milk	SS
EBV	+1.5	+7.2	-4.9	+3.8	+53	+88	+109	+85	+17	+2.0
Acc	70%	60%	85%	85%	84%	83%	83%	79%	78%	81%
Perc	61	10	46	41	29	53	66	76	55	53
DTC	CWT	EMA	Rib	P8	RBY	IMF	NFI-F	Doc	Angle	Claw
-6.5	+67	+7.5	-0.3	-0.7	+1.9	+0.8	+0.24	+13	+1.01	+0.86
52%	77%	76%	78%	75%	74%	74%	61%	60%	75%	76%
20	49	28	59	57	8	91	58	29	61	55

Inbreeding Coefficient: 2%

Min./ (Avg.) Generations: 4(8)

Embryo Purchaser ..... \$ .....

Sale Closes on timer Saturday, 28th May 2022 at 1pm



**DUNOON PATHWAY P1379<sup>SV</sup>**

**24/09/2018**

**BHRP1379**

Register: HBR

Mating Type: Natural

AMFU,CAFU,DDF,NHFU



Selection Indexes	
\$A	\$A-L
\$207	\$334
40	56

Semen Package 25 Straw sold per straw. Dunoon Pathway P1379 is extremely quiet, sound, excellent growth, milk and carcase statistics. His first calves look outstanding and will have a presence in the future. P1379 has 9 traits in the top 20% of the breed. Semen has been collected and is eligible for export to New Zealand.

\*Calf by Dunoon Pathway P1379<sup>SV</sup> pictured.

RENNYLEA EDMUND E11<sup>PV</sup>

CLUNIE RANGE HANK H358<sup>SV</sup>

CLUNIE RANGE NAOMI F351<sup>#</sup>

**Sire: BHRM017 DUNOON MONTROSE M017<sup>SV</sup>**

DUNOON GABBA G548<sup>PV</sup>

DUNOON PRINCESS K074<sup>#</sup>

DUNOON PRINCESS F286<sup>#</sup>

TE MANIA BARTEL B219<sup>PV</sup>

DUNOON EVIDENT E614<sup>PV</sup>

DUNOON ELSA B681<sup>SV</sup>

**Dam: BHRH230 DUNOON DANDLOO H230<sup>#</sup>**

DUNOON F DIRECTION Y138<sup>SV</sup>

DUNOON DANDLOO B112<sup>#</sup>

DUNOON DANDLOO X156<sup>#</sup>

**May 2022 TransTasman Angus Cattle Evaluation**

TACE <small>IPV</small>	CEDir	CEDtrs	GL	BW	200	400	600	MCW	Milk	SS
EBV	-3.8	-7.8	-2.7	+5.7	+57	+101	+143	+110	+25	+2.0
Acc	55%	50%	72%	73%	71%	71%	72%	69%	65%	71%
Perc	89	99	80	83	15	17	8	33	6	49
DTC	CWT	EMA	Rib	P8	RBY	IMF	NFI-F	Doc	Angle	Claw
-1.5	+79	+9.3	-1.9	-1.5	+1.1	+2.5	+0.45	+21	+0.86	+0.50
41%	67%	64%	70%	66%	66%	64%	55%	46%	54%	54%
93	13	11	92	77	25	32	80	12	23	3

Traits Observed: BWT,200WT,400WT,SC,Scan(EMA,Rib,Rump,IMF),DOC,Genomics

Straw Purchaser ..... \$ .....



Register: HBR

Mating Type: Natural

AMFU,CAFU,DDF,NHFU



Selection Indexes	
\$A	\$A-L
\$207	\$334
40	56

Semen Package 25 Straw sold per straw. Dunoon Pathway P1379 is extremely quiet, sound, excellent growth, milk and carcase statistics. His first calves look outstanding and will have a presence in the future. P1379 has 9 traits in the top 20% of the breed. Semen has been collected and is eligible for export to New Zealand.

\*Calf by Dunoon Pathway P1379<sup>SV</sup> pictured.

RENNYLEA EDMUND E11<sup>PV</sup>

CLUNIE RANGE HANK H358<sup>SV</sup>

CLUNIE RANGE NAOMI F351<sup>#</sup>

**Sire: BHRM017 DUNOON MONTROSE M017<sup>SV</sup>**

DUNOON GABBA G548<sup>PV</sup>

DUNOON PRINCESS K074<sup>#</sup>

DUNOON PRINCESS F286<sup>#</sup>

TE MANIA BARTEL B219<sup>PV</sup>

DUNOON EVIDENT E614<sup>PV</sup>

DUNOON ELSA B681<sup>SV</sup>

**Dam: BHRH230 DUNOON DANDLOO H230<sup>#</sup>**

DUNOON F DIRECTION Y138<sup>SV</sup>

DUNOON DANDLOO B112<sup>#</sup>

DUNOON DANDLOO X156<sup>#</sup>

### May 2022 TransTasman Angus Cattle Evaluation

TACE <small>IP@MIL</small>	CEDir	CEDtrs	GL	BW	200	400	600	MCW	Milk	SS
EBV	-3.8	-7.8	-2.7	+5.7	+57	+101	+143	+110	+25	+2.0
Acc	55%	50%	72%	73%	71%	71%	72%	69%	65%	71%
Perc	89	99	80	83	15	17	8	33	6	49
DTC	CWT	EMA	Rib	P8	RBY	IMF	NFI-F	Doc	Angle	Claw
-1.5	+79	+9.3	-1.9	-1.5	+1.1	+2.5	+0.45	+21	+0.86	+0.50
41%	67%	64%	70%	66%	66%	64%	55%	46%	54%	54%
93	13	11	92	77	25	32	80	12	23	3

Traits Observed: BWT,200WT,400WT,SC,Scan(EMA,Rib,Rump,IMF),DOC,Genomics

Straw Purchaser ..... \$ .....



**DUNOON PATHWAY P1379<sup>SV</sup>**

**24/09/2018**

**BHRP1379**

Register: HBR

Mating Type: Natural

AMFU,CAFU,DDF,NHFU



Selection Indexes	
\$A	\$A-L
\$207	\$334
40	56

Semen Package 25 Straw sold per straw. Dunoon Pathway P1379 is extremely quiet, sound, excellent growth, milk and carcase statistics. His first calves look outstanding and will have a presence in the future. P1379 has 9 traits in the top 20% of the breed. Semen has been collected and is eligible for export to New Zealand.

\*Calf by Dunoon Pathway P1379<sup>SV</sup> pictured.

RENNYLEA EDMUND E11<sup>PV</sup>

CLUNIE RANGE HANK H358<sup>SV</sup>

CLUNIE RANGE NAOMI F351<sup>#</sup>

**Sire: BHRM017 DUNOON MONTROSE M017<sup>SV</sup>**

DUNOON GABBA G548<sup>PV</sup>

DUNOON PRINCESS K074<sup>#</sup>

DUNOON PRINCESS F286<sup>#</sup>

TE MANIA BARTEL B219<sup>PV</sup>

DUNOON EVIDENT E614<sup>PV</sup>

DUNOON ELSA B681<sup>SV</sup>

**Dam: BHRH230 DUNOON DANDLOO H230<sup>#</sup>**

DUNOON F DIRECTION Y138<sup>SV</sup>

DUNOON DANDLOO B112<sup>#</sup>

DUNOON DANDLOO X156<sup>#</sup>

**May 2022 TransTasman Angus Cattle Evaluation**

TACE <small>IPV</small>	CEDir	CEDtrs	GL	BW	200	400	600	MCW	Milk	SS
EBV	-3.8	-7.8	-2.7	+5.7	+57	+101	+143	+110	+25	+2.0
Acc	55%	50%	72%	73%	71%	71%	72%	69%	65%	71%
Perc	89	99	80	83	15	17	8	33	6	49
DTC	CWT	EMA	Rib	P8	RBY	IMF	NFI-F	Doc	Angle	Claw
-1.5	+79	+9.3	-1.9	-1.5	+1.1	+2.5	+0.45	+21	+0.86	+0.50
41%	67%	64%	70%	66%	66%	64%	55%	46%	54%	54%
93	13	11	92	77	25	32	80	12	23	3

Traits Observed: BWT,200WT,400WT,SC,Scan(EMA,Rib,Rump,IMF),DOC,Genomics

Straw Purchaser ..... \$ .....



**DUNOON PATHWAY P1379<sup>SV</sup>**

**24/09/2018**

**BHRP1379**

Register: HBR

Mating Type: Natural

AMFU,CAFU,DDF,NHFU



Selection Indexes	
\$A	\$A-L
\$207	\$334
40	56

Semen Package 25 Straw sold per straw. Dunoon Pathway P1379 is extremely quite, sound, excellent growth, milk and carcase statistics. His first calves look outstanding and will have a presence in the future. P1379 has 9 traits in the top 20% of the breed. Semen has been collected and is eligible for export to New Zealand.

\*Calf by Dunoon Pathway P1379<sup>SV</sup> pictured.

RENNYLEA EDMUND E11<sup>PV</sup>

CLUNIE RANGE HANK H358<sup>SV</sup>

CLUNIE RANGE NAOMI F351<sup>#</sup>

**Sire: BHRM017 DUNOON MONTROSE M017<sup>SV</sup>**

DUNOON GABBA G548<sup>PV</sup>

DUNOON PRINCESS K074<sup>#</sup>

DUNOON PRINCESS F286<sup>#</sup>

TE MANIA BARTEL B219<sup>PV</sup>

DUNOON EVIDENT E614<sup>PV</sup>

DUNOON ELSA B681<sup>SV</sup>

**Dam: BHRH230 DUNOON DANDLOO H230<sup>#</sup>**

DUNOON F DIRECTION Y138<sup>SV</sup>

DUNOON DANDLOO B112<sup>#</sup>

DUNOON DANDLOO X156<sup>#</sup>

**May 2022 TransTasman Angus Cattle Evaluation**

TACE <small>IPV</small>	CEDir	CEDtrs	GL	BW	200	400	600	MCW	Milk	SS
EBV	-3.8	-7.8	-2.7	+5.7	+57	+101	+143	+110	+25	+2.0
Acc	55%	50%	72%	73%	71%	71%	72%	69%	65%	71%
Perc	89	99	80	83	15	17	8	33	6	49
DTC	CWT	EMA	Rib	P8	RBY	IMF	NFI-F	Doc	Angle	Claw
-1.5	+79	+9.3	-1.9	-1.5	+1.1	+2.5	+0.45	+21	+0.86	+0.50
41%	67%	64%	70%	66%	66%	64%	55%	46%	54%	54%
93	13	11	92	77	25	32	80	12	23	3

Traits Observed: BWT,200WT,400WT,SC,Scan(EMA,Rib,Rump,IMF),DOC,Genomics

Straw Purchaser ..... \$ .....

**Sale Closes on timer Saturday, 28th May 2022 at 1pm**

# Buyers Instruction Slip

Contact Name .....

Trading Name .....

Postal Address .....

Phone ..... Email .....

PIC Number 

--	--	--	--	--	--	--	--

Lots Purchased .....

Angus Australia Transfer Required  Yes  No

Buyer Signature .....

HOW DO YOU  
REALLY KNOW  
IT'S **ANGUS** ?

**ANGUS**  
VERIFIED

[www.angusaustralia.com.au](http://www.angusaustralia.com.au)

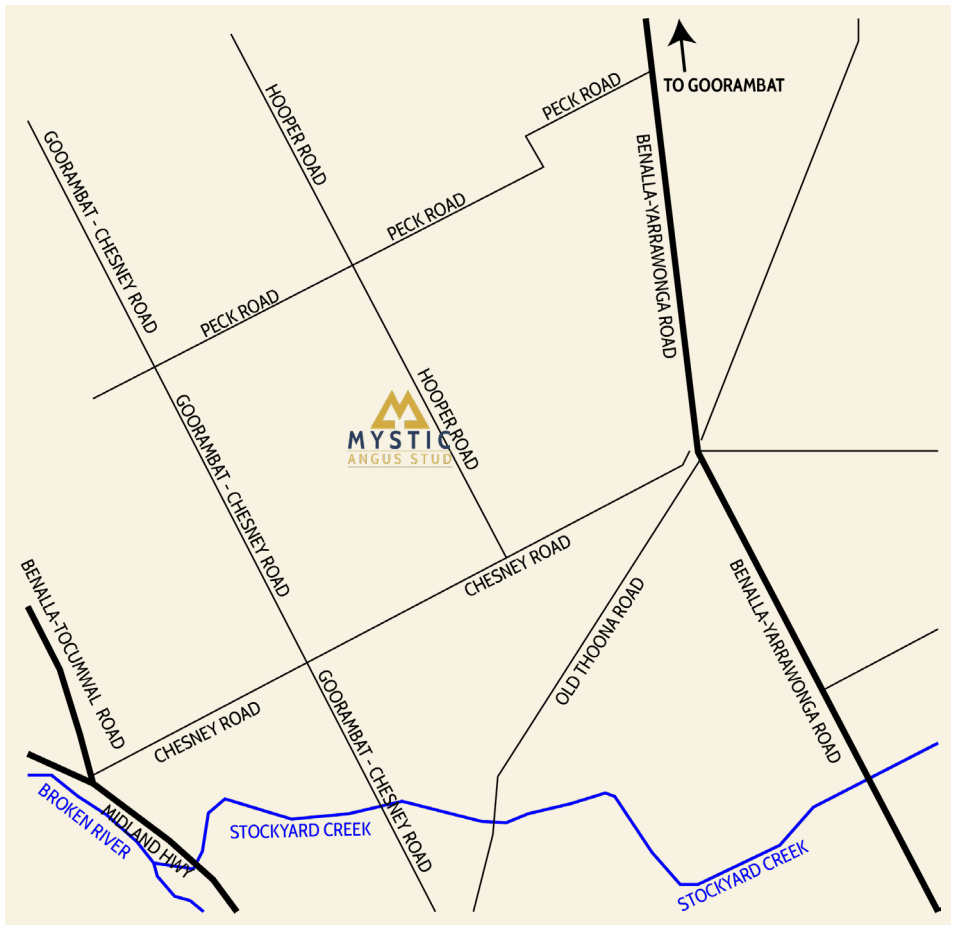
# How to find Mystic Angus

103 Hooper Road, GOORAMBAT, VIC

We are located approximately 13 Kms North of Benalla take the Yarrawonga Rd from Benalla and then turn left into Chesney Rd. Hooper Rd is the first on your right and Mystic Angus is then the first on your left once you are on Hooper Rd.

Call Peter 0412 658 418 if you need any further directions.

*We thank you for your support at our first sale, thanks Team Mystic.*



Embryo Joining Sire EBV Quick Reference

Animal Ident	Calving Ease				Growth				Fertility				Carcase				Feed		Temp.		Structural		Selection Indexes	
	CEDr	CEDi	GL	BWT	200	400	600	MCW	Milk	SS	DTC	CVT	EMA	RIB	P8	RBV	IMF	NFI-F	Doc	Angle	Claw	\$A	\$A-L	
USA17954351	-9.1	+3.1	-3.6	+5.2	+68	+118	+146	+108	+23	+2.2	-3.3	+88	+0.2	-1.9	-3.1	+3.3	+0.7	-0.35	+1	+0.72	-0.86	\$253	\$385	
USA17298481	+7.2	+9.5	-4.5	+1.8	+53	+84	+96	+60	+21	+1.7	-4.8	+59	+9.7	+1.7	+2.7	+0.9	+0.0	+0.29	+33	+0.92	+0.78	\$245	\$370	
<b>TACE</b> Tactical Animal Care Experts	CEDr	CEDi	GL	BWT	200	400	600	MCW	Milk	SS	DTC	CVT	EMA	RIB	P8	RBV	IMF	NFI-F	Doc	Angle	Claw	\$A	\$A-L	
	-0.2	+2.5	-4.7	+4.1	+50	+89	+116	+100	+18	-2.1	-4.7	+66	+6.2	+0.0	-0.4	+0.5	+2.1	-0.19	-7	+0.97	+0.85	\$194	+336	

# Embryo Joining Sires

**BUSHES WIND CHILL 982<sup>PV</sup> (USA17954351)**



**S CHISUM 255<sup>SV</sup> (USA17298481)**





**MEAT STANDARDS AUSTRALIA**  
Excellence in Eating Quality Awards

# TOP 100 PRODUCER 2021

VICTORIA

This certificate is proudly presented to

**P Wilkinson**

For excellence in eating quality performance and  
MSA grading compliance between 2019–2021

A handwritten signature in black ink, appearing to read "J Strong".

**Jason Strong, Managing Director**  
Meat & Livestock Australia

22/12/21

Date



Full Catalogue Design by Sam Hamilton, Angus Australia  
"Enhancing & Promoting the value of Angus"

ph: [02] 6773 4613      email: [sam@angusaustralia.com.au](mailto:sam@angusaustralia.com.au)

[www.angusaustralia.com.au](http://www.angusaustralia.com.au)



**Angus**  
AUSTRALIA