



SPRYS

SHORTHORNS

&

ANGUS

58 Years of Breeding Bull & Female Sale

Tuesday 26th April, 2022

on property "Ardlui" Wagga Wagga
Commencing at 1pm



Sprys Golden Rod R33
Lot 2



Sprys-W Paratrooper R601
Lot 20

Enquiries Welcome

Gerald and Lynden Spry

Ph: **02 6928 5526**

Mobile: **0428 651 481**

Email: **glspry@sprys.com.au**

www.sprys.com.au



Trading as GJ & LL Spry ABN 63 815 350 153

“Ardlui” RMB 5389
Holbrook Road
WAGGA WAGGA NSW 2650 AUSTRALIA
Tel. 02 6928 5526 Fax. 02 6928 5563
Email: glspry@sprys.com.au
www.sprys.com.au

Dear Beef Producers

Welcome to our 58 years of breeding sale of the Spry Family. We have had a long term commitment to the improvement of the Shorthorn breed and in more recent years the same strong commitment to the Angus breed.

The last 18 months has seen confidence in Agriculture with strong prices and in particular beef. It has been very gratifying to see so many of our Clients receiving outstanding prices for their product in the yard as well as in the store market. We have been collecting MSA data from Clients hook sale and we must say they have been outstanding.

All the bulls and females in the sale carry Sprys full guarantee. They are selected from the very top end of our herds so you can buy with confidence. All bulls are performance recorded with IGS for the Shorthorns and EBV's for the Angus.

Bulls will be fully Veterinary checked by Holbrook Vet Centre and Holbrook Cattle Vets. Our sale preparation has in mind the longevity of the bulls so they have a long working life for their new owners. Big sale weights are not a priority but longevity is.

We are extremely proud to say that we believe the offering this year is the best, most consistent groups of bulls and females we have offered in 58 years of breeding. They offer soundness, balance, temperament and maturity with a good data set which is difficult to find.

The Shorthorn females we have put up for sale are from the very top end of our herd. This gives established breeders as well as new breeders the opportunity to get some of the very best, proven genetics in the Shorthorn breed. Some of the females have been in our Donor herd.

If we can be of any assistance prior to or after the sale please do not hesitate to give us a call. Gerald & Lynden thank you for your interest in our breeding programmes and we cherish the friendship established with many Clients.

We wish you a safe return home and a happy and prosperous 2022.

Kindest Regards,
Gerald & Lynden



BREEDING BETTER BEEF - SUPPLYING BETTER BULLS

Lots 1-19 - Shorthorn Bulls
Lots 20-45 - Angus Bulls
Lots 46-72 - Shorthorn Bulls
Lots 73-79 - Females
Lot 80 - Semen Package

TUESDAY 26th April, 2022

on property, "Ardlui", Wagga Wagga commencing at 1pm.
Video of sale bulls & females will be on our website approximately
3 weeks prior to sale.

www.sprys.com.au

- Sale will be interfaced with AuctionsPlus
Contact Michael Coggan – 0409 848 411
Alex Croker – 0428 326 810



Guest Auctioneer – Paul Dooley 0458 662 646. Paul has inspected the sale bulls & females well prior to the sale.



Premier Livestock Solutions will be available to help with your selections at no cost.
Tom Wilding-Davies 0429 570 504
Matt Spry 0417 327 245

SELLING AGENTS:

H Francis & Co., Wagga Wagga

Alex Croker – 0428 326 810
Scott Myers – 0428 763 434
Tim Francis – 0428 263 582
Cory Parker – 0458 363 131



Michael Coggan – 0409 848 411
Ross Milne – 0408 057 558
Paul Jameson – 0428 667 998
Nic Hannaford – 0417 201 460

Lincoln McKinlay – 0419 239 963
Jenni O'Sullivan – 0428 222 080
Andrew Meara – 0427 210 634

SALE INFORMATION

“THE SELLING SYSTEM” The sale shed is located in close proximity to the bull pens. The auctioneer sells the bulls by auction with video of each lot projected onto the screen, rather than running the sale bulls into the sale ring. This system is very well accepted and we believe it is buyer and animal friendly and concurs with modern occupational, health and safety requirements.

INSPECTION

Bulls can be inspected prior to sale with arrangements with the vendor or selling agent. This gives us the opportunity to assist in selection of the best genetics for your requirements.

GUARANTEE BULLS AND SOUNDNESS EVALUATION as per attachment.

HEALTH

TB and Brucellosis free herd. JD Status is JBas 6.

All bulls have vaccinated twice with 7 in 1. Also vaccinated against Vibriosis once, make sure you give the 2nd vaccination.

Bulls have been tested negative for persistently infected Pestivirus (BVDV).

Please note: The bulls in this catalogue have never been handled with horses. We recommend that if you use horses that you move your new bull with non cycling cattle so they are not spooked by a new situation. We also recommend that the new bulls are moved on their own by motorbike as this is what they are used to. We also use dogs on bulls. Gradually introduce the movement of bulls with horses so they can adapt in their own time.

DELIVERY

We take personal interest in efficient delivery of all lots after the sale - contact Gerald direct with a minimum of 24 hours notice.

AUCTIONSPLUS

This sale is interfaced with Auctionsplus. This will enable remote bidders to operate in the sale from their location via computer. Bidding will only be available to registered Auctionsplus users. Prospective bidders must register at least 24 hours prior to sale with Auctionsplus. Contact Auctionsplus 02 92624222 www.auctionsplus.com.au

BUYERS ORDERS AND PHONE LINK UP

Mobile phones operate successfully at the Sale Shed (Venue). We encourage potential purchasers who are unable to attend the

sale to make arrangements with the vendor or his Agent if you wish to be contacted during the sale to place bids. Please make arrangements at least 48 hours prior to sale.

PERSONAL TRANSPORT TO AND FROM SALE VENUE

We can arrange transport to and from the sale venue, please contact the selling Agent or Sprys.

TRANSPORT OF YOUR PURCHASED ANIMALS Stud Stock transport representatives will be available on sale day.

Please speak with Gerald regarding his recommendations. No delivery on sale day.

Transport rebate to \$200 per bull given to purchasers in Sth Australia, Qld, Tasmania & KI & NT and WA.

INSURANCE

We encourage you to insure your purchased lot or lots. All care will be taken from the fall of the gavel but it is the purchaser's responsibility for any injury or death. An insurance agent will be in attendance Sale day.

PLEASE NOTE

It is unethical for anyone to promote or advertise or arrange the sale of cattle, other than those Vendors in the sale, unless with permission by the vendors.

AIR FACILITIES

Good airport facilities are at Wagga and Albury and private planes may also use Holbrook.

CATERING

Complimentary morning tea and lunch will be available prior to the sale, catered for by Little Billabong CWA.

OUTSIDE AGENT REBATE

1. The Vendors agree to allow a rebate to outside Agents introducing their client in writing within 24 hours prior to the sale and settling on their behalf within 7 days of the sale. (This clause will be strictly enforced). Introductions must be sent direct to the Vendors.
2. Any outside Agent travelling a distance to the sale with their client and settling on their behalf within 7 days should contact the Vendor prior for approval of a larger rebate.

Sale Catalogue Disclaimer: All reasonable care has been taken to ensure that the information provided in this catalogue is correct at the time of publication. However, neither the vendor or the selling agents make no other representations about the accuracy, reliability or completeness of any information provided in this catalogue and do not assume any responsibility for the use or interpretation of the information in this catalogue. You are encouraged to seek independent verification of any information contained in this catalogue before relying on such information.

IMPORTANT NOTICES

The Selling Agent, its members, subsidiary or related corporations, officers, agents and employees for themselves and for those for whom they act while exercising due care provide all information without responsibility and give no guarantee whatsoever as to its accuracy. All persons who attend the sale do so entirely at their risk and the Selling Agent, its members, subsidiary or related corporations, officers, agents, employees and its principals, for themselves and for those for whom they act, do not assume or accept any responsibility or liability of whatever nature for any injury or damage whatsoever which may occur.

UNDERSTANDING SHORTHORN IGS EPD'S

UNDERSTANDING SHORTHORN IGS EPD'S

The Shorthorn IGS Genetic Evaluation - Powered by BOLT offers a full suite of EPD's for Maternal, Growth, Production and Carcase Traits. IGS is the largest genetic evaluation for beef cattle in the world and IGS EPD's measure the genetic merit of an animals progeny.

SHORTHORN IGS EPD'S EXPLAINED

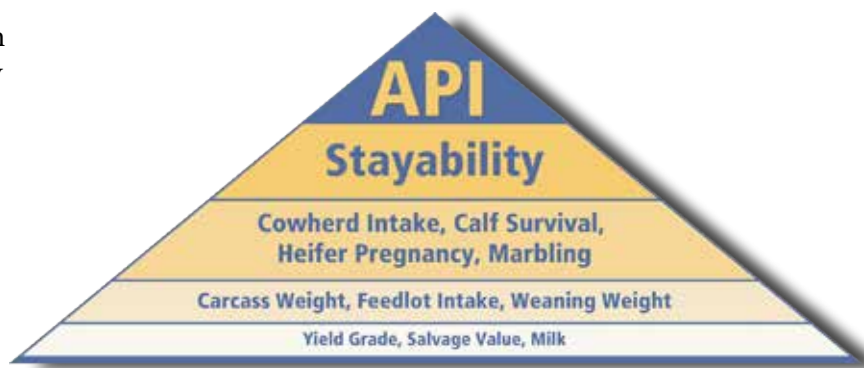
EPD	MEASURE	TRAITS
CE-D	%	CALVING EASE DIRECT - % OF EXTRA UNASSISTED BIRTHS IN HEIFERS. POSITIVE VALUES ARE MORE FAVOURABLE.
CE-M	%	CALVING EASE MATERNAL - % OF EXTRA UNASSISTED BIRTHS IN 1ST CALVING HEIFERS. POSITIVE VALUES ARE MORE FAVOURABLE.
BWT	POUNDS	BIRTH WEIGHT - POUNDS OF BIRTHWEIGHT.
WW	POUNDS	WEANING WEIGHT - POUNDS OF WEANING WEIGHT ADJUSTED TO 205 DAYS.
YW	POUNDS	YEARLING WEIGHT - POUNDS OF YEARLING WEIGHT ADJUSTED TO 365 DAYS OF AGE.
MILK	POUNDS	MILK - POUNDS OF WEANING WEIGHT OF DAUGHTERS PROGENY DUE TO MILK PRODUCTION.
MWW	POUNDS	MATERNAL WEANING WEIGHT - POUNDS OF WEANING WEIGHT OF DAUGHTERS PROGENY DUE TO MILK AND GROWTH.
STAY	%	STAYABILITY - % OF DAUGHTERS REMAINING IN THE HERD AT 6 YEARS OF AGE. POSITIVE VALUES ARE MORE FAVOURABLE.
DOC	%	DOCILITY - % OF PROGENY RECEIVING A DOCILITY SCORE OF 1 (IDEAL). POSITIVE VALUES ARE MORE FAVOURABLE.
CWT	POUNDS	CARCASE WEIGHT - POUNDS OF CARCASE WEIGHT.
REA	SQ. INCHES	RIB EYE AREA - RIB EYE AREA IN SQUARE INCHES.
FAT	INCHES	RIB FAT - RIB FAT IN INCHES.
MS		MARBLE SCORE - DIFFERENCES IN CARCASS MARBLE SCORES. POSITIVE VALUES ARE MORE FAVOURABLE.
ALL PURPOSE INDEX		
API	\$ PER HEAD	API \$INDEX - SIRE USED IN SELF REPLACING COW HERD WITH PROGENY MARKETED FOR BOTH QUALITY AND YIELD.
RANK %	%	RANK % - EPD RANKING RELATIVE TO SHORTHORN PERCENTILE BAND. LOWER % VALUES USUALLY MORE FAVOURABLE

UNDERSTANDING RANK %

EPD Values are a critical function, however to use EPD's correctly, it is important to first understand how the EPD Values ranks relative to the breed average. To make this process easier, the Rank % Value is published with each EPD and \$Index and tells you where each value ranks relative to breed average. With the exception of EPD and \$ Index Values that may exceed or your thresholds for that trait, breeders should concentrate on the Rank % itself, as the critical value.

ALL PURPOSE \$INDEX - API

Though EPDs allow for the comparison of genetic levels for many economically important traits, they only provide a piece of the economic puzzle. That's where \$ Indexes come in. Through well conceived, rigorous mathematical computation, \$ Indexes blend EPDs and economics to estimate an animal's overall impact on your bottom line.



ALL PURPOSE INDEX (API):

Evaluates sires for use on the entire cow herd (bred to both Angus first-calf heifers and mature cows) with the portion of their daughters required to maintain herd size retained and the remaining heifers and steers put onto feed and marketed for both quality grade and yield.

HOW RANK % WORKS

IGS EPD's are used for direct comparisons, not just across the same breed within different countries, but across all breeds and all countries in IGS. That means that the EPD's for a Shorthorn bull in Australia can be directly compared to the EPD's for a Simmental bull in Canada or the EPD's for a Red Angus bull in America.

Whilst the IGS EPD's can be directly compared across all IGS recorded animals, the same can not be said for percentiles. Percentile bands for Shorthorns in Australia only rank each Australian Shorthorn against other Australian Shorthorn cattle.

To make this process as uncomplicated as possible, we also print the EPD's with a Rank % value.

The Rank % value lists the percentile rank for every EPD and every animal.

IGS	CE DIRECT	BIRTH WEIGHT	WEANING WEIGHT	YEARLING WEIGHT	MILK	TOTAL MATERNAL	CE MATERNAL
EPD	+11	-0.4	+58	+92	+19	48	+10
RANK %	16%	11%	58%	39%	57%	63%	7%

In the above table, the animal has a CE-D EPD of +11. Without having a copy of the percentile band it is impossible to know where +11 sits relative to the other Shorthorns in Australia. However, the Rank % value tells you instantly that +11 for CE-D places the animal in the 16th percentile or in the top 16% of the Shorthorn breed in Australia.

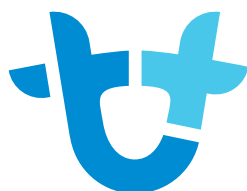
Rank % is designed to give you instant access to know where each EPD sits relative to the Shorthorn breed in Australia. So for most breeders, the Rank % value will be more important than the EPD value itself.

UNDERSTANDING ACCURACIES

BOLT EPD accuracies will see the most change, usually lowering numerically and especially for non-parent animals, however the reported accuracy will be more accurate.

With BOLT EPD's, accuracy can be more directly solved (without using assumptions), which results in a more reliable accuracy, although that accuracy will quite often be lower numerically.

Accuracy refers to the amount a reported EPD can possibly change as more data is added. EPD values with higher accuracy result in less possible change for the value over time. More accurate accuracies better represent the amount of possible change for each EPD.



AuctionsPlus

How to Register and Bid on AuctionsPlus

1

Go to www.auctionsplus.com.au to register at least 48 hours before the sale.

2

Select “**Sign Up**” in the top right hand corner.

3

Fill out your name, mobile number, email address and create a password.

4

Go to your emails and confirm the account.

5

Return to AuctionsPlus and log in.

6

Select “**Dashboard**” and then select “**Request Approval to Buy**”.

7

Fill in buyer details and once completed go back to Dashboard.

8

Complete buyer induction module (approx. 30 minutes).

9

AuctionsPlus will email you to let you know that your account has been approved.

10

Log in on Sale Day and connect to auction.

11

Bid using the two-step process – unlock the bid button and bid at that price.

12

If you are successful, the selling agent will contact you post sale to organise delivery and payment.

For more information please contact us on:

Phone: (02) 9262 4222

Email: info@auctionsplus.com.au



You can Purchase with confidence at Sprys

A strong emphasis is placed on traits that contribute positively to commercial profitability and sustainability of beef production.

Firstly we aim to breed a functional female focusing on Structural Soundness, Docility, Fertility & Calving Ease.

Animals are joined for restricted periods resulting in short calving periods. Any animal not meeting the criteria are culled. The focus then moves towards Growth & Carcase quality, avoiding extremes. Sprys Angus & Shorthorns perform well in the natural environments of Australia.

REFERENCE SIRES

REFERENCE SIRE **MURIDALE THERMAL ENERGY 15A (P)**

DOB: 27/03/2013

Colour: Red

Ident No: MCAN477341

SASKVALLEY ULTRA 12J (P) Roan
SASKVALLEY ROUGHNECK 154R (P) Red
SASKVALLEY RAGGEDY ANN 57H (P) Red Little White

SASKVALLEY ULTRA 12J (P) Roan
SASKVALLEY BONANZA 219M (P) Roan
SASKVALLEY BRENDA 218K (P) Roan

Sire: SASKVALLEY TRADITION 106T (P) Red

Dam: MURIDALE GOOSE 32R (P) Roan

SASKVALLEY ULTRA 12J (P) Roan
SASKVALLEY MYRTLE 83N (P) Roan
SASKVALLEY MYRTLE 174D (P) Red

MURIDALE BUSTER 14K (P) Roan
MURIDALE SWAN 54N (P) White
MURIDALE DARLIN 64K (P) Roan

FEBRUARY 2022 IGS EPD's

	CE	BW	WW	YW	Milk	MCE	MWWT	STAY	DOC	CW	REA	FAT	MARB
EPD	13.2	2.3	62.1	93.8	32.4	9.3	63.5	20.1	17.9	22.8	0.52	-0.059	0.33
Acc	61%	83%	78%	78%	49%	47%	59%	44%	48%	64%	62%	45%	54%
%RK	5	35	15	20	10	5	5	1	2	4	15	10	1

	API
Index	153.57
%RK	1

DNA tested Homozygous polled.

Thermal Energy 15A is, without doubt, the most consistent Shorthorn sire we have ever used for his overall consistency breeding easy doing, fertile, docile progeny with a great data set. The carcase data from his progeny is outstanding for MSA Index's.



MURIDALE THERMAL ENERGY 15A (P)

REFERENCE SIRES

REFERENCE SIRE **SPRYS SOLAR N135 (P)**

DOB: 13/09/2017

Colour: Red Little White

Ident No: GLSN135

SASKVALLEY ROUCHNECK 154R (P) Red
SASKVALLEY TRADITION 106T (P) Red
SASKVALLEY MYRTLE 83N (P) Roan

BYLAND GOLD SPEAR (P)
RED ROSE GOLD SPEAR RUFFIAN (P)
RED ROSE GUS ROAN LADY 6J (P)

Sire: MURIDALE THERMAL ENERGY 15A (P) Red
SASKVALLEY BONANZA 219M (P) Roan
MURIDALE GOOSE 32R (P) Roan
MURIDALE SWAN 54N (P) White

Dam: SPRYS SPEAR'S KATE G6 (P)
THE GROVE LEGEND A584 (P)
SPRYS KATE D159 (H)
SPRYS LEGENDS KATE Y031 (P)

FEBRUARY 2022 IGS EPD's

	CE	BW	WW	YW	Milk	MCE	MWWT	STAY	DOC	CW	REA	FAT	MARB
EPD	9.7	3.2	52.1	81.0	32.1	6.6	58.2	15.8	13.9	27.9	0.47	-0.057	0.06
Acc	52%	63%	59%	62%	18%	25%	32%	27%	50%	52%	46%	35%	47%
%RK	25	55	55	55	10	35	20	10	15	2	20	5	20

	API
Index	119.75
%RK	15

DNA tested Homozygous polled.

Solar has been a very successful sire, breeding ease doing, easy calving, extremely sound progeny who have great docility and feet with a slick, fine coat. The calving ease of this young sire has been quite outstanding. If you add some Solar to your programme you will not be disappointed. We really like the mix of genetics in him.

REFERENCE SIRE **SPRYS PRIMROSE'S BUDDY J17 (P) (ET) (AI)**

DOB: 01/03/2013

Colour: Roan

Ident No: GLSJ17

BYLAND GOLD DUST (P) Red and White
BYLAND GOLD SPEAR (P) Red Little White
BYLAND AUGUSTA ID40 (P) Red

EDEN PARK RED EAGLE U002 (P) (ET) (AI) Red
THE GROVE KASPROWICZ W791 (P) Red
THE GROVE DALE 39TH (P) Red

Sire: RED ROSE GOLD SPEAR RUFFIAN (IMP CAN) (P) Roan
EIONMOR MR GUS 80C (IMP CAN) (P) Roan
RED ROSE GUS ROAN LADY 6J (P) Roan
RAELYND ROAN LADY 15D (P) Roan

Dam: THE GROVE PRIMROSE A742 (P) (ET) (AI) Red
EVILO SUPER STAR L32 (P) (AI) Red
THE GROVE PRIMROSE R202 (P) Red
THE GROVE PRIMROSE 18TH (P) Red

FEBRUARY 2022 IGS EPD's

	CE	BW	WW	YW	Milk	MCE	MWWT	STAY	DOC	CW	REA	FAT	MARB
EPD	16.8	-0.8	42.8	61.2	28.8	7.9	50.2	13.8	14.4	6.2	0.44	-0.040	0.03
Acc	64%	76%	72%	72%	46%	43%	55%	31%	50%	64%	62%	42%	54%
%RK	1	3	95	100	30	15	70	30	10	45	30	2	25

	API
Index	126.39
%RK	5

DNA tested Homozygous polled.

Buddy J17 is proving to be a very popular choice with breeders for his overall calving ease, medium maturity and his progeny to survive in tough conditions. His daughters are very fertile and have excellent maternal traits. Buddy's dam is one of the all time top breeding Shorthorn females.



SPRYS PRIMROSE'S BUDDY J17 (P) (ET) (AI)

REFERENCE SIRE

REFERENCE SIRE **SPRYS EXTRA SPECIAL N61 (P)**

DOB: 17/07/2017

Colour: Red Little White

Ident No: GLSN61

SASKVALLEY ROUGHNECK 154R (P)
SASKVALLEY TRADITION 106T (P)
SASKVALLEY MYRTLE 83N (P)

SPRYS AUSSIE GOLD B086 (P)
SPRYS ALL GOLD D052 (P)
NEEARRA JUDITH 104 (P)

Sire: MURIDALE THERMAL ENERGY 15A (P)

Dam: SPRYS GOLDS JULIET G166 (P)

SASKVALLEY BONANZA 219M (P)
MURIDALE GOOSE 32R (P)
MURIDALE SWAN 54N (P)

ROYALLA EXTERMINATOR (P)
SPRYS EXT JULIET D058 (P)
SPRYS VOODOOS JULIET B104

FEBRUARY 2022 IGS EPD's

	CE	BW	WW	YW	Milk	MCE	MWWT	STAY	DOC	CW	REA	FAT	MARB
EPD	8.3	4.4	65.8	98.9	29.6	5.5	62.5	17.1	18.8	22.0	0.51	-0.080	0.35
Acc	52%	65%	60%	61%	19%	27%	33%	29%	51%	52%	47%	32%	46%
%RK	40	80	10	10	25	55	10	4	1	4	15	40	1

	API
Index	140.02
%RK	1

DNA tested Homozygous polled.

Extra Special N61 was sold for \$44,000 at Dubbo National and has bred the house down. The first of his progeny are so consistent with good performance and balance with outstanding data. The structure of his progeny is a big plus so you can buy his progeny with confidence.



SPRYS EXTRA SPECIAL N61 (P)

REFERENCE SIRE **SPRYS GOLDENROD P39 (P)**

DOB: 24/06/2018

Colour: Red Little White

Ident No: GLSP39

ALTA CEDAR ULTIMATE 130K (IMP) (H)
LEVELDALE JAVELIN 535R (P)
LEVELDALE JANET 229M (ET) (P)

RED ROSE GOLD SPEAR RUFFIAN (P)
SPRYS PRIMROSE'S BUDDY J17 (P)
THE GROVE PRIMROSE A742 (P)

Sire: JSF GOLDENROD 57U (P)

Dam: SPRYS MISS BUDDY M36 (P)

WAUKARU GOLD ELEMENT 156 (P)
KL GOLD ROSE (P)
KL DOUBLE ROSE (P)

YAMBURGAN EVEREST G643 (P)
SPRYS MISS P EVEREST K124 (H)
SPRYS MISS PATENT G120 (P)

FEBRUARY 2022 IGS EPD's

	CE	BW	WW	YW	Milk	MCE	MWWT	STAY	DOC	CW	REA	FAT	MARB
EPD	11.4	0.6	58.7	85.0	31.2	5.7	60.6	13.5	14.8	13.5	0.37	-0.099	-0.18
Acc	47%	56%	48%	50%	9%	20%	22%	18%	40%	47%	43%	30%	42%
%RK	15	10	25	45	15	55	15	35	10	20	50	95	90

	API
Index	111.08
%RK	30

DNA tested Homozygous polled.

Sold for \$30,000 in our 2020 sale. Goldenrod P39 is proving to be a very popular choice by many breeders. His progeny are born easy with good growth and excellent carcass shape. His daughters do look outstanding. Semen socks are sold out until more semen can be collected. P39 is owned by the Bennett family at Wilcannia.



SPRYS GOLDENROD P39 (P)

REFERENCE SIREs

REFERENCE SIRE **SPRYS BOOM TIME M222 (P) (ET) (AI)**

DOB: 07/08/2016

Colour: Red

Ident No: GLSM222

SASKVALLEY ROUCHNECK 154R (P) Red
SASKVALLEY TRADITION 106T (P) Red
SASKVALLEY MYRTLE 83N (P) Roan

Sire: **MURIDALE THERMAL ENERGY 15A (P) Red**

SASKVALLEY BONANZA 219M (P) Roan
MURIDALE GOOSE 32R (P) Roan
MURIDALE SWAN 54N (P) White

WAUKARU PATENT 8161 (IMP USA) (P) (ET) Red
SPRYS PATENT G60 (P) (AI) Red
LONE PINE BALM C050 (P) Red Little White

Dam: **SPRYS PATENTS CHERRY J90 (P) Roan**

JR LEGEND 78H (IMP USA) (P) Red
SPRYS LEGENDS CHERRY G141 (P) (AI) Roan
LONE PINE CHERRY A064 (P) Roan

FEBRUARY 2022 IGS EPD's

	CE	BW	WW	YW	Milk	MCE	MWWT	STAY	DOC	CW	REA	FAT	MARB
EPD	2.5	6.4	75.0	110.7	27.4	3.5	64.9	16.9	14.2	22.2	0.65	-0.090	-0.08
Acc	53%	69%	61%	63%	16%	28%	31%	31%	48%	56%	52%	43%	48%
%RK	100	100	2	2	45	90	3	5	10	4	2	80	60

	API
Index	108.74
%RK	40

DNA tested Homozygous polled.

Boom Time was sold for \$36,000 and has proven to be a very potent sire, leaving progeny with tremendous thickness, balance and they weight like lead. You can add performance with Boom Time. His progeny are very docile and slick coated.



SPRYS BOOM TIME M222 (P) (ET) (AI)



**EXCLUSIVE
BY NAME,
EXCLUSIVE
BY NATURE...**

PERFECTLY SUITED FOR THAT SPECIAL OCCASION WHEN FRIENDS, FAMILY OR COLLEAGUES COME TOGETHER TO SHARE A RICHLY REWARDING MOMENT IN TIME.

Enrich that moment with a legend.



WWW.1000GUINEAS.COM.AU

**Thousand Guineas
steak will be provided
for Lunch by
JBS and Sprys.**

THOUSAND GUINEAS SHORTHORN BEEF IS A TIMELESS CELEBRATION OF AUSTRALIA'S RICH AGRICULTURAL HISTORY. A HISTORY OF FARMING FAMILIES THAT HAVE DEDICATED THEIR LIVES TO BRINGING YOU THE FINEST BEEF ONLY THEIR PRISTINE COUNTRYSIDE AND WORLD CLASS LIVESTOCK CAN PRODUCE.

Enjoy it. Savour it. Remember it.

HUNDREDS OF YEARS OF WORK, OF REFINEMENT, OF GOOD TIMES, AND OF BAD, UNITE WITH THOUSAND GUINEAS SHORTHORN BEEF TO BRING YOU A BEEF PRODUCT THAT IS RIGHTFULLY RESERVED FOR ONLY THOSE THAT WILL TRULY APPRECIATE AND TAKE DELIGHT THE EXPERIENCE IT DELIVERS.

Be a part of this journey.

SIGHT UNSEEN PURCHASING PROGRAM

100% satisfaction guarantee.
Available to buyers who cannot attend the Sale.

For those purchasers who have discussed their requirements with us prior to the Sale we offer a 100% money back guarantee if the purchaser is not completely satisfied with their purchase.

We must be notified within seven days of taking delivery.

However the purchaser will be responsible for return transport costs.

SPRYS BULL GUARANTEE:

All bulls are backed by a 3 YEAR GUARANTEE. In the event of a bull proven to be incapable of natural service the vendor can either offer a suitable replacement if available or issue a credit for future sales. The credit is a pro-rata value of the bull minus the salvage value. The guarantee can only apply if the bull's incapacity is not caused by injury or disease since taking delivery. Any claim must be accompanied by a relevant veterinary certificate. The vendor retains the right to obtain independent veterinary confirmation of any claim.

It is important to understand that normal care must be taken and good husbandry practices observed, as we cannot replace a bull that is injured or dies for any reason. As such, we recommend you insure animals against injury. A representative of an insurance service organisation will be available on sale day.

PURCHASER TOP PRICED BULL AT AUCTION

Semen collection
to the value of \$400.
Donated by Sprys

VISUAL APPRAISAL

Although EBV's and EPD's provide an estimate of an animal's genetic merit for a range of production traits, they do not provide information for all of the traits that must be considered during selection of **functional** animals. In all situations, EBV's should be used in conjunction with visual assessment for other traits of importance (structural soundness, temperament, fertility etc). A recommended practise is to firstly select replacement breeding stock based on EPD's and EBV's and Indexes and to then select from this group to ensure that the final selections are visually acceptable.

FEBRUARY BREED AVERAGE EPD's 2022

	CE	BW	WW	YW	Milk	MCE	MWWT	STAY	DOC	CW	REA	FAT	MARB
EPD	7.7	3.0	53.1	82.3	26.3	5.7	52.7	12.3	10.7	4.6	0.37	-0.080	-0.04

	API
Index	106.14

• Please Note

The Vendors retain the right to collect semen from any bull in the sale for within herd use only, at a time convenient to the Purchaser. All collection costs to be paid for by the Vendor or Vendors. The Purchaser retains all semen marketing unless mentioned in the Lot notes.

SHORTHORN SALE BULLS



SHORTHORN

All bulls will have been Genomics & DNA Sire Verified & tested for Poll Gene.

LOT 1 SPRYS JUST A RIPPER R129 (P)

DOB: 17/07/2020 Colour: Red Ident No.: GLSR129

SASKVALLEY ROUGHNECK 154R (P)
SASKVALLEY TRADITION 106T (P)
SASKVALLEY MYRTLE 83N (P)
Sire: MURIDALE THERMAL ENERGY 15A (P)
SASKVALLEY BONANZA 219M (P)
MURIDALE GOOSE 32R (P)
MURIDALE SWAN 54N (P)

GLENELL IMF B90 (P)
OUTBACK SPRYS BALANCE G266 (P)
SCHULLER RED KATE C1 (P)
Dam: SPRYS BALANCES JULIET J67 (P)
SPRYS ALL GOLD D052 (P)
SPRYS GOLDS JULIET G166 (P)
SPRYS EXT JULIET D058 (P)

MEASUREMENTS	
Scrotal Size	I
Weight	I

FEBRUARY 2022 IGS EPD's

	CE	BW	WW	YW	Milk	MCE	MWWT	STAY	DOC	CW	REA	FAT	MARB
EPD	12.0	2.1	46.8	73.1	28.8	9.3	52.2	16.4	18.3	15.0	0.51	-0.051	0.27
Acc	39%	44%	42%	43%	18%	21%	26%	28%	40%	44%	42%	34%	43%
%RK	10	30	80	80	30	5	55	10	1	15	15	4	2

	API
Index	135.44
%RK	1

Top 1% for API, top 2% for Marbling, top 4% for Fat, top 5% for Maternal Calving Ease and top 10% for Calving Ease.

Homozygous Polled.
An outstanding young sire to start the sale. A Thermal Energy 15A son who combines phenotype and a top data set.

Dam is a top Donor with sons selling to \$40,000. The Thermal Energy 15A X Balance is a real winner. You cannot go wrong with the genetics in this dark red Sire.



LOT 1

Purchaser: \$.....

LOT 2 SPRYS GOLDEN ROD R33 (P)

DOB: 04/07/2020 Colour: Red Ident No.: GLSR33

LEVELDALE JAVELIN 535R (P)
JSF GOLDENROD 57U (P)
KL GOLD ROSE (P)
Sire: SPRYS GOLDENROD P39 (P)
SPRYS PRIMROSE'S BUDDY J17 (P)
SPRYS MISS BUDDY M36 (P)
SPRYS MISS P EVEREST K124 (H)

CRATHES DENON (P)
CRATHES HASTINGS (P)
CRATHES ENIA 6TH (P)
Dam: SPRYS HASTINGS CHERRY P103 (P)
JR LEGEND 78H (IMP USA) (P)
SPRYS LEGENDS CHERRY G141 (P)
LONE PINE CHERRY A064 (P)

MEASUREMENTS	
Scrotal Size	I
Weight	I

FEBRUARY 2022 IGS EPD's

	CE	BW	WW	YW	Milk	MCE	MWWT	STAY	DOC	CW	REA	FAT	MARB
EPD	9.3	1.4	50.	74.6	25.7	6.6	50.9	9.5	12.4	10.8	0.26	-0.095	-0.07
Acc	39%	44%	40%	40%	7%	17%	18%	22%	37%	39%	40%	36%	35%
%RK	30	20	65	75	60	35	65	90	30	25	80	90	60

	API
Index	101.74
%RK	70

Homozygous Polled.
A really well balanced, structurally sound, young sire who has impressed us since day 1. Used as a cover bull on heifers at Sprys in Spring 2021. Out of a 1st calver. The Goldenrod P39 sire is impressing many breeders who have used him and demand has been excellent for his semen. P39 was sold for \$30,000 in 2020 to Glenalbyn Props, Wilcannia. His dam comes from the reliable Cherry family who keep coming up with productive progeny.



LOT 2

Purchaser: \$.....

SHORTHORN SALE BULLS

LOT 3 SPRYS BOOMER R58 (P)

DOB: 31/07/2020

Colour: Roan

Ident No.: GLSR58

 SASKVALLEY TRADITION 106T (P)
 MURIDALE THERMAL ENERGY 15A (P)
 MURIDALE GOOSE 32R (P)
Sire: **SPRYS BOOM TIME M222 (P)**
 SPRYS PATENT G60 (P)
 SPRYS PATENTS CHERRY J90 (P)
 SPRYS LEGENDS CHERRY G141 (P)

 YAMBURGAN EVEREST E102 (P)
 YAMBURGAN EVEREST G643 (P)
 YAMBURGAN D231 (P)
Dam: **SPRYS MISS P EVEREST K124 (H)**
 WAUKARU PATENT 8161 (IMP USA) (P)
 SPRYS MISS PATENT G120 (P)
 GLSD1119 (SFA) (P)
MEASUREMENTS

Scrotal Size I

Weight I

FEBRUARY 2022 IGS EPD's

	CE	BW	WW	YW	Milk	MCE	MWWT	STAY	DOC	CW	REA	FAT	MARB
EPD	4.3	3.8	63.8	98.1	26.5	4.4	58.4	19.2	12.0	12.9	0.39	-0.081	-0.25
Acc	37%	41%	40%	41%	11%	18%	21%	25%	32%	43%	41%	32%	41%
%RK	90	70	10	15	50	75	20	1	35	20	45	50	100

	API
Index	106.34
%RK	50

Top 1% for Stayability, top 10% for Weaning Wt, top 15% for Yearling Wt and top 20% for Carcase Wt.

What a stout, powerful young sire who was used as a back up bull at Sprys in Spring 2021. Boomer is one impressive young sire with tremendous thickness, length of body and heaps of eye appeal. A full brother was equal top price Shorthorn bull at our 2021 sale sold to Wangolina herd in SA. His dam has been a prolific Donor for Sprys and is now in the Trojon herd. Add extra weight and carcase to your herd by using Boomer R58.



LOT 3

Purchaser: \$.....

LOT 4 OUTBACK SPRYS SPECIAL R282 (P)

DOB: 28/07/2020

Colour: Roan

Ident No.: OB R282

 SASKVALLEY TRADITION 106T (P)
 MURIDALE THERMAL ENERGY 15A (P)
 MURIDALE GOOSE 32R (P)
Sire: **SPRYS EXTRA SPECIAL N61 (P)**
 SPRYS ALL GOLD D052 (P)
 SPRYS GOLDS JULIET G166 (P)
 SPRYS EXT JULIET D058 (P)

 YAMBURGAN ZEUS H140 (P)
 FUTURITY EDGED IN STONE K148 (P)
 FUTURITY CHICAGO'S ENIA C38 (P)
Dam: **OUTBACK FAY N20 (P)**
 SPRYS SOLUTION E006 (P)
 OUTBACK FAY J51 (P)
 OUTBACK FAY G44 (P)
MEASUREMENTS

Scrotal Size I

Weight I

FEBRUARY 2022 IGS EPD's

	CE	BW	WW	YW	Milk	MCE	MWWT	STAY	DOC	CW	REA	FAT	MARB
EPD	7.4	4.4	63.0	96.1	33.1	3.8	64.6	14.4	17.8	12.1	0.39	-0.084	0.18
Acc	39%	46%	43%	44%	12%	18%	22%	23%	32%	42%	41%	34%	39%
%RK	50	80	15	15	10	85	3	25	2	20	45	60	5

	API
Index	122.73
%RK	10

Top 1% for Carcase Wt, top 4% for Marbling, top 5% for Rib Eye Appeal and top 25% for Docility and Fat.

Homozygous Polled.
 A well balanced, deep, easy doing bull who has good balance of EPD's. The Extra Special N61 sire is breeding the house down and has an awesome group of young sires in the sale. On his Dam's side, Marbling and Rib Eye Area really excels.
 Add Marbling and all Carcase Traits with R282.



LOT 4

Purchaser: \$.....

SHORTHORN SALE BULLS



SHORTHORN

LOT 5 SPRYS THERMAL R126 (P)

DOB: 18/08/2020 **Colour:** Red **Ident No.:** GLSR126

SASKVALLEY TRADITION 106T (P)
MURIDALE THERMAL ENERGY 15A (P)
MURIDALE GOOSE 32R (P)
Sire: SPRYS THERMAL ENERGY N54 (S)
YAMBURGAN EVEREST G643 (P)
SPRYS MISS P EVEREST K124 (H)
SPYS MISS PATENT G120 (P)

GLENELL IMF B90 (P)
OUTBACK SPRYS BALANCE G266 (P)
SCHULLER RED KATE C1 (P)
Dam: SPRYS BALANCES JULIET J67 (P)
SPRYS ALL GOLD D052 (P)
SPRYS GOLDS JULIET G166 (P)
SPRYS EXT JULIET D058 (P)

MEASUREMENTS	
Scrotal Size	I
Weight	I

FEBRUARY 2022 IGS EPD's

	CE	BW	WW	YW	Milk	MCE	MWWT	STAY	DOC	CW	REA	FAT	MARB
EPD	7.0	2.7	53.8	87.3	27.2	6.1	54.1	15.7	13.3	7.7	0.40	-0.054	0.02
Acc	34%	39%	37%	38%	12%	16%	20%	24%	34%	41%	39%	31%	38%
%RK	60	45	45	35	45	45	45	15	20	35	40	4	30

	API
Index	116.31
%RK	20

Top 4% for Fat, top 15% for Stayability and top 20% for API and Docility.

Homozygous Polled.
A medium framed young sire with a balanced set of EPD's and great structure. Is a 3/4 brother to Lot 1, out of the same Dam, who has bred extremely well. Dam is now owned by Sarah Sutton.



LOT 5

Purchaser: \$.....

LOT 6 OUTBACK SPRYS SOLAR R307 (P)

DOB: 22/08/2020 **Colour:** Roan **Ident No.:** OB R307

SASKVALLEY TRADITION 106T (P)
MURIDALE THERMAL ENERGY 15A (P)
MURIDALE GOOSE 32R (P)
Sire: SPRYS SOLAR N135 (P)
RED ROSE GOLD SPEAR RUFFIAN (I (P)
SPRYS SPEAR'S KATE G6 (P)
SPRYS KATE D159 (H)

SPRYS PATENT'S ACE G38 (P)
OUTBACK JOKER J328 (P)
LACHLAN FRANCIS Z024 (P)
Dam: OUTBACK KATHY M77 (P)
OUTBACK SPRYS BALANCE G266 (P)
OUTBACK KATHY J182 (P)
OUTBACK KATHRYN G72 (P)

MEASUREMENTS	
Scrotal Size	I
Weight	I

FEBRUARY 2022 IGS EPD's

	CE	BW	WW	YW	Milk	MCE	MWWT	STAY	DOC	CW	REA	FAT	MARB
EPD	9.6	1.6	49.2	79.5	28.3	5.4	52.9	14.7	11.1	12.8	0.39	-0.038	0.06
Acc	40%	45%	43%	44%	12%	18%	22%	24%	32%	43%	41%	36%	41%
%RK	25	20	70	60	35	60	50	20	50	20	45	2	20

	API
Index	119.44
%RK	15

Top 2% for Fat, top 15% for API, top 20% for BW, Stayability, Marbling and Carcase Wt, top 25% for Calving Ease.

Homozygous Polled.
We think a lot of this thick, deep, soft, easy doing young sire who should be ideal for Heifer and Cow joinings. His sire, Solar, has bred easy calving, easy doing, moderate framed progeny who have fine, slick skin and coat. Dam is thick, deep and soft in a medium maturity package.



LOT 6

Purchaser: \$.....

SHORTHORN SALE BULLS

LOT 7

SPRYS THERMALS ULTIMATE R111

DOB: 26/08/2020

Colour: Roan

Ident No.: GLSR111

 SASKVALLEY ROUGHNECK 154R (P)
 SASKVALLEY TRADITION 106T (P)
 SASKVALLEY MYRTLE 83N (P)

Sire: MURIDALE THERMAL ENERGY 15A (P)

 SASKVALLEY BONANZA 219M (P)
 MURIDALE GOOSE 32R (P)
 MURIDALE SWAN 54N (P)

 THE GROVE INFORMANT Y463 (P)
 THE GROVE GIGABYTES J0837 (P)
 THE GROVE KOOKAS DALE E1237 (P)

Dam: SPRYS MISS GIGABYTES M58 (P)

D1119 (SFA) (P)

MEASUREMENTS

Scrotal Size I

Weight I

FEBRUARY 2022 IGS EPD's

	CE	BW	WW	YW	Milk	MCE	MWWT	STAY	DOC	CW	REA	FAT	MARB
EPD	10.0	3.2	69.0	115.8	28.6	8.1	63.1	11.9	10.4	25.4	0.59	-0.102	0.12
Acc	40%	47%	42%	43%	15%	21%	24%	25%	39%	43%	42%	36%	42%
%RK	20	55	4	1	30	15	5	60	60	2	5	100	10

	API
Index	125.17
%RK	10

Top 1% for Yearling Wt, top 2% for Carcase Wt, top 5% for Maternal Weaning Wt and Rib Eye Area and top 10% API.

Homozygous Polled.

A great Growth and Carcase sire in a medium maturity package.

The Thermal Energy sire puts most great traits together in one package. His Dam, is a very impressive female who always catches your eye in the paddock ... long, stout and a dark roan.



Sprys Miss Gigabytes M58 (P)
dam of Lot 7.



LOT 7

Purchaser: \$.....

LOT 8

SPRYS STOUT ROD R26 (P)

DOB: 04/07/2020

Colour: Red Little White

Ident No.: GLSR26

 LEVELDALE JAVELIN 535R (P)
 JSF GOLDENROD 57U (P)
 KL GOLD ROSE (P)

Sire: SPRYS GOLDENROD P39 (P)

 SPRYS PRIMROSE'S BUDDY J17 (P)
 SPRYS MISS BUDDY M36 (P)
 SPRYS MISS P EVEREST K124 (H)

 LEVELDALE JAVELIN 535R (P)
 JSF GOLDENROD 57U (P)
 KL GOLD ROSE (P)

Dam: SPRYS GOLDENRODS LILY P38 (P)

 SPRYS PRIMROSE'S BUDDY J17 (P)
 SPRYS BUDDY'S LILY M209 (P)
 SPRYS WINCHESTER'S LILY H176 (P)

MEASUREMENTS

Scrotal Size I

Weight I

FEBRUARY 2022 IGS EPD's

	CE	BW	WW	YW	Milk	MCE	MWWT	STAY	DOC	CW	REA	FAT	MARB
EPD	8.9	2.1	60.5	92.4	33.8	3.5	64.1	19.7	11.2	28.5	0.63	-0.101	-0.08
Acc	39%	45%	41%	41%	9%	17%	20%	21%	30%	40%	40%	34%	38%
%RK	30	30	20	25	5	85	4	1	45	1	3	100	65

	API
Index	124.69
%RK	10

Top 1% for Carcase Wt and Stayability, top 3% for Rib Eye Area, top 5% for Milk, top 10% for API and top 20% for Weaning Wt.

Homozygous Polled.

R26 is a big carcase and growth bull with tremendous thickness. A really interesting mix of genetics, double Buddy and double Goldenrod. We would expect his daughters to make awesome productive cows with a great carcase. The Goldenrod P39 sire is breeding functional, balanced progeny.



Sprys Goldenrod P39 (P), sire of Lot 8.

Purchaser: \$.....

SHORTHORN SALE BULLS



SHORTHORN

LOT 9 OUTBACK SPRYS SPECIAL R288 (P)

DOB: 01/08/2020 **Colour:** Roan **Ident No.:** OB R288

SASKVALLEY TRADITION 106T (P)
MURIDALE THERMAL ENERGY 15A (P)
MURIDALE GOOSE 32R (P)
Sire: SPRYS EXTRA SPECIAL N61 (P)
SPRYS ALL GOLD D052 (P)
SPRYS GOLDS JULIET G166 (P)
SPRYS EXT JULIET D058 (P)

MARELLAN INDESTRUCTABLE (P)
ELOORA BAKER G31 (P)
ELOORA ARRAS D18 (P)
Dam: OUTBACK KATHY N11 (P)
SPRYS ROCK SOLID H5 (P)
OUTBACK KATHY K100 (P)
OUTBACK FD KATHY D21 (P)

MEASUREMENTS	
Scrotal Size	I
Weight	I

FEBRUARY 2022 IGS EPD's

	CE	BW	WW	YW	Milk	MCE	MWWT	STAY	DOC	CW	REA	FAT	MARB
EPD	8.6	3.7	65.2	100.7	28.0	7.6	60.6	15.6	12.3	6.1	0.52	-0.085	0.16
Acc	38%	45%	42%	43%	11%	17%	21%	22%	33%	42%	39%	31%	37%
%RK	35	70	10	10	35	20	10	15	30	45	15	65	10

API	
Index	128.53
%RK	4

Top 4% for API, top 10% for Weaning Wt, Marbling and Yearling Wt and top 15% for Rib Eye Area.

Homozygous Polled.

A high performing young sire who has an excellent balance of EPD's with striking phenotype. Was used in the Outback herd Spring 2021. Semen to be collected for the Outback herd. Dam is a very functional, medium maturity female who will join the Donor pen in 2022.



LOT 9

Purchaser: \$.....

LOT 10 OUTBACK SPRYS SPECIAL R273 (P)

DOB: 23/07/2020 **Colour:** Red Little White **Ident No.:** OB R273

SASKVALLEY TRADITION 106T (P)
MURIDALE THERMAL ENERGY 15A (P)
MURIDALE GOOSE 32R (P)
Sire: SPRYS EXTRA SPECIAL N61 (P)
SPRYS ALL GOLD D052 (P)
SPRYS GOLDS JULIET G166 (P)
SPRYS EXT JULIET D058 (P)

JR LEGEND 78H (IMP USA) (P)
SPRYS TLC CANYON C056 (P)
THE GROVE PRIMROSE A742 (P)
Dam: OUTBACK ENIA L61 (P)
LACHLAN MASTER CARD (P)
OUTBACK ENIA F28 (P)
SCHULLER TB ENIA C11 (P)

MEASUREMENTS	
Scrotal Size	I
Weight	I

FEBRUARY 2022 IGS EPD's

	CE	BW	WW	YW	Milk	MCE	MWWT	STAY	DOC	CW	REA	FAT	MARB
EPD	10.6	3.3	55.6	86.9	21.3	8.7	49.1	12.0	16.0	34.5	0.49	-0.092	0.09
Acc	40%	46%	43%	44%	13%	18%	23%	25%	36%	43%	42%	32%	41%
%RK	20	55	40	35	90	10	75	55	4	1	20	85	15

API	
Index	116.59
%RK	20

Top 1% for Carcase Wt, top 15% for Marbling and top 20% for Calving Ease and Rib Eye Area.

A thick, deep structurally sound sire in a medium maturity package. His dam is a medium maturity female with outstanding udder and teat design.



LOT 10

Purchaser: \$.....

SHORTHORN SALE BULLS

LOT 11 | **SPRYS GOLDEN ROD R25 (P)**

DOB: 26/06/2020 Colour: Red Little White Ident No.: GLSR25

LEVELDALE JAVELIN 535R (P)
 JSF GOLDENROD 57U (P)
 KL GOLD ROSE (P)
Sire: SPRYS GOLDENROD P39 (P)
 SPRYS PRIMROSE'S BUDDY J17 (P)
 SPRYS MISS BUDDY M36 (P)
 SPRYS MISS P EVEREST K124 (H)

SPRYS TLC CANYON C056 (P)
 OUTBACK SPRYS GRAND CANYON M25 (P)
 OUTBACK MONA Z914 (P)
Dam: SPRYS CANYONS JULIET P84 (P)
 OUTBACK SPRYS BALANCE G266 (P)
 SPRYS BALANCES JULIET J67 (P)
 SPRYS GOLDS JULIET G166 (P)

MEASUREMENTS	
Scrotal Size	I
Weight	I

FEBRUARY 2022 IGS EPD's

	CE	BW	WW	YW	Milk	MCE	MWWT	STAY	DOC	CW	REA	FAT	MARB
EPD	10.5	1.1	48.0	71.3	30.4	6.2	54.4	14.0	16.0	16.9	0.27	-0.071	-0.15
Acc	39%	43%	38%	38%	7%	16%	17%	22%	31%	40%	38%	32%	38%
%RK	20	15	75	85	20	40	40	30	4	10	80	20	85

	API
Index	106.70
%RK	50

Top 4% for Docility, top 10% for Carcase Wt, top 15% for Birth Wt and top 20% for Fat, Calving Ease and Milk.

Homozygous Polled.

A thick, deep, long sire who has an excellent combination of very productive genetics and goes back to the J67 female. The Miss Buddy M36 Donor is a model cow for us at Sprys. (Watch out for more M36 progeny in the future).



LOT 11

Purchaser: \$.....

LOT 12 | **SPRYS EXTRA SPECIAL R91 (P)**

DOB: 06/08/2020 Colour: Roan Ident No.: GLSR91

SASKVALLEY TRADITION 106T (P)
 MURIDALE THERMAL ENERGY 15A (P)
 MURIDALE GOOSE 32R (P)
Sire: SPRYS EXTRA SPECIAL N61 (P)
 SPRYS ALL GOLD D052 (P)
 SPRYS GOLDS JULIET G166 (P)
 SPRYS EXT JULIET D058 (P)

WAUKARU PATENT 8161 (IMP USA) (P)
 SPRYS PATENT G60 (P)
 LONE PINE BALM C050 (P)
Dam: SPRYS MISS COMPLEMENT N77 (P)
 YAMBURGAN OSSIE D59 (P)
 SPRYS OSSIES BLANCHE J42 (P)
 LAKE HAWDON BLANCHE E25 (P)

MEASUREMENTS	
Scrotal Size	I
Weight	I

FEBRUARY 2022 IGS EPD's

	CE	BW	WW	YW	Milk	MCE	MWWT	STAY	DOC	CW	REA	FAT	MARB
EPD	5.8	4.5	57.4	86.6	26.1	3.0	54.8	12.2	12.8	28.1	0.59	-0.073	0.19
Acc	39%	44%	39%	39%	8%	17%	18%	25%	34%	40%	39%	33%	39%
%RK	75	85	30	40	55	90	40	55	25	1	5	25	4

	API
Index	114.31
%RK	25

Top 1% for Carcase Wt and top 4% for Marbling.

Another very impressive roan sire who has a lot of potential. Add growth, milk, docility and marbling to your herd. Really like the combination of leading EPD animals in his pedigree.

Dam is a high performing, functional female who is rearing another top calf. The J42 Granddam has bred a number of outstanding progeny who excel in marbling.



Sprys Extra Special N61 (P), sire of Lot 12.

Purchaser: \$.....

SHORTHORN SALE BULLS



SHORTHORN

LOT 13 SPRYS EXTRA SPECIAL R110 (P)

DOB: 29/08/2020 **Colour:** Red Little White **Ident No.:** GLSR110

SASKVALLEY TRADITION 106T (P)
MURIDALE THERMAL ENERGY 15A (P)
MURIDALE GOOSE 32R (P)
Sire: SPRYS EXTRA SPECIAL N61 (P)
SPRYS ALL GOLD D052 (P)
SPRYS GOLDS JULIET G166 (P)
SPRYS EXT JULIET D058 (P)

THE GROVE INFORMANT Y463 (P)
THE GROVE GIGABYTES J0837 (P)
THE GROVE KOOKAS DALE E1237 (P)
Dam: SPRYS GIGABYTES JUDITH M219 (P)
GLENELL IMF B90 (P)
SPRYS IMF'S JUDITH J100 (P)
SPRYS PATENTS JUDITH G47 (P)

MEASUREMENTS	
Scrotal Size	I
Weight	I

FEBRUARY 2022 IGS EPD's

	CE	BW	WW	YW	Milk	MCE	MWWT	STAY	DOC	CW	REA	FAT	MARB
EPD	6.6	4.3	62.2	97.1	27.1	6.5	58.2	14.4	10.5	16.1	0.53	-0.083	0.20
Acc	17%	20%	19%	20%	10%	11%	13%	10%	18%	18%	17%	15%	18%
%RK	65	80	15	15	45	35	20	25	55	10	10	55	4

	API
Index	123.15
%RK	10

Top 4% for Marbling, top 10% for API, Carcase Wt and Rib Eye Area and top 15% for Weaning and Yearling Wt.

Homozygous Polled.
A dark red bull with great balance, thickness and eye appeal who has great growth and carcass EPD's.
The Judith family are a very consistent family who keep coming up with the outstanding progeny year after year.



LOT 13

Purchaser: \$.....

LOT 14 OUTBACK SPRYS SPECIAL R305 (P)

DOB: 25/08/2020 **Colour:** Red **Ident No.:** OB R305

SASKVALLEY TRADITION 106T (P)
MURIDALE THERMAL ENERGY 15A (P)
MURIDALE GOOSE 32R (P)
Sire: SPRYS EXTRA SPECIAL N61 (P)
SPRYS ALL GOLD D052 (P)
SPRYS GOLDS JULIET G166 (P)
SPRYS EXT JULIET D058 (P)

WAUKARU GOLD CARD 5042 (IMP USA) (P)
WAUKARU PATENT 8161 (IMP USA) (P)
WAUKARU 12H MELITA ROSE 5021 (H)
Dam: SPRYS G & M MISS PATENT G215 (P)
EDEN PARK STOCKMAN (P)
SCHULLER ANN B47 (P)
CHADWICK R127 (H)

MEASUREMENTS	
Scrotal Size	I
Weight	I

FEBRUARY 2022 IGS EPD's

	CE	BW	WW	YW	Milk	MCE	MWWT	STAY	DOC	CW	REA	FAT	MARB
EPD	10.3	2.8	60.5	97.9	27.3	7.0	57.6	17.3	10.6	17.5	0.33	-0.074	0.06
Acc	37%	42%	44%	45%	12%	19%	23%	25%	35%	45%	43%	36%	41%
%RK	20	45	20	15	45	30	25	4	55	10	65	30	20

	API
Index	128.61
%RK	4

Top 4% for API and Stayability, top 10% for Carcase Wt and top 20% for Weaning Wt.

A long, thick, dark red who carries plenty of carcass and growth in a very easy doing package.
Dam has been our No. 1 Donor for the last 5 years at Outback. Sons have sold to \$15,000. She has 6 sons in the sale.



Sprys G & M Miss Patent G215 (P)
dam of Lot 14.



LOT 14

Purchaser: \$.....

SHORTHORN SALE BULLS

LOT 15

OUTBACK SPRYS SPECIAL R289 (P)

DOB: 01/08/2020

Colour: Roan

Ident No.: OB R289

SASKVALLEY TRADITION 106T (P)
MURIDALE THERMAL ENERGY 15A (P)
MURIDALE GOOSE 32R (P)

NAGOL PARK E.M ZONE 2003 (P)
KAMILAROI MEAT PACKER (P)
TLC ERICA X002 (P)

Sire: SPRYS EXTRA SPECIAL N61 (P)

Dam: OUTBACK JUNE L59 (P)

SPRYS ALL GOLD D052 (P)
SPRYS GOLDS JULIET G166 (P)
SPRYS EXT JULIET D058 (P)

TLC ICON X003 (P)
SCHULLER JUNE B35 (P)
SCHULLER JUNE FX23 (P)

MEASUREMENTS

Scrotal Size I

Weight I

FEBRUARY 2022 IGS EPD's

	CE	BW	WW	YW	Milk	MCE	MWWT	STAY	DOC	CW	REA	FAT	MARB
EPD	5.5	4.4	64.6	103.3	27.7	6.0	60.0	14.0	17.2	34.5	0.30	-0.094	0.16
Acc	40%	46%	44%	45%	12%	18%	23%	24%	34%	44%	42%	37%	39%
%RK	80	80	10	5	40	45	15	30	2	1	75	90	10

	API
Index	119.84
%RK	15

Top 1% for Carcase Wt, top 2% for Docility, top 5% for Yearling Wt,
top 10% for Marbling and top 15% for API.

Homozygous Polled.

Another outstanding Extra Special son who has plenty of body and capacity in a very sound structural package.

Dam is a deep bodied female with plenty of softness and capacity.



LOT 15

Purchaser: \$.....

LOT 16

OUTBACK SPRYS SOLAR R269 (P)

DOB: 19/07/2020

Colour: Red

Ident No.: OB R269

SASKVALLEY TRADITION 106T (P)
MURIDALE THERMAL ENERGY 15A (P)
MURIDALE GOOSE 32R (P)

YAMBURGAN ZEUS H140 (P)
FUTURITY EDGED IN STONE K148 (P)
FUTURITY CHICAGO'S ENIA C38 (P)

Sire: SPRYS SOLAR N135 (P)

Dam: OUTBACK ANN P64 (P)

RED ROSE GOLD SPEAR RUFFIAN (I (P)
SPRYS SPEAR'S KATE G6 (P)
SPRYS KATE D159 (H)

WAUKARU PATENT 8161 (IMP USA) (P)
SPRYS G & M MISS PATENT G215 (P)
SCHULLER ANN B47 (P)

MEASUREMENTS

Scrotal Size I

Weight I

FEBRUARY 2022 IGS EPD's

	CE	BW	WW	YW	Milk	MCE	MWWT	STAY	DOC	CW	REA	FAT	MARB
EPD	10.1	2.0	55.0	90.8	32.3	6.6	59.8	12.8	13.0	23.3	0.67	-0.070	0.18
Acc	40%	45%	43%	43%	12%	18%	22%	24%	37%	43%	42%	31%	37%
%RK	20	25	40	25	10	35	15	45	25	3	2	20	5

	API
Index	125.76
%RK	5

Top 2% for Rib Eye Area, top 3% for Carcase Wt, top 5% for API and
Marbling and top 10% for Milk.

A very good Solar son out of a 1st calver who will impress for his overall balance and data set.

Dam is an impressive daughter of the great G215 Donor. Should be OK for Heifers and Cows.



LOT 16

Purchaser: \$.....

SHORTHORN SALE BULLS



SHORTHORN

LOT 17 OUTBACK SPRYS BUDDY R301 (P)

DOB: 20/08/2020 **Colour:** Roan **Ident No.:** OB R301

BYLAND GOLD SPEAR (P)
 RED ROSE GOLD SPEAR RUFFIAN (I (P)
 RED ROSE GUS ROAN LADY 6J (P)
Sire: SPRYS PRIMROSE'S BUDDY J17 (P)
 THE GROVE KASPROWICZ W791 (P)
 THE GROVE PRIMROSE A742 (P)
 THE GROVE PRIMROSE R202 (P)

WAUKARU GOLD CARD 5042 (IMP USA) (P)
 WAUKARU PATENT 8161 (IMP USA) (P)
 WAUKARU 12H MELITA ROSE 5021 (H)
Dam: SPRYS G & M MISS PATENT G215 (P)
 EDEN PARK STOCKMAN (P)
 SCHULLER ANN B47 (P)
 CHADWICK R127 (H)

MEASUREMENTS	
Scrotal Size	I
Weight	I

2022 IGS EPD's

	CE	BW	WW	YW	Milk	MCE	MWWT	STAY	DOC	CW	REA	FAT	MARB
EPD	13.2	1.3	51.0	82.4	26.0	7.4	51.5	10.0	13.4	17.9	0.41	-0.062	-0.13
Acc	40%	44%	45%	47%	20%	22%	28%	28%	35%	48%	44%	36%	42%
%RK	5	15	60	50	55	25	60	85	20	10	40	10	80

	API
Index	105.65
%RK	50

Top 5% for Calving Ease, top 10% for Carcase Wt, Fat and Docility and top 15% for Birth Wt.

A long bodied, easy moving son of the great sire Buddy J17, who has bred calving ease, do-ability, medium framed progeny with great maternal traits.

Dam has been number 1 Donor at Outback for 5 years and has 6 sons in the sale. Should be OK for heifers and cows.



LOT 17

Purchaser: \$.....

LOT 18 OUTBACK SPRYS SOLAR R309 (P)

DOB: 23/08/2020 **Colour:** Roan **Ident No.:** OB R309

SASKVALLEY TRADITION 106T (P)
 MURIDALE THERMAL ENERGY 15A (P)
 MURIDALE GOOSE 32R (P)
Sire: SPRYS SOLAR N135 (P)
 RED ROSE GOLD SPEAR RUFFIAN (I (P)
 SPRYS SPEAR'S KATE G6 (P)
 SPRYS KATE D159 (H)

SPRYS PATENT'S ACE G38 (P)
 OUTBACK JOKER J328 (P)
 LACHLAN FRANCIS Z024 (P)
Dam: OUTBACK ISABELLA M81 (P)
 OUTBACK SPRYS BALANCE G266 (P)
 OUTBACK VICTORIA J224 (P)
 OUTBACK ISABELLA G113 (P)

MEASUREMENTS	
Scrotal Size	I
Weight	I

2022 IGS EPD's

	CE	BW	WW	YW	Milk	MCE	MWWT	STAY	DOC	CW	REA	FAT	MARB
EPD	10.1	2.5	44.9	74.4	27.8	6.7	50.3	17.9	13.9	15.1	0.53	-0.060	0.05
Acc	39%	45%	42%	44%	11%	17%	21%	24%	31%	42%	40%	33%	39%
%RK	20	40	85	75	40	35	70	3	15	15	10	10	20

	API
Index	123.41
%RK	10

Top 3% for Stayability, top 10% for API, Rib Eye Area and Fat, top 15% for Carcase Wt and Docility and top 20% for Marbling and Calving Ease.

Homozygous Polled.
 Used on heifers as a cover bull after AI at Sprys, Spring 2021. An eye catching dark roan sire who has an excellent data set. An excellent Solar son who combines many outstanding genetics in his pedigree. Dam is a deep, soft, easy doing female.



LOT 18

Purchaser: \$.....

SHORTHORN SALE BULLS

LOT 19 **SPRYS ROMEO R03 (P)**

DOB: 09/03/2020

Colour: Red Little White Ident No.: MKSR03

 SASKVALLEY TRADITION 106T (P)
 MURIDALE THERMAL ENERGY 15A (P)
 MURIDALE GOOSE 32R (P)
Sire: **SPRYS BOOM TIME M222 (P)**
 SPRYS PATENT G60 (P)
 SPRYS PATENTS CHERRY J90 (P)
 SPRYS LEGENDS CHERRY G141 (P)

 RONELLE PARK EAGLE (P)
 RONELLE PARK HURRICANE H242 (P)
 NARRALDA ZENA C080 (P)
Dam: **WARRABERRY FREDA N135 (P)**
 MARELLAN KNAPSACK (P)
 WARRABERRY FREDA F72 (P)
 WARRABERRY FREDA 41 (P)
MEASUREMENTS

Scrotal Size I

Weight I

FEBRUARY 2022 IGS EPD's

	CE	BW	WW	YW	Milk	MCE	MWWT	STAY	DOC	CW	REA	FAT	MARB
EPD	4.3	5.5	68.9	103.7	26.5	3.1	61.0	15.4	14.0	26.9	0.69	-0.077	-0.02
Acc	20%	23%	21%	21%	7%	11%	12%	12%	19%	21%	20%	17%	19%
%RK	90	95	4	5	50	90	10	15	15	2	1	35	45

	API
Index	110.17
%RK	35

Top 1% for Rib Eye Area, top 2% for Carcase Wt, top 4% for Weaning Wt, top 5% for Yearling Wt, top 10% for Maternal Weaning Wt and top 15% for Stayability and Docility.

This young sire has a lot of potential to be a top Sire with great genetics and is stout made with excellent structure and an awesome temperament. Boom Time has given outstanding performance, temperament and excellent foot structure to his progeny. Freda, his dam, is one hell of a Donor cow who has great structure and do-ability. Add Weight, Carcase and Docility with Romeo R3.



Warraberry Freda N135, dam of Lot 19.

Purchaser: \$.....



Sprys G&M Miss Patent G215 (Donor)
 Dam of 6 bulls in sale, Lots 50, 68, 14, 66, 63 & 17.

UNDERSTANDING TRANS TASMAN ANGUS CATTLE EVALUATION (TACE)

CALVING EASE			
Calving Ease Direct	(%)	Genetic differences in the ability of a sire's calves to be born unassisted from 2 year old heifers.	Higher EBVs indicate fewer calving difficulties in 2 year old heifers.
Calving Ease Daughters	(%)	Genetic differences in the ability of a sire's daughters to calve unassisted at 2 years of age.	Higher EBVs indicate fewer calving difficulties in 2 year old heifers.
Gestation Length	days	Genetic differences between animals in the length of time from the date of conception to the birth of the calf.	Lower EBVs indicate shorter gestation length.
Birth Weight	kg	Genetic differences between animals in calf weight at birth.	Lower EBVs indicate lighter birth weight.
GROWTH			
200 Day Growth	kg	Genetic differences between animals in live weight at 200 days of age due to genetics for growth.	Higher EBVs indicate heavier live weight.
400 Day Weight	kg	Genetic differences between animals in live weight at 400 days of age.	Higher EBVs indicate heavier live weight.
600 Day Weight	kg	Genetic differences between animals in live weight at 600 days of age.	Higher EBVs indicate heavier live weight.
Mature Cow Weight	kg	Genetic differences between animals in live weight of cows at 5 years of age.	Higher EBVs indicate heavier mature weight.
Milk	kg	Genetic differences between animals in live weight at 200 days of age due to the maternal contribution of its dam.	Higher EBVs indicate heavier live weight.
FERTILITY			
Days to Calving	days	Genetic differences between animals in the time from the start of the joining period (i.e. when the female is introduced to a bull) until subsequent calving.	Lower EBVs indicate shorter time to calving.
Scrotal Size	cm	Genetic differences between animals in scrotal circumference at 400 days of age.	Higher EBVs indicate larger scrotal circumference.
CARCASE			
Carcase Weight	kg	Genetic differences between animals in hot standard carcass weight at 750 days of age.	Higher EBVs indicate heavier carcass weight.
Eye Muscle Area	cm ²	Genetic differences between animals in eye muscle area at the 12/13th rib site in a 400 kg carcass.	Higher EBVs indicate larger eye muscle area.
Rib Fat	mm	Genetic differences between animals in fat depth at the 12/13th rib site in a 400 kg carcass.	Higher EBVs indicate more fat.
P8 Fat	mm	Genetic differences between animals in fat depth at the P8 rump site in a 400 kg carcass.	Higher EBVs indicate more fat.
Retail Beef Yield	%	Genetic differences between animals in boned out saleable meat from a 400 kg carcass.	Higher EBVs indicate higher yield.
Intramuscular Fat	%	Genetic differences between animals in intramuscular fat (marbling) at the 12/13th rib site in a 400 kg carcass.	Higher EBVs indicate more intramuscular fat.
FEED EFFICIENCY/TEMPERAMENT			
NFI-F	kg/day	Genetic differences between animals in feed intake at a standard weight and rate of weight gain when animals are in a growing phase.	Lower EBVs indicate more feed efficiency.
Docility	%	Genetic differences between animals in temperament.	Higher EBVs indicate better temperament.
STRUCTURE			
Foot Angle	score	Genetic differences in foot angle (strength of pastern, depth of heel)	Lower EBVs indicate more desirable foot angle.
Claw Set	score	Genetic differences in claw set structure (shape and evenness of claws)	Lower EBVs indicate more desirable claw structure.
SELECTION INDEXES			
SA	\$	Genetic differences between animals in net profitability per cow joined in a typical commercial self replacing herd using Angus bulls. This selection index is not specific to a particular market end-point, but identifies animals that will improve overall net profitability in the majority of commercial, self replacing, grass and grain finishing beef production systems.	Higher selection indexes indicate greater profitability.
\$D	\$	Genetic differences between animals in net profitability per cow joined in a commercial self replacing herd targeting the domestic supermarket trade. Steers are either finished using pasture, pasture supplemented by grain, or grain (e.g. 50-70 days) with steers assumed to be slaughtered at 510kg live weight (280kg carcass weight with 12mm P8 fat depth) at 16 months of age.	Higher selection indexes indicate greater profitability.
\$GN	\$	Genetic differences between animals in net profitability per cow joined in a commercial self replacing herd targeting pasture grown steers with a 250 day feedlot finishing period for the grain fed high quality, highly marbled markets. Steers assumed to be slaughtered at 800kg live weight (455kg carcass weight with 30mm P8 fat depth) at 24 months of age, with a significant premium for steers that exhibit superior marbling.	Higher selection indexes indicate greater profitability.
\$GS	\$	Genetic differences between animals in net profitability per cow joined in a commercial self replacing herd targeting pasture finished steers. Steers are assumed to be slaughtered at 650kg live weight (350kg carcass weight with 12mm P8 fat depth) at 22 months of age. Emphasis has been placed on eating quality and tenderness to favour animals that are suited to MSA requirements.	Higher selection indexes indicate greater profitability.

ANGUS REFERENCE SIRES

REFERENCE SIRE **MILLAH MURRAH PARATROOPER P15^{PV}** **HBR**

DOB: 29/01/2018 Ident No.: NMMP15 Genetic Status: **AMF, CAF, DDF, NHF, DWF, MAF, MHF, OHF, OSF, RGF**

BASIN FRANCHISE P142[#]
 EF COMPLEMENT 8088^{PV}
 EF EVERELDA ENTENSE 6117[#]
Sire: EF COMMANDO 1366^{PV}
 B/R AMBUSH 28[#]
 RIVERBEND YOUNG LUCY W1470[#]
 RIVERBEND YOUNG LUCY T1080[#]

HIGHLANDER OF STERN AB[#]
 MILLAH MURRAH HIGHLANDER G18^{SV}
 MILLAH MURRAH PRUE D85^{PV}
Dam: MILLAH MURRAH ELA M9^{PV}
 MATAURI REALITY 839[#]
 MILLAH MURRAH ELA K127^{SV}
 MILLAH MURRAH ELA G88^{SV}

March 2022

TACE	Calving Ease DIR (%)	Calving Ease DTRS (%)	Gest. Length (days)	Birth Wt. (kg)	200 Day Wt. (kg)	400 Day Wt. (kg)	600 Day Wt. (kg)	Mat. Cow Wt. (kg)	Milk (kg)	Days to Calving (days)	Scrotal Size (cm)	Carcass Wt. (kg)	Eye Muscle Area (sq.cm)	Rib Fat (mm)	Rump Fat (mm)	Retail Beef Yield (%)	IMF (%)	NFI-F	Docility	Angle	Claw	\$A	\$A-L
EBV	+5.9	+10.0	-9.0	+2.9	+64	+117	+140	+113	+22	-5.6	+3.2	+90	+8.2	-0.4	-0.4	+0.4	+2.5	+0.25	+16	+0.86	+0.68	\$271	\$457
ACC	81%	59%	98%	98%	97%	96%	88%	80%	70%	48%	94%	79%	83%	84%	82%	77%	80%	65%	95%	83%	87%	2	1
Perc	24	1	4	23	4	2	10	28	15	33	11	2	20	61	50	53	32	58	23	23	17	2	1

Traits Observed: GL,BWT,200WT(x2),400WT(x2),Scan(EMA,Rib,Rump,IMF),DOC,Genomics

Used by AI.

The record breaker and his progeny are really proving extremely popular with stud and commercial breeders alike. Progeny have topped a large number of sales last Spring and now Autumn also. We like the phenotype we see in his progeny.



MILLAH MURRAH PARATROOPER P15^{PV}

REFERENCE SIRE **LANDFALL KEYSTONE K132^{PV}** **HBR**

DOB: 19/07/2014 Ident No.: TFAK132 Genetic Status: **AMF, CAF, DDF, NHF, DWF, MAF, MHF, OHF, OSF, RGF**

BOOROOMOOKA UNDERTAKEN U170^{PV}
 BOOROOMOOKA UNDERTAKEN Y145^{PV}
 BOOROOMOOKA UAAISE U101^{SV}
Sire: RENNYLEA EDMUND E11^{PV}
 YTHANBRAE HENRY VIII U8^{SV}
 LAWSONS HENRY VIII Y5^{SV}
 YTHANBRAE DIRECTION T270[#]

CONNEALY FRONTLINE[#]
 S A V FRONT RUNNER 0713[#]
 JACS BLOSSOM 5357[#]
Dam: LANDFALL ARCHER H807^{SV}
 DUNOON REAGAN R093+96^{SV}
 LANDFALL ARCHER X9^{PV}
 LANDFALL ARCHER T74[#]

March 2022

TACE	Calving Ease DIR (%)	Calving Ease DTRS (%)	Gest. Length (days)	Birth Wt. (kg)	200 Day Wt. (kg)	400 Day Wt. (kg)	600 Day Wt. (kg)	Mat. Cow Wt. (kg)	Milk (kg)	Days to Calving (days)	Scrotal Size (cm)	Carcass Wt. (kg)	Eye Muscle Area (sq.cm)	Rib Fat (mm)	Rump Fat (mm)	Retail Beef Yield (%)	IMF (%)	NFI-F	Docility	Angle	Claw	\$A	\$A-L
EBV	+4.2	+7.5	-8.2	+2.1	+58	+111	+146	+120	+21	-6.0	+0.7	+98	+6.7	+1.7	-1.6	+0.2	+2.0	+0.46	+11	+1.14	+0.82	\$243	\$424
ACC	93%	79%	99%	99%	98%	98%	98%	95%	94%	67%	98%	91%	91%	91%	90%	88%	89%	77%	98%	95%	95%	10	5
Perc	39	9	8	11	13	5	5	19	22	27	93	1	39	10	79	62	51	81	37	84	44	10	5

Traits Observed: GL,CE,BWT,200WT,400WT,600WT,SC,Scan(EMA,Rib,Rump,IMF),Genomics

Used by AI.

Keystone K132 has proven very popular in a large number of beef herds in Australia. His progeny has a good data set with some extra growth.



LANDFALL KEYSTONE K132^{PV}

ANGUS REFERENCE SIRES

REFERENCE SIRE **BALDRIDGE BEAST MODE B074^{PV}** **HBR**

DOB: 07/02/2014 Ident No.: USA17960722 Genetic Status: **AMFU, CAF, DDF, NHFU, DWF, MAF, MHF**

B A R EXT TRAVELER 205[#]
 C R A BEXTOR 872 5205 608[#]
 CRA LADY JAYE 608 498 S EASY[#]
Sire: G A R PROPHET^{SV}
 S S OBJECTIVE T510 OT26[#]
 G A R OBJECTIVE 1885[#]
 G A R 1407 NEW DESIGN 2232[#]

SITZ UPWARD 307R^{SV}
 STYLES UPGRADE J59[#]
 PLAINVIEW LASSIE 71B[#]
Dam: BALDRIDGE ISABEL Y69[#]
 BALDRIDGE KABOOM K243 KCF[#]
 BALDRIDGE ISABEL T935[#]
 BALDRIDGE ISABEL P4527[#]

March 2022

TACE	Calving Ease DIR (%)	Calving Ease DTRS (%)	Gest. Length (days)	Birth Wt. (kg)	200 Day Wt. (kg)	400 Day Wt. (kg)	600 Day Wt. (kg)	Mat. Cow Wt. (kg)	Milk (kg)	Days to Calving (days)	Scrotal Size (cm)	Carcass Wt. (kg)	Eye Muscle Area (sq.cm)	Rib Fat (mm)	Rump Fat (mm)	Retail Beef Yield (%)	IMF (%)	NFI-F	Docility	Angle	Claw	\$A	\$A-L
EBV	+6.9	+7.2	-3.5	+3.5	+75	+121	+151	+119	+16	-6.2	+2.7	+77	+5.2	-1.2	-2.4	+1.0	+2.7	+0.11	+21	+0.50	+0.60	\$312	\$502
ACC	93%	78%	99%	99%	98%	99%	98%	95%	93%	61%	98%	91%	90%	90%	88%	86%	88%	75%	98%	98%	97%		
Perc	17	11	70	35	1	1	3	20	65	24	23	17	65	82	91	28	26	40	13	1	8	1	1

Traits Observed: Genomics

Used by AI.

Beast Mode really does add profit with his progeny. They are stout made, deep and heavy in a medium maturity package. His progeny certainly have a lot of commercial merit to make us all a better bottom line.



BALDRIDGE BEAST MODE B074^{PV}

REFERENCE SIRE **LANDFALL KEYSTONE N680^{SV}** **HBR**

DOB: 02/08/2017 Ident No.: TFAKN680 Genetic Status: **AMFU, CAFU, DDFU, NHFU**

BOOROOMOOKA UNDERTAKEN Y145^{PV}
 RENNYLEA EDMUND E11^{PV}
 LAWSONS HENRY VIII Y5^{SV}
Sire: LANDFALL KEYSTONE K132^{PV}
 S A V FRONT RUNNER 0713[#]
 LANDFALL ARCHER H807^{SV}
 LANDFALL ARCHER X9^{PV}

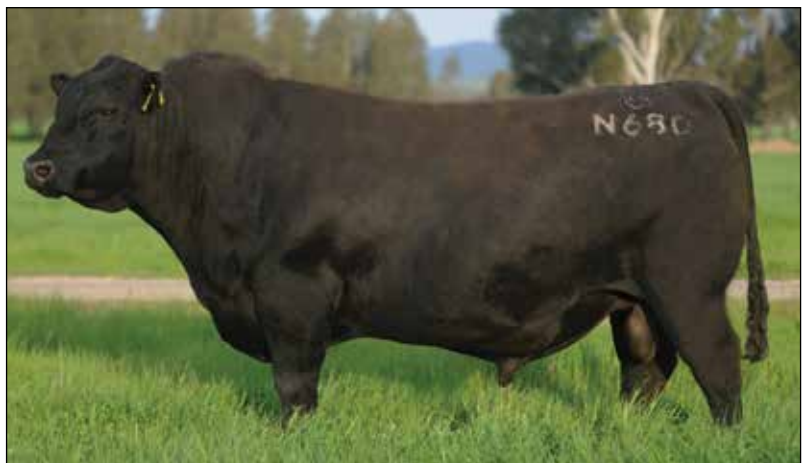
TE MANIA AMBASSADOR A134^{SV}
 TUWHARETOA REGENT D145^{PV}
 LAWSONS HENRY VIII Y5^{SV}
Dam: LANDFALL PRINCESS K748[#]
 TE MANIA INFINITY 04 379 AB[#]
 LANDFALL PRINCESS D48^{SV}
 LANDFALL B453[#]

March 2022

TACE	Calving Ease DIR (%)	Calving Ease DTRS (%)	Gest. Length (days)	Birth Wt. (kg)	200 Day Wt. (kg)	400 Day Wt. (kg)	600 Day Wt. (kg)	Mat. Cow Wt. (kg)	Milk (kg)	Days to Calving (days)	Scrotal Size (cm)	Carcass Wt. (kg)	Eye Muscle Area (sq.cm)	Rib Fat (mm)	Rump Fat (mm)	Retail Beef Yield (%)	IMF (%)	NFI-F	Docility	Angle	Claw	\$A	\$A-L
EBV	+2.0	+2.3	-5.6	+3.6	+55	+98	+130	+105	+14	-6.1	+0.9	+80	+5.4	+1.7	+0.3	-0.3	+2.9	+0.29	+11	+1.04	+0.60	\$239	\$394
ACC	68%	59%	85%	82%	82%	82%	81%	78%	70%	50%	78%	74%	71%	75%	73%	72%	71%	61%	73%	66%	66%		
Perc	57	58	34	37	22	24	21	42	81	25	90	12	61	10	31	79	21	63	37	66	8	13	15

Traits Observed: GL,CE,BWT,200WT,400WT,600WT,SC,Scan(EMA,Rib,Rump,IMF),Genomics

Purchased from Landfall, N680 has proven to be very successful for us. He is easy calving, deep bodied, easy doing with a strong head and outstanding temperament. His progeny are quite outstanding in phenotype with a good, balanced set of EBV's. Used mainly on heifers at Sprys.



LANDFALL KEYSTONE N680^{SV}

ANGUS REFERENCE SIRES

REFERENCE SIRE

RENNYLEA BALANCE N455^{PV}

HBR

DOB: 26/07/2017

Ident No.: NORN455

Genetic Status: AMFU, CAFU, DDFU, NHFU

BOOROOMOOKA UNDERTAKEN U170^{PV}
BOOROOMOOKA UNDERTAKEN Y145^{PV}
BOOROOMOOKA UAAISE U101^{SV}

BON VIEW NEW DESIGN 1407[#]
BOOROOMOOKA DESIGN Y120^{SV}
BOOROOMOOKA WAITARA W196[#]

Sire: **RENNYLEA EDMUND E11^{PV}**

Dam: **RENNYLEA G371^{SV}**

YTHANBRAE HENRY VIII U8^{SV}
LAWSONS HENRY VIII Y5^{SV}
YTHANBRAE DIRECTION T270[#]

LEACHMAN BOOM TIME[#]
RENNYLEA D6[#]
RENNYLEA B190[#]

March 2022

TACE	Calving Ease DIR (%)	Calving Ease DTRS (%)	Gest. Length (days)	Birth Wt. (kg)	200 Day Wt. (kg)	400 Day Wt. (kg)	600 Day Wt. (kg)	Mat. Cow Wt. (kg)	Milk (kg)	Days to Calving (days)	Scrotal Size (cm)	Carcass Wt. (kg)	Eye Muscle Area (sq.cm)	Rib Fat (mm)	Rump Fat (mm)	Retail Beef Yield (%)	IMF (%)	NFI-F	Docility	Angle	Claw	\$A	\$A-L
EBV	+6.7	-1.4	-4.3	+4.1	+45	+72	+99	+63	+19	-6.3	+2.0	+64	+11.3	+1.6	-1.1	+0.9	+3.3	+0.62	+9	+1.10	+0.62	\$236	\$348
ACC	67%	63%	73%	79%	76%	75%	76%	75%	71%	57%	76%	72%	70%	74%	71%	72%	70%	64%	70%	73%	73%		
Perc	18	85	56	49	73	93	85	96	35	22	50	60	4	12	68	32	12	91	43	78	10	15	45

Traits Observed: BWT,200WT,400WT,600WT,SC,Scan(EMA,Rib,Rump,IMF),DOC,Structure(Claw Set x 1, Foot Angle x 1),Genomics

Balance was purchased from Rennylea for his overall soundness and balance in a fine, slick hair type. Balance N455 is easy moving, long bodied with a balanced data set. This is his first progeny to be offered by Sprys.



RENNYLEA BALANCE N455^{PV}

WATTLETOP BARUNAH E295



Dam of 6 lots in the sale.

Equal top priced female at the Wattletop dispersal purchased for \$38,000. This female has been awesome for us, her progeny are very impressive, certainly at the top end of the Angus breed in Australia.

ANGUS SALE BULLS



LOT 20 SPRYS-W PARATROOPER R601^{PV} HBR

DOB: 11/07/2020 Ident No.: LGSR601 Genetic Status: AMF, CAF, DDF, NHF

EF COMPLEMENT 8088^{PV}
 EF COMMANDO 1366^{PV}
 RIVERBEND YOUNG LUCY W1470[#]
Sire: MILLAH MURRAH PARATROOPER P15^{PV}
 MILLAH MURRAH HIGHLANDER G18^{SV}
 MILLAH MURRAH ELA M9^{PV}
 MILLAH MURRAH ELA K127^{SV}

KAROO W109 DIRECTION Z181^{SV}
 CARABAR DOCKLANDS D62^{PV}
 CARABAR BLACKCAP MARY B12^{PV}
Dam: PREMIER BARA K15^{PV}
 TC STOCKMAN 365[#]
 KENNY'S CREEK BARA U44^{SV}
 KENNY'S CREEK BARA Q8+95[#]

MEASUREMENTS	
Scrotal Size	l
Weight	l

March 2022

TACE	Calving Ease DIR (%)	Calving Ease DTRS (%)	Gest. Length (days)	Birth Wt. (kg)	200 Day Wt. (kg)	400 Day Wt. (kg)	600 Day Wt. (kg)	Mat. Cow Wt. (kg)	Milk (kg)	Days to Calving (days)	Scrotal Size (cm)	Carcase Wt. (kg)	Eye Muscle Area (sq.cm)	Rib Fat (mm)	Rump Fat (mm)	Retail Beef Yield (%)	IMF (%)	NFI-F	Docility	Angle	Claw	\$A	\$A-L
EBV	+3.1	+8.6	-6.8	+4.5	+53	+93	+114	+87	+23	-3.8	+1.2	+75	+7.4	-0.4	-0.9	+0.1	+2.3	+0.04	+6	+1.02	+0.86	\$214	\$351
ACC	61%	52%	73%	75%	74%	74%	72%	70%	64%	43%	72%	67%	66%	70%	67%	67%	66%	56%	56%	68%	69%		
Perc	48	4	19	59	32	38	57	74	11	66	82	23	29	61	63	66	39	32	54	61	53	33	43

Traits Observed: BWT,200WT,400WT,SC,Scan(EMA,Rib,Rump,IMF),Genomics

Top 4% for Calving Ease Daughters and top 9% for Milk. An excellent balance of EBV's.

An outstanding young Sire used in Sprys herd in Spring 2021. R601 is a long bodied, thick, soft, easy doing bull who is by the great breeding sire Paratrooper P15. His Dam was selected as the pick of the Premier herd prior to their dispersal. (We purchased a flush in 2019) Bara K15 was the top priced female at the Premier dispersal in Spring 2020 at \$46,000. Sprys retain the right to collect semen for within herd use only.



Premier Bara K15^{PV}, dam of Lot 20.



LOT 20

Purchaser: \$.....

LOT 21 SPRYS-W KEYSTONE R516^{PV} HBR

DOB: 06/07/2020 Ident No.: LGSR516 Genetic Status: AMF, CAF, DDF, NHF

RENNYLEA EDMUND E11^{PV}
 LANDFALL KEYSTONE K132^{PV}
 LANDFALL ARCHER H807^{SV}
Sire: LANDFALL KEYSTONE N680^{SV}
 TUWHARETOA REGENT D145^{PV}
 LANDFALL PRINCESS K748[#]
 LANDFALL PRINCESS D48^{SV}

MATAURI REALITY 839[#]
 TRIO ULTIMATE M121^{PV}
 TRIO BURNETTE D14^{PV}
Dam: SPRYS-W BERKLEY P528^{PV}
 TE MANIA BERKLEY B1^{PV}
 MURRAY BERKLEY F7^{SV}
 MURRAY RITO 2V1 A72[#]

MEASUREMENTS	
Scrotal Size	l
Weight	l

March 2022

TACE	Calving Ease DIR (%)	Calving Ease DTRS (%)	Gest. Length (days)	Birth Wt. (kg)	200 Day Wt. (kg)	400 Day Wt. (kg)	600 Day Wt. (kg)	Mat. Cow Wt. (kg)	Milk (kg)	Days to Calving (days)	Scrotal Size (cm)	Carcase Wt. (kg)	Eye Muscle Area (sq.cm)	Rib Fat (mm)	Rump Fat (mm)	Retail Beef Yield (%)	IMF (%)	NFI-F	Docility	Angle	Claw	\$A	\$A-L
EBV	+5.9	+6.7	-6.2	+2.7	+50	+94	+118	+107	+18	-7.1	+2.7	+84	+6.1	+1.8	+0.1	-0.3	+3.3	+0.67	+10	+0.96	+0.42	\$221	\$391
ACC	53%	48%	67%	69%	68%	68%	69%	67%	61%	39%	64%	64%	61%	67%	63%	63%	61%	52%	45%	60%	60%		
Perc	24	14	26	19	45	36	46	38	46	13	23	6	49	9	36	79	12	93	39	46	1	26	16

Traits Observed: BWT,200WT,DOC,Genomics

Used as a yearling on heifers in Spring 2021. A little more frame in R516 combined with great structure and balance in an easy moving package. Out of a 1st calver. A very versatile sire for both heifers and cows. Sprys retain the right to collect semen for within herd use only.



LOT 21

Purchaser: \$.....

ANGUS SALE BULLS



ANGUS

LOT 22 SPRYS-W MASTER BLASTER S517^{PV} HBR

DOB: 26/02/2021 **Ident No.:** LGS21S517 **Genetic Status:** AMF, CAF, DDF, NHF

C R A BEXTOR 872 5205 608[#]
 G A R PROPHET^{SV}
 G A R OBJECTIVE 1885[#]
Sire: BALDRIDGE BEAST MODE B074^{PV}
 STYLES UPGRADE J59[#]
 BALDRIDGE ISABEL Y69[#]
 BALDRIDGE ISABEL T935[#]

L T 598 BANDO 9074[#]
 WATTLETOP USA9074 C118^{PV}
 WATTLETOP USUAL U86[#]
Dam: WATTLETOP BARUNAH E295^{PV}
 B/R AMBUSH 28[#]
 WATTLETOP BARUNAH C136^{SV}
 WATTLETOP BARUNAH Z155^{PV}

MEASUREMENTS	
Scrotal Size	I
Weight	I

March 2022

TACE	Calving Ease DIR (%)	Calving Ease DTRS (%)	Gest. Length (days)	Birth Wt. (kg)	200 Day Wt. (kg)	400 Day Wt. (kg)	600 Day Wt. (kg)	Mat. Cow Wt. (kg)	Milk (kg)	Days to Calving (days)	Scrotal Size (cm)	Carcass Wt. (kg)	Eye Muscle Area (sq.cm)	Rib Fat (mm)	Rump Fat (mm)	Retail Beef Yield (%)	IMF (%)	NFI-F	Docility	Angle	Claw	\$A	\$A-L
EBV	+0.4	+7.2	-5.1	+5.8	+67	+108	+139	+122	+14	-6.2	+2.8	+80	+4.0	-1.0	-2.3	+0.2	+2.7	-0.18	+21	+0.68	+0.64	\$243	\$414
ACC	63%	55%	72%	74%	73%	73%	74%	71%	68%	44%	70%	69%	67%	70%	67%	67%	66%	57%	58%	72%	72%		
Perc	69	11	42	85	2	7	11	17	76	24	20	12	82	77	90	62	26	12	12	3	12	10	7

Traits Observed: BWT,200WT,400WT,SC,Scan(EMA,Rib,Rump,IMF),DOC,Genomics

"An excellent, balanced data set."

An awesome young sire who is a very impressive individual – stout made, deep bodied with a lot of muscle expression combined with an outstanding pedigree makes him a potential top stud sire. Dam was equal top priced female at the Wattletop dispersal.



Purchaser: \$.....

LOT 22

LOT 23 SPRYS-W TRADEMARK S501^{PV} HBR

DOB: 23/03/2021 **Ident No.:** LGS21S501 **Genetic Status:** AMF, CAFU, DDF, NHF

C R A BEXTOR 872 5205 608[#]
 G A R PROPHET^{SV}
 G A R OBJECTIVE 1885[#]
Sire: BALDRIDGE BEAST MODE B074^{PV}
 STYLES UPGRADE J59[#]
 BALDRIDGE ISABEL Y69[#]
 BALDRIDGE ISABEL T935[#]

L T 598 BANDO 9074[#]
 WATTLETOP USA9074 C118^{PV}
 WATTLETOP USUAL U86[#]
Dam: WATTLETOP BARUNAH E295^{PV}
 B/R AMBUSH 28[#]
 WATTLETOP BARUNAH C136^{SV}
 WATTLETOP BARUNAH Z155^{PV}

MEASUREMENTS	
Scrotal Size	I
Weight	I

March 2022

TACE	Calving Ease DIR (%)	Calving Ease DTRS (%)	Gest. Length (days)	Birth Wt. (kg)	200 Day Wt. (kg)	400 Day Wt. (kg)	600 Day Wt. (kg)	Mat. Cow Wt. (kg)	Milk (kg)	Days to Calving (days)	Scrotal Size (cm)	Carcass Wt. (kg)	Eye Muscle Area (sq.cm)	Rib Fat (mm)	Rump Fat (mm)	Retail Beef Yield (%)	IMF (%)	NFI-F	Docility	Angle	Claw	\$A	\$A-L
EBV	+3.0	+6.3	-5.0	+3.9	+68	+110	+139	+111	+16	-5.7	+2.2	+76	+6.2	-1.4	-3.6	+1.3	+2.2	-0.50	+21	+0.64	+0.74	\$272	\$439
ACC	64%	55%	72%	74%	73%	73%	74%	72%	68%	44%	73%	69%	67%	70%	67%	67%	67%	58%	58%	72%	72%		
Perc	49	17	44	45	2	5	10	31	62	32	41	18	47	85	98	19	43	2	12	2	27	2	3

Traits Observed: BWT,200WT(x2),400WT,SC,Scan(EMA,Rib,Rump,IMF),DOC,Genomics

A full brother to Lot 22.

Another young sire in the same mould as his brother who excels in profitability traits. Outstanding growth in a medium maturity package. Excellent Indexes ... Top 2% and Top 3%.



Purchaser: \$.....

LOT 23

ANGUS SALE BULLS



LOT 24 SPRYS-W KEYSTONE S506^{PV} HBR

DOB: 12/02/2021 Ident No.: LGS21S506 Genetic Status: AMF, CAF, DDF, NHF

BOOROOMOOKA UNDERTAKEN Y145^{PV}
 RENNYLEA EDMUND E11^{PV}
 LAWSONS HENRY VIII Y5^{SV}
Sire: LANDFALL KEYSTONE K132^{PV}
 S A V FRONT RUNNER 0713[#]
 LANDFALL ARCHER H807^{SV}
 LANDFALL ARCHER X9^{PV}

L T 598 BANDO 9074[#]
 WATTLETOP USA9074 C118^{PV}
 WATTLETOP USUAL U86[#]
Dam: WATTLETOP BARUNAH E295^{PV}
 B/R AMBUSH 28[#]
 WATTLETOP BARUNAH C136^{SV}
 WATTLETOP BARUNAH Z155^{PV}

MEASUREMENTS	
Scrotal Size	I
Weight	I

March 2022

TACE	Calving Ease DIR (%)	Calving Ease DTRS (%)	Gest. Length (days)	Birth Wt. (kg)	200 Day Wt. (kg)	400 Day Wt. (kg)	600 Day Wt. (kg)	Mat. Cow Wt. (kg)	Milk (kg)	Days to Calving (days)	Scrotal Size (cm)	Carcass Wt. (kg)	Eye Muscle Area (sq.cm)	Rib Fat (mm)	Rump Fat (mm)	Retail Beef Yield (%)	IMF (%)	NFI-F	Docility	Angle	Claw	\$A	\$A-L
EBV	-2.1	+6.2	-5.0	+5.8	+68	+122	+164	+151	+21	-4.1	+0.5	+102	+5.3	-0.5	-2.1	+0.6	+1.5	-0.44	+16	+0.90	+0.86	\$219	\$408
ACC	64%	57%	72%	75%	74%	74%	74%	73%	69%	47%	73%	70%	68%	72%	69%	69%	68%	59%	58%	69%	69%		
Perc	83	18	44	85	1	1	1	2	20	61	96	1	63	64	88	44	71	3	22	32	53	27	9

Traits Observed: BWT,200WT(x2),400WT,SC,Scan(EMA,Rib,Rump,IMF),DOC,Genomics

A very attractive young sire who is sure to catch your eye with his overall balance and ease of movement with a tremendous front end. S506 has outstanding growth and selection indexes.



Purchaser: \$.....

LOT 24

LOT 25 SPRYS-W IMPROVER S500^{PV} HBR

DOB: 22/02/2021 Ident No.: LGS21S500 Genetic Status: AMF, CAF, DDF, NHF

RENNYLEA EDMUND E11^{PV}
 LANDFALL KEYSTONE K132^{PV}
 LANDFALL ARCHER H807^{SV}
Sire: LANDFALL KEYSTONE N680^{SV}
 TUWHARETOA REGENT D145^{PV}
 LANDFALL PRINCESS K748[#]
 LANDFALL PRINCESS D48^{SV}

H P C A INTENSITY[#]
 RENNYLEA L508^{PV}
 RENNYLEA H414^{SV}
Dam: SPRYS-W BARUNAH P610^{PV}
 WATTLETOP USA9074 C118^{PV}
 WATTLETOP BARUNAH E295^{SV}
 WATTLETOP BARUNAH C136^{SV}

MEASUREMENTS	
Scrotal Size	I
Weight	I

March 2022

TACE	Calving Ease DIR (%)	Calving Ease DTRS (%)	Gest. Length (days)	Birth Wt. (kg)	200 Day Wt. (kg)	400 Day Wt. (kg)	600 Day Wt. (kg)	Mat. Cow Wt. (kg)	Milk (kg)	Days to Calving (days)	Scrotal Size (cm)	Carcass Wt. (kg)	Eye Muscle Area (sq.cm)	Rib Fat (mm)	Rump Fat (mm)	Retail Beef Yield (%)	IMF (%)	NFI-F	Docility	Angle	Claw	\$A	\$A-L
EBV	-2.3	+2.1	-2.6	+4.2	+54	+91	+119	+80	+21	-5.2	+2.2	+74	+7.7	+0.9	+0.1	+0.6	+2.5	+0.23	+11	+1.02	+0.84	\$242	\$362
ACC	55%	50%	68%	70%	70%	69%	70%	68%	62%	39%	65%	65%	62%	68%	64%	64%	62%	53%	46%	61%	61%		
Perc	84	60	82	52	29	45	45	84	19	40	41	25	25	24	36	44	32	56	38	61	49	11	34

Traits Observed: BWT,200WT(x2),400WT,SC,Scan(EMA,Rib,Rump,IMF),Genomics

We really appreciate this young sire for his overall balance and structure and balanced EBV's. Out of a 1st calver who is in our Donor program at Sprys. His Grand Dam is the awesome Donor E295. Should be suited to heifers and cows.



Purchaser: \$.....

LOT 25

ANGUS SALE BULLS



ANGUS

LOT 26 SPRYS-W BLACK PROGRESS S508^{PV} HBR

DOB: 08/02/2021 Ident No.: LGS21S508 Genetic Status: AMF, CAF, DDF, NHF

SCR PROMISE 4042[#]
 SYDGEN TRUST 6228[#]
 SYDGEN FOREVER LADY 4413[#]
Sire: SYDGEN BLACK PEARL 2006^{PV}
 CONNEALY FORWARD[#]
 SYDGEN ANITA 8611[#]
 THREE TREES ANITA 5133[#]

L T 598 BANDO 9074[#]
 WATTLETOP USA9074 C118^{PV}
 WATTLETOP USUAL U86[#]
Dam: WATTLETOP BARUNAH E295^{PV}
 B/R AMBUSH 28[#]
 WATTLETOP BARUNAH C136^{SV}
 WATTLETOP BARUNAH Z155^{PV}

MEASUREMENTS	
Scrotal Size	I
Weight	I

March 2022

TACE	Calving Ease DIR (%)	Calving Ease DTRS (%)	Gest. Length (days)	Birth Wt. (kg)	200 Day Wt. (kg)	400 Day Wt. (kg)	600 Day Wt. (kg)	Mat. Cow Wt. (kg)	Milk (kg)	Days to Calving (days)	Scrotal Size (cm)	Carcass Wt. (kg)	Eye Muscle Area (sq.cm)	Rib Fat (mm)	Rump Fat (mm)	Retail Beef Yield (%)	IMF (%)	NFI-F	Docility	Angle	Claw	\$A	\$A-L
EBV	-1.3	+6.3	-7.8	+5.6	+62	+100	+138	+108	+23	-4.3	+3.1	+91	+4.9	-0.4	-1.7	+1.3	+1.4	-0.47	+11	+1.02	+0.82	\$225	\$370
ACC	66%	61%	74%	76%	75%	75%	76%	75%	71%	55%	74%	72%	70%	74%	71%	71%	70%	64%	58%	69%	70%		
Perc	79	17	10	81	6	20	11	37	10	57	13	2	69	61	81	19	75	2	36	61	44	22	28

Traits Observed: BWT,200WT(x2),400WT,SC,Scan(EMA,Rib,Rump,IMF),DOC,Genomics

A thick, deep sided young sire with plenty of growth and natural thickness. His progeny will really push the scales down for you.



LOT 26

Purchaser: \$.....

LOT 27 SPRYS-W KEYSTONE S509^{PV} HBR

DOB: 06/02/2021 Ident No.: LGS21S509 Genetic Status: AMF, CAF, DDF, NHF

RENNYLEA EDMUND E11^{PV}
 LANDFALL KEYSTONE K132^{PV}
 LANDFALL ARCHER H807^{SV}
Sire: LANDFALL KEYSTONE N680^{SV}
 TUWHARETOA REGENT D145^{PV}
 LANDFALL PRINCESS K748[#]
 LANDFALL PRINCESS D48^{SV}

L T 598 BANDO 9074[#]
 WATTLETOP USA9074 C118^{PV}
 WATTLETOP USUAL U86[#]
Dam: WATTLETOP BARUNAH E295^{PV}
 B/R AMBUSH 28[#]
 WATTLETOP BARUNAH C136^{SV}
 WATTLETOP BARUNAH Z155^{PV}

Scrotal Size	I
Weight	I

March 2022

TACE	Calving Ease DIR (%)	Calving Ease DTRS (%)	Gest. Length (days)	Birth Wt. (kg)	200 Day Wt. (kg)	400 Day Wt. (kg)	600 Day Wt. (kg)	Mat. Cow Wt. (kg)	Milk (kg)	Days to Calving (days)	Scrotal Size (cm)	Carcass Wt. (kg)	Eye Muscle Area (sq.cm)	Rib Fat (mm)	Rump Fat (mm)	Retail Beef Yield (%)	IMF (%)	NFI-F	Docility	Angle	Claw	\$A	\$A-L
EBV	-1.9	+2.7	-6.3	+6.2	+65	+114	+158	+138	+23	-3.9	+2.0	+97	+8.2	-0.8	-2.6	+0.9	+2.9	-0.09	+16	+1.14	+0.66	\$233	\$407
ACC	56%	51%	69%	71%	70%	70%	70%	68%	63%	41%	69%	66%	63%	68%	64%	65%	63%	54%	48%	64%	64%		
Perc	82	54	24	89	3	3	2	5	13	65	50	1	20	72	93	32	21	18	22	84	15	16	10

Traits Observed: BWT,200WT(x2),400WT,SC,Scan(EMA,Rib,Rump,IMF),DOC,Genomics

The Keystone N680 progeny have impressed us a lot. We used him mostly on heifers with excellent results. Plenty of growth in this young sire.

Purchaser: \$.....

ANGUS SALE BULLS



LOT 28 SPRYS-W KEYSTONE R510^{PV} APR

DOB: 02/07/2020 Ident No.: LGSR510 Genetic Status: AMF, CAF, DDF, NHF

RENNYLEA EDMUND E11^{PV}
 LANDFALL KEYSTONE K132^{PV}
 LANDFALL ARCHER H807^{SV}
Sire: LANDFALL KEYSTONE N680^{SV}
 TUWHARETOA REGENT D145^{PV}
 LANDFALL PRINCESS K748[#]
 LANDFALL PRINCESS D48^{SV}

MOOGENILLA G54^{SV}
 MOOGENILLA L210^{SV}
 MOOGENILLA G94[#]
Dam: SPRYS-W ANNIE P504^{SV}
 KANSAS ABERDEEN F84^{SV}
 SPRYS-W ANNIE M502[#]
 KANSAS ANNIE G239^{SV}

MEASUREMENTS	
Scrotal Size	I
Weight	I

March 2022

TACE	Calving Ease DIR (%)	Calving Ease DTRS (%)	Gest. Length (days)	Birth Wt. (kg)	200 Day Wt. (kg)	400 Day Wt. (kg)	600 Day Wt. (kg)	Mat. Cow Wt. (kg)	Milk (kg)	Days to Calving (days)	Scrotal Size (cm)	Carcass Wt. (kg)	Eye Muscle Area (sq.cm)	Rib Fat (mm)	Rump Fat (mm)	Retail Beef Yield (%)	IMF (%)	NFI-F	Docility	Angle	Claw	\$A	\$A-L
EBV	+1.0	+4.4	-7.3	+5.6	+66	+110	+153	+130	+17	-8.1	+1.3	+95	+7.0	+1.6	+0.6	+0.2	+1.6	+0.40	+9	+1.02	+0.74	\$256	\$439
ACC	52%	47%	66%	68%	68%	67%	68%	66%	60%	37%	67%	63%	60%	66%	62%	63%	61%	51%	39%	60%	60%		
Perc	65	36	14	81	2	6	3	9	57	6	79	1	34	12	25	62	67	75	42	61	27	5	3

Traits Observed: BWT,200WT,400WT,SC,Scan(EMA,Rib,Rump,IMF),DOC,Genomics

A stand out young sire in his group with heaps of weight and depth in a balanced data set. Out of a 1st calver with a very impressive set of EBV's.



Purchaser: \$.....

LOT 28

LOT 29 PREMIER REGULATOR R80^{PV} HBR

DOB: 18/07/2020 Ident No.: ASHR80 Genetic Status: AMFU, CAFU, DDFU NHFU

LEACHMAN RIGHT TIME 338-5605[#]
 WMR TIMELESS 458[#]
 WMR BLACKCAP 521[#]
Sire: GDAR REGULATOR 364^{PV}
 GDAR GAME DAY 449[#]
 GDAR BLACKCAP LADY 071[#]
 GDAR BLACKCAP LADY 717[#]

HYLINE RIGHT TIME 338[#]
 THE GRANGE WHEEL WRIGHT D6^{PV}
 IMRAN MISS VEGAS U20[#]
Dam: KANSAS TARIKU G299^{PV}
 B/R NEW DESIGN 036[#]
 KANSAS TARIKU V94[#]
 BOOROOMOOKA TARIKU T14[#]

MEASUREMENTS	
Scrotal Size	I
Weight	I

March 2022

TACE	Calving Ease DIR (%)	Calving Ease DTRS (%)	Gest. Length (days)	Birth Wt. (kg)	200 Day Wt. (kg)	400 Day Wt. (kg)	600 Day Wt. (kg)	Mat. Cow Wt. (kg)	Milk (kg)	Days to Calving (days)	Scrotal Size (cm)	Carcass Wt. (kg)	Eye Muscle Area (sq.cm)	Rib Fat (mm)	Rump Fat (mm)	Retail Beef Yield (%)	IMF (%)	NFI-F	Docility	Angle	Claw	\$A	\$A-L
EBV	-2.2	+7.4	-4.6	+5.4	+56	+93	+130	+103	+18	-4.2	+1.7	+66	+4.4	+1.3	+1.6	+0.3	+1.8	-0.24	+4	+0.64	+0.62	\$222	\$361
ACC	60%	51%	71%	74%	73%	73%	73%	71%	67%	44%	70%	68%	67%	70%	67%	67%	66%	56%	46%	68%	68%		
Perc	83	9	51	78	19	37	22	45	41	59	63	53	77	16	10	57	59	9	59	2	10	25	35

Traits Observed: BWT,200WT,400WT(x2),SC,Scan(EMA,Rib,Rump,IMF),Genomics

We think a lot of this young bull who has the balance and soundness to make him a potential sire of the future. His dam is one top female who produced great progeny for Premier and Sprys. R80 was purchased at the Premier dispersal on a recipient.



Purchaser: \$.....

LOT 29

ANGUS SALE BULLS



ANGUS

LOT 30 PREMIER KRAKATOA R28^{PV} HBR

DOB: 10/07/2020 Ident No.: ASHR28 Genetic Status: AMFU, CAFU, DDFU, NHFU

SCHURRTOP REALITY X723[#]
 MATAURI REALITY 839[#]
 MATAURI 06663[#]
Sire: MILWILLAH KRAKATOA K92^{PV}
 COONAMBLE ELEVATOR E11^{PV}
 MILWILLAH BARUNAH H224[#]
 MILWILLAH BARUNAH B55^{PV}

S A F 598 BANDO 5175[#]
 S A V 5175 BANDO 0699[#]
 L L A GEORGINA 419[#]
Dam: ST PAULS 0699 LOWAN B207^{PV}
 B/R NEW DESIGN 036[#]
 TE MANIA LOWAN W39^{PV}
 TE MANIA LOWAN R182+96[#]

MEASUREMENTS	
Scrotal Size	I
Weight	I

March 2022

TACE	Calving Ease DIR (%)	Calving Ease DTRS (%)	Gest. Length (days)	Birth Wt. (kg)	200 Day Wt. (kg)	400 Day Wt. (kg)	600 Day Wt. (kg)	Mat. Cow Wt. (kg)	Milk (kg)	Days to Calving (days)	Scrotal Size (cm)	Carcass Wt. (kg)	Eye Muscle Area (sq.cm)	Rib Fat (mm)	Rump Fat (mm)	Retail Beef Yield (%)	IMF (%)	NFI-F	Docility	Angle	Claw	\$A	\$A-L
EBV	+1.0	-0.6	-7.2	+5.4	+47	+86	+114	+106	+13	-1.1	+0.7	+61	+7.6	+0.7	-0.4	+1.1	+1.5	+0.18	+3	+0.92	+0.68	\$160	\$291
ACC	61%	54%	72%	75%	73%	73%	73%	71%	67%	45%	68%	68%	66%	70%	67%	67%	65%	56%	55%	69%	69%		
Perc	65	81	15	78	65	62	55	39	85	95	93	70	26	28	50	25	71	49	64	37	17	83	82

Traits Observed: BWT,200WT,400WT(x2),SC,Scan(EMA,Rib,Rump,IMF),Genomics

A stout, thick, deep sided bull who will certainly produce progeny with plenty of carcass. His dam has been an outstanding Donor for the Premier herd. Purchased at the Premier dispersal with his recipient mum.



Purchaser: \$.....

LOT 30

LOT 31 PREMIER NAPA R66^{PV} HBR

DOB: 15/07/2020 Ident No.: ASHR66 Genetic Status: AMFU, CAFU, DDFU, NHFU

SCHURRTOP REALITY X723[#]
 MATAURI REALITY 839[#]
 MATAURI 06663[#]
Sire: MILWILLAH NAPA N498^{PV}
 COONAMBLE ELEVATOR E11^{PV}
 MILWILLAH BARUNAH H224[#]
 MILWILLAH BARUNAH B55^{PV}

CARABAR DOCKLANDS D62^{PV}
 PREMIER DOCKLANDS K18^{PV}
 KENNY'S CREEK BARA U44^{SV}
Dam: PREMIER ABIGALE 9317 P126^{PV}
 S A V PRIORITY 7283[#]
 PREMIER ABIGALE 9317 J29^{PV}
 S A V ABIGALE 9317[#]

MEASUREMENTS	
Scrotal Size	I
Weight	I

March 2022

TACE	Calving Ease DIR (%)	Calving Ease DTRS (%)	Gest. Length (days)	Birth Wt. (kg)	200 Day Wt. (kg)	400 Day Wt. (kg)	600 Day Wt. (kg)	Mat. Cow Wt. (kg)	Milk (kg)	Days to Calving (days)	Scrotal Size (cm)	Carcass Wt. (kg)	Eye Muscle Area (sq.cm)	Rib Fat (mm)	Rump Fat (mm)	Retail Beef Yield (%)	IMF (%)	NFI-F	Docility	Angle	Claw	\$A	\$A-L
EBV	+6.1	+3.0	-5.4	+4.3	+40	+70	+90	+78	+16	-3.3	+3.1	+53	+10.4	+1.5	+0.4	+0.1	+3.0	+0.97	+0	+0.88	+0.96	\$172	\$294
ACC	55%	49%	83%	72%	71%	70%	70%	67%	62%	41%	68%	65%	62%	67%	64%	64%	62%	53%	46%	64%	64%		
Perc	23	51	37	55	90	95	94	86	61	75	13	90	6	13	29	66	18	99	73	28	73	75	81

Traits Observed: GL,BWT,200WT,400WT(x2),SC,Scan(EMA,Rib,Rump,IMF),Genomics

Should be OK for heifers and cows. A very correct, calving ease young sire who is very well balanced with a large EMA EBV and positive fats coupled with a high IMF. His sire was sold at the Premier dispersal back to the famous Milwillah Stud. R66 was purchased with his dam at the Premier dispersal. Abigail 9317 was an imported embryo from SAV herd in the USA. She has a little more frame with extra length and very sound structure.

Purchaser: \$.....

ANGUS SALE BULLS



LOT 32 SPRYS-W GENERAL R544^{SV} APR

DOB: 31/07/2020 Ident No.: LGSR544 Genetic Status: AMF, CAF, DDF, NHF

TE MANIA BERKLEY B1^{PV}
 AYRVALE GENERAL G18^{PV}
 AYRVALE EASE E3^{PV}
Sire: SPRYS-W GENERAL N521^{PV}
 WATTLETOP USA9074 C118^{PV}
 WATTLETOP BARUNAH E295^{PV}
 WATTLETOP BARUNAH C136^{SV}

HYLINE RIGHT TIME 338[#]
 RENNYLEA C510^{PV}
 RENNYLEA X131^{SV}
Dam: SPRYS-W GOVERNESS N534[#]
 TC FRANKLIN 619[#]
 SPRYS FRANKLIN GOVERNESS G G226[#]
 COOLANA Y163[#]

MEASUREMENTS	
Scrotal Size	I
Weight	I

March 2022

TACE	Calving Ease DIR (%)	Calving Ease DTRS (%)	Gest. Length (days)	Birth Wt. (kg)	200 Day Wt. (kg)	400 Day Wt. (kg)	600 Day Wt. (kg)	Mat. Cow Wt. (kg)	Milk (kg)	Days to Calving (days)	Scrotal Size (cm)	Carcass Wt. (kg)	Eye Muscle Area (sq.cm)	Rib Fat (mm)	Rump Fat (mm)	Retail Beef Yield (%)	IMF (%)	NFI-F	Docility	Angle	Claw	\$A	\$A-L
EBV	+5.0	+8.1	-7.0	+3.0	+49	+90	+120	+72	+25	-3.8	+3.1	+70	+8.6	-1.1	-2.5	+1.5	+1.6	+0.12	+7	+0.82	+0.94	\$227	\$355
ACC	53%	48%	69%	69%	67%	68%	68%	66%	60%	40%	69%	63%	61%	66%	63%	63%	61%	52%	41%	65%	66%		
Perc	32	6	17	25	56	49	43	92	5	66	13	38	16	79	92	14	67	42	51	16	69	21	39

Traits Observed: BWT,200WT,400WT,SC,Scan(EMA,Rib,Rump,IMF),DOC,Genomics

Really like the blend of genetics in this young sire coupled with an excellent data set. Should be OK on heifers and cows. Sire was purchased by Ascot Angus Stud, Queensland.

Purchaser: \$.....

LOT 33 SPRYS-W KEYSTONE R571^{PV} APR

DOB: 01/07/2020 Ident No.: LGSR571 Genetic Status: AMF, CAF, DDF, NHF

RENNYLEA EDMUND E11^{PV}
 LANDFALL KEYSTONE K132^{PV}
 LANDFALL ARCHER H807^{SV}
Sire: LANDFALL KEYSTONE N680^{SV}
 TUWHARETOA REGENT D145^{PV}
 LANDFALL PRINCESS K748[#]
 LANDFALL PRINCESS D48^{SV}

Dam: SPRYS-W P568[#]
 SPRYS GAMBLER G035^{SV}
 SPRYS GAMBLERS BONNIE J141[#]
 SPRYS FD GOVERNESS G222[#]

MEASUREMENTS	
Scrotal Size	I
Weight	I

March 2022

TACE	Calving Ease DIR (%)	Calving Ease DTRS (%)	Gest. Length (days)	Birth Wt. (kg)	200 Day Wt. (kg)	400 Day Wt. (kg)	600 Day Wt. (kg)	Mat. Cow Wt. (kg)	Milk (kg)	Days to Calving (days)	Scrotal Size (cm)	Carcass Wt. (kg)	Eye Muscle Area (sq.cm)	Rib Fat (mm)	Rump Fat (mm)	Retail Beef Yield (%)	IMF (%)	NFI-F	Docility	Angle	Claw	\$A	\$A-L
EBV	+2.1	+4.3	-4.6	+2.6	+43	+73	+96	+62	+15	-5.4	+1.1	+56	+11.1	-0.4	-0.5	+2.3	+1.6	+0.24	-	+0.92	+0.88	\$228	\$335
ACC	52%	47%	66%	68%	68%	67%	68%	66%	60%	38%	62%	63%	60%	66%	62%	63%	61%	52%	-	60%	59%		
Perc	57	37	51	18	82	92	89	96	74	37	85	83	4	61	53	4	67	57	-	37	57	20	55

Traits Observed: BWT,400WT,SC,Scan(EMA,Rib,Rump,IMF),Genomics

Should be OK for heifers and cows. Out of a 1st calver. A really stout, thick, deep ribbed sire who has a lot of Rib Eye Area and a balance of good calving ease and excellent mature cow weight.



Purchaser: \$.....

LOT 33

ANGUS SALE BULLS



ANGUS

LOT 34 SPRYS BLUE BOY R650 UNREGISTERED

DOB: 10/08/2020 Ident No.: LGSR650 Colour: Blue Roan

RENNYLEA EDMUND E11^{PV}
 LANDFALL KEYSTONE K132^{PV}
 LANDFALL ARCHER H807^{SV}
Sire: LANDFALL KEYSTONE N680^{SV}
 TUWHARETOA REGENT D145^{PV}
 LANDFALL PRINCESS K748[#]
 LANDFALL PRINCESS D48^{SV}

COOTA PARK BLUE-E D177
 COOTA PARK BLUE-E F6
 COOTA PARK BLUE-E D174
Dam: COOTA PARK BLUE-E H119
 COOTA PARK BLUE-E D64
 COOTA PARK BLUE-E F187
 COOTA PARK BLUE-E D402

MEASUREMENTS	
Scrotal Size	I
Weight	I

Sire EBV's March 2022

TACE	Calving Ease DIR (%)	Calving Ease DTRS (%)	Gest. Length (days)	Birth Wt. (kg)	200 Day Wt. (kg)	400 Day Wt. (kg)	600 Day Wt. (kg)	Mat. Cow Wt. (kg)	Milk (kg)	Days to Calving (days)	Scrotal Size (cm)	Carcass Wt. (kg)	Eye Muscle Area (sq.cm)	Rib Fat (mm)	Rump Fat (mm)	Retail Beef Yield (%)	IMF (%)	NFI-F	Docility	Angle	Claw	\$A	\$A-L
EBV	+2.0	+2.3	-5.6	+3.6	+55	+98	+130	+105	+14	-6.1	+0.9	+80	+5.4	+1.7	+0.3	-0.3	+2.9	+0.29	+11	+1.04	+0.60	\$239	\$394
ACC	68%	59%	85%	82%	82%	82%	81%	78%	70%	50%	78%	74%	71%	75%	73%	72%	71%	61%	73%	66%	66%		
Perc	57	58	34	37	22	24	21	42	81	25	90	12	61	10	31	79	21	63	37	66	8	13	15

Traits Observed: GL,CE,BWT,200WT,400WT,600WT,SC,Scan(EMA,Rib,Rump,IMF),Genomics

75% Angus X 25% Shorthorn

This outstanding young sire is not registered with the Angus Society. Blue Boy R650 is one hell of a beef animal. Medium maturity, thick, soft, easy doing and structurally outstanding. Use Blue Boy R650 in any beef programme, self replacing or terminal herds. If we could breed all our bulls like him we would have it made. Dam is a blue roan.



Purchaser: \$.....

LOT 34

LOT 35 SPRYS-W KEYSTONE R519^{SV} MBR

DOB: 06/07/2020 Ident No.: LGSR519 Genetic Status: AMF, CAF, DDF, NHF

RENNYLEA EDMUND E11^{PV}
 LANDFALL KEYSTONE K132^{PV}
 LANDFALL ARCHER H807^{SV}
Sire: LANDFALL KEYSTONE N680^{SV}
 TUWHARETOA REGENT D145^{PV}
 LANDFALL PRINCESS K748[#]
 LANDFALL PRINCESS D48^{SV}

HYLINE RIGHT TIME 338[#]
 RENNYLEA C510^{PV}
 RENNYLEA X131^{SV}
Dam: SPRYS-W LUCINDA P653[#]
 COOTA PARK D141[#]
 COOTA PARK BLUE-E F020 F20 (RED)[#]
 COOTA PARK D222[#]

MEASUREMENTS	
Scrotal Size	I
Weight	I

March 2022

TACE	Calving Ease DIR (%)	Calving Ease DTRS (%)	Gest. Length (days)	Birth Wt. (kg)	200 Day Wt. (kg)	400 Day Wt. (kg)	600 Day Wt. (kg)	Mat. Cow Wt. (kg)	Milk (kg)	Days to Calving (days)	Scrotal Size (cm)	Carcass Wt. (kg)	Eye Muscle Area (sq.cm)	Rib Fat (mm)	Rump Fat (mm)	Retail Beef Yield (%)	IMF (%)	NFI-F	Docility	Angle	Claw	\$A	\$A-L
EBV	+4.6	+2.8	-3.6	+1.4	+39	+74	+91	+66	+12	-7.5	+1.8	+53	+5.4	+3.5	+4.1	-2.2	+3.2	+0.93	+9	+1.06	+0.64	\$209	\$335
ACC	53%	48%	65%	68%	67%	67%	68%	66%	60%	38%	67%	63%	60%	65%	61%	62%	60%	51%	45%	61%	61		
Perc	35	53	68	6	93	90	94	95	89	10	59	89	61	1	1	99	14	99	43	70	12	37	55

Traits Observed: BWT,200WT,400WT,SC,Scan(EMA,Rib,Rump,IMF),DOC,Genomics

R519 is 86% Angus and 14% Shorthorn.

Use on heifers and cows. Another great young sire who has the phenotype and data set to make a very profitable beef operation. His Grand Dam, F20, is a high feed efficiency cow who was an outstanding female – medium maturity. Easy doing and structurally outstanding with calving ease, high fats and high IMF. Have a close look at this young sire, he certainly covers a lot of bases.

Purchaser: \$.....

ANGUS SALE BULLS



LOT 36 SPRYS-W BALANCE R561^{SV} APR

DOB: 27/08/2020 Ident No.: LGSR561 Genetic Status: AMF, CAF, DDF, NHF

BOOROOMOOKA UNDERTAKEN Y145^{PV}
 RENNYLEA EDMUND E11^{PV}
 LAWSONS HENRY VIII Y5^{SV}
Sire: RENNYLEA BALANCE N455^{PV}
 BOOROOMOOKA DESIGN Y120^{SV}
 RENNYLEA G371^{SV}
 RENNYLEA D6[#]

S A V FINAL ANSWER 0035[#]
 CONNEALY CAPITALIST 028[#]
 PRIDES PITA OF CONANGA 8821[#]
Dam: SPRYS-W MISS CAPITALIST M522[#]
 B/R FUTURE DIRECTION 4268^{SV}
 SPRYS FD GOVERNESS G220[#]
 COOLANA Z223[#]

MEASUREMENTS	
Scrotal Size	I
Weight	I

March 2022

TACE	Calving Ease DIR (%)	Calving Ease DTRS (%)	Gest. Length (days)	Birth Wt. (kg)	200 Day Wt. (kg)	400 Day Wt. (kg)	600 Day Wt. (kg)	Mat. Cow Wt. (kg)	Milk (kg)	Days to Calving (days)	Scrotal Size (cm)	Carcass Wt. (kg)	Eye Muscle Area (sq.cm)	Rib Fat (mm)	Rump Fat (mm)	Retail Beef Yield (%)	IMF (%)	NFI-F	Docility	Angle	Claw	\$A	\$A-L
EBV	+4.9	-0.8	-3.9	+4.1	+50	+85	+124	+97	+20	-6.8	+2.9	+74	+7.2	+0.9	-1.1	+1.0	+1.9	+0.79	+4	+1.00	+0.92	\$216	\$359
ACC	53%	48%	67%	68%	66%	65%	67%	65%	60%	40%	61%	62%	59%	65%	61%	62%	60%	51%	42%	64%	64%		
Perc	32	82	63	49	46	64	34	57	27	16	17	24	31	24	68	28	55	97	61	56	65	31	37

Traits Observed: BWT,200WT,400WT,SC,Scan(EMA,Rib,Rump,IMF),DOC,Genomics

The first of the Rennylea Balance N455 sons to be offered at Sprys. His Dam is a very good Capitalist 028 daughter who is stout made with heaps of capacity. OK for heifers and cows.

Purchaser: \$.....

LOT 37 SPRYS-W BALANCE R567^{PV} HBR

DOB: 16/08/2020 Ident No.: LGSR567 Genetic Status: AMF, CAF, DDF, NHF

BOOROOMOOKA UNDERTAKEN Y145^{PV}
 RENNYLEA EDMUND E11^{PV}
 LAWSONS HENRY VIII Y5^{SV}
Sire: RENNYLEA BALANCE N455^{PV}
 BOOROOMOOKA DESIGN Y120^{SV}
 RENNYLEA G371^{SV}
 RENNYLEA D6[#]

SITZ NEW DESIGN 458N[#]
 COOLANA NEW DESIGN 458N E52SV
 COOLANA PRIMROSE C156[#]
Dam: COOLANA NIGHTINGALE G281[#]
 B/R NEW DESIGN 036[#]
 COOLANA NIGHTINGALE D26[#]
 CAMPBELL FARMS NIGHTINGALE T573[#]

MEASUREMENTS	
Scrotal Size	I
Weight	I

March 2022

TACE	Calving Ease DIR (%)	Calving Ease DTRS (%)	Gest. Length (days)	Birth Wt. (kg)	200 Day Wt. (kg)	400 Day Wt. (kg)	600 Day Wt. (kg)	Mat. Cow Wt. (kg)	Milk (kg)	Days to Calving (days)	Scrotal Size (cm)	Carcass Wt. (kg)	Eye Muscle Area (sq.cm)	Rib Fat (mm)	Rump Fat (mm)	Retail Beef Yield (%)	IMF (%)	NFI-F	Docility	Angle	Claw	\$A	\$A-L
EBV	+3.8	-2.1	-6.7	+5.1	+48	+81	+110	+98	+19	-4.5	+2.9	+67	+8.0	-0.9	-3.3	+1.2	+3.1	+0.12	+8	+1.06	+0.56	\$188	\$320
ACC	56%	51%	66%	70%	69%	69%	70%	68%	63%	43%	70%	66%	63%	68%	64%	65%	63%	55%	43%	60%	60%		
Perc	42	88	20	72	58	77	65	56	40	54	17	48	22	75	97	22	16	42	48	70	6	60	66

Traits Observed: BWT,200WT,400WT,SC,Scan(EMA,Rib,Rump,IMF),DOC,Genomics

Another good Balance N455 son who combines structure with a balanced data set. This is the last bull to be sold out of the great Donor Coolana Nightingale G281. She has produced several bulls which have been used in Stud herds. Sons have sold to \$30,000.

Purchaser: \$.....

LOT 38 SPRYS-W IDENTITY R604^{PV} HBR

DOB: 17/08/2020 Ident No.: LGSR604 Genetic Status: AMF, CAF, DDF, NHF

CONNEALY ONWARD[#]
 SITZ UPWARD 307R^{SV}
 SITZ HENRIETTA PRIDE 81M[#]
Sire: KOUPALS B&B IDENTITY^{SV}
 G A R EXALTATION 3144[#]
 B&B ERICA 605[#]
 B&B ERICA 4064[#]

B/R NEW DESIGN 036[#]
 BOOROOMOOKA THEO T030^{SV}
 BOOROOMOOKA QUAINT Q34+95[#]
Dam: PREMIER Y301 DREAM L49^{SV}
 PREMIER DREAMLINE F2^{PV}
 PREMIER Y301 DREAM J69[#]
 PREMIER Y301 DREAM G13^{PV}

MEASUREMENTS	
Scrotal Size	I
Weight	I

March 2022

TACE	Calving Ease DIR (%)	Calving Ease DTRS (%)	Gest. Length (days)	Birth Wt. (kg)	200 Day Wt. (kg)	400 Day Wt. (kg)	600 Day Wt. (kg)	Mat. Cow Wt. (kg)	Milk (kg)	Days to Calving (days)	Scrotal Size (cm)	Carcass Wt. (kg)	Eye Muscle Area (sq.cm)	Rib Fat (mm)	Rump Fat (mm)	Retail Beef Yield (%)	IMF (%)	NFI-F	Docility	Angle	Claw	\$A	\$A-L
EBV	+4.5	+0.4	-5.4	+1.6	+44	+84	+101	+54	+19	-4.5	+2.2	+50	+9.3	+0.9	+0.9	+1.6	+0.6	-0.11	+6	+0.70	+0.60	\$225	\$332
ACC	61%	54%	73%	74%	73%	72%	73%	71%	67%	47%	68%	68%	66%	71%	67%	68%	66%	57%	54%	68%	68%		
Perc	36	74	37	7	78	69	82	98	36	54	41	94	11	24	19	12	94	17	53	4	8	22	58

Traits Observed: BWT,200WT,400WT,SC,Scan(EMA,Rib,Rump,IMF),Genomics

An impressive Kouplas B&B Identity ET son who has worked so well for the Millwillah herd and out of a daughter of the famous Dream Line. Excellent birth weight, EMA and Structure EBV's. Use on heifers and cows.

Purchaser: \$.....

ANGUS SALE BULLS



ANGUS

LOT 39 SPRYS-W BALANCE R562^{SV} HBR

DOB: 16/08/2020 **Ident No.:** LGSR563 **Genetic Status:** AMF, CAF, DDF, NHF

BOOROOMOOKA UNDERTAKEN Y145^{PV}
 RENNYLEA EDMUND E11^{PV}
 LAWSONS HENRY VIII Y5^{SV}
Sire: RENNYLEA BALANCE N455^{PV}
 BOOROOMOOKA DESIGN Y120^{SV}
 RENNYLEA G371^{SV}
 RENNYLEA D6[#]

TE MANIA BERKLEY B1^{PV}
 PATAWALLA F54^{SV}
 PATAWALLA B81[#]
Dam: PATAWALLA H41[#]
 PATAWALLA B65^{PV}
 PATAWALLA D13[#]
 PATAWALLA B26^{SV}

MEASUREMENTS	
Scrotal Size	I
Weight	I

March 2022

TACE	Calving Ease DIR (%)	Calving Ease DTRS (%)	Gest. Length (days)	Birth Wt. (kg)	200 Day Wt. (kg)	400 Day Wt. (kg)	600 Day Wt. (kg)	Mat. Cow Wt. (kg)	Milk (kg)	Days to Calving (days)	Scrotal Size (cm)	Carcass Wt. (kg)	Eye Muscle Area (sq.cm)	Rib Fat (mm)	Rump Fat (mm)	Retail Beef Yield (%)	IMF (%)	NFI-F	Docility	Angle	Claw	\$A	\$A-L
EBV	+11.6	+7.6	-12.8	+0.6	+42	+70	+93	+62	+18	-9.1	+2.8	+64	+9.3	+1.0	+0.2	+1.1	+2.1	+0.65	+5	+1.08	+0.92	\$241	\$370
ACC	53%	48%	65%	68%	67%	66%	67%	65%	60%	40%	67%	63%	60%	66%	62%	63%	61%	52%	43%	60%	60%		
Perc	1	8	1	3	84	95	92	96	45	3	20	58	11	22	34	25	47	93	56	74	65	12	29

Traits Observed: BWT,200WT,400WT,SC,Scan(EMA,Rib,Rump,IMF),DOC,Genomics

An excellent calving ease bull by the impressive Balance N455 sire. R563 has a very good data set. His dam is a functional, productive female with great fertility. She was purchased at Sandy Yeates dispersal.

Purchaser: \$.....

LOT 40 SPRYS-W ENHANCE R535^{SV} HBR

DOB: 29/07/2020 **Ident No.:** LGSR535 **Genetic Status:** AMF, CAF, DDF, NHF

SYDGEN GOOGOL[#]
 SYDGEN EXCEED 3223^{PV}
 SYDGEN FOREVER LADY 1255[#]
Sire: SYDGEN ENHANCE^{SV}
 SYDGEN LIBERTY GA 8627[#]
 SYDGEN RITA 2618[#]
 FOX RUN RITA 9308[#]

BALD BLAIR ULONG A16^{PV}
 BALD BLAIR DEBONAIR D34^{SV}
 BALD BLAIR X14^{SV}
Dam: COOLANA ANNABELL K159[#]
 PRAIRIEDGE MARBULL DESIGN931[#]
 COOLANA ANNABELL A6[#]
 COOLANA T27[#]

MEASUREMENTS	
Scrotal Size	I
Weight	I

March 2022

TACE	Calving Ease DIR (%)	Calving Ease DTRS (%)	Gest. Length (days)	Birth Wt. (kg)	200 Day Wt. (kg)	400 Day Wt. (kg)	600 Day Wt. (kg)	Mat. Cow Wt. (kg)	Milk (kg)	Days to Calving (days)	Scrotal Size (cm)	Carcass Wt. (kg)	Eye Muscle Area (sq.cm)	Rib Fat (mm)	Rump Fat (mm)	Retail Beef Yield (%)	IMF (%)	NFI-F	Docility	Angle	Claw	\$A	\$A-L
EBV	-0.4	-3.4	-3.4	+4.3	+60	+103	+127	+83	+18	-2.4	+1.6	+66	+10.3	-0.8	-1.2	+2.2	+1.4	-0.44	+17	+1.10	+0.98	\$258	\$379
ACC	61%	53%	70%	73%	71%	71%	72%	69%	64%	38%	68%	66%	64%	68%	65%	65%	64%	54%	56%	70%	70%		
Perc	74	93	71	55	9	13	28	80	44	86	67	54	7	72	71	4	75	3	19	78	76	5	23

Traits Observed: BWT,200WT,400WT,SC,Scan(EMA,Rib,Rump,IMF),DOC,Genomics

A twin by Enhance and out of a very productive Coolana female who have worked very well for us at Sprys. She is deep ribbed and easy doing female with a great udder and teats who we purchased at the Coolana dispersal.

Purchaser: \$.....

LOT 41 SPRYS-W ENHANCE R536^{SV} HBR

DOB: 29/07/2020 **Ident No.:** LGSR536 **Genetic Status:** AMF, CAF, DDF, NHF

SYDGEN GOOGOL[#]
 SYDGEN EXCEED 3223^{PV}
 SYDGEN FOREVER LADY 1255[#]
Sire: SYDGEN ENHANCE^{SV}
 SYDGEN LIBERTY GA 8627[#]
 SYDGEN RITA 2618[#]
 FOX RUN RITA 9308[#]

BALD BLAIR ULONG A16^{PV}
 BALD BLAIR DEBONAIR D34^{SV}
 BALD BLAIR X14^{SV}
Dam: COOLANA ANNABELL K159[#]
 PRAIRIEDGE MARBULL DESIGN931[#]
 COOLANA ANNABELL A6[#]
 COOLANA T27[#]

MEASUREMENTS	
Scrotal Size	I
Weight	I

March 2022

TACE	Calving Ease DIR (%)	Calving Ease DTRS (%)	Gest. Length (days)	Birth Wt. (kg)	200 Day Wt. (kg)	400 Day Wt. (kg)	600 Day Wt. (kg)	Mat. Cow Wt. (kg)	Milk (kg)	Days to Calving (days)	Scrotal Size (cm)	Carcass Wt. (kg)	Eye Muscle Area (sq.cm)	Rib Fat (mm)	Rump Fat (mm)	Retail Beef Yield (%)	IMF (%)	NFI-F	Docility	Angle	Claw	\$A	\$A-L
EBV	-0.1	-3.2	-4.9	+4.3	+53	+84	+104	+78	+16	-3.5	+1.4	+53	+7.3	-1.9	-1.9	+1.9	+1.4	-0.90	+8	+1.20	+0.82	\$215	\$322
ACC	61%	52%	70%	72%	71%	71%	71%	68%	63%	38%	67%	66%	64%	68%	64%	64%	64%	53%	57%	71%	70%		
Perc	72	92	46	55	31	69	77	86	60	71	75	90	30	92	85	7	75	1	48	91	44	31	65

Traits Observed: BWT,200WT,400WT,SC,Scan(EMA,Rib,Rump,IMF),DOC,Genomics

Twin brother to Lot 40 – see notes.

Purchaser: \$.....

ANGUS SALE BULLS



LOT 42 SPRYS-W KEYSTONE R500^{PV} HBR

DOB: 20/06/2020 Ident No.: LGSR500 Genetic Status: AMF, CAF, DDF, NHF

RENNYLEA EDMUND E11^{PV}
 LANDFALL KEYSTONE K132^{PV}
 LANDFALL ARCHER H807^{SV}
Sire: LANDFALL KEYSTONE N680^{SV}
 TUWHARETOA REGENT D145^{PV}
 LANDFALL PRINCESS K748[#]
 LANDFALL PRINCESS D48^{SV}

H P C A INTENSITY[#]
 RENNYLEA L508^{PV}
 RENNYLEA H414^{SV}
Dam: SPRYS-W ANNE P550^{PV}
 TE MANIA INFINITY 04 379 AB[#]
 WATTLETOP ANN F56^{SV}
 WATTLETOP ANN Z397^{SV}

MEASUREMENTS	
Scrotal Size	I
Weight	I

March 2022

TACE	Calving Ease DIR (%)	Calving Ease DTRS (%)	Gest. Length (days)	Birth Wt. (kg)	200 Day Wt. (kg)	400 Day Wt. (kg)	600 Day Wt. (kg)	Mat. Cow Wt. (kg)	Milk (kg)	Days to Calving (days)	Scrotal Size (cm)	Carcass Wt. (kg)	Eye Muscle Area (sq.cm)	Rib Fat (mm)	Rump Fat (mm)	Retail Beef Yield (%)	IMF (%)	NFI-F	Docility	Angle	Claw	\$A	\$A-L
EBV	+4.8	+6.0	-6.8	+2.8	+47	+84	+105	+91	+11	-6.5	+1.6	+61	+8.7	+0.9	+1.1	+0.9	+1.8	+0.62	+0	+0.96	+0.72	\$218	\$365
ACC	56%	51%	69%	71%	70%	70%	71%	69%	64%	41%	69%	66%	63%	69%	65%	65%	64%	55%	48%	59%	59%		
Perc	33	20	19	21	65	67	75	68	93	20	67	72	15	24	16	32	59	91	74	46	24	29	32

Traits Observed: BWT,200WT,400WT,SC,Scan(EMA,Rib,Rump,IMF),DOC,Genomics

Another excellent calving ease bull who is medium maturity, long and thick made with excellent structure. R500 has a big EMA with positive fats.

Purchaser: \$.....

LOT 43 SPRYS-W BALANCE R564^{SV} APR

DOB: 04/09/2020 Ident No.: LGSR564 Genetic Status: AMF, CAF, DDF, NHF

BOOROOMOOKA UNDERTAKEN Y145^{PV}
 RENNYLEA EDMUND E11^{PV}
 LAWSONS HENRY VIII Y5^{SV}
Sire: RENNYLEA BALANCE N455^{PV}
 BOOROOMOOKA DESIGN Y120^{SV}
 RENNYLEA G371^{SV}
 RENNYLEA D6[#]

BALD BLAIR ULONG A16^{PV}
 BALD BLAIR DEBONAIR D34^{SV}
 BALD BLAIR X14^{SV}
Dam: COOLANA K720[#]
 COOLANA HIGHMARK Z39^{SV}
 COOLANA C620[#]
 COOLANA Z221[#]

MEASUREMENTS	
Scrotal Size	I
Weight	I

March 2022

TACE	Calving Ease DIR (%)	Calving Ease DTRS (%)	Gest. Length (days)	Birth Wt. (kg)	200 Day Wt. (kg)	400 Day Wt. (kg)	600 Day Wt. (kg)	Mat. Cow Wt. (kg)	Milk (kg)	Days to Calving (days)	Scrotal Size (cm)	Carcass Wt. (kg)	Eye Muscle Area (sq.cm)	Rib Fat (mm)	Rump Fat (mm)	Retail Beef Yield (%)	IMF (%)	NFI-F	Docility	Angle	Claw	\$A	\$A-L
EBV	+8.8	+6.9	-7.9	+2.5	+42	+71	+95	+63	+15	-8.2	+1.4	+44	+7.1	+3.1	+1.2	-0.1	+3.0	+0.44	+7	+1.20	+0.60	\$236	\$365
ACC	53%	49%	67%	68%	66%	66%	67%	65%	60%	41%	63%	63%	60%	65%	62%	62%	60%	52%	44%	65%	65%		
Perc	7	13	9	16	85	94	90	96	73	6	75	98	33	2	14	73	18	79	50	91	8	14	32

Traits Observed: BWT,200WT,400WT,SC,Scan(EMA,Rib,Rump,IMF),DOC,Genomics

Big calving ease, EMA and positive fat with an excellent IMF EBV. Out of another impressive Coolana cow purchased from their dispersal. Use on heifers and cows.

Purchaser: \$.....

LOT 44 SPRYS-W BALANCE R562^{SV} APR

DOB: 30/08/2020 Ident No.: LGSR562 Genetic Status: AMF, CAF, DDF, NHF

BOOROOMOOKA UNDERTAKEN Y145^{PV}
 RENNYLEA EDMUND E11^{PV}
 LAWSONS HENRY VIII Y5^{SV}
Sire: RENNYLEA BALANCE N455^{PV}
 BOOROOMOOKA DESIGN Y120^{SV}
 RENNYLEA G371^{SV}
 RENNYLEA D6[#]

Dam: UNKNOWN

MEASUREMENTS	
Scrotal Size	I
Weight	I

March 2022

TACE	Calving Ease DIR (%)	Calving Ease DTRS (%)	Gest. Length (days)	Birth Wt. (kg)	200 Day Wt. (kg)	400 Day Wt. (kg)	600 Day Wt. (kg)	Mat. Cow Wt. (kg)	Milk (kg)	Days to Calving (days)	Scrotal Size (cm)	Carcass Wt. (kg)	Eye Muscle Area (sq.cm)	Rib Fat (mm)	Rump Fat (mm)	Retail Beef Yield (%)	IMF (%)	NFI-F	Docility	Angle	Claw	\$A	\$A-L
EBV	+2.6	+1.4	-3.9	+3.9	+48	+84	+116	+99	+15	-1.5	+2.0	+72	+5.1	+1.2	+0.4	-0.6	+2.8	+0.47	-	-	-	\$178	\$311
ACC	46%	43%	60%	63%	63%	62%	64%	61%	56%	35%	57%	59%	56%	62%	58%	59%	56%	48%	-	-	-		
Perc	53	66	63	45	60	67	51	53	69	93	50	30	66	18	29	87	23	82	-	-	-	69	72

Traits Observed: BWT,400WT,SC,Scan(EMA,Rib,Rump,IMF),Genomics

Light birth weight young sire. Note that this young bull was found orphaned and did not identify his Dam so stole a drink from anyone he could get a drink from.

Purchaser: \$.....

ANGUS SALE BULLS



ANGUS

LOT 45

SPRYS-W KEYSTONE R522^{PV}

HBR

DOB: 19/07/2020

Ident No.: LGSR522

Genetic Status: AMF, CAF, DDF, NHF

RENNYLEA EDMUND E11^{PV}
LANDFALL KEYSTONE K132^{PV}
LANDFALL ARCHER H807^{SV}

MATAURI REALITY 839[#]
TRIO ULTIMATE M121^{PV}
TRIO BURNETTE D14^{PV}

Sire: LANDFALL KEYSTONE N680^{SV}

Dam: SPRYS-W ESTER P549^{SV}

TUWHARETOA REGENT D145^{PV}
LANDFALL PRINCESS K748[#]
LANDFALL PRINCESS D48^{SV}

THE LAURELS GRANITE G90^{PV}
A.J.M. J4[#]
A.J.M. ESTER F5[#]

MEASUREMENTS

Scrotal Size I

Weight I

March 2022

TACE	Calving Ease DIR (%)	Calving Ease DTRS (%)	Gest. Length (days)	Birth Wt. (kg)	200 Day Wt. (kg)	400 Day Wt. (kg)	600 Day Wt. (kg)	Mat. Cow Wt. (kg)	Milk (kg)	Days to Calving (days)	Scrotal Size (cm)	Carcass Wt. (kg)	Eye Muscle Area (sq.cm)	Rib Fat (mm)	Rump Fat (mm)	Retail Beef Yield (%)	IMF (%)	NFI-F	Docility	Angle	Claw	\$A	\$A-L
EBV	+4.3	+7.8	-6.8	+2.8	+49	+85	+119	+116	+10	-6.6	+2.2	+72	+2.1	+3.0	+1.3	-0.8	+2.5	+0.28	+3	+1.32	+0.70	\$195	\$362
ACC	52%	47%	67%	69%	68%	67%	69%	66%	60%	38%	68%	64%	60%	66%	62%	63%	61%	51%	43%	60%	60%		
Perc	38	7	19	21	51	65	44	24	97	19	41	30	96	2	13	91	32	62	64	98	20	53	34

Traits Observed: BWT,200WT,400WT,SC,Scan(EMA,Rib,Rump,IMF),DOC,Genomics

A medium framed young sire who has calving ease, positive fats and high IMF. Out of a 1st calver. Note: has a small amount of scar tissue on one eye which is from a grass seed. This has not had any affect on his vision.

Purchaser: \$.....



4/41-43 Moorong St
Wagga Wagga NSW 2650
Ph: 6921 6366
Fax: 6921 6493
Email: livestock@hfrancisandco.com.au
www.hfrancisandco.com.au

H Francis & Co sell Cattle at the Wagga Livestock Marketing Centre every Monday and Sheep & Lambs every Thursday.

They also offer a range of services including:

- Paddock sales, over the hook sales and direct to feedlot sales
- On farm Stud Sales
- Auctions Plus Sales
- Clearing Sales – on property & monthly online sales
- Rural property sales

For any of your livestock or property needs contact one of our friendly agents

- Tim Francis 0428 263 852
- Alex Croker 0428 326 810
- Matt Hawker 0418 861 320
- Sam Sutton 0448 080 607
- David Kosa 0432 064 188
- Helen De Costa 0448 353 764
- Scott Myers 0428 763 434 – Stud Stock Specialist
- Pat McCrohon 0407 029 845
- Corey Parker 0458 363 131
- Lachlan Woodhouse 0428 287 150

SHORTHORN SALE BULLS

LOT 46

OUTBACK SPRYS SPECIAL R274 (P)

DOB: 26/07/2020 Colour: Red Little White Ident No.: OB R274

SASKVALLEY TRADITION 106T (P)
 MURIDALE THERMAL ENERGY 15A (P)
 MURIDALE GOOSE 32R (P)
Sire: SPRYS EXTRA SPECIAL N61 (P)
 SPRYS ALL GOLD D052 (P)
 SPRYS GOLDS JULIET G166 (P)
 SPRYS EXT JULIET D058 (P)

GLENELL IMF B90 (P)
 OUTBACK SPRYS BALANCE G266 (P)
 SCHULLER RED KATE C1 (P)
Dam: OUTBACK SNOWDROP K40 (P)
 LACHLAN C335 (P)
 DRD G10 (P)
 DRD B014 (P)

MEASUREMENTS	
Scrotal Size	I
Weight	I

FEBRUARY 2022 IGS EPD's

	CE	BW	WW	YW	Milk	MCE	MWWT	STAY	DOC	CW	REA	FAT	MARB
EPD	8.9	2.8	45.6	76.9	24.7	6.4	47.5	14.3	14.0	4.1	0.42	-0.080	0.09
Acc	40%	46%	43%	43%	11%	18%	22%	25%	34%	42%	40%	33%	39%
%RK	30	45	85	70	70	40	85	25	15	55	35	45	15

	API
Index	116.85
%RK	20

Top 15% for Docility and Marbling, top 20% for API, top 25% for Stayability.

Homozygous Polled.

A very impressive, deep, thick, easy doing sire who will impress many breeders. These Extra Special sons are similar in type with good data sets and the phenotype will impress. His dam is entering the Donor pen this Spring, she has an outstanding Goldenrod P39 daughter at foot.



LOT 46

Purchaser: \$

LOT 47

OUTBACK SPRYS INDEX R299 (P)

DOB: 19/08/2020 Colour: Roan Ident No.: OB R299

BELMORE JACKAROO Z109 (P)
 SOUTHCOTE HERO H1 (P)
 SOUTHCOTE F56 (P)
Sire: SOUTHCOTE INDEX M12 (P)
 BROUGHTON PARK THUNDER C023 (P)
 SOUTHCOTE ACACIA K9 (P)
 SOUTHCOTE ACACIA H37 (P)

SASKVALLEY TRADITION 106T (P)
 MURIDALE THERMAL ENERGY 15A (P)
 MURIDALE GOOSE 32R (P)
Dam: OUTBACK MELITA N6 (P)
 SPRYS PATENT'S ACE G38 (P)
 OUTBACK MELITIA J108 (P)
 FUTURITY MELITIA'S LEGEND W17 (P)

MEASUREMENTS	
Scrotal Size	I
Weight	I

FEBRUARY 2022 IGS EPD's

	CE	BW	WW	YW	Milk	MCE	MWWT	STAY	DOC	CW	REA	FAT	MARB
EPD	14.2	3.0	62.5	105.0	25.9	9.7	57.2	12.2	14.6	24.9	0.58	-0.079	0.19
Acc	39%	46%	43%	44%	11%	18%	22%	23%	34%	43%	42%	34%	40%
%RK	3	50	15	4	55	4	25	55	10	2	10	40	4

	API
Index	131.87
%RK	2

Top 2% for API, top 3% for Calving Ease, top 4% for Yearling Wt, Maternal Calving Ease and Marbling, top 10% for Rib Eye Area.

Homozygous Polled.

A striking silver roan with excellent data and structure who could be used as a stud Sire. Should be OK for heifers and cows. His Dam is a typical Thermal Energy daughter . . . sound structure, easy doing and fertile.



LOT 47

Purchaser: \$

SHORTHORN SALE BULLS



SHORTHORN

LOT 48 | SPRYS HASTINGS R101 (P)

DOB: 23/8/2020 **Colour:** Roan **Ident No.:** GLSR101

CRATHES DENON (P)
 CRATHES HASTINGS (P)
 CRATHES ENIA 6TH (P)
Sire: SPRYS HASTINGS P102 (P)
 JR LEGEND 78H (IMP USA) (P)
 SPRYS LEGENDS CHERRY G141 (P)
 LONE PINE CHERRY A064 (P)

WAUKARU PATENT 8161 (IMP USA) (P)
 SPRYS DOUBLE BARREL H155 (P)
 SPRYS LEGENDS MARGLORY Y069 (P)
Dam: SPRYS D.B. ELLE K111 (P)
 SPRYS ALL GOLD D052 (P)
 SPRYS GOLD'S ELLE F444 (P)
 C444 (P)

MEASUREMENTS	
Scrotal Size	I
Weight	I

FEBRUARY 2022 IGS EPD's

	CE	BW	WW	YW	Milk	MCE	MWWT	STAY	DOC	CW	REA	FAT	MARB
EPD	6.5	4.5	61.2	93.1	20.1	6.1	50.7	16.8	10.5	4.2	0.42	-0.081	-0.08
Acc	39%	44%	38%	38%	13%	18%	21%	23%	29%	42%	41%	35%	38%
%RK	65	85	20	20	95	45	65	10	55	50	35	50	65

API	
Index	111.67
%RK	30

Top 10% for Stayability, top 20% for Weaning and Yearling Wt and top 30% for API.

Another striking roan with plenty of performance and stayability. His dam is a heavy, deep bodied female who was a calf at foot on her Dam at Sydney Royal and was Supreme Champion Shorthorn for the Carter family.



LOT 48

Purchaser: \$.....

LOT 49 | OUTBACK SPRYS SPECIAL R281 (P)

DOB: 28/07/2020 **Colour:** Red **Ident No.:** OB R281

SASKVALLEY TRADITION 106T (P)
 MURIDALE THERMAL ENERGY 15A (P)
 MURIDALE GOOSE 32R (P)
Sire: SPRYS EXTRA SPECIAL N61 (P)
 SPRYS ALL GOLD D052 (P)
 SPRYS GOLDS JULIET G166 (P)
 SPRYS EXT JULIET D058 (P)

GLENELL IMF B90 (P)
 SPRYS SOLUTION E006 (P)
 SPRYS AC. ULTIMATE M. NIAM A10 (P)
Dam: OUTBACK ISABELLA H91 (P)
 SPRY'S FAIR DINKUM Z027 (P)
 SCHULLER ISABELLA C43 (P)
 SCHULLER ISABELLA FW204 (P)

MEASUREMENTS	
Scrotal Size	I
Weight	I

FEBRUARY 2022 IGS EPD's

	CE	BW	WW	YW	Milk	MCE	MWWT	STAY	DOC	CW	REA	FAT	MARB
EPD	9.1	1.8	53.6	80.0	26.4	6.1	53.2	13.4	16.7	9.5	0.32	-0.056	0.13
Acc	39%	46%	42%	43%	13%	17%	23%	23%	34%	41%	41%	35%	39%
%RK	30	25	50	60	55	45	50	35	3	30	65	5	10

API	
Index	120.26
%RK	10

Top 3% for Docility, top 5% for Fat and top 10% for API and Marbling.

A dark red, slick coated, great doing bull who we think could be a great breeding sire. The combination of calving ease, docility and adequate growth with excellent carcass traits make him a sure bet. Have a good close look at his pedigree and phenotype.



LOT 49

Purchaser: \$.....

SHORTHORN SALE BULLS

LOT 50 **SPRYS PROPHECY R56 (P)**

DOB: 29/07/2020

Colour: Red

Ident No.: GLSR56

CRATHES DENON (P)
 CRATHES HASTINGS (P)
 CRATHES ENIA 6TH (P)
Sire: FUTURITY PROPHECY P13 (P)
 FUTURITY F118 (P)
 FUTURITY ENIA H8 (P)
 FUTURITY PHENOMENONS ENIA E20 (P)

WAUKARU GOLD CARD 5042 (IMP USA) (P)
 WAUKARU PATENT 8161 (IMP USA) (P)
 WAUKARU 12H MELITA ROSE 5021 (H)
Dam: SPRYS G & M MISS PATENT G215 (P)
 EDEN PARK STOCKMAN (P)
 SCHULLER ANN B47 (P)
 CHADWICK R127 (H)

MEASUREMENTS	
Scrotal Size	I
Weight	I

FEBRUARY 2022 IGS EPD's

	CE	BW	WW	YW	Milk	MCE	MWWT	STAY	DOC	CW	REA	FAT	MARB
EPD	5.1	3.4	59.7	95.5	26.8	3.9	56.7	7.7	6.7	24.1	0.53	-0.081	0.13
Acc	39%	42%	41%	41%	13%	19%	22%	26%	39%	43%	42%	33%	43%
%RK	85	60	20	15	50	85	30	95	95	3	10	50	10

	API
Index	105.09
%RK	55

Top 3% for Carcase Wt, top 10% for Rib Eye Area and Marbling, top 15% for Yearling Wt and top 20% for Weaning Wt.

This young sire is sure to attract attention for his great phenotype and excellent structure, good weight EPD's and outstanding carcass data. His Dam has been the number 1 Donor at Outback for 5 years. There are 6 bulls from G215 in the sale.



LOT 50

Purchaser: \$.....

LOT 51 **SPRYS HASTINGS R545 (P)**

DOB: 11/09/2020

Colour: Roan

Ident No.: GLSR545

CRATHES DENON (P)
 CRATHES HASTINGS (P)
 CRATHES ENIA 6TH (P)
Sire: SPRYS HASTINGS P102 (P)
 JR LEGEND 78H (IMP USA) (P)
 SPRYS LEGENDS CHERRY G141 (P)
 LONE PINE CHERRY A064 (P)

ELOORA WINCHESTER E17 (P)
 SPRYS ON TARGET H189 (P)
 SPRYS SUPERSTARS MAID D014 (P)
Dam: SPRYS ON TARGETS JUDITH M15 (P)
 WAUKARU PATENT 8161 (IMP USA) (P)
 SPRYS PATENT'S JUDITH G53 (P)
 NEEARRA JUDITH 104 (P)

MEASUREMENTS	
Scrotal Size	I
Weight	I

FEBRUARY 2022 IGS EPD's

	CE	BW	WW	YW	Milk	MCE	MWWT	STAY	DOC	CW	REA	FAT	MARB
EPD	1.7	5.9	61.8	100.5	27.5	0.6	58.4	11.7	7.2	17.6	0.58	-0.093	-0.20
Acc	38%	44%	39%	39%	12%	18%	21%	25%	32%	40%	40%	33%	40%
%RK	100	100	15	10	40	100	20	60	90	10	10	90	95

	API
Index	87.91
%RK	100

Top 10% for Yearling Wt, Carcase Wt and Rib Eye Area, top 15% for Weaning Wt, top 20% for Maternal Weaning Wt.

Another high growth and big carcass sire wrapped up in a slick silver roan hide.



LOT 51

Purchaser: \$.....

SHORTHORN SALE BULLS



SHORTHORN

LOT 52 OUTBACK SPRYS REMBRANDT R300 (P)

DOB: 18/08/2020 **Colour:** Roan **Ident No.:** OB R300

MARELLAN INDESTRUCTABLE (P)
 ROYALLA OSTENTATIOUS G404 (P)
 MARELLAN REDWING J6065 (P)
Sire: ROYALLA REMBRANDT K413 (P)
 WEEBOLLABOLLA THEODORE T85 (P)
 MARELLAN DORA 8074L (P)
 INVERARY DORA W184 (P)

SASKVALLEY TRADITION 106T (P)
 MURIDALE THERMAL ENERGY 15A (P)
 MURIDALE GOOSE 32R (P)
Dam: SPRYS THERMALS CHERRY N74 (P)
 JR LEGEND 78H (IMP USA) (P)
 SPRYS LEGENDS CHERRY G141 (P)
 LONE PINE CHERRY A064 (P)

MEASUREMENTS	
Scrotal Size	I
Weight	I

FEBRUARY 2022 IGS EPD's

	CE	BW	WW	YW	Milk	MCE	MWWT	STAY	DOC	CW	REA	FAT	MARB
EPD	9.6	2.7	60.7	92.0	31.8	8.4	62.2	14.5	15.0	8.3	0.39	-0.076	-0.18
Acc	36%	42%	44%	44%	15%	19%	25%	26%	34%	45%	43%	34%	42%
%RK	25	45	20	25	10	10	10	25	10	35	45	35	90

API	
Index	108.02
%RK	45

Top 10% for Maternal Calving Ease and top 20% for Weaning Wt, Maternal Weaning Wt, Milk and Docility.

Homozygous Polled.
 A striking sire with a good blend of carcass, growth and calving ease genetics. Dam is a Donor at Outback. The dominant Cherry family strikes again.



LOT 52

Purchaser: \$.....

LOT 53 OUTBACK SPRYS BOOM TIME R278 (P)

DOB: 29/07/2020 **Colour:** Red **Ident No.:** OB R278

SASKVALLEY TRADITION 106T (P)
 MURIDALE THERMAL ENERGY 15A (P)
 MURIDALE GOOSE 32R (P)
Sire: SPRYS BOOM TIME M222 (P)
 SPRYS PATENT G60 (P)
 SPRYS PATENTS CHERRY J90 (P)
 SPRYS LEGENDS CHERRY G141 (P)

GUMBLE CAPRICORN 2ND (P)
 THE GROVE KAMILAROI W057 (P)
 THE GROVE BLUE DALE 2ND (P)
Dam: WOOLCOTT F145 (P)
 THE GROVE MANPOWER Y320 (P)
 WOOLCOTT SARH B175 (P)
 THE GROVE U587 (P)

MEASUREMENTS	
Scrotal Size	I
Weight	I

FEBRUARY 2022 IGS EPD's

	CE	BW	WW	YW	Milk	MCE	MWWT	STAY	DOC	CW	REA	FAT	MARB
EPD	4.2	6.4	72.0	112.0	27.7	4.8	63.7	13.3	16.1	14.7	0.71	-0.087	0.01
Acc	35%	40%	42%	43%	11%	15%	21%	23%	34%	44%	43%	34%	41%
%RK	90	100	2	2	40	70	4	40	4	15	1	70	35

API	
Index	108.28
%RK	40

Top 1% for Rib Eye Area, top 2% for Weaning and Yearling Wt, top 4% for Maternal Weaning Wt & Docility and top 15% for Carcass Wt.

Homozygous Polled.
 Add weight, carcass and Docility with R278. A dark red, slick coated young sire with plenty of performance and carcass in a very sound package. Dam is very productive, sound structured female who has bred very well.

Purchaser: \$.....

SHORTHORN SALE BULLS

LOT 54 **OUTBACK SPRYS SPECIAL R283 (P)**
DOB: 28/07/2020 **Colour:** Red Little White **Ident No.:** OB R283

 SASKVALLEY TRADITION 106T (P)
 MURIDALE THERMAL ENERGY 15A (P)
 MURIDALE GOOSE 32R (P)
Sire: SPRYS EXTRA SPECIAL N61 (P)
 SPRYS ALL GOLD D052 (P)
 SPRYS GOLDS JULIET G166 (P)
 SPRYS EXT JULIET D058 (P)

 ARUBIAL ACCESSORY A097 (P)
 KOOROON DOUBLE DALE E020 (P)
 THE GROVE DALE Z046 (P)
Dam: KOOROON FRANCIS J77 (P)
 NARRALDA WARRIOR V11 (P)
 LACHLAN FRANCIS (P)
 LACHLAN FRANCIS Z023 (P)

MEASUREMENTS	
Scrotal Size I	
Weight I	

FEBRUARY 2022 IGS EPD's

	CE	BW	WW	YW	Milk	MCE	MWWT	STAY	DOC	CW	REA	FAT	MARB
EPD	9.5	3.2	55.1	79.2	25.7	7.1	53.3	14.0	12.6	11.9	0.47	-0.084	0.00
Acc	39%	45%	41%	42%	12%	17%	22%	25%	33%	43%	41%	35%	38%
%RK	25	55	40	60	60	25	50	30	25	20	20	60	35

	API
Index	112.88
%RK	25

Top 20% for Carcase Wt and Rib Eye Area and top 25% for API, Calving Ease, Docility and Maternal Calving Ease.

Homozygous Polled.

His Dam was purchased at the Kooroon Dispersal sale.

A thick, deep bodied, easy doing bull in a medium framed package.


LOT 54

Purchaser: \$.....

LOT 55 **OUTBACK SPRYS SPECIAL R295 (P)**
DOB: 11/08/2020 **Colour:** Red **Ident No.:** OB R295

 SASKVALLEY TRADITION 106T (P)
 MURIDALE THERMAL ENERGY 15A (P)
 MURIDALE GOOSE 32R (P)
Sire: SPRYS EXTRA SPECIAL N61 (P)
 SPRYS ALL GOLD D052 (P)
 SPRYS GOLDS JULIET G166 (P)
 SPRYS EXT JULIET D058 (P)

 OUTBACK SPRYS BALANCE G266 (P)
 OUTBACK GRAVITY L53 (P)
 OUTBACK CARNATION H144 (P)
Dam: OUTBACK ANN N87 (P)
 SPRYS PATENT'S ACE G38 (P)
 OUTBACK ANN K102 (P)
 SCHULLER ANN B47 (P)

MEASUREMENTS	
Scrotal Size I	
Weight I	

FEBRUARY 2022 IGS EPD's

	CE	BW	WW	YW	Milk	MCE	MWWT	STAY	DOC	CW	REA	FAT	MARB
EPD	3.6	6.2	71.4	111.7	27.4	2.3	63.1	11.5	18.6	18.3	0.48	-0.067	0.12
Acc	39%	45%	42%	43%	10%	17%	21%	23%	32%	42%	40%	34%	40%
%RK	95	100	3	2	45	95	5	65	1	10	20	15	10

	API
Index	109.66
%RK	35

Top 1 for Docility, top 2% for Yearling Wt, top 3% for Weaning Wt, top 5% for Maternal Weaning Wt, top 10% for Carcase Wt and Marbling and top 15% for Fat.

Another thick, easy doing young sire who will add Docility, Weight and Carcase traits to his progeny. His Dam is an outstanding breeding female.


LOT 55

Purchaser: \$.....

SHORTHORN SALE BULLS



SHORTHORN

LOT 56 SPRYS REMBRANDT'S JEMM R96 (P)

DOB: 11/08/2020 **Colour:** Red Little White **Ident No.:** GLSR96

ROYALLA OSTENTATIOUS G404 (P)
 ROYALLA REMBRANDT K413 (P)
 MARELLAN DORA 8074L (P)
Sire: OUTBACK SPRYS REMBRANDT P269 (P)
 THE GROVE KOOKABURRA W735 (P)
 SPRYS OUTBACK KOOKABURRA'S JUD (P)
 NEEARRA JUDITH 104 (P)

SASKVALLEY TRADITION 106T (P)
 MURIDALE THERMAL ENERGY 15A (P)
 MURIDALE GOOSE 32R (P)
Dam: SPRYS THERMALS JEMM P147 (P)
 SPRYS HOPES IMF G13 (P)
 DROMORE EMERALD JEMM (P)
 SPRYS MISS EMERALD (P)

MEASUREMENTS	
Scrotal Size	I
Weight	I

FEBRUARY 2022 IGS EPD's

	CE	BW	WW	YW	Milk	MCE	MWWT	STAY	DOC	CW	REA	FAT	MARB
EPD	10.7	1.5	61.1	93.1	31.2	8.9	61.8	12.9	12.3	22.5	0.49	-0.085	0.06
Acc	38%	43%	39%	40%	10%	17%	20%	23%	37%	41%	41%	32%	39%
%RK	15	20	20	20	15	10	10	40	25	4	20	60	20

API	
Index	122.32
%RK	10

Top 4% for Carcase Wt, top 10% for API, Maternal Calving Ease and Maternal Weaning Wt, top 15% for Marbling, top 20% for Rib Eye Area and Calving Ease and top 25% for Docility.

A thick, soft, easy doing, deep sided young sire with excellent balanced data set on all traits. Dam is a good doing and easy keeping female.

Purchaser: \$.....

LOT 57 OUTBACK SPRYS SOLAR R265 (P)

DOB: 04/07/2020 **Colour:** Roan **Ident No.:** OB R265

SASKVALLEY TRADITION 106T (P)
 MURIDALE THERMAL ENERGY 15A (P)
 MURIDALE GOOSE 32R (P)
Sire: SPRYS SOLAR N135 (P)
 RED ROSE GOLD SPEAR RUFFIAN (I (P)
 SPRYS SPEAR'S KATE G6 (P)
 SPRYS KATE D159 (H)

TURANVILLE BONECRUSHER H102 (P)
 TURANVILLE CRUSHER L96 (P)
 TURANVILLE WALLFLOWER H70 (P)
Dam: OUTBACK CHERRY P97 (P)
 JR LEGEND 78H (IMP USA) (P)
 SPRYS LEGENDS CHERRY G141 (P)
 LONE PINE CHERRY A064 (P)

MEASUREMENTS	
Scrotal Size	I
Weight	I

FEBRUARY 2022 IGS EPD's

	CE	BW	WW	YW	Milk	MCE	MWWT	STAY	DOC	CW	REA	FAT	MARB
EPD	11.6	2.1	51.1	79.1	28.1	8.7	53.7	17.0	9.8	9.3	0.33	-0.067	-0.09
Acc	40%	46%	43%	42%	11%	18%	22%	23%	34%	43%	40%	33%	38%
%RK	10	30	60	60	35	10	45	5	65	30	65	15	70

API	
Index	117.99
%RK	15

Top 5% for Stayability, top 10% Maternal Calving Ease and Maternal Weaning Wt, top 15% for Marbling, top 20% for Rib Eye Area, Calving Ease, Birth Wt, Weaning Wt and Rib Eye Area.

Homozygous Polled.
 Dark roan, slick coated, easy doing, medium maturity Sire which should be suited to heifers and cows. The Cherry family shows again. Out of a 2 year old heifer.



Sprys Legends Cherry G141, Grand Dam of Lot 57.

Purchaser: \$.....

SHORTHORN SALE BULLS

LOT 58 **OUTBACK SPRYS SOLAR R293 (P)**
DOB: 10/08/2020 **Colour:** Red **Ident No.:** OB R293

 SASKVALLEY TRADITION 106T (P)
 MURIDALE THERMAL ENERGY 15A (P)
 MURIDALE GOOSE 32R (P)

Sire: SPRYS SOLAR N135 (P)

 RED ROSE GOLD SPEAR RUFFIAN (I (P)
 SPRYS SPEAR'S KATE G6 (P)
 SPRYS KATE D159 (H)

 SPRYS PATENT'S ACE G38 (P)
 OUTBACK JOKER J328 (P)
 LACHLAN FRANCIS 2024 (P)

Dam: OUTBACK FRANCES L64 (P)

 CROOKED POST GRISSOM 24T (IMP (P)
 OUTBACK FRANCES H133 (P)
 EDEN PARK AWESOME LADY Z012 (H)

MEASUREMENTS

Scrotal Size I

Weight I

FEBRUARY 2022 IGS EPD's

	CE	BW	WW	YW	Milk	MCE	MWWT	STAY	DOC	CW	REA	FAT	MARB
EPD	10.6	1.8	51.5	86.0	32.2	6.3	58.0	21.3	9.9	9.2	0.62	-0.091	-0.10
Acc	39%	46%	43%	44%	12%	18%	22%	23%	33%	42%	39%	33%	40%
%RK	20	25	60	40	10	40	20	1	65	30	3	85	70

	API
Index	127.95
%RK	4

Top 1% for Stayability, top 3% for Rib Eye Area and top 4% for API and top 10% for Milk.

Another thick, easy doing young sire who will add Docility, Weight and Carcase traits to his progeny. His Dam is an outstanding breeding female.


LOT 58

Purchaser: \$.....

LOT 59 **SPRYS BLANCHES EMPEROR R86 (P)**
DOB: 06/08/2020 **Colour:** Red Little White **Ident No.:** GLSR86

 YAMBURGAN EMPEROR E103 (P)
 YAMBURGAN EMPEROR G679 (P)
 YAMBURGAN MARGARET D125 (P)

Sire: YAMBURGAN EMPEROR L63 (P)

 CROOKED POST GRISSOM 24T (IMP (P)
 YAMBURGAN MIMI G14 (P)
 YAMBURGAN MIMI E19 (P)

 THE GROVE OSCAR A748 (P)
 YAMBURGAN OSSIE D59 (P)
 YAMBURGAN VIOLA 8TH (H)

Dam: SPRYS OSSIES BLANCHE J42 (P)

 BROUGHTON PARK VICTORY B050 (P)
 LAKE HAWDON BLANCHE E25 (P)
 LAKE HAWDON BEVERLEY BLANCHE (P)

MEASUREMENTS

Scrotal Size I

Weight I

FEBRUARY 2022 IGS EPD's

	CE	BW	WW	YW	Milk	MCE	MWWT	STAY	DOC	CW	REA	FAT	MARB
EPD	9.5	2.7	46.6	77.5	27.3	8.3	50.6	15.0	9.8	11.3	0.60	-0.063	0.06
Acc	23%	34%	23%	23%	12%	14%	16%	12%	13%	28%	27%	23%	28%
%RK	25	40	80	65	45	15	65	20	60	25	4	10	20

	API
Index	118.40
%RK	15

Top 4% for Rib Eye Area, top 10% for Fat, top 15% for API and Maternal Calving Ease, top 20% for Stayability and top 25% for Calving Ease.

A smooth, slick coated young sire with great structural soundness. Dam is a top Donor at Sprys who puts added marbling into her progeny. Grand Dam was top priced female at Lake Hawdon dispersal.


LOT 59

Purchaser: \$.....

SHORTHORN SALE BULLS



SHORTHORN



Sprys Legends Cherry G141 – Grand Dam of a number of sale Lots including Lots 2, 65, 52 & 57.

LOT 60 SPRYS GIGABYTES R81 (P)

DOB: 04/08/2020 **Colour:** Roan **Ident No.:** GLSR81

THE GROVE INFORMANT Y463 (P)
 THE GROVE GIGABYTES J0837 (P)
 THE GROVE KOOKAS DALE E1237 (P)
Sire: SPRYS GIGABYTES N122 (P)
 OUTBACK SPRYS BALANCE G266 (P)
 SPRYS BALANCES JULIET J67 (P)
 SPRYS GOLDS JULIET G166 (P)

HC TIMELINE 17T (P)
 HC FREE SPIRIT 6Y (P)
 NEW BEGINNINGS ELSIE'S JADE (I (H))
Dam: SPRYS FREE SPIRITS PATTIE M16 (P)
 NARRALDA WARRIOR V11 (P)
 LACHLAN PATTIE (P)
 SPRYS WAGMANS PATTIE A020 (P)

MEASUREMENTS	
Scrotal Size	I
Weight	I

FEBRUARY 2022 IGS EPD's

	CE	BW	WW	YW	Milk	MCE	MWWT	STAY	DOC	CW	REA	FAT	MARB
EPD	11.5	0.9	44.3	68.2	22.9	8.3	45.1	11.8	4.9	-2.6	0.39	-0.063	0.17
Acc	38%	45%	38%	37%	9%	16%	19%	22%	35%	40%	41%	34%	41%
%RK	15	15	90	90	80	15	95	60	95	80	45	10	5

	API
Index	121.21
%RK	10

Top 5% for Marbling, top 10% for API and Fat, top 15% for Calving Ease, Birth Wt and Maternal Calving Ease.

R81's Sire, Gigabytes N122 sold for \$40,000 and semen rights sold to USA, Canada, New Zealand and South Africa. A very correct, easy moving sire with excellent structure. Should be OK for heifers and cows. His Dam is Lot 75 in the sale. Add Marbling, Fat and Calving Ease to your herd.

Purchaser: \$.....

LOT 61 SPRYS SOLUTIONS HASTINGS R109 (P)

DOB: 27/08/2020 **Colour:** Red **Ident No.:** GLSR109

CRATHES DENON (P)
 CRATHES HASTINGS (P)
 CRATHES ENIA 6TH (P)
Sire: SPRYS HASTINGS P102 (P)
 JR LEGEND 78H (IMP USA) (P)
 SPRYS LEGENDS CHERRY G141 (P)
 LONE PINE CHERRY A064 (P)

SPRYS SOLUTION E006 (P)
 OUTBACK SPRYS SOLUTION H283 (P)
 OUTBACK DIVA D07 (P)
Dam: SPRYS DREAM L60 (P)
 MARELLAN EMERALD (P)
 SPRYS EMERALDS DREAM E055 (P)
 SPRYS ANNIES DREAM B074 (P)

MEASUREMENTS	
Scrotal Size	I
Weight	I

FEBRUARY 2022 IGS EPD's

	CE	BW	WW	YW	Milk	MCE	MWWT	STAY	DOC	CW	REA	FAT	MARB
EPD	9.2	2.0	39.8	62.3	19.6	8.1	39.5	12.8	11.9	-0.9	0.28	-0.082	0.09
Acc	37%	45%	38%	38%	11%	17%	20%	24%	30%	41%	40%	34%	39%
%RK	30	25	100	95	95	15	100	45	35	75	80	55	15

	API
Index	112.46
%RK	30

Top 15% for Maternal Calving Ease and Marbling and top 25% for Birth Weight.

A thick, long bodied, dark red, sound sire with good balance of EPD's. Dam is Lot 76 in sale.



LOT 61

Purchaser: \$.....

SHORTHORN SALE BULLS

LOT 62 | **SPRYS GOLDEN ROD R46 (P)**

DOB: 14/07/2020 Colour: Red Little White Ident No.: GLSR46

LEVELDALE JAVELIN 535R (P)
JSF GOLDENROD 57U (P)
KL GOLD ROSE (P)Sire: **SPRYS GOLDENROD P39 (P)**SPRYS PRIMROSE'S BUDDY J17 (P)
SPRYS MISS BUDDY M36 (P)
SPRYS MISS P EVEREST K124 (H)Dam: **SPRYS JOSIE P117 (P)****MEASUREMENTS**

Scrotal Size I

Weight I

FEBRUARY 2022 IGS EPD's

	CE	BW	WW	YW	Milk	MCE	MWWT	STAY	DOC	CW	REA	FAT	MARB
EPD	10.7	1.0	66.5	104.6	26.5	6.3	59.8	10.3	14.8	5.9	0.44	-0.086	-0.04
Acc	36%	40%	37%	36%	4%	13%	15%	20%	36%	38%	36%	30%	37%
%RK	15	15	10	5	50	40	15	80	10	45	30	65	50

	API
Index	115.19
%RK	20

Top 5% for Yearling Wt, top 10% for Docility, top 15% for Calving Ease and Birth Wt and top 20% for API.

Medium maturity, easy doing sire with excellent calving ease and good growth. Out of a 1st calver. Goldenrod P39 topped our 2020 sale at \$30,000. Should be OK for heifers and cows.

Purchaser: \$.....

LOT 63 | **OUTBACK SPRYS EIS R303 (P)**

DOB: 25/08/2020 Colour: Red Little White Ident No.: OB R303

YAMBURGAN ZEUS D79 (P)
YAMBURGAN ZEUS H140 (P)
BROUGHTON PARK HARMONY F55 (P)Sire: **FUTURITY EDGED IN STONE K148 (P)**TURANVILLE CHICAGO Z82 (P)
FUTURITY CHICAGO'S ENIA C38 (P)
FUTURITY ENIAS LEGEND Z32 (P)WAUKARU GOLD CARD 5042 (IMP USA) (P)
WAUKARU PATENT 8161 (IMP USA) (P)
WAUKARU 12H MELITA ROSE 5021 (H)Dam: **SPRYS G & M MISS PATENT G215 (P)**EDEN PARK STOCKMAN (P)
SCHULLER ANN B47 (P)
CHADWICK R127 (H)**MEASUREMENTS**

Scrotal Size I

Weight I

FEBRUARY 2022 IGS EPD's

	CE	BW	WW	YW	Milk	MCE	MWWT	STAY	DOC	CW	REA	FAT	MARB
EPD	10.8	2.0	59.7	94.8	32.3	5.8	62.2	8.9	8.9	11.1	0.34	-0.070	0.07
Acc	38%	44%	46%	47%	21%	24%	29%	24%	37%	46%	44%	39%	44%
%RK	15	25	20	20	10	50	10	90	80	25	60	20	20

	API
Index	113.56
%RK	25

Top 10% for Milk and Maternal Weaning Wt, top 15% for Calving Ease and top 20% for Marbling, Fat, Weaning and Yearling Wt.

Homozygous Polled.

A well balanced, long bodied sire with a strong data set. Sired by the top breeding sire Edged In Stone and out of the Number 1 Donor at Outback, G215. She has 6 sons in the sale.

**Sprys G&M Miss Patent G215, dam of Lot 63.**

Purchaser: \$.....

SHORTHORN SALE BULLS



SHORTHORN

LOT 64 OUTBACK SPRYS HASTINGS R271 (P)

DOB: 22/07/2020 Colour: Red Ident No.: OB R271

CRATHES DENON (P)
CRATHES HASTINGS (P)
CRATHES ENIA 6TH (P)
Sire: SPRYS HASTINGS P102 (P)
JR LEGEND 78H (IMP USA) (P)
SPRYS LEGENDS CHERRY G141 (P)
LONE PINE CHERRY A064 (P)

WAUKARU PATENT 8161 (IMP USA) (P)
SPRYS ROCK SOLID H5 (P)
SCHULLER ANN B47 (P)
Dam: OUTBACK FRANCES L62 (P)
CROOKED POST GRISSOM 24T (IMP (P)
OUTBACK FRANCES H128 (P)
EDEN PARK AWESOME LADY Z012 (H)

MEASUREMENTS	
Scrotal Size	I
Weight	I

FEBRUARY 2022 IGS EPD's

	CE	BW	WW	YW	Milk	MCE	MWWT	STAY	DOC	CW	REA	FAT	MARB
EPD	4.8	2.4	51.4	85.1	26.1	4.5	51.8	12.5	12.2	6.0	0.72	-0.089	-0.06
Acc	39%	45%	42%	43%	13%	18%	23%	25%	34%	44%	41%	36%	39%
%RK	85	35	60	40	55	75	60	50	30	45	1	80	55

	API
Index	103.53
%RK	60

Top 1% for Rib Eye Area.

A really stout, thick, medium maturity bull with lots of carcass shape. Dam is a thick, powerful female just like R271. R271 is a very high yielding bull with a B+ carcass score.



LOT 64

Purchaser: \$.....

LOT 65 OUTBACK SPRYS GIGABYTES R311 (P)

DOB: 27/08/2020 Colour: White Ident No.: OB R311

THE GROVE INFORMANT U255 (P)
THE GROVE INFORMANT Y463 (P)
THE GROVE U664 (P)
Sire: THE GROVE GIGABYTES J0837 (P)
THE GROVE KOOKABURRA W735 (P)
THE GROVE KOOKAS DALE E1237 (P)
THE GROVE R.E. DALE W744 (P)

SASKVALLEY TRADITION 106T (P)
MURIDALE THERMAL ENERGY 15A (P)
MURIDALE GOOSE 32R (P)
Dam: SPRYS THERMALS CHERRY N74 (P)
JR LEGEND 78H (IMP USA) (P)
SPRYS LEGENDS CHERRY G141 (P)
LONE PINE CHERRY A064 (P)

MEASUREMENTS	
Scrotal Size	I
Weight	I

FEBRUARY 2022 IGS EPD's

	CE	BW	WW	YW	Milk	MCE	MWWT	STAY	DOC	CW	REA	FAT	MARB
EPD	4.2	4.6	56.2	85.1	27.8	6.4	55.9	13.1	4.0	18.7	0.77	-0.091	0.08
Acc	36%	42%	44%	45%	16%	20%	25%	25%	38%	44%	43%	37%	43%
%RK	90	85	35	40	40	40	30	40	100	10	1	85	15

	API
Index	108.04
%RK	45

Top 1% for Rib Eye Area, top 10% for Carcass Wt and top 15% for Marbling.

Homozygous Polled.
A very good white son of Gigabytes out of a Thermal Energy 15A daughter. Ideal to breed roans and also strawberry roan from white face cows. Add Marbling, Rib Eye Area and Carcass to your herd. Dam is in the Donor herd. N74 is breeding soft, high marbling progeny.



LOT 65

Purchaser: \$.....

SHORTHORN SALE BULLS

**LOT 66** **OUTBACK SPRYS EIS R304 (P)**

DOB: 25/08/2020

Colour: Red

Ident No.: OB R304

YAMBURGAN ZEUS D79 (P)
YAMBURGAN ZEUS H140 (P)
BROUGHTON PARK HARMONY F55 (P)

Sire: **FUTURITY EDGED IN STONE K148 (P)**

TURANVILLE CHICAGO Z82 (P)
FUTURITY CHICAGO'S ENIA C38 (P)
FUTURITY ENIAS LEGEND Z32 (P)

WAUKARU GOLD CARD 5042 (IMP USA) (P)
WAUKARU PATENT 8161 (IMP USA) (P)
WAUKARU 12H MELITA ROSE 5021 (H)

Dam: **SPRYS G & M MISS PATENT G215 (P)**

EDEN PARK STOCKMAN (P)
SCHULLER ANN B47 (P)
CHADWICK R127 (H)

MEASUREMENTS

Scrotal Size |

Weight |

FEBRUARY 2022 IGS EPD's

	CE	BW	WW	YW	Milk	MCE	MWWT	STAY	DOC	CW	REA	FAT	MARB
EPD	11.5	1.6	54.3	87.5	32.3	6.5	59.5	9.5	9.7	8.8	0.66	-0.074	0.12
Acc	39%	45%	46%	47%	21%	24%	29%	24%	37%	46%	42%	36%	46%
%RK	15	20	45	35	10	35	15	90	70	30	2	30	10

	API
Index	117.73
%RK	15

Top 2% for Rib Eye Area, top 10% for Milk and Marbling, top 15% for API, Calving Ease and Maternal Weaning Wt.

Homozygous Polled.

A long bodied, easy moving sire with excellent structure and a good data set. His Dam is Number 1 Donor at Outback and has 6 sons in the sale. Should be OK on heifers and cows.

Purchaser: \$.....

LOT 67 **SPRYS REMBRANDT R106 (P)**

DOB: 21/08/2020

Colour: Red

Ident No.: GLSR106

ROYALLA OSTENTATIOUS G404 (P)
ROYALLA REMBRANDT K413 (P)
MARELLAN DORA 8074L (P)

Sire: **OUTBACK SPRYS REMBRANDT P269 (P)**

THE GROVE KOOKABURRA W735 (P)
SPRYS OUTBACK KOOKABURRA'S JUD (P)
NEEARRA JUDITH 104 (P)

SASKVALLEY TRADITION 106T (P)
MURIDALE THERMAL ENERGY 15A (P)
MURIDALE GOOSE 32R (P)

Dam: **SPRYS THERMALS LAVENDER P145 (P)**

SPRYS PATENT'S ACE G38 (P)
SPRYS ACES LAVENDAR K113 (P)
ELOORA LAVENDAR Z50 (P)

MEASUREMENTS

Scrotal Size |

Weight |

FEBRUARY 2022 IGS EPD's

	CE	BW	WW	YW	Milk	MCE	MWWT	STAY	DOC	CW	REA	FAT	MARB
EPD	12.7	4.4	69.7	106.3	32.4	9.5	67.3	14.8	14.2	28.9	0.35	-0.073	0.07
Acc	39%	43%	41%	41%	11%	18%	21%	23%	32%	41%	41%	32%	41%
%RK	10	80	3	4	10	4	2	20	15	1	55	25	20

	API
Index	126.69
%RK	5

Top 1% for Carcase Wt, top 2% for Maternal Weaning Wt, top 3% for Weaning Wt, top 4% for Yearling Wt, top 10% for Calving Ease, top 15% for Docility, top 20% for Marbling and top 25% for Fat.

A good, dark red sire with a great data set. The Rembrandt X Thermal Energy cross seems to work a treat. Note the awesome Donor, Lavendar Z50 in his pedigree.

Purchaser: \$.....

LOT 68 **OUTBACK SPRYS HERITAGE R315 (P)**

DOB: 03/09/2020

Colour: Roan

Ident No.: OB R315

THE GROVE INFORMANT Y463 (P)
THE GROVE GIGABYTES J0837 (P)
THE GROVE KOOKAS DALE E1237 (P)

Sire: **SPRYS HERITAGE M213 (P)**

GLENELL IMF B90 (P)
SPRYS IMF'S JUDITH J100 (P)
SPRYS PATENTS JUDITH G47 (P)

WAUKARU GOLD CARD 5042 (IMP USA) (P)
WAUKARU PATENT 8161 (IMP USA) (P)
WAUKARU 12H MELITA ROSE 5021 (H)

Dam: **SPRYS G & M MISS PATENT G215 (P)**

EDEN PARK STOCKMAN (P)
SCHULLER ANN B47 (P)
CHADWICK R127 (H)

MEASUREMENTS

Scrotal Size |

Weight |

FEBRUARY 2022 IGS EPD's

	CE	BW	WW	YW	Milk	MCE	MWWT	STAY	DOC	CW	REA	FAT	MARB
EPD	8.6	3.3	61.4	98.5	24.8	8.2	55.5	9.2	-0.2	12.0	0.51	-0.077	0.04
Acc	42%	48%	46%	47%	17%	21%	27%	25%	31%	46%	44%	36%	43%
%RK	35	55	15	10	65	15	35	90	100	20	15	35	25

	API
Index	108.71
%RK	40

Top 10% for Maternal Calving Ease, top 15% for Weaning Wt, Maternal Calving Ease and Rib Eye Area, top 20% for Carcase Wt and top 25% for Marbling.

A silver roan of medium maturity and is Homozygous Polled. Add weight and carcase to your herd.

Purchaser: \$.....

SHORTHORN SALE BULLS



SHORTHORN

LOT 69 OUTBACK SPRYS HERITAGE R297 (P)

DOB: 18/08/2020 **Colour:** White **Ident No.:** OB R297

THE GROVE INFORMANT Y463 (P)
 THE GROVE GIGABYTES J0837 (P)
 THE GROVE KOOKAS DALE E1237 (P)
Sire: SPRYS HERITAGE M213 (P)
 GLENELL IMF B90 (P)
 SPRYS IMF'S JUDITH J100 (P)
 SPRYS PATENTS JUDITH G47 (P)

ROYALLA OSTENTATIOUS G404 (P)
 ROYALLA REMBRANDT K413 (P)
 MARELLAN DORA 8074L (P)
Dam: OUTBACK DIXY N55 (P)
 SPRYS SOLUTION E006 (P)
 OUTBACK DIXY H166 (P)
 OUTBACK DIXY E100 (P)

MEASUREMENTS	
Scrotal Size	I
Weight	I

FEBRUARY 2022 IGS EPD's

	CE	BW	WW	YW	Milk	MCE	MWWT	STAY	DOC	CW	REA	FAT	MARB
EPD	8.8	2.9	53.0	83.9	24.8	8.6	51.3	9.5	6.1	0.3	0.46	-0.093	-0.06
Acc	39%	47%	43%	45%	11%	18%	22%	21%	31%	44%	41%	34%	41%
%RK	35	45	50	45	65	10	60	90	95	70	25	90	55

	API
Index	101.56
%RK	70

Top 10% for Maternal Calving Ease and top 25% for Rib Eye Area.

Another good, white, Homozygous Polled bull to use for some colour and also in cross breeding programmes. The Rembrandt, Heritage M213 and Solution is a nice mix of quality, productive genetics.

Purchaser: \$.....

LOT 70 OUTBACK SPRYS INDEX R310 (P)

DOB: 24/08/2020 **Colour:** Roan **Ident No.:** OB R310

BELMORE JACKAROO Z109 (P)
 SOUTHCOTE HERO H1 (P)
 SOUTHCOTE F56 (P)
Sire: SOUTHCOTE INDEX M12 (P)
 BROUGHTON PARK THUNDER C023 (P)
 SOUTHCOTE ACACIA K9 (P)
 SOUTHCOTE ACACIA H37 (P)

BYLAND GOLD SPEAR (P)
 CROOKED POST GRISSOM 24T (IMP (P)
 CROOKED POST RED ROSE 11P (P)
Dam: OUTBACK FRANCES H158 (P)
 EDEN PARK DUNDAS AWESOME (P)
 EDEN PARK AWESOME LADY Z012 (H)
 EDEN PARK LEGENDS FRANCES W004 (P)

MEASUREMENTS	
Scrotal Size	I
Weight	I

FEBRUARY 2022 IGS EPD's

	CE	BW	WW	YW	Milk	MCE	MWWT	STAY	DOC	CW	REA	FAT	MARB
EPD	11.2	2.6	54.4	92.4	29.4	5.9	56.6	12.7	15.8	23.3	0.44	-0.087	-0.02
Acc	40%	46%	43%	45%	12%	18%	22%	24%	34%	45%	42%	33%	40%
%RK	15	40	45	25	25	10	30	45	5	3	30	70	45

	API
Index	114.88
%RK	20

Top 3% for Carcase Wt, top 5% for Docility, top 10% for Maternal Calving Ease, top 20% for API and top 25% for Yearling Wt.

Homozygous Polled.
 A great blend of calving ease, docility and carcase genetics. Should be OK to use on heifers and cows.



LOT 70

Purchaser: \$.....

SHORTHORN SALE BULLS



LOT 71 | SPRYS GOLDEN ROD R50 (P)

DOB: 18/07/2020 **Colour:** Roan **Ident No.:** GLSR50

LEVELDALE JAVELIN 535R (P)
 JSF GOLDENROD 57U (P)
 KL GOLD ROSE (P)
Sire: SPRYS GOLDENROD P39 (P)
 SPRYS PRIMROSE'S BUDDY J17 (P)
 SPRYS MISS BUDDY M36 (P)
 SPRYS MISS P EVEREST K124 (H)

THE GROVE INFORMANT Y463 (P)
 THE GROVE GIGABYTES J0837 (P)
 THE GROVE KOOKAS DALE E1237 (P)
Dam: SPRYS MISS HERITAGE P153 (P)
 THE GROVE FAST EDDIE C999 (P)
 WOOLCOTT F025 (P)
 WOOLCOTT C006 (P)

MEASUREMENTS	
Scrotal Size	I
Weight	I

FEBRUARY 2022 IGS EPD's

	CE	BW	WW	YW	Milk	MCE	MWWT	STAY	DOC	CW	REA	FAT	MARB
EPD	3.9	4.1	60.6	93.9	28.0	2.5	58.3	10.8	12.6	19.0	0.45	-0.113	-0.20
Acc	40%	44%	38%	38%	7%	16%	17%	23%	32%	40%	38%	33%	37%
%RK	95	75	20	20	35	95	20	75	25	10	25	100	95

API	
Index	90.41
%RK	95

Top 10% for Carcase Wt, top 20% for Weaning and Yearling Wt and Maternal Weaning Wt and top 25% for Docility.

Homozygous Polled.
 Out of a 1st calver. A good, young sire to add weight, carcase and milk to your herd. His sire is doing an exceptional job in many herds.
 Sold for \$30,000.

Purchaser: \$.....

LOT 72 | OUTBACK SPRYS PROPHECY R279 (P)

DOB: 27/07/2020 **Colour:** Red **Ident No.:** OB R279

CRATHES DENON (P)
 CRATHES HASTINGS (P)
 CRATHES ENIA 6TH (P)
Sire: FUTURITY PROPHECY P13 (P)
 FUTURITY F118 (P)
 FUTURITY ENIA H8 (P)
 FUTURITY PHENOMENONS ENIA E20 (P)

WAUKARU PATENT 8161 (IMP USA) (P)
 SPRYS ROCK SOLID H5 (P)
 SCHULLER ANN B47 (P)
Dam: OUTBACK ELEANOR M7 (P)
 SPRYS PATENT'S ACE G38 (P)
 OUTBACK ELEANOR J81 (P)
 LAKE HAWDON ELEANOR F04 (P)

MEASUREMENTS	
Scrotal Size	I
Weight	I

FEBRUARY 2022 IGS EPD's

	CE	BW	WW	YW	Milk	MCE	MWWT	STAY	DOC	CW	REA	FAT	MARB
EPD	5.9	7.2	79.5	120.7	27.7	4.1	67.5	9.5	13.4	26.2	0.72	-0.072	-0.02
Acc	39%	47%	43%	44%	12%	17%	22%	23%	35%	42%	41%	33%	41%
%RK	75	100	1	1	40	80	2	90	20	2	1	25	45

API	
Index	101.91
%RK	65

Top 1% for Weaning and Yearling Wt and Rib Eye Area, top 2% for Carcase Wt and Maternal Weaning Wt, top 20% for Docility and top 25% for Fat.

Homozygous Polled.
 A good, dark red bull who will add weight, carcase and docility to your herd. His Dam is a high growth female and sons have sold to \$16,000.

Purchaser: \$.....



RESET

TYPESETTING

We work every day, not just sale day!

We're always open for a chat, so get in touch to find out how we can help with your next project.

Eva McNamara 0491 663 356 | eva.mcnamara@gmail.com

We specialise in a variety of projects spanning stud sale catalogues, association journals, booklets, brochures and promotional material, press advertisements, business stationery or a customised invitation for that special occasion.



SHORTHORN FEMALES

LOT 73 | SPRYS ACES PRIMROSE K45 (P)

DOB: 08/07/2014 **Colour:** Roan **Ident No.:** GLSK45

Waukaru Gold Card 5042 (IMP USA) (P)
Waukaru Patent 8161 (IMP USA) (P)
Waukaru 12H Melita Rose 5021 (H)
Sire: SPRYS PATENT'S ACE G38 (P)
SPRYS ONLY A Legend W026 (P)
NEEARRA JUDITH 104 (P)
NEEARRA JUDITH 67 (P)

Eden Park Red Eagle U002 (P)
The Grove Kasprovicz W791 (P)
The Grove Dale 39TH (P)
Dam: THE GROVE PRIMROSE A742 (P)
EVILO SUPER STAR L32 (P)
THE GROVE PRIMROSE R202 (P)
THE GROVE PRIMROSE 18TH (P)

FEBRUARY 2022 IGS EPD's

	CE	BW	WW	YW	Milk	MCE	MWWT	STAY	DOC	CW	REA	FAT	MARB
EPD	11.5	2.4	55.3	82.4	25.0	3.7	52.7	10.6	9.5	10.9	0.47	-0.086	-0.31
Acc	46%	53%	50%	50%	31%	28%	37%	32%	36%	48%	47%	34%	45%
%RK	15	35	40	50	65	85	50	75	70	25	20	65	100

	API
Index	94.13
%RK	90

**PTIC to Muridale Phantom 10F. AI date: 18/10/21.
Due date: 27/7/22.**

Homozygous Polled.

Frozen embryo's sold to \$2,500 each in last year's sale. It is very rare that a female of this calibre comes up for sale. Primrose K45 is one hell of a female and out of an elite female in The Grove Primrose A742. Two young sires from Primrose sold and averaged \$24,000 at Auction, (Mortal M40 and Heritage P73).



LOT 73



Sprys Mortal M40



Sprys Heritage P73

Purchaser: \$.....

SHORTHORN FEMALES

LOT 74 SPRYS FREE SPIRITS PATTIE M16 (P)
DOB: 02/04/2016 **Colour:** Roan **Ident No.:** GLSM16

SULL GNCC SALUTE 532R (P)
 HC TIMELINE 17T (P)
 SHADYBROOK PRESTO 73G (IMP CAN) (P)
Sire: HC FREE SPIRIT 6Y (P)
 DIAMOND CAPTAIN MARK 27C (P)
 NEW BEGINNINGS ELSIE'S JADE (I (H))
 DIAMOND FIRST ELSIE 1F (P)

SPRYS GRANDSLAM Q23 (P)
 NARRALDA WARRIOR V11 (P)
 NARRALDA ROBIN Q1 (P)
Dam: LACHLAN PATTIE (P)
 DUNBEACON WAGMAN (P)
 SPRYS WAGMANS PATTIE A020 (P)
 SPRYS RC PATTIE W192 (P)

FEBRUARY 2022 IGS EPD's

	CE	BW	WW	YW	Milk	MCE	MWWT	STAY	DOC	CW	REA	FAT	MARB
EPD	9.3	1.2	34.8	53.3	20.2	4.2	37.6	9.4	8.5	-2.9	0.26	-0.063	-0.09
Acc	27%	37%	31%	29%	18%	18%	22%	9%	27%	27%	26%	25%	30%
%RK	30	15	100	100	95	80	100	90	80	85	80	10	70

	API
Index	94.90
%RK	90

PTIC to Muridale Thermal Energy 15A. AI: 18/10/21.

A very productive female who has bred very well for us. Son is Sale Lot 60.

An outstanding 3 in 1 unit. Has an excellent roan heifer calf at foot, born 30/7/21 (Ident: GLSS70) by Sprys Gigabytes N122 who was sold for \$40,000. Calf could be a show heifer if required.



Calf at foot, GLSS70.



LOT 74

Purchaser: \$.....

LOT 75 SPRYS SWEET AS A ROSE J10 (P)
DOB: 26/02/2013 **Colour:** Red **Ident No.:** GLSJ10

EIONMOR MR GUS 85C (P)
 DEERHORN CRUICKSHANK 946 (IMP (P))
 DEERHORN 75 LADY 319 (P)
Sire: THE GROVE KOOKABURRA W735 (P)
 BLUE RIDGE TRITAN 76B (IMP CAN) (P)
 THE GROVE BLUE DALE 2ND (P)
 THE GROVE DALE 39TH (P)

JR LEGEND 78H (IMP USA) (P)
 SPRYS JUST A LEGEND W019 (P)
 SPRYS CONDO JOYCE S100 (P)
Dam: PAKARAKA LEGENDS ROSE A005 (P)
 EDEN PARK RAIN MAKER T8 (P)
 LONE PINE ROSE V104 (P)
 LONE PINE ROSE Q48 (P)

FEBRUARY 2022 IGS EPD's

	CE	BW	WW	YW	Milk	MCE	MWWT	STAY	DOC	CW	REA	FAT	MARB
EPD	8.3	3.2	51.5	76.6	34.4	11.7	60.2	11.4	3.4	-6.9	0.47	-0.098	0.02
Acc	42%	48%	44%	44%	29%	25%	34%	29%	33%	47%	42%	35%	43%
%RK	40	55	60	70	4	1	15	65	100	95	20	95	30

	API
Index	107.07
%RK	45

PTIC - AI to Muridale Phantom 10F on 16/11/21. Cover bull Sprys Thermal Energy Q71 from 27/11/21.

Homozygous Polled.
 Another top Donor female who has bred extremely well for us. J10 flushes very well.

Top heifer calf at foot by Outback Sprys Buddy M302 (Ident: GLSS136) born 21/9/21.



Muridale Phantom 10F



LOT 75 with calf at foot, GLSS136.

Purchaser: \$.....

SHORTHORN FEMALES



SHORTHORN

LOT 76 SPRYS DREAM L60 (P)

DOB: 17/07/2015 **Colour:** Red Little White **Ident No.:** GLSL60

GLENELL IMF B90 (P)
 SPRYS SOLUTION E006 (P)
 SPRYS AC. ULTIMATE M. NIAM A10 (P)
Sire: OUTBACK SPRYS SOLUTION H283 (P)
 SPRY'S FAIR DINKUM Z027 (P)
 OUTBACK DIVA D07 (P)
 ERAMBIE POI SONG 48 (P)

SUTHERLAND BUNDABERG (IMP USA) (P)
 MARELLAN EMERALD (P)
 MARELLAN SUSAN 66TH (P)
Dam: SPRYS EMERALDS DREAM E055 (P)
 SOUTHCOTE VOODOO V35 (P)
 SPRYS ANNIES DREAM B074 (P)
 SPRYS POC ANNIE W211 (P)

FEBRUARY 2022 IGS EPD's

	CE	BW	WW	YW	Milk	MCE	MWWT	STAY	DOC	CW	REA	FAT	MARB
EPD	6.9	3.8	51.0	80.6	17.0	5.8	42.5	12.0	14.5	10.1	0.29	-0.059	0.09
Acc	25%	40%	31%	31%	20%	17%	24%	11%	19%	30%	29%	23%	29%
%RK	60	70	60	55	100	50	100	55	10	25	75	10	15

	API
Index	108.52
%RK	40

AI to Muridale Phantom 10F on 16/11/21 and run with cover bull, Sprys Thermal Energy Q71 from 27/11/21.

An awesome 3 in 1 unit who has bred very well at Sprys. Bull in sale Lot 61 is her previous calf. L60 has a top red heifer calf at foot (Ident: GLSS115) born 21/8/21 by The Grove P187.



GLSSL60 calf.



LOT 76

Purchaser: \$.....

LOT 77 SPRYS PATENTS CARNATION G19 (P)

DOB: 04/04/2011 **Colour:** Red **Ident No.:** GLSG19

WAUKARU GOLDSHIP (IMP USA) (P)
 WAUKARU GOLD CARD 5042 (IMP USA) (P)
 WAUKARU COLONIAL NAN 233 (P)
Sire: WAUKARU PATENT 8161 (IMP USA) (P)
 C P BOSTON BODACIOUS 12H (IMP P)
 WAUKARU 12H MELITA ROSE 5021 (H)
 WAUKARU MELITA ROSE 0144 (P)

ARMSTRONG GOLD V027 (IMP USA) (P)
 SPRYS JADES GOLD A096 (P)
 NEW BEGINNINGS ELSIE'S JADE (I (H))
Dam: SPRYS JADES CARNATION C129 (P)
 MANDALONG SUPER ERMIN (P)
 SPRYS ERMINS CARNATION Y032 (P)
 MARRINGTON CARNATION (P)

FEBRUARY 2022 IGS EPD's

	CE	BW	WW	YW	Milk	MCE	MWWT	STAY	DOC	CW	REA	FAT	MARB
EPD	5.5	4.2	65.8	101.1	27.7	1.5	60.6	13.8	12.5	23.1	0.60	-0.087	-0.28
Acc	25%	40%	33%	34%	29%	22%	30%	18%	22%	34%	33%	24%	29%
%RK	80	80	10	10	40	100	10	30	30	3	4	70	100

	API
Index	95.59
%RK	85

PTIC - AI to Sprys Primrose Buddy J17 18/10/21. The Vet who preg tested says she may have twins again so the purchaser may get a 4 in 1 unit.

G19 has been a great breeder for us. A daughter was sold to Spencer Family Shorthorns and was Champion at Adelaide and Melbourne Royals and Junior Heifer Show. She had twin red heifers born 31/7/21 and sells with the best of the twin heifers, GLSS73 (Sprys retained the other), by The Grove P187.



Sprys Carnation



GLSG19 calf.



LOT 77

Purchaser: \$.....

SHORTHORN FEMALES

LOT 78

SPRYS GIGABYTES JUDITH M225 (P)

DOB: 18/08/2016 Colour: Red Little White Ident No.: GLSM225

THE GROVE INFORMANT U255 (P)
 THE GROVE INFORMANT Y463 (P)
 THE GROVE U664 (P)
Sire: THE GROVE GIGABYTES J0837 (P)
 THE GROVE KOOKABURRA W735 (P)
 THE GROVE KOOKAS DALE E1237 (P)
 THE GROVE R.E. DALE W744 (P)

COOLONG XS574 (P)
 GLENELL IMF B90 (P)
 GLENELL X154 (P)
Dam: SPRYS IMF'S JUDITH J100 (P)
 WAUKARU PATENT 8161 (IMP USA) (P)
 SPRYS PATENTS JUDITH G47 (P)
 NEEARRA JUDITH 104 (P)

FEBRUARY 2022 IGS EPD's

	CE	BW	WW	YW	Milk	MCE	MWWT	STAY	DOC	CW	REA	FAT	MARB
EPD	5.9	5.1	64.1	9.5	18.7	7.5	50.8	11.0	-1.4	7.4	0.57	-0.092	0.04
Acc	39%	47%	46%	47%	25%	24%	32%	28%	42%	46%	43%	38%	42%
%RK	75	95	10	10	95	20	65	70	100	40	10	85	25

	API
Index	106.25
%RK	50

AI to JSF Times Square on 16/11/21 and run with cover bull Sprys Thermal Energy Q71 from 27/11/21. PTIC.

Homozygous Polled.

A thick, stout, deep, easy doing female from the well known Judith family who just keep producing top end progeny. Red heifer calf at foot, GLSS130, by JR Legend born 7/9/21.



Calf at foot, GLSS130.



LOT 78

Purchaser: \$.....

LOT 79

SPRYS BOOM TIMES LAVENDAR Q59 (P)

DOB: 27/07/2019 Colour: Red Little White Ident No.: GLSQ59

SASKVALLEY TRADITION 106T (P)
 MURIDALE THERMAL ENERGY 15A (P)
 MURIDALE GOOSE 32R (P)
Sire: SPRYS BOOM TIME M222 (P)
 SPRYS PATENT G60 (P)
 SPRYS PATENTS CHERRY J90 (P)
 SPRYS LEGENDS CHERRY G141 (P)

WEEBOLLABOLLA THEODORE T85 (P)
 ROYALLA NOSTALGIA (P)
 ROYALLA COUNTESS 8055 (P)
Dam: SPRYS NOSTALGIA'S LAVENDAR M38 (P)
 WAUKARU PATENT 8161 (IMP USA) (P)
 SPRYS PATENTS LAVENDAR K117 (P)
 ELOORA LAVENDAR Z50 (P)

FEBRUARY 2022 IGS EPD's

	CE	BW	WW	YW	Milk	MCE	MWWT	STAY	DOC	CW	REA	FAT	MARB
EPD	5.9	4.3	65.8	102.2	28.3	5.1	61.2	14.5	12.3	10.4	0.53	-0.086	-0.17
Acc	22%	33%	24%	24%	12%	14%	16%	9%	17%	28%	27%	22%	26%
%RK	75	80	10	10	35	65	10	25	30	25	10	65	90

	API
Index	104.16
%RK	60

Roan Heifer calf at foot GLST8 born 8/3/22 by Outback Sprys Buddy M302.

An outstanding Boom Time female who could be a great one . . . seeing is believing. Carcase and femininity and from the top Lavendar family who go back to the awesome Donor Lavendar Z50.

•Sells with two straws semen in Sprys Primroses Buddy J17 with delivery of semen at Holbrook Breeders, Holbrook.



LOT 79

Purchaser: \$.....

LOT 80 | 4 Straws in Muridale Thermal Energy 15A

4 Straws semen in Muridale Thermal Energy 15A. Homozygous Polled. The last semen to be sold in Thermal Energy 15A as we only have a few straws left in stock and no more to come from the USA. Sons have sold to \$44,000.

Selling on a per straw basis ex Holbrook Breeders.

No more semen will be sold by Sprys in Muridale Thermal Energy 15A as stocks are very low.

MURIDALE THERMAL ENERGY 15A (P)

DOB: 27/03/2013

Colour: Red

Ident No.: MCAN477341

SASKVALLEY ULTRA 12J (P)
SASKVALLEY ROUGHNECK 154R (P)
SASKVALLEY RAGGEDY ANN 57H (P)
Sire: SASKVALLEY TRADITION 106T (P)
SASKVALLEY ULTRA 12J (P)
SASKVALLEY MYRTLE 83N (P)
SASKVALLEY MYRTLE 174D (P)

SASKVALLEY ULTRA 12J (P)
SASKVALLEY BONANZA 219M (P)
SASKVALLEY BRENDA 218K (P)
Dam: MURIDALE GOOSE 32R (P)
MURIDALE BUSTER 14K (P)
MURIDALE SWAN 54N (P)
MURIDALE DARLIN 64K (P)

FEBRUARY 2022 IGS EPD's

	CE	BW	WW	YW	Milk	MCE	MWWT	STAY	DOC	CW	REA	FAT	MARB
EPD	13.2	2.3	62.1	93.8	32.4	9.3	63.5	20.1	17.9	22.8	0.52	-0.059	0.33
Acc	61%	83%	78%	78%	49%	47%	59%	44%	48%	64%	62%	45%	53%
%RK	5	35	15	20	10	5	5	1	2	4	15	10	1

	API
Index	153.57
%RK	1



Muridale Thermal Energy 15A

Notes:

We consider Thermal Energy 15A to be the best breeding Shorthorn bull we have ever used and that is a big statement. He gets most things right for a productive, easy doing, profitable enterprise. Just look at the balance of traits he has. Progeny are ideal for the Thousand Guineas programme at JBS. Do not miss this opportunity . . . No more to be sold!

Purchaser: \$.....

Attention Buyer

Animal details included in this catalogue, including but not limited to pedigree, DNA information, Estimated Breeding Values (EBVs) and Index values, are based on information provided by the breeder or owner of the animal. Whilst all reasonable care has been taken to ensure that the information provided in this catalogue was correct at the time of publication, Angus Australia will assume no responsibility for the accuracy or completeness of the information, nor for the outcome (including consequential loss) of any action taken based on this information.

Parent Verification Suffixes

The animals listed within this catalogue including its pedigree, are displaying a Parent Verification Suffix which indicates the DNA parent verification status that has been conducted on the animal. The Parent Verification Suffixes that will appear at the end of each animal's name.

The suffix displayed at the end of each animal's name indicates the DNA parentage verification that has been conducted by Angus Australia.

PV : both parents have been verified by DNA.

SV : the sire has been verified by DNA.

DV : the dam has been verified by DNA.

: DNA verification has not been conducted.

E : DNA verification has identified that the sire and/or dam may possibly be incorrect, but this cannot be confirmed conclusively.

Privacy Information

In order for Angus Australia to process the transfer of a registered animal in this catalogue, the vendor will need to provide certain information to Angus Australia and the buyer consents to the collection and disclosure of that information by Angus Australia in certain circumstances. If the buyer does not wish for his or her information to be stored and disclosed by Angus Australia, the buyer must complete the form included below and forward it to Angus Australia. If the form is not completed, the buyer will be taken to have consented to the disclosure of such information.

.....

BUYERS OPTION TO OPT OUT OF DISCLOSING PERSONAL INFORMATION TO ANGUS AUSTRALIA

If you do not complete this form, you will be taken to have consented to Angus Australia using your name, address and phone number for the purposes of effecting a change of registration of the animal(s) that you have purchased, maintaining its database and disclosing that information to its members on its website.

I, the buyer of animals with the following idents.....

.....
from member.....(name) do not consent to Angus Australia using my name, address and phone number for the purposes of effecting a change of registration of the animals I have mentioned above that I have purchased, maintaining its database and disclosing that information to its members on its website.

Name: Signature:

Date:

Please forward this completed consent form to Angus Australia, 86 Glen Innes Road, Armidale NSW 2350.



If you have any questions or queries regarding any of the above, please contact Angus Australia on (02) 6773 4600 or email office@angusaustralia.com.au

Updated 25/11/2020



CARING FOR YOUR BULL

Arrival

Upon arrival ensure your new bulls socialize with a group of animals, (anything except other bulls in the yards, when they arrive).

Run the new bull with a small group of empty females, (he has come from a different herd and may not have had exposure to some of the normal pathogens present in your herd). This must be done, only two new bull at a time, with the empty females, for a period of 2 to 4 weeks. Ideally give the cows prostaglandin every 2 weeks so they can continue to cycle.

Pre Joining

We recommend a breeding soundness examination (BSE), including structural assessment, testicular palpation and (ideally) a service ability test. This is mandatory for second joining and older bull each year. It will improve the fertility performance of the herd, by removing non-working bull out with the cows. If bull(s) are not service tested it is essential you observe the bull serve in the first week of joining.

Keep vaccinations up to date, vibrovax, pestivirus and leptospirosis 7 in 1 and an annual drench, 4-6 weeks prior to joining.

Joining

New bull(s) have the highest risk of breakdown in the herd, this risk can be reduced by:

- Protect a new bull by not overjoining, 40 females per bull maximum.
- It is recommended, if single sire joining with a new bull, to rotate him with a proven bull for at least once cycle. Also, it is good practice to rotate proven bull(s) for the last cycle with all new bull(s).
- Recommend that all females are joined in groups with 2 bulls.

'Most new bull fertility issues develop during the joining period, rather than being pre-existing problems, this means that bull surveillance during the joining period is essential.'

Once the joining is set up, monitoring is essential to identify issues as they develop.

Your new bulls need to be run in mobs that are easily monitored, check them 2 to 3 times a week for the first three weeks and then weekly thereafter. This includes looking for:

- The bull serving, (this has not been successful until the bull thrusts). If a bull is continually mounting without serving it is often a sign the bull has developed a penile infection and needs to be rested and replaced immediately.
- Lameness
- Evidence of penile or prepuccial swelling or inflammation
- Signs of ill health, lethargy, etc
- Numbers of females cycling, (for every 21 females, once cycles each day at the commencement of joining). After three weeks of joining, there should be one cow cycling every three days per 21 females if the bulls are working satisfactory.

Post Joining

Bulls need to be removed from the cows, at the same time, to create their new mobs. This will limit the amount of potential injuries by reducing the number of bull interactions.

Bull paddock management is very important to minimize injury between joining's. The bulls need enough room to reduce fighting, restricted feed and water will increase interaction.

The target between joining's is to restrict weight gain in older bulls to prevent breakdowns. Ideally young bulls have access to a higher level of nutrition as they continue to grow.

Early pregnancy testing is essential for good female management and detection of surprises. The earlier the pregnancy testing is undertaken, the more likely the cause of the problem will be identified. This will not only give you early notice of the problem but also help in formulating a plan to help reduce the chance of the problem occurring in the future.





BUYER'S INSTRUCTION SLIP



To be handed in to the Settling Office immediately after the sale (by all purchasers).

PURCHASER DETAILS

Purchaser Name:

Trading Name:

Address:

Phone Numbers: B/H A/H Mobile

Email Address:

Manager / Stockman Phone No.:

Property Identification Code (PIC, must be provided on sale day)

DELIVERY DETAILS

Lots Purchased:

Insure for: (period) Amount:

ACCOUNT DETAILS

Signature:

If you elect to settle through an Agent who has nominated you, the Agent must sign below. **This applies to ALL AGENTS.**

Agent: Signature:

Date: 26th April, 2022

STUD REGISTRATIONS

Do you wish to have the Shorthorn or Angus Beef Registration transferred into your name? Please tick the box and if yes give your membership number.

Yes

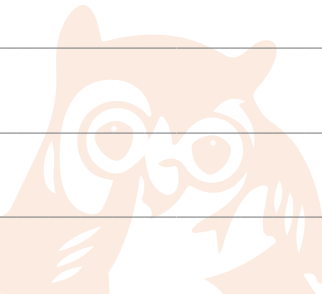
No

(Member Number)

EXTRA DELIVERY DETAILS INCLUDING DIRCTIONS IF REQUIRED

.....
.....
.....

NOTES



SPRYS

SHORTHORNS

BREEDING BETTER BEEF - SUPPLYING BETTER BULLS

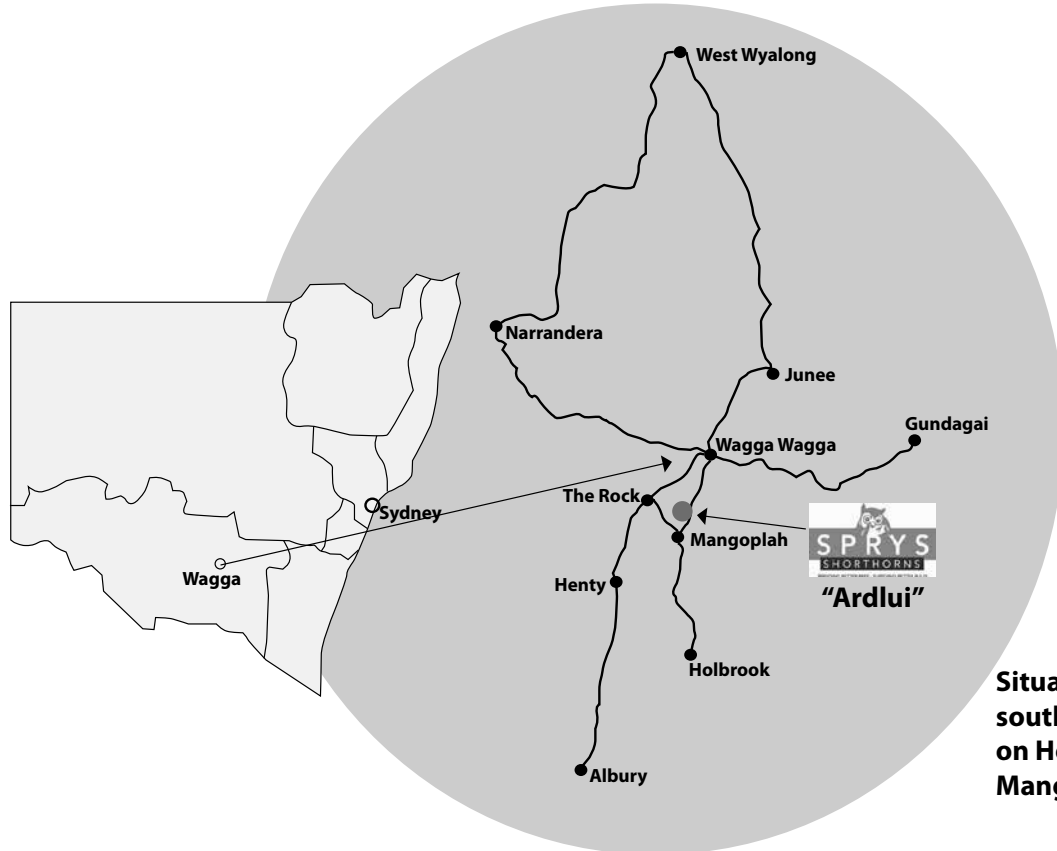


SPRYS

ANGUS

BREEDING BETTER BEEF - SUPPLYING BETTER BULLS

HOW TO GET TO SPRY'S



PLS.

Premium Livestock Solutions

For all your livestock procurement and supply chain management solutions.

Please contact:

Tom Wilding-Davies: 0429 570 504 | Matt Spry: 0417 327 245





Sprys-W Overdrive Q573 sold for \$50,000 to Bull Oakwell Angus Stud, Pinaroo SA.



Equal top price Shorthorn bull, Outback Sprys Buddy Q283, sold to the Brook family, Eloora Stud, Cavendish Vic with Lot 3, sold to Wangolina Props, Kingston SA, Sprys Boom Time Q120.