

# **K** KELLY **V** VANGUS

QUALITY STOCK & SERVICE

## **Annual Bull Sale**



**THURSDAY 24th MARCH 2022**

**64 ANGUS BULLS - 18 MONTH OLD  
36 COMMERCIAL HEIFERS**





# LAWSONS ROCKY R4010

Rocky is the record breaking, highest priced yearling bull across all breeds within Australia, selling for \$130,000 to Kelly Angus, Gilmandyke Angus, Dunoon Angus and Knowla Livestock.

Rocky commands your attention with his sire appeal and overall balance in an attractive, well-made package. A bull that stands square to the ground, with added muscling, natural thickness, and base width.

Rocky was 34kg born out of a maiden heifer P4005, who is a functional female, with a picture perfect udder

The data speaks for itself, he is the only animal in the breed to have his level and combination of calving ease, growth, fertility, and carcass data.

## FIVE STAR SIRE

**ROCKY IS UNMATCHED  
WITHIN THE ANGUS BREED.**

★★★★★ **CALVING EASE + GROWTH + CARCASS**  
★★★★★ **MATERNAL + STRUCTURE + DOCILITY**

Trait	CE <sub>Dir</sub>	CE <sub>Mat</sub>	EBW	2000	4000	6000	MCS	Milk	SC
EBV	+7.2	+5.2	+2.1	+56	+101	+126	+96	+26	+3.8
Rank	35	27	31	20	18	29	50	8	20

Trait	CWT	FMAA	Rib	Rump	IBW	SA	SON	SA <sub>C</sub>	SON <sub>C</sub>
EBV	78	11.5	0.6	-0.2	5.5	5382	\$413	\$488	\$584
Rank	14	3	31	44	1	1	1	2	1

TOP 10%

TOP 30%



**JACK LAURIE**  
0467 484 479



# POWERPLAY

JAN625 **TEXAS POWERPLAY P613**

**POWER  
UP YOUR  
PROGRAM  
WITH  
POWERPLAY!**



**WORLD WIDE SIRES**  
[wwwaustralia.com](http://wwwaustralia.com)



# Annual Bull Sale

THURSDAY 24th MARCH 2022

64 ANGUS BULLS - 18 MONTH OLD  
36 COMMERCIAL HEIFERS

SALE 1PM | INSPECTIONS FROM 10AM

(INSPECTIONS ARE WELCOME AT ANY TIME PRIOR TO SALE BY APPOINTMENT)

LUNCH & REFRESHMENTS PROVIDED



Patrick Joyce 0434 559 101



Sale Location: On Farm:  
171 Nashs Road, Yea VIC 3717



[kellyangus.com.au](http://kellyangus.com.au)



Nutrien Stud Stock

Ray Atwell 0428 836 136

Peter Godbolt 0457 591 929

Nutrien Yea

Chris Pollard 0428 993 860

Matt Pollard 0459 030 892

Tyson Bush 0419 756 746

Rick Wills 0437 469 079



**AuctionsPlus**

Buy and Sell stock nationally



# Sale Information

## **Covid Regulations**

The Kelly Angus sale will be run under the Covid regulations that are current at the time of the sale.

## **Biosecurity**

Kelly Angus hold current status of J-BAS 8.

## **Bull Health**

All bulls catalogued for sale have been semen tested by Drew Pickford –Nationwide AB. All bulls are tested-negative for Pestivirus. All sale bulls are fully vaccinated with Pestigard, 7 in 1 and Vibrovax. They have also had Selovin LA, Vitamin AD&E and Bormection injectable drench.

## **Insurance**

Kelly Angus recommends insuring all purchases from the fall of the hammer. An insurance representative will be in attendance on the day.

## **Free Delivery**

We will endeavour to personally deliver your bulls to your property. For interstate clients we will arrange transport as soon as possible.

## **Rebate**

A 3% rebate will apply to agents that introduce their clients prior to the sale and attend the sale with or on behalf of clients. Accounts must be settled within 10 days.

## **Catering**

Morning tea and Lunch will be provided.

## **Sale Time/Inspections**

The sale will commence at 1pm on Thursday 24th March 2022. Inspections from 10am on Sale Day. We welcome inspections by appointment any time prior to the Sale.

## **Safety**

All sale bulls are quiet to handle and we have the upmost of confidence in their temperament. Sale day places added pressure on the bulls and we ask that you use caution while inspecting the bulls. Visitors enter bull pens at their own risk. Children must be supervised at all times.

## **Quality Assurance**

To ensure we provide our clients a product that is of the highest quality we have strict procedures that are followed from birth.

All calves are tagged at birth with a management tag and NLIS tag. They are weighed and DNA collected via TSU. From this sample we verify parentage, genomic test, pesti test and test for genetic defects if there is any probability in the pedigree. Calves are vaccinated at 4-6 weeks with 7 in 1, a booster shot is given between 8-10 weeks of age.

At weaning calves are weighed and receive a triple acting oral drench, Selovin LA, and are vaccinated with Pestigard and IBR MH. Booster shots are given as required. Mature Cow Weights are also recorded at weaning.

All weaner bulls are kept in the one management group until 400 day weights are recorded along with Ultrasound Scanning for EMA, Fats and IMF. Scrotal Size and any abnormalities are also recorded. At that point any culls are removed. At around 16 months the bulls are independently structurally assessed and docility scored. At this time bulls are also semen tested and vaccinated with Vibrovax.

## **Disclaimer**

Whilst all due care and attention have been paid in the compilation of this catalogue, neither the vendor nor the selling agents or the representative(s) thereof assume any responsibility whatsoever for the correctness, use or interpretation of the information in this sale catalogue.





## Welcome

On behalf of the Kelly Angus team we welcome you and your family to our 3rd annual on-farm sale.

Our sale will be held on the Thursday, 24th March starting at 1pm. Nutrien will be conducting the sale and it will also be interfaced with Auctions Plus. We are offering 65, 18-20 month-old bulls out of leading AI sires and also a number of home bred sires with exceptional data and type. A first for the stud we are offering 30 open commercial heifers 15-17 months old, these will be sold in lots of 10.

The 65 bulls catalogued are sons of Ferguson Trailblazer, GAR Inertia, RES Dark Fire, Lawsons Blue Bagger and Hazeldene Jackpot plus a selection of our home bred sires that have stood up well. These bulls have clearly complimented our stud herd, supporting our breeding objectives in respect to moderate frame, fertility and easy doing cattle. There is a good range of genetic and performance options within the group. With 40 bulls suitable for heifer joining yet having enough power to cover your cow herd we are very pleased with the scope of the offering. Off the back of an unbelievable year with an abundance of grass and huge prices the positivity in the industry is truly amaz-

ing. We are receiving fantastic feedback from clients that our bulls are very resilient and fit into many different applications. The progeny that we are seeing are outstanding and a real credit to the producers. We are also receiving tremendous MSA data that backs up our focus for carcase quality.

We have had a busy past year as we are working on our own carbon neutral program via Integrity Ag in Queensland. It is an interesting and in-depth program that we are finding very rewarding. We are heavily investing into positive practices for a more sustainable future. We continually search for new and better technology and introduce modern practices so all can benefit from our genetics. We pride ourselves on predictability via our strength of data collection and genomic enhanced EBV's in order to achieve predictable outcomes from the calving paddock right through to the supermarket shelves.

Our direction is CLEAN AND GREEN and to thrive off grass as this has a positive on-flow for our clients. Our commercially run cow herd has to perform as they would on any large property and our bulls are kept in large contemporary groups so

measure real performance. We are breeding livestock that can blend into all applications, focusing on calving ease and carcase quality to achieve high marbling grass-fed carcasses.

On the genetic side of things we were able to secure a share in one of the most exciting young bulls in the breed Lawsons ROCKY VL4010. We are looking forward to his first calves being born in the spring. Texas POWERPLAY TEXP613 calves have hit the ground across the country and from all reports they are outstanding. Kelly Angus QUINN GXNQ209 is a young sire we retained last year. He is a curve bender with exceptional calving ease, low birth weight transforming to an excellent growth spread and quality carcase traits. We will be weaning his first progeny soon.

We cannot thank all of our client's enough for their ongoing support, it's very humbling to have you return each year with positive feedback. We look forward to welcoming you on sale day.

**Patrick Joyce**

**RS FERGUSON TRAILBLAZER 239E<sup>SV</sup> USA18996007**

Date of Birth: 18/02/2017 Register: HBR AMF,CAF,DDF,NHF,MHF,OHF,OSF

AA R TEN X 7008 SA<sup>SV</sup> LD EMBLAZON 999<sup>PV</sup>  
**SIRE: USA17262835 V A R DISCOVERY 2240<sup>PV</sup>** **DAM: USA17717153 MOLITOR999 BARBELLA 940-3012<sup>#</sup>**  
 DEER VALLEY RITA 0308<sup>#</sup> MOLITOR FA BARBELLA 389-940<sup>#</sup>

TACE	Mid February 2022 TransTasman Angus Cattle Evaluation																			Select. Indexes	
	CEDir	CEDtrs	GL	BW	200	400	600	MCW	Milk	SS	DTC	CWT	EMA	Rib	P8	RBY	IMF	NFI-F	DOC	\$A	\$A-L
EBVs	+3.0	+5.7	-7.8	+3.8	+76	+140	+180	+166	+15	+2.7	-6.9	+91	+4.6	+0.7	+0.2	-0.4	+3.6	+0.49	-3	\$295	\$531
Acc	69%	55%	95%	93%	88%	87%	84%	81%	78%	86%	47%	81%	78%	79%	76%	76%	61%	62%			

Statistics: Number of Herds: 10, Prog Analysed: 96, Genomic Prog: 0 Traits Observed: Genomics

**RS RES DARK FIRE E612<sup>SV</sup> USA18746402**

Date of Birth: 29/09/2016 Register: HBR AMFU,CAFU,DDFU,NHFU

CONNEALY IN SURE 8524<sup>#</sup> CONNEALY THUNDER<sup>#</sup>  
**SIRE: USA17328461 G A R SURE FIRE<sup>SV</sup>** **DAM: USA18102634 RES ELELA 193 587 466<sup>#</sup>**  
 CHAIR ROCK 5050 G A R 8086<sup>#</sup> RES ELELA 721 5652 193<sup>#</sup>

TACE	Mid February 2022 TransTasman Angus Cattle Evaluation																			Select. Indexes	
	CEDir	CEDtrs	GL	BW	200	400	600	MCW	Milk	SS	DTC	CWT	EMA	Rib	P8	RBY	IMF	NFI-F	DOC	\$A	\$A-L
EBVs	+4.4	+4.8	-6.1	+3.7	+53	+94	+116	+93	+14	+2.3	-4.5	+70	+4.9	+0.0	+0.5	+0.3	+2.9	-0.20	-	\$234	\$382
Acc	66%	54%	91%	89%	85%	84%	81%	78%	75%	82%	48%	79%	75%	77%	73%	74%	73%	61%	-		

Statistics: Number of Herds: 2, Prog Analysed: 30, Genomic Prog: 0 Traits Observed: Genomics

**RS G A R INERTIA<sup>PV</sup> USA18636043**

Date of Birth: 9/08/2016 Register: HBR AMF,CAF,DDF,NHF,DWF,MAF,MHF,OHF,OSF

G A R PROGRESS<sup>SV</sup> G A R PROPHET<sup>SV</sup>  
**SIRE: USA17354145 G A R MOMENTUM<sup>PV</sup>** **DAM: USA17965352 G A R PROPHET 2984<sup>#</sup>**  
 G A R BIG EYE 1770<sup>#</sup> G A R DAYBREAK 1521<sup>#</sup>

TACE	Mid February 2022 TransTasman Angus Cattle Evaluation																			Select. Indexes	
	CEDir	CEDtrs	GL	BW	200	400	600	MCW	Milk	SS	DTC	CWT	EMA	Rib	P8	RBY	IMF	NFI-F	DOC	\$A	\$A-L
EBVs	-0.4	+1.6	-6.1	+3.4	+62	+104	+139	+105	+18	+1.3	-3.1	+73	+8.9	+0.0	+0.7	-0.1	+3.5	+0.92	+0	\$268	\$416
Acc	83%	68%	99%	98%	97%	97%	96%	88%	81%	96%	56%	86%	88%	88%	85%	83%	86%	70%	96%		

Statistics: Number of Herds: 56, Prog Analysed: 918, Genomic Prog: 136 Traits Observed: Genomics

**RS LAWSONS BLUE BAGGER N149<sup>SV</sup> VLYN149**

Date of Birth: 29/05/2017 Register: HBR AMFU,CAFU,DDF,NHFU

TUWHARETOA REGENT D145<sup>PV</sup> G A R ANTICIPATION<sup>#</sup>  
**SIRE: HKFJ5 PARINGA JUDD J5<sup>PV</sup>** **DAM: VLYL684 LAWSONS ANTICIPATION L684<sup>#</sup>**  
 STRATHEWEN BERKLEY WILPENA F30<sup>PV</sup> LAWSONS BARTEL E7 J921<sup>#</sup>

TACE	Mid February 2022 TransTasman Angus Cattle Evaluation																			Select. Indexes	
	CEDir	CEDtrs	GL	BW	200	400	600	MCW	Milk	SS	DTC	CWT	EMA	Rib	P8	RBY	IMF	NFI-F	DOC	\$A	\$A-L
EBVs	+11.5	+5.5	-5.6	+2.1	+62	+102	+140	+122	+20	+2.6	-6.2	+90	+14.4	+1.6	+1.6	+0.7	+2.7	+0.40	+5	\$278	\$466
Acc	80%	62%	97%	96%	93%	94%	90%	81%	72%	90%	51%	78%	79%	81%	80%	77%	78%	64%	73%		

Statistics: Number of Herds: 8, Prog Analysed: 241, Genomic Prog: 0 Traits Observed: BWT,200WT,400WT(x2),600WT,SC,Scan(EMA,Rib,Rump,IMF),Genomics

**RS HAZELDEAN M584<sup>PV</sup> NHZM584**

Date of Birth: 11/08/2016 Register: HBR AMF,CAF,DDF,NHF

ARDROSSAN EQUATOR A241<sup>PV</sup> TE MANIA BERKLEY B1<sup>PV</sup>  
**SIRE: SRKJ310 BOWMONT JACKPOT J310<sup>PV</sup>** **DAM: NHZG38 HAZELDEAN G38<sup>PV</sup>**  
 ARDROSSAN WILCOOLA Z31<sup>PV</sup> HAZELDEAN A90<sup>SV</sup>

TACE	Mid February 2022 TransTasman Angus Cattle Evaluation																			Select. Indexes	
	CEDir	CEDtrs	GL	BW	200	400	600	MCW	Milk	SS	DTC	CWT	EMA	Rib	P8	RBY	IMF	NFI-F	DOC	\$A	\$A-L
EBVs	+3.6	+9.9	-4.3	+3.2	+52	+94	+124	+114	+14	+2.5	-4.6	+72	+6.6	-0.3	-1.3	+0.8	+2.4	+0.15	+4	\$209	\$375
Acc	68%	58%	75%	90%	87%	87%	85%	79%	72%	85%	53%	76%	74%	77%	75%	73%	73%	61%	76%		

Statistics: Number of Herds: 2, Prog Analysed: 55, Genomic Prog: 23 Traits Observed: CE,BWT,200WT,400WT,600WT,SC,Scan(EMA,Rib,Rump,IMF),DOC,Structure(Claw Set x 1, Foot Angle x 1),Genomics

RS

KELLY ANGUS KODAK P210<sup>PV</sup>

GXNP210

Date of Birth: 2/08/2018

Register: HBR

AMF,CAF,DDF,NHF,DWF,MAF,MHF,OHF,OSF,RGF

RENNYLEA EDMUND E11<sup>PV</sup>TOPBOS AMBASSADOR F4<sup>PV</sup>SIRE: NORK522 RENNYLEA KODAK K522<sup>SV</sup>DAM: VLYJ1246 LAWSONS AMBASSADOR J1246<sup>SV</sup>RENNYLEA EISA ERICA F810<sup>#</sup>LAWSONS PROGRESS G363<sup>#</sup>

TACE	Mid February 2022 TransTasman Angus Cattle Evaluation																			Select. Indexes	
	CEDir	CEDtrs	GL	BW	200	400	600	MCW	Milk	SS	DTC	CWT	EMA	Rib	P8	RBY	IMF	NFI-F	DOC	\$A	\$A-L
EBVs	+12.3	+9.2	-3.4	-2.8	+38	+75	+102	+90	+21	+4.0	-4.0	+62	+3.5	+0.6	-2.2	-0.5	+5.0	+0.38	-	\$200	\$348
Acc	70%	58%	94%	90%	87%	87%	82%	78%	71%	84%	49%	76%	77%	79%	78%	75%	74%	64%	-		

Statistics: Number of Herds: 4, Prog Analysed: 48, Genomic Prog: 0

Traits Observed: BWT,200WT,400WT,SC,Scan(EMA,Rib,Rump,IMF),Genomics

RS

KELLY ANGUS KATAPALT P225<sup>SV</sup>

GXNP225

Date of Birth: 13/08/2018

Register: HBR

AMFU,CAFU,DDF,NHF

S A V THUNDERBIRD 9061<sup>SV</sup>G A R SELECTIVE<sup>#</sup>SIRE: CXBK1 PRIME KATAPALT K1<sup>SV</sup>DAM: VLYF8392 LAWSONS SELECTIVE F8392<sup>#</sup>PRIME JEDDA H81<sup>#</sup>LAWSONS GAR PINNACLE Y576<sup>#</sup>

TACE	Mid February 2022 TransTasman Angus Cattle Evaluation																			Select. Indexes	
	CEDir	CEDtrs	GL	BW	200	400	600	MCW	Milk	SS	DTC	CWT	EMA	Rib	P8	RBY	IMF	NFI-F	DOC	\$A	\$A-L
EBVs	+10.6	+2.1	-8.7	+0.3	+53	+93	+117	+93	+17	+3.5	-6.4	+62	+5.5	+2.5	+1.9	+0.0	+1.8	+0.30	-	\$243	\$399
Acc	63%	52%	84%	83%	79%	79%	77%	73%	67%	81%	43%	70%	70%	72%	71%	68%	66%	56%	-		

Statistics: Number of Herds: 1, Prog Analysed: 15, Genomic Prog: 0

Traits Observed: GL,BWT,200WT,400WT,SC,Scan(EMA,Rib,Rump,IMF),Genomics

RS

KELLY ANGUS KODAK P268<sup>SV</sup>

GXNP268

Date of Birth: 14/07/2018

Register: HBR

AMFU,CAFU,DDF,NHFU

RENNYLEA EDMUND E11<sup>PV</sup>G A R SURE FIRE<sup>SV</sup>SIRE: NORK522 RENNYLEA KODAK K522<sup>SV</sup>DAM: VLYL1333 LAWSONS SURE FIRE L1333<sup>#</sup>RENNYLEA EISA ERICA F810<sup>#</sup>LAWSONS BARTEL E7 J1316<sup>#</sup>

TACE	Mid February 2022 TransTasman Angus Cattle Evaluation																			Select. Indexes	
	CEDir	CEDtrs	GL	BW	200	400	600	MCW	Milk	SS	DTC	CWT	EMA	Rib	P8	RBY	IMF	NFI-F	DOC	\$A	\$A-L
EBVs	+6.7	+7.0	-3.3	+2.5	+59	+99	+130	+115	+17	+3.7	-8.1	+77	+8.9	+1.2	+0.1	+0.7	+2.8	+0.55	-	\$263	\$446
Acc	64%	55%	73%	81%	79%	78%	77%	74%	67%	78%	47%	72%	71%	73%	72%	71%	68%	61%	-		

Statistics: Number of Herds: 1, Prog Analysed: 13, Genomic Prog: 0

Traits Observed: BWT,200WT,400WT,SC,Scan(EMA,Rib,Rump,IMF),Genomics

RS

KELLY ANGUS KODAK P187<sup>SV</sup>

GXNP187

Date of Birth: 23/07/2018

Register: HBR

AMF,CAFU,DDF,NHFU

RENNYLEA EDMUND E11<sup>PV</sup>G A R PROPHET<sup>SV</sup>SIRE: NORK522 RENNYLEA KODAK K522<sup>SV</sup>DAM: GXNM30 KELLY ANGUS PROPHET M30<sup>#</sup>RENNYLEA EISA ERICA F810<sup>#</sup>LAWSONS BARTEL E7 J1175<sup>#</sup>

TACE	Mid February 2022 TransTasman Angus Cattle Evaluation																			Select. Indexes	
	CEDir	CEDtrs	GL	BW	200	400	600	MCW	Milk	SS	DTC	CWT	EMA	Rib	P8	RBY	IMF	NFI-F	DOC	\$A	\$A-L
EBVs	+7.7	+9.5	-3.9	+2.7	+53	+87	+117	+97	+21	+2.0	-7.3	+66	+8.3	+1.6	+0.2	-0.1	+3.3	+0.68	-	\$248	\$412
Acc	63%	56%	84%	77%	74%	74%	74%	72%	67%	75%	48%	70%	68%	72%	69%	70%	67%	61%	-		

Statistics: Number of Herds: 1, Prog Analysed: 5, Genomic Prog: 0

Traits Observed: GL,CE,BWT,200WT,400WT,SC,Scan(EMA,Rib,Rump,IMF),Genomics

RS

KELLY ANGUS KODAK P171<sup>SV</sup>

GXNP171

Date of Birth: 17/07/2018

Register: HBR

AMFU,CAFU,DDF,NHFU

RENNYLEA EDMUND E11<sup>PV</sup>AYRVALE HERCULES H9<sup>PV</sup>SIRE: NORK522 RENNYLEA KODAK K522<sup>SV</sup>DAM: GXNM32 KELLY ANGUS HERCULES M32<sup>#</sup>RENNYLEA EISA ERICA F810<sup>#</sup>LAWSONS REGENT J1178<sup>#</sup>

TACE	Mid February 2022 TransTasman Angus Cattle Evaluation																			Select. Indexes	
	CEDir	CEDtrs	GL	BW	200	400	600	MCW	Milk	SS	DTC	CWT	EMA	Rib	P8	RBY	IMF	NFI-F	DOC	\$A	\$A-L
EBVs	+9.0	+8.9	-6.5	+0.9	+52	+96	+121	+101	+22	+3.4	-7.1	+75	+6.6	+0.9	-0.9	+0.2	+4.1	+0.41	-	\$257	\$431
Acc	61%	55%	84%	74%	73%	73%	73%	71%	66%	75%	46%	69%	67%	71%	69%	69%	66%	59%	-		

Statistics: Number of Herds: 1, Prog Analysed: 3, Genomic Prog: 0

Traits Observed: GL,CE,BWT,200WT,400WT,SC,Scan(EMA,Rib,Rump,IMF),Genomics

**RS KELLY ANGUS FULL POWER P207<sup>SV</sup> GXNP207**

Date of Birth: 30/07/2018 Register: HBR AMF,CAF,DDF,NHF,DWF,MAF,MHF,OHF,OSF,RGF

PA POWER TOOL 9108<sup>SV</sup> TOPBOS AMBASSADOR F4<sup>PV</sup>  
**SIRE: USA16981588 PA FULL POWER 1208<sup>PV</sup>** **DAM: VLYJ1258 LAWSONS AMBASSADOR J1258<sup>#</sup>**  
 PINE VIEW SQR RITA W091<sup>#</sup> LAWSONS TANK B1155 G229<sup>#</sup>

TACE	Mid February 2022 TransTasman Angus Cattle Evaluation																			Select. Indexes	
	CEDir	CEDtrs	GL	BW	200	400	600	MCW	Milk	SS	DTC	CWT	EMA	Rib	P8	RBY	IMF	NFI-F	DOC	\$A	\$A-L
EBVs	+1.6	-1.4	-5.8	+4.3	+57	+99	+129	+105	+19	+3.0	-3.3	+83	+14.0	-2.2	-1.4	+2.5	+3.1	+0.11	-	\$255	\$403
Acc	68%	58%	90%	85%	81%	80%	79%	77%	70%	81%	49%	74%	73%	75%	74%	73%	70%	63%	-		

*Statistics: Number of Herds: 1, Prog Analysed: 17, Genomic Prog: 0* *Traits Observed: GL,BWT,200WT,400WT,SC,Scan(EMA,Rib,Rump,IMF),Genomics*

**RS KELLY ANGUS FULL POWER P244<sup>PV</sup> GXNP244**

Date of Birth: 17/08/2018 Register: HBR AMF,CAF,DDF,NHF,DWF,MAF,MHF,OHF,OSF,RGF

PA POWER TOOL 9108<sup>SV</sup> PARINGA JUDD J5<sup>PV</sup>  
**SIRE: USA16981588 PA FULL POWER 1208<sup>PV</sup>** **DAM: GXNM39 KELLY ANGUS JUDD M39<sup>SV</sup>**  
 PINE VIEW SQR RITA W091<sup>#</sup> LAWSONS AMBASSADOR J1228<sup>#</sup>

TACE	Mid February 2022 TransTasman Angus Cattle Evaluation																			Select. Indexes	
	CEDir	CEDtrs	GL	BW	200	400	600	MCW	Milk	SS	DTC	CWT	EMA	Rib	P8	RBY	IMF	NFI-F	DOC	\$A	\$A-L
EBVs	+5.5	+0.4	-3.7	+1.8	+42	+86	+107	+58	+23	+1.6	-4.0	+64	+10.2	+0.8	+2.1	+0.0	+3.9	+0.68	-	\$252	\$369
Acc	67%	58%	89%	82%	79%	79%	78%	75%	69%	79%	48%	73%	72%	74%	73%	72%	70%	62%	-		

*Statistics: Number of Herds: 2, Prog Analysed: 17, Genomic Prog: 0* *Traits Observed: GL,CE,BWT,200WT,400WT,SC,Scan(EMA,Rib,Rump,IMF),Genomics*

**RS KELLY ANGUS KATAPALT P160<sup>SV</sup> GXNP160**

Date of Birth: 12/07/2018 Register: HBR AMF,CAFU,DDF,NHF

S A V THUNDERBIRD 9061<sup>SV</sup> G A R PROPHET<sup>SV</sup>  
**SIRE: CXBK1 PRIME KATAPALT K1<sup>SV</sup>** **DAM: GXNM104 KELLY ANGUS M104<sup>#</sup>**  
 PRIME JEDDA H81<sup>#</sup> LAWSONS PAYLOAD X951 E824<sup>#</sup>

TACE	Mid February 2022 TransTasman Angus Cattle Evaluation																			Select. Indexes	
	CEDir	CEDtrs	GL	BW	200	400	600	MCW	Milk	SS	DTC	CWT	EMA	Rib	P8	RBY	IMF	NFI-F	DOC	\$A	\$A-L
EBVs	+7.7	+3.6	-12.8	+2.5	+54	+90	+121	+91	+17	+2.9	-5.5	+68	+6.4	+1.9	+1.7	-0.3	+2.0	+0.40	-	\$236	\$387
Acc	61%	53%	84%	76%	73%	73%	71%	66%	73%	43%	67%	65%	69%	66%	66%	64%	55%	-			

*Statistics: Number of Herds: 1, Prog Analysed: 3, Genomic Prog: 0* *Traits Observed: GL,CE,BWT,200WT,400WT,SC,Scan(EMA,Rib,Rump,IMF),Genomics*

**RS KELLY ANGUS FULL POWER P240<sup>SV</sup> GXNP240**

Date of Birth: 16/08/2018 Register: HBR AMFU,CAFU,DDF,NHFU

PA POWER TOOL 9108<sup>SV</sup> G A R ULTIMATE<sup>#</sup>  
**SIRE: USA16981588 PA FULL POWER 1208<sup>PV</sup>** **DAM: VLYE371 LAWSONS ULTIMATE E371<sup>#</sup>**  
 PINE VIEW SQR RITA W091<sup>#</sup> LAWSONS NEW DESIGN 14074 B768<sup>SV</sup>

TACE	Mid February 2022 TransTasman Angus Cattle Evaluation																			Select. Indexes	
	CEDir	CEDtrs	GL	BW	200	400	600	MCW	Milk	SS	DTC	CWT	EMA	Rib	P8	RBY	IMF	NFI-F	DOC	\$A	\$A-L
EBVs	-2.1	-0.3	-2.0	+2.9	+47	+86	+105	+89	+12	+2.2	-7.5	+57	+8.5	-0.2	+0.9	+0.7	+3.4	+0.58	-	\$230	\$362
Acc	66%	58%	85%	80%	78%	77%	77%	75%	71%	77%	48%	73%	70%	73%	71%	71%	69%	62%	-		

*Statistics: Number of Herds: 1, Prog Analysed: 8, Genomic Prog: 0* *Traits Observed: GL,BWT,200WT,400WT,SC,Scan(EMA,Rib,Rump,IMF),Genomics*

**RS KELLY ANGUS INDEX P37<sup>SV</sup> GXNP37**

Date of Birth: 23/07/2018 Register: HBR AMFU,CAFU,DDF,NHFU

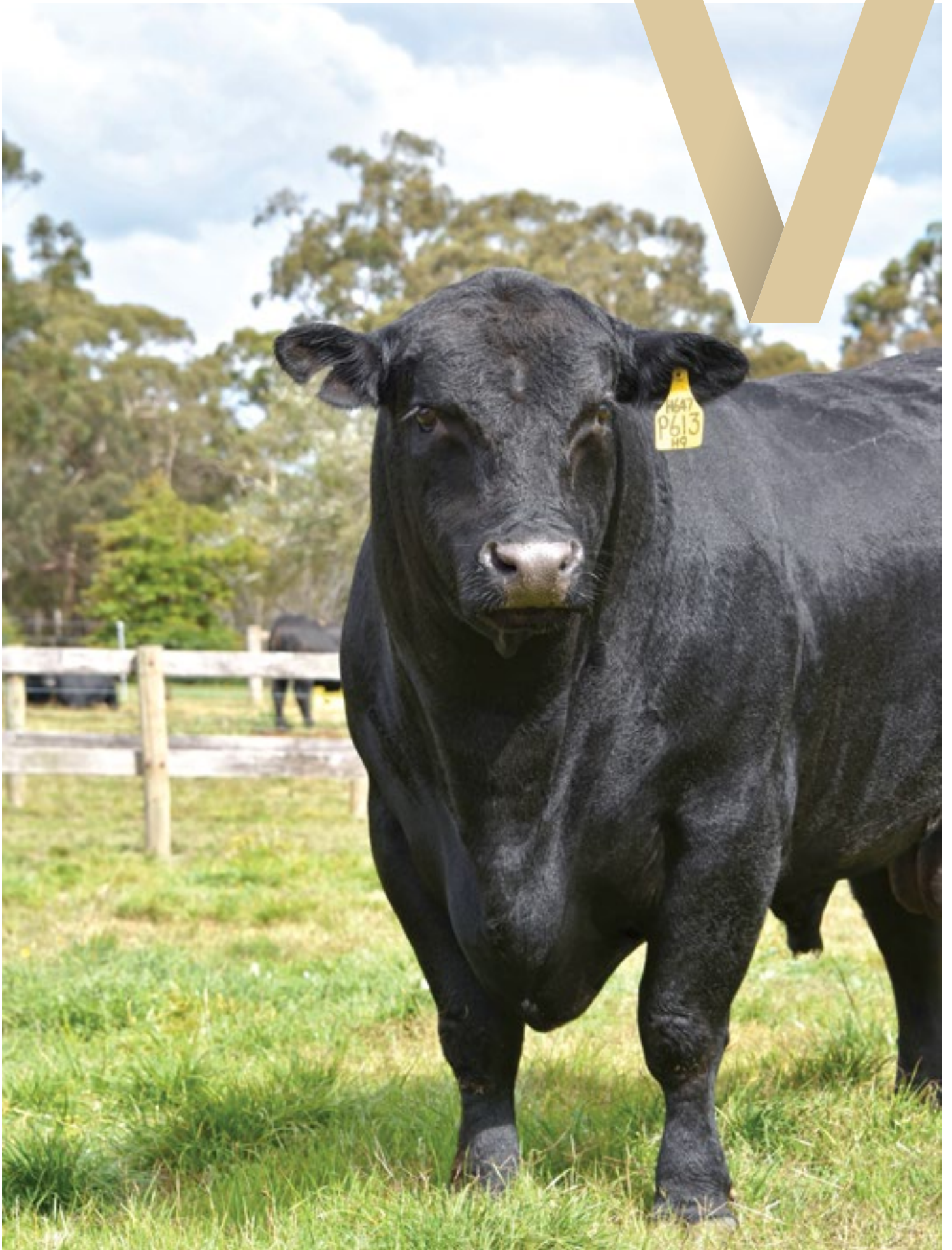
G A R INGENUITY<sup>#</sup> G A R SURE FIRE<sup>SV</sup>  
**SIRE: USA17513381 V A R INDEX 3282<sup>PV</sup>** **DAM: VLYL1353 LAWSONS SURE FIRE L1353<sup>#</sup>**  
 SANDPOINT BLACKBIRD 8809<sup>#</sup> LAWSONS HENRY D1054 J1139<sup>#</sup>

TACE	Mid February 2022 TransTasman Angus Cattle Evaluation																			Select. Indexes	
	CEDir	CEDtrs	GL	BW	200	400	600	MCW	Milk	SS	DTC	CWT	EMA	Rib	P8	RBY	IMF	NFI-F	DOC	\$A	\$A-L
EBVs	+7.6	+3.6	-3.6	+1.1	+44	+89	+99	+79	+20	+1.3	-4.2	+62	+10.6	+1.2	-0.3	+1.5	+2.3	-0.11	-	\$223	\$363
Acc	64%	55%	85%	81%	78%	77%	77%	75%	69%	77%	46%	72%	69%	73%	70%	70%	68%	59%	-		

*Statistics: Number of Herds: 1, Prog Analysed: 10, Genomic Prog: 0* *Traits Observed: GL,BWT,200WT,400WT,SC,Scan(EMA,Rib,Rump,IMF),Genomics*



V  
K



## UNDERSTANDING THE TRANSTASMAN ANGUS CATTLE EVALUATION (TACE)



### What is the TransTasman Angus Cattle Evaluation?

The TransTasman Angus Cattle Evaluation is the genetic evaluation program adopted by Angus Australia for Angus and Angus influenced beef cattle. The TransTasman Angus Cattle Evaluation uses Best Linear Unbiased Prediction (BLUP) technology to produce Estimated Breeding Values (EBVs) of recorded cattle for a range of important production traits (e.g. weight, carcase, fertility).

The TransTasman Angus Cattle Evaluation is an international genetic evaluation and includes pedigree, performance and genomic information from the Angus Australia and Angus New Zealand databases, along with selected information from the American and Canadian Angus Associations.

The TransTasman Angus Cattle Evaluation utilises a range of genetic evaluation software, including the internationally recognised BLUPF90 family of programs, and BREEDPLAN® beef genetic evaluation analytical software, as developed by the Animal Genetics and Breeding Unit (AGBU), a joint institute of NSW Agriculture and the University of New England, and Meat and Livestock Australia Limited (MLA).

### What is an EBV?

An animal's breeding value can be defined as its genetic merit for each trait. While it is not possible to determine an animal's true breeding value, it is possible to estimate it. These estimates of an animal's true breeding value are called EBVs (Estimated Breeding Values).

EBVs are expressed as the difference between an individual animal's genetics and a historical genetic level (i.e. group of animals) within the TACE genetic evaluation, and are reported in the units in which the measurements are taken.

### Using EBVs to Compare the Genetics of Two Animals

TACE EBVs can be used to estimate the expected difference in the genetics of two animals, with the expected difference equating to half the difference in the EBVs of the animals, all other things being equal (e.g. they are joined to the same animal/s).

For example, a bull with a 200 Day Growth EBV of +60 would be expected to produce progeny that are, on average, 10 kg heavier at 200 days of age than a bull with a 200 Day Growth EBV of +40 kg (i.e. 20 kg difference between the sire's EBVs, then halved as the sire only contributes half the genetics).

Or similarly, a bull with an IMF EBV of +3.0 would be expected to produce progeny with on average, 1% more intramuscular fat in a 400 kg carcase than a bull with a IMF EBV of +1.0 (i.e. 2% difference between the sire's EBVs, then halved as the sire only contributes half the genetics).

### Using EBVs to Benchmark an Animal's Genetics with the Breed

EBVs can also be used to benchmark an animal's genetics relative to the genetics of other Angus or Angus infused animals recorded with Angus Australia.

To benchmark an animal's genetics relative to other Angus animals, an animal's EBV can be compared to the EBV reference tables, which provide:

- the breed average EBV
- the percentile bands table

The current breed average EBV is listed on the bottom of each page in this publication, while the current EBV reference tables are included at the end of these introductory notes. For easy reference, the percentile band in which an animal's EBV ranks is also published in association with the EBV.

### Considering Accuracy

An accuracy value is published with each EBV, and is usually displayed as a percentage value immediately below the EBV.

The accuracy value provides an indication of the reliability of the EBV in estimating the animal's genetics (or true breeding value), and is an indication of the amount of information that has been used in the calculation of the EBV.

EBVs with accuracy values below 50% should be considered as preliminary or of low accuracy, 50-74% as of medium accuracy, 75-90% of medium to high accuracy, and 90% or greater as high accuracy.

### Description of TACE EBVs

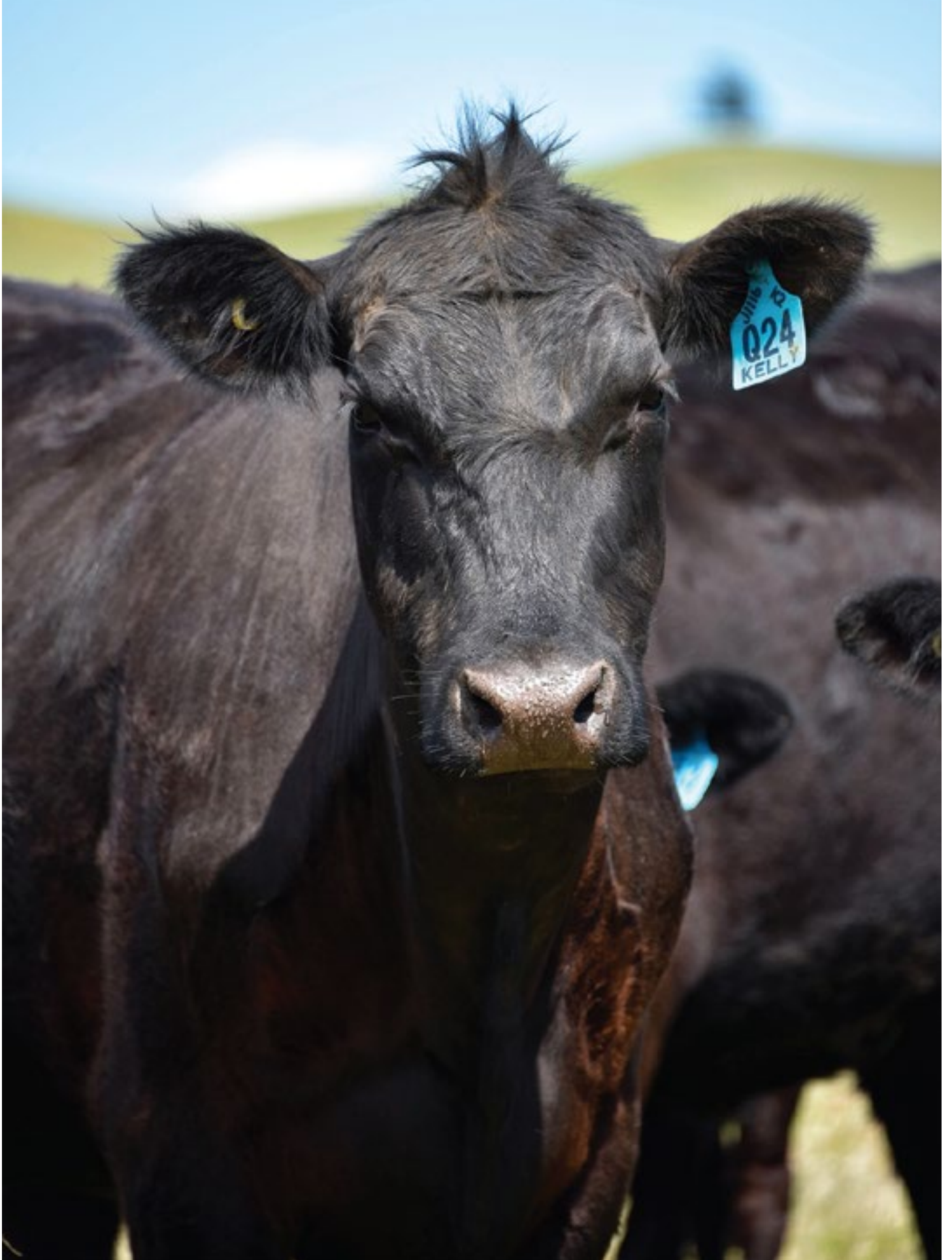
EBVs are calculated for a range of traits within TACE, covering calving ease, growth, fertility, maternal performance, carcase merit, feed efficiency and structural soundness. A description of each EBV included in this publication is provided on the following page.



## UNDERSTANDING ESTIMATED BREEDING VALUES (EBVS)

Calving Ease	CEDir	%	Genetic differences in the ability of a sire's calves to be born unassisted from 2 year old heifers.	Higher EBVs indicate fewer calving difficulties in 2 year old heifers.
	CEDtrs	%	Genetic differences in the ability of a sire's daughters to calve unassisted at 2 years of age.	Higher EBVs indicate fewer calving difficulties in 2 year old heifers.
	GL	days	Genetic differences between animals in the length of time from the date of conception to the birth of the calf.	Lower EBVs indicate shorter gestation length.
	BW	kg	Genetic differences between animals in calf weight at birth.	Lower EBVs indicate lighter birth weight.
Growth	200 Day	kg	Genetic differences between animals in live weight at 200 days of age due to genetics for growth.	Higher EBVs indicate heavier live weight.
	400 Day	kg	Genetic differences between animals in live weight at 400 days of age.	Higher EBVs indicate heavier live weight.
	600 Day	kg	Genetic differences between animals in live weight at 600 days of age.	Higher EBVs indicate heavier live weight.
	MCW	kg	Genetic differences between animals in live weight of cows at 5 years of age.	Higher EBVs indicate heavier mature weight.
	Milk	kg	Genetic differences between animals in live weight at 200 days of age due to the maternal contribution of its dam.	Higher EBVs indicate heavier live weight.
Fertility	DtC	days	Genetic differences between animals in the time from the start of the joining period (i.e. when the female is introduced to a bull) until subsequent calving.	Lower EBVs indicate shorter time to calving.
	SS	cm	Genetic differences between animals in scrotal circumference at 400 days of age.	Higher EBVs indicate larger scrotal circumference.
Carcass	CWT	kg	Genetic differences between animals in hot standard carcass weight at 750 days of age.	Higher EBVs indicate heavier carcass weight.
	EMA	cm <sup>2</sup>	Genetic differences between animals in eye muscle area at the 12/13th rib site in a 400 kg carcass.	Higher EBVs indicate larger eye muscle area.
	Rib Fat	mm	Genetic differences between animals in fat depth at the 12/13th rib site in a 400 kg carcass.	Higher EBVs indicate more fat.
	P8 Fat	mm	Genetic differences between animals in fat depth at the P8 rump site in a 400 kg carcass.	Higher EBVs indicate more fat.
	RBV	%	Genetic differences between animals in boned out saleable meat from a 400 kg carcass.	Higher EBVs indicate higher yield.
	IMF	%	Genetic differences between animals in intramuscular fat (marbling) at the 12/13th rib site in a 400 kg carcass.	Higher EBVs indicate more intramuscular fat.
Feed/Temp.	NFI-F	kg/day	Genetic differences between animals in feed intake at a standard weight and rate of weight gain when animals are in a feedlot finishing phase.	Lower EBVs indicate more feed efficiency.
	Doc	%	Genetic differences between animals in temperament.	Higher EBVs indicate better temperament.
Structure	Foot Angle	score	Genetic differences in foot angle (strength of pastern, depth of heel).	Lower EBVs indicate more desirable foot angle.
	Claw Set	score	Genetic differences in claw set structure (shape and evenness of claws).	Lower EBVs indicate more desirable claw structure.
Selection Index	\$A	\$	Genetic differences between animals in net profitability per cow joined in a typical commercial self replacing herd using Angus bulls. This selection index is not specific to a particular market end-point, but identifies animals that will improve overall net profitability in the majority of commercial, self replacing, grass and grain finishing beef production systems.	Higher selection indexes indicate greater profitability.
	\$A-L	\$	<p>The \$A-L index is similar to the \$A index but is modelled on a production system where feed is surplus to requirements for the majority of the year, or the cost of supplying additional feed when animal feed requirements increase is low.</p> <p>While the \$A aims to maintain mature cow weight, the \$A-L does not aim to limit the increase in mature cow weight as there is minimal cost incurred if the feed maintenance requirements of the female breeding herd increase as a result of selection decisions.</p>	Higher selection indexes indicate greater profitability.





V  
K







# Understanding Genomics

Genomics is a term used to describe the analysis of the function and structure of a genome, being the complete set of DNA within a single cell or organism.

Within the beef industry, genomics is still an ever expanding technology, with a range of potential applications available within a beef enterprise, plus many more under development.

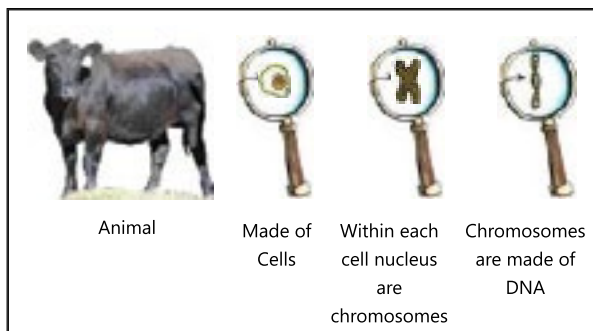
Some of the most common current applications of genomic technology include:

- Parentage Verification
- Management of Genetic Conditions
- Change in Qualitative Traits (e.g. coat colour/polledness)
- Genetic Improvement in Production Traits
- Assessment of Breed Composition

### What is DNA?

Deoxyribonucleic acid (DNA) is an exceptionally important molecule found in the nucleus of all bovine cells. It is often described as the 'blueprint' of an organism because it codes the instructions for how that organism will develop, function and appear.

In plants and animals, DNA is bundled into chromosomes. Beef cattle have 30 chromosome pairs, each pair including one chromosome inherited from the sire and one from the dam. Because the progeny inherit chromosomes from both parents, the DNA 'blueprint' is passed on from one generation to the next.

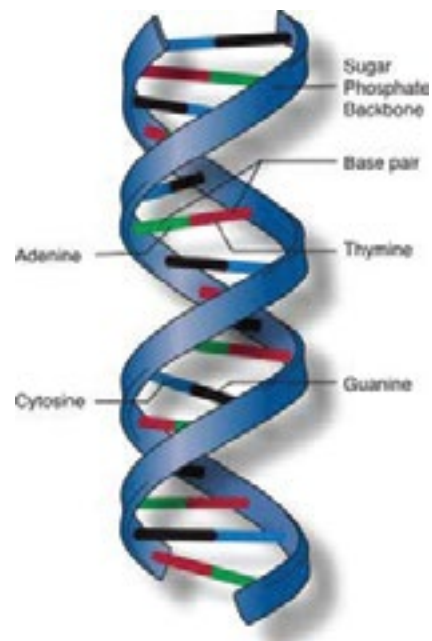


### DNA Structure

DNA looks like a long twisted ladder, or double helix. The sides of the ladder are made up of alternating sugar and phosphate molecules. The rungs connect to the sugar molecules and are known as nitrogenous bases. It is the bases which provide the key functionality of DNA and exhibit variation between individuals.

There are approximately 3 billion base pairs in bovine DNA, with four different bases, Adenine (A), Thymine (T),

Guanine (G) and Cytosine (C). Each rung of DNA is made up of two bases linked together, either G to C or T to A. The sequences of these base pairs make up the 'message' of DNA, and differences in sequences provide the basis for variation between individuals.



### What is a Gene?

A gene is a base pair sequence at a particular location on the chromosome which codes for a specific product. It is estimated there are between 22,000 and 28,000 genes in the beef animals. Genes are separated on chromosomes by areas of 'non-coding DNA' for which no function has been identified, but still make up part of the animal's genotype.

### What is an Allele?

For each gene there may be 2 or more variations, known as alleles, which can result in different phenotypes or observable characteristics. For example one of the genes influencing coat colour has three alleles, the "e" allele for red coat colour, the ED allele for black coat colour and a "Wild type" E+ allele. Which alleles the animal has, and how those alleles interact with each other determines the coat colour of the animal.

### What is a Gene Marker (or DNA Marker)?

A gene or DNA marker is a known, heritable base pair sequence which is associated with a particular gene. The DNA marker sequence does not necessarily have to be part of the gene that codes for the trait but only associated with it, therefore the value of the genetic marker will vary.

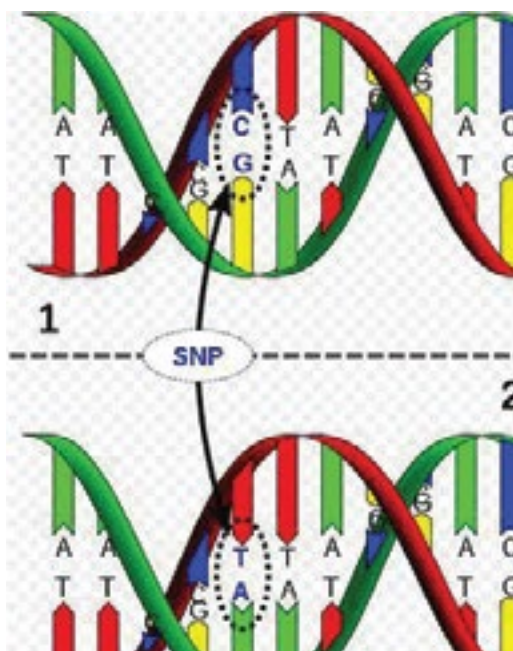


There are several types of DNA markers, but those most commonly being used in the beef industry are SNPs (pronounced "snips"), microsatellites and Indels.

#### What is a SNP?

Single Nucleotide Polymorphisms (SNPs) are markers where there is a difference in a single base pair. For example, in the figure below, the top animal has a "C & G" base pair at the particular location in the DNA, whereas the bottom animal has a "T & A" base pair.

While early DNA technology only evaluated an animal's DNA for a relatively small number of SNPs, SNP chips now routinely evaluate animals at many thousands of individual SNPs. For example, DNA chips with 7,000 (i.e. 7K), 50,000 (i.e. 50K) or 800,000 (i.e. 800K) SNPs on them are now available.



#### What is a Microsatellite?

A microsatellite is a repeat of a particular base pair sequence at a specific location in an animal's DNA, for example CACACACA. The number of base pair repeats differs between animals. Microsatellites form the basis for traditional DNA parent verification, which use multiple microsatellites to determine a calves' parentage through the exclusion of possible candidates which do not have the same microsatellites.

■ CACACACACACACA ■  
■ GTGTGTGTGTGTGT ■

#### Key Terms

**Trait** – Attribute or characteristic of animals that can be measured and improved genetically (for example, growth rate, fertility, carcass or meat quality)

**Genotype** – the full genetic makeup of an animal including dominant and recessive alleles that may not be expressed

**Phenotype** – the observable characteristics or traits of an animal that result from the interaction between the animal's genotype and the environment

**Locus** – the specific location of a gene or DNA sequence on a chromosome

**Allele** – one form of a gene or a genetic locus

**Homozygous** – animal carries identical alleles for a gene

**Heterozygous** – animal carries different alleles for a gene

**Dominant** – an allele is dominant over another so that the phenotype of the dominant allele is always expressed over the recessive allele

**Recessive** – an allele is recessive, so that the phenotype is only expressed when two copies of the allele are present (i.e. it is homozygous).

**Carrier** – animal which is heterozygous and 'carries' a recessive allele which is not being expressed phenotypically

#### What is an Indel?

An Indel is an insertion or deletion of a particular base pair sequence at a specific location in an animal's DNA. Indels are often associated with recessive genetic conditions.

#### What is a Genomic Prediction Equation?

As each production trait is influenced by many genes, inferring genetic merit for a particular trait requires the accumulated effects of many markers. Genomic Prediction Equations take the genotype of an animal as collected using dense SNP chips (e.g. 50,000 SNPs), to estimate the animal's breeding value based on the known effect of each SNP on the trait of interest.

For further information, please contact staff at:

Angus Australia  
Phone: 02 6773 4600  
Email: [office@angusaustralia.com.au](mailto:office@angusaustralia.com.au)  
Website: [www.angusaustralia.com.au](http://www.angusaustralia.com.au)



EBV Quick Reference for Kelly Angus

Animal Ident	Calving Ease				Growth				Fertility				Carcass				Temp. Doc	Structural		Selection Indexes				
	CEDir	CEDtrs	GL	BWT	200	400	600	MCW	Milk	SS	DTC	CWT	EMA	RIB	P8	RBY		IMF	NFI-F	Angle	Claw	\$A	\$A-L	
1	GXNR246	+1.6	-3.0	-5.1	+5.4	+65	+104	+154	+153	+18	+3.0	-4.3	+97	+10.1	-2.1	-1.8	+2.1	+2.0	+0.12	-	+1.18	+1.04	\$226	\$410
2	GXNR305	+3.7	+3.0	-6.8	+2.6	+60	+108	+139	+120	+13	+4.6	-6.2	+82	+7.6	+0.6	+0.0	+0.3	+3.7	+0.60	-	+0.76	+0.66	\$260	\$442
3	GXNR319	-3.1	-4.2	-2.7	+5.5	+53	+93	+129	+134	+16	+2.0	-8.5	+70	+5.6	-0.3	+0.1	+0.4	+2.4	+0.22	-	+0.84	+0.70	\$185	\$347
4	GXNR359	+4.9	+4.3	+0.5	+4.2	+62	+103	+140	+120	+23	+2.5	-5.7	+77	+6.3	-0.2	-0.7	+0.9	+1.9	-0.27	-	+0.92	+0.64	\$247	\$419
5	GXNR287	+5.9	+6.7	-5.0	+1.0	+47	+89	+109	+73	+19	+1.8	-5.2	+68	+10.5	+1.8	+1.3	-0.2	+2.6	+0.39	-	+1.14	+0.82	\$242	\$381
6	GXNR258	+4.9	+1.2	-4.2	+4.5	+59	+100	+127	+116	+20	+3.2	-7.0	+84	+7.5	-0.9	-0.3	+0.7	+2.9	+0.31	-	+0.98	+0.86	\$241	\$411
7	GXNR281	+0.2	+1.7	+2.9	+4.7	+60	+108	+155	+162	+17	+2.3	-4.3	+90	+2.2	-2.1	-3.6	+0.2	+4.5	-0.16	-	+0.74	+0.58	\$203	\$397
8	GXNR342	+7.5	+6.1	-2.2	+2.0	+50	+97	+118	+116	+16	+2.0	-3.9	+68	+7.6	-1.7	-3.1	+1.8	+2.7	-0.10	-	+1.02	+0.72	\$208	\$380
9	GXNR233	+6.3	+8.6	-4.8	+1.8	+52	+94	+123	+97	+20	+2.6	-10.3	+65	+7.3	+2.9	+3.6	-1.1	+3.5	+0.56	-	+0.86	+0.86	\$273	\$448
10	GXNR274	+6.5	+7.5	-0.6	+2.1	+58	+100	+125	+104	+15	+1.9	-7.0	+66	+4.4	+0.6	-0.2	-0.5	+3.5	+0.29	-	+0.76	+0.94	\$264	\$436
11	GXNR260	+2.9	+2.9	-3.6	+1.4	+40	+77	+103	+93	+17	+3.5	-7.3	+68	+3.7	+1.2	-0.4	-0.5	+4.7	+0.74	-	+0.90	+0.82	\$204	\$347
12	GXNR227	+6.1	+7.7	-6.6	+2.2	+50	+85	+114	+83	+18	+2.3	-3.4	+68	+14.4	-0.1	-0.5	+2.0	+2.5	+0.31	-	+0.96	+0.86	\$252	\$392
13	GXNR249	+4.1	+1.8	-6.7	+4.0	+62	+111	+151	+145	+18	+2.6	-8.2	+81	+6.7	+0.8	+0.8	-0.2	+3.9	+0.57	-	+1.02	+1.12	\$260	\$464
14	GXNR365	+1.2	+1.2	-2.4	+3.9	+62	+101	+126	+76	+24	+4.2	-7.0	+77	+12.7	-0.8	+0.5	+1.2	+4.3	+0.58	-	+0.80	+1.06	\$318	\$457
15	GXNR311	+9.1	+1.8	-5.3	+1.8	+42	+78	+99	+69	+13	+1.1	-7.6	+53	+5.7	+2.5	+1.7	-0.9	+3.2	+0.54	-	+1.18	+1.06	\$228	\$360
16	GXNR289	+4.2	+0.5	-5.7	+2.4	+58	+99	+124	+99	+15	+2.3	-4.8	+74	+12.5	+2.4	+1.7	+0.8	+1.8	+0.42	-	+1.22	+1.00	\$257	\$412
17	GXNR267	+5.5	-5.0	-3.2	+5.5	+65	+114	+155	+150	+20	+2.3	-2.7	+96	+10.6	-3.2	-3.9	+2.8	+2.4	-0.54	-	+0.98	+0.94	\$229	\$416
18	GXNR266	+6.8	+2.1	-4.8	+3.0	+54	+107	+147	+130	+21	+3.2	-2.2	+73	+1.7	-2.4	-2.3	-0.2	+4.1	-0.37	-	+0.80	+0.46	\$210	\$389
19	GXNR268	+3.8	+5.1	-5.9	+3.2	+63	+114	+139	+122	+17	+2.1	-8.5	+82	+6.6	+1.7	+2.3	-0.9	+3.8	+0.65	-	+1.18	+0.98	\$283	\$476
20	GXNR303	+2.5	+3.8	-6.0	+3.4	+56	+92	+123	+88	+20	+2.8	-4.4	+66	+8.4	+1.6	+0.9	+0.1	+3.7	+0.65	-	+1.22	+1.26	\$263	\$403
21	GXNR248	+10.9	+9.4	-5.1	+0.7	+50	+81	+108	+64	+22	+1.2	-4.1	+68	+13.6	+1.7	+1.5	+0.3	+2.2	+0.20	-	+0.92	+0.92	\$261	\$392
22	GXNR335	-8.9	-9.9	+1.4	+6.1	+63	+103	+133	+125	+18	+2.0	-6.2	+81	+4.7	-2.0	-2.7	+0.9	+2.2	-0.03	-	+0.86	+0.90	\$200	\$332
23	GXNR367	+4.2	+8.9	-5.7	+2.3	+50	+86	+110	+83	+21	+2.0	-7.4	+64	+4.1	+1.4	+0.7	-1.3	+3.6	-0.07	-	+0.92	+0.84	\$239	\$384
24	GXNR366	+9.6	+4.9	-8.4	+2.1	+50	+88	+120	+85	+27	+3.4	-7.4	+69	+6.3	+1.0	+1.9	-0.3	+2.6	+0.37	-	+0.90	+0.78	\$247	\$399
25	GXNR354	+1.9	-2.6	-2.5	+3.9	+58	+106	+140	+110	+20	+3.1	-4.9	+75	+10.2	-1.0	-2.1	+1.7	+3.0	+0.62	-	+0.92	+0.60	\$253	\$410
26	GXNR291	+9.7	+4.2	-6.5	+0.8	+48	+83	+107	+77	+15	+1.3	-3.9	+56	+7.1	-0.5	-1.0	+1.0	+2.4	+0.19	-	+0.96	+0.88	\$236	\$368
27	GXNR360	+2.5	+8.7	-1.3	+3.6	+48	+84	+107	+92	+22	+2.9	-8.6	+58	+6.2	+1.6	+1.6	-0.4	+2.9	+0.32	-	+1.06	+0.94	\$218	\$368
28	GXNR312	-3.9	+1.9	-5.1	+4.8	+51	+88	+114	+108	+16	+2.7	-3.0	+71	+15.0	-0.5	-0.7	+2.0	+3.0	+0.54	-	+0.86	+0.82	\$201	\$335
29	GXNR293	+7.6	+7.2	-5.9	+0.5	+49	+94	+128	+107	+24	+4.5	-5.9	+72	+5.5	+0.7	-0.3	+0.2	+3.2	+0.13	-	+0.92	+1.06	\$227	\$399
30	GXNR300	+7.6	+1.9	-8.9	+1.9	+55	+99	+129	+125	+14	+2.9	-7.6	+68	+9.0	+2.1	+1.7	+0.3	+2.9	+0.72	-	+1.02	+0.88	\$245	\$434
31	GXNR277	+1.6	-0.7	-1.3	+4.3	+64	+106	+140	+120	+14	+3.6	-3.3	+84	+11.3	-0.3	-2.4	+1.6	+3.6	-0.14	-	+0.78	+0.70	\$260	\$423
32	GXNR333	+8.0	-0.9	-5.3	+1.1	+45	+73	+98	+70	+16	+2.7	-6.3	+60	+6.4	+2.3	+1.5	-0.3	+2.1	+0.65	-	+1.14	+1.20	\$218	\$340
	<b>TACE</b>	+2.2	+2.6	-4.7	+4.1	+50	+89	+117	+101	+17	+2.1	-4.7	+66	+6.2	+0.0	-0.4	+0.5	+2.1	+0.19	+7	+0.97	+0.85	+195	+337

EBV Quick Reference for Kelly Angus

Animal Ident	Calving Ease			Growth				Fertility				Carcass				Feed		Temp.		Structural		Selection Indexes		
	CEDir	CEDtrs	GL	BWT	200	400	600	MCW	Milk	SS	DTC	CWT	EMA	RIB	P8	RBY	IMF	NFI-F	Doc	Angle	Claw	\$A	\$A-L	
33	GXNR278	+4.9	+4.2	-2.0	+1.7	+46	+88	+122	+110	+20	+3.2	-3.5	+72	+5.4	-2.8	-3.9	+4.5	+0.06	-	+0.88	+0.74	\$203	\$357	
34	GXNR368	+1.9	+6.2	-6.2	+5.0	+46	+81	+106	+83	+20	+3.4	-5.5	+51	+9.0	-2.3	-2.7	+2.8	+0.16	-	+1.08	+1.00	\$208	\$336	
35	GXNR279	+5.3	+2.5	-2.3	+2.5	+51	+95	+127	+118	+20	+4.0	-3.8	+77	+7.0	-0.6	-1.9	+3.4	-0.01	-	+1.00	+1.06	\$213	\$378	
36	GXNR301	+10.6	+7.6	-8.6	-0.2	+44	+79	+102	+71	+20	+1.6	-5.7	+60	+4.3	+2.2	+1.6	+2.3	+0.50	-	+0.98	+0.80	\$223	\$358	
37	GXNR284	+8.6	+8.6	-9.0	+0.1	+47	+91	+113	+91	+17	+2.9	-7.7	+60	+5.1	+0.8	+0.6	+4.4	+0.71	-	+1.06	+0.92	\$253	\$420	
38	GXNR329	+3.4	+4.1	-3.4	+4.0	+54	+94	+125	+103	+23	+5.0	-6.8	+70	+12.9	-2.1	-1.6	+2.9	+0.52	-	+0.96	+0.62	\$253	\$412	
39	GXNR363	+1.7	+6.7	-5.9	+2.4	+54	+101	+125	+122	+16	+1.3	-6.0	+73	+4.0	-0.1	+0.2	+2.1	-0.16	-	+1.04	+0.66	\$210	\$382	
40	GXNR361	+1.1	+6.0	-3.3	+3.3	+62	+109	+144	+131	+25	+4.2	-7.1	+90	+7.9	-1.0	-3.2	+3.8	-0.06	-	+0.72	+0.58	\$251	\$436	
41	GXNR358	+2.4	+5.6	+1.1	+4.1	+62	+111	+146	+126	+21	+3.0	-5.7	+84	+6.2	-1.7	-2.4	+3.9	+0.07	-	+1.02	+0.98	\$263	\$444	
42	GXNR336	+1.1	+8.5	-3.4	+5.1	+56	+92	+131	+115	+17	+4.1	-6.6	+68	+2.4	+0.6	+1.4	+2.2	+0.08	-	+0.82	+0.68	\$216	\$379	
43	GXNR364	+9.8	+4.3	-6.5	+0.3	+52	+94	+113	+84	+20	+2.7	-7.3	+64	+8.5	+0.7	+0.3	+2.4	+0.31	-	+1.26	+1.14	\$268	\$423	
44	GXNR230	+1.2	+2.7	-5.5	+4.8	+71	+119	+148	+130	+18	+2.2	-5.8	+87	+5.3	-0.2	+0.0	+2.6	-0.44	-	+0.62	+0.96	\$272	\$455	
45	GXNR226	+13.1	+7.0	-9.4	-0.9	+42	+73	+98	+96	+14	+1.9	-5.8	+65	+12.7	+1.4	+1.7	+3.4	+0.80	-	+1.08	+1.04	\$217	\$371	
46	GXNR320	+1.1	+0.0	-0.9	+5.3	+51	+89	+110	+93	+13	+1.5	-4.7	+66	+11.1	-0.4	-0.6	+3.4	-0.35	-	+1.14	+0.72	\$224	\$360	
47	GXNR244	-2.1	+0.3	-5.6	+5.9	+50	+84	+107	+88	+10	+1.4	-4.0	+54	+4.5	-0.5	-0.8	+1.4	+2.3	-0.36	-	+0.86	+0.80	\$202	\$318
48	GXNR254	+4.4	+7.5	-6.1	+2.1	+49	+88	+104	+82	+11	+1.7	-6.4	+56	+4.9	+0.3	+1.0	+3.8	+0.43	-	+1.02	+0.86	\$250	\$394	
49	GXNR349	-3.8	-2.6	+0.3	+3.1	+45	+82	+102	+75	+12	+1.6	-5.8	+60	+9.8	-0.6	+1.4	+3.2	+0.75	-	+1.08	+1.28	\$227	\$337	
50	GXNR310	+1.9	-0.9	-3.6	+4.9	+52	+91	+116	+96	+13	+1.4	-2.7	+64	+10.2	-1.0	+0.1	+3.1	+0.13	-	+0.78	+1.00	\$228	\$363	
51	GXNR265	+6.3	+3.6	-3.3	+2.6	+62	+102	+124	+105	+14	+1.8	-7.4	+62	+13.3	+1.7	+1.9	+3.1	+0.54	-	+1.04	+1.10	\$290	\$464	
52	GXNR302	+7.0	+6.2	-2.1	+1.0	+45	+78	+105	+92	+23	+1.4	-4.4	+66	+2.2	+0.3	-1.2	+3.5	-0.18	-	+0.92	+0.78	\$201	\$342	
53	GXNR346	+5.7	+1.9	-3.4	+1.9	+43	+82	+93	+54	+23	+0.3	-6.3	+56	+11.1	+2.7	+3.5	+4.9	+0.86	-	+1.06	+1.28	\$259	\$379	
54	GXNR314	+7.5	+4.6	-0.6	+2.1	+37	+72	+89	+62	+16	+0.6	-4.1	+50	+11.5	+0.6	-0.1	+3.2	+0.62	-	+0.82	+0.82	\$210	\$328	
55	GXNR222	+9.7	+7.2	-6.9	+2.2	+60	+97	+134	+102	+22	+2.7	-6.0	+84	+13.5	+0.8	-0.5	+2.2	+1.8	+0.42	-	+1.00	+1.08	\$285	\$454
56	GXNR304	+1.1	+1.6	-4.0	+2.2	+52	+92	+115	+80	+17	+1.0	-3.4	+70	+10.9	-0.1	+0.3	+3.0	+0.37	-	+0.80	+0.94	\$252	\$379	
57	GXNR245	+7.6	+6.7	-5.5	+2.2	+47	+91	+128	+129	+20	+2.4	-4.9	+77	-1.8	-1.8	-3.1	+5.2	+0.01	-	+0.88	+0.92	\$185	\$365	
58	GXNR353	+0.4	+8.0	-3.4	+3.6	+46	+86	+105	+106	+13	+0.7	-5.1	+70	+8.2	-1.9	-2.6	+2.7	-0.06	-	+0.72	+0.66	\$186	\$332	
59	GXNR324	+6.5	+3.7	-7.2	+2.2	+57	+98	+129	+103	+15	+2.2	-4.6	+68	+7.4	+0.6	+0.7	+2.5	+0.16	-	+0.82	+0.84	\$256	\$418	
60	GXNR299	+3.3	+4.1	-6.0	+4.0	+58	+103	+137	+121	+16	+3.2	-6.5	+70	+3.7	+1.0	-0.7	+3.2	+0.64	-	+0.94	+0.78	\$238	\$413	
61	GXNR286	+10.9	-0.7	-12.7	-1.0	+41	+74	+88	+69	+14	+1.3	-6.1	+49	+5.4	+1.3	+2.0	+3.1	+0.36	-	+1.14	+0.96	\$226	\$348	
62	GXNR341	+4.4	+4.2	-2.4	+2.2	+42	+68	+97	+77	+21	+1.5	-5.2	+48	+1.1	+1.1	+0.4	+3.4	+0.59	-	+1.02	+0.84	\$195	\$313	
63	GXNR328	+8.8	+3.2	-10.0	+2.4	+41	+72	+92	+85	+11	+0.4	-6.1	+58	+6.2	+0.8	+1.4	+2.1	+0.25	-	+0.72	+0.90	\$190	\$327	
64	GXNR348	+6.3	+3.2	-1.2	+2.0	+51	+96	+117	+111	+21	+0.5	-6.3	+71	+8.2	-0.1	-2.2	+3.3	-0.42	-	+1.04	+0.70	\$222	\$388	
	<b>TACE</b>	+2.2	+2.6	-4.7	+4.1	+50	+89	+117	+101	+17	+2.1	-4.7	+66	+6.2	+0.0	-0.4	+2.1	+0.19	+7	+0.97	+0.85	+195	+337	







**LOT 1**  
KELLY ANGUS BLUE BAGGER R246sv



**LOT 2**  
KELLY ANGUS KODAK R305sv



**LOT 3**  
KELLY ANGUS KODAK R319sv



**LOT 4**  
KELLY ANGUS KODAK R359sv



**LOT 5**  
KELLY ANGUS JACKPOT R287sv



**LOT 7**  
KELLY ANGUS KODAK R281PV



**LOT 10**  
KELLY ANGUS TRAILBLAZER R274sv



**LOT 11**  
KELLY ANGUS KODAK R260sv



**LOT 12**  
KELLY ANGUS FULL POWER R227sv



**LOT 15**  
KELLY ANGUS KATAPULT R311sv



**LOT 16**  
KELLY ANGUS KATAPULT R289pv



**LOT 17**  
KELLY ANGUS BLUE BAGGER R267sv



## Lot 1 KELLY ANGUS BLUE BAGGER R246<sup>SV</sup> GXNR246

DOB: 13/07/2020 Registration Status: HBR Genetic Status: AMFU, CAFU, DDFU, NHFU  
 TUWHARETOA REGENT D145<sup>PV</sup> G A R SOLUTION<sup>SV</sup>  
 PARINGA JUDD J5<sup>PV</sup> LAWSONS INVINCIBLE C402<sup>PV</sup>  
 STRATHEWEN BERKLEY WILPENA F30<sup>PV</sup> LAWSONS PREDESTINED A598<sup>#</sup>  
 Sire: VLYN149 LAWSONS BLUE BAGGER N149<sup>SV</sup> Dam: VLYG440 LAWSONS INVINCIBLE G440<sup>#</sup>  
 G A R ANTICIPATION<sup>#</sup> LAWSONS TANK X1235<sup>#</sup>  
 LAWSONS ANTICIPATION L684<sup>#</sup> LAWSONS TANK E475<sup>#</sup>  
 LAWSONS BARTEL E7 J921<sup>#</sup> LAWSONS CONSISTENCE B1023<sup>#</sup>

### Mid February 2022 TransTasman Angus Cattle Evaluation

TACE	Dir	Dtrs	GL	BW	200 W	400 W	600 W	MCW	Milk
EBV	+1.6	-3.0	-5.1	+5.4	+65	+104	+154	+153	+18
ACC	59%	50%	84%	73%	70%	70%	70%	68%	62%

SS	D t C	CWT	EMA	Rib	Rump	RBV	IMF	NFI-F	Doc
+3.0	-4.3	+97	+10.1	-2.1	-1.8	+2.1	+2.0	+0.12	-
70%	41%	65%	62%	67%	64%	64%	62%	53%	-

### Selection Indexes

\$A	\$A-L
\$226	\$410

Traits Observed: GL,BWT,200WT,400WT,SC, Scan(EMA,Rib,Rump,IMF),Genomics

Notes: A heavy weight Blue Bagger son out of a solid cow who has daughters retained in the herd. Add some growth and EMA to your herd.

Purchaser: ..... \$: .....

## Lot 2 KELLY ANGUS KODAK R305<sup>SV</sup> GXNR305



DOB: 6/08/2020 Registration Status: APR Genetic Status: AMFU, CAFU, DDFU, NHFU  
 RENNYLEA EDMUND E11<sup>PV</sup> G A R SOLUTION<sup>SV</sup>  
 RENNYLEA KODAK K522<sup>SV</sup> LAWSONS INVINCIBLE C402<sup>PV</sup>  
 RENNYLEA EISA ERICA F810<sup>#</sup> LAWSONS PREDESTINED A598<sup>#</sup>  
 Sire: GXNP268 KELLY ANGUS KODAK P268<sup>SV</sup> Dam: VLYG309 LAWSONS INVINCIBLE G309<sup>#</sup>  
 G A R SURE FIRE<sup>SV</sup> S S OBJECTIVE T510 0T26<sup>#</sup>  
 LAWSONS SURE FIRE L1333<sup>#</sup> LAWSONS OBJECTIVE E121<sup>#</sup>  
 LAWSONS BARTEL E7 J1316<sup>#</sup> LAWSONS NEW DESIGN 1407 A1306<sup>#</sup>

### Mid February 2022 TransTasman Angus Cattle Evaluation

TACE	Dir	Dtrs	GL	BW	200 W	400 W	600 W	MCW	Milk
EBV	+3.7	+3.0	-6.8	+2.6	+60	+108	+139	+120	+13
ACC	55%	50%	67%	71%	69%	68%	69%	68%	62%

SS	D t C	CWT	EMA	Rib	Rump	RBV	IMF	NFI-F	Doc
+4.6	-6.2	+82	+7.6	+0.6	+0.0	+0.3	+3.7	+0.60	-
69%	41%	65%	62%	67%	64%	65%	62%	54%	-

### Selection Indexes

\$A	\$A-L
\$260	\$442

Traits Observed: BWT,200WT,400WT,SC, Scan(EMA,Rib,Rump,IMF),Genomics

Notes: R305 is a really well made grandson of Kodak. A bull with plenty of growth and carcass that tops it off with calving ease and a low birthweight.

Purchaser: ..... \$: .....

## Lot 3 KELLY ANGUS KODAK R319<sup>SV</sup> GXNR319

DOB: 9/08/2020 Registration Status: HBR Genetic Status: AMFU, CAFU, DDFU, NHFU  
 RENNYLEA EDMUND E11<sup>PV</sup> TE MANIA AMBASSADOR A134<sup>SV</sup>  
 RENNYLEA KODAK K522<sup>SV</sup> TUWHARETOA REGENT D145<sup>PV</sup>  
 RENNYLEA EISA ERICA F810<sup>#</sup> LAWSONS HENRY VIII Y5<sup>SV</sup>  
 Sire: GXNP268 KELLY ANGUS KODAK P268<sup>SV</sup> Dam: VLYJ1194 LAWSONS REGENT J1194<sup>#</sup>  
 G A R SURE FIRE<sup>SV</sup> LAWSONS IRONSTONE B1370<sup>SV</sup>  
 LAWSONS SURE FIRE L1333<sup>#</sup> LAWSONS IRONSTONE E104<sup>#</sup>  
 LAWSONS BARTEL E7 J1316<sup>#</sup> LAWSONS INTEGRITY A841<sup>#</sup>

### Mid February 2022 TransTasman Angus Cattle Evaluation

TACE	Dir	Dtrs	GL	BW	200 W	400 W	600 W	MCW	Milk
EBV	-3.1	-4.2	-2.7	+5.5	+53	+93	+129	+134	+16
ACC	55%	50%	66%	69%	67%	67%	68%	67%	62%

SS	D t C	CWT	EMA	Rib	Rump	RBV	IMF	NFI-F	Doc
+2.0	-8.5	+70	+5.6	-0.3	+0.1	+0.4	+2.4	+0.22	-
68%	41%	63%	61%	66%	62%	64%	61%	53%	-

### Selection Indexes

\$A	\$A-L
\$185	\$347

Traits Observed: BWT,200WT,400WT,SC, Scan(EMA,Rib,Rump,IMF),Genomics

Notes: A bull with a tremendous amount of body that will add volume to your weaners.

Purchaser: ..... \$: .....



**Lot 4** **KELLY ANGUS KODAK R359<sup>SV</sup>** **GXNR359**

DOB: 30/08/2020 Registration Status: HBR Genetic Status: AMFU,CAFU,DDF,NHFU  
 RENNYLEA EDMUND E11<sup>PV</sup> CONNEALY FORWARD<sup>#</sup>  
 RENNYLEA KODAK K522<sup>SV</sup> STERITA PARK BLACK JACK J231<sup>PV</sup>  
 RENNYLEA EISA ERICA F810<sup>#</sup> SYDGEN FOREVER LADY 4413<sup>#</sup>  
 Sire: GXNP268 KELLY ANGUS KODAK P268<sup>SV</sup> Dam: GXNM14 KELLY ANGUS BLACK JACK M14<sup>#</sup>  
 G A R SURE FIRE<sup>SV</sup> G A R ANTICIPATION<sup>#</sup>  
 LAWSONS SURE FIRE L1333<sup>#</sup> LAWSONS ANTICIPATION K1562<sup>#</sup>  
 LAWSONS BARTEL E7 J1316<sup>#</sup> LAWSONS DINKY DI E341<sup>#</sup>

**Mid February 2022 TransTasman Angus Cattle Evaluation**

TACE	Dir	Dtrs	GL	BW	200 W	400 W	600 W	MCW	Milk
EBV	+4.9	+4.3	+0.5	+4.2	+62	+103	+140	+120	+23
ACC	53%	47%	67%	69%	67%	67%	68%	67%	60%

SS	D t C	CWT	EMA	Rib	Rump	RBV	IMF	NFI-F	Doc
+2.5	-5.7	+77	+6.3	-0.2	-0.7	+0.9	+1.9	-0.27	-
69%	36%	63%	60%	66%	62%	63%	60%	51%	-

**Selection Indexes**

\$A	\$A-L
\$247	\$419

*Traits Observed:* 200WT,400WT,SC, Scan(EMA,Rib,Rump,IMF),Genomics

Notes: Out of a lovely cow this bull is very well made with fantastic growth and milk figures.

Purchaser:..... \$:.....

**Lot 5** **KELLY ANGUS JACKPOT R287<sup>SV</sup>** **GXNR287**



DOB: 1/08/2020 Registration Status: HBR Genetic Status: AMFU,CAFU,DDF,NHFU  
 ARDROSSAN EQUATOR A241<sup>PV</sup> B/R NEW DESIGN 036<sup>#</sup>  
 BOWMONT JACKPOT J310<sup>PV</sup> G A R NEW DESIGN 5050<sup>#</sup>  
 ARDROSSAN WILCOOLA Z31<sup>PV</sup> G A R PRECISION 706<sup>#</sup>  
 Sire: NHZM584 HAZELDEAN M584<sup>PV</sup> Dam: VLYG403 LAWSONS NEW DESIGN 5050 G403<sup>#</sup>  
 TE MANIA BERKLEY B1<sup>PV</sup> LAWSONS TANK X1235<sup>#</sup>  
 HAZELDEAN G38<sup>PV</sup> LAWSONS TANK E266<sup>#</sup>  
 HAZELDEAN A90<sup>SV</sup> LAWSONS PREMIUM BEEF B779<sup>#</sup>

**Mid February 2022 TransTasman Angus Cattle Evaluation**

TACE	Dir	Dtrs	GL	BW	200 W	400 W	600 W	MCW	Milk
EBV	+5.9	+6.7	-5.0	+1.0	+47	+89	+109	+73	+19
ACC	55%	50%	69%	72%	70%	70%	70%	69%	63%

SS	D t C	CWT	EMA	Rib	Rump	RBV	IMF	NFI-F	Doc
+1.8	-5.2	+68	+10.5	+1.8	+1.3	-0.2	+2.6	+0.39	-
70%	41%	65%	62%	68%	64%	65%	63%	53%	-

**Selection Indexes**

\$A	\$A-L
\$242	\$381

*Traits Observed:* BWT,200WT,400WT,SC, Scan(EMA,Rib,Rump,IMF),Genomics

Notes: R287 would have to be one of the favorites in the group. A moderate well put together Jackpot son, he has great calving ease and a low BW. EMA in the top 6% of the breed and plenty of fat cover. An all round good bull.

Purchaser:..... \$:.....

**Lot 6** **KELLY ANGUS BLUE BAGGER R258<sup>SV</sup>** **GXNR258**

DOB: 15/07/2020 Registration Status: APR Genetic Status: AMFU,CAFU,DDF,NHFU  
 TUWHARETOA REGENT D145<sup>PV</sup> PAPA EQUATOR 2928<sup>#</sup>  
 PARINGA JUDD J5<sup>PV</sup> WILSON DOWNS EQUATOR V191<sup>SV</sup>  
 STRATHEWEN BERKLEY WILPENA F30<sup>PV</sup> WILCO QUEENIE S9<sup>#</sup>  
 Sire: VLYN149 LAWSONS BLUE BAGGER N149<sup>SV</sup> Dam: VLYE342 LAWSONS EQUATOR E342<sup>#</sup>  
 G A R ANTICIPATION<sup>#</sup> TEHAMA SCHWARZENEGGER N600<sup>#</sup>  
 LAWSONS ANTICIPATION L684<sup>#</sup> LAWSONS SCHWARZENEGGER B859<sup>#</sup>  
 LAWSONS BARTEL E7 J921<sup>#</sup> LAWSONS HENRY VIII X1118<sup>#</sup>

**Mid February 2022 TransTasman Angus Cattle Evaluation**

TACE	Dir	Dtrs	GL	BW	200 W	400 W	600 W	MCW	Milk
EBV	+4.9	+1.2	-4.2	+4.5	+59	+100	+127	+116	+20
ACC	59%	50%	85%	74%	72%	72%	72%	69%	64%

SS	D t C	CWT	EMA	Rib	Rump	RBV	IMF	NFI-F	Doc
+3.2	-7.0	+84	+7.5	-0.9	-0.3	+0.7	+2.9	+0.31	-
72%	40%	66%	63%	69%	65%	65%	63%	53%	-

**Selection Indexes**

\$A	\$A-L
\$241	\$411

*Traits Observed:* GL,BWT,200WT,400WT,SC, Scan(EMA,Rib,Rump,IMF),Genomics

Notes: Another upstanding Blue Bagger son with plenty of eye appeal.

Purchaser:..... \$:.....

- Top 1%
- Top 5%
- Top 10%
- Top 25%

**Lot 7 KELLY ANGUS KODAK R281<sup>PV</sup> GXNR281**

DOB: 23/07/2020 Registration Status: HBR Genetic Status: AMFU, CAFU, DDFU, NHFU  
 RENNYLEA EDMUND E11<sup>PV</sup> MCC DAYBREAK<sup>#</sup>  
 RENNYLEA KODAK K522<sup>SV</sup> G A R SUNRISE<sup>SV</sup>  
 RENNYLEA EISA ERICA F810<sup>#</sup> G A R OBJECTIVE R227<sup>#</sup>  
 Sire: GXNP210 KELLY ANGUS KODAK P210<sup>PV</sup> Dam: GXNN62 KELLY ANGUS SUNRISE N62<sup>SV</sup>  
 TOPBOS AMBASSADOR F4<sup>PV</sup> TUWHARETOA REGENT D145<sup>PV</sup>  
 LAWSONS AMBASSADOR J1246<sup>SV</sup> LAWSONS REGENT J1194<sup>#</sup>  
 LAWSONS PROGRESS G363<sup>#</sup> LAWSONS IRONSTONE E104<sup>#</sup>

**Mid February 2022 TransTasman Angus Cattle Evaluation**

TACE	Dir	Dtrs	GL	BW	200 W	400 W	600 W	MCW	Milk
EBV	+0.2	+1.7	+2.9	+4.7	+60	+108	+155	+162	+17
ACC	55%	48%	84%	72%	70%	69%	70%	68%	62%

SS	D t C	CWT	EMA	Rib	Rump	RBV	IMF	NFI-F	Doc
+2.3	-4.3	+90	+2.2	-2.1	-3.6	+0.2	+4.5	-0.16	-
70%	39%	65%	63%	68%	64%	65%	63%	54%	-

**Selection Indexes**

\$A	\$A-L
\$203	\$397

**Traits Observed:** GL,BWT,200WT,400WT,SC, Scan(EMA,Rib,Rump,IMF),Genomics

**Notes:** Out of the same cow line as lot 3 this bull has all of the power and performance you could want. Sired by our Kodak son P210, this combination has this bull ranking in the top 1% for IMF.

Purchaser: ..... \$: .....

**Lot 8 KELLY ANGUS KODAK R342<sup>PV</sup> GXNR342**



DOB: 22/08/2020 Registration Status: HBR Genetic Status: AMFU, CAFU, DDF, NHFU  
 RENNYLEA EDMUND E11<sup>PV</sup> TE MANIA AFRICA A217<sup>PV</sup>  
 RENNYLEA KODAK K522<sup>SV</sup> LAWSONS KI AFRICA J6041<sup>PV</sup>  
 RENNYLEA EISA ERICA F810<sup>#</sup> LANDFALL ANGUISH E50<sup>SV</sup>  
 Sire: GXNP171 KELLY ANGUS KODAK P171<sup>SV</sup> Dam: GXNN124 KELLY ANGUS VISIONARY N124<sup>SV</sup>  
 AYRVALE HERCULES H9<sup>PV</sup> LAWSONS NOVAK E313<sup>SV</sup>  
 KELLY ANGUS HERCULES M32<sup>#</sup> LAWSONS NOVAK H912<sup>#</sup>  
 LAWSONS REGENT J1178<sup>#</sup> LAWSONS IRONSTONE E186<sup>#</sup>

**Mid February 2022 TransTasman Angus Cattle Evaluation**

TACE	Dir	Dtrs	GL	BW	200 W	400 W	600 W	MCW	Milk
EBV	+7.5	+6.1	-2.2	+2.0	+50	+97	+118	+116	+16
ACC	51%	46%	69%	67%	66%	65%	66%	65%	58%

SS	D t C	CWT	EMA	Rib	Rump	RBV	IMF	NFI-F	Doc
+2.0	-3.9	+68	+7.6	-1.7	-3.1	+1.8	+2.7	-0.10	-
67%	36%	61%	58%	65%	61%	61%	59%	50%	-

**Selection Indexes**

\$A	\$A-L
\$208	\$380

**Traits Observed:** BWT,200WT,400WT,SC, Scan(EMA,Rib,Rump,IMF),Genomics

**Notes:** Sired by another homebred Kodak son R342 is a bull with plenty of thickness. He has plenty of calving ease, a low BW and good growth.

Purchaser: ..... \$: .....

**Lot 9 KELLY ANGUS TRAILBLAZER R233<sup>PV</sup> GXNR233**



DOB: 11/07/2020 Registration Status: APR Genetic Status: AMFU, CAFU, DD5%, NHFU  
 A A R TEN X 7008 S A<sup>SV</sup> G A R SURE FIRE<sup>SV</sup>  
 V A R DISCOVERY 2240<sup>PV</sup> LAWSONS SURE FIRE L1187<sup>SV</sup>  
 DEER VALLEY RITA 0308<sup>#</sup> LAWSONS PREDESTINED E239<sup>#</sup>  
 Sire: USA18996007 FERGUSON TRAILBLAZER 239E<sup>SV</sup> Dam: GXNN134 KELLY ANGUS SF L1187 N134<sup>SV</sup>  
 LD EMBLAZON 999<sup>PV</sup> AYRVALE BARTEL E7<sup>PV</sup>  
 MOLITOR999 BARBELLA 940-3012<sup>#</sup> LAWSONS BARTEL E7 K1474<sup>#</sup>  
 MOLITOR FA BARBELLA 389-940<sup>#</sup> LAWSONS HENRY VIII H8072<sup>#</sup>

**Mid February 2022 TransTasman Angus Cattle Evaluation**

TACE	Dir	Dtrs	GL	BW	200 W	400 W	600 W	MCW	Milk
EBV	+6.3	+8.6	-4.8	+1.8	+52	+94	+123	+97	+20
ACC	53%	46%	84%	72%	70%	69%	70%	69%	62%

SS	D t C	CWT	EMA	Rib	Rump	RBV	IMF	NFI-F	Doc
+2.6	-10.3	+65	+7.3	+2.9	+3.6	-1.1	+3.5	+0.56	-
70%	38%	65%	62%	68%	64%	64%	62%	52%	-

**Selection Indexes**

\$A	\$A-L
\$273	\$448

**Traits Observed:** GL,BWT,200WT,400WT,SC, Scan(EMA,Rib,Rump,IMF),Genomics

**Notes:** The first of the Trailblazer sons, R233 ticks plenty of boxes. Exceptional calving ease and BW, good growth and high fertility figures backed up by a great carcass, a bull not to be missed.

Purchaser: ..... \$: .....

Top 1%    Top 5%    Top 10%    Top 25%

**Lot 10**

**KELLY ANGUS TRAILBLAZER R274<sup>SV</sup>**

**GXNR274**



DOB: 18/07/2020 Registration Status: APR

Genetic Status: AMFU, CAFU, DDF, NHFU

A A R TEN X 7008 S A<sup>SV</sup>  
 V A R DISCOVERY 2240<sup>PV</sup>  
 DEER VALLEY RITA 0308<sup>#</sup>  
 Sire: USA18996007 FERGUSON TRAILBLAZER 239E<sup>SV</sup>  
 LD EMBLAZON 999<sup>PV</sup>  
 MOLITOR999 BARBELLA 940-3012<sup>#</sup>  
 MOLITOR FA BARBELLA 389-940<sup>#</sup>

MCC DAYBREAK<sup>#</sup>  
 G A R ANTICIPATION<sup>#</sup>  
 G A R 5050 NEW DESIGN 0530<sup>#</sup>  
 Dam: VLYL1200 LAWSONS ANTICIPATION L1200<sup>#</sup>  
 LAWSONS DINKY-DI Z191<sup>SV</sup>  
 LAWSONS DINKY DI E576<sup>#</sup>  
 LAWSONS TANK A1212<sup>#</sup>

**Mid February 2022 TransTasman Angus Cattle Evaluation**

TACE	Dir	Dtrs	GL	BW	200 W	400 W	600 W	MCW	Milk
EBV	+6.5	+7.5	-0.6	+2.1	+58	+100	+125	+104	+15
ACC	55%	47%	84%	72%	69%	69%	69%	68%	63%
SS	D t C	CWT	EMA	Rib	Rump	RBV	IMF	NFI-F	Doc
+1.9	-7.0	+66	+4.4	+0.6	-0.2	-0.5	+3.5	+0.29	-
70%	38%	65%	62%	67%	63%	63%	62%	51%	-

**Selection Indexes**

\$A	\$A-L
\$264	\$436

*Traits Observed:* GL,BWT,200WT,400WT,SC, Scan(EMA,Rib,Rump,IMF),Genomics

Notes: Another outstanding Trailblazer son that offers calving ease, low birth weight, plenty of growth along with a lower mature cow weight.

Purchaser: ..... \$: .....

**Lot 11**

**KELLY ANGUS KODAK R260<sup>SV</sup>**

**GXNR260**



DOB: 15/07/2020 Registration Status: APR

Genetic Status: AMFU, CAFU, DDFU, NHFU

RENNYLEA EDMUND E11<sup>PV</sup>  
 RENNYLEA KODAK K522<sup>SV</sup>  
 RENNYLEA EISA ERICA F810<sup>#</sup>  
 Sire: GXNP210 KELLY ANGUS KODAK P210<sup>PV</sup>  
 TOPBOS AMBASSADOR F4<sup>PV</sup>  
 LAWSONS AMBASSADOR J1246<sup>SV</sup>  
 LAWSONS PROGRESS G363<sup>#</sup>

TE MANIA AMBASSADOR A134<sup>SV</sup>  
 TUWHARETOA REGENT D145<sup>PV</sup>  
 LAWSONS HENRY VIII Y5<sup>SV</sup>  
 Dam: VLYJ1199 LAWSONS AMBASSADOR J1199<sup>SV</sup>  
 G A R ULTIMATE<sup>#</sup>  
 LAWSONS ULTIMATE E8277<sup>#</sup>  
 LAWSONS PINNACLE X1503<sup>#</sup>

**Mid February 2022 TransTasman Angus Cattle Evaluation**

TACE	Dir	Dtrs	GL	BW	200 W	400 W	600 W	MCW	Milk
EBV	+2.9	+2.9	-3.6	+1.4	+40	+77	+103	+93	+17
ACC	57%	52%	84%	72%	70%	70%	70%	69%	63%
SS	D t C	CWT	EMA	Rib	Rump	RBV	IMF	NFI-F	Doc
+3.5	-7.3	+68	+3.7	+1.2	-0.4	-0.5	+4.7	+0.74	-
70%	43%	66%	64%	69%	66%	67%	64%	56%	-

**Selection Indexes**

\$A	\$A-L
\$204	\$347

*Traits Observed:* GL,BWT,200WT,400WT,SC, Scan(EMA,Rib,Rump,IMF),Genomics

Notes: Thick as a brick, R260 is built much like his sire P210. Highly fertile with an IMF in the top 1% of the breed he has a lot to offer.

Purchaser: ..... \$: .....

**Lot 12**

**KELLY ANGUS FULL POWER R227<sup>SV</sup>**

**GXNR227**



DOB: 9/07/2020 Registration Status: APR

Genetic Status: AMFU, CAFU, DDF, NHFU

PA POWER TOOL 9108<sup>SV</sup>  
 PA FULL POWER 1208<sup>PV</sup>  
 PINE VIEW SQR RITA W091<sup>#</sup>  
 Sire: GXNP207 KELLY ANGUS FULL POWER P207<sup>SV</sup>  
 TOPBOS AMBASSADOR F4<sup>PV</sup>  
 LAWSONS AMBASSADOR J1258<sup>#</sup>  
 LAWSONS TANK B1155 G229<sup>#</sup>

G A R PREDESTINED<sup>#</sup>  
 THOMAS GRADE UP 6849<sup>SV</sup>  
 THOMAS MISS LUCY 4206<sup>#</sup>  
 Dam: VLYE676 LAWSONS GRADE UP E676<sup>#</sup>  
 G A R YIELD GRADE<sup>#</sup>  
 LAWSONS YIELD GRADE A373<sup>#</sup>  
 LAWSONS HENRY VIII X1341<sup>#</sup>

**Mid February 2022 TransTasman Angus Cattle Evaluation**

TACE	Dir	Dtrs	GL	BW	200 W	400 W	600 W	MCW	Milk
EBV	+6.1	+7.7	-6.6	+2.2	+50	+85	+114	+83	+18
ACC	56%	50%	84%	72%	70%	69%	70%	69%	64%
SS	D t C	CWT	EMA	Rib	Rump	RBV	IMF	NFI-F	Doc
+2.3	-3.4	+68	+14.4	-0.1	-0.5	+2.0	+2.5	+0.31	-
71%	41%	65%	63%	68%	64%	65%	62%	54%	-

**Selection Indexes**

\$A	\$A-L
\$252	\$392

*Traits Observed:* GL,BWT,200WT,400WT,SC, Scan(EMA,Rib,Rump,IMF),Genomics

Notes: This bulls mother has had a son in each of our 3 sales. If your looking for a heifer option or to add some EMA check this bull out.

Purchaser: ..... \$: .....

- Top 1%
- Top 5%
- Top 10%
- Top 25%



**Lot 13 KELLY ANGUS TRAILBLAZER R249<sup>PV</sup> GXNR249**

DOB: 13/07/2020 Registration Status: HBR Genetic Status: AMFU, CAFU, DDFU, NHFU  
 A A R TEN X 7008 S A<sup>SV</sup> SYDGEN C C & 7<sup>#</sup>  
 V A R DISCOVERY 2240<sup>PV</sup> T C A VISIONARY 158<sup>SV</sup>  
 DEER VALLEY RITA 0308<sup>#</sup> T C A TREASURE 0699 601<sup>#</sup>  
 Sire: USA18996007 FERGUSON TRAILBLAZER 239E<sup>SV</sup> Dam: GXNN99 KELLY ANGUS VISIONARY N99<sup>SV</sup>  
 LD EMBLAZON 999<sup>PV</sup> LAWSONS IRONSTONE B1370<sup>SV</sup>  
 MOLITOR999 BARBELLA 940-3012<sup>#</sup> LAWSONS IRONSTONE E104<sup>#</sup>  
 MOLITOR FA BARBELLA 389-940<sup>#</sup> LAWSONS INTEGRITY A841<sup>#</sup>

**Mid February 2022 TransTasman Angus Cattle Evaluation**

TACE	Dir	Dtrs	GL	BW	200 W	400 W	600 W	MCW	Milk
EBV	+4.1	+1.8	-6.7	+4.0	+62	+111	+151	+145	+18
ACC	54%	46%	84%	72%	69%	69%	69%	68%	62%
SS	D t C	CWT	EMA	Rib	Rump	RBV	IMF	NFI-F	Doc
+2.6	-8.2	+81	+6.7	+0.8	+0.8	-0.2	+3.9	+0.57	-
70%	37%	64%	62%	67%	63%	63%	61%	51%	-

**Selection Indexes**

\$A	\$A-L
\$260	\$464

**Traits Observed:** GL,BWT,200WT,400WT,SC, Scan(EMA,Rib,Rump,IMF),Genomics

Notes: A deep bodied Trailblazer son showing plenty of growth and a great carcass.

Purchaser:..... \$:.....

**Lot 14 KELLY ANGUS FULL POWER R365<sup>SV</sup> GXNR365**

DOB: 2/09/2020 Registration Status: HBR Genetic Status: AMFU, CAFU, DDF, NHF  
 PA POWER TOOL 9108<sup>SV</sup> C R A BEXTOR 872 5205 608<sup>#</sup>  
 PA FULL POWER 1208<sup>PV</sup> G A R PROPHET<sup>SV</sup>  
 PINE VIEW SQR RITA W091<sup>#</sup> G A R OBJECTIVE 1885<sup>#</sup>  
 Sire: GXNP207 KELLY ANGUS FULL POWER P207<sup>SV</sup> Dam: VLYL1331 LAWSONS PROPHET L1331<sup>#</sup>  
 TOPBOS AMBASSADOR F4<sup>PV</sup> AYRVALE BARTEL E7<sup>PV</sup>  
 LAWSONS AMBASSADOR J1258<sup>#</sup> LAWSONS BARTEL E7 J1294<sup>#</sup>  
 LAWSONS TANK B1155 G229<sup>#</sup> LAWSONS TANK B1155 G357<sup>#</sup>

**Mid February 2022 TransTasman Angus Cattle Evaluation**

TACE	Dir	Dtrs	GL	BW	200 W	400 W	600 W	MCW	Milk
EBV	+1.2	+1.2	-2.4	+3.9	+62	+101	+126	+76	+24
ACC	56%	51%	71%	71%	69%	69%	69%	68%	62%
SS	D t C	CWT	EMA	Rib	Rump	RBV	IMF	NFI-F	Doc
+4.2	-7.0	+77	+12.7	-0.8	+0.5	+1.2	+4.3	+0.58	-
64%	41%	65%	62%	68%	64%	65%	62%	55%	-

**Selection Indexes**

\$A	\$A-L
\$318	\$457

**Traits Observed:** BWT,400WT,SC, Scan(EMA,Rib,Rump,IMF),Genomics

Notes: This bull displays a below average birth weight with a whopping growth curve all in a moderate package. Backs it up with tremendous carcass data.

Purchaser:..... \$:.....

**Lot 15 KELLY ANGUS KATAPALT R311<sup>SV</sup> GXNR311**



DOB: 8/08/2020 Registration Status: HBR Genetic Status: AMFU, CAFU, DDC, NHFU  
 S A V THUNDERBIRD 9061<sup>SV</sup> G A R SOLUTION<sup>SV</sup>  
 PRIME KATAPALT K1<sup>SV</sup> LAWSONS INVINCIBLE C402<sup>PV</sup>  
 PRIME JEDDA H81<sup>#</sup> LAWSONS PREDESTINED A598<sup>#</sup>  
 Sire: GXNP225 KELLY ANGUS KATAPALT P225<sup>SV</sup> Dam: VLYG295 LAWSONS INVINCIBLE G295<sup>#</sup>  
 G A R SELECTIVE<sup>#</sup> LAWSONS DINKY-DI Z191<sup>SV</sup>  
 LAWSONS SELECTIVE F8392<sup>#</sup> LAWSONS DINKY DI E327<sup>#</sup>  
 LAWSONS GAR PINNACLE Y576<sup>#</sup> LAWSONS YIELD GRADE B356<sup>#</sup>

**Mid February 2022 TransTasman Angus Cattle Evaluation**

TACE	Dir	Dtrs	GL	BW	200 W	400 W	600 W	MCW	Milk
EBV	+9.1	+1.8	-5.3	+1.8	+42	+78	+99	+69	+13
ACC	54%	49%	69%	71%	68%	68%	69%	67%	62%
SS	D t C	CWT	EMA	Rib	Rump	RBV	IMF	NFI-F	Doc
+1.1	-7.6	+53	+5.7	+2.5	+1.7	-0.9	+3.2	+0.54	-
69%	39%	63%	61%	66%	63%	63%	61%	52%	-

**Selection Indexes**

\$A	\$A-L
\$228	\$360

**Traits Observed:** BWT,200WT,400WT,SC, Scan(EMA,Rib,Rump,IMF),Genomics

Notes: A good honest all round bull with good calving ease, low birth weight and positive fats.

Purchaser:..... \$:.....

Top 1% Top 5% Top 10% Top 25%

**Lot 16**

**KELLY ANGUS KATAPULT R289<sup>PV</sup>**

**GXNR289**



DOB: 31/07/2020 Registration Status:HBR

Genetic Status: AMFU,CAFU,DDC,NHFU

S A V THUNDERBIRD 9061<sup>SV</sup>  
 PRIME KATAPULT K1<sup>SV</sup>  
 PRIME JEDDA H81<sup>#</sup>  
 Sire: GXNP225 KELLY ANGUS KATAPULT P225<sup>SV</sup>  
 G A R SELECTIVE<sup>#</sup>  
 LAWSONS SELECTIVE F8392<sup>#</sup>  
 LAWSONS GAR PINNACLE Y576<sup>#</sup>

G A R MOMENTUM<sup>PV</sup>  
 G A R METHOD<sup>SV</sup>  
 G A R DAYBREAK 1332<sup>#</sup>  
 Dam: GXNN69 KELLY ANGUS METHOD N69<sup>SV</sup>  
 TE MANIA AFRICA A217<sup>PV</sup>  
 LAWSONS AFRICA H995<sup>#</sup>  
 LAWSONS TOTAL F880<sup>#</sup>

**Mid February 2022 TransTasman Angus Cattle Evaluation**

TACE	Dir	Dtrs	GL	BW	200 W	400 W	600 W	MCW	Milk
EBV	+4.2	+0.5	-5.7	+2.4	+58	+99	+124	+99	+15
ACC	52%	46%	70%	70%	68%	67%	68%	66%	60%

SS	D t C	CWT	EMA	Rib	Rump	RBV	IMF	NFI-F	Doc
+2.3	-4.8	+74	+12.5	+2.4	+1.7	+0.8	+1.8	+0.42	-
69%	36%	63%	60%	66%	62%	62%	60%	50%	-

**Selection Indexes**

\$A	\$A-L
\$257	\$412

**Traits Observed:** BWT,200WT,400WT,SC, Scan(EMA,Rib,Rump,IMF),Genomics

Notes: Low birth weight with high fat cover and an exceptional EMA. A good all round bull.

Purchaser:..... \$:.....

**Lot 17**

**KELLY ANGUS BLUE BAGGER R267<sup>SV</sup>**

**GXNR267**

DOB: 15/07/2020 Registration Status:HBR

Genetic Status: AMFU,CAFU,DDF,NHF

TUWHARETOA REGENT D145<sup>PV</sup>  
 PARINGA JUDD J5<sup>PV</sup>  
 STRATHEWEN BERKLEY WILPENA F30<sup>PV</sup>  
 Sire: VLYN149 LAWSONS BLUE BAGGER N149<sup>SV</sup>  
 G A R ANTICIPATION<sup>#</sup>  
 LAWSONS ANTICIPATION L684<sup>#</sup>  
 LAWSONS BARTEL E7 J921<sup>#</sup>

TUWHARETOA REGENT D145<sup>PV</sup>  
 TOPBOS AMBASSADOR F4<sup>PV</sup>  
 TUWHARETOA C115<sup>SV</sup>  
 Dam: VLYJ1161 LAWSONS AMBASSADOR J1161<sup>#</sup>  
 G A R ULTIMATE<sup>#</sup>  
 LAWSONS ULTIMATE E793<sup>#</sup>  
 LAWSONS CASPER A1245<sup>#</sup>

**Mid February 2022 TransTasman Angus Cattle Evaluation**

TACE	Dir	Dtrs	GL	BW	200 W	400 W	600 W	MCW	Milk
EBV	+5.5	-5.0	-3.2	+5.5	+65	+114	+155	+150	+20
ACC	60%	51%	84%	73%	72%	72%	72%	69%	64%

SS	D t C	CWT	EMA	Rib	Rump	RBV	IMF	NFI-F	Doc
+2.3	-2.7	+96	+10.6	-3.2	-3.9	+2.8	+2.4	-0.54	-
67%	41%	66%	64%	69%	65%	65%	64%	54%	-

**Selection Indexes**

\$A	\$A-L
\$229	\$416

**Traits Observed:** GL,BWT,200WT,400WT,SC, Scan(EMA,Rib,Rump,IMF),Genomics

Notes: This Blue Bagger son is out of highly productive cow. He has an exceptional muscle pattern and very high growth figures all in a feed efficient package.

Purchaser:..... \$:.....

**Lot 18**

**KELLY ANGUS KODAK R266<sup>PV</sup>**

**GXNR266**



DOB: 16/07/2020 Registration Status:HBR

Genetic Status: AMFU,CAFU,DDFU,NHFU

RENNYLEA EDMUND E11<sup>PV</sup>  
 RENNYLEA KODAK K522<sup>SV</sup>  
 RENNYLEA EISA ERICA F810<sup>#</sup>  
 Sire: GXNP210 KELLY ANGUS KODAK P210<sup>PV</sup>  
 TOPBOS AMBASSADOR F4<sup>PV</sup>  
 LAWSONS AMBASSADOR J1246<sup>SV</sup>  
 LAWSONS PROGRESS G363<sup>#</sup>

KC HAAS GPS<sup>#</sup>  
 TEXAS MOUNT K002<sup>PV</sup>  
 TEXAS UNDINE Z183<sup>PV</sup>  
 Dam: GXNP38 KELLY ANGUS K2 P38<sup>SV</sup>  
 TE MANIA AFRICA A217<sup>PV</sup>  
 LAWSONS AFRICA H934<sup>#</sup>  
 LAWSONS PAYLOAD X951 E554<sup>#</sup>

**Mid February 2022 TransTasman Angus Cattle Evaluation**

TACE	Dir	Dtrs	GL	BW	200 W	400 W	600 W	MCW	Milk
EBV	+6.8	+2.1	-4.8	+3.0	+54	+107	+147	+130	+21
ACC	55%	49%	83%	71%	69%	69%	69%	67%	62%

SS	D t C	CWT	EMA	Rib	Rump	RBV	IMF	NFI-F	Doc
+3.2	-2.2	+73	+1.7	-2.4	-2.3	-0.2	+4.1	-0.37	-
70%	40%	65%	63%	68%	64%	65%	63%	54%	-

**Selection Indexes**

\$A	\$A-L
\$210	\$389

**Traits Observed:** GL,BWT,200WT,400WT,SC, Scan(EMA,Rib,Rump,IMF),Genomics

Notes: A calving ease sire that we used over our heifers. High growth with a great IMF.

Purchaser:..... \$:.....

## Lot 19 KELLY ANGUS TRAILBLAZER R268<sup>SV</sup> GXNR268



DOB: 15/07/2020 Registration Status: HBR Genetic Status: AMFU, CAFU, DDF, NHF  
 A A R TEN X 7008 S A<sup>SV</sup>  
 V A R DISCOVERY 2240<sup>PV</sup> YTHANBRAE HENRY VIII U8<sup>SV</sup>  
 DEER VALLEY RITA 0308<sup>#</sup> LAWSONS HENRY VIII G1097<sup>SV</sup>  
 Sire: USA18996007 FERGUSON TRAILBLAZER 239E<sup>SV</sup> Dam: VLYK1605 LAWSONS HENRY G1097 K1605<sup>#</sup>  
 LD EMBLAZON 999<sup>PV</sup> LAWSONS RIGHT DIRECTION D673<sup>#</sup>  
 MOLITOR999 BARBELLA 940-3012<sup>#</sup> LAWSONS INVINCIBLE C402<sup>PV</sup>  
 MOLITOR FA BARBELLA 389-940<sup>#</sup> LAWSONS INVINCIBLE G1849<sup>#</sup>  
 LAWSONS SCHWARZENEGGER B334<sup>#</sup>

### Mid February 2022 TransTasman Angus Cattle Evaluation

TACE	Dir	Dtrs	GL	BW	200 W	400 W	600 W	MCW	Milk
EBV	+3.8	+5.1	-5.9	+3.2	+63	+114	+139	+122	+17
ACC	53%	45%	84%	72%	68%	68%	68%	66%	62%

SS	D t C	CWT	EMA	Rib	Rump	RBV	IMF	NFI-F	Doc
+2.1	-8.5	+82	+6.6	+1.7	+2.3	-0.9	+3.8	+0.65	-
70%	36%	64%	60%	66%	62%	62%	60%	50%	-

### Selection Indexes

\$A	\$A-L
\$283	\$476

Traits Observed: GL,BWT,200WT,400WT,SC, Scan(EMA,Rib,Rump,IMF),Genomics

Notes: Our highest ranking Trailblazer son. He is the complete package from good calving ease and BW through to explosive early growth, positive fats and high IMF. This bull would suit any herd.

Purchaser: ..... \$: .....

## Lot 20 KELLY ANGUS INERTIA R303<sup>PV</sup> GXNR303



DOB: 5/08/2020 Registration Status: HBR Genetic Status: AMFU, CAFU, DDFU, NHFU  
 G A R PROGRESS<sup>SV</sup> RENNYLEA EDMUND E11<sup>PV</sup>  
 G A R MOMENTUM<sup>PV</sup> RENNYLEA KODAK K522<sup>SV</sup>  
 G A R BIG EYE 1770<sup>#</sup> RENNYLEA EISA ERICA F810<sup>#</sup>  
 Sire: USA18636043 G A R INERTIA<sup>PV</sup> Dam: GXNP52 KELLY ANGUS KODAK P52<sup>SV</sup>  
 G A R PROPHET<sup>SV</sup> TOPBOS AMBASSADOR F4<sup>PV</sup>  
 G A R PROPHET 2984<sup>#</sup> LAWSONS AMBASSADOR J1228<sup>#</sup>  
 G A R DAYBREAK 1521<sup>#</sup> LAWSONS GRADE UP F229<sup>#</sup>

### Mid February 2022 TransTasman Angus Cattle Evaluation

TACE	Dir	Dtrs	GL	BW	200 W	400 W	600 W	MCW	Milk
EBV	+2.5	+3.8	-6.0	+3.4	+56	+92	+123	+88	+20
ACC	59%	52%	84%	73%	72%	72%	72%	69%	64%

SS	D t C	CWT	EMA	Rib	Rump	RBV	IMF	NFI-F	Doc
+2.8	-4.4	+66	+8.4	+1.6	+0.9	+0.1	+3.7	+0.65	-
72%	42%	67%	66%	70%	66%	67%	66%	56%	-

### Selection Indexes

\$A	\$A-L
\$263	\$403

Traits Observed: GL,BWT,200WT,400WT,SC, Scan(EMA,Rib,Rump,IMF),Genomics

Notes: A long bodied Inertia son that has a good carcass spread.

Purchaser: ..... \$: .....

## Lot 21 KELLY ANGUS BLUE BAGGER R248<sup>SV</sup> GXNR248



DOB: 13/07/2020 Registration Status: HBR Genetic Status: AMF, CAFU, DDF, NHFU  
 TUWHARETOA REGENT D145<sup>PV</sup> AYRVALE BARTEL E7<sup>PV</sup>  
 PARINGA JUDD J5<sup>PV</sup> LAWSONS INCREDIBLE H803<sup>PV</sup>  
 STRATHEWEN BERKLEY WILPENA F30<sup>PV</sup> LAWSONS DINKY DI E447<sup>PV</sup>  
 Sire: VLYN149 LAWSONS BLUE BAGGER N149<sup>SV</sup> Dam: GXNM58 KELLY ANGUS INCREDIBLE M58<sup>#</sup>  
 G A R ANTICIPATION<sup>#</sup> YTHANBRAE HENRY VIII U8<sup>SV</sup>  
 LAWSONS ANTICIPATION L684<sup>#</sup> LAWSONS HENRY VIII H8048<sup>#</sup>  
 LAWSONS BARTEL E7 J921<sup>#</sup> LAWSONS PARAMOUNT X460<sup>#</sup>

### Mid February 2022 TransTasman Angus Cattle Evaluation

TACE	Dir	Dtrs	GL	BW	200 W	400 W	600 W	MCW	Milk
EBV	+10.9	+9.4	-5.1	+0.7	+50	+81	+108	+64	+22
ACC	59%	50%	84%	73%	70%	70%	71%	68%	62%

SS	D t C	CWT	EMA	Rib	Rump	RBV	IMF	NFI-F	Doc
+1.2	-4.1	+68	+13.6	+1.7	+1.5	+0.3	+2.2	+0.20	-
71%	39%	65%	63%	68%	64%	64%	63%	53%	-

### Selection Indexes

\$A	\$A-L
\$261	\$392

Traits Observed: GL,BWT,200WT,400WT,SC, Scan(EMA,Rib,Rump,IMF),Genomics

Notes: All the calving ease you could want and an extra low birth weight. Also boasts a fantastic carcass.

Purchaser: ..... \$: .....



**Lot 22** **KELLY ANGUS KODAK R335<sup>SV</sup>** **GXNR335**

DOB: 19/08/2020 Registration Status: HBR Genetic Status: AMFU, CAFU, DDFU, NHFU  
 RENNYLEA EDMUND E11<sup>PV</sup>  
 RENNYLEA KODAK K522<sup>SV</sup>  
 RENNYLEA EISA ERICA F810<sup>#</sup>  
 Sire: GXNP268 KELLY ANGUS KODAK P268<sup>SV</sup>  
 G A R SURE FIRE<sup>SV</sup>  
 LAWSONS SURE FIRE L1333<sup>#</sup>  
 LAWSONS BARTEL E7 J1316<sup>#</sup>  
 Dam: VLYJ1326 LAWSONS GENERAL J1326<sup>#</sup>  
 LAWSONS INVINCIBLE C402<sup>PV</sup>  
 LAWSONS INVINCIBLE G8144<sup>#</sup>  
 LAWSONS FAIR DINKUM C8193<sup>#</sup>

**Mid February 2022 TransTasman Angus Cattle Evaluation**

TACE	Dir	Dtrs	GL	BW	200 W	400 W	600 W	MCW	Milk
EBV	-8.9	-9.9	+1.4	+6.1	+6.3	+103	+133	+125	+18
ACC	54%	49%	68%	70%	69%	68%	69%	67%	63%

SS	D t C	CWT	EMA	Rib	Rump	RBV	IMF	NFI-F	Doc
+2.0	-6.2	+81	+4.7	-2.0	-2.7	+0.9	+2.2	-0.03	-
70%	39%	65%	62%	68%	64%	64%	62%	54%	-

**Selection Indexes**

\$A	\$A-L
\$200	\$332

**Traits Observed:** BWT, 200WT, 400WT, SC, Scan(EMA, Rib, Rump, IMF), Genomics

Notes: A bull that packs a huge amount of growth that would suit cows.

Purchaser: ..... \$: .....

**Lot 23** **KELLY ANGUS KODAK R367<sup>SV</sup>** **GXNR367**



DOB: 23/08/2020 Registration Status: HBR Genetic Status: AMFU, CAFU, DDFU, NHFU  
 RENNYLEA EDMUND E11<sup>PV</sup>  
 RENNYLEA KODAK K522<sup>SV</sup>  
 RENNYLEA EISA ERICA F810<sup>#</sup>  
 Sire: GXNP187 KELLY ANGUS KODAK P187<sup>SV</sup>  
 G A R PROPHET<sup>SV</sup>  
 KELLY ANGUS PROPHET M30<sup>#</sup>  
 LAWSONS BARTEL E7 J1175<sup>#</sup>  
 Dam: VLYH912 LAWSONS NOVAK H912<sup>#</sup>  
 LAWSONS IRONSTONE B1370<sup>SV</sup>  
 LAWSONS IRONSTONE E186<sup>#</sup>  
 LAWSONS NEW DESIGN U84 Y1327<sup>#</sup>

**Mid February 2022 TransTasman Angus Cattle Evaluation**

TACE	Dir	Dtrs	GL	BW	200 W	400 W	600 W	MCW	Milk
EBV	+4.2	+8.9	-5.7	+2.3	+50	+86	+110	+83	+21
ACC	53%	48%	70%	68%	67%	67%	67%	66%	61%

SS	D t C	CWT	EMA	Rib	Rump	RBV	IMF	NFI-F	Doc
+2.0	-7.4	+64	+4.1	+1.4	+0.7	-1.3	+3.6	-0.07	-
62%	39%	63%	60%	66%	62%	63%	61%	52%	-

**Selection Indexes**

\$A	\$A-L
\$239	\$384

**Traits Observed:** BWT, Genomics

Notes: Out of a robust cow, R367 is a good honest bull suitable for heifers.

Purchaser: ..... \$: .....

**Lot 24** **KELLY ANGUS KATAPAUPT R366<sup>SV</sup>** **GXNR366**



DOB: 31/08/2020 Registration Status: HBR Genetic Status: AMFU, CAFU, DDFU, NHFU  
 S A V THUNDERBIRD 9061<sup>SV</sup>  
 PRIME KATAPAUPT K1<sup>SV</sup>  
 PRIME JEDDA H81<sup>#</sup>  
 Sire: GXNP160 KELLY ANGUS KATAPAUPT P160<sup>SV</sup>  
 G A R PROPHET<sup>SV</sup>  
 KELLY ANGUS M104<sup>#</sup>  
 LAWSONS PAYLOAD X951 E824<sup>#</sup>  
 Dam: VLYK1447 LAWSONS BARTEL E7 K1447<sup>#</sup>  
 TE MANIA BARTEL B219<sup>PV</sup>  
 AYRVALE BARTEL E7<sup>PV</sup>  
 EAGLEHAWK JEDDA B32<sup>SV</sup>  
 B/R NEW DAY 454<sup>#</sup>  
 LAWSONS NEW DAY G343<sup>#</sup>  
 LAWSONS TOTAL E716<sup>#</sup>

**Mid February 2022 TransTasman Angus Cattle Evaluation**

TACE	Dir	Dtrs	GL	BW	200 W	400 W	600 W	MCW	Milk
EBV	+9.6	+4.9	-8.4	+2.1	+50	+88	+120	+85	+27
ACC	54%	50%	71%	70%	69%	69%	70%	68%	63%

SS	D t C	CWT	EMA	Rib	Rump	RBV	IMF	NFI-F	Doc
+3.4	-7.4	+69	+6.3	+1.0	+1.9	-0.3	+2.6	+0.37	-
64%	41%	65%	62%	68%	64%	65%	63%	54%	-

**Selection Indexes**

\$A	\$A-L
\$247	\$399

**Traits Observed:** BWT, Genomics

Notes: Perfect for heifer joinings backed in with a handy carcass.

Purchaser: ..... \$: .....

- Top 1%
- Top 5%
- Top 10%
- Top 25%



**LOT 18**  
KELLY ANGUS KODAK R266PV



**LOT 20**  
KELLY ANGUS INERTIA R303PV



**LOT 21**  
KELLY ANGUS BLUE BAGGER R248sv



**LOT 22**  
KELLY ANGUS KODAK R335sv



**LOT 23**  
KELLY ANGUS KODAK R367sv



**LOT 25**  
KELLY ANGUS KODAK R354PV

**Lot 25** **KELLY ANGUS KODAK R354<sup>PV</sup>** **GXNR354**

DOB: 30/08/2020 Registration Status: HBR Genetic Status: AMFU,CAFU,DDF,NHFU  
 RENNYLEA EDMUND E11<sup>PV</sup> S A V THUNDERBIRD 9061<sup>SV</sup>  
 RENNYLEA KODAK K522<sup>SV</sup> PRIME KATAPALT K1<sup>SV</sup>  
 RENNYLEA EISA ERICA F810<sup>#</sup> PRIME JEDDA H81<sup>#</sup>  
 Sire: GXNP268 KELLY ANGUS KODAK P268<sup>SV</sup> Dam: GXNN67 KELLY ANGUS KATAPALT N67<sup>SV</sup>  
 G A R SURE FIRE<sup>SV</sup> DUNOON EVIDENT E614<sup>PV</sup>  
 LAWSONS SURE FIRE L1333<sup>#</sup> LAWSONS EVIDENT H807<sup>#</sup>  
 LAWSONS BARTEL E7 J1316<sup>#</sup> LAWSONS PAYLOAD X951 E805<sup>#</sup>

**Mid February 2022 TransTasman Angus Cattle Evaluation**

TACE	Dir	Dtrs	GL	BW	200 W	400 W	600 W	MCW	Milk
EBV	+1.9	-2.6	-2.5	+3.9	+58	+106	+140	+110	+20
ACC	53%	48%	69%	71%	69%	69%	69%	68%	61%

SS	D t C	CWT	EMA	Rib	Rump	RBV	IMF	NFI-F	Doc
+3.1	-4.9	+75	+10.2	-1.0	-2.1	+1.7	+3.0	+0.62	-
70%	38%	64%	62%	68%	64%	64%	62%	53%	-

**Selection Indexes**

\$A	\$A-L
\$253	\$410

*Traits Observed:* 200WT,400WT,SC, Scan(EMA,Rib,Rump,IMF),Genomics

Notes: If your looking for growth and carcase this bull will do that easily.

Purchaser: ..... \$: .....

**Lot 26** **KELLY ANGUS KATAPALT R291<sup>PV</sup>** **GXNR291**



DOB: 1/08/2020 Registration Status: HBR Genetic Status: AMFU,CAFU,DDC,NHFU  
 S A V THUNDERBIRD 9061<sup>SV</sup> SYDGEN C C & 7<sup>#</sup>  
 PRIME KATAPALT K1<sup>SV</sup> T C A VISIONARY 158<sup>SV</sup>  
 PRIME JEDDA H81<sup>#</sup> T C A TREASURE 0699 601<sup>#</sup>  
 Sire: GXNP225 KELLY ANGUS KATAPALT P225<sup>SV</sup> Dam: GXNN79 KELLY ANGUS VISIONARY N79<sup>SV</sup>  
 G A R SELECTIVE<sup>#</sup> LAWSONS INVINCIBLE C402<sup>PV</sup>  
 LAWSONS SELECTIVE F8392<sup>#</sup> LAWSONS INVINCIBLE G295<sup>#</sup>  
 LAWSONS GAR PINNACLE Y576<sup>#</sup> LAWSONS DINKY DI E327<sup>#</sup>

**Mid February 2022 TransTasman Angus Cattle Evaluation**

TACE	Dir	Dtrs	GL	BW	200 W	400 W	600 W	MCW	Milk
EBV	+9.7	+4.2	-6.5	+0.8	+48	+83	+107	+77	+15
ACC	53%	47%	70%	70%	69%	68%	69%	67%	61%

SS	D t C	CWT	EMA	Rib	Rump	RBV	IMF	NFI-F	Doc
+1.3	-3.9	+56	+7.1	-0.5	-1.0	+1.0	+2.4	+0.19	-
70%	37%	64%	61%	67%	63%	63%	61%	51%	-

**Selection Indexes**

\$A	\$A-L
\$236	\$368

*Traits Observed:* BWT,200WT,400WT,SC, Scan(EMA,Rib,Rump,IMF),Genomics

Notes: Amazing calving ease and extreme low birth bull in a moderate package.

Purchaser: ..... \$: .....

**Lot 27** **KELLY ANGUS KODAK R360<sup>SV</sup>** **GXNR360**



DOB: 7/08/2020 Registration Status: HBR Genetic Status: AMFU,CAFU,DDFU,NHFU  
 RENNYLEA EDMUND E11<sup>PV</sup> TE MANIA BARTEL B219<sup>PV</sup>  
 RENNYLEA KODAK K522<sup>SV</sup> AYRVALE BARTEL E7<sup>PV</sup>  
 RENNYLEA EISA ERICA F810<sup>#</sup> EAGLEHAWK JEDDA B32<sup>SV</sup>  
 Sire: GXNP187 KELLY ANGUS KODAK P187<sup>SV</sup> Dam: VLYK1510 LAWSONS BARTEL E7 K1510<sup>#</sup>  
 G A R PROPHET<sup>SV</sup> LAWSONS NOVAK E313<sup>SV</sup>  
 KELLY ANGUS PROPHET M30<sup>#</sup> LAWSONS NOVAK H8152<sup>#</sup>  
 LAWSONS BARTEL E7 J1175<sup>#</sup> LAWSONS GAR PINNACLE Z9<sup>#</sup>

**Mid February 2022 TransTasman Angus Cattle Evaluation**

TACE	Dir	Dtrs	GL	BW	200 W	400 W	600 W	MCW	Milk
EBV	+2.5	+8.7	-1.3	+3.6	+48	+84	+107	+92	+22
ACC	54%	50%	70%	69%	67%	67%	68%	67%	62%

SS	D t C	CWT	EMA	Rib	Rump	RBV	IMF	NFI-F	Doc
+2.9	-8.6	+58	+6.2	+1.6	+1.6	-0.4	+2.9	+0.32	-
63%	41%	64%	61%	67%	63%	64%	62%	54%	-

**Selection Indexes**

\$A	\$A-L
\$218	\$368

*Traits Observed:* BWT,400WT,SC, Scan(EMA,Rib,Rump,IMF),Genomics

Notes: A deep bodied bull with a moderate frame. A great all round option.

Purchaser: ..... \$: .....

- Top 1%
- Top 5%
- Top 10%
- Top 25%



## Lot 28 KELLY ANGUS FULL POWER R312<sup>PV</sup> GXNR312

DOB: 8/08/2020 Registration Status: HBR Genetic Status: AMF,CAFU,DDFU,NHFU  
 PA POWER TOOL 9108<sup>SV</sup> MATAURI REALITY 839#  
 PA FULL POWER 1208<sup>PV</sup> MILWILLAH KRAKATOA K92<sup>PV</sup>  
 PINE VIEW SQR RITA W091# MILWILLAH BARUNAH H224#  
 Sire: GXNP207 KELLY ANGUS FULL POWER P207<sup>SV</sup> Dam: GXNN55 KELLY ANGUS KRAKATOA N55<sup>SV</sup>  
 TOPBOS AMBASSADOR F4<sup>PV</sup> LAWSONS NOVAK E313<sup>SV</sup>  
 LAWSONS AMBASSADOR J1258# LAWSONS NOVAK J1133#  
 LAWSONS TANK B1155 G229# LAWSONS EQUATOR E237#

### Mid February 2022 TransTasman Angus Cattle Evaluation

TACE	Dir	Dtrs	GL	BW	200 W	400 W	600 W	MCW	Milk
EBV	-3.9	+1.9	-5.1	+4.8	+51	+88	+114	+108	+16
ACC	54%	48%	71%	71%	69%	68%	69%	68%	62%

SS	D t C	CWT	EMA	Rib	Rump	RBV	IMF	NFI-F	Doc
+2.7	-3.0	+71	+15.0	-0.5	-0.7	+2.0	+3.0	+0.54	-
70%	39%	64%	62%	67%	64%	64%	62%	53%	-

### Selection Indexes

\$A	\$A-L
\$201	\$335

Traits Observed: BWT,200WT,400WT,SC, Scan(EMA,Rib,Rump,IMF),Genomics

Notes: This bull would be more suited to cows but what an amazing carcass he has. If your looking to lift your carcass traits this is the bull.

Purchaser: ..... \$: .....

## Lot 29 KELLY ANGUS KODAK R293<sup>PV</sup> GXNR293



DOB: 2/08/2020 Registration Status: APR Genetic Status: AMF,CAFU,DDC,NHFU  
 RENNYLEA EDMUND E11<sup>PV</sup> AYRVALE BARTEL E7<sup>PV</sup>  
 RENNYLEA KODAK K522<sup>SV</sup> AYRVALE HERCULES H9<sup>PV</sup>  
 RENNYLEA EISA ERICA F810# LAWSONS INVINCIBLE F338<sup>SV</sup>  
 Sire: GXNP210 KELLY ANGUS KODAK P210<sup>PV</sup> Dam: GXNP113 KELLY ANGUS HERCULES P113<sup>SV</sup>  
 TOPBOS AMBASSADOR F4<sup>PV</sup> YTHANBRAE HENRY VIII U8<sup>SV</sup>  
 LAWSONS AMBASSADOR J1246<sup>SV</sup> LAWSONS HENRY VIII H8072#  
 LAWSONS PROGRESS G363# LAWSONS EQUATOR E8124#

### Mid February 2022 TransTasman Angus Cattle Evaluation

TACE	Dir	Dtrs	GL	BW	200 W	400 W	600 W	MCW	Milk
EBV	+7.6	+7.2	-5.9	+0.5	+49	+94	+128	+107	+24
ACC	56%	51%	84%	71%	70%	70%	70%	68%	63%

SS	D t C	CWT	EMA	Rib	Rump	RBV	IMF	NFI-F	Doc
+4.5	-5.9	+72	+5.5	+0.7	-0.3	+0.2	+3.2	+0.13	-
71%	41%	66%	64%	69%	65%	66%	64%	55%	-

### Selection Indexes

\$A	\$A-L
\$227	\$399

Traits Observed: GL,BWT,200WT,400WT,SC, Scan(EMA,Rib,Rump,IMF),Genomics

Notes: Yet another genuine heifer bull that also has handy growth and a good carcass.

Purchaser: ..... \$: .....

## Lot 30 KELLY ANGUS KATAPALU R300<sup>SV</sup> GXNR300



DOB: 5/08/2020 Registration Status: HBR Genetic Status: AMFU,CAFU,DDF,NHFU  
 S A V THUNDERBIRD 9061<sup>SV</sup> MCC DAYBREAK#  
 PRIME KATAPALU K1<sup>SV</sup> G A R ANTICIPATION#  
 PRIME JEDDA H81# G A R 5050 NEW DESIGN 0530#  
 Sire: GXNP225 KELLY ANGUS KATAPALU P225<sup>SV</sup> Dam: VLYL1168 LAWSONS ANTICIPATION L1168#  
 G A R SELECTIVE# DUNOON EVIDENT E614<sup>PV</sup>  
 LAWSONS SELECTIVE F8392# LAWSONS EVIDENT H862#  
 LAWSONS GAR PINNACLE Y576# LAWSONS SCHWARZENEGGER C890#

### Mid February 2022 TransTasman Angus Cattle Evaluation

TACE	Dir	Dtrs	GL	BW	200 W	400 W	600 W	MCW	Milk
EBV	+7.6	+1.9	-8.9	+1.9	+55	+99	+129	+125	+14
ACC	53%	46%	70%	69%	67%	67%	68%	66%	61%

SS	D t C	CWT	EMA	Rib	Rump	RBV	IMF	NFI-F	Doc
+2.9	-7.6	+68	+9.0	+2.1	+1.7	+0.3	+2.9	+0.72	-
70%	36%	63%	60%	65%	62%	62%	60%	50%	-

### Selection Indexes

\$A	\$A-L
\$245	\$434

Traits Observed: BWT,200WT,400WT,SC, Scan(EMA,Rib,Rump,IMF),Genomics

Notes: A really complete bull, plenty of body on a sound structure. Calving ease, low birth weight, good growth, high EMA and positive fats top this fella off.

Purchaser: ..... \$: .....

**Lot 31**

**KELLY ANGUS KODAK R277<sup>PV</sup>**

**GXNR277**

DOB: 17/07/2020 Registration Status: **APR**

Genetic Status: **AMFU,CAFU,DDFU,NHFU**

RENNYLEA EDMUND E11<sup>PV</sup>  
 RENNYLEA KODAK K522<sup>SV</sup>  
 RENNYLEA EISA ERICA F810<sup>#</sup>  
 Sire: GXNP210 KELLY ANGUS KODAK P210<sup>PV</sup>  
 TOPBOS AMBASSADOR F4<sup>PV</sup>  
 LAWSONS AMBASSADOR J1246<sup>SV</sup>  
 LAWSONS PROGRESS G363<sup>#</sup>

G A R MOMENTUM<sup>PV</sup>  
 G A R METHOD<sup>SV</sup>  
 G A R DAYBREAK 1332<sup>#</sup>  
 Dam: GXNN49 KELLY ANGUS METHOD N49<sup>SV</sup>  
 AYRVALE BARTEL E7<sup>PV</sup>  
 LAWSONS BARTEL E7 K1571<sup>#</sup>  
 LAWSONS TANK E192<sup>#</sup>

**Mid February 2022 TransTasman Angus Cattle Evaluation**

TACE	Dir	Dtrs	GL	BW	200 W	400 W	600 W	MCW	Milk
<b>EBV</b>	<b>+1.6</b>	<b>-0.7</b>	<b>-1.3</b>	<b>+4.3</b>	<b>+64</b>	<b>+106</b>	<b>+140</b>	<b>+120</b>	<b>+14</b>
ACC	55%	49%	84%	72%	70%	70%	70%	69%	62%

**Selection Indexes**

\$A	\$A-L
\$260	\$423

SS	D t C	CWT	EMA	Rib	Rump	RBV	IMF	NFI-F	Doc
<b>+3.6</b>	<b>-3.3</b>	<b>+84</b>	<b>+11.3</b>	<b>-0.3</b>	<b>-2.4</b>	<b>+1.6</b>	<b>+3.6</b>	<b>-0.14</b>	-
70%	39%	66%	63%	69%	65%	65%	63%	54%	-

**Traits Observed:** GL,BWT,200WT,400WT,SC, Scan(EMA,Rib,Rump,IMF),Genomics

**Notes:** A deep bodied P210 son that has picked up some growth from his dams side. A good combination of Kodak, E7 and Method. High growth, EMA and IMF in a feed efficient package.

Purchaser:..... \$:.....

**Lot 32**

**KELLY ANGUS KATAPALT R333<sup>SV</sup>**

**GXNR333**



DOB: 17/08/2020 Registration Status: **HBR**

Genetic Status: **AMF,CAFU,DDC,NHFU**

S A V THUNDERBIRD 9061<sup>SV</sup>  
 PRIME KATAPALT K1<sup>SV</sup>  
 PRIME JEDDA H81<sup>#</sup>  
 Sire: GXNP225 KELLY ANGUS KATAPALT P225<sup>SV</sup>  
 G A R SELECTIVE<sup>#</sup>  
 LAWSONS SELECTIVE F8392<sup>#</sup>  
 LAWSONS GAR PINNACLE Y576<sup>#</sup>

G A R SOLUTION<sup>SV</sup>  
 LAWSONS INVINCIBLE C402<sup>PV</sup>  
 LAWSONS PREDESTINED A598<sup>#</sup>  
 Dam: VLYG8287 LAWSONS INVINCIBLE G8287<sup>#</sup>  
 YTHANBRAE HENRY VIII U8<sup>SV</sup>  
 LAWSONS HENRY VIII D8267<sup>#</sup>  
 LAWSONS PARAMOUNT W426<sup>#</sup>

**Mid February 2022 TransTasman Angus Cattle Evaluation**

TACE	Dir	Dtrs	GL	BW	200 W	400 W	600 W	MCW	Milk
<b>EBV</b>	<b>+8.0</b>	<b>-0.9</b>	<b>-5.3</b>	<b>+1.1</b>	<b>+45</b>	<b>+73</b>	<b>+98</b>	<b>+70</b>	<b>+16</b>
ACC	53%	48%	68%	69%	67%	67%	68%	66%	61%

**Selection Indexes**

\$A	\$A-L
\$218	\$340

SS	D t C	CWT	EMA	Rib	Rump	RBV	IMF	NFI-F	Doc
<b>+2.7</b>	<b>-6.3</b>	<b>+60</b>	<b>+6.4</b>	<b>+2.3</b>	<b>+1.5</b>	<b>-0.3</b>	<b>+2.1</b>	<b>+0.65</b>	-
69%	38%	63%	60%	65%	62%	62%	60%	51%	-

**Traits Observed:** BWT,200WT,400WT,SC, Scan(EMA,Rib,Rump,IMF),Genomics

**Notes:** Plenty of length in this bull, he will mature out to a large frame.

Purchaser:..... \$:.....

**Lot 33**

**KELLY ANGUS KODAK R278<sup>SV</sup>**

**GXNR278**



DOB: 16/07/2020 Registration Status: **HBR**

Genetic Status: **AMFU,CAFU,DDFU,NHFU**

RENNYLEA EDMUND E11<sup>PV</sup>  
 RENNYLEA KODAK K522<sup>SV</sup>  
 RENNYLEA EISA ERICA F810<sup>#</sup>  
 Sire: GXNP210 KELLY ANGUS KODAK P210<sup>PV</sup>  
 TOPBOS AMBASSADOR F4<sup>PV</sup>  
 LAWSONS AMBASSADOR J1246<sup>SV</sup>  
 LAWSONS PROGRESS G363<sup>#</sup>

TE MANIA AFRICA A217<sup>PV</sup>  
 LAWSONS KI AFRICA J6041<sup>PV</sup>  
 LANDFALL ANGUISH E50<sup>SV</sup>  
 Dam: GXNN128 KELLY ANGUS KI J6041 N128<sup>#</sup>  
 LAWSONS INVINCIBLE C402<sup>PV</sup>  
 LAWSONS INVINCIBLE G8144<sup>#</sup>  
 LAWSONS FAIR DINKUM C8193<sup>#</sup>

**Mid February 2022 TransTasman Angus Cattle Evaluation**

TACE	Dir	Dtrs	GL	BW	200 W	400 W	600 W	MCW	Milk
<b>EBV</b>	<b>+4.9</b>	<b>+4.2</b>	<b>-2.0</b>	<b>+1.7</b>	<b>+46</b>	<b>+88</b>	<b>+122</b>	<b>+110</b>	<b>+20</b>
ACC	53%	46%	83%	71%	67%	67%	67%	66%	59%

**Selection Indexes**

\$A	\$A-L
\$203	\$357

SS	D t C	CWT	EMA	Rib	Rump	RBV	IMF	NFI-F	Doc
<b>+3.2</b>	<b>-3.5</b>	<b>+72</b>	<b>+5.4</b>	<b>-2.8</b>	<b>-3.9</b>	<b>+0.8</b>	<b>+4.5</b>	<b>+0.06</b>	-
68%	36%	62%	60%	65%	62%	62%	60%	51%	-

**Traits Observed:** GL,BWT,200WT,400WT,SC, Scan(EMA,Rib,Rump,IMF),Genomics

**Notes:** Another P210 high IMF son, good calving ease and low birth weight.

Purchaser:..... \$:.....

- Top 1%
- Top 5%
- Top 10%
- Top 25%

## Lot 34 KELLY ANGUS KODAK R368<sup>SV</sup> GXNR368

DOB: 23/08/2020 Registration Status: HBR Genetic Status: AMFU, CAFU, DDF, NHFU  
 RENNYLEA EDMUND E11<sup>PV</sup> TE MANIA ULONG U41<sup>SV</sup>  
 RENNYLEA KODAK K522<sup>SV</sup> TE MANIA AFRICA A217<sup>PV</sup>  
 RENNYLEA EISA ERICA F810<sup>#</sup> TE MANIA JEDDA Y32<sup>SV</sup>  
 Sire: GXNP187 KELLY ANGUS KODAK P187<sup>SV</sup> Dam: VLYH934 LAWSONS AFRICA H934<sup>#</sup>  
 G A R PROPHET<sup>SV</sup> LAWSONS PAYLOAD X951<sup>#</sup>  
 KELLY ANGUS PROPHET M30<sup>#</sup> LAWSONS PAYLOAD X951 E554<sup>#</sup>  
 LAWSONS BARTEL E7 J1175<sup>#</sup> LAWSONS INTEGRITY A1372<sup>#</sup>

### Mid February 2022 TransTasman Angus Cattle Evaluation

TACE	Dir	Dtrs	GL	BW	200 W	400 W	600 W	MCW	Milk
EBV	+1.9	+6.2	-6.2	+5.0	+46	+81	+106	+83	+20
ACC	54%	49%	70%	69%	67%	67%	68%	66%	61%

SS	D t C	CWT	EMA	Rib	Rump	RBY	IMF	NFI-F	Doc
+3.4	-5.5	+51	+9.0	-2.3	-2.7	+2.0	+2.8	+0.16	-
63%	41%	64%	61%	66%	63%	64%	61%	53%	-

### Selection Indexes

\$A	\$A-L
\$208	\$336

Traits Observed: BWT, Genomics

Notes: Out of a cow with a huge capacity this bull will breed plenty of body into your calves.

Purchaser: ..... \$: .....

## Lot 35 KELLY ANGUS KODAK R279<sup>SV</sup> GXNR279



DOB: 17/07/2020 Registration Status: APR Genetic Status: AMFU, CAFU, DDF, NHFU  
 RENNYLEA EDMUND E11<sup>PV</sup> CONNEALY FORWARD<sup>#</sup>  
 RENNYLEA KODAK K522<sup>SV</sup> STERITA PARK BLACK JACK J231<sup>PV</sup>  
 RENNYLEA EISA ERICA F810<sup>#</sup> SYDGEN FOREVER LADY 4413<sup>#</sup>  
 Sire: GXNP210 KELLY ANGUS KODAK P210<sup>PV</sup> Dam: GXNM51 KELLY ANGUS BLACK JACK M51<sup>#</sup>  
 TOPBOS AMBASSADOR F4<sup>PV</sup> STORTH OAKS D21 AB<sup>SV</sup>  
 LAWSONS AMBASSADOR J1246<sup>SV</sup> LAWSONS STORTH OAKS H936<sup>#</sup>  
 LAWSONS PROGRESS G363<sup>#</sup> LAWSONS GRADE UP E256<sup>#</sup>

### Mid February 2022 TransTasman Angus Cattle Evaluation

TACE	Dir	Dtrs	GL	BW	200 W	400 W	600 W	MCW	Milk
EBV	+5.3	+2.5	-2.3	+2.5	+51	+95	+127	+118	+20
ACC	53%	47%	84%	71%	68%	68%	68%	67%	60%

SS	D t C	CWT	EMA	Rib	Rump	RBY	IMF	NFI-F	Doc
+4.0	-3.8	+77	+7.0	-0.6	-1.9	+1.4	+3.4	-0.01	-
69%	37%	63%	61%	67%	63%	63%	61%	52%	-

### Selection Indexes

\$A	\$A-L
\$213	\$378

Traits Observed: GL, BWT, 200WT, 400WT, SC, Scan(EMA, Rib, Rump, IMF), Genomics

Notes: A larger framed P210 son suitable for heifers.

Purchaser: ..... \$: .....

## Lot 36 KELLY ANGUS KATAPALT R301<sup>SV</sup> GXNR301



DOB: 4/08/2020 Registration Status: HBR Genetic Status: AMFU, CAFU, DDF, NHFU  
 S A V THUNDERBIRD 9061<sup>SV</sup> G A R SOLUTION<sup>SV</sup>  
 PRIME KATAPALT K1<sup>SV</sup> LAWSONS INVINCIBLE C402<sup>PV</sup>  
 PRIME JEDDA H81<sup>#</sup> LAWSONS PREDESTINED A598<sup>#</sup>  
 Sire: GXNP225 KELLY ANGUS KATAPALT P225<sup>SV</sup> Dam: VLYG406 LAWSONS INVINCIBLE G406<sup>#</sup>  
 G A R SELECTIVE<sup>#</sup> WILSON DOWNS EQUATOR V191<sup>SV</sup>  
 LAWSONS SELECTIVE F8392<sup>#</sup> LAWSONS EQUATOR E751<sup>SV</sup>  
 LAWSONS GAR PINNACLE Y576<sup>#</sup> LAWSONS FAIR DINKUM C1141<sup>#</sup>

### Mid February 2022 TransTasman Angus Cattle Evaluation

TACE	Dir	Dtrs	GL	BW	200 W	400 W	600 W	MCW	Milk
EBV	+10.6	+7.6	-8.6	-0.2	+44	+79	+102	+71	+20
ACC	54%	49%	71%	70%	69%	69%	70%	68%	63%

SS	D t C	CWT	EMA	Rib	Rump	RBY	IMF	NFI-F	Doc
+1.6	-5.7	+60	+4.3	+2.2	+1.6	-0.8	+2.3	+0.50	-
66%	39%	65%	62%	67%	64%	64%	62%	53%	-

### Selection Indexes

\$A	\$A-L
\$223	\$358

Traits Observed: BWT, 200WT, Genomics

Notes: A Katapult grandson that carries through the calving ease, low BW and positive fats from his sire.

Purchaser: ..... \$: .....



**Lot 37**

**KELLY ANGUS TRAILBLAZER R284<sup>SV</sup>**

**GXNR284**



DOB: 31/07/2020 Registration Status: APR

Genetic Status: AMFU, CAFU, DDF, NHFU

A A R TEN X 7008 S A<sup>SV</sup>  
 V A R DISCOVERY 2240<sup>PV</sup>  
 DEER VALLEY RITA 0308<sup>#</sup>  
 Sire: USA18996007 FERGUSON TRAILBLAZER 239E<sup>SV</sup>  
 LD EMBLAZON 999<sup>PV</sup>  
 MOLITOR999 BARBELLA 940-3012<sup>#</sup>  
 MOLITOR FA BARBELLA 389-940<sup>#</sup>

TE MANIA BARTEL B219<sup>PV</sup>  
 AYRVALE BARTEL E7<sup>PV</sup>  
 EAGLEHAWK JEDDA B32<sup>SV</sup>  
 Dam: VLYJ1313 LAWSONS BARTEL E7 J1313<sup>#</sup>  
 LAWSONS TANK B1155<sup>PV</sup>  
 LAWSONS TANK B1155 G8053<sup>#</sup>  
 LAWSONS PREDESTINED E8380<sup>#</sup>

**Mid February 2022 TransTasman Angus Cattle Evaluation**

TACE	Dir	Dtrs	GL	BW	200 W	400 W	600 W	MCW	Milk
EBV	+8.6	+8.6	-9.0	+0.1	+47	+91	+113	+91	+17
ACC	55%	50%	83%	71%	69%	68%	69%	67%	62%

SS	D t C	CWT	EMA	Rib	Rump	RBV	IMF	NFI-F	Doc
+2.9	-7.7	+60	+5.1	+0.8	+0.6	-0.7	+4.4	+0.71	-
70%	41%	65%	62%	67%	63%	64%	62%	53%	-

**Selection Indexes**

\$A	\$A-L
\$253	\$420

**Traits Observed:** GL,BWT,200WT,400WT,SC, Scan(EMA,Rib,Rump,IMF),Genomics

**Notes:** An genuine heifer bull that would also be suited to cows. He has a fantastic carcass and sits in the top 2% for IMF.

Purchaser: ..... \$: .....

**Lot 38**

**KELLY ANGUS KODAK R329<sup>SV</sup>**

**GXNR329**

DOB: 15/08/2020 Registration Status: HBR

Genetic Status: AMF, CAFU, DDFU, NHF

RENNYLEA EDMUND E11<sup>PV</sup>  
 RENNYLEA KODAK K522<sup>SV</sup>  
 RENNYLEA EISA ERICA F810<sup>#</sup>  
 Sire: GXNP268 KELLY ANGUS KODAK P268<sup>SV</sup>  
 G A R SURE FIRE<sup>SV</sup>  
 LAWSONS SURE FIRE L1333<sup>#</sup>  
 LAWSONS BARTEL E7 J1316<sup>#</sup>

TE MANIA BARTEL B219<sup>PV</sup>  
 AYRVALE BARTEL E7<sup>PV</sup>  
 EAGLEHAWK JEDDA B32<sup>SV</sup>  
 Dam: VLYH869 LAWSONS BARTEL E7 H869<sup>#</sup>  
 TEHAMA SCHWARZENEGGER N600<sup>#</sup>  
 LAWSONS SCHWARZENEGGER C1110<sup>#</sup>  
 LAWSONS GAR NEW DESIGN 1407 A990<sup>#</sup>

**Mid February 2022 TransTasman Angus Cattle Evaluation**

TACE	Dir	Dtrs	GL	BW	200 W	400 W	600 W	MCW	Milk
EBV	+3.4	+4.1	-3.4	+4.0	+54	+94	+125	+103	+23
ACC	56%	51%	70%	71%	70%	69%	70%	69%	64%

SS	D t C	CWT	EMA	Rib	Rump	RBV	IMF	NFI-F	Doc
+5.0	-6.8	+70	+12.9	-2.1	-1.6	+2.6	+2.9	+0.52	-
70%	42%	66%	63%	68%	65%	66%	63%	55%	-

**Selection Indexes**

\$A	\$A-L
\$253	\$412

**Traits Observed:** BWT,200WT,400WT,SC, Scan(EMA,Rib,Rump,IMF),Genomics

**Notes:** A bull not to overlook. Sired by P268 who we used as a yearling (6/8 sons born have made the sale group) and out of a cow who has bred extremely well, R329 is a versatile bull well worth a second look.

Purchaser: ..... \$: .....

**Lot 39**

**KELLY ANGUS JACKPOT R363<sup>SV</sup>**

**GXNR363**



DOB: 23/09/2020 Registration Status: HBR

Genetic Status: AMF, CAFU, DDF, NHFU

ARDROSSAN EQUATOR A241<sup>PV</sup>  
 BOWMONT JACKPOT J310<sup>PV</sup>  
 ARDROSSAN WILCOOLA Z31<sup>PV</sup>  
 Sire: NHZM584 HAZELDEAN M584<sup>PV</sup>  
 TE MANIA BERKLEY B1<sup>PV</sup>  
 HAZELDEAN G38<sup>PV</sup>  
 HAZELDEAN A90<sup>SV</sup>

LAWSONS TANK X1235<sup>#</sup>  
 LAWSONS TANK B1155<sup>PV</sup>  
 LAWSONS NEW DESIGN 1407 Z1393<sup>SV</sup>  
 Dam: VLYG1783 LAWSONS TANK B1155 G1783<sup>#</sup>  
 LAWSONS PAYLOAD X951<sup>#</sup>  
 LAWSONS PAYLOAD X951 E1616<sup>#</sup>  
 LAWSONS INTEGRITY B303<sup>#</sup>

**Mid February 2022 TransTasman Angus Cattle Evaluation**

TACE	Dir	Dtrs	GL	BW	200 W	400 W	600 W	MCW	Milk
EBV	+1.7	+6.7	-5.9	+2.4	+54	+101	+125	+122	+16
ACC	55%	49%	69%	72%	70%	69%	70%	68%	63%

SS	D t C	CWT	EMA	Rib	Rump	RBV	IMF	NFI-F	Doc
+1.3	-6.0	+73	+4.0	-0.1	+0.2	-0.1	+2.1	-0.16	-
65%	41%	65%	62%	67%	64%	64%	62%	53%	-

**Selection Indexes**

\$A	\$A-L
\$210	\$382

**Traits Observed:** BWT,400WT,SC, Scan(EMA,Rib,Rump,IMF),Genomics

**Notes:** Jackpot has certainly bred well for us and if your wanting a moderate birth and to add growth this fella will do that.

Purchaser: ..... \$: .....

Top 1%    Top 5%    Top 10%    Top 25%

## Lot 40

## KELLY ANGUS KODAK R361<sup>SV</sup>

## GXNR361

DOB: 23/09/2020

Registration Status: HBR

Genetic Status: AMFU, CAFU, DDF, NHFU

RENNYLEA EDMUND E11<sup>PV</sup>  
 RENNYLEA KODAK K522<sup>SV</sup>  
 RENNYLEA EISA ERICA F810<sup>#</sup>  
 Sire: GXNP171 KELLY ANGUS KODAK P171<sup>SV</sup>  
 AYRVALE HERCULES H9<sup>PV</sup>  
 KELLY ANGUS HERCULES M32<sup>#</sup>  
 LAWSONS REGENT J1178<sup>#</sup>

TC TOTAL 410<sup>#</sup>  
 LAWSONS NOVAK E313<sup>SV</sup>  
 LAWSONS PREDESTINED B770<sup>SV</sup>  
 Dam: VLYK1532 LAWSONS NOVAK K1532<sup>#</sup>  
 LAWSONS TANK B1155<sup>PV</sup>  
 LAWSONS TANK B1155 H8021<sup>#</sup>  
 LAWSONS HIGH GRADE C8431<sup>#</sup>

### Mid February 2022 TransTasman Angus Cattle Evaluation

TACE	Dir	Dtrs	GL	BW	200 W	400 W	600 W	MCW	Milk
EBV	+1.1	+6.0	-3.3	+3.3	+62	+109	+144	+131	+25
ACC	54%	49%	70%	69%	67%	67%	68%	67%	61%

SS	D t C	CWT	EMA	Rib	Rump	RBV	IMF	NFI-F	Doc
+4.2	-7.1	+90	+7.9	-1.0	-3.2	+0.9	+3.8	-0.06	-
63%	39%	64%	61%	67%	63%	64%	61%	54%	-

### Selection Indexes

\$A	\$A-L
\$251	\$436

Traits Observed: BWT, 400WT, SC, Scan(EMA, Rib, Rump, IMF), Genomics

Notes: A larger framed bull out of one of the heaviest cows in the herd. Highly fertile, high growth and a high IMF makes him suitable for many applications.

Purchaser: ..... \$: .....

## Lot 41

## KELLY ANGUS KODAK R358<sup>PV</sup>

## GXNR358

DOB: 1/09/2020

Registration Status: HBR

Genetic Status: AMFU, CAFU, DDFU, NHF

RENNYLEA EDMUND E11<sup>PV</sup>  
 RENNYLEA KODAK K522<sup>SV</sup>  
 RENNYLEA EISA ERICA F810<sup>#</sup>  
 Sire: GXNP171 KELLY ANGUS KODAK P171<sup>SV</sup>  
 AYRVALE HERCULES H9<sup>PV</sup>  
 KELLY ANGUS HERCULES M32<sup>#</sup>  
 LAWSONS REGENT J1178<sup>#</sup>

MCC DAYBREAK<sup>#</sup>  
 G A R SUNRISE<sup>SV</sup>  
 G A R OBJECTIVE R227<sup>#</sup>  
 Dam: GXNN42 KELLY ANGUS SUNRISE N42<sup>SV</sup>  
 AYRVALE BARTEL E7<sup>PV</sup>  
 LAWSONS BARTEL E7 K1510<sup>#</sup>  
 LAWSONS NOVAK H8152<sup>#</sup>

### Mid February 2022 TransTasman Angus Cattle Evaluation

TACE	Dir	Dtrs	GL	BW	200 W	400 W	600 W	MCW	Milk
EBV	+2.4	+5.6	+1.1	+4.1	+62	+111	+146	+126	+21
ACC	52%	47%	69%	68%	66%	66%	67%	66%	59%

SS	D t C	CWT	EMA	Rib	Rump	RBV	IMF	NFI-F	Doc
+3.0	-5.7	+84	+6.2	-1.7	-2.4	+1.0	+3.9	+0.07	-
68%	37%	62%	59%	65%	61%	62%	60%	51%	-

### Selection Indexes

\$A	\$A-L
\$263	\$444

Traits Observed: 200WT, 400WT, SC, Scan(EMA, Rib, Rump, IMF), Genomics

Notes: A Kodak grandson, this bull has plenty of IMF and growth. He will mature out to a large frame.

Purchaser: ..... \$: .....

## Lot 42

## KELLY ANGUS JACKPOT R336<sup>SV</sup>

## GXNR336

DOB: 20/08/2020

Registration Status: HBR

Genetic Status: AMFU, CAFU, DDF, NHF

ARDROSSAN EQUATOR A241<sup>PV</sup>  
 BOWMONT JACKPOT J310<sup>PV</sup>  
 ARDROSSAN WILCOOLA Z31<sup>PV</sup>  
 Sire: NHZM584 HAZELDEAN M584<sup>PV</sup>  
 TE MANIA BERKLEY B1<sup>PV</sup>  
 HAZELDEAN G38<sup>PV</sup>  
 HAZELDEAN A90<sup>SV</sup>

BON VIEW NEW DESIGN 1407<sup>#</sup>  
 LAWSONS DINKY-DI Z191<sup>SV</sup>  
 G A R PRECISION 1900<sup>#</sup>  
 Dam: VLYE1150 LAWSONS DINKY DI E1150<sup>#</sup>  
 G A R RETAIL PRODUCT<sup>#</sup>  
 LAWSONS RETAIL PRODUCT C696<sup>#</sup>  
 LAWSONS GAR HENRY VIII Z560<sup>PV</sup>

### Mid February 2022 TransTasman Angus Cattle Evaluation

TACE	Dir	Dtrs	GL	BW	200 W	400 W	600 W	MCW	Milk
EBV	+1.1	+8.5	-3.4	+5.1	+56	+92	+131	+115	+17
ACC	55%	50%	68%	71%	69%	69%	70%	68%	62%

SS	D t C	CWT	EMA	Rib	Rump	RBV	IMF	NFI-F	Doc
+4.1	-6.6	+68	+2.4	+0.6	+1.4	-0.1	+2.2	+0.08	-
70%	42%	64%	61%	67%	63%	63%	61%	53%	-

### Selection Indexes

\$A	\$A-L
\$216	\$379

Traits Observed: BWT, 200WT, 400WT, SC, Scan(EMA, Rib, Rump, IMF), Genomics

Notes: Suitable for cow joinings out of a cow that has stood the test of time.

Purchaser: ..... \$: .....

**Lot 43**

**KELLY ANGUS KATAPAUULT R364<sup>SV</sup>**

**GXNR364**



DOB: 3/09/2020 Registration Status:HBR

Genetic Status: AMFU,CAFU,DDFU,NHFU

S A V THUNDERBIRD 9061<sup>SV</sup>

TE MANIA BARTEL B219<sup>PV</sup>

PRIME KATAPAUULT K1<sup>SV</sup>

AYRVALE BARTEL E7<sup>PV</sup>

PRIME JEDDA H81<sup>#</sup>

EAGLEHAWK JEDDA B32<sup>SV</sup>

Sire: GXNP225 KELLY ANGUS KATAPAUULT P225<sup>SV</sup>

Dam: VLYK1590 LAWSONS BARTEL E7 K1590<sup>#</sup>

G A R SELECTIVE<sup>#</sup>

LAWSONS TANK X1235<sup>#</sup>

LAWSONS SELECTIVE F8392<sup>#</sup>

LAWSONS TANK F862<sup>#</sup>

LAWSONS GAR PINNACLE Y576<sup>#</sup>

LAWSONS ROCKY W129 A809<sup>PV</sup>

**Mid February 2022 TransTasman Angus Cattle Evaluation**

TACE	Dir	Dtrs	GL	BW	200 W	400 W	600 W	MCW	Milk
EBV	+9.8	+4.3	-6.5	+0.3	+52	+94	+113	+84	+20
ACC	53%	48%	69%	69%	68%	67%	68%	66%	60%

SS	D t C	CWT	EMA	Rib	Rump	RBV	IMF	NFI-F	Doc
+2.7	-7.3	+64	+8.5	+0.7	+0.3	+1.0	+2.4	+0.31	-
63%	38%	63%	60%	65%	62%	62%	60%	51%	-

**Selection Indexes**

\$A	\$A-L
\$268	\$423

Traits Observed: BWT,Genomics

Notes: This bull is an ideal heifer bull but with data that will not compromise in any herd.

Purchaser:..... \$:.....

**Lot 44**

**KELLY ANGUS DARK FIRE R230<sup>SV</sup>**

**GXNR230**

DOB: 10/07/2020 Registration Status:HBR

Genetic Status: AMFU,CAFU,DDFU,NHFU

CONNEALY IN SURE 8524<sup>#</sup>

C R A BEXTOR 872 5205 608<sup>#</sup>

G A R SURE FIRE<sup>SV</sup>

G A R PROPHET<sup>SV</sup>

CHAIR ROCK 5050 G A R 8086<sup>#</sup>

G A R OBJECTIVE 1885<sup>#</sup>

Sire: USA18746402 RES DARK FIRE E612<sup>SV</sup>

Dam: GXNM64 KELLY ANGUS PROPHET M64<sup>#</sup>

CONNEALY THUNDER<sup>#</sup>

LAWSONS TANK B1155<sup>PV</sup>

RES ELELA 193 587 466<sup>#</sup>

LAWSONS TANK B1155 G229<sup>#</sup>

RES ELELA 721 5652 193<sup>#</sup>

LAWSONS DINKY DI E162<sup>#</sup>

**Mid February 2022 TransTasman Angus Cattle Evaluation**

TACE	Dir	Dtrs	GL	BW	200 W	400 W	600 W	MCW	Milk
EBV	+1.2	+2.7	-5.5	+4.8	+71	+119	+148	+130	+18
ACC	55%	50%	84%	72%	71%	70%	71%	69%	64%

SS	D t C	CWT	EMA	Rib	Rump	RBV	IMF	NFI-F	Doc
+2.2	-5.8	+87	+5.3	-0.2	+0.0	+0.3	+2.6	-0.44	-
71%	43%	67%	64%	69%	65%	67%	64%	56%	-

**Selection Indexes**

\$A	\$A-L
\$272	\$455

Traits Observed: GL,BWT,200WT,400WT,SC, Scan(EMA,Rib,Rump,IMF),Genomics

Notes: The first of three Dark Fire sons. We used R230 as a back up to AI over our first calvers. Highest 200 and 400 day growth across all sale bulls. Out of a Profit cow who has bred very well. Super quiet and would be a great bull to have around.

Purchaser:..... \$:.....

**Lot 45**

**KELLY ANGUS BLUE BAGGER R226<sup>PV</sup>**

**GXNR226**



DOB: 10/07/2020 Registration Status:HBR

Genetic Status: AMFU,CAFU,DDFU,NHFU

TUWHARETOA REGENT D145<sup>PV</sup>

SYDGEN C C & 7<sup>#</sup>

PARINGA JUDD J5<sup>PV</sup>

T C A VISIONARY 158<sup>SV</sup>

STRATHEWEN BERKLEY WILPENA F30<sup>PV</sup>

T C A TREASURE 0699 601<sup>#</sup>

Sire: VLYN149 LAWSONS BLUE BAGGER N149<sup>SV</sup>

Dam: GXNP68 KELLY ANGUS VISIONARY P68<sup>SV</sup>

G A R ANTICIPATION<sup>#</sup>

LAWSONS INVINCIBLE C402<sup>PV</sup>

LAWSONS ANTICIPATION L684<sup>#</sup>

LAWSONS INVINCIBLE G440<sup>#</sup>

LAWSONS BARTEL E7 J921<sup>#</sup>

LAWSONS TANK E475<sup>#</sup>

**Mid February 2022 TransTasman Angus Cattle Evaluation**

TACE	Dir	Dtrs	GL	BW	200 W	400 W	600 W	MCW	Milk
EBV	+13.1	+7.0	-9.4	-0.9	+42	+73	+98	+96	+14
ACC	58%	49%	84%	73%	71%	71%	71%	68%	62%

SS	D t C	CWT	EMA	Rib	Rump	RBV	IMF	NFI-F	Doc
+1.9	-5.8	+65	+12.7	+1.4	+1.7	+0.1	+3.4	+0.80	-
72%	39%	66%	63%	68%	65%	65%	63%	54%	-

**Selection Indexes**

\$A	\$A-L
\$217	\$371

Traits Observed: GL,BWT,200WT,400WT,SC, Scan(EMA,Rib,Rump,IMF),Genomics

Notes: A Blue Bagger meat machine. Moderate frame, amazing calving ease, gestation length and low birth weight packaged with a great carcass.

Purchaser:..... \$:.....

Top 1%    Top 5%    Top 10%    Top 25%





**LOT 29**  
KELLY ANGUS KODAK R293<sub>PV</sub>



**LOT 31**  
KELLY ANGUS KODAK R277<sub>PV</sub>



**LOT 32**  
KELLY ANGUS KATAPULT R333<sub>sv</sub>



**LOT 34**  
KELLY ANGUS KODAK R368<sub>sv</sub>



**LOT 46**  
KELLY ANGUS DARK FIRE R320<sub>sv</sub>



**LOT 56**  
KELLY ANGUS FULL POWER R304<sub>PV</sub>

**Lot 46** **KELLY ANGUS DARK FIRE R320<sup>SV</sup>** **GXNR320**

DOB: 11/08/2020 Registration Status:HBR Genetic Status: **AMF,CAFU,DDF,NHFU**  
 CONNEALY IN SURE 8524# TUWHARETOA REGENT D145<sup>PV</sup>  
 G A R SURE FIRE<sup>SV</sup> TOPBOS AMBASSADOR F4<sup>PV</sup>  
 CHAIR ROCK 5050 G A R 8086# TUWHARETOA C115<sup>SV</sup>  
 Sire: USA18746402 RES DARK FIRE E612<sup>SV</sup> Dam: VLYJ1228 LAWSONS AMBASSADOR J1228#  
 CONNEALY THUNDER# THOMAS GRADE UP 6849<sup>SV</sup>  
 RES ELELA 193 587 466# LAWSONS GRADE UP F229#  
 RES ELELA 721 5652 193# LAWSONS SOLUTION D1351#

**Mid February 2022 TransTasman Angus Cattle Evaluation**

TACE	Dir	Dtrs	GL	BW	200 W	400 W	600 W	MCW	Milk
<b>EBV</b>	<b>+1.1</b>	<b>+0.0</b>	<b>-0.9</b>	<b>+5.3</b>	<b>+51</b>	<b>+89</b>	<b>+110</b>	<b>+93</b>	<b>+13</b>
ACC	55%	48%	84%	72%	70%	70%	70%	69%	64%

SS	D t C	CWT	EMA	Rib	Rump	RBY	IMF	NFI-F	Doc
<b>+1.5</b>	<b>-4.7</b>	<b>+66</b>	<b>+11.1</b>	<b>-0.4</b>	<b>-0.6</b>	<b>+0.9</b>	<b>+3.4</b>	<b>-0.35</b>	-
70%	40%	66%	63%	68%	64%	65%	63%	54%	-

**Selection Indexes**

\$A	\$A-L
\$224	\$360

**Traits Observed:** GL,BWT,200WT,400WT,SC, Scan(EMA,Rib,Rump,IMF),Genomics

**Notes:** This bull is out of a cow that had been part of a flush program and who has bred very well with daughters retained. This maternal line bred the top price bull from 2020.

Purchaser:..... \$:.....

**Lot 47** **KELLY ANGUS DARK FIRE R244<sup>PV</sup>** **GXNR244**

DOB: 12/07/2020 Registration Status:HBR Genetic Status: **AMFU,CAFU,DDFU,NHFU**  
 CONNEALY IN SURE 8524# G A R INGENUITY#  
 G A R SURE FIRE<sup>SV</sup> V A R INDEX 3282<sup>PV</sup>  
 CHAIR ROCK 5050 G A R 8086# SANDPOINT BLACKBIRD 8809#  
 Sire: USA18746402 RES DARK FIRE E612<sup>SV</sup> Dam: GXNP82 KELLY ANGUS INDEX P82<sup>SV</sup>  
 CONNEALY THUNDER# G A R PROGRESS<sup>SV</sup>  
 RES ELELA 193 587 466# LAWSONS PROGRESS H1077#  
 RES ELELA 721 5652 193# LAWSONS PAYLOAD X951 E605#

**Mid February 2022 TransTasman Angus Cattle Evaluation**

TACE	Dir	Dtrs	GL	BW	200 W	400 W	600 W	MCW	Milk
<b>EBV</b>	<b>-2.1</b>	<b>+0.3</b>	<b>-5.6</b>	<b>+5.9</b>	<b>+50</b>	<b>+84</b>	<b>+107</b>	<b>+88</b>	<b>+10</b>
ACC	53%	47%	84%	71%	69%	68%	68%	67%	62%

SS	D t C	CWT	EMA	Rib	Rump	RBY	IMF	NFI-F	Doc
<b>+1.4</b>	<b>-4.0</b>	<b>+54</b>	<b>+4.5</b>	<b>-0.5</b>	<b>-0.8</b>	<b>+1.4</b>	<b>+2.3</b>	<b>-0.36</b>	-
70%	38%	65%	61%	67%	62%	64%	62%	52%	-

**Selection Indexes**

\$A	\$A-L
\$202	\$318

**Traits Observed:** GL,BWT,200WT,400WT,SC, Scan(EMA,Rib,Rump,IMF),Genomics

**Notes:** An all round cow bull.

Purchaser:..... \$:.....

**Lot 48** **KELLY ANGUS TRAILBLAZER R254<sup>SV</sup>** **GXNR254**



DOB: 14/07/2020 Registration Status:HBR Genetic Status: **AMFU,CAFU,DDF,NHFU**  
 A A R TEN X 7008 S A<sup>SV</sup> ROCKN D AMBUSH 1531#  
 V A R DISCOVERY 2240<sup>PV</sup> B/R AMBUSH 28#  
 DEER VALLEY RITA 0308# B/R RUBY OF TIFFANY 8250#  
 Sire: USA18996007 FERGUSON TRAILBLAZER 239E<sup>SV</sup> Dam: VLYE308 LAWSONS AMBUSH E308#  
 LD EMBLAZON 999<sup>PV</sup> BON VIEW NEW DESIGN 1407#  
 MOLITOR999 BARBELLA 940-3012# LAWSONS NEW DESIGN 1407 B1279#  
 MOLITOR FA BARBELLA 389-940# LAWSONS GRIDMAKER Y986#

**Mid February 2022 TransTasman Angus Cattle Evaluation**

TACE	Dir	Dtrs	GL	BW	200 W	400 W	600 W	MCW	Milk
<b>EBV</b>	<b>+4.4</b>	<b>+7.5</b>	<b>-6.1</b>	<b>+2.1</b>	<b>+49</b>	<b>+88</b>	<b>+104</b>	<b>+82</b>	<b>+11</b>
ACC	55%	49%	84%	73%	70%	70%	70%	68%	64%

SS	D t C	CWT	EMA	Rib	Rump	RBY	IMF	NFI-F	Doc
<b>+1.7</b>	<b>-6.4</b>	<b>+56</b>	<b>+4.9</b>	<b>+0.3</b>	<b>+1.0</b>	<b>-0.3</b>	<b>+3.8</b>	<b>+0.43</b>	-
70%	40%	65%	62%	67%	64%	64%	62%	52%	-

**Selection Indexes**

\$A	\$A-L
\$250	\$394

**Traits Observed:** GL,BWT,200WT,400WT,SC, Scan(EMA,Rib,Rump,IMF),Genomics

**Notes:** Great calving ease and birth ratio. Out of a matron that is still breeding in the herd.

Purchaser:..... \$:.....

Top 1%    Top 5%    Top 10%    Top 25%

## Lot 49 KELLY ANGUS FULL POWER R349<sup>PV</sup> GXNR349

DOB: 23/08/2020 Registration Status: HBR Genetic Status: AMFU,CAFU,DDFU,NHFU  
 PA POWER TOOL 9108<sup>SV</sup> PA FULL POWER 1208<sup>PV</sup> PA FULL POWER 1208<sup>PV</sup>  
 PINE VIEW SQR RITA W091<sup>#</sup> PINE VIEW SQR RITA W091<sup>#</sup>  
 Sire: GXNP240 KELLY ANGUS FULL POWER P240<sup>SV</sup> G A R ULTIMATE<sup>#</sup> Dam: GXNP79 KELLY ANGUS FULL POWER P79<sup>SV</sup>  
 LAWSONS ULTIMATE E371<sup>#</sup> LAWSONS NEW DESIGN 14074 B768<sup>SV</sup> KELLIE ANGUS JUDD M111<sup>#</sup>  
 LAWSONS NEW DAY G265<sup>#</sup>

### Mid February 2022 TransTasman Angus Cattle Evaluation

TACE	Dir	Dtrs	GL	BW	200 W	400 W	600 W	MCW	Milk
EBV	-3.8	-2.6	+0.3	+3.1	+45	+82	+102	+75	+12
ACC	59%	54%	75%	74%	73%	73%	74%	72%	67%

SS	D t C	CWT	EMA	Rib	Rump	RBY	IMF	NFI-F	Doc
+1.6	-5.8	+60	+9.8	-0.6	+1.4	+0.7	+3.2	+0.75	-
72%	43%	70%	68%	73%	69%	71%	68%	60%	-

### Selection Indexes

\$A	\$A-L
\$227	\$337

Traits Observed: BWT,200WT,400WT,SC, Scan(EMA,Rib,Rump,IMF),Genomics

Notes: A smaller frame bull full of thickness, good EMA and IMF.

Purchaser: ..... \$: .....

## Lot 50 KELLY ANGUS FULL POWER R310<sup>PV</sup> GXNR310

DOB: 8/08/2020 Registration Status: HBR Genetic Status: AMFU,CAFU,DDFU,NHFU  
 PA POWER TOOL 9108<sup>SV</sup> SYDGEN C C & 7<sup>#</sup>  
 PA FULL POWER 1208<sup>PV</sup> T C A VISIONARY 158<sup>SV</sup> T C A VISIONARY 158<sup>SV</sup>  
 PINE VIEW SQR RITA W091<sup>#</sup> T C A TREASURE 0699 601<sup>#</sup>  
 Sire: GXNP244 KELLY ANGUS FULL POWER P244<sup>PV</sup> PARINGA JUDD J5<sup>PV</sup> Dam: GXNP85 KELLY ANGUS VISIONARY P85<sup>SV</sup>  
 KELLIE ANGUS JUDD M39<sup>SV</sup> LAWSONS DINKY-DI Z191<sup>SV</sup>  
 LAWSONS AMBASSADOR J1228<sup>#</sup> LAWSONS DINKY DI E734<sup>#</sup>  
 LAWSONS GAR YIELD GRADE A815<sup>#</sup>

### Mid February 2022 TransTasman Angus Cattle Evaluation

TACE	Dir	Dtrs	GL	BW	200 W	400 W	600 W	MCW	Milk
EBV	+1.9	-0.9	-3.6	+4.9	+52	+91	+116	+96	+13
ACC	54%	49%	70%	69%	68%	67%	68%	66%	62%

SS	D t C	CWT	EMA	Rib	Rump	RBY	IMF	NFI-F	Doc
+1.4	-2.7	+64	+10.2	-1.0	+0.1	+1.3	+3.1	+0.13	-
68%	39%	64%	61%	66%	62%	64%	62%	53%	-

### Selection Indexes

\$A	\$A-L
\$228	\$363

Traits Observed: BWT,200WT,400WT,SC, Scan(EMA,Rib,Rump,IMF),Genomics

Notes: A carcass bull suitable for cows.

Purchaser: ..... \$: .....

## Lot 51 KELLY ANGUS BLUE BAGGER R265<sup>PV</sup> GXNR265



DOB: 15/07/2020 Registration Status: HBR Genetic Status: AMFU,CAFU,DDFU,NHFU  
 TUWHARETOA REGENT D145<sup>PV</sup> SYDGEN C C & 7<sup>#</sup>  
 PARINGA JUDD J5<sup>PV</sup> T C A VISIONARY 158<sup>SV</sup> T C A VISIONARY 158<sup>SV</sup>  
 STRATHEWEN BERKLEY WILPENA F30<sup>PV</sup> T C A TREASURE 0699 601<sup>#</sup>  
 Sire: VLYN149 LAWSONS BLUE BAGGER N149<sup>SV</sup> G A R ANTICIPATION<sup>#</sup> Dam: GXNP90 KELLY ANGUS VISIONARY P90<sup>SV</sup>  
 LAWSONS ANTICIPATION L684<sup>#</sup> LAWSONS INVINCIBLE C402<sup>PV</sup>  
 LAWSONS BARTEL E7 J921<sup>#</sup> LAWSONS INVINCIBLE G1849<sup>#</sup>  
 LAWSONS SCHWARZENEGGER B334<sup>#</sup>

### Mid February 2022 TransTasman Angus Cattle Evaluation

TACE	Dir	Dtrs	GL	BW	200 W	400 W	600 W	MCW	Milk
EBV	+6.3	+3.6	-3.3	+2.6	+62	+102	+124	+105	+14
ACC	58%	49%	84%	73%	71%	71%	71%	68%	63%

SS	D t C	CWT	EMA	Rib	Rump	RBY	IMF	NFI-F	Doc
+1.8	-7.4	+82	+13.3	+1.7	+1.9	+0.4	+3.1	+0.54	-
72%	40%	66%	64%	69%	65%	66%	64%	54%	-

### Selection Indexes

\$A	\$A-L
\$290	\$464

Traits Observed: GL,BWT,200WT,400WT,SC, Scan(EMA,Rib,Rump,IMF),Genomics

Notes: These Blue Bagger sons certainly have plenty of punch and this guy is no exception. Full of meat, EMA in the top 1% of the breed. Suitable for heifers but doesn't lack any power for cow joinings.

Purchaser: ..... \$: .....



**Lot 52** **KELLY ANGUS KODAK R302<sup>PV</sup>** **GXNR302**



DOB: 6/08/2020 Registration Status:HBR Genetic Status: **AMFU,CAFU,DDFU,NHFU**  
 RENNYLEA EDMUND E11<sup>PV</sup> G A R INGENUITY#  
 RENNYLEA KODAK K522<sup>SV</sup> V A R INDEX 3282<sup>PV</sup>  
 Sire: GXNP210 KELLY ANGUS KODAK P210<sup>PV</sup> Dam: GXNP24 KELLY ANGUS INDEX P24<sup>SV</sup>  
 RENNYLEA EISA ERICA F810# SANDPOINT BLACKBIRD 8809#  
 TOPBOS AMBASSADOR F4<sup>PV</sup> STERITA PARK BLACK JACK J231<sup>PV</sup>  
 LAWSONS AMBASSADOR J1246<sup>SV</sup> KELLY ANGUS BLACK JACK M17 M18#  
 LAWSONS PROGRESS G363# LAWSONS AMBASSADOR J1120#

**Mid February 2022 TransTasman Angus Cattle Evaluation**

TACE	Dir	Dtrs	GL	BW	200 W	400 W	600 W	MCW	Milk
<b>EBV</b>	<b>+7.0</b>	<b>+6.2</b>	<b>-2.1</b>	<b>+1.0</b>	<b>+45</b>	<b>+78</b>	<b>+105</b>	<b>+92</b>	<b>+23</b>
ACC	54%	48%	84%	71%	69%	69%	70%	67%	62%

SS	D t C	CWT	EMA	Rib	Rump	RBY	IMF	NFI-F	Doc
<b>+1.4</b>	<b>-4.4</b>	<b>+66</b>	<b>+2.2</b>	<b>+0.3</b>	<b>-1.2</b>	<b>-0.5</b>	<b>+3.5</b>	<b>-0.18</b>	-
70%	38%	65%	63%	68%	64%	65%	62%	53%	-

**Selection Indexes**

\$A	\$A-L
\$201	\$342

**Traits Observed:** GL,BWT,200WT,400WT,SC, Scan(EMA,Rib,Rump,IMF),Genomics

Notes: A heifer bull with a low MCW, high milk and IMF. Great feed efficiency.

Purchaser:..... \$:.....

**Lot 53** **KELLY ANGUS FULL POWER R346<sup>PV</sup>** **GXNR346**



DOB: 25/08/2020 Registration Status:HBR Genetic Status: **AMFU,CAFU,DDFU,NHFU**  
 PA POWER TOOL 9108<sup>SV</sup> TE MANIA BERKLEY B1<sup>PV</sup>  
 PA FULL POWER 1208<sup>PV</sup> ALLOURA GET CRACKING G10<sup>SV</sup>  
 PINE VIEW SQR RITA W091# ALLOURA JEDDA Z15#  
 Sire: GXNP244 KELLY ANGUS FULL POWER P244<sup>PV</sup> Dam: GXNP122 KELLY ANGUS GET CRACKING P122<sup>SV</sup>  
 PARINGA JUDD J5<sup>PV</sup> DUNOON EVIDENT E614<sup>PV</sup>  
 KELLY ANGUS JUDD M39<sup>SV</sup> LAWSONS EVIDENT H863#  
 LAWSONS AMBASSADOR J1228# LAWSONS SOLUTION C858#

**Mid February 2022 TransTasman Angus Cattle Evaluation**

TACE	Dir	Dtrs	GL	BW	200 W	400 W	600 W	MCW	Milk
<b>EBV</b>	<b>+5.7</b>	<b>+1.9</b>	<b>-3.4</b>	<b>+1.9</b>	<b>+43</b>	<b>+82</b>	<b>+93</b>	<b>+54</b>	<b>+23</b>
ACC	55%	49%	71%	69%	68%	68%	69%	67%	62%

SS	D t C	CWT	EMA	Rib	Rump	RBY	IMF	NFI-F	Doc
<b>+0.3</b>	<b>-6.3</b>	<b>+56</b>	<b>+11.1</b>	<b>+2.7</b>	<b>+3.5</b>	<b>-1.6</b>	<b>+4.9</b>	<b>+0.86</b>	-
69%	39%	65%	62%	67%	63%	64%	62%	55%	-

**Selection Indexes**

\$A	\$A-L
\$259	\$379

**Traits Observed:** BWT,200WT,400WT,SC, Scan(EMA,Rib,Rump,IMF),Genomics

Notes: An ideal heifer bull for anyone wanting to reduce MCW. This bull will add fat cover and improve IMF.

Purchaser:..... \$:.....

**Lot 54** **KELLY ANGUS FULL POWER R314<sup>PV</sup>** **GXNR314**



DOB: 7/08/2020 Registration Status:HBR Genetic Status: **AMFU,CAFU,DDF,NHFU**  
 PA POWER TOOL 9108<sup>SV</sup> RENNYLEA EDMUND E11<sup>PV</sup>  
 PA FULL POWER 1208<sup>PV</sup> RENNYLEA KODAK K522<sup>SV</sup>  
 PINE VIEW SQR RITA W091# RENNYLEA EISA ERICA F810#  
 Sire: GXNP244 KELLY ANGUS FULL POWER P244<sup>PV</sup> Dam: GXNP99 KELLY ANGUS KODAK P99<sup>SV</sup>  
 PARINGA JUDD J5<sup>PV</sup> LAWSONS INVINCIBLE C402<sup>PV</sup>  
 KELLY ANGUS JUDD M39<sup>SV</sup> LAWSONS INVINCIBLE G295#  
 LAWSONS AMBASSADOR J1228# LAWSONS DINKY DI E327#

**Mid February 2022 TransTasman Angus Cattle Evaluation**

TACE	Dir	Dtrs	GL	BW	200 W	400 W	600 W	MCW	Milk
<b>EBV</b>	<b>+7.5</b>	<b>+4.6</b>	<b>-0.6</b>	<b>+2.1</b>	<b>+37</b>	<b>+72</b>	<b>+89</b>	<b>+62</b>	<b>+16</b>
ACC	55%	50%	68%	69%	68%	67%	69%	67%	62%

SS	D t C	CWT	EMA	Rib	Rump	RBY	IMF	NFI-F	Doc
<b>+0.6</b>	<b>-4.1</b>	<b>+50</b>	<b>+11.5</b>	<b>+0.6</b>	<b>-0.1</b>	<b>+0.7</b>	<b>+3.2</b>	<b>+0.62</b>	-
68%	39%	65%	62%	67%	63%	65%	62%	54%	-

**Selection Indexes**

\$A	\$A-L
\$210	\$328

**Traits Observed:** BWT,200WT,400WT,SC, Scan(EMA,Rib,Rump,IMF),Genomics

Notes: Fantastic calving ease and birth with an exceptional carcass. Add some carcass value to your heifers first calves.

Purchaser:..... \$:.....

- Top 1%
- Top 5%
- Top 10%
- Top 25%

## Lot 55 KELLY ANGUS BLUE BAGGER R222<sup>PV</sup> GXNR222



DOB: 8/07/2020 Registration Status: HBR Genetic Status: AMFU, CAFU, DDFU, NHFU  
 TUWHARETOA REGENT D145<sup>PV</sup> SYDGEN C C & 7<sup>#</sup>  
 PARINGA JUDD J5<sup>PV</sup> STRATHEWEN BERKLEY WILPENA F30<sup>PV</sup> T C A VISIONARY 158<sup>SV</sup>  
 Sire: VLYN149 LAWSONS BLUE BAGGER N149<sup>SV</sup> Dam: GXNP91 KELLY ANGUS VISIONARY P91<sup>SV</sup>  
 G A R ANTICIPATION<sup>#</sup> DUNOON EVIDENT E614<sup>PV</sup>  
 LAWSONS ANTICIPATION L684<sup>#</sup> LAWSONS EVIDENT H8010<sup>#</sup>  
 LAWSONS BARTEL E7 J921<sup>#</sup> LAWSONS SCHWARZENEGGER C8648<sup>#</sup>

### Mid February 2022 TransTasman Angus Cattle Evaluation

TACE	Dir	Dtrs	GL	BW	200 W	400 W	600 W	MCW	Milk
EBV	+9.7	+7.2	-6.9	+2.2	+60	+97	+134	+102	+22
ACC	59%	50%	74%	74%	73%	72%	73%	70%	64%

SS	D t C	CWT	EMA	Rib	Rump	RBY	IMF	NFI-F	Doc
+2.7	-6.0	+84	+13.5	+0.8	-0.5	+2.2	+1.8	+0.42	-
68%	41%	67%	65%	70%	66%	67%	65%	55%	-

### Selection Indexes

\$A	\$A-L
\$285	\$454

Traits Observed: BWT,200WT,400WT,SC, Scan(EMA,Rib,Rump,IMF),Genomics

Notes: With explosive data across the board. A heifer bull that does not compromise on growth and carcass traits. Top 1% for EMA, \$A and \$A-L.

Purchaser: ..... \$: .....

## Lot 56 KELLY ANGUS FULL POWER R304<sup>PV</sup> GXNR304



DOB: 7/08/2020 Registration Status: APR Genetic Status: AMFU, CAFU, DDFU, NHFU  
 PA POWER TOOL 9108<sup>SV</sup> AYRVALE BARTEL E7<sup>PV</sup>  
 PA FULL POWER 1208<sup>PV</sup> AYRVALE HERCULES H9<sup>PV</sup>  
 PINE VIEW SQR RITA W091<sup>#</sup> LAWSONS INVINCIBLE F338<sup>SV</sup>  
 Sire: GXNP240 KELLY ANGUS FULL POWER P240<sup>SV</sup> Dam: GXNP16 KELLY ANGUS HERCULES P16<sup>SV</sup>  
 G A R ULTIMATE<sup>#</sup> STERITA PARK BLACK JACK J231<sup>PV</sup>  
 LAWSONS ULTIMATE E371<sup>#</sup> KELLY ANGUS BLACK JACK M73<sup>#</sup>  
 LAWSONS NEW DESIGN 14074 B768<sup>SV</sup> LAWSONS PROGRESS G405<sup>#</sup>

### Mid February 2022 TransTasman Angus Cattle Evaluation

TACE	Dir	Dtrs	GL	BW	200 W	400 W	600 W	MCW	Milk
EBV	+1.1	+1.6	-4.0	+2.2	+52	+92	+115	+80	+17
ACC	55%	50%	71%	70%	69%	69%	70%	68%	63%

SS	D t C	CWT	EMA	Rib	Rump	RBY	IMF	NFI-F	Doc
+1.0	-3.4	+70	+10.9	-0.1	+0.3	+0.7	+3.0	+0.37	-
70%	40%	66%	63%	69%	65%	66%	64%	55%	-

### Selection Indexes

\$A	\$A-L
\$252	\$379

Traits Observed: BWT,200WT,400WT,SC, Scan(EMA,Rib,Rump,IMF),Genomics

Notes: A moderate framed bull that packs a punch. He has carcass data that will really add quality to heifers first calves.

Purchaser: ..... \$: .....

## Lot 57 KELLY ANGUS KODAK R245<sup>PV</sup> GXNR245



DOB: 12/07/2020 Registration Status: APR Genetic Status: AMFU, CAFU, DDF, NHFU  
 RENNYLEA EDMUND E11<sup>PV</sup> H P C A INTENSITY<sup>#</sup>  
 RENNYLEA KODAK K522<sup>SV</sup> LAWSONS INTENSITY L199<sup>PV</sup>  
 RENNYLEA EISA ERICA F810<sup>#</sup> LAWSONS BARTEL E7 J252<sup>PV</sup>  
 Sire: GXNP210 KELLY ANGUS KODAK P210<sup>PV</sup> Dam: GXNP114 KELLY ANGUS INTENSITY L199 P114<sup>SV</sup>  
 TOPBOS AMBASSADOR F4<sup>PV</sup> WILSON DOWNS EQUATOR V191<sup>SV</sup>  
 LAWSONS AMBASSADOR J1246<sup>SV</sup> LAWSONS EQUATOR E342<sup>#</sup>  
 LAWSONS PROGRESS G363<sup>#</sup> LAWSONS SCHWARZENEGGER B859<sup>#</sup>

### Mid February 2022 TransTasman Angus Cattle Evaluation

TACE	Dir	Dtrs	GL	BW	200 W	400 W	600 W	MCW	Milk
EBV	+7.6	+6.7	-5.5	+2.2	+47	+91	+128	+129	+20
ACC	53%	47%	84%	71%	69%	69%	69%	67%	61%

SS	D t C	CWT	EMA	Rib	Rump	RBY	IMF	NFI-F	Doc
+2.4	-4.9	+77	-1.8	-1.8	-3.1	-1.4	+5.2	+0.01	-
69%	37%	64%	62%	67%	63%	64%	62%	52%	-

### Selection Indexes

\$A	\$A-L
\$185	\$365

Traits Observed: GL,200WT,400WT,SC, Scan(EMA,Rib,Rump,IMF),Genomics

Notes: If you are looking to increase marbling substantially this bull will do that. IMF of 5.

Purchaser: ..... \$: .....

**Lot 58**

**KELLY ANGUS JACKPOT R353<sup>SV</sup>**

**GXNR353**



DOB: 1/09/2020 Registration Status: HBR  
 ARDOSSAN EQUATOR A241<sup>PV</sup>  
 BOWMONT JACKPOT J310<sup>PV</sup>  
 ARDOSSAN WILCOOLA Z31<sup>PV</sup>  
 Sire: NHZM584 HAZELDEAN M584<sup>PV</sup>  
 TE MANIA BERKLEY B1<sup>PV</sup>  
 HAZELDEAN G38<sup>PV</sup>  
 HAZELDEAN A90<sup>SV</sup>

Genetic Status: AMFU, CAFU, DDC, NH50%  
 ROCKN D AMBUSH 1531#  
 B/R AMBUSH 28#  
 B/R RUBY OF TIFFANY 8250#  
 Dam: VLYF362 LAWSONS AMBUSH F362#  
 LAWSONS SWAGMAN A179<sup>SV</sup>  
 LAWSONS GAR SWAGMAN D1016#  
 LAWSONS GAR GRIDMAKER Z547#

**Mid February 2022 TransTasman Angus Cattle Evaluation**

TACE	Dir	Dtrs	GL	BW	200 W	400 W	600 W	MCW	Milk
EBV	+0.4	+8.0	-3.4	+3.6	+46	+86	+105	+106	+13
ACC	54%	49%	68%	72%	70%	69%	70%	68%	63%

SS	D t C	CWT	EMA	Rib	Rump	RBY	IMF	NFI-F	Doc
+0.7	-5.1	+70	+8.2	-1.9	-2.6	+1.5	+2.7	-0.06	-
70%	41%	64%	61%	67%	63%	64%	61%	52%	-

**Selection Indexes**

\$A	\$A-L
\$186	\$332

**Traits Observed:** BWT,200WT,400WT,SC, Scan(EMA,Rib,Rump,IMF),Genomics

Notes: Another Jackpot son out of a fertile proven cow.

Purchaser: ..... \$: .....

**Lot 59**

**KELLY ANGUS KATAPALT R324<sup>SV</sup>**

**GXNR324**



DOB: 15/08/2020 Registration Status: HBR  
 S A V THUNDERBIRD 9061<sup>SV</sup>  
 PRIME KATAPALT K1<sup>SV</sup>  
 PRIME JEDDA H81#  
 Sire: GXNP225 KELLY ANGUS KATAPALT P225<sup>SV</sup>  
 G A R SELECTIVE#  
 LAWSONS SELECTIVE F8392#  
 LAWSONS GAR PINNACLE Y576#

Genetic Status: AMFU, CAFU, DDF, NHFU  
 S S OBJECTIVE T510 0T26#  
 G A R SELECTIVE#  
 G A R 1407 NEW DESIGN 803#  
 Dam: VLYE617 LAWSONS SELECTIVE E617#  
 G A R PREDESTINED#  
 LAWSONS PREDESTINED A597#  
 LAWSONS PAYLOAD X911#

**Mid February 2022 TransTasman Angus Cattle Evaluation**

TACE	Dir	Dtrs	GL	BW	200 W	400 W	600 W	MCW	Milk
EBV	+6.5	+3.7	-7.2	+2.2	+57	+98	+129	+103	+15
ACC	56%	50%	73%	73%	71%	71%	72%	70%	66%

SS	D t C	CWT	EMA	Rib	Rump	RBY	IMF	NFI-F	Doc
+2.2	-4.6	+68	+7.4	+0.6	+0.7	+0.4	+2.5	+0.16	-
72%	40%	67%	64%	69%	66%	66%	64%	54%	-

**Selection Indexes**

\$A	\$A-L
\$256	\$418

**Traits Observed:** BWT,200WT,400WT,SC, Scan(EMA,Rib,Rump,IMF),Genomics

Notes: Good growth, moderate mature cow weight out of a mature cow.

Purchaser: ..... \$: .....

**Lot 60**

**KELLY ANGUS TRAILBLAZER R299<sup>PV</sup>**

**GXNR299**

DOB: 5/08/2020 Registration Status: HBR  
 A A R TEN X 7008 S A<sup>SV</sup>  
 V A R DISCOVERY 2240<sup>PV</sup>  
 DEER VALLEY RITA 0308#  
 Sire: USA18996007 FERGUSON TRAILBLAZER 239E<sup>SV</sup>  
 LD EMBLAZON 999<sup>PV</sup>  
 MOLITOR999 BARBELLA 940-3012#  
 MOLITOR FA BARBELLA 389-940#

Genetic Status: AMFU, CAFU, DDFU, NHFU  
 RENNYLEA EDMUND E11<sup>PV</sup>  
 RENNYLEA KODAK K522<sup>SV</sup>  
 RENNYLEA EISA ERICA F810#  
 Dam: GXNP56 KELLY ANGUS KODAK P56<sup>SV</sup>  
 TOPBOS AMBASSADOR F4<sup>PV</sup>  
 LAWSONS AMBASSADOR J1306#  
 LAWSONS TANK B1155 G1734#

**Mid February 2022 TransTasman Angus Cattle Evaluation**

TACE	Dir	Dtrs	GL	BW	200 W	400 W	600 W	MCW	Milk
EBV	+3.3	+4.1	-6.0	+4.0	+58	+103	+137	+121	+16
ACC	53%	47%	83%	71%	68%	68%	68%	66%	61%

SS	D t C	CWT	EMA	Rib	Rump	RBY	IMF	NFI-F	Doc
+3.2	-6.5	+70	+3.7	+1.0	-0.7	+0.1	+3.2	+0.64	-
70%	37%	64%	61%	66%	62%	63%	61%	52%	-

**Selection Indexes**

\$A	\$A-L
\$238	\$413

**Traits Observed:** GL,BWT,200WT,400WT,SC, Scan(EMA,Rib,Rump,IMF),Genomics

Notes: A Trailblazer out of a first calving heifer, a thick neat moderate bull.

Purchaser: ..... \$: .....

- Top 1%
- Top 5%
- Top 10%
- Top 25%



## Lot 61

## KELLY ANGUS KATAPALUT R286<sup>SV</sup>

## GXNR286



DOB: 1/08/2020 Registration Status: HBR

Genetic Status: AMF,CAFU,DDF,NHFU

S A V THUNDERBIRD 9061<sup>SV</sup>

G A R SOLUTION<sup>SV</sup>

PRIME KATAPALUT K1<sup>SV</sup>

LAWSONS INVINCIBLE C402<sup>PV</sup>

PRIME JEDDA H81<sup>#</sup>

LAWSONS PREDESTINED A598<sup>#</sup>

Sire: GXNP225 KELLY ANGUS KATAPALUT P225<sup>SV</sup>

Dam: VLYH8122 LAWSONS INVINCIBLE H8122<sup>#</sup>

G A R SELECTIVE<sup>#</sup>

WILSON DOWNS EQUATOR V191<sup>SV</sup>

LAWSONS SELECTIVE F8392<sup>#</sup>

LAWSONS EQUATOR E8374<sup>#</sup>

LAWSONS GAR PINNACLE Y576<sup>#</sup>

LAWSONS NEW DESIGN 1407 Y1226<sup>#</sup>

### Mid February 2022 TransTasman Angus Cattle Evaluation

TACE	Dir	Dtrs	GL	BW	200 W	400 W	600 W	MCW	Milk
EBV	+10.9	-0.7	-12.7	-1.0	+41	+74	+88	+69	+14
ACC	54%	49%	70%	70%	68%	68%	69%	67%	63%

SS	D t C	CWT	EMA	Rib	Rump	RBV	IMF	NFI-F	Doc
+1.3	-6.1	+49	+5.4	+1.3	+2.0	-0.3	+3.1	+0.36	-
70%	39%	64%	62%	67%	64%	64%	62%	52%	-

### Selection Indexes

\$A	\$A-L
\$226	\$348

Traits Observed: BWT,200WT,400WT,SC, Scan(EMA,Rib,Rump,IMF),Genomics

Notes: A moderate bull with the shortest gestation length out of the whole sale group at -12.7. He carries positive fats and a handy IMF.

Purchaser: ..... \$: .....

## Lot 62

## KELLY ANGUS KODAK R341<sup>SV</sup>

## GXNR341



DOB: 23/08/2020 Registration Status: HBR

Genetic Status: AMFU,CAFU,DDF,NHFU

RENNYLEA EDMUND E11<sup>PV</sup>

G A R PREDESTINED<sup>#</sup>

RENNYLEA KODAK K522<sup>SV</sup>

G A R PROGRESS<sup>SV</sup>

RENNYLEA EISA ERICA F810<sup>#</sup>

G A R OBJECTIVE 2345<sup>#</sup>

Sire: GXNP187 KELLY ANGUS KODAK P187<sup>SV</sup>

Dam: VLYH1077 LAWSONS PROGRESS H1077<sup>#</sup>

G A R PROPHET<sup>SV</sup>

LAWSONS PAYLOAD X951<sup>#</sup>

KELLY ANGUS PROPHET M30<sup>#</sup>

LAWSONS PAYLOAD X951 E605<sup>#</sup>

LAWSONS BARTEL E7 J1175<sup>#</sup>

LAWSONS INTEGRITY A822<sup>#</sup>

### Mid February 2022 TransTasman Angus Cattle Evaluation

TACE	Dir	Dtrs	GL	BW	200 W	400 W	600 W	MCW	Milk
EBV	+4.4	+4.2	-2.4	+2.2	+42	+68	+97	+77	+21
ACC	53%	48%	69%	70%	68%	67%	69%	67%	62%

SS	D t C	CWT	EMA	Rib	Rump	RBV	IMF	NFI-F	Doc
+1.5	-5.2	+48	+1.1	+1.1	+0.4	-1.1	+3.4	+0.59	-
68%	39%	64%	61%	67%	63%	63%	61%	52%	-

### Selection Indexes

\$A	\$A-L
\$195	\$313

Traits Observed: BWT,200WT,400WT,SC, Scan(EMA,Rib,Rump,IMF),Genomics

Notes: Another ideal heifer option.

Purchaser: ..... \$: .....

## Lot 63

## KELLY ANGUS KATAPALUT R328<sup>SV</sup>

## GXNR328



DOB: 17/08/2020 Registration Status: HBR

Genetic Status: AMFU,CAFU,DDF,NHFU

S A V THUNDERBIRD 9061<sup>SV</sup>

G A R PINNACLE<sup>#</sup>

PRIME KATAPALUT K1<sup>SV</sup>

LAWSONS TANK X1235<sup>#</sup>

PRIME JEDDA H81<sup>#</sup>

YTHANBRAE NEW DESIGN 036 U89<sup>#</sup>

Sire: GXNP160 KELLY ANGUS KATAPALUT P160<sup>SV</sup>

Dam: VLYF862 LAWSONS TANK F862<sup>#</sup>

G A R PROPHET<sup>SV</sup>

YTHANBRAE ROCKN D AMBUSH W129<sup>#</sup>

KELLY ANGUS M104<sup>#</sup>

LAWSONS ROCKY W129 A809<sup>PV</sup>

LAWSONS PAYLOAD X951 E824<sup>#</sup>

LAWSONS NEW DESIGN 1407 Y314<sup>SV</sup>

### Mid February 2022 TransTasman Angus Cattle Evaluation

TACE	Dir	Dtrs	GL	BW	200 W	400 W	600 W	MCW	Milk
EBV	+8.8	+3.2	-10.0	+2.4	+41	+72	+92	+85	+11
ACC	53%	48%	69%	70%	67%	67%	68%	66%	62%

SS	D t C	CWT	EMA	Rib	Rump	RBV	IMF	NFI-F	Doc
+0.4	-6.1	+58	+6.2	+0.8	+1.4	-0.1	+2.1	+0.25	-
69%	38%	63%	59%	65%	61%	62%	60%	51%	-

### Selection Indexes

\$A	\$A-L
\$190	\$327

Traits Observed: BWT,200WT,400WT,SC, Scan(EMA,Rib,Rump,IMF),Genomics

Notes: This bull will be suitable to join heifers for a number of years as he wont mature into an extreme bull.

Purchaser: ..... \$: .....

**Lot 64**

**KELLY ANGUS INDEX R348<sup>PV</sup>**

**GXNR348**



DOB: 30/08/2020 Registration Status:HBR

Genetic Status: AMFU,CAFU,DDFU,NHFU

G A R INGENUITY#  
 V A R INDEX 3282<sup>PV</sup>  
 SANDPOINT BLACKBIRD 8809#  
 Sire: GXNP37 KELLY ANGUS INDEX P37<sup>SV</sup>  
 G A R SURE FIRE<sup>SV</sup>  
 LAWSONS SURE FIRE L1353#  
 LAWSONS HENRY D1054 J1139#

TE MANIA BERKLEY B1<sup>PV</sup>  
 ALLOURA GET CRACKING G10<sup>SV</sup>  
 ALLOURA JEDDA Z15#  
 Dam: GXNP132 KELLY ANGUS GET CRACKING P132<sup>SV</sup>  
 G A R ANTICIPATION#  
 LAWSONS ANTICIPATION K1625#  
 LAWSONS HENRY VIII G8109#

**Mid February 2022 TransTasman Angus Cattle Evaluation**

TACE	Dir	Dtrs	GL	BW	200 W	400 W	600 W	MCW	Milk
<b>EBV</b>	<b>+6.3</b>	<b>+3.2</b>	<b>-1.2</b>	<b>+2.0</b>	<b>+51</b>	<b>+96</b>	<b>+117</b>	<b>+111</b>	<b>+21</b>
ACC	54%	48%	69%	70%	69%	68%	70%	68%	63%

SS	D t C	CWT	EMA	Rib	Rump	RBV	IMF	NFI-F	Doc
<b>+0.5</b>	<b>-6.3</b>	<b>+71</b>	<b>+8.2</b>	<b>-0.1</b>	<b>-2.2</b>	<b>+0.3</b>	<b>+3.3</b>	<b>-0.42</b>	-
70%	39%	66%	62%	68%	64%	65%	63%	55%	-

**Selection Indexes**

\$A	\$A-L
\$222	\$388

*Traits Observed:* BWT,200WT,400WT,SC, Scan(EMA,Rib,Rump,IMF),Genomics

**Notes:** A heifer bull that is in the top 3% for feed efficiency. With a great EMA and IMF.

Purchaser:..... \$:.....

**Lot 65**

**COMMERCIAL HEIFERS**

12 x Unjoined 16 to 18 Month Heifers sold in Lots of 12.  
 Quality Angus Genetics - Each heifers' sire-line is the same as this year's Sale Bulls.

Purchaser:..... \$:.....

**Lot 66**

**COMMERCIAL HEIFERS**

12 x Unjoined 16 to 18 Month Heifers sold in Lots of 12.  
 Quality Angus Genetics - Each heifers' sire-line is the same as this year's Sale Bulls.

Purchaser:..... \$:.....

**Lot 67**

**COMMERCIAL HEIFERS**

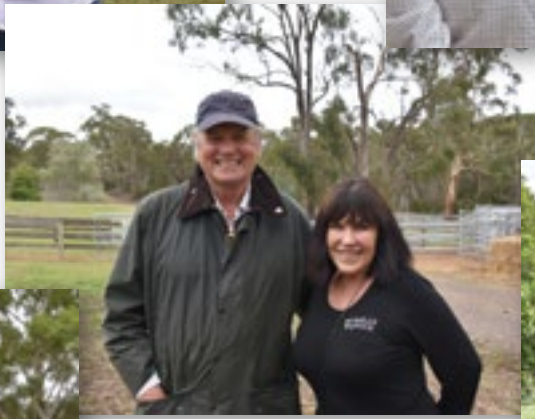
12 x Unjoined 16 to 18 Month Heifers sold in Lots of 12.  
 Quality Angus Genetics - Each heifers' sire-line is the same as this year's Sale Bulls.

Purchaser:..... \$:.....















## Conditions of Sale

We trust that the Bull/s you have purchased today will perform as you expect and provide ongoing value to you.

The rigorous structural assessment practices adopted at our farm are intended to ensure that all livestock continue to meet our high standards for genetics, performance and structural integrity. Our commitment to our purchasers is second to none.

All Kelly Angus Bulls are independently assessed by Jim Green prior to sale. In the event that the Bull/s, the subject of the purchase, suffers a structural or fertility breakdown within 2 years of the day of sale Kelly Angus will refund or replace the bull

provided the problem is not caused by injury or disease incurred after taking delivery.

The purchaser may:

- Request a full refund of the purchase price (nett of GST)

OR

- Negotiate for the purchase of a replacement Kelly Angus Bull of similar genetic make-up.

### Conditions:

1. Any claim for a refund or credit must be accompanied by a full veterinary report.
2. Any refund or credit will be equal to the purchase price less the salvage value of the bull.





# BRINGING YOUR NEW BULL HOME

WHEN PURCHASING A BULL, CARE AND HANDLING AFTER THE SALE CAN BE AS IMPORTANT AS THE PURCHASE ITSELF. LOOKING AFTER YOUR BULL WELL DURING THE INITIAL STAGES OF HIS WORKING LIFE MAY ENSURE LONGEVITY AND SUCCESS WITHIN YOUR BREEDING HERD.

## PURCHASE

Temperament is an important characteristic when selecting a bull. Selecting a bull that may be flighty or aggressive will make life difficult for you each time he is handled. Note which bulls continually push to the centre of a mob, run around, or are unreasonably nervous, aggressive or excited.

At the sale, note any changes of temperament by individual bulls. Some bulls that are quiet in the yard or paddock may not like the pressure and noise of the auction and become excited. Others that were excited beforehand get much worse in the sale ring and can really perform. Use the yard or paddock behaviour as a guide, rather than the temperament shown in the ring.

## DELIVERY

When transporting your new bull insurance against loss in transit, accidental loss of use, or infertility, is sometimes provided by vendors. Where it is not, it is worth considering. After purchase tips:

- When purchasing, ask which health treatments he has received.
- Treat and handle him quietly at all times - no dogs, no buzzers. Talk to him and give him time and room to make up his mind.
- With more than one bull from different origins, you must be able to separate them on the truck.
- Make sure that the truck floor is covered to prevent bulls from slipping. Sand, sawdust or a floor grid will prevent bulls from being damaged by going down in transit.
- If you can arrange it, put a few quiet cows or steers on the truck with the bull. Let them down into a yard with the bulls for a while before loading and after unloading.
- Unload and reload during the trip as little as possible. If necessary, rest with water and feed. Treat bulls kindly your impatience or nervousness is easily transmitted to an animal unfamiliar to you and unsure of his environment.

## IF YOU USE A PROFESSIONAL CARRIER:

- Make sure the carrier knows which bulls can be mixed together.

- Discuss with the carrier, resting procedures for long trips, expected delivery time, truck condition and quiet handling.
- Give ear tag and brand numbers to the carrier and make sure you have the carrier's phone number.
- If buying bulls from interstate, organise any necessary health tests before leaving and work out if any other requirements must be met before cattle can come into another State.

When buying bulls from far away, you may often have to fit in with other delivery arrangements to reduce cost. You should make it clear how you want your bulls handled.

## ARRIVAL

When the bull or bulls arrive home, unload them at the yards into a group of house cows, steers or herd cows. Never jump them from the back of a truck directly into a paddock—it may be the last time you see them. Bulls from different origins should be put into separate yards with other cattle for company.

Provide hay and water, then leave them alone until the next morning.

The next day, bulls should receive routine health treatments. If they have not been treated before, all bulls should be vaccinated with:

- 5-in-1 vaccine;
- vibriosis vaccine;
- leptospirosis vaccine (if in areas like the Hunter where leptospirosis exists);
- three-day sickness vaccine (if in areas where this sickness can cause problems).

Give particular attention to preventing new bulls bringing vibriosis into a herd. Vibriosis, a sexually transmitted disease, causes infertility and abortions and is most commonly introduced to a clean herd by an infected bull. These bulls show no signs of the illness. Vaccinated bulls are free from vibriosis, so vaccinating bulls against the disease should be a routine practice.

Vaccination involves two injections, 4–6 weeks apart, at the time of introduction, and then a booster shot every year. Complete the vaccinations 4 weeks before joining.



# BRINGING YOUR NEW BULL HOME

Consult with your veterinarian and draw up a policy for treating bulls on arrival and then annually. Bulls should be drenched to prevent introducing worms and, if necessary, should be treated for lice.

Plan to give follow-up vaccinations 4–6 weeks later. Leave the bulls in the yards for the next day or two on feed and water to allow them to settle down with other stock for company. A bull's behaviour will decide how quickly he can be moved out to paddocks.

## MATING NEW YOUNG BULLS

Newly purchased young bulls should not be placed with older herd bulls for multiple-sire joining. The older, dominant bull will not allow the young bulls to work, and will knock them around while keeping them away from the cows.

Use new bulls in either single-sire groups or with young bulls their own age. If a number of young bulls are to be used together, run them together for a few weeks before joining starts. They sort out their pecking order quickly and have few problems later.

When the young bulls are working, inspect them regularly and closely.

## MATING NEW YOUNG BULLS

Older working bulls also need special care and attention before mating starts. They should be tested or checked every year for physical soundness, testicle tone, and serving capacity or ability.

All bulls to be used must be free-moving, active and in good condition. Working bulls may need supplementary feeding before the joining season to bring up condition.

## DURING MATING

- Check bulls at least twice each week for the first 2 months. Get up close to them and watch each bull walk; check for swellings around the sheath and for lameness.
- Have a spare bull or bulls available to replace any that break down. Replace any suspect bull immediately.
- Rotate bulls in single-sire groups to make sure that any bull infertility is covered. Single-sire joining works well but it has risks. The bulls must be checked regularly and carefully, or the bulls should be rotated every one or two cycles.

Bulls are a large investment for breeding herds and they have a major effect on herd fertility. A little time and attention to make sure they are fit, free from disease and actively working is well worthwhile.

## NORTHERN AUSTRALIA

Although the Angus breed originated in a cooler climate, they can adapt to subtropical regions with many straight-bred and cross bred producers finding success in Northern Australia. Some of the following information may also be helpful for new bulls located in more temperate climates.

## ADAPTATION

They key to Northern success for Angus is that cattle introduced from the Southern regions of Australia be allowed to adapt to their new environment before commencing their working life. If possible, a break of 3 months is advisable before you set your bull to work.

## PURCHASE IN COOLER MONTHS

Ensure your bulls are in good condition before they do commence their working life. The cooler months are an ideal time to purchase and introduce Angus cattle, allowing them plenty of time to acclimatise.

## CHANGE OF FEED SOURCE

When inducting Angus cattle into your herd consider their source of feed. Have you taken an animal which has been supplemented on grain straight to a dry pasture? Animals should be gradually changed over to their new feed to ensure they do not lose condition. This may involve using supplements which could include dry lick/urea blocks.

## MANAGING CATTLE TICKS

For ticky areas, bulls should be vaccinated prior to transport and given another booster afterwards. Remember males are more susceptible to ticks than females.

Information is provided by the Department of Primary Industries NSW. For further information visit the DPI web site: [www.dpi.nsw.gov.au](http://www.dpi.nsw.gov.au). or [www.angusaustralia.com.au](http://www.angusaustralia.com.au). Further reading - Buying Angus Bulls

**FOR FURTHER INFORMATION VISIT**  
[www.angusaustralia.com.au](http://www.angusaustralia.com.au)

Angus Australia Locked Bag 11, Armidale NSW 2350  
Phone: (02) 6772 3011 | Fax: (02) 6772 3095  
Email: [office@angusaustralia.com.au](mailto:office@angusaustralia.com.au)  
Website: [www.angusaustralia.com.au](http://www.angusaustralia.com.au)

ACCOMODATION NEAR

# Yea, Victoria



## Royal Mail Hotel

📍 88 High St, Yea, Victoria  
🌐 [royalmailhotelyea.com.au](http://royalmailhotelyea.com.au)  
☎ 03 5797 2515



## Yea Peppercorn Hotel

📍 21A Station St, Yea, Victoria  
🌐 [yeapeppercorn.com.au](http://yeapeppercorn.com.au)  
☎ 03 5797 2000



## Yea Motel

📍 8 Miller St, Yea, Victoria  
🌐 [yeamotel.com.au](http://yeamotel.com.au)  
☎ 03 5797 2660



## Yea Riverside Caravan Park

📍 1 Court St, Yea, Victoria  
🌐 [yeariverside.com.au](http://yeariverside.com.au)  
☎ 03 5797 2972



V  
K



# V<sup>K</sup> KELLY VANGUS

QUALITY STOCK & SERVICE

# V<sup>K</sup>

 0434 559 101    @ vkppfarm@vkpp.com.au

 171 Nashs Road, Yea VIC 3717

 [kellyangus.com.au](http://kellyangus.com.au)