

GRANGEBURN

SIMMENTALS



JBAS 7
FREIGHT ASSISTANCE AVAILABLE

Thursday 3rd of February

2030 Glenelg Hwy Wannon VIC



 **AuctionsPlus™**

 **SOUTHERN GRAMPIANS**
LIVESTOCK & REAL ESTATE

JME
LIVESTOCK & REAL ESTATE

Andrew Button 0460 310 217

Jack Hickey 0436 189 690

REFERENCE SIRES



Grangeburn Masters Pride



FGAF Radioactive



Double Bar D Spitfire



Bar 5 Hektor



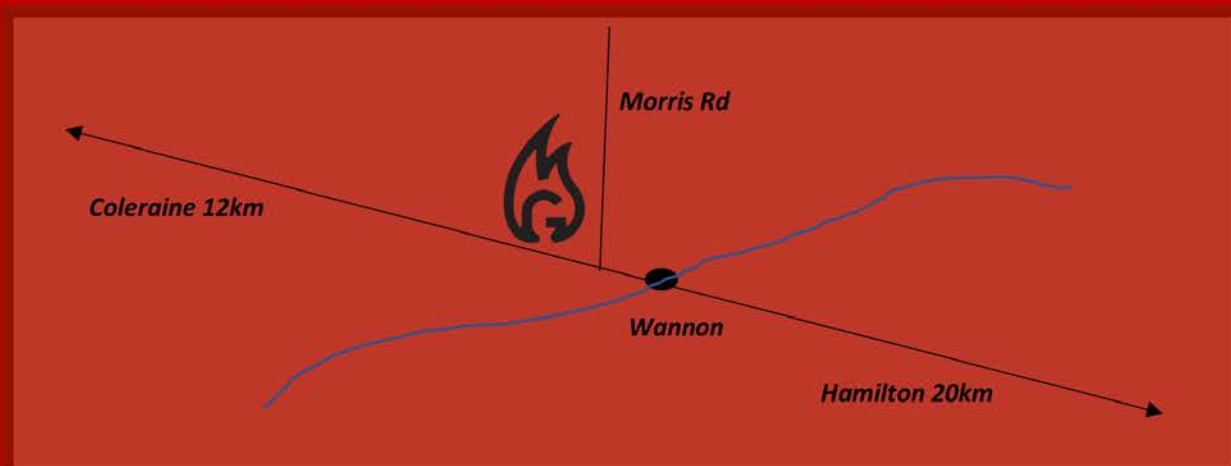
Wormbete Nitrate



Valley Creek Joker

GRANGEBURN FIELD DAY & ONLINE SALE

ON-PROPERTY AT "BLACK STUMP"
2030 GLENELG HIGHWAY WANNON VIC



OFFERING:

14 SIMMENTAL AND SIMANGUS SIRES

5 SIMMENTAL HEIFERS

2 ELITE EMBRYO PACKAGES

3 SEMEN PACKAGES

PLEASE NOTE: ONLINE AUCTION WILL RUN FROM 9AM AND WILL CLOSE AT 6PM
(OR UNTIL BIDDING CEASES ONLINE) ON THURSDAY 3RD OF FEBRUARY 2022.
INSPECTION CAN TAKE PLACE ON THE DAY OR IN THE LEAD UP BY APPOINTMENT
WITH BRODHI 0418723996.

 AuctionsPlus™



WELCOME

With great excitement I welcome you to view the inaugural on-property offering of Grangeburn genetics! This offering has been a long term goal for us with no stone unturned to bring to Australia some very exclusive genetics, from a couple of elite northern hemisphere herds that are rarely tapped into. Easily our best group of bulls to date, we believe there are bulls in there for all applications whether it be vealers, weaner calves, bullock production or even producing the next generation of Simmental sires elsewhere.

It's also with great excitement that we are able to welcome visitors from other states in Australia once again given the pandemic situation is lowering its ugly

head – that being said if you aren't able to get across and inspect the cattle we will be doing our first videography this year and each lot will have a representative video online at AuctionsPlus. We also welcome on Jack Hickey and Andrew Button as our agents, who will also do their best to field any requests you may have leading up to or during the online auction.

I'm looking forward to continued prosperity in the beef cattle sector hopefully into the future and it's great to see clients getting rewarded with phenomenal prices for calves! Don't hesitate to send us pictures of Grangeburn sired calves at any time.

Brodhi Carracher



AuctionsPlus

How to Register and Bid on AuctionsPlus

1

Go to www.auctionsplus.com.au to register at least 48 hours before the sale.

2

Select "**Sign Up**" in the top right hand corner.

3

Fill out your name, mobile number, email address and create a password.

4

Go to your emails and confirm the account.

5

Return to AuctionsPlus and log in.

6

Select "**Dashboard**" and then select "**Request Approval to Buy**".

7

Fill in buyer details and once completed go back to Dashboard.

8

Complete buyer induction module (approx. 30 minutes).

9

AuctionsPlus will email you to let you know that your account has been approved.

10

Log in on sale day and connect to auction.

11

Bid using the two-step process – unlock the bid button and bid at that price.

12

If you are successful, the selling agent will contact you post sale to organise delivery and payment.

For more information please contact us on:

Phone: (02) 9262 4222

Email: info@auctionsplus.com.au

SALE INFORMATION

Inspection: Cattle may be inspected any time prior to the sale day, by arrangement. If you can't make it on sale day, we encourage you to inspect the bulls at a time convenient to you by contacting Brodhi directly on 0418 723 996.

Auction: Held online only through AuctionsPlus, the auction will open at 9am on 3rd of February before closing at 6pm – extended only by further bids. A 2% agent rebate is offered for those introducing their client in writing at least 24 hours prior to sale commencement and are attendance with their client on the day.

COVIDSAFE: CovidSafe plans will be in place, please check in on arrival and maintain social distancing where required.

Delivery: This year we are offering freight assistance up to 300km from 2030 Glenelg Highway in any direction.

Field Day Safety: We pride ourselves on the excellent temperament of our cattle, however, there are risks associated with natural bull behaviour. Entering yards is done so at your own risk. We take all precautions to keep you safe by providing secure yards and prohibiting children from entering yards.

Breeding Soundness: All sale bulls offered for sale have passed a semen motility and morphology test by Drew Pickford, Nationwide Artificial Breeders. All bulls offered for sale have been examined by Nationwide Artificial Breeders for penile and testicular soundness also. The certificates for these inspections are available for each bull.

Supplementary Sheet: The bulls have scan data supplied by BREEDPLAN certified scanning technician, Max Bowman, for Eye Muscle Area, Rump & Rib Fat, Marbling (IMF%) and will also have Weight and Scrotal Size Measurements provided.

Guarantee: All stock are guaranteed breeders. Any claim against the breeding ability of an animal purchased should be made in writing and accompanied by a Veterinary Certificate within six months of the date of sale. In the event of a bull failing to breed, it may either be replaced with an animal of comparable value or credit to the full purchase price will be given on a private sale animal. We will guarantee structural integrity of our cattle for up to 12 months from purchase date.

Health: We maintain a J-BAS 7 score so livestock are free to move anywhere in Australia, except into WA. All sale animals pesti-tested negative.

All bulls have been vaccinated twice with Ultravac 7-in-1, Pestigard, Botulinum, 3 Germ (once), BEF and Vibrovax.

Unjoined heifers received all but Vibrovax whilst PTIC heifers received just Ultravac 7-in-1, Pestigard, Botulinum and BEF.

Refreshments: Cool refreshments will be provided on the day, along with snacks in COVIDSafe packaging.

Sale Bulls: Our bulls have been prepared on pasture for the majority of their life, with a silage and grain based pellet given through tough times where grass was sparse, so that they remain structurally and reproductively sound. Due to less grain, sale weights of our bulls may be slightly less than bulls at other sales.

Retained Semen Shares: Grangeburn retains the right to collect semen from any bull sold through the auction at our expense. Semen on a limited number of bulls has already been done.

Performance Data: We have been using raw data and Breedplan information to measure the genetic improvement in our cattle. Aiming for progeny with good growth, combined with the right maturity pattern and an ability to finish easily off available nutrition.

Visitors: We welcome visitors to our property anytime to see how Grangeburn's program has advanced. We think you'll find that our cows are productive and up to the task of producing the next generation weaner calves, replacement heifers or even some sale bulls of your own.

Artificial Breeding Programs

Semen Testing

Semen Collection

Nationwide Artificial Breeders Pty. Ltd.

Drew Pickford

M: 0428 925 255

Call Anytime



BULL MANAGEMENT

To give you an overview of how, and what your new bull has gone through to get to this stage I thought I'd give you a run-down of his life at Grangeburn. Our main calving period begins late in March through to May. Where calves are weighed at birth and tagged with two tags for identification, the calf is also given a score from 1-5 as to its calving ease.

The calves go through two rounds of assessment as they come through the yards for each of their Ultravac 7 in 1 doses, at roughly 6 and 10 weeks of age. At these points we castrate the bottom 50% of bull calves to maintain quality. Calves are weighed at 200 days old for growth EBV's and their dams are weighed for mature cow weight EBV's at this point.

Calves are weaned at 5-7 months dependent on the season, where they have DNA sampled for parent verification and Pestivirus testing to rule out PI. They also receive mineral and vitamin supplements, a Piligard vaccination and are drenched before yard weaning for 3 days. The calves often are licking our hands once those three days are up. They then venture out onto pasture and silage, until the bulls receive a mixed ration prior to our sale day.

All cattle in the herd are Pestivirus PI negative and are vaccinated annually with Pestigard, as well as Ultravac 7 in 1. Bulls only are vaccinated with Vibriovax, Botulinum, BEF and 3 Germ so they will have the ability to resist disease in any environment.

All bulls are examined externally for scrotal and penile abnormalities prior to field day. They also have a crush side semen

evaluation completed and have passed this, plus morphology in the laboratory.

Cattle Management: Going forward we recommend that all cattle purchased from Grangeburn be given at a minimum Pestigard and Ultravac 7 in 1 vaccination annually, prior to joining. Bulls should also receive a Vibriovax vaccination annually.

When bulls leave Grangeburn they're leaving home for the first time and will arrive in unfamiliar surroundings at your property. Please ensure that when the bull is unloaded that he has company in a cow or steer, if he can't be put with the bull mob right away, in a large paddock. Being the youngest of a group your young bull will be at the bottom of the pecking order, so care must be taken to ensure adequate feed and water sources are available for the young developing bull.

Our bulls are used to being handled with utes and 4x4 motorbikes, and SxS UTV. Keep this in mind when handling your new Grangeburn bull at home.

Under good management a rising two year old bull should be capable of serving 40 cows on his own, an older bull can handle more. However, if cows are synchronised for AI those that return as not pregnant to AI could wear your bull out if he has not got sufficient back up.

It is important to observe your bull at the beginning of mating to ensure there is no injury or disease preventing successful service of cows. Most injuries will occur in the first days to weeks of joining. Check him regularly to ensure he is not lame, nor injured. Plus, he likes it when you check him out!



www. jmellis.com.au

52 Gray Street

HAMILTON

03 55723109

Your local Livestock & Real Estate Agency

For enquiries on Grangeburn's offering please call Jack Hickey 0436 189 690



**SOUTHERN
GRAMPIANS**
LIVESTOCK & REAL ESTATE

Contact 5571 1404

62 Thompson Street, Hamilton

rma network. Accredited Member

sglrealestate.com.au



Southern Grampians Livestock & Real Estate has been operating and providing a benchmark service for the last 25 years.

We are a dynamic team, who are passionate about our brand and proud of our proven success record.

We will continue to excel in our level of professionalism, as our reputation is built on trust, communication and performance.

Our Real Estate Specialist Team offer outstanding advice, knowledge and successful results in Property Management, Residential & Rural property sales. Our driven Livestock team will exceed all expectations.

Our obliging service in all areas is your guarantee.

Health Templeton

0408 368 370

John Lawson

0499 752 513

Blair O'Toole

0458 690 008

James Milich

0488 555 304

Dylan Praolini

0437 025 737

Glenn Judd

0448 925 444

Ken Boyd

0408 039 294

Josh Lilley

0400 529 810

Cameron Pepper

0448 908 768

Andrew Button

0460 310 217

Ian Button

0478 983 773

Scott Judd

0417 910 648

PROOF - SGLS

LOT 1 Grangeburn Roadhouse Rebel (P)



ZEUPR044 - HETERO POLLED - 100/100 - BORN 12/4/20

Champs Bravo

Woonallee Flame

Grangeburn Masters Pride

Juraley Swazi K18

Woonallee Regal K13

Woonallee Swazi G40

	CE DIR	BW	200WT	400WT	600WT	RIB	RUMP	EMA	MILK	RBV
EBV	-10.5	+4.0	+30	+39	+61	+0.2	+0.8	+3.0	+11	+1.9
Acc	43%	69%	64%	65%	68%	46%	46%	45%	44%	46%
Avg	+2.4	+0.7	+20	+36	+45	+0.4	+0.2	+2.5	+8	+0.5

Roadhouse Rebel has been a favourite literally since birth, the photo doesn't do this bull any justice. His extra skin and softness is a welcome addition in a bull with so much grunt and power. Super temperament and standing on great feet and legs, he's a proper good son of a slick skinned Flame daughter who always weans a heavy one! With so much Flame and Masters Pride in our herd already his use would have been limited so us offering him is your gain and our loss, look at those top 10% 200 day growth EBV's. Small scurs.

LOT 2 Grangeburn Ring O' Fire (PP) (ET)



ZEUPR046 - HOMO POLLED - 100/100 - BORN 14/4/20

Bar 5 FF Hexagon

Gibby's Ultimate

Bar 5 Hextor

JB CDN Fashionista

Dora Lee's Daniella

JB CDN Freysia

	CE DIR	BW	200WT	400WT	600WT	RIB	RUMP	EMA	MILK	RBV
EBV	-4.3	+3.0	+23	+38	+42	-0.6	-0.8	+2.3	+7	+0.7
Acc	36%	67%	61%	64%	67%	46%	44%	45%	36%	43%
Avg	+2.4	+0.7	+20	+36	+45	+0.4	+0.2	+2.5	+8	+0.5

What a bull to lead off the offering of ET progeny from the JB Livestock herd! He's got a great top line with extra length for production of those valuable cuts, bomb proof temperament and to top it off he'll leave no horns on progeny being homozygous poll. Have a look at his ET sister at lot 15 to see how his daughters will look in your herd! His ET brother will be retained in herd as well as 4 more ET sisters. Stud sire potential.

LOT 3 Grangeburn Rhinestone (P) (ET)



ZEUPR039 - HETERO POLLED - 100/100 - BORN 8/4/20

FGAF Geurrero

JB CDN Windwalker

FGAF Radioactive

JB CDN Annifried

Starwest Angel

JB CDN Jovita

	CE DIR	BW	200WT	400WT	600WT	RIB	RUMP	EMA	MILK	RBV
EBV	+7.7	-2.1	+7	+16	+14	+0.2	+0.1	+3.4	-	+0.6
Acc	27%	64%	57%	60%	64%	41%	40%	40%	-	40%
Avg	+2.4	+0.7	+20	+36	+45	+0.4	+0.2	+2.5	+8	+0.5

I absolutely love the capacity in this ET bull, again from the JB Livestock herd, he oozes softness and carcass. He's an outcross for most in Australia being by the now deceased FGAF Radioactive who has bred the house down in Canada and USA. His ET sister is a favourite of mine and is destined for the donor pen once she calves down, again huge capacity and softness. Don't miss this absolute tank who had fat and IMF scans as good as any in the group. We are eagerly awaiting his first calves as he backed up our traditional stud heifers and hardly lost condition! Top 10% for BW. Semen to be retained.

LOT 4 Grangeburn Rage Cage (PP) (TW)



ZEUPR003 - HOMO POLLED - 100/100 - BORN 13/3/20



	CE DIR	BW	200WT	400WT	600WT	RIB	RUMP	EMA	MILK	RBV
EBV	-6.7	+3.2	+26	+40	+54	-0.1	+0.1	+2.8	+12	+1.6
Acc	42%	67%	61%	61%	64%	44%	43%	42%	42%	43%
Avg	+2.4	+0.7	+20	+36	+45	+0.4	+0.2	+2.5	+8	+0.5

First homozygous polled son of Masters Pride to be offered, with that extra and slick skin and super temperament. Out of a really smart Flame cow who goes back to some different cow lines than most our cattle. A standout in terms of bone and carcass shape too, a top end bull with a stacked pedigree!

LOT 5 Grangeburn Renegade Master (P)

ZEUPR060 - HETERO POLLED - 100/100 - BORN 17/5/20



Champs Bravo
Grangeburn Masters Pride
 Woonallee Regal K13
 Double Bar D Spitfire
Grangeburn Repertoire N10
 Six Creeks Dort D2

	CE DIR	BW	200WT	400WT	600WT	RIB	RUMP	EMA	MILK	RBV
EBV	-3.5	+1.5	+19	+27	+32	+0.0	+0.3	+4.6	+9	+2.1
Acc	41%	64%	60%	63%	66%	45%	45%	45%	39%	45%
Avg	+2.4	+0.7	+20	+36	+45	+0.4	+0.2	+2.5	+8	+0.5

Another polled son of Masters Pride, with extra hindquarter and slick skin. Out of a really sound and easy doing Spitfire daughter. I have a lot of time for this bull, gives a little away in age but he's a top prospect. Small scurs. Top 5% for EMA & RBV.

LOT 6 Grangeburn Roulette (P)

ZEUPR012 - HETERO POLLED - 100/0 - BORN 28/3/20



Woonallee Justified
Woonallee Muscleman
 Woonallee Rosy
 Bar 5 SA Expert
Rosemont Park Elsie E12
 Rosemont Park Q-Missy

	CE DIR	BW	200WT	400WT	600WT	RIB	RUMP	EMA	MILK	RBV
EBV	-1.6	+2.0	+20	+34	+34	+0.0	+0.5	+2.4	+13	+1.0
Acc	38%	68%	62%	64%	67%	42%	41%	43%	40%	43%
Avg	+2.4	+0.7	+20	+36	+45	+0.4	+0.2	+2.5	+8	+0.5

A paternal brother to Grangeburn Quickdraw who sold for \$20,000 at the 2021 QSBS to Springfield Simmentals. He's super correct and got excellent growth for age, he's hard to fault!

LOT 7 Grangeburn Rocketman (H) (ET)

ZEUPR033 - HORNED - 100/100 - BORN 5/4/20



FGAF Geurrero
FGAF Radioactive
 Starwest Angel
 JB CDN Windwalker
JB CDN Antebellum
 JB CDN Jovita

	CE DIR	BW	200WT	400WT	600WT	RIB	RUMP	EMA	MILK	RBY
EBV	+6.4	-1.0	+9	+20	+27	-0.1	-0.3	+3.1	-	+0.8
Acc	26%	63%	56%	60%	64%	41%	40%	40%	-	40%
Avg	+2.4	+0.7	+20	+36	+45	+0.4	+0.2	+2.5	+8	+0.5

Another FGAF Radioactive son here with a great top and strength through that spine, walks on good solid black feet. Out of a great donor cow in Antebellum, the recipient didn't deliver the potential this calf could've had but he doesn't show it!

LOT 8 Grangeburn Ring Leader (P) (TW)

ZEUPR001 - HETERO POLLED - 100/100 - BORN 11/3/20



Valley Creek Harrach
Valley Creek Joker
 Barana Felton
 Woonallee Essendon
Juraley Ellen H7
 Juraley Ellen E4

	CE DIR	BW	200WT	400WT	600WT	RIB	RUMP	EMA	MILK	RBY
EBV	-3.4	+1.9	+19	+32	+49	-0.6	-0.4	+2.1	+11	+1.2
Acc	35%	65%	56%	57%	59%	36%	36%	36%	26%	36%
Avg	+2.4	+0.7	+20	+36	+45	+0.4	+0.2	+2.5	+8	+0.5

A polled vealer bull with extra hindquarter and a real slick skin, he's a safe bet out of a really good cow in H7.

LOT 9 Grangeburn Rough N Ready (PP)

ZEUPR097 - HETERO BLACK - HOMO POLL - BORN 19/9/20



Bonnydale Blackhawk H274
Wormbete Nitrate
 Bonnydale Jossie G210
 Woonallee Half Back
Lavarta Naughty or Nice
 TrentonFarm Charlies Angel

	CE DIR	BW	200WT	400WT	600WT	RIB	RUMP	EMA	MILK	RBV
EBV	+8.7	-1.4	+16	+26	+24	+0.4	-0.5	+2.4	+8	-0.1
Acc	34%	62%	55%	55%	49%	39%	39%	39%	37%	39%
Avg	+2.4	+0.7	+20	+36	+45	+0.4	+0.2	+2.5	+8	+0.5

The youngest bull in the catalogue, just 16.5 months at sale day. A heap of muscle in him and an early maturity pattern, all with a beautiful skin type on him.

LOT 10 Grangeburn Rocket (PP) (TW)

ZEUPR074 - HOMO BLACK - HOMO POLL - BORN 14/8/20



ASR Augustus Z2165
Valley Creek New York
 Valley Creek Lady Luck
 Woonallee Half Back
Lavarta Laila
 Lavarta Honolulu

	CE DIR	BW	200WT	400WT	600WT	RIB	RUMP	EMA	MILK	RBV
EBV	+10.2	-2.2	+16	+33	+27	+1.0	+0.2	+2.8	+6	-0.7
Acc	33%	63%	57%	59%	52%	41%	41%	42%	37%	41%
Avg	+2.4	+0.7	+20	+36	+45	+0.4	+0.2	+2.5	+8	+0.5

A twin this fella, he had a rough start but hasn't looked back at just 17.5 months on sale day. The sire line has been very successful in heifer matings - R74 is a bull who could be used on heifers or cows! Top 10% BW

Livestock insurance that fits

Insure our way,
the local way.



In the livestock business, we understand it takes years to breed and produce your stock, which is why it pays to make sure you're protected if the unexpected occurs. Elders Insurance offers a wide range of risk protection options in one policy to cover any livestock enterprise you may be involved in. As we all know, there is always an inherent risk when transporting livestock but many of us forget about the risks while they are in the paddock. With every season and area being different it is important to consider all of the potential risks to your livestock and ensure you have suitable cover in advance for unforeseen circumstances involving your valuable livestock assets.

Contact Damian Carracher for a personalised quote.

0427 517 544  **Elders Insurance Casterton**

Damian Carracher Insurances Pty Ltd The trustee for the DJ & FL Carracher Family Trust ABN 35454334933 trading as Elders Insurance Mount Gambier Region AR No. 254881 is an Authorised Representative of Elders Insurance (Underwriting Agency) Pty Limited ABN 56 138 879 026, AFSL 340965. Insurance is underwritten by QBE Insurance (Australia) Limited ABN 78 003 191 035 AFSL 239545. Visit www.eldersinsurance.com.au to consider the Product Disclosure Statement and any applicable Target Market Determination to decide if the product is right for you.



Insurance

LOT 11 Grangeburn Razzamatazz (PP)

ZEU1R159 - HETERO BLACK - HOMO POLL - BORN 30/3/20



Bonnydale Blackhawk H274
Wormbete Nitrate
 Bonnydale Jossie G210
 Purebred Angus
Purebred Angus F507
 Purebred Angus

	CE DIR	BW	200WT	400WT	600WT	RIB	RUMP	EMA	MILK	RBV
EBV	+1.9	-1.9	+17	+26	+35	+2.9	+1.9	+1.2	+6	-1.3
Acc	28%	60%	54%	58%	61%	39%	38%	39%	31%	39%
Avg	+2.4	+0.7	+20	+36	+45	+0.4	+0.2	+2.5	+8	+0.5

First of the SimAngus bulls is a big teddy bear with a temperament to die for, added growth and dimension in this bull for those wanting to add a bit of vigour and punch into their calves. He was the heavy weight of his contemporary at scanning!

LOT 12 Grangeburn Riff Raff (PP)

ZEU1R169 - HETERO BLACK - HOMO POLL - BORN 4/4/20



Bonnydale Blackhawk H274
Wormbete Nitrate
 Bonnydale Jossie G210
 Purebred Angus
Purebred Angus J16
 Purebred Angus

	CE DIR	BW	200WT	400WT	600WT	RIB	RUMP	EMA	MILK	RBV
EBV	+5.1	-2.5	+15	+26	+42	+3.8	+3.1	+0.4	+6	-2.3
Acc	28%	60%	54%	58%	61%	39%	38%	39%	31%	39%
Avg	+2.4	+0.7	+20	+36	+45	+0.4	+0.2	+2.5	+8	+0.5

Added capacity to this heavyweight SimAngus bull with extra spring of rib. Can't go wrong with this fella over some Angus cows for added bone and weight in your weaners.

LOT 13 Grangeburn Rayban (PP)

ZEU1R126 - HETERO BLACK - HOMO POLL - BORN 19/3/20



Bonnydale Blackhawk H274
Wormbete Nitrate
 Bonnydale Jossie G210
 Purebred Angus
Purebred Angus J11
 Purebred Angus

	CE DIR	BW	200WT	400WT	600WT	RIB	RUMP	EMA	MILK	RBV
EBV	+7.7	-4.9	+4	+12	+7	+3.6	+2.9	+1.5	+5	-1.9
Acc	28%	60%	54%	58%	61%	39%	38%	39%	31%	39%
Avg	+2.4	+0.7	+20	+36	+45	+0.4	+0.2	+2.5	+8	+0.5

More moderate in frame score than his brothers but a really tidy compact and muscle packed SimAngus is R126. His calves would be very handy in a weaner sale!

LOT 14 Grangeburn Roosevelt (PP)

ZEU1R145 - HETERO BLACK - HOMO POLL - BORN 25/4/20



Bonnydale Blackhawk H274
Wormbete Nitrate
 Bonnydale Jossie G210
 Purebred Angus
Purebred Angus J39
 Purebred Angus

	CE DIR	BW	200WT	400WT	600WT	RIB	RUMP	EMA	MILK	RBV
EBV	+4.5	-2.6	+10	+25	+37	+3.4	+2.6	-0.2	+4	-2.3
Acc	27%	46%	51%	56%	59%	39%	38%	39%	31%	39%
Avg	+2.4	+0.7	+20	+36	+45	+0.4	+0.2	+2.5	+8	+0.5

Added frame to this growthy bull, great temperament too. Out of a top Angus cow in J39 with a heap of do-ability, his daughters would make excellent future breeders.



LEPTO CAN PUT YOU AND YOUR FAMILY IN HOSPITAL

ULTRAVAC® 7in1 VACCINATION SIMPLE AND HIGHLY EFFECTIVE



CALVES
1ST DOSE MARKING (6-10 wks)
2ND DOSE WEANING (12-16 wks)

HEIFERS
PRE-JOINING
Booster vaccination 2-4 weeks pre-joining

COWS
PRE-CALVING
Vaccinate 4-6 weeks pre-calving

BULLS
PRE-JOINING
Booster vaccination 2-4 weeks pre-joining
Vaccinate unvaccinated bulls twice

THE ONLY VACCINE TO PREVENT SHEDDING OF LEPTOSPIRES*

*Only Ultravac®7in1 prevents urinary shedding of *Leptospira borgpetersenii* serovar Hardjo type Hardjobovis and *Letospira interrogans* serovar Pomona, while also protecting against the key clostridial diseases. Zoetis Australia Pty Ltd. ABN 94 156 476 425. Level 6, 5 Rider Boulevard, Rhodes NSW 2138. ©2021 Zoetis Inc. All rights reserved. 02/21. ZL1326

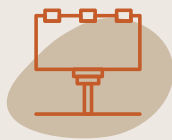


Maximise your Stud Stock Sales with Australia's only dedicated Cattle Stud Marketing Agency

Stud Stock Marketing Services has the end-to-end means to market and promote your stud breeding operation, physical sales, genetic sales, online sales, paddock sales and even Breed Association.

Our team can assist to identify who your primary market is, identify the best ways to market and promote your operation to them and then perform some or all of the necessary marketing/promotion efforts at your request.

Create marketing campaigns, industry leading websites, targeted social media, fit-for-purpose video and TV commercials, high quality print (catalogues/flyers/newspaper articles) and then there's design and production of banners, shed cards, branded merchandise and more.



MARKETING STRATEGY, PLANS AND CAMPAIGNS

Develop a marketing campaign that includes how, when and where to market and promote. Identify how return on investment (ROI) is measured so that you only spend money where its needed.



BRANDING AND GRAPHIC DESIGN

Align your brand with your desired market segment. Make your brand reflect the quality and professionalism of your operation every time it's visible to a potential buyer.



WEBSITE DESIGN, BUILD, HOST AND MAINTAIN

Create a website that markets and promotes your operation 24/7, 365 days a year. Create an industry leading website that improves your Google Ranking and creates more leads for your business.



DIGITAL MARKETING AND FACEBOOK CAMPAIGNS

Have you ever received metrics on Facebook posts or campaigns you have paid for? Likely not, because they don't stack up and are overpriced. Our offering is affordable, and it works.



VIDEO PRODUCTION AND EDITING

Video sells better than photos or print. Our team can develop videos on anything you require including bulls for sale, stud sales, TV ads and more. We have a three-tiered solution offering pricing for every budget.



LAUNCH OR GROW YOUR STUD SALE

Let us launch, improve or manage your entire bull sale. Only selling out of the paddock or online? We have a solution to sell your animals out of the paddock for a better return, one that has been tested and will get you results.

ELEVATE YOUR CATTLE STUD BRAND



07 3063 4564



gday@studstockmarketing.com.au



@studstockmarketingservices

LOT 15 Grangeburn Fashionista R37 FF (P) (ET)

ZEUPR037 - HETERO POLLED - 100/100 - BORN 6/4/20



Bar 5 FF Hexagon

Bar 5 Hextor

Dora Lee's Daniella

Gibby's Ultimate

JB CDN Fashionista

JB CDN Freysia

	CE DIR	BW	200WT	400WT	600WT	RIB	RUMP	EMA	MILK	RBV
EBV	-2.9	+2.3	+22	+33	+34	-0.3	-0.4	+2.2	+7	+0.5
Acc	37%	68%	61%	64%	68%	56%	55%	40%	36%	47%
Avg	+2.4	+0.7	+20	+36	+45	+0.4	+0.2	+2.5	+8	+0.5

Once in a lifetime opportunity presents here. We scalded the northern hemisphere in search of donors and JB Livestock had what we were looking for and this heifer typifies what we were after. Functional polled females with exceptional growth, calving ease and correct structurally. A full brother retained for stud duties, another brother sells with high recommendations at Lot 2 - she only sells because we said we would offer an exciting one and we have sisters on the ground. Joined to Grangeburn Rhinestone R39 from 5/6/21. PTIC.

LOT 16 EMBRYO PACKAGE (IMPORTED)



JB CDN Fashionista

X



BAR 5 SA Hextor

Our good fortune with ET results on Fashionista's genetics means we have a few spare to share. Selling 2 embryos both sired by Bar 5 SA Hextor - we have proof mating works, check out lot 2 and 15. Can't guarantee pregnancies on this mating as these are the only embryos we have on this mating however with our past results we are confident in these embryos!

LOT 17 (A & B) Grangeburn Mona Lisa (H) (ET)

Thanks to Prostock Solutions in USA we were able to source a flush from the now deceased and world famous Diamond T Mona Lisa 273U - never before or again will her progeny reach our shores. We are offering the pick of two exceptional 273U daughters sired by DBD Spitfire 20X, once again this opportunity only comes up as we have more sisters in the wings coming through! You be the judge, but we believe both these two are very strong representations of their dams breeding potency. Both were AI'd to imported calving ease sire Rugged R Cavill on 24/5/21 and were backed up with Grangeburn Royal Flush (PP) from 5/6/21 to 15/8/21. PTIC.

OFFERING PICK - OTHER HEIFER TO BE RETAINED - SELECTION TO BE MADE BY 10/2/21



A

**ZEUPR017 - HORNED - 100/100
BORN 29/3/20**



Mona Lisa 273U



B

**ZEUPR021 - HORNED - 100/100
BORN 3/4/20**



DBD Spitfire 20X

	CE DIR	BW	200WT	400WT	600WT	RIB	RUMP	EMA	MILK	RBV
R21	-1.1	+1.5	+19	+29	+41	-0.7	-0.6	+2.9	+7	+1.5
R17	-0.3	+1.0	+18	+26	+34	-0.3	-0.1	+3.3	+7	+1.5
Acc	34%	68%	64%	66%	68%	58%	56%	45%	46%	48%
Avg	+2.4	+0.7	+20	+36	+45	+0.4	+0.2	+2.5	+8	+0.5

Double Bar D Everest 103U

BHR Baron SA 2842P

Double Bar D Spitfire

Diamond T Mona Lisa 273U

Virginia MS Treasure 4T

Diamond T Leneff

LOT 18 Grangeburn Lady Pretoria R88 (PP)

ZEUPR088 - HOMO POLLED - 100/100 - BORN 11/9/20



— Champs Bravo
Grangeburn Masters Pride
 — Woonallee Regal K13
 — DDD Sargent Rote 211U
Woonallee Lady Pretoria H14
 — Woonallee Lady Pretoria F3

	CE DIR	BW	200WT	400WT	600WT	RIB	RUMP	EMA	MILK	RBV
EBV	-13.7	+2.9	+24	+34	+43	+0.5	+0.9	+3.9	+12	+1.7
Acc	44%	70%	65%	66%	62%	60%	58%	44%	45%	53%
Avg	+2.4	+0.7	+20	+36	+45	+0.4	+0.2	+2.5	+8	+0.5

A really soft and well natured baby heifer who wouldn't play the game when it come to photo day. Her dam is always producing the right type of sale bull, year in year out. Homozygous polled, watch her grow into an outstanding female. Top 10% EMA. Offered unjoined.

LOT 19 Grangeburn Kathie R232 (P) (TW)

ZEUPR232 - HETERO POLLED - 100/100 - BORN 24/9/20



— Bonnydale Blackhawk H274
Wormbete Nitrate
 — Bonnydale Jossie G210
 — Woonallee BHR Tornado
Six Creeks Kathie L26
 — Woonallee Kathie B112

	CE DIR	BW	200WT	400WT	600WT	RIB	RUMP	EMA	MILK	RBV
EBV	+2.6	+0.2	+22	+34	+46	+0.0	-0.3	+3.7	+11	+1.6
Acc	38%	63%	58%	53%	50%	39%	38%	34%	43%	36%
Avg	+2.4	+0.7	+20	+36	+45	+0.4	+0.2	+2.5	+8	+0.5

A descendant of the famous Kathie cow family whom have produced many top cattle Australia wide, she did it tough as a twin for a start but is now kicking goals! Structurally very correct with a good nature. Offered unjoined.

LOT 20 EMBRYO PACKAGE (IMPORTED)



X



Again, good fortune with ET results on Fashionista's genetics means we are offering 2 embryos both sired by FSMB Pol Eddy this time. One of the only polled French Attack sons to date, his young ET calves that we have on the ground are looking outstanding. Can't guarantee pregnancies as these are the only embryos left we have on this mating however with our past results we are confident in these embryos!

LOT 21 - JB CDN CAPTAIN CALL SEMEN (10 STRAWS)

LOT 22 - JB CDN CAPTAIN CALL SEMEN (10 STRAWS)



JB CDN Captain Call - 13 months.

'Captain' is the bull we'd been searching for, he's got the pedigree, the performance and the cosmetics that we all like to see and watch perform. Out of the strong Freysia line of females, and sired by Double Bar D Chisholm, he represents a new sire line for Australia. Cosmetically he's cherry red, full pigmented and polled.

Selling two packages of 10 straws, this is the first semen to be offered and will be the only semen sold on Captain in 2022. Purchaser has the option to purchase further 10 straws at the same price.

LOT 23 - MASTERS PRIDE SEMEN PACKAGE (10 STRAWS)



The old favourite, Masters Pride, has produced some potent bulls to offer this year and for many before. His daughters are perhaps his strongest though, really soft with capacity and good udders.

Selling one package of 10 straws with the option to purchase more at the same price.



GRANGEBURN

BUYER INSTRUCTION SLIP

(NO VERBAL INSTRUCTIOSN WILL BE ACCEPTED)

BUYERS PIC: _____

Trading Name: _____

Address: _____

Phone: _____

Email: _____

Agent: _____

Lots Purchased: _____

Society Transfer required: YES/NO **Herd Ident:** _____

Delivery Details: _____

Signature: _____

REFERENCE COWS



JB CDN ANNIFRIED

Dam of Grangeburn Rhinestone (Lot 3)



JB CDN FASHIONISTA

Dam of Grangeburn Ring O' Fire (Lot 2)
& Grangeburn Fashionista R37 (Lot 15)



DIAMOND T MONA LISA 273U

Dam of Grangeburn Mona Lisa R17 (Lot 17A)
& Grangeburn Mona Lisa R21 (Lot 17B)



JB CDN ANTEBELLUM

Dam of Grangeburn Rocketman (Lot 7)

