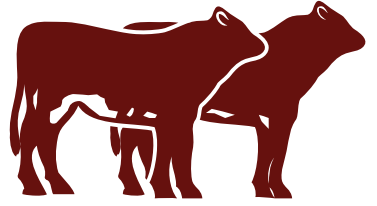


TARA



SHORTHORNS



AuctionsPlus

HELMSMAN SALE

Friday, 16th December, 2022

TARA SHORTHORNS SALE

16TH DECEMBER 2022

Dear Beef Producers

Thank you for expressing an interest in our breeding program. We are proud of the bulls on offer and believe that they are a testament to our objectives to breed quality, sound, well tempered animals. All bulls have been 100% grass fed. They have also been performance recorded with IGS. The majority of the sale bulls are sired by our 2019 South Australain stud sire purchase, Belmore Quantum N132. This year with the opening of the quarantine borders we have purchased two new stud sires- one from Sprys sale, Outback Sprys Special R273, the other from the National Shorthorn Sale Dubbo, Tataila Rubix R12. We are excited to see their progeny on the ground next year.

If we can be of any assistance before or after the sale please dont hesitate to give us a call.

HEALTH

All bulls have been semen tested, vaccinated once with Vibrovac (please give them a second dose), twice with 7 in 1, Multi Min and have returned negative pestivirus results (BVDV). They were last drenched with Eclipse on the 28/10/2022.

CONTACTS



Deane Allen
Rob Gibbings 0418931146

Tara Shorthorns
Tim Bleechmore 0427672055
Lucy Bleechmore - 0468720778

NEW STUD SIRES



Outbacks Sprys R273



Tataila Rubix R12

ONLINE BIDDING

This sale will be run in a helmsman format and conducted entirely on Auctions Plus. Bidding will only be available to registered Auctionsplus users. Prospective bidders must register prior to sale with Auctionsplus. Contact Auctionsplus 02 92624222 or go online to www.auctionsplus.com.au. if you need assistance to do this. Alternatively you can attend the Elders Bunbury offices on sale day to bid or contact your local agent to bid on your behalf.



AuctionsPlus

How to Register and Bid on AuctionsPlus

1

Go to www.auctionsplus.com.au to register at least 48 hours before the sale.

2

Select "**Sign Up**" in the top right hand corner.

3

Fill out your name, mobile number, email address and create a password.

4

Go to your emails and confirm the account.

5

Return to AuctionsPlus and log in.

6

Select "**Dashboard**" and then select "**Request Approval to Buy**".

7

Fill in buyer details and once completed go back to Dashboard.

8

Complete buyer induction module (approx. 30 minutes).

9

AuctionsPlus will email you to let you know that your account has been approved.

10

Log in on sale day and connect to auction.

11

Bid using the two-step process – unlock the bid button and bid at that price.

12

If you are successful, the selling agent will contact you post sale to organise delivery and payment.

For more information please contact us on:

Phone: (02) 9262 4222

Email: info@auctionsplus.com.au

REFERENCE SIRES

BELMORE QUANTUM N132 (PP)



Purchased from Belmore Short-horns in 2019 for \$33,000 Quantum has a great data set and has proven to breed easy doing, sound progeny with great docility and good growth.

	API
INDEX	118.30
% RK	20

	CE	BW	WW	YW	MILK	MCE	M WWT	STAY	DOC	CW	REA	FAT	MARB	YG
EPD	5.8	4.3	61.6	96.1	27.7	4.2	58.5	18.8	16.8	6.7	0.30	-0.065	-0.03	-0.27
ACC	48%	53%	46%	45%	17%	20%	27%	28%	35%	38%	38%	31%	38%	31%
%RK	75	80	15	15	30	75	15	2	4	40	75	15	45	95

TARA QUINN Q7 (PP)



Q7 is a testament to our breeding objectives. He is an easy calving sire with an outstanding data set and has proven to breed thick, easy doing progeny.

	API
INDEX	114.53
% RK	30

	CE	BW	WW	YW	MILK	MCE	M WWT	STAY	DOC	CW	REA	FAT	MARB	YG
EPD	13.8	1.3	50.3	83.8	26.3	12.4	51.5	14.4	10.3	22.4	0.67	-0.111	-0.18	-0.44
ACC	42%	50%	42%	42%	14%	20%	23%	28%	34%	37%	33%	29%	33%	29%
%RK	4	20	65	45	45	1	50	30	60	4	2	100	95	4

UNDERSTANDING SHORTHORN IGS EPD'S

The Shorthorn IGS Genetic Evaluation - Powered by BOLT offers a full suite of EPD's for: Maternal, Growth, Production and Carcase Traits. IGS is the largest genetic evaluation for beef cattle in the world and IGS EPD's measure the genetic merit of an animals progeny.

SHORTHORN IGS EPD'S EXPLAINED

EPD	MEASURE	TRAITS
CE-D	%	CALVING EASE DIRECT - % OF EXTRA UNASSISTED BIRTHS IN HEIFERS. POSITIVE VALUES ARE MORE FAVOURABLE.
CE-M	%	CALVING EASE MATERNAL - % OF EXTRA UNASSISTED BIRTHS IN 1ST CALVING HEIFERS. POSITIVE VALUES ARE MORE FAVOURABLE.
BWT	POUNDS	BIRTH WEIGHT - POUNDS OF BIRTHWEIGHT.
WW	POUNDS	WEANING WEIGHT - POUNDS OF WEANING WEIGHT ADJUSTED TO 205 DAYS.
YW	POUNDS	YEARLING WEIGHT - POUNDS OF YEARLING WEIGHT ADJUSTED TO 365 DAYS OF AGE.
MILK	POUNDS	MILK - POUNDS OF WEANING WEIGHT OF DAUGHTERS PROGENY DUE TO MILK PRODUCTION.
MWW	POUNDS	MATERNAL WEANING WEIGHT - POUNDS OF WEANING WEIGHT OF DAUGHTERS PROGENY DUE TO MILK AND GROWTH.
STAY	%	STAYABILITY - % OF DAUGHTERS REMAINING IN THE HERD AT 6 YEARS OF AGE. POSITIVE VALUES ARE MORE FAVOURABLE.
DOC	%	DOCILITY - % OF PROGENY RECEIVING A DOCILITY SCORE OF 1 (IDEAL). POSITIVE VALUES ARE MORE FAVOURABLE.
CWT	POUNDS	CARCASE WEIGHT - POUNDS OF CARCASE WEIGHT.
REA	SQ. INCHES	RIB EYE AREA - RIB EYE AREA IN SQUARE INCHES.
FAT	INCHES	RIB FAT - RIB FAT IN INCHES.
MS		MARBLE SCORE - DIFFERENCES IN CARCASS MARBLE SCORES. POSITIVE VALUES ARE MORE FAVOURABLE.
ALL PURPOSE INDEX		
API	\$ PER HEAD	API \$INDEX - SIRES USED IN SELF REPLACING COW HERD WITH PROGENY MARKETED FOR BOTH QUALITY AND YIELD.
RANK %	%	RANK % - EPD RANKING RELATIVE TO SHORTHORN PERCENTILE BAND. LOWER % VALUES USUALLY MORE FAVOURABLE

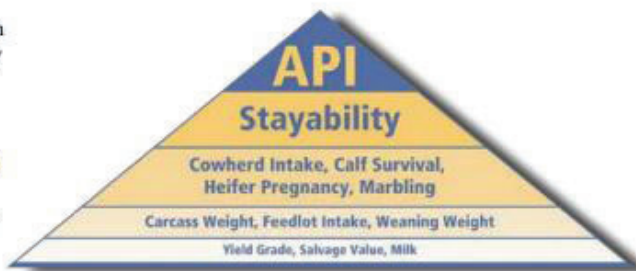
UNDERSTANDING RANK %

EPD Values are a critical function, however to use EPD's correctly, it is important to first understand how the EPD Values ranks relative to the breed average. To make this process easier, the Rank % Value is published with each EPD and \$Index and tells you where each value ranks relative to breed average.

With the exception of EPD and \$ Index Values that may exceed or your thresholds for that trait, breeders should concentrate on the Rank % itself, as the critical value.

ALL PURPOSE \$INDEX - API

Though EPDs allow for the comparison of genetic levels for many economically important traits, they only provide a piece of the economic puzzle. That's where \$ Indexes come in. Through well conceived, rigorous mathematical computation, \$ Indexes blend EPDs and economics to estimate an animal's overall impact on your bottom line.



ALL PURPOSE INDEX (API):

Evaluates sires for use on the entire cow herd (bred to both Angus first-calf heifers and mature cows) with the portion of their daughters required to maintain herd size retained and the remaining heifers and steers put onto feed and marketed for both quality grade and yield.

HOW RANK % WORKS

IGS EPD's are used for direct comparisons, not just across the same breed within different countries, but across all breeds and all countries in IGS. That means that the EPD's for a Shorthorn bull in Australia can be directly compared to the EPD's for a Simmental bull in Canada or the EPD's for a Red Angus bull in America.

Whilst the IGS EPD's can be directly compared across all IGS recorded animals, the same can not be said for percentiles. Percentile bands for Shorthorns in Australia only rank each Australian Shorthorn against other Australian Shorthorn cattle.

To make this process as uncomplicated as possible, we also print the EPD's with a Rank % value.

The Rank % value lists the percentile rank for every EPD and every animal.

IGS	CE DIRECT	BIRTH WEIGHT	WEANING WEIGHT	YEARLING WEIGHT	MILK	TOTAL MATERNAL	CE MATERNAL
EPD	+11	-0.4	+58	+92	+19	48	+10
RANK %	16%	11%	58%	39%	57%	63%	7%

In the above table, the animal has a CE-D EPD of +11. Without having a copy of the percentile band it is impossible to know where +11 sits relative to the other Shorthorns in Australia. However, the Rank % value tells you instantly that +11 for CE-D places the animal in the 16th percentile or in the top 16% of the Shorthorn breed in Australia.

Rank % is designed to give you instant access to know where each EPD sits relative to the Shorthorn breed in Australia. So for most breeders, the Rank % value will be more important than the EPD value itself.

UNDERSTANDING ACCURACIES

BOLT EPD accuracies will see the most change, usually lowering numerically and especially for non-parent animals, however the reported accuracy will be more accurate.

With BOLT EPD's, accuracy can be more directly solved (without using assumptions), which results in a more reliable accuracy, although that accuracy will quite often be lower numerically.

Accuracy refers to the amount a reported EPD can possibly change as more data is added. EPD values with higher accuracy result in less possible change for the value over time. More accurate accuracies better represent the amount of possible change for each EPD.

LOT 1

TARA SILO S4

DOB: 27/01/2021

Colour: White

Ident: TKLS4

BELMORE QUANTUR G193

NORTHERN LEGEND 3N (IMP CAN)

BELMORE PATSY B275

SIRE: BELMORE QUANTUM N132

BELMORE JACKAROO Z109

BELMORE JILLAROO D150

BELMORE GUCCI Z265

SPRYS MORTAL M40

ROYALLA NOSTALGIA

SPRYS ACES PRIMROSE K45

DAM: TARA LORNA Q2

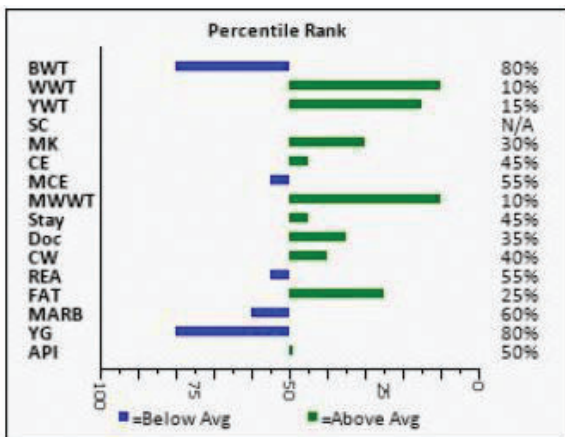
TARA LORNA L32 (SFA)

TARA JEMIMA J32 (SFA)

	CE	BW	WW	YW	MILK	MCE	M WWT	STAY	DOC	CW	REA	FAT	MARB	YG
EPD	7.9	4.3	64.2	96.7	27.5	5.4	59.6	13.2	12.0	6.4	0.36	-0.072	-0.06	-0.31
ACC	15%	25%	16%	15%	7%	7%	10%	7%	9%	12%	11%	8%	11%	9%
%RK	45	80	10	15	30	55	10	45	35	40	55	25	60	80

Homozygous polled. A structurally correct and easy doing bull. Out of a first calver.

	API
INDEX	108.35
% RK	50



LOT 2 TARA SHERMAN S39

DOB: 02/02/2021

Colour: Roan

Ident: TKLS39

BELMORE QUANTUR G193

NORTHERN LEGEND 3N (IMP CAN)

SIRE: BELMORE QUANTUM N132

BELMORE JACKAROO Z109

BELMORE JILLAROO D150

BELMORE GUCCI Z265

DAM: TARA MISSY M495 (SFA)

	CE	BW	WW	YW	MILK	MCE	M WWT	STAY	DOC	CW	REA	FAT	MARB	YG
EPD	9.7	3.0	62.9	89.3	29.3	6.3	60.8	11.3	12.4	-0.8	0.23	-0.086	-0.11	-0.33
ACC	14%	22%	15%	15%	7%	7%	10%	7%	8%	9%	8%	6%	10%	7%
%RK	25	50	15	30	20	35	10	75	30	75	90	65	75	65

Homozygous polled. A structurally correct, larger framed bull. Good milk, WWT and YWT EPD's.

	API
INDEX	105.28
% RK	60



LOT 3 TARA SCOOTER S24

DOB: 19/02/2021

Colour: White

Ident: TKLS24

BELMORE QUANTUR G193

NORTHERN LEGEND 3N (IMP CAN)

BELMORE PATSY B275

SIRE: BELMORE QUANTUM N132

BELMORE JACKAROO Z109

BELMORE JILLAROO D150

BELMORE GUCCI Z265

DAM: TARA LORNA L32

TARA JEMIMA J32 (SFA)

	API
INDEX	101.22
% RK	75

	CE	BW	WW	YW	MILK	MCE	M WWT	STAY	DOC	CW	REA	FAT	MARB	YG
EPD	4.2	6.8	69.6	101.2	31.2	2.3	66	11.3	12.4	4.9	0.23	-0.078	0.02	-0.29
ACC	12%	26%	14%	14%	7%	6%	9%	6%	8%	11%	10%	7%	12%	8%
%RK	95	100	3	10	10	95	2	75	30	50	90	40	30	90

Homozygous polled. An extremely docile, free moving bull with awesome feet and out of an exceptional milking cow.

LOT 4 TARA SLIM SHADY S11

DOB: 27/01/2021

Colour: White

Ident: TKLS11

SPRYS HERITAGE M213

THE GROVE GIGABYTES J0837

SIRE: TARA QUINN Q7

SPRYS IMF'S JUDITH J100

BELMORE FREYA L135

BELMORE QUARE G233

SPRYS PRIMROSE'S BUDDY

RED ROSE GOLD SPEAR RUFFIAN

DAM: TARA PEARL P5

THE GROVE PRIMROSE A742

TARA N532 (SFA)

TARA LORNA L32 (SFA)

	CE	BW	WW	YW	MILK	MCE	M WWT	STAY	DOC	CW	REA	FAT	MARB	YG
EPD	16.0	-1.0	45.0	66.4	26.6	11.4	49.1	9.1	10.5	13.7	0.51	-0.107	-0.15	-0.41
ACC	12%	24%	12%	12%	3%	5%	6%	6%	7%	8%	7%	7%	7%	6%
%RK	1	2	85	90	40	1	65	95	55	15	15	100	85	10

Homozygous polled. We thought a lot of this bull early on and used him over a mob of heifers as a yearling. Ranked top 2% for birthweight and top 1% for both calving ease and maternal calving ease respectively. Also in the top 15% for both carcase weight and REA.

	API
INDEX	108.22
% RK	50

LOT 5 TARA STEELE S15

DOB: 07/03/2021

Colour: Red little white

Ident: TKLS15

SPRYS HERITAGE M213

THE GROVE GIGABYTES J0837

SIRE: TARA QUINN Q7

BELMORE QUARE G233

BELMORE FREYA L135

BELMORE NORTHERN DANCER

MARSCHAY JUGGERNAUT

SPRYS PATENTS ACE G38

MARSCHAY BELLA

DAM: BELMORE BELLA M321

BELMORE JACKAROO Z109

BELMORE JILLAROO G110

BELMORE BLUE WREN Z268

	CE	BW	WW	YW	MILK	MCE	M WWT	STAY	DOC	CW	REA	FAT	MARB	YG
EPD	5.0	5.1	70	107.2	27.9	4.0	62.9	14.9	13.6	9.7	0.49	-0.079	-0.08	-0.35
ACC	17%	31%	22%	21%	10%	11%	14%	9%	12%	14%	13%	11%	13%	11%
%RK	85	95	3	3	30	80	4	25	20	30	20	40	65	40

Homozygous polled. A larger framed, long bodied bull. At scanning he had the second highest EMA measurement in the sale group. He ranks in the top 3% of the breed for WWT and YWT.

	API
INDEX	108.45
% RK	50



LOT #

6

TARA SMART CASUAL S17

COLOUR: RED DOB: 15/03/2021 IDENT: TKLS17

BELMORE QUANTUR G193 NORTHERN LEGEND 3N
 BELMORE QUANTUM N132 BELMORE PATSY B275
 BELMORE JILLAROO D150 BELMORE JACKAROO Z109
 BELMORE GUCCI Z265
 TARA MEG M89 (SFA)

	CE	BW	WW	YW	MILK	MCE	M WWT	STAY	DOC	CW	REA	FAT	MARB	YG
EPD	5.3	5.8	56.9	82.4	25.5	3.6	54.0	11.3	12.5	-2.8	0.15	-0.085	-0.10	-0.31
ACC	13%	26%	17%	16%	7%	8%	10%	7%	8%	10%	11%	8%	10%	9%
%RK	85	100	30	50	50	85	35	75	30	80	95	60	70	80

Homozygous polled. Out of a foundation cow so not much data to back him but an awesome solid red bull

	API
INDEX	93.39
% RK	95

LOT #

7

TARA SARGEANT S18

COLOUR: RED DOB: 12/03/2021 IDENT: TKLS18

BELMORE QUANTUR G193 NORTHERN LEGEND 3N
 BELMORE QUANTUM N132 BELMORE PATSY B275
 BELMORE JILLAROO D150 BELMORE JACKAROO Z109
 BELMORE GUCCI Z265
 BELMORE QUINELLA G53 BELMORE JACKAROO Z109
 BELMORE QUINCE M294 BELMORE LOTUS Z176
 BELMORE BEWITCHED A57
 BELMORE TERESA X58

	CE	BW	WW	YW	MILK	MCE	M WWT	STAY	DOC	CW	REA	FAT	MARB	YG
EPD	5.5	4.3	53.8	83.0	24	3.1	50.9	18.4	14.4	5.1	0.34	-0.074	-0.04	-0.31
ACC	17%	31%	19%	18%	11%	11%	14%	9%	10%	15%	14%	10%	14%	11%
%RK	80	80	45	45	65	90	55	3	15	45	65	30	50	80

Homozygous polled. Another Quantum son. Quiet natured and smooth coated.

LOT 8 TARA SPENCER S30

DOB: 21/03/2021

Colour: Red

Ident: TKLS30

SPRYS MORTAL M40

ROYALLA NOSTALGIA F65

SPRYS ACES PRIMROSE K45

SIRE: TARA NOSTALGIA Q9 (SFA)

TARA LANA L05 (SFA)

DAM: TARA K11

	API
INDEX	89.59
% RK	100

	CE	BW	WW	YW	MILK	MCE	M WWT	STAY	DOC	CW	REA	FAT	MARB	YG
EPD	7.9	4.7	71.4	101.7	23.7	3.6	59.4	8.4	8.9	0.0	0.38	-0.105	-0.26	-0.42
ACC	14%	26%	15%	15%	6%	6%	9%	6%	8%	10%	10%	9%	12%	8%
%RK	45	90	2	10	65	85	10	95	75	70	50	100	100	10

A thick, dark red who carries plenty of carcass and growth. High weaning weight and yearling weight EPD's.



LOT 9 TARA STORMY S33

DOB: 26/03/2021

Colour: Red little white

Ident: TKLS33

SPRYS HERITAGE M213

THE GROVE GIGABYTES J0837

SPRYS IMF'S JUDITH J100

SIRE: TARA QUINN Q7

BELMORE QUARE G233

BELMORE FREYA L135

BELMORE NORTHERN DANCER

SPRYS PRIMROSES BUDDY J17

RED ROSE SPEAR RUFFIAN

THE GROVE PRIMROSE A742

DAM: TARA PARIS P6 (SFA)

TARA LILLIAN L96 (SFA)

	CE	BW	WW	YW	MILK	MCE	M WWT	STAY	DOC	CW	REA	FAT	MARB	YG
EPD	13.5	1.8	51.6	78.8	27.8	9.3	53.6	12.6	10.8	11.5	0.47	-0.091	-0.06	-0.37
ACC	15%	28%	17%	17%	7%	8%	10%	9%	10%	12%	11%	4%	8%	8%
%RK	5	25	55	60	30	5	35	55	55	20	25	80	60	35

Homozygous polled. An extremely docile, free moving bull with good structure and out of an exceptional milking cow.

LOT #

10

TARA SOLAR S34

COLOUR: RED&WHITE DOB: 28/03/2021 IDENT: TKLS34

SPRYS HERITAGE M213

THE GROVE GIGABYTES

TARA QUINN Q7

BELMORE FREYA L135

BELMORE SQUARE G233

BELMORE NORTHERN DANCER

TARA LANA L05 (SFA)

	CE	BW	WW	YW	MILK	MCE	M WWT	STAY	DOC	CW	REA	FAT	MARB	YG
EPD	10.8	3.3	64.7	97.6	28.4	8.4	60.8	9.1	11.6	11.2	0.44	-0.109	-0.07	-0.41
ACC	15%	26%	15%	15%	6%	7%	9%	6%	11%	11%	10%	6%	9%	8%
%RK	20	60	10	10	25	10	10	95	40	25	30	100	60	15

Homozygous polled. Ranked in the top 10% for both WWT, YWT and MWWT.

	API
INDEX	106.09
% RK	55

LOT #

11

TARA SCOTTY S42

COLOUR: RED DOB: 12/05/2021 IDENT: TKLS42

BELMORE QUANTUR G193

NORTHERN LEGEND 3N

BELMORE QUANTUM N132

BELMORE PATSY B275

BELMORE JACKAROO Z109

BELMORE GUCCI Z265

MARSCHAY JUGGERNAUT J57

SPRYS PATENTS ACE G38

MARSCHAY BELLA

BELMORE BELLA M156

BELMORE MARGO G337

BELMORE MASON C102

TREVINO PATSY 170TH

	CE	BW	WW	YW	MILK	MCE	M WWT	STAY	DOC	CW	REA	FAT	MARB	YG
EPD	8.4	2.8	54.8	86.6	25.2	6.3	52.6	13.8	12.4	9.4	0.42	-0.089	-0.16	-0.35
ACC	18%	27%	19%	19%	8%	10%	12%	8%	10%	16%	14%	10%	13%	12%
%RK	40	45	40	35	55	35	454	40	30	30	40	70	90	45

Twin. A complete outcross sire. Scurred, very well put together bull which had the highest EMA measurement at scanning.

	API
INDEX	105.24
% RK	60

LOT #

12

TARA SUMMIT S44

COLOUR: ROAN DOB: 19/05/2021 IDENT: TKLS44

BELMORE QUANTUR G193 BELMORE NORTHERN LEGEND
 BELMORE PATSY B275
 BELMORE QUANTUM N132 BELMORE JACKAROO Z109
 BELMORE GUCCI Z265
 BELMORE JILLAROO D150
 CRATHES DENON SPRYS LEGEND Z076
 MARS ENIA W7
 CRATHES WENDY N15 SPRYS ADVANCER A114
 CRATHES WENDY F21 NEEARA WENDY 52

	CE	BW	WW	YW	MILK	MCE	M WWT	STAY	DOC	CW	REA	FAT	MARB	YG
EPD	5.4	4.5	57.9	91.7	19.3	3.9	48.3	16.3	13.5	9.9	0.32	-0.080	0.08	-0.30
ACC	16%	26%	19%	19%	9%	11%	12%	10%	10%	14%	14%	10%	13%	11%
%RK	80	85	25	20	90	80	75	15	20	25	70	45	20	85

Homozygous polled. One of the younger sires in the group. Structurally sound, nice roan.

	API
INDEX	117.00
% RK	20

LOT #

13

TARA SCULLY S46

COLOUR: RED DOB: 19/05/2021 IDENT: TKLS46

BELMORE QUANTUR G193 BELMORE PATSY B275
 BELMORE QUANTUM N132 BELMORE JACKAROO Z109
 BELMORE GUCCI Z265
 BELMORE JILLAROO D150
 TARA NITRO N34 (SFA)
 TARA JAZZ J34 (SFA)

	CE	BW	WW	YW	MILK	MCE	M WWT	STAY	DOC	CW	REA	FAT	MARB	YG
EPD	7.6	3.8	59.3	87.8	25.7	4.6	55.4	11.3	13.0	1.0	0.22	-0.081	-0.02	-0.30
ACC	11%	13%	12%	11%	6%	5%	8%	7%	9%	10%	10%	9%	9%	9%
%RK	50	70	20	30	50	70	30	75	25	65	90	45	45	80

Homozygous polled. Late calving twin to lot 14. Will grow into a very good sire. Quality maternal line. Moderately framed.

	API
INDEX	105.24
% RK	60

LOT #

14

TARA SAO S47

COLOUR: ROAN DOB: 19/05/2021 IDENT: TKLS47

BELMORE QUANTUM N132 BELMORE QUANTUR G193 NORTHERN LEGEND 3N
 BELMORE JILLAROO D150 BELMORE PATSY B275
 BELMORE JACKAROO Z109
 TARA NITRO N34 (SFA) BELMORE GUCCI Z265

	API
INDEX	105.42
% RK	60

	CE	BW	WW	YW	MILK	MCE	M WWT	STAY	DOC	CW	REA	FAT	MARB	YG
EPD	7.6	3.8	59.3	87.8	25.7	4.6	55.4	11.3	13.0	1.0	0.22	-0.081	-0.02	-0.30
ACC	11%	13%	12%	11%	6%	5%	8%	7%	9%	10%	10%	9%	9%	9%
%RK	50	70	20	30	50	70	30	75	25	65	90	45	45	80

Twin to lot 13. Thick bodied. Quality maternal line. Moderate framed.

LOT #

15

TARA SIMPSON S49

COLOUR: RED LITTLE WHITE DOB: 14/06/2021 IDENT:

TARA QUINN Q7 SPRYS HERITAGE M213 THE GROVE GIGABYTES
 BELMORE FREYA L135 SPRYS IMF'S JUDITH J100
 BELMORE QUARE G233
 BELMORE NORTHERN DANCER
 THE GROVE HONEY BADGER THE GROVE TABOO E228
 TARA MADELINE Q10 (SFA) FUTURITY CHICAGOS RUBY
 TARA MADELINE M90

	CE	BW	WW	YW	MILK	MCE	M WWT	STAY	DOC	CW	REA	FAT	MARB	YG
EPD	8.7	4.0	59.9	93.2	24.2	8.1	54.2	12.7	7.9	12.4	0.41	-0.092	-0.08	-0.35
ACC	15%	27%	17%	17%	7%	8%	10%	9%	11%	12%	11%	5%	7%	9%
%RK	35	75	20	20	65	15	35	55	85	20	40	80	65	50

Homozygous polled. Sleek coated younger bull with plenty of thickness.

	API
INDEX	107.23
% RK	50

LOT #
16

TARA SALUTE S60

COLOUR: RED DOB: 10/08/2021 IDENT: TKLS60

BELMORE QUANTUR G193 NORTHERN LEGEND 3N

BELMORE QUANTUM N132

BELMORE JILLAROO D150

BELMORE JACKAROO Z109

BELMORE GUCCI Z265

TARA K13 (SFA)

	CE	BW	WW	YW	MILK	MCE	M WWT	STAY	DOC	CW	REA	FAT	MARB	YG
EPD	7.7	3.9	60.1	87.0	28.5	4.6	58.6	11.3	12.6	4.8	0.19	-0.083	-0.07	-0.29
ACC	11%	14%	11%	11%	8%	5%	9%	6%	8%	10%	10%	7%	9%	8%
%RK	50	75	20	35	25	70	15	75	30	50	95	55	60	90

Homozygous polled. The youngest bull in the sale, is a twin out of a top performing cow. Has performed well on his own since an early weaning.

	API
INDEX	102.43
% RK	70

CURRENT SHORTHORN IGS BREED AVERAGE EPD'S DECEMBER 2022

	CE	BW	WW	YW	MILK	MCE	M WWT	STAY	DOC	CW	REA	FAT	MB	YG	API
EPD	7.8	2.9	52.6	81.3	25.1	5.5	51.4	12.8	10.7	4.4	0.38	-0.081	-0.03	-0.34	107.76

Scan date : 8/11/22

ANIMAL		P8 Fat	RIB FAT	EMA	IMF%
S4		10	7	97	5.8
S39		6	5	92	4.7
S24		9	6	108	6.5
S11		9	6	95	6.4
S15		8	6	116	5.2
S17		7	5	104	5.1
S18		8	6	100	5.4
S30		8	5	98	5.3
S33		7	5	115	5.2
S34		5	3	94	5.2
S42		4	3	118	5.1
S44		5	4	84	6.1
S46		6	5	92	5.3
S47		5	4	88	4.3
S49		8	6	98	5.0
S60		7	5	75	5.0