



GundaPark
54 angus bulls

www.drb.com.au

2022
ANNUAL
SALE

AuctionsPlus.com.au sale starts 10th
ends 14 November 2:00pm

Darby Blackley: 0428 274 224

Elders

Stud Stock: Michael Smith 0428 541 711

Elders Livestock

Wandoan Robert Paterson 0427 875 358

Miles Henry Sinnamon 0429 611 177

Auctions Plus online Auction

This is an online auction, through Auctions Plus. Sale starts 10th November and **finishes Monday 14th November 2:00pm** in Queensland.

End times:

NSW 3:00 pm

Qld 2:00 pm

SA 2:30 pm

WA 12:00 noon

NT 1:30 pm

Inspection

Inspections available prior to sale on 10th and 11st November (9am - 4pm) contact:

Darby Blackley

M: 0428 274 224

E: drb@drb.com.au

“Gundagai”

32705 Leichhardt Highway,

7km south of Wandoan, QLD 4419

All bulls have been semen and morphology tested.

Bulls have not been clipped or had their hoofs trimmed, what you see is what you get.

Potential heifer bulls include:

Lot 1 Q60, Lot 2 Q73, Lot 8 R36, Lot 9 R40, Lot 23 R97, Lot 36 S27, Lot 39 S43 and Lot 40 Q45.

Agent Rebate

2% commission will be paid to any outside agent, settling within seven days.

Settling within 7 days

Additional Information

Visit our website at www.drb.com.au for additional information, including videos.

Visit Angus Australia website www.angusaustralia.com.au to search find additional information on individual animals (search by Society ID) and comprehensive information on ‘understanding Estimated Breeding Values’.

Breedplan figures

GundaPark Angus is a member of the Angus Society of Australia (QIA), participating in Angus GROUP BREEDPLAN.

The Angus Society is now updating Estimated Breeding Values (EBV's) monthly. As more data is collected and entered the EBV's of young bulls may change. Check online at www.angusaustralia.com.au

HBR & APR Bulls

Registration status are listed with each bull.

HBR—Herd Book Registered bulls are stud registered with the Angus Society and are transferable for stud duties.

APR—Angus Performance Registered bulls are performance recorded bull.

Disclaimer

Every care has been taken in compiling this catalogue to ensure accuracy of information supplied, but no responsibility is accepted for any errors which may have occurred. The vendors and selling agents assume no responsibility for the correctness, use or interpretation of the information included in this catalogue.



AuctionsPlus

How to Register as an AuctionsPlus user

1. To sign up to AuctionsPlus, fill in your details and create a password.
2. Verify your email.
3. Follow the steps to verify your ID.
4. Enter your PIC number, ABN and business details if relevant.
5. Carefully read and accept our user rules and responsibilities.
6. Complete the user quiz.
7. Submit your request to our team.



Scan to sign up now



Scan to see detailed
step by step instructions

www.auctionsplus.com.au



(02) 9262 4222

...Reference Sires

The suffix displayed at the end of each animal's name indicates the DNA parentage verification that has been conducted by Angus Australia.
 PV : both parents have been verified by DNA
 SV : the sire has been verified by DNA
 DV : the dam has been verified by DNA
 # : DNA verification has not been conducted
 E : DNA verification has identified that the sire and/or dam may possibly be incorrect, but this cannot be confirmed conclusively.

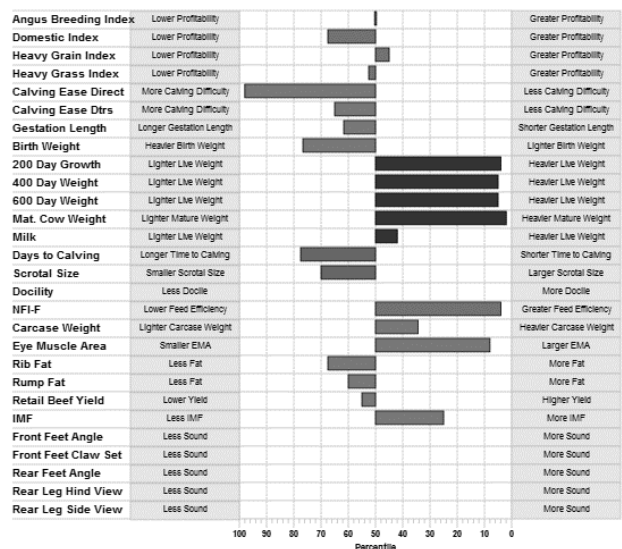
TEXAS KING OF THE ROAD K526^{SV}

Society ID: DXTK526



Sire: TC TOTAL 410

Dam: TEXAS UNDINE Z183



EBV Traits (in the top 5% of breed or better):

- 200 Day growth
- 400 day weight
- 600 day weight
- Mature cow weight
- NFI-F feed efficiency
- Eye Muscle Area (top 8%)

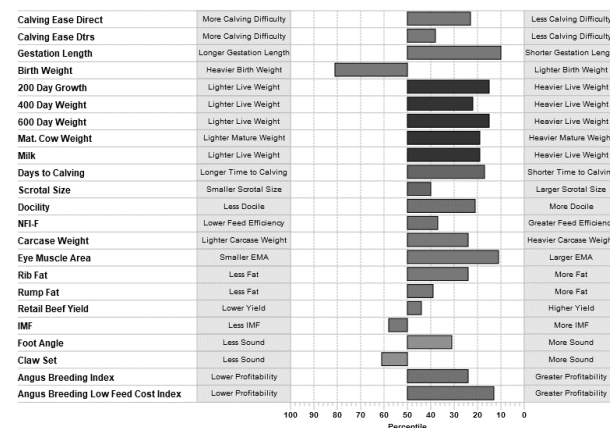
GRANITE RIDGE KAISER K26^{SV}

Society ID: SJKK26



Sire: TE MANIA FOE F734

Dam: GRANITE RIDGE SUPREME F158

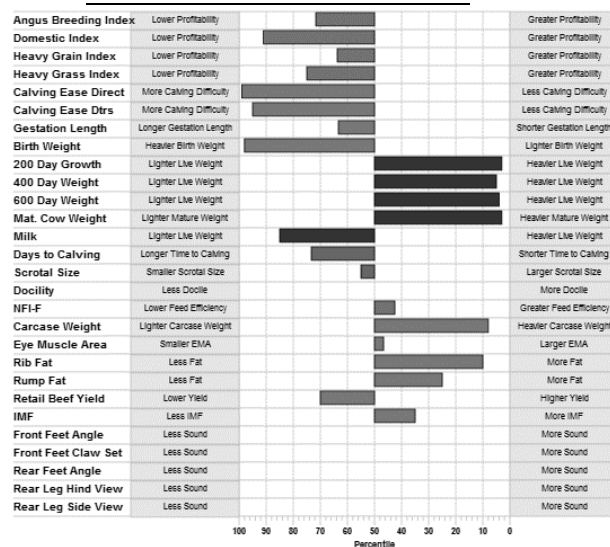


GUNDAPARK EMPEROR K82^{SV}

Society ID: QIAK82

Sire: TE MANIA EMPEROR E343^{PV}

Dam: GUNDAPARK KATHERINE F33[#]



EBV Traits (in the top 5% of breed or better):

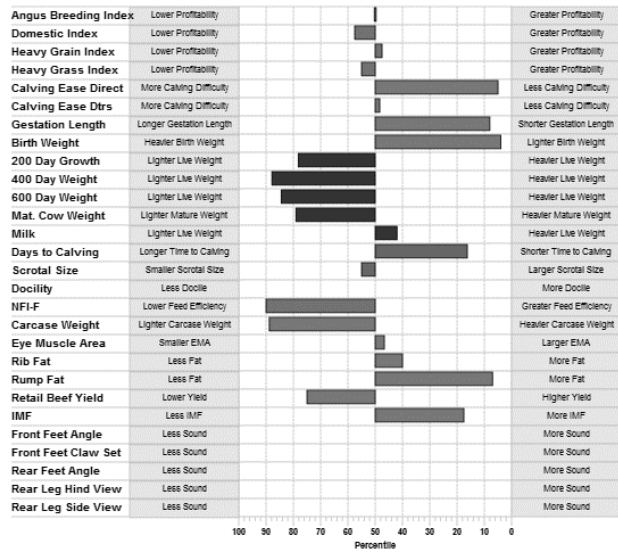
- 200 Day Growth
- 400 Day Weight
- 600 Day Weight
- Mature Cow Weight
- Carcass Weight (top 8%)
- Rib Fat (top 10%)

GUNDAPARK INVINCIBLE K70^{SV+}

Society ID: QIAK70

Sire: LAWSONS INVINCIBLE C402

Dam: WATTLETOP GILDA B26#



EBV Traits (in the top 20% of breed or better):

- Calving Ease direct (top 5%)
- Birth Weight (top 5%)
- Gestation Length
- Days to Calving
- Rump Fat (top 7%)
- IMF

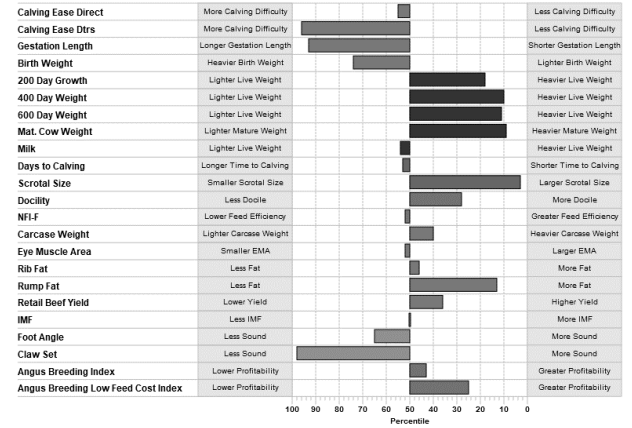
Texas Global G563

Society ID: DXTG563



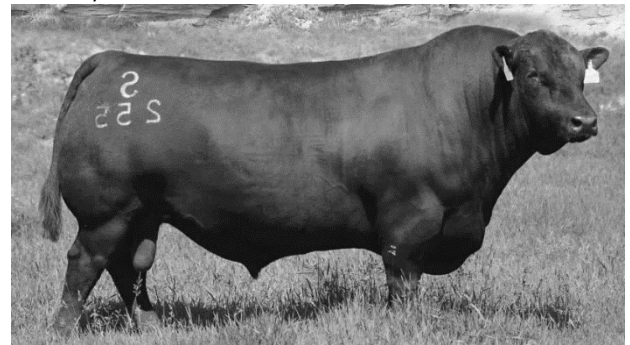
Sire: SITZ NEW DESIGN 458N#

Dam: TEXAS UNDINE Z036^{SV}



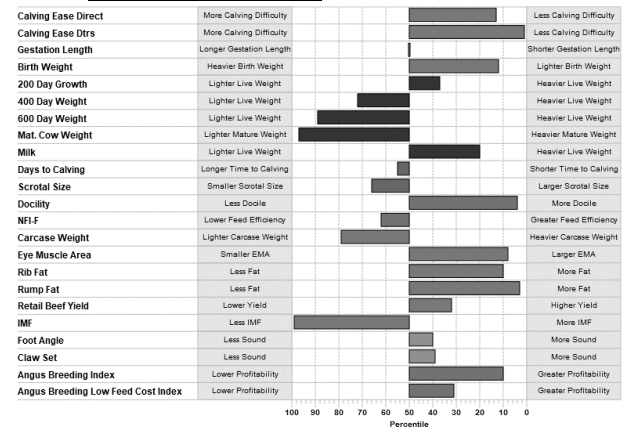
HAZELDEAN JAIPUR J140^{SV+}

Society ID: USA17298481



Sire: S CHISUM 6175^{PV}

Dam: S BLOSSOM 0278#



EBV Traits (in the top 10% of breed or better):

- Calving Ease daughters (top 1%)
- Eye Muscle area
- Rump fat
- Docility

A Brief Description of EBVs

EBVs are expressed in the units of measurement for each particular trait and are shown as +ve or -ve differences from the breed base. The average EBV for different traits changes over time as the breed makes genetic progress.

Accuracy %

Provides an indication of the reliability of an EBV. As more performance information become available on an animal (or it's progeny, or relatives) then the accuracy of it's EBVs for particular traits will increase.

CALVING EASE

Calving Ease DIR (%) - Estimates of the genetic differences between animals in the ability of their calves from 2 year old heifers to be delivered without assistance. Higher (positive) CEDir EBVs indicate an animal is expected to produce fewer calving difficulties in 2 year old heifers (i.e. greater calving ease).

Calving Ease DTRS (%) - Estimates of the genetic differences between animals in the ability of their 2-year-old daughters to calve without assistance. Higher CEDtrs (positive) EBVs indicate an animal is expected to produce a higher percentage of daughters who will calve unassisted at 2 years of age.

Gestation length (days) - Estimates of the genetic differences between animals in the number of days from the date of conception to the calf birth date. A negative figure is shorter gestation length.

Birth Weight (kg) - Estimates of the genetic differences between animals in calf birth weight. Lower Birth Weight EBVs indicate the animal is expected to produce progeny with lighter birth weight.

WEIGHT

Higher (positive) EBVs indicate the animal is expected to produce progeny with heavier live weights at particular days of age.

200-day Wt (kg) - Estimates of the genetic differences between animals in liveweight at 200 days of age.

400-day Wt (kg) - Estimates of the genetic differences between animals in liveweight at 400 days of age.

600-day Wt (kg) - Estimates of the genetic differences between animals in liveweight at 400 days of age.

MATERNAL

Mature Cow Weight (kg) - Estimates of the genetic differences between animals in cow weight at 5 years of age. Higher Mature Cow Weight EBVs indicate the animal is expected to produce daughters with heavier mature weights. Heavier mature weights are associated with higher feed and maintenance costs, but conversely higher returns for cull cows.

Milk (kg) Estimates of the genetic differences between animals in milk production, expressed as variation in 200day weight of daughter's calves. Higher Milk EBVs indicate the animal is expected to produce daughters that have heavier calves at 200 days of age due to superior maternal attributes (e.g. more milk).

FERTILITY

Scrotal Size (cm) - Estimates of the genetic differences between animal in scrotal circumference at 400 days of age. Higher Scrotal Size EBVs indicate the animal is expected to produce sons with larger scrotal circumference as yearlings and daughters that reach puberty earlier.

Days to Calving - Estimates of the genetic differences in female fertility, expressed as the number of days from the start of the joining period until subsequent calving. Lower Days to Calving EBVs indicate an animal is expected to produce progeny that conceive earlier in the joining period. Females with lower Days to Calving EBVs also tend to show earlier puberty as heifers and earlier return to oestrous after calving.

CARCASE MERIT EBVs

Carcass Weight (kg) - Estimates of the genetic differences between animals in carcass weight, adjusted to 650 days of age. Higher Carcass Weight EBVs indicate the animal is expected to produce progeny with heavier carcass weights.

Eye Muscle Area (cm²) - Estimates of the genetic differences between animals in eye muscle area at the 12/13th rib site, in a 300kg carcass. Higher EMA EBVs indicate the animal is expected to produce progeny with larger eye muscle area, relative to carcass weight.

Rib Fat (mm) - Estimates of the genetic differences between animals in fat depth at the 12/13th rib site, in a 400kg carcass. Higher Rib Fat EBVs indicate the animal is expected to produce progeny with greater fat depth in a 400 kg carcass.

Rump Fat (mm) - Estimates of the genetic differences between animals in fat depth at the P8 rump site, in a 400 kg carcass. Higher Rump Fat EBVs indicate the animal is expected to produce progeny with greater fat depth in a 400 kg carcass.

Retail Beef Yield % (RBY%) - Estimates of the genetic differences between animals in percentage retail beef yield, in a 400kg carcass. Higher RBY EBVs indicate the animal is expected to produce progeny that yield a higher percentage of saleable beef from a 400 kg carcass.

Intra-Muscular Fat % (IMF%) - Estimates of the genetic differences between animals in percentage intra-muscular fat marbling) at the 12/13th rib site, in a 400kg carcass. Higher IMF EBVs indicate the animal is expected to produce progeny with a higher percentage of intramuscular fat (marbling) in a 400 kg carcass.

Docility (DOC) - Calculated from a subjective assessment of temperament when animals are between 60 to 400 days of age and are expressed in percentage units. Higher Docility EBVs indicate an animal is expected to produce a higher percentage of progeny with acceptable temperament.

FEED EFFICIENCY EBVs

Net Feed Intake post weaning (NFI-P) - Estimates of the genetic differences in feed intake for at a standard weight and rate of weight gain when animals are in a growing phase. Expressed in kilogram per day units. Lower NFI-P EBVs indicate the animal is expected to produce progeny that eat less feed per day, relative to their weight and rate of weight gain.

Net Feed Intake Feedlot (NFI-F) EBVs are estimates of genetic differences between animals in feed intake at a standard weight and rate of weight gain when animals are in a feedlot finishing phase. Lower NFI-F EBVs indicate the animal is expected to produce progeny that eat less feed per day, relative to their weight and rate of weight gain.

Genetic Test Codes

Genetic Conditions that codes currently exist for are:

- Arthrogryposis Multiplex (AM)
- Contractual Arachnodactyly (CA)
- Neuropathic Hydrocephalus (NH)
- Red gene (RD)
- Mannosidosis (MA)
- Developmental Duplications (DD)

Disclaimer: Angus Australia makes no statements, representations or warranties about the accuracy or completeness of, any information relating to the status of a particular animal; and, disclaims all responsibility for information and all liability (including without limitation, liability in negligence) for all expenses, losses, damages, and costs you may incur as a result of information being inaccurate or incomplete in any way for any reason.

Pestivirus / BVDV (PI Status)

POS Positive —another sample should be collected 21 days after the initial sample and tested to confirm persistent infection. If there is any doubt about the status of a valuable live animal the laboratory we use offers confirmatory testing on blood samples.

SUS Suspicious—another sample should be collected 21 days after the initial sample and tested to confirm persistent infection. If there is any doubt about the status of a valuable live animal the laboratory we use offers confirmatory testing on blood samples.

NEG Negative

Description of the Genetic Test Codes

Indicates that the sample submitted for this animal **has been tested** and found to be **free** of the causative mutation responsible for the genetic condition (AM, CA, NH, RD, MA or DD). This animal is homozygous free, meaning that it has two copies of the normal variant (or allele) of the gene.

Indicates that the sample submitted for this animal **has been tested** and found to be **a carrier** of the causative mutation responsible for the genetic condition (AM, CA, NH, RD, MA or DD). This animal is heterozygous for the mutation, meaning that it has one mutant allele and one normal allele. This animal could pass the mutation to approximately half of its progeny.

Indicates that, based on pedigree information supplied by the breeder of the animal, the animal **has a chance to be a carrier** of the mutation responsible for the genetic condition (AM, CA, NH or DD) but **has not been tested**. The higher the indicated percentage, the larger the chance the animal may be a carrier. To verify the status of this animal, Angus Australia recommends that testing be undertaken prior to using this animal for breeding purposes.

Indicates that, based on pedigree information supplied by the breeder of the animal, the animal is **expected to be free** of the mutation responsible for the genetic condition (AM, CA, NH or DD) but has not been tested. This animal **has not been tested** for the causative mutation and Angus Australia gives no guarantee as to the animal's "free" status.

Indicates that the sample submitted for this animal has been tested and the animal found to be homozygous for the mutation responsible for the genetic condition (AM, CA, NH or DD) and have two copies of the mutant variant of the gene.

Note, for some recessive conditions such as DD, not all homozygous animals appear to display phenotypic expression of the condition.

AMF
CAF
NHF
RDF
MAF
DDF

AMC
CAC
NHC
RDC
MAC
DDC

AM
_%
CA_%
NH_%
DD_%

AMFU
CAFU
NHFU
DDFU

AMA
CAA
NHA
DDA

Balancing Carcase and fertility in your breeding program



A brief guide to Angus Group BREEDPLAN

Angus GROUP BREEDPLAN is an advanced genetic evaluation system that provides a genetic description of Angus cattle for a comprehensive range of traits influencing fertility, growth and carcase performance. It provides predictions of the genetic merit of individual animals called Estimated Breeding Values (EBVs). EBVs are based on all available pedigree and performance records provided by breeders in Australia and New Zealand, along with available overseas genetic information.

Group BREEDPLAN Estimated Breeding Values (EBVs) for a range of traits important to breeders. 1. establish a clear set of objectives for your herd—analyse current performance and consider future customer requirements. And herd targets.

Using EBVs for making comparisons between animals

When using EBVs to assist in selection decisions it is important to remember that only half the EBV differences between animals are expressed in their progeny.

For example, when comparing the expected differences in the 400-Day weights of calves from two bulls, you need to consider half of the difference in EBVs between the bulls multiplied by the expected number of calves to be obtained during the normal life of a bull in your herd.

Example: 400-day Wt. EBV
 Bull A +60 kg
 Bull B +20 kg

Expected difference in 400-day weight:

$$1/2 \times (60\text{kg} - 20\text{kg}) = 20\text{kg per calf}$$

Total gain over 3 years of use, with 25 calves per year:

25 calves' x 3 years' x 20 kg = 1500kg
(plus further benefits from the future improved performance of daughter's calves).

This simple calculation can be a useful guide to assist in determining the potential extra revenue you can expect from using a bull with superior growth EBVs. Similar calculations can be made for determining the expected effect on progeny performance of differences in other EBVs. These differences will exist if the environment allows the animals to express their full genetic potential.

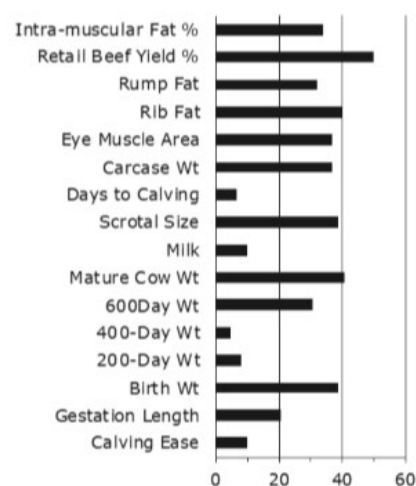
In selecting bulls for use in your herd it is often helpful to compare their EBV figures relative to the whole drop of bulls for sale. During 2011 many of the bulls for sale will come from the 2009 calf drop. The Percentile table on page 6 lists the EBV percentile bands for the 2009 born calves for each of the traits included in the Angus GROUP BREEDPLAN ANALYSIS. This table provides a guide to the relative ranking of any animal compared with the total contemporary annual calf drop.

Heritability of Traits

Only part of the variation that we observe among animals is due to genetic differences. Most of the variation is generally due to non-genetic factors such as differences in environment and nutrition.

The degree to which genetic differences influence performance varies from trait to trait. This is explained by differences in the 'heritability' of the traits. Growth and carcase traits tend to have moderate to high heritabilities (ie. 20% to 40%), whilst female fertility and calving ease have lower heritabilities (10% or lower).

GROUP BREEDPLAN takes into account the different degrees of heritability of various traits and the known genetic relationships between the traits.



Lot

1

Visual Tag **QIAQ060** **Gundapark Q60** ^{SV}

Society ID: QIAQ60 37 months old, born 24/09/2019 Registration Status: HBR

- BON VIEW NEW DESIGN 1407
- SITZ NEW DESIGN 458N
- SITZ ELLUNAS ELITE 3308
- Sire TEXAS GLOBAL G563**
- BT ULTRAVOX 297E
- TEXAS UNDINE Z036
- TEXAS UNDINE W63
- TE MANIA ULONG U41 (AI)(ET)
- TE MANIA AFRICA A217
- TE MANIA JEDDA Y32

Birth weight 32 Kg
 Weight 672 Kg
 Percent progressive motility 80 %
 Morphology percent normal 66 %
 Scrotal Circumference 37.5 cm
 National ID QCTR0078ZBS00493
 Gene Probe: AMFU NHFU CAFU DDF
 Treatments: Ultravac 7 in 1, BEF Three day, vibrio and tick fever vaccine.
 Pestivirus / BVDV negative.

Dam Gundapark DORIS N3

- GUNDAPARK BANE B6
- GUNDAPARK DORIS F3
- DIAMOND RIDGE DORIS B13

Calv-Ease		Birth		Growth			Maternal		Fert		Carcase						Feed
CE DIR	CE DTR	GL	BW	200	400	600	MCW	Milk	SS	DC	CWT	EMA	Rib	P8	RBY	IMF	NFIF
7.5	4.3	-1.7	3.4	50	96	120	116	19	3.2	-6	62	6.3	-1.2	-0.1	1.7	1.4	-0.2
58%	52%	77%	72%	70%	69%	70%	68%	65%	65%	45%	66%	64%	68%	65%	65%	64%	55%
<i>TransTasman Angus BREEDBPLAN average EBVs for September 2022</i>																	
+2.0	+2.5	-4.6	+4.1	+49	+89	+116	+100	+17	+2.1	-4.6	+66	+6.1	+0.0	-0.4	+0.5	+2.0	+0.18

Lot

2

Visual Tag **QIAQ073** **Gundapark Q73** ^{SV}

Society ID: QIAQ73 36 months old, born 4/10/2019 Registration Status: HBR

- GAR SOLUTION (ET) USA1422615
- LAWSONS INVINCIBLEC402
- LAWSONS PREDESTINED VLYA598
- Sire Gundapark INVINCIBLE K70**
- TE MANIA ULONG U41 (AI)(ET)
- WATTLETOP GILDA B26
- WATTLETOP GILDA Z287
- TE MANIA BARTEL
- AYRVALE BARTEL E7
- EAGLEHAWK JEDDA B32

Birth weight 32 Kg
 Weight 646 Kg
 Percent progressive motility 60 %
 Morphology percent normal 68 %
 Scrotal Circumference 38 cm
 National ID QCTR0078ZBQ00002
 Gene Probe: AMFU NHFU CAFU DDFU
 Treatments: Ultravac 7 in 1, BEF Three day, vibrio and tick fever vaccine.
 Pestivirus / BVDV negative.

Dam Gundapark L46

- GUNDAPARK D32
- Gundapark J141
- WATTLETOP USUAL A82 (AI)(ET)

Calv-Ease		Birth		Growth			Maternal		Fert		Carcase						Feed
CE DIR	CE DTR	GL	BW	200	400	600	MCW	Milk	SS	DC	CWT	EMA	Rib	P8	RBY	IMF	NFIF
10.8	4.9	-5	0	33	61	76	58	21	3.4	-7.3	40	6	1	1.9	0.7	1.3	0.2
56%	51%	70%	72%	69%	68%	69%	67%	62%	61%	42%	64%	60%	66%	62%	63%	61%	54%
<i>TransTasman Angus BREEDBPLAN average EBVs for September 2022</i>																	
+2.0	+2.5	-4.6	+4.1	+49	+89	+116	+100	+17	+2.1	-4.6	+66	+6.1	+0.0	-0.4	+0.5	+2.0	+0.18

Lot

3

Visual Tag **QIAR006 Gundapark R6 #**

Society ID: QIAR6 33 months old, born 11/01/2020 Registration Status: HBR

- GAR SOLUTION (ET) USA1422615
- LAWSONS INVINCIBLEC402
- LAWSONS PREDESTINED VLYA598
- Sire **Gundapark INVINCIBLE K70**
- TE MANIA ULONG U41 (AI)(ET)
- WATTLETOP GILDA B26
- WATTLETOP GILDA Z287
- TE MANIA YORKSHIRE Y437 (AI)
- TE MANIA BERKLEY B1
- TE MANIA LOWAN Z53

Birth weight 35 Kg
 Weight 732 Kg
 Percent progressive motility 70 %
 Morphology percent normal 73 %
 Scrotal Circumference 41 cm
 National ID QCTR0078ZBQ00180
 Gene Probe: AMFU NHFU CAFU DDFU
 Treatments: Ultravac 7 in 1, BEF Three day, vibrio.
 Pestivirus / BVDV negative.

- Dam **GUNDAPARK LASSIE G72**
- GUNDAPARK CHADWICK C9
- GUNDAPARK LASSIE E76
- RIPPLE VALE LASSIE Y14

Calv-Ease		Birth		Growth			Maternal		Fert		Carcase						Feed
CE DIR	CE DTR	GL	BW	200	400	600	MCW	Milk	SS	DC	CWT	EMA	Rib	P8	RBY	IMF	NFIF
8.1	3.4	-7.1	3	41	75	97	100	15	1.5	-6.9	55	5	0.3	0.7	-0.1	2.5	0.2
53%	47%	60%	72%	59%	58%	58%	57%	52%	51%	40%	55%	50%	55%	52%	53%	51%	46%
<i>TransTasman Angus BREEDPLAN average EBVs for September 2022</i>																	
+2.0	+2.5	-4.6	+4.1	+49	+89	+116	+100	+17	+2.1	-4.6	+66	+6.1	+0.0	-0.4	+0.5	+2.0	+0.18

Lot

4

Visual Tag **QIAR023 Gundapark R23^{SV}**

Society ID: QIAR23 32 months old, born 6/02/2020 Registration Status: HBR

- GAR SOLUTION (ET) USA1422615
- LAWSONS INVINCIBLEC402
- LAWSONS PREDESTINED VLYA598
- Sire **Gundapark INVINCIBLE K70**
- TE MANIA ULONG U41 (AI)(ET)
- WATTLETOP GILDA B26
- WATTLETOP GILDA Z287
- B/R NEW DESIGN 036
- BON VIEW NEW DESIGN 1407
- BON VIEW PRIDE 664

Birth weight 24 Kg
 Weight 662 Kg
 Percent progressive motility 80 %
 Morphology percent normal 86 %
 Scrotal Circumference 35 cm
 National ID QCTR0078ZBQ00225
 Gene Probe: AMF NHF CAF DDF
 Treatments: Ultravac 7 in 1, BEF Three day, vibrio and tick fever vaccine.
 Pestivirus / BVDV negative.

- Dam **WATTLETOP USUAL B102 (AI)(ET)**
- CA FUTURE DIRECTION 5321
- WATTLETOP USUAL X3 (AI)(ET)
- WATTLETOP USUAL P57 (AI)

Calv-Ease		Birth		Growth			Maternal		Fert		Carcase						Feed
CE DIR	CE DTR	GL	BW	200	400	600	MCW	Milk	SS	DC	CWT	EMA	Rib	P8	RBY	IMF	NFIF
10.7	4.2	-7.1	0	30	56	77	51	23	1.4	-6.5	28	1.8	1.5	4.4	-1	1.7	0
57%	52%	69%	72%	69%	69%	70%	68%	64%	62%	44%	65%	61%	66%	63%	64%	61%	54%
<i>TransTasman Angus BREEDPLAN average EBVs for September 2022</i>																	
+2.0	+2.5	-4.6	+4.1	+49	+89	+116	+100	+17	+2.1	-4.6	+66	+6.1	+0.0	-0.4	+0.5	+2.0	+0.18

Lot

5

Visual Tag **QIAR033** **Gundapark R33** ^{SV}

Society ID: QIAR33 31 months old, born 31/03/2020 Registration Status: HBR

- TE MANIA BERKLEY B1
- TE MANIA EMPEROR E343
- TE MANIA LOWAN Z74
- Sire Gundapark EMPEROR K82**
- HIDDEN VALLEY LOOKOUT Z7 (AI)
- GUNDAPARK KATHERINE F33
- GUNDAPARK KATHERINE D28
- TE MANIA AFRICA A217
- KANSAS AFRICA G205
- KANSAS BARBARA A71

Birth weight 54 Kg
 Weight 710 Kg
 Percent progressive motility 60 %
 Morphology percent normal 77 %
 Scrotal Circumference 35.5 cm
 National ID QCTR0078ZBQ00209
 Gene Probe: AMFU NHFU CAFU DDF
 Treatments: Ultravac 7 in 1, BEF Three day, vibrio and tick fever vaccine.
 Pestivirus / BVDV negative.

Dam Gundapark NINAH J57

- GUNDAPARK CHADWICK C9
- GUNDAPARK NINAH F13
- GUNDAPARK NINAH D33

Calv-Ease		Birth		Growth			Maternal		Fert		Carcase						Feed
CE DIR	CE DTR	GL	BW	200	400	600	MCW	Milk	SS	DC	CWT	EMA	Rib	P8	RBY	IMF	NFIF
-6.4	-10.7	-2.8	7.1	51	89	124	114	17	1.8	-4.8	66	3.7	2	1	-0.2	0.8	0
53%	48%	67%	71%	67%	66%	68%	66%	60%	59%	38%	63%	58%	64%	60%	61%	59%	51%
<i>TransTasman Angus BREEDPLAN average EBVs for September 2022</i>																	
+2.0	+2.5	-4.6	+4.1	+49	+89	+116	+100	+17	+2.1	-4.6	+66	+6.1	+0.0	-0.4	+0.5	+2.0	+0.18

Lot

6

Visual Tag **QIAR034** **Gundapark R34** ^{SV}

Society ID: QIAR34 31 months old, born 31/03/2020 Registration Status: HBR

- TE MANIA BERKLEY B1
- TE MANIA EMPEROR E343
- TE MANIA LOWAN Z74
- Sire Gundapark EMPEROR K82**
- HIDDEN VALLEY LOOKOUT Z7 (AI)
- GUNDAPARK KATHERINE F33
- GUNDAPARK KATHERINE D28
- B/R AMBUSH 28
- GUNDAPARK BR AMBUSH G23
- WATTLETOP ANN B59

Birth weight 44 Kg
 Weight 686 Kg
 Percent progressive motility 60 %
 Morphology percent normal 65 %
 Scrotal Circumference 37 cm
 National ID QCTR0078ZBQ00245
 Gene Probe: AMF NHF CAF DDF
 Treatments: Ultravac 7 in 1, BEF Three day, vibrio and tick fever vaccine.
 Pestivirus / BVDV negative.

Dam Gundapark BEAUTY K27

- RAFF MIDLAND Z204 (AI)(ET)
- GUNDAPARK BEAUTY QIAG17
- DIAMOND RIDGE BEAUTY A21

Calv-Ease		Birth		Growth			Maternal		Fert		Carcase						Feed
CE DIR	CE DTR	GL	BW	200	400	600	MCW	Milk	SS	DC	CWT	EMA	Rib	P8	RBY	IMF	NFIF
-3.1	3.4	-2.5	5.2	46	84	108	96	15	2	-4.3	64	4.3	2.9	2.4	-1.1	2.2	0.1
52%	47%	66%	70%	68%	67%	68%	66%	60%	60%	39%	63%	59%	65%	61%	62%	59%	52%
<i>TransTasman Angus BREEDPLAN average EBVs for September 2022</i>																	
+2.0	+2.5	-4.6	+4.1	+49	+89	+116	+100	+17	+2.1	-4.6	+66	+6.1	+0.0	-0.4	+0.5	+2.0	+0.18

Lot

7

Visual Tag **QIAR035** **Gundapark R35**

Society ID: QIAR35 31 months old, born 31/03/2020 Registration Status: HBR

- TE MANIA BERKLEY B1
- TE MANIA EMPEROR E343
- TE MANIA LOWAN Z74
- Sire Gundapark EMPEROR K82**
- HIDDEN VALLEY LOOKOUT Z7 (AI)
- GUNDAPARK KATHERINE F33
- GUNDAPARK KATHERINE D28
- SUMMITCREST SCOTCH CAP OB45
- GARDENS HIGHMARK USA13047487
- GREENGARDEN PRIDE6128

Birth weight 44 Kg
 Weight Kg
 Percent progressive motility %
 Morphology percent normal %
 Scrotal Circumference cm
 National ID QCTR0078ZBR00286
 Gene Probe: AMFU NHFU CAFU DDFU
 Treatments: Ultravac 7 in 1, BEF Three day, vibrio and tick fever vaccine.
 Pestivirus / BVDV negative.

- Dam Gundapark KATHERINE F25**
- TC STOCKMAN 2164
- RIPPLE VALE KATHERINE W82 (AI)
- RIPPLE VALE KATHERINE K75 (AI)

Calv-Ease		Birth		Growth			Maternal		Fert		Carcase						Feed
CE DIR	CE DTR	GL	BW	200	400	600	MCW	Milk	SS	DC	CWT	EMA	Rib	P8	RBY	IMF	NFIF
-4.5	-5.5	-2.1	5.8	50	85	124	135	12	2.1	-6.6	59	0.7	3.1	5.3	-1.9	0.9	0.1
57%	52%	72%	74%	71%	70%	71%	70%	64%	64%	46%	67%	63%	68%	65%	66%	63%	56%
<i>TransTasman Angus BREEDPLAN average EBVs for September 2022</i>																	
+2.0	+2.5	-4.6	+4.1	+49	+89	+116	+100	+17	+2.1	-4.6	+66	+6.1	+0.0	-0.4	+0.5	+2.0	+0.18

Lot

8

Visual Tag **QIAR036** **Gundapark R36^{SV}**

Society ID: QIAR36 31 months old, born 31/03/2020 Registration Status: HBR

- GAR SOLUTION (ET) USA1422615
- LAWSONS INVINCIBLEC402
- LAWSONS PREDESTINED VLYA598
- Sire Gundapark INVINCIBLE K70**
- TE MANIA ULONG U41 (AI)(ET)
- WATTLETOP GILDA B26
- WATTLETOP GILDA Z287
- RAFF MIDLAND Z204 (AI)(ET)
- GUNDAPARK R. MIDLAND G18
- WATTLETOP KERRY E62

Birth weight 41 Kg
 Weight 692 Kg
 Percent progressive motility 60 %
 Morphology percent normal 82 %
 Scrotal Circumference 36.5 cm
 National ID QCTR0078ZBT00705
 Gene Probe: AMFU NHFU CAFU DDFU
 Treatments: Ultravac 7 in 1, BEF Three day, vibrio and tick fever vaccine.
 Pestivirus / BVDV negative.

- Dam Gundapark USUAL L139**
- GUNDAPARK E19
- GUNDAPARK USUAL G13
- WATTLETOP USUAL A82 (AI)(ET)

Calv-Ease		Birth		Growth			Maternal		Fert		Carcase						Feed
CE DIR	CE DTR	GL	BW	200	400	600	MCW	Milk	SS	DC	CWT	EMA	Rib	P8	RBY	IMF	NFIF
8.3	2.9	-5.1	2.1	47	82	115	98	20	3.3	-3.6	60	2.1	-1.6	-0.6	0.1	2.4	-0.2
53%	47%	66%	71%	67%	67%	68%	66%	60%	60%	38%	62%	58%	64%	60%	61%	59%	50%
<i>TransTasman Angus BREEDPLAN average EBVs for September 2022</i>																	
+2.0	+2.5	-4.6	+4.1	+49	+89	+116	+100	+17	+2.1	-4.6	+66	+6.1	+0.0	-0.4	+0.5	+2.0	+0.18

Lot
9

Visual Tag **QIAR040** **Gundapark R40** ^{SV}

Society ID: QIAR40 30 months old, born 7/04/2020 Registration Status: HBR

- GAR SOLUTION (ET) USA1422615
- LAWSONS INVINCIBLEC402
- LAWSONS PREDESTINED VLYA598
- Sire **Gundapark INVINCIBLE K70**
- TE MANIA ULONG U41 (AI)(ET)
- WATTLETOP GILDA B26
- WATTLETOP GILDA Z287
- VERMILION DATELINE 7078
- GUNDAPARK D32
- RIPPLE VALE NINAH W90 (AI)

Birth weight 35 Kg
 Weight 650 Kg
 Percent progressive motility 70 %
 Morphology percent normal 90 %
 Scrotal Circumference 38 cm
 National ID QCTR0078ZBS00520
 Gene Probe: AMFU NHFU CAFU DDFU
 Treatments: Ultravac 7 in 1, BEF Three day, vibrio and tick fever vaccine.
 Pestivirus / BVDV negative.

Dam **GUNDAPARK KERRY J83**

- HYLINE RIGHT TIME 338
- WATTLETOP KERRY E62
- WATTLETOP Z101

Calv-Ease		Birth		Growth			Maternal		Fert		Carcase						Feed
CE DIR	CE DTR	GL	BW	200	400	600	MCW	Milk	SS	DC	CWT	EMA	Rib	P8	RBY	IMF	NFIF
8.5	6.5	-7.6	0.4	40	74	92	99	12	2.8	-8.1	49	4.2	1.1	2.8	-0.1	1.5	0.1
54%	49%	66%	72%	68%	67%	68%	66%	61%	60%	39%	63%	59%	65%	61%	62%	59%	51%
<i>TransTasman Angus BREEDPLAN average EBVs for September 2022</i>																	
+2.0	+2.5	-4.6	+4.1	+49	+89	+116	+100	+17	+2.1	-4.6	+66	+6.1	+0.0	-0.4	+0.5	+2.0	+0.18

Lot
10

Visual Tag **QIAR041** **Gundapark R41** ^{SV}

Society ID: QIAR41 30 months old, born 7/04/2020 Registration Status: HBR

- TE MANIA BERKLEY B1
- TE MANIA EMPEROR E343
- TE MANIA LOWAN Z74
- Sire **Gundapark EMPEROR K82**
- HIDDEN VALLEY LOOKOUT Z7 (AI)
- GUNDAPARK KATHERINE F33
- GUNDAPARK KATHERINE D28
- GUNDAPARK BART B12
- GUNDAPARK D63
- DIAMOND RIDGE BEAUTY B8

Birth weight 41 Kg
 Weight 646 Kg
 Percent progressive motility 80 %
 Morphology percent normal 65 %
 Scrotal Circumference 37 cm
 National ID QCTR0078ZBQ00192
 Gene Probe: AMFU NHFU CAFU DDFU
 Treatments: Ultravac 7 in 1, BEF Three day, vibrio and tick fever vaccine.
 Pestivirus / BVDV negative.

Dam **GUNDAPARK JOYFULL H26**

- BT ULTRAVOX 297E
- GUNDAPARK JOYFUL A8
- RIPPLE VALE JOYFUL Y33

Calv-Ease		Birth		Growth			Maternal		Fert		Carcase						Feed
CE DIR	CE DTR	GL	BW	200	400	600	MCW	Milk	SS	DC	CWT	EMA	Rib	P8	RBY	IMF	NFIF
0.6	0.3	-3.9	4.5	44	76	97	88	4	0.7	-1.9	46	5.2	0.1	-0.3	1.2	1.2	-0.2
54%	48%	68%	72%	69%	68%	69%	67%	61%	61%	39%	64%	59%	65%	61%	62%	59%	52%
<i>TransTasman Angus BREEDPLAN average EBVs for September 2022</i>																	
+2.0	+2.5	-4.6	+4.1	+49	+89	+116	+100	+17	+2.1	-4.6	+66	+6.1	+0.0	-0.4	+0.5	+2.0	+0.18

Lot 11

Visual Tag **QIAR051** **Gundapark R51** ^{SV}
 Society ID: QIAR51 29 months old, born 11/05/2020 Registration Status: HBR

-- TE MANIA BERKLEY B1 Birth weight 45 Kg
 -- TE MANIA EMPEROR E343 Weight 522 Kg
 -- TE MANIA LOWAN Z74 Percent progressive motility 30 %
 Sire **Gundapark EMPEROR K82** Morphology percent normal 85 %
 -- HIDDEN VALLEY LOOKOUT Z7 (AI) Scrotal Circumference 35 cm
 -- GUNDAPARK KATHERINE F33 National ID QCTR0078ZBQ00160
 -- GUNDAPARK KATHERINE D28 Gene Probe: AMFU NHFU CAFU DDF
 -- TE MANIA YORKSHIRE Y437 (AI) Treatments: Ultravac 7 in 1, BEF Three day,
 -- TE MANIA BERKLEY B1 vibrio and tick fever vaccine.
 -- TE MANIA LOWAN Z53 Pestivirus / BVDV negative.

Dam **GUNDAPARK ANN F009**
 -- LAWSONS NEW DESIGN 1407 Y64
 -- WATTLETOP ANN B164
 -- WATTLETOP ANN Z285

Calv-Ease		Birth		Growth			Maternal		Fert		Carcase						Feed
CE DIR	CE DTR	GL	BW	200	400	600	MCW	Milk	SS	DC	CWT	EMA	Rib	P8	RBY	IMF	NFIF
8.8	4.4	-7.8	2	46	82	105	93	19	2.1	-8.1	65	7.2	0.2	1.3	-0.7	3.4	0.3
57%	52%	70%	72%	69%	68%	69%	68%	62%	61%	43%	65%	61%	66%	62%	64%	61%	54%
<i>TransTasman Angus BREEDPLAN average EBVs for September 2022</i>																	
+2.0	+2.5	-4.6	+4.1	+49	+89	+116	+100	+17	+2.1	-4.6	+66	+6.1	+0.0	-0.4	+0.5	+2.0	+0.18

Lot 12

Visual Tag **QIAR053** **Gundapark R53** ^{SV}
 Society ID: QIAR53 29 months old, born 12/05/2020 Registration Status: HBR

-- GAR SOLUTION (ET) USA1422615 Birth weight 45 Kg
 -- LAWSONS INVINCIBLEC402 Weight 754 Kg
 -- LAWSONS PREDESTINED VLYA598 Percent progressive motility 70 %
 Sire **Gundapark INVINCIBLE K70** Morphology percent normal 81 %
 -- TE MANIA ULONG U41 (AI)(ET) Scrotal Circumference 37 cm
 -- WATTLETOP GILDA B26 National ID QCTR0078ZBQ00184
 -- WATTLETOP GILDA Z287 Gene Probe: AMFU NHFU CAFU DDFU
 -- BON VIEW NEW DESIGN 208 Treatments: Ultravac 7 in 1, BEF Three day,
 -- RITO 4L6 OF 2536 208 vibrio.
 -- G A R PRECISION 2536 Pestivirus / BVDV negative.

Dam **GUNDAPARK QUIXOTO G62**
 -- VERMILION NEBRASKA M404
 -- DIAMOND RIDGE QUIXOTE B28
 -- DIAMOND RIDGE QUIXOTE Z28

Calv-Ease		Birth		Growth			Maternal		Fert		Carcase						Feed
CE DIR	CE DTR	GL	BW	200	400	600	MCW	Milk	SS	DC	CWT	EMA	Rib	P8	RBY	IMF	NFIF
7.6	5.3	-8.8	2.2	46	77	95	104	15	0.6	-3.2	61	4.5	-0.7	-0.2	-0.2	2.4	-0.4
55%	49%	70%	73%	69%	68%	70%	68%	62%	62%	39%	64%	60%	66%	62%	62%	60%	52%
<i>TransTasman Angus BREEDPLAN average EBVs for September 2022</i>																	
+2.0	+2.5	-4.6	+4.1	+49	+89	+116	+100	+17	+2.1	-4.6	+66	+6.1	+0.0	-0.4	+0.5	+2.0	+0.18

Lot 13

Visual Tag **QIAR056** **Gundapark R56** ^{SV}
 Society ID: QIAR56 29 months old, born 12/05/2020 Registration Status: HBR

- GAR SOLUTION (ET) USA1422615
- LAWSONS INVINCIBLEC402
- LAWSONS PREDESTINED VLYA598
- Sire **Gundapark INVINCIBLE K70**
- TE MANIA ULONG U41 (AI)(ET)
- WATTLETOP GILDA B26
- WATTLETOP GILDA Z287
- TE MANIA YORKSHIRE Y437 (AI)
- TE MANIA BERKLEY B1
- TE MANIA LOWAN Z53

Birth weight 44 Kg
 Weight 582 Kg
 Percent progressive motility 80 %
 Morphology percent normal 87 %
 Scrotal Circumference 32.5 cm
 National ID QCTR0078ZBQ00247
 Gene Probe: AMFU NHFU CAFU DDFU
 Treatments: Ultravac 7 in 1, BEF Three day, vibrio and tick fever vaccine.
 Pestivirus / BVDV negative.

- Dam **GUNDAPARK NINAH J38**
- GUNDAPARK CARL C13
- GUNDAPARK NINAH F53
- GUNDAPARK NINAH Z15

Calv-Ease		Birth		Growth			Maternal		Fert		Carcase						Feed
CE DIR	CE DTR	GL	BW	200	400	600	MCW	Milk	SS	DC	CWT	EMA	Rib	P8	RBY	IMF	NFIF
9.2	5.4	-8.2	3.1	41	69	88	81	11	-0.3	-6.8	47	2.1	0.5	1.9	-1.2	2.6	0
55%	50%	68%	73%	69%	68%	69%	68%	62%	62%	43%	65%	61%	66%	62%	64%	61%	54%
<i>TransTasman Angus BREEDPLAN average EBVs for September 2022</i>																	
+2.0	+2.5	-4.6	+4.1	+49	+89	+116	+100	+17	+2.1	-4.6	+66	+6.1	+0.0	-0.4	+0.5	+2.0	+0.18

Lot 14

Visual Tag **QIAR073** **Gundapark KAISER R73** ^{SV}
 Society ID: QIAR73 24 months old, born 24/10/2020 Registration Status: HBR

-
- TE MANIA FOE F734
-
- Sire **GRANITE RIDGE KAISER K26**
-
- GRANITE RIDGE SUPREME F158
-
- BOOROOMOOKA YOGI
- GUNDAPARK YOGI F11
- WATTLETOP ANN B59

Birth weight 44 Kg
 Weight 600 Kg
 Percent progressive motility 70 %
 Morphology percent normal 85 %
 Scrotal Circumference 41 cm
 National ID QCTR0078ZBR00253
 Gene Probe: AMFU NHFU CAFU DDF
 Treatments: Ultravac 7 in 1, BEF Three day, vibrio and tick fever vaccine.
 Pestivirus / BVDV negative.

- Dam **Gundapark KIRRA QIAJ131**
- RITO 4L6 OF 2536 208
- GUNDAPARK KIRRA E64
- GUNDAPARK KIRRA A17

Calv-Ease		Birth		Growth			Maternal		Fert		Carcase						Feed
CE DIR	CE DTR	GL	BW	200	400	600	MCW	Milk	SS	DC	CWT	EMA	Rib	P8	RBY	IMF	NFIF
-2.8	-4.1	-5.8	6.9	56	91	114	116	14	2.7	-6.3	64	11.4	-0.4	-2.2	2.5	1.4	-0.1
59%	51%	84%	74%	72%	72%	73%	71%	67%	68%	40%	67%	65%	69%	66%	66%	64%	55%
<i>TransTasman Angus BREEDPLAN average EBVs for September 2022</i>																	
+2.0	+2.5	-4.6	+4.1	+49	+89	+116	+100	+17	+2.1	-4.6	+66	+6.1	+0.0	-0.4	+0.5	+2.0	+0.18

Lot 15

Visual Tag **QIAR081** **Gundapark KAISER R81** ^{SV}
 Society ID: QIAR81 24 months old, born 27/10/2020 Registration Status: HBR

--
 -- TE MANIA FOE F734
 --
 Sire **GRANITE RIDGE KAISER K26**
 --
 -- GRANITE RIDGE SUPREME F158
 --
 -- GUNDPARK BART B12
 -- GUNDPARK D63
 -- DIAMOND RIDGE BEAUTY B8
 Dam **GUNDPARK USUAL H19**
 -- WATTLETOP C40 (AI)
 -- GUNDPARK USUAL E39
 -- WATTLETOP USUAL B303 (AI)(ET)

Birth weight 38 Kg
 Weight 642 Kg
 Percent progressive motility 80 %
 Morphology percent normal 82 %
 Scrotal Circumference 38 cm
 National ID QCTR0078ZBR00320
 Gene Probe: AMFU NHFU CAFU DDF
 Treatments: Ultravac 7 in 1, BEF Three day, vibrio and tick fever vaccine.
 Pestivirus / BVDV negative.

Calv-Ease		Birth		Growth			Maternal		Fert		Carcase						Feed
CE DIR	CE DTR	GL	BW	200	400	600	MCW	Milk	SS	DC	CWT	EMA	Rib	P8	RBY	IMF	NFIF
3.7	2.5	-3.5	3.9	53	96	135	114	24	2	-2.8	76	6.6	0.8	-0.6	-0.1	2.8	-0.1
58%	49%	83%	73%	71%	70%	71%	69%	65%	66%	38%	65%	62%	67%	63%	63%	62%	52%
<i>TransTasman Angus BREEDPLAN average EBVs for September 2022</i>																	
+2.0	+2.5	-4.6	+4.1	+49	+89	+116	+100	+17	+2.1	-4.6	+66	+6.1	+0.0	-0.4	+0.5	+2.0	+0.18

Lot 16

Visual Tag **QIAR082** **Gundapark JAIPUR R82** ^{SV}
 Society ID: QIAR82 24 months old, born 26/10/2020 Registration Status: HBR

-- PAPA EQUATOR 2928
 -- ARDROSSAN EQUATOR A2 41
 -- ARDROSSAN PRINCESS W38
 Sire **HAZELDEAN JAIPUR J140**
 --
 -- HAZELDEAN C33
 --
 -- B/R DESTINATION 727-928
 -- GUNDPARK E19
 -- WATTLETOP LUCY A319 (AI)(ET)
 Dam **GUNDPARK KRUGERAND BRIONYG93**
 -- RITO 4L6 OF 2536 208
 -- GUNDPARK KRUGERAND BRIONY E55
 -- GLENLACHIE KRUGERAND BRIONY B5

Birth weight 39 Kg
 Weight 582 Kg
 Percent progressive motility 60 %
 Morphology percent normal 67 %
 Scrotal Circumference 40 cm
 National ID QCTR0078ZBT00771
 Gene Probe: AMFU NHFU CAFU DDFU
 Treatments: Ultravac 7 in 1, BEF Three day, vibrio and tick fever vaccine.
 Pestivirus / BVDV negative.

Calv-Ease		Birth		Growth			Maternal		Fert		Carcase						Feed
CE DIR	CE DTR	GL	BW	200	400	600	MCW	Milk	SS	DC	CWT	EMA	Rib	P8	RBY	IMF	NFIF
7	7.3	-6.8	2.4	46	81	107	93	16	2.7	-7.5	69	4.6	0.6	0.5	0.8	1.4	0.5
59%	51%	83%	72%	71%	70%	71%	69%	65%	66%	49%	67%	64%	69%	66%	67%	64%	58%
<i>TransTasman Angus BREEDPLAN average EBVs for September 2022</i>																	
+2.0	+2.5	-4.6	+4.1	+49	+89	+116	+100	+17	+2.1	-4.6	+66	+6.1	+0.0	-0.4	+0.5	+2.0	+0.18

Lot
17

Visual Tag **QIAR084** **Gundapark JAIPUR R84^{SV}**
Society ID: QIAR84 24 months old, born 26/10/2020 Registration Status: HBR

-- PAPA EQUATOR 2928
-- ARDROSSAN EQUATOR A2 41
-- ARDROSSAN PRINCESS W38
Sire **HAZELDEAN JAIPUR J140**
--
-- HAZELDEAN C33
--
-- VERMILION DATELINE 7078
-- GUNDAPARK D32
-- RIPPLE VALE NINAH W90 (AI)

Birth weight 45 Kg
Weight 686 Kg
Percent progressive motility 70 %
Morphology percent normal 73 %
Scrotal Circumference 39 cm
National ID QCTR0078ZBR00341
Gene Probe: AMFU NHFU CAFU DDFU
Treatments: Ultravac 7 in 1, BEF Three day, vibrio.
Pestivirus / BVDV negative.

Dam **GUNDAPARK BARWON J66**
-- WATTLETOP ZOOMER Z171 (AI)
-- WATTLETOP BARWON C151
-- WATTLETOP BARWON A397

Calv-Ease		Birth		Growth			Maternal		Fert		Carcase						Feed
CE DIR	CE DTR	GL	BW	200	400	600	MCW	Milk	SS	DC	CWT	EMA	Rib	P8	RBY	IMF	NFIF
-0.2	0.1	-5.1	6.5	59	97	138	124	19	1.9	-1.8	82	8.9	-3.5	-4.6	3.6	0.1	0
59%	51%	83%	73%	71%	70%	71%	69%	65%	66%	49%	67%	64%	69%	66%	67%	64%	58%
<i>TransTasman Angus BREEDPLAN average EBVs for September 2022</i>																	
+2.0	+2.5	-4.6	+4.1	+49	+89	+116	+100	+17	+2.1	-4.6	+66	+6.1	+0.0	-0.4	+0.5	+2.0	+0.18

Lot
18

Visual Tag **QIAR086** **Gundapark KAISER R86^{SV}**
Society ID: QIAR86 24 months old, born 27/10/2020 Registration Status: APR

--
-- TE MANIA FOE F734
--
Sire **GRANITE RIDGE KAISER K26**
--
-- GRANITE RIDGE SUPREME F158
--
-- VERMILION DATELINE 7078
-- GUNDAPARK D32
-- RIPPLE VALE NINAH W90 (AI)

Birth weight 42 Kg
Weight 570 Kg
Percent progressive motility 80 %
Morphology percent normal 86 %
Scrotal Circumference 36 cm
National ID QCTR0078ZBR00274
Gene Probe: AMFU NHFU CAFU DDFU
Treatments: Ultravac 7 in 1, BEF Three day, vibrio and tick fever vaccine.
Pestivirus / BVDV negative.

Dam **Gundapark QIAJ125**
-- BT EQUATOR 395M
-- GUNDAPARK WATTLE D10
-- WATTLETOP B296 (AI)

Calv-Ease		Birth		Growth			Maternal		Fert		Carcase						Feed
CE DIR	CE DTR	GL	BW	200	400	600	MCW	Milk	SS	DC	CWT	EMA	Rib	P8	RBY	IMF	NFIF
2.9	-1.8	-4.2	5	55	92	127	108	18	2.5	-6.4	72	9.3	0.5	-0.8	1.5	0.9	0.1
59%	51%	84%	74%	72%	71%	72%	70%	66%	68%	40%	67%	64%	68%	65%	65%	64%	54%
<i>TransTasman Angus BREEDPLAN average EBVs for September 2022</i>																	
+2.0	+2.5	-4.6	+4.1	+49	+89	+116	+100	+17	+2.1	-4.6	+66	+6.1	+0.0	-0.4	+0.5	+2.0	+0.18

Lot
19

Visual Tag **QIAR089** **Gundapark JAIPUR R89** ^{SV}
Society ID: QIAR89 24 months old, born 28/10/2020 Registration Status: HBR

-- PAPA EQUATOR 2928
-- ARDROSSAN EQUATOR A2 41
-- ARDROSSAN PRINCESS W38
Sire **HAZELDEAN JAIPUR J140**
--
-- HAZELDEAN C33
--
-- GAR SOLUTION (ET) USA1422615
-- LAWSONS INVINCIBLEC402
-- LAWSONS PREDESTINED VLYA598

Birth weight 37 Kg
Weight 584 Kg
Percent progressive motility 70 %
Morphology percent normal 72 %
Scrotal Circumference 35 cm
National ID QCTR0078ZBR00349
Gene Probe: AMF NHF CAF DDF
Treatments: Ultravac 7 in 1, BEF Three day, vibrio.
Pestivirus / BVDV negative.

Dam **Gundapark USUAL L90**
-- BON VIEW NEW DESIGN 1407
-- WATTLETOP USUAL B102 (AI)(ET)
-- WATTLETOP USUAL X3 (AI)(ET)

Calv-Ease		Birth		Growth			Maternal		Fert		Carcase					Feed	
CE DIR	CE DTR	GL	BW	200	400	600	MCW	Milk	SS	DC	CWT	EMA	Rib	P8	RBY	IMF	NFIF
5.7	1.4	-5.5	3.1	43	71	100	85	22	1.6	-6.8	60	4.9	-0.3	0.6	0.1	2.2	0.8
62%	56%	84%	73%	72%	72%	73%	71%	68%	68%	53%	69%	67%	71%	68%	69%	67%	61%
<i>TransTasman Angus BREEDPLAN average EBVs for September 2022</i>																	
+2.0	+2.5	-4.6	+4.1	+49	+89	+116	+100	+17	+2.1	-4.6	+66	+6.1	+0.0	-0.4	+0.5	+2.0	+0.18

Lot
20

Visual Tag **QIAR091** **Gundapark JAIPUR R91** ^{SV}
Society ID: QIAR91 24 months old, born 27/10/2020 Registration Status: HBR

-- PAPA EQUATOR 2928
-- ARDROSSAN EQUATOR A2 41
-- ARDROSSAN PRINCESS W38
Sire **HAZELDEAN JAIPUR J140**
--
-- HAZELDEAN C33
--
-- TE MANIA BERKLEY B1
-- TE MANIA EMPEROR E343
-- TE MANIA LOWAN Z74

Birth weight 37 Kg
Weight 654 Kg
Percent progressive motility 80 %
Morphology percent normal 78 %
Scrotal Circumference 39 cm
National ID QCTR0078ZBR00335
Gene Probe: AMFU NHFU CAFU DDFU
Treatments: Ultravac 7 in 1, BEF Three day, vibrio and tick fever vaccine.
Pestivirus / BVDV negative.

Dam **GUNDAPARK KERRY H49**
-- HYLINE RIGHT TIME 338
-- WATTLETOP KERRY E62
-- WATTLETOP Z101

Calv-Ease		Birth		Growth			Maternal		Fert		Carcase					Feed	
CE DIR	CE DTR	GL	BW	200	400	600	MCW	Milk	SS	DC	CWT	EMA	Rib	P8	RBY	IMF	NFIF
6.4	7.3	-3.9	2.8	46	89	131	129	21	3.5	-2.7	75	6.1	-1.9	-3.5	2	1.1	0.2
63%	57%	84%	74%	73%	72%	73%	72%	68%	68%	54%	70%	68%	72%	69%	70%	68%	62%
<i>TransTasman Angus BREEDPLAN average EBVs for September 2022</i>																	
+2.0	+2.5	-4.6	+4.1	+49	+89	+116	+100	+17	+2.1	-4.6	+66	+6.1	+0.0	-0.4	+0.5	+2.0	+0.18

Lot
21

Visual Tag **QIAR095** **Gundapark KAISER R95** ^{SV}
 Society ID: QIAR95 24 months old, born 30/10/2020 Registration Status: HBR

--
 -- TE MANIA FOE F734
 --
 Sire **GRANITE RIDGE KAISER K26**
 --
 -- GRANITE RIDGE SUPREME F158
 --
 -- PAPA EQUATOR 2928
 -- ARDROSSAN EQUATOR A2 41
 -- ARDROSSAN PRINCESS W38

Birth weight 42 Kg
 Weight 630 Kg
 Percent progressive motility 60 %
 Morphology percent normal 60 %
 Scrotal Circumference 41 cm
 National ID QCTR0078ZBR00283
 Gene Probe: AMFU NHFU CAFU DDFU
 Treatments: Ultravac 7 in 1, BEF Three day,
 vibrio and tick fever vaccine.
 Pestivirus / BVDV negative.

Dam **Gundapark KERRY L59**
 -- TE MANIA EMPEROR E343
 -- GUNDAPARK KERRY H49
 -- WATTLETOP KERRY E62

Calv-Ease		Birth		Growth			Maternal		Fert		Carcase						Feed
CE DIR	CE DTR	GL	BW	200	400	600	MCW	Milk	SS	DC	CWT	EMA	Rib	P8	RBY	IMF	NFIF
4.1	3.7	-3.4	4.2	52	91	123	96	21	1.7	-7.5	76	2.9	1.2	1.3	-1.3	1.7	0
61%	55%	84%	74%	72%	72%	73%	71%	67%	68%	45%	68%	66%	70%	67%	67%	66%	57%
<i>TransTasman Angus BREEDPLAN average EBVs for September 2022</i>																	
+2.0	+2.5	-4.6	+4.1	+49	+89	+116	+100	+17	+2.1	-4.6	+66	+6.1	+0.0	-0.4	+0.5	+2.0	+0.18

Lot
22

Visual Tag **QIAR096** **Gundapark KING R96** ^{SV}
 Society ID: QIAR96 23 months old, born 19/11/2020 Registration Status: HBR

-- BON VIEW NEW DESIGN 208
 -- TC TOTAL 410
 -- TC ERICA EILEEN 2047
 Sire **TEXAS KING OF THE ROADK526**
 -- BUSH GRAND DESIGN
 -- TEXAS UNDINE Z183
 -- TEXAS UNDINE X221
 -- TE MANIA UNLIMITED U3271(AI)(ET)
 -- HIGHLANDER OF STERN AB
 -- STERN 2664

Birth weight 38 Kg
 Weight 570 Kg
 Percent progressive motility 70 %
 Morphology percent normal 83 %
 Scrotal Circumference 39 cm
 National ID QCTR0078ZBR00329
 Gene Probe: AMFU NHFU CAFU DDFU
 Treatments: Ultravac 7 in 1, BEF Three day,
 vibrio.
 Pestivirus / BVDV negative.

Dam **Gundapark HIGHLANDER L75**
 -- VERMILION NEBRASKA M404
 -- DIAMOND RIDGE QUIXOTE B28
 -- DIAMOND RIDGE QUIXOTE Z28

Calv-Ease		Birth		Growth			Maternal		Fert		Carcase						Feed
CE DIR	CE DTR	GL	BW	200	400	600	MCW	Milk	SS	DC	CWT	EMA	Rib	P8	RBY	IMF	NFIF
2.2	-0.3	-3	2.9	46	84	113	107	16	2.1	-5	60	4.7	0.2	0.8	-0.6	2.5	0.1
55%	50%	67%	71%	67%	66%	68%	66%	61%	61%	41%	63%	59%	65%	61%	62%	60%	52%
<i>TransTasman Angus BREEDPLAN average EBVs for September 2022</i>																	
+2.0	+2.5	-4.6	+4.1	+49	+89	+116	+100	+17	+2.1	-4.6	+66	+6.1	+0.0	-0.4	+0.5	+2.0	+0.18

Lot 23

Visual Tag **QIAR097** **Gundapark KING R97** ^{SV}
 Society ID: QIAR97 23 months old, born 19/11/2020 Registration Status: HBR

-- BON VIEW NEW DESIGN 208 Birth weight 36 Kg
 -- TC TOTAL 410 Weight 566 Kg
 -- TC ERICA EILEEN 2047 Percent progressive motility 80 %
 Sire **TEXAS KING OF THE ROADK526** Morphology percent normal 89 %
 -- BUSH GRAND DESIGN Scrotal Circumference 35.5 cm
 -- TEXAS UNDINE Z183 National ID QCTR0078ZBT00776
 -- TEXAS UNDINE X221 Gene Probe: AMFU NHFU CAFU DDFU
 Treatments: Ultravac 7 in 1, BEF Three day, vibrio.
 Pestivirus / BVDV negative.

-- GAR SOLUTION (ET) USA1422615
 -- LAWSONS INVINCIBLEC402
 -- LAWSONS PREDESTINED VLYA598

Dam **Gundapark NINAH K41**
 -- TE MANIA EMPEROR E343
 -- GUNDAPARK NINAH H92
 -- GUNDAPARK NINAH Z15

Calv-Ease		Birth		Growth			Maternal		Fert		Carcase						Feed
CE DIR	CE DTR	GL	BW	200	400	600	MCW	Milk	SS	DC	CWT	EMA	Rib	P8	RBY	IMF	NFIF
3.3	0.4	-1.8	2.4	42	80	98	88	10	0.2	-7.3	44	3.8	3.1	4.6	-2	2.9	0.5
58%	53%	70%	73%	71%	70%	71%	69%	65%	65%	44%	67%	63%	69%	65%	66%	64%	56%
<i>TransTasman Angus BREEDPLAN average EBVs for September 2022</i>																	
+2.0	+2.5	-4.6	+4.1	+49	+89	+116	+100	+17	+2.1	-4.6	+66	+6.1	+0.0	-0.4	+0.5	+2.0	+0.18

Lot 24

Visual Tag **QIAR098** **Gundapark KING R98** ^{SV}
 Society ID: QIAR98 23 months old, born 19/11/2020 Registration Status: HBR

-- BON VIEW NEW DESIGN 208 Birth weight 42 Kg
 -- TC TOTAL 410 Weight 518 Kg
 -- TC ERICA EILEEN 2047 Percent progressive motility 50 %
 Sire **TEXAS KING OF THE ROADK526** Morphology percent normal 85 %
 -- BUSH GRAND DESIGN Scrotal Circumference 36 cm
 -- TEXAS UNDINE Z183 National ID QCTR0078ZBR00303
 -- TEXAS UNDINE X221 Gene Probe: AMFU NHFU CAFU DDFU
 Treatments: Ultravac 7 in 1, BEF Three day, vibrio and tick fever vaccine.
 Pestivirus / BVDV negative.

-- BON VIEW NEW DESIGN 208
 -- RITO 4L6 OF 2536 208
 -- G A R PRECISION 2536

Dam **GUNDAPARK KIRRA E64**
 -- GUNDAPARK MAX X5
 -- GUNDAPARK KIRRA A17
 -- GUNDAPARK KIRRA Y4

Calv-Ease		Birth		Growth			Maternal		Fert		Carcase						Feed
CE DIR	CE DTR	GL	BW	200	400	600	MCW	Milk	SS	DC	CWT	EMA	Rib	P8	RBY	IMF	NFIF
-1.8	-0.7	-7	3.5	48	83	105	109	10	1.4	-6.1	51	4.6	1.5	2.4	-0.9	2	-0.1
56%	50%	68%	72%	69%	68%	69%	68%	63%	63%	40%	64%	60%	66%	62%	63%	60%	53%
<i>TransTasman Angus BREEDPLAN average EBVs for September 2022</i>																	
+2.0	+2.5	-4.6	+4.1	+49	+89	+116	+100	+17	+2.1	-4.6	+66	+6.1	+0.0	-0.4	+0.5	+2.0	+0.18

Lot
25

Visual Tag **QIAR102** **Gundapark JAIPUR R102 #**
Society ID: QIAR102 23 months old, born 21/11/2020 Registration Status: HBR

-- PAPA EQUATOR 2928
-- ARDROSSAN EQUATOR A2 41
-- ARDROSSAN PRINCESS W38
Sire HAZELDEAN JAIPUR J140
--
-- HAZELDEAN C33
--
-- LAWSONS INVINCIBLEC402
-- Gundapark INVINCIBLE K70
-- WATTLETOP GILDA B26

Birth weight 41 Kg
Weight 481 Kg
Percent progressive motility 60 %
Morphology percent normal 77 %
Scrotal Circumference 35 cm
National ID QCTR0078ZBR00273
Gene Probe: AMFU NHFU CAFU DDF
Treatments: Ultravac 7 in 1, BEF Three day, vibrio and tick fever vaccine.
Pestivirus / BVDV negative.

Dam Gundapark NANCY N27
-- GUNDAPARK D32
-- Gundapark NANCY L6
-- GUNDAPARK NANCY Y1

Calv-Ease		Birth		Growth			Maternal		Fert		Carcase						Feed
CE DIR	CE DTR	GL	BW	200	400	600	MCW	Milk	SS	DC	CWT	EMA	Rib	P8	RBY	IMF	NFIF
7.4	-0.3	-6.7	2.8	42	74	98	92	15	1.7	-5.4	51	4.9	-0.7	0.5	0.5	2.2	0.2
54%	49%	64%	74%	66%	64%	65%	64%	58%	57%	39%	61%	57%	62%	59%	60%	57%	50%
<i>TransTasman Angus BREEDPLAN average EBVs for September 2022</i>																	
+2.0	+2.5	-4.6	+4.1	+49	+89	+116	+100	+17	+2.1	-4.6	+66	+6.1	+0.0	-0.4	+0.5	+2.0	+0.18

Lot
26

Visual Tag **QIAR104** **Gundapark R104^{SV}**
Society ID: QIAR104 23 months old, born 27/11/2020 Registration Status: HBR

-- BON VIEW NEW DESIGN 208
-- TC TOTAL 410
-- TC ERICA EILEEN 2047
Sire TEXAS KING OF THE ROADK526
-- BUSH GRAND DESIGN
-- TEXAS UNDINE Z183
-- TEXAS UNDINE X221
-- VERMILION DATELINE 7078
-- GUNDAPARK D32
-- RIPPLE VALE NINAH W90 (AI)

Birth weight 39 Kg
Weight 580 Kg
Percent progressive motility 60 %
Morphology percent normal 59 %
Scrotal Circumference 39 cm
National ID QCTR0078ZBR00305
Gene Probe: AMFU NHFU CAFU DDFU
Treatments: Ultravac 7 in 1, BEF Three day, vibrio and tick fever vaccine.
Pestivirus / BVDV negative.

Dam Gundapark NINAH L32
-- GUNDAPARK D63
-- GUNDAPARK NINAH G56
-- GUNDAPARK NINAH Z15

Calv-Ease		Birth		Growth			Maternal		Fert		Carcase						Feed
CE DIR	CE DTR	GL	BW	200	400	600	MCW	Milk	SS	DC	CWT	EMA	Rib	P8	RBY	IMF	NFIF
-0.1	-2.2	-3.3	3.7	44	77	99	83	13	2.1	-2.5	53	5.8	-1.6	-1.8	1.4	1.1	-0.6
54%	48%	65%	71%	68%	67%	68%	66%	61%	62%	38%	63%	59%	65%	61%	61%	59%	51%
<i>TransTasman Angus BREEDPLAN average EBVs for September 2022</i>																	
+2.0	+2.5	-4.6	+4.1	+49	+89	+116	+100	+17	+2.1	-4.6	+66	+6.1	+0.0	-0.4	+0.5	+2.0	+0.18

Lot 27

Visual Tag **QIAR114 Gundapark R114^{SV}**

Society ID: QIAR114 22 months old, born 13/12/2020 Registration Status: APR

- BON VIEW NEW DESIGN 208
- TC TOTAL 410
- TC ERICA EILEEN 2047
- Sire **TEXAS KING OF THE ROADK526**
- BUSH GRAND DESIGN
- TEXAS UNDINE Z183
- TEXAS UNDINE X221
- ARDROSSAN DIRECTION W109
- ARDROSSAN ADMIRAL A2 (AI)(ET)(TNC)
- KENNY'S CREED ROSEBUD W171

Birth weight 37 Kg
 Weight 554 Kg
 Percent progressive motility 50 %
 Morphology percent normal 68 %
 Scrotal Circumference 34.5 cm
 National ID QCTR0078ZBR00336
 Gene Probe: AMFU NHFU CAFU DD8%
 Treatments: Ultravac 7 in 1, BEF Three day, vibrio and tick fever vaccine.
 Pestivirus / BVDV negative.

- Dam **GUNDAPARK ADMIRATION G21**
- GARDENS HIGHMARK USA13047487
- WATTLETOP Z113
- WATTLETOP U44

Calv-Ease		Birth		Growth			Maternal		Fert		Carcase						Feed
CE DIR	CE DTR	GL	BW	200	400	600	MCW	Milk	SS	DC	CWT	EMA	Rib	P8	RBY	IMF	NFIF
-3.9	-3.9	-2.6	4.5	54	94	124	123	15	-0.4	-0.1	67	6.5	-2.6	-2.5	0.9	1.4	-0.4
57%	52%	69%	73%	70%	69%	70%	69%	63%	64%	44%	66%	62%	68%	64%	64%	63%	55%
<i>TransTasman Angus BREEDPLAN average EBVs for September 2022</i>																	
+2.0	+2.5	-4.6	+4.1	+49	+89	+116	+100	+17	+2.1	-4.6	+66	+6.1	+0.0	-0.4	+0.5	+2.0	+0.18

Lot 28

Visual Tag **QIAR115 Gundapark R115^{SV}**

Society ID: QIAR115 22 months old, born 10/12/2020 Registration Status: HBR

- BON VIEW NEW DESIGN 208
- TC TOTAL 410
- TC ERICA EILEEN 2047
- Sire **TEXAS KING OF THE ROADK526**
- BUSH GRAND DESIGN
- TEXAS UNDINE Z183
- TEXAS UNDINE X221
- TE MANIA YORKSHIRE Y437 (AI)
- TE MANIA BERKLEY B1
- TE MANIA LOWAN Z53

Birth weight 43 Kg
 Weight 514 Kg
 Percent progressive motility 60 %
 Morphology percent normal 67 %
 Scrotal Circumference 36 cm
 National ID QCTR0078ZBR00246
 Gene Probe: AMFU NHFU CAFU DDFU
 Treatments: Ultravac 7 in 1, BEF Three day, vibrio and tick fever vaccine.
 Pestivirus / BVDV negative.

- Dam **GUNDAPARK KATHLEEN J46**
- BT RIGHT TIME 24J
- RIPPLE VALE KATHLEEN A116
- RIPPLE VALE LASSIE U20

Calv-Ease		Birth		Growth			Maternal		Fert		Carcase						Feed
CE DIR	CE DTR	GL	BW	200	400	600	MCW	Milk	SS	DC	CWT	EMA	Rib	P8	RBY	IMF	NFIF
0.5	4.6	-5	3.5	48	84	106	107	12	1.5	-4.8	67	8	0.7	-0.4	-0.3	3.1	0.2
56%	51%	64%	71%	67%	66%	67%	66%	61%	61%	42%	63%	59%	65%	61%	62%	60%	53%
<i>TransTasman Angus BREEDPLAN average EBVs for September 2022</i>																	
+2.0	+2.5	-4.6	+4.1	+49	+89	+116	+100	+17	+2.1	-4.6	+66	+6.1	+0.0	-0.4	+0.5	+2.0	+0.18

Lot
29

Visual Tag **QIAR145** **Gundapark R145 #**

Society ID: QIAR145 22 months old, born 29/12/2020 Registration Status: HBR

--
-- TE MANIA FOE F734
--
Sire **GRANITE RIDGE KAISER K26**
--
-- GRANITE RIDGE SUPREME F158
--
-- K C F BENNETT PERFORMER
-- COONAMBLE HECTOR H249
-- COONAMBLE E9

Dam **Gundapark COONAMBLE N130**
-- L T 598 BANDO 9074
-- GUNDAPARK G49
-- GUNDAPARK BANE B9

Birth weight 41 Kg
Weight 508 Kg
Percent progressive motility 80 %
Morphology percent normal 79 %
Scrotal Circumference 36.5 cm
National ID QCTR0078ZBR00436
Gene Probe: AMFU NHFU CAFU DDFU
Treatments: Ultravac 7 in 1, BEF Three day, vibrio and tick fever vaccine.
Pestivirus / BVDV negative.

Calv-Ease		Birth		Growth			Maternal		Fert		Carcase						Feed
CE DIR	CE DTR	GL	BW	200	400	600	MCW	Milk	SS	DC	CWT	EMA	Rib	P8	RBY	IMF	NFIF
2.4	1.2	-6	5.5	51	89	119	108	15	2	-5.9	68	7.9	1	0.6	0.6	1.5	-0.1
57%	48%	67%	72%	63%	63%	63%	62%	60%	61%	39%	59%	58%	60%	58%	58%	57%	49%
<i>TransTasman Angus BREEDPLAN average EBVs for September 2022</i>																	
+2.0	+2.5	-4.6	+4.1	+49	+89	+116	+100	+17	+2.1	-4.6	+66	+6.1	+0.0	-0.4	+0.5	+2.0	+0.18

Lot
30

Visual Tag **QIAS012** **Gundapark S12^{SV}**

Society ID: QIA21S12 21 months old, born 12/01/2021 Registration Status: HBR

-- GAR SOLUTION (ET) USA1422615
-- LAWSONS INVINCIBLEC402
-- LAWSONS PREDESTINED VLYA598
Sire **Gundapark INVINCIBLE K70**
-- TE MANIA ULONG U41 (AI)(ET)
-- WATTLETOP GILDA B26
-- WATTLETOP GILDA Z287
-- PAPA EQUATOR 2928
-- ARDROSSAN EQUATOR A2 41
-- ARDROSSAN PRINCESS W38

Dam **Gundapark BRIONY M127**
-- RITO 4L6 OF 2536 208
-- GUNDAPARK KRUGERAND BRIONY E55
-- GLENLACHIE KRUGERAND BRIONY B5

Birth weight 38 Kg
Weight 508 Kg
Percent progressive motility 80 %
Morphology percent normal 76 %
Scrotal Circumference 35 cm
National ID QCTR0078ZBR00432
Gene Probe: AMFU NHFU CAFU DDFU
Treatments: Ultravac 7 in 1, BEF Three day, vibrio and tick fever vaccine.
Pestivirus / BVDV negative.

Calv-Ease		Birth		Growth			Maternal		Fert		Carcase						Feed
CE DIR	CE DTR	GL	BW	200	400	600	MCW	Milk	SS	DC	CWT	EMA	Rib	P8	RBY	IMF	NFIF
3.6	2.9	-8	3.9	52	90	115	110	19	3.2	-8.5	72	5.8	0.5	1.2	-0.1	2.5	0.5
57%	52%	71%	73%	70%	69%	70%	69%	64%	63%	44%	66%	62%	68%	64%	65%	63%	55%
<i>TransTasman Angus BREEDPLAN average EBVs for September 2022</i>																	
+2.0	+2.5	-4.6	+4.1	+49	+89	+116	+100	+17	+2.1	-4.6	+66	+6.1	+0.0	-0.4	+0.5	+2.0	+0.18

Lot 31

Visual Tag **QIAS015** **Gundapark S15 #**

Society ID: QIA21S15 21 months old, born 18/01/2021 Registration Status: HBR

- GAR SOLUTION (ET) USA1422615
- LAWSONS INVINCIBLEC402
- LAWSONS PREDESTINED VLYA598
- Sire Gundapark INVINCIBLE K70**
- TE MANIA ULONG U41 (AI)(ET)
- WATTLETOP GILDA B26
- WATTLETOP GILDA Z287
- VERMILION DATELINE 7078
- GUNDAPARK D32
- RIPPLE VALE NINAH W90 (AI)

Birth weight 46 Kg
 Weight 538 Kg
 Percent progressive motility 80 %
 Morphology percent normal 84 %
 Scrotal Circumference 36 cm
 National ID QCTR0078ZBR00449
 Gene Probe: AMFU NHFU CAFU DDFU
 Treatments: Ultravac 7 in 1, BEF Three day, vibrio and tick fever vaccine.
 Pestivirus / BVDV negative.

Dam Gundapark QUIXOTO N46

- RITO 4L6 OF 2536 208
- GUNDAPARK QUIXOTO G62
- DIAMOND RIDGE QUIXOTE B28

Calv-Ease		Birth		Growth			Maternal		Fert		Carcase						Feed
CE DIR	CE DTR	GL	BW	200	400	600	MCW	Milk	SS	DC	CWT	EMA	Rib	P8	RBY	IMF	NFIF
3.5	0.1	-5.7	4.3	47	80	105	99	16	2.1	-4.7	56	6	-1	0	1	1.9	0
50%	42%	57%	71%	58%	56%	56%	55%	50%	48%	34%	52%	47%	52%	49%	50%	48%	42%
<i>TransTasman Angus BREEDPLAN average EBVs for September 2022</i>																	
+2.0	+2.5	-4.6	+4.1	+49	+89	+116	+100	+17	+2.1	-4.6	+66	+6.1	+0.0	-0.4	+0.5	+2.0	+0.18

Lot 32

Visual Tag **QIAS017** **Gundapark S17 SV**

Society ID: QIA21S17 21 months old, born 13/01/2021 Registration Status: HBR

- GAR SOLUTION (ET) USA1422615
- LAWSONS INVINCIBLEC402
- LAWSONS PREDESTINED VLYA598
- Sire Gundapark INVINCIBLE K70**
- TE MANIA ULONG U41 (AI)(ET)
- WATTLETOP GILDA B26
- WATTLETOP GILDA Z287
- PAPA EQUATOR 2928
- ARDROSSAN EQUATOR A2 41
- ARDROSSAN PRINCESS W38

Birth weight 45 Kg
 Weight 540 Kg
 Percent progressive motility 80 %
 Morphology percent normal 88 %
 Scrotal Circumference 36 cm
 National ID QCTR0078ZBR00352
 Gene Probe: AMFU NHFU CAFU DDF
 Treatments: Ultravac 7 in 1, BEF Three day, vibrio.
 Pestivirus / BVDV negative.

Dam Gundapark USUAL M118

- RAFF MIDLAND Z204 (AI)(ET)
- GUNDAPARK USUAL F54
- WATTLETOP USUAL B288 (AI)(ET)

Calv-Ease		Birth		Growth			Maternal		Fert		Carcase						Feed
CE DIR	CE DTR	GL	BW	200	400	600	MCW	Milk	SS	DC	CWT	EMA	Rib	P8	RBY	IMF	NFIF
0.7	-1.6	-7.3	5.5	44	79	105	109	15	3.1	-6.4	59	7	-2.6	-1.3	2.3	1.7	0.3
56%	51%	70%	72%	69%	68%	69%	67%	62%	62%	43%	65%	61%	67%	63%	64%	61%	54%
<i>TransTasman Angus BREEDPLAN average EBVs for September 2022</i>																	
+2.0	+2.5	-4.6	+4.1	+49	+89	+116	+100	+17	+2.1	-4.6	+66	+6.1	+0.0	-0.4	+0.5	+2.0	+0.18

Lot
33

Visual Tag **QIAS020** **Gundapark S20** ^{SV}
Society ID: QIA21S20 21 months old, born 20/01/2021 Registration Status: HBR

-- PAPA EQUATOR 2928
-- ARDROSSAN EQUATOR A2 41
-- ARDROSSAN PRINCESS W38
Sire **HAZELDEAN JAIPUR J140**
--
-- HAZELDEAN C33
--
-- RAFF MIDLAND Z204 (AI)(ET)
-- GUNDAPARK R. MIDLAND G18
-- WATTLETOP KERRY E62

Birth weight 33 Kg
Weight 510 Kg
Percent progressive motility 40 %
Morphology percent normal 54 %
Scrotal Circumference 36 cm
National ID QCTR0078ZBR00363
Gene Probe: AMFU NHFU CAFU DDFU
Treatments: Ultravac 7 in 1, BEF Three day,
vibrio and tick fever vaccine.
Pestivirus / BVDV negative.

Dam **Gundapark N64**

-- GUNDAPARK D63
-- GUNDAPARK QIAH33
-- GUNDAPARK TOPSY C20

Calv-Ease		Birth		Growth			Maternal		Fert		Carcase					Feed	
CE DIR	CE DTR	GL	BW	200	400	600	MCW	Milk	SS	DC	CWT	EMA	Rib	P8	RBY	IMF	NFIF
11.4	10.3	-7.8	0.1	34	68	88	59	24	2.5	-6.2	56	3.6	0.5	-0.5	0.5	0.7	0.6
59%	51%	83%	72%	71%	71%	72%	70%	66%	67%	49%	68%	65%	70%	67%	68%	65%	59%
<i>TransTasman Angus BREEDPLAN average EBVs for September 2022</i>																	
+2.0	+2.5	-4.6	+4.1	+49	+89	+116	+100	+17	+2.1	-4.6	+66	+6.1	+0.0	-0.4	+0.5	+2.0	+0.18

Lot
34

Visual Tag **QIAS022** **Gundapark S22** ^{SV}
Society ID: QIA21S22 21 months old, born 20/01/2021 Registration Status:

--
-- TE MANIA FOE F734
--
Sire **GRANITE RIDGE KAISER K26**
--
-- GRANITE RIDGE SUPREME F158
--
-- SUMMITCREST SCOTCH CAP OB45
-- GARDENS HIGHMARK USA13047487
-- GREENGARDEN PRIDE6128

Birth weight 31 Kg
Weight 497 Kg
Percent progressive motility 80 %
Morphology percent normal 79 %
Scrotal Circumference 38 cm
National ID QCTR0078ZBR00424
Gene Probe: AMFU NHFU CAFU DDFU
Treatments: Ultravac 7 in 1, BEF Three day,
vibrio.
Pestivirus / BVDV negative.

Dam **GUNDAPARK KATHERINE F25**

-- TC STOCKMAN 2164
-- RIPPLE VALE KATHERINE W82 (AI)
-- RIPPLE VALE KATHERINE K75 (AI)

Calv-Ease		Birth		Growth			Maternal		Fert		Carcase					Feed	
CE DIR	CE DTR	GL	BW	200	400	600	MCW	Milk	SS	DC	CWT	EMA	Rib	P8	RBY	IMF	NFIF
10.5	4.7	-6.9	0.1	38	69	85	55	21	1	-6.2	48	3.8	2.2	3.8	-1.5	1.7	0.1
60%	53%	83%	73%	72%	71%	73%	71%	67%	68%	44%	67%	65%	69%	66%	66%	64%	56%
<i>TransTasman Angus BREEDPLAN average EBVs for September 2022</i>																	
+2.0	+2.5	-4.6	+4.1	+49	+89	+116	+100	+17	+2.1	-4.6	+66	+6.1	+0.0	-0.4	+0.5	+2.0	+0.18

Lot
35

Visual Tag **QIAS024** **Gundapark S24** ^{SV}
Society ID: QIA21S24 21 months old, born 22/01/2021 Registration Status: HBR

-- BON VIEW NEW DESIGN 208
-- TC TOTAL 410
-- TC ERICA EILEEN 2047
Sire TEXAS KING OF THE ROADK526
-- BUSH GRAND DESIGN
-- TEXAS UNDINE Z183
-- TEXAS UNDINE X221

-- GUNDAPARK CARL C13
-- GUNDAPARK G5
-- GUNDAPARK MAXI X6

Birth weight 42 Kg
Weight 435 Kg
Percent progressive motility 60 %
Morphology percent normal 87 %
Scrotal Circumference 35.5 cm
National ID QCTR0078ZBR00390
Gene Probe: AMFU NHFU CAFU DDFU
Treatments: Ultravac 7 in 1, BEF Three day, vibrio and tick fever vaccine.
Pestivirus / BVDV negative.

Dam Gundapark JOYFULL L11
-- GUNDAPARK D63
-- GUNDAPARK JOYFULL H21
-- GUNDAPARK JOYFULL E83

Calv-Ease		Birth		Growth			Maternal		Fert		Carcase						Feed
CE DIR	CE DTR	GL	BW	200	400	600	MCW	Milk	SS	DC	CWT	EMA	Rib	P8	RBY	IMF	NFIF
-2.1	0.5	-1	4.7	51	92	119	124	10	0.1	-1.5	65	4.9	-0.7	0.1	-0.8	2.2	-0.5
53%	47%	65%	72%	69%	68%	69%	67%	62%	62%	38%	64%	60%	66%	62%	62%	60%	52%
<i>TransTasman Angus BREEDPLAN average EBVs for September 2022</i>																	
+2.0	+2.5	-4.6	+4.1	+49	+89	+116	+100	+17	+2.1	-4.6	+66	+6.1	+0.0	-0.4	+0.5	+2.0	+0.18

Lot
36

Visual Tag **QIAS027** **Gundapark S27** ^{SV}
Society ID: QIA21S27 21 months old, born 29/01/2021 Registration Status: HBR

-- SITZ UPWARD 3075
-- THOMAS UP RIVER 1614
-- THOMAS CAROL 7595
Sire MILLAH MURRAH LAKESIDE L69
-- YTHANBRAE HENRY VIII U8
-- MILLAH MURRAH PRUE H113
-- MILLAH MURRAH PRUE C48

-- TE MANIA AFRICA A217
-- KANSAS AFRICA G205
-- KANSAS BARBARA A71

Birth weight 38 Kg
Weight 560 Kg
Percent progressive motility 60 %
Morphology percent normal 75 %
Scrotal Circumference 37 cm
National ID QCTR0078ZBR00374
Gene Probe: AMFU NHFU CAFU DDF
Treatments: Ultravac 7 in 1, BEF Three day, vibrio and tick fever vaccine.
Pestivirus / BVDV negative.

Dam GUNDAPARK NINAH J57
-- GUNDAPARK CHADWICK C9
-- GUNDAPARK NINAH F13
-- GUNDAPARK NINAH D33

Calv-Ease		Birth		Growth			Maternal		Fert		Carcase						Feed
CE DIR	CE DTR	GL	BW	200	400	600	MCW	Milk	SS	DC	CWT	EMA	Rib	P8	RBY	IMF	NFIF
8	-2	-3.2	2.2	41	78	109	94	29	1.8	-4.6	64	5.2	1.9	-0.4	-1	2.5	0.4
57%	50%	83%	73%	71%	70%	71%	69%	65%	66%	39%	66%	63%	68%	64%	65%	63%	54%
<i>TransTasman Angus BREEDPLAN average EBVs for September 2022</i>																	
+2.0	+2.5	-4.6	+4.1	+49	+89	+116	+100	+17	+2.1	-4.6	+66	+6.1	+0.0	-0.4	+0.5	+2.0	+0.18

Lot
37

Visual Tag **QIAS030** **Gundapark S30** ^{SV}

Society ID: QIA21S30 21 months old, born 23/01/2021 Registration Status: HBR

-- PAPA EQUATOR 2928
-- ARDROSSAN EQUATOR A2 41
-- ARDROSSAN PRINCESS W38
Sire **HAZELDEAN JAIPUR J140**

--
-- HAZELDEAN C33
--
-- RAFF MIDLAND Z204 (AI)(ET)
-- GUNDAPARK R. MIDLAND G18
-- WATTLETOP KERRY E62

Dam **Gundapark USUAL K102**

-- BON VIEW NEW DESIGN 1407
-- WATTLETOP USUAL B102 (AI)(ET)
-- WATTLETOP USUAL X3 (AI)(ET)

Birth weight 43 Kg
Weight 546 Kg
Percent progressive motility 70 %
Morphology percent normal 69 %
Scrotal Circumference 37 cm
National ID QCTR0078ZBR00431
Gene Probe: AMF NHF CAF DDF
Treatments: Ultravac 7 in 1, BEF Three day, vibrio and tick fever vaccine.
Pestivirus / BVDV negative.

Calv-Ease		Birth		Growth			Maternal		Fert		Carcase						Feed
CE DIR	CE DTR	GL	BW	200	400	600	MCW	Milk	SS	DC	CWT	EMA	Rib	P8	RBY	IMF	NFIF
6.5	6.6	-6.7	3.6	46	78	108	95	24	2.8	-6.8	66	6.5	-0.2	0.3	1.2	1.5	0.4
60%	53%	83%	73%	72%	71%	72%	70%	67%	68%	51%	69%	66%	71%	67%	68%	66%	60%
<i>TransTasman Angus BREEDPLAN average EBVs for September 2022</i>																	
+2.0	+2.5	-4.6	+4.1	+49	+89	+116	+100	+17	+2.1	-4.6	+66	+6.1	+0.0	-0.4	+0.5	+2.0	+0.18

Lot
38

Visual Tag **QIAS031** **Gundapark S31** ^{SV}

Society ID: QIA21S31 21 months old, born 24/01/2021 Registration Status: HBR

-- GAR SOLUTION (ET) USA1422615
-- LAWSONS INVINCIBLEC402
-- LAWSONS PREDESTINED VLYA598
Sire **Gundapark INVINCIBLE K70**

-- TE MANIA ULONG U41 (AI)(ET)
-- WATTLETOP GILDA B26
-- WATTLETOP GILDA Z287
-- BOOROOMOOKA YOGI
-- GUNDAPARK YOGI F11
-- WATTLETOP ANN B59

Dam **Gundapark BEAUTY L4**

-- S A V 5175 BANDO 0699
-- GUNDAPARK BEAUTY C2
-- DIAMOND RIDGE BEAUTY U9

Birth weight 44 Kg
Weight 492 Kg
Percent progressive motility 70 %
Morphology percent normal 80 %
Scrotal Circumference 39 cm
National ID QCTR0078ZBR00423
Gene Probe: AMFU NHFU CAFU DDF
Treatments: Ultravac 7 in 1, BEF Three day, vibrio.
Pestivirus / BVDV negative.

Calv-Ease		Birth		Growth			Maternal		Fert		Carcase						Feed
CE DIR	CE DTR	GL	BW	200	400	600	MCW	Milk	SS	DC	CWT	EMA	Rib	P8	RBY	IMF	NFIF
3.9	0.4	-4.7	3.9	38	67	93	83	18	1.9	-4.3	48	4.2	0.3	2	-0.5	1.8	0.3
54%	49%	68%	72%	69%	69%	70%	68%	62%	62%	39%	64%	60%	66%	62%	63%	60%	52%
<i>TransTasman Angus BREEDPLAN average EBVs for September 2022</i>																	
+2.0	+2.5	-4.6	+4.1	+49	+89	+116	+100	+17	+2.1	-4.6	+66	+6.1	+0.0	-0.4	+0.5	+2.0	+0.18

Lot
39

Visual Tag QIAS043 **Gundapark S43^{SV}**

Society ID: QIA21S43 20 months old, born 8/02/2021 Registration Status: HBR

- GAR SOLUTION (ET) USA1422615
- LAWSONS INVINCIBLEC402
- LAWSONS PREDESTINED VLYA598
- Sire Gundapark INVINCIBLE K70**
- TE MANIA ULONG U41 (AI)(ET)
- WATTLETOP GILDA B26
- WATTLETOP GILDA Z287
- GUNDAPARK E19
- GUNDAPARK ALLIANCE J70
- DIAMOND RIDGE BEAUTY B8

Birth weight 36 Kg
 Weight 566 Kg
 Percent progressive motility 60 %
 Morphology percent normal 84 %
 Scrotal Circumference 36 cm
 National ID QCTR0078ZBR00412
 Gene Probe: AMFU NHFU CAFU DDFU
 Treatments: Ultravac 7 in 1, BEF Three day, vibrio and tick fever vaccine.
 Pestivirus / BVDV negative.

- Dam Gundapark KATHLEEN L127**
- TE MANIA BERKLEY B1
- GUNDAPARK KATHLEEN J46
- RIPPLE VALE KATHLEEN A116

Calv-Ease		Birth		Growth			Maternal		Fert		Carcase						Feed	
CE DIR	CE DTR	GL	BW	200	400	600	MCW	Milk	SS	DC	CWT	EMA	Rib	P8	RBV	IMF	NFIF	
4.2	6.7	-5.5	2.1	48	81	98	84	18	0.9	-6.2	58	8.7	2.1	1.8	-0.4	2.1	0.1	
54%	48%	64%	71%	67%	66%	67%	65%	60%	61%	38%	62%	58%	64%	60%	61%	59%	51%	
<i>TransTasman Angus BREEDPLAN average EBVs for September 2022</i>																		
+2.0	+2.5	-4.6	+4.1	+49	+89	+116	+100	+17	+2.1	-4.6	+66	+6.1	+0.0	-0.4	+0.5	+2.0	+0.18	

Lot
40

Visual Tag **QIAQ045** **Gundapark EDMUND Q45 #**

Society ID: QIAQ45 37 months old, born 16/09/2019 Registration Status: N

-- BOOROOMOOKA UNDERTAKEN U170	Birth weight	32 Kg
-- BOOROOMOOKA UNDERTAKEN Y145	Weight	800 Kg
-- BOOROOMOOKA UAAISE U101	Percent progressive motility	80 %
<i>Sire</i> RENNYLEA EDMUND E11	Morphology percent normal	84 %
--	Scrotal Circumference	39 cm
-- LAWSONS HENRY VIII Y5	National ID	QCTR0078ZBQ00115
--	Gene Probe:	
-- LAWSONS INVINCIBLEC402	Treatments:	Ultravac 7 in 1, BEF Three day, vibrio and tick fever vaccine.
-- Gundapark QIAK048	Pestivirus / BVDV	negative.
-- GUNDAPARK DORIS H45		
<i>Dam</i> Gundapark N13		
-- GUNDAPARK CEDRIC C17		
-- GUNDAPARK JOYFULL F52		
-- GUNDAPARK JOYFUL A8		

Lot
41

Visual Tag **QIAR003** **Gundapark R3 #**

Society ID: 25 months old, born 14/09/2020 Registration Status: N

Birth weight	Kg
Weight	684 Kg
Percent progressive motility	60 %
Morphology percent normal	76 %
Scrotal Circumference	36 cm
National ID	QCTR0078ZBQ00202
Gene Probe:	
Treatments:	Ultravac 7 in 1, BEF Three day, vibrio and tick fever vaccine.
Pestivirus / BVDV	negative.

Lot 42

Visual Tag **QIAR024** **Gundapark R24**

Society ID: QIAR24 32 months old, born 4/02/2020 Registration Status: N

-- TE MANIA BERKLEY B1
-- TE MANIA EMPEROR E343
-- TE MANIA LOWAN Z74
Sire **Gundapark EMPEROR K82**
-- HIDDEN VALLEY LOOKOUT Z7 (AI)
-- GUNDAPARK KATHERINE F33
-- GUNDAPARK KATHERINE D28

-- VERMILION DATELINE 7078
-- GUNDAPARK D32
-- RIPPLE VALE NINAH W90 (AI)

Dam **Gundapark J114**

-- GENLACHIE KRIGERRAND BOGARTE
Z10
-- GLENLACHIE KRUGERAND YESIMA B10
-- GLENLACHIE YESIMA X7

Birth weight 40 Kg
Weight 602 Kg
Percent progressive motility 80 %
Morphology percent normal 75 %
Scrotal Circumference 35 cm
National ID QCTR0078ZBQ00210
Gene Probe:
Treatments: Ultravac 7 in 1, BEF Three day,
vibrio and tick fever vaccine.
Pestivirus / BVDV negative.

Lot 43

Visual Tag **QIAR026** **Gundapark R26 #**

Society ID: QIAR26 32 months old, born 25/02/2020 Registration Status: HBR

-- TE MANIA BARTEL
-- AYRVALE BARTEL E7
-- EAGLEHAWK JEDDA B32
Sire **Gundapark BARTEL K57**
-- S S A V PIONEER 7301
-- GUNDAPARK NANCY H127
-- GUNDAPARK NANCY Y1

-- RAFF MIDLAND Z204 (AI)(ET)
-- GUNDAPARK R. MIDLAND G18
-- WATTLETOP KERRY E62

Dam **Gundapark N64**

-- GUNDAPARK D63
-- GUNDAPARK QIAH33
-- GUNDAPARK TOPSY C20

Birth weight 33 Kg
Weight 692 Kg
Percent progressive motility 80 %
Morphology percent normal 56 %
Scrotal Circumference 40 cm
National ID QCTR0078ZBQ00215
Gene Probe: AMFU NHFU CAFU DDFU
Treatments: Ultravac 7 in 1, BEF Three day,
vibrio and tick fever vaccine.
Pestivirus / BVDV negative.

Lot
44

Visual Tag **QIAR031** **Gundapark R31 #**

Society ID: QIAR31 31 months old, born 31/03/2020 Registration Status: HBR

-- TE MANIA BERKLEY B1
-- TE MANIA EMPEROR E343
-- TE MANIA LOWAN Z74
Sire **Gundapark EMPEROR K82**
-- HIDDEN VALLEY LOOKOUT Z7 (AI)
-- GUNDAPARK KATHERINE F33
-- GUNDAPARK KATHERINE D28

-- CONNEALY DATELINE
-- VERMILION DATELINE 7078
-- VERMILION BLACKBIRD 5044

Dam **GUNDAPARK USUAL G35**

-- BON VIEW NEW DESIGN 1407
-- WATTLETOP USUAL B303 (AI)(ET)
-- WATTLETOP USUAL U102 (ET)

Birth weight 39 Kg
Weight 632 Kg
Percent progressive motility 60 %
Morphology percent normal 76 %
Scrotal Circumference 40 cm
National ID QCTR0078ZBQ00155
Gene Probe: AMFU NHFU CAFU DDF
Treatments: Ultravac 7 in 1, BEF Three day,
vibrio and tick fever vaccine.
Pestivirus / BVDV negative.

Lot
45

Visual Tag **QIAR038** **Gundapark R38 #**

Society ID: QIAR38 30 months old, born 4/04/2020 Registration Status: HBR

-- TE MANIA BERKLEY B1
-- TE MANIA EMPEROR E343
-- TE MANIA LOWAN Z74
Sire **Gundapark EMPEROR K82**
-- HIDDEN VALLEY LOOKOUT Z7 (AI)
-- GUNDAPARK KATHERINE F33
-- GUNDAPARK KATHERINE D28

-- GARDENS HIGHMARK USA13047487
-- GUNDAPARK CHADWICK C9
-- RIPPLE VALE QUAIL X80

Dam **GUNDAPARK LASSIE E76**

-- BT DIRECTION 65D
-- RIPPLE VALE LASSIE Y14
-- RIPPLE VALE LASSIE H77 (AI)

Birth weight 46 Kg
Weight 636 Kg
Percent progressive motility 60 %
Morphology percent normal 74 %
Scrotal Circumference 41 cm
National ID QCTR0078ZBQ00243
Gene Probe: AMFU NHFU CAFU DDFU
Treatments: Ultravac 7 in 1, BEF Three day,
vibrio and tick fever vaccine.
Pestivirus / BVDV negative.

Lot
46

Visual Tag **QIAR054** **Gundapark R54 #**

Society ID: QIAR54 29 months old, born 11/05/2020 Registration Status: N

-- TE MANIA BERKLEY B1
-- TE MANIA EMPEROR E343
-- TE MANIA LOWAN Z74
Sire **Gundapark EMPEROR K82**
-- HIDDEN VALLEY LOOKOUT Z7 (AI)
-- GUNDAPARK KATHERINE F33
-- GUNDAPARK KATHERINE D28

-- BOOROOMOOKA YOGI
-- GUNDAPARK YOGI F11
-- WATTLETOP ANN B59

Dam **Gundapark KATHLEEN K127**
-- BASIN MAX 602C
-- GUNDAPARK KATHLEEN B15
-- DIAMOND RIDGE KATHLEEN V9

Birth weight 46 Kg
Weight 752 Kg
Percent progressive motility 60 %
Morphology percent normal 58 %
Scrotal Circumference 38 cm
National ID QCTR0078ZBQ00234
Gene Probe:
Treatments: Ultravac 7 in 1, BEF Three day,
vibrio and tick fever vaccine.
Pestivirus / BVDV negative.

Lot
47

Visual Tag **QIAR065** **Gundapark R65**

Society ID: QIAR65 28 months old, born 24/06/2020 Registration Status: N

-- GAR SOLUTION (ET) USA1422615
-- LAWSONS INVINCIBLEC402
-- LAWSONS PREDESTINED VLYA598
Sire **Gundapark INVINCIBLE K70**
-- TE MANIA ULONG U41 (AI)(ET)
-- WATTLETOP GILDA B26
-- WATTLETOP GILDA Z287

-- HIGHLANDER OF STERN AB
-- BRAVEHEART OF STERN
-- STERN 3886

Dam **Gundapark NINAH M107**
-- GUNDAPARK CARL C13
-- GUNDAPARK NINAH F53
-- GUNDAPARK NINAH Z15

Birth weight Kg
Weight 576 Kg
Percent progressive motility 70 %
Morphology percent normal 83 %
Scrotal Circumference 37 cm
National ID QCTR0078ZBR00302
Gene Probe:
Treatments: Ultravac 7 in 1, BEF Three day,
vibrio..
Pestivirus / BVDV negative.

Lot
48

Visual Tag **QIAR099** **Gundapark KING R99 #**

Society ID: QIAR99 23 months old, born 19/11/2020 Registration Status:

-- BON VIEW NEW DESIGN 208
-- TC TOTAL 410
-- TC ERICA EILEEN 2047
Sire **TEXAS KING OF THE ROADK526**
-- BUSH GRAND DESIGN
-- TEXAS UNDINE Z183
-- TEXAS UNDINE X221

-- CA FUTURE DIRECTION 5321
-- ARDROSSAN DIRECTION W109
-- ARDROSSAN WILCOOLA Q71

Dam **GUNDAPARK ANNABELLE D18**

-- GLENOCH UPPERCRUST (AI) (TNC)
-- GLENOCH ANNABELLE W53
-- GLENOCH ANNABELLA S31

Birth weight 38 Kg
Weight 512 Kg
Percent progressive motility 70 %
Morphology percent normal 85 %
Scrotal Circumference 39 cm
National ID QCTR0078ZBR00321
Gene Probe: AMFU NH2% CAFU DDFU
Treatments: Ultravac 7 in 1, BEF Three day,
vibrio and tick fever vaccine.
Pestivirus / BVDV negative.

Lot
49

Visual Tag **QIAR117** **Gundapark R117 #**

Society ID: QIAR117 22 months old, born 16/12/2020 Registration Status:

-- BON VIEW NEW DESIGN 208
-- TC TOTAL 410
-- TC ERICA EILEEN 2047
Sire **TEXAS KING OF THE ROADK526**
-- BUSH GRAND DESIGN
-- TEXAS UNDINE Z183
-- TEXAS UNDINE X221

-- KENNY'S CREEK SANDY S15
-- TWYNAM YARRAMAN Y17 (AI) (TNC)
-- TWYNAM WEDGWOOD W46

Dam **GUNDAPARK ANNABELLE E15**

-- GLENOCH UPPERCRUST (AI) (TNC)
-- GLENOCH ANNABELLE W53
-- GLENOCH ANNABELLA S31

Birth weight 33 Kg
Weight 485 Kg
Percent progressive motility 80 %
Morphology percent normal 85 %
Scrotal Circumference 35 cm
National ID QCTR0078ZBR00306
Gene Probe: AMFU NHFU CAFU DD1%
Treatments: Ultravac 7 in 1, BEF Three day,
vibrio and tick fever vaccine.
Pestivirus / BVDV negative.

Lot
50

Visual Tag **QIAR122** **Gundapark R122 #**

Society ID: QIAR122 22 months old, born 21/12/2020 Registration Status:

-- GAR SOLUTION (ET) USA1422615
-- LAWSONS INVINCIBLEC402
-- LAWSONS PREDESTINED VLYA598
Sire **Gundapark INVINCIBLE K70**
-- TE MANIA ULONG U41 (AI)(ET)
-- WATTLETOP GILDA B26
-- WATTLETOP GILDA Z287

-- TE MANIA YORKSHIRE Y437 (AI)
-- TE MANIA BERKLEY B1
-- TE MANIA LOWAN Z53

Dam **GUNDAPARK FLOWER H62**
-- SPRING COVE ENDURANCE 360
-- GLENOCH FLOWER Y16 (AI)
-- GLENOCH FLOWER V43

Birth weight 35 Kg
Weight 524 Kg
Percent progressive motility 50 %
Morphology percent normal 85 %
Scrotal Circumference 35.5 cm
National ID QCTR0078ZBR00285
Gene Probe: AMFU NHFU CAFU DD1%
Treatments: Ultravac 7 in 1, BEF Three day, vibrio.
Pestivirus / BVDV negative.

Lot
51

Visual Tag **QIAR133** **Gundapark R133 #**

Society ID: QIAR133 22 months old, born 26/12/2020 Registration Status:

-- BON VIEW NEW DESIGN 208
-- TC TOTAL 410
-- TC ERICA EILEEN 2047
Sire **TEXAS KING OF THE ROADK526**
-- BUSH GRAND DESIGN
-- TEXAS UNDINE Z183
-- TEXAS UNDINE X221

--
--
--

Dam **Gundapark M157**
--
--
--

Birth weight 45 Kg
Weight 504 Kg
Percent progressive motility 70 %
Morphology percent normal 58 %
Scrotal Circumference 35 cm
National ID QCTR0078ZBR00371
Gene Probe:
Treatments: Ultravac 7 in 1, BEF Three day, vibrio and tick fever vaccine.
Pestivirus / BVDV negative.

Lot
52

Visual Tag **QIAS044** **Gundapark S44 #**

Society ID: QIA21S44 20 months old, born 8/02/2021 Registration Status:

-- GAR SOLUTION (ET) USA1422615
-- LAWSONS INVINCIBLEC402
-- LAWSONS PREDESTINED VLYA598
Sire **Gundapark INVINCIBLE K70**
-- TE MANIA ULONG U41 (AI)(ET)
-- WATTLETOP GILDA B26
-- WATTLETOP GILDA Z287

-- CONNEALY DATELINE
-- VERMILION DATELINE 7078
-- VERMILION BLACKBIRD 5044

Dam **GUNDAPARK USUAL G35**

-- BON VIEW NEW DESIGN 1407
-- WATTLETOP USUAL B303 (AI)(ET)
-- WATTLETOP USUAL U102 (ET)

Birth weight 35 Kg
Weight 500 Kg
Percent progressive motility 60 %
Morphology percent normal 79 %
Scrotal Circumference 35 cm
National ID QCTR0078ZBR00405
Gene Probe:
Treatments: Ultravac 7 in 1, BEF Three day,
vibrio and tick fever vaccine.
Pestivirus / BVDV negative.

Lot
53

Visual Tag **QIAS077** **Gundapark S77**

Society ID: QIA22S77 20 months old, born 14/02/2021 Registration Status: N

Birth weight Kg
Weight 584 Kg
Percent progressive motility 50 %
Morphology percent normal 65 %
Scrotal Circumference 35 cm
National ID QCTR0078ZBS00542
Gene Probe:
Treatments: Ultravac 7 in 1, BEF Three day,
vibrio.
Pestivirus / BVDV negative.

Lot
54

Visual Tag **QIAS080** **Gundapark S80**

Society ID: QIA21S80 14 months old, born 28/08/2021 Registration Status: N

Birth weight Kg
Weight 512 Kg
Percent progressive motility 80 %
Morphology percent normal 92 %
Scrotal Circumference 36 cm
National ID QCTR0078ZBS00464
Gene Probe:
Treatments: Ultravac 7 in 1, BEF Three day,
vibrio and tick fever vaccine.
Pestivirus / BVDV negative.

LIVESTOCK AUCTION TERMS AND CONDITIONS OF SALE

CHAPTER ONE - PRELIMINARY

1. (a) A vendor is bound by these terms and conditions by offering livestock for sale by auction.

(b) An agent (which includes an auctioneer) is bound by these terms and conditions by conducting an auction sale.

(c) A buyer is bound by these terms and conditions by bidding at auction.

2. (a) In these terms the expression auctioneer, agent, buyer and vendor respectively includes the servants, contractors, agents of each of them. The auctioneer, agent, buyer and vendor shall be wholly responsible for the acts and omissions of their respective servants, contractors and agents. The term "auctioneer" includes, so far as the law and context permits, the vendor's agent.

(b) When used in these terms the expressions "companion animals" means all animals originating from a property on a particular day. Where lots are split and sent to multiple establishments, then all of these animals shall be regarded as companions.

3. The following applies in interpreting these terms and conditions:

(a) The following words have the following meanings:

Fees means all levies, charges, fees, costs and other expenses incurred or relating to these terms and conditions and the sale and purchase of livestock including, without limitation, transaction levies, yard and weigh dues, cartage, advertising and rebates, and whether paid for, or incurred, by the agent; Livestock means animals auctioned pursuant to these terms and conditions; and

Price means the amount at which the lot has been sold to the buyer referred to in clause 7 of these terms and conditions

(i) plus any Fees and other expenses incurred in relation to the purchase of livestock that are payable by the buyer; and

(ii) plus any GST added in accordance with clause 12.

(b) These terms and conditions are subject to legislation or regulation in the State in which the auction is conducted and in the event of any conflict then the legislation or regulation will prevail. The provisions of these terms and conditions are in addition to, and do not derogate from, the duties and rights of vendors, agents and buyers set out in legislation and regulation in the State in which the auction is conducted.

CHAPTER TWO – STANDARD TERMS OF SALE

4. Subject to any reserve price, and to the right, prior to the fall of the hammer, of the vendor to withdraw any lot without declaring the reserve, the highest bidder shall be the buyer.

5. The auctioneer has the right to bid on behalf of the vendor provided that right is

notified prior to the commencement of the sale and is subject to State law.

6. A bid cannot be made or accepted after the fall of the hammer unless, in accordance with clause 8, the auctioneer decides to put the lot up again.

7. The last price called by the auctioneer at the fall of the hammer shall be the amount at which the lot has been sold.

8. In the event of a disputed bid, the auctioneer is the sole arbitrator of the successful bidder or the auctioneer may decide to put the lot up again. The auctioneer's decision is final.

9. The auctioneer may refuse to accept any bid which, in the auctioneer's opinion, is not in the best interests of the vendor and need not give reasons for doing so. The minimum bid for liveweight selling is 0.2 of a cent (\$0.002).

10. A bidder shall be deemed to be a principal unless, prior to bidding, the bidder has given to the auctioneer a copy of written authority to bid for or on behalf of another person.

11. The successful bidder at a livestock auction sale must give to the auctioneer at the fall of the hammer:

(a) the purchaser's name; or

(b) the bid card number which identifies the purchaser; or

(c) the name of the person on whose behalf the successful bid was made; and

(d) the Property Identification Code (known as the "PIC") of destination.

12. The auction shall be conducted on the basis that the bid price shall be exclusive of Goods and Services Tax (GST). GST shall be added after the fall of the hammer for those sales subject to GST.

13. As soon as practicable after the fall of the hammer, the buyer shall if requested by the agent, sign the agreement for sale.

14. If a buyer does not comply with any of these terms and conditions, which includes the requirements of State law, any livestock knocked down to that buyer may be re-sold by public auction or private contract in whatever lots and manner the auctioneer decides. The re-sale may be with or without notice and shall be at the buyer's risk. The buyer is responsible for all loss and expense arising out of a re-sale and is not entitled to any resulting profit.

15. The buyer of livestock must pay the agent the full amount of the purchase price in immediate funds on receipt of a tax invoice. Payment is required prior to delivery unless some other time for payment is specified in a written agreement between the buyer and

the auctioneer that was made before the fall of the hammer.

16. No person may bid unless, prior to the commencement of the sale, that person has made arrangements satisfactory to the auctioneer for payment for livestock purchased. If bids in breach of this condition are inadvertently accepted, delivery shall not be given until the purchase money is paid and any law, rule or practice to the contrary is accordingly negated as far as possible.

17. (a) Cattle sold on a liveweight basis that are weighed pre-sale are at the risk and expense of the buyer upon the fall of the hammer.

(b) Cattle sold on a liveweight basis that are weighed post-sale are at the risk and expense of the buyer immediately after weighing.

(c) All livestock other than cattle sold on a liveweight basis are at the risk and expense of the buyer upon the fall of the hammer.

18. (a) Subject to this clause the sale is complete on the fall of the hammer.

(b) The time for rejection is the time commencing at the fall of the hammer and ending at the first of:

(i) delivery is taken by a representative of the buyer;

(ii) departure of the animal from the purchaser's delivery pen; or

(iii) one hour after the last animal is:

a. in the case of pre-sale weighing, sold; or

b. in the case of post-sale weighing, weighed.

(c) During the time for rejection the buyer may reject any animal which is lame, blind or diseased where that condition existed prior to the fall of the hammer but could not be reasonably observed when the animal was in the selling pen.

(d) If the purchaser rejects an animal during the time for rejection then the sale of that animal is cancelled and the animal is returned to the vendor or sold at such price as the purchaser and the agent may agree.

(e) This sub-clause applies only to cattle which are sold in Queensland at auction for slaughter. The agent has responsibility for the prevention of loss or escape (but not death, sickness or injury) of those cattle from the time of the fall of the hammer, through delivery to and from the scales, to the buyer's delivery pen and on to the buyer's nominated transport. This responsibility ends at the earlier of those cattle boarding the buyer's nominated transport or sunset on the day after the sale. This sub-clause does not apply if the agent makes an announcement to that effect prior to sale.

19. (a) Subject to the right of rejection in Clause 18, all conditions and warranties expressed or implied by law are hereby excluded from the sale to the extent that the law allows. All lots are open for inspection prior to the commencement of the sale and are sold with all faults, if any. No compensation shall be given for any faults,

imperfections, errors of description, number in or of any lots sold or otherwise.

(b) Any claim or objection arising out of an error or misdescription in the provision of relevant information in terms of legislation or regulation concerning the National Livestock Identification Scheme (NLIS) must be made by 5:00pm on the seventh day after the fall of the hammer. No objection, requisition or claim against the vendor or agent in respect of such error or misdescription can be made after that time.

(c) Any statements made by the vendor or the auctioneer whether in writing or orally to the effect that any female has been pregnancy tested or scanned positive shall mean and require only that a certificate in writing shall be supplied to the buyer signed by a qualified veterinary surgeon or certified scanner certifying that the said female has been tested or scanned on the date specified in the certificate and that in the opinion of the surgeon or scanner the female was pregnant on that date.

(d) For cattle, the agent undertakes to make every reasonable effort to ensure that any NLIS cattle device number is transferred from the saleyard account to the purchaser's account on the NLIS database no later than midnight on the day of the sale.

(e) Where livestock have a food safety or market eligibility status derived from the NVD and/or the NLIS/ERP database, the agent will inform the buyers by presale catalogue in conjunction with vendor branding and/or announce the status prior to the offering of those lots.

20. If delivery is made to, or possession obtained by, the buyer or its representative before full payment of the Price, then until full payment is received, the buyer:

- (a) does not acquire title to the livestock;
- (b) holds the livestock as bailee only for the vendor;
- (c) must act in a fiduciary capacity in its relationship with the vendor;
- (d) must store the stock separately or so that they are readily distinguishable from other livestock owned by the buyer;
- (e) is responsible for the safety and well being of the livestock;
- (f) may make a bona fide sale for market value of any or all of the livestock. As between the buyer and the subsequent buyer, the sale shall be made by the buyer in its own name and not as agent for the vendor, however as between the vendor and buyer, the sale shall be made as bailee and agent for the vendor; and
- (g) must keep and account for the proceeds of any subsequent sale separately from its other money and hold those proceeds, together with the benefits of any rights against subsequent buyers, on trust for the vendor.

21. In addition to clause 20, if payment is not made according to clause 15, but delivery has been made to, or possession obtained by, the buyer or its representative:

- (a) The vendor or its agent may repossess and resell the livestock and enter property owned

or occupied by the buyer or its representative if necessary to do so; and

(b) Interest may be charged at the rate usually charged by the agent for overdue accounts on any amounts which remain owing at any time.

22. The buyer may not make any claim against the vendor for actions by the vendor or its agent under clauses 20 or 21 and indemnifies the vendor and its agent against any loss, damage, costs, expenses, penalties, fines or claims suffered by the vendor, the agent or any person or entity arising from the vendor exercising its rights under clauses 20 or 21.

23.1. Clause 23 applies whenever the agent pays the vendor before being paid by the buyer, which the agent is not bound to do. The agent is then the del credere agent of the vendor at law.

23.2. The vendor hereby gives notice to the buyer of the assignments referred to in clause 23.3.

23.3. When this clause applies, in addition to any rights of the agent that arise by operation of the law, the parties agree that, subject to clause 23.6 the agent is subrogated to all rights of the vendor under these terms and conditions against the buyer.

23.4. Title to the livestock does not pass to the agent or a nominee of the agent unless the agent, by written notice to the vendor, notifies the vendor that it is to be transferred to the agent or a nominee of the agent.

23.5. The vendor acknowledges that the agent may take enforcement, repossession or other action to recover any livestock for which the buyer has not paid in full, or the Price of such livestock, owing by the buyer under these terms and conditions:

- (a) when this clause does not apply, as agent of the vendor (including by reselling the livestock); and
- (b) when this clause applies, on the agent's own behalf exercising the rights of the vendor by subrogation or assignment under these terms and conditions (whether in the vendor's name or not) and, where title to the livestock has not passed to the agent, by selling the livestock as agent of the vendor without the agent having to account to the vendor for the proceeds of sale.

23.6. The agent may at any time, assign, transfer, securitise or otherwise dispose of all or any of its rights under these terms and conditions and any debts created pursuant to it (including, without limitation, the rights assigned to it under clause 23.3).

23.7. The vendor hereby irrevocably appoints the agent as the vendor's attorney to:

- (a) do at any time and in any manner as the agent thinks fit all acts necessary or desirable to perfect or improve the rights and interests afforded, or intended to be afforded, to the agent under these terms and conditions; and
- (b) appoint one or more sub-attorneys to do anything that the agent may do as the vendor's attorney.

23.8. These terms and conditions do not render the agent liable to the buyer as vendor nor entitle the buyer to set off against the

agent any right the buyer may have against the vendor or otherwise.

23.9. The buyer acknowledges that the provisions of this clause 23 are intended solely for the benefit of the agent (and its assigns) and the vendor. The liabilities and obligations of the buyer will not be in any way affected:

- (a) by this clause 23, other than as it expressly provides; or
- (b) by the failure of the agent or the vendor or either of them to comply with the terms of this clause 23.

23.10. The buyer must pay all amounts payable to the vendor or the agent under these terms and conditions without any deduction, withholding, set off or counterclaim whatsoever, whether the benefit of a deduction, withholding, set off or counterclaim is alleged to exist in favour of the buyer as against the vendor or the agent in any capacity whatsoever or any other person including any assignor of the vendor's or the buyer's interests under these terms and conditions.

24. (a) The agent agrees that he is liable to pay to the vendor the Price, less such commission as is agreed between the vendor and the agent, and in the absence of any agreement such amount as is reasonable, and less the Fees that are payable by the vendor that were incurred by the agent on behalf of the vendor in relation to the sale of the livestock.

(b) In the event that the buyer pays the Price or part of it direct to the vendor then the agent has no liability to the vendor for the amount of such payment. Further, if the agent pays the vendor any amount which the buyer also pays direct to the vendor in respect of the same livestock, then the vendor must repay the agent that amount and the agent may debit that amount to an account held in the name of the vendor by the agent.

(c) Regardless of whether or not a sale has occurred the agent may, but is not under obligation so to do, instead of deducting payments owed to it by the vendor, debit the amount of the commission and fees to an account held in the name of the vendor by the agent.

25. The auctioneer has been retained by the vendor as auctioneer for the purpose of selling the livestock comprised in the lots. The terms of engagement between the auctioneer and the vendor do not extend to the provision of advice by the auctioneer to the vendor in relation to the safety or otherwise of the sale ring, the saleyards and the surrounding environments.

CHAPTER THREE – VENDOR WARRANTY FOR CORRECT PRESENTATION AND DECLARATION

26. This chapter applies only in the case of livestock and their companion animals sold at auction for slaughter when the buyer is the slaughterer and the livestock are transported direct from the sale yard to the meatworks at which they are slaughtered. This chapter does not apply if the buyer is a trader who

subsequently resells the livestock to a slaughterer. A slaughterer is any person who pays the AMPC Processor levy.

27. The warranty of a vendor is that livestock and their companion animals offered for sale at auction:

- (a) pass AQIS and other regulatory authority requirements and inspections at the time of slaughter;
- (b) are of merchantable quality;
- (c) carry an NLIS device in accordance with State law;
- (d) in the case where a representation has been made in the pre-sale catalogue that the livestock have particular characteristics or are fit for a particular purpose or market, and such representations are based on information in the National Vendor Declaration, the livestock will have those characteristics or will be fit for the particular purpose or market; and
- (e) all information in any National Vendor Declaration provided by the vendor is true, complete and correct in all material respects.

28. In the event of a breach by the vendor of the vendor's warranty and provided such breach is notified by the buyer to the agent by 5:00pm on the 7th day after the fall of the hammer then the buyer is not liable to pay the portion of the Price of such of the vendor's livestock to which the breach applies.

29. However if the breach by the vendor is such that the livestock are not rejected outright but are instead downgraded then the buyer will pay the value of the livestock at their next highest and best use.

30. In the case of a breach by the vendor of the vendor's warranty then the vendor will also be liable to the buyer for any further losses which the buyer might establish but the buyer will take all reasonable steps in co-operation with the agent and vendor to mitigate both the effect of the breach and the amount of any loss.

31. Where a sentinel animal of a lot tests positive for chemical residue, and provided such test is certified and notified as required by these vendor warranty terms, then:

- (a) the buyer will be entitled to delay payment for the price of all livestock in that lot; or
- (b) the vendor has the option, at the vendor's cost, of collecting the companion animals and returning them to the vendor's property; or of having the livestock slaughtered in which event the risk of further condemnations will be that of the vendor. Where product integrity is potentially jeopardised, the Processor has the right to refuse slaughter and send the livestock back to the consigning property at the vendor's cost.

32. The auctioneer is liable to the buyer in respect of any breach of the vendor's warranty arising out of:

- (a) any error, by the auctioneer, of transcription of information from the National

Vendor Declaration completed by the vendor to the pre-sale catalogue or the buyers post-sale summary;

(b) any failure by the auctioneer to notify the buyer, prior to bidding, of any breach by the vendor of the warranty of the vendor if the buyer establishes that the agent knew of such breach prior to the sale; and

(c) any failure by the auctioneer to disclose prior to bidding, and in the pre-sale catalogue, that the vendor has failed to provide a National Vendor Declaration that is complete in all material aspects.

CHAPTER FOUR – OWNERS RISK FOR CONDITION OF CATTLE

33. This chapter applies only in the case of cattle and their companion animals sold at auction for slaughter when the buyer is the slaughterer and the cattle are transported direct from the sale yard to the meatworks at which they are slaughtered. This chapter does not apply if the buyer is a trader who subsequently resells cattle to a slaughterer. A slaughterer is any person who pays the AMPC Processor levy.

34. Owners risk reflects the producer's responsibility to provide slaughter cattle for sale that are fit for human consumption. Cattle are fit for human consumption if they are not condemned as unfit by AQIS. Owners risk applies if the condemnation is due to a condition in the animal which the buyer establishes, by the AQIS certificate, existed prior to the fall of the hammer.

35. A buyer with the benefit of owners risk protection is not liable to pay the Price of that animal to the vendor. The buyer remains nevertheless liable for all costs incurred after the fall of the hammer in transport, slaughter, testing and disposal of the animal.

36. Owners risk protection is available to the buyer of cattle to which this chapter applies if all of the following are satisfied:

- (a) a certificate is issued by AQIS which states the relevant NLIS RFID tag number and PIC, the date of the certificate, the reason for condemnation and that the reason for condemnation existed prior to the fall of the hammer;
- (b) the certificate is received by the selling agent either in its original form or by fax by 5:00pm on the 7th day after the fall of the hammer; and
- (c) if the condemnation is due to chemical residue the certificate follows testing in an AQIS approved laboratory which establishes maximum residue limits in excess of the Australian limit.

37. Owners risk does not apply, and the buyer must pay for the cattle, if the reason for condemnation is any of the following:

- (a) bruising,
- (b) fever,
- (c) partial condemnation, or
- (d) emaciation.

CHAPTER FIVE – NOTICES REQUIRED BY STATE LEGISLATION

NSW Legislation

Property, Stock and Business Agents Act 2002 Warnings

Penalties for collusive practices. It is an offence against the Property, Stock and Business Agents Act 2002 for a person to do any of the following as a result of a collusive practice, or to induce or attempt to induce another person by a collusive practice to do any of the following:

- (i) to abstain from bidding; or
- (ii) to bid to a limited extent only; or
- (iii) to do any other act that might prevent free and open competition.

Severe penalties may be imposed on persons convicted of collusive practices.

The auctioneer has the right to make one bid on behalf of the vendor if the auctioneer clearly and precisely announces that fact prior to the sale.

Tasmanian Legislation

The auctioneer must not appear to acknowledge a dummy bid. A buyer must not give, agree to give or offer a gift or other consideration to a person for abstaining from bidding and a person must not accept any gift or consideration for abstaining from bidding. A person must not participate in collusive practices by way of making or receiving an unlawful promise to abstain from bidding, not to bid except to a limited extent or do any other thing which may prevent free and open competition.

Western Australian Legislation

Auction Sales Act 1973 s31 NOTICE

It is an offence to:

- (i) induce or attempt to induce another person to abstain from bidding by means of a promise, expressed or implied, that the other person will have the right to elect to take over as buyer or to toss or draw lots to establish who is to become the owner;
- (ii) abstain or agree to abstain from bidding as a result of such a promise;
- (iii) knowingly enter or permit or cause to be entered in the auctioneer's record any name other than that of the actual successful bidder;
- (iv) enter in the auctioneer's record the name of the buyer other than that of the actual successful bidder; or
- (v) in the case of successful bidder supply wrong information as to the name of the buyer to the auctioneer or to any person, firm or corporation on whose behalf the sale is conducted.

The vendor, or any person on behalf of the vendor, or the auctioneer have the right to make no more than three bids.

© 1 FEBRUARY 2011 Australian Livestock & Property Agents Association Limited All rights reserved. Unauthorised reproduction in whole or in part is an infringement of copyright.

These are recommended conditions of sale. They are provided to ALPA members as recommended terms and conditions onl