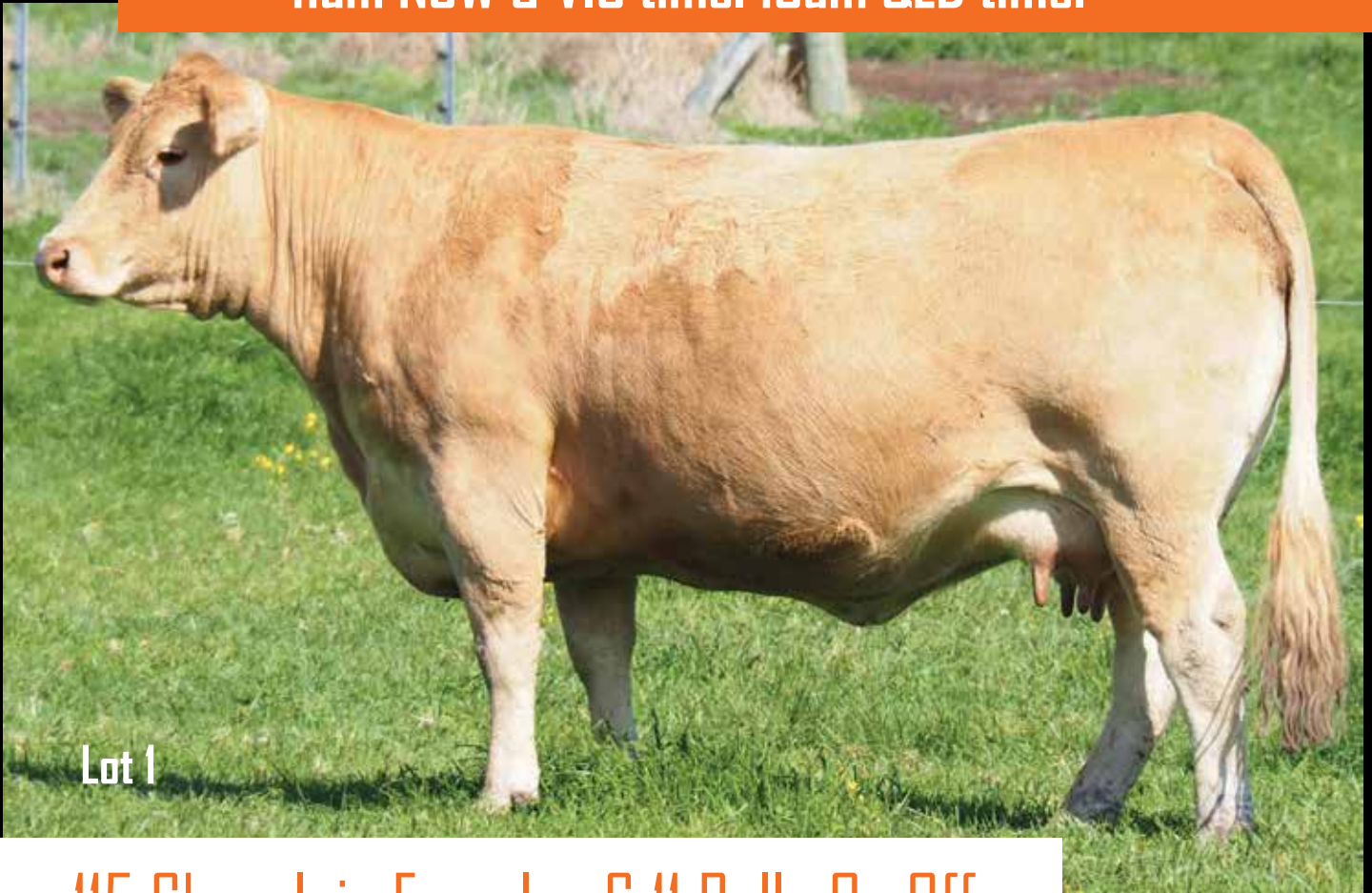


GLENLEA BEEF

FEMALE SALE

Saturday 5th November 2022

11am NSW & VIC time. 10am QLD time.



Lot 1

115 Charolais Females & 11 Bulls On Offer

Sale to be held at Casino Saleyards (NLRX)
and via AuctionsPlus and Stocklive.

WWW.GLENLEABEEF.COM.AU

SCX JEHU 233E

Highest Priced Charolais bull ever sold
at Auction in Canada for \$CAD265,000.



*Photos at
5 years of age.*

- Proven Breeding Bull with daughters in production.
- Sons have sold to \$CAN80,000.
- Homozygous Polled (PP)
- NZ Semen Rights owned by Silverstream Charolais.



Australian Semen
Rights Owned by
Glenlea Beef.

We welcome our Australian partners in JEHU:
Charnelle Charolais - QLD semen rights
Waterford Charolais - VIC semen rights.
Challambi Charolais - NSW with an exclusive semen package.

Embryos For Sale Spring 2022.

WELCOME TO OUR ANNUAL STUD & COMMERCIAL FEMALE SALE

The Glenlea Beef Charolais herd is now in our 49th year, our herd is now based across a wide range of environments, however, the Sub Tropical North Coast of NSW has the majority of our cow herd. We have assembled an amazing draft of Charolais females for you to assess at our Stud and Commercial female sale. This sale is the largest offering of Charolais Seedstock females in Australia in 2022.

We have designed this sale to have all descriptions of females, with a range of price expectations so that everyone interested in Charolais females can find something in the sale in their budget and all of them quality! From entry level Base Recorded Charolais females to the most elite Donors.

With bull sales this year in Winton, Roma, and Clermont it's been busy with our bulls also sold at multi-vendor sales to repeat and new clients. With paddock sales in addition to these sales we have sold over 240 Charolais bulls so far in 2022! With over 300 in the paddock for 2023! Moving to 400 for 2024. Our focus is Queensland with our bull sales, and we have big plans for 2023 and beyond.

Our performance recording and genetic testing is a key part of our growth, and we are committed to providing full performance data, from collecting and submitting Raw data for analysis to BREEDPLAN, weights and carcass scans, DNA Testing and identifying PP polled animals. Almost all the females in this catalogue have had weights and carcass data collected and submitted to BREEDPLAN for analysis.

This sale has Many outstanding individuals, leading off with and incredible female in lot 1. Through the cows and calves and into the large line of Glenlea/Fairfield females which includes all the "S" heifers suitable for seedstock production. We hope you enjoy looking over this catalogue, viewing all the videos and updated photos closer to sale online on our sales pages with Auctions Plus, we welcome all questions as we know our cattle better than anyone else and share our knowledge and advice freely with our clients. Our after sales service we take very seriously and we want to hear about any issues first that may arise, so we can fix it to our mutual satisfaction.

Our females adapt quickly to their new homes in a wide range of environments, and we attribute this easy adaptability to having generationally bred cattle with natural doing ability as our number 1 selection criteria, with performance recording and all the other selection and breeding tools we use being applied after that. Our clients from Longreach in north Qld to Gippsland in Victoria prove this every year with their repeat buying!

The sale includes a large draft of Calmview females from Tony and Suzie Farrell, we have a long friendship and business relationship with the Farrell's and they are well bred, coastal raised cattle that can go into any environment and thrive! You wont need luck with purchases from our sale, the cattle and our after sales advice and support make certain of your Charolais breeding success! You don't just buy a female from us you buy into a vertically integrated breeding and marketing business that we bring along our clients with us, either with a little help or full service involvement that is all up to you.

Regards,
Roderick Binny
Glenlea Beef



GLENLEA BEEF

FEMALE SALE

Saturday 5th November 2022

11am NSW & VIC time. 10am QLD time.

**Sale to be held at Casino Saleyards (NLRX) under cover
and online via AuctionsPlus and Stocklive.**

115 Charolais Females & 11 Bulls on offer

Nearly all Polled | Both Red Factor & White | Many DNA Tested PP Polled

INSPECTIONS

Friday 4th November in afternoon from 2pm at sale location in holding pens and from 9am sale day penned up in selling pens as individual lots or two per pen.

VIDEOS

Videos will be available on all lots 1 week prior to sale day, along with updated photos, on AuctionsPlus. Feature lot videos will be available 2 weeks prior to sale at www.glenleabeef.com.au



STUD PRINCIPAL

Roderick Binny P: 0409 911 791

E: rbinny@australiangrassfedmeats.com

CONTACTS

Pinedock Pastoral

*For independent assessment and opinion on
Glenlea cattle as all have been prepared at
Pinedock except for lot 1,2,and 4.
James Dockrill P: 0400 387 116*



RAY WHITE CASINO

Andrew Summerville P: 0429 620 362

Nick Fuller P: 0484 200 101

Luke Thomas P: 0484 200 488

Isaac Young P: 0428 441 575



Calmview Charolais

Tony Farrell P: 0417 212 692

WWW.GLENLEABEEF.COM.AU

Conditions of Sale

HEALTH AND FERTILITY: All females are sold as fertile ready to join or PTIC. In the advent of any females not conceiving, the procedure will be a vet examination then discussion with vendors, Glenlea or Calmview. We will either arrange to return the animal to get pregnant at vendors property and then return to purchasers, at 50/50 share cost of transport, or find another solution by mutual agreement if the first solution is not practical due to distance or other factors. This does not include animals that are injured or suffering disease contracted after the sale. We strongly recommend you insure your purchases.

On rare occasion a female tested as PTIC may lose the pregnancy after sale, due to transport stress, change of environment or other factor this is at purchaser's risk.

Glenlea is a JBAS 7 herd and Calmview is JBAS 8 herd.

Vaccinations: 7 in1 up to date. All Glenlea / Fairfield prefix females were born in QLD in a cattle tick zone so should be safe to return to same without 3 germ tick vaccine, this is at purchasers' risk. No warranty applies to this risk factor.

All other females we would strongly recommend Tick Fever Vaccination asap after delivery and treatment with a potent backline or injectable for external parasites while the vaccination takes effect. If unsure about this or require assistance call Roderick Binny to discuss and we will find a solution to your situation.

INSURANCE: We recommend you insure your new purchases. RAY WHITE AGENTS can arrange this at fall of hammer sale day.

AGENT REBATE: A rebate of 1% to all licensed agents is available, introducing buyers 24 hours prior to sale and settling accounts within 7 days. This applies to agent and / or buyer attending in person, this will not apply to online purchases through AuctionsPlus or Stocklive.

REFRESHMENTS: Canteen will be open sale day.

TRANSPORT: Delivery will be co-ordinated by Ray White Casino. Maximum charges for delivery to Albury for southern buyers is \$250 per cow/calf and \$200 per individual lot. To Toowoomba for northern buyers that will be \$200 per cow/calf and \$150 per individual lot. Feeding charges may apply while waiting for transport, this is modest and will be charged by NRLX or Ray White to purchasers' account.

PHONE BIDDING: Phone bidding is available by contacting the agents or vendor prior to sale to arrange for a dedicated agent to call you and assist you with your bidding.

ACCURACY OF CATALOGUE: Every effort is made to be as accurate as possible. However mistakes can happen in the construction of catalogue and printing, we will resolve any issues at best as possible but make no warranty.

CHAROLAIS BREEDPLAN: We no longer print detailed explanations of BREEDPLAN in our catalogues. All information explaining BREEDPLAN and how to use it to help with your selections is available at the click of your mouse. Of particular relevance is that Charolais EBV's can only be compared within the Charolais breed. For instance the average 600 Day weight EBV in Charolais is +33kg for the average for Angus is +110kg . This is not a reflection of Angus having a higher 600-day growth, rather they have a much lower base breed growth and an average animal needs a 600 weight above the base of +110kg above the base of Angus where as Charolais are a much higher growth breed that has a higher base weight, therefore an average Charolais only needs to be +33kg above the base to be average for the Charolais breed . This is often confused when trying to compare breeds and performance. The key point is don't compare EBV's across breeds as they are only able to be comparable within each breed.





Can't make the sale?
Register in just seven easy steps and log onto AuctionsPlus to bid from anywhere on your phone, tablet or desktop.

- 1 REGISTER ONLINE**
FREE once off registration for all auctions.
- 2 COMPLETE BUYER INDUCTION**
The buyer induction will help you understand the roles and responsibilities of everyone on the AuctionsPlus system.
- 3 VIEW CATALOGUE**
Stock history, photos, videos, pedigrees and more. You can also favourite lots you are interested in.
- 4 ENTER AUCTION**
Log into the auction anytime, anywhere and bid on your mobile, tablet or computer. Auctions can end after 30 minutes so get in early.
- 5 Auto bid**
Can't stay for the whole sale? Set your maximum bid on the lot that you want to purchase and let the computer bid for you.
- 6 CONTACT SELLER**
If successful, contact selling agent to arrange payment and delivery. Or if you are the highest bidder you can log into your dashboard to meet the reserve.
- 7 PAYMENT**
Via the selling agent's terms and conditions.
- 8 DELIVERY**
Arrange transport of livestock at your expense

Contact AuctionsPlus on (02) 9262 4222
or www.auctionsplus.com.au

GLENLEA REDS™



*Photo at
30 months*

GLENLEA KOWBOY (P) R/F

Powerful sire. Carcass and growth with 100% apricot calves out of white cows. His first yearling progeny sell in 2023.



*Photo at
26 months*

GLENLEA PHEONIX (PP) R/F

Fast becoming a trait leading sire for all growth traits, top 1% of the breed. We will have 2-year-old progeny for sale in 2023.



*Photo at
3 years*

GLENLEA HONORABLE P80 (P) R/F

Powerful carcass sire leaving 100% apricot progeny from white cows. His first release of progeny at this sale last year, as calves at foot, created high interest. Wait till you see his yearling progeny in 2023!



*Photo at
7.5 years*

GLENLEA JUST RED (PP) R/F

Sire of many high selling progeny over the last few years. 100% apricot progeny out of white cows. We have a number of Red PP Polled daughter's that will breed the next generation.

**LIMITED RELEASE SEMEN AVAILABLE THAT WILL PRODUCE
THOSE HIGH VALUE APRIOCT BULLS EVERYTIME!**

Call Roderick to discuss using these sires in your breeding program.

0409 911 791

GLENLEA BEEF
WWW.GLENLEABEEF.COM.AU

~ Glenlea Beef ~

Background, Bloodlines, Breeding Strategy & Customer Service

Australian Charolais breeders have embraced performance recording as other countries have reduced their efforts, I have seen this first hand in north America. Our data now is more accurate and detailed, making looking overseas less likely to add genetics that take your herd forward in genetic development than using **Australian evolved genetics that are the best in the world for our environments and markets** with large amounts of individual data to help us as seedstock producers, identify positive influences.

Glenlea beef is now a large seedstock enterprise, including JV herds total over 1000 Charolais females. We have been using **Australian bred sires** to continue the evolution of the herd over the last 10 to 15 years with limited use of overseas sires. Where you will see overseas as well Australian sires in the Glenlea herd is in our E.T. program using **exclusive proven sires** in very specific planned matings to produce elite progeny from our highest genetic merit females, our donors! An exception to this is SCX JEHU (PP) selected from Canada. A proven bull with daughters in production prior to Glenlea purchasing the Australian semen rights.

Our genetic base of the Glenlea herd is now as diverse as the breed in Australia, with a blend of many bloodlines and different phenotypes to produce an Australian type Charolais. We have a degree of type variation, which is necessary with our range of markets and geographic footprint, from higher growth and yield types for northern markets over bos indicus cows to more moderate, early maturing types that suit more southern markets, but all assessed through the same process for all economic traits. This will be evident through the catalogue and comments, and EBV's on individual lots will highlight this.

Our breeding strategy is to produce powerful performance cattle in a medium to moderate frame score with a complete carcass. By that we mean above average yield, EMA, fat cover and IMF%. Measuring birthweights to be able to assist our bull clients to make the best selections for their operation and maintaining calving ease through BW and early gestation length.

Maternal strength focus on fertility, milking ability with great udders and moderate sized teats for longevity. While we are primary a terminal breed, in northern markets especially, Charolais x heifers are retained in there 1000's, so as seedstock producers we must always have our customers and in turn their customers in the front of mind in our breeding decisions, as those decisions ripple down the supply chain and leave big impacts, both positive and negative.

Polled genetics have progress in our breed to match horned bloodlines for every economic trait. Our herd still has a number of horned females and these are joined to homozygous polled sires. 98% of our calves born in the last 5 years are polled, many homozygous, and all testing will be available in catalogue or supplementary sheet.

BREEDPLAN is a genetic evaluation tool now over 30 years old and proven across many breeds and countries. We no longer print a detailed general explanation in our catalogues for bull sales or female sales as that information is available at the touch of your phone screen or click of your mouse! We are happy to explain any of the finer points of EBV's as they relate to the Charolais breed and specifically to our cattle, just call and ask! In the comments of each lot, you will see our summary of the EBV's printed for that lot.

Customer Service is at the heart of what we do, we spend much of our time travelling to clients both commercial and stud to help with a full range of services. We provide many services to all our clients from the most basic to full stud breeding and marketing support. Your success is our success. We are here to assist and work with you and your agents to help you achieve the highest possible price for your Glenlea sired stock.



1. Glenlea Louis R305E (P)

Sold for \$32,000 to Moondoogundi Charolais, Home Rule, NSW Mitch and Sarah Redding, at our Roma 2022 Sale.

His first progeny will stand out in 2024!



2. Glenlea Isabella 24th (PP) R/F

Top Price female, sired by Glenlea Just Red (PP) R/F, at our Dawn of the Decade sale in March 2021. Selling for \$24,500 to Ashdan Charolais, Dan and Ashley Humphrey, Johns River, NSW.

R24 was also the highest priced Charolais Female sold in 2021 in Australia. She went on to be Reserve Heifer Calf Champion at BEEF 2021 in Rockhampton 2 months after the sale, prepared by Pinedock Fitting.

Her first progeny will be seen in 2023!



3. Glenlea Isabella K60E (PP) R/F

Top price female at our Scone 2021 sale selling to Wildes Pastoral, Aberdeen for \$15,000 with her 6 month heifer calf at foot.

4. Glenlea JR R45 (P) R/F

Top priced bull at our Winton 2022 Sale. Sired by Glenlea Just Red (PP) R/F. Selling for \$16,000 to The Horsely Family, Hereward Beef, "Hereward" Longreach QLD.

Photo L to R: Roderick Binny, Scott Taylor"(Elders Winton) and Gavin Smith (Winton Saleyard Manager).



REFERENCE SIRE
ORARA WATERFALL GLENLEA NORTH (P)
TATTOO: WFA N25E

DOB: 22/03/2017

COLOUR: White

RANGAN PARK REDEMPTION E42 (RAN E42E) (AI) (ET) (R/F) (P)

ROSEDALE DINGA (MR D25E) (P)

SIRE: GLENLEA HILTON (AI) (P) GLEH30E (P)

DAM: GLENLEA CHAROL 72ND (GLE J8E) (P)

GLENLEA CAAROL X11E GLEX11E (H)

GLENLEA CAAROL 42ND F37 (GLE F37E) (P)



COMMENTS: Exciting new sire out of the top priced female at our 2019 sale CHAROL 72nd (\$12,250) loaded with performance, and muscle on a medium frame.

Co-owned with Shandon Charolais at Dorrigo. His first sons will be sold in 2021 and they are outstanding types.

Top 5% all growth traits Top15% EMA and Top 20% MILK.

REFERENCE SIRE
GLENLEA KENWORTH (P)
TATTOO: GLE K80E

DOB: 01/10/2014

COLOUR: White

LT RIO BRAVO 3181 P M665507 (OAU Y5507E) (P)

CARABINIER 71357 C33 (IAF C6041F)

SIRE: RANGAN PARK RIO BRAVO D15 (RAN D15E) (AI) (ET) (P)

DAM: THW TATT MAC D10E (THW D10E) (AI) (P)

PALGROVE SHOW GIRL 6 (PK P82E) (AI) (P)

COORANGA AROHA 9 (MLB X26E) (AI) (ET) (P)



COMMENTS: One of our most consistent sires.

His sons are thick carcass bulls with great finish, good bone and ideal maturity type to have enough shape to attract premiums as weaners and enough growth and carcass to grow out into heavy feeders and bullocks.

EBVs are above average in 11 out of 16 recorded traits in the Charolais breed.

REFERENCE SIRE
GLENLEA PLUTO (AI) (ET) (P)
TATTOO: GLE P38E

DOB: 04/08/2018

COLOUR: White

SILVERSTREAM EVOLUTION E168 (OAN E168E) (P)

LHD CIGAR E46 (OAU Q46E) (P)

SIRE: SILVERSTREAM HOLSTER H187 (OAN H187E) (P)

DAM: VALLEY VIEW REBBY CIGAR 14TH (VLW H14E) (AI)(ET)(P)

SILVERSTREAM JILLY E105 (OAN E105E) (P)

GOBONGO REBBY D213E (GO D213E) (AI) (ET) (P) (R/F)



COMMENTS: Powerful carcass bull with exceptional bloodlines

REFERENCE SIRE
ELRIDGE LORD (AI) (P) (R/F)
TATTOO: RUU L43E

DOB: 17/08/2015

COLOUR: Red factor

LT RIO BRAVO 3181 P M665507 (OAU Y5507E) (P)

RANGAN PARK REDEMPTION E42 (RAN E42E) (P)

SIRE: PARINGA RIO BRAVO D213E (TOL D213E) (P)

DAM: ELRIDGE HARMONY (RUU H14E)

PARINGA CIGAR B064 (TOL B64E)

ELRIDGE ALLEGANZ (RUU A13E)



Photo at 2 years.

COMMENTS: Trait leading sire for growth, fat cover with moderate BW and excellent EMA.

Progeny are docile and can finish at any age so have great market versatility.

Really breaks the rules in opposing traits of growth and finish.

His daughters are coming through with perfect udders, extra growth and plenty of milk.

Top 1% all growth traits, Top 10% Fat Cover.

REFERENCE SIRE
ELRIDGE LEVI (AI) (P)
TATTOO: RUU L69E

DOB: 12/11/2015

COLOUR: White

LT RIO BRAVO 3181 P M665507 (OAU Y5507E) (P)

BRANCH VIEW BIT TOUGH (BVC B4E) (AI) (ET) (P)

SIRE: **PARINGA RIO BRAVO D213E (TOL D213E) (AI) (P)**
DAM: **GRANVILLE LUCY 10 (GDA F11E) (H)**

PARINGA CIGAR B064 (TOL B64E) (AI) (ET)

GRANVILLE (GDA A97E) (H)



COMMENTS: Breeding thick bodied, early maturing performance cattle like S139 pictured.

Levi has a number of daughters in this sale that are amongst the best of the heifers on offer.

S139 is was our top priced yearling son of Levi at our recent ROMA Bull Sale, selling for \$15,000 to Hartley Grazing.

REFERENCE SIRE
ANC Q RED (P) (R/F)
TATTOO: ANC Q199F

DOB: 03/08/2019

COLOUR: Red factor

ANC HECTARE (ANC H110F) (H)

ANC HUDDLE (ANC H120F) (P)

SIRE: **ANC KINGSTON K277 (ANC K277F) (P)**
DAM: **ANC HUDDLE'S NETTY M297 (ANC M297F) (P)**

ANC GERMAINE (ANC G283F) (H)

ANC FONTENAY'S NETTY (ANC J30F) (P)



COMMENTS: Sire of calves at foot on Calmview females.

REFERENCE SIRE
ANC QURANTINE (P)
TATTOO: ANC Q173F

DOB: 28/07/2019

COLOUR: White

ANC HECTARE (ANC H110F) (H)

ANC GREENWICH (ANC G1F) (P)

SIRE: ANC KINGSTON K277 (ANC K277F) (P)

DAM: ANC ELITE 1ST (ANC M376F) (H)

ANC GERMAINE (ANC G283F) (H)

SHILOH GOLDEN ELITE (SCB G4F) (AI) (H)


COMMENTS: Sire of calves at foot on Calmview females.

REFERENCE SIRE
ROSEDALE REX (P) (R/F) - Joining Sire
TATTOO: MR R48E

DOB: 17/08/2015

COLOUR: Red factor

LT LEDGER 0332 (OAU F3168E) (P)

LT LONG DISTANCE 9001 (OAU E143E) (P)

SIRE: AIRLIE KOWTOW (A1S K47E) (AI) (ET) (P) (R/F)

DAM: ROSEDALE BUTTERSCOTCH K71 (MR K71E)(AI)(P)(R/F)

AIRLIE IONA Z608E Z608E (A1S Z608E) (P)

ROSEDALE BUTTERSCOTCH H123 (MR H123E) (P) (R/F)


COMMENTS: Joining sire Calmview heifers

LOT
1



Calf



LOT
1

GLENLEA
CHIFFON 10TH (P) (R/F)

TATTOO: GLE P109E
DOB: 09/03/2018

EC NO DOUBT 2022 P M685500 (OAU Z2022E) (P)
SIRE: **LITTLE VALLEY GRANDIOSE (GKB G5E) (P)**
LITTLE VALLEY DOLLY (GKB D5E) (P)

TR RED SMOKE M723761 (OAU B6641E) (P)
DAM: **VALLEY VIEW CHIFFON 58 (VLW H58E) (P)**
FERNVALE CHIFFON (FEN C22E)



September 2022 Australasian Charolais BREEDPLAN Analysis

	CE Dir	GL	BW	200	400	600	Milk	SS	Carc Wt	EMA	Rump	IMF
EBV	-0.3	-2.5	+0.1	+14	+24	+39	+11	+0.8	+22	+2.3	+1.1	+0.5
Acc	48%	53%	72%	56%	60%	58%	50%	45%	49%	40%	52%	41%

COMMENTS: One of the most elite young cows in her prime in the entire Glenlea Beef herd. We wanted to offer a very special female to start the sale!

She is made for magic, perfect temperament, volume, carcass, perfect udder, early maturing, medium framed with loads of performance. Her EBV's are outstanding, well above average in almost all recorded traits, backing up her type and production.

Her sire is a very proven sire, with many high selling bulls and females at our sales, and daughters breeding on to produce high selling progeny. Her dam is from one of the most well known and prolific cow families in the breed, producing many sires including Glenlea Honorable and Fernvale Trapper.

This female is absolutely a donor female, so versatile to be able produce progeny for southern or northern markets by simply changing sires with unlimited earning potential.

Her first daughter by Glenlea Just Red (PP) R/F is retained by Glenlea, she is an amazing heifer, and we have big plans for her future.

REJOINED: Chiffon was A.I. on 24/9/22 to the record high selling Canadian sire (\$CA265,000) and proven sire SCX JEHU (PP). Her calf will be one of the first born in Australia by JEHU. That calf could be priceless in our cattle market that exists in Australia.

If she is not PTIC sale day to JEHU we will retain her and flush her to JEHU for the successful purchaser, with the purchaser to receive all freezable embryos, at no cost, then join her to the bull of your choice.

PLUS
Calf

TAYLOR GLENLEA
TRUE IMPACT (AI) (P) (R/F)

TATTOO: TC3 T3E
DOB: 20/03/2022

MXV COUGARHILL HANK 720G MC200052 (PED -52E)
SIRE: **PCC SUDDEN IMPACT 848U PEMC321017 (OAC D1017E) (P)**
SPARROWS TEMPEST 174K PFC290732 (PED -732E) (P)

LITTLE VALLEY GRANDIOSE (GKB G5E) (P)
DAM: **GLENLEA CHIFFON 10TH (GLE P109E) (P)**
VALLEY VIEW CHIFFON 58 (VLW H58E) (P)



September 2022 Australasian Charolais BREEDPLAN Analysis

	CE Dir	GL	BW	200	400	600	Milk	SS	Carc Wt	EMA	Rump	IMF
EBV	-14.5	-2.7	+1.5	+16	+29	+47	+13	+1.6	+25	+2.7	+1.6	+0.7
Acc	44%	69%	68%	60%	57%	57%	48%	48%	47%	37%	44%	37%

COMMENTS: Red Factor Bull **calf at foot**. TC3 T3E born in March and Sired by PCC Sudden Impact. We think this bull is a top shelf Charolais bull in the making. Growth, medium maturity, fine hair, good carcass with extra softness.

The successful purchaser will have an invitation to sell this bull back in any of our bulls sales in QLD in 2024.

Offered by Glenlea and Taylor Charolais.



LOT
2

**Cow
& Calf
Unit**

ORARA WATERFALL GLENLEA
GRETA 1ST (P)

TATTOO: WFA K25E
DOB: 21/06/2014

HARVIE JAGER 65J PMC228759 (OAC U8759E) (P) ROSEDALE DINGA (MR D25E) (P)
SIRE: BRANCH VIEW FORDGED FROM STEEL (BVC F34E) (P) DAM: JACKSON GRETA (MEJ G10E) (P)
BRANCH VIEW XQUISITE Z47E (BVC Z47E) JACKSON COUNTESS (MEJ C233E) (P)



September 2022 Australasian Charolais BREEDPLAN Analysis

	CE Dir	GL	BW	200	400	600	Milk	SS	Carc Wt	EMA	Rump	IMF
EBV	+8.7	-1.7	-0.9	+8	+20	+25	+9	+0.6	+18	+1.0	-1.5	+0.2
Acc	50%	56%	75%	59%	60%	63%	54%	57%	49%	39%	46%	39%

COW COMMENTS: When selecting these first 5 lots we went to top shelf of jointly owned Glenlea and Taylor females. Due to divorce in the Taylor family the offering of these females has been necessitated and so is an opportunity to access females that would never normally be offered outside a dispersal sale.

This female is deep, soft, bomb proof temperament, from a highly productive cow family, tremendous milker and is PP Polled (Tested Homozygous). Heifer calf at foot and rejoined to the world renowned JEHU.

This is a herd building 3 in 1 package.

REJOINED: A.I. to SCX JEHU on September 3rd. *Pregnancy test details sale day.*

CALF COMMENTS: Heifer calf at foot TC3 T5E born April and Sired by PCC Sudden Impact. Taylor Greta 1st is show prospect heifer. Very eye appealing, good growth, balance of softness and carcass.

Pinedock Fitting will break her in and take to her first show at no charge for the successful purchaser!



TAYLOR GRETA 1ST (AI) (P)

TATTOO: TC3 T5E **DOB:** 10/04/2022

SIRE: PCC SUDDEN IMPACT 848U PEMC321017(OACD1017E)(P)
DAM: ORARA WATERFALL GLENLEA GRETA 1ST (WFAK25E)(P)



September 2022 Australasian Charolais BREEDPLAN Analysis

	CE Dir	GL	BW	200	400	600
EBV	-4.8	-2.6	+0.1	+9	+22	+32
Acc	45%	66%	67%	55%	54%	55%
	Milk	SS	Carc Wt	EMA	Rump	IMF
EBV	+13	+1.4	+20	+2.1	+0.3	+0.5
Acc	49%	51%	45%	37%	42%	37%



LOT
3

**Cow
& Calf
Unit**

**ORARA WATERFALL GLENLEA
CHAROL 1ST (P)**

**TATTOO: WFA K44E
DOB: 06/09/2014**

SIRE: BRANCH VIEW FORGED FROM STEEL (BVC F34E) (P) **DAM: GLENLEA CHAROL 58TH (GLE G32E) (P)**
 HARVIE JAGER 65J PMC228759 (OAC U8759E) (P) CRATHES DR. IMPECCABLE (KRG D21F)
 BRANCH VIEW XQUISITE Z47E (BVC Z47E) GLENLEA CAAROL W8E (GLE W8E)

September 2022 Australasian Charolais BREEDPLAN Analysis

	CE Dir	GL	BW	200	400	600	Milk	SS	Carc Wt	EMA	Rump	IMF
EBV	-1.4	-1.1	+1.3	+11	+22	+33	+10	+1.2	+14	+1.2	-1.0	+0.4
Acc	48%	50%	65%	53%	53%	55%	49%	49%	46%	36%	41%	35%

COW COMMENTS: Charol 1st is a cow that we have had great progeny from, long, deep, powerful and polled! She weans the heaviest calf in her group every year and have many more in her future being super sound in every way.

We selected this pair of "Forged From Steel" daughter's, lot 2 and 3 as they have been outstanding producers and of the caliber to add new cow family to an existing stud or build a new stud herd around.

Ready to AI, Flush or Join to your sire.

CALF COMMENTS: Bull calf at foot "THE BRICK" is just that, he will impress on sale day! Carcass, depth, growth, polled and very docile, a stud sire prospect! His sire was purchased privately by Minnie Vale Charolais as a yearling for \$15,000 in 2020 and is breeding outstanding progeny for us through A.I. He is an E.T. son by Silverstream Holster (P) out of a full sister to Lot 1's Dam in this sale! Minnie Vale will offer his first progeny in 2023.

The successful purchaser has the option to sell this bull calf at any of our 2024 bull sales.



TAYLOR GLENLEA THE BRICK (AI) (P)
TATTOO: TC3 T11E DOB: 20/08/2022

SIRE: GLENLEA QBRICK (GLE Q906E) (P)
DAM: ORARA WATERFALL GLENLEA CHAROL 1ST (WFAK44E)(P)

September 2022 Australasian Charolais BREEDPLAN Analysis

	CE Dir	GL	BW	200	400	600
EBV	+1.2	-1.9	+1.0	+14	+26	+37
Acc	36%	42%	64%	44%	44%	46%
	Milk	SS	Carc Wt	EMA	Rump	IMF
EBV	+7	+1.1	+20	+1.8	+0.3	+0.0
Acc	37%	37%	36%	29%	32%	29%



LOT
4

**Cow
& Calf
Unit**

TAYLOR GLENLEA
ESTELLA 68TH (P)

TATTOO: TC3 Q2E
DOB: 02/08/2019

SIRE: PALGROVE CELTIC (PK C632E) (P)
LVH-FAIRFIELD LONE RANGER (LVH L36E) (P)
FERNVALE CHARITY (FEN C63E)

DAM: RANGAN PARK RIO BRAVO D15 (RAN D15E) (P)
GLENLEA ESTELLA 34TH (GLE K19E) (P)
THW ESTELLA 32 JOUFFLU (THW E2E)

September 2022 Australasian Charolais BREEDPLAN Analysis

	CE Dir	GL	BW	200	400	600	Milk	SS	Carc Wt	EMA	Rump	IMF
EBV	+0.7	-4.0	+0.9	+18	+36	+44	+8	+1.4	+28	+2.3	+0.6	+0.3
Acc	39%	43%	55%	47%	48%	49%	42%	38%	41%	32%	33%	31%

COW COMMENTS: A classy, powerful young cow. Growth, muscle, good bone, fine coated perfect udder and teat type for longevity.

Her sire has produced consistently powerful, big carcass progeny and this female is as good a daughter as we have of him with a calf at foot. Dam is a Rio D15 daughter, trait leader across all growth and carcass traits and out of a very square ljoufflu cow, a pedigree full of individual greats.

REJOINED: A.I. to SCX JEHU on September 3rd. *Pregnancy test details sale day.*

CALF COMMENTS: Bull **calf at foot** "Top Gun" is growing out to be a lead bull for 2024, great carcass and bone, double polled, sired by the best Kenworth son we have bred in Quickfire, who is producing progeny in the multi breed EBV project currently running to create across breed EBV's.

The successful purchaser will have an invitation to sell this bull back in any of our bulls sales in QLD in 2024.

TAYLOR GLENLEA TOP GUN (P)

TATTOO: TC3 T9E **DOB:** 14/06/2022

SIRE: GLENLEA QUICK FIRE (GLE Q66E) (P)
DAM: TAYLOR GLENLEA ESTELLA 68TH (TC3 Q2E) (P)

September 2022 Australasian Charolais BREEDPLAN Analysis

	CE Dir	GL	BW	200	400	600
EBV	+0.5	-3.7	+0.5	+16	+31	+40
Acc	30%	31%	44%	45%	41%	40%
	Milk	SS	Carc Wt	EMA	Rump	IMF
EBV	+8	+1.4	+25			
Acc	29%	30%	32%			

The influence of the “JANET” cow family

Specifically Lot 5 and her two full sisters.



1. TAYLOR GLENLEA RANGER 6TH (P)

An outstanding son of GLE H8E (Lot 5). A yearling bull in our Roma sale in September that sold for \$16,000. He was a standout from birth with his powerful body type and breed leading EBV's

2. SHANDON GLENLEA Q-BRICK (P)

A grandson of full sister to Lot 5. A PP Polled bull that we are using extensively in our joining this year. He is one of our up and coming young sires, many progeny will be offered in the future. The strength and consistency of his dam and grand dam gives him a special place in our breeding program.



3. GLENLEA JANET 122ND (P) (R/F) *pictured at 11 months*

The 2019 daughter of lot 5's full sister L34, sired by Glenlea Honorable (P) R/F. A powerful type with all growth and carcass EBV's well above breed average. Q56 was sold at this age as a special elite heifer to add to the stud herd for Ashley and Dan Humphries, ASHDAN Charolais. She will become a donor in 2023 after calving with her second calf.



LOT
5



Calf



LOT
5

GLENLEA
JANET 60TH (AI) (P)

TATTOO: GLE H8E
DOB: 18/02/2012

LT RIO BRAVO 3181 P M665507 (OAU Y5507E) (P)
SIRE: RANGAN PARK RIO BRAVO D15 (RAN D15E) (P)
PALGROVE SHOW GIRL 6 (PK P82E) (P)

VIOLET HILLS ZACHARIAH (VHV Z80E) (P)
DAM: GLENLEA JANET 30TH (GLE E10E) (P)
GLENLEA JANET U6E R/F (GLE U6E) (P)

September 2022 Australasian Charolais BREEDPLAN Analysis

	CE Dir	GL	BW	200	400	600	Milk	SS	Carc Wt	EMA	Rump	IMF
EBV	-0.6	-5.9	+0.5	+21	+37	+44	+5	+0.9	+28	+3.0	+1.4	+0.7
Acc	56%	68%	71%	66%	67%	65%	60%	56%	59%	50%	59%	46%

COMMENTS: If you want to produce progeny at the pointy end of the Charolais breed in Australia this cow has to be in your sights. From one of oldest and most prolific cow families in the Glenlea herd with over 40 years of history, that has produced champions in the showring and high sellers in the sale ring and bred on through the generations with increased performance.

Full sister K73 is a leading cow in the Shandon Stud herd for Scott Beaumont at Dorrigo, he purchased her as a joined heifer from our 2017 female sale. Another full sister L34 in the Glenlea herd is producing outstanding progeny with a son recently being selected to export semen to the USA and Canada!

We have retained H8's 2019 daughter, who's first calf, TC3 S10E a heifer, was recently sold privately to KDB Charolais for \$8000 at 10 months of age. The strength of the JANET cow family is a constant in our herd and will be in yours also.

EBV's are about as ideal as you will find in the Charolais breed, moderate birth, top 5% 200 and 400 days, Top 15% 600 day and Mature Weight, top 5% EMA, top 15% Fat Cover and IMF% all with recorded progeny from actual recorded data, not just pedigree generated EBV's.

We will retain H8 for the successful purchaser and flush her to the record priced and proven breeding bull SCX JEHU at no charge, purchaser to receive all freezable embryos, and then join her to the bull of your choice. This is an incredible opportunity in an incredible time in the Cattle business in Australia.

PLUS
Calf

TAYLOR GLENLEA
THE CHIEF (AI) (P/S)

TATTOO: TC3 T12E
DOB: 21/08/2022

MANDALONG CHOCK (RP C59E) (P/S)
SIRE: KELLY WALLAH RED-CHAR CHIEFTAIN (RW H146E)
KELLY WALLAH B16D (RW B16D)

RANGAN PARK RIO BRAVO D15 (RAN D15E) (P)
DAM: GLENLEA JANET 60TH (GLE H8E) (P)
GLENLEA JANET 30TH (GLE E10E) (P)

September 2022 Australasian Charolais BREEDPLAN Analysis

	CE Dir	GL	BW	200	400	600	Milk	SS	Carc Wt	EMA	Rump	IMF
EBV	+3.3	-4.9	-0.3	+10	+23	+24	+9	+0.7	+18	+1.5	+0.6	+0.5
Acc	44%	54%	68%	54%	54%	54%	47%	46%	45%	32%	36%	29%

COMMENTS: "The Chief" is a special bull calf. You will be astounded by his development since this photo was taken for catalogue, on sale day.

I selected his sire way back in 1989 while still on his Dam, an exceptional cow with very prominent functional original French Bloodlines. Grand sire Mandalong Chock was sold to a syndicate in the mid 80's for \$165,000 and produced good framed, progeny with growth, smooth muscling and good Fat cover.

Leading genetics from another time, still relevant 3 decades later and I am sure "The Chief's" EBV data will lift upwards when his individual performance is recorded with BREEDPLAN.

LOT
6

CALMVIEW
LAURA M38E (P)

TATTOO: CVW M38E
DOB: 19/09/2016

WCR SIR FA MAC 2244 M234430 (OAU B2244E) (P)
SIRE: **FERNVALE GOLD DIGGER (FEN G39E) (P)**
FERNVALE ANGEL (FEN A30E)

GAUGUIN 8591105891 (OAF L859F)
DAM: **CALMVIEW LAURA (CVW G45F) (P/S)**
HUNTINGTON LAURA 6 (WCC B590F)

September 2022 Australasian Charolais BREEDPLAN Analysis

Charolais	CE Dir	GL	BW	200	400	600	Milk	SS	Carc Wt	EMA	Rump	IMF
EBV	-1.8	-0.2	+1.9	+16	+32	+48	+5	+0.6	+27	+2.7	-1.4	+0.2
Acc	47%	54%	72%	64%	60%	62%	59%	47%	50%	39%	38%	38%

COMMENTS: Long bodied, feminine, lovely udder, fine coated.

Bull calf at foot by Palgrove Masterplan. A homozygous polled sire CVW T49E.

REJOINED: Has been running with Palgrove R810E Homozygous polled white bull from 7/9/2022. *Pregnancy test details sale day.*

Due to continual wet weather we were unable to take high quality catalogue photos.

Videos will be produced well ahead of the sale of both cow and calf at foot, and will be available to view on the AuctionPlus website.

LOT
7

CALMVIEW
ZOE M53E (P)

TATTOO: CVW M53E
DOB: 24/10/2016

LT RIO BRAVO 3181 P M665507 (OAU Y5507E) (P)
SIRE: **ASCOT JACK FLASH J105E (JAJ J105E) (P)**
GOBONGO JULIETTE B43E (GO B43E) (P)

FERNVALE ZAMBO (FEN Z73F)
DAM: **NARGOON ZOE H020E (J5Y H20E) (P)**
NARGOON ZOE (J5Y Z15E)

September 2022 Australasian Charolais BREEDPLAN Analysis

Charolais	CE Dir	GL	BW	200	400	600	Milk	SS	Carc Wt	EMA	Rump	IMF
EBV	+4.0	-2.3	-0.2	+17	+35	+53	+16	+0.9	+30	+1.6	+0.8	+0.7
Acc	46%	47%	71%	63%	58%	58%	59%	42%	46%	32%	34%	32%

COMMENTS: This is a deep bodied female, moderate frame and fine coat.

Heifer calf at foot by Homozygous polled full French sire. CVW T78E

REJOINED: Has been running with Palgrove R810E Homozygous polled white bull from 7/9/2022. *Pregnancy test details sale day.*

Due to continual wet weather we were unable to take high quality catalogue photos.

Videos will be produced well ahead of the sale of both cow and calf at foot, and will be available to view on the AuctionPlus website.

LOT
8

CALMVIEW
RUBY N35E (P)

TATTOO: CVW N35E
DOB: 22/06/2017

ANC FONTENAY (ANC F77F) (P)
SIRE: **ANC KILOWATT (ANC K96F) (P)**
TIRRIKE ERINNA (RES E21F)

GUNNADOO YUPPY (GN1 Y131E) (P)
DAM: **ROSEDALE KELLY D193 (MR D193E) (P)**
ROSEDALE KELLY U108 (MR U108E) (P)

September 2022 Australasian Charolais BREEDPLAN Analysis

Charolais	CE Dir	GL	BW	200	400	600	Milk	SS	Carc Wt	EMA	Rump	IMF
EBV	-2.6	-1.5	+1.4	+12	+23	+34	+6	+0.0	+17	+1.1	+0.0	+0.2
Acc	44%	41%	72%	62%	61%	67%	56%	44%	51%	30%	31%	28%

COMMENTS: Good bodied female, great udder, very correct in her structure, fine coat.

Bull calf at foot by Palgrove Masterplan. CVW T60E Homozygous polled.

REJOINED: Has been running with Palgrove R810E Homozygous polled white bull from 7/9/2022. *Pregnancy test details sale day.*

Due to continual wet weather we were unable to take high quality catalogue photos.

Videos will be produced well ahead of the sale of both cow and calf at foot, and will be available to view on the AuctionPlus website.

LOT
9

CALMVIEW
FESTOON M9E (P)

TATTOO: CVW M9E
DOB: 30/05/2016

WCR SIR FA MAC 2244 M234430 (OAU B2244E) (P)
SIRE: **FERNVALE GOLD DIGGER (FEN G39E) (P)**
FERNVALE ANGEL (FEN A30E)

PALGROVE ADRIAN S WW1547XBA01390 (PK A63E) (P)
DAM: **CALMVIEW FESTOON 2 (CVW F24E) (P)**
PALGROVE FESTOON 186 (PK C798E) (P)

September 2022 Australasian Charolais BREEDPLAN Analysis

	CE Dir	GL	BW	200	400	600	Milk	SS	Carc Wt	EMA	Rump	IMF
EBV	+1.2	-2.7	+0.7	+14	+29	+49	+13	+1.4	+25	+1.6	+0.3	+0.5
Acc	46%	45%	72%	63%	57%	58%	62%	38%	44%	31%	32%	30%

COMMENTS: The name says it all. Quality genetics in her parentage. Strong female that will breed performance progeny.

Bull **calf at foot** by homozygous polled full French sire. CVW T66E

REJOINED: Has been running with Palgrove R810E Homozygous polled white bull from 7/9/2022. *Pregnancy test details sale day.*

Due to continual wet weather we were unable to take high quality catalogue photos.

Videos will be produced well ahead of the sale of both cow and calf at foot, and will be available to view on the AuctionPlus website.

LOT
10

CALMVIEW
CHABLIS M12E

TATTOO: CVW M12E
DOB: 31/05/2016

WCR SIR FA MAC 2244 M234430 (OAU B2244E) (P)
SIRE: **FERNVALE GOLD DIGGER (FEN G39E) (P)**
FERNVALE ANGEL (FEN A30E)

WCR SIR DUKE 835 M286251 (OAU H835E) (P)
DAM: **FERNVALE CHABLIS (FEN C17E) (P)**
FERNVALE KOOL KATE (FEN K6E) (P)

September 2022 Australasian Charolais BREEDPLAN Analysis

	CE Dir	GL	BW	200	400	600	Milk	SS	Carc Wt	EMA	Rump	IMF
EBV	+7.3	-3.4	-0.1	+13	+29	+53	+14	+1.9	+25	+0.7	+0.3	+0.6
Acc	50%	50%	72%	64%	59%	59%	61%	43%	47%	35%	37%	34%

COMMENTS: This opportunity doesn't come along every day - both parents are Fernvale Charolais genetics. Long bodied female that produces quality progeny.

Bull **calf at foot** by homozygous polled full French sire. CVW T91E

REJOINED: Has been running with Palgrove R810E Homozygous polled white bull from 7/9/2022. *Pregnancy test details sale day.*

Due to continual wet weather we were unable to take high quality catalogue photos.

Videos will be produced well ahead of the sale of both cow and calf at foot, and will be available to view on the AuctionPlus website.

LOT
11

CALMVIEW
JAIMICA M34E (P)

TATTOO: CVW M34E
DOB: 11/09/2016

LT RIO BRAVO 3181 P M665507 (OAU Y5507E) (P)
SIRE: **ASCOT JACK FLASH J105E (JAJ J105E) (P)**
GOBONGO JULIETTE B43E (GO B43E) (P)

ANC FALSTAFF (ANC F82F) (P)
DAM: **HARLEYWOOD JAIMICA (WEA J15E) (P)**
HARLEYWOOD FAMOUS (WEA F44E)

September 2022 Australasian Charolais BREEDPLAN Analysis

	CE Dir	GL	BW	200	400	600	Milk	SS	Carc Wt	EMA	Rump	IMF
EBV	+5.3	-2.3	-0.8	+18	+35	+46	+14	+1.0	+30	+2.1	+1.1	+0.6
Acc	44%	42%	68%	62%	56%	56%	58%	36%	43%	29%	31%	29%

COMMENTS: Deep bodied, well put together female, fine hair type good udder structure.

Heifer **calf at foot** by homozygous polled full French sire CVW T68E

REJOINED: Has been running with Palgrove R810E Homozygous polled white bull from 7/9/2022. *Pregnancy test details sale day.*

Due to continual wet weather we were unable to take high quality catalogue photos.

Videos will be produced well ahead of the sale of both cow and calf at foot, and will be available to view on the AuctionPlus website.

LOT
12

CALMVIEW
FLORA M36E

TATTOO: CVW M36E
DOB: 13/09/2016

WCR SIR FA MAC 2244 M234430 (OAU B2244E) (P)
SIRE: FERNVALE GOLD DIGGER (FEN G39E) (P)
FERNVALE ANGEL (FEN A30E)

HARLEYWOOD QUINCEY R/F (WEA Q16E)
DAM: HARLEYWOOD FLORA (WEA F6E)
BULLAGULL WENDY (MWS W5E)

September 2022 Australasian Charolais BREEDPLAN Analysis

	CE Dir	GL	BW	200	400	600	Milk	SS	Carc Wt	EMA	Rump	IMF
EBV	-3.7	-1.7	+1.8	+14	+30	+46	+6	+1.1	+24	+1.6	+0.3	+0.3
Acc	47%	52%	72%	61%	56%	56%	56%	36%	42%	28%	28%	27%

COMMENTS: Has more frame and bone than the other Calmview females. Strong bodied type that will breed performance progeny.

Heifer **calf at foot** by homozygous polled full French sire. CVW T93E

REJOINED: Has been running with Palgrove R810E Homozygous polled white bull from 7/9/2022. *Pregnancy test details sale day.*

Due to continual wet weather we were unable to take high quality catalogue photos.

Videos will be produced well ahead of the sale of both cow and calf at foot, and will be available to view on the AuctionPlus website.

LOT
13

CALMVIEW
PANACHE L50E (P)

TATTOO: CVW L50E
DOB: 22/09/2015

SPARROWS DURANGO 585P PMC289528 (PED -9528E)
SIRE: WINN MANS LANZA 610S PMC307395 (OAC B7395E) (P)
WINN MAN MERIT 036K PFC317547 (PED -7547E)

ADVANCE XR8 (ADV X50E)
DAM: CHARNELLE PANACHE 2 (GKA F70E) (P/S)
PALGROVE PANACHE 139 (PK A396E) (P)

September 2022 Australasian Charolais BREEDPLAN Analysis

	CE Dir	GL	BW	200	400	600	Milk	SS	Carc Wt	EMA	Rump	IMF
EBV	+2.9	-4.6	+0.1	+20	+36	+51	+10	+2.3	+27	+0.6	-0.6	+0.0
Acc	54%	60%	73%	67%	63%	63%	65%	54%	53%	42%	47%	42%

COMMENTS: This top shelf female is sired by Winns Mans Lanza out of a Panache female. Good opportunity here.

Bull **calf at foot** by homozygous polled full French sire. CVWT86E

REJOINED: Has been running with Palgrove R810E Homozygous polled white bull from 7/9/2022. *Pregnancy test details sale day.*

Due to continual wet weather we were unable to take high quality catalogue photos.

Videos will be produced well ahead of the sale of both cow and calf at foot, and will be available to view on the AuctionPlus website.

LOT
14

CALMVIEW
KRYSTAL L68E (AI) (P)

TATTOO: CVW L68E
DOB: 04/11/2015

JMB DATELINE 754T PMC310942 (PED -3109E)
SIRE: G. BROS THIN RED LINE 527W MC326475 (OAC E6475E) (P)
G BROS TULIP 101T PFC359984 (PED -9984E)

BRANCH VIEW ELDORADO (BVC E20E) (P)
DAM: BRANCH VIEW KRYSTAL J21E (BVC J21E)
BRANCH VIEW KRYSTAL D20E (BVC D20E)

September 2022 Australasian Charolais BREEDPLAN Analysis

	CE Dir	GL	BW	200	400	600	Milk	SS	Carc Wt	EMA	Rump	IMF
EBV	+0.5	-3.7	-0.2	+8	+17	+12	+1	+2.3	+10	+0.3	+0.7	-0.2
Acc	47%	61%	71%	60%	58%	58%	60%	49%	47%	35%	37%	35%

COMMENTS: Another great opportunity here sired by G Bros Thin Red Line out of an outstanding female that produces quality calves each year.

Heifer **calf at foot** by homozygous polled full French sire. CVW T85E

REJOINED: Has been running with Palgrove R810E Homozygous polled white bull from 7/9/2022. *Pregnancy test details sale day.*

Due to continual wet weather we were unable to take high quality catalogue photos.

Videos will be produced well ahead of the sale of both cow and calf at foot, and will be available to view on the AuctionPlus website.

LOT
15

CALMVIEW
FESTOON 2 L75E

TATTOO: CVW L75E
DOB: 10/11/2015

M6 GRID MAKER 104 PET M633377 (OAU W3377E) (P)
SIRE: **PALGROVE HYDRO H8 (PK H8E) (P)**
PALGROVE FESTOON 108 (PK W396E)

AIRLIE YALLTA (A1S Y264E)
DAM: **PALGROVE FESTOON 186 (PK C798E) (P)**
PALGROVE FESTOON 112 (PK Y228E) (P)

September 2022 Australasian Charolais BREEDPLAN Analysis

	CE Dir	GL	BW	200	400	600	Milk	SS	Carc Wt	EMA	Rump	IMF
EBV	+3.4	-4.1	+0.5	+13	+29	+46	+16	+1.9	+26	+2.7	-0.7	+0.0
Acc	47%	53%	71%	60%	57%	58%	59%	48%	47%	38%	39%	36%

COMMENTS: This female offers Palgrove genetics on both sides of parentage. Long bodied, fine hair very feminine.

Bull **calf at foot** by homozygous polled full French sire. CVW T64E

REJOINED: Has been running with Palgrove R810E Homozygous polled white bull from 7/9/2022. *Pregnancy test details sale day.*

Due to continual wet weather we were unable to take high quality catalogue photos.

Videos will be produced well ahead of the sale of both cow and calf at foot, and will be available to view on the AuctionPlus website.

LOT
16

CALMVIEW
DELVEEN K56E (P)

TATTOO: CVW K56E
DOB: 01/11/2014

LT BLUEGRASS 4017P M686569 (OAU Z4017E) (P)
SIRE: **GLENLEA EARLY (GLE E11E) (P)**
GLENLEA JANET 26TH R/F (PS) (GLE C8E) (P)

AIRLIE DAKOTA (A1S D38E)
DAM: **AIRLIE DELVEEN G647E (A1S G647E)**
AIRLIE DELVEEN E8E (A1S E8E)

September 2022 Australasian Charolais BREEDPLAN Analysis

	CE Dir	GL	BW	200	400	600	Milk	SS	Carc Wt	EMA	Rump	IMF
EBV	+5.0	-4.7	-0.8	+11	+22	+29	+16	+1.6	+19	+1.6	+0.3	+0.4
Acc	47%	47%	69%	63%	59%	59%	60%	45%	47%	33%	34%	32%

COMMENTS: Lovely feminine cow. Good easy doing type, overall great carcass and cover. Powerful bloodlines in dam's side.

Heifer **calf at foot** by homozygous polled full French sire. CVW T94E

REJOINED: Has been running with Palgrove R810E Homozygous polled white bull from 7/9/2022. *Pregnancy test details sale day.*

Due to continual wet weather we were unable to take high quality catalogue photos.

Videos will be produced well ahead of the sale of both cow and calf at foot, and will be available to view on the AuctionPlus website.

LOT
17

CALMVIEW
KAITLYN N44E (P)

TATTOO: CVW N44E
DOB: 27/06/2017

LT RIO BRAVO 3181 P M665507 (OAU Y5507E) (P)
SIRE: **ASCOT JACK FLASH J105E (JAJ J105E) (P)**
GOBONGO JULIETTE B43E (GO B43E) (P)

ANC GREENWICH (ANC G1F) (P)
DAM: **ANC KAITLYN (ANC K37F)**
ANC FRIS (ANC B477F)

September 2022 Australasian Charolais BREEDPLAN Analysis

	CE Dir	GL	BW	200	400	600	Milk	SS	Carc Wt	EMA	Rump	IMF
EBV	+2.8	-2.2	+0.0	+13	+24	+26	+6	+0.5	+18	+1.6	+0.8	+0.1
Acc	44%	43%	69%	64%	63%	67%	59%	41%	54%	31%	32%	29%

COMMENTS: Long bodied, feminine, good udder, fine coated. Outcross genetics on offer here ANC dam and Ascot sire combine to produce another quality female.

Bull **calf at foot** by homozygous polled full French sire. CVW T79E

REJOINED: Has been running with Palgrove R810E Homozygous polled white bull from 7/9/2022. *Pregnancy test details sale day.*

Due to continual wet weather we were unable to take high quality catalogue photos.

Videos will be produced well ahead of the sale of both cow and calf at foot, and will be available to view on the AuctionPlus website.

LOT
18

CALMVIEW
MAXINE N61E (P)

TATTOO: CVW N61E
DOB: 02/08/2017

VIOLET HILLS HILSTON (VHV H191E) (P)
SIRE: VIOLET HILLS KARATHA (VHV K174E) (P)
VIOLET HILLS GRACE (VHV G23E) (P)

PALGROVE HYDRO H8 (PK H8E) (P)
DAM: CALMVIEW MAXINE K45E (CVW K45E) (P)
PALGROVE MAXINE 54 (PK Y60E)

September 2022 Australasian Charolais BREEDPLAN Analysis

	CE Dir	GL	BW	200	400	600	Milk	SS	Carc Wt	EMA	Rump	IMF
EBV	+6.7	-4.9	-1.3	+10	+23	+31	+14	+1.0	+23	+1.8	-1.2	-0.1
Acc	39%	40%	65%	55%	53%	55%	55%	50%	44%	35%	36%	34%

COMMENTS: Another feminine Calmview bred young cow. Fine coated great udder with extra carcase. The EBV's support good growth and early maturing.

Heifer **calf at foot** by homozygous polled full French sire. CVW T95E

REJOINED: Has been running with Palgrove R810E Homozygous polled white bull from 7/9/2022. *Pregnancy test details sale day.*

Due to continual wet weather we were unable to take high quality catalogue photos.

Videos will be produced well ahead of the sale of both cow and calf at foot, and will be available to view on the AuctionPlus website.

LOT
19

CALMVIEW
DEULTRA N98E (P)

TATTOO: CVW N98E
DOB: 08/11/2017

CALMVIEW GALLIANT (CVW G40E) (P)
SIRE: CALMVIEW KOOPER (CVW K19E) (P)
PALGROVE ESTELLA 267 (PK C1038E)

PLATINUM ULTRA (AJ1 U37E) (P)
DAM: CVW CALMVEIW DEULTRA (CVW D11E) (P)
JAY TEES APHRODITE (JT A1E)

September 2022 Australasian Charolais BREEDPLAN Analysis

	CE Dir	GL	BW	200	400	600	Milk	SS	Carc Wt	EMA	Rump	IMF
EBV	-1.5	-3.6	+0.8	+19	+29	+46	+11	+2.1	+21	+1.7	+1.0	+0.4
Acc	44%	47%	72%	64%	65%	61%	59%	38%	51%	29%	31%	28%

COMMENTS: This cow's dam has really left her mark at Calmview, it shows here in N98E. Milk, length, bone and structure. Highly recommended female.

Bull **calf at foot** by homozygous polled full French sire. CVW T87E

REJOINED: Has been running with Palgrove R810E Homozygous polled white bull from 7/9/2022. *Pregnancy test details sale day.*

Due to continual wet weather we were unable to take high quality catalogue photos.

Videos will be produced well ahead of the sale of both cow and calf at foot, and will be available to view on the AuctionPlus website.



Our top priced yearling bull (16 months old) at our recent Roma Bull Sale, **MAW Glenlea Neptune S31 (PP)** sold for \$24,000. "

JOINED HEIFERS

We have put together a large line up of Charolais heifers ... more than anywhere else in Australia in 2022!

They include the complete draft of Glenlea / Fairfield "S" Heifers - the only Heifers not included are ones we assessed as not suitable for seedstock breeding or were born late in 2021 and are too young to offer.

Access to a complete drop normally only occurs in a dispersal sale. Our large number of purebred cows allow us to offer large lines of females to start or build into a seedstock breeding program.

We have different registration grades on offer. Base females that are recorded on the breed data base, "A" Registered Females and "E" Registered Females. This is noted on individual lots and all progeny of these heifers can be registered with the Charolais Society of Australia if required.

For more explanation, please talk to Roderick who will be happy to explain in more detail and discuss your breeding goals.

We are so confident in the progeny of both Leopold and Muscles that we offer to any successful purchaser the opportunity to sell back to Glenlea Beef all suitable male progeny at a premium.

This gives you a guaranteed premium market for the progeny of the heifers' you purchase.

For more details call Roderick to discuss.



Photo at 23 months

ALLEDNAW LEOPOLD (PP) - AKT R45E

Allednaw Leopold R45 is a Sire we selected to join many of our heifers this year. Critically important is his top 1% calving ease and low BW in the breed. He is the result of line breeding so he has a higher probability of breeding true to type and delivering calving ease under a wide range of environments and management.

After inspecting many sires meeting our selection criteria (including being pp polled, extra quiet temperament, sound feet, strength of type) Leopold was the best beef type bull. Having the added yield and doability that the Allednaw cattle are known for so that his progeny will have real world commercial appeal and many sons will make sale bulls and heifers be retained. So many low BW bulls just produce male progeny that have no carcass or doability and are just plain types that become average steers. Finding low BW sires that produce seedstock progeny is always a great challenge. We are confident Leopold R45 is one of those bulls.



Photo at 4.5 years

CHALLAMBI MUSCLES (PP) - CHA M15E

Challambi Muscles is a proven low BW bull, very consistent. Sons with yield, fat cover and performance. Daughters with softness and milk. He is a no miss Sire. One of the standout heifers in this sale, lot 21, is a daughter out of a first calver. We have sold many sons over last 4 years, many selling as yearling bulls as they are early maturing and well finished and developed at a young age.

LOT
20

GLENLEA FAIRFIELD
DESIRE 1ST (P/S)

TATTOO: GLE S170A
DOB: 30/01/2021

SIRE: FAIRFIELD STUD SIRE

EC NO DOUBT 2022 P M685500 (OAU Z2022E) (P)
DAM: LVH-FAIRFIELD DESIRE II H91 (LVH H91E) (P)
LVH-FAIRFIELD DESIRE 2 (LVH E144F)



September 2022 Australasian Charolais BREEDPLAN Analysis

	CE Dir	GL	BW	200	400	600	Milk	SS	Carc Wt	EMA	Rump	IMF
EBV	+0.8	-1.9	+0.8	+20	+45	+62	+10	+1.0	+34	+2.0	+1.1	+0.5
Acc	38%	56%	50%	50%	53%	53%	40%	52%	47%	40%	42%	40%

COMMENTS: Outstanding female to start the heifer section of the sale.

She has a powerful bull calf at foot, and calved at only 21 months. Desire 1st highlights what you can expect from these Glenlea / Fairfield females. Fertility, performance, milk and doability.

Bull calf at foot born 6/9/22

READY TO JOIN



LOT
21

GLENLEA
CHAROL 135TH (P)

TATTOO: GLE S20E
DOB: 07/02/2021

LT VENTURE 3198 M835612 (OAU J5612E) (P)
SIRE: CHALLAMBI MUSCLES (CHA M15E) (P)
ROSEDALE HIGHNESS G114E (MR G114E) (P)

JC LANNISTER L1 (CJC L1E) (P)
DAM: GLENLEA CHAROL 105TH (GLE P1E) (P)
GLENLEA CHAROL 91ST (GLE L21E) (P)



September 2022 Australasian Charolais BREEDPLAN Analysis

	CE Dir	GL	BW	200	400	600	Milk	SS	Carc Wt	EMA	Rump	IMF
EBV	+1.0	-5.1	-1.1	+19	+39	+50	+13	+2.2	+32	+2.6	+2.7	+0.4
Acc	38%	43%	55%	52%	54%	60%	39%	45%	49%	39%	51%	40%

COMMENTS: Growth, carcass, volume and docility. Proven sire and from one of our most prolific cow families.

This heifer has future donor written all over her and we cannot fault her. Her future earning potential is unlimited. Breed leading EBV's From Birth to Growth and Carcass.

The Glenlea Beef team can help you to maximize her income potential.

PTIC To LT Countdown (PP), a new release Sire with proven calving ease bloodlines. This mating has the potential to produce a stud sire. **A.I. 18/6/22 Due 3/4/23 PTIC.**



LOT
22

GLENLEA
GRETA 4TH (P)

TATTOO: GLE S15E
DOB: 02/02/2021

GLENLEA HILTON (GLE H30E) (P) BRANCH VIEW FORDGED FROM STEEL (BVC F34E) (P)
SIRE: ORARA WATERFALL GLENLEA NORTH (WFAN25E)(P) DAM: ORARA WATERFALL GLENLEA GRETA 1ST (WFAK25E)(P)
GLENLEA CHAROL 72ND (GLE J8E) (P) JACKSON GRETA (MEJ G10E) (P)

September 2022 Australasian Charolais BREEDPLAN Analysis

	CE Dir	GL	BW	200	400	600	Milk	SS	Carc Wt	EMA	Rump	IMF
EBV	+4.4	-1.9	-0.2	+12	+24	+36	+9	+1.1	+23	+1.0	-2.5	+0.1
Acc	35%	42%	69%	52%	55%	61%	34%	44%	48%	38%	51%	39%

COMMENTS: Growth, extra carcass and volume. Proven sire from a highly productive cow family.

S15's extra carcass yield makes her ideal for northern production systems, she will produce bulls that will be very easy to sell.

Joined to Challambi Muscles (PP) from August 20th. *Pregnancy test details sale day.*



LOT
23

HUON
ESTELLA 38 (AI) (ET) (P)

TATTOO: DG1 S8E
DOB: 20/02/2021

RANGAN PARK PINAY F21 (RAN F21E) (P) EATONS ROYAL DYNASTY 6164 (OAU M726505) (P)
SIRE: RANGAN PINAY F21 M96 (RAN M96E) (P) DAM: PALGROVE ESTELLA J880 (PK J880E)
RANGAN PARK ALETTA G123 (RAN G123E) (P) PALGROVE ESTELLA 341 (PK F711E)

September 2022 Australasian Charolais BREEDPLAN Analysis

	CE Dir	GL	BW	200	400	600	Milk	SS	Carc Wt	EMA	Rump	IMF
EBV	+7.6	-6.1	-1.4	+8	+16	+22	+8	+0.6	+13	+1.5	+1.5	+0.6
Acc	43%	59%	71%	60%	62%	68%	44%	55%	56%	46%	59%	47%

COMMENTS: The first of four E.T. heifer's out of Palgrove Donors. These were purchased as calves at foot from the Huon Charolais dispersal.

Growth, fine coat, polled, and excellent fat cover. Outstanding cow families.

Our large numbers allows us to offer females of this class!

Joined to Challambi Muscles (PP) from August 20th. *Pregnancy test details sale day.*



LOT
24

HUON
ESTELLA 39 (AI) (ET) (P)

TATTOO: DG1 S10E
DOB: 20/02/2021

MERIT ROUNDUP 9508W (OAC E6558E) (P)
SIRE: RANGAN ROUNDUP K18 (RAN K18E) (P)
RANGAN PARK ALETTA H57 (RAN H57E) (P)

MD SENTINAL RULER G1520 (OAU S9416E) (P/S)
DAM: PALGROVE ESTELLA 336 (PK F334E)
PALGROVE ESTELLA 269 (PK C1182E) (P)

September 2022 Australasian Charolais BREEDPLAN Analysis

	CE Dir	GL	BW	200	400	600	Milk	SS	Carc Wt	EMA	Rump	IMF
EBV	+3.3	-2.5	-0.1	+15	+32	+38	+9	+1.8	+22	+0.9	-0.7	+0.1
Acc	47%	59%	72%	62%	64%	69%	48%	57%	57%	48%	61%	49%

COMMENTS: Volume, softness, polled, performance.

Dam was top price female at Palgrove sale in 2017 at \$18,000. Full brother is the pick of the E.T. Huon born bulls.

Excellent EBV's growth spread from moderate BW to above average growth.

Joined to Challambi Muscles (PP) from August 20th. *Pregnancy test details sale day.*



LOT
25

HUON
ESTELLA 41 (AI) (ET) (P/S)

TATTOO: DG1 S13E
DOB: 20/02/2021

RANGAN PARK PINAY F21 (RAN F21E) (P)
SIRE: RANGAN PINAY F21 M96 (RAN M96E) (P)
RANGAN PARK ALETTA G123 (RAN G123E) (P)

EATONS ROYAL DYNASTY 6164 M726505 (OAU M726505) (P)
DAM: PALGROVE ESTELLA J880 (PK J880E)
PALGROVE ESTELLA 341 (PK F711E)

September 2022 Australasian Charolais BREEDPLAN Analysis

	CE Dir	GL	BW	200	400	600	Milk	SS	Carc Wt	EMA	Rump	IMF
EBV	+5.9	-5.9	-1.2	+8	+16	+21	+7	+0.7	+12	+1.5	+2.3	+0.6
Acc	43%	59%	71%	60%	62%	68%	44%	55%	56%	46%	59%	47%

COMMENTS: Early maturing heifer that will grow into a great cow and out of a great Dam!

Thick bodied with extra fat cover, could fit into any stud Charolais herd.

Lots of French breeding in this female with an Evolution Dam and Pinay sire.

All carcass EBV's well above average.

Joined to Challambi Muscles (PP) from August 20th. *Pregnancy test details sale day.*



LOT
26

HUON
ESTELLA 43 (AI) (ET) (P)

TATTOO: DG1 S19E
DOB: 26/02/2021

RANGAN PARK PINAY F21 (RAN F21E) (P)
SIRE: RANGAN PINAY F21 M96 (RAN M96E) (P)
RANGAN PARK ALETTA G123 (RAN G123E) (P)

SILVERSTREAM EVOLUTION E168 (OAN E168E) (P)
DAM: PALGROVE ESTELLA K252E (PK K252E)
PALGROVE ESTELLA 306 (PK E250E) (P)

September 2022 Australasian Charolais BREEDPLAN Analysis

	CE Dir	GL	BW	200	400	600	Milk	SS	Carc Wt	EMA	Rump	IMF
EBV	+7.2	-4.7	-0.5	+9	+14	+19	+3	+0.0	+10	+1.6	+1.2	+0.8
Acc	45%	59%	71%	61%	63%	68%	46%	54%	56%	48%	60%	49%

COMMENTS: This fine coated, well muscled with good fat cover heifer, has the maternal strength of her Palgrove dam and the carcass of her Polled Pinay sire.

These types of heifer's are just not offered for sale by any stud in the current market, except for Glenlea! With our strength in numbers and commitment to offer herd building females at our sales, then back it up with a marketing program that you can plug into. We don't just sell our cattle, we offer our clients a breeding and marketing program.

Joined to Challambi Muscles (PP) from August 20th. *Pregnancy test details sale day.*



LOT
27

GLENLEA
BOP BOP 10TH (P) (R/F)

TATTOO: GLE S21E
DOB: 10/02/2021

RANGAN PARK REDEMPTION E42 (RAN E42E) (P)
SIRE: GLENLEA JUST RED (GLE J5E) (P)
GLENLEA JANET U6E R/F (GLE U6E) (P)

GLENLEA HI GUY (GLE H52E) (P)
DAM: ORARA WATERFALL GLENLEA BOP BOP 1ST (WFAL44E)(P)
PIPECLAY G2E (ROL G2E)

September 2022 Australasian Charolais BREEDPLAN Analysis

	CE Dir	GL	BW	200	400	600	Milk	SS	Carc Wt	EMA	Rump	IMF
EBV	-12.7	-2.5	+2.2	+18	+37	+51	+7	+1.1	+24	+1.0	+0.9	+0.7
Acc	41%	48%	67%	55%	58%	63%	37%	47%	51%	41%	53%	40%

COMMENTS: The only Glenlea Just Red daughter in the sale. Dam is a Donor cow we value highly and has exceptional E.T. progeny on the ground. She had a high selling bull at our Clermont sale last year.

S21 is a high growth, clean coated heifer with breed leading EBV's. Note she has a white patch over her tail head area.

PTIC to Allednaw Leopold R45 Due Feb / March 2023.



LOT
28

GLENLEA FAIRFIELD
AVA 1ST (P)

TATTOO: GLE S201E
DOB: 14/03/2021

PARINGA RIO BRAVO D213E (TOL D213E) (P)
SIRE: ELRIDGE LORD (RUU L43E) (P)
ELRIDGE HARMONY (RUU H14E)

PALGROVE CELTIC (PK C632E) (P)
DAM: LVH-FAIRFIELD AVA J42E (LVH J42E) (P)
LVH-FAIRFIELD AVA (LVH C42E) (P)

September 2022 Australasian Charolais BREEDPLAN Analysis

	CE Dir	GL	BW	200	400	600	Milk	SS	Carc Wt	EMA	Rump	IMF
EBV	+5.1	-1.6	+1.2	+20	+47	+71	+8	+2.2	+33	+1.4	+2.0	+0.7
Acc	35%	49%	57%	57%	61%	68%	37%	52%	56%	46%	58%	47%

COMMENTS: This heifer is James Dockrill's pick of the Glenlea / Fairfield heifers.

Breed leading growth, super soft and easy doing, with that X factor that makes her catch your eye every time. Her temperament is so gentle.

Will have poll test results before sale day.

Top of the breed EBV's for growth and all positive carcass traits.

Joined to Challambi Muscles (PP) from August 20th. *Pregnancy test details sale day.*



LOT
29

GLENLEA FAIRFIELD
ADELAIDE 1 (P)

TATTOO: GLE S163E
DOB: 11/04/2021

PARINGA RIO BRAVO D213E (TOL D213E) (P)
SIRE: ELRIDGE LEVI (RUU L69E) (P)
GRANVILLE LUCY 10 (GDA F11E)

FERNVALE EMBASSY (FEN E46E)
DAM: LVH-FAIRFIELD ADELAIDE J70E (LVH J70E)
LVH-FAIRFIELD ADELAIDE 2 (LVH E24E) (P)

September 2022 Australasian Charolais BREEDPLAN Analysis

	CE Dir	GL	BW	200	400	600	Milk	SS	Carc Wt	EMA	Rump	IMF
EBV	-0.4	-0.2	+1.0	+14	+34	+44	+9	+0.8	+25	+2.1	+0.5	+0.7
Acc	34%	48%	55%	56%	60%	67%	35%	50%	55%	44%	57%	46%

COMMENTS: Early maturing, easy doing heifer. Great carcass. We love this type of female.

A Yearling Levi son was our top price Fairfield bull at our recent Roma sale selling for \$15,000 and he is the male version of this heifer.

EBV's well above average growth and carcass traits.

Joined to Challambi Muscles (PP) from August 20th. *Pregnancy test details sale day.*



LOT
30

GLENLEA FAIRFIELD
NANNY 1ST (R/F)

TATTOO: GLE S205A
DOB: 05/03/2021

SIRE: FAIRFIELD STUD SIRE

DSK EDGE FIREFLY F14E (DSK F14E) (P)
DAM: LVH-FAIRFIELD NANNY J88E (LVH J88E)
LVH-FAIRFIELD NANNY 2 (LVH E170E) (P)

September 2022 Australasian Charolais BREEDPLAN Analysis

	CE Dir	GL	BW	200	400	600	Milk	SS	Carc Wt	EMA	Rump	IMF
EBV	+0.0	-0.7	+0.4	+15	+38	+47	+10	+1.3	+25	+1.9	+3.2	+0.7
Acc	34%	49%	55%	56%	60%	67%	35%	51%	55%	45%	58%	46%

COMMENTS: This is powerful heifer. Extra bone, carcass and overall yield. Light red Factor, fine coated and excellent fat cover.

Above average EBV's across growth and carcass.

Joined to Challambi Muscles (PP) from August 20th. *Pregnancy test details sale day.*



1. RANGAN ROUNDUP K18 (AI) (P)
RAN K18E

Sire of Lot 24



2. RANGAN PINAY F21 M96 (AI) (P)
RAN M96E

Sire of Lots 23, 25 and 26

LOT
31

GLENLEA
832

TATTOO: GLE R832
DOB: October 2020

SIRE: GLENLEA STUD SIRE

DAM: GLENLEA CHAROLAIS COW

COMMENTS: These next 7 lots are Base Charolais females with progeny able to be registered with Charolais Breed Society if required.

They will breed outstanding Charolais progeny.

PTIC TO Allednaw Leopold R45 Due Feb / March 2023.



LOT
32

GLENLEA
848

TATTOO: GLE R848
DOB: October 2020

SIRE: GLENLEA STUD SIRE

DAM: GLENLEA CHAROLAIS COW

PTIC TO Allednaw Leopold R45 Due Feb / March 2023.



LOT
33

GLENLEA
845

TATTOO: GLE R845
DOB: October 2020

SIRE: GLENLEA STUD SIRE

DAM: GLENLEA CHAROLAIS COW

PTIC TO Allednaw Leopold R45 Due Feb / March 2023.



LOT
34

GLENLEA
806

TATTOO: GLE R806
DOB: October 2020

SIRE: GLENLEA STUD SIRE

DAM: GLENLEA CHAROLAIS COW

Joined to Allednaw Leopold R45 from 20th August.
Pregnancy test details sale day.



LOT
35

GLENLEA
805

TATTOO: GLE R805
DOB: November 2020

SIRE: GLENLEA STUD SIRE

DAM: GLENLEA CHAROLAIS COW

PTIC TO Allednaw Leopold R45 Due Feb / March 2023.



LOT
36

GLENLEA
847

TATTOO: GLE R847
DOB: November 2020

SIRE: GLENLEA STUD SIRE

DAM: GLENLEA CHAROLAIS COW

Joined to Allednaw Leopold R45 (PP) from 20th August.
Pregnancy test details sale day.



LOT
37

GLENLEA
838 (R/F)

TATTOO: GLE R838
DOB: November 2020

SIRE: GLENLEA STUD SIRE

DAM: GLENLEA CHAROLAIS COW

Joined to Allednaw Leopold R45 from 20th August.
Pregnancy test details sale day.



LOT
38

GLENLEA
SHADY (P)

TATTOO: GLE S1010A
DOB: 21/01/2021

RANGAN PARK RIO BRAVO D15 (RAN D15E) (P)

SIRE: GLENLEA KENWORTH (GLE K80E) (P)

THW TATT MAC D10E (THW D10E) (P)

DAM: CSA CHAROLAIS GENERIC DAM 997 (\$A7 A997)



September 2022 Australasian Charolais
BREEDPLAN Analysis

	CE Dir	GL	BW	200	400	600
EBV	+0.4	-4.0	-0.6	+8	+19	+22
Acc	33%	31%	41%	36%	35%	35%
	Milk	SS	Carc Wt	EMA	Rump	IMF
EBV	+5	+1.2	+17		+1.1	
Acc	30%	32%	30%		27%	

COMMENTS: Big volumed, early maturing, great doing type of heifer. PTIC TO Allednaw Leopold R45 Due Feb / March 2023.



LOT
39

GLENLEA
MY GIRL 23RD (P)

TATTOO: GLE S650A
DOB: 06/01/2021

SIRE: GLENLEA STUD SIRE

RANGAN PARK RIO BRAVO D15 (RAN D15E) (P)

DAM: GLENLEA MY GIRL 10TH (GLE L199E) (P)

THW MY GIRL (THW E3E) (P)



September 2022 Australasian Charolais
BREEDPLAN Analysis

	CE Dir	GL	BW	200	400	600
EBV	+2.3	-4.1	+0.5	+13	+29	+39
Acc	35%	36%	49%	50%	52%	59%
	Milk	SS	Carc Wt	EMA	Rump	IMF
EBV	+6	+1.4	+21	+2.3	+2.7	+0.8
Acc	38%	47%	48%	38%	50%	39%

COMMENTS: Big well grown heifer, medium frame and maturity. Dam is a big strong, good milking female. Great Carcass EBV's with above average growth. PTIC TO Allednaw Leopold R45 Due Feb / March 2023.



LOT
40

GLENLEA
GRETA 5TH

TATTOO: GLE S652E
DOB: 13/02/2021

VERNOLA JUST RIGHT J6E (VIW J6E) (P/S)
SIRE: ALLEDNAW GLENLEA MARLO (AKT M41E) (P)
CANOONA EMMA A3 (IGV A3E) (P)

GLENLEA HILTON (GLE H30E) (P)
DAM: ORARA WATERFALL GRETA 3RD (WFA N18E)
JACKSON GRETA (MEJ G10E) (P)



September 2022 Australasian Charolais
BREEDPLAN Analysis

	CE Dir	GL	BW	200	400	600
EBV	+6.2	-1.9	+0.4	+14	+31	+47
Acc	30%	33%	51%	48%	50%	58%
	Milk	SS	Carc Wt	EMA	Rump	IMF
EBV	+7	+1.0	+29	+1.4	-0.5	-0.1
Acc	32%	45%	46%	36%	48%	36%



COMMENTS: Big strong well grown heifer, good overall yield.
Dam is a very big volumed Hilton daughter that we think a lot of.
PTIC TO Allednaw Leopold R45 Due Feb / March 2023.

LOT
41

GLENLEA FAIRFIELD
BROCADE 1S (P)

TATTOO: GLE S167E
DOB: 17/03/2021

ADVANCE DOMINO D36 (ADV D36E) (P)
SIRE: CRATHES JACKPOT (KRG J28E) (P)
PALGROVE ESTELLA 195 (PK Z498E) (P)

PALGROVE ZILLMAN (PK Z108E) (P)
DAM: LVH-FAIRFIELD BROCADE J11 (LVH J11E)
FERNVALE BROCADE (FEN B23E)



September 2022 Australasian Charolais
BREEDPLAN Analysis

	CE Dir	GL	BW	200	400	600
EBV	+2.2	+0.5	+1.7	+16	+37	+53
Acc	36%	50%	57%	58%	61%	68%
	Milk	SS	Carc Wt	EMA	Rump	IMF
EBV	+9	+1.2	+29	+2.2	+1.1	+0.3
Acc	37%	52%	56%	46%	58%	46%



COMMENTS: Very balanced heifer across all traits both physical and EBV's.
A type that we would all like to have a paddock full of. Joined to Allednaw Leopold R45 (PP) from 20th August. *Pregnancy test details sale day.*

LOT
42

GLENLEA FAIRFIELD
COLLEEN 1S

TATTOO: GLE S168E
DOB: 05/04/2021

PARINGA RIO BRAVO D213E (TOL D213E) (P)
SIRE: ELRIDGE LEVI (RUU L69E) (P)
GRANVILLE LUCY 10 (GDA F11E)

DSK EDGE FIREFLY F14E (DSK F14E) (P)
DAM: LVH-FAIRFIELD COLLEEN J85E (LVH J85E) (P)
JUANDAH COLLEEN (KEL C271E)



September 2022 Australasian Charolais
BREEDPLAN Analysis

	CE Dir	GL	BW	200	400	600
EBV	-0.7	-0.5	+1.1	+17	+39	+51
Acc	33%	48%	55%	56%	59%	66%
	Milk	SS	Carc Wt	EMA	Rump	IMF
EBV	+9	+1.0	+29	+1.9	+1.5	+0.3
Acc	35%	50%	54%	44%	57%	46%



COMMENTS: Another very nice "Levi" daughter, early maturing, thick bodied, good doing type. Joined to Allednaw Leopold R45 (PP) from 20th August. *Pregnancy test details sale day.*

LOT
43

GLENLEA FAIRFIELD
CALICO 1ST (P)

TATTOO: GLE S296E
DOB: 16/05/2021

PARINGA RIO BRAVO D213E (TOL D213E) (P)
SIRE: **ELRIDGE LEVI (RUU L69E) (P)**
GRANVILLE LUCY 10 (GDA F11E)

PALGROVE CELTIC (PK C632E) (P)
DAM: **LVH-FAIRFIELD CALICO J44E (LVH J44E) (P)**
FERNVALE CALICO (FEN C80E)



September 2022 Australasian Charolais
BREEDPLAN Analysis

	CE Dir	GL	BW	200	400	600
EBV	+1.8	-2.1	+1.9	+27	+56	+77
Acc	35%	49%	55%	56%	59%	64%
	Milk	SS	Carc Wt	EMA	Rump	IMF
EBV	+7	+1.8	+45	+3.8	+2.6	+0.7
Acc	38%	52%	54%	45%	55%	45%



COMMENTS: High performance female, younger than most, easy doing medium maturity type that will breed some great bulls. Joined to Challambi Muscles (PP) from 20th August.
Pregnancy test details sale day.

LOT
44

GLENLEA FAIRFIELD
LUCINDA 1S (P)

TATTOO: GLE S299E
DOB: 20/04/2021

ADVANCE DOMINO D36 (ADV D36E) (P)
SIRE: **CRATHES JACKPOT (KRG J28E) (P)**
PALGROVE ESTELLA 195 (PK Z498E) (P)

PALGROVE DEBUT (PK D619E)
DAM: **LVH-FAIRFIELD LUCINDA J86E (LVH J86E)**
GOBONGO LUCINDA B96E (GO B96E) (P)



September 2022 Australasian Charolais
BREEDPLAN Analysis

	CE Dir	GL	BW	200	400	600
EBV	+0.9	-0.6	+1.0	+17	+43	+64
Acc	34%	50%	55%	57%	60%	67%
	Milk	SS	Carc Wt	EMA	Rump	IMF
EBV	+7	+2.0	+29	+1.3	+3.1	+1.1
Acc	36%	51%	55%	45%	57%	46%



COMMENTS: Big strong heifer, from a great dam. Will produce high value progeny. Joined to Challambi Muscles (PP) from 20th August. *Pregnancy test details sale day.*

LOT
45

GLENLEA
SABINE (P)

TATTOO: GLE S179
DOB: 12/03/2021

SIRE: **FAIRFIELD STUD SIRE**

DAM: **FAIRFIELD CHAROLAIS COW**

COMMENTS: Lovely bodied polled heifer.

Joined to Allednaw Leopold R45 (PP) from 20th August.
Pregnancy test details sale day.



LOT
46

GLENLEA FAIRFIELD
ZANTANA 1S (P)

TATTOO: GLE S197E
DOB: 10/02/2021

PARINGA RIO BRAVO D213E (TOL D213E) (P)
SIRE: **ELRIDGE LEVI (RUU L69E) (P)**
GRANVILLE LUCY 10 (GDA F11E)

MOONGOOL CASHMERE (DP2 C321E) (P)
DAM: **LVH-FAIRFIELD ZANTANA J35E (LVH J35E)**
FERNVALE ZANTANA (FEN Z134E) (P)



September 2022 Australasian Charolais
BREEDPLAN Analysis

	CE Dir	GL	BW	200	400	600
EBV	+0.1	+0.4	+2.3	+23	+49	+75
Acc	36%	49%	57%	58%	61%	68%
	Milk	SS	Carc Wt	EMA	Rump	IMF
EBV	+6	+1.8	+38	+1.8	+1.1	+0.2
Acc	38%	51%	56%	45%	58%	46%

COMMENTS: Big Powerful heifer, good frame, fine coated and polled, will produce high value progeny. Joined to Allednaw Leopold R45 (PP) from 20th August. *Pregnancy test details sale day.*



LOT
47

GLENLEA FAIRFIELD
STILL (P)

TATTOO: GLE S158
DOB: 18/03/2021

SIRE: **FAIRFIELD STUD SIRE**

DAM: **FAIRFIELD STUD FEMALE**

COMMENTS: Early maturing heifer, polled, ideal balance of carcass and softness.

PTIC TO Allednaw Leopold R45 Due Feb / March 2023.



LOT
48

GLENLEA FAIRFIELD
LAURA 1ST

TATTOO: GLE S180A
DOB: 21/03/2021

SIRE: **FAIRFIELD STUD SIRE**

PALGROVE DEBUT (PK D619E)
DAM: **LVH-FAIRFIELD LAURA H278E (LVH H278E)**
LVH-FAIRFIELD ANNABELLE (LVH A8E)



September 2022 Australasian Charolais
BREEDPLAN Analysis

	CE Dir	GL	BW	200	400	600
EBV	+0.8	-0.8	+1.5	+19	+45	+62
Acc	35%	51%	55%	55%	58%	64%
	Milk	SS	Carc Wt	EMA	Rump	IMF
EBV	+7	+1.4	+35	+3.0	+2.1	+0.8
Acc	37%	52%	53%	45%	55%	45%

COMMENTS: Good framed , plenty of growth, she will grow into a big cow. Joined to Allednaw Leopold R45 (PP) from 20th August. *Pregnancy test details sale day.*



LOT
49

GLENLEA FAIRFIELD
CHIT CHAT

TATTOO: GLE S189E
DOB: 04/04/2021

ADVANCE DOMINO D36 (ADV D36E) (P)
SIRE: CRATHES JACKPOT (KRG J28E) (P)
PALGROVE ESTELLA 195 (PK Z498E) (P)

ADVANCE COLBY C129 (ADV C129E) (P)
DAM: LVH-FAIRFIELD CHIT CHAT (LVH F68E) (P)
FERNVALE CHIT CHAT (FEN C55E) (P)



September 2022 Australasian Charolais
BREEDPLAN Analysis

	CE Dir	GL	BW	200	400	600
EBV	-0.3	-0.1	+1.5	+19	+43	+56
Acc	34%	48%	57%	59%	62%	69%
	Milk	SS	Carc Wt	EMA	Rump	IMF
EBV	+7	+1.0	+32	+2.0	+0.8	+0.5
Acc	35%	51%	57%	44%	57%	46%

COMMENTS: Good deep bodied type, great carcass, will produce quality bulls. Joined to Challambi Muscles (PP) from 20th August. *Pregnancy test details sale day.*



LOT
50

GLENLEA
MY GIRL 21ST (P)

TATTOO: GLE S22E
DOB: 15/02/2021

GLENLEA HILTON (GLE H30E) (P)
SIRE: ORARA WATERFALL GLENLEA NORTH (WFA N25E) (P)
GLENLEA CHAROL 72ND (GLE J8E) (P)

GLENLEA JUST RED (GLE J5E) (P)
DAM: GLENLEA MY GIRL 9TH (GLE M107E) (P)
THW MY GIRL (THW E3E) (P)



September 2022 Australasian Charolais
BREEDPLAN Analysis

	CE Dir	GL	BW	200	400	600
EBV	-6.7	-2.5	+1.7	+17	+32	+50
Acc	35%	41%	68%	53%	56%	63%
	Milk	SS	Carc Wt	EMA	Rump	IMF
EBV	+5	+1.9	+26	+1.4	+1.4	+0.0
Acc	34%	44%	50%	40%	54%	41%

COMMENTS: A powerful heifer, PP Polled, extra thick bodied. Joined to Challambi Muscles (PP) from 20th August. *Pregnancy test details sale day.*



LOT
51

GLENLEA
SARINA

TATTOO: GLE S19A
DOB: 11/02/2021

GLENLEA HILTON (GLE H30E) (P)
SIRE: ORARA WATERFALL GLENLEA NORTH (WFA N25E) (P)
GLENLEA CHAROL 72ND (GLE J8E) (P)

DAM: GLENLEA H157 (GLE H157)



September 2022 Australasian Charolais
BREEDPLAN Analysis

	CE Dir	GL	BW	200	400	600
EBV	-2.1	-2.5	+0.7	+13	+27	+42
Acc	25%	31%	64%	47%	51%	59%
	Milk	SS	Carc Wt	EMA	Rump	IMF
EBV		+1.4	+26	+0.8	-1.7	-0.2
Acc		35%	44%	35%	50%	36%

COMMENTS: Good frame, growth and length. Joined to Allednaw Leopold R45 (PP) from 20th August. *Pregnancy test details sale day.*



LOT
52

GLENLEA
SUEY (P)

TATTOO: GLE S210A
DOB: 25/03/2021

VALLEY VIEW GLENLEA JUST'NEASY (VLW J23E) (P)
SIRE: KYNHAVEN MURPHY (SRB M14E) (P)
MULLUM CORALIE 4 (BLA K199E) (P)

DAM: CSA CHAROLAIS GENERIC DAM 997 (\$A7 A997)



September 2022 Australasian Charolais
BREEDPLAN Analysis

	CE Dir	GL	BW	200	400	600
EBV			-0.6	+9	+21	+25
Acc			39%	41%	45%	55%
	Milk	SS	Carc Wt	EMA	Rump	IMF
EBV	+1.3	+19	+1.4	+1.7	+0.4	
Acc	30%	42%	31%	48%	33%	



COMMENTS: Easy doing, easy finishing and fine hair coat.
REJOINED Joined to Challambi Muscles (PP) from 20th August. *Pregnancy test details sale day.*

LOT
53

GLENLEA
SUZIE (P)

TATTOO: GLE S199A
DOB: 05/02/2021

VALLEY VIEW GLENLEA JUST'NEASY (VLW J23E) (P)
SIRE: KYNHAVEN MURPHY (SRB M14E) (P)
MULLUM CORALIE 4 (BLA K199E) (P)

DAM: CSA CHAROLAIS GENERIC DAM 997 (\$A7 A997)



September 2022 Australasian Charolais
BREEDPLAN Analysis

	CE Dir	GL	BW	200	400	600
EBV			-1.3	+6	+18	+26
Acc			39%	41%	45%	55%
	Milk	SS	Carc Wt	EMA	Rump	IMF
EBV	+1.7	+11	-0.8	+2.5	+1.0	
Acc	30%	42%	31%	48%	33%	



COMMENTS: Good frame, Low BW and fine coated. Joined to Challambi Muscles (PP) from 20th August. *Pregnancy test details sale day.*

LOT
54

GLENLEA FAIRFIELD
SALLY (P)

TATTOO: GLE S159A
DOB: 01/03/2021

ADVANCE DOMINO D36 (ADV D36E) (P)
SIRE: CRATHES JACKPOT (KRG J28E) (P)
PALGROVE ESTELLA 195 (PK Z498E) (P)

DAM: CSA CHAROLAIS GENERIC DAM 997 (\$A7 A997)



September 2022 Australasian Charolais
BREEDPLAN Analysis

	CE Dir	GL	BW	200	400	600
EBV	+1.7	-2.0	-0.5	+12	+34	+42
Acc	28%	44%	47%	53%	57%	65%
	Milk	SS	Carc Wt	EMA	Rump	IMF
EBV	+6	+1.1	+26	+1.2	+2.6	+0.7
Acc	30%	48%	53%	43%	57%	44%



COMMENTS: Easy doing type, early maturing and polled.

LOT
55

GLENLEA FAIRFIELD
SKY (P)

TATTOO: GLE S190
DOB: 04/03/2021

SIRE: FAIRFIELD STUD SIRE

DAM: FAIRFIELD CHAROLAIS COW

COMMENTS: Nicely balanced all round, polled and fine hair.

Joined to Allednaw Leopold R45 (PP) from 20th August.
Pregnancy test details sale day.



LOT
56

GLENLEA FAIRFIELD
SERENA (P)

TATTOO: GLE S161
DOB: 15/03/2021

SIRE: FAIRFIELD STUD SIRE

DAM: FAIRFIELD CHAROLAIS COW

COMMENTS: Early maturing, moderate frame, easy doing.

PTIC TO Allednaw Leopold R45 Due Feb / March 2023.



LOT
57

GLENLEA FAIRFIELD
SAUCY (R/F)

TATTOO: GLE S266
DOB: 25/03/2021

PARINGA RIO BRAVO D213E (TOL D213E) (P)

SIRE: ELRIDGE LORD (RUU L43E) (P)
ELRIDGE HARMONY (RUU H14E)

DAM: CSA CHAROLAIS GENERIC DAM 997 (\$A7 A997)



September 2022 Australasian Charolais
BREEDPLAN Analysis

	CE Dir	GL	BW	200	400	600
EBV	+1.7	-1.4	+0.4	+14	+36	+46
Acc	28%	44%	45%	50%	54%	60%
	Milk	SS	Carc Wt	EMA	Rump	IMF
EBV	+6	+1.1	+29	+1.6	+1.3	+0.0
Acc	30%	47%	50%	41%	53%	42%

COMMENTS: Strong good framed heifer, fine coated, will be a great cow.



LOT
58

GLENLEA FAIRFIELD
ESTELLA 1S (P)

TATTOO: GLE S214A
DOB: 23/03/2021

SIRE: FAIRFIELD STUD SIRE

ADVANCE COLBY C129 (ADV C129E) (P)
DAM: LVH-FAIRFIELD ESTELLA J21E (LVH J21E)
GREENWOOD B42E ESTELLA 32 (TSP B42E)



September 2022 Australasian Charolais
BREEDPLAN Analysis

	CE Dir	GL	BW	200	400	600
EBV	-4.5	+0.8	+1.6	+12	+30	+34
Acc	35%	48%	56%	57%	60%	67%
	Milk	SS	Carc Wt	EMA	Rump	IMF
EBV	+7	+0.4	+20	+1.1	-0.1	+0.0
Acc	36%	51%	55%	44%	53%	46%

COMMENTS: Early maturing, very docile, suit colder country with thicker hair coat. Joined to Challambi Muscles (PP) from 20th August. *Pregnancy test details sale day.*



LOT
59

GLENLEA FAIRFIELD
KITTY 1ST (P)

TATTOO: GLE S204A
DOB: 17/03/2021

SIRE: FAIRFIELD STUD SIRE

PALGROVE ZILLMAN (PK Z108E) (P)
DAM: LVH-FAIRFIELD KITTY J27E (LVH J27E)
GUNNADOO KITTY V229E (GN1 V229E)



September 2022 Australasian Charolais
BREEDPLAN Analysis

	CE Dir	GL	BW	200	400	600
EBV	+0.2	+0.1	+1.3	+13	+33	+39
Acc	36%	50%	57%	58%	61%	68%
	Milk	SS	Carc Wt	EMA	Rump	IMF
EBV	+8	+0.4	+26	+3.1	+2.3	+0.5
Acc	39%	53%	56%	46%	58%	47%

COMMENTS: Great bodied heifer, early maturing and polled. Joined to Challambi Muscles (PP) from 20th August. *Pregnancy test details sale day.*



LOT
60

GLENLEA FAIRFIELD
SABA (P)

TATTOO: GLE S194
DOB: 23/02/2021

SIRE: FAIRFIELD STUD SIRE

DAM: FAIRFIELD CHAROLAIS COW

COMMENTS: Early maturing, balanced, fine hair type.

Joined to Allednaw Leopold R45 (PP) from 20th August. *Pregnancy test details sale day.*



LOT
61

CALMVIEW
MAXINE S2E (P)

TATTOO: CVW S2E
DOB: 09/01/2021

ANC KINGSTON K277 (ANC K277F) (P)
SIRE: ANC NASDAQ (ANC N357F) (P)
ANC NATASHA 311 (ANC K311F) (P)

VIOLET HILLS KARATHA (VHV K174E) (P)
DAM: CALMVIEW MAXINE N61E (CVW N61E) (P)
CALMVIEW MAXINE K45E (CVW K45E) (P)



September 2022 Australasian Charolais
BREEDPLAN Analysis

	CE Dir	GL	BW	200	400	600
EBV	+6.2	-2.3	-0.6	+13	+22	+28
Acc	32%	36%	67%	54%	48%	50%
	Milk	SS	Carc Wt	EMA	Rump	IMF
EBV	+9	+0.7	+21			
Acc	32%	29%	35%			

COMMENTS: Lovely heifer, great shape showing extra carcass.

PTIC to homozygous polled red factor Rosedale R48E 12 weeks on 21/9/22

Due to continual wet weather we were unable to take high quality catalogue photos.

Videos will be produced well ahead of the sale of both cow and calf at foot, and will be available to view on the AuctionPlus website.

LOT
62

CALMVIEW
JAMICA S8E (P)

TATTOO: CVW S8E
DOB: 16/01/2021

PLEASANT DAWN CHISUM 216A PMC350100 (OAC J216E) (P)
SIRE: PALGROVE NIFTY (PK N458E) (P)
PALGROVE TREASURE L299E (PK L299E) (P)

CALMVIEW LENCHO L54E (CVW L54E) (P)
DAM: CALMVIEW JAMICA P59E (CVW P59E) (P)
CALMVIEW JAIMICA M34E (CVW M34E) (P)



September 2022 Australasian Charolais
BREEDPLAN Analysis

	CE Dir	GL	BW	200	400	600
EBV	+5.4	-4.4	-2.0	+3	+16	+16
Acc	33%	45%	65%	58%	53%	53%
	Milk	SS	Carc Wt	EMA	Rump	IMF
EBV	+14	+1.8	+16	+1.2	+1.0	-0.1
Acc	35%	43%	40%	31%	31%	30%

COMMENTS: Sired by Palgrove Nifty homozygous polled, quality stud heifer.

PTIC to homozygous polled red factor Rosedale R48E 8 weeks on 21/9/22

Due to continual wet weather we were unable to take high quality catalogue photos.

Videos will be produced well ahead of the sale of both cow and calf at foot, and will be available to view on the AuctionPlus website.

LOT
63

CALMVIEW
REBBY S63E (P)

TATTOO: CVW S63E
DOB: 29/01/2021

PLEASANT DAWN CHISUM 216A PMC350100 (OAC J216E) (P)
SIRE: PALGROVE NIFTY (PK N458E) (P)
PALGROVE TREASURE L299E (PK L299E) (P)

CALMVIEW LENCHO L54E (CVW L54E) (P)
DAM: CALMVIEW REBBY P57E (CVW P57E)
CALMVIEW REBBY K32E (CVW K32E) (P)



September 2022 Australasian Charolais
BREEDPLAN Analysis

	CE Dir	GL	BW	200	400	600
EBV	+6.0	-4.8	-1.7	+2	+16	+19
Acc	33%	46%	65%	59%	54%	54%
	Milk	SS	Carc Wt	EMA	Rump	IMF
EBV	+14	+2.2	+16	+1.2	+0.6	-0.2
Acc	36%	44%	41%	32%	32%	31%

COMMENTS: Another well-bred high-performance stud heifer.

PTIC to homozygous polled red factor Rosedale R48E 8 weeks on 21/9/22

Due to continual wet weather we were unable to take high quality catalogue photos.

Videos will be produced well ahead of the sale of both cow and calf at foot, and will be available to view on the AuctionPlus website.

LOT
64

CALMVIEW
DESIRE R84E (P)

TATTOO: CVW R84E
DOB: 20/10/2020

ANC KINGSTON K277 (ANC K277F) (P)
SIRE: ANC NASDAQ (ANC N357F) (P)
ANC NATASHA 311 (ANC K311F) (P)

VERNOLA JUST RIGHT J6E (VIW J6E) (P/S)
DAM: ALLEDNAW DESIRE L24 (AKT L24E) (P)
ALLEDNAW DESIRE G102E (AKT G102E) (P)



September 2022 Australasian Charolais
BREEDPLAN Analysis

	CE Dir	GL	BW	200	400	600
EBV	+1.3	-0.6	+1.3	+14	+24	+29
Acc	34%	38%	66%	47%	45%	48%
	Milk	SS	Carc Wt	EMA	Rump	IMF
EBV	+1	+0.5	+20			
Acc	35%	25%	34%			

COMMENTS: By homozygous polled full French sire out of a Desire cow.

Preg test details sale day

Due to continual wet weather we were unable to take high quality catalogue photos.

Videos will be produced well ahead of the sale of both cow and calf at foot, and will be available to view on the AuctionPlus website.

LOT
65

CALMVIEW
LAURA S40E (P)

TATTOO: CVW S40E
DOB: 23/02/2021

LT LEDGER 0332 M791626 (OAU F3168E) (P)
SIRE: PALGROVE MONARCH (PK M628E) (P)
PALGROVE DESIRE 172 (PK F724F)

JAY TEES HANGOVER (JT H32E) (P)
DAM: CALMVIEW LAURA L72E (CVW L72E) (P)
CALMVIEW LAURA J63E (CVW J63E) (P)



September 2022 Australasian Charolais
BREEDPLAN Analysis

	CE Dir	GL	BW	200	400	600
EBV	+5.8	-2.8	-0.4	+16	+27	+32
Acc	41%	51%	67%	60%	56%	55%
	Milk	SS	Carc Wt	EMA	Rump	IMF
EBV	+7	+0.7	+23	+1.8	+0.2	+0.7
Acc	48%	46%	45%	36%	39%	35%

COMMENTS: Another quality Palgrove Monarch daughter.

Pregnancy test details sale day.

Due to continual wet weather we were unable to take high quality catalogue photos.

Videos will be produced well ahead of the sale of both cow and calf at foot, and will be available to view on the AuctionPlus website.



Lot 1 in this sale **Glenlea Chiffon 10th (P) R/F** when she was 12 months old.

LOT
66

CALMVIEW
BRYELA S48E (P)

TATTOO: CVW S48E
DOB: 03/03/2021

LT LEDGER 0332 M791626 (OAU F3168E) (P)
SIRE: **PALGROVE MONARCH (PK M628E) (P)**
PALGROVE DESIRE 172 (PK F724F)

FERNVALE GOLD DIGGER (FEN G39E) (P)
DAM: **CALMVIEW BRYELA M21E (CVW M21E) (P)**
MIXHILL BRYELA (MIX B375E)

September 2022 Australasian Charolais BREEDPLAN Analysis

	CE Dir	GL	BW	200	400	600	Milk	SS	Carc Wt	EMA	Rump	IMF
EBV	+2.9	-1.4	+0.9	+18	+31	+44	+8	+1.0	+27	+2.4	-0.6	+0.6
Acc	41%	49%	67%	59%	55%	55%	46%	45%	44%	35%	39%	35%

COMMENTS: Palgrove Monarch has left his mark here.

Pregnancy test details sale day.

LOT
67

CALMVIEW
AMBROSIA S50E (P)

TATTOO: CVW S50E
DOB: 15/03/2021

LT LEDGER 0332 M791626 (OAU F3168E) (P)
SIRE: **PALGROVE MONARCH (PK M628E) (P)**
PALGROVE DESIRE 172 (PK F724F)

PALGROVE HYDRO H8 (PK H8E) (P)
DAM: **CALMVIEW AMBROSIA L6E (CVW L6E)**
FERNVALE AMBROSIA (FEN A76E) (P)

September 2022 Australasian Charolais BREEDPLAN Analysis

	CE Dir	GL	BW	200	400	600	Milk	SS	Carc Wt	EMA	Rump	IMF
EBV	+7.4	-2.8	-0.2	+20	+33	+48	+10	+1.7	+30	+2.7	-0.9	+0.4
Acc	43%	51%	68%	60%	57%	56%	48%	47%	46%	37%	41%	37%

COMMENTS: They just keep coming Monarch daughter. Cant keep them all.

Pregnancy test details sale day.

LOT
68

CALMVIEW
KRYSTAL R51E (P)

TATTOO: CVW R51E
DOB: 12/06/2020

LT LEDGER 0332 M791626 (OAU F3168E) (P)
SIRE: **PALGROVE MONARCH (PK M628E) (P)**
PALGROVE DESIRE 172 (PK F724F)

G. BROS THIN RED LINE 527W MC326475 (OAC E6475E) (P)
DAM: **CALMVIEW KRYSTAL L68E (CVW L68E) (P)**
BRANCH VIEW KRYSTAL J21E (BVC J21E)

September 2022 Australasian Charolais BREEDPLAN Analysis

	CE Dir	GL	BW	200	400	600	Milk	SS	Carc Wt	EMA	Rump	IMF
EBV	+4.7	-2.7	-0.3	+16	+25	+27	+4	+1.7	+20	+1.5	-0.2	+0.4
Acc	42%	54%	69%	61%	57%	57%	47%	48%	46%	36%	40%	36%

COMMENTS: Homozygous polled heifer by Palgrove Monarch. PTIC to DSKR28E polled red factor bull due to calve 28/2/23

LOT
69

CALMVIEW
FLORA P58E

TATTOO: CVW P58E
DOB: 15/10/2018

GLENLEA EARLY (GLE E11E) (P)
SIRE: **CALMVIEW LENCHO L54E (CVW L54E) (P)**
CALMVIEW NOLANA E26E (CVW J13E) (P)

ANC BOUNTY (ANC B549F) (P)
DAM: **ANC BOUNTY'S FLORA 2ND (ANC K58F)**
ANC ZERENS FLORA (ANC C761F)

September 2022 Australasian Charolais BREEDPLAN Analysis

	CE Dir	GL	BW	200	400	600	Milk	SS	Carc Wt	EMA	Rump	IMF
EBV	+0.5	-2.1	+1.1	+9	+20	+22	+5	+0.8	+16	+1.6	-0.9	-0.6
Acc	38%	39%	67%	59%	55%	57%	49%	36%	43%	30%	30%	28%

COMMENTS: Young cow with all her life ahead. PTIC to Wakefield Q213E homozygous polled red factor 11 weeks on 6/8/22

LOT
70

CALMVIEW
POPPY P72E (P) (R/F)

TATTOO: CVW P72E
DOB: 17/11/2018

ASCOT ELDORADO (JAJ E14E) (P)
SIRE: ASCOT ELDORADO L525 (JAJ L525E) (P)
ASCOT F27E (JAJ F27E)

GLENLEA EARLY (GLE E11E) (P)
DAM: CALMVIEW POPPY J05E (CVW J5E) (P)
CALMVIEW POPPY G79E (CVW G79E) (P)

September 2022 Australasian Charolais BREEDPLAN Analysis

	CE Dir	GL	BW	200	400	600	Milk	SS	Carc Wt	EMA	Rump	IMF
EBV	+0.7	-4.2	-0.7	+10	+19	+21	+7	+1.2	+14	+1.8	+0.9	+0.4
Acc	41%	43%	68%	57%	54%	55%	47%	46%	43%	35%	37%	33%

COMMENTS: Young cow from the Poppy cow family. PTIC to Wakefield Q213E homozygous polled red factor 12 weeks on 6/8/22

LOT
71

CALMVIEW
MAXINE R13E

TATTOO: CVW R13E
DOB: 12/04/2020

ANC FONTENAY (ANC F77F) (P)
SIRE: ANC KILOWATT (ANC K96F) (P)
TIRRIKE ERINNA (RES E21F)

PALGROVE HYDRO H8 (PK H8E) (P)
DAM: CALMVIEW LUCKY L27E (CVW L27E) (P)
GLENLEA OTHELIA 4TH (GLE F15E) (P)

September 2022 Australasian Charolais BREEDPLAN Analysis

	CE Dir	GL	BW	200	400	600	Milk	SS	Carc Wt	EMA	Rump	IMF
EBV	-0.9	-2.3	+1.6	+16	+28	+41	+7	+0.7	+25			
Acc	37%	37%	69%	56%	52%	53%	42%	32%	39%			

COMMENTS: This heifer is out of leading cow families.

Pregnancy test details sale day.

LOT
72

CALMVIEW
DOLOTTA R14F (P)

TATTOO: CVW R14F
DOB: 12/04/2020

ANC FONTENAY (ANC F77F) (P)
SIRE: ANC KILOWATT (ANC K96F) (P)
TIRRIKE ERINNA (RES E21F)

ANC DOGOOD (ANC D327F)
DAM: CALMVIEW DALOTTA J54F (CVW J54F) (P/S)
KANDANGA VALLEY DALOTTA D208F (KAV D208F)

September 2022 Australasian Charolais BREEDPLAN Analysis

	CE Dir	GL	BW	200	400	600	Milk	SS	Carc Wt	EMA	Rump	IMF
EBV	-0.7	-1.6	+1.1	+9	+14	+18	+4	-0.2	+14			
Acc	34%	35%	68%	56%	51%	53%	42%	27%	37%			

COMMENTS: Only full French heifer offered by Calmview

Pregnancy test details sale day.

LOT
73

GLENLEA FAIRFIELD
ZANADOO 1S (P)

TATTOO: GLE S165A
DOB: 23/03/2021

SIRE: FAIRFIELD STUD SIRE

MOONGOOL CASHMERE (DP2 C321E) (P)
DAM: LVH-FAIRFIELD ZANADOO J100E (LVH J100E)
FERNVALE ZANADO (FEN Z101E)

September 2022 Australasian Charolais BREEDPLAN Analysis

	CE Dir	GL	BW	200	400	600	Milk	SS	Carc Wt	EMA	Rump	IMF
EBV	-1.4	+0.0	+0.9	+17	+36	+47	+6	+1.2	+27	+2.4	+3.0	+0.3
Acc	35%	49%	57%	57%	61%	67%	37%	51%	56%	45%	58%	46%

Joined to Challambi Muscles (PP) from 20th August. Pregnancy test details sale day.

LOT
75

GLENLEA FAIRFIELD
VERMINT 1S (P)

TATTOO: GLE S218A
DOB: 11/04/2021

SIRE: FAIRFIELD STUD SIRE

DSK WW ARCHER A20E (DSK A20E) (P)
DAM: LVH-FAIRFIELD VERMINT (LVH F58E) (P)
GREENWOOD VERMINT Y22E (TSP Y22E) (P)

September 2022 Australasian Charolais BREEDPLAN Analysis



	CE Dir	GL	BW	200	400	600	Milk	SS	Carc Wt	EMA	Rump	IMF
EBV	+1.1	-0.8	+1.4	+18	+42	+64	+6	+1.6	+28	+0.4	+0.9	+0.9
Acc	35%	50%	57%	59%	63%	69%	38%	52%	58%	46%	58%	47%

Joined to Challambi Muscles (PP)
from 20th August. *Pregnancy test details sale day.*

LOT
76

GLENLEA FAIRFIELD
SUSETTE 1S

TATTOO: GLE S215E
DOB: 17/03/2021

ADVANCE DOMINO D36 (ADV D36E) (P)
SIRE: CRATHES JACKPOT (KRG J28E) (P)
PALGROVE ESTELLA 195 (PK Z498E) (P)

PALGROVE ZILLMAN (PK Z108E) (P)
DAM: LVH-FAIRFIELD SUSETTE J97E (LVH J97E) (P)
AYR EBOR'S SUSETTE (AYR Z137E)

September 2022 Australasian Charolais BREEDPLAN Analysis



	CE Dir	GL	BW	200	400	600	Milk	SS	Carc Wt	EMA	Rump	IMF
EBV	+3.0	-0.4	+0.4	+11	+28	+31	+8	+0.7	+21	+2.7	+2.4	+0.4
Acc	36%	50%	56%	57%	61%	68%	37%	52%	56%	45%	58%	46%

Joined to Challambi Muscles (PP)
from 20th August. *Pregnancy test details sale day.*

LOT
77

GLENLEA FAIRFIELD
CARISSA 1S (P)

TATTOO: GLE S216E
DOB: 09/05/2021

PARINGA RIO BRAVO D213E (TOL D213E) (P)
SIRE: ELRIDGE LEVI (RUU L69E) (P)
GRANVILLE LUCY 10 (GDA F11E)

PALGROVE DEBUT (PK D619E)
DAM: LVH-FAIRFIELD CARISSA J7 (LVH J7E) (P/S)
LVH-FAIRFIELD ZAP (LVH Z1E)

September 2022 Australasian Charolais BREEDPLAN Analysis



	CE Dir	GL	BW	200	400	600	Milk	SS	Carc Wt	EMA	Rump	IMF
EBV	+1.8	-0.3	+1.7	+17	+40	+55	+7	+1.5	+31	+2.6	+1.5	+0.2
Acc	34%	50%	55%	55%	58%	63%	36%	51%	53%	44%	55%	45%

Joined to Challambi Muscles (PP)
from 20th August. *Pregnancy test details sale day.*

LOT
78

GLENLEA FAIRFIELD
SHIRLEY

TATTOO: GLE S157
DOB: 08/03/2021

SIRE: FAIRFIELD STUD SIRE

DAM: FAIRFIELD STUD COW

Joined to Challambi Muscles (PP) from 20th August. *Pregnancy test details sale day.*

LOT
79

GLENLEA FAIRFIELD
WENDY 1ST (P)

TATTOO: GLE S171A
DOB: 28/04/2021

SIRE: FAIRFIELD STUD SIRE

PALGROVE ZILLMAN (PK Z108E) (P)
DAM: LVH-FAIRFIELD WENDY J1E (LVH J1E) (P)
ANC LEADER'S WENDI (ANC Y103E)



September 2022 Australasian Charolais BREEDPLAN Analysis

	CE Dir	GL	BW	200	400	600	Milk	SS	Carc Wt	EMA	Rump	IMF
EBV	+2.2	-0.3	+0.6	+12	+32	+34	+9	+0.6	+26	+3.1	+1.7	+0.4
Acc	36%	50%	57%	58%	61%	68%	37%	52%	56%	46%	58%	46%

Joined to Challambi Muscles (PP)
from 20th August. *Pregnancy test
details sale day.*

LOT
80

GLENLEA
GRACE 7TH (P)

TATTOO: GLE R69E
DOB: 23/10/2020

ASCOT GALAXY G131 (JAJ G131E) (P)
SIRE: CHALLAMBI NORMAN (CHA N13E) (P)
GOBONGO ISABELLA D86E (GO D86E) (P)

LITTLE VALLEY GRANDIOSE (GKB G5E) (P)
DAM: GLENLEA GRACE 2ND (GLE P123E) (P)
ORARA WATERFALL GLENLEA GRACE 1ST (WFA K27E) (P)



September 2022 Australasian Charolais BREEDPLAN Analysis

	CE Dir	GL	BW	200	400	600	Milk	SS	Carc Wt	EMA	Rump	IMF
EBV	-1.1	-2.7	-0.5	+11	+27	+40	+14	+1.3	+23	+1.7	+1.1	+0.5
Acc	37%	40%	62%	55%	52%	51%	38%	39%	41%	33%	38%	33%

Joined to Allednaw Leopold R45
(PP) from 20th August. *Pregnancy
test details sale day.*

LOT
81

GLENLEA FAIRFIELD
AGINA 2ND (P)

TATTOO: GLE S186A
DOB: 14/02/2021

SIRE: FAIRFIELD STUD SIRE

LT BLUEGRASS 4017P M686569 (OAU Z4017E) (P)
DAM: LVH-FAIRFIELD AGINA II H85 (LVH H85E) (P)
LVH-FAIRFIELD LILLY (LVH E106E) (P)



September 2022 Australasian Charolais BREEDPLAN Analysis

	CE Dir	GL	BW	200	400	600	Milk	SS	Carc Wt	EMA	Rump	IMF
EBV	+8.3	-2.2	+0.7	+22	+48	+65	+9	+1.8	+38	+2.4	+1.7	+0.5
Acc	39%	57%	57%	60%	63%	69%	41%	55%	59%	49%	60%	50%

Joined to Allednaw Leopold R45
(PP) from 20th August. *Pregnancy
test details sale day.*

LOT
82

GLENLEA
SAMMY

TATTOO: GLE S212
DOB: 01/03/2021

SIRE: FAIRFIELD STUD SIRE

DAM: FAIRFIELD CHAROLAIS COW

Joined to Allednaw Leopold R45 (PP) from 20th August.
Pregnancy test details sale day.

LOT
83

GLENLEA FAIRFIELD
BELLE 1ST (P) (R/F)

TATTOO: GLE S200A
DOB: 16/03/2021

SIRE: FAIRFEILD STUD SIRE

PALGROVE DEBUT (PK D619E)
DAM: LVH-FAIRFIELD BELLE H145 (LVH H145E)
LVH-FAIRFIELD BELLE (LVH B8F)



September 2022 Australasian Charolais BREEDPLAN Analysis

	CE Dir	GL	BW	200	400	600	Milk	SS	Carc Wt	EMA	Rump	IMF
EBV	+0.2	-1.0	+0.9	+17	+38	+49	+7	+1.3	+27	+3.5	+2.8	+1.0
Acc	35%	50%	56%	57%	60%	67%	36%	52%	55%	45%	54%	46%

Joined to Allednaw Leopold R45 (PP) from 20th August. *Pregnancy test details sale day.*

LOT
84

GLENLEA FAIRFIELD
SHAZZ (P)

TATTOO: GLE S156
DOB: 09/02/2021

SIRE: FAIRFIELD STUD SIRE

DAM: FAIRFIELD CHAROLAIS COW

Joined to Allednaw Leopold R45 (PP) from 20th August. *Pregnancy test details sale day.*

LOT
85

GLENLEA FAIRFIELD
SKYWAY (P/S)

TATTOO: GLE S188
DOB: 04/03/2021

SIRE: FAIRFIELD STUD SIRE

DAM: FAIRFIELD CHAROLAIS COW

PTIC TO Allednaw Leopold R45 Due Feb / March 2023.

LOT
86

GLENLEA FAIRFIELD
ANNIE 1ST (P)

TATTOO: GLE S206A
DOB: 19/02/2021

SIRE: FAIRFIELD STUD SIRE

PALGROVE CELTIC (PK C632E) (P)
DAM: LVH-FAIRFIELD ANNIE H241 (LVH H241E) (P)
LVH-FAIRFIELD ANNIE 2 (LVH C13E) (P)



September 2022 Australasian Charolais BREEDPLAN Analysis

	CE Dir	GL	BW	200	400	600	Milk	SS	Carc Wt	EMA	Rump	IMF
EBV	+5.0	-1.2	+1.7	+19	+45	+64	+7	+1.7	+33	+1.5	+0.3	+0.3
Acc	35%	49%	56%	57%	61%	68%	37%	52%	56%	46%	58%	47%

Joined to Allednaw Leopold R45 (PP) from 20th August. *Pregnancy test details sale day.*

LOT
87

GLENLEA FAIRFIELD
ALICE 1ST (P) (R/F)

TATTOO: GLE S176E
DOB: 11/02/2021

PARINGA RIO BRAVO D213E (TOL D213E) (P)
SIRE: **ELRIDGE LEVI (RUU L69E) (P)**
GRANVILLE LUCY 10 (GDA F11E)

PALGROVE ZILLMAN (PK Z108E) (P)
DAM: **LVH-FAIRFIELD ALICE H254 (LVH H254E)**
LVH-FAIRFIELD REFINE (LVH F16E) (P)

September 2022 Australasian Charolais BREEDPLAN Analysis

	CE Dir	GL	BW	200	400	600	Milk	SS	Carc Wt	EMA	Rump	IMF
EBV	-0.7	-1.9	-0.4	+12	+33	+39	+10	+1.1	+25	+3.1	+3.8	+1.0
Acc	37%	51%	56%	58%	61%	68%	39%	54%	57%	47%	59%	48%

Joined to Allednaw Leopold R45 (PP) from 20th August. *Pregnancy test details sale day.*

LOT
88

GLENLEA FAIRFIELD
CARLA 1ST (P)

TATTOO: GLE S209A
DOB: 19/01/2021

SIRE: **FAIRFIELD STUD SIRE**

PALGROVE DALLAS (PK D288E) (P)
DAM: **LVH-FAIRFIELD CARLA H181 (LVH H181E) (P)**
LVH-FAIRFIELD KARLA 3 (LVH E2E) (P)

September 2022 Australasian Charolais BREEDPLAN Analysis

	CE Dir	GL	BW	200	400	600	Milk	SS	Carc Wt	EMA	Rump	IMF
EBV	+1.9	-0.7	+1.7	+17	+36	+50	+5	+1.1	+24	+1.1	+0.7	+0.1
Acc	35%	51%	56%	58%	61%	68%	37%	53%	56%	46%	59%	47%

Joined to Allednaw Leopold R45 (PP) from 20th August. *Pregnancy test details sale day.*

LOT
89

GLENLEA FAIRFIELD
CHARLOTTE1 (P)

TATTOO: GLE S211A
DOB: 02/02/2021

SIRE: **FAIRFIELD STUD SIRE**

PALGROVE CELTIC (PK C632E) (P)
DAM: **LVH-FAIRFIELD CHARLOTTE H244 (LVH H244E) (P)**
FERNVALE CHARLOTTE (FEN C53E) (P)

September 2022 Australasian Charolais BREEDPLAN Analysis

	CE Dir	GL	BW	200	400	600	Milk	SS	Carc Wt	EMA	Rump	IMF
EBV	+4.0	-1.5	+0.9	+15	+34	+43	+7	+1.4	+24	+1.9	+1.0	+0.3
Acc	36%	50%	57%	58%	61%	68%	38%	53%	57%	46%	59%	47%

Joined to Allednaw Leopold R45 (PP) from 20th August. *Pregnancy test details sale day.*

LOT
90

GLENLEA FAIRFIELD
BUTTONS 1S (P) (R/F)

TATTOO: GLE S183E
DOB: 21/03/2021

PARINGA RIO BRAVO D213E (TOL D213E) (P)
SIRE: **ELRIDGE LORD (RUU L43E) (P)**
ELRIDGE HARMONY (RUU H14E)

PALGROVE ZILLMAN (PK Z108E) (P)
DAM: **LVH-FAIRFIELD BUTTONS H34 (LVH H34E)**
ANC ELLERSLIE'S BUTTONS (ANC Z43E)

September 2022 Australasian Charolais BREEDPLAN Analysis

	CE Dir	GL	BW	200	400	600	Milk	SS	Carc Wt	EMA	Rump	IMF
EBV	+2.5	+0.5	+0.7	+10	+27	+37	+9	+0.6	+19	+1.7	+1.2	+0.5
Acc	36%	52%	56%	56%	59%	65%	38%	52%	54%	44%	55%	45%

Joined to Allednaw Leopold R45 (PP) from 20th August. *Pregnancy test details sale day.*

LOT
91

GLENLEA FAIRFIELD
SARINA S181 (P) (R/F)

TATTOO: GLE S181
DOB: 12/03/2021

SIRE: FAIRFIELD STUD SIRE

Joined to Allednaw Leopold R45 (PP) from 20th August.
Pregnancy test details sale day.

DAM: FAIRFIELD CHAROLAIS COW

LOT
92

GLENLEA FAIRFIELD
CASCADE1ST (P)

TATTOO: GLE S160A
DOB: 14/03/2021

SIRE: FAIRFIELD STUD SIRE

PALGROVE CELTIC (PK C632E) (P)
DAM: LVH-FAIRFIELD CASCADE H307E (LVH H307E) (P)
FERNVALE CASCADE (FEN C75E) (P)



September 2022 Australasian Charolais BREEDPLAN Analysis

	CE Dir	GL	BW	200	400	600	Milk	SS	Carc Wt	EMA	Rump	IMF
EBV	+2.9	-1.7	+0.1	+14	+36	+42	+8	+1.5	+27	+2.8	+3.9	+0.8
Acc	35%	49%	57%	58%	61%	68%	37%	52%	56%	46%	58%	47%

Joined to Allednaw Leopold R45
(PP) from 20th August. *Pregnancy
test details sale day.*

LOT
93

GLENLEA FAIRFIELD
SONARA

TATTOO: GLE S172
DOB: 12/02/2021

SIRE: FAIRFIELD STUD SIRE

Joined to Allednaw Leopold R45 (PP) from 20th August.
Pregnancy test details sale day.

DAM: FAIRFIELD CHAROLAIS COW

LOT
94

GLENLEA FAIRFIELD
SARA (P)

TATTOO: GLE S219
DOB: 11/01/2021

SIRE: FAIRFIELD STUD SIRE

Joined to Allednaw Leopold R45 (PP) from 20th August.
Pregnancy test details sale day.

DAM: FAIRFIELD CHAROLAIS COW

11 Specially Selected, Early Maturing Charolais Sires.

These are a special group of bulls, selected for the Northern Rivers production systems, including bulls with unique bloodlines and some with seedstock sire potential.

These bulls represent an early release of some of our best young bulls that we would normally offer in sales in the first half of 2023.

We look forward to showing them to you on sale day.

LOT
95

MAW GLENLEA

SWAGGER (P) (R/F)

TATTOO: MAW S10E

DOB: 16/04/2021

ASCOT JUGGERNAUT J134E (JAJ J134E) (P)

SIRE: ASCOT MILESTONE M622E (JAJ M622E) (P/S)

ASCOT J119E (JAJ J119E) (P)

RANGAN ROUNDUP K18 (RAN K18E) (P)

DAM: HUON YVONNE 2 (DG1 N27E) (P)

HUON YVONNE (DG1 K14E)

September 2022 Australasian Charolais BREEDPLAN Analysis												
Charolais	CE Dir	GL	BW	200	400	600	Milk	SS	Carc Wt	EMA	Rump	IMF
EBV	-3.0	-2.3	+0.5	+16	+34	+44	+7	+2.4	+28	+2.4	+0.0	+0.5
Acc	33%	45%	51%	45%	45%	46%	35%	45%	38%	32%	35%	32%

COMMENTS: Outstanding type 18 months old in photo, combining all the traits needed in a Charolais Sire. Growth, muscle, easy finishing and volume. Sire and Dam have performance genetics going back for generations. All adding up to a high-performance, good doing bull that will leave herd building females and high value male progeny either steers or bulls. Moderate BW with Top 20% 200 to 600 day growth with moderating mature weight to finish and have lower maintenance daughters, with excellent carcass traits.



LOT
96

GLENLEA
NORTH S10 (P)

TATTOO: GLE S10E
DOB: 25/01/2021

GLENLEA HILTON (GLE H30E) (P)
SIRE: ORARA WATERFALL GLENLEA NORTH (WFA N25E) (P)
GLENLEA CHAROL 72ND (GLE J8E) (P)

GLENLEA KENWORTH (GLE K80E) (P)
DAM: GLENLEA EVE 2ND (GLE N350E) (P)
JACKSON EVE (MEJ E37E) (P)

September 2022 Australasian Charolais BREEDPLAN Analysis												
	CE Dir	GL	BW	200	400	600	Milk	SS	Carc Wt	EMA	Rump	IMF
EBV	+0.1	-3.1	+0.5	+17	+32	+50	+7	+2.1	+26	+0.7	+0.2	+0.4
Acc	32%	38%	67%	51%	54%	60%	31%	61%	46%	39%	41%	38%

COMMENTS: Class bull DNA Tested PP Polled with extra yield in every area of his carcass. Early maturing, Fine coated, and positive Fat cover, ideal to produce progeny across the market range from weaners to bullocks. His dam is a moderate, big milking extra soft female and his sire, North is breeding powerful progeny with great carcass, S10 is a perfect example, 20 months old sale day, he will impress when you inspect him. Strong maternal traits will make his daughter's valuable heifers in your herd. Great EBV's Top 15% for all growth traits and positive for all carcass.



PP POLLED

LOT
97

GLENLEA
NORTH S24 (P)

TATTOO: GLE S24E
DOB: 24/02/2021

GLENLEA HILTON (GLE H30E) (P)
SIRE: ORARA WATERFALL GLENLEA NORTH (WFA N25E) (P)
GLENLEA CHAROL 72ND (GLE J8E) (P)

JC LANNISTER L1 (CJC L1E) (P)
DAM: GLENLEA ISABELLA 3RD (GLE P2E) (P)
GLENLEA ISABELLA 2ND (GLE L22E) (P)

September 2022 Australasian Charolais BREEDPLAN Analysis												
	CE Dir	GL	BW	200	400	600	Milk	SS	Carc Wt	EMA	Rump	IMF
EBV	-1.1	-2.4	+0.7	+18	+33	+46	+10	+1.5	+27	+2.5	+0.0	+0.5
Acc	34%	42%	64%	52%	55%	60%	34%	63%	48%	42%	45%	41%

COMMENTS: Early maturing super docile bull, moderate framed, ideal for weaners to heavy feeders. Fine Hair type, good doing type with excellent muscling and well finished. Strong maternal traits will add value to your heifers that you retain. EBV's Moderate BW with Top 20% growth and top 15% EMA.



LOT
98

VALLEY VIEW
SILVER (AI) (P)

TATTOO: VLW S1E
DOB: 09/04/2021

SILVERSTREAM GEDDES G102 (OAN G102D) (P)
SIRE: SILVERSTREAM MANHATTAN M171 (OAN M171E) (P)
SILVERSTREAM WENDY G98 083110098E (PED G98E) (P)

LHD CIGAR E46 M434790 (OAU Q46E) (P)
DAM: VALLEY VIEW CHIFFON SILVER N2 (VLW N2E) (P)
VALLEY VIEW CHIFFON SILVER (VLW J6E) (P)



September 2022 Australasian Charolais BREEDPLAN Analysis

	CE Dir	GL	BW	200	400	600	Milk	SS	Carc Wt	EMA	Rump	IMF
EBV	-7.3	-1.7	+2.1	+19	+33	+43	+4	+1.3	+24	+2.5	+0.4	-0.3
Acc	47%	56%	59%	56%	57%	56%	48%	53%	49%	42%	46%	41%

COMMENTS: We purchased his Dam in January for a Northern Rivers record of \$17,000 for a Charolais cow with Silver at side. Sired by the NZ bull Manhattan, who is breeding very powerful progeny for both growth and carcass, Silver is one of the first sons to sell in Australia. His Dam is by Cigar, one of the most sort after sires ever imported from the USA, out of the Chiffon cow family, one of the most well known in Australia. Deep, thick, high yielding carcass, early maturing, his photo here doesn't do him justice, we will have an updated one and video before sale day on Auctions Plus, to top off the package he is DNA tested PP Polled.



PP POLLED

LOT
99

DSK
KIND SORTED S22 (P)

TATTOO: DSK S22E
DOB: 12/03/2021

ANC GUSTAV (ANC G218F) (P)
SIRE: ANC KIND (ANC K155F) (P)
ANC ISABEAU (ANC A156F)

MOONGOOL ENCORE (DP2 E438E) (P)
DAM: DSK ME FLOSSY J93E (DSK J93E) (P)
DSK EDGE FLOSSY E50E (DSK E50E) (P)



September 2022 Australasian Charolais BREEDPLAN Analysis

	CE Dir	GL	BW	200	400	600	Milk	SS	Carc Wt	EMA	Rump	IMF
EBV	-1.7	-3.2	+0.5	+7	+20	+29	+8	+1.6	+20		-0.6	
Acc	37%	39%	50%	44%	43%	44%	34%	41%	35%		28%	

COMMENTS: This bull's dam was our pick of the mature DSK cows at their dispersal last year, her 12-month-old son topped the bull section at that sale, half-brother to S22. S22 was our pick of the bull calves at foot. He has grown out to be an early maturing, extra thick bull with an outstanding carcass, fine hair type, very docile and DNA Tested PP Polled.



PP POLLED

LOT
100

ASHDAN
RALPH (AI) (P)

TATTOO: ADB R2E
DOB: 17/09/2020

CEDARDALE WINCHESTER 70W (OAC E5927E) (P) LITTLE VALLEY JACKSON (GKB J10E) (P)
SIRE: CEDARDALE ABRACADABRA 123A (OAC J1435E) (P) DAM: LITTLE VALLEY NEPHRITE (GKB N10E) (P)
CEDARDALE MISS 45T (OAC C337E) (P) LITTLE VALLEY JEWEL (GKB J6E) (P)



September 2022 Australasian Charolais BREEDPLAN Analysis

	CE Dir	GL	BW	200	400	600	Milk	SS	Carc Wt	EMA	Rump	IMF
EBV	+1.7	-5.7	-0.3	+5	+9	+12	+8	+1.4	+4		+1.2	
Acc	32%	42%	45%	40%	39%	39%	35%	32%	32%		28%	

COMMENTS: Built like a tank, perfect bull to sire well shaped, slick coated Char X weaners out of Brahman and Brahman x cows. Low BW, big scrotal, high yielding carcass.



PP POLLED

LOT
101

CALMVIEW
SAWN S61E (P)

TATTOO: CVW S61E
DOB: 02/02/2021

PALGROVE HERITAGE H135 (PK H135E) (P) PINAY 8552394134 (OAF U4134F)
SIRE: PALGROVE MASTERPLAN (PK M709E) (P) DAM: PALGROVE DESIRE 202 (PK H1244F)
PALGROVE PANACHE 250 (PK F208E) (P) PALGROVE DESIRE 69 (PK X465F)



September 2022 Australasian Charolais BREEDPLAN Analysis

	CE Dir	GL	BW	200	400	600	Milk	SS	Carc Wt	EMA	Rump	IMF
EBV	-0.2	-3.2	+0.7	+11	+20	+28	+11	+0.4	+16	+1.6	-0.3	+0.4
Acc	47%	48%	71%	59%	58%	57%	51%	51%	48%	43%	47%	43%

COMMENTS: Here is a bull that offers a lot to the breed.

Dam Palgrove Desire 202 (Full French) Sire Palgrove Masterplan (Homozygous polled) This genetic combination provides growth, length and carcass.

He is halter broken.

A potential stud sire.



LOT
102

CALMVIEW
SLY S17E (P) (R/F)

TATTOO: CVW S17E
DOB: 24/01/2021

PLEASANT DAWN CHISUM 216A (OAC J216E) (P)
SIRE: PALGROVE NIFTY (PK N458E) (P)
PALGROVE TREASURE L299E (PK L299E) (P)

ASCOT ELDORADO L525 (JAJ L525E) (P)
DAM: CALMVIEW BIRDI Q25E (CVW Q25E) (P)
CALMVIEW BRIDI L36E (CVW L36E) (P)

September 2022 Australasian Charolais BREEDPLAN Analysis												
Charolais	CE Dir	GL	BW	200	400	600	Milk	SS	Carc Wt	EMA	Rump	IMF
EBV	+5.8	-4.2	-2.1	+2	+15	+12	+11	+1.8	+18	+3.1	+0.8	-0.6
Acc	33%	46%	68%	61%	60%	66%	36%	46%	51%	44%	43%	42%

COMMENTS: Homozygous polled heifer bull. Sly S17E is low birth weight and suitable for heifers.

Red factor bull with plenty of length and growth.

Have a good look here red factor and homozygous polled



PP POLLED

LOT
103

CALMVIEW
MINSTER S23E (AI) (R/F)

TATTOO: CVW S23E
DOB: 31/01/2021

SILVERSTREAM EVOLUTION E168 (OAN E168E) (P)
SIRE: SILVERSTREAM MINISTER M130 (OAN M130E) (P)
SILVERSTREAM LOTUS E96 083090096G (OAN E96E)

TR RED SMOKE M723761 (OAU B6641E) (P)
DAM: FERVALE FAN CAN (FEN F12E) (P)
FERVALE CAN CAN (FEN C16E) (P)

September 2022 Australasian Charolais BREEDPLAN Analysis												
Charolais	CE Dir	GL	BW	200	400	600	Milk	SS	Carc Wt	EMA	Rump	IMF
EBV	+3.1	-3.9	+0.3	+12	+29	+42	+9	+2.1	+23	+1.3	+1.1	+0.2
Acc	44%	71%	71%	63%	63%	69%	50%	50%	55%	48%	49%	47%

COMMENTS: S23E by New Zealand bull Silverstream Minster.

He has great muscle pattern, low birth weight, growth and structure.

We think this bull is bred to deliver in all aspects of the market.



LOT
104

CALMVIEW
MINSTER S42E (AI) (P) (R/F)

TATTOO: CVW S42E
DOB: 07/02/2021

SILVERSTREAM EVOLUTION E168 (OAN E168E) (P)
SIRE: SILVERSTREAM MINISTER M130 (OAN M130E) (P)
SILVERSTREAM LOTUS E96 083090096G (OAN E96E)

BIG SNOW GOLD BULLION R/F (KRL V80F)
DAM: SHILOH RED SNO (SCB H21F)
SHILOH ELITE (SCB E1F)

September 2022 Australasian Charolais BREEDPLAN Analysis												
	CE Dir	GL	BW	200	400	600	Milk	SS	Carc Wt	EMA	Rump	IMF
EBV	+1.1	-1.7	+1.8	+8	+18	+33	+3	+0.8	+16	+0.7	-2.3	+0.6
Acc	42%	71%	70%	59%	61%	66%	45%	49%	54%	47%	48%	47%

COMMENTS: Minister S42E offers a lot to the breed. Polled red factor, great carcass length and shape.

A top shelf bull, stud or commercial. A sire with plenty of weight for age.

Front paddock bull



LOT
105

CALMVIEW
SON OF MINISTER S105 (AI) (ET) (P/S)

TATTOO: CVW S105E
DOB: 13/02/2021

BR DUKE 295 M216200 (OAU -47) (P)
SIRE: BR DUKE 261 (OAU C261E) (P)
BR ANN 14 F281867 (OAU -46)

SILVERSTREAM TYCOON T41 (OAN X41E)
DAM: PALGROVE DULCIE 47 (PK B266E)
PALGROVE DULCIE 21 R/F (PK U5E)

September 2022 Australasian Charolais BREEDPLAN Analysis												
	CE Dir	GL	BW	200	400	600	Milk	SS	Carc Wt	EMA	Rump	IMF
EBV	+3.5	-3.2	+0.5	+12	+20	+34	+13	+0.8	+12	-0.3	-1.5	+0.1
Acc	53%	57%	72%	66%	65%	70%	59%	56%	60%	53%	54%	50%

COMMENTS: This bull is an 'ET' calf by Duke 261 the leading bull in the breed for milk. This bull is bred in the purple.

Ideal to keep heifers from with added maternal value.

Red factor length and shape.

Have good look here.



UNJOINED HEIFERS

The next 21 lots are ready to join.

Two drafts, the first being Glenlea / Fairfield Heifers and the second a draft from Calmview.

Diversified genetics that would be an ideal start to any new charolais breeding program, or additions to an existing one.

We feel all have a place in a seedstock breeding program.



LOT 106 GLENLEA FAIRFIELD SANDY (P)

Sandy is a outstanding young female to lead off the unjoined heifer section of the sale. Thick bodied and easy doing, eye appeal, Polled, Outstanding EBV's and sire verified. A quality female that will breed high value progeny for you for years to come

LOT
106

GLENLEA FAIRFIELD
SANDY (P)

TATTOO: GLE S175A
DOB: 19/05/2021

PARINGA RIO BRAVO D213E (TOL D213E) (P)
SIRE: ELRIDGE LEVI (RUU L69E) (P)
GRANVILLE LUCY 10 (GDA F11E)

DAM: CSA CHAROLAIS GENERIC DAM 997 (\$A7 A997)



September 2022 Australasian Charolais BREEDPLAN Analysis

	CE Dir	GL	BW	200	400	600	Milk	SS	Carc Wt	EMA	Rump	IMF
EBV	+1.7	-1.7	+0.3	+16	+41	+51	+6	+1.2	+33	+2.2	+1.8	+0.4
Acc	28%	44%	43%	50%	58%	53%	30%	46%	49%	43%	55%	44%

LOT
107

GLENLEA FAIRFIELD
SHANIA (R/F)

TATTOO: GLE S208
DOB: 25/05/2021

SIRE: FAIRFIELD STUD SIRE

DAM: FAIRFIELD CHAROLAIS COW

LOT
108

GLENLEA FAIRFIELD
SCANNA (P)

TATTOO: GLE S173A
DOB: 20/05/2021

ADVANCE DOMINO D36 (ADV D36E) (P)
SIRE: CRATHES JACKPOT (KRG J28E) (P)
PALGROVE ESTELLA 195 (PK Z498E) (P)

DAM: CSA CHAROLAIS GENERIC DAM 997 (\$A7 A997)



September 2022 Australasian Charolais BREEDPLAN Analysis

	CE Dir	GL	BW	200	400	600	Milk	SS	Carc Wt	EMA	Rump	IMF
EBV	+1.7	-1.9	-0.4	+14	+40	+49	+7	+1.5	+29	+1.1	+3.1	+0.6
Acc	28%	44%	43%	50%	58%	53%	30%	46%	49%	43%	55%	44%

LOT
109

GLENLEA
SARCEE (P) (R/F)

TATTOO: GLE S193
DOB: 02/05/2021

SIRE: FAIRFIELD STUD SIRE

DAM: FAIRFIELD CHAROLAIS COW

LOT
110

GLENLEA
SHELLEY (P)

TATTOO: GLE S196A
DOB: 12/02/2021

VALLEY VIEW GLENLEA JUST'NEASY (VLW J23E) (P)
SIRE: KYNHAVEN MURPHY (SRB M14E) (P)
MULLUM CORALIE 4 (BLA K199E) (P)

DAM: CSA CHAROLAIS GENERIC DAM 997 (\$A7 A997)



September 2022 Australasian Charolais BREEDPLAN Analysis

	CE Dir	GL	BW	200	400	600	Milk	SS	Carc Wt	EMA	Rump	IMF
EBV			-1.3	+3	+9	+3		+0.7	+9	+1.3	+1.2	+0.2
Acc			39%	41%	45%	55%		30%	42%	31%	48%	33%

LOT
111

GLENLEA FAIRFIELD
SOMONE (P)

TATTOO: GLE S174A
DOB: 11/05/2021

PARINGA RIO BRAVO D213E (TOL D213E) (P)
SIRE: ELRIDGE LEVI (RUU L69E) (P)
GRANVILLE LUCY 10 (GDA F11E)

DAM: CSA CHAROLAIS GENERIC DAM 997 (\$A7 A997)



September 2022 Australasian Charolais BREEDPLAN Analysis

	CE Dir	GL	BW	200	400	600	Milk	SS	Carc Wt	EMA	Rump	IMF
EBV	+1.7	-1.4	+0.1	+11	+33	+40	+7	+1.1	+24	+0.5	+0.8	+0.1
Acc	28%	44%	43%	50%	58%	53%	30%	46%	49%	43%	55%	44%

LOT
112

GLENLEA FAIRFIELD
SYDNEY (P) (R/F)

TATTOO: GLE S203
DOB: 16/05/2021

SIRE: FAIRFIELD STUD SIRE

DAM: FAIRFIELD CHAROLAIS COW

LOT
113

GLENLEA FAIRFIELD
SABINA

TATTOO: GLE S164
DOB: 23/05/2021

SIRE: FAIRFIELD STUD SIRE

DAM: FAIRFIELD CHAROLAIS COW

LOT
114

GLENLEA FAIRFIELD
SASSY (R/F)

TATTOO: GLE S184
DOB: 01/06/2021

SIRE: FAIRFIELD STUD SIRE

DAM: FAIRFIELD CHAROLAIS COW

LOT
115

GLENLEA FAIRFIELD
SUNSET (P)

TATTOO: GLE S213
DOB: 02/06/2021

SIRE: FAIRFIELD STUD SIRE

DAM: FAIRFIELD CHAROLAIS COW

LOT
116

GLENLEA FAIRFIELD
SARA (P)

TATTOO: GLE S219
DOB: 11/01/2021

SIRE: FAIRFIELD STUD SIRE

DAM: FAIRFIELD CHAROLAIS COW

LOT
117

ROCKWELL
STORMY

TATTOO: RCK S3E
DOB: 03/03/2021

VIOLET HILLS JOLLY JOKER (VHV J187E) (P)
SIRE: VIOLET HILLS MARCELLO (VHV M203E) (P)
VIOLET HILLS FREDERICKA (VHV F41E)

LITTLE VALLEY GRANDIOSE (GKB G5E) (P)
DAM: GLENLEA BOP BOP 1ST (GLE P117E) (P)
PIPECLAY E3E (ROL E3E)

September 2022 Australasian Charolais BREEDPLAN Analysis

	CE Dir	GL	BW	200	400	600	Milk	SS	Carc Wt	EMA	Rump	IMF
EBV	+0.1	-3.3	+1.1	+17	+34	+48	+10	+0.9	+31	+2.9	-0.5	+0.0
Acc	33%	34%	47%	42%	43%	44%	36%	43%	37%	31%	33%	30%

COMMENTS: Note age, purchased as calf at foot on Glenlea bred show cow. Kept a good one for last!

LOT
118

CALMVIEW
RUBY S68E (P) (TW)

TATTOO: CVW S68E
DOB: 23/06/2021

ISIDOR P 6770885072 (OAF J5072F) (P)
SIRE: ANC PLATINUM (ANC P52F) (P)
ANC FERROUS'S MONIQUE (ANC J349F) (P)

CHARNELLE HARRY (GKA H20E) (P)
DAM: CALMVIEW RUBY M32E (CVW M32E) (P)
ROSEDALE RUBY D199 (MR D199E) (P)

September 2022 Australasian Charolais BREEDPLAN Analysis

	CE Dir	GL	BW	200	400	600	Milk	SS	Carc Wt	EMA	Rump	IMF
EBV	-2.4	-2.0	+1.3	+10	+23	+32	+8	+0.5	+20			
Acc	33%	44%	62%	51%	45%	46%	35%	27%	32%			

COMMENTS: Polled stud heifer by full French homozygous polled sire

LOT
119

CALMVIEW
PANACHE S71E (P)

TATTOO: CVW S71E
DOB: 25/06/2021

ISIDOR P 6770885072 (OAF J5072F) (P)
SIRE: ANC PLATINUM (ANC P52F) (P)
ANC FERROUS'S MONIQUE (ANC J349F) (P)

WINN MANS LANZA 610S PMC307395 (OAC B7395E) (P)
DAM: CALMVIEW PANACHE L50E (CVW L50E) (P)
CHARNELLE PANACHE 2 (GKA F70E) (P/S)

September 2022 Australasian Charolais BREEDPLAN Analysis

	CE Dir	GL	BW	200	400	600	Milk	SS	Carc Wt	EMA	Rump	IMF
EBV	+0.4	-3.2	+0.8	+14	+26	+37	+7	+1.1	+22			
Acc	35%	49%	66%	55%	49%	49%	35%	30%	35%			

COMMENTS: Quality female genetic here. White and polled .

LOT
120

CALMVIEW
JELENA S77E (P)

TATTOO: CVW S77E
DOB: 07/07/2021

ISIDOR P 6770885072 (OAF J5072F) (P)
SIRE: **ANC PLATINUM (ANC P52F) (P)**
ANC FERROUS'S MONIQUE (ANC J349F) (P)

FERNVALE GOLD DIGGER (FEN G39E) (P)
DAM: **CALMVIEW JELENA K29E (CVW K29E) (P)**
PALGROVE JELENA 28 (PK B1056E)

September 2022 Australasian Charolais BREEDPLAN Analysis

	CE Dir	GL	BW	200	400	600	Milk	SS	Carc Wt	EMA	Rump	IMF
EBV	+1.4	-1.8	+0.7	+10	+20	+30	+7		+19			
Acc	32%	45%	66%	46%	43%	44%	32%		30%			

COMMENTS: Polled stud heifer by full French homozygous sire.

LOT
121

CALMVIEW
ZOE S85E (P)

TATTOO: CVW S85E
DOB: 21/07/2021

ISIDOR P 6770885072 (OAF J5072F) (P)
SIRE: **ANC PLATINUM (ANC P52F) (P)**
ANC FERROUS'S MONIQUE (ANC J349F) (P)

ASCOT JACK FLASH J105E (JAJ J105E) (P)
DAM: **CALMVIEW ZOE M53E (CVW M53E) (P)**
NARGOON ZOE H020E (J5Y H20E) (P)

September 2022 Australasian Charolais BREEDPLAN Analysis

	CE Dir	GL	BW	200	400	600	Milk	SS	Carc Wt	EMA	Rump	IMF
EBV	+3.2	-2.4	+0.2	+13	+26	+38	+10	+0.4	+25			
Acc	32%	45%	66%	54%	47%	48%	33%	25%	32%			

COMMENTS: Polled stud heifer by full French homozygous sire.

LOT
122

CALMVIEW
ITENSE S119E (P)

TATTOO: CVW S119E
DOB: 15/10/2021

PALGROVE HERITAGE H135 (PK H135E) (P)
SIRE: **PALGROVE MASTERPLAN (PK M709E) (P)**
PALGROVE PANACHE 250 (PK F208E) (P)

GAUGUIN 8591105891 (OAF L859F)
DAM: **SHILOH ITENSE (SCB J3E) (P)**
GUNNADOO IRENE Y112E (GN1 Y112E)

September 2022 Australasian Charolais BREEDPLAN Analysis

	CE Dir	GL	BW	200	400	600	Milk	SS	Carc Wt	EMA	Rump	IMF
EBV	-4.0	-0.4	+1.2	+12	+22	+28	+11	+0.0	+14	+1.1	+0.3	+0.7
Acc	44%	45%	69%	60%	57%	56%	48%	48%	47%	39%	43%	39%

COMMENTS: Palgrove Masterplan (homozygous polled) daughter white and polled.

LOT
123

CALMVIEW
DIGNA S125E (P)

TATTOO: CVW S125E
DOB: 02/11/2021

ASCOT ELDORADO (JAJ E14E) (P)
SIRE: **ASCOT ELDORADO L525 (JAJ L525E) (P)**
ASCOT F27E (JAJ F27E)

GALLWAY - RS 8900451063 (OAF G1063F) (P)
DAM: **CHARNELLE DIGNA 168 (GKA P32E) (P)**
CHARNELLE DIGNA78 (GKA D10E) (P)

September 2022 Australasian Charolais BREEDPLAN Analysis

	CE Dir	GL	BW	200	400	600	Milk	SS	Carc Wt	EMA	Rump	IMF
EBV	-2.9	-1.8	-0.4	+5	+15	+16	+7	+1.4	+13	+2.2	+0.8	+0.3
Acc	40%	48%	57%	56%	53%	55%	43%	47%	45%	34%	36%	33%

COMMENTS: Ascot Eldorado daughter white and polled.

LOT
124

CALMVIEW
MAXINE S128E (P)

TATTOO: CVW S128E
DOB: 21/10/2021

PLEASANT DAWN CHISUM 216A PMC350100 (OAC J216E) (P)
SIRE: PALGROVE NIFTY (PK N458E) (P)
PALGROVE TREASURE L299E (PK L299E) (P)

PALGROVE MONARCH (PK M628E) (P)
DAM: CALMVIEW MAXINE Q139E (CVW Q139E) (P)
PALGROVE MAXINE N559E (PK N559E) (P)

COMMENTS: Palgrove Nifty (homozygous polled) daughter white polled

LOT
125

CALMVIEW
KERFIE S130E (P)

TATTOO: CVW S130E
DOB: 31/10/2021

PLEASANT DAWN CHISUM 216A PMC350100 (OAC J216E) (P)
SIRE: PALGROVE NIFTY (PK N458E) (P)
PALGROVE TREASURE L299E (PK L299E) (P)

ASCOT ELDORADO L525 (JAJ L525E) (P)
DAM: CALMVIEW KERFIE Q140E (CVW Q140E) (P)
CALMVIEW KERFIE N28E (CVW N28E) (P)

COMMENTS: Palgrove Nifty (homozygous polled) daughter white polled

LOT
126

CALMVIEW
DEULTRA S132E (P)

TATTOO: CVW S132E
DOB: 16/11/2021

PLEASANT DAWN CHISUM 216A PMC350100 (OAC J216E) (P)
SIRE: PALGROVE NIFTY (PK N458E) (P)
PALGROVE TREASURE L299E (PK L299E) (P)

ASCOT ELDORADO L525 (JAJ L525E) (P)
DAM: CALMVIEW DEULTRA Q143E (CVW Q143E)
CALMVIEW DEULTRA N98E (CVW N98E) (P)

COMMENTS: Palgrove Nifty (homozygous polled) daughter white polled

END OF SALE



Pictured: Rod Binny with Mitch and Sarah Redding and their Daughter with top price bull at Glenlea's Roma sale, Glenlea Louis R305 (P) purchased for \$32,000 as a foundation sire for their stud Charolais program.

Mitch and Sarah bought their first Charolais females from this sale last year, when held at Scone and have been so impressed with those females and their progeny they have made the commitment to breed Stud Charolais into the longer term.

Photo courtesy of QCL and Sally Gall.



Joined Glenlea / Fairfield Heifers in the sun.

PD
PINEDOCK
FITTING

James & Jane Docrill
James: 0400 387 116
Jane: 0438 812 240
Ph: 02 66 63 1274
E: pinedock@gmail.com



The Docrill family are an integral part of Glenlea Beef and provide a range of services, from feeding and showing our cattle, preparing bulls for our range of bull sales, marketing photos, clipping and video taking, production and editing. Additionally an increasing amount of private bulls directly from their Casino, NSW property.

All the rest of the Glenlea Beef team thank them for all their support, input and hard work without which Glenlea Beef could not operate in the way it does currently.



1. Glenlea Q-Brick
pictured at 16 months

An E.T. Calf, sired by Silverstream Holster out of a full sister to the Dam of Lot 1 Glenlea Chiffon 10th (P) R/F. Breed leading genetics.

Sire of bull calf Lot 3.



2. Glenlea Charol 105th (GLE P1E) (P)

Dam of lot 21 as a first calver. A great example of the Glenlea Charol cow family. This female was the 105th Glenlea Charol registered and has developed into an amazing cow. A chance to own a daughter in lot 21 that could return you 10 times her purchase price!



3. Burravale Romeo

Charbray Bull. A son of Glenlea Elsa 61st (P), a cow purchased at our 2019 Drought buster sale for \$4250 with a powerful red factor bull calf at foot. Romeo was her 2020 calf and sold at the 2022 National Charbray Sale for \$27,000 for first time Charbray National vendor, Lachlan Dickson, Burravale Charolais and Charbrays.

Glenlea females breed on and make wonderful returns for their new owners.



LOT 31



LOT 33



LOT 42



LOT 52



LOT 21



LOT 28



LOT 29



LOT 23