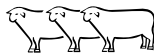


**old
woombi**
POLL DORSET STUD



Chain-o-Ponds
BORDER LEICESTERS

SPRING SALE

ON-PROPERTY

**1PM WEDNESDAY
12 OCTOBER 2022**

93 QUALITY LOTS



AuctionsPlus
INTERFACED
LIVE ONLINE

**COMPLETE
CHAROLLAIS DISPERSAL**
ALL EWES, LAMBS AND RAMS

12 BORDER LEICESTER RAMS

30 POLL DORSET RAMS



AuctionsPlus

Buy and Sell stock nationally





ELDERS WALCHA

Livestock, Farm Supplis, Agronomy, Wool, Real Estate, Insurance & Banking

Elders Walcha have a dedicated local team committed to our clients and our community. Our team live your business like you do. Experience the difference and contact the Elders Branch today about all your agribusiness needs.

Thomas Henry	Branch Manager/Wool Manager	0409 659 877
Allan Laurie	Territory Sales Manager	0455 821 394
James Sharpe	Territory Sales Manager	0409 272 490
Joel Henry	Rural Products Sales Manager	0400 488 304
Kayla Partridge	Support Officer Rural Products	0267 742 600
Katrina Campbell	Rural Products Sales Rep	0417 222 109
Cassandra Sutton	Sales Support Officer	0267 742 600
Mark Atkins	Real Estate	0455 310 657
Tanya McKnight	Rural Bank Agribusiness Relationships Manager	0429 900 096

Elders Walcha

110 Fitzroy Street, Walcha NSW 2354

Phone: 02 6774 260

Email: dg_walcha@elders.com.au





ANNUAL SALE

1PM WEDNESDAY 12 OCTOBER 2022

INSPECTION AVAILABLE FROM 10.00AM SALE DAY

CHAROLLAIS DISPERSAL
ALL EWES, LAMBS AND RAMS

12 BORDER LEICESTER RAMS

30 POLL DORSET RAMS

'Ashfield' Oxley Highway, Walcha NSW 2354

Sam and Kate Lisle

02 6777 2605 or 0427 773 944

Selling Agents



Tom Henry..... 0409 659 877

Allan Laurie 0455 821 394

James Sharpe..... 0409 272 490

Walcha Office..... 02 6774 2600



WELCOME

We are happy to be offering our Poll Dorset and Border Leicester rams, in addition to a complete dispersal of our Charollais flock, at our second Spring on-property sale at 'Ashfield' Walcha. It has been an incredible year with a very wet twelve months and not a lot of sunshine. This has made it very trying to finish livestock, particularly in view of a market that has seen some great highs and swift downturns. Lambing this year has also had its challenges with the amount of water on the ground, but we are seeing the light at the end of the tunnel with a week to go.

We have decided to disperse the Charollais flock this year as we continue to increase our Border Leicester and Poll Dorset Stud numbers. We originally started the stud in 2013 with embryos purchased from Allstock and implanted into our cull Poll Dorset Ewes. Over the years we have been using an AI program to bring in new genetics from both Farmgene and Roseville park. We have used the rams over our maiden 1st XB ewes for their ease of lambing, while maintaining a very saleable, high yielding lamb.

We are also offering up 12 Border Leicester Rams. All of these rams have been used in our 1st XB operation, with their lambs presenting incredibly well. We are trying to increase our EMD and Fat while maintaining a true Border Leicester type. These rams have been micron tested and averaged 34 mic.

Our Poll Dorsets still continue to be at the top of the game, with many in this catalogue in the top 5% and 10% of the breed for various traits. We're striving to produce a lamb that finishes early (WWT), with a good fat cover and plenty of muscle, while also being structural sound.

Further thanks to the Elders Walcha team, Candice Liddle for her exceptional photography, Megan Scrivener for her cataloguing brilliance, and all those who have supported us with ram sales over the last 13 years. Our intention is to continue to produce fantastic sheep for the commercial and stud markets, both locally and interstate.

Sam and Kate



OUR SALE

SALE COMMENCES

1.00pm Wednesday 12 October 2022
on property and on AuctionsPlus.
Inspection from 10.00am.

SELLING SYSTEM

All lots will be auctioned individually
and interfaced with Auctions Plus,
and sold under the normal terms and
conditions of Elders Walcha.

GST

All animals are sold excluding GST.

REBATE

There will be a 2% rebate to outside
agents introducing clients in writing
24 hours prior to the sale.

SEMEN RIGHTS

We retain the right to collect 100 doses
of semen for In Stud use from any of
the rams sold. This is at the vendor's
expense and purchaser's convenience.

DELIVERY

Rams, ewes and lambs are available for
pick up at the conclusion of the sale, or
at a later date by pre-arrangement.

DISCLAIMER

All LambPlan ASBVs have been
provided by Sheep Genetics –
Analysis run 15/09/2022.

Every effort has been made to ensure
the information in this catalogue is true
and correct at the time of printing.

CATERING

A luncheon will be provided.



HEALTH

OVINE JOHNES MN3 STATUS

NS21092 expiry 30/04/2023

OVINE BRUCELLOSIS FREE

N 92/263 expiry 31/08/2023

DRENCH

Ewes Nilverm LV 21/09/22

Lambs Pyrimide 21/09/22

Rams Nilverm LV 30/09/22

VACCINE

Ewes Glanvac 6S 21/07/22

Lambs Glanvac 6 21/09/22

Rams Glanvac 6 9/08/22

SHEARING

Ewes 21/07/22

Rams 9/08/22

FOOTROT AND LICE FREE

LOCATION

HOW TO GET TO OUR SALE

'Ashfield' is situated 5kms east of
Walcha on the Oxley Highway.



PERCENTILE REPORT Terminal

Dated 15 September 2022



Band	TCP	BWT	WWT	PWT	PFAT	PEMD	LMY	IMF	SHEARF5	LEQ	EQ
1	158.47	-0.5	12.64	19.45	1.11	4.1	5.39	0.38	-2.57	157.93	155.47
5	153.58	-0.32	11.75	18.05	0.57	3.45	4.72	0.06	-0.97	150.87	149.74
10	150.74	-0.03	11.29	17.33	0.33	3.1	4.39	-0.06	-0.24	147	146.15
20	146.98	0.16	10.72	16.43	0.07	2.67	3.99	-0.2	0.63	142.13	141.52
30	143.91	0.23	10.29	15.74	-0.11	2.36	3.7	-0.3	1.25	138.43	137.97
40	141.03	0.29	9.89	15.11	-0.25	2.08	3.45	-0.38	1.82	135.28	134.87
50	138.27	0.33	9.47	14.46	-0.39	1.83	3.21	-0.46	2.38	132.38	131.99
60	135.38	0.38	8.99	13.67	-0.52	1.59	2.93	-0.54	3	129.56	129.15
70	132.22	0.42	8.38	12.67	-0.66	1.33	2.6	-0.62	3.75	126.68	126.24
80	128.49	0.47	7.54	11.32	-0.82	1.04	2.13	-0.71	4.64	123.43	123
90	123.51	0.54	6.32	9.54	-1.03	0.66	1.44	-0.85	5.83	118.47	118.04



Sheep Genetics

PERCENTILE REPORT First Cross Sire Breeds

Dated 15 September 2022



Band	BLX	BWT	MWWT	WWT	PWT	PFAT	PEMD	WR
1	149.55	-0.1	2.35	8.47	13.07	1.92	2.08	0.19
5	138.81	0.03	1.84	7.5	11.6	1.15	1.6	0.14
10	132.67	0.08	1.59	6.99	10.85	0.83	1.32	0.11
20	127.1	0.15	1.27	6.39	9.94	0.5	0.98	0.07
30	123.23	0.2	1.05	5.93	9.27	0.28	0.74	0.05
40	119.81	0.24	0.87	5.54	8.68	0.09	0.52	0.03
50	116.14	0.28	0.7	5.14	8.06	-0.08	0.34	0.01
60	111.77	0.31	0.53	4.75	7.42	-0.24	0.16	-0.01
70	107.59	0.35	0.36	4.3	6.67	-0.4	-0.02	-0.03
80	103.72	0.39	0.15	3.77	5.8	-0.59	-0.24	-0.05
90	99.5	0.45	-0.16	3	4.61	-0.87	-0.54	-0.07



GENETIC TRENDS OLD WOOMBI CHAROLLAIS

Report: Genetic Trends
Analysis: TERMINAL
Analysis date: 15/09/2022
Flock code: CH5003
Flock name: CH5003-OLD WOOMBI

Total animals by drop



Reports are prepared using data supplied by breeders and/or accredited operators. We cannot guarantee the accuracy of this data. ASBV's are designed to estimate genetic merit of animals from the data supplied. The reports are provided to assist breeders but no liability is accepted for the outcome resulting from the use of this information.

CH5003-OLD WOOMBI

Year	TCP	BWT	PWT	PEMD	PFAT	LMY	IMF	SHEARF5
2012								
2013	115.54	0.20	8.22	0.08	-0.61	1.51	-0.14	0.15
2014	125.70	0.41	13.00	0.38	-0.62	2.67	-0.30	2.57
2015	129.77	0.11	10.43	1.29	-1.05	3.20	-0.52	1.62
2016	119.06	0.20	10.49	0.05	-0.73	2.17	-0.23	1.40
2017	118.86	0.16	9.06	0.48	-0.49	1.81	-0.21	0.61
2018	123.43	0.18	9.88	0.80	-0.50	2.15	-0.23	0.86
2019	116.18	0.19	9.10	0.09	-0.52	1.61	-0.17	0.88
2020	117.87	0.21	9.66	0.26	-0.45	1.76	-0.22	1.18
2021	120.32	0.21	9.94	0.51	-0.43	1.88	-0.18	1.45
2022	118.99	0.19	9.40	0.34	-0.55	1.88	-0.21	0.71

Breed

Year	TCP	BWT	PWT	PEMD	PFAT	LMY	IMF	SHEARF5
2012	125.37	0.10	9.47	1.10	-0.82	2.33	-0.29	0.69
2013	123.66	0.11	8.98	0.86	-0.85	2.20	-0.26	0.71
2014	124.64	0.16	9.64	0.76	-0.79	2.11	-0.26	0.43
2015	126.38	0.15	10.08	0.95	-1.12	2.87	-0.40	1.34
2016	127.63	0.08	10.47	1.13	-0.72	2.57	-0.33	0.73
2017	128.07	0.10	10.18	1.17	-0.88	2.71	-0.35	0.73
2018	126.47	0.14	10.03	1.07	-0.69	2.53	-0.33	0.80
2019	125.49	0.16	9.94	0.98	-0.58	2.32	-0.29	0.59
2020	125.70	0.15	10.33	1.04	-0.36	2.17	-0.26	0.52
2021	122.78	0.13	9.38	0.94	-0.28	1.86	-0.21	0.31
2022	122.17	0.21	9.49	0.34	-0.55	2.08	-0.24	0.71

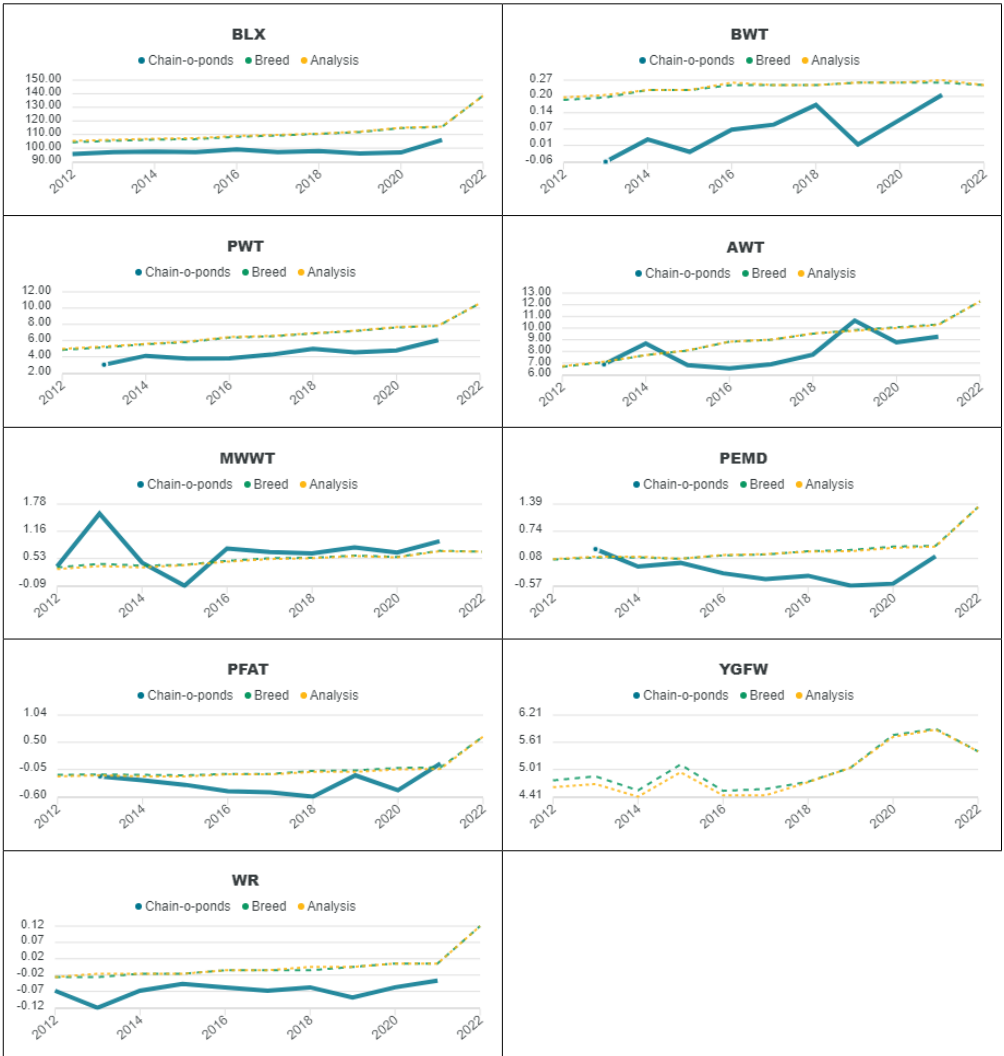
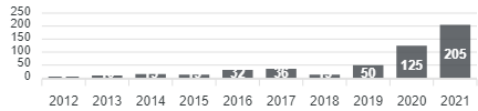
Analysis

Year	TCP	BWT	PWT	PEMD	PFAT	LMY	IMF	SHEARF5
2012	124.92	0.27	10.49	0.92	-0.63	2.13	-0.43	2.52
2013	126.12	0.27	10.94	1.02	-0.60	2.26	-0.45	2.64
2014	127.31	0.27	11.31	1.11	-0.59	2.38	-0.46	2.78
2015	128.24	0.28	11.65	1.21	-0.54	2.46	-0.48	2.88
2016	129.13	0.27	12.01	1.28	-0.52	2.55	-0.49	2.95
2017	130.75	0.27	12.42	1.39	-0.48	2.64	-0.49	2.90
2018	132.26	0.28	12.80	1.49	-0.45	2.75	-0.49	2.93
2019	133.37	0.28	13.12	1.59	-0.42	2.84	-0.49	2.91
2020	134.77	0.28	13.36	1.69	-0.40	2.91	-0.48	2.79
2021	136.87	0.27	13.74	1.83	-0.36	3.01	-0.45	2.56
2022	143.28	0.31	15.21	2.33	-0.27	3.44	-0.39	2.38

GENETIC TRENDS: CHAIN-O-PONDS BORDER LEICESTER

Report: Genetic Trends
Analysis: FIRST CROSS SIRE BREEDS
Analysis date: 15/09/2022
Flock code: 022965
Flock name: CHAIN-O-PONDS

Total animals by drop



Reports are prepared using data supplied by breeders and/or accredited operators. We cannot guarantee the accuracy of this data. ASBV's are designed to estimate genetic merit of animals from the data supplied. The reports are provided to assist breeders but no liability is accepted for the outcome resulting from the use of this information.

CHAIN-O-PONDS

Year	BLX	BWT	PWT	AWT	MWWT	PEMD	PFAT	YGFW	WR
2012	95.57				0.35				-0.07
2013	97.04	-0.06	3.03	6.89	1.56	0.31	-0.19		-0.12
2014	97.48	0.03	4.13	8.68	0.44	-0.11	-0.27		-0.07
2015	97.04	-0.02	3.78	6.83	-0.09	-0.02	-0.36		-0.05
2016	99.09	0.07	3.82	6.54	0.76	-0.27	-0.49		-0.06
2017	97.10	0.09	4.27	6.90	0.68	-0.41	-0.51		-0.07
2018	97.95	0.17	4.99	7.73	0.65	-0.33	-0.60		-0.06
2019	96.13	0.01	4.54	10.65	0.79	-0.57	-0.17		-0.09
2020	96.79	0.11	4.79	8.77	0.67	-0.52	-0.47		-0.06
2021	105.97	0.21	6.07	9.27	0.93	0.14	0.07		-0.04
2022									

Breed

Year	BLX	BWT	PWT	AWT	MWWT	PEMD	PFAT	YGFW	WR
2012	104.32	0.19	4.86	6.68	0.33	0.06	-0.16	4.77	-0.03
2013	105.44	0.20	5.17	7.07	0.41	0.11	-0.15	4.86	-0.03
2014	106.28	0.23	5.56	7.69	0.37	0.11	-0.16	4.55	-0.02
2015	106.63	0.23	5.81	8.07	0.39	0.08	-0.17	5.12	-0.02
2016	108.36	0.25	6.38	8.83	0.48	0.16	-0.14	4.54	-0.01
2017	109.24	0.25	6.52	9.00	0.54	0.18	-0.14	4.58	-0.01
2018	110.47	0.25	6.87	9.52	0.55	0.26	-0.08	4.74	-0.01
2019	111.81	0.26	7.18	9.83	0.60	0.29	-0.07	5.05	-0.00
2020	114.72	0.26	7.82	10.07	0.57	0.37	-0.02	5.77	0.01
2021	115.65	0.26	7.81	10.31	0.71	0.39	-0.01	5.91	0.01
2022	138.51	0.25	10.61	12.30	0.69	1.32	0.61	5.41	0.12

Analysis

Year	BLX	BWT	PWT	AWT	MWWT	PEMD	PFAT	YGFW	WR
2012	105.32	0.20	4.98	6.73	0.29	0.07	-0.19	4.82	-0.03
2013	106.18	0.21	5.27	7.12	0.36	0.13	-0.17	4.89	-0.02
2014	106.95	0.23	5.80	7.68	0.33	0.13	-0.19	4.41	-0.02
2015	107.34	0.23	5.89	8.09	0.38	0.08	-0.19	4.95	-0.02
2016	108.95	0.26	6.44	8.84	0.46	0.17	-0.15	4.44	-0.01
2017	109.74	0.25	6.57	9.01	0.52	0.19	-0.15	4.44	-0.01
2018	110.68	0.25	6.92	9.54	0.54	0.25	-0.10	4.73	-0.00
2019	112.12	0.26	7.22	9.77	0.59	0.26	-0.10	5.05	-0.00
2020	115.04	0.26	7.66	10.01	0.56	0.34	-0.05	5.73	0.01
2021	115.88	0.27	7.84	10.26	0.70	0.37	-0.04	5.89	0.01
2022	138.51	0.25	10.61	12.30	0.69	1.32	0.61	5.41	0.12

GENETIC TRENDS OLD WOOMBI POLL DORSETS

Report: Genetic Trends
Analysis: TERMINAL
Analysis date: 15/09/2022
Flock code: 163457
Flock name: OLD WOOMBI

Total animals by drop



Reports are prepared using data supplied by breeders and/or accredited operators. We cannot guarantee the accuracy of this data. ASBV's are designed to estimate genetic merit of animals from the data supplied. The reports are provided to assist breeders but no liability is accepted for the outcome resulting from the use of this information.

OLD WOOMBI

Year	TCP	BWT	PWT	PEMD	PFAT	LMY	IMF	SHEARF5
2012	127.75	0.27	10.49	1.17	-0.80	2.71	-0.54	3.28
2013	128.62	0.28	11.45	1.10	-0.86	2.96	-0.63	4.17
2014	131.90	0.40	13.49	1.25	-0.63	3.18	-0.51	4.05
2015	132.19	0.39	13.22	1.74	-0.64	3.58	-0.69	5.33
2016	140.18	0.39	14.26	2.16	-0.49	3.78	-0.61	4.11
2017	136.65	0.39	14.11	2.05	-0.51	3.72	-0.68	4.82
2018	140.66	0.38	14.43	2.67	-0.33	3.91	-0.52	4.01
2019	146.17	0.41	15.30	3.00	-0.21	4.03	-0.48	3.25
2020	148.08	0.42	15.53	3.09	-0.37	4.33	-0.59	3.68
2021	147.30	0.40	15.79	2.93	-0.39	4.33	-0.67	4.28
2022	150.17	0.43	15.98	3.14	-0.36	4.45	-0.66	3.79

Breed

Year	TCP	BWT	PWT	PEMD	PFAT	LMY	IMF	SHEARF5
2012	125.14	0.36	10.57	1.02	-0.83	2.62	-0.54	4.40
2013	126.43	0.37	10.99	1.11	-0.80	2.72	-0.57	4.48
2014	127.74	0.37	11.46	1.23	-0.77	2.84	-0.57	4.53
2015	128.91	0.39	11.81	1.36	-0.72	2.91	-0.58	4.56
2016	130.25	0.39	12.30	1.44	-0.70	3.03	-0.60	4.63
2017	132.02	0.38	12.73	1.59	-0.87	3.20	-0.62	4.74
2018	133.65	0.39	13.12	1.69	-0.64	3.29	-0.62	4.76
2019	134.85	0.39	13.40	1.79	-0.60	3.36	-0.62	4.71
2020	136.17	0.39	13.84	1.89	-0.60	3.45	-0.61	4.65
2021	138.43	0.39	14.10	2.01	-0.59	3.56	-0.58	4.45
2022	144.04	0.39	15.10	2.52	-0.49	3.88	-0.54	4.05

Analysis

Year	TCP	BWT	PWT	PEMD	PFAT	LMY	IMF	SHEARF5
2012	124.92	0.27	10.49	0.92	-0.63	2.13	-0.43	2.52
2013	126.12	0.27	10.94	1.02	-0.60	2.26	-0.45	2.64
2014	127.31	0.27	11.31	1.11	-0.59	2.38	-0.46	2.78
2015	128.24	0.28	11.65	1.21	-0.54	2.46	-0.48	2.88
2016	129.13	0.27	12.01	1.28	-0.52	2.55	-0.49	2.95
2017	130.75	0.27	12.42	1.39	-0.48	2.64	-0.49	2.90
2018	132.26	0.28	12.80	1.49	-0.45	2.75	-0.49	2.93
2019	133.37	0.28	13.12	1.59	-0.42	2.84	-0.49	2.91
2020	134.77	0.28	13.36	1.69	-0.40	2.91	-0.48	2.79
2021	136.87	0.27	13.74	1.83	-0.36	3.01	-0.45	2.56
2022	143.28	0.31	15.21	2.33	-0.27	3.44	-0.39	2.38

ASBV'S EXPLAINED

AUSTRALIAN SHEEP BREEDING VALUES

An ASBV is an estimate of the genetic potential a sheep has to pass on to its progeny. ASBV's are available for a range of economical important traits and are designed to be used in conjunction with visual selection. The appearance and performance of an animal is a combination of its genes and the environment in which it is raised (e.g. the amount and quality of feed, single or twin or twin birth type.) ASBV's account for these environmental effects, allowing the comparison of sheep based on the genes they will pass on to their progeny. It is important to remember when selecting sheep you are choosing the genes, not the environment.

Reference – Lambplan ASBV's www.sheepgenetics.org.au

BIRTH WEIGHT (BWT)

Rams with more negative BWT ASBVs produce lambs which are lighter at birth (kg). (BWT ASBV's estimate the genetic difference between animals in live weight at birth). Use low or negative BWT for maiden ewes.

WEANING WEIGHT (WWT)

Estimates the genetic difference between live weights at 100 days. Rams with a more positive ASBV for weaning weight (WWT) will, on average, produce lambs with faster growth to weaning (kg).

WEIGHT (PWWT)

Post weaning weight estimates the genetic difference between animals (kg). The higher the ASBV figure the better for superior later growth of lambs.

ADULT WEANING WEIGHT (AWT)

Adult weaning weight at two years (kg).

FAT (PFAT)

Post weaning fat depth at approx. 225 days (mm). Rams with a more negative ASBV for post weaning fat (PFAT) will produce progeny that are leaner.

EYE MUSCLE DEPTH (PEMD)

Post weaning eye muscle depth at approximately 225 days. Rams with more positive ASBV's for EMD will produce progeny that have more muscle and yield more lean meat (mm).

SCROTAL CIRCUMFERENCE (PSC)

Post weaning scrotal circumference (mm) Rams with larger testes will sire more daughters and wean a higher percentage of lambs.

NUMBER OF LAMBS WEANED (NLW)

Number of lambs weaned (%) Rams with more positive NLW ASBV's will produce daughters that wean a higher percentage of lambs.

YNLW

Number of lambs weaned % for a one year old ewe.

WEC

Worm egg count (%) – Rams with more negative WEC ASBVs produce progeny who have a higher genetic potential to resist worm burdens. Lower WEC ASBVs are desirable.

MWWT

Maternal weaning weight (kg) – Rams with more positive MWWT ASBV's will produce daughters that wean heavier lambs.

RUN DATE

ASBVs have been generated from the 15 September 2022 run.

SALE LOT DATA

For each lot we have provided ASBV figures along with Accuracy. Figures in the Top 5% have been highlighted in red and in the Top 10% green. Please refer to page 6 of this catalogue for an explanation of Traits.

TRAITS
↓

	BWT	WWT	PWT	PFAT	PEMD	LMY	IMF	SHRF5	TCP	LEQ
TOP ROW ASBV FIGURES →	0.27	10.4	16.3	-0.3	3.1	4.35	-0.15	0.7	157.1	152.9
SECOND ROW ACCURACY →	65	66	64	65	67	58	43	41	38	40

↑ GREEN TEXT INDICATES A FIGURE IN THE TOP 10%

↑ RED TEXT INDICATES A FIGURE IN THE TOP 5%

NOTES

REFERENCE SIRES



	BWT	WWT	PWWT	PFAT	PEMD	TCP	LEQ	EQ
OLD WOOMBI 160618	0.15	5.6	8.33	-0.29	0.07	113.83	112.93	112.46
	75	77	78	78	80	55	41	41
OLD WOOMBI 210709	0.19	6.15	8.75	-0.57	0.3	117.66	117.48	115.59
	64	60	57	58	61	36	27	27
FARMGENE AU 100064	0.01	5.79	8.8	-0.33	0.92	124.24	122.11	121.84
	79	91	92	92	93	70	54	57
FARMGENE AU 120041	0.22	6.91	9.5	-0.35	0.42	118.2	119.67	117.42
	62	70	70	71	73	48	36	36
ROSEVILLE PARK 110008	0.28	6.68	9.31	-0.95	-0.29	116.28	115.48	113.74
	69	73	72	72	73	61	40	41
ROSEVILLE PARK 120001	0.20	6.91	10.21	-0.68	-0.49	114.39	112.08	111.9
	64	64	64	61	64	41	30	30

REFERENCE SIRES



	BWT	MWWT	WWT	PWWT	PFAT	PEMD	WR	BLX
CHAIN 'O' PONDS 140446 SHOWMAN 5TH	0.34	0.1	5.08	7.17	-0.95	-0.81	-0.8	95.18
	79	83	83	82	78	76	46	57
CADELL 140101 BONN 5TH	0.11	1.22	2.54	3.69	-0.58	-0.73	-0.02	100.75
	81	82	86	85	80	78	47	59
TENALBA 170231	0.66	1.39	6.56	9.99	-0.29	-1.29	-0.10	96.79
	84	78	89	88	85	83	46	59
TENALBA 190105	0.30	2.12	4.32	6.11	0.98	1.34	-0.05	115.68
	81	54	85	82	77	76	33	48
TENALBA 190112	0.15	1.71	3.90	6.09	-0.32	0.45	0.00	114.18
	77	57	83	82	78	76	34	48
INVERBRACKIE 190801 CLIVE	0.38	-0.82	6.69	11.83	1.39	2.03	0.22	151.38
	91	75	93	93	90	88	57	69

REFERENCE SIRES

	BWT	WWT	PWWT	PFAT	PEMD	TCP	LEQ	EQ
OLD WOOMBI 120135	0.26	10.63	16.58	0.76	2.35	147.42	149.94	153.86
	98	98	98	98	98	92	90	90
OLD WOOMBI 150042	0.59	11.57	18.21	0.26	3.09	150.59	145.49	143.73
	98	98	98	98	98	92	90	90
OLD WOOMBI 150132	0.59	11.22	15.83	-0.51	4.44	152.37	146.08	144.05
	94	95	95	95	96	79	71	73
OLD WOOMBI 170410	0.14	8.47	13.26	-0.32	3.96	158.04	154.8	153.82
	81	92	92	92	93	74	65	66
OLD WOOMBI 180136	0.47	10.93	15.12	-0.72	3.76	149.81	142.92	141.16
	93	92	90	88	90	69	59	61
OLD WOOMBI 180425	0.40	11.36	17.96	-0.73	3.66	164.52	153.71	154.29
	96	95	94	93	94	73	63	64
OLD WOOMBI 200002	0.45	12.25	18.6	-0.23	2.58	151.63	146.44	143.25
	79	81	82	81	83	66	59	60
DERRYNOCK 170082	0.35	10.56	16.39	0.12	2.69	147.61	145.31	141.74
	88	89	88	85	86	70	65	65
DERRYNOCK 180474	0.32	12.2	19.46	-0.63	1.45	145.75	137.65	135.39
	88	89	87	84	85	70	65	66
DERRYNOCK 190400	0.11	10.17	14.97	0.03	5.06	163.36	150.81	147.72
	96	95	94	93	94	76	68	69
KURRALEA 140241	0.52	10.76	15.57	-1.46	1.46	143.79	128.56	129.78
	92	97	97	97	97	86	79	82
ULANDI PARK 080185	0.63	8.88	12.96	-1.15	0.52	125.88	113.76	116.31
	95	98	97	97	97	90	85	88
ULANDI PARK 190014	0.50	9.57	13.77	-0.85	1.43	134.65	129.25	127.03
	90	94	95	94	95	74	63	66

PLEASE NOTE: COLOUR CODE FOR FIGURES – RED TOP 5% GREEN TOP 10%

CHAROLLAIS



LOT 1. OW-210059

SIRE: OW 180136 See page 18



LOT 2. OW-210074

SIRE: OW 180136 See page 18



LOT 3. OW-210702

SIRE: CA 120041 See page 18



LOT 4. OW-210706

SIRE: CA 100064 See page 18



LOT 5. OW-210710

SIRE: CA 100064 See page 19



LOT 6. OW-210711

SIRE: CA 120041 See page 19



LOT 7. OW-210715

SIRE: CA 100064 See page 19



LOT 8. OW-210723

SIRE: CA 120041 See page 19



LOT 9. OW-210727

SIRE: OW 160618 See page 20



LOT 10. OW-200701

SIRE: OW 160618 See page 20



LOT 11. OW-200713

SIRE: OW 160618 See page 20



LOT 12. OW-200717

SIRE: OW 160618 See page 20



LOT 13. OW-200719

SIRE: OW 160618 *See page 21*



LOT 14. OW-200721

SIRE: OW 160618 *See page 21*



LOT 15. OW-200722

SIRE: OW 160618 *See page 21*



LOT 16. OW-200723

SIRE: OW 160618 *See page 21*



LOT 17. OW-200726

SIRE: OW 170410 *See page 22*



LOT 18. OW-190704

SIRE: OW 160618 *See page 22*



LOT 19. OW-190705

SIRE: OW 160618 *See page 22*



LOT 20. OW-190707

SIRE: OW 160618 *See page 22*



LOT 21. OW-190708

SIRE: OW 160618 *See page 23*



LOT 22. OW-190717

SIRE: OW 160618 *See page 23*



LOT 23. OW-190726

SIRE: OW 160618 *See page 23*



LOT 24. OW-170708

SIRE: OW 160618 *See page 23*

LOT 1. OLD WOOMBI-210059

DOB: 3/6/2021

SIRE: OW 180136

DAM: OW 190702

DAM'S SIRE: OW 160618

PROGENY: 220740

SIRE OF PROG: 210709

 Single

BIRTH RATE/ RAISE TYPE: S/S

Picture page 16

TCP	BWT	WWT	PWT	PFAT	PEMD	LMY	IMF	SHEARFS	LEQ	EQ
135.69	0.28	8.57	12.16	-0.80	2.04	3.64	-0.48	3.01	130.87	129.71
44	60	62	62	62	64	52	36	36	36	36

Purchased by:

\$

LOT 2. OLD WOOMBI-210074

DOB: 11/6/2021

SIRE: OW 180136

DAM: OW 190717

DAM'S SIRE: OW 160618

PROGENY:

SIRE OF PROG: 210709

 Single

BIRTH RATE/ RAISE TYPE: S/S

Daughter of lot 22

Picture page 16

TCP	BWT	WWT	PWT	PFAT	PEMD	LMY	IMF	SHEARFS	LEQ	EQ
129.25	0.31	7.74	10.74	-0.33	2.18	2.88	-0.35	2.33	125.89	124.72
44	61	62	62	62	64	53	36	36	35	36

Purchased by:

\$

LOT 3. OLD WOOMBI-210702

DOB: 27/7/2021

SIRE: CA 120041

DAM: OW 190726

DAM'S SIRE: OW 160618

PROGENY:

SIRE OF PROG:

 Twin

BIRTH RATE/ RAISE TYPE:

Twin with Lot 47, daughter of

Lot 23. Lot 3 picture page 16.

TCP	BWT	WWT	PWT	PFAT	PEMD	LMY	IMF	SHEARFS	LEQ	EQ
120.87	0.16	6.58	9.74	-0.18	0.61	1.55	-0.03		121.70	119.96
36	53	57	55	57	60	49	30		28	28

Purchased by:

\$

LOT 4. OLD WOOMBI-210706

DOB: 29/7/2021

SIRE: CA 100064

DAM: OW 170708

DAM'S SIRE: OW 160618

PROGENY:

SIRE OF PROG:

 Triplet

BIRTH RATE/ RAISE TYPE:

Daughter of Lot 24

Picture page 16

TCP	BWT	WWT	PWT	PFAT	PEMD	LMY	IMF	SHEARFS	LEQ	EQ
124.23	0.09	5.99	8.80	-0.27	1.25	1.83	-0.21	-0.05	121.37	121.48
41	58	63	62	57	58	50	32	33	32	32

Purchased by:

\$

LOT 5. OLD WOOMBI-210710

DOB: 30/7/2021

SIRE: CA 100064

DAM: OW 170721

DAM'S SIRE: OW 160618

PROGENY: 220739

SIRE OF PROG: 210709

 Single

BIRTH RATE/ RAISE TYPE: S/S

Daughter of Lot 27

Picture page 16

TCP	BWT	WWT	PWT	PFAT	PEMD	LMY	IMF	SHEARFS	LEQ	EQ
116.94	0.04	4.87	7.49	-0.34	0.42	1.12	-0.07	-0.70	116.16	115.73
43	59	64	62	63	65	55	35	34	33	34

Purchased by: \$

LOT 6. OLD WOOMBI-210711

DOB: 30/7/2021

SIRE: CA 120041

DAM: Unknown

DAM'S SIRE:

PROGENY:

SIRE OF PROG:

 Twin

BIRTH RATE/ RAISE TYPE:

Twin with Lot 49

Picture page 16

TCP	BWT	WWT	PWT	PFAT	PEMD	LMY	IMF	SHEARFS	LEQ	EQ
111.25	0.24	6.44	8.98	-0.52	-0.02	1.54	-0.06			
28	46	50	46	50	53	43	24			

Purchased by: \$

LOT 7. OLD WOOMBI-210715

DOB: 31/7/2021

SIRE: CA 100064

DAM: OW 170711

DAM'S SIRE: OW 160618

PROGENY:

SIRE OF PROG:

 Twin

BIRTH RATE/ RAISE TYPE:

Twin with Lot 41, daughter of

Lot 26. Lot 7 picture page 16.

TCP	BWT	WWT	PWT	PFAT	PEMD	LMY	IMF	SHEARFS	LEQ	EQ
121.30	0.21	6.94	10.12	-0.43	0.56	2.07	-0.34	1.46	117.30	116.91
43	58	63	62	64	65	56	36	35	34	34

Purchased by: \$

LOT 8. OLD WOOMBI-210723

DOB: 1/8/2021

SIRE: CA 120041

DAM: OW 160630

DAM'S SIRE: R 120001

PROGENY: 220737, 220738

SIRE OF PROG: 210709

 Twin

BIRTH RATE/ RAISE TYPE: T/T

Twin with Lot 42, daughter of

Lot 32. Lot 8 picture page 16.

TCP	BWT	WWT	PWT	PFAT	PEMD	LMY	IMF	SHEARFS	LEQ	EQ
117.40	0.29	7.68	10.74	-0.55	-0.28	1.75	0.03		118.16	117.06
37	55	58	56	58	60	50	30		29	28

Purchased by: \$

LOT 9. OLD WOOMBI-210727

DOB: 14/10/2021

SIRE: OW 160618

DAM: Unknown

DAM'S SIRE:

PROGENY:

SIRE OF PROG:

 Single

BIRTH RATE/ RAISE TYPE:

Picture page 16

TCP	BWT	WWT	PWT	PFAT	PEMD	LMY	IMF	SHEARFS	LEQ	EQ
113.19	0.07	5.05	7.57	-	0.44	1.18	-0.08	-	-	-
26	44	40	40	-	40	33	19	-	-	-

Purchased by:

\$

LOT 10. OLD WOOMBI-200701

DOB: 2/9/2020

SIRE: OW 160618

DAM: OW 130610

DAM'S SIRE: R 110008

PROGENY: 220721

SIRE OF PROG: 210709

 Single

BIRTH RATE/ RAISE TYPE: S/S

Picture page 16

TCP	BWT	WWT	PWT	PFAT	PEMD	LMY	IMF	SHEARFS	LEQ	EQ
112.70	0.18	4.74	7.22	-0.38	0.01	0.98	-0.06	-	113.23	111.68
37	60	61	59	52	54	46	27	-	28	28

Purchased by:

\$

LOT 11. OLD WOOMBI-200713

DOB: 11/9/2020

SIRE: OW 160618

DAM: OW 140402

DAM'S SIRE: OW 130112

PROGENY:

SIRE OF PROG: CA 100064

 Triplet

BIRTH RATE/ RAISE TYPE: T/O

Daughter of Lot 35

Picture page 16

TCP	BWT	WWT	PWT	PFAT	PEMD	LMY	IMF	SHEARFS	LEQ	EQ
118.82	0.54	9.51	13.47	-0.87	-0.31	2.80	-0.62	4.26	111.61	111.08
40	62	62	59	61	63	53	34	33	32	32

Purchased by:

\$

LOT 12. OLD WOOMBI-200717

DOB: 11/9/2020

SIRE: OW 160618

DAM: OW 170708

DAM'S SIRE: OW 160618

PROGENY:

SIRE OF PROG:

 Twin

BIRTH RATE/ RAISE TYPE:

Daughter of Lot 24

Picture page 16

TCP	BWT	WWT	PWT	PFAT	PEMD	LMY	IMF	SHEARFS	LEQ	EQ
119.21	0.15	6.07	8.83	0.37	1.25	1.00	-0.04	-0.32	118.19	118.22
42	62	64	62	64	66	55	33	32	32	32

Purchased by:

\$

LOT 13. OLD WOOMBI-200719

DOB: 12/9/2020

SIRE: OW 160618

DAM: OW 160460

DAM'S SIRE:

PROGENY:

SIRE OF PROG:

 Single

BIRTH RATE/ RAISE TYPE:

Daughter of Lot 29

Picture page 17

TCP	BWT	WWT	PWT	PFAT	PEMD	LMY	IMF	SHEARFS	LEQ	EQ
117.98	0.21	6.89	9.49	-0.43	0.41	1.66	-0.16	-	-	115.57
33	53	55	53	54	56	46	26	-	-	25

Purchased by: \$

LOT 14. OLD WOOMBI-200721

DOB: 13/9/2020

SIRE: OW 160618

DAM: OW 140403

DAM'S SIRE: OW 120008

PROGENY: 220722

SIRE OF PROG: 210709

 Twin

BIRTH RATE/ RAISE TYPE: S/S

Picture page 17

TCP	BWT	WWT	PWT	PFAT	PEMD	LMY	IMF	SHEARFS	LEQ	EQ
118.22	0.36	7.70	10.79	-0.78	0.18	2.67	-0.56	3.26	112.98	111.38
40	60	62	59	61	63	54	36	35	33	33

Purchased by: \$

LOT 15. OLD WOOMBI-200722

DOB: 15/9/2020

SIRE: OW 160618

DAM: OW 170721

DAM'S SIRE: OW 160618

PROGENY:

SIRE OF PROG:

 Twin

BIRTH RATE/ RAISE TYPE:

Twin with Lot 16, daughter of Lot 27. Lot 15 picture page 17.

TCP	BWT	WWT	PWT	PFAT	PEMD	LMY	IMF	SHEARFS	LEQ	EQ
108.22	0.00	3.05	5.24	-0.17	0.07	0.27	0.07	-1.73	109.19	108.71
40	62	64	63	56	58	50	30	30	30	30

Purchased by: \$

LOT 16. OLD WOOMBI-200723

DOB: 15/9/2020

SIRE: OW 160618

DAM: OW 170721

DAM'S SIRE: OW 160618

PROGENY: 220725

SIRE OF PROG: 210709

 Twin

BIRTH RATE/ RAISE TYPE: S/S

Twin with Lot 15, daughter of Lot 27. Lot 16 Picture page 17.

TCP	BWT	WWT	PWT	PFAT	PEMD	LMY	IMF	SHEARFS	LEQ	EQ
109.32	0.05	3.82	6.14	-0.28	0.00	0.57	0.02	-1.17	109.71	109.20
40	63	65	63	56	58	50	30	30	30	30

Purchased by: \$

LOT 17. OLD WOOMBI-200726

DOB: 27/9/2020

SIRE: OW 170410

DAM: OW 190708

DAM'S SIRE: OW 160618

PROGENY: 220720

SIRE OF PROG: 210709

 Twin

BIRTH RATE/ RAISE TYPE: S/S

Daughter of Lot 21

Picture page 17

TCP	BWT	WWT	PWT	PFAT	PEMD	LMY	IMF	SHEARFS	LEQ	EQ
135.24	0.29	8.09	12.09	-0.42	1.87	3.04	-0.31	1.17	131.49	131.05
43	62	63	61	58	58	50	38	38	37	37

Purchased by:

\$

LOT 18. OLD WOOMBI-190704

DOB: 9/9/2019

SIRE: OW 160618

DAM: OW 170712

DAM'S SIRE: OW 160618

PROGENY: 220731, 220732

SIRE OF PROG: 210709

 Single

BIRTH RATE/ RAISE TYPE: T/T

Picture page 17

TCP	BWT	WWT	PWT	PFAT	PEMD	LMY	IMF	SHEARFS	LEQ	EQ
117.11	0.26	7.67	11.05	-0.62	-0.24	2.07	-0.33	2.34	113.43	112.87
47	65	67	67	68	71	56	35	34	36	36

Purchased by:

\$

LOT 19. OLD WOOMBI-190705

DOB: 9/9/2019

SIRE: OW 160618

DAM: OW 160630

DAM'S SIRE: R 120001

PROGENY: 220114, 220115

SIRE OF PROG: 210709

 Single

BIRTH RATE/ RAISE TYPE: T/T

Re-tag 734, daughter of Lot 32

Picture page 17

TCP	BWT	WWT	PWT	PFAT	PEMD	LMY	IMF	SHEARFS	LEQ	EQ
108.11	0.30	6.41	8.93	-1.04	-1.28	1.34	0.01	0.71	107.92	107.72
45	61	65	65	66	69	54	33	33	35	35

Purchased by:

\$

LOT 20. OLD WOOMBI-190707

DOB: 10/9/2019

SIRE: OW 160618

DAM: OW 170717

DAM'S SIRE: OW 160618

PROGENY:

SIRE OF PROG:

 Twin

BIRTH RATE/ RAISE TYPE:

Picture page 17

TCP	BWT	WWT	PWT	PFAT	PEMD	LMY	IMF	SHEARFS	LEQ	EQ
121.28	0.13	7.09	10.52	-0.23	0.55	1.89	-0.19	0.72	119.23	118.66
47	62	66	67	68	70	56	33	33	35	35

Purchased by:

\$

LOT 21. OLD WOOMBI-190708

DOB: 10/9/2019

SIRE: OW 160618

DAM: OW 160601

DAM'S SIRE: R 120001

PROGENY: 220704, 220705

SIRE OF PROG: CA 100064

 Twin

BIRTH RATE/ RAISE TYPE: T/T

Daughter of Lot 30, daughter is Lot 17. Lot 21 picture page 17.

TCP	BWT	WWT	PWT	PFAT	PEMD	LMY	IMF	SHEARFS	LEQ	EQ
115.93	0.31	7.98	11.17	-0.51	-0.11	2.10	-0.33	2.51	111.46	111.60
45	65	67	67	65	68	54	33	33	34	35

Purchased by: \$

LOT 22. OLD WOOMBI-190717

DOB: 15/9/2019

SIRE: OW 160618

DAM: OW 130623

DAM'S SIRE: R 110008

PROGENY:

SIRE OF PROG:

 Twin

BIRTH RATE/ RAISE TYPE:

Daughter of Lot 36, daughter is Lot 2. Lot 22 picture page 17.

TCP	BWT	WWT	PWT	PFAT	PEMD	LMY	IMF	SHEARFS	LEQ	EQ
107.88	0.14	4.79	6.59	-0.09	0.07	0.61	0.02	-0.41	108.30	107.70
47	65	68	68	69	71	57	34	33	35	36

Purchased by: \$

LOT 23. OLD WOOMBI-190726

DOB: 19/9/2019

SIRE: OW 160618

DAM: OW 140373

DAM'S SIRE: OW 120003

PROGENY: 220708

SIRE OF PROG: CA 100064

 Twin

BIRTH RATE/ RAISE TYPE: S/S

Daughter is Lot 3, son is Lot 47
Picture page 17

TCP	BWT	WWT	PWT	PFAT	PEMD	LMY	IMF	SHEARFS	LEQ	EQ
121.40	0.22	6.42	10.18	-0.16	0.47	1.40	-0.04	0.36	121.58	120.33
46	63	66	66	66	69	56	36	35	36	36

Purchased by: \$

LOT 24. OLD WOOMBI-170708

DOB: 12/8/2017

SIRE: OW 160618

DAM: OW 150087

DAM'S SIRE: CA 090234

PROGENY: 220715, 220715

SIRE OF PROG: 210709

 Twin

BIRTH RATE/ RAISE TYPE: T/T

Daughters are Lot 4 and 12
Picture page 17

TCP	BWT	WWT	PWT	PFAT	PEMD	LMY	IMF	SHEARFS	LEQ	EQ
124.10	0.09	5.81	8.34	-0.14	1.66	1.85	-0.21	0.05	120.81	121.31
45	65	67	66	65	68	55	33	33	34	34

Purchased by: \$



LOT 25. OW-170710

SIRE: OW 160618 *See page 26*



LOT 26. OW-170711

SIRE: OW 160618 *See page 26*



LOT 27. OW-170721

SIRE: OW 160618 *See page 26*



LOT 28. OW-170736

SIRE: OW 160618 *See page 26*



LOT 29. OW-160460

SIRE: – *See page 27*



LOT 30. OW-160601

SIRE: R 120001 *See page 27*



LOT 31. OW-160602

SIRE: R 120001 *See page 27*



LOT 32. OW-160630

SIRE: R 120001 *See page 27*



LOT 33. OW-160634

SIRE: R 120001 *See page 28*



LOT 34. OW-150152

SIRE: CA 090234 *See page 28*



LOT 35. OW-140402

SIRE: OW 130112 *See page 28*



LOT 36. OW-130623

SIRE: R 110008 *See page 28*



LOT 37. OW-200707

SIRE: OW 160618 *See page 29*



LOT 38. OW-200740

SIRE: – *See page 29*



LOT 39. OW-200724

SIRE: OW 160618 *See page 29*



LOT 40. OW-200715

SIRE: OW 160618 *See page 29*



LOT 41. OW-210716

SIRE: CA 100064 *See page 30*



LOT 42. OW-210722

SIRE: CA 120041 *See page 30*



LOT 43. OW-210709

SIRE: CA 120041 *See page 30*



LOT 44. OW-210714

SIRE: CA 120041 *See page 30*



LOT 45. OW-210728

SIRE: – *See page 31*



LOT 46. OW-210713

SIRE: CA 120041 *See page 31*



LOT 47. OW-210701

SIRE: CA 120041 *See page 31*



LOT 48. OW-210721

SIRE: CA 120041 *See page 31*

LOT 25. OLD WOOMBI-170710

DOB: 12/8/2017

SIRE: OW 160618

DAM: OW 130610

DAM'S SIRE: R 110008

PROGENY: 220719

SIRE OF PROG: 210709

 Twin

BIRTH RATE/ RAISE TYPE: S/S

Sons are lot 39 and 43

Picture page 24

TCP	BWT	WWT	PWT	PFAT	PEMD	LMY	IMF	SHEARFS	LEQ	EQ
113.84	0.18	5.35	7.95	-0.54	-0.05	1.37	-0.13	0.05	113.54	111.99
45	66	67	67	67	70	56	33	32	34	34

Purchased by:

\$

LOT 26. OLD WOOMBI-170711

DOB: 13/8/2017

SIRE: OW 160618

DAM: OW 140404

DAM'S SIRE: OW 120008

PROGENY: 220707

SIRE OF PROG: CA 100064

 Twin

BIRTH RATE/ RAISE TYPE: S/S

Daughter is Lot 7, son is Lot 41

Picture page 24

TCP	BWT	WWT	PWT	PFAT	PEMD	LMY	IMF	SHEARFS	LEQ	EQ
118.38	0.35	8.47	11.82	-0.61	-0.04	2.47	-0.50	3.65	112.66	112.12
47	65	67	67	68	71	58	38	37	38	38

Purchased by:

\$

LOT 27. OLD WOOMBI-170721

DOB: 19/8/2017

SIRE: OW 160618

DAM: OW 130619

DAM'S SIRE: R 110008

PROGENY: 220729, 220730

SIRE OF PROG: 210709

 Twin

BIRTH RATE/ RAISE TYPE: T/T

Daughters are lot 5, 15 and 16

Picture page 24

TCP	BWT	WWT	PWT	PFAT	PEMD	LMY	IMF	SHEARFS	LEQ	EQ
109.27	0.05	3.92	6.13	-0.50	-0.21	0.69	0.00	-0.94	109.54	108.95
45	66	69	68	67	69	56	33	32	34	34

Purchased by:

\$

LOT 28. OLD WOOMBI-170736

DOB: 30/8/2017

SIRE: OW 160618

DAM: OW 150156

DAM'S SIRE: CA 090234

PROGENY: 220703

SIRE OF PROG: CA 100064

 Twin

BIRTH RATE/ RAISE TYPE: S/S

Son is Lot 40

Picture page 24

TCP	BWT	WWT	PWT	PFAT	PEMD	LMY	IMF	SHEARFS	LEQ	EQ
119.51	0.10	5.09	8.03	-0.51	0.73	1.70	-0.19	-0.61	118.58	117.06
45	64	66	66	66	68	55	33	33	34	35

Purchased by:

\$

LOT 29. OLD WOOMBI-160460

DOB:

SIRE:

DAM:

DAM'S SIRE:

PROGENY: 220706

SIRE OF PROG: CA 100064

BIRTH RATE/ RAISE TYPE: S/S

Daughter is Lot 13

Picture page 24

TCP	BWT	WWT	PWT	PFAT	PEMD	LMY	IMF	SHEARFS	LEQ	EQ
-	0.01	4.84	-	-	-	-	-	-	-	-
-	41	40	-	-	-	-	-	-	-	-

Purchased by: \$

LOT 30. OLD WOOMBI-160601

DOB: 31/7/2016

SIRE: R 120001

DAM: OW 140404

DAM'S SIRE: OW 120008

PROGENY: 220726, 220727

SIRE OF PROG: 210709

 Twin

BTH RATE/ RSE TYPE: TRIP/TW

Twin with Lot 31, daughter is

Lot 21. Picture page 24.

TCP	BWT	WWT	PWT	PFAT	PEMD	LMY	IMF	SHEARFS	LEQ	EQ
116.52	0.29	8.02	11.28	-0.77	-0.28	2.36	-0.48	3.58	109.70	110.49
44	64	64	64	64	66	52	34	34	36	35

Purchased by: \$

LOT 31. OLD WOOMBI-160602

DOB: 31/7/2016

SIRE: R 120001

DAM: OW 140404

DAM'S SIRE: OW 120008

PROGENY: 220711, 220712

SIRE OF PROG: 210709

 Twin

BIRTH RATE/ RAISE TYPE: T/T

Twin with Lot 30, sons are

Lot 44 and 46. Picture page 24.

TCP	BWT	WWT	PWT	PFAT	PEMD	LMY	IMF	SHEARFS	LEQ	EQ
117.54	0.30	7.77	11.20	-0.29	0.27	2.10	-0.44	2.96	110.23	111.99
45	64	66	65	66	68	55	36	35	36	36

Purchased by: \$

LOT 32. OLD WOOMBI-160630

DOB: 4/8/2016

SIRE: R 120001

DAM: OW 140434

DAM'S SIRE: OW 120135

PROGENY: 220736

SIRE OF PROG: 210709

 Twin

BIRTH RATE/ RAISE TYPE: S/S

Daughters are Lot 8 and 19, son

is Lot 42. Picture page 24.

TCP	BWT	WWT	PWT	PFAT	PEMD	LMY	IMF	SHEARFS	LEQ	EQ
115.82	0.32	8.32	11.81	-0.65	-0.96	1.65	0.10	1.01	116.10	116.32
47	65	69	68	67	69	57	37	37	38	37

Purchased by: \$

LOT 33. OLD WOOMBI-160634

DOB: 5/8/2016

SIRE: R 120001

DAM: OW 140373

DAM'S SIRE: OW 120003

PROGENY: 220713, 220714

SIRE OF PROG: CA 100064

 Single

BIRTH RATE/ RAISE TYPE: T/T

Sons are Lot 37 and 48

Picture page 24

TCP	BWT	WWT	PWT	PFAT	PEMD	LMY	IMF	SHEARFS	LEQ	EQ
118.54	0.48	9.14	13.27	-0.90	-0.99	2.10	-0.15	2.61	116.52	116.14
45	66	68	67	66	69	55	35	34	36	35

Purchased by:

\$

LOT 34. OLD WOOMBI-150152

DOB: 26/7/2015

SIRE: CA 090234

DAM: OW 130624

DAM'S SIRE: R 110008

PROGENY: 220733, 220734

SIRE OF PROG: 210709

 Twin

BIRTH RATE/ RAISE TYPE: T/T

Picture page 24

TCP	BWT	WWT	PWT	PFAT	PEMD	LMY	IMF	SHEARFS	LEQ	EQ
128.61	0.05	6.53	9.49	-1.33	1.06	3.25	-0.45	0.64	123.76	123.25
54	71	74	74	74	76	64	42	41	43	43

Purchased by:

\$

LOT 35. OLD WOOMBI-140402

DOB: 16/9/2014

SIRE: OW 130112

DAM: OW 130614

DAM'S SIRE: R 110008

PROGENY: 220717

SIRE OF PROG: 210709

 Single

BIRTH RATE/ RAISE TYPE: T/T

Daughter is Lot 11, son is Lot 50

Picture page 24

TCP	BWT	WWT	PWT	PFAT	PEMD	LMY	IMF	SHEARFS	LEQ	EQ
118.73	0.57	10.16	14.76	-0.48	-0.43	2.16	-0.73	5.78	110.05	109.48
49	70	71	68	67	70	60	45	45	43	43

Purchased by:

\$

LOT 36. OLD WOOMBI-130623

DOB:

SIRE: R 110008

DAM: Unknown

DAM'S SIRE:

PROGENY: 220701

SIRE OF PROG: CA 100064

BIRTH RATE/ RAISE TYPE: T/S

Daughter is Lot 22

Picture page 24

TCP	BWT	WWT	PWT	PFAT	PEMD	LMY	IMF	SHEARFS	LEQ	EQ
107.92	0.08	4.61	6.26	-0.32	-0.08	0.68	0.01	-0.35	108.48	107.67
47	70	70	70	68	71	57	34	33	37	36

Purchased by:

\$

LOT 37. OLD WOOMBI-200707

DOB: 4/9/2020

SIRE: OW 160618

DAM: OW 160634

DAM'S SIRE: R 120001

PROGENY:

SIRE OF PROG:

 Twin

BIRTH RATE/ RAISE TYPE:

Son of Lot 33

Picture page 25

TCP	BWT	WWT	PWT	PFAT	PEMD	LMY	IMF	SHEARFS	LEQ	EQ
116.62	0.36	8.24	11.76	-0.98	-0.90	2.12	-0.19	2.19	114.33	113.85
41	60	63	61	63	65	54	33	31	31	31

Purchased by: \$

LOT 38. OLD WOOMBI-200740

DOB:

SIRE:

DAM:

DAM'S SIRE:

PROGENY:

SIRE OF PROG:

BIRTH RATE/ RAISE TYPE:

Picture page 25

TCP	BWT	WWT	PWT	PFAT	PEMD	LMY	IMF	SHEARFS	LEQ	EQ
-	-	-	-	-	-	-	-	-	-	-
-	-	-	-	-	-	-	-	-	-	-

Purchased by: \$

LOT 39. OLD WOOMBI-200724

DOB: 15/9/2020

SIRE: OW 160618

DAM: OW 170710

DAM'S SIRE: OW 160618

PROGENY:

SIRE OF PROG:

 Single

BIRTH RATE/ RAISE TYPE:

Son of Lot 25

Picture page 25

TCP	BWT	WWT	PWT	PFAT	PEMD	LMY	IMF	SHEARFS	LEQ	EQ
114.14	0.19	5.12	7.81	-0.10	0.56	1.18	-0.10	-0.47	113.53	112.58
42	63	65	63	65	67	57	34	32	32	32

Purchased by: \$

LOT 40. OLD WOOMBI-200715

DOB: 11/9/2020

SIRE: OW 160618

DAM: OW 170736

DAM'S SIRE: OW 160618

PROGENY:

SIRE OF PROG:

 Single

BIRTH RATE/ RAISE TYPE:

Son of Lot 28

Picture page 25

TCP	BWT	WWT	PWT	PFAT	PEMD	LMY	IMF	SHEARFS	LEQ	EQ
119.05	0.08	5.31	8.22	-0.05	1.09	1.49	-0.15	-0.45	117.89	116.95
42	62	65	62	65	67	56	34	32	32	32

Purchased by: \$

LOT 41. OLD WOOMBI-210716

DOB: 31/7/2021

SIRE: CA 100064

DAM: OW 170711

DAM'S SIRE: OW 160618

PROGENY:

SIRE OF PROG:

 Twin

BIRTH RATE/ RAISE TYPE:

Twin with Lot 7, son of Lot 26

Picture page 25

TCP	BWT	WWT	PWT	PFAT	PEMD	LMY	IMF	SHEARFS	LEQ	EQ
122.56	0.26	7.97	11.29	-0.63	0.32	2.45	-0.40	2.27	117.89	117.46
43	58	64	62	64	66	56	37	35	34	35

Purchased by:

\$

LOT 42. OLD WOOMBI-210722

DOB: 1/8/2021

SIRE: CA 120041

DAM: OW 160630

DAM'S SIRE: R 120001

PROGENY:

SIRE OF PROG:

 Twin

BIRTH RATE/ RAISE TYPE:

Twin with Lot 8, son of Lot 32

Picture page 25

TCP	BWT	WWT	PWT	PFAT	PEMD	LMY	IMF	SHEARFS	LEQ	EQ
117.98	0.27	7.68	10.75	-0.42	-0.13	1.69	0.04	-	118.86	117.78
36	54	58	55	58	61	50	30	-	28	28

Purchased by:

\$

LOT 43. OLD WOOMBI-210709

DOB: 29/7/2021

SIRE: CA 120041

DAM: OW 170710

DAM'S SIRE: OW 160618

PROGENY:

SIRE OF PROG:

 Twin

BIRTH RATE/ RAISE TYPE:

Son of Lot 25

Picture page 25

TCP	BWT	WWT	PWT	PFAT	PEMD	LMY	IMF	SHEARFS	LEQ	EQ
117.66	0.19	6.15	8.75	-0.57	0.30	1.86	-0.14	-	117.48	115.59
36	64	60	57	58	61	50	29	-	27	27

Purchased by:

\$

LOT 44. OLD WOOMBI-210714

DOB: 30/7/2021

SIRE: CA 120041

DAM: OW 160602

DAM'S SIRE: R 120001

PROGENY:

SIRE OF PROG:

 Twin

BIRTH RATE/ RAISE TYPE:

Twin with Lot 46, son of Lot 31

Picture page 25

TCP	BWT	WWT	PWT	PFAT	PEMD	LMY	IMF	SHEARFS	LEQ	EQ
118.20	0.30	7.22	10.26	-0.26	0.51	1.92	-0.24	-	115.27	114.87
36	53	57	55	58	60	49	30	-	28	28

Purchased by:

\$

LOT 45. OLD WOOMBI-210728

DOB:

SIRE:

DAM:

DAM'S SIRE:

PROGENY:

SIRE OF PROG:

BIRTH RATE/ RAISE TYPE:

Picture page 25

TCP	BWT	WWT	PWT	PFAT	PEMD	LMY	IMF	SHEARFS	LEQ	EQ
-	-	-	-	-	-	-	-	-	-	-
-	-	-	-	-	-	-	-	-	-	-

Purchased by: \$

LOT 46. OLD WOOMBI-210713

DOB: 30/7/2021

SIRE: CA 120041

DAM: OW 160602

DAM'S SIRE: R 120001

PROGENY:

SIRE OF PROG:

 Twin

BIRTH RATE/ RAISE TYPE:

Twin with Lot 44, son of Lot 31

Picture page 25

TCP	BWT	WWT	PWT	PFAT	PEMD	LMY	IMF	SHEARFS	LEQ	EQ
117.58	0.23	7.03	10.00	-0.25	0.37	1.73	-0.20	-	115.17	114.75
36	53	57	55	58	60	49	30	-	28	28

Purchased by: \$

LOT 47. OLD WOOMBI-210701

DOB: 27/7/2021

SIRE: CA 120041

DAM: OW 190726

DAM'S SIRE: OW 160618

PROGENY:

SIRE OF PROG:

 Twin

BIRTH RATE/ RAISE TYPE:

Twin with Lot 3, son of Lot 23

Picture page 25

TCP	BWT	WWT	PWT	PFAT	PEMD	LMY	IMF	SHEARFS	LEQ	EQ
120.13	0.18	6.57	9.72	-0.24	0.48	1.52	-0.03	-	121.03	119.28
36	53	57	55	58	60	50	30	-	28	28

Purchased by: \$

LOT 48. OLD WOOMBI-210721

DOB: 31/7/2021

SIRE: CA 120041

DAM: OW 160634

DAM'S SIRE: R 120001

PROGENY:

SIRE OF PROG:

 Twin

BIRTH RATE/ RAISE TYPE:

Son of Lot 33

Picture page 25

TCP	BWT	WWT	PWT	PFAT	PEMD	LMY	IMF	SHEARFS	LEQ	EQ
117.59	0.36	7.86	11.23	-0.32	-0.20	1.41	0.01	-	118.36	116.99
36	53	58	55	58	60	49	29	-	28	27

Purchased by: \$

LOT 49. OLD WOOMBI-210712

DOB: 30/7/2021

SIRE: CA 120041

DAM: Unknown

DAM'S SIRE:

PROGENY:

SIRE OF PROG:

 Twin

BIRTH RATE/ RAISE TYPE:

Twin with Lot 6

Pictured below

TCP	BWT	WWT	PWT	PFAT	PEMD	LMY	IMF	SHEARFS	LEQ	EQ
115.06	0.13	6.07	8.58	-0.28	0.55	1.55	-0.07	-	-	-
29	46	51	47	51	54	43	24	-	-	-

Purchased by:

\$

LOT 50. OLD WOOMBI-210719

DOB: 31/7/2021

SIRE: CA 100064

DAM: OW 140402

DAM'S SIRE: OW 130112

PROGENY:

SIRE OF PROG:

:

 Twin

BIRTH RATE/ RAISE TYPE:

Son of Lot 35

Pictured below

TCP	BWT	WWT	PWT	PFAT	PEMD	LMY	IMF	SHEARFS	LEQ	EQ
120.41	0.13	6.90	10.48	-0.39	0.29	1.66	-0.41	2.24	115.60	115.21
44	60	65	62	64	66	57	39	37	36	36

Purchased by:

\$

LOT 51. OLD WOOMBI-210075

DOB:

SIRE: Unknown

DAM: Unknown

DAM'S SIRE:

PROGENY:

SIRE OF PROG:

BIRTH RATE/ RAISE TYPE:

Pictured below

TCP	BWT	WWT	PWT	PFAT	PEMD	LMY	IMF	SHEARFS	LEQ	EQ
-	-	-	-	-	-	-	-	-	-	-
-	-	-	-	-	-	-	-	-	-	-

Purchased by:

\$



LOT 49. OW-210712

SIRE: CA 120041



LOT 50. OW-210719

SIRE: CA 100064



LOT 51. OW-210075

SIRE: Unknown

BORDER LEICESTER



LOT 52. CoP 219010
SIRE: I 190801 See page 34



LOT 53. CoP 219024
SIRE: I 190801 See page 34



LOT 54. CoP 219061
SIRE: T 190105 See page 34



LOT 55. CoP 219007
SIRE: I 190801 See page 34



LOT 56. CoP 219055
SIRE: T 190105 See page 35



LOT 57. CoP 219005
SIRE: I 190801 See page 35



LOT 58. CoP 219069
SIRE: T 170231 See page 35



LOT 59. CoP 219094
SIRE: T 190112 See page 35



LOT 60. CoP 219089
SIRE: T 190105 See page 36



LOT 61. CoP 219160
SIRE: T 170231 See page 36



LOT 62. CoP 219080
SIRE: T 190105 See page 36



LOT 63. CoP 219100
SIRE: T 170231 See page 36

LOT 52. CHAIN-O-PONDS-219010

DOB: 27/7/2021

SIRE: I 190801

DAM: COP 199597 DAM'S SIRE: COP

 Twin

Re-tagged 219192

Picture page 33

BLX	BWT	MWWT	WWT	PWT	PFAT	PEMD	WR	MCP +
123.03	-0.02	-0.38	3.44	7.02	1.02	1.46	0.07	127.15
40	57	45	64	64	63	60	35	42

Purchased by:

\$

LOT 53. CHAIN-O-PONDS-219024

DOB: 29/7/2021

SIRE: I 190801

DAM: COP 189266 DAM'S SIRE: COP 140446

 Twin

Picture page 33

BLX	BWT	MWWT	WWT	PWT	PFAT	PEMD	WR	MCP +
124.96	0.35	0.04	6.33	10.67	0.76	1.21	0.03	131.56
42	59	48	66	66	65	62	37	44

Purchased by:

\$

LOT 54. CHAIN-O-PONDS-219061

DOB: 13/8/2021

SIRE: T 190105

DAM: COP 199003 DAM'S SIRE: COP 130750

 Single

Top 5% MWWT

Picture page 33

BLX	BWT	MWWT	WWT	PWT	PFAT	PEMD	WR	MCP +
106.21	0.26	1.88	4.11	6.10	0.46	0.40	-0.08	109.93
30	55	37	61	57	53	54	22	35

Purchased by:

\$

LOT 55. CHAIN-O-PONDS-219007

DOB: 27/7/2021

SIRE: I 190801

DAM: COP 199083 DAM'S SIRE: T 170231

 Single

Top 5% MWWT

Picture page 33

BLX	BWT	MWWT	WWT	PWT	PFAT	PEMD	WR	MCP +
123.73	0.39	-0.12	6.19	10.14	0.56	0.49	0.07	128.01
41	59	48	64	61	59	60	37	42

Purchased by:

\$

LOT 56. CHAIN-O-PONDS-219055

DOB: 11/8/2021

SIRE: T 190105

DAM: COP 199099 DAM'S SIRE: COP 130750

 Twin

Picture page 33

BLX	BWT	MWWT	WWT	PWT	PFAT	PEMD	WR	MCP +
110.05	0.29	2.26	5.10	7.21	-0.13	0.28	-0.07	113.62
29	53	35	60	56	53	53	19	33

Purchased by: \$

LOT 57. CHAIN-O-PONDS-219005

DOB: 27/7/2021

SIRE: I 190801

DAM: COP 199012 DAM'S SIRE: COP 130750

 Twin

Picture page 33

BLX	BWT	MWWT	WWT	PWT	PFAT	PEMD	WR	MCP +
117.91	0.22	-0.14	5.70	9.20	-0.38	-0.22	0.06	121.16
39	58	48	63	59	58	58	35	40

Purchased by: \$

LOT 58. CHAIN-O-PONDS-219069

DOB: 15/8/2021

SIRE: T 170231

DAM: COP 189289 DAM'S SIRE: COP

 Twin

Picture page 33

BLX	BWT	MWWT	WWT	PWT	PFAT	PEMD	WR	MCP +
95.19	0.34	1.12	4.18	6.67	-0.40	-0.80	-0.10	99.01
33	54	44	61	56	55	55	26	36

Purchased by: \$

LOT 59. CHAIN-O-PONDS-219094

DOB: 19/8/2021

SIRE: T 190112

DAM: COP 209057 DAM'S SIRE: COP 140446

 Single

Picture page 33

BLX	BWT	MWWT	WWT	PWT	PFAT	PEMD	WR	MCP +
110.11	0.25	1.28	5.17	8.12	-0.80	0.09	-0.04	113.78
35	57	39	65	65	64	61	25	40

Purchased by: \$

LOT 60. CHAIN-O-PONDS-219089

DOB: 19/8/2021

SIRE: T 190105

DAM: COP 199062 DAM'S SIRE: COP

 Twin

Picture page 33

BLX	BWT	MWWT	WWT	PWT	PFAT	PEMD	WR	MCP +
106.36	0.19	1.04	3.84	6.20	-0.23	0.50	-0.06	110.99
31	54	35	63	62	60	57	21	37

Purchased by:

\$

LOT 61. CHAIN-O-PONDS-219160

DOB: 25/10/2021

SIRE: T 170231

DAM: COP DAM'S SIRE: COP

 Single

Picture page 33

BLX	BWT	MWWT	WWT	PWT	PFAT	PEMD	WR	MCP +
97.52	0.30	1.17	4.48	7.04	-0.37	-0.49	-0.10	101.92
32	54	41	60	56	54	54	24	35

Purchased by:

\$

LOT 62. CHAIN-O-PONDS-219080

DOB: 16/8/2021

SIRE: T 190105

DAM: COP DAM'S SIRE: COP

 Twin

Picture page 33

BLX	BWT	MWWT	WWT	PWT	PFAT	PEMD	WR	MCP +
101.87	-0.02	-	1.18	2.52	-	-	-0.06	104.70
25	51	-	59	54	-	-	17	28

Purchased by:

\$

LOT 63. CHAIN-O-PONDS-219100

DOB: 24/8/2021

SIRE: T 170231

DAM: COP 189231 DAM'S SIRE: C 140101

 Single

Top 10% MWWT

Picture page 33

BLX	BWT	MWWT	WWT	PWT	PFAT	PEMD	WR	MCP +
109.79	0.70	1.58	8.13	11.30	-1.37	-0.47	-0.06	115.82
38	58	46	65	65	64	61	30	42

Purchased by:

\$

POLL DORSETS



LOT 64. OW-210097

SIRE: D 190400 *See page 38*



LOT 65. OW-210191

SIRE: J 150014 *See page 38*



LOT 66. OW-210155

SIRE: D 190400 *See page 38*



LOT 67. OW-210160

SIRE: D 190400 *See page 38*



LOT 68. OW-210267

SIRE: D 180474 *See page 39*



LOT 69. OW-210119

SIRE: D 190400 *See page 39*



LOT 70. OW-210018

SIRE: OW 180425 *See page 39*



LOT 71. OW-210110

SIRE: D 190400 *See page 39*



LOT 72. OW-210233

SIRE: UP 080185 *See page 40*



LOT 73. OW-210142

SIRE: D 190400 *See page 40*



LOT 74. OW-210082

SIRE: J 150014 *See page 40*



LOT 75. OW-210106

SIRE: D 170082 *See page 40*

LOT 64. OLD WOOMBI-210097

DOB: 26/7/2021

SIRE: D 190400

DAM: OW 170048 DAM'S SIRE: OW 150042

 Single

Top 5% TCP, WWT, PEMD and LMY
Top 10% LEQ and EQ. Picture pg 37.

TCP	BWT	WWT	PWT	PFAT	PEMD	LMY	IMF	SHEARFS	LEQ	EQ
157.81	0.42	11.80	17.29	-0.36	3.61	5.06	-0.96	4.76	148.51	146.06
50	65	67	65	67	68	60	51	50	47	47

Purchased by:

\$

LOT 65. OLD WOOMBI-210191

DOB: 29/7/2021

SIRE: J 150014

DAM: OW 190001 DAM'S SIRE: OW 150042

 Twin

TOP 5% PEMD and LMY
Picture page 37

TCP	BWT	WWT	PWT	PFAT	PEMD	LMY	IMF	SHEARFS	LEQ	EQ
150.59	0.36	10.96	16.70	0.12	4.24	4.97	-0.82	6.58	140.89	140.64
51	65	67	65	66	68	60	50	50	47	47

Purchased by:

\$

LOT 66. OLD WOOMBI-210155

DOB: 28/7/2021

SIRE: D 190400

DAM: OW 160233 DAM'S SIRE: OW 150042

 Twin

Top 5% TCP and PEMD, Top 10%
LMY, LEQ and EQ. Picture page 37

TCP	BWT	WWT	PWT	PFAT	PEMD	LMY	IMF	SHEARFS	LEQ	EQ
157.35	0.37	10.23	15.49	0.11	4.13	4.43	-0.89	2.42	148.51	146.55
50	65	66	64	66	68	59	50	49	46	46

Purchased by:

\$

LOT 67. OLD WOOMBI-210160

DOB: 28/7/2021

SIRE: D 190400

DAM: OW 170257 DAM'S SIRE: OW 150185

 Twin

Top 5% TCP, PEMD and LMY
Picture page 37

TCP	BWT	WWT	PWT	PFAT	PEMD	LMY	IMF	SHEARFS	LEQ	EQ
154.68	0.26	10.39	15.10	-0.38	4.44	5.71	-1.28	6.08	140.73	139.58
49	65	66	64	66	68	59	49	48	45	45

Purchased by:

\$

LOT 68. OLD WOOMBI-210267

DOB: 31/7/2021

SIRE: D 180474

DAM: OW 170008 DAM'S SIRE: OW 120135

 Twin

Twin with Lot 86

Picture page 37

TCP	BWT	WWT	PWT	PFAT	PEMD	LMY	IMF	SHEARFS	LEQ	EQ
145.52	0.36	11.26	17.54	-0.07	2.42	4.21	-0.63	4.82	137.78	137.46
49	63	65	63	64	66	58	51	50	47	47

Purchased by: \$

LOT 69. OLD WOOMBI-210119

DOB: 27/7/2021

SIRE: D 190400

DAM: OW 190027 DAM'S SIRE: OW 150042

 Single

Top 5% TCP, PEMD and LMY

Top 10% LEQ and EQ. Picture pg 37

TCP	BWT	WWT	PWT	PFAT	PEMD	LMY	IMF	SHEARFS	LEQ	EQ
158.34	0.31	10.57	16.00	-0.07	4.23	4.83	-0.98	3.27	148.48	146.54
50	65	66	64	66	68	60	51	50	47	47

Purchased by: \$

LOT 70. OLD WOOMBI-210018

DOB: 23/5/2021

SIRE: OW 180425

DAM: OW 160252 DAM'S SIRE: OW 150042

 Twin

Top 5% TCP, PEMD, LMY and EQ

Top 10% LEQ. Picture page 37.

TCP	BWT	WWT	PWT	PFAT	PEMD	LMY	IMF	SHEARFS	LEQ	EQ
159.65	0.40	10.46	16.35	-0.45	3.92	4.97	-0.73	2.05	150.01	150.67
51	66	68	68	68	70	59	47	47	45	46

Purchased by: \$

LOT 71. OLD WOOMBI-210110

DOB: 27/7/2021

SIRE: D 190400

DAM: OW 180189 DAM'S SIRE: OW 150132

 Twin

Top 5% TCP, PEMD and LMY

Top 10% LEQ and EQ. Picture pg 37

TCP	BWT	WWT	PWT	PFAT	PEMD	LMY	IMF	SHEARFS	LEQ	EQ
159.05	0.33	11.28	16.27	-0.40	4.10	5.26	-0.87	4.25	150.79	148.41
49	65	66	64	66	68	59	49	48	45	45

Purchased by: \$

LOT 72. OLD WOOMBI-210233

DOB: 29/7/2021

SIRE: UP 080185

DAM: OW 160244 DAM'S SIRE: OW 140091

 Twin

Picture page 37

TCP	BWT	WWT	PWT	PFAT	PEMD	LMY	IMF	SHEARFS	LEQ	EQ
133.37	0.66	11.03	15.65	-0.84	0.96	3.76	-0.84	6.10	120.60	122.97
53	65	68	66	67	69	62	52	52	48	49

Purchased by:

\$

LOT 73. OLD WOOMBI-210142

DOB: 28/7/2021

SIRE: D 190400

DAM: OW 180065 DAM'S SIRE: OW 120135

 Twin

Top 5% TCP and PEMD, Top 10% LMY and LEQ. Picture page 37.

TCP	BWT	WWT	PWT	PFAT	PEMD	LMY	IMF	SHEARFS	LEQ	EQ
154.60	0.28	10.39	15.29	-0.09	3.67	4.45	-0.69	2.66	147.13	146.05
50	65	66	64	66	68	59	50	50	47	47

Purchased by:

\$

LOT 74. OLD WOOMBI-210082

DOB: 24/7/2021

SIRE: J 150014

DAM: OW 180359 DAM'S SIRE: OW 150042

 Twin

Twin with Lot 84. Top 5% TCP, WWT and LMY. Top 10% PWT

TCP	BWT	WWT	PWT	PFAT	PEMD	LMY	IMF	SHEARFS	LEQ	EQ
153.82	0.41	12.06	17.78	-0.77	2.91	5.19	-0.75	5.81	143.73	144.60
51	65	66	65	67	68	60	50	50	47	47

Purchased by:

\$

LOT 75. OLD WOOMBI-210106

DOB: 27/7/2021

SIRE: D 170082

DAM: OW 180194 DAM'S SIRE: OW 150185

 Single

Picture page 37

TCP	BWT	WWT	PWT	PFAT	PEMD	LMY	IMF	SHEARFS	LEQ	EQ
139.93	0.51	10.89	16.28	-0.55	1.98	4.23	-0.71	6.32	132.80	131.03
48	62	64	62	61	65	54	47	47	45	44

Purchased by:

\$

LOT 76. OLD WOOMBI-210153

DOB: 28/7/2021

SIRE: J 150014

DAM: OW 190183 DAM'S SIRE: OW 150042

 Twin

Top 5% WWT and PWT, Top 10% TCP and LMY. Picture page 42.

TCP	BWT	WWT	PWT	PFAT	PEMD	LMY	IMF	SHEARFS	LEQ	EQ
151.35	0.44	12.73	18.62	-0.27	2.86	4.63	-0.59	5.80	143.84	143.70
51	65	67	65	67	68	60	50	50	47	47

Purchased by: \$

LOT 77. OLD WOOMBI-210238

DOB: 30/7/2021

SIRE: D 170082

DAM: OW 190019 DAM'S SIRE: OW 150042

 Twin

Top 10% PEMD
Picture page 42

TCP	BWT	WWT	PWT	PFAT	PEMD	LMY	IMF	SHEARFS	LEQ	EQ
144.79	0.35	9.57	14.63	-0.13	3.19	4.14	-0.61	3.55	138.66	137.14
45	61	63	60	62	64	56	46	46	42	42

Purchased by: \$

LOT 78. OLD WOOMBI-210280

DOB: 1/8/2021

SIRE: J 150014

DAM: OW 190178 DAM'S SIRE: OW 150132

 Single

Top 5% TCP and PEMD, Top 10% LMY and EQ. Picture page 42.

TCP	BWT	WWT	PWT	PFAT	PEMD	LMY	IMF	SHEARFS	LEQ	EQ
153.61	0.44	11.03	16.73	-0.19	3.88	4.72	-0.55	4.60	146.64	146.61
50	64	66	65	66	68	60	48	48	45	46

Purchased by: \$

LOT 79. OLD WOOMBI-210091

DOB: 26/7/2021

SIRE: J 150014

DAM: OW 170058 DAM'S SIRE: OW 150185

 Twin

Twin with Lot 93, Top 5% PEMD and LMY. Picture page 42.

TCP	BWT	WWT	PWT	PFAT	PEMD	LMY	IMF	SHEARFS	LEQ	EQ
146.23	0.23	9.96	14.99	-0.44	3.51	4.82	-0.83	6.52	135.72	136.25
50	65	66	65	67	68	60	49	49	46	46

Purchased by: \$



LOT 76. OW-210153

SIRE: J 150014 See page 41



LOT 77. OW-210238

SIRE: D 170082 See page 41



LOT 78. OW-210280

SIRE: J 150014 See page 41



LOT 79. OW-210091

SIRE: J 150014 See page 41



LOT 80. OW-210109

SIRE: K 140241



LOT 81. OW-210184

SIRE: D 170082



LOT 82. OW-210202

SIRE: D 190400



LOT 83. OW-210210

SIRE: J 150014



LOT 84. OW-210083

SIRE: J 150014 See page 44



LOT 85. OW-210193

SIRE: J 150014 See page 44



LOT 86. OW-210268

SIRE: D 180474 See page 44



LOT 87. OW-210050


SIRE: OW 180425 See page 44

LOT 80. OLD WOOMBI-210109

DOB: 27/7/2021

SIRE: K 140241

DAM: OW 170031 DAM'S SIRE: OW 150042

 **Single**
Top 10% LMY

TCP	BWT	WWT	PWT	PFAT	PEMD	LMY	IMF	SHEARFS	LEQ	EQ
147.12	0.51	10.88	16.03	-0.65	2.45	4.68	-0.92	5.72	135.30	135.99
53	65	67	65	67	68	62	54	54	50	51

Purchased by: _____ \$

LOT 81. OLD WOOMBI-210184

DOB: 29/7/2021

SIRE: D 170082

DAM: OW 190090 DAM'S SIRE: OW 150132

 **Twin**
Top 10% PEMD

TCP	BWT	WWT	PWT	PFAT	PEMD	LMY	IMF	SHEARFS	LEQ	EQ
147.21	0.47	10.58	15.91	0.00	3.30	4.15	-0.50	4.19	142.71	140.68
47	62	64	62	63	66	57	48	47	44	44


Purchased by: _____ \$

LOT 82. OLD WOOMBI-210202

DOB: 29/7/2021

SIRE: D 190400

DAM: OW 190011 DAM'S SIRE: OW 150042

 **Twin**
Top 5% TCP, WWT, PWT and LMY
Top 10% PEMD

TCP	BWT	WWT	PWT	PFAT	PEMD	LMY	IMF	SHEARFS	LEQ	EQ
156.96	0.49	12.71	18.47	-0.49	3.30	5.38	-1.02	4.89	145.73	144.52
50	65	66	64	66	68	60	51	50	47	47


Purchased by: _____ \$

LOT 83. OLD WOOMBI-210210

DOB: 29/7/2021

SIRE: J 150014

DAM: OW 150377 DAM'S SIRE: OW 140091

 **Twin**
Top 5% TCP and PEMD
Top 10% LMY and EQ

TCP	BWT	WWT	PWT	PFAT	PEMD	LMY	IMF	SHEARFS	LEQ	EQ
154.00	0.24	9.21	13.76	-0.09	4.25	4.41	-0.58	3.16	145.30	146.85
50	66	67	65	66	68	60	49	49	46	46

Purchased by: _____ \$

LOT 84. OLD WOOMBI-210083

DOB: 24/7/2021

SIRE: J 150014

DAM: OW 180359 DAM'S SIRE: OW 150042

 Twin

Twin with Lot 74. Top 5% TCP and LMY. Top 10% WWT, PWT and PEMD

TCP	BWT	WWT	PWT	PFAT	PEMD	LMY	IMF	SHEARFS	LEQ	EQ
154.76	0.34	11.70	17.39	-0.58	3.23	5.07	-0.73	5.56	144.88	145.78
51	65	66	65	67	68	60	50	50	47	47

Purchased by:

\$

LOT 85. OLD WOOMBI-210193

DOB: 29/7/2021

SIRE: J 150014

DAM: OW 190037 DAM'S SIRE: OW 150042

 Twin

Top 10% PEMD

Picture page 42

TCP	BWT	WWT	PWT	PFAT	PEMD	LMY	IMF	SHEARFS	LEQ	EQ
146.38	0.30	10.28	15.48	-0.10	3.26	3.91	-0.47	3.85	139.15	140.36
49	64	65	63	65	66	59	48	48	45	45

Purchased by:

\$

LOT 86. OLD WOOMBI-210268

DOB: 31/7/2021

SIRE: D 180474

DAM: OW 170008 DAM'S SIRE: OW 120135

 Twin

Twin with Lot 68, Top 10% WWT and PWT. Picture page 42.

TCP	BWT	WWT	PWT	PFAT	PEMD	LMY	IMF	SHEARFS	LEQ	EQ
144.58	0.39	11.32	17.58	-0.34	2.09	4.38	-0.67	5.03	136.53	136.19
49	63	65	63	64	66	58	51	50	47	47

Purchased by:

\$

LOT 87. OLD WOOMBI-210050

DOB: 31/5/2021

SIRE: OW 180425

DAM: OW 180371 DAM'S SIRE: OW 150042

 Twin

Top 5% TCP and LMY,

Top 10% PEMD. Picture page 42.

TCP	BWT	WWT	PWT	PFAT	PEMD	LMY	IMF	SHEARFS	LEQ	EQ
154.53	0.36	10.74	16.41	-0.64	3.13	4.83	-0.81	3.72	146.07	144.65
52	65	68	68	68	70	59	48	48	46	47

Purchased by:

\$

LOT 88. OLD WOOMBI-210048

DOB: 31/5/2021

SIRE: OW 180425

DAM: OW 190039 DAM'S SIRE: OW 150042

 Single

Top 5% TCP and LMY, Top 10% PWT, PEMD, LEQ and EQ. Pic p45.

TCP	BWT	WWT	PWT	PFAT	PEMD	LMY	IMF	SHEARFS	LEQ	EQ
157.09	0.45	11.28	17.58	-0.50	3.17	4.75	-0.69	2.73	148.67	148.39
52	66	68	68	68	70	59	49	49	47	47

Purchased by: \$

LOT 89. OLD WOOMBI-210247

DOB: 30/7/2021

SIRE: J 150014

DAM: OW180353 DAM'S SIRE: OW 150185

 Twin

Top 5% PEMD
Picture page 45

TCP	BWT	WWT	PWT	PFAT	PEMD	LMY	IMF	SHEARFS	LEQ	EQ
146.02	0.17	8.31	13.32	0.05	4.20	4.13	-0.60	4.49	137.69	138.70
51	65	66	65	66	68	60	49	49	46	46

Purchased by: \$

LOT 90. OLD WOOMBI-210245

DOB: 30/7/2021

SIRE: D 180474

DAM: OW 170123 DAM'S SIRE: OW 150042

 Single

Picture page 42

TCP	BWT	WWT	PWT	PFAT	PEMD	LMY	IMF	SHEARFS	LEQ	EQ
144.19	0.41	10.65	16.85	-0.72	1.65	3.90	-0.65	4.42	137.77	135.93
48	63	65	62	61	61	56	50	49	45	46

Purchased by: \$

LOT 91. OLD WOOMBI-210025

DOB: 24/5/2021

SIRE: OW 180425

DAM: OW 180246 DAM'S SIRE: OW 150042

 Twin

Top 10% PEMD
Picture page 42

TCP	BWT	WWT	PWT	PFAT	PEMD	LMY	IMF	SHEARFS	LEQ	EQ
150.60	0.37	9.91	14.75	-0.46	3.40	4.37	-0.65	2.73	142.13	142.55
52	65	68	68	69	70	59	48	48	46	47

Purchased by: \$

LOT 92. OLD WOOMBI-210270

DOB: 31/7/2021

SIRE: J 150014

DAM: OW 180168 DAM'S SIRE: OW 120135

 Twin

Top 5% PEMD

Top10% TCP, LMY and EQ

TCP	BWT	WWT	PWT	PFAT	PEMD	LMY	IMF	SHEARFS	LEQ	EQ
153.30	0.21	10.06	15.34	-0.06	3.86	4.45	-0.42	3.05	146.64	147.85
51	65	67	65	67	68	61	51	51	48	48

Purchased by:

\$

LOT 93. OLD WOOMBI-210092

DOB: 26/7/2021

SIRE: J 150014

DAM: OW 170058 DAM'S SIRE: OW 150185

 Twin

Twin with Lot 79

Top 5% PEMD, Top 10% LMY

TCP	BWT	WWT	PWT	PFAT	PEMD	LMY	IMF	SHEARFS	LEQ	EQ
145.59	0.19	9.60	14.56	-0.40	3.51	4.66	-0.80	6.29	135.46	135.99
50	65	66	65	67	68	60	49	49	46	46

Purchased by:

\$



LOT 88. OW-210048

SIRE: OW 180425 See page 45



LOT 89. OW-210247

SIRE: J 150014 See page 45



LOT 90. OW-210245

SIRE: D 180474 See page 45



LOT 91. OW-210025

SIRE: OW 180425 See page 45



LOT 92. OW-210270

SIRE: J 150014



LOT 93. OW-210092

SIRE: J 150014

BUYERS INSTRUCTION SLIP

NO VERBAL INSTRUCTIONS WILL BE ACCEPTED.

Name:

Address:

Postcode:

Phone:

Email:

Please send the account:

directly to me: Please indicate if the account is to be made out to a different name from above.

to my Agent:

Lots purchased:

Transport arrangements: Note all instructions in regards to the delivery must be given in writing.

Insurance: Please indicate if insurance is required. Yes No

Signature of Buyer or their representative:

THANK YOU

Thank you to all who attended
our Old Woombi annual spring sale,
whether in person or online.

We wish successful purchasers
all the best with their rams
and look forward to seeing you
all at our next sale on
Tuesday 31 January 2023.

Sam and Kate





'Ashfield' Oxley Highway, Walcha NSW 2354

Sam and Kate Lisle

02 6777 2605 or 0427 773 944

Selling Agents



Tom Henry.....0409 659 877

Allan Laurie.....0455 821 394

James Sharpe0409 272 490

Walcha Office.....02 6774 2600