

YOUR **NO. #1 F1**



LOT 4
MARELLAN WELL DONE

Marellan Shorthorns

"Bred for Bos Indicus Cows" Bull Sale

Monday 27th Sept 2021

ONLINE & ON PROPERTY "Emerald Downs" Emerald

Dear Beef Producers,

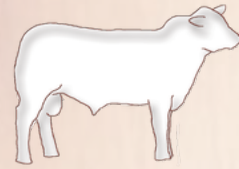
It is with great pleasure that we invite to our 2021 "Bred for Bos Indicus Cows Bull Sale, online and on-property. The Sale commences at 12 Midday, with inspection from 8am on Sale Day, or any other time by appointment.

It has been exceptionally pleasing to receive so many good reports of the progeny of our Marellan Shorthorn bulls over Bos Indicus Cows in the last 12 months. It's great to see that your Bos Indicus Cows and our Shorthorn bulls are forming a profitable and potent combination. We continue to strive for **Industry Leading Selection Pressure**, to instil in our herd more genetic gain and northern industry relevance. With less than 100mm this year, Selection Pressure has been pretty easy. We want our cattle to do more on less, when compared to other options.

Please Note that this year's sale is both on farm and online, through Auctions Plus. Videos of the bulls will be available around mid-September, via www.marellan.com.au or Marellan Shorthorns Facebook or Auctions Plus. If you are intending on using Auctions Plus on sale day, please ensure that you are registered to do so. The sale will also be live streamed via the Marellan Shorthorns Facebook page.

About the Bulls: On offer will be 50 Shorthorn Bulls. All these bulls have been blooded and have been fully vaccinated with 3-day, Vibrio, Pestiguard and 7 in 1. The bulls have been **Morphology Semen Tested** and up to date weighs and scan will be available before the sale. We are very pleased with this year's bulls. These bulls represent the very best in Shorthorn genetics, which have been bred for generations to prosper in the Queensland environment. **PLEASE NOTE:** Marellan Shorthorn bulls are grass-fed paddock bulls, **NO GRAIN – NOT EVER.** We think that this policy is in the best **long-term** interests of both our business and yours. This inevitably means that the bulls are not as visually impressive (lighter weights and lower scans) to the eye, as you may see at other sales. We ask both returning clients and new clients to **lower your sale day expectations but increase your long-term expectations** of the contribution that these Marellan Shorthorn bulls can make to your herd.

Yours sincerely,
Lincoln & Lisa Job and Family



marellan
shorthorns

Bred for Bos Indicus Cows!



Marellan Shorthorns

"Bred for Bos Indicus Cows" Bull Sale

Monday 27th Sept 2021 "Emerald Downs" Emerald
ONLINE & ON PROPERTY

Monday 27th September 2021

12 noon

ON PROPERTY

"Emerald Downs" Emerald

Inspection from 8am on sale day

51 Shorthorn Bulls

Selling Agent:

H&W
Livestock & Property


AuctionsPlus
Buy and Sell stock nationally

Outside Agents Rebate:

A 5% rebate will be offered to outside agents who;

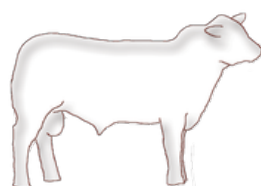
1. Introduce their clients more than 24 hours before the sale (to vendors or selling agents)
2. Attend the sale with them (or purchase on their behalf) and settle within 7 days.
3. Agents may **ONLY** introduce clients under the specific instruction of their clients.
4. Sale day buyers registration forms must be consistent with introductions.

LINCOLN & LISA JOB

(M) 0404 083 438

www.marellan.com.au | lincolnandlisa@marellan.com.au

If you are unable to reach Lincoln on sale day or before,
please feel free to call Lisa's mobile on 0411 311 323



marellan
shorthorns

Bred for Bos Indicus Cows!

Sale Information

Inspection: Inspection will be from 8am on sale day or any other time by appointment.

On Property & Online: The sale will be On-Property at “Emerald Downs” under Covid-Safe protocol. The Sale will also be on the AuctionPlus selling platform and Streamed live on the Marellan Shorthorns Facebook page. Video’s of the Bulls will be online by 7-10 days prior to the sale.

Accommodation: Emerald has numerous accommodation options.

Airport: “Emerald Downs” is situated only 10km from the Emerald Airport. Please call Lincoln (0404 08 34 38) or Lisa (0411 311 323) if you would like us to arrange for you to be picked up from the airport.

Breeding Soundness: All bulls will be Semen Morphology tested and examined for reproductive and structural soundness by Dr Ced Wise, Adam Wise and Rocky Repro.

Supplementary Sheet: Supplementary Sheets will be available in the week leading up to the Sale. Bulls will be weighed, scanned for EMA, IMF, Marble Fleck and Fat cover. Scrotal measurements have been done by Dr Ced Wise & Adam Wise with the ‘reliable’ tension measurer, in accordance with the Australian Cattle Veterinarians.

Delivery: We will endeavour to help co-ordinate efficient delivery of the bulls where required. Trucks are welcome on sale day. All bulls sold outside of the ticks will be delivered and presented clean to the clearance dip at the vendor’s expense.

Health: All bulls have been vaccinated with 7 in 1, Pestiguard, 3-day and Vibrio. All bulls have been blooded with 3-germ. The Central Highlands is ticky country; consequently, all bulls have been exposed to ticks on numerous occasions and will need to be cleared if they are sold to a tick free area. Bulls will not be within a withholding period on sale day and are therefore free to go to Organic herds.

Delayed Payment: Delayed payment may be available to some producers. Please speak to Lincoln prior to sale day.

Mobile Phones: “Emerald Downs” has very good mobile phone coverage.

Directions: “Emerald Downs” is located just north of Emerald on the Gregory Highway. Please see inside the back cover for a map.

Sale Bulls: Sale bulls have been prepared for their working lives, under our strict Selection Pressure polices. They are genuine grass fed, paddock reared bulls that have undergone intense selection pressure. Consequently, they will not have the finish that you may see at other sales. We are determined to ensure that our bulls can survive and thrive in Central, North and Western Queensland, rather than ‘look good’ on sale day. Parent Verification on some bulls is pending. Please speak to Lincoln if you require any clarification.

Semen Rights: We have collected semen from a limited number of sale bulls. **We retain 50% Semen rights on ALL LOTS.** It is most likely that this will be absolutely irrelevant for virtually all buyers but please speak to Lincoln if you require any clarification.

GST: 10% GST will be added to the knock down price.

IGS Breed Average EPD’s

	CE	BW	WW	YW	Milk	MCE	MWWT	Stay	DOC	CWT	REA	FAT	MARB	YG	API\$
EPD	+7.8	+3.1	+52.3	+81.4	+26.3	+5.8	+52.4	+12.4	+10.3	+3.4	+0.38	-0.085	+0.01	-0.36	\$106.12



SPECIALISING IN MARKETING

- **Livestock**
- **Rural Property**
- **Stud Sales &**
- **Clearing Sales**

Jake Passfield 0488 588 044
Tony Hoch 0448 831 553

Clermont Office 07 4983 1555



www.hochandwilkinson.com



How to Register and Bid on AuctionsPlus

- | | |
|--|---|
| <p>1 Go to www.auctionsplus.com.au to register at least 48 hours before the sale.</p> <p>2 Select "Sign Up" in the top right hand corner.</p> <p>3 Fill out your name, mobile number, email address and create a password.</p> <p>4 Go to your emails and confirm the account.</p> <p>5 Return to AuctionsPlus and log in.</p> <p>6 Select "Dashboard" and then select "Request Approval to Buy".</p> | <p>7 Fill in buyer details and once completed go back to Dashboard.</p> <p>8 Complete buyer induction module (approx. 30 minutes).</p> <p>9 AuctionsPlus will email you to let you know that your account has been approved.</p> <p>10 Log in on sale day and connect to auction.</p> <p>11 Bid using the two-step process – unlock the bid button and bid at that price.</p> <p>12 If you are successful, the selling agent will contact you post sale to organise delivery and payment.</p> |
|--|---|

For more information please contact us on:
Phone: (02) 9262 4222
Email: info@auctionsplus.com.au



AuctionsPlus
Buy and Sell stock nationally

Bid online on AuctionsPlus and watch online on the Marellan Shorthorns Facebook Page.

Industry Leading Selection Pressure – to Increase your bottom line \$

Our breeding philosophy is pretty simple, start with the best genetics possible (& keep adding to that group), chuck them all in at the deep end and see who learns to swim...quickly. This approach is ultimately about your herd as much as ours. Because if our bulls don't excel in your herd, we don't have a business. Feedback is always welcome, both positive and negative. As this feedback helps to refine our breeding program.



'No Grain – Not Ever'

Marellan Shorthorns exists for the sustainability and profitability of our herd and our client's herds. Our 2021 sale bulls are genuine grass-fed paddock reared bulls. **No Grain – Not Ever**; it proves our bulls can handle the environment. **No Grain – Not Ever**; It ensures the bulls are not carrying excess weight, they don't need to be let down; our bulls are for breeding not for looking prime on sale day. We believe that not pushing a bull's skeletal structure to the maximum is best for longevity. **No Grain – Not Ever**; it's part of our wider selection pressure.

Paternal (Bull) Selection Pressure

Our Paternal (Bull) Selection pressure doesn't end with **No Grain – Not Ever**; Once weaned we deliberately ensure that our bulls don't get a silver spoon put in their mouths. We ensure that that are only grazed on low quality feed and given minimum animal health treatments. This most definitely effects their growth, development and heavy they are on sale day, but this selection pressure means that only those with the best survivability prosper, making the culling process quite easy. The bulls are then finished for sale day on grazing crop. **Please don't expect to see fat, prime, feedlot finished bulls on sale day**. The feedlot is the finishing system of many, **but grass is production system of virtually all**. Our bulls are all about production, so our Paternal Selection Pressure reflects this. But don't worry, their progeny will be great feedlot performers, a group of mixed sex feedlot cattle (mainly cull cows) averaged 3.41KG per day. Our bulls are light but have been tested and verified with extreme selection pressure, for the long-term benefit of your herd and ours. If you can source British Bred Bulls of high quality anywhere in the country that have had that much selection pressure; we suggest you do!





Marellan Shorthorn Cows at “Nunya” Yamala

Shorthorns in the Ticks

We are determined to produce a tropically adapted Shorthorn herd in the ticks. We want our herd to survive and thrive in an environment that is similar to our client's herds. We use environmental selection pressure to make our cattle even more industry relevant. There are very few British Bred Bull breeding herds in the country that are in the ticks. Breeding a tropically adapted Shorthorn herd is not easy, but that's our aim. To help achieve this, environmental selection pressure is at the heart of our breeding philosophy. To have Shorthorns in the ticks we apply **Unique Selection Pressure** within our herd. We have and are monitoring the tick levels on different individuals and lines within our herd to identify and then propagate those that have the lowest tick burden and highest industry relevance for the north. Our aim isn't to have Shorthorn cows that need constant intervention, but to have a herd of Shorthorn Females that get no more care and attention than the majority of Bos Indicus herds. As stud breeders we believe that our selection pressure must be harder than our clients, to help ensure that our bulls provide genetic gain for their new owners.

Maternal Selection Pressure – Focussed on Fertility

Selection Pressure is at the absolute core of our breeding philosophy. When immense selection pressure is combined with the pursuit of elite genetics, it becomes the mechanism by which the value of a herd is ultimately determined. It is only those that remain after a heavy selection pressure that we want to breed from; the cream rises to the top. But our selection pressure doesn't stop with ticks, fly and heat. Fertility is at the core of our selection pressure. Heifers are only joined for 2 cycles and we demand that our cows calve each year, and rebreed whilst lactating, ensure a calving interval that is close to or less than 365 days. Females that don't meet our high standards are culled, to ensure that inferior and uneconomical traits are not spread into our client's herds. We are finding that our ideal females are ones with constitution and rumen capacity, that maintain their body condition throughout lactation and along the roller-coaster that is Central Queensland seasons. Fertility is also our focus with our bulls. Our bulls are semen motility & morphology tested. All scrotal measurements are undertaken with the 'Reliable' tension measurer in accordance with the Australian Cattle Vets.

MARELLAN WELSHMAN (P)

LOT 1

ID: JOBQ119

BORN: 20/7/19 (26 MTHS)

ROAN



WEEBOLLABOLLA FINLAY F120 (P)
Sire: WEEBOLLABOLLA J95 (H)
 WEEBOLLABOLLA BILLABONG B109 (P)
 GOBOTHERY SIRE
Dam: GOBOTHERY CCFG170 (P)
 GOBOTHERY COW

Top 15% Yealing Weight, Top 20% Weaning Weight.
 A super attractive roan to start the sale. Welshman combines doing ability with carcase and maternal attributes. He always looks good, even when he was on very low-quality feed. A bull that would suit every type of Bos Indicus cows.

Weight	Fat	EMA	IMF	Fleck	Scrotal	Morph.	Mot.
						86%	90%

	CE	BW	WW	YW	Milk	MCE	MWWT	Stay	DOC	CWT	REA	FAT	MARB	YG	API\$
EPD	+5.5	+4.5	+60.0	+97.4	+22.6	+5.6	+52.6	+11.9	+10.1	+2.3	+0.41	-0.083	-0.01	-0.37	\$102.90
Acc.	7%	7%	7%	7%	4%	5%	5%	3%	2%	6%	6%	3%	5%	5%	

Purchaser: Price: \$

MARELLAN WYATT (P)

LOT 2

ID: JOBQ104

BORN: 16/8/19 (25 MTHS)

ROAN



YAMBURGAN SPARTA H369 (S)
Sire: MOOMBI SPARTA L37 (P)
 MOOMBI VICTORIA F17 (P)
 ROYALLA NEXT OF KIN F261 (P)
Dam: WARRABERRY WATERMAID M79 (P)
 WARRABERRY WATERMAID 1ST (P)

Top 10% Fat.
 A class act. Wyatt has thickness of rump and loin along with great mobility. A long-bodied eye-catching roan that will cover country with ease. Sire PV under review.
 Tested Homozygous Polled

Weight	Fat	EMA	IMF	Fleck	Scrotal	Morph.	Mot.
						90%	85%

	CE	BW	WW	YW	Milk	MCE	MWWT	Stay	DOC	CWT	REA	FAT	MARB	YG	API\$
EPD	+6.4	+3.7	+54.1	+82.8	+25.7	+5.0	+52.8	+11.1	+10.2	+2.2	+0.41	-0.070	-0.01	-0.33	\$99.96
Acc.	17%	30%	22%	20%	7%	10%	12%	9%	2%	20%	19%	12%	12%	15%	

Purchaser: Price: \$

MARELLAN WAGON (P)

LOT 3

ID: JOBQ099

BORN: 25/7/19 (26 MTHS)

ROAN



Sire: BUNDALEER UNITED CHIEF U21 (P)
WEEBOLLABOLLA GOODAR G105 (P)
 WEEBOLLABOLLA E25 (P)

Dam: MARELLAN LUDWIG 8267 (P)
WARRABERRY MEME G45 (P)
 WARRABERRY MEME 14 (P)

Top 15% Docility, Fat, Top 30% Milk, Maternal Weaning Weight.

Another top-quality roan bull. A great option for those wanting to retain F1 females. Wagon's dam, Meme G45 has bred many outstanding progeny, including Samoa from our 2017 Bull Sale. She has 3 grandsons in the sale (Lots 6, 23 & 47). Marbled on the outside, Marbled on the inside!

Weight	Fat	EMA	IMF	Fleck	Scrotal	Morph.	Mot.
						96%	95%

	CE	BW	WW	YW	Milk	MCE	MWWT	Stay	DOC	CWT	REA	FAT	MARB	YG	API\$
EPD	+7.8	+3.6	+53.4	+79.8	+29.1	+5.6	+55.8	+10.4	+13.3	0.0	+0.34	-0.071	-0.15	-0.32	\$91.93
Acc.	19%	23%	21%	20%	9%	12%	13%	11%	6%	20%	20%	11%	13%	15%	

Purchaser: Price: \$

MARELLAN WELL DONE (P)

LOT 4

ID: JOBQ097

BORN: 24/7/19 (26 MTHS)

ROAN



Sire: ROYALLA IMITATOR (P)
MARELLAN STOIC (P)
 WARRABERRY CHANCE J141 (P)

Dam: ROYALLA NEXT OF KIN F261 (P)
WARRABERRY MURIEL K97 (P)
 WARRABERRY MURIEL G103 (P)

Top 15% Birth Weight, Top 20% Calving Ease, Maternal Calving Ease, Top 25% Docility.

Well Done is a super eye-catching roan, tremendous mobility to produce functional, saleable, and edible progeny. Sired by Stoic, top priced bull at our 2017 Sale selling to Mt Micah.

Tested Homozygous Polled

Weight	Fat	EMA	IMF	Fleck	Scrotal	Morph.	Mot.
						97%	85%

	CE	BW	WW	YW	Milk	MCE	MWWT	Stay	DOC	CWT	REA	FAT	MARB	YG	API\$
EPD	+10.5	+1.4	+42.0	+66.7	+27.9	+7.7	+48.9	+12.4	+12.2	-7.9	+0.21	-0.083	-0.09	-0.34	\$103.23
Acc.	14%	30%	21%	19%	10%	11%	14%	7%	4%	21%	21%	8%	8%	14%	

Purchaser: Price: \$

MARELLAN WIPER (P)

LOT 5

ID: JOBQ110

BORN: 12/7/19 (26 MTHS)

WHITE



THE GROVE OSCAR A748 (P)
Sire: WEEBOLLABOLLA HIGGINS H82 (P)
 WEEBOLLABOLLA JILLAROO Z49 (P)

GOBOTHERY SIRE
Dam: GOBOTHERY 910 (P)
 GOBOTHERY COW

Top 15% Yearling Weight, Top 20% Weaning Weight.
 A big strong white with loads of doing ability and plenty of performance. Wiper will breed quick finishing progeny that have tremendous weight for age. He will produce 100% roan progeny out of Santa, Droughtmaster or Brangus Cows.

Weight	Fat	EMA	IMF	Fleck	Scrotal	Morph.	Mot.
						79%	80%

	CE	BW	WW	YW	Milk	MCE	MWWT	Stay	DOC	CWT	REA	FAT	MARB	YG	API\$
EPD	+5.4	+4.4	+59.5	+96.8	+22.6	+5.6	+52.4	+11.6	+10.1	+2.3	+0.41	-0.083	0.00	-0.37	\$102.32
Acc.	7%	7%	7%	7%	4%	5%	5%	3%	2%	6%	6%	4%	5%	5%	

Purchaser: Price: \$

MARELLAN WAGON WHEEL (P)

LOT 6

ID: JOBQ101

BORN: 29/7/19 (25 MTHS)

ROAN



BUNDALEER UNITED CHIEF U21 (P)
Sire: WEEBOLLABOLLA GOODAR G105 (P)
 WEEBOLLABOLLA E25 (P)

MARELLAN NICODEMUS (P)
Dam: WARRABERRY TRITA M231 (P)
 WARRABERRY MEME G45 (P)

Top 5% Fat, Top 10% Docility, Top 20% Milk, Top 25% Maternal Calving Ease, Top 30% Maternal Weaning Weight.

A big, long made bull with plenty of carcass. Heaps of maternal to breed F1 females and top bullocks. Wagon Wheel looks like the paint tin landed on him. Dam also produced Victorious, who sold in last years sale for \$10,000.

Weight	Fat	EMA	IMF	Fleck	Scrotal	Morph.	Mot.
						93%	90%

	CE	BW	WW	YW	Milk	MCE	MWWT	Stay	DOC	CWT	REA	FAT	MARB	YG	API\$
EPD	+8.7	+3.1	+52.3	+79.9	+30.0	+7.2	+56.2	+9.7	+14.7	0.0	+0.36	-0.064	-0.14	-0.31	\$93.21
Acc.	18%	31%	25%	23%	10%	13%	15%	8%	7%	21%	21%	8%	10%	15%	

Purchaser: Price: \$

MARELLAN WEDNESDAY (P)

LOT 7

ID: JOBQ098

BORN: 25/7/19 (26 MTHS)

ROAN



SPRYS EXCLUSIVE E021 (P)
Sire: YANCO LEGACY L20 (P)
 BARVON PATENT A GOLD G76 AI (P)
 MARELLAN KNAPSACK (P)
Dam: WARRABERRY FREDA F84 (P)
 WARRABERRY FREDA B02 (P)

Top 20% Yield Grade, Top 30% Yearling Weight.
 Wednesday is a sound made bull. Good soft skin which in the Shorthorn population is a sign of meat quality. A good roan to breed bullocks, feeders or F1 females.

Weight	Fat	EMA	IMF	Fleck	Scrotal	Morph.	Mot.
						84%	70%

	CE	BW	WW	YW	Milk	MCE	MWWT	Stay	DOC	CWT	REA	FAT	MARB	YG	API\$
EPD	+5.5	+4.4	+55.6	+87.8	+23.7	+3.2	+51.5	+11.3	+10.6	+4.3	+0.35	-0.105	-0.07	-0.40	\$96.04
Acc.	16%	31%	23%	21%	9%	10%	14%	9%	8%	19%	18%	11%	12%	14%	

Purchaser: Price: \$

MARELLAN WINNER (H)

LOT 8

ID: JOBQ094

BORN: 20/7/19 (26 MTHS)

ROAN



ROYALLA IMITATOR (P)
Sire: MARELLAN STOIC (P)
 WARRABERRY CHANCE J141 (P)
 ROYALLA IMITATOR (P)
Dam: WARRABERRY CAMELOT K163 (P)
 WARRABERRY CAMELOT H163 (P)

Top 10% Birth Weight, Top 15% Calving Ease, Top 20% Maternal Calving Ease, Top 25% Docility.
 Horned. Another Roan Stoic son. A Long-bodied bull that will transmit speed of finish into his progeny. Winner is a good framed bull that is loaded with strong maternal lines, making him a good option for producing maternal F1's. Sire PV under review.

Photo: Marellan Stoic, sire of Lot 6 & Lot 4.

Weight	Fat	EMA	IMF	Fleck	Scrotal	Morph.	Mot.
						95%	75%

	CE	BW	WW	YW	Milk	MCE	MWWT	Stay	DOC	CWT	REA	FAT	MARB	YG	API\$
EPD	+11.2	+0.8	+39.7	+63.	+28.1	+7.7	+48.0	+13.0	+11.9	-11.7	+0.19	-0.086	-0.09	-0.36	\$105.60
Acc.	10%	14%	9%	9%	6%	8%	7%	6%	4%	20%	20%	8%	7%	14%	

Purchaser: Price: \$

MARELLAN WAYNE

LOT 9

ID: JOBQ113

BORN: 1/8/19 (25 MTHS)

ROAN



THE GROVE OSCAR A748 (P)
Sire: WEEBOLLABOLLA HIGGINS H82 (P)
 WEEBOLLABOLLA JILLAROO Z49 (P)

GOBOTHERY SIRE
Dam: GOBOTHERY 913 (P)
 GOBOTHERY COW

Top 15% Yearling Weight, Top 20% Weaning Weight.
 A bull that will produce progeny that will fatten in small windows of opportunity. A good bull for Charbray females. Wayne should be OK to use on heifers.

Weight	Fat	EMA	IMF	Fleck	Scrotal	Morph.	Mot.
						89%	85%

	CE	BW	WW	YW	Milk	MCE	MWWT	Stay	DOC	CWT	REA	FAT	MARB	YG	API\$
EPD	+5.5	+4.5	+60.0	+97.4	+22.6	+5.6	+52.6	+11.9	+10.1	+2.3	+0.41	-0.083	-0.01	-0.37	\$102.90
Acc.	7%	7%	7%	7%	4%	5%	5%	3%	2%	6%	6%	3%	5%	5%	

Purchaser: Price: \$

MARELLAN WINDSCREEN WIPER (P)

LOT 10

ID: JOBQ114

BORN: 25/7/19 (26 MTHS)

ROAN



THE GROVE OSCAR A748 (P)
Sire: WEEBOLLABOLLA G138 (P)
 WEEBOLLABOLLA VIGILANCE V113 (P)

GOBOTHERY SIRE
Dam: GOBOTHERY CCFH484 (P)
 GOBOTHERY COW

Top 15% Yearling Weight, Top 20% Weaning Weight.
 If you want big heavy bullocks that can fatten in the paddock or excel in the feedlot, this is a bull to consider. A long framed bull with a really strong stature. He was shy at photo time and closed his eyes.

Weight	Fat	EMA	IMF	Fleck	Scrotal	Morph.	Mot.
						85%	85%

	CE	BW	WW	YW	Milk	MCE	MWWT	Stay	DOC	CWT	REA	FAT	MARB	YG	API\$
EPD	+5.4	+4.4	+59.5	+96.8	+22.6	+5.6	+52.4	+11.6	+10.1	+2.3	+0.41	-0.083	0.00	-0.37	\$102.32
Acc.	7%	7%	7%	7%	4%	5%	5%	3%	2%	6%	6%	4%	5%	5%	

Purchaser: Price: \$

MARELLAN WHIMSICAL (P)

LOT 11

ID: JOBQ107

BORN: 8/8/19 (25 MTHS)

ROAN



SPRYS EXCLUSIVE E021 (P)
Sire: YANCO LEGACY L20 (P)
 BARVON PATENT A GOLD G76 AI (P)
 ROYALLA SIRE
Dam: WARRABERRY H209 (P)
 POTTIE BRED

Top 15% Carcase Weight, Top 30% Yearling Weight.
 A big soggy roan to breed those heavy bullocks that fatten quickly while the season lasts. Whimsical is a good performing bull with a robust stature.

Weight	Fat	EMA	IMF	Fleck	Scrotal	Morph.	Mot.
						89%	85%

	CE	BW	WW	YW	Milk	MCE	MWWT	Stay	DOC	CWT	REA	FAT	MARB	YG	API\$
EPD	+4.3	+4.6	+55.8	+89.3	+23.1	+2.3	+51.0	+10.6	+10.4	+12.3	+0.42	-0.100	-0.08	-0.37	\$92.71
Acc.	9%	10%	9%	9%	4%	5%	6%	5%	7%	9%	9%	7%	8%	7%	

Purchaser: Price: \$

MARELLAN WILKIE (P)

LOT 12

ID: JOBQ116

BORN: 18/7/19 (26 MTHS)

ROAN



GOBOTHERY SIRE
Sire: GOBOTHERY CHRIS CCFL191 (P)
 GOBOTHERY COW
 GOBOTHERY SIRE
Dam: GOBOTHERY 916 (P)
 GOBOTHERY COW

A good roan with carcase coverage bull. Wilkie will bred those good framed quick finishing bullocks. Please note, he carries more hair than most of our bulls.

Tested Homozygous Polled

Weight	Fat	EMA	IMF	Fleck	Scrotal	Morph.	Mot.
						91%	70%

Purchaser: Price: \$

NO GRAIN – NOT EVER

NO GRAIN – NOT EVER. NO Pellets. NO Silage. NO Vague Statements about Bull Preparation.
 Just HEAPS of SELECTION PRESSURE and a finish on Grazing Crop.



Location: 9 Turrama Road, Clermont QLD
Phone: 07 4983 1688 Fax: 07 4983 1779
Website: www.breckoncattleequipment.com.au



Leading Manufacturers of

~ Manual, Hydraulic and Pneumatic Crushes & Branding Cradles ~

~ Feeding Equipment ~ Roller Mills ~



**Breckon Cattle Equipment
"BCE" proudly owned and
manufactured by Gregory
Fabrications in Clermont QLD.
Contact them for all you cattle
handling equipment.**



MARELLAN WESTERN FORCE (P)

LOT 13

ID: JOBQ103

BORN: 5/8/19 (25 MTHS)

RED AND WHITE



BUNDALEER UNITED CHIEF U21 (P)
Sire: WEEBOLLABOLLA GOODAR G105 (P)
 WEEBOLLABOLLA E25 (P)

DUNBEACON DAMPIER G121 (P)
Dam: WARRABERRY JEMMIMAH K35 (P)
 MARELLAN JEMMIMAH 1299 (P)

Top 20% Docility, Fat, Top 30% Calving Ease, Maternal Calving Ease, Maternal Weaning Weight.

Long, sound and muscular. A great all-rounder to breed top bullocks and F1 females. Western Force is a clean coated bull with supreme athleticism.

Tested Homozygous Polled

Weight	Fat	EMA	IMF	Fleck	Scrotal	Morph.	Mot.
						96%	95%

	CE	BW	WW	YW	Milk	MCE	MWWT	Stay	DOC	CWT	REA	FAT	MARB	YG	API\$
EPD	+9.0	+3.5	+54.4	+85.5	+28.5	+6.9	+55.7	+11.7	+12.5	-0.1	+0.32	-0.077	-0.03	-0.33	\$104.34
Acc.	17%	31%	24%	23%	10%	11%	15%	8%	6%	22%	21%	7%	10%	15%	

Purchaser: Price: \$

MARELLAN WATERMELON (P)

LOT 14

ID: JOBQ124

BORN: 28/7/19 (25 MTHS)

RED



GOBOTHERY SIRE
Sire: GOBOTHERY SIRE (P)
 GOBOTHERY COW

GOBOTHERY SIRE
Dam: GOBOTHERY CCFM334 (P)
 GOBOTHERY COW

Top 15% Yearling Weight, Top 20% Weaning Weight.
 A rich red with length and thickness. I predict his F1 daughters will be something special. Watermelon is a double ticker for those wanting to maintain a red herd.

Weight	Fat	EMA	IMF	Fleck	Scrotal	Morph.	Mot.
						75%	80%

	CE	BW	WW	YW	Milk	MCE	MWWT	Stay	DOC	CWT	REA	FAT	MARB	YG	API\$
EPD	+5.4	+4.4	+59.5	+96.8	+22.6	+5.6	+52.4	+11.6	+10.1	+2.3	+0.41	-0.083	0.00	-0.37	\$102.32
Acc.	7%	7%	7%	7%	4%	5%	5%	3%	2%	6%	6%	4%	5%	5%	

Purchaser: Price: \$

MARELLAN WILLING (P)

LOT 15

ID: JOBQ121

BORN: 15/7/19 (26 MTHS)

RED



GOBOTHERY SIRE
Sire: GOBOTHERY SIRE (P)
 GOBOTHERY COW
 GOBOTHERY SIRE
Dam: GOBOTHERY 921 (P)
 GOBOTHERY COW

Top 15% Yearling Weight, Top 20% Weaning Weight, Another long-bodied red. Plenty of performance and thickness through the pins in this bullock bull. Very similar in type to lot 14.

Tested Homozygous Polled

Weight	Fat	EMA	IMF	Fleck	Scrotal	Morph.	Mot.
						96%	80%

	CE	BW	WW	YW	Milk	MCE	MWWT	Stay	DOC	CWT	REA	FAT	MARB	YG	API\$
EPD	+5.4	+4.4	+59.5	+96.8	+22.6	+5.6	+52.4	+11.6	+10.1	+2.3	+0.41	-0.083	0.00	-0.37	\$102.32
Acc.	7%	7%	7%	7%	4%	5%	5%	3%	2%	6%	6%	4%	5%	5%	

Purchaser: Price: \$

MARELLAN WELLO (H)

LOT 16

ID: JOBQ100

BORN: 29/7/19 (25 MTHS)

RED



ROYALLA NOSTALGIA (P)
Sire: DAMO PARK TIPPERARY M022 (P)
 DAMO PARK MELODY 4TH (P)
 WARRABERRY FELDON (P)
Dam: WARRABERRY WENDY J135 (H)
 YAMBURGAN A324 (P)

Top 25% Yearling Weight, Milk, Maternal Weaning Weight, Fat, Marbling.

Horned. A thick made Tipperary son. Good skin and structure. A great bull for red herds wanting to produce both bullocks and F1 females. A bad dehorn job, could made him one of the buys of the day.

Photo: Sire Damo Park Tipperary M022, sire of Lots 16, 18 & 19.

Weight	Fat	EMA	IMF	Fleck	Scrotal	Morph.	Mot.
						92%	90%

Sire of Lot 16

	CE	BW	WW	YW	Milk	MCE	MWWT	Stay	DOC	CWT	REA	FAT	MARB	YG	API\$
EPD	+7.5	+4.1	+54.9	+90.7	+29.8	+5.1	+57.3	+11.1	+11.2	-3.0	+0.37	-0.079	+0.07	-0.37	\$106.83
Acc.	16%	31%	22%	20%	9%	11%	13%	8%	6%	20%	19%	11%	12%	15%	

Purchaser: Price: \$

MARELLAN WATSON (P)

LOT 17

ID: JOBQ111

BORN: 22/7/19 (26 MTHS)

RED



Cows at Nunya.

THE GROVE OSCAR A748 (P)
Sire: WEEBOLLABOLLA G138 (P)
 WEEBOLLABOLLA VIGILANCE V113 (P)
 GOBOTHERY SIRE
Dam: GOBOTHERY 911 (P)
 GOBOTHERY COW

Top 15% Yearling Weight, Top 20% Weaning Weight.
 Watson has that silky skin on a good frame. An ideal option to breed growthy steers.

Tested Homozygous Polled

Weight	Fat	EMA	IMF	Fleck	Scrotal	Morph.	Mot.
						85%	65%

	CE	BW	WW	YW	Milk	MCE	MWWT	Stay	DOC	CWT	REA	FAT	MARB	YG	API\$
EPD	+5.4	+4.4	+59.5	+96.8	+22.6	+5.6	+52.4	+11.6	+10.1	+2.3	+0.41	-0.083	0.00	-0.37	\$102.32
Acc.	7%	7%	7%	7%	4%	5%	5%	3%	2%	6%	6%	4%	5%	5%	

Purchaser: Price: \$

MARELLAN WILLIAM WILBERFORCE (P)

LOT 18

ID: JOBQ102

BORN: 31/7/19 (25 MTHS)

RED



ROYALLA NOSTALGIA (P)
Sire: DAMO PARK TIPPERARY M022 (P)
 DAMO PARK MELODY 4TH (P)
 MARELLAN PREMIX (P)
Dam: WARRABERRY L69
 WARRABERRY COW (P)

Top 15% Calving Ease, Top 20% Birth Weight, Docility, Fat, Top 35% Maternal Calving Ease.
 Great Skin and great Carcase, there's a lot to like about this bull. William Wilberforce is one of the pick bulls in the sale for breeders with a red herd wanting to produce F1 red females or bullocks. We are using Tipperary heavily in our ET programs.

Weight	Fat	EMA	IMF	Fleck	Scrotal	Morph.	Mot.
						77%	75%

	CE	BW	WW	YW	Milk	MCE	MWWT	Stay	DOC	CWT	REA	FAT	MARB	YG	API\$
EPD	+11.2	+1.6	+51.7	+82.6	+27.0	+6.6	+52.9	+8.4	+12.5	-10.1	+0.29	-0.077	+0.03	-0.36	\$106.72
Acc.	15%	27%	21%	19%	6%	8%	11%	6%	6%	19%	18%	8%	9%	13%	

Purchaser: Price: \$

MARELLAN WINGS (P)

LOT 19

ID: JOBQ095

BORN: 21/7/19 (26 MTHS)

RED



ROYALLA NOSTALGIA (P)
Sire: DAMO PARK TIPPERARY M022 (P)
 DAMO PARK MELODY 4TH (P)
 MARELLAN LUDWIG 8267 (P)
Dam: WARRABERRY BEC G30 (P)
 WARRABERRY BEC (P)

Top 1% Fat, Top 2% Marbling, Top 20% Birth Weight, Top 25% Docility, API, Top 30% Calving Ease.
Another quality Tipperary son. Smooth made, short coated and nice shape.

Weight	Fat	EMA	IMF	Fleck	Scrotal	Morph.	Mot.
						86%	75%

	CE	BW	WW	YW	Milk	MCE	MWWT	Stay	DOC	CWT	REA	FAT	MARB	YG	API\$
EPD	+9.0	+1.6	+44.8	+71.5	+24.1	+5.5	+46.5	+8.5	+12.1	+6.4	+0.42	-0.028	+0.27	-0.21	\$113.75
Acc.	18%	30%	24%	23%	9%	10%	14%	6%	6%	21%	20%	10%	12%	15%	

Purchaser: Price: \$

MARELLAN WAR MACHINE (P)

LOT 20

ID: JOBQ091

BORN: 3/7/19 (26 MTHS)

RED



ROYALLA ORVILLE G231 (P)
Sire: NUNYARA SUPERMAN L191 (P)
 NUNYARA CARNATION J071 (P)
 MARELLAN NICODEMUS (P)
Dam: WARRABERRY MYRTLE M170 (H)
 WARRABERRY MYRTLE G03 (H)

Top 10% Calving Ease, Maternal Calving Ease, Fat, Top 15% Birth Weight, Docility.
Thick, deep and quick to fatten. War Machine will breed calves that fill the branding cradle. A bull most suited to operations chasing speed of turnoff.

Weight	Fat	EMA	IMF	Fleck	Scrotal	Morph.	Mot.
						94%	85%

	CE	BW	WW	YW	Milk	MCE	MWWT	Stay	DOC	CWT	REA	FAT	MARB	YG	API\$
EPD	+12.4	+1.3	+44.0	+67.6	+27.7	+8.8	+49.7	+11.9	+13.2	-8.5	+0.26	-0.071	-0.05	-0.33	\$107.17
Acc.	19%	30%	24%	22%	9%	11%	14%	9%	2%	20%	20%	12%	13%	15%	

Purchaser: Price: \$

MARELLAN WARATAH (P)

LOT 21

ID: JOBQ089

BORN: 27/6/19 (27 MTHS)

RED



ROYALLA ORVILLE G231 (P)
Sire: NUNYARA SUPERMAN L191 (P)
 NUNYARA CARNATION J071 (P)

MARELLAN NICODEMUS (P)
Dam: WARRABERRY M150 (P)
 WARRABERRY COW (P)

Top 10% Calving Ease, Top 15% Birth Weight, Top 25% Fat, API, Top 30% Docility.

Another Superman son, same type as lot 20, they'd go well together. An ideal bull for breeders with a domestic bias or simply wanting to turn off cattle at young ages. The Nicodemus influence is strong here, lots of carcase and the ability to cover it.

Tested Homozygous Polled

Weight	Fat	EMA	IMF	Fleck	Scrotal	Morph.	Mot.
						84%	65%

	CE	BW	WW	YW	Milk	MCE	MWWT	Stay	DOC	CWT	REA	FAT	MARB	YG	API\$
EPD	+11.7	+1.1	+46.5	+73.0	+26.5	+6.7	+49.8	+13.5	+11.6	-3.2	+0.24	-0.078	0.00	-0.32	\$114.09
Acc.	9%	10%	9%	8%	3%	5%	5%	6%	1%	9%	9%	7%	8%	7%	

Purchaser: Price: \$

MARELLAN WOLVERINE (P)

LOT 22

ID: JOBQ090

BORN: 1/7/19 (26 MTHS)

ROAN



ROYALLA ORVILLE G231 (P)
Sire: NUNYARA SUPERMAN L191 (P)
 NUNYARA CARNATION J071 (P)

MARELLAN NICODEMUS (P)
Dam: WARRABERRY WENDY M228 (P)
 WARRABERRY WENDY J135 (H)

Top 15% Calving Ease, Maternal Calving Ease, Fat, Top 20% Milk, Top 25% Birth Weight, Docility, Top 30% Maternal Weaning Weight.

A super soggy Roan. Wolverine will breed those easy to finish bullocks. Ideally suited to an operation that aims to sell progeny at young ages or over Euro blood females that need more fat coverage. He is showing a lot of the Nicodemus influence.

Weight	Fat	EMA	IMF	Fleck	Scrotal	Morph.	Mot.
						81%	90%

	CE	BW	WW	YW	Milk	MCE	MWWT	Stay	DOC	CWT	REA	FAT	MARB	YG	API\$
EPD	+11.4	+2.0	+50.4	+78.5	+30.4	+8.1	+55.6	+12.2	+12.3	-2.9	+0.33	-0.072	-0.06	-0.33	\$107.93
Acc.	17%	30%	24%	22%	8%	10%	13%	8%	2%	19%	18%	12%	13%	14%	

Purchaser: Price: \$

YOUR **NO. #1 F1**

YOUR **NO.**

Maternal



The role of hybrid vigour (heterosis) is very well documented, giving between 8.5% - 23% advantage. However, it is essential that the F1 female comes from a complimentary combination, that will continue to advance your herd, rather than just breed out. The Marellan Shorthorn x Bos Indicus F1 female provides numerous benefits - Increased fertility, increased performance, increased longevity, and increased market option for her progeny. She could be your num #1 F1 for many years to come. The great thing about your Marellan Shorthorn sired x Bos Indicus cow F1 females is that they allow you to retain 100% of the heterosis in your production system.



In the Marellan herd Grass is King. Grass is the only thing our bulls receive (NO finishing system of many of our clients) and Organic product is only going to increase in this segment. Our unique environmental system allows our Shorthorn Bulls in the box seat to produce the best northern grass finishing operations. This is as valuable as the Grass fed and organic product to the inevitable further market segments along meat quality lines.

#1 F1

YOUR

NO. #1 F1

Grass

Feedlot



Grass is our production system. Grass (Grain – NOT Ever), and Grass is the best. Consumer demand for Grass-fed beef is increasing, as it is a booming market. Selection pressure puts Marellan to produce F1 progeny that can excel in these F1 progeny will be even more profitable as markets continue to mature, leading to increased production.

The outstanding credentials of Shorthorn cattle in feedlots is very well known, excelling in the profitable trifecta of weight gain, meat quality, and processor/consumer demand. Marellan Shorthorn x Bos Indicus steers and heifers are highly saleable and in demand from feedlots, or to achieve outstanding results for on farm grain finishers. The F1 factor gives early weight gain for reaching feedlot weights at younger ages along with feedlot performance. And the Shorthorn component builds in meat quality to ensure processor demand and consumer satisfaction.



Acknowledgement: Animals featured here from Appleton Cattle Co & WH Kettle & Co.

MARELLAN WOW FACTOR (P)

LOT 23

ID: JOBQ093

BORN: 13/7/19 (26 MTHS)

ROAN



ROYALLA IMITATOR (P)
Sire: WARRABERRY ROCKY BALBOA L12 (P)
 WARRABERRY FREDA J117 (H)
 MARELLAN PRINCE CASPIAN (P)
Dam: WARRABERRY TRITA N286 (P)
 WARRABERRY MEME G45 (P)

Top 10% Maternal Calving Ease, Top 15% Calving Ease, Birth Weight, Fat.

Wow Factor here. A real combination bull; carcass, doing ability and mobility. A high class bull to use on heifers or cows to breed top bullocks and F1 females.

Weight	Fat	EMA	IMF	Fleck	Scrotal	Morph.	Mot.
						95%	85%

	CE	BW	WW	YW	Milk	MCE	MWWT	Stay	DOC	CWT	REA	FAT	MARB	YG	API\$
EPD	+11.1	+1.3	+42.1	+63.0	+28.7	+8.6	+49.8	+10.9	+10.4	-10.6	+0.20	-0.073	-0.12	-0.33	\$98.58
Acc.	23%	32%	24%	23%	9%	15%	14%	8%	3%	21%	20%	11%	12%	15%	

Purchaser: Price: \$

MARELLAN WORCESTERSHIRE SAUCE (P)

LOT 24

ID: JOBQ096

BORN: 21/7/19 (26 MTHS)

ROAN



ROYALLA QUANTICO J011 (P)
Sire: WARRABERRY NETFLIX AND CHILL (P)
 WARRABERRY TRITA L72 (P)
 RONELLE PARK HURRICANE H242 (P)
Dam: WARRABERRY FREDA N112 (P)
 WARRABERRY FREDA H50 (P)

Top 10% Calving Ease, Birth Weight, Top 20% Docility, Fat, Top 30% Maternal Calving Ease, Stayability, Top 35% Marbling.

Worcestershire Sauce is a super soft bull with heaps of doing ability. Another low birth weight roan that will breed progeny that are quick to finish. I reckon his progeny out of Charbray females would be special.

Weight	Fat	EMA	IMF	Fleck	Scrotal	Morph.	Mot.
						94%	80%

	CE	BW	WW	YW	Milk	MCE	MWWT	Stay	DOC	CWT	REA	FAT	MARB	YG	API\$
EPD	+11.8	+0.3	+47.8	+76.7	+26.7	+7.0	+50.6	+14.0	+12.5	-3.1	+0.34	-0.082	0.00	-0.37	\$117.93
Acc.	19%	30%	23%	22%	9%	13%	14%	9%	3%	24%	23%	12%	13%	17%	

Purchaser: Price: \$



MARELLAN WARREN (P)

LOT 25

ID: JOBQ105 BORN: 21/8/19 (25 MTHS) ROAN

Top 10% Fat.
A thick rumped spotty roan with a nice slop in his rump. Please note, Warren has 1 copy of the myostatin muscle gene.

Tested Homozygous Polled

Weight	Fat	EMA	IMF	Fleck	Scrotal	Morph.	Mot.
						86%	85%

Sire: YAMBURGAN SPARTA H369 (S)
MOOMBI SPARTA L37 (P)
MOOMBI VICTORIA F17 (P)

Dam: ROYALLA IMITATOR (P)
WARRABERRY FREDA L33 (P)
WARRABERRY FREDA J40 (P)

	CE	BW	WW	YW	Milk	MCE	MWWT	Stay	DOC	CWT	REA	FAT	MARB	YG	API\$
EPD	+8.0	+2.9	+48.7	+75.4	+22.3	+6.3	+46.7	+13.3	+10.5	-7.6	+0.30	-0.068	0.00	-0.33	\$106.01
Acc.	18%	32%	23%	21%	7%	11%	12%	9%	2%	21%	20%	11%	12%	15%	

Purchaser: Price: \$

MARELLAN WADE (P)

LOT 26

ID: JOBQ106 BORN: 22/8/19 (25 MTHS) ROAN



Sire: ROYALLA IMITATOR (P)
WARRABERRY ROCKY BALBOA L12 (P)
WARRABERRY FREDA J117 (H)

Dam: MARELLAN PRINCE CASPIAN (P)
WARRABERRY N61
WARRABERRY COW (P)

Top 20% Calving Ease, Maternal Calving Ease, Top 25% Birth Weight.
A nice smooth made roan bull. Wade is a medium maturity bull that has good combination of muscularity, soundness of structure and doing ability. He would suit many different operations and markets. Sire PV is pending.

Weight	Fat	EMA	IMF	Fleck	Scrotal	Morph.	Mot.
						92%	85%

	CE	BW	WW	YW	Milk	MCE	MWWT	Stay	DOC	CWT	REA	FAT	MARB	YG	API\$
EPD	+10.3	+2.1	+48.3	+74.9	+26.3	+7.5	+50.5	+9.1	+9.9	-6.7	+0.28	-0.082	-0.04	-0.36	\$100.59
Acc.	18%	26%	21%	19%	6%	10%	11%	7%	3%	21%	29%	11%	12%	15%	

Purchaser: Price: \$

MARELLAN WILEY (P)

LOT 27

ID: JOBQ120

BORN: 2/8/19 (25 MTHS)

ROAN



GOBOTHERY SIRE
Sire: GOBOTHERY SIRE (P)
 GOBOTHERY COW
 GOBOTHERY SIRE
Sire: GOBOTHERY 920 (P)
 GOBOTHERY COW

A really good doing bull that would suit Charbray females. A bull to produce quick finishing progeny. Wiley's shoulder set looks good for calving heifers.

Tested Homozygous Polled

Weight	Fat	EMA	IMF	Fleck	Scrotal	Morph.	Mot.
							60%

Purchaser: Price: \$

NO GRAIN – NOT EVER

NO GRAIN – NOT EVER. NO Pellets. NO Silage. NO Vague Statements about Bull Preparation. Just HEAPS of SELECTION PRESSURE and a finish on Grazing Crop.

MARELLAN WESTERLY (H)

LOT 28

ID: JOBQ117

BORN: 22/7/19 (26 MTHS)

ROAN



THE GROVE OSCAR A748 (P)
Sire: WEEBOLLABOLLA HIGGINS H82 (P)
 WEEBOLLABOLLA JILLAROO z49 (P)
 GOBOTHERY SIRE
Sire: GOBOTHERY 917
 GOBOTHERY COW

Top 15% Yearling Weight, Top 20% Weaning Weight. Horned. Westerly is a thick bull with doing ability and grunt. Would do a marvellous job over Bos Indicus females. Another bad dehorn for the astute buyer.

Weight	Fat	EMA	IMF	Fleck	Scrotal	Morph.	Mot.
						89%	90%

	CE	BW	WW	YW	Milk	MCE	MWWT	Stay	DOC	CWT	REA	FAT	MARB	YG	API\$
EPD	+5.4	+4.4	+59.5	+96.8	+22.6	+5.6	+52.4	+11.6	+10.1	+2.3	+0.41	-0.083	0.00	-0.37	\$102.32
Acc.	7%	7%	7%	7%	4%	5%	5%	3%	2%	6%	6%	4%	5%	5%	

Purchaser: Price: \$

MARELLAN WEIGHT (H)

LOT 29

ID: JOBQ060

BORN: 6/9/19 (24 MTHS)

RED



MARELLAN PROPHET (P)
Sire: MARELLAN SLICK (P)
 MARELLAN AUGUSTA 2027 (P)

LACHLAN C335 (P)
Sire: MARELLAN CAMELOT 0078 (P)
 MARELLAN CAMELOT 5214 (P)

Dam is Top 4% Milk, Top 15% Maternal Weaning Weight, REA, Yield Grade, Top 30% Docility, Marbling. Horned. Deep and thick and big rocks. His progeny out of Bos Indicus cows will be special. One of the carcass bulls of the sale. Camelot 0078 is one of our best. Dam PV required another DNA sample, will be sorted before sale day (for those that care). PLEASE NOTE, Dam's EPD's.

Weight	Fat	EMA	IMF	Fleck	Scrotal	Morph.	Mot.
						87%	75%

	CE	BW	WW	YW	Milk	MCE	MWWT	Stay	DOC	CWT	REA	FAT	MARB	YG	API\$
EPD	+6.1	+3.2	+49.7	+77.5	+34.2	+6.0	+59.1	+10.4	+11.8	+1.9	+0.50	-0.088	+0.06	-0.41	\$101.68
Acc.	38%	48%	40%	41%	26%	22%	31%	14%	19%	30%	29%	17%	20%	22%	

Purchaser: Price: \$

MARELLAN WINCHESTER 9068 (P)

LOT 30

ID: JOBQ068

BORN: 13/9/19 (24 MTHS)

RLW



ROYALLA QUANTUM J392 (P)
Sire: ROYALLA TRIGGER M246 (P)
 ROYALLA MELODY 8366L (P)

MARELLAN INDESTRUCTABLE (P)
Dam: ROYALLA IDA 8364L (P)
 ROYALLA IDA 6TH (P)

Top 1% Milk, Top 2% Maternal Weaning Weight, Top 10% Fat, Top 20% Stayability, Top 30% Yearling Weight. A big framed bullock bull. Has a very good topline for his frame. It would be hard to pack more maternal function into a bull, a good option for those looking to retain F1 females. Sired was Champion Shorthorn at Beef 2018. Ida 8364 has bred exceptionally well. Tested Homozygous Polled

Weight	Fat	EMA	IMF	Fleck	Scrotal	Morph.	Mot.
						89%	80%

	CE	BW	WW	YW	Milk	MCE	MWWT	Stay	DOC	CWT	REA	FAT	MARB	YG	API\$
EPD	+6.1	+3.7	+55.9	+87.9	+39.1	+6.2	+67.1	+15.1	+10.7	-2.0	+0.31	-0.065	+0.02	-0.30	\$110.03
Acc.	20%	23%	21%	21%	11%	12%	14%	12%	15%	28%	28%	14%	17%	20%	

Purchaser: Price: \$



INTRODUCING *the new*
PREMIUM SHORTHORN BRANDED PROGRAMME

**THE STORY OF
 THOUSAND GUINEAS**

The story begins in the North East of England in the 18th century, where Teeswater & Durham cattle breeds were being refined using selective breeding techniques by Charles and Robert Colling. This program would go on to give rise to one of the *most highly sought after beef cattle breeds* anywhere in the world... **THE SHORTHORN.**

The culmination of this breeding program was the birth of the bull Comet in 1804, who, in 1810 went on to fetch 1,000 Guineas at the Brafferton sale, breaking all records as the first bull to draw such a price tag.

THIS BLOODLINE would go on to be a key influencer in the Modern Shorthorn breed that is celebrated for its superb eating qualities.

SUPERIOR IN TASTE

WITH THOUSAND GUINEAS you will enjoy an open texture with a buttery flavour, a great bite *and lots of juice*. Perfectly suited for that special occasion when friends, family or colleagues come together to share a richly rewarding *moment in time*.

SPECIFICATIONS

BREED TYPE	<i>Shorthorn</i> <small>(VERIFIED & ACCREDITED)</small>
FEEDING REGIME	<i>Grain fed</i>
LIVESTOCK GRADE	<i>YP (0-4 tooth)</i>
EATING QUALITY ASSURANCE	<i>MSA graded</i>
MARBLE SCORE	<i>2+</i>
MEAT COLOUR	<i>1B - 3</i>
FAT COLOUR	<i>0 - 3</i>



**WANT TO BE PART OF THIS
 EXCLUSIVE BRAND?**
 CONTACT YOUR NEAREST
JBS LIVESTOCK BUYER.

NSW

- KEITH HAMMOND DUBBO 0428 849230
- RICHARD SADLER TAMWORTH 0429 667866
- TONY CLIFFORD SCONE 0428 683050
- RON WEBSTER ARMIDALE 0428 492467
- STEWART BULMER TENTERFIELD 0428 666973
- ALLAN EURELL WAGGA 0428 694526
- PETER STEER ALBURY/WODONGA 0427 343094
- NEALE FLANAGAN ALBURY/WODONGA 0418 357133
- RON CRUICKSHANK COWRA 0428 795620

QLD

- SCOTT CARSWELL TOOWOOMBA 0428 727202
- JASON CARSWELL TOOWOOMBA 0499 773878
- JOHN NORRIS TOOWOOMBA 0427 776514
- DAMIAN GOULD ROMA 0428 188351
- MATT CURTIS BIGGENDAN 0427 556037
- BRAD HALL ROLLESTON 0400 782707
- SIMON FRASER CLERMONT 0400 314281
- LIAM WELLER LONGREACH 0429 193612



WORTH ITS WEIGHT IN GOLD



MARELLAN WWW. (P)

LOT 31

ID: JOBQ143

BORN: 31/12/19 (20 MTHS)

RED



ROYALLA QUANTICO J011 (P)
Sire: MARELLAN TIDAL WAVE (P)
 MARELLAN CARNIVALE 4055 (P)
 MARELLAN LOADED (P)
Dam: MARELLAN ISOBEL 2042 (P)
 MARELLAN ISOBEL 8013L (P)

Top 1% Yield Grade, Top 20% Calving Ease, Top 30% REA.

WWW. has the carcass I like; a thick, soft muscle pattern but still the ability to cover that carcass. A wide topped bull that will produce calves that will make you wish you branded when they were younger.

Tested Homozygous Polled

Weight	Fat	EMA	IMF	Fleck	Scrotal	Morph.	Mot.
						91%	80%

	CE	BW	WW	YW	Milk	MCE	MWWT	Stay	DOC	CWT	REA	FAT	MARB	YG	API\$
EPD	+10.3	+2.5	+47.6	+80.6	+28.4	+6.7	+52.2	+11.7	+11.0	-11.1	+0.44	-0.098	-0.08	-0.47	\$104.04
Acc.	17%	18%	18%	18%	9%	9%	12%	12%	3%	18%	18%	15%	16%	15%	

Purchaser: Price: \$

MARELLAN WAVE (P)

LOT 32

ID: JOBQ079

BORN: 28/10/19 (22 MTHS)

RLW



ROYALLA QUANTICO J011 (P)
Sire: MARELLAN TIDAL WAVE (P)
 MARELLAN CARNIVALE 4055 (P)
 MARELLAN PROPHET (P)
Dam: MARELLAN BLUEBELLE 5128 (P)
 MARELLAN BLUEBELLE 2213 (P)

Dam is Top 3% Birth Weight, Top 5% Calving Ease, Top 25% Yearling Weight, Milk, Top 30% Maternal Weaning Weight.

Wave has that really attractive combination of a strong constitution, carcass shape and northern doing ability. He'll breed bullocks, replacement females or feeders. A bull with 12.5% content. Sire PV pending.

PLEASE NOTE, Dam's EPD's.
 Tested Homozygous Polled

Weight	Fat	EMA	IMF	Fleck	Scrotal	Morph.	Mot.
							75%

	CE	BW	WW	YW	Milk	MCE	MWWT	Stay	DOC	CWT	REA	FAT	MARB	YG	API\$
EPD	+13.1	-0.8	+52.7	+91.0	+29.4	+6.5	+55.8	+11.0	+8.4	-7.1	+0.09	-0.087	-0.43	-0.31	\$94.90
Acc.	37%	44%	40%	41%	8%	15%	19%	22%	7%	42%	38%	29%	35%	31%	

Purchaser: Price: \$

MARELLAN WATER (P)

LOT 33

ID: JOBQ139

BORN: 25/12/19 (21 MTHS)

RLW



ROYALLA QUANTICO J011 (P)
Sire: MARELLAN TIDAL WAVE (P)
 MARELLAN CARNIVALE 4055 (P)
 MARELLAN NICODEMUS (P)
Dam: MARELLAN SUSAN 5113 (P)
 MARELLAN SUSAN 0280 (P)

Top 5% Yield Grade, Top 30% Milk, Maternal Calving Ease, REA.
 A good solid red bull to breed top F1 progeny that will have market versatility. Water is out of a top Nicodemus cow.

Weight	Fat	EMA	IMF	Fleck	Scrotal	Morph.	Mot.
						84%	75%

	CE	BW	WW	YW	Milk	MCE	MWWT	Stay	DOC	CWT	REA	FAT	MARB	YG	API\$
EPD	+7.8	+4.2	+51.2	+82.2	+29.0	+6.9	+54.6	+12.9	+10.6	-6.1	+0.44	-0.094	-0.05	-0.44	\$102.23
Acc.	17%	19%	18%	18%	7%	9%	11%	12%	5%	18%	18%	15%	17%	15%	

Purchaser: Price: \$

MARELLAN WTAR (P)

LOT 34

ID: JOBQ130

BORN: 14/11/19 (22 MTHS)

RED



MARELLAN PROPHET (P)
Sire: MARELLAN STAR (P)
 MARELLAN CAMELOT 0078 (P)
 MARELLAN NICODEMUS (P)
Dam: MARELLAN MOLLY 2137 (P)
 MARELLAN MOLLY 9156 (P)

Dam is Top 5% Milk, Top 10% Yield Grade, Top 15% Docility.
 A thick, meaty Star son. Wtar is a good doing bull that is a maternal 3/4 brother to Skywalker, one of our top bulls from the 2017 sale. Sire PV pending.

PLEASE NOTE, Dam's EPD's.
 Tested Homozygous Polled

Weight	Fat	EMA	IMF	Fleck	Scrotal	Morph.	Mot.
						80%	85%

	CE	BW	WW	YW	Milk	MCE	MWWT	Stay	DOC	CWT	REA	FAT	MARB	YG	API\$
EPD	+6.3	+3.9	+42.1	+62.9	+33.6	+6.8	+54.7	+11.4	+13.5	-5.2	+0.41	-0.096	-0.09	-0.43	\$90.99
Acc.	42%	48%	44%	44%	23%	25%	30%	28%	9%	45%	43%	32%	41%	34%	

Purchaser: Price: \$

MARELLAN WEEKLY (P)

LOT 35

ID: JOBQ083

BORN: 2/11/19 (22 MTHS)

RLW



Sire Marellan Star

Sire: MARELLAN PROPHET (P)
MARELLAN STAR (P)
 MARELLAN CAMELOT 0078 (P)

Dam: MARELLAN INDESTRUCTIBLE (P)
MARELLAN ISOBEL 0262 (P)
 MARELLAN ISOBEL 3119 (P)

Dam is Top 2% Milk, Top 3% Birth Weight, Top 10% Maternal Calving Ease, Top 15% Calving Ease, Top 20% Fat, API, Top 30% Stayability.

Another Star son with shape and northern do-ability. Should be OK to use on heifers. Sire PV pending.

PLEASE NOTE, Dam's EPD's.
 Tested Homozygous Polled

Photo: Sire Marellan Star

Weight	Fat	EMA	IMF	Fleck	Scrotal	Morph.	Mot.
						80%	85%

	CE	BW	WW	YW	Milk	MCE	MWWT	Stay	DOC	CWT	REA	FAT	MARB	YG	API\$
EPD	+11.5	-0.5	+41.4	+64.3	+35.7	+8.9	+56.4	+13.9	+10.7	-7.9	+0.35	-0.077	0.00	-0.37	\$115.53
Acc.	27%	40%	35%	36%	29%	22%	31%	21%	15%	32%	28%	17%	23%	22%	

Purchaser: Price: \$

MARELLAN UNCLE RON 9134 (P)

LOT 36

ID: JOBQ134

BORN: 19/12/19 (21 MTHS)

RED & WHITE



Sire: MARELLAN PROPHET (P)
MARELLAN SID (P)
 MARELLAN IDA 2012 (P)

Dam: NCC VERMONT (P)
MARELLAN PAULINE 2246 (P)
 MINING VALE PAULINE B017 (P)

Top 15% Milk, Top 25% Fat, Top 30% Maternal Weaning Weight.

3/4 Shorthorn and 25% Brahman.

I love the carcass and Tropical coat on this Sid son. A top option for those requiring some content in their bulls.

Weight	Fat	EMA	IMF	Fleck	Scrotal	Morph.	Mot.
						83%	80%

	CE	BW	WW	YW	Milk	MCE	MWWT	Stay	DOC	CWT	REA	FAT	MARB	YG	API\$
EPD	+8.3	+3.1	+49.2	+80.8	+30.9	+4.5	+55.5	+12.6	+7.9	-4.3	+0.24	-0.079	-0.08	-0.33	\$101.88
Acc.	12%	17%	14%	14%	6%	8%	9%	8%	4%	20%	21%	10%	12%	15%	

Purchaser: Price: \$

MARELLAN WIKI LEAKS (P)

LOT 37

ID: JOBQ133

BORN: 19/12/19 (21 MTHS)



Sire: MARELLAN PROPHET (P)
MARELLAN STAR (P)
 MARELLAN CAMELOT 0078 (P)

Dam: MARELLAN NICODEMUS (P)
MARELLAN FULLGLOSS 3006 (P)
 MARELLAN FULLGLOSS 5283 (P)

Top 5% Fat, Top 15% Docility.
 A top roan bull. Wiki Leaks is a thick made bull that has doing ability and a magnificent structure to perform in big paddocks. Dam is sired by the carcass and coverage supremo, Nicodemus. Sire PV pending. PLEASE NOTE, Dam's EPD's.

Tested Homozygous Polled

Weight	Fat	EMA	IMF	Fleck	Scrotal	Morph.	Mot.
						89%	90%

	CE	BW	WW	YW	Milk	MCE	MWWT	Stay	DOC	CWT	REA	FAT	MARB	YG	API\$
EPD	+3.7	+5.3	+51.2	+74.5	+24.6	+4.5	+50.2	+12.6	+13.2	-9.2	+0.07	-0.063	-0.14	-0.25	\$87.06
Acc.	42%	48%	43%	45%	23%	23%	30%	29%	9%	44%	41%	31%	38%	33%	

Purchaser: Price: \$

MARELLAN WELL COVERED (P)

LOT 38

ID: JOBQ078

BORN: 26/10/19 (23 MTHS)

ROAN



Sire: MARELLAN PROPHET (P)
MARELLAN STAR (P)
 MARELLAN CAMELOT 0078 (P)

Dam: MARELLAN LOTE TUQIRI (P)
MARELLAN LAUREL 1102 (P)
 MARELLAN LAUREL 4034 (P)

Top 2% Fat, Top 10% Calving Ease, Top 15% Birth Weight, Top 20% Maternal Calving Ease, Top 30% Milk. A super easy doing Star son that should be OK to use on heifers. His progeny will not be the heaviest, but that will be out the door first. Please note, he carries more hair than most of our bulls.

Tested Homozygous Polled

Weight	Fat	EMA	IMF	Fleck	Scrotal	Morph.	Mot.
						92%	80%

	CE	BW	WW	YW	Milk	MCE	MWWT	Stay	DOC	CWT	REA	FAT	MARB	YG	API\$
EPD	+12.0	+1.1	+44.4	+70.6	+29.0	+7.8	+51.2	+11.6	+10.1	-6.3	+0.20	-0.052	+0.02	-0.25	\$110.66
Acc.	19%	21%	19%	19%	10%	11%	13%	11%	4%	19%	18%	15%	16%	16%	

Purchaser: Price: \$

What a great event Beef 2021 was for the Shorthorn breed. Firstly, with Royalla Shorthorns taking out the coveted Interbreed Champion Bull with a great Roan sire and crowd favourite, Royalla Ventura. Secondly, we were overwhelmed with the interest in our tropically adapted Shorthorns on our site display. The feature being the F1 progeny of Marellan Shorthorn bulls and some of our clients Bos Indicus cows. A special thankyou to; Appleton Cattle Co for their Shorthorn x Droughtmaster and Shorthorn X Brahman bullocks, Togara Enterprises for their Santa X Shorthorn Bullock and the Burrows family for their Belmont Red X Shorthorn Bullock. A special thanks also to Alex, Georgia, Cody, Rory, Jack, Buster, Ella & Estera for their efforts during the week.



MARELLAN X-MEN (P)

LOT 39

ID: JOBR031

BORN: 16/2/20 (19 MTHS)

RED



ROYALLA QUANTICO J011 (P)
Sire: MARELLAN TIDAL WAVE (P)
MARELLAN CARNIVALE 4055 (P)

MARELLAN PHIL KEARNS (P)
Dam: MARELLAN BRONWYN 4050 (P)
MARELLAN BRONWYN 2248 (P)

Top 10% Calving Ease, Top 15% Birth Weight, Milk, Yield Grade, API, Top 25% Maternal Calving Ease, Stayability.

Long, smooth, thick and the balance of Simone Biles. Great butterfly loin and coat type. X-Men is an absolute cracker for those that can handle 1/8 content. His dam, Bronwyn 4050, is one of our elite donor cows.

Tested Homozygous Polled

Weight	Fat	EMA	IMF	Fleck	Scrotal	Morph.	Mot.
						89%	65%

	CE	BW	WW	YW	Milk	MCE	MWWT	Stay	DOC	CWT	REA	FAT	MARB	YG	API\$
EPD	+12.2	+1.0	+44.6	+75.3	+31.1	+7.2	+53.4	+14.7	+9.5	-11.6	+0.35	-0.087	+0.01	-0.41	\$118.46
Acc.	17%	18%	17%	17%	7%	8%	10%	11%	2%	18%	17%	14%	16%	14%	

Purchaser: Price: \$

MARELLAN X-WAVE (P)

LOT 40

ID: JOBR029

BORN: 15/2/20 (19 MTHS)

RLW



ROYALLA QUANTICO J011 (P)
Sire: MARELLAN TIDAL WAVE (P)
 MARELLAN CARNIVALE 4055 (P)
 MARELLAN KNAPSACK (P)
Dam: MARELLAN MELODY 2040 (P)
 ROYALLA MELODY I5277 (H)

Top 4% Yield Grade, Top 5% API, Top 15% Calving Ease, Stayability, Top 20% Maternal Calving Ease, REA, Marbling, Top 25% Yearling Weight, Top 30% Weaning Weight, Maternal Weaning Weight.
A top Tidal Wave son. X-Wave is a standout bull for his smooth carcass and structural correctness. He's an effortless mover with the balance of Charles Blondin. A bull whose progeny would fit into almost every market. Additionally, his maternal genetics would indicate that X-Wave would breed top grade F1 females.

Weight	Fat	EMA	IMF	Fleck	Scrotal	Morph.	Mot.
						85%	85%

	CE	BW	WW	YW	Milk	MCE	MWWT	Stay	DOC	CWT	REA	FAT	MARB	YG	API\$
EPD	+11.3	+2.4	+56.7	+91.1	+27.1	+7.5	+55.5	+15.5	+10.4	-1.9	+0.48	-0.097	+0.09	-0.44	\$125.25
Acc.	17%	18%	18%	18%	9%	9%	12%	12%	3%	18%	18%	15%	17%	15%	

Purchaser: Price: \$

MARELLAN XCALIBUR (P)

LOT 41

ID: JOBR018

BORN: 5/2/20 (19 MTHS)

RED



Sire: DNA PV Pending

MARELLAN NUKARNI (P)
Dam: MARELLAN SUSAN 3175 (P)
 MARELLAN SUSAN 3352 (P)

Dam is Top 4% Birth Weight, Top 10% Calving Ease, Fat, Top 20% Maternal Calving Ease.
A magnificent young bull. X-United is clean coated and combines a thick top, wide rump, soft skin and tremendous length and freedom of movement. Sire PV results pending.

PLEASE NOTE, Dam's EPD's.

Tested Homozygous Polled

Weight	Fat	EMA	IMF	Fleck	Scrotal	Morph.	Mot.
						96%	90%

	CE	BW	WW	YW	Milk	MCE	MWWT	Stay	DOC	CWT	REA	FAT	MARB	YG	API\$
EPD	+12.9	-0.3	+31.6	+54.2	+18.2	+7.6	+34.0	+9.0	+9.3	-13.0	+0.19	-0.070	-0.08	-0.33	\$99.50
Acc.	23%	34%	29%	29%	17%	14%	21%	5%	3%	28%	27%	19%	22%	21%	

Purchaser: Price: \$

MARELLAN X-TIDE (P)

LOT 42

ID: JOBR035

BORN: 17/2/20 (19 MTHS)

RLW



Sire Marellan Tidal Wave

ROYALLA QUANTICO J011 (P)
Sire: MARELLAN TIDAL WAVE (P)
 MARELLAN CARNIVALE 4055 (P)

MARELLAN NICODEMUS (P)
Dam: MARELLAN CHERIE 5114 (P)
 MARELLAN CHERIE I5386 (P)

Top 15% Yield Grade, Top 20% Maternal Calving Ease, Top 25% Calving Ease, Top 30% Docility.

Another high performing Tidal Wave son. X-Tide is a top option for bullock or feeder steer producers. He is super long bodied with good width when you get behind him. All of X-Tide 4 grandparents have performed well in the Ticks and the Central Queensland environment. Environmental survivability is our number one selection criteria.

Photo: Sire Marellan Tidal Wave

Weight	Fat	EMA	IMF	Fleck	Scrotal	Morph.	Mot.
						91%	85%

	CE	BW	WW	YW	Milk	MCE	MWWT	Stay	DOC	CWT	REA	FAT	MARB	YG	API\$
EPD	+9.7	+3.0	+45.3	+73.5	+27.5	+7.9	+50.2	+12.3	+11.6	-11.2	+0.30	-0.092	-0.14	-0.41	\$98.72
Acc.	17%	19%	18%	18%	8%	9%	11%	12%	4%	18%	18%	15%	17%	15%	

Purchaser: Price: \$

MARELLAN X-CARNIE (P)

LOT 43

ID: JOBR037

BORN: 22/2/20 (19 MTHS)

RED & WHITE



SPRYS TRUE BLUE (P)
Sire: MARELLAN POM (P)
 MARELLAN CAMELOT 0078 (P)

DIRRABILLA JARRAH (P)
Dam: MARELLAN CARNIVALE 2036 (P)
 MARELLAN CARNIVALE 7039 (P)

Dam is Top 10% Stayability, Marbling, Top 15% Fat. I love the carcass in this bull, muscle with softness and doing ability. Please note, X-Carnie carries more hair than most of our bulls. Carnivale 2036 is the granddam of Tidal Wave.

PLEASE NOTE, Dam's EPD's.

Weight	Fat	EMA	IMF	Fleck	Scrotal	Morph.	Mot.
						78%	70%

	CE	BW	WW	YW	Milk	MCE	MWWT	Stay	DOC	CWT	REA	FAT	MARB	YG	API\$
EPD	+1.5	+6.1	+54.6	+76.5	+26.6	+2.5	+53.9	+16.1	+10.0	+3.5	+0.38	-0.072	+0.13	-0.33	\$105.91
Acc.	39%	43%	42%	43%	27%	22%	32%	28%	6%	44%	42%	34%	38%	34%	

Purchaser: Price: \$

MARELLAN X-TRADE (P)

LOT 44

ID: JOBR022

BORN: 11/2/20 (19 MTHS)

RED



SEIFERT TEDSTAR (H)
Sire: MARELLAN UNITED (P)
 YAMBURGAN CONNIE D133 (P)
 MARELLAN LAND LORD (P)
Dam: MARELLAN MAVIS 6185 (P)
 ROYALL MAVIS (P)

Top 30% Yield Grade.
 A complete young sire, thick from behind, wide on top and good mobility. 25% Belmont. Dam is a top daughter of Land Lord.

Weight	Fat	EMA	IMF	Fleck	Scrotal	Morph.	Mot.
						82%	75%

	CE	BW	WW	YW	Milk	MCE	MWWT	Stay	DOC	CWT	REA	FAT	MARB	YG	API\$
EPD	+6.7	+2.6	+46.9	+72.4	+23.6	+5.9	+47.1	+13.0	+10.3	-8.3	+0.29	-0.088	-0.13	-0.38	\$97.07
Acc.	10%	11%	11%	11%	3%	5%	6%	7%	3%	13%	13%	11%	12%	11%	

Purchaser: Price: \$

Clermont Prime Cattle Show 2021



In a display of over 500 prime cattle that would rival any royal show in the country, Clermont Show presented us with the opportunity to showcase our F1 Shorthorn X Bos Indicus Cattle. The highlight was being awarded the most successful exhibitor (for 15 head and under) in the prime cattle section. We received 2 firsts, 2 seconds as well as other placings and the all-time heaviest cow of the show. Thanks to the Appleton Cattle Co, Togara Enterprises and the Burrows family for supplying most of these stock to us.



Our 11yr old Brahman X Shorthorn cow was awarded the heaviest cow of the show and set the all-time record at 900kg.

MARELLAN XPLOSIVE (P)

LOT 45

ID: JOBR011

BORN: 26/1/20 (20 MTHS)

ROAN

Dam is Top 4% Milk, Top 15% Maternal Weaning Weight, REA, Yield Grade, Top 30% Docility, Marbling. A top grade Nicodemus son. I like the length, doing ability and muscle pattern of the bull. Combining the Isobel and Camelot families ensure a big dose of maternal function for those wanting to breed maternal F1's. Dam PV required another DNA sample, will be sorted before sale day.

Sire: WEEBOLLABOLLA BOSWORTH (P)
MARELLAN NICODEMUS (P)
 MARELLAN ISOBEL 7152 (P)

LACHLAN C335 (P)
Dam: MARELLAN CAMELOT 0078 (P)
 MARELLAN CAMELOT 5214 (P)

PLEASE NOTE, Dam's EPD's.

Weight	Fat	EMA	IMF	Fleck	Scrotal	Morph.	Mot.
						92%	80%

	CE	BW	WW	YW	Milk	MCE	MWWT	Stay	DOC	CWT	REA	FAT	MARB	YG	API\$
EPD	+6.1	+3.2	+49.7	+77.5	+34.2	+6.0	+59.1	+10.4	+11.8	+1.9	+0.50	-0.088	+0.06	-0.41	\$101.68
Acc.	38%	48%	40%	41%	26%	22%	31%	14%	19%	30%	29%	17%	20%	22%	

Purchaser: Price: \$



Marellan Nicodemus, sire of Lots 45 & 46.



Marellan Camelot 0078, dam of Lots 29, 45 & 46.

MARELLAN XPLODE (P)

LOT 46

ID: JOBR012

BORN: 26/1/20 (20 MTHS)

RED

Sire is Top 2% Fat, Top 3% Docility, Top 10% Maternal Calving Ease, Top 30% Milk. Full brother to Lot 45. Not as much performance as his brother but plenty doing ability to breed those quick finishing progeny that taste great. Dam PV required another DNA sample, will be sorted before sale day.

Sire: WEEBOLLABOLLA BOSWORTH (P)
MARELLAN NICODEMUS (P)
 MARELLAN ISOBEL 7152 (P)

LACHLAN C335 (P)
Dam: MARELLAN CAMELOT 0078 (P)
 MARELLAN CAMELOT 5214 (P)

PLEASE NOTE, Sire's EPD's.

Tested Homozygous Polled

Weight	Fat	EMA	IMF	Fleck	Scrotal	Morph.	Mot.
						93%	70%

	CE	BW	WW	YW	Milk	MCE	MWWT	Stay	DOC	CWT	REA	FAT	MARB	YG	API\$
EPD	+7.0	+4.8	+41.1	+60.4	+29.0	+9.2	+49.6	+9.0	+16.1	-12.6	+0.22	-0.048	-0.20	-0.28	\$77.96
Acc.	54%	74%	66%	66%	37%	36%	47%	35%	30%	54%	54%	35%	48%	40%	

Purchaser: Price: \$

MARELLAN X-TALOFA (P)

LOT 47

ID: JOBR045

BORN: 5/3/20 (18 MTHS)

ROAN



Dam Marellan Molly 3195

MARELLAN PRINCE CASPIAN (P)
Sire: MARELLAN SAMOA (P)
 WARRABERRY MEME G45 (P)

MARELLAN MR SLICK (P)
Dam: MARELLAN MOLLY 3195 (P)
 MARELLAN MOLLY 1245 (H)

Top 10% Fat, Top 15% Birth Weight, Top 20% Calving Ease, Top 25% Maternal Calving Ease, Top 30% Milk. X-Talofa is a striking roan with magnificent softness. Dam is one of our very best, Molly 3195. His sire sold in our 2017 to WH Kettle & Co.

Weight	Fat	EMA	IMF	Fleck	Scrotal	Morph.	Mot.
						75%	85%

	CE	BW	WW	YW	Milk	MCE	MWWT	Stay	DOC	CWT	REA	FAT	MARB	YG	API\$
EPD	+10.0	+1.2	+38.0	+58.4	+28.9	+7.3	+47.9	+11.1	+10.5	-7.2	+0.26	-0.070	-0.06	-0.32	\$99.87
Acc.	15%	16%	14%	15%	6%	9%	9%	7%	2%	14%	13%	11%	11%	11%	

Purchaser: Price: \$

MARELLAN UNCLE REG (P)

LOT 48

ID: JOBR023

BORN: 11/2/20 (19 MTHS)

ROAN



MARELLAN PROPHET (P)
Sire: MARELLAN SID (P)
 MARELLAN IDA 2012 (P)

ROYALLA QUANTICO J011 (P)
Dam: MARELLAN KEZIAH 6201 (P)
 MARELLAN KEZIAH 4069 (H)

Top 10% API, Top 15% Milk, Maternal Calving Ease, Marbling, Top 20% Calving Ease, Fat, Top 25% Yearling Weight, Top 30% Stayability.

A top combo of carcass and doing ability in this Sid son. Uncle Reg is not the biggest framed bull but has a great barrel and thickness from behind. His progeny will be easy to fatten and even easier to sell. 7 of his ancestors have proven there survivability in the north. Tested Homozygous Polled

Weight	Fat	EMA	IMF	Fleck	Scrotal	Morph.	Mot.
						89%	70%

	CE	BW	WW	YW	Milk	MCE	MWWT	Stay	DOC	CWT	REA	FAT	MARB	YG	API\$
EPD	+10.6	+2.4	+54.1	+89.9	+31.4	+8.1	+58.5	+13.9	+9.1	-0.4	+0.37	-0.077	+0.12	-0.35	\$122.11
Acc.	18%	19%	18%	18%	6%	9%	10%	11%	5%	18%	18%	15%	17%	15%	

Purchaser: Price: \$

MARELLAN X-CON (P)

LOT 49

ID: JOBR041

BORN: 1/3/20 (18 MTHS)

ROAN



WEEBOLLABOLLA QUILPIE (P)
Sire: WEEBOLLABOLLA THEODORE (P)
 WEEBOLLABOLLA NINDETHANA (P)

MARELLAN PROPHET (P)
Dam: MARELLAN LAUREN 7105 (P)
 MARELLAN LAUREL 4243 (P)

Top 1% Weaning Weight, Yearling Weight, Maternal Weaning Weight, Top 5% API, Top 10% Calving Ease, Top 25% Yield Grade, Top 30% Maternal Calving Ease, REA.

X-Con is a specialist bull to use on heifers. Not the performance of some, but a really nice clean skinned roan type. This sire Theodore is arguably the most influential Shorthorn bull ever in Australia. Sire PV pending.

PLEASE NOTE, Dam's EPD's.

Weight	Fat	EMA	IMF	Fleck	Scrotal	Morph.	Mot.
						87%	85%

	CE	BW	WW	YW	Milk	MCE	MWWT	Stay	DOC	CWT	REA	FAT	MARB	YG	API\$
EPD	+12.4	+3.3	+77.8	+125.3	+28.4	+7.1	+67.3	+13.8	+10.7	+5.7	+0.45	-0.093	-0.01	-0.39	\$125.00
Acc.	32%	36%	38%	36%	7%	13%	17%	20%	6%	39%	37%	29%	30%	30%	

Purchaser: Price: \$

MARELLAN X-LOIN (P)

LOT 50

ID: JOBR058

BORN: 4/4/20 (17 MTHS)

ROAN



ROYALLA QUANTUM J392 (P)
Sire: ROYALLA TENDERLOIN M221 (P)
 ROYALLA PATTIE G193 (P)

MARELLAN QUEENSLAND RED (P)
Dam: MARELLAN FULLGLOSS 6114 (P)
 ROYALLA FULLGLOSS 7261K (P)

Top 15% Yield Grade, Top 30% REA.

A striking roan with grunt. X-Loin is the youngest bull in the sale but will produce top class bullocks. X-Loin is a powerful bull that had more birth weight than most and is not a good option use on heifers. Please note, he carries more hair than most of our bulls.

Weight	Fat	EMA	IMF	Fleck	Scrotal	Morph.	Mot.
						83%	80%

	CE	BW	WW	YW	Milk	MCE	MWWT	Stay	DOC	CWT	REA	FAT	MARB	YG	API\$
EPD	+5.5	+4.4	+53.5	+87.1	+24.8	+3.9	+51.6	+10.9	+10.2	+6.9	+0.45	-0.102	-0.14	-0.41	\$91.18
Acc.	16%	17%	16%	16%	5%	7%	9%	11%	5%	17%	17%	14%	16%	14%	

Purchaser: Price: \$

MARELLAN X-ROAN (P)

LOT 51

ID: JOBR057

BORN: 2/4/20 (17 MTHS)

ROAN



ROYALLA QUANTUM J392 (P)
Sire: ROYALLA TENDERLOIN M221 (P)
 ROYALLA PATTIE G193 (P)
 MARELLAN QUADE STAR (P)
Dam: MARELLAN DESTINY 6154 (P)
 MARELLAN DESTINY A027 (P)

Top 4% Yield Grade, Top 15% Yearling Weight, Top 20% Milk, Maternal Weaning Weight, Top 30% Weaning Weight, Fat.

A smooth coated roan that would suit steer and F1 female production systems. X-roan will be a big framed bull with length and a really smooth muscle pattern.

Tested Homozygous Polled

Weight	Fat	EMA	IMF	Fleck	Scrotal	Morph.	Mot.
						90%	85%

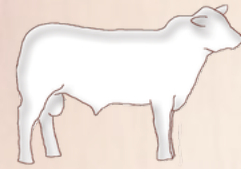
	CE	BW	WW	YW	Milk	MCE	MWWT	Stay	DOC	CWT	REA	FAT	MARB	YG	API\$
EPD	+8.3	+3.0	+56.9	+94.2	+30.1	+5.3	+58.6	+13.1	+10.7	-3.3	+0.45	-0.100	-0.17	-0.44	\$102.40
Acc.	15%	16%	16%	16%	5%	7%	9%	10%	9%	17%	17%	13%	15%	14%	

Purchaser: Price: \$

YOUR **NO. #1 F1**

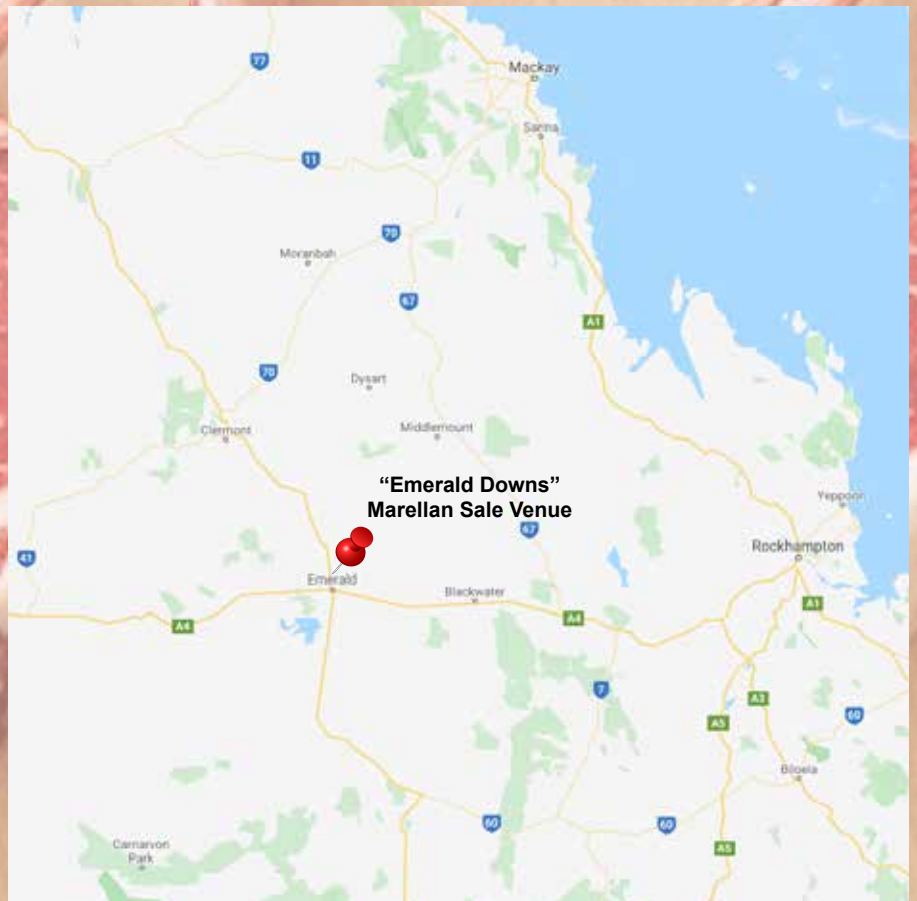


Congratulations to Neil and Margaret Dunbar of Capella on an outstanding result at the August Emerald Special Sale. Their high \$c kg pen of Santa X Marellan Shorthorn weaner steers topped at a magnificent \$6.73 per kg. The top pen averaged \$2016.



marellan
shorthorns

Bred for Bos Indicus Cows!



Marellan Shorthorns *"Bred for Bos Indicus Cows" Bull Sale*

Monday 27th Sept 2021 "Emerald Downs" Emerald
ONLINE & ON PROPERTY



LOT 22

LOT 23

LOT 2