

2021



THE 16TH ANNUAL
SANTA CENTRAL SALE

TUESDAY
14th SEPTEMBER – 12 noon
HEADINGLY SALE COMPLEX, CLIFTON QLD



Photography by:
Kent B Ward | Danni MacCue
Phoebe Ferguson | Helen Walker

I would like to welcome you to our 16th Annual Sale.

After many years of tough seasonal conditions, we have seen a dramatic turnaround with excellent general rain returning. We have now one of the best oats crops we have seen for many years. Ironically the bulls have been battling constant wet weather however enjoying the robust oats crop. This year's sale females excepting show females are prepared solely on oats.

Again, this year we have been pleased to witness progeny of Santa Central bulls perform in commercial herds with progeny topping sales in the current buoyant market. Also, progeny appear in stud and show catalogues in high and consistent numbers all across Australia, something we as vendors are particularly proud of. Sale animals in this catalogue are the very best chosen out of over 2,500 classified females.


Again, this year the 2021 sale will be interfaced with AuctionsPlus, photos and videos will be available on each lot via our QR codes.

I would like to thank Wendy and my girls for their support. Ned and the many workers, clients and friends that without their help none of what we do would be possible.

We would like to welcome you to 'Headingly' and appreciate your interest in our 2021 catalogue. Please feel free to contact myself or your preferred Nutrien agent if you would like an on property inspection or further information on any lots.

Regards
Scott G Ferguson
0407 645 917



 Our Socials



 WATCH NOW

JOIN US:

Santa Central Vendors would like to invite you to join them at the Federal Hotel (next to Dan Murphy's), James Street, Toowoomba from 6.30 to 7.00pm on Monday 13th September. The restaurant will be available for dinner that evening (a bulk booking has been made). Accommodation is available at the Federal Motel next door. Any enquiries please contact us via email: glenoaks@westnet.com.au



2021

THE 16TH ANNUAL **SANTA CENTRAL SALE**

TUESDAY, 14th SEPTEMBER – 12 noon

HEADINGLY SALE COMPLEX, CLIFTON QLD

– FEATURING –

- 32 CLASSIFIED SHOW BULLS**
- 93 CLASSIFIED BULLS**
- 17 FEMALES**

89% POLLS



AuctionsPlus

Buy and Sell stock nationally

auctionsplus.com.au

02 9262 4222

studsales@auctionsplus.com.au



Livestock

NUTRIEN TOOWOOMBA

07 4637 3000

Colby Ede0417 265 980

Andrew Costello0429 485 191

Simon Booth0438 756 245



AuctionsPlus®

Australia's Livestock Marketplace

Can't make the sale?

Purchase online in eight simple steps!

Log on to AuctionsPlus and bid on your phone, tablet or computer.

1

REGISTER ONLINE

Free once off registration for all auctions.

2

COMPLETE BUYER INDUCTION

The buyer induction will help you understand the roles and responsibilities of everyone on the AuctionsPlus system.

3

VIEW CATALOGUE

View photos, videos, pedigrees and more.

4

ENTER AUCTION

Log into the auction anytime, anywhere and bid on your mobile, tablet or computer.

5

AUTO BID

Can't stay for the whole sale? Set your maximum bid on the lot that you want to purchase and let the computer bid for you.

6

CONTACT SELLING AGENT

If successful, contact selling agent to arrange payment and delivery. The agent contact details will be available in the catalogue header.

7

PAYMENT

Via the selling agent's terms and conditions.

8

DELIVERY

Arrange transport of livestock at your expense.

Contact AuctionsPlus on (02) 9262 4222
or email studsales@auctionsplus.com.au
or www.auctionsplus.com.au

Check us out on:



BULLAMAKINKA

After many years of conducting our own annual bull sale we are now again offering the lead of our draft of bulls at the Santa Central bull sale. This year's draft are represented by some of our proven Bullamakinka sires including Bullamakinka K476(P) and K84(P) (Canowindra Gold Edition/ d.Warenda Sentry (P)) and Bullamakinka Rimfire M022 (P). Many of our sale bulls are by new sires purchased in 2018 including Waco Napoleon (P), the top priced santa bull in 2018 for \$82500, Waco Nike N124, Glenn Oaks Nashville (PS) and Dunlop Return(P). The major investment in new sires in 2018 has been beneficial in our breeding program with all of the selection of new sires clicking with our breeders.

Bullamakinka stud was formed in 2006 following the acquisition of "Bullamakinka" in the Goondiwindi district and after investment in the purchase of select lines of breeders from studs, Warenda, Kelly Wallah, Erin Vale, Rosevale, Yarrowonga, Waco, Marston, Eidsvold Station, Moongana, Santa Park, Douglas, Kolodong, Killarney and Wave Hill. Major investment has been made since the stud was formed on sires including our foundation sires, Warenda Sentry (P) and Canowindra Gold Edition with their genetics forming the majority of our current breeder base of approximately 400 breeders. Recently, additional sire acquisitions include Waco Napoleon (P), Dangarfield X-Box (P), Waco Flynn, Glenn Oaks Nashville (PS), Waco Nelson (PS), Yarrowonga Diplomat (P), Dunlop Return (P), Dunlop Quentin (PS), Yarrabee Himalaya (P) and Waco N124.

Our stud aim is to produce fertile cattle with good softness, bone, growth and muscle with fine tropical coats and good breed character.

DIAMOND H

The Hatton family have been breeding Santa Gertrudis for over 40 years. The Diamond H Stud was established in 1993 with Yarrowonga and Waco bloodlines.

The Hatton family run pure bred commercial and stud herds over 5 properties in the Wandoan and Auburn River districts, north of Chinchilla. Their cattle country comprises of a mix of brigalow, ironbark, sandalwood and vine scrub, grassed predominately with buffel and some lighter forest areas.

Recent sires have been purchased from Waco, Glenn Oaks, Wave Hill, Warenda, Munnabah,

Hardigreen Park, Yarrabee, Dunlop and Strathmore studs.

GLENALBYN

Glenalbyn stud (no. 466) was established at Bourke NSW more than 50 years ago when classified Santa Gertrudis bulls were introduced to our stud Poll Hereford cows in the mid 1960's. This resulted in Mick, Poppy and Howard Courts registering their stud, Glenalbyn, in 1969. Stud cows were then purchased from Yarrowonga and sires from Pampoola, King Ranch and Spring Creek.

In the early 1980's sires were purchased from Swan Hill, Robenlea, Rosevale, Watasanta and the final King Ranch sale. In the late 80's more females were purchased from Yarrowonga.

Seven years ago, retaining all its females, Glenalbyn Stud relocated to Wellington, NSW. We believe that these genetics produce cattle that can adapt to all conditions and reproduce every year. The cattle produced are soft, sound and easy doing that can manage tough conditions.

With the purchase of Glenn Oaks Palo in 2020 for the record price of \$126,000 (in conjunction with Munnabah), there is much excitement within the stud with the arrival of his much-anticipated calves.

Bulls offered today are sired by Denngal Magic purchased in 2018 and out of cows sired by Glenn Oaks Jetlag and Warenda Kingston purchased in 2014 and 2016 respectively. We are happy to present these 3 young sires which show correctness, neatness and great temperament.

GLENN OAKS

Glenn Oaks was started with females from Kabunga West and Bilukura Santa Studs. The late Bruce Perrett was very generous and looked after me well at the Big S sales.

Glenn Oaks females have always been run in conjunction with the Glenview Stud and early sires were from King Ranch and Yarrowonga-Waco.

We have consistently had success at Royal and Feature shows winning many broad ribbons. We have been fortunate to breed and sell bulls successfully that have gone onto breed for their purchasers including names like Braveheart, Banker, Cooper, Drayton, Farmhand, Fleetwood, Hastings, Jabba, Jacobite, Jack Hammer, Jetlag, Jibba, Jumbo Bwana, Kilimanjaro, King Pin,

STUD PROFILES

Kingsburg, Lambert, Lionheart, Magnate, Nakuru, Nashville and Z77 that have all sold for consistent prices into studs.

It is particularly pleasing to see Glenn Oaks bloodlines appear in pedigrees of sale and show for studs such as Bullamakinka, Dangarfield, Dunlop, Glenalbyn, Goolagong, Jamar, Munnabah, Santahat, Waco, Wave Hill, Welbatch, Yarrabee and Yugilbar to name a few.

Recent sires from Yarrowonga, Waco, Diamond H and Dunlop have bred consistently for us. Not forgetting Yarrowonga Oberg daughters have been the most consistent breeders we have ever had. Recent sires that have been purchased include Diamond H R47 and Munnabah Ironman (with Warena) and Goolagong Leopard.

2016 saw the purchase of Diamond H Red Foo (with Warena and Wave Hill) who unfortunately died prematurely. We were enormously happy with his athleticism and constitution.

2017 we purchased (in partnership with Warena) Waco Murdoch and Waco L596.

In 2018, Yarrabee Gunyah 1377 (P) was purchased in partnership with the Diamond H stud for \$54,000.

2019 sire purchases include Yarrowonga P590 (PS), Forest Park 1073 and Glenalbyn Noble.

2020 saw Glenn Oaks Palo P1211 (ET)(AI)(PS) break the Australian breed record selling for \$126,000 to the Munnabah and Glenalbyn studs. 2020 also saw Glenn Oaks Penfold P1261 (ET)(AI)(PS) sell for \$95,000 to the Warena stud. Both out of Glenn Oaks Harmony who was the dam of 7 Glenn Oaks bulls in 2020's sale. These 7 bulls combined to gross \$279,000 and average \$39,857. With much sadness Harmony passed away suddenly in late 2020.

GOOLAGONG

Breeding quality beef is something which comes naturally for the team at Goolagong Santa Gertrudis stud, with Brian and son Heath Tiller being involved with beef cattle their whole lives.

Goolagong stud was established in 1979 and has been through several changes since Brian purchased the original 17 Santa Gertrudis cows, three heifers and bull.

Heath is a fifth-generation farmer on the original selection property at Warnertown, South Australia and has continued to work hard to introduce the right bloodlines to continue to

improve the herds confirmation, growth for age and fertility.

The stud has also continuously improved its herd by adhering to the Santa Gertrudis breed standards and comparing its animals to others by showing cattle at various country shows, the Royal shows at Adelaide and Sydney and the Brisbane Ekka.

Some of Goolagong's top achievements include selling bulls in Queensland to a top of \$36,000 and selling a heifer for \$19,500 at Santa Central's inaugural female sale.

The stud, which also owns an Angus stud, holds an annual on-property bull sale selling about 80 bulls to buyers across Australia.

Heath aims to breed bulls with a low birth weight, high growth rate and are structurally correct and females which are true to type with good skins.

HARDIGREEN PARK

Established in 1972 with a foundation on genetics from Red Beef, Jumping Rock, Big Sur, Lilydale, Widden, Goonoo, King Ranch, Cumberland and Yarrowonga studs. The stud has grown over the years and expanded the herd with female additions from Pinaroo, Kelly Wallah, Santa Park, Warena, Yulgilbar, Wave Hill, Glenn Oaks and Bullamakinka studs. Combined with regular additions to our sire battery from studs including Bullamakinka, Dangarfield, Diamond H, Drensmaine, Glenn Oaks, Kelly Wallah, Rosevale, Warena, Waco, Wave Hill and Yarrowonga just to name a few. In 2020 Watasanta On The Money (P) and Watasanta Oh My Goodness (P) were purchased to continue the introduction of new genetics.

We believe the broad spread of genetics in our cow herd and sire battery, are one of the great strengths in the Hardigreen Park herd. We aim to produce soft, easy doing and fertile seed stock, commercially focused cattle to suit a wide range of markets.

This year Hardigreen Park have put up a draft of 5 unled classified bulls for the 2021 Santa Central Sale, sired by Bullamakinka K476 (P), Glenn Oaks Lionheart (PS), Warena Labrador (P), and first release sire Yarrowonga N90 (PP).

JARRAH PARK

Mike purchased his first Santa cow in 1998, a Hardigreen Park female, and from then has always had a love for the breed. Mike and Danni then registered Jarrah Park in 2009 after a small

nucleus of high performance females had been developed after further purchases from Warendra, Rosevale and Hardigreen Park and breeding a nice line of females from the initial purchases had occurred.

Jarrah Park has always been run as a small herd, with a limited number of females been kept as breeders. This has allowed us to develop an exceptional line of females, which must perform and not only just have a calf each year, but be a quality calf, with new females constantly pressuring the established females to keep their place in the herd.

KILCOCK

Kilcock Santas started the wheels turning 32 years ago as a commercial cattle operation which ran alongside merino wool production, cropping, irrigation and fodder programs.

Over the journey, the purchase of remaining Kent stud cows from the Wills family, a draft of Anderson bred cattle from Brookside, a draft of Tim Phillips from The Reefs and some of the old original cows from King Ranch, Cumberland and Calga bloodlines were graded and became our base.

This all took a big change of direction when we sat down and decided to do the cattle in a more official program. Registering the stud in July 2015.

Since the cattle became a major priority, we still had to make the farm work, so the sheep had to go and a more intense beef production ramped up. Cropping and irrigation being paramount in our part of the world for fodder production and the ability to finish all cattle for all markets is a major criteria at Kilcock.

Breeding objectives is one of our major priorities. Soft, easy doing, quiet and traditional cattle with plenty of skin, ear, fat and milk which makes our cattle sought after with processors, breeders and backgrounders. We focus on the female cattle being the vital building blocks of all aspects at Kilcock.

The purchase of stud sires since 2015 are Bullamakinka K462, Yarrowonga L688, Canowindra P5, Goolagong N212, Munnabah 1242 & Nightwalker P2683 (\$32,500), Aberdeen Mandella V34 V57 and X28, Balgree Champion, Big Ben, Maximus, Warrilee L3 M90, The Wave Hill Piano Man P84 (\$52,500). These sires play a major role from natural to A.I. programs every year. Hopefully the three bulls presented this year will impress at our first entry to the Santa

Central Sale 2021 and we hope that the season is great for all breeders.

MUNNABAH

Tom and Anna Dunlop purchased Munnabah Santa Gertrudis stud, comprising of 90 registered and 150 commercial cows, in 2009 from its founders Harry and Jill Powell.

Commencing in 1980 Munnabah Santa Gertrudis was underway with the purchase of 100 Santa cows that were run on a second property "Caramana", Grafton. The progeny of these cows, by a registered bull, were sent to "Munna", Coolah to be fattened where the weight gain and marketability were so impressive that Harry and Jill registered Munnabah stud in 1987 with their first stud sire being Capricorn Ability.

Since then the strong genetic makeup of well-muscled and high weight gain cattle that will perform in a variety of stud, commercial and cross breeding herds and markets We have continued with numerous sire purchases over the years including Warendra, Yarrowonga, Watasanta, Yulgilbar and Glenn Oaks.

We place enormous emphasis and improvement in weight gain, muscle, fertility, temperament, a neat sheath, and polled genes

RESTDOWN

Restdown stud was established in 2005 by Jacob after many years of having commercial cattle.

The stud is run at "Gilgai" Mathoura NSW in conjunction with crops and fat lambs.

Since participating in Santa Central he has sold to a wide range of states, with an unled top of \$40,000, receiving complimentary feedback from buyers.

Cattle bred by Restdown have been represented successfully at Country and Royal Shows.

As with the commercial herd emphasis has been on easy care, productive fuller-framed females.

TOOKEY CREEK

In the late 70's Ian and Louise moved to "Wilga" on the black soil plains near the small township of Bellata, North Western NSW where they fell in love with cattle, farming and Santa Gertrudis. From their early love of cattle, Tookey Creek Santa Gertrudis Stud was founded in 1987, after Santa heifers were introduced from their great

STUD PROFILES

family friend and mentor “Uncle Arthur” (the late Arthur Kirkby). The love of Santas continued to grow and associations developed with the likes of Kensit Kelly and Gordon Bevan who became great family friends and mentors.

More recently, Tookey Creek has had great success in the show ring and sale ring with terrific results such as Tookey Creek Geronimo Supreme Santa Exhibit at Sydney Royal Easter Show and Tookey Creek Malta selling for \$47,500 to Yulgilbar.

Tookey Creek strives to breed functional, fertile and structurally correct females, who form the basis of our breeding herd. We cast a very discerning eye over all our stock paying particular attention to sheaths and navels, temperament and structural correctness.

WARENDA

The first Santa Gertrudis bull was purchased in 1965 and used over Poll Hereford cows. Only Santa bulls were purchased thereafter. The benefits of the breed became obvious to my father. This was the base of the Warena Stud registered in 1984.

Valued sires have been purchased and home bred sires retained. Many have been very influential in the stud, namely Murrumbo Beaumon (P) and Warena Mexico (P). Recently sires Waco Murdock and Bullamakinka Nick (P) have been added, and Glenn Oaks Penfold (P) was purchased at Santa Central Sale in 2020 for 2nd top price of \$95,000. He was admired for his power. At 25 months he had a weight 1118 kgs. EMA 154cm. DWG 1.42 and we look forward to his calves due to arrive August 2021.

AI programs have also been conducted over the years.

The selection of females is strict. Neat udders, quiet temperament, doing ability, fertility and quality, which is a slick tropical coat and breed character, all required and strived for.

Very few females are offered for sale, only a select heifer, occasionally.

Warena Stud commenced showing in 1990 and met with success at regional shows, breed feature shows and Royal shows. Broad ribbons have been won at Brisbane, Sydney and Melbourne with both heifers, cows, junior and senior bulls.

Warena conducted an on property sale for 12 years until 2009. Sales were successful with loyal repeat buyers with bulls selling to studs. Warena Sahara held the Australian record price of \$80000 for 8 years.

The stud herd was unfortunately reduced in 2009. Warena has sold at the Santa Central Sale since with a bull sale average of \$9871 over the last 12 years.

WAVE HILL

In the mid 1950's the Kirkby Family first imported Santa Gertrudis cattle from America. These cattle were the foundation of the Wave Hill Stud. Wave Hill has always concentrated on breeding cattle that are fertile and efficient. It has been important that the cowherd is low maintenance with cows expected to calve unassisted. Neat teats and good shaped udders are highly desirable and very hereditary. Doing ability is also strongly emphasized, along with trim sheaths and excellent scrotal measurements.

Wave Hill has had major achievements at auction sales. Bulls have consistently sold for excellent averages for many years in both QLD and NSW. At the 2015 Santa Central sale Wave Hill achieved equal top prices of \$67,500 for two bulls Wave Hill Jager(P) and Wave Hill Jackal(P).

Wave Hill has been showing cattle for many years with success. Winning broad ribbons at both Sydney and Brisbane Royal Shows. Achievements have been Grand Champion Bull at Brisbane RNA in 1994 and again in 2015.

2017 saw the Wave Hill stud purchased in its entirety by Scott and Wendy Ferguson.

July 2021 Santa Gertrudis BREEDPLAN - Percentile Bands for all 2019 born animals - Use this table as a guide to compare individual animals with the current genetic level of the breed

Percentile Band	Gestational Length (days)	Birth Wt (kg)	200 Day Wt (kg)	400 Day Wt (kg)	600 Day Wt (kg)	Mat Cow Wt (kg)	Milk (kg)	Scrotal Size (cm)	Days to Calving (days)	PMS (%)	Carcass Wt (kg)	Eye Muscle Area (sq cm)	Rib fat (mm)	Rump Fat (mm)	Retail Beef Yield (%)	IMF (%)	Flight Time (secs)	SF (kg)	Domestic Index (\$)	Export Index (\$)
High 1%	-3.9	-1.9	+25	+40	+54	+73	+6	+3.1	-13.1	+8.0	+24	+4.9	+2.3	+2.5	+1.8	+0.8	+0.41	-0.16	+34	+48
High 5%	-2.1	-1.0	+21	+33	+45	+58	+4	+2.4	-9.5	+5.6	+20	+4.1	+1.6	+1.6	+1.4	+0.5	+0.25	-0.07	+29	+39
High 10%	-1.5	-0.5	+19	+29	+40	+52	+3	+2.1	-7.6	+4.2	+18	+3.6	+1.3	+1.1	+1.2	+0.4	+0.19	-0.04	+27	+36
High 15%	-1.2	-0.1	+17	+27	+36	+47	+3	+1.9	-6.3	+3.2	+16	+3.3	+1.0	+0.8	+1.1	+0.3	+0.16	-0.01	+25	+33
High 20%	-1.0	+0.2	+16	+25	+34	+43	+2	+1.7	-5.2	+2.5	+15	+3.1	+0.9	+0.7	+1.0	+0.3	+0.13	+0.02	+23	+31
High 25%	-0.8	+0.5	+15	+24	+32	+40	+2	+1.6	-4.3	+1.9	+14	+2.9	+0.7	+0.5	+0.9	+0.2	+0.11	+0.04	+22	+28
High 30%	-0.7	+0.7	+14	+22	+30	+38	+1	+1.4	-3.5	+1.4	+13	+2.7	+0.6	+0.4	+0.9	+0.2	+0.09	+0.05	+21	+27
High 35%	-0.6	+1.0	+13	+21	+29	+35	+1	+1.3	-2.9	+1.1	+12	+2.5	+0.5	+0.3	+0.8	+0.1	+0.08	+0.06	+20	+25
High 40%	-0.6	+1.1	+13	+20	+27	+33	+1	+1.2	-2.3	+0.8	+12	+2.4	+0.4	+0.2	+0.8	+0.1	+0.07	+0.07	+19	+24
High 45%	-0.5	+1.3	+12	+19	+25	+31	+1	+1.1	-1.8	+0.4	+11	+2.2	+0.3	+0.1	+0.7	+0.1	+0.05	+0.08	+18	+22
50%	-0.4	+1.4	+11	+18	+24	+29	+0	+1.0	-1.3	+0.2	+10	+2.1	+0.3	+0.0	+0.7	+0.1	+0.04	+0.10	+17	+21
Low 45%	-0.4	+1.5	+10	+16	+23	+27	+0	+0.9	-0.7	-0.1	+9	+1.9	+0.2	-0.1	+0.7	+0.0	+0.03	+0.11	+16	+20
Low 40%	-0.3	+1.7	+10	+15	+21	+25	+0	+0.8	-0.2	-0.3	+9	+1.8	+0.1	-0.2	+0.6	+0.0	+0.02	+0.12	+15	+18
Low 35%	-0.2	+1.8	+9	+14	+20	+23	-1	+0.7	+0.3	-0.5	+8	+1.7	+0.0	-0.3	+0.6	+0.0	+0.01	+0.13	+14	+17
Low 30%	-0.2	+1.9	+8	+13	+18	+21	-1	+0.6	+0.8	-0.8	+7	+1.5	+0.0	-0.4	+0.5	-0.1	+0.00	+0.14	+13	+16
Low 25%	-0.1	+2.1	+7	+11	+17	+18	-1	+0.5	+1.4	-1.0	+6	+1.4	-0.1	-0.6	+0.4	-0.1	-0.01	+0.16	+12	+14
Low 20%	+0.0	+2.3	+6	+10	+15	+16	-2	+0.3	+2.0	-1.4	+5	+1.2	-0.2	-0.7	+0.4	-0.1	-0.03	+0.17	+11	+12
Low 15%	+0.1	+2.5	+5	+8	+12	+12	-2	+0.2	+2.7	-1.7	+3	+1.0	-0.4	-0.9	+0.3	-0.2	-0.04	+0.19	+9	+10
Low 10%	+0.4	+2.8	+2	+5	+8	+8	-3	-0.1	+3.6	-2.2	+1	+0.7	-0.6	-1.1	+0.2	-0.2	-0.07	+0.22	+6	+7
Low 5%	+0.7	+3.4	-1	+1	+4	+3	-4	-0.9	+5.1	-3.0	-2	+0.4	-0.8	-1.5	-0.1	-0.3	-0.11	+0.26	+3	+3
Low 1%	+1.8	+4.5	-6	-4	-2	-6	-6	-1.4	+7.9	-5.5	-6	-0.6	-1.4	-2.2	-0.4	-0.5	-0.20	+0.34	-1	-2

As a set of benchmark figures that approximate the current genetic level for the breed, you will find the average EBVs for all animals born in 2011 (Table1) to be very useful. You can use these average EBVs to help you to assess the relative ranking of animals for the various traits. Only Santa Gertrudis GROUP BREEDPLAN EBVs or Interim EBVs with Accuracy (ACC) can be validly compared between herds.

ESTIMATED BREEDING VALUES (EBV): The EBV is the best estimate of an animal’s genetic merit for that trait.

ACCURACY: An accuracy is presented with every EBV and gives an indication of the amount of information that has been used in the calculation of that EBV. The higher the accuracy the lower the likelihood of change in the animal’s EBV as more information is analysed for that animal or its relatives. Accuracy below 50% should be considered low.

FERTILITY

SS: Scrotal Size EBV (cm) is an indicator of male fertility in regards to semen quality and quantity. Higher (positive) EBVs indicate higher fertility. Size is also positively associated with earlier age at puberty of bull and heifer progeny.

DC: Days to Calving EBV (days) is an indicator of female fertility based on the time between the cows first exposure to a bull and when she subsequently calves. Cows that calve late in the season or fail to calve are penalized. This is more useful as a sire trait. Lower (negative) EBVs are preferred indicating shorter days to calving for sire’s daughters.

GROWTH

MILK: 200-Day Milk EBV (kg) is an estimate of an animal’s milking ability. For sires, this EBV is indicative of their daughter’s milking ability as it affects the 200 day weight of their calves.

200: 200-Day Growth EBV: (kg) is calculated from the weight of animals taken between 80 and 300 days of age. Values are adjusted to 200 days and for age of dam. This EBV is the best single estimate of an animal’s genetic merit for growth to early ages.

400: 400-Day Weight EBV (kg) is calculated from the weight of animals taken between 301 and 500 days of age, adjusted to 400 days and for age of dam. This EBV is the best single estimate of an animal’s genetic merit for yearling weight.

EBVs

600: 600-Day Weight EBV (kg) is calculated from the weight of animals taken between 501 and 900 days of age, adjusted to 600 days and for age of dam. This EBV is the best single estimate of an animal's genetic merit for growth beyond yearling age.

MWT: Mature Cow Weight EBV (kg) is an estimate of the genetic difference in cow weight at 5 years of age. Smaller, or more moderate EBVs are generally more favourable.

CARCASE

CWT: Carcase Weight EBV (kg) estimates the genetic difference in carcase weight at a standard age of 650 days.

EMA: Eye Muscle Area EBV (cm²) estimates the genetic differences in eye muscle area at the 12/13th rib site of a 300kg dressed carcase. More positive EBVs indicate better muscling on animals.

RIB: Rib Fat EBV (mm) estimates the genetic differences in fat depth at the 12/13th rib site of a 300kg dressed carcase. More positive EBVs indicate more subcutaneous fat and earlier maturity.

RUMP: Rump Fat EBV (mm) estimates the genetic differences in fat depth at the P8 site of a 300kg dressed carcase. More positive EBVs indicate more subcutaneous fat and earlier maturity.

RBV%: Retail Beef Yield Percent EBV (%) represents total (boned out) meat yield as a percentage of a 300kg dressed carcase. A more positive EBV indicates higher percentage yield for the 300kg carcase size.

IMF%: Intra Muscular Fat Percent EBV (%) is an estimate of the genetic difference in the percentage of intra-muscular fat at the 12/13th rib site in a 300kg carcase. Depending on market targets, larger more positive values are generally more favourable.

The Santa Gertrudis GROUP BREEDPLAN Estimated Breeding Values contained in this Sale Catalogue were compiled by the Agricultural Business Research Institute (ABRI) from data supplied by the breeders. Neither the Santa Gertrudis Breeders (Australia) Association nor the ABRI oversee or audit the collection of this data.

SALE INFORMATION / LOCATION MAP

Whilst all care is taken, people attend Santa Central Sale at "Headingly" at their own risk and no responsibility will be accepted by us.

SUPPLEMENTARY SHEET:

All bulls will have been scanned prior to the sale. These scans include measurements for eye muscle area and fat at the rump and rib sites. This sheet will also include actual sale weights and scrotal sizes to guide your selections.

VACCINATIONS & TESTS

All bulls have been inoculated for 7 in 1, Vibrio, 3 Day and 3 Germ Blood. All bulls have been semen tested for motility and morphology.

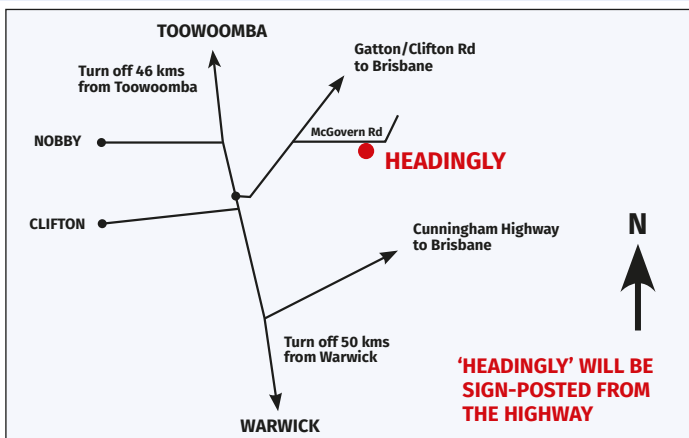
DELIVERY: Apart from purchasers who have trucks present on the day – NO delivery will be given until the day after the sale. Free delivery only applies to the following centres: Dalby, Wandoan, Taroom, Roma, Blackall, Goondiwindi, Narrabri, Tamworth. Buyers will be advised by the agents regarding their deliveries.

INSURANCE is recommended and an insurance representative will be present on the day.

OUTSIDE AGENT REBATE: A 4% rebate will only apply to purchasers that are introduced in writing 24 hours prior to the sale to Jennifer Radke. Phone: 07 4637 3000 – jennifer.radke@nutrien.com.au The agent is required to appear in person with their buyer and settling their account within 7 days.

CONDITIONS OF SALE are on public display at the agent's office.

Please contact Scott Ferguson mob 0407 645 917 for more information.



BULLAMAKINKA



Bullamakinka K476 (P)

Bullamakinka K476 (P) was closely bred to K84 (P) being Gold Edition/Sentry genetics, K476 (P) was retained for his genetics, tropical type, growth for age with his first sons offered in 2018.



Bullamakinka K84 (P)

K84 (P) is a big dark poll Gold Edition/Sentry bull that is breeding well for us with his first sons offered in 2018. K84 (P) is throwing progeny that have similar style and breed character and produced N296 (P) purchased by Annabranth Stud for \$36,000.



Bullamakinka Rimfire M022 (P)

Sired by Yarrowonga Diplomat (P) and becoming one of our leading sires with his first crop of sons averaging over \$22,600 in the first year at Santa Central.

Rimfire is a big quiet bull with exceptional growth and carcass and is throwing similar traits into his progeny. Rimfire produced Bullamakinka Quarantine Q40 (P) sold to Goolagong Stud for \$65,000 and retained sire, Bullamakinka Q80 (P). In 2021 he has produced a number of quality sons including Bullamakinka Rocky (P) being the Junior Champion Santa bull at Beef 2021.



Dunlop Return M96 (P)

Purchased in 2018 at Clermont for \$20,000, Return was purchased for his outcross genetics, good growth and is a big active bull that covers the ground well. The first of his progeny are available for sale in 2021 and are showing good promise.

REFERENCE SIRES



Glenn Oaks Nashville N128 (PS)

Glenn Oaks Nashville (PS) was purchased in 2018 for \$24,000 at 15 months and purchased for his outcross genetics, early maturity pattern, thickness and softness. Nashville has been used successfully as a heifer bull and is producing a very even line of progeny with his first sons selling in 2021. He was joined to 72 yearling stud heifers and the mob returned 71 PTIC.



Waco Napoleon N80 (P)

Waco Napoleon is a sire that we purchased for \$82,500 in 2018 for his thickness, breed character and sire appeal. The first of Napoleon's sons are to be offered in 2021 and exhibit similar type and thickness to their sire.



Waco Nike N124

N124 is a big growthy horned bull with good breed character and bone that we bought to join back over poll cows. He is breeding very well for us with his first sons being offered in 2021. N124 has produced the largest number of sale bulls in 2021 which reflects his breeding consistency.

DIAMOND H



Dunlop Rigby M32 (P)

Purchased at the 2017 Dunlop Sale for \$18,000, sired by Yarrowonga Christo H1222 (P).



Dunlop N476 (P)

Purchased at the 2018 Dunlop Sale for \$11,000.



Glenn Oaks Kingsburg K110 (P)

Kingsburg was purchased at the 2016 Santa Central Sale from Phoebe, Sophie and Lilly Ferguson for \$22,000. He has thrown an even line of weaners for the last three years.



Glenn Oaks Nakuru N53 (PS)

Purchased at the 2018 Santa Central Sale for \$22,000. Sired by Munnabah Ironman 960 (P).

Strathmore Matchmaker M310 (P)

Purchased in 2017 at the Strathmore sale, sired by Strathmore J526.

Waco Chapman H80 (ET) (P)

Purchased in 2014 for \$42,000, sired by Yarrawonga Youtube. Consistently breeding quality easy doing cattle. Top prices received for sons Diamond H Trickshot (P) \$30,000 (Moongana Stud) and Diamond H Thurston \$20,000 (J Howard Burleigh Estates) at the 2017 Diamond H sale.



Waco Floyd L1104 (P)

Purchased in 2017 jointly with Yarrawonga, for \$90,000. Floyd possesses great weight for age, depth of body and a soft muscle pattern. He is a dark poll bull with volume and a strong presence in the paddock.

REFERENCE SIRES



Wave Hill Jackal J98 (P)

Son of Glenn Oaks Fleetwood purchased at Santa Central 2015 for equal top price of \$67,500. Producing an exceptional line of poll bulls and females.



Wave Hill Longstrong L84 (P)

Purchased at the 2017 Santa Central Sale for \$10,000. Sired by Glenn Oaks Fleetwood F27 (PS).

GLENALBYN



Denngal Magic M26 (P)

Denngal Magic was purchased in 2018. He was selected for his length, width, scrotal circumference, neatness of sheath and outstanding temperament. He has passed his placid nature onto his progeny and this has been a drawcard to already selling some of his young sires. Magic has developed into a large bull that carries himself very well and isn't shy to miss any opportunity. His progeny are showing plenty of promise displaying all his great characteristics. This year's bulls are the first to be offered.

GLENN OAKS and WAVE HILL



Diamond H Renegade (P)

By Warena Equador (P) was purchased in 2015. He has bred an even line of well-muscled calves with good temperament and character.



Goolagong L22 (ET)

Goolagong L22 was purchased by the Yarrawonga stud at the 2017 Goolagong sale.



Goolagong Leopard L26 (AI) (P)

Goolagong Leopard (AI)(P) was purchased at the 2016 Santa Central sale for \$23,000 he had been awarded Reserve Junior Champion at the Ekka one month earlier. We have been impressed with Leopard's progeny and he has used extensively throughout the stud.

Waco Attorney F678

Attorney has proven to be a successful sire. He has been extremely fertile siring many sale bulls, we have also retained females in the stud. Unfortunately, Attorney was found dead in early 2021.



Waco Murdock M188

Murdock was purchased in partnership with Warena Stud in 2017. We had noticed and appreciated his muscling, depth of body, beautiful skin and faultless temperament at the EKKA one month before sale time.



Yarrabee Gunyah 1377 (P)

Gunyah was purchased in 2018 for \$54,000 in partnership with the Diamond H stud. He has grown into a massive sire with extraordinary length. We believed he was a standout bull for the 2018 year. Gunyah is extremely quiet just like his sire Glenn Oaks Jumbo Bwana J26 (P).

SEKO ROLLERMILL MIXER

**JUST
RELEASED**



- Roll & mix full ration
- Handles all grains
- Precision chop length of fibrous product
- Various discharge elevators to suit all applications
- Customise your options

**QMA have
extensive experience
in Stock Feeding
and Grain Drying
& Handling**



QUEENSLAND MACHINERY AGENCY

(07) 4696 3350 | 0447 965 555 | www.qma.net.au

mark@qma.net.au | 8 Nobby Connection Road, Nobby QLD 4360



Yarrowonga Detonator J438 (P)

Detonator was retained by the Yarrowonga stud.



Yarrowonga Finisher L846

Finisher was purchased in 1016 for \$26,000. He was prepared for the annual EKKA at Glenn Oaks Fitting Service. Finisher was admired for his flawless temperament, breed character and bone. He was bred very well for us and his strength may well be in his females. Unfortunately, he was badly hurt in 2020 and this may well be his last sale progeny.

Yarrowonga N672 (P)

N672 was purchased in 2018 for \$12,000 late in the Yarrowonga catalogue. He was used over heifers in his first year with 2021 sale cattle the results of that joining. N672 died in early 2021.

GOOLAGONG



Goolagong Neptune N188 (AI) (P)

Goolagong Neptune was used at Goolagong in 2019 due to his standout appearance, breed character, confirmation and skin type. He was sold at the studs annual on property sale in 2020 to Phil Reid, Newenham.



Goolagong Nitro N256

A standout yearling of Goolagong's 2017 bull calves with tremendous softness and strong breed character. Used by the stud, shown at the Brisbane Ekka and sold to Yarrowonga Cattle Co for \$36,000 at the Santa Central Sale.

REFERENCE SIRES



Warena Kilimanjaro K4 (P)

Kilimanjaro was offered at the 2016 and purchased by the Hatton family of Santahat Stud for \$50,000. A share was retained by Warena and Glenn Oaks. He has been used extensively in an ET programme with some very pleasing results.



Wave Hill Larikan L9 (P)

Purchased for \$67,500 at Santa Central 2017 Sale. He has good sire appeal, softness and great skin. His pedigree is filled with good poll, exceptional growth and a big eye muscle. He carries himself very well with a tight sheath.

HARDIGREEN PARK



Bullamakinka K476 (P)

Bullamakinka K476 (P) was closely bred to K84 (P) being Gold Edition/Sentry genetics, K476(P) was retained for his genetics, tropical type, growth for age with his first sons offered in 2018.



Glenn Oaks Lionheart L48 (PS)

Lionheart (PS) was purchased in 2016 for \$38,000.



Warena Labrador L4 (P)

Warena Labrador (P) was purchased at the 2018 Santa Central Sale for \$55,000. He was a strong and robust poll, who sired a number of good calves before having to be put down.



Yarrowonga N90 (PP)

N90 (PP) is a soft, easy doing homozygous polled sire with a good muscle pattern and very high fertility, he has a placid nature and has been a very consistent sire in the Hardigreen Park herd. His first progeny will hit the sale ring in 2021.

JARRAH PARK and TOOKEY CREEK

Tookey Creek Magnus M14

Retained as the standout son of Waco Einstein (purchased for \$47,500), he has all the attributes we look for in a great sire. He has bred an exceptional line of functional, fertile females, and his sons are proving to be as admirable as he is. Magnus is still active in the stud.

Waco N222 (P)

Purchased at the 2018 Yarrowonga Waco sale as the first son offered by Yarrowonga El Salvador, we thought we'd try something a little different with a small number of cows. We were not disappointed with the results, with an outstanding son creating part of this year's show team.

Yarrowonga N22

Purchased in 2018 at the Yarrowonga Waco sale for \$14,000, we were surprised at the value of this bull. He has a great sire appeal, softness, skin type and an impeccable temperament, attributes that he has passed onto his progeny. We used Yarrowonga N22 for 3 years before we unfortunately lost him.

REFERENCE SIRES

KILCOCK



Aberdeen Mandela I60 (P)

Mandella is a lovely traditional bull, that we used in a A.I program over a select special group of females. This bull is the Sire of our Kilcock H-Man, also we have retained a bull this year who we believe will offer us plenty of horsepower, Females from this bull just stand out no matter how many in the mob they always make you go back for another look.



Goolagong N212 (ET) (AI) (PS)

N212 who was purchased at Santa Central in 2018, has been used over a broad spectrum of females and producing lovely thick bulls that are easy doing, soft, but packs a pile of red meat on lovely boned cattle without losing that big soft rolling skin. His females are very thick but still show beautiful feminine traits. All heifers joined this year for his first batch of calves are all PTIC.

MUNNABAH



Glenn Oaks King Pin K122 (P)

King Pin was purchased at the 2015 Santa Central Sale, he was purchased for his correct structure, slick coat and depth of body. King Pin is leaving large even lines of heifers and bulls and his progeny are showing great breed character along with a placid nature. He is a well-balanced bull who has proven to be the go to bull for our stud with a great hit rate evident in his pregnancy tested females.



Wave Hill Malachite M22 (PS)

Malachite was purchased at the 2018 Santa Central sale in partnership with Diamond H stud. Chosen for his correct structure, daily wight gain and EMA of 140, depth and his considerable length, coupled this with an incredible temperament. Thus, Malachite's calves are displaying his length, depth and considerable weight gain at an early age together with impeccable temperament. Malachite has grown into an impressive sire and is having a positive impact on our stud at the moment.



Wave Hill Squatter (P)

Squatter was purchased at the Santa Central sale in 2016. He was purchased for his outstanding depth of body, muscle, top line and tidy sheath. Squatter has been a prolific calf getter and has left large even lines of heifers throughout the stud, which are displaying his softness, tidy udders and femininity.



Yarrawonga Fireworks L556

Purchased for \$40,000 at the 2016 Yarrawonga Waco bull sale, Fireworks is a bull that impressed us with his structural correctness, length, bone, neat sheath and above all bullet proof temperament. Fireworks has grown into a huge bull weighing well over 1300kg last time we were able to fit him in the crush. With a consistent above 90% pregnancy testing results, Fireworks has an outstanding hit rate and fertility. His progeny is impressing us as can be seen by his offering of bulls for sale, while his heifers are large framed with plenty of bone and femininity.

RESTDOWN



Restdown 141 (P)

Restdown 141 (P) is a reliable sire still used consistently through Restdown and Burramarra studs with sons sold to Hardigreen Park and Dunlop amongst others, with a top of \$18,000.

WARENDA



Bullamakinka Hallmark (P)

Hallmark was purchased for \$40,000 in 2012. A long dark coloured bull with a strong top line, neat sheath and placid temperament. His daughters are valued breeders in the stud. 13 of his sons have sold at auction to average \$9,423. Warendra Q76 (P) is the last son to be offered.

REFERENCE SIRES



Bullamakinka Nick N54 (P)

Nick (P) was purchased at the Bullamakinka sale in 2018 for the top price of \$57,000. He was impressive for his overall eye appeal, correct structure, strong top line with a smooth tail setting. He has beautiful breed character with a slick coat type and has developed into a big heavy sire. The consistently placid temperament of his calves is a trait highly valued at Warenda. His first calves are on offer this year at Santa Central Sale.



Waco Murdock M188

Murdock was purchased in partnership with Glenn Oaks stud in 2017. We had noticed and appreciated his muscling, depth of body, beautiful skin and faultless temperament at the EKKKA a month before sale time. This years bulls will be the last to be offered by the Warenda stud.



Warenda Charlton (PS)

Charlton (PS) is 13 years and semi-retired. He is still a free moving bull with excellent feet, tidy underline and placid temperament. His daughters breed well and are an asset in the stud. To date 48 bulls have sold at auction to average \$9512 with top prices of \$50,000 for Warenda Killamanjaro (P) and \$67,500 for Wave Hill Jager (P).

DISCLAIMER

All reasonable care has been taken by the vendors to ensure that the information provided in this catalogue is accurate at the time of publication. However, neither the vendors nor the selling agents nor any of their representatives assume any responsibility or liability for the correctness, use or interpretation of any of the information supplied.

Unless specifically stated, there has been no verification of pedigrees of the sale lots by DNA test or otherwise. The information concerning the pedigrees of the lots is supplied by the vendors as the most accurate information that is available to them.



GLENN OAKS QUACKEL Q132

TATTOO: Q132

STUD BOOK No.: GLO19MQ132

BORN: 12/6/19

27 months



YARRAWONGA VERSATILE (PS)
 YARRAWONGA COMMANDER H332
 YARRAWONGA C963

SIRE: YARRAWONGA FINISHER L846
 OAKDALE BALLARD
 YARRAWONGA F415
 YARRAWONGA C87 (P)



DAM: GLENN OAKS F40

WEIGHT	DLG	SCROTUM	EMA	RIB FAT	RUMP FAT

Purchaser: _____ Price: \$ _____



GOOLAGONG QUADE Q148 (P)

TATTOO: Q148

STUD BOOK No.: G0019MQ148

BORN: 12/8/19

25 months



YARRAWONGA VALID
GLENN OAKS FLEETWOOD F27 (PS)
GLENN OAKS C63 (P)

SIRE: WAVE HILL LARIKAN L9 (P)

WAVE HILL LIZARD (AI)(P)
WAVE HILL X103 (P)
WAVE HILL K75

WACO SPRINGBOK (IMP) (ET)
GOOLAGONG ELVIS
WACO WINE

DAM: GOOLAGONG K41 (P)

GOOLAGONG B2 (AI)
GOOLAGONG E069
GOOLAGONG X85 (P)



WEIGHT	DLG	SCROTUM	EMA	RIB FAT	RUMP FAT

	200D WT	400D WT	600D WT	MAT COW WT	MILK	SCROTAL SIZE	DAYS TO CALVING	EMA	RIB	RUMP	RBY%	IMF
EBV	-3	+3	+0					-0.8	-0.4	-1.2	+0.3	-0.1
ACC	57%	50%	50%					29%	29%	29%	22%	29%

Purchaser: _____ Price: \$ _____



MUNNABAH OBAN P2760 (P)

TATTOO: **P2760** STUD BOOK No.: **MUN19MP2760** BORN: **21/8/19** 25 months



WACO SAMSON
 WACO CEASER H310 (P)
 WACO B285 (P)
SIRE: YARRAWONGA FIREWORKS L556
 WAVE HILL BRONSON (AI)
 YARRAWONGA G581
 YARRAWONGA Y585
 WARENDA REQUEST
 MUNNABAH P1936 (P)
 MUNNABAH 393 (P)
DAM: MUNNABAH P2393
 WATASANTA CLIMATE CHANGER (P)
 MUNNABAH 795
 MUNNABAH P1371 (P)



WEIGHT	DLG	SCROTUM	EMA	RIB FAT	RUMP FAT

Purchaser: _____ Price: \$ _____



TOOKEY CREEK Q4 (P)

TATTOO: Q4

STUD BOOK No.: T0019MQ4

BORN: 26/8/19

25 months



WACO YALE E880 (P)
 WACO EINSTEIN K808 (P)
 WACO A871
SIRE: TOOKEY CREEK MAGNUS
 WARENDA SAHARA (P)
 TOOKEY CREEK G9 (P)
 TOOKEY CREEK 9256
 ROWANLEA CORPORAL C06
 ROWANLEA FREEWAY F68 (P)
 ROWANLEA WIGGLE W037 (P)
DAM: TOOKEY CREEK J59 (P)
 CUMBERLAND AUSTRALIS (P)
 TOOKEY CREEK G35 (P)
 TOOKEY CREEK 6552 (AI)



WEIGHT	DLG	SCROTUM	EMA	RIB FAT	RUMP FAT

Purchaser: _____ Price: \$ _____



MUNNABAH ORPHEAS P2766 (P)

TATTOO: **P2766**STUD BOOK No.: **MUN19MP2766**BORN: **27/8/19****25 months**

YARRAWONGA VALID
GLENN OAKS FLEETWOOD F27 (PS)
GLENN OAKS C63 (P)

SIRE: WAVE HILL MALACHITE M22 (PS)

WAVE HILL ARNIE
WAVE HILL D697
WAVE HILL X12 (P)

WARENDA SAHARA (P)
YULGILBAR DROVER D234 (AI)(P)
YULGILBAR B53

DAM: MUNNABAH 917

WARENDA REQUEST
MUNNABAH P1648



WEIGHT	DLG	SCROTUM	EMA	RIB FAT	RUMP FAT

Purchaser: _____ Price: \$ _____



GLENALBYN QUAID Q780

TATTOO: **Q780**

STUD BOOK No.: **GLN19MQ780**

BORN: **31/8/19**

25 months



DENNGAL TONTO T1 (P)
 DENNGAL HUSTLER H33
 G.B.L. A29 (AI)(P)
SIRE: DENNGAL MAGIC M26 (P)
 GYRANDA F140 (PS)
 GYRANDA J511 (P)
 GYRANDA C349 (P)
 WAREnda CHARLTON (PS)
 WAREnda KINGSTON K14 (P)
 WAREnda E69 (P)
DAM: GLENALBYN NATALIE N679 (P)
 GLENN OAKS JETLAG J164 (P)
 GLENALBYN 593 (P)
 GLENALBYN 531



WEIGHT	DLG	SCROTUM	EMA	RIB FAT	RUMP FAT

Purchaser: _____ Price: \$ _____



MUNNABAH OSCAR 1428 (P)

TATTOO: 1428

STUD BOOK No.: MUN19M1428

BORN: 1/9/19

24 months



YARRAWONGA VALID
 GLENN OAKS FLEETWOOD F27 (PS)
 GLENN OAKS C63 (P)
SIRE: WAVE HILL MALACHITE M22 (PS)
 WAVE HILL ARNIE
 WAVE HILL D697
 WAVE HILL X12 (P)
 WATASANTA ZAG (AI)(P)
 WATASANTA CLIMATE CHANGER (P)
 WATASANTA 515 (P)
DAM: MUNNABAH P2150 (P)



WEIGHT	DLG	SCROTUM	EMA	RIB FAT	RUMP FAT

Purchaser: _____ Price: \$ _____



WARENDA QUILPIE Q20 (PS)

TATTOO: Q20

STUD BOOK No.: WRN19MQ20

BORN: 5/9/19

24 months



CANOWINDRA B64 (P)
 CANOWINDRA GOLD EDITION
 QUANDILLA Y35 (P)
SIRE: BULLAMAKINKA NICK N54 (P)
 WARENDA SENTRY (P)
 BULLAMAKINKA J43
 BULLAMAKINKA F53
 YARRAWONGA WOODCRAFT (P)
 YARRAWONGA BREWSTER G152
 YARRAWONGA A701 (P)
DAM: WARENDA J35
 MURRUMBO BEAUMON (P)
 WARENDA N47 (P)
 WARENDA E48



WEIGHT	DLG	SCROTUM	EMA	RIB FAT	RUMP FAT

Purchaser: _____ Price: \$ _____



TOOKEY CREEK Q20 (P)

TATTOO: Q20

STUD BOOK No.: T0019MQ20

BORN: 14/9/19

24 months



YARRAWONGA BARBARIAN G398
 YARRAWONGA EFFICIENT K584 (P)
 YARRAWONGA D815 (P)

SIRE: YARRAWONGA N22

CARDONA KEYSTONE K261
 YARRAWONGA K113
 YARRAWONGA H277

BULLAMAKINKA DREAMTIME (P)
 BENELKAY FUTURAMA F38 (P)
 BENELKAY LADYKILLER (P)

DAM: TOOKEY CREEK M15 (P)

YARRABEE ZAMBIA 1027 (P)
 TOOKEY CREEK H59 (P)
 TOOKEY CREEK A80



WEIGHT	DLG	SCROTUM	EMA	RIB FAT	RUMP FAT

Purchaser: _____ Price: \$ _____



DNA Sampling Simplified

with the Allflex TSU (Tissue Sampling Units)



- Highest quality sample method
- Vials fit in standard lab well plate (96 vials)
- Efficient and cost effective
- Available with paired NLIS and management tags



Questions? 1300 138 247 or customerservice@allflex.com.au

www.allflex.com.au





BULLAMAKINKA REGIMENT R32 (P)

TATTOO: **R32**

STUD BOOK No.: **BLM20MR32**

BORN: **15/9/19**

24 months



YARRAWONGA VERSATILE (PS)
 WACO DIEGO J258 (PS)
 WACO E377 (P)
SIRE: WACO NAPOLEON N80 (P)
 EIDSVOLD STATION E460
 YARRAWONGA H399 (P)
 YARRAWONGA C671 (P)
 WARENDA SENTRY (P)
 BULLAMAKINKA G230 (PS)
 ERIN VALE SPORTY SPICE S39
DAM: BULLAMAKINKA L129 (P)
 RAYTEK 300 (PS)
 RAYTEK C64 (P)
 RAYTEK BELLA (P)



WEIGHT	DLG	SCROTUM	EMA	RIB FAT	RUMP FAT

Purchaser: _____ Price: \$ _____



GLENALBYN QUAINS Q802 (P)

TATTOO: Q802

STUD BOOK No.: GLN19MQ802

BORN: 25/9/19

24 months



DENNGAL TONTO T1 (P)
 DENNGAL HUSTLER H33
 G.B.L. A29 (AI)(P)
SIRE: DENNGAL MAGIC M26 (P)
 GYRANDA F140 (PS)
 GYRANDA J511 (P)
 GYRANDA C349 (P)
 WARENDA CHARLTON (PS)
 WARENDA KINGSTON K14 (P)
 WARENDA E69 (P)
DAM: GLENALBYN NATASHA N685 (P)
 GLENN OAKS JETLAG J164 (P)
 GLENALBYN 586 (P)
 GLENALBYN 516 (P)



WEIGHT	DLG	SCROTUM	EMA	RIB FAT	RUMP FAT

Purchaser: _____ Price: \$ _____



GLENALBYN QUICKSILVER Q808 (P)

TATTOO: Q808

STUD BOOK No.: GLN19MQ808

BORN: 30/9/19

24 months



DENNGAL TONTO T1 (P)
 DENNGAL HUSTLER H33
 G.B.L. A29 (AI)(P)
SIRE: DENNGAL MAGIC M26 (P)
 GYRANDA F140 (PS)
 GYRANDA J511 (P)
 GYRANDA C349 (P)
 DUNLOP KAISER (PS)
 GLENN OAKS JETLAG J164 (P)
 GLENN OAKS A89 (P)
DAM: GLENALBYN NEWSFLASH 704 (P)
 GLENN OAKS BENEDICT (ET)
 GLENALBYN 553
 MULTIPLE DAM



WEIGHT	DLG	SCROTUM	EMA	RIB FAT	RUMP FAT

Purchaser: _____ Price: \$ _____



BULLAMAKINKA ROLEX R380 (P)

TATTOO: **R380**

STUD BOOK No.: **BLM20MR380**

BORN: **2/10/19**

23 months



DUNLOP KAISER (PS)
GLENN OAKS JAY WALK J129 (P)
GLENN OAKS Z25

SIRE: WACO N124

WACO SAMSON
WACO H771
WACO A615

CANOWINDRA B64 (P)
CANOWINDRA GOLD EDITION
QUANDILLA Y35 (P)

DAM: BULLAMAKINKA L109

WARENDA SENTRY (P)
BULLAMAKINKA J75 (AI)(P)
BULLAMAKINKA G73 (AI)



WEIGHT	DLG	SCROTUM	EMA	RIB FAT	RUMP FAT

Purchaser: _____ Price: \$ _____



DIAMOND H XAVIER X257 (P)

TATTOO: X257

STUD BOOK No.: DIA20MX257

BORN: 3/10/19

23 months



WATASANTA ANTS PANTS (P)
 WACO YALE E880 (P)
 WACO B71 (P)
SIRE: WACO FLOYD L1104 (P)
 WACO VERSACE (P)
 WACO G885 (P)
 WACO A900
 DIAMOND H IRON BAR
 DIAMOND H OSCAR O220 (P)
 DIAMOND H I244 (P)
DAM: DIAMOND H S219 (P)
 YARRAWONGA PACIFIC
 DIAMOND H O241
 DIAMOND H F28



Reserve Junior Champion Bull at BEEF 2021

WEIGHT	DLG	SCROTUM	EMA	RIB FAT	RUMP FAT

Purchaser: _____ Price: \$ _____



GLENN OAKS RUBBEL R36 (PS)

TATTOO: R36

STUD BOOK No.: GLO20MR36

BORN: 10/10/19

23 months



GLENN OAKS BRAVEHEART
 WARENDA EQUADOR (P)
 WARENDA N41 (P)
SIRE: DIAMOND H RENEGADE R47 (P)
 DIAMOND H GENERAL (P)
 DIAMOND H N036
 DIAMOND H 288

MULTIPLE SIRE

DAM: WACO G743



WEIGHT	DLG	SCROTUM	EMA	RIB FAT	RUMP FAT

Purchaser: _____ Price: \$ _____



BULLAMAKINKA ROCKY R82 (P)

TATTOO: **R82**STUD BOOK No.: **BLM20MR82**BORN: **13/10/19****23 months**

YARRAWONGA BASS G1072 (PS)
 YARRAWONGA DIPLOMAT J16 (P)
 YARRAWONGA F909 (P)

SIRE: BULLAMAKINKA RIMFIRE M022 (P)
 CANOWINDRA GOLD EDITION
 BULLAMAKINKA J339
 ROSEVALE AFFRICA B163 (P)

WILGARON JESTER (AI)(P)
 WARENDA SENTRY (P)
 WARENDA IZA

DAM: BULLAMAKINKA J347 (P)
 KELLY WALLAH FRODO (P)
 KELLY WALLAH X43 (P)
 KELLY WALLAH 836



Junior Champion Bull at BEEF 2021

WEIGHT	DLG	SCROTUM	EMA	RIB FAT	RUMP FAT

Purchaser: _____ Price: \$ _____

Boost Livestock performance

with Anipro Liquid Supplements.

MOLASSES BASED
LIQUID SUPPLEMENT

ESSENTIAL PROTEIN,
MINERALS AND VITAMINS

UP TO 27% IMPROVEMENT
IN FORAGE INTAKE

FULLY SERVICED PROGRAM
SAVES TIME & MONEY

Anipro
Liquid Supplements

Deliver protein and
minerals to optimise
cattle production.

Improving results in beef cattle systems requires year-round nutrition planning. Anipro provides convenient, custom nutrition liquid supplements that optimises available forage, minerals, and protein for herd health and profitability.

| 1800 300 593
| performancefeeds.com.au



**PERFORMANCE
FEEDS**



BULLAMAKINKA RAMBO R438 (P)

TATTOO: **R438**

STUD BOOK No.: **BLM20MR438**

BORN: **25/10/19**

23 months



CANOWINDRA B64 (P)
 CANOWINDRA GOLD EDITION
 QUANDILLA Y35 (P)
SIRE: BULLAMAKINKA K476 (P)
 WAREnda SENTRY (P)
 BULLAMAKINKA F65 (P)
 YARRAWONGA A499
 CANOWINDRA GOLD EDITION
 BULLAMAKINKA H114 (P)
 YARRAWONGA B399 (P)
DAM: BULLAMAKINKA L273
 MULTIPLE DAM



WEIGHT	DLG	SCROTUM	EMA	RIB FAT	RUMP FAT

Purchaser: _____ Price: \$ _____



WARENDA QUITO Q60 (P)

TATTOO: Q60

STUD BOOK No.: WRN19MQ60

BORN: 30/10/19

23 months



YARRAWONGA VERSATILE (PS)
 WACO DIEGO J258 (PS)
 WACO E377 (P)
SIRE: WACO MURDOCK M188
 MULTIPLE SIRE
 WACO H113
 WACO E271
 WARENDA CHARLTON (PS)
 WARENDA KILIMANJARO K4 (P)
 WARENDA E71 (P)
DAM: WARENDA M59 (P)



WEIGHT	DLG	SCROTUM	EMA	RIB FAT	RUMP FAT

Purchaser: _____ Price: \$ _____



GLENN OAKS RICARDO R96 (P)

TATTOO: **R96**

STUD BOOK No.: **GLO20MR96**

BORN: **9/11/19**

22 months



MULTIPLE SIRE

SIRE: YARRAWONGA N672 (P)

MULTIPLE DAM

WARENDA EQUADOR (P)
 DIAMOND H RENEGADE R47 (P)
 DIAMOND H N036

DAM: GLENN OAKS M4 (P)
 YARRAWONGA ARCHER G280
 GLENN OAKS J300



WEIGHT	DLG	SCROTUM	EMA	RIB FAT	RUMP FAT

Purchaser: _____ Price: \$ _____

agribusiness

more
than
money



Dedicated to
**THE AGRICULTURAL
INDUSTRY IN
THE DARLING DOWNS**

With more than 155 years of experience looking after primary producers and secondary processors, we have the insights, expertise and the local knowledge to help you bring your plans to life – at every stage of the journey.

**Talk to your NAB Agribusiness banker today
or call:**

Wayne Bothmann

0404 886 014

David Moffitt

0436 657 720



GLENN OAKS RAMJET R26 (P)

TATTOO: **R26**

STUD BOOK No.: **GLO20MR26**

BORN: **15/11/19**

22 months



DIAMOND H LEGEND (P)
 GLENN OAKS JUMBO BWANA J26 (P)
 GLENN OAKS B53
SIRE: YARRABEE GUNYAH 1377 (P)
 SUJO FLASH
 YARRABEE DANBUE 6135
 YARRABEE XORAH 5867
 WAVE HILL MATLOCK (PS)
 WAVE HILL ARNIE
 WAVE HILL M137
DAM: WAVE HILL E64
 WAVE HILL CENTRE MAN
 WAVE HILL M75 (P)
 WAVE HILL G43



WEIGHT	DLG	SCROTUM	EMA	RIB FAT	RUMP FAT

Purchaser: _____ Price: \$ _____



TOOKEY CREEK Q32 (PS)

TATTOO: Q32

STUD BOOK No.: TOO19MQ32

BORN: 25/11/19

22 months



YARRAWONGA AVENGER G300 (PS)
 YARRAWONGA EL SALVADOR K306 (PS)
 WACO CHANEL H95 (ET)(PS)

SIRE: WACO N222 (P)

WACO F201 (ET)
 YARRAWONGA U325

G.B.L. HORATIO
 TOOKEY CREEK 6924 (AI)
 CAPRICORN IBIS

DAM: TOOKEY CREEK B97 (P)

MURGO FARRER (PS)
 TOOKEY CREEK 5630 (AI)
 TOOKEY CREEK 3817



WEIGHT	DLG	SCROTUM	EMA	RIB FAT	RUMP FAT

Purchaser: _____ Price: \$ _____



KILCOCK KASPER Q28

TATTOO: Q28

STUD BOOK No.: KCS19MQ28

BORN: 29/11/19

22 months



WACO YALE E880 (P)
 WACO EMPEROR K512 (P)
 WACO D579
SIRE: GOOLAGONG N212 (ET)(AI)(PS)
 WACO VOLUME (P)
 GOOLAGONG F055
 GOOLAGONG C21
 DE LEEAH VALE JASPER (P)
 CATHNAL OTTIS
 CATHNAL INGRID (AI)
DAM: KILCOCK J15



WEIGHT	DLG	SCROTUM	EMA	RIB FAT	RUMP FAT

Purchaser: _____ Price: \$ _____



BULLAMAKINKA ROMEO R336 (P)

TATTOO: **R336**

STUD BOOK No.: **BLM20MR336**

BORN: **2/12/19**

21 months



CANOWINDRA B64 (P)
 CANOWINDRA GOLD EDITION
 QUANDILLA Y35 (P)
SIRE: BULLAMAKINKA K84 (P)
 WARENDA SENTRY (P)
 BULLAMAKINKA F43 (P)
 ERIN VALE X40
 YARRAWONGA BASS G1072 (PS)
 YARRAWONGA DIPLOMAT J16 (P)
 YARRAWONGA F909 (P)
DAM: BULLAMAKINKA M077
 WARENDA SENTRY (P)
 BULLAMAKINKA F181 (P)
 ERIN VALE TESSA (P)



WEIGHT	DLG	SCROTUM	EMA	RIB FAT	RUMP FAT

Purchaser: _____ Price: \$ _____



GLENN OAKS REMINGTON R86 (P)

TATTOO: **R86**

STUD BOOK No.: **GLO20MR86**

BORN: **2/12/19**

21 months



MULTIPLE SIRE

SIRE: YARRAWONGA N672 (P)

MULTIPLE DAM

YULGILBAR DROVER D234 (AI)(P)
 MUNNABAH IRONMAN 960 (P)
 MUNNABAH 597

DAM: GLENN OAKS N89

MULTIPLE SIRE
 GLENN OAKS H68 (P)
 MULTIPLE DAM



WEIGHT	DLG	SCROTUM	EMA	RIB FAT	RUMP FAT

Purchaser: _____ Price: \$ _____



WARENDA QUICKSAND Q76 (P)

TATTOO: Q76

STUD BOOK No.: WRN19MQ76

BORN: 10/12/19

21 months



WILGARROON JESTER (AI)(P)
 WARENDA SENTRY (P)
 WARENDA IZA
SIRE: BULLAMAKINKA HALLMARK H20 (P)
 COOLOON TOMAHAWK
 BULLAMAKINKA 611
 EIDSVOLD STATION V731
 YARRAWONGA WOODCRAFT (P)
 YARRAWONGA BREWSTER G152
 YARRAWONGA A701 (P)
DAM: WARENDA K25
 WARENDA DENVER (P)
 WARENDA G31
 WARENDA S151



WEIGHT	DLG	SCROTUM	EMA	RIB FAT	RUMP FAT

Purchaser: _____ Price: \$ _____



BULLAMAKINKA REMINGTON R294 (P)

TATTOO: **R294**STUD BOOK No.: **BLM20MR294**BORN: **15/12/19****21 months**

MULTIPLE SIRE
WACO ATTORNEY F678
MULTIPLE DAM

SIRE: GLENN OAKS NASHVILLE N128 (PS)

WACO H1304
GLENN OAKS L8
WACO A493

DANGARFIELD RENAULT (PS)
WARRILLEE FORTRESS F90 (P)
WARRILLEE 699

DAM: BULLAMAKINKA K31 (P)

MULTIPLE DAM



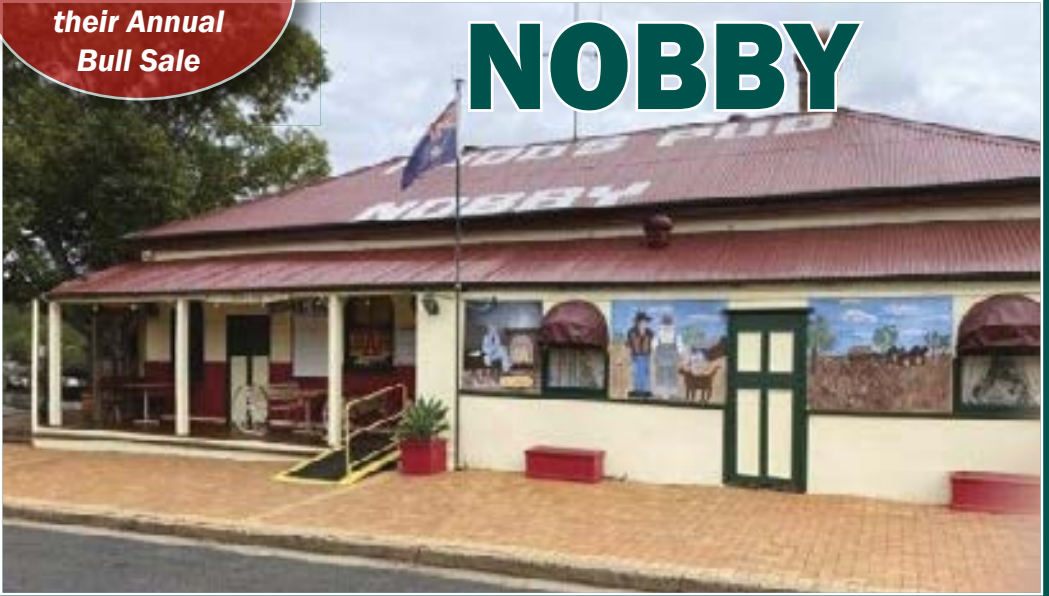
WEIGHT	DLG	SCROTUM	EMA	RIB FAT	RUMP FAT

Purchaser: _____ Price: \$ _____

*Wishing
Scott & Wendy
every success for
their Annual
Bull Sale*

RUDD'S PUB

NOBBY



- Open for Lunch and Dinner 7 Days a Week
- Catering for Private Functions
- Accommodation Available



10 TOOTH STREET, NOBBY QLD 4360

Phone (07) 4696 3211



RESTDOWN RYAN 660 (PS)

TATTOO: **660**STUD BOOK No.: **RES19M660**BORN: **30/12/19****21 months**

WAVE HILL Z146 (P)
 HARDIGREEN PARK LEROY (P)
 HARDIGREEN PARK B715 (P)

SIRE: RESTDOWN 141 (P)

WACO SAMSON
 RESTDOWN 18
 YARRAWONGA A631 (P)

KULOOMBA 303 (PS)
 KULOOMBA BRO 408 (P)
 KULOOMBA 767 (P)

DAM: RESTDOWN 464 (P)

WARENDA KAHOONA
 RESTDOWN 189 (AI)
 WAVE HILL D641



WEIGHT	DLG	SCROTUM	EMA	RIB FAT	RUMP FAT

Purchaser: _____ Price: \$ _____



DIAMOND H X-TRA X214 (P)

TATTOO: X214

STUD BOOK No.: DIA20MX214

BORN: 4/1/20

20 months



YARRAWONGA YOUTUBE (P)
YARRAWONGA CHRISTO H1222 (P)
YARRAWONGA E339

SIRE: DUNLOP RIGBY M32 (P)
MULTIPLE SIRE
DUNLOP G31

YARRAWONGA JASPER
DIAMOND H GENERAL (P)
DIAMOND H 215 (P)

DAM: DIAMOND H R221
GILLESPIE L61
DIAMOND H L101
DIAMOND H 75



WEIGHT	DLG	SCROTUM	EMA	RIB FAT	RUMP FAT

Purchaser: _____ Price: \$ _____



DIAMOND H XAV X316 (P)

TATTOO: X316

STUD BOOK No.: DIA20MX316

BORN: 10/1/20

20 months



YULGILBAR DROVER D234 (AI)(P)
 MUNNABAH IRONMAN 960 (P)
 MUNNABAH 597
SIRE: GLENN OAKS NAKURU N53 (PS)
 MULTIPLE SIRE
 GLENN OAKS D73
 MULTIPLE DAM
 DIAMOND H IRON BAR
 DIAMOND H OSCAR O220 (P)
 DIAMOND H I244 (P)
DAM: DIAMOND H R323 (P)
 ROWANLEA YATALA Y042
 DIAMOND H O019 (P)
 CANOWINDRA 1880



WEIGHT	DLG	SCROTUM	EMA	RIB FAT	RUMP FAT

Purchaser: _____ Price: \$ _____



BULLAMAKINKA REBEL R334 (P)

TATTOO: **R334**

STUD BOOK No.: **BLM20MR334**

BORN: **15/1/20**

20 months



CANOWINDRA B64 (P)
 CANOWINDRA GOLD EDITION
 QUANDILLA Y35 (P)
SIRE: BULLAMAKINKA K476 (P)
 WARENDA SENTRY (P)
 BULLAMAKINKA F65 (P)
 YARRAWONGA A499
 9 BAR EL CAPT 5T3
 CHAPARROSA PETER PAN IMP
 CHAPARROSA RANCH 3/H210
DAM: BULLAMAKINKA L331 (AI)(P)



MULTIPLE DAM

WEIGHT	DLG	SCROTUM	EMA	RIB FAT	RUMP FAT

Purchaser: _____ Price: \$ _____



DIAMOND H XANDY X266 (P)

TATTOO: X266

STUD BOOK No.: DIA20MX266

BORN: 2/2/20

19 months



YARRAWONGA RUTHLESS (P)
YARRAWONGA YOUTUBE (P)
YARRAWONGA A247

SIRE: WACO CHAPMAN H80 (ET)(P)

YARRAWONGA W100
WACO SIENNA
WACO U555 (P)

GLENN OAKS BRAVEHEART
WARENDA EQUADOR (P)
WARENDA N41 (P)

DAM: DIAMOND H Q037

DIAMOND H IRON BAR
DIAMOND H M225
DIAMOND H I15



WEIGHT	DLG	SCROTUM	EMA	RIB FAT	RUMP FAT

Purchaser: _____ Price: \$ _____



NOBBY

GENERAL STORE

7 DAYS
a week

BREAD, MILK,

ICE, FUEL, PAPERS, SWAP N GO GAS BOTTLES

Home of the famous Nobby Burger!

Fresh ground Merlo Coffee

Fresh rolls, wraps, salads

Fresh cooked takeaways

We can cater for your next function:

Morning teas, sandwiches, BBQs



**PHONE
ORDERS
WELCOME**

TRADING HOURS

- Monday to Friday 6am - 6pm
- Saturday 6am - 3pm
- Sunday 8am - 2pm



T 4696 3207 14 Tooth St NOBBY



DIAMOND H XANE X287 (PS)

TATTOO: X287

STUD BOOK No.: DIA20MX287

BORN: 4/2/20

19 months



YULGILBAR DROVER D234 (AI)(P)
 MUNNABAH IRONMAN 960 (P)
 MUNNABAH 597
SIRE: GLENN OAKS NAKURU N53 (PS)
 MULTIPLE SIRE
 GLENN OAKS D73
 MULTIPLE DAM
 DIAMOND H GENERAL (P)
 DIAMOND H K070 (AI)
 DIAMOND H G132
DAM: DIAMOND H O207
 DIAMOND H CENTENARY
 DIAMOND H H102
 DIAMOND H 219



Calf Champion Male at BEEF 2021

WEIGHT	DLG	SCROTUM	EMA	RIB FAT	RUMP FAT

Purchaser: _____ Price: \$ _____



GOOLAGONG PHOENIX P189

TATTOO: **P189** STUD BOOK No.: **GOO18MP189** BORN: **14/9/18** **36 months**

YARRAWONGA VALID
 GLENN OAKS FLEETWOOD F27 (PS)
 GLENN OAKS C63 (P)
SIRE: WAVE HILL LARIKAN L9 (P)
 WAVE HILL LIZARD (AI)(P)
 WAVE HILL X103 (P)
 WAVE HILL K75
 WACO SPRINGBOK (IMP) (ET)
 GOOLAGONG ELVIS
 WACO WINE
DAM: GOOLAGONG J27
 WALMONA QUILLAN (P)
 GOOLAGONG G013 (P)
 GOOLAGONG A104 (P)



WEIGHT	DLG	SCROTUM	EMA	RIB FAT	RUMP FAT

Purchaser: _____ Price: \$ _____



DIAMOND H W039 (PS)

TATTOO: **W039** STUD BOOK No.: **DIA19MW039** BORN: **20/10/18** **35 months**

YARRAWONGA VALID
 GLENN OAKS FLEETWOOD F27 (PS)
 GLENN OAKS C63 (P)
SIRE: WAVE HILL LONGSTRONG L84 (P)
 WAVE HILL ARNIE
 WAVE HILL F79
 WACO WRANGLER (P)
 DIAMOND H O195
 DIAMOND H J406
DAM: DIAMOND H S22 (P)
 GRALYN C34
 DIAMOND H P235 (P)
 DIAMOND H K222



WEIGHT	DLG	SCROTUM	EMA	RIB FAT	RUMP FAT

Purchaser: _____ Price: \$ _____



DIAMOND H W049 (P)

TATTOO: **W049** STUD BOOK No.: **DIA19MW049** BORN: **2/11/18** **34 months**

MULTIPLE SIRE
SIRE: STRATHMORE MATCHMAKER M310 (P)
 MULTIPLE DAM
 YARRAWONGA TAVERN
 GLENVIEW GRANVILLE G120 (PS)
 GLENVIEW X20
DAM: DIAMOND H S062
 CANOWINDRA D67
 DIAMOND H K222
 DIAMOND H I336



WEIGHT	DLG	SCROTUM	EMA	RIB FAT	RUMP FAT

Purchaser: _____ Price: \$ _____



DIAMOND H W041 (PS)

TATTOO: **W041**

STUD BOOK No.: **DIA19MW041**

BORN: **7/11/18**

34 months



YARRAWONGA VALID
GLENN OAKS FLEETWOOD F27 (PS)
GLENN OAKS C63 (P)

SIRE: WAVE HILL LONGSTRONG L84 (P)
WAVE HILL ARNIE
WAVE HILL F79

GLENN OAKS BRAVEHEART
WARENDA EQUADOR (P)
WARENDA N41 (P)

DAM: DIAMOND H R55 (P)
DIAMOND H MARSHALL E87
DIAMOND H M191
MULTIPLE DAM



WEIGHT	DLG	SCROTUM	EMA	RIB FAT	RUMP FAT

Purchaser: _____ Price: \$ _____



DIAMOND H WALLACE W266 (P)

TATTOO: **W266**

STUD BOOK No.: **DIA19MW266**

BORN: **19/12/18**

33 months

YARRAWONGA RUTHLESS (P)
YARRAWONGA YOUTUBE (P)

YARRAWONGA A247

SIRE: WACO CHAPMAN H80 (ET)(P)

YARRAWONGA W100

WACO SIENNA

WACO U555 (P)

WARENDA DENVER (P)

WARENDA HALIFAX H14 (P)

WARENDA D657 (P)

DAM: DIAMOND H T087 (P)

DIAMOND H IRON BAR

DIAMOND H P197

MULTIPLE DAM



WEIGHT	DLG	SCROTUM	EMA	RIB FAT	RUMP FAT

Purchaser: _____ Price: \$ _____





GOOLAGONG PERCY P223 (P)

TATTOO: **P223**

STUD BOOK No.: **GOO18MP223**

BORN: **22/12/18**

33 months



YULGILBAR DROVER D234 (AI)(P)
 MUNNABAH 944 (P)
 MUNNABAH 445 (P)
SIRE: WAVE HILL MOLTON M39 (PS)
 WAVE HILL ARNIE
 WAVE HILL D677
 WAVE HILL Y18 (P)
 YARRAWONGA OUTRANK (PS)
 YARRAWONGA VERSATILE (PS)
 YARRAWONGA Z521
DAM: GOOLAGONG LASSIE L71 (ET)(AI)
 WACO MADAGASCAR (P)
 GOOLAGONG Z37 (PS)
 GOOLAGONG X47



WEIGHT	DLG	SCROTUM	EMA	RIB FAT	RUMP FAT

	200D WT	400D WT	600D WT	MAT COW WT	MILK	SCROTAL SIZE	DAYS TO CALVING	EMA	RIB	RUMP	RBY%	IMF
EBV	+14	+18	+26			+0.6						
ACC	42%	35%	37%			21%						

Purchaser: _____ Price: \$ _____



DIAMOND H WESTERN W245 (PS)

TATTOO: **W245**

STUD BOOK No.: **DIA19MW245**

BORN: **4/3/19**

30 months

WATASANTA ANTS PANTS (P)
 WACO YALE E880 (P)
 WACO B71 (P)
SIRE: WACO FLOYD L1104 (P)
 WACO VERSACE (P)
 WACO G885 (P)
 WACO A900

WARENDA DENVER (P)
 WARENDA HALIFAX H14 (P)
 WARENDA D657 (P)

DAM: DIAMOND H T087 (P)
 DIAMOND H IRON BAR
 DIAMOND H P197
 MULTIPLE DAM



WEIGHT	DLG	SCROTUM	EMA	RIB FAT	RUMP FAT

Purchaser: _____ Price: \$ _____





DIAMOND H WORCHESTER W285

TATTOO: **W285**

STUD BOOK No.: **DIA19MW285**

BORN: **10/3/19**

30 months



CANOWINDRA JAG J26 (PS)
 CANOWINDRA MAGNUM M5 (P)
 CANOWINDRA G87

SIRE: CANOWINDRA P2 (PS)
 NUNGAROI UTOPIA (P)
 CANOWINDRA H95 (P)
 CANOWINDRA B36

DIAMOND H IRON BAR
 DIAMOND H OSCAR O220 (P)
 DIAMOND H I244 (P)

DAM: DIAMOND H R101 (P)
 ROWANLEA YATALA Y042
 DIAMOND H O023
 DIAMOND H CORAL



WEIGHT	DLG	SCROTUM	EMA	RIB FAT	RUMP FAT

Purchaser: _____ Price: \$ _____



DIAMOND H WARNER W289 (P)

TATTOO: **W289**

STUD BOOK No.: **DIA19MW289**

BORN: **20/4/19**

29 months

CANOWINDRA JAG J26 (PS)
 CANOWINDRA MAGNUM M5 (P)
 CANOWINDRA G87

SIRE: CANOWINDRA P2 (PS)

NUNGAROI UTOPIA (P)
 CANOWINDRA H95 (P)
 CANOWINDRA B36

YARRAWONGA YOUTUBE (P)
 WACO CHAPMAN H80 (ET)(P)
 WACO SIENNA

DAM: DIAMOND H U042 (P)

HARDIGREEN PARK NERO
 DIAMOND H Q244
 DIAMOND H N189



WEIGHT	DLG	SCROTUM	EMA	RIB FAT	RUMP FAT

Purchaser: _____ Price: \$ _____





GLENN OAKS Q144 (P)

TATTOO: **Q144**

STUD BOOK No.: **GLO19MQ144**

BORN: **15/6/19**

27 months



GLENN OAKS BRAVEHEART
 WARENDA EQUADOR (P)
 WARENDA N41 (P)
SIRE: DIAMOND H RENEGADE R47 (P)
 DIAMOND H GENERAL (P)
 DIAMOND H N036
 DIAMOND H 288



MULTIPLE SIRE

DAM: YARRAWONGA G521 (P)
 YARRAWONGA MATRIX (P)
 YARRAWONGA D731 (P)
 YARRAWONGA A407 (P)

WEIGHT	DLG	SCROTUM	EMA	RIB FAT	RUMP FAT

Purchaser: _____ Price: \$ _____



GOOLAGONG QUIGLEY Q111

TATTOO: Q111

STUD BOOK No.: GOO19MQ111

BORN: 18/6/19

27 months

YARRAWONGA VALID
GLENN OAKS FLEETWOOD F27 (PS)
GLENN OAKS C63 (P)

SIRE: WAVE HILL LARIKAN L9 (P)
WAVE HILL LIZARD (AI)(P)
WAVE HILL X103 (P)
WAVE HILL K75

YARRAWONGA VERSATILE (PS)
YARRAWONGA AVENGER G300 (PS)
YARRAWONGA SPRITELY (ET)(P)

DAM: GOOLAGONG L9 (AI)
GOOLAGONG ELVIS
GOOLAGONG H27
MULTIPLE DAM



WEIGHT	DLG	SCROTUM	EMA	RIB FAT	RUMP FAT

Purchaser: _____ Price: \$ _____



MUNNABAH 1418 (P)

TATTOO: 1418

STUD BOOK No.: MUN19M1418

BORN: 11/8/19

25 months

OAKDALE ACORN 536
DUNLOP KAISER (PS)
DUNLOP SX732

SIRE: GLENN OAKS KING PIN K122 (P)
GREENUP VIAGRA Y98 (P)
GLENN OAKS C14 (P)
KELLY WALLAH W79

YARRAWONGA VAUTIN (ET)(P)
YARRAWONGA J822 (P)
YARRAWONGA Z559 (P)

DAM: MUNNABAH 1197 (P)
YULGILBAR DROVER D234 (AI)(P)
MUNNABAH 941 (P)
MUNNABAH 667 (AI)(P)



WEIGHT	DLG	SCROTUM	EMA	RIB FAT	RUMP FAT

Purchaser: _____ Price: \$ _____



HARDIGREEN PARK RULER Q98 (PS)

TATTOO: **Q98**

STUD BOOK No.: **HAR19MQ98**

BORN: **14/8/19**

25 months



YARRAWONGA AVENGER G300 (PS)
 YARRAWONGA ECLIPSE K304 (PP)
 YARRAWONGA A33 (ET)(P)
SIRE: YARRAWONGA N90 (PP)
 MULTIPLE SIRE
 YARRAWONGA J1391 (P)
 YARRAWONGA ART G203 (P)
 DANGARFIELD QUARTERBACK (P)
 DANGARFIELD TORRENT T011 (AI)
 DANGARFIELD 1501
DAM: HARDIGREEN PARK H33
 YARRAWONGA HERMAN
 HARDIGREEN PARK B294
 HARDIGREEN PARK A529



WEIGHT	DLG	SCROTUM	EMA	RIB FAT	RUMP FAT

	200D WT	400D WT	600D WT	MAT COW WT	MILK	SCROTAL SIZE	DAYS TO CALVING	EMA	RIB	RUMP	RBV%	IMF
EBV	+13	+19	+27	+33	-3	+0.9		+1.3	+0.9	+0.7	+0.3	
ACC	62%	62%	57%	53%	34%	65%		41%	50%	49%	32%	

Purchaser: _____ Price: \$ _____

Find us on 

Finesse



EMBROIDERY

0409 383 480

finesseembroidery@bigpond.com

Can supply and embroider on:

- Shirts • Polos • Pants • Jackets • Caps •
- Towels • Stubby Coolers •

No job too big or too small!

Numerous clothing brands including:

- Bisley • JB's Wear •
- Biz Collection • DNC Workwear •
- Ritemate • Pilbara •



With over 25 years of experience



MUNNABAH P2761 (PS)

TATTOO: **P2761** STUD BOOK No.: **MUN19MP2761** BORN: **20/8/19** **25 months**



WACO SAMSON
 WACO CEASER H310 (P)
 WACO B285 (P)
SIRE: YARRAWONGA FIREWORKS L556
 WAVE HILL BRONSON (AI)
 YARRAWONGA G581
 YARRAWONGA Y585
 WATASANTA ZAG (AI)(P)
 WATASANTA CLIMATE CHANGER (P)
 WATASANTA 515 (P)
DAM: MUNNABAH P2207



WEIGHT	DLG	SCROTUM	EMA	RIB FAT	RUMP FAT

Purchaser: _____ Price: \$ _____



MUNNABAH P2752 (P)

TATTOO: **P2752** STUD BOOK No.: **MUN19MP2752** BORN: **14/8/19** 25 months

WACO SAMSON
 WACO CEASER H310 (P)
 WACO B285 (P)
SIRE: YARRAWONGA FIREWORKS L556
 WAVE HILL BRONSON (AI)
 YARRAWONGA G581
 YARRAWONGA Y585



MULTIPLE SIRE

DAM: MUNNABAH P2443

WEIGHT	DLG	SCROTUM	EMA	RIB FAT	RUMP FAT

Purchaser: _____ Price: \$ _____



MUNNABAH P2754 (P)

TATTOO: **P2754** STUD BOOK No.: **MUN19MP2754** BORN: **20/8/19** 25 months

WACO SAMSON
 WACO CEASER H310 (P)
 WACO B285 (P)
SIRE: YARRAWONGA FIREWORKS L556
 WAVE HILL BRONSON (AI)
 YARRAWONGA G581
 YARRAWONGA Y585



DAM: MULTIPLE DAM

WEIGHT	DLG	SCROTUM	EMA	RIB FAT	RUMP FAT

Purchaser: _____ Price: \$ _____



MUNNABAH 1424 (P)

TATTOO: **1424** STUD BOOK No.: **MUN19M1424** BORN: **21/8/19** 25 months

WACO SAMSON
 WACO CEASER H310 (P)
 WACO B285 (P)
SIRE: YARRAWONGA FIREWORKS L556
 WAVE HILL BRONSON (AI)
 YARRAWONGA G581
 YARRAWONGA Y585



OAKDALE ACORN 536
 DUNLOP KAISER (PS)
 DUNLOP SX732
DAM: GLENN OAKS LAVASHA L5 (P)
 YARRAWONGA OBERG (P)
 GLENN OAKS B73
 OAKDALE ZIP

WEIGHT	DLG	SCROTUM	EMA	RIB FAT	RUMP FAT

Purchaser: _____ Price: \$ _____



TOOKEY CREEK Q2 (PS)

TATTOO: **Q2** STUD BOOK No.: **TOO19MQ2** BORN: **24/8/19** 25 months

YARRAWONGA BARBARIAN G398
 YARRAWONGA EFFICIENT K584 (P)
 YARRAWONGA D815 (P)
SIRE: YARRAWONGA N22
 CARDONA KEYSTONE K261
 YARRAWONGA K113
 YARRAWONGA H277
 BULLAMAKINKA DREAMTIME (P)
 BENELKAY FUTURAMA F38 (P)
 BENELKAY LADYKILLER (P)
DAM: TOOKEY CREEK M77 (P)
 HARTWOOD B341 (P)
 TOOKEY CREEK 8575 (P)
 G.B.L. A126 (P)



WEIGHT	DLG	SCROTUM	EMA	RIB FAT	RUMP FAT

Purchaser: _____ Price: \$ _____



TOOKEY CREEK Q8 (P)

TATTOO: **Q8** STUD BOOK No.: **TOO19MQ8** BORN: **30/8/19** 25 months

YARRAWONGA BARBARIAN G398
 YARRAWONGA EFFICIENT K584 (P)
 YARRAWONGA D815 (P)
SIRE: YARRAWONGA N22
 CARDONA KEYSTONE K261
 YARRAWONGA K113
 YARRAWONGA H277
 BULLAMAKINKA DREAMTIME (P)
 BENELKAY FUTURAMA F38 (P)
 BENELKAY LADYKILLER (P)
DAM: TOOKEY CREEK M69
 ROWANLEA FREEWAY F68 (P)
 TOOKEY CREEK H21
 TOOKEY CREEK 9206 (P)



WEIGHT	DLG	SCROTUM	EMA	RIB FAT	RUMP FAT

Purchaser: _____ Price: \$ _____



JARRAH PARK Q3 (P)

TATTOO: **Q3** STUD BOOK No.: **JAR19MQ3** BORN: **31/8/19** 25 months

WACO YALE E880 (P)
 WACO EINSTEIN K808 (P)
 WACO A871
SIRE: TOOKEY CREEK MAGNUS
 WARENDA SAHARA (P)
 TOOKEY CREEK G9 (P)
 TOOKEY CREEK 9256
 SUJO FIRST CLASS (AI)(P)
 BENELKAY LIFELINE (P)
 BENELKAY 1199 (P)
DAM: ROSEVALE HEIDI H113 (P)
 HARDIGREEN PARK BOON
 ROSEVALE HEIDI A359
 ROSEVALE HEIDI W342



WEIGHT	DLG	SCROTUM	EMA	RIB FAT	RUMP FAT

Purchaser: _____ Price: \$ _____



BULLAMAKINKA RICOCHET R12 (P)

TATTOO: **R12**

STUD BOOK No.: **BLM20MR12**

BORN: **1/9/19**

24 months

YARRAWONGA VERSATILE (PS)
 WACO DIEGO J258 (PS)
 WACO E377 (P)

SIRE: WACO NAPOLEON N80 (P)

EIDSVOLD STATION E460
 YARRAWONGA H399 (P)
 YARRAWONGA C671 (P)



DAM: MULTIPLE DAM

WEIGHT	DLG	SCROTUM	EMA	RIB FAT	RUMP FAT

Purchaser: _____ Price: \$ _____





HARDIGREEN PARK REGARD Q48 (P)

TATTOO: Q48

STUD BOOK No.: HAR19MQ48

BORN: 3/9/19

24 months



WARENDA SENTRY (P)
 BULLAMAKINKA HALLMARK H20 (P)
 BULLAMAKINKA 611
SIRE: WARENDA LABRADOR L4 (P)
 WARENDA DENVER (P)
 WARENDA G19 (P)
 WARENDA S15 (P)
 TYNDALE NODDY (AI)(P)
 ROSEVALE ZEST Z32 (AI)(PS)
 ROSEVALE PATRICIA W275 (P)
DAM: WAVE HILL F49
 CANOWINDRA SNOWDON (PS)
 WAVE HILL W40
 WAVE HILL K11



WEIGHT	DLG	SCROTUM	EMA	RIB FAT	RUMP FAT

	200D WT	400D WT	600D WT	MAT COW WT	MILK	SCROTAL SIZE	DAYS TO CALVING	EMA	RIB	RUMP	RBV%	IMF
EBV	+15	+22	+30	+44	+3	+0.8		+2.8	-1.2	-1.9	+1.2	
ACC	61%	60%	57%	52%	33%	64%		42%	50%	50%	34%	

Purchaser: _____ Price: \$ _____



BULLAMAKINKA RUSTY R16 (P)

TATTOO: **R16**

STUD BOOK No.: **BLM20MR16**

BORN: **5/9/19**

24 months

YARRAWONGA VERSATILE (PS)
 WACO DIEGO J258 (PS)
 WACO E377 (P)
SIRE: WACO NAPOLEON N80 (P)
 EIDSVOLD STATION E460
 YARRAWONGA H399 (P)
 YARRAWONGA C671 (P)
 WILGARON JESTER (AI)(P)
 WARENDA SENTRY (P)
 WARENDA IZA
DAM: BULLAMAKINKA J55
 ROSEVALE QUILPIE Z292
 BULLAMAKINKA E41
 ERIN VALE Z32



WEIGHT	DLG	SCROTUM	EMA	RIB FAT	RUMP FAT

Purchaser: _____ Price: \$ _____





JARRAH PARK Q5 (P)

TATTOO: Q5

STUD BOOK No.: JAR19MQ5

BORN: 7/9/19

24 months



YARRAWONGA BARBARIAN G398
 YARRAWONGA EFFICIENT K584 (P)
 YARRAWONGA D815 (P)

SIRE: YARRAWONGA N22

CARDONA KEYSTONE K261
 YARRAWONGA K113
 YARRAWONGA H277

BIARA 9020 (P)
 MOONGANA HILUX H2230 (P)
 MOONGANA 1661

DAM: JARRAH PARK LEIA L6 (P)

KELLY WALLAH GUSTAVUS (P)
 JARRAH PARK DIVA (P)
 TOOKEY CREEK 6402



WEIGHT	DLG	SCROTUM	EMA	RIB FAT	RUMP FAT

Purchaser: _____ Price: \$ _____

PROVIDING QUALITY AGRICULTURAL SERVICES ACROSS SOUTH EAST QUEENSLAND

Nutrien Ag Solutions is committed to providing clients with services and expertise to better their farming operation.

Specialising in:

- Rural Merchandise
- Fertiliser
- Insurance
- Real Estate
- Livestock
- Wool
- Finance
- Equine

Nutrien Ag Solutions Toowoomba	388 Taylor St, Toowoomba	(07) 4637 3000
Branch Manager	James McMahon	0437 674 744
Merchandise Manager	Rob Wiemers	(07) 4637 3001
Livestock	Andrew Costello	0429 485 191
	Jenny Radke	(07) 4637 3000
Stud Stock	Colby Ede	0417 265 980
Finance	Robert Moncrieff	0408 296 952
Insurance	Lizz Whittall	0409 267 068



WARENDA QUEBEC Q30

TATTOO: **Q30**

STUD BOOK No.: **WRN19MQ30**

BORN: **14/9/19**

24 months

CANOWINDRA B64 (P)
 CANOWINDRA GOLD EDITION
 QUANDILLA Y35 (P)
SIRE: BULLAMAKINKA NICK N54 (P)
 WARENDA SENTRY (P)
 BULLAMAKINKA J43
 BULLAMAKINKA F53
 WARENDA MAHOGANY (P)
 WARENDA DENVER (P)
 MARSTON C307
DAM: WARENDA H7
 GLENN OAKS BRAVEHEART
 WARENDA E73 (P)
 WARENDA K115 (P)



WEIGHT	DLG	SCROTUM	EMA	RIB FAT	RUMP FAT

Purchaser: _____ Price: \$ _____





BULLAMAKINKA RYAN R14 (P)

TATTOO: **R14**

STUD BOOK No.: **BLM20MR14**

BORN: **15/9/19**

24 months



YARRAWONGA BASS G1072 (PS)
 YARRAWONGA DIPLOMAT J16 (P)
 YARRAWONGA F909 (P)
SIRE: BULLAMAKINKA RIMFIRE M022 (P)
 CANOWINDRA GOLD EDITION
 BULLAMAKINKA J339
 ROSEVALE AFFRICA B163 (P)
 WILGARROON JESTER (AI)(P)
 WARENDA SENTRY (P)
 WARENDA IZA
DAM: BULLAMAKINKA F39
 L-L FARMS MR POLL IMP (P)
 ERIN VALE UNIQUE U5 (AI)
 WACO D61



WEIGHT	DLG	SCROTUM	EMA	RIB FAT	RUMP FAT

Purchaser: _____ Price: \$ _____



HARDIGREEN PARK REPUBLIC Q58

TATTOO: **Q58**

STUD BOOK No.: **HAR19MQ58**

BORN: **17/9/19**

24 months

CANOWINDRA B64 (P)
 CANOWINDRA GOLD EDITION
 QUANDILLA Y35 (P)
SIRE: BULLAMAKINKA K476 (P)
 WARENDA SENTRY (P)
 BULLAMAKINKA F65 (P)
 YARRAWONGA A499
 YARRAWONGA BASS G1072 (PS)
 YARRAWONGA DIPLOMAT J16 (P)
 YARRAWONGA F909 (P)
DAM: BULLAMAKINKA M047 (P)
 STRATHMORE Z218
 BULLAMAKINKA G189
 MARSTON D524



WEIGHT	DLG	SCROTUM	EMA	RIB FAT	RUMP FAT

Purchaser: _____ Price: \$ _____



BULLAMAKINKA RUPERT R386

TATTOO: **R386**

STUD BOOK No.: **BLM20MR386**

BORN: **18/9/19**

24 months

DUNLOP KAISER (PS)
 GLENN OAKS JAY WALK J129 (P)
 GLENN OAKS Z25
SIRE: WACO N124
 WACO SAMSON
 WACO H771
 WACO A615
 ROSEVALE AMBASSADOR D350
 ROSEVALE AMBASSADOR G270 (PS)
 ROSEVALE JOY A115 (P)
DAM: RAYTEK J43 (P)
 RAYTEK DJ (P)
 RAYTEK Y38
 RAYTEK J56 (P)



WEIGHT	DLG	SCROTUM	EMA	RIB FAT	RUMP FAT

Purchaser: _____ Price: \$ _____



GLENN OAKS R42 (P)

TATTOO: **R42**

STUD BOOK No.: **GLO20MR42**

BORN: **21/9/19**

24 months

GLENN OAKS BRAVEHEART
 WARENDA EQUADOR (P)
 WARENDA N41 (P)
SIRE: DIAMOND H RENEGADE R47 (P)
 DIAMOND H GENERAL (P)
 DIAMOND H N036
 DIAMOND H 288
 WACO LANDLORD (P)
 YARRAWONGA RUTHLESS (P)
 YARRAWONGA G730
DAM: YARRAWONGA G991
 YARRAWONGA IRISH
 YARRAWONGA Y103
 YARRAWONGA U641



WEIGHT	DLG	SCROTUM	EMA	RIB FAT	RUMP FAT

Purchaser: _____ Price: \$ _____



WARENDA Q34 (P)

TATTOO: Q34

STUD BOOK No.: WRN19MQ34

BORN: 21/9/19

24 months



CANOWINDRA B64 (P)
 CANOWINDRA GOLD EDITION
 QUANDILLA Y35 (P)
SIRE: BULLAMAKINKA NICK N54 (P)
 WARENDA SENTRY (P)
 BULLAMAKINKA J43
 BULLAMAKINKA F53
 WARENDA MAHOGANY (P)
 WARENDA DENVER (P)
 MARSTON C307
DAM: WARENDA J29 (P)
 WAVE HILL ARNIE
 WARENDA E85
 WARENDA N37



WEIGHT	DLG	SCROTUM	EMA	RIB FAT	RUMP FAT

Purchaser: _____ Price: \$ _____



HARDIGREEN PARK REGAL Q78 (P)

TATTOO: **Q78**

STUD BOOK No.: **HAR19MQ78**

BORN: **22/9/19**

24 months

OAKDALE ACORN 536
DUNLOP KAISER (PS)
DUNLOP SX732

SIRE: GLENN OAKS LIONHEART L48 (PS)
DANGARFIELD SECOND-TO-NONE
GLENN OAKS HARMONY H36
GLENN OAKS B35 (P)

MULTIPLE SIRE

DAM: BIRRA C73 (P)
MULTIPLE SIRE
BIRRA 918 (P)
MULTIPLE DAM



WEIGHT	DLG	SCROTUM	EMA	RIB FAT	RUMP FAT

Purchaser: _____ Price: \$ _____



BULLAMAKINKA REAGAN R408 (P)

TATTOO: **R408**

STUD BOOK No.: **BLM20MR408**

BORN: **24/9/19**

24 months

CANOWINDRA B64 (P)
CANOWINDRA GOLD EDITION
QUANDILLA Y35 (P)

SIRE: BULLAMAKINKA K84 (P)
WARENDA SENTRY (P)
BULLAMAKINKA F43 (P)
ERIN VALE X40
TYNDALE NODDY (AI)(P)
WARENDA RANDOM (AI)
WARENDA M17

DAM: BULLAMAKINKA H123
WILGAROON JESTER (AI)(P)
BULLAMAKINKA F85 (P)
MARSTON A665



WEIGHT	DLG	SCROTUM	EMA	RIB FAT	RUMP FAT

Purchaser: _____ Price: \$ _____

McAuley & Co.

ACCOUNTING || ADVISORY

Agricultural experts supporting your business from the ground up

A Boutique Firm providing an innovative,
modern and personalised approach
to accounting.

Book your free consultation today.

McAuley & Co is proud to be associated with
Scott & Wendy Ferguson



M. 0438 773 822 || P. +61 (07) 4633 9823

Clifford Chambers, Suite 8 || 120 Russell Street, Toowoomba City QLD 4350

Danny@McAuleyCo.com.au

CERTIFIED PRACTICISING ACCOUNTANTS



DIAMOND H X399 (P)

TATTOO: X399

STUD BOOK No.: DIA20MX399

BORN: 25/9/19

24 months



WATASANTA ANTS PANTS (P)
 WACO YALE E880 (P)
 WACO B71 (P)
SIRE: WACO FLOYD L1104 (P)
 WACO VERSACE (P)
 WACO G885 (P)
 WACO A900
 WACO WRANGLER (P)
 DIAMOND H O195
 DIAMOND H J406
DAM: DIAMOND H S11
 DIAMOND H IRON BAR
 DIAMOND H P191
 DIAMOND H J171



WEIGHT	DLG	SCROTUM	EMA	RIB FAT	RUMP FAT

Purchaser: _____ Price: \$ _____



MUNNABAH 1454 (P)

TATTOO: 1454

STUD BOOK No.: MUN19M1454

BORN: 25/9/19

24 months

YARRAWONGA VALID
GLENN OAKS FLEETWOOD F27 (PS)
GLENN OAKS C63 (P)
SIRE: WAVE HILL MALACHITE M22 (PS)
WAVE HILL ARNIE
WAVE HILL D697
WAVE HILL X12 (P)

YARRAWONGA ROMEO (P)
WACO VIKING (P)
WACO Z771

DAM: MUNNABAH 951 (P)
TOOKEY CREEK 6492 (PS)
MUNNABAH 525 (P)
MUNNABAH Y410



WEIGHT	DLG	SCROTUM	EMA	RIB FAT	RUMP FAT

Purchaser: _____ Price: \$ _____



WARENDA Q42 (P)

TATTOO: Q42

STUD BOOK No.: WRN19MQ42

BORN: 29/9/19

24 months

YARRAWONGA VERSATILE (PS)
WACO DIEGO J258 (PS)
WACO E377 (P)
SIRE: WACO MURDOCK M188
MULTIPLE SIRE
WACO H113
WACO E271

WARENDA MAHOGANY (P)
WARENDA DENVER (P)
MARSTON C307

DAM: WARENDA M19 (P)
WARENDA CHARLTON (PS)
WARENDA F15
MARSTON C187



WEIGHT	DLG	SCROTUM	EMA	RIB FAT	RUMP FAT

Purchaser: _____ Price: \$ _____



BULLAMAKINKA REGENT R366

TATTOO: R366

STUD BOOK No.: BLM20MR366

BORN: 1/10/19

23 months

DUNLOP KAISER (PS)
GLENN OAKS JAY WALK J129 (P)
GLENN OAKS Z25

SIRE: WACO N124
WACO SAMSON
WACO H771
WACO A615

CANOWINDRA B64 (P)
CANOWINDRA GOLD EDITION
QUANDILLA Y35 (P)

DAM: BULLAMAKINKA L95 (P)
COUCH 524
BULLAMAKINKA G87 (AI)(P)
BULLAMAKINKA E35 (P)



WEIGHT	DLG	SCROTUM	EMA	RIB FAT	RUMP FAT

Purchaser: _____ Price: \$ _____



DIAMOND H X238 (PS)

TATTOO: X238

STUD BOOK No.: DIA20MX238

BORN: 2/10/19

23 months

WATASANTA ANTS PANTS (P)
 WACO YALE E880 (P)
 WACO B71 (P)
SIRE: WACO FLOYD L1104 (P)
 WACO VERSACE (P)
 WACO G885 (P)
 WACO A900

YARRAWONGA ROMEO (P)
 WACO WRANGLER (P)
 WACO A291 (P)
DAM: DIAMOND H R322 (P)
 DIAMOND H GENERAL (P)
 DIAMOND H K026
 DIAMOND H REEBOK E64



WEIGHT	DLG	SCROTUM	EMA	RIB FAT	RUMP FAT

Purchaser: _____ Price: \$ _____



BULLAMAKINKA RANSOM R356 (PS)

TATTOO: R356

STUD BOOK No.: BLM20MR356

BORN: 3/10/19

23 months

DUNLOP KAISER (PS)
 GLENN OAKS JAY WALK J129 (P)
 GLENN OAKS Z25
SIRE: WACO N124
 WACO SAMSON
 WACO H771
 WACO A615

CANOWINDRA B64 (P)
 CANOWINDRA GOLD EDITION
 QUANDILLA Y35 (P)
DAM: BULLAMAKINKA K359
 SUJO FERRYMAN (PS)
 BULLAMAKINKA 801



WEIGHT	DLG	SCROTUM	EMA	RIB FAT	RUMP FAT

Purchaser: _____ Price: \$ _____



DIAMOND H X236 (PS)

TATTOO: X236

STUD BOOK No.: DIA20MX236

BORN: 3/10/19

23 months

WATASANTA ANTS PANTS (P)
 WACO YALE E880 (P)
 WACO B71 (P)
SIRE: WACO FLOYD L1104 (P)
 WACO VERSACE (P)
 WACO G885 (P)
 WACO A900

WACO WRANGLER (P)
 DIAMOND H O195
 DIAMOND H J406
DAM: DIAMOND H S19 (P)
 GRALYN C34
 DIAMOND H P216
 DIAMOND H F48



WEIGHT	DLG	SCROTUM	EMA	RIB FAT	RUMP FAT

Purchaser: _____ Price: \$ _____



HARDIGREEN PARK REQUEST Q132 (PS)

TATTOO: **Q132**

STUD BOOK No.: **HAR19MQ132**

BORN: **3/10/19**

23 months

YARRAWONGA AVENGER G300 (PS)
 YARRAWONGA ECLIPSE K304 (PP)
 YARRAWONGA A33 (ET)(P)

SIRE: YARRAWONGA N90 (PP)

MULTIPLE SIRE
 YARRAWONGA J1391 (P)
 YARRAWONGA ART G203 (P)

STRATHMORE YOGI Y6 (AI)
 DRENSMAINE APEX 238 (P)
 DRENSMAINE 675

DAM: HARDIGREEN PARK L37

DANGARFIELD TORRENT T011 (AI)
 HARDIGREEN PARK H37
 PINAROO U241



WEIGHT	DLG	SCROTUM	EMA	RIB FAT	RUMP FAT

Purchaser: _____ Price: \$ _____



DIAMOND H XCESS X203 (PS)

TATTOO: **X203**

STUD BOOK No.: **DIA20MX203**

BORN: **4/10/19**

23 months

YARRAWONGA YOUTUBE (P)
 YARRAWONGA CHRISTO H1222 (P)
 YARRAWONGA E339

SIRE: DUNLOP RIGBY M32 (P)

MULTIPLE SIRE
 DUNLOP G31

GLENN OAKS BRAVEHEART
 WARENDA EQUADOR (P)
 WARENDA N41 (P)

DAM: DIAMOND H S605

DIAMOND H IDAHO
 DIAMOND H N098
 DIAMOND H J403



WEIGHT	DLG	SCROTUM	EMA	RIB FAT	RUMP FAT

Purchaser: _____ Price: \$ _____



DIAMOND H X211 (P)

TATTOO: **X211**

STUD BOOK No.: **DIA20MX211**

BORN: **7/10/19**

23 months

YARRAWONGA YOUTUBE (P)
 YARRAWONGA CHRISTO H1222 (P)
 YARRAWONGA E339

SIRE: DUNLOP RIGBY M32 (P)

MULTIPLE SIRE
 DUNLOP G31

DAM: MULTIPLE DAM



WEIGHT	DLG	SCROTUM	EMA	RIB FAT	RUMP FAT

Purchaser: _____ Price: \$ _____



DIAMOND H X183 (P)

TATTOO: X183

STUD BOOK No.: DIA20MX183

BORN: 7/10/19

23 months

YARRAWONGA YOUTUBE (P)
 YARRAWONGA CHRISTO H1222 (P)
 YARRAWONGA E339

SIRE: **DUNLOP RIGBY M32 (P)**
 MULTIPLE SIRE
 DUNLOP G31



DAM: MULTIPLE DAM

WEIGHT	DLG	SCROTUM	EMA	RIB FAT	RUMP FAT

Purchaser: _____ Price: \$ _____





NEW CURRICULUM OPPORTUNITIES IN 2022

Agricultural Science now offered from Year 7 – Year 12
along with Aviation, Dance, Hospitality, Health Services and
Allied Health, Sport & Recreation, Psychology



Fairholme College
TOOWOOMBA

Proudly a college of the Presbyterian Church of Queensland



GLENN OAKS R522 (P)

TATTOO: **R522**

STUD BOOK No.: **GLO20MR522**

BORN: **8/10/19**

23 months



YARRAWONGA VERSATILE (PS)
 YARRAWONGA COMMANDER H332
 YARRAWONGA C963
SIRE: YARRAWONGA FINISHER L846
 OAKDALE BALLARD
 YARRAWONGA F415
 YARRAWONGA C87 (P)
 WACO SAMSON
 YARRAWONGA ARCHER G280
 YARRAWONGA A21 (ET)(PS)
DAM: GLENN OAKS K84 (P)
 YARRAWONGA IRISH
 WACO Y327
 WACO U467



WEIGHT	DLG	SCROTUM	EMA	RIB FAT	RUMP FAT

Purchaser: _____ Price: \$ _____



MUNNABAH P2786

TATTOO: **P2786**

STUD BOOK No.: **MUN19MP2786**

BORN: **9/10/19**

23 months

YARRAWONGA VALID
GLENN OAKS FLEETWOOD F27 (PS)
GLENN OAKS C63 (P)
SIRE: WAVE HILL K23 SQUATTER (P)
ROSEVALE ZEST Z32 (AI)(PS)
WAVE HILL F49
WAVE HILL W40



DAM: MULTIPLE DAM

WEIGHT	DLG	SCROTUM	EMA	RIB FAT	RUMP FAT

Purchaser: _____ Price: \$ _____



BULLAMAKINKA ROYAL R384 (P)

TATTOO: **R384**

STUD BOOK No.: **BLM20MR384**

BORN: **10/10/19**

23 months

DUNLOP KAISER (PS)
GLENN OAKS JAY WALK J129 (P)
GLENN OAKS Z25
SIRE: WACO N124
WACO SAMSON
WACO H771
WACO A615



CANOWINDRA B64 (P)
CANOWINDRA GOLD EDITION
QUANDILLA Y35 (P)

DAM: BULLAMAKINKA K23 (P)

MULTIPLE DAM

WEIGHT	DLG	SCROTUM	EMA	RIB FAT	RUMP FAT

Purchaser: _____ Price: \$ _____



GLENN OAKS R60 (P)

TATTOO: **R60**

STUD BOOK No.: **GLO20MR60**

BORN: **10/10/19**

23 months

GLENN OAKS BRAVEHEART
WARENDA EQUADOR (P)
WARENDA N41 (P)
SIRE: DIAMOND H RENEGADE R47 (P)
DIAMOND H GENERAL (P)
DIAMOND H N036
DIAMOND H 288



MULTIPLE SIRE

DAM: GLENN OAKS J50

WACO OREGON
YARRAWONGA B931
YARRAWONGA X275

WEIGHT	DLG	SCROTUM	EMA	RIB FAT	RUMP FAT

Purchaser: _____ Price: \$ _____



GLENN OAKS R46 (P)

TATTOO: **R46**

STUD BOOK No.: **GLO20MR46**

BORN: **10/10/19**

23 months

GLENN OAKS BRAVEHEART
 WARENDA EQUADOR (P)
 WARENDA N41 (P)
SIRE: DIAMOND H RENEGADE R47 (P)
 DIAMOND H GENERAL (P)
 DIAMOND H N036
 DIAMOND H 288
 YARRAWONGA MATRIX (P)
 YARRAWONGA TAVERN
 YARRAWONGA X677
DAM: GLENN OAKS H62 (P)
 YARRAWONGA OBERG (P)
 GLENN OAKS B73
 OAKDALE ZIP



WEIGHT	DLG	SCROTUM	EMA	RIB FAT	RUMP FAT

Purchaser: _____ Price: \$ _____



GLENN OAKS R70 (P)

TATTOO: **R70**

STUD BOOK No.: **GLO20MR70**

BORN: **10/10/19**

23 months

GLENN OAKS BRAVEHEART
 WARENDA EQUADOR (P)
 WARENDA N41 (P)
SIRE: DIAMOND H RENEGADE R47 (P)
 DIAMOND H GENERAL (P)
 DIAMOND H N036
 DIAMOND H 288
 OAKDALE ACORN 536
 DUNLOP KAISER (PS)
 DUNLOP SX732
DAM: GLENN OAKS J20 (P)
 GREENUP VIAGRA Y98 (P)
 GLENN OAKS C14 (P)
 KELLY WALLAH W79



WEIGHT	DLG	SCROTUM	EMA	RIB FAT	RUMP FAT

Purchaser: _____ Price: \$ _____



GLENN OAKS R52

TATTOO: **R52**

STUD BOOK No.: **GLO20MR52**

BORN: **12/10/19**

23 months

YARRAWONGA VERSATILE (PS)
 YARRAWONGA COMMANDER H332
 YARRAWONGA C963
SIRE: YARRAWONGA FINISHER L846
 OAKDALE BALLARD
 YARRAWONGA F415
 YARRAWONGA C87 (P)



MULTIPLE SIRE

DAM: GLENN OAKS G47
 YARRAWONGA LORDLY
 YARRAWONGA B731
 YARRAWONGA G534

WEIGHT	DLG	SCROTUM	EMA	RIB FAT	RUMP FAT

Purchaser: _____ Price: \$ _____



GLENN OAKS R64 (P)

TATTOO: R64

STUD BOOK No.: GLO20MR64

BORN: 12/10/19

23 months

GLENN OAKS BRAVEHEART
 WAREDA EQUADOR (P)
 WAREDA N41 (P)
SIRE: DIAMOND H RENEGADE R47 (P)
 DIAMOND H GENERAL (P)
 DIAMOND H N036
 DIAMOND H 288

OAKDALE ACORN 536
 DUNLOP KAISER (PS)
 DUNLOP SX732

DAM: GLENN OAKS J78
 YARRAWONGA HONDURAS
 NORALLA 740
 NORALLA 430



WEIGHT	DLG	SCROTUM	EMA	RIB FAT	RUMP FAT

Purchaser: _____ Price: \$ _____



Lot 84



GLENN OAKS R68

TATTOO: **R68**

STUD BOOK No.: **GLO20MR68**

BORN: **12/10/19**

23 months



YARRAWONGA VERSATILE (PS)
 YARRAWONGA COMMANDER H332
 YARRAWONGA C963
SIRE: YARRAWONGA FINISHER L846
 OAKDALE BALLARD
 YARRAWONGA F415
 YARRAWONGA C87 (P)
 YARRAWONGA OBERG (P)
 GLENN OAKS BRAVEHEART
 GLENN OAKS 401
DAM: WAVE HILL F37 (PS)
 CANOWINDRA SNOWDON (PS)
 WAVE HILL W91
 WAVE HILL N35 (P)



WEIGHT	DLG	SCROTUM	EMA	RIB FAT	RUMP FAT

Purchaser: _____ Price: \$ _____



LION & SHIELD

INSURANCE & FINANCIAL SERVICES

INSURANCE | SUPERANNUATION | FINANCE

Need a review?

If you think you are paying too much for your insurance, need assistance in sorting out your finances or not getting the returns you want on your super investments, look no further than our team at Lion and Shield.

We specialise in:

Personal Insurance – Life, TPD, Trauma & Income Protection
Superannuation
Managed Investments
Business Structure
Estate Planning
Retirement Planning

Contact Ben Wilshire for a free consultation:

(We can come to you!)

Work: (07) 4632 2900

Mobile: 0438 113 327

Email: admin@lionandshield.com.au

Website: www.lionandshield.com.au

Address: 102 Margaret St Toowoomba QLD 4390



RISK AND INVESTMENT ADVISORS AUSTRALIA PTY LTD
ABN: 21 104 922 394 Australian Financial Services Licence No: 238 141





DIAMOND H X169 (P)

TATTOO: X169

STUD BOOK No.: DIA20MX169

BORN: 16/10/19

23 months

YARRAWONGA VALID
GLENN OAKS FLEETWOOD F27 (PS)
GLENN OAKS C63 (P)
SIRE: WAVE HILL LONGSTRONG L84 (P)
WAVE HILL ARNIE
WAVE HILL F79

YARRAWONGA YOUTUBE (P)
WACO CHAPMAN H80 (ET)(P)
WACO SIENNA
DAM: DIAMOND H S241 (P)
DIAMOND H JUSTICE (P)
DIAMOND H P095
DIAMOND H 197



WEIGHT	DLG	SCROTUM	EMA	RIB FAT	RUMP FAT

Purchaser: _____ Price: \$ _____



WARENDA QUAMBONE Q56 (P)

TATTOO: Q56

STUD BOOK No.: WRN19MQ56

BORN: 18/10/19

23 months

WARENDA MEXICO (AI)(P)
WARENDA REQUIRE (PS)
WARENDA N13
SIRE: WARENDA CHARLTON (PS)
STRATHMORE MONTROSE
WARENDA R121
WARENDA HOLLY (P)

WARENDA MAHOGANY (P)
WARENDA DENVER (P)
MARSTON C307
DAM: WARENDA M25 (P)
WAVE HILL ARNIE
WARENDA E57 (P)
WARENDA T25 (P)



WEIGHT	DLG	SCROTUM	EMA	RIB FAT	RUMP FAT

Purchaser: _____ Price: \$ _____



DIAMOND H X313 (P)

TATTOO: X313

STUD BOOK No.: DIA20MX313

BORN: 20/10/19

23 months

MULTIPLE SIRE
WACO ATTORNEY F678
MULTIPLE DAM
SIRE: GLENN OAKS KINGSBURG K110 (P)
WAVE HILL LIZARD (AI)(P)
GLENN OAKS G600
MULTIPLE DAM

YARRAWONGA OBERG (P)
GLENN OAKS BRAVEHEART
GLENN OAKS 401
DAM: DIAMOND H R247 (AI)
GRALYN C34
DIAMOND H O024
DIAMOND H K366



WEIGHT	DLG	SCROTUM	EMA	RIB FAT	RUMP FAT

Purchaser: _____ Price: \$ _____



DIAMOND H X081 (PS)

TATTOO: X081

STUD BOOK No.: DIA20MX081

BORN: 26/10/19

23 months



MULTIPLE SIRE

SIRE: YARRAWONGA N542 (P)

- YARRAWONGA BECKER G590 (PS)
- YARRAWONGA K33
- YARRAWONGA F61

- DIAMOND H GENERAL (P)
- DIAMOND H LARRIKAN (P)
- DIAMOND H 284 (P)

DAM: DIAMOND H T196

- DIAMOND H GENERAL (P)
- DIAMOND H M026 (P)
- DIAMOND H 294



WEIGHT	DLG	SCROTUM	EMA	RIB FAT	RUMP FAT

Purchaser: _____ Price: \$ _____



BULLAMAKINKA RANGER R76 (P)

TATTOO: **R76**

STUD BOOK No.: **BLM20MR76**

BORN: **28/10/19**

23 months

YARRAWONGA BASS G1072 (PS)
 YARRAWONGA DIPLOMAT J16 (P)
 YARRAWONGA F909 (P)
SIRE: BULLAMAKINKA RIMFIRE M022 (P)
 CANOWINDRA GOLD EDITION
 BULLAMAKINKA J339
 ROSEVALE AFFRICA B163 (P)
 THE LAKES FRANCESCO (PS)
 GREENUP FRANCESCO Y38 (P)
 ROSEVALE VERONICA X112 (P)
DAM: BULLAMAKINKA F51 (P)
 SANTA PARK Q102 (P)
 SANTA PARK S1
 SANTA PARK Q7 (PS)



WEIGHT	DLG	SCROTUM	EMA	RIB FAT	RUMP FAT

Purchaser: _____ Price: \$ _____



BULLAMAKINKA REDFORD R388 (P)

TATTOO: **R388**

STUD BOOK No.: **BLM20MR388**

BORN: **29/10/19**

23 months

DUNLOP KAISER (PS)
 GLENN OAKS JAY WALK J129 (P)
 GLENN OAKS Z25
SIRE: WACO N124
 WACO SAMSON
 WACO H771
 WACO A615
 WARENDA SENTRY (P)
 BULLAMAKINKA G230 (PS)
 ERIN VALE SPORTY SPICE S39
DAM: BULLAMAKINKA M275 (P)
 COOLOON TOMAHAWK
 BULLAMAKINKA 611
 EIDSVOLD STATION V731



WEIGHT	DLG	SCROTUM	EMA	RIB FAT	RUMP FAT

Purchaser: _____ Price: \$ _____



BULLAMAKINKA RENEGADE R382 (PS)

TATTOO: **R382**

STUD BOOK No.: **BLM20MR382**

BORN: **2/11/19**

22 months

DUNLOP KAISER (PS)
 GLENN OAKS JAY WALK J129 (P)
 GLENN OAKS Z25
SIRE: WACO N124
 WACO SAMSON
 WACO H771
 WACO A615
 CANOWINDRA GOLD EDITION
 BULLAMAKINKA H276 (P)
 MOONGANA B1485 (P)
DAM: BULLAMAKINKA M215 (P)
 WARENDA RANDOM (AI)
 BULLAMAKINKA E81
 MOONGANA V457



WEIGHT	DLG	SCROTUM	EMA	RIB FAT	RUMP FAT

Purchaser: _____ Price: \$ _____



WARENDA Q62 (P)

TATTOO: Q62

STUD BOOK No.: WRN19MQ62

BORN: 2/11/19

22 months

YARRAWONGA VERSATILE (PS)

WACO DIEGO J258 (PS)

WACO E377 (P)

SIRE: WACO MURDOCK M188

MULTIPLE SIRE

WACO H113

WACO E271

WARENDA SENTRY (P)

BULLAMAKINKA HALLMARK H20 (P)

BULLAMAKINKA 611

DAM: WARENDA N19 (P)



WEIGHT	DLG	SCROTUM	EMA	RIB FAT	RUMP FAT

Purchaser: _____ Price: \$ _____





BULLAMAKINKA RAMSAY R290 (P)

TATTOO: **R290**

STUD BOOK No.: **BLM20MR290**

BORN: **3/11/19**

22 months



DUNLOP KAISER (PS)
 GLENN OAKS JAY WALK J129 (P)
 GLENN OAKS Z25

SIRE: WACO N124

WACO SAMSON
 WACO H771
 WACO A615

WARENDA SENTRY (P)
 BULLAMAKINKA G230 (PS)
 ERIN VALE SPORTY SPICE S39

DAM: BULLAMAKINKA K387

YARRAWONGA MAMBO
 ERIN VALE Z20
 ERIN VALE TESSA (P)



WEIGHT	DLG	SCROTUM	EMA	RIB FAT	RUMP FAT

Purchaser: _____ Price: \$ _____

Binny Bowe

BOUTIQUE

75 King Street, Clifton QLD 4361

 Fashion  Shoes 
 Accessories  Haberdashery 



Stocking a variety of brands including:

Trelise Cooper • Brave + True
Hut Clothing • Frankie + Dash
Stella + Gemma



SHOP ONLINE www.binnyboweboutique.com.au



DIAMOND H XMAN X272 (P)

TATTOO: X272

STUD BOOK No.: DIA20MX272

BORN: 4/11/19

22 months

YARRAWONGA VALID
 GLENN OAKS FLEETWOOD F27 (PS)
 GLENN OAKS C63 (P)
SIRE: WAVE HILL JACKAL J98 (P)
 WAVE HILL ARNIE
 WAVE HILL E155
 WAVE HILL Y18 (P)
 GLENN OAKS BRAVEHEART
 WARENDA EQUADOR (P)
 WARENDA N41 (P)
DAM: DIAMOND H Q057
 GRALYN B806
 DIAMOND H M131
 DIAMOND H H198



WEIGHT	DLG	SCROTUM	EMA	RIB FAT	RUMP FAT

Purchaser: _____ Price: \$ _____



WARENDA Q66

TATTOO: Q66

STUD BOOK No.: WRN19MQ66

BORN: 4/11/19

22 months

CANOWINDRA B64 (P)
 CANOWINDRA GOLD EDITION
 QUANDILLA Y35 (P)
SIRE: BULLAMAKINKA NICK N54 (P)
 WARENDA SENTRY (P)
 BULLAMAKINKA J43
 BULLAMAKINKA F53
 WARENDA MAHOGANY (P)
 WARENDA DENVER (P)
 MARSTON C307
DAM: WARENDA G17



WEIGHT	DLG	SCROTUM	EMA	RIB FAT	RUMP FAT

Purchaser: _____ Price: \$ _____



BULLAMAKINKA RIO R74 (P)

TATTOO: **R74**

STUD BOOK No.: **BLM20MR74**

BORN: **12/11/19**

22 months



YARRAWONGA BASS G1072 (PS)
 YARRAWONGA DIPLOMAT J16 (P)
 YARRAWONGA F909 (P)
SIRE: BULLAMAKINKA RIMFIRE M022 (P)
 CANOWINDRA GOLD EDITION
 BULLAMAKINKA J339
 ROSEVALE AFFRICA B163 (P)
 ORANA QUILPIE
 ROSEVALE QUILPIE Z292
 ROSEVALE CELIA Y240 (P)
DAM: BULLAMAKINKA E197 (P)
 WACO ECHELON (PS)
 ERIN VALE TESSA (P)
 WACO ENJOY (AI)



WEIGHT	DLG	SCROTUM	EMA	RIB FAT	RUMP FAT

Purchaser: _____ Price: \$ _____



BULLAMAKINKA RINGO R64 (P)

TATTOO: **R64**

STUD BOOK No.: **BLM20MR64**

BORN: **15/11/19**

22 months

YARRAWONGA VERSATILE (PS)
 WACO DIEGO J258 (PS)
 WACO E377 (P)
SIRE: WACO NAPOLEON N80 (P)
 EIDSVOLD STATION E460
 YARRAWONGA H399 (P)
 YARRAWONGA C671 (P)
 YARRAWONGA BASS G1072 (PS)
 YARRAWONGA DIPLOMAT J16 (P)
 YARRAWONGA F909 (P)
DAM: BULLAMAKINKA M061 (P)



WEIGHT	DLG	SCROTUM	EMA	RIB FAT	RUMP FAT

Purchaser: _____ Price: \$ _____



Gillies Meats



**We wish
Scott & Wendy
every success
for their
Annual
Bull Sale**



Open Monday-Friday 7am to 5pm; Saturday 7am-12 noon

“Fresh Meat Specialists”

53 KING ST, CLIFTON - Phone 4697 3997



BULLAMAKINKA RAFFA R264 (P)

TATTOO: **R264** STUD BOOK No.: **BLM20MR264** BORN: **18/11/19** **22 months**



MULTIPLE SIRE
 WACO ATTORNEY F678
 MULTIPLE DAM
SIRE: GLENN OAKS NASHVILLE N128 (PS)
 WACO H1304
 GLENN OAKS L8
 WACO A493



DAM: MULTIPLE DAM

WEIGHT	DLG	SCROTUM	EMA	RIB FAT	RUMP FAT

Purchaser: _____ Price: \$ _____



GLENN OAKS R106 (P)

TATTOO: **R106**

STUD BOOK No.: **GLO20MR106**

BORN: **18/11/19**

22 months

MULTIPLE SIRE

SIRE: YARRAWONGA N672 (P)

MULTIPLE DAM

WARENDA EQUADOR (P)
DIAMOND H RENEGADE R47 (P)
DIAMOND H N036

DAM: GLENN OAKS N87 (P)

WAVE HILL ARNIE
WAVE HILL E64
WAVE HILL M75 (P)



WEIGHT	DLG	SCROTUM	EMA	RIB FAT	RUMP FAT

Purchaser: _____ Price: \$ _____



KILCOCK SLICK Q5 (P)

TATTOO: **Q5**

STUD BOOK No.: **KCS19MQ5**

BORN: **21/11/19**

22 months

STRATHMORE MONTROSE
ABERDEEN F76 (PS)
WAVE HILL J104 (P)

SIRE: ABERDEEN MANDELA I60 (P)

ABERDEEN EMINENCE (P)
ABERDEEN B13 (P)
ABERDEEN JESSICA 2 (P)

DE LEEAH VALE JASPER (P)
CATHNAL OTTIS
CATHNAL INGRID (AI)

DAM: KILCOCK M75

MULTIPLE SIRE
KILCOCK H08 (P)
MULTIPLE DAM



WEIGHT	DLG	SCROTUM	EMA	RIB FAT	RUMP FAT





GLENN OAKS R98 (PS)

TATTOO: **R98**

STUD BOOK No.: **GLO20MR98**

BORN: **22/11/19**

22 months



MULTIPLE SIRE

SIRE: YARRAWONGA N672 (P)

MULTIPLE DAM

WARENDA EQUADOR (P)
DIAMOND H RENEGADE R47 (P)
DIAMOND H N036

DAM: GLENN OAKS N66 (P)

GLENN OAKS K71



WEIGHT	DLG	SCROTUM	EMA	RIB FAT	RUMP FAT

Purchaser: _____ Price: \$ _____



GNF
REAL ESTATE

**THE PROGRESSIVE SALES
TEAM CATERING FOR
ALL YOUR LIVESTOCK &
REAL ESTATE NEEDS**

**COVERING SOUTH EASTERN QUEENSLAND
AND NORTHERN NEW SOUTH WALES**

OFFICE – 07 4661 4644

www.gnfrealstate.com.au

Matthew Grayson	0419 686 540
Maugan Benn	0427 253 528
Brian Gillam	0428 299 725
Blake Doro	0423 962 797

REAL ESTATE:

Rural

Jacob Allport 0448 060 959

Residential

Tiffany Cruice 0447 301 913



Phone (07) 4661 4644
Fax (07) 4661 4929
www.gnfrealstate.com.au
61 Albion St., Warwick QLD 4370

GNF warwick



KILCOCK MR.T Q10 (P)

TATTOO: Q10

STUD BOOK No.: KCS19MQ10

BORN: 22/11/19

22 months



STRATHMORE MONTROSE
 ABERDEEN F76 (PS)
 WAVE HILL J104 (P)
SIRE: ABERDEEN MANDELA I60 (P)
 ABERDEEN EMINENCE (P)
 ABERDEEN B13 (P)
 ABERDEEN JESSICA 2 (P)
 DE LEEAH VALE JASPER (P)
 CATHNAL OTTIS
 CATHNAL INGRID (AI)
DAM: KILCOCK K38 (P)
 MULTIPLE SIRE
 KILCOCK H2
 MULTIPLE DAM



WEIGHT	DLG	SCROTUM	EMA	RIB FAT	RUMP FAT

Purchaser: _____ Price: \$ _____



BULLAMAKINKA RADAR R260 (P)

TATTOO: **R260**

STUD BOOK No.: **BLM20MR260**

BORN: **28/11/19**

22 months



MULTIPLE SIRE
 WACO ATTORNEY F678
 MULTIPLE DAM
SIRE: GLENN OAKS NASHVILLE N128 (PS)
 WACO H1304
 GLENN OAKS L8
 WACO A493
 HARDIGREEN PARK OMEGA F16 (P)
 DANGARFIELD X-BOX (PS)
 DANGARFIELD 8488
DAM: BULLAMAKINKA P265
 CANOWINDRA GOLD EDITION
 BULLAMAKINKA K65
 MOONGANA 1179



WEIGHT	DLG	SCROTUM	EMA	RIB FAT	RUMP FAT

Purchaser: _____ Price: \$ _____



BULLAMAKINKA REX R402 (P)

TATTOO: **R402**STUD BOOK No.: **BLM20MR402**BORN: **28/11/19****22 months**

MULTIPLE SIRE
 WACO ATTORNEY F678
 MULTIPLE DAM
SIRE: GLENN OAKS NASHVILLE N128 (PS)
 WACO H1304
 GLENN OAKS L8
 WACO A493
 YARRAWONGA VERSATILE (PS)
 ROSEHILL JAMESON 4 (ET)(AI)(PS)
 GLENN OAKS FABIANA F66
DAM: BULLAMAKINKA P29 (P)
 STRATHMORE Z218
 BULLAMAKINKA G189
 MARSTON D524



WEIGHT	DLG	SCROTUM	EMA	RIB FAT	RUMP FAT

Purchaser: _____ Price: \$ _____



DIAMOND H X267 (P)

TATTOO: X267

STUD BOOK No.: DIA20MX267

BORN: 3/12/19

21 months

YARRAWONGA RUTHLESS (P)
YARRAWONGA YOUTUBE (P)

YARRAWONGA A247

SIRE: WACO CHAPMAN H80 (ET)(P)

YARRAWONGA W100

WACO SIENNA

WACO U555 (P)

YARRAWONGA JASPER

DIAMOND H GENERAL (P)

DIAMOND H 215 (P)

DAM: DIAMOND H Q170 (P)

TARA LEGEND

DIAMOND H G232

DIAMOND H CYBIL



WEIGHT	DLG	SCROTUM	EMA	RIB FAT	RUMP FAT

Purchaser: _____ Price: \$ _____



DIAMOND H X315 (P)

TATTOO: X315

STUD BOOK No.: DIA20MX315

BORN: 7/12/19

21 months

MULTIPLE SIRE
WACO ATTORNEY F678

MULTIPLE DAM

SIRE: GLENN OAKS KINGSBURG K110 (P)

WAVE HILL LIZARD (AI)(P)

GLENN OAKS G600

MULTIPLE DAM

YARRAWONGA ROMEO (P)

WACO WRANGLER (P)

WACO A291 (P)

DAM: DIAMOND H R135 (P)

DIAMOND H ADAM

DIAMOND H ADAM E34

DIAMOND H 49



WEIGHT	DLG	SCROTUM	EMA	RIB FAT	RUMP FAT

Purchaser: _____ Price: \$ _____



DIAMOND H X-BOX X279 (PS)

TATTOO: X279

STUD BOOK No.: DIA20MX279

BORN: 10/12/19

21 months



YULGILBAR DROVER D234 (AI)(P)
 MUNNABAH IRONMAN 960 (P)
 MUNNABAH 597

SIRE: GLENN OAKS NAKURU N53 (PS)

MULTIPLE SIRE
 GLENN OAKS D73
 MULTIPLE DAM

WAVE HILL Z146 (P)
 HARDIGREEN PARK LAWYER
 HARDIGREEN PARK B705 (P)

DAM: DIAMOND H 0150

DIAMOND H CENTENARY
 DIAMOND H L309
 MULTIPLE DAM



WEIGHT	DLG	SCROTUM	EMA	RIB FAT	RUMP FAT

Purchaser: _____ Price: \$ _____



GLENN OAKS R38 (P)

TATTOO: **R38**

STUD BOOK No.: **GLO20MR38**

BORN: **10/12/19**

21 months

GLENN OAKS BRAVEHEART
 WARENDA EQUADOR (P)
 WARENDA N41 (P)
SIRE: DIAMOND H RENEGADE R47 (P)
 DIAMOND H GENERAL (P)
 DIAMOND H N036
 DIAMOND H 288



MULTIPLE SIRE

DAM: GLENN OAKS M305

MULTIPLE DAM

WEIGHT	DLG	SCROTUM	EMA	RIB FAT	RUMP FAT

Purchaser: _____ Price: \$ _____



BULLAMAKINKA REUBEN R88 (P)

TATTOO: **R88**

STUD BOOK No.: **BLM20MR88**

BORN: **15/12/19**

21 months

YARRAWONGA VERSATILE (PS)
 WACO DIEGO J258 (PS)
 WACO E377 (P)
SIRE: WACO NAPOLEON N80 (P)
 EIDSVOLD STATION E460
 YARRAWONGA H399 (P)
 YARRAWONGA C671 (P)



EL PASCOL VIKING (P)
 PINAROO TWICER
 PINAROO Q52

DAM: BULLAMAKINKA G111

WARENDA SENTRY (P)
 BULLAMAKINKA E155 (P)
 BULLAMAKINKA 4 (P)

WEIGHT	DLG	SCROTUM	EMA	RIB FAT	RUMP FAT

Purchaser: _____ Price: \$ _____



GLENN OAKS R94 (P)

TATTOO: **R94**

STUD BOOK No.: **GLO20MR94**

BORN: **15/12/19**

21 months

MULTIPLE SIRE

SIRE: YARRAWONGA N672 (P)

MULTIPLE DAM

WACO TRITON (ET)(P)
 WACO ELAND J1402 (P)
 WACO Y65

DAM: GLENN OAKS N93 (P)

WAVE HILL BRONSON (AI)
 YARRAWONGA G905
 YARRAWONGA Z159



WEIGHT	DLG	SCROTUM	EMA	RIB FAT	RUMP FAT

Purchaser: _____ Price: \$ _____



DIAMOND H X281 (PS)

TATTOO: X281

STUD BOOK No.: DIA20MX281

BORN: 16/12/19

21 months

YULGILBAR DROVER D234 (AI)(P)
MUNNABAH IRONMAN 960 (P)
MUNNABAH 597

SIRE: GLENN OAKS NAKURU N53 (PS)

MULTIPLE SIRE
GLENN OAKS D73
MULTIPLE DAM

WAVE HILL Z146 (P)
HARDIGREEN PARK LAWYER
HARDIGREEN PARK B705 (P)

DAM: DIAMOND H Q314 (P)

DIAMOND H GENERAL (P)
DIAMOND H L065
TARA D823 (P)



WEIGHT	DLG	SCROTUM	EMA	RIB FAT	RUMP FAT

Purchaser: _____ Price: \$ _____



DIAMOND H X299 (P)

TATTOO: X299

STUD BOOK No.: DIA20MX299

BORN: 18/12/19

21 months

YULGILBAR DROVER D234 (AI)(P)
MUNNABAH IRONMAN 960 (P)
MUNNABAH 597

SIRE: GLENN OAKS NAKURU N53 (PS)

MULTIPLE SIRE
GLENN OAKS D73
MULTIPLE DAM

GILLESPIE L61
DIAMOND H IDAHO
DIAMOND H 267

DAM: DIAMOND H OLGA O122 (P)

MULTIPLE DAM



WEIGHT	DLG	SCROTUM	EMA	RIB FAT	RUMP FAT

Purchaser: _____ Price: \$ _____



BULLAMAKINKA RAIDER R228 (PS)

TATTOO: R228

STUD BOOK No.: BLM20MR288

BORN: 20/12/19

21 months

DUNLOP KAISER (PS)
GLENN OAKS JAY WALK J129 (P)
GLENN OAKS Z25

SIRE: WACO N124

WACO SAMSON
WACO H771
WACO A615

CANOWINDRA B64 (P)
CANOWINDRA GOLD EDITION
QUANDILLA Y35 (P)

DAM: BULLAMAKINKA K251 (P)

SWAN HILL MORLEY 9491
BULLAMAKINKA D67 (P)
KEYSTONE 680



WEIGHT	DLG	SCROTUM	EMA	RIB FAT	RUMP FAT

Purchaser: _____ Price: \$ _____

THOMPSON LONGHORN

Est. 1983

Innovative Livestock Equipment - Design and Manufacture

AUTOMATED CATTLE YARD TECHNOLOGY THAT GETS YOU RESULTS



Consult, Design, Fabricate & Install

With over 35 years' experience servicing the livestock industry, Thompson Longhorn provides services including consultation, design, fabrication and installation.

Whether you need an individual service or a combination, our experienced team will address your specific design requirements cost factors, technology, workplace safety and animal welfare, backed by a high quality assurance and future support.



**DELIVERING
SOLUTIONS
AUSTRALIA WIDE
and ABROAD**

Ph: 07 4666 6174
www.thompsonlonghorn.com.au



BULLAMAKINKA REAL DEAL R310 (P)

TATTOO: **R310**

STUD BOOK No.: **BLM20MR310**

BORN: **5/1/20**

20 months



GREENUP FITZGERALD F144
 GREENUP JUSTICE J020 (P)
 GREENUP E27 (P)

SIRE: DUNLOP M96 (P)

MULTIPLE SIRE
 DUNLOP B1089 (PS)
 MULTIPLE DAM

YARRAWONGA VERSATILE (PS)
 ROSEHILL JAMESON 4 (ET)(AI)(PS)
 GLENN OAKS FABIANA F66

DAM: BULLAMAKINKA N41 (P)

WARENDA SENTRY (P)
 BULLAMAKINKA E155 (P)
 BULLAMAKINKA 4 (P)



WEIGHT	DLG	SCROTUM	EMA	RIB FAT	RUMP FAT

Purchaser: _____ Price: \$ _____



BULLAMAKINKA RAPTOR R340 (P)

TATTOO: **R340** STUD BOOK No.: **BLM20MR340** BORN: **10/1/20** **20 months**



CANOWINDRA B64 (P)
 CANOWINDRA GOLD EDITION
 QUANDILLA Y35 (P)
SIRE: BULLAMAKINKA K476 (P)
 WARENDA SENTRY (P)
 BULLAMAKINKA F65 (P)
 YARRAWONGA A499
 CANOWINDRA B64 (P)
 CANOWINDRA GOLD EDITION
 QUANDILLA Y35 (P)
DAM: BULLAMAKINKA K381 (P)



WEIGHT	DLG	SCROTUM	EMA	RIB FAT	RUMP FAT

Purchaser: _____ Price: \$ _____



RESTDOWN 661 (P)

TATTOO: **661**

STUD BOOK No.: **RES20M661**

BORN: **14/1/20**

20 months

WAVE HILL Z146 (P)
 HARDIGREEN PARK LEROY (P)
 HARDIGREEN PARK B715 (P)
SIRE: RESTDOWN 141 (P)
 WACO SAMSON
 RESTDOWN 18
 YARRAWONGA A631 (P)

WAVE HILL Z146 (P)
 HARDIGREEN PARK LEROY (P)
 HARDIGREEN PARK B715 (P)
DAM: KULOOMBA KV417
 KULOOMBA 842 (PS)
 KULOOMBA 201 (P)
 KULOOMBA 36 (AI)(P)



WEIGHT	DLG	SCROTUM	EMA	RIB FAT	RUMP FAT

Purchaser: _____ Price: \$ _____



GLENN OAKS R44

TATTOO: **R44**

STUD BOOK No.: **GLO20MR44**

BORN: **20/1/20**

20 months

GLENN OAKS BRAVEHEART
 WARENDA EQUADOR (P)
 WARENDA N41 (P)
SIRE: DIAMOND H RENEGADE R47 (P)
 DIAMOND H GENERAL (P)
 DIAMOND H N036
 DIAMOND H 288

DIAMOND H GENERAL (P)
 DIAMOND H LEGEND (P)
 DIAMOND H 232
DAM: GLENN OAKS H82
 YARRAWONGA OBERG (P)
 GLENN OAKS B29
 WACO Y465



WEIGHT	DLG	SCROTUM	EMA	RIB FAT	RUMP FAT

Purchaser: _____ Price: \$ _____



GLENN OAKS R184 (P)

TATTOO: **R184**

STUD BOOK No.: **GLO20MR184**

BORN: **5/2/20**

19 months

YARRAWONGA VOLUNTEER (AI)(P)
 WACO XBOX (P)
 WACO B219 (P)
SIRE: YARRAWONGA DETONATOR J438 (P)
 KELLY WALLAH QUETZCOATL (P)
 WACO C625
 KELLY WALLAH Y49 (PS)

WARENDA MAHOGANY (P)
 WARENDA DENVER (P)
 MARSTON C307
DAM: GLENN OAKS L72
 YARRAWONGA TAVERN
 GLENN OAKS H2



WEIGHT	DLG	SCROTUM	EMA	RIB FAT	RUMP FAT

Purchaser: _____ Price: \$ _____



GLENN OAKS R180 (PS)

TATTOO: **R180** STUD BOOK No.: **GLO20MR180** BORN: **6/2/20** **19 months**

YARRAWONGA OUTRANK (PS)
YARRAWONGA VERSATILE (PS)
YARRAWONGA Z521

SIRE: GOOLAGONG L22 (ET)

WACO VOLUME (P)
GOOLAGONG G73 (P)
GOOLAGONG ESTHER (P)

WACO TRITON (ET)(P)
WACO ELAND J1402 (P)
WACO Y65

DAM: GLENN OAKS L58

MULTIPLE SIRE
GLENN OAKS E118
GLENN OAKS X33



WEIGHT	DLG	SCROTUM	EMA	RIB FAT	RUMP FAT

Purchaser: _____ Price: \$ _____



WAVE HILL R146 (P)

TATTOO: **R146** STUD BOOK No.: **WAV20MR146** BORN: **6/2/20** **19 months**

YARRAWONGA VERSATILE (PS)
WACO DIEGO J258 (PS)
WACO E377 (P)

SIRE: WACO MURDOCK M188

MULTIPLE SIRE
WACO H113
WACO E271

WARENDA REQUIRE (PS)
WARENDA CHARLTON (PS)
WARENDA R121

DAM: WAVE HILL L1

WAVE HILL XTRA (P)
WAVE HILL D836 (P)
WAVE HILL X87 (P)



WEIGHT	DLG	SCROTUM	EMA	RIB FAT	RUMP FAT

Purchaser: _____ Price: \$ _____



GLENN OAKS R154 (P)

TATTOO: **R154** STUD BOOK No.: **GLO20MR154** BORN: **10/2/20** **19 months**

WACO SAMSON
WACO ZEUS
WACO A709

SIRE: GOOLAGONG LEOPARD L26 (AI)(P)

WACO VOLUME (P)
GOOLAGONG G069 (P)
GOOLAGONG Y45 (P)

MULTIPLE SIRE

DAM: WACO G553



WEIGHT	DLG	SCROTUM	EMA	RIB FAT	RUMP FAT

Purchaser: _____ Price: \$ _____



GLENN OAKS R182 (P)

TATTOO: **R182**

STUD BOOK No.: **GLO20MR182**

BORN: **10/2/20**

19 months

YARRAWONGA VOLUNTEER (AI)(P)
 WACO XBOX (P)
 WACO B219 (P)
SIRE: YARRAWONGA DETONATOR J438 (P)
 KELLY WALLAH QUETZCOATL (P)
 WACO C625
 KELLY WALLAH Y49 (PS)
 OAKDALE ACORN 536
 DUNLOP KAISER (PS)
 DUNLOP SX732
DAM: GLENN OAKS K44
 YARRAWONGA OBERG (P)
 GLENN OAKS B42
 YARRAWONGA Y565 (P)



WEIGHT	DLG	SCROTUM	EMA	RIB FAT	RUMP FAT

Purchaser: _____ Price: \$ _____



GLENN OAKS R168 (P)

TATTOO: **R168**

STUD BOOK No.: **GLO20MR168**

BORN: **15/2/20**

19 months

WACO SAMSON
 WACO ZEUS
 WACO A709
SIRE: GOOLAGONG LEOPARD L26 (AI)(P)
 WACO VOLUME (P)
 GOOLAGONG G069 (P)
 GOOLAGONG Y45 (P)
 OAKDALE ACORN 536
 DUNLOP KAISER (PS)
 DUNLOP SX732
DAM: GLENN OAKS J144
 PAD36M02
 YARRAWONGA Y473
 YARRAWONGA W623



WEIGHT	DLG	SCROTUM	EMA	RIB FAT	RUMP FAT

Purchaser: _____ Price: \$ _____



GLENN OAKS R88 (PS)

TATTOO: **R88**

STUD BOOK No.: **GLO20MR88**

BORN: **16/2/20**

19 months

MULTIPLE SIRE
SIRE: YARRAWONGA N672 (P)
 MULTIPLE DAM
 YARRAWONGA YEMEN
 YARRAWONGA J134 (ET)(P)
 YARRAWONGA YAYA (ET)(P)
DAM: GLENN OAKS M116 (P)
 YARRAWONGA SIR
 GLENN OAKS F38
 KELLY WALLAH T43



WEIGHT	DLG	SCROTUM	EMA	RIB FAT	RUMP FAT

Purchaser: _____ Price: \$ _____

Nutrien Harcourts

Trusted values & local knowledge

in property sales
on the Darling Downs



Nutrien Harcourts Cooke

67 King Street, Clifton

T 4612 3779

cooke.nutrienharcourts.com.au



BULLAMAKINKA RYDER R342 (P)

TATTOO: R342

STUD BOOK No.: BLM20MR342

BORN: 27/2/20

19 months

CANOWINDRA B64 (P)
 CANOWINDRA GOLD EDITION
 QUANDILLA Y35 (P)
SIRE: BULLAMAKINKA K476 (P)
 WARENDA SENTRY (P)
 BULLAMAKINKA F65 (P)
 YARRAWONGA A499
 DANGARFIELD RENAULT (PS)
 WARRILLEE FORTRESS F90 (P)
 WARRILLEE 699
DAM: BULLAMAKINKA K143 (P)
 GREENUP FRANCESCO Y38 (P)
 BULLAMAKINKA F135 (P)
 YARRAWONGA X189



WEIGHT	DLG	SCROTUM	EMA	RIB FAT	RUMP FAT

Purchaser: _____ Price: \$ _____





TOOKEY CREEK POSSUM P53 (P)

TATTOO: P53

STUD BOOK No.: TOO19FP53

BORN: 2/2/19

31 months



BIARA 9020 (P)
 MOONGANA HILUX H2230 (P)
 MOONGANA 1661
SIRE: TOOKEY CREEK L24 (P)
 KELLY WALLAH GUSTAVUS (P)
 TOOKEY CREEK A18
 TOOKEY CREEK 8015 (P)
 KELLY WALLAH GANDALF (PS)
 TOOKEY CREEK UTE (PS)
 HARDIGREEN PARK A571

DAM: TOOKEY CREEK A80
 AGVAC ICEMAN
 TOOKEY CREEK 6201 (AI)
 TOOKEY CREEK 4127

Calf P53, a heifer born 15/3/2021 is by Yarrowonga N22(P). Tookey Creek A80 had 9 calves with 6 classifying. Four females have been retained in the stud. P53 was her last calf.



Purchaser: _____ Price: \$ _____



GLENN OAKS QUIN Q47 (P)

TATTOO: Q47

STUD BOOK No.: GLO19FQ47

BORN: 24/4/19

29 months



GLENN OAKS BRAVEHEART
 WAREDA EQUADOR (P)
 WAREDA N41 (P)
SIRE: DIAMOND H RENEGADE R47 (P)
 DIAMOND H GENERAL (P)
 DIAMOND H N036
 DIAMOND H 288
 OAKDALE ACORN 536
 DUNLOP KAISER (PS)
 DUNLOP SX732
DAM: GLENN OAKS J501
 MULTIPLE DAM



Will be sold with a heifer calf at foot born 22/02/2021. Sired by Glenn Oaks Quartermaine Q74 (P) who was sold to Luke & Carly Baker at our 2020 sale for \$24,000. Q47 was entered for the 2021 Ekka but was withdrawn due to our reduction in number because of COVID-19.



Purchaser: _____ Price: \$ _____



GOOLAGONG QUEENIE Q166 (P)

TATTOO: **Q166**

STUD BOOK No.: **GOO19FQ166**

BORN: **19/6/19**

27 months

YARRAWONGA VALID
GLENN OAKS FLEETWOOD F27 (PS)
GLENN OAKS C63 (P)

SIRE: WAVE HILL LARIKAN L9 (P)
WAVE HILL LIZARD (AI)(P)
WAVE HILL X103 (P)
WAVE HILL K75

CANOWINDRA ELROY E65
YARRAWONGA ALBERTA F460
YARRAWONGA B421

DAM: GOOLAGONG J41
WALMONA QUILLAN (P)
GOOLAGONG GIGGLES G003
GOOLAGONG Z47 (PS)

*Has been prepared solely on
our oats crop.*



	200D WT	400D WT	600D WT	MAT COW WT	MILK	SCROTAL SIZE	DAYS TO CALVING	EMA	RIB	RUMP	RBV%	IMF
EBV	+5	+10	+9									
ACC	43%	40%	39%									

Purchaser: _____ Price: \$ _____





TOOKEY CREEK Q5 (P)

TATTOO: Q5

STUD BOOK No.: T0019FQ5

BORN: 25/8/19

25 months



WACO YALE E880 (P)
 WACO EINSTEIN K808 (P)
 WACO A871
SIRE: TOOKEY CREEK MAGNUS
 WARENDA SAHARA (P)
 TOOKEY CREEK G9 (P)
 TOOKEY CREEK 9256
 JIMLYN PARK YANKEE
 DANGARFIELD QUALCO (P)
 DANGARFIELD 4322
DAM: TOOKEY CREEK H39 (P)
 ROSEVALE V646
 TOOKEY CREEK 6984 (P)
 BRIGALOW OCHRE (P)

*Tookey Creek Q5 dam
 TC H39 (born 2012) has
 had 7 calves in 7 years,
 3 classified and a herd
 bull selling privately.
 Her last calf is a weaner
 heifer not yet presented.
 Tookey Creek 6984 (Q5's
 granddam) had 7 calves
 in 7 years, 4 'S' with a
 female retained in our show team. Tookey Creek Q5
 is PTIC to Yarrowonga N22.*



Purchaser: _____ Price: \$ _____



Growing Together for Success

Grow with Pursehouse Rural



Agronomy

Ag Chem and
Fertiliser

Animal Health
Supplies

Stock Feed and
Handling Systems

Fencing Supplies

And More



Find your local branch in Clifton
58 King Street. 07 4612 4800.

Mon - Fri 8am to 5pm

www.pursehouserural.com.au

 @pursehouseruralclifton



GOOLAGONG QUINCIE Q188 (P)

TATTOO: **Q188**

STUD BOOK No.: **GOO19FQ188**

BORN: **11/10/19**

23 months

YARRAWONGA VALID
GLENN OAKS FLEETWOOD F27 (PS)
GLENN OAKS C63 (P)

SIRE: WAVE HILL LARIKAN L9 (P)

WAVE HILL LIZARD (AI)(P)
WAVE HILL X103 (P)
WAVE HILL K75

WACO SPRINGBOK (IMP) (ET)
GOOLAGONG ELVIS
WACO WINE

DAM: GOOLAGONG K31

GOOLAGONG YORK
GOOLAGONG B61

*Has been prepared solely on
our oats crop.*



	200D WT	400D WT	600D WT	EMA	RIB	RUMP	RBYP%	IMF
EBV	+2	+8	+7	-0.8	-0.2	-0.9	+0.1	+0.0
ACC	42%	39%	38%	25%	27%	27%	20%	26%

Purchaser: _____ Price: \$ _____





DIAMOND H X325 (P)

TATTOO: X325

STUD BOOK No.: DIA20FX325

BORN: 14/10/19

23 months



YARRAWONGA VALID
GLENN OAKS FLEETWOOD F27 (PS)
GLENN OAKS C63 (P)

SIRE: WAVE HILL JACKAL J98 (P)

WAVE HILL ARNIE
WAVE HILL E155
WAVE HILL Y18 (P)

WAVE HILL Z146 (P)
HARDIGREEN PARK LAWYER
HARDIGREEN PARK B705 (P)

DAM: DIAMOND H Q084

GILLESPIE L61
DIAMOND H L083
DIAMOND H 291



Has been prepared solely on our oats crop.

Purchaser: _____ Price: \$ _____



DIAMOND H X327 (P)

TATTOO: X327

STUD BOOK No.: DIA20FX327

BORN: 10/11/19

22 months

YARRAWONGA VALID
GLENN OAKS FLEETWOOD F27 (PS)
GLENN OAKS C63 (P)

SIRE: WAVE HILL JACKAL J98 (P)

WAVE HILL ARNIE
WAVE HILL E155
WAVE HILL Y18 (P)

WAVE HILL Z146 (P)
HARDIGREEN PARK LAWYER
HARDIGREEN PARK B705 (P)

DAM: DIAMOND H R267 (AI)(P)

DIAMOND H GENERAL (P)
DIAMOND H L060 (P)
DIAMOND H CHARIS

*Has been prepared solely on
our oats crop.*



Purchaser: _____ Price: \$ _____





DIAMOND H XENA X275 (P)

TATTOO: X275

STUD BOOK No.: DIA20FX275

BORN: 4/12/19

21 months



YULGILBAR DROVER D234 (AI)(P)
MUNNABAH IRONMAN 960 (P)
MUNNABAH 597

SIRE: GLENN OAKS NAKURU N53 (PS)

MULTIPLE SIRE
GLENN OAKS D73
MULTIPLE DAM

WAVE HILL Z146 (P)
HARDIGREEN PARK LAWYER
HARDIGREEN PARK B705 (P)

DAM: DIAMOND H O163

GILLESPIE L61
DIAMOND H L084
DIAMOND H 281 (P)



Has been prepared solely on our oats crop.

Purchaser: _____ Price: \$ _____



GLENN OAKS R65 (P)

TATTOO: R65

STUD BOOK No.: GLO20FR65

BORN: 10/12/19

21 months



GLENN OAKS BRAVEHEART
 WARENDA EQUADOR (P)
 WARENDA N41 (P)
SIRE: DIAMOND H RENEGADE R47 (P)
 DIAMOND H GENERAL (P)
 DIAMOND H N036
 DIAMOND H 288
 MULTIPLE SIRE
 WACO H1304
 MULTIPLE DAM
DAM: GLENN OAKS L8
 NARGANOO OVATION (P)
 WACO A493
 WACO W119



Has been prepared solely on our oats crop.

Purchaser: _____ Price: \$ _____



KILLARNEY CO-OP.

Killarney Co-operative Limited

Phone 07 4664 1188

Fax 07 4664 1377

www.killarneycoop.com

Community owned: Profits returned to shareholders



For all your stockfeed requirements.



24 HOUR FUEL





DIAMOND H XENI X322 (P)

TATTOO: X322

STUD BOOK No.: DIA20FX322

BORN: 4/2/20

19 months



YARRAWONGA VALID
GLENN OAKS FLEETWOOD F27 (PS)
GLENN OAKS C63 (P)

SIRE: WAVE HILL JACKAL J98 (P)

WAVE HILL ARNIE
WAVE HILL E155
WAVE HILL Y18 (P)

WAVE HILL Z146 (P)
HARDIGREEN PARK LAWYER
HARDIGREEN PARK B705 (P)

DAM: DIAMOND H P027 (P)

GILLESPIE L61
DIAMOND H L100
DIAMOND H DELLEY



Will be shown at the 2021 Ekka.

Purchaser: _____ Price: \$ _____



GLENN OAKS RAFFI R91 (P)

TATTOO: R91

STUD BOOK No.: GLO20FR91

BORN: 20/2/20

19 months



MULTIPLE SIRE

SIRE: YARRAWONGA N672 (P)

MULTIPLE DAM

YARRAWONGA YEMEN
YARRAWONGA J134 (ET)(P)
YARRAWONGA YAYA (ET)(P)

DAM: GLENN OAKS M97 (P)

GLENN OAKS G136



Was entered for the 2021 Ekka but was withdrawn due to our reduction in numbers because of COVID-19.

Purchaser: _____ Price: \$ _____



GLENN OAKS R209 (P)

TATTOO: **R209**

STUD BOOK No.: **GLO20FR209**

BORN: **29/2/20**

19 months

GLENN OAKS BRAVEHEART
 WARENDA EQUADOR (P)
 WARENDA N41 (P)
SIRE: DIAMOND H RENEGADE R47 (P)
 DIAMOND H GENERAL (P)
 DIAMOND H N036
 DIAMOND H 288
 WACO SAMSON
 YARRAWONGA ARCHER G280
 YARRAWONGA A21 (ET)(PS)
DAM: GLENN OAKS K117
 KENDARA SANDMAN 3701
 GLENN OAKS C62
 KELLY WALLAH T51

Has been prepared solely on our oats crop.



Purchaser: _____ Price: \$ _____



GLENN OAKS R33 (P)

TATTOO: **R33**

STUD BOOK No.: **GLO20FR33**

BORN: **15/3/20**

18 months

MULTIPLE SIRE
SIRE: WACO ATTORNEY F678
 MULTIPLE DAM
 WACO BWANA
 YARRAWONGA HONDURAS
 YARRAWONGA E380 (ET)
DAM: NORALLA 737
 SWAN HILL BANCROFT 5189
 NORALLA 509
 NORALLA 231

Has been prepared solely on our oats crop.



Purchaser: _____ Price: \$ _____





GOOLAGONG RULA R29 (AI)(P)

TATTOO: R29

STUD BOOK No.: GOO20FR29

BORN: 29/3/20

18 months



WARENDA REQUIRE (PS)
 WARENDA CHARLTON (PS)
 WARENDA R121
SIRE: WARENDA KILIMANJARO K4 (P)
 WAVE HILL ARNIE
 WARENDA E71 (P)
 WARENDA S113 (P)
 DIAMOND H LEGEND (P)
 GLENN OAKS JUMBO BWANA J26 (P)
 GLENN OAKS B53
DAM: GOOLAGONG N194 (ET)(AI)(P)
 WACO VOLUME (P)
 GOOLAGONG H5
 GOOLAGONG E039 (P)



Has been prepared solely on our oats crop.

	200D WT	400D WT	600D WT	MAT COW WT	MILK	SCROTAL SIZE
EBV	+9	+16	+25			
ACC	55%	47%	49%			

Purchaser: _____ Price: \$ _____



GOOLAGONG REIGN R28 (AI)(P)

TATTOO: R28

STUD BOOK No.: GOO20FR28

BORN: 29/3/20

18 months



CARDONA MAMBO M33 (P)
 CARDONA PERFECTO P55 (P)
 CARDONA GLITTER M232 (P)
SIRE: GOOLAGONG NITRO N256 (ET)(AI)(P)
 WACO VOLUME (P)
 GOOLAGONG H5
 GOOLAGONG E039 (P)

WACO YALE E880 (P)
 WACO EMPEROR K512 (P)
 WACO D579
DAM: GOOLAGONG M138 (ET)(AI)(P)
 YARRAWONGA YOUTUBE (P)
 GOOLAGONG KANDI K19 (AI)
 GOOLAGONG D11 (P)



Will be shown at the 2021 Ekka.

	200D WT	400D WT	600D WT	MAT COW WT	MILK	SCROTAL SIZE
EBV	+19	+24	+32			
ACC	52%	41%	44%			

Purchaser: _____ Price: \$ _____



GOOLAGONG RAVEN R61 (P)

TATTOO: R61

STUD BOOK No.: GOO20FR61

BORN: 4/5/20

16 months



CARDONA MAMBO M33 (P)
 CARDONA PERFECTO P55 (P)
 CARDONA GLITTER M232 (P)
SIRE: GOOLAGONG N188 (AI)(P)
 YARRAWONGA YOUTUBE (P)
 GOOLAGONG H49 (AI)
 GOOLAGONG B61
 YARRAWONGA VERSATILE (PS)
 YARRAWONGA AVENGER G300 (PS)
 YARRAWONGA SPRITELY (ET)(P)
DAM: GOOLAGONG L7 (AI)(P)
 WACO VOLUME (P)
 GOOLAGONG F055
 GOOLAGONG C21



Will be shown at the 2021 Ekka.

	200D WT	400D WT	600D WT	MAT COW WT	MILK	SCROTAL SIZE
EBV	+11	+17	+22			
ACC	54%	44%	46%			

Purchaser: _____ Price: \$ _____



GOOLAGONG REGAN R69 (P)

TATTOO: **R69**

STUD BOOK No.: **GOO20FR69**

BORN: **27/5/20**

16 months

CARDONA MAMBO M33 (P)
 CARDONA PERFECTO P55 (P)
 CARDONA GLITTER M232 (P)
SIRE: GOOLAGONG N188 (AI)(P)
 YARRAWONGA YOUTUBE (P)
 GOOLAGONG H49 (AI)
 GOOLAGONG B61
 WACO YALE E880 (P)
 WACO EMPEROR K512 (P)
 WACO D579
DAM: GOOLAGONG N37 (P)
 WACO ZEUS
 GOOLAGONG L5 (AI)(P)
 GOOLAGONG ETHEL (P)

Has been prepared solely on our oats crop.



	200D WT	400D WT	600D WT	MAT COW WT	MILK	SCROTAL SIZE
EBV	+10	+15	+18			
ACC	51%	41%	43%			

Purchaser: _____ Price: \$ _____





Sale Summary

No.	Description	Total Sold	Average	Top Price
	Led Bulls			
	Unled Bulls			
	TOTAL BULLS			
	Females			
	GROSS			

Thank You

**Thank you for supporting our
16th Santa Central Sale at "Headingly".
We sincerely hope you have enjoyed your day.
Wishing you a safe journey home.**



Donni MacCue
Event Coordinator

Proud sponsor of the 2021 **Santa Central Bull Sale**



Call your local Toowoomba team
on **07 4642 0400**





Buyer Instruction Slip – Santa Central Sale 14/09/2021

NO VERBAL INSTRUCTIONS CAN BE ACCEPTED

Bid Card No..... PIC.....

Name.....

Address.....

Contact Person.....

Phone/s.....

Email.....

Lots Purchased..... Total.....

DELIVERY

Destination.....

Delivery Date.....

Transport Arrangements (include Carriers Name).....

Further Instructions:

Stud Name (if transfer is required)..... Stud No.....

Insurance (state period).....

Signature..... Date.....

Parklyon Hay Supplies



- Oaten, wheaten and barley hay and barley straw HD 8 x 4 x 3
- Lucerne 8 x 4 x 3
- Small squares lucerne and cereal Bale Baron packs
- Freight available NSW QLD NT

CRT139253AA

PHONE LIAM LYONS 0417 972 164
liamlyons@bigpond.com



VENDOR	CONTACT DETAILS	LOT NUMBERS
BULLAMAKINKA	Craig Hindle 0427 036 052	10, 13, 16, 17, 23, 26, 30, 53, 55, 58, 60, 64, 68, 70, 78, 89, 90, 91, 93, 96, 97, 98, 103, 104, 109, 113, 114, 115, 125
DIAMOND H	Shane Hatton 0427 693 237	14, 28, 29, 31, 32, 34, 35, 36, 37, 39, 40, 41, 65, 69, 71, 73, 74, 75, 85, 87, 88, 94, 105, 106, 107, 111, 112, 131, 132, 133, 135
GLENALBYN	Howard Courts 0427 747 517	6, 11, 12
GLENN OAKS	Scott & Wendy Ferguson 0407 645 917	1, 15, 19, 20, 24, 42, 61, 76, 79, 80, 81, 82, 83, 84, 99, 101, 108, 110, 117, 118, 119, 121, 122, 123, 124, 127, 134, 136, 137, 138
GOOLAGONG	Heath Tiller 0418 859 361	2, 33, 38, 43, 128, 130, 139, 140, 141, 142
HARDIGREEN PARK	Moreton Rolfe 02 9908 1469	45, 54, 59, 63, 72
JARRAH PARK	Michael & Danielle MacCue 0409 785 301	52, 56
KILCOCK	Mark Daly – 0417 345 873 Matt Way – 0457 584 509	22, 100, 102
MUNNABAH	Tom & Anna Dunlop 0408 264 302	3, 5, 7, 44, 46, 47, 48, 49, 66, 77
RESTDOWN	Jacob Ryan 0438 841 411	27, 116
TOOKEY CREEK	Ian & Louise MacCue 0428 937 466	4, 9, 21, 50, 51, 126, 129
WARENDA	Sylvia Kirkby 0428 922 099	8, 18, 25, 57, 62, 67, 86, 92, 95
WAVE HILL	Scott & Wendy Ferguson 0407 645 917	120

