



**Minnamurra  
Speckle Park**



# **SPECKLE PARK SALE**

**Bred for Quality & Performance**

**60 Purebred Speckle Park Bulls**

25 two-year-old bulls and 35 yearling bulls

Also 4 tropical cross-bred Speckle bulls

**Friday 3rd September, 2021 - 1pm**

'Mount Mill', Coolah Creek Rd, Coolah NSW

Bid live on AuctionsPlus

[www.minnamurra.com.au](http://www.minnamurra.com.au)

# WELCOME

Welcome to Minnamurra's seventh Speckle Park sale. All the indications are for another good season ahead; over the last ten years it has been rare to have two good seasons in row. Coupled with this, the cattle market is booming, with the EYCI touching ten dollars last week. It augurs well for a rosy future in agriculture, particularly for Speckle Park cattle, and gives buyers confidence to choose from amongst the better bloodlines in the breed.

We are very happy with our lineup of bulls this year, with 87% of the draft recording at least one EBV trait in the top 10% of the breed, reflecting favorably the depth of our female herd and the consistency of our breeding program over the last 10 years. All our 2-year-old bulls have been ability tested over a mob of our commercial heifers last November, with a pleasing 85% calving rate over just a short joining period. The R bulls have been raised purely on pastures, supplemented in the last few months with some oats, and are showing a good even line across the whole draft. This is the first offer of Rawhide sons in Australia. We are extremely pleased with his progeny to date and their scans, and have been confident to use him over both heifers and cows. Our Crusader 025C calves have hit the ground this year too and we are waiting to see how they grow out. We have a number of new sires in the pipeline and have also started to cull our female herd heavily over the last two years, only retaining those that conform in type, fertility and calving ease to produce bulls suited to commercial cattle breeders in Australia. We are excited about our future path and the success of the Speckle Park breed.

Our breeding program was again vindicated in the ANZ National Beef Competition at Beef Week in Rockhampton in May this year where two pens of Minnamurra Speckle F1 steers finished fifth and eighth in the Grain Fed Export Class. The competition drew entrants from all over Australia, and considering these steers had done it tough during the drought, to finish within 2 points of the leaders, out of 300 points, was a great endorsement for our genetics.

For those unable to make it to Coolah for the sale this year due to COVID or travel restrictions, videos of all lots are available on our website or via the QR code on the back cover, and there will be audio in real time on AuctionsPlus for you to bid live. And note the freight offer for interstate buyers. Thankyou for your support, stay safe, and I wish you well with your bidding.



# SALE INFORMATION

## GETTING THERE

"Mount Mill" is situated 10km from Coolah, NSW. See page 71 for map & accomodation details. Sale starts at 1pm.

## COVID RESTRICTIONS

The sale will be run in accordance with NSW Covid-19 protocols. Everyone will be required to register their name and contact phone number on arrival; face masks and hand gel will be available on site. There is plenty of room in the sale arena to practise social distancing. If you are unwell please do not attend. You will be able to bid online on AuctionsPlus.

## PHONE BIDDING

Contact Agents 24 hours prior to sale.

## SELLING SYSTEM AND BUYER'S REGISTRATION

All lots will be sold subject to the usual terms and conditions governing auction sales. Intending purchasers should obtain a Buyer's Number and registration slip available from the selling agents prior to the sale.

## THE MINNAMURRA GUARANTEE

Any Minnamurra Speckle Park bull that proves to be structurally unsound, infertile or incapable of service is guaranteed for up to 6 months from date of sale.

Under these circumstances Minnamurra will replace the bull with a satisfactory substitute if available or issue a refund equal to the purchase price, less the salvage value.

The guarantee covers the purchase value of the bull, without interest, cost and damages. The guarantee shall apply providing the bull's incapacity is not caused by injury or disease contracted since leaving the sale. A veterinary certificate must be supplied by the purchaser on request.

If any bull that is purchased does not possess a reasonable fertility, although not totally infertile, any dispute that may arise will be settled by an arbitrator appointed by the auctioneers and must be lodged within 6 calendar months from date of sale.

We recommend that all purchasers discuss injury insurance of their bulls at the sale with Elders Ltd or their Agent. This guarantee is in addition to the normal terms and conditions governing auction sales.

## HEALTH TREATMENTS

**All the sale bulls have been tested negative to Pestivirus and have been vaccinated for ticks and Vibriosis prior to sale, allowing access to Qld.**

We recommend annual boosters be given to all bulls. All of our bulls receive 5-in-1 vaccinations at three-months of age, six weeks later and a booster as a yearling. All animals are drenched at weaning and periodically according to worm counts. Minnamurra has J Bas 7 Johnes status.

## VET CHECK

All Minnamurra bulls were examined by Dr Chris Hallet prior to sale day which included palpation of the sexual anatomy, semen testing, sperm morphology and pestivirus DNA testing, as well as physical examination of their structure and feet. All 'Q' bulls were ability tested in a 6 week joining period over commercial heifers in Nov/Dec last year.

Stress, transport and nutritional changes can affect a bull's semen cycle for up to 70 days. If you move your bull to a completely different environment, we strongly recommend you do your own fertility examination prior to use. Similar precautions should be exercised prior to drawing a bull.

## FREIGHT

All bulls must be transported from Mount Mill by sundown Sunday. However, if Covid transport restrictions prevent buyers meeting this deadline, Minnamurra will agist bulls for up to three months at a rate of \$7.50 per head per week until restrictions are lifted. Formal possession, risk and expenses passes to the buyer at the fall of the hammer. Minnamurra can arrange transport through, and recommends, Dick Smith Transport.

**For interstate buyers, Minnamurra will arrange and cover freight costs as far as the Qld or Vic border.**

Contact Steven Smith on 02 6882 2463 or mobile 0428 636 236.

## **FEED REGIME**

All the bulls were reared on improved green pastures and hay from birth. They have had access to oats in paddock feeders for the last 3 months.

## **SCAN DATA & EBV's**

All bulls were scanned on 21st June, and their data submitted to Breedplan for EBV determination. They will be scanned again two weeks prior to the sale and the raw data will be available on the supplementary sheet on sale day, including scan data for the unregistered bulls.

**NB: EBVs in the top 10% or better of the Speckle breed are highlighted with green shading; EBVs above the breed average (B.Av) are highlighted in red.**

## **GENETIC TESTING**

All purebred bulls in this catalogue have been DNA verified for parentage except for the red coated bulls that are excluded from registration. (These have been marked in the catalogue as unregistered and are being sold as commercial bulls only). All purebred animals have been tested for poll, coat and myostatin. Bulls have also been tested for Leptin (tenderness). Results are recorded against each animal as follows:

### **DNA TEST DATA:**

Key codes to the DNA tests shown against each lot in the catalogue are as follows:

P:C	Carries one horn gene
P:F	Free of the horn gene
P:-	Not tested
R:C	Carries one red gene
R:F	Free of the red gene
R:N	No result returned
M:C	Carries one myostatin gene
M:F	Free of the myostatin gene
L: C/C	Unmutated leptin genes
L: C/T	One mutated leptin gene
L: T/T	Two mutated leptin genes

## **SEMEN RIGHTS**

Minnamurra retains the semen rights for in-herd use only in a number of bulls in this catalogue, as noted under the lot number. If the right to collect semen is exercised, Minnamurra will consult with the new owner of the bull to arrange a convenient time for collection, with the cost of collection being paid for by Minnamurra.

## **PRE SALE INSPECTION**

Bulls will be available for inspection from 8am on the morning of the sale. They will be moved into the sale arena and yarded at 11am. Inspections are welcome at other times by arrangement.

## **SUPPLEMENTARY SHEET**

Updated weights, scans or any other new or relevant information will be available on sale day.

## **CATERING**

Morning tea and lunch will be provided at the sale.

## **MOBILE RECEPTION**

Optus service is good, but Telstra service is patchy. Wi-Fi will be available in the sales arena, so Telstra phones can be used if Wi-Fi calling is activated.

## **NO VERBAL INSTRUCTIONS**

Please fill out the buyer's instruction sheet available on sale day from the office.

## **AGENT'S REBATE**

A 2% rebate will be paid to all settling agents who accompany their clients on sale day or who introduce their clients in writing by fax or email at least 24 hours prior to the sale to Elders Tamworth (contacts@elders.com.au).

## **GST**

Bulls will be sold GST exclusive i.e. If the bull is knocked down for \$5,000, you will be charged \$5,500.

The sale is interfaced with AuctionsPlus and will be conducted live on line in real time. For those not able to attend the sale, new users must register 24 hours prior to the sale in order to bid. Full instructions are on the AuctionsPlus website. Note that transport must be organised sale day.

**For further information contact:**

Jon Goudge 0428 668 005  
 jon.goudge@elders.com.au  
 www.auctionsplus.com.au

**SELLING AGENTS**

**Elders Tamworth :-**

Settling Agents.....02 6765 3900  
 Jon Goudge.....0428 668 005  
 Nathan McConnell .....0429 653 901  
 Brian Kennedy .....0427 844 047  
 Paul Jameson .....0428 667 998  
 Lincoln McKinlay .....0419 239 963

**AUCTIONEER**

Paul Dooley..... 0458 662 646

**LIVESTOCK CONSULTANT**

Andrew Hosken.....0429 657 765

**SETTLING YOUR BULLS IN**

We strongly recommend that you have some other cattle in the yards to welcome your new addition. All our bulls have been running in their contemporary groups since birth, so it can be quite distressing for them to be left in a yard by themselves after being trucked. We can assure you that our bulls are handled extensively with low stress practices prior to sale - everything from vaccinations, being washed 3 times (photos, videos and pre-sale), fertility testing, scanning, branding, etc. Also, when cataloguing, we put each bull by himself to ensure his temperament is sound. Despite this we still find that the odd bull will fire up when he reaches his new home. There is a subtle difference between a bull that is frightened and trying to defend himself, and one that is straight out aggressive. Despite our best efforts to deliver you a nice quite bull, we still have the odd one that doesn't want to play the game. If this does happen, we are truly sorry, but please don't hesitate to get in touch with us so we can resolve the problem.

Note that yearling bulls i.e., our 'R' bulls, should be depastured with no more than 20 cows for their first joining, until they have fully matured.

**Please bring this Catalogue to the Sale**

*DISCLAIMER: Minnamurra Pastoral Company, the selling agents, officers, agents and employees, while exercising due care, provide all information without responsibility and do not warrant its accuracy. They also accept no responsibility for accidents that occur on or about the venue. You attend the venue and the sale at your own risk.*



*Minnamurra Staff at our 2020 Spring Sale.*

## REFERENCE SIRE:

### JSF REDNECK WHISKEY 4B

Whiskey was sashed Junior Champion at Agribition in 2015, where we purchased a major share in him with Johner Stock Farm in Canada, and are delighted with his progeny. He is putting a beautiful head and shoulders on all his calves, while under the skin the marbling and eye muscle development is extraordinary. This bull is doing great things for the breed.

REDNECK WILD WILLY 2W

**SIRE: REDNECK FERDINAND 14Y**

REDNECK REDNECK U ALMOST FROZE

REDNECK REDNECK TEDDY 5T

**DAM: REDNECK WHISKEY 7W**

REDNECK REDNECK SCARLET 1S



	GL	BW	200	400	600	MCW	Milk	SS	CWT	EMA	RIB	RUMP	RBY	IMF
EBV	-2.3	-0.3	+14	+31	+30	+35	+2	+0.9	+15	+0.1	+4.9	+6.8	-4.1	+1.1
ACC	85%	95%	93%	93%	94%	78%	57%	93%	81%	69%	81%	80%	79%	74%

### UPTO SPECS ULYSSES 25U

A well-structured long bodied bull valued for his longevity and soundness. His semen has been used extensively around the world with proven results.

SPRUCE LANE VENTURE 3J

**SIRE: RAVEN MEADOWS MAGNUM 10N**

PARKLANDS PARKLAND 10J

THUNDER 1C

**DAM: PRAIRIE HILL REBA 154F**

SPOTS 'N SPROUTS 1D



	GL	BW	200	400	600	MCW	Milk	SS	CWT	EMA	RIB	RUMP	RBY	IMF
EBV	+2.1	+3.6	+17	+27	+36	+37	+1	+1.4	+17	+0.8	+0.7	+0.9	-0.4	+0.0
ACC	66%	94%	90%	88%	88%	74%	43%	85%	76%	61%	73%	73%	71%	67%

### DOUBLE S JSF RAWHIDE 260D

One of the newer sires in the Minnamurra stable, Rawhide is maturing into great bull, similar to Whiskey. His calves that have dropped so far are low birth weight and easy out. We are very excited about this bull.

P.A.R. LITTLE TNT 88W

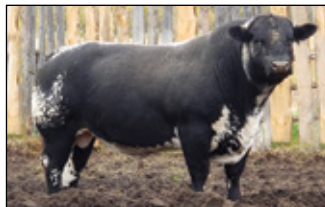
**SIRE: P.A.R. ASCAPE 89A**

P.A.R. MONALISA 89X

UNEEDA WONDERBAR 05W

**DAM: UNEEDA YASEMIN 260Y**

UNEEDA UNA 60U



	GL	BW	200	400	600	MCW	Milk	SS	CWT	EMA	RIB	RUMP	RBY	IMF
EBV	+1.0	+0.8	+10	+11	+11	+6	+0	-0.8	+13	+1.3	+0.3	+0.2	+0.5	-0.2
ACC	75%	88%	79%	76%	73%	54%	0%	71%	59%	43%	56%	56%	53%	48%

## BIG STAR MAVRICK M12

We purchased Mavrick in 2018 as a cover bull for our AI program and we couldn't be happier with the way he has grown out into a complete well-balanced bull. He's long, thick all the way through, has a great temperament and moves really well.

A & W 15R

**SIRE: WATTLE GROVE RANSOM**

WATTLE GROVE MISS WATTLE E3

RIVER HILL TRAFFIC JAM 26T

**DAM: WATTLE GROVE 26T TRUDIE F99**

ROB 'N SON'S FARMS 10N



	GL	BW	200	400	600	MCW	Milk	SS	CWT	EMA	RIB	RUMP	RBY	IMF
EBV	+1.9	+3.1	+16	+23	+41	+45	+4	+0.3	+22	+0.9	-0.4	-0.6	+0.6	+0.1
ACC	55%	86%	79%	78%	77%	62%	47%	70%	64%	49%	61%	61%	58%	53%

## JACKUNGAH NATE N08 (AI)

Nate is a true JSF Trade Secret son, a very thick, long, moderate framed bull with a good temperament, chosen as a cover bull for our AI program. Trade Secret has proven himself all around the world and we are please to have this exceptional son in our program.

REDNECK YOGI GOES REDNECK

**SIRE: JOHNER STOCK FARM TRADE SECRET 11A**

MONNERY RIVER 7W

HWY.4 SPECKLE PARK 2H

**DAM: WATTLE GROVE SPARKLE E31**

CODIAK PRAIRIE FIRE 01J



	GL	BW	200	400	600	MCW	Milk	SS	CWT	EMA	RIB	RUMP	RBY	IMF
EBV	-2.9	-0.1	+13	+25	+29	+29	+1	+1.2	+18	-0.2	-0.2	-0.4	-0.1	-0.1
ACC	54%	81%	75%	72%	69%	54%	33%	73%	59%	49%	56%	56%	54%	46%

## JAD NOSEY JACK N13 (ET)

Nosey Jack was bought as a cover bull, but we couldn't be happier with the way he has grown out into a big, large framed Lacerta bull, with length, depth and a great temperament. A very handy addition to our stable of sires that we intend to use extensively.

SPOTS 'N SPROUTS JUNO 103J

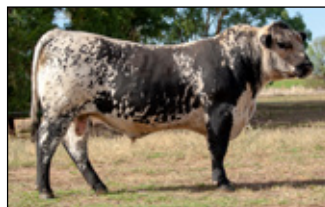
**SIRE: STAR BANK LACERTA 68L**

STAR BANK 55H

RIVER HILL TRAFFIC JAM 26T

**DAM: RIVER HILL 26T WHISTLER 38W**

RIVER HILL TEASHER 38T



	GL	BW	200	400	600	MCW	Milk	SS	CWT	EMA	RIB	RUMP	RBY	IMF
EBV	+0.4	+3.0	+23	+42	+52	+46	+6	+0.2	+33	+1.8	-1.2	-1.8	+1.2	-0.3
ACC	59%	81%	77%	75%	75%	64%	51%	77%	66%	55%	62%	62%	60%	53%

## MINNAMURRA NIGHTHAWK N112 (ET)

Nighthawk was the pick of our 2017 calf drop and we are extremely pleased that we retained him for a cover bull in our AI program. He has grown out to be a real Whiskey son, a moderate framed meaty bull with a good temperament. We have used him over heifers with no trouble. His dam is out of the exceptional Codiak Unique 8R bloodline, the cross with Whiskey that has proved so successful. We plan to use this sire extensively in the future.

REDNECK FERDINAND 14Y

**SIRE: REDNECK JSF WHISKEY 4B**

REDNECK WHISKEY 7W

SPOTS 'N SPROUTS STANDS ALONE 300X

**DAM: MINNAMURRA 300X UNIQUE J83**

CODIAK UNIQUE 8R

	GL	BW	200	400	600	MCW	Milk	SS	CWT	EMA	RIB	RUMP	RBY	IMF
EBV	-1.2	+1.1	+18	+36	+45	+56	+3	+1.2	+25	+0.5	+3.3	+4.4	-2.5	+0.9
ACC	61%	84%	77%	75%	73%	61%	44%	73%	63%	55%	62%	62%	61%	55%

## JACKUNGAH MONEY MAKER M07 (ET)

Money Maker was bought as a cover bull for our AI program, and has grown into a big, large framed Eldorado bull, with length, depth and a great temperament. We are now using him as a regular paddock bull with his own cows, outside of the AI program.

HWY.4 SPECKLE PARK 2H

**SIRE: MAINSTREAM ELDORADO E11**

SPOTS 'N SPROUTS 3K

RIVERINA 82U ROMNEY G306

**DAM: JACKUNGAH KODA K01**

SIX STAR 50S EILEEN D102

	GL	BW	200	400	600	MCW	Milk	SS	CWT	EMA	RIB	RUMP	RBY	IMF
EBV	+1.0	+3.2	+16	+20	+30	+30	+5	+0.1	+14	+0.8	+0.4	+0.5	+0.0	+0.0
ACC	49%	71%	63%	59%	59%	49%	46%	44%	48%	36%	44%	44%	42%	38%

## RIVER HILL CRUSADER 025C

Crusader was the standout bull at the 2016 Summit 3 Sale in Canada and the highest priced Speckle bull at the time. He is a well muscled and well covered bull with great carcass attributes. His first calves are only 6 months old and yet to develop, but we have great hopes for this sire.

P.A.R. MOO FASSA 03M

**SIRE: RIVER HILL TOUCHDOWN 50T**

PRAIRIE HILL NABOB 50N

RIVER HILL TRAFFIC JAM 26T

**DAM: RIVER HILL ALYNDA 025A**

PURA VIDA YORBALINDA 25Y

	GL	BW	200	400	600	MCW	Milk	SS	CWT	EMA	RIB	RUMP	RBY	IMF
EBV	+0.5	+1.4	+13	+20	+23	+20	+4	+0.0	+14	+0.4	+0.3	+0.3	-0.4	+0.1
ACC	56%	71%	59%	52%	54%	43%	32%	32%	38%	27%	32%	32%	31%	28%



# EBV PERCENTILES

## Speckle Park - Percentile EBV Bands for 2019 Born Calves

Percentile Band	Gestation Length (days)	Birth Wt (kg)	200 Day Wt (kg)	400 Day Wt (kg)	600 Day Wt (kg)	Mat Cow Wt (kg)	Milk (kg)	Scrotal Size (cm)	Carcass Wt (kg)	Eye Muscle Area (sq cm)	Rib Fat (mm)	Rump Fat (mm)	Retail Beef Yield (%)	IMF (%)
Top Value	-4.2	-3.1	44	60	80	78	10	1.9	48	2.5	5.4	7.4	2	1.3
Top 1%	-2.7	-1.4	28	42	58	62	7	1.3	35	1.8	2.8	3.8	1.5	0.9
Top 5%	-1.6	-0.3	24	36	49	52	7	0.8	29	1.4	1.2	1.6	1.1	0.6
Top 10%	-1.1	0.2	22	33	45	47	6	0.7	27	1.2	0.8	1	0.9	0.4
Top 15%	-0.8	0.5	20	31	42	44	5	0.6	25	1.1	0.6	0.7	0.7	0.3
Top 20%	-0.6	0.7	19	29	40	41	5	0.5	23	1	0.5	0.5	0.6	0.2
Top 25%	-0.5	0.9	18	27	37	39	5	0.4	22	0.9	0.4	0.4	0.5	0.2
Top 30%	-0.3	1	17	25	35	37	4	0.4	21	0.8	0.3	0.3	0.4	0.1
Top 35%	-0.2	1.2	16	24	33	35	4	0.3	20	0.8	0.2	0.2	0.4	0.1
Top 40%	-0.1	1.3	15	23	32	33	4	0.3	19	0.7	0.1	0.1	0.3	0
Top 45%	-0.1	1.4	15	22	30	32	4	0.2	18	0.6	0.1	0	0.2	0
Top 50%	0	1.6	14	21	29	30	3	0.2	17	0.6	0	-0.1	0.1	0
Top 55%	0.2	1.7	13	20	28	29	3	0.1	16	0.5	-0.1	-0.2	0	0
Top 60%	0.3	1.8	13	19	27	27	3	0.1	15	0.5	-0.1	-0.3	0	-0.1
Top 65%	0.4	2	12	18	25	26	3	0	15	0.4	-0.2	-0.4	-0.1	-0.1
Top 70%	0.5	2.1	11	17	24	25	3	0	14	0.3	-0.3	-0.5	-0.2	-0.2
Top 75%	0.6	2.3	10	16	22	23	2	-0.1	13	0.3	-0.4	-0.6	-0.3	-0.2
Top 80%	0.7	2.5	9	15	20	21	2	-0.1	12	0.2	-0.5	-0.8	-0.4	-0.3
Top 85%	0.9	2.8	9	13	19	19	2	-0.2	10	0.1	-0.6	-0.9	-0.5	-0.3
Top 90%	1.1	3.1	7	11	16	16	1	-0.3	9	-0.1	-0.7	-1.1	-0.8	-0.4
Top 95%	1.4	3.6	5	8	11	11	0	-0.5	6	-0.3	-1	-1.4	-1.1	-0.5
Top 99%	2.2	4.6	1	0	3	3	-1	-1	1	-0.6	-1.4	-2	-2.4	-0.7
Low Value	2.8	6.8	-11	-12	-16	-20	-3	-2.2	-3	-1.3	-2.1	-3	-4.1	-1.1

# DNA Sampling Simplified

TSU, paired to matching NLIS and Management tags, creating an absolute sample-to-animal linkage!

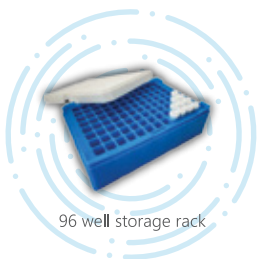


Allflex Livestock Intelligence

## Tissue Sampling Unit (TSU)

- Clean, uncontaminated testing, yielding excellent lab results.
- Easy-to-use; collect samples in seconds with a single-squeeze motion.

96-vial well plate protects samples and is compatible with testing laboratories systems.



96 well storage rack

Also available in bulk packs!



Bulk pack (100)

**Questions:** Call Wal White  
Area Sales Manager, Central NSW  
0438 560 272 or [contact@allflex.com.au](mailto:contact@allflex.com.au)



**Allflex**<sup>®</sup>  
Livestock Intelligence™



**Lot 1 MINNAMURRA QUIESSENCE Q75 (ET)**

**SIRE:** REDNECK FERDINAND 14Y Born: 22/8/2019  
**REDNECK JSF WHISKEY 4B** Colour: White  
 REDNECK WHISKEY 7W Identifier: MPC Q75  
 DNA Tests: P:F R:C M:F L:C/T  
 SPOTS 'N SPROUTS STANDS ALONE 300X  
**DAM:** MINNAMURRA 300X UNIQUE J83  
 CODIAK UNIQUE 8R \$ \_\_\_\_\_

July 2021 Speckle Park Group Breedplan

	Calving Ease		Growth & Maternal					Fertility		Carcase				
	GL	BW	200	400	600	MCW	Milk	SS	CWT	EMA	RIB	RUMP	RBV	IMF
EBV	-0.5	+1.9	+18	+34	+45	+56	+3	+1.3	+21	+0.6	+3.8	+5.2	-2.9	+1.0
ACC	59%	77%	74%	73%	74%	62%	44%	76%	64%	54%	62%	62%	60%	54%
B.Av	+0.0	+2	+14	+22	+30	+31	+4.0	+0	+18.0	+0.6	+0.1	+0.0	+0.1	+0.0

*The perfect bull to start this year's sale. A great combination of Whiskey and the Codiak Unique line, some of the most predictable genetics in the Speckle Park Breed. A complete, soft, easy doing bull who moves very efficiently for such a muscular bull.*



**Lot 2 MINNAMURRA QUANTOCK Q64 (ET)**

**SIRE:** REDNECK FERDINAND 14Y Born: 17/8/2019  
**REDNECK JSF WHISKEY 4B** Colour: White  
 REDNECK WHISKEY 7W Identifier: MPC Q64  
 DNA Tests: P:F R:C M:F L:C/T

SPOTS 'N SPROUTS STANDS ALONE 300X

**DAM:** MINNAMURRA 300X UNIQUE J83  
 CODIAK UNIQUE 8R \$ \_\_\_\_\_

July 2021 Speckle Park Group Breedplan

Calving Ease		Growth & Maternal						Fertility	Carcase					
	GL	BW	200	400	600	MCW	Milk	SS	CWT	EMA	RIB	RUMP	RBV	IMF
EBV	-1.2	+1.6	+22	+39	+51	+60	+3	+0.9	+26	+0.3	+3.3	+4.5	-2.6	+0.8
ACC	59%	77%	74%	73%	74%	62%	44%	76%	64%	54%	62%	62%	60%	54%
B.Av	+0.0	+2	+14	+22	+30	+31	+4.0	+0	+18.0	+0.6	+0.1	+0.0	+0.1	+0.0

*A full brother to Lot 1. A bigger, heavier bull with tremendous length of body. A wide muzzled, masculine sire who really stands out in this year's catalogue. Q64 is also a full brother to Minnamurra Nighthawk N112, who has been retained as a Minnamurra sire, and who has sons in this draft.*



**Lot 3 MINNAMURRA QUOTIDIAN Q76 (ET)**

**SIRE:** REDNECK FERDINAND 14Y Born: 23/8/2019  
**REDNECK JSF WHISKEY 4B** Colour: Speckled  
 REDNECK WHISKEY 7W Identifier: MPC Q76  
 DNA Tests: P:F R:C M:F L:C/C

RIVER HILL WALKER 60W  
**DAM: MINNAMURRA 60W PASSION STAR H3**  
 STYALS PASSION STAR 15P \$ \_\_\_\_\_

July 2021 Speckle Park Group Breedplan

Calving Ease		Growth & Maternal						Fertility		Carcase				
	GL	BW	200	400	600	MCW	Milk	SS	CWT	EMA	RIB	RUMP	RBY	IMF
EBV	-0.9	-0.3	+11	+24	+24	+21	+3	-0.2	+13	+0.3	+2.6	+3.5	-2.4	+0.5
ACC	57%	77%	73%	72%	73%	61%	41%	75%	63%	52%	61%	61%	59%	53%
B.Av	+0.0	+2	+14	+22	+30	+31	+4.0	+0	+18.0	+0.6	+0.1	+0.0	+0.1	+0.0

*A stylish, good fronted bull who always holds his head above his spine. Rare to find a bull with such width through the hindquarter with beautiful rein of neck and perfectly laid in shoulders.*



**Lot 4 MINNAMURRA QUADROON Q81 (ET)**

**SIRE:** REDNECK FERDINAND 14Y Born: 26/8/2019  
**REDNECK JSF WHISKEY 4B** Colour: White  
 REDNECK WHISKEY 7W Identifier: MPC Q81  
 DNA Tests: P:F R:C M:C L:C/C

**DAM:** RIVER HILL WALKER 60W  
**MINNAMURRA 60W PASSION STAR H3**  
 STYALS PASSION STAR 15P \$ \_\_\_\_\_

July 2021 Speckle Park Group Breedplan

Calving Ease		Growth & Maternal						Fertility		Carcase				
	GL	BW	200	400	600	MCW	Milk	SS	CWT	EMA	RIB	RUMP	RBY	IMF
EBV	-0.4	+1.8	+20	+36	+42	+42	+3	+0.3	+23	+0.6	+2.2	+2.9	-1.9	+0.4
ACC	57%	77%	73%	72%	73%	61%	41%	75%	63%	52%	61%	61%	59%	53%
B.Av	+0.0	+2	+14	+22	+30	+31	+4.0	+0	+18.0	+0.6	+0.1	+0.0	+0.1	+0.0

*A very soft, long bodied bull with excellent shape and expression through the hindquarter. One of the heaviest bulls in this catalogue with a good, quiet nature. Full brother to Lot 3.*



**Lot 5 MINNAMURRA QUESTACON Q39**

**SIRE:** WATTLE GROVE RANSOM H120 Born: 1/8/2019  
**BIG STAR MAVRICK M12** Colour: White  
 WATTLE GROVE 26T TRUDIE F99 Identifier: MPC Q39  
 DNA Tests: P:F R:C M:F L:C/T  
 SPOTS 'N SPROUTS STANDS ALONE 300X  
**DAM:** MINNAMURRA 300X JANETTE J23  
 P.A.R. JANETTE 44H \$ \_\_\_\_\_

July 2021 Speckle Park Group Breedplan

	Calving Ease		Growth & Maternal					Fertility	Carcase					
	GL	BW	200	400	600	MCW	Milk	SS	CWT	EMA	RIB	RUMP	RBY	IMF
EBV	-0.1	+1.0	+12	+21	+35	+39	+4	+1.0	+19	+0.7	-0.2	-0.4	+0.2	-0.1
ACC	49%	75%	71%	69%	70%	58%	40%	71%	59%	47%	56%	56%	53%	46%
B.Av	+0.0	+2	+14	+22	+30	+31	+4.0	+0	+18.0	+0.6	+0.1	+0.0	+0.1	+0.0

*A bull displaying excellent weight for age and softness. A strong, sirey headed bull with a lot of length from hip to pin, indicating good calving ease. One of the heaviest bulls in this catalogue and the first to be offered by our new sire Big Star Mavrack M12. A light birthweight bull (34kg) suitable for heifers.*



**Lot 6 MINNAMURRA QUILLON Q34**

**SIRE:** WATTLE GROVE RANSOM H120 Born: 20/7/2019  
**BIG STAR MAVRICK M12** Colour: White  
 WATTLE GROVE 26T TRUDIE F99 Identifier: MPC Q34  
 DNA Tests: P:F R:F M:F L:C/C  
 SPOTS 'N SPROUTS STANDS ALONE 300X  
**DAM:** MINNAMURRA 300X TORI J69  
 UPTO SPECS TORI 10T \$ \_\_\_\_\_

July 2021 Speckle Park Group Breedplan

Calving Ease		Growth & Maternal						Fertility		Carcase				
	GL	BW	200	400	600	MCW	Milk	SS	CWT	EMA	RIB	RUMP	RBV	IMF
EBV	+0.7	+2.4	+21	+29	+41	+44	+5	+0.4	+27	+1.0	-0.4	-0.6	+0.7	-0.1
ACC	47%	73%	68%	68%	69%	57%	40%	49%	58%	47%	56%	56%	53%	46%
B.Av	+0.0	+2	+14	+22	+30	+31	+4.0	+0	+18.0	+0.6	+0.1	+0.0	+0.1	+0.0

*A bigger framed, very long bodied bull who suits both domestic and export markets. A smooth shouldered, mid maturity bull with a lot of rein of neck and balance.*





**Lot 7 MINNAMURRA QUANGO Q68 (ET)**

**SIRE:** REDNECK FERDINAND 14Y Born: 20/8/2019  
**REDNECK JSF WHISKEY 4B** Colour: White  
 REDNECK WHISKEY 7W Identifier: MPC Q68  
 DNA Tests: P:F R:F M:C L:C/C

RIVER HILL WALKER 60W  
**DAM: MINNAMURRA 60W PASSION STAR H3**  
 STYALS PASSION STAR 15P \$ \_\_\_\_\_

July 2021 Speckle Park Group Breedplan

Calving Ease			Growth & Maternal					Fertility		Carcase				
	GL	BW	200	400	600	MCW	Milk	SS	CWT	EMA	RIB	RUMP	RBY	IMF
EBV	-1.0	+0.7	+18	+33	+37	+37	+3	-0.2	+24	+1.0	+2.3	+3.1	-1.6	+0.4
ACC	57%	77%	73%	72%	73%	61%	41%	75%	63%	52%	61%	61%	59%	53%
B.Av	+0.0	+2	+14	+22	+30	+31	+4.0	+0	+18.0	+0.6	+0.1	+0.0	+0.1	+0.0

*A soft easy doing, low birth weight bull with tremendous depth through the flank and twist. Lot 7 is one of those bulls who keeps catching your eye. Scanned extremely well across the board within his contemporary group. Full brother to Lots 3 & 4.*



**Lot 8 MINNAMURRA QUADRILLE Q66 (ET)**

**SIRE:** RAVEN MEADOWS MAGNUM 10N Born: 19/8/2019  
**UPTO SPECS ULYSSES 25U** Colour: Speckled  
 PRAIRIE HILL REBA 154F Identifier: MPC Q66  
 DNA Tests: P:F R:F M:F L:C/C

RIVER HILL SKIPPER 6S  
**DAM:** **SPOTS 'N SPROUTS 7W**  
 SPOTS 'N SPROUTS 7T \$ \_\_\_\_\_

July 2021 Speckle Park Group Breedplan

Calving Ease		Growth & Maternal						Fertility		Carcase				
	GL	BW	200	400	600	MCW	Milk	SS	CWT	EMA	RIB	RUMP	RBV	IMF
EBV	+0.6	+2.7	+18	+27	+34	+35	+2	+1.4	+16	+0.3	+0.6	+0.7	-0.6	+0.2
ACC	50%	78%	74%	72%	73%	59%	27%	75%	61%	49%	58%	57%	56%	49%
B.Av	+0.0	+2	+14	+22	+30	+31	+4.0	+0	+18.0	+0.6	+0.1	+0.0	+0.1	+0.0

*A very sound structured, moderate boned bull who carries muscle right along his top line. A Ulysses son who will breed high fertility and early sexual maturity in his daughters, a very high scrotal measurement.*



**Lot 9 MINNAMURRA QUADRATIC Q57 (ET)**

**SIRE:** REDNECK FERDINAND 14Y Born: 12/8/2019  
 REDNECK JSF WHISKEY 4B Colour: Speckled  
 REDNECK WHISKEY 7W Identifier: MPC Q57  
 DNA Tests: P:F R:C M:F L:C/C

SPOTS 'N SPROUTS STANDS ALONE 300X

**DAM:** MINNAMURRA 300X TORI J87  
 UPTO SPECS TORI 10T \$ \_\_\_\_\_

July 2021 Speckle Park Group Breedplan														
Calving Ease			Growth & Maternal					Fertility		Carcase				
	GL	BW	200	400	600	MCW	Milk	SS	CWT	EMA	RIB	RUMP	RBY	IMF
EBV	-1.9	-0.5	+13	+23	+27	+36	+3	+0.5	+17	+0.2	+3.4	+4.7	-2.7	+0.9
ACC	58%	77%	73%	69%	69%	57%	44%	61%	59%	47%	56%	56%	55%	52%
B.Av	+0.0	+2	+14	+22	+30	+31	+4.0	+0	+18.0	+0.6	+0.1	+0.0	+0.1	+0.0

*One of the lightest birthweight bulls to be offered this year. A very long bodied, sound shouldered, Whiskey son who will breed beautiful replacement females. Minnamurra have retained 10 daughters of J87 in their herd from this Whiskey/Stands Alone cross. Suitable for heifers.*



**Lot 10 MINNAMURRA QUARTERMAINE Q65 (ET)**

**SIRE:** REDNECK FERDINAND 14Y Born: 18/8/2019  
**REDNECK JSF WHISKEY 4B** Colour: Speckled  
 REDNECK WHISKEY 7W Identifier: MPC Q65  
 DNA Tests: P:F R:C M:F L:C/T

SPOTS 'N SPROUTS STANDS ALONE 300X

**DAM:** MINNAMURRA 300X JANETTE J23  
 P.A.R. JANETTE 44H \$ \_\_\_\_\_

July 2021 Speckle Park Group Breedplan

Calving Ease			Growth & Maternal					Fertility		Carcase				
	GL	BW	200	400	600	MCW	Milk	SS	CWT	EMA	RIB	RUMP	RBY	IMF
EBV	-1.6	+0.5	+15	+28	+30	+32	+4	+1.3	+16	+0.1	+2.3	+3.2	-2.0	+0.4
ACC	58%	77%	74%	73%	74%	62%	44%	76%	64%	53%	61%	61%	59%	53%
B.Av	+0.0	+2	+14	+22	+30	+31	+4.0	+0	+18.0	+0.6	+0.1	+0.0	+0.1	+0.0

*A similar type of bull to Lot 9. A very light birthweight bull with a lot of testicular development and moderate bone, which indicates good calving ease.*



**Lot 11 MINNAMURRA QUINTET Q42**

**SIRE:** WATTLE GROVE RANSOM H120 Born: 10/8/2019  
**BIG STAR MAVRICK M12** Colour: Leopard  
 WATTLE GROVE 26T TRUDIE F99 Identifier: MPC Q42  
 DNA Tests: P:F R:F M:F L:T/T  
 SPOTS 'N SPROUTS STANDS ALONE 300X  
**DAM:** MINNAMURRA 300X TORI J64  
 UPTO SPECS TORI 10T \$ \_\_\_\_\_

July 2021 Speckle Park Group Breedplan

Calving Ease			Growth & Maternal					Fertility		Carcase					
	GL	BW	200	400	600	MCW	Milk	SS	CWT	EMA	RIB	RUMP	RBY	IMF	
EBV	+1.7	+2.3	+12	+14	+26	<b>+33</b>	+3	<b>+0.4</b>	+13	+0.2	<b>+0.1</b>	<b>+0.0</b>	<b>+0.1</b>	<b>+0.0</b>	
ACC	48%	73%	69%	68%	69%	57%	40%	71%	58%	47%	56%	56%	53%	46%	
B.Av	+0.0	+2	+14	+22	+30	+31	+4.0	+0	+18.0	+0.6	+0.1	+0.0	+0.1	+0.0	

*A moderate framed, mid maturity bull with good softness and a lot of depth through the twist and flank. Lot 11 shows a lot of constitution with good heart room and carries a lot of carcase on a moderate frame.*



**Lot 12 MINNAMURRA QUINTUS Q48 (AI)**

**SIRE:** REDNECK FERDINAND 14Y Born: 4/9/2019  
**REDNECK JSF WHISKEY 4B** Colour: White  
 REDNECK WHISKEY 7W Identifier: MPC Q48  
 DNA Tests: P:F R:C M:F L:C/T

SPOTS 'N SPROUTS STANDS ALONE 300X

**DAM:** MINNAMURRA 300X UNIQUE J124  
 CODIAK UNIQUE 8R \$ \_\_\_\_\_

July 2021 Speckle Park Group Breedplan

Calving Ease		Growth & Maternal						Fertility	Carcase					
	GL	BW	200	400	600	MCW	Milk	SS	CWT	EMA	RIB	RUMP	RBY	IMF
EBV	-0.8	+2.3	+23	+39	+54	+59	+2	+0.5	+27	+0.4	+2.2	+3.0	-2.0	+0.7
ACC	63%	74%	69%	71%	72%	60%	43%	72%	62%	53%	61%	61%	59%	53%
B.Av	+0.0	+2	+14	+22	+30	+31	+4.0	+0	+18.0	+0.6	+0.1	+0.0	+0.1	+0.0

*A good natured, very wide thurled bull with a soft muscle pattern and not coarse in any way. A great predicable combination of genetics with Whiskey and Codiak Unique.*



**Lot 13 MINNAMURRA QUARTET Q45 (AI)**

**SIRE:** P.A.R. ASCAPE 89A Born: 31/8/2019  
**DOUBLE S JSF RAWHIDE 260D** Colour: Speckled  
 UNEEDA YASEMIN 260Y Identifier: MPC Q45  
 DNA Tests: P:F R:F M:F L:C/C

SIX STAR ROYAL FLESH 101Y  
**DAM:** **MINNAMURRA 101Y NICE LADY L54**  
 MINNAMURRA 60W NICE LADY G8 \$ \_\_\_\_\_

July 2021 Speckle Park Group Breedplan

Calving Ease			Growth & Maternal					Fertility		Carcase				
	GL	BW	200	400	600	MCW	Milk	SS	CWT	EMA	RIB	RUMP	RBV	IMF
EBV	+0.7	+2.8	<b>+20</b>	<b>+29</b>	<b>+39</b>	<b>+39</b>	+1	-0.2	<b>+26</b>	<b>+1.5</b>	-0.2	-0.4	<b>+0.8</b>	<b>+0.0</b>
ACC	49%	58%	53%	52%	53%	42%	27%	46%	44%	34%	44%	44%	42%	39%
B.Av	+0.0	+2	+14	+22	+30	+31	+4.0	+0	+18.0	+0.6	+0.1	+0.0	+0.1	+0.0

A long bodied bull who scanned highly for EMA within his contemporary group. A stylish fronted, sound structured bull standing on good bone. Lot 13 will grow on and breed excellent, grass and feedlot export progeny. Q45 is the first bull to be offered by our new sire JSF Rawhide 260D, and out of the same dam line that produced standout sire Minnamurra Leander L81. A light birthweight bull (34kg) suitable for heifers.



**Lot 14 MINNAMURRA QUADRUPAL Q79 (ET)**

**SIRE:** REDNECK FERDINAND 14Y Born: 25/8/2019  
**REDNECK JSF WHISKEY 4B** Colour: White  
 REDNECK WHISKEY 7W Identifier: MPC Q79  
 DNA Tests: P:C R:C M:F L:C/T

SPOTS 'N SPROUTS STANDS ALONE 300X

**DAM:** MINNAMURRA 300X TORI J87  
 UPTO SPECS TORI 10T \$ \_\_\_\_\_

July 2021 Speckle Park Group Breedplan

Calving Ease		Growth & Maternal						Fertility		Carcase				
	GL	BW	200	400	600	MCW	Milk	SS	CWT	EMA	RIB	RUMP	RBY	IMF
EBV	-0.8	+2.5	+24	+35	+47	+57	+3	+0.6	+23	+0.2	+3.4	+4.6	-2.7	+1.0
ACC	58%	77%	74%	73%	74%	62%	44%	76%	63%	54%	57%	57%	57%	54%
B.Av	+0.0	+2	+14	+22	+30	+31	+4.0	+0	+18.0	+0.6	+0.1	+0.0	+0.1	+0.0

*A bigger framed, growthy bull with an excellent smooth well angled shoulder. A softer muscle pattern bull with a lot of slope from hip to pin and calving ease. Full brother to Lot 9.*





**Lot 15 MINNAMURRA QUIETUDE Q70 (ET)**

**SIRE:** REDNECK FERDINAND 14Y Born: 20/8/2019  
**REDNECK JSF WHISKEY 4B** Colour: White  
 REDNECK WHISKEY 7W Identifier: MPC Q70  
 DNA Tests: P:F R:C M:F L:C/C

SPOTS 'N SPROUTS STANDS ALONE 300X

**DAM:** MINNAMURRA 300X UNIQUE J83  
 CODIAK UNIQUE 8R \$ \_\_\_\_\_

July 2021 Speckle Park Group Breedplan

Calving Ease		Growth & Maternal						Fertility		Carcase					
	GL	BW	200	400	600	MCW	Milk	SS	CWT	EMA	RIB	RUMP	RBY	IMF	
EBV	-0.3	+3.0	+25	+41	+55	+66	+3	+1.0	+26	+0.4	+3.8	+5.2	-3.0	+1.0	
ACC	59%	77%	74%	73%	74%	62%	44%	76%	64%	54%	62%	62%	60%	54%	
B.Av	+0.0	+2	+14	+22	+30	+31	+4.0	+0	+18.0	+0.6	+0.1	+0.0	+0.1	+0.0	

*One the of the standout lots to be catalogued this year and a full brother to Lots 1 and 2. Q70 scanned at the top of the group for nearly every trait. A sirey, free moving young bull with a lot of potential. A full brother to sire Minnamurra Nighthawk N112.*



**Lot 16 MINNAMURRA QUORUM Q62 (ET)**

**SIRE:** REDNECK FERDINAND 14Y Born: 16/8/2019  
 REDNECK JSF WHISKEY 4B Colour: Speckled  
 REDNECK WHISKEY 7W Identifier: MPC Q62  
 DNA Tests: P:F R:C M:C L:C/C

**DAM:** RIVER HILL WALKER 60W  
 MINNAMURRA 60W PASSION STAR H3  
 STYALS PASSION STAR 15P \$ \_\_\_\_\_

July 2021 Speckle Park Group Breedplan

Calving Ease		Growth & Maternal						Fertility		Carcase				
	GL	BW	200	400	600	MCW	Milk	SS	CWT	EMA	RIB	RUMP	RBY	IMF
EBV	-1.0	-0.1	+12	+25	+26	+25	+3	+0.1	+16	+0.5	+2.3	+3.1	-2.0	+0.5
ACC	54%	65%	63%	62%	63%	53%	41%	60%	54%	45%	54%	54%	52%	49%
B.Av	+0.0	+2	+14	+22	+30	+31	+4.0	+0	+18.0	+0.6	+0.1	+0.0	+0.1	+0.0

*A compact expressively muscled bull with good depth and spring of rib. A quiet natured, efficient bull who will turn off early, quick growing progeny. Full brother to Lots 3, 4 & 7. A light birthweight bull (30kg) suitable for heifers.*



**Lot 17 MINNAMURRA QUOTENIAL Q83 (ET)**

**SIRE:** REDNECK FERDINAND 14Y Born: 2/9/2019  
**REDNECK JSF WHISKEY 4B** Colour: Speckled  
 REDNECK WHISKEY 7W Identifier: MPC Q83  
 DNA Tests: P:F R:C M:C L:C/C

RIVER HILL WALKER 60W  
**DAM: MINNAMURRA 60W PASSION STAR H3**  
 STYALS PASSION STAR 15P \$ \_\_\_\_\_

July 2021 Speckle Park Group Breedplan

Calving Ease		Growth & Maternal						Fertility		Carcase				
	GL	BW	200	400	600	MCW	Milk	SS	CWT	EMA	RIB	RUMP	RBY	IMF
EBV	-1.5	-0.9	+11	+25	+22	+17	+3	-0.2	+17	+0.6	+1.4	+1.8	-1.2	+0.1
ACC	57%	77%	73%	72%	73%	61%	41%	75%	63%	52%	61%	61%	59%	53%
B.Av	+0.0	+2	+14	+22	+30	+31	+4.0	+0	+18.0	+0.6	+0.1	+0.0	+0.1	+0.0

*A low birthweight, moderate framed bull with excellent rib and rump data. A softer easy doing bull with a lot of expression and a strong sirey head and outlook. Full brother to Lots 3, 4, 7 & 16.*



**Lot 18 MINNAMURRA QUALIFY Q54**

**SIRE:** WATTLE GROVE RANSOM H120 Born: 17/9/2019  
**BIG STAR MAVRICK M12** Colour: White  
WATTLE GROVE 26T TRUDIE F99 Identifier: MPC Q54  
DNA Tests: P:F R:F M:C L:T/T  
SIX STAR ANCHOR E229 **Unregistered**  
**DAM:** **MINNAMURRA E229 JEZEBELL L149**  
UNKNOWN DAM \$ \_\_\_\_\_

July 2021 Speckle Park Group Breedplan

Calving Ease		Growth & Maternal						Fertility	Carcase					
	GL	BW	200	400	600	MCW	Milk	SS	CWT	EMA	RIB	RUMP	RBY	IMF
EBV														
ACC														
B.Av	+0.0	+2	+14	+22	+30	+31	+4.0	+0	+18.0	+0.6	+0.1	+0.0	+0.1	+0.0

*A very deep ribbed, heavier muscled bull with a tremendous hindquarter. If you are looking to increase yield in your vealers, lot 18 fits the bill. Note: Q54's dam was unable to be DNA parent verified, and is being sold as a commercial bull only.*



**Lot 19 MINNAMURRA QUERULOUS Q59 (ET)**

**SIRE:** REDNECK FERDINAND 14Y Born: 15/8/2019  
 REDNECK JSF WHISKEY 4B Colour: Speckled  
 REDNECK WHISKEY 7W Identifier: MPC Q59  
 DNA Tests: P:F R:F M:C L:C/C

RIVER HILL WALKER 60W  
**DAM:** MINNAMURRA 60W PASSION STAR H3  
 STYALS PASSION STAR 15P \$ \_\_\_\_\_

July 2021 Speckle Park Group Breedplan														
Calving Ease			Growth & Maternal					Fertility		Carcase				
	GL	BW	200	400	600	MCW	Milk	SS	CWT	EMA	RIB	RUMP	RBY	IMF
EBV	-1.4	-1.6	+4	+17	+13	+9	+3	+0.0	+11	+0.4	+1.5	+2.1	-1.5	+0.3
ACC	57%	77%	73%	72%	73%	61%	41%	75%	63%	52%	61%	61%	59%	53%
B.Av	+0.0	+2	+14	+22	+30	+31	+4.0	+0	+18.0	+0.6	+0.1	+0.0	+0.1	+0.0

*A light birthweight, easy doing bull with excellent rib and rump scans. A masculine headed, early maturing bull who will add yield and sexual maturity to your female herd. Full brother to Lots 3, 4, 7, 16 & 17. Suitable for heifers.*



**Lot 20 MINNAMURRA QUADRUPLEX Q60 (ET)**

**SIRE:** RAVEN MEADOWS MAGNUM 10N Born: 15/8/2019  
**UPTO SPECS ULYSSES 25U** Colour: White  
 PRAIRIE HILL REBA 154F Identifier: MPC Q60  
 DNA Tests: P:F R:F M:F L:C/C

**DAM:** CODIAK CRIKEY GNK 13U  
**CODIAK AMANDA GNK 42Y**  
 CODIAK UNIQUE 8R \$ \_\_\_\_\_

July 2021 Speckle Park Group Breedplan

Calving Ease			Growth & Maternal					Fertility		Carcase				
	GL	BW	200	400	600	MCW	Milk	SS	CWT	EMA	RIB	RUMP	RBV	IMF
EBV	+1.4	+2.2	+10	+19	+28	+37	+2	+0.6	+12	+0.1	+1.8	+2.3	-1.4	+0.5
ACC	56%	79%	76%	74%	75%	64%	43%	77%	65%	54%	62%	62%	60%	54%
B.Av	+0.0	+2	+14	+22	+30	+31	+4.0	+0	+18.0	+0.6	+0.1	+0.0	+0.1	+0.0

*A high IMF scanning Ulysses bull with a moderate frame and tremendous softness. Rare to see such muscle expression, marbling and softness all in the one package.*



**Lot 21 MINNAMURRA QUADRAPHONIC Q67 (ET)**

**SIRE:** RAVEN MEADOWS MAGNUM 10N Born: 19/8/2019  
**UPTO SPECS ULYSSES 25U** Colour: Speckled  
 PRAIRIE HILL REBA 154F Identifier: MPC Q67  
 DNA Tests: P:F R:F M:F L:C/C

RIVER HILL SKIPPER 6S  
**DAM:** **SPOTS 'N SPROUTS 7W**  
 SPOTS 'N SPROUTS 7T \$ \_\_\_\_\_

July 2021 Speckle Park Group Breedplan

Calving Ease		Growth & Maternal						Fertility		Carcase					
	GL	BW	200	400	600	MCW	Milk	SS	CWT	EMA	RIB	RUMP	RBV	IMF	
EBV	+0.0	+0.7	+11	+16	+16	+15	+2	+0.9	+8	-0.1	+1.2	+1.5	-1.1	+0.2	
ACC	50%	78%	74%	72%	73%	59%	27%	75%	61%	49%	58%	58%	55%	49%	
B.Av	+0.0	+2	+14	+22	+30	+31	+4.0	+0	+18.0	+0.6	+0.1	+0.0	+0.1	+0.0	

*A sound structured, stylish bull with a lot of length and good rein of neck. A high rib and rump scanning bull who always stands square. Full brother to Lot 8.*



**Lot 22 MINNAMURRA QUASIMODO Q36**

**SIRE:** WATTLE GROVE RANSOM H120 Born: 24/7/2019  
**BIG STAR MAVRICK M12** Colour: White  
WATTLE GROVE 26T TRUDIE F99 Identifier: MPC Q36  
DNA Tests: P:F R:F M:F L:C/C

RIVER HILL STRIKER 50U  
**DAM:** **MINNAMURRA 50U TEEKA J95**  
UPTO SPECS TEEKA 8T \$ \_\_\_\_\_

July 2021 Speckle Park Group Breedplan

Calving Ease		Growth & Maternal						Fertility		Carcase				
	GL	BW	200	400	600	MCW	Milk	SS	CWT	EMA	RIB	RUMP	RBV	IMF
EBV	+1.0	<b>+0.7</b>	+4	+6	+9	+9	+2	<b>+0.2</b>	+6	+0.3	-0.3	-0.5	<b>+0.2</b>	<b>+0.0</b>
ACC	47%	73%	69%	67%	69%	56%	39%	71%	57%	46%	55%	55%	52%	45%
B.Av	+0.0	+2	+14	+22	+30	+31	+4.0	+0	+18.0	+0.6	+0.1	+0.0	+0.1	+0.0

*A high IMF scanning bull in this part of the catalogue. An excellent fronted, upstanding Mavrick son with a lot of depth and muscle shape through the flank and lower leg. A light birthweight bull (33kg) suitable for heifers.*





**Lot 23 MINNAMURRA QUINTON Q82 (ET)**

**SIRE:** REDNECK FERDINAND 14Y Born: 29/8/2019  
**REDNECK JSF WHISKEY 4B** Colour: Red  
 REDNECK WHISKEY 7W Identifier: MPC Q82  
 DNA Tests: P:F R:A M:F L:C/T  
 SPOTS 'N SPROUTS STANDS ALONE 300X **Unregistered**  
**DAM:** MINNAMURRA 300X JANETTE J23  
 P.A.R. JANETTE 44H \$ \_\_\_\_\_

July 2021 Speckle Park Group Breedplan

Calving Ease		Growth & Maternal					Fertility		Carcase					
	GL	BW	200	400	600	MCW	Milk	SS	CWT	EMA	RIB	RUMP	RBY	IMF
EBV														
ACC														

B.Av	+0.0	+2	+14	+22	+30	+31	+4.0	+0	+18.0	+0.6	+0.1	+0.0	+0.1	+0.0
------	------	----	-----	-----	-----	-----	------	----	-------	------	------	------	------	------

*An early maturing red factor bull, very similar to Lot 22. A well muscled deep bodied bull. A lighter boned, smooth shouldered bull indicating lower birthweight. Full brother to Lot 10. Note: Because Q82 has a red coat, he is unable to be registered and is being sold as a commercial bull only.*



**Lot 24 MINNAMURRA QUINLAN Q15 (AI)**

**SIRE:** REDNECK FERDINAND 14Y Born: 4/3/2019  
 REDNECK JSF WHISKEY 4B Colour: Black  
 REDNECK WHISKEY 7W Identifier: MPC Q15  
 DNA Tests: P:F R:F M:F L:C/C

SPOTS 'N SPROUTS STANDS ALONE 300X

**DAM:** MINNAMURRA 300X BAMBI J80  
 EL RANCHO NO GOTTO BAMBI 01J \$ \_\_\_\_\_

July 2021 Speckle Park Group Breedplan

Calving Ease		Growth & Maternal						Fertility	Carcase					
	GL	BW	200	400	600	MCW	Milk	SS	CWT	EMA	RIB	RUMP	RBY	IMF
EBV	-3.2	-0.9	+10	+17	+21	+23	+2	+0.8	+10	-0.2	+1.4	+1.9	-1.2	-0.1
ACC	64%	75%	73%	71%	69%	56%	41%	73%	60%	51%	60%	60%	58%	51%
B.Av	+0.0	+2	+14	+22	+30	+31	+4.0	+0	+18.0	+0.6	+0.1	+0.0	+0.1	+0.0

*A light birthweight, sound fronted Whiskey son with good shoulder angulation and placement. Q15 is well suited to heifers.*



**Lot 25 MINNAMURRA RASTUS R51**

**SIRE:** REDNECK JSF WHISKEY 4B Born: 12/4/2020  
**MINNAMURRA NIGHTHAWK N112** Colour: White  
 MINNAMURRA 300X UNIQUE J83 Identifier: MPC R51  
 DNA Tests: P:F R:F M:F L:C/T

CODIAK SO LONG GEORGE 6Z  
**DAM: MINNAMURRA 6Z SPANISH ANGEL N39**  
 MINNAMURRA 300X SPANISH ANGEL L27 \$ \_\_\_\_\_

July 2021 Speckle Park Group Breedplan

	Calving Ease		Growth & Maternal					Fertility		Carcase				
	GL	BW	200	400	600	MCW	Milk	SS	CWT	EMA	RIB	RUMP	RBY	IMF
EBV	+0.0	+2.9	+22	+41	+51	+59	+3	+2.1	+28	+1.0	+2.3	+3.1	-1.6	+0.7
ACC	48%	70%	67%	65%	63%	49%	35%	69%	55%	46%	54%	54%	52%	45%
B.Av	+0.0	+2	+14	+22	+30	+31	+4.0	+0	+18.0	+0.6	+0.1	+0.0	+0.1	+0.0

*A standout lot in this year's catalogue, despite being a heifer calf, and the first Nighthawk bull to be offered for sale. It is very rare to see an individual standout this far in front of his contemporaries. R51 scanned at the top of his group for every trait. A very good natured, balanced bull that is very hard to fault. A young sire with tremendous potential. MPC retains the right to collect 200 straws of semen at a future date.*



**Lot 26 MINNAMURRA RAYAN R11 (AI)**

**SIRE:** REDNECK FERDINAND 14Y Born: 13/3/2020  
 REDNECK JSF WHISKEY 4B Colour: Leopard  
 REDNECK WHISKEY 7W Identifier: MPC R11  
 DNA Tests: P:F R:C M:F L:C/C

MINNAMURRA JOE J141  
**DAM:** MINNAMURRA J141 AVALANCHE M5  
 MINNAMURRA 300X AVALANCHE K34 \$ \_\_\_\_\_

July 2021 Speckle Park Group Breedplan

Calving Ease		Growth & Maternal						Fertility		Carcase				
	GL	BW	200	400	600	MCW	Milk	SS	CWT	EMA	RIB	RUMP	RBY	IMF
EBV	-3.0	-1.2	+12	+28	+33	+40	+4	+0.8	+21	+0.6	+2.6	+3.6	-2.1	+0.7
ACC	64%	75%	73%	71%	69%	55%	41%	74%	60%	51%	59%	59%	57%	51%
B.Av	+0.0	+2	+14	+22	+30	+31	+4.0	+0	+18.0	+0.6	+0.1	+0.0	+0.1	+0.0

*A lighter birthweight, curve bending growth bull with good softness and overall efficiency. A bull with good spring of rib and depth through the flank and over the loin. A quiet, good natured Whiskey son that is well worth an inspection. Suitable for heifers.*



**Lot 27 MINNAMURRA ROMAN R36 (AI)**

**SIRE:** REDNECK FERDINAND 14Y Born: 21/3/2020  
**REDNECK JSF WHISKEY 4B** Colour: Speckled  
 REDNECK WHISKEY 7W Identifier: MPC R36  
 DNA Tests: P:F R:C M:F L:C/C

RIVER HILL WALKER 60W  
**DAM:** MINNAMURRA 60W PHO-FINISH H1  
 NOTTA PHO-FINISH 54P \$ \_\_\_\_\_

July 2021 Speckle Park Group Breedplan

Calving Ease			Growth & Maternal					Fertility		Carcase				
	GL	BW	200	400	600	MCW	Milk	SS	CWT	EMA	RIB	RUMP	RBY	IMF
EBV	-1.5	+1.0	+19	+35	+44	+47	+5	+0.9	+26	+1.1	+1.9	+2.6	-1.3	+0.4
ACC	64%	75%	72%	70%	68%	55%	43%	71%	59%	50%	57%	57%	55%	50%

B.Av	+0.0	+2	+14	+22	+30	+31	+4.0	+0	+18.0	+0.6	+0.1	+0.0	+0.1	+0.0
------	------	----	-----	-----	-----	-----	------	----	-------	------	------	------	------	------

*A very correct, good weight for age bull who was one of the highest IMF scanning bulls of the group. A highly fertile young sire with a big scrotal measurement.*



**Lot 28 MINNAMURRA ROCKSTAR R48 (AI)**

**SIRE:** P.A.R. ASCAPE 89A Born: 30/3/2020  
**DOUBLE S JSF RAWHIDE 260D** Colour: White  
 UNEEDA YASEMIN 260Y Identifier: MPC R48  
 DNA Tests: P:F R:F M:C L:C/C

SIX STAR ANCHOR E229

**DAM:** **MINNAMURRA E229 SPANISH ANGEL L95**  
 SIX STAR 82U SPANISH ANGEL \$ \_\_\_\_\_

July 2021 Speckle Park Group Breedplan

Calving Ease			Growth & Maternal					Fertility		Carcase				
	GL	BW	200	400	600	MCW	Milk	SS	CWT	EMA	RIB	RUMP	RBY	IMF
EBV	+1.1	+2.8	+18	+18	+25	+22	+3	-0.7	+15	+0.5	-0.9	-1.4	+1.0	-0.5
ACC	61%	74%	70%	67%	64%	48%	26%	68%	54%	43%	53%	53%	50%	43%
B.Av	+0.0	+2	+14	+22	+30	+31	+4.0	+0	+18.0	+0.6	+0.1	+0.0	+0.1	+0.0

*A bigger framed, quiet natured Rawhide son, well suited to both the export and domestic markets.  
 A good growth for age sire who will produce very quick growing feeder steers.*



**Lot 29 MINNAMURRA REBEL R3**

**SIRE:** JSF TRADE SECRET 11A Born: 28/2/2020  
**JACKUNGAH NATE N08** Colour: Speckled  
 WATTLE GROVE SPARKLE E31 Identifier: MPC R3  
 DNA Tests: P:F R:C M:F L:T/T  
 REDNECK JSF WHISKEY 4B  
**DAM:** **MINNAMURRA 4B JANETTE N91**  
 MINNAMURRA 300X JANETTE J22 \$ \_\_\_\_\_

July 2021 Speckle Park Group Breedplan

	Calving Ease			Growth & Maternal				Fertility		Carcase					
	GL	BW	200	400	600	MCW	Milk	SS	CWT	EMA	RIB	RUMP	RBY	IMF	
EBV	-3.4	-2.1	+10	+24	+23	+29	+4	+1.2	+18	-0.2	+2.0	+2.7	-1.9	+0.5	
ACC	48%	73%	69%	66%	63%	48%	30%	71%	54%	45%	53%	52%	50%	42%	
B.Av	+0.0	+2	+14	+22	+30	+31	+4.0	+0	+18.0	+0.6	+0.1	+0.0	+0.1	+0.0	

*A stylish efficient moving bull with a soft carcase pattern and very high rib and rump data. R3 is a bull that keeps catching your eye because of his balance and overall consistency of muscle. The first bull to be offered by our new sire Jackungah Nate N08, and out of a first calving heifer. A light birthweight bull (24kg) suitable for heifers.*



**Lot 30 MINNAMURRA ROYAL R45 (AI)**

**SIRE:** REDNECK FERDINAND 14Y  
**REDNECK JSF WHISKEY 4B**  
 REDNECK WHISKEY 7W

Born: 25/3/2020  
 Colour: Speckled  
 Identifier: MPC R45  
 DNA Tests: P:F R:F M:F L:C/C

**DAM:** RIVER HILL WALKER 60W  
**MINNAMURRA 60W SIX L91**  
 STYALS SIX 16P

\$ \_\_\_\_\_

July 2021 Speckle Park Group Breedplan

Calving Ease		Growth & Maternal						Fertility		Carcase				
	GL	BW	200	400	600	MCW	Milk	SS	CWT	EMA	RIB	RUMP	RBV	IMF
EBV	-1.0	+1.1	+17	+34	+38	+43	+4	+1.3	+22	+0.9	+2.7	+3.7	-2.0	+0.6
ACC	64%	76%	74%	72%	69%	55%	41%	74%	60%	50%	57%	56%	55%	48%
B.Av	+0.0	+2	+14	+22	+30	+31	+4.0	+0	+18.0	+0.6	+0.1	+0.0	+0.1	+0.0

*A big barrelled efficient walking bull with a lot of depth right through his hindquarter. A typical Whiskey bull with excellent data, high rib, rump and growth all in a lower birthweight package.*





**Lot 31 MINNAMURRA RANSOM R8**

**SIRE:** JSF TRADE SECRET 11A Born: 6/3/2020  
**JACKUNGAH NATE N08** Colour: Speckled  
 WATTLE GROVE SPARKLE E31 Identifier: MPC R8  
 DNA Tests: P:F R:C M:F L:T/T  
 REDNECK JSF WHISKEY 4B  
**DAM:** **MINNAMURRA 4B JANETTE G37 N22**  
 SIX STAR 13U JANETTE G37 \$ \_\_\_\_\_

July 2021 Speckle Park Group Breedplan

Calving Ease		Growth & Maternal						Fertility		Carcase					
	GL	BW	200	400	600	MCW	Milk	SS	CWT	EMA	RIB	RUMP	RYB	IMF	
EBV	-1.1	-1.0	+7	+20	+20	+23	+2	+0.9	+16	+0.1	+1.0	+1.3	-0.9	+0.2	
ACC	48%	73%	67%	65%	62%	48%	30%	68%	53%	44%	52%	52%	50%	42%	
B.Av	+0.0	+2	+14	+22	+30	+31	+4.0	+0	+18.0	+0.6	+0.1	+0.0	+0.1	+0.0	

*A very low birthweight, high scanning Nate son for all traits. A wide thurled, quiet natured bull with good length from hip to pin. Suitable for heifers.*



**Lot 32 MINNAMURRA RIO R25 (AI)**

**SIRE:** REDNECK FERDINAND 14Y  
**REDNECK JSF WHISKEY 4B**  
 REDNECK WHISKEY 7W

Born: 22/3/2020  
 Colour: Speckled  
 Identifier: MPC R25  
 DNA Tests: P:F R:C M:F L:C/T

**DAM:** CODIAK SO LONG GEORGE 6Z  
**MINNAMURRA 6Z UNIQUE L138**  
 MINNAMURRA 300X UNIQUE J73 \$ \_\_\_\_\_

July 2021 Speckle Park Group Breedplan

Calving Ease		Growth & Maternal						Fertility	Carcase					
	GL	BW	200	400	600	MCW	Milk	SS	CWT	EMA	RIB	RUMP	RBY	IMF
EBV	-1.6	+0.7	+16	+28	+31	+33	+2	+0.2	+16	+0.1	+2.7	+3.7	-2.3	+0.6
ACC	65%	76%	74%	72%	70%	56%	42%	75%	61%	52%	60%	60%	58%	52%
B.Av	+0.0	+2	+14	+22	+30	+31	+4.0	+0	+18.0	+0.6	+0.1	+0.0	+0.1	+0.0

*A very quiet, deep bodied bull displaying finer bone and a lighter birthweight. A typical Whiskey type of bull out of the Codiak Unique line who will breed excellent grass fed or feeder steers. A moderate birthweight bull (35kg) suitable for heifers.*



**Lot 33 MINNAMURRA ROY R44 (AI)**

**SIRE:** P.A.R. ASCAPE 89A Born: 7/4/2020  
**DOUBLE S JSF RAWHIDE 260D** Colour: Speckled  
 UNEEDA YASEMIN 260Y Identifier: MPC R44  
 DNA Tests: P:F R:F M:C L:C/C

STAR BANK LACERTA 68L  
**DAM:** **MINNAMURRA 68L PASSION STAR G2**  
 STYALS PASSION STAR 15P \$ \_\_\_\_\_

July 2021 Speckle Park Group Breedplan

Calving Ease			Growth & Maternal					Fertility		Carcase					
	GL	BW	200	400	600	MCW	Milk	SS	CWT	EMA	RIB	RUMP	RBV	IMF	
EBV	+2.4	+2.6	+18	+28	+33	+32	+5	-0.1	+26	+1.9	+0.2	+0.2	+0.7	-0.2	
ACC	62%	74%	71%	68%	64%	49%	31%	71%	55%	44%	52%	52%	49%	42%	
B.Av	+0.0	+2	+14	+22	+30	+31	+4.0	+0	+18.0	+0.6	+0.1	+0.0	+0.1	+0.0	

*A bigger framed Rawhide son with good weight for age and muscle expression. A very high EMA to weight ratio scanning bull within the group.*



**Lot 34 MINNAMURRA RAYMOND R12**

**SIRE:** JSF TRADE SECRET 11A  
**JACKUNGAH NATE N08**  
 WATTLE GROVE SPARKLE E31

Born: 9/3/2020  
 Colour: White  
 Identifier: MPC R12  
 DNA Tests: P:F R:C M:F L:C/T

**DAM:** REDNECK JSF WHISKEY 4B  
**MINNAMURRA 4B TORI N121**  
 MINNAMURRA 300X TORI J87

\$ \_\_\_\_\_

July 2021 Speckle Park Group Breedplan

Calving Ease		Growth & Maternal						Fertility		Carcase				
	GL	BW	200	400	600	MCW	Milk	SS	CWT	EMA	RIB	RUMP	RBY	IMF
EBV	-2.2	+0.2	+16	+30	+35	+43	+2	+1.0	+22	+0.2	+2.0	+2.7	-1.5	+0.5
ACC	46%	73%	68%	66%	63%	48%	31%	71%	54%	45%	53%	53%	50%	42%
B.Av	+0.0	+2	+14	+22	+30	+31	+4.0	+0	+18.0	+0.6	+0.1	+0.0	+0.1	+0.0

*A later maturing, bigger framed bull showing good weight for age. A lighter birth weight smooth shouldered bull who will breed beautiful feminine replacement females. Suitable for heifers.*



**Lot 35 MINNAMURRA REUBEN R15**

**SIRE:** JSF TRADE SECRET 11A Born: 10/3/2020  
**JACKUNGAH NATE N08** Colour: Speckled  
 WATTLE GROVE SPARKLE E31 Identifier: MPC R15  
 DNA Tests: P:F R:F M:F L:C/T

REDNECK JSF WHISKEY 4B  
**DAM: MINNAMURRA 4B TEEKA N14**  
 MINNAMURRA 50U TEEKA J108 \$ \_\_\_\_\_

July 2021 Speckle Park Group Breedplan														
Calving Ease			Growth & Maternal					Fertility		Carcase				
	GL	BW	200	400	600	MCW	Milk	SS	CWT	EMA	RIB	RUMP	RBY	IMF
EBV	-2.0	+0.1	+12	+28	+31	+34	+1	+1.7	+17	-0.2	+1.1	+1.4	-1.3	+0.3
ACC	47%	73%	68%	66%	62%	47%	30%	70%	54%	44%	52%	52%	50%	41%
B.Av	+0.0	+2	+14	+22	+30	+31	+4.0	+0	+18.0	+0.6	+0.1	+0.0	+0.1	+0.0

*A long bodied, high rib and rump scanning bull. R15 is a lower birthweight bull out of a heifer dam with a high scrotal measurement, well suited to producing very early sexual maturity in his daughters. A light birthweight bull (31kg) suitable for heifers.*



**Lot 36 MINNAMURRA RICKY R23 (AI)**

**SIRE:** P.A.R. ASCAPE 89A  
**DOUBLE S JSF RAWHIDE 260D**  
 UNEEDA YASEMIN 260Y

Born: 30/3/2020  
 Colour: Black  
 Identifier: MPC R23  
 DNA Tests: P:F R:F M:C L:C/C

RIVER HILL STRIKER 50U  
**DAM: MINNAMURRA 50U UNIQUE J128**  
 CODIAK UNIQUE 8R

\$ \_\_\_\_\_

July 2021 Speckle Park Group Breedplan

Calving Ease		Growth & Maternal						Fertility		Carcase					
	GL	BW	200	400	600	MCW	Milk	SS	CWT	EMA	RIB	RUMP	RBV	IMF	
EBV	+0.4	+1.3	+17	+25	+29	+25	+6	-0.6	+24	+1.3	-0.2	-0.4	+0.5	+0.0	
ACC	62%	74%	71%	68%	65%	50%	32%	71%	55%	45%	54%	54%	51%	43%	
B.Av	+0.0	+2	+14	+22	+30	+31	+4.0	+0	+18.0	+0.6	+0.1	+0.0	+0.1	+0.0	

*A very long bodied, quiet natured bull with muscle filling right through his twist and stifle. A strong topped bull with well laid on hips and good fill over the loin. A moderate birthweight bull (35kg) suitable for heifers.*



**Lot 37 MINNAMURRA RYAN R47**

**SIRE:** WATTLE GROVE RANSOM H120 Born: 26/4/2020  
**BIG STAR MAVRICK M12** Colour: Speckled  
 WATTLE GROVE 26T TRUDIE F99 Identifier: MPC R47  
 DNA Tests: P:F R:F M:F L:C/C  
 SIX STAR ROYAL FLESH 101Y  
**DAM:** **MINNAMURRA 101Y PHO FINISH L45**  
 MINNAMURRA 60W PHO-FINISH H5 \$ \_\_\_\_\_

July 2021 Speckle Park Group Breedplan

Calving Ease		Growth & Maternal						Fertility		Carcase					
	GL	BW	200	400	600	MCW	Milk	SS	CWT	EMA	RIB	RUMP	RBV	IMF	
EBV	+1.7	+3.9	+21	+24	+41	+44	+3	-0.4	+22	+0.9	-0.2	-0.4	+0.5	+0.1	
ACC	46%	74%	69%	67%	64%	50%	40%	70%	55%	45%	54%	54%	51%	44%	
B.Av	+0.0	+2	+14	+22	+30	+31	+4.0	+0	+18.0	+0.6	+0.1	+0.0	+0.1	+0.0	

*A loose skinned, easy moving bull with good muscle expression and fill right behind his shoulder. A stronger boned bull displaying a good rein of neck and growth for age.*



**Lot 38 MINNAMURRA ROHAN R33 (AI)**

**SIRE:** P.A.R. ASCAPE 89A  
**DOUBLE S JSF RAWHIDE 260D**  
 UNEEDA YASEMIN 260Y

Born: 20/3/2020  
 Colour: Black  
 Identifier: MPC R33  
 DNA Tests: P:F R:F M:C L:C/C

A & W 15R  
**DAM:** MINNAMURRA 15R LORETTA J45  
 STAR BANK LORETTA 40L

\$ \_\_\_\_\_

July 2021 Speckle Park Group Breedplan

Calving Ease		Growth & Maternal						Fertility		Carcase				
	GL	BW	200	400	600	MCW	Milk	SS	CWT	EMA	RIB	RUMP	RBY	IMF
EBV	+0.4	<b>+1.6</b>	<b>+16</b>	<b>+22</b>	+29	+30	<b>+4</b>	-0.7	<b>+20</b>	<b>+1.1</b>	<b>+0.6</b>	<b>+0.7</b>	+0.0	<b>+0.2</b>
ACC	60%	73%	68%	64%	62%	47%	25%	64%	51%	38%	46%	46%	43%	36%
B.Av	+0.0	+2	+14	+22	+30	+31	+4.0	+0	+18.0	+0.6	+0.1	+0.0	+0.1	+0.0

*A good weight for age, wide bodied bull who moves efficiently for such a well muscled young sire. R33 carries his muscle well down his hind leg and twist, adding to his good growth and weight.*





**Lot 39 MINNAMURRA ROCKY R30**

**SIRE:** JSF TRADE SECRET 11A Born: 16/3/2020  
**JACKUNGAH NATE N08** Colour: White  
 WATTLE GROVE SPARKLE E31 Identifier: MPC R30  
 DNA Tests: P:F R:F M:F L:C/T  
 REDNECK JSF WHISKEY 4B  
**DAM:** **MINNAMURRA 4B TEEKA N5**  
 MINNAMURRA 82U TEEKA J44 \$ \_\_\_\_\_

July 2021 Speckle Park Group Breedplan

Calving Ease		Growth & Maternal						Fertility		Carcase					
	GL	BW	200	400	600	MCW	Milk	SS	CWT	EMA	RIB	RUMP	RBY	IMF	
EBV	-2.0	+1.1	+18	+28	+33	+39	+0	+1.1	+18	+0.3	+2.1	+2.8	-1.5	+0.4	
ACC	47%	73%	66%	63%	61%	47%	29%	65%	51%	42%	50%	50%	47%	40%	
B.Av	+0.0	+2	+14	+22	+30	+31	+4.0	+0	+18.0	+0.6	+0.1	+0.0	+0.1	+0.0	

*A complete, very soft easy doing bull with good testicle development. An efficient moving, shorter gestation length sire with a moderate birth weight, suitable for heifers.*



**Lot 40 MINNAMURRA REVOLVER R52 (AI)**

**SIRE:** WATTLE GROVE RANSOM H120 Born: 16/4/2020  
**BIG STAR MAVRICK M12** Colour: Leopard  
 WATTLE GROVE 26T TRUDIE F99 Identifier: MPC R52  
 DNA Tests: P:F R:F M:F L:C/C

RIVER HILL STRIKER 50U  
**DAM: MINNAMURRA 50U TEEKA J92**  
 UPTO SPECS TEEKA 8T \$ \_\_\_\_\_

July 2021 Speckle Park Group Breedplan

Calving Ease			Growth & Maternal					Fertility	Carcase					
	GL	BW	200	400	600	MCW	Milk	SS	CWT	EMA	RIB	RUMP	RBY	IMF
EBV	+2.1	+4.3	+17	+21	+38	+41	+2	+1.6	+15	+0.6	-0.8	-1.2	+0.8	-0.2
ACC	46%	74%	67%	64%	63%	50%	39%	65%	53%	43%	52%	52%	49%	43%
B.Av	+0.0	+2	+14	+22	+30	+31	+4.0	+0	+18.0	+0.6	+0.1	+0.0	+0.1	+0.0

*A masculine, powerful young sire who is very complete right through and hard to fault. A standout bull, well worth an inspection.*



**Lot 41 MINNAMURRA REX R17**

**SIRE:** REDNECK JSF WHISKEY 4B Born: 10/3/2020  
**MINNAMURRA NIGHTHAWK N112** Colour: Leopard  
 MINNAMURRA 300X UNIQUE J83 Identifier: MPC R17  
 DNA Tests: P:F R:C M:F L:C/C

CODIAK SO LONG GEORGE 6Z  
**DAM: MINNAMURRA 6Z TORI N105**  
 MINNAMURRA 15R TORI J26 \$ \_\_\_\_\_

July 2021 Speckle Park Group Breedplan

Calving Ease		Growth & Maternal						Fertility		Carcase					
	GL	BW	200	400	600	MCW	Milk	SS	CWT	EMA	RIB	RUMP	RBY	IMF	
EBV	+0.1	<b>+1.0</b>	+9	+20	+24	<b>+39</b>	+2	<b>+1.5</b>	+12	+0.1	<b>+3.6</b>	<b>+4.9</b>	-2.6	<b>+0.9</b>	
ACC	47%	73%	69%	67%	64%	50%	35%	71%	55%	46%	54%	54%	52%	45%	
B.Av	+0.0	+2	+14	+22	+30	+31	+4.0	+0	+18.0	+0.6	+0.1	+0.0	+0.1	+0.0	

*A loose skinned, easy doing, very soft bull with an excellent constitution. A high IMF marbling scanning bull who will breed excellent feeder steers. A light birthweight bull (32kg) suitable for heifers.*



**Lot 42 MINNAMURRA ROYCE R46 (AI)**

**SIRE:** P.A.R. ASCAPE 89A Born: 30/3/2020  
**DOUBLE S JSF RAWHIDE 260D** Colour: Speckled  
 UNEEDA YASEMIN 260Y Identifier: MPC R46  
 DNA Tests: P:F R:F M:C L:C/T

SIX STAR ANCHOR E229  
**DAM:** **MINNAMURRA E229 PASSION STAR L102**  
 MINNAMURRA 60W PASSION STAR H3 \$ \_\_\_\_\_

July 2021 Speckle Park Group Breedplan

Calving Ease		Growth & Maternal						Fertility		Carcase				
	GL	BW	200	400	600	MCW	Milk	SS	CWT	EMA	RIB	RUMP	RBY	IMF
EBV	+1.9	+2.3	+12	+17	+24	+22	+1	-0.5	+14	<b>+0.9</b>	<b>+0.3</b>	<b>+0.3</b>	+0.0	<b>+0.0</b>
ACC	62%	75%	71%	69%	65%	49%	27%	71%	55%	44%	54%	54%	51%	43%
B.Av	+0.0	+2	+14	+22	+30	+31	+4.0	+0	+18.0	+0.6	+0.1	+0.0	+0.1	+0.0

*A very good natured, quiet bull with a fine coat type, well suited to Northern Australia. A masculine headed, stylish fronted bull with good rein of neck, who will grow on.*



**Lot 43 MINNAMURRA ROLLAND R49**

**SIRE:** REDNECK JSF WHISKEY 4B Born: 1/4/2020  
**MINNAMURRA NIGHTHAWK N112** Colour: White  
 MINNAMURRA 300X UNIQUE J83 Identifier: MPC R49  
 CODIAK SO LONG GEORGE 6Z DNA Tests: P:F R:F M:F L:C/T  
**DAM:** **MINNAMURRA 6Z NABOB N94**  
 MINNAMURRA 101Y NABOB L56 \$ \_\_\_\_\_

July 2021 Speckle Park Group Breedplan

	Calving Ease		Growth & Maternal					Fertility		Carcase					
	GL	BW	200	400	600	MCW	Milk	SS	CWT	EMA	RIB	RUMP	RBY	IMF	
EBV	+0.2	+4.7	+28	+36	+49	+54	+3	+0.6	+23	+0.5	+1.7	+2.3	-1.1	+0.5	
ACC	49%	73%	69%	67%	64%	50%	34%	71%	55%	46%	54%	54%	52%	45%	
B.Av	+0.0	+2	+14	+22	+30	+31	+4.0	+0	+18.0	+0.6	+0.1	+0.0	+0.1	+0.0	

*Another very sound Nighthawk son with a lot of softness and heart room, adding to R49's ability to maintain weight during the breeding season. A high growth bull to 200 and 400 days who will breed quick marketing progeny.*



**Lot 44 MINNAMURRA ROLAND R34 (AI)**

**SIRE:** P.A.R. ASCAPE 89A Born: 23/3/2020  
**DOUBLE S JSF RAWHIDE 260D** Colour: Speckled  
 UNEEDA YASEMIN 260Y Identifier: MPC R34  
 DNA Tests: P:F R:F M:F L:C/T

SIX STAR ROYAL FLESH 101Y  
**DAM:** **MINNAMURRA 101Y JANETTE L76**  
 SIX STAR 13U JANETTE G37 \$ \_\_\_\_\_

July 2021 Speckle Park Group Breedplan

Calving Ease		Growth & Maternal						Fertility		Carcase				
	GL	BW	200	400	600	MCW	Milk	SS	CWT	EMA	RIB	RUMP	RBV	IMF
EBV	+0.9	+1.7	+11	+11	+16	+13	+1	-0.9	+9	+0.4	+0.0	-0.1	+0.1	-0.2
ACC	61%	73%	69%	66%	64%	48%	29%	67%	53%	42%	52%	52%	49%	42%
B.Av	+0.0	+2	+14	+22	+30	+31	+4.0	+0	+18.0	+0.6	+0.1	+0.0	+0.1	+0.0

*A good framed, later maturing bull who will grow on. A smooth muscled bull who is not coarse in any way.*



**Lot 45 MINNAMURRA RAY R10**

**SIRE:** STAR BANK LACERTA 68L Born: 4/4/2020  
**JAD NOSEY JACK N13** Colour: Leopard  
 RIVER HILL 26T WHISTLER 38W Identifier: MPC R10  
 DNA Tests: P:F R:F M:F L:C/C  
 SPOTS 'N SPROUTS STANDS ALONE 300X  
**DAM:** MINNAMURRA 300X MISS JENNIE L24  
 STYALS MISS JENNIE 5N \$ \_\_\_\_\_

July 2021 Speckle Park Group Breedplan

	Calving Ease		Growth & Maternal					Fertility		Carcase					
	GL	BW	200	400	600	MCW	Milk	SS	CWT	EMA	RIB	RUMP	RBY	IMF	
EBV	-0.2	+0.4	+14	+34	+41	+37	+4	+0.1	+32	+1.9	-1.0	-1.4	+1.1	-0.4	
ACC	48%	73%	70%	67%	64%	51%	38%	71%	56%	46%	52%	52%	50%	42%	
B.Av	+0.0	+2	+14	+22	+30	+31	+4.0	+0	+18.0	+0.6	+0.1	+0.0	+0.1	+0.0	

*A lower birthweight bull by new sire Nosey Jack N13 with curve bending growth figures to 400 days. A deep, wide barrelled bull with good heart room and constitution. Suitable for heifers.*



**Lot 46 MINNAMURRA RAPHAEL R9**

**SIRE:** JSF TRADE SECRET 11A Born: 21/3/2020  
**JACKUNGAH NATE N08** Colour: White  
 WATTLE GROVE SPARKLE E31 Identifier: MPC R9  
 DNA Tests: P:F R:C M:F L:C/T  
 REDNECK JSF WHISKEY 4B  
**DAM:** **MINNAMURRA 4B PASSION STAR N41**  
 MINNAMURRA 60W PASSION STAR J9 \$ \_\_\_\_\_

July 2021 Speckle Park Group Breedplan

Calving Ease		Growth & Maternal						Fertility	Carcase					
	GL	BW	200	400	600	MCW	Milk	SS	CWT	EMA	RIB	RUMP	RBV	IMF
EBV	-2.3	-0.7	+11	+27	+30	+30	+2	+1.2	+17	+0.0	+1.4	+1.9	-1.7	+0.4
ACC	48%	73%	68%	66%	63%	48%	30%	71%	54%	44%	52%	52%	50%	42%
B.Av	+0.0	+2	+14	+22	+30	+31	+4.0	+0	+18.0	+0.6	+0.1	+0.0	+0.1	+0.0

*A high rib, rump and IMF marbling scanning bull who suits both the domestic and export markets. A young sire with a very high scrotal measurement and short gestation length. R9 will breed very fertile replacement females. A light birthweight bull (28kg) suitable for heifers.*





**Lot 47 MINNAMURRA RAMON R5**

**SIRE:** REDNECK JSF WHISKEY 4B Born: 19/3/2020  
**MINNAMURRA NIGHTHAWK N112** Colour: White  
 MINNAMURRA 300X UNIQUE J83 Identifier: MPC R5  
 CODIAK SO LONG GEORGE 6Z DNA Tests: P:F R:F M:F L:C/C  
**DAM:** **MINNAMURRA 6Z ALTHEA N85**  
 MINNAMURRA 300X ALTHEA L43 \$ \_\_\_\_\_

July 2021 Speckle Park Group Breedplan

Calving Ease			Growth & Maternal					Fertility		Carcase					
	GL	BW	200	400	600	MCW	Milk	SS	CWT	EMA	RIB	RUMP	RBY	IMF	
EBV	-1.6	-0.7	+9	+18	+22	+25	+4	+0.0	+16	+0.3	+0.9	+1.1	-0.7	+0.3	
ACC	50%	74%	69%	67%	64%	50%	35%	71%	55%	46%	54%	54%	52%	45%	
B.Av	+0.0	+2	+14	+22	+30	+31	+4.0	+0	+18.0	+0.6	+0.1	+0.0	+0.1	+0.0	

*A very similar type of bull to Lot 46. A light birthweight, moderate boned bull who will breed fertile females and is well suited to joining heifers.*



**Lot 48 MINNAMURRA RAFAEL R1**

**SIRE:** REDNECK JSF WHISKEY 4B Born: 3/3/2020  
**MINNAMURRA NIGHTHAWK N112** Colour: Speckled  
 MINNAMURRA 300X UNIQUE J83 Identifier: MPC R1  
 DNA Tests: P:F R:F M:F L:C/C

SIX STAR ROYAL FLESH 101Y  
**DAM: MINNAMURRA 101Y TORI N136**  
 MINNAMURRA 300X TORI J87 \$ \_\_\_\_\_

July 2021 Speckle Park Group Breedplan

Calving Ease		Growth & Maternal						Fertility		Carcase				
	GL	BW	200	400	600	MCW	Milk	SS	CWT	EMA	RIB	RUMP	RBV	IMF
EBV	+0.2	+3.8	+27	+39	+53	+58	+2	+0.8	+26	+0.8	+1.7	+2.2	-1.2	+0.6
ACC	42%	61%	62%	61%	59%	48%	36%	48%	52%	44%	52%	52%	50%	44%
B.Av	+0.0	+2	+14	+22	+30	+31	+4.0	+0	+18.0	+0.6	+0.1	+0.0	+0.1	+0.0

*A bull packed with quick growing genetics. A soundly structured, long bodied bull who always stands square.*



**Lot 49 MINNAMURRA RAEBURN R50**

**SIRE:** MAINSTREAM ELDORADO E11 Born: 6/5/2020  
**JACKUNGAH MONEY MAKER M07** Colour: Black  
 JACKUNGAH KODA K01 Identifier: MPC R50  
 DNA Tests: P:C R:F M:F L:C/C  
 SPOTS 'N SPROUTS STANDS ALONE 300X  
**DAM:** MINNAMURRA 300X AVALANCHE K29  
 STAR BANK 45R \$ \_\_\_\_\_

July 2021 Speckle Park Group Breedplan

Calving Ease			Growth & Maternal					Fertility		Carcase				
	GL	BW	200	400	600	MCW	Milk	SS	CWT	EMA	RIB	RUMP	RBY	IMF
EBV	+0.7	+3.4	+21	+26	+39	+39	+5	-0.2	+21	+0.7	-0.2	-0.4	+0.4	-0.2
ACC	42%	67%	63%	55%	55%	43%	38%	39%	43%	30%	35%	35%	34%	31%
B.Av	+0.0	+2	+14	+22	+30	+31	+4.0	+0	+18.0	+0.6	+0.1	+0.0	+0.1	+0.0

*A high rib and rump scanning bull within the contemporary group. A quick, early growth bull to 200 days who with his moderate bone, will produce higher yielding progeny.*



**Lot 50 MINNAMURRA RODRIGO R31**

**SIRE:** JSF TRADE SECRET 11A  
**JACKUNGAH NATE N08**  
 WATTLE GROVE SPARKLE E31

**DAM:** MINNAMURRA JAGUAR J156  
**MINNAMURRA J156 TWO AH N62**  
 MINNAMURRA 15R TWO AH L36

Born: 27/3/2020  
 Colour: Leopard  
 Identifier: MPC R31  
 DNA Tests: P:F R:F M:F L:T/T

\$ \_\_\_\_\_

July 2021 Speckle Park Group Breedplan

Calving Ease		Growth & Maternal						Fertility		Carcase					
	GL	BW	200	400	600	MCW	Milk	SS	CWT	EMA	RIB	RUMP	RBY	IMF	
EBV	-0.9	+2.7	+22	+36	+49	+46	+2	+0.6	+30	+1.1	-1.5	-2.2	+1.4	-0.4	
ACC	43%	73%	68%	65%	62%	47%	31%	70%	53%	44%	53%	53%	49%	41%	
B.Av	+0.0	+2	+14	+22	+30	+31	+4.0	+0	+18.0	+0.6	+0.1	+0.0	+0.1	+0.0	

*A moderate framed, very quiet natured bull with good growth for age. A high EMA scanning bull within the group. R31 displays a lot of carcass development through the hind quarter and along the top line.*



**Lot 51 MINNAMURRA ROGAN R32 (AI)**

**SIRE:** P.A.R. ASCAPE 89A Born: 25/3/2020  
**DOUBLE S JSF RAWHIDE 260D** Colour: White  
 UNEEDA YASEMIN 260Y Identifier: MPC R32  
 DNA Tests: P:F R:F M:F L:C/C  
 SPOTS 'N SPROUTS STANDS ALONE 300X  
**DAM:** MINNAMURRA 300X TORI J66  
 UPTO SPECS TORI 10T \$ \_\_\_\_\_

July 2021 Speckle Park Group Breedplan

Calving Ease			Growth & Maternal					Fertility		Carcase					
	GL	BW	200	400	600	MCW	Milk	SS	CWT	EMA	RIB	RUMP	RBY	IMF	
EBV	+0.8	+0.6	+7	+3	+8	+8	+3	-0.7	+5	+0.4	+0.9	+1.2	-0.4	+0.0	
ACC	62%	74%	71%	68%	65%	50%	35%	70%	55%	45%	53%	53%	51%	44%	
B.Av	+0.0	+2	+14	+22	+30	+31	+4.0	+0	+18.0	+0.6	+0.1	+0.0	+0.1	+0.0	

*A masculine, strong headed bull with good muscle expression down the hind leg. An easy moving, efficient walking bull for a sire with this much carcase expression.*



**Lot 52 MINNAMURRA RAMSEY R6**

**SIRE:** WATTLE GROVE RANSOM H120 Born: 16/4/2020  
**BIG STAR MAVRICK M12** Colour: Leopard  
 WATTLE GROVE 26T TRUDIE F99 Identifier: MPC R6  
 DNA Tests: P:C R:F M:F L:C/C  
 SPOTS 'N SPROUTS STANDS ALONE 300X  
**DAM:** MINNAMURRA 300X TORI J87  
 UPTO SPECS TORI 10T \$ \_\_\_\_\_

July 2021 Speckle Park Group Breedplan

Calving Ease		Growth & Maternal						Fertility		Carcase					
	GL	BW	200	400	600	MCW	Milk	SS	CWT	EMA	RIB	RUMP	RBV	IMF	
EBV	+0.7	+2.1	+16	+22	+36	+44	+3	+0.2	+21	+0.6	+0.8	+1.0	-0.4	+0.4	
ACC	46%	71%	62%	60%	61%	51%	41%	53%	51%	41%	50%	50%	48%	45%	
B.Av	+0.0	+2	+14	+22	+30	+31	+4.0	+0	+18.0	+0.6	+0.1	+0.0	+0.1	+0.0	

*A moderate framed, high 200-day weight bull with good width through the thurle and top line. A softer high rib, rump and IMF scanning bull who will produce very high meat-eating quality. A light birthweight bull (26kg) suitable for heifers.*



**Lot 53 MINNAMURRA RHETT R18 (AI)**

**SIRE:** P.A.R. ASCAPE 89A Born: 24/3/2020  
**DOUBLE S JSF RAWHIDE 260D** Colour: Speckled  
 UNEEDA YASEMIN 260Y Identifier: MPC R18  
 DNA Tests: P:F R:F M:C L:C/C

CODIAK CRIKEY GNK 13U  
**DAM:** **SIX STAR 13U PENELOPE G29**  
 LAKEVIEW PENELOPE 5P \$ \_\_\_\_\_

July 2021 Speckle Park Group Breedplan														
Calving Ease			Growth & Maternal					Fertility		Carcase				
	GL	BW	200	400	600	MCW	Milk	SS	CWT	EMA	RIB	RUMP	RBV	IMF
EBV	-0.1	-0.7	+4	+11	+10	+11	+3	+0.1	+14	+1.5	+0.4	+0.4	+0.6	-0.3
ACC	62%	74%	71%	68%	64%	47%	27%	71%	53%	42%	50%	50%	47%	39%
B.Av	+0.0	+2	+14	+22	+30	+31	+4.0	+0	+18.0	+0.6	+0.1	+0.0	+0.1	+0.0

*A similar type of maturity patter to Lot 52, only carrying a lot more carcase ability. A young sire with a big EMA to weight ratio, rare to see a bull with high rib and rump measurements with such a high eye muscle area. A light birthweight bull (33kg) suitable for heifers.*



**Lot 54 MINNAMURRA ROCCO R27**

**SIRE:** JSF TRADE SECRET 11A  
**JACKUNGAH NATE N08**  
 WATTLE GROVE SPARKLE E31

Born: 24/3/2020  
 Colour: Speckled  
 Identifier: MPC R27  
 DNA Tests: P:F R:C M:F L:C/T

**DAM:** REDNECK JSF WHISKEY 4B  
**MINNAMURRA 4B WAGU N13**  
 MINNAMURRA 300X WAGU J7

\$ \_\_\_\_\_

July 2021 Speckle Park Group Breedplan

Calving Ease		Growth & Maternal						Fertility		Carcase				
	GL	BW	200	400	600	MCW	Milk	SS	CWT	EMA	RIB	RUMP	RBY	IMF
EBV	-1.1	+1.1	+14	+26	+30	+33	+1	+0.8	+16	+0.1	+1.1	+1.5	-1.0	+0.2
ACC	47%	73%	68%	61%	60%	46%	30%	47%	48%	35%	43%	43%	41%	37%
B.Av	+0.0	+2	+14	+22	+30	+31	+4.0	+0	+18.0	+0.6	+0.1	+0.0	+0.1	+0.0

*A lighter birthweight, early maturing bull with good bone and constitution to suit the domestic market. Suitable for heifers.*





**Lot 55 MINNAMURRA RYDER R4**

**SIRE:** JSF TRADE SECRET 11A Born: 25/2/2020  
**JACKUNGAH NATE N08** Colour: Speckled  
 WATTLE GROVE SPARKLE E31 Identifier: MPC R4  
 DNA Tests: P:F R:C M:F L:C/T

REDNECK JSF WHISKEY 4B  
**DAM: MINNAMURRA 4B TEEKA N6**  
 MINNAMURRA 82U TEEKA J46 \$ \_\_\_\_\_

July 2021 Speckle Park Group Breedplan

Calving Ease		Growth & Maternal						Fertility		Carcase					
	GL	BW	200	400	600	MCW	Milk	SS	CWT	EMA	RIB	RUMP	RBY	IMF	
EBV	-2.7	-1.8	+8	+17	+18	+23	+2	+1.0	+14	-0.1	+1.4	+1.8	-1.2	+0.3	
ACC	47%	73%	68%	66%	62%	48%	30%	70%	54%	44%	52%	52%	49%	41%	
B.Av	+0.0	+2	+14	+22	+30	+31	+4.0	+0	+18.0	+0.6	+0.1	+0.0	+0.1	+0.0	

*A very long bodied, light birthweight bull with good presence and head carriage. Another high rib, rump and IMF scanning bull who will grow on. Suitable for heifers.*



**Lot 56 MINNAMURRA ROGER R28**

**SIRE:** REDNECK JSF WHISKEY 4B Born: 30/3/2020  
 MINNAMURRA NIGHTHAWK N112 Colour: White  
 MINNAMURRA 300X UNIQUE J83 Identifier: MPC R28  
 DNA Tests: P:F R:F M:F L:C/T

CODIAK SO LONG GEORGE 6Z  
**DAM:** MINNAMURRA 6Z TORI N141  
 MINNAMURRA 300X TORI J113 \$ \_\_\_\_\_

July 2021 Speckle Park Group Breedplan

Calving Ease		Growth & Maternal						Fertility	Carcase					
	GL	BW	200	400	600	MCW	Milk	SS	CWT	EMA	RIB	RUMP	RBY	IMF
EBV	+0.1	+2.1	+14	+18	+27	+28	+2	+0.9	+12	+0.6	+0.9	+1.1	-0.5	+0.2
ACC	48%	74%	69%	67%	64%	50%	36%	72%	56%	47%	55%	55%	53%	45%
B.Av	+0.0	+2	+14	+22	+30	+31	+4.0	+0	+18.0	+0.6	+0.1	+0.0	+0.1	+0.0

*A smaller framed, lighter boned bull with good slope from hip to pin, and good carcass traits.*



**Lot 57 MINNAMURRA REAGAN R13 (AI)**

**SIRE:** REDNECK FERDINAND 14Y Born: 26/3/2020  
**REDNECK JSF WHISKEY 4B** Colour: White  
 REDNECK WHISKEY 7W Identifier: MPC R13  
 DNA Tests: P:F R:F M:F L:C/C

MINNAMURRA JAGUAR J156  
**DAM: MINNAMURRA J156 PHO-FINISH M18**  
 MINNAMURRA 60W PHO-FINISH H1 \$ \_\_\_\_\_

July 2021 Speckle Park Group Breedplan

Calving Ease			Growth & Maternal					Fertility		Carcase				
	GL	BW	200	400	600	MCW	Milk	SS	CWT	EMA	RIB	RUMP	RBY	IMF
EBV	-2.3	-0.6	+14	+20	+28	+28	+5	-0.9	+16	-0.1	+1.9	+2.5	-1.8	+0.5
ACC	54%	75%	72%	71%	68%	55%	41%	74%	60%	51%	59%	59%	57%	51%
B.Av	+0.0	+2	+14	+22	+30	+31	+4.0	+0	+18.0	+0.6	+0.1	+0.0	+0.1	+0.0

*A very good natured, quiet Whiskey bull with his typical carcase characteristics. A high meat-eating quality bull. Also, a light birthweight bull (31kg) well suited to heifers.*



**Lot 58 MINNAMURRA ROBERTO R26**

**SIRE:** JSF TRADE SECRET 11A Born: 28/4/2020  
**JACKUNGAH NATE N08** Colour: Speckled  
 WATTLE GROVE SPARKLE E31 Identifier: MPC R26  
 DNA Tests: P:C R:C M:F L:C/T

REDNECK JSF WHISKEY 4B  
**DAM:** **MINNAMURRA 4B TORI N104**  
 MINNAMURRA 300X TORI J113 \$ \_\_\_\_\_

July 2021 Speckle Park Group Breedplan

Calving Ease			Growth & Maternal					Fertility	Carcase					
	GL	BW	200	400	600	MCW	Milk	SS	CWT	EMA	RIB	RUMP	RBV	IMF
EBV	-2.2	-1.0	+7	+17	+20	+18	+1	+0.7	+13	+0.0	+0.0	-0.1	-0.3	-0.1
ACC	43%	66%	63%	62%	59%	46%	29%	65%	52%	43%	51%	51%	48%	41%
B.Av	+0.0	+2	+14	+22	+30	+31	+4.0	+0	+18.0	+0.6	+0.1	+0.0	+0.1	+0.0

*A neat, soundly structured bull with a lot of efficiency of movement who will cover his cows quickly. Well suited to heifers.*



**Lot 59 MINNAMURRA REDSKIN R40**

**SIRE:** JSF TRADE SECRET 11A Born: 1/4/2020  
**JACKUNGAH NATE N08** Colour: Red  
 WATTLE GROVE SPARKLE E31 Identifier: MPC R40  
 DNA Tests: P:F R:A M:F L:C/T  
 REDNECK JSF WHISKEY 4B **Unregistered**  
**DAM:** **MINNAMURRA 4B PHO-FINISH N87**  
 MINNAMURRA 60W PHO-FINISH H4 \$ \_\_\_\_\_

July 2021 Speckle Park Group Breedplan														
Calving Ease			Growth & Maternal					Fertility		Carcase				
	GL	BW	200	400	600	MCW	Milk	SS	CWT	EMA	RIB	RUMP	RBY	IMF
EBV														
ACC														
B.Av	+0.0	+2	+14	+22	+30	+31	+4.0	+0	+18.0	+0.6	+0.1	+0.0	+0.1	+0.0

*A moderate framed bull showing a lot of carcass development and expression for his age. A deep bodied, deep hindquarterd bull with a lot of fill through the twist and lower leg. Note: Because R40 has a red coat, he is unable to be registered and is being sold as a commercial bull only.*

# TROPICAL BULLS

Minnamurra has embarked on a breeding program to produce a line of Bos Indicus infused Speckle Park commercial bulls more suited to the climate of the central north of Australia i.e., to give a finely coated animal better able to handle the heat and buffalo fly problems of our northern country, yet retaining the do-ability, carcass traits, meat yield and eating quality that is the strength of the Speckle Park breed.

Whilst it is early days in our program, these bulls by purebred Brangus sire Winchester out of top quality Minnamurra Speckle/Angus cross cows are worthy herd bulls.

## PEDIGREE FOR LOTS 60 - 63

**BORN: MARCH 2020**

TELPARA HILLS MR HOUSTON 468C3

**SIRE: TELPARA HILLS WINCHESTER 146M3**

TELPARA HILLS MISS L11 146C1

CODIAK SO LONG GEORGE 6Z

**DAM: MINNAMURRA F1 SPECKLE COW**

MINNAMURRA TEMANIA ANGUS COW



## Lot 60 **ROCKIN R646**

*A masculine headed, sirey young sire with a lot of presence and growth for age. A bull that combines high tropical traits for Northern Australia and meat quality very well.*



**Lot 61    ROUNABOUT R647**

*A bigger framed, growthy bull very similar in type to lot 60, but carrying more carcass and width through his hind quarter. A very fine coated, high Bos Indicus content bull with tremendous efficiency of movement and walking ability.*



**Lot 62    REVELLER R649**

*A slightly lower growth bull with a high Bos Indicus content and a finer sheath. Lot 62 shows similar muscle content to lots 60 and 61 with good stifle development and fill over the loin.*

## TROPICAL BULLS cont..

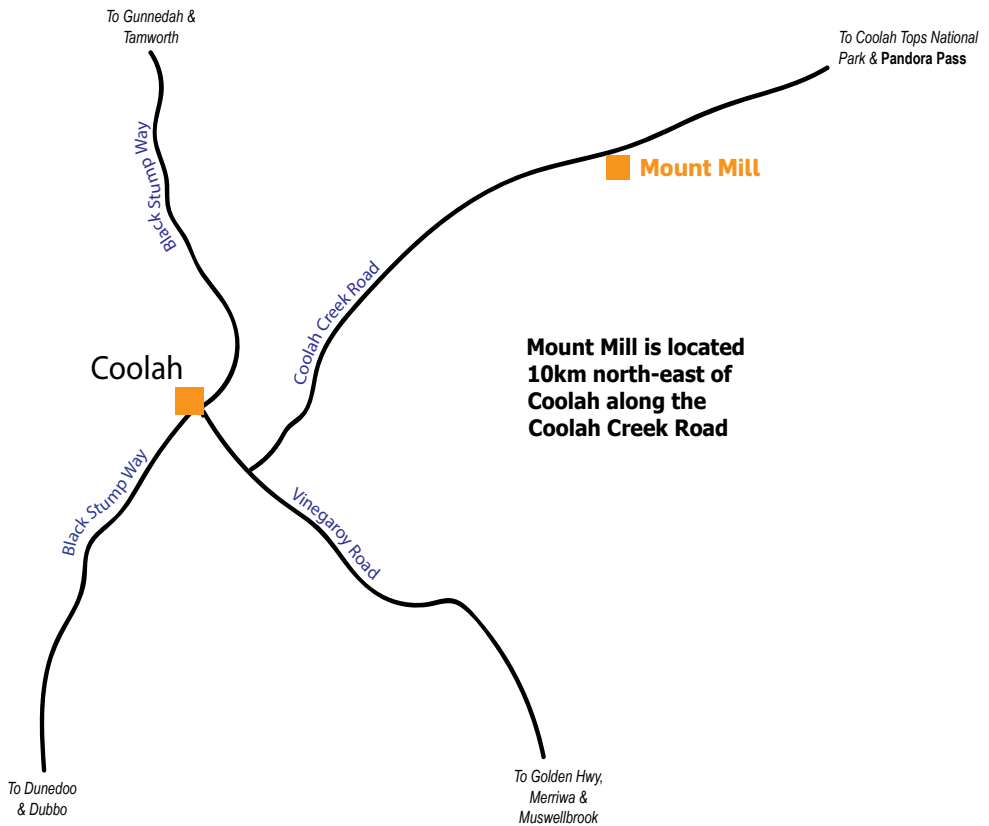


### Lot 63 RIDDLER R648

*A moderate framed higher British breed content type of bull with a very fine, short hair type. Lot 63 shows good width and carcass development in an earlier maturing package.*







## ACCOMMODATION IN COOLAH

### Coolah Valley Hotel

28 Binnia St, Coolah

12 rooms with some rooms sleeping up to 5 people with a range of double/single beds, shared shower facilities and meals.

Ph: 6377 1210

### Coolah Caravan Park

38 Cunningham St, Coolah

Standard, Deluxe and Executive cabins with a variety of bed configurations to suit, i.e. queen, double, king single, single. Powered and unpowered sites with shared shower facilities.

Ph: 6377 1338

### Black Stump Inn

61 Binnia St, Coolah

Single, twin and family rooms, meals. Shared shower facilities

Ph: 6377 1231

### Black Stump Motel

10 Campbell St, Coolah

Rated 3 stars, clean and comfy rooms

Ph: 6377 1208

Motels also available in Mudgee, Gulgong and Dunedoo.

# CARCASE MERIT

## Excerpt from The Land article “The objective data adds up”

Minnamurra Speckle Park general manager Dennis Power has been in the breed for a decade, and he knows its strengths - in carcase yield and quality. He's backed up all of his claims about the breed by entering his cattle in carcase competitions, with exceptional results, particularly through the RNA Paddock to Palate Competition, where they've had the highest individual index score for five years straight. Mr Power has also had the champion 100-day carcase and they've taken out the eating quality awards multiple times. They've also performed well in The Land's Beef Spectacular Feedback Trial, winning the overall carcase competition two years in a row.

“We're not trying to compete with the bigger European breeds when it comes to feedlot performance, but the Speckle Park carcase comes through at the end, with the dressing and boning percentages – and the yield is what's really important to the breed,” Mr Power said. “Consistently winning the award for highest MSA indexing steer means we're breeding cattle with the most profitable, edible cuts off the carcase.”

The most recent carcase results, through the ANZ National Beef Carcase Competition, held as part of Beef Australia, included strong marks in class six - grain-fed pen of three export chiller bullocks from 300kg to 420kg. Minnamurra's two pens placed fifth and eighth, and while they weren't right at the top, they weren't far off the mark. “There were only two points of difference (out of a 300-point total) between first and fifth, so it was a strong class, and we were really pleased with our steers' performance,” Mr Power said. “We were very proud of them, because they went up against cattle entered from every state in the country, and every breed”. “A lot of these steers have been through drought as calves or weaners so it's hard to pick good lines of steers to compete, but by doing these competitions all the time, it keeps giving you a good benchmark for where you're going with your cattle. “We don't select our steers at an early stage, and with the timing of the competitions, our lead steers are over the entry weight because they're such early maturing cattle. “It's nearly always our second-tier cattle, but I still want to be benchmarking those middle-of-the-road, average-type cattle, because they give us a more realistic view of what Speckle Park cattle can do.

**“Consistent quality, right across the board, is where a commercial producer makes money, not with the top pen of steers.”**

Speckle Park cattle are known for their consistency when it comes to carcase. In May a line of purebred cull cows from Minnamurra were processed by HW Greenham at Moe in Victoria. All 50 cows were Meat Standards Australia (MSA) graded, with an average MSA index of 54.14 and up to 60.55, with minimal discounts for the very heavy cows. The cows dressed at an average 54 per cent and averaged \$2,288.90. “That was the first time Greenhams had ever had 50 of any purebred cows, and that dressing percentage was incredible,” Mr Power said. “That's objective data that you can't argue with. “They've made money for us with all their calves, but to make that money at the end is impressive.”

Agent Andrew Hosken, Tamworth, said it was particularly impressive to have all cows grade MSA. “They were a genuine run of cull cows - empties or old big heavy cows, but in good order given the season. “We've had some very good kills at Greenham, but taking into account the journey from Coolah to Moe, about 1000km, the dressing percentage was a tremendous result. “It's a reflection of the breed and the management of the cattle, and handling by the carrier.”

# FEEDLOT & CARCASE TRIALS

## Results for Minnamurra Speckle Park x Angus Steers:

<b>Primex 2013</b>	1st & 2nd Eating Quality MSA Score, Individual animal 3rd Carcase Performance, MSA Score & Yield, Individual animal
<b>Beef Spectacular 2015</b>	1st, 2nd & 3rd Carcase Competition 3rd, 8th & 10th in the team performance out of 95 teams 3rd & 4th for feedlot performance
<b>Beef Spectacular 2016</b>	1st Carcase Competition Riverine Premium Beef Champion Pen 7th in team performance out of 76 teams
<b>RNA Paddock to Plate 2016</b>	1st MSA Meat Eating Quality, 70 day Trade team 10th Paddock to Plate 70 day team overall
<b>Gympie Classic 2016</b>	Highest Index Score Award The Dylan Dalton Cattleman's Choice Award
<b>RNA Paddock to Plate 2017</b>	1st Place pen of 6 Carcases, 70 day trade team 2nd place Paddock to Plate, 70 day team overall
<b>RNA Paddock to Plate 2018</b>	Highest Individual Index Score, 100 day export class
<b>RNA Paddock to Plate 2019</b>	Highest Individual Index Score, 70 day trade team 1st MSA Meat Eating Quality, 70 day trade team 1st MSA Meat Eating Quality, 100 day export team
<b>RNA Paddock to Plate 2020</b>	Champion Carcase 2020, 100 Day HGP Free Class 3rd, Pen of 6 Carcases, 100 Day HGP Free Class
<b>National Beef Carcase Competition 2021</b>	5th & 8th place, Pen of 3 Carcases, Grain fed export class

## Results for Minnamurra Angus Steers:

<b>Primex 2013</b>	1st Team Eating Quality Awards 2nd Carcase Performance, MSA Score & Yield – Individual Animal 2nd Carcase Performance, MSA Score & Yield – Team Award 2nd Total Team Score
<b>RNA Paddock to Plate 2016</b>	1st MSA Meat Eating Quality, 100 day Trade team Highest Index Score, 100 day Trade 7th Paddock to Plate team overall
<b>Beef Spectacular 2017</b>	Riverine Premium Beef Champion Pen Reserve Champion Pen of 5 Steers 2nd, 5th & 8th in team performance out of 81 teams
<b>Merriwa Annual Show</b>	Champion pen of steers over the singular hook.
<b>RNA Paddock to Plate 2018</b>	2nd & 3rd of the 70 day trade class teams

*"MPC have entered all runs of stock into commercial feed lot and performance trials with continuous success. I am genuinely very impressed at their continuous success. Often it has been the tail cattle sent for judging, as the lead is either too heavy or have long been sold."*

**Andrew Hosken**  
**Industry Livestock Specialist**



# Minnamurra Speckle Park



Breeding for Quality & Performance



Scan to see videos  
of all bulls



[www.minnamurra.com.au](http://www.minnamurra.com.au)