



MAROCARA DORSETS

Kelly Wongarbon Pty Ltd | 21st Annual

ON PROPERTY SALE

at 'Hillview' Wongarbon | 7th September 2021 | 2pm



160 PERFORMANCE RAMS

Lambplan measured | Quality assured



Carter Lindsay & Weber



Licensed Auctioneers, Stock & Station Agents, Real Estate Agents, Carcase & Feedlot Agents

SPECIALIST AUCTIONEERS

Shaun McHugh 0417 487 914
www.carterlindsayweber.com.au



THANK YOU FOR YOUR SUPPORT



21st Annual MAROCARA on-property Sale. “Hillview” River Rd, Wongarbon NSW 2831.

Thank you for attending our 21st Annual Ram sale, with the current fantastic lamb prices we hope everyone can capitalise with a good season in many areas, making it one to remember. We are proud to offer this wonderful line up of rams for your inspection, they have to come together well with no supplementary feeding to date.

This year due to the Covid-19 pandemic, our sale will be run simultaneously with **AuctionsPlus**.

As of the 20th August, we are permitted to hold a “**On-site**” auction. All agricultural auctions have been granted an exception from the Minister to operate. We realise some people may not be willing to attend during these times and we will endeavor to cater to everyone's needs. We will also be offering a **delivery service** for rams purchased at the sale (conditions apply), in particular buyers who purchase online and not able to attend due to Covid. Please ensure all Covid safe protocols are adhered to whilst attending the sale. Please sign in using the QR Code or fill out attendance record, masks must be worn whilst attending the sale. **Please do not attend the sale if you are feeling un-well.**

Online catalogues are now available also. We have photos of each lot uploaded and some lots have videos attached. Contact Gus (email or phone) if you would like these emailed directly. Please use this link to the Auctionsplus site.

<http://auctionsplus.com.au/auctions/sheep/marocara-dorsets-on-property-ram-sale/76267ps>

You must be registered to bid on AuctionsPlus, you can do this via the website.

Please read the terms and conditions if you would like to participate, contact us if you need help.

All rams are also available on the **Sheep Genetics Website**.

Please note, only a limited number of rams are registerable, for more information regarding individual ram registration please be in touch.

If you have any questions please don't hesitate to call Gus, Al or John. We look forward to seeing you before the sale.

Kind Regards

Gus Kelly

0428 878 221 angus.kelly@bigpond.com

Alistair Kelly

0427 878 221 alistairkelly@bigpond.com

John Kelly

0437 130 841

Property PIC – NJ220319 Brucellosis accreditation – W82/17 expires February 28, 2022.

MAROCARA is declared to be footrot and lice free.

Vaccinated with Glanvac 6 in 1 and drenched with Avomec Dual on 22/07/21.

Rams were shorn on 22/7/2021 by Blue Hills Sheep Services, Jim Bourke 0428 878 413.

Weighed 18-8-2021.

All buyers will be supplied with a National Sheep Health Statement (SHS) and National Vendor Declaration (NVD). MAROCARA has a “Property Biosecurity Plan”

Definitions of Abbreviations

DOB = Month of Lambing. **Sire** = Sires as indicated with stud name. **BT** = Birth type, 1 = Single, 2 = Twin, 3 = Triplet.

WWT = Weaning weight expressed in kgs at 14 weeks of age. Rams with a higher WWT figure will have lambs that grow quicker to weaning.

PWWT = Post Weaning weight, expressed in kgs at 7.5 months of age. A positive PWWT reflects the animals ability to grow after weaning and reach target weight.




PFAT = Post weaning fat depth, expressed in mm at 45kg. Estimates the difference in animals fat at the GR site. An animal with negative PFAT will produce leaner lambs.

PEMD = Post weaning eye muscle depth, expressed in mm at 45kg. Animals with a higher PEMD will have more muscle and more lean meat yield independent of weight. The correlation between PEMD and hindquarter development is only 15%, therefore visual assessments need to be made.

TCP = Terminal Carcase Production is a \$ value index. Similar production traits to Carcase plus for growth and muscle with emphasis on eating quality. Use this index to “maintain eating quality and improving carcass growth”

IMF = marbling and shear force. **SF5** = is a measurement of tenderness (shearforce)

EQ = Index is targeting larger improvements in eating quality and modest increase in LMY. Information is gathered through genotyping young rams to improve accuracy of this ASBV's.

		<h2 style="text-align: center;">SIREs OF CATALOGUED RAMS - 2021.</h2>																		
Sire	Sire of Sire	BT	BWT	WWT	PWT	PFAT	PEMD	Breed %	IMF	SF5	DRESS %	LMY	IB	TCP	EQ	Prog	Fiks	# rams in sale		
190115	150049	1	0.2	10.1	15.7	-0.2	4.7	93%	-0.3	2.6	3.2	5.2	5%	161.6	157.9	30	1	8		
190074	Old Woombi 150042	2	0.5	12.4	18.5	-0.9	2.2	95%	-0.4	3.7	2.2	4.7	4%	154.0	147.9	91	1	4		
190009	Pollambi 160212	2	0.4	11.2	18.0	-0.4	2.9	84%	-0.7	3.8	3.1	4.6	3%	156.4	147.4	88	1	10		
180317	150049	1	0.6	11.0	15.6	-0.4	2.6	100%	-0.2	2.8	2.1	3.9	6%	148.2	145.6	85	1	9		
190209	Pollambi 160212	2	0.3	10.8	17.0	-0.4	3.4	84%	-0.6	4.1	3.0	4.7	2%	153.3	145.5	97	1	12		
190117	Lambpro 160299	2	0.7	13.0	18.5	-0.8	2.6	90%	-0.7	4.9	2.2	4.9	4%	151.8	143.0	92	1	8		
190037	Aberdeen 160617	2	0.7	13.4	19.2	-1.0	2.1	92%	-0.8	7.9	2.3	5.4	3%	148.8	139.0	17	1	5		
Felix 180325	Felix 170667	1	0.2	10.1	15.7	-1.0	3.2	95%	-0.8	5.8	2.5	5.1	5%	147.6	137.3	245	1	31		
170107	150049	1	0.2	9.7	14.6	-0.2	3.0	90%	-0.4	5.2	2.4	3.9	2%	141.5	136.4	174	2	11		
180252	Aberdeen 160527	2	0.4	9.9	14.1	-0.6	3.0	100%	-0.9	7.6	2.5	4.8	2%	142.0	130.9	59	1	21		
170273	150035	2	0.1	8.5	13.1	-0.1	2.5	90%	-0.5	5.6	2.3	2.8	4%	135.4	128.5	42	1	4		
180141	160141	1	0.2	10.1	14.4	0.7	2.9	90%	-0.5	5.3	2.3	2.7	2%	132.9	126.6	104	1	10		
Aberdeen 180538	Aberdeen 160679	2	0.4	10.4	14.5	-0.3	1.4	100%	-0.7	5.6	1.5	3.4	7%	133.2	124.9	124	1	14		
180259	Felix 161073	1	0.3	8.4	13.7	-0.4	2.7	100%	-1.3	9.3	2.1	4.5	3%	131.9	116.3	40	1	6		
				Top 5 %		Top 10 %			Top 20 %											



MAROCARA DORSETS - 160 Rams
Tuesday 7th Sept 2021, 2pm -
On Site & Auctionsplus



LOT	TAG	SIRE	DOB	Kgs	BT	Wwt	Pwwt	Pfat	PEMD	IMF	SF5	TCP	EQ	Buyer/Price
1	648	Felix 180325	July-20	102	2	8.7	13.6	-0.9	2.7	-0.9	5.6	140.0	129.2	Top 20% PEMD
2	106	Aberdeen 180538	May-20	113	2	9.8	14.6	-0.8	1.0	-0.9	5.4	133.0	122.6	
3	161	180141	May-20	97	2	9.8	14.0	-0.1	2.4	-0.4	5.7	134.9	129.4	
4	139	180252	May-20	115	2	9.4	13.4	-0.5	2.8	-0.8	6.3	139.2	129.0	Top 20% PEMD
5	466	190074	July-20	107	2	12.0	17.6	-1.0	1.7	-0.7	5.1	145.8	136.9	Top 10% Pwmt, Top 5% Wwt
6	286	180252	May-20	114	1	9.6	13.8	-0.7	3.3	-0.8	6.8	144.3	134.8	Top 10% PEMD
7	406	Aberdeen 180538	June-20	104	1	10.4	15.1	-0.5	1.9	-0.8	7.0	135.2	125.8	
8	612	190037	July-20	109	1	9.7	14.5	-0.8	2.3	-0.6	3.6	145.0	137.7	
9	569	Felix 180325	July-20	96	2	9.4	14.4	-0.7	1.8	-0.8	5.9	135.5	126.1	
10	267	180141	May-20	111	1	9.3	14.5	-0.1	2.7	-0.9	6.3	136.6	125.9	Top 20% PEMD
11	568	Felix 180325	July-20	102	2	9.5	14.7	-0.5	2.1	-0.7	5.8	137.1	127.9	
12	323	Felix 180325	May-20	99	2	9.9	15.5	-0.4	3.8	-0.6	5.1	150.0	142.3	Top 5% PEMD, Top 20% TCP
13	204	Felix 180325	May-20	109	2	10.5	15.7	-1.4	2.0	-0.9	6.5	142.3	130.9	Top 10% Wwt
14	114	170107	May-20	105	2	7.7	12.1	-0.2	2.9	-0.7	5.2	134.7	125.6	Top 20% PEMD
15	452	190009	July-20	111	2	9.5	15.0	0.2	3.4	-0.7	2.4	149.6	140.5	Top 20% TCP, Top 10% PEMD
16	84	180317	May-20	108	1	9.1	13.4	-0.4	3.2	-0.3	2.4	146.1	141.3	Top 10% PEMD, Top 20% IMF
17	67	180141	May-20	127	1	9.5	13.4	-0.4	2.0	-0.9	6.7	130.2	119.1	
18	243	180317	May-20	108	3	8.6	12.5	-0.1	3.1	-0.5	3.3	140.5	133.7	Top 10% PEMD
19	255	Felix 180325	May-20	115	1	9.5	14.1	-1.2	2.2	-1.0	6.3	138.5	126.9	
20	433	Felix 180325	July-20	113	2	9.2	15.0	-0.5	2.7	-0.9	5.1	142.8	131.9	Top 20% PEMD
21	658	190209	July-20	105	2	11.0	16.9	-0.9	2.2	-0.8	5.9	146.3	136.7	Top 10% Wwt, Top 20% Pwmt, Top 20% TCP
22	447	190117	July-20	112	2	11.7	16.3	-0.4	3.0	-0.8	5.8	145.5	135.6	Top 20% PEMD, Top 5% Wwt
23	636	190074	July-20	101	3	11.0	17.4	-0.4	3.3	-0.5	4.2	154.4	147.9	Top 10% Wwt, Top 10% Pwmt, Top 10% PEMD, Top 5% TCP, Top 10% EQ
24	803	190209	Sept-20	100	1	10.9	16.7	-0.9	2.9	-0.5	5.2	151.3	144.7	Top 20% PEMD, Top 10% Wwt, Top 20% Pwmt, Top 10% TCP
25	490	190209	July-20	107	1	10.4	16.0	-0.3	3.3	-0.5	4.3	150.0	143.2	Top 10% PEMD, Top 20% TCP
26	547	190009	July-20	114	3	10.4	17.3	-0.5	3.6	-0.7	2.5	160.3	151.4	Top 20% Pwmt, Top 5% PEMD, Top 5% TCP, Top 5% EQ
27	539	190117	July-20	119	2	12.1	17.3	-1.0	3.8	-0.9	6.1	157.3	146.7	Top 20% Pwmt, Top 5% PEMD, Top 5% Wwt, Top 5% TCP, Top 10% EQ
28	187	170107	May-20	127	2	9.9	14.9	-0.2	2.9	-0.4	5.2	142.1	136.9	Top 20% PEMD
29	564	190009	July-20	103	2	9.9	15.0	-0.2	4.0	-1.0	5.0	152.6	141.1	Top 5% PEMD, Top 10% TCP
30	641	190009	July-20	107	2	11.6	17.5	-0.7	2.9	-1.0	5.8	152.1	140.5	Top 20% PEMD, Top 10% Wwt, Top 10% Pwmt, Top 10% TCP
31	673	190209	July-20	98	2	10.9	17.0	-0.2	3.7	-0.6	4.5	154.5	146.9	Top 10% Wwt, Top 20% Pwmt, Top 5% PEMD, Top 5% TCP, Top 10% EQ
32	660	190009	July-20	100	2	10.9	17.3	-0.7	3.2	-0.7	5.5	154.4	145.1	Top 10% Wwt, Top 20% Pwmt, Top 10% PEMD, Top 5% TCP, Top 20% EQ
33	63	180252	May-20	118	2	9.4	14.0	-0.3	2.1	-0.7	4.8	137.7	129.2	
34	575	Felix 180325	July-20	109	2	9.9	15.3	-1.2	2.3	-0.9	6.3	141.5	131.1	
35	654	190009	July-20	105	2	10.8	16.6	-0.8	3.3	-1.0	5.5	153.8	141.9	Top 10% Wwt, Top 20% Pwmt, Top 10% PEMD, Top 10% TCP
				Top 5 %		Top 10 %		Top 20 %						



MAROCARA DORSETS - 160 Rams
Tuesday 7th Sept 2021, 2pm -
On Site & Auctionsplus



LOT	TAG	SIRE	DOB	Kgs	BT	Wwt	Pwwt	Pfat	PEMD	IMF	SF5	TCP	EQ	Buyer/Price
36	488	Felix 180325	July-20	103	3	10.7	16.6	-0.9	2.6	-0.7	4.5	147.9	139.4	Top 20% PEMD, Top 10% Wwt, Top 20% Pwwt, Top 20% TCP
37	533	190009	July-20	105	3	11.2	17.7	-0.8	1.7	-0.7	5.9	145.9	137.5	Top 10% Wwt, Top 10% Pwwt
38	239	170107	May-20	108	2	9.9	14.8	-0.4	2.2	-0.6	5.9	137.0	129.1	
39	434	Felix 180325	July-20	100	2	8.6	14.3	-0.7	2.8	-0.9	4.8	143.3	132.3	Top 20% PEMD
40	637	Felix 180325	July-20	102	1	8.8	13.4	-1.0	2.5	-0.8	5.2	139.0	128.9	
41	560	Felix 180325	July-20	110	1	10.2	15.3	-1.0	2.1	-0.8	7.1	138.7	128.6	
42	214	180252	May-20	110	2	10.0	14.3	-0.9	2.6	-1.2	8.5	138.8	124.5	Top 20% PEMD
43	496	190209	July-20	103	3	10.0	15.3	-0.1	2.8	-0.4	3.5	144.7	139.9	Top 20% PEMD
44	650	Felix 180325	July-20	104	2	10.5	16.1	-0.6	2.4	-0.6	4.7	144.3	136.2	
45	236	180259	May-20	115	2	9.7	15.5	-1.1	2.2	-1.3	7.4	140.4	125.2	
46	416	190117	June-20	111	2	10.8	15.5	-0.8	2.3	-1.0	5.7	142.3	130.4	Top 10% Wwt
47	750	190209	Aug-20	102	2	11.0	17.6	-0.9	2.6	-1.0	6.5	148.9	137.0	Top 20% PEMD, Top 10% Wwt, Top 10% Pwwt, Top 20% TCP
48	455	190115	July-20	111	1	8.9	14.1	-0.3	3.7	-0.7	4.4	148.4	139.8	Top 5% PEMD, Top 20% TCP
49	81	180317	May-20	131	2	11.3	16.1	-0.8	2.2	-0.5	4.4	145.2	138.4	Top 10% Wwt
50	155	Felix 180325	May-20	109	2	9.2	13.8	-0.6	2.8	-1.0	6.6	138.5	126.7	Top 20% PEMD
51	108	180259	May-20	113	2	8.6	13.7	-0.5	3.2	-0.9	7.1	139.9	129.0	Top 10% PEMD
52	404	190209	June-20	112	2	9.8	14.9	-0.4	2.7	-0.7	4.6	141.4	133.1	Top 20% PEMD
53	367	Felix 180325	June-20	103	2	9.3	14.6	-0.9	2.6	-0.8	5.3	142.1	132.1	Top 20% PEMD
54	75	Aberdeen 180538	May-20	118	2	10.6	14.9	-1.1	1.6	-0.9	5.7	139.3	128.8	Top 10% Wwt
55	421	Aberdeen 180538	July-20	112	2	10.0	14.2	-1.0	0.9	-0.8	5.7	131.4	121.3	
56	653	190209	July-20	111	2	10.5	15.8	-1.1	2.2	-0.8	6.0	143.9	134.3	
57	302	180141	May-20	99	2	9.8	14.7	0.3	2.6	-0.4	4.6	138.4	133.3	Top 20% PEMD
58	142	180252	May-20	124	2	10.7	15.2	-1.3	2.4	-0.8	5.7	146.2	136.5	Top 10% Wwt, Top 20% TCP
59	31	180141	May-20	113	2	10.5	15.8	-0.1	2.4	-0.3	3.8	141.5	136.9	Top 20% IMF
60	245	180317	May-20	108	2	10.0	14.9	-0.2	3.1	-0.5	3.4	148.4	142.3	Top 10% PEMD, Top 20% TCP
61	148	170107	May-20	115	2	9.3	14.6	-0.1	2.8	-0.4	3.2	142.7	137.9	Top 20% PEMD
62	335	180141	May-20	106	2	9.4	13.5	0.6	3.7	-0.4	5.3	138.0	132.2	Top 5% PEMD
63	26	180259	May-20	114	1	8.2	13.2	0.2	3.8	-1.2	6.1	139.6	125.8	Top 5% PEMD
64	246	180317	May-20	101	2	9.1	13.6	-0.1	3.3	-0.4	2.9	146.8	141.1	Top 10% PEMD, Top 20% TCP
65	275	180317	May-20	114	1	9.7	13.9	-0.3	2.2	-0.5	4.8	136.7	129.7	
66	57	170107	May-20	123	2	9.2	13.9	-0.5	2.6	-0.8	6.0	138.4	128.9	Top 20% PEMD
67	509	190115	July-20	107	2	9.9	15.7	-1.0	3.5	-0.8	4.7	153.3	143.9	Top 5% PEMD, Top 10% TCP
68	594	Aberdeen 180538	July-20	98	2	9.6	14.0	-0.7	2.4	-0.6	5.7	139.7	132.3	
69	365	180252	June-20	120	2	8.6	12.9	-0.8	2.6	-1.1	6.1	138.8	125.9	Top 20% PEMD
70	512	190209	July-20	115	2	11.4	17.1	-0.6	1.6	-0.7	6.1	140.9	131.6	Top 10% Wwt, Top 20% Pwwt
				Top 5 %		Top 10 %		Top 20 %						



MAROCARA DORSETS - 160 Rams
Tuesday 7th Sept 2021, 2pm -
On Site & Auctionsplus



LOT	TAG	SIRE	DOB	Kgs	BT	Wwt	Pwwt	Pfat	PEMD	IMF	SF5	TCP	EQ	Buyer/Price
71	250	180252	May-20	113	2	9.9	13.7	-1.4	1.8	-0.9	7.7	137.1	125.8	
72	103	180252	May-20	114	2	9.3	14.0	-0.4	3.0	-1.1	6.2	140.6	127.9	Top 20% PEMD
73	361	180317	June-20	114	1	9.5	13.8	-0.1	2.5	-0.6	4.4	138.1	130.9	
74	210	180252	May-20	113	2	9.5	14.3	-0.7	2.7	-1.0	7.3	139.9	128.1	Top 20% PEMD
75	282	180317	May-20	118	1	10.0	14.1	-1.1	2.1	-0.7	4.9	140.6	131.7	
76	176	180252	May-20	106	2	9.2	14.1	-0.8	3.0	-1.0	6.2	143.4	131.4	Top 20% PEMD
77	522	Felix 180325	July-20	119	2	10.1	15.3	-0.6	2.8	-0.9	6.1	142.7	131.5	Top 20% PEMD
78	273	170273	May-20	115	2	10.1	15.5	-0.3	2.7	-0.7	5.8	144.0	134.9	Top 20% PEMD
79	543	Felix 180325	July-20	107	3	10.4	15.7	-0.6	3.5	-0.9	6.0	147.6	136.7	Top 5% PEMD, Top 20% TCP
80	483	190115	July-20	110	2	10.3	14.8	-0.4	3.1	-0.6	5.7	143.4	135.8	Top 10% PEMD
81	83	180252	May-20	108	1	8.4	12.5	-1.1	2.4	-1.2	7.2	136.0	122.5	
82	505	190037	July-20	106	2	12.0	17.7	-0.7	2.2	-0.8	7.6	143.0	132.6	Top 10% Pwmt, Top 5% Wwt
83	357	180252	June-20	108	2	8.9	13.1	-1.0	3.0	-1.2	7.8	139.8	125.7	Top 20% PEMD
84	348	170273	June-20	117	2	9.2	14.4	-1.0	2.1	-1.0	6.1	139.1	127.0	
85	388	Syndicate	June-20	112	2	6.6	10.5	-0.8	1.4	-0.8	4.3	125.2	115.3	
86	437	190117	July-20	113	2	11.9	16.5	-1.3	1.9	-0.7	5.4	146.6	137.6	Top 20% Pwmt, Top 5% Wwt, Top 20% TCP
87	710	Felix 180325	Aug-20	110	1	10.3	16.0	-1.1	2.4	-1.0	6.1	143.8	131.6	
88	366	Felix 180325	June-20	98	2	8.7	13.6	-1.0	2.5	-0.8	5.2	140.1	130.3	Top 20% PEMD
89	85	180317	May-20	109	1	10.1	14.7	-0.3	2.1	-0.4	4.6	136.7	131.4	
90	411	Aberdeen 180538	June-20	116	2	10.8	15.6	-0.4	1.8	-0.8	6.4	136.3	126.2	Top 10% Wwt
91	252	180252	May-20	120	2	10.3	15.2	-0.4	2.7	-0.9	7.4	140.5	130.1	Top 20% PEMD
92	664	190117	July-20	109	1	11.2	16.6	-0.4	2.7	-0.8	5.2	146.3	136.7	Top 20% PEMD, Top 10% Wwt, Top 20% Pwmt, Top 20% TCP
93	448	190117	July-20	108	2	12.2	17.0	-0.7	2.6	-0.8	6.3	145.8	135.3	Top 20% PEMD, Top 20% Pwmt, Top 5% Wwt
94	463	190115	July-20	113	2	9.1	13.9	-0.5	3.3	-0.6	5.0	146.1	138.8	Top 10% PEMD
95	487	190009	July-20	108	3	11.0	17.6	-0.3	2.9	-0.6	3.1	153.3	145.7	Top 20% PEMD, Top 10% Wwt, Top 10% Pwmt, Top 10% TCP, Top 10% EQ
96	320	Felix 180325	May-20	102	1	8.1	12.7	-0.9	2.7	-0.9	5.7	137.6	126.4	Top 20% PEMD
97	754	190209	Aug-20	103	2	10.5	16.2	-0.5	3.2	-0.8	5.4	149.6	139.8	Top 10% PEMD, Top 20% TCP
98	58	170107	May-20	121	2	8.1	12.8	-0.5	2.7	-0.7	5.3	136.7	127.8	Top 20% PEMD
99	177	180141	May-20	105	2	9.2	14.0	0.5	3.1	-0.2	3.4	139.9	136.6	Top 10% PEMD, Top 20% IMF
100	695	Aberdeen 180538	Aug-20	105	2	10.3	15.5	-0.7	1.6	-0.8	5.3	139.0	129.4	
101	723	Felix 180325	Aug-20	106	1	10.7	16.7	-0.4	3.6	-0.9	5.5	149.3	138.7	Top 10% Wwt, Top 20% Pwmt, Top 5% PEMD, Top 20% TCP
102	279	180252	May-20	106	1	8.6	12.3	-0.4	3.1	-0.9	6.5	137.0	125.9	Top 10% PEMD
103	318	180252	May-20	110	2	8.7	12.8	-0.2	2.9	-0.8	5.6	138.8	128.9	Top 20% PEMD
104	178	Felix 180325	May-20	105	2	8.8	14.0	-0.5	3.4	-0.9	4.6	145.3	134.6	Top 10% PEMD
105	311	Felix 180325	May-20	104	2	9.3	13.6	-1.0	2.6	-1.1	7.4	137.1	124.2	Top 20% PEMD
				Top 5 %		Top 10 %			Top 20 %					



MAROCARA DORSETS - 160 Rams
Tuesday 7th Sept 2021, 2pm -
On Site & Auctionsplus



LOT	TAG	SIRE	DOB	Kgs	BT	Wwt	Pwwt	Pfat	PEMD	IMF	SF5	TCP	EQ	Buyer/Price
106	481	190115	July-20	110	1	11.4	16.7	-0.4	3.1	-0.6	6.0	149.3	142.1	Top 10% Wwt, Top 20% Pwwt, Top 10% PEMD, Top 20% TCP
107	497	190115	July-20	108	2	10.3	16.3	-0.6	3.6	-0.7	4.4	153.8	145.6	Top 5% PEMD, Top 10% TCP, Top 10% EQ
108	265	Syndicate	May-20	117	2	8.2	12.3	-0.9	1.1			130.0	121.0	
109	392	Syndicate	June-20	124	2	8.4	12.6	-1.1	1.0			130.6	122.6	
110	354	Syndicate	June-20	116	2	8.2	12.1	-0.7	2.2	-0.8	5.2	133.2	123.1	
111	409	Felix 180325	June-20	103	3	9.6	14.7	-0.1	2.9	-0.7	5.0	139.1	130.6	Top 20% PEMD
112	470	190115	July-20	107	2	9.7	14.5	-0.1	3.1	-0.5	4.3	143.8	137.1	Top 10% PEMD
113	371	Syndicate	June-20	134	1	8.4	12.6	-1.0	0.2			119.4	108.0	
114	577	190117	July-20	110	2	11.2	16.9	-0.3	2.6	-0.7	5.3	144.4	135.2	Top 20% PEMD, Top 10% Wwt, Top 20% Pwwt
115	684	190074	July-20	110	1	11.2	16.9	-0.9	1.7	-0.9	6.2	142.1	131.4	Top 10% Wwt, Top 20% Pwwt
116	185	Aberdeen 180538	May-20	116	2	10.8	16.4	-0.8	1.8	-1.1	6.5	139.5	126.3	Top 10% Wwt
117	76	180252	May-20	127	1	9.2	14.3	-0.7	2.3	-0.5	3.6	143.5	136.8	
118	12	170107	May-20	120	2	9.5	15.1	-0.5	2.4	-0.4	3.2	143.5	138.4	
119	281	170107	May-20	106	1	9.0	13.6	-0.6	2.1	-0.6	6.1	134.3	126.9	
120	213	180252	May-20	115	2	10.4	14.8	-1.1	2.4	-1.2	8.8	139.3	124.6	
121	86	180252	May-20	113	2	9.9	14.6	-0.9	2.5	-1.2	7.7	141.2	126.6	
122	595	190209	July-20	104	2	10.0	15.5	-0.8	3.1	-0.6	5.1	148.9	141.8	Top 10% PEMD, Top 20% TCP
123	1	Aberdeen 180538	May-20	112	1	9.5	13.5	0.3	2.9	-0.7	5.5	134.6	125.7	Top 20% PEMD
124	513	190009	July-20	105	2	10.4	16.0	-0.7	2.7	-0.7	4.8	149.6	140.6	Top 20% TCP
125	428	190074	July-20	112	2	11.2	16.7	-0.3	2.3	-0.5	4.4	143.7	137.2	Top 10% Wwt, Top 20% Pwwt
126	47	180252	May-20	123	2	10.0	14.8	-0.1	2.6	-0.7	5.1	142.1	133.7	Top 20% PEMD
127	652	190037	July-20	104	2	10.8	16.0	-0.7	2.3	-0.9	7.1	141.8	130.8	Top 10% Wwt
128	643	190037	July-20	116	1	11.4	15.9	-1.1	2.3	-1.1	7.9	142.3	129.3	Top 10% Wwt
129	304	Aberdeen 180538	May-20	120	2	10.0	15.2	0.0	1.5	-0.6	5.1	135.4	127.5	
130	269	Aberdeen 180538	May-20	115	2	9.5	14.7	-0.4	1.4	-0.8	5.2	133.1	123.6	
131	760	Felix 180325	Aug-20	95	2	10.5	16.2	-0.8	3.3	-1.0	5.4	149.3	137.8	Top 10% PEMD, Top 20% TCP
132	532	190009	July-20	100	3	10.7	17.0	-0.6	2.2	-0.6	5.5	146.5	138.4	Top 10% Wwt, Top 20% Pwwt, Top 20% TCP
133	559	190209	July-20	110	2	9.9	15.2	-0.8	2.3	-0.6	4.7	144.0	136.0	
134	149	170107	May-20	116	2	10.1	14.9	-0.8	2.9	-0.7	5.9	142.4	133.4	Top 20% PEMD
135	387	Syndicate	June-20	120	2	7.7	11.9	-1.3	0.8	-0.9	5.3	126.1	115.1	
136	263	Syndicate	May-20	121	2	6.7	10.7	-0.9	0.7	-0.6	2.8	123.4	115.6	
137	567	Felix 180325	July-20	100	2	9.5	14.3	-1.1	2.5	-0.7	5.1	142.6	133.7	
138	589	190115	July-20	100	2	10.3	15.4	-0.8	3.7	-0.7	4.3	153.1	144.5	Top 5% PEMD, Top 10% TCP
139	196	180259	May-20	116	1	8.8	13.5	-0.9	1.4	-0.9	8.0	128.0	117.0	
140	274	170273	May-20	118	2	10.9	16.1	-0.8	2.0	-0.8	6.9	141.8	132.0	Top 10% Wwt
						Top 5 %		Top 10 %			Top 20 %			



MAROCARA DORSETS - 160 Rams
Tuesday 7th Sept 2021, 2pm -
On Site & AuctionsPlus



LOT	TAG	SIRE	DOB	Kgs	BT	Wwt	Pwwt	Pfat	PEMD	IMF	SF5	TCP	EQ	Buyer/Price
141	79	Aberdeen 180538	May-20	119	1	9.2	13.5	-0.6	1.7	-0.8	5.8	132.8	122.7	
142	100	180252	May-20	133	2	9.8	14.5	-0.9	2.4	-0.9	6.8	140.1	128.7	
143	46	180252	May-20	119	2	9.7	14.2	-0.3	2.8	-0.7	5.1	142.3	133.6	Top 20% PEMD
144	499	Felix 180325	July-20	110	2	10.1	15.1	-1.2	2.7	-1.1	6.6	144.3	131.7	Top 20% PEMD
145	156	Felix 180325	May-20	117	2	10.1	14.9	-1.1	2.2	-1.0	7.4	138.8	126.2	
146	405	190037	June-20	117	2	11.0	15.9	-0.7	1.9	-0.7	6.4	138.6	129.5	Top 10% Wwt
147	349	170273	June-20	115	2	9.5	14.2	-0.5	1.3	-0.6	6.5	131.2	123.0	
148	321	180141	May-20	103	2	10.7	15.3	0.3	2.6	-0.6	6.3	135.2	127.4	Top 20% PEMD, Top 10% Wwt
149	328	180259	May-20	109	2	9.5	14.8	-0.5	2.7	-1.1	7.2	139.8	126.6	Top 20% PEMD
150	127	170107	May-20	109	2	9.7	15.4	-0.4	2.6	-0.4	3.6	144.7	139.0	Top 20% PEMD
151	316	180141	May-20	97	2	9.4	14.0	-0.2	3.0	-0.6	5.5	139.3	132.1	Top 10% PEMD
152	615	Felix 180325	July-20	95	2	9.4	14.1	-0.6	3.0	-0.9	6.2	141.1	129.8	Top 20% PEMD
153	375	170107	June-20	102	3	10.3	15.6	-0.6	2.2	-0.7	5.9	141.7	132.4	
154	89	Aberdeen 180538	May-20	109	2	10.6	15.1	-1.1	1.1	-1.0	7.4	132.7	120.6	Top 10% Wwt
155	717	Felix 180325	Aug-20	104	1	12.0	18.9	-0.8	3.2	-1.0	6.7	154.4	142.6	Top 5% Pwwt, Top 10% PEMD, Top 5% Wwt, Top 5% TCP
156	208	180141	May-20	101	2	9.7	14.1	-0.6	2.5	-0.9	6.4	136.0	124.9	
157	748	Felix 180325	Aug-20	102	2	10.7	16.8	-0.8	3.2	-0.7	5.0	151.5	142.5	Top 10% Wwt, Top 20% Pwwt, Top 10% PEMD, Top 10% TCP
158	645	190117	July-20	108	2	12.1	18.0	-0.6	2.7	-0.6	5.3	149.3	141.1	Top 20% PEMD, Top 5% Pwwt, Top 5% Wwt, Top 20% TCP
159	71	180259	May-20	103	1	8.1	13.4	-0.3	1.7	-0.8	7.7	125.4	115.2	
160	618	Aberdeen 180538	July-20	105	2	9.7	14.6	-0.4	1.6	-0.9	6.4	132.6	121.3	
				Top 5 %		Top 10 %				Top 20 %				



MAROCARA Averages - 15 August 2021 Analysis.

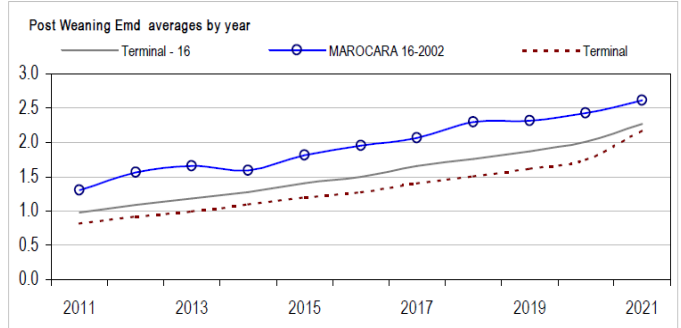
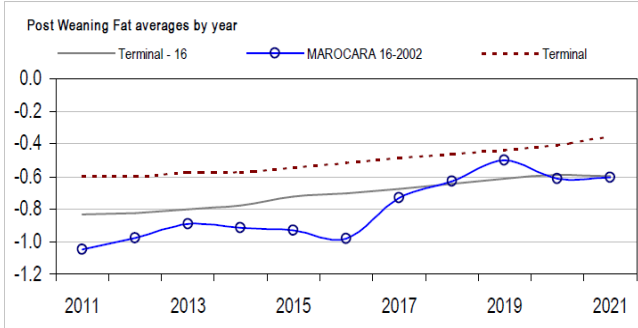
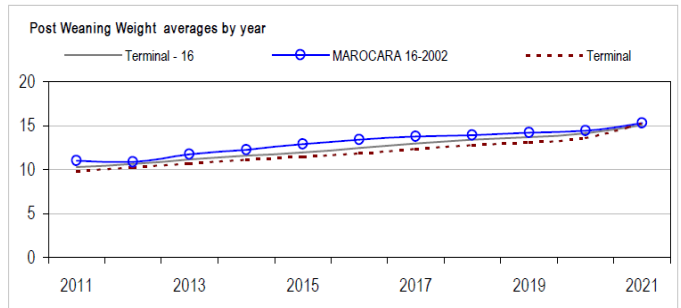
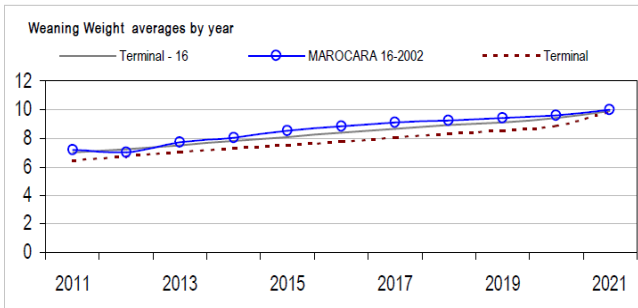
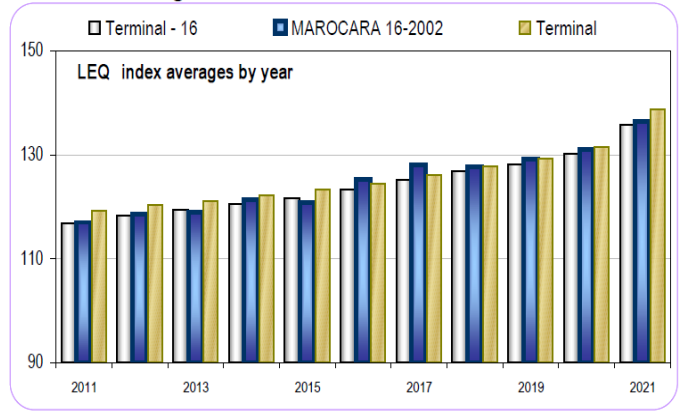
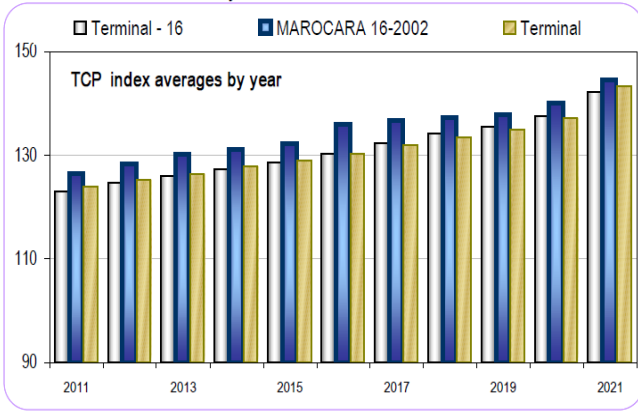
	WWT	PWWT	PFAT	PEMD	TCP	EQ	Counts
2021 SALE Rams Av.	9.9	14.9	-0.6	2.6	141.6	132.1	160
2020 MD Progeny Av.	9.6	14.5	-0.6	2.4	140.0	131.1	811
Poll Dorset 2020 drop progeny across flocks Av.	9.4	14.1	-0.5	2.0	137.5	130.3	48481
Percentile bands- Terminal Breeds across flocks.							
Top 5%	11.7	18.1	-1.2	3.5	154.1	150.9	
Top 10%	11.2	17.4	-1.1	3.1	150.7	146.6	
Top 20%	10.6	16.5	-0.8	2.6	146.3	141.1	

MAROCARA
ANGUS KELLY
16-2002

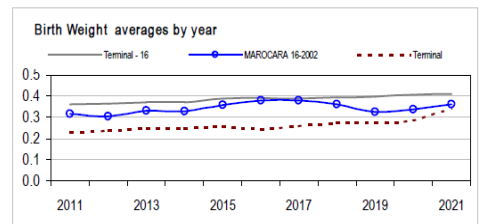


Analysis : **Terminal - 16**

Dated : 15 August 2021



Terminal - 16	Bwt	Wwt	Pwwt	Pfat	Pemd	TCP	LEQ	Counts
2012	0.37	7.24	10.66	-0.82	1.09	124.6	118.3	48365
2013	0.37	7.51	11.13	-0.80	1.18	126.0	119.4	47513
2014	0.37	7.79	11.56	-0.78	1.28	127.3	120.6	47538
2015	0.39	8.06	11.97	-0.72	1.40	128.6	121.7	48581
2016	0.39	8.37	12.48	-0.71	1.50	130.4	123.3	48222
2017	0.39	8.66	12.98	-0.68	1.65	132.4	125.1	50094
2018	0.40	8.93	13.38	-0.64	1.75	134.1	126.9	47203
2019	0.40	9.12	13.69	-0.61	1.87	135.5	128.2	46080
2020	0.41	9.40	14.16	-0.59	2.01	137.5	130.3	48481
2021	0.41	9.91	15.06	-0.60	2.27	142.3	135.7	11720



MAROCARA 16-2002	Bwt	Wwt	Pwwt	Pfat	Pemd	TCP	LEQ	Counts
2012	0.31	7.01	10.89	-0.98	1.56	128.2	118.5	543
2013	0.33	7.70	11.74	-0.89	1.65	130.2	119.0	528
2014	0.33	8.02	12.24	-0.91	1.59	131.1	121.4	679
2015	0.36	8.51	12.89	-0.93	1.81	132.3	120.8	614
2016	0.38	8.82	13.43	-0.98	1.96	136.0	125.4	772
2017	0.38	9.12	13.78	-0.73	2.06	136.7	128.1	830
2018	0.36	9.25	13.91	-0.63	2.29	137.2	127.6	728
2019	0.32	9.43	14.24	-0.50	2.32	137.8	129.2	745
2020	0.34	9.61	14.45	-0.61	2.43	140.0	131.1	811
2021	0.36	9.98	15.31	-0.61	2.61	144.5	136.5	870

Reports are prepared using data supplied by breeders and/or accredited operators for the analysis. SheepGenetics cannot guarantee the accuracy of this data. ASBV's are designed to estimate genetic merit of animals from the data supplied. Reports are provided to assist breeders but no liability is accepted for the outcome resulting from the use of this information.

Linkage Summary	
MAROCARA 16-2002	
Weights	Yes
Carcase	Yes
WEC	No
Reproduction	No
Site Code	162002

16-August-2021



