

MACQUARIE SEEDSTOCK

20th Anniversary 2020



History

"We recognised from the beginning the importance of maintaining the true benefits of the breed and refused to sacrifice growth rates, carcass shape, carcass quality, fertility and hardiness for other traits."

Macquarie, foundation stud no.4, was registered in 2000 with 50% of the first embryos imported into Eastern Australia from elite South African genetics.

Our ewes demonstrate the following commercially relevant traits:

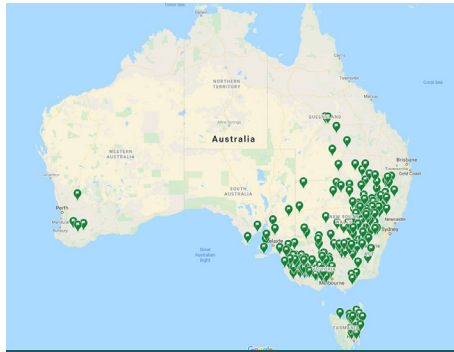
- **Constitution** – ability to ride out lows of nutrition.
- **Fertility** – ability to rebreed in a short joining period under prevailing nutrition levels.
- **Adaptability** – ability to respond positively to fluctuating nutritional and climatic environments.
- **Production Efficiency** – ability to convert available feed.
- **Longevity** - ability to be productive up to 8 years of age.

Our breeding program aims for a balanced set of EBV traits, backed up by a strict visual appraisal for structure, wool quality, staple length, doing ability and soundness. Commercially unprofitable sheep are eliminated.

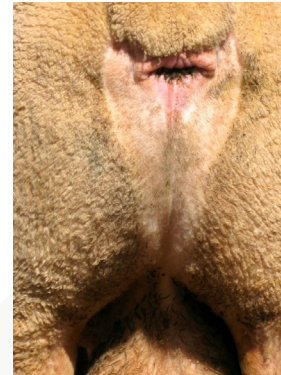
MACQUARIE :

- Large genetic ewe base
- 5 families
- Elite performance ewes flushed annually
- 500 rams available annually
- Macquarie has focused on :
 - fecundity
 - early growth rates
 - long staple, shafty, bright, soft handling, well nourished, quality wool that handles all environments

- A testament to our quality wools and doing ability, flock rams are sold throughout NSW, QLD, SA, VIC and Tasmania.
- Macquarie genetics have influenced major Dohne studs in all Australian states through semen, rams and stud ewes.
- Macquarie genetics have also been a major contributor in the establishment of the Dohne breed in a number of other countries, including: New Zealand, Uruguay, Argentina, Chile, Peru, North America and the Falkland Islands.
- Macquarie is a founding member of the Southern Dohne Breeders' Group instrumental in fostering newly established Dohne studs and public awareness of the breed throughout eastern Australia.
- **Macquarie ceased mulesing in 2004 and is certified through Authentico.**



Macquarie's Australian Genetic Distribution



Natural Bare Breech



■ Breeding

"We maintain an efficient, productive ewe flock, selected on the basis of science and practical assessment."

From the outset we developed families within our stud based on genetics and type. These families assure consistency and predictability in breeding. It also allows us to introduce new genetics into a family without going outside our stud. Impact sires lay down the platform for high performing genetics.

IMPACT SIRES:

EMPIRE, MACQUARIE 'TOM' 7021

- Retained
- Used in 9 studs
- Reference sire
- 1035 progeny

Family sires have sold to \$13,000 and include:

NSW - Kardinia , DD , Midgery , Perry Family.

VIC - McColl Family , Stirling , Koonik , Burnbank.

WA - Far Valley , Kintail Park , Chirmininup , Glenlea , Bilney Family.

SA - Mt Alma , Narloo.

International - Uruguay , Chile , Argentina , North America.

OLYMPUS, MACQUARIE 681

- Reference sire
- Used in 13 studs
- 1315 progeny
- Purchased by Calga Dohne Stud, NSW for an Australian record price of \$20,000

Family sires have sold to \$12,200 and include:

NSW - Kardinia , Midgery , Uardry.

VIC - Havelock Park.



7021 grandson 'Bob' 4684 - Champion NSW Ram , Champion NSW Pair, Reserve National Pair ASWS 2019. Purchased by the McColl Family VIC for \$13,000 , an auction record for a Dohne ram in VIC.



MAJESTIC, MACQUARIE 1440

- Purchased by Havelock Park Dohne Stud, VIC for \$15,000 (A record private sale of a Dohne ram in Victoria)
- Used in 4 studs
- 671 progeny

Family sires have sold to \$16,000 and include:

NSW - Uardry, Kardinia, Midgery, Perry Family.

VIC - West Wail, Barnadown, Hendrick, Havelock Park, Koonik, Glenaroua, Buxton Family.

WA - Chirniminup

1051 - Supreme Dohne Exhibit Inaugural Dohne showing ASWS 2016

Reference sire MD Majestic 17-4342 highest ranked 2017 drop Registered Dohne ram. Retained for stud use.



Animal ID: MACQUARIE - 174342

PWT	YWT	AWT	PEMD	PFAT	YCFW	YFD
8.5	9.6	8.1	2.6	1.1	8.3	0.0
74%	74%	72%	65%	61%	67%	81%

YDCV	YSS	YWEC	NLW	MWWT	DOHNE BASE	DOHNE+
-1.0	-0.1	-	13%	2.2	203.9	212.6
73%	60%		37%	56%	43%	49%



Grandson 18-0479. Used extensively in the Stud

WARDRY, CHIRNIMINUP 7388

- Used in 5 studs
- 604 progeny
- Family sires have sold to \$5000 and include :
NSW - Kardinia
VIC - West Wail , Glenaroua

Balance..... Efficiency

"Consistency is key to our breeding decisions. Look at the uniformity and consistency that the Macquarie families have bred into their renown flocks by continually stacking the pedigrees with genetics that are pure and that they are familiar with."

- Average adult ewe body weight at joining is 65kg.
 - Through rigid selection { low adult body weight: high wean body weight } we have reduced this by 9kg over 10 years
 - In cattle , a 10% increase in adult cow body weight results in a 70% increase in consumption
- Average weaned lamb weight over 3 generations has seen a increase by : 1st generation - 2.4kg ; 2nd generation - 4.2kg. Overall increase over 15 years - 6.6kg
- Only ewes that rear a lamb are retained
- 8 month adult ewe shearing intervals (5 year averages)
 - average 3.75 kg per head giving an annual breeding ewe wool cut of 5.62 kg
 - average staple length of 76 mm (8 months)
 - average yield 67 %
 - average NKT 54
- Average Wool Production Percentage (WPP - wool weight / body weight expressed as a %) 8.64 greasy or 5.78 clean
 - hardiness , survivability and fertility is reduced with an increase in this figure

The 'doing ability' is reflected in our stud ewe wool test results from May 2019 in the middle of the drought . Macquarie's non mulesed AAAM Authentico accredited line with 8 months drought affected growth sold through Schute Bell averaged:

FIBRE DIAMETER	VEGETABLE MATTER	YIELD	STAPLE LENGTH (MM)	STAPLE STRENGTH	COEFFICIENT OF VARIATION	CLEAN CENTS PER KG
20.3	0.7	65.5	76	56	11	2275

Adaptability

"Our 30 year Studmaster/Classer experience in breeding and classing sheep for a variety of climatic conditions has enabled Macquarie to have clients across the most diverse regions throughout Australia and overseas"

QUALITY WOOL

- superior wool character & style one of the few Dohne studs consistently selling rams south and east of the great divide and into Tasmania.
- superior staple length

COMMERCIAL CLIENTS IN A RANGE OF ENVIRONMENTS

- Pastoral and rangeland areas of North West QLD, South West QLD, North and Western NSW and the Riverina of NSW
- Mixed sheep Wheat Belt of Central QLD, Northern and Central NSW
- Tablelands of NSW
- Central , Southern , Eastern and Wimmera Regions of Victoria
- South East South Australia
- Tasmania

STUD CLIENTS

- NSW, QLD, VIC, SA, WA
- Uruguay, Chile, Argentina, Peru, Falkland Islands, New Zealand

MARKETABILITY

- Auctions Plus
- Macquarie blood receive a consistent premium
- Macquarie blood has the highest Dohne bloodline throughput

THE 'ANGUS' OF THE SHEEP BREEDS

"Composite Breeders seeking to increase the value of the fleece by reducing fibre diameter without compromising growth rates , carcass shape or fertility are introducing the Dohne."

DOHNE EWE

- + Dohne Sire
- Self replacing
- High fertility
- High fecundity
- Apparel Merino wool
- Prime lamb

COMPOSITE EWE

- + Dohne Sire
- Prime lamb dam
- Reduction in micron by 8-10
- High fertility
- High fecundity
- Prime sucker lamb
- Leaner carcass
- Self replacing

MERINO EWE

- + Dohne Sire
- Self replacing
- Improved fertility
- Faster growth rates
- Apparel Merino wool
- Quality lamb carcass
- Progeny become prime lamb dams

DOHNE EWE

- + Terminal Sire
- Prime lamb dam
- High fertility
- High fecundity
- Apparel Merino wool
- Prime sucker lamb

Carcase

- Overall Champion Pen of Dohne x lambs (F3's at the 2006 Southern Meats Hook Competition with an average dressed weight of 28.7kg and an average yield of 50.2%
- 2008 National Expo & Sale taking out 3 Champions



Showing

*It's not about winning 'a' broad ribbon
it's all about consistency"*

FLEECE / WOOL

Dohne Expo 2008

- Champion Pure Dohne Ewe – 6.58kg (skirted), 19.8 micron
- Champion Pure Dohne Ram lamb – 5.63kg (skirted), 18 micron
- Champion Pure Dohne Ewe lamb – 5.14kg (skirted), 18.3 micron



Macquarie's success at the Australian Sheep and Wool Show (ASWS) is unsurpassed;

- Champion Dohne Fleece 2009, 2012, 2013, 2014
- Reserve Champion Dohne Fleece 2009, 2011
- Most valuable commercial Fleece Group 5 (8 classes) 2009
- Dohne Marquee Best Group of 3 Fleeces 2018 & 2019
- Dohne Marquee Best Single Fleece 2018 & 2019



RAMS

Inaugural Showing of the Dohne in Australia ASWS 2016

8 rams shown - 7 rams placed

- Supreme Exhibit
- Grand Champion Ram
- Senior Champion Ram
- 1st & 3rd Senior Ram
- 4 & 5th Junior Ram
- 2nd Junior Pairs
- 3rd & 4th Senior Pairs
- Most Successful Exhibitor

ASWS 2018

Dohne Ram Classes -
max 5 show rams - 4 rams placed

- Reserve Champion Ram
- 2nd Place Single Ram
- 3rd Place Pair of Rams
- 3rd Place Pen of Three Dohne Rams

ASWS 2019

Max 4 show rams - 3 rams placed

- NSW Champion Single
- NSW Champion Pair
- National Reserve Champion Pair
- Most Successful Exhibitor (Rams & Fleece)



Centre of Excellence

"Having spent the last 40 years applying advanced breeding technologies such as artificial insemination and embryo transfer to the Australian sheep industries, I am acutely aware that the benefits of these technologies are fundamental to the genetic gain in seedstock production which, inevitably, flows through to the commercial breeder."

- Dr Greg McCann , Macquarie co-principal , Central West Genetics

We utilise technologies such as embryo transplant, artificial insemination, genomic analysis, DNA and objective measurements (EBVs) to achieve genetic gain in each generation of Macquarie sheep.

- Allows us to use just the top 1% of sires 1/3 of the requirements for natural mating
- Flushing of elite ewes 18 years of pedigree performance
- Breeding consistent Dohnes that are true to type

HEALTH - CLIENTS GUARANTEE

- All sires are blood tested for footrot at Lincoln University, New Zealand
- All sires are DNA'd for the Information Nucleus Flock Genomics
- All sires are regularly faecal sampled for worms.
- Brucellosis Accredited since 1984 ... W84/38
- OJD biosecurity and 350 pool tested



EXPORT

CWG is accredited to export to :

- Uruguay
- Chile
- Argentina
- New Zealand
- North America
- South Africa

Services

SHEEP CLASSING CONSULTING

James Koster - 0427 546 873

- Accredited Australian Dohne Breeders' Association classer
- Over 30 year's experience classing stud and commercial flocks in a variety of climatic conditions
- Located Northern NSW

John Nadin - 0427 474 610

- Over 30 year's experience classing stud and commercial flocks in a variety of climatic conditions
- Located Central West NSW

Will Nadin - 0430 315 558

- New to the team
- Classing
- Stud and commercial experience
- Located South Western NSW

VETERINARY ADVICE AND SERVICE

Greg McCann - 0499 865 120

- Over 40 year's experience
- Specialising in sheep and cattle
- Worm testing service
- Located Central West NSW



“ Due to the plain bodies we were able to give up mulesing a couple of crosses ago, we simply do not need to mules anymore. ”

John Witts 'Munargo', Collarenebri NSW

Contact

Ram Sales , Ram Selection and Deliveries

John Nadin

P 0427 474 610

E john@macquariedohnes.com.au

Stud Classer, Classing Northern NSW/QLD and Ram Selection

James Koster

P 0427 546 873

E jameskoster@bigpond.com

Stud Representative, Classing Southern NSW

Will Nadin

P 0430 315 558

E wrcontractmustering@gmail.com

Veterinary Advise, Semen and Embryo Sales

Greg McCann

P 0499 865 120

E gmccann@hwy.com.au

Office and Admin

Tanya Barton

P (02) 6027 1190

P macquarie@dohnes.com.au



Clemson Hiscox & Co Pty Ltd

Walgett **P** (02) 6828 7222

Chris Clemson **P** 0428 287 222

Russel Hiscox **P** 0428 281 248

Paul Dooley Pty Ltd

Tamworth – Paul Dooley

P 0458 662 646



www.dohnes.com.au