



KURRALEA

POLL DORSET | SUFFOLK | WHITE SUFFOLK



24TH ANNUAL PRODUCTION SALE 2021

Tuesday 28th September, 12.30pm

Kurralea Sires



■ K165-16 (R) Champion Ram Adelaide Royal Show 2017. Sold for \$18,000. K435-16 (L) Reserve Champion Ram Adelaide Royal 2017. Sold for \$12,000.



■ Winning Interbreed Group of 3 Rams Melbourne Royal 2017 – White Suffolk K231-16 (keeper ram), K273-16, K81-16 (keeper ram).

24th Annual Production Sale Kurralea Poll Dorset, White Suffolk & Suffolk Studs

Flock No. 2368, 477 & 2254. Founded 1975

Tuesday 28th September 2021 at 12.30 pm. Inspection welcome 10.30 am, morning of sale (luncheon provided).

	POLL DORSET	WHITE SUFFOLK
Sale Offerings	21 Stud Rams 150 Flock Rams	17 Stud Rams 150 Flock Rams
Vendor	J.E. & K.M. Prentice A.B.N. 29 291 021 356 Kurralea, Ariah Park N.S.W. 2665 Ben Mobile: 0429 814 549 Email: lucycprentice@gmail.com	
Agents	Elders VP - Wagga Wagga N.S.W. 2650 (2% rebate to outside agents in attendance or introducing client in writing prior to the sale)	

PLEASE BRING
CATALOGUE TO SALE

**KURRALEA IS LAMBPLAN RECORDED - FIGURES AVAILABLE ON ALL STUD STOCK ON DAY OF SALE.
KURRALEA RETAINS THE RIGHT TO USE SEMEN FOR IN-FLOCK USE ONLY IN ALL STUD RAMS.
SALE WILL BE INTERFACED WITH AUCTIONSPLUS.**


AuctionsPlus
Buy and Sell stock nationally

**KURRALEA IS MONITORED NEGATIVE TWO V FOR OVINE JOHNES DISEASE.
KURRALEA IS BRUCELLOSIS ACCREDITED FREE.
KURRALEA IS FOOTROOT FREE.**

■ History of Kurralea Poll Dorset Stud

The Kurralea Poll Dorset stud was founded in 1975 and has grown to be one of the major suppliers of rams to the stud and commercial industry. A philosophy of breeding for practical, functional and easy care sheep with the highest performance and carcase standards has been behind customer demand that has fuelled this growth.

The typical Kurralea Poll Dorset is larger framed and longer bodied than most, with strong and flat bone that enables it to carry the increased muscling capabilities required by today's consumers, retailers, processors and commercial producers alike. Built into that is a special focus on early growth and yield, but not at the expense of the ability to have progeny keep growing to heavier carcase weights if required, thus giving all clients market flexibility. This has required patience, plus a consistent unwavering focus on the stud's selection principles.

Along with that are the practical management advantages that Kurralea has always placed strong emphasis on, such as clean points, especially open faces, mobility and most important of all, libido & fertility.

Objective measurement through Lambplan has been adopted from its beginning, not to replace any of the above selection principles,

but rather to add an extra layer of information to improve on them; sharpening practical focus and accuracies, while removing sentiment or emotion from the equation.

While the commercial focus, enhanced by Lambplan data plays a major part in Kurralea's success, the show ring has also been important in putting the sheep under the eyes of independent assessment, while gaining wider exposure than possible by any other means.

Kurralea has also enjoyed much success in the sale ring for stud rams, initially at the Melbourne Royal ram sale, but since 1998 all rams have only been offered at the annual Kurralea on-property sale. Highlights of \$15,000 in 1999 and \$20,000 in 2003 were surpassed in 2005. A new national on-property record was set when K655-02 sold for \$25,000 to the Armdale & Armdale Park studs.

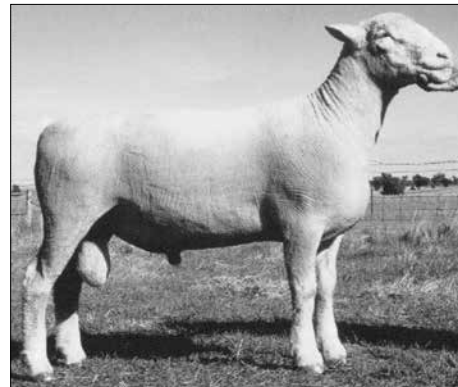
In 2005, 32 stud rams averaged \$6,055 including K809-04 for \$26,000 to a syndicate of the Gererdan, Penrise & Punchgrove studs.

Consistent top results followed until the 2102 sale when K11-11 sold for \$28,000, a new national Poll Dorset auction record for any venue, going to the Ulandi Park & Janmac studs in partnership. Janmac returned in 2016 to top the sale at \$13,500.

The 2017 sale topped at \$18,000 for K165-16, our Adelaide Royal Champion ram. In 2018, Smithson Stud purchased K511-17 for \$15,000.

Despite 2019 being a very tough, dry season and being unable to show, we were thrilled to set another Australian Poll Dorset auction record with selling K140-18 for \$32,000! He was purchased by Shirlee Downs and Dongadilling studs, WA.

Again, no stud rams will be offered at any other venues, so buyers can attend with confidence knowing the very best will be on offer at this annual sale.



■ K211-98 'Five Star'

■ History of Kurralea White Suffolk Stud

With an objective of satisfying growing demand for prime lamb genetics from new breeds other than Poll Dorsets Kurralea experimented and benchmarked with a few of the more viable options that emerged on the Australian sheep scene. In 1999 the defining move was made to form the Kurralea White Suffolk stud. 70 ewes were purchased from the leading established studs, Galaxy Park, Detpa Grove & Allendale, plus the transfer of the entire flock of Kurralea Poll Dorset-Texel cross ewes from those earlier experimental crossings.

The same breeding objectives that have guided the success of the Kurralea Poll Dorset stud have been put in place for the White Suffolks. Other than defined breed type and standard differences in the breeds' objectives, the end commercial goal for Kurralea is that buyers with a breed preference can select a consistent type for similar commercial market options as with their Poll Dorsets, while those who have no breed preference can confidently select from either breed draft.

To achieve that objective, the White Suffolks had to reach a high standard very quickly and then maintain it over the years since. Investments in outstanding sires have been made on a needs

basis, the most influential coming from the Wheetelande, Anden, Detpa Grove & Gemini studs.

Three influential sires used heavily at Kurralea in recent years are, Wheetelande 7684-14, Wheetelande 8159-14, purchased for \$11,000 & \$22,000 respectively, as well as Anden 277-15 – the meat breeds record priced ram at \$68,000, who we purchased a semen share in. This ram was supreme all breeds Champion Ram at Hamilton Sheepvention and Adelaide Royal in 2016. He is sired by Kurralea 305-13, who was purchased by Anden for \$11,000.

A few showing highlights have included winning Supreme all breeds champion rams at 2006 Melbourne Royal show with K126-05, and also winning Grand Champion Ram at Adelaide Royal in 2008 with K283-07 who was later sold for \$12,000.

The Kurralea on property sale results have been consistently good. In 2010, 3 rams topped \$10,000, with K303-09 selling for \$13,500 to Bundara Downs stud. 2014 also produced a fantastic sale result for Kurralea White Suffolk stud, including K305-13 (mentioned above) and K284-13, who was the Bendigo Elite senior champion that year and topped the Kurralea White Suffolk sale at \$12,000.

The 2017 top priced White Suffolk K182-16 ram sold for \$11,500 to Brurob & Anden studs. In 2018 Smithson Stud purchased K253-17 for \$17,000, setting a new Kurralea White Suffolk Stud record.

At our 2020 sale, Kurralea 009-19 sold for \$20,000 to Janmac studs, Goroke – breaking our previous White Suffolk top price record. Kurralea retained semen in this ram and have been very impressed with his progeny so far. Look out for them at next years sale! Once again, no stud rams will be offered for sale at any other venues so buyers can attend with full confidence they are getting to select from the best.



■ K283-07, Champion White Suffolk
Adelaide Royal 2008.

■ Description of Poll Dorset Sires

KURRALEA 11-11

Champion Ram Adelaide Royal Show 2012, and sold for \$28,000 at Kurralea sale in 2012.

KURRALEA 68-13

Well-muscled and very correct Son of K11-11. Sire of twins K164-16 & K165-16, sold for \$11,000 & \$18,000.

KURRALEA 241-14 'Syd'

Exceptional son of K11-11. Sire of K140-18, who set Australian Poll Dorset Auction record at last years sale.

KURRALEA 636-17

He is a very bare, structurally correct ram with good balance of performance figures. Breeding very well.

KURRALEA 511-17

Sold for \$15,000 to Smithston Stud. Used as a ram lamb. 5 sons in the sale.

ULANDI PARK 476-17

Purchased for \$9000, for his good balance of performance figures and stud sire appeal.

KURRALEA 140-18

Sold at our 2019 sale for an Australian Poll Dorset auction record of \$32,000. Used by AI, and has some exceptional sons in this years offering.

ULANDI PARK 151-17

Purchased in partnership with Janmac for \$17,000. Reserve Champion Ram at Melbourne Royal Show 2018.

KURRALEA 378-18

Well muscled son of Kurralea 547-17.

MALLEE PARK 196-19

A very stylish ram, son of K165-16, used by AI.

BRUROB 36-19

Another stylish son of K165-16, used by AI.

ABBREVIATIONS POLL DORSETS:

A - Allendale, AB - Aberdeen, B - Brurob, D - Derrynock, J - Janmac, K - Kurralea, MP - Mallee Park, UP - Ulandi Park, V - Valma, WB - Warburn.

■ Description of White Suffolk Sires

DETPA GROVE 522-11

Sire of 2014 Bendigo Senior Champion Ram & winning pair, with K284-13 selling for \$12,000 and K305-13 for \$11,000.

GEMINI 326-11

High performance ram. Sire of K406-13, who sold for \$10,000.

WHEETLANDE 7684-14

An outstanding ram purchased at Adelaide Royal Show Elite Sale in 2015 for \$11,000. Is breeding very well at Kurralea.

ANDEN 277-15 “CRUISER”

Purchased by Kattata Well stud, Port Kenny SA for \$68,000 – a National Meat sheep auction record. Cruiser was sired by Kurralea 305-13 purchased by Anden at our 2014 sale.

KURRALEA 231-16

A very big powerful son of W7684-14.

KURRALEA 677-18

Grandson of Anden “Cruiser”. Good White Suffolk type, who is breeding very well.

ANDEN 101-18

Classy ram, with a good balance of performance figures.

GEMINI 070-18

High performance ram, used by AI.

KURRALEA 004-18

Sold to Smithston stud, used by AI for his excellent breed type.

KURRALEA 396-18

Top son of Wheetelände 7684-14.

KURRALEA 566-18

High Performance ram sired by Detpa Grove 770-15. Some excellent progeny in this years sale.

ABBREVIATIONS WHITE SUFFOLKS:

A - Allendale, AB - Aberdeen, B - Brurob, D - Derrynock, J - Janmac, K - Kurralea, MP - Mallee Park, UP - Ulandi Park, V - Valma, WB - Warburn.

■ 21 Poll Dorset Stud Rams

Lot	Tag No.	DOB	Sire	Dam	SOD	Purchaser \$
1	086-20 WT(15/8) 124	Apr BWT 0.47	K140-18 PWWT 16.0	K190-15 PFAT -0.8	K068-13 PEMD 2.1	TCP 145
2	031-20 T WT(15/8) 120	Apr BWT 0.42	K140-18 PWWT 13.8	K297-17 PFAT -0.7	K037-15 PEMD 2.0	TCP 138.2
3	164-20 WT(15/8) 130	May BWT 0.52	UP151-17 PWWT 14.1	K276-17 PFAT -0.7	W097-14 PEMD 1.1	TCP 129.9
4	070-20 WT(15/8) 125	Apr BWT 0.52	K378-18 PWWT 13.6	K064-14 PFAT -0.7	MP016-12 PEMD 1.6	TCP 132.7
5	101-20 WT(15/8) 116	Apr BWT 0.54	MP196-18 PWWT 15.6	K142-18 PFAT -1.1	K241-14 PEMD 1.4	TCP 139.7

■ 21 Poll Dorset Stud Rams

Lot	Tag No.	DOB	Sire	Dam	SOD	Purchaser \$
6	034-20 WT(15/8) 131	Apr BWT 0.4	K140-18 PWWT 13.5	K018-14 PFAT -0.6	V582-12 PEMD 1.8	TCP 134.8
7	047-20 T WT(15/8) 121	Apr BWT 0.51	K241-14 PWWT 16.4	K310-16 PFAT -1.4	AB757-14 PEMD 1.2	TCP 137.7
8	051-20 WT(15/8) 126	Apr BWT 0.49	K241-14 PWWT 15.1	K052-16 PFAT -1.7	AB757-14 PEMD 0.7	TCP 134
9	288-20 T WT(15/8) 114	May BWT 0.58	K636-17 PWWT 16.1	K646-16 PFAT -0.6	K068-13 PEMD 1.9	TCP 140.9
10	142-20 WT(15/8) 127	May BWT 0.4	UP476-17 PWWT 13.9	K220-17 PFAT -0.6	AB757-14 PEMD 2.0	TCP 138

■ 21 Poll Dorset Stud Rams

Lot	Tag No.	DOB	Sire	Dam	SOD	Purchaser \$
11	166-20	May	UP476-17	K431-17	W097-14	
	WT(15/8) 117	BWT 0.47	PWWT 13.8	PFAT -0.7	PEMD 1.6	TCP 134.4
.....						
12	158-20	May	UP476-17	K359-15	K008-14	
	WT(15/8) 115	BWT 0.42	PWWT 12.4	PFAT -1.1	PEMD 1.6	TCP 133.3
.....						
13	096-20	Apr	K140-18	K257-14	K011-11	
	WT(15/8) 123	BWT 0.47	PWWT 15.3	PFAT -0.7	PEMD 2.0	TCP 141.6
.....						
14	080-20 T	Apr	K140-18	K011-15	K291-13	
	WT(15/8) 118	BWT 0.45	PWWT 13.6	PFAT -1.1	PEMD 1.0	TCP 132.2
.....						
15	167-20	May	K378-18	K136-14	K174-12	
	WT(15/8) 110	BWT 0.52	PWWT 13.8	PFAT -1.0	PEMD 1.2	TCP 131.6
.....						

■ 21 Poll Dorset Stud Rams

Lot	Tag No.	DOB	Sire	Dam	SOD	Purchaser \$
16	209-20	May	B036-18	K152-18	A341-14	
	WT(15/8) 120	BWT 0.64	PWWT 15.3	PFAT -0.6	PEMD 1.4	TCP 136.7
.....						
17	094-20 T	Apr	MP036-18	K048-15	K291-13	
	WT(15/8) 122	BWT 0.59	PWWT 15.6	PFAT -0.7	PEMD 1.0	TCP 137
.....						
18	253-20	May	K378-18	K534-15	K161-13	
	WT(15/8) 110	BWT 0.5	PWWT 15.0	PFAT -0.7	PEMD 1.7	TCP 136.2
.....						
19	143-20	May	UP476-17	K107-15	K068-13	
	WT(15/8) 113	BWT 0.47	PWWT 13.2	PFAT -1.3	PEMD 1.4	TCP 136.5
.....						
20	449-20 T	Jun	K636-17	K435-15	K102-13	
	WT(15/8) 107	BWT 0.5	PWWT 14.0	PFAT -0.8	PEMD 1.1	TCP 135
.....						

■ 21 Poll Dorset Stud Rams

Lot	Tag No.	DOB	Sire	Dam	SOD	Purchaser \$
21	155-20	May	UP151-17	K510-16	K037-15	
	WT(15/8) 107	BWT 0.44	PWWT 13.2	PFAT -0.7	PEMD 1.7	TCP 134.4
.....						



■ Lot 1, K086-20



■ Lot 2, K031-20 T



■ Lot 3, K164-20



■ Lot 4, K070-20



■ Lot 5, K101-20



■ Lot 6, K034-20



■ Lot 7, K047-20 T



■ Lot 8, K051-20



■ Lot 9, K288-20 T



■ Lot 10, K142-20



■ Lot 11, K166-20



■ Lot 12, K158-20



■ Lot 13, K096-20



■ Lot 14, K080-20 T



■ Lot 15, K167-20



■ Lot 16, K209-20



■ Lot 17, K094-20 T



■ Lot 18, K253-20



■ Lot 19, K143-20



■ Lot 20, K449-20 T



■ Lot 21, K155-20

■ 17 White Suffolk Stud Rams

Lot	Tag No.	DOB	Sire	Dam	SOD	Purchaser \$
22	312-20	Jun	A101-18	K149-16	W8159-14	
	WT(15/8) 120	BWT 0.3	PWWT 15.1	PFAT -0.7	PEMD 1.6	TCP 138.7
.....						
23	045-20 T	May	G070-18	K506-16	W7684-14	
	WT(15/8) 122	BWT 0.23	PWWT 16.2	PFAT -0.2	PEMD 2.1	TCP 144.7
.....						
24	032-20	Apr	G070-18	K142-15	K186-12	
	WT(15/8) 120	BWT 0.19	PWWT 15.2	PFAT -0.4	PEMD 1.1	TCP 137.7
.....						
25	033-20	Apr	K004-18	K147-16	W8159-14	
	WT(15/8) 133	BWT 0.42	PWWT 12.8	PFAT -1.1	PEMD 0.4	TCP 132.1
.....						
26	012-20 T	Apr	K004-18	K353-15	K284-13	
	WT(15/8) 124	BWT 0.36	PWWT 11.9	PFAT -0.9	PEMD 0.6	TCP 130
.....						

■ 17 White Suffolk Stud Rams

Lot	Tag No.	DOB	Sire	Dam	SOD	Purchaser \$
27	224-20	Jun	K396-18	K093-17	A277-15	
	WT(15/8) 127	BWT 0.42	PWWT 13.8	PFAT -0.3	PEMD 1.4	TCP 136
.....						
28	371-20	Jun	K677-18	K525-17	K576-15	
	WT(15/8) 111	BWT 0.48	PWWT 14.4	PFAT -0.3	PEMD 1.6	TCP 140.5
.....						
29	429-20	Jun	A101-18	K182-17	A277-15	
	WT(15/8) 125	BWT 0.42	PWWT 16.4	PFAT -1.0	PEMD 1.1	TCP 139.9
.....						
30	070-20 T	May	A101-18	K409-16	P217-14	
	WT(15/8) 110	BWT 0.29	PWWT 16.3	PFAT -0.3	PEMD 1.5	TCP 139.6
.....						
31	120-20	Jun	K566-18	K184-17	A277-15	
	WT(15/8) 111	BWT 0.56	PWWT 15.6	PFAT -0.4	PEMD 2.4	TCP 145.8
.....						

■ 17 White Suffolk Stud Rams

Lot	Tag No.	DOB	Sire	Dam	SOD	Purchaser \$
32	152-20 T	Jun	K566-18	K312-13	DG522-11	
	WT(15/8) 110	BWT 0.6	PWWT 15.9	PFAT -0.7	PEMD 1.1	TCP 138
.....						
33	154-20	Jun	K677-18	K197-16	G326-11	
	WT(15/8) 111	BWT 0.49	PWWT 15.9	PFAT -0.7	PEMD 1.5	TCP 144.5
.....						
34	222-20	Jun	K677-18	K117-15	G326-11	
	WT(15/8) 105	BWT 0.4	PWWT 15.1	PFAT -0.2	PEMD 2.4	TCP 148.3
.....						
35	050-20	May	K004-18	K169-15	DG522-11	
	WT(15/8) 121	BWT 0.4	PWWT 12.5	PFAT -0.1	PEMD 1.7	TCP 134.4
.....						
36	051-20	May	K004-18	K374-17	DG770-15	
	WT(15/8) 112	BWT 0.37	PWWT 12.5	PFAT -0.4	PEMD 1.1	TCP 132.2
.....						

■ 17 White Suffolk Stud Rams

Lot	Tag No.	DOB	Sire	Dam	SOD	Purchaser \$
37	215-20	Jun	A101-18	K158-15	G326-11	
	WT(15/8) 113	BWT 0.2	PWWT 13.8	PFAT -0.4	PEMD 1.2	TCP 136.5
.....						
38	391-20 T	Jun	G070-18	K116-18	A206-16	
	WT(15/8) 110	BWT 0.26	PWWT 15.1	PFAT -0.5	PEMD 1.8	TCP 142
.....						



■ Lot 22, K312-20



■ Lot 23, K045-20 T



■ Lot 24, K032-20



■ Lot 25, K033-20



■ Lot 26, K012-20 T



■ Lot 27, K224-20



■ Lot 28, K371-20



■ Lot 29, K429-20



■ Lot 30, K070-20 T



■ Lot 31, K120-20



■ Lot 32, K152-20 T



■ Lot 33, K154-20



■ Lot 34, K222-20



■ Lot 35, K050-20



■ Lot 36, K051-20



■ Lot 37, K215-20



■ Lot 38, K391-20 T

White Suffolk Sires



■ Wheetelande 7684-14, purchased at Adelaide Elite Sale 2015 for \$11,000.



■ Wheetelande 8159-14, purchased by Kattata Well stud SA for \$22,000, with a semen share purchased by Kurralea.



■ Anden 277-15 "Cruiser", record breaking White Suffolk ram purchased by Kattata Well stud SA for \$68,000. Sired by Kurralea 305-13.

■ Kurralea Sires



- Kurralea 378-18 sired by K547-17.
PWWT: 15.7, PFAT: -0.6, PEMD: 2.0,
CP: 204, TCP: 140.



- Kurralea 231-16, sired by
Wheetelände 768-14.
Semen available.



- Kurralea 253-17, topped the White
Suffolk stud offering, sold to Smithston
Stud for \$17,000.

■ Kurralea Buyers Instruction Slip

NAME _____

ADDRESS _____

PHONE No. _____

PEN	TAG No.	DESCRIPTION	PRICE

FLOCK No. _____

ACCOUNT TO _____

DELIVERY INSTRUCTIONS _____

INSURE FOR _____

BUYERS SIGNATURE _____

INSTRUCTION CLERK _____

DATE _____

NO VERBAL INSTRUCTIONS CAN BE ACCEPTED

■ Sale Averages

Kurralea:	Top	Gross	Average
_____ Poll Stud Rams	_____	_____	_____
_____ Poll Flock Rams	_____	_____	_____
_____ White Suffolk Stud Rams	_____	_____	_____
_____ White Suffolk Flock Rams	_____	_____	_____
			SALE GROSS _____

Kurralea wish to thank all buyers and under bidders for their support.

Kurralea Sires



■ K11-11, Champion Ram Adelaide Royal 2012 and sold for \$28,000 Australian Poll Dorset auction record, at Kurralea sale in 2012.



■ K241-14, 'Syd', exceptional son of K11-11 who is breeding very well. Semen available.



■ K636-17, sired by K435-16 Reserve Champion Ram Adelaide Royal Show 2017.

■ Kurralea Sires



■ Ulandi Park 151-17 Reserve Champion Ram Melbourne Royal 2018. Purchased in partnership with Janmac for \$18,000.



■ Ulandi Park 476-17 Purchased for \$9000.



■ Kurralea 511-17, topped the Poll Dorset stud offering, sold to Smithston Stud for \$15,000.

■ Kurralea Sires



■ K140-18, Record \$32,000 ram at 2019 sale.



■ K009-19, Sold for \$20,000 to Janmac Studs, Goroke VIC.

Kurralea Past Sires



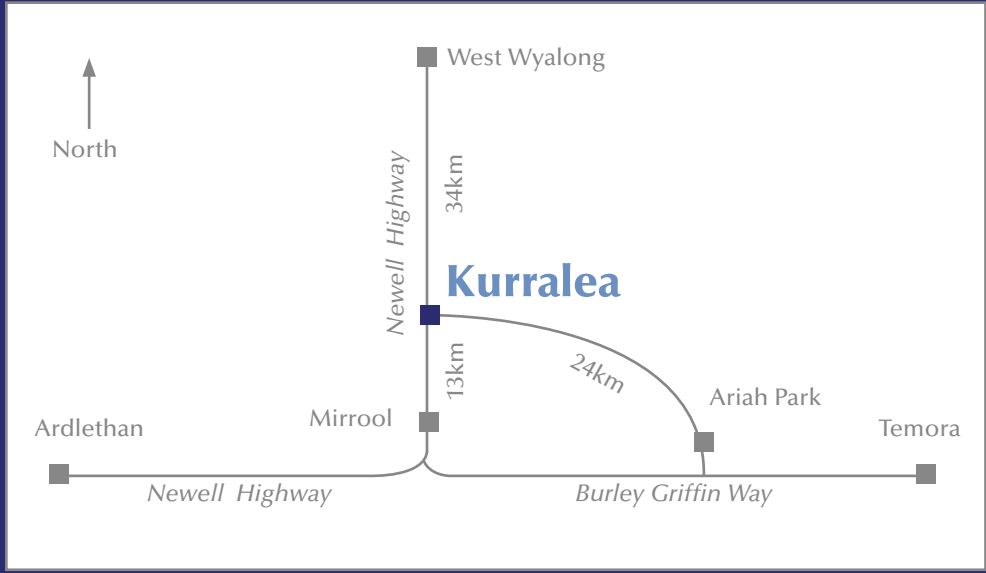
■ K143-7, Supreme Champion Adelaide Royal 2008.



■ K542-7, Champion Ram Melbourne Royal 2008.



■ K527-09 'Big Game'.
Gundagai Champion Poll Dorset 2010.



WATCH FOR SALE FLAGS.