

12TH ON-PROPERTY RAM SALE







Photos & Videos of Ram's on-line at
kerinpoll.com.au

12TH ON-PROPERTY RAM SALE

OFFERING 550 RAMS

Friday, September 24th, 2021
 "Karuga Park" 1217 Bournewood Road, Yeoval NSW 2868

INSPECTIONS FROM 6:30AM SALE STARTS 12:00PM Morning tea and lunch will be provided.		SALES CONTACTS	
		NIGEL & KATE KERIN P 0427 464 070 E kerinag@bigpond.com W www.kerinpoll.com.au	BRETT KERIN P 0427 861 938
			
			
AUCTIONEERS		AGENTS- BOWYER & LIVERMORE	
SALE WILL BE INTERFACED WITH AUCTIONSPLUS			
Paul Dooley	0458 662 646	Todd Clements Nick Fogarty Justin Guy Tom Card	0429 070 225 0409 070 225 0421 467 520 0438 594 675

SALE DAY COVID-19 SAFETY PLAN

The Ram Sale is to be held On-Property at Kerin Poll on Friday, September 24th commencing at 12 noon. To avoid delays, we strongly encourage you to Pre Register with the Selling Agents (Bowyer and Livermore) via email office@bandl.com.au as a buyer by 5pm on Wednesday 22nd September. On the Buyer Registration form please also write down names/mobile numbers of people travelling to the sale with you. Names will be ticked off when entering. If you have not pre-registered, you will be directed straight to a registrations desk before you can access the Sale Day Facility. Please maintain social distancing of 1.5 metres and adopt good hand hygiene practices.

FOR WARD

THERE is one thing we are not afraid of at Kerin Poll and that's the science behind sheep breeding.

Top sheep backed with elite figures have allowed our business to move forward at almost break-neck speed, something we couldn't have achieved if we had denied the value of tools like genomics, MatSel and Australian Sheep Breeding Values.

The use of these tools allows businesses to march forward in an environment where adoption and implementation is



simply the most logical choice.

We have also harnessed some of the smartest minds in the industry in our quest to be the best performing Merinos in Australia.

Investing in the best genes which are backed by science, not hearsay or tradition, can lift your business quickly and effectively without giving anything away and that's what we know this year's draft of rams will do for your flock.



We also believe we have produced sheep which will fit the changing environment, turning climate challenges into opportunities with the main drivers being fertility and early growth.

The philosophy at Kerin Poll remains the same – if you win, we win – and this year's sale team is another great example of this relationship.

The offering has been lifted to 550 rams to allow everyone a chance to bid and secure their numbers, and it again will be the largest auction offering of Poll Merino rams in Australia.

Please note: the AVERAGE for the draft of rams is in the top 5 per cent of ASBVs for post weaning weight (PWT), yearling weight (YWT), fleece weight (YGFW) and in the top 10 per cent for early breach wrinkle score (EBWR).

You would find it difficult to go to a sale offering 100 rams, let alone 550, that would have this data set.

Some important things to notice in this catalogue include the consistently high Australian Sheep Breeding Values which lead the industry. These include:

- Catalogue average of +7.9 for post-weaning weight (PWT) or the top 5 per cent of the breed
- Catalogue average of +26 for yearly greasy fleece weight (YGFW) which is in the top 5 of the breed
- Catalogue average of +9.9 for yearling weight which is in the top 5 per cent of the breed.

(ASBVs are from MerinoSelect run date 21/7/2021)

The 550 rams averaged 90kg when they were weighed as they were lotted. All rams have been ran on grass and no self-feeders were used. All rams were treated with 6in1 and drenched with startect.

All rams shorn 3/05/2021

While movement might be restricted to our auction, please feel confident to bid freely, knowing not only do we stand by every ram we sell, but the figures do too.

And at this exciting time for the sheep industry, we wish you well in finding the genetics to move your business from good to great.

Energy requirement (MJ ME) for lamb growth from 25 to 35 kg liveweight

Lamb growth rate (g/hd/d)	Energy per lamb per day	Days on Farm	Energy consumed per lamb
100	13	100	1300
200	17	50	850(53%)
300	22	33	726(79%)

- Nigel, Kate, Joe, Brett, Oliver & Georgia.

SALE INFORMATION

Inspection

Sale inspections from 6:30am. Pre-sale inspections by appointment always welcome.

Catering

Morning tea, light refreshments and lunch will be provided.

Fertility

The rams testicles have been examined at classing and are guaranteed to be ready for work. Should a ram prove infertile or incapable upon veterinary inspection within six (6) months of purchase, the ram will be replaced or refunded.

Delivery

All Rams will be delivered by Dick Smith Transport Australia wide free of charge.

Insurance

It will be the responsibility of the purchasers to insure their Rams if required which can be arranged through Bowyer & Livermore after the sale.

Outside agents

Will be offered a 2 % rebate by the vendor. All introductions have to be emailed to Bowyer and Livermore by 5pm on Wednesday 22nd September.

office@bandl.com.au | 02 6331 5166

Buyers instructions

Please complete the buyer's instruction slip provided on sale day by Bowyer & Livermore. No verbal instructions will be accepted.

GST

The Kerin Poll On-Property Ram Sale will be GST exclusive. GST will be added to the purchase price prior to invoicing.

Disclaimer

All reasonable care has been taken to ensure that the information provided in this catalogue is correct. However the vendor or the selling agent do not assume any responsibility for the correctness, use or interpretation of the information included in this catalogue.





WHAT ARE ASBVS?

Australian Sheep Breeding Values are an estimate of an animal's true breeding value based on pedigree and performance recorded information. They are essentially a projection of how that animal's progeny will perform for a range of traits.



PWT (Post Weaning Weight)

Taken at 200 Days of age this ASBV describes the animal's genetic merit for growth rate. A positive ASBV means the animal is genetically faster growing.

YWT (Yearling Weight)

ASBVs describe the animal's genetic merit for growth rate. A positive ASBV means the animal is genetically faster growing.

YFAT (Yearling Fat Depth)

- ASBVs describe the value of an animal's genes for fat depth at a constant weight - a negative ASBV means a genetically leaner animal.

YEMD (Yearling Eye Muscle Depth)

- ASBVs describe the value of an animal's genes for eye muscle depth at a constant weight - a positive ASBV means a genetically thicker-muscled animal, and one that will have slightly more of its lean tissue in the higher-priced cuts

YGFW (Yearling greasy Fleece Weight)

ASBVs describe the value of animal's genes for wool weight a positive ASBV means a genetically heavier cutting animal.

EBWR (Early Breech Wrinkle)

Rams with a lower breech wrinkle (BWR) will produce progeny that have a lower degree of wrinkle in the breech area. A ram with an ASBV of -0.3 scores lower than the progeny of a ram with an ASBV of 0.

YFD (Yearling Fibre Diameter)

Lower negative fibre diameter (FD) ASBV's are generally desirable.

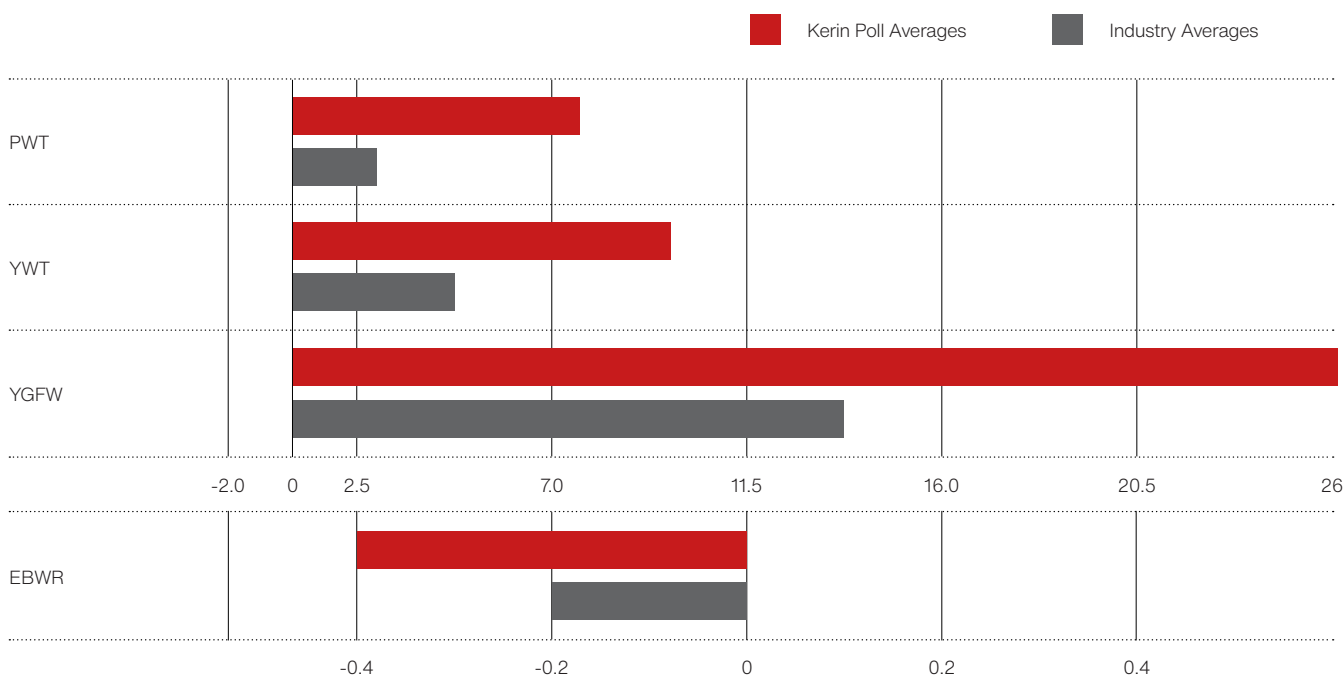
A ram that has an ASBV of -0.8 will produce progeny that are genetically 0.4 microns finer than a ram with an ASBV of 0.

TREND IN DATA

Kerin Poll Merino stud was established in 2009 with the goal to build the traits that made the terminal industry a success into the Merino breed, “fast early growth”, “fertility” and “doing ability”. 12 years on our data for post weaning weight is 130% above the Australian Merino industry average.

transfer and artificial insemination. Resulting in our Merinos exhibiting outstanding growth patterns only previously seen in terminal breeds. This has allowed our clients to succeed in producing an animal with increased fertility and fast growth, allowing their flocks to create a faster turnover of product.

With the innovation of genomics/MatSel and technology we were able to fast track our data through the use of embryo



	MIC	CV	SD	PWT	YWT	YFAT	YEMD	YCFW	YGFW
2010	19.0	15.3	-	-	+3.8	-0.39	-1.06	-	-
2011	19.0	15.4	3.0	-	+4.9	-0.24	-0.71	-	-
2012	19.3	15.7	3.0	-	+5.7	0.0	-0.5	-	-
2013	18.7	15.1	2.8	-	+6.7	0.3	+0.3	-	-
2014	19.0	14.6	2.7	-	+6.0	0.2	+0.4	+14.4	-
2015	19.2	16.8	3.1	-	+6.7	-0.1	-0.4	+19.5	-
2016	19.6	15.6	3.1	+6.4	+7.7	-0.1	-0.1	-	+20.8
2017	20.2	14.7	3.0	+5.8	+7.1	0.0	-0.2	-	+19.1
2018	18.2	15.2	2.9	+6.3	+8.4	-0.2	-0.1	-	+21.2
2019	19.9	14.4	2.9	+6.4	+8.6	-0.2	+0.1	-	21.2
2020	19.5	15.1	2.9	+7.0	+9.0	-0.3	+0.1	-	24.5
2021	18.7	14.9	2.8	+7.9	+9.9	0	+0.4	-	26
INDUSTRY AVERAGES				+3.4	+5.1	+0.1	+0.3	-	13.8



SEMEN RETENTION RIGHTS

Kerin Agriculture selling as Kerin Poll Merino Stud Retains semen rights on all rams sold on the following conditions:

1. The commercial rights to the semen of the animal sold are forever owned by Kerin Poll Merino Stud and the right of the Purchaser as to semen from the animal is limited to the use, naturally or by way of artificial insemination, on the Purchaser's own herd or flock. The Purchaser does not have any right to sell or otherwise commercially deal with the semen from or semen rights of the animal.
2. The names of all members of any syndicate, partnership or other joint arrangement of ownership of the animal by the Purchaser must be listed on the bidder card at registration prior to the sale.
3. The Purchaser (which includes all the members of any syndicate, partnership or other joint arrangement) does not have the right or legal ability to sell, lease, transfer or otherwise deal with fractions or portions of the Purchaser's interest in the animal and can only sell, lease, transfer or otherwise deal with animal as a whole.
4. If the Purchaser transfers the animal, whether by way of sale, gift or otherwise, then the transferee is bound by these rules and the Purchaser agrees to obtain the agreement of transferee to these rules and to guarantee the performance of the rules by the transferee to Kerin Poll Merino Stud.

LOT 1	SIRE	DROP	MIC	SD	CV	CF%	BW
	151911	MAY	18.9	2.7	14.4	99.5	114
TAG	PWT	YWT	YFAT	YEMD	YGFW	YFD	EBWR
200220	8.7	12	-0.7	0.3	26.1	-1.2	-0.9
TWIN	BUYER				\$		

LOT 2	SIRE	DROP	MIC	SD	CV	CF%	BW
	180227	MAY	19.5	2.8	14.2	99.8	98
TAG	PWT	YWT	YFAT	YEMD	YGFW	YFD	EBWR
201314	8.4	10.9	1	0.9	23.3	-0.3	-0.4
TWIN	BUYER				\$		

LOT 3	SIRE	DROP	MIC	SD	CV	CF%	BW
	180227	MAY	19.9	3.3	16.7	99.2	102
TAG	PWT	YWT	YFAT	YEMD	YGFW	YFD	EBWR
200839	10.1	13	0.3	0.6	33	-0.1	-0.9
TWIN	BUYER				\$		

LOT 4	SIRE	DROP	MIC	SD	CV	CF%	BW
	182504	MAY	18.8	2.3	12.4	99.8	96
TAG	PWT	YWT	YFAT	YEMD	YGFW	YFD	EBWR
200328	7.1	8.7	0.6	1.1	18.6	-0.9	-0.9
SINGLE	BUYER				\$		

LOT 5	SIRE	DROP	MIC	SD	CV	CF%	BW
	180227	MAY	19.3	2.5	13.2	99.8	96
TAG	PWT	YWT	YFAT	YEMD	YGFW	YFD	EBWR
200828	7.9	9.9	1	1.1	18.2	-0.4	-0.9
SINGLE	BUYER				\$		

LOT 6	SIRE	DROP	MIC	SD	CV	CF%	BW
	180227	MAY	19	2.5	13.4	99.8	100
TAG	PWT	YWT	YFAT	YEMD	YGFW	YFD	EBWR
200860	9.7	12.1	0.5	0.7	24.9	-0.6	-0.7
SINGLE	BUYER				\$		

LOT 7	SIRE	DROP	MIC	SD	CV	CF%	BW
	180227	MAY	21.4	3.2	14.8	99.2	102
TAG	PWT	YWT	YFAT	YEMD	YGFW	YFD	EBWR
200812	11.7	14.6	1.9	1.3	20.3	1	-1.1
SINGLE	BUYER				\$		

LOT 8	SIRE	DROP	MIC	SD	CV	CF%	BW
	170822	MAY	19.5	2.3	11.7	100	96
TAG	PWT	YWT	YFAT	YEMD	YGFW	YFD	EBWR
201190	6.5	9.2	0.4	2.2	25.8	0	-0.1
TWIN	BUYER				\$		

LOT 9	SIRE	DROP	MIC	SD	CV	CF%	BW
	180227	MAY	17.7	3.1	17.3	99.2	96
TAG	PWT	YWT	YFAT	YEMD	YGFW	YFD	EBWR
200807	7.7	10.6	0.2	0.8	32.3	-1.2	-0.4
TWIN	BUYER				\$		

LOT 10	SIRE	DROP	MIC	SD	CV	CF%	BW
	183464	MAY	20.4	3	14.7	99.5	93
TAG	PWT	YWT	YFAT	YEMD	YGFW	YFD	EBWR
200051	5.6	7.5	0.7	2.1	19.2	-0.5	-0.5
SINGLE	BUYER				\$		

LOT	SIRE	DROP	MIC	SD	CV	CF%	BW
11	170660	MAY	19.9	2.8	14.1	99.8	92
TAG	PWT	YWT	YFAT	YEMD	YGFW	YFD	EBWR
201003	6.3	7.6	0.3	1	23.2	-0.1	-0.8
SINGLE	BUYER				\$		

LOT	SIRE	DROP	MIC	SD	CV	CF%	BW
12	182563	MAY	18.8	2.6	14	99.8	98
TAG	PWT	YWT	YFAT	YEMD	YGFW	YFD	EBWR
201647	8.3	10.6	0.3	0.9	28.5	-0.8	-0.1
SINGLE	BUYER				\$		

LOT	SIRE	DROP	MIC	SD	CV	CF%	BW
13	182504	MAY	19.4	2.8	14.3	99.5	101
TAG	PWT	YWT	YFAT	YEMD	YGFW	YFD	EBWR
200088	9.4	11.4	-0.2	0.6	23	-0.7	-0.6
TWIN	BUYER				\$		

LOT	SIRE	DROP	MIC	SD	CV	CF%	BW
14	180227	MAY	21.1	3.5	18.4	98.9	106
TAG	PWT	YWT	YFAT	YEMD	YGFW	YFD	EBWR
200840	10.8	12.5	0.5	0.8	33	0.4	-1
SINGLE	BUYER				\$		

LOT	SIRE	DROP	MIC	SD	CV	CF%	BW
15	162610	MAY	18.5	2.6	13.9	99.5	108
TAG	PWT	YWT	YFAT	YEMD	YGFW	YFD	EBWR
201705	9	10.5	-0.1	0.7	23.8	-0.8	-0.5
SINGLE	BUYER				\$		

LOT	SIRE	DROP	MIC	SD	CV	CF%	BW
16	162610	MAY	18.3	2.6	14.2	99.8	101
TAG	PWT	YWT	YFAT	YEMD	YGFW	YFD	EBWR
200184	9.2	11.1	0.5	0.9	20.7	-0.9	-0.7
SINGLE	BUYER				\$		

LOT	SIRE	DROP	MIC	SD	CV	CF%	BW
17	180043	MAY	19.8	2.4	12	100	104
TAG	PWT	YWT	YFAT	YEMD	YGFW	YFD	EBWR
201513	9.3	12.3	-0.2	-0.1	30.3	-0.5	-0.4
TWIN	BUYER				\$		

LOT	SIRE	DROP	MIC	SD	CV	CF%	BW
18	170660	MAY	19.2	2.2	11.7	100	100
TAG	PWT	YWT	YFAT	YEMD	YGFW	YFD	EBWR
201024	9.4	11.3	0.3	-0.2	27.5	-0.2	-0.2
TWIN	BUYER				\$		

LOT	SIRE	DROP	MIC	SD	CV	CF%	BW
19	182563	MAY	17.8	2.4	13.5	99.8	100
TAG	PWT	YWT	YFAT	YEMD	YGFW	YFD	EBWR
201654	10.1	12.4	0.3	0.3	22.8	-1.1	-0.2
SINGLE	BUYER				\$		

LOT	SIRE	DROP	MIC	SD	CV	CF%	BW
20	180027	MAY	18.5	3.5	20.7	99.8	99
TAG	PWT	YWT	YFAT	YEMD	YGFW	YFD	EBWR
201311	7.7	9.3	-0.6	-0.6	24.9	-1.1	-0.6
TWIN	BUYER				\$		

LOT	SIRE	DROP	MIC	SD	CV	CF%	BW
21	183464	MAY	19.5	3.3	17.1	99	94
TAG	PWT	YWT	YFAT	YEMD	YGFW	YFD	EBWR
200089	6.3	8.6	0.1	0.9	28.5	-0.5	-0.5
SINGLE	BUYER				\$		

LOT	SIRE	DROP	MIC	SD	CV	CF%	BW
22	180938	MAY	19.3	2.9	15.1	99.2	108
TAG	PWT	YWT	YFAT	YEMD	YGFW	YFD	EBWR
200459	9.1	10.2	-0.5	-0.1	26	-0.8	-0.5
SINGLE	BUYER				\$		

LOT	SIRE	DROP	MIC	SD	CV	CF%	BW
23	180227	MAY	19.7	2.9	14.6	99.5	102
TAG	PWT	YWT	YFAT	YEMD	YGFW	YFD	EBWR
200823	9.2	11.7	0.7	0.9	30.3	-0.2	-0.9
TWIN	BUYER				\$		

LOT	SIRE	DROP	MIC	SD	CV	CF%	BW
24	180227	MAY	19.4	3.3	17	99.5	97
TAG	PWT	YWT	YFAT	YEMD	YGFW	YFD	EBWR
200817	8.1	10.1	0.4	0.8	20.4	-0.3	-0.9
SINGLE	BUYER				\$		

LOT	SIRE	DROP	MIC	SD	CV	CF%	BW
25	182506	MAY	19.3	3.5	19.9	99	99
TAG	PWT	YWT	YFAT	YEMD	YGFW	YFD	EBWR
200625	9.7	11.7	-0.3	-1	30.7	-0.5	-0.4
TRIPLET	BUYER				\$		

LOT	SIRE	DROP	MIC	SD	CV	CF%	BW
26	182504	MAY	18.7	2.6	14	100	101
TAG	PWT	YWT	YFAT	YEMD	YGFW	YFD	EBWR
200308	6.6	8.4	0.4	1.3	24.4	-1	-0.5
SINGLE	BUYER				\$		

LOT	SIRE	DROP	MIC	SD	CV	CF%	BW
27	180227	MAY	18.1	2.5	14	99.5	106
TAG	PWT	YWT	YFAT	YEMD	YGFW	YFD	EBWR
200821	7.8	9.6	0.2	0.8	24	-1	-0.6
SINGLE	BUYER				\$		

LOT	SIRE	DROP	MIC	SD	CV	CF%	BW
28	180043	MAY	20.4	2.9	14.1	99	106
TAG	PWT	YWT	YFAT	YEMD	YGFW	YFD	EBWR
201524	9.1	11.9	-0.3	-0.6	22.8	-0.2	-1
TRIPLET	BUYER				\$		

LOT	SIRE	DROP	MIC	SD	CV	CF%	BW
29	130306	MAY	20.4	3	14.8	99	106
TAG	PWT	YWT	YFAT	YEMD	YGFW	YFD	EBWR
200870	6.9	9.2	-0.8	0.3	34.5	0.1	-0.4
TWIN	BUYER				\$		

LOT	SIRE	DROP	MIC	SD	CV	CF%	BW
30	182563	MAY	19.1	3.2	16.8	99	106
TAG	PWT	YWT	YFAT	YEMD	YGFW	YFD	EBWR
201639	11.1	13.6	-0.4	-0.5	32.6	-1	-0.2
SINGLE	BUYER				\$		

LOT	SIRE	DROP	MIC	SD	CV	CF%	BW
31	182563	MAY	20.8	3.1	14.8	99.2	102
TAG	PWT	YWT	YFAT	YEMD	YGFW	YFD	EBWR
201669	9.8	12.2	0.1	0.9	25.7	0	-0.3
SINGLE	BUYER				\$		

LOT	SIRE	DROP	MIC	SD	CV	CF%	BW
32	182504	MAY	21	3.5	19	99	99
TAG	PWT	YWT	YFAT	YEMD	YGFW	YFD	EBWR
200370	8.9	10.1	0.3	1.2	32.6	0.1	-0.7
TWIN	BUYER				\$		

LOT	SIRE	DROP	MIC	SD	CV	CF%	BW
33	170660	MAY	18.1	2.4	13.1	99.5	97
TAG	PWT	YWT	YFAT	YEMD	YGFW	YFD	EBWR
201025	8.9	10.5	0.3	-0.1	18	-0.9	-0.8
TWIN	BUYER				\$		

LOT	SIRE	DROP	MIC	SD	CV	CF%	BW
34	182563	MAY	18.1	3.5	19.3	99.5	90
TAG	PWT	YWT	YFAT	YEMD	YGFW	YFD	EBWR
201693	8.4	11.2	-0.1	0.4	35.3	-1	0.2
TWIN	BUYER				\$		

LOT	SIRE	DROP	MIC	SD	CV	CF%	BW
35	162610	MAY	20.7	2.3	11.3	99.8	88
TAG	PWT	YWT	YFAT	YEMD	YGFW	YFD	EBWR
201755	8	10.1	0.3	1.2	26.1	-0.1	-0.9
TWIN	BUYER				\$		

LOT	SIRE	DROP	MIC	SD	CV	CF%	BW
36	182504	MAY	18.7	3	16	99.2	91
TAG	PWT	YWT	YFAT	YEMD	YGFW	YFD	EBWR
200304	7.3	9	0.2	2.1	21.6	-1.1	-0.9
TWIN	BUYER				\$		

LOT	SIRE	DROP	MIC	SD	CV	CF%	BW
37	170325	MAY	18.3	2.3	12.4	99.8	82
TAG	PWT	YWT	YFAT	YEMD	YGFW	YFD	EBWR
201102	5.1	7.3	-1	-0.4	21.5	-1.3	-0.5
TWIN	BUYER				\$		

LOT	SIRE	DROP	MIC	SD	CV	CF%	BW
38	183464	MAY	19.2	2.6	13.6	99.8	82
TAG	PWT	YWT	YFAT	YEMD	YGFW	YFD	EBWR
200009	4.4	6.6	0.6	1.6	22.4	-0.7	-0.8
TWIN	BUYER				\$		

LOT	SIRE	DROP	MIC	SD	CV	CF%	BW
39	170402	MAY	18.4	2.1	11.2	100	84
TAG	PWT	YWT	YFAT	YEMD	YGFW	YFD	EBWR
201358	5.6	8	-0.2	-0.5	25.3	-1.3	-0.6
TWIN	BUYER				\$		

LOT	SIRE	DROP	MIC	SD	CV	CF%	BW
40	151911	MAY	18.7	2.4	12.8	99.8	85
TAG	PWT	YWT	YFAT	YEMD	YGFW	YFD	EBWR
200286	6.7	10.3	-0.7	0.1	24.2	-1.2	-0.3
SINGLE	BUYER				\$		

LOT	SIRE	DROP	MIC	SD	CV	CF%	BW
41	170660	MAY	18.8	3.5	20.7	99	90
TAG	PWT	YWT	YFAT	YEMD	YGFW	YFD	EBWR
200925	9.6	11.9	0.1	0	33.9	-0.4	-0.2
SINGLE	BUYER				\$		

LOT	SIRE	DROP	MIC	SD	CV	CF%	BW
42	182504	MAY	20.4	2.5	12.4	99.8	92
TAG	PWT	YWT	YFAT	YEMD	YGFW	YFD	EBWR
200376	8.4	10	0.6	1.2	25.6	-0.2	-0.8
TWIN	BUYER				\$		

LOT	SIRE	DROP	MIC	SD	CV	CF%	BW
43	180227	MAY	21.4	2.9	13.6	99.5	90
TAG	PWT	YWT	YFAT	YEMD	YGFW	YFD	EBWR
200834	7	9.3	1.3	1.9	20.6	0.4	-1
TWIN	BUYER				\$		

LOT	SIRE	DROP	MIC	SD	CV	CF%	BW
44	170822	MAY	18.3	3.3	18	99.2	91
TAG	PWT	YWT	YFAT	YEMD	YGFW	YFD	EBWR
201157	6.9	8.8	0.4	1.3	19	-1.2	-0.4
SINGLE	BUYER				\$		

LOT	SIRE	DROP	MIC	SD	CV	CF%	BW
45	151911	MAY	18.1	2.7	15.1	99.5	94
TAG	PWT	YWT	YFAT	YEMD	YGFW	YFD	EBWR
200272	6.7	8.7	-0.5	0.3	23.2	-1.6	-0.4
TRIPLET	BUYER				\$		

LOT	SIRE	DROP	MIC	SD	CV	CF%	BW
46	182579	MAY	20	3.5	17.5	99	96
TAG	PWT	YWT	YFAT	YEMD	YGFW	YFD	EBWR
200167	9.5	10.8	-0.2	0.1	31.6	-0.2	-0.7
SINGLE	BUYER				\$		

LOT	SIRE	DROP	MIC	SD	CV	CF%	BW
47	180027	MAY	17.2	2.7	15.4	100	96
TAG	PWT	YWT	YFAT	YEMD	YGFW	YFD	EBWR
201214	8.4	11	-0.4	-0.5	15.1	-1.5	-0.2
SINGLE	BUYER				\$		

LOT	SIRE	DROP	MIC	SD	CV	CF%	BW
48	181877	MAY	21.3	3.2	15	99.8	103
TAG	PWT	YWT	YFAT	YEMD	YGFW	YFD	EBWR
200714	9.4	11.4	-0.8	0.3	34.2	0.4	-0.5
TRIPLET	BUYER				\$		

LOT	SIRE	DROP	MIC	SD	CV	CF%	BW
49	151911	MAY	20.1	3.5	19.2	99.5	96
TAG	PWT	YWT	YFAT	YEMD	YGFW	YFD	EBWR
200242	7.3	9.6	-1	0.5	26	-0.2	-0.4
SINGLE	BUYER				\$		

LOT	SIRE	DROP	MIC	SD	CV	CF%	BW
50	180043	MAY	20.3	2.5	12.5	99.8	96
TAG	PWT	YWT	YFAT	YEMD	YGFW	YFD	EBWR
201472	8.8	11.7	-0.9	-1.4	31	0	-0.3
SINGLE	BUYER				\$		

LOT	SIRE	DROP	MIC	SD	CV	CF%	BW
51	162610	MAY	19.1	2.3	12	100	98
TAG	PWT	YWT	YFAT	YEMD	YGFW	YFD	EBWR
201711	9.8	12.6	0	1.3	23.5	-0.5	-0.1
SINGLE	BUYER				\$		

LOT	SIRE	DROP	MIC	SD	CV	CF%	BW
52	170325	MAY	18.4	2.5	13.4	99.8	86
TAG	PWT	YWT	YFAT	YEMD	YGFW	YFD	EBWR
201067	5.8	7.5	0.1	1.1	20.9	-1	0.3
SINGLE	BUYER				\$		

LOT	SIRE	DROP	MIC	SD	CV	CF%	BW
53	180027	MAY	18.5	2.6	14.2	99.5	92
TAG	PWT	YWT	YFAT	YEMD	YGFW	YFD	EBWR
201226	9.9	11.4	0	-1.2	26.9	-1.2	-0.3
TWIN	BUYER				\$		

LOT	SIRE	DROP	MIC	SD	CV	CF%	BW
54	170402	MAY	18.4	2.3	12.6	100	91
TAG	PWT	YWT	YFAT	YEMD	YGFW	YFD	EBWR
201364	5.3	8.8	-0.4	-0.7	21.3	-1.2	-0.2
SINGLE	BUYER				\$		

LOT	SIRE	DROP	MIC	SD	CV	CF%	BW
55	181877	MAY	20.1	2.7	13.2	100	95
TAG	PWT	YWT	YFAT	YEMD	YGFW	YFD	EBWR
200736	8.3	10.3	-0.9	0.3	27	-0.3	0.3
SINGLE	BUYER				\$		

LOT	SIRE	DROP	MIC	SD	CV	CF%	BW
56	180227	MAY	20.6	2.5	12.2	100	92
TAG	PWT	YWT	YFAT	YEMD	YGFW	YFD	EBWR
200858	7.1	9.3	1	0.8	22.5	0.2	-0.7
SINGLE	BUYER				\$		

LOT	SIRE	DROP	MIC	SD	CV	CF%	BW
57	180227	MAY	20.4	2.9	14.2	99.8	92
TAG	PWT	YWT	YFAT	YEMD	YGFW	YFD	EBWR
200853	8.5	10.8	0.9	1.7	23.5	0.6	-0.3
SINGLE	BUYER				\$		

LOT	SIRE	DROP	MIC	SD	CV	CF%	BW
58	170325	MAY	20.5	2.5	12.3	100	90
TAG	PWT	YWT	YFAT	YEMD	YGFW	YFD	EBWR
201091	5.9	8	0	0.7	28.8	0.1	-0.3
SINGLE	BUYER				\$		

LOT	SIRE	DROP	MIC	SD	CV	CF%	BW
59	170822	MAY	17	2.4	14	100	88
TAG	PWT	YWT	YFAT	YEMD	YGFW	YFD	EBWR
201141	5.7	6.3	0.9	1.2	16.4	-1.7	-0.7
SINGLE	BUYER				\$		

LOT	SIRE	DROP	MIC	SD	CV	CF%	BW
60	170325	MAY	21	3.3	15.9	99.2	86
TAG	PWT	YWT	YFAT	YEMD	YGFW	YFD	EBWR
201089	4.9	7.3	-0.2	1	21	0.1	-0.8
TRIPLET	BUYER				\$		

LOT	SIRE	DROP	MIC	SD	CV	CF%	BW
61	180027	MAY	18.2	3.1	17	99.2	87
TAG	PWT	YWT	YFAT	YEMD	YGFW	YFD	EBWR
201208	6.3	8	0	-0.5	24.9	-1.2	0
TRIPLET	BUYER				\$		

LOT	SIRE	DROP	MIC	SD	CV	CF%	BW
62	182563	MAY	18.2	2.1	11.4	100	86
TAG	PWT	YWT	YFAT	YEMD	YGFW	YFD	EBWR
201656	6.8	9.4	0.4	1.5	22.8	-1	-0.5
SINGLE	BUYER				\$		

LOT	SIRE	DROP	MIC	SD	CV	CF%	BW
63	170402	MAY	17.7	2.2	12.4	100	82
TAG	PWT	YWT	YFAT	YEMD	YGFW	YFD	EBWR
201397	4.7	7.4	-0.1	-0.2	18.6	-1.5	0.3
SINGLE	BUYER				\$		

LOT	SIRE	DROP	MIC	SD	CV	CF%	BW
64	182504	MAY	17.5	2.9	16.4	99.5	82
TAG	PWT	YWT	YFAT	YEMD	YGFW	YFD	EBWR
200381	6.2	8.6	-0.2	0.3	25.3	-1.5	-0.1
TWIN	BUYER				\$		

LOT	SIRE	DROP	MIC	SD	CV	CF%	BW
65	180027	MAY	18.6	3.4	18.2	99	86
TAG	PWT	YWT	YFAT	YEMD	YGFW	YFD	EBWR
201253	6.5	8.4	-0.5	0.2	29.5	-1.1	0.1
SINGLE	BUYER				\$		

LOT	SIRE	DROP	MIC	SD	CV	CF%	BW
66	151911	MAY	19.3	2.4	12.7	99.8	87
TAG	PWT	YWT	YFAT	YEMD	YGFW	YFD	EBWR
200270	7.5	9.9	-1	-0.1	23.1	-0.9	-0.6
SINGLE	BUYER				\$		

LOT	SIRE	DROP	MIC	SD	CV	CF%	BW
67	180043	MAY	18.7	2.4	13	99.8	92
TAG	PWT	YWT	YFAT	YEMD	YGFW	YFD	EBWR
201512	7.5	10.5	-0.5	-0.5	26.3	-1.2	-0.7
TWIN	BUYER				\$		

LOT	SIRE	DROP	MIC	SD	CV	CF%	BW
68	182563	MAY	18.7	2.3	12.2	100	93
TAG	PWT	YWT	YFAT	YEMD	YGFW	YFD	EBWR
201645	10.3	12.3	0.2	1.2	21.7	-1	-0.6
SINGLE	BUYER				\$		

LOT	SIRE	DROP	MIC	SD	CV	CF%	BW
69	170325	MAY	20.6	2.4	11.6	99.8	92
TAG	PWT	YWT	YFAT	YEMD	YGFW	YFD	EBWR
201090	6.5	8	0.4	1	22.4	0.4	-0.6
TWIN	BUYER				\$		

LOT	SIRE	DROP	MIC	SD	CV	CF%	BW
70	170402	MAY	19.8	2.5	12.5	99.8	88
TAG	PWT	YWT	YFAT	YEMD	YGFW	YFD	EBWR
201383	6.1	8.7	-0.1	-0.3	22.4	-0.5	-0.3
SINGLE	BUYER				\$		

LOT	SIRE	DROP	MIC	SD	CV	CF%	BW
71	180027	MAY	18.5	3.1	16.7	99.2	84
TAG	PWT	YWT	YFAT	YEMD	YGFW	YFD	EBWR
201288	7.5	9	-0.4	-0.5	20.6	-1.1	-0.3
SINGLE	BUYER				\$		

LOT	SIRE	DROP	MIC	SD	CV	CF%	BW
72	183464	MAY	19.6	2.4	12	100	83
TAG	PWT	YWT	YFAT	YEMD	YGFW	YFD	EBWR
200039	6	8.1	0.8	1.6	24.2	-0.5	-0.9
TWIN	BUYER				\$		

LOT	SIRE	DROP	MIC	SD	CV	CF%	BW
73	183464	MAY	19.2	2.8	14.7	99.8	86
TAG	PWT	YWT	YFAT	YEMD	YGFW	YFD	EBWR
200001	5.7	8.2	0	0.3	24.1	-0.5	-0.8
SINGLE	BUYER				\$		

LOT	SIRE	DROP	MIC	SD	CV	CF%	BW
74	151911	MAY	19.1	2.2	11.7	100	91
TAG	PWT	YWT	YFAT	YEMD	YGFW	YFD	EBWR
200280	7.3	9.1	-0.5	0.1	19.4	-0.9	-0.6
TWIN	BUYER				\$		

LOT	SIRE	DROP	MIC	SD	CV	CF%	BW
75	182563	MAY	16.9	2.6	15.1	99.8	94
TAG	PWT	YWT	YFAT	YEMD	YGFW	YFD	EBWR
201611	8.2	11	-0.3	-0.3	25.1	-1.4	0.2
SINGLE	BUYER				\$		

LOT	SIRE	DROP	MIC	SD	CV	CF%	BW
76	151911	MAY	19.3	2.7	13.9	99.2	93
TAG	PWT	YWT	YFAT	YEMD	YGFW	YFD	EBWR
200248	7.8	10.3	-0.3	-0.1	29	-0.8	0
TWIN	BUYER				\$		

LOT	SIRE	DROP	MIC	SD	CV	CF%	BW
77	182504	MAY	20.3	2.7	13.5	100	92
TAG	PWT	YWT	YFAT	YEMD	YGFW	YFD	EBWR
200319	6.4	8.4	-0.3	0.3	22.2	-0.4	-0.2
TWIN	BUYER				\$		

LOT	SIRE	DROP	MIC	SD	CV	CF%	BW
78	180027	MAY	20	2.5	12.3	99.8	94
TAG	PWT	YWT	YFAT	YEMD	YGFW	YFD	EBWR
201210	8.3	9.8	0	-0.3	23.2	-0.4	-0.4
TWIN	BUYER				\$		

LOT	SIRE	DROP	MIC	SD	CV	CF%	BW
79	170660	MAY	19.1	2.7	14.4	99.5	94
TAG	PWT	YWT	YFAT	YEMD	YGFW	YFD	EBWR
200935	8.8	10.2	0.1	0.3	27.2	-0.4	-0.3
SINGLE	BUYER				\$		

LOT	SIRE	DROP	MIC	SD	CV	CF%	BW
80	162610	MAY	20.3	2.4	11.9	99.5	92
TAG	PWT	YWT	YFAT	YEMD	YGFW	YFD	EBWR
201756	7.1	10	-0.5	-0.3	31	-0.5	-0.3
SINGLE	BUYER				\$		

LOT	SIRE	DROP	MIC	SD	CV	CF%	BW
81	180027	MAY	20.3	2.5	12.3	100	88
TAG	PWT	YWT	YFAT	YEMD	YGFW	YFD	EBWR
201292	11.1	13.6	0.1	0.1	20	-0.3	-0.5
SINGLE	BUYER				\$		

LOT	SIRE	DROP	MIC	SD	CV	CF%	BW
82	182579	MAY	18.2	2.8	15.7	99.8	82
TAG	PWT	YWT	YFAT	YEMD	YGFW	YFD	EBWR
200185	7.9	10.2	0.2	0.5	33.6	-1.1	-0.5
SINGLE	BUYER				\$		

LOT	SIRE	DROP	MIC	SD	CV	CF%	BW
83	182579	MAY	18.7	2.4	12.7	100	91
TAG	PWT	YWT	YFAT	YEMD	YGFW	YFD	EBWR
200181	7.8	9.7	-0.1	0.3	26.3	-1.3	-0.8
SINGLE	BUYER				\$		

LOT	SIRE	DROP	MIC	SD	CV	CF%	BW
84	162610	MAY	19.7	2.2	11.3	99.8	90
TAG	PWT	YWT	YFAT	YEMD	YGFW	YFD	EBWR
201731	8.8	10.7	-0.3	0.6	23.1	-0.6	-0.8
SINGLE	BUYER				\$		

LOT	SIRE	DROP	MIC	SD	CV	CF%	BW
85	180043	MAY	17.8	2.4	13.6	99.8	97
TAG	PWT	YWT	YFAT	YEMD	YGFW	YFD	EBWR
201520	7.5	9.7	-0.6	-0.2	22.4	-1.4	-0.7
SINGLE	BUYER				\$		

LOT	SIRE	DROP	MIC	SD	CV	CF%	BW
86	183464	MAY	18.8	2.6	13.9	99.8	102
TAG	PWT	YWT	YFAT	YEMD	YGFW	YFD	EBWR
200020	8.1	10.6	0	0.6	27	-0.9	-0.5
SINGLE	BUYER				\$		

LOT	SIRE	DROP	MIC	SD	CV	CF%	BW
87	182506	MAY	19.3	2.4	12.4	99.8	102
TAG	PWT	YWT	YFAT	YEMD	YGFW	YFD	EBWR
200621	10.1	12.3	-0.6	-1.1	27.3	-0.7	-0.4
TWIN	BUYER				\$		

LOT	SIRE	DROP	MIC	SD	CV	CF%	BW
88	182506	MAY	17.7	2.4	13.7	99.8	99
TAG	PWT	YWT	YFAT	YEMD	YGFW	YFD	EBWR
200627	9.3	10.8	-0.4	-0.9	22.2	-1.2	0
SINGLE	BUYER				\$		

LOT	SIRE	DROP	MIC	SD	CV	CF%	BW
89	180027	MAY	18.1	2.4	13.2	99.8	101
TAG	PWT	YWT	YFAT	YEMD	YGFW	YFD	EBWR
201306	9.5	11.5	-0.1	-0.6	21.7	-1.1	-0.7
TWIN	BUYER				\$		

LOT	SIRE	DROP	MIC	SD	CV	CF%	BW
90	180227	MAY	19.2	2.9	15.3	99.5	98
TAG	PWT	YWT	YFAT	YEMD	YGFW	YFD	EBWR
200824	8.8	11.3	0	0.2	28.1	-0.5	-0.9
TWIN	BUYER				\$		

LOT	SIRE	DROP	MIC	SD	CV	CF%	BW
91	180938	MAY	18.6	2.8	14.9	99.8	96
TAG	PWT	YWT	YFAT	YEMD	YGFW	YFD	EBWR
200462	9	10.6	0	0.5	35.5	-1.2	-0.7
TWIN	BUYER				\$		

LOT	SIRE	DROP	MIC	SD	CV	CF%	BW
92	180027	MAY	19.5	2.8	14.1	99.8	91
TAG	PWT	YWT	YFAT	YEMD	YGFW	YFD	EBWR
201321	6.4	8.1	-0.1	-0.4	21.8	-0.7	0
SINGLE	BUYER				\$		

LOT	SIRE	DROP	MIC	SD	CV	CF%	BW
93	182506	MAY	20.3	2.6	12.6	100	93
TAG	PWT	YWT	YFAT	YEMD	YGFW	YFD	EBWR
200606	8.1	10.5	0	0.2	28.8	0	0
TWIN	BUYER				\$		

LOT	SIRE	DROP	MIC	SD	CV	CF%	BW
94	180043	MAY	19.7	2.5	12.7	99.8	95
TAG	PWT	YWT	YFAT	YEMD	YGFW	YFD	EBWR
201451	7.8	10	-0.8	-0.8	24.2	-0.5	-0.7
TWIN	BUYER				\$		

LOT	SIRE	DROP	MIC	SD	CV	CF%	BW
95	180027	MAY	21.2	2.7	12.6	99.8	96
TAG	PWT	YWT	YFAT	YEMD	YGFW	YFD	EBWR
201320	9.9	12.3	0.3	0	19.5	0.4	-0.7
TWIN	BUYER				\$		

LOT	SIRE	DROP	MIC	SD	CV	CF%	BW
96	162610	MAY	19.5	2.3	12	99.8	100
TAG	PWT	YWT	YFAT	YEMD	YGFW	YFD	EBWR
201803	8.3	10.5	-0.1	0.6	27.9	-0.5	-0.4
SINGLE	BUYER				\$		

LOT	SIRE	DROP	MIC	SD	CV	CF%	BW
97	182506	MAY	18.8	3.1	16.3	99.8	95
TAG	PWT	YWT	YFAT	YEMD	YGFW	YFD	EBWR
200612	7.7	9.7	-0.4	-0.9	28.1	-0.9	-0.3
SINGLE	BUYER				\$		

LOT	SIRE	DROP	MIC	SD	CV	CF%	BW
98	151911	MAY	16.5	2.7	16.4	99.5	99
TAG	PWT	YWT	YFAT	YEMD	YGFW	YFD	EBWR
200299	7	9	-0.5	0.2	19.8	-2.2	-0.3
SINGLE	BUYER				\$		

LOT	SIRE	DROP	MIC	SD	CV	CF%	BW
99	160502	MAY	19.2	3.5	18.9	99.2	100
TAG	PWT	YWT	YFAT	YEMD	YGFW	YFD	EBWR
201567	8.7	9.7	-0.6	-1.1	34.1	-0.9	-0.2
SINGLE	BUYER				\$		

LOT	SIRE	DROP	MIC	SD	CV	CF%	BW
100	162610	MAY	19.7	2.5	12.8	100	104
TAG	PWT	YWT	YFAT	YEMD	YGFW	YFD	EBWR
201787	10.6	12.1	0.3	-0.7	19.3	-0.3	-0.8
SINGLE	BUYER				\$		

LOT	SIRE	DROP	MIC	SD	CV	CF%	BW
101	162610	MAY	17.8	2.5	14.2	99.5	113
TAG	PWT	YWT	YFAT	YEMD	YGFW	YFD	EBWR
201744	10.5	12.2	0.1	0.3	19.3	-1.3	-0.7
SINGLE	BUYER				\$		

LOT	SIRE	DROP	MIC	SD	CV	CF%	BW
102	182506	MAY	18.4	2.4	13	99.5	102
TAG	PWT	YWT	YFAT	YEMD	YGFW	YFD	EBWR
200622	10.2	12.9	0	-0.7	27.6	-0.9	-0.5
SINGLE	BUYER				\$		

LOT	SIRE	DROP	MIC	SD	CV	CF%	BW
103	180027	MAY	19.7	25	12.8	100	98
TAG	PWT	YWT	YFAT	YEMD	YGFW	YFD	EBWR
201232	9.1	10.7	0.2	0	17.7	-0.7	-0.6
TWIN	BUYER				\$		

LOT	SIRE	DROP	MIC	SD	CV	CF%	BW
104	180027	MAY	17.3	2.8	16.1	99.5	96
TAG	PWT	YWT	YFAT	YEMD	YGFW	YFD	EBWR
201257	6.9	8.2	0	0.3	16.9	-1.8	-0.6
TWIN	BUYER				\$		

LOT	SIRE	DROP	MIC	SD	CV	CF%	BW
105	170660	MAY	19.5	3.5	18.5	99.8	94
TAG	PWT	YWT	YFAT	YEMD	YGFW	YFD	EBWR
200993	7.4	9.9	0.1	0.4	27.3	-0.3	-0.3
TWIN	BUYER				\$		

LOT	SIRE	DROP	MIC	SD	CV	CF%	BW
106	160502	MAY	19.6	3.1	15.6	99	92
TAG	PWT	YWT	YFAT	YEMD	YGFW	YFD	EBWR
201554	6.5	8.5	-0.6	-1	31.7	-0.6	-0.2
SINGLE	BUYER				\$		

LOT	SIRE	DROP	MIC	SD	CV	CF%	BW
107	183464	MAY	18.5	2.9	15.4	99.8	89
TAG	PWT	YWT	YFAT	YEMD	YGFW	YFD	EBWR
200042	8	10.6	0.5	1.7	20.4	-1	-0.9
TWIN	BUYER				\$		

LOT	SIRE	DROP	MIC	SD	CV	CF%	BW
108	182563	MAY	20.2	2.8	14	99.2	92
TAG	PWT	YWT	YFAT	YEMD	YGFW	YFD	EBWR
201607	10.5	13.3	0.3	0.4	26.3	-0.2	-0.6
SINGLE	BUYER				\$		

LOT	SIRE	DROP	MIC	SD	CV	CF%	BW
109	182506	MAY	18.4	2.6	14.3	99.8	93
TAG	PWT	YWT	YFAT	YEMD	YGFW	YFD	EBWR
200539	10.5	13.3	-0.1	-1.4	27.2	-0.8	-0.2
SINGLE	BUYER				\$		

LOT	SIRE	DROP	MIC	SD	CV	CF%	BW
110	181877	MAY	18.5	2.4	12.9	100	96
TAG	PWT	YWT	YFAT	YEMD	YGFW	YFD	EBWR
200712	7.5	9.3	-0.1	0.9	15.3	-0.7	-0.4
TWIN	BUYER				\$		

LOT	SIRE	DROP	MIC	SD	CV	CF%	BW
111	182504	MAY	18.1	2.8	15.3	99.8	96
TAG	PWT	YWT	YFAT	YEMD	YGFW	YFD	EBWR
200313	6.6	9.1	-0.2	0.2	23.3	-1.4	-0.2
SINGLE	BUYER				\$		

LOT	SIRE	DROP	MIC	SD	CV	CF%	BW
112	180027	MAY	20.3	2.8	13.6	99.5	100
TAG	PWT	YWT	YFAT	YEMD	YGFW	YFD	EBWR
200732	10.3	12.5	0	-0.6	27.4	-0.3	-0.4
TWIN	BUYER				\$		

LOT	SIRE	DROP	MIC	SD	CV	CF%	BW
113	162610	MAY	18.2	2.5	14	99.8	102
TAG	PWT	YWT	YFAT	YEMD	YGFW	YFD	EBWR
201792	10.7	12.5	-0.4	-0.1	17.2	-1.1	-0.7
SINGLE	BUYER				\$		

LOT	SIRE	DROP	MIC	SD	CV	CF%	BW
114	180027	MAY	16.9	2.3	13.7	99.8	96
TAG	PWT	YWT	YFAT	YEMD	YGFW	YFD	EBWR
201308	7.5	8.7	-0.2	0.4	17.7	-2	-0.3
SINGLE	BUYER				\$		

LOT	SIRE	DROP	MIC	SD	CV	CF%	BW
115	162610	MAY	19.2	2.5	12.1	99.8	97
TAG	PWT	YWT	YFAT	YEMD	YGFW	YFD	EBWR
201808	9	10.8	0.2	1.5	16.8	-0.5	-0.5
SINGLE	BUYER				\$		

LOT	SIRE	DROP	MIC	SD	CV	CF%	BW
116	182504	MAY	18.6	2.3	12.1	100	97
TAG	PWT	YWT	YFAT	YEMD	YGFW	YFD	EBWR
200361	7	8.7	0.7	2	14.5	-1	-0.5
SINGLE	BUYER				\$		

LOT	SIRE	DROP	MIC	SD	CV	CF%	BW
117	162610	MAY	18.7	3	16.3	99.2	107
TAG	PWT	YWT	YFAT	YEMD	YGFW	YFD	EBWR
201778	7.7	10.2	0	0.7	24.6	-1.3	-1
TWIN	BUYER				\$		

LOT	SIRE	DROP	MIC	SD	CV	CF%	BW
118	180027	MAY	20	2.9	14.3	99.8	101
TAG	PWT	YWT	YFAT	YEMD	YGFW	YFD	EBWR
201279	9.4	11.5	-0.6	0.2	25.4	-0.5	-0.4
SINGLE	BUYER				\$		

LOT	SIRE	DROP	MIC	SD	CV	CF%	BW
119	170402	MAY	19.8	2.3	11.8	100	97
TAG	PWT	YWT	YFAT	YEMD	YGFW	YFD	EBWR
201390	7.7	10	-0.3	-0.6	22.7	-0.6	-0.3
SINGLE	BUYER				\$		

LOT	SIRE	DROP	MIC	SD	CV	CF%	BW
120	182563	MAY	17.7	3.4	19	99.5	95
TAG	PWT	YWT	YFAT	YEMD	YGFW	YFD	EBWR
201636	8.6	10.3	0.1	0.5	22.8	-1.5	0
TWIN	BUYER				\$		

LOT	SIRE	DROP	MIC	SD	CV	CF%	BW
121	180027	MAY	18.3	3.5	19.8	99.8	96
TAG	PWT	YWT	YFAT	YEMD	YGFW	YFD	EBWR
201273	7.7	9.6	-0.7	-0.5	31	-1.4	0
SINGLE	BUYER				\$		

LOT	SIRE	DROP	MIC	SD	CV	CF%	BW
122	180043	MAY	18.7	3.1	16.6	99.5	96
TAG	PWT	YWT	YFAT	YEMD	YGFW	YFD	EBWR
201492	7.1	9.2	-0.3	-0.4	22.9	-0.9	-0.8
SINGLE	BUYER				\$		

LOT	SIRE	DROP	MIC	SD	CV	CF%	BW
123	170402	MAY	18	1.9	10.6	100	95
TAG	PWT	YWT	YFAT	YEMD	YGFW	YFD	EBWR
201396	5.9	8.2	0.2	0.5	22.4	-1.5	-0.3
TWIN	BUYER				\$		

LOT	SIRE	DROP	MIC	SD	CV	CF%	BW
124	182579	MAY	18.9	2.9	15.3	99.5	100
TAG	PWT	YWT	YFAT	YEMD	YGFW	YFD	EBWR
200178	8.3	10.1	0.1	0.3	28.1	-1	-0.4
TWIN	BUYER				\$		

LOT	SIRE	DROP	MIC	SD	CV	CF%	BW
125	182506	MAY	17.8	2	11.4	100	95
TAG	PWT	YWT	YFAT	YEMD	YGFW	YFD	EBWR
200604	6.2	8.1	-0.1	-0.4	31.7	-1.3	-0.3
SINGLE	BUYER				\$		

LOT	SIRE	DROP	MIC	SD	CV	CF%	BW
126	183464	MAY	18.4	2.2	12.1	100	94
TAG	PWT	YWT	YFAT	YEMD	YGFW	YFD	EBWR
200044	6.9	8.7	0.2	1.1	24.8	-0.8	-0.5
SINGLE	BUYER				\$		

LOT	SIRE	DROP	MIC	SD	CV	CF%	BW
127	182579	MAY	16.8	2.5	14.9	100	94
TAG	PWT	YWT	YFAT	YEMD	YGFW	YFD	EBWR
200183	8	9.7	-0.5	-0.1	27.7	-2.1	-0.3
SINGLE	BUYER				\$		

LOT	SIRE	DROP	MIC	SD	CV	CF%	BW
128	170660	MAY	20.8	3.5	17.3	99.2	98
TAG	PWT	YWT	YFAT	YEMD	YGFW	YFD	EBWR
201016	8.3	9.5	0	0.3	31.6	0.4	-0.6
SINGLE	BUYER				\$		

LOT	SIRE	DROP	MIC	SD	CV	CF%	BW
129	162610	MAY	19.2	3.5	18.7	99	103
TAG	PWT	YWT	YFAT	YEMD	YGFW	YFD	EBWR
201809	7.3	9.3	-0.5	-0.3	25.9	-0.8	-0.5
SINGLE	BUYER				\$		

LOT	SIRE	DROP	MIC	SD	CV	CF%	BW
130	180043	MAY	20.4	3.5	17.9	99	103
TAG	PWT	YWT	YFAT	YEMD	YGFW	YFD	EBWR
201503	8.6	11.4	-0.4	-0.7	32.7	-0.2	-0.8
TWIN	BUYER				\$		

LOT	SIRE	DROP	MIC	SD	CV	CF%	BW
131	182563	MAY	19.6	2.4	12.4	99.8	99
TAG	PWT	YWT	YFAT	YEMD	YGFW	YFD	EBWR
201680	9.5	11.9	0.7	0.8	26.6	-0.5	-0.3
TWIN	BUYER				\$		

LOT	SIRE	DROP	MIC	SD	CV	CF%	BW
132	151911	MAY	18.2	2.5	13.6	99.8	100
TAG	PWT	YWT	YFAT	YEMD	YGFW	YFD	EBWR
200255	9.3	11.6	-0.7	0.6	27.6	-1.1	-0.3
SINGLE	BUYER				\$		

LOT	SIRE	DROP	MIC	SD	CV	CF%	BW
133	182563	MAY	18.2	2.4	13.2	99.8	105
TAG	PWT	YWT	YFAT	YEMD	YGFW	YFD	EBWR
201671	10.7	12.8	0.4	0.7	29.8	-1.3	0
TWIN	BUYER				\$		

LOT	SIRE	DROP	MIC	SD	CV	CF%	BW
134	180227	MAY	18.6	2.7	14.5	99.8	100
TAG	PWT	YWT	YFAT	YEMD	YGFW	YFD	EBWR
200806	11.7	14.4	0.7	1.4	15.3	-0.9	-1.1
TWIN	BUYER				\$		

LOT	SIRE	DROP	MIC	SD	CV	CF%	BW
135	180227	MAY	20.6	2.7	13.2	100	97
TAG	PWT	YWT	YFAT	YEMD	YGFW	YFD	EBWR
200816	10.2	12.3	0.9	1.1	20	0.3	-0.9
SINGLE	BUYER				\$		

LOT	SIRE	DROP	MIC	SD	CV	CF%	BW
136	182504	MAY	18.8	3	15.7	99.5	96
TAG	PWT	YWT	YFAT	YEMD	YGFW	YFD	EBWR
200382	8.2	10.2	-0.2	0.4	28.7	-0.9	-0.5
SINGLE	BUYER				\$		

LOT	SIRE	DROP	MIC	SD	CV	CF%	BW
137	183464	MAY	20.8	2.8	13.3	99.8	93
TAG	PWT	YWT	YFAT	YEMD	YGFW	YFD	EBWR
200003	6.6	9.9	0.4	0.7	22.5	-0.1	-0.7
SINGLE	BUYER				\$		

LOT	SIRE	DROP	MIC	SD	CV	CF%	BW
138	162610	MAY	19.2	2.5	12.8	100	93
TAG	PWT	YWT	YFAT	YEMD	YGFW	YFD	EBWR
201715	8	10.6	-0.6	0.3	23.6	-0.4	-0.9
SINGLE	BUYER				\$		

LOT	SIRE	DROP	MIC	SD	CV	CF%	BW
139	180043	MAY	19.3	2.7	13.8	99.8	92
TAG	PWT	YWT	YFAT	YEMD	YGFW	YFD	EBWR
201461	7.8	10.7	-0.6	0.2	29.2	-0.5	-0.6
TRIPLET	BUYER				\$		

LOT	SIRE	DROP	MIC	SD	CV	CF%	BW
140	182504	MAY	20.3	2.9	14.5	99.2	91
TAG	PWT	YWT	YFAT	YEMD	YGFW	YFD	EBWR
200303	6.7	8.6	0.9	1.9	20.1	-0.1	-0.7
SINGLE	BUYER				\$		

LOT	SIRE	DROP	MIC	SD	CV	CF%	BW
141	170325	MAY	19.1	3.4	17.8	99	86
TAG	PWT	YWT	YFAT	YEMD	YGFW	YFD	EBWR
201093	5.7	8.5	-1.3	-0.3	32.2	-1.1	-0.1
TWIN	BUYER				\$		

LOT	SIRE	DROP	MIC	SD	CV	CF%	BW
142	170402	MAY	19.8	3.4	17.4	99	89
TAG	PWT	YWT	YFAT	YEMD	YGFW	YFD	EBWR
201360	5.7	8.7	0.1	0.2	36.7	-0.4	0
SINGLE	BUYER				\$		

LOT	SIRE	DROP	MIC	SD	CV	CF%	BW
143	182563	MAY	17.8	2.2	12.6	100	95
TAG	PWT	YWT	YFAT	YEMD	YGFW	YFD	EBWR
201618	5.6	6.5	0	0.7	23.6	-1.8	0
SINGLE	BUYER				\$		

LOT	SIRE	DROP	MIC	SD	CV	CF%	BW
144	162610	MAY	20.1	3.5	20	99	94
TAG	PWT	YWT	YFAT	YEMD	YGFW	YFD	EBWR
201749	7.3	8.2	-0.2	0.2	26.2	-0.2	-0.3
TRIPLET	BUYER				\$		

LOT	SIRE	DROP	MIC	SD	CV	CF%	BW
145	162610	MAY	17.9	3.2	17.8	99.5	92
TAG	PWT	YWT	YFAT	YEMD	YGFW	YFD	EBWR
201810	7.2	9.3	0	0.5	21	-1.3	-0.9
TWIN	BUYER				\$		

LOT	SIRE	DROP	MIC	SD	CV	CF%	BW
146	180027	MAY	18.4	2.5	13.5	100	90
TAG	PWT	YWT	YFAT	YEMD	YGFW	YFD	EBWR
201236	8.5	10.2	0.5	0.1	21.7	-1.1	-0.4
SINGLE	BUYER				\$		

LOT	SIRE	DROP	MIC	SD	CV	CF%	BW
147	183464	MAY	19.3	2.5	12.7	99.8	93
TAG	PWT	YWT	YFAT	YEMD	YGFW	YFD	EBWR
200025	8.1	10.8	0	1.2	20.1	-0.6	-1
TWIN	BUYER				\$		

LOT	SIRE	DROP	MIC	SD	CV	CF%	BW
148	180938	MAY	18.1	2.3	12.8	99.8	93
TAG	PWT	YWT	YFAT	YEMD	YGFW	YFD	EBWR
200424	8.2	9.8	0.2	1.2	28.2	-1.2	-0.3
TRIPLET	BUYER				\$		

LOT	SIRE	DROP	MIC	SD	CV	CF%	BW
149	182579	MAY	21.2	3.5	17	98.9	90
TAG	PWT	YWT	YFAT	YEMD	YGFW	YFD	EBWR
200169	7.6	10.3	0.3	0.7	30.9	0.2	-0.2
SINGLE	BUYER				\$		

LOT	SIRE	DROP	MIC	SD	CV	CF%	BW
150	162610	MAY	18.4	2.5	13.4	99.8	82
TAG	PWT	YWT	YFAT	YEMD	YGFW	YFD	EBWR
201773	8	9	-0.6	-0.2	22.2	-0.9	-0.7
SINGLE	BUYER				\$		

LOT	SIRE	DROP	MIC	SD	CV	CF%	BW
151	170325	MAY	19.6	2.9	14.9	99.5	84
TAG	PWT	YWT	YFAT	YEMD	YGFW	YFD	EBWR
201052	6	7.9	0	0.4	21.8	-1.1	-0.7
TRIPLET	BUYER				\$		

LOT	SIRE	DROP	MIC	SD	CV	CF%	BW
152	181877	MAY	19.8	2.6	12.9	99.5	89
TAG	PWT	YWT	YFAT	YEMD	YGFW	YFD	EBWR
200719	7.3	9	-1	0.1	26.8	-0.2	-0.2
SINGLE	BUYER				\$		

LOT	SIRE	DROP	MIC	SD	CV	CF%	BW
153	180938	MAY	18.2	3	16.5	99	92
TAG	PWT	YWT	YFAT	YEMD	YGFW	YFD	EBWR
200437	10.2	12	0.2	0.6	27	-1.1	-0.5
TWIN	BUYER				\$		

LOT	SIRE	DROP	MIC	SD	CV	CF%	BW
154	182579	MAY	19.1	2.9	15.4	99.2	89
TAG	PWT	YWT	YFAT	YEMD	YGFW	YFD	EBWR
200157	9.4	11	-0.1	0.2	29.6	-0.8	0
TWIN	BUYER				\$		

LOT	SIRE	DROP	MIC	SD	CV	CF%	BW
155	182504	MAY	17.5	3.5	20	99.5	87
TAG	PWT	YWT	YFAT	YEMD	YGFW	YFD	EBWR
200310	6	7.7	0	0.7	21.2	-1.8	-0.1
TWIN	BUYER				\$		

LOT	SIRE	DROP	MIC	SD	CV	CF%	BW
156	170402	MAY	19	3	15.8	99.5	89
TAG	PWT	YWT	YFAT	YEMD	YGFW	YFD	EBWR
201375	5	7.5	-0.4	-0.9	25.3	-0.9	-0.6
SINGLE	BUYER				\$		

LOT	SIRE	DROP	MIC	SD	CV	CF%	BW
157	180027	MAY	18.8	2.2	11.9	100	88
TAG	PWT	YWT	YFAT	YEMD	YGFW	YFD	EBWR
201286	8	9.4	-0.4	-0.6	21.2	-1	-0.3
SINGLE	BUYER				\$		

LOT	SIRE	DROP	MIC	SD	CV	CF%	BW
158	180227	MAY	19.8	3.1	15.7	99.8	91
TAG	PWT	YWT	YFAT	YEMD	YGFW	YFD	EBWR
200819	6.9	8.5	0.4	0.7	19.3	-0.1	-1.1
TWIN	BUYER				\$		

LOT	SIRE	DROP	MIC	SD	CV	CF%	BW
159	160502	MAY	19.1	2.6	13.3	99.2	96
TAG	PWT	YWT	YFAT	YEMD	YGFW	YFD	EBWR
201599	5.6	7.3	-1.2	-0.8	22.1	-0.9	-0.5
SINGLE	BUYER				\$		

LOT	SIRE	DROP	MIC	SD	CV	CF%	BW
160	180938	MAY	17.5	2.6	15.1	99.8	95
TAG	PWT	YWT	YFAT	YEMD	YGFW	YFD	EBWR
200468	9.3	11.2	-0.8	-0.2	31	-1.4	-0.5
SINGLE	BUYER				\$		

LOT	SIRE	DROP	MIC	SD	CV	CF%	BW
161	182563	MAY	17.4	2.6	15.2	99.5	96
TAG	PWT	YWT	YFAT	YEMD	YGFW	YFD	EBWR
201652	10.1	11.7	0.7	1.1	19.1	-1.3	-0.5
SINGLE	BUYER				\$		

LOT	SIRE	DROP	MIC	SD	CV	CF%	BW
162	170660	MAY	21.3	2.9	13.7	99.5	96
TAG	PWT	YWT	YFAT	YEMD	YGFW	YFD	EBWR
201001	9.9	11.8	0.5	0	27.1	0.7	-0.4
TWIN	BUYER				\$		

LOT	SIRE	DROP	MIC	SD	CV	CF%	BW
163	180027	MAY	17.3	2.4	13.8	100	89
TAG	PWT	YWT	YFAT	YEMD	YGFW	YFD	EBWR
201285	7.8	9.4	0.2	0.6	22	-1.6	-0.7
TWIN	BUYER				\$		

LOT	SIRE	DROP	MIC	SD	CV	CF%	BW
164	162610	MAY	17.7	2.7	15.1	99.5	90
TAG	PWT	YWT	YFAT	YEMD	YGFW	YFD	EBWR
201799	6.9	8.7	-0.5	0.9	19.5	-1.1	-0.8
SINGLE	BUYER				\$		

LOT	SIRE	DROP	MIC	SD	CV	CF%	BW
165	151911	MAY	17.6	2.2	12.5	100	92
TAG	PWT	YWT	YFAT	YEMD	YGFW	YFD	EBWR
200290	5.4	7.2	-0.9	0.1	22	-1.8	-0.4
SINGLE	BUYER				\$		

LOT	SIRE	DROP	MIC	SD	CV	CF%	BW
166	162610	MAY	21.5	3	13.7	99.5	94
TAG	PWT	YWT	YFAT	YEMD	YGFW	YFD	EBWR
201762	9.2	10.9	-0.3	0.2	26	0.2	-0.4
TWIN	BUYER				\$		

LOT	SIRE	DROP	MIC	SD	CV	CF%	BW
167	182506	MAY	17.9	2.5	13.9	99.5	99
TAG	PWT	YWT	YFAT	YEMD	YGFW	YFD	EBWR
200609	9.5	13.1	-0.8	-1	23.3	-0.9	-0.1
SINGLE	BUYER				\$		

LOT	SIRE	DROP	MIC	SD	CV	CF%	BW
168	180043	MAY	18.4	2.5	13.8	99.2	97
TAG	PWT	YWT	YFAT	YEMD	YGFW	YFD	EBWR
201494	7.9	10.4	-0.2	-0.2	23.6	-0.9	-0.4
SINGLE	BUYER				\$		

LOT	SIRE	DROP	MIC	SD	CV	CF%	BW
169	182579	MAY	19.5	2.3	11.7	99.8	97
TAG	PWT	YWT	YFAT	YEMD	YGFW	YFD	EBWR
200154	8.5	10.5	0	0.4	284	-0.7	-0.8
TWIN	BUYER				\$		

LOT	SIRE	DROP	MIC	SD	CV	CF%	BW
170	162610	MAY	20.2	2.7	13.5	99.8	103
TAG	PWT	YWT	YFAT	YEMD	YGFW	YFD	EBWR
201805	11.6	14.6	0.4	1.8	30.8	0.2	-0.8
TWIN	BUYER				\$		

LOT	SIRE	DROP	MIC	SD	CV	CF%	BW
171	182506	MAY	18.2	2.1	11.6	100	114
TAG	PWT	YWT	YFAT	YEMD	YGFW	YFD	EBWR
200514	8.3	10.1	0.2	-0.9	19.9	-1.1	-0.8
SINGLE	BUYER				\$		

LOT	SIRE	DROP	MIC	SD	CV	CF%	BW
172	151911	MAY	17.4	2.6	14.9	99.5	103
TAG	PWT	YWT	YFAT	YEMD	YGFW	YFD	EBWR
200238	7.7	9.7	-0.7	-0.4	27.2	-1.7	-0.1
SINGLE	BUYER				\$		

LOT	SIRE	DROP	MIC	SD	CV	CF%	BW
173	182506	MAY	20.2	2.6	12.6	99.8	108
TAG	PWT	YWT	YFAT	YEMD	YGFW	YFD	EBWR
200546	9	12.2	-0.4	-1.8	23.2	-0.3	-0.7
SINGLE	BUYER				\$		

LOT	SIRE	DROP	MIC	SD	CV	CF%	BW
174	182563	MAY	18.2	2.1	11.8	100	102
TAG	PWT	YWT	YFAT	YEMD	YGFW	YFD	EBWR
201692	10.2	12.1	-0.3	-0.2	27.2	-1.1	0.3
SINGLE	BUYER				\$		

LOT	SIRE	DROP	MIC	SD	CV	CF%	BW
175	182563	MAY	19.4	2.6	13.4	99.8	110
TAG	PWT	YWT	YFAT	YEMD	YGFW	YFD	EBWR
201657	10.5	13.3	0.5	0.7	24.2	-0.7	-0.3
SINGLE	BUYER				\$		

LOT	SIRE	DROP	MIC	SD	CV	CF%	BW
176	180227	MAY	18.9	2.7	14.2	99.8	100
TAG	PWT	YWT	YFAT	YEMD	YGFW	YFD	EBWR
200865	6.4	8.9	0.8	1.6	16.6	-0.3	-1
SINGLE	BUYER				\$		

LOT	SIRE	DROP	MIC	SD	CV	CF%	BW
177	182504	MAY	20	3.5	20.2	99.5	105
TAG	PWT	YWT	YFAT	YEMD	YGFW	YFD	EBWR
200334	7.4	9.5	-0.1	0	25.6	-0.3	-0.8
SINGLE	BUYER				\$		

LOT	SIRE	DROP	MIC	SD	CV	CF%	BW
178	182504	MAY	18.4	3	16.1	99.2	101
TAG	PWT	YWT	YFAT	YEMD	YGFW	YFD	EBWR
200307	9.7	11.4	-0.2	1	23.5	-1.1	-0.7
SINGLE	BUYER				\$		

LOT	SIRE	DROP	MIC	SD	CV	CF%	BW
179	170660	MAY	20.6	2.6	12.7	99.8	93
TAG	PWT	YWT	YFAT	YEMD	YGFW	YFD	EBWR
201029	6.8	8.5	-0.1	0.6	23.3	0.3	-0.5
SINGLE	BUYER				\$		

LOT	SIRE	DROP	MIC	SD	CV	CF%	BW
180	180227	MAY	19.3	3.4	17.7	99.2	92
TAG	PWT	YWT	YFAT	YEMD	YGFW	YFD	EBWR
200851	8.2	10.3	0.1	0.9	21.7	-0.6	-1
TWIN	BUYER				\$		

LOT	SIRE	DROP	MIC	SD	CV	CF%	BW
181	130306	MAY	17.5	2.6	14.7	99.8	93
TAG	PWT	YWT	YFAT	YEMD	YGFW	YFD	EBWR
200884	8.5	9.9	-1.2	-1.5	30.6	-1.5	-0.2
SINGLE	BUYER				\$		

LOT	SIRE	DROP	MIC	SD	CV	CF%	BW
182	151911	MAY	19.4	3.2	16.6	99.8	94
TAG	PWT	YWT	YFAT	YEMD	YGFW	YFD	EBWR
200289	9.4	12.2	-1.1	0.1	25.4	-0.9	-0.6
SINGLE	BUYER				\$		

LOT	SIRE	DROP	MIC	SD	CV	CF%	BW
183	151911	MAY	19.7	2.9	14.7	99	93
TAG	PWT	YWT	YFAT	YEMD	YGFW	YFD	EBWR
200265	7.1	9.1	-1.1	-0.1	22.4	-0.7	0
SINGLE	BUYER				\$		

LOT	SIRE	DROP	MIC	SD	CV	CF%	BW
184	180227	MAY	19.6	2.5	12.6	100	92
TAG	PWT	YWT	YFAT	YEMD	YGFW	YFD	EBWR
200810	8.7	10.6	0.9	1.7	16.1	-0.3	-0.7
TWIN	BUYER				\$		

LOT	SIRE	DROP	MIC	SD	CV	CF%	BW
185	170402	MAY	20.4	3	14.7	99.5	91
TAG	PWT	YWT	YFAT	YEMD	YGFW	YFD	EBWR
201395	7.5	10.1	0	-0.8	35.1	0.1	0.2
SINGLE	BUYER				\$		

LOT	SIRE	DROP	MIC	SD	CV	CF%	BW
186	162610	MAY	18.6	2.4	12.7	99.8	90
TAG	PWT	YWT	YFAT	YEMD	YGFW	YFD	EBWR
201777	7.7	9.3	-0.2	1.2	17.3	-1.4	-0.9
TWIN	BUYER				\$		

LOT	SIRE	DROP	MIC	SD	CV	CF%	BW
187	180227	MAY	18.5	2.8	15.3	100	91
TAG	PWT	YWT	YFAT	YEMD	YGFW	YFD	EBWR
201304	6.6	9.5	0.4	0.8	24.5	-0.7	-0.6
SINGLE	BUYER				\$		

LOT	SIRE	DROP	MIC	SD	CV	CF%	BW
188	182504	MAY	19.4	2.5	12.9	100	85
TAG	PWT	YWT	YFAT	YEMD	YGFW	YFD	EBWR
200369	8.8	10.7	0.4	1.3	24.8	-0.4	-0.2
SINGLE	BUYER				\$		

LOT	SIRE	DROP	MIC	SD	CV	CF%	BW
189	183464	MAY	19.1	2.2	11.6	99.8	87
TAG	PWT	YWT	YFAT	YEMD	YGFW	YFD	EBWR
200029	5.7	8.3	0.2	1	24.3	-0.8	-0.5
TWIN	BUYER				\$		

LOT	SIRE	DROP	MIC	SD	CV	CF%	BW
190	151911	MAY	18.7	2.5	12.5	99.9	84
TAG	PWT	YWT	YFAT	YEMD	YGFW	YFD	EBWR
200296	5.7	7.9	-0.8	-0.2	20.3	-1.2	-0.6
TWIN	BUYER				\$		

LOT	SIRE	DROP	MIC	SD	CV	CF%	BW
191	182504	MAY	19.1	2.7	14.1	99.5	81
TAG	PWT	YWT	YFAT	YEMD	YGFW	YFD	EBWR
200368	7.6	9.7	0.1	1.2	21.4	-1	-0.8
TWIN	BUYER				\$		

LOT	SIRE	DROP	MIC	SD	CV	CF%	BW
192	182579	MAY	18.4	3.5	20.6	99	84
TAG	PWT	YWT	YFAT	YEMD	YGFW	YFD	EBWR
200197	6.4	7.4	-0.1	0.3	28.7	-1	-0.6
SINGLE	BUYER				\$		

LOT	SIRE	DROP	MIC	SD	CV	CF%	BW
193	170660	MAY	20.4	2.9	14.3	99.8	89
TAG	PWT	YWT	YFAT	YEMD	YGFW	YFD	EBWR
200913	7.6	9.3	0.6	0.2	34.2	0.6	-0.3
SINGLE	BUYER				\$		

LOT	SIRE	DROP	MIC	SD	CV	CF%	BW
194	181877	MAY	18	2.6	14.4	99.8	90
TAG	PWT	YWT	YFAT	YEMD	YGFW	YFD	EBWR
200716	8.7	11.3	-1	0.2	32.8	-1	0.1
TWIN	BUYER				\$		

LOT	SIRE	DROP	MIC	SD	CV	CF%	BW
195	182563	MAY	18	2.8	15.3	99.5	90
TAG	PWT	YWT	YFAT	YEMD	YGFW	YFD	EBWR
201670	9.3	10.7	0.3	0.8	26.1	-0.7	0.2
SINGLE	BUYER				\$		

LOT	SIRE	DROP	MIC	SD	CV	CF%	BW
196	180043	MAY	18.2	3	16.5	99.2	89
TAG	PWT	YWT	YFAT	YEMD	YGFW	YFD	EBWR
201441	8.8	11.3	-0.9	-0.6	23.6	-1.1	-0.8
SINGLE	BUYER				\$		

LOT	SIRE	DROP	MIC	SD	CV	CF%	BW
197	182506	MAY	16.6	2.1	12.4	100	87
TAG	PWT	YWT	YFAT	YEMD	YGFW	YFD	EBWR
200628	9.5	13.2	-0.5	-0.9	23	-1.8	-0.4
SINGLE	BUYER				\$		

LOT	SIRE	DROP	MIC	SD	CV	CF%	BW
198	170402	MAY	17.3	2.6	15.1	99.8	80
TAG	PWT	YWT	YFAT	YEMD	YGFW	YFD	EBWR
201366	7.1	9.6	0.3	1	14	-1.7	-0.7
TWIN	BUYER				\$		

LOT	SIRE	DROP	MIC	SD	CV	CF%	BW
199	170325	MAY	21.4	3	14.2	99.2	79
TAG	PWT	YWT	YFAT	YEMD	YGFW	YFD	EBWR
201095	5.8	8.2	-0.5	0.8	24.5	0.1	-0.3
TRIPLET	BUYER				\$		

LOT	SIRE	DROP	MIC	SD	CV	CF%	BW
200	180027	MAY	19.9	2.3	11.7	99.8	79
TAG	PWT	YWT	YFAT	YEMD	YGFW	YFD	EBWR
201303	7.4	9.4	0.6	0.9	23.8	-0.4	-0.4
TWIN	BUYER				\$		

LOT	SIRE	DROP	MIC	SD	CV	CF%	BW
201	181877	MAY	19.2	2.5	13.1	100	83
TAG	PWT	YWT	YFAT	YEMD	YGFW	YFD	EBWR
200701	6.7	9.2	-0.3	0.1	30.9	-0.5	-0.4
TWIN	BUYER				\$		

LOT	SIRE	DROP	MIC	SD	CV	CF%	BW
202	170402	MAY	18.1	2.5	14	99.5	79
TAG	PWT	YWT	YFAT	YEMD	YGFW	YFD	EBWR
201370	4.5	6.9	-0.3	-0.3	25.2	-1.4	-0.3
SINGLE	BUYER				\$		

LOT	SIRE	DROP	MIC	SD	CV	CF%	BW
203	170402	MAY	19.5	2.9	14.9	99.8	79
TAG	PWT	YWT	YFAT	YEMD	YGFW	YFD	EBWR
201335	5.6	8.2	-0.3	-1.4	30.9	-0.7	-0.6
TWIN	BUYER				\$		

LOT	SIRE	DROP	MIC	SD	CV	CF%	BW
204	182563	MAY	19.1	2.5	13.2	99.5	89
TAG	PWT	YWT	YFAT	YEMD	YGFW	YFD	EBWR
201700	8.5	9.9	-0.1	0.8	26	-0.3	-0.2
SINGLE	BUYER				\$		

LOT	SIRE	DROP	MIC	SD	CV	CF%	BW
205	183464	MAY	19.2	3.5	20.3	99.2	89
TAG	PWT	YWT	YFAT	YEMD	YGFW	YFD	EBWR
200010	6.3	8.5	0.1	1.2	24.8	-0.8	-0.5
SINGLE	BUYER				\$		

LOT	SIRE	DROP	MIC	SD	CV	CF%	BW
206	151911	MAY	20	2.9	14.5	99.8	88
TAG	PWT	YWT	YFAT	YEMD	YGFW	YFD	EBWR
200257	6	8.2	-0.6	-0.1	24.4	-0.6	-0.4
SINGLE	BUYER				\$		

LOT	SIRE	DROP	MIC	SD	CV	CF%	BW
207	151911	MAY	18.6	2.4	13.1	99.8	91
TAG	PWT	YWT	YFAT	YEMD	YGFW	YFD	EBWR
200241	6.7	8.6	-0.7	0.2	20.5	-1.2	-0.4
SINGLE	BUYER				\$		

LOT	SIRE	DROP	MIC	SD	CV	CF%	BW
208	182563	MAY	17.9	2.1	11.5	100	91
TAG	PWT	YWT	YFAT	YEMD	YGFW	YFD	EBWR
201683	8.1	10.2	-0.2	0.5	24.9	-1.1	-0.3
SINGLE	BUYER				\$		

LOT	SIRE	DROP	MIC	SD	CV	CF%	BW
209	182506	MAY	18.4	2.8	15.4	99.8	96
TAG	PWT	YWT	YFAT	YEMD	YGFW	YFD	EBWR
200557	9.1	11.1	0.3	-1.3	27.7	-0.9	-0.4
SINGLE	BUYER				\$		

LOT	SIRE	DROP	MIC	SD	CV	CF%	BW
210	182579	MAY	20.9	3.5	19.2	99	94
TAG	PWT	YWT	YFAT	YEMD	YGFW	YFD	EBWR
200153	7.6	10.3	-0.2	-0.3	35.3	0	0.1
SINGLE	BUYER				\$		

LOT	SIRE	DROP	MIC	SD	CV	CF%	BW
211	182563	MAY	19.5	2.3	11.9	99.8	96
TAG	PWT	YWT	YFAT	YEMD	YGFW	YFD	EBWR
201694	8.8	11.4	0.6	1.5	30.9	-0.4	-0.1
SINGLE	BUYER				\$		

LOT	SIRE	DROP	MIC	SD	CV	CF%	BW
212	180938	MAY	18.7	2.8	14.9	99.5	94
TAG	PWT	YWT	YFAT	YEMD	YGFW	YFD	EBWR
200485	9.3	9.7	-0.7	-0.6	31.7	-1.2	-0.5
TWIN	BUYER				\$		

LOT	SIRE	DROP	MIC	SD	CV	CF%	BW
213	180027	MAY	18.5	2.5	13.7	99.5	92
TAG	PWT	YWT	YFAT	YEMD	YGFW	YFD	EBWR
201315	9.9	11.7	0.2	0.1	23.7	-1	0.1
TRIPLET	BUYER				\$		

LOT	SIRE	DROP	MIC	SD	CV	CF%	BW
214	182563	MAY	18.8	3.2	17.2	99.8	97
TAG	PWT	YWT	YFAT	YEMD	YGFW	YFD	EBWR
201665	8.6	10.9	0	0.5	26.4	-1	-0.3
SINGLE	BUYER				\$		

LOT	SIRE	DROP	MIC	SD	CV	CF%	BW
215	182563	MAY	20.1	2.9	14.4	99.8	99
TAG	PWT	YWT	YFAT	YEMD	YGFW	YFD	EBWR
201604	10.1	12.4	0.1	0.3	29.1	-0.2	-0.2
SINGLE	BUYER				\$		

LOT	SIRE	DROP	MIC	SD	CV	CF%	BW
216	180227	MAY	20.2	3.3	16.3	99.2	107
TAG	PWT	YWT	YFAT	YEMD	YGFW	YFD	EBWR
200862	11.4	13.2	0.8	0.8	18.6	0.3	-0.7
SINGLE	BUYER				\$		

LOT	SIRE	DROP	MIC	SD	CV	CF%	BW
217	162610	MAY	19.8	2.1	10.7	100	104
TAG	PWT	YWT	YFAT	YEMD	YGFW	YFD	EBWR
201813	11.4	15.1	-0.2	0.7	18.6	-0.6	-1.1
TWIN	BUYER				\$		

LOT	SIRE	DROP	MIC	SD	CV	CF%	BW
218	182506	MAY	19.7	2.9	14.6	99.5	100
TAG	PWT	YWT	YFAT	YEMD	YGFW	YFD	EBWR
200611	9.3	11.4	-0.3	-0.9	24	-0.4	-0.7
TWIN	BUYER				\$		

LOT	SIRE	DROP	MIC	SD	CV	CF%	BW
219	183464	MAY	20.4	3.5	18.1	99	96
TAG	PWT	YWT	YFAT	YEMD	YGFW	YFD	EBWR
200082	8.4	10.3	0.4	0.9	27.6	0	-0.2
SINGLE	BUYER				\$		

LOT	SIRE	DROP	MIC	SD	CV	CF%	BW
220	180027	MAY	19.2	2.5	13	99.5	99
TAG	PWT	YWT	YFAT	YEMD	YGFW	YFD	EBWR
201307	8.6	11.2	0.2	-0.3	25.5	-0.6	-0.1
TWIN	BUYER				\$		

LOT	SIRE	DROP	MIC	SD	CV	CF%	BW
221	180227	SEPT	19	2.7	14.1	99.8	96
TAG	PWT	YWT	YFAT	YEMD	YGFW	YFD	EBWR
203560	10.4	14.2	0.3	0.9	27.6	0.4	-0.8
SINGLE	BUYER				\$		

LOT	SIRE	DROP	MIC	SD	CV	CF%	BW
222	190002	SEPT	19.8	3.2	16	99.5	86
TAG	PWT	YWT	YFAT	YEMD	YGFW	YFD	EBWR
202533	8.7	10.8	0.3	0.9	34.1	1.2	-0.4
SINGLE	BUYER				\$		

LOT	SIRE	DROP	MIC	SD	CV	CF%	BW
223	190084	SEPT	18	2.9	16.1	99.8	86
TAG	PWT	YWT	YFAT	YEMD	YGFW	YFD	EBWR
202769	9.8	12	0.1	1.2	29.5	-0.3	-0.2
TWIN	BUYER				\$		

LOT	SIRE	DROP	MIC	SD	CV	CF%	BW
224	192203	SEPT	16.8	2.7	15.8	99.8	85
TAG	PWT	YWT	YFAT	YEMD	YGFW	YFD	EBWR
203412	8.2	10.3	-1.1	0.5	31.5	-1.3	-0.4
SINGLE	BUYER				\$		

LOT	SIRE	DROP	MIC	SD	CV	CF%	BW
225	190002	SEPT	21.5	3.1	14	99.5	87
TAG	PWT	YWT	YFAT	YEMD	YGFW	YFD	EBWR
202518	8	10.7	0.4	1	47	2.1	0.1
TWIN	BUYER				\$		

LOT	SIRE	DROP	MIC	SD	CV	CF%	BW
226	182563	SEPT	17.3	2.7	15.9	99.8	82
TAG	PWT	YWT	YFAT	YEMD	YGFW	YFD	EBWR
202403	8.3	9.5	0	0.6	25.4	-1	-0.3
SINGLE	BUYER				\$		

LOT	SIRE	DROP	MIC	SD	CV	CF%	BW
227	191512	SEPT	17.3	2.6	15.1	99.2	82
TAG	PWT	YWT	YFAT	YEMD	YGFW	YFD	EBWR
203264	7.5	9.8	0.2	0.1	25	-1	-0.2
TWIN	BUYER				\$		

LOT	SIRE	DROP	MIC	SD	CV	CF%	BW
228	190274	SEPT	20	3.1	15.3	99.5	82
TAG	PWT	YWT	YFAT	YEMD	YGFW	YFD	EBWR
203083	8.2	9.5	0.1	0	24.2	0.1	-0.4
TWIN	BUYER				\$		

LOT	SIRE	DROP	MIC	SD	CV	CF%	BW
229	162610	SEPT	17.7	2.8	15.8	99.8	80
TAG	PWT	YWT	YFAT	YEMD	YGFW	YFD	EBWR
202129	9.9	12.6	-0.3	0.7	30.1	-0.3	-0.5
TWIN	BUYER				\$		

LOT	SIRE	DROP	MIC	SD	CV	CF%	BW
230	190121	SEPT	18.3	2.9	16	99.8	81
TAG	PWT	YWT	YFAT	YEMD	YGFW	YFD	EBWR
202835	6.6	7.9	0.2	0.2	26.3	-0.5	-0.4
TWIN	BUYER				\$		

LOT	SIRE	DROP	MIC	SD	CV	CF%	BW
231	190002	SEPT	18.8	2.4	12.6	99.8	79
TAG	PWT	YWT	YFAT	YEMD	YGFW	YFD	EBWR
202558	7.6	10.3	0.1	0.8	33.7	0	0
TWIN	BUYER				\$		

LOT	SIRE	DROP	MIC	SD	CV	CF%	BW
232	182504	SEPT	17.5	2.4	13.7	99.8	77
TAG	PWT	YWT	YFAT	YEMD	YGFW	YFD	EBWR
202384	7.2	8.2	-0.4	1.4	24.7	-0.3	-0.8
TWIN	BUYER				\$		

LOT	SIRE	DROP	MIC	SD	CV	CF%	BW
233	183464	SEPT	17.2	2.5	14.7	100	79
TAG	PWT	YWT	YFAT	YEMD	YGFW	YFD	EBWR
202467	6.8	8.3	-0.2	1	22.1	-0.3	-0.4
TWIN	BUYER				\$		

LOT	SIRE	DROP	MIC	SD	CV	CF%	BW
234	190125	SEPT	17	2.5	14.9	99.8	79
TAG	PWT	YWT	YFAT	YEMD	YGFW	YFD	EBWR
202879	7.9	10.3	-0.8	0.1	29.6	-1.1	-0.2
TWIN	BUYER				\$		

LOT	SIRE	DROP	MIC	SD	CV	CF%	BW
235	190048	SEPT	18.2	2.7	15	99.8	80
TAG	PWT	YWT	YFAT	YEMD	YGFW	YFD	EBWR
202726	7.9	10.3	-0.1	0.5	27.4	-0.2	-0.4
TWIN	BUYER				\$		

LOT	SIRE	DROP	MIC	SD	CV	CF%	BW
236	162610	SEPT	18.8	3.5	20	99	81
TAG	PWT	YWT	YFAT	YEMD	YGFW	YFD	EBWR
202120	7.9	10.1	-0.4	-0.9	26.1	-0.3	-0.5
SINGLE	BUYER				\$		

LOT	SIRE	DROP	MIC	SD	CV	CF%	BW
237	192161	SEPT	18.9	2.8	14.6	99.5	79
TAG	PWT	YWT	YFAT	YEMD	YGFW	YFD	EBWR
203317	7.2	8.6	0.4	1.6	26.4	0.3	-0.2
TWIN	BUYER				\$		

LOT	SIRE	DROP	MIC	SD	CV	CF%	BW
238	162610	SEPT	16.8	2.4	14.5	100	79
TAG	PWT	YWT	YFAT	YEMD	YGFW	YFD	EBWR
202143	7.6	9.6	-0.4	0.6	19.1	-1.4	-1
TWIN	BUYER				\$		

LOT	SIRE	DROP	MIC	SD	CV	CF%	BW
239	170660	SEPT	20.8	2.9	14	100	86
TAG	PWT	YWT	YFAT	YEMD	YGFW	YFD	EBWR
203491	8.6	10.7	-0.2	-0.5	38	1	-0.3
TWIN	BUYER				\$		

LOT	SIRE	DROP	MIC	SD	CV	CF%	BW
240	190125	SEPT	16.3	3.6	20	99.2	85
TAG	PWT	YWT	YFAT	YEMD	YGFW	YFD	EBWR
202884	5.3	7	-0.6	1.3	18.1	-1.2	-0.4
SINGLE	BUYER				\$		

LOT	SIRE	DROP	MIC	SD	CV	CF%	BW
241	160502	SEPT	19.2	2.9	15.4	100	83
TAG	PWT	YWT	YFAT	YEMD	YGFW	YFD	EBWR
202056	8.2	9.2	-0.6	-0.6	33.1	0.5	0
TWIN	BUYER				\$		

LOT	SIRE	DROP	MIC	SD	CV	CF%	BW
242	170325	SEPT	16.6	3	18.2	99.8	82
TAG	PWT	YWT	YFAT	YEMD	YGFW	YFD	EBWR
202214	7	10	-0.8	-0.6	25	-1.2	-0.3
SINGLE	BUYER				\$		

LOT	SIRE	DROP	MIC	SD	CV	CF%	BW
243	190125	SEPT	17.6	2.3	13.2	99.8	83
TAG	PWT	YWT	YFAT	YEMD	YGFW	YFD	EBWR
202911	5.6	9.7	0.3	0.5	18.6	-0.9	-0.3
SINGLE	BUYER				\$		

LOT	SIRE	DROP	MIC	SD	CV	CF%	BW
244	170402	SEPT	17.6	2.9	16.4	99.8	82
TAG	PWT	YWT	YFAT	YEMD	YGFW	YFD	EBWR
202229	6.1	8.4	0.3	-0.3	24	-0.6	-0.3
TWIN	BUYER				\$		

LOT	SIRE	DROP	MIC	SD	CV	CF%	BW
245	190002	SEPT	19.9	3.3	16.7	99	79
TAG	PWT	YWT	YFAT	YEMD	YGFW	YFD	EBWR
202554	8.1	10.5	0.4	0.4	36.1	0.7	-0.3
TWIN	BUYER				\$		

LOT	SIRE	DROP	MIC	SD	CV	CF%	BW
246	183464	SEPT	17.5	2.5	14	99.8	79
TAG	PWT	YWT	YFAT	YEMD	YGFW	YFD	EBWR
202492	7.3	9.7	0.6	1.3	19.8	-0.5	-0.6
TWIN	BUYER				\$		

LOT	SIRE	DROP	MIC	SD	CV	CF%	BW
247	190242	SEPT	19.4	3.5	17.9	99.8	79
TAG	PWT	YWT	YFAT	YEMD	YGFW	YFD	EBWR
203029	5	7.4	0.2	-0.4	38.7	0.2	-0.2
TWIN	BUYER				\$		

LOT	SIRE	DROP	MIC	SD	CV	CF%	BW
248	170822	SEPT	17.3	2.9	16.6	99.5	79
TAG	PWT	YWT	YFAT	YEMD	YGFW	YFD	EBWR
202255	6.9	8.5	0.3	0.1	22.7	-1.3	0
TWIN	BUYER				\$		

LOT	SIRE	DROP	MIC	SD	CV	CF%	BW
249	191449	SEPT	19	2.7	14.4	99.8	76
TAG	PWT	YWT	YFAT	YEMD	YGFW	YFD	EBWR
203230	6.6	9.4	0.4	0.9	30.4	0.3	-0.1
SINGLE	BUYER				\$		

LOT	SIRE	DROP	MIC	SD	CV	CF%	BW
250	190022	SEPT	17.6	2.9	16.4	99.8	79
TAG	PWT	YWT	YFAT	YEMD	YGFW	YFD	EBWR
202648	7.1	8.9	-0.3	-0.7	24.3	-0.5	-0.3
SINGLE	BUYER				\$		

LOT	SIRE	DROP	MIC	SD	CV	CF%	BW
251	182504	SEPT	18.3	3.1	16.7	99.8	79
TAG	PWT	YWT	YFAT	YEMD	YGFW	YFD	EBWR
202375	7.2	8.6	0.2	1.2	27.8	-0.3	-0.1
SINGLE	BUYER				\$		

LOT	SIRE	DROP	MIC	SD	CV	CF%	BW
252	190015	SEPT	16.5	3.5	20	99.2	79
TAG	PWT	YWT	YFAT	YEMD	YGFW	YFD	EBWR
202567	7	8.4	-0.3	-0.1	28.8	-1.3	-0.2
SINGLE	BUYER				\$		

LOT	SIRE	DROP	MIC	SD	CV	CF%	BW
253	190015	SEPT	18.5	2.8	14.9	99.5	81
TAG	PWT	YWT	YFAT	YEMD	YGFW	YFD	EBWR
202569	6.6	8.7	0.5	0.3	25.4	-0.3	-0.7
SINGLE	BUYER				\$		

LOT	SIRE	DROP	MIC	SD	CV	CF%	BW
254	190084	SEPT	18.5	2.9	15.7	99.5	85
TAG	PWT	YWT	YFAT	YEMD	YGFW	YFD	EBWR
202784	9.8	12.2	0	1.2	22.4	-0.7	-0.5
SINGLE	BUYER				\$		

LOT	SIRE	DROP	MIC	SD	CV	CF%	BW
255	180227	SEPT	17.1	3.5	20	99.5	90
TAG	PWT	YWT	YFAT	YEMD	YGFW	YFD	EBWR
203580	9.4	10.8	0.4	0.9	23.9	-0.8	-0.3
TWIN	BUYER				\$		

LOT	SIRE	DROP	MIC	SD	CV	CF%	BW
256	190274	SEPT	18.8	2.3	12.5	100	85
TAG	PWT	YWT	YFAT	YEMD	YGFW	YFD	EBWR
203086	7.9	9.4	-0.3	-0.7	28.3	-0.4	0
SINGLE	BUYER				\$		

LOT	SIRE	DROP	MIC	SD	CV	CF%	BW
257	182579	SEPT	17	2.3	13.7	100	88
TAG	PWT	YWT	YFAT	YEMD	YGFW	YFD	EBWR
202427	10	12.4	0.4	0	26.4	-0.7	-0.7
TWIN	BUYER				\$		

LOT	SIRE	DROP	MIC	SD	CV	CF%	BW
258	190017	SEPT	19.3	3.5	20.2	99.8	82
TAG	PWT	YWT	YFAT	YEMD	YGFW	YFD	EBWR
202609	8.1	10	-0.7	0.1	28	-0.3	-0.4
TWIN	BUYER				\$		

LOT	SIRE	DROP	MIC	SD	CV	CF%	BW
259	190017	SEPT	19	2.7	14.5	100	80
TAG	PWT	YWT	YFAT	YEMD	YGFW	YFD	EBWR
202638	4.7	6.4	-0.3	1.1	26.7	0	-0.3
SINGLE	BUYER				\$		

LOT	SIRE	DROP	MIC	SD	CV	CF%	BW
260	170325	SEPT	17.8	2	11.3	100	79
TAG	PWT	YWT	YFAT	YEMD	YGFW	YFD	EBWR
202159	7.5	10.6	0.2	1	21	-1	-0.6
TWIN	BUYER				\$		

LOT	SIRE	DROP	MIC	SD	CV	CF%	BW
261	162610	SEPT	17.2	2.4	14.1	100	73
TAG	PWT	YWT	YFAT	YEMD	YGFW	YFD	EBWR
202118	8.6	10.4	-0.5	-0.3	24.8	-0.9	-0.5
SINGLE	BUYER				\$		

LOT	SIRE	DROP	MIC	SD	CV	CF%	BW
262	170660	SEPT	18.2	2.8	15.2	99.8	70
TAG	PWT	YWT	YFAT	YEMD	YGFW	YFD	EBWR
203502	6.4	8.1	0.1	0.5	34.2	0.2	-0.5
TWIN	BUYER				\$		

LOT	SIRE	DROP	MIC	SD	CV	CF%	BW
263	183464	SEPT	17.2	2.6	15	100	74
TAG	PWT	YWT	YFAT	YEMD	YGFW	YFD	EBWR
202497	7.1	8.9	-0.1	1.6	17.1	-1.4	-0.7
TWIN	BUYER				\$		

LOT	SIRE	DROP	MIC	SD	CV	CF%	BW
264	190048	SEPT	16.3	2.5	15.2	99.8	75
TAG	PWT	YWT	YFAT	YEMD	YGFW	YFD	EBWR
202717	7.7	10.2	-0.3	1	24.9	-1.2	-0.3
TWIN	BUYER				\$		

LOT	SIRE	DROP	MIC	SD	CV	CF%	BW
265	192161	SEPT	17.2	2.7	15.6	100	72
TAG	PWT	YWT	YFAT	YEMD	YGFW	YFD	EBWR
203322	5.6	6.8	0	0.7	27.4	-1	0
TWIN	BUYER				\$		

LOT	SIRE	DROP	MIC	SD	CV	CF%	BW
266	190251	SEPT	17.4	2.2	12.6	99.8	76
TAG	PWT	YWT	YFAT	YEMD	YGFW	YFD	EBWR
203067	8.3	10.2	0.2	0	20.6	-0.4	-0.7
TWIN	BUYER				\$		

LOT	SIRE	DROP	MIC	SD	CV	CF%	BW
267	191309	SEPT	18.7	3	16.1	99.2	74
TAG	PWT	YWT	YFAT	YEMD	YGFW	YFD	EBWR
203191	8	10.2	0.3	1.1	25.8	0.4	-0.3
TWIN	BUYER				\$		

LOT	SIRE	DROP	MIC	SD	CV	CF%	BW
268	162610	SEPT	17.2	3	17.2	99.8	74
TAG	PWT	YWT	YFAT	YEMD	YGFW	YFD	EBWR
202130	7.9	9.9	-0.3	1.2	15.2	-1	-0.5
TRIPLET	BUYER				\$		

LOT	SIRE	DROP	MIC	SD	CV	CF%	BW
269	190274	SEPT	17.5	2.5	14.1	99.8	78
TAG	PWT	YWT	YFAT	YEMD	YGFW	YFD	EBWR
203098	6.4	7.7	0.2	0.7	15	-0.4	0
SINGLE	BUYER				\$		

LOT	SIRE	DROP	MIC	SD	CV	CF%	BW
270	180027	SEPT	17.6	2.4	13.8	99.8	72
TAG	PWT	YWT	YFAT	YEMD	YGFW	YFD	EBWR
202279	10.4	13	-0.1	-0.9	30.1	-0.3	-0.8
TRIPLET	BUYER				\$		

LOT	SIRE	DROP	MIC	SD	CV	CF%	BW
271	170660	SEPT	18.6	2.3	12.3	100	78
TAG	PWT	YWT	YFAT	YEMD	YGFW	YFD	EBWR
203487	9.4	11	-0.3	-0.5	32.4	0.2	-0.8
TWIN	BUYER				\$		

LOT	SIRE	DROP	MIC	SD	CV	CF%	BW
272	190236	SEPT	18.1	2.2	12.2	100	79
TAG	PWT	YWT	YFAT	YEMD	YGFW	YFD	EBWR
203016	8.3	10.7	-0.3	-0.4	26.6	-0.4	-0.3
TWIN	BUYER				\$		

LOT	SIRE	DROP	MIC	SD	CV	CF%	BW
273	181877	SEPT	17.8	2.7	15.4	99.5	78
TAG	PWT	YWT	YFAT	YEMD	YGFW	YFD	EBWR
202365	6.3	8	-0.5	0.4	31.1	-0.7	0
TWIN	BUYER				\$		

LOT	SIRE	DROP	MIC	SD	CV	CF%	BW
274	190236	SEPT	18.1	2.7	14.6	99.8	70
TAG	PWT	YWT	YFAT	YEMD	YGFW	YFD	EBWR
203301	6.8	8.9	0	-0.2	25.5	-0.4	0
TWIN	BUYER				\$		

LOT	SIRE	DROP	MIC	SD	CV	CF%	BW
275	1991459	SEPT	18.8	2.9	15.5	99.5	75
TAG	PWT	YWT	YFAT	YEMD	YGFW	YFD	EBWR
203250	5.2	7	0.3	0	22.7	0.1	-0.3
SINGLE	BUYER				\$		

LOT	SIRE	DROP	MIC	SD	CV	CF%	BW
276	180027	SEPT	16.6	2.7	16	99.8	77
TAG	PWT	YWT	YFAT	YEMD	YGFW	YFD	EBWR
202286	7.9	9.3	-0.1	0.2	23.9	-1.7	-0.4
TWIN	BUYER				\$		

LOT	SIRE	DROP	MIC	SD	CV	CF%	BW
277	190002	SEPT	18.3	2.6	14.5	99.8	78
TAG	PWT	YWT	YFAT	YEMD	YGFW	YFD	EBWR
202537	7.3	10.1	0.3	0.9	35.4	-0.1	0
SINGLE	BUYER				\$		

LOT	SIRE	DROP	MIC	SD	CV	CF%	BW
278	190121	SEPT	20	3	15	100	80
TAG	PWT	YWT	YFAT	YEMD	YGFW	YFD	EBWR
202833	6.8	8.9	0.8	0.4	30.3	0.6	-0.8
SINGLE	BUYER				\$		

LOT	SIRE	DROP	MIC	SD	CV	CF%	BW
279	180227	SEPT	18.7	2.9	15.7	99.8	76
TAG	PWT	YWT	YFAT	YEMD	YGFW	YFD	EBWR
203552	8.3	10.6	0.8	0.9	22.6	0.6	-0.7
TRIPLET	BUYER				\$		

LOT	SIRE	DROP	MIC	SD	CV	CF%	BW
280	190251	SEPT	17.4	3.5	20	99.5	76
TAG	PWT	YWT	YFAT	YEMD	YGFW	YFD	EBWR
203066	5.2	6.6	0.3	0.2	34.6	-0.5	0.3
TWIN	BUYER				\$		

LOT	SIRE	DROP	MIC	SD	CV	CF%	BW
281	190017	SEPT	17.6	2.9	16.7	99.5	79
TAG	PWT	YWT	YFAT	YEMD	YGFW	YFD	EBWR
202612	7.1	10.1	-0.3	1.4	30.5	-0.7	-0.3
TWIN	BUYER				\$		

LOT	SIRE	DROP	MIC	SD	CV	CF%	BW
282	190135	SEPT	17.3	2.3	13.5	100	80
TAG	PWT	YWT	YFAT	YEMD	YGFW	YFD	EBWR
202970	7.2	8.4	-0.3	-0.5	23.1	-0.6	-0.2
TWIN	BUYER				\$		

LOT	SIRE	DROP	MIC	SD	CV	CF%	BW
283	190017	SEPT	16	2	12.8	100	83
TAG	PWT	YWT	YFAT	YEMD	YGFW	YFD	EBWR
202630	8.6	10.3	-0.4	-0.3	23.9	-1.3	-0.4
TWIN	BUYER				\$		

LOT	SIRE	DROP	MIC	SD	CV	CF%	BW
284	162610	SEPT	19.7	2.8	14	100	83
TAG	PWT	YWT	YFAT	YEMD	YGFW	YFD	EBWR
202144	8.2	11	-0.2	1	23.1	-0.2	-0.4
TRIPLET	BUYER				\$		

LOT	SIRE	DROP	MIC	SD	CV	CF%	BW
285	190022	SEPT	19.1	3.3	17.1	99.8	84
TAG	PWT	YWT	YFAT	YEMD	YGFW	YFD	EBWR
202668	8.8	11.4	0.2	0.3	19.9	-0.3	-0.8
TWIN	BUYER				\$		

LOT	SIRE	DROP	MIC	SD	CV	CF%	BW
286	190125	SEPT	17.1	2.7	15.6	99.5	86
TAG	PWT	YWT	YFAT	YEMD	YGFW	YFD	EBWR
202914	9	10.6	-0.5	1	27.2	-0.7	-0.8
SINGLE	BUYER				\$		

LOT	SIRE	DROP	MIC	SD	CV	CF%	BW
287	151911	SEPT	17.1	3.5	20	99.2	84
TAG	PWT	YWT	YFAT	YEMD	YGFW	YFD	EBWR
202020	8.2	9.4	-1	-0.4	31.2	-1.6	-0.5
TWIN	BUYER				\$		

LOT	SIRE	DROP	MIC	SD	CV	CF%	BW
288	190135	SEPT	18.1	2.4	13.3	100	83
TAG	PWT	YWT	YFAT	YEMD	YGFW	YFD	EBWR
202944	5.9	7.5	0.1	1.2	23.2	-0.3	0.1
SINGLE	BUYER				\$		

LOT	SIRE	DROP	MIC	SD	CV	CF%	BW
289	190121	SEPT	19.3	3.2	16.5	99.5	80
TAG	PWT	YWT	YFAT	YEMD	YGFW	YFD	EBWR
202845	9.7	12	0.3	0.2	35.1	0.3	-0.3
SINGLE	BUYER				\$		

LOT	SIRE	DROP	MIC	SD	CV	CF%	BW
290	192161	SEPT	19.4	2.6	13.5	100	77
TAG	PWT	YWT	YFAT	YEMD	YGFW	YFD	EBWR
203365	8.1	9.8	0.8	1.8	25	0.6	-0.7
TWIN	BUYER				\$		

LOT	SIRE	DROP	MIC	SD	CV	CF%	BW
291	190251	SEPT	18.3	2.9	15.6	99.8	76
TAG	PWT	YWT	YFAT	YEMD	YGFW	YFD	EBWR
203063	6.6	7.6	0	1.1	25.2	0.1	-0.1
TWIN	BUYER				\$		

LOT	SIRE	DROP	MIC	SD	CV	CF%	BW
292	190022	SEPT	18	2.5	13.7	100	71
TAG	PWT	YWT	YFAT	YEMD	YGFW	YFD	EBWR
202670	7.4	8.9	-0.3	-0.4	30.5	0	-0.4
TWIN	BUYER				\$		

LOT	SIRE	DROP	MIC	SD	CV	CF%	BW
293	190002	SEPT	19	3.3	17.3	99	74
TAG	PWT	YWT	YFAT	YEMD	YGFW	YFD	EBWR
202549	7.5	9.7	0.9	1.2	26.7	0.4	-0.2
TWIN	BUYER				\$		

LOT	SIRE	DROP	MIC	SD	CV	CF%	BW
294	190242	SEPT	18.9	2.4	12.8	100	77
TAG	PWT	YWT	YFAT	YEMD	YGFW	YFD	EBWR
203050	6.4	9.1	0.2	0.5	25.8	-0.1	-0.7
SINGLE	BUYER				\$		

LOT	SIRE	DROP	MIC	SD	CV	CF%	BW
295	190902	SEPT	19.4	3.2	16.3	99.2	83
TAG	PWT	YWT	YFAT	YEMD	YGFW	YFD	EBWR
203161	10.6	12.1	0.5	1.9	39.4	0.6	-0.2
TWIN	BUYER				\$		

LOT	SIRE	DROP	MIC	SD	CV	CF%	BW
296	190022	SEPT	20.6	3.5	20	99	84
TAG	PWT	YWT	YFAT	YEMD	YGFW	YFD	EBWR
202683	9.7	12.2	0.3	0.3	35.4	0.3	-0.6
TWIN	BUYER				\$		

LOT	SIRE	DROP	MIC	SD	CV	CF%	BW
297	170660	SEPT	17	2.5	14.9	99.5	79
TAG	PWT	YWT	YFAT	YEMD	YGFW	YFD	EBWR
203506	7.9	9.1	0.1	-0.1	28.4	-0.8	0
TWIN	BUYER				\$		

LOT	SIRE	DROP	MIC	SD	CV	CF%	BW
298	190084	SEPT	17.9	3.2	18	99	79
TAG	PWT	YWT	YFAT	YEMD	YGFW	YFD	EBWR
202786	10	12.4	0.1	0.4	25.2	-0.7	-0.5
TWIN	BUYER				\$		

LOT	SIRE	DROP	MIC	SD	CV	CF%	BW
299	170660	SEPT	18.2	3.2	17.7	99	76
TAG	PWT	YWT	YFAT	YEMD	YGFW	YFD	EBWR
203458	5.5	6.7	0.5	0.6	37.1	-0.3	-0.1
TWIN	BUYER				\$		

LOT	SIRE	DROP	MIC	SD	CV	CF%	BW
300	190135	SEPT	17.1	2	11.4	100	79
TAG	PWT	YWT	YFAT	YEMD	YGFW	YFD	EBWR
202966	8.3	11	0	0.4	18.6	-1	-0.4
SINGLE	BUYER				\$		

LOT	SIRE	DROP	MIC	SD	CV	CF%	BW
301	190002	SEPT	17.9	2.5	13.8	100	92
TAG	PWT	YWT	YFAT	YEMD	YGFW	YFD	EBWR
202566	8.5	11.1	0.1	0	31	-0.2	-0.4
TWIN	BUYER				\$		

LOT	SIRE	DROP	MIC	SD	CV	CF%	BW
302	180227	SEPT	18.2	3.3	18.4	99.8	83
TAG	PWT	YWT	YFAT	YEMD	YGFW	YFD	EBWR
203562	8.9	10.3	0.7	1.5	27.9	-0.3	-0.7
TWIN	BUYER				\$		

LOT	SIRE	DROP	MIC	SD	CV	CF%	BW
303	170660	SEPT	20.9	3.2	15.4	99	84
TAG	PWT	YWT	YFAT	YEMD	YGFW	YFD	EBWR
203513	10.1	11.8	0.3	-0.3	31.2	1.2	-0.4
TRIPLET	BUYER				\$		

LOT	SIRE	DROP	MIC	SD	CV	CF%	BW
304	180027	SEPT	16.6	2.8	16.7	99.5	76
TAG	PWT	YWT	YFAT	YEMD	YGFW	YFD	EBWR
202269	8	10	-0.5	-0.2	20.5	-1.1	-0.6
TRIPLET	BUYER				\$		

LOT	SIRE	DROP	MIC	SD	CV	CF%	BW
305	190017	SEPT	17.9	2.3	13.1	99.8	79
TAG	PWT	YWT	YFAT	YEMD	YGFW	YFD	EBWR
202596	6.6	9	-0.2	-0.2	30.5	-0.3	-0.5
SINGLE	BUYER				\$		

LOT	SIRE	DROP	MIC	SD	CV	CF%	BW
306	191459	SEPT	17.7	2.7	15.2	99.5	78
TAG	PWT	YWT	YFAT	YEMD	YGFW	YFD	EBWR
203246	5.6	7.8	0.2	1.8	17.7	-0.3	-0.5
TWIN	BUYER				\$		

LOT	SIRE	DROP	MIC	SD	CV	CF%	BW
307	190125	SEPT	18.9	2.6	13.9	99.5	74
TAG	PWT	YWT	YFAT	YEMD	YGFW	YFD	EBWR
202900	5.9	8.4	-0.2	-0.6	28.1	0.1	-0.3
SINGLE	BUYER				\$		

LOT	SIRE	DROP	MIC	SD	CV	CF%	BW
308	190002	SEPT	19	2.5	13.3	99.8	76
TAG	PWT	YWT	YFAT	YEMD	YGFW	YFD	EBWR
202515	8.7	11.5	-0.2	-0.3	32.4	0	0
TWIN	BUYER				\$		

LOT	SIRE	DROP	MIC	SD	CV	CF%	BW
309	190125	SEPT	18.2	3.3	17.9	99	79
TAG	PWT	YWT	YFAT	YEMD	YGFW	YFD	EBWR
202896	6.9	10	-0.5	0	34.4	-0.7	-0.1
SINGLE	BUYER				\$		

LOT	SIRE	DROP	MIC	SD	CV	CF%	BW
310	182579	SEPT	17.1	2.7	15.8	99.8	84
TAG	PWT	YWT	YFAT	YEMD	YGFW	YFD	EBWR
202439	10.5	12.6	-0.1	0.3	26.8	-0.8	-0.6
SINGLE	BUYER				\$		

LOT	SIRE	DROP	MIC	SD	CV	CF%	BW
311	170822	SEPT	16	2.4	15	100	87
TAG	PWT	YWT	YFAT	YEMD	YGFW	YFD	EBWR
202242	8.1	10.3	-0.3	1.3	21	-2	-0.5
SINGLE	BUYER				\$		

LOT	SIRE	DROP	MIC	SD	CV	CF%	BW
312	180938	MAY	17.2	2.2	12.5	99.8	84
TAG	PWT	YWT	YFAT	YEMD	YGFW	YFD	EBWR
200489	6.9	8.2	-0.5	0.8	25.9	-2.2	-0.2
TWIN	BUYER				\$		

LOT	SIRE	DROP	MIC	SD	CV	CF%	BW
313	180227	MAY	20.1	3.1	15.3	99.8	92
TAG	PWT	YWT	YFAT	YEMD	YGFW	YFD	EBWR
200854	5.8	7.5	1.8	2.7	23.7	0.2	-0.9
SINGLE	BUYER				\$		

LOT	SIRE	DROP	MIC	SD	CV	CF%	BW
314	180227	MAY	20.5	3.1	14.9	99.2	95
TAG	PWT	YWT	YFAT	YEMD	YGFW	YFD	EBWR
200804	8	10.2	0.4	1.4	25.2	0.2	-0.8
SINGLE	BUYER				\$		

LOT	SIRE	DROP	MIC	SD	CV	CF%	BW
315	170822	MAY	19	2.3	11.9	100	89
TAG	PWT	YWT	YFAT	YEMD	YGFW	YFD	EBWR
201176	5.5	7.1	-0.2	1.3	18.8	-0.7	0.1
TWIN	BUYER				\$		

LOT	SIRE	DROP	MIC	SD	CV	CF%	BW
316	151911	MAY	17.7	2.6	14.4	99.8	91
TAG	PWT	YWT	YFAT	YEMD	YGFW	YFD	EBWR
200273	5.5	7.9	-0.4	-0.6	21.9	-1.5	-0.9
SINGLE	BUYER				\$		

LOT	SIRE	DROP	MIC	SD	CV	CF%	BW
317	151911	MAY	16.5	3.3	20	99.2	99
TAG	PWT	YWT	YFAT	YEMD	YGFW	YFD	EBWR
200227	8.2	9.7	-0.5	-0.2	21.2	-2	-0.4
SINGLE	BUYER				\$		

LOT	SIRE	DROP	MIC	SD	CV	CF%	BW
318	130306	MAY	19.8	2.8	14	99.5	94
TAG	PWT	YWT	YFAT	YEMD	YGFW	YFD	EBWR
200906	7.9	9.4	-0.6	0.4	23.2	-0.7	-0.7
TWIN	BUYER				\$		

LOT	SIRE	DROP	MIC	SD	CV	CF%	BW
319	170660	MAY	20.1	2.6	13	99.8	94
TAG	PWT	YWT	YFAT	YEMD	YGFW	YFD	EBWR
201008	8.9	10.3	0.1	0.5	28.7	0.1	0
TWIN	BUYER				\$		

LOT	SIRE	DROP	MIC	SD	CV	CF%	BW
320	183464	MAY	19.9	2.5	12.5	99.8	98
TAG	PWT	YWT	YFAT	YEMD	YGFW	YFD	EBWR
200047	7.6	9.8	0.2	1.2	27.1	-0.4	-0.5
TWIN	BUYER				\$		

LOT	SIRE	DROP	MIC	SD	CV	CF%	BW
321	170402	MAY	18.4	2.6	13.9	99.5	93
TAG	PWT	YWT	YFAT	YEMD	YGFW	YFD	EBWR
201371	5.6	8.3	-0.3	-0.7	28.5	-1.3	0
SINGLE	BUYER				\$		

LOT	SIRE	DROP	MIC	SD	CV	CF%	BW
322	170660	MAY	19.4	2.9	14.9	99.5	84
TAG	PWT	YWT	YFAT	YEMD	YGFW	YFD	EBWR
202020	5.6	7.3	0.3	0.4	27.2	-0.6	-0.7
TWIN	BUYER				\$		

LOT	SIRE	DROP	MIC	SD	CV	CF%	BW
323	180227	MAY	17.3	2.6	14.9	100	94
TAG	PWT	YWT	YFAT	YEMD	YGFW	YFD	EBWR
200842	6.5	9	0.8	1.7	19.1	-1.1	-1.2
SINGLE	BUYER				\$		

LOT	SIRE	DROP	MIC	SD	CV	CF%	BW
324	170660	MAY	20.2	3.1	15.5	99	84
TAG	PWT	YWT	YFAT	YEMD	YGFW	YFD	EBWR
201002	6.3	7.3	0.2	-0.2	30.2	0.2	-0.3
TWIN	BUYER				\$		

LOT	SIRE	DROP	MIC	SD	CV	CF%	BW
325	170660	MAY	18.4	2.9	15.8	99.2	85
TAG	PWT	YWT	YFAT	YEMD	YGFW	YFD	EBWR
200971	4.9	6.1	0	0.7	36.1	-0.6	0.6
TWIN	BUYER				\$		

LOT	SIRE	DROP	MIC	SD	CV	CF%	BW
326	170660	MAY	20.4	2.8	13.8	99.5	87
TAG	PWT	YWT	YFAT	YEMD	YGFW	YFD	EBWR
201014	5.7	7	0.4	-0.1	25.4	0	-0.7
TWIN	BUYER				\$		

LOT	SIRE	DROP	MIC	SD	CV	CF%	BW
327	182506	MAY	18.9	2.4	12.9	99.8	88
TAG	PWT	YWT	YFAT	YEMD	YGFW	YFD	EBWR
200616	7.4	10.3	-0.5	-2	27.1	-1.2	0
TWIN	BUYER				\$		

LOT	SIRE	DROP	MIC	SD	CV	CF%	BW
328	182563	MAY	18	2.4	13.1	100	92
TAG	PWT	YWT	YFAT	YEMD	YGFW	YFD	EBWR
201659	8.1	10.3	0.2	0.4	20.9	-1.1	0.1
SINGLE	BUYER				\$		

LOT	SIRE	DROP	MIC	SD	CV	CF%	BW
329	183464	MAY	18.7	2.6	13.8	100	91
TAG	PWT	YWT	YFAT	YEMD	YGFW	YFD	EBWR
200012	6.5	8.7	0.4	0.8	24	-0.8	-0.8
SINGLE	BUYER				\$		

LOT	SIRE	DROP	MIC	SD	CV	CF%	BW
330	182563	MAY	17.6	2.4	13.5	100	101
TAG	PWT	YWT	YFAT	YEMD	YGFW	YFD	EBWR
201664	9.5	11.3	-0.4	-0.1	27	-1.4	0.1
SINGLE	BUYER				\$		

LOT	SIRE	DROP	MIC	SD	CV	CF%	BW
331	180227	SEPT	16.8	2.8	16.7	99.8	95
TAG	PWT	YWT	YFAT	YEMD	YGFW	YFD	EBWR
203604	8.4	10.7	0.2	0.9	28	-0.7	-0.6
SINGLE	BUYER				\$		

LOT	SIRE	DROP	MIC	SD	CV	CF%	BW
332	190274	SEPT	19.2	2.7	14.1	99.8	86
TAG	PWT	YWT	YFAT	YEMD	YGFW	YFD	EBWR
203102	9	10.4	-0.1	-0.5	20.2	0.2	-0.1
SINGLE	BUYER				\$		

LOT	SIRE	DROP	MIC	SD	CV	CF%	BW
333	170660	SEPT	19.3	2.5	13.1	99.8	87
TAG	PWT	YWT	YFAT	YEMD	YGFW	YFD	EBWR
203450	11	12.3	0.4	0.4	36.5	0.7	-0.6
SINGLE	BUYER				\$		

LOT	SIRE	DROP	MIC	SD	CV	CF%	BW
334	162610	SEPT	18.3	3	16.5	99.8	80
TAG	PWT	YWT	YFAT	YEMD	YGFW	YFD	EBWR
202127	7.8	9.7	-0.5	0.7	19.4	-0.2	-0.4
TWIN	BUYER				\$		

LOT	SIRE	DROP	MIC	SD	CV	CF%	BW
335	170325	SEPT	19.5	3.1	15.9	99.5	79
TAG	PWT	YWT	YFAT	YEMD	YGFW	YFD	EBWR
202205	6.8	8.7	0.2	1.1	37	-0.3	0.1
TWIN	BUYER				\$		

LOT	SIRE	DROP	MIC	SD	CV	CF%	BW
336	190002	SEPT	17.9	3.3	18.3	99.5	80
TAG	PWT	YWT	YFAT	YEMD	YGFW	YFD	EBWR
202538	8.1	10.1	0.4	0.4	15.5	-0.5	-0.5
SINGLE	BUYER				\$		

LOT	SIRE	DROP	MIC	SD	CV	CF%	BW
337	162610	SEPT	17.5	3	16.9	99.8	79
TAG	PWT	YWT	YFAT	YEMD	YGFW	YFD	EBWR
202093	6.6	8.7	-0.1	0.9	24.1	-0.8	-0.4
TWIN	BUYER				\$		

LOT	SIRE	DROP	MIC	SD	CV	CF%	BW
338	190079	SEPT	18.2	2.7	14.9	99.8	79
TAG	PWT	YWT	YFAT	YEMD	YGFW	YFD	EBWR
202754	7.6	9.4	-0.7	0.4	24.8	-0.9	-0.6
TWIN	BUYER				\$		

LOT	SIRE	DROP	MIC	SD	CV	CF%	BW
339	190048	SEPT	16.4	2.5	15	99.8	80
TAG	PWT	YWT	YFAT	YEMD	YGFW	YFD	EBWR
202711	6.6	8.9	-0.4	0.6	21.3	-1.2	-0.6
SINGLE	BUYER				\$		

LOT	SIRE	DROP	MIC	SD	CV	CF%	BW
340	190119	SEPT	18.6	2.9	15.4	100	77
TAG	PWT	YWT	YFAT	YEMD	YGFW	YFD	EBWR
202818	6.8	8.5	-0.5	-0.3	27.6	-0.3	0
SINGLE	BUYER				\$		

LOT	SIRE	DROP	MIC	SD	CV	CF%	BW
341	190002	SEPT	20.5	3.1	15.3	99.5	77
TAG	PWT	YWT	YFAT	YEMD	YGFW	YFD	EBWR
202519	7.8	10.1	0.5	0.9	20.9	0.5	-0.2
SINGLE	BUYER				\$		

LOT	SIRE	DROP	MIC	SD	CV	CF%	BW
342	190015	SEPT	17.8	3.3	18.7	99.2	77
TAG	PWT	YWT	YFAT	YEMD	YGFW	YFD	EBWR
202582	6.2	9.7	0.1	-0.2	33.4	0	-0.7
SINGLE	BUYER				\$		

LOT	SIRE	DROP	MIC	SD	CV	CF%	BW
343	190125	SEPT	17.9	2.4	13.6	99.8	74
TAG	PWT	YWT	YFAT	YEMD	YGFW	YFD	EBWR
202885	7.8	10.4	0	1.4	21.5	-0.1	-0.3
SINGLE	BUYER				\$		

LOT	SIRE	DROP	MIC	SD	CV	CF%	BW
344	191525	SEPT	17.2	2.8	16.4	99.5	75
TAG	PWT	YWT	YFAT	YEMD	YGFW	YFD	EBWR
203310	8.2	11.4	-0.6	-0.2	22.1	-1.3	-0.2
SINGLE	BUYER				\$		

LOT	SIRE	DROP	MIC	SD	CV	CF%	BW
345	190902	SEPT	18.6	3.1	16.9	99.5	77
TAG	PWT	YWT	YFAT	YEMD	YGFW	YFD	EBWR
203158	6.6	8.5	0	0.1	35.6	-0.3	-0.3
TWIN	BUYER				\$		

LOT	SIRE	DROP	MIC	SD	CV	CF%	BW
346	180227	SEPT	18.3	2.8	15.3	99.8	77
TAG	PWT	YWT	YFAT	YEMD	YGFW	YFD	EBWR
203559	7.4	8.4	0.8	1.3	23.5	0.2	-0.7
TWIN	BUYER				\$		

LOT	SIRE	DROP	MIC	SD	CV	CF%	BW
347	180027	SEPT	18.3	2.6	14.3	100	79
TAG	PWT	YWT	YFAT	YEMD	YGFW	YFD	EBWR
202272	7.5	9.9	0.1	-0.1	24.1	-0.7	-0.4
TWIN	BUYER				\$		

LOT	SIRE	DROP	MIC	SD	CV	CF%	BW
348	190017	SEPT	18.7	2.6	13.7	99.8	77
TAG	PWT	YWT	YFAT	YEMD	YGFW	YFD	EBWR
202613	5.3	6.9	-0.5	-0.5	26.7	0.1	-0.3
SINGLE	BUYER				\$		

LOT	SIRE	DROP	MIC	SD	CV	CF%	BW
349	190274	SEPT	21.1	3.5	17.1	99.8	76
TAG	PWT	YWT	YFAT	YEMD	YGFW	YFD	EBWR
203092	5.8	7.3	0.1	1.2	20.2	0.9	-0.3
TWIN	BUYER				\$		

LOT	SIRE	DROP	MIC	SD	CV	CF%	BW
350	190084	SEPT	18	2.6	14.4	100	76
TAG	PWT	YWT	YFAT	YEMD	YGFW	YFD	EBWR
202772	9.6	12.2	0.9	1.6	27.6	0.1	-0.4
TWIN	BUYER				\$		

LOT	SIRE	DROP	MIC	SD	CV	CF%	BW
351	191309	SEPT	18.7	3.5	19.6	99.5	80
TAG	PWT	YWT	YFAT	YEMD	YGFW	YFD	EBWR
203188	7	8.9	0.3	1.8	29.6	0.5	-0.2
SINGLE	BUYER				\$		

LOT	SIRE	DROP	MIC	SD	CV	CF%	BW
352	162610	SEPT	16	3.4	20	99.5	81
TAG	PWT	YWT	YFAT	YEMD	YGFW	YFD	EBWR
202111	6.2	7.1	-0.2	1.5	27.7	-2	-0.4
TWIN	BUYER				\$		

LOT	SIRE	DROP	MIC	SD	CV	CF%	BW
353	170325	SEPT	19.4	3.3	17.2	99	84
TAG	PWT	YWT	YFAT	YEMD	YGFW	YFD	EBWR
202209	6	8.4	-0.9	0.4	31.7	-0.3	0.2
TWIN	BUYER				\$		

LOT	SIRE	DROP	MIC	SD	CV	CF%	BW
354	190002	SEPT	20.2	3	4.6	100	83
TAG	PWT	YWT	YFAT	YEMD	YGFW	YFD	EBWR
202536	9.1	11.9	0.4	0.5	39.1	0.5	0.2
TWIN	BUYER				\$		

LOT	SIRE	DROP	MIC	SD	CV	CF%	BW
355	190121	SEPT	17.9	2.8	15.6	99.8	85
TAG	PWT	YWT	YFAT	YEMD	YGFW	YFD	EBWR
202842	8	10.2	-0.5	-0.5	32.8	-0.1	-0.4
TWIN	BUYER				\$		

LOT	SIRE	DROP	MIC	SD	CV	CF%	BW
356	180027	SEPT	18.4	2.2	12	100	83
TAG	PWT	YWT	YFAT	YEMD	YGFW	YFD	EBWR
202265	7.1	9.1	-0.1	-0.1	31.6	-0.2	-0.4
TWIN	BUYER				\$		

LOT	SIRE	DROP	MIC	SD	CV	CF%	BW
357	190251	SEPT	17.8	2.7	15.5	99.8	88
TAG	PWT	YWT	YFAT	YEMD	YGFW	YFD	EBWR
203058	7.9	8.3	0	-0.3	23.8	-0.3	0
TWIN	BUYER				\$		

LOT	SIRE	DROP	MIC	SD	CV	CF%	BW
358	170660	SEPT	17.7	3	16.8	99.5	87
TAG	PWT	YWT	YFAT	YEMD	YGFW	YFD	EBWR
203504	7.4	10	0.1	0.1	30.6	-0.8	-0.3
SINGLE	BUYER				\$		

LOT	SIRE	DROP	MIC	SD	CV	CF%	BW
359	191512	SEPT	17.9	2.9	16.1	99.8	86
TAG	PWT	YWT	YFAT	YEMD	YGFW	YFD	EBWR
203271	6.4	7.3	-0.5	-0.2	31.7	-0.5	-0.22
SINGLE	BUYER				\$		

LOT	SIRE	DROP	MIC	SD	CV	CF%	BW
360	190274	SEPT	19.7	3.5	20.8	99.5	85
TAG	PWT	YWT	YFAT	YEMD	YGFW	YFD	EBWR
203094	9.1	10.4	0.1	1.4	31	0	-0.5
SINGLE	BUYER				\$		

LOT	SIRE	DROP	MIC	SD	CV	CF%	BW
361	162610	SEPT	17.6	3.5	20	99.8	86
TAG	PWT	YWT	YFAT	YEMD	YGFW	YFD	EBWR
202104	9.1	11.4	-0.4	0.4	24.3	-0.4	-0.8
TWIN	BUYER				\$		

LOT	SIRE	DROP	MIC	SD	CV	CF%	BW
362	151911	SEPT	18.4	3	16.5	99.5	89
TAG	PWT	YWT	YFAT	YEMD	YGFW	YFD	EBWR
202006	6.6	9	-0.4	0.8	18	-0.5	-0.7
TWIN	BUYER				\$		

LOT	SIRE	DROP	MIC	SD	CV	CF%	BW
363	182504	SEPT	17	3	17.8	99.8	91
TAG	PWT	YWT	YFAT	YEMD	YGFW	YFD	EBWR
202383	10.8	13.2	-0.2	0.4	26.9	-0.7	-0.4
SINGLE	BUYER				\$		

LOT	SIRE	DROP	MIC	SD	CV	CF%	BW
364	190048	SEPT	17.7	3.2	18.3	99.2	86
TAG	PWT	YWT	YFAT	YEMD	YGFW	YFD	EBWR
202727	9.5	10.7	-0.7	0.4	35.1	-0.4	-0.5
TWIN	BUYER				\$		

LOT	SIRE	DROP	MIC	SD	CV	CF%	BW
365	183464	SEPT	19.6	3.5	18	99.8	83
TAG	PWT	YWT	YFAT	YEMD	YGFW	YFD	EBWR
202477	8.2	9.6	0.8	2	27.2	0.9	-0.7
TWIN	BUYER				\$		

LOT	SIRE	DROP	MIC	SD	CV	CF%	BW
366	190022	SEPT	19.7	2.6	13.3	100	82
TAG	PWT	YWT	YFAT	YEMD	YGFW	YFD	EBWR
202658	7.8	9.8	0.6	0.3	35	0.8	-0.4
TRIPLET	BUYER				\$		

LOT	SIRE	DROP	MIC	SD	CV	CF%	BW
367	190022	SEPT	17.7	3.1	17.4	99.2	80
TAG	PWT	YWT	YFAT	YEMD	YGFW	YFD	EBWR
202679	8.8	10.8	-0.5	-0.7	36.4	-0.7	-0.6
TWIN	BUYER				\$		

LOT	SIRE	DROP	MIC	SD	CV	CF%	BW
368	162610	SEPT	18.6	2.8	15.2	99.8	83
TAG	PWT	YWT	YFAT	YEMD	YGFW	YFD	EBWR
202112	7.4	9.7	0.1	0.9	19.5	-0.4	-0.5
TWIN	BUYER				\$		

LOT	SIRE	DROP	MIC	SD	CV	CF%	BW
369	170660	SEPT	21.4	3.2	14.8	99.2	81
TAG	PWT	YWT	YFAT	YEMD	YGFW	YFD	EBWR
203446	10.5	11.9	0.3	0.3	35.3	1.9	-0.3
TRIPLET	BUYER				\$		

LOT	SIRE	DROP	MIC	SD	CV	CF%	BW
370	190002	SEPT	18.5	2.3	12.2	100	80
TAG	PWT	YWT	YFAT	YEMD	YGFW	YFD	EBWR
202531	9	11.1	0.3	1	35.4	0.5	0
TWIN	BUYER				\$		

LOT	SIRE	DROP	MIC	SD	CV	CF%	BW
371	182579	SEPT	18.5	2.5	13.4	99.8	81
TAG	PWT	YWT	YFAT	YEMD	YGFW	YFD	EBWR
202414	8.9	11.5	0.3	0.5	33.3	0.2	-0.6
TWIN	BUYER				\$		

LOT	SIRE	DROP	MIC	SD	CV	CF%	BW
372	190084	SEPT	17	3.5	20	99.8	82
TAG	PWT	YWT	YFAT	YEMD	YGFW	YFD	EBWR
202794	8.5	10.2	0.2	0.7	27	-0.4	-0.4
SINGLE	BUYER				\$		

LOT	SIRE	DROP	MIC	SD	CV	CF%	BW
373	180027	SEPT	16.1	2.6	16.2	100	79
TAG	PWT	YWT	YFAT	YEMD	YGFW	YFD	EBWR
202276	7.3	8.4	-0.5	-0.2	24.5	-1.2	-0.5
SINGLE	BUYER				\$		

LOT	SIRE	DROP	MIC	SD	CV	CF%	BW
374	190125	SEPT	17.7	3.5	20	99	79
TAG	PWT	YWT	YFAT	YEMD	YGFW	YFD	EBWR
202922	6	8.1	0	0.9	24	-0.2	-0.7
SINGLE	BUYER				\$		

LOT	SIRE	DROP	MIC	SD	CV	CF%	BW
375	170660	SEPT	18.3	2.6	14.3	99.5	77
TAG	PWT	YWT	YFAT	YEMD	YGFW	YFD	EBWR
203494	7.3	8.8	-0.4	0	36.7	0	-0.3
TWIN	BUYER				\$		

LOT	SIRE	DROP	MIC	SD	CV	CF%	BW
376	192203	SEPT	17.4	2.9	16.4	100	79
TAG	PWT	YWT	YFAT	YEMD	YGFW	YFD	EBWR
203420	8.3	10.3	-0.2	0.6	18.6	-0.8	-0.3
TWIN	BUYER				\$		

LOT	SIRE	DROP	MIC	SD	CV	CF%	BW
377	190119	SEPT	16	2.8	17.4	99.5	76
TAG	PWT	YWT	YFAT	YEMD	YGFW	YFD	EBWR
202816	6.4	7.2	-0.4	0.1	17.9	-1.5	-0.2
TWIN	BUYER				\$		

LOT	SIRE	DROP	MIC	SD	CV	CF%	BW
378	190048	SEPT	19	3.3	17.6	99	76
TAG	PWT	YWT	YFAT	YEMD	YGFW	YFD	EBWR
202697	6.3	8.1	-0.6	0.2	20.4	-0.1	-0.6
TWIN	BUYER				\$		

LOT	SIRE	DROP	MIC	SD	CV	CF%	BW
379	170325	SEPT	16	2.3	14.4	99.8	72
TAG	PWT	YWT	YFAT	YEMD	YGFW	YFD	EBWR
202206	5.9	8	-0.8	-0.2	30	-1.6	-0.4
TWIN	BUYER				\$		

LOT	SIRE	DROP	MIC	SD	CV	CF%	BW
380	192161	SEPT	17.6	2.2	12.4	100	74
TAG	PWT	YWT	YFAT	YEMD	YGFW	YFD	EBWR
203350	6.9	8.2	0.7	2	20.2	-0.4	-0.3
TWIN	BUYER				\$		

LOT	SIRE	DROP	MIC	SD	CV	CF%	BW
381	190119	SEPT	17.1	2.7	15.9	99.8	70
TAG	PWT	YWT	YFAT	YEMD	YGFW	YFD	EBWR
202811	6.5	8.3	-0.3	0.9	30.4	-0.6	-0.2
TWIN	BUYER				\$		

LOT	SIRE	DROP	MIC	SD	CV	CF%	BW
382	190048	SEPT	18.1	3.3	18.2	99.5	77
TAG	PWT	YWT	YFAT	YEMD	YGFW	YFD	EBWR
202702	10.6	12.3	-0.5	-0.4	30.5	-0.3	-0.5
TWIN	BUYER				\$		

LOT	SIRE	DROP	MIC	SD	CV	CF%	BW
383	190048	SEPT	16.9	2.9	17	99.5	75
TAG	PWT	YWT	YFAT	YEMD	YGFW	YFD	EBWR
202720	6.3	8.3	-0.3	1.5	30.4	-1.1	-0.5
SINGLE	BUYER				\$		

LOT	SIRE	DROP	MIC	SD	CV	CF%	BW
384	180027	SEPT	16.4	2.6	15.6	100	77
TAG	PWT	YWT	YFAT	YEMD	YGFW	YFD	EBWR
202273	7.5	9.3	-0.7	-1.3	29.2	-1.1	-0.1
TWIN	BUYER				\$		

LOT	SIRE	DROP	MIC	SD	CV	CF%	BW
385	180938	SEPT	17.5	2.6	14.9	99.2	78
TAG	PWT	YWT	YFAT	YEMD	YGFW	YFD	EBWR
202339	9.2	10.8	0	0.6	30.4	-1.3	-0.1
TWIN	BUYER				\$		

LOT	SIRE	DROP	MIC	SD	CV	CF%	BW
386	190017	SEPT	19.3	3.3	17.3	99.8	76
TAG	PWT	YWT	YFAT	YEMD	YGFW	YFD	EBWR
202619	9	11.5	-0.8	0.1	36.7	0	-0.3
SINGLE	BUYER				\$		

LOT	SIRE	DROP	MIC	SD	CV	CF%	BW
387	182563	SEPT	17.6	3	16.9	99	80
TAG	PWT	YWT	YFAT	YEMD	YGFW	YFD	EBWR
202395	8.6	11.5	-0.4	-0.9	26.4	-1.5	0.1
TWIN	BUYER				\$		

LOT	SIRE	DROP	MIC	SD	CV	CF%	BW
388	180227	SEPT	17.9	2.8	15.7	99.8	79
TAG	PWT	YWT	YFAT	YEMD	YGFW	YFD	EBWR
203606	9.8	11.6	0.8	1.2	31.3	-0.3	-0.6
TWIN	BUYER				\$		

LOT	SIRE	DROP	MIC	SD	CV	CF%	BW
389	190079	SEPT	16.7	2.4	14.2	100	77
TAG	PWT	YWT	YFAT	YEMD	YGFW	YFD	EBWR
202753	6	8.2	-1	0.1	31.4	-0.9	-0.2
SINGLE	BUYER				\$		

LOT	SIRE	DROP	MIC	SD	CV	CF%	BW
390	190015	SEPT	16.1	2.5	15.7	100	76
TAG	PWT	YWT	YFAT	YEMD	YGFW	YFD	EBWR
202576	6.6	9.6	0.1	-0.2	23.1	-1.4	-0.2
TWIN	BUYER				\$		

LOT	SIRE	DROP	MIC	SD	CV	CF%	BW
391	190022	SEPT	18.6	2.8	14.8	99.5	81
TAG	PWT	YWT	YFAT	YEMD	YGFW	YFD	EBWR
202674	8.1	9.5	0	0	29.4	0.4	-0.5
TWIN	BUYER				\$		

LOT	SIRE	DROP	MIC	SD	CV	CF%	BW
392	190125	SEPT	18.9	2.7	14.4	99.8	81
TAG	PWT	YWT	YFAT	YEMD	YGFW	YFD	EBWR
202925	7.8	9.3	0.2	0.6	28	0.1	-0.4
SINGLE	BUYER				\$		

LOT	SIRE	DROP	MIC	SD	CV	CF%	BW
393	170660	SEPT	17.4	2.2	12.9	100	83
TAG	PWT	YWT	YFAT	YEMD	YGFW	YFD	EBWR
203466	9.4	12.2	0.7	0.7	27.7	-0.2	-0.2
TWIN	BUYER				\$		

LOT	SIRE	DROP	MIC	SD	CV	CF%	BW
394	190048	SEPT	18.2	3.5	19.4	99.5	83
TAG	PWT	YWT	YFAT	YEMD	YGFW	YFD	EBWR
202703	7.2	8.4	-0.2	1.1	27.9	-0.1	-0.5
SINGLE	BUYER				\$		

LOT	SIRE	DROP	MIC	SD	CV	CF%	BW
395	170660	SEPT	20.3	3.1	15.5	99.5	86
TAG	PWT	YWT	YFAT	YEMD	YGFW	YFD	EBWR
203517	8.1	9.4	0.2	0.1	29.3	0.8	-0.3
TWIN	BUYER				\$		

LOT	SIRE	DROP	MIC	SD	CV	CF%	BW
396	190079	SEPT	18	3	16.6	100	85
TAG	PWT	YWT	YFAT	YEMD	YGFW	YFD	EBWR
202740	9.1	10.7	-0.9	-0.2	32.5	-0.4	-0.5
SINGLE	BUYER				\$		

LOT	SIRE	DROP	MIC	SD	CV	CF%	BW
397	190079	SEPT	20.3	2.8	13.9	100	86
TAG	PWT	YWT	YFAT	YEMD	YGFW	YFD	EBWR
202739	7.3	9.1	-0.1	1.4	27.4	0.4	-0.5
TWIN	BUYER				\$		

LOT	SIRE	DROP	MIC	SD	CV	CF%	BW
398	170660	SEPT	18.5	2.7	14.8	99.8	87
TAG	PWT	YWT	YFAT	YEMD	YGFW	YFD	EBWR
203495	11.4	13.7	0.4	0.2	35.6	0.2	-0.5
TWIN	BUYER				\$		

LOT	SIRE	DROP	MIC	SD	CV	CF%	BW
399	162610	SEPT	17.1	2.3	13.2	100	88
TAG	PWT	YWT	YFAT	YEMD	YGFW	YFD	EBWR
202086	8.7	10.9	-0.4	0.8	18.7	-0.5	-0.6
TWIN	BUYER				\$		

LOT	SIRE	DROP	MIC	SD	CV	CF%	BW
400	180938	SEPT	16.1	2.6	16.4	100	88
TAG	PWT	YWT	YFAT	YEMD	YGFW	YFD	EBWR
202343	8.2	10.5	-0.5	-0.4	27.4	-1.9	-0.1
TWIN	BUYER				\$		

LOT	SIRE	DROP	MIC	SD	CV	CF%	BW
401	191459	SEPT	19.9	3.5	17.7	99.5	95
TAG	PWT	YWT	YFAT	YEMD	YGFW	YFD	EBWR
203257	8.8	12.3	0.3	1.2	29.6	0.2	-0.2
SINGLE	BUYER				\$		

LOT	SIRE	DROP	MIC	SD	CV	CF%	BW
402	160502	SEPT	16.7	2.1	12.5	100	92
TAG	PWT	YWT	YFAT	YEMD	YGFW	YFD	EBWR
202050	8.1	9.7	-0.5	-0.4	23.9	-1.2	0.2
TWIN	BUYER				\$		

LOT	SIRE	DROP	MIC	SD	CV	CF%	BW
403	190119	SEPT	19.8	3.1	15.9	99.5	95
TAG	PWT	YWT	YFAT	YEMD	YGFW	YFD	EBWR
202806	8.3	9.3	-1.2	-1.1	30.9	0.1	0.1
SINGLE	BUYER				\$		

LOT	SIRE	DROP	MIC	SD	CV	CF%	BW
404	180227	SEPT	18.2	3.2	17.5	99.5	89
TAG	PWT	YWT	YFAT	YEMD	YGFW	YFD	EBWR
203593	9.1	11.8	0.3	1.6	27	-0.4	-1
SINGLE	BUYER				\$		

LOT	SIRE	DROP	MIC	SD	CV	CF%	BW
405	190251	SEPT	16.3	2.5	15.4	99.5	86
TAG	PWT	YWT	YFAT	YEMD	YGFW	YFD	EBWR
203053	10.1	11.7	0	0.2	19.4	-1.1	-0.3
TWIN	BUYER				\$		

LOT	SIRE	DROP	MIC	SD	CV	CF%	BW
406	190048	SEPT	16	3.2	20.7	99.2	88
TAG	PWT	YWT	YFAT	YEMD	YGFW	YFD	EBWR
202724	7	8.5	-0.3	0.2	23.1	-1.7	-0.3
SINGLE	BUYER				\$		

LOT	SIRE	DROP	MIC	SD	CV	CF%	BW
407	192203	SEPT	16.9	2.6	15.4	100	89
TAG	PWT	YWT	YFAT	YEMD	YGFW	YFD	EBWR
203396	9.2	11.3	-0.9	0.7	25	-1.2	-0.2
SINGLE	BUYER				\$		

LOT	SIRE	DROP	MIC	SD	CV	CF%	BW
408	190002	SEPT	20.8	2.7	12.9	100	86
TAG	PWT	YWT	YFAT	YEMD	YGFW	YFD	EBWR
202544	9.9	13	0.6	0.3	31.5	1.2	0
TWIN	BUYER				\$		

LOT	SIRE	DROP	MIC	SD	CV	CF%	BW
409	170660	SEPT	19.1	2.9	15.4	99.5	90
TAG	PWT	YWT	YFAT	YEMD	YGFW	YFD	EBWR
203448	8.7	10.4	0.5	0.5	23.4	0	-0.4
TWIN	BUYER				\$		

LOT	SIRE	DROP	MIC	SD	CV	CF%	BW
410	160502	SEPT	18.2	2.2	12.1	100	94
TAG	PWT	YWT	YFAT	YEMD	YGFW	YFD	EBWR
202032	8.7	10.3	0	-0.2	25.9	-0.4	-0.5
SINGLE	BUYER				\$		

LOT	SIRE	DROP	MIC	SD	CV	CF%	BW
411	180043	SEPT	17.4	2.2	12.9	100	89
TAG	PWT	YWT	YFAT	YEMD	YGFW	YFD	EBWR
202333	9.7	13.4	0.3	0.2	24.8	-0.6	-0.7
SINGLE	BUYER				\$		

LOT	SIRE	DROP	MIC	SD	CV	CF%	BW
412	192203	SEPT	16.7	2.7	16.4	99.8	86
TAG	PWT	YWT	YFAT	YEMD	YGFW	YFD	EBWR
203414	9.3	11.1	-0.8	0.9	24.3	-0.9	-0.3
SINGLE	BUYER				\$		

LOT	SIRE	DROP	MIC	SD	CV	CF%	BW
413	180938	SEPT	16.7	3.1	18.3	99.5	87
TAG	PWT	YWT	YFAT	YEMD	YGFW	YFD	EBWR
202350	9	10.1	-0.8	-0.8	35.8	-1.3	-0.1
TWIN	BUYER				\$		

LOT	SIRE	DROP	MIC	SD	CV	CF%	BW
414	180043	SEPT	18.7	2.8	14.8	99.5	83
TAG	PWT	YWT	YFAT	YEMD	YGFW	YFD	EBWR
202295	8.5	10.3	-0.3	-0.1	25.4	-0.3	-0.8
TRIPLET	BUYER				\$		

LOT	SIRE	DROP	MIC	SD	CV	CF%	BW
415	191364	SEPT	17.7	3.4	19.5	99.2	90
TAG	PWT	YWT	YFAT	YEMD	YGFW	YFD	EBWR
203195	6.4	8	-0.5	0.3	27.3	0	-0.3
SINGLE	BUYER				\$		

LOT	SIRE	DROP	MIC	SD	CV	CF%	BW
416	190017	SEPT	17.6	2.8	15.9	99.5	81
TAG	PWT	YWT	YFAT	YEMD	YGFW	YFD	EBWR
202615	6.3	8.1	-0.1	1.3	25.7	-0.3	-0.7
SINGLE	BUYER				\$		

LOT	SIRE	DROP	MIC	SD	CV	CF%	BW
417	191525	SEPT	17.8	2.7	14.9	99.8	75
TAG	PWT	YWT	YFAT	YEMD	YGFW	YFD	EBWR
203308	6.7	8.5	-0.5	0.6	17	-1	-0.3
SINGLE	BUYER				\$		

LOT	SIRE	DROP	MIC	SD	CV	CF%	BW
418	190079	SEPT	17.5	3.1	17.7	99	72
TAG	PWT	YWT	YFAT	YEMD	YGFW	YFD	EBWR
202759	8.3	10.3	-0.8	0	27.4	-0.8	-0.4
TWIN	BUYER				\$		

LOT	SIRE	DROP	MIC	SD	CV	CF%	BW
419	190134	SEPT	17.1	3.4	20	99.5	76
TAG	PWT	YWT	YFAT	YEMD	YGFW	YFD	EBWR
202931	6.6	8	0.5	-0.2	23.2	-0.8	0
SINGLE	BUYER				\$		

LOT	SIRE	DROP	MIC	SD	CV	CF%	BW
420	190079	SEPT	18.8	2.8	15.1	100	70
TAG	PWT	YWT	YFAT	YEMD	YGFW	YFD	EBWR
202748	7.2	8.4	-0.6	0.4	30.7	-0.1	-0.7
TWIN	BUYER				\$		

LOT	SIRE	DROP	MIC	SD	CV	CF%	BW
421	190079	SEPT	17	2.7	15.7	100	71
TAG	PWT	YWT	YFAT	YEMD	YGFW	YFD	EBWR
202736	6.6	8.8	-0.3	1.7	29.1	-0.9	-0.5
TWIN	BUYER				\$		

LOT	SIRE	DROP	MIC	SD	CV	CF%	BW
422	190242	SEPT	19.1	3.4	18.1	99	71
TAG	PWT	YWT	YFAT	YEMD	YGFW	YFD	EBWR
203034	6.9	9.9	-0.1	-0.3	32.8	0.1	-0.5
TWIN	BUYER				\$		

LOT	SIRE	DROP	MIC	SD	CV	CF%	BW
423	190079	SEPT	18.1	2.4	13.1	99.8	75
TAG	PWT	YWT	YFAT	YEMD	YGFW	YFD	EBWR
202761	7.5	9.5	-0.2	0.2	23.8	-0.5	-0.5
SINGLE	BUYER				\$		

LOT	SIRE	DROP	MIC	SD	CV	CF%	BW
424	190002	SEPT	18.7	2.9	15.4	99.8	76
TAG	PWT	YWT	YFAT	YEMD	YGFW	YFD	EBWR
202551	8.3	10.2	0.7	1.3	28.5	-0.2	-0.3
TWIN	BUYER				\$		

LOT	SIRE	DROP	MIC	SD	CV	CF%	BW
425	190236	SEPT	19.1	2.5	13.2	100	76
TAG	PWT	YWT	YFAT	YEMD	YGFW	YFD	EBWR
203021	6.8	9.4	-0.4	0.2	21.2	-0.3	0
SINGLE	BUYER				\$		

LOT	SIRE	DROP	MIC	SD	CV	CF%	BW
426	191512	SEPT	19.2	2.6	13.3	100	77
TAG	PWT	YWT	YFAT	YEMD	YGFW	YFD	EBWR
203270	7.6	10.7	0.5	-0.2	32.3	0.2	-0.5
SINGLE	BUYER				\$		

LOT	SIRE	DROP	MIC	SD	CV	CF%	BW
427	160502	SEPT	17.6	2.6	14.7	99.8	84
TAG	PWT	YWT	YFAT	YEMD	YGFW	YFD	EBWR
202027	9.9	11.7	-0.6	0.3	28.5	-0.5	0
TWIN	BUYER				\$		

LOT	SIRE	DROP	MIC	SD	CV	CF%	BW
428	190002	SEPT	18.7	2.6	13.7	100	87
TAG	PWT	YWT	YFAT	YEMD	YGFW	YFD	EBWR
202542	11.2	14.5	0.1	-0.1	35.1	0.2	-0.2
SINGLE	BUYER				\$		

LOT	SIRE	DROP	MIC	SD	CV	CF%	BW
429	190017	SEPT	17.6	2.2	12.4	100	86
TAG	PWT	YWT	YFAT	YEMD	YGFW	YFD	EBWR
202628	9.2	11.5	-0.2	0.5	33.2	-0.4	-0.1
TWIN	BUYER				\$		

LOT	SIRE	DROP	MIC	SD	CV	CF%	BW
430	190017	SEPT	17	2.6	15.2	99.8	86
TAG	PWT	YWT	YFAT	YEMD	YGFW	YFD	EBWR
202627	7.2	9.3	-0.9	-0.6	38.9	-0.7	0.1
SINGLE	BUYER				\$		

LOT	SIRE	DROP	MIC	SD	CV	CF%	BW
431	183464	SEPT	18.1	2.3	12.6	100	84
TAG	PWT	YWT	YFAT	YEMD	YGFW	YFD	EBWR
202444	5	7.2	1	2.7	16.2	-0.3	-0.6
TRIPLET	BUYER				\$		

LOT	SIRE	DROP	MIC	SD	CV	CF%	BW
432	180043	SEPT	17.5	2.9	16.8	99.8	79
TAG	PWT	YWT	YFAT	YEMD	YGFW	YFD	EBWR
202328	8.6	11.2	-0.9	-0.4	27.2	-0.7	-0.7
SINGLE	BUYER				\$		

LOT	SIRE	DROP	MIC	SD	CV	CF%	BW
433	170822	SEPT	17.7	2.4	13.4	99.8	80
TAG	PWT	YWT	YFAT	YEMD	YGFW	YFD	EBWR
202250	6.6	8.9	0.5	1.5	23.3	-0.7	0.3
TWIN	BUYER				\$		

LOT	SIRE	DROP	MIC	SD	CV	CF%	BW
434	170402	SEPT	18.9	3.5	20	99	77
TAG	PWT	YWT	YFAT	YEMD	YGFW	YFD	EBWR
202226	6.5	8	0.1	-0.3	30.2	0.3	-0.2
TWIN	BUYER				\$		

LOT	SIRE	DROP	MIC	SD	CV	CF%	BW
435	183464	SEPT	18.6	2.5	13.3	100	78
TAG	PWT	YWT	YFAT	YEMD	YGFW	YFD	EBWR
202505	7.1	9.7	-0.4	0.5	24.9	0	-0.3
TWIN	BUYER				\$		

LOT	SIRE	DROP	MIC	SD	CV	CF%	BW
436	190002	SEPT	18.7	3.5	18.5	99.5	75
TAG	PWT	YWT	YFAT	YEMD	YGFW	YFD	EBWR
202552	5.7	7.8	-0.3	0.7	28	-0.1	0.2
TWIN	BUYER				\$		

LOT	SIRE	DROP	MIC	SD	CV	CF%	BW
437	170325	SEPT	18.9	2.7	14.2	99.5	77
TAG	PWT	YWT	YFAT	YEMD	YGFW	YFD	EBWR
202196	6.6	9.8	-1.2	-0.2	32	-0.6	-0.1
TWIN	BUYER				\$		

LOT	SIRE	DROP	MIC	SD	CV	CF%	BW
438	170660	SEPT	19.2	3.1	16	100	83
TAG	PWT	YWT	YFAT	YEMD	YGFW	YFD	EBWR
203473	8.1	10.2	-0.5	-0.3	41.6	0.3	-0.1
TWIN	BUYER				\$		

LOT	SIRE	DROP	MIC	SD	CV	CF%	BW
439	190211	SEPT	16.5	2.8	17.2	99.8	84
TAG	PWT	YWT	YFAT	YEMD	YGFW	YFD	EBWR
202989	6.8	9.1	0.3	-0.2	23.1	-1.4	-0.2
SINGLE	BUYER				\$		

LOT	SIRE	DROP	MIC	SD	CV	CF%	BW
440	182504	SEPT	18.5	3.5	19.9	99.5	86
TAG	PWT	YWT	YFAT	YEMD	YGFW	YFD	EBWR
202376	7	9.4	-0.3	0.5	27.8	-0.5	0
SINGLE	BUYER				\$		

LOT	SIRE	DROP	MIC	SD	CV	CF%	BW
441	181877	SEPT	19.2	2.7	14.2	99.8	91
TAG	PWT	YWT	YFAT	YEMD	YGFW	YFD	EBWR
202357	10.5	13.9	-0.7	0.5	31.2	-0.1	-0.3
TWIN	BUYER				\$		

LOT	SIRE	DROP	MIC	SD	CV	CF%	BW
442	170660	SEPT	17.5	3.3	19	99.8	85
TAG	PWT	YWT	YFAT	YEMD	YGFW	YFD	EBWR
203479	7.2	8.4	-0.1	-0.4	25	-0.7	-0.2
TWIN	BUYER				\$		

LOT	SIRE	DROP	MIC	SD	CV	CF%	BW
443	191525	SEPT	18.1	2.7	15.1	100	81
TAG	PWT	YWT	YFAT	YEMD	YGFW	YFD	EBWR
203283	7.1	9.7	-0.5	0.9	28.4	-0.9	0
SINGLE	BUYER				\$		

LOT	SIRE	DROP	MIC	SD	CV	CF%	BW
444	190251	SEPT	19.4	2.9	14.9	99.8	77
TAG	PWT	YWT	YFAT	YEMD	YGFW	YFD	EBWR
203056	8.1	10.4	-0.1	0.7	27.6	0.7	-0.3
SINGLE	BUYER				\$		

LOT	SIRE	DROP	MIC	SD	CV	CF%	BW
445	190300	SEPT	17.4	2.5	14.2	99.8	77
TAG	PWT	YWT	YFAT	YEMD	YGFW	YFD	EBWR
203115	8.1	8.9	-0.5	0.1	26.6	-0.3	-0.4
SINGLE	BUYER				\$		

LOT	SIRE	DROP	MIC	SD	CV	CF%	BW
446	192203	SEPT	17.2	3.3	19.1	99.5	76
TAG	PWT	YWT	YFAT	YEMD	YGFW	YFD	EBWR
203410	8.4	11.3	-1	0.3	31.4	-1.6	-0.6
TWIN	BUYER				\$		

LOT	SIRE	DROP	MIC	SD	CV	CF%	BW
447	182563	SEPT	16.9	3	17.7	99.8	76
TAG	PWT	YWT	YFAT	YEMD	YGFW	YFD	EBWR
202394	8.3	10.3	0.5	1.1	25.3	-1.4	-0.1
TWIN	BUYER				\$		

LOT	SIRE	DROP	MIC	SD	CV	CF%	BW
448	170822	SEPT	16.6	2.8	16.7	99.8	77
TAG	PWT	YWT	YFAT	YEMD	YGFW	YFD	EBWR
202241	4.5	6.2	0.1	1.5	20.8	-1.1	-0.3
TWIN	BUYER				\$		

LOT	SIRE	DROP	MIC	SD	CV	CF%	BW
449	190017	SEPT	17.5	2.8	15.9	99.8	79
TAG	PWT	YWT	YFAT	YEMD	YGFW	YFD	EBWR
202644	7.9	10.7	-0.6	0.7	29.4	-0.3	-0.5
TWIN	BUYER				\$		

LOT	SIRE	DROP	MIC	SD	CV	CF%	BW
450	192161	SEPT	19.3	3.5	20.8	99	79
TAG	PWT	YWT	YFAT	YEMD	YGFW	YFD	EBWR
203381	5.7	6.6	1.1	2.5	23.9	0.7	-0.2
TWIN	BUYER				\$		

LOT	SIRE	DROP	MIC	SD	CV	CF%	BW
451	192161	SEPT	20	3.5	17.7	99	83
TAG	PWT	YWT	YFAT	YEMD	YGFW	YFD	EBWR
203385	7.2	8.3	1.4	1.9	18.3	0	-0.3
TRIPLET	BUYER				\$		

LOT	SIRE	DROP	MIC	SD	CV	CF%	BW
452	190017	SEPT	17.7	2.6	15	99.8	79
TAG	PWT	YWT	YFAT	YEMD	YGFW	YFD	EBWR
202611	7.1	9.9	-0.5	0.4	30.6	-0.6	-0.5
TWIN	BUYER				\$		

LOT	SIRE	DROP	MIC	SD	CV	CF%	BW
453	190084	SEPT	18.2	2.8	15.1	100	77
TAG	PWT	YWT	YFAT	YEMD	YGFW	YFD	EBWR
202790	7.2	8.9	-0.2	0.4	33.3	-0.5	0.1
TWIN	BUYER				\$		

LOT	SIRE	DROP	MIC	SD	CV	CF%	BW
454	190022	SEPT	17.6	3.3	18.8	99.8	84
TAG	PWT	YWT	YFAT	YEMD	YGFW	YFD	EBWR
202665	6.6	7.9	-0.1	-0.6	34	-0.3	0.1
TWIN	BUYER				\$		

LOT	SIRE	DROP	MIC	SD	CV	CF%	BW
455	160502	SEPT	17.4	2.6	15	100	84
TAG	PWT	YWT	YFAT	YEMD	YGFW	YFD	EBWR
202052	7.2	8.4	-0.4	-0.9	27.6	-0.9	-0.2
TWIN	BUYER				\$		

LOT	SIRE	DROP	MIC	SD	CV	CF%	BW
456	160502	MAY	20.3	2.6	12.7	100	92
TAG	PWT	YWT	YFAT	YEMD	YGFW	YFD	EBWR
201571	6.4	8.4	-0.6	-0.1	31	-0.3	-0.2
SINGLE	BUYER				\$		

LOT	SIRE	DROP	MIC	SD	CV	CF%	BW
457	182563	MAY	19.7	2.8	14.5	100	93
TAG	PWT	YWT	YFAT	YEMD	YGFW	YFD	EBWR
201619	8.8	10.7	0.6	0.4	24.2	0.6	-0.2
SINGLE	BUYER				\$		

LOT	SIRE	DROP	MIC	SD	CV	CF%	BW
458	162610	MAY	19.8	2.8	14.	99.5	96
TAG	PWT	YWT	YFAT	YEMD	YGFW	YFD	EBWR
201807	13.1	15.5	0.5	1.3	24.2	0.2	-0.7
TWIN	BUYER				\$		

LOT	SIRE	DROP	MIC	SD	CV	CF%	BW
459	180027	MAY	19.6	2.4	12.3	99.8	107
TAG	PWT	YWT	YFAT	YEMD	YGFW	YFD	EBWR
201317	9.9	11.5	0.3	-1.4	22.3	-0.6	-0.4
SINGLE	BUYER				\$		

LOT	SIRE	DROP	MIC	SD	CV	CF%	BW
460	182563	MAY	17.8	2.5	14.1	100	87
TAG	PWT	YWT	YFAT	YEMD	YGFW	YFD	EBWR
201623	7.3	9.6	0.3	0.2	26.7	-1.3	0
TWIN	BUYER				\$		

LOT	SIRE	DROP	MIC	SD	CV	CF%	BW
461	162610	MAY	21.5	3.3	15.3	99.2	88
TAG	PWT	YWT	YFAT	YEMD	YGFW	YFD	EBWR
201811	7.8	9.6	0	0.9	24.9	0.4	-0.8
SINGLE	BUYER				\$		

LOT	SIRE	DROP	MIC	SD	CV	CF%	BW
462	182563	MAY	19.5	3.1	16	99.5	90
TAG	PWT	YWT	YFAT	YEMD	YGFW	YFD	EBWR
201697	8	10	0.4	0.7	22.8	-0.6	-0.3
SINGLE	BUYER				\$		

LOT	SIRE	DROP	MIC	SD	CV	CF%	BW
463	182563	MAY	19	2.8	14.6	99.8	92
TAG	PWT	YWT	YFAT	YEMD	YGFW	YFD	EBWR
201660	8.2	10.8	0.3	0.9	28.1	-0.6	-0.3
SINGLE	BUYER				\$		

LOT	SIRE	DROP	MIC	SD	CV	CF%	BW
464	182579	MAY	17.4	2.3	13.1	99.8	102
TAG	PWT	YWT	YFAT	YEMD	YGFW	YFD	EBWR
200127	9.9	11.8	0.5	0.9	25.7	-1.5	-0.2
SINGLE	BUYER				\$		

LOT	SIRE	DROP	MIC	SD	CV	CF%	BW
465	170402	MAY	19.7	3.5	20	99.2	96
TAG	PWT	YWT	YFAT	YEMD	YGFW	YFD	EBWR
201324	8.2	11.1	0.1	0.1	23.3	-0.3	-1.1
TWIN	BUYER				\$		

LOT	SIRE	DROP	MIC	SD	CV	CF%	BW
466	182504	MAY	19.4	3.3	16.8	99	99
TAG	PWT	YWT	YFAT	YEMD	YGFW	YFD	EBWR
200392	9.8	12.2	0.6	1.3	20.7	-0.9	-0.5
TWIN	BUYER				\$		

LOT	SIRE	DROP	MIC	SD	CV	CF%	BW
467	180043	MAY	19	3.5	19.5	99.8	92
TAG	PWT	YWT	YFAT	YEMD	YGFW	YFD	EBWR
201529	7.3	9.2	-0.7	-0.6	30	-1	-0.7
SINGLE	BUYER				\$		

LOT	SIRE	DROP	MIC	SD	CV	CF%	BW
468	170660	MAY	18.7	2.3	12.4	99.5	87
TAG	PWT	YWT	YFAT	YEMD	YGFW	YFD	EBWR
201011	6.3	7.7	0	0.5	30	-0.4	0.3
TWIN	BUYER				\$		

LOT	SIRE	DROP	MIC	SD	CV	CF%	BW
469	181877	MAY	20.2	3.5	19.3	99	90
TAG	PWT	YWT	YFAT	YEMD	YGFW	YFD	EBWR
200715	6.4	8.4	-0.7	0.8	31.9	-0.4	-0.2
SINGLE	BUYER				\$		

LOT	SIRE	DROP	MIC	SD	CV	CF%	BW
470	180027	MAY	18.2	2.6	14.1	99.5	85
TAG	PWT	YWT	YFAT	YEMD	YGFW	YFD	EBWR
201290	7.2	8.8	0.2	-0.4	21.3	-0.9	-0.7
TWIN	BUYER				\$		

LOT	SIRE	DROP	MIC	SD	CV	CF%	BW
471	182504	MAY	18.9	2.5	13.4	99.8	89
TAG	PWT	YWT	YFAT	YEMD	YGFW	YFD	EBWR
200324	7.2	9.3	-0.3	0.6	25.6	-1	-0.1
TWIN	BUYER				\$		

LOT	SIRE	DROP	MIC	SD	CV	CF%	BW
472	162610	MAY	21.5	3.5	16.2	99	96
TAG	PWT	YWT	YFAT	YEMD	YGFW	YFD	EBWR
201765	11.7	12.7	-0.1	0.3	25.8	0.6	-1.2
TWIN	BUYER				\$		

LOT	SIRE	DROP	MIC	SD	CV	CF%	BW
473	162610	MAY	19	2.5	13.1	99.8	98
TAG	PWT	YWT	YFAT	YEMD	YGFW	YFD	EBWR
201797	8.4	10.1	-0.2	-0.5	20.2	-0.6	-0.5
SINGLE	BUYER				\$		

LOT	SIRE	DROP	MIC	SD	CV	CF%	BW
474	180027	MAY	19.7	3.5	17.7	99	95
TAG	PWT	YWT	YFAT	YEMD	YGFW	YFD	EBWR
201319	7.9	9.4	-0.2	0.4	25.4	-0.7	0
SINGLE	BUYER				\$		

LOT	SIRE	DROP	MIC	SD	CV	CF%	BW
475	182504	MAY	19.3	3.2	16.8	99.8	93
TAG	PWT	YWT	YFAT	YEMD	YGFW	YFD	EBWR
200360	7.4	9.5	0	0.9	25.6	-0.7	-0.6
TWIN	BUYER				\$		

LOT	SIRE	DROP	MIC	SD	CV	CF%	BW
476	182504	MAY	19.4	3.2	16.6	99	89
TAG	PWT	YWT	YFAT	YEMD	YGFW	YFD	EBWR
200379	6	7.6	0.4	2.1	23.8	-0.6	-0.6
SINGLE	BUYER				\$		

LOT	SIRE	DROP	MIC	SD	CV	CF%	BW
477	170660	MAY	20.2	2.5	12.5	100	89
TAG	PWT	YWT	YFAT	YEMD	YGFW	YFD	EBWR
201033	7.2	9.6	0.7	0.5	29.2	0.1	-0.2
SINGLE	BUYER				\$		

LOT	SIRE	DROP	MIC	SD	CV	CF%	BW
478	182506	MAY	17.5	2.6	14.9	99.8	86
TAG	PWT	YWT	YFAT	YEMD	YGFW	YFD	EBWR
200610	4.5	6.3	-0.2	-0.4	23.5	-1.5	-0.7
SINGLE	BUYER				\$		

LOT	SIRE	DROP	MIC	SD	CV	CF%	BW
479	180043	MAY	19.9	2.9	14.7	99.8	91
TAG	PWT	YWT	YFAT	YEMD	YGFW	YFD	EBWR
201502	7.4	9.4	-0.5	-0.5	28	-0.3	-0.4
SINGLE	BUYER				\$		

LOT	SIRE	DROP	MIC	SD	CV	CF%	BW
480	180227	MAY	20.6	2.5	12.3	99.8	91
TAG	PWT	YWT	YFAT	YEMD	YGFW	YFD	EBWR
200827	8.5	11.6	0.6	1	21.6	0	-0.5
TWIN	BUYER				\$		

LOT	SIRE	DROP	MIC	SD	CV	CF%	BW
481	182579	MAY	20.2	2.6	12.7	99.8	93
TAG	PWT	YWT	YFAT	YEMD	YGFW	YFD	EBWR
200144	7.5	8.9	-0.2	0.7	26.5	-0.4	-0.4
TRIPLET	BUYER				\$		

LOT	SIRE	DROP	MIC	SD	CV	CF%	BW
482	170325	MAY	18.6	3.2	17.3	99	92
TAG	PWT	YWT	YFAT	YEMD	YGFW	YFD	EBWR
201085	6.1	8.2	-0.6	0.9	21.8	-1.2	0.1
SINGLE	BUYER				\$		

LOT	SIRE	DROP	MIC	SD	CV	CF%	BW
483	182504	MAY	20.9	3.1	14.9	99.5	96
TAG	PWT	YWT	YFAT	YEMD	YGFW	YFD	EBWR
200378	9	10.6	0.3	1.6	29.2	0.4	-1
SINGLE	BUYER				\$		

LOT	SIRE	DROP	MIC	SD	CV	CF%	BW
484	170822	MAY	19.2	2.8	14.5	99.8	96
TAG	PWT	YWT	YFAT	YEMD	YGFW	YFD	EBWR
201123	6.2	6	0	-0.1	25.1	-0.9	-0.2
TWIN	BUYER				\$		

LOT	SIRE	DROP	MIC	SD	CV	CF%	BW
485	182563	MAY	19.1	2.3	12.1	100	101
TAG	PWT	YWT	YFAT	YEMD	YGFW	YFD	EBWR
201668	9.7	11.7	0.2	1	23.9	-0.6	-0.3
SINGLE	BUYER				\$		

LOT	SIRE	DROP	MIC	SD	CV	CF%	BW
486	183464	MAY	20.5	2.5	12.2	99.5	95
TAG	PWT	YWT	YFAT	YEMD	YGFW	YFD	EBWR
200028	7.7	9.9	0.5	1.7	21	-0.1	-0.8
TWIN	BUYER				\$		

LOT	SIRE	DROP	MIC	SD	CV	CF%	BW
487	180027	MAY	19	2.1	11	100	93
TAG	PWT	YWT	YFAT	YEMD	YGFW	YFD	EBWR
201267	8.3	10.3	-0.3	0	19.7	-1.1	-0.3
TWIN	BUYER				\$		

LOT	SIRE	DROP	MIC	SD	CV	CF%	BW
488	181877	MAY	19.4	2.6	13.2	99.8	87
TAG	PWT	YWT	YFAT	YEMD	YGFW	YFD	EBWR
200706	6.1	8.1	-0.4	1.2	27	-0.5	0.2
SINGLE	BUYER				\$		

LOT	SIRE	DROP	MIC	SD	CV	CF%	BW
489	162610	MAY	19.6	3.2	16.5	99.5	81
TAG	PWT	YWT	YFAT	YEMD	YGFW	YFD	EBWR
201804	7.6	9.5	-0.1	0.4	17.8	-0.8	-0.8
TWIN	BUYER				\$		

LOT	SIRE	DROP	MIC	SD	CV	CF%	BW
490	180938	MAY	19	2.8	14.6	99.2	87
TAG	PWT	YWT	YFAT	YEMD	YGFW	YFD	EBWR
200445	7.8	8.7	0.1	0.7	34.5	-0.7	0.2
TWIN	BUYER				\$		

LOT	SIRE	DROP	MIC	SD	CV	CF%	BW
491	180043	MAY	21.2	2.9	13.5	99.8	83
TAG	PWT	YWT	YFAT	YEMD	YGFW	YFD	EBWR
201437	9.3	12.1	0.4	-0.4	23.4	0.2	-0.6
TWIN	BUYER				\$		

LOT	SIRE	DROP	MIC	SD	CV	CF%	BW
492	182579	MAY	19	3.5	19.9	99	87
TAG	PWT	YWT	YFAT	YEMD	YGFW	YFD	EBWR
200141	6.9	9	-0.1	0.7	36.2	-0.8	-0.8
SINGLE	BUYER				\$		

LOT	SIRE	DROP	MIC	SD	CV	CF%	BW
493	170660	MAY	20.1	2.7	13.6	100	86
TAG	PWT	YWT	YFAT	YEMD	YGFW	YFD	EBWR
201028	7.5	8.8	0.6	1	31.6	-0.1	-0.1
SINGLE	BUYER				\$		

LOT	SIRE	DROP	MIC	SD	CV	CF%	BW
494	182504	MAY	18.9	3.5	18.6	99	87
TAG	PWT	YWT	YFAT	YEMD	YGFW	YFD	EBWR
200385	7.1	8.4	0.1	0.5	22	-1	-0.1
TWIN	BUYER				\$		

LOT	SIRE	DROP	MIC	SD	CV	CF%	BW
495	170402	MAY	18.9	2.1	11.2	100	91
TAG	PWT	YWT	YFAT	YEMD	YGFW	YFD	EBWR
201359	7.5	10.1	0.2	0.4	25.5	-1.1	-0.6
TWIN	BUYER				\$		

LOT	SIRE	DROP	MIC	SD	CV	CF%	BW
496	160502	MAY	20.4	3.1	15	99.2	93
TAG	PWT	YWT	YFAT	YEMD	YGFW	YFD	EBWR
201593	7	7.9	-0.7	0	29.4	-0.3	-0.2
TWIN	BUYER				\$		

LOT	SIRE	DROP	MIC	SD	CV	CF%	BW
497	182579	MAY	18.8	2.4	12.8	99.2	92
TAG	PWT	YWT	YFAT	YEMD	YGFW	YFD	EBWR
200211	8.8	10.5	-0.4	-0.3	32	-1	-0.3
TWIN	BUYER				\$		

LOT	SIRE	DROP	MIC	SD	CV	CF%	BW
498	181877	MAY	18.7	2.1	11.4	100	88
TAG	PWT	YWT	YFAT	YEMD	YGFW	YFD	EBWR
200703	8.1	10.2	-0.9	0.4	29.8	-1	-0.3
SINGLE	BUYER				\$		

LOT	SIRE	DROP	MIC	SD	CV	CF%	BW
499	162610	MAY	19.2	2.3	12	100	85
TAG	PWT	YWT	YFAT	YEMD	YGFW	YFD	EBWR
201734	8.4	9.5	-0.4	0.2	24.4	-0.9	-0.5
TWIN	BUYER				\$		

LOT	SIRE	DROP	MIC	SD	CV	CF%	BW
500	162610	MAY	20.2	2.4	12.1	100	89
TAG	PWT	YWT	YFAT	YEMD	YGFW	YFD	EBWR
201768	8.2	10.4	-0.4	0.8	26	-0.5	-0.5
TWIN	BUYER				\$		

LOT	SIRE	DROP	MIC	SD	CV	CF%	BW
501	180027	MAY	18.4	2.4	12.8	99.8	93
TAG	PWT	YWT	YFAT	YEMD	YGFW	YFD	EBWR
201305	8	9.5	-0.4	-0.1	14.4	-1.2	-0.3
SINGLE	BUYER				\$		

LOT	SIRE	DROP	MIC	SD	CV	CF%	BW
502	180043	MAY	19.1	2.3	12	100	93
TAG	PWT	YWT	YFAT	YEMD	YGFW	YFD	EBWR
201489	7.7	10.2	-0.6	-0.7	16.5	-0.9	-1
SINGLE	BUYER				\$		

LOT	SIRE	DROP	MIC	SD	CV	CF%	BW
503	170660	MAY	18.6	2.7	14.6	99.2	92
TAG	PWT	YWT	YFAT	YEMD	YGFW	YFD	EBWR
201038	6.1	7.1	0	0.4	24.1	-0.5	0
SINGLE	BUYER				\$		

LOT	SIRE	DROP	MIC	SD	CV	CF%	BW
504	180938	MAY	19.1	2.9	15.1	99.2	96
TAG	PWT	YWT	YFAT	YEMD	YGFW	YFD	EBWR
200401	11.1	12.5	0	-0.4	29.4	-0.8	-0.7
SINGLE	BUYER				\$		

LOT	SIRE	DROP	MIC	SD	CV	CF%	BW
505	180938	MAY	19.7	2.6	12.9	99.5	96
TAG	PWT	YWT	YFAT	YEMD	YGFW	YFD	EBWR
200433	9.1	10.9	0	0.7	32.7	-0.6	-0.7
TWIN	BUYER				\$		

LOT	SIRE	DROP	MIC	SD	CV	CF%	BW
506	180027	MAY	20.2	3.2	15.6	99.2	98
TAG	PWT	YWT	YFAT	YEMD	YGFW	YFD	EBWR
201312	8.6	11	0.2	0.7	26.8	-0.2	-0.3
SINGLE	BUYER				\$		

LOT	SIRE	DROP	MIC	SD	CV	CF%	BW
507	182563	MAY	19	2.6	13.8	99.8	99
TAG	PWT	YWT	YFAT	YEMD	YGFW	YFD	EBWR
201681	9.6	11.5	0	0.1	23.9	-0.9	0
TWIN	BUYER				\$		

LOT	SIRE	DROP	MIC	SD	CV	CF%	BW
508	160502	MAY	18.8	2.7	14.4	99.5	97
TAG	PWT	YWT	YFAT	YEMD	YGFW	YFD	EBWR
201549	7.5	9.3	-0.6	-1.3	23.3	-0.9	-0.6
SINGLE	BUYER				\$		

LOT	SIRE	DROP	MIC	SD	CV	CF%	BW
509	180938	MAY	18	2.9	16.3	99.8	98
TAG	PWT	YWT	YFAT	YEMD	YGFW	YFD	EBWR
200460	9.2	10.4	-0.4	-0.4	34.4	-1.4	0
SINGLE	BUYER				\$		

LOT	SIRE	DROP	MIC	SD	CV	CF%	BW
510	183464	MAY	20.6	3.1	15.3	99.8	101
TAG	PWT	YWT	YFAT	YEMD	YGFW	YFD	EBWR
200071	9.6	11.3	0.6	-0.2	25.6	0	-0.5
SINGLE	BUYER				\$		

LOT	SIRE	DROP	MIC	SD	CV	CF%	BW
511	182579	MAY	18.9	2.7	14.5	99.8	96
TAG	PWT	YWT	YFAT	YEMD	YGFW	YFD	EBWR
200198	9.7	11.5	0.5	0.3	28.5	-1	-0.3
SINGLE	BUYER				\$		

LOT	SIRE	DROP	MIC	SD	CV	CF%	BW
512	180043	MAY	18.7	2.8	15.1	99.5	92
TAG	PWT	YWT	YFAT	YEMD	YGFW	YFD	EBWR
201455	7	8.8	-0.6	0.4	28.1	-1.1	-0.6
SINGLE	BUYER				\$		

LOT	SIRE	DROP	MIC	SD	CV	CF%	BW
513	180027	MAY	17.8	2.5	14.1	99.5	89
TAG	PWT	YWT	YFAT	YEMD	YGFW	YFD	EBWR
201291	8.1	9.6	0	-0.1	18.3	-1.3	-0.1
TWIN	BUYER				\$		

LOT	SIRE	DROP	MIC	SD	CV	CF%	BW
514	180227	MAY	20.7	2.8	13.4	100	91
TAG	PWT	YWT	YFAT	YEMD	YGFW	YFD	EBWR
200833	7.4	9.9	0.7	1.9	17.4	0.4	-1
SINGLE	BUYER				\$		

LOT	SIRE	DROP	MIC	SD	CV	CF%	BW
515	170660	MAY	20.1	2.9	14.6	99.5	90
TAG	PWT	YWT	YFAT	YEMD	YGFW	YFD	EBWR
201021	6.3	7.6	0.2	0.6	29.7	0.3	-0.6
SINGLE	BUYER				\$		

LOT	SIRE	DROP	MIC	SD	CV	CF%	BW
516	182504	MAY	18.9	2.3	12	99.8	92
TAG	PWT	YWT	YFAT	YEMD	YGFW	YFD	EBWR
200359	8.3	10.2	-0.1	0.7	25.6	-0.6	-1
TWIN	BUYER				\$		

LOT	SIRE	DROP	MIC	SD	CV	CF%	BW
517	151911	MAY	19.3	2.6	13.4	99.8	93
TAG	PWT	YWT	YFAT	YEMD	YGFW	YFD	EBWR
200262	7.4	9.3	-0.7	-0.3	28.3	-0.8	-0.6
SINGLE	BUYER				\$		

LOT	SIRE	DROP	MIC	SD	CV	CF%	BW
518	151911	MAY	19.5	2.3	11.7	100	93
TAG	PWT	YWT	YFAT	YEMD	YGFW	YFD	EBWR
200261	8.8	11	-0.5	-0.3	28.6	-0.7	-0.4
SINGLE	BUYER				\$		

LOT	SIRE	DROP	MIC	SD	CV	CF%	BW
519	162610	MAY	19.1	2.4	12.5	100	94
TAG	PWT	YWT	YFAT	YEMD	YGFW	YFD	EBWR
201802	7.9	9.4	0.5	1.2	20.6	-0.8	-0.8
TWIN	BUYER				\$		

LOT	SIRE	DROP	MIC	SD	CV	CF%	BW
520	162610	MAY	18.8	2.9	15.5	99.2	100
TAG	PWT	YWT	YFAT	YEMD	YGFW	YFD	EBWR
201806	9.2	10.9	-0.1	-0.4	22.9	-0.8	-0.8
SINGLE	BUYER				\$		

LOT	SIRE	DROP	MIC	SD	CV	CF%	BW
521	182563	MAY	17.6	3.5	20	99.2	99
TAG	PWT	YWT	YFAT	YEMD	YGFW	YFD	EBWR
201602	10	11.5	-0.4	0.7	29.6	-1.3	0
SINGLE	BUYER				\$		

LOT	SIRE	DROP	MIC	SD	CV	CF%	BW
522	180027	MAY	19.1	2.8	14.6	99.8	93
TAG	PWT	YWT	YFAT	YEMD	YGFW	YFD	EBWR
201309	8.2	10	0.3	0.3	22.4	-0.9	-0.6
TWIN	BUYER				\$		

LOT	SIRE	DROP	MIC	SD	CV	CF%	BW
523	170402	MAY	20.3	2.7	13.1	100	83
TAG	PWT	YWT	YFAT	YEMD	YGFW	YFD	EBWR
201373	5.4	9	0.5	0.8	23	-0.3	-0.1
SINGLE	BUYER				\$		

LOT	SIRE	DROP	MIC	SD	CV	CF%	BW
524	170822	MAY	17.7	2.5	14	99.8	88
TAG	PWT	YWT	YFAT	YEMD	YGFW	YFD	EBWR
201125	5.8	7	-0.5	0.3	13.9	-1.1	-0.4
SINGLE	BUYER				\$		

LOT	SIRE	DROP	MIC	SD	CV	CF%	BW
525	151911	MAY	18.6	2.5	13.3	100	86
TAG	PWT	YWT	YFAT	YEMD	YGFW	YFD	EBWR
200259	4.7	7.5	-0.2	0	26.9	-1.4	0
SINGLE	BUYER				\$		

LOT	SIRE	DROP	MIC	SD	CV	CF%	BW
526	180043	MAY	18.9	2.3	12.1	100	89
TAG	PWT	YWT	YFAT	YEMD	YGFW	YFD	EBWR
201531	7.4	9.7	-0.1	-0.4	20.7	-1	-1
TWIN	BUYER				\$		

LOT	SIRE	DROP	MIC	SD	CV	CF%	BW
527	130306	MAY	19.7	2.7	13.9	99.2	89
TAG	PWT	YWT	YFAT	YEMD	YGFW	YFD	EBWR
200902	7.9	9.1	-0.5	0	27.3	-0.6	-0.7
SINGLE	BUYER				\$		

LOT	SIRE	DROP	MIC	SD	CV	CF%	BW
528	183464	MAY	19.7	2.8	14.1	99.8	86
TAG	PWT	YWT	YFAT	YEMD	YGFW	YFD	EBWR
200061	5.4	6.6	0	1.2	30.3	-0.1	-0.4
SINGLE	BUYER				\$		

LOT	SIRE	DROP	MIC	SD	CV	CF%	BW
529	182579	MAY	18.7	2.8	14.9	99.5	86
TAG	PWT	YWT	YFAT	YEMD	YGFW	YFD	EBWR
200152	6.9	8.7	0	0	25.9	-0.6	-0.2
SINGLE	BUYER				\$		

LOT	SIRE	DROP	MIC	SD	CV	CF%	BW
530	170822	MAY	17.9	3.1	17	99.5	86
TAG	PWT	YWT	YFAT	YEMD	YGFW	YFD	EBWR
201167	5.8	7.8	-0.7	1.2	27.4	-1.5	-0.4
SINGLE	BUYER				\$		

LOT	SIRE	DROP	MIC	SD	CV	CF%	BW
531	170660	MAY	18.6	2.3	12.4	99.8	86
TAG	PWT	YWT	YFAT	YEMD	YGFW	YFD	EBWR
201022	6.9	8.4	0.8	0.9	29.5	-0.5	-0.5
SINGLE	BUYER				\$		

LOT	SIRE	DROP	MIC	SD	CV	CF%	BW
532	180227	MAY	20	2.9	14.7	99.8	93
TAG	PWT	YWT	YFAT	YEMD	YGFW	YFD	EBWR
200848	10.2	11.8	0.9	1.6	21.1	0.1	-1.1
TWIN	BUYER				\$		

LOT	SIRE	DROP	MIC	SD	CV	CF%	BW
533	182563	MAY	19.5	3	15.5	99.5	94
TAG	PWT	YWT	YFAT	YEMD	YGFW	YFD	EBWR
201696	10.7	12.6	0.2	0.2	25.9	-0.6	-0.3
TRIPLET	BUYER				\$		

LOT	SIRE	DROP	MIC	SD	CV	CF%	BW
534	182504	MAY	18.3	2.4	12.9	100	95
TAG	PWT	YWT	YFAT	YEMD	YGFW	YFD	EBWR
200375	6.1	7.6	0.2	1.3	16.3	-1	-1.1
SINGLE	BUYER				\$		

LOT	SIRE	DROP	MIC	SD	CV	CF%	BW
535	181877	MAY	18.7	3.1	16.7	99	94
TAG	PWT	YWT	YFAT	YEMD	YGFW	YFD	EBWR
200720	5.7	7.9	-0.7	0.6	28.1	-0.8	-0.3
SINGLE	BUYER				\$		

LOT	SIRE	DROP	MIC	SD	CV	CF%	BW
536	182504	MAY	17.9	2.8	15.7	99	94
TAG	PWT	YWT	YFAT	YEMD	YGFW	YFD	EBWR
200331	8.1	10.3	-0.4	1.2	25	-1.6	0
TWIN	BUYER				\$		

LOT	SIRE	DROP	MIC	SD	CV	CF%	BW
537	180027	MAY	18.1	2.6	14.3	99.8	89
TAG	PWT	YWT	YFAT	YEMD	YGFW	YFD	EBWR
201283	7.5	9.3	0	-0.4	24.8	-1.3	-0.4
SINGLE	BUYER				\$		

LOT	SIRE	DROP	MIC	SD	CV	CF%	BW
538	170402	MAY	19.9	2.4	12.1	99.8	87
TAG	PWT	YWT	YFAT	YEMD	YGFW	YFD	EBWR
201327	6.5	9.4	0.4	-0.2	26.3	0	-0.6
SINGLE	BUYER				\$		

LOT	SIRE	DROP	MIC	SD	CV	CF%	BW
539	180938	MAY	20.9	2.7	12.7	99	85
TAG	PWT	YWT	YFAT	YEMD	YGFW	YFD	EBWR
200470	9.5	10.6	-0.4	-0.3	29.8	0	0.1
SINGLE	BUYER				\$		

LOT	SIRE	DROP	MIC	SD	CV	CF%	BW
540	170660	MAY	20	2.7	13.3	99.5	84
TAG	PWT	YWT	YFAT	YEMD	YGFW	YFD	EBWR
201013	8.7	10.6	0.7	0.7	30	0.2	-0.1
TWIN	BUYER				\$		

LOT	SIRE	DROP	MIC	SD	CV	CF%	BW
541	182563	MAY	20.5	2.8	13.6	99.8	88
TAG	PWT	YWT	YFAT	YEMD	YGFW	YFD	EBWR
201661	8	10	0.2	1.4	25.1	-0.1	-0.3
SINGLE	BUYER				\$		

LOT	SIRE	DROP	MIC	SD	CV	CF%	BW
542	151911	MAY	18.5	2.4	13.1	99.5	92
TAG	PWT	YWT	YFAT	YEMD	YGFW	YFD	EBWR
200253	7.7	10.1	-0.6	-0.4	27.3	-0.9	-0.6
SINGLE	BUYER				\$		

LOT	SIRE	DROP	MIC	SD	CV	CF%	BW
543	180043	MAY	19.2	3.5	18.4	99.5	93
TAG	PWT	YWT	YFAT	YEMD	YGFW	YFD	EBWR
201511	9.2	11.3	-0.1	0.3	22.7	-0.6	-0.8
TWIN	BUYER				\$		

LOT	SIRE	DROP	MIC	SD	CV	CF%	BW
544	182563	MAY	19.1	2.4	12.8	99.5	95
TAG	PWT	YWT	YFAT	YEMD	YGFW	YFD	EBWR
201679	10.2	12.2	0.1	0.8	22.2	-0.7	-0.3
SINGLE	BUYER				\$		

LOT	SIRE	DROP	MIC	SD	CV	CF%	BW
545	182563	MAY	19.3	2.5	12.8	99.8	96
TAG	PWT	YWT	YFAT	YEMD	YGFW	YFD	EBWR
201682	10.3	12.3	0.7	0.8	28.9	-0.3	0.3
SINGLE	BUYER				\$		

LOT	SIRE	DROP	MIC	SD	CV	CF%	BW
546	182504	MAY	20.5	2.9	14.2	99.8	102
TAG	PWT	YWT	YFAT	YEMD	YGFW	YFD	EBWR
200314	8.8	10.9	0.7	1.5	22.7	0	-0.8
SINGLE	BUYER				\$		

LOT	SIRE	DROP	MIC	SD	CV	CF%	BW
547	180043	MAY	20	2.9	14.6	99.8	104
TAG	PWT	YWT	YFAT	YEMD	YGFW	YFD	EBWR
201517	4.9	8.3	0.5	1.8	35.8	-0.2	-0.3
TWIN	BUYER				\$		

LOT	SIRE	DROP	MIC	SD	CV	CF%	BW
548	180027	MAY	18.4	2.1	11.6	100	100
TAG	PWT	YWT	YFAT	YEMD	YGFW	YFD	EBWR
201282	9.8	11.1	0.1	-0.3	15.6	-1.1	-0.3
SINGLE	BUYER				\$		

LOT	SIRE	DROP	MIC	SD	CV	CF%	BW
549	182563	MAY	18.7	2.6	14	99.2	99
TAG	PWT	YWT	YFAT	YEMD	YGFW	YFD	EBWR
201643	10.9	13.1	-0.5	-0.9	30.7	-0.8	0.2
SINGLE	BUYER				\$		

LOT	SIRE	DROP	MIC	SD	CV	CF%	BW
550	182504	MAY	19.4	2.9	15.1	99.2	99
TAG	PWT	YWT	YFAT	YEMD	YGFW	YFD	EBWR
200387	7.7	10.1	-0.4	0.1	32.3	-0.8	-0.4
TWIN	BUYER				\$		

PARTNERS IN OUR SUCCESS

 <p>CULLEN MARKETING</p>		
		
		
<p>Fiona Myers</p>		



Photographed from Left to Right: Hugh Browning, Joseph Kerin, Nigel Kerin, Dave Kiel, Matt Letcher, Brett Kerin



“Intelligence is
the ability to adapt
to change”

- Stephen Hawking

You're invited - 365 days a year - to scrutinise
our entire business, our management, our livestock
and our investments into the Merino industry.

kerinag@bigpond.com

Nigel: 0427 464 070

Brett: 0427 861 938

Karuga Park, 1217 Bournewood Road,
Yeoval NSW 2868

