



HICKS BEEF BULL SALE



Wednesday 1st September, 2021
1.00pm HOLBROOK

SALE VIDEOS
www.hicksbeef.com.au
www.auctionsplus.com.au



LOT 48 ABC Q933



LOT 51 ABC Q1244



LOT 53 ABC R927



LOT 54 ABC R795



LOT 63 HICKS HENRY Q51



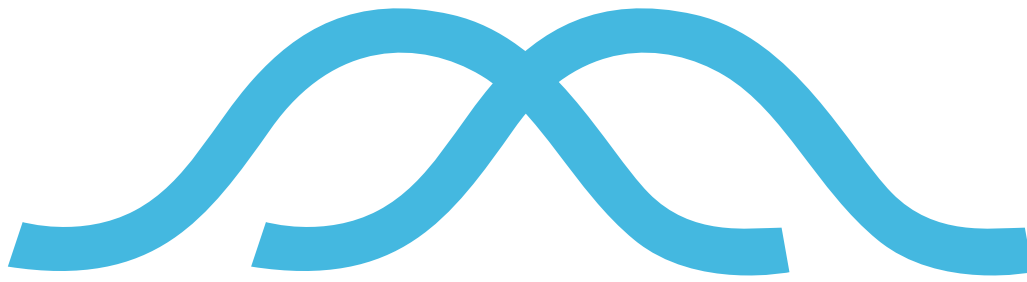
LOT 65 HICKS PROFIT BUILDER Q93 ET



LOT 73 HICKS HENRY Q10



LOT 80 HICKS MARBLE BAR Q165



HICKS BEEF BULL SALE

Wednesday 1st September, 2021

Sale Commences: 1.00pm
Inspections from 10.00am

Auction in the sale barn with video presentation of each lot. All lots will be penned for your inspection on sale day. We encourage you to call and arrange an inspection prior to sale day.

The Hicks Beef Bull Sale will be conducted under the current COVID-19 protocols.

62 Australian Beef Composite Bulls
19 Hicks Red Angus Bulls

Andrew Hicks
M: 0427 147 258

Tom Hicks
M: 0448 796 124

Email: tom@hicksbeef.com.au or aahicks@bigpond.com
Website: www.hicksbeef.com.au (visit for link to video of sale bulls)



This sale is interfaced with AuctionsPlus

Our sale is conducted live on line in real time; remote bidders can bid on computers at their location. The remote bid is immediately transferred to the auction ring.

Bidding is only available to registered AuctionsPlus users

You must register at least 24 hours prior to sale with AuctionsPlus.

Phone: 02 9262 4222 W: www.auctionsplus.com.au



Phil Gledhill 0407 078 094
Jenni O'Sullivan 0428 222 080

2% REBATE
to Outside Agents

We have poor mobile phone reception at our sale ring. Please call Phil from Elders to organise phone bidding.

RED ANGUS GROUP BREEDPLAN

ESTIMATED BREEDING VALUES (EBVs) The EBV is the best estimate of an animal's genetic merit for that trait.

ACCURACY: Accuracy is based on the amount of performance information available on the animal and its close relatives - particularly the number of progeny analysed. The higher the accuracy value the lower the likelihood of change in the animal's EBV as more information is analysed for that animal or its relatives. Even though an EBV with a low accuracy may change in the future, it is still the best estimate of an animal's genetic merit for that trait.

Gestation Length EBV (days) is an estimate of the time from conception to the birth of the calf and is based on ASI and hand mating records. Lower (negative) GL EBVs indicate shorter gestation length and therefore easier calving and increased growth after birth.

Birth Weight EBV (kg) is based on the measured birth weight of progeny, adjusted for dam age. The lower the value the lighter the calf at birth and the lower the likelihood of a difficult birth. This is particularly important when selecting sires for use over heifers.

200-Day Growth EBV (kg) is calculated from the weight of progeny taken between 80 and 300 days of age. Values are adjusted to 200 days and for age of dam. This EBV is the best single estimate of an animal's genetic merit for growth to early ages.

400-Day Weight EBV (kg) is calculated from the weight of progeny taken between 301 and 500 days of age, adjusted to 400 days and for age of dam. This EBV is the best single estimate of an animal's genetic merit for yearling weight.

600-Day Weight EBV (kg) is calculated from the weight of progeny taken between 501 and 900 days of age, adjusted to 600 days and for age of dam. This EBV is the best single estimate of an animal's genetic merit for growth beyond yearling age.

Mature Cow Weight EBV (kg) is based on the cow weight when the calf is weighed for weaning, adjusted to 5 years of age. This EBV is an estimate of the genetic difference in cow weight at 5 years of age and is an indicator of growth at later ages and potential feed maintenance requirements of the females in the breeding herd. Steer breeders wishing to grow animals out to a larger weight may also use the Mature Cow Weight EBV.

Milk EBV (kg) is an estimate of an animal's milking ability. For sires, this EBV indicates the effect of the daughter's milking ability, inherited from the sire, on the 200-day weights of her calves. For dams, it indicates her milking ability.

Scrotal Size EBV (cm) This EBV is an estimate of an animal's genetic merit for scrotal size. There is also a small negative correlation with age of puberty in female progeny and therefore selection for increased scrotal size will result in reduced age at calving of female progeny.

Carcase Weight EBV (kg) is based on abattoir carcass records and is an indicator of the genetic differences in carcass weight at the standard age of 650 days.

Eye Muscle Area EBV (sq cm) This EBV estimates genetic differences in eye muscle area at the 12/13th rib site of a 300 kg dressed carcass. More positive EBVs indicate better muscling on animals. Sires with relatively higher EMA EBVs are expected to produce better-muscled and higher percentage yielding progeny at the same carcass weight than will sires with lower EMA EBVs.

Rib Fat and Rump Fat EBVs (mm) are calculated from measurements of subcutaneous fat depth at the 12/13th rib site and the P8 rump site and are adjusted to a standard 300 kg carcass. These EBVs are indicators of the genetic differences in fat distribution on a standard 300 kg carcass. Sires with low, or negative, fat EBVs are expected to produce leaner progeny at any particular carcass weight than will sires with higher EBVs.

Retail Beef Yield EBV (%) indicates genetic differences between animals for retail yield percentage in a standard 300 kg carcass. Sires with larger EBVs are expected to produce progeny with higher yielding carcasses.

Intramuscular Fat EBV (%) is an estimate of the genetic difference in the percentage of intramuscular fat at the 12/13th rib site in a 300 kg carcass. Depending on market targets, larger more positive values are generally more favourable.

For further information please contact the Red Angus Society or Red Angus BREEDPLAN.



Beef Class Structural Assessment System

Structural problems in cattle have a substantial effect on both the reproductive and growth performance of a beef herd. It is widely recognised that structural problems in sires have detrimental effects on conception rates, calving patterns and thus profitability. Similarly, females with inadequate structural characteristics are more prone to weaning lighter calves or conceiving later in the breeding season than their more functional counterparts. These structural problems are filtered through the supply chain resulting in reduced income for the producer, feedlot and thus reducing the overall productivity of the Australian Beef Industry.

Over the past decade, use of the Beef Class Structural Assessment System in the seedstock industry has produced a marked improvement in herds which have shown commitment to using the information appropriately. Through these dedicated breeders, there has been a flow on affect of structural improvement through out all sectors of the beef cattle industry.

Jim Green and Liam Cardile of 'BEEFXCEL' service many of the leading seedstock herds in Australia. 'BEEFXCEL' is not involved in any genetic marketing or specific breeding advice and therefore has no conflict of interests to influence their stock appraisal. The integrity of the structural data provided by 'BEEFXCEL' is recognised throughout the industry as Jim and Liam are fully INDEPENDENT assessors.

HICKS BEEF STRUCTURAL PROGRAM: Since 2003 Hicks Beef have used the services of BEEFXCEL to assess the structure of all sale bulls. The Spring 2021 Hicks Beef Sale Bulls have been independently structurally assessed to maximise the quality of stock on offer. Any animals deemed inadequate have been removed from the sale draft. The Hicks Beef sale bulls were assessed by **Liam Cardile** of LRC Livestock on 26/05/2021. The composite bulls scrotal circumference measurement was taken on 10/09/2020. Please note the yearling bulls were assessed and scrotal circumference measurement was taken on 01/07/2021.

How to Use The Beef Class Structural Assessment System

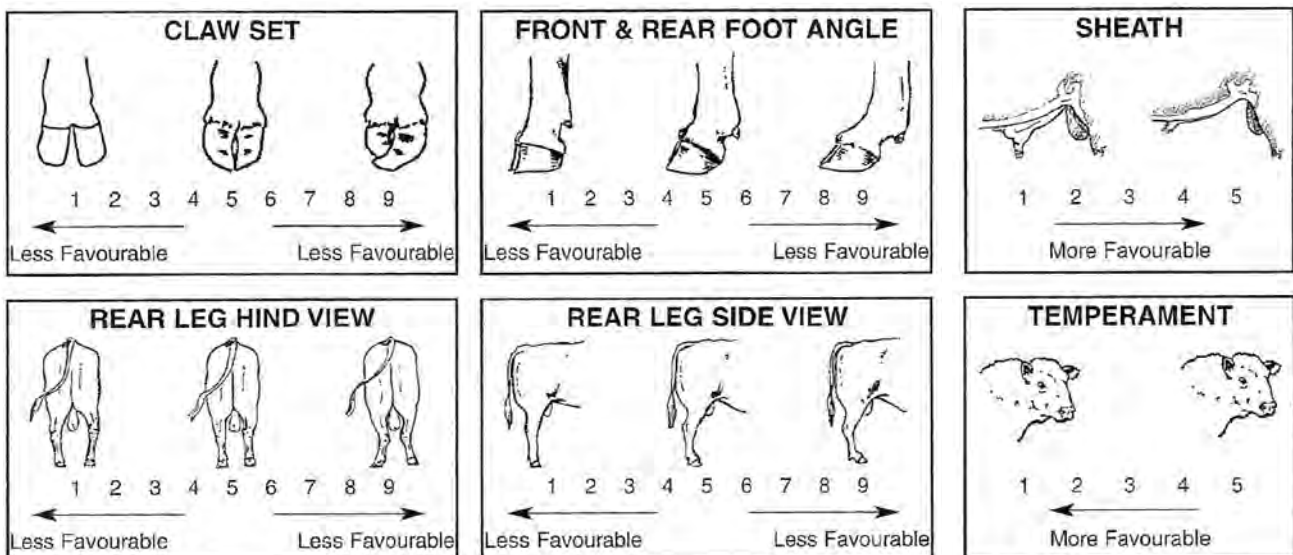
The Beef Class Structural Assessment System uses a 1-9 scoring system:

- A score of **5** is ideal (Note: Except for Temperament where a Score of 1 is ideal);
- A score of **4 or 6** shows slight variation from ideal, but this indicates most animals. An animal scoring 4 or 6 would be acceptable in any breeding program;
- A score of **3 or 7** shows greater variation but would be acceptable in most commercial programs.

However, seedstock producers should be vigilant and understand that this score indicates greater variation from ideal;

- A score of **2 or 8** are low scoring animals and should be looked at closely before purchasing;
- A score of **1 or 9** should not be catalogued and are considered culls.

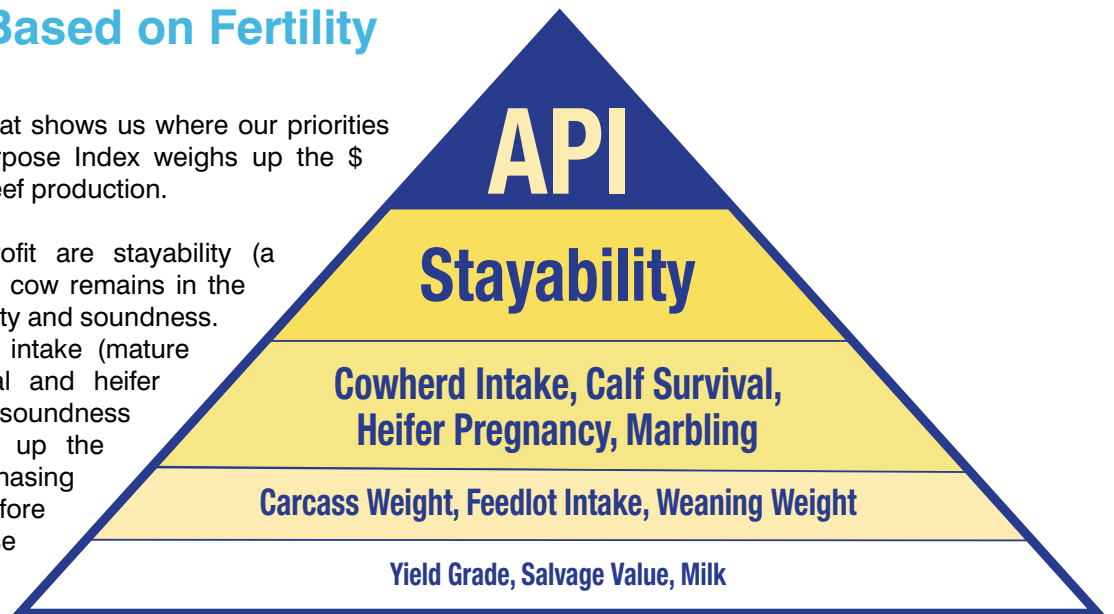
Liam Cardile on 0409 572 570



API – Profit Based on Fertility

API – the profit index that shows us where our priorities should be. The All Purpose Index weighs up the \$ inputs and outputs of beef production.

The big drivers of profit are stayability (a measure of how long a cow remains in the herd) a measure of fertility and soundness. Followed by cow herd intake (mature cow size), calf survival and heifer pregnancy. Yes, fertility, soundness and live calves make up the priority for breeders chasing higher returns, before weaning weight, carcass weight and feedlot intake.



HICKS BEEF GUARANTEE - Nothing left to chance Genomically Enhanced EPDs

- All sale bulls and females are assessed on one of the world's most advanced performance programs in the world with IGS - International Genetic Solutions
- All figures; both dams, sires and individuals are genomically enhanced, with DNA verifying parentage and improving the accuracy of the performance figures.

The DNA test is like knowing

- 15 Calving Ease Scores
- 21 Birth Weight
- 22 Weaning Weights
- 24 Yearling Weights
- 25 Daughters Records for Stayability
- 6 Carcass Weights
- 8 Marbling Scores
- 5 Rib Eye Measurements

- Independent veterinarian breeding soundness checks by the industry leading Holbrook Veterinary Clinic.
- Independently assessed for structural soundness by Liam Cardile, LRC Livestock, one of Australia's most experienced stock assessors.

- All bulls measured for all traits, birth, weaning, yearling, carcass scanned, temperament.
- All females on Total Herd Enrolment, all measurable traits recorded.
- Producing bulls in optimum condition for their first joining season is our priority.

We keep our bulls on a steady plane of nutrition, with a high roughage, silage based ration.

- All bulls vaccinated with Vibrovax, Ultravac 7 in 1 and Pestiguard
- All bulls tested free for pesti virus
- Backed by Hicks guarantee

Vet Check Information

All bulls presented in the auction have been fertility tested by the Holbrook Veterinary Clinic. They have passed an examination of their reproductive tract, which includes a testicular palpation, internal reproductive organ palpation and penis check.

General health and structure are part of the course for this veterinary examination. Service ability testing and semen assessment have not been performed and we encourage all purchases to integrate their new bulls into the risk mitigation strategy that they employ back home.



QUICK GUIDE TO EPDS



CE
Calving Ease

- 375,000+ animals recorded annually
- 500 Sires progeny tested (now 60-70 per year)
- 35,000 matings on Angus Heifers (progeny tested)

BW
Birth Weight

MM
Maternal Milk

DOC
Docility

CW
Carcass Weight

YG
Yield Grade
(Lower ranks higher on percentile table)

API
All Purpose Index

(Dollars per cow exposed in a self replacing herd bred to both Angus heifers and mature cows. Great economic index based on the production system)

TI
Terminal Index

(Dollars per cow exposed under a Terminal Sire scenario)

CE	BW	WW	YW	ADG	MCE	MM	MWW	STAY	DOC	CWT	YG	MB	BF	REA	API	TI
12.2	0.1	52.6	68.8	0.19	11.2	19.3	45.2	15.4	11.2	29	-0.26	0.24	-0.04	0.64	123	59

WW
Weaning Weight
160 - 250 days

- 375,000+ animals recorded annually
- Progeny tested in 43 Feedlots

YW
Yearling Weight
330 - 440 days

ADG
Average Daily Gain
(Post Weaning Weight Gain)

MCE
Maternal Calving Ease
(Daughters calving ease as a heifer)

MWW
Maternal Weaning Weight
(Weaning weight due to growth and milk)

STAY
Stayability
(Percent of daughters remaining in the cow herd at 6 years of age)

MB
Marbling
(Based on actual marbling scores)

- 30 - 35,000 carcass scans per year
- 10,000 progeny test carcass recorded

BF
Back Fat
(Lower ranks higher on the percentile table)

REA
Rib Eye Area

2021 Multi Breed Percentile Table

%	API	TI	CE	BW	WW	PWG	YW	MCE	MLK	MWW	STY	DOC	CWT	YG	MRB	BF	REA	SF
1	178.77	97.37	20.1	-5.1	99.5	0.39	159	12	33.5	77.6	22.4	19	62.3	-0.5	0.89	-0.11	1.16	-0.5
2	171.17	94.97	18.9	-4.3	96.3	0.37	153.4	11.4	31.9	75.3	21.5	17.9	57.9	-0.47	0.79	-0.1	1.09	-0.48
3	167.33	93.41	18.3	-3.8	94.3	0.36	149.9	11	31	73.8	21	17.3	55.4	-0.45	0.74	-0.1	1.05	-0.47
4	164.45	92.25	17.9	-3.5	92.8	0.35	147.1	10.7	30.4	72.8	20.6	16.9	53.5	-0.43	0.7	-0.09	1.02	-0.46
5	162.1	91.37	17.4	-3.2	91.6	0.34	144.9	10.4	29.8	71.9	20.3	16.5	52.1	-0.42	0.67	-0.09	0.99	-0.45
10	154.39	88.13	16.1	-2.3	87.6	0.32	137.8	9.6	28.1	69.1	19.2	15.4	47.3	-0.38	0.57	-0.08	0.91	-0.42
15	149.32	85.94	15.3	-1.6	85	0.31	133.1	9	27	67.2	18.5	14.7	44.3	-0.35	0.51	-0.07	0.86	-0.41
20	145.52	84.25	14.7	-1.2	82.9	0.3	129.5	8.6	26.1	65.8	17.9	14.2	41.9	-0.32	0.47	-0.07	0.82	-0.39
25	142.31	82.78	14.1	-0.8	81.2	0.29	126.4	8.2	25.4	64.5	17.4	13.7	40	-0.3	0.43	-0.06	0.78	-0.38
30	139.36	81.45	13.7	-0.5	79.6	0.28	123.7	7.9	24.7	63.4	17	13.2	38.1	-0.28	0.4	-0.06	0.75	-0.37
35	136.57	80.25	13.2	-0.2	78.2	0.27	121.3	7.6	24.2	62.4	16.6	12.8	36.5	-0.27	0.37	-0.05	0.72	-0.36
40	134.07	79.11	12.9	0.1	76.9	0.26	119	7.3	23.6	61.5	16.2	12.5	35	-0.25	0.34	-0.05	0.7	-0.35
45	131.67	78.03	12.5	0.3	75.7	0.26	116.8	7	23	60.6	15.8	12.1	33.5	-0.23	0.32	-0.05	0.67	-0.35
50	129.28	76.93	12.1	0.6	74.4	0.25	114.5	6.7	22.5	59.7	15.4	11.8	32.1	-0.22	0.29	-0.04	0.65	-0.34
55	126.92	75.85	11.8	0.8	73.2	0.24	112.3	6.5	22	58.8	14.9	11.5	30.6	-0.2	0.27	-0.04	0.62	-0.33
60	124.55	74.76	11.4	1	71.9	0.24	110.2	6.2	21.4	57.9	14.5	11.1	29.2	-0.18	0.24	-0.04	0.6	-0.32
65	121.98	73.61	11.1	1.3	70.7	0.23	108	5.9	20.8	56.9	14	10.8	27.8	-0.17	0.22	-0.03	0.57	-0.31
70	119.34	72.39	10.7	1.5	69.3	0.22	105.7	5.6	20.3	56	13.5	10.4	26.2	-0.15	0.2	-0.03	0.54	-0.3
75	116.63	71.15	10.2	1.8	67.9	0.22	103.2	5.3	19.7	55	12.9	10	24.6	-0.13	0.18	-0.02	0.51	-0.29
80	113.66	69.72	9.7	2.1	66.3	0.21	100.4	4.9	19	53.8	12.3	9.5	22.9	-0.11	0.15	-0.02	0.47	-0.28
85	110.24	68.08	9.1	2.4	64.4	0.2	97.2	4.5	18.2	52.5	11.5	8.9	20.8	-0.09	0.12	-0.01	0.43	-0.27
90	106.04	66.04	8.4	2.9	62.1	0.19	93.3	3.9	17.1	50.9	10.4	8	18.2	-0.06	0.09	-0.01	0.38	-0.25
95	99.82	63.14	7.2	3.6	58.4	0.17	87.3	3.1	15.6	48.4	9	6.5	14.1	-0.01	0.03	0	0.31	-0.23
Avg	129.28	76.93	12.1	0.6	74.4	0.25	114.5	6.7	22.5	59.7	15.4	11.8	32.1	-0.22	0.29	-0.04	0.65	-0.34

BLACK COMPOSITE SALE BULLS

BLACK COMPOSITE SALE BULLS

LOT 1 ABC Q1089



Born: **27/8/19** Color: **Homozygous Black** Brand: **Q1089**
Homozygous Poll

G A R PROPHET
ABC N845
 ABC MISS LUCKY C580 ET

HOOKS BEACON 56B
ABC N594
 ABC L1018



Q1089 covers the economic bases together with great structure. He offers great calving ease numbers and matching both top 5% with good muscle, growth and stayability. His pedigree reflects the best in the industry with GAR Prophet, one of the leading Angus sires with Hooks Beacon the top Simmental sire. Q1089 is attractive, thick and a high capacity bull sired by one of our outstanding homebred bulls.

CE	BW	WW	YW	MCE	MILK	MWW	STAY	DOC	CWT	YG	MARB	BF	REA	API	TI
17.7	-1.2	69	113.9	11.6	21.7	56.1	16.7	7.2	25.5	-0.26	0.67	-0.027	0.82	162.4	85.9
Structural Assessment															
F	Claw	Set	H	Front Angle		Rear Angle		Rear Legs Side		Rear Legs Hind		Sheath		Scr. Circ 10/09/20	
6			5	6		5		4		5		5		37	

Purchaser: \$:

LOT 2 ABC Q1021 ET



Born: **22/8/19** Color: **Black** Brand: **Q1021**
Poll

G A R PROGRESS
KCF APOLLO A340
 MISS T524 Y533

G A R PROPHET
ABC K507
 ABC H729



We think so highly of this bull we have used him in our herd. Q1021 is in the top 1% of the API profit index. A calving ease bull suitable for heifer joinings and great yearling growth with top 2% marbling. A wonderful outcross bull by Gelbvieh Bennett Apollo. This bull combines two of the leading GAR Gardiner Angus bulls, Progress and Prophet, with both Gelbvieh and Simmental sires.

CE	BW	WW	YW	MCE	MILK	MWW	STAY	DOC	CWT	YG	MARB	BF	REA	API	TI
15.5	-0.2	82	131.4	9.9	25.5	66.4	13.9	10.5	52.1	0.05	0.8	0.002	0.41	179.4	106.1
Structural Assessment															
F	Claw	Set	H	Front Angle		Rear Angle		Rear Legs Side		Rear Legs Hind		Sheath		Scr. Circ 10/09/20	
7			6	6		6		5		5		5		38	

Purchaser: \$:

LOT 3 ABC Q655



Born: **6/8/19** Color: **Homozygous Black** Brand: **Q655**
Homozygous Poll

G A R MOMENTUM
G A R DRIVE
 MAPLECREST BLACKCAP 3007

HOOKS BEACON 56B
ABC N609
 ABC L772



Q655 ranks in the top 1% of both economic indexes API and TI. His pedigree combines two world class bulls; GAR Drive and Hooks Beacon. Few bulls anywhere have growth with top carcass with top 2% REA and top 1% marbling. HICKS BEEF TO RETAIN SEMEN AND MARKETING RIGHTS.

CE	BW	WW	YW	MCE	MILK	MWW	STAY	DOC	CWT	YG	MARB	BF	REA	API	TI
14.2	-1.2	77.7	126.5	8.7	24.8	63.5	16.7	17.9	50.7	-0.19	0.89	-0.001	1.11	169.7	94.7
Structural Assessment															
F	Claw	Set	H	Front Angle		Rear Angle		Rear Legs Side		Rear Legs Hind		Sheath		Scr. Circ 10/09/20	
7			6	5		5		5		6		4		40	

Purchaser: \$:

LOT 4 ABC Q826



Born: **13/8/19** Color: **Homozygous Black** Brand: **Q826**
Homozygous Poll

HOOKS BEACON 56B ABC K500
ABC N513 ABC N714
 ABC L615 ABC K506



Q826 ranks at the top 3% of calving ease and top 3% marbling and top 1% maternal calving ease. He is suitable for heifer joinings and his daughters will calve easier. Q826's numbers are outstanding with a top 3% API which reflects his great balanced traits.

CE	BW	WW	YW	MCE	MILK	MWW	STAY	DOC	CWT	YG	MARB	BF	REA	API	TI
18.8	-3.2	68.8	116.3	12.4	22.3	56.7	16.1	11.6	31.7	-0.12	0.73	-0.002	0.65	165.7	87.8
Structural Assessment															
F	Claw	Set	H	Front Angle		Rear Angle		Rear Legs Side		Rear Legs Hind		Sheath		Scr. Circ 10/09/20	
6		6		6		6		5		5		4		38	

Purchaser: \$:

LOT 5 ABC Q1046



Born: **23/8/19** Color: **Homozygous Black** Brand: **Q1046**
Homozygous Poll

G A R PROPHET HOOKS BEACON 56B
ABC N845 ABC N586
 ABC MISS LUCKY C580 ET ABCL1007



Q1046 is a great young sire with balanced traits. He has great carcass data including top 2% for marbling and top 10% REA. Together with good yearling growth and top 4% for calving ease. The pedigree tell us why he is so outstanding as Prophet and Beacon are world class sires.

CE	BW	WW	YW	MCE	MILK	MWW	STAY	DOC	CWT	YG	MARB	BF	REA	API	TI
18.1	-0.8	78.1	132.4	11.7	20.6	59.6	15.2	10.6	37.9	-0.3	0.82	-0.039	0.99	172.7	95.3
Structural Assessment															
F	Claw	Set	H	Front Angle		Rear Angle		Rear Legs Side		Rear Legs Hind		Sheath		Scr. Circ 10/09/20	
6		6		5		4		4		5		4		36	

Purchaser: \$:

LOT 6 ABC Q1105



Born: **29/8/19** Color: **Black** Brand: **Q1105**
Homozygous Poll

G A R PROPHET WEBB BETTIS H026
ABC N845 ABC M804
 ABC MISS LUCKY C580 ET ABC J1148



An attractive bull with growth and carcass. Sired by our outstanding homebred sire N845 who is An ET calf from our top cow C580. Q1105 one of our high yearling weights. He has a slight pink eye scar from a calf.

CE	BW	WW	YW	MCE	MILK	MWW	STAY	DOC	CWT	YG	MARB	BF	REA	API	TI
12.3	1.4	81.6	136.8	7	22.4	63.1	12.6	13.2	47.2	-0.18	0.64	-0.044	0.72	142.6	87.4
Structural Assessment															
F	Claw	Set	H	Front Angle		Rear Angle		Rear Legs Side		Rear Legs Hind		Sheath		Scr. Circ 10/09/20	
6		7		6		7		5		5		5		40	

Purchaser: \$:

BLACK COMPOSITE SALE BULLS

BLACK COMPOSITE SALE BULLS

BLACK COMPOSITE SALE BULLS

LOT 7 ABC ABC Q1193



Born: **7/9/19** Color: **Heterozygous Black** Brand: **Q1193**

Homozygous Poll

HOOKS BEACON 56B
ABC N513
ABC L615

G A R SURE FIRE
ABC N544
ABC L595



Q1193 is an attractive bull with volume.
A calving ease bull that will improve carcass.
His pedigree combines two world recognised bulls: GAR Sure Fire who is very popular in the US and Beacon a leading performance Simmental sire.

CE	BW	WW	YW	MCE	MILK	MWW	STAY	DOC	CWT	YG	MARB	BF	REA	API	TI
16.1	-1	72.9	119.2	9.2	24	60.4	13.4	11.7	43.7	0	0.71	0.007	0.52	151.9	86.3
Structural Assessment															
F	Claw	Set	H	Front Angle		Rear Angle		Rear Legs Side		Rear Legs Hind		Sheath		Scr. Circ 10/09/20	
6		6		5		6		5		5		5		38	

Purchaser: \$:

LOT 8 ABC Q1224



Born: **17/9/19** Color: **Homozygous Black** Brand: **Q1224**

Homozygous Poll

G A R PROPHET
ABC N855
ABC H1102

CCR COWBOY CUT 5048Z
ABC M940
ABC H1068



Q1224 is a thick meaty bull with great numbers.
A bull suitable for heifers with top 10% calving ease.
His high stayability means that his daughters will stay in your herd longer.
He is docile and his progeny should be too with top 3% docility.

CE	BW	WW	YW	MCE	MILK	MWW	STAY	DOC	CWT	YG	MARB	BF	REA	API	TI
16.3	0.2	74.9	119.8	10.3	24.9	62.3	17.1	17.7	37.5	0.01	0.66	-0.013	0.24	154.6	84.4
Structural Assessment															
F	Claw	Set	H	Front Angle		Rear Angle		Rear Legs Side		Rear Legs Hind		Sheath		Scr. Circ 10/09/20	
6		6		5		6		5		5		4		36	

Purchaser: \$:

LOT 9 ABC Q703



Born: **8/8/19** Color: **Homozygous Black** Brand: **Q703**

Homozygous Poll

TRIPLE C SINGLETARY S3H
CCR COWBOY CUT 5048Z
CCR MS4045 TIME 7322T

XSIM SINGLETARY H2075Z
ABC M1115
ST PAULS DIR PEAR H425



Q703 is a growth bull with top 10% yearling growth and good temperament.
When we used this bull's sire years ago, we had no idea that he would produce so many attractive progeny with great numbers.

CE	BW	WW	YW	MCE	MILK	MWW	STAY	DOC	CWT	YG	MARB	BF	REA	API	TI
9.1	3	94.6	142.7	6.1	26.1	73.4	22.2	16	36.6	-0.26	0.49	-0.061	0.7	163.1	94.7
Structural Assessment															
F	Claw	Set	H	Front Angle		Rear Angle		Rear Legs Side		Rear Legs Hind		Sheath		Scr. Circ 10/09/20	
6		6		5		5		4		5		4		40	

Purchaser: \$:

RED COMPOSITE SALE BULLS

LOT 10 ABC Q813



Born: **12/8/19** Color: **Red** Brand: **Q813**

Homozygous Poll

WS PRIME TIME B6
HOOKS DELEGATE 64D
HOOKS ZAFIRAH 41Z

HICKS ABC INDEXER E538
ABC M999
ABC H804



Leachmans describe this bull's sire, Delegate, as the most complete Red Simmental in the industry. Delegate is from the same cow as Hooks Beacon. Q813 has top 10% yearling weight and good stayability so his daughters are more likely to stay in the herd, getting in calf every year.

CE	BW	WW	YW	MCE	MILK	MWW	STAY	DOC	CWT	YG	MARB	BF	REA	API	TI
13	0	85	137.6	9.2	26.2	68.6	17.6	12.3	42.4	-0.16	0.34	-0.038	0.62	143.9	85.4
Structural Assessment															
F	Claw	Set	H	Front Angle		Rear Angle		Rear Legs Side		Rear Legs Hind		Sheath		Scr. Circ 10/09/20	
5		6		5		5		4		5		4		36	

Purchaser: \$:

LOT 11 ABC Q740



Born: **10/8/19** Color: **Red** Brand: **Q740**

Homozygous Poll

WS PRIME TIME B6
HOOKS DELEGATE 64D
HOOKS ZAFIRAH 41Z

HICKS OB45 C720
ABC E1436
ABC C1110



Another great Delegate son, with plenty of weight and volume. Q740 has top 3% calving ease. Excellent for joining to heifers and his heifers should calve easy with his top 2% maternal calving ease.

CE	BW	WW	YW	MCE	MILK	MWW	STAY	DOC	CWT	YG	MARB	BF	REA	API	TI
18.6	-3.3	68.4	113.6	11.7	23.2	57.4	16	6.9	25.6	-0.19	0.46	-0.036	0.52	154.3	83
Structural Assessment															
F	Claw	Set	H	Front Angle		Rear Angle		Rear Legs Side		Rear Legs Hind		Sheath		Scr. Circ 10/09/20	
6		6		5		7		5		5		5		37	

Purchaser: \$:

LOT 12 ABC Q900



Born: **15/8/19** Color: **Red** Brand: **Q900**

Homozygous Poll

WS PRIME TIME B6
HOOKS DELEGATE 64D
HOOKS ZAFIRAH 41Z

HICKS XPO C507
ABC F1068
ABC D1132



A strong growth bull with outstanding yearling weight. His thickness and capacity reflect this weight. His dam is 11 years old. She is a great cow with 9 calves on the ground and the 10th due soon. Like all our cows they must have a calf every year from a 6 week joining.

CE	BW	WW	YW	MCE	MILK	MWW	STAY	DOC	CWT	YG	MARB	BF	REA	API	TI
9	3	88.8	146.7	6.4	30.2	74.5	15.6	9.7	46.2	-0.17	0.38	-0.042	0.68	133.7	85.2
Structural Assessment															
F	Claw	Set	H	Front Angle		Rear Angle		Rear Legs Side		Rear Legs Hind		Sheath		Scr. Circ 10/09/20	
6		6		5		6		5		5		4		33	

Purchaser: \$:

RED COMPOSITE SALE BULLS

RED COMPOSITE SALE BULLS

RED COMPOSITE SALE BULLS

LOT 13 ABC Q716 ET



Born: 9/8/19 Color: Red Brand: Q716

Homozygous Poll

ABC H754
ABC L547
ABC H963

G A R PROPHET
ABC K507
ABC H729



An embryo transplant son of our great K507 cow.
If you are looking for growth and marbling there are not too many red bulls anywhere to equal Q716.
Top 3% yearling weight, top 3% marbling, top 3% Terminal Index. Compared to 20,000,000 records world wide.

CE	BW	WW	YW	MCE	MILK	MWW	STAY	DOC	CWT	YG	MARB	BF	REA	API	TI
10.9	3.7	93.3	152.6	5.5	23	69.6	12	8.8	50.3	-0.1	0.77	-0.036	0.55	146.2	94.1
Structural Assessment															
F	Claw	Set	H	Front Angle		Rear Angle		Rear Legs Side		Rear Legs Hind		Sheath		Scr. Circ 10/09/20	
7			6	6		6		5		6		5		40	

Purchaser: \$:

LOT 14 ABC Q896



Born: 15/8/19 Color: Red Brand: Q896

Homozygous Poll

WS PRIME TIME B6
HOOKS DELEGATE 64D
HOOKS ZAFIRAH 41Z

WS BEEF MAKER R13
ABC K553
ABC H1416



A thick, red meat bull with great numbers.
Also a great pedigree, combining two of the top red bulls in the industry Delegate and Beef Maker.
These great sires are reflected in the balanced numbers of this bull. Sensible calving ease, very good growth and great carcass.

CE	BW	WW	YW	MCE	MILK	MWW	STAY	DOC	CWT	YG	MARB	BF	REA	API	TI
14.8	-0.2	77.6	125.9	9.2	25.3	64	17.3	12.4	39.5	-0.31	0.32	-0.072	0.78	142.8	81.5
Structural Assessment															
F	Claw	Set	H	Front Angle		Rear Angle		Rear Legs Side		Rear Legs Hind		Sheath		Scr. Circ 10/09/20	
6			5	5		5		5		5		5		41	

Purchaser: \$:

LOT 15 ABC Q897



Born: 15/8/19 Color: Red Brand: Q897

Homozygous Poll

WS PRIME TIME B6
HOOKS DELEGATE 64D
HOOKS ZAFIRAH 41Z

HICKS XPO B530
ABC H1050
ABC F1219



This is a bull with great balanced numbers as reflected in his high All Purpose Index.
Should be very suitable to join to heifers.
High marbling and good stayability.
Q897 has not settled in with this group of bulls and seems to prefer a fight to a feed, but we believe he offers great genetic potential with his top 10% API. A Hicks Beef joining sire 2020.

CE	BW	WW	YW	MCE	MILK	MWW	STAY	DOC	CWT	YG	MARB	BF	REA	API	TI
17.1	-0.9	71.2	119	11.6	30.3	65.8	18.8	8.7	23.8	-0.16	0.55	-0.026	0.51	159.4	84.4
Structural Assessment															
F	Claw	Set	H	Front Angle		Rear Angle		Rear Legs Side		Rear Legs Hind		Sheath		Scr. Circ 10/09/20	
5			6	5		6		5		5		5		40	

Purchaser: \$:

LOT 16 ABC Q796



Born: **12/8/19** Color: **Red** Brand: **Q796**

Homozygous Poll

WS BEEF KING W107 ABC H791
WS ALL AROUND Z35 **ABC L1190**
 CDI MS HIGH ROLLER 3 ABC D148



An attractive, thick, meaty bull.
 We used WS AllAround, a black bull that carries a red gene, to bring some great traits to our red breeding program and Q796 is one of his good sons.
 A sensible top 30% calving ease with top 15% weaning weight.

CE	BW	WW	YW	MCE	MILK	MWW	STAY	DOC	CWT	YG	MARB	BF	REA	API	TI
13.9	0.3	84.6	129.6	6.8	21.9	64.2	18.3	9.2	29.8	-0.3	0.35	-0.06	0.73	145.6	84.9
Structural Assessment															
F	Claw	Set	H	Front Angle		Rear Angle		Rear Legs Side		Rear Legs Hind		Sheath		Scr. Circ 10/09/20	
6			6	6		6		5		5		5		40	

Purchaser: \$:

LOT 17 ABC Q746



Born: **10/8/19** Color: **Red** Brand: **Q746**

Homozygous Poll

WS PRIME TIME B6 ABC H914
HOOKS DELEGATE 64D **ABC L802**
 HOOKS ZAFIRAH 41Z ABC D1032



A thick moderate Delegate son, should be ideal for grass fattening or feedlot, with his excellent carcass numbers.
 Great for heifer joinings.
 Top 10% All Purpose Index reflects great balanced numbers.
 Hicks Beef joining sire 2020.

CE	BW	WW	YW	MCE	MILK	MWW	STAY	DOC	CWT	YG	MARB	BF	REA	API	TI
15.3	-0.1	72.2	120.9	10.5	27.2	63.2	15.1	9.9	26	-0.34	0.61	-0.073	0.72	153.4	86.1
Structural Assessment															
F	Claw	Set	H	Front Angle		Rear Angle		Rear Legs Side		Rear Legs Hind		Sheath		Scr. Circ 10/09/20	
6			6	6		6		4		5		5		38	

Purchaser: \$:

LOT 18 ABC Q547



Born: **26/7/19** Color: **Red** Brand: **Q547**

Homozygous Poll

WS PRIME TIME B6 ABC K503
HOOKS DELEGATE 64D **ABC N898**
 HOOKS ZAFIRAH 41Z ABC L510



Moderate, thick Delegate son.
 Top 20% calving ease should be suitable for heifer joinings.
 Top 20% marbling for great carcass.

CE	BW	WW	YW	MCE	MILK	MWW	STAY	DOC	CWT	YG	MARB	BF	REA	API	TI
15	-1	77.4	120.6	9.2	28.2	66.9	15.6	11.6	33.2	-0.21	0.47	-0.042	0.63	147.4	85.6
Structural Assessment															
F	Claw	Set	H	Front Angle		Rear Angle		Rear Legs Side		Rear Legs Hind		Sheath		Scr. Circ 10/09/20	
6			5	5		5		5		5		4		35	

Purchaser: \$:

RED COMPOSITE SALE BULLS

RED COMPOSITE SALE BULLS

LOT 19 ABC Q843



Born: **13/8/19** Color: **Red** Brand: **Q843**

Homozygous Poll

WS PRIME TIME B6
HOOKS DELEGATE 64D
 HOOKS ZAFIRAH 41Z

HICKS FUTURE DIRECTION Z589
HICKS C1054
 ABC A1358



Moderate and thick, with good stayability so his heifers should be sound and fertile. Q843 is from one of our great proven cows with 11 calves on our records, all from a 6 week joining period. High stayability means this bull's daughters continue on in your herd.

CE	BW	WW	YW	MCE	MILK	MWW	STAY	DOC	CWT	YG	MARB	BF	REA	API	TI
12.5	-0.2	73.7	116.8	8	25.5	62.3	17.5	16.3	29.4	-0.25	0.22	-0.051	0.64	131.9	75.8
Structural Assessment															
F Claw Set H		Front Angle		Rear Angle		Rear Legs Side		Rear Legs Hind		Sheath		Scr. Circ 10/09/20			
6	7	5		6		5		5		4		39			

Purchaser: \$:

LOT 20 ABC Q800



Born: **12/8/19** Color: **Red** Brand: **Q800**

Homozygous Poll

WS PRIME TIME B6
HOOKS DELEGATE 64D
 HOOKS ZAFIRAH 41Z

HICKS ADA G11
ABC K1040
 ABC H1046



A very attractive growth bull with plenty of thickness. Use on cows to boost yearling weights top 2%. Another strong Delegate son.

CE	BW	WW	YW	MCE	MILK	MWW	STAY	DOC	CWT	YG	MARB	BF	REA	API	TI
9.8	2.9	90.1	153.4	8.9	29.3	74.4	12.2	16	48.6	-0.15	0.15	-0.048	0.61	117	80.7
Structural Assessment															
F Claw Set H		Front Angle		Rear Angle		Rear Legs Side		Rear Legs Hind		Sheath		Scr. Circ 10/09/20			
6	6	5		5		5		5		4		37			

Purchaser: \$:

RED COMPOSITE SALE BULLS

BLACK COMPOSITE SALE BULLS

LOT 21 ABC Q1007



Born: **21/8/19** Color: **Homozygous Black** Brand: **Q1007**
Homozygous Poll

G A R PROPHET
ABC N845
 ABC MISS LUCKY C580 ET

KCF APOLLO A340
ABC N1003
 ABC B1162



Q1007 is an attractive thick red meat bull backed by top 3% API and top 2% marbling. Solid calving ease for heifers with top 3% calving ease. Sired by our outstanding homebred sire N845, combining our best Simmental cow with the great Prophet sire.

CE	BW	WW	YW	MCE	MILK	MWW	STAY	DOC	CWT	YG	MARB	BF	REA	API	TI		
18.8	-1.7	72.3	122.2	12.1	23.2	59.3	13.6	8.1	26.2	-0.19	0.85	-0.015	0.7	166.4	91.7		
Structural Assessment																	
F Claw Set H		Front Angle		Rear Angle		Rear Legs Side		Rear Legs Hind		Sheath		Scr. Circ 10/09/20					
5		5		5		6		5		6		5		40			

Purchaser: \$:

LOT 22 ABC Q598



Born: **31/7/19** Color: **Homozygous Black** Brand: **Q598**
Homozygous Poll

TE MANIA BERKLEY B1
RENNYLEA G420
 RENNYLEA E528

ABC L636
ABC N1172
 ABC J888



Q598 is an attractive Rennylea G420 son with great balanced numbers and API in top 2%. This bull is above top 1% for marbling. Top 10% for yearling growth. A great bull for increasing weight in your calves and taking carcass to the next level.

CE	BW	WW	YW	MCE	MILK	MWW	STAY	DOC	CWT	YG	MARB	BF	REA	API	TI
13.9	1.4	89	141.2	8.9	25.5	70	13.7	14.7	40.1	0.01	1.06	0.027	0.59	170.3	101.5
Structural Assessment															
F Claw Set H		Front Angle		Rear Angle		Rear Legs Side		Rear Legs Hind		Sheath		Scr. Circ 10/09/20			
7		6		6		5		5		5		40			

Purchaser: \$:

LOT 23 ABC Q939 ET



Born: **17/8/19** Color: **Homozygous Black** Brand: **Q939**
Homozygous Poll

G A R PROGRESS
G A R MOMENTUM
 G A R BIG EYE 1770

WEBB ENIGMA E323 (ET)
ABC H1102
 ABC-COOPER C580 ET



Q939 is an ET calf from a very successful flush. We've used 3 full brothers in our herd and a brother sold very well in the Autumn sale. A solid three dimensional bull with a top pedigree. He combines great calving ease figures and should be excellent for heifers. Also top 3% for marbling.

CE	BW	WW	YW	MCE	MILK	MWW	STAY	DOC	CWT	YG	MARB	BF	REA	API	TI
18.2	-1	70.4	114.6	7.5	21.6	56.7	17.1	12.5	36.6	-0.13	0.75	-0.02	0.6	164.1	86.3
Structural Assessment															
F Claw Set H		Front Angle		Rear Angle		Rear Legs Side		Rear Legs Hind		Sheath		Scr. Circ 10/09/20			
6		6		5		6		5		5		37			

Purchaser: \$:

BLACK COMPOSITE SALE BULLS

BLACK COMPOSITE SALE BULLS

BLACK COMPOSITE SALE BULLS

LOT 24 ABC Q642



Born: **2/8/19** Color: **Homozygous Black** Brand: **Q642**
Homozygous Poll

HOOKS SHEAR FORCE 38K G A R PROPHET
HOOKS BEACON 56B **ABC N938**
 HOOKS ZAFIRAH 41Z ABC H990



“Attractive, thick and docile” are my field notes.
 His numbers show a great carcass bull. If you want to compete in steer trials this may be your bull; it’s hard to get as much growth, muscle and marbling in the one package. This bull’s balanced numbers are reflected in his great API.

CE	BW	WW	YW	MCE	MILK	MWW	STAY	DOC	CWT	YG	MARB	BF	REA	API	TI
9.5	-1.4	81.2	125.4	4	25.3	65.9	17.8	9.5	49.4	-0.14	0.64	-0.007	0.89	155.6	91
Structural Assessment															
F	Claw	Set	H	Front Angle		Rear Angle		Rear Legs Side		Rear Legs Hind		Sheath		Scr. Circ 10/09/20	
6		6		5		6		5		6		5		39	

Purchaser: \$:

LOT 25 ABC Q983



Born: **19/8/19** Color: **Homozygous Black** Brand: **Q983**
Homozygous Poll

G A R PROPHET KCF APOLLO A340
ABC N845 **ABC N963**
 ABC MISS LUCKY C580 ET ABC H1318



Superb numbers back a very good bull.
 You don’t find many bulls around to equal this bull’s API profit index.
 He has extreme calving ease in top 1%.
 Marbling is also top 1%.

CE	BW	WW	YW	MCE	MILK	MWW	STAY	DOC	CWT	YG	MARB	BF	REA	API	TI
20.5	-3	63.1	105.1	12.9	22.1	53.6	14.4	7.8	27.3	-0.13	0.9	-0.016	0.53	170.3	88.2
Structural Assessment															
F	Claw	Set	H	Front Angle		Rear Angle		Rear Legs Side		Rear Legs Hind		Sheath		Scr. Circ 10/09/20	
7		6		6		6		5		5		4		32	

Purchaser: \$:

LOT 26 ABC Q760



Born: **11/8/19** Color: **Homozygous Black** Brand: **Q760**
Homozygous Poll

TRIPLE C SINGLETARY S3H XSIM SINGLETARY H2075Z
CCR COWBOY CUT 5048Z **ABC M1135**
 CCR MS4045 TIME 7322T ABC H507



Q760 is moderate and thick with great stayability.
 His sire Cowboy Cut has produced many attractive progeny backed by numbers.
 This bull’s balanced numbers are reflected in his top 10% API.

CE	BW	WW	YW	MCE	MILK	MWW	STAY	DOC	CWT	YG	MARB	BF	REA	API	TI
12.5	0.5	79.9	119	7.6	22.7	62.6	21.4	19.1	29.5	-0.21	0.58	-0.042	0.61	159.2	86.8
Structural Assessment															
F	Claw	Set	H	Front Angle		Rear Angle		Rear Legs Side		Rear Legs Hind		Sheath		Scr. Circ 10/09/20	
6		6		6		5		5		5		5		38	

Purchaser: \$:

LOT 27 ABC Q559



Born: **27/7/19** Color: **Black** Brand: **Q559**
Homozygous Poll

C R A BEXTOR 872 5205 608 ABC J952
G A R PROPHET ABC N1033
 G A R OBJECTIVE 1885 ABC D1148



If you want to put the great GAR Prophet into your herd, this is your chance. Prophet has been extensively used in many top performance breeding programs. Q559's figures, backed by genomic testing, suggest he is suitable for heifer joinings.

CE	BW	WW	YW	MCE	MILK	MWW	STAY	DOC	CWT	YG	MARB	BF	REA	API	TI
16	-0.3	76.3	119.8	10.3	21.6	59.7	13.7	9.9	28.5	0.03	0.66	0.015	0.28	148.4	85.4
Structural Assessment															
F Claw Set H		Front Angle		Rear Angle		Rear Legs Side		Rear Legs Hind		Sheath		Scr. Circ 10/09/20			
7	6	7	6	5	6	5	6	5	38						

Purchaser: \$:

LOT 28 ABC Q918 ET



Born: **16/8/19** Color: **Homozygous Black** Brand: **Q918**
Homozygous Poll

G A R PROGRESS WEBB ENIGMA E323 (ET)
G A R MOMENTUM ABC H1102
 G A R BIG EYE 1770 ABC-COOPER C580 ET



Q918 is an ET calf from our outstanding Simmental cow H1102. He is a moderate and thick bull with stunning numbers. Great calving ease for heifers.

CE	BW	WW	YW	MCE	MILK	MWW	STAY	DOC	CWT	YG	MARB	BF	REA	API	TI
18.2	-0.8	72.2	119.1	7.5	21.6	57.6	17.1	12.5	45.1	-0.07	0.71	-0.022	0.52	162.2	86
Structural Assessment															
F Claw Set H		Front Angle		Rear Angle		Rear Legs Side		Rear Legs Hind		Sheath		Scr. Circ 10/09/20			
6	6	5	6	6	5	3	41								

Purchaser: \$:

LOT 29 ABC Q1022 ET



Born: **22/8/19** Color: **Homozygous Black** Brand: **Q1022**
Homozygous Poll

G A R PROGRESS CCR COWBOY CUT 5048Z
G A R MOMENTUM XSIM MISS STRIKE L2067C
 G A R BIG EYE 1770 XSIM M LUCKY H2023



An ET calf from one of our selection from the Coolana dispersal. His sire GAR Momentum is one of the most proven bulls from the Gardiner Angus program. Q1022 has thickness and a great temperament together with top 5% API and top 2% for marbling.

CE	BW	WW	YW	MCE	MILK	MWW	STAY	DOC	CWT	YG	MARB	BF	REA	API	TI
13.7	1.3	80.8	123.5	4.9	20.5	60.8	17.4	16.9	43.5	-0.15	0.82	-0.021	0.76	161.3	90.6
Structural Assessment															
F Claw Set H		Front Angle		Rear Angle		Rear Legs Side		Rear Legs Hind		Sheath		Scr. Circ 10/09/20			
6	5	5	5	5	5	5	40								

Purchaser: \$:

BLACK COMPOSITE SALE BULLS

BLACK COMPOSITE SALE BULLS

LOT 30 ABC Q583



Born: **30/7/19** Color: **Homozygous Black** Brand: **Q583**

Homozygous Poll

G A R MOMENTUM HOOKS XAVIER 14X
G A R DRIVE ABC N777
 MAPLECREST BLACKCAP 3007 ABC J728



This Drive son has depth, capacity and thickness.
 Superb carcase numbers with top 1% marbling and top 10% REA.
 He combines one of the new stars GAR Drive with the strongly proven bloodlines of Hooks Xavier.

CE	BW	WW	YW	MCE	MILK	MWW	STAY	DOC	CWT	YG	MARB	BF	REA	API	TI
14.6	-2.5	72.3	120.1	7.4	23.5	59.6	16.1	8.8	42.1	-0.14	0.89	0.009	0.93	168.9	92.6
Structural Assessment															
F	Claw	Set	H	Front Angle		Rear Angle		Rear Legs Side		Rear Legs Hind		Sheath		Scr. Circ 10/09/20	
7		6		6		6		6		5		5		38	

Purchaser: \$:

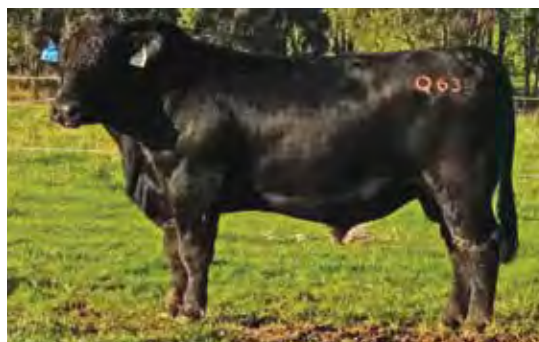
LOT 31 ABC Q633



Born: **3/8/19** Color: **Heterozygous Black** Brand: **Q633**

Homozygous Poll

HOOKS BLACK HAWK 50B HICKS XPO B530
HOOKS EAGLE 6E ABC E1159
 HOOKS CRYSTAL 1C ABC C1134



This bull is from a proven 12 year old cow who has had 10 calves all within a 6 week joining; 9 sons and 1 female who still remains in our program.
 Great carcase figures.

CE	BW	WW	YW	MCE	MILK	MWW	STAY	DOC	CWT	YG	MARB	BF	REA	API	TI
13.3	-1.3	77.5	125.2	8.6	20.3	59	16.7	15.5	24.4	-0.26	0.43	-0.025	0.8	142.8	82.7
Structural Assessment															
F	Claw	Set	H	Front Angle		Rear Angle		Rear Legs Side		Rear Legs Hind		Sheath		Scr. Circ 10/09/20	
6		6		5		6		5		5		5		40	

Purchaser: \$:

LOT 32 ABC Q589



Born: **30/7/19** Color: **Homozygous Black** Brand: **Q589**

Homozygous Poll

C R A BEXTOR 872 5205 608 ABC J952
G A R PROPHET ABC N1057
 G A R OBJECTIVE 1885 ABC H866



An attractive, thick Prophet son.
 Strong growth with excellent marbling.
 Solid profit indexes with top 10% API and top 4% TI.

CE	BW	WW	YW	MCE	MILK	MWW	STAY	DOC	CWT	YG	MARB	BF	REA	API	TI
14.5	0.7	85.6	135.2	9.8	24.6	67.4	12.7	11.2	43.5	0.09	0.76	0.019	0.32	152.1	92.3
Structural Assessment															
F	Claw	Set	H	Front Angle		Rear Angle		Rear Legs Side		Rear Legs Hind		Sheath		Scr. Circ 10/09/20	
6		7		6		7		5		5		5		39	

Purchaser: \$:

LOT 33 ABC Q860 ET



Born: **14/8/19** Color: **Homozygous Black** Brand: **Q860**
Homozygous Poll

TE MANIA BERKLEY B1
HAZELDEAN F1023
 HAZELDEAN B723

WEBB ENIGMA E323 (ET)
ABC H1102
 ABC-COOPER C580 ET



At the time of cataloguing we have not been able to get figures on this bull due to a DNA laboratory delay. EPDs will be available prior to sale. These figures are mid parent values. A thick and moderate bull. He is an ET calf where we joined the top proven marbling Angus sire with our highest performing Simmental cow. Q860's sire Hazeldean F1023 was a very sound footed bull who was identified in the Australian Angus Benchmarking program.

CE	BW	WW	YW	MCE	MILK	MWW	STAY	DOC	CWT	YG	MARB	BF	REA	API	TI
16.1	0.6	74.7	123.15	10.9	23.75	61.05	13.5	10.35	31.9	-0.09	0.5	-0.02	0.41	144.7	81.9
Structural Assessment															
F Claw Set H		Front Angle		Rear Angle		Rear Legs Side		Rear Legs Hind		Sheath		Scr. Circ 10/09/20			
5		6		5		6		5		5		4		40	

Purchaser: \$:

LOT 34 ABC Q1095



Born: **28/8/19** Color: **Black** Brand: **Q1095**
Homozygous Poll

HOOKS BEACON 56B
ABC N537
 ABC L1074

CCR BOULDER 1339A
ABC M901
 ABC G1171



Q1095 is a solid, thick beef bull. A pedigree that combines two of the best sires in the industry; Hook's Beacon and CCR Boulder. Reasonable calving ease, good growth and top carcass.

CE	BW	WW	YW	MCE	MILK	MWW	STAY	DOC	CWT	YG	MARB	BF	REA	API	TI
14	0.4	79.9	129.8	9.1	24.1	64	13.8	19.7	32.2	-0.3	0.52	-0.044	0.91	141.6	85.3
Structural Assessment															
F Claw Set H		Front Angle		Rear Angle		Rear Legs Side		Rear Legs Hind		Sheath		Scr. Circ 10/09/20			
6		6		5		6		5		5		4		36	

Purchaser: \$:

BLACK COMPOSITE SALE BULLS

RED COMPOSITE SALE BULLS

RED COMPOSITE SALE BULLS

LOT 35 ABC Q554



Born: 27/7/19 Color: Red Brand: Q554

Homozygous Poll

WS PRIME TIME B6
HOOKS DELEGATE 64D
 HOOKS ZAFIRAH 41Z

ANDRAS NEW DIRECTION R240
ABC N612
 ABC L1035



We love the Delegate progeny. They are thick, three dimensional cattle. This young bull is a great example of why we like Delegate. Q554 has great growth, weight gain and muscle REA.

CE	BW	WW	YW	MCE	MILK	MWW	STAY	DOC	CWT	YG	MARB	BF	REA	API	TI
14.2	-1	82.9	132.1	8.4	25.7	67.1	15.2	10.6	37.1	-0.25	0.32	-0.045	0.79	140.3	85.2
Structural Assessment															
F	Claw	Set	H	Front Angle		Rear Angle		Rear Legs Side		Rear Legs Hind		Sheath		Scr. Circ 10/09/20	
6			5	5		5		5		5		5		39	

Purchaser: \$:

LOT 36 ABC Q1082



Born: 27/8/19 Color: Red Brand: Q1082

Homozygous Poll

MILWILLAH MARBLE BAR J53
HICKS MARBLE BAR N30
 HICKS RED PATRICIA K28

ABC K576
ABC M1279
 ABC E1288



Few red bulls world wide would match the balanced numbers of this bull. Q1082 offers extreme calving ease for heifer joinings top 2%, and top 1% marbling. His API of 170 is top 2%. If you are looking for a heifer bull who will leave females that you can breed on from; and produce high marbling steers that you will want to keep and eat yourself, this is the bull.

CE	BW	WW	YW	MCE	MILK	MWW	STAY	DOC	CWT	YG	MARB	BF	REA	API	TI
19.2	-4.2	54.9	91.2	11.7	30.2	57.6	16.4	12.6	19.4	-0.07	0.9	-0.007	0.29	171.4	85.2
Structural Assessment															
F	Claw	Set	H	Front Angle		Rear Angle		Rear Legs Side		Rear Legs Hind		Sheath		Scr. Circ 10/09/20	
5			6	5		6		5		5		4		39	

Purchaser: \$:

LOT 37 ABC Q1183



Born: 6/9/19 Color: Red Brand: Q1183

Homozygous Poll

HOOKS BEACON 56B
ABC N578
 ABC L802

ABC K576
ABC N1067
 ABC H1308



Hicks Beef Spring 2020 joining sire. Used as a yearling to bring the Beacon line and marbling into our red herd. Q1183 has strong carcass traits. His API of 151 is top 15%, reflecting the well balanced, profitable numbers of this young sire.

CE	BW	WW	YW	MCE	MILK	MWW	STAY	DOC	CWT	YG	MARB	BF	REA	API	TI
12.2	1.4	76	119.1	7.6	26.2	64.1	16.9	11.4	26.6	-0.21	0.72	-0.02	0.73	151.6	85.9
Structural Assessment															
F	Claw	Set	H	Front Angle		Rear Angle		Rear Legs Side		Rear Legs Hind		Sheath		Scr. Circ 10/09/20	
6			6	6		6		5		6		5		36	

Purchaser: \$:

LOT 38 ABC Q530



Born: **25/7/19** Color: **Red** Brand: **Q530**

Homozygous Poll

WS PRIME TIME B6
HOOKS DELEGATE 64D
HOOKS ZAFIRAH 41Z

ABC K503
ABC N763
ABC L1155



A calving ease Delegate son.
One of the most attractive bulls in the catalogue.
Q530 offers calving ease for heifers, growth and carcase.

CE	BW	WW	YW	MCE	MILK	MWW	STAY	DOC	CWT	YG	MARB	BF	REA	API	TI
16.9	-1.8	80.3	127.5	10.9	28.8	68.9	16	7.7	40	-0.21	0.48	-0.044	0.7	154.4	89
Structural Assessment															
F	Claw	Set	H	Front Angle		Rear Angle		Rear Legs Side		Rear Legs Hind		Sheath		Scr. Circ 10/09/20	
7			7	6		7		5		5		4		40	

Purchaser: \$:

LOT 39 ABC Q980



Born: **19/8/19** Color: **Red** Brand: **Q980**

Homozygous Poll

KCF APOLLO A340
ABC N955
ABC F166

ANDRAS NEW DIRECTION R240
ABC N527
ABC L1187



A thick, meaty bull with guts and capacity.
Q980 offers an outcross pedigree with an increase in Gelbvieh content.
His All Purpose Index of 150 is top 15%, showing the great numbers backing this bull.

CE	BW	WW	YW	MCE	MILK	MWW	STAY	DOC	CWT	YG	MARB	BF	REA	API	TI
14.1	-0.9	67.4	113.1	8	24.4	58	14.8	11.5	32.9	-0.12	0.32	-0.012	0.57	150	86.8
Structural Assessment															
F	Claw	Set	H	Front Angle		Rear Angle		Rear Legs Side		Rear Legs Hind		Sheath		Scr. Circ 10/09/20	
7			6	6		5		4		5		4		34	

Purchaser: \$:

LOT 40 ABC Q647



Born: **5/8/19** Color: **Red** Brand: **Q647**

Homozygous Poll

WS PRIME TIME B6
HOOKS DELEGATE 64D
HOOKS ZAFIRAH 41Z

HICKS ABC INDEXER E538
ABC M1152
ABC F1245



A moderate grass fattening type, by the super sire Delegate.
Q647 should provide high satisfaction for use on heifers, top 4% calving ease and top 4% birth weight.

CE	BW	WW	YW	MCE	MILK	MWW	STAY	DOC	CWT	YG	MARB	BF	REA	API	TI
18.5	-3.8	68.8	112.3	12	25.7	60.1	19	11.4	24.8	-0.21	0.28	-0.047	0.5	150.8	79.4
Structural Assessment															
F	Claw	Set	H	Front Angle		Rear Angle		Rear Legs Side		Rear Legs Hind		Sheath		Scr. Circ 10/09/20	
7			6	6		5		4		5		5		39	

Purchaser: \$:

RED COMPOSITE SALE BULLS

RED COMPOSITE SALE BULLS

LOT 41 ABC Q1203



Born: 9/9/19 Color: Red Brand: Q1203

Homozygous Poll

GW PREDESTINED 701T ABC E1182
ABC K576 ABC J855
 ABC H874 ABC A1231



The sire of this bull, K576, requires special treatment to keep the condition off him before joining. We don't think this is a bad problem. Q1203 is a moderate beef bull and one of the thickest. His high stayability means his heifers should be fertile and sound.

CE	BW	WW	YW	MCE	MILK	MWW	STAY	DOC	CWT	YG	MARB	BF	REA	API	TI
12.2	1.4	71.3	106.6	5.3	26.9	62.6	20.4	15.1	27.6	-0.16	0.53	-0.037	0.45	144.7	77.6
Structural Assessment															
F	Claw	Set	H	Front Angle		Rear Angle		Rear Legs Side		Rear Legs Hind		Sheath		Scr. Circ 10/09/20	
5		6		5		6		5		5		4		36	

Purchaser: \$:

LOT 42 ABC Q637



Born: 4/8/19 Color: Red Brand: Q637

Homozygous Poll

BECKTON NEBULA P P707 LEACHMAN CADILLAC L025A
BROWN PREMIER X7876 ABC M544
 BROWN MS DESTINATION T7664 ABC K511



This thick, wide based bull is by Brown Premier, the high marbling Red Angus sire that impressed us when we saw him in the US. Top 15% marbling Top 25% Terminal Index We used Q637 in our Spring 2020 joining season.

CE	BW	WW	YW	MCE	MILK	MWW	STAY	DOC	CWT	YG	MARB	BF	REA	API	TI
13.7	-3.3	70.3	111.6	8.3	25.7	60.7	11.6	15.3	36.7	-0.05	0.56	-0.009	0.44	139.4	83.4
Structural Assessment															
F	Claw	Set	H	Front Angle		Rear Angle		Rear Legs Side		Rear Legs Hind		Sheath		Scr. Circ 10/09/20	
6		6		6		6		4		5		5		40	

Purchaser: \$:

LOT 43 ABC Q728



Born: 9/8/19 Color: Red Brand: Q728

Homozygous Poll

WS BEEF KING W107 ABC C625
CDI RIMROCK 325Z ABC G850
 CDI MS TOP GUN 5U ABC C1160



Rimrock is a US sire that has left us many attractive progeny. This is a high muscle, thick bull. We used this bull as a yearling in our Spring 2020 joining season.

CE	BW	WW	YW	MCE	MILK	MWW	STAY	DOC	CWT	YG	MARB	BF	REA	API	TI
11	2	75.4	105.2	7.4	22.9	60.6	16.2	8.1	4.5	-0.48	0.18	-0.083	0.79	120.5	72.9
Structural Assessment															
F	Claw	Set	H	Front Angle		Rear Angle		Rear Legs Side		Rear Legs Hind		Sheath		Scr. Circ 10/09/20	
7		6		6		6		5		5		4		38	

Purchaser: \$:

BLACK COMPOSITE SALE BULLS

LOT 44 ABC Q1222



Born: **17/9/19** Color: **Heterozygous Black** Brand: **Q1222**
Homozygous Poll

KCF APOLLO A340
ABC N955
 ABC F166

BROWN PREMIER X7876
ABC N562
 ABC L824



Fabulous outcross pedigree for black bulls.
 Q1222 is an all rounder bull with top 5% API and top 3% TI.
 With top 30% calving ease and top 35% yearling weight, he is what we call a curve bender (moderate birth and high growth).
 He has solid structure and is docile.

CE	BW	WW	YW	MCE	MILK	MWW	STAY	DOC	CWT	YG	MARB	BF	REA	API	TI
13.9	-0.8	74.4	123.9	8.6	26.6	63.7	15.5	8.2	35.2	-0.01	0.48	-0.003	0.34	161.7	94.5
Structural Assessment															
F	Claw	Set	H	Front Angle		Rear Angle		Rear Legs Side		Rear Legs Hind		Sheath		Scr. Circ 10/09/20	
6		6		5		5		5		5		5		37	

Purchaser: \$:

LOT 45 ABC Q945



Born: **17/8/19** Color: **Homozygous Black** Brand: **Q945**
Homozygous Poll

HOOKS SHEAR FORCE 38K
HOOKS BEACON 56B
 HOOKS ZAFIRAH 41Z

CCR COWBOY CUT 5048Z
XSIM MISS CHARM L2071C
 X SIM MISS L CHARM H2055



Q945 is a thick, carcass bull. Top 2% REA and top 10% marbling
 His API is top 4% and also top 2% for stayability. This bull is strong on many traits.

CE	BW	WW	YW	MCE	MILK	MWW	STAY	DOC	CWT	YG	MARB	BF	REA	API	TI
14.2	-0.5	78.8	115.6	9.7	28.9	68.2	21.4	14.2	32	-0.4	0.59	-0.049	1.17	163.9	89.2
Structural Assessment															
F	Claw	Set	H	Front Angle		Rear Angle		Rear Legs Side		Rear Legs Hind		Sheath		Scr. Circ 10/09/20	
6		6		5		5		4		5		4		36	

Purchaser: \$:

LOT 46 ABC Q566



Born: **28/7/19** Color: **Homozygous Black** Brand: **Q566**
Homozygous Poll

HOOKS SHEAR FORCE 38K
HOOKS BEACON 56B
 HOOKS ZAFIRAH 41Z

ABC L897
ABC N1123
 ABC J830



Hooks Beacon is a bull that has changed the Simmental breed. He increases calving ease, gives above average growth and combines muscle and marbling like no other.
 This Beacon son offers top 15% calving ease for heifers and top 15% marbling.

CE	BW	WW	YW	MCE	MILK	MWW	STAY	DOC	CWT	YG	MARB	BF	REA	API	TI
16	-2.3	70.6	110.3	10.1	25.3	60.5	19.1	9.7	36.4	-0.28	0.53	-0.031	0.98	159.2	84.8
Structural Assessment															
F	Claw	Set	H	Front Angle		Rear Angle		Rear Legs Side		Rear Legs Hind		Sheath		Scr. Circ 10/09/20	
6		6		5		6		5		5		5		40	

Purchaser: \$:

BLACK COMPOSITE SALE BULLS

BLACK COMPOSITE SALE BULLS

BLACK COMPOSITE SALE BULLS

LOT 47 ABC Q1040



Born: **23/8/19** Color: **Homozygous Black** Brand: **Q1040**

Homozygous Poll

G A R PROPHET ABC L900
ABC N845 ABC N1235
 ABC MISS LUCKY C580 ET ABC E1411



Q1040 is a sound and attractive bull with top 5% marbling.
 Excellent calving ease bull suitable for heifer joinings.

CE	BW	WW	YW	MCE	MILK	MWW	STAY	DOC	CWT	YG	MARB	BF	REA	API	TI
18.2	-1.8	62.6	105.3	11.2	16.3	47.6	13.5	14.9	23.7	-0.18	0.69	-0.035	0.48	152.5	80.9
Structural Assessment															
F Claw Set H		Front Angle		Rear Angle		Rear Legs Side		Rear Legs Hind		Sheath		Scr. Circ 10/09/20			
5 5		5		6		4		5		5		37			

Purchaser: \$:

LOT 48 ABC Q933



Born: **17/8/19** Color: **Black**

Brand: **Q933**

Homozygous Poll

HOOKS BEACON 56B CCR BOULDER 1339A
ABC N537 ABC M645
 ABC L1074 ABC H1192



An attractive heifer bull with top 1% calving ease and top 2% low birth weight.
 A sound Beacon grandson with muscle.

CE	BW	WW	YW	MCE	MILK	MWW	STAY	DOC	CWT	YG	MARB	BF	REA	API	TI
21.1	-4.9	60.9	98	12.6	21.9	52.3	16.4	22.8	28.2	-0.21	0.2	-0.024	0.73	139.2	72
Structural Assessment															
F Claw Set H		Front Angle		Rear Angle		Rear Legs Side		Rear Legs Hind		Sheath		Scr. Circ 10/09/20			
5 5		5		6		4		6		5		38			

Purchaser: \$:

LOT 49 ABC Q1152



Born: **2/9/19** Color: **Homozygous Black** Brand: **Q1152**

Homozygous Poll

G A R PROPHET HOOKS YELLOWSTONE
ABC N845 ABC M790
 ABC MISS LUCKY C580 ET PERT F45



A wide topped N845 son with well balanced numbers backed by an API in the top 15%.
 A moderate birth and top 20% calving ease so should be suitable for heifers.
 Q1152 has great carcass data with top 10% marbling.

CE	BW	WW	YW	MCE	MILK	MWW	STAY	DOC	CWT	YG	MARB	BF	REA	API	TI
14.9	-0.7	67	106.2	9.3	27.9	61.4	15	11.7	26.4	-0.28	0.6	-0.063	0.61	149.4	82.7
Structural Assessment															
F Claw Set H		Front Angle		Rear Angle		Rear Legs Side		Rear Legs Hind		Sheath		Scr. Circ 10/09/20			
5 5		5		6		5		5		4		34			

Purchaser: \$:

LOT 50 ABC Q1227



Born: **17/9/19** Color: **Homozygous Black** Brand: **Q1227**

Homozygous Poll

HOOKS BEACON 56B
ABC N537
ABC L1074

HICKS ABC INDEXER E538
ABC M1255
ABC F1202



A wide topped, high volume bull with great structure and temperament.
Calving ease is top 10% so should be suitable for heifers.

CE	BW	WW	YW	MCE	MILK	MWW	STAY	DOC	CWT	YG	MARB	BF	REA	API	TI
16.4	-1.1	68.5	108.9	9.6	23.2	57.4	16.2	18	27.7	-0.18	0.26	-0.031	0.56	135.7	74.7
Structural Assessment															
F Claw Set H		Front Angle		Rear Angle		Rear Legs Side		Rear Legs Hind		Sheath		Scr. Circ 10/09/20			
5	6	5	6	5	6	5	5	4	38						

Purchaser: \$:

LOT 51 ABC Q1244



Born: **25/9/19** Color: **Homozygous Black** Brand: **Q1244**

Homozygous Poll

HOOKS BEACON 56B
ABC N537
ABC L1074

ABC K595
ABC M1208
ABC H759



A moderate, sound Beacon grandson.
Top 20% calving ease with good growth.

CE	BW	WW	YW	MCE	MILK	MWW	STAY	DOC	CWT	YG	MARB	BF	REA	API	TI
15.1	0.2	78	123.3	9.5	23.5	62.5	13	20.6	30.7	-0.24	0.28	-0.022	0.86	126.4	77.7
Structural Assessment															
F Claw Set H		Front Angle		Rear Angle		Rear Legs Side		Rear Legs Hind		Sheath		Scr. Circ 10/09/20			
5	6	5	6	5	6	5	5	4	37						

Purchaser: \$:



BLACK COMPOSITE SALE BULLS



YEARLING BULLS

The offering of 11 black composite yearling bulls in this year's Spring Sale will allow for clients to purchase bulls with the best genetic gain of the herd, whilst maintaining excellent type and soundness. Yearling bulls are an integral part of the Hicks Beef sire list with approximately 20 used each year in our stud and commercial herds.

In order to harness the potential of yearling bulls there are important management requirements:

- Yearling bulls can work alongside other yearling bulls or an older bull in a mob of cows.
- Ensure they have adequate feed and are on a rising plane of nutrition
- We recommend joining one yearling bull to about 30- 35 cows for mating load.
- It critical that condition is monitored over the joining period with a condition score of below 2 beginning to impact reproductive organs.
- It is important to monitor your working bull at least once every 2 days in the first cycle (21 days) and twice weekly thereafter to ensure they are successfully mounting cows, that they look in good condition and they are not lame
- After joining a yearling bull should be placed on good quality feed with plenty of space until the next joining period to ensure a long and fulfilled working life.

We encourage anyone interested in purchasing a yearling bull with questions to contact the Hicks Beef team.

BLACK COMPOSITE YEARLING BULLS

LOT 52 ABC R678



Born: **3/8/20** Color: **Homozygous Black** Brand: **R678**
Homozygous Poll

S D S ALUMNI 115X
GIBBS 3133A MOUNTAINEER
 GIBBS 9024W BLACKCAP 7067T

XSIM SINGLETARY H2075Z
ABC M1135
 ABC H507



Some clients have asked for yearling bulls and here they are. Correct management is very important, please follow our guidelines.
 This docile Mountaineer son stacks some solid numbers together with a top 10% API. Moderate calving ease bull top 25%.
 We used Mountaineer for his sound numbers, great phenotype and outcross pedigree.

CE	BW	WW	YW	MCE	MILK	MWW	STAY	DOC	CWT	YG	MARB	BF	REA	API	TI
14.3	-1.1	68.2	113.1	8	24.4	58.4	17.4	15	23.4	-0.12	0.73	-0.033	0.31	157.8	84.4
Structural Assessment															
F	Claw	Set	H	Front Angle		Rear Angle		Rear Legs Side		Rear Legs Hind		Sheath		Scr. Circ 01/07/21	
6			6	5		6		5		5		4		41	

Purchaser: \$:

LOT 53 ABC R927



Born: **11/8/20** Color: **Homozygous Black** Brand: **R927**
Homozygous Poll

CCR COWBOY CUT 5048Z
WS PROCLAMATION E202
 WS MISS SUGAR C4

XSIM SINGLETARY H2075Z
ABC M1242
 ABC F1298



An attractive, thick bull with width and capacity.
 By Proclamation, a very attractive growth bull, very popular in the US.
 R927 has strong numbers and should be used on cows to improve growth and carcass.

CE	BW	WW	YW	MCE	MILK	MWW	STAY	DOC	CWT	YG	MARB	BF	REA	API	TI
8.4	2.1	87.8	135	6.6	25.9	69.8	18.8	14.2	41.5	-0.26	0.73	-0.053	0.8	158.1	93.5
Structural Assessment															
F	Claw	Set	H	Front Angle		Rear Angle		Rear Legs Side		Rear Legs Hind		Sheath		Scr. Circ 01/07/21	
6			5	5		5		5		5		5		38	

Purchaser: \$:

LOT 54 ABC R795



Born: **7/8/20** Color: **Homozygous Black** Brand: **R795**
Homozygous Poll

HOOKS SHEAR FORCE 38K
HOOKS BEACON 56B
 HOOKS ZAFIRAH 41Z

ASR AUGUSTUS Z2165
ABC L882
 PERT F45



A great Beacon son, typical of his sire with great calving ease of top 10%, and muscle of top 1%; and built like a tank.
 High stayability suggests his heifers will remain in the herd for a long time with superior fertility and soundness.
 API top 15%, shows from calving ease, growth and carcass this bull has it covered.

CE	BW	WW	YW	MCE	MILK	MWW	STAY	DOC	CWT	YG	MARB	BF	REA	API	TI
16.9	-3.1	74.5	113.4	10.4	26.5	63.7	19	12.2	33.4	-0.54	0.32	-0.082	1.34	152.5	84
Structural Assessment															
F	Claw	Set	H	Front Angle		Rear Angle		Rear Legs Side		Rear Legs Hind		Sheath		Scr. Circ 01/07/21	
5			6	5		5		5		5		4		39	

Purchaser: \$:

BLACK COMPOSITE YEARLING BULLS

BLACK COMPOSITE YEARLING BULLS

BLACK COMPOSITE YEARLING BULLS

LOT 55 ABC R839



Born: **8/8/20** Color: **Homozygous Black** Brand: **R839**

Homozygous Poll

S D S ALUMNI 115X
GIBBS 3133A MOUNTAINEER
 GIBBS 9024W BLACKCAP 7067T

GW PREMIUM BEEF 021TS
ABC M546
 ABC K908



Another great Mountaineer son.
 A very good yearling bull for heifer matings with a calving ease of top 2%.
 Strong yearling growth top 35%.
 Great marbling top 10%.
 Profit Index API top 5%.

CE	BW	WW	YW	MCE	MILK	MWW	STAY	DOC	CWT	YG	MARB	BF	REA	API	TI
19.3	-2.8	72.5	123.3	9.7	21.7	57.9	15.1	12.7	37	-0.11	0.64	-0.039	0.39	160.5	87.4
Structural Assessment															
F	Claw	Set	H	Front Angle		Rear Angle		Rear Legs Side		Rear Legs Hind		Sheath		Scr. Circ 01/07/21	
6			5	5		4		4		5		5		37	

Purchaser: \$:

LOT 56 ABC R936



Born: **11/8/20** Color: **Homozygous Black** Brand: **R936**

Homozygous Poll

CCR COWBOY CUT 5048Z
TJ ROOSEVELT 366E
 TJ 99A

ST PAULS GARY LYON G236
ABC L720
 ABC J1061



Another new sire, Roosevelt, who has proven to be a good growth bull with strong stayability. Also with a great phenotype, where R936 gets his good looks.
 Offering top 10% growth for weaning and yearling.
 Top 30% marbling.
 With the length and capacity for cow joining.

CE	BW	WW	YW	MCE	MILK	MWW	STAY	DOC	CWT	YG	MARB	BF	REA	API	TI
11.6	2.5	87.7	136.4	5.7	29.6	73.4	17.8	10.1	38.5	-0.15	0.4	-0.028	0.62	141.5	85.4
Structural Assessment															
F	Claw	Set	H	Front Angle		Rear Angle		Rear Legs Side		Rear Legs Hind		Sheath		Scr. Circ 01/07/21	
5			6	5		5		5		5		4		43	

Purchaser: \$:

LOT 57 ABC R934



Born: **11/8/20** Color: **Homozygous Black** Brand: **R934**

Homozygous Poll

LEACHMAN ADVANCE 5019A
LCOC ACCELERATE X166D
 GRUBL STABILIZER AX103

ABC H684
ABC L672
 ABC H898



Something a little different, the sire is Leachman Accelerate, a moderate, thick made bull.
 R934 is a docile bull combining reasonable calving ease top 20%, with top 15% yearling weight. We used to think these sorts of figures were impossible.
 Top 10% marbling.
 Top 20% API.

CE	BW	WW	YW	MCE	MILK	MWW	STAY	DOC	CWT	YG	MARB	BF	REA	API	TI
15.2	1.1	84.7	134.9	9.2	20	62.3	13.5	20.9	41.1	-0.14	0.58	-0.036	0.58	145.1	87.6
Structural Assessment															
F	Claw	Set	H	Front Angle		Rear Angle		Rear Legs Side		Rear Legs Hind		Sheath		Scr. Circ 01/07/21	
5			6	5		5		4		5		4		37	

Purchaser: \$:

LOT 58 ABC R1007



Born: **15/8/20** Color: **Black** Brand: **R1007**

Homozygous Poll

S D S ALUMNI 115X
GIBBS 3133A MOUNTAINEER
 GIBBS 9024W BLACKCAP 7067T

G A R PROPHET
ABC N868 ET
 ST PAULS SURE OLIE LUCY H430



Another curve bending son of Mountaineer, with a calving ease in the top 20% and yearling weight top 20%. Suitable for heifers but will still produce calves with good weights at weaning and yearling. Docile and with great structure. Marbling top 3%. Great balanced numbers reflected in top 10% API and TI.

CE	BW	WW	YW	MCE	MILK	MWW	STAY	DOC	CWT	YG	MARB	BF	REA	API	TI
15.3	0.1	79.7	130.3	8.8	25.5	65.3	14.8	17.4	36	-0.07	0.74	-0.027	0.37	156.6	90.2
Structural Assessment															
F	Claw	Set	H	Front Angle		Rear Angle		Rear Legs Side		Rear Legs Hind		Sheath		Scr. Circ 01/07/21	
5		5		5		6		5		6		5		39.5	

Purchaser: \$:

LOT 59 ABC R830



Born: **8/8/20** Color: **Homozygous Black** Brand: **R830**

Homozygous Poll

TRIPLE C SINGLETARY S3H
CCR COWBOY CUT 5048Z
 CCR MS4045 TIME 7322T

TE MANIA EMPEROR E343
ABC L502
 ABC J768



Using the best cattle we can find world wide. Cowboy Cut is one of the most popular US Simmental sires. And from a dam by the most proven Australian Angus sire Te Mania Emperor. R830 is a growth bull with stayability and marbling. Top 15% API (profit index).

CE	BW	WW	YW	MCE	MILK	MWW	STAY	DOC	CWT	YG	MARB	BF	REA	API	TI
13.6	0.5	82.3	124.8	8.8	26.1	67.2	19	17.3	33.1	-0.14	0.42	-0.026	0.56	148	84.6
Structural Assessment															
F	Claw	Set	H	Front Angle		Rear Angle		Rear Legs Side		Rear Legs Hind		Sheath		Scr. Circ 01/07/21	
6		6		5		5		5		5		5		40	

Purchaser: \$:

LOT 60 ABC R990



Born: **14/8/20** Color: **Heterozygous Black** Brand: **R990**

Homozygous Poll

WS BEEF KING W107
WS ALL AROUND Z35
 CDI MS HIGH ROLLER 3

HICKS Y573
ABC F112
 ABC D093



A thick, moderate All Around son. Use on cows to increase stayability in his daughters and to improve carcass.

CE	BW	WW	YW	MCE	MILK	MWW	STAY	DOC	CWT	YG	MARB	BF	REA	API	TI
12.5	0.5	75.6	119.4	7.2	23.5	61.2	18.7	12.2	34	-0.2	0.46	-0.054	0.54	146.5	81.6
Structural Assessment															
F	Claw	Set	H	Front Angle		Rear Angle		Rear Legs Side		Rear Legs Hind		Sheath		Scr. Circ 01/07/21	
5		5		5		5		5		6		5		38	

Purchaser: \$:

BLACK COMPOSITE YEARLING BULLS

BLACK COMPOSITE YEARLING BULLS

LOT 61 ABC R840



Born: **8/8/20** Color: **Heterozygous Black** Brand: **R840**
Homozygous Poll

S D S ALUMNI 115X G A R PROPHET
GIBBS 3133A MOUNTAINEER **ABC K582**
 GIBBS 9024W BLACKCAP 7067T ABC H943



The All Purpose Index is the first figure we look at when buying bulls. It gives all traits a weighting on their economic importance. R840 has an API and TI in the top 10%, see Gibbs Mountaineer and GAR Prophet in his pedigree.
 Docile. Very high marbling top 3%.

CE	BW	WW	YW	MCE	MILK	MWW	STAY	DOC	CWT	YG	MARB	BF	REA	API	TI
13.9	0.8	79.1	132.3	8	25.5	65	14.6	17.2	39.7	0.04	0.77	-0.004	0.26	154.3	89.2
Structural Assessment															
F Claw Set H		Front Angle		Rear Angle		Rear Legs Side		Rear Legs Hind		Sheath		Scr. Circ 01/07/21			
6		6		5		5		5		4		37			

Purchaser: \$:

LOT 62 ABC R641



Born: **3/17/20** Color: **Homozygous Black** Brand: **R641**
Homozygous Poll

S D S ALUMNI 115X WEBB BETTIS H026
GIBBS 3133A MOUNTAINEER **ABCL570**
 GIBBS 9024W BLACKCAP 7067T ABC H999



Slick coated, moderate bull, with thickness.
 A growth Mountaineer son, from a high growth Bettis cow.
 Top 10% yearling.
 Top 5% average daily gain, a trait associated with feed efficiency.

CE	BW	WW	YW	MCE	MILK	MWW	STAY	DOC	CWT	YG	MARB	BF	REA	API	TI
12.9	0.7	83.1	138.5	6.6	27.6	69.1	16.3	13.7	38.6	-0.28	0.25	-0.084	0.61	135.5	82.1
Structural Assessment															
F Claw Set H		Front Angle		Rear Angle		Rear Legs Side		Rear Legs Hind		Sheath		Scr. Circ 01/07/21			
7		6		5		5		6		5		41			

Purchaser: \$:



Hicks Beef Bull Checklist

- ✓ **Moderate Birth** - we aim to have birth weights lighter than breed average
- ✓ **Specialist Heifer Bulls** - in all our breeds, top 20% calving ease
- ✓ **Weight Gains** - up in the top 20% of breed for 200 & 400 day weights
- ✓ **Mature Weights Less** than breed average, large cows need more maintenance
- ✓ **Carcass** - we believe muscle and yield will be demanded by industry and that marbling is an important trait
- ✓ **Temperament** - is important, we cull heavily on temperament, sale bulls and cows
- ✓ **Structurally Correct** - we feel that we are competent enough to structurally assess bulls, but we know you want an independent professional. We use Liam Cardile from CTC to assess all our sale bulls for feet, legs, sheath and testicles
- ✓ **Tested** - for known genetic abnormalities.
- ✓ **Tested negative** - Pesti-virus carriers.

hicks
RED • ANGUS

hicks
RED • ANGUS

2021 Red Angus GROUP BREEDPLAN Percentile Bands for all 2019 born animals

Percentile Band	CED (%)	CEM (%)	GL (days)	BW (kg)	200 (kg)	400 (kg)	600 (kg)	MCW (kg)	Milk (kg)	SS (cm)	CWT (kg)	EMA (sq. cm)	RIB (mm)	Rump (mm)	RBV (%)	IMF (%)	S. market Index	Vealer Index	Northern Index
Top Value	6.4	5.3	-5.7	-3.4	53	86	118	129	25	3.3	70	7	2.2	2.9	2.9	1.8	\$81	\$70	\$79
Top 1%	4.9	3.8	-4.3	-0.5	45	68	90	97	20	2.1	57	4.1	1.4	1.6	2.4	1.5	\$64	\$59	\$68
Top 5%	3.2	2.7	-3.2	0.7	39	60	79	82	16	1.5	49	3.1	0.8	1	1.9	1	\$55	\$52	\$60
Top 10%	2.2	1.8	-2.6	1.4	37	56	74	77	15	1.3	46	2.7	0.6	0.7	1.6	0.7	\$51	\$49	\$56
Top 15%	1.5	1.4	-2.1	1.8	36	53	70	72	14	1.2	44	2.5	0.4	0.5	1.4	0.6	\$49	\$47	\$53
Top 20%	1.1	1.1	-1.8	2	34	51	67	69	13	1.1	41	2.3	0.3	0.3	1.3	0.5	\$46	\$45	\$51
Top 25%	0.6	0.8	-1.6	2.3	33	50	65	67	13	1.1	40	2.1	0.2	0.1	1.2	0.4	\$45	\$44	\$49
Top 30%	0.2	0.5	-1.4	2.5	33	48	63	65	12	1	39	2	0.1	0	1.1	0.3	\$43	\$42	\$48
Top 35%	-0.1	0.3	-1.3	2.7	32	47	61	63	12	1	38	1.9	0	-0.1	1.1	0.3	\$42	\$41	\$47
Top 40%	-0.4	0	-1.1	2.8	31	46	59	61	12	0.9	37	1.8	-0.1	-0.2	1	0.2	\$41	\$40	\$46
Top 45%	-0.8	-0.3	-0.9	2.9	30	45	58	59	11	0.9	36	1.7	-0.2	-0.3	0.9	0.2	\$40	\$39	\$44
Top 50%	-1.1	-0.5	-0.8	3.1	29	43	57	57	11	0.9	35	1.6	-0.2	-0.4	0.8	0.1	\$39	\$39	\$43
Top 55%	-1.4	-0.8	-0.7	3.2	29	42	55	56	11	0.8	35	1.5	-0.3	-0.5	0.7	0.1	\$38	\$38	\$42
Top 60%	-1.8	-1	-0.5	3.3	28	41	54	54	10	0.8	34	1.4	-0.3	-0.6	0.6	0.1	\$37	\$37	\$41
Top 65%	-2.2	-1.3	-0.4	3.5	27	40	53	52	10	0.8	33	1.3	-0.4	-0.7	0.6	0	\$36	\$36	\$40
Top 70%	-2.6	-1.6	-0.3	3.7	26	39	51	51	9	0.7	32	1.2	-0.5	-0.8	0.5	0	\$35	\$35	\$40
Top 75%	-3.1	-1.9	-0.1	3.9	26	38	50	49	9	0.7	31	1.1	-0.6	-1	0.4	-0.1	\$34	\$34	\$38
Top 80%	-3.7	-2.2	0	4.1	25	37	49	48	9	0.6	30	1	-0.7	-1.1	0.3	-0.1	\$32	\$33	\$37
Top 85%	-4.3	-2.7	0.2	4.3	24	35	47	45	8	0.6	29	0.9	-0.8	-1.2	0.1	-0.1	\$31	\$32	\$36
Top 90%	-5.2	-3.4	0.4	4.7	23	33	44	42	8	0.5	28	0.7	-0.9	-1.4	0	-0.2	\$29	\$31	\$34
Top 95%	-7	-4.5	0.7	5.2	21	31	40	37	7	0.3	25	0.5	-1.1	-1.7	-0.3	-0.3	\$27	\$29	\$31
Top 99%	-10	-6.5	1.4	6.7	18	27	32	29	5	0	21	-0.1	-1.7	-2.5	-1	-0.6	\$21	\$25	\$25
Low Value	-17	-11.6	4.1	9.1	10	12	18	2	3	-5.3	13	-1.3	-2.6	-3.8	-2.1	-1.2	\$11	\$14	\$16
AVERAGE	-1.1	-0.5	-0.8	3.1	29	43	57	57	11	0.9	35	1.6	-2.6	-0.2	-0.4	0.8	\$39	\$39	\$43

HICKS RED ANGUS SALE BULLS JULY 2021 GROUP BREEDPLAN

LOT	IDENT	Calving Ease				Growth & Maternal				Fertility				Carcass				\$ Index	
		CE-Dir	GL	BW	200	400	600	MWT	Milk	SS	CWT	RIB	RUMP	EMA	RBV	IMF	SMI	VI	Nth. I
63	HICKS HENRY Q51	-4.1	-1.9	+5.8	+48	+69	+90	+81	+13	+0.5	+60	+0.5	+5.5	+1.7	+0.8	\$69	\$66	\$77	
64	HICKS HENRY Q23	+1.6	-3.3	+3.6	+44	+61	+78	+79	+15	+1.2	+51	-0.3	+3.2	+1.5	-0.1	\$62	\$66	\$65	
65	HICKS PROFIT BUILDER Q93 ET	-1	-1.7	+2.4	+35	+63	+73	+71	+13	+1.7	+50	+0.2	+2.9	+0.6	+1	\$62	\$49	\$63	
66	HICKS HENRY Q62	+1.6	-2.8	+2.8	+41	+62	+76	+76	+16	+1	+53	-0.4	+2.9	+1.5	0	\$62	\$61	\$61	
67	HICKS MARBLE BAR Q110 ET	-0.8	-4.6	+3.3	+37	+59	+71	+72	+13	+1.7	+41	+1.1	+2.5	-0.7	+1.4	\$56	\$48	\$62	
	<i>Mid Parent Values</i>																		
68	HICKS PREMIER Q20	-3.7	-1.4	+3.3	+37	+56	+67	+68	+17	+1	+45	-0.4	+0.8	0	+1.7	\$49	\$43	\$49	
69	HICKS HENRY Q28	+2	-1.6	+1.8	+29	+53	+67	+65	+15	+2.2	+46	+1	+4.1	+0.4	+1.2	\$63	\$51	\$66	
70	HICKS PROFIT BUILDER Q114	-3.8	-1.4	+3.8	+41	+70	+82	+79	+13	+1.8	+54	+0.2	+2.9	+0.6	+1	\$63	\$52	\$67	
71	HICKS HENRY Q55	+2.6	-4.3	+2.3	+37	+45	+61	+60	+13	+1.4	+33	+0.5	+1.7	+0.1	+0.6	\$49	\$54	\$53	
72	HICKS REDEMPTION Q125	+0.2	-1.8	+3.3	+37	+59	+72	+72	+14	+0.1	+45	+0.5	+0.7	-0.1	+0.8	\$54	\$48	\$57	
73	HICKS HENRY Q10	-0.5	-1.7	+3.8	+39	+66	+81	+81	+14	+2	+55	+0.1	+3.8	+1.3	+0.6	\$66	\$57	\$70	
74	HICKS PREMIER Q83 ET	+2.0	-3.5	+2.0	+40	+59	+71	+70	+14	+1.1	+48	+1.8	-1.7	+1.5	-0.2	\$56	\$57	\$53	
	<i>Mid Parent Values</i>																		
75	HICKS PROFIT BUILDER Q56 ET	-1.1	-2.5	+1.9	+37	+59	+71	+70	+11	+1.9	+48	-0.2	+2.2	+0.8	+0.7	\$56	\$50	\$61	
76	HICKS PROFIT BUILDER Q75 ET	+0.3	-1.2	-0.5	+21	+37	+49	+44	+9	+2.8	+34	+0.9	+3.6	+0.3	+1.1	\$48	\$39	\$55	
77	HICKS REDEMPTION Q123	+3	-2.7	+1.4	+32	+49	+58	+62	+12	+0.8	+36	-0.2	-0.2	-0.2	+0.4	\$45	\$43	\$44	
78	HICKS MARBLE BAR Q176	-0.1	-2.5	+2.9	+33	+51	+64	+64	+14	+0.7	+39	+0.3	+2.5	+0.8	0	\$49	\$48	\$52	
79	HICKS BROWN PREMIER Q3	+3.3	-4	+1.9	+41	+52	+64	+63	+16	-0.7	+43	-1.2	+1	+1.6	-0.8	\$49	\$59	\$44	
80	HICKS MARBLE BAR Q165	+5.4	-3.4	-1.3	+19	+28	+38	+36	+17	+0.1	+30	+1.2	+3.3	+0.2	+0.6	\$45	\$44	\$42	
81	HICKS MARBLE BAR Q170	+3.4	-2.9	+0.2	+21	+36	+46	+47	+13	+0.9	+30	+0.1	+2.5	+1.1	-0.3	\$42	\$40	\$41	
	BREED AVERAGE 2019 BORN CALVES	-1.4	-0.9	+3.1	+30	+44	+58	+58	+11	+0.9	+36	-0.2	+1.7	+0.8	+0.2	\$40	\$39	\$44	

RED ANGUS SALE BULLS

LOT 63 HICKS HENRY Q51



Born: **11/8/19** Reg Number: **HRAQ51** Tattoo: **Q51**

HICKS HENRY H61
HICKS HENRY M55
 HICKS SARAH F590

HICKS HARVEST H56
HICKS SALLY K76
 HICKS SALLY F565



A carcass, growth bull at the top of the breed. Top 1% for 200 day, 400 day, 600 day and muscle as well as all 3 \$ indexes.
 High fat and top 10% marbling.

CED	GL	BW	200	400	600	MCW	MILK	SS	CWT	RIB	RUMP	EMA	RBY	IMF	SMI	VI	NSI
-4.1	-1.9	5.8	48	69	90	81	13	0.5	60	0.5	0.5	5.5	1.7	0.8	\$69	\$66	\$77
Structural Assessment																	
F Claw Set H		Front Angle			Rear Angle			Rear Legs Side		Rear Legs Hind		Sheath		Temp			
6 6		5			5			4		5		5		2			

Purchaser: \$:

LOT 64 HICKS HENRY Q23



Born: **5/8/19** Reg Number: **HRAQ23** Tattoo: **Q23**

MESSMER PACKER S008
HICKS HENRY H61
 HICKS RED D537 T

TE MANIA EMPEROR E343
HICKS RED PATRICIA M22
 HICKS RED PATRICIA K121



Look at the pedigree of this attractive bull. We believe Henry H61 is our best performance sire for calving ease, growth and muscle. We have combined this with a Temania Emperor cow.
 Q23 is suited to heifer joinings with calving ease in top 10%.
 Top 5% for 200 day and 400 day weight.
 Docile.

CED	GL	BW	200	400	600	MCW	MILK	SS	CWT	RIB	RUMP	EMA	RBY	IMF	SMI	VI	NSI
1.6	-3.3	3.6	44	61	78	79	15	1.2	51	0	-0.3	3.2	1.5	-0.1	\$62	\$66	\$65
Structural Assessment																	
F Claw Set H		Front Angle			Rear Angle			Rear Legs Side		Rear Legs Hind		Sheath		Temp			
6 7		6			6			4		6		5		1			

Purchaser: \$:

LOT 65 HICKS PROFIT BUILDER Q93 ET



Born: **16/8/19** Reg Number: **HRAQ93** Tattoo: **Q93**

LSF TAKEOVER 9943W
H2R PROFITBUILDER B403
 BROWN MS P707 Y6674

HICKS REDEMPTION K44
HICKS TOP RECORD N48
 HICKS TOP RECORD L46



This good looking bull combines great calving ease with top 5% 400 day weight with strong carcass data.
 His sire, Profit Builder, has proven to be a moderate bull that stacks thickness and weight into his progeny.

CED	GL	BW	200	400	600	MCW	MILK	SS	CWT	RIB	RUMP	EMA	RBY	IMF	SMI	VI	NSI
-1	-1.7	2.4	35	63	73	71	13	1.7	50	0.2	0.3	2.9	0.6	1	\$62	\$49	\$63
Structural Assessment																	
F Claw Set H		Front Angle			Rear Angle			Rear Legs Side		Rear Legs Hind		Sheath		Temp			
6 6		5			6			4		5		5		1			

Purchaser: \$:

RED ANGUS SALE BULLS

RED ANGUS SALE BULLS

LOT 66 HICKS HENRY Q62



Born: **12/8/19** Reg Number: **HRAQ62** Tattoo: **Q62**

MESSMER PACKER S008
HICKS HENRY H61
HICKS RED D537 T

HICKS EMPEROR K3 BLACK
HICKS SARAH M65
HICKS SARAH J113



One of the last sons of our super sire H61. His daughter commanded top price at our recent 25 year female sale.
Suitable for heifer joinings, top 15% calving ease.
Q62 is an attractive, deep and thick bull with top 5% 200 day and 400 day weights.

CED	GL	BW	200	400	600	MCW	MILK	SS	CWT	RIB	RUMP	EMA	RBY	IMF	SMI	VI	NSI
1.6	-2.8	2.8	41	62	76	76	16	1	53	-0.4	-0.8	2.9	1.5	0	\$62	\$61	\$61
Structural Assessment																	
F Claw Set H		Front Angle			Rear Angle		Rear Legs Side		Rear Legs Hind		Sheath		Temp				
7 7		6			6		4		5		4		2				

Purchaser: \$:

LOT 67 HICKS MARBLE BAR Q110 ET



Born: **17/8/19** Reg Number: **HRAQ110** Tattoo: **Q110**

MILWILLAH FEVOLA F37
MILWILLAH MARBLE BAR J53
MILWILLAH LOWAN G291

TE MANIA DAIQUIRI D19
TE MANIA MITTAGONG F801
TE MANIA MITTAGONG Z288



This is an ET calf from a beautiful, proven red Te Mania cow by Millwillah Marble Bar, giving this young sire 7/8 Te Mania pedigree. It is very hard to get elite black bloodlines into the Red Angus breed to this degree. These are Mid Parent Value EBVs for Q110, Group Breedplan EBVs will be available before the sale.

CED	GL	BW	200	400	600	MCW	MILK	SS	CWT	RIB	RUMP	EMA	RBY	IMF	SMI	VI	NSI
-0.8	-4.6	3.3	37	59	71	73	13	1.7	41	1.1	1.4	2.5	-0.7	1.4	\$56	\$48	\$62
Structural Assessment																	
F Claw Set H		Front Angle			Rear Angle		Rear Legs Side		Rear Legs Hind		Sheath		Temp				
7 6		6			7		6		5		4		2				

Purchaser: \$:

LOT 68 HICKS PREMIER Q20



Born: **3/8/19** Reg Number: **HRAQ20** Tattoo: **Q20**

BROWN PREMIER X7876
HICKS PREMIER M35
HICKS RED H109

HICKS RED LABEL L151
HICKS AMY N37
HICKS AMY K11



An eye catching bull with one of the highest IMF figures in the breed. With his IMF figure of 1.7 he is within 0.1 of the top value of the breed.
Q20 also brings top 10% 200 day and 400 day weight. Show his progeny to the feedlots!

CED	GL	BW	200	400	600	MCW	MILK	SS	CWT	RIB	RUMP	EMA	RBY	IMF	SMI	VI	NSI
-3.7	-1.4	3.3	37	56	67	68	17	1	45	-0.4	-0.8	0.8	0	1.7	\$49	\$43	\$49
Structural Assessment																	
F Claw Set H		Front Angle			Rear Angle		Rear Legs Side		Rear Legs Hind		Sheath		Temp				
6 6		6			7		5		6		5		1				

Purchaser: \$:

RED ANGUS SALE BULLS

LOT 69 HICKS HENRY Q28



Born: **7/8/19** Reg Number: **HRAQ28** Tattoo: **Q28**

HICKS HENRY H61
HICKS HENRY M55
 HICKS SARAH F590

HICKS PACKER H83
HICKS RED L140
 HICKS RED H30



A moderate, thick, calving ease bull suitable for heifers.
 A scrotal circumference of 41cm at 12 months.
 Outstanding carcass data. Top 1% for EMA, top 5% for marbling and top 15% for 400 day weight. What a cracker.

CED	GL	BW	200	400	600	MCW	MILK	SS	CWT	RIB	RUMP	EMA	RBY	IMF	SMI	VI	NSI
2	-1.6	1.8	29	53	67	65	15	2.2	46	1	1	4.1	0.4	1.2	\$63	\$51	\$66
Structural Assessment																	
F Claw Set H		Front Angle			Rear Angle			Rear Legs Side		Rear Legs Hind		Sheath		Temp			
6 6		6			7			5		5		5		2			

Purchaser: \$:

LOT 70 HICKS PROFIT BUILDER Q114 ET



Born: **17/8/19** Reg Number: **HRAQ114** Tattoo: **Q114**

LSF TAKEOVER 9943W
H2R PROFITBUILDER B403
 BROWN MS P707 Y6674

HICKS REDEMPTION K44
HICKS TOP RECORD N48
 HICKS TOP RECORD L46



A wide topped Profit Builder son with thickness that will be great for grass fed or feedlot market.
 His 400 day weight is top 1%.
 Excellent carcass animal near the top for muscle and marbling and positive fat.
 Q114's dam is a great Redemption cow.

CED	GL	BW	200	400	600	MCW	MILK	SS	CWT	RIB	RUMP	EMA	RBY	IMF	SMI	VI	NSI
-3.8	-1.4	3.8	41	70	82	79	13	1.8	54	0.2	0.2	2.9	0.6	1	\$63	\$52	\$67
Structural Assessment																	
F Claw Set H		Front Angle			Rear Angle			Rear Legs Side		Rear Legs Hind		Sheath		Temp			
7 6		6			6			5		6		5		2			

Purchaser: \$:

LOT 71 HICKS REDEMPTION Q55



Born: **12/8/19** Reg Number: **HRAQ55** Tattoo: **Q55**

HICKS REDEMPTION K44
HICKS REDEMPTION M42
 HICKS RED PATRICIA K143

MILWILLAH MARBLE BAR J53
HICKS RED SUNSET N34
 HICKS RED SUNSET K38



A calving ease bull in top 10% making him suitable for heifers.
 Top 10% 200 day weight shows great early growth with above average muscle and good marbling.
 Q55 is from a promising Marble Bar heifer by our calving ease sire Redemption.

CED	GL	BW	200	400	600	MCW	MILK	SS	CWT	RIB	RUMP	EMA	RBY	IMF	SMI	VI	NSI
2.6	-4.3	2.3	37	45	61	60	13	1.4	33	0.5	0.4	1.7	0.1	0.6	\$49	\$54	\$53
Structural Assessment																	
F Claw Set H		Front Angle			Rear Angle			Rear Legs Side		Rear Legs Hind		Sheath		Temp			
6 7		6			7			5		6		5		2			

Purchaser: \$:

RED ANGUS SALE BULLS

LOT 72 HICKS REDEMPTION Q125



Born: **17/8/19** Reg Number: **HRAQ125** Tattoo: **Q125**

HICKS REDEMPTION K44
HICKS REDEMPTION M42
 HICKS RED PATRICIA K143

BROWN PREMIER X7876
HICKS TOP RECORD N86
 HICKS TOP RECORD J26



This bull offers great balanced numbers with a Supermarket Index of \$54 which is top 6%.

His fat puts him in the top 10% which is handy for the grass fed market.

Good rib eye and great marbling.

Excellent temperament.

CED	GL	BW	200	400	600	MCW	MILK	SS	CWT	RIB	RUMP	EMA	RBY	IMF	SMI	VI	NSI
0.2	-1.8	3.3	37	59	72	72	14	0.1	45	0.5	0.7	2	-0.1	0.8	\$54	\$48	\$57
Structural Assessment																	
F Claw Set H		Front Angle			Rear Angle		Rear Legs Side		Rear Legs Hind		Sheath		Temp				
6 7		5			6		5		6		4		1				

Purchaser: \$:

LOT 73 HICKS HENRY Q10



Born: **28/7/19** Reg Number: **HRAQ10** Tattoo: **Q10**

HICKS HENRY H61
HICKS HENRY M55
 HICKS SARAH F590

HICKS REDEMPTION K44
HICKS BEEAC N57
 HICKS BEEAC L111 BLACK



A moderate bull with guts, growth, carcase and structure.
 Top 1% Supermarket Index and top 1% Northern Steer Index.
 Top 5% for muscle, top 15% for marbling and positive fat.

CED	GL	BW	200	400	600	MCW	MILK	SS	CWT	RIB	RUMP	EMA	RBY	IMF	SMI	VI	NSI
-0.5	-1.7	3.8	39	66	81	81	14	2	55	0.1	-0.1	3.8	1.3	0.6	\$66	\$57	\$70
Structural Assessment																	
F Claw Set H		Front Angle			Rear Angle		Rear Legs Side		Rear Legs Hind		Sheath		Temp				
6 5		5			5		5		5		5		1				

Purchaser: \$:

LOT 74 HICKS PREMIER Q83 ET



Born: **15/8/19** Reg Number: **HRAQ83** Tattoo: **Q83**

BECKTON NEBULA P P707
BROWN PREMIER X7876
 BROWN MS DESTINATION T7664

HICKS HENRY H61
RED PATRICIA N179
 HICKS RED PATRICIA J84



A very good ET calf from one of our great young heifers. The intention of the mating was to produce curve bending progeny with moderate calving ease that will grow quickly with muscle and thickness. Docile. Note these are Mid Parent Value EBVs for Q83, his Group Breedplan EBVs will be available before sale day.

CED	GL	BW	200	400	600	MCW	MILK	SS	CWT	RIB	RUMP	EMA	RBY	IMF	SMI	VI	NSI
2	-3.5	2	40	59	71	70	14	1.1	48	-1.2	-1.7	1.8	1.5	-0.2	\$56	\$57	\$53
Structural Assessment																	
F Claw Set H		Front Angle			Rear Angle		Rear Legs Side		Rear Legs Hind		Sheath		Temp				
6 6		6			6		5		5		5		2				

Purchaser: \$:

RED ANGUS SALE BULLS

LOT 75 HICKS PROFIT BUILDER Q56 ET



Born: **12/8/19** Reg Number: **HRAQ56** Tattoo: **Q56**

LSF TAKEOVER 9943W
H2R PROFITBUILDER B403
 BROWN MS P707 Y6674

BROWN PREMIER X7876
HICKS RED PATRICIA N52
 HICKS RED PATRICIA G8



Above average calving ease with top 10% growth for 200 day, 400 day and 600 day weights.

Strong carcass data with marbling in top 10%.

Great profit indexes.

CED	GL	BW	200	400	600	MCW	MILK	SS	CWT	RIB	RUMP	EMA	RBY	IMF	SMI	VI	NSI
-1.1	-2.5	1.9	37	59	71	70	11	1.9	48	-0.2	-0.2	2.2	0.8	0.7	\$56	\$50	\$61
Structural Assessment																	
F Claw Set H		Front Angle			Rear Angle		Rear Legs Side		Rear Legs Hind		Sheath		Temp				
6 6		6			6		5		6		5		1				

Purchaser: \$:

LOT 76 HICKS PROFIT BUILDER Q75



Born: **13/8/19** Reg Number: **HRAQ75** Tattoo: **Q75**

LSF TAKEOVER 9943W
H2R PROFITBUILDER B403
 BROWN MS P707 Y6674

HICKS HARVEST H56
HICKS RED PATRICIA K142
 HICKS RED PATRICIA F543



This thick, heavy Profit Builder is typical of this popular US sire.

Great growth, carcass and marbling. This bull will get meat buyers excited!

CED	GL	BW	200	400	600	MCW	MILK	SS	CWT	RIB	RUMP	EMA	RBY	IMF	SMI	VI	NSI
0.3	-1.2	-0.5	21	37	49	44	9	2.8	34	0.9	1.3	3.6	0.3	1.1	\$48	\$39	\$55
Structural Assessment																	
F Claw Set H		Front Angle			Rear Angle		Rear Legs Side		Rear Legs Hind		Sheath		Temp				
6 6		6			6		5		5		5		1				

Purchaser: \$:

LOT 77 HICKS REDEMPTION Q123



Born: **17/8/19** Reg Number: **HRAQ123** Tattoo: **Q123**

HICKS REDEMPTION K44
HICKS REDEMPTION M42
 HICKS RED PATRICIA K143

BROWN PREMIER X7876
HICKS RED PATRICIA N52
 HICKS RED PATRICIA G8



Q123 is a set and forget type sire for heifers with top 5% calving ease.

His sire was used extensively in our heifer matings and his dam is stacked with low birth weight easy calving.

CED	GL	BW	200	400	600	MCW	MILK	SS	CWT	RIB	RUMP	EMA	RBY	IMF	SMI	VI	NSI
3	-2.7	1.4	32	49	58	62	12	0.8	36	-0.2	-0.3	-0.2	-0.2	0.4	\$45	\$43	\$44
Structural Assessment																	
F Claw Set H		Front Angle			Rear Angle		Rear Legs Side		Rear Legs Hind		Sheath		Temp				
6 6		6			7		6		6		5		1				

Purchaser: \$:

RED ANGUS SALE BULLS

LOT 78 HICKS MARBLE BAR Q176



Born: **2/9/19** Reg Number: **HRAQ176** Tattoo: **Q176**

MILWILLAH MARBLE BAR J53
HICKS MARBLE BAR N1
 HICKS DANDLOO L64

HICKS PACKER H83
HICKS BEEAC L150
 HICKS BEEAC H125



Q176 has great balanced numbers. Calving ease better than average, good growth and carcass resulting in top 15% Supermarket Index and top 10% Vealer Index.

CED	GL	BW	200	400	600	MCW	MILK	SS	CWT	RIB	RUMP	EMA	RBY	IMF	SMI	VI	NSI
-0.1	-2.5	2.9	33	51	64	64	14	0.7	39	0.3	0.1	2.5	0.8	0	\$49	\$48	\$52
Structural Assessment																	
F Claw Set H		Front Angle			Rear Angle		Rear Legs Side		Rear Legs Hind		Sheath		Temp				
6 6		6			6		5		6		5		2				

Purchaser: \$:

LOT 79 HICKS PREMIER Q3



Born: **23/7/19** Reg Number: **UNREGISTERED** Tattoo: **Q3**

BECKTON NEBULA P P707
BROWN PREMIER X7876
 BROWN MS DESTINATION T7664

HICKS HENRY K82
HICKS RED N122
 HICKS RED PATRICIA J831



A calving ease bull, top 5%, with explosive early growth, top 5% 200 day weight. It is not surprising that this bull ranks highly for the vealer index top 1%. This bull is unregistered, performance registered only.

CED	GL	BW	200	400	600	MCW	MILK	SS	CWT	RIB	RUMP	EMA	RBY	IMF	SMI	VI	NSI
3.3	-4	1.9	41	52	64	63	16	-0.7	43	-1.2	-1.7	1	1.6	-0.8	\$49	\$59	\$44
Structural Assessment																	
F Claw Set H		Front Angle			Rear Angle		Rear Legs Side		Rear Legs Hind		Sheath		Temp				
6 6		6			6		5		5		5		1				

Purchaser: \$:

LOT 80 HICKS MARBLE BAR Q165



Born: **28/8/19** Reg Number: **UNREGISTERED** Tattoo: **Q165**

MILWILLAH MARBLE BAR J53
HICKS MARBLE BAR N1
 HICKS DANDLOO L64

TE MANIA RED LABEL Z1023 ET
HICKS RED H7
 HICKS RED E756



An elite calving ease sire with well above top 1% for calving ease. Strong carcass numbers with top 5% EMA and fat with top 15% marbling. Unregistered. Performance registered only.

CED	GL	BW	200	400	600	MCW	MILK	SS	CWT	RIB	RUMP	EMA	RBY	IMF	SMI	VI	NSI
5.4	-3.4	-1.3	19	28	38	36	17	0.1	30	1.2	1.5	3.3	0.2	0.6	\$45	\$44	\$42
Structural Assessment																	
F Claw Set H		Front Angle			Rear Angle		Rear Legs Side		Rear Legs Hind		Sheath		Temp				
7 6		6			6		5		5		5		1				

Purchaser: \$:

RED ANGUS SALE BULLS

LOT 81 HICKS MARBLE BAR Q170



Born: **29/8/19** Reg Number: **HRAQ170** Tattoo: **Q170**

MILWILLAH MARBLE BAR J53
HICKS MARBLE BAR N1
 HICKS DANDLOO L64

HICKS PACKER H83
HICKS BEEAC L35
 HICKS BEEAC H62



Another young calving ease bull, top 5%.
 This bull has a lot of red meat with plenty of muscle.

CED	GL	BW	200	400	600	MCW	MILK	SS	CWT	RIB	RUMP	EMA	RBY	IMF	SMI	VI	NSI	
3.4	-2.9	0.2	21	36	46	47	13	0.9	30	0.1	-0.1	2.5	1.1	-0.3	\$42	\$40	\$41	
Structural Assessment																		
F Claw Set H		Front Angle			Rear Angle		Rear Legs Side		Rear Legs Hind		Sheath			Temp				
6		7			6		7		6		6			5			2	

Purchaser: \$:



RED ANGUS SALE BULLS

DIRECTIONS

DELIVERY: Stock awaiting delivery will be held free of charge for up to 14 days after the sale at the buyer's risk.

GUARANTEE: We have always provided full replacement guarantee against fertility and genetic faults. It is important that we are contacted as soon as possible to rectify any problem.

FEEDING POLICY: We believe that overfeeding can cause many problems to bulls long and short term. All our cattle are run in large paddocks under commercial cattle conditions. All Breedplan figures are assessed under these conditions usually from mobs of over 100 cows and calves.

As we sell our bulls younger than most studs we feel it is important that they are in suitable condition to withstand the rigours of their first season. The bulls are given a supplementary ration for 10 weeks, out in the paddock still in their calving groups.

All bulls are treated identically with no preferential treatment for the top bulls. We have sold bulls to many areas of Australia and have had no complaints about their mobility or fertility.

Terms and Conditions of Sale

1. Subject to reserve prices, the highest bidder shall be the purchaser, and in the event of any dispute arising it shall be settled by the Auctioneer, unless one of the claimants will advance the bidding above the disputed bid, in which case the lot or lots shall be put up again.
2. The purchaser shall deposit the whole or any part of the purchase money if required at any time during the sale.
3. All stock shall be paid for in cash immediately on conclusion of sale, and prior to delivery, but, in the event of delivery being made, or possession obtained by the purchaser or his representative prior to the payment of the purchase money, or any cheque given on account of same, the purchaser shall hold the stock as trustee only for the vendor.
4. All stock shall be at the risk of the purchaser upon the fall of the hammer.
5. No warranty is given by the Auctioneers with any lot, and, as all lots are available for inspection previous to the commencement of the sale, the same are sold with all faults, if any.

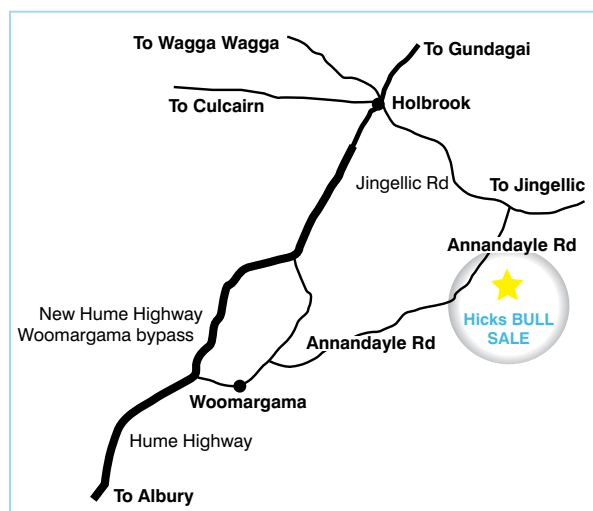
The Auctioneers shall not be responsible for any errors or omissions in any particular appearing in the description or pedigrees of any lot for sale, and no error, omission, or misdescription in such particulars or pedigrees shall invalidate the sale or be made the subject of any claim for compensation.

Directions from the South

Take the Woomargama exit to the old Hume Highway. Turn right onto Annandayle Road.

Directions from the North

From Holbrook turn east down the Jingellic Road, travel 8.1kms then turn right into Annandayle Road and we are 2.8kms on the left.





LOT 21 ABC Q1007



LOT 22 ABC Q598



LOT 23 ABC Q939



LOT 24 ABC Q642



LOT 35 ABC Q554



LOT 36 ABC Q1082



LOT 41 ABC Q1203



LOT 43 ABC Q728



LOT 1 ABC Q1089



LOT 3 ABC Q655



LOT 5 ABC Q1046



LOT 7 ABC Q1193



LOT 10 ABC Q813



LOT 11 ABC Q740



LOT 13 ABC Q716 ET



LOT 19 ABC Q843