



**GLENGOWAN
ANGUS
2021**

**BULL & HEIFER
SALE**

**THURSDAY 9 SEPTEMBER
1.00PM**

www.glengowan.com.au



GLENGOWAN ANGUS



ANNUAL BULL & HEIFER SALE

Featuring quality tablelands

Registered bulls and 100 Commercial females

THURSDAY 9 SEPTEMBER 2021, AT 1 PM

Richard & Sandra Retallack
Glengowan

782 Moorilda Road
Newbridge NSW, 2795

P: (02) 6368 1053

M: 0458 523 337

E: glengowan.angus@bigpond.com



Steve Mooney
Ray White Emms Mooney

28 Adelaide Street
Blayney, NSW 2799

P: (02) 6368 4611

M: 0428 683 152

E: steven.mooney@raywhite.com

www.glengowan.com.au

15 Reasons to invest in a Glengowan Bull:

- 64 years of breeding Angus cattle in the central west
- A rock solid maternal heritage behind every animal
- Constant evaluation and purchase of top sires
- Decades of utilising powerful, proven outcross genetics
- Strong commercial focus within our own herd
- Breeding priorities are structural soundness & fertility
- Strict selection of cows with ease of calving
- Only quiet, easy doing cattle remain in the herd
- Calves weighed and tagged at birth
- All animals are Breedplan recorded
- Bulls vet tested for fertility & soundness (VBBSE certificates)
- All animals are AM, NH, CA and DD free
- Fully drenched, vaccinated & vet tested PI free
- Affordable sale averages mean excellent value for money
- Delivered FREE within 200 km

TACE



TransTasman Angus
Cattle Evaluation



Angus
AUSTRALIA

PRACTICAL, PROVEN, PROFITABLE

We are pleased to welcome everyone to the 2021 Glengowan sale. While cattle prices are currently at levels we could only dream of, the last three years were hard going for many on the land. On the positive side, the drought offered us a great opportunity to re-evaluate our business model and really focus on the future. As a result, 2019 and 2020 saw us restructure our cattle business which included a complete rationalization of the stud and an expansion of the commercial herd which is now spread across 'Glengowan' and several leasehold properties.

The Glengowan stud herd retains some elite females which are still based on NZ genetics for their stamina and softness but we have also invested heavily in our breeding program over the last few years by introducing several prominent Australian sires. They were carefully selected to add to the herd without compromising our multi-generational building blocks of depth, fertility and temperament. The next couple of years will therefore see the results of some outstanding new genetics packed with performance and phenotype.

We celebrated '60 years strong' with many of you in 2017 and this was a milestone for our family in breeding stud Angus cattle. We continue to build on this solid foundation with our primary focus remaining on balance, integrity and commercial performance in our herd. We have always avoided extreme traits and have opted instead for a more rigorous, considered approach by concentrating on the true attributes of the Angus breed; ease of calving, fertility, longevity and good structure with quiet temperaments. Generations of Glengowan cows and their progeny have been carefully appraised and selected for these attributes with the result that our bloodlines are proven to perform in tough environments and still produce top weaners. Our cows and their progeny are run under a strictly commercial conditions in a challenging climate; too wet, too dry or sometimes just way too cold.

The sale bulls for 2021 are a consistent group of strong commercially focused all-rounders with pedigrees stacked with strong, proven bloodlines. They show depth, bone, volume and soundness and adhere to our breeding principals of producing moderately framed cattle with good structure, meat, temperament and type. The group overall have a good balance of EBVs and they offer access to some very solid genetics with the first bulls of several new sires, including Ascot Hallmark, Ascot Lion Heart, Millah Murrah Kruze Time as well as Glengowan Magnam M5 and Banquet Jupiter J263. As always, the sale bulls have been semen tested and individually assessed by the vets from the Blayney Veterinary Hospital and are fit and ready to work. Please contact us to view the cattle prior to the sale.

This year we will offer 100 commercial females. These are quality Glengowan Angus females and with over 80 years of commercial breeding behind them they offer a great opportunity for any producer.

We look forward to seeing you at Glengowan on THURSDAY 9 SEPTEMBER. Inspections will commence at 10 am. A complimentary morning tea, BBQ lunch and afternoon tea will be available at the sale complex. We look forward to seeing you on the day,

Richard, Sandra & Isabella



INSPECTION TIMES

The Glengowan Angus sale will be held at Glengowan, Moorilda on Thursday 9 September 2021. The sale complex is heated, undercover and is located on the Barry- Newbridge Road, 15 km from Blayney. Please observe all the directions regarding checking in, hand sanitising, masks and social distancing if you attend the sale. Cattle may be inspected on sale day from 10.00am-12.30pm or prior to the sale by appointment. Selling will commence at 1pm. A supplementary sheet of weights and information will be available on sale day.

IDENTIFICATION

Bulls are identified with NLIS tags, lot numbers and freeze brands which include their Angus Australia identification and the Glengowan registered brand of a G in a square over a bar. The Glengowan PIC is ND111541. All sale bulls are Herd Book Registered (HBR) with Angus Australia. All bulls have been DNA tested and are sire or parent verified.

PHOTOGRAPHY

Photographs were taken by Rachel Gordon, the 17th Photographer, Millthorpe.

SAFETY RULES & RECOMMENDATIONS

We are confident all the bulls offered for sale are quiet and of sound temperament, however sale day brings a completely new set of conditions and the bulls will be subjected to unusual levels of noise and pressure with many people invading their space. Even the quietest bull can become upset under these circumstances and this is not the time to 'front' or attempt to intimidate the bulls. Please leave the pens in a timely manner, remain alert to the animals around you and do not overcrowd the area at any time. **CHILDREN ARE NOT PERMITTED TO ENTER PENS and must be supervised by a parent at all times.** Visitors at any time enter 'Glengowan', the pens and the sale complex at their own risk.

BUYER REGISTRATION

A buyer registration system will apply. Please register with the selling agent well before the auction.

PHONE BIDDING

There is limited mobile phone coverage in our area and reception at the selling complex is patchy at best so please make arrangements with the agents to arrange phone bidding prior to the sale.

SALE CONDITIONS

All lots will be sold subject to the usual conditions governing auction sales which will be displayed on the day. The auction price is exclusive of GST. All bulls sell with 100% semen rights to the purchaser. Glengowan reserves the right to collect up to 200 straws of any sale animal for use within our herd. Collection will be at the vendor's expense by arrangement with the purchaser.

REBATE

A rebate of 5% is offered to outside agents introducing buyers prior to the sale in writing and settling on their behalf within 7 days.

HEALTH & FEEDING

The Glengowan herd is consistently monitored for general health and temperament. Any animals not meeting our standards are removed from the herd. An intensive drenching and vaccination program is used at Glengowan and care and health of the animals is a top priority. All sale bulls have been drenched and vaccinated with 7 in 1 prior to the sale. The bulls have been grazed on pasture and oats and have also received some supplementary feeding during the coldest months only.

INDEPENDENT ASSESSMENT

All bulls have passed a strict breeding soundness evaluation conducted by vets from the Blayney Veterinary Hospital in July 2021. They were assessed for general structural soundness including assessment and palpitation of their sexual anatomy and were semen tested. Each bull has a Bull Breeding Soundness Evaluation (VBBSE) certificate which will be on display on sale day with copies available on request. All have blood tested negative for pestivirus.



GENETIC TESTING

NH, AM, CA and DD are recessive defects and a DNA test has been developed to identify carriers. Carriers are identified as with a C after the initials. We believe that by definition any animal carrying a defect is genetically inferior and that they should not be sold by breeders. Glengowan bulls are either tested or pedigree free of all known defects.

FREE DELIVERY

Glengowan Angus will provide free delivery within 200 kms of Glengowan and also to Dubbo, Cowra and Lithgow saleyards. Delivery times will be negotiated with buyers. Extra distance is available to volume buyers.

YOUR NEW BULL

Immediately after the sale, please fill out the buyer's instruction sheet which includes delivery instructions. The vendors will register ownership transfers with the Angus Society of Australia if details are provided to us. Please advise transfer details including your membership name and herd identity number. Non-members are requested to provide the name and address to which the animals are to be transferred. We strongly recommend that you insure your bull immediately after purchase.

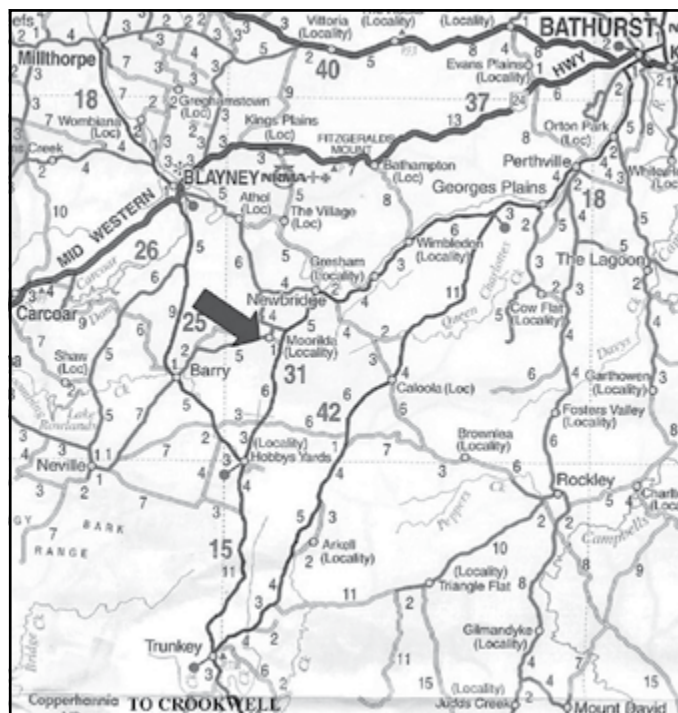
Your bull is ready, willing and able to go to work and is already familiar with people on foot, tractors, vehicles and motorbikes. He will easily adapt to most other farm vehicles and animals including horses and working dogs if they are introduced slowly. When you take your new bull home remember he is used to the security of a large mob and will find being alone a new experience which he may take time to settle into. Please do not put him with other bulls. If you can't put your bull in a new mob straight away, try and have a few steers or pregnant cows in the yards as companions. We also recommend that bulls are alternated during the joining period to safeguard against any unknown injury or illness which may affect their fertility. Please do not hesitate to contact us for further advice regarding your new bull.

GUARANTEE

The sale bulls are guaranteed for one year from the date of sale for structural soundness, fertility and capability of service. If a purchaser claims any bull is unsound, infertile or incapable of service Glengowan Angus will replace the bull with a satisfactory substitute if available or issue a credit on a pro-rata value of the bull (less the salvage value) which can be used at a later Glengowan sale. The guarantee covers only the purchase value of the bull and does

not apply if the bull contracts an illness after leaving Glengowan, is injured, treated negligently or without consideration for the information regarding new bulls above. A veterinary certificate must be supplied by the purchaser stating that the bull is incapable or infertile and that in the vet's opinion no injury or illness has been suffered by the bull which may have affected his fertility. Any complaint must be lodged within eleven months of the sale. Glengowan Angus is not liable for any damage or loss incurred by the purchaser as a result of the purchase of the bull. This guarantee is in addition to the usual terms and conditions governing auction sales.

DIRECTIONS



From Blayney- take the Newbridge Road at the Post Office and keep right for 15 km. Don't go to Newbridge. You will pass a small sign 'Moorilda' proceed about 500 m then go right to Barry. The Glengowan sale complex entrance is at the top of the hill.

Glengowan is 40 minutes' drive from Bathurst, 1 hr, 15 minutes from Oberon, 2 hours from Mudgee and 2 hrs 20 minutes from Goulburn.

Please bring this catalogue to the sale.

www.glengowan.com.au



SELLING AGENTS - **Ray White** EMMS MOONEY



BREEDPLAN INFORMATION



TransTasman Angus Cattle Evaluation - August 2021 Reference Tables

BREED AVERAGE EBVs																									
Brd Avg	Calving Ease		Birth		Growth				Fertility				Carcase				Other			Structure			Selection Indexes		
	CEDir	CEDirS	GL	BW	200	400	600	MCW	Milk	SS	DTC	CWT	EMA	RIB	P8	RBV	IMF	NFI-F	DOC	Angle	Claw	ABI	DOM	GRN	GRS
	+1.8	+2.4	-4.5	+4.2	+48	+87	+114	+98	+17	+2.0	-4.6	+65	+6.0	-0.1	-0.4	+0.5	+2.0	+0.17	+6	+0.98	+0.85	+116	+109	+122	+113

* Breed average represents the average EBV of all 2019 drop Australian Angus and Angus-influenced seedstock animals analysed in the August 2021 TransTasman Angus Cattle Evaluation .

PERCENTILE BANDS TABLE																										
% Band	Calving Ease		Birth		Growth				Fertility				Carcase				Other			Structure			Selection Indexes			
	CEDir	CEDirS	GL	BW	200	400	600	MCW	Milk	SS	DTC	CWT	EMA	RIB	P8	RBV	IMF	NFI-F	DOC	Angle	Claw	ABI	DOM	GRN	GRS	
	Less Calving Difficulty	Less Calving Difficulty	Shorter Gestation Length	Lighter Birth Weight	Heavier Live Weight	Heavier Live Weight	Heavier Live Weight	Heavier Mature Weight	Heavier Live Weight	Larger Scrotal Size	Shorter Time to Calving	Heavier Carcass Weight	Larger EMA	More Fat	More Fat	Higher Yield	More IMF	Greater Feed Efficiency	More Doile	More Sound	More Sound	Greater Profitability	Greater Profitability	Greater Profitability	Greater Profitability	
1%	+11.0	+10.0	-10.5	+0.2	+66	+117	+156	+153	+28	+4.3	-9.6	+91	+12.5	+3.3	+3.3	+2.8	+4.5	-0.56	+33	+0.60	+0.42	+162	+139	+190	+149	
5%	+8.9	+8.2	-8.6	+1.5	+61	+107	+142	+135	+24	+3.5	-8.2	+83	+10.3	+2.1	+2.0	+2.1	+3.7	-0.33	+25	+0.72	+0.54	+150	+131	+172	+139	
10%	+7.7	+7.2	-7.6	+2.1	+58	+102	+135	+126	+23	+3.1	-7.4	+78	+9.2	+1.6	+1.4	+1.7	+3.3	-0.22	+20	+0.76	+0.62	+143	+127	+162	+134	
15%	+6.8	+6.5	-7.0	+2.6	+56	+99	+131	+120	+22	+2.8	-6.9	+76	+8.5	+1.2	+1.1	+1.5	+3.1	-0.14	+18	+0.80	+0.66	+139	+124	+155	+131	
20%	+6.1	+5.8	-6.5	+2.9	+54	+97	+127	+116	+21	+2.7	-6.5	+74	+7.9	+1.0	+0.8	+1.3	+2.8	-0.08	+15	+0.84	+0.70	+135	+121	+150	+128	
25%	+5.4	+5.3	-6.1	+3.1	+53	+95	+124	+112	+20	+2.5	-6.1	+72	+7.4	+0.7	+0.5	+1.1	+2.6	-0.03	+14	+0.86	+0.72	+132	+119	+145	+125	
30%	+4.8	+4.7	-5.7	+3.4	+52	+93	+122	+109	+19	+2.4	-5.8	+70	+7.1	+0.6	+0.3	+1.0	+2.5	+0.01	+12	+0.90	+0.74	+129	+117	+141	+123	
35%	+4.2	+4.3	-5.4	+3.6	+51	+91	+120	+106	+19	+2.3	-5.5	+69	+6.7	+0.4	+0.1	+0.9	+2.3	+0.05	+10	+0.92	+0.78	+126	+116	+137	+121	
40%	+3.6	+3.8	-5.1	+3.8	+50	+90	+118	+103	+18	+2.2	-5.2	+68	+6.4	+0.2	+0.1	+0.8	+2.2	+0.09	+9	+0.94	+0.80	+124	+114	+133	+119	
45%	+3.0	+3.3	-4.8	+4.0	+49	+88	+116	+100	+17	+2.0	-4.9	+66	+6.1	+0.1	-0.2	+0.7	+2.0	+0.13	+8	+0.96	+0.82	+121	+113	+129	+117	
50%	+2.4	+2.8	-4.5	+4.2	+48	+87	+114	+98	+17	+1.9	-4.7	+65	+5.8	-0.1	-0.4	+0.5	+1.9	+0.17	+6	+0.98	+0.84	+119	+111	+125	+115	
55%	+1.8	+2.3	-4.2	+4.4	+48	+86	+112	+95	+16	+1.8	-4.4	+64	+5.5	-0.2	-0.6	+0.4	+1.8	+0.20	+5	+1.00	+0.86	+116	+109	+121	+113	
60%	+1.1	+1.8	-3.9	+4.6	+47	+84	+110	+93	+16	+1.7	-4.2	+63	+5.3	-0.4	-0.8	+0.3	+1.7	+0.24	+3	+1.02	+0.88	+114	+108	+117	+111	
65%	+0.4	+1.3	-3.6	+4.8	+46	+83	+107	+90	+15	+1.6	-3.9	+61	+5.0	-0.6	-1.0	+0.2	+1.6	+0.28	+2	+1.04	+0.92	+111	+106	+113	+109	
70%	-0.3	+0.7	-3.3	+5.0	+45	+81	+105	+87	+15	+1.5	-3.6	+60	+4.7	-0.7	-1.2	+0.1	+1.4	+0.32	+0	+1.06	+0.94	+107	+104	+109	+107	
75%	-1.1	+0.1	-3.0	+5.3	+44	+80	+103	+84	+14	+1.4	-3.3	+58	+4.3	-0.9	-1.4	-0.1	+1.3	+0.37	-2	+1.08	+0.96	+104	+102	+104	+104	
80%	-2.1	-0.7	-2.6	+5.6	+43	+78	+100	+81	+13	+1.3	-2.9	+56	+4.0	-1.1	-1.6	-0.2	+1.2	+0.43	-4	+1.12	+1.00	+100	+99	+97	+101	
85%	-3.2	-1.6	-2.1	+5.9	+41	+75	+97	+73	+12	+1.1	-2.5	+54	+3.5	-1.4	-1.9	-0.4	+1.0	+0.49	-6	+1.16	+1.04	+95	+96	+90	+97	
90%	-4.7	-2.8	-1.6	+6.3	+39	+72	+92	+72	+11	+0.9	-1.9	+51	+3.0	-1.7	-2.3	-0.7	+0.8	+0.58	-9	+1.20	+1.10	+87	+92	+80	+91	
95%	-7.1	-4.7	-0.6	+7.0	+36	+67	+85	+63	+10	+0.5	-0.9	+47	+2.1	-2.2	-2.9	-1.1	+2.6	+0.70	-13	+1.26	+1.16	+76	+84	+64	+82	
99%	-12.4	-8.8	+1.3	+8.3	+29	+56	+69	+45	+7	-0.2	+1.2	+37	+0.3	-3.2	-4.1	-2.0	-0.1	+0.95	-21	+1.42	+1.32	+0	+0	+0	+0	
	More Calving Difficulty	More Calving Difficulty	Longer Gestation Length	Heavier Birth Weight	Lighter Live Weight	Lighter Live Weight	Lighter Mature Weight	Lighter Live Weight	Smaller Scrotal Size	Longer Time to Calving	Lighter Carcass Weight	Smaller EMA	Less Fat	Less Fat	Lower Yield	Less IMF	Lower Feed Efficiency	Less Doile	Less Sound	Less Sound	Lower Profitability	Lower Profitability	Lower Profitability	Lower Profitability		

* The percentile bands represent the distribution of EBVs across the 2019 drop Australian Angus and Angus-influenced seedstock animals analysed in the August 2021 TransTasman Angus Cattle Evaluation .

Understanding Estimated Breeding Values (EBVs)

What is the TransTasman Angus Cattle Evaluation?

The TransTasman Angus Cattle Evaluation is the genetic evaluation program adopted by Angus Australia for Angus and Angus influenced beef cattle. The TransTasman Angus Cattle Evaluation uses Best Linear Unbiased Prediction (BLUP) technology to produce Estimated Breeding Values (EBVs) of recorded cattle for a range of important production traits (e.g. weight, carcass, fertility).

The TransTasman Angus Cattle Evaluation is an international genetic evaluation and includes pedigree, performance and genomic information from the Angus Australia and Angus New Zealand databases, along with selected information from the American and Canadian Angus Associations.

The TransTasman Angus Cattle Evaluation utilises a range of genetic evaluation software, including the internationally recognised BLUPF90 family of programs, and BREEDPLAN® beef genetic evaluation analytical software, as developed by the Animal Genetics and Breeding Unit (AGBU), a joint institute of NSW Agriculture and the University of New England, and Meat and Livestock Australia Limited (MLA).

What is an EBV?

An animal's breeding value can be defined as its genetic merit for each trait. While it is not possible to determine an animal's true breeding value, it is possible to estimate it. These estimates of an animal's true breeding value are called EBVs (Estimated Breeding Values).

EBVs are expressed as the difference between an individual animal's genetics and a historical genetic level (i.e. group of animals) within the TACE genetic evaluation, and are reported in the units in which the measurements are taken.

Using EBVs to Compare the Genetics of Two Animals

TACE EBVs can be used to estimate the expected difference in the genetics of two animals, with the expected difference equating to half the difference in the EBVs of the animals, all other things being equal (e.g. they are joined to the same animal/s).

For example, a bull with a 200 Day Growth EBV of +60 would be expected to produce progeny that are, on average, 10 kg heavier at 200 days of age than a bull with a 200 Day Growth EBV of +40 kg (i.e. 20 kg difference between the sire's EBVs, then halved as the sire only contributes half the genetics).

Or similarly, a bull with an IMF EBV of +3.0 would be expected to produce progeny with on average, 1% more intramuscular fat in a 400 kg carcass than a bull with an IMF EBV of +1.0 (i.e. 2% difference between the sire's EBVs, then halved as the sire only contributes half the genetics).

Using EBVs to Benchmark an Animal's Genetics with the Breed

EBVs can also be used to benchmark an animal's genetics relative to the genetics of other Angus or Angus infused animals in Australia.

To benchmark an animal's genetics relative to other Angus animals, an animal's EBV can be compared to the EBV reference tables, which provide:

- the breed average EBV
- the percentile bands table

The current breed average EBV is listed on the bottom of each page in this publication, while the current EBV reference tables are included at the end of these introductory notes.

For easy reference, the percentile band in which an animal's EBV ranks is also published in association with the EBV.

Considering Accuracy

An accuracy value is published with each EBV, and is usually displayed as a percentage value immediately below the EBV.

The accuracy value provides an indication of the reliability of the EBV in estimating the animal's genetics (or true breeding value), and is an indication of the amount of information that has been used in the calculation of the EBV.

EBVs with accuracy values below 50% should be considered as preliminary or of low accuracy, 50-74% as of medium accuracy, 75-90% of medium to high accuracy, and 90% or greater as high accuracy.

Description of TACE EBVs

EBVs are calculated for a range of traits within TACE, covering calving ease, growth, fertility, maternal performance, carcass merit, feed efficiency and structural soundness. A description of each EBV included in this publication is provided on the following page.

Birth	CEDir	%	Genetic differences in the ability of a sire's calves to be born unassisted from 2 year old heifers.	Higher EBVs indicate fewer calving difficulties in 2 year old heifers.
	CEDirS	%	Genetic differences in the ability of a sire's daughters to calve unassisted at 2 years of age.	Higher EBVs indicate fewer calving difficulties in 2 year old heifers.
	GL	days	Genetic differences between animals in the length of time from the date of conception to the birth of the calf.	Lower EBVs indicate shorter gestation length.
Growth	BW	kg	Genetic differences between animals in calf weight at birth.	Lower EBVs indicate lighter birth weight.
	200 Day	kg	Genetic differences between animals in live weight at 200 days of age due to genetics for growth.	Higher EBVs indicate heavier live weight.
	400 Day	kg	Genetic differences between animals in live weight at 400 days of age.	Higher EBVs indicate heavier live weight.
	600 Day	kg	Genetic differences between animals in live weight at 600 days of age.	Higher EBVs indicate heavier live weight.
	MCW	kg	Genetic differences between animals in live weight of cows at 5 years of age.	Higher EBVs indicate heavier mature weight.
	Milk	kg	Genetic differences between animals in live weight at 200 days of age due to the maternal contribution of its dam.	Higher EBVs indicate heavier live weight.
Fertility	DTC	days	Genetic differences between animals in the time from the start of the joining period (i.e. when the female is introduced to a bull) until subsequent calving.	Lower EBVs indicate shorter time to calving.
	SS	cm	Genetic differences between animals in scrotal circumference at 400 days of age.	Higher EBVs indicate larger scrotal circumference.
	CWT	kg	Genetic differences between animals in hot standard carcass weight at 750 days of age.	Higher EBVs indicate heavier carcass weight.
	EMA	cm ²	Genetic differences between animals in eye muscle area at the 12/13th rib site in a 400 kg carcass.	Higher EBVs indicate larger eye muscle area.
Carcass	Rib Fat	mm	Genetic differences between animals in fat depth at the 12/13th rib site in a 400 kg carcass.	Higher EBVs indicate more fat.
	P8 Fat	mm	Genetic differences between animals in fat depth at the P8 rump site in a 400 kg carcass.	Higher EBVs indicate more fat.
	RBV	%	Genetic differences between animals in boned out saleable meat from a 400 kg carcass.	Higher EBVs indicate higher yield.
	IMF	%	Genetic differences between animals in intramuscular fat (marbling) at the 12/13th rib site in a 400 kg carcass.	Higher EBVs indicate more intramuscular fat.
Other	NFI-F	kg/day	Genetic differences between animals in feed intake at a standard weight and rate of weight gain when animals are in a feedlot finishing phase.	Lower EBVs indicate more feed efficiency.
	Doc	%	Genetic differences between animals in temperament.	Higher EBVs indicate better temperament.
Structure	Foot Angle	score	Genetic differences in foot angle (strength of pastern, depth of heel).	Lower EBVs indicate more desirable foot angle.
	Claw Set	score	Genetic differences in claw set structure (shape and evenness of claws).	Lower EBVs indicate more desirable claw structure.
Selection Index	ABI	\$	Genetic differences between animals in net profitability per cow joined in a typical commercial self replacing herd using Angus bulls. This selection index is not specific to a particular production system or market end-point, but identifies animals that will improve overall profitability in the majority of commercial grass and grain finishing beef production systems.	Higher selection index values indicate greater profitability.
	DOM	\$	Genetic differences between animals in net profitability per cow joined in a commercial self replacing herd targeting the domestic supermarket trade.	Higher selection index values indicate greater profitability.
	HGRN	\$	Genetic differences between animals in net profitability per cow joined in a commercial self replacing herd targeting pasture grown steers with a 250 day feedlot finishing period for the grain fed high quality, highly marbled markets.	Higher selection index values indicate greater profitability.
	HGRS	\$	Genetic differences between animals in net profitability per cow joined in a commercial self replacing herd targeting pasture finished steers.	Higher selection index values indicate greater profitability.

EBV Quick Reference for Glengowan Angus Bull Sale

Animal Ident	Calving Ease				Birth				Growth				Fertility				Carcase				Other				Selection Indexes			
	CED	CEM	GL	BW	200	400	600	MCW	Milk	SS	DC	CWT	EMA	Rib	Rump	RBV	IMF	NFI-F	Doc	ABI	DOM	GRN	GRS					
1	NGGQ10	-3.2	-0.7	-4.8	+7.1	+45	+91	+118	+120	+13	+1.1	-5.3	+56	-2.5	-1.1	-1.1	-0.1	+1.1	-0.28	-	\$94	\$93	\$98	\$93				
2	NGGQ9	-2.2	+0.0	-3.9	+6.4	+48	+94	+131	+117	+15	+2.6	-4.5	+66	+1.3	-0.6	-0.4	+0.0	+1.3	+0.32	-	\$112	\$100	\$117	\$110				
3	NGGQ1	-3.7	-0.8	-4.3	+6.8	+47	+89	+124	+120	+15	+2.4	-5.1	+61	+0.3	+0.8	+0.5	-0.7	+1.6	+0.38	-	\$102	\$91	\$107	\$100				
4	NGGQ3	+1.6	+4.5	-5.4	+3.9	+35	+74	+97	+77	+14	+2.6	-6.6	+47	-1.8	+1.5	+2.3	-2.1	+2.5	+0.65	-	\$102	\$94	\$109	\$98				
5	NGGQ15	-1.7	-1.5	-2.5	+6.2	+48	+92	+121	+107	+13	+2.5	-5.0	+82	+0.6	-0.1	+0.5	-0.7	+1.6	+0.27	-	\$105	\$99	\$108	\$104				
6	NGGQ16	+7.6	+9.3	-3.8	+2.6	+44	+80	+102	+72	+18	+2.0	-4.7	+61	+7.0	-0.4	+0.6	+0.8	+2.2	+0.41	-	\$128	\$121	\$133	\$124				
7	NGGQ26	+2.7	+0.4	-3.7	+5.8	+39	+75	+110	+111	+12	+1.0	-1.5	+53	+3.5	-0.3	-0.7	+0.5	-0.1	-0.35	-	\$82	\$83	\$68	\$90				
8	NGGQ27	+1.7	-0.5	-3.5	+5.5	+35	+65	+98	+94	+12	+1.0	-2.0	+46	+5.0	+0.1	-0.4	+0.7	-0.2	-0.22	-	\$70	\$78	\$52	\$80				
9	NGGQ33	-4.1	-4.7	-3.5	+7.8	+47	+89	+126	+134	+14	+1.7	-2.7	+60	+4.6	+0.0	-0.7	+0.7	-0.2	-0.32	-	\$85	\$83	\$74	\$92				
10	NGGQ35	-3.5	-6.3	-2.4	+7.5	+40	+75	+110	+113	+11	+1.4	-1.2	+51	+4.4	+0.0	-0.6	+0.5	-0.1	-0.24	-	\$69	\$72	\$54	\$79				
11	NGGQ37	-2.6	-3.8	-2.1	+5.4	+40	+75	+106	+108	+14	+1.2	-1.2	+49	+5.3	-0.1	-0.7	+0.7	-0.5	-0.13	-	\$66	\$75	\$45	\$78				
12	NGGQ48	-2.4	+0.3	-7.8	+5.6	+43	+77	+99	+99	+11	+1.1	-4.2	+53	+8.0	-1.0	-1.0	+1.9	+0.3	+0.40	-	\$92	\$97	\$84	\$96				
13	NGGQ54	-8.2	-1.0	-3.6	+9.1	+60	+114	+154	+162	+13	+3.2	-4.3	+92	+7.0	-1.3	-2.6	+1.5	+1.4	-0.07	-	\$127	\$111	\$143	\$121				
14	NGGQ74	-2.4	-1.1	-5.4	+6.3	+44	+83	+106	+101	+9	+2.1	-4.7	+52	+4.9	+0.9	+1.3	+0.4	-0.1	+0.00	-	\$88	\$93	\$73	\$95				
15	NGGQ82	-8.2	-7.0	-3.9	+8.2	+45	+83	+117	+132	+6	+1.2	+0.7	+53	+0.5	-2.4	-2.9	+1.0	+0.2	-0.26	-	\$59	\$68	\$50	\$67				
16	NGGQ77	-5.8	-2.7	-3.6	+6.9	+41	+80	+106	+118	+6	+2.2	-1.0	+48	+3.8	-2.0	-1.9	+1.5	+0.1	-0.32	-	\$71	\$82	\$62	\$78				
17	NGGQ64	-9.3	-4.0	-3.9	+8.6	+48	+88	+117	+123	+4	+2.3	-1.9	+55	+3.8	-2.2	-1.6	+1.5	+0.3	-0.17	-	\$79	\$85	\$73	\$84				
18	NGGQ80	+2.1	+0.0	-5.1	+4.7	+34	+69	+88	+84	+6	+0.8	-2.7	+84	+2.5	+0.6	+1.1	-0.1	+0.6	-0.07	-	\$78	\$87	\$65	\$85				
19	NGGQ76	+6.4	+1.0	-5.1	+3.6	+34	+73	+95	+81	+7	+2.3	-2.0	+40	+3.2	+0.0	+0.5	+0.8	-0.2	+0.06	-	\$84	\$94	\$67	\$94				
20	NGGQ47	+1.7	-4.8	-3.8	+3.1	+33	+69	+84	+74	+13	+0.9	-3.7	+41	-0.9	+1.4	+2.6	-2.2	+2.0	+0.01	-	\$72	\$79	\$66	\$76				





REFERENCE SIRES

**RS****ASCOT HALLMARK H147^{PV}****QQFH147**

Date of Birth: 05/08/2012

Register: HBR

AMFU,CAFU,DDF,NHFU

TE MANIA YORKSHIRE Y437^{PV}BOOROOMOOKA NEUTRON A238^{PV}TE MANIA BERKLEY B1^{PV}MILLAH MURRAH DIGBY D108^{PV}TE MANIA LOWAN Z53[#]MILLAH MURRAH FLOWER A70^{PV}**Sire: VTME343 TE MANIA EMPEROR E343^{PV}****Dam: NMMF123 MILLAH MURRAH BRENDA F123^{PV}**B T ULTRAVOX 297E[#]TE MANIA INFINITY 04 379 AB[#]TE MANIA LOWAN Z74^{PV}MILLAH MURRAH BRENDA D113^{PV}TE MANIA LOWAN V201[#]MILLAH MURRAH BRENDA B21^{PV}**August 2021 TransTasman Angus Cattle Evaluation**

	CALVING EASE		BIRTH		GROWTH				FERTILITY				CARCASE			OTHER			
	Dir	Dtrs	GL	BWT	200D	400D	600D	MCW	Milk	SS	D t C	CWT	EMA	Rib	P8	RBY	IMF	NFI-F	Doc
EBVs	-2.8	+1.8	-5.3	+7.5	+60	+110	+156	+137	+17	+3.3	-8.0	+80	-1.1	+0.9	+0.8	-1.1	+2.2	+0.66	+1
Acc	91%	80%	98%	98%	98%	98%	98%	96%	96%	97%	72%	94%	93%	94%	93%	91%	92%	87%	96%
Perc	84	61	36	98	6	4	1	4	52	7	6	8	99	22	20	95	37	94	68

Selection Indexes

Angus Breeding	Domestic	Heavy Grain	Heavy Grass
\$143	\$113	\$161	\$133

Traits Observed: BWT,200WT,400WT,600WT,SC,Scan(EMA,Rib,Rump,IMF),Genomics

Statistics: Number of Herds: 68, Prog Analysed: 966, Genomic Prog: 297

Hallmark presents a powerful package with a strong pedigree of Te Mania Emperor and the Millah Murrah Brenda lines. He is a larger framed bull with great structure and temperament and excellent feet. He is in the top 1% for all indexes.

RS**ASCOT LION HEART L305^{PV}****QQFL305**

Date of Birth: 15/03/2015

Register: HBR

AMFU,CAFU,DDFU,NHFU

TE MANIA BERKLEY B1^{PV}TE MANIA BARTEL B219^{PV}TE MANIA EMPEROR E343^{PV}DUNOON EVIDENT E614^{PV}TE MANIA LOWAN Z74^{PV}DUNOON ELSA B681^{SV}**Sire: QQFH147 ASCOT HALLMARK H147^{PV}****Dam: QQFH148 ASCOT H148^{SV}**MILLAH MURRAH DIGBY D108^{PV}MILLAH MURRAH EQUATOR D78^{PV}MILLAH MURRAH BRENDA F123^{PV}MILLAH MURRAH FLOWER F126^{PV}MILLAH MURRAH BRENDA D113^{PV}MILLAH MURRAH FLOWER B76^{PV}**August 2021 TransTasman Angus Cattle Evaluation**

	CALVING EASE		BIRTH		GROWTH				FERTILITY				CARCASE			OTHER			
	Dir	Dtrs	GL	BWT	200D	400D	600D	MCW	Milk	SS	D t C	CWT	EMA	Rib	P8	RBY	IMF	NFI-F	Doc
EBVs	-4.4	-0.6	-4.8	+6.9	+61	+115	+148	+136	+20	+4.4	-6.1	+90	+9.6	-2.0	-3.3	+2.7	+1.5	+0.42	+5
Acc	75%	62%	94%	96%	93%	93%	93%	86%	83%	89%	53%	82%	82%	83%	82%	79%	79%	68%	60%
Perc	90	80	45	95	5	2	3	5	25	1	25	2	8	94	97	2	66	79	53

Selection Indexes

Angus Breeding	Domestic	Heavy Grain	Heavy Grass
\$146	\$130	\$163	\$137

Traits Observed: BWT,200WT,400WT(x2),SC,Scan(EMA,Rib,Rump,IMF),Genomics

Statistics: Number of Herds: 19, Prog Analysed: 301, Genomic Prog: 72

Lion Heart is a son of Ascot Hallmark and was purchased by Ben Nevis Angus & Trio Angus. Like his sire, Lion Heart is a very stylish bull with excellent structure and temperament.

RS**BANQUET JUPITER J263^{SV}****VONJ263**

Date of Birth: 02/04/2013

Register: HBR

AMFU,CAFU,DDFU,NHFU

BANQUET XTRA BELIEF X030[#]KAHARAU CLINTON 752[#]BANQUET DAY DREAM D053^{PV}BANQUET YAWNING Y279[#]BANQUET DREAM V104[#]BANQUET VICKY T27[#]**Sire: VONF485 BANQUET FORBIDABULL F485^{PV}****Dam: VONA356 BANQUET DREAM A356[#]**HINGAIA 469[#]DYLEMMA RADAR W42^{SV}BANQUET DREAM W173^{PV}BANQUET DREAM Y281[#]BANQUET KIWI DREAM+92[#]BANQUET DREAM V76[#]**August 2021 TransTasman Angus Cattle Evaluation**

	CALVING EASE		BIRTH		GROWTH				FERTILITY				CARCASE			OTHER			
	Dir	Dtrs	GL	BWT	200D	400D	600D	MCW	Milk	SS	D t C	CWT	EMA	Rib	P8	RBY	IMF	NFI-F	Doc
EBVs	-6.5	-0.5	-4.3	+8.4	+50	+91	+120	+130	+1	+2.7	+0.3	+58	+5.5	-3.5	-3.5	+2.7	+0.2	-0.47	-
Acc	76%	58%	95%	95%	91%	92%	92%	85%	81%	87%	49%	80%	77%	78%	78%	74%	71%	61%	-
Perc	95	79	53	99	42	34	32	7	99	18	98	72	55	99	98	2	97	2	-

Selection Indexes

Angus Breeding	Domestic	Heavy Grain	Heavy Grass
\$86	\$95	\$82	\$91

Traits Observed: GL,CE,BWT,200WT,400WT,600WT,Scan(EMA,Rib,Rump,IMF),Genomics

Statistics: Number of Herds: 8, Prog Analysed: 265, Genomic Prog: 3

We purchased Jupiter J263 at the Banquet 2015 Autumn sale for \$40000. We considered him a standout for his head, depth, hindquarter and top line. He has excellent feet and an exceptionally quiet temperament. His EMA of 6.5 was outstanding and was at the time Banquet's highest EMA scan. Jupiter's extended pedigree also appealed to us as it demonstrates some legendary NZ sires including Hingaia 469. Jupiter has left a line of beautiful females.

RS
GLENGOWAN MAGNAM M5^{SV}
NGGM5

Date of Birth: 02/02/2016

Register: HBR

AMFU,CAFU,DDFU,NHFU

WAITARA VALLEY TEX*
 HINGAIA 469*
 HINGAIA 910*
Sire: QRFJ347 RAFF HINGAIA J347^{DV}
 ONEILLS EXPEDITION*
 RAFF BLACKBIRD F14*
 HOFF BLACKBIRD 594 5217*

MATAURI STOCKMAN 526 AB^{SV}
 GLENGOWAN CARMICHAEL C41 (AI) C41^{SV}
 GLENGOWAN CLARISSA X129*
Dam: NGGJ116 GLENGOWAN FRANSITA J116*
 BALD BLAIR NEW TREND R6+96*
 GLENGOWAN FRANSITA X76*
 GLENGOWAN FRANSITA Q38+95*


August 2021 TransTasman Angus Cattle Evaluation

	CALVING EASE		BIRTH		GROWTH				FERTILITY				CARCASE			OTHER			
	Dir	Dtrs	GL	BWT	200D	400D	600D	MCW	Milk	SS	D t C	CWT	EMA	Rib	P8	RBV	IMF	NFI-F	Doc
EBVs	-0.3	-1.1	-2.3	+7.0	+47	+84	+126	+131	+15	+1.8	-0.5	+67	+7.4	-0.4	-1.4	+1.2	-0.3	-0.34	-
Acc	53%	45%	62%	74%	71%	73%	75%	68%	58%	57%	44%	65%	60%	65%	62%	63%	60%	55%	-
Perc	71	83	84	96	58	60	22	7	71	55	97	41	25	60	76	21	99	5	-

Selection Indexes

Angus Breeding	Domestic	Heavy Grain	Heavy Grass
\$87	\$85	\$74	\$97

Traits Observed: CE,BWT,200WT(x2),400WT,600WT(x2)

Statistics: Number of Herds: 1, Prog Analysed: 11, Genomic Prog: 0

Glengowan Magnam was a bull we retained for his excellent structure, depth and temperament. He is leaving some lovely calves and shows typical softness from his Hingaia 469 grand-sire.

RS
MILLAH MURRAH KRUSE TIME K400^{PV}
NMMK400

Date of Birth: 23/08/2014

Register: HBR

AMF,CAF,DDF,NHF,MAF,RGF

N BAR EMULATION EXT*
 LEACHMAN RIGHT TIME^{SV}
 LEACHMAN ERICA 0025*
Sire: USA24J BT RIGHT TIME 24J*
 TRAVELER 124 G D A R*
 SITZ EVERELDA ENTENSE 1905*
 SITZ EVERELDA ENTENSE 1791*

HINGAIA 469*
 CRUSADER OF STERN AB*
 STERN 6129*
Dam: NMMA204 MILLAH MURRAH ELA A204*
 YTHANBRAE NEW DESIGN 036 V1002*
 MILLAH MURRAH ELA Y46*
 MILLAH MURRAH ELA W43*


August 2021 TransTasman Angus Cattle Evaluation

	CALVING EASE		BIRTH		GROWTH				FERTILITY				CARCASE			OTHER			
	Dir	Dtrs	GL	BWT	200D	400D	600D	MCW	Milk	SS	D t C	CWT	EMA	Rib	P8	RBV	IMF	NFI-F	Doc
EBVs	-2.1	-6.1	-1.5	+3.2	+43	+79	+106	+108	+16	+0.0	-1.1	+55	+4.3	-0.2	-0.6	-0.4	+1.1	-0.23	+1
Acc	79%	69%	97%	97%	94%	95%	92%	86%	83%	93%	61%	83%	83%	85%	83%	81%	82%	70%	92%
Perc	81	98	91	27	77	76	67	31	55	99	95	82	75	54	55	83	81	9	69

Selection Indexes

Angus Breeding	Domestic	Heavy Grain	Heavy Grass
\$72	\$78	\$62	\$79

Traits Observed: BWT,Genomics

Statistics: Number of Herds: 35, Prog Analysed: 306, Genomic Prog: 87

Used as an AI sire Kruse Time K400 offers an outstanding maternal line which includes legendary bulls such as Hingaia 469, Crusader of Stern and Right Time 24J. He has excellent structure and capacity.



Lot 3

GLENGOWAN HALLMARK Q1^{SV}



Date of Birth: 09/03/2019

Register: HBR

Ident: NGGQ1

AMFU,CAFU,DDFU,NHFU

TE MANIA BERKLEY B1^{PV}
 TE MANIA EMPEROR E343^{PV}
 TE MANIA LOWAN Z74^{PV}
Sire: QQFH147 ASCOT HALLMARK H147^{PV}
 MILLAH MURRAH DIGBY D108^{PV}
 MILLAH MURRAH BRENDA F123^{PV}
 MILLAH MURRAH BRENDA D113^{PV}

BURKE 22 OF TURIROA[#]
 GLENGOWAN CARBINE C9^{SV}
 GLENGOWAN MOONLIGHT Y31[#]
Dam: NGGG26 GLENGOWAN ROSE MARIE G26[#]
 BOOROOMOOKA YELLOWSTONE Y59^{SV}
 GLENGOWAN ROSE MARIE D110^{PV}
 GLENGOWAN ROSE MARIE Z95^{SV}

TACE TransTasman Angus Cattle Evaluation	August 2021 TransTasman Angus Cattle Evaluation														
	BIRTH		GROWTH				FERTILITY				CARCASE				
	BW	200	400	600	MCW	Milk	SS	DTC	CWT	EMA	Rib	P8	RBY	IMF	
EBVs	+6.8	+47	+89	+124	+120	+15	+2.4	-5.1	+61	+0.3	+0.8	+0.5	-0.7	+1.6	
Acc	69%	64%	64%	65%	63%	61%	58%	41%	61%	57%	60%	57%	58%	57%	
Perc	94	55	44	25	15	69	28	41	62	99	24	26	90	62	

Traits Observed: BWT,200WT,400WT,600WT(x2)

A very stylish bull with good frame and length. Thick carcase with tremendous bone. Super quiet and easy doing.

Purchaser..... \$.....



LOT 3: GLENGOWAN HALLMARK Q1

Lot 4

GLENGOWAN HALLMARK Q3^{SV}



Date of Birth: 12/03/2019

Register: HBR

Ident: NGGQ3

AMFU,CAFU,DDFU,NHFU

TE MANIA BERKLEY B1^{PV}
 TE MANIA EMPEROR E343^{PV}
 TE MANIA LOWAN Z74^{PV}
Sire: QQFH147 ASCOT HALLMARK H147^{PV}
 MILLAH MURRAH DIGBY D108^{PV}
 MILLAH MURRAH BRENDA F123^{PV}
 MILLAH MURRAH BRENDA D113^{PV}

TE MANIA INFINITY 04 379 AB[#]
 GLENGOWAN FORREST F91^{SV}
 GLENGOWAN CLARISSA D83[#]
Dam: NGGJ133 GLENGOWAN COUNTESS J133[#]
 GLENGOWAN U122[#]
 GLENGOWAN COUNTESS E16[#]
 GLENGOWAN COUNTESS X137[#]

TACE TransTasman Angus Cattle Evaluation	August 2021 TransTasman Angus Cattle Evaluation														
	BIRTH		GROWTH				FERTILITY				CARCASE				
	BW	200	400	600	MCW	Milk	SS	DTC	CWT	EMA	Rib	P8	RBY	IMF	
EBVs	+3.9	+35	+74	+97	+77	+14	+2.6	-6.6	+47	-1.8	+1.5	+2.3	-2.1	+2.5	
Acc	73%	71%	71%	72%	70%	66%	66%	45%	68%	65%	70%	66%	67%	65%	
Perc	43	96	88	84	85	75	21	18	95	99	12	4	99	28	

Traits Observed: GL,BWT,200WT,400WT,600WT(x2),Genomics

A handy type with depth, thickness, length and a low birthweight.

Purchaser..... \$.....

Lot 5

GLENGOWAN HALLMARK Q15^{PV}



Date of Birth: 19/03/2019

Register: HBR

Ident: NGGQ15

AMFU,CAFU,DDFU,NHFU

TE MANIA BERKLEY B1^{PV}
 TE MANIA EMPEROR E343^{PV}
 TE MANIA LOWAN Z74^{PV}
Sire: QQFH147 ASCOT HALLMARK H147^{PV}
 MILLAH MURRAH DIGBY D108^{PV}
 MILLAH MURRAH BRENDA F123^{PV}
 MILLAH MURRAH BRENDA D113^{PV}

TE MANIA INFINITY 04 379 AB[#]
 GLENGOWAN FORREST F91^{SV}
 GLENGOWAN CLARISSA D83[#]
Dam: NGGJ165 GLENGOWAN RAMONA J165^{SV}
 BANQUET ASTON A144^{SV}
 GLENGOWAN RAMONA E13[#]
 GLENGOWAN RUMONA A50[#]

TACE TransTasman Angus Cattle Evaluation	August 2021 TransTasman Angus Cattle Evaluation													
	BIRTH			GROWTH			FERTILITY				CARCASE			
	BW	200	400	600	MCW	Milk	SS	DTC	CWT	EMA	Rib	P8	RBY	IMF
EBVs	+6.2	+48	+92	+121	+107	+13	+2.5	-5.0	+62	+0.6	-0.1	+0.5	-0.7	+1.6
Acc	72%	67%	68%	70%	65%	60%	60%	43%	61%	59%	63%	60%	61%	59%
Perc	89	53	32	32	32	79	24	43	60	99	51	26	90	62

Traits Observed: GL,BWT,200WT,400WT(x2),600WT

With Te Mania Infinity in his background this bull is thick and well fleshed with excellent muscle.

Purchaser..... \$.....

Lot 6

GLENGOWAN QUARRY Q16^{SV}



Date of Birth: 19/03/2019

Register: APR

Ident: NGGQ16

AM6%,CA6%,DD6%,NH6%

B/R NEW DIMENSION 7127^{SV}
 TE MANIA BARTEL B219^{PV}
 TE MANIA JEDDA W85[#]
Sire: HIOE7 AYRVALE BARTEL B7^{PV}
 MYTTY
 EAGLEHAWK JEDDA B
 EAGLEHAWK JEDDA Z48[#]

Dam: UN

WITHDRAWN

TACE TransTasman Angus Cattle Evaluation	August 2021 TransTasman Angus Cattle Evaluation													
	BIRTH			GROWTH			FERTILITY				CARCASE			
	BW	200	400	600	MCW	Milk	SS	DTC	CWT	EMA	Rib	P8	RBY	IMF
EBVs	+2.6	+44	+80	+102	+72	+18	+2.0	-4.7	+61	+7.0	-0.4	+0.6	+0.8	+2.2
Acc	55%	55%	55%	56%	56%	54%	53%	47%	56%	54%	57%	55%	57%	55%
Perc	17	72	73	76	89	36	45	48	64	31	60	24	36	37

Traits Observed: None

A low birthweight in this Aryvale Bartel son. An excellent commercial bull with a good Angus head. Dam DNA result pending.

Purchaser..... \$.....

Lot 7

GLENGOWAN HALLMARK Q26^{SV}



Date of Birth: 29/04/2019

Register: HBR

Ident: NGGQ26

AMFU,CAFU,DDFU,NHFU

HINGAIA 469[#]
 RAFF HINGAIA J347^{PV}
 RAFF BLACKBIRD F14[#]
Sire: NGGM5 GLENGOWAN MAGNAM M5^{SV}
 GLENGOWAN CARMICHAEL C41 (AI) C41^{SV}
 GLENGOWAN FRANSITA J116[#]
 GLENGOWAN FRANSITA X76[#]

TURIHAUA BREAK D92[#]
 TURIROA BRUNO 10693[#]
 TURIROA TULIP 459[#]
Dam: NGGJ41 GLENGOWAN ROSE MARIE J41[#]
 BANQUET ASTON A144^{SV}
 GLENGOWAN ROSE MARIE D23[#]
 GLENGOWAN ROSE MARIE A68[#]

TACE TransTasman Angus Cattle Evaluation	August 2021 TransTasman Angus Cattle Evaluation													
	BIRTH			GROWTH			FERTILITY				CARCASE			
	BW	200	400	600	MCW	Milk	SS	DTC	CWT	EMA	Rib	P8	RBY	IMF
EBVs	+5.8	+39	+75	+110	+111	+12	+1.0	-1.5	+53	+3.5	-0.3	-0.7	+0.5	-0.1
Acc	68%	63%	64%	67%	60%	47%	43%	29%	53%	45%	50%	47%	48%	45%
Perc	84	90	86	57	26	89	86	93	86	85	57	58	49	99

Traits Observed: BWT,200WT,400WT,600WT(x2)

Thickness, length and smoothness in spades from a beautiful Bruno cow.

Purchaser..... \$.....

Lot 8

GLENGOWAN HALLMARK Q27^{SV}



Date of Birth: 29/04/2019

Register: HBR

Ident: NGGQ27

AMFU,CAFU,DDFU,NHFU

HINGAIA 469[#]
 RAFF HINGAIA J347^{DV}
 RAFF BLACKBIRD F14[#]

TURIHAUA BREAK D92[#]
 TURIROA BRUNO 10693[#]
 TURIROA TULIP 459[#]

Sire: NGGM5 GLENGOWAN MAGNAM M5^{SV}

Dam: NGGJ91 GLENGOWAN PET J91[#]

GLENGOWAN CARMICHAEL C41 (AI) C41^{SV}
 GLENGOWAN FRANSITA J116[#]
 GLENGOWAN FRANSITA X76[#]

GLENGOWAN U122[#]
 GLENGOWAN PET D2[#]
 GLENGOWAN PET X21[#]

TACE TransTasman Angus Cattle Evaluation	August 2021 TransTasman Angus Cattle Evaluation													
	BIRTH			GROWTH				FERTILITY				CARCASE		
	BW	200	400	600	MCW	Milk	SS	DTC	CWT	EMA	Rib	P8	RBY	IMF
EBVs	+5.5	+35	+65	+93	+94	+12	+1.0	-2.0	+46	+5.0	+0.1	-0.4	+0.7	-0.2
Acc	68%	63%	64%	68%	59%	46%	42%	29%	53%	45%	50%	47%	48%	45%
Perc	79	96	97	89	56	90	86	89	95	64	44	50	40	99

Traits Observed: BWT,200WT,400WT(x2),600WT

Long and full of meat with a ton of capacity. Strong maternal line from Hingaia and U122 Enforcer x Pet.

Purchaser..... \$.....



LOT 8: GLENGOWAN HALLMARK Q27

Lot 9

GLENGOWAN QASR Q33^{SV}



Date of Birth: 04/05/2019

Register: HBR

Ident: NGGQ33

AMFU,CAFU,DDFU,NHFU

HINGAIA 469[#]
 RAFF HINGAIA J347^{DV}
 RAFF BLACKBIRD F14[#]

TURIHAUA GAMBO W29[#]
 TURIHAUA CRUMBLE Y167[#]
 TURIHAUA W275[#]

Sire: NGGM5 GLENGOWAN MAGNAM M5^{SV}

Dam: NGGN11 GLENGOWAN SUTANIA N11[#]

GLENGOWAN CARMICHAEL C41 (AI) C41^{SV}
 GLENGOWAN FRANSITA J116[#]
 GLENGOWAN FRANSITA X76[#]

GLENGOWAN CARMICHAEL C41 (AI) C41^{SV}
 GLENGOWAN SUTANIA G208[#]
 GLENGOWAN SUTANIA B75 (AI) B75[#]

TACE TransTasman Angus Cattle Evaluation	August 2021 TransTasman Angus Cattle Evaluation													
	BIRTH			GROWTH				FERTILITY				CARCASE		
	BW	200	400	600	MCW	Milk	SS	DTC	CWT	EMA	Rib	P8	RBY	IMF
EBVs	+7.8	+47	+89	+126	+134	+14	+1.7	-2.7	+60	+4.6	+0.0	-0.7	+0.7	-0.2
Acc	65%	62%	64%	67%	59%	47%	46%	35%	54%	47%	52%	49%	51%	48%
Perc	99	57	42	21	5	77	60	82	66	71	47	58	40	99

Traits Observed: BWT,200WT,400WT(x2),600WT

Great muscle and bone evident here backed up by a strong pedigree with Hingaia 469 and Turihaia Crumble, two NZ legends.

Purchaser..... \$.....



Stud cows including Glengowan Sutania N11, dam of lot 9



Lot 10 GLENGOWAN QUILL Q35^{SV}

Date of Birth: 16/05/2019 Register: HBR Ident: NGGQ35 **AMFU,CAFU,DDFU,NHFU**

HINGAIA 469[#] TURIHUA CRUMBLE Y167[#]
 RAFF HINGAIA J347^{DV} GLENGOWAN ENFORCER E63^{SV}
 RAFF BLACKBIRD F14[#] GLENGOWAN BRENDA S93[#]
Sire: NGGM5 GLENGOWAN MAGNAM M5^{SV} **Dam: NGGJ84 GLENGOWAN ROSE J84[#]**
 GLENGOWAN CARMICHAEL C41 (AI) C41^{SV} GLENGOWAN U122[#]
 GLENGOWAN FRANSITA J116[#] GLENGOWAN ROSE D99[#]
 GLENGOWAN FRANSITA X76[#] GLENGOWAN ROSE Z74[#]

TACE Trans Tasman Angus Cattle Evaluation	August 2021 TransTasman Angus Cattle Evaluation													
	BIRTH		GROWTH				FERTILITY				CARCASE			
	BW	200	400	600	MCW	Milk	SS	DTC	CWT	EMA	Rib	P8	RBY	IMF
EBVs	+7.5	+40	+75	+110	+113	+11	+1.4	-1.2	+51	+4.4	+0.0	-0.6	+0.5	-0.1
Acc	68%	61%	59%	60%	55%	48%	45%	31%	51%	46%	51%	47%	49%	46%
Perc	98	87	85	58	23	93	73	94	90	74	47	55	49	99

Traits Observed: BWT,200WT,400WT(x2),600WT

Fantastic back end in this bull with excellent muscle and butt shape. The 469 and Crumble combination again is a maternal winner.

Purchaser..... \$.....



Lot 11 GLENGOWAN QUIP Q37^{SV}

Date of Birth: 16/05/2019 Register: HBR Ident: NGGQ37 **AMFU,CAFU,DDFU,NHFU**

HINGAIA 469[#] KAHARAU CLASS 790[#]
 RAFF HINGAIA J347^{DV} KAHARAU CLARION 08-844 AB[#]
 RAFF BLACKBIRD F14[#] KAHARAU 6184[#]
Sire: NGGM5 GLENGOWAN MAGNAM M5^{SV} **Dam: NGGK117 GLENGOWAN JOLLIMONT K117[#]**
 GLENGOWAN CARMICHAEL C41 (AI) C41^{SV} GLENGOWAN CHISHOLM C17^{PV}
 GLENGOWAN FRANSITA J116[#] GLENGOWAN JOLLIMONT F114^{PV}
 GLENGOWAN FRANSITA X76[#] GLENGOWAN JOLLIMONT A37^{SV}

TACE Trans Tasman Angus Cattle Evaluation	August 2021 TransTasman Angus Cattle Evaluation													
	BIRTH		GROWTH				FERTILITY				CARCASE			
	BW	200	400	600	MCW	Milk	SS	DTC	CWT	EMA	Rib	P8	RBY	IMF
EBVs	+5.4	+40	+75	+106	+108	+14	+1.2	-1.2	+49	+5.3	-0.1	-0.7	+0.7	-0.5
Acc	67%	60%	58%	59%	55%	46%	45%	35%	50%	47%	53%	50%	50%	48%
Perc	78	87	86	67	31	74	80	94	93	58	51	58	40	99

Traits Observed: BWT,200WT,400WT,600WT(x2)

A terrifically soft, long bull. A great option who will add meat where it is needed.

Purchaser..... \$.....

Lot 12

GLENGOWAN LIONHEART Q48^{SV}



Date of Birth: 20/09/2019

Register: HBR

Ident: NGGQ48

AMFU,CAFU,DDFU,NHFU

TE MANIA EMPEROR E343^{PV}
 ASCOT HALLMARK H147^{PV}
 MILLAH MURRAH BRENDA F123^{PV}
Sire: QQFL305 ASCOT LION HEART L305^{PV}
 DUNOON EVIDENT E614^{PV}
 ASCOT H148^{SV}
 MILLAH MURRAH FLOWER F126^{PV}

KAHARAU CLASS 790[#]
 KAHARAU CLARION 08-844 AB[#]
 KAHARAU 6184[#]
Dam: NGGK79 GLENGOWAN KARABAH K79[#]
 BANQUET ASTON A144^{SV}
 GLENGOWAN FRANSITA D38[#]
 LITTLE HILLS FRANSITA Y12[#]

TACE TransTasman Angus Cattle Evaluation	August 2021 TransTasman Angus Cattle Evaluation													
	BIRTH			GROWTH			FERTILITY				CARCASE			
	BW	200	400	600	MCW	Milk	SS	DTC	CWT	EMA	Rib	P8	RBY	IMF
EBVs	+5.6	+43	+77	+99	+99	+11	+1.1	-4.2	+53	+8.0	-1.0	-1.0	+1.9	+0.3
Acc	73%	71%	71%	71%	68%	63%	65%	41%	66%	63%	68%	64%	65%	62%
Perc	81	76	81	81	46	92	83	58	86	19	78	66	7	97

Traits Observed: GL,BWT,200WT,400WT(x2),Genomics

Beautifully soft bull with excellent butt shape and massive EMA.

Purchaser..... \$.....



Lot 13

GLENGOWAN LIONHEART Q54^{SV}



Date of Birth: 23/09/2019

Register: APR

Ident: NGGQ54

AMFU,CAFU,DDFU,NHFU

TE MANIA EMPEROR E343^{PV}
 ASCOT HALLMARK H147^{PV}
 MILLAH MURRAH BRENDA F123^{PV}
Sire: QQFL305 ASCOT LION HEART L305^{PV}
 DUNOON EVIDENT E614^{PV}
 ASCOT H148^{SV}
 MILLAH MURRAH FLOWER F126^{PV}

HINGAIA 469[#]
 RAFF HINGAIA J347^{PV}
 RAFF BLACKBIRD F14[#]
Dam: NGGM32 GLENGOWAN MOONLIGHT M32[#]
 GLENGOWAN ENFORCER E63^{SV}
 GLENGOWAN MOONLIGHT J171[#]
 GLENGOWAN F44^{PV}

TACE TransTasman Angus Cattle Evaluation	August 2021 TransTasman Angus Cattle Evaluation													
	BIRTH			GROWTH			FERTILITY				CARCASE			
	BW	200	400	600	MCW	Milk	SS	DTC	CWT	EMA	Rib	P8	RBY	IMF
EBVs	+9.1	+60	+114	+154	+162	+13	+3.2	-4.3	+92	+7.0	-1.3	-2.6	+1.5	+1.4
Acc	72%	69%	69%	70%	67%	61%	64%	39%	65%	63%	68%	64%	65%	62%
Perc	99	7	2	2	1	79	8	56	1	31	84	93	13	70

Traits Observed: GL,BWT,200WT,400WT(x2),Genomics

Lots of bone and thickness in this bull with a ton of meat. Will produce some cracking weaners.

Purchaser..... \$.....

Lot 14

GLENGOWAN QUATRO Q74^{SV}



Date of Birth: 18/10/2019

Register: HBR

Ident: NGGQ74

AMFU,CAFU,DDFU,NHFU

BANQUET DAY DREAM D053^{PV}
 BANQUET FORBIDABULL F485^{PV}
 BANQUET DREAM W173^{PV}
Sire: VONJ263 BANQUET JUPITER J263^{SV}
 BANQUET YAWNING Y279[#]
 BANQUET DREAM A356[#]
 BANQUET DREAM Y281[#]

TURIHAUA GAMBO W29[#]
 TURIHAUA CRUMBLE Y167[#]
 TURIHAUA W275[#]
Dam: NNGK84 GLENGOWAN EGYPT K84[#]
 GLENGOWAN CLASSIC C6^{SV}
 GLENGOWAN EGYPT F30[#]
 GLENGOWAN EGYPT D25^{PV}

TACE Trans Tasman Angus Cattle Evaluation	August 2021 TransTasman Angus Cattle Evaluation														
	BIRTH			GROWTH				FERTILITY				CARCASE			
	BW	200	400	600	MCW	Milk	SS	DTC	CWT	EMA	Rib	P8	RBY	IMF	
EBVs	+6.3	+44	+83	+106	+101	+9	+2.1	-4.7	+52	+4.9	+0.9	+1.3	+0.4	-0.1	
Acc	74%	71%	72%	72%	69%	64%	66%	42%	67%	63%	68%	65%	66%	62%	
Perc	91	72	62	67	43	96	41	48	88	66	22	12	54	99	

Traits Observed: BWT,200WT,400WT(x2),Genomics

A lovely soft, strong, thick, Jupiter son with great depth from 469 and Enforcer in his pedigree.

Purchaser..... \$.....



LOT 13: GLENGOWAN LIONHEART Q54

Lot 15

GLENGOWAN QATAR Q82^{SV}



Date of Birth: 23/10/2019

Register: HBR

Ident: NGGQ82

AMFU,CAFU,DDFU,NHFU

BANQUET DAY DREAM D053^{PV}
 BANQUET FORBIDABULL F485^{PV}
 BANQUET DREAM W173^{PV}
Sire: VONJ263 BANQUET JUPITER J263^{SV}
 BANQUET YAWNING Y279[#]
 BANQUET DREAM A356[#]
 BANQUET DREAM Y281[#]

TURIHAUA CRUMBLE Y167[#]
 GLENGOWAN ENFORCER E63^{SV}
 GLENGOWAN BRENDA S93[#]
Dam: NNGK2 GLENGOWAN FRANSITA K2[#]
 GLENGOWAN CARBINE C9^{SV}
 GLENGOWAN FRANSITA G10[#]
 GLENGOWAN FRANSITA D38[#]

TACE Trans Tasman Angus Cattle Evaluation	August 2021 TransTasman Angus Cattle Evaluation														
	BIRTH			GROWTH				FERTILITY				CARCASE			
	BW	200	400	600	MCW	Milk	SS	DTC	CWT	EMA	Rib	P8	RBY	IMF	
EBVs	+8.2	+45	+83	+117	+132	+6	+1.2	+0.7	+53	+0.5	-2.4	-2.9	+1.0	+0.2	
Acc	73%	71%	70%	72%	68%	63%	64%	38%	65%	61%	66%	63%	63%	60%	
Perc	99	69	62	41	6	99	80	99	86	99	97	95	28	97	

Traits Observed: BWT,200WT,400WT(x2),Genomics

A handy, practical bull who will do the job. A strong Jupiter son.

Purchaser..... \$.....

Lot 16

GLENGOWAN QUILPIE Q77^{PV}



Date of Birth: 18/10/2019

Register: HBR

Ident: NGGQ77

AMFU,CAFU,DDFU,NHFU

BANQUET DAY DREAM D053^{PV}
 BANQUET FORBIDABULL F485^{PV}
 BANQUET DREAM W173^{PV}
Sire: VONJ263 BANQUET JUPITER J263^{SV}
 BANQUET YAWNING Y279[#]
 BANQUET DREAM A356[#]
 BANQUET DREAM Y281[#]

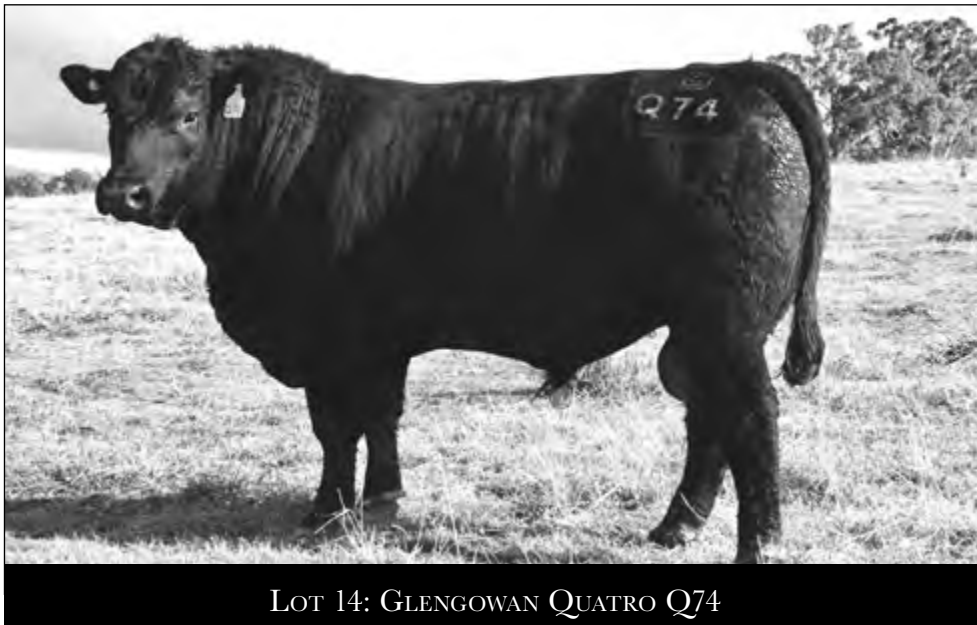
0490 OF KAKAHU AB[#]
 STERN 0768[#]
 STERN 1531[#]
Dam: NGGH16 GLENGOWAN RUA H16^{SV}
 GLENGOWAN BETHUNE B84^{SV}
 GLENGOWAN RUA E115[#]
 GLENGOWAN RUA X121[#]

TACE Trans Tasman Angus Cattle Evaluation	August 2021 TransTasman Angus Cattle Evaluation													
	BIRTH		GROWTH				FERTILITY				CARCASE			
	BW	200	400	600	MCW	Milk	SS	DTC	CWT	EMA	Rib	P8	RBV	IMF
EBVs	+6.9	+41	+80	+106	+118	+6	+2.2	-1.0	+48	+3.8	-2.0	-1.9	+1.5	+0.1
Acc	73%	62%	62%	63%	59%	54%	56%	33%	56%	52%	55%	53%	52%	50%
Perc	95	85	74	68	17	99	36	95	93	82	94	85	13	98

Traits Observed: BWT,200WT,400WT,600WT

Lots of length and stretch in this bull who will cover a lot of ground. His pedigree brings typical thickness and softness.

Purchaser..... \$.....



Lot 17

GLENGOWAN QUOTA Q64^{SV}



Date of Birth: 16/10/2019

Register: HBR

Ident: NGGQ64

AMFU,CAFU,DDFU,NHFU

BANQUET DAY DREAM D053^{PV}
 BANQUET FORBIDABULL F485^{PV}
 BANQUET DREAM W173^{PV}
Sire: VONJ263 BANQUET JUPITER J263^{SV}
 BANQUET YAWNING Y279[#]
 BANQUET DREAM A356[#]
 BANQUET DREAM Y281[#]

BRAVEHEART OF STERN^{SV}
 PREMIER BRAVEHEART H46^{SV}
 CARRINGTON PARK DREAM D5^{SV}
Dam: NGGL13 GLENGOWAN FRANSITA L13[#]
 KAHARAU CLARION 08-844 AB[#]
 GLENGOWAN FRANSITA G65[#]
 LITTLE HILLS FRANSITA Y12[#]

TACE Trans Tasman Angus Cattle Evaluation	August 2021 TransTasman Angus Cattle Evaluation													
	BIRTH		GROWTH				FERTILITY				CARCASE			
	BW	200	400	600	MCW	Milk	SS	DTC	CWT	EMA	Rib	P8	RBV	IMF
EBVs	+8.6	+48	+88	+117	+123	+4	+2.3	-1.9	+55	+3.8	-2.2	-1.6	+1.5	+0.3
Acc	70%	61%	62%	63%	58%	53%	54%	34%	55%	51%	54%	52%	52%	49%
Perc	99	51	47	39	12	99	32	90	82	82	95	80	13	97

Traits Observed: BWT,200WT,400WT(x2)

A very solid compact type with lots of bone and thickness. Will go anywhere.

Purchaser..... \$.....

Lot 18

GLENGOWAN Q80^{SV}



Date of Birth: 22/10/2019

Register: HBR

Ident: NGGQ80

AMFU,CAFU,DDFU,NHFU

BANQUET DAY DREAM D053^{PV}
 BANQUET FORBIDABULL F485^{PV}
 BANQUET DREAM W173^{PV}
Sire: VONJ263 BANQUET JUPITER J263^{SV}
 BANQUET YAWNING Y279[#]
 BANQUET DREAM A356[#]
 BANQUET DREAM Y281[#]

TURIHAUA CRUMBLE Y167[#]
 GLENGOWAN ENFORCER E63^{SV}
 GLENGOWAN BRENDA S93[#]
Dam: NGGH130 GLENGOWAN CLARISSA H130[#]
 GLENGOWAN U122[#]
 GLENGOWAN CLARISSA D138[#]
 GLENGOWAN CLARISSA Y18[#]

TACE TransTasman Angus Cattle Evaluation	August 2021 TransTasman Angus Cattle Evaluation														
	BIRTH			GROWTH			FERTILITY				CARCASE				
	BW	200	400	600	MCW	Milk	SS	DTC	CWT	EMA	Rib	P8	RBY	IMF	
EBVs	+4.7	+34	+69	+88	+84	+6	+0.8	-2.7	+34	+2.5	+0.6	+1.1	-0.1	+0.6	
Acc	74%	72%	72%	73%	69%	64%	65%	40%	66%	62%	68%	64%	65%	61%	
Perc	63	97	94	94	75	99	91	82	99	93	29	15	74	93	

Traits Observed: BWT,200WT,400WT,Genomics

Good shape and length in this useful commercial bull. A good all-rounder.

Purchaser..... \$.....



LOT 20: GLENGOWAN KRUZE Q47

Lot 19

GLENGOWAN QUEBEC Q76^{SV}



Date of Birth: 18/10/2019

Register: HBR

Ident: NGGQ76

AMFU,CAFU,DDFU,NHFU

BANQUET DAY DREAM D053^{PV}
 BANQUET FORBIDABULL F485^{PV}
 BANQUET DREAM W173^{PV}
Sire: VONJ263 BANQUET JUPITER J263^{SV}
 BANQUET YAWNING Y279[#]
 BANQUET DREAM A356[#]
 BANQUET DREAM Y281[#]

TURIHAUA GAMBO W29[#]
 TURIHAUA CRUMBLE Y167[#]
 TURIHAUA W275[#]
Dam: NGGK97 GLENGOWAN MATAKA K97[#]
 GLENGOWAN WOODY A67^{SV}
 GLENGOWAN MATAKA D86[#]
 GLENGOWAN MATAKA A57[#]

TACE TransTasman Angus Cattle Evaluation	August 2021 TransTasman Angus Cattle Evaluation														
	BIRTH			GROWTH			FERTILITY				CARCASE				
	BW	200	400	600	MCW	Milk	SS	DTC	CWT	EMA	Rib	P8	RBY	IMF	
EBVs	+3.6	+34	+73	+95	+81	+7	+2.3	-2.0	+40	+3.2	+0.0	+0.5	+0.8	-0.2	
Acc	73%	71%	71%	72%	69%	64%	65%	41%	66%	62%	67%	64%	64%	61%	
Perc	36	97	89	87	79	99	32	89	99	88	47	26	36	99	

Traits Observed: BWT,200WT,400WT(x2),Genomics

Really soft, thick bull with a low birthweight. A practical, go anywhere type.

Purchaser..... \$.....

Lot 20

GLENGOWAN KRUSE Q47^{SV}



Date of Birth: 20/09/2019

Register: HBR

Ident: NGGQ47

AMFU,CAFU,DDFU,NHFU

LEACHMAN RIGHT TIME^{SV}

BT RIGHT TIME 24^J

SITZ EVERELDA ENTENSE 1905^{*}

Sire: NMMK400 MILLAH MURRAH KRUSE TIME K400^{PV}

CRUSADER OF STERN AB[#]

MILLAH MURRAH ELA A204[#]

MILLAH MURRAH ELA Y46[#]

TE MANIA INFINITY 04 379 AB[#]

GLENGOWAN FORREST F91^{SV}

GLENGOWAN CLARISSA D83[#]

Dam: NGGJ166 GLENGOWAN ROSE J166[#]

GLENGOWAN W57[#]

GLENGOWAN ROSE E23[#]

GLENGOWAN ROSE A23[#]

TACE TransTasman Angus Cattle Evaluation	August 2021 TransTasman Angus Cattle Evaluation													
	BIRTH			GROWTH			FERTILITY				CARCASS			
	BW	200	400	600	MCW	Milk	SS	DTC	CWT	EMA	Rib	P8	RBY	IMF
EBVs	+3.1	+33	+69	+84	+74	+13	+0.9	-3.7	+41	-0.9	+1.4	+2.6	-2.2	+2.0
Acc	72%	70%	69%	70%	67%	62%	64%	40%	65%	61%	66%	63%	63%	61%
Perc	25	98	94	96	88	80	88	67	98	99	13	3	99	45

Traits Observed: GL,BWT,200WT,400WT(x2),Genomics

A low birthweight bull this Millah Murrah Kruse Time son will be a solid commercial performer.

Purchaser..... \$.....

COMMERCIAL HEIFERS

PENS OF ANGUS HEIFERS

Lot 21 Unjoined heifers Purchaser:Price:

Lot 22 Unjoined heifers Purchaser:Price:

Lot 23 Unjoined heifers Purchaser:Price:

Lot 24 Unjoined heifers Purchaser:Price:

Lot 25 Cows and calves Purchaser:.....Price:

Lot 26 Cows and calves Purchaser:.....Price:



HEALTH & SAFETY

We, the owners of Glengowan Angus are committed to ensuring the health and safety of our officers, employees, contractors and visitors to our property. In November 2017 we undertook a voluntary Advisory Inspection by Worksafe NSW. We wish to advise that all efforts have been made to provide a safe working environment and safety systems however people entering “Glengowan” should be aware that hazards exist which include, but are not limited to, quad bikes, livestock movements, electric fences, trees and vehicles. People entering the property for any reason whatsoever including cattle sales or inspections should be aware of these hazards and enter at their own risk. We (the owners, employees and agents) are not liable for any personal injury or death suffered by you or for any theft, loss or damage to any property caused or contributed to by us or any other person. Everyone entering “Glengowan”, must also be aware of and adhere to any Covid 19 regulations currently in place.

SALE CATALOGUE DISCLAIMER

Whilst every effort is made to ensure the accuracy of the information contained in this catalogue at the time of printing Glengowan Angus, its officers, employees and agents assume no

responsibility for the accuracy or completeness of the information or opinions contained in the catalogue nor for the outcome (including consequential loss) of any action taken based on the information in this catalogue. Information including but not limited to pedigree, DNA information, Estimated Breeding Values (EBVs) and Index values, is based on data supplied by a third party; Angus Australia.

INSURANCE

We strongly recommend that all bulls are insured by the purchaser as the bull becomes their responsibility at the fall of the hammer.

PRIVACY INFORMATION

The animals included in this catalogue are registered with Angus Australia. In order for Angus Australia to process the transfer of a registered animal in this catalogue, the vendor will need to provide certain information to Angus Australia and the buyer consents to the collection and disclosure of that information by Angus Australia in certain circumstances. If the buyer does not wish for his or her information to be stored and disclosed by Angus Australia, the buyer must complete the form included below and forward it to Angus Australia. If the form is not completed, the buyer will be taken to have consented to the disclosure of such information.

BUYER'S OPTION TO OPT OUT OF DISCLOSING PERSONAL INFORMATION TO ANGUS AUSTRALIA

If you do not complete this form, you will be taken to have consented to Angus Australia using your name, address and phone number for the purposes of effecting a change of registration of the animal(s) that you have purchased, maintaining its databases and disclosing that information to its members on its website.

I, the buyer of animals with the following registration numbers

.....
 from member (name) do not consent to Angus Australia using my name, address and phone number for the purposes of effecting a change of registration of the following animal(s) that I have purchased, maintaining its databases and disclosing that information to its members on its website.

Signature:

Date:

Please forward this completed consent form to Angus Australia, Glen Innes Road, Locked Bag 11, Armidale NSW 2350. If you have any queries, please telephone 02 6772 3011 or e-mail office@angusaustralia.com.au.





BUYER'S INSTRUCTION SHEET



Trading Name:

Stud Name:

Address:

.....Postcode:

Telephone:Mobile:

Email:PIC:

LOTS PURCHASED:.....

.....

Carrier's Name:.....

Pick-Up Date: Time:

Account To:

Insurance:

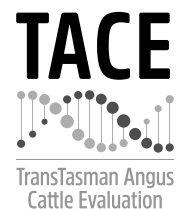
.....

Registration Transfer Request: Yes No (Only tick yes if you require transfer of a lot/s to be transferred into your stud prefix by the Breed Society)

NB: In the interest of buyers, to prevent the occurrence of mistakes, all instructions concerning delivery, trucking or shipping of cattle/sheep must be given in writing and signed by the buyer or his/her representative.

Print Name: _____ Signature: _____

Thank you to all purchasers, bidders and visitors.
Please join us for a complimentary lunch prior to the sale
and refreshments after the sale.



GLENGOWAN 64 YEARS STRONG



FOUNDED ON TRADITION. FOCUSED ON THE FUTURE



**CELEBRATING
64 YEARS
OF BREEDING**



www.glengowan.com.au