

WARADGERY

COOPWORTHS and SOUTH SUFFOLKS



7th ANNUAL ON PROPERTY RAM SALE

100 RAMS

Thursday 30th September 2021

Auction starts at 1pm



John Lawson 0499 752 513
Heath Templeton 0408 368 370

WARADGERY

COOPWORTHS and SOUTH SUFFOLKS

7th ANNUAL ON PROPERTY RAM SALE

100 RAMS

Thursday 30th September 2021

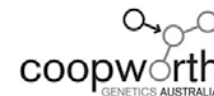
Auction starts at 1pm

Tim & Amelia Johnston

2317 Coleraine Balmoral Rd.
Brit Brit 3315

Mobile: 0438 756 236

Email: waradgery2@activ8.net.au



John Lawson 0499 752 513
Heath Templeton 0408 368 370

HISTORY & BLOODLINES

Waradgery Coopworth Stud was founded in 2005 with the purchase of 90 ewes from the Cleverlie Coopworth Stud Dispersal.

An additional 250 ewes have been purchased from John Marriott's Clifton Hill Stud in subsequent years.

Since that time we have adopted an extensive AI programme annually using the best available genetics from NZ & Australia. The best progeny from this program are used as Stud Sires.

OUR COOPWORTHS

Waradgery is one of only a few studs which maintains a focus on breeding a true to type Coopworth. We do not breed composites. If another breed is used then the progeny are back-crossed to introduce the desired traits.

This maximises hybrid vigour when Terminal Rams are used over our Coopworth ewes. Hybrid vigour is important to us & our clients

We breed a sheep which shows thickness and depth in body whilst maintaining the maternal features emphasising fertility and growth. Our Coopworths have an excellent temperament. This is important when handling the sheep in the yards and at shearing and is reflected in their mothering ability at lambing.

LOCATION

'Waradgery' is located on the Brim Brim Plateau at Brit Brit in the Western District of Victoria. At 300m elevation we enjoy a 700ml average rainfall. The timing of the Autumn break can be variable but we can usually rely on a good spring.

PRODUCTION SYSTEM

Our business consists of 5000 commercial ewes run over 2 properties comprising approx. 1000ha. The 2&3 year old ewes are joined to Coopworth rams for a July/August lamb, whilst the older ewes are joined to a Terminal ram to produce a June/July born sucker.

The Maternal wether and later Terminal lambs are either finished in an on farm feed system or sold as light kill or stores. This flexibility has enabled us to take opportunities as various seasons & markets provide.

We achieve weaning rates of 130% in the earlier Terminal mated ewes and up to 145% in the later Coopworth ewes. Having large numbers of lambs is central to our production system and is the key profit driver.

The Coopworth Stud is maintained at 300 ewes. Up to 50% of the ewes are classed out of the Stud into the Commercial Flock annually. This maintains a high level of selection pressure driving genetic gain. Our size enables us to know our sheep well enough to validate selection. We can identify with generations of well performing sheep.

OBJECTIVE MEASUREMENT

As Coopworth breeders we have been performance recording with Lambplan since the establishment of the Stud. Each sale ram has 21 data entries including 12 observed traits. The Stud has a strong genetic linkage across the Maternal breeds and offers rams in the Top Percentile Bands each year.

RAM SALES

Since 2009 Waradgery has been a vendor in the National Coopworth Selected Ram Sale. We have topped this sale on a number of occasions and always achieved a good price average & total clearance rates.

In the future all the top rams will be sold at the On Property Sale. This will enable buyers to select their rams from the best available draft of sale rams.

Further rams will be available for Private Selection following the Sale.

FLOCK HEALTH

The Waradgery flock is footrot & lice free.

Ovine Brucellosis accred. No. 3618

OJD Vacc since 2004. 2nd Gen since 2009.

THE MATERNAL SELECTION INDEX

The management of Lambplan have constructed an economically based selection index for the Maternal sheep. In the past, much of the selection of sheep has been distorted because of the over-emphasis of some traits to the relative exclusion of others. This applied, particularly, to fertility, as it is a trait you cannot "see".

As sheep are multi-purpose, multi-trait animals, it can be difficult to place the correct selection emphasis on the traits of maximum economic importance. A selection index ranks traits according to their relative economic importance, arriving at a single figure which is very convenient for both the ram breeder and the ram buyer. Individuals are still quite free to select their rams with a slightly greater emphasis on certain traits, but for maximum economic return, the use of the Maternal Selection Index will result in the greatest total economic return.

THE MATERNAL \$ INDEX

Birth Weight	11%
Weaning Weight	23%
Post-Weaning Weight	25%
Fat Depth	4%
Eye Muscle Depth	5%
Milk (Maternal Weaning Weight)	5%
Greasy Fleece Weight	3%
Worm Egg Count	8%
Number of Lambs Weaned	16%

The construction of this index takes into account the rams genetic influence on the lifetime performance of his daughters (50% genetic influence), plus the 25% influence on the grand-daughters, 12.5% influence on the great grand-daughters, etc., plus the extra value of the wether sons and the value of approximately 33% of the daughters that are not used for breeding within the ram buyers own flock.

New Zealand based sires require a number of lambings and rearings by the Australian based daughters to develop a meaningful breeding value for milk (maternal weaning weight).

WARADGERY

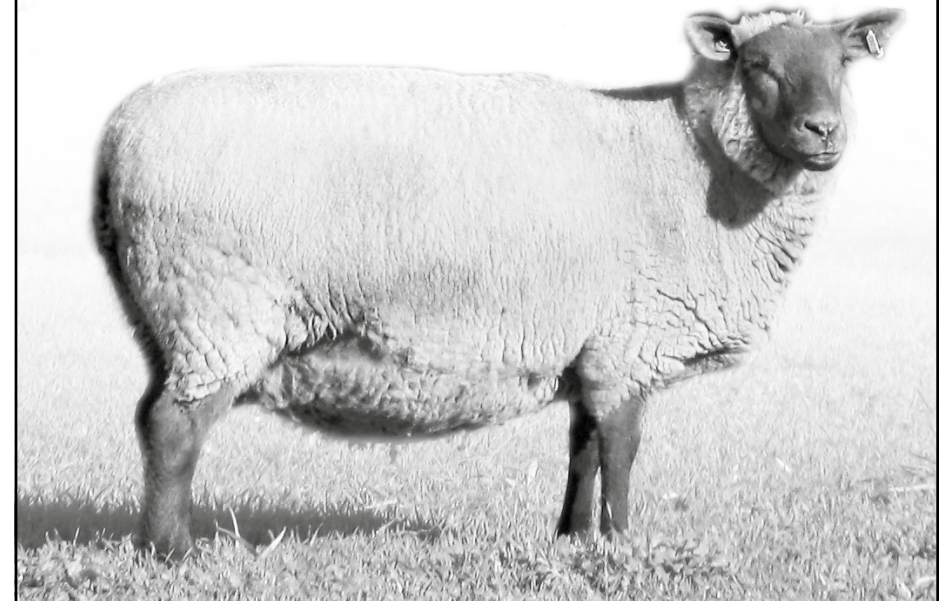
South Suffolk Stud

In May 2016 we were excited to purchase a significant portion of the *Willow Drive South Suffolk Stud* at their Flock Reduction Sale. We have subsequently purchased 2 Stud Rams along with a quantity of semen from various sires.

We believe that this breed will complement our Coopworth operation. We are attracted to the early maturing well shaped lambs with a high yielding carcass.

South Suffolk Rams are ideal for Ewe Lamb & Maiden Ewe joining for ease of lambing. Their markings & a tight fine skin enables a clear break for 3rd cycle joining of Maternal Ewes. This avoids late maternal lambs.

A Selection of Top South Suffolk Rams will be offered at the On Property Sale.



Percentile Report

Analysis **MATERNAL** Dated 15-Aug-21



Animals born in 2020 Count 81899

Band	Bwt kg	Wwt kg	Mwwt kg	Pwwt kg	Pfat mm	Pemd mm	Ywt kg	Yfat mm	Yemd mm	Ygfw %	Yfd u	Pfec %	NLW %	YNLW %	PSC cm	Awt kg	MCP+	BLX	MWP+	Mat\$
0	-0.6	15.5	4.1	22.6	2.7	5.8	24.1	3.2	4.8	40	-5.5	-96	37	45	9.1	27.7	196.2	188.3	245.8	209.4
1	-0.1	12.0	2.1	18.3	1.2	3.4	18.6	1.4	2.9	31	-4.1	-82	25	33	7.1	20.2	171.9	162.6	215.8	182.7
2	0.0	11.5	1.8	17.5	0.9	3.1	17.9	1.1	2.7	29	-3.8	-77	23	31	6.8	19.3	167.9	158.2	210.8	178.8
3	0.1	11.3	1.7	17.0	0.8	2.9	17.5	0.9	2.6	28	-3.6	-74	22	29	6.6	18.8	165.1	154.9	207.8	176.4
4	0.1	11.1	1.6	16.7	0.6	2.8	17.1	0.7	2.4	27	-3.4	-70	21	27	6.4	18.4	163.1	152.7	205.5	174.2
5	0.1	10.9	1.5	16.4	0.6	2.6	16.9	0.5	2.4	26	-3.3	-68	20	26	6.2	18.0	161.3	150.8	203.6	172.3
10	0.2	10.3	1.3	15.4	0.3	2.3	16.0	0.1	2.1	23	-2.7	-59	17	22	5.7	16.9	155.2	145.0	197.0	166.1
15	0.2	9.9	1.1	14.7	0.1	2.0	15.4	-0.1	1.9	21	-2.2	-53	16	20	5.3	16.2	150.8	141.1	192.4	161.9
20	0.3	9.5	0.9	14.2	0.0	1.8	14.9	-0.3	1.7	19	-1.4	-48	14	18	5.0	15.6	147.3	138.1	188.6	158.4
25	0.3	9.2	0.8	13.7	-0.2	1.6	14.5	-0.5	1.5	17	-0.5	-45	13	16	4.8	15.1	144.3	135.7	185.3	155.5
30	0.4	9.0	0.7	13.2	-0.3	1.4	14.1	-0.7	1.3	15	-0.1	-41	12	14	4.6	14.7	141.8	133.5	182.4	152.9
35	0.4	8.7	0.6	12.8	-0.4	1.3	13.8	-0.8	1.2	13	0.1	-38	11	13	4.4	14.3	139.5	131.7	179.6	150.6
40	0.4	8.4	0.5	12.5	-0.4	1.1	13.4	-0.9	1.1	11	0.2	-35	10	12	4.2	13.9	137.3	129.9	176.9	148.4
45	0.5	8.2	0.4	12.1	-0.5	1.0	13.0	-1.0	1.0	9	0.4	-31	10	11	4.1	13.5	135.1	128.1	174.3	146.2
50	0.5	7.9	0.2	11.7	-0.6	0.8	12.6	-1.1	0.8	8	0.5	-28	9	10	3.9	13.0	133.1	126.4	171.7	144.0
55	0.5	7.6	0.1	11.3	-0.7	0.7	12.2	-1.3	0.7	7	0.6	-25	8	9	3.8	12.6	131.1	124.7	169.0	141.8
60	0.5	7.3	0.0	10.8	-0.8	0.5	11.8	-1.4	0.6	5	0.7	-22	7	8	3.6	12.2	129.2	122.9	166.2	139.5
65	0.6	6.9	-0.1	10.3	-0.9	0.4	11.3	-1.5	0.5	4	0.8	-19	6	7	3.5	11.7	127.3	121.0	163.3	137.1
70	0.6	6.5	-0.2	9.8	-1.0	0.3	10.7	-1.6	0.4	2	0.9	-15	5	6	3.3	11.2	125.3	119.2	160.2	134.5
75	0.6	6.1	-0.3	9.2	-1.1	0.1	10.1	-1.7	0.2	1	1.0	-11	4	5	3.1	10.6	123.3	117.2	156.7	131.8
80	0.7	5.6	-0.5	8.5	-1.2	0.0	9.4	-1.8	0.1	-1	1.1	-6	3	4	2.9	10.0	120.9	115.2	153.0	128.8
85	0.7	5.0	-0.7	7.6	-1.3	-0.2	8.5	-2.0	0.0	-3	1.3	1	2	2	2.6	9.2	118.1	113.0	148.4	125.5
90	0.7	4.3	-0.9	6.6	-1.5	-0.4	7.4	-2.2	-0.2	-5	1.5	9	0	1	2.3	8.2	114.5	110.4	141.9	121.6
95	0.8	3.3	-1.2	5.0	-1.8	-0.7	5.7	-2.5	-0.5	-9	1.7	22	-2	-2	1.8	6.4	108.9	106.3	129.2	115.5
96	0.8	3.0	-1.3	4.6	-1.8	-0.7	5.1	-2.6	-0.5	-10	1.8	26	-3	-3	1.7	5.8	107.5	105.2	125.8	113.8
97	0.8	2.7	-1.4	4.0	-1.9	-0.8	4.5	-2.7	-0.6	-12	1.9	32	-4	-4	1.5	5.2	105.9	103.8	122.1	111.9
98	0.9	2.3	-1.6	3.4	-2.0	-1.0	3.9	-2.9	-0.7	-15	2.1	39	-5	-6	1.3	4.3	103.9	102.0	117.3	109.3
99	0.9	1.6	-1.9	2.6	-2.3	-1.2	2.9	-3.1	-0.9	-19	2.4	52	-6	-10	1.0	3.1	101.0	99.6	110.9	105.7
100	1.2	-3.8	-3.7	-5.0	-3.8	-3.0	-3.6	-5.3	-2.6	-45	4.7	184	-14	-23	-1.0	-3.8	83.5	83.0	72.5	85.3

SHEEP GENETICS



SHEEP GENETICS



Lot	1	Tag	200180	DOB	24/07/20	Twin	Sire	Cloven Hills 170335					
	BWT	MWWT	WWT	PWT	YWT	AWT	PFAT	PEMD	LMY	YNLW	NLW	MCP+	MAT\$
	0.80	0.0	10.2	16.0	15.6	15.4	-1.4	0.2	5.5	20%	16%	153	167
Accuracy	61	45	68	67	68	60	59	56	56	34	36	43	48

Purchaser \$

Lot	2	Tag	200222	DOB	25/07/20	Twin	Sire	Cloven Hills 170335					
	BWT	MWWT	WWT	PWT	YWT	AWT	PFAT	PEMD	LMY	YNLW	NLW	MCP+	MAT\$
	0.83	0.4	10.1	14.9	14.6	14.7	-1.3	0.2	5.3	20%	18%	151	166
Accuracy	61	46	68	67	68	60	59	56	56	34	36	43	48

Purchaser \$

Lot	3	Tag	200401	DOB	1/08/20	Twin	Sire	Waradgery 190161					
	BWT	MWWT	WWT	PWT	YWT	AWT	PFAT	PEMD	LMY	YNLW	NLW	MCP+	MAT\$
	0.76	0.6	10.2	15.0	16.5	16.2	-0.9	0.5	4.9	14%	13%	148	163
Accuracy	60	45	68	67	68	60	58	55	55	33	34	42	47

Purchaser \$

Lot	4	Tag	200413	DOB	2/08/20	Twin	Sire	CashmoreOakl 184588					
	BWT	MWWT	WWT	PWT	YWT	AWT	PFAT	PEMD	LMY	YNLW	NLW	MCP+	MAT\$
	0.47	-0.7	9.6	14.6	16.8	17.2	-0.2	1.2	4.2	15%	14%	147	162
Accuracy	60	43	67	67	67	60	58	55	55	33	34	42	47

Purchaser \$

Lot	5	Tag	200079	DOB	19/07/20	Twin	Sire	Cloven Hills 170335					
	BWT	MWWT	WWT	PWT	YWT	AWT	PFAT	PEMD	LMY	YNLW	NLW	MCP+	MAT\$
	0.75	0.5	9.7	14.2	13.7	13.1	-1.3	1.0	5.8	15%	11%	152	162
Accuracy	62	48	69	68	69	61	60	57	57	35	37	44	49

Purchaser \$

Lot	6	Tag	200422	DOB	3/08/20	Twin	Sire	CashmoreOakl 184588					
	BWT	MWWT	WWT	PWT	YWT	AWT	PFAT	PEMD	LMY	YNLW	NLW	MCP+	MAT\$
	0.57	-0.5	10.0	14.7	16.9	17.7	-0.5	1.2	4.5	11%	13%	146	161
Accuracy	58	40	67	66	67	59	57	54	54	30	30	40	44

Purchaser \$

Lot	7	Tag	200160	DOB	23/07/20	Twin	Sire	Cloven Hills 170335					
	BWT	MWWT	WWT	PWT	YWT	AWT	PFAT	PEMD	LMY	YNLW	NLW	MCP+	MAT\$
	0.76	0.4	9.0	13.7	13.9	13.6	-1.3	0.3	4.9	19%	15%	147	161
Accuracy	62	48	68	68	68	61	59	56	57	33	35	44	48

Purchaser \$

Lot	8	Tag	200427	DOB	3/08/20	Twin	Sire	CashmoreOakl 184588					
	BWT	MWWT	WWT	PWT	YWT	AWT	PFAT	PEMD	LMY	YNLW	NLW	MCP+	MAT\$
	0.48	-0.9	9.7	15.2	17.5	18.1	-0.3	1.5	4.7	13%	12%	146	161
Accuracy	58	40	62	63	68	60	58	56	52	29	29	39	43

Purchaser \$

Lot	9	Tag	200320	DOB	27/07/20	Twin	Sire	Cloven Hills 170335					
	BWT	MWWT	WWT	PWT	YWT	AWT	PFAT	PEMD	LMY	YNLW	NLW	MCP+	MAT\$
	0.85	0.3	8.5	13.0	12.7	11.7	-1.2	0.5	4.8	20%	15%	149	160
Accuracy	62	48	68	68	68	61	59	56	56	34	36	44	49

Purchaser \$

Lot	10	Tag	200161	DOB	23/07/20	Twin	Sire	Cloven Hills 170335					
	BWT	MWWT	WWT	PWT	YWT	AWT	PFAT	PEMD	LMY	YNLW	NLW	MCP+	MAT\$
	0.74	0.4	8.6	13.3	13.7	13.3	-1.0	0.3	4.4	19%	15%	146	160
Accuracy	62	48	68	68	68	61	59	56	57	33	35	44	48

Purchaser \$

Lot	11	Tag	200242	DOB	25/07/20	Twin	Sire	CashmoreOakl 182649					
	BWT	MWWT	WWT	PWT	YWT	AWT	PFAT	PEMD	LMY	YNLW	NLW	MCP+	MAT\$
	0.47	-0.1	8.8	14.2	17.9	18.8	-1.0	0.6	4.7	11%	15%	140	159
Accuracy	60	42	68	67	67	59	56	54	54	29	29	40	45

Purchaser \$

Lot	12	Tag	200382	DOB	29/07/20	Twin	Sire	CashmoreOakl 182649					
	BWT	MWWT	WWT	PWT	YWT	AWT	PFAT	PEMD	LMY	YNLW	NLW	MCP+	MAT\$
	0.43	-0.8	9.3	14.7	17.8	18.7	-0.8	0.7	4.5	11%	15%	141	159
Accuracy	60	42	67	67	67	59	56	53	54	29	29	40	45

Purchaser \$

Lot	13	Tag	200072	DOB	18/07/20	Twin	Sire	CashmoreOakl 182649					
	BWT	MWWT	WWT	PWT	YWT	AWT	PFAT	PEMD	LMY	YNLW	NLW	MCP+	MAT\$
	0.33	-0.3	8.2	13.2	16.4	16.5	-0.8	0.7	4.2	13%	16%	142	159
Accuracy	61	44	68	68	68	60	58	56	56	33	34	43	47

Purchaser \$

Lot	14	Tag	200252	DOB	25/07/20	Triplet	Sire	CashmoreOakl 182649					
	BWT	MWWT	WWT	PWT	YWT	AWT	PFAT	PEMD	LMY	YNLW	NLW	MCP+	MAT\$
	0.36	-1.0	8.2	13.3	16.5	16.2	-0.3	1.0	3.9	12%	17%	143	159
Accuracy	59	43	67	66	67	59	57	55	55	30	31	41	45

Purchaser \$

Lot	15	Tag	200216	DOB	24/07/20	Twin	Sire	Waradgery 190161					
	BWT	MWWT	WWT	PWT	YWT	AWT	PFAT	PEMD	LMY	YNLW	NLW	MCP+	MAT\$
	0.62	0.0	8.9	12.7	14.7	13.9	-1.0	0.4	4.6	17%	18%	144	158
Accuracy	61	45	68	67	68	60	57	55	55	34	35	42	47

Purchaser \$

Lot	16	Tag	200259	DOB	25/07/20	Twin	Sire	CashmoreOakl 184588					
	BWT	MWWT	WWT	PWT	YWT	AWT	PFAT	PEMD	LMY	YNLW	NLW	MCP+	MAT\$
	0.51	-1.0	8.8	13.8	16.4	16.7	-0.1	1.7	4.2	13%	13%	145	158
Accuracy	59	42	67	66	67	59	57	54	54	29	29	40	44

Purchaser \$

Lot	49	Tag	200015	DOB	12/07/20	Twin	Sire Cloven Hills 170335						
	BWT	MWWT	WWT	PWT	YWT	AWT	PFAT	PEMD	LMY	YNLW	NLW	MCP+	MAT\$
	0.72	-0.6	9.1	13.6	13.5	13.5	-1.0	0.5	5.0	15%	11%	143	152
<i>Accuracy</i>	61	47	67	67	68	59	57	54	55	30	32	42	46

Purchaser \$

Lot	50	Tag	200042	DOB	16/07/20	Twin	Sire Cloven Hills 170335						
	BWT	MWWT	WWT	PWT	YWT	AWT	PFAT	PEMD	LMY	YNLW	NLW	MCP+	MAT\$
	0.61	-1.1	8.3	12.8	12.9	12.9	-1.0	0.7	4.8	17%	14%	142	152
<i>Accuracy</i>	62	47	69	68	69	61	59	56	57	35	38	44	49

Purchaser \$

Lot	51	Tag	200360	DOB	29/07/20	Twin	Sire CashmoreOakl 182649						
	BWT	MWWT	WWT	PWT	YWT	AWT	PFAT	PEMD	LMY	YNLW	NLW	MCP+	MAT\$
	0.26	-0.8	6.9	11.3	14.6	14.3	-0.4	1.0	3.5	9%	16%	138	152
<i>Accuracy</i>	60	43	68	67	68	60	57	54	55	30	31	41	45

Purchaser \$

Lot	52	Tag	200378	DOB	29/07/20	Twin	Sire Waradgery 180064						
	BWT	MWWT	WWT	PWT	YWT	AWT	PFAT	PEMD	LMY	YNLW	NLW	MCP+	MAT\$
	0.71	0.6	7.9	11.7	13.5	13.2	-1.3	-0.5	3.9	17%	16%	135	152
<i>Accuracy</i>	61	43	68	68	68	60	58	55	56	26	28	41	45

Purchaser \$

Lot	53	Tag	200411	DOB	2/08/20	Single	Sire CashmoreOakl 182649						
	BWT	MWWT	WWT	PWT	YWT	AWT	PFAT	PEMD	LMY	YNLW	NLW	MCP+	MAT\$
	0.33	-1.2	7.8	12.4	15.7	15.9	-0.9	0.5	4.2	11%	16%	136	152
<i>Accuracy</i>	60	40	63	63	68	60	59	57	52	29	30	39	43

Purchaser \$

Lot	54	Tag	200094	DOB	20/07/20	Twin	Sire Cloven Hills 170335						
	BWT	MWWT	WWT	PWT	YWT	AWT	PFAT	PEMD	LMY	YNLW	NLW	MCP+	MAT\$
	0.67	0.4	8.0	12.1	12.6	12.5	-1.1	0.7	4.8	12%	11%	140	152
<i>Accuracy</i>	61	45	68	67	68	60	58	55	55	30	32	42	46

Purchaser \$

Lot	55	Tag	200210	DOB	24/07/20	Twin	Sire Cloven Hills 170335						
	BWT	MWWT	WWT	PWT	YWT	AWT	PFAT	PEMD	LMY	YNLW	NLW	MCP+	MAT\$
	0.70	-0.6	7.9	12.2	13.5	13.4	-0.9	0.6	4.3	17%	15%	139	152
<i>Accuracy</i>	62	47	68	68	68	60	58	55	56	32	35	43	48

Purchaser \$

Lot	56	Tag	200067	DOB	18/07/20	Single	Sire Cloven Hills 170335						
	BWT	MWWT	WWT	PWT	YWT	AWT	PFAT	PEMD	LMY	YNLW	NLW	MCP+	MAT\$
	0.67	-0.4	8.4	12.8	14.1	13.9	-1.4	0.3	4.8	15%	12%	139	151
<i>Accuracy</i>	60	42	67	67	67	59	57	55	55	30	32	42	46

Purchaser \$

Lot	57	Tag	200098	DOB	20/07/20	Single	Sire CashmoreOakl 182649						
	BWT	MWWT	WWT	PWT	YWT	AWT	PFAT	PEMD	LMY	YNLW	NLW	MCP+	MAT\$
	0.32	-1.1	7.5	12.0	14.8	14.3	-0.4	1.2	3.8	8%	13%	139	151
<i>Accuracy</i>	60	41	68	67	67	59	57	54	54	30	31	41	45

Purchaser \$

Lot	58	Tag	200115	DOB	21/07/20	Twin	Sire Waradgery 190161						
	BWT	MWWT	WWT	PWT	YWT	AWT	PFAT	PEMD	LMY	YNLW	NLW	MCP+	MAT\$
	0.48	-0.4	8.3	12.5	14.1	13.4	-0.9	0.8	4.8	11%	11%	141	151
<i>Accuracy</i>	60	43	66	66	66	58	55	52	53	27	28	39	44

Purchaser \$

Lot	59	Tag	200337	DOB	27/07/20	Single	Sire CashmoreOakl 182649						
	BWT	MWWT	WWT	PWT	YWT	AWT	PFAT	PEMD	LMY	YNLW	NLW	MCP+	MAT\$
	0.29	-0.9	8.1	12.7	15.3	15.5	-0.6	0.8	4.2	8%	12%	138	151
<i>Accuracy</i>	59	40	67	67	67	59	57	54	54	29	29	40	44

Purchaser \$

Lot	60	Tag	200238	DOB	25/07/20	Twin	Sire Cloven Hills 170335						
	BWT	MWWT	WWT	PWT	YWT	AWT	PFAT	PEMD	LMY	YNLW	NLW	MCP+	MAT\$
	0.69	-0.6	8.0	11.9	13.7	13.3	-1.2	0.2	4.1	16%	16%	138	151
<i>Accuracy</i>	61	44	68	67	68	59	57	54	55	29	31	41	46

Purchaser \$

Lot	61	Tag	200230	DOB	25/07/20	Twin	Sire Cloven Hills 170335						
	BWT	MWWT	WWT	PWT	YWT	AWT	PFAT	PEMD	LMY	YNLW	NLW	MCP+	MAT\$
	0.61	-0.9	8.2	12.5	13.3	13.1	-1.0	0.4	4.4	16%	14%	140	151
<i>Accuracy</i>	61	45	68	67	68	59	57	54	55	29	31	41	46

Purchaser \$

Lot	62	Tag	200149	DOB	23/07/20	Twin	Sire Waradgery 190161						
	BWT	MWWT	WWT	PWT	YWT	AWT	PFAT	PEMD	LMY	YNLW	NLW	MCP+	MAT\$
	0.56	-0.5	8.5	12.5	14.1	13.6	-0.5	1.0	4.4	10%	11%	139	150
<i>Accuracy</i>	60	45	68	67	68	60	57	54	55	30	31	41	46

Purchaser \$

Lot	63	Tag	200129	DOB	22/07/20	Twin	Sire Waradgery 190161						
	BWT	MWWT	WWT	PWT	YWT	AWT	PFAT	PEMD	LMY	YNLW	NLW	MCP+	MAT\$
	0.61	-0.3	8.2	12.5	14.5	14.5	-0.9	0.5	4.4	13%	13%	137	150
<i>Accuracy</i>	61	45	68	68	68	60	57	55	55	29	30	41	46

Purchaser \$

Lot	64	Tag	200024	DOB	14/07/20	Twin	Sire Waradgery 190161						
	BWT	MWWT	WWT	PWT	YWT	AWT	PFAT	PEMD	LMY	YNLW	NLW	MCP+	MAT\$
	0.63	-0.2	8.9	13.0	16.7	16.7	-0.9	0.6	4.3	10%	11%	134	150
<i>Accuracy</i>	59	42	67	67	67	59	56	53	54	30	31	41	45

Purchaser \$

Lot 65	Tag 200283	DOB 26/07/20			Twin			Sire Waradgery 180064					
	BWT	MWWT	WWT	PWT	YWT	AWT	PFAT	PEMD	LMY	YNLW	NLW	MCP+	MAT\$
	0.53	-0.5	7.6	11.2	13.5	12.6	-1.3	-0.4	3.8	18%	18%	135	150
<i>Accuracy</i>	60	42	66	68	69	61	59	57	56	26	29	42	45

Purchaser \$

Lot 66	Tag 200022	DOB 14/07/20			Single			Sire Cloven Hills 170335					
	BWT	MWWT	WWT	PWT	YWT	AWT	PFAT	PEMD	LMY	YNLW	NLW	MCP+	MAT\$
	0.69	-0.3	7.2	11.2	12.7	12.5	-1.2	0.4	4.2	18%	15%	137	149
<i>Accuracy</i>	61	45	68	68	68	60	58	55	55	31	32	42	47

Purchaser \$

Lot 67	Tag 200330	DOB 27/07/20			Twin			Sire Waradgery 180064					
	BWT	MWWT	WWT	PWT	YWT	AWT	PFAT	PEMD	LMY	YNLW	NLW	MCP+	MAT\$
	0.61	-0.5	8.4	12.3	14.9	14.9	-1.5	-0.8	3.9	16%	18%	132	149
<i>Accuracy</i>	60	43	67	67	67	59	56	53	54	23	26	39	43

Purchaser \$

Lot 68	Tag 200329	DOB 27/07/20			Twin			Sire Waradgery 180064					
	BWT	MWWT	WWT	PWT	YWT	AWT	PFAT	PEMD	LMY	YNLW	NLW	MCP+	MAT\$
	0.54	-0.5	7.7	11.5	13.8	13.4	-1.2	-0.3	3.7	16%	18%	134	149
<i>Accuracy</i>	60	43	67	67	67	59	56	53	54	23	26	39	43

Purchaser \$

Lot 69	Tag 200369	DOB 29/07/20			Twin			Sire Waradgery 180064					
	BWT	MWWT	WWT	PWT	YWT	AWT	PFAT	PEMD	LMY	YNLW	NLW	MCP+	MAT\$
	0.66	0.3	8.0	11.8	13.5	13.6	-1.4	-0.4	4.2	15%	14%	133	149
<i>Accuracy</i>	61	42	68	67	68	60	57	55	55	25	28	40	44

Purchaser \$

Lot 70	Tag 200030	DOB 15/07/20			Twin			Sire Waradgery 190161					
	BWT	MWWT	WWT	PWT	YWT	AWT	PFAT	PEMD	LMY	YNLW	NLW	MCP+	MAT\$
	0.64	0.3	8.1	11.9	14.9	15.1	-0.9	0.2	4.1	10%	13%	133	148
<i>Accuracy</i>	60	46	68	67	68	60	57	55	55	35	35	43	48

Purchaser \$

Lot 71	Tag 200274	DOB 27/07/20			Twin			Sire Waradgery 190161					
	BWT	MWWT	WWT	PWT	YWT	AWT	PFAT	PEMD	LMY	YNLW	NLW	MCP+	MAT\$
	0.57	-0.3	8.1	11.3	12.9	12.6	-1.0	0.7	4.7	11%	13%	137	148
<i>Accuracy</i>	59	42	67	66	67	58	55	52	53	29	29	39	44

Purchaser \$

Lot 72	Tag 200154	DOB 23/07/20			Twin			Sire Waradgery 180064					
	BWT	MWWT	WWT	PWT	YWT	AWT	PFAT	PEMD	LMY	YNLW	NLW	MCP+	MAT\$
	0.44	0.1	6.4	9.7	11.2	10.1	-0.9	-0.1	3.3	16%	17%	135	148
<i>Accuracy</i>	61	42	65	67	69	60	59	57	55	23	26	40	44

Purchaser \$

Lot 73	Tag 200102	DOB 20/07/20			Twin			Sire CashmoreOakl 182649					
	BWT	MWWT	WWT	PWT	YWT	AWT	PFAT	PEMD	LMY	YNLW	NLW	MCP+	MAT\$
	0.25	-1.3	6.4	10.3	13.3	12.8	-0.5	1.0	3.6	11%	15%	136	148
<i>Accuracy</i>	61	43	67	67	67	59	57	54	54	30	31	41	45

Purchaser \$

Lot 74	Tag 200430	DOB 5/08/20			Single			Sire CashmoreOakl 184588					
	BWT	MWWT	WWT	PWT	YWT	AWT	PFAT	PEMD	LMY	YNLW	NLW	MCP+	MAT\$
	0.38	-1.3	7.8	11.3	13.8	14.0	0.2	1.6	3.3	9%	11%	137	148
<i>Accuracy</i>	59	39	67	66	67	58	56	53	53	29	28	39	43

Purchaser \$

Lot 75	Tag 200020	DOB 14/07/20			Single			Sire Waradgery 180064					
	BWT	MWWT	WWT	PWT	YWT	AWT	PFAT	PEMD	LMY	YNLW	NLW	MCP+	MAT\$
	0.56	-0.1	6.9	10.3	12.5	11.9	-1.4	-0.4	3.6	19%	18%	132	147
<i>Accuracy</i>	60	43	68	67	68	60	57	54	55	26	29	40	44

Purchaser \$

Lot 76	Tag 200351	DOB 27/07/20			Twin			Sire Waradgery 180064					
	BWT	MWWT	WWT	PWT	YWT	AWT	PFAT	PEMD	LMY	YNLW	NLW	MCP+	MAT\$
	0.56	0.2	7.2	10.5	12.8	12.6	-1.4	-0.5	3.7	16%	17%	130	147
<i>Accuracy</i>	61	44	69	69	69	61	58	55	56	26	28	41	45

Purchaser \$

Lot 77	Tag 200151	DOB 23/07/20			Single			Sire Waradgery 180064					
	BWT	MWWT	WWT	PWT	YWT	AWT	PFAT	PEMD	LMY	YNLW	NLW	MCP+	MAT\$
	0.50	-0.1	7.7	11.7	14.9	15.2	-1.3	-0.4	3.7	16%	14%	128	146
<i>Accuracy</i>	60	41	68	67	68	59	57	54	54	26	29	40	44

Purchaser \$

Lot 78	Tag 200027	DOB 14/07/20			Twin			Sire Waradgery 180064					
	BWT	MWWT	WWT	PWT	YWT	AWT	PFAT	PEMD	LMY	YNLW	NLW	MCP+	MAT\$
	0.43	-0.7	7.2	10.7	13.5	13.6	-1.0	-0.9	3.0	19%	21%	128	146
<i>Accuracy</i>	62	46	69	68	69	61	59	57	57	32	34	43	48

Purchaser \$

Lot 79	Tag 200135	DOB 22/07/20			Twin			Sire Waradgery 180064					
	BWT	MWWT	WWT	PWT	YWT	AWT	PFAT	PEMD	LMY	YNLW	NLW	MCP+	MAT\$
	0.36	-1.2	6.3	9.3	12.3	11.8	-1.2	-0.2	3.3	17%	18%	127	142
<i>Accuracy</i>	59	41	67	67	67	59	56	54	54	23	26	39	43

Purchaser \$

Lot 80	Tag 200271	DOB 26/07/20			Triplet			Sire Waradgery 180064					
	BWT	MWWT	WWT	PWT	YWT	AWT	PFAT	PEMD	LMY	YNLW	NLW	MCP+	MAT\$
	0.49	-0.9	6.8	10.1	13.3	13.0	-1.1	-0.8	2.8	17%	18%	125	141
<i>Accuracy</i>	60	41	66	67	69	60	58	56	55	24	26	40	43

Purchaser \$

SOUTH SUFFOLKS

Lot 81	Tag 2070	DOB 15/07/20	Single	Sire	Waradgery 18003
BWT	BWT (kg)	WWT (kg)	PWT (kg)	Sale Wt (kg)	
Date	15/7/2020	3/12/2020	15/2/2021	14/9/2021	
	5.0	45.5	52.0	74.0	

Purchaser \$

Lot 82	Tag 2044	DOB 28/06/20	Single	Sire	Waradgery 18003
BWT	BWT (kg)	WWT (kg)	PWT (kg)	Sale Wt (kg)	
Date	28/06/2020	3/12/2020	15/2/2021	14/09/2021	
	5.0	56.0	62.0	70.5	

Purchaser \$

Lot 83	Tag 2057	DOB 29/06/20	Twin	Sire	Waradgery 16035
BWT	BWT (kg)	WWT (kg)	PWT (kg)	Sale Wt (kg)	
Date	29/06/2020	3/12/2020	15/2/2021	14/9/2021	
	5.0	57.0	56.5	70.0	

Purchaser \$

Lot 84	Tag 2051	DOB 29/06/20	Twin	Sire	Waradgery 18003
BWT	BWT (kg)	WWT (kg)	PWT (kg)	Sale Wt (kg)	
Date	29/6/2020	3/12/2020	15/2/2021	14/09/2021	
	4.5	62.5	52.0	68.0	

Purchaser \$

Lot 85	Tag 2015	DOB 25/06/20	Twin	Sire	Waradgery 18003
BWT	BWT (kg)	WWT (kg)	PWT (kg)	Sale Wt (kg)	
Date	25/6/2020	3/12/2020	15/2/2021	14/9/2021	
	5.5	60.5	63.0	68.0	

Purchaser \$

SOUTH SUFFOLKS

Lot 86	Tag 2042	DOB 28/06/21	Twin	Sire	Waradgery 18003
BWT	BWT (kg)	WWT (kg)	PWT (kg)	Sale Wt (kg)	
Date	28/6/2020	3/12/2020	15/2/2021	14/9/2021	
	4.5	53.5	56.5	67.5	

Purchaser \$

Lot 87	Tag 2039	DOB 27/06/20	Twin	Sire	Waradgery 18003
BWT	BWT (kg)	WWT (kg)	PWT (kg)	Sale Wt (kg)	
Date	27/6/2020	3/12/2020	15/2/2021	19/9/2021	
	5.0	55.0	60.0	65.0	

Purchaser \$

Lot 88	Tag 2001	DOB 21/06/20	Twin	Sire	Waradgery 16035
BWT	BWT (kg)	WWT (kg)	PWT (kg)	Sale Wt (kg)	
Date	21/6/2020	3/12/2020	15/2/2021	14/9/2021	
	4.5	56.5	60.0	65.0	

Purchaser \$

Lot 89	Tag 2079	DOB 17/07/20	Single	Sire	Waradgery 16035
BWT	BWT (kg)	WWT (kg)	PWT (kg)	Sale Wt (kg)	
Date	17/7/2020	3/12/2020	15/2/2021	14/9/2021	
	5.5	56.5	60.0	62.0	

Purchaser \$

Lot 90	Tag 2008	DOB 23/07/20	Twin	Sire	Waradgery 160035
BWT	BWT (kg)	WWT (kg)	PWT (kg)	Sale Wt (kg)	
Date	23/7/2020	3/12/2020	15/2/2021	14/9/2021	
	5.0	55.5	56.0	62.0	

Purchaser \$

SOUTH SUFFOLKS

Lot 91	Tag 2072	DOB 15/07/20	Single	Sire Waradgery 18003
BWT	BWT (kg)	WWT (kg)	PWT (kg)	Sale Wt (kg)
Date	15/7/2020	3/12/2020	15/2/2021	14/9/2021
	5.5	50.5	49.0	62.5

Purchaser \$

Lot 92	Tag 2083	DOB 20/07/20	Single	Sire Waradgery 18003
BWT	BWT (kg)	WWT (kg)	PWT (kg)	Sale Wt (kg)
Date	20/7/2020	3/12/2020	15/2/2021	14/9/2021
	5.0	48.5	49.0	60.0

Purchaser \$

Lot 93	Tag 2034	DOB 27/06/20	Twin	Sire Waradgery 18003
BWT	BWT (kg)	WWT (kg)	PWT (kg)	Sale Wt (kg)
Date	27/6/2020	3/12/2020	15/2/2021	14/9/2021
	5.0	45.5	48.5	59.0

Purchaser \$

Lot 94	Tag 2076	DOB 18/07/20	Single	Sire Waradgery 16035
BWT	BWT (kg)	WWT (kg)	PWT (kg)	Sale Wt (kg)
Date	18/7/2020	3/12/2020	15/2/2021	14/9/2021
	4.5	43.0	39.0	58.0

Purchaser \$

Lot 95	Tag 2081	DOB 21/07/20	Single	Sire Waradgery 18003
BWT	BWT (kg)	WWT (kg)	PWT (kg)	Sale Wt (kg)
Date	18/7/2020	3/12/2020	15/2/2021	14/9/2021
	5.0	36.5	39.0	58.0

Purchaser \$

SOUTH DOWNS

Lot 96	Tag 2110	DOB 10/07/20	Single	Sire Shellal 18008
BWT	BWT (kg)	WWT (kg)	PWT (kg)	Sale Wt (kg)
Date	10/7/2020	3/12/2020		14/9/2021
	5.3	51.5		67.0

Purchaser \$

Lot 97	Tag 2114	DOB 12/07/20	Single	Sire Shellal 18008
BWT	BWT (kg)	WWT (kg)	PWT (kg)	Sale Wt (kg)
Date	12/7/2020	3/12/2020		14/9/2021
	5.7	44.0		66.5

Purchaser \$

Lot 98	Tag 2108	DOB 12/07/2020	Twin	Sire Shellal 18008
BWT	BWT (kg)	WWT (kg)	PWT (kg)	Sale Wt (kg)
Date	12/7/2020	3/12/2020		14/9/2021
	5.6	37.5		65.5

Purchaser \$

Lot 99	Tag 2091	DOB 10/08/20	Twin	Sire Waradgery 188083
BWT	BWT (kg)	WWT (kg)	PWT (kg)	Sale Wt (kg)
Date	10/8/2020	3/12/2020		14/9/2021
	5.0	45.5		64.0

Purchaser \$

Lot 100	Tag 2133	DOB 17/07/20	Single	Sire Shellal 18008
BWT	BWT (kg)	WWT (kg)	PWT (kg)	Sale Wt (kg)
Date	17/7/2020	3/12/2020		14/9/2021
	6.7	40.5		61.5

Purchaser \$

Notes

Notes

BUYER'S INSTRUCTION SLIP

Buyer No.

Name.....

Address.....

.....PC.....

Email

Flock Name & No. Stud Transfer Req'd Yes / No
--

Phone

LOT	TAG No.	DESCRIPTION	PRICE

Account to.....

Delivery Instructions.....

.....

Insure for.....

Signed.....

NO VERBAL INSTRUCTIONS CAN BE ACCEPTED



Tim & Amelia Johnston

2317 Coleraine Balmoral Rd.
Brit Brit 3315

Mobile: 0438 756 236

Email: waradgery2@activ8.net.au



Waradgery Coopworth Stud

Directions:



65km from Hamilton & 25km from Coleraine



Get the coopworth **ADVANTAGE**