

TENALBA

BORDER LEICESTER STUD

'ALBERT' MOOLA ROAD
CANOWINDRA NEW SOUTH WALES

22ND ANNUAL SALE

Offering 78 Rams
Thursday 16th September 2021

SALE COMMENCES 11.00AM
ON PROPERTY

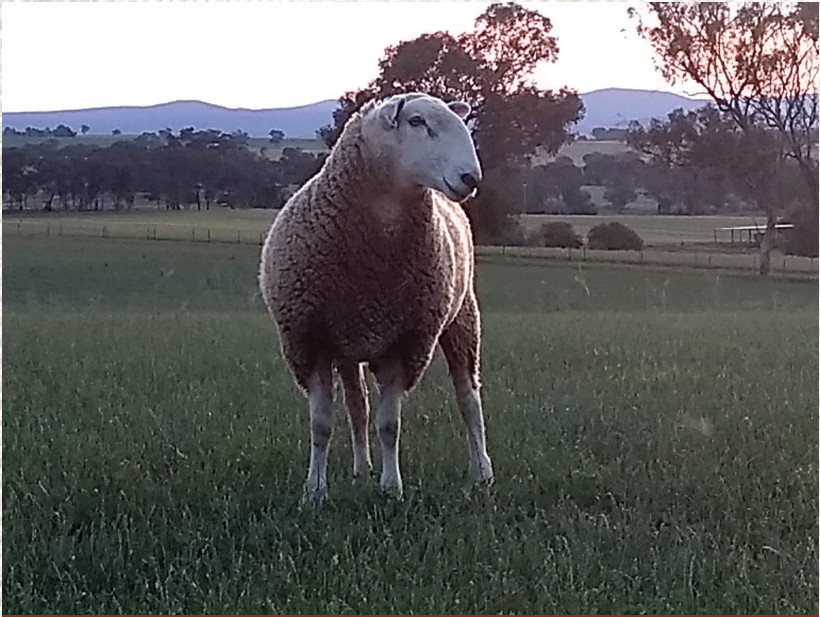
All Sheep Lambplan Tested
MAP Ovine Johnes MN3V
Brucellosis Accredited Free
Footrot Free

STUD MASTER PHILLIP RUSSELL
Telephone 02 6344 1964 | Mobile 0427 023 780



Selling Agents KMWL
Paul Breen 0427 102 667

Interfaced with Auctionsplus
 **AuctionsPlus**[®]
Australia's Livestock Marketplace



Tenalba 219/17



Tenalba 39/19 with triplets born and raised last year.
One is lot 247 in sale.

Tenalba Border Leicester Stud was established in 1976 and has endeavoured to breed to best maternal sire available to the lamb industry. We have focussed on milking ability and fertility as these are two of the biggest drivers of profit in the lamb industry.

The collection of raw data is enabling us to produce a maternal sire that has traits beneficial for the prime lamb industry. By using this raw data and also utilising Lambplan to assist with data/trait analysis. Our sheep are continuing to develop the traits needed to be leaders in the maternal sector whilst still maintaining their worth as prime lambs.

LAMBPLAN ASBV's are calculated from raw data collected by breeders and accredited Lambplan operators. Lambplan (a division of Meat and Livestock Australia Limited) does not oversee or audit the collection of this data and therefore MLA does not accept any responsibility for the accuracy of the information in this document. Lambplan ASBV's are designed to give the best possible estimate of true genetic merit from that data, ie the estimate that maximizes the correlation between ASBV's and true genetic merit.



All sale sheep have been vaccinated with 6 in 1 three times in the last twelve months. They have also been Gudair vaccinated.



Our flock is rated MN3 V in the Market Assurance Programme.

We are brucellosis accredited free,
and footrot free.

ASBV's

(Australian Sheep Breeding Value)

BWT: Birth weight measured in kgs

MWWT: Maternal Weaning Weight, related to milking ability of the female progeny.
Measured in kg

WWT: Weaning Weight. (With MWWT relevant to the sucker industry).
Measured in kg

PWWT: Post Weaning Weight. A good indicator of the lamb's ability to grow after weaning to market weights. (8 – 10 months)
Measured in kg

PFAT: Post Weaning Fat.
Measured in mm

PEMD: Post Weaning Eye Muscle Depth.
Measured in mm

LEGEND

Acc: Accuracies for ASBV's as a percentage

Tw: Twin

Tr: Triplet

Qu: Quadruplet

BT: Birth Type

RT: Rear Type

ASBV's in this catalogue

This year the catalogue does not contain an ASBV for Number of Lambs Weaned or an Index figure.

I have decided to not report Number of Lambs Weaned as it is believed to be approximately 5% heritable and as such is reported with very low accuracies, within this flock at around 20% to 30%. I do not think that 20% - 30% accuracies are reliable enough.

With the index being heavily influenced by the Number of Lambs Weaned component I believe it may also create an index figure that is not truly reflective of what these sheep offer the industry.

The ASBV's in the catalogue are those that are reported with high accuracies.

MEMORANDUM OF SIRES

	BWT	MWWT	WWT	PWWT	PFAT	PEMD
	Tenalba 82/17Tw		Sire Tenalba 141/15Tw			
	0.2	1.8	5.5	8.2	1	0.7
Acc	(85)	(71)	(89)	(89)	(88)	(86)

An impressive son of Tenalba 141/15, from a maiden ewe. He has a great balance of ASBVs.

	Tenalba 219/17 Tw		Sire Tenalba 29/15 Tw			
	0.08	1.7	6.2	8.9	-0	2
Acc	(92)	(73)	(93)	(92)	(91)	(89)

This ram brings an exceptional balance of ASBVs to match his sire appeal. He has great birth weight, good growth, with a growth curve that should help maintain mature ewe size at manageable levels. Top shelf ram for maternal weaning weight and eye muscle.

	Tenalba 67/18		Sire Hanookra 537/16			
	0.19	0.9	4.9	8.2	0.2	1.1
Acc	(81)	(53)	(86)	(85)	83)	(81)

An out cross ram from an impressive ewe that reared triplets brilliantly.

	Tenalba 139/18Tw		Sire Hanookra 537/16			
	0.47	0.6	7.1	11.7	0.2	1.3
Acc	(88)	(54)	(89)	(88)	(87)	(85)

This ram brings positive growth, fat and muscle. He has a real sires outlook.

	Kegra 56/18Tw		Sire Kegra 222/15Tr			
	0.21	1.7	6.7	10.3	0.8	-0.2
Acc	(83)	(56)	(88)	(87)	(85)	(83)

This ram is a complete outcross. He brings strong maternal weaning weight, positive growth and fat.

The following sires were used for the ewe lamb mating in 2020

	BWT	MWWT	WWT	PWWT	PFAT	PEMD
	Tenalba 19/19Tw			Sire Tenalba 37/17Tw		
	0.48	0.7	6	10.3	-0.1	0.3
Acc	(74)	(54)	(80)	(79)	(77)	(74)

This ram comes from an exceptional ewe line.

	Tenalba 28/19Tr			Sire Tenalba 219/17Tw		
	0.28	2	5.7	8.7	-0	1.1
Acc	(72)	(53)	(77)	(77)	(75)	(73)

This ram was top priced ram at last years sale \$7500. He was only sold as I had used his maternal brother the previous year. He has an impressive blend of ASBVs that are really suitable for breeding superior first cross ewes.

	Tenalba 37/19Tr			Sire Tenalba 219/17Tw		
	0.2	0.7	7.5	10.7	-0.8	0.3
Acc	(73)	(53)	(78)	(77)	(75)	(72)

This ram has good birth weight and early growth. From another well performed ewe.

	Tenalba 115/19Tw			Sire Tenalba 37/17Tw		
	0.21	0.7	6.1	10.4	0.6	0.1
Acc	(70)	(51)	(76)	(75)	(72)	(69)

This ram was out of a maiden ewe which has a strong maternal pedigree.

Please note

Lots 5, 6, 10, 18, and 31 were used this year in the ewe lamb joining program.

COVID-safe measures will be in place.

To reduce the COVID risk we may be required to wear a mask. Please do not attend if you have travelled to a hot spot in the last 2 weeks, have been in contact with someone suspected of having coronavirus, or have any symptoms of the virus. If this makes you unable to attend, please contact Phil (or the agents) for alternative arrangements.

LAMBPLAN - 25 years of service

Lambplan continues to be a useful tool. It does a very solid job of reporting the highly heritable traits i.e. birth weight (BWT), weaning weight (WWT), post weaning weight (PWWT), post weaning eye muscle depth (PEMD), and post weaning fat depth (PFAT). I have found the reporting of maternal weaning weight (MWWT) to be satisfactory, whilst the reporting of number of lambs weaned (NLW), which is lowly heritable, appears to be questionable and is still a work in progress. There are many different management systems/styles throughout industry which make the reporting of NLW difficult.

All maternal indices are heavily driven by NLW which creates a distraction when selecting rams. The use of ASBVs when selecting your breeding stock instead of the index figure allows you to select an even type/ breeding line. Selection using indices may give a huge variation in traits/type, creating progeny with very different finishing/maturity patterns. Selection of breeding stock with a good balance of ASBVs that suite your breeding objectives I believe enables us to better target our goals.

I am also finding Sheep Genetics reporting of across flock and across breed breeding values to be unreliable and highly variable. Their reporting of within flock breeding values appear to be more useful.

	BWT	MWWT	WWT	PWWT	PFAT	PEMD
Lambplan Breed Average	.24	0.7	4.86	7.53	-0.11	0.33
Tenalba Sale Ram Average	.28	1.3	5.94	9.08	0.07	0.81

78 Rams

	BWT	MWWT	WWT	PWWT	PFAT	PEMD
Lot 1	Sire 67	BT 2	RT 2		Twin to lot 2	
52/20Tw	0.45	1	6.7	10	0.2	0.8
Acc	(60)	(42)	(68)	(67)	(67)	(64)
Lot 2	Sire 67	BT 2	RT 2		Twin to lot 1	
53/20Tw	0.42	1	6.2	9.6	0.4	0.7
Acc	(60)	(42)	(68)	(67)	(67)	(64)
Lot 3	Sire 56	BT 2	RT 2			
62/20Tw	0.29	1.5	6.6	9.7	0.3	0.7
Acc	(60)	(43)	(68)	(67)	(67)	(64)
Lot 4	Sire 139	BT 2	RT 2			
65/20Tr	0.34	1.6	6.5	10.4	0.3	0.7
Acc	(63)	(43)	(69)	(69)	(68)	(65)
Lot 5	Sire 67	BT 2	RT 2			
179/20Tw	0.23	1.9	5.3	8.2	-0.1	1.2
Acc	(61)	(47)	(69)	(68)	(68)	(65)
Lot 6	Sire 219	BT 2	RT 2		Twin to lot 53	
14/20Tw	0.22	1.8	7.1	9.8	0.4	0.8
Acc	(67)	(55)	(72)	(72)	(71)	(69)
Lot 7	Sire 219	BT 2	RT 2			
39/20Tw	0.19	1.1	5.8	9.1	0	1.8
Acc	(63)	(48)	(70)	(69)	(68)	(66)

	BWT	MWWT	WWT	PWWT	PFAT	PEMD
Lot 8	Sire 139	BT 2	RT 2			
79/20Tw	0.42	1.1	6.7	8.8	-0.9	0.8
Acc	(64)	(46)	(69)	(69)	(69)	(66)
Lot 9	Sire 139	BT 2	RT 2			
37/20Tw	0.38	1.3	6.5	9.5	-0	1.1
Acc	(64)	(46)	(69)	(69)	(68)	(65)
Lot 10	Sire 139	BT 2	RT 2		Twin to lot 39	
110/20Tw	0.3	0.4	6.3	10.7	-0	1.1
Acc	(62)	(41)	(68)	(68)	(67)	(65)
Lot 11	Sire 219	BT 3	RT 2			
96/20Tr	0.08	0.7	5.9	9.4	0	1.6
Acc	(65)	(53)	(70)	(70)	(69)	(67)
Lot 12	Sire 37	BT 2	RT 2	Dam was a ewe lamb		Twin to lot 43
236/20Tw	0.27	1.3	6.4	10.2	-0.1	0.2
Acc	(58)	(41)	(66)	(65)	(64)	(61)
Lot 13	Sire 139	BT 2	RT 2		Twin to lot 16	
49/20Tw	0.48	2.2	6.6	10.2	0.2	0.5
Acc	(63)	(48)	(69)	(69)	(67)	(64)
Lot 14	Sire 56	BT 3	RT 2			
3/20Tr	0.33	1.8	7.8	11.9	-0.4	-0.4
Acc	(61)	(46)	(69)	(68)	(68)	(65)

	BWT	MWWT	WWT	PWWT	PFAT	PEMD
Lot 15	Sire 67	BT 1	RT 1			
27/20	0.29	1.4	5.9	8.8	-0	0.4
Acc	(61)	(47)	(69)	(68)	(68)	(65)
Lot 16	Sire 139	BT 2	RT 2		Twin to lot 13	
48/20Tw	0.45	2.2	5.8	9.1	0.1	0.5
Acc	(63)	(48)	(69)	(69)	(69)	(66)
Lot 17	Sire 56	BT 2	RT 2			
114/20Tw	0.3	1.4	5.9	9.4	-0.3	-0.6
Acc	(61)	(42)	(68)	(68)	(67)	(65)
Lot 18	Sire 19	BT 1	RT 1		Dam was ewe lamb	
231/20	0.32	1.6	6.5	9.8	0.1	0.6
Acc	(58)	(39)	(66)	(66)	(67)	(63)
Lot 19	Sire 56	BT 2	RT 1			
91/20Tw	0.29	1.9	7.1	10.5	0	-0
Acc	(60)	(41)	(68)	(67)	(67)	(64)
Lot 20	Sire 67	BT 3	RT 2			
203/20Tr	0.22	1	5.9	9.2	0.3	0.8
Acc	(61)	(43)	(68)	(68)	(68)	(65)
Lot 21	Sire 219	BT 1	RT 1			
218/20	0.29	1.1	5.5	7.9	-0	1.2
Acc	(63)	(47)	(68)	(65)	(58)	(57)

	BWT	MWWT	WWT	PWWT	PFAT	PEMD
Lot 22	Sire 219	BT 2	RT 2		Twin to lot 51	
60/26Tw	0.12	0.8	5.7	8.7	-0.4	0.4
Acc	(62)	(49)	(68)	(68)	(68)	(65)
Lot 23	Sire 139	BT 2	RT 2			
210/20Tw	0.31	0.7	6.2	9.3	-0.8	1
Acc	(64)	(47)	(69)	(69)	(68)	(66)
Lot 24	Sire 139	BT 2	RT 2			
54/20Tw	0.38	0.7	6.5	9.3	-0.1	1
Acc	(64)	(48)	(69)	(69)	(69)	(66)
Lot 25	Sire 82	BT 3	RT 3			
8/20Tr	0.1	2.2	4.7	7.6	0.6	1.1
Acc	(61)	(47)	(68)	(68)	(67)	(65)
Lot 26	Sire 219	BT 2	RT 1			
99/20Tw	0.01	0.1	4.4	7.8	0.7	1.6
Acc	(64)	(49)	(70)	(70)	(70)	(67)
Lot 27	Sire 82	BT 3	RT 2			
74/20Tr	0.36	1.4	5.7	8.8	0.1	0.2
Acc	(62)	(51)	(69)	(69)	(69)	(66)
Lot 28	Sire 139	BT 3	RT 2			
80/20Tr	0.31	1.2	5.4	8.5	-0.3	1
Acc	(62)	(43)	(68)	(68)	(68)	(65)

	BWT	MWWT	WWT	PWWT	PFAT	PEMD
Lot 29	Sire 219	BT 2	RT 2			
137/20Tw	0.38	1.6	5.9	7.7	-0.3	0.6
Acc	(65)	(51)	(70)	(70)	(69)	(67)
Lot 30	Sire 82	BT 2	RT 2			
212/20Tw	0.14	1.1	4.9	8.1	1	0.5
Acc	(62)	(49)	(69)	(69)	(69)	(66)
Lot 31	Sire 82	BT 2	RT 2			
83/20Tw	0.31	1.5	6.8	10.2	1	0.5
Acc	(62)	(48)	(69)	(69)	(68)	(66)
Lot 32	Sire 219	BT	RT 2			
93/20Tw	0.22	1	7.2	9.6	-0.2	1.4
Acc	(64)	(47)	(69)	(69)	(69)	(66)
Lot 33	Sire 56	BT 3	RT 3			
200/20Tr	0.2	1.3	6.8	10.9	0.2	0
Acc	(61)	(45)	(68)	(68)	(68)	(65)
Lot 34	Sire 19	BT 2	RT 1	Dam was ewe lamb		
223/20Tw	0.41	1.6	6.2	9.5	0.4	1.1
Acc	(59)	(40)	(67)	(67)	(66)	(63)
Lot 35	Sire 219	BT 2	RT 2			
121/20Tw	0.12	1.6	4.9	8	0.1	1.3
Acc	(62)	(52)	(61)	(60)	(59)	(58)

	BWT	MWWT	WWT	PWWT	PFAT	PEMD
Lot 36	Sire 139	BT 3	RT 2		Twin to lot 28	
81/20Tr	0.33	1.2	4.8	8.4	0.2	0.9
Acc	(62)	(43)	(68)	(68)	(67)	(65)
Lot 37	Sire 28	BT 2	RT 1	Dam was ewe lamb		Twin to lot 78
229/20Tw	0.35	1.9	6.2	9.2	0.1	0.3
Acc	(57)	(39)	(65)	(65)	(65)	(62)
Lot 38	Sire 82	BT 3	RT 2		Triplet to Lot 58	
139/20Tr	0.22	1.9	4.4	7.4	0.3	0.5
Acc	(60)	(46)	(68)	(67)	(67)	(64)
Lot 39	Sire 139	BT 2	RT 2			
111/19Tw	0.34	0.4	6.4	10	-0.2	0.9
Acc	(62)	(41)	(68)	(68)	(67)	(65)
Lot 40	Sire 28	BT 2	RT 2	Dam was ewe lamb		
242/20Tw	0.28	1.9	6	9.3	-0.1	0.9
Acc	(58)	(41)	(65)	(65)	(65)	(62)
Lot 41	Sire 219	BT 3	RT 3			
187/20Tr	0.22	1.7	5.7	9	-0.2	1.2
Acc	(65)	(51)	(71)	(70)	(70)	(67)
Lot 42	Sire 19	BT 2	RT 2	Dam was ewe lamb		Twin to lot 57
233/20Tw	0.42	1.7	5.8	9.2	0.4	0.8
Acc	(58)	(41)	(66)	(66)	(65)	(62)

	BWT	MWWT	WWT	PWWT	PFAT	PEMD
Lot 43	Sire 37	BT 2	RT 2	Dam was ewe lamb Twin to lot 12		
235/20Tw	0.27	1.3	7	10.5	-0.6	0
Acc	(58)	(41)	(66)	(65)	(64)	(61)
Lot 44	Sire 139	BT 3	RT 2	Triplet to lot 47		
47/20Tr	0.36	1.4	6.1	9.2	0.2	0.5
Acc	(58)	(46)	(69)	(69)	(68)	(66)
Lot 45	Sire 139	BT 2	RT 2			
150/20Tw	0.34	0.3	4.2	8.2	1	1.2
Acc	(62)	(43)	(68)	(68)	(68)	(65)
Lot 46	Sire 219	BT 3	RT 2	Triplet to lot 48		
146/20Tr	0.27	2	6.8	9.2	0.1	1.2
Acc	(65)	(51)	(70)	(70)	(69)	(67)
Lot 47	Sire 139	BT 3	RT 2	Triplet to lot 44		
46/20Tr	0.45	1.4	6.5	8.9	-0.1	0.1
Acc	(64)	(46)	(69)	(69)	(68)	(66)
Lot 48	Sire 219	BT 3	RT 2	Triplet to lot 46		
145/20Tw	0.31	2	6	8.6	0.2	1.4
Acc	(65)	(51)	(70)	(70)	(69)	(67)
Lot 49	Sire 219	BT 2	RT 2			
76/20Tw	0.24	1.8	6.3	8.6	0.4	1.9
Acc	(63)	(47)	(69)	(69)	(67)	(65)

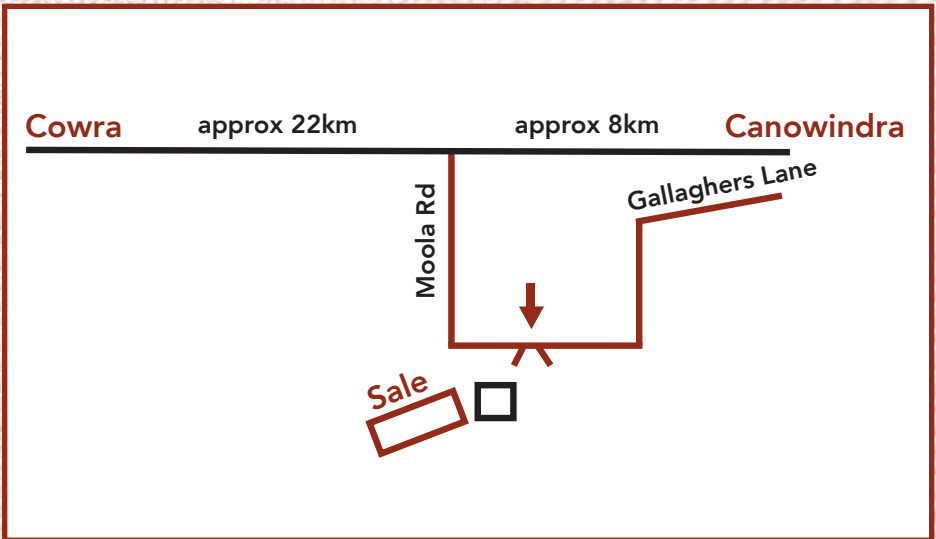
	BWT	MWWT	WWT	PWWT	PFAT	PEMD
Lot 50	Sire 56	BT 3	RT 2			
172/19Tw	0.24	1	6.5	9.5	-0.2	-0.5
Acc	(62)	(47)	(69)	(69)	(68)	(65)
Lot 51	Sire 82	BT 2	RT 2		Twin to lot 22	
59/20Tw	0.25	0.8	5.4	8.1	-0.3	0.5
Acc	(62)	(49)	(68)	(68)	(68)	(65)
Lot 52	Sire 219	BT 2	RT 2			
201/20Tw	0.31	1	7.5	10.7	0.1	1.2
Acc	(64)	(47)	(70)	(69)	(69)	(66)
Lot 53	Sire 219	BT 2	RT 2		Twin to lot 6	
13/20Tw	0.13	1.8	5.9	8.2	0.5	1
Acc	(67)	(55)	(72)	(72)	(71)	(69)
Lot 54	Sire 19	BT 2	RT 2		Dam was ewe lamb	
238/20Tw	0.43	1.3	6.5	9.8	-0.2	0.4
Acc	(59)	(41)	(67)	(66)	(66)	(63)
Lot 55	Sire 219	BT 3	RT 2		Twin to lot 11	
95/20Tr	0.01	0.7	4.8	8.2	0.4	1.9
Acc	(65)	(53)	(70)	(70)	(69)	(67)
Lot 56	Sire 139	BT 2	RT 1			
77/20Tw	0.3	0.9	6	9.2	0	0.7
Acc	(63)	(42)	(68)	(68)	(67)	(65)

	BWT	MWWT	WWT	PWWT	PFAT	PEMD
Lot 57	Sire 19	BT 2	RT 2	Dam was ewe lamb		
234/20Tw	0.32	1.7	5.7	9.1	-0	0.4
Acc	(58)	(41)	(66)	(66)	(65)	(62)
Lot 58	Sire 82	BT 3	RT 2	Triplet to lot 38		
138/20Tr	0.27	1.9	4.7	7.9	0	0.6
Acc	(60)	(46)	(68)	(67)	(67)	(64)
Lot 59	Sire 67	BT 2	RT 2	Twin to lot 5		
178/20Tw	0.33	1.9	6.4	9.6	-0.4	0.6
Acc	(60)	(47)	(68)	(67)	(64)	(62)
Lot 60	Sire 219	BT 2	RT 2			
141/20Tw	0.2	0.9	5	7.6	0.6	1.4
Acc	(64)	(49)	(69)	(69)	(69)	(66)
Lot 61	Sire 139	BT 3	RT 3			
157/19Tr	0.29	1	5.4	9.6	0.5	1
Acc	(63)	(43)	(69)	(68)	(68)	(65)
Lot 62	Sire 19	BT 2	RT 2	Dam was ewe lamb		
226/20Tw	0.27	0.6	4.5	8.8	0	1.5
Acc	(58)	(41)	(67)	(67)	(66)	(63)
Lot 63	Sire 219	BT 3	RT 2			
181/20Tr	0.24	1.9	5.7	8.2	0.4	1.7
Acc	(64)	(49)	(69)	(69)	(69)	(66)

	BWT	MWWT	WWT	PWWT	PFAT	PEMD
Lot 64	Sire 19	BT 2	RT 2	Dam was ewe lamb		
100/20Tw	0.45	1.2	6.1	9.7	-0.6	0.2
Acc	(59)	(40)	(67)	(66)	(66)	(63)
Lot 65	Sire 67	BT 2	RT 1			
128/20Tw	0.16	1.4	4.8	7.6	0.2	0.5
Acc	(61)	(43)	(68)	(68)	(67)	(65)
Lot 66	Sire 37	BT 1	RT 1	Dam was ewe lamb		
250/20	0.47	2	9.9	13.5	-0.9	0.5
Acc	(59)	(41)	(65)	(62)	(54)	(52)
Lot 67	Sire 19	BT 2	RT 2	Dam was ewe lamb		
193/20Tw	0.43	1.3	6.8	10.6	-0.1	0.6
Acc	(58)	(41)	(65)	(62)	(54)	(52)
Lot 68	Sire 28	BT 2	RT 2	Dam was ewe lamb		
222/20Tw	0.22	1	4.6	7.8	0.2	0.8
Acc	(57)	(41)	(64)	(61)	(52)	(51)
Lot 69	Sire 28	BT 1	RT 1	Dam was ewe lamb		
230/20	0.14	1.9	5.7	7.9	0.2	1
Acc	(60)	(40)	(67)	(67)	(67)	(64)
Lot 70	Sire 28	BT 2	RT 2	Dam was ewe lamb		
243/20Tw	0.23	1.9	5.2	8.4	0.3	0.7
Acc	(58)	(41)	(65)	(65)	(65)	(62)

	BWT	MWWT	WWT	PWWT	PFAT	PEMD
Lot 71	Sire 219	BT 2	RT 2			
10/20Tw	0.08	1.7	5.4	7.2	-0.5	1.1
Acc	(65)	(49)	(70)	(70)	(70)	(67)
Lot 72	Sire 37	BT 1	RT 1	Dam was ewe lamb		
227/20	0.27	0.7	6.3	8.4	-0.4	0.1
Acc	(58)	(39)	(66)	(66)	(65)	(62)
Lot 73	Sire 219	BT 3	RT 3			
247/20Tr	0.18	0.9	3.9	7	0.4	1.3
Acc	(59)	(42)	(67)	(66)	(66)	(63)
Lot 74	Sire 56	BT 2	RT 1			
177/20Tw	0.21	1.5	6.1	9	1.2	0.3
Acc	(60)	(42)	(68)	(68)	(67)	(64)
Lot 75	Sire 37	BT 2	RT 1	Dam was ewe lamb		
224/20Tw	0.42	1.4	7	10.2	-0.5	0.3
Acc	(57)	(39)	(64)	(61)	(52)	(50)
Lot 76	Sire 219	BT 3	RT 3			
160/20Tr	0.06	1.3	4.4	7.5	-0.3	1.4
Acc	(65)	(49)	(71)	(70)	(70)	(67)
Lot 77	Sire 219	BT 1	RT 1			
24/20	0.12	1	5.8	7.4	-0.4	0.9
Acc	(67)	(53)	(73)	(72)	(72)	(69)

FIND US HERE



Selling Agents: KMWL
Paul Breen 0427 102 667

Wishing you every success with your Purchases.
Thank you for attending our Sale.