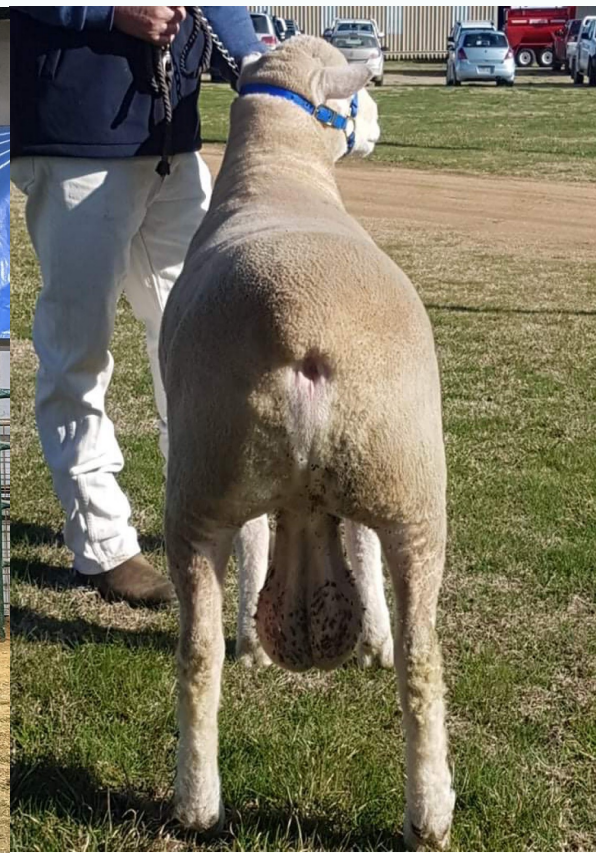




*Flock 2616*

*Founded 1977*



## **Spring Ram & Ewe Sale**

**Thursday 30 September 2021, 1:30pm**  
**1171 Nundle Rd, Piallamore**

# Sale Information

Any ram selected to be registered and transferred for stud use have \$4000 reserve. Please inform agents if you would like your rams registered. Rams weighed 07/09/2021. Sheep have been multiple vaccinated, 6 in 1+B12 11/8/2021. Abelene Park is an Accredited brucellosis free flock - No 81/1 & Property Biosecurity Plan. All sheep vaccinated with Gudair and Scabiguard. 2% rebate offered to outside agents accompanying purchaser to the sale. LambPlan Data Analysis 15/8/2021.

Abbreviations used:

T - Twin

TR - Triplet

Q - Quad

H - Hiltiden

Y - Yentrac

Tat - Tattykeel



## Brief Stud History

Abelene Park Poll Dorset Stud was founded in 1977 with the purchase of 75 ewes from Boree Cabonne Stud, 9 Karawina Ewes and 5 Ewes from Tattykeel Stud, along with the Ram Marylebone 921-68.

Twelve sires from the famous Karawina Stud were used during the 80's and 90's. These rams embedded a consistent quality and type in our stud and contributed greatly to improving our flock.

Since 1998, we have conducted a number of AI programs that have proved very successful. We have been able to use some outstanding sires that have helped take our flock in the direction we have been aiming for and produced some excellent commercially relevant sheep that also compete strongly in the show ring.



# **Abelene Park News**

We are holding the sale at 'Belaylee' again this year, 1171 Nundle Rd, Piallamore.

This year we have interfaced the sale with AuctionsPlus, due to the uncertainty of Covid. Fortunately, prospective buyers and agents can still attend and participate in the sale as visual appraisal is an important part of selection.

We have LambPlan data for the rams as another tool to help select the best rams for your operation. Please see information on the following page to understand how best to use the figures. We are always available to help with ram selection and understanding of information.

We also like to exhibit at major events as another way of benchmarking against leading studs in Australia.

Due to Covid, we have only taken rams to the NSW Dorset Championships in Cowra. Our pair of intermediate rams came first in class, AP51 - Lot 1 in this sale, won the Junior Woolly class and our keeper ram AP39 'Brickman' won the Junior Performance class and Junior Champion Ram. Our 3 rams in the Australasian Dorset Championships Online Sale sold to \$10,000 for AP17 to Merilba, and averaged \$7,000.

The White Suffolk and Charollais infused rams offer more selection type and are a really interesting group. The White Suffolk rams have strong links in the LambPlan database, which reflects in the ASBV numbers.

The lamb market continues to be very strong, particularly for quality well grown young lambs. With an improved season and lambs getting to marketable weights quickly, returns from your prime lamb sires have great potential.

Thank you for attending the sale, please let us know if we can assist with any questions you may have.

The Douglas Family

## **Sire Information**

### **“Aldi” AP228-18**

### **Sire AP251-08**

This is the first drop of this amazing young sire. He was our keeper ram from our hugely successful 2019 show team. He has exceeded the very high expectations we had for him at joining time when he went over many of our elite ewes. As you can see at the start of the catalogue, many of our selected rams are his sons. He is also the sire of ‘Brickman’, our keeper ram this year that is a really powerful young ram that was Junior Champion at the NSW Championships and performance class winner.

### **AP185-18**

### **Sire AP107-17**

A large frame ram with smooth shoulders and wide loin. He is sired by AP107, who also sired our Supreme Exhibit at the Australasian Dorset Championships in Bendigo in 2019. A son of AP185 was our top selling ram at \$10,000 in the recent ADC online ram sale.

### **Yentrac 169-11**

### **Sire Penrise 140-08**

We only lost this great old sire earlier this year at 10 years of age. He has sired over \$100,000 in stud rams alone, including AP232 who was sold to the Springwaters Stud for \$24,000 in 2016. He sired 3 Champion Rams at Bendigo and 3 times his sons topped the national sale there. This will be his last drop of lambs from natural mating, however we do have semen stored which we will use in future AI programs.

### **AP25-19**

### **Sire Tattykeel 666-07**

An AI son of T666 that we used as a ram lamb and was sold to the Coolcappa Stud in 2020. A large frame ram with excellent smooth shoulders and good leg setting.

### **“Silk” AP228-19**

### **Sire Yentrac 169-11**

A top son of Y169 that we retained last year. He is a ram with excellent neck and shoulder setting, long body and very good hindquarter. He was used at only 5 months old and his progeny in this sale are from that joining. He will have more progeny in 2022 that are showing great promise as lambs.

## **“Digger” AP287-17**

## **Sire Yentrac 710-15 “Dozer”**

A big strong son of Y710 that we retained. A clean well muscled ram that has bred well. Sire of AP57-19 sold in 2020 for \$4250 to the Mabury Stud.

“Dozer” Yentrac 710-15 x Yentrac 651 - 12

AP65-19 x AP157-18

AP57-19 x “Digger”

## **White Suffolk**

Farrer 258-17 x Farrer 64-16

AP2-19 x Farrer 258-17

## **Charollais**

Camlea 82 x Camlea



## Understanding LAMBPLAN ASBVs

Rams with lower ASBVs for birth weight (BWT) produce lambs with lower birth weight. Both low (lamb survival) and high (lambing difficulties) birth weights should be avoided.

Rams with more positive ASBVs for post weaning weight (PWT) produce lambs that grow quicker and reach target weights in a shorter time. This ram will produce lambs that are, on average, 3kg heavier at post weaning age (7.5 months) than a ram with an ASBV of 0.

Worm egg count (WEC) ASBVs estimate an animal's genetic potential for worm burdens. Lower WEC ASBVs are desirable. This ram will, on average, sire progeny that will have 5% fewer eggs/gram than a ram with an ASBV of 0.

Trait	BWT (kg)	WWT (kg)	PWT (kg)	PFAT (mm)	PEMD (mm)	WEC (%)	INDEX
ASBV	0.3	4	6.0	-1.5	1.0	-10	150
Acc	43	63	71	59	69	37	

Rams with a more positive ASBV for weaning weight (WWT) will, on average, produce lambs that grow quicker to weaning. This ram will produce lambs that are 2kg heavier than a ram with a 0 ASBV for WWT.

Rams with a more negative ASBV for post weaning fat (PFAT) will produce lambs that are leaner, at the same weight. This ram will produce lambs that are, on average, 0.75mm leaner at the GR site when compared to a ram with a FAT ASBV of 0.

Rams with more positive ASBVs for post weaning eye muscle depth (PEMD) produce lambs that have more muscle, independent of weight, and a higher lean meat yield. This ram will produce lambs that have, on average, a 0.5mm deeper eye muscle than a ram with a 0 EMD ASBV.

An index is a guide to the value of a ram for a particular market. Rams with higher indexes will produce lambs that are more suited to that particular market target. It is important to understand what market the index applies to before using an index.

- An ASBV of 0 is the average of the 1990 drop. It is important to compare ASBVs against current industry average.
- *Note: A useful rule of thumb for converting ram ASBVs into lamb production differences is to simply halve the ASBV (as rams contribute half the genetics of the lamb).*
- Accuracy - published as a percentage, is a reflection of the amount of effective information that is available to calculate the ASBV. All ASBVs are now published with accuracies. The higher the percentage, the closer the ASBV is to the true breeding value of the animal. Breeding values without accuracies are Flock Breeding Values (FBVs) and can only be compared within the flock.
- MLA acknowledges the contributions of the Australian Government and AWI in the development of this publication.

For more information contact Sheep Genetics  
 Ph: 02 8055 1818 Fax: 02 8055 1850  
 info@sheepgenetics.org.au www.sheepgenetics.org.au

Sheep Genetics is a program of Meat & Livestock Australia Limited ABN 39 081 678 364



# Poll Dorset Rams

Lot	Tag	DOB	Sire	Sire of Dam	KG
1	051t	08/08	Aldi	Y169	140
BWT	WWT	PWT	PFAT	PEMD	TCP
0.36	9.7	13.88	-1.67	0.28	129.7
Buyer:			Price:		

Lot	Tag	DOB	Sire	Sire of Dam	KG
2	160t	11/09	Silk	H70	119
BWT	WWT	PWT	PFAT	PEMD	TCP
0.20	7.2	10.03	-0.42	1.76	127.6
Buyer:			Price:		

Lot	Tag	DOB	Sire	Sire of Dam	KG
3	082tr	16/08	Aldi	107	124
BWT	WWT	PWT	PFAT	PEMD	TCP
0.29	9.5	13.81	-1.66	-0.24	125.8
Buyer:			Price:		

Lot	Tag	DOB	Sire	Sire of Dam	KG
4	035	04/08	Aldi	Y169	137
BWT	WWT	PWT	PFAT	PEMD	TCP
0.29	9.1	12.7	-1.6	0.4	127.2
Buyer:			Price:		

Lot	Tag	DOB	Sire	Sire of Dam	KG
5	069t	14/08	Aldi	Y169	131
BWT	WWT	PWT	PFAT	PEMD	TCP
0.24	8.2	11.71	-1.63	0.53	127.5
Buyer:			Price:		

Lot	Tag	DOB	Sire	Sire of Dam	KG
6	103t	19/08	Aldi	202	122
BWT	WWT	PWT	PFAT	PEMD	TCP
0.31	8.3	12.64	-1.74	0.28	128.4
Buyer:			Price:		

Lot	Tag	DOB	Sire	Sire of Dam	KG
7	135t	25/08	Silk	Package	132
BWT	WWT	PWT	PFAT	PEMD	TCP
0.24	7.2	10.35	-0.91	0.54	122.7
Buyer:			Price:		



Lot	Tag	DOB	Sire	Sire of Dam	KG
8	007t	21/04	Aldi	278	138
BWT	WWT	PWT	PFAT	PEMD	TCP
0.30	8.8	12.8	-1.7	0.6	129.2
Buyer:			Price:		

Lot	Tag	DOB	Sire	Sire of Dam	KG
9	066	13/08	Aldi	202	129
BWT	WWT	PWT	PFAT	PEMD	TCP
0.23	7.3	10.52	-1.46	0.82	126.5
Buyer:			Price:		

Lot	Tag	DOB	Sire	Sire of Dam	KG
10	197	14/09	Aldi	Y169	119
BWT	WWT	PWT	PFAT	PEMD	TCP
0.30	8.5	12.15	-1.55	0.57	127.7
Buyer:			Price:		

Lot	Tag	DOB	Sire	Sire of Dam	KG
11	227t	29/09	Aldi	117	117
BWT	WWT	PWT	PFAT	PEMD	TCP
0.28	7.9	11.24	-1.77	-0.29	121.5
Buyer:			Price:		

Lot	Tag	DOB	Sire	Sire of Dam	KG
12	215t	25/09	25	Package	112
BWT	WWT	PWT	PFAT	PEMD	TCP
0.28	7.3	10.09	-1.08	0.29	120.8
Buyer:			Price:		

Lot	Tag	DOB	Sire	Sire of Dam	KG
13	077t	15/08	Y169	278	112
BWT	WWT	PWT	PFAT	PEMD	TCP
0.32	7.7	11.56	-0.22	1.35	127.7
Buyer:			Price:		

Lot	Tag	DOB	Sire	Sire of Dam	KG
14	055t	09/08	185		105
BWT	WWT	PWT	PFAT	PEMD	TCP
0.42	9.8	14.37	-1.48	-0.74	122.4
Buyer:			Price:		

Lot	Tag	DOB	Sire	Sire of Dam	KG
15	105t	19/08	185		104
BWT	WWT	PWT	PFAT	PEMD	TCP
0.34	9	12.8	-0.25	0.12	119.59
Buyer:			Price:		

Lot	Tag	DOB	Sire	Sire of Dam	KG
16	137	25/08	185		106
BWT	WWT	PWT	PFAT	PEMD	TCP
0.50	10.2	13.56	-1.2	-0.39	120.86
Buyer:			Price:		

Lot	Tag	DOB	Sire	Sire of Dam	KG
17	211t	16/09	Y169		103
BWT	WWT	PWT	PFAT	PEMD	TCP
0.24	7.5	11.04	-1.05	0.5	124.63
Buyer:			Price:		

Lot	Tag	DOB	Sire	Sire of Dam	KG
18	172t	09/09	Aldi		101
BWT	WWT	PWT	PFAT	PEMD	TCP
0.32	8.6	12.11	-1.18	0.04	122.77
Buyer:			Price:		

Lot	Tag	DOB	Sire	Sire of Dam	KG
19	210t	15/09	57		106
BWT	WWT	PWT	PFAT	PEMD	TCP
0.26	8.6	12.34	-1.21	0.39	125.12
Buyer:			Price:		

Lot	Tag	DOB	Sire	Sire of Dam	KG
20	184	12/09	Dozer		104
BWT	WWT	PWT	PFAT	PEMD	TCP
0.34	8.3	11.86	-1.53	0.85	128.98
Buyer:			Price:		

Lot	Tag	DOB	Sire	Sire of Dam	KG
21	093	17/08	185		105
BWT	WWT	PWT	PFAT	PEMD	TCP
0.42	9.6	13	-0.51	-0.01	119.26
Buyer:			Price:		

Lot	Tag	DOB	Sire	Sire of Dam	KG
22	175t	09/09	Aldi		98
BWT	WWT	PWT	PFAT	PEMD	TCP
0.21	9	14.34	-0.97	0.72	132.09
Buyer:			Price:		

Lot	Tag	DOB	Sire	Sire of Dam	KG
23	063tr	12/08	185		94
BWT	WWT	PWT	PFAT	PEMD	TCP
0.27	8.3	11.86	-1.12	-0.25	119.4
Buyer:			Price:		

Lot	Tag	DOB	Sire	Sire of Dam	KG
24	036tr	05/08	Dozer		100
BWT	WWT	PWT	PFAT	PEMD	TCP
0.30	8.6	12.49	-1.44	-0.25	122.6
Buyer:			Price:		

Lot	Tag	DOB	Sire	Sire of Dam	KG
25	141t	05/09	Aldi		103
BWT	WWT	PWT	PFAT	PEMD	TCP
0.24	8.8	13.46	-1.56	0.72	131.4
Buyer:			Price:		

Lot	Tag	DOB	Sire	Sire of Dam	KG
26	068t	14/08	Aldi		100
BWT	WWT	PWT	PFAT	PEMD	TCP
0.24	8	11.37	-1.5	1.13	130.2
Buyer:			Price:		

Lot	Tag	DOB	Sire	Sire of Dam	KG
27	173t	09/09	Aldi		91
BWT	WWT	PWT	PFAT	PEMD	TCP
0.19	7.5	10.88	-0.95	0.94	125.37
Buyer:			Price:		

Lot	Tag	DOB	Sire	Sire of Dam	KG
28	168t	09/09	Aldi		92
BWT	WWT	PWT	PFAT	PEMD	TCP
0.20	7.7	11.29	-1.58	1.71	134.74
Buyer:			Price:		

Lot	Tag	DOB	Sire	Sire of Dam	KG
29	218t	25/09	Aldi		98
BWT	WWT	PWT	PFAT	PEMD	TCP
0.19	7.5	11.01	-1.64	0.09	123.2
Buyer:			Price:		

Lot	Tag	DOB	Sire	Sire of Dam	KG
30	108t	19/08	Aldi		100
BWT	WWT	PWT	PFAT	PEMD	TCP
0.30	7.9	11.88	-0.31	0.8	124.48
Buyer:			Price:		

Lot	Tag	DOB	Sire	Sire of Dam	KG
31	169t	09/09	Aldi		95
BWT	WWT	PWT	PFAT	PEMD	TCP
0.12	7.6	11.34	-1.4	1.64	133.44
Buyer:			Price:		

Lot	Tag	DOB	Sire	Sire of Dam	KG
32	144t	05/09	25		99
BWT	WWT	PWT	PFAT	PEMD	TCP
0.29	6.8	9.78	-0.68	-0.03	117.05
Buyer:			Price:		

Lot	Tag	DOB	Sire	Sire of Dam	KG
33	089tr	17/08	Y169		92
BWT	WWT	PWT	PFAT	PEMD	TCP
0.41	7.9	11.55	-1.08	0.7	127.48
Buyer:			Price:		

Lot	Tag	DOB	Sire	Sire of Dam	KG
34	115t	21/08	Y169		93
BWT	WWT	PWT	PFAT	PEMD	TCP
0.36	8.3	11.3	-1.32	0.33	124.29
Buyer:			Price:		

Lot	Tag	DOB	Sire	Sire of Dam	KG
35	138	25/08	Aldi		93
BWT	WWT	PWT	PFAT	PEMD	TCP
0.43	9.7	12.86	-2.11	-0.11	126.24
Buyer:			Price:		

Lot	Tag	DOB	Sire	Sire of Dam	KG
36	094t	18/08	Aldi		93
BWT	WWT	PWT	PFAT	PEMD	TCP
0.31	8.5	12.11	-1.76	-0.28	122.82
Buyer:			Price:		

Lot	Tag	DOB	Sire	Sire of Dam	KG
37	162	09/09	185		95
BWT	WWT	PWT	PFAT	PEMD	TCP
0.35	8.6	11.99	0.3	0.41	116.58
Buyer:			Price:		

Lot	Tag	DOB	Sire	Sire of Dam	KG
38	217t	25/09	Aldi		88
BWT	WWT	PWT	PFAT	PEMD	TCP
0.20	8.4	11.27	-1.41	1.19	128.95
Buyer:			Price:		

Lot	Tag	DOB	Sire	Sire of Dam	KG
39	157t	09/09	25		94
BWT	WWT	PWT	PFAT	PEMD	TCP
0.32	6.4	8.91	-1.47	-0.34	116.6
Buyer:			Price:		



Lot	Tag	DOB	Sire	Sire of Dam	KG
40	139t	05/09	Aldi		91
BWT	WWT	PWT	PFAT	PEMD	TCP
0.25	8.7	13.02	-1.89	1.09	134.73
Buyer:			Price:		

Lot	Tag	DOB	Sire	Sire of Dam	KG
41	229t	29/09	Digger		90
BWT	WWT	PWT	PFAT	PEMD	TCP
0.20	8.5	12.36	-0.8	1.41	128.17
Buyer:			Price:		

Lot	Tag	DOB	Sire	Sire of Dam	KG
42	071t	15/08	Digger		99
BWT	WWT	PWT	PFAT	PEMD	TCP
0.39	8	12.12	-1.1	0.24	122.5
Buyer:			Price:		

Lot	Tag	DOB	Sire	Sire of Dam	KG
43	129tr	24/08	Aldi		90
BWT	WWT	PWT	PFAT	PEMD	TCP
0.27	8.1	12.16	-1.69	0.29	127.7
Buyer:			Price:		

Lot	Tag	DOB	Sire	Sire of Dam	KG
44	124t	23/08	Aldi		92
BWT	WWT	PWT	PFAT	PEMD	TCP
0.21	7.1	11.04	-1.24	0.57	125.66
Buyer:			Price:		

Lot	Tag	DOB	Sire	Sire of Dam	KG
45	073t	15/08	185		85
BWT	WWT	PWT	PFAT	PEMD	TCP
0.14	7	10.33	-0.58	0.89	121.7
Buyer:			Price:		

Lot	Tag	DOB	Sire	Sire of Dam	KG
46	074t	15/08	Y169		89
BWT	WWT	PWT	PFAT	PEMD	TCP
0.44	8.5	11.89	-0.74	0	120.3
Buyer:			Price:		

Lot	Tag	DOB	Sire	Sire of Dam	KG
47	079t	15/08	Aldi		84
BWT	WWT	PWT	PFAT	PEMD	TCP
0.19	6.4	9.23	-1.41	0.79	123
Buyer:			Price:		

Lot	Tag	DOB	Sire	Sire of Dam	KG
48	081tr	16/08	Aldi		95
BWT	WWT	PWT	PFAT	PEMD	TCP
0.27	9.7	14.02	-1.64	0.62	132
Buyer:			Price:		

Lot	Tag	DOB	Sire	Sire of Dam	KG
49	208	15/09	185		90
BWT	WWT	PWT	PFAT	PEMD	TCP
0.42	9.8	13.45	-1.38	0.01	123.96
Buyer:			Price:		

Lot	Tag	DOB	Sire	Sire of Dam	KG
50	177	10/09	Y169		85
BWT	WWT	PWT	PFAT	PEMD	TCP
0.31	8	11.85	-0.67	1.79	133.03
Buyer:			Price:		

Lot	Tag	DOB	Sire	Sire of Dam	KG
51	170t	09/09	25		97
BWT	WWT	PWT	PFAT	PEMD	TCP
0.28	6	9.07	-1.28	-0.17	118.58
Buyer:			Price:		

Lot	Tag	DOB	Sire	Sire of Dam	KG
52	152t	08/09	25		90
BWT	WWT	PWT	PFAT	PEMD	TCP
0.23	5.9	7.83	-0.49	0.25	113.28
Buyer:			Price:		

Lot	Tag	DOB	Sire	Sire of Dam	KG
53	180t	12/09	Aldi		84
BWT	WWT	PWT	PFAT	PEMD	TCP
0.20	6.7	9.7	-1.62	0.72	124.69
Buyer:			Price:		

Lot	Tag	DOB	Sire	Sire of Dam	KG
54	097q	18/08	Silk		84
BWT	WWT	PWT	PFAT	PEMD	TCP
0.08	6.2	8.99	-0.85	0.36	117.54
Buyer:			Price:		

Lot	Tag	DOB	Sire	Sire of Dam	KG
55	230t	30/09	185		87
BWT	WWT	PWT	PFAT	PEMD	TCP
0.31	8.4	10.94	-0.87	0.3	118.89
Buyer:			Price:		

# White Suffolk & Charollais infused Rams

Lot	Tag	DOB	Sire	Sire of Dam	KG
56	186t	12/09	F258	Poll Dorset	107
BWT	WWT	PWT	PFAT	PEMD	TCP
0.26	9.1	13.6	-1	1.7	141.4
Buyer:			Price:		

Lot	Tag	DOB	Sire	Sire of Dam	KG
57	33t	04/08	F258	Poll Dorset	110
BWT	WWT	PWT	PFAT	PEMD	TCP
0.22	9.1	13.5	-1.1	1.8	141.9
Buyer:			Price:		

Lot	Tag	DOB	Sire	Sire of Dam	KG
58	85t	17/08	F258	Poll Dorset	99
BWT	WWT	PWT	PFAT	PEMD	TCP
0.24	9.7	14.3	-0.4	2.1	141.9
Buyer:			Price:		

Lot	Tag	DOB	Sire	Sire of Dam	KG
59	204	15/09	2	Poll Dorset	106
BWT	WWT	PWT	PFAT	PEMD	TCP
0.32	8.3	12.3	-1.3	1.2	135.5
Buyer:			Price:		

Lot	Tag	DOB	Sire	Sire of Dam	KG
60	185t	12/09	F258	Poll Dorset	95
BWT	WWT	PWT	PFAT	PEMD	TCP
0.25	9.1	13.9	-1.4	1.9	144.3
Buyer:			Price:		

Lot	Tag	DOB	Sire	Sire of Dam	KG
61	102t	18/08	2	Poll Dorset	95
BWT	WWT	PWT	PFAT	PEMD	TCP
0.12	7	11.3	-0.1	2.2	135.2
Buyer:			Price:		

Lot	Tag	DOB	Sire	Sire of Dam	KG
62	133t	24/08	2	Poll Dorset	96
BWT	WWT	PWT	PFAT	PEMD	TCP
0.31	8.1	12	-1.3	1.1	134.9
Buyer:			Price:		

Lot	Tag	DOB	Sire	Sire of Dam	KG
63	279t	21/08	2	Charollais	103
BWT	WWT	PWT	PFAT	PEMD	TCP
0.15	7.4	11.8	-0.2	1.8	134.9
Buyer:			Price:		

Lot	Tag	DOB	Sire	Sire of Dam	KG
64	281t	03/09	F258	Charollais	93
BWT	WWT	PWT	PFAT	PEMD	TCP
-0.01	7.5	11.9	-0.2	3.2	145.7
Buyer:			Price:		

Lot	Tag	DOB	Sire	Sire of Dam	KG
65	203t	12/09	C82	Charollais	89
BWT	WWT	PWT	PFAT	PEMD	TCP
-0.02	5.6	9.1	0.5	1.7	123
Buyer:			Price:		

# EWES

Lot	Tag	DOB	Sire	Sire of Dam	KG
66	3	12/04	Y169	202-13	95
Buyer:			Price:		

Lot	Tag	DOB	Sire	Sire of Dam	KG
67	118t	22/08	65-19	Y169	89
Buyer:			Price:		

Lot	Tag	DOB	Sire	Sire of Dam	KG
68	2	10/04	Y169	278	85
Buyer:			Price:		

Lot	Tag	DOB	Sire	Sire of Dam	KG
69	226	29/09	Silk	Y169	87
Buyer:			Price:		

Lot	Tag	DOB	Sire	Sire of Dam	KG
70	272	Retag	25-19		83
Buyer:			Price:		

Lot	Tag	DOB	Sire	Sire of Dam	KG
71	80t	15/08	Aldi	TAT666-07	82
Buyer:			Price:		



Lot	Tag	DOB	Sire	Sire of Dam	KG
72	123t	23/08	Aldi	Y169	78
Buyer:			Price:		

Lot	Tag	DOB	Sire	Sire of Dam	KG
73	22t	16/06	185	102-17	83
Buyer:			Price:		

Lot	Tag	DOB	Sire	Sire of Dam	KG
74	99q	18/08	Silk	251-08	81
Buyer:			Price:		

Lot	Tag	DOB	Sire	Sire of Dam	KG
75	57t	10/08	Aldi	208-15	84
Buyer:			Price:		

# Notes:



**M<sup>c</sup>CULLOCH**  
— AGENCIES —

**282 Peel Street or Po Box 444**

**TAMWORTH NSW 2340**

**PH: (02) 6766 6006**

**Daniel McCulloch: 0429 613 332**

**Mitch Swain: 0429 446 952**

## **Woolomin General Store**

**Shane & Kylie Douglas**

**11 Nundle Road  
WOOLOMIN 2340  
Ph - 6764 2243**

- ◆ Open 7 Days
- ◆ Eftpos Available
- ◆ Takeaway Food
- ◆ Fishing Licenses
- ◆ Gas Refills
- ◆ Grocery Lines
- ◆ Post Office
- ◆ Bait
- ◆ Bottle Shop

**5 Mins From  
Chaffey Dam**

- ◆ Fishing
- ◆ Skiing
- ◆ Boating

## Sale Location:

**Max & Coral Douglas & Family  
Belaylee**

1171 Nundle Rd,  
PIALLAMORE NSW 2340

Phone: 02 6764 2275

abelenepark@gmail.com



Supreme Exhibit Bendigo 2019

# Belaylee May Sales

*Enquiries Welcome*

**Ph: 6769 4210**

**M: 0467 691311**