



LIMOUSIN

Hand Dispensal

13 - 15 AUGUST 2021



TURN KEY OPPORTUNITY

**95 Females ★ 35 Yearling Bulls ★ 21 Embryo Calves
Semen & Embryo Inventory**



OFFERED AS

A Whole!



WELCOME

It is with great pride that we offer the Raven Polled Limousin Herd in its entirety as a 'Turn Key' going concern for the potential investor to purchase the herd and hit the ground running the following day.

This very unique and grand opportunity has been made available due to an expanding Schulz family business, which has created a shift in focus that doesn't allow the time currently given to the stud enterprise. This opportunity provides someone with a passion for breeding cattle or a desire to improve their genetic base to turn the key and start, which is a shorter road to success than building from scratch as we did.

The Raven herd has been built on a very high standard, with nothing spared in an endeavour to breed cattle that are genetically programmed to increase performance under commercial Australian conditions. With this noted we feel it is in the best interest of our herd that we hand it on to somebody who will take the stud to a new level and continue building on the solid foundations we have laid.

I believe Penny and myself have created a functional herd that carries the high yielding Limousin attributes the industry knows and loves, yet have an inbuilt fat that insures Raven genetics finish on grass easily, with the required resilience when the seasons become tight.

These genetic improvements have become reality through rigorous data collecting with the herd holding the highest rating of 5 Stars from Breedplan Completeness of Performance. We have tried to breed cattle with a good balance of traits, however the Raven herd has become proficient for growth, temperament (Docility) short gestation length, positive fat and marbling (IMF%), all key drivers in profitability and ultimately meat eating quality.



We would like to take the opportunity to sincerely thank all who have supported us over the last 13 years since the Raven herd was established, whether it's our loyal clients, fellow breeders or reliable service providers.

The stud operation has bought us many fabulous opportunities and has allowed us the pleasure of serving the many wonderful cattle producers who have chosen Raven genetics to improve their beef business.

I am sure we will still be seeing most people as we are remaining in the Livestock industry sector only in a different fashion.

**Jason, Penny
Heston & Audrey Schulz**

**NEW GENETICS AND A NEW GENERATION
OF SPECIALISED BREEDING**

Raven

LIMOUSIN

Herd Dispersal

**COMMENCES FRIDAY 13 AUGUST 2021 AT 1PM EST
CLOSES SUNDAY 15 AUGUST 2021 AT 3PM EST**



TURN KEY OPPORTUNITY

**95 Females PG 11 ★ 35 Yearling Bulls PG 27
21 Embryo Calves PG 32 ★ Semen & Embryo Inventory PG 34**

OFFERED AS *A Whole!*



Jason & Penny Schulz

M 0417 863 268

E jason@ravenlimousin.com.au

www.ravenlimousin.com.au



AuctionsPlus®

Elders

Tony Wetherall 0427 390 001

Laryn Gogel 0436 020 245

Steven Doecke 0427 817 323



HISTORY

The Development of the Raven Herd

The Raven herd was established in 2008 by Jason & Penny Schulz who together share a strong interest in the power of genetics and an ongoing desire to breeding quality livestock.

The couple could see a market opportunity to breed Limousin bulls, a breed that they experienced in their own commercial herd, having success with using Limousin bulls over British Bred cows. This combination produced profitable gains achieved through hybrid vigour and the breed's ability to improve growth and carcase yield, but they acknowledged that the market preferred a black coat colour to remain competitive.

It was in 2007 that Penny received an advertisement via email promoting the dispersal of the Kensal Black Limousin herd in NSW. This started the discussions around breeding black Limousin cattle and after searching through the Kensal catalogue it was decided purchasing embryos and implanting them in their commercial herd was the most feasible option. After much research the key cows were identified and we were able to secure a couple of packages of embryos and had them implanted later that year. The following year two black and polled heifers were purchased from the Mandayen Sale with the purpose of becoming embryo donors to propagate and develop what would become the Raven herd.

With a plan to grow quickly in cow numbers the Schulz's embarked in an overseas trip to the USA in search of potential genetics to invest in, and after touring many herds across the Midwest it became evident that we needed to select genetics from the 400 cow Hunt Limousin herd due to the herds outstanding confirmation, sound structure and data integrity. The Hunt family are also incredibly honest people and they ran their cows under what I considered commercial conditions that could be closely relatable to how we operate our cow herd here in South Australia.

Five cows were selected from this tour to go into an export collection centre to harvest embryos to be sent to Australia with the resulting Ribbon family being the most successful from this early investment.

The herd continued to grow through embryo technology, annually flushing the best cows within herd, many progeny from the original USA imports. To ensure diversity of genetics Raven has imported several US semen sires, forming partnerships with other breeders to make the investment feasible. In 2014 Raven successfully held its first annual bull sale, selling bulls locally in South Australia, Victoria, New South Wales and Western Australia.

The Raven client base has continued to grow both in numbers and geographically which greatly increased with the inclusion of sale females in 2018. This proved to be sort after by many Limousin breeders.



1



2



3



4



5



6



7



8



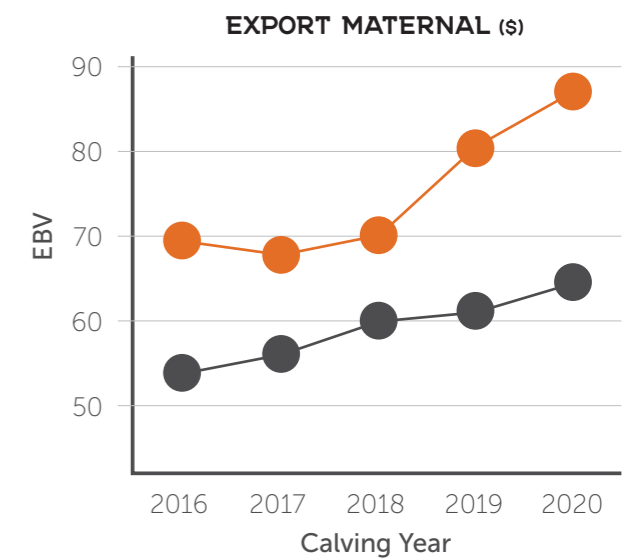
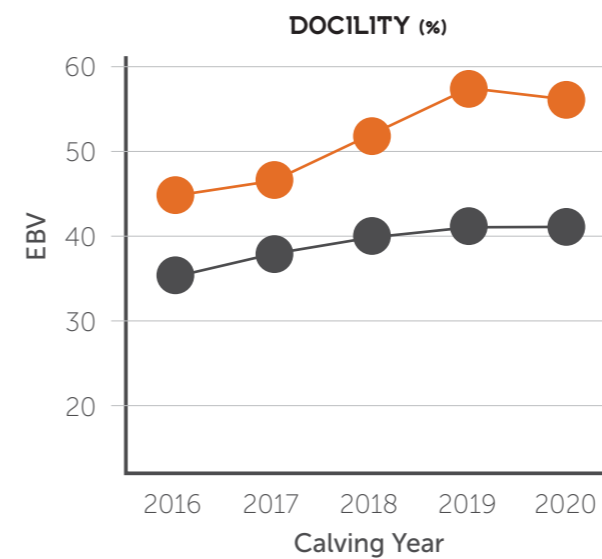
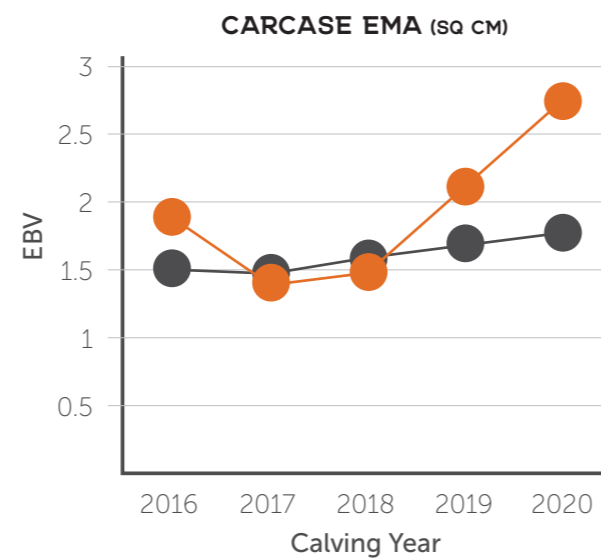
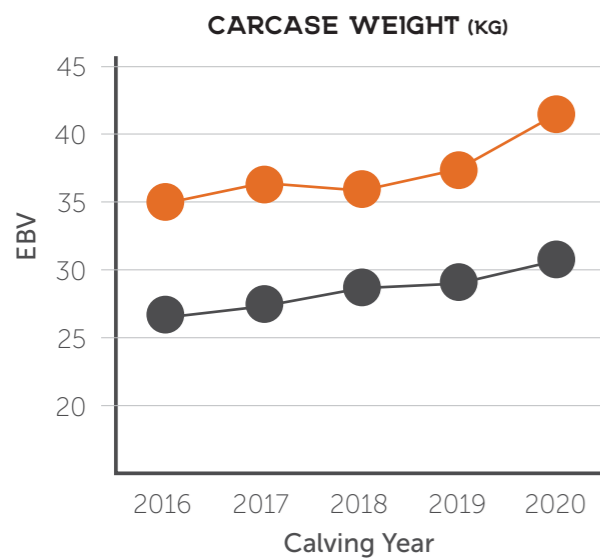
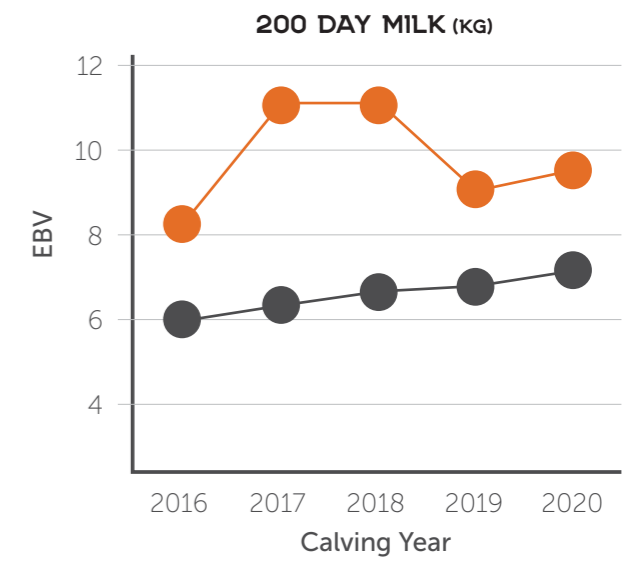
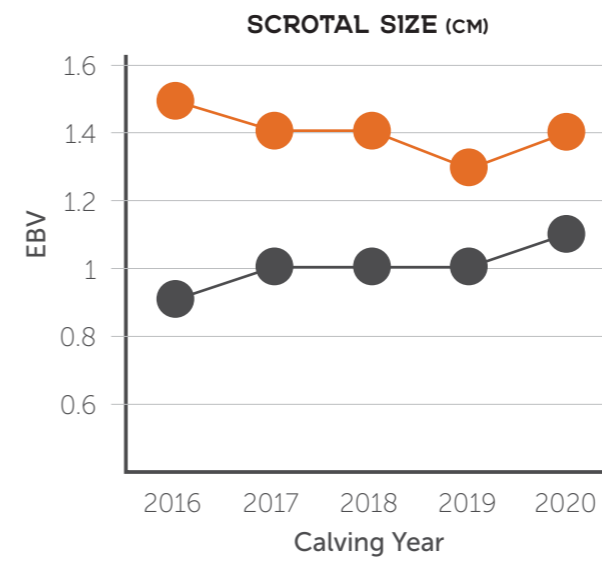
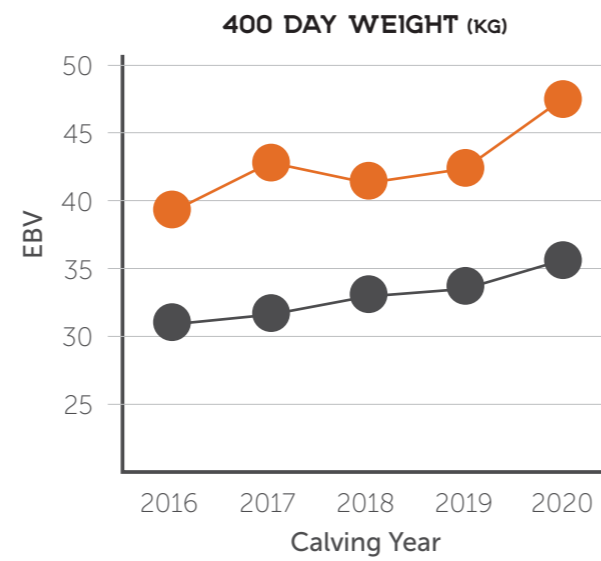
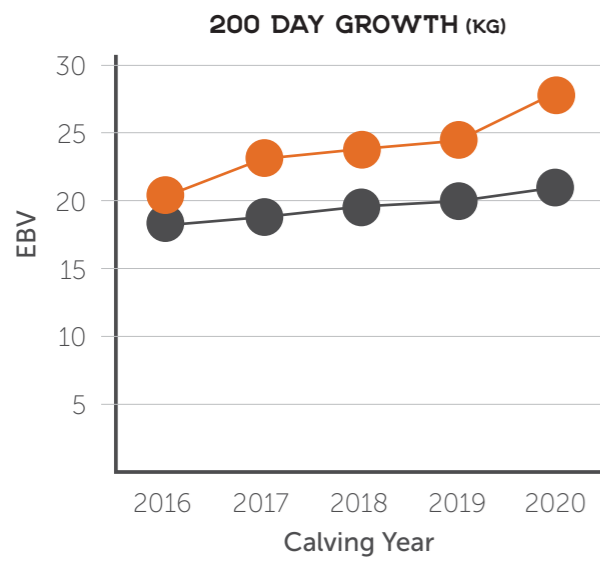
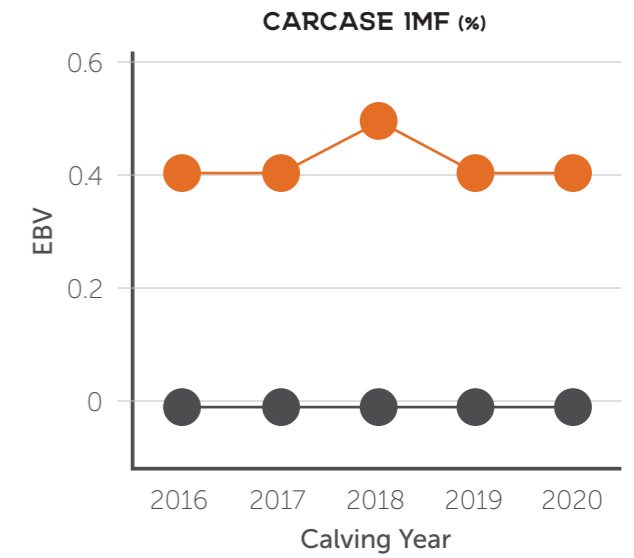
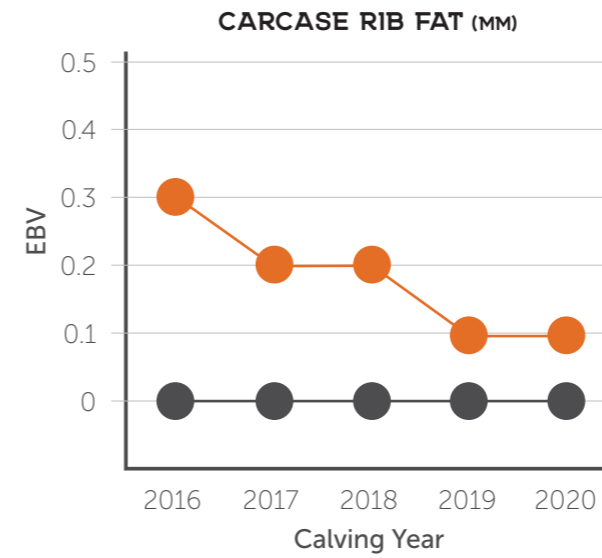
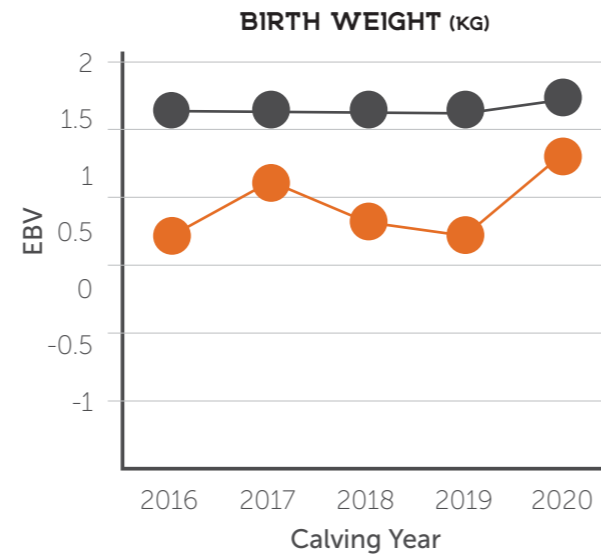
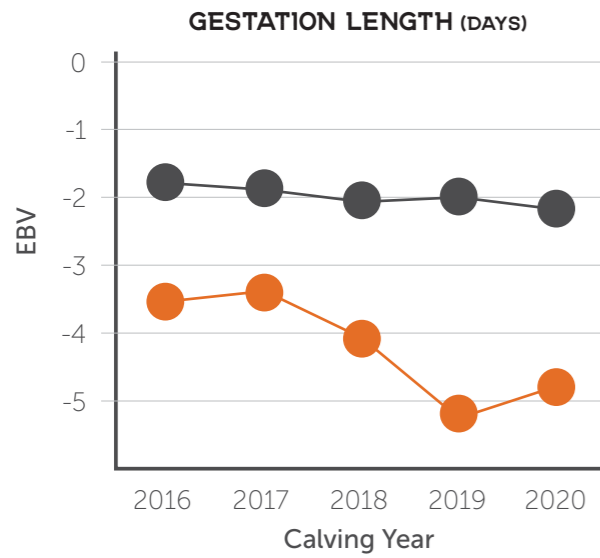
9

1. Early photo of Jason & Penny after one of their initial purchases of 5 black Limousin females at the 2009 Mandayen Sale. 2. Jason & Penny pictured with Dan and Charlie Hunt of Hunt Limousin Ranch, Nebraska USA. 3. Penny in a pen of bulls in the USA 4. 2019 Bull Sale with Top Price bull buyers Danny & Shauna Chaplin, Patchewarra. Photo: Stock Journal 5. Our hire car number plate in the USA. 6. Jason judging cattle at the Royal Melbourne Show. 7. Jason inspecting the Raven sired steers at Teys Charlton Feedlot in November 2018. 8. Jason, Penny and Heston pictured with renowned donor cow Raven Red Ms Gillard G81 after an ET daughter sold for \$12,000 to Pelican Rise Limousins, VIC. Photo: Stock Journal 9. Young heifers sold to \$11,500 in the 2018 sale, pictured with Top Price buyer Tony Sutcliffe, Toebelle Limousins, NSW.



BREEDPLAN PERFORMANCE GRAPHS

LEGEND ● Raven ● Society
 June 2021 - Australian Limousin Breeders' Society Limited



How to Register and Bid on AuctionsPlus

- 1 Go to www.auctionsplus.com.au to register at least 48 hours before the sale.
- 2 Select **"Sign Up"** in the top right hand corner.
- 3 Fill out your name, mobile number, email address and create a password.
- 4 Go to your emails and confirm the account.
- 5 Return to AuctionsPlus and log in.
- 6 Select **"Dashboard"** and then select **"Request Approval to Buy"**.
- 7 Fill in buyer details and once completed go back to Dashboard.
- 8 Complete buyer induction module (approx. 30 minutes).
- 9 AuctionsPlus will email you to let you know that your account has been approved.
- 10 Log in on sale day and connect to auction.
- 11 Bid using the two-step process – unlock the bid button and bid at that price.
- 12 If you are successful, the selling agent will contact you post sale to organise delivery and payment.

For more information please contact us on:

Phone: (02) 9262 4222

Email: info@auctionsplus.com.au



The Raven herd is a JBAS 8 herd #S418 and has been in the Johnes free monitored program for the past 10 years. The herd has had regular whole herd faecal tests ensuring WA entry and a confidence the herd is clean.

The herd is under the PIRSA One Biosecurity plan and has upheld property and herd surveillance.

All cattle are Vaccinated with Ultravac 7 and have had no prevalence of Pesti-Virus on annual PI testing.

All calves will be vaccinated at marking with their booster shot given in August.



LIMOUSIN

Herd Dispensal

95 Females PG 11

35 Yearling Bulls PG 27

21 Embryo Calves PG 32

Semen & Embryo Inventory PG 34

OFFERED AS *A Whole!*



WHAT COMES WITH THE SALE?

The Herd & Genetics

- > 37 mature Limousin breeding cows (whole herd – predominantly black) with their June/July 2021 calves at foot (sold open to breed)
- > 3 mature Limousin donor cows (sold dry and open to breed)
- > All 26 first calving Limousin heifers (predominantly black) with their June/July 2021 calves at foot (sold open to breed)
- > 30 Bred 2020 drop replacement Limousin heifers (predominantly black - Artificially Inseminated early August)
- > 35x 2020 drop Limousin bulls (predominantly black) to be sold in 2022 Sale
- > 21x Recipient cows with 2021 June born Embryo Calves at foot and re-implanted embryos in August
- > Limousin Semen Inventory (please refer to list)
- > Limousin Embryo Inventory (please refer to list)

The Extras

- > The Raven prefix RAV
- > The Raven Brand (Freeze Brand included)
- > The Raven logo in its various forms and style guide
- > 13 years of comprehensive data collected and on file (Practical Systems rego# 05855)
- > Raven Client and Mailing list (400+ contacts)
- > Raven marketing IP and preferred service providers
- > Raven website
- > Raven Facebook page with 2000+ followers



All females are annually artificially inseminated once and joined to ensure a tight calving

No chances are even given to Raven females that fail to breed!



EXPLANATION



Cow family lines & their model numbers

The Raven herd is built on several distinctive cow family lines which provides structure for breeding programs and ensuring the herd maintains pedigree diversity. Certain cow family lines are proficient in particular traits allowing for prescribed breeding and crossing of two lines within herd where applicable.

Like most herds the cow family line has a name with daughters taking the name passed down through the maternal line.

As an additional aid in the paddock when the Raven herd was established it was decided that each family had a model number also, which made up part or all of their registered number.

This registered number is freeze branded on every individual animal at around 12-15 mths along with the Raven brand making their number (model number) a quick reference of what lineage the individual belongs to.



WONDER Family

93s



This family line has become one of the go-to mainstays for the Raven herd in recent years after Raven Red Ms Wonder M93 entered our embryo donor program in 2017 for her superior phenotype, followed by her matriarch of a dam Wonder D1093 being selected in 2018 as a 10yo cow due to her excellent progeny track record and absolutely sound foot, leg and udder structure for such an old cow.

These 2 cows have delivered clean fronted, deep bodied, thick-made daughters that are sound and fertile being genuine assets to the herd. Highlights have been in sons Raven Penthouse ET P693 and Raven Predator P93 who both have found homes in fellow Australian interstate stud herds.

We also on sold Raven Red Ms Wonder M93 to Maximus Limousin Stud as we are confident we had black coated daughters that could take our herd to the next level, one worth noting is P593.

All the Wonders offer additional bone, depth of body, carcass weight, adequate growth, calving ease and exceptional docility.

IDENT	YEAR	COLOUR	SIRE	CED	CE-DTRS	GL	BWT	MILK	200	400	CWT	EMA	RIB	RUMP	IMF%	DOC.
MDNPD1093	2008	Black	Mandayan Vision Y329	2.3	3.8	-0.4	1.7	10	19	33	32	0.1	-0.2	-0.2	0	62
RAVPN93	2017	Black	LFLC ACE 750A	0.8	2.5	-2.3	1.9	14	27	42	41	0.4	-0.2	-0.2	0	63
RAVPP593	2018	Black	LFLC Ace 750A	3.7	2.9	-3.1	0.9	12	25	43	43	0.6	-0.4	-0.5	0	65
RAVPQ493	2019	Black	LFLC Denver 857D	2	2.9	-4.2	1.4	9	24	41	31	1.1	-0.1	-0.2	0.1	46
RAVPQ593	2019	Black	LFLC Denver 857D	2	2.9	-4.2	1.6	9	25	42	33	1.1	-0.2	-0.2	0.1	57
RAVPQ693	2019	Black	LFLC Denver 857D	1.2	2.7	-4	1.4	9	24	40	30	1	-0.1	-0.3	0.1	57
RAVPQ793	2019	Black	LFLC Denver 857D	-0.1	2.6	-3.8	2.8	9	31	53	39	1.7	-0.1	-0.1	0.2	57
RAVPR93	2020	Apricot	Summit Blueprint M20	2.2	2.3	-4.2	1.1	6	23	42	41	2.7	-0.3	-0.4	0.1	73
RAVPR993	2020	Black	Summit Blueprint M20	1.8	1.7	-6.4	1.1	8	27	48	46	2.9	-0.3	-0.4	0.1	70
COW HERD AVERAGE				1.9	1.5	-4.1	1.2	10.3	27	46	41	2.8	0.1	0.2	0.3	57
BREED AVERAGE				0.4	0.7	-1.8	1.7	7	20	34	30	1.8	0	-0.3	0	44

Matriarch of the Wonder family,
Mandayan Wonder D1093



Raven Red
Ms Wonder
M93

Wonder
D1093



Raven
Penthouse
ET P693



Raven Wonder
ET P593



Raven June
Wonder J93



PEARL Family

57s



Raven Vision of Pearl F57

The Pearl family are descendants of the elite Kensal cow Pearl U151 who in her lifetime created 44 progeny and sold at the Kensal dispersal in 2007 for \$20,000.

The Pearls are known for their immense length of body, super long fronts and herd versatility. As a testament to their longevity we still retain Raven Vision of Pearl F57 within herd who was a resulting embryo calf from the original U151 cow.

Growth, Positive Fat and IMF% (marbling) is this cow families strengths, making the Pearls active contributors to the herd with noteworthy young heifer Pearl R157 being one of the top-end heifers from our 2020 drop.

HIGHLIGHTED TRAITS LEGEND

200D Wt. | Bull selection reference

+26 | **Bold & Orange**
= Top 10% of the breed

+24 | **Bold**
= Top 20% of the breed

IDENT	YEAR	COLOUR	SIRE	CED	CE-DTRS	GL	BWT	MILK	200	400	CWT	EMA	RIB	RUMP	IMF%	DOC.
RAVPF57	2010	Black	Mandayen Vision Y329	-1.2	4.2	-2.5	2.1	6	23	39	37	2.2	0.1	0.1	0.2	27
RAVPM57	2016	Black	Progress Dutch Force J11	1.8	2.9	0.2	1.6	9	16	34	37	4.1	-0.4	-0.8	-0.3	19
RAVPP57	2018	Black	LFLC Ace 750A	-2.1	2.6	-2.6	2.5	13	30	44	37	0.7	-0.1	-0.1	0.2	46
RAVPP857	2018	Black	Runl Xtra-Loyal 644 X	6.2	2.1	-2.9	-0.2	11	20	32	36	4.6	0.4	0.7	0.2	45
RAVPQ210	2019	Black	LFLC Ace 750A	1	0.1	-1.4	1.3	11	25	39	40	0.7	0.3	0.4	0.2	55
RAVPR157	2020	Black	Mandayen Kung Fu N221	0.6	3.1	-3.6	2.2	11	34	49	42	2.3	0.5	0.9	0.4	55
COW HERD AVERAGE				1.9	1.5	-4.1	1.2	10.3	27	46	41	2.8	0.1	0.2	0.3	57
BREED AVERAGE				0.4	0.7	-1.8	1.7	7	20	34	30	1.8	0	-0.3	0	44

Raven Neutron N129



Raven Ninja N229

Raven Quatro Q829



Raven Queen Pearl Q210



JAMTIME *Family*

63s



Raven Red Jam Time J63

We created this family line which was derived from the Pearl family with Jamtime being a Grand-daughter of the Pearl U151 herd.

The reason for commencing a new line was due to the fact we felt we had created something special in Jamtime J63 who has become a donor cow due to her modern type, super easy finishing and fertility (given her donor harvesting records)

Creating this line captured the combination of pedigree with Jamtime being sired by the moderate, thick-made Raven Time E1492 who was sired by the outcross HC Final Time 407 and going back to the breed reputable, Ramornie Jill T10 cow featuring on his maternal side.

The Jamtimes are proving themselves cow makers with daughters demonstrating great angularity and femininity. They are super clean fronted, fine haired, great mothers and easy keeping.

This family line have loads of milk and the sons are big in their scrotal and all progeny are repeatedly some of the highest marbling cattle in the Australian Limousin breed.

IDENT	YEAR	COLOUR	SIRE	CED	CE. DTRS	GL	BWT	MILK	200	400	CWT	EMA	RIB	RUMP	IMF%	DOC.
RAVPJ63	2013	Apricot	Mandayen Raven Time E1492	-0.9	0.2	-4.3	0.9	10	21	36	41	3.2	0.7	0.9	0.4	31
RAVPQ163	2019	Black	Summit Blueprint M20	-0.8	0.3	-5.6	1.3	6	25	48	48	4.7	0	0.1	0.3	63
RAVPQ363	2019	Black	LFLC Ace 750A	0.4	0.8	-3.3	2	13	29	47	47	2.5	-0.4	-0.6	-0.1	39
RAVPQ463	2019	Black	LFLC Ace 750A	-0.4	0.6	-3.2	2.2	13	31	49	48	2.2	0.2	0.4	0.4	39
RAVPQ563	2019	Black	LFLC Ace 750A	0.4	0.8	-3.5	1.1	13	27	43	42	1.3	0.6	1	0.6	33
RAVPR63	2020	Black	Raven Man O Man M617	1.2	0.2	-6.7	0.6	5	23	37	37	2.9	0.2	0.2	0.3	58
RAVPR563	2020	Black	LFLC Denver 857D	0.5	1.1	-6.1	1.1	10	25	43	37	2.7	0.3	0.3	0.4	56
COW HERD AVERAGE				1.9	1.5	-4.1	1.2	10.3	27	46	41	2.8	0.1	0.2	0.3	57
BREED AVERAGE				0.4	0.7	-1.8	1.7	7	20	34	30	1.8	0	-0.3	0	44

Raven Red Marmalade M163



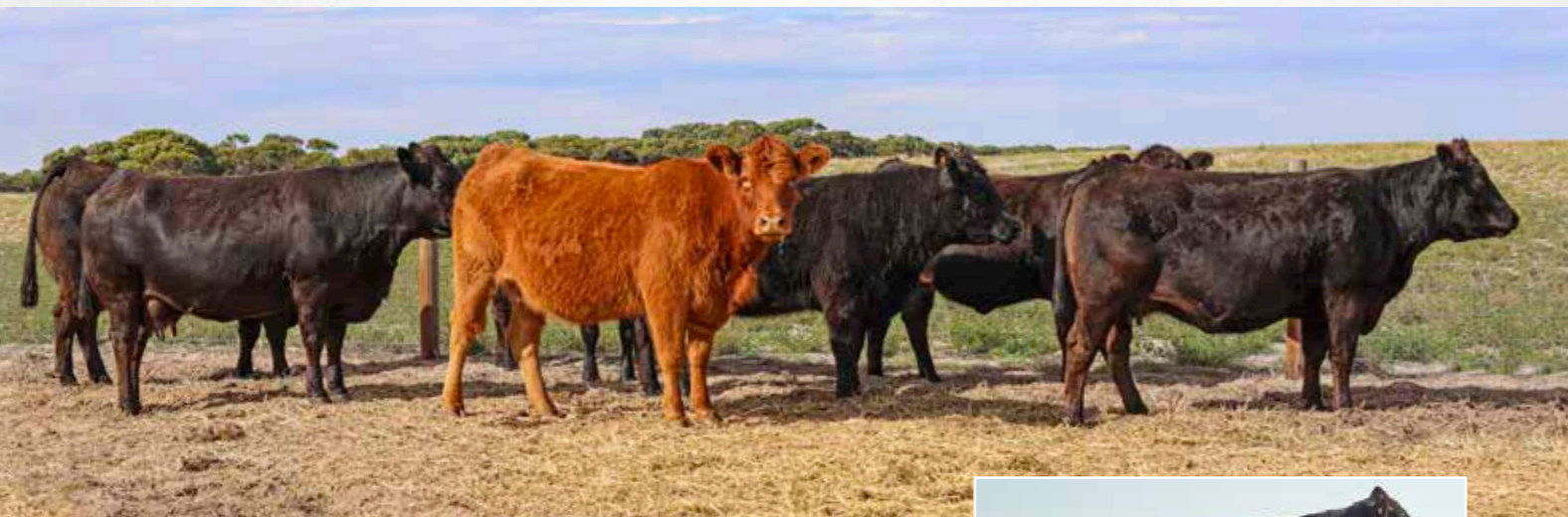
Raven Precinct P163



Raven Nemesis N163

RIBBON Family

148s, 248s & 349s



Original cow in USA, Hunt Ribbon H148R

The Ribbon family line commenced after our 2010 trip to the USA in search of elite, reliable cows to flush embryos from to import to Australia. After touring the Midwest it became evident that we needed to select genetics from the 400 cow Hunt Limousin herd due to the herds outstanding confirmation, sound structure and data integrity.

The Hunt family are also incredibly honest people and they ran their cows under what I considered commercial conditions that could be closely relatable to how we operate our cow herd here in South Australia. We selected 5 cows from this tour to go into an export collection centre to harvest embryos to be sent to Australia with the resulting Ribbon family being the most successful from this early investment.

Hunt Ribbon 148R at the time was the highest REA (EMA) in the North American Limousin Foundation database an accolade she still holds today still featuring in the top 1% 21 years on. Phenotypically she was large framed and super long, traits which are inherent from Ribbons sire Hunt Mr Jock 44J.

The resulting Ribbons in the Raven herd today are from two original flushes to sires Wulfs Xtractor and RUNL Stetson leaving the Family Model numbers 148, 248 & 349. All of these Ribbons carry the traits we liked in the original cow, with current generations being more moderately framed, appropriate for the Australian environment and our markets.

We have intentionally retained a large percentage of these valuable Ribbon females, however we have seen sons be sort by commercial producers often topping our annual bull sale, with two notable sons entering the Tara Limousin herd in WA in Raven Red Nucleus N148 and Raven Mandate M349 who are both leaving their mark.

Some twenty odd Ribbon females make up the herd, making the Ribbon family the largest representation at Raven.

IDENT	YEAR	COLOUR	SIRE	CE	CE-DTRS	GL	BWT	MILK	200	400	CWT	EMA	RIB	RUMP	IMF%	DOC
RAVPJ248	2013	Black	Runl Stetson 850S	6.6	3.1	-3.9	0.3	6	24	43	44	5.2	-0.3	-0.1	0	57
RAVPJ349	2013	Black	Runl Stetson 850S	8.9	4.5	-4.2	-0.8	4	21	36	41	5.5	0.1	0.5	0.1	54
RAVPN248	2017	Black	Progress Dutch Force J11	5.5	2.2	-0.9	0.9	9	19	38	37	4.1	-0.5	-0.9	-0.4	26
RAVPN481	2017	Apricot	Cole Zone 89Z	0.8	2.2	-2.7	1.6	15	31	54	50	3.7	-0.2	-0.1	0.3	42
RAVPN482	2017	Apricot	Greenwood PLD Zambuka	3.9	-0.4	-4.8	1	9	28	51	42	4.4	0.7	1.1	0.4	72
RAVPN483	2017	Apricot	Greenwood PLD Zambuka	4.1	-0.2	-5.2	0.5	9	25	46	34	3.2	0.8	1.2	0.5	61
RAVPN484	2017	Apricot	Greenwood PLD Zambuka	3.9	-0.4	-4.7	0.8	8	26	46	37	3.9	0.7	1.1	0.4	72
RAVPN749	2017	Black	Morrisvale Lumberjack	9.4	3	-7.1	-0.5	11	28	44	51	6.3	0.2	0.5	-0.1	41
RAVPP148	2018	Black	LFLC Ace 750A	6.2	3.6	-4.1	0.6	12	30	51	53	2.8	-0.9	-1.2	0	67
RAVPP349	2018	Black	LFLC Ace 750A	7.5	3.3	-2.5	-0.3	9	23	34	44	3.9	-0.3	-0.1	0	58
RAVPP482	2018	Black	Runl Xtra-Loyal 644 X	3.1	1.9	-4.3	1.6	13	35	55	49	5.1	0.1	0.4	0.3	47
RAVPQ349	2019	Black	LFLC Ace 750A	4.3	2.8	-3.1	1	10	28	44	44	2.8	-0.1	0.2	0.1	52
RAVPQ448	2019	Black	LFLC Denver 857D	3.5	2.1	-3.3	1.1	9	23	41	33	3	-0.3	-0.5	-0.1	40
RAVPQ482	2019	Black	LFLC Denver 857D	2.7	0.7	-6.3	0.9	9	28	50	35	3.1	0.5	0.7	0.5	61
RAVPQ484	2019	Black	LFLC Denver 857D	3.1	0.8	-7.1	0.7	8	27	44	33	3.2	0.2	0.4	0.2	66
RAVPQ749	2019	Black	Summit Blueprint M20	4.9	1.4	-6.5	-0.3	3	21	38	41	5.1	-0.3	-0.2	0	64
RAVPQ848	2019	Apricot	Summit Blueprint M20	4	2.2	-5	0.6	5	24	51	49	4.6	-0.4	-0.6	0.1	67
RAVPR82	2020	Black	Mandayen Kung Fu N221	2.9	2.7	-4.4	1.6	11	36	53	47	4.5	0.7	1.2	0.5	49
RAVPR148	2020	Apricot	TMF Courage 41E	0.3	1.8	-2.9	1.8	10	31	58	51	3.5	-0.4	-0.4	0.3	68
RAVPR348	2020	Black	TMF Courage 41E	-4.2	0.5	-2.9	2.8	11	34	60	50	3.4	-0.3	-0.2	0.2	52
RAVPR349	2020	Black	Summit Blueprint M20	5.1	2.6	-5.8	-0.1	3	23	43	46	5.4	-0.2	0	0.2	65
RAVPR482	2020	Black	TMF Courage 41E	-0.1	-0.8	-2.9	1.9	11	29	53	43	3.4	0.5	0.8	0.5	69
COW HERD AVERAGE				1.9	1.5	-4.1	1.2	10.3	27	46	41	2.8	0.1	0.2	0.3	57
BREED AVERAGE				0.4	0.7	-1.8	1.7	7	20	34	30	1.8	0	-0.3	0	44

Raven Jewel 'N Ribbon J349



Raven Lady Ribbon L349



Raven Jade 'N Ribbon J248



Raven Hunt Ribbon H148



Raven Mandate M349, son of J349

SELINA *Family*

68s



Raven Karo' Sel K68

An exciting new Purebred Limousin family line has been created at Raven through a grade up process born from our Lim-Flex program. The Selina line goes back to an original stud Angus purchase in "Gralunga Selina Z19" who stamped her Limousin sired Lim-Flex calves with the depth, width and thickness we selected her for.

Three generations on, we were gifted with a graded Purebred cow named Raven Karo' Sel K68 who has a track record of greatness!

K68's progeny have typified where the Limousin breed needs to be. They have performance, length of body, docility and are positive in fat with plenty of IMF% (Marbling).

We have offered for sale several Selina females the past few years which generated a lot of interest with the highlight being an 8 month old heifer Raven Red Selina Q668 selling for \$11,500 to Toebelle Limousins, NSW in our 2020 sale.

We have recently collected a Selina son Q682 with intent to use him back through the herd as we feel the type and outcross pedigree makes the sire a good choice to progress the herd in the pursuit of further increasing meat quality (marbling) to the herds already high yielding genetics.

IDENT	YEAR	COLOUR	SIRE	CED	CE-DTRS	GL	BWT	MILK	200	400	CWT	EMA	RIB	RUMP	IMF%	DOC.
RAVPK68	2014	Black	Wulfs Yankee K689Y	1.3	4.3	-1.4	1.3	14	28	43	45	0.9	-0.1	-0.2	0.7	51
RAVPM668	2016	Black	Wulfs Paxton 1641P	4.9	4.7	-3.2	0.7	18	28	43	46	2.5	-0.4	-0.6	0.2	44
RAVPM768	2017	Black	LFLC Ace 750A	4	3.2	-5.1	-0.6	12	23	35	32	0	0.5	0.8	0.6	53
RAVPR668	2020	Black	TMF Courage 44E	-4.4	1.3	-1.8	2.7	14	32	53	45	1.7	0.1	0.2	0.6	55
RAVPR968	2020	Black	Summit Blueprint M20	2.6	1.9	-6.3	0.3	7	26	46	42	2.7	0	0.1	0.4	68
COW HERD AVERAGE				1.9	1.5	-4.1	1.2	10.3	27	46	41	2.8	0.1	0.2	0.3	57
BREED AVERAGE				0.4	0.7	-1.8	1.7	7	20	34	30	1.8	0	-0.3	0	44

Raven Red Selina Q668



Raven Lady Selina L68

Raven Quadrangle Q968



Raven Red Necessity N668



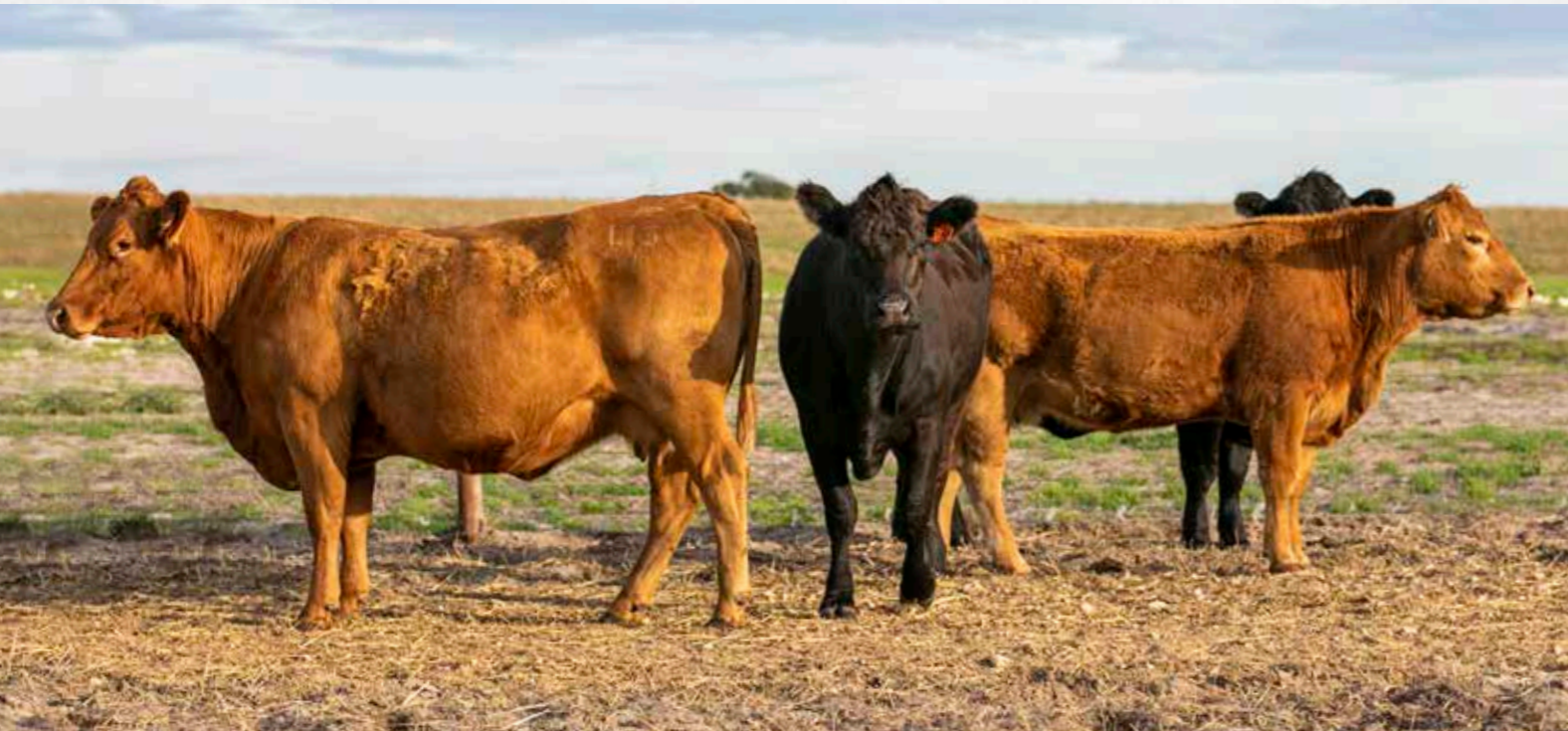
Raven Red Quay ET Q681



Raven New York N68

KRYSTAL *Family*

31s & 48s



A family line that was the foundation to the Raven herd, after purchasing two Krystal heifers from the Mandayan Sale in 2009 that were used to flush embryos and propagate to build what became the herd.

The Krystal females that were purchased were C856 and C863, both sired by Wulfs Nobel Prize and selected for their consistent type, carcass data and impeccable temperament. They both went back to the original Ramornie Krystal L21 who has become synonymous amongst Limousin breeders.

This line not only built the Raven herd through embryo transfer but also delivered bulls that were used back in herd as well as attractive animals that have been purchased to improve other Limousin herds.

A highlight cow was Raven Krystal Horizon H756 who was shown as a young heifer on one of Ravens few show outings (we don't typically show cattle) winning Junior Champion Female at the Adelaide Royal Show and then winning Reserve Champion Female at the Limousin National Show and Sale where she sold to Eltham Limousin Stud, NSW.

We thought fondly of this cow, so much so we recently partnered on a bull 'Summit Herdsman P65' who is a grandson to the H756 cow. Herdsman P65 will go with the sale opportunity as an ongoing investment for the Raven herd.

The Krystal's are performance machines with great docility and I believe the herd has a donor in the making with young cow Raven Red Arizona P748 showing plenty of class, performance and type.

IDENT	YEAR	COLOUR	SIRE	CED	CE-DTRS	GL	BWT	MILK	200	400	CWT	EMA	RIB	RUMP	IMF%	DOC.
RAVPL131	2015	Apricot	Wulfs Yankee K689Y	-2.6	1.6	4.8	2.7	21	29	43	42	2.6	0.6	1	0.7	39
RAVPN31	2017	Black	Birubi Kaiser K140	2	-0.5	-2.6	0.3	18	17	33	30	1.8	-0.3	-0.5	0.1	40
RAVPN48	2017	Black	Birubi Kaiser K140	-3.9	-1.8	-2.5	2.9	18	27	49	35	0.1	-0.6	-1.2	0	68
RAVPN748	2017	Black	Gats Aztec	-3.7	-0.3	-5.5	1.8	9	29	53	42	2.8	0.8	1.1	0.7	40
RAVPP748	2018	Apricot	Raven Mandate M349	1.9	-1.5	-3.5	1.2	9	22	43	34	4.4	0.9	1.4	0.3	61
RAVPP848	2018	Black	Runl Xtra-Loyal 644 X	2.4	-0.2	-1.9	1.2	13	24	41	36	3.9	0.4	0.6	0.2	46
RAVPR648	2020	Black	Summit Blueprint M20	-2.4	0	-7	1.7	6	30	56	47	4.1	0.1	0.3	0.5	70
RAVPR748	2020	Apricot	Summit Blueprint M20	-1.5	-1	-5.1	1.9	7	29	55	46	4.3	0.1	0.1	0.4	72
RAVPR848	2020	Black	Mandayan Kung Fu N221	1	1.5	-2.9	1.9	11	32	48	41	3.9	0.8	1.2	0.4	55
RAVPR948	2020	Black	Summit Blueprint M20	2.7	0	-7.7	0.6	10	26	49	44	2.7	-0.6	-0.9	0.1	74
RAVPR968	2020	Black	Summit Blueprint M20	2.6	1.9	-6.3	0.3	7	26	46	42	2.7	0	0.1	0.4	68
COW HERD AVERAGE				1.9	1.5	-4.1	1.2	10.3	27	46	41	2.8	0.1	0.2	0.3	57
BREED AVERAGE				0.4	0.7	-1.8	1.7	7	20	34	30	1.8	0	-0.3	0	44

Raven Yankee Jim J9



Krystal Factor F48



Donor cow, Mandayan Krystal C856



Mandayan Krystal C863



Raven Krystal N748



Raven Nothing Spared N456



Junior Champion Female, Raven Krystal Horizon H756 at Adelaide Royal Show 2013



Raven Red Krystal P756

OTHER Families



Like any good sporting team it takes more than the few star players to fill all the positions on the field. In addition to the 6 prominent family lines found in the Raven herd, others are in the wings ensuring the herd has diversity and allowing for opportunity to create outcross progeny within herd.

Other family lines that are contributors:

- > The **Wadley 73's** who hail from the USA donor cow Hunt Wadley 73W. These are calving ease specialists, thick and muscular.
- > The **Heart 43** line offer immense length of body, udder confirmation and marbling.
- > The **Prue 119** Purebred line that has been graded up from the great Angus Prue family. These females are bold in their rib and exhibit capacity and are easy fleshing.
- > The **Keeper 10** line that commenced from a Jock sired heifer purchased from the Birubi herd. These cattle have added frame and cross really well with moderate lines in the 73's, 248's or 349's.
- > The **Moncrief 107** line also offer a point of difference with cow Raven Know It All K107 used as a donor cow, producing some eye catching calves.

IDENT	YEAR	COLOUR	SIRE	CED	CE-DTRS	GL	BWT	MILK	200	400	CWT	EMA	RIB	RUMP	IMF%	DOC.
WADLEY FAMILY																
RAVPJ73	2013	Black	Runl Stetson 850S	7.5	1.5	-2.7	-1.8	6	13	20	26	3.1	0	0.2	0	52
RAVPN73	2017	Black	LFLC Ace 750A	4.8	1.8	-1.8	0.3	12	23	34	36	2.5	-0.4	-0.4	-0.1	48
RAVPQ973	2019	Black	LFLC Denver 857D	3.3	2	-6.3	0.7	10	28	44	35	2.5	-0.3	-0.3	0.1	41
RAVPR973	2020	Black	Mandayen Kong K8	-1	2.6	-0.3	2.8	15	33	55	47	3.5	-0.1	-0.1	0.1	39
HEART FAMILY																
RAVPM643	2016	Black	Raven Kingston K78	-1.4	-1.1	0.4	3	3	27	46	37	-0.4	-0.6	-0.9	0.2	59
RAVPP843	2018	Black	Gats Aztec	-3.5	0.7	0	1.4	4	20	35	34	0.7	-0.4	-0.4	0.3	54
RAVPQ43	2019	Black	Raven Man O Man M617	-0.9	0.7	-4.1	1.4	8	25	41	35	1.4	0.3	0.5	0.6	66
RAVPR243	2020	Black	LFLC Denver 857D	2.4	0.6	-6.1	1.1	8	27	46	33	0.6	0.3	0.4	0.7	69
RAVPR643	2020	Black	LFLC Denver 857D	-2	0.1	-2.5	3.1	6	32	53	37	0.9	-0.4	-0.6	0.2	64
PRUE FAMILY																
RAVPP119	2018	Black	LFLC Ace 750A	0.9	-0.6	-3.2	0.5	12	22	38	29	0.9	1	1.7	0.8	67
RAVPQ119	2019	Black	Raven Man O Man M617	0.6		-3.8	0.8	9	24	43	38	2.4	0.5	1	0.7	57
RAVPQ719	2019	Black	LFLC Denver 857D	3.8	1.7	-5.8	0.1	10	27	41	32	1.5	1	1.6	1	61
KEEPER FAMILY																
RAVPP610	2018	Black	LFLC Zest 51Z	3.5	2.8	-5.8	0.3	8	22	43	40	2.4	-0.3	-0.4	0.1	38
RAVPQ10	2019	Black	Raven Man O Man M617	2.4	2.8	-7.1	0.6	9	26	47	41	3.5	0.4	0.7	0.4	70
RAVPQ810	2019	Black	Raven Man O Man M617	1.1	1	-3	1.8	8	28	47	41	3.3	0.8	1.3	0.4	66
RAVPQ910	2019	Black	Raven Man O Man M617	2.3	3.2	-4.6	1.5	13	27	46	40	1.7	0.1	0.1	0.3	64
OTHER																
AMSPK410	2014	Black	RLF Yardley 601Y	-3.1	0.3	-3.8	3.8	10	38	65	49	2.9	-0.5	-0.7	0.1	44
RAVPM607	2016	Black	Wulfs Paxton 1641P	2.2	2.9	-1.7	1.7	13	26	43	46	3.5	-0.9	-1.4	-0.3	53
RAVPN653	2017	Black	LFLC Ace 750A	1.2	-0.4	-3.4	1.5	12	27	41	33	0.5	0.3	0.5	0.2	51
RAVPP2	2018	Black	LFLC Ace 750A	0.6	2.8	-4.9	1.7	14	30	47	43	1.1	-0.2	-0.2	0.1	57
RAVPP620	2018	Black	Runl Xtra-Loyal 644 X	5.2	1.6	-4.5	-0.7	15	22	30	26	1.5	0.4	1.1	0.7	40
RAVPQ181	2019	Black	LFLC Denver 857D	-1.5	-2	-5.9	2.7	7	34	58	37	2.6	0.2	0.3	0.3	70
RAVPQ653	2019	Black	Raven Man O Man M617	-0.6	0.2	-4.6	2	10	30	44	35	2.1	0.4	0.7	0.2	68
RAVPQ707	2019	Red	Raven Man O Man M617	0.1	1.9	-4.2	1.8	10	28	44	41	3.9	-0.2	-0.3	0	64
RAVPR207	2020	Black	Cole Architect 08A	1	0.6	-5.8	2.4	10	33	60	52	3.6	-0.1	-0.1	0	60
RAVPR60	2020	Black	Mandayen Kung Fu N221	2.6	2	-5.4	0.5	11	28	37	37	2	0.6	1	0.6	60
RAVPR290	2020	Black	LFLC Denver 857D	0.2	1.7	-4.7	1.7	11	27	44	33	2.2	-0.2	-0.3	0.1	27
RAVPR127	2020	Black	Runl Stetson 850S	5.5	1.6	-2.3	-0.2	12	18	34	32	1.2	0.2	0.5	0.5	60
RAVPR410	2020	Black	Wulfs Xcellsior X252X	3	-1.8	-4.6	1.2	7	30	52	49	4	-0.2	-0.1	0.3	33
RAVPR719	2020	Black	Summit Blueprint M20	2.7	0.9	-6.3	0.1	7	26	44	42	3.6	0.4	0.8	0.7	74
RAVPR723	2020	Black	Summit Blueprint M20	3	1.5	-7.2	0	8	25	45	44	2.7	0	0.4	0.5	69
RAVPR807	2020	Black	Mandayen Kung Fu N221	4	2.8	-4.6	0.7	12	30	42	42	4.3	0.5	0.9	0.3	61
RAVPR917	2020	Black	Summit Blueprint M20	4.3	0.9	-8.6	-0.2	6	26	49	48	4.4	0.1	0.2	0.5	72
RAVPR919	2020	Black	Mandayen Kung Fu N221	3.3	2.3	-5.3	0.1	13	24	37	33	0.2	0.8	1.3	0.8	
COW HERD AVERAGE				1.9	1.5	-4.1	1.2	10.3	27	46	41	2.8	0.1	0.2	0.3	57
BREED AVERAGE				0.4	0.7	-1.8	1.7	7	20	34	30	1.8	0	-0.3	0	44



PERFORMANCE DRIVEN

SUMMIT *Henderson*

P65 (HP)(B)

FEATURE SIRE OF THE 2021 CALF DROP



Identifier: HLGP65 Birth Date: 04/09/2018 Grade: Pure Black Homo. Polled • F94L AC

S. **SUMMIT PAYCHECK M22** WULFS ZANE X238Z
 SUMMIT EXOTIC J5 D. **SUMMIT KRYSTAL L35**
 RAVEN KRYSTAL HORIZON J756

IDENT	YEAR	COLOUR	SIRE	CED	CE	DTRS	GL	BWT	MILK	200	400	CWT	EMA	RIB	RUMP	IMF%	DOC
HLGP65	2018	Black	Summit Paycheck M22	-0.2	2.1	-4.6	2.1	5	27	52	49	4.2	-0.7	-1	-0.1	61	

INFLUENTIAL SIRES

2020 AI SIRES

SIRES TO THE 2021 PROGENY



WULFS YANKEE K689Y (HP)(B)



RUNL STETSON 850S (HP)(HB)



BALAMORE ENDEAVOR (HP)(HB)



RAVEN RED PRIVILEGE P907 (HP)(R)



LFLC ACE 750A (HP)(HB)



LFLC DENVER 857D (HP)(HB)



RAVEN QUARTER-BACK Q81 (HP)(B)



RAVEN QUAGMYRE ET Q207 (HP)(HB)



MANDAYEN RAVEN TIME E1492 (P)(B)



RAVEN MAN O MAN M617 (HP)(B)



SUMMIT BLUEPRINT M20 (HP)(B)



SUMMIT HERDSMAN P65 (HP)(B)

YEARLING

Bulls



The 35x yearling bulls featured have been selected and earmarked for the 2022 Autumn Bull Sale. The even run of bulls were born between 11th May 2020 – 30th July 2020 and are well grown, grazing on pasture only, supplemented by cereal hay.

The bulls are predominantly black hided and all of them are polled with the majority of them likely to DNA test Homozygous Polled, based on past history of testing.

The line-up features 13 embryo transfer (ET) bulls with a number of these showing real sire potential, with notable bulls by ET flush Summit Blueprint M20x Mandayen Wonder D1093.

There are a consistent draft of bulls sired by LFLC Denver 857D, Summit Blueprint M20 and Mandayen Kung Fu N221.

All bulls have had Birth Weight, 200day weight and Docility scores submitted to Breedplan and have a full set of EBV's on the Australian Limousin Breeders database.

HIGHLIGHTED TRAITS LEGEND

200D Wt. | Bull selection reference

+26 | **Bold & Orange**
= Top 10% of the breed

+24 | **Bold**
= Top 20% of the breed

IDENT	SIRE	COLOUR	CED	CE-DTRS	GL	BWT	200	400	MILK	SCROTAL	CWT	EMA	RIB	RUMP	IMF%	DOC.
RAVPR20	MDN Kung Fu N221	Black	0.4	3	-6.5	1.9	35	53	12	1.5	45	2.5	0.5	0.8	0.4	58
RAVPR24	SW Nobel Prize K9	Red	2	2.3	-3.5	0.8	23	41	15	1.5	40	2.7	-0.2	-0.3	0	42
RAVPR41	Wulfs Xcellsoir X252X	Black	1.3	-2.1	-3.9	2	33	57	7	2	51	4.1	-0.2	-0.2	0.3	46
RAVPR48	MDN Kung Fu N221	Black	3.9	3.5	-4.1	1.2	33	51	11	1.7	49	3.3	0.1	0.3	0.3	62
RAVPR54	Cole Architect 08A	Red	-3.4	0.5	-4.3	3.4	40	65	-	2.1	53	-	0.2	0.4	0.3	63
RAVPR57	TMF Courage 41E	Black	-4.8	1.3	-1.6	2.9	28	49	10	1.4	41	2.3	0.2	0.4	0.4	38
RAVPR107	Summit Blueprint M20	Black	0.5	3	-6.1	1.9	28	51	8	1.1	44	2.8	-0.2	-0.4	0.1	62
RAVPR119	MDN Kung Fu N221	Black	2.5	1.6	-4.1	0.9	29	44	11	1.4	37	2.4	1.1	1.8	0.7	67
RAVPR120	MDN Kung Fu N221	Black	4.1	2.6	-4.5	0.3	28	39	12	1.4	35	2.7	0.8	1.5	0.7	38
RAVPR153	Raven Man O Man M617	Apricot	1.5	0.5	-4.4	1.2	26	38	10	1.9	32	1.8	0.4	0.7	0.2	58
RAVPR193	Summit Blueprint M20	Black	4.5	2.6	-4.5	-0.1	17	33	6	0.3	37	2.7	-0.3	-0.4	0.1	73
RAVPR248	Summit Blueprint M20	Black	5.3	2.1	-6	-0.4	21	41	4	0.8	44	5.3	-0.4	-0.3	0.1	65
RAVPR307	Cole Architect 08A	Black	0.4	0.5	-5.7	2.6	33	59	10	2.1	51	3.6	-0.1	-0.1	0	53
RAVPR343	MDN Kung Fu N221	Black	0.2	2.2	-2.2	1.1	25	39	7	1.4	38	2.3	0.4	0.8	0.4	50
RAVPR363	LFLC Denver 857D	Black	0.6	1.1	-6	1	25	41	10	1.3	35	2.6	0.3	0.3	0.4	48
RAVPR393	Summit Blueprint M20	Black	0	2	-4	2.2	28	52	6	0.7	46	2.9	-0.4	-0.4	0.1	73
RAVPR407	LFLC Denver 857D	Black	3.6	2.3	-7.2	1.1	28	49	9	1.7	40	3	-0.2	-0.4	0	58
RAVPR448	Summit Blueprint M20	Black	3.5	1.4	-4.5	0.9	24	46	5	0.9	45	4.7	-0.5	-0.7	-0.1	56
RAVPR481	LFLC Denver 857D	Black	2.3	2.2	-5.3	1.1	29	50	12	2.1	41	2.9	-0.2	-0.2	0.3	38
RAVPR483	Summit Blueprint M20	Black	4.9	0.5	-7.1	0	25	47	6	1.2	43	4.3	0.1	0.3	0.3	66
RAVPR484	TMF Courage 41E	Apricot	0	-0.8	-2	1.9	28	50	10	2.1	41	-	0.5	0.8	0.4	69
RAVPR493	Summit Blueprint M20	Black	2.9	2.4	-4.4	1	23	43	6	0.5	42	2.8	-0.3	-0.4	0.1	73
RAVPR507	LFLC Denver 857D	Black	1.2	1.9	-6.7	1.5	28	50	9	1.7	40	3	-0.2	-0.4	0	58
RAVPR593	MDN Kung Fu N221	Black	4.6	3.4	-4.1	0.5	27	42	11	1.4	43	2.2	0.4	0.7	0.3	67
RAVPR607	LFLC Denver 857D	Black	-4.5	2.8	0.9	4.3	37	62	15	2.4	53	4	-0.4	-0.6	0	40
RAVPR663	LFLC Denver 857D	Black	2.3	1.3	-6.3	0	19	36	10	1.1	33	2.7	0.3	0.4	0.4	55
RAVPR693	Summit Blueprint M20	Black	2.2	2.3	-4.2	1.1	23	42	6	0.5	41	2.7	-0.3	-0.4	0.1	70
RAVPR731	TMF Courage 41E	Black	-6.4	-0.1	1.1	3.7	35	56	17	2.1	46	2.5	0.4	0.7	0.6	43
RAVPR743	MDN Kung Fu N221	Black	-0.7	1.6	-3.1	2.4	33	51	13	1.7	40	1.2	0.5	0.7	0.6	59
RAVPR763	LFLC Denver 857D	Black	-0.3	1	-5.8	1.2	25	41	10	1.3	35	2.6	0.3	0.3	0.4	40
RAVPR857	Summit Blueprint M20	Black	1.3	1.7	-3.8	1.3	23	45	6	0.6	45	4.8	-0.5	-0.7	0	65
RAVPR868	LFLC Denver 857D	Black	2.9	3.3	-4.8	1.7	33	51	13	1.4	42	2.3	-0.3	-0.4	0.2	52
RAVPR931	Summit Blueprint M20	Black	4.6	0.5	-6.3	-0.6	19	38	10	0.2	39	3.6	-0.4	-0.5	0.2	64
RAVPR949	Summit Blueprint M20	Black	6.7	2	-7.4	-0.3	26	46	7	0.3	51	5.8	-0.1	-0.1	0.1	70
RAVPR985	Goldstein Park Next Gen	Black	0.6	1.2	-5	1.4	25	44	12	1.2	37	1.5	-0.3	-0.4	0.2	25
2020 BULL AVERAGE			1.4	1.6	-4.5	1.3	27	47	9	1.3	42	2.9	0.0	0.1	0.2	56
BREED AVERAGE 2019 BORN CALVES			0.4	0.8	-2	1.6	20	34	7	1	29	1.7	0	-0.2	0	41

21x EMBRYO

Calves

MAY/JUNE 2021



The 21x Embryo Calves on offer were born in May/June 2021 with 18x of them being raised on commercial British bred recipients and 3x raised on ALBS Registered Limousin cows.

These embryos have been created from the most elite cows from the Raven program, sired by the latest sires that bring pedigree diversity to the herd.

Based on past history, the Raven embryo calves are at the top of our annual sale draft and have consistently provided a genetic resource to select future sires and embryo donors that have improved the herd.

The calves will be registered by point of sale and are from the following flushes.

- | | | |
|--------------------------|---|------------------------------------|
| S. JYF Chunk | x | D. Mandayen Wonder D1093 |
| S. JFY Chunk | x | D. Raven Wonder ET P593 |
| S. JYF Chunk | x | D. Birubi Windcharm K54 |
| S. Balamore Endeavour | x | D. Raven Red Jamtime J63 |
| S. Summit Prototype M148 | x | D. Goldstein Park Made Krystal M33 |
| S. LFLC Ace 750A | x | D. Raven Red Ms Gillard G81 |

EMBRYO INVENTORY



RAVEN KNOW IT ALL K107

- S. LFLC Denver 857D x Raven Know It All K107 2x embryos
- S. LFLC Denver 857D x Raven Red Ms Gillard G81 10x embryos
- S. LFLC Ace 750A x Raven Red Ms Gillard G81 4x IVF embryos
- S. LFLC Ace 750A x Raven Red Ms Gillard G81 7x embryos
- S. TMF Courage 41E x Birubi Windcharm K54 4x embryos

TOTAL
27 / 4 JOININGS



RAVEN RED MS GILLARD G81



BIRUBI WINDCHARM K54



SEMEN INVENTORY

North American Imported Bulls

Wulfs Yankee K689Y.....	143	TMF Courage 41E.....	22
LFLC Ace 750A.....	80	Wulfs Xcellsior X252X.....	2
Balamore Endeavour.....	48	JYF Chunk.....	2
LFLC Zest 59Z.....	46	Greenwood Zambuka.....	1

Australian Semen

Summit Herdsman P65.....	95	Summit Blueprint M20.....	18
Birubi Kaiser K140.....	34	Mandayen Kong K8.....	2
Mandayen Raven Time E1492.....	20		

Raven Limousin Semen

Raven Quarter-Back Q81.....	149	Raven Mandate M349.....	32
Raven Qubal ET Q682.....	142	Raven Lunch Cut L93.....	25
Raven Moomba M9.....	133	Raven Harvard H254.....	22
Raven Red Privilege P907.....	69	Raven Man O Man M617.....	15
Raven Red Jackhammer J653.....	51	Raven Jager Bomb J850.....	15
Raven Nemesis N163.....	38		

TOTAL

1204 STRAWS / 23 SIRES

SALE CATALOGUE DISCLAIMER

All reasonable care has been taken to ensure the information provided in the catalogue is correct at the time of publication. Both the vendor and agent make no representations about accuracy, reliability or the completeness of any information provided and do not assume any responsibility for the use, or interpretation of the information.

TESTIMONIALS

We find that when our bulls and cows go back home, they just 'do', they don't go backwards, they keep performing.

We like the data and the performance the Schulz's provide in the Limousin, the Raven program which we really go big on data.

To get some great genetics is just a big plus for us.

**Tony Sutcliffe
Tobelle Limousins**



I've been watching Jason & Penny for a long time and I love the amount of effort they put into their program.

I take a lot of notice of the objective figures in the catalogue and I was after finishability and the poll gene has been a big plus for me.

**Elke Hocking
Lucindale**



Jason & Penny do a really good job and really dedicated to their Limousin stud.

They put a lot of work into it with great figures and that's why I keep coming back.

**Geoff Bowles
Mt Compass**



We invest in Raven genes because they are at the forefront of the Limousin breed.

They do heavy data collection, positive fat, good maternal orientation, strong feet and legs, and they use a lot of sires we source.

I have a lot of faith in the program and the family as a whole.

**Bede McAlpin & Kate Johnston
McAlpin Livestock**



ACKNOWLEDGEMENT

Raven Service Providers

ANIMAL HEALTH & NUTRITION



Platinum Ag Coorong
Michael Camac
08 8575 1488



Elders Keith
Steven Doecke
0427 817 323



Hills Farm Supplies
Anthony Pearce
0467 600 061

BREEDING • BRANDING • SCANNING & SEMEN TESTING



NHD Murray Bridge
Kent Llewellyn
0417 821 179

Embryo Transfer Service SA
Mike Boerema 0428 811 381

Ben Glatz Scanning Services
Ben Glatz 0407 712 455



Nationwide AB
Drew Pickford
0428 925 255

ANIMAL HEALTH • MONITORING & BIOSECURITY

Kingston Vet Clinic SA
Michael Warner
08 8767 2516

PIRSA Biosecurity
Jeremy Rogers
0427 608 133

BREEDING & DATA RECORDING



Southern Beef Technology Services
Boyd Gudex
0437 468 159

Practical Systems Stockbook
02 6771 6100

Breedplan ABRI
02 6773 3555

MARKETING



Cattlelogue Queen
Simone Roll
0429 133 349



Brad Griffin Photography
Brad Griffin
0447 086 400



Pandy Films
Andrew Morphet
0400 270 547



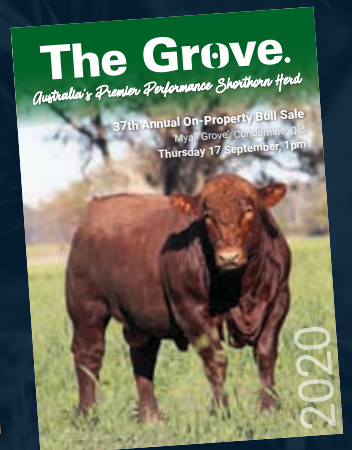
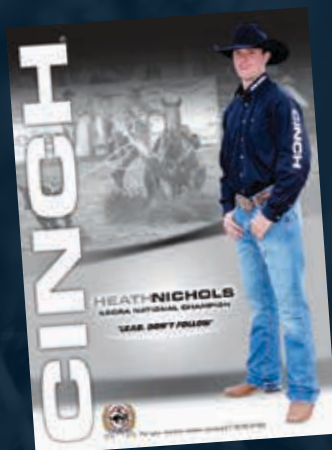
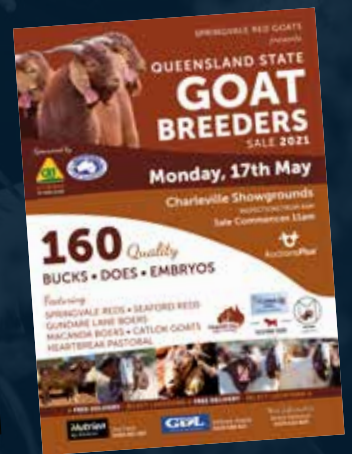
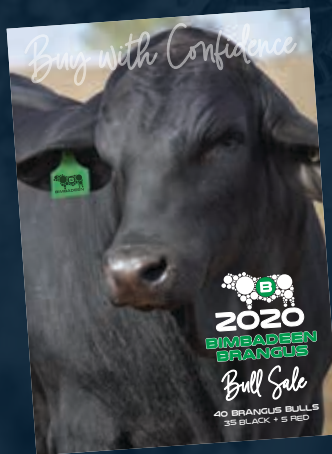
StudStockSales.com
Struan Pearce
0458 508 432



STRONG MARKETABILITY

CATTLELOGUE Queen

STAND OUT
from the crowd



Customized SALE CATALOGUE Design

Advertisements • Promotional Material • Publications
Sale, Trade Show, Homestead & Property Signage



- CATTLE
- HORSES
- SHEEP
- GOATS

www.cattleloguequeen.com.au

