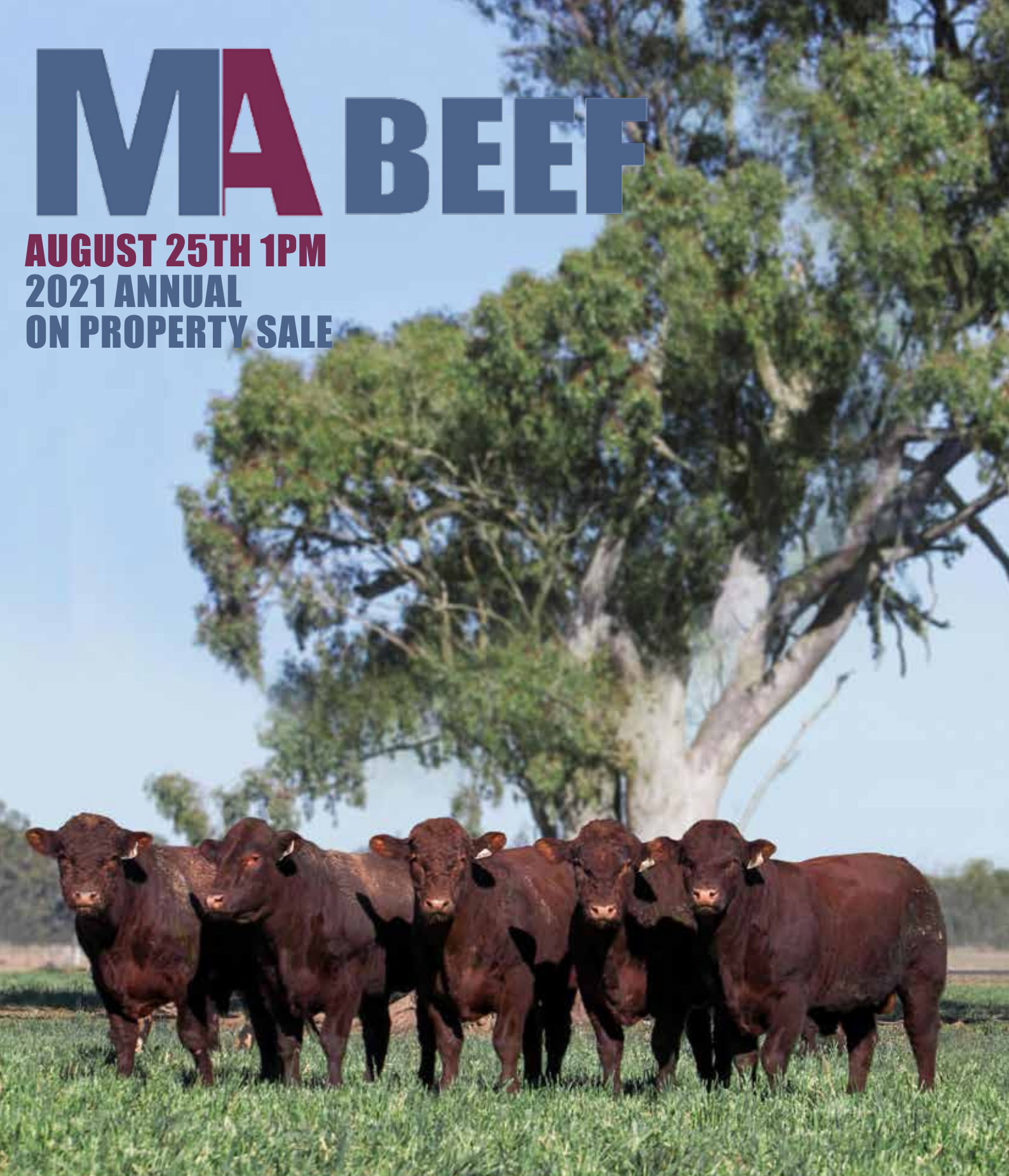


MA BEEF

AUGUST 25TH 1PM
2021 ANNUAL
ON PROPERTY SALE



52 PERFORMANCE PACKED
BULLS

www.manchee.com.au

YY

YAMBURGAN SHORTHORNS

THE LAND

ARTICLE BY CATHERINE MILLER - (14/7/21)

Inglewood Props' win in the largest annual beef carcass competition in the Southern Hemisphere came from 1354 steers and heifers processed at Teys Australia's Naracoorte abattoir.

The Southern Grass fed Carcass Classic delivery period was between early October 2020 and late February 2021.

Another carcass in their same consignment of 60 Shorthorn steers, delivered in mid October last year, had the equal highest Meat Standards Australia eating quality score, 67.7 points.

1200 and increase the stocking rates at their southern property.

"The previous years have been really dry at the station (105mm in 2018 and 2019) so we have had a lot of cattle at Crystal Brook and had found it hard to get them with enough shape for slaughter off grass," he said.

"Last year we had double our average annual rainfall on the station so we had less cattle at Crystal Brook and we were able to hold them longer," he said.



"Tey's Australia general manager operations Sage Murray and SGCC chairman Ben Glatz, Avenue Range (right) congratulate Sam and Jade Inglis, Inglewood Props, Crystal Brook on their grand champion carcass."

The Inglis family continued their midas touch also winning the highest aggregate team of three animals and placing third in the team of 10 class.

Mr Inglis said they had been "around the mark" since first entering the SGCC four years ago but the return to favourable seasons on their pastoral property, Wirraminna Station, near Glendambo, had helped them reach the next level.

The Inglis family aim to breed most of their cattle on Wirraminna and then take the weaners south to their home base at Crystal Brook to grow them out and finish them on barley-vetch pastures.

However a run of dry years until 2020 had forced them to drop their numbers from 2500-3000 head to about

Inglewood Props are now focussing on rebuilding their herd.

"There is always room for improvement but we are pretty happy with where our cattle are at," Mr Inglis said.

He said they had been breeding Shorthorn cattle for decades and remain impressed by the breed's maternal attributes, docility and doing ability.

"Our main emphasis has been selecting nice, soft skinned bulls with good feet, good temperament and structurally sound," he said.

"Eye muscle area and marbling does come into it but we know Shorthorns are already good for these traits."

MA BEEF

Since 1947

27th ANNUAL SALE

Wednesday 25th August 2021

On-Property - 'Wallah' Narrabri NSW

Sale Commencing at 1pm

(With Morning Tea & Lunch Provided)



OFFERING 52 LOTS

36 Performance Tested 2 Year Old Shorthorn Bulls

16 Performance Tested Yearling Shorthorn Bulls

Manchee Agriculture

John 0427 944 825

Ph 02 6794 4825

www.manchee.com.au

john@manchee.com.au



Narrabri | 02 6792 3163

Scott Hamilton | 0447 449 912

David Mortimer | 0427 449 913

hmaoffice@bigpond.com

Nutrien
Ag Solutions*

Narrabri | 02 6799 1111

John Settree | 0408 297 368

Matt Collett | 0427 311 415

jenny.mapstone@nutrien.com.au



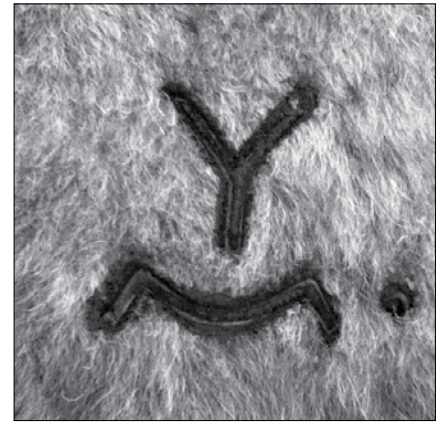
Paul Dooley | 0458 662 646

| 02 6766 2646

Welcome to the 2021 Manchee Agriculture Bull Sale.

The Australian Beef industry is currently seeing unprecedented growth and optimism. We hope everyone is seeing the rewards of this after battling some long difficult seasons.

Australia has maintained its reputation as a niche, high quality, clean beef product. This needs to continue for Australian beef producers to be competitive around the world. It is imperative that we continue using the highest quality genetics to maintain our competitive edge.



The 2021 draft of bulls will see a reduced number due to lower breeder numbers in the drought. The bulls have rebounded quickly after a tough start as weaners. 2021 is turning into one of the best seasons we have seen with the bulls going onto forage oats in mid April.

At Manchee Agriculture we are focused on utilising our data to focus on our future genetic direction. Since January 2019, Manchee Agriculture has sold 468 steers into the Thousand Guineas program with an average marble score 2.0, EMA 84sqcm, dressed weight 390kg and an average P8 fat of 19mm. Also congratulations to long term Yamburgan clients, Sam and Jade Inglis of Inglewood Props on their win in the SACC Carcase competition. It is carcase data such as this that keeps the Shorthorn breed at the forefront of the beef industry.

The 2021 catalogue sees a very impressive line by 3 new sires, Y. Gigabytes M1052, Y. Spartan N27 and Y. Zeus M499. All three sires are showing high carcase quality traits and yield. We are very impressed with the carcase data of these sires.

From the team at Manchee Agriculture, we thank you for your support and look forward to seeing you on the 25th August 2021.

Regards,

John Manchee.



REWARDING THOUSAND GUINEAS DATA



Since the 29th January 2019, Manchee Agriculture has sent 468 steers through the JBS Shorthorn Beef Thousand Guineas branded beef program. We are particularly pleased to see the combination of dressed weight, marble score and the amount of P8 fat over such a number.



Manchee Agriculture has concentrated heavily on our carcass performance and it's pleasing to see our current crop of sires with such high performing data.

These steers are a cross section of all our genetics, however the bulk of the sires represented were: -

Y. Monkira M14, Y. Zeus M499,
Y. Gigabytes M1052 & Y. Spartan N27

JBS Data commencing 29th January 2019

Feedlot	No.Head	Ind.Weight	Days	ADG	F. Weight	P8	MB	EMA	Dress Wt.	% Yield
Beef City	52	415	137	2.18	712	21	1.7	85	388	54.51
Beef City	75	404	134	2.02	675	20	2.1	85	370	54.83
Beef City	21	365	165	1.93	682	20	2.2	87	388	56.87
Beef City	74	416	150	2.07	724	23	2.1	87	405	55.93
Caroona	51	398	151	1.99	698	15	1.6	86	397	56.86
Caroona	50	369	155	1.97	676	15	2.3	85	382	56.46
Caroona	50	395	150	2	694	19	1.8	83	394	56.71
Caroona	45	464	140	1.7	701	17	1.8	81	388	55.42
Caroona	50	447	161	1.68	718	17	2.1	81	401	55.86
	Total 468	AVG 408	AVG 149	AVG 2.00	AVG 698	AVG 19	AVG 2.0	AVG 84	AVG 390	AVG 56.0



Lots showing the YY logo are selected as potential sires or donors for Manchee Agriculture to use in the future. Manchee Agriculture retains the right to collect up to 300 straws, for in herd use at no cost to the purchaser. Manchee Agriculture will collect semen at an agreed time with the purchaser.

SUPPLEMENTARY SHEET

All bulls will have up to date weights, EMA, fat depth, scrotal size measurements and have been semen tested. A supplementary sheet with this information will be available from the 21st August, 2020. EPD figures are printed in the catalogue.

INSPECTION

We encourage prospective buyers to inspect cattle prior to sale. This gives us an opportunity to assist you in your selection of the best genetics for your requirements. Inspection on sale day will be from 9am.

ACCOMMODATION

Accommodation can be hard to get in Narrabri, we recommend you book early.

Nandewar Motor Inn - (02) 6792 1155 or 1800 027 941.

Southern Cross Motor Inn - (02) 6792 3838.

Club Motor Inn - (02) 6792 3191

Mid Town Inn - (02) 6792 2233

Adelong Motel - (02) 6792 1488

TRANSPORT

Bulls sold in to Queensland, South Australia, Victoria, Tasmania and Northern Territory are eligible for a transport rebate from Manchee Agriculture to the NSW border only.

HEALTH

All bulls have been vaccinated with 7 in 1 and Pestiguard and drenched with Dectomax on 2nd June 2021. Booster shots are due in June each year. Semen testing will be carried out by Geoff Steinbeck, Excel Genetics, Dungowan. (02) 6769 4251. The bulls are guaranteed fertile on the day of the sale.

BREEDING GUARANTEE

All bulls are guaranteed to be breeders with the exception of:

- (a) In the event of injury or disease that occurs to the animal after the sale;
- (b) Gross negligence or wilful misconduct on the part of the purchaser.

BUYERS INSTRUCTION

1. No verbal instructions will be accepted.
2. Please use the instruction slip provided by the settling agents and hand it to the booking clerk before leaving.
3. Instructions for dispatch for consignments comprising of more than one owner must be signed by each buyer, no instructions will be considered complete until all have been signed.
4. All bulls will be sold GST exclusive.

BUYER REGISTRATION

We request that all prospective buyers register and receive a buyer number before the sale.

OUTSIDE AGENT REBATE

An outside agent rebate of 3% will be offered to agents who attend the sale and introduce their clients in writing to Hamilton Mortimer Agency, 02 6792 3163, at least 24 hours prior to the sale. Agents introducing their clients in writing at least 24 hours prior to the sale and not attending the sale will be paid a 1% rebate. The rebate WILL NOT be paid outside these conditions.

AIRCRAFT

There is an airstrip at Narrabri. Vendor's agents will be happy to arrange transport to the sale. Please make contact well before the sale date.

DISCLAIMER

The vendors, selling agents, its members, related corporations and employees, will act with due care to provide correct information but will not be responsible for any errors or omissions in this catalogue. All persons who attend the sale do so entirely at their own risk and the vendor, Manchee Agriculture, JT & EN Manchee, LJC & RT Manchee and the selling agents do not assume or accept any responsibility or liability, of whatever nature, legal or otherwise, for any accident, injury or damage which may occur.

HOW TO READ THE SALE CATALOGUE

Bulls name and registration details → **LOT 7** **YAMBURGAN PERCEUS Q162 (P)** **HBR** ← **Herd Book Registered or COM -Commercial Registered**

Pedigree information →

DOB: 01/08/2019
 YAMBURGAN ZEUS D79
 YAMBURGAN ZEUS H140
 BROUGHTON PARK HARMONY F55
SIRE: YAMBURGAN ZEUS M499
 BROUGHTON PARK THUNDER C023
 YAMBURGAN COUNTESS G98
 BROUGHTON PARK COUNTESS C097
 SPRYS BONECRUSHER B030
 NEEARRA GOVERNOR
 NEEARRA WENDY G3
DAM: YAMBURGAN FIDGET H270
 THE GROVE LOCKYER X857
 YAMBURGAN FIDGET C6
 YAMBURGAN FIDGET 147TH

REG: YY Q162
 COLOUR: RED LITTLE WHITE

A complete, wide topped bull with muscle filling all the way to behind the shoulder. Lot 7 scanned highly for IMF marbling within the group. A mid maturity, masculine bull who will grow on.

Comments about the bull including his EPD percentile rankings

Image

Select Lot Symbol

July 2021 IGS EPD'S															
	CE	BW	WW	YW	Milk	MCE	MWWT	STAY	DOC	CW	REA	FAT	MARB	YG	API
EPD	6.8	2.9	65.2	106.1	30.5	6.1	63.1	12	8.9	10.6	0.58	-0.074	-0.06	-0.36	Index
Acc	37%	40%	36%	37%	11%	17%	19%	23%	28%	41%	40%	33%	35%	33%	106.95
%RK	65	45	10	3	20	45	5	60	75	20	5	15	75	50	45

Purchaser _____ \$ _____



Buying

STEP

Selling

REGISTER ONLINE

FREE once off registration for all auctions.

VIEW CATALOGUE

Stock history, photos, videos, pedigrees and more .

LIMIT BID

Can't make the auction? Set your maximum bid prior to auction and let the system bid for you.

ENTER AUCTION

Log into the auction anytime, anywhere and bid on your mobile, tablet or computer.

CONTACT SELLER

Contact selling agent to arrange payment and delivery.

PAYMENT

Via the selling agent's terms and conditions.

DELIVERY

Arrange transport of livestock at your expense.

1

CONTACT AGENT

Arrange for your livestock to be assessed.

2

SELECT AUCTION

Select an auction in which to offer your livestock.

3

SET PRICES

Avoid market volatility with a reserve price and free re-offer.

4

VIEW AUCTION

Log into the auction and watch it in real-time on your mobile, tablet or computer.

5

VIEW RESULTS

View the results Australia wide and your agent will contact the buyer to organise delivery.

6

PAYMENT

Via your agent's terms and conditions.

7

DELIVERY

Sell direct from your paddock, the buyer manages freight.

Log in today at auctionsplus.com.au or call 02 9262 4222



YAMBURGAN ZEUS M499 (P)

24 August 2016

Yamburgan Zeus M499 is proving to be a very consistent sire, breeding true to type just like his sire. A low birth weight bull with excellent growth and carcass traits. We are very excited about the influence this sire is having on the herd. His progeny carry an extra degree of yield and muscle development. Zeus M499 is represented by 10 sons.

Pictured is Yamburgan Zeus H140.

JULY 2021 IGS EPD's

	CE	BW	WW	YW	Milk	MCE	MWWT	STAY	DOC	CW	REA	FAT	MARB	YG	API
EPD	7.5	2.3	67.7	104.5	31.2	6.7	65.1	9.4	14.4	3.6	0.46	-0.084	0.13	-0.38	Index
Acc	50%	60%	49%	50%	19%	27%	29%	27%	22%	49%	46%	36%	42%	37%	114.35
%RK	50	30	4	4	15	35	3	90	10	50	25	40	10	35	20



YAMBURGAN GIGABYTES M1052 (P)

08 December 2016

This is the second drop of calves to be offered by Y Gigabytes M1052. A long bodied, high muscling and marbling sire, which genetically is a rare combination. His progeny have stood out since they were calves and we are very impressed with his performance to date.

His dam BP Harmony F55 is also the dam of Y. Zeus H140, one of Australia's most widely used sires. M1052 is represented by 15 sons.

Homozygous Polled.

JULY 2021 IGS EPD's

	CE	BW	WW	YW	Milk	MCE	MWWT	STAY	DOC	CW	REA	FAT	MARB	YG	API
EPD	2.7	5.1	64.8	106.6	33.4	5.4	65.8	11.6	8.2	13.4	0.85	-0.111	0.18	-0.53	Index
Acc	48%	59%	50%	48%	15%	24%	27%	20%	37%	48%	44%	32%	42%	35%	111.02
%RK	100	90	10	3	10	60	2	65	85	15	1	100	5	1	30



YAMBURGAN SPARTAN N27 (P)

11 March 2017

Spartan N27 is a soft, well muscled, very wide thurled bull, with tremendous presence and sire appeal. A bull that scanned and performed at the top of his contemporary group. Spartan was first used as a 14 month old bull and has been heavily worked over the last 2 years.

His dam is a high performing, high milking female with lots of body capacity and is still in production.

Pictured is the Grand Sire of N27 Y Sparta F149. Spartan N27 is represented by 10 sons.

Homozygous Polled.

JULY 2021 IGS EPD's

	CE	BW	WW	YW	Milk	MCE	MWWT	STAY	DOC	CW	REA	FAT	MARB	YG	API
EPD	9.7	3.2	56.9	89.4	15	7.8	43.5	8	9.3	-10.9	0.28	-0.08	-0.08	-0.37	Index
Acc	45%	56%	42%	42%	10%	19%	21%	23%	25%	43%	42%	34%	37%	34%	97.27
%RK	25	50	30	25	100	20	95	95	70	100	80	30	85	40	85

PERFORMANCE RECORDED 2 YEAR OLD BULLS



LOT 1 YAMBURGAN CORDILLO Q152 (P) HBR

DOB: 01/08/2019

REG: YY Q152

COLOUR: RED LITTLE WHITE

WEEBOLLABOLLA THEODORE T85
YAMBURGAN TOBERMOREY F090
YAMBURGAN CONNIE D133
SIRE: YAMBURGAN MONKIRA M14
BROUGHTON PARK THUNDER C023
YAMBURGAN DUCHESS G115
BROUGHTON PARK DUCHESS C069
YAMBURGAN CHURCHILL C26
YAMBURGAN SIR WINSTON F330
YAMBURGAN JEWEL X189
DAM: YAMBURGAN FIDGET H424
WEEBOLLABOLLA THEODORE T85
YAMBURGAN FIDGET E127
YAMBURGAN FIDGET C150

A bull that has been a standout in the group from a very early age. Lot 1 scanned at the top of his contemporaries for all traits. A very soft easy doing bull who is hard to fault. We are very pleased with the consistency of the Monkira M14 progeny, he is breeding very true to type.



July 2021 IGS EPD'S

	CE	BW	WW	YW	Milk	MCE	MWWT	STAY	DOC	CW	REA	FAT	MARB	YG	API
EPD	6.5	4.5	50.6	79.7	25	7	50.3	13.6	11.1	-21	0.32	-0.079	0	-0.42	Index
Acc	36%	42%	38%	38%	12%	19%	21%	22%	6%	41%	40%	34%	38%	33%	103.76
%RK	70	80	60	55	65	30	65	35	40	100	70	25	50	10	60

Purchaser _____ \$ _____

LOT 2 YAMBURGAN SPARTAN Q177 (P) HBR

DOB: 05/08/2019

REG: YY Q177

COLOUR: RED

YAMBURGAN SPARTA F149
YAMBURGAN SPARTAN K442
YAMBURGAN COUNTESS G98
SIRE: YAMBURGAN SPARTAN N27
BROUGHTON PARK AMBASSADOR F29
YAMBURGAN FANCY H116
YAMBURGAN FANCY F11
YAMBURGAN ZEUS D79
YAMBURGAN ZEUS H140
BROUGHTON PARK HARMONY F55
DAM: YAMBURGAN FIDGET K358
YAMBURGAN SIR WINSTON F330
YAMBURGAN FIDGET H424
YAMBURGAN FIDGET E127

Homozygous polled. A quiet good-natured bull who was the highest Rib Eye scanning bull of the group. Dam, Y. Fidget K358 is a daughter of the dam of Lot 1, a beautiful uddered, soft, wide barreled H140 daughter.



July 2021 IGS EPD'S

	CE	BW	WW	YW	Milk	MCE	MWWT	STAY	DOC	CW	REA	FAT	MARB	YG	API
EPD	9.7	4.1	65.8	104.5	21.2	8.1	54.1	8.3	11.4	-8	0.11	-0.075	0.06	-0.29	Index
Acc	38%	45%	37%	37%	9%	16%	18%	21%	9%	40%	39%	34%	36%	32%	107.17
%RK	25	75	5	4	90	15	40	95	35	95	100	20	25	95	45

Purchaser _____ \$ _____

JULY 2021 IGS EPD AVERAGES FOR ALL 2019 CALVES

	CE	BW	WW	YW	Milk	MCE	MWWT	STAY	DOC	CW	REA	FAT	MARB	YG	API
EPD	7.8	3.1	52.1	81.1	26.4	5.8	52.4	12.3	10.4	3.4	0.38	-0.085	0.01	-0.36	105.90

LOT 3 YAMBURGAN PERCEUS Q214 (P) HBR

DOB: 17/08/2019

REG: YY Q214

COLOUR: RED

YAMBURGAN ZEUS D79
YAMBURGAN ZEUS H140
BROUGHTON PARK HARMONY F55
SIRE: YAMBURGAN ZEUS M499
BROUGHTON PARK THUNDER C023
YAMBURGAN COUNTESS G98
BROUGHTON PARK COUNTESS C097
THE GROVE OSCAR A748
YAMBURGAN EMPEROR E103
YAMBURGAN ROYAL 71ST
DAM: YAMBURGAN JILL H640
NARRALDA ALADDIN A048
YAMBURGAN JILL D204
YAMBURGAN JILL 180TH

A bull who has always displayed good weight for age. A beautiful fine coated bull, well suited to Northern Australia. A great combination of genetics with Emperor and Zeus combining low birth and increased softness.



July 2021 IGS EPD'S

	CE	BW	WW	YW	Milk	MCE	MWWT	STAY	DOC	CW	REA	FAT	MARB	YG	API
EPD	4.1	3.2	57.8	89.4	32.4	5	61.3	9.8	10.7	-5.5	0.35	-0.08	0.07	-0.37	Index
Acc	40%	46%	38%	38%	12%	20%	21%	25%	27%	41%	41%	35%	36%	34%	101.42
%RK	95	50	25	25	10	65	10	85	50	90	60	30	25	40	70

Purchaser _____ \$ _____

LOT 4 YAMBURGAN SPARTAN Q217 (P) HBR

DOB: 20/08/2019

REG: YY Q217

COLOUR: RED LITTLE WHITE

YAMBURGAN SPARTA F149
YAMBURGAN SPARTAN K442
YAMBURGAN COUNTESS G98
SIRE: YAMBURGAN SPARTAN N27
BROUGHTON PARK AMBASSADOR F29
YAMBURGAN FANCY H116
YAMBURGAN FANCY F11
THE GROVE KOOKABURRA W735
YAMBURGAN GENERAL H188
YAMBURGAN CONNIE F169
DAM: YAMBURGAN ABBEY L252
NARRALDA ALADDIN A048
YAMBURGAN ABBEY E258
YAMBURGAN ABBEY Y251

Homozygous Polled. A stylish upstanding bull who always stands with his head above his spine. Scanned very consistently across the board for all traits.



July 2021 IGS EPD'S

	CE	BW	WW	YW	Milk	MCE	MWWT	STAY	DOC	CW	REA	FAT	MARB	YG	API
EPD	6.9	2.6	61.1	97.2	22.7	5.3	53.3	9.5	9.9	2.4	0.54	-0.101	-0.12	-0.45	Index
Acc	36%	39%	35%	35%	5%	15%	15%	21%	8%	38%	36%	29%	33%	30%	97.85
%RK	60	35	15	10	85	60	45	85	60	55	10	95	95	3	80

Purchaser _____ \$ _____

LOT 5 YAMBURGAN SPARTAN Q221 (P) HBR

DOB: 22/08/2019

REG: YY Q221

COLOUR: RED

YAMBURGAN SPARTA F149
YAMBURGAN SPARTAN K442
YAMBURGAN COUNTESS G98
SIRE: YAMBURGAN SPARTAN N27
BROUGHTON PARK AMBASSADOR F29
YAMBURGAN FANCY H116
YAMBURGAN FANCY F11
YAMBURGAN ZEUS D79
YAMBURGAN ZEUS H140
BROUGHTON PARK HARMONY F55
DAM: YAMBURGAN MAYFLOWER K366
YAMBURGAN OSSIE E65
YAMBURGAN MAYFLOWER H171
YAMBURGAN MAYFLOWER F87

Homozygous Polled. A very stylish, well balanced bull with tremendous muscle shape and capacity. A very masculine type who will breed both excellent replacement females and quick growing feeder steers.



July 2021 IGS EPD'S

	CE	BW	WW	YW	Milk	MCE	MWWT	STAY	DOC	CW	REA	FAT	MARB	YG	API
EPD	8	2.8	53.4	90.7	21.6	6.3	48.3	10.4	10.8	1.5	0.52	-0.108	-0.07	-0.47	Index
Acc	38%	45%	35%	35%	8%	15%	17%	22%	10%	39%	38%	31%	32%	31%	101.47
%RK	45	40	45	25	90	40	80	80	45	60	15	100	80	1	70

Purchaser _____ \$ _____

JULY 2021 IGS EPD AVERAGES FOR ALL 2019 CALVES

	CE	BW	WW	YW	Milk	MCE	MWWT	STAY	DOC	CW	REA	FAT	MARB	YG	API
EPD	7.8	3.1	52.1	81.1	26.4	5.8	52.4	12.3	10.4	3.4	0.38	-0.085	0.01	-0.36	105.90

LOT 6 YAMBURGAN TIGER MOTH Q183 (P)

HBR

DOB: 08/08/2019

REG: YY Q183

COLOUR: RED

THE GROVE INFORMANT Y463
THE GROVE GIGABYTES J0837
THE GROVE KOOKAS DALE E1237
SIRE: YAMBURGAN GIGABYTES M1052
BROUGHTON PARK THUNDER C023
BROUGHTON PARK HARMONY F55
BROUGHTON PARK HARMONY C091
CROOKED POST GRISSOM 24T (IMP)
YAMBURGAN GRISSOM G31
YAMBURGAN ISABELLA E35
DAM: YAMBURGAN INGRID J424
YAMBURGAN ACHILLES
YAMBURGAN INGRID G622
YAMBURGAN INGRID 86TH

A fine coated, smooth shouldered bull with good frame and growth for age. A low birth weight bull who will produce quick growing progeny to 400 days.



July 2021 IGS EPD'S

	CE	BW	WW	YW	Milk	MCE	MWWT	STAY	DOC	CW	REA	FAT	MARB	YG	API
EPD	8.1	2.9	52.3	87.3	26.9	7.3	53.1	12	11.8	2.4	0.53	-0.09	0.07	-0.42	Index
Acc	37%	44%	37%	37%	8%	16%	18%	22%	30%	40%	39%	29%	35%	31%	111.18
%RK	45	45	50	35	50	25	45	60	30	55	10	65	25	10	30

Purchaser _____ \$ _____

LOT 7 YAMBURGAN PERCEUS Q162 (P)

HBR

DOB: 01/08/2019

REG: YY Q162

COLOUR: RED LITTLE WHITE

YAMBURGAN ZEUS D79
YAMBURGAN ZEUS H140
BROUGHTON PARK HARMONY F55
SIRE: YAMBURGAN ZEUS M499
BROUGHTON PARK THUNDER C023
YAMBURGAN COUNTESS G98
BROUGHTON PARK COUNTESS C097
SPRYS BONECRUSHER B030
NEEARRA GOVERNOR
NEEARRA WENDY 63
DAM: YAMBURGAN FIDGET H270
THE GROVE LOCKYER X857
YAMBURGAN FIDGET C6
YAMBURGAN FIDGET 147TH

A complete, wide topped bull with muscle filling all the way to behind the shoulder. Lot 7 scanned highly for IMF marbling within the group. A mid maturity, masculine bull who will grow on.



July 2021 IGS EPD'S

	CE	BW	WW	YW	Milk	MCE	MWWT	STAY	DOC	CW	REA	FAT	MARB	YG	API
EPD	6.8	2.9	65.2	106.1	30.5	6.1	63.1	12	8.9	10.6	0.58	-0.074	-0.06	-0.36	Index
Acc	37%	40%	36%	37%	11%	17%	19%	23%	28%	41%	40%	33%	35%	33%	106.95
%RK	65	45	10	3	20	45	5	60	75	20	5	15	75	50	45

Purchaser _____ \$ _____

LOT 8 YAMBURGAN TIGER MOTH Q215 (P)

HBR

DOB: 19/08/2019

REG: YY Q215

COLOUR: ROAN

THE GROVE INFORMANT Y463
THE GROVE GIGABYTES J0837
THE GROVE KOOKAS DALE E1237
SIRE: YAMBURGAN GIGABYTES M1052
BROUGHTON PARK THUNDER C023
BROUGHTON PARK HARMONY F55
BROUGHTON PARK HARMONY C091
BYLAND GOLD SPEAR
CROOKED POST GRISSOM 24T (IMP)
CROOKED POST RED ROSE 11P
DAM: YAMBURGAN MARGARET G567
THE GROVE LOCKYER X857
YAMBURGAN MARGARET 45TH
YAMBURGAN MARGARET 31ST



Homozygous Polled. A bigger framed good natured bull with a lot of length of body and weight for age. A deep flanked bull with a lot of fill right through the twist and well laid in hips, which tells me he has a lot of carcass development over the loin. Dam Y. Margaret G567 is a beautiful 10 year old Matron with 3 daughters retained.



July 2021 IGS EPD'S

	CE	BW	WW	YW	Milk	MCE	MWWT	STAY	DOC	CW	REA	FAT	MARB	YG	API
EPD	5.1	3.8	60.2	95.8	28.8	6.6	58.9	15.1	14.6	13.8	0.88	-0.088	-0.03	-0.48	Index
Acc	36%	45%	38%	37%	10%	17%	19%	21%	28%	39%	38%	32%	37%	31%	109.03
%RK	85	65	20	15	30	35	15	20	10	15	1	55	65	1	40

Purchaser _____ \$ _____

JULY 2021 IGS EPD AVERAGES FOR ALL 2019 CALVES

	CE	BW	WW	YW	Milk	MCE	MWWT	STAY	DOC	CW	REA	FAT	MARB	YG	API
EPD	7.8	3.1	52.1	81.1	26.4	5.8	52.4	12.3	10.4	3.4	0.38	-0.085	0.01	-0.36	105.90

LOT 9 YAMBURGAN CHENNAI Q56 (P) COM

DOB: 12/03/2019

REG: YY Q56

COLOUR: ROAN

MARELLAN HUM DINGER
ROYALLA KUBAL
ROYALLA MARGIES MEMORY 2344
SIRE: YAMBURGAN KUBAL M74
YAMBURGAN TOBERMOREY F090
YAMBURGAN MAYFLOWER K113
YAMBURGAN MAYFLOWER G617

A moderate framed very well muscled bull with a powerful carcass and a lot of shape through the hind leg. Dam Y. Connie C202 has been a prolific breeder over a 13 year period with 5 daughters retained. Actual Birth wt 34kg.



JR LEGEND 78H (IMP USA)
THE GROVE NEW LEGEND Z058
THE GROVE DALE W699
DAM: YAMBURGAN CONNIE C202
THE GROVE LOCKYER X857
YAMBURGAN CONNIE 127TH
YAMBURGAN CONNIE 57TH

July 2021 IGS EPD'S

	CE	BW	WW	YW	Milk	MCE	MWWT	STAY	DOC	CW	REA	FAT	MARB	YG	API
EPD	6.6	3.1	57.5	91.2	28.4	7.8	57.2	11.5	9.5	14	0.67	-0.104	0.15	-0.45	Index
Acc	20%	32%	21%	22%	11%	13%	14%	9%	13%	18%	17%	13%	16%	14%	113.47
%RK	65	50	25	25	35	20	25	65	70	15	2	100	10	2	25

Purchaser _____ \$ _____

LOT 10 YAMBURGAN MEGABYTES Q57 (P) HBR

DOB: 12/03/2019

REG: YY Q57

COLOUR: RED LITTLE WHITE

THE GROVE INFORMANT Y463
THE GROVE GIGABYTES J0837
THE GROVE KOOKAS DALE E1237
SIRE: YAMBURGAN GIGABYTES M1052
BROUGHTON PARK THUNDER C023
BROUGHTON PARK HARMONY F55
BROUGHTON PARK HARMONY C091

A very similar type of bull to Lot 9 with a little more weight for age and length of body. A masculine headed bull who will breed both good replacement females and excellent feeder steers. Dam is a big capacity type of female with an excellent udder and teats.



CROOKED POST GRISSOM 24T (IMP)
YAMBURGAN GRISSOM G31
YAMBURGAN ISABELLA E35
DAM: YAMBURGAN MATILDA K392
WEEBOLLABOLLA THEODORE T85
YAMBURGAN MATILDA 45TH
YAMBURGAN MATILDA 36TH

July 2021 IGS EPD'S

	CE	BW	WW	YW	Milk	MCE	MWWT	STAY	DOC	CW	REA	FAT	MARB	YG	API
EPD	6.3	3.5	59.6	95.7	26.1	6.4	55.9	11.4	9.4	4.7	0.65	-0.107	0.07	-0.49	Index
Acc	20%	31%	21%	20%	9%	12%	13%	9%	12%	16%	16%	12%	14%	13%	109.6
%RK	70	60	20	15	55	40	30	65	70	45	2	100	25	1	35

Purchaser _____ \$ _____

LOT 11 YAMBURGAN TIGER MOTH Q196 (P) HBR

DOB: 13/08/2019

REG: YY Q196

COLOUR: ROAN

THE GROVE INFORMANT Y463
THE GROVE GIGABYTES J0837
THE GROVE KOOKAS DALE E1237
SIRE: YAMBURGAN GIGABYTES M1052
BROUGHTON PARK THUNDER C023
BROUGHTON PARK HARMONY F55
BROUGHTON PARK HARMONY C091

An eye-catching, mid maturing bull with a lot of softness and muscle shape. I really admire Lot 11 for his tremendous fill over the loin and behind the shoulder. A complete sire who will suit all markets and climate conditions.



BYLAND GOLD SPEAR
CROOKED POST GRISSOM 24T (IMP)
CROOKED POST RED ROSE 11P
DAM: YAMBURGAN ADELAIDE H168
YAMBURGAN CHURCHILL C26
YAMBURGAN ADELAIDE F399
YAMBURGAN ADELAIDE C290



July 2021 IGS EPD'S

	CE	BW	WW	YW	Milk	MCE	MWWT	STAY	DOC	CW	REA	FAT	MARB	YG	API
EPD	7.4	2.6	61.1	98.4	32.8	7.5	63.4	16.7	10.1	16.5	0.97	-0.13	0	-0.61	Index
Acc	36%	44%	37%	37%	9%	16%	18%	22%	30%	39%	37%	29%	34%	30%	120.38
%RK	55	35	15	10	10	25	4	10	60	10	1	100	50	1	10

Purchaser _____ \$ _____

JULY 2021 IGS EPD AVERAGES FOR ALL 2019 CALVES

	CE	BW	WW	YW	Milk	MCE	MWWT	STAY	DOC	CW	REA	FAT	MARB	YG	API
EPD	7.8	3.1	52.1	81.1	26.4	5.8	52.4	12.3	10.4	3.4	0.38	-0.085	0.01	-0.36	105.90

LOT 12 YAMBURGAN CHENNAI Q138 (P)

HBR

DOB: 20/07/2019

REG: YY Q138

COLOUR: RED

MARELLAN HUM DINGER
ROYALLA KUBAL
ROYALLA MARGIES MEMORY 2344
SIRE: YAMBURGAN KUBAL M74
YAMBURGAN TOBERMOREY F090
YAMBURGAN MAYFLOWER K113
YAMBURGAN MAYFLOWER G617
THE GROVE LOCKYER X857
YAMBURGAN CHURCHILL C26
YAMBURGAN MARGARET 24TH
DAM: YAMBURGAN ADELAIDE F399
YAMBURGAN SAMBO 5TH
YAMBURGAN ADELAIDE C290
YAMBURGAN ADELAIDE U179

A compact, well muscled, slick coated bull with good efficiency of movement and balance. Lot 12 is well suited to both the grass and feedlot finisher. The same family line as Lot 11.



July 2021 IGS EPD'S

	CE	BW	WW	YW	Milk	MCE	MWWT	STAY	DOC	CW	REA	FAT	MARB	YG	API
EPD	6.7	3.1	52.4	86.7	22.7	6.1	48.9	8.3	10.5	2.4	0.4	-0.098	-0.12	-0.4	Index
Acc	38%	45%	35%	35%	10%	15%	18%	22%	4%	39%	38%	26%	35%	30%	90.77
%RK	65	50	50	35	85	45	75	95	50	55	45	90	95	20	95

Purchaser _____ \$ _____

LOT 13 YAMBURGAN PERCEUS Q175 (P)

HBR

DOB: 05/08/2019

REG: YY Q175

COLOUR: RED

YAMBURGAN ZEUS D79
YAMBURGAN ZEUS H140
BROUGHTON PARK HARMONY F55
SIRE: YAMBURGAN ZEUS M499
BROUGHTON PARK THUNDER C023
YAMBURGAN COUNTESS G98
BROUGHTON PARK COUNTESS C097
WEEBOLLABOLLA THEODORE T85
YAMBURGAN TOBERMOREY F090
YAMBURGAN CONNIE D133
DAM: YAMBURGAN JILL K527
THE GROVE OSCAR A748
YAMBURGAN JILL E79
YAMBURGAN JILL 168TH

A very soft, easy doing Zeus type of bull. Long bodied with excellent neck extension and shoulder placement. A good-natured bull with well laid in hips and good muscling over the loin.
A lower birth weight bull.



July 2021 IGS EPD'S

	CE	BW	WW	YW	Milk	MCE	MWWT	STAY	DOC	CW	REA	FAT	MARB	YG	API
EPD	8.1	1.9	55.1	88.4	27.3	7.8	54.9	12.1	15.1	4.9	0.61	-0.083	0.01	-0.42	Index
Acc	37%	41%	38%	38%	12%	18%	21%	25%	24%	43%	41%	33%	39%	33%	110.55
%RK	45	25	35	30	45	20	35	55	5	45	3	35	45	10	35

Purchaser _____ \$ _____

LOT 14 YAMBURGAN CORDILLO Q158 (P)

HBR

DOB: 01/08/2019

REG: YY Q158

COLOUR: ROAN

WEEBOLLABOLLA THEODORE T85
YAMBURGAN TOBERMOREY F090
YAMBURGAN CONNIE D133
SIRE: YAMBURGAN MONKIRA M14
BROUGHTON PARK THUNDER C023
YAMBURGAN DUCHESS G115
BROUGHTON PARK DUCHESS C069
YAMBURGAN EMPEROR E103
YAMBURGAN EMPEROR G679
YAMBURGAN MARGARET D125
DAM: YAMBURGAN CLOUDY K192
WEEBOLLABOLLA THEODORE T85
YAMBURGAN CLOUDY E128
YAMBURGAN CLOUDY C49

Homozygous Polled. A more moderate framed bull with good constitution and spring of rib. A smooth, easy fleshing bull with a lot of efficiency of movement.



July 2021 IGS EPD'S

	CE	BW	WW	YW	Milk	MCE	MWWT	STAY	DOC	CW	REA	FAT	MARB	YG	API
EPD	8.3	3	53	78.1	26.2	8.1	52.7	11	11	-9.3	0.27	-0.072	0.09	-0.34	Index
Acc	40%	47%	39%	39%	11%	20%	20%	24%	6%	42%	40%	34%	38%	33%	108.22
%RK	40	45	45	60	55	15	50	70	45	95	85	15	20	70	40

Purchaser _____ \$ _____

JULY 2021 IGS EPD AVERAGES FOR ALL 2019 CALVES

	CE	BW	WW	YW	Milk	MCE	MWWT	STAY	DOC	CW	REA	FAT	MARB	YG	API
EPD	7.8	3.1	52.1	81.1	26.4	5.8	52.4	12.3	10.4	3.4	0.38	-0.085	0.01	-0.36	105.90

LOT 15 YAMBURGAN SPARTAN Q147 (P)

HBR

DOB: 01/08/2019

REG: YY Q147

COLOUR: ROAN

YAMBURGAN SPARTA F149
YAMBURGAN SPARTAN K442
YAMBURGAN COUNTESS G98
SIRE: YAMBURGAN SPARTAN N27
BROUGHTON PARK AMBASSADOR F29
YAMBURGAN FANCY H116
YAMBURGAN FANCY F11
THE GROVE OSCAR A748
YAMBURGAN OSSIE E65
YAMBURGAN JILL 132ND
DAM: YAMBURGAN MAYFLOWER K181
WEEBOLLABOLLA THEODORE T85
YAMBURGAN MAYFLOWER D131
YAMBURGAN MAYFLOWER 334TH

A deep bodied bull with a lot of depth through the twist and flank. A stylish moderate framed type with good muscling running right behind his shoulder. The combination of Sparta and Ossie E65 will produce tremendous carcass cattle.



July 2021 IGS EPD'S

	CE	BW	WW	YW	Milk	MCE	MWWT	STAY	DOC	CW	REA	FAT	MARB	YG	API
EPD	7.6	5.1	66.5	102.2	19.2	6.9	52.5	8.5	8.6	3.4	0.48	-0.071	0.02	-0.36	Index
Acc	38%	45%	36%	36%	8%	16%	17%	23%	9%	39%	39%	30%	34%	31%	101.17
%RK	50	90	5	5	95	30	50	95	80	50	20	10	40	55	70

Purchaser _____ \$ _____

LOT 16 YAMBURGAN PERCEUS Q170 (P)

HBR

DOB: 07/08/2019

REG: YY Q170

COLOUR: RED

YAMBURGAN ZEUS D79
YAMBURGAN ZEUS H140
BROUGHTON PARK HARMONY F55
SIRE: YAMBURGAN ZEUS M499
BROUGHTON PARK THUNDER C023
YAMBURGAN COUNTESS G98
BROUGHTON PARK COUNTESS C097
THE GROVE LOCKYER X857
THE GROVE OSCAR A748
THE GROVE DALE 39TH
DAM: YAMBURGAN JILL E79
BROOME GRAND OCCASSION W10
YAMBURGAN JILL 168TH
YAMBURGAN JILL 124TH

A compact moderate framed bull who's dam always breeds softness and constitution. Lot 16 packs a lot of meat on his frame, an easy moving, efficient, neat shouldered bull who will breed beautiful females.



July 2021 IGS EPD'S

	CE	BW	WW	YW	Milk	MCE	MWWT	STAY	DOC	CW	REA	FAT	MARB	YG	API
EPD	8.2	2.5	60.7	95.1	29.6	8.4	60	14.3	10.3	-2	0.29	-0.098	0.04	-0.38	Index
Acc	39%	46%	38%	38%	12%	18%	21%	24%	29%	41%	41%	34%	36%	33%	116.94
%RK	40	35	15	15	25	15	15	25	55	75	80	90	35	30	15

Purchaser _____ \$ _____

LOT 17 YAMBURGAN PERCEUS Q200 (H)

HBR

DOB: 14/08/2019

REG: YY Q200

COLOUR: RED LITTLE WHITE

YAMBURGAN ZEUS D79
YAMBURGAN ZEUS H140
BROUGHTON PARK HARMONY F55
SIRE: YAMBURGAN ZEUS M499
BROUGHTON PARK THUNDER C023
YAMBURGAN COUNTESS G98
BROUGHTON PARK COUNTESS C097
WEEBOLLABOLLA THEODORE T85
YAMBURGAN TOBERMOREY F090
YAMBURGAN CONNIE D133
DAM: YAMBURGAN JILL J580
THE GROVE OSCAR A748
YAMBURGAN JILL E79
YAMBURGAN JILL 168TH

A bigger framed Perceus bull with a low birth weight and very high scanning results within his contemporary group. Very high for all traits especially IMF marbling.



July 2021 IGS EPD'S

	CE	BW	WW	YW	Milk	MCE	MWWT	STAY	DOC	CW	REA	FAT	MARB	YG	API
EPD	5.1	2.2	59.5	98.7	27.7	5.9	57.5	9.9	11.5	-0.2	0.55	-0.099	0.08	-0.46	Index
Acc	40%	46%	37%	38%	12%	19%	20%	23%	25%	42%	41%	33%	37%	33%	107.76
%RK	85	30	20	10	40	50	20	85	35	70	10	95	20	2	45

Purchaser _____ \$ _____

JULY 2021 IGS EPD AVERAGES FOR ALL 2019 CALVES

	CE	BW	WW	YW	Milk	MCE	MWWT	STAY	DOC	CW	REA	FAT	MARB	YG	API
EPD	7.8	3.1	52.1	81.1	26.4	5.8	52.4	12.3	10.4	3.4	0.38	-0.085	0.01	-0.36	105.90

LOT 18 YAMBURGAN TIGER MOTH Q417 (P)

HBR

DOB: 27/09/2019

REG: YY Q417

COLOUR: RED

THE GROVE INFORMANT Y463
THE GROVE GIGABYTES J0837
THE GROVE KOOKAS DALE E1237
SIRE: YAMBURGAN GIGABYTES M1052
BROUGHTON PARK THUNDER C023
BROUGHTON PARK HARMONY F55
BROUGHTON PARK HARMONY C091
CROOKED POST GRISSOM 24T (IMP)
YAMBURGAN GRISSOM G31
YAMBURGAN ISABELLA E35
DAM: YAMBURGAN ISABELLA K384
DUNBEACON BENTLEY
YAMBURGAN ISABELLA F1
YAMBURGAN ISABELLA B293

Homozygous Polled. A stylish fronted, good weight for age sire with good width, spring of rib and depth of flank. A sound, efficient moving bull who always stands with his head above his shoulders.



July 2021 IGS EPD'S

	CE	BW	WW	YW	Milk	MCE	MWWT	STAY	DOC	CW	REA	FAT	MARB	YG	API
EPD	4.5	4.4	60.6	95.2	24	5.8	54.3	10.6	8.4	9.2	0.68	-0.11	0.05	-0.5	Index
Acc	15%	20%	17%	17%	7%	10%	10%	8%	13%	16%	16%	11%	14%	13%	102.97
%RK	90	80	15	15	75	50	40	75	85	25	1	100	30	1	65

Purchaser _____ \$ _____

LOT 19 YAMBURGAN TIGER MOTH Q182 (P)

HBR

DOB: 06/08/2019

REG: YY Q182

COLOUR: ROAN

THE GROVE INFORMANT Y463
THE GROVE GIGABYTES J0837
THE GROVE KOOKAS DALE E1237
SIRE: YAMBURGAN GIGABYTES M1052
BROUGHTON PARK THUNDER C023
BROUGHTON PARK HARMONY F55
BROUGHTON PARK HARMONY C091
THE GROVE LOCKYER X857
THE GROVE OSCAR A748
THE GROVE DALE 39TH
DAM: YAMBURGAN MAREE F84
YAMBURGAN DIAMANTINA 3RD
YAMBURGAN MAREE 47TH
YAMBURGAN MAREE 35TH

Homozygous Polled. A well framed very quiet bull with good depth over the loin and jump muscle. A masculine headed, wide muzzled, complete sire, well worth an inspection.



July 2021 IGS EPD'S

	CE	BW	WW	YW	Milk	MCE	MWWT	STAY	DOC	CW	REA	FAT	MARB	YG	API
EPD	5.9	4	49.6	78.8	27.2	7.3	52	16.3	8.2	4.4	0.54	-0.063	-0.14	-0.35	Index
Acc	36%	45%	38%	37%	11%	18%	20%	24%	27%	40%	40%	33%	36%	32%	101.22
%RK	75	70	65	60	45	25	55	10	85	45	10	5	95	60	70

Purchaser _____ \$ _____

LOT 20 YAMBURGAN SPARTAN Q216 (P)

HBR

DOB: 20/08/2019

REG: YY Q216

COLOUR: RED

YAMBURGAN SPARTA F149
YAMBURGAN SPARTAN K442
YAMBURGAN COUNTESS G98
SIRE: YAMBURGAN SPARTAN N27
BROUGHTON PARK AMBASSADOR F29
YAMBURGAN FANCY H116
YAMBURGAN FANCY F11
BYLAND GOLD SPEAR
CROOKED POST GRISSOM 24T (IMP)
CROOKED POST RED ROSE 11P
DAM: YAMBURGAN MAREE G30
THE GROVE LOCKYER X857
YAMBURGAN MAREE C15
YAMBURGAN MAREE 31ST

A standout sire in this part of the catalogue. A lower birth weight bull with good growth to 400 days. A very wide, deep hind quartered bull with a lot of balance and sire appeal. Dam is a moderate framed, neat uddered female who was only CFA last year aged 10 years.



July 2021 IGS EPD'S

	CE	BW	WW	YW	Milk	MCE	MWWT	STAY	DOC	CW	REA	FAT	MARB	YG	API
EPD	10	2.7	48.3	76.6	18.3	7.3	42.5	13.2	11.3	-2.1	0.4	-0.096	-0.09	-0.41	Index
Acc	38%	44%	36%	36%	8%	15%	17%	21%	9%	38%	38%	30%	34%	31%	104.99
%RK	20	40	70	65	100	25	95	40	40	75	45	85	85	15	55

Purchaser _____ \$ _____

JULY 2021 IGS EPD AVERAGES FOR ALL 2019 CALVES

	CE	BW	WW	YW	Milk	MCE	MWWT	STAY	DOC	CW	REA	FAT	MARB	YG	API
EPD	7.8	3.1	52.1	81.1	26.4	5.8	52.4	12.3	10.4	3.4	0.38	-0.085	0.01	-0.36	105.90

LOT 21 YAMBURGAN PERCEUS Q311 (P)

HBR

DOB: 10/09/2019

REG: YY Q311

COLOUR: ROAN

YAMBURGAN ZEUS D79
YAMBURGAN ZEUS H140
BROUGHTON PARK HARMONY F55
SIRE: YAMBURGAN ZEUS K62
YAMBURGAN EMPEROR E103
YAMBURGAN MARGARET H86
YAMBURGAN MARGARET 42ND
THE GROVE INFORMER F1131
THE GROVE SHERLOCK J0110
THE GROVE B135
DAM: YAMBURGAN CLOVER N484
THE GROVE KOOKABURRA W735
YAMBURGAN CLOVER J176
YAMBURGAN CLOVER B212

Homozygous Polled. One of the standout lots of this years catalogue. A very stylish fronted bull with good balance and sire presence. Lot 21 scanned very well for all traits across the board. Rare to see a bull with such curve bending data and physical attributes to match.



July 2021 IGS EPD'S

	CE	BW	WW	YW	Milk	MCE	MWWT	STAY	DOC	CW	REA	FAT	MARB	YG	API
EPD	12.6	1.7	54.5	81.5	29.8	11.5	57.1	9.5	8.4	6.1	0.49	-0.079	0.11	-0.37	Index
Acc	38%	40%	36%	35%	7%	17%	17%	24%	10%	40%	39%	32%	36%	32%	115.37
%RK	10	20	40	50	25	1	25	85	85	40	20	25	15	45	20

Purchaser _____ \$ _____

LOT 22 YAMBURGAN SPARTAN Q324 (P)

HBR

DOB: 21/09/2019

REG: YY Q324

COLOUR: RED LITTLE WHITE

YAMBURGAN SPARTA F149
YAMBURGAN SPARTAN K442
YAMBURGAN COUNTESS G98
SIRE: YAMBURGAN SPARTAN N27
BROUGHTON PARK AMBASSADOR F29
YAMBURGAN FANCY H116
YAMBURGAN FACNY F11
YAMBURGAN ZEUS D79
YAMBURGAN ZEUS H140
BROUGHTON PARK HARMONY F55
DAM: YAMBURGAN MARGARET N63
YAMBURGAN TOBERMOREY F090
YAMBURGAN MARGARET K108
YAMBURGAN MARGARET 42ND

Homozygous Polled. A stylish, good fronted bull who stands out in the mob. A very fine coated, sirey headed bull with a maturity pattern to suit a number of markets. A young sire with a lot of potential.



July 2021 IGS EPD'S

	CE	BW	WW	YW	Milk	MCE	MWWT	STAY	DOC	CW	REA	FAT	MARB	YG	API
EPD	9.8	3.2	56	86.7	22.5	8.3	50.5	9.2	12.3	11	0.62	-0.096	-0.1	-0.43	Index
Acc	37%	40%	36%	36%	8%	17%	17%	21%	9%	40%	40%	32%	36%	32%	98.39
%RK	25	50	35	35	85	15	65	90	25	20	3	85	90	10	80

Purchaser _____ \$ _____

LOT 23 YAMBURGAN ANZAC Q234 (P)

HBR

DOB: 28/08/2019

REG: YY Q234

COLOUR: RED

THE GROVE LOCKYER X857
THE GROVE OSCAR A748
THE GROVE DALE 39TH
SIRE: YAMBURGAN OSSIE E65
YAMBURGAN FOXER 27TH
YAMBURGAN JILL 132ND
YAMBURGAN JILL 79TH
SPRYS BONECRUSHER B030
NEEARRA GOVERNOR
NEEARRA WENDY 63
DAM: YAMBURGAN ROSEWOOD H537
BROOME GRAND OCCASSION W10
YAMBURGAN ROSEWOOD 188TH
YAMBURGAN ROSEWOOD 182ND

A standout individual with a lot of potential. Lot 23 has an excellent muscle pattern with tremendous depth through the hindquarter and twist. A very sound structured bull who always stands square. Dam is from one of our strongest, most consistent breeding lines.



July 2021 IGS EPD'S

	CE	BW	WW	YW	Milk	MCE	MWWT	STAY	DOC	CW	REA	FAT	MARB	YG	API
EPD	5.3	3.5	53.8	85	26.1	4.7	53	15.7	7.4	7.6	0.52	-0.075	0.11	-0.36	Index
Acc	18%	34%	23%	23%	15%	14%	18%	11%	10%	25%	24%	20%	20%	20%	115.22
%RK	85	60	40	40	55	70	45	15	90	30	15	20	15	55	20

Purchaser _____ \$ _____

JULY 2021 IGS EPD AVERAGES FOR ALL 2019 CALVES

	CE	BW	WW	YW	Milk	MCE	MWWT	STAY	DOC	CW	REA	FAT	MARB	YG	API
EPD	7.8	3.1	52.1	81.1	26.4	5.8	52.4	12.3	10.4	3.4	0.38	-0.085	0.01	-0.36	105.90

LOT 24 YAMBURGAN TIGER MOTH Q172 (P)

HBR

DOB: 07/08/2019

REG: YY Q172

COLOUR: ROAN

THE GROVE INFORMANT Y463
 THE GROVE GIGABYTES J0837
 THE GROVE KOOKAS DALE E1237
SIRE: YAMBURGAN GIGABYTES M1052
 BROUGHTON PARK THUNDER C023
 BROUGHTON PARK HARMONY F55
 BROUGHTON PARK HARMONY C091
 THE GROVE LEGEND A584
 YAMBURGAN ZEUS D79
 YAMBURGAN MATILDA 61ST
DAM: YAMBURGAN JILL G218
 NARRALDA ALADDIN A048
 YAMBURGAN JILL E91
 YAMBURGAN JILL 136TH

Homozygous Polled. A soft easy doing, mid maturity bull that suits a number of markets. A well muscled bull with a soft muscle pattern, indicating good meat quality.



July 2021 IGS EPD'S

	CE	BW	WW	YW	Milk	MCE	MWWT	STAY	DOC	CW	REA	FAT	MARB	YG	API
EPD	6.4	0.8	47.4	74.8	26	6.7	49.7	14.8	7.4	6.4	0.5	-0.112	-0.01	-0.45	Index
Acc	38%	45%	37%	36%	10%	17%	19%	21%	29%	40%	40%	31%	36%	32%	111.20
%RK	70	10	75	70	60	35	70	20	90	35	15	100	55	3	30

Purchaser _____ \$ _____

LOT 25 YAMBURGAN SPARTAN Q237 (P)

COM

DOB: 29/08/2019

REG: YY Q237

COLOUR: RED

YAMBURGAN SPARTA F149
 YAMBURGAN SPARTAN K442
 YAMBURGAN COUNTESS G98
SIRE: YAMBURGAN SPARTAN N27
 BROUGHTON PARK AMBASSADOR F29
 YAMBURGAN FANCY H116
 YAMBURGAN FANCY F11
 YAMBURGAN ZEUS D79
 YAMBURGAN ZEUS H140
 BROUGHTON PARK HARMONY F55
DAM: YAMBURGAN CLOUDY L174
 YAMBURGAN TOBERMOREY F090
 YAMBURGAN CLOUDY J220
 YAMBURGAN CLOUDY 568TH

Homozygous Polled. A low birth weight, good natured sire with a very fine coat and hair type. I really admire the expressive muscle shape to Lot 25, a moderate framed bull with a soft smooth muscle pattern.



July 2021 IGS EPD'S

	CE	BW	WW	YW	Milk	MCE	MWWT	STAY	DOC	CW	REA	FAT	MARB	YG	API
EPD	8.6	2.1	50.9	82.7	19.6	7.9	45.1	12.4	12.3	-1.6	0.53	-0.074	0.05	-0.4	Index
Acc	37%	45%	36%	37%	9%	17%	18%	24%	9%	40%	39%	34%	36%	32%	111.52
%RK	35	25	55	45	95	20	90	55	25	75	10	15	30	20	30

Purchaser _____ \$ _____

LOT 26 YAMBURGAN TIGER MOTH Q245 (P)

HBR

DOB: 01/09/2019

REG: YY Q245

COLOUR: RED LITTLE WHITE

THE GROVE INFORMANT Y463
 THE GROVE GIGABYTES J0837
 THE GROVE KOOKAS DALE E1237
SIRE: YAMBURGAN GIGABYTES M1052
 BROUGHTON PARK THUNDER C023
 BROUGHTON PARK HARMONY F55
 BROUGHTON PARK HARMONY C091
 YAMBURGAN JAFAR D174
 YAMBURGAN SPARTA F149
 YAMBURGAN CLOUDY C61
DAM: YAMBURGAN FIRST LADY J383
 BROUGHTON PARK SENATOR Y041
 BROUGHTON PARK FIRST LADY C081
 BROUGHTON PARK FIRST LADY U124

Homozygous Polled. A good boned, strong hocked bull with a lot of width and spring of rib. A moderate framed bull who catches your eye with the amount of muscle he carries on his frame.



July 2021 IGS EPD'S

	CE	BW	WW	YW	Milk	MCE	MWWT	STAY	DOC	CW	REA	FAT	MARB	YG	API
EPD	2.7	5.6	64.9	106.6	19.4	4.7	51.9	12.4	13.7	9.4	0.45	-0.07	0.18	-0.32	Index
Acc	38%	45%	38%	38%	9%	17%	19%	20%	28%	40%	40%	32%	36%	32%	110.55
%RK	100	95	10	3	95	70	55	55	10	25	30	10	5	85	35

Purchaser _____ \$ _____

JULY 2021 IGS EPD AVERAGES FOR ALL 2019 CALVES

	CE	BW	WW	YW	Milk	MCE	MWWT	STAY	DOC	CW	REA	FAT	MARB	YG	API
EPD	7.8	3.1	52.1	81.1	26.4	5.8	52.4	12.3	10.4	3.4	0.38	-0.085	0.01	-0.36	105.90

LOT 27 YAMBURGAN PERCEUS Q165 (H) HBR

DOB: 29/07/2019

REG: YY Q165

COLOUR: RED

YAMBURGAN ZEUS D79
YAMBURGAN ZEUS H140
BROUGHTON PARK HARMONY F55
SIRE: YAMBURGAN ZEUS M499
BROUGHTON PARK THUNDER C023
YAMBURGAN COUNTESS G98
BROUGHTON PARK COUNTESS C097
THE GROVE LOCKYER X857
YAMBURGAN LOCKYER 18TH
YAMBURGAN MOIRA 89TH
DAM: YAMBURGAN KING FISHER E253
YAMBURGAN KING FISHER S219

A very quiet, good natured bull with a near perfect shoulder placement and rein of neck. Lot 27 will breed beautiful replacement females.



July 2021 IGS EPD'S

	CE	BW	WW	YW	Milk	MCE	MWWT	STAY	DOC	CW	REA	FAT	MARB	YG	API
EPD	7.5	2.7	67.5	106.1	28.1	6.6	61.9	8.7	15.6	-1.3	0.39	-0.08	0.16	-0.37	Index
Acc	37%	44%	35%	36%	10%	15%	18%	22%	31%	39%	38%	34%	34%	32%	113.79
%RK	50	40	4	3	40	35	10	90	4	75	45	30	10	45	25

Purchaser _____ \$ _____

LOT 28 YAMBURGAN TIGER MOTH Q235 (P) HBR

DOB: 28/08/2019

REG: YY Q235

COLOUR: ROAN

THE GROVE INFORMANT Y463
THE GROVE GIGABYTES J0837
THE GROVE KOOKAS DALE E1237
SIRE: YAMBURGAN GIGABYTES M1052
BROUGHTON PARK THUNDER C023
BROUGHTON PARK HARMONY F55
BROUGHTON PARK HARMONY C091
BYLAND GOLD SPEAR
CROOKED POST GRISSOM 24T (IMP)
CROOKED POST RED ROSE 11P
DAM: YAMBURGAN CLOUDY G21
THE GROVE OSCAR A748
YAMBURGAN CLOUDY E26
YAMBURGAN CLOUDY 447TH

Homozygous Polled. A longer bodied, lower actual birth weight bull with good length and slope from hip to pin adding to calving ease. An efficient moving sound structured bull who always stands square with his head above his spine.



July 2021 IGS EPD'S

	CE	BW	WW	YW	Milk	MCE	MWWT	STAY	DOC	CW	REA	FAT	MARB	YG	API
EPD	3.8	3.2	54.6	91.8	32.5	5.5	59.8	14.4	12.1	10.7	0.62	-0.089	-0.01	-0.42	Index
Acc	38%	45%	37%	37%	11%	17%	20%	20%	29%	40%	39%	32%	35%	32%	106.38
%RK	95	50	40	20	10	55	15	25	25	20	3	60	55	10	50

Purchaser _____ \$ _____

LOT 29 YAMBURGAN TIGER MOTH Q248 (P) HBR

DOB: 02/09/2019

REG: YY Q248

COLOUR: WHITE

THE GROVE INFORMANT Y463
THE GROVE GIGABYTES J0837
THE GROVE KOOKAS DALE E1237
SIRE: YAMBURGAN GIGABYTES M1052
BROUGHTON PARK THUNDER C023
BROUGHTON PARK HARMONY F55
BROUGHTON PARK HARMONY C091
THE GROVE OSCAR A748
YAMBURGAN EVEREST E102
YAMBURGAN MARGARET 31ST
DAM: YAMBURGAN CLOVER G424
YAMBURGAN SAMBO 5TH
YAMBURGAN CLOVER D309
YAMBURGAN CLOVER V197

Homozygous Polled. A very easy doing white bull with excellent weight for age, overall capacity and muscle content. A wide muzzled, sirey headed bull who walks very efficiently with genuine muscle development.



July 2021 IGS EPD'S

	CE	BW	WW	YW	Milk	MCE	MWWT	STAY	DOC	CW	REA	FAT	MARB	YG	API
EPD	3.7	3.1	56.2	91.4	33.9	5.3	62	14	10.3	16.4	0.72	-0.106	0.18	-0.47	Index
Acc	37%	44%	37%	37%	10%	16%	19%	21%	28%	38%	37%	32%	34%	31%	116.70
%RK	95	50	30	25	4	60	10	30	55	10	1	100	5	2	15

Purchaser _____ \$ _____

JULY 2021 IGS EPD AVERAGES FOR ALL 2019 CALVES

	CE	BW	WW	YW	Milk	MCE	MWWT	STAY	DOC	CW	REA	FAT	MARB	YG	API
EPD	7.8	3.1	52.1	81.1	26.4	5.8	52.4	12.3	10.4	3.4	0.38	-0.085	0.01	-0.36	105.90

LOT 30 YAMBURGAN PERCEUS Q149 (P)

HBR

DOB: 01/08/2019

REG: YY Q149

COLOUR: RED

YAMBURGAN ZEUS D79
YAMBURGAN ZEUS H140
BROUGHTON PARK HARMONY F55
SIRE: YAMBURGAN ZEUS M499
BROUGHTON PARK THUNDER C023
YAMBURGAN COUNTESS G98
BROUGHTON PARK COUNTESS C097
SPRYS BONECRUSHER B030
NEEARRA GOVERNOR
NEEARRA WENDY 63
DAM: YAMBURGAN FIDGET H270
THE GROVE LOCKYER X857
YAMBURGAN FIDGET C6
YAMBURGAN FIDGET 147TH

A low birth weight good natured Perceus bull with the shoulder placement and length from hip to pin for calving ease.



July 2021 IGS EPD'S

	CE	BW	WW	YW	Milk	MCE	MWWT	STAY	DOC	CW	REA	FAT	MARB	YG	API
EPD	7.7	2.4	60.9	95.2	30.5	6.6	61	12.3	11	4	0.47	-0.087	0.03	-0.39	Index
Acc	16%	21%	18%	18%	9%	11%	12%	10%	13%	23%	24%	12%	14%	17%	112.25
%RK	50	35	15	15	20	35	10	55	45	50	25	50	40	25	25

Purchaser _____

\$ _____

LOT 31 YAMBURGAN CHENNAI Q135 (P)

HBR

DOB: 10/07/2019

REG: YY Q135

COLOUR: ROAN

MARELLAN HUM DINGER
ROYALLA KUBAL
ROYALLA MARGIES MEMORY 2344
SIRE: YAMBURGAN KUBAL M74
YAMBURGAN TOBERMOREY F090
YAMBURGAN MAYFLOWER K113
YAMBURGAN MAYFLOWER G617
THE GROVE OSCAR A748
YAMBURGAN EVEREST E102
YAMBURGAN MARGARET 31ST
DAM: YAMBURGAN JILL G339
WEEBOLLABOLLA THEODORE T85
YAMBURGAN JILL C72
YAMBURGAN JILL 179TH

A moderate framed, expressive muscled bull with a lot of power and genuine carcass potential. An easy calving, very low birth weight bull well suited to heifers.



July 2021 IGS EPD'S

	CE	BW	WW	YW	Milk	MCE	MWWT	STAY	DOC	CW	REA	FAT	MARB	YG	API
EPD	12.5	0.1	46.3	74.4	30	10.3	53.2	15	10	-10.2	0.24	-0.082	0.02	-0.36	Index
Acc	15%	20%	16%	16%	9%	11%	11%	10%	4%	16%	16%	12%	14%	13%	121.45
%RK	10	5	80	75	20	3	45	20	60	95	90	35	40	50	10

Purchaser _____

\$ _____

LOT 32 YAMBURGAN CHENNAI Q123 (P)

HBR

DOB: 21/07/2019

REG: YY Q123

COLOUR: RED

MARELLAN HUM DINGER
ROYALLA KUBAL
ROYALLA MARGIES MEMORY 2344
SIRE: YAMBURGAN KUBAL M74
YAMBURGAN TOBERMOREY F090
YAMBURGAN MAYFLOWER K113
YAMBURGAN MAYFLOWER G617
THE GROVE OSCAR A748
YAMBURGAN OSSIE D96
YAMBURGAN MARGARET 31ST
DAM: YAMBURGAN MATILDA G2
WEEBOLLABOLLA THEODORE T85
YAMBURGAN MATILDA C63
YAMBURGAN MATILDA 58TH

A soft very easy doing bull with a moderate maturity pattern. Lot 32 is a slick, fine coated bull well suited to northern Australia.



July 2021 IGS EPD'S

	CE	BW	WW	YW	Milk	MCE	MWWT	STAY	DOC	CW	REA	FAT	MARB	YG	API
EPD	8.8	1.6	49.2	76.8	23	6.6	47.6	14.9	7.7	-12.1	0.17	-0.076	0.07	-0.33	Index
Acc	33%	38%	35%	35%	11%	15%	19%	23%	5%	41%	39%	30%	36%	31%	117.55
%RK	35	20	65	65	80	35	80	20	90	100	95	20	25	80	15

Purchaser _____

\$ _____

JULY 2021 IGS EPD AVERAGES FOR ALL 2019 CALVES

	CE	BW	WW	YW	Milk	MCE	MWWT	STAY	DOC	CW	REA	FAT	MARB	YG	API
EPD	7.8	3.1	52.1	81.1	26.4	5.8	52.4	12.3	10.4	3.4	0.38	-0.085	0.01	-0.36	105.90

LOT 33 YAMBURGAN MONSOON Q269 (P)

HBR

DOB: 10/09/2019

REG: YY Q269

COLOUR: RED LITTLE WHITE

THE GROVE OSCAR A748
YAMBURGAN OSSIE D807
YAMBURGAN JILL 142ND
SIRE: YAMBURGAN MONSOON J37
BROUGHTON PARK THUNDER C023
YAMBURGAN COUNTESS G98
BROUGHTON PARK COUNTESS C097
THE GROVE OSCAR A748
YAMBURGAN OSSIE E65
YAMBURGAN JILL 132ND
DAM: YAMBURGAN QUEEN H261
BROUGHTON PARK SENATOR Y041
BROUGHTON PARK QUEEN D059
BROUGHTON PARK QUEEN X042

A lighter birth weight, sound structured bull who moves and walks very efficiently. Lot 33 has a very well placed shoulder with excellent angle to indicate he will breed beautiful replacement females.



July 2021 IGS EPD'S

	CE	BW	WW	YW	Milk	MCE	MWWT	STAY	DOC	CW	REA	FAT	MARB	YG	API
EPD	14.9	0.6	50.5	72	24.2	11.9	49.5	13.2	9	-13	0.28	-0.056	0.22	-0.32	Index
Acc	40%	47%	36%	37%	13%	18%	21%	20%	6%	40%	37%	34%	34%	32%	130.97
%RK	2	10	60	80	75	1	70	40	75	100	80	3	3	85	2

Purchaser _____ \$ _____

LOT 34 YAMBURGAN CHENNAI Q332 (P)

HBR

DOB: 29/09/2019

REG: YY Q332

COLOUR: ROAN

MARELLAN HUM DINGER
ROYALLA KUBAL
ROYALLA MARGIES MEMORY 2344
SIRE: YAMBURGAN KUBAL M74
YAMBURGAN TOBERMOREY F090
YAMBURGAN MAYFLOWER K113
YAMBURGAN MAYFLOWER G617
YAMBURGAN ZEUS H140
YAMBURGAN ZEUS L150
YAMBURGAN CLOUDY J95
DAM: YAMBURGAN FIDGET N261
YAMBURGAN ANZAC H616
YAMBURGAN FIDGET L901
YAMBURGAN FIDGET J3905

A rare individual with a very low birth weight and a high Rib Eye to weight ratio. Lot 34 scanned very highly for Rib Eye within his group.
A very easy care, good doing bull with good carcass shape and depth through the hind quarter and lower leg.



July 2021 IGS EPD'S

	CE	BW	WW	YW	Milk	MCE	MWWT	STAY	DOC	CW	REA	FAT	MARB	YG	API
EPD	15.3	-0.5	44	70.3	31.2	11.2	53.2	8.8	11.5	-0.3	0.49	-0.075	0.08	-0.38	Index
Acc	36%	39%	33%	33%	7%	16%	16%	23%	3%	39%	38%	29%	34%	30%	116.60
%RK	1	3	85	85	15	2	45	90	35	70	20	20	20	30	15

Purchaser _____ \$ _____

LOT 35 YAMBURGAN CHENNAI Q444 (P)

HBR

DOB: 19/10/2019

REG: YY Q444

COLOUR: RED

MARELLAN HUM DINGER
ROYALLA KUBAL
ROYALLA MARGIES MEMORY 2344
SIRE: YAMBURGAN KUBAL M74
YAMBURGAN TOBERMOREY F090
YAMBURGAN MAYFLOWER K113
YAMBURGAN MAYFLOWER G617
YAMBURGAN OSSIE D220
MOOMBI OOKTALI G34
SPJ HONOR Z23
DAM: YAMBURGAN ROYAL L555
DUNBEACON BENTLEY
YAMBURGAN ROYAL G229
YAMBURGAN ROYAL E89

A similar type of bull to Lot 34, moderate framed with good shape and muscle expression through the hindquarter.
A very low birth weight bull well suited to heifers.



July 2021 IGS EPD'S

	CE	BW	WW	YW	Milk	MCE	MWWT	STAY	DOC	CW	REA	FAT	MARB	YG	API
EPD	9.4	2.3	53.3	91.4	25.5	9.1	52.2	12.6	8.7	13	0.54	-0.089	0.02	-0.38	Index
Acc	35%	40%	36%	36%	10%	17%	19%	22%	3%	40%	38%	30%	36%	31%	113.21
%RK	30	30	45	25	65	10	55	50	80	15	10	60	40	35	25

Purchaser _____ \$ _____

JULY 2021 IGS EPD AVERAGES FOR ALL 2019 CALVES

	CE	BW	WW	YW	Milk	MCE	MWWT	STAY	DOC	CW	REA	FAT	MARB	YG	API
EPD	7.8	3.1	52.1	81.1	26.4	5.8	52.4	12.3	10.4	3.4	0.38	-0.085	0.01	-0.36	105.90

LOT 36 YAMBURGAN CORDILLO Q403 (P)

HBR

DOB: 24/09/2019

REG: YY Q403

COLOUR: RED LITTLE WHITE

WEEBOLLABOLLA THEODORE T85
YAMBURGAN TOBERMOREY F090
YAMBURGAN CONNIE D133

A low birth weight easy calving bull with a good nature. Moderate framed, efficient moving and soft.

SIRE: YAMBURGAN MONKIRA M14
BROUGHTON PARK THUNDER C023
YAMBURGAN DUCHESS G115
BROUGHTON PARK DUCHESS C069



YAMBURGAN MITTIEBAH 3RD
YAMBURGAN ACHILLES
YAMBURGAN JEWEL X189

DAM: YAMBURGAN G238
WEEBOLLABOLLA THEODORE T85
YAMBURGAN HIGHNESS C256
YAMBURGAN HIGHNESS V231

July 2021 IGS EPD'S

	CE	BW	WW	YW	Milk	MCE	MWWT	STAY	DOC	CW	REA	FAT	MARB	YG	API
EPD	9.7	1.9	51.8	81.7	31.7	7	57.6	16.2	12.4	-20.8	0.29	-0.079	-0.08	-0.41	Index
Acc	37%	43%	39%	40%	13%	20%	22%	22%	7%	42%	40%	34%	39%	33%	113.70
%RK	25	25	50	50	15	30	20	10	25	100	80	25	85	15	25

Purchaser _____ \$ _____

DNA SAMPLING SIMPLIFIED

with the **ALLFLEX TISSUE SAMPLING UNIT (TSU)**



- Easiest way to collect a quality sample
- Vials fit in standard lab well plate (96 vials)
- Efficient and cost effective
- Available with paired NLIS and management tags



Livestock Intelligence™

www.allflex.com.au Questions? 1300 138 247 or customerservice@allflex.com.au

JULY 2021 IGS EPD AVERAGES FOR ALL 2019 CALVES															
	CE	BW	WW	YW	Milk	MCE	MWWT	STAY	DOC	CW	REA	FAT	MARB	YG	API
EPD	7.8	3.1	52.1	81.1	26.4	5.8	52.4	12.3	10.4	3.4	0.38	-0.085	0.01	-0.36	105.90



LOT 37 | **YAMBURGAN THUNDERSTRUCK Q502 (P)** | **COM**


DOB: 27/12/2019 REG: YY Q502 COLOUR: ROAN

WEEBOLLABOLLA THEODORE T85
BROUGHTON PARK THUNDER C023
BROUGHTON PARK ROSE A011

SIRE: YAMBURGAN THUNDERBOLT M495
YAMBURGAN NANDEWAR 3RD
YAMBURGAN MARGARET 31ST
YAMBURGAN MARGARET 20TH
YAMBURGAN TOBERMOREY F090
YAMBURGAN MONKIRA L103
YAMBURGAN ROSE G124

DAM: YAMBURGAN QUEEN N211
BROUGHTON PARK SENATOR Y041
BROUGHTON PARK QUEEN D059
BROUGHTON PARK QUEEN X042

Homozygous Polled. A slick fine coated bull with tremendous length of body and soundness. Lot 37 is low birth weight, high yielding bull with an excellent REA scan within the group. Commercial registered.



July 2021 IGS EPD'S															
	CE	BW	WW	YW	Milk	MCE	MWWT	STAY	DOC	CW	REA	FAT	MARB	YG	API
EPD	8.9	1.8	43	58.8	26.3	6.5	47.8	15.9	8.3	-6.9	0.47	-0.097	-0.06	-0.46	Index
Acc	34%	37%	35%	35%	10%	16%	18%	22%	5%	41%	38%	33%	35%	32%	108.11
%RK	35	20	90	100	55	40	80	10	85	90	25	90	75	2	40

Purchaser _____ \$ _____

LOT 38 | **YAMBURGAN CHENNAI Q344 (P)** | **HBR**


DOB: 08/10/2019 REG: YY Q344 COLOUR: RED LITTLE WHITE

MARELLAN HUM DINGER
ROYALLA KUBAL
ROYALLA MARGIES MEMORY 2344

SIRE: YAMBURGAN KUBAL M74
YAMBURGAN TOBERMOREY F090
YAMBURGAN MAYFLOWER K113
YAMBURGAN MAYFLOWER G617
YAMBURGAN ZEUS D79
YAMBURGAN ZEUS H140
BROUGHTON PARK HARMONY F55

DAM: YAMBURGAN MARGARET N241
THE GROVE LOCKYER X857
YAMBURGAN MARGARET 45TH
YAMBURGAN MARGARET 31ST

A very low birth weight, high calving ease sire, well suited to heifers. A moderate framed, well shaped bull with a good nature and very correct structure.



July 2021 IGS EPD'S															
	CE	BW	WW	YW	Milk	MCE	MWWT	STAY	DOC	CW	REA	FAT	MARB	YG	API
EPD	11.8	-1.5	31.2	46.7	27.1	10	42.7	12.8	13	2.5	0.24	-0.077	0.07	-0.3	Index
Acc	37%	40%	36%	36%	10%	18%	19%	24%	6%	40%	39%	32%	37%	32%	114.65
%RK	10	2	100	100	50	3	95	45	15	55	90	20	25	95	20

Purchaser _____ \$ _____

JULY 2021 IGS EPD AVERAGES FOR ALL 2019 CALVES															
	CE	BW	WW	YW	Milk	MCE	MWWT	STAY	DOC	CW	REA	FAT	MARB	YG	API
EPD	7.8	3.1	52.1	81.1	26.4	5.8	52.4	12.3	10.4	3.4	0.38	-0.085	0.01	-0.36	105.90

LOT 39 YAMBURGAN THUNDERSTRUCK R10 (P) COM

DOB: 15/01/2020

REG: YY R10

COLOUR: RED

WEEBOLLABOLLA THEODORE T85
BROUGHTON PARK THUNDER C023
BROUGHTON PARK ROSE A011
SIRE: YAMBURGAN THUNDERBOLT M495
YAMBURGAN NANDEWAR 3RD
YAMBURGAN MARGARET 31ST
YAMBURGAN MARGARET 20TH
THE GROVE KOOKABURRA W735
YAMBURGAN KOOKABURRA J214
YAMBURGAN CONNIE D133
DAM: YAMBURGAN SKYLER N745
YAMBURGAN SKYLER D1050

One of the leading yearling bulls catalogued. A growthy, slick coated bull with tremendous length of body. Commercial registered.



July 2021 IGS EPD'S

	CE	BW	WW	YW	Milk	MCE	MWWT	STAY	DOC	CW	REA	FAT	MARB	YG	API
EPD															Index
Acc															
%RK															

Purchaser _____ \$ _____

LOT 40 YAMBURGAN THUNDERSTRUCK R8 (P) COM

DOB: 16/01/2020

REG: YY R8

COLOUR: ROAN

WEEBOLLABOLLA THEODORE T85
BROUGHTON PARK THUNDER C023
BROUGHTON PARK ROSE A011
SIRE: YAMBURGAN THUNDERBOLT M495
YAMBURGAN NANDEWAR 3RD
YAMBURGAN MARGARET 31ST
YAMBURGAN MARGARET 20TH
MARELLAN INDESTRUCTABLE
MARELLAN LOYAL
MARELLAN ELLA
DAM: YAMBURGAN VELVET M187
BROUGHTON PARK GOLDRUSH A030
YAMBURGAN VELVET G113
BROUGHTON PARK VELVET C060

A bigger framed, good weight for age bull with a correct shoulder placement and rein of neck. Lot 40 will breed beautiful replacement females and is well suited to heifers. Commercial registered.



July 2021 IGS EPD'S

	CE	BW	WW	YW	Milk	MCE	MWWT	STAY	DOC	CW	REA	FAT	MARB	YG	API
EPD	9.5	-0.2	49.5	75.4	32.5	6.6	57.3	14.4	7.9	3.6	0.37	-0.084	-0.21	-0.35	Index
Acc	33%	38%	34%	35%	9%	16%	17%	24%	6%	41%	40%	31%	35%	32%	104.88
%RK	25	4	65	70	10	35	25	25	90	50	55	40	100	60	55

Purchaser _____ \$ _____

LOT 41 YAMBURGAN PERCEUS R26 (P) HBR

DOB: 29/02/2020

REG: YY R26

COLOUR: RED LITTLE WHITE

YAMBURGAN ZEUS D79
YAMBURGAN ZEUS H140
BROUGHTON PARK HARMONY F55
SIRE: YAMBURGAN ZEUS M499
BROUGHTON PARK THUNDER C023
YAMBURGAN COUNTESS G98
BROUGHTON PARK COUNTESS C097
THE GROVE OSCAR A748
YAMBURGAN OSSIE E65
YAMBURGAN JILL 132ND
DAM: YAMBURGAN QUEEN K409
MARRINGTON BOTTLER B67
BROUGHTON PARK QUEEN D093
BUNDALEER QUEEN ANN B28

Homozygous Polled. A good natured, quiet bull with a lot of length of body and weight for age. A low birth weight, high REA scanning Perceus bull. A young sire with a lot of potential.



July 2021 IGS EPD'S

	CE	BW	WW	YW	Milk	MCE	MWWT	STAY	DOC	CW	REA	FAT	MARB	YG	API
EPD	6.6	2.9	52.8	81	28.3	6.3	54.7	11.4	10.6	7.3	0.8	-0.092	0.03	-0.49	Index
Acc	38%	45%	37%	37%	9%	17%	18%	25%	31%	40%	39%	32%	34%	32%	104.89
%RK	65	45	45	50	35	40	35	65	50	35	1	75	40	1	55

Purchaser _____ \$ _____

JULY 2021 IGS EPD AVERAGES FOR ALL 2019 CALVES

	CE	BW	WW	YW	Milk	MCE	MWWT	STAY	DOC	CW	REA	FAT	MARB	YG	API
EPD	7.8	3.1	52.1	81.1	26.4	5.8	52.4	12.3	10.4	3.4	0.38	-0.085	0.01	-0.36	105.90

LOT 42 YAMBURGAN THUNDERSTRUCK R3 (P) COM

DOB: 20/01/2020

REG: YY R3

COLOUR: RED

WEEBOLLABOLLA THEODORE T85
BROUGHTON PARK THUNDER C023
BROUGHTON PARK ROSE A011

SIRE: YAMBURGAN THUNDERBOLT M495
YAMBURGAN NANDEWAR 3RD
YAMBURGAN MARGARET 31ST
YAMBURGAN MARGARET 20TH

YAMBURGAN ZEUS D79
YAMBURGAN ZEUS H140
BROUGHTON PARK HARMONY F55

DAM: YAMBURGAN MARCHIONESS M331
MARELLAN LOYAL
YAMBURGAN MARCHIONESS J439
BROUGHTON PARK MARCHIONESS F10

A very similar type of bull to lot 40. A bigger framed well grown bull with good weight for age. Lot 42 always stands square with his head above his spine, a very balanced sire. Commercial registered.



July 2021 IGS EPD'S

	CE	BW	WW	YW	Milk	MCE	MWWT	STAY	DOC	CW	REA	FAT	MARB	YG	API
EPD	10.3	2.9	48.8	76.2	31.1	7.6	55.5	14.1	9.4	0.7	0.67	-0.096	-0.06	-0.49	Index
Acc	34%	38%	36%	36%	10%	16%	19%	22%	7%	40%	38%	33%	35%	32%	108.64
%RK	20	45	65	65	15	20	30	30	70	65	2	85	75	1	40

Purchaser _____ \$ _____

LOT 43 YAMBURGAN CHENNAI R16 (P) HBR

DOB: 01/01/2020

REG: YY R16

COLOUR: ROAN

MARELLAN HUM DINGER
ROYALLA KUBAL
ROYALLA MARGIES MEMORY 2344

SIRE: YAMBURGAN KUBAL M74
YAMBURGAN TOBERMOREY F090
YAMBURGAN MAYFLOWER K113
YAMBURGAN MAYFLOWER G617

CROOKED POST GRISSOM 24T (IMP)
YAMBURGAN GRISSOM G31
YAMBURGAN ISABELLA E35

DAM: YAMBURGAN JILL N721
YAMBURGAN JAFAR E120
YAMBURGAN JILL H2331
DALGONALLY JILL B739

A stylish young sire who always catches your eye. Lot 43 is a soft easy doing bull with a low birth weight and good calving ease. Well suited to heifers and mature cows.



July 2021 IGS EPD'S

	CE	BW	WW	YW	Milk	MCE	MWWT	STAY	DOC	CW	REA	FAT	MARB	YG	API
EPD	10.4	0.6	45.2	63.5	25.5	8.4	48.1	16.3	10.2	-2.1	0.3	-0.085	-0.22	-0.35	Index
Acc	33%	37%	34%	34%	8%	14%	17%	22%	4%	37%	37%	32%	34%	31%	105.07
%RK	20	10	85	95	65	15	80	10	55	75	75	45	100	60	55

Purchaser _____ \$ _____

LOT 44 YAMBURGAN TIGER MOTH R70 (P) HBR

DOB: 11/03/2020

REG: YY R70

COLOUR: RED LITTLE WHITE

THE GROVE INFORMANT Y463
THE GROVE GIGABYTES J0837
THE GROVE KOOKAS DALE E1237

SIRE: YAMBURGAN GIGABYTES M1052
BROUGHTON PARK THUNDER C023
BROUGHTON PARK HARMONY F55
BROUGHTON PARK HARMONY C091

YAMBURGAN ZEUS D79
YAMBURGAN ZEUS H140
BROUGHTON PARK HARMONY F55

DAM: YAMBURGAN CONNIE M12
THE GROVE NEW LEGEND Z058
YAMBURGAN CONNIE D133
YAMBURGAN CONNIE 133RD

Homozygous Polled. A very high REA scanning bull within the contemporary group. A quiet good natured bull who is very hard to fault. A genetic combination of calving ease and carcass traits. A young sire to keep your eye on.



July 2021 IGS EPD'S

	CE	BW	WW	YW	Milk	MCE	MWWT	STAY	DOC	CW	REA	FAT	MARB	YG	API
EPD	2.7	4.5	66	104.2	29.9	5.8	62.9	9.9	13.2	6	0.74	-0.114	0.1	-0.53	Index
Acc	38%	41%	40%	39%	11%	19%	21%	24%	21%	44%	39%	31%	39%	32%	104.21
%RK	100	80	5	4	25	50	5	85	15	40	1	100	15	1	60

Purchaser _____ \$ _____

JULY 2021 IGS EPD AVERAGES FOR ALL 2019 CALVES

	CE	BW	WW	YW	Milk	MCE	MWWT	STAY	DOC	CW	REA	FAT	MARB	YG	API
EPD	7.8	3.1	52.1	81.1	26.4	5.8	52.4	12.3	10.4	3.4	0.38	-0.085	0.01	-0.36	105.90

LOT 45 YAMBURGAN SPARTAN R44 (P)

HBR

DOB: 15/04/2020

REG: YY R44

COLOUR: RED

YAMBURGAN SPARTA F149
YAMBURGAN SPARTAN K442
YAMBURGAN COUNTESS G98
SIRE: YAMBURGAN SPARTAN N27
BROUGHTON PARK AMBASSADOR F29
YAMBURGAN FANCY H116
YAMBURGAN FANCY F11
YAMBURGAN ZEUS D79
YAMBURGAN ZEUS H140
BROUGHTON PARK HARMONY F55
DAM: YAMBURGAN MARGARET M278
CROOKED POST GRISSOM 24T (IMP)
YAMBURGAN MARGARET G485
YAMBURGAN MARGARET 45TH

Homozygous Polled. A complete, standout yearling bull who just keeps getting better. A well muscled, wide thurled very quiet N27 son. A bull that keeps catching your eye, typical Spartan carcass development.



July 2021 IGS EPD'S

	CE	BW	WW	YW	Milk	MCE	MWWT	STAY	DOC	CW	REA	FAT	MARB	YG	API
EPD	9.1	2.6	53.8	81.5	21.7	7.8	48.6	11.4	12.3	-16.2	0.06	-0.081	-0.12	-0.32	Index
Acc	34%	39%	34%	34%	7%	16%	16%	22%	10%	40%	38%	34%	36%	32%	99.95
%RK	30	35	40	50	90	20	75	65	25	100	100	30	95	80	75

Purchaser _____ \$ _____

LOT 46 YAMBURGAN SPARTAN R39 (P)

HBR

DOB: 29/03/2020

REG: YY R39

COLOUR: RED

YAMBURGAN SPARTA F149
YAMBURGAN SPARTAN K442
YAMBURGAN COUNTESS G98
SIRE: YAMBURGAN SPARTAN N27
BROUGHTON PARK AMBASSADOR F29
YAMBURGAN FANCY H116
YAMBURGAN FANCY F11
THE GROVE OSCAR A748
YAMBURGAN OSSIE E65
YAMBURGAN JILL 132ND
DAM: YAMBURGAN FANCY L61
YAMBURGAN KURRAJONG 5TH
YAMBURGAN FANCY F11
YAMBURGAN FANCY B411

Homozygous Polled. A very similar type of bull to Lot 45, only carrying a lot more carcass development. If you are looking to add yield to your herd this is the bull, one of the best shaped bulls catalogued.



July 2021 IGS EPD'S

	CE	BW	WW	YW	Milk	MCE	MWWT	STAY	DOC	CW	REA	FAT	MARB	YG	API
EPD	8.2	3.7	59.9	96.1	20.8	7	50.8	9.2	7.9	-24.3	0.29	-0.101	-0.07	-0.48	Index
Acc	36%	45%	35%	36%	9%	15%	18%	20%	9%	39%	38%	30%	34%	31%	99.16
%RK	40	65	20	15	90	30	65	90	90	100	80	95	80	1	80

Purchaser _____ \$ _____

LOT 47 YAMBURGAN PERCEUS R38 (P)

COM

DOB: 28/03/2020

REG: YY R38

COLOUR: RED LITTLE WHITE

YAMBURGAN ZEUS D79
YAMBURGAN ZEUS H140
BROUGHTON PARK HARMONY F55
SIRE: YAMBURGAN ZEUS M499
BROUGHTON PARK THUNDER C023
YAMBURGAN COUNTESS G98
BROUGHTON PARK COUNTESS C097
THE GROVE INFORMANT Y463
THE GROVE GIGABYTES J0837
THE GROVE KOOKAS DALE E1237
DAM: YAMBURGAN HARMONY M1057
BROUGHTON PARK THUNDER C023
BROUGHTON PARK HARMONY F55
BROUGHTON PARK HARMONY C091

Homozygous Polled. A long bodied, low birth weight bull with good width and balance. A young sire with a very predictable pedigree for carcass development. Commercial Registered.



July 2021 IGS EPD'S

	CE	BW	WW	YW	Milk	MCE	MWWT	STAY	DOC	CW	REA	FAT	MARB	YG	API
EPD	6.3	2.6	63.1	99.2	32.3	6.8	63.9	10	10.5	3.5	0.56	-0.089	0.17	-0.42	Index
Acc	22%	32%	23%	23%	13%	14%	16%	9%	6%	25%	24%	12%	14%	18%	114.29
%RK	70	35	10	10	10	35	4	85	50	50	10	60	10	10	20

Purchaser _____ \$ _____

JULY 2021 IGS EPD AVERAGES FOR ALL 2019 CALVES

	CE	BW	WW	YW	Milk	MCE	MWWT	STAY	DOC	CW	REA	FAT	MARB	YG	API
EPD	7.8	3.1	52.1	81.1	26.4	5.8	52.4	12.3	10.4	3.4	0.38	-0.085	0.01	-0.36	105.90

LOT 48 YAMBURGAN TIGER MOTH R82 (P)

HBR

DOB: 01/04/2020

REG: YY R82

COLOUR: RED

THE GROVE INFORMANT Y463
 THE GROVE GIGABYTES J0837
 THE GROVE KOOKAS DALE E1237
SIRE: YAMBURGAN GIGABYTES M1052
 BROUGHTON PARK THUNDER C023
 BROUGHTON PARK HARMONY F55
 BROUGHTON PARK HARMONY C091
 YAMBURGAN JAFAR D174
 YAMBURGAN SPARTA F149
 YAMBURGAN CLOUDY C61
DAM: YAMBURGAN FIRST LADY J68
 BROUGHTON PARK SENATOR Y041
 BROUGHTON PARK FIRST LADY D105
 BROUGHTON PARK FIRST LADY Y090

Homozygous Polled. A young sire who will really grow on. One of the younger bulls catalogued. A deep bodied wide thurled bull who has the frame to grow into a tremendous sire. Well worth an inspection.



July 2021 IGS EPD'S

	CE	BW	WW	YW	Milk	MCE	MWWT	STAY	DOC	CW	REA	FAT	MARB	YG	API
EPD	4.9	3.5	56.9	88.6	16.1	6.3	44.6	11.5	9.5	3.2	0.6	-0.085	0.27	-0.43	Index
Acc	36%	44%	38%	38%	11%	17%	20%	21%	28%	40%	38%	32%	37%	32%	116.77
%RK	90	60	30	30	100	40	95	65	70	50	4	45	2	10	15

Purchaser _____ \$ _____

LOT 49 YAMBURGAN TIGER MOTH R88 (P)

HBR

DOB: 03/04/2020

REG: YY R88

COLOUR: RED LITTLE WHITE

THE GROVE INFORMANT Y463
 THE GROVE GIGABYTES J0837
 THE GROVE KOOKAS DALE E1237
SIRE: YAMBURGAN GIGABYTES M1052
 BROUGHTON PARK THUNDER C023
 BROUGHTON PARK HARMONY F55
 BROUGHTON PARK HARMONY C091
 THE GROVE KOOKABURRA W735
 YAMBURGAN GENERAL H188
 YAMBURGAN CONNIE F169
DAM: YAMBURGAN MATILDA M124
 WEEBOLLABOLLA THEODORE T85
 YAMBURGAN MATILDA 45TH
 YAMBURGAN MATILDA 36TH

A very similar bull to Lot 48 with more growth for age. A bull with a lot of width and natural muscling in such a young sire. Dam is a beautiful big roomy cow with a great udder and teats. A very predictable female line the same as retained sire Y. Bedourie P94.



July 2021 IGS EPD'S

	CE	BW	WW	YW	Milk	MCE	MWWT	STAY	DOC	CW	REA	FAT	MARB	YG	API
EPD	5.7	3.2	57	83.3	31.3	5.3	59.8	11.7	9.2	10.3	0.88	-0.11	0	-0.55	Index
Acc	37%	44%	37%	37%	9%	17%	18%	20%	25%	40%	39%	30%	36%	31%	103.21
%RK	80	50	30	45	15	60	15	65	75	20	1	100	50	1	65

Purchaser _____ \$ _____

LOT 50 YAMBURGAN PERCEUS R24 (P)

HBR

DOB: 25/02/2020

REG: YY R24

COLOUR: RED

YAMBURGAN ZEUS D79
 YAMBURGAN ZEUS H140
 BROUGHTON PARK HARMONY F55
SIRE: YAMBURGAN ZEUS M499
 BROUGHTON PARK THUNDER C023
 YAMBURGAN COUNTESS G98
 BROUGHTON PARK COUNTESS C097
 THE GROVE INFORMANT Y463
 THE GROVE GIGABYTES J0837
 THE GROVE KOOKAS DALE E1237
DAM: YAMBURGAN HARMONY M1056
 BROUGHTON PARK THUNDER C023
 BROUGHTON PARK HARMONY F55
 BROUGHTON PARK HARMONY C091

Homozygous Polled. One of the lowest birth weight bulls catalogued. A wide thurled bull who will grow on. Dam is a beautiful type of female. A maternal sister to Y. Zeus H140.



July 2021 IGS EPD'S

	CE	BW	WW	YW	Milk	MCE	MWWT	STAY	DOC	CW	REA	FAT	MARB	YG	API
EPD	7.3	1.3	62.3	99.3	32.3	7.2	63.5	7.9	13.2	10.6	0.72	-0.105	0.05	-0.49	Index
Acc	40%	46%	40%	40%	12%	20%	21%	23%	18%	41%	42%	31%	37%	33%	107.23
%RK	55	15	15	10	10	25	4	95	15	20	1	100	30	1	45

Purchaser _____ \$ _____

JULY 2021 IGS EPD AVERAGES FOR ALL 2019 CALVES

	CE	BW	WW	YW	Milk	MCE	MWWT	STAY	DOC	CW	REA	FAT	MARB	YG	API
EPD	7.8	3.1	52.1	81.1	26.4	5.8	52.4	12.3	10.4	3.4	0.38	-0.085	0.01	-0.36	105.90

LOT 51 YAMBURGAN SPITFIRE R98 (P)

COM

DOB: 23/03/2020

REG: YY R98

COLOUR: ROAN

THE GROVE INFORMANT Y463
THE GROVE GIGABYTES J0837
THE GROVE KOOKAS DALE E1237

SIRE: YAMBURGAN GIGABYTES N514
BROUGHTON PARK THUNDER C023
YAMBURGAN COUNTESS G98
BROUGHTON PARK COUNTESSSS C097

KUBAL ROYALLA KUBAL
YAMBURGAN KUBAL M74
YAMBURGANMAYFLOWER K113

DAM: YAMBURGAN FANCY P20
YAMBURGAN ZEUS H140
YAMBURGAN FANCY M27
YAMBURGAN FANCY J395

A soft easy doing low birth weight bull, well suited to heifers. A good combination of genetics with Gigabytes and Kubal, providing calving ease and excellent carcass traits.



July 2021 IGS EPD'S

	CE	BW	WW	YW	Milk	MCE	MWWT	STAY	DOC	CW	REA	FAT	MARB	YG	API
EPD															Index
Acc															
%RK															

Purchaser _____ \$ _____

LOT 52 YAMBURGAN TIGER MOTH R92 (P)

HBR

DOB: 18/04/2020

REG: YY R92

COLOUR: RED

THE GROVE INFORMANT Y463
THE GROVE GIGABYTES J0837
THE GROVE KOOKAS DALE E1237

SIRE: YAMBURGAN GIGABYTES M1052
BROUGHTON PARK THUNDER C023
BROUGHTON PARK HARMONY F55
BROUGHTON PARK HARMONY C091

SPRYS BONECRUSHER B030
NEEARRA GOVERNOR
NEEARRA WENDY 63

DAM: YAMBURGAN CLOUDY J95
DUNBEACON BENTLEY
YAMBURGAN CLOUDY F6
YAMBURGAN CLOUDY D5

Homozygous Polled. The youngest bull catalogued. A bull with good frame and potential to grow on. Lot 52 has an excellent combination of carcass traits, you won't know this bull next year. Well worth an inspection.



July 2021 IGS EPD'S

	CE	BW	WW	YW	Milk	MCE	MWWT	STAY	DOC	CW	REA	FAT	MARB	YG	API
EPD	7.1	4.3	57.3	87.6	34.7	6.8	63.4	11.7	9.5	11.8	0.78	-0.087	0.14	-0.46	Index
Acc	37%	44%	36%	36%	10%	16%	19%	22%	30%	41%	38%	31%	36%	31%	111.16
%RK	60	80	30	30	3	35	4	65	70	20	1	50	10	2	30

Purchaser _____ \$ _____

BULK BUYING BONUS

Zoetis have kindly donated 2 x 500ml of Dectomax Injectable valued at \$560 to be awarded to the purchaser of the largest quantity of bulls (with the highest average).

We thank Zoetis (formally Pfizer) for their continued support of Manchee Agriculture.



JULY 2021 IGS EPD AVERAGES FOR ALL 2019 CALVES

	CE	BW	WW	YW	Milk	MCE	MWWT	STAY	DOC	CW	REA	FAT	MARB	YG	API
EPD	7.8	3.1	52.1	81.1	26.4	5.8	52.4	12.3	10.4	3.4	0.38	-0.085	0.01	-0.36	105.90

DIRECTIONS TO MANCHEE AGRICULTURE

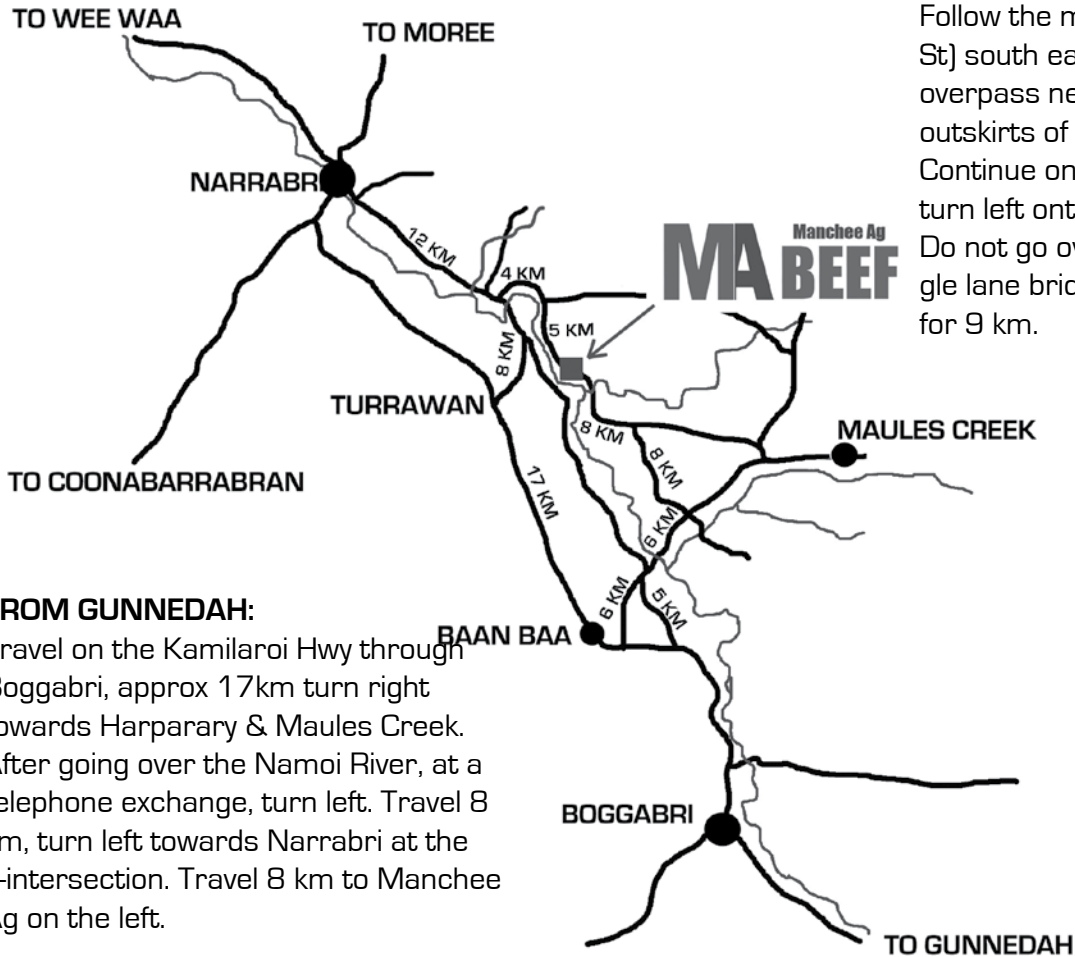
YOU CAN ALSO FIND US ON **GOOGLE MAPS** BY SEARCHING FOR MANCHEE AGRICULTURE.

Look for blue & white MANCHEE AG road signs.

FROM NARRABRI:

Follow the main street (Maitland St) south east, under the railway overpass near the RSL club on the outskirts of town.

Continue on this road for 12 km, turn left onto the Maules Creek Rd. Do not go over the Namoi River (single lane bridge). Travel on this road for 9 km.



FROM GUNNEDAH:

Travel on the Kamilaroi Hwy through Boggabri, approx 17km turn right towards Harparary & Maules Creek. After going over the Namoi River, at a telephone exchange, turn left. Travel 8 km, turn left towards Narrabri at the T-intersection. Travel 8 km to Manchee Ag on the left.

ACCOMMODATION CAN BE DIFFICULT TO GET IN NARRABRI - PLEASE BOOK EARLY.
MOTEL DETAILS ARE AVAILABLE ON THE SALE INFORMATION PAGE.

Performance recording is of vital importance in the Manchee Agriculture operation. MA believes in the utilisation of large contemporary groups to allow animals, that meet our tough selection criteria, to be identified and offered at our sale. This years two year old bulls were assessed for scanning in a contemporary group of 57 bulls, the yearling bulls were in a group of 26 bulls.

Our ability to focus on the combination of practical breeding principles including fertility, calving ease, weight for age and carcass quality sets MA apart when it comes to our strength in all selection indexes.

CALVING EASE DIRECT (CE-D)

Reported as the percentage of extra unassisted births in first calving heifers, relative to the average. CE-D is relative to the direct Calving Ease of the animal. Higher values are more favourable.

CALVING EASE MATERNAL (CE-M)

Reported as the percentage of extra unassisted births in first calving heifers, relative to the average. CE-M is relative to the Calving Ease of the daughters of the animal. Higher values are more favourable.

MILK

Reported as pounds of weaning weight of progeny from the animals daughters, relative to the average. Predicts the difference in maternal production of daughters relative to milk production and mothering. Values are relative to the environment of the production system. Low input environments should be very conscious of introducing too much milk due to the increased nutrient requirements that it can place on cows.

MATERNAL WEANING WEIGHT

Reported as pounds of weaning weight of progeny from the animals daughters, relative to the average. This is a measure of weaning weight differences relative to the combined effects of growth and milk. Breeders who are not looking to change milk production should consider Total Maternal as the most relevant EPD for maternal weaning weights. Higher values are more favourable.

STAYABILITY (STAY)

Reported as the differences in percentage of a sire's offspring that are predicted to still be in the herd at 6 years of age ... given that they calved at 2, relative to the average. Stayability is a measure of reproductive longevity. Higher values are more favourable.

DOCILITY

Reported as the percentage of progeny, relative to the average, that will record a score of docile. Higher values are more favourable.

BIRTH WEIGHT

Reported in pounds of birth weight relative to the average. When selecting bulls to use on heifers, breeders should also focus on the Calving Ease EPD as Birthweight is already used in the Calving Ease EPD calculation.

WEANING WEIGHT -ADJUSTED TO 205 DAYS

Reported in pounds of weaning weight of direct progeny, relative to the average. Higher values are usually more favourable dependant on its relationship with birthweight.

YEARLING WEIGHT -ADJUSTED TO 365 DAYS

Reported in pounds of yearling weight of direct progeny, relative to the average. Higher values are usually more favourable

dependant on its relationship with birthweight. CARCASS EPD'S-ADJUSTED TO 475 DAYS OF AGE.

CARCASS WEIGHT

Reported as pounds of Carcass Weight relative to the average. Higher values are usually more favourable, however this is relevant to each producers target market.

RIB EYE AREA

Reported as square inches relative to the average.

Higher values are usually more favourable.

FAT

Reported as inches of back fat relative to the average.

Higher values are usually more favourable, however this requires a balance between adequate doing ability in daughters and carcass fat thresholds for target markets.

YIELD GRADE

Reported as expected differences in progeny average USDA Yield Grade scores.

Yield Grade is used to improve the yield potential of progeny and may seem a strange value for Australian animals. Whilst Australian animals will never receive a USDA graded Yield Grade score, they will also never receive an actual Retail Beef Yield % value either. However, US Shorthorns (including progeny of Australian sires used in the US) are USDA graded each year and so the pedigree linkages provide linkage to actual.

USDA Yield Grade values

Lower values are usually more favourable, however because of the negative correlations between fat and yield it is important to maintain some balance in the selection.

MARBLE SCORE

Reported as the differences in actual carcass marble scores relative to the average. This is different to IMF% which is used as an indicator trait in Marble Score. Higher values are more favourable.

ALL PURPOSE \$INDEX -API

Though EPDs allow for the comparison of genetic levels for many economically important traits, they only provide a piece of the economic puzzle. That's where \$ Indexes come in. Through well conceived, rigorous mathematical computation, \$ Indexes blend EPD's and economics to estimate an animal's overall impact on your bottom line.

The All Purpose \$Index (API) evaluates sires for use on the entire cow herd, bred to both first-calf heifers and mature cows, with the portion of their daughters required to maintain herd size retained and the remaining heifers and steers put onto feed and marketed for both quality grade and yield.

UNDERSTANDING ACCURACIES

BOLT EPD accuracies have experienced the most change, usually lowering numerically and especially for non-parent animals, however the reported accuracy will be more accurate.

Accuracy refers to the amount a reported EPD can possibly change as more data is added. EPD values with higher accuracy result in less possible change for the value over time. More accurate accuracies better represent the amount of possible change for each EPD.



LOT 12 YY Q138



LOT 15 YY Q147



LOT 16 YY Q170



LOT 21 YY Q311



LOT 22 YY Q324



LOT 24 YY Q172



LOT 25 YY Q237



LOT 26 YY Q245



LOT 1 YY Q152



LOT 2 YY Q177



LOT 3 YY Q214



LOT 4 YY Q217



LOT 5 YY Q221



LOT 8 YY Q215



LOT 9 YY Q56



LOT 11 YY Q196