

# GLENMORGAN ANGUS



LOT 3 - GLENMORGAN ENHANCE MAN R107

## 80 YEARLING BULLS

1 PM - TUESDAY 24TH AUGUST 2021

# BULL SALE

*Featuring progeny of S Powerpoint WS 5503,  
GAR Ashland, Landfall Keystone K132 and  
Sydgen Enhance.*

- QUALITY
- PERFORMANCE
- PEDIGREES
- VALUE

[WWW.GLENMORGANANGUS.COM](http://WWW.GLENMORGANANGUS.COM)



# REFERENCE SIRE & SELECT LOTS



**ASA Reg: USA18159093**  
**D.O.B: 19/02/2015**

## S POWERPOINT WS 5503<sup>PV</sup>

- S Powerpoint progeny are a stand out at Glenmorgan. Offering an outcross pedigree from the renowned Spickler Angus Ranch in the USA
- Powerpoint is our curve bending specialist providing calving ease, growth, carcass quality, IMF & excellent feet. He offers a great spread of numbers.
- This year's Powerpoint draft are deep bodied, long & have exceptional coats. They are a very even line that are heavy muscled bulls and come out of second calvers to mature cows with many out of the beautiful Wattletop cows that we have purchased.
- All Powerpoint calves born unassisted, born small & then they explode.

TEHAMA REVERE USA 17233917#      D R SIERRA CUT 7404# USA16047469  
 TEHAMA ELITE BLACKBIRD T003 USA#  
 S QUEEN ESSA 248 USA 17298584#      S SUMMIT 956 USA 16433346#  
 S QUEEN ESSA 0131 USA16699242#

Mid July 2021 TRANS TASMAN ANGUS CATTLE EVALUATION

	CED	CEDT	GL	BW	200	400	600	MCW	MLK	DC	SS	CWT	EMA	RIB	RMP	RBY	IMF	Angus Breeding	Domestic Index	Heavy Grain Index	Heavy Grass Index
EBV	+3.6	+10.2	-6.1	+3.3	+63	+114	+132	+117	+12	-4.5	+0.8	+78	+5.7	+1.8	+1.2	-0.9	+1.6	\$129	\$129	\$127	\$130
Acc	74%	51%	98%	98%	96%	96%	95%	88%	81%	43%	92%	84%	85%	86%	81%	80%	83%				



**LOT 8**  
**GLENMORGAN POWERPOINT MAN R243<sup>SV</sup>**  
 Sire: S POWERPOINT WS 5503<sup>PV</sup>  
 Dam: WATTLETOP BARUNAH L137#



**LOT 9**  
**GLENMORGAN POWERPOINT MAN R257<sup>SV</sup>**  
 Sire: S POWERPOINT WS 5503<sup>PV</sup>  
 Dam: GLENMORGAN REALITY LADY N230#



**LOT 10**  
**GLENMORGAN POWERPOINT MAN R232<sup>SV</sup>**  
 Sire: S POWERPOINT WS 5503<sup>PV</sup>  
 Dam: GLENMORGAN N208#



**LOT 11**  
**GLENMORGAN POWERPOINT MAN R239<sup>SV</sup>**  
 Sire: S POWERPOINT WS 5503<sup>PV</sup>  
 Dam: WATTLETOP USUAL M48#





**LOT 12**  
**GLENMORGAN POWERPOINT MAN R229<sup>SV</sup>**  
Sire: S POWERPOINT WS 5503<sup>PV</sup>  
Dam: GLENMORGAN PATRIOT LADY N409<sup>#</sup>



**LOT 13**  
**GLENMORGAN POWERPOINT MAN R260<sup>SV</sup>**  
Sire: S POWERPOINT WS 5503<sup>PV</sup>  
Dam: WATTLETOP ANN M90<sup>#</sup>



**LOT 15**  
**GLENMORGAN POWERPOINT MAN R226<sup>SV</sup>**  
Sire: S POWERPOINT WS 5503<sup>PV</sup>  
Dam: GLENMORGAN DISCOVERY LADY N248<sup>#</sup>



**LOT 16**  
**GLENMORGAN POWERPOINT MAN R235<sup>SV</sup>**  
Sire: S POWERPOINT WS 5503<sup>PV</sup>  
Dam: WIRRIBILLA FARMS NANCY N9<sup>#</sup>



**LOT 17**  
**GLENMORGAN POWERPOINT MAN R225<sup>SV</sup>**  
Sire: S POWERPOINT WS 5503<sup>PV</sup>  
Dam: GLENMORGAN REALITY LADY N106<sup>#</sup>



**LOT 18**  
**GLENMORGAN POWERPOINT MAN R224<sup>SV</sup>**  
Sire: S POWERPOINT WS 5503<sup>PV</sup>  
Dam: WATTLETOP DANDLOO G312<sup>#</sup>



# REFERENCE SIRE & SELECT LOTS

S POWERPOINT WS 5503 continued.....



**LOT 43**  
**GLENMORGAN POWERPOINT MAN R205<sup>SV</sup>**  
**Sire: S POWERPOINT WS 5503<sup>PV</sup>**  
**Dam: GLENMORGAN REALITY LADY N234<sup>#</sup>**



**LOT 44**  
**GLENMORGAN POWERPOINT MAN 263<sup>SV</sup>**  
**Sire: S POWERPOINT WS 5503<sup>PV</sup>**  
**Dam: WATTLETOP DANDLOO K273<sup>#</sup>**



**LOT 45**  
**GLENMORGAN POWERPOINT MAN R261<sup>SV</sup>**  
**Sire: S POWERPOINT WS 5503<sup>PV</sup>**  
**Dam: GLENMORGAN BANDO LADY H250<sup>#</sup>**



**LOT 46**  
**GLENMORGAN POWERPOINT MAN R247<sup>SV</sup>**  
**Sire: S POWERPOINT WS 5503<sup>PV</sup>**  
**Dam: GLENMORGAN RITO 9969 LADY K527<sup>#</sup>**



**LOT 47**  
**GLENMORGAN POWERPOINT MAN R264<sup>SV</sup>**  
**Sire: S POWERPOINT WS 5503<sup>PV</sup>**  
**Dam: WATTLETOP ALEXIS G262<sup>#</sup>**



**LOT 48**  
**GLENMORGAN POWERPOINT MAN 242<sup>SV</sup>**  
**Sire: S POWERPOINT WS 5503<sup>PV</sup>**  
**Dam: WATTLETOP J283<sup>#</sup>**





**LOT 49**  
**GLENMORGAN POWERPOINT MAN R252<sup>SV</sup>**  
 Sire: S POWERPOINT WS 5503<sup>PV</sup>  
 Dam: GLENMORGAN SURE FIRE LADY N376<sup>#</sup>



**LOT 50**  
**GLENMORGAN POWERPOINT MAN R250<sup>SV</sup>**  
 Sire: S POWERPOINT WS 5503<sup>PV</sup>  
 Dam: WIRRIBILLA FARMS NICKI N7<sup>#</sup>



**LOT 51**  
**GLENMORGAN POWERPOINT MAN R244<sup>SV</sup>**  
 Sire: S POWERPOINT WS 5503<sup>PV</sup>  
 Dam: GLENMORGAN THUNDERBIRD LADY G14<sup>#</sup>



**LOT 73**  
**GLENMORGAN POWERPOINT MAN R212<sup>SV</sup>**  
 Sire: S POWERPOINT WS 5503<sup>PV</sup>  
 Dam: GLENMORGAN REALITY LADY N111<sup>#</sup>



**LOT 74**  
**GLENMORGAN POWERPOINT MAN R248<sup>SV</sup>**  
 Sire: S POWERPOINT WS 5503<sup>PV</sup>  
 Dam: GLENMORGAN REALITY LADY N114<sup>#</sup>



**LOT 78**  
**GLENMORGAN POWERPOINT MAN R259<sup>SV</sup>**  
 Sire: S POWERPOINT WS 5503<sup>PV</sup>  
 Dam: GLENMORGAN SURE FIREY LADY N380<sup>#</sup>



# REFERENCE SIRE & SELECT LOTS



**ASA Reg: TFAK132**  
**D.O.B:19/07/2014**

## LANDFALL KEYSTONE K132<sup>PV</sup>

- Keystone is a proven calving ease sire with good growth figures to match. These cattle really perform.
- Superb feet and legs, docile, deep bodied with great outlook in head and neck carriage. Such stretch and they are beautifully balanced.
- Keystone bulls will be a great asset for heifer matings with such a good spread of numbers. All calves were born small and easily and straight away got up and started growing.
- This is what we are looking for at Glenmorgan. Ranked No.4 Sire with most progeny recorded in the last two years.

RENNYLEA EDMUND E11<sup>PV</sup>

BOOROOMOOKA UNDERTAKEN Y145<sup>PV</sup>  
LAWSONS HENRY V111 Y5<sup>SV</sup>

LANDFALL ARCHER H807<sup>SV#</sup>

SAV FRONT RUNNER 0713<sup>#</sup>  
LANDFALL ARCHER X9<sup>PV</sup>

Mid July 2021 TRANS TASMAN ANGUS CATTLE EVALUATION

	CED	CEDT	GL	BW	200	400	600	MCW	MLK	DC	SS	CWT	EMA	RIB	RMP	RBY	IMF	Angus Breeding	Domestic Index	Heavy Grain Index	Heavy Grass Index
EBV	+6.2	+7.4	-7.9	+2.2	+59	+111	+147	+132	+19	-7.1	+0.9	+100	+7.2	+1.9	-1.6	+0.1	+2.0	\$156	\$133	\$171	\$147
Acc	92%	77%	99%	99%	98%	98%	98%	94%	92%	62%	97%	89%	88%	89%	87%	84%	87%				



**LOT 20**  
**GLENMORGAN KEYSTONE MAN R116<sup>SV</sup>**  
Sire: LANDFALL KEYSTONE K132<sup>PV</sup>  
Dam: GLENMORGAN BIG SKY LADY P283<sup>#</sup>



**LOT 21**  
**GLENMORGAN KEYSTONE MAN R146<sup>SV</sup>**  
Sire: LANDFALL KEYSTONE K132<sup>PV</sup>  
Dam: GLENMORGAN BIG SKY LADY P209<sup>#</sup>



**LOT 22**  
**GLENMORGAN KEYSTONE MAN R130<sup>SV</sup>**  
Sire: LANDFALL KEYSTONE K132<sup>PV</sup>  
Dam: GLENMORGAN SITZ E111 LADY P205



**LOT 23**  
**GLENMORGAN KEYSTONE MAN R129<sup>SV</sup>**  
Sire: LANDFALL KEYSTONE K132<sup>PV</sup>  
Dam: GLENMORGAN BIGY SKY LADY P289





**LOT 24**  
**GLENMORGAN KEYSTONE MAN R154<sup>SV</sup>**  
**Sire: LANDFALL KEYSTONE K132<sup>PV</sup>**  
**Dam: GLENMORGAN GENERAL LADY P271**



**LOT 26**  
**GLENMORGAN KEYSTONE MAN R157<sup>SV</sup>**  
**Sire: LANDFALL KEYSTONE K132<sup>PV</sup>**  
**Dam: GLENMORGAN BIG SKY LADY P316<sup>#</sup>**



**LOT 28**  
**GLENMORGAN KEYSTONE MAN R143<sup>SV</sup>**  
**Sire: LANDFALL KEYSTONE K132<sup>PV</sup>**  
**Dam: GLENMORGAN FRANKLIN LADY P252<sup>#</sup>**



**LOT 67**  
**GLENMORGAN KEYSTONE MAN R162<sup>SV</sup>**  
**Sire: LANDFALL KEYSTONE K132<sup>PV</sup>**  
**Dam: GLENMORGAN PROPHET LADY P390<sup>#</sup>**



**LOT 68**  
**GLENMORGAN KEYSTONE MAN R132<sup>SV</sup>**  
**Sire: LANDFALL KEYSTONE K132<sup>PV</sup>**  
**Dam: GLENMORGAN FRANKLIN LADY P225<sup>#</sup>**



**LOT 69**  
**GLENMORGAN KEYSTONE MAN R127<sup>SV</sup>**  
**Sire: LANDFALL KEYSTONE K132<sup>PV</sup>**  
**Dam: GLENMORGAN GENERAL LADY P319<sup>#</sup>**



# REFERENCE SIRE & SELECT LOTS



## G A R ASHLAND<sup>PV</sup>

- Ashland was a popular choice after visiting Gardiner Angus Ranch in Kansas USA. He is unmatched for his combination of calving ease, growth, marbling and muscle.
- So much depth of pedigree especially with B/R Ambush 28 in the mix.
- Deep bodied, high growth cattle with great coats that were born easily.
- Good natured and at Glenmorgan we have 35 half sisters of the sale bulls which we are excited to introduce into our breeding herd.

G A R DAYLIGHT<sup>#</sup>

G A R EARLY BIRD<sup>#</sup>

G A R PROGRESS 830<sup>#</sup>

B/R AMBUSH28<sup>#</sup>

CHAIR ROCK AMBUSH 1018<sup>#</sup>

G A R YIELD GRADE N366<sup>#</sup>

ASA Reg: USA18217198

D.O.B: 31/01/2015

### Mid July 2021 TRANS TASMAN ANGUS CATTLE EVALUATION

	CED	CEDT	GL	BW	200	400	600	MCW	MLK	DC	SS	CWT	EMA	RIB	RMP	RBY	IMF	Angus Breeding	Domestic Index	Heavy Grain Index	Heavy Grass Index
EBV	-0.7	+6.8	-6.5	+3.6	+69	+121	+150	+117	+16	-3.0	+1.7	+83	+13.6	-2.3	-3.0	+2.7	+2.8	\$169	\$154	\$191	\$160
Acc	84%	57%	99%	99%	98%	97%	95%	87%	82%	48%	95%	86%	87%	87%	83%	82%	85%				



LOT 31

GLENMORGAN ASHLAND MAN R296<sup>SV</sup>

Sire: GAR ASHLAND<sup>PV</sup>

Dam: GLENMORGAN TRACTION LADY L274<sup>#</sup>



LOT 32

GLENMORGAN ASHLAND MAN R331<sup>SV</sup>

Sire: GAR ASHLAND<sup>PV</sup>

Dam: GLENMORGAN BERKLEY LADY K461<sup>#</sup>



LOT 34

GLENMORGAN ASHLAND MAN R322<sup>SV</sup>

Sire: G A R ASHLAND<sup>PV</sup>

Dam: GLENMORGAN THUNDERBIRD LADY J261<sup>#</sup>



LOT 36

GLENMORGAN ASHLAND MAN R344<sup>SV</sup>

Sire: G A R ASHLAND<sup>PV</sup>

Dam: GLENMORGAN EQUINOX LADY F112<sup>#</sup>





**LOT 40**  
**GLENMORGAN ASHLAND MAN R320<sup>SV</sup>**  
 Sire: G A R ASHLAND<sup>PV</sup>  
 Dam: GLENMORGAN TEN X LADY K320<sup>#</sup>



**LOT 55**  
**GLENMORGAN ASHLAND MAN R347<sup>SV</sup>**  
 Sire: G A R ASHLAND<sup>PV</sup>  
 Dam: GLENMORGAN BARTEL LADY L111<sup>#</sup>



**LOT 58**  
**GLENMORGAN ASHLAND MAN R280<sup>SV</sup>**  
 Sire: G A R ASHLAND<sup>PV</sup>  
 Dam: GLENMORGAN PERFORMER LADY E47<sup>#</sup>



**LOT 65**  
**GLENMORGAN ASHLAND MAN R330<sup>SV</sup>**  
 Sire: G A R ASHLAND<sup>PV</sup>  
 Dam: GLENMORGAN KLOONEY LADY M267<sup>#</sup>



**LOT 79**  
**GLENMORGAN ASHLAND MAN R310<sup>SV</sup>**  
 Sire: G A R ASHLAND<sup>PV</sup>  
 Dam: GLENMORGAN KLOONEY LADY M306<sup>#</sup>



**LOT 80**  
**GLENMORGAN ASHLAND MAN R287<sup>SV</sup>**  
 Sire: G A R ASHLAND<sup>PV</sup>  
 Dam: GLENMORGAN TEN X LADY K263<sup>#</sup>



# REFERENCE SIRE & SELECT LOTS



**ASA Reg: USA18170041**  
**D.O.B: 27/01/2015**

## SYDGEN ENHANCE<sup>SV</sup>

- Sydgen Enhance has an outstanding birth to growth spread with calving ease, docility and carcase.
- His calves have a very sleek coat and are going from strength to strength. Enhance calves are extremely docile from day one.
- We have been extremely impressed with Sydgen Enhance daughters that are calving this year. Easy doing, deep, with impressive udders and are very good mothers. On recent inspections of Enhance he was extremely docile, very good feet and legs, long and deep bodied with a great tail set and sheath. Enhance has been used extensively and he has a great data set.
- This year at Glenmorgan there will be some rising 18 mth old Enhance sons.

SYDGEN EXCEED 3223<sup>PV</sup> USA

SYDGEN GOOGOL<sup>#</sup>

SYDGEN FOREVER LADY 1255<sup>#</sup>

SYDGEN RITA 2618<sup>#</sup> USA

SYDGEN LIBERTY GA 8627<sup>#</sup>

FOX RUN RITA 9308<sup>#</sup>

### Mid July 2021 TRANS TASMAN ANGUS CATTLE EVALUATION

	CED	CEDT	GL	BW	200	400	600	MCW	MLK	DC	SS	CWT	EMA	RIB	RMP	RBY	IMF	Angus Breeding	Domestic Index	Heavy Grain Index	Heavy Grass Index
EBV	+4.1	+1.9	-3.6	+3.2	+62	+108	+142	+104	+21	-1.9	+2.8	+79	+8.6	-2.2	-2.4	+1.4	+2.6	\$146	\$134	\$160	\$141
Acc	88%	56%	99%	99%	98%	98%	98%	87%	82%	45%	97%	86%	88%	88%	84%	82%	86%				



**LOT 1**  
**GLENMORGAN ENHANCE MAN R100<sup>SV</sup>**  
 Sire: SYDGEN ENHANCE<sup>SV</sup>  
 Dam: GLENMORGAN RITO 9969 LADY K519<sup>#</sup>



**LOT 2**  
**GLENMORGAN ENHANCE MAN R102<sup>SV</sup>**  
 Sire: SYDGEN ENHANCE<sup>SV</sup>  
 Dam: GLENMORGAN HARVESTOR LADY M407<sup>#</sup>



**LOT 3**  
**GLENMORGAN ENHANCE MAN R107<sup>SV</sup>**  
 Sire: SYDGEN ENHANCE<sup>SV</sup>  
 Dam: GLENMORGAN KLOONEY LADY M317<sup>#</sup>



**LOT 5**  
**GLENMORGAN ENHANCE MAN R106<sup>SV</sup>**  
 Sire: SYDGEN ENHANCE<sup>SV</sup>  
 Dam: GLENMORGAN HARVESTOR LADY K523<sup>#</sup>





# GLENMORGAN ANGUS BULL SALE

**1.00pm TUESDAY 24TH AUGUST 2021**

**At Glenmorgan, 353 Glenshiel Road, Llangothlin**

## **80 PASTURE PREPARED YEARLING ANGUS BULLS**



**AuctionsPlus**  
*Buy and Sell stock nationally*

This sale will also be interfaced with  
Auctions Plus  
Auctions Plus Sydney 02 9262 4222  
[www.auctionsplus.com.au](http://www.auctionsplus.com.au)



**Find us on Facebook**



**Find us on Instagram**

**CONTACT:**

**NICHOLAS & KAREN MORGAN**  
353 Glenshiel Road  
Llangothlin NSW 2365  
Mob: 0427 636 121  
Email: [neklmorgan@gmail.com](mailto:neklmorgan@gmail.com)

**SELLING AGENTS:**

**RAY WHITE RURAL - GUYRA/ARMIDALE**  
BLAKE O'RIELLY 0448 213 668  
SAM SEWELL 0447 255 100  
ANDREW STARR 0428 792 466  
BRUCE BIRCH 0428 363 063

**AUCTIONEER: PAUL DOOLEY 0458 662 646**

**[www.glenmorganangus.com](http://www.glenmorganangus.com)**



Welcome to our 6th Glenmorgan Angus Bull Sale on our beautiful property near Guyra in the New England.

Glenmorgan Angus is family owned and operated by Karen and I and our three boys, Thomas (20), Lachlan (17) and Daniel (16) - when they have time after work, school, rugby and social commitments.



Our 2021 Bull Sale will present 80 Yearling Bulls, including 6 autumn drop bulls for the buyer who is looking for a slightly larger animal. The Sale will feature the Progeny of S Powerpoint WS 5503, GAR Ashland, Keystone Landfall K132 and Sydgen Enhance. We are always trying to improve our herd and by mating all cows to AI we can tap into new and superior genetics from Australia, USA and New Zealand. S Powerpoint from Spickler Angus Ranch in North Dakota is a real stand-out. This is the second year we have offered Powerpoint sons. He offers an outcross pedigree and he is our curve bending specialist. GAR Ashland has a combination of calving ease, growth, marbling, and muscle that is unmatched. These Ashland sons have so much depth of pedigree especially with B/R Ambush 28 in the mix. A new calving ease sire is Landfall Keystone with good figures to match. The Keystone bulls have a real presence – docile, deep bodied with a great outlook in head and neck carriage. Sydgen Enhance has an outstanding birth to growth spread and his calves are extremely docile.

Our Sale Bulls have thrived on a pasture combination of fescues, clovers, oats and rye. With the wonderful season of 2020/21 and the purchase of Seaforth in 2020 we have had increased scope to finish the bulls for sale. The bulls this year look magnificent.

Confidence in the cattle market continues to be strong, with good rainfall and more forecast the market will continue to remain positive making it an ideal opportunity to buy quality bulls and to replace and rebuild breeding herds.

Our bulls are exceptionally quiet and have been yard weaned, trained by horses, dogs, and motorbike. With low birth, good growth and EMA and great IMF numbers our bulls would be a great asset to your heifer and cow mating program.

We are producing good quality, easy doing cattle that are fertile, have good temperament, are deep bodied and well-muscled. EBV's are very important to our operation and this year all bulls have been genomically tested. Sale Bulls have been Sire verified. All bulls have been tested for a range of Recessive Genetic conditions and all have tested free of CA, NH, AM & DD. Bulls have tested negative for PI (pestivirus)

A big thank you to Geoff and Cass Steinbeck, The Ray White Team, Lewis Taylor, Dan Vidler (and his dogs) Tim Light, Briony and Kelso Looker, Leis Gordon, the master chefs from Grazag and Ben Simpson (OGA).

On behalf of Karen and our boys, I wish you all the best with your bull purchases and thank you for your support. We hope you enjoy your sunny warm day in Guyra.

*Nicholas*



Livestock

**Ray White®**



## Your Local Livestock Marketing and Sales Specialists

- Comprehensive and professional livestock marketing and selling team
- Locally owned and operated
- Part of the extensive Ray White corporate network allowing our sales of livestock to gain competition from purchasers at a national level
- Fully licensed, accredited AuctionsPlus assessors and licensed auctioneers

Sam Sewell 0447 255 100  
Blake O'Reilly 0448 213 668  
Andrew Starr 0428 792 466  
Bruce Birch 0428 363 063  
02 6779 2033 or 02 6772 1125

---

**Ray White Livestock Guyra/Armidale**

[raywhitelivestock.com.au](http://raywhitelivestock.com.au)



# SALE INFORMATION

Selling will commence at 1.00pm on Tuesday 24th August 2021 at the shed and yards of Glenmorgan.

## COVID 19 REGULATIONS

The Sale will operate under the COVID 19 requirements at the time of the sale. All persons attending the sale will be required to register and record contact details. Hand Sanitiser will be provided and social distancing will need to be observed. If you require assistance with Border Permits please contact Karen on 0407 636 121.

## YEARLING BULLS

Our focus has always been on selling pasture prepared yearling bulls. Yearling bulls allow the introduction of superior genetics into herds a year earlier than normal, resulting in faster genetic improvement. Their introduction has the potential to allow breeders to extend the working lives of bulls by a year or more, lowering the bull costs of a herd. We believe yearling bulls will offer a lower base cost, this reduces bull costs per calf and boosts profitability.

In the bulls we have on offer it is essential that they are well grown, structurally sound, and ready to perform with good scrotal measurements. Docility is also a major factor in selection. This is done through drafting, and management of cattle with both horses, dogs, motorbikes and kids.

## INSPECTIONS

We welcome your inspection of bulls prior to sale day. This can be arranged by contacting Nicholas on 0427 636 121 or the Ray White Selling Agents: Blake O'Reilly 0448 213 668 or Sam Sewell 0447 255 100. All bulls can be inspected from 10.00am on Sale Day.

## SELLING SYSTEM

Sale of Bulls will be under normal auction conditions. Please register with agents to obtain a buyer's number if you are considering making a purchase. If you are successful in purchasing a bull please complete the Buyers Instruction Page.

The sale is GST Exclusive. You will be invoiced the purchase price of the bull plus 10% GST.

## AUCTIONS PLUS

Individual videos of each bull in the sale will be available on Auctions Plus and the Glenmorgan Angus Website. Videos also available on Angus Australia website. We recommend pre sale inspections due to the unpredictable nature of COVID 19 regulations and bids can be placed online. The sale will be interfaced with Auctions Plus. Contact Auctions Plus Sydney (02) 9262 4222 or [www.auctionsplus.com.au](http://www.auctionsplus.com.au).

## SUPPLEMENTARY SHEET

Updated weights will be provided on sale day along with other new or additional information.

## MOBILE COVERAGE

Mobile phone reception is available. Please make arrangements with agents for phone bidding.

## OUTSIDE AGENTS REBATE

A rebate of 2% is available to outside agents introducing buyers prior to the sale. Please contact Ray White Rural for further information.

## GUARANTEE

Every bull is guaranteed to be a breeder at the time of the sale and is guaranteed fertile for six months from sale date. In the unlikely event of infertility, provided it is not caused by injury or illness contracted after our sale, we will endeavour to supply a satisfactory replacement if available or issue a credit equal to the purchase value of the bull less salvage value which may be used at the next Glenmorgan sale.

## INSURANCE

We encourage buyers to insure their purchased bull or bulls at the time of the sale. All care will be taken with the fall of the hammer but it the purchasers responsibility for any injury or death occurred thereafter.

## TRANSPORT

Local and Interstate carriers will be in attendance on sale day. Anybody with concerns about organising transport, especially larger distances, please contact Nicholas or Ray White Rural.

We recommend Trevor and Jillian Foley for transporting your livestock. Contact information on page 47.

## REFRESHMENTS

The masterchefs from Grazag will be cooking a delicious scotch fillet steak before the sale. Tea & coffee will also be available.

## SALE DAY SAFETY

Your safety is important to us. Our cattle are quiet however animal behaviour can be unpredictable at times. Noise and large crowds of people can make animals react differently so please be mindful of the bulls when you enter their yards. Children should be supervised at all times.





### SALE CATALOGUE DISCLAIMER

Every care has been taken during the compilation of the Catalogue to ensure the accuracy of information supplied. However, no responsibility will be accepted for any errors that may have occurred.

### GENOMICS AND SIRE VERIFICATION

All bulls have been genomically tested using Angus GS. All genomic information from these tests has been provided to Breedplan to be used in their Single Step Breedplan Analysis. This provides much greater accuracy in the EBV's of Sale Bulls.

All Sale Bulls have been Sire verified.

### HERD HEALTH STATUS

All bulls catalogued are free of the genetic conditions AM, NH, CA and DD. All bulls have tested negative for Pestivirus.

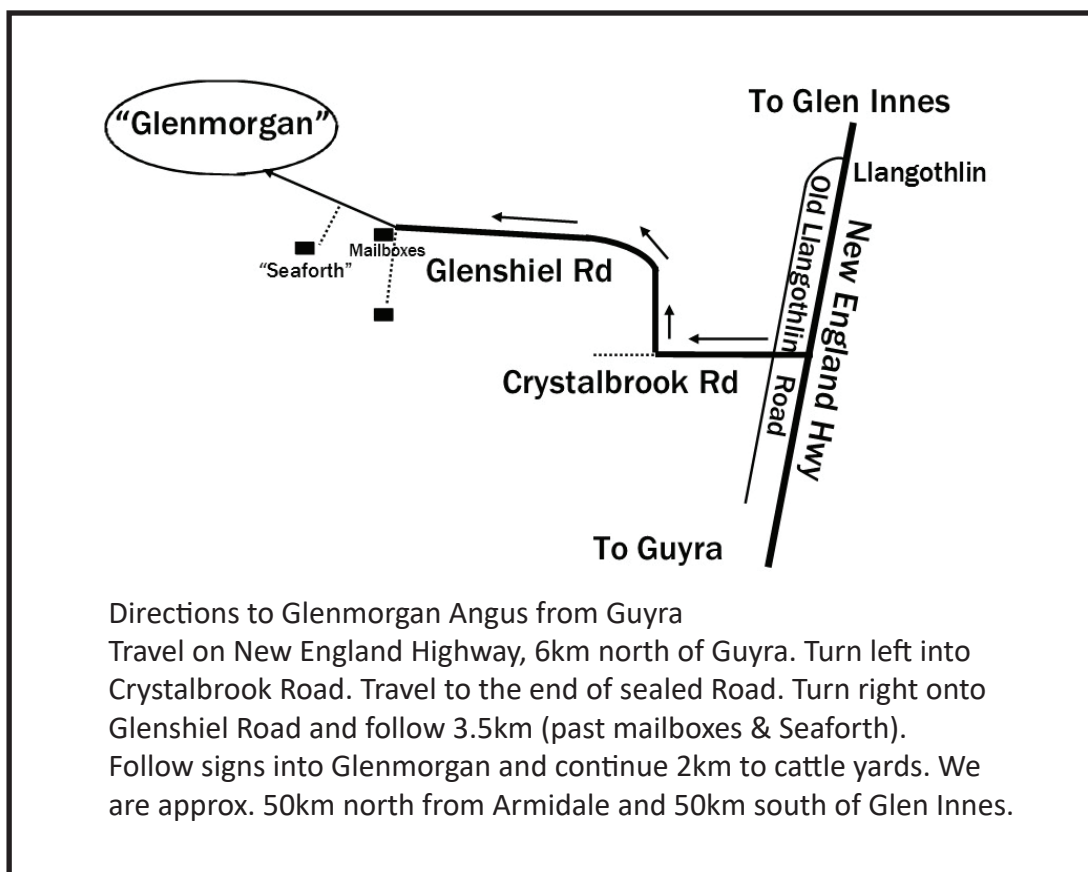
All bulls have had the following treatments this year: 2 x 7 in 1 Vaccine, Cydectin Long Acting, Flukazole, Multimin, Selovin LA, Brute Pour On, 2 x Vibrovax, Zoetis Bovi-Shield MH - One (for the control of Bovine respiratory disease).

### JOHNE'S DISEASE

Under the new Johne's scoring system the Glenmorgan herd is a J - BAS score 7.

### HEALTH CHECK

Leisa Brown of Guyra District Veterinary Service has carried out a complete breeding soundness evaluation on each bull listed in the Glenmorgan Angus Sale Catalogue. This included a physical examination to ensure structural soundness. Examination of reproductive organs - rectal palpation to examine secondary organs, measurement of scrotal circumference, palpation of the testicles and full examination of the penis and prepuce. Semen Collection and assessment of gross motility.





# Ramage Engineering

ABN 90 079 032 232

PTY LTD

LIVESTOCK HANDLING EQUIPMENT



## Specialising in Livestock Handling Equipment including:

- Cattle Crushes renowned for their durability
- V Cattle Race
- Weigh Crates
- Loading Ramps (sheep and cattle)
- Portable and Permanent Cattle and Sheep Yards
- and our very popular - Suspended Cattle Weigh Crush

**Agents for NLIS equipment and for all your Steel Supplies**

New England Highway, Guyra • Phone 02 6779 1958 • [sales@ramageengineering.com](mailto:sales@ramageengineering.com)

[www.ramage-engineering.com](http://www.ramage-engineering.com)

*'Rodney and his team at Ramage Engineering have done a sensational job in planning and building the yards at Glenmorgan'.*





# *Ag Solutions*<sup>™</sup>

The team at Nutrien Ag Solutions Guyra can assist you with all your agricultural needs.

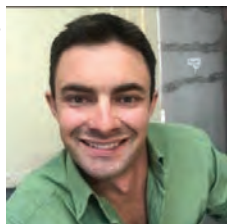
- Fencing
- Animal Health
- Animal Management
  - Chemical
  - Fertiliser
  - Produce
- Tanks & Irrigation
- Shearing Supplies
- Insurance – Brian Doyle 0447 676 484

Come in and talk to the team today.

Branch Manager

Josh Lawlor

PH. 0429 668 002





# TransTasman Angus Cattle Evaluation - Mid July 2021 Reference Tables



BREED AVERAGE EBVs																																
Brd Avg	Calving Ease				Birth				Growth				Fertility				Carcase				Other				Structure				Selection Indexes			
	CEDir	CEDirs	GL	BW	200	400	600	MCW	Milk	SS	DTC	CWT	EMA	RIB	P8	RYB	IMF	NFLF	DOC	Angle	Claw	ABI	DOM	GRN	GRS	CEDir	CEDirs	GL	BW			
+1.9	+2.6	-4.5	+4.2	+48	+87	+114	+98	+17	+2.0	-4.6	+65	+6.0	-0.1	-0.4	+0.5	+2.0	+0.17	+6	+0.98	+0.85	+118	+110	+124	+114	+1.9	+2.6	-4.5	+4.2	+48			

\* Breed average represents the average EBV of all 2019 drop Australian Angus and Angus-influenced seedstock animals analysed in the Mid July 2021 TransTasman Angus Cattle Evaluation .

PERCENTILE BANDS TABLE																																
% Band	Calving Ease				Birth				Growth				Fertility				Carcase				Other				Structure				Selection Indexes			
	Less	More	Longer	Heavier	Lighter	Lighter	Lighter	Lighter	Lighter	Lighter	Lighter	Lighter	Lighter	Lighter	Lighter	Lighter	Lighter	Lighter	Lighter	Lighter	Lighter	Lighter	Lighter	Lighter	Lighter	Less	More	Longer	Heavier	Lighter		
1%	+12.2	+10.9	-10.5	+0.2	+66	+117	+156	+154	+28	+4.3	-9.7	+91	+12.5	+3.3	+2.8	+4.5	-0.56	+33	+0.60	+0.42	+164	+140	+192	+151	+12.2	+10.9	-10.5	+0.2	+66			
5%	+9.8	+9.0	-8.6	+1.5	+61	+107	+142	+135	+24	+3.5	-8.2	+83	+10.3	+2.1	+2.1	+3.8	-0.33	+25	+0.72	+0.54	+152	+132	+174	+141	+10.7	+9.0	-8.6	+1.5	+61			
10%	+8.4	+7.8	-7.6	+2.2	+58	+102	+136	+126	+23	+3.1	-7.4	+78	+9.2	+1.6	+1.7	+3.4	-0.22	+20	+0.76	+0.62	+145	+128	+164	+135	+10.2	+7.8	-7.6	+2.2	+58			
15%	+7.4	+7.0	-7.0	+2.6	+56	+99	+131	+120	+22	+2.9	-6.9	+76	+8.4	+1.2	+1.5	+3.1	-0.14	+18	+0.80	+0.66	+140	+125	+157	+132	+9.9	+7.0	-7.0	+2.6	+56			
20%	+6.6	+6.3	-6.5	+2.9	+54	+97	+128	+116	+21	+2.7	-6.5	+74	+7.9	+1.0	+1.3	+2.9	-0.08	+16	+0.84	+0.70	+137	+122	+152	+129	+9.7	+6.3	-6.5	+2.9	+54			
25%	+5.8	+5.6	-6.1	+3.1	+53	+95	+125	+112	+20	+2.5	-6.1	+72	+7.4	+0.7	+1.1	+2.7	-0.03	+14	+0.86	+0.72	+133	+120	+147	+127	+9.5	+5.6	-6.1	+3.1	+53			
30%	+5.1	+5.0	-5.7	+3.4	+52	+93	+122	+109	+19	+2.4	-5.8	+70	+7.0	+0.6	+1.0	+2.5	+0.01	+12	+0.88	+0.74	+131	+119	+143	+124	+9.3	+5.0	-5.7	+3.4	+52			
35%	+4.5	+4.5	-5.4	+3.6	+51	+91	+120	+106	+19	+2.3	-5.5	+69	+6.7	+0.4	+0.9	+2.3	+0.05	+11	+0.92	+0.78	+128	+117	+139	+122	+9.1	+4.5	-5.4	+3.6	+51			
40%	+3.8	+4.0	-5.1	+3.8	+50	+90	+118	+103	+18	+2.2	-5.2	+68	+6.4	+0.2	+0.8	+2.2	+0.09	+9	+0.94	+0.80	+125	+115	+135	+120	+8.9	+4.0	-5.1	+3.8	+50			
45%	+3.2	+3.4	-4.8	+4.0	+49	+89	+116	+101	+17	+2.1	-4.9	+66	+6.1	+0.1	+0.6	+2.1	+0.13	+8	+0.96	+0.82	+123	+114	+131	+119	+8.7	+3.4	-4.8	+4.0	+49			
50%	+2.5	+2.9	-4.5	+4.2	+48	+87	+114	+98	+17	+2.0	-4.7	+65	+5.8	-0.1	+0.4	+1.9	+0.17	+6	+0.98	+0.84	+120	+112	+127	+117	+8.5	+2.9	-4.5	+4.2	+48			
55%	+1.8	+2.4	-4.2	+4.4	+48	+86	+112	+96	+16	+1.8	-4.4	+64	+5.3	-0.2	+0.6	+1.8	+0.21	+5	+1.00	+0.86	+118	+111	+123	+115	+8.3	+2.4	-4.2	+4.4	+48			
60%	+1.1	+1.8	-3.9	+4.6	+47	+84	+110	+93	+16	+1.7	-4.1	+63	+5.3	-0.4	+0.3	+1.7	+0.24	+4	+1.02	+0.88	+115	+109	+123	+113	+8.1	+1.8	-3.9	+4.6	+47			
65%	+0.4	+1.2	-3.6	+4.8	+46	+83	+108	+90	+15	+1.6	-3.9	+61	+5.0	-0.6	+0.2	+1.6	+0.28	+2	+1.04	+0.92	+112	+107	+115	+110	+7.9	+1.2	-3.6	+4.8	+46			
70%	-0.5	+0.6	-3.3	+5.0	+45	+81	+105	+88	+15	+1.5	-3.6	+60	+4.7	-0.7	+0.1	+1.5	+0.33	+0	+1.06	+0.94	+109	+105	+111	+108	+7.7	+0.6	-3.3	+5.0	+45			
75%	-1.4	-0.1	-3.0	+5.3	+44	+80	+103	+85	+14	+1.4	-3.3	+58	+4.3	-0.9	-0.1	+1.3	+0.37	-2	+1.08	+0.96	+106	+103	+106	+105	+7.5	-0.1	-3.0	+5.3	+44			
80%	-2.4	-0.9	-2.6	+5.6	+43	+78	+100	+81	+13	+1.3	-2.9	+57	+4.0	-1.1	-0.2	+1.2	+0.43	-3	+1.12	+1.00	+101	+100	+99	+102	+7.3	-0.9	-2.6	+5.6	+43			
85%	-3.6	-1.8	-2.1	+5.9	+41	+75	+97	+77	+12	+1.1	-2.5	+54	+3.5	-1.4	-0.4	+1.0	+0.49	-6	+1.14	+1.04	+96	+97	+92	+98	+7.1	-1.8	-2.1	+5.9	+41			
90%	-5.2	-3.1	-1.6	+6.3	+39	+72	+93	+72	+11	+0.9	-1.9	+52	+3.0	-1.7	-0.7	+0.8	+0.57	-9	+1.20	+1.10	+89	+93	+82	+93	+6.9	-3.1	-1.6	+6.3	+39			
95%	-7.8	-5.1	-0.6	+7.0	+36	+67	+85	+63	+10	+0.5	-0.9	+47	+2.1	-2.2	-1.1	+0.5	+0.70	-13	+1.26	+1.16	+77	+85	+66	+83	+6.7	-5.1	-0.6	+7.0	+36			
99%	-13.4	-9.5	+1.3	+8.3	+29	+56	+69	+45	+7	-0.2	+1.3	+37	+0.4	-3.2	-2.0	-0.1	+0.95	-21	+1.42	+1.32	+0	+0	+0	+0	+6.5	-9.5	+1.3	+8.3	+29			

\* The percentile bands represent the distribution of EBVs across the 2019 drop Australian Angus and Angus-influenced seedstock animals analysed in the Mid July 2021 TransTasman Angus Cattle Evaluation .

## UNDERSTANDING THE TRANSTASMAN ANGUS CATTLE EVALUATION (TACE)



### What is the TransTasman Angus Cattle Evaluation?

The TransTasman Angus Cattle Evaluation is the genetic evaluation program adopted by Angus Australia for Angus and Angus influenced beef cattle. The TransTasman Angus Cattle Evaluation uses Best Linear Unbiased Prediction (BLUP) technology to produce Estimated Breeding Values (EBVs) of recorded cattle for a range of important production traits (e.g. weight, carcase, fertility).

The TransTasman Angus Cattle Evaluation is an international genetic evaluation and includes pedigree, performance and genomic information from the Angus Australia and Angus New Zealand databases, along with selected information from the American and Canadian Angus Associations.

The TransTasman Angus Cattle Evaluation utilises a range of genetic evaluation software, including the internationally recognised BLUPF90 family of programs, and BREEDPLAN® beef genetic evaluation analytical software, as developed by the Animal Genetics and Breeding Unit (AGBU), a joint institute of NSW Agriculture and the University of New England, and Meat and Livestock Australia Limited (MLA).

### What is an EBV?

An animal's breeding value can be defined as its genetic merit for each trait. While it is not possible to determine an animal's true breeding value, it is possible to estimate it. These estimates of an animal's true breeding value are called EBVs (Estimated Breeding Values).

EBVs are expressed as the difference between an individual animal's genetics and a historical genetic level (i.e. group of animals) within the TACE genetic evaluation, and are reported in the units in which the measurements are taken.

### Using EBVs to Compare the Genetics of Two Animals

TACE EBVs can be used to estimate the expected difference in the genetics of two animals, with the expected difference equating to half the difference in the EBVs of the animals, all other things being equal (e.g. they are joined to the same animal/s).

For example, a bull with a 200 Day Growth EBV of +60 would be expected to produce progeny that are, on average, 10 kg heavier at 200 days of age than a bull with a 200 Day Growth EBV of +40 kg (i.e. 20 kg difference between the sire's EBVs, then halved as the sire only contributes half the genetics).

Or similarly, a bull with an IMF EBV of +3.0 would be expected to produce progeny with on average, 1% more intramuscular fat in a 400 kg carcass than a bull with a IMF EBV of +1.0 (i.e. 2% difference between the sire's EBVs, then halved as the sire only contributes half the genetics).

### Using EBVs to Benchmark an Animal's Genetics with the Breed

EBVs can also be used to benchmark an animal's genetics relative to the genetics of other Angus or Angus infused animals in Australia.

To benchmark an animal's genetics relative to other Angus animals, an animal's EBV can be compared to the EBV reference tables, which provide:

- the breed average EBV
- the percentile bands table

The current breed average EBV is listed on the bottom of each page in this publication, while the current EBV reference tables are included at the end of these introductory notes. For easy reference, the percentile band in which an animal's EBV ranks is also published in association with the EBV.

### Considering Accuracy

An accuracy value is published with each EBV, and is usually displayed as a percentage value immediately below the EBV.

The accuracy value provides an indication of the reliability of the EBV in estimating the animal's genetics (or true breeding value), and is an indication of the amount of information that has been used in the calculation of the EBV.

EBVs with accuracy values below 50% should be considered as preliminary or of low accuracy, 50-74% as of medium accuracy, 75-90% of medium to high accuracy, and 90% or greater as high accuracy.

### Description of TACE EBVs

EBVs are calculated for a range of traits within TACE, covering calving ease, growth, fertility, maternal performance, carcase merit, feed efficiency and structural soundness. A description of each EBV included in this publication is provided on the following page.



# UNDERSTANDING ANGUS BREEDPLAN EBVs

BIRTH			
<b>Calving Ease Direct</b>	%	Genetic differences in the ability of a sire's calves to be born unassisted from 2 year old heifers.	Higher EBVs indicate fewer calving difficulties in 2 year old heifers.
<b>Calving Ease Daughters</b>	%	Genetic differences in the ability of a sire's daughters to calve unassisted at 2 years of age.	Higher EBVs indicate fewer calving difficulties in 2 year old heifers.
<b>Gestation Length</b>	days	Genetic differences between animals in the length of time from the date of conception to the birth of the calf.	Lower EBVs indicate shorter gestation length.
<b>Birth Weight</b>	kg	Genetic differences between animals in calf weight at birth.	Lower EBVs indicate lighter birth weight.
GROWTH			
<b>200 Day Growth</b>	kg	Genetic differences between animals in live weight at 200 days of age due to genetics for growth.	Higher EBVs indicate heavier live weight.
<b>400 Day Weight</b>	kg	Genetic differences between animals in live weight at 400 days of age.	Higher EBVs indicate heavier live weight.
<b>600 Day Weight</b>	kg	Genetic differences between animals in live weight at 600 days of age.	Higher EBVs indicate heavier live weight.
<b>Mature Cow Weight</b>	kg	Genetic differences between animals in live weight of cows at 5 years of age.	Higher EBVs indicate heavier mature weight.
<b>Milk</b>	kg	Genetic differences between animals in live weight at 200 days of age due to the maternal contribution of its dam.	Higher EBVs indicate heavier live weight.
FERTILITY			
<b>Days to Calving</b>	days	Genetic differences between animals in the time from the start of the joining period (i.e. when the female is introduced to a bull) until subsequent calving.	Lower EBVs indicate shorter time to calving.
<b>Scrotal Size</b>	cm	Genetic differences between animals in scrotal circumference at 400 days of age.	Higher EBVs indicate larger scrotal circumference.
CARCASE			
<b>Carcase Weight</b>	kg	Genetic differences between animals in hot standard carcass weight at 750 days of age.	Higher EBVs indicate heavier carcass weight.
<b>Eye Muscle Area</b>	cm <sup>2</sup>	Genetic differences between animals in eye muscle area at the 12/13th rib site in a 400 kg carcass.	Higher EBVs indicate larger eye muscle area.
<b>Rib Fat</b>	mm	Genetic differences between animals in fat depth at the 12/13th rib site in a 400 kg carcass.	Higher EBVs indicate more fat.
<b>Rump Fat</b>	mm	Genetic differences between animals in fat depth at the P8 rump site in a 400 kg carcass.	Higher EBVs indicate more fat.
<b>Retail Beef Yield</b>	%	Genetic differences between animals in boned out saleable meat from a 400 kg carcass.	Higher EBVs indicate higher yield.
<b>Intramuscular Fat</b>	%	Genetic differences between animals in intramuscular fat (marbling) at the 12/13th rib site in a 400 kg carcass.	Higher EBVs indicate more intramuscular fat.

FEED EFFICIENCY			
<b>Net Feed Intake (Feedlot)</b>	kg/day	Genetic differences between animals in feed intake at a standard weight and rate of weight gain when animals are in a feedlot finishing phase.	Lower EBVs indicate more feed efficiency.
TEMPERAMENT			
<b>Docility</b>	%	Genetic differences between animals in temperament.	Higher EBVs indicate better temperament.
STRUCTURE			
<b>Front Feet Angle</b>	%	Genetic differences between animals in desirable front feet angle (strength of pastern, depth of heel).	Higher EBVs indicate more desirable structure.
<b>Front Feet Claw Set</b>	%	Genetic differences between animals in desirable front feet claw set structure (shape and evenness of claw).	Higher EBVs indicate more desirable structure.
<b>Rear Feet Angle</b>	%	Genetic differences between animals in desirable rear feet angle (strength of pastern, depth of heel).	Higher EBVs indicate more desirable structure.
<b>Rear Leg Hind View</b>	%	Genetic differences between animals in desirable rear leg structure when viewed from behind.	Higher EBVs indicate more desirable structure.
<b>Rear Leg Side View</b>	%	Genetic differences between animals in desirable rear leg structure when viewed from the side.	Higher EBVs indicate more desirable structure.
SELECTION INDEXES			
<b>Angus Breeding Index</b>	\$	Genetic differences between animals in net profitability per cow joined in a typical commercial self replacing herd using Angus bulls. This selection index is not specific to a particular production system or market end-point, but identifies animals that will improve overall profitability in the majority of commercial grass and grain finishing beef production systems.	Higher selection index values indicate greater profitability.
<b>Domestic Index</b>	\$	Genetic differences between animals in net profitability per cow joined in a commercial self replacing herd targeting the domestic supermarket trade.	Higher selection index values indicate greater profitability.
<b>Heavy Grain Index</b>	\$	Genetic differences between animals in net profitability per cow joined in a commercial self replacing herd targeting pasture grown steers with a 200 day feedlot finishing period for the grain fed high quality, highly marbled markets.	Higher selection index values indicate greater profitability.
<b>Heavy Grass Index</b>	\$	Genetic differences between animals in net profitability per cow joined in a commercial self replacing herd targeting pasture finished steers.	Higher selection index values indicate greater profitability.





regional & agribusiness

more  
than  
money



nab

# DEDICATED TO THE BEEF INDUSTRY IN NEW ENGLAND

With more than 155 years of experience looking after primary producers and secondary processors, we have the insights, expertise and the local knowledge to help you bring your plans to life – at every stage of the journey.

**Talk to your NAB Agribusiness banker today or call:**

**Daren Wilkinson** (Managing Partner) – 0436 910 867

#### **Armidale Office**

**Ian Ryan** (Agribusiness Manager) – 0427 006 867

**Jack Grant** (Agribusiness Manager) – 0414 884 344

**Peter Haynes** (Agribusiness Manager) – 0427 006 873

**Kieran Brennan** (Agribusiness Manager) – 0410 446 844

#### **Inverell Office**

**Mark Hynes** (Agribusiness Manager) – 0427 005 199

**Emma Turner** (Agribusiness Manager) – 0429 566 844

## Attention Buyer

Animal details included in this catalogue, including but not limited to pedigree, DNA information, Estimated Breeding Values (EBVs) and Index values, are based on information provided by the breeder or owner of the animal. Whilst all reasonable care has been taken to ensure that the information provided in this catalogue was correct at the time of publication, Angus Australia will assume no responsibility for the accuracy or completeness of the information, nor for the outcome (including consequential loss) of any action taken based on this information.

## Parent Verification Suffixes

The animals listed within this catalogue including its pedigree, are displaying a Parent Verification Suffix which indicates the DNA parent verification status that has been conducted on the animal. The Parent Verification Suffixes that will appear at the end of each animal's name.

The suffix displayed at the end of each animal's name indicates the DNA parentage verification that has been conducted by Angus Australia.

PV : both parents have been verified by DNA.

SV : the sire has been verified by DNA.

DV : the dam has been verified by DNA.

# : DNA verification has not been conducted.

E : DNA verification has identified that the sire and/or dam may possibly be incorrect, but this cannot be confirmed conclusively.

## Privacy Information

In order for Angus Australia to process the transfer of a registered animal in this catalogue, the vendor will need to provide certain information to Angus Australia and the buyer consents to the collection and disclosure of that information by Angus Australia in certain circumstances. If the buyer does not wish for his or her information to be stored and disclosed by Angus Australia, the buyer must complete the form included below and forward it to Angus Australia. If the form is not completed, the buyer will be taken to have consented to the disclosure of such information.

### BUYERS OPTION TO OPT OUT OF DISCLOSING PERSONAL INFORMATION TO ANGUS AUSTRALIA

If you do not complete this form, you will be taken to have consented to Angus Australia using your name, address and phone number for the purposes of effecting a change of registration of the animal(s) that you have purchased, maintaining its database and disclosing that information to its members on its website.

I, the buyer of animals with the following idents.....

.....(name) do not consent to Angus Australia using my name, address and phone number for the purposes of effecting a change of registration of the animals I have mentioned above that I have purchased, maintaining its database and disclosing that information to its members on its website.

Name: ..... Signature: .....

Date: .....

Please forward this completed consent form to Angus Australia, 86 Glen Innes Road, Armidale NSW 2350.



If you have any questions or queries regarding any of the above, please contact Angus Australia on (02) 6773 4600 or email [office@angusaustralia.com.au](mailto:office@angusaustralia.com.au)



**EBV Quick Reference for Glenmorgan Angus Bull Sale**

Animal Ident	Calving Ease		Birth		Growth				Fertility				Carcass				Other				Structural				Selection Indexes			
	CEDir	CEDirs	GL	BWT	200	400	600	MCW	Milk	SS	DTC	CWT	EMA	RIB	P8	RBV	IMF	NF-F	DOC	Angle	Claw	ABI	DOM	GRN	GRS			
1	ABWR100	+0.9	-2.7	-4.7	+5.2	+59	+106	+137	+121	+17	+2.8	-1.2	+81	+4.8	-3.9	-4.0	+1.8	+1.7	-0.62	-	+0.92	+0.76	+120	+118	\$129	\$118		
2	ABWR102	+2.0	+1.5	-5.8	+4.5	+59	+107	+144	+120	+14	+2.6	-1.4	+76	+11.4	-2.0	-2.5	+2.7	+1.2	-0.68	-	+0.96	+0.94	+143	+132	\$150	\$142		
3	ABWR107	+0.6	+3.0	-4.7	+4.9	+62	+109	+140	+134	+14	+2.8	-3.7	+85	+4.7	-0.9	-1.5	+0.3	+2.2	-0.50	-	+1.12	+0.80	+131	+122	\$143	\$126		
4	ABWR103	-4.8	+4.7	-6.0	+6.5	+67	+111	+151	+128	+17	+3.0	-5.3	+81	+7.3	-0.9	+0.3	+0.9	+2.0	-0.44	-	+1.26	+1.04	+147	+126	\$159	\$142		
5	ABWR106	+5.4	+3.7	-4.2	+3.0	+50	+88	+112	+86	+20	+2.3	-3.5	+60	+5.9	-1.7	-1.6	+1.4	+1.2	-0.49	-	+1.16	+0.78	+114	+116	\$112	\$116		
6	ABWR109	+6.5	+4.8	-7.6	+2.8	+52	+98	+133	+115	+21	+4.2	-3.7	+71	+1.7	+0.2	-1.4	+0.0	+2.3	-0.13	-	+1.22	+1.40	+129	+116	\$142	\$124		
7	ABWR234	+2.3	+8.2	-4.4	+3.6	+68	+117	+140	+120	+15	+2.6	-4.7	+80	+7.9	+0.5	-1.5	+1.0	+2.0	+0.09	-	+1.08	+0.98	+146	+140	\$155	\$142		
8	ABWR243	-1.9	+8.5	-6.1	+4.4	+55	+106	+130	+105	+19	+2.0	-4.4	+78	+5.1	+0.8	+0.6	-0.1	+1.7	-0.04	-	+0.94	+0.90	+125	+120	\$128	\$124		
9	ABWR257	+3.9	+9.9	-5.1	+4.3	+59	+100	+125	+113	+11	+1.9	-4.4	+72	+5.1	+1.1	-1.2	-0.2	+1.8	-0.09	-	+0.80	+0.82	+123	+119	\$127	\$122		
10	ABWR232	+1.8	+5.3	-6.5	+4.9	+56	+99	+129	+118	+15	+1.1	-4.8	+76	+5.2	+0.5	-0.2	-0.1	+1.9	-0.27	-	+0.80	+0.68	+127	+117	\$134	\$124		
11	ABWR239	+1.6	+5.7	-6.3	+4.6	+58	+103	+131	+110	+19	+2.0	-5.3	+77	+6.4	+1.3	+1.4	-0.1	+1.4	-0.19	-	+1.10	+0.98	+130	+121	\$129	\$130		
12	ABWR229	+2.2	+9.4	-6.3	+4.0	+59	+104	+128	+112	+14	-0.5	-1.0	+72	+6.8	-1.1	-2.3	+1.4	+1.1	-0.27	-	+1.00	+0.92	+117	+122	\$115	\$121		
13	ABWR260	+0.7	+8.1	-4.7	+4.8	+55	+92	+115	+107	+12	+0.5	-3.7	+74	+7.0	+0.0	-0.8	+0.5	+1.5	-0.08	-	+1.10	+0.92	+113	+113	\$112	\$114		
14	ABWR237	+2.7	+10.0	-5.9	+2.9	+52	+89	+98	+78	+8	+0.9	-6.5	+57	+8.3	+0.7	+0.5	+1.0	+0.6	-0.21	-	+0.88	+0.80	+115	+123	\$103	\$118		
15	ABWR226	+2.6	+9.6	-5.2	+3.7	+62	+114	+137	+129	+15	+2.0	-6.3	+77	+9.5	-0.1	-1.9	+1.4	+1.9	+0.18	-	+0.80	+1.02	+152	+142	\$166	\$144		
16	ABWR235	-0.4	+10.9	-5.3	+4.0	+61	+105	+127	+103	+14	+1.3	-8.4	+72	+7.3	+2.7	+2.6	-0.6	+1.7	+0.45	-	+0.78	+0.82	+140	+129	\$142	\$137		
17	ABWR225	+4.8	+7.5	-6.2	+3.3	+58	+107	+128	+120	+6	+0.9	-2.7	+70	+4.1	+1.8	+1.4	-0.7	+1.4	-0.13	-	+1.06	+0.94	+121	+123	\$118	\$124		
18	ABWR224	+6.6	+5.8	-7.8	+3.4	+50	+92	+118	+104	+11	+0.7	-2.9	+60	+3.6	+1.4	+1.9	-0.3	+1.0	+0.14	-	+0.98	+0.88	+113	+112	\$105	\$118		
19	ABWR117	+1.9	-0.2	-7.6	+5.0	+69	+124	+166	+157	+17	+2.5	-5.4	+99	+8.2	-1.7	-3.7	+2.0	+1.8	+0.15	-	+0.86	+0.78	+164	+141	\$185	\$154		
20	ABWR116	+4.4	+11.0	-9.1	+3.2	+60	+111	+150	+139	+15	+1.3	-4.8	+87	+5.3	-0.3	-0.8	+0.4	+1.7	+0.39	-	+0.98	+1.12	+150	+131	\$162	\$145		
21	ABWR146	+0.3	+7.3	-4.7	+3.7	+57	+105	+134	+124	+20	+2.8	-7.6	+85	+7.1	+1.0	-0.9	+0.8	+1.2	+0.40	-	+1.06	+0.96	+138	+125	\$144	\$133		
22	ABWR130	-1.6	+4.7	-5.1	+5.0	+62	+113	+159	+143	+20	+1.5	-3.3	+95	+2.7	-0.9	-2.7	+0.4	+1.7	-0.35	-	+0.98	+0.82	+135	+116	\$148	\$131		
23	ABWR129	-2.6	+8.1	-6.2	+5.5	+64	+115	+157	+154	+20	+1.8	-3.0	+97	+2.5	-2.2	-4.2	+1.1	+1.4	+0.13	-	+1.12	+1.06	+128	+116	\$140	\$124		
24	ABWR154	+0.9	+0.3	-3.1	+3.4	+62	+111	+143	+117	+17	+1.6	-5.6	+91	+9.0	-0.3	-2.8	+1.0	+1.8	+0.27	-	+1.06	+0.86	+144	+130	\$155	\$139		
25	ABWR156	+7.3	+8.8	-4.4	+2.9	+63	+116	+148	+135	+18	+1.7	-8.2	+98	+5.3	+2.9	+2.1	-1.5	+2.1	+0.15	-	+1.02	+0.78	+156	+134	\$166	\$149		
26	ABWR157	+0.3	+6.7	-4.4	+4.0	+53	+99	+133	+120	+17	+0.5	-5.8	+78	+7.6	+0.5	-1.6	+0.8	+1.0	+0.40	-	+0.94	+0.82	+130	+117	\$134	\$128		
27	ABWR118	+4.3	+5.0	-8.4	+2.8	+56	+102	+125	+97	+21	+2.4	-5.8	+85	+7.6	+1.4	-0.8	+0.0	+2.9	+0.63	-	+1.02	+1.00	+142	+131	\$158	\$134		
28	ABWR143	+8.1	+8.6	-5.8	+1.2	+51	+96	+129	+95	+24	+2.5	-7.0	+72	+6.6	+3.7	+1.6	-0.5	+1.4	+0.44	-	+1.02	+0.76	+139	+122	\$139	\$138		
29	ABWR139	+7.2	+6.3	-5.7	+2.4	+58	+106	+135	+101	+21	+2.5	-5.0	+84	+8.5	-0.6	-2.1	+1.0	+2.6	+0.53	-	+1.20	+0.90	+153	+138	\$170	\$145		
30	ABWR138	+3.7	+5.6	-5.6	+3.1	+65	+115	+148	+131	+19	+0.1	-5.4	+95	+7.2	-0.4	-3.9	+1.2	+1.9	+0.33	-	+0.96	+0.68	+149	+135	\$164	\$142		
31	ABWR296	+3.1	+5.7	-5.4	+3.2	+62	+113	+145	+115	+17	+2.1	-0.4	+73	+11.2	-1.9	-2.5	+2.7	+2.1	+0.45	-	+1.18	+1.38	+153	+143	\$166	\$149		
32	ABWR331	-1.8	+7.0	-5.8	+4.4	+57	+101	+131	+110	+13	+1.1	-5.2	+72	+6.1	+0.9	+0.1	-0.9	+3.3	-0.01	-	+1.08	+1.20	+139	+121	\$157	\$130		
33	ABWR318	+4.3	+7.7	-8.4	+3.5	+66	+115	+144	+138	+10	+2.2	-1.2	+82	+9.7	-1.9	-2.9	+2.1	+2.0	-0.20	-	+1.52	+1.24	+146	+140	\$159	\$143		
34	ABWR322	-5.7	+1.4	-3.9	+5.2	+73	+129	+159	+136	+17	+2.4	-1.9	+90	+8.6	-2.5	-3.7	+2.6	+1.6	-0.06	-	+1.12	+1.16	+143	+138	\$153	\$140		
35	ABWR354	-0.1	+1.0	-2.6	+4.5	+56	+108	+138	+124	+13	+0.6	+0.0	+73	+10.2	-1.2	+0.2	+1.0	+1.5	+0.03	-	+1.08	+1.24	+128	+123	\$129	\$130		
36	ABWR344	-11.8	-2.5	-2.3	+5.2	+62	+107	+136	+114	+20	+3.3	-4.0	+72	+4.3	-1.9	-0.7	+1.0	+1.9	-0.23	-	+1.22	+1.18	+113	+108	\$118	\$111		
37	ABWR278	+4.1	+5.3	-5.8	+3.6	+68	+117	+153	+121	+17	+2.1	-1.2	+85	+9.7	-2.4	-4.2	+2.5	+1.6	+0.04	-	+1.10	+1.02	+149	+140	\$159	\$147		
38	ABWR306	-2.9	+1.2	-2.9	+4.2	+59	+113	+143	+121	+19	+1.5	-1.7	+85	+6.8	-3.3	-4.0	+1.7	+2.8	+0.22	-	+1.32	+1.46	+138	+129	\$160	\$130		
39	ABWR298	+0.1	+5.6	-7.1	+3.5	+62	+108	+138	+108	+17	+2.2	-3.6	+76	+8.9	-1.9	-1.5	+2.2	+1.9	+0.19	-	+1.10	+1.24	+148	+137	\$158	\$144		
40	ABWR320	+3.7	+3.3	-5.1	+3.1	+63	+108	+137	+119	+17	+0.8	-4.4	+80	+7.6	-1.1	-1.9	+0.8	+2.3	-0.01	-	+0.94	+1.26	+142	+131	\$154	\$137		



CEDir	CEDirs	GL	BWT	200	400	600	MCW	Milk	SS	DTC	CWT	EMA	RIB	P8	RBV	IMF	NF-F	DOC	Angle	Claw	ABI	DOM	GRN	GRS
+1.9	+2.6	-4.5	+4.2	+48	+87	+114	+98	+17	+2.0	-4.6	+65	+6.0	-0.1	-0.4	+0.5	+2.0	+0.17	+6	+0.98	+0.85	+118	+110	+124	+114

**EBV Quick Reference for Glenmorgan Angus Bull Sale**

Animal Ident	Calving Ease		Birth		Growth				Fertility				Carcass				Other				Structural				Selection Indexes			
	CEDir	CEDir	GL	BWT	200	400	600	MCW	Milk	SS	DTC	CWT	EWA	RIB	P8	RBV	IMF	NFI-F	DOC	Angle	Claw	ABI	DOM	GRN	GRS			
41	ABWR317	+2.4	+0.9	-5.1	+3.1	+53	+96	+122	+112	+13	+0.9	-5.1	+70	+4.7	-0.6	-2.5	+0.4	+2.5	-0.02	-	+0.94	+0.80	\$127	\$119	\$143	\$120		
42	ABWR323	+2.5	+6.5	-4.1	+2.7	+51	+87	+108	+80	+16	+0.6	-5.2	+62	+5.4	-0.7	-2.1	+0.9	+2.1	+0.29	-	+1.02	+1.16	\$121	\$119	\$128	\$118		
43	ABWR205	-1.8	+3.5	-6.4	+7.2	+72	+129	+167	+173	+15	+2.2	-2.0	+92	+3.8	-0.2	-1.6	+0.0	+1.6	-0.54	-	+0.96	+0.80	\$132	\$122	\$142	\$131		
44	ABWR263	-11.5	-7.1	-2.8	+7.0	+67	+112	+141	+141	+9	+2.0	-4.5	+81	+8.4	-0.2	-1.7	+1.3	+1.2	-0.16	-	+0.96	+0.76	\$113	\$109	\$116	\$112		
45	ABWR261	-8.1	+1.4	-4.1	+6.7	+64	+108	+131	+125	+10	+1.3	-5.3	+83	+5.3	-1.8	-2.5	+0.8	+2.2	-0.49	-	+0.88	+0.82	\$120	\$116	\$132	\$114		
46	ABWR247	-3.8	+3.3	-4.1	+5.6	+61	+108	+134	+119	+18	+1.7	-4.4	+79	+4.8	+0.5	-0.1	+0.5	+0.4	-0.28	-	+1.22	+1.16	\$110	\$112	\$101	\$115		
47	ABWR264	-6.1	+6.1	-2.0	+6.7	+59	+109	+138	+130	+16	+2.7	-5.8	+72	+5.8	-0.1	-0.1	+0.4	+2.0	-0.06	-	+0.94	+0.82	\$132	\$120	\$144	\$126		
48	ABWR242	+7.7	+9.3	-5.2	+1.8	+52	+92	+108	+82	+19	+0.9	-4.3	+64	+5.3	+1.0	-0.5	-0.5	+2.3	+0.00	-	+0.96	+0.96	\$117	\$119	\$119	\$116		
49	ABWR252	+2.6	+7.2	-3.4	+4.9	+63	+108	+135	+114	+12	+2.3	-4.1	+73	+7.0	+1.4	+2.4	+0.0	+1.6	+0.00	-	+0.84	+1.06	\$138	\$130	\$138	\$138		
50	ABWR250	+3.1	+8.8	-3.8	+3.8	+59	+101	+117	+86	+13	+2.1	-5.2	+73	+8.1	+1.7	+1.2	-1.0	+2.1	-0.02	-	+0.80	+0.70	\$125	\$124	\$124	\$126		
51	ABWR244	+3.6	+7.2	-5.8	+3.6	+56	+105	+122	+104	+12	+0.9	-1.9	+70	+6.7	-1.2	-2.1	+1.5	+1.0	-0.41	-	+1.02	+1.12	\$119	\$128	\$117	\$122		
52	ABWR228	+4.9	+6.9	-6.9	+3.7	+61	+107	+124	+94	+16	+1.9	-5.8	+66	+4.9	+1.4	+3.1	+0.0	+1.8	+0.01	-	+0.66	+0.74	\$140	\$137	\$140	\$139		
53	ABWR307	-0.5	+0.9	-3.4	+4.3	+67	+118	+147	+132	+19	+2.0	-5.3	+82	+6.8	+0.1	-0.9	+1.0	+0.9	-0.18	-	+0.92	+0.96	\$135	\$128	\$135	\$135		
54	ABWR220	+3.7	+6.4	-7.7	+3.8	+51	+93	+115	+102	+7	+0.5	-7.1	+64	+3.0	+2.1	+1.8	-1.3	+2.1	+0.04	-	+0.86	+1.02	\$127	\$117	\$133	\$123		
55	ABWR347	+0.8	+7.8	-3.7	+3.5	+60	+100	+121	+88	+19	+1.8	-6.7	+72	+12.2	-0.3	-0.2	+1.9	+1.8	+0.14	-	+1.02	+1.14	\$148	\$139	\$153	\$143		
56	ABWR337	+1.9	+4.5	-2.2	+2.9	+48	+90	+114	+75	+15	+1.7	+0.6	+66	+9.9	-1.9	-1.1	+2.2	+1.5	+0.15	-	+1.24	+1.24	\$119	\$122	\$117	\$123		
57	ABWR270	+1.1	+7.0	-4.8	+3.6	+57	+107	+134	+109	+17	+1.3	-1.8	+79	+11.0	-2.4	-2.1	+1.9	+2.0	+0.02	-	+1.22	+1.10	\$141	\$134	\$151	\$138		
58	ABWR280	+1.6	+4.7	-5.9	+3.9	+63	+113	+139	+109	+18	+3.3	-1.4	+83	+10.5	+0.0	-0.1	+1.3	+2.1	-0.03	-	+1.08	+1.24	\$142	\$137	\$148	\$141		
59	ABWR304	-0.1	+6.3	-7.2	+3.9	+56	+104	+138	+125	+13	+1.5	-1.0	+77	+7.4	-2.8	-3.9	+2.7	+1.3	-0.14	-	+1.06	+1.10	\$131	\$126	\$140	\$129		
60	ABWR281	+6.0	+6.8	-7.2	+4.5	+60	+106	+139	+118	+17	+2.3	-2.6	+84	+10.7	-2.7	-3.3	+2.6	+2.1	+0.36	-	+1.10	+1.12	\$152	\$140	\$169	\$146		
61	ABWR309	+1.8	+7.1	-2.8	+1.8	+50	+91	+108	+71	+21	+1.5	-3.2	+58	+12.2	+0.6	-0.2	+0.7	+3.6	+0.98	-	+1.02	+1.08	\$138	\$131	\$154	\$131		
62	ABWR273	-2.4	+7.2	-5.0	+2.4	+55	+99	+124	+100	+13	+2.1	-3.6	+72	+3.4	-0.4	+0.8	-0.7	+3.7	+0.60	-	+1.08	+1.36	\$133	\$121	\$151	\$125		
63	ABWR14	-1.4	+4.3	-4.7	+4.7	+58	+107	+139	+123	+19	+2.0	-2.2	+77	+11.7	-3.4	-4.3	+3.3	+1.9	+0.14	-	+1.02	+1.18	\$144	\$134	\$161	\$138		
64	ABWR326	-5.1	-2.0	-3.3	+4.5	+58	+103	+128	+101	+18	+2.0	-1.1	+74	+11.2	-1.4	-2.6	+2.3	+2.3	+0.52	-	+1.04	+1.26	\$126	\$123	\$136	\$123		
65	ABWR330	+2.3	+4.8	-5.2	+4.1	+56	+96	+113	+78	+17	+0.8	-3.6	+63	+12.7	-1.4	-2.4	+2.6	+1.5	+0.13	-	+1.00	+1.12	\$131	\$134	\$133	\$131		
66	ABWR345	-0.9	+2.9	-4.0	+5.4	+65	+117	+150	+129	+14	+1.4	-2.2	+85	+9.6	-1.8	-3.2	+2.0	+2.7	+0.25	-	+1.20	+1.38	\$154	\$139	\$176	\$145		
67	ABWR162	+6.0	+6.9	-1.9	+3.3	+46	+77	+103	+82	+14	+1.6	-6.4	+61	+6.9	+1.0	-0.7	+0.0	+3.0	+0.56	-	+1.06	+0.60	\$130	\$116	\$145	\$121		
68	ABWR132	+9.8	+11.0	-6.8	+1.6	+56	+92	+121	+94	+19	+2.8	-10.2	+80	+10.0	+1.8	-0.4	+0.8	+1.8	+0.52	-	+1.24	+1.20	\$154	\$134	\$163	\$146		
69	ABWR127	+9.4	+5.6	-6.1	+1.2	+56	+101	+128	+99	+17	+3.0	-9.6	+82	+10.4	+3.8	+0.9	+0.5	+1.6	+0.47	-	+0.94	+0.92	\$157	\$138	\$164	\$151		
70	ABWR161	+3.6	+3.4	-0.7	+3.0	+51	+93	+124	+95	+24	+2.1	-6.4	+82	+7.3	+2.1	-0.3	+0.1	+1.8	+0.02	-	+1.16	+0.88	\$132	\$118	\$137	\$128		
71	ABWR151	+6.4	+5.2	-2.9	+0.8	+45	+88	+110	+79	+18	+2.0	-5.8	+69	+6.6	+1.5	-0.5	+0.1	+1.2	+0.24	-	+1.12	+0.82	\$119	\$116	\$116	\$120		
72	ABWR144	+5.3	+4.1	-6.3	+2.2	+48	+93	+122	+111	+20	+0.8	-7.2	+75	+4.2	+0.8	-1.0	-0.6	+2.3	+0.52	-	+1.12	+0.84	\$131	\$116	\$144	\$123		
73	ABWR212	+7.9	+11.8	-8.2	+3.2	+52	+86	+112	+100	+15	+1.6	-5.1	+63	+4.2	+3.6	+1.9	-1.4	+2.1	+0.16	-	+0.90	+0.86	\$119	\$118	\$120	\$118		
74	ABWR248	+7.5	+10.1	-4.9	+2.9	+54	+93	+110	+88	+10	+2.0	-5.8	+58	+5.1	+4.6	+3.9	-1.9	+1.7	+0.60	-	+0.92	+0.84	\$118	\$117	\$110	\$121		
75	ABWR231	+4.3	+8.7	-6.7	+3.9	+58	+105	+127	+111	+17	+2.0	-6.3	+73	+4.2	+3.5	+3.5	-1.5	+1.3	+0.02	-	+0.92	+0.78	\$126	\$121	\$120	\$128		
76	ABWR219	+8.3	+8.2	-6.1	+1.7	+47	+90	+111	+105	+17	+1.4	-5.3	+68	+0.6	+1.5	+0.5	-1.6	+1.9	+0.10	-	+0.90	+0.82	\$107	\$106	\$108	\$107		
77	ABWR230	+6.4	+9.1	-5.5	+3.4	+56	+93	+114	+103	+11	+1.9	-5.5	+64	+7.1	+2.6	+1.2	-0.6	+1.6	+0.21	-	+0.76	+0.84	\$121	\$118	\$118	\$122		
78	ABWR259	-3.6	+4.4	-4.4	+4.7	+64	+113	+130	+114	+12	+1.9	-4.4	+76	+9.0	+0.0	-1.1	+0.9	+2.3	-0.02	-	+0.88	+1.02	\$134	\$132	\$144	\$129		
79	ABWR310	+0.5	+4.7	-4.4	+3.4	+56	+104	+130	+108	+18	+1.5	-1.4	+74	+13.7	-1.7	-3.0	+2.4	+2.4	+0.27	-	+0.90	+0.80	\$142	\$135	\$156	\$137		
80	ABWR287	+2.2	+7.2	-6.3	+3.9	+64	+118	+144	+118	+17	+3.0	-5.4	+80	+9.5	-1.5	-2.8	+2.4	+1.9	-0.13	-	+1.06	+1.12	\$161	\$149	\$178	\$153		







# GLENMORGAN ENHANCE MAN R100<sup>SV</sup>

## HBR

DOB: 22/03/2020

AMFU,CAFU,DDFU,NHFU

IDENT: ABWR100

MATING TYPE: AI

SYDGEN EXCEED 3223<sup>PV</sup>

SYDGEN GOOGOL<sup>#</sup>  
SYDGEN FOREVER LADY 1255<sup>#</sup>

S A V 707 RITO 9969<sup>#</sup>

RITO 707 OF IDEAL 3407 7075<sup>#</sup>  
BR POLLY 8077-472<sup>#</sup>

SIRE: USA18170041 SYDGEN ENHANCE<sup>SV</sup>

DAM: ABWK519 GLENMORGAN RITO 9969 LADY K519<sup>#</sup>

SYDGEN RITA 2618<sup>#</sup>

SYDGEN LIBERTY GA 8627<sup>#</sup>  
FOX RUN RITA 9308<sup>#</sup>

S A V ABIGALE 0312<sup>#</sup>

S A V PROVIDENCE 6922<sup>#</sup>  
S A V ABIGALE 7006<sup>#</sup>

Mid July 2021 TransTasman Angus Cattle Evaluation

Traits Observed: GL,BWT,200WT,400WT,SC,Scan(EMA,Rib,Rump,IMF),Genomics



Selection Indexes	Angus Breeding: \$120		Domestic: \$118		Heavy Grain: \$129			Heavy Grass: \$118									
	CED	CEDT	GL	BW	200	400	600	MCW	MLK	SS	DC	CWT	EMA	RIB	RMP	RBY	IMF
EBV	+0.9	-2.7	-4.7	+5.2	+59	+106	+137	+121	+17	+2.8	-1.2	+81	+4.8	-3.9	-4.0	+1.8	+1.7
Acc	60%	45%	83%	74%	72%	72%	73%	69%	63%	71%	36%	67%	65%	69%	66%	66%	65%

Purchaser: ..... Price \$ .....



# GLENMORGAN ENHANCE MAN R102<sup>SV</sup>

## HBR

DOB: 22/03/2020

AMFU,CAFU,DDFU,NHFU

IDENT: ABWR102

MATING TYPE: AI

SYDGEN EXCEED 3223<sup>PV</sup>

SYDGEN GOOGOL<sup>#</sup>  
SYDGEN FOREVER LADY 1255<sup>#</sup>

GLENMORGAN HARVESTOR MAN  
K510<sup>SV</sup>

S A V HARVESTOR 0338<sup>#</sup>  
S A V BLACKBIRD 1264<sup>#</sup>

SIRE: USA18170041 SYDGEN ENHANCE<sup>SV</sup>

DAM: ABWM407 GLENMORGAN HARVESTOR LADY M407<sup>#</sup>

SYDGEN RITA 2618<sup>#</sup>

SYDGEN LIBERTY GA 8627<sup>#</sup>  
FOX RUN RITA 9308<sup>#</sup>

GLENMORGAN TEN X LADY J209<sup>#</sup>

A A R TEN X 7008 S A<sup>SV</sup>  
WATTLETOP USUAL D275<sup>#</sup>

Mid July 2021 TransTasman Angus Cattle Evaluation

Traits Observed: GL,BWT,200WT,400WT,SC,Scan(EMA,Rib,Rump,IMF),Genomics



Selection Indexes	Angus Breeding: \$143		Domestic: \$132		Heavy Grain: \$150			Heavy Grass: \$142									
	CED	CEDT	GL	BW	200	400	600	MCW	MLK	SS	DC	CWT	EMA	RIB	RMP	RBY	IMF
EBV	+2.0	+1.5	-5.8	+4.5	+59	+107	+144	+120	+14	+2.6	-1.4	+76	+11.4	-2.0	-2.5	+2.7	+1.2
Acc	59%	45%	83%	73%	71%	71%	72%	68%	62%	71%	35%	65%	64%	68%	65%	65%	64%

Purchaser: ..... Price \$ .....



# GLENMORGAN ENHANCE MAN R107<sup>SV</sup>

## HBR

DOB: 25/03/2020

AMFU,CAFU,DDFU,NHFU

IDENT: ABWR107

MATING TYPE: AI

SYDGEN EXCEED 3223<sup>PV</sup>

SYDGEN GOOGOL<sup>#</sup>  
SYDGEN FOREVER LADY 1255<sup>#</sup>

MILLAH MURRAH KLOONEY K42<sup>PV</sup>

BOOROOMOOKA THEO T030<sup>SV</sup>  
MILLAH MURRAH PRUE H4<sup>SV</sup>

SIRE: USA18170041 SYDGEN ENHANCE<sup>SV</sup>

DAM: ABWM317 GLENMORGAN KLOONEY LADY M317<sup>#</sup>

SYDGEN RITA 2618<sup>#</sup>

SYDGEN LIBERTY GA 8627<sup>#</sup>  
FOX RUN RITA 9308<sup>#</sup>

WATTLETOP ANN F88<sup>#</sup>

L T 598 BANDO 9074<sup>#</sup>  
WATTLETOP ANN V58<sup>SV</sup>

Mid July 2021 TransTasman Angus Cattle Evaluation

Traits Observed: GL,BWT,200WT,400WT,SC,Scan(EMA,Rib,Rump,IMF),Genomics



Selection Indexes	Angus Breeding: \$131		Domestic: \$122		Heavy Grain: \$143			Heavy Grass: \$126									
	CED	CEDT	GL	BW	200	400	600	MCW	MLK	SS	DC	CWT	EMA	RIB	RMP	RBY	IMF
EBV	+0.6	+3.0	-4.7	+4.9	+62	+109	+140	+134	+14	+2.8	-3.7	+85	+4.7	-0.9	-1.5	+0.3	+2.2
Acc	60%	48%	83%	72%	71%	71%	72%	68%	62%	71%	38%	66%	64%	68%	65%	65%	64%

Purchaser: ..... Price \$ .....



# GLENMORGAN ENHANCE MAN R103<sup>SV</sup>

## HBR

DOB: 23/03/2020

AMFU,CAFU,DDFU,NHFU

IDENT: ABWR103

MATING TYPE: AI

SYDGEN EXCEED 3223<sup>PV</sup>

SYDGEN GOOGOL<sup>#</sup>  
SYDGEN FOREVER LADY 1255<sup>#</sup>

MUSGRAVE BIG SKY<sup>PV</sup>

CONNELLY EARNAN 076E<sup>PV</sup>  
SAV PRIMROSE 7861<sup>#</sup>

SIRE: USA18170041 SYDGEN ENHANCE<sup>SV</sup>

DAM: NWPM159 WATTLETOP USUAL M159<sup>#</sup>

SYDGEN RITA 2618<sup>#</sup>

SYDGEN LIBERTY GA 8627<sup>#</sup>  
FOX RUN RITA 9308<sup>#</sup>

WATTLETOP USUAL K117<sup>#</sup>

TUWHARETOA REGENT D145<sup>SV</sup>  
WATTLETOP USUAL D87<sup>SV</sup>

Mid July 2021 TransTasman Angus Cattle Evaluation

Traits Observed: GL,BWT,200WT,400WT,SC,Scan(EMA,Rib,Rump,IMF),Genomics



Selection Indexes	Angus Breeding: \$147		Domestic: \$126		Heavy Grain: \$159			Heavy Grass: \$142									
	CED	CEDT	GL	BW	200	400	600	MCW	MLK	SS	DC	CWT	EMA	RIB	RMP	RBY	IMF
EBV	-4.8	+4.7	-6.0	+6.5	+67	+111	+151	+128	+17	+3.0	-5.3	+81	+7.3	-0.9	+0.3	+0.9	+2.0
Acc	61%	49%	83%	73%	72%	72%	73%	69%	63%	71%	39%	66%	65%	69%	65%	65%	64%

Purchaser: ..... Price \$ .....



# GLENMORGAN ENHANCE MAN R106<sup>SV</sup>

## HBR

DOB: 25/03/2020

AMFU,CAFU,DDFU,NHFU

IDENT: ABWR106

MATING TYPE: AI

SYDGEN EXCEED 3223<sup>PV</sup>

SYDGEN GOOGOL<sup>#</sup>  
SYDGEN FOREVER LADY 1255<sup>#</sup>

S A V HARVESTOR 0338<sup>#</sup>

S A V HERITAGE 6295<sup>#</sup>  
S A V EMBLYNETTE 7749<sup>#</sup>

SIRE:USA18170041 SYDGEN ENHANCE<sup>SV</sup>

DAM: ABWK523 GLENMORGAN HARVESTOR LADY K523<sup>#</sup>

SYDGEN RITA 2618<sup>#</sup>

SYDGEN LIBERTY GA 8627<sup>#</sup>  
FOX RUN RITA 9308<sup>#</sup>

S A V EMBLYNETTE 1025<sup>#</sup>

S A V BRAND NAME 9115<sup>#</sup>  
S A V EMBLYNETTE 5483<sup>#</sup>

Mid July 2021 TransTasman Angus Cattle Evaluation

Traits Observed: GL,BWT,200WT,400WT,SC,Scan(EMA,Rib,Rump,IMF),Genomics



Selection Indexes	Angus Breeding: \$114		Domestic: \$116		Heavy Grain: \$112			Heavy Grass:\$116									
	CED	CEDT	GL	BW	200	400	600	MCW	MLK	SS	DC	CWT	EMA	RIB	RMP	RBY	IMF
EBV	+5.4	+3.7	-4.2	+3.0	+50	+88	+112	+86	+20	+2.3	-3.5	+60	+5.9	-1.7	-1.6	+1.4	+1.2
Acc	59%	45%	83%	74%	72%	72%	73%	69%	63%	71%	36%	66%	65%	69%	65%	65%	64%

Purchaser:.....Price \$.....



# GLENMORGAN TEN X K333 MAN R109<sup>SV</sup>

## HBR

DOB: 09/04/2020

AMFU,CAFU,DDFU,NHFU

IDENT: ABWR109

MATING TYPE: Natural

A A R TEN X 7008 S A<sup>SV</sup>

MYTTY IN FOCUS<sup>#</sup>  
A A R LADY KELTON 5551<sup>#</sup>

MATAURI REALITY 839<sup>#</sup>

SCHURRPT REALITY X723<sup>#</sup>  
MATAURI 06663<sup>#</sup>

SIRE:ABWK333 GLENMORGAN TEN X MAN K333<sup>SV</sup>

DAM: ABWM102 GLENMORGAN REALITY LADY M102<sup>#</sup>

WATTLETOP ANN F88<sup>#</sup>

LT 598 BANDO 9074<sup>#</sup>  
WATTLETOP ANN V58<sup>#</sup>

GLENMORGAN TEN X LADY K260<sup>#</sup>

A A R TEN X 7008 S A<sup>SV</sup>  
WATTLETOP BARUNAH G326<sup>#</sup>

Mid July 2021 TransTasman Angus Cattle Evaluation

Traits Observed: BWT,200WT,400WT,SC,Scan(EMA,Rib,Rump,IMF),Genomics



Selection Indexes	Angus Breeding: \$129		Domestic: \$116		Heavy Grain: \$142			Heavy Grass:\$124									
	CED	CEDT	GL	BW	200	400	600	MCW	MLK	SS	DC	CWT	EMA	RIB	RMP	RBY	IMF
EBV	+6.5	+4.8	-7.6	+2.8	+52	+98	+133	+115	+21	+4.2	-3.7	+71	+1.7	+0.2	-1.4	+0.0	+2.3
Acc	56%	51%	71%	71%	69%	69%	70%	68%	62%	68%	44%	66%	63%	68%	65%	66%	63%

Purchaser:.....Price \$.....



# GLENMORGAN POWERPOINT MAN R234<sup>SV</sup>

## HBR

DOB: 16/08/2020

AMFU,CAFU,DDFU,NHFU

IDENT: ABWR234

MATING TYPE: AI

TEHAMA REVERE<sup>#</sup>

D R SIERRA CUT 7404<sup>#</sup>  
TEHAMA ELITE BLACKBIRD T003<sup>#</sup>

V A R DISCOVERY 2240<sup>PV</sup>

A A R TEN X 7008 S A<sup>SV</sup>  
DEER VALLEY RITA 0308<sup>#</sup>

SIRE:USA18159093 S POWERPOINT WS 5503<sup>PV</sup>

DAM: ABWN296 GLENMORGAN DISCOVERY LADY N296<sup>#</sup>

S QUEEN ESSA 248<sup>#</sup>

S SUMMIT 956<sup>#</sup>  
S QUEEN ESSA 0131<sup>#</sup>

GLENMORGAN RIGHT TIME LADY  
G249<sup>#</sup>

GLENMORGAN RIGHT TIME E81<sup>SV</sup>  
WATTLETOP BARUNAH X91<sup>#</sup>

Mid July 2021 TransTasman Angus Cattle Evaluation

Traits Observed: GL,BWT,200WT,Genomics



Selection Indexes	Angus Breeding: \$146		Domestic: \$140		Heavy Grain: \$155			Heavy Grass:\$142									
	CED	CEDT	GL	BW	200	400	600	MCW	MLK	SS	DC	CWT	EMA	RIB	RMP	RBY	IMF
EBV	+2.3	+8.2	-4.4	+3.6	+68	+117	+140	+120	+15	+2.6	-4.7	+80	+7.9	+0.5	-1.5	+1.0	+2.0
Acc	56%	45%	84%	74%	72%	72%	73%	69%	63%	67%	37%	66%	64%	69%	65%	65%	64%

Purchaser:.....Price \$.....



# GLENMORGAN POWERPOINT MAN R243<sup>SV</sup>

## HBR

DOB: 18/08/2020

AMFU,CAFU,DDFU,NHFU

IDENT: ABWR243

MATING TYPE: AI

TEHAMA REVERE<sup>#</sup>

D R SIERRA CUT 7404<sup>#</sup>  
TEHAMA ELITE BLACKBIRD T003<sup>#</sup>

CLUDEN NEWRY EQUATOR F10<sup>SV</sup>

ARDROSSAN EQUATOR A241<sup>PV</sup>  
CLUDEN NEWRY ARAWATEA A162<sup>#</sup>

SIRE:USA18159093 S POWERPOINT WS 5503<sup>PV</sup>

DAM: NWPL137 WATTLETOP BARUNAH L137<sup>#</sup>

S QUEEN ESSA 248<sup>#</sup>

S SUMMIT 956<sup>#</sup>  
S QUEEN ESSA 0131<sup>#</sup>

WATTLETOP BARUNAH H214<sup>#</sup>

B/R FUTURE DIRECTION 4268<sup>SV</sup>  
WATTLETOP BARUNAH UZ318<sup>#</sup>

Mid July 2021 TransTasman Angus Cattle Evaluation

Traits Observed: GL,BWT,200WT,Genomics



Selection Indexes	Angus Breeding: \$125		Domestic: \$120		Heavy Grain: \$128			Heavy Grass:\$124									
	CED	CEDT	GL	BW	200	400	600	MCW	MLK	SS	DC	CWT	EMA	RIB	RMP	RBY	IMF
EBV	-1.9	+8.5	-6.1	+4.4	+55	+106	+130	+105	+19	+2.0	-4.4	+78	+5.1	+0.8	+0.6	-0.1	+1.7
Acc	56%	46%	85%	74%	72%	72%	73%	70%	64%	67%	38%	67%	64%	69%	65%	66%	64%

Purchaser:.....Price \$.....





# GLENMORGAN POWERPOINT MAN R257<sup>SV</sup>

## HBR

DOB: 20/08/2020

AMFU,CAFU,DDFU,NHFU

IDENT: ABWR257

MATING TYPE: AI

TEHAMA REVERE<sup>#</sup>

D R SIERRA CUT 7404<sup>#</sup>  
TEHAMA ELITE BLACKBIRD T003<sup>#</sup>  
S SUMMIT 956<sup>#</sup>  
S QUEEN ESSA 0131<sup>#</sup>

MATAURI REALITY 839<sup>#</sup>

SCHURRTOP REALITY X723<sup>#</sup>  
MATAURI 06663<sup>#</sup>  
A A R TEN X 7008 S A<sup>SV</sup>  
GLENMORGAN THUNDERBIRD LADY G221<sup>#</sup>

SIRE: USA18159093 S POWERPOINT WS 5503<sup>PV</sup>

DAM: ABWN230 GLENMORGAN REALITY LADY N230<sup>#</sup>

S QUEEN ESSA 248<sup>#</sup>

GLENMORGAN TEN X LADY K321<sup>#</sup>

Mid July 2021 TransTasman Angus Cattle Evaluation

Traits Observed: GL,BWT,200WT,Genomics



Selection Indexes	Angus Breeding: \$123		Domestic: \$119		Heavy Grain: \$127			Heavy Grass: \$122									
	CED	CEDT	GL	BW	200	400	600	MCW	MLK	SS	DC	CWT	EMA	RIB	RMP	RBY	IMF
EBV	+3.9	+9.9	-5.1	+4.3	+59	+100	+125	+113	+11	+1.9	-4.4	+72	+5.1	+1.1	-1.2	-0.2	+1.8
Acc	57%	48%	84%	74%	73%	72%	74%	70%	64%	68%	41%	68%	66%	70%	66%	67%	66%

Purchaser: ..... Price \$ .....



# GLENMORGAN POWERPOINT MAN R232<sup>SV</sup>

## HBR

DOB: 15/08/2020

AMFU,CAFU,DDF,NHFU

IDENT: ABWR232

MATING TYPE: AI

TEHAMA REVERE<sup>#</sup>

D R SIERRA CUT 7404<sup>#</sup>  
TEHAMA ELITE BLACKBIRD T003<sup>#</sup>  
S SUMMIT 956<sup>#</sup>  
S QUEEN ESSA 0131<sup>#</sup>

WATTLETOP J95<sup>PV</sup>

TUWHARETOA REGENT D145<sup>PV</sup>  
WATTLETOP IDOLDEE F171<sup>#</sup>

SIRE: USA18159093 S POWERPOINT WS 5503<sup>PV</sup>

DAM: ABWN208 GLENMORGAN N208<sup>#</sup>

S QUEEN ESSA 248<sup>#</sup>

WATTLETOP DANDLOO G133<sup>#</sup>

TE MANIA AFRICA A217<sup>PV</sup>  
WATTLETOP DANDLOO D175<sup>SV</sup>

Mid July 2021 TransTasman Angus Cattle Evaluation

Traits Observed: GL,BWT,200WT,Genomics



Selection Indexes	Angus Breeding: \$127		Domestic: \$117		Heavy Grain: \$134			Heavy Grass: \$124									
	CED	CEDT	GL	BW	200	400	600	MCW	MLK	SS	DC	CWT	EMA	RIB	RMP	RBY	IMF
EBV	+1.8	+5.3	-6.5	+4.9	+56	+99	+129	+118	+15	+1.1	-4.8	+76	+5.2	+0.5	-0.2	-0.1	+1.9
Acc	55%	45%	84%	73%	72%	71%	73%	69%	63%	66%	37%	66%	64%	69%	65%	65%	64%

Purchaser: ..... Price \$ .....



# GLENMORGAN POWERPOINT MAN R239<sup>SV</sup>

## HBR

DOB: 15/08/2020

AMFU,CAFU,DDFU,NHFU

IDENT: ABWR239

MATING TYPE: AI

TEHAMA REVERE<sup>#</sup>

D R SIERRA CUT 7404<sup>#</sup>  
TEHAMA ELITE BLACKBIRD T003<sup>#</sup>  
S SUMMIT 956<sup>#</sup>  
S QUEEN ESSA 0131<sup>#</sup>

CARABAR DOCKLANDS D62<sup>PV</sup>

KAROO W109 DIRECTION Z181<sup>SV</sup>  
CARABAR BLACKCAP MARY B12<sup>PV</sup>

SIRE: USA18159093 S POWERPOINT WS 5503<sup>PV</sup>

DAM: NWP48 WATTLETOP USUAL M48<sup>#</sup>

S QUEEN ESSA 248<sup>#</sup>

WATTLETOP USUAL K43<sup>#</sup>

WATTLETOP SITZ 458N E111<sup>SV</sup>  
WATTLETOP USUAL H161<sup>#</sup>

Mid July 2021 TransTasman Angus Cattle Evaluation

Traits Observed: GL,BWT,200WT



Selection Indexes	Angus Breeding: \$130		Domestic: \$121		Heavy Grain: \$129			Heavy Grass: \$130									
	CED	CEDT	GL	BW	200	400	600	MCW	MLK	SS	DC	CWT	EMA	RIB	RMP	RBY	IMF
EBV	+1.6	+5.7	-6.3	+4.6	+58	+103	+131	+110	+19	+2.0	-5.3	+77	+6.4	+1.3	+1.4	-0.1	+1.4
Acc	55%	42%	85%	74%	68%	65%	65%	61%	55%	59%	35%	58%	57%	60%	57%	57%	57%

Purchaser: ..... Price \$ .....



# GLENMORGAN POWERPOINT MAN R229<sup>SV</sup>

## APR

DOB: 15/08/2020

AMFU,CAFU,DDFU,NHFU

IDENT: ABWR229

MATING TYPE: AI

TEHAMA REVERE<sup>#</sup>

D R SIERRA CUT 7404<sup>#</sup>  
TEHAMA ELITE BLACKBIRD T003<sup>#</sup>  
S SUMMIT 956<sup>#</sup>  
S QUEEN ESSA 0131<sup>#</sup>

DEER VALLEY PATRIOT 3222<sup>SV</sup>

CONNEALY CAPITALIST 028<sup>#</sup>  
DEER VALLEY RITA 0274<sup>#</sup>

SIRE: USA18159093 S POWERPOINT WS 5503<sup>PV</sup>

DAM: ABWN409 GLENMORGAN PATRIOT LADY N409<sup>#</sup>

S QUEEN ESSA 248<sup>#</sup>

GLENMORGAN F213<sup>#</sup>

ARDROSSAN EQUINOX B75<sup>#</sup>  
UNKNOWN

Mid July 2021 TransTasman Angus Cattle Evaluation

Traits Observed: GL,BWT,200WT,Genomics



Selection Indexes	Angus Breeding: \$117		Domestic: \$122		Heavy Grain: \$115			Heavy Grass: \$121									
	CED	CEDT	GL	BW	200	400	600	MCW	MLK	SS	DC	CWT	EMA	RIB	RMP	RBY	IMF
EBV	+2.2	+9.4	-6.3	+4.0	+59	+104	+128	+112	+14	-0.5	-1.0	+72	+6.8	-1.1	-2.3	+1.4	+1.1
Acc	54%	43%	84%	73%	72%	72%	73%	69%	63%	66%	35%	66%	64%	68%	65%	64%	64%

Purchaser: ..... Price \$ .....



# GLENMORGAN POWERPOINT MAN R260<sup>SV</sup>

## HBR

DOB: 20/08/2020

AMFU,CAFU,DDFU,NHFU

IDENT: ABWR260

MATING TYPE: AI

TEHAMA REVERE<sup>#</sup>

D R SIERRA CUT 7404<sup>#</sup>  
TEHAMA ELITE BLACKBIRD T003<sup>#</sup>  
S SUMMIT 956<sup>#</sup>  
S QUEEN ESSA 0131<sup>#</sup>

SYDGEN BLACK PEARL 2006<sup>PV</sup>

SYDGEN TRUST 6228<sup>#</sup>  
SYDGEN ANITA 8611<sup>#</sup>

SIRE:USA18159093 S POWERPOINT WS 5503<sup>PV</sup>

DAM: NWPMP90 WATTLETOP ANN M90<sup>#</sup>

S QUEEN ESSA 248<sup>#</sup>

WATTLETOP J305<sup>#</sup>

WATTLETOP CONNECTION D144 F371<sup>#</sup>  
WATTLETOP ANN B348<sup>#</sup>

Mid July 2021 TransTasman Angus Cattle Evaluation

Traits Observed: GL,BWT,200WT,Genomics



Selection Indexes	Angus Breeding: \$113		Domestic: \$113		Heavy Grain: \$112			Heavy Grass:\$114									
	CED	CEDT	GL	BW	200	400	600	MCW	MLK	SS	DC	CWT	EMA	RIB	RMP	RBY	IMF
EBV	+0.7	+8.1	-4.7	+4.8	+55	+92	+115	+107	+12	+0.5	-3.7	+74	+7.0	+0.0	-0.8	+0.5	+1.5
Acc	56%	46%	84%	73%	71%	71%	72%	68%	62%	66%	37%	65%	63%	68%	64%	64%	63%

Purchaser:.....Price \$.....



# GLENMORGAN POWERPOINT MAN R237<sup>SV</sup>

## HBR

DOB: 15/08/2020

AMFU,CAFU,DDFU,NHFU

IDENT: ABWR237

MATING TYPE: AI

TEHAMA REVERE<sup>#</sup>

D R SIERRA CUT 7404<sup>#</sup>  
TEHAMA ELITE BLACKBIRD T003<sup>#</sup>  
S SUMMIT 956<sup>#</sup>  
S QUEEN ESSA 0131<sup>#</sup>

WATTLETOP BUSHMAN E17<sup>SV</sup>

WILLALOOKA BUSHMAN B333<sup>SV</sup>  
WATTLETOP USUAL C93<sup>#</sup>

SIRE:USA18159093 S POWERPOINT WS 5503<sup>PV</sup>

DAM: NWP351 WATTLETOP USUAL G351<sup>#</sup>

S QUEEN ESSA 248<sup>#</sup>

WATTLETOP USUAL C357<sup>#</sup>

WATTLETOP ACONITES A95<sup>SV</sup>  
WATTLETOP USUAL Z286<sup>#</sup>

Mid July 2021 TransTasman Angus Cattle Evaluation

Traits Observed: GL,BWT,200WT,Genomics



Selection Indexes	Angus Breeding: \$115		Domestic: \$123		Heavy Grain: \$103			Heavy Grass:\$118									
	CED	CEDT	GL	BW	200	400	600	MCW	MLK	SS	DC	CWT	EMA	RIB	RMP	RBY	IMF
EBV	+2.7	+10.0	-5.9	+2.9	+52	+89	+98	+78	+8	+0.9	-6.5	+57	+8.3	+0.7	+0.5	+1.0	+0.6
Acc	54%	43%	84%	73%	71%	71%	72%	69%	63%	65%	34%	65%	62%	67%	63%	63%	62%

Purchaser:.....Price \$.....



# GLENMORGAN POWERPOINT MAN R226<sup>SV</sup>

## HBR

DOB: 15/08/2020

AMFU,CAFU,DDFU,NHFU

IDENT: ABWR226

MATING TYPE: AI

TEHAMA REVERE<sup>#</sup>

D R SIERRA CUT 7404<sup>#</sup>  
TEHAMA ELITE BLACKBIRD T003<sup>#</sup>  
S SUMMIT 956<sup>#</sup>  
S QUEEN ESSA 0131<sup>#</sup>

V A R DISCOVERY 2240<sup>PV</sup>

A A R TEN X 7008 S A<sup>SV</sup>  
DEER VALLEY RITA 0308<sup>#</sup>

SIRE:USA18159093 S POWERPOINT WS 5503<sup>PV</sup>

DAM: ABWN248 GLENMORGAN DISCOVERY LADY N248<sup>#</sup>

S QUEEN ESSA 248<sup>#</sup>

GLENMORGAN BENNET TOTAL  
LADY H4<sup>#</sup>

K C F BENNETT TOTAL<sup>#</sup>  
GLENMORGAN BISMARCK LADY F204<sup>#</sup>

Mid July 2021 TransTasman Angus Cattle Evaluation

Traits Observed: GL,BWT,200WT,Genomics



Selection Indexes	Angus Breeding: \$152		Domestic: \$142		Heavy Grain: \$166			Heavy Grass:\$144									
	CED	CEDT	GL	BW	200	400	600	MCW	MLK	SS	DC	CWT	EMA	RIB	RMP	RBY	IMF
EBV	+2.6	+9.6	-5.2	+3.7	+62	+114	+137	+129	+15	+2.0	-6.3	+77	+9.5	-0.1	-1.9	+1.4	+1.9
Acc	56%	46%	84%	74%	73%	72%	73%	70%	64%	67%	38%	67%	65%	69%	66%	66%	65%

Purchaser:.....Price \$.....



# GLENMORGAN POWERPOINT MAN R235<sup>SV</sup>

## HBR

DOB: 16/08/2020

AMFU,CAFU,DDFU,NHFU

IDENT: ABWR235

MATING TYPE: AI

TEHAMA REVERE<sup>#</sup>

D R SIERRA CUT 7404<sup>#</sup>  
TEHAMA ELITE BLACKBIRD T003<sup>#</sup>  
S SUMMIT 956<sup>#</sup>  
S QUEEN ESSA 0131<sup>#</sup>

MUSGRAVE BIG SKY<sup>PV</sup>

CONNELLY EARNAN 076E<sup>PV</sup>  
SAV PRIMROSE 7861<sup>#</sup>

SIRE:USA18159093 S POWERPOINT WS 5503<sup>PV</sup>

DAM: WFNAN9 WIRIBILLA FARMS NANCY N9<sup>#</sup>

S QUEEN ESSA 248<sup>#</sup>

WATTLETOP USUAL H191<sup>#</sup>

WATTLETOP SITZ 458N E111<sup>SV</sup>  
WATTLETOP USUAL C224<sup>#</sup>

Mid July 2021 TransTasman Angus Cattle Evaluation

Traits Observed: GL,BWT,200WT,Genomics



Selection Indexes	Angus Breeding: \$140		Domestic: \$129		Heavy Grain: \$142			Heavy Grass:\$137									
	CED	CEDT	GL	BW	200	400	600	MCW	MLK	SS	DC	CWT	EMA	RIB	RMP	RBY	IMF
EBV	-0.4	+10.9	-5.3	+4.0	+61	+105	+127	+103	+14	+1.3	-8.4	+72	+7.3	+2.7	+2.6	-0.6	+1.7
Acc	55%	46%	84%	73%	71%	71%	72%	69%	63%	66%	38%	66%	64%	68%	64%	64%	64%

Purchaser:.....Price \$.....





# GLENMORGAN POWERPOINT MAN R225<sup>SV</sup>

## APR

DOB: 15/08/2020

AMFU,CAFU,DDFU,NHFU

IDENT: ABWR225

MATING TYPE: AI

TEHAMA REVERE<sup>#</sup>

D R SIERRA CUT 7404<sup>#</sup>  
TEHAMA ELITE BLACKBIRD T003<sup>#</sup>  
S SUMMIT 956<sup>#</sup>  
S QUEEN ESSA 0131<sup>#</sup>

MATAURI REALITY 839<sup>#</sup>

SCHURRTOP REALITY X723<sup>#</sup>  
MATAURI 06663<sup>#</sup>  
S A V REGISTRY 2831<sup>#</sup>  
GLENMORGAN D140<sup>#</sup>

SIRE: USA18159093 S POWERPOINT WS 5503<sup>PV</sup>

DAM: ABWN106 GLENMORGAN REALITY LADY N106<sup>#</sup>

S QUEEN ESSA 248<sup>#</sup>

GLENMORGAN REGISTRY LADY  
L387<sup>#</sup>

Mid July 2021 TransTasman Angus Cattle Evaluation

Traits Observed: GL,BWT,200WT,Genomics



Selection Indexes	Angus Breeding: \$121		Domestic: \$123		Heavy Grain: \$118			Heavy Grass: \$124									
	CED	CEDT	GL	BW	200	400	600	MCW	MLK	SS	DC	CWT	EMA	RIB	RMP	RBY	IMF
EBV	+4.8	+7.5	-6.2	+3.3	+58	+107	+128	+120	+6	+0.9	-2.7	+70	+4.1	+1.8	+1.4	-0.7	+1.4
Acc	55%	46%	84%	73%	72%	71%	72%	69%	63%	66%	39%	66%	64%	69%	65%	65%	64%

Purchaser: ..... Price \$ .....



# GLENMORGAN POWERPOINT MAN R224<sup>SV</sup>

## HBR

DOB: 16/08/2020

AMFU,CAFU,DDFU,NHFU

IDENT: ABWR224

MATING TYPE: AI

TEHAMA REVERE<sup>#</sup>

D R SIERRA CUT 7404<sup>#</sup>  
TEHAMA ELITE BLACKBIRD T003<sup>#</sup>  
S SUMMIT 956<sup>#</sup>  
S QUEEN ESSA 0131<sup>#</sup>

GLENAVON C140<sup>SV</sup>

ARDROSSAN ADMIRAL A2<sup>PV</sup>  
GLENAVON X107<sup>#</sup>  
ARDROSSAN CONNECTION X15<sup>SV</sup>  
WATTLETOP V11<sup>#</sup>

SIRE: USA18159093 S POWERPOINT WS 5503<sup>PV</sup>

DAM: NWP312 WATTLETOP DANDLOO G312<sup>#</sup>

S QUEEN ESSA 248<sup>#</sup>

WATTLETOP DANDLOO D120<sup>SV</sup>

Mid July 2021 TransTasman Angus Cattle Evaluation

Traits Observed: GL,BWT,200WT,Genomics



Selection Indexes	Angus Breeding: \$113		Domestic: \$112		Heavy Grain: \$105			Heavy Grass: \$118									
	CED	CEDT	GL	BW	200	400	600	MCW	MLK	SS	DC	CWT	EMA	RIB	RMP	RBY	IMF
EBV	+6.6	+5.8	-7.8	+3.4	+50	+92	+118	+104	+11	+0.7	-2.9	+60	+3.6	+1.4	+1.9	-0.3	+1.0
Acc	56%	46%	84%	74%	72%	72%	73%	70%	64%	67%	37%	66%	64%	69%	65%	65%	64%

Purchaser: ..... Price \$ .....



# GLENMORGAN KEYSTONE MAN R117<sup>SV</sup>

## HBR

DOB: 16/07/2020

AMFU,CAFU,DDFU,NHFU

IDENT: ABWR117

MATING TYPE: AI

RENNYLEA EDMUND E11<sup>PV</sup>

BOOROOMOOKA UNDERTAKEN Y145<sup>PV</sup>  
LAWSONS HENRY VIII Y5<sup>SV</sup>  
S A V FRONT RUNNER 0713<sup>#</sup>  
LANDFALL ARCHER X9<sup>PV</sup>

AYRVALE GENERAL G18<sup>PV</sup>

TE MANIA BERKLEY B1<sup>PV</sup>  
AYRVALE EASE E3<sup>SV</sup>  
A A R TEN X 7008 S A<sup>SV</sup>  
WATTLETOP DANDLOO D94<sup>#</sup>

SIRE: TFAK132 LANDFALL KEYSTONE K132<sup>PV</sup>

DAM: ABWP325 GLENMORGAN GENERAL LADY P325<sup>#</sup>

LANDFALL ARCHER H807<sup>SV</sup>

GLENMORGAN TEN X LADY J323<sup>#</sup>

Mid July 2021 TransTasman Angus Cattle Evaluation

Traits Observed: GL,BWT,200WT,Genomics



Selection Indexes	Angus Breeding: \$164		Domestic: \$141		Heavy Grain: \$185			Heavy Grass: \$154									
	CED	CEDT	GL	BW	200	400	600	MCW	MLK	SS	DC	CWT	EMA	RIB	RMP	RBY	IMF
EBV	+1.9	-0.2	-7.6	+5.0	+69	+124	+166	+157	+17	+2.5	-5.4	+99	+8.2	-1.7	-3.7	+2.0	+1.8
Acc	61%	54%	83%	72%	70%	70%	71%	68%	64%	66%	43%	65%	63%	68%	65%	65%	63%

Purchaser: ..... Price \$ .....



# GLENMORGAN KEYSTONE MAN R116<sup>SV</sup>

## HBR

DOB: 15/07/2020

AMFU,CAFU,DDFU,NHFU

IDENT: ABWR116

MATING TYPE: AI

RENNYLEA EDMUND E11<sup>PV</sup>

BOOROOMOOKA UNDERTAKEN Y145<sup>PV</sup>  
LAWSONS HENRY VIII Y5<sup>SV</sup>  
S A V FRONT RUNNER 0713<sup>#</sup>  
LANDFALL ARCHER X9<sup>PV</sup>

MUSGRAVE BIG SKY<sup>PV</sup>

CONNELLY EARNAN 076E<sup>PV</sup>  
SAV PRIMROSE 7861<sup>#</sup>  
WATTLETOP SITZ 458N E111<sup>SV</sup>  
WATTLETOP USUAL F80<sup>#</sup>

SIRE: TFAK132 LANDFALL KEYSTONE K132<sup>PV</sup>

DAM: ABWP283 GLENMORGAN BIG SKY LADY P283<sup>#</sup>

LANDFALL ARCHER H807<sup>SV</sup>

WATTLETOP USUAL H125<sup>#</sup>

Mid July 2021 TransTasman Angus Cattle Evaluation

Traits Observed: GL,BWT,200WT,Genomics



Selection Indexes	Angus Breeding: \$150		Domestic: \$131		Heavy Grain: \$162			Heavy Grass: \$145									
	CED	CEDT	GL	BW	200	400	600	MCW	MLK	SS	DC	CWT	EMA	RIB	RMP	RBY	IMF
EBV	+4.4	+11.0	-9.1	+3.2	+60	+111	+150	+139	+15	+1.3	-4.8	+87	+5.3	-0.3	-0.8	+0.4	+1.7
Acc	62%	55%	84%	73%	72%	72%	73%	70%	67%	68%	44%	67%	65%	69%	66%	66%	65%

Purchaser: ..... Price \$ .....



# GLENMORGAN KEYSTONE MAN R146<sup>SV</sup>

## HBR

DOB: 26/07/2020

AMFU,CAFU,DDFU,NHFU

IDENT: ABWR146

MATING TYPE: AI

RENNYLEA EDMUND E11<sup>PV</sup>

BOOROOMOOKA UNDERTAKEN Y145<sup>PV</sup>  
LAWSONS HENRY VIII Y5<sup>SV</sup>

MUSGRAVE BIG SKY<sup>PV</sup>

CONNEALY EARNAN 076E<sup>PV</sup>  
SAV PRIMROSE 7861<sup>#</sup>

SIRE: TFAK132 LANDFALL KEYSTONE K132<sup>PV</sup>

DAM: ABWP209 GLENMORGAN BIG SKY LADY P209<sup>#</sup>

LANDFALL ARCHER H807<sup>SV</sup>

S A V FRONT RUNNER 0713<sup>#</sup>  
LANDFALL ARCHER X9<sup>PV</sup>

WATTLETOP GILDA L342<sup>#</sup>

WATTLETOP FRANKLIN J63<sup>SV</sup>  
WATTLETOP J246<sup>#</sup>

Mid July 2021 TransTasman Angus Cattle Evaluation

Traits Observed: GL,BWT,200WT,Genomics



Selection Indexes	Angus Breeding: \$138		Domestic: \$125		Heavy Grain: \$144			Heavy Grass: \$133									
	CED	CEDT	GL	BW	200	400	600	MCW	MLK	SS	DC	CWT	EMA	RIB	RMP	RBY	IMF
EBV	+0.3	+7.3	-4.7	+3.7	+57	+105	+134	+124	+20	+2.8	-7.6	+85	+7.1	+1.0	-0.9	+0.8	+1.2
Acc	61%	54%	83%	72%	71%	71%	72%	70%	65%	67%	42%	66%	64%	68%	65%	65%	64%

Purchaser: ..... Price \$ .....



# GLENMORGAN KEYSTONE MAN R130<sup>SV</sup>

## HBR

DOB: 21/07/2020

AMFU,CAFU,DDFU,NHFU

IDENT: ABWR130

MATING TYPE: AI

RENNYLEA EDMUND E11<sup>PV</sup>

BOOROOMOOKA UNDERTAKEN Y145<sup>PV</sup>  
LAWSONS HENRY VIII Y5<sup>SV</sup>

WATTLETOP SITZ 458N E111<sup>SV</sup>

SITZ NEW DESIGN 458N<sup>#</sup>  
WATTLETOP DANDLOO C36<sup>SV</sup>

SIRE: TFAK132 LANDFALL KEYSTONE K132<sup>PV</sup>

DAM: ABWP205 GLENMORGAN SITZ E111 LADY P205<sup>#</sup>

LANDFALL ARCHER H807<sup>SV</sup>

S A V FRONT RUNNER 0713<sup>#</sup>  
LANDFALL ARCHER X9<sup>PV</sup>

WATTLETOP ANN M107<sup>#</sup>

SYDGEN BLACK PEARL 2006<sup>PV</sup>  
WATTLETOP ANN F56<sup>SV</sup>

Mid July 2021 TransTasman Angus Cattle Evaluation

Traits Observed: GL,BWT,200WT,Genomics



Selection Indexes	Angus Breeding: \$135		Domestic: \$116		Heavy Grain: \$148			Heavy Grass: \$131									
	CED	CEDT	GL	BW	200	400	600	MCW	MLK	SS	DC	CWT	EMA	RIB	RMP	RBY	IMF
EBV	-1.6	+4.7	-5.1	+5.0	+62	+113	+159	+143	+20	+1.5	-3.3	+95	+2.7	-0.9	-2.7	+0.4	+1.7
Acc	61%	53%	84%	73%	72%	71%	73%	70%	66%	68%	43%	67%	65%	69%	66%	66%	65%

Purchaser: ..... Price \$ .....



# GLENMORGAN KEYSTONE MAN R129<sup>SV</sup>

## HBR

DOB: 20/07/2020

AMFU,CAFU,DDFU,NHFU

IDENT: ABWR129

MATING TYPE: AI

RENNYLEA EDMUND E11<sup>PV</sup>

BOOROOMOOKA UNDERTAKEN Y145<sup>PV</sup>  
LAWSONS HENRY VIII Y5<sup>SV</sup>

MUSGRAVE BIG SKY<sup>PV</sup>

CONNEALY EARNAN 076E<sup>PV</sup>  
SAV PRIMROSE 7861<sup>#</sup>

SIRE: TFAK132 LANDFALL KEYSTONE K132<sup>PV</sup>

DAM: ABWP289 GLENMORGAN BIG SKY LADY P289<sup>#</sup>

LANDFALL ARCHER H807<sup>SV</sup>

S A V FRONT RUNNER 0713<sup>#</sup>  
LANDFALL ARCHER X9<sup>PV</sup>

GLENMORGAN BANDO LADY H244<sup>#</sup>

GLENMORGAN BANDO D5<sup>SV</sup>  
GLENMORGAN ROCKN D LADY D18<sup>#</sup>

Mid July 2021 TransTasman Angus Cattle Evaluation

Traits Observed: GL,BWT,200WT,Genomics



Selection Indexes	Angus Breeding: \$128		Domestic: \$116		Heavy Grain: \$140			Heavy Grass: \$124									
	CED	CEDT	GL	BW	200	400	600	MCW	MLK	SS	DC	CWT	EMA	RIB	RMP	RBY	IMF
EBV	-2.6	+8.1	-6.2	+5.5	+64	+115	+157	+154	+20	+1.8	-3.0	+97	+2.5	-2.2	-4.2	+1.1	+1.4
Acc	62%	54%	84%	73%	72%	71%	73%	70%	66%	67%	43%	67%	65%	69%	66%	66%	65%

Purchaser: ..... Price \$ .....



# GLENMORGAN KEYSTONE MAN R154<sup>SV</sup>

## HBR

DOB: 28/07/2020

AMFU,CAFU,DDFU,NHFU

IDENT: ABWR154

MATING TYPE: AI

RENNYLEA EDMUND E11<sup>PV</sup>

BOOROOMOOKA UNDERTAKEN Y145<sup>PV</sup>  
LAWSONS HENRY VIII Y5<sup>SV</sup>

AYRVALE GENERAL G18<sup>PV</sup>

TE MANIA BERKLEY B1<sup>PV</sup>  
AYRVALE EASE E3<sup>PV</sup>

SIRE: TFAK132 LANDFALL KEYSTONE K132<sup>PV</sup>

DAM: ABWP271 GLENMORGAN GENERAL LADY P271<sup>#</sup>

LANDFALL ARCHER H807<sup>SV</sup>

S A V FRONT RUNNER 0713<sup>#</sup>  
LANDFALL ARCHER X9<sup>PV</sup>

GLENMORGAN THUNDERBIRD  
LADY G221<sup>#</sup>

S A V THUNDERBIRD 9061<sup>SV</sup>  
WATTLETOP USUAL D79<sup>#</sup>

Mid July 2021 TransTasman Angus Cattle Evaluation

Traits Observed: BWT,200WT,Genomics



Selection Indexes	Angus Breeding: \$144		Domestic: \$130		Heavy Grain: \$155			Heavy Grass: \$139									
	CED	CEDT	GL	BW	200	400	600	MCW	MLK	SS	DC	CWT	EMA	RIB	RMP	RBY	IMF
EBV	+0.9	+0.3	-3.1	+3.4	+62	+111	+143	+117	+17	+1.6	-5.6	+91	+9.0	-0.3	-2.8	+1.0	+1.8
Acc	62%	54%	72%	72%	71%	71%	72%	70%	65%	67%	43%	66%	64%	69%	66%	66%	64%

Purchaser: ..... Price \$ .....





# GLENMORGAN KEYSTONE MAN R156<sup>SV</sup>

## APR

DOB: 28/07/2020

AMFU,CAFU,DDFU,NHFU

IDENT: ABWR156

MATING TYPE: AI

RENNYLEA EDMUND E11<sup>PV</sup>

BOOROOMOOKA UNDERTAKEN Y145<sup>PV</sup>  
LAWSONS HENRY VIII Y5<sup>SV</sup>

WATTLETOP FRANKLIN G188<sup>SV</sup>

TC FRANKLIN 619<sup>#</sup>  
WATTLETOP BARUNAH E295<sup>DV</sup>

SIRE: TFAK132 LANDFALL KEYSTONE K132<sup>PV</sup>

DAM: ABWP224 GLENMORGAN FRANKLIN LADY P224<sup>#</sup>

LANDFALL ARCHER H807<sup>SV</sup>

S A V FRONT RUNNER 0713<sup>#</sup>  
LANDFALL ARCHER X9<sup>PV</sup>

GLENMORGAN BARTEL LADY K100<sup>#</sup>

AYRVALE BARTEL E7<sup>PV</sup>  
GLENMORGAN RIGHT ANSWER LADY H171<sup>#</sup>

Mid July 2021 TransTasman Angus Cattle Evaluation

Traits Observed: BWT,200WT,Genomics



Selection Indexes	Angus Breeding: \$156		Domestic: \$134		Heavy Grain: \$166			Heavy Grass: \$149									
	CED	CEDT	GL	BW	200	400	600	MCW	MLK	SS	DC	CWT	EMA	RIB	RMP	RBY	IMF
EBV	+7.3	+8.8	-4.4	+2.9	+63	+116	+148	+135	+18	+1.7	-8.2	+98	+5.3	+2.9	+2.1	-1.5	+2.1
Acc	61%	53%	72%	72%	71%	70%	72%	69%	65%	67%	42%	66%	64%	69%	65%	65%	64%

Purchaser: ..... Price \$ .....



# GLENMORGAN KEYSTONE MAN R157<sup>SV</sup>

## HBR

DOB: 28/07/2020

AMFU,CAFU,DDFU,NHFU

IDENT: ABWR157

MATING TYPE: AI

RENNYLEA EDMUND E11<sup>PV</sup>

BOOROOMOOKA UNDERTAKEN Y145<sup>PV</sup>  
LAWSONS HENRY VIII Y5<sup>SV</sup>

MUSGRAVE BIG SKY<sup>PV</sup>

CONNEALY EARNAN 076E<sup>PV</sup>  
SAV PRIMROSE 7861<sup>#</sup>

SIRE: TFAK132 LANDFALL KEYSTONE K132<sup>PV</sup>

DAM: ABWP316 GLENMORGAN BIG SKY LADY P316<sup>#</sup>

LANDFALL ARCHER H807<sup>SV</sup>

S A V FRONT RUNNER 0713<sup>#</sup>  
LANDFALL ARCHER X9<sup>PV</sup>

GLENMORGAN RITO 9969 LADY  
K527<sup>#</sup>

S A V 707 RITO 9969<sup>#</sup>  
S A V EMBLYNETTE 7310<sup>#</sup>

Mid July 2021 TransTasman Angus Cattle Evaluation

Traits Observed: BWT,200WT,Genomics



Selection Indexes	Angus Breeding: \$130		Domestic: \$117		Heavy Grain: \$134			Heavy Grass: \$128									
	CED	CEDT	GL	BW	200	400	600	MCW	MLK	SS	DC	CWT	EMA	RIB	RMP	RBY	IMF
EBV	+0.3	+6.7	-4.4	+4.0	+53	+99	+133	+120	+17	+0.5	-5.8	+78	+7.6	+0.5	-1.6	+0.8	+1.0
Acc	61%	54%	72%	72%	71%	71%	72%	69%	65%	67%	43%	66%	64%	68%	65%	65%	64%

Purchaser: ..... Price \$ .....



# GLENMORGAN KEYSTONE MAN R118<sup>PV</sup>

## APR

DOB: 17/07/2020

AMFU,CAFU,DDFU,NHFU

IDENT: ABWR118

MATING TYPE: AI

RENNYLEA EDMUND E11<sup>PV</sup>

BOOROOMOOKA UNDERTAKEN Y145<sup>PV</sup>  
LAWSONS HENRY VIII Y5<sup>SV</sup>

ACC BOURBON 0115<sup>SV</sup>

V A R DISCOVERY 2240<sup>PV</sup>  
APPLE RITA 26430<sup>#</sup>

SIRE: TFAK132 LANDFALL KEYSTONE K132<sup>PV</sup>

DAM: ABWP215 GLENMORGAN BOURBON LADY P215<sup>SV</sup>

LANDFALL ARCHER H807<sup>SV</sup>

S A V FRONT RUNNER 0713<sup>#</sup>  
LANDFALL ARCHER X9<sup>PV</sup>

GLENMORGAN UPFRONT LADY  
E129<sup>#</sup>

WATTLETOP UPFRONT U28<sup>#</sup>  
UNKNOWN

Mid July 2021 TransTasman Angus Cattle Evaluation

Traits Observed: GL,BWT,200WT,Genomics



Selection Indexes	Angus Breeding: \$142		Domestic: \$131		Heavy Grain: \$158			Heavy Grass: \$134									
	CED	CEDT	GL	BW	200	400	600	MCW	MLK	SS	DC	CWT	EMA	RIB	RMP	RBY	IMF
EBV	+4.3	+5.0	-8.4	+2.8	+56	+102	+125	+97	+21	+2.4	-5.8	+85	+7.6	+1.4	-0.8	+0.0	+2.9
Acc	59%	51%	84%	72%	71%	71%	72%	69%	65%	67%	40%	66%	64%	68%	65%	65%	64%

Purchaser: ..... Price \$ .....



# GLENMORGAN KEYSTONE MAN R143<sup>SV</sup>

## APR

DOB: 25/07/2020

AMFU,CAFU,DDFU,NHFU

IDENT: ABWR143

MATING TYPE: AI

RENNYLEA EDMUND E11<sup>PV</sup>

BOOROOMOOKA UNDERTAKEN Y145<sup>PV</sup>  
LAWSONS HENRY VIII Y5<sup>SV</sup>

WATTLETOP FRANKLIN G188<sup>SV</sup>

TC FRANKLIN 619<sup>#</sup>  
WATTLETOP BARUNAH E295<sup>DV</sup>

SIRE: TFAK132 LANDFALL KEYSTONE K132<sup>PV</sup>

DAM: ABWP252 GLENMORGAN FRANKLIN LADY P252<sup>#</sup>

LANDFALL ARCHER H807<sup>SV</sup>

S A V FRONT RUNNER 0713<sup>#</sup>  
LANDFALL ARCHER X9<sup>PV</sup>

GLENMORGAN BARTEL LADY K103<sup>#</sup>

AYRVALE BARTEL E7<sup>PV</sup>  
GLENMORGAN RIGHT ANSWER LADY H163<sup>#</sup>

Mid July 2021 TransTasman Angus Cattle Evaluation

Traits Observed: GL,BWT,200WT,Genomics



Selection Indexes	Angus Breeding: \$139		Domestic: \$122		Heavy Grain: \$139			Heavy Grass: \$138									
	CED	CEDT	GL	BW	200	400	600	MCW	MLK	SS	DC	CWT	EMA	RIB	RMP	RBY	IMF
EBV	+8.1	+8.6	-5.8	+1.2	+51	+96	+129	+95	+24	+2.5	-7.0	+72	+6.6	+3.7	+1.6	-0.5	+1.4
Acc	61%	53%	84%	72%	70%	70%	71%	69%	65%	66%	41%	66%	63%	68%	65%	64%	64%

Purchaser: ..... Price \$ .....



# GLENMORGAN KEYSTONE MAN R139<sup>PV</sup>

## APR

DOB: 24/07/2020

AMFU,CAFU,DDFU,NHFU

IDENT: ABWR139

MATING TYPE: AI

RENNYLEA EDMUND E11<sup>PV</sup>

BOOROOMOOKA UNDERTAKEN Y145<sup>PV</sup>  
LAWSONS HENRY VIII Y5<sup>SV</sup>

BALDRIDGE BEAST MODE B074<sup>PV</sup>

G A R PROPHET<sup>SV</sup>  
BALDRIDGE ISABEL Y69<sup>#</sup>

SIRE: TFAK132 LANDFALL KEYSTONE K132<sup>2PV</sup>

DAM: ABWP127 GLENMORGAN BEAST MODE LADY P127<sup>SV</sup>

LANDFALL ARCHER H807<sup>SV</sup>

S A V FRONT RUNNER 0713<sup>#</sup>  
LANDFALL ARCHER X9<sup>PV</sup>

GLENMORGAN KLOONEY LADY  
M270<sup>#</sup>

MILLAH MURRAH KLOONEY K42<sup>PV</sup>  
GLENMORGAN PERFORMER LADY E54<sup>#</sup>

Mid July 2021 TransTasman Angus Cattle Evaluation

Traits Observed: GL,BWT,200WT,Genomics



Selection Indexes	Angus Breeding: \$153		Domestic: \$138		Heavy Grain: \$170			Heavy Grass: \$145									
	CED	CEDT	GL	BW	200	400	600	MCW	MLK	SS	DC	CWT	EMA	RIB	RMP	RBY	IMF
EBV	+7.2	+6.3	-5.7	+2.4	+58	+106	+135	+101	+21	+2.5	-5.0	+84	+8.5	-0.6	-2.1	+1.0	+2.6
Acc	61%	53%	84%	73%	72%	71%	72%	70%	66%	68%	42%	67%	65%	69%	66%	66%	65%

Purchaser: .....Price \$.....



# GLENMORGAN KEYSTONE MAN R138<sup>SV</sup>

## APR

DOB: 24/07/2020

AMFU,CAFU,DDFU,NHFU

IDENT: ABWR138

MATING TYPE: AI

RENNYLEA EDMUND E11<sup>PV</sup>

BOOROOMOOKA UNDERTAKEN Y145<sup>PV</sup>  
LAWSONS HENRY VIII Y5<sup>SV</sup>

BALDRIDGE BEAST MODE B074<sup>PV</sup>

G A R PROPHET<sup>SV</sup>  
BALDRIDGE ISABEL Y69<sup>#</sup>

SIRE: TFAK132 LANDFALL KEYSTONE K132<sup>2PV</sup>

DAM: ABWP103 GLENMORGAN BEAST MODE LADY P103<sup>#</sup>

LANDFALL ARCHER H807<sup>SV</sup>

S A V FRONT RUNNER 0713<sup>#</sup>  
LANDFALL ARCHER X9<sup>PV</sup>

GLENMORGAN KLOONEY LADY  
M254<sup>#</sup>

MILLAH MURRAH KLOONEY K42<sup>PV</sup>  
GLENMORGAN J114<sup>#</sup>

Mid July 2021 TransTasman Angus Cattle Evaluation

Traits Observed: GL,BWT,200WT,Genomics



Selection Indexes	Angus Breeding: \$149		Domestic: \$135		Heavy Grain: \$164			Heavy Grass: \$142									
	CED	CEDT	GL	BW	200	400	600	MCW	MLK	SS	DC	CWT	EMA	RIB	RMP	RBY	IMF
EBV	+3.7	+5.6	-5.6	+3.1	+65	+115	+148	+131	+19	+0.1	-5.4	+95	+7.2	-0.4	-3.9	+1.2	+1.9
Acc	60%	51%	84%	72%	70%	70%	71%	68%	64%	66%	40%	65%	63%	67%	64%	64%	63%

Purchaser: .....Price \$.....



# GLENMORGAN ASHLAND MAN R296<sup>SV</sup>

## HBR

DOB: 25/08/2020

AMF,CAFU,DDFU,NHFU

IDENT: ABWR296

MATING TYPE: AI

G A R EARLY BIRD<sup>#</sup>

G A R DAYLIGHT<sup>#</sup>  
G A R PROGRESS 830<sup>#</sup>

JMB TRACTION 292<sup>PV</sup>

SITZ TOP GAME 561X<sup>#</sup>  
JMB EMULOTA 013<sup>#</sup>

SIRE: USA18217198 G A R ASHLAND<sup>PV</sup>

DAM: ABWL274 GLENMORGAN TRACTION LADY L274<sup>#</sup>

CHAIR ROCK AMBUSH 1018<sup>#</sup>

B/R AMBUSH 28<sup>#</sup>  
G A R YIELD GRADE N366<sup>#</sup>

WATTLETOP DANDLOO D94<sup>#</sup>

ARDROSSAN CONNECTION X15<sup>SV</sup>  
WATTLETOP DANDLOO B174<sup>#</sup>

Mid July 2021 TransTasman Angus Cattle Evaluation

Traits Observed: BWT,200WT,Genomics



Selection Indexes	Angus Breeding: \$153		Domestic: \$143		Heavy Grain: \$166			Heavy Grass: \$149									
	CED	CEDT	GL	BW	200	400	600	MCW	MLK	SS	DC	CWT	EMA	RIB	RMP	RBY	IMF
EBV	+3.1	+5.7	-5.4	+3.2	+62	+113	+145	+115	+17	+2.1	-0.4	+73	+11.2	-1.9	-2.5	+2.7	+2.1
Acc	59%	47%	73%	73%	72%	71%	72%	68%	63%	67%	38%	66%	64%	68%	65%	65%	64%

Purchaser: .....Price \$.....



# GLENMORGAN ASHLAND MAN R331<sup>SV</sup>

## APR

DOB: 28/08/2020

AMFU,CAFU,DDFU,NHFU

IDENT: ABWR331

MATING TYPE: AI

G A R EARLY BIRD<sup>#</sup>

G A R DAYLIGHT<sup>#</sup>  
G A R PROGRESS 830<sup>#</sup>

KANSAS BERKLEY G13<sup>SV</sup>

TE MANIA BERKLEY B1<sup>PV</sup>  
KANSAS PANDA X11<sup>#</sup>

SIRE: USA18217198 G A R ASHLAND<sup>PV</sup>

DAM: ABWK461 GLENMORGAN BERKLEY LADY K461<sup>#</sup>

CHAIR ROCK AMBUSH 1018<sup>#</sup>

B/R AMBUSH 28<sup>#</sup>  
G A R YIELD GRADE N366<sup>#</sup>

WATTLETOP G287<sup>#</sup>

WATTLETOP ANDY C109<sup>PV</sup>  
WATTLETOP Y359<sup>#</sup>

Mid July 2021 TransTasman Angus Cattle Evaluation

Traits Observed: BWT,200WT,Genomics



Selection Indexes	Angus Breeding: \$139		Domestic: \$121		Heavy Grain: \$157			Heavy Grass: \$130									
	CED	CEDT	GL	BW	200	400	600	MCW	MLK	SS	DC	CWT	EMA	RIB	RMP	RBY	IMF
EBV	-1.8	+7.0	-5.8	+4.4	+57	+101	+131	+110	+13	+1.1	-5.2	+72	+6.1	+0.9	+0.1	-0.9	+3.3
Acc	58%	46%	71%	73%	71%	70%	72%	68%	63%	65%	37%	65%	63%	68%	64%	64%	63%

Purchaser: .....Price \$.....





# GLENMORGAN ASHLAND MAN R318<sup>SV</sup>

## HBR

DOB: 26/08/2020

AMFU,CAFU,DDFU,NHFU

IDENT: ABWR318

MATING TYPE: AI

G A R EARLY BIRD<sup>#</sup>

G A R DAYLIGHT<sup>#</sup>  
G A R PROGRESS 830<sup>#</sup>

MATAURI REALITY 839<sup>#</sup>

SCHURRTOP REALITY X723<sup>#</sup>  
MATAURI 06663<sup>#</sup>

SIRE:USA18217198 G A R ASHLAND<sup>PV</sup>

DAM: ABWM114 GLENMORGAN REALITY LADY M114<sup>#</sup>

CHAIR ROCK AMBUSH 1018<sup>#</sup>

B/R AMBUSH 28<sup>#</sup>  
G A R YIELD GRADE N366<sup>#</sup>

GLENMORGAN HARVESTOR LADY  
K522<sup>#</sup>

S A V HARVESTOR 0338<sup>#</sup>  
S A V BLACKBIRD 1264<sup>#</sup>

Mid July 2021 TransTasman Angus Cattle Evaluation

Traits Observed: BWT,200WT,Genomics



Selection Indexes	Angus Breeding: \$146		Domestic: \$140			Heavy Grain: \$159			Heavy Grass:\$143								
	CED	CEDT	GL	BW	200	400	600	MCW	MLK	SS	DC	CWT	EMA	RIB	RMP	RBY	IMF
EBV	+4.3	+7.7	-8.4	+3.5	+66	+115	+144	+138	+10	+2.2	-1.2	+82	+9.7	-1.9	-2.9	+2.1	+2.0
Acc	59%	48%	73%	73%	71%	71%	71%	68%	63%	67%	40%	66%	64%	68%	65%	65%	64%

Purchaser:.....Price \$.....



# GLENMORGAN ASHLAND MAN R322<sup>SV</sup>

## APR

DOB: 28/08/2020

AMFU,CAFU,DDFU,NHFU

IDENT: ABWR322

MATING TYPE: AI

G A R EARLY BIRD<sup>#</sup>

G A R DAYLIGHT<sup>#</sup>  
G A R PROGRESS 830<sup>#</sup>

S A V THUNDERBIRD 9061<sup>SV</sup>

S A V FINAL ANSWER 0035<sup>#</sup>  
S A V EMBLYNETTE 7411<sup>#</sup>

SIRE:USA18217198 G A R ASHLAND<sup>PV</sup>

DAM: ABWJ261 GLENMORGAN THUNDERBIRD LADY J261<sup>#</sup>

CHAIR ROCK AMBUSH 1018<sup>#</sup>

B/R AMBUSH 28<sup>#</sup>  
G A R YIELD GRADE N366<sup>#</sup>

GLENMORGAN E65<sup>#</sup>

K C F BENNETT PERFORMER<sup>#</sup>  
UNKNOWN

Mid July 2021 TransTasman Angus Cattle Evaluation

Traits Observed: BWT,200WT,Genomics



Selection Indexes	Angus Breeding: \$143		Domestic: \$138			Heavy Grain: \$153			Heavy Grass:\$140								
	CED	CEDT	GL	BW	200	400	600	MCW	MLK	SS	DC	CWT	EMA	RIB	RMP	RBY	IMF
EBV	-5.7	+1.4	-3.9	+5.2	+73	+129	+159	+136	+17	+2.4	-1.9	+90	+8.6	-2.5	-3.7	+2.6	+1.6
Acc	58%	47%	70%	73%	71%	70%	71%	67%	62%	65%	38%	65%	63%	67%	64%	64%	63%

Purchaser:.....Price \$.....



# GLENMORGAN ASHLAND MAN R354<sup>SV</sup>

## APR

DOB: 30/08/2020

AMFU,CAFU,DDFU,NHFU

IDENT: ABWR354

MATING TYPE: AI

G A R EARLY BIRD<sup>#</sup>

G A R DAYLIGHT<sup>#</sup>  
G A R PROGRESS 830<sup>#</sup>

UNKNOWN

SIRE:USA18217198 G A R ASHLAND<sup>PV</sup>

DAM: ABWD128 GLENMORGAN D128<sup>#</sup>

CHAIR ROCK AMBUSH 1018<sup>#</sup>

B/R AMBUSH 28<sup>#</sup>  
G A R YIELD GRADE N366<sup>#</sup>

UNKNOWN

Mid July 2021 TransTasman Angus Cattle Evaluation

Traits Observed: BWT,200WT,Genomics



Selection Indexes	Angus Breeding: \$128		Domestic: \$123			Heavy Grain: \$129			Heavy Grass:\$130								
	CED	CEDT	GL	BW	200	400	600	MCW	MLK	SS	DC	CWT	EMA	RIB	RMP	RBY	IMF
EBV	-0.1	+1.0	-2.6	+4.5	+56	+108	+138	+124	+13	+0.6	+0.0	+73	+10.2	-1.2	+0.2	+1.0	+1.5
Acc	53%	41%	68%	71%	69%	68%	68%	65%	59%	62%	32%	63%	59%	65%	60%	61%	60%

Purchaser:.....Price \$.....



# GLENMORGAN ASHLAND MAN R344<sup>SV</sup>

## APR

DOB: 30/08/2020

AMFU,CAFU,DDFU,NHFU

IDENT: ABWR344

MATING TYPE: AI

G A R EARLY BIRD<sup>#</sup>

G A R DAYLIGHT<sup>#</sup>  
G A R PROGRESS 830<sup>#</sup>

ARDROSSAN EQUINOX B75<sup>#</sup>

BT RIGHT TIME 24J<sup>#</sup>  
ARDROSSAN PRINCESS U101<sup>#</sup>

SIRE:USA18217198 G A R ASHLAND<sup>PV</sup>

DAM: ABWF112 GLENMORGAN EQUINOX LADY F112<sup>#</sup>

CHAIR ROCK AMBUSH 1018<sup>#</sup>

B/R AMBUSH 28<sup>#</sup>  
G A R YIELD GRADE N366<sup>#</sup>

GLENMORGAN C308<sup>#</sup>

K C F BENNETT PERFORMER<sup>#</sup>  
UNKNOWN

Mid July 2021 TransTasman Angus Cattle Evaluation

Traits Observed: BWT,200WT,Genomics



Selection Indexes	Angus Breeding: \$113		Domestic: \$108			Heavy Grain: \$118			Heavy Grass:\$111								
	CED	CEDT	GL	BW	200	400	600	MCW	MLK	SS	DC	CWT	EMA	RIB	RMP	RBY	IMF
EBV	-11.8	-2.5	-2.3	+5.2	+62	+107	+136	+114	+20	+3.3	-4.0	+72	+4.3	-1.9	-0.7	+1.0	+1.9
Acc	57%	45%	70%	72%	71%	70%	71%	67%	62%	65%	37%	65%	63%	67%	63%	64%	63%

Purchaser:.....Price \$.....



# GLENMORGAN ASHLAND MAN R278<sup>SV</sup>

## APR

DOB: 23/08/2020

AMFU,CAFU,DDFU,NHFU

IDENT: ABWR278

MATING TYPE: AI

G A R EARLY BIRD<sup>#</sup>

G A R DAYLIGHT<sup>#</sup>  
G A R PROGRESS 830<sup>#</sup>

CONNEALY RIGHT ANSWER 746<sup>#</sup>

S A V FINAL ANSWER 0035<sup>#</sup>  
HAPPY DELL OF CONANGA 262<sup>#</sup>

SIRE: USA18217198 G A R ASHLAND<sup>PV</sup>

DAM: ABWH163 GLENMORGAN RIGHT ANSWER LADY H163<sup>#</sup>

CHAIR ROCK AMBUSH 1018<sup>#</sup>

B/R AMBUSH 28<sup>#</sup>  
G A R YIELD GRADE N366<sup>#</sup>

UNKNOWN

Mid July 2021 TransTasman Angus Cattle Evaluation

Traits Observed: BWT,200WT,Genomics



Selection Indexes	Angus Breeding: \$149		Domestic: \$140		Heavy Grain: \$159			Heavy Grass: \$147									
	CED	CEDT	GL	BW	200	400	600	MCW	MLK	SS	DC	CWT	EMA	RIB	RMP	RBY	IMF
EBV	+4.1	+5.3	-5.8	+3.6	+68	+117	+153	+121	+17	+2.1	-1.2	+85	+9.7	-2.4	-4.2	+2.5	+1.6
Acc	57%	44%	70%	73%	71%	70%	70%	67%	62%	65%	35%	65%	62%	67%	63%	64%	62%

Purchaser: ..... Price \$ .....



# GLENMORGAN ASHLAND MAN R306<sup>SV</sup>

## HBR

DOB: 25/08/2020

AMFU,CAFU,DDFU,NHFU

IDENT: ABWR306

MATING TYPE: AI

G A R EARLY BIRD<sup>#</sup>

G A R DAYLIGHT<sup>#</sup>  
G A R PROGRESS 830<sup>#</sup>

A A R TEN X 7008 S A<sup>SV</sup>

MYTTY IN FOCUS<sup>#</sup>  
A A R LADY KELTON 5551<sup>#</sup>

SIRE: USA18217198 G A R ASHLAND<sup>PV</sup>

DAM: ABWJ321 GLENMORGAN TEN X LADY J321<sup>#</sup>

CHAIR ROCK AMBUSH 1018<sup>#</sup>

B/R AMBUSH 28<sup>#</sup>  
G A R YIELD GRADE N366<sup>#</sup>

WATTLETOP USUAL C62<sup>#</sup>

B/R AMBUSH 28<sup>#</sup>  
WATTLETOP USUAL A75<sup>#</sup>

Mid July 2021 TransTasman Angus Cattle Evaluation

Traits Observed: BWT,200WT,Genomics



Selection Indexes	Angus Breeding: \$138		Domestic: \$129		Heavy Grain: \$160			Heavy Grass: \$130									
	CED	CEDT	GL	BW	200	400	600	MCW	MLK	SS	DC	CWT	EMA	RIB	RMP	RBY	IMF
EBV	-2.9	+1.2	-2.9	+4.2	+59	+113	+143	+121	+19	+1.5	-1.7	+85	+6.8	-3.3	-4.0	+1.7	+2.8
Acc	61%	50%	74%	75%	73%	73%	74%	70%	65%	68%	42%	69%	66%	71%	67%	68%	67%

Purchaser: ..... Price \$ .....



# GLENMORGAN ASHLAND MAN R298<sup>SV</sup>

## HBR

DOB: 25/08/2020

AMFU,CAFU,DDFU,NHFU

IDENT: ABWR298

MATING TYPE: AI

G A R EARLY BIRD<sup>#</sup>

G A R DAYLIGHT<sup>#</sup>  
G A R PROGRESS 830<sup>#</sup>

A A R TEN X 7008 S A<sup>SV</sup>

MYTTY IN FOCUS<sup>#</sup>  
A A R LADY KELTON 5551<sup>#</sup>

SIRE: USA18217198 G A R ASHLAND<sup>PV</sup>

DAM: ABWK242 GLENMORGAN TEN X LADY K242<sup>#</sup>

CHAIR ROCK AMBUSH 1018<sup>#</sup>

B/R AMBUSH 28<sup>#</sup>  
G A R YIELD GRADE N366<sup>#</sup>

GLENMORGAN USA338 LADY F66<sup>#</sup>

WATTLETOP USA338 C225<sup>SV</sup>  
GLENMORGAN RETAIL PRODUCT D19<sup>#</sup>

Mid July 2021 TransTasman Angus Cattle Evaluation

Traits Observed: BWT,200WT,Genomics



Selection Indexes	Angus Breeding: \$148		Domestic: \$137		Heavy Grain: \$158			Heavy Grass: \$144									
	CED	CEDT	GL	BW	200	400	600	MCW	MLK	SS	DC	CWT	EMA	RIB	RMP	RBY	IMF
EBV	+0.1	+5.6	-7.1	+3.5	+62	+108	+138	+108	+17	+2.2	-3.6	+76	+8.9	-1.9	-1.5	+2.2	+1.9
Acc	59%	47%	73%	73%	71%	71%	72%	68%	62%	66%	39%	66%	64%	68%	64%	65%	64%

Purchaser: ..... Price \$ .....



# GLENMORGAN ASHLAND MAN R320<sup>SV</sup>

## APR

DOB: 27/08/2020

AMFU,CAFU,DDFU,NHFU

IDENT: ABWR320

MATING TYPE: AI

G A R EARLY BIRD<sup>#</sup>

G A R DAYLIGHT<sup>#</sup>  
G A R PROGRESS 830<sup>#</sup>

A A R TEN X 7008 S A<sup>SV</sup>

MYTTY IN FOCUS<sup>#</sup>  
A A R LADY KELTON 5551<sup>#</sup>

SIRE: USA18217198 G A R ASHLAND<sup>PV</sup>

DAM: ABWK320 GLENMORGAN TEN X LADY K320<sup>#</sup>

CHAIR ROCK AMBUSH 1018<sup>#</sup>

B/R AMBUSH 28<sup>#</sup>  
G A R YIELD GRADE N366<sup>#</sup>

GLENMORGAN RIGHT TIME LADY  
G243<sup>#</sup>

GLENMORGAN RIGHT TIME E81<sup>SV</sup>  
WATTLETOP D322<sup>#</sup>

Mid July 2021 TransTasman Angus Cattle Evaluation

Traits Observed: BWT,200WT,Genomics



Selection Indexes	Angus Breeding: \$142		Domestic: \$131		Heavy Grain: \$154			Heavy Grass: \$137									
	CED	CEDT	GL	BW	200	400	600	MCW	MLK	SS	DC	CWT	EMA	RIB	RMP	RBY	IMF
EBV	+3.7	+3.3	-5.1	+3.1	+63	+108	+137	+119	+17	+0.8	-4.4	+80	+7.6	-1.1	-1.9	+0.8	+2.3
Acc	60%	49%	74%	74%	73%	73%	74%	70%	65%	68%	41%	68%	66%	71%	67%	68%	66%

Purchaser: ..... Price \$ .....





# GLENMORGAN ASHLAND MAN R317<sup>SV</sup>

## HBR

DOB: 28/08/2020

AMFU,CAFU,DDF,NHFU

IDENT: ABWR317

MATING TYPE: AI

G A R EARLY BIRD<sup>#</sup>

G A R DAYLIGHT<sup>#</sup>  
G A R PROGRESS 830<sup>#</sup>

BOOROOMOOKA FRANKEL F510<sup>PV</sup>

ARDROSSAN EQUATOR A241<sup>PV</sup>  
BOOROOMOOKA TRACEY Z5<sup>PV</sup>

SIRE: USA18217198 G A R ASHLAND<sup>PV</sup>

DAM: ABWJ200 GLENMORGAN FRANKEL LADY J200<sup>#</sup>

CHAIR ROCK AMBUSH 1018<sup>#</sup>

B/R AMBUSH 28<sup>#</sup>  
G A R YIELD GRADE N366<sup>#</sup>

WATTLETOP ANN C110<sup>#</sup>

L T 598 BANDO 9074<sup>#</sup>  
WATTLETOP ANN V58<sup>SV</sup>

Mid July 2021 TransTasman Angus Cattle Evaluation

Traits Observed: BWT,200WT,Genomics



Selection Indexes	Angus Breeding: \$127		Domestic: \$119		Heavy Grain: \$143			Heavy Grass: \$120									
	CED	CEDT	GL	BW	200	400	600	MCW	MLK	SS	DC	CWT	EMA	RIB	RMP	RBY	IMF
EBV	+2.4	+0.9	-5.1	+3.1	+53	+96	+122	+112	+13	+0.9	-5.1	+70	+4.7	-0.6	-2.5	+0.4	+2.5
Acc	60%	48%	72%	73%	72%	71%	72%	68%	63%	66%	39%	66%	64%	69%	65%	65%	64%

Purchaser: ..... Price \$ .....



# GLENMORGAN ASHLAND MAN R323<sup>SV</sup>

## HBR

DOB: 27/08/2020

AMFU,CAFU,DDF,NHFU

IDENT: ABWR323

MATING TYPE: AI

G A R EARLY BIRD<sup>#</sup>

G A R DAYLIGHT<sup>#</sup>  
G A R PROGRESS 830<sup>#</sup>

A A R TEN X 7008 S A<sup>SV</sup>

MYTTY IN FOCUS<sup>#</sup>  
A A R LADY KELTON 5551<sup>#</sup>

SIRE: USA18217198 G A R ASHLAND<sup>PV</sup>

DAM: ABWK279 GLENMORGAN TEN X LADY K279<sup>#</sup>

CHAIR ROCK AMBUSH 1018<sup>#</sup>

B/R AMBUSH 28<sup>#</sup>  
G A R YIELD GRADE N366<sup>#</sup>

GLENMORGAN PENDLETON LADY E92<sup>#</sup>

HARB PENDLETON 765 J H<sup>SV</sup>  
WATTLETOP USUAL W16<sup>#</sup>

Mid July 2021 TransTasman Angus Cattle Evaluation

Traits Observed: BWT,200WT,Genomics



Selection Indexes	Angus Breeding: \$121		Domestic: \$119		Heavy Grain: \$128			Heavy Grass: \$118									
	CED	CEDT	GL	BW	200	400	600	MCW	MLK	SS	DC	CWT	EMA	RIB	RMP	RBY	IMF
EBV	+2.5	+6.5	-4.1	+2.7	+51	+87	+108	+80	+16	+0.6	-5.2	+62	+5.4	-0.7	-2.1	+0.9	+2.1
Acc	60%	48%	73%	74%	72%	71%	72%	69%	64%	67%	41%	67%	65%	69%	65%	66%	65%

Purchaser: ..... Price \$ .....



# GLENMORGAN POWERPOINT MAN R205<sup>SV</sup>

## HBR

DOB: 14/08/2020

AMFU,CAFU,DDFU,NHFU

IDENT: ABWR205

MATING TYPE: AI

TEHAMA REVERE<sup>#</sup>

D R SIERRA CUT 7404<sup>#</sup>  
TEHAMA ELITE BLACKBIRD T003<sup>#</sup>

MATAURI REALITY 839<sup>#</sup>

SCHURRPT REALITY X723<sup>#</sup>  
MATAURI 06663<sup>#</sup>

SIRE: USA18159093 S POWERPOINT WS 5503<sup>PV</sup>

DAM: ABWN234 GLENMORGAN REALITY LADY N234<sup>#</sup>

S QUEEN ESSA 248<sup>#</sup>

S SUMMIT 956<sup>#</sup>  
S QUEEN ESSA 0131<sup>#</sup>

GLENMORGAN RITO 9969 LADY K520<sup>#</sup>

S A V 707 RITO 9969<sup>#</sup>  
S A V EMBLYNETTE 7310<sup>#</sup>

Mid July 2021 TransTasman Angus Cattle Evaluation

Traits Observed: GL,BWT,200WT,Genomics



Selection Indexes	Angus Breeding: \$132		Domestic: \$122		Heavy Grain: \$142			Heavy Grass: \$131									
	CED	CEDT	GL	BW	200	400	600	MCW	MLK	SS	DC	CWT	EMA	RIB	RMP	RBY	IMF
EBV	-1.8	+3.5	-6.4	+7.2	+72	+129	+167	+173	+15	+2.2	-2.0	+92	+3.8	-0.2	-1.6	+0.0	+1.6
Acc	56%	47%	84%	74%	72%	72%	73%	69%	63%	67%	40%	67%	65%	69%	66%	66%	65%

Purchaser: ..... Price \$ .....



# GLENMORGAN POWERPOINT MAN R263<sup>SV</sup>

## HBR

DOB: 20/08/2020

AMFU,CAFU,DDFU,NHFU

IDENT: ABWR263

MATING TYPE: AI

TEHAMA REVERE<sup>#</sup>

D R SIERRA CUT 7404<sup>#</sup>  
TEHAMA ELITE BLACKBIRD T003<sup>#</sup>

TUWHARETOA REGENT D145<sup>PV</sup>

TE MANIA AMBASSADOR A134<sup>SV</sup>  
LAWSONS HENRY VIII Y5<sup>SV</sup>

SIRE: USA18159093 S POWERPOINT WS 5503<sup>PV</sup>

DAM: NWPK273 WATTLETOP DANDLOO K273<sup>#</sup>

S QUEEN ESSA 248<sup>#</sup>

S SUMMIT 956<sup>#</sup>  
S QUEEN ESSA 0131<sup>#</sup>

WATTLETOP DANDLOO F2<sup>#</sup>

TE MANIA INFINITY 04 379 AB<sup>#</sup>  
WATTLETOP DANDLOO D17<sup>SV</sup>

Mid July 2021 TransTasman Angus Cattle Evaluation

Traits Observed: GL,BWT,200WT,Genomics



Selection Indexes	Angus Breeding: \$113		Domestic: \$109		Heavy Grain: \$116			Heavy Grass: \$112									
	CED	CEDT	GL	BW	200	400	600	MCW	MLK	SS	DC	CWT	EMA	RIB	RMP	RBY	IMF
EBV	-11.5	-7.1	-2.8	+7.0	+67	+112	+141	+141	+9	+2.0	-4.5	+81	+8.4	-0.2	-1.7	+1.3	+1.2
Acc	57%	48%	84%	73%	72%	72%	73%	69%	64%	67%	41%	67%	65%	69%	65%	66%	65%

Purchaser: ..... Price \$ .....



# GLENMORGAN POWERPOINT MAN R261<sup>SV</sup>

## HBR

DOB: 20/08/2020

AMFU,CAFU,DDFU,NHFU

IDENT: ABWR261

MATING TYPE: AI

TEHAMA REVERE<sup>#</sup>

D R SIERRA CUT 7404<sup>#</sup>  
TEHAMA ELITE BLACKBIRD T003<sup>#</sup>  
S SUMMIT 956<sup>#</sup>  
S QUEEN ESSA 0131<sup>#</sup>

GLENMORGAN BANDO D5<sup>PV</sup>  
DAM: ABWH250 GLENMORGAN BANDO LADY H250<sup>#</sup>  
GLENMORGAN RETAIL PRODUCT  
D16<sup>#</sup>

LT 598 BANDO 9074<sup>#</sup>  
WATTLETOP USUAL U86<sup>#</sup>  
G A R RETAIL PRODUCT<sup>#</sup>  
WATTLETOP USUAL U86<sup>#</sup>

SIRE: USA18159093 S POWERPOINT WS 5503<sup>PV</sup>

S QUEEN ESSA 248<sup>#</sup>

Mid July 2021 TransTasman Angus Cattle Evaluation

Traits Observed: GL,BWT,200WT,Genomics



Selection Indexes	Angus Breeding: \$120		Domestic: \$116			Heavy Grain: \$132			Heavy Grass: \$114								
	CED	CEDT	GL	BW	200	400	600	MCW	MLK	SS	DC	CWT	EMA	RIB	RMP	RBY	IMF
EBV	-8.1	+1.4	-4.1	+6.7	+64	+108	+131	+125	+10	+1.3	-5.3	+83	+5.3	-1.8	-2.5	+0.8	+2.2
Acc	56%	46%	84%	74%	71%	71%	72%	69%	62%	65%	37%	66%	63%	68%	64%	64%	63%

Purchaser: ..... Price \$ .....



# GLENMORGAN POWERPOINT MAN R247<sup>SV</sup>

## HBR

DOB: 17/08/2020

AMFU,CAFU,DDFU,NHFU

IDENT: ABWR247

MATING TYPE: AI

TEHAMA REVERE<sup>#</sup>

D R SIERRA CUT 7404<sup>#</sup>  
TEHAMA ELITE BLACKBIRD T003<sup>#</sup>  
S SUMMIT 956<sup>#</sup>  
S QUEEN ESSA 0131<sup>#</sup>

S A V 707 RITO 9969<sup>#</sup>  
DAM: ABWK527 GLENMORGAN RITO 9969 LADY K527<sup>#</sup>  
S A V EMBLYNETTE 7310<sup>#</sup>

RITO 707 OF IDEAL 3407 7075<sup>#</sup>  
BR POLLY 8077-472<sup>#</sup>  
S A V 8180 TRAVELER 004<sup>#</sup>  
S A V EMBLYNETTE 4352<sup>#</sup>

SIRE: USA18159093 S POWERPOINT WS 5503<sup>PV</sup>

S QUEEN ESSA 248<sup>#</sup>

Mid July 2021 TransTasman Angus Cattle Evaluation

Traits Observed: GL,BWT,200WT,Genomics



Selection Indexes	Angus Breeding: \$110		Domestic: \$112			Heavy Grain: \$101			Heavy Grass: \$115								
	CED	CEDT	GL	BW	200	400	600	MCW	MLK	SS	DC	CWT	EMA	RIB	RMP	RBY	IMF
EBV	-3.8	+3.3	-4.1	+5.6	+61	+108	+134	+119	+18	+1.7	-4.4	+79	+4.8	+0.5	-0.1	+0.5	+0.4
Acc	56%	46%	85%	75%	73%	73%	74%	70%	65%	68%	38%	68%	66%	70%	66%	67%	66%

Purchaser: ..... Price \$ .....



# GLENMORGAN POWERPOINT MAN R264<sup>SV</sup>

## HBR

DOB: 20/08/2020

AMFU,CAFU,DDF,NHFU

IDENT: ABWR264

MATING TYPE: AI

TEHAMA REVERE<sup>#</sup>

D R SIERRA CUT 7404<sup>#</sup>  
TEHAMA ELITE BLACKBIRD T003<sup>#</sup>  
S SUMMIT 956<sup>#</sup>  
S QUEEN ESSA 0131<sup>#</sup>

TE MANIA AFRICA A217<sup>PV</sup>  
DAM: NWP6262 WATTLETOP ALEXIS G262<sup>#</sup>  
WATTLETOP ALEXIS Y135<sup>#</sup>

TE MANIA ULONG U41<sup>SV</sup>  
TE MANIA JEDDA Y32<sup>SV</sup>  
YTHANBRAE PRECISION V329<sup>#</sup>  
WATTLETOP ALEXIS W11<sup>#</sup>

SIRE: USA18159093 S POWERPOINT WS 5503<sup>PV</sup>

S QUEEN ESSA 248<sup>#</sup>

Mid July 2021 TransTasman Angus Cattle Evaluation

Traits Observed: GL,BWT,200WT,Genomics



Selection Indexes	Angus Breeding: \$132		Domestic: \$120			Heavy Grain: \$144			Heavy Grass: \$126								
	CED	CEDT	GL	BW	200	400	600	MCW	MLK	SS	DC	CWT	EMA	RIB	RMP	RBY	IMF
EBV	-6.1	+6.1	-2.0	+6.7	+59	+109	+138	+130	+16	+2.7	-5.8	+72	+5.8	-0.1	-0.1	+0.4	+2.0
Acc	57%	48%	84%	73%	71%	71%	72%	69%	63%	66%	40%	66%	64%	68%	65%	65%	64%

Purchaser: ..... Price \$ .....



# GLENMORGAN POWERPOINT MAN R242<sup>SV</sup>

## HBR

DOB: 15/08/2020

AMFU,CAFU,DDFU,NHFU

IDENT: ABWR242

MATING TYPE: AI

TEHAMA REVERE<sup>#</sup>

D R SIERRA CUT 7404<sup>#</sup>  
TEHAMA ELITE BLACKBIRD T003<sup>#</sup>  
S SUMMIT 956<sup>#</sup>  
S QUEEN ESSA 0131<sup>#</sup>

RITO 9M25 OF RITA 5F56 PRED<sup>SV</sup>  
DAM: NWPJ283 WATTLETOP J283<sup>#</sup>  
WATTLETOP ANN F82<sup>#</sup>

G A R PREDESTINED<sup>#</sup>  
RITA 5F56 OF 198 FD<sup>#</sup>  
B/R AMBUSH 28<sup>#</sup>  
WATTLETOP ANN Z243<sup>#</sup>

SIRE: USA18159093 S POWERPOINT WS 5503<sup>PV</sup>

S QUEEN ESSA 248<sup>#</sup>

Mid July 2021 TransTasman Angus Cattle Evaluation

Traits Observed: GL,BWT,200WT,Genomics



Selection Indexes	Angus Breeding: \$117		Domestic: \$119			Heavy Grain: \$119			Heavy Grass: \$116								
	CED	CEDT	GL	BW	200	400	600	MCW	MLK	SS	DC	CWT	EMA	RIB	RMP	RBY	IMF
EBV	+7.7	+9.3	-5.2	+1.8	+52	+92	+108	+82	+19	+0.9	-4.3	+64	+5.3	+1.0	-0.5	-0.5	+2.3
Acc	56%	46%	85%	74%	72%	71%	72%	70%	64%	66%	37%	66%	64%	69%	65%	65%	64%

Purchaser: ..... Price \$ .....



# GLENMORGAN POWERPOINT MAN R252<sup>SV</sup>

## APR

DOB: 18/08/2020

AMFU,CAFU,DDFU,NHFU

IDENT: ABWR252

MATING TYPE: AI

TEHAMA REVERE<sup>#</sup>

D R SIERRA CUT 7404<sup>#</sup>  
TEHAMA ELITE BLACKBIRD T003<sup>#</sup>  
S SUMMIT 956<sup>#</sup>  
S QUEEN ESSA 0131<sup>#</sup>

G A R SURE FIRE<sup>SV</sup>

CONNELLY IN SURE 8524<sup>#</sup>  
CHAIR ROCK 5050 G A R 8086<sup>#</sup>  
S A V THUNDERBIRD 9061<sup>SV</sup>  
UNKNOWN

SIRE: USA18159093 S POWERPOINT WS 5503<sup>PV</sup>

DAM: ABWN376 GLENMORGAN SURE FIRE LADY N376<sup>#</sup>

S QUEEN ESSA 248<sup>#</sup>

GLENMORGAN G6<sup>#</sup>

Mid July 2021 TransTasman Angus Cattle Evaluation

Traits Observed: GL,BWT,200WT,Genomics



Selection Indexes	Angus Breeding: \$138		Domestic: \$130			Heavy Grain: \$138			Heavy Grass: \$138								
	CED	CEDT	GL	BW	200	400	600	MCW	MLK	SS	DC	CWT	EMA	RIB	RMP	RBY	IMF
EBV	+2.6	+7.2	-3.4	+4.9	+63	+108	+135	+114	+12	+2.3	-4.1	+73	+7.0	+1.4	+2.4	+0.0	+1.6
Acc	55%	45%	84%	73%	72%	72%	73%	69%	63%	67%	38%	67%	65%	69%	65%	66%	65%

Purchaser: ..... Price \$ .....



# GLENMORGAN POWERPOINT MAN R250<sup>SV</sup>

## HBR

DOB: 18/08/2020

AMFU,CAFU,DDF,NHFU

IDENT: ABWR250

MATING TYPE: AI

TEHAMA REVERE<sup>#</sup>

D R SIERRA CUT 7404<sup>#</sup>  
TEHAMA ELITE BLACKBIRD T003<sup>#</sup>  
S SUMMIT 956<sup>#</sup>  
S QUEEN ESSA 0131<sup>#</sup>

WATTLETOP FRANKLIN G188<sup>SV</sup>

TC FRANKLIN 619<sup>#</sup>  
WATTLETOP BARUNAH E295<sup>DV</sup>  
KENNY'S CREEK REGENT G213<sup>SV</sup>  
WATTLETOP ANN B184<sup>#</sup>

SIRE: USA18159093 S POWERPOINT WS 5503<sup>PV</sup>

DAM: WFAN7 WIRIBILLA FARMS NICKI N7<sup>#</sup>

S QUEEN ESSA 248<sup>#</sup>

WATTLETOP ANN K76<sup>#</sup>

Mid July 2021 TransTasman Angus Cattle Evaluation

Traits Observed: GL,BWT,200WT,Genomics



Selection Indexes	Angus Breeding: \$125		Domestic: \$124			Heavy Grain: \$124			Heavy Grass: \$126								
	CED	CEDT	GL	BW	200	400	600	MCW	MLK	SS	DC	CWT	EMA	RIB	RMP	RBY	IMF
EBV	+3.1	+8.8	-3.8	+3.8	+59	+101	+117	+86	+13	+2.1	-5.2	+73	+8.1	+1.7	+1.2	-1.0	+2.1
Acc	56%	45%	84%	73%	71%	71%	72%	68%	63%	66%	36%	66%	64%	69%	65%	65%	64%

Purchaser: ..... Price \$ .....



# GLENMORGAN POWERPOINT MAN R244<sup>SV</sup>

## HBR

DOB: 18/08/2020

AMFU,CAFU,DDFU,NHFU

IDENT: ABWR244

MATING TYPE: AI

TEHAMA REVERE<sup>#</sup>

D R SIERRA CUT 7404<sup>#</sup>  
TEHAMA ELITE BLACKBIRD T003<sup>#</sup>  
S SUMMIT 956<sup>#</sup>  
S QUEEN ESSA 0131<sup>#</sup>

S A V THUNDERBIRD 9061<sup>SV</sup>

S A V FINAL ANSWER 0035<sup>#</sup>  
S A V EMBLYNETTE 7411<sup>#</sup>  
K C F BENNETT TOTAL<sup>#</sup>  
WATTLETOP JODY C210<sup>#</sup>

SIRE: USA18159093 S POWERPOINT WS 5503<sup>PV</sup>

DAM: ABWG14 GLENMORGAN THUNDERBIRD LADY G14<sup>#</sup>

S QUEEN ESSA 248<sup>#</sup>

GLENMORGAN BENNET TOTAL  
LADY E1<sup>#</sup>

Mid July 2021 TransTasman Angus Cattle Evaluation

Traits Observed: GL,BWT,200WT,Genomics



Selection Indexes	Angus Breeding: \$119		Domestic: \$128			Heavy Grain: \$117			Heavy Grass: \$122								
	CED	CEDT	GL	BW	200	400	600	MCW	MLK	SS	DC	CWT	EMA	RIB	RMP	RBY	IMF
EBV	+3.6	+7.2	-5.8	+3.6	+56	+105	+122	+104	+12	+0.9	-1.9	+70	+6.7	-1.2	-2.1	+1.5	+1.0
Acc	58%	49%	85%	75%	74%	73%	74%	71%	65%	68%	40%	68%	66%	71%	67%	67%	66%

Purchaser: ..... Price \$ .....



# GLENMORGAN POWERPOINT MAN R228<sup>SV</sup>

## APR

DOB: 15/08/2020

AMFU,CAFU,DDFU,NHFU

IDENT: ABWR228

MATING TYPE: AI

TEHAMA REVERE<sup>#</sup>

D R SIERRA CUT 7404<sup>#</sup>  
TEHAMA ELITE BLACKBIRD T003<sup>#</sup>  
S SUMMIT 956<sup>#</sup>  
S QUEEN ESSA 0131<sup>#</sup>

G A R SURE FIRE<sup>SV</sup>

CONNELLY IN SURE 8524<sup>#</sup>  
CHAIR ROCK 5050 G A R 8086<sup>#</sup>  
S A V THUNDERBIRD 9061<sup>SV</sup>  
GLENMORGAN F220<sup>#</sup>

SIRE: USA18159093 S POWERPOINT WS 5503<sup>PV</sup>

DAM: ABWN309 GLENMORGAN SURE FIRE LADY N309<sup>#</sup>

S QUEEN ESSA 248<sup>#</sup>

GLENMORGAN THUNDERBIRD  
LADY H24<sup>#</sup>

Mid July 2021 TransTasman Angus Cattle Evaluation

Traits Observed: GL,BWT,200WT,Genomics



Selection Indexes	Angus Breeding: \$140		Domestic: \$137			Heavy Grain: \$140			Heavy Grass: \$139								
	CED	CEDT	GL	BW	200	400	600	MCW	MLK	SS	DC	CWT	EMA	RIB	RMP	RBY	IMF
EBV	+4.9	+6.9	-6.9	+3.7	+61	+107	+124	+94	+16	+1.9	-5.8	+66	+4.9	+1.4	+3.1	+0.0	+1.8
Acc	56%	45%	84%	73%	72%	71%	73%	69%	63%	66%	38%	67%	65%	69%	65%	66%	65%

Purchaser: ..... Price \$ .....





# GLENMORGAN POWERPOINT MAN R307<sup>SV</sup>

## HBR

DOB: 28/08/2020

AMFU,CAFU,DDFU,NHFU

IDENT: ABWR307

MATING TYPE: AI

TEHAMA REVERE<sup>#</sup>

D R SIERRA CUT 7404<sup>#</sup>  
TEHAMA ELITE BLACKBIRD T003<sup>#</sup>

S A V THUNDERBIRD 9061<sup>SV</sup>

S A V FINAL ANSWER 0035<sup>#</sup>  
S A V EMBLYNETTE 7411<sup>#</sup>

SIRE:USA18159093 S POWERPOINT WS 5503<sup>PV</sup>

DAM: ABWH143 GLENMORGAN THUNDERBIRD LADY H143<sup>#</sup>

S QUEEN ESSA 248<sup>#</sup>

S SUMMIT 956<sup>#</sup>  
S QUEEN ESSA 0131<sup>#</sup>

WATTLETOP USUAL C62<sup>#</sup>

B/R AMBUSH 28<sup>#</sup>  
WATTLETOP USUAL A75<sup>#</sup>

Mid July 2021 TransTasman Angus Cattle Evaluation

Traits Observed: BWT,200WT,Genomics



Selection Indexes	Angus Breeding: \$135		Domestic: \$128			Heavy Grain: \$135			Heavy Grass:\$135								
	CED	CEDT	GL	BW	200	400	600	MCW	MLK	SS	DC	CWT	EMA	RIB	RMP	RBY	IMF
EBV	-0.5	+0.9	-3.4	+4.3	+67	+118	+147	+132	+19	+2.0	-5.3	+82	+6.8	+0.1	-0.9	+1.0	+0.9
Acc	57%	47%	74%	74%	72%	71%	72%	69%	63%	66%	38%	66%	64%	68%	64%	65%	64%

Purchaser:.....Price \$.....



# GLENMORGAN POWERPOINT MAN R220<sup>SV</sup>

## APR

DOB: 15/08/2020

AMFU,CAFU,DDFU,NHFU

IDENT: ABWR220

MATING TYPE: AI

TEHAMA REVERE<sup>#</sup>

D R SIERRA CUT 7404<sup>#</sup>  
TEHAMA ELITE BLACKBIRD T003<sup>#</sup>

WATTLETOP FRANKLIN G7<sup>SV</sup>

TC FRANKLIN 619<sup>#</sup>  
WATTLETOP BARUNAH E211<sup>#</sup>

SIRE:USA18159093 S POWERPOINT WS 5503<sup>PV</sup>

DAM: NWPJ345 WATTLETOP J345<sup>#</sup>

S QUEEN ESSA 248<sup>#</sup>

S SUMMIT 956<sup>#</sup>  
S QUEEN ESSA 0131<sup>#</sup>

WATTLETOP B100<sup>#</sup>

G A R PREDESTINED<sup>#</sup>  
WATTLETOP Z271<sup>#</sup>

Mid July 2021 TransTasman Angus Cattle Evaluation

Traits Observed: GL,BWT,200WT,Genomics



Selection Indexes	Angus Breeding: \$127		Domestic: \$117			Heavy Grain: \$133			Heavy Grass:\$123								
	CED	CEDT	GL	BW	200	400	600	MCW	MLK	SS	DC	CWT	EMA	RIB	RMP	RBY	IMF
EBV	+3.7	+6.4	-7.7	+3.8	+51	+93	+115	+102	+7	+0.5	-7.1	+64	+3.0	+2.1	+1.8	-1.3	+2.1
Acc	55%	44%	84%	74%	72%	71%	72%	69%	63%	66%	36%	66%	63%	68%	64%	64%	63%

Purchaser:.....Price \$.....



# GLENMORGAN ASHLAND MAN R347<sup>SV</sup>

## HBR

DOB: 29/08/2020

AMFU,CAFU,DDFU,NHFU

IDENT: ABWR347

MATING TYPE: AI

G A R EARLY BIRD<sup>#</sup>

G A R DAYLIGHT<sup>#</sup>  
G A R PROGRESS 830<sup>#</sup>

AYRVALE BARTEL E7<sup>PV</sup>

TE MANIA BARTEL B219<sup>PV</sup>  
EAGLEHAWK JEDDA B32<sup>SV</sup>

SIRE:USA18217198 G A R ASHLAND<sup>PV</sup>

DAM: ABWL111 GLENMORGAN BARTEL LADY L111<sup>#</sup>

CHAIR ROCK AMBUSH 1018<sup>#</sup>

B/R AMBUSH 28<sup>#</sup>  
G A R YIELD GRADE N366<sup>#</sup>

GLENMORGAN BERKLEY LADY J147<sup>#</sup>

KANSAS BERKLEY G13<sup>SV</sup>  
GLENMORGAN RIGHT TIME LADY G244<sup>#</sup>

Mid July 2021 TransTasman Angus Cattle Evaluation

Traits Observed: BWT,200WT,Genomics



Selection Indexes	Angus Breeding: \$148		Domestic: \$139			Heavy Grain: \$153			Heavy Grass:\$143								
	CED	CEDT	GL	BW	200	400	600	MCW	MLK	SS	DC	CWT	EMA	RIB	RMP	RBY	IMF
EBV	+0.8	+7.8	-3.7	+3.5	+60	+100	+121	+88	+19	+1.8	-6.7	+72	+12.2	-0.3	-0.2	+1.9	+1.8
Acc	60%	49%	70%	73%	72%	71%	72%	68%	63%	66%	40%	66%	64%	69%	65%	66%	64%

Purchaser:.....Price \$.....



# GLENMORGAN ASHLAND MAN R337<sup>SV</sup>

## APR

DOB: 29/08/2020

AMFU,CAFU,DDFU,NHFU

IDENT: ABWR337

MATING TYPE: AI

G A R EARLY BIRD<sup>#</sup>

G A R DAYLIGHT<sup>#</sup>  
G A R PROGRESS 830<sup>#</sup>

UNKNOWN

DAM: ABWD124 GLENMORGAN D124<sup>#</sup>

SIRE:USA18217198 G A R ASHLAND<sup>PV</sup>

CHAIR ROCK AMBUSH 1018<sup>#</sup>

B/R AMBUSH 28<sup>#</sup>  
G A R YIELD GRADE N366<sup>#</sup>

UNKNOWN

Mid July 2021 TransTasman Angus Cattle Evaluation

Traits Observed: BWT,200WT,Genomics



Selection Indexes	Angus Breeding: \$119		Domestic: \$122			Heavy Grain: \$117			Heavy Grass:\$123								
	CED	CEDT	GL	BW	200	400	600	MCW	MLK	SS	DC	CWT	EMA	RIB	RMP	RBY	IMF
EBV	+1.9	+4.5	-2.2	+2.9	+48	+90	+114	+75	+15	+1.7	+0.6	+66	+9.9	-1.9	-1.1	+2.2	+1.5
Acc	54%	41%	68%	71%	69%	68%	69%	65%	59%	62%	32%	63%	60%	66%	62%	62%	61%

Purchaser:.....Price \$.....



# GLENMORGAN ASHLAND MAN R270<sup>SV</sup>

## APR

DOB: 21/08/2020

AMFU,CAFU,DDFU,NHFU

IDENT: ABWR270

MATING TYPE: AI

G A R EARLY BIRD<sup>#</sup>

G A R DAYLIGHT<sup>#</sup>  
G A R PROGRESS 830<sup>#</sup>

CONNELY MENTOR 7374<sup>SV</sup>

G A R RETAIL PRODUCT<sup>#</sup>  
EXECUTA OF CONANGA 939<sup>#</sup>

SIRE: USA18217198 G A R ASHLAND<sup>PV</sup>

DAM: ABWH162 GLENMORGAN MENTOR LADY H162<sup>#</sup>

CHAIR ROCK AMBUSH 1018<sup>#</sup>

B/R AMBUSH 28<sup>#</sup>  
G A R YIELD GRADE N366<sup>#</sup>

GLENMORGAN PERFORMER LADY  
E47<sup>#</sup>

K C F BENNETT PERFORMER<sup>#</sup>  
UNKNOWN

Mid July 2021 TransTasman Angus Cattle Evaluation

Traits Observed: GL,BWT,200WT,Genomics



Selection Indexes	Angus Breeding: \$141		Domestic: \$134			Heavy Grain: \$151			Heavy Grass: \$138								
	CED	CEDT	GL	BW	200	400	600	MCW	MLK	SS	DC	CWT	EMA	RIB	RMP	RBY	IMF
EBV	+1.1	+7.0	-4.8	+3.6	+57	+107	+134	+109	+17	+1.3	-1.8	+79	+11.0	-2.4	-2.1	+1.9	+2.0
Acc	59%	47%	84%	74%	72%	71%	72%	69%	64%	67%	39%	67%	65%	69%	65%	66%	64%

Purchaser: ..... Price \$ .....



# GLENMORGAN ASHLAND MAN R280<sup>SV</sup>

## APR

DOB: 23/08/2020

AMFU,CAFU,DDFU,NHFU

IDENT: ABWR280

MATING TYPE: AI

G A R EARLY BIRD<sup>#</sup>

G A R DAYLIGHT<sup>#</sup>  
G A R PROGRESS 830<sup>#</sup>

K C F BENNETT PERFORMER<sup>#</sup>

HYLINE RIGHT TIME 338<sup>#</sup>  
K C F MISS 589 L182<sup>#</sup>

SIRE: USA18217198 G A R ASHLAND<sup>PV</sup>

DAM: ABWE47 GLENMORGAN PERFORMER LADY E47<sup>#</sup>

CHAIR ROCK AMBUSH 1018<sup>#</sup>

B/R AMBUSH 28<sup>#</sup>  
G A R YIELD GRADE N366<sup>#</sup>

UNKNOWN

Mid July 2021 TransTasman Angus Cattle Evaluation

Traits Observed: BWT,200WT,Genomics



Selection Indexes	Angus Breeding: \$142		Domestic: \$137			Heavy Grain: \$148			Heavy Grass: \$141								
	CED	CEDT	GL	BW	200	400	600	MCW	MLK	SS	DC	CWT	EMA	RIB	RMP	RBY	IMF
EBV	+1.6	+4.7	-5.9	+3.9	+63	+113	+139	+109	+18	+3.3	-1.4	+83	+10.5	+0.0	-0.1	+1.3	+2.1
Acc	58%	46%	71%	73%	71%	70%	71%	67%	63%	65%	38%	66%	63%	68%	64%	65%	63%

Purchaser: ..... Price \$ .....



# GLENMORGAN ASHLAND MAN R304<sup>SV</sup>

## APR

DOB: 24/08/2020

AMFU,CAFU,DDFU,NHFU

IDENT: ABWR304

MATING TYPE: AI

G A R EARLY BIRD<sup>#</sup>

G A R DAYLIGHT<sup>#</sup>  
G A R PROGRESS 830<sup>#</sup>

WMR TIMELESS 458<sup>#</sup>

LEACHMAN RIGHT TIME 338-5605<sup>#</sup>  
WMR BLACKCAP 521<sup>#</sup>

SIRE: USA18217198 G A R ASHLAND<sup>PV</sup>

DAM: ABWH196 GLENMORGAN TIMELESS LADY H196<sup>#</sup>

CHAIR ROCK AMBUSH 1018<sup>#</sup>

B/R AMBUSH 28<sup>#</sup>  
G A R YIELD GRADE N366<sup>#</sup>

GLENMORGAN RIGHT TIME LADY  
F167<sup>#</sup>

BT RIGHT TIME 24<sup>#</sup>  
UNKNOWN

Mid July 2021 TransTasman Angus Cattle Evaluation

Traits Observed: BWT,200WT,Genomics



Selection Indexes	Angus Breeding: \$131		Domestic: \$126			Heavy Grain: \$140			Heavy Grass: \$129								
	CED	CEDT	GL	BW	200	400	600	MCW	MLK	SS	DC	CWT	EMA	RIB	RMP	RBY	IMF
EBV	-0.1	+6.3	-7.2	+3.9	+56	+104	+138	+125	+13	+1.5	-1.0	+77	+7.4	-2.8	-3.9	+2.7	+1.3
Acc	59%	47%	72%	74%	73%	72%	73%	69%	64%	68%	39%	68%	65%	70%	66%	67%	65%

Purchaser: ..... Price \$ .....



# GLENMORGAN ASHLAND MAN R281<sup>SV</sup>

## APR

DOB: 23/08/2020

AMFU,CAFU,DDFU,NHFU

IDENT: ABWR281

MATING TYPE: AI

G A R EARLY BIRD<sup>#</sup>

G A R DAYLIGHT<sup>#</sup>  
G A R PROGRESS 830<sup>#</sup>

MILLAH MURRAH KLOONEY K42<sup>PV</sup>

BOOROOMOOKA THEO T030<sup>SV</sup>  
MILLAH MURRAH PRUE H4<sup>SV</sup>

SIRE: USA18217198 G A R ASHLAND<sup>PV</sup>

DAM: ABWM219 GLENMORGAN KLOONEY LADY H219<sup>#</sup>

CHAIR ROCK AMBUSH 1018<sup>#</sup>

B/R AMBUSH 28<sup>#</sup>  
G A R YIELD GRADE N366<sup>#</sup>

GLENMORGAN E71<sup>#</sup>

K C F BENNETT PERFORMER<sup>#</sup>  
UNKNOWN

Mid July 2021 TransTasman Angus Cattle Evaluation

Traits Observed: BWT,200WT,Genomics



Selection Indexes	Angus Breeding: \$152		Domestic: \$140			Heavy Grain: \$169			Heavy Grass: \$146								
	CED	CEDT	GL	BW	200	400	600	MCW	MLK	SS	DC	CWT	EMA	RIB	RMP	RBY	IMF
EBV	+6.0	+6.8	-7.2	+4.5	+60	+106	+139	+118	+17	+2.3	-2.6	+84	+10.7	-2.7	-3.3	+2.6	+2.1
Acc	58%	46%	69%	72%	70%	69%	70%	66%	61%	65%	37%	65%	62%	67%	63%	63%	62%

Purchaser: ..... Price \$ .....



# GLENMORGAN ASHLAND MAN R309<sup>SV</sup>

## HBR

DOB: 28/08/2020

AMFU,CAFU,DDFU,NHFU

IDENT: ABWR309

MATING TYPE: AI

G A R EARLY BIRD\*

G A R DAYLIGHT\*  
G A R PROGRESS 830\*

JMB TRACTION 292<sup>PV</sup>

SITZ TOP GAME 561X\*  
JMB EMULOTA 013\*

SIRE: USA18217198 G A R ASHLAND<sup>PV</sup>

DAM: ABWL314 GLENMORGAN TRACTION LADY L314\*

CHAIR ROCK AMBUSH 1018\*

B/R AMBUSH 28\*  
G A R YIELD GRADE N366\*

GLENMORGAN ROCKN D D21\*

ROCKN D AMBUSH 1531\*  
WATTLETOP BARUNAH T90\*

Mid July 2021 TransTasman Angus Cattle Evaluation

Traits Observed: BWT,200WT,Genomics



Selection Indexes	Angus Breeding: \$138		Domestic: \$131		Heavy Grain: \$154			Heavy Grass: \$131									
	CED	CEDT	GL	BW	200	400	600	MCW	MLK	SS	DC	CWT	EMA	RIB	RMP	RBY	IMF
EBV	+1.8	+7.1	-2.8	+1.8	+50	+91	+108	+71	+21	+1.5	-3.2	+58	+12.2	+0.6	-0.2	+0.7	+3.6
Acc	60%	48%	74%	74%	73%	72%	73%	70%	64%	68%	39%	67%	65%	70%	66%	66%	65%

Purchaser: ..... Price \$ .....



# GLENMORGAN ASHLAND MAN R273<sup>SV</sup>

## APR

DOB: 21/08/2020

AMFU,CAFU,DDFU,NHFU

IDENT: ABWR273

MATING TYPE: AI

G A R EARLY BIRD\*

G A R DAYLIGHT\*  
G A R PROGRESS 830\*

POSS TOTAL IMPACT 745\*

TC TOTAL 410\*  
POSS BLACKCAP 5116\*

SIRE: USA18217198 G A R ASHLAND<sup>PV</sup>

DAM: ABWJ102 GLENMORGAN TOTAL IMPACT LADY J102\*

CHAIR ROCK AMBUSH 1018\*

B/R AMBUSH 28\*  
G A R YIELD GRADE N366\*

GLENMORGAN THUNDERBIRD  
LADY G102\*

S A V THUNDERBIRD 9061<sup>SV</sup>  
UNKNOWN

Mid July 2021 TransTasman Angus Cattle Evaluation

Traits Observed: GL,BWT,200WT,Genomics



Selection Indexes	Angus Breeding: \$133		Domestic: \$121		Heavy Grain: \$151			Heavy Grass: \$125									
	CED	CEDT	GL	BW	200	400	600	MCW	MLK	SS	DC	CWT	EMA	RIB	RMP	RBY	IMF
EBV	-2.4	+7.2	-5.0	+2.4	+55	+99	+124	+100	+13	+2.1	-3.6	+72	+3.4	-0.4	+0.8	-0.7	+3.7
Acc	60%	48%	84%	73%	72%	72%	72%	69%	64%	67%	39%	67%	65%	70%	66%	66%	65%

Purchaser: ..... Price \$ .....



# GLENMORGAN ASHLAND MAN R314<sup>SV</sup>

## APR

DOB: 28/08/2020

AMFU,CAFU,DDFU,NHFU

IDENT: ABWR314

MATING TYPE: AI

G A R EARLY BIRD\*

G A R DAYLIGHT\*  
G A R PROGRESS 830\*

DEER VALLEY ALL IN<sup>SV</sup>

A A R TEN X 7008 S A<sup>SV</sup>  
DEER VALLEY RITA 0274\*

SIRE: USA18217198 G A R ASHLAND<sup>PV</sup>

DAM: ABWL417 GLENMORGAN ALL IN LADY L417\*

CHAIR ROCK AMBUSH 1018\*

B/R AMBUSH 28\*  
G A R YIELD GRADE N366\*

GLENMORGAN C319\*

ARDROSSAN DIRECTION W109<sup>PV</sup>  
UNKNOWN

Mid July 2021 TransTasman Angus Cattle Evaluation

Traits Observed: BWT,200WT,Genomics



Selection Indexes	Angus Breeding: \$144		Domestic: \$134		Heavy Grain: \$161			Heavy Grass: \$138									
	CED	CEDT	GL	BW	200	400	600	MCW	MLK	SS	DC	CWT	EMA	RIB	RMP	RBY	IMF
EBV	-1.4	+4.3	-4.7	+4.7	+58	+107	+139	+123	+19	+2.0	-2.2	+77	+11.7	-3.4	-4.3	+3.3	+1.9
Acc	59%	47%	71%	73%	72%	71%	72%	68%	63%	67%	39%	66%	64%	68%	65%	65%	64%

Purchaser: ..... Price \$ .....



# GLENMORGAN ASHLAND MAN R326<sup>SV</sup>

## APR

DOB: 27/08/2020

AMFU,CAFU,DDF,NHFU

IDENT: ABWR326

MATING TYPE: AI

G A R EARLY BIRD\*

G A R DAYLIGHT\*  
G A R PROGRESS 830\*

WATTLETOP UPFRONT U28\*

B/R NEW DESIGN 036\*  
WATTLETOP USUAL P22+94\*

SIRE: USA18217198 G A R ASHLAND<sup>PV</sup>

DAM: ABWE129 GLENMORGAN UPFRONT LADY E129\*

CHAIR ROCK AMBUSH 1018\*

B/R AMBUSH 28\*  
G A R YIELD GRADE N366\*

UNKNOWN

Mid July 2021 TransTasman Angus Cattle Evaluation

Traits Observed: BWT,200WT,Genomics



Selection Indexes	Angus Breeding: \$126		Domestic: \$123		Heavy Grain: \$136			Heavy Grass: \$123									
	CED	CEDT	GL	BW	200	400	600	MCW	MLK	SS	DC	CWT	EMA	RIB	RMP	RBY	IMF
EBV	-5.1	-2.0	-3.3	+4.5	+58	+103	+128	+101	+18	+2.0	-1.1	+74	+11.2	-1.4	-2.6	+2.3	+2.3
Acc	57%	45%	71%	73%	72%	71%	72%	69%	64%	66%	38%	67%	64%	69%	65%	66%	64%

Purchaser: ..... Price \$ .....





# GLENMORGAN ASHLAND MAN R330<sup>SV</sup>

## APR

DOB: 28/08/2020

AMFU,CAFU,DDFU,NHFU

IDENT: ABWR330

MATING TYPE: AI

G A R EARLY BIRD\*

G A R DAYLIGHT\*  
G A R PROGRESS 830\*

MILLAH MURRAH KLOONEY K42<sup>PV</sup>

BOOROOMOOKA THEO T030<sup>SV</sup>  
MILLAH MURRAH PRUE H4<sup>SV</sup>

SIRE:USA18217198 G A R ASHLAND<sup>PV</sup>

DAM: ABWM267 GLENMORGAN KLOONEY LADY M267\*

CHAIR ROCK AMBUSH 1018\*

B/R AMBUSH 28\*  
G A R YIELD GRADE N366\*

GLENMORGAN F319\*

K C F BENNETT PERFORMER\*  
UNKNOWN

Mid July 2021 TransTasman Angus Cattle Evaluation

Traits Observed: BWT,200WT,Genomics



Selection Indexes	Angus Breeding: \$131		Domestic: \$134		Heavy Grain: \$133			Heavy Grass:\$131									
	CED	CEDT	GL	BW	200	400	600	MCW	MLK	SS	DC	CWT	EMA	RIB	RMP	RBY	IMF
EBV	+2.3	+4.8	-5.2	+4.1	+56	+96	+113	+78	+17	+0.8	-3.6	+63	+12.7	-1.4	-2.4	+2.6	+1.5
Acc	58%	46%	70%	72%	71%	70%	70%	67%	62%	66%	38%	66%	63%	68%	64%	64%	63%

Purchaser:.....Price \$.....



# GLENMORGAN ASHLAND MAN R345<sup>SV</sup>

## APR

DOB: 30/08/2020

AMF,CAFU,DDFU,NHFU

IDENT: ABWR345

MATING TYPE: AI

G A R EARLY BIRD\*

G A R DAYLIGHT\*  
G A R PROGRESS 830\*

MILLAH MURRAH KLOONEY K42<sup>PV</sup>

BOOROOMOOKA THEO T030<sup>SV</sup>  
MILLAH MURRAH PRUE H4<sup>SV</sup>

SIRE:USA18217198 G A R ASHLAND<sup>PV</sup>

DAM: ABWM333 GLENMORGAN KLOONEY LADY M333\*

CHAIR ROCK AMBUSH 1018\*

B/R AMBUSH 28\*  
G A R YIELD GRADE N366\*

GLENMORGAN THUNDERBIRD  
LADY J285\*

S A V THUNDERBIRD 9061<sup>SV</sup>  
GLENMORGAN CONNECTION LADY E164\*

Mid July 2021 TransTasman Angus Cattle Evaluation

Traits Observed: BWT,200WT,Genomics



Selection Indexes	Angus Breeding: \$154		Domestic: \$139		Heavy Grain: \$176			Heavy Grass:\$145									
	CED	CEDT	GL	BW	200	400	600	MCW	MLK	SS	DC	CWT	EMA	RIB	RMP	RBY	IMF
EBV	-0.9	+2.9	-4.0	+5.4	+65	+117	+150	+129	+14	+1.4	-2.2	+85	+9.6	-1.8	-3.2	+2.0	+2.7
Acc	59%	47%	69%	73%	71%	70%	71%	68%	63%	66%	38%	66%	64%	68%	64%	65%	64%

Purchaser:.....Price \$.....



# GLENMORGAN KEYSTONE MAN R162<sup>PV</sup>

## APR

DOB: 23/07/2020

AMFU,CAFU,DDFU,NHFU

IDENT: ABWR162

MATING TYPE: AI

RENNYLEA EDMUND E11<sup>PV</sup>

BOOROOMOOKA UNDERTAKEN Y145<sup>PV</sup>  
LAWSONS HENRY VIII Y5<sup>SV</sup>

G A R PROPHET<sup>SV</sup>

C R A BEXTOR 872 5205 608\*  
G A R OBJECTIVE 1885\*

SIRE:TFAK132 LANDFALL KEYSTONE K132<sup>PV</sup>

DAM: ABWP390 GLENMORGAN PROPHET LADY P390<sup>SV</sup>

LANDFALL ARCHER H807<sup>SV</sup>

S A V FRONT RUNNER 0713\*  
LANDFALL ARCHER X9<sup>PV</sup>

GLENMORGAN G185\*

B/R FUTURE DIRECTION 4268<sup>SV</sup>  
UNKNOWN

Mid July 2021 TransTasman Angus Cattle Evaluation

Traits Observed: GL,BWT,200WT,Genomics



Selection Indexes	Angus Breeding: \$130		Domestic: \$116		Heavy Grain: \$145			Heavy Grass:\$121									
	CED	CEDT	GL	BW	200	400	600	MCW	MLK	SS	DC	CWT	EMA	RIB	RMP	RBY	IMF
EBV	+6.0	+6.9	-1.9	+3.3	+46	+77	+103	+82	+14	+1.6	-6.4	+61	+6.9	+1.0	-0.7	+0.0	+3.0
Acc	61%	54%	83%	72%	70%	70%	71%	69%	65%	67%	43%	66%	64%	68%	65%	65%	64%

Purchaser:.....Price \$.....



# GLENMORGAN KEYSTONE MAN R132<sup>SV</sup>

## HBR

DOB: 22/07/2020

AMFU,CAFU,DDFU,NHFU

IDENT: ABWR132

MATING TYPE: AI

RENNYLEA EDMUND E11<sup>PV</sup>

BOOROOMOOKA UNDERTAKEN Y145<sup>PV</sup>  
LAWSONS HENRY VIII Y5<sup>SV</sup>

WATTLETOP FRANKLIN G188<sup>SV</sup>

TC FRANKLIN 619\*  
WATTLETOP BARUNAH E295<sup>DV</sup>

SIRE:TFAK132 LANDFALL KEYSTONE K132<sup>PV</sup>

DAM: ABWP225 GLENMORGAN FRANKLIN LADY P225<sup>SV</sup>

LANDFALL ARCHER H807<sup>SV</sup>

S A V FRONT RUNNER 0713\*  
LANDFALL ARCHER X9<sup>PV</sup>

GLENMORGAN BARTEL LADY K163\*

AYRVALE BARTEL E7<sup>PV</sup>  
GLENMORGAN BANDO LADY H239\*

Mid July 2021 TransTasman Angus Cattle Evaluation

Traits Observed: GL,BWT,200WT,Genomics



Selection Indexes	Angus Breeding: \$154		Domestic: \$134		Heavy Grain: \$163			Heavy Grass:\$146									
	CED	CEDT	GL	BW	200	400	600	MCW	MLK	SS	DC	CWT	EMA	RIB	RMP	RBY	IMF
EBV	+9.8	+11.0	-6.8	+1.6	+56	+92	+121	+94	+19	+2.8	-10.2	+80	+10.0	+1.8	-0.4	+0.8	+1.8
Acc	62%	54%	84%	73%	71%	71%	72%	70%	66%	67%	42%	67%	64%	69%	66%	65%	64%

Purchaser:.....Price \$.....



# GLENMORGAN KEYSTONE MAN R127<sup>SV</sup>

## HBR

DOB: 21/07/2020

AMFU,CAFU,DDFU,NHFU

IDENT: ABWR127

MATING TYPE: AI

RENNYLEA EDMUND E11<sup>PV</sup>

BOOROOMOOKA UNDERTAKEN Y145<sup>PV</sup>  
LAWSONS HENRY VIII Y5<sup>SV</sup>

AYRVALE GENERAL G18<sup>PV</sup>

TE MANIA BERKLEY B1<sup>PV</sup>  
AYRVALE EASE E3<sup>PV</sup>

SIRE: TFAK132 LANDFALL KEYSTONE K132<sup>PV</sup>

DAM: ABWP319 GLENMORGAN GENERAL LADY P319<sup>#</sup>

LANDFALL ARCHER H807<sup>SV</sup>

S A V FRONT RUNNER 0713<sup>#</sup>  
LANDFALL ARCHER X9<sup>PV</sup>

GLENMORGAN FINAL ANSWER  
LADY F23<sup>#</sup>

S A V FINAL ANSWER 0035<sup>#</sup>  
WATTLETOP USUAL D344<sup>#</sup>

Mid July 2021 TransTasman Angus Cattle Evaluation

Traits Observed: GL,BWT,200WT,Genomics



Selection Indexes	Angus Breeding: \$157		Domestic: \$138		Heavy Grain: \$164			Heavy Grass: \$151									
	CEB	CEDT	GL	BW	200	400	600	MCW	MLK	SS	DC	CWT	EMA	RIB	RMP	RBY	IMF
EBV	+9.4	+5.6	-6.1	+1.2	+56	+101	+128	+99	+17	+3.0	-9.6	+82	+10.4	+3.8	+0.9	+0.5	+1.6
Acc	62%	54%	84%	73%	72%	71%	73%	70%	66%	67%	43%	67%	65%	69%	66%	66%	65%

Purchaser: ..... Price \$ .....



# GLENMORGAN KEYSTONE MAN R161<sup>SV</sup>

## APR

DOB: 29/07/2020

AMFU,CAFU,DDFU,NHFU

IDENT: ABWR161

MATING TYPE: AI

RENNYLEA EDMUND E11<sup>PV</sup>

BOOROOMOOKA UNDERTAKEN Y145<sup>PV</sup>  
LAWSONS HENRY VIII Y5<sup>SV</sup>

AYRVALE GENERAL G18<sup>PV</sup>

TE MANIA BERKLEY B1<sup>PV</sup>  
AYRVALE EASE E3<sup>PV</sup>

SIRE: TFAK132 LANDFALL KEYSTONE K132<sup>PV</sup>

DAM: ABWP292 GLENMORGAN GENERAL LADY P292<sup>#</sup>

LANDFALL ARCHER H807<sup>SV</sup>

S A V FRONT RUNNER 0713<sup>#</sup>  
LANDFALL ARCHER X9<sup>PV</sup>

WATTLETOP G334<sup>#</sup>

BOOROOMOOKA DESIGN Y340<sup>SV</sup>  
WATTLETOP Y264<sup>#</sup>

Mid July 2021 TransTasman Angus Cattle Evaluation

Traits Observed: BWT,200WT,Genomics



Selection Indexes	Angus Breeding: \$132		Domestic: \$118		Heavy Grain: \$137			Heavy Grass: \$128									
	CEB	CEDT	GL	BW	200	400	600	MCW	MLK	SS	DC	CWT	EMA	RIB	RMP	RBY	IMF
EBV	+3.6	+3.4	-0.7	+3.0	+51	+93	+124	+95	+24	+2.1	-6.4	+82	+7.3	+2.1	-0.3	+0.1	+1.8
Acc	61%	54%	72%	72%	71%	71%	72%	70%	65%	67%	43%	67%	64%	69%	66%	66%	64%

Purchaser: ..... Price \$ .....



# GLENMORGAN KEYSTONE MAN R151<sup>PV</sup>

## APR

DOB: 28/07/2020

AMFU,CAFU,DDFU,NHFU

IDENT: ABWR151

MATING TYPE: AI

RENNYLEA EDMUND E11<sup>PV</sup>

BOOROOMOOKA UNDERTAKEN Y145<sup>PV</sup>  
LAWSONS HENRY VIII Y5<sup>SV</sup>

WATTLETOP FRANKLIN G188<sup>SV</sup>

TC FRANKLIN 619<sup>#</sup>  
WATTLETOP BARUNAH E295<sup>SV</sup>

SIRE: TFAK132 LANDFALL KEYSTONE K132<sup>PV</sup>

DAM: ABWP261 GLENMORGAN FRANKLIN LADY P261<sup>SV</sup>

LANDFALL ARCHER H807<sup>SV</sup>

S A V FRONT RUNNER 0713<sup>#</sup>  
LANDFALL ARCHER X9<sup>PV</sup>

GLENMORGAN ALL IN LADY L427<sup>#</sup>

DEER VALLEY ALL IN<sup>SV</sup>  
GLENMORGAN C315<sup>#</sup>

Mid July 2021 TransTasman Angus Cattle Evaluation

Traits Observed: BWT,200WT,Genomics



Selection Indexes	Angus Breeding: \$119		Domestic: \$116		Heavy Grain: \$116			Heavy Grass: \$120									
	CEB	CEDT	GL	BW	200	400	600	MCW	MLK	SS	DC	CWT	EMA	RIB	RMP	RBY	IMF
EBV	+6.4	+5.2	-2.9	+0.8	+45	+88	+110	+79	+18	+2.0	-5.8	+69	+6.6	+1.5	-0.5	+0.1	+1.2
Acc	62%	54%	73%	73%	72%	72%	73%	70%	67%	68%	43%	68%	65%	70%	66%	67%	65%

Purchaser: ..... Price \$ .....



# GLENMORGAN KEYSTONE MAN R144<sup>PV</sup>

## APR

DOB: 25/07/2020

AMFU,CAFU,DDFU,NHFU

IDENT: ABWR144

MATING TYPE: AI

RENNYLEA EDMUND E11<sup>PV</sup>

BOOROOMOOKA UNDERTAKEN Y145<sup>PV</sup>  
LAWSONS HENRY VIII Y5<sup>SV</sup>

ACC BOURBON 0115<sup>SV</sup>

V A R DISCOVERY 2240<sup>PV</sup>  
APPLE RITA 26430<sup>#</sup>

SIRE: TFAK132 LANDFALL KEYSTONE K132<sup>PV</sup>

DAM: ABWP349 GLENMORGAN BOURBON LADY P349<sup>SV</sup>

LANDFALL ARCHER H807<sup>SV</sup>

S A V FRONT RUNNER 0713<sup>#</sup>  
LANDFALL ARCHER X9<sup>PV</sup>

GLENMORGAN C309<sup>#</sup>

ARDROSSAN DIRECTION W109<sup>PV</sup>  
UNKNOWN

Mid July 2021 TransTasman Angus Cattle Evaluation

Traits Observed: GL,BWT,200WT,Genomics



Selection Indexes	Angus Breeding: \$131		Domestic: \$116		Heavy Grain: \$144			Heavy Grass: \$123									
	CEB	CEDT	GL	BW	200	400	600	MCW	MLK	SS	DC	CWT	EMA	RIB	RMP	RBY	IMF
EBV	+5.3	+4.1	-6.3	+2.2	+48	+93	+122	+111	+20	+0.8	-7.2	+75	+4.2	+0.8	-1.0	-0.6	+2.3
Acc	59%	51%	84%	72%	70%	70%	71%	68%	65%	66%	40%	66%	63%	67%	64%	64%	63%

Purchaser: ..... Price \$ .....



# GLENMORGAN POWERPOINT MAN R212<sup>SV</sup>

## APR

DOB: 14/08/2020

AMFU,CAFU,DDFU,NHFU

IDENT: ABWR212

MATING TYPE: AI

TEHAMA REVERE<sup>#</sup>

D R SIERRA CUT 7404<sup>#</sup>  
TEHAMA ELITE BLACKBIRD T003<sup>#</sup>  
S SUMMIT 956<sup>#</sup>  
S QUEEN ESSA 0131<sup>#</sup>

MATAURI REALITY 839<sup>#</sup>

SCHURRTOP REALITY X723<sup>#</sup>  
MATAURI 06663<sup>#</sup>  
JMB TRACTION 292<sup>PV</sup>  
GLENMORGAN BANDO LADY H239<sup>#</sup>

SIRE: USA18159093 S POWERPOINT WS 5503<sup>PV</sup>

DAM: ABWN111 GLENMORGAN REALITY LADY N111<sup>#</sup>

S QUEEN ESSA 248<sup>#</sup>

GLENMORGAN TRACTION LADY L243<sup>#</sup>

Mid July 2021 TransTasman Angus Cattle Evaluation

Traits Observed: GL,BWT,200WT,Genomics



Selection Indexes	Angus Breeding: \$119		Domestic: \$118		Heavy Grain: \$120			Heavy Grass: \$118									
	CED	CEDT	GL	BW	200	400	600	MCW	MLK	SS	DC	CWT	EMA	RIB	RMP	RBY	IMF
EBV	+7.9	+11.8	-8.2	+3.2	+52	+96	+112	+100	+15	+1.6	-5.1	+63	+4.2	+3.6	+1.9	-1.4	+2.1
Acc	57%	47%	84%	74%	72%	72%	73%	70%	64%	67%	40%	67%	65%	69%	66%	66%	65%

Purchaser: ..... Price \$ .....



# GLENMORGAN POWERPOINT MAN R248<sup>SV</sup>

## HBR

DOB: 18/08/2020

AMFU,CAFU,DDF,NHFU

IDENT: ABWR248

MATING TYPE: AI

TEHAMA REVERE<sup>#</sup>

D R SIERRA CUT 7404<sup>#</sup>  
TEHAMA ELITE BLACKBIRD T003<sup>#</sup>  
S SUMMIT 956<sup>#</sup>  
S QUEEN ESSA 0131<sup>#</sup>

MATAURI REALITY 839<sup>#</sup>

SCHURRTOP REALITY X723<sup>#</sup>  
MATAURI 06663<sup>#</sup>  
JMB TRACTION 292<sup>PV</sup>  
GLENMORGAN RIGHT TIME LADY G250<sup>#</sup>

SIRE: USA18159093 S POWERPOINT WS 5503<sup>PV</sup>

DAM: ABWN114 GLENMORGAN REALITY LADY N114<sup>#</sup>

S QUEEN ESSA 248<sup>#</sup>

GLENMORGAN TRACTION LADY L279<sup>#</sup>

Mid July 2021 TransTasman Angus Cattle Evaluation

Traits Observed: GL,BWT,200WT,Genomics



Selection Indexes	Angus Breeding: \$118		Domestic: \$117		Heavy Grain: \$110			Heavy Grass: \$121									
	CED	CEDT	GL	BW	200	400	600	MCW	MLK	SS	DC	CWT	EMA	RIB	RMP	RBY	IMF
EBV	+7.5	+10.1	-4.9	+2.9	+54	+93	+110	+88	+10	+2.0	-5.8	+58	+5.1	+4.6	+3.9	-1.9	+1.7
Acc	56%	47%	84%	73%	72%	71%	73%	69%	63%	67%	39%	66%	64%	69%	65%	65%	64%

Purchaser: ..... Price \$ .....



# GLENMORGAN POWERPOINT MAN R231<sup>SV</sup>

## HBR

DOB: 16/08/2020

AMFU,CAFU,DDFU,NHFU

IDENT: ABWR231

MATING TYPE: AI

TEHAMA REVERE<sup>#</sup>

D R SIERRA CUT 7404<sup>#</sup>  
TEHAMA ELITE BLACKBIRD T003<sup>#</sup>  
S SUMMIT 956<sup>#</sup>  
S QUEEN ESSA 0131<sup>#</sup>

MATAURI REALITY 839<sup>#</sup>

SCHURRTOP REALITY X723<sup>#</sup>  
MATAURI 06663<sup>#</sup>  
S A V 707 RITO 9969<sup>#</sup>  
S A V EMBLYNETTE 7310<sup>#</sup>

SIRE: USA18159093 S POWERPOINT WS 5503<sup>PV</sup>

DAM: ABWN264 GLENMORGAN REALITY LADY N264<sup>#</sup>

S QUEEN ESSA 248<sup>#</sup>

GLENMORGAN RITO 9969 LADY K527<sup>#</sup>

Mid July 2021 TransTasman Angus Cattle Evaluation

Traits Observed: GL,BWT,200WT,Genomics



Selection Indexes	Angus Breeding: \$126		Domestic: \$121		Heavy Grain: \$120			Heavy Grass: \$128									
	CED	CEDT	GL	BW	200	400	600	MCW	MLK	SS	DC	CWT	EMA	RIB	RMP	RBY	IMF
EBV	+4.3	+8.7	-6.7	+3.9	+58	+105	+127	+111	+17	+2.0	-6.3	+73	+4.2	+3.5	+3.5	-1.5	+1.3
Acc	56%	46%	84%	73%	71%	71%	72%	68%	63%	66%	39%	66%	64%	68%	65%	65%	64%

Purchaser: ..... Price \$ .....



# GLENMORGAN POWERPOINT MAN R219<sup>SV</sup>

## HBR

DOB: 15/08/2020

AMFU,CAFU,DDF,NHFU

IDENT: ABWR219

MATING TYPE: AI

TEHAMA REVERE<sup>#</sup>

D R SIERRA CUT 7404<sup>#</sup>  
TEHAMA ELITE BLACKBIRD T003<sup>#</sup>  
S SUMMIT 956<sup>#</sup>  
S QUEEN ESSA 0131<sup>#</sup>

GLENAVON C140<sup>SV</sup>

ARDROSSAN ADMIRAL A2<sup>PV</sup>  
GLENAVON X107<sup>#</sup>  
WATTLETOP RETAIL PRODUCT B216<sup>PV</sup>  
WATTLETOP ZBARUNAH 103 Z103<sup>SV</sup>

SIRE: USA18159093 S POWERPOINT WS 5503<sup>PV</sup>

DAM: NWP352 WATTLETOP BARUNAH G352<sup>#</sup>

S QUEEN ESSA 248<sup>#</sup>

WATTLETOP BARUNAH D264<sup>SV</sup>

Mid July 2021 TransTasman Angus Cattle Evaluation

Traits Observed: GL,BWT,200WT,Genomics



Selection Indexes	Angus Breeding: \$107		Domestic: \$106		Heavy Grain: \$108			Heavy Grass: \$107									
	CED	CEDT	GL	BW	200	400	600	MCW	MLK	SS	DC	CWT	EMA	RIB	RMP	RBY	IMF
EBV	+8.3	+8.2	-6.1	+1.7	+47	+90	+111	+105	+17	+1.4	-5.3	+68	+0.6	+1.5	+0.5	-1.6	+1.9
Acc	56%	45%	84%	74%	72%	72%	73%	69%	63%	66%	36%	66%	63%	68%	65%	64%	63%

Purchaser: ..... Price \$ .....





# GLENMORGAN POWERPOINT MAN R230<sup>SV</sup>

## APR

DOB: 16/08/2020

AMFU,CAFU,DDFU,NHF

IDENT: ABWR230

MATING TYPE: AI

TEHAMA REVERE<sup>#</sup>

D R SIERRA CUT 7404<sup>#</sup>  
TEHAMA ELITE BLACKBIRD T003<sup>#</sup>  
S SUMMIT 956<sup>#</sup>  
S QUEEN ESSA 0131<sup>#</sup>

MATAURI REALITY 839<sup>#</sup>

SCHURRTOP REALITY X723<sup>#</sup>  
MATAURI 06663<sup>#</sup>  
A A R TEN X 7008 S A<sup>SV</sup>  
GLENMORGAN RIGHT TIME LADY G243<sup>#</sup>

SIRE: USA18159093 S POWERPOINT WS 5503<sup>PV</sup>

DAM: ABWN339 GLENMORGAN REALITY LADY N339<sup>#</sup>

S QUEEN ESSA 248<sup>#</sup>

GLENMORGAN TEN X LADY K320<sup>#</sup>

Mid July 2021 TransTasman Angus Cattle Evaluation

Traits Observed: GL,BWT,200WT,Genomics



Selection Indexes	Angus Breeding: \$121		Domestic: \$118		Heavy Grain: \$118			Heavy Grass: \$122									
	CED	CEDT	GL	BW	200	400	600	MCW	MLK	SS	DC	CWT	EMA	RIB	RMP	RBY	IMF
EBV	+6.4	+9.1	-5.5	+3.4	+56	+93	+114	+103	+11	+1.9	-5.5	+64	+7.1	+2.6	+1.2	-0.6	+1.6
Acc	55%	46%	84%	73%	71%	70%	72%	68%	62%	65%	39%	65%	63%	68%	64%	64%	63%

Purchaser: ..... Price \$ .....



# GLENMORGAN POWERPOINT MAN R259<sup>SV</sup>

## APR

DOB: 20/08/2020

AMFU,CAFU,DDFU,NHFU

IDENT: ABWR259

MATING TYPE: AI

TEHAMA REVERE<sup>#</sup>

D R SIERRA CUT 7404<sup>#</sup>  
TEHAMA ELITE BLACKBIRD T003<sup>#</sup>  
S SUMMIT 956<sup>#</sup>  
S QUEEN ESSA 0131<sup>#</sup>

G A R SURE FIRE<sup>SV</sup>

CONNEALY IN SURE 8524<sup>#</sup>  
CHAIR ROCK 5050 G A R 8086<sup>#</sup>  
S A V THUNDERBIRD 9061<sup>SV</sup>  
GLENMORGAN D218<sup>#</sup>

SIRE: USA18159093 S POWERPOINT WS 5503<sup>PV</sup>

DAM: ABWN380 GLENMORGAN SURE FIRE LADY N380<sup>#</sup>

S QUEEN ESSA 248<sup>#</sup>

GLENMORGAN THUNDERBIRD  
LADY H223<sup>#</sup>

Mid July 2021 TransTasman Angus Cattle Evaluation

Traits Observed: GL,BWT,200WT,Genomics



Selection Indexes	Angus Breeding: \$134		Domestic: \$132		Heavy Grain: \$144			Heavy Grass: \$129									
	CED	CEDT	GL	BW	200	400	600	MCW	MLK	SS	DC	CWT	EMA	RIB	RMP	RBY	IMF
EBV	-3.6	+4.4	-4.4	+4.7	+64	+113	+130	+114	+12	+1.9	-4.4	+76	+9.0	+0.0	-1.1	+0.9	+2.3
Acc	55%	45%	84%	73%	71%	71%	72%	68%	62%	66%	37%	66%	64%	68%	65%	65%	64%

Purchaser: ..... Price \$ .....



# GLENMORGAN ASHLAND MAN R310<sup>SV</sup>

## APR

DOB: 28/08/2020

AMFU,CAFU,DDFU,NHFU

IDENT: ABWR310

MATING TYPE: AI

G A R EARLY BIRD<sup>#</sup>

G A R DAYLIGHT<sup>#</sup>  
G A R PROGRESS 830<sup>#</sup>  
B/R AMBUSH 28<sup>#</sup>  
G A R YIELD GRADE N366<sup>#</sup>

MILLAH MURRAH KLOONEY K42<sup>PV</sup>

BOOROOMOOKA THEO T030<sup>SV</sup>  
MILLAH MURRAH PRUE H4<sup>SV</sup>  
WATTLETOP HIGHMARK B15<sup>SV</sup>  
WATTLETOP W156<sup>#</sup>

SIRE: USA18217198 G A R ASHLAND<sup>PV</sup>

DAM: ABWM306 GLENMORGAN KLOONEY LADY M306<sup>#</sup>

CHAIR ROCK AMBUSH 1018<sup>#</sup>

WATTLETOP D330<sup>#</sup>

Mid July 2021 TransTasman Angus Cattle Evaluation

Traits Observed: BWT,200WT,Genomics



Selection Indexes	Angus Breeding: \$142		Domestic: \$135		Heavy Grain: \$156			Heavy Grass: \$137									
	CED	CEDT	GL	BW	200	400	600	MCW	MLK	SS	DC	CWT	EMA	RIB	RMP	RBY	IMF
EBV	+0.5	+4.7	-4.4	+3.4	+56	+104	+130	+108	+18	+1.5	-1.4	+74	+13.7	-1.7	-3.0	+2.4	+2.4
Acc	59%	47%	73%	73%	72%	71%	71%	68%	63%	67%	38%	66%	64%	69%	65%	65%	64%

Purchaser: ..... Price \$ .....



# GLENMORGAN ASHLAND MAN R287<sup>SV</sup>

## HBR

DOB: 24/08/2020

AMFU,CAFU,DDF,NHFU

IDENT: ABWR287

MATING TYPE: AI

G A R EARLY BIRD<sup>#</sup>

G A R DAYLIGHT<sup>#</sup>  
G A R PROGRESS 830<sup>#</sup>  
B/R AMBUSH 28<sup>#</sup>  
G A R YIELD GRADE N366<sup>#</sup>

A A R TEN X 7008 S A<sup>SV</sup>

MYTTY IN FOCUS<sup>#</sup>  
A A R LADY KELTON 5551<sup>#</sup>  
WATTLETOP ANDY C109<sup>PV</sup>  
WATTLETOP BARUNAH C33<sup>#</sup>

SIRE: USA18217198 G A R ASHLAND<sup>PV</sup>

DAM: ABWK263 GLENMORGAN TEN X LADY K263<sup>#</sup>

CHAIR ROCK AMBUSH 1018<sup>#</sup>

WATTLETOP BARUNAH G119<sup>#</sup>

Mid July 2021 TransTasman Angus Cattle Evaluation

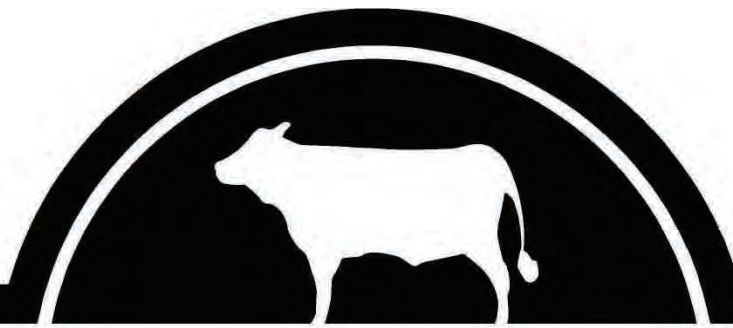
Traits Observed: BWT,200WT,Genomics



Selection Indexes	Angus Breeding: \$161		Domestic: \$149		Heavy Grain: \$178			Heavy Grass: \$153									
	CED	CEDT	GL	BW	200	400	600	MCW	MLK	SS	DC	CWT	EMA	RIB	RMP	RBY	IMF
EBV	+2.2	+7.2	-6.3	+3.9	+64	+118	+144	+118	+17	+3.0	-5.4	+80	+9.5	-1.5	-2.8	+2.4	+1.9
Acc	60%	48%	73%	74%	72%	72%	73%	69%	64%	67%	41%	67%	65%	69%	66%	67%	65%

Purchaser: ..... Price \$ .....

# NOTES



## **DOUBLE L FITTING SERVICE**

**For All Your Show and Sale Ring Preparations**

**Contact:**

**Tim Light: 0458 744 552**

**or**

**Briony Looker: 0488 527 949**

**Email: [doublel\\_fitting@yahoo.com.au](mailto:doublel_fitting@yahoo.com.au)**

---

# GRAZAG

GRAZING AND AGRICULTURAL PRODUCTION SOLUTIONS

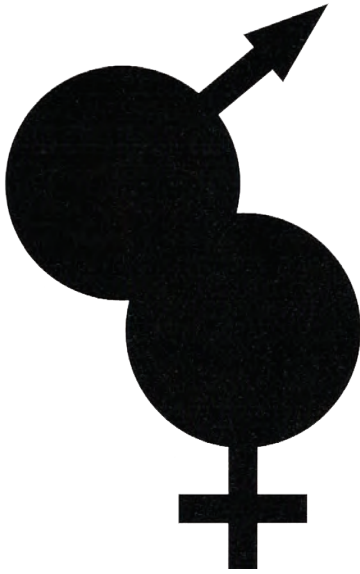
An agricultural and rural merchandise distribution business providing products and services to the New England district. GrazAg has two convenient locations in Armidale and Guyra, featuring complete drive-through services. GrazAg offers an extensive range of rural merchandise products direct to the New England grazier.

**Armidale: 02. 6770 3400**

**Guyra: 02. 6770 3420**

**[www.grazag.com.au](http://www.grazag.com.au)**





# Excel Genetics

## BEEF BREEDING EXCELLENCE

- Semen Sales
- Semen Storage and Distribution
- A.I Hardware
- Liquid Nitrogen
- Bull Collection & Semen Testing
- Synchronised Breeding Programs
- Embryo Collection and Implantation
- Donor Management
- Mating Assessment Programs
- Freeze Branding

**Australia wide Distribution Network with  
33 years of hands on experience.**

***Contact: Geoff & Cass Steinbeck***

***Ph: 02 6769 4251***

***Mob: 0427 056 017***

***E: [steinab@bigpond.com](mailto:steinab@bigpond.com)***

## T.J. & J.L. Foley

Livestock, Wool & General Carriers

“Dallyn”

ARMIDALE NSW 2350

*Fully insured*

Telephone/Fax (02) 6772 3456

Mobiles 0428 659 072 / 0428 961 014

Email [tjfoley@northnet.com.au](mailto:tjfoley@northnet.com.au)

***Transporting in New England since 1972***

# BUYERS INSTRUCTIONS

## NO VERBAL INSTRUCTIONS CAN BE ACCEPTED

Name: ..... Buyer No: .....

Address: .....

.....

..... Buyer PIC: .....

Email: .....

Insurance Required: .....

Agent: .....

Carrier: .....

Lot(s) Purchased:

Lot:	\$	Lot:	\$
Lot:	\$	Lot:	\$
Lot:	\$	Lot:	\$
Lot:	\$	Lot:	\$
Lot:	\$	Lot:	\$

Transfer Required: Yes/No Transfer To: .....

Signature of Buyer: ..... Date: .....


Insurance for your stock can be arranged immediately upon your instructions

Look what today's yearlings can grow into....



Here are some fine examples of Glenmorgan Angus bulls sold to various clients in the past

**DANDYLEA KELPIE STUD**



**DAN VIDLER 0403930058**  
GUYRA N.S.W 2365  
danvidler1@gmail.com



# EUROPEAN UNION VENDOR DECLARATION (CATTLE) AND WAYBILL

D23788544

E0720

Export Control Act (Cwth); ACT Stock Act 1991; NSW Rural Lands Protection Act 1998; Queensland Stock Act 1915; WA Stock (Identification and Movement) Act 1970.

This form must be used for all cattle consigned from one EU accredited facility to another EU accredited facility. When cattle are sent from an EU accredited facility to a destination that is not EU accredited the National Vendor Declaration (cattle) and waybill should be used.

## Part A To be completed by the accredited manager responsible for the husbandry of the cattle.

Owner of cattle **NICHOLAS + KAREN MORGAN**

Property/place where the journey commenced **Glennmorgan Angus Trust**  
**353 Glenshiel Rd Llangothlin NSW 2365**  
(ADDRESS CONTINUED) (TOWN/SUBURB) (POSTAL ADDRESS) (STATE)

Property Identification Code (PIC) of this property  
**NH020292**  
This MUST be the PIC of the property that the stock is being moved from

### Description of cattle

Number	Description (BREED, SEX, E.G. HEREFORD CROSS STEERS)	Brands or Earmarks (IF PRESENT OR REQUIRED)
80	YEARLING ANGUS BULLS	
80	Total	

### Consigned to

NAME OF PERSON OR BUSINESS  
(ADDRESS) (TOWN/SUBURB) (STATE)

### Destination (if different) of cattle

Destination PIC (REQ: WA & TAS) **30** Number of rumen devices **30**  
(LOCATION ADDRESS) (STATE)

NLIS devices used on these cattle Number of ear tags **30** Number of rumen devices **30**

### Details of other statutory documents relating to this movement e.g. health statement

DOCUMENT TYPE NUMBER OFFICE OF ISSUE EXPIRY DATE

### 1 Have the cattle in this consignment ever in their lives been fed feed containing animal fats?

Yes  No  (See Explanatory Notes)

### 2 Were all of the cattle born and raised on the vendor's property?

Yes  No  If No, how long were the cattle obtained or purchased?  
(If purchased at different times, tick the box corresponding to the time of the most recent purchase.)

A. Less than 2 months  B. 2-6 months  C. 6-12 months  D. more than 12 months

### 3 In the past 60 days, have any of these cattle been fed by-product stockfeeds?

Yes  No  If Yes, attach a list of the by-product stockfeeds, date when last fed and a copy of an analyst's report if available.

### 4 In the past 6 months, have any of these cattle been on a property listed on the ERP database or placed under grazing restrictions because of chemical residue?

Yes  No  If Yes, give details:

5 Are any of the cattle in this consignment still within a Withholding Period (WHP) or Export Slaughter Interval (ESI) as set by APVMA or SAFE MEAT, following treatment with any veterinary drug or chemical?  
 Yes  No  If Yes, give details: (Record additional details in question 8)

CHEMICAL PRODUCT DATE APPLIED DATE FIRST FED/GRAZED DATE FEEDING/GRAZING CEASED

6 In the past 60 days, have any of the cattle in this consignment consumed any material that was still within a withholding period when harvested, collected or first grazed?  
 Yes  No  If Yes, give details:

CHEMICAL PRODUCT DATE APPLIED DATE FIRST FED/GRAZED DATE FEEDING/GRAZING CEASED

7 In the past 42 days, were any of these cattle  
 a) grazed in a spray risk area; or  
 b) fed fodder cut from a spray drift risk area? (See Explanatory Notes for definition of spray drift risk area.)  
 Yes  No  If Yes, Date sprayed: / /20

8 Additional information: see requirements in Explanatory Notes for completing this document.

### Declaration

**NICHOLAS MORGAN** Glennmorgan Angus Trust  
FULL NAME FULL ADDRESS TOWN/SUBURB STATE  
**353 Glenshiel Rd Llangothlin NSW 2365**  
ADDRESS CONTINUED

I declare as the manager responsible for the husbandry of the animals in this consignment, that the information stated in this declaration is true and correct. I also declare that none of the animals have ever been treated with HGP or products containing Oestradiol 17B and/or its ester-like derivatives; I have records available to demonstrate that the animals were either a) born on the property the PIC of which is shown, or b) for purchased cattle, accompanied by an EU vendor declaration attesting to their freedom from prohibited hormone treatments. I also declare that all cattle in this consignment have been properly identified by the use of the approved NLIS device. This declaration is made under the Export Control Act. I will retain a copy of this declaration for two(2) years, three (3) years in WA (Giving false or misleading information is a serious offence under the Criminal Code Act 1995, the punishment for which is a period of imprisonment not exceeding 12 months).

I also declare that I have read and understood all the questions that I have answered, that I have read and understood the explanatory notes, and that, while under my control, the cattle were not fed restricted animal material (including meat and bone meal) in breach of State or Territory legislation.

Signature\* **N Morgan** Date\* **24/08/2021**

\*Only the person whose name appears above may sign this declaration, or make amendments which must be initialled.

Tel no. **0427-636121** Fax no. \_\_\_\_\_

Email. **nek.morgane@gmail.com**

Part B To be completed by the person in charge of the cattle while they are being moved.  
 Completion of this part is optional in SA and VIC.

Movement commenced: / /20 (am/pm)

Vehicle registration number(s):

I am the person in charge of the cattle during the

movement and declare all the information in Part B is true and correct.

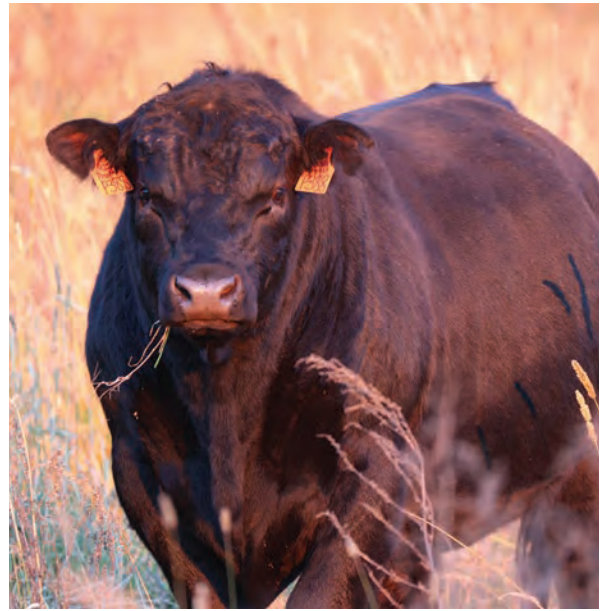
Signature \_\_\_\_\_ Date / /20 Tel no. \_\_\_\_\_

\*When more than one truck is carrying the cattle, other vehicle registration numbers are to be recorded.





















# GLENMORGAN ANGUS

[www.glenmorganangus.com](http://www.glenmorganangus.com)



**80 YEARLING BULLS**

**NICHOLAS & KAREN MORGAN**

**GLENMORGAN ANGUS**

353 Glenshiel Road,

Llangothlin NSW 2365

Nicholas Mob: 0427 636 121

**RayWhite** RURAL GUYRA/ARMIDALE

**BLAKE O'REILLY 0448 213 668**

**SAM SEWELL 0447 255 100**

**ANDREW STARR 0428 792 466**

**BRUCE BIRCH 0428 363 063**