

LOT 1	BOWEN QUALM Q063 (PP)	BWNQ063
Born: 14/6/19	POLL C-PcPc,IEF,HYF,DLF,	Eye Pigment: 100-100
		Tattoo: Q063

ALLENDALE YACKA (AI) (P)
 ALLENDALE ANZAC E114 (PP)
 ALLENDALE DAWN B22 (AI) (ET) (P)
SIRE: WIRRUNA MATTY M288 (AI) (ET) (PP)
 ELITE 4110 E212 (AI) (PP)
 WIRRUNA CIRCLE H13 (AI) (PP)
 WIRRUNA CIRCLE F31 (AI) (PP)
 BOWEN DIAMANTINA D203 (AI) (PP)
 BOWEN DIAMANTINA J209 (PP)
 PEAKES IRISH MAID E317 (P)
DAM: BOWEN VIRTUE M16 (P)
 MAUNGAHINA KINGDOM BAY 070073 (IMP NZL) (P)
 BOWEN VIRTUE G60 (AI) (P)
 BOWEN VIRTUE A297 (AI) (P)



STRUCTURAL ASSESSMENT								
CLAW SET FRONT	CLAW SET REAR	FRONT FEET ANGLE	REAR FEET ANGLE	REAR LEGS SIDE VIEW	REAR LEGS HINDVIEW	SCROTAL (cm)	TEMP.	SHEATH
6	6	6	6	7	6	42	1	5

MAY 2021 HEREFORD BREEDPLAN

CED	CEM	GL	BW	200d	400d	600d	Mcw	Milk	SS	CWT	EMA	Rib	Rump	RBV	IMF	SELECTION INDEXES			
+4.3	+1.2	-4	+3.7	+39	+63	+85	+58	+13	+2.7	+56	+3.3	+2.8	+4	-0.9	+2.5	SSR	NSR	SBMat	NBTerm
47%	37%	63%	67%	67%	67%	69%	61%	52%	75%	61%	53%	59%	62%	53%	60%	\$175	\$167	\$176	\$128

Traits Observed: CE,200WT,400WT,600WT,SS,FAT,EMA,IMF,Genomics

Notes: This Matty M288 son Qualm gets that great depth of body from the high capacity female lines of Virtue & Irish Maid cow families, he has a bullet proof temperament. His data is outstanding with low birth weight, short gestation through to excellent fats, marbling data is 2.5 which is five times the breed average of 0.05.

Purchaser: \$

LOT 2	BOWEN QUEUE Q048 (AI) (PP)	BWNQ048
Born: 14/8/19	IEF,HYF,DLF,POLL C-PcPc,	Eye Pigment: 100-100
		Tattoo: Q048

ALLENDALE YACKA (AI) (P)
 ALLENDALE ANZAC E114 (PP)
 ALLENDALE DAWN B22 (AI) (ET) (P)
SIRE: WIRRUNA MATTY M288 (AI) (ET) (PP)
 ELITE 4110 E212 (AI) (PP)
 WIRRUNA CIRCLE H13 (AI) (PP)
 WIRRUNA CIRCLE F31 (AI) (PP)
 JB 531 BRAXTON CAL 605U (P)
 HILLS-GALORE ENTERPRISE 20C (IMP CAN) (PP)
 HILLS-GALORE 105P STAR 95W (P)
DAM: BOWEN MAPLE N068 (AI) (P)
 JSF 37 271 DEVO 23C (IMP CAN) (PP)
 BOWEN MAPLE A197 (AI) (ET) (P)
 BOWEN MAPLE P111 (P)



STRUCTURAL ASSESSMENT								
CLAW SET FRONT	CLAW SET REAR	FRONT FEET ANGLE	REAR FEET ANGLE	REAR LEGS SIDE VIEW	REAR LEGS HINDVIEW	SCROTAL (cm)	TEMP.	SHEATH
6	6	5	6	6	4	42	1	5

MAY 2021 HEREFORD BREEDPLAN

CED	CEM	GL	BW	200d	400d	600d	Mcw	Milk	SS	CWT	EMA	Rib	Rump	RBV	IMF	SELECTION INDEXES			
-1.6	-1.6	-3.2	+4.4	+38	+70	+94	+85	+17	+3.2	+62	+3.8	+1.4	+1.8	+0.3	+1.2	SSR	NSR	SBMat	NBTerm
47%	37%	72%	67%	66%	66%	68%	60%	52%	75%	61%	52%	57%	60%	51%	59%	\$140	\$128	\$139	\$107

Traits Observed: GL,CE,200WT,400WT,600WT,SS,FAT,EMA,IMF,Genomics

Notes: Soft & deep bodied with an outcross pedigree sired by the popular Matty M288 sire combined with the ever reliable Maple cow family. He has a great set of data across the board with short gestation excellent weight & carcass EBVs.

Purchaser: \$

LOT 3	BOWEN Q C Q043 (PP)	BWNQ043
Born: 22/7/19 POLL C-PcPf,IEF,HYF,DLF,		Eye Pigment: 100-100 Tattoo: Q043

PINE HILL CROSSFIRE C558 (AI) (P)
 YAVENVALE JET FIRE J032 (PP)
 YAVENVALE EMPRESS G320 (P)
SIRE: BOWEN MAGISTRATE M241 (AI) (PP)
 HUNTER LAKES FONZ F15 (AI) (P)
 BOWEN IRISH GIRL J269 (P)
 BOWEN IRISH GIRL A152 (AI) (P)
 STUDBROOK D'ARTAGNION V086 (AI) (ET) (S)
 OTAPAWA SPARK 3060 (IMP NZL) (AI) (ET) (P)
 OTAPAWA SPOT P30 (P)
DAM: BOWEN MAPLE J135 (AI) (P)
 DEBARRY EDEN (PP)
 BOWEN MAPLE E90 (AI) (P)
 BOWEN MAPLE B182 (AI) (ET) (P)



STRUCTURAL ASSESSMENT								
CLAW SET FRONT	CLAW SET REAR	FRONT FEET ANGLE	REAR FEET ANGLE	REAR LEGS SIDE VIEW	REAR LEGS HINDVIEW	SCROTAL (cm)	TEMP.	SHEATH
6	6	6	6	6	6	40	1	5

MAY 2021 HEREFORD BREEDPLAN

CED	CEM	GL	BW	200d	400d	600d	Mcw	Milk	SS	CWT	EMA	Rib	Rump	RBV	IMF	SELECTION INDEXES			
+5.3	+6.5	-3.1	+5.3	+40	+65	+94	+83	+21	+1.9	+66	+4.8	+1.9	+2.5	-0.1	+1.7	SSR	NSR	SBMat	NBTerm
43%	35%	61%	68%	67%	67%	69%	61%	52%	74%	58%	49%	55%	59%	52%	56%	\$172	\$157	\$183	\$135

Traits Observed: CE,BWT,200WT,400WT,600WT,SS,FAT,EMA,IMF,Genomics

Notes: QC Q43 has a stout profile, he has been a stand out the whole way with his striking appearance natural balance & style. Brilliant cow families feature in his pedigree, his dam Maple J135 is picture perfect. Scanned equal highest EMA in his mob, data is excellent across the sector with calving ease, growth, fertility & carcass with an actual birth weight of 37kg. We will be retaining semen for within herd use at Bowen.

Purchaser: \$

LOT 4	BOWEN QUOTE Q162 (PP)	BWNQ162
Born: 21/9/19 POLL C-PcPc,IEF,HYF,DLF,		Eye Pigment: 100-100 Tattoo: Q162

PINE HILL CROSSFIRE C558 (AI) (P)
 YAVENVALE JET FIRE J032 (PP)
 YAVENVALE EMPRESS G320 (P)
SIRE: BOWEN MAGISTRATE M241 (AI) (PP)
 HUNTER LAKES FONZ F15 (AI) (P)
 BOWEN IRISH GIRL J269 (P)
 BOWEN IRISH GIRL A152 (AI) (P)
 GRASSMERE SPARK 330 (P)
 GRASSMERE SPARK 555 (IMP NZL) (PP)
 GRASSMERE PRINCESS 245 (P)
DAM: BOWEN MATCHLESS J169 (AI) (P)
 MERRANLEE SUNDANCE S55 (AI) (PP)
 BOWEN MATCHLESS X139 (P)
 BOWEN MATCHLESS S260 (AI) (P)



STRUCTURAL ASSESSMENT								
CLAW SET FRONT	CLAW SET REAR	FRONT FEET ANGLE	REAR FEET ANGLE	REAR LEGS SIDE VIEW	REAR LEGS HINDVIEW	SCROTAL (cm)	TEMP.	SHEATH
6	6	5	6	5	6	39	1	4

MAY 2021 HEREFORD BREEDPLAN

CED	CEM	GL	BW	200d	400d	600d	Mcw	Milk	SS	CWT	EMA	Rib	Rump	RBV	IMF	SELECTION INDEXES			
+3.5	+6.7	-2.1	+5.6	+35	+56	+83	+82	+14	+1.9	+53	+3.7	+1.4	+1.7	+0.1	+0.9	SSR	NSR	SBMat	NBTerm
42%	33%	60%	68%	67%	66%	69%	60%	51%	74%	57%	48%	54%	58%	50%	54%	\$134	\$121	\$146	\$107

Traits Observed: 200WT,400WT,600WT,SS,FAT,EMA,IMF,Genomics

Notes: A dominant sires head and outlook with an excellent hind quarter & carcass type. This Magistrate son features top end cow families in his pedigree giving you maternal strength & consistency in type. Data shows short gestation, high growth weights, EMA & IMF with positive fats EBVs.

Purchaser: \$

LOT
5

BOWEN QUEENSLIFF Q033 (PP)

BWNQ033

Born: 21/8/19

POLL C-PcPf,IEF,HYF,DLF,

Eye Pigment: 100-100

Tattoo: Q033

PINE HILL CROSSFIRE C558 (AI) (P)
 YAVENTALE JET FIRE J032 (PP)
 YAVENTALE EMPRESS G320 (P)
SIRE: BOWEN MAGISTRATE M241 (AI) (PP)
 HUNTER LAKES FONZ F15 (AI) (P)
 BOWEN IRISH GIRL J269 (P)
 BOWEN IRISH GIRL A152 (AI) (P)
 BOWEN VINCENT V1 (S)
 DEBARRY EDEN (PP)
 DEBARRY PURITY V50 (AI) (ET) (P)
DAM: BOWEN LAVENDER E125 (AI) (ET) (P)
 MAWARRA KAHLUA (AI) (H)
 SVY LAVENDER Y005 (AI) (H)
 SVY LAVENDER 11 (AI) (H)



STRUCTURAL ASSESSMENT								
CLAW SET FRONT	CLAW SET REAR	FRONT FEET ANGLE	REAR FEET ANGLE	REAR LEGS SIDE VIEW	REAR LEGS HINDVIEW	SCROTAL (cm)	TEMP.	SHEATH
7	6	6	6	6	6	42	1	5

MAY 2021 HEREFORD BREEDPLAN

CED	CEM	GL	BW	200d	400d	600d	Mcw	Milk	SS	CWT	EMA	Rib	Rump	RBV	IMF	SELECTION INDEXES			
+1.6	+5.2	-2.5	+6.7	+41	+67	+97	+79	+18	+2.9	+61	+4	-0.8	-1.5	+2.2	+0.1	SSR	NSR	SBMat	NBTerm
43%	35%	59%	67%	65%	65%	66%	58%	51%	62%	56%	46%	52%	56%	49%	54%	\$165	\$143	\$168	\$115

Traits Observed: CE,200WT,400WT,600WT,SS,FAT,EMA,IMF,Genomics

Notes: Queenscliff has always been a stand out sire with a very impressive stout phenotype, he is well balanced with that stand up & look at me profile. We used Queenscliff at Bowen on heifers in 2020. This sire has a great spread of data for weight, milk, EMA, RBV with top indexes.

Purchaser: \$

LOT
6

BOWEN QUICKSAND Q050 (AI) (PP)

BWNQ050

Born: 1/8/19

POLL C-PcPc,IEF,HYF,DLF,

Eye Pigment: 100-100

Tattoo: Q050

ALLENDALE YACKA (AI) (P)
 ALLENDALE ANZAC E114 (PP)
 ALLENDALE DAWN B22 (AI) (ET) (P)
SIRE: WIRRUNA MATTY M288 (AI) (ET) (PP)
 ELITE 4110 E212 (AI) (PP)
 WIRRUNA CIRCLE H13 (AI) (PP)
 WIRRUNA CIRCLE F31 (AI) (PP)
 PINE HILL CROSSFIRE C558 (AI) (P)
 YAVENTALE JET FIRE J032 (PP)
 YAVENTALE EMPRESS G320 (P)
DAM: BOWEN ROLLINA N004 (P)
 BOWEN HARPER H2 (AI) (P)
 BOWEN ROLLINA K171 (P)
 BOWEN ROLLINA G198 (AI) (ET) (P)



STRUCTURAL ASSESSMENT								
CLAW SET FRONT	CLAW SET REAR	FRONT FEET ANGLE	REAR FEET ANGLE	REAR LEGS SIDE VIEW	REAR LEGS HINDVIEW	SCROTAL (cm)	TEMP.	SHEATH
6	6	6	6	6	6	39	1	5

MAY 2021 HEREFORD BREEDPLAN

CED	CEM	GL	BW	200d	400d	600d	Mcw	Milk	SS	CWT	EMA	Rib	Rump	RBV	IMF	SELECTION INDEXES			
+9.3	+7.4	-6.9	+3.2	+36	+61	+82	+71	+13	+1.6	+58	+3	+1.5	+2.2	-0.5	+2.1	SSR	NSR	SBMat	NBTerm
49%	38%	73%	68%	68%	68%	69%	62%	53%	76%	62%	54%	59%	62%	53%	61%	\$160	\$153	\$185	\$141

Traits Observed: GL,CE,200WT,400WT,600WT,SS,FAT,EMA,IMF,Genomics

Notes: Quicksand has a lovely long bodied profile, is well structured with the same cow families featured in his pedigree as lot 7. He has exceptional calving ease on both sides of pedigree & is ideal for heifer joining. Scanned highest IMF in mob with an excellent set of data across the board. We will be retaining semen for within herd use at Bowen.

Purchaser: \$

LOT 7	BOWEN QUEENSTOWN Q034 (PP)	BWNQ034
Born: 5/9/19	POLL: C-PcPf,IEF,HYF,DLF,	Eye Pigment: 100-100
		Tattoo: Q034

PINE HILL CROSSFIRE C558 (AI) (P)
 YAVENVALE JET FIRE J032 (PP)
 YAVENVALE EMPRESS G320 (P)
SIRE: BOWEN MAGISTRATE M241 (AI) (PP)
 HUNTER LAKES FONZ F15 (AI) (P)
 BOWEN IRISH GIRL J269 (P)
 BOWEN IRISH GIRL A152 (AI) (P)
 HARVIE RAFTSMAN 16R (IMP CAN) (P)
 BOWEN HARPER H2 (AI) (P)
 BOWEN URSULA F217 (AI) (P)
DAM: BOWEN ROLLINA K171 (P)
 BOWEN TORNADO Z260 (AI) (ET) (PP)
 BOWEN ROLLINA G198 (AI) (ET) (P)
 BOWEN ROLLINA W237 (P)



STRUCTURAL ASSESSMENT								
CLAW SET FRONT	CLAW SET REAR	FRONT FEET ANGLE	REAR FEET ANGLE	REAR LEGS SIDE VIEW	REAR LEGS HINDVIEW	SCROTAL (cm)	TEMP.	SHEATH
6	6	6	6	6	4	42	1	5

MAY 2021 HEREFORD BREEDPLAN

CED	CEM	GL	BW	200d	400d	600d	Mcw	Milk	SS	CWT	EMA	Rib	Rump	RBV	IMF	SELECTION INDEXES			
+2.6	+4.5	-0.9	+6	+43	+66	+97	+78	+20	+3.2	+62	+3.3	-0.1	-0.7	+1.3	+0.5	SSR	NSR	SBMat	NBTerm
38%	28%	58%	67%	65%	65%	68%	58%	48%	73%	56%	46%	52%	56%	49%	53%	\$160	\$138	\$168	\$119

Traits Observed: 200WT,400WT,600WT,SS,FAT,EMA,IMF,Genomics

Notes: A terrific son of Magistrate combining the dominate cow families of Rollina, Ursula & Irish Girl. Queenstown has a real sires presence with his excellent structure & body depth combined with top weight, milk & index data. This type of bull is certainly getting harder to find.

Purchaser: \$

LOT 8	BOWEN QUIRKY Q053 (AI) (PP)	BWNQ053
Born: 8/8/19	POLL: C-PcPc,IEF,HYF,DLF,	Eye Pigment: 100-100
		Tattoo: Q053

ALLENDALE YACKA (AI) (P)
 ALLENDALE ANZAC E114 (PP)
 ALLENDALE DAWN B22 (AI) (ET) (P)
SIRE: WIRRUNA MATTY M288 (AI) (ET) (PP)
 ELITE 4110 E212 (AI) (PP)
 WIRRUNA CIRCLE H13 (AI) (PP)
 WIRRUNA CIRCLE F31 (AI) (PP)
 PINE HILL CROSSFIRE C558 (AI) (P)
 YAVENVALE JET FIRE J032 (PP)
 YAVENVALE EMPRESS G320 (P)
DAM: BOWEN NEUTRON N020 (P)
 MATARIKI HOLY - SMOKE (IMP NZL) (P)
 BOWEN MARGEE K183 (AI) (P)
 BOWEN MARGEE H221 (AI) (P)



STRUCTURAL ASSESSMENT								
CLAW SET FRONT	CLAW SET REAR	FRONT FEET ANGLE	REAR FEET ANGLE	REAR LEGS SIDE VIEW	REAR LEGS HINDVIEW	SCROTAL (cm)	TEMP.	SHEATH
6	6	5	6	6	6	40	1	4

MAY 2021 HEREFORD BREEDPLAN

CED	CEM	GL	BW	200d	400d	600d	Mcw	Milk	SS	CWT	EMA	Rib	Rump	RBV	IMF	SELECTION INDEXES			
+8.2	+6.6	-5.3	+5.5	+50	+82	+114	+100	+21	+2.7	+77	+4.4	+0.4	+0.3	+1.1	+1.6	SSR	NSR	SBMat	NBTerm
50%	39%	74%	70%	70%	70%	71%	64%	56%	76%	64%	56%	61%	64%	55%	63%	\$199	\$183	\$224	\$171

Traits Observed: GL,CE,200WT,400WT,600WT,SS,FAT,EMA,IMF,Genomics

Notes: A stout powerful sire, Quirky has a pedigree loaded with calving ease sires Matty M288, Jet Fire J032 & Holy Smoke all used on heifers at Bowen. Pedigree contains powerful female lines, we will be retaining semen for within herd use at Bowen, he has a terrific set of data across the board rated at the top end of the breed.

Purchaser: \$

LOT 9	BOWEN QUICKSILVER Q20 (PP)	BWNQ020
Born: 19/8/19 POLL C-PcPf,IEF,HYF,DLF, Eye Pigment: 100-100 Tattoo: Q020		

PINE HILL CROSSFIRE C558 (AI) (P)
 YAVENVALE JET FIRE J032 (PP)
 YAVENVALE EMPRESS G320 (P)
SIRE: BOWEN MAGISTRATE M241 (AI) (PP)
 HUNTER LAKES FONZ F15 (AI) (P)
 BOWEN IRISH GIRL J269 (P)
 BOWEN IRISH GIRL A152 (AI) (P)
 OTAPAWA SPARK 3060 (IMP NZL) (AI) (ET) (P)
 BOWEN FLASHER F140 (AI) (P)
 BOWEN MATCHLESS B157 (AI) (ET) (P)
DAM: BOWEN VICTORIA LASS J37 (AI) (P)
 KARINA OASIS R47 (P)
 AMOR VICTORIA LASS X28 (P)
 KENYA VICTORIA LASS 3 (P)



STRUCTURAL ASSESSMENT								
CLAW SET FRONT	CLAW SET REAR	FRONT FEET ANGLE	REAR FEET ANGLE	REAR LEGS SIDE VIEW	REAR LEGS HINDVIEW	SCROTAL (cm)	TEMP.	SHEATH
7	6	6	6	7	4	42	1	4

MAY 2021 HEREFORD BREEDPLAN

CED	CEM	GL	BW	200d	400d	600d	Mcw	Milk	SS	CWT	EMA	Rib	Rump	RBV	IMF	SELECTION INDEXES			
+0.9	+4	-3	+4.8	+41	+63	+93	+84	+20	+2.6	+60	+3.5	+0.1	+0.1	+0.9	+0.4	SSR	NSR	SBMat	NBTerm
39%	29%	58%	66%	65%	66%	68%	59%	49%	74%	56%	46%	52%	56%	49%	52%	\$145	\$126	\$149	\$108

Traits Observed: CE,200WT,400WT,600WT,SS,FAT,EMA,IMF,Genomics

Notes: Strong free moving son of Magistrate, great skin & hair type with eye catching performance. Quicksilver Q20 has some impressive cow families tied into his pedigree, maternal Brother sold in the 2020 Bowen Bull Sale. His EBV data showing high weights for 200 to 600 day weight, milk & indexes with moderate birth weight & short gestation.

Purchaser: \$

LOT 10	BOWEN QUADRANT Q069 (AI) (PP)	BWNQ069
Born: 20/6/19 POLL C-PcPc,IEF,HYF,DLF, Eye Pigment: 100-100 Tattoo: Q069		

KCF BENNETT 3008 M326 (P)
 NJW 73S M326 TRUST 100W ET (IMP USA) (ET) (P)
 NJW P606 72N DAYDREAM 73S (P)
SIRE: BOWEN TRUST L234 (AI) (PP)
 DEBARRY EDEN (PP)
 BOWEN RUTH E321 (AI) (P)
 BOWEN RUTH B31 (AI) (P)
 CAPETHORNE HOT SHOT 03 22 (P)
 MATARIKI HOLY - SMOKE (IMP NZL) (P)
 MATARIKI GIRLIE 00323 (P)
DAM: BOWEN VIRTUE M286 (AI) (P)
 GUILFORD DUKE D26 (P)
 BOWEN VIRTUE H247 (P)
 BOWEN VIRTUE C218 (AI) (P)



STRUCTURAL ASSESSMENT								
CLAW SET FRONT	CLAW SET REAR	FRONT FEET ANGLE	REAR FEET ANGLE	REAR LEGS SIDE VIEW	REAR LEGS HINDVIEW	SCROTAL (cm)	TEMP.	SHEATH
6	6	6	6	7	6	39	1	4

MAY 2021 HEREFORD BREEDPLAN

CED	CEM	GL	BW	200d	400d	600d	Mcw	Milk	SS	CWT	EMA	Rib	Rump	RBV	IMF	SELECTION INDEXES			
+3	+2.9	-1.2	+3.5	+37	+62	+84	+79	+21	+1.2	+61	+4.1	-0.3	-1	+1.2	+0.5	SSR	NSR	SBMat	NBTerm
41%	36%	71%	64%	64%	64%	66%	58%	52%	74%	56%	48%	53%	57%	50%	54%	\$128	\$109	\$141	\$110

Traits Observed: GL,CE,200WT,400WT,600WT,SS,FAT,EMA,IMF,Genomics

Notes: Quadrant is free moving slick skinned stylish son of Trust L234. We used Trust L234, Eden & Holy Smoke on heifers at Bowen with great success. His data is outstanding for calving ease growth & carcass, he would be suitable for heifers.

Purchaser: \$

LOT 11	BOWEN QUINCY Q91 (PP)	BWNQ091
Born: 19/8/19 POLL C-PcPc,IEF,HYF,DLF, Eye Pigment: 100-100 Tattoo: Q091		

ALLENDALE WATERHOUSE D1 (PP)
 DAYS CALIBRE G74 (PP)
 ALLENDALE DAWN C62 (AI) (P)
SIRE: BOWEN KYOOMA K27 (PP)
 BOWEN ARGYLE A355 (AI) (S)
 BOWEN KATIE D236 (P)
 BOWEN KATIE A336 (P)
 STUDBROOK D'ARTAGNION V086 (AI) (ET) (S)
 OTAPAWA SPARK 3060 (IMP NZL) (AI) (ET) (P)
 OTAPAWA SPOT P30 (P)
DAM: BOWEN LADY ALMOND L84 (AI) (P)
 TYCOLAH ZORRO (P)
 PEAKES LADY ALMOND Z223 (P)
 BINBARRA LADY ALMOND W33 (P)



STRUCTURAL ASSESSMENT								
CLAW SET FRONT	CLAW SET REAR	FRONT FEET ANGLE	REAR FEET ANGLE	REAR LEGS SIDE VIEW	REAR LEGS HINDVIEW	SCROTAL (cm)	TEMP.	SHEATH
6	6	6	7	7	6	41	1	5

MAY 2021 HEREFORD BREEDPLAN

CED	CEM	GL	BW	200d	400d	600d	Mcw	Milk	SS	CWT	EMA	Rib	Rump	RBV	IMF	SELECTION INDEXES			
+3.5	+4.6	-0.5	+6	+39	+68	+91	+95	+12	+3	+58	+5.5	+2.1	+3	-0.3	+1.7	SSR	NSR	SBMat	NBTerm
44%	38%	59%	69%	67%	67%	69%	61%	57%	75%	59%	51%	56%	60%	53%	58%	\$165	\$158	\$165	\$124

Traits Observed: CE,200WT,400WT,600WT,SS,FAT,EMA,IMF,Genomics

Notes: Some powerful sire lines in this Kyooma Sons pedigree, rated at the top end of the breed for weights, EMA, Fats & IMF EBVs.

Purchaser: \$

LOT 12	BOWEN QUARTERLY Q135 (S)	BWNQ135
Born: 5/8/19 POLL C-HPc,IEF,HYF,DLF, Eye Pigment: 100-100 Tattoo: Q135		

SHF WONDER M326 W18 ET (P)
 NJW 73S W18 HOMETOWN 10Y (IMP USA) (P)
 NJW P606 72N DAYDREAM 73S (P)
SIRE: BOWEN MASTERMIND M314 (AI) (P)
 DEBARRY EDEN (PP)
 BOWEN RUTH E321 (AI) (P)
 BOWEN RUTH B31 (AI) (P)
 BOWEN MINISTER Y168 (S)
 STUDBROOK PRINCE B034 (S)
 BOWEN PRINCESS T65 (P)
DAM: BOWEN NANCY G324 (P)
 BOWEN VALOUR V39 (AI) (P)
 BOWEN NANCY B317 (P)
 BOWEN NANCY R194 (P)



STRUCTURAL ASSESSMENT								
CLAW SET FRONT	CLAW SET REAR	FRONT FEET ANGLE	REAR FEET ANGLE	REAR LEGS SIDE VIEW	REAR LEGS HINDVIEW	SCROTAL (cm)	TEMP.	SHEATH
6	6	6	6	6	6	39	1	5

MAY 2021 HEREFORD BREEDPLAN

CED	CEM	GL	BW	200d	400d	600d	Mcw	Milk	SS	CWT	EMA	Rib	Rump	RBV	IMF	SELECTION INDEXES			
-7.2	0	+1.5	+6	+36	+52	+77	+79	+16	+0.9	+46	+3.4	+0.1	-0.7	+1.1	+0.7	SSR	NSR	SBMat	NBTerm
41%	32%	56%	68%	67%	67%	69%	62%	52%	74%	58%	48%	54%	58%	51%	54%	\$74	\$56	\$70	\$56

Traits Observed: CE,200WT,400WT,600WT,SS,FAT,EMA,IMF,Genomics

Notes: Strong Mastermind son that will grow into a great carcass sire producing progeny that will weigh like lead. You would travel a long way to find better cows than Princess T65, Nancy R194 & Ruth E321 in a pedigree. Quarterly scanned the second highest EMA in his mob has high retail beef yield & IMF data.

Purchaser: \$

LOT
13

BOWEN QUIGLEY Q067 (PP)

BWNQ067

Born: 26/7/19

POLL C-PcPf,IEF,HYF,DLF,

Eye Pigment: 100-100

Tattoo: Q067

KCF BENNETT 3008 M326 (P)
 NJW 73S M326 TRUST 100W ET (IMP USA) (ET) (P)
 NJW P606 72N DAYDREAM 73S (P)
SIRE: BOWEN TRUST L234 (AI) (PP)
 DEBARRY EDEN (PP)
 BOWEN RUTH E321 (AI) (P)
 BOWEN RUTH B31 (AI) (P)
 STUDBROOK D'ARTAGNION V086 (AI) (ET) (S)
 OTAPAWA SPARK 3060 (IMP NZL) (AI) (ET) (P)
 OTAPAWA SPOT P30 (P)
DAM: BOWEN FANCY M78 (AI) (P)
 EF F524 FELLIS 821C (IMP USA) (P)
 BOWEN FANCY H271 (AI) (ET) (P)
 BOWEN FANCY X57 (AI) (P)



STRUCTURAL ASSESSMENT								
CLAW SET FRONT	CLAW SET REAR	FRONT FEET ANGLE	REAR FEET ANGLE	REAR LEGS SIDE VIEW	REAR LEGS HINDVIEW	SCROTAL (cm)	TEMP.	SHEATH
6	5	6	6	6	6	41	1	4

MAY 2021 HEREFORD BREEDPLAN

CED	CEM	GL	BW	200d	400d	600d	Mcw	Milk	SS	CWT	EMA	Rib	Rump	RBV	IMF	SELECTION INDEXES			
+3.5	+4.7	-2.1	+6.4	+45	+77	+104	+101	+18	+1.6	+68	+5.2	-0.3	-0.8	+1.3	+0.4	SSR	NSR	SBMat	NBTerm
41%	36%	64%	64%	64%	64%	67%	59%	52%	74%	57%	49%	54%	58%	51%	55%	\$164	\$144	\$175	\$132

Traits Observed: CE,200WT,400WT,600WT,SS,FAT,EMA,IMF,Genomics

Notes: High growth powerful sire with terrific carcass style & sires presence, he exhibits exciting carcass data with his high 200 day to mature cow weight & EMA EBVs.

Purchaser: \$

LOT
14

BOWEN QUILPIE Q82 (PP)

BWNQ082

Born: 25/7/19

POLL C-PcPc,IEF,HYF,DLF,

Eye Pigment: 100-100

Tattoo: Q082

ALLENDALE WATERHOUSE D1 (PP)
 DAYS CALIBRE G74 (PP)
 ALLENDALE DAWN C62 (AI) (P)
SIRE: BOWEN KYOOMA K27 (PP)
 BOWEN ARGYLE A355 (AI) (S)
 BOWEN KATIE D236 (P)
 BOWEN KATIE A336 (P)
 BRAYBOOK CHEROKEE C200 (AI) (P)
 BOWEN FRONTIER F314 (P)
 BOWEN HILDA W188 (P)
DAM: BOWEN HUMBLE K163 (P)
 RILO PARK UNSHAKEABLE (AI) (ET) (P)
 PEAKES HUMBLE E165 (AI) (P)
 AMOR HUMBLE B52 (P)



STRUCTURAL ASSESSMENT								
CLAW SET FRONT	CLAW SET REAR	FRONT FEET ANGLE	REAR FEET ANGLE	REAR LEGS SIDE VIEW	REAR LEGS HINDVIEW	SCROTAL (cm)	TEMP.	SHEATH
6	6	6	6	7	6	41	1	5

MAY 2021 HEREFORD BREEDPLAN

CED	CEM	GL	BW	200d	400d	600d	Mcw	Milk	SS	CWT	EMA	Rib	Rump	RBV	IMF	SELECTION INDEXES			
-1.4	+2.9	-1.1	+5.2	+32	+52	+71	+71	+11	+1.8	+40	+4.1	+1.7	+2.9	-0.6	+1.6	SSR	NSR	SBMat	NBTerm
40%	32%	57%	68%	68%	68%	70%	61%	56%	75%	59%	50%	56%	60%	52%	57%	\$115	\$107	\$109	\$80

Traits Observed: CE,200WT,400WT,600WT,SS,FAT,EMA,IMF,Genomics

Notes: Striking Kyooma son, so correct & free moving with growth. He excels in carcass data for EMA & fats with an IMF rating 3 times the breed average.

Purchaser: \$

LOT 15	BOWEN QUERY Q81 (PP)	BWNQ081
Born: 6/8/19 POLL C-PcPc,IEF,HYF,DLF, Eye Pigment: 100-100 Tattoo: Q081		

ALLENDALE WATERHOUSE D1 (PP)
 DAYS CALIBRE G74 (PP)
 ALLENDALE DAWN C62 (AI) (P)
SIRE: BOWEN KYOOMA K27 (PP)
 BOWEN ARGYLE A355 (AI) (S)
 BOWEN KATIE D236 (P)
 BOWEN KATIE A336 (P)
 CAPETHORNE HOT SHOT 03 22 (P)
 MATARIKI HOLY - SMOKE (IMP NZL) (P)
 MATARIKI GIRLIE 00323 (P)
DAM: BOWEN FLORRIE K215 (AI) (ET) (P)
 BOWEN LIDDELL Z128 (AI) (P)
 BOWEN FLORRIE C91 (P)
 BOWEN FLORRIE Y10 (P)

STRUCTURAL ASSESSMENT								
CLAW SET FRONT	CLAW SET REAR	FRONT FEET ANGLE	REAR FEET ANGLE	REAR LEGS SIDE VIEW	REAR LEGS HINDVIEW	SCROTAL (cm)	TEMP.	SHEATH
6	6	6	6	5	6	38	1	5

Notes: Free moving high growth son of Kyooma K27 featuring great structure, pedigree contains donor dams Florrie C91 & Katie D236 in pedigree. Excellent growth & carcass data for weights, EMA & IMF.

MAY 2021 HEREFORD BREEDPLAN

CED	CEM	GL	BW	200d	400d	600d	Mcw	Milk	SS	CWT	EMA	Rib	Rump	RBY	IMF	SELECTION INDEXES			
																SSR	NSR	SBMat	NBTerm
-1.1	+1.4	+1.9	+7.2	+39	+64	+92	+107	+9	+1.8	+57	+5.2	+0.4	+0.6	+0.8	+1.2	\$130	\$118	\$129	\$102
45%	38%	58%	70%	68%	68%	70%	62%	58%	76%	60%	52%	57%	61%	54%	59%				

Traits Observed: CE,200WT,400WT,600WT,SS,FAT,EMA,IMF,Genomics

Purchaser: \$

LOT 16	BOWEN QUEBEC Q049 (AI) (PP)	BWNQ049
Born: 10/8/19 POLL C-PcPc,IEF,HYF,DLF, Eye Pigment: 100-95 Tattoo: Q049		

ALLENDALE YACKA (AI) (P)
 ALLENDALE ANZAC E114 (PP)
 ALLENDALE DAWN B22 (AI) (ET) (P)
SIRE: WIRRUNA MATTY M288 (AI) (ET) (PP)
 ELITE 4110 E212 (AI) (PP)
 WIRRUNA CIRCLE H13 (AI) (PP)
 WIRRUNA CIRCLE F31 (AI) (PP)
 GRASSMERE SPARK 555 (IMP NZL) (PP)
 BOWEN SPARK K90 (AI) (PP)
 BOWEN ROLLINA B101 (AI) (P)
DAM: BOWEN MATCHLESS N192 (P)
 DXB 7C BLOCKBUSTER 3K (IMP CAN) (P)
 BOWEN MATCHLESS B186 (AI) (ET) (P)
 BOWEN MATCHLESS S238 (AI) (ET) (P)

STRUCTURAL ASSESSMENT								
CLAW SET FRONT	CLAW SET REAR	FRONT FEET ANGLE	REAR FEET ANGLE	REAR LEGS SIDE VIEW	REAR LEGS HINDVIEW	SCROTAL (cm)	TEMP.	SHEATH
7	6	5	6	6	5	41	1	4

Notes: Matty M288 son combined with the top Rollina & Matchless cow families. Quebec has data at the top end of the breed for IMF, carcass, growth & very short gestation.

MAY 2021 HEREFORD BREEDPLAN

CED	CEM	GL	BW	200d	400d	600d	Mcw	Milk	SS	CWT	EMA	Rib	Rump	RBY	IMF	SELECTION INDEXES			
																SSR	NSR	SBMat	NBTerm
+5.8	+5.6	-4.6	+5.6	+48	+75	+111	+91	+18	+2.7	+70	+3.3	+0.8	+0.8	+0.5	+1.8	\$201	\$182	\$213	\$155
48%	37%	73%	68%	67%	68%	69%	62%	54%	76%	62%	53%	59%	62%	53%	60%				

Traits Observed: GL,CE,200WT,400WT,600WT,SS,FAT,EMA,IMF,Genomics

Purchaser: \$



Wirruna Matty M288 sire of lots 1, 2, 6, 8 & 16

LOT
17

BOWEN QWADE Q064 (AI) (PP)

BWNQ064

Born: 24/6/19

POLL C-PcPc,IEF,HYF,DLF,

Eye Pigment: 100-100

Tattoo: Q064

KOANUI ROCKET 0219 (IMP NZL) (P)
 PINE HILL CROSSFIRE C558 (AI) (P)
 PINE HILL GHOST MAPLE W16 (AI) (P)
SIRE: YAVENVALE JET FIRE J032 (PP)
 KURRAJONG PARK B144 (P)
 YAVENVALE EMPRESS G320 (P)
 YAVENVALE EMPRESS C340 (H#)
 ALLENDALE WATERHOUSE D1 (PP)
 DAYS CALIBRE G74 (PP)
 ALLENDALE DAWN C62 (AI) (P)
DAM: BOWEN FANCY M180 (P)
 TYCOLAH ZORRO (P)
 BOWEN FANCY E205 (AI) (P)
 BOWEN FANCY A381 (AI) (P)



STRUCTURAL ASSESSMENT								
CLAW SET FRONT	CLAW SET REAR	FRONT FEET ANGLE	REAR FEET ANGLE	REAR LEGS SIDE VIEW	REAR LEGS HINDVIEW	SCROTAL (cm)	TEMP.	SHEATH
6	6	6	6	6	5	41	1	5

MAY 2021 HEREFORD BREEDPLAN

CED	CEM	GL	BW	200d	400d	600d	Mcw	Milk	SS	CWT	EMA	Rib	Rump	RBV	IMF	SELECTION INDEXES			
+5.8	+7.9	+1.6	+2.9	+32	+58	+80	+70	+15	+2.1	+55	+4.1	+0.7	+1	+0.4	+1.1	SSR	NSR	SBMat	NBTerm
48%	39%	70%	67%	67%	67%	69%	61%	56%	75%	59%	52%	57%	60%	53%	58%	\$150	\$139	\$165	\$120

Traits Observed: GL,CE,200WT,400WT,600WT,SS,FAT,EMA,IMF,Genomics

Notes: Qwade is a striking son of Jet Fire with a high performance pedigree combining a high yielding carcass with IMF & EMA, would be suitable for heifers with his low birth weight data.

Purchaser: \$

LOT
18

BOWEN QUID Q99 (PP)

BWNQ099

Born: 25/8/19

POLL C-PcPf,IEF,HYF,DLF,

Eye Pigment: 100-100

Tattoo: Q099

ALLENDALE WATERHOUSE D1 (PP)
 DAYS CALIBRE G74 (PP)
 ALLENDALE DAWN C62 (AI) (P)
SIRE: BOWEN KYOOMA K27 (PP)
 BOWEN ARGYLE A355 (AI) (S)
 BOWEN KATIE D236 (P)
 BOWEN KATIE A336 (P)
 STUDBROOK D'ARTAGNION V086 (AI) (ET) (S)
 OTAPAWA SPARK 3060 (IMP NZL) (AI) (ET) (P)
 OTAPAWA SPOT P30 (P)
DAM: BOWEN FANCY K10 (AI) (P)
 BOWEN VINCENT V1 (S)
 BOWEN FANCY B26 (AI) (P)
 BOWEN FANCY W150 (AI) (P)



STRUCTURAL ASSESSMENT								
CLAW SET FRONT	CLAW SET REAR	FRONT FEET ANGLE	REAR FEET ANGLE	REAR LEGS SIDE VIEW	REAR LEGS HINDVIEW	SCROTAL (cm)	TEMP.	SHEATH
7	6	6	6	7	6	38	1	4

MAY 2021 HEREFORD BREEDPLAN

CED	CEM	GL	BW	200d	400d	600d	Mcw	Milk	SS	CWT	EMA	Rib	Rump	RBV	IMF	SELECTION INDEXES			
+2.1	+5.4	+0.2	+5.9	+37	+61	+87	+98	+13	+1.6	+55	+5.3	+0.4	+0.5	+0.4	+1.5	SSR	NSR	SBMat	NBTerm
45%	39%	60%	70%	68%	68%	70%	62%	57%	75%	60%	52%	57%	61%	54%	59%	\$140	\$126	\$144	\$111

Traits Observed: CE,200WT,400WT,600WT,SS,FAT,EMA,IMF,Genomics

Notes: This large framed fellow has the brilliant skin & hair type typical of his sire Kyooma, his dam Fancy K10 is a picture perfect female. Ideal carcass data & excels in weight, EMA & IMF.

Purchaser: \$

LOT 19	BOWEN QUIMBY Q046 (PP)	BWNQ046
Born: 7/8/19	POLL C-PcP _f ,IEF,HYF,DLF,	Eye Pigment: 100-100
WITHDRAWN		Tattoo: Q046



Cows at Bowen January 2021

LOT 20	BOWEN QUARTET Q040 (PP)	BWNQ040
Born: 8/9/19	POLL C-PcP _f ,IEF,HYF,DLF,	Eye Pigment: 100-100
		Tattoo: Q040

PINE HILL CROSSFIRE C558 (AI) (P)
 YAVENVALE JET FIRE J032 (PP)
 YAVENVALE EMPRESS G320 (P)
SIRE: BOWEN MAGISTRATE M241 (AI) (PP)
 HUNTER LAKES FONZ F15 (AI) (P)
 BOWEN IRISH GIRL J269 (P)
 BOWEN IRISH GIRL A152 (AI) (P)
 BOWEN URIARRA U96 (AI) (ET) (P)
 BOWEN URIARRA X217 (P)
 BOWEN HILDA T287 (P)
DAM: BOWEN URSULA G157 (AI) (P)
 BOWEN VALOUR V39 (AI) (P)
 PEAKES URSULA B324 (P)
 KAYNE URSULA W7 (P)



STRUCTURAL ASSESSMENT								
CLAW SET FRONT	CLAW SET REAR	FRONT FEET ANGLE	REAR FEET ANGLE	REAR LEGS SIDE VIEW	REAR LEGS HINDVIEW	SCROTAL (cm)	TEMP.	SHEATH
6	6	6	6	7	6	40	1	5

MAY 2021 HEREFORD BREEDPLAN

CED	CEM	GL	BW	200d	400d	600d	Mcw	Milk	SS	CWT	EMA	Rib	Rump	RBV	IMF	SELECTION INDEXES			
+0.4	+4	-1	+4	+32	+45	+66	+65	+15	+1.5	+46	+3.5	+0.4	+0.4	+0.7	+0.6	SSR	NSR	SBMat	NBTerm
39%	29%	61%	67%	66%	66%	69%	61%	51%	74%	57%	47%	53%	57%	50%	53%	\$102	\$91	\$105	\$78

Traits Observed: 200WT,400WT,600WT,SS,FAT,EMA,IMF,Genomics

Notes: One of the younger Magistrate sons in the sale offering, he will develop into a standout sire with power & presence. Pedigree contains the ever reliable cow families of Ursula, Hilda & Irish Girl. Maternal brother sold in 2016 Bowen Bull Sale.

Purchaser: \$

LOT
21

BOWEN QUICK SMART Q074 (AI) (ET) (PP)

BWNQ074

Born: 2/9/19

POLL C-PcPc,IEF,HYF,DLF,

Eye Pigment: 100-100

Tattoo: Q074

ALLENDALE WATERHOUSE D1 (PP)
 DAYS ROBIN HOOD H38 (AI) (ET) (PP)
 ALLENDALE FANCY U5 (AI) (P)
SIRE: HUNTER LAKES LION HEART L110 (AI) (ET) (PP)
 SOUTH BUKALONG WALLACE 2 (P)
 HUNTER LAKES FANCY F7 (AI) (P)
 ALLENDALE FANCY D24 (AI) (P)
 STUDBROOK D'ARTAGNION V086 (AI) (ET) (S)
 OTAPAWA SPARK 3060 (IMP NZL) (AI) (ET) (P)
 OTAPAWA SPOT P30 (P)
DAM: BOWEN RUTH J214 (AI) (PP)
 DEBARRY EDEN (PP)
 BOWEN RUTH E321 (AI) (P)
 BOWEN RUTH B31 (AI) (P)



STRUCTURAL ASSESSMENT									
CLAW SET FRONT	CLAW SET REAR	FRONT FEET ANGLE	REAR FEET ANGLE	REAR LEGS SIDE VIEW	REAR LEGS HINDVIEW	SCROTAL (cm)	TEMP.	SHEATH	
6	6	6	6	5	6	40	1	4	

MAY 2021 HEREFORD BREEDPLAN

CED	CEM	GL	BW	200d	400d	600d	Mcw	Milk	SS	CWT	EMA	Rib	Rump	RBV	IMF	SELECTION INDEXES			
-3	+4.8	-3.8	+6.2	+41	+67	+97	+99	+15	+3.3	+58	+4.4	+2	+3.3	-0.3	+1.5	SSR	NSR	SBMat	NBTerm
44%	39%	63%	68%	67%	67%	68%	61%	55%	64%	60%	50%	56%	60%	52%	57%	\$161	\$149	\$144	\$101

Traits Observed: 200WT,400WT,600WT,SS,FAT,EMA,IMF,Genomics

Notes: Quick Smart is one of youngest in the sale draft. Terrific female lines an ET son of Ruth J214 one of the most powerful females at Bowen, grand dam donor Ruth E321 is the mother of Mastermind M314 used at Bowen with progeny featuring in this years sale. Sired by the 2017 Dubbo National Reserve Senior Champion Hunter Lakes Lion Heart L110 sold for the top price of \$65,000. Data is at the top of the breed for short gestation, 200day to mature cow weights with excellent EMA, fats & IMF EBVs.

Purchaser: \$

LOT
22

BOWEN QUICKDRAW Q137 (S)

BWNQ137

Born: 1/10/19

POLL C-HPc,IEF,HYF,DLF,

Eye Pigment: 100-100

Tattoo: Q137

ALLENDALE WATERHOUSE D1 (PP)
 DAYS CALIBRE G74 (PP)
 ALLENDALE DAWN C62 (AI) (P)
SIRE: BOWEN CALIBRE K207 (AI) (ET) (PP)
 MAUNGAHINA KINGDOM BAY 070073 (IMP NZL) (P)
 BOWEN HILDA F8 (AI) (P)
 BOWEN HILDA A101 (AI) (P)
 GRASSMERE SPARK 330 (P)
 GRASSMERE SPARK 555 (IMP NZL) (PP)
 GRASSMERE PRINCESS 245 (P)
DAM: BOWEN FLORRIE K260 (AI) (P)
 KOANUI ROCKET 0219 (IMP NZL) (P)
 BOWEN FLORRIE F23 (AI) (P)
 BOWEN FLORRIE C91 (P)



STRUCTURAL ASSESSMENT									
CLAW SET FRONT	CLAW SET REAR	FRONT FEET ANGLE	REAR FEET ANGLE	REAR LEGS SIDE VIEW	REAR LEGS HINDVIEW	SCROTAL (cm)	TEMP.	SHEATH	
6	4	6	6	6	6	41	1	4	

MAY 2021 HEREFORD BREEDPLAN

CED	CEM	GL	BW	200d	400d	600d	Mcw	Milk	SS	CWT	EMA	Rib	Rump	RBV	IMF	SELECTION INDEXES			
+0.9	+6.8	+1.2	+8.7	+45	+77	+109	+113	+10	+2.8	+65	+5.2	+0.9	+1.2	+0.5	+1.7	SSR	NSR	SBMat	NBTerm
45%	39%	64%	68%	67%	67%	69%	60%	54%	75%	58%	51%	55%	59%	52%	56%	\$171	\$156	\$176	\$130

Traits Observed: 200WT,400WT,600WT,SS,FAT,EMA,IMF,Genomics

Notes: One of the standout K207 sons with his sheer volume & power, a real eye catcher. He is a very easy doing type that will put weight into his progeny. His weight, indexes, EMA & IMF data is at the top end of the breed with positive fats.

Purchaser: \$

LOT 23 **BOWEN QUANTITY Q134 (PP)** **BWNQ134**
 Born: 8/8/19 POLL C-PcPf,IEF,HYF,DLF, Eye Pigment: 100-100 Tattoo: Q134

SIRE: **BOWEN MASTERMIND M314 (AI) (P)**
 SHF WONDER M326 W18 ET (P)
 NJW 73S W18 HOMETOWN 10Y (IMP USA) (P)
 NJW P606 72N DAYDREAM 73S (P)
 DEBARRY EDEN (PP)
 BOWEN RUTH E321 (AI) (P)
 BOWEN RUTH B31 (AI) (P)
 BBSF 3K RANCHMAN 18R (IMP CAN) (P)
 BOWEN COWBOY C245 (AI) (ET) (PP)
 BOWEN ROLLINA N61 (P)
 DAM: **BOWEN MARGEE J146 (P)**
 BOWEN URIARRA X217 (P)
 PEAKES MARGEE B10 (P)
 KYILLA PARK MARGEE (H)

STRUCTURAL ASSESSMENT								
CLAW SET FRONT	CLAW SET REAR	FRONT FEET ANGLE	REAR FEET ANGLE	REAR LEGS SIDE VIEW	REAR LEGS HINDVIEW	SCROTAL (cm)	TEMP.	SHEATH
6	6	6	6	6	6	41	1	5

Notes: Powerful Mastermind son with outstanding body length & weight gain. Pedigree combines the three outstanding sires of Mastermind, Cowboy & Uriarra with excellent cow families. Maternal brother sold in the 2019 Bowen Bull sale.

MAY 2021 HEREFORD BREEDPLAN

CED	CEM	GL	BW	200d	400d	600d	Mcw	Milk	SS	CWT	EMA	Rib	Rump	RBV	IMF	SELECTION INDEXES			
-4.5	+3.4	-0.9	+6	+38	+58	+81	+74	+18	+2	+50	+3.3	-0.9	-1.8	+1.6	0	SSR	NSR	SBMat	NBTerm
40%	32%	58%	67%	66%	67%	69%	60%	52%	74%	58%	49%	54%	58%	51%	55%	\$108	\$85	\$101	\$69

Traits Observed: CE,200WT,400WT,600WT,SS,FAT,EMA,IMF,Genomics

Purchaser: \$

LOT 24 **BOWEN QUIBBLE Q041 (AI) (PP)** **BWNQ041**
 Born: 19/8/19 POLL C-PcPf,IEF,HYF,DLF, Eye Pigment: 100-100 Tattoo: Q041

SIRE: **INJEMIRA ANZAC H006 (PP)**
 ALLENDALE YACKA (AI) (P)
 ALLENDALE ANZAC E114 (PP)
 ALLENDALE DAWN B22 (AI) (ET) (P)
 PINE HILL ERIK Y601 (AI) (S)
 INJEMIRA MARINDA B028 (AI) (P)
 INJEMIRA MARINDA Y065 (H)
 PINE HILL CROSSFIRE C558 (AI) (P)
 YAVENVALE JET FIRE J032 (PP)
 YAVENVALE EMPRESS G320 (P)
 DAM: **BOWEN FLORRIE M232 (AI) (P)**
 OTAPAWA SKYMATE 2046 (IMP NZL) (ET) (P)
 BOWEN FLORRIE J272 (AI) (ET) (P)
 BOWEN FANCY X57 (AI) (P)

STRUCTURAL ASSESSMENT								
CLAW SET FRONT	CLAW SET REAR	FRONT FEET ANGLE	REAR FEET ANGLE	REAR LEGS SIDE VIEW	REAR LEGS HINDVIEW	SCROTAL (cm)	TEMP.	SHEATH
6	6	5	6	6	6	40	2	5

Notes: Quibble is a high growth Anzac H006 son, backed by very impressive cow lines he will breed fantastic females. His data is at the top end of the breed for milk, EMA, carcass weight & 200 to 600 day weight EBVs.

MAY 2021 HEREFORD BREEDPLAN

CED	CEM	GL	BW	200d	400d	600d	Mcw	Milk	SS	CWT	EMA	Rib	Rump	RBV	IMF	SELECTION INDEXES			
-3.5	+1.7	+1.5	+5.2	+40	+71	+100	+86	+26	+2.3	+68	+4.7	+0.2	0	+1.7	+0.4	SSR	NSR	SBMat	NBTerm
47%	40%	74%	68%	67%	68%	69%	62%	58%	76%	59%	52%	56%	60%	53%	58%	\$147	\$124	\$142	\$102

Traits Observed: GL,CE,200WT,400WT,600WT,SS,FAT,EMA,IMF,Genomics

Purchaser: \$

LOT 25 **BOWEN QUIVER Q025 (PP)** **BWNQ025**
 Born: 30/7/19 POLL C-PcPf,IEF,HYF,DLF, Eye Pigment: 100-100 Tattoo: Q025

SIRE: **BOWEN MAGISTRATE M241 (AI) (PP)**
 PINE HILL CROSSFIRE C558 (AI) (P)
 YAVENVALE JET FIRE J032 (PP)
 YAVENVALE EMPRESS G320 (P)
 HUNTER LAKES FONZ F15 (AI) (P)
 BOWEN IRISH GIRL J269 (P)
 BOWEN IRISH GIRL A152 (AI) (P)
 BOWEN DIAMANTINA D203 (AI) (PP)
 BOWEN GWYDIR G222 (AI) (ET) (PP)
 BOWEN ROLLINA Y186 (AI) (P)
 DAM: **BOWEN GLEAM K28 (P)**
 BOWEN URIARRA U96 (AI) (ET) (P)
 PEAKES GLEAM C293 (P)
 KAYNE GLEAM X286 (AI) (P)

STRUCTURAL ASSESSMENT								
CLAW SET FRONT	CLAW SET REAR	FRONT FEET ANGLE	REAR FEET ANGLE	REAR LEGS SIDE VIEW	REAR LEGS HINDVIEW	SCROTAL (cm)	TEMP.	SHEATH
7	6	5	6	6	6	41	1	5

Notes: Impressive Magistrate son excelling in RBV, EMA & 200day to mature cow weight data. Maternal brother sold in the 2020 Bowen Bull Sale \$12,000.

MAY 2021 HEREFORD BREEDPLAN

CED	CEM	GL	BW	200d	400d	600d	Mcw	Milk	SS	CWT	EMA	Rib	Rump	RBV	IMF	SELECTION INDEXES			
-0.4	-1.1	-1.8	+7.8	+43	+64	+97	+92	+15	+2.5	+60	+4.4	-0.8	-1.7	+2.5	+0.2	SSR	NSR	SBMat	NBTerm
38%	28%	60%	69%	67%	67%	69%	60%	49%	75%	57%	48%	54%	58%	50%	55%	\$137	\$118	\$141	\$107

Traits Observed: CE,200WT,400WT,600WT,SS,FAT,EMA,IMF,Genomics

Purchaser: \$

LOT 26	BOWEN QUINTET Q108 (PP)	BWNQ108
Born: 24/8/19 POLL C-PcPf,IEF,HYF,DLF,		Eye Pigment: 100-100 Tattoo: Q108

NJW 73S M326 TRUST 100W ET (IMP USA) (ET) (P)
 NJW 78P TWENTYTWELVE 190Z (IMP CAN) (AI) (ET) (P)
 NJW BW LADYSPORT DEW 78P ET (P)

SIRE: BOWEN MACKLEN M91 (AI) (PP)
 BOWEN ESPLANADE E332 (AI) (PP)
 BOWEN MARLINE H194 (AI) (P)
 BOWEN MARLINE E109 (P)

MSU OPTIMUM Z03 (IMP USA) (P)
 HEATHERDALE OPIUM U78 (AI) (P)
 NEILPO MARITANA 29 (P)

DAM: BOWEN CORAL E18 (AI) (P)
 BOWEN VINCENT V1 (S)
 BOWEN CORAL B258 (AI) (P)
 BOWEN CORAL Y204 (P)



Photo Grand Sire NJW 78P TWENTYTWELVE 190Z

STRUCTURAL ASSESSMENT								
CLAW SET FRONT	CLAW SET REAR	FRONT FEET ANGLE	REAR FEET ANGLE	REAR LEGS SIDE VIEW	REAR LEGS HINDVIEW	SCROTAL (cm)	TEMP.	SHEATH
6	6	6	6	6	6	37	1	5

MAY 2021 HEREFORD BREEDPLAN

CED	CEM	GL	BW	200d	400d	600d	Mcw	Milk	SS	CWT	EMA	Rib	Rump	RBV	IMF	SELECTION INDEXES			
+5.7	+5.1	-2	+4.9	+34	+57	+84	+76	+11	+1.9	+54	+4.1	-0.8	-1.6	+1.8	+0.2	SSR	NSR	SBMat	NBTerm
38%	33%	62%	67%	66%	65%	67%	61%	55%	73%	58%	48%	55%	58%	51%	55%	\$144	\$129	\$160	\$117

Traits Observed: CE,200WT,400WT,600WT,SS,FAT,EMA,IMF,Genomics

Notes: Quintet is an upstanding son of Macklen & will develop into a powerful sire suitable for heifers with his moderate birth & short gestation. His dam Coral E18 has a been a terrific breeding female Quintet Q106 is the 5th son to be offered at Bowen Bull sale with sons selling to \$16,000 we will be moving dam Coral E18 into our donor program.

Purchaser: \$

LOT 27	BOWEN QUAD Q4 (PP)	BWNQ004
Born: 19/8/19 POLL C-PcPf,IEF,HYF,DLF,		Eye Pigment: 100-100 Tattoo: Q004

PINE HILL CROSSFIRE C558 (AI) (P)
 YAVENVALE JET FIRE J032 (PP)
 YAVENVALE EMPRESS G320 (P)

SIRE: BOWEN MAGISTRATE M241 (AI) (PP)
 HUNTER LAKES FONZ F15 (AI) (P)
 BOWEN IRISH GIRL J269 (P)
 BOWEN IRISH GIRL A152 (AI) (P)

ALLENDALE NATIONAL W168 (PP)
 BOWEN DIAMANTINA D203 (AI) (PP)
 BOWEN MATCHLESS Z152 (AI) (P)

DAM: BOWEN MATCHLESS J304 (AI) (ET) (P)
 BOWEN TORNADO Z260 (AI) (ET) (PP)
 RILO PARK MATCHLESS C10 (AI) (ET) (P)
 BOWEN MATCHLESS L140 (AI) (P)



STRUCTURAL ASSESSMENT								
CLAW SET FRONT	CLAW SET REAR	FRONT FEET ANGLE	REAR FEET ANGLE	REAR LEGS SIDE VIEW	REAR LEGS HINDVIEW	SCROTAL (cm)	TEMP.	SHEATH
6	6	6	6	5	5	42	1	5

MAY 2021 HEREFORD BREEDPLAN

CED	CEM	GL	BW	200d	400d	600d	Mcw	Milk	SS	CWT	EMA	Rib	Rump	RBV	IMF	SELECTION INDEXES			
-1.6	-2.8	-0.4	+5.9	+42	+67	+96	+89	+10	+3.3	+63	+3.4	+0.3	+0.1	+1	+0.8	SSR	NSR	SBMat	NBTerm
42%	34%	60%	67%	66%	66%	68%	60%	49%	74%	57%	48%	53%	57%	50%	54%	\$145	\$130	\$138	\$103

Traits Observed: CE,200WT,400WT,600WT,SS,FAT,EMA,IMF,Genomics

Notes: Quad Q4 has superior strength to his pedigree with sires Magistrate, Diamantina & Tornado. No wonder he expresses that great sire appeal & carcass type. Dam line is from the legendary Matchless L140 a top performing Donor cow for Richard & Loraine Moteby - Rilo Park Poll Herefords breeding many champions & high sell progeny. Data shows excellent weight, IMF & Indexes.

Purchaser: \$

LOT 28 **BOWEN QUARRY Q93 (PP)** **BWNQ093**
 Born: 17/9/19 POLL C-PcPc,IEF,HYF,DLF, Eye Pigment: 50-90 Tattoo: Q093

ALLENDALE WATERHOUSE D1 (PP)
 DAYS CALIBRE G74 (PP)
 ALLENDALE DAWN C62 (AI) (P)
SIRE: BOWEN CALIBRE K207 (AI) (ET) (PP)
 MAUNGAHINA KINGDOM BAY 070073 (IMP NZL) (P)
 BOWEN HILDA F8 (AI) (P)
 BOWEN HILDA A101 (AI) (P)
 BOWEN ARGYLE A355 (AI) (S)
 BOWEN CROWN PRINCE C330 (AI) (P)
 BOWEN PRINCESS T65 (P)
DAM: BOWEN IRISH MAID G2 (P)
 DEBARRY HIGHLANDER 2 (AI) (S)
 PEAKES IRISH MAID B382 (P)
 CAS IRISH MAID U167 (AI) (P)

STRUCTURAL ASSESSMENT									SCROTAL (cm)	TEMP.	SHEATH
CLAW SET FRONT	CLAW SET REAR	FRONT FEET ANGLE	REAR FEET ANGLE	REAR LEGS SIDE VIEW	REAR LEGS HINDVIEW						
6	5	6	6	7	6	37	1	5			

Notes: Quarry excels in type & structure, with EMA & IMF. His sire K207 sold at our 2016 Bowen sale for the top price of \$70,000 to the Rayleigh Stud. Dam Irish Maid is a standout for body depth & type, maternal brother sold in the 2016 Bowen Bull sale \$12,000.

MAY 2021 HEREFORD BREEDPLAN

CED	CEM	GL	BW	200d	400d	600d	Mcw	Milk	SS	CWT	EMA	Rib	Rump	RBY	IMF	SELECTION INDEXES			
																SSR	NSR	SBMat	NBTerm
-4.9	0	-0.1	+7.2	+36	+54	+78	+90	+6	+0.8	+46	+4.3	0	-0.4	+1.1	+0.9	\$93	\$81	\$86	\$68

Traits Observed: 200WT,400WT,600WT,SS,FAT,EMA,IMF,Genomics

Purchaser: \$

LOT 29 **BOWEN QUADE Q102 (PP)** **BWNQ102**
 Born: 17/9/19 POLL C-PcPf,IEF,HYF,DLF, Eye Pigment: 100-100 Tattoo: Q102

ALLENDALE WATERHOUSE D1 (PP)
 DAYS CALIBRE G74 (PP)
 ALLENDALE DAWN C62 (AI) (P)
SIRE: BOWEN CALIBRE K207 (AI) (ET) (PP)
 MAUNGAHINA KINGDOM BAY 070073 (IMP NZL) (P)
 BOWEN HILDA F8 (AI) (P)
 BOWEN HILDA A101 (AI) (P)
 BRAYBOOK CHEROKEE C200 (AI) (P)
 BOWEN FRONTIER F314 (P)
 BOWEN HILDA W188 (P)
DAM: BOWEN IRISH GIRL L238 (P)
 DEBARRY HIGHLANDER 2 (AI) (S)
 PEAKES IRISH GIRL A346 (AI) (P)
 CAS IRISH GIRL S89 (AI) (P)

STRUCTURAL ASSESSMENT									SCROTAL (cm)	TEMP.	SHEATH
CLAW SET FRONT	CLAW SET REAR	FRONT FEET ANGLE	REAR FEET ANGLE	REAR LEGS SIDE VIEW	REAR LEGS HINDVIEW						
6	5	6	6	6	6	39	2	5			

Notes: Quade is a sound structured free moving bull with a beautiful skin & hair type, his data is high for EMA, IMF & fats. Pedigree features a double cross of our top Hilda cow lines.

MAY 2021 HEREFORD BREEDPLAN

CED	CEM	GL	BW	200d	400d	600d	Mcw	Milk	SS	CWT	EMA	Rib	Rump	RBY	IMF	SELECTION INDEXES			
																SSR	NSR	SBMat	NBTerm
-4.4	+0.8	-0.2	+5.9	+35	+54	+79	+79	+4	+2.5	+55	+5.5	+1.2	+2.1	-0.1	+1.6	\$122	\$114	\$106	\$75

Traits Observed: 200WT,400WT,600WT,SS,FAT,EMA,IMF,Genomics

Purchaser: \$

LOT 30 **BOWEN QUESTACON Q061 (AI) (PP)** **BWNQ061**
 Born: 16/6/19 POLL C-PcPc,IEF,HYF,DLF, Eye Pigment: 100-100 Tattoo: Q061

KCF BENNETT 3008 M326 (P)
 NJW 73S M326 TRUST 100W ET (IMP USA) (ET) (P)
 NJW P606 72N DAYDREAM 73S (P)
SIRE: BOWEN TRUST L234 (AI) (PP)
 DEBARRY EDEN (PP)
 BOWEN RUTH E321 (AI) (P)
 BOWEN RUTH B31 (AI) (P)
 STUDBROOK D'ARTAGNION V086 (AI) (ET) (S)
 OTAPAWA SPARK 3060 (IMP NZL) (AI) (ET) (P)
 OTAPAWA SPOT P30 (P)
DAM: BOWEN FANCY M95 (AI) (P)
 EF F524 FELLIS 821C (IMP USA) (P)
 BOWEN FANCYH281 (AI) (ET) (P)
 BOWEN FANCY X57 (AI) (P)

STRUCTURAL ASSESSMENT									SCROTAL (cm)	TEMP.	SHEATH
CLAW SET FRONT	CLAW SET REAR	FRONT FEET ANGLE	REAR FEET ANGLE	REAR LEGS SIDE VIEW	REAR LEGS HINDVIEW						
7	6	6	6	5	5	38	1	4			

Notes: Very attractive Trust L234 son, an absolute carcass sire with fantastic data right across the board, combining low birth weight, short gestation through to excellent marbling, fats & EMA EBVs. Would be suitable for heifers.

MAY 2021 HEREFORD BREEDPLAN

CED	CEM	GL	BW	200d	400d	600d	Mcw	Milk	SS	CWT	EMA	Rib	Rump	RBY	IMF	SELECTION INDEXES			
																SSR	NSR	SBMat	NBTerm
+4.8	+5.2	-2.9	+1.9	+30	+52	+65	+46	+20	+0.5	+55	+6.7	+2	+2.3	+0.9	+1.3	\$141	\$137	\$151	\$111

Traits Observed: GL,CE,200WT,400WT,600WT,SS,FAT,EMA,IMF,Genomics

Purchaser: \$

LOT 31 **BOWEN QUIN Q14 (AI) (PP)** **BWNQ014**
 Born: 8/8/19 POLL C-PcPc,IEF,HYF,DLF, Eye Pigment: 100-100 Tattoo: Q014

SIRE: **BOWEN KASPER K217 (AI) (ET) (PP)**
 BOWEN LIDDELL Z128 (AI) (P)
 BOWEN FLORRIE C91 (P)
 BOWEN FLORRIE Y10 (P)

DAM: **BOWEN VICTORIA LASS M251 (AI) (P)**
 BOWEN FLASHER F140 (AI) (P)
 BOWEN VICTORIA LASS J37 (AI) (P)
 AMOR VICTORIA LASS X28 (P)

STRUCTURAL ASSESSMENT								
CLAW SET FRONT	CLAW SET REAR	FRONT FEET ANGLE	REAR FEET ANGLE	REAR LEGS SIDE VIEW	REAR LEGS HINDVIEW	SCROTAL (cm)	TEMP.	SHEATH
6	6	6	6	5	4	39	1	4

Notes: Quin is well pigmented with slick skin. Data shows excellent fats, EMA & IMF with calving data suitable for heifer joining. Sires Revolution 4R & Holy Smoke were used over heifers at Bowen with great success.

MAY 2021 HEREFORD BREEDPLAN

CED	CEM	GL	BW	200d	400d	600d	Mcw	Milk	SS	CWT	EMA	Rib	Rump	RBV	IMF	SELECTION INDEXES			
+1.1	0	-0.5	+4.6	+33	+49	+73	+62	+18	+2.2	+44	+4.6	+1.3	+1.8	+0.8	+0.7	SSR	NSR	SBMat	NBTerm
41%	35%	73%	66%	65%	66%	68%	60%	52%	75%	57%	50%	55%	58%	51%	55%	\$130	\$118	\$126	\$91

Traits Observed: GL,CE,200WT,400WT,600WT,SS,FAT,EMA,IMF,Genomics

Purchaser: \$

LOT 32 **BOWEN QUIPOLLY Q88 (S)** **BWNQ088**
 Born: 14/8/19 POLL C-HPc,IEF,HYF,DLF, Eye Pigment: 100-100 Tattoo: Q088

SIRE: **BOWEN KYOOMA K27 (PP)**
 BOWEN ARGYLE A355 (AI) (S)
 BOWEN KATIE D236 (P)
 BOWEN KATIE A336 (P)

DAM: **BOWEN FLORRIE K212 (AI) (ET) (P)**
 BOWEN LIDDELL Z128 (AI) (P)
 BOWEN FLORRIE C91 (P)
 BOWEN FLORRIE Y10 (P)

STRUCTURAL ASSESSMENT								
CLAW SET FRONT	CLAW SET REAR	FRONT FEET ANGLE	REAR FEET ANGLE	REAR LEGS SIDE VIEW	REAR LEGS HINDVIEW	SCROTAL (cm)	TEMP.	SHEATH
7	6	7	7	7	6	39	1	5

Notes: Quipolly has the excellent structural soundness typical of Kyooma progeny with a pedigree featuring donor dams Florrie C91 & Katie D236 up front in his pedigree. Excellent growth data & the carcass traits of EMA & IMF.

MAY 2021 HEREFORD BREEDPLAN

CED	CEM	GL	BW	200d	400d	600d	Mcw	Milk	SS	CWT	EMA	Rib	Rump	RBV	IMF	SELECTION INDEXES			
-1	+1.7	-0.2	+5.4	+36	+65	+88	+95	+14	+2	+58	+4.3	+0.7	+1.2	+0.3	+1.4	SSR	NSR	SBMat	NBTerm
45%	38%	59%	70%	69%	69%	70%	63%	59%	76%	61%	52%	58%	62%	55%	60%	\$137	\$123	\$131	\$101

Traits Observed: CE,200WT,400WT,600WT,SS,FAT,EMA,IMF,Genomics

Purchaser: \$

LOT 33 **BOWEN QUEENBEYAN Q141 (PP)** **BWNQ141**
 Born: 22/9/19 POLL C-PcPf,IEF,HYF,DLF, Eye Pigment: 100-100 Tattoo: Q141

SIRE: **BOWEN CALIBRE K207 (AI) (ET) (PP)**
 MAUNGAHINA KINGDOM BAY 070073 (IMP NZL) (P)
 BOWEN HILDA F8 (AI) (P)
 BOWEN HILDA A101 (AI) (P)

DAM: **BOWEN DORT L3 (AI) (P)**
 BOWEN DIAMANTINA D203 (AI) (PP)
 BOWEN DORT H222 (P)
 BOWEN DORT D88 (P)

STRUCTURAL ASSESSMENT								
CLAW SET FRONT	CLAW SET REAR	FRONT FEET ANGLE	REAR FEET ANGLE	REAR LEGS SIDE VIEW	REAR LEGS HINDVIEW	SCROTAL (cm)	TEMP.	SHEATH
6	7	6	7	7	4	39	1	5

Notes: Queenbeyan has a pedigree of performance, he will develop into an impressive sire producing signature Hereford cherry red weaners, sire K207 sold at our 2016 Bowen sale for the top price of \$70,000 to the Rayleigh Stud. Data showing high weights, fats, EMA with his IMF rated at the top end of breed.

MAY 2021 HEREFORD BREEDPLAN

CED	CEM	GL	BW	200d	400d	600d	Mcw	Milk	SS	CWT	EMA	Rib	Rump	RBV	IMF	SELECTION INDEXES			
+0.8	+2.6	-0.4	+5.1	+37	+62	+86	+83	+14	+3.1	+54	+3.8	+0.8	+1.3	+0.1	+1.6	SSR	NSR	SBMat	NBTerm
44%	37%	65%	69%	68%	68%	69%	61%	55%	76%	59%	51%	56%	60%	53%	57%	\$133	\$122	\$139	\$107

Traits Observed: 200WT,400WT,600WT,SS,FAT,EMA,IMF,Genomics

Purchaser: \$

LOT 34 **BOWEN QUESTMAN Q157 (PP)** **BWNQ157**
 Born: 28/9/19 POLL C-PcPc,IEF,HYF,DLF, Eye Pigment: 100-100 Tattoo: Q157

SIRE: **BOWEN MASTERMIND M314 (AI) (P)**
 SHF WONDER M326 W18 ET (P)
 NJW 73S W18 HOMETOWN 10Y (IMP USA) (P)
 NJW P606 72N DAYDREAM 73S (P)
 DEBARRY EDEN (PP)
 BOWEN RUTH E321 (AI) (P)
 BOWEN RUTH B31 (AI) (P)
 BOWEN VINCENT V1 (S)
 DEBARRY SCHOONER (S)
 DIMBY SONIA 32 (P)
 DAM: **BOWEN URSULA G42 (P)**
 BOWEN STU-GRADON W404 (S)
 PEAKES URSULA C287 (P)
 KAYNE URSULA X285 (AI) (P)

STRUCTURAL ASSESSMENT								
CLAW SET FRONT	CLAW SET REAR	FRONT FEET ANGLE	REAR FEET ANGLE	REAR LEGS SIDE VIEW	REAR LEGS HINDVIEW	SCROTAL (cm)	TEMP.	SHEATH
6	6	6	6	6	5	40	1	5

Notes: High volume Mastermind son featuring some very powerful sires in his pedigree, maternal brothers sold in previous Bowen Bull sales averaging \$13,000. He excels in growth weight & fertility with a high milk pedigree.

MAY 2021 HEREFORD BREEDPLAN

CED	CEM	GL	BW	200d	400d	600d	Mcw	Milk	SS	CWT	EMA	Rib	Rump	RBV	IMF	SELECTION INDEXES			
-5.1	+2.7	+1.8	+5.8	+36	+59	+78	+79	+19	+2.7	+46	+2	-0.4	-1.1	+0.6	-0.2	SSR	NSR	SBMat	NBTerm
41%	33%	56%	69%	68%	67%	70%	62%	53%	75%	58%	49%	55%	59%	51%	55%	\$82	\$59	\$78	\$56

Traits Observed: 200WT,400WT,600WT,SS,FAT,EMA,IMF,Genomics

Purchaser: \$

LOT 35 **BOWEN QUALITY Q059 (AI) (TW) (PP)** **BWNQ059**
 Born: 25/6/19 POLL C-PcPf,IEF,HYF,DLF, Eye Pigment: 100-100 Tattoo: Q059

SIRE: **BOWEN MAGISTRATE M241 (AI) (PP)**
 PINE HILL CROSSFIRE C558 (AI) (P)
 YAVENVALE JET FIRE J032 (PP)
 YAVENVALE EMPRESS G320 (P)
 HUNTER LAKES FONZ F15 (AI) (P)
 BOWEN IRISH GIRL J269 (P)
 BOWEN IRISH GIRL A152 (AI) (P)
 DAYS WIZARD F84 (P)
 THE RANCH TIPPERARY J06 (AI) (PP)
 THE RANCH SUSAN F02 (P)
 DAM: **BOWEN MARGEE M159 (P)**
 BOWEN URIARRA X217 (P)
 PEAKES MARGEE B10 (P)
 KYILLA PARK MARGEE (H)

STRUCTURAL ASSESSMENT								
CLAW SET FRONT	CLAW SET REAR	FRONT FEET ANGLE	REAR FEET ANGLE	REAR LEGS SIDE VIEW	REAR LEGS HINDVIEW	SCROTAL (cm)	TEMP.	SHEATH
6	6	6	6	6	6	38	1	5

Notes: We picked the right name for this fellow, with his quality presence & docility typical of the Magistrate sire, he has very impressive structure data.

MAY 2021 HEREFORD BREEDPLAN

CED	CEM	GL	BW	200d	400d	600d	Mcw	Milk	SS	CWT	EMA	Rib	Rump	RBV	IMF	SELECTION INDEXES			
+2.1	+3.2	-1.1	+6.6	+39	+63	+94	+85	+19	+2.5	+58	+3.4	-0.2	-0.1	+0.9	-0.1	SSR	NSR	SBMat	NBTerm
37%	26%	55%	65%	65%	64%	65%	57%	47%	61%	55%	44%	51%	56%	47%	52%	\$129	\$107	\$144	\$106

Traits Observed: 200WT,400WT,600WT,SS,FAT,EMA,IMF,Genomics

Purchaser: \$

LOT 36 **BOWEN SPARK Q46** **UNREGISTERED**
 Born: 06/08/19 Polled Eye Pigment: 100-100

SIRE: **BOWEN SPARK K204 (AI) (ET) (PP)**
 GRASSMERE SPARK 330 (P)
 GRASSMERE SPARK 555(IMP NZL)(PP)
 GRASSMERE PRINCESS 245 (P)
 KOANUI ROCKET 0219 (IMP NZL) (P)
 BOWEN FLORRIE F23(AI) (P)
 BOWEN FLORRIE C91 (P)
 BBSF 3K RANCHMAN 18R (IMP CAN) (P)
 BOWEN COWBOY C245 (AI) (ET) (PP)
 BOWEN ROLLINA N61 (P)
 DAM: **BOWEN PRUNELLA M143 (P)**
 BOWEN TORNADO Z260 (AI)(ET)(PP)
 PEAKES PRUNELLA D341 (P)
 CAS PRUNELLA W306 (P)

STRUCTURAL ASSESSMENT								
CLAW SET FRONT	CLAW SET REAR	FRONT FEET ANGLE	REAR FEET ANGLE	REAR LEGS SIDE VIEW	REAR LEGS HINDVIEW	SCROTAL (cm)	TEMP.	SHEATH
6	6	6	7	7	6	39	1	5

Notes: The dam Bowen Prunella M143 was sold PTIC to EMAI with the right to purchase back the calf at weaning.

SIRE BOWEN SPARK K204 EBVS MAY 2021 HEREFORD GROUP BREEDPLAN

CED	CEM	GL	BW	200d	400d	600d	Mcw	Milk	SS	CWT	EMA	Rib	Rump	RBV	IMF	SELECTION INDEXES			
+3.8	+9.3	+3.5	+5.1	+39	+65	+98	+92	+12	+1.3	+62	+4.0	+0.8	+0.8	+0.5	+1.9	SSR	NSR	SBMat	NBTerm
58%	53%	71%	79%	84%	81%	84%	76%	71%	79%	74%	64%	68%	72%	66%	70%	+\$171	+\$157	+\$185	+\$135

Purchaser: \$

LOT 37	BOWEN QUOTATION Q18 (PP)	BWNQ018
Born: 21/8/19 POLL C-PcPf,IEF,HYF,DLF,		Eye Pigment: 100-100 Tattoo: Q018

PINE HILL CROSSFIRE C558 (AI) (P)
 YAVENVALE JET FIRE J032 (PP)
 YAVENVALE EMPRESS G320 (P)
SIRE: BOWEN MAGISTRATE M241 (AI) (PP)
 HUNTER LAKES FONZ F15 (AI) (P)
 BOWEN IRISH GIRL J269 (P)
 BOWEN IRISH GIRL A152 (AI) (P)
 TYCOLAH ZORRO (P)
 BOWEN CAULFIELD C264 (AI) (ET) (P)
 WIRANYA RHODA Q25 (AI) (P)
DAM: BOWEN GLEAM H157 (P)
 BOWEN LEGION Z190 (P)
 PEAKES GLEAM D76 (P)
 PEAKES GLEAM Z192 (P)



STRUCTURAL ASSESSMENT								
CLAW SET FRONT	CLAW SET REAR	FRONT FEET ANGLE	REAR FEET ANGLE	REAR LEGS SIDE VIEW	REAR LEGS HINDVIEW	SCROTAL (cm)	TEMP.	SHEATH
6	6	6	7	6	6	38	1	5

MAY 2021 HERFORD BREEDPLAN

CED	CEM	GL	BW	200d	400d	600d	Mcw	Milk	SS	CWT	EMA	Rib	Rump	RBV	IMF	SELECTION INDEXES			
-0.7	+0.7	-2.7	+3.9	+31	+45	+67	+51	+18	+2.1	+48	+4.6	+1.5	+2	+0.5	+1.2	SSR	NSR	SBMat	NBTerm
39%	28%	58%	69%	67%	67%	69%	61%	51%	74%	57%	47%	53%	57%	50%	53%	\$119	\$108	\$114	\$81

Traits Observed: CE,200WT,400WT,600WT,SS,FAT,EMA,IMF,Genomics

Notes: Quotation Q18 has a powerful pedigree with sires Magistrate & Caulfield up front in his pedigree, maternal brother sold in the 2016 Bowen Bull Sale. A very enticing spread of data including short gestation low birth with excellent fats, IMF & EMA data.

Purchaser: \$

LOT 38	BOWEN MASTERMIND Q56	UNREGISTERED
Born: 30/08/19 Polled		Eye Pigment: 100-100

SHF WONDER M326 ET (P)
 NJW 73S W18 HOMETOWN 10Y (IMP USA)(P)
 NJW P606 72N DAYDREAM 73S (P)
SIRE: BOWEN MASTERMIND M314 (AI) (P)
 DEBARRY EDEN (PP)
 BOWEN RUTH E321 (AI) (P)
 BOWEN RUTH B31 (AI) (P)
 BBSF 3K RANCHMAN 18R (IMP CAN) (P)
 BOWEN COWBOY C245 (AI) (ET) (PP)
 BOWEN ROLLINA N61 (P)
DAM: BOWEN HILDA K9 (P)
 BOWEN ARGYLE A355(AI) (S)
 BOWEN HILDA D179 (P)
 BOWEN HILDA A101(AI)(P)



STRUCTURAL ASSESSMENT								
CLAW SET FRONT	CLAW SET REAR	FRONT FEET ANGLE	REAR FEET ANGLE	REAR LEGS SIDE VIEW	REAR LEGS HINDVIEW	SCROTAL (cm)	TEMP.	SHEATH
6	4	6	6	5	6	39	1	5

SIRE BOWEN MASTERMIND M314- EBVS MAY 2021 HERFORD GROUP BREEDPLAN

CED	CEM	GL	BW	200d	400d	600d	Mcw	Milk	SS	CWT	EMA	Rib	Rump	RBV	IMF	SELECTION INDEXES			
-9.0	+2.7	+0.7	+5.9	+35	+56	+77	+73	+21	+1.3	+46	+4.0	-0.4	-1.5	+1.2	+1.0	SSR	NSR	SBMat	NBTerm
65%	49%	77%	92%	89%	87%	88%	78%	63%	84%	77%	65%	71%	75%	67%	73%	+\$86	+\$60	+\$72	+\$50

Notes: The dam Bowen Hilda K9 was sold PTIC to EMAI with right to purchase back the calf at weaning.

Purchaser: \$

LOT 39 **BOWEN QUENTIN Q152 (S)** **BWNQ152**
 Born: 11/9/19 POLL C-HPc,IEF,HYF,DLF, Eye Pigment: 100-80 Tattoo: Q152

ALLENDALE WATERHOUSE D1 (PP)
 DAYS CALIBRE G74 (PP)
 ALLENDALE DAWN C62 (AI) (P)
SIRE: BOWEN KYOOMA K27 (PP)
 BOWEN ARGYLE A355 (AI) (S)
 BOWEN KATIE D236 (P)
 BOWEN KATIE A336 (P)
 SHF WONDER M326 W18 ET (P)
 NJW 73S W18 HOMETOWN 10Y (IMP USA) (P)
 NJW P606 72N DAYDREAM 73S (P)
DAM: BOWEN MAPLE L130 (AI) (P)
 BOWEN TORNADO Z260 (AI) (ET) (PP)
 BOWEN MAPLE G94 (AI) (P)
 BOWEN MAPLE E90 (AI) (P)

STRUCTURAL ASSESSMENT								
CLAW SET FRONT	CLAW SET REAR	FRONT FEET ANGLE	REAR FEET ANGLE	REAR LEGS SIDE VIEW	REAR LEGS HINDVIEW	SCROTAL (cm)	TEMP.	SHEATH
6	6	6	6	7	6	41	1	4

Notes: Kyooma son with data showing short gestation & low birth weight suitable for heifer joining, he excels in EMA, fats & IMF. His dam Maple L130 is the pick of 2015 born females on Bowen.

MAY 2021 HEREFORD BREEDPLAN

CED	CEM	GL	BW	200d	400d	600d	Mcw	Milk	SS	CWT	EMA	Rib	Rump	RBV	IMF	SELECTION INDEXES			
+1.8	+4.8	-0.8	+3.6	+34	+55	+75	+78	+13	+3.2	+49	+4.1	+1	+1.4	-0.1	+1.4	SSR	NSR	SBMat	NBTerm
43%	35%	60%	69%	68%	68%	70%	61%	56%	75%	59%	51%	56%	60%	53%	58%	\$132	\$123	\$131	\$98

Traits Observed: 200WT,400WT,600WT,SS,FAT,EMA,IMF,Genomics

Purchaser: \$

LOT 40 **BOWEN QUARTER Q037 (S)** **BWNQ037**
 Born: 26/8/19 POLL C-HPc,IEF,HYF,DLF, Eye Pigment: 100-100 Tattoo: Q037

PINE HILL CROSSFIRE C558 (AI) (P)
 YAVENVALE JET FIRE J032 (PP)
 YAVENVALE EMPRESS G320 (P)
SIRE: BOWEN MAGISTRATE M241 (AI) (PP)
 HUNTER LAKES FONZ F15 (AI) (P)
 BOWEN IRISH GIRL J269 (P)
 BOWEN IRISH GIRL A152 (AI) (P)
 MOUNTAIN VALLEY ROCKYNEED B1 (P)
 CASCADE EL DORADO E27 (P)
 CASCADE IRISH MAID A37 (AI) (P)
DAM: BOWEN LADY ALMOND H143 (P)
 BOWEN VALOUR V39 (AI) (P)
 PEAKES LADY ALMOND B4 (P)
 BINBARRA LADY ALMOND W33 (P)

STRUCTURAL ASSESSMENT								
CLAW SET FRONT	CLAW SET REAR	FRONT FEET ANGLE	REAR FEET ANGLE	REAR LEGS SIDE VIEW	REAR LEGS HINDVIEW	SCROTAL (cm)	TEMP.	SHEATH
7	6	5	6	5	6	39	1	5

Notes: This Magistrate son has short gestation, excellent growth for age with high EMA & retail yield data. Pedigree combines some impressive cow families, two maternal brothers have sold in previous Bowen Bull Sales to \$12,000.

MAY 2021 HEREFORD BREEDPLAN

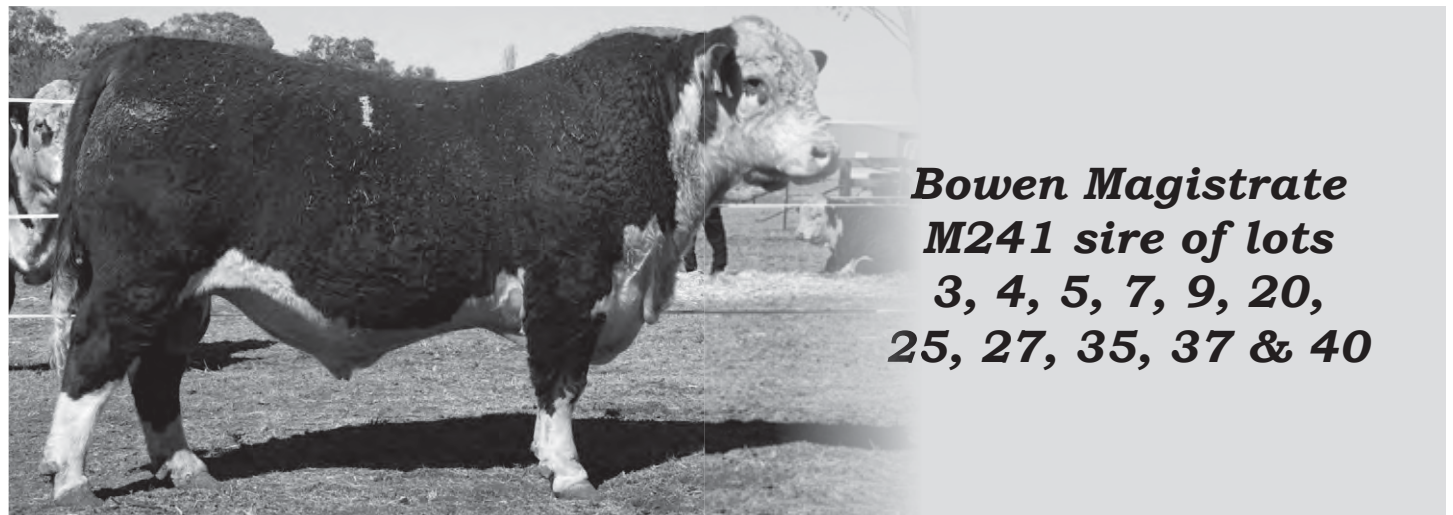
CED	CEM	GL	BW	200d	400d	600d	Mcw	Milk	SS	CWT	EMA	Rib	Rump	RBV	IMF	SELECTION INDEXES			
+1.6	+3	-3.2	+4.4	+38	+55	+80	+75	+16	+1.8	+58	+4.8	-0.7	-1.2	+2.1	+0.4	SSR	NSR	SBMat	NBTerm
41%	31%	60%	67%	65%	66%	68%	59%	50%	74%	57%	48%	52%	56%	50%	53%	\$120	\$110	\$134	\$104

Traits Observed: CE,200WT,400WT,600WT,SS,FAT,EMA,IMF,Genomics

Purchaser: \$

LOT 41 **BOWEN QUESTION A BULL Q16 (PP)** **BWNQ163**
 Born: 13/10/19 POLL C-PcPc,IEF,HYF,DLF, Eye Pigment: 100-100 Tattoo: Q163

WITHDRAWN



**Bowen Magistrate
 M241 sire of lots
 3, 4, 5, 7, 9, 20,
 25, 27, 35, 37 & 40**

LOT 42 **BOWEN QUAKER Q011 (AI) (PP)** **BWNQ011**
 Born: 19/8/19 POLL C-PcPc,IEF,HYF,DLF, Eye Pigment: 100-100 Tattoo: Q011

SIRE: **BOWEN KASPER K217 (AI) (ET) (PP)**
 CAPETHORNE HOT SHOT 03 22 (P)
 MATARIKI HOLY - SMOKE (IMP NZL) (P)
 MATARIKI GIRLIE 00323 (P)
 BOWEN LIDDELL Z128 (AI) (P)
 BOWEN FLORRIE C91 (P)
 BOWEN FLORRIE Y10 (P)
 DAM: **BOWEN HILDA M66 (AI) (P)**
 FELTONS LEGEND 242 (IMP USA) (P)
 MSU TCF REVOLUTION 4R (IMP USA) (PP)
 MSU TCF RACHAEL ET 54N (P)
 BOWEN COWBOY C245 (AI) (ET) (PP)
 BOWEN HILDA G270 (P)
 BOWEN HILDA C323 (P)

STRUCTURAL ASSESSMENT								
CLAW SET FRONT	CLAW SET REAR	FRONT FEET ANGLE	REAR FEET ANGLE	REAR LEGS SIDE VIEW	REAR LEGS HINDVIEW	SCROTAL (cm)	TEMP.	SHEATH
7	6	7	7	7	6	40	1	5

Notes: Solid Kasper son that oozes quality, skin & hair type. He has calving ease genetics in his pedigree that make him suitable for heifers, with excellent IMF & EMA data. Sires Revolution 4R & Holy Smoke were used over heifers at Bowen with great success.

MAY 2021 HEREFORD BREEDPLAN

CED	CEM	GL	BW	200d	400d	600d	Mcw	Milk	SS	CWT	EMA	Rib	Rump	RBV	IMF	SELECTION INDEXES			
-0.6	-0.7	+1.4	+4.5	+34	+55	+78	+75	+14	+2.6	+52	+5.4	+0.7	+0.4	+1	+1	SSR	NSR	SBMat	NBTerm
42%	36%	72%	66%	64%	66%	68%	60%	52%	75%	57%	50%	54%	58%	51%	55%	\$127	\$115	\$121	\$92

Traits Observed: GL,CE,200WT,400WT,600WT,SS,FAT,EMA,IMF,Genomics

Purchaser: \$

LOT 43 **BOWEN QUESTIONNAIRE Q150 (P)** **BWNQ150**
 Born: 29/7/19 POLL C-HPc,IEF,HYF,DLF, Eye Pigment: 100-100 Tattoo: Q150

SIRE: **BOWEN MASTERMIND M314 (AI) (P)**
 SHF WONDER M326 W18 ET (P)
 NJW 73S W18 HOMETOWN 10Y (IMP USA) (P)
 NJW P606 72N DAYDREAM 73S (P)
 DEBARRY EDEN (PP)
 BOWEN RUTH E321 (AI) (P)
 BOWEN RUTH B31 (AI) (P)
 DAM: **BOWEN CHERRY RIPE D34 (AI) (P)**
 BRAXTON GIANT THUNDER S138 (IMP NZL) (P)
 BOWEN TORNADO Z260 (AI) (ET) (PP)
 BOWEN TRICEL P180 (P)
 BRAXTON WESTWIND 120M (IMP NZL) (P)
 BOWEN CHERRY RIPE X174 (AI) (P)
 MOORLANDS CHERRY RIPW N345 (P)

STRUCTURAL ASSESSMENT								
CLAW SET FRONT	CLAW SET REAR	FRONT FEET ANGLE	REAR FEET ANGLE	REAR LEGS SIDE VIEW	REAR LEGS HINDVIEW	SCROTAL (cm)	TEMP.	SHEATH
6	6	6	6	6	6	38	1	5

Notes: Strong Mastermind son out of the famous Cherry Ripe cow family, this is the third son from Cherry Ripe D34 to be offered at a Bowen Bull Sale, maternal brother sold in the 2020 Bowen Bull sale. This fellow has very good carcass yield & moderate birth weight data.

MAY 2021 HEREFORD BREEDPLAN

CED	CEM	GL	BW	200d	400d	600d	Mcw	Milk	SS	CWT	EMA	Rib	Rump	RBV	IMF	SELECTION INDEXES			
-6.1	+1.1	+0.2	+4.4	+31	+50	+60	+50	+19	+0.5	+35	+2.7	-0.2	-1.1	+1.1	+0.6	SSR	NSR	SBMat	NBTerm
44%	36%	61%	69%	68%	67%	70%	61%	53%	75%	60%	51%	56%	60%	53%	57%	\$78	\$60	\$66	\$47

Traits Observed: CE,200WT,400WT,600WT,SS,FAT,EMA,IMF,Genomics

Purchaser: \$

LOT 44 **BOWEN QUANDRY Q133 (P)** **BWNQ133**
 Born: 1/9/19 POLL C-HPc,IEF,HYF,DLF, Eye Pigment: 100-100 Tattoo: Q133

WITHDRAWN



LOT 45 **BOWEN QUINN Q90 (PP)** **BWNQ090**
 Born: 4/8/19 POLL C-PcPf,IEF,HYF,DLF, Eye Pigment: 100-100 Tattoo: Q090

NJW 73S M326 TRUST 100W ET (IMP USA) (ET) (P)
 NJW 78P TWENTYTWELVE 190Z (IMP CAN) (AI) (ET) (P)
 NJW BW LADYSPORT DEW 78P ET (P)
SIRE: BOWEN MACKLEN M91 (AI) (PP)
 BOWEN ESPLANADE E332 (AI) (PP)
 BOWEN MARLINE H194 (AI) (P)
 BOWEN MARLINE E109 (P)
 FELTONS LEGEND 242 (IMP USA) (P)
 MSU TCF REVOLUTION 4R (IMP USA) (PP)
 MSU TCF RACHAEL ET 54N (P)
DAM: BOWEN KATIE L224 (AI) (P)
 BOWEN ARGYLE A355 (AI) (S)
 BOWEN KATIE D236 (P)
 BOWEN KATIE A336 (P)

STRUCTURAL ASSESSMENT								
CLAW SET FRONT	CLAW SET REAR	FRONT FEET ANGLE	REAR FEET ANGLE	REAR LEGS SIDE VIEW	REAR LEGS HINDVIEW	SCROTAL (cm)	TEMP.	SHEATH
6	6	6	6	6	6	41	1	4

Notes: Quinn has been had an eye catching profile since birth, pedigree includes some excellent females including grand donor dam Katie D236 mother of or top price Poll Hereford bull at the 2020 Bowen sale Porter P259 selling for \$16,000 to Eathorpe Poll Hereford Stud. Data shows outstanding EMA, IMF with low birth weight.

MAY 2021 HEREFORD BREEDPLAN

CED	CEM	GL	BW	200d	400d	600d	Mcw	Milk	SS	CWT	EMA	Rib	Rump	RBV	IMF	SELECTION INDEXES			
+2.2	+4.6	-0.4	+3.4	+33	+56	+78	+67	+13	+1.8	+51	+5	+0.6	+0.3	+1.1	+1.3	SSR	NSR	SBMat	NBTerm
36%	30%	60%	64%	63%	64%	67%	58%	49%	74%	55%	47%	52%	56%	49%	52%	\$148	\$138	\$150	\$109

Traits Observed: CE,200WT,400WT,600WT,SS,FAT,EMA,IMF,Genomics

Purchaser: \$

LOT 46 **BOWEN QUILL Q110 (S)** **BWNQ110**
 Born: 24/8/19 POLL C-HPc,IEF,HYF,DLF, Eye Pigment: 95-100 Tattoo: Q110

ALLENDALE WATERHOUSE D1 (PP)
 DAYS CALIBRE G74 (PP)
 ALLENDALE DAWN C62 (AI) (P)
SIRE: BOWEN KYOOMA K27 (PP)
 BOWEN ARGYLE A355 (AI) (S)
 BOWEN KATIE D236 (P)
 BOWEN KATIE A336 (P)
 SKY 236G PREMIER 132K (P)
 OTAPAWA SKYMATE 2046 (IMP NZL) (ET) (P)
 OTAPAWA LEONORA P23 (IMP NZL) (P)
DAM: BOWEN FLORRIE J272 (AI) (ET) (P)
 KENYA KIDMAN (P)
 BOWEN FANCY X57 (AI) (P)
 BOWEN FANCY U2791 (AI) (P)

STRUCTURAL ASSESSMENT								
CLAW SET FRONT	CLAW SET REAR	FRONT FEET ANGLE	REAR FEET ANGLE	REAR LEGS SIDE VIEW	REAR LEGS HINDVIEW	SCROTAL (cm)	TEMP.	SHEATH
6	4	5	6	7	6	41	1	4

Notes: Strong free striding Kyooma son featuring the two donor cows Fancy X57 & Katie D236. Excellent carcass data & IMF rated at the top end of the breed.

MAY 2021 HEREFORD BREEDPLAN

CED	CEM	GL	BW	200d	400d	600d	Mcw	Milk	SS	CWT	EMA	Rib	Rump	RBV	IMF	SELECTION INDEXES			
-7.8	+2.1	-1.2	+7.9	+38	+61	+85	+94	+12	+2.6	+49	+3.9	+1.1	+1.4	-0.2	+1.4	SSR	NSR	SBMat	NBTerm
44%	37%	59%	69%	68%	68%	69%	62%	58%	65%	60%	50%	56%	60%	52%	58%	\$108	\$90	\$86	\$61

Traits Observed: CE,400WT,600WT,SS,FAT,EMA,IMF,Genomics

Purchaser: \$

LOT 47 **BOWEN QUART Q015 (AI) (PP)** **BWNQ015**
 Born: 16/8/19 POLL C-PcPf,IEF,HYF,DLF, Eye Pigment: 100-100 Tattoo: Q015

ALLENDALE YACKA (AI) (P)
 ALLENDALE ANZAC E114 (PP)
 ALLENDALE DAWN B22 (AI) (ET) (P)
SIRE: INJEMIRA ANZAC H006 (PP)
 PINE HILL ERIK Y601 (AI) (S)
 INJEMIRA MARINDA B028 (AI) (P)
 INJEMIRA MARINDA Y065 (H)
 PINE HILL CROSSFIRE C558 (AI) (P)
 YAVENVALE JET FIRE J032 (PP)
 YAVENVALE EMPRESS G320 (P)
DAM: BOWEN LARGESS M101 (P)
 BOWEN URALBA U160 (P)
 PEAKES LARGESS A95 (P)
 KAYNE LARGESS X242 (P)

STRUCTURAL ASSESSMENT								
CLAW SET FRONT	CLAW SET REAR	FRONT FEET ANGLE	REAR FEET ANGLE	REAR LEGS SIDE VIEW	REAR LEGS HINDVIEW	SCROTAL (cm)	TEMP.	SHEATH
6	6	6	6	6	7	40	1	5

Notes: Quart has high growth potential & will develop into a striking sire. Pedigree combines the calving ease sires Uralba U160 & Jetfire J032. Data is low birth, short gestation, with excellent milk, weights, EMA & Indexes.

MAY 2021 HEREFORD BREEDPLAN

CED	CEM	GL	BW	200d	400d	600d	Mcw	Milk	SS	CWT	EMA	Rib	Rump	RBV	IMF	SELECTION INDEXES			
+1.8	+3.3	-1.3	+3.4	+35	+65	+91	+85	+22	+2.7	+65	+4.8	+0.2	0	+2.1	-0.2	SSR	NSR	SBMat	NBTerm
47%	40%	72%	68%	67%	67%	69%	62%	58%	76%	59%	51%	56%	60%	53%	58%	\$145	\$133	\$154	\$115

Traits Observed: GL,CE,200WT,400WT,600WT,SS,FAT,EMA,IMF,Genomics

Purchaser: \$

LOT 48	BOWEN QUADRUPLE Q120 (S)	BWNQ120
Born: 12/9/19 POLL C-PcPc,IEF,HYF,DLF, Eye Pigment: 100-100 Tattoo: Q120		

ALLENDALE WATERHOUSE D1 (PP)
 DAYS CALIBRE G74 (PP)
 ALLENDALE DAWN C62 (AI) (P)
SIRE: BOWEN KYOOMA K27 (PP)
 BOWEN ARGYLE A355 (AI) (S)
 BOWEN KATIE D236 (P)
 BOWEN KATIE A336 (P)
 BRAYBOOK CHEROKEE C200 (AI) (P)
 BOWEN FRONTIER F314 (P)
 BOWEN HILDA W188 (P)
DAM: BOWEN IRISH GIRL J259 (P)
 DEBARRY HIGHLANDER 2 (AI) (S)
 PEAKES IRISH GIRL A346 (AI) (P)
 CAS IRISH GIRL S89 (AI) (P)

STRUCTURAL ASSESSMENT								
CLAW SET FRONT	CLAW SET REAR	FRONT FEET ANGLE	REAR FEET ANGLE	REAR LEGS SIDE VIEW	REAR LEGS HINDVIEW	SCROTAL (cm)	TEMP.	SHEATH
6	6	6	6	6	6	38	1	5

Notes: Upstanding Kyooma son long free striding with impressive data for weight, EMA & IMF with shorter gestation. Maternal brother sold in the 2018 Bowen Bull sale.

MAY 2021 HEREFORD BREEDPLAN

CED	CEM	GL	BW	200d	400d	600d	Mcw	Milk	SS	CWT	EMA	Rib	Rump	RBY	IMF	SELECTION INDEXES			
																SSR	NSR	SBMat	NBTerm
-4.1	+1.5	-2.6	+7.2	+41	+62	+90	+107	+6	+0.8	+55	+4.4	+0.7	+1.3	+0.7	+0.6	\$117	\$109	\$109	\$84
42%	34%	56%	70%	69%	69%	71%	62%	58%	75%	60%	50%	56%	61%	53%	58%				

Traits Observed: 200WT,400WT,600WT,SS,FAT,EMA,IMF,Genomics

Purchaser: \$

LOT 49	BOWEN QUAILIFICATION Q129 (PP)	BWNQ129
Born: 5/8/19 POLL C-PcPc,IEF,HYF,DLF, Eye Pigment: 99-95 Tattoo: Q129		

ALLENDALE WATERHOUSE D1 (PP)
 DAYS CALIBRE G74 (PP)
 ALLENDALE DAWN C62 (AI) (P)
SIRE: BOWEN KYOOMA K27 (PP)
 BOWEN ARGYLE A355 (AI) (S)
 BOWEN KATIE D236 (P)
 BOWEN KATIE A336 (P)
 GRASSMERE SPARK 330 (P)
 GRASSMERE SPARK 555 (IMP NZL) (PP)
 GRASSMERE PRINCESS 245 (P)
DAM: BOWEN IRISH ROSE H260 (AI) (ET) (P)
 SEVENBARDOT HUMMEL Q60 (P)
 MERAWAH IRISH ROSE X147 (P)
 MERAWAH IRISH ROSE N20 (P)

STRUCTURAL ASSESSMENT								
CLAW SET FRONT	CLAW SET REAR	FRONT FEET ANGLE	REAR FEET ANGLE	REAR LEGS SIDE VIEW	REAR LEGS HINDVIEW	SCROTAL (cm)	TEMP.	SHEATH
6	6	6	6	7	6	40	1	4

Notes: This free moving sire has a pedigree filled with brilliant cow families, he is a typical Kyooma son exhibiting outstanding growth & carcass data rated at the top end of the breed for weight, EMA, fats, IMF & index EBVs.

MAY 2021 HEREFORD BREEDPLAN

CED	CEM	GL	BW	200d	400d	600d	Mcw	Milk	SS	CWT	EMA	Rib	Rump	RBY	IMF	SELECTION INDEXES			
																SSR	NSR	SBMat	NBTerm
+1.5	+5.8	-0.4	+7.9	+38	+68	+103	+111	+8	+2.3	+60	+5.4	+2.1	+2.9	0	+2.1	\$175	\$164	\$174	\$128
45%	37%	58%	69%	68%	68%	69%	62%	58%	74%	60%	51%	56%	60%	53%	58%				

Traits Observed: CE,200WT,400WT,600WT,SS,FAT,EMA,IMF,Genomics

Purchaser: \$



Bowen Kyooma K27 sire of lots 11, 14, 15, 18, 32, 39, 46, 48, 49 & 50

LOT 50	BOWEN QUAIL Q114 (PP)	BWNQ114
Born: 5/9/19 POLL C-PcPc,IEF,HYF,DLF		Eye Pigment: 100-100 Tattoo: Q114

ALLENDALE WATERHOUSE D1 (PP)
 DAYS CALIBRE G74 (PP)
 ALLENDALE DAWN C62 (AI) (P)
SIRE: BOWEN KYOOMA K27 (PP)
 BOWEN ARGYLE A355 (AI) (S)
 BOWEN KATIE D236 (P)
 BOWEN KATIE A336 (P)
 MAUNGAHINA KINGDOM BAY 070073 (IMP NZL) (P)
 BOWEN FORT WORTH F44 (AI) (P)
 BOWEN TRICEL B100 (P)
DAM: BOWEN ADVANCE K246 (P)
 BOWEN MR BEAN B18 (AI) (P)
 BOWEN ADVANCE G147 (AI) (P)
 BOWEN ADVANCE D202 (P)

STRUCTURAL ASSESSMENT								
CLAW SET FRONT	CLAW SET REAR	FRONT FEET ANGLE	REAR FEET ANGLE	REAR LEGS SIDE VIEW	REAR LEGS HINDVIEW	SCROTAL (cm)	TEMP.	SHEATH
6	6	6	6	7	6	40	1	4

Notes: Quail is a high growth son of Kyooma & will develop into a powerful sire. The Kyooma sons excel in structural soundness & carcass data, maternal brother sold in the 2020 Bowen Bull sale. His data at the top end of the breed for EMA, fats & IMF.

MAY 2021 HEREFORD BREEDPLAN

CED	CEM	GL	BW	200d	400d	600d	Mcw	Milk	SS	CWT	EMA	Rib	Rump	RBV	IMF	SELECTION INDEXES			
-4.3	+2.2	-1	+5.5	+35	+58	+82	+83	+9	+2.6	+53	+5.1	+1.5	+2.1	+0.5	+1.3	SSR	NSR	SBMat	NBTerm
41%	33%	58%	71%	69%	69%	71%	62%	58%	77%	60%	51%	57%	61%	53%	59%	\$134	\$126	\$116	\$81

Traits Observed: 200WT,400WT,600WT,SS,FAT,EMA,IMF,Genomics

Purchaser: \$

LOT 51	BOWEN MASTERMIND Q50	UNREGISTERED
Born: 14/08/19 Polled		Eye Pigment: 100-100

SHF WONDER M326 ET (P)
 NJW 73S W18 HOMETOWN 10Y (IMP USA)(P)
 NJW P606 72N DAYDREAM 73S (P)
SIRE: BOWEN MASTERMIND M314 (AI) (P)
 DEBARRY EDEN (PP)
 BOWEN RUTH E321 (AI) (P)
 BOWEN RUTH B31 (AI) (P)
 ALLENDALE NATIONAL W168 (PP)
 BOWEN DIAMANTINA D203 (AI) (PP)
 BOWEN MATCHLESS Z152(AI) (P)
DAM: BOWEN IRISH GIRL H61 (P)
 PEAKES STATESMAN Y28 (P)
 PEAKES IRISH GIRL C200 (AI) (P)
 PEAKES IRISH GIRL A122(P)

STRUCTURAL ASSESSMENT								
CLAW SET FRONT	CLAW SET REAR	FRONT FEET ANGLE	REAR FEET ANGLE	REAR LEGS SIDE VIEW	REAR LEGS HINDVIEW	SCROTAL (cm)	TEMP.	SHEATH
6	5	6	6	6	7	39	1	4

Notes: The dam Bowen Irish Girl H61 was sold PTIC to EMAI with right to purchase back the calf at weaning.

SIRE BOWEN MASTERMIND M314- EBVS MAY 2021 HEREFORD GROUP BREEDPLAN

CED	CEM	GL	BW	200d	400d	600d	Mcw	Milk	SS	CWT	EMA	Rib	Rump	RBV	IMF	SELECTION INDEXES			
-9.0	+2.7	+0.7	+5.9	+35	+56	+77	+73	+21	+1.3	+46	+4.0	-0.4	-1.5	+1.2	+1.0	SSR	NSR	SBMat	NBTerm
65%	49%	77%	92%	89%	87%	88%	78%	63%	84%	77%	65%	71%	75%	67%	73%	+\$86	+\$60	+\$72	+\$50

Purchaser: \$

BOWEN PICK OF THE DROP FEMALE SALE

On property @ 'BOWEN' Barraba, NSW.

Pick of the 'R' 2020 born females
all 2020 females will be offered at the sale.

BOWEN PASTORAL
Poll Hereford & Angus

24th March
2022